

# Thousands of acres could be left out of CRP

By RICK WHITE  
Managing Editor

Bailey County farmers bid in almost twice the allotted amount of land during the 26-day Conservation Reserve Program sign-up period that ended March 28.

A total of 141,829 acres in Bailey County were bid into the 11-year-old federal program that pays farmers to idle crop land, according to the Farm Service Agency.

The average bid was between \$35-38, which included a \$5 management fee.

A total of 637 acres bid. Under CRP rules, the most Bailey County can get accepted into the program is 91,006 acres, or 25 percent of the total registered crop land, unless a waiver.

The U.S. Department of Agriculture is expected to announce in June which land has been accepted in to the program.

Some FSA officials were caught off guard by the high numbers.

"I blame that predominantly on the drought we're in," said Bailey County FSA executive director Kim Hanlin. "If it was feasible to plant the land and make a profit, they wouldn't be bidding it into CRP."

The 10-year contracts of all 95,222 acres in Bailey County

"If it was feasible to plant the land and make a profit, they wouldn't be bidding it into CRP."

— County FSA executive director Kim Hanlin on the amount of acres bid into CRP

that are currently enrolled in CRP will expire Sept. 30.

Ninety-five percent of that land was rebid.

CRP contracts in Texas covering 2.5 million acres and nationally covering 22 million expire Sept. 30.

About 32.9 million acres are now enrolled in 10-year contracts around the country.

Under the new rules, equal weight will be given to erosion, water quality and wildlife habitat in determining which of the estimated 240 million eligible acres nationally will be accepted into CRP.

Soil erosion is the only area in which West Texas will rate high.

In order to be eligible, land had to have an erodibility factor of at least 8. The average for Bailey County was 13 according to the Soil Conservation

Continued on page 3



JOURNAL PHOTO BY RICK WHITE

Mirage Thursday's rain created a huge puddle in the parking lot next to the Texaco Mini Mart on American Boulevard. The picture was taken in the early morning hours Friday.

# Gentle rain soaks area

By SAMUEL VILLARREAL  
Journal Staff Writer

Long, steady rains Wednesday night and Thursday turned many Muleshoe curbs and intersections into an array of streams and ponds.

Muleshoe received 1.27 inches of rain over a 36-hour period, according to local National Weather Service agent R.G. Bennett, almost tripling it's year to date total of precipitation. The steady rain that fell throughout the day filled the streets with an overflow of rainwater.

Muleshoe's total precipitation for the

year stands at 1.93 inches. The average total for this time of year is 1.64 inches.

Justin Weaver, a meteorologist with the National Weather Service in Lubbock, said the area rains were due to an upper level storm system that moved in from Arizona in combination with a cold front passing over the area.

Many areas in the Panhandle and South Plains received around two inches of rain from Wednesday and Thursday.

The Clarendon area was reported to have received more than 10 inches of rain; 7 inches of which fell in a span of

two hours. The heavy rains caused flash flooding along segments of U.S. Highway 287, stalling several vehicles.

Most area farmers agree Thursday's rains couldn't have come at a better time.

"It was a good, timely rain," said Bula Gin manager Charles Heffington. "We'll need a couple more inches before we plant, but we can go with less if it comes at the right time."

The Bula Coop Gin received one and two-tenths inches of rain Thursday.

Heffington said the majority of farm-

Continued on page 3

# Mules rout Dimmitt behind Kemp's no-hitter

By RICK WHITE  
Managing Editor

There was no fist pumping or jumps of joy after Layne Kemp tossed a five-inning no-hitter Tuesday at Dimmitt.

He just smiled.

It's about as close to showing an emotion as the Muleshoe High School junior gets.

Kemp (3-4) allowed just four base runners and got plenty of offensive support from his teammates as Muleshoe hammered Dimmitt in a 14-0 District 1-3A game called after five innings because of the 10-run mercy rule.

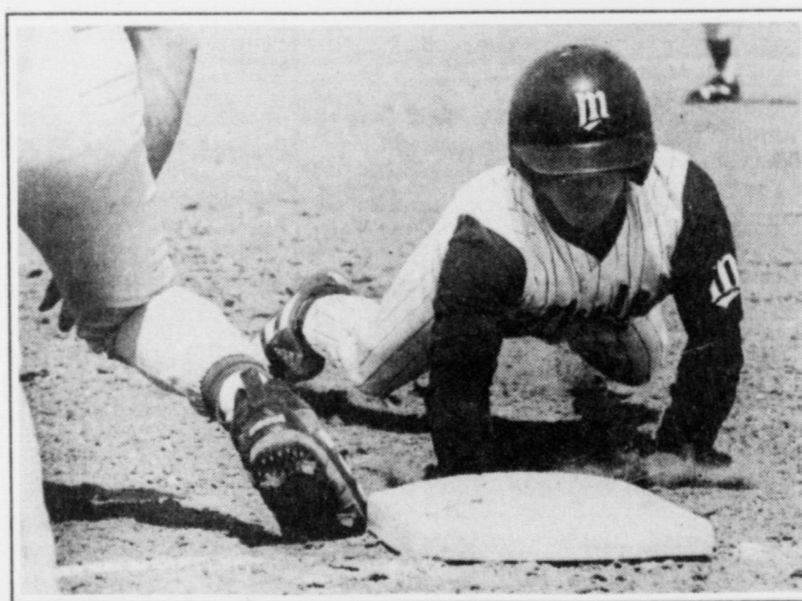
Muleshoe coach Brad Hill was excited about the no-hitter and hustled out to the mound to congratulate his staff ace after the final out.

"I said, 'Hey, Layne! You know you threw a no-hitter! He just looked at me and said, 'Yes, sir.' He just had a smile on his face. He's real calm and mild-mannered."

He had his coach fooled. "I was pretty nervous, I just tried not to show it," said Kemp, who struck out 10 and walked two.

Muleshoe (7-7) broke

Continued on page 4



Back!

Muleshoe's Johnny Flores dives back into first during a game against Sanford-Fritch last Saturday. The Mules game versus Perryton scheduled for this Saturday in Amarillo was moved to Monday because of the weather.

# Local spotters play key role for NWS

By SAMUEL VILLARREAL  
Journal Staff Writer

A group of 50 law enforcement officers and volunteer firefighters from the Muleshoe area attended a tornado spotting seminar Wednesday, where they learned to identify severe weather.

The National Weather Service held a training seminar Wednesday at the Earl M. Ladd Fire Station to help local spotters identify severe weather before it happens.

NWS meteorologist Jody James, who conducted the seminar, said local spotters may be

more important this year than years past.

"Last year was a weak year (for severe weather)," James said. "This year looks like it will be at or above average."

James said the recent outbreaks of storms in the Panhandle and South Plains areas will probably be a common sight this year.

Storms capable of producing severe weather or tornadoes often produce clouds with several distinctive features, according to James. Spotters are trained to recognize these features to

Continued on page 3

# Council dumps trash proposals

By RICK WHITE  
Managing Editor

The Muleshoe City Council Wednesday rejected proposals from two private contractors to take over the city's solid waste disposal.

The Council unanimously rejected proposals from Browning Ferris Industries (BFI) of Amarillo and South Plains Waste Services of Olton.

The city will re-open bidding in hopes of attracting additional proposals.

Browning Ferris is an acknowledged international leader in the solid waste industry while South Plains is a small, relatively new company.

Muleshoe City Manager James Fisher said the two proposals were from opposite ends of the spectrum, making them hard to compare.

"We really need to explore all the options available," said Fisher, adding that he has received calls from two or three other firms inquiring about the contract.

"We need to find someone that will be our partner in solv-

## CITY COUNCIL

ing all our sanitation issues. Waste management is more than just picking up the trash and hauling it to the landfill."

The switch to a private contractor to handle the city's waste disposal would be permanent, Fisher said.

The current budget for waste disposal is \$249,276 a year.

Under new state guidelines, the city must close its Type I landfill by October. The landfill will be full before then, Fisher said.

BFI's bid of \$14.95 a month for substantially higher than in other communities, according to Fisher.

Fisher said the BFI's residential fees in other communities are in the \$10-12 range and include both Type I (perishable) and Type IV (bulk items) service.

The bid submitted to Muleshoe was for Type I service only.

Continued on page 2

A friendly reminder



DAYLIGHT-SAVING TIME  
BEGINS APRIL 6TH

Clocks should be advanced ahead one hour at 2 a.m. Sunday for daylight-saving time.



AROUND MULESHOE

### High Plains boll weevil program April 8

The Plains Cotton Growers Association will hold a meeting at 7:30 April 8 in the Bailey County Coliseum to discuss the future of the High Plains Boll Weevil Eradication Program. The meeting will be directed by Parmer County Extension Agent and Boll Weevil Steering Committee member Mark Williams.

### Soup and Sandwich luncheon April 10

The Soup & Sandwich luncheon will be held April 10 from 12 - 1 p.m. at the fellowship hall of the 16th and D Church of Christ. This month's menu will feature skillet-burgers and homemade pie.

The program for April is entitled "Sing His Praises" and will feature local singing talents Melanie Gruhlkey, Jay & Sally Messenger, Jack Stone and Curtis Shelburne.

### First Assembly reaches attendance goal

Jack Stone, pastor of the First Assembly of God Church in Muleshoe, recently challenged his church to reach an attendance of 150, stating he would not shave until the church reached that goal.

On March 2, the congregation not only reached their goal of 150, but they exceeded it by making Stone shave on the podium.



Rev. Jack Stone

### Calvary Baptist hosting Drewitt singers

Calvary Baptist Church will host The Tommy Drewitt Family April 7 at 7 p.m. The Drewitt Family hails from Louisiana and specializes in Southern Gospel music.

There will be no admission charge. A love offering will be taken. For more information, call 272-4012.

### Area students named to SPC's Dean's list

Several Muleshoe area students were named to the combined President and Dean's Honor lists at South Plains College for the fall 1996 semester.

Students named to the President's Honor List include Jason Barrett of Muleshoe. Students named to the Dean's Honor List were Tiffany Copley, Jeremy Freeman and Demetrio Martinez of Muleshoe and Torrey Roberts of Eochs.

### Shain honored at Hi-Plains Gem show

Izetta Shain of Muleshoe was named grand prize winner at the 1997 Hi-Plains Gem and Mineral Show. Shain received a Cathedral amethyst for her display of gems.

### Prevent Blindness selling golf cards

Prevent Blindness Lubbock is currently selling cards for its Golf Fore Sight Program. The cards, which cost \$30, enable the holder to play one free round of golf at each of the 34 participating courses in the South Plains.

Courses included are Abernathy Country Club, Brownfield CC, Bull's-eye Driving Range (Lubbock), Caprock Post Golf Course, Clarendon CC, Elm Grove Golf Club (Lubbock), Floydada CC, Friona CC, Huber Golf Course (Borger), Island Oaks Golf Club (Idalou), Lamesa CC, Levelland CC, Littlefield CC, Lorenzo CC, Meadowbrook Municipal Golf Course (Lubbock), Morton CC, Muleshoe CC, Olton CC, Palo Duro Creek Golf Club (Canyon), Panhandle CC, Pine Valley Golf Course (Lubbock), Plains Fairway Public Golf Course (Lamesa), Plainview CC, Shadow Hills Golf Course (Lubbock), Slaton Golf Course, Spur Golf Course, Sundown Municipal Golf Course, T-Bar Country Club (Tahoka) Tule Lake Golf Club (Tulia) and Yoakum County Golf Course.

Several New Mexico courses are part of the program, including Lovington CC, The Links at Sierra Blanca (Ruidoso), The Lodge at Cloudcroft and Timberon Golf Course.

For more information, contact the Prevent Blindness Office at (806) 797-6701.

### LOCAL WEATHER AT A GLANCE

	HIGH	LOW	PRECIP
3/25	64	34	Since 4/3
3/26	77	45	1.27 in.
3/27	74	43	Year to date
3/28	56	46	1.98 in.

Source: R.G. Bennett, Observer - National Weather Service

### Extended Forecast

Skies will be clear all weekend. Last week's rains will be replaced by high winds, but the weather should become fair by Tuesday. Highs for the weekend will be in the 60's, with lows in the upper 40's.

### REAL ESTATE AUCTION 2 FARMS

Tuesday, April 15, 1997  
10:30 a.m.

### AUCTION ON LOCATION

LOCATION: Farm #1, From Hwy 214 and 54 Intersection in Enochs, Texas, go 3 miles East on Hwy 54 to South East Corner, 170 Acres, 6 small wells, some have pumps, all in CRP, 1/8 Minerals.

LOCATION: Farm #2 from Hwy 214 and 54 Intersection in Enochs, Texas, go 2 miles East on Hwy 54 then 1/2 mile North to Southwest Corner, approx. 176 Acres, 73 Acres in CRP, Stock Water, 1/4 Minerals.

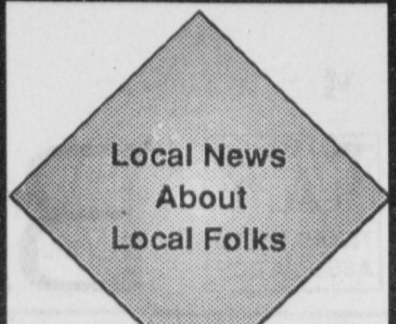
TERMS: 20% down, close in 30 days, will furnish title policy.

NOTE: The owner reserves the rights to accept or reject the Final Bid.

### Floyd Nesbitt Auctioneers

107 Ave. St., Levelland, TX  
(806) 894-7814 or (806) 266-5408

Announcements made by the Auctioneer Sale Day take precedence over any printed or oral statement. TX56605



## Muleshoe Journal

To Subscribe, call 272-4536

### Rheata White Studio & Gallery

228 Main, Muleshoe

FLORAL DESIGN - One Day Classes  
Saturday, April 12, 10 a.m. - 2 p.m.  
Saturday, April 19, 10 a.m. - 2 p.m.  
DRAWING & WATER COLOR  
Tuesdays: April 15 & 22 & 29th  
Mornings 10 a.m. - 12 p.m.  
Nights 6:30 p.m. - 8:30 p.m.

Reservations Must Be Made 272-3889 272-4696-before 6:00

Collector Nanny Bears, Paintings, Silks, Prints, Art Objects, Shards, Shard Boxes, DanNanny, Decorative Pieces, Graduation Ideas, Collectables

### Bailey County Journal USPS 040-200

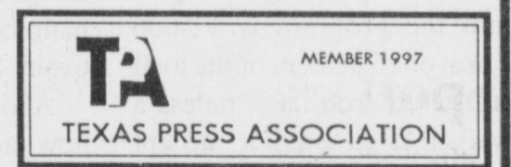
Established March 31, 1963. Published by Triple S Publishing, Inc. Every Sunday at 304 W. Second, Box 449, Muleshoe, TX 79347.

Second Class Postage paid at Muleshoe, TX. POSTMASTER: Send address changes to the Bailey County Journal, P.O. Box 449, Muleshoe, TX 79347.

We are qualified members of: Panhandle Press Association, National Newspaper Association, West Texas Press Association and Texas Press Association

WEST TEXAS PRESS ASSOCIATION

PPA Panhandle Press Association



Scot Stinnett, Publisher  
Lisa Stinnett, Vice-President/Comptroller  
Rick White, Editor  
Jessica Orozco, Classifieds  
Pat Durben, Advertising

© 1990



SUBSCRIPTIONS: Muleshoe Journal and Bailey County Journal By Carrier Yearly - \$22.00  
Bailey and surrounding counties: by mail - \$24.00  
Elsewhere - \$26.00  
Advertising Rate Cards on Application  
\*Advertisers should check their ad the first day of insertion. The Journals will not be liable for failure to publish an ad or for a typographical error or errors in publications except to the extent of the cost of the ad for the first day of insertion. Adjustment for errors will be limited to the cost of that portion of the ad where the error occurred.\*

## Council

Continued from page 1

The city currently charges \$12.50.

BFI's commercial rates were substantially higher than the current rates.

The city's commercial rates range from \$14-32, compared to \$39.03 for once-a-week pickup and \$108.59 for three times a week for Browning Ferris.

South Plains rates were considerably lower than BFI's for both residential (\$8.40 or 9.40) and commercial \$26 and \$46).

If South Plains was granted the contract, it would have

double the size of the four-year-old company.

"We talked to some of the South Plains' customers, and they were very happy with their service and talked favorably of them," Fisher said.

Still, Fisher said he wasn't convinced going with South Plains was the right choice.

"Call it a gut feeling," Fisher said.

All contract proposals were for five years with the city receiving a 5% franchising fee.



Air masses travel about 750 miles per day (slower in summer, faster in winter).

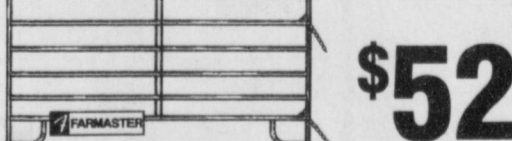
## Payless Cashways

### PANELS & GATES



52"x16' Stock Panel  
4-gauge steel. All galvanized, welded steel. (442226) **12.49**

52"x16' Combo Panel (159222) ..... **16.49**



12' Utility Corral Panel  
Diamond-Kote graphite gray finish lasts for years. With chain connectors. (472447) **\$52**

12' Entrance Panel With Gate (479405) ..... **\$95**



10' Utility Tube Gate  
50" high. Includes chain latch, adjustable hinges and lag bolts. (470024) **\$46**

12' (471423) ..... **\$49** 14' (471458) ..... **\$58**

16' (472203) ..... **\$65**



52"x10' Steel Panel Gate  
Hardened 24-gauge galvanized spring steel. With chain latch, hinges and lag bolts. (159387) **\$39**

52"x12' (159395) ... **\$43** 52"x16' (159415) ... **\$57**

52"x14' (159407) ... **\$48**

## YOUR FARM & RANCH SAVINGS SOURCE!

PRICES GOOD THRU 4/12/97

### WIRE FENCE



48"x100' Non-Climb Horse Fence  
12-gauge galvanized wire. Stiff stay knots are smooth on both sides to prevent injury to animals. (159143) **\$79**

60"x100' (159151) ..... **\$95**

72"x100' (159178) ..... **\$119**



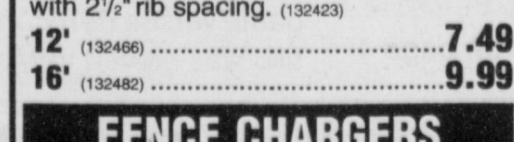
32"x330' Hinge Joint Field Fence  
14-gauge galvanized wire. (159021) **\$58**

39"x330' (959818) ..... **\$74**

47"x330' (959893) ..... **\$84**

39"x330' High tensile (340225) **\$67**

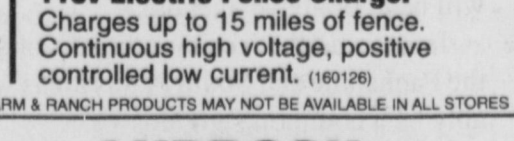
39"x330' High tensile (316852) **\$75**



8' Corrugated Steel  
Light gauge galvanized steel with 2 1/2" rib spacing. (132423) **5.49**

12' (132466) ..... **7.49**

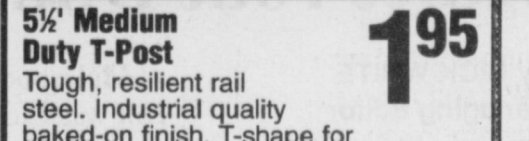
16' (132482) ..... **9.99**



110v Electric Fence Charger  
Charges up to 15 miles of fence. Continuous high voltage, positive controlled low current. (160126) **\$49**

SOME FARM & RANCH PRODUCTS MAY NOT BE AVAILABLE IN ALL STORES

### T-POSTS



5 1/2" Medium Duty T-Post  
Tough, resilient rail steel. Industrial quality baked-on finish. T-shape for added strength. #125 (159876) **1.95**

6" (159884) ..... **2.05**

6 1/2" (159892) ..... **2.25**



72-Gallon Steel Stock Tank  
Heavy galvanized steel side walls and extra heavy galvanized tank bottoms. (160946) **\$47**

100-Gallon (160954) **\$54** 150-Gallon (160962) **\$74**



100-Gallon Poly Stock Tank  
Contains UV inhibitors to prevent deterioration from sunlight. (642647) **\$59**

150-Gallon (642698) ..... **\$84**



2-Point High-Tensile Barbed Wire Galvanized wire with 5" spacing between barbs. 80-rod roll. 15 1/2 gauge. (852522) **20.75**

2-Point 12-gauge (158686) **25.75**

Cable Twist Wire  
12-gauge barbless cable. Galvanized Made in the USA. 80-rod roll. (473787) **28.75**

## FISH

Now is the time for Pond and Lake Stocking of Hybrid Bluegill, Florida Hybrid Bass, Channel Catfish, Fathead Minnows, Triploid Grass Carp and Black Crappie.  
Permit Required For Triploid Grass Carp.

The Hybrid Bluegill can REACH the weight of 2 1/2 to 3 lbs.  
We furnish your hauling containers. We guarantee live delivery.  
Supplies - Spawning Mats - Turtle Traps, Fish Traps, Liquid Fertilizer, Pond and Lake Surveys and Gift Certificates

**Deliver will be Thursday, Thursday, April 17 at the times listed for the following towns and locations.**

CANYON - Consumers Fuel Assoc. 655-2134	7:30-8:30 am
HEREFORD - Country Store 364-6442	9:30-10:30 am
FRIONA - Hi-Pro Animal Health 800-433-2950	11:00-12:00 pm
MULESHOE - Wiedebush & Co. 272-4281	1:00-2:00 pm
SUDAN - Farmers Coop Sudan 227-2461	2:30-3:30 pm

**To Place Your Order Call: 405-777-2202 • Toll Free 1-800-433-2950**  
Fax 405-777-2899 — Or Contact Your Local Feed Dealer

Fishery consultant available.  
DISCOUNTS AND FREE DELIVERY ARE AVAILABLE ON LARGER ORDERS.

**DUNN'S FISH FARMS, INC.**  
P.O. Box 85 Fittstown, OK 74842

### Heart Attack Warning Signals

American Heart Association  
Fighting Heart Disease and Stroke

- Uncomfortable pressure, fullness, squeezing or pain in the center of chest lasting more than a few minutes
- Pain spreading to the shoulders, neck or arms
- Chest discomfort with lightheadedness, fainting, sweating, nausea or shortness of breath

(If any of these signs occur GET HELP FAST.)

©1996, American Heart Association

**LUBBOCK**  
5921 34th STREET  
W. 34th St. & Loop 289  
793-7451 164

**LUBBOCK**  
102 E. 50th STREET  
50th & Ave. A  
763-4346 46

**AMARILLO**  
5200 SOUTH WESTERN STREET  
(806) 359-8501 196  
(806) 359-5451 COMMERCIAL PHONE



## MISD seeking nominations for Teacher of the Year

The Muleshoe Independent School District will present its sixth annual Teacher of the Year Awards during the general faculty meeting May 29 in the Muleshoe High School auditorium.

An award will be given for both elementary and secondary teachers. The teachers selected will receive a golden apple and a check for \$250, underwritten by Muleshoe State Bank and First Bank of Muleshoe. They will also advance to the regional competition in Lubbock.

Written nominations will be accepted through 4 p.m. May 1, and can be submitted by any MISD employee, student, parent or community member. Teachers nominated will be sent an information packet and may decide whether they wish to follow through by providing the required information.

Information packets will be due in the superintendent's office by 4 p.m. May 15. A committee composed of representatives of each campus, the MISD Board of Trustees, and community member will review the information provided by each nominee and select the Teachers of the Year.

## Spotters

Continued from page 1

keep a step ahead of severe weather.

For example, rotating winds within a storm will give clouds a streaked appearance, often resembling a barber's pole. Storm clouds that appear clustered from underneath are indicative of multiple storm cells within the cloud.

A major precursor of tornadoes is known as a wall cloud. A wall cloud occurs when the bottom of the storm base drops below the rest of the storm cloud.

James said the NWS uses radar equipment to track storms and alert spotters before storm systems approach their area.

Even with all the high-tech equipment, James said the NWS still relies heavily upon local storm spotters in times of emergency. Because they are surrounded by intense storm activity, some tornadoes can remain undetected by even the most sophisticated weather radar.

"We often receive calls of visual confirmation of a tornado," James said. "When we look at our radar, there isn't anything there."

"When the NWS confirms severe weather, the first thing we do is alert local law sheriff's stations and police departments in the area," James said.

James said television stations provide the best means to quickly alert a large number of people when severe weather strikes.

The City of Muleshoe maintains one alert siren, which is located at the Earl M. Ladd Fire Station. Muleshoe Police Chief Rick Henegar said the siren is powerful enough to heard throughout the city.

Henegar said he would like to see an increased emergency alert system and plans to meet with city officials to discuss the matter.

## Parker named district clerk

Elaine Parker of Muleshoe was sworn in Tuesday as the new District 287 Clerk during a ceremony at the Bailey County Courthouse.

Parker replaces Nelda Merriott, who retired March 31 after 30 years.

District Judge Jack Young named Parker to serve the remaining three years of Merriott's term.

District clerk is an elected office.

Parker, who has served the last 17 years as the deputy district clerk, is a 1967 graduate of Muleshoe High School.

Her husband, Alton Parker, has worked with the Texas Department of Transportation for the past 24 years.

"I hope to maintain the standard of friendly and efficient service that has always been a



### Swearing in

Elaine Parker is sworn in as District 287 Clerk Tuesday by Judge Jack Young in a ceremony at the Bailey County Courthouse. Parker will replace Nelda Merriott.

part of our office," Parker said.

District 287 covers Bailey and Parmer County.

Parker said she is accepting applications for deputy district clerk.

## Three Way places 6th in district UIL

By SAMUEL VILLARREAL  
Journal Staff Writer

Three Way High School placed sixth at the University Interscholastic League District 6-1A meet held last week.

Josh Tooley was a triple winner for Three Way, taking the top spots in poetry interpretation, science, and physics.

Tooley advanced to the Region 1-1A competition April at South Plains College in Levelland.

Other Three Way regional qualifiers were Katie Arens (1st place, prose interpretation), Jessica Robinson (1st place, editorial writing), Joey Smith (3rd place, current events) and April Cook (3rd place, extemporaneous persuasive speaking).

Witharal High School was the easy winner at the district meet, scoring 315 points. Meadow High School took second place with 187 points. Cotton Center narrowly took third place with 170 points, while Wilson was close behind with 169 points.

Amherst was 5th with 146 points, followed by Three Way (135), Brownfield Union (73), Spade (69) and New Home (49).

## Rain

Continued from page 1

land in the Bula area is used for non-irrigated cotton, causing farmers to rely on Mother Nature to water their crops.

"The rain decides if we have a good crop or not," Heffington.

Even those farmers who irrigate their land will benefit from Thursday's rains.

"The more rain we get, the less we have to pay for irrigation," said Charles Moraw, manager at Muleshoe Coop Gin. The Muleshoe gin received one and one-half inches of rain Thursday.

Marvin McCall, Maple Coop Gin manager, estimates that farmers would spend \$50 per acre if they had to rely entirely on irrigation to water their cotton crops.

"We're definitely not unhappy," McCall said. "It was a good rain, but we sure could use some more."

McCall said rain in the Maple area was spotty, with

farmers receiving between four-tenths and one and one-half inches of rain Thursday.

Area gins report that farmers will begin planting this year's cotton crop within the next month. In the meantime, they will be taking advantage of the moisture to lay down fertilizers and pest control chemicals.

"The moisture makes it easier to plow the field, which in turn help to control the weeds," Heffington said.

Local news about local folks.

Muleshoe Journal To subscribe, call 272-4536

## CRP

Continued from page 1

Service.

Cost is another factor, District Conservationist Jim Lutz calls the "human factor."

Included on the sign-up form is a statement that reads "points assigned to the cost/acre factor will be determined after the sign-up ends and all the offers are reviewed."

This factor will be based on the offer amount and whether cost-share is involved.

"Not a soul was comfortable with what they bid," Lutz said. "They just didn't have any idea how price would weighed."

## Here's a Gift You and I Could Never Afford

To accept something we have in no way earned can be difficult. It offends our sensibilities. It kills our pride. To learn that we have no claim to the "bread of righteousness" but must look up to God for "the crumbs of grace" feels a great deal to us like accepting charity, taking a handout, receiving a gift which would indebted us deeply and forever to the Giver. It seems that

does that leave for me to do?" as if we might not only be humbled, we might be out of work! How else, we want to know, can I show that I've earned God's gift? But a gift that is earned is no gift at all.

Behind our question lies one like this: "Do you mean to say that I've lived all of my life as a good Christian but that a serial killer who truly repents and accepts Christ is just as acceptable to God as I am?" Yes. And if that hurts, our pride is not dead yet, and we have far too high an opinion of ourselves. (Read Matthew 20:1-16.)

Is Christ's sacrifice all-sufficient? Or is it not? Gift? Or wage?

If you can add something to His sacrifice, at least part of your salvation becomes a wage. And if part is a wage, what part? How much? How can you ever be sure that you've worked enough? And if you can never be sure, how can you ever really be at peace with God? You can't. Not that way. It won't work. It never has.

The Good News is that we can have peace. Salvation is always available. Wonderfully. Freely. As a gift. Once our pride dies. Once we lower ourselves to accept the most expensive gift ever given. It is a gift bought and paid for. But you didn't buy it. Nor did I. Nor could we. Ever. It was bought by Christ. For you. For me. A lifetime spent loving Him and His children is the proper response to His love, but it will never earn for us what is already freely given.



**Focus On Faith**  
Curtis Shelburne

way, well, because it is that way.

How, we religious folks want to know, can we obtain salvation? How, our un-churched friends want to know, can we find genuine happiness, fulfillment, contentment?

All "ways" to salvation that have ever been tried boil down in the final analysis to only two: grace through faith or law through works. Gift? Or wage? They are mutually exclusive. We must choose.

Ah, but to accept such an undeserved gift would be deadly to our pride. Yes, it would. Which is precisely what God intended. Some of us, well-intentioned but seriously mistaken (and deperately needing to spend some time grappling with Paul's *Letter to the Romans*) worry, "If salvation is based completely on what Christ has already done, what

Curtis Shelburne is minister of the 16th & D Church of Christ in Muleshoe.

## Opening Tuesday, April 8



- Breakfast & Lunch
- Daily Specials
- Salad Bar

OPEN  
MONDAY-FRIDAY  
5 A.M. - 4 P.M.  
SATURDAY  
6 A.M. - 2 P.M.

121 Main Street  
Muleshoe 272-5563

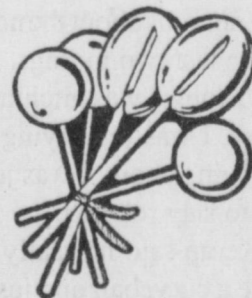


**\$1.00** month

### REMEMBER:

What the BIG print giveth the small print taketh away!!

Don't be a for the Big City Dealers Slick Come Ons.

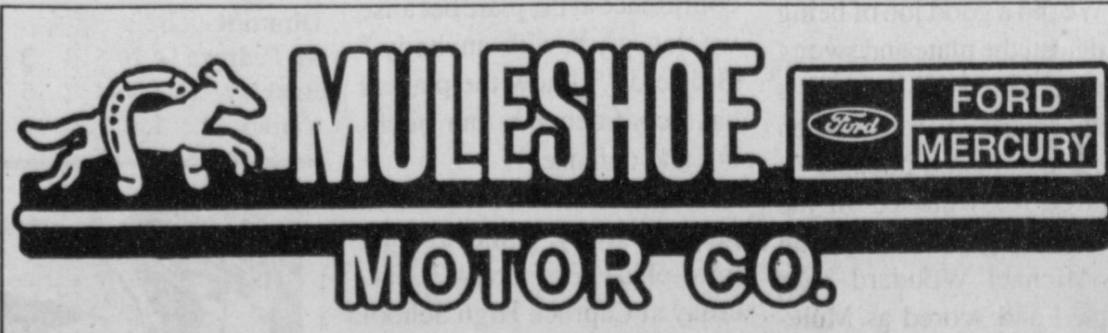


Come to Muleshoe Motor Co. - your Hometown Dealer WHERE A DOLLAR IS A DOLLAR.

All payment listed on the vehicles in inventory are with no money down. (Excluding T.T. & L.)

SHOP AND SAVE AT MULESHOE MOTOR CO.

"WE WANT TO BE YOUR CAR OR TRUCK DEALER!"



1225 W. American Blvd.  
806-272-4251 or 800-432-7617





# BAILEY COUNTY JOURNAL



## SPORTS EXTRA

Volume 36, No. 14

Published every Sunday at Muleshoe, Bailey County, Texas 79347

Sunday, April 6, 1997

### District 1-3A track preview

## Muleshoe among favorites for title

By RICK WHITE  
Managing Editor

Seniors Cari Faver and JoBeth Gilleland hope to finish their high school track careers the same way they started — with a district title.

Faver and Gilleland are two of the big reasons why Muleshoe is among the favorites to win the girls title at the District 1-3A track meet Thursday at Canyon Randall High School.

Sanford-Fritch and Perryton also figure in the hunt.

"We don't have quantity, but we do have quality," Muleshoe coach Kim Zollinger said. "We have a chance to win, or at least contend, in every event."

Zollinger rates Sanford-Fritch as the slight favorite because of depth.

Muleshoe has won four of six meets this year with a team of just 12.

Faver and Gilleland were freshmen when Muleshoe

### GIRLS

won its last girls district title in 1994.

Faver is the prohibitive favorite in the 1600 and 3200 meters, while Gilleland has been the Lady Mules' leading individual point scorer most meets.

Junior Kendra Benham is the favorite for the Lady Mules in the 100 meters and shot put.

"We kind of knew we were going to be strong this year," said Gilleland, who routinely finishes in the top three in four events and is among the favorites in the 300-meter hurdles. "And we've had some freshman come along and fill in some of the other slots."

Both Gilleland and Faver admitted competition has been lacking at some of the meets.

Faver hasn't been beaten or really tested in the 1600 and 3200 since the first meet of the season.

Continued on page 5



### A triple stretch

Muleshoe seniors (from left) Priscilla Aguirre, Cari Faver and JoBeth Gilleland borrow a hurdle to stretch after a light workout Thursday.

## Mules look to play role of spoiler

Muleshoe will have to settle for the role of spoiler this year at the District 1-3A boys track meet being held Thursday at Canyon Randall High School.

"We don't have enough depth or talent to win the district," Muleshoe coach Ted Johnson said. "But like in football where one team beats

### BOYS

another team to keep them out of the playoffs. We want to be like that, a spoiler."

Friera appears to be the prohibitive favorite with Perryton, Sanford-Fritch and Dimmitt all in the mix.

Muleshoe's best chances to medal are Ricko Aguirre in the shot put and discus, Marcelino

Continued on page 5

## MHS earns four seeds at 1-3A net tournament

The Muleshoe High School tennis teams will compete at the University Interscholastic League District 1-3A tennis tournament next week in Amarillo.

Several MHS players earned seeds for the tournament, which will take place Tuesday and Wednesday.

Cambri Lewis earned top seed in the girls singles.

The boys doubles team of Issac Miramontes and Colby Latham will be the no. 2 seed in the boys doubles tournament.

Aaron Faver in boys singles and Cassidy Cleavenger and Ellen Wood in girls doubles earned third seeds.

District 1-3A Tournament Tuesday & Wednesday in Amarillo

Boys singles  
1st round  
Mays (Dimmitt) vs Espinosa; Foster (Perryton) vs. Shelburne (Muleshoe).

Quarterfinals  
1. Lamb (Perryton) vs Mays-Espinosa winner; 2. Beck (Dimmitt) vs. Foster-Shelburne winner; 3. Faver

Continued on page 5

## Mules

Continued from page 1

out of a prolonged slump with a season-high 11 hits, halting a two-game losing streak.

Muleshoe is tied for fourth in the 1-3A race with Dalhart at 3-3, two games behind Tulia (5-1).

"It's was a pretty big win for us because it keeps us in the running for the district title," Kemp said. "It also helped out because it will give us some confidence."

Kemp said he started getting nervous about the no-hitter in the last two innings.

"I knew I was pitching a no-hitter, I was just trying not to worrying about. I was just trying to stay relaxed."

Kemp said he really didn't have a curveball and just did a good job of spotting his fastball.

Muleshoe broke the game open with five runs in the fifth inning and took a 10-0 lead.

Matt McClanahan and freshman James Barrett each had two-run singles in the inning.

"That helped me relax a little more," Kemp said.

Aaron Purdy had three hits and McClanahan and Barrett had two hits each.

Muleshoe also drew 10 walks from three Dimmitt pitchers.

"We did a good job of being a patient at the plate and swung at good pitches," Hill said. "It's a amazing what you can do when you swing at good pitches."

Jarrod Redwine led off the second inning with a home run and Michael Woodard later doubled and scored as Muleshoe took a 3-0 lead.

Muleshoe scored twice more in the third.

Purdy led off with a single and eventually scored on a

### BASEBALL

#### District 1-3A standings

	Dist.	Overall
Tulia	5-1	6-3
Sanford-Fritch	4-1	6-8
Perryton	4-2	10-6
Muleshoe	3-3	7-7
Dalhart	3-3	5-10
Dimmitt	2-3	8-7
Friera	1-5	6-10
River Road	1-5	6-11

#### Tuesday's games

Muleshoe 14, Dimmitt 0; Tulia 8, Friera 3; Perryton 7, Sanford-Fritch 6; Dalhart 9, River Road 8

#### Friday's games

Friera at River Road

#### Saturday's games

Tulia at Dalhart; Dimmitt at Sanford-Fritch

#### Monday's games

Muleshoe vs Perryton at Caprock High School

### Muleshoe (7-7, 3-3)

	ab	r	h	bi
Wheeler, ss	3	0	0	0
Kemp, p	3	3	0	0
Alanis, 3b	2	2	1	0
Purdy, rf	4	3	3	2
McClanahan, cf	3	2	2	3
Redwine, lf	3	2	1	2
Woodard, c	3	2	1	2
Barrett, rf	3	0	2	2
Mason, 1b	3	0	1	1
Pineda, 2b	0	0	0	0
Totals	27	14	11	12

### Dimmitt (9-8, 3-3)

	ab	r	h	bi
Pedroza, lf	2	0	0	0
Saucedo, 2b	2	0	0	0
Matthews, cf	1	0	0	0
L. Nino, 1b	2	0	0	0
Furr, c	2	0	0	0
M. Pedroza, p, 3b	1	0	0	0
J. Nino, dh	2	0	0	0
Silva, ss	2	0	0	0
Buckley, 3b, p	0	0	0	0
Carpio, p	1	0	0	0
Cavazos, rf	0	0	0	0
Totals	15	0	0	0

### Muleshoe 122 54 1411 1

### Dimmitt 000 00 0 0 1

Kemp and Woodard; M. Pedroza, Buckley (2) Carpio (4) and Furr. WP — Kemp (3-4). LP—Pedroza (2-2). LOB — Muleshoe 4, Dimmitt 3. DP — Muleshoe. SB — Muleshoe, Kemp, McClanahan; Dimmitt, Matthews 2, M. Pedroza 1..2B—Muleshoe, Woodard. HR — Muleshoe, Redwine (1).

#### Pitching summary

	ip	h	r	er	sobb
Kemp, W	5	0	0	0	10 3
Dimmitt					
M. Pedroza	2	5	3	3	0 0
Buckley	1.2	4	7	5	0 3
Carpio	1.1	2	4	4	0 4

passed ball and McClanahan walked, stole second and came home on a sacrifice fly and a groundout to make it 5-0.

Second baseman Larry Pineda kept the no-hitter alive in the bottom of the third when he backhanded a soft liner up the middle and doubled a Dimmitt base runner off first.

Muleshoe tacked on four more runs in the fifth with the help of four walks and back-to-back singles by Purdy and McClanahan.

"I hope we can just get some confidence at the plate because we can pitch with anybody," Hill said. "I know the players have confidence in our pitching and defense."

Muleshoe was scheduled to play an away game against third-place Perryton (4-2) Saturday at Caprock High School in Amarillo.

The game was postponed until 4:30 p.m. Monday.

The Rangers (10-6) have won three straight.



## Time's Running Out!

IRA  
NOT  
IRS

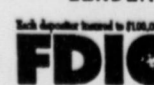
April 15th Will Be Here  
Soon

- Contributions are tax deductible
- Interest on your contributions are tax sheltered and compounding until you take it out.

### MULESHOE STATE BANK

101 W. American Blvd.  
272-4561 Muleshoe, TX

801 Ave. A  
481-9580 Farwell, TX





## Girls

Continued from page 4

"It's been hard," admitted the two-time regional qualifier in both races. She went to state in the 1600 as a sophomore.

Gilleland said she was disappointed when the Lady Mules participated in a weaker class at the Deaf Smith Relays in Hereford two weeks ago.

"I really wanted to see how we would have done," Gilleland said about competing against some of the top Class 4-5A schools in the Panhandle. "You always run faster when someone is pushing you."

Gilleland qualified for regionals in the 300-meter hurdles last year.

The 800 meters is shaping up to be the most interesting race at district.

Lindsey Dudley of Sanford-Fritch has the best time (2:29.6) heading into the meet, but Muleshoe freshman Stacy

Locker is right on her heels.

Also in the mix are Leigh Ann Ogden of Perryton and Shawna Kenworthy of Dimmitt.

Locker has run a 2:31.1 and can do better if she's pushed, according to her coach.

"Cari and Stacy have been basically been running by themselves all season," Zollinger said.

Locker also figures to finish second behind Faver in the 1600.

Other strong favorites include Jenae Mincher of Sanford-Fritch in the 200 and 400 meters; Mindy Mason of Sanford-Fritch in the discus; and Whitney Ellis of Friona in the 100-meter hurdles.

Preliminaries start at 9 a.m. Field events start at 1:30 p.m. with the finals at 5 p.m.

## Boys

Continued from page 4

Ruiz in the 400 and Louis Hines in the 200 meters.

The 400-meter relay team of Ruiz, Hines, Gilbert Vela and Greg Pena could also slip into medal contention.

Aguirre set a new school in the discus earlier this year of 155 feet, 1 inch. His season-best in the shot put is 48-10.

Charile Milner of Friona is the favorite in both events with throws of 165-2 in the discus and 50-8 in the shot.

Ruiz has been improving all

season in the 400 but must knock two seconds off his best time to compete.

Doug Yarbrough of Tulia has run a 21.7 in the 200, but Hines to sneak into second or third. The junior's best time is 23.39.

The Muleshoe junior varsity has plenty of depth and could contend for the district title.

Preliminaries start at 9 a.m. Field events start at 1:30 p.m. with the finals at 5 p.m.

## Texas Cotton Ginners' 90th annual trade show April 10-11

The largest gathering of Texas cotton industry associates will be at the Texas Cotton Ginners' Association (TCGA) 90th Annual Meeting & Cotton Trade Show April 10-11 in the Lubbock Civic Center.

The theme for this year's meeting is "Deep in the Heart of Cotton," which reflects upon the great heritage of the cotton industry and the state of Texas.

"We look forward to the annual meet-

ing in Lubbock every year," said Sid Brough, TCGA President. "It gives ginners an opportunity to look at new equipment available, visit with interesting technical representative, and review the operation of our association for the past year while planning for the next."

More than 200 exhibitors will be present at the trade show with products

and technology to bring the cotton industry into the next century.

The show officially opens at 9 a.m. April 10 and will run through Friday evening, concluding with an awards banquet.

The Texas Cotton Ginner of the Year and the recipient of the 4-H Cotton Award will be honored at the banquet.

## Net

Continued from page 4

(Muleshoe) vs. Foust (Dalhart); 4. Hutcheson (Dalhart) vs. Bhakta (Friona).

Girls singles  
1st round

O'Daniel (Tulia) vs. Schulte (Dimmitt); Baker (Friona) vs.

McDaniel (Dalhart); LaFebre (Perryton) vs. Hahn (Muleshoe); Turner (Dimmitt) vs. Martin (Dalhart).

Quarterfinals

1. Lewis (Muleshoe) vs. O'Daniel-Schulte winner; 2. Hall (Perryton) vs. Baker-McDaniel winner; 3. Barnett (Tulia) vs. LaFebre-Hahn winner; 4. Hendly (Friona) vs. Turner-Martin winner;

Boys doubles

1st round

Latham/Bruns (Muleshoe) vs. Copeland/Fisk (Dalhart); Eagen/Spear (Dalhart) vs. Flores/Riggs (Dimmitt);

Quarterfinals

1. Cunningham/Bailey (Perryton) vs. Latham/Bruns-Copeland/Fisk winner; 2. Latham/Miramontes vs. Eagen/Spear-Flores/Riggs winner; 3. Portwood/Portwood (Dimmitt) vs. Espinosa/Procter (Friona); 4. Cunningham/Stallings (Perryton) vs. Rodriguez/Aronce (Friona)

Girls Doubles

1st round

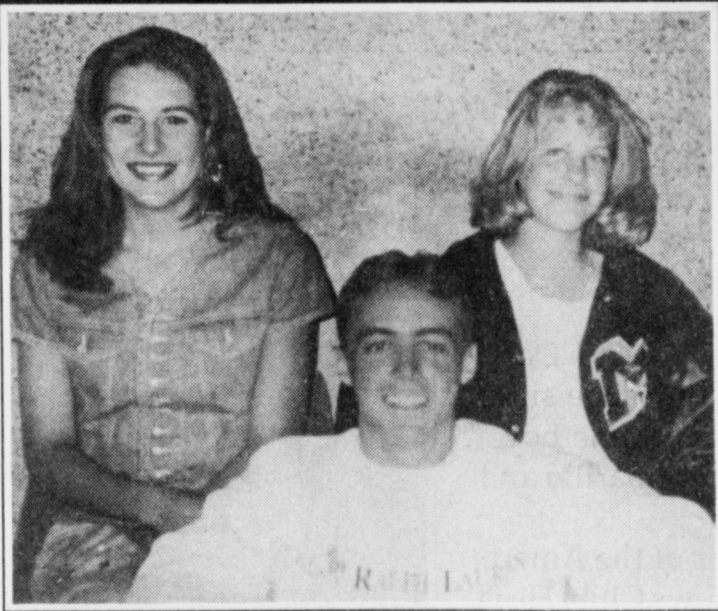
Symons/Tregellas (Perryton) vs. Bruns/Copley (Muleshoe); McDonald/Jubay (Friona) vs.

Blackwell/Marshall (Dalhart); Welch/Merritt (Dimmitt) vs. Russell/Gidden (Tulia);

Quarterfinals

1. Ortiz/Doss (Dimmitt) vs. White/Jarmusillo (Perryton); 2. Smith/Symons (Perryton) vs. Welch/Merritt-Russell/Gidden winner; 3. Cleavenger/Wood (Muleshoe) vs. McDonald/Jubay-Blackwell/Marshall winner; 4. Blackburn/Campbell (Friona) vs. Symons/Tregellas-Bruns/Copley winner.

## Western 66 Congratulates the Mule & Lady Mules of the Week!



CASSIDY CLEAVINGER, ELLEN WOOD & COLBY LATHAM

Juniors Cassidy Cleavinger and Ellen Wood won the Lubbock Invitational Tennis Tournament last weekend. Cassidy is the daughter of Mike & Criss Cleavinger. Ellen is the daughter of Hal & Linda Wood. Senior Colby Latham played well at the Plainview Tennis Tournament and is a state qualifier in powerlifting. He is the son of Gaylord & Linda Laytham.



## The CardStop

24 Hour Fuel Service

715 W.

American Blvd.,  
Muleshoe

To apply for a card,  
contact WESTERN 66

272-4556

We have diesel!



Neanderthal man is so called because the first Neanderthal fossil, the top of skull, was found in the Neander Gorge near Düsseldorf, Germany.

# \$1000

# CONTRIBUTION

**To the Fire Department of your choice with the purchase of any new car or truck**

↑

**he IRIS infra-red smoke helmet is the latest in fire fighting technology. It allows fire fighters to see through the thickest of smoke and rescue adults and children from burning buildings.**

**During the month of April for every new vehicle sold at any Bender location, we will contribute \$100 to the fire department of your choice toward the purchase of the IRIS infra-red smoke helmet or other needed equipment, and you get the deduction on your 1997 income tax return.**

## BENDERS FAMILY OF DEALERSHIPS

The largest inventory, lowest prices, and best service between Amarillo, Lubbock, and Albuquerque.

*You're going to like our family*

**BENDER CHEVROLET  
OLDSMOBILE CADILLAC**

2500 Mabry Drive, Clovis, NM  
(505) 763-4465

**BENDER  
HONDA NISSAN**

3000 Mabry Drive, Clovis, NM  
(505) 762-3701

**BENDER CHRYSLER  
PLYMOUTH DODGE**

3400 Mabry Drive, Clovis, NM  
(505) 762-4511



## County Heart Association holds meeting

At the monthly meeting recently held of the Bailey County Chapter of the American Heart Association several community related items were discussed.

One of the events being worked on at this time is the Hoops for Heart which will take place at Watson Junior High and De Shazo Elementary. This is going to take place either late April or early May.

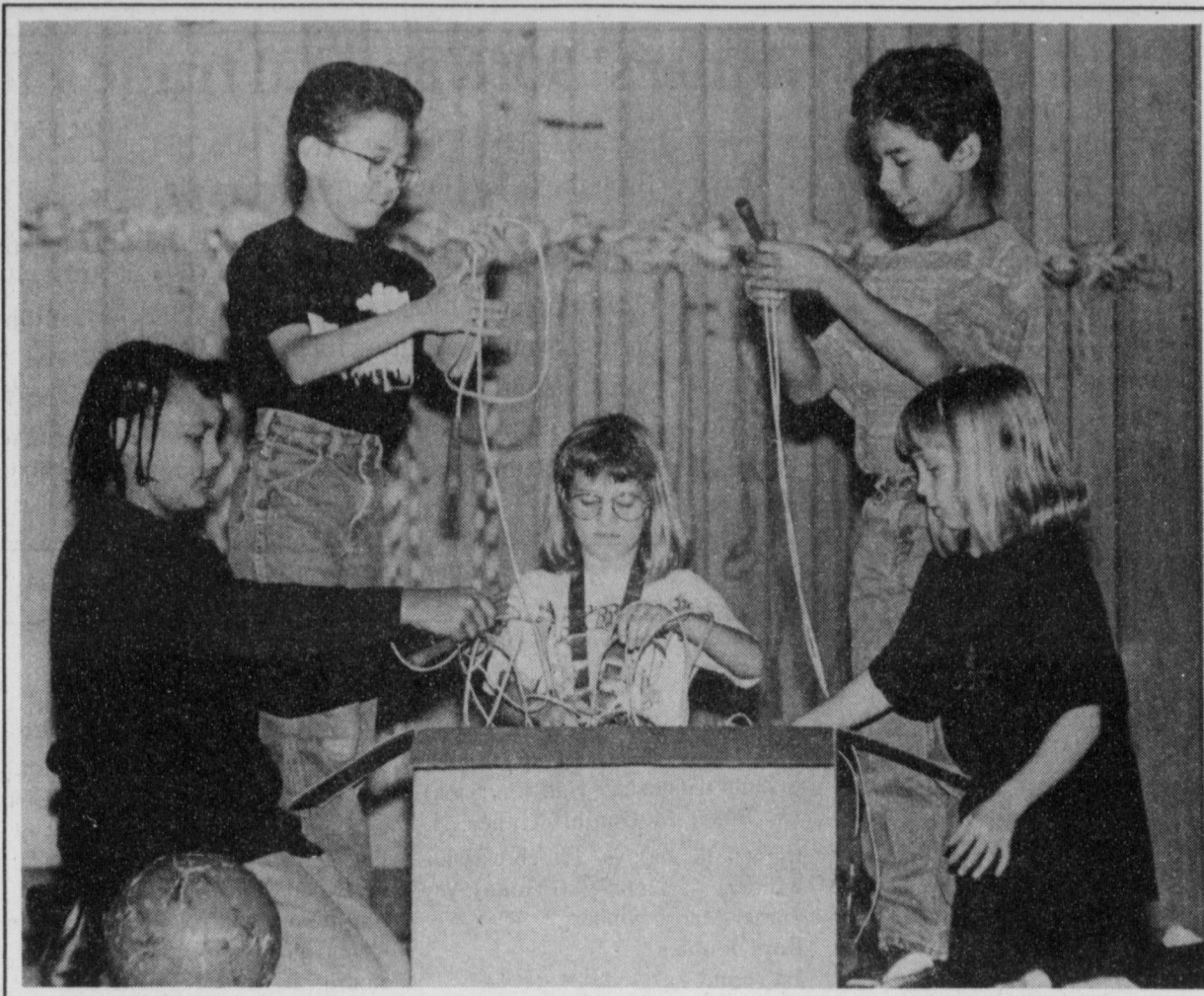
Also discussed were the Memorial Mailings that have already gone out in First Bank's statements and are scheduled to go out either April or May in Muleshoe State Bank's statements.

Another event that the public is invited to sign up for is an adult CPR class that is going to be held at the Dillman gymnasium on Saturday, May 3, from 9-12. There will be "hands on" instruction. Anyone who attends will receive a certification that will last two years and a manual.

Walkers are needed to participate in the American Heart Association Heart walk that will take place April 19 from 9-11 a.m. at the Muleshoe High School track. In case of bad weather, the Heart Walk will be moved to the civic center.

Heart related illnesses have made up at least 40% or the total deaths in Bailey County since 1992. An incomplete list of honorary chairpersons includes the Jim Gruhlkey family and Dr. Bruce Purdy. Several community groups will be walking and raising money for this important event. Those who raise \$50 or more will get a T-shirt. The young and the young-at-heart are encouraged to participate.

For more information concerning the Heart walk or the Adult CPR class, please contact any of the following AHA Board members: Virginia Bowers, Terri Brown, Jimella Clemmons, Felicia Green, Lori Hall, Gail Hargrove, Ricki Kelly, Nancy Kidd, Pam Lytal, Lucy Mardis, Caice McCutchen, Joyce McGehee, Anita Mitchell, Glenda Powell, Joy Stancell or Linda Tucker.



### Jumping brings joy

DeShazo Elementary students (from left) Jennifer Martin, Michael Gonzales, Kami Brown, Pedro Bustillos and Hillary Tipps look at some of the prizes earned by participating in an American Heart Association Jump-a-thon in March. Students raised \$2,101.91. Brown and Tipps raised the most donations.

## Alco announces yearly earnings

ABILENE, Kan. — Duckwall-ALCO Stores, Inc. (NASDAQ:DUCK) today announced results for the fourth quarter and twelve months ended Feb. 2, 1997.

For the fourth quarter ended Feb. 2 the company reported sales of \$86.2 million, a 10.3% increase over sales of \$78.1 million in the fourth quarter of last year. Net earnings advanced \$501,000 over the prior year to \$3.4 million, or \$.67 per share, compared to net earnings of \$2.9 million, or \$.73 per share in the prior year's fourth quarter. Weighted average number of common share outstanding were 5.1 million compared to 4.0 million share in the prior year's fourth quarter.

For the year ended Feb. 2, the Company reported sales of \$278.8 million, a 8.7% increase over sales of \$256.5 in the prior fiscal year. Net earnings were \$6.1 million, or \$1.40 per share, compared to net earnings of \$5.1 million, or \$1.28 per share in the prior year. Weighted average number of common shares outstanding were 4.3 million shares compared to 4.0

million shares in the prior year.

Glen L. Shank, President and Chief Executive Officer, said "I am very pleased with the overall operating results for he quarter and year. By staying focused on our operations and executing our growth strategy, we have been able to drive better than 18% growth in net income. During this fiscal year, we eliminated five major promotional circulars that, while having a negative impact on same store sales, improved both our gross and operating margins by reducing the associated promotional markdowns and advertising costs. In addition, the Christmas selling season was one week shorter than the prior year, which also had a negative impact on same store sales."

Shank continued, "During the year we opened 30 stores and closed one store. At year end, we had 137 or 74% of our 185 stores located in non-competitive markets. This percentage will continue to grow as we plan to open 40 new stores in the next fiscal year, the vast majority of which will be in new, non-competitive mar-

kets."

Duckwall-ALCO Stores, Inc., is a leading regional retailer which operates 186 stores in the central United states under the names "ALCO" and "Duckwall."



DAYLIGHT-SAVING TIME BEGINS APRIL 6TH

## Local clerks attend education seminar

Bailey County Clerk Nelda Merriott, and District Clerk Billie Downing were among 550 county and district clerks who attended the 25th annual County and District Clerks' Continuing Education Seminar in College Station March 19-21.

"The continuing education seminar provides valuable information and current procedures of the office to county and district clerks," Merriott said.

The theme for this year's educational program was "Rest not on past accomplishment — Fear not future challenges!"

Participants took part in general sessions and workshops that covered such topics as probate and guardianships, child support, delinquent tax suits, bond forfeitures, indexing and recording procedures and juveniles issues.

County Government of the Texas Agricultural Extension Service and the County and District Clerks' Association of Texas in cooperation with the Texas Association of Counties. Clerks who attended all of the sessions will receive 12 hours of credit. State law requires county and district clerks to complete a minimum of 20 hours of continuing education relating to their duties of office every 24 months.

"During the seminar, new officials also had the opportunity to network with those who have been in office a while," Downing said. "Talking with others who hold the same office from different counties is beneficial when it comes to handling similar situations or problems in your own community."

The seminar was sponsored by the V.G. Young institute of



1996 Ford Mustang (12,000 miles, auto)	\$15,400
1995 Chrysler Cirrus (loaded)	\$13,900
1994 Lincoln Continental (phone)	\$13,900
1994 Ford F150 (automatic, low miles)	\$9,900
1993 Mercury Topaz (48,000 miles)	\$5,990
1992 Ford Ranger	\$4,990

\*WAC, cash or trade of \$2,000 plus T.T.&L.

1225 W. American Blvd. 806-272-4251 or 800-432-7617

Home Folks Caring For Folks At Home.



## MULESHOE AREA HOME HEALTH

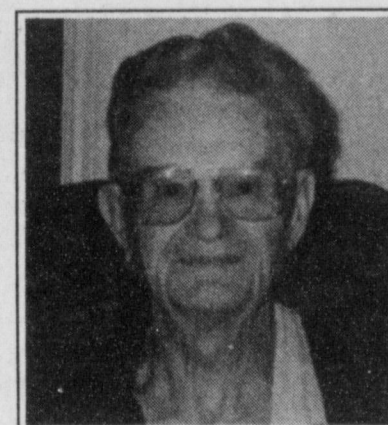
Agency

### Featured Patient

James L. Lambert is married to Doris Lambert. He has been in Muleshoe since 1941. They have two girls and one boy - Donna of Quebec, Linda of Amarillo and the late Leland Lambert.

Mr. Lambert is a member of the American Legion and the Oddfellows Club. He is also a member of the First Baptist Church.

The girls at the Muleshoe Area Home Health Agency are angels of God in his opinion. He appreciates the fact that they help people to stay in their home.



James L. Lambert

To receive Home Health Services, talk with your physician or talk with hospital personnel when you are hospitalized.

24 Hour # 272-3346  
Local Nurse on call 24 hours a day to offer prompt service.

We accept Medicare, Medicaid and Private Insurance

It Is Your Right To Choose The Home Health Agency You Prefer.

Affiliated with Lubbock Methodist Hospital Systems



### School Menus

For the week of April 7-11

#### MULESHOE

Dillman & DeShazo

#### Breakfast

Monday— French toast, fruit or juice, milk. Tuesday— breakfast hot pocket, fruit or juice, milk. Wednesday— sausage biscuit, fruit or juice, milk. Thursday— cheese toast, fruit or juice, milk. Friday— cinnamon roll, fruit or juice, milk.

#### Lunch

Monday— nachos, lettuce, tomato, pinto beans, milk. Tuesday— cheeseburger, fries, lettuce, tomato, sliced pears, milk. Wednesday— baked potato, ham & cheese, mixed fruit, apple slices, milk. Thursday— corn dogs, veggies soup, cinnamon roll, pineapple tidbits, milk. Friday— chicken, mashed potatoes, gravy, green beans, hot roll, milk.

#### Jr. High and High School

#### Breakfast

Monday— French toast, fruit or juice, milk. Tuesday— breakfast hot pocket, fruit or juice, milk. Wednesday— sausage biscuit, fruit or juice, milk. Thursday— cheese toast, fruit or juice, milk. Friday— cinnamon roll, fruit or juice, milk.

#### Lunch

Monday— nachos, lettuce, tomato, pinto beans, milk. Tuesday— cheeseburger, fries, lettuce, tomato, sliced pears, milk. Wednesday— baked potato, ham & cheese, mixed fruit, apple slices, milk. Thursday— corn dogs, veggies soup, cinnamon roll, pineapple tidbits, milk. Friday— chicken, mashed potatoes, gravy, green beans, hot roll, milk.

#### THREE WAY

#### Breakfast

Monday— pancake & sausage, juice, milk. Tuesday— donuts, fruit or juice, milk. Wednesday— oatmeal, Cocoa Puffs, toast, graham crackers, juice, milk. Thursday— eggs, bacon, biscuit, juice, milk. Friday— waffles, sausage, juice, milk.

#### Lunch

Monday— chicken strips, carrots, green beans, rolls, pears, milk. Tuesday— fajits, salad, refried beans, tortillas, chocolate chip cookies, milk. Wednesday— cheeseburger, fries, grapes, milk. Thursday— turkey roast, whipped potatoes, sweet peas, biscuits, apricots, milk. Friday— tamales, pinto beans, spanish rice peaches, birthday cake, milk.

Local news about local folks.

Muleshoe Journal

To subscribe, call 272-4536

New Out Of Hospital Advance Directives Now Available!



**NURSING HOME NEWS**

Ruby Wilson went out with her daughter, granddaughter and great granddaughter Sunday for an Easter lunch at Clovis.

Nettie Quesenberry's family got together for a fish fry on Easter Sunday.

Melvin Griffin and Donna Locker called the Bingo games Saturday. Fresh fruit was served to each resident.

Jane Reeder helped serve the residents coffee and donuts Wednesday morning.

Mary, Mrs. Turner's daughter visits her daily and assisted Mrs. Turner with her meals. Her daughter-in-law Dorothy Turner and Dorothy's daughter visited her last week.

We are needing sponsors

for the residents to walk, wheel or rock for the American Heart Association Heart Walk April 19. If you would be interested in sponsoring a resident it would really help us and them. We deeply appreciate it.

Bottie Tiller was visited by her sister-in-law this week.

Tuesday morning Melvin Griffin met with a group of residents for conversation and laughter.

Tuesday afternoon, Beverly Wagon, Pat Watson, Mary Jo Burge, Chickie and Joy all came together to shampoo and set the ladies hair.

Wednesday morning following coffee/donut time, Loyce Killingsworth and J.C. Shanks lead us in a gospel sing-

a-long.

Happy April birthday to P. Helmer 4/17; M. Jennings 4/21; Guy Kendall 4/14; E. Ladd 4/24; Kenneth Martin 4/2; Ruby Wilson 4/10.

Zaoda Gibbs went out with her son Gibbs Wednesday. Rue Kimbrough went out with her family Sunday. Winnie Orcutt went out with her family Scott and Robin Dickerson Sunday. Aline Locke spent Easter early afternoon with Don and Donna Locker. Ruth Lacky had Easter dinner with Walter Lacky and family Naomi Black spent Easter Sunday with her family in their home. Helen Tinskey went out to be with her daughter Linda Foster and her family Sunday. Zeffa Shafer went out

Easter to have dinner and visit with her family. Rosie Sneed and Pearl Helmer attended their church Sunday, The First Assembly of God.

Nancy Lemons brought ceramics for the residents to paint Thursday morning. Residents participating were Boatie Tiller, Florence Harvey, Jackie Davenport, Netti Quesenberry, Pearl Helmer, Rosie Sneed, Kathrine Rogers, Naomi Black, Lilly Wuerflein, Lora Dale, Hazel Riddle, Aline Locke, Lib King and Helen Tinskey watched and gave encouragement from the side line.

Pastor David McIntire, Clara Lou Jones and Karen Cook directed a memorial Service for R.B. Cunningham

Thursday morning.

The residents Easter party,

Friday afternoon was a celebration of the Easter season, with special music and songs by Pastor and Mrs. Jack Stone, an Easter egg hunt and refreshments of finger sandwiches, deviled eggs, chips, marshmallow chickens and little cakes. Nancy Kidd made sandwiches and deviled eggs. Volunteers Plus was the co-hostess and Terri Brown, the real live bunny.

Pat Watson and Anna B. Lane entertained at the March Birthday Party Thursday. Decorators Floral provided the flowers.

Lora Dale's daughter Brenda

was here visiting Thursday and Friday.

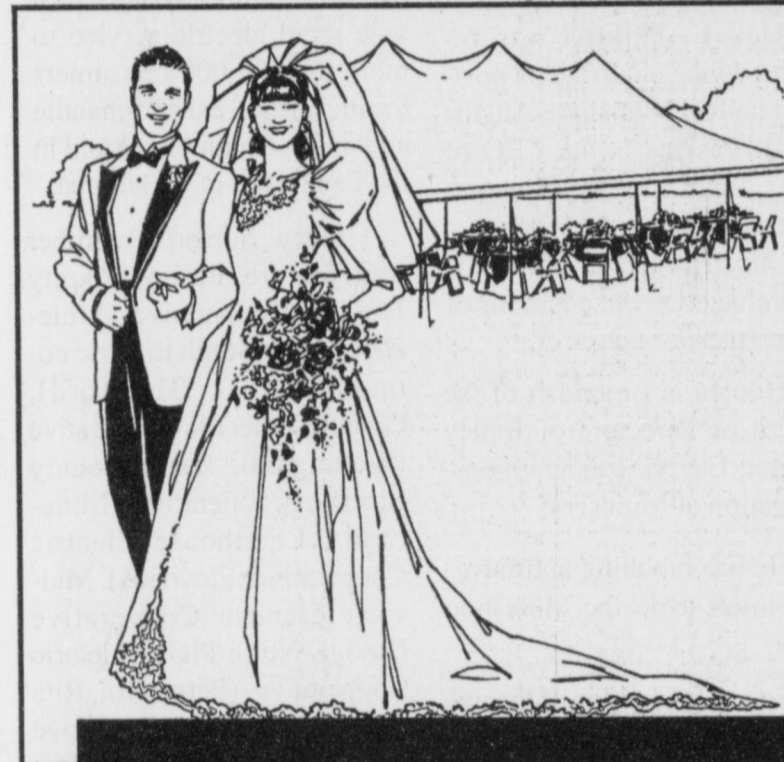
**Tired Of Long Hours & Low Pay**

Friona Motors is looking for a select number of money motivated employees who meet the following criteria:

- ♦ Are willing to be trained
- ♦ Want a \$50K Income Potential
- ♦ Want Health Care Benefits
- ♦ Want to be a Professional
- ♦ Like Money

Experience is not necessary. If you think any of these fill a need in your life, come see:

**Jim Russell**  
**Friona Motors**  
 1011 Grand  
 Friona, TX  
 (806) 247-2701



*Plan Your  
 Wedding With  
 Us!!!*

**YOUR WEDDING HEADQUARTERS**

*Come to Ben Franklin Crafts For EVERYTHING on your list!*

- Lace - Flowers - Napkins - Ribbons - Corsages
- Balloons - Cake Decorations - Table Decorations
- Thank You Notes - Announcements

Have your wedding memories custom framed in the Ben Franklin Frame Shop.  
**RECEIVE 50% OFF** custom framing. Includes frame, mats & glass.

**CUSTOM WEDDING ORDER SPECIAL**

**10% OFF** on custom wedding orders of \$100 or more

**15% OFF** on custom wedding orders of \$200 or more

Coupon not valid with other promotional offers.

**Ben Franklin Crafts®**  
 Your Creative Outlet STORE HOURS: Mon.-Sat. 9-8, Sun. 12-6  
 Hilltop Plaza - 21st & Main Clovis, NM 762-2900

**The Angel Bow-tique**  
 Cindy Magby 272-3617

*For All Your Wedding Needs -*  
**Wedding Rentals**

- Candleabras
- Floral Arrangements
- Personalized Unity Candles

Ask salesperson for more information or to schedule a consultation.

*See Our Booth Displayed at*  
**Treasures From The Heart**  
 2104 W. American Blvd., Muleshoe

**Blanca's Crafts & More**  
**"Affordable Wedding and Party Supplies"**

Accessories and decorations for all your special occasions. Wedding, Quinceañeras, Baptisms, Holy Communion, Baby Showers, and More.

Party rentals, balloons and flowers. Invitations. Custom made caketops, photo albums, video boxes, bouquets, headpieces, etc.

211 N Prince Clovis  
**762-0650**

**Custom Woods**  
**CUSTOM BUILT FURNITURE**

- Computer & Entertainment Centers
- Blanket & Cedar Chest
- Roll-Up Top Desk

*"Bring us your designs"*  
**Ron Cramer**  
 - 30 years experience

**1905 Sheldon - Clovis, NM 763-7994**

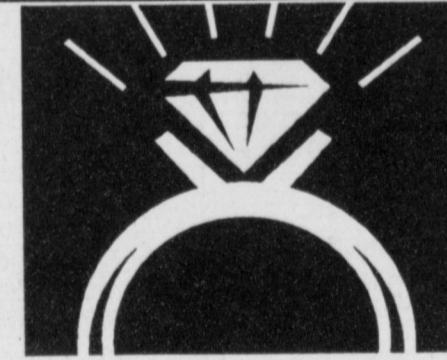
- Wedding Dresses
- Veils • Baptism Dresses
- First Communion
- Accessories • Prom
- Quincenera Dresses
- Dress Shoes

**We Carry Casual Clothes**

**Rachel's Fashion**

512 Main St., Clovis, NM  
 505-763-4885  
 OPEN TUESDAY - SATURDAY 10:00-6:00

Mastercard & Visa & Layaways Welcome



**LA RUE JEWELRY AND MFG.**

Doyal G. La Rue

102 West Fifth St. 505-763-3354  
 Clovis, NM 88101

*As special as you...*



The day of your dreams deserves the finest... Masterpiece Wedding Invitations. Take time now to see our big selection of beautiful styles.

With each printed invitation order you may select one of the following...

- FREE PRINTED RETURN ADDRESS
- FREE LINED INNER ENVELOPES
- FREE THANK YOU NOTES
- FREE INFORMALS

**Landmark Label & Design**  
 218 Main Street  
 Muleshoe, Texas 79347  
 (806)272-6767

**KAREN'S BALLOONS**  
**PROUDLY INTRODUCES**

*A Wedding to Remember*

- Candelabras
- Brides Bouquets
- Bridesmaids Bouquets
- Invitations
- Boutonnieres
- Flower Girl Baskets
- Cake Tops
- Cake Servers

- Candles
- Brides Books
- Ring Pillows
- Toasting Glasses
- Garters
- Napkins (We imprint in our shop)
- Corsages
- Balloons

Call NOW and Reserve your special wedding date  
**762-0679**

**Decorating Den**

FOR THE BRIDE & GROOM - Gifts and Accessories

Register your gift selections with Decorating Den!

Decorating Den can help make moving into your new home or apartment an exciting experience!

Our selection includes Gift Certificates for \$25-\$50, \$75-\$100, wallpaper, area rugs, bedspreads, window treatments, furniture, floral arrangements, a complete line of accessories, and many other decorating products.

**Decorating Den Hazel M. Cole**  
 212 Remuda, Clovis, NM 88101 (505) 762-2379

**I Can Help With Your Wedding Trousseau**

- Mother's Dresses
- Grandmother's Dresses
- Silks • Sportswear
- Hundreds of Coordinated Wardrobe Options

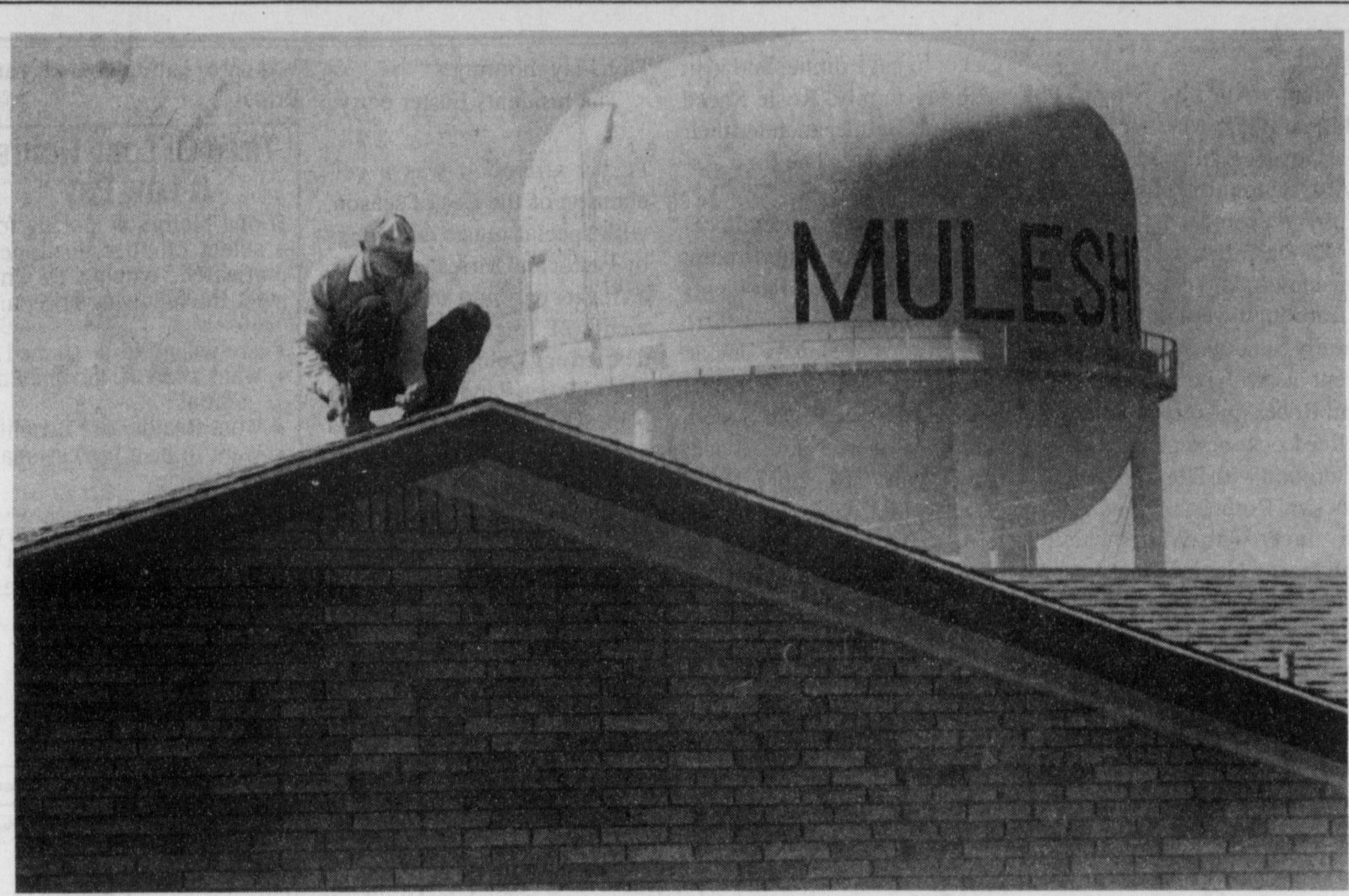
**We Also Have All Occasion Dressing**

Softly Tailored Suits, Blouses & Dresses and Casually Elegant Separates.  
 Authur Court Designs for Graduates & Brides

**Marilyn Young**  
 1807 W. Ave. H 272-4365

**DONCASTER**





**Towering over Muleshoe**

Mike Durben, an independent roofing contractor from Clovis, works on the roof of a house on W. 20th Street during the last week of March. The National Weather Service's extended forecast calls for dry and windy weather with highs in the 60s through the weekend.

**Two Lazbuddie FHA Leadership teams state bound**

Lazbuddie FHA Lasting Rose Chapter recently competed in Star Events at the Region I FHA Leadership conference at Lubbock.

Two teams qualified to advance to the State Competition in Dallas in April.

Shena Seaton was elected a Regional Officer and the Chapter was recognized as a Catch the Spirit Chapter.

The team of Jennifer Hill, Sarah Cardona and Jamie Bohler competed in the Focus on Children Star Event. This event must relate to the area of child development and address a specific need that will impact children in a positive way.

The team chose for their project to work with young children in the area of reading readiness.

They worked with teachers, parents, and children to accomplish their goals. They made a video documenting their work. They feel they have made a real contribution to helping some children become more prepared to learn to read. They received 4th place at the region meeting and will advance to state in April.

The team of Janis Hernandez, Rachel Rodriguez, and Melissa Aguirre competed in the Chapter Service Project.

They also receive a 4th place at regional and will advance to state competition.

This event involves a project that will make a worthwhile contribution to families, the school or community.

They chose to re-establish the YES Program in our community.

YES stands for Youth Exchanging with Seniors.

Their project involved promoting interest in the project, training members to work with senior citizens, making contact with senior citizens in the community, having meetings with seniors and visiting and helping seniors citizens in their homes.

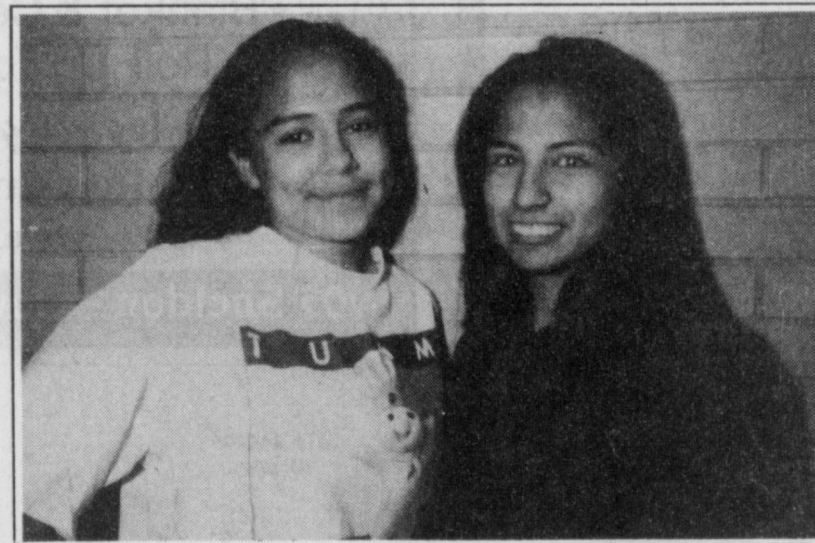
Sarah Watson served as the Chapters voting delegate at the House of Delegates meeting where new Regional Officers were elected for the coming year.

Shena Seaton, a Lazbuddie sophomore, was elected to serve as Vice President of Fi-



**Focus on Children Star event team.**

Members of the team are (from left) Sarah Cardona, Jennifer Hill and Jamie Bohler.



**Chapter Service team**

Members of the team are (from left) Rachel Rodriguez and Janis Hernandez (Melissa Aguirre not pictured).

nance for the coming year. Shena will be attending several planning and training meetings over the summer to prepare her for her new responsibilities.

Lazbuddie Lasting Rose Chapter was also recognized as a Level 2 CATCH THE

SPIRIT chapter.

Those attending from Lazbuddie were Melissa Aguirre, Jamie Bohler, Sarah Cardona, Janis Hernandez, Jennifer Hill, Rachel Rodriguez, Shena Seaton and Sarah Watson, along with Glenn and Barbara Lust. Barbara Lust is the Chapter Advisor.

**REBEKAH NEWS**

Our meeting was called to order by Noble Grand, Mary Ann Ramirez with ten members present.

It was reported that Les Lambert had to go to the hospital in Amarillo to have his back drained. We all miss him and Doris. Hope he will soon be well and up and around. We sent a sympathy card to Lola Goodnough family.

We voted in a new candidate and read an application for membership from another candidate. Initiation will be later this month.

Our skating dates for this month are the 4th and 18th, cost is one dollar, please bring your own skates and join the fun.

Our family night for Odd Fellows and Rebekah's is Friday April 11 here at the hall, so please bring a cover dish and enjoy the fellowship.

Saturday April 12 is the South Plains Association meeting in Lubbock. Muleshoe is to do the Memorial Service.

There being no further business we closed with love to all.

**Muleshoe farmer elected to Golden Spread posts**

Billy C. Harbin of Floydada was elected chairman of the Board of Directors of Golden Spread Electric Cooperative, Inc. following its annual meeting March 31.

Harbin succeeds Robert L. Elliott, Jr. of Dalhart

Elliott, who served as chairman from 1991 and as vice Chairman from 1984 to 1991, did not seek re-election.

Harbin is the executive vice president and general manager of Lighthouse Electric Cooperative, Inc., and was formerly employed at Lamb County Electric cooperative as engineering services manager.

Jack L. Perkins was re-elected vice chairman, a position he has held since August 1971. Perkins is the CEO of Tri-County Electric Cooperative, Inc. at Hooker, Okla.

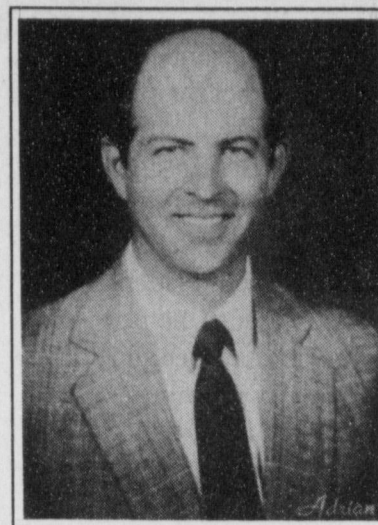
Gary Hooten of Muleshoe was elected to the positions of secretary and treasurer.

Hooten is a member of the board of Directors of Bailey County Electric cooperative association at Muleshoe.

He has ranching and farming interests in the Muleshoe area.

Stan McClendon, General Manger of Greenbelt Electric Cooperative at Wellington, was elected to the Audit Committee.

Golden Spread is the wholesale electric supplier for 11



**Gary Hooten**

rural electric cooperative distribution systems. Golden Spread's member systems provide retail electric service to more than 97,000 consumers located in the Texas Panhandle and on the South plains and in the Panhandle of Oklahoma.

Golden Spread's member systems are Bailey County Electric Cooperative (Muleshoe), Deaf Smith Electric cooperative (Hereford), Greenbelt Electric Cooperative (Wellington), Lamb County Electric Cooperative (Littlefield), Lighthouse Electric Cooperative (Floydada), Midwest Electric Cooperative (Roby), North Plains Electric Cooperative (Perryton), Rita Blanca Electric Cooperative (Dalhart), South Plains Electric Cooperative (Lubbock), Swisher Electric Cooperative (Tulia) and Tri-County Electric cooperative (Hooker, Oklahoma).

**Goodwrench Service Plus**

**Offers you**

# MORE

GM Goodwrench Service Plus is more than just another way to service your vehicle - it's a better way. Because GM Goodwrench Service Plus has highly trained technicians who know your GM vehicle inside and out.

*Plus* **UP-FRONT COMPETITIVE PRICING**  
Which means no surprises when the bill comes.

*Plus* **COURTESY TRANSPORTATION**  
After you drop off your vehicle, we'll take you where you want to go.

*Plus* **LIFETIME SERVICE GUARANTEE**  
Parts and labor are covered for as long as you own your GM vehicle. See dealer for details of this limited warranty. Covered parts include:

- Air Conditioning Accumulator
- Air Conditioning Compressor
- Air Conditioning Condenser
- CV Joint/Boot Seal Kit
- Ignition Module
- Ignition Coils
- EGR Valve
- Fuel Injectors
- Fuel Pump
- Ignition Wire Set
- Individual Ignition Wires
- New/Remanufactured Generator
- New/Remanufactured Starter Motor
- Oxygen Sensor
- Shock Absorbers/Struts
- Throttle Body Injector
- Water Pump

Please present coupon prior to service

# FOR LESS.

<p><b>QUICK LUBE<sup>plus</sup> Lube, Oil &amp; Filter Change</b> <span style="float: right; font-size: 2em;"><b>\$17</b></span></p> <p style="font-size: x-small;">Complete chassis lube; AC oil filter; up to 5 quarts quality motor oil, plus 10-point maintenance check.</p> <p style="font-size: x-small;">Offer expires 4-30-97. Taxes not included. Applies to most GM vehicles. See dealer for details.</p>	<p><b>24-Point Maintenance Inspection</b> <span style="float: right; font-size: 2em;"><b>FREE</b></span></p> <p style="font-size: x-small;">Includes emission check, lights, engine, battery, brakes, cooling systems, general appearance, transmission operations, tires &amp; steering. Needed repairs will be noted &amp; a free written estimate will be provided.</p> <p style="font-size: x-small;">Offer expires 06/30/97. Applies to most GM vehicles. See dealer for details.</p>
<p><b>Tire Rotation</b> <span style="float: right; font-size: 2em;"><b>\$18</b></span></p> <p style="font-size: x-small;">Inspect for irregular tire wear. Check tire pressure. Rotate per manufacturer's specifications. Visual inspection of rims.</p> <p style="font-size: x-small;">Offer expires 4-30-97. Taxes not included. Applies to most GM vehicles. See dealer for details.</p>	<p><b>Radiator Service/Coolant</b> <span style="float: right; font-size: 2em;"><b>\$25</b></span></p> <p style="font-size: x-small;">Drain &amp; flush cooling system. Replace coolant. Clean outside of radiator &amp; air conditioning condenser. Pressure test entire system. Inspect condition of all hoses, clamps &amp; belts.</p> <p style="font-size: x-small;">Offer expires 4-30-97. Taxes not included. Applies to most GM vehicles. See dealer for details.</p>
<p><b>Air Conditioning Service</b> <span style="float: right; font-size: 2em;"><b>\$45</b></span></p> <p style="font-size: x-small;">Adjust drive belts. Tighten fittings. Check operating pressure. Check for leaks. Clean condenser fins. Performance-test system (Freon extra).</p> <p style="font-size: x-small;">Offer expires 4-30-97. Taxes not included. Applies to most GM vehicles. See dealer for details.</p>	<p><b>Tire Rotation/Balance/Brake Inspection</b> <span style="float: right; font-size: 2em;"><b>\$36</b></span></p> <p style="font-size: x-small;">Inspect for irregular tire wear. Check tire pressure. Rotate per manufacturer's specifications. Inspect rims. Computer balance 4 wheels. Check brake linings, rotors, drums, hydraulic system &amp; master cylinder.</p> <p style="font-size: x-small;">Offer expires 4-30-97. Taxes not included. Applies to most GM vehicles. See dealer for details.</p>

**BENDER**

**2500 Mabry Drive, Clovis, NM (505) 763-4465**



# BAILEY COUNTY DEVOTIONAL PAGE

**Risinger Plumbing**  
Serving Muleshoe Area  
All Plumbing Repairs  
**272-6772**

**El Jacalito**  
Tortilla Factory  
516 North First Muleshoe  
272-5556  
Mon.-Wed.-Thurs. Alfredo & Mariann Anzaldúa

**EASTER GRAIN, INC.**  
Easter 272-5255  
Labuddie 965-2817

**Triple S Publishing**  
304 W. 2nd 272-4536  
Muleshoe, TX

**ALEX'S TIRE SERVICE**  
302 E. American Blvd.  
272-5012 Muleshoe

**IRRIGATION PUMPS & POWER**  
ZIMMATIC CENTER-PIVOTS  
W. Hwy. 84 272-4483

**MAPLE COOP GIN**  
927-5501  
Maple, Texas

**Leal's Tortilla Factory, Inc.**  
"Serving West Texas since 1957"  
107 E. Ash 272-5772 Muleshoe, TX

**O & C OSONS**  
Erection Sprinkler Ser. Welding & Repair  
Repair & Assemble 272-5018 909 W. American Blvd. 272-3475  
Lupe Olivarez

**Discount Computer & Repair Service**  
**CompuTeK**  
206 Main 272-5404  
1-800-687-3816

**BOBO INSURANCE AGENCY**  
108 E. Ave. C 272-4264

**Shipman's Body Shop**  
Auto Painting • Wrecker Service • Free Estimates  
Tractor Glass & Windshields  
410 N. 1st Muleshoe, TX  
272-4408 FAX 272-3366

**SAIN IRRIGATION & MACHINES**  
Complete Pump Service  
W. American Blvd. 272-4397  
Walt Sain Muleshoe, TX 272-4148

**Bob STOVALL Printing**  
Quality -- Service  
221 E. AVE. B 272-3373  
C.R. & EVA NELL DALE MULESHOE

**TERRA INTERNATIONAL, INC.**  
272-4203  
Muleshoe, Texas

**RONNIE HOLT INSURANCE AGENCY**  
Specializing in Crop, Life & Health Insurance  
Western 66 Office Bldg.  
272-4271 Muleshoe, TX

**PACO FEED YARD, INC.**  
Commercial Cattle Feeders  
P.O. Box 956 265-3281  
Friona, TX  
Feller Hughs-Mgr.

**WESTERN '66' COMPANY**

**JAMES CRANE TIRE CO., INC.**  
107 Main 272-4594  
Mike Hahn Muleshoe, TX

## Facts About The BIBLE BY JOHN LEHTI

### PARABLES - THE GREAT INSTRUMENT OF TEACHERS!

IN BIBLICAL TIMES, THE OLD STORY-TELLER, THE RECITER OF PARABLES WAS THE TEACHER, THE INSTRUCTOR OF THE PEOPLE—HIS CLASS-ROOM WAS ANY CONVENIENT STREET CORNER WHERE YOUNG AND OLD-AIKE LISTENED TO WHAT HE HAD TO SAY. THIS METHOD, AGES BEFORE THE PRINTED BOOK, WAS JUST ABOUT THE ONLY WAY TO INFORM. THOSE WHO COULD READ THE WRITTEN WORD WERE FEW AND FAR BETWEEN SO, BY WORD OF MOUTH, HISTORY WAS PASSED DOWN FROM ONE GENERATION TO ANOTHER—BUT THE PARABLE WAS MORE THAN JUST HISTORY—IT PRESENTED TO THE LISTENER MORAL ETHICS, IT MADE HIM PONDER ON WHAT WAS THE RIGHT THING TO DO AND WHAT WAS WRONG! WHEN JESUS BEGAN HIS MINISTRY, HE RECITED THE LAW, HE GAVE HIS "SERMON ON THE MOUNT" BUT THESE DIRECT TEACHINGS WERE MUCH TOO STERN AND DEMANDING—AND TURNED MANY PEOPLE AWAY....



...BUT WHEN JESUS BEGAN TO ILLUSTRATE HIS SERMONS WITH THE WELL-KNOWN FORM OF THE PARABLE, THE COMMON MAN COULD UNDERSTAND HIM, COULD PLACE HIMSELF IN THE STORIES—A FISHERMAN COULD GET THE POINT IN "THE NET CAST INTO THE SEA," A HERDIER COULD WELL UNDERSTAND "THE LOST SHEEP," AND A FARMER "THE SEED CAST INTO THE GROUND" AND, THROUGH THIS TRADITIONAL METHOD, JESUS' TEACHINGS BEGAN TO SPREAD LIKE WILDFIRE!

**NEXT WEEK: A CAMEL OR A ROPE — HOW CORRECT IS OUR BIBLE?!**

SAVE THIS FOR YOUR SUNDAY SCHOOL SCRAP-BOOK

**This devotional & directory is made possible by these businesses who encourage all of us to attend worship services.**

**ASSEMBLY OF GOD**  
FIRST ASSEMBLY OF GOD  
521 South First Street • 272-3017  
Jack Stone, Min. • 272-3984  
S.S. 9:45 a.m., W.S. 11 a.m. & 6:30 p.m.,  
Wed. 7:30 p.m.

**BAPTIST CALVARY BAPTIST**  
1733 W. Ave. C. Rev. Jeff Coffman  
**CIRCLE BACK BAPTIST**  
Intersection FM 3397 & FM 298  
Jessie Shaver, Min • 946-3676

**FIRST BAPTIST**  
220 West Ave. E.  
Stacey Conner, Min.  
**FIRST BAPTIST**  
Labuddie • 965-2126

**PRIMERA IGLESIA BAUTISTA**  
223 E. Ave. B Roy Martinez, Min.  
**PRIMITIVE BAPTIST**  
621 South First  
Elder Cleveland Bass, Min.

**PROGRESS BAPTIST**  
Progress, TX  
**PROGRESS SECOND BAPTIST**  
Arthur Hays, Min.  
1st & 3rd Sundays

**RICHLAND HILLS BAPTIST**  
17th & West Ave. D  
Brad Gathright, Min.

**ST. MATTHEWS BAPTIST**  
Corner of W. Boston & W. Birch  
Floyd R. Monroe, Min.

**THREE WAY BAPTIST**  
927-5467  
James Sinclair, Pastor  
**TRINITY BAPTIST**  
314 E. Ave. B  
Robert Brown, Min.

**CATHOLIC IMMACULATE CONCEPTION CATHOLIC**  
805 E. Hickory  
Joseph Augustine, Min.

**CHRISTIAN THE CHRISTIAN CENTER**  
Morton Hwy. • 272-5105  
Reydon Stanford, Min.

**CHURCH OF CHRIST LARIAT CHURCH OF CHRIST**  
Sam Billingsley, Min.  
S.S. 10 a.m.; W.S. 11 a.m. & 6 p.m.,  
Wed. 7 p.m.

**LAZBUDDIE CHURCH OF CHRIST**  
Nathan Crawford, Min.  
S.S. 9:30 a.m.; W.S. 10:20 a.m. & 5 p.m.;  
Wed. 7 p.m.

**MULESHOE CHURCH OF CHRIST**  
22nd & W. American Blvd.  
John Knox, Min.  
S.S. 9:30 a.m.; W.S. 10:20 a.m. & 6 p.m.;  
Wed. 7:30 p.m.

**SIXTEENTH & AVE. D CHURCH OF CHRIST**  
Curtis Shelburne, Min. • 272-4619  
W.S. 10:30 a.m. & 6 p.m.;  
Wed. 7:30 p.m.

**LUTHERAN ST. JOHN LUTHERAN**  
Lariat, TX  
Richard Greenhaner, Min.  
S.S. 10:30 a.m.; W.S. 9:30 a.m.

**METHODIST FIRST UNITED METHODIST HISPANIC MINISTRIES**  
E. 5th and E. Ave. D  
Pastor Benito Cavazos

**FIRST UNITED METHODIST**  
507 W. 2nd St.  
Pastor John Wagoner  
**LAZBUDDIE METHODIST**  
965-2121

**EL DEVINO SALVADOR**  
814 W. Ave. C, Muleshoe, TX  
Guadalupe Ballinas, Min.

**NAZARENE NEW VISION CHURCH OF THE NAZARENE**  
814 W. Ave. C • 272-3622  
David R. McIntire

**PENTECOSTAL IGLESIA PENTECOSTAL UNIDIA**  
207 East Ave. G • 272-3636  
Wencelado Trevino, Min.

**INTER DENOMINATIONAL NEW COVENANT**  
Plainview Hwy. Jimmy Low, Min.  
S.S. 9:30 a.m.; W.S. 10:15 a.m.;  
Wed. 7 p.m.

**WINKLES TRUCKS, INC.**  
Box 757 (806) 247-2724  
Friona, TX

**Lowe's MARKETPLACE**  
401 W. American Blvd.  
Muleshoe 272-4585  
515 W. American Blvd.  
Muleshoe 272-4406

**Decorators Floral & Gifts**  
616 South First 272-4340  
Muleshoe, TX

**SHERLEY-ANDERSON LAZBUDDIE ELEVATOR**  
965-2922 Labuddie, TX

**1ST BANK** MEMBER FDIC  
202 South First 272-4515

**WES-TEX FEED YARDS, INC.**  
Custom Cattle Feeding  
272-7555 Muleshoe, TX

**AMERICAN AVI** West Hiway 84 272-4266 Muleshoe

**BAILEY GIN COMPANY, INC.**  
946-3397  
Sudan, TX  
Peanut Hawkins, MGR

**WESTERN DRUG**  
114 Main 272-3106 Muleshoe

**Delton E. Wilhite & Associates**  
Home, Auto, Crop, Life & Health Insurance  
1631 W. American Blvd., Muleshoe 272-3652

**HERITAGE HOUSE INN**  
2301 W. American Blvd. 272-7575  
Muleshoe, Texas  
Clint & Evelyn Peat - Resident Owners  
Reservations 1-800-253-5896

**BRUCE, INC. AIR CONDITIONING**  
Hwy. 214 North 272-5114  
Muleshoe, TX  
TACL-B003350C, LP08638

**MULESHOE COOPERATIVE GINS**  
P.O. Box 569  
272-4794 Muleshoe, TX

**MULESHOE AREA HEALTHCARE Center**  
"Committed to Caring"  
106 W. Ave. H Muleshoe 272-7578

**MULESHOE MOTOR CO.**  
1225 W. American Blvd. 272-4251

**"THE FIVE AREA TELEPHONE COOPERATIVE ORGANIZATION"**  
West Plains Telecommunications Co.  
Five Area Systems, Inc., Plateau Cellular Network  
Five Area Long Distance - Five Area Internet  
302 Uvalde Muleshoe, USA (806)272-5533

**WANDA BROWND INSURANCE AGENCY**  
118 E. Ave. C Muleshoe 272-7548

Since 1957 - The Original  
**Leal's Mexican Restaurant**  
1010 W. American Blvd. 272-3294  
Muleshoe, TX Victor & Debbie Leal

**Triple S Publishing**  
304 W. 2nd 272-4536  
Publishers of the Muleshoe Journal and Bailey County Journals



# Miller, Embry wed March 8

Stacey Kay Embry and Brian Richard Miller were united in marriage March 8, 1997, at Brentwood Oaks Church of Christ in Austin, Texas. The wedding was officiated by Phil Ware, minister, Westover Hills Church of Christ, in Austin.

Stacey is the daughter of Johnny and Tanya Embry of Muleshoe, and Brian is the son of Richard and Gail Miller of Austin. Stacey is the granddaughter of Joe and Claudine Embry of Muleshoe and Raymond and Faye Horton of Wellington. Brian's grandparents are Duncan and Kaye Miller of Normal, Ill., and Chet and Alice Blumenstein of Minocqua, Wis.

The bride's gown was made of white, raw silk and featured a sweetheart neckline. Reembroidered lace with sequins and simulated pearls accentuated the princess bodice and sleeves. The bosque waist dropped to a full, semi-cathedral length train, and decorative self-buttons and an appliqued bow enhanced the back of her gown. Something old was a penny in Stacey's shoe that was minted in the year of her birth. Something new was a lace handkerchief given to her by a family friend. Something borrowed was a cultured pearl necklace which belongs to her paternal grandmother. Something blue was the blue

ribbons in her bridal bouquet.

The maid of honor was Kelly Anderson and the bridesmaids were Andrea Klaer, Whitney King and Mindy Marstiller. Flower girl was Rachel Lightfoot. The best man was Brad Miller, brother of the groom, and the groomsmen were Tony Garcia, Chris Gougenheim and John Embry, brother of the bride. Ring bearer was Benjamin Lightfoot and the ushers were Casey Bell, Joe Geraci and Clay Loucks.

The bride was escorted down the aisle by her father to the traditional "Wedding March." A special tribute from the bride and groom to their parents was read by the minister and was followed by a musical selection, "Parent's Prayer."

The unity candle ceremony began with "Just You and I" being sung as Stacey and Brian lit their unity candle. Following a prayer of thanksgiving, a blessing from Numbers 6:24-26 was read by Eric Jacobsen, special friend of the bride. Stacey concluded the unity candle ceremony by singing "Keeper of the Stars" to Brian.

Following the ceremony, a reception was held in the church parlor. Serving the guests were Shannon Adams, Chrissy Anderson, Julie Church, Cari Jacobsen, and Lori Hodges, cousin of the bride.



Mrs. Brian Richard Miller (Stacey Kay Embry)

For their honeymoon, the couple spent a week in Maui, then returned to their home in Austin.

The bride and groom graduated from Westwood High School, Austin, in 1992. Stacey graduated from Texas A&M University in December 1995 and is currently teaching 7th grade Language Arts and Reading at Canyon Vista Middle School in Austin. Brian will graduate from The University of Texas at Austin in May 1997 and will begin medical school at Southwestern Medical School, Dallas in August.

## OBITUARY

### Clara Ary Black

STEPHENVILLE, Texas — Graveside services for Clara Ary Black, 82, of Stephenville were held April 3 at Sudan Cemetery, Sudan with Rev. Jack Stone, pastor of First Assembly of God Church, Muleshoe officiating.

Burial followed in the Sudan Cemetery under the direction of Ellis Funeral Home of Muleshoe.

Mrs. Black died April 1 at Harris-Methodist Hospital, Stephenville.

She was born May 27, 1914 in Greenville, Ark. She married Edd Ary Sept. 18, 1932 in Stigler, Okla. He died Nov. 23,

1977.

Mrs. Black had lived in Stephenville since 1989 moving from Roswell. She had lived in Muleshoe from 1945 to 1984. She was a homemaker.

She was preceded in death by one son, Charles Ary.

Survivors include three sons; Harvey Ary of Oklahoma City, Mike Ary of Cimarron, N.M. and Ron Ary of Stephenville; one daughter, Shirley Sanchez of Roswell; two sisters; Oma Green of Compton, Calif. and Opal Martin of Levelland; 21 grandchildren, 19 great-grandchildren, 2 great-great-grandchildren.

### Earn Big Bucks!

Well established automobile dealership is looking for quality employees who meet the following criteria:

- ✓ Have No Experience
- ✓ Desire a \$50K Income Potential
- ✓ Desire Work In a Professional Environment
- ✓ Want a Car Allowance
- ✓ Like To Work As Part Of A Team

This opportunity is the chance for an aggressive person who strongly desires to succeed. If you want to earn big bucks, apply in person:

**Doug Hulderman**  
Jones Pontiac GMC Buick  
3400 Mabry Dr  
Clovis, NM  
505-762-2986

### Federal Land Bank Association

316 Main St., Muleshoe  
806-272-3010

Long Term Financing for Farms, Ranches, Rural Housing, Operating and Improvements.

**Current Variable Rate 7.95%.**

Fixed rates are available.

Call for quote.

A Property Rights Advocate and Equal Opportunity Lender.

### HOSPITAL ADMISSIONS

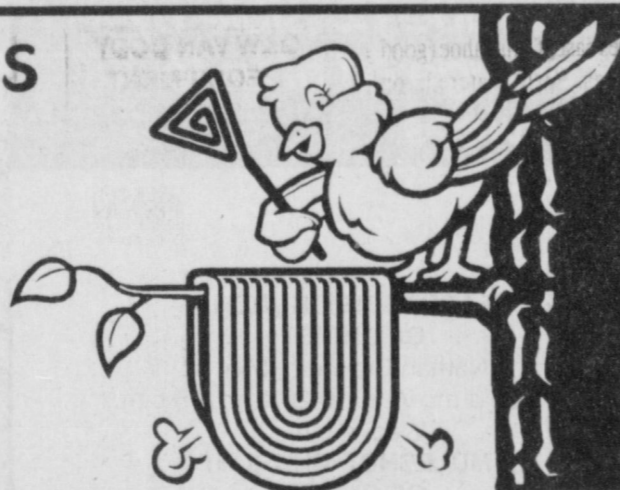
The Muleshoe Area Medical Center has reported the following admissions to the hospital:

- March 28 — James Peeler, Maxine Ragsdale
- March 29 — James Peeler, Delbert Watson, Lola Goodnough, Maxine Ragsdale
- March 30 — James Peeler, Delbert Watson, Maxine Ragsdale, Inez Lozano
- March 31 — Johan Loeppky
- April 1 — Johan Loeppky, Dulces Perez, Maxine Donaldson
- April 2 — Myrtle Lee
- April 3 — Myrtle Lee

*Subscribe today!*

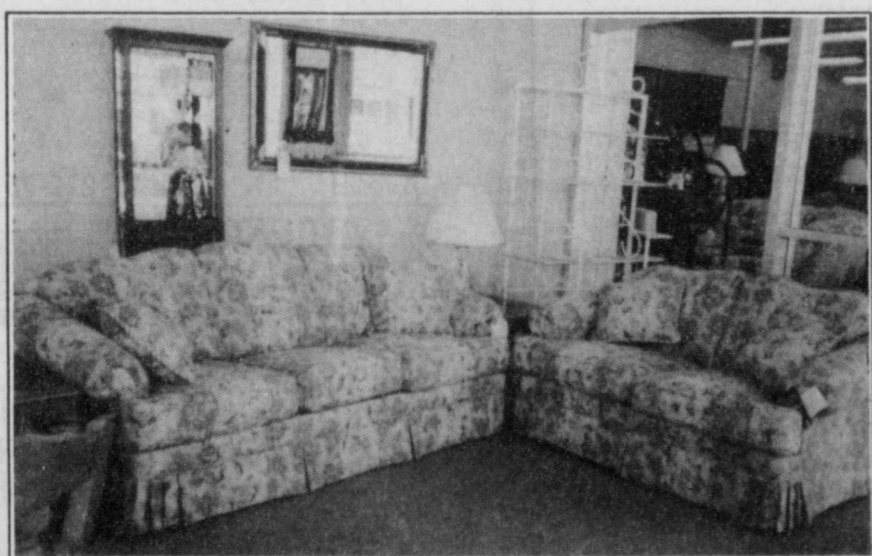
Call the Muleshoe Journal  
272-4536

AN OFFER THAT'S  
**HARD TO BEAT!**



**1/2 Price Sale**

Buy Any Sofa & Purchase Matching Loveseat at 1/2 Price



**One Week Only!**

Over 35 Styles To Choose From

Special Orders Welcome!

**Factory Direct Furniture**

300 S. Ave. C  
Portales, NM (505) 356-4814

Master Card • Visa • Discover • American Express • True Value Card Accepted

*Elegance You Can Afford!*

Financing Available

STORE HOURS: Monday-Saturday  
9a.m.-6 p.m.

**THE CLASSIFIEDS**

small ads **BIG** deals

Shop the classified and grab a great deal on a great deal of items!

- Autos • Appliances
- Furniture • Real Estate

**Muleshoe Journal**

304 W. 2nd 272-4536

*Call today!*



# Journal Classifieds

Call 272-4536 Deadlines: For Thursday, 5 p.m. Monday; For Sunday, 5 p.m. Thursday Call 272-4536

## NOTICE OF SALE

The Bailey Central Appraisal District will offer for sale by means of competitive bids an office building at 104 East Avenue C, Muleshoe, Bailey County, Texas. Being legally described as a rectangular tract of land 100 feet by 60 feet and being more particularly described as the Westerly 60 feet of Lots 21, 22, 23, and 24, block 21, Original Town of the City of Muleshoe, Bailey County, Texas. The structure can be inspected by calling Kaye Elliott, Chief Appraiser at 806-272-5501.

All bids must be in writing, in sealed envelopes, marked as follows: "Bid for office building at 104 E Ave C" and submitted to the Appraisal District office at 302 Main Street, Muleshoe, Texas, no later than May 14, 1997. Bids will be opened at the Appraisal District Board of Directors meeting, at the Appraisal District Conference room Thursday, May 15, 1997 at 1:00 p.m.

The Board of Directors reserves the right to accept or reject any or all bids. A letter of credit from an authorized financial institution must accompany the bid. Financing arrangements must be completed within 24 hours of acceptance of the bid. Published in the Bailey County Journal March 9, April 6, April 13, May 4 and Muleshoe Journal March 23, April 24, May 1, May 8.

## NOTICE OF PROPOSALS

The Bailey County Commissioners Court is currently accepting sealed proposals for group health insurance coverage for Bailey County Employees. Proposals must be delivered to the County Judge's office, 300 S. 1st, Muleshoe, TX 79347, no later than Monday, May 12, 1997, at 11:00 a.m., at which time proposals will be opened.

Proposals should be for the same coverage and in the amounts now provided under the Bailey County Employee Benefit Trust, a partially self-funded plan, which plan year runs from June 1st through May 31st. Any proposals for more or less coverage, or for plans which

would not be partially self-funded, should be presented as options and labeled as such.

Specifications, as well as personnel and claims experience information, are available in the County judge's office and will be provided upon request.

The County reserves the right to accept or reject any or all proposals.

Published in the Muleshoe Journal March 27 and published in the Bailey County Journal April 6, April 20.

## NOTICE TO CREDITORS

Notice is hereby given that original Letters Testamentary for the Estate of MARTHA YOUNG, DECEASED, were issued on February 17, 1997, in Docket No. 2108, pending in the County Court of Bailey County, Texas, to: Prisca Lynn Gilbert and Pamela D. Atwood.

The residence of Prisca Lynn Gilbert is in Brazoria County, Texas and the residence of Pamela Dee Atwood is in Bailey County, Texas; the post office address is:

c/o Pamela Dee Atwood  
510 East Dallas  
Muleshoe, Texas 79347

All persons having claims against this Estate which is currently being administered are required to present them within the time and in the manner prescribed by law.

DATED the 1st day of April, 1997. Gordon H. Green, Attorney for the Estate.

Published in The Bailey County Journal April 6.

## NOTICE OF INCORPORATION

Notice is hereby given that KING AG AVIATION, whose principal business office is located in Bailey County, Texas, became incorporated on March 1, 1997, under the firm name of KING AG AVIATION, INC.

Gordon H. Green Attorney for King Ag Aviation, Inc.

Published in the Bailey County Journal April 6, 13, 20, 27.

## REAL ESTATE

**For Sale:** 14x66 1986 Mobile Home, 3 bdrm, 2 bath, 272-5811 leave message. 14s-6tc

**For Rent:** 2 newly remodeled houses just outside city limits. 2 bdrm fully carpeted, 3 bdrm with central heat, utility, 1 car garage, references required. Call 272-3767. 14s-3tc

**For Sale:** Commercial Property. 1.451 acres. Easy access, Hwy 84, Muleshoe, TX. Call 806-272-3137 for more information. 14s-2sunc

**BRICK:** 3 bdrm, 1 3/4 bath, family room, fireplace, kitchen w/ built-ins, dining, utility, garage, central heat/air, fenced corner lot. 1815 W Ave I. Joann Chester Realty 806-227-2368. 1815 W. Ave I

**Stucco house** with four rooms and bath for sale. 22x48. 301 East Elm, Muleshoe, Tx. \$10,000 or make offer. Call (806)2723137. 15s-2sunc

**House for sale.** 1407 West Ave. B, Muleshoe, Tx. \$10,000 or make offer. Call (806)272-3137. 15s-2sunc

**For Rent:** 2 bedroom, 2 bath, mobile home in Muleshoe. \$350 with references. 965-2943. 15s-2tc

## AUTOMOBILE

'94 Lincoln Towncar, loaded, 60,000 miles, Emerald green, leather interior, \$17,995. Portales, N.M. (505)359-1775.

'89 Ford 3/4 ton, 460 engine, 4x4, \$7,995. Portales, N.M. (505)359-0947.

'93 Dodge Dakota extended cab, extra nice, read and silver, \$8,995. Portales, N.M. (505)359-1775.

'94 Ford Ranger extended cab, XLT, purple, 5 speed, \$10,995. Portales, N.M. (505)359-0947.

'94 Plymouth Acclaim, 4 door, V-6, clean, \$5,595. Portales, N.M. (505)359-1775.

## FOR SALE

**For Sale:** Total electric Brick home - 3 bdrm, 2 bath, fireplace, 1 car garage, storage bldg. Call 806-272-3196. 11t-8tpd

**Local Apparel Business For Sale.** Lets talk, 272-7561. 14t-4tc

**Apple Trees!!!** Clearance sale. Semi-dwarf Fuji, Gala, Reds, Goldens, and Cameo varieties. \$8 each. Call for info 505/752-1627 or 505/382-1866. 14t-3tc

**Fine Quality Alfalfa For Sale** (Inside a Barn) 272-5012 11t-4sunc

## HELP WANTED

**Morton Manor** needs a full time LVN. Contact Brien at 806-266-8866. 13s-sunc

**Friendly Help Wanted at Dairy Queen.** Apply between 7 - 9 a.m. and 2-4 p.m. 14t-2tc

**TRAIN FOR YOUR FUTURE JOB CORPS** U.S. Department of Labor, Vocational/Technical training. Free tuition, including GED. Health and dental care provided, spending allowance, savings account and clothing allowances while you train. Men and Women, ages 18-24. Placement assistance upon graduation. Call today to see if you qualify. 806-763-6416 or 1-800-392-2093. 15s-6sunc

## MISCELLANEOUS

**FREE:** 1-small dog to good home. 1-1yr. old Tree Walker, with papers. 272-4118. 15s-1tc

**LOST** a black Chihuahua. Answers to the name of Taz. He has a bad attitude and gets violent when bathed. If found please call 272-4984 or 272-4657. —  
**REWARD—** 15s-1tc

## TIME SAVER

Can Do maintenance and general home repair, painting, yard work, etc. 272-3214. 11t-8tpd

## MOBILE HOMES

Shop til you drop or just shop Lub Homes. Clovis 762-1211 or 1-800-306-1211.

You are buying a home! But it may be for your landlord! Come see us today. Luv Homes, Clovis 762-1211 or 1-800-306-1211.

## WANTED

**\$\$\$WANTED\$\$\$**  
We buy used mobile homes. We pay top dollar, any year, any condition. We need your used mobile home. Please call 1-800-404-1321. 7t-tfc

## FARMS & RANCHES

**LET'S LOOK**  
240 acres between Muleshoe and the state line, on pavement, two good houses, sprinkler, 3 irr. wells & domestic well, good barns, shop, boxcar & steel pens, poss. of lease on 2 - 1/4's with sprinklers with purchase of 240 acres. OWNERS WOULD CONSIDER SELLING 80 ACRES SEPARATELY.  
207 acres - Hub area - choice land, irr. well on electricity, 700 GPM sprinkler, good allotments, adjoining 348 acres with sprinkler for sale also if larger unit desired.

**WE HAVE**  
other farms (both larger & smaller), most with sprinklers, some row-watered, some dryland, RANCHES — 5 1/2 sections, on pavement, west of Lubbock — Irrigation potential, 5055 acres east of Muleshoe (good fences, well watered, on pavement, good pens) and a good 48 section N.M. ranch approx. 32% deeded, balance leased, good home, on pavement. In coop with N.M broker.

**SCOTT LAND CO.**  
Ben G. Scott  
(806) 647-4375 D/N

## Salesman Wanted

for latest technology in water systems. Irrigation and residential sales. Agriculture and irrigation background preferable. Potential for 25,000-75,000 per gear. Send resume to Box 449-Z, Muleshoe, TX 79347.

## Wanted Cash Lease

160 acres with center pivot irrigation systems. Minimum of 700 gallons per minute water well required. Call 806-785-0082 or 806-797-5913 after 7:30 p.m. 10t-5sunc

## HANDYMAN!

No Job too Small. Repairs, improvements, all types. Free estimates. Call Mick 272-6791

## PRIMESTAR

Call Gabriel Today and Save Over \$100  
272-3072 or 1-800-815-2358 pin 9240  
7s-sunc

## HAY FOR SALE

Haygrazer and large round bales. Delivery available. Discounts on quantity. Call (505) 276-7522, 477-2220, 359-0947, 276-7527 41t-tfc

## G&W VAN BODY & EQUIPMENT

for SALES-PARTS-SERVICE  
**AMERICAN EQUIPMENT & TRAILER**  
3707 H.L.K. Jr. Blvd.-Lubbock, TX  
806-747-2991



Ronald Byrd  
Farwell, Texas  
Licensed Broker

Office (806) 481-3846  
Mobile (505) 760-1495  
308 Third St., Farwell, TX

Crista Bass  
Sales Associate  
Home (806) 925-6464

78 Acres NW of Muleshoe, Highway Frontage. Excellent development property. Owner will sell as one unit for \$40,000 or will divide into 5 or 10 acre tracts at \$750.00 per acre. If you have wanted a small acreage, this is your prime opportunity

320 Acres N.E. of Muleshoe. 4 wells, 2-Electric sprinklers, large 2 story stucco house, large barn, lays well

## Director HomeHealth Preferred

Position available in Hereford, Texas. Requires RN licensure; Supervisory experience and knowledge of administrative policies, fiscal management and medicare reimbursement.

For additional information, contact:  
St. Mary Hospital  
Department of Human Resources  
4014 22nd Place, Ste. 9, Lubbock, TX 79410  
(806) 796-6673  
An Equal Opportunity Employer

## Subscribe to the Muleshoe and Bailey County Journals!

Carrier Rate — \$22.00  
Mailed (In County) — \$24.00  
Mailed (Out of County) — \$26.00

# NOTICE

## CLASSIFIED DEADLINES

For the  
Thursday  
Muleshoe  
Journal,  
Deadline  
Monday  
5:00 pm

For the  
Sunday,  
Bailey  
County  
Journal,  
Deadline  
Thursday  
5:00 pm



## Nieman Realty



116 E. Ave. C

George Nieman, Broker

272-5285 or 272-5286

### RICHLAND HILLS - PARKRIDGE AREA

NICE 3-3-1 Brick, cent. Heat, Evap. Air, built-ins, 2000' + lv. area, fenced yd., stor. bldg., MORE !! \$60K !!! RH-2

NICE 3-2-2 Brick, cent. A&H, built-ins, FP, approx. 2150' lv. area, fenced yd., MORE!!! \$69K!!! RH-7

VERY NICE 3-2-1 Brick, Cent. A&H, built-ins, fans, new paint, carpet, & drapes, fenced yd. \$60K!!! RH-1

NICE 3-2-2- Brick, Cent. A&H, built-ins, FP, cov. patio, fenced yd. \$50's!!!

### HIGHLAND AREA

2 Bdrm, 1 bath home, fenced yard. \$16,500!!! HL-4

VERY NICE 3-2-2 Brick, Cent. A&H, built-ins, fenced yd., spklr. sys., MUCH MORE!!! \$60's !!! HL-1

NICE 3-2 Home, Heat Pump, FP, fenced yd., stor. bldg. \$30's!! HL-3

NICELY REMODELED 3-2-1 Brick, Cent. A&H, built-ins, FP, nice carpet & tile, fenced yard, storage building, MORE!!! \$60's!!! HL-8

JUST LISTED-NICE 3-2-2 Brick, Cent. A&H, built-ins, gas log FP, fenced yd., stor. bldg., MORE!! \$60K!!! HL-5

### LENAU - COUNTRY CLUB AREA

VERY NICE 4 bdrm. 2 1/2 bath double wide, corner lot, built-ins, heat pump, FP, MUCH MORE !!! \$50's!!! CC-2

NICE 2-2-2 Brick, on corner lot, heat pump, fenced yard, storage bldg., MORE! \$40's !!! L-1

2-1-1 Carport Home, wall furnace, nice carpet, storm shelter, stor. bldg., fenced yd. \$20's!!! CC-3

### HIGH SCHOOL

VERY NICE 3 bdrm., 2 bath Home on corner lot, Cent. A&H, built-ins, stor. bldg., fenced yd., MUCH MORE!!! \$40's!!! HS-1

VERY NICE 3-2 Home, Cent. A&H, built-ins, fans, fenced yd., stor. bldg., MUCH MORE!!!! \$30's!!! HS-5

VERY NICE 3-2-1 Home on corner lot, Cent. A&H, built-ins, ceiling fans, fenced yd., stor. bldg.!! \$30's!! HS-3

NICE 2-1-1 Brick, Heat Pump, nice carpets, well insulated, storm windows & doors. \$30's!!! HS6

## BUSINESS FOR SALE-SNACK SHACK - Lot, Buildings, furniture, and fixtures!!!!

### RURAL HOMES

2-2-1 carport Mobile Home on .665 acres on pavement close to town, Cent. heat, evap., air, DW, large barn, stor. bldg. and MORE!! \$25K!! HR-5

VERY NICE 3-11/2-1 Home on 8 acres, on pavement close to town, Cent. A&H, built-ins, sun room, concrete cellar, storage bldgs., fenced yd., RV cover, mobile home hookups, stock pens, fenced acreage, & MORE!! \$50's!! HR-6

ASK ABOUT OUR COMMERCIAL LISTINGS!!!

## BETTER LIVING MOBILE HOMES

We Have A Good Selection of 4 Bedroom Mobile Homes

Single Wide 4 Bedrooms starting at \$26,000. YOUR PAYMENTS WOULD BE LESS THAN RENT!

— Doublewide, tape & texture, over 2000 square feet - nicest home on the market

— WE EVEN HAVE 5 BEDROOMS AVAILABLE! —

1-800-404-1321 Portales, NM (505)356-5448

Lic. # D00681

'Se Habla Espanol'

## James F. Hayes & Co.

### AGRICULTURAL REAL ESTATE SERVICES

656 Acres of C.R.P. — Clays Corner Hub Area. Two years left on contract. 3 irrigation wells, 1 domestic well. 90% lays good with good soils. Will be productive farm when it comes out of C.R.P.

640 Acres Oklahoma Land — 2 Sprinklers, 4 irrigation wells, 115 Acres of pasture, modest home, 2 domestic wells

317 Acres in Lamb County on Bailey County line. 3 wells, 1 sprinkler, lays good. Call for details!

654 Acres in southern Bailey County. Grain sorghum & wheat allotment. Signed into program.

320 Acres - Lubbock area — 3 wells, 1 sprinkler, 60 acres of C.R.P. Good Soil

640 Acres of New Mexico State Lease Land. Half mile Center Pivot Sprinkler system with 3 wells, Barns, Pens.\*

240 Acres in Northwestern Lamb County near Bailey County line. Good Soil, Lays good, 3 wells.

Oklahoma Lane — 240 acres with small home. 3 irrigation wells, 1 quarter is sprinkler ready. Good soil and lays good.

### Vic Coker, Agent

310 Main St. Suite 103 Muleshoe  
Office 272-3100 Home 965-2468

WHEN LAND INVOLVES COWS AND PLOWS

\* in cooperation with a New Mexico Broker



# SPRING FEVER Sale

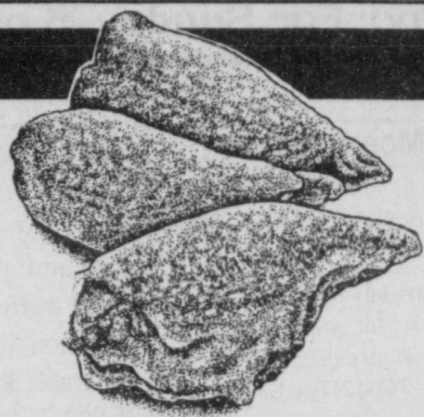
All Types  
**Pepsi**  
3 liter btl.  
**\$1.39**



All Types  
**Pepsi Cola**  
12 pack, 12 oz. cans  
**2/\$5**

## MEAT

- PREFERRED TRIM BONELESS TOP
- Sirloin Steaks** ..... lb. **\$2.39**
  - FRESH BUTT
  - Pork Roast** ..... lb. **\$1.19**
  - SHURSAVING, 1 LB. ROLL REGULAR OR HOT
  - Breakfast Sausage** ..... **89¢**
  - FRESH
  - Pork Steak** ..... lb. **\$1.39**
  - FRESH PORK SHOULDER COUNTRY STYLE
  - Ribs** ..... lb. **\$1.49**
  - FRESH PORK SHOULDER BONELESS COUNTRY STYLE
  - Ribs** ..... lb. **\$1.99**



**PILGRIM'S PRIDE**  
**GRADE A SPLIT**  
**Fryer Breasts**  
**99¢**  
lb.

- Shurfine Quality
- Sliced Bacon** ..... 1 lb. pkg. **\$1.79**
  - Shurfine
  - Meat Wieners** ..... 12 oz. pkg. **69¢**
  - Shurfine
  - Beef Wieners** ..... 12 oz. pkg. **99¢**
  - Shurfine
  - Cooked Ham** ..... 6 oz. pkg. **\$1.49**
  - Shurfine
  - Chopped Ham** ..... 6 oz. pkg. **\$1.29**
  - Shurfine Regular or Polish
  - Smoked Sausage** ..... 1 lb. pkg. **\$1.59**
  - Shurfine
  - Ham Salad** ..... 7.5 oz. ctn. **\$1.19**
  - Shurfine
  - Chicken Salad** ..... 7.5 oz. pkg. **99¢**

**SHURFINE**  
• SLICED BOLOGNA  
• SALAMI • P & P LOAF  
• SPICED LUNCHEON  
• GARLIC BOLOGNA  
**Lunch Meats**  
**79¢**  
12 oz. pkg.

Shurfine Water Thin  
• Ham • Beef • Turkey  
• Corn Beef • Pastrami  
• Chicken  
**Sliced Meats** ..... 2.5 oz. pkg. **39¢**

## Super Produce SALE!

- SMALL SUPER SELECT **Cucumbers**
- U.S. NO. 1 BAKING **Potatoes**
- GOLDEN DELICIOUS **Apples**
- RUBY RED **Grapefruit**
- RED DELICIOUS **Apples**
- GREEN **Bell Peppers**
- 3 OZ. **Mini Carrots**
- **YELLOW Onions**
- JUICY **Oranges**
- TANGY **Lemons**
- TROPICAL **Kiwi**
- FANCY **Pears**

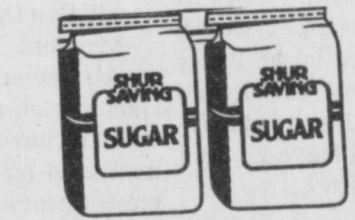


**10¢** ea.

## Blooming Shursaving Spring Deals

### — Shelf Specials —

- Shursaving Clear or Lemon **Dish Liquid** ..... 40 oz. btl. **\$1.19**
- Shursaving White Powdered **Detergent** ..... 32 oz. box **\$1.19**
- Shursaving Fabric Softener **Sheets** ..... 40 ct. box **\$1.19**
- Western Family Devil's Food **Smart Bites** ..... 6.75 oz. box **\$1.19**
- Shursaving White **Napkins** ..... 250 ct. pkg. **\$1.69**
- Shursaving **Lemon Juice** ..... 32 oz. btl. **\$1.49**
- Shursaving Elbo Macaroni or Long **Spaghetti** ..... 32 oz. pkg. **\$1.19**
- Shursaving Long Grain **Rice** ..... 4 lb. bag **\$1.79**
- Shursaving Pre-Creamed **Shortening** ..... 42 oz. can **\$1.19**
- Shursaving Hamburger Sliced **Dill Pickles** ..... 32 oz. jar **\$1.19**
- Shursaving Plain or Iodized **Salt** ..... 26 oz. box **3/\$1**
- Shursaving, 18 oz. box **Corn Flakes Cereal** ..... **\$1.19**
- Shursaving, 13 oz. box **Crispy Rice Cereal** ..... **\$1.49**
- Shursaving **Salad Oil** ..... 48 oz. btl. **\$1.49**
- Shursaving **Coffee Filters** ..... 200 ct. pkg. **89¢**
- Shursaving Crunchy or Creamy **Peanut Spread** ..... 18 oz. jar **99¢**
- Shursaving **Salad Dressing** ..... 32 oz. jar **99¢**



Shursaving Granulated **Sugar**  
**\$1.29**  
4 lb. bag

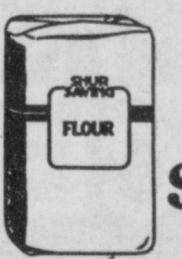


Shursaving **Tomato Sauce**

8 oz. cans **6/\$1**



Shursaving Regular Liquid **Bleach**  
gallon jug **69¢**



Shursaving All Purpose **Flour**  
25 lb. bag **\$2.99**

- Shursaving Chunk **Dog Food** ..... 20 lb. bag **\$2.99**
- 7.25 oz. boxes, Shursaving **Mac & Cheese Dinners** ..... **6/\$1**
- Shursaving Plain or Rippled **Potato Chips** ..... 16 oz. pkgs. **2/\$3**
- Shurfine Assorted **Tortilla Chips** ..... 40 oz. pkgs. **2/\$5**
- Shursaving **Saltine Crackers** ..... 16 oz. box **69¢**
- Shurfine 24 ct. Medium or 18 ct. Large **Basic Diapers** ..... your choice **\$2.99**
- Western Family Aloe Scented/Unscented **Baby Wipes Refills** ..... 80 ct. ctn. **\$1.89**
- Western Family Aloe Scented/Unscented **Baby Wipes** ..... 80 ct. ctn. **\$1.99**
- Shursaving Evaporated **Filled Milk** ..... 12 oz. cans **2/89¢**

## Frozen & Dairy

- Shurfine Regular or Lite **Whipped Topping** ..... 8 oz. **79¢**
- Shurfine, 32 oz. pkg. **Chopped Broccoli** ..... **\$1.99**
- 32 oz. pkg., Cut Green Beans/Sweet Peas/WK Corn/Mixed Vegetables **Shurfine Vegetables** ..... **\$1.79**
- Sliced Squash/Cut or Whole Baby Okra **Shurfine Vegetables** ..... 16 oz. bag **\$1.19**
- Shursaving, 20 oz. bags **Shoestring Potatoes** ..... **2/\$1**
- Shurfine, 12 oz. can **Grape Juice** ..... 12 oz. can **\$2.69**
- Shursaving Cherry or Assorted **Twin Pops** ..... 6 ct. pack **79¢**
- Shurfine Whole **Strawberries** ..... 16 oz. ctns. **2/\$3**

Shurfine Chilled **Orange Juice**  
gallon jug **\$2.69**



- Shurfine **Buttermilk** ..... 1/2 gallon **\$1.19**
- Shursaving Vegetable Oil **Spread** ..... 32 oz. tub **69¢**
- Shurfine Assorted Texas Style **Biscuits** ..... 12 oz. cans **5/\$3**
- Shurfine Cinnamon or Crescent **Rolls** ..... 8-12.4 oz. cans **3/\$4**
- Shurfine Halfmoon **Cheddar Cheese** ..... 8 oz. pkg. **2/\$3**
- Shurfine Cheddar or Mozzarella **Shredded Cheese** ..... 4 oz. bag **79¢**
- Shursaving, 10.6 oz. pkg. **Sandwich Singles** ..... **99¢**
- Shurfine **Citrus Punch** ..... 16 oz. btl. **4/\$1**

Shurfine Choc./Vanilla or Strawberry **Ice Cream**  
5 qt. pail **\$3.89**

## Health & Beauty Aids

- Western Family 5 Gr. Tri Buffered **Aspirin** ..... 100 ct. **\$1.99**
- Western Family Hydrogen **Peroxide** ..... 8 oz. **39¢**
- Western Family, 500 MG **Vitamin C** ..... 100 ct. **\$1.99**
- Western Family, Asstd. Paste or Gel **Toothpaste** ..... 5-7 oz. **99¢**
- Western Family, Baby **Lotion or Oil** ..... 14-16 oz. **\$1.99**
- Western Family **Cotton Swabs** ..... 300 ct. **\$1.39**
- Western Family, Asstd. Anti-Plaque **Rinse or Mouthwash** ..... 16-24 oz. **\$1.49**
- Western Family 24 ct. Caplets or Tablets **Complete Allergy** ..... **\$1.69**
- Western Family, Hista Tabs **Decongestant** ..... 100 ct. **\$3.89**
- Western Family, 30 MG **Psuda Tabs** ..... 100 ct. **\$2.49**
- Western Family, Ex. Moist or Decongestant **Nasal Spray** ..... 1 oz. **\$1.69**
- Western Family Caplets or Tablets **Ibuprofen** ..... 100 ct. **\$2.99**
- Western Family, Caplets or Tablets, Ex. Str. **Non-Aspirin** ..... 500 M, 100 ct. **\$2.49**
- Western Family, Gelcaps, 500 M Ex. Str. **Non-Aspirin** ..... 100 ct. **\$2.99**
- Western Family, Reg. or Mint **Milk Of Magnesia** ..... 12 oz. **\$1.99**

- Western Family **Bis-Mate** ..... 8 oz. **\$1.99**
- Western Family, 10 ct. **Disposable Razors** ..... 110mm-200, 135mm-100, 200 or 400 **99¢**
- Western Family **Film** ..... 24 exp. **\$1.89**
- Western Family **Zinc Oxide Ointment** ..... 2 oz. **99¢**
- Western Family, 1 oz. **Itch Relief Cream** ..... **\$1.29**
- Western Family, 1 oz. **Hydrocortizone or Triple Ointment** ..... **\$1.39**
- Western Family, 96 ct. Ex. Str., 150 ct. Asstd. Flavors or Peppermint **Antacid Tabs** ..... your choice **\$1.99**
- Western Family, 15 oz. **Shampoo Plus Conditioner** ..... **\$1.99**
- Western Family, Active or Moist **SPF-15 Sunblock** ..... 4 oz. **\$2.59**
- Western Family, 8 oz. Hawaiian Oil SPF 2 or Lotion SPF 4 **Suntan Lotion** ..... **\$1.89**
- Western Family, Regular or Super **Tampons** ..... 8 ct. **89¢**

• CS/WK Golden Corn • Sweet Peas • Wh. Peeled Tomatoes

**Shursaving Vegetables**  
14.5-15.2 oz. cans  
**3/89¢**



• Pinto Beans • Mex. Style Chili Beans • Short Cut Gr. Beans • White Hominy • Golden Hominy • Mixed Vegetables • Whole White Potatoes

**Shursaving White Bath Tissue**  
4 roll pkg. **59¢**

**Shursaving White Paper Towels**  
2 ply rolls **5/\$2**

Shurfine **Orange Juice**  
16 oz. can **99¢**

- 12 oz. boxes, Western Family **Vanilla Wafers** ..... **2/\$3**
- Shursaving Instant **Potatoes** ..... 16 oz. box **\$1.39**
- 32 oz. pkgs. Shursaving Asstd. **Sandwich Cookies** ..... **2/\$3**
- Shursaving Irregular YC Sliced **Peaches** ..... 29 oz. can **99¢**
- Shursaving **Fruit Mix** ..... 16 oz. can **69¢**
- Shursaving Pieces & Stems **Mushrooms** ..... 4 oz. jars **2/\$1**
- Shursaving **Sweet Relish** ..... 22 oz. jar **\$1.59**
- Shursaving Cranapple Drink or Cranberry **Juice Cocktail** ..... 64 oz. btl. **\$1.99**
- Shursaving Apple **Juice Cocktail** ..... 64 oz. btl. **\$1.39**
- All Varieties, 6 pack, 12 oz. cans **Shursaving Soda** ..... **89¢**
- Shurfine, 64 oz. btl. **Citrus Punch** ..... **69¢**

WESTERN UNION | MONEY TRANSFER™  
"The fastest way to send money!"

# Lowes' MARKETPLACE

515 W. American Blvd.  
401 W. American Blvd.  
Muleshoe 272-4585

WE RESERVE THE RIGHT TO LIMIT QUANTITIES IN TEXAS

Muleshoe 272-4406

PRICES EFFECTIVE APRIL 2-8, 1997  
OPEN MONDAY-SATURDAY 7:30 A.M. - 8:00 P.M., SUNDAY 8:00 A.M. - 7:00 P.M.