

The Post Dispatch

The Newspaper serving the people of Garza County

Sixty-eighth Year Number 13

USPS 439-620

Newsstand price 50 cents

Wednesday, August 25, 1993



Dispatch Photo by John Cordson

NEWLY ELECTED Post city officials were sworn in during a special August 20 meeting at the city council chambers in city hall. New council members included (Standing l-r) Marion Cruse, Ward 2; Juanita Pantoja, Ward 1; Bill Pool, Ward 4 and Archie Gill, Ward 3. Also being sworn in was Post Mayor Jim Jackson (seated) who won re-election to a second term.

New council takes oath

by John Cordson

Members of the outgoing Post City Council imparted words of wisdom on the incoming and history making council during swearing in ceremonies held August 20 in the council chambers at city hall. New council members Juanita Pantoja, Ward 1; Marion Cruse, Ward 2; Archie Gill, Ward 3 and Bill Pool, Ward 4 were sworn in along with Post Mayor Jim Jackson who won re-election to a second term in the August 14 vote.

This council elected under the ward or district system is history making in that it is the first time Post voters have not elected a council using the at-large method. The ward system divided Post into five districts that reflected population distribution of minorities in the community.

Prior to the swearing in of the new council, each member of the former council was given an opportunity to speak to the four new council members and mayor.

"Don't be intimidated," advised outgoing council member Jim Schooler. "There is going to be a lot of

pressure put on you by individuals. Stand your ground and stand up for what you believe in."

Incumbent councilman Dr. Larry Mills from Ward 5 who faces a runoff election September 11 against challenger John Butterfield said that the newly created ward boundaries should "become moot and invisible after the election, they are only there for the election."

He called for the new council to look beyond the boundaries and work together for the whole city, not just their wards.

Outgoing councilman Dan Lamb who did not seek re-election told the new council to "separate out what we want and what is right, forget what you want and do what is right."

Following the oath of office which was administered by city judge Louise Greene, the new council and their guests were shown a short video from the Texas Municipal League explaining the workings of city government.

Mayor Jim Jackson then issued a challenge to the incoming council.

"I believe it is very important that we

respond to different situations and conduct yourselves on the council as you vote and voice your opinion is very important to the citizens of Post. I hope and believe this representative council, democratically elected, will build confidence and trust with our citizenship because of what they see and hear."

Jackson added that he believed each new council member had lofty goals for Post and the county. Teamwork played a big part in Jackson's challenge to the new council. He explained that trust and respect would go a long way in bringing about positive results as the council tackled the problems the city would face in the future.

"I would like to give each of you something to think about and remember before you make any kind of decision. You should speak up and speak out," said Jackson. "There are three things that I think are very important to remember before you voice an opinion or vote on anything. Gather the facts, listen to the public and vote your conscience."

Post Rotary Club earmarks \$1,000 for flood victims

According to Post Rotary Club president John Walker, the Post club voted unanimously to send a contribution of \$1,000 to the Salvation Army to aid flood victims in the mid-

west. Club members made the generous donation during their regular monthly meeting held August 3

Summer playdays finals held at Noel White arena

Finals for the summer series of playdays at the Noel White arena were held Monday, August 9. An awards presentation followed. The series included six playdays with five age divisions and an open breakaway roping. Other events included pole bending, barrel racing, flag race and goat touching or tying.

Each playday averaged 100 runs by kids from three years old to 19.

Max and Rebecca Haney cooked hamburgers and provided a concession stand for each of the playdays. Parents and kids pitched in to help with all of the work involved with holding the

playdays. After the awards ceremony, all of the kids and parents presented the Whites with special appreciation gifts. Orabeth received a silver personalized bracelet while Noel received silver spur buckles.

Awards chairman for the year was Nancy McDonald. Winners in each of the age groups were:

5 and under

1, Sterling Smith, buckle was donated by Molly and Jack Lott; 2, Cheyenne White, bead halter donated by Quannah and Sue Maxey and Jerry and Dorothy McNeely; 3, Trent McDonald, saddle

See "Summer" on page 3

"Picnic" opens August 27 at Garza Theatre

In a break from a series of comedies, the Garza Theatre will present William Inge's summer romance "Picnic" beginning this Friday, August 27.

Directed by David Weaver Jr. the performance stars (pictured back row l-r) Emily Hataway and Steve Sever. Second row; Doug Burns Jane Prince Jones and Christy Morris. Third row; Joan Farfello, Heather Marris and Cory Fortenberry. Front row; Cheri Brooks and Marci Hill.

"Picnic" will be presented for nine performances only. Tickets are available at the box office.

Photo by Charles Wallace



Hot summer sun is drying out cotton crop

Lack of rain and hot weather putting stress on crop

by John Cordson

Early morning showers that fell on parts of Post and Garza County last Monday did little to ease the pressure on dryland cotton acreage's stressed by the hot dry weather that has plagued the area this summer. The lack of rain has turned what was once a promising crop for producers at the beginning of the season into one of doubt.

"We started out so good, but the rains didn't come," said Garza County cotton producer Jerry Thuett. "We needed rain by August 1, now it's too late."

The cotton's stress is evident from the road. Drive by any number of dryland fields and the vivid white of open cotton bolls is a visible sign that all is not well.

"To be able to drive down the road in mid-August and see open cotton, it's not good," said Garza County Extension agent John Senter.

"It's highly unusual for us to have this much open cotton this time of year," agreed Thuett. "It's a direct result of no moisture. If we don't have moisture, we don't have a crop."

Thuett says what moisture that has fallen in the county has been spotty with some areas receiving a little moisture while others never seeing a drop.

Rainfall this year on a county-wide average is about half of last year's according to Senter. He said it is hard to give an exact figure on how much rain the county has received because

of the spotty rainfall mentioned by Thuett.

The dry year will translate into a smaller cotton crop. Senter said last year, Garza County cotton producers harvest on an average 508 pounds of lint per acre. "I'm not saying everybody made this, it's just a county average," said Senter.

The drought will definitely cut into this. How much, neither Senter nor Thuett could say.

Heavier showers than those that fell last Monday would help some of the marginal dryland acres fill out what bolls they have already produced. Too much moisture though could result in as much damage as the drought has caused.

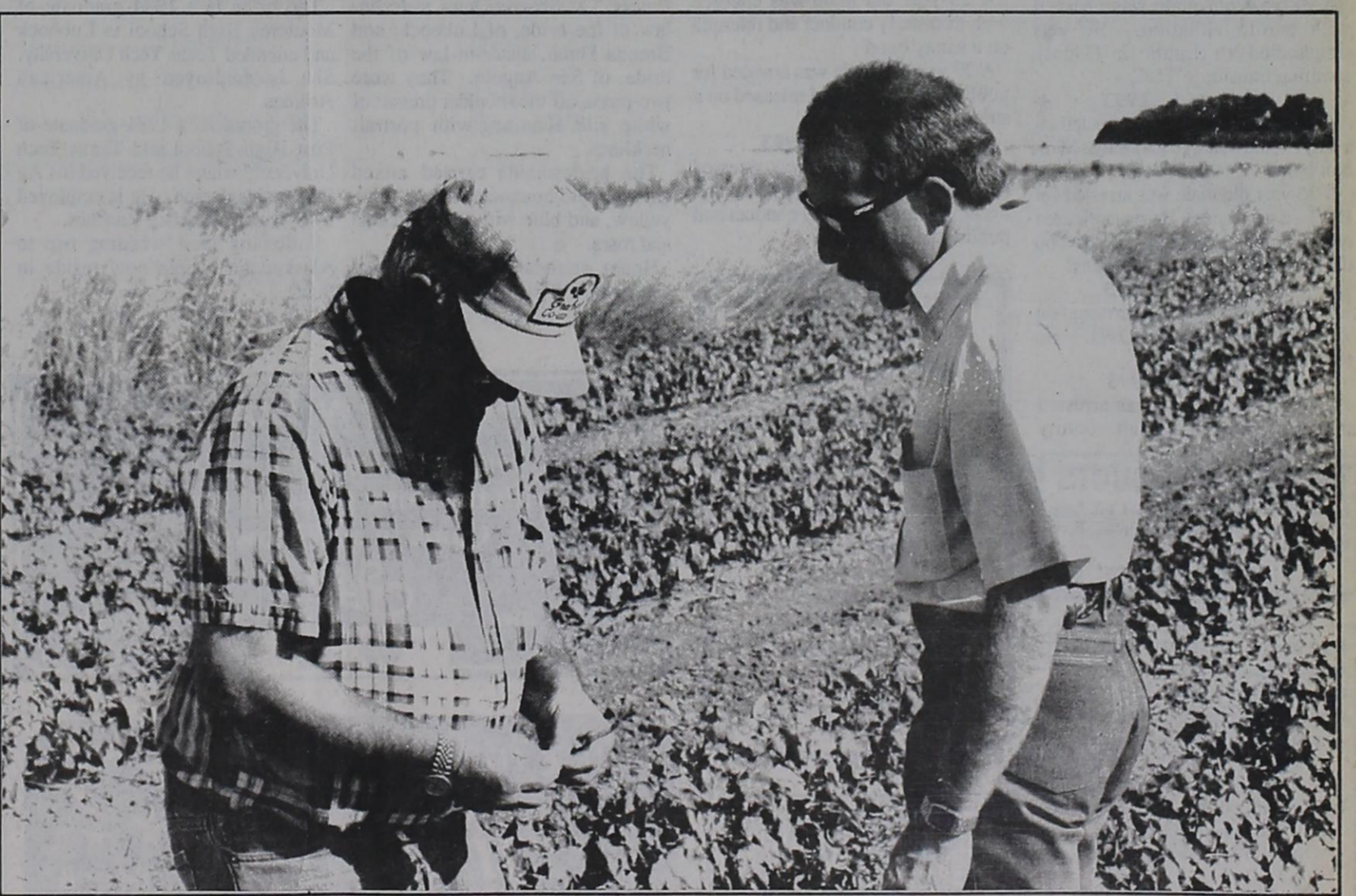
"Cool rainy weather in September could be just as devastating as the drought," said Thuett. He said cotton plants would begin shedding their bolls and adding more foliage.

Just down the road from the drought stressed fields, Thuett can see what might have been if the rainfall had just been near average. Cotton fields under irrigation are lush and green, standing waste high in some cases while drought stressed plants barely reach 12 inches.

"If it had rained right, most of the cotton could have looked like this," said Thuett while standing in a field of waste high cotton.

Thuett uses two types of irrigation, furrow and drip. The furrow irrigated acres haven't escaped the effects of this summer's drought. Compared to the drip irrigated fields, they are a little shorter, not as lush and the boll count is not as high. Thuett explained that furrow irrigation, with its high water demands in water short Garza County, is normally used as a supplement to rainfall.

Thuett says because irrigation water is in short supply, "we just can't water



Dispatch Photo by John Cordson

GARZA COUNTY cotton producer Jerry Thuett (left) and County Extension Agent John Senter examine the effects of the hot dry weather on one of Thuett's dryland cotton fields. Thuett has dryland acres along with row and drip irrigated fields.

it (furrow irrigated cotton) like we want too."

Most of the furrow irrigated acres have been watered twice. Thuett says he puts down approximately two inches of water per irrigation. During normal years, these two irrigations would be all the cotton needed, but this is not a normal year.

"If we continue to get this kind of weather until the first of September,

I'll take another look at it (a third irrigation)," said Thuett.

While furrow irrigation demands a tremendous volume of water to compensate for evaporation and other losses in getting the water to the plant, this is not the case for Thuett's drip irrigated fields. A thin tube buried 14 inches deep between the rows of cotton delivers water right to the plants root system.

Every two feet along the water tube, there is an emitter where the water is delivered. Thuett puts on three gallons of water per minute per acre with his drip system. This is set up on a timing schedule that allows him to get over a large number of acres every 24 hours.

"With drip irrigation we utilize as much land as we can with a limited amount of water," said Thuett.

To illustrate his claim, Thuett said

that he is currently watering a quarter section with the same amount of water it took him to water 40 acres two years ago.

"And I struggled to get across that," said Thuett.

Along with a water savings, Thuett's drip irrigated fields have the potential to produce a large quantity of cotton at harvest.

See "Cotton" on page 4

NEWS BRIEFS

Football tickets are available

Bold Gold football tickets are now on sale at the Post High School office. Antelope fans not wanting to miss any of the action of the upcoming season are encouraged to purchase their tickets now.

Booster meeting Aug. 30

The Antelope Booster Club will hold a meeting Monday, August 30 at the SPS Reddy Room beginning at 7 p.m.

Class of '58 holding reunion

The Post High School class of 1958 will be holding its 35th reunion Saturday, September 4 at the VFW. The evening's activities get under way at 5 p.m. Any graduate student is invited to come and visit.

Gospel Opry features Plainview group

The Tahoka Gospel Opry is presenting the music of Peaceful Heart Saturday, September 4 at the old Venture Foods building in Tahoka. Along with the contemporary Christian group from Plainview, the 7 p.m. performance will include music from New Haven, Sonny Grant, Darrell Clawson, the West Texas Praise team and Fred Goldsmith.

The opry performance is free. For more information call 998-5254.

Gospel singing Sept. 4

The public is invited to a night of "Old Time Gospel Singing" at the Challis Baptist Church 7 miles north of Brownfield on the Lubbock Highway. The evening's free entertainment featuring the West Texas Praise Team from Tahoka gets underway at 7 p.m.

Along with the West Texas Praise Team, Terri Sue Caldwell from Slaton and the Spirit of Salvation from Midland will be on hand. For more information, call 585-6631.

Benefit dinner at VFW

There will be a benefit at the Post VFW September 12 to help Maleccy Johnston with medical expenses. The barbecue starts at 12 noon.

There will also be a cake walk getting underway at 2 p.m. with an auction at 3. A dance will begin at 4 p.m.

Everyone wishing to make and donate cakes or donate something for the auction can bring their items to the VFW each day after 12 noon or call 495-2042 or 3162. Items can be picked up. There will also be chances sold for a half of beef.

WPS offers support group, changes date

Women's Protective Services support group for victims of domestic violence will be held every Tuesday from 9:30 a.m. until 10:30 for adults who have been emotionally, physically or sexually abused by a spouse, relationship partner or family member. The group meets at the WPS' office located at the Postex, Mill. For more information call 1-800-736-6491.

Commodities distribution

The commodities distribution are held on the third Monday every month at the Service Center on the Snyder Highway. The center will be open for the distribution from 9-12 and from 1-3 p.m.

The commodities distribution will continue at the Service Barn until further notice.

Special night at Trail Blazers

Senior citizens are invited to a special "birthday and game night" on August 31 at the Garza County Trail Blazers. They will help celebrate August birthdays of local senior citizens. Refreshments will be served while seniors enjoy games of 42 and other games.

The evening's festivities get underway at 7:30 p.m. next Tuesday, August 31.

Law Enforcement

July 23, 1993

A 39 year old female was arrested for DWI (2nd offense) and released on bond.

July 25, 1993

A 18 year old male was arrested and released on bond following his arrest for DWI (1st offense).

July 27, 1993

A 18 year old male was charged with revocation of probation and released. He will continue with probation.

July 29, 1993

A 20 year old male was arrested on Capias pro fine and released with time paid and court costs.

July 30, 1993

A 32 year old male was charged with parole violation. He was transferred to Lubbock County awaiting transfer to TDC.

August 1, 1993

A 22 year old male was arrested on a DWI-felony charge and released on bail bond.

A 36 year old male was arrested for DWI - 1st offense. He was released after paying a fine and court costs/60 days jail probated for 24 months.

August 2, 1993

A 27 year old male was arrested on violation of probation-DWI. He remains in custody.

August 3, 1993

A 37 year old male was arrested and charged with assault (family

violence) and assault on peace officer (felony). He was released after paying bail bonds.

August 4, 1993

A 35 year old male was arrested on a parole violation (burglary of a habitation) and transferred to Lubbock County SO.

August 5, 1993

A 27 year old male was arrested on a Lubbock County Warrant for bond forfeiture-forgery and remains in custody.

August 7, 1993

A 33 year old male was arrested for driving while intoxicated (2nd offense) and released on bail bond.

August 8, 1993

A 23 year old male was charged with disorderly conduct and released on a surety bond.

A 29 year old male was arrested for public intoxication and released on a surety bond.

August 9, 1993

A 21 year old male was arrested and released on bail bonds following his arrests for disorderly conduct and public intoxication.

Health, Medicare, Life, Mutual Funds Annuities.
Call Harold Craig
495-2995

Dr Lewis Moore OPTOMETRIST

Announcing New Office Hours:
- Wednesdays -
9:30 a.m. to 5 p.m.

206 West Main
495-3687

COMPLETE VISUAL CARE

CENTRAL
Kenneth Knowles, owner
BAIL BONDS

We're Here When You Need Us!

24 HOURS A DAY CREDIT BONDS
Se Habla Espanol
495-3830

101 W. Main
Professional Bail Bondsmen
Notary Service
"Who You Gonna Call"

Money Grams AMERICAN EXPRESS Money Orders



Mrs. John Kirkpatrick

Dunn, Kirkpatrick exchange wedding vows August 14

Tonya Gaile Dunn of Lubbock and John Drew Kirkpatrick of Post were married in an August 14, 1993 ceremony at the First United Methodist Church of Post. C.V. Blake, brother-in-law of the bride officiated the ceremony.

The bride is the daughter of Mr. and Mrs. Charles A. Dunn of Lubbock and Sandra Skinner of Kirkwood, MO.

The groom is the son of Mr. and Mrs. K.W. Kirkpatrick of Post.

Given in marriage by her father, the bride wore a gown of white satin and schiffli lace designed by Demetrios for Ilissa. The bodice encrusted with sequins and pearls featured a sweetheart neckline and off the shoulder contessa sleeves. The straight skirt was highlighted with beaded applique and hem lace. The detachable train was cathedral length and was decorated with a beaded applique. To complete her attire the bride wore a pearl and satin rosette tiara highlighted with two tiers of silk illusion veiling. Her bouquet was a cascading white mixture of casablanca lilies with roses and orchids.

Sisters of the bride, Mindy Greve, of Blanchard, OK and Shelly Blake, of Bryan, TX served as the bride's honor attendants.

Serving as bridesmaids were Amy Breedlove, of Lubbock; Becky Sexton, of Lubbock; Jana Hoffman, of Lubbock; Dana Yeisley, of Eules, TX; Shariss Dunn, sister-in-law of the bride, of Lubbock; and Brenda Dunn, sister-in-law of the bride, of San Angelo. They wore two-piece, off the shoulder dresses of white silk shantung with portrait necklines.

The bridesmaids carried mixed garden style bouquets in pale pink, yellow, and blue with lilies, orchids and roses.

Honor attendants for the groom were Mark Kirkpatrick, brother of the groom, of Post and Richard

Kirkpatrick, brother of the groom, of Lubbock.

Jamie Bulls of Irving; Randy Bartlett of Dallas; Scott Stockton of Lubbock; Brent McCarty of Dallas; Joel Kirkpatrick, cousin of the groom, of Crosbyton and Will Kirkpatrick, cousin of the groom, of Post served as groomsmen. They all wore classic black tuxedos.

Dan Dunn, brother of the bride, of Lubbock; Rodney Dunn, brother of the bride of San Angelo and John Greve, brother-in-law of the bride, of Blanchard, OK served as ushers.

Nephews of the bride, Bryan Blake of Bryan, TX and Logan Greve of Blanchard, OK were candlelighters. Betty Dotts, organist, of Lubbock; Allan Finney, trumpeter, of Muleshoe; and Mark Quintana, vocalist, of Dallas provided the wedding music.

The reception was held at the Post Community Center. The bride's table was covered with a floor length brocade cloth. The three-tiered cake was decorated with fresh flowers. Silver serving pieces were used. The groom's cake was a chocolate cake with white icing decorated with citrus candy. Lemonade, coffee and champagne were served. Music for dancing was provided by Masterpiece.

A dinner and dance on Friday evening was given by Mr. and Mrs. K.W. Kirkpatrick at the Post Community Center.

The bride is a 1984 graduate of Monterey High School in Lubbock and attended Texas Tech University. She is employed by American Airlines.

The groom is a 1981 graduate of Post High School and Texas Tech University where he received his Ag Economics degree. He is employed by Stoker-Kirkpatrick Ranches.

Following their wedding trip to Alaska, the couple now reside in Post.

Menus

Trail Blazers

Thursday, August 26
Brisket, new potatoes w/ white sauce, okra & tomatoes, apricots, biscuits, gingersnaps or sugar cookies, choice of beverage.

Friday, August 27
Pork chop, au gratin potatoes, carrots & zucchini, cornbread, tossed salad, pineapple cobbler, choice of beverage.

Monday, August 30
Smothered steak, macaroni & cheese, green beans, tossed salad, wheat rolls, frosted cake, choice of beverage.

Tuesday, September 1
Oven fried fish, baked beans, broccoli, coleslaw, cornbread, rocky road pudding, choice of beverage.

Wednesday, September 2
Chicken cacciatore, peas & carrots, cabbage, cornbread, raisin pie, choice of beverage.

Southland Schools

Monday, August 30
Breakfast: Donut, fruit, milk
Lunch: Lasagna, tossed salad, garlic bread, fruit, milk.

Tuesday, August 31
Breakfast: Cinnamon toast, applesauce, milk.
Lunch: Beanie-weiners, buttered carrots, corn, cornbread, cake, milk.

Wednesday, September 1
Breakfast: Cream of wheat, fruit, milk.
Lunch: Meat loaf, Au gratin potatoes, blackeye peas, roll, applecrisp.

Thursday, September 2
Breakfast: Cinnamon rolls, fruit, milk.

Friday, September 3
Breakfast: Waffles, syrup, ham, juice, milk.
Lunch: Hamburgers w/ all the trimmings, french fries, salad, ice cream, milk.

Post Schools

Monday, August 30
Breakfast: NO SCHOOL - TEACHER IN-SERVICE

Tuesday, August 31
Breakfast: Malt-o-meal, sausage, toast, fruit, milk.
Lunch: Frito pie, lettuce salad, corn, cornbread, cookies, milk.

Wednesday, September 1
Breakfast: Muffins, fruit, milk.
Lunch: Tacos w/ sauce, lettuce, french fries, fruit cup, milk.

Thursday, September 2
Breakfast: Oatmeal, bacon, toast, fruit, milk.

Friday, September 3
Breakfast: Cereal, toast, fruit, milk.
Lunch: Spaghetti w/ meat sauce, cabbage slaw, pinto beans, fruit cobbler, garlic toast, milk.

Note: Children will not be allowed to charge for more than 2 weeks at a time.

clip and save

Births

Anthony Lynn Bishop

Tony and D'Anne Bishop of Wilson are proud to announce the birth of their son, Anthony Lynn. He was born Wednesday, August 18, 1993 at 10:37 a.m. at Methodist Hospital in Lubbock. He weighed five pounds, 15 ounces and was 20 1/2 inches long at birth.

Anthony's paternal grandmother is Audrey Bishop of Slaton and great-grandmother is Bessie Howard also of Slaton.

His maternal grandparents are Steve and Myra Collops of Arlington and great-grandfather is Les Collops of Hutchins.

Kids 'N' - Art

Weekly Fall Classes:
With - Jean D.

& Linda Puckett

Wednesdays & Thursdays

3:30 - 4:30

Algertita Arts Center

for more information

Linda Puckett, KNA Director

495-4000 after 6 p.m. 495-3623

Farm Bureau Insurance

Insurance For All Your Needs

Life * Auto * Fire * Farm Liability
Health Insurance



Phone 998-4320 or 998-4591
PAT GREEN, LUTCF, Agency Manager
Danny Preston - G.G. Fillingim

Ted Tatum 915 W 13th, POST - 495-2641

COLD CASH

RECEIVE CASH REBATES • LOWER YOUR ELECTRIC BILLS
CONSERVE ENERGY

And a cool home. That's what you'll get when you take part in this money-saving new program sponsored by your electric cooperative. Now you can get cold cash rebates for installing high efficiency air conditioners(1) and heat pumps(2) in your home. Your electric cooperative is in the business of saving you money!

To learn more about how you can reduce your electric bills and receive cash rebates, call:

THE SENSIBLE SAVER PROGRAMS

Dickens Electric Cooperative, Inc.

(806) 271-3311

All New Look!
Jan's has a brand new face with the same personal service!
Come in and Browse!
Little Luxuries... Small Indulgences...
211 E. Main 495-3311

The Circle T Lounge
Dance
"JIMMY BLAKLEY"
Saturday, August 28 - 9pm to 2am
Beer & Wine Coolers
"Come on Down and Bring Your Friends"
CONVENIENT DRIVE UP WINDOW
Regular Hours: NEW POOL TABLES
Open 8:00 - 12:00a.m. M-F
Sat 8:00 - 2a.m. Sun 12p.m. - 12a.m.
Located at 116 S. Ave F Post

Walkins' PRODUCTS
Impeccable Quality Household Products Since 1868. Wholesale or Retail. Free Catalog & Information:
J.C. & Sons, Inc.
P.O. Box 104 • Fort Worth, TX 76156
FTE (806) 495-3218

Entered at U.S. Post Office, Post, Texas for transmission through the mails as Second Class matter, according to an Act of Congress, March 3, 1879.

Subscription Rates:
In Garza County - \$15 per year
In Texas - \$18 per year
Out of State - \$24 per year

John Cordson, Managing Editor
Deirdre Pittman, Office Manager
Mark Waugh, Advertising

Deadline:
Mondays at 5 p.m.
P.O. Box 10
Post, Texas 79356
806-495-2816

Post Publishing Company
Todd W. Newton, President
Member
Texas Press Association
West Texas Press Association

Sports

Bold Gold to use final pre-season scrimmage to fine tune

by John Cordson

Bold Gold head football coach Dwayne Osborne wants to use the 'Lopes upcoming scrimmage this Friday in Post as a tune-up for the regular season opener that is just around the corner.

"Anything can happen in this scrimmage," said Osborne of the 'Lopes August 27 meeting with the New Deal Lions. "We need to tune things up a bit and polish and find some guys who can help us out."

Kickoff for the 'Lopes final "pre-season contest is set for 6 p.m. The 'Lopes take the field for the real thing September 3 when they host Abernathy.

According to coach Osborne, the 'Lopes came out of their August 20 scrimmage in Floydada in good shape.

"We did a good job the other night holding them to some 130 yards of offense and one score," said Osborne. "We moved the ball well but didn't score."

Osborne said fumbles hurt the 'Lopes who finished the scrimmage with close to 140 yards of offense.

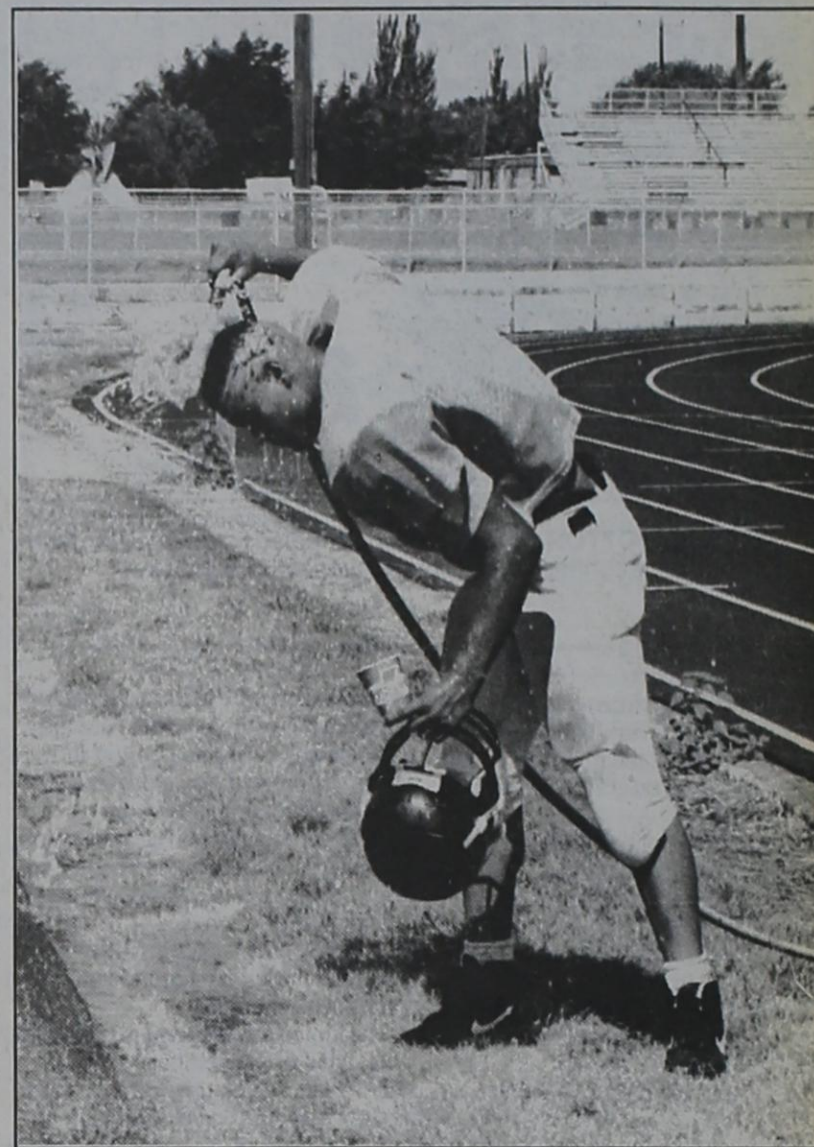
"Every time we got close we would fumble," said Osborne. "We've got to correct that."

A look at the Bold Gold offense as the 'Lopes prepare to go into the season shows an abundance of players in the skill positions and a shortage of linemen.

"Depth in the line is a problem," admitted Osborne. "The guys up there right now can get the job done" it's just a question of depth.

Osborne said if the 'Lopes were to play tomorrow, his starting front five would include (from tackle to tackle) Stewart Childers, Marcus Espitia, Kelly Line, Ray Perez and Clint Melton.

The skill positions are another matter. Osborne says the 'Lopes are blessed with a number of quality skill players. Perhaps the biggest logjam is in the offensive backfield where Osborne



Dispatch Photo by John Cordson

RELIEF IS WHERE YOU FIND IT; especially on a hot day. Bold Gold football player Adrian Castillo cools off under a garden hose after practice.

says "we have six to eight kids who could step in there and we're not going to miss a beat. That's where we're real deep."

Offensive end is another position where Osborne and the coaching staff have to find a way to get the most out of all of the quality available. Osborne listed seven players who could help the 'Lopes.



Clint Johnson

Summer

Continued from page 1

pad donated by Macy Ranch; 4, Schelli White, leather headstall donated by Stanley and Sherry McNeely; 5, Patrick Reiter.

Others participating were Joel Clary and Kenzie Mason.

6-8

1, Clint Johnson, buckle donated by Macy Ranch; 2, Chance Tatum; 3, Whitney McNeely, saddle pad donated by Macy Ranch; 4, Tandi Humble, leather headstall donated by Danny and Vicki Williams; 5, Tye Mason

9-12

Wendy McNeely, buckle donated by Ditch Witch Southwest of Lubbock; 2, Coty Zachary, beaded halter donated by Steve and Jackie White; 3, Camie Payne; 4, Erica Schooler, leather headstall donated by Mike and Molly Tatum; 5, Veronica Williams.

Others participating were Monty Humble, Riley Tatum, Emily Smith, Bronc Davis, Jackie Davis, Tye Haney and Matthew Ramsey.

13-15

1, Kerri Zachary, buckle donated by Max and Rebecca Haney; 2, Vanessa Williams, beaded halter donated by Collier Drug Store; 3, (tie) Monica Schooler and Christy Reiter, leather



Heather Dickson and Kim Reiter



Wendy McNeely

headstall donated by Casey and Pam Zachary; 5, Bobbie Jo Davis.

16-19

1, Kim Reiter, buckle donated by H&M Construction; 2, Heather Dickson.

Breakaway calf roping

1, Josh Adair, buckle donated by



Sterling Smith

Mike and Clarice Johnson.

Others participating were Tye Haney, Emily Smith, Heather Dickson, Monica Schooler, Casey Short, Cassie Short, Clay Johnson and Monty Humble. (Buckles and combs donated by Noel and Orabeth White.)

Clip and Save

Post FOOTBALL '93 Schedule

Varsity

Date	Opponent
Sept. 3	Abernathy
Sept. 10	at Slaton
Sept. 17	Stanton
Sept. 24	*at Ralls
Oct. 1	*Seagraves
Oct. 8	*at Idalou
Oct. 15	+*Sundown
Oct. 22	OPEN
Oct. 29	*at Crosbyton
Nov. 5	*Tahoka

Non-District - 8:00 P.M.

District - 7:30 P.M.

*Denotes District Game

+Homecoming

7th & 8th Grades

Date	Opponent
Sept. 9	at Slaton
Sept. 16	Stanton
Sept. 23	at Ralls
Sept. 30	Seagraves
Oct. 7	at Idalou
Oct. 14	Sundown
Oct. 21	OPEN
Oct. 28	at Crosbyton
Nov. 4	Tahoka

7th Grade - 5:00 P.M.

8th Grade Follows

Junior Varsity

Date	Opponent
Sept. 2	at Abernathy
Sept. 9	Slaton
Sept. 16*	at Stanton
Sept. 23	Ralls
Sept. 30	at Seagraves
Oct. 7	Idalou
Oct. 14	at Sundown
Oct. 21+	Denver City
Oct. 28	Crosbyton
Nov. 4	at Tahoka

Games Start at 6:00 P.M.

*Starts at 6:30

+Starts at 5:00



CAL-MAINE FOODS

"The Good Egg In Town"



"Backing the Bold Gold Antelopes"

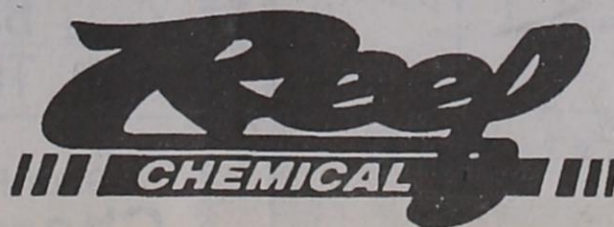


Dickens Electric Cooperative
Spur, Tx 271-3311

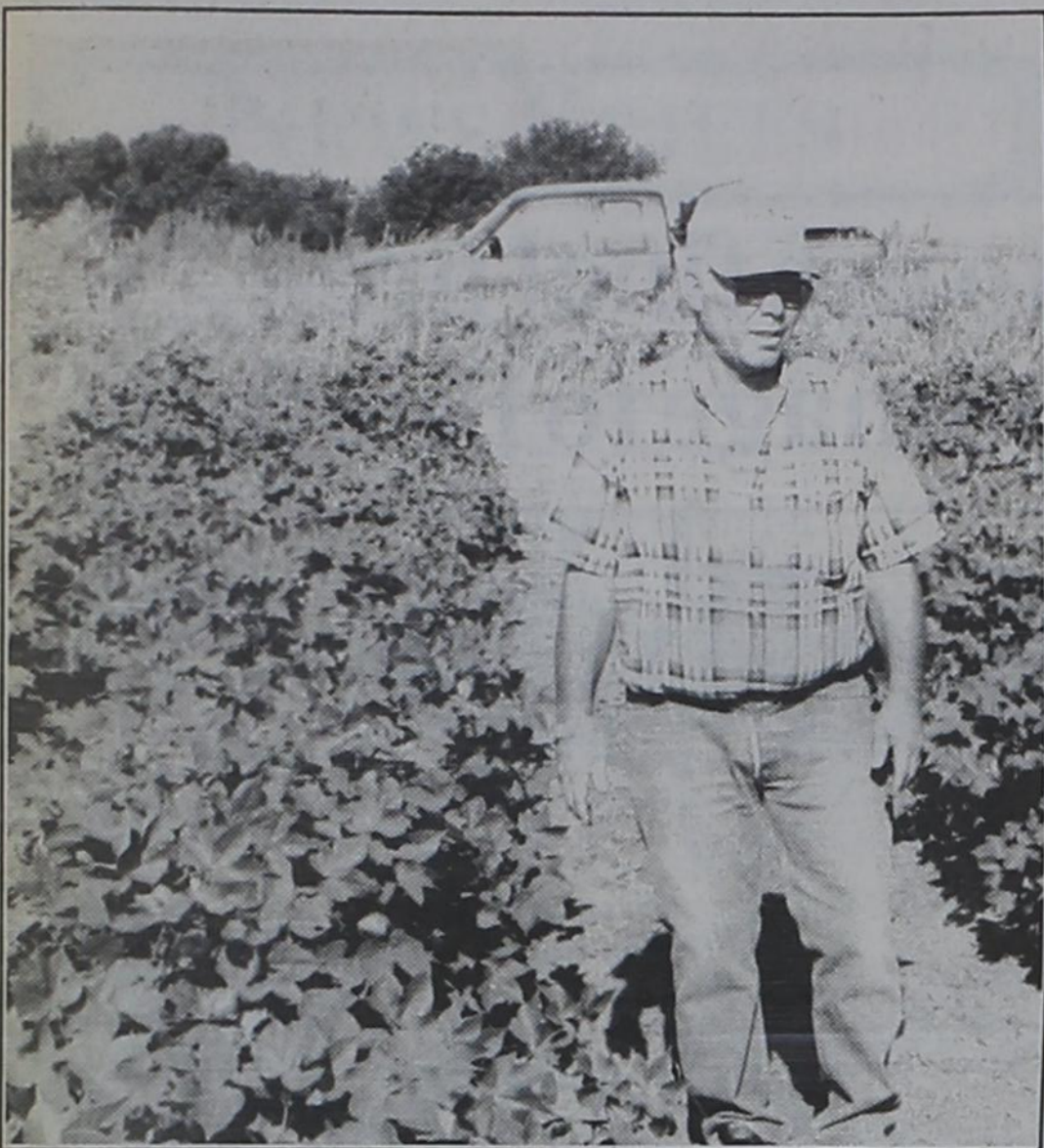


Clip and Save

P. O. BOX 1109
SNYDER, TEXAS 79549



Phone: 1-915-573-1133
1-800-552-0691



Dispatch Photo by John Cordson
THE PLUSH COTTON plants in this drip irrigated field owned by Jerry Thuett are in stark contrast to the drought stressed dryland fields.

• Cotton

Continued from page 1
 "We've never seen load like this," said Thuett about the high boll count. "Usually when you get cotton this tall, it's empty."
 "It has the potential for three bails per acre," continued Thuett. "But if I pull two off I will be tickled."
 The problem Thuett sees with his drip irrigated fields is that there are not enough of them.
 "I have a small number of acres under drip --- too small to make an accurate test," said Thuett.
 He is not the only producer who

probably wishes he had more irrigated acres. Senter estimates there are only 6,000 acres of irrigated cotton in the county compared to approximately 40,000 acres of dryland cotton.
 An ample supply of water does not assure a producer of a good crop. The irrigated cotton faces the same need of the dryland cotton for a good September. Thuett says it still needs a favorable month of good weather to reach its full potential.
 "The key to the irrigated this year is what type of September we have," said Thuett. "If it turns off cool and wet, our potential could go down."

Cable company explains new regulations

Last fall, the Cable Act of 1992 was passed by congress. Though it was heralded as a victory for cable consumers across the country, certain elements of the bill, most notably the "Must Carry" and "Retransmission Consent" may soon affect your viewing.

What are "Must Carry and Retransmission Consent?" After many years of intense lobbying by the major networks (ABC, CBS, NBC, PBS and other local independent TV stations), when congress passed the 1992 Cable Act they gave local broadcast stations who meet certain signal criteria the right to request carriage on local cable systems ("Must Carry") or elect to ask cable operators to compensate them for carrying their signal ("Retransmission Consent").

Historically, most cable operators have made channel carriage decisions based on a number of elements including the programming interests in the communities they service, the number of channels their cable plant can technically carry, the costs for the equipment to add the network and the programming costs of the networks. That is now about to change.

With the "Must Carry" element of the cable act, your local cable operator may now be required to carry local broadcast networks that many of their customers do not find appealing, if the local broadcaster requests carriage. In some instances, where the cable system cannot technically carry any additional channels, cable operators may have to drop some favorite cable networks to make the required "must carry" broadcast network additions.

If a network does not demand "Must Carry" they can request that cable operators compensate them to re-transmit their signal (The

"Retransmission Consent" option) If the local ABC, CBS, NBC affiliate or independent networks and your local cable operator cannot agree on a retransmission fee, one of these networks could be dropped from your cable line-up. Or, if any agreement is reached, but the local cable operator cannot afford the extra programming fee, they may have to drop a satellite channel from the line-up to keep costs under control.

Cable operators are not pleased with the "Retransmission Consent" and "Must Carry" regulation. They feel that they have been contributing to the broadcast network's livelihood by bringing the networks to many households that could not receive the network clearly with a standard rooftop antenna. By increasing the viewing base for the ABC CBS, NBC and some independent networks, the advertising base expands. And so do the network's advertising revenues. Therefore, why should the networks receive additional funding?

Most cable operators also feel that it is discriminatory to ask to pay for broadcast signals viewed on a TV set that is hooked up to cable, but by using an antenna that same station can be viewed for free.

Also, the cable industry feels that by guaranteeing a channel position for a broadcast network's signal and not for cable satellite received networks, the government is saying that the news and information programs on CNN; the educational programs on the Discovery Channel and the Learning Channel are not as important as those on the Broadcast Networks.

The new Must Carry and Retransmission Regulation will begin to take effect this October. As cable companies begin to comply with the 1992 Cable Act consumers may have already seen changes in their channel line-ups, though in many instances those changes won't be permanent until the October compliance date. Sounds confusing? You bet it is.

Beef Up Your Word Power

with Dr. Charles Somerville
Pusillanimous adj. - mean-spirited; cowardly
Prevaricator n. liar



Vocabulary n. - the words of a language
 Example of how pusillanimous and prevaricator are used when combined with the noun, vocabulary.
 When angrily confronting a six foot eight cowboy who is limited in vocabulary, it is probably safer to call him a **pusillanimous prevaricator** (and tell him it's a compliment) than to call him a "yellow polecat liar."

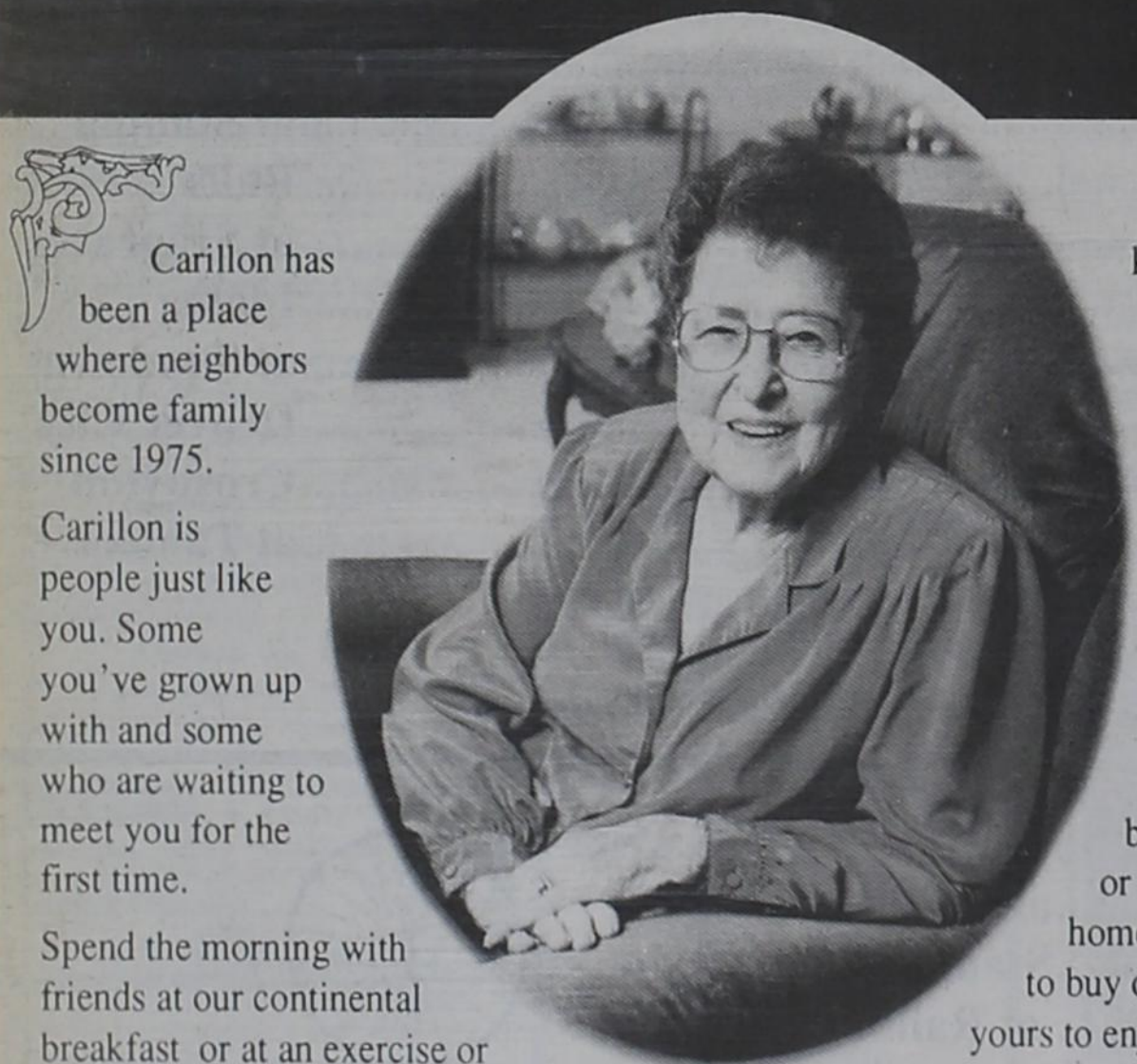
Census of ag releases U.S. Public Use Files

The Commerce Department's Census Bureau is making available a Public Use File (PUF) based on a 10 percent sample of all farms/ranches from the 1987 Census of Agriculture. This file provides a set of selected data items at the micro level to meet analysts' and researchers' needs while maintaining confidentiality of the individual data from the 1987 census.
 There are 108 different economic and demographic data variables available. Included are data on land use, value of sales, selected expenditures, government payments,

business structure, crop acres, livestock and poultry inventories, Standard Industrial Classification, and characteristics of farm operators. Most data variables are categorical with no geographic identification.
 This public use file is in the 2nd Compact Disk-Read Only Memory (CD-ROM) issued for the 1987 Census of Agriculture series entitled, "Specialty Publications and Public Use Files." Also included on this CD-ROM are data from six additional publications: "State Level Public Use Files", "Agricultural Products Sold", "Census of

Horticultural Specialties (1988), and the "ZIP Code Tabulations of Selected Items."
 Data from the State Level Public Use Files are available on diskette on a cost-reimbursement basis from the Agriculture Division Bureau of the Census, Washington, DC 20233 or call (800) 523-3215.
 The "Specialty Publications and Public Use Files" CD-ROM may be purchased for \$150 prepaid from the Data User Service Division, Customer Services, Bureau of the Census, Washington DC 20233 or call (301) 763-4100.

SILVER & GOLD
 Make New Friends and Keep The Old



Carillon has been a place where neighbors become family since 1975. Carillon is people just like you. Some you've grown up with and some who are waiting to meet you for the first time. Spend the morning with friends at our continental breakfast or at an exercise or painting class. Cook in your own

kitchen or dine in the restaurant-style Skylight Inn, then relax in the library or the heated indoor pool. Enjoy your own furnishings in your choice of a studio, one or two bedroom apartment, or a cozy cottage home. After you choose to buy or lease, the future is yours to enjoy at Carillon.

Visit all your friends at Carillon today.

CARILLON

1717 Norfolk Avenue
 Lubbock, Texas 79416
 806/791-6000

I value both friendships and privacy. I'd like more information about Carillon.
 (Mail this coupon to: Carillon, 1717 Norfolk Ave., Lubbock, TX 79416. Or call 791-6000 for your private showing.)

Name _____
 Address _____
 City _____
 State _____ Zip _____ Phone _____

ALLSUP'S

PRICES EFFECTIVE August 25-31, 1993

#61 409 N. Broadway 495-4146
 #124 326 W. 8th 495-4069

Enjoy Coca-Cola CLASSIC

ALL TYPES COCA-COLA 12 OZ. CANS \$2.29 6 pack

SHURFINE CORN FLAKES 12 OZ. BOX \$1.29

HAM, EGG AND CHEESE OR SAUSAGE, EGG AND CHEESE BREAKFAST BURRITOS FOR ONLY 89¢

CORN KING SLICED BACON 12 OZ. PKG. 99¢

ALLSUP'S CORN DOGS 2 FOR 99¢

GRANULATED SHURFINE SUGAR 4 LB. BAG \$1.69

HORMEL LITTLE SIZZLERS 79¢ 12 OZ.

SHURFINE Dog food 20 lb bag \$3.99

Shur-Fine Bleach 1 Gal 89¢

COMBO OF THE MONTH
 2 PIECES CHICKEN, POTATO WEDGES & A TALLSUP FOR ONLY \$1.99

COOKED FOODS SPECIAL OF THE WEEK
 ALLSUP'S BURRITO & A 20 OZ. NR COKE FOR ONLY 99¢

WESTERN FAMILY IBUPROFEN TABLETS 100 CT. BTL. \$2.49

TEXAS FIRECRACKER SAUSAGE 3 OZ. 69¢

BUBBLE JUG BUBBLE GUM 2.25 OZ. 69¢

KLEENEX FACIAL TISSUE 175 CT. 99¢

BONKERS FRUIT CANDIES 3 FOR \$1

JR. MINTS, SUGAR DADDIES OR SUGAR BABIES 3 FOR \$1

Brawny Paper Towels 89¢

Soft and Gentle Bathroom Tissue 4ct pkg. 89¢

Shur-Fine Charcoal 10 lbs \$1.39

Fire I with
 The State warns Texas credentials services fire This equi extinguish suppression
 The warni reports from Dallas that protection defrauded person is licensed fire is not lice required.
 "If your bu a fire prote ask to see h is easily ide seal embler said State Emerson. produce the local law en
 Perry out b
 Agricultu Perry has o Cotton Pro grower orga out the b program.
 "We are begin the e said. "Now certified, th the meat a program."
 Texas Cot represents state. Its p allow a fo problems, t the intere producers ar of the condi cotton is pr Bob Bickley A provis eradication effect June 1 representing petition the agricultur group to dev eradication hearing and provided by organization established the organiza meeting in a "The pro beginning
 Low be el
 "Low bir eligible for Income (S Wells, Soc Lubbock. SSI usualy for Medicai SSI is a provides individuals blind, or h don't own income; an for adults. than 1200 pounds 10 considered Even an ir than 1200
 on Air W C 119 N.

Fire Marshal's Office recommends caution with fire protection equipment inspections

The State Fire Marshal's Office warns Texas businesses to verify the credentials of any technician who services fire protection equipment. This equipment includes fire extinguishers and automatic fire suppression systems.

The warning was issued following reports from Austin, Houston and Dallas that a man posing as a fire protection service technician has defrauded several businesses. The person is not an employee of a licensed fire protection company and is not licensed by the state as required.

"If your business is approached by a fire protection service technician, ask to see his or her license, which is easily identified by the large state seal emblem printed on the front," said State Fire Marshal Ernest A. Emerson. "If the person cannot produce the license, contact your local law enforcement department or

the State Fire Marshal's Office. Business owners and employees should also be suspicious of anyone requiring cash payment for services."

Licensing Investigation Director Al Ramirez explained that both the companies and the individuals who service fire extinguishers and automatic fire suppression systems, such as those on kitchen range hoods, must be licensed by the Texas Commission on Fire Protection. All fire protection company employees are required to carry their licenses while working.

"According to reports on the alleged fraud cases, a man will enter the place of business and look over the service tag on an extinguisher in the business," Ramirez said. "He will then say that he is with that company and that he is there to do the annual inspection. After acting as if he is checking the fire extinguishers, he will demand cash

payment. He provides a handwritten receipt on a generic invoice or sales order form."

The person suspected in the reported incidents is described as a white male, between 5 feet, 5 inches and 5 feet, 10 inches tall, and weighing approximately 170 pounds. He is described as clean shaven with black or dark brown hair, clean-cut and professional.

State Fire Marshal Ernest A. Emerson also requested that anyone with additional information on the person described contact the Austin office, 512-326-1700 or the nearest regional office: Region 1, Austin, 512-458-8097; Region 2, Lufkin, 409-634-4665; Region 3, Duncanville, 214-296-0766; Region 4, Lubbock, 806-792-0886; Region 5, Corpus Christi, 512-855-3782; Region 6, Tyler, 903-509-0330; or Region 7, Conroe, 409-756-0210.

Former Post resident accepts position in Tulsa

Former Post resident Marilyn J. Steel, daughter of Mr. and Mrs. J.C. Steel, has accepted a position as administrative assistant to OSU Programs at University Center in Tulsa.

She has been associated with the philosophy department at Oklahoma

State University in Stillwater for the past 10 years. She is a graduate of Post High School and Oklahoma State University. She has two daughters, Lisa Garrido of Tulsa and Amy Verhalen of Arlington.

**5 p.m.
Monday is
deadline
for all
advertising**

Perry certifies cotton organization to carry out boll weevil eradication program

Agriculture Commissioner Rick Perry has officially certified Texas Cotton Producers Inc. as the cotton grower organization which will carry out the boll weevil eradication program.

"We are moving ever-forward to begin the eradication effort," Perry said. "Now that this group has been certified, they can begin to develop the meat and bones of this vital program."

Texas Cotton Producers Inc. (TCP) represents cotton growers in the state. Its primary purposes are to allow a forum for discussion of problems, to promote and protect the interests of Texas cotton producers and to foster improvement of the conditions under which Texas cotton is produced and sold, says Bob Bickley, president of TCP.

A provision of boll weevil eradication law, which went into effect June 1, required organizations representing cotton producers to petition the commissioner of agriculture for certification as the group to develop and formulate the eradication plan. After a public hearing and review of information provided by TCP demonstrating the organization's ability to meet the established criteria, Perry certified the organization during its summer meeting in Austin.

"The program is critical to beginning the demise of the pest

which annually cost cotton growers over \$20 million," Perry said. "A major benefit of the eradication program will be to decrease pesticide use through integrated pest management techniques as well as judicious, well-timed applications of pesticides."

Jim Ed Miller, chairman of TCP's boll weevil eradication committee, said the need for this program is critical since farmers report a heavy infestation in every region of the state outside the High Plains boll weevil suppression area.

The group, to be known as the Boll Weevil Eradication Foundation, will establish nine eradication zones across the state to combat the pest. Each zone will vote independently on whether to begin a comprehensive eradication effort in that zone. In addition, a cotton grower from each zone will be elected to the board of the Foundation and will be responsible for helping develop the rules and procedures. The Foundation will determine when voting will occur in each zone.

"The earliest a vote could occur would be sometime this fall," Bickley said. "Final protective rules must be completed and hearings in each zone must be held prior to the actual vote."

Bickley says that all zones will probably not vote at the same time.

He added that all zones will be represented on the board by appointed growers from each zone until the time when growers are actually voted in.

"All members of the TCP organizations are pleased with the way things are progressing with the rules and certification process," Bickley said.

Bickley and Perry both said TDA and TCP are steadfast in the goal of cooperatively working together to see the eradication program up and going quickly.

"We at the Texas Department of Agriculture are dedicated to doing everything we can to speed along this process, while paying special attention to our responsibilities. Eradication of this pest is crucial to the continued success of Texas cotton producers and the protection of our environment," Perry said.

The next step for the Foundation is to establish a toll-free number for growers to call with questions. In addition, the Foundation will hold hearings in each of the nine eradication zones prior to the eradication vote, and will begin developing rules for carrying out the program.

TDA will review the rules the Foundation develops to assure that they reflect current state laws and will approve the Foundation's annual budget submission.

The time you enjoy wasting is not wasted time.
—Bertrand Russell

Low birth-weight babies may be eligible for SSI benefits

"Low birth-weight babies may be eligible for Supplemental Security Income (SSI) benefits," said Bruce Wells, Social Security manager in Lubbock. "And being eligible for SSI usually means you are eligible for Medicaid."

SSI is a federal program that provides monthly benefits to individuals who are 65 or older, or blind, or have a disability and who don't own much or have a lot of income; and the program isn't just for adults. Infants who weigh less than 1200 grams (approximately 2 pounds 10 ounces) at birth are considered disabled and may qualify. Even an infant who weighs more than 1200 grams at birth, and has

serious medical problems, may also meet the SSI disability requirement.

"Generally, while the infant is in the hospital," notes Wells, "the parents' income is not counted and will not affect the baby's eligibility. However, if the baby is receiving SSI and is discharged to go home with his or her parents, the parents' income will be reviewed and may affect the baby's continuing eligibility for benefits."

For more information about low birth-weight babies and SSI, you can visit your nearest Social Security office or call the toll-free number, 1-800-772-1213 business days between 7 a.m. and 7 p.m.

Let's Make a Plan

Dear Friends:

Some things are so obvious that they escape detection. Have you ever considered coming into the bank and visiting with one of our people to tell us what you want and need to accomplish your financial goals?

We may not have all the answers, but we do know the right questions to ask to find them. We can help you make a plan.

Sincerely yours,

Charles Hardin

© 1992 Michaels Publishing

Security, Integrity & Opportunity

"responsibly building your future"

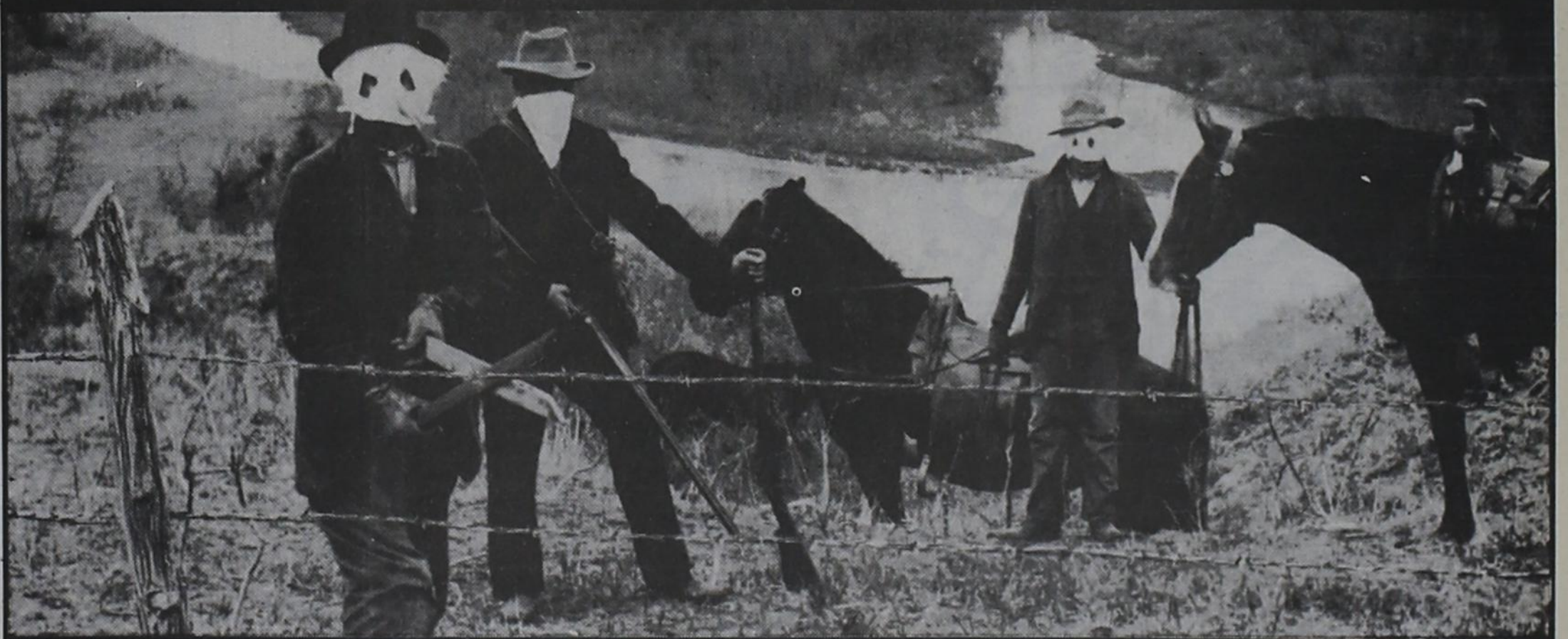


THE FIRST NATIONAL BANK

P.O. BOX 430 POST, TEXAS 79356 • 806/495-2804



DIGITAL CELLULAR EXTENDED COVERAGE AREA



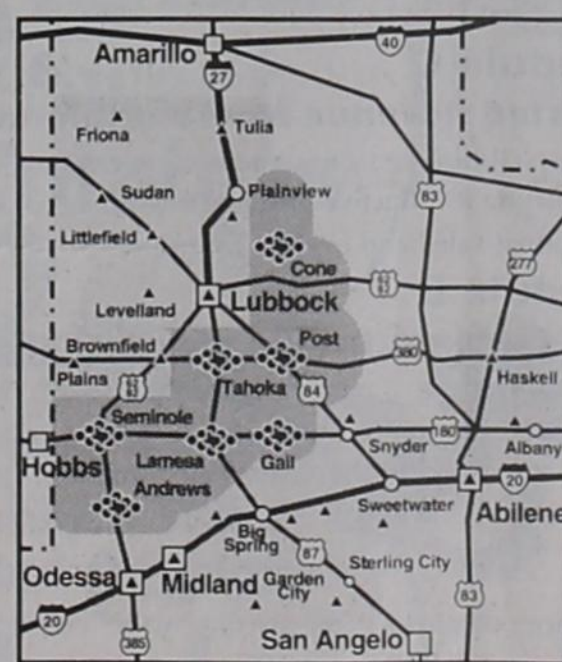
There is an easier way to roam free on the range

Back in the early days, you probably decided to buy a cellular phone to make it a little easier to roam free on the range. Little did you know that there was a whole new set of boundaries to stumble across. Your cellular company wouldn't let you cut across another coverage area and receive calls without an extra roaming fee. And you had to remember every roamer access code for every coverage area you crossed. Soon, people were looking for you, and you couldn't be found. Your face was plastered on a wanted poster in your office because you gave the wrong code to your secretary. People actually said they wanted to 'ring your neck'.

Today, things are different. Digital Cellular has introduced a way for you to 'roam free' on the South Plains of Texas. As a Digital Cellular customer, you can roam in our Extended Coverage Area and receive your calls without additional roaming charges, daytime tolls or access numbers. Regular air time rates do apply.

So now, whether you're roaming across the range from Friona to Sterling City, or Haskell to Odessa or even in downtown Lubbock, Digital Cellular is putting you on the line for less. Less hassle. Less cost.

1-800-662-8805



Digital Cellular
OF TEXAS

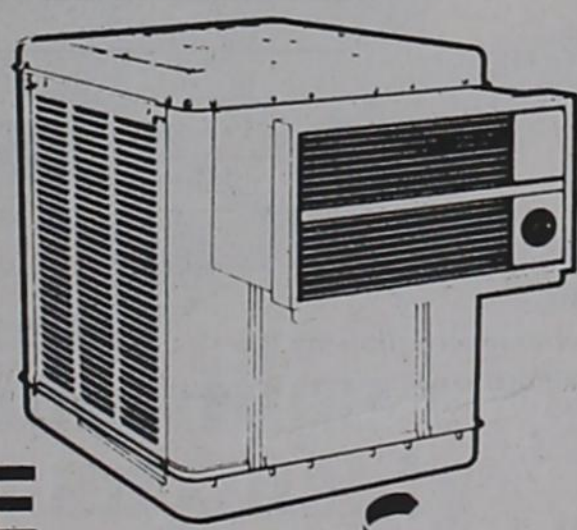
We're putting you on the line.

Box 53118 • Lubbock, Texas 79453 • 1-800-662-8805 • 924-5432
A Division of P.A.S. Telecommunications, Inc.

Hot Prices!

Hot Weather!

End of season
CLOSE OUT SALE



CHAMPION
COOL. FRESH. CLEAN AIR.

on Champion
Air Conditioners at
Wallace Lumber Company, Inc.

119 N. Ave. H



495-2835

Living on the Edge of the Caprock

September Field Fay planned at research site in Halfway

Research results which can help Garza County farmers make more effective use of water and other resources to control crop pests and hold down costs will be featured at the 84th annual Field Day of the Texas Agricultural Experiment Station.

The program will be September 14 at the Experiment Station's High Plains Research Facility at Halfway. It is 14 miles west of Plainview on U.S. Hwy. 70. Tours will begin at 1 p.m. and end at 4 p.m.

Visitors will be transported by trailers to four major stops. Jerry Jones, Research Associate and field day chair, said one stop will feature work being done to control insects in corn and sorghum. Other stops will feature cropping systems and weed control, cotton breeding, and irrigation scheduling with Potential Evaporation Transpiration.

A walking tour will be conducted in the grape vineyard and a youth tour

will be conducted for Lamb County fourth grade students. The Texas A&M University System Computer Training and Education Center will be open and will demonstrate a variety of computer programs for home and farm management.

Home economists with the Texas Agricultural Extension Service will have exhibits and other displays that

John Senter
Garza County Extension Agent



will show new farm and research equipment.

The field day is a cooperative presentation of the Texas Agricultural Experiment Station, Texas Agricultural Extension Service, High Plains Research Foundation, Texas Forest Service, USDA-Agricultural Research Service and Texas Tech University.

If you would like to attend and carpool, call the Garza County Extension Office by 5 p.m. September 10.



Short wins age group break away roping

GARZA COUNTY break away roping winner in the 14 and under division was Cassie Short. Other finishers in order were Clay Johnson, Wasey Moore and Casey Short.

DQ Treats & Fats

Country Basket

Four beef steak fingers, fries, country gravy and Texas toast. It's a DQ® original!

\$1.99

On Sale at Dairy Queen® August 16-29, 1993

©Reg. TM Am. D.Q. Corp. *Reg. TM Tx. D.Q. Op. Coun. ©Tx. D.Q. Op. Coun. At participating Dairy Queen stores.

1993 Property Tax Rates in Garza County and Garza Memorial Hospital

This notice concerns 1993 property tax rates for Garza County and Garza Memorial Hospital. It presents information about three tax rates. Last year's tax rate is the actual rate the taxing unit used to determine property taxes last year. This year's effective tax rate would impose the same total taxes as last year if you compare properties taxed in both years. This year's rollback rate is the highest tax rate the taxing unit can set before taxpayers can start tax rollback procedures. In each case these rates are found by dividing the total amount of taxes by the tax base (the total value of taxable property) with adjustments as required by state law. The rates are given per \$100 of property value.

50-211 (Rev. 6-93-2)

1993 Property Tax Rates in GARZA COUNTY and GARZA MEMORIAL HOSPITAL

This notice concerns 1993 property tax rates for Garza County and Garza Memorial Hospital. It presents information about three tax rates. Last year's tax rate is the actual rate the taxing unit used to determine property taxes last year. This year's effective tax rate would impose the same total taxes as last year if you compare properties taxed in both years. This year's rollback rate is the highest tax rate the taxing unit can set before taxpayers can start tax rollback procedures. In each case these rates are found by dividing the total amount of taxes by the tax base (the total value of taxable property) with adjustments as required by state law. The rates are given per \$100 of property value.

	General Fund	Farm to Market/ Flood Control Fund	Garza Memorial Hospital
Last year's tax rate:			
Last year's operating taxes	\$ 983,702	\$	\$ 537,501
Last year's debt taxes	\$ 0	\$	\$ 0
Last year's total taxes	\$ 983,702	\$	\$ 537,501
Last year's tax base	\$ 468,426,770	\$	\$ 467,389,610
Last year's total tax rate	\$.2100 /\$100	\$/100	\$.1150 /\$100

This year's effective tax rate:			
Last year's adjusted taxes (after subtracting taxes on lost property)	\$ 983,464	\$	\$ 537,371
+ This year's adjusted tax base (after subtracting value of new property)	\$ 427,903,562	\$	\$ 426,812,840
- This year's effective tax rate for each fund	\$.229833/\$100	\$/100	\$.125903/\$100
Total effective tax rate	\$.229833/\$100		\$.125903/\$100

In the first year a county collects the additional sales tax to reduce property taxes, it must insert the following lines unless its first adjustment was made last year:

- Sales tax adjustment rate	\$ /\$100		
- Effective tax rate	\$ /\$100		
x 1.03 = maximum rate unless unit publishes notices and holds hearing	\$ 236727/\$100		\$ 129680/\$100

This year's rollback tax rate:			
Last year's adjusted operating taxes (after subtracting taxes on lost property and including taxes for state criminal justice mandate.)	\$ 983,464	\$	\$ 537,371
+ This year's adjusted tax base	\$ 427,903,562	\$	\$ 426,812,840
- This year's effective operating rate	\$.229833/\$100	\$/100	\$.125903/\$100
x 1.08 = this year's maximum operating rate	\$ 248219/\$100	\$/100	\$ 135975/\$100
+ This year's debt rate	\$ 0/\$100	\$/100	\$ 0/\$100
- This year's rollback rate for each fund	\$.248219/\$100	\$/100	\$.135975/\$100
This year's total rollback rate	\$.248219/\$100		

A county that collects the additional sales tax to reduce property taxes, including one that collects the tax for the first time this year, must insert the following lines:

- Sales tax adjustment rate	\$ /\$100		
- Rollback tax rate	\$ /\$100		

Schedule A

Unencumbered Fund Balances

The following estimated balances will be left in the unit's property tax accounts at the end of the fiscal year. These balances are not encumbered by a corresponding debt obligation.

Type of Property Tax Fund	Balance
GENERAL FUND	\$51,219.70
R&B #1	\$52,087.00
R&B #2	\$ 4,042.49
R&B #3	\$ 4,789.27
R&B #4	\$76,189.78
GARZA MEMORIAL HOSP	\$300,000.00

Schedule B

1993 Debt Service

The unit plans to pay the following amounts for long-term debts that are secured by property taxes. These amounts will be paid from property tax revenues (or additional sales tax revenues, if applicable).

Description of Debt	Principal or Contract Payment to be Paid from Property Taxes	Interest to be Paid from Property Taxes	Other Amounts to be Paid	Total Payment
NA	\$	\$	\$	\$
(Expand as needed)				
Total required for 1993 debt service			\$	\$
- Amount (if any) paid from funds listed in Schedule A			\$	\$
- Excess collections last year			\$	\$
- Total to be paid from taxes in 1993			\$	\$
+ Amount added in anticipation that the unit will collect only _____ % of its taxes in 1993			\$	\$
- Total Debt Levy			\$	\$

Schedule C

Expected Revenue from Additional Sales Tax

(For hospital districts, cities and counties with additional sales tax to reduce property taxes)

In calculating its effective and rollback tax rates, the unit estimated that it will receive \$ _____ 0 in additional sales and use tax revenues.

Schedule D

State Criminal Justice Mandate (For Counties)

The GARZA County Auditor certifies that GARZA County has spent \$ 3630.00 in the previous 12 months beginning JULY, 19 92, for the maintenance and operations cost of keeping inmates sentenced to the Texas Department of Criminal Justice. GARZA County Sheriff has provided information on these costs, minus the state revenues received for reimbursement of such costs.

This notice contains a summary of actual effective and rollback tax rates' calculations. You can inspect a copy of the full calculations at Garza County Courthouse, Main Street & Avenue L, Post, Texas

Name of person preparing this notice LAURA "CHITA" HATAWAY, RTA

Title TAX ASSESSOR/COLLECTOR

Date prepared AUGUST 20, 1993



AISLES OF SMILES

WED 25 THUR 26 FRI 27 SAT 28 SUN 29 MON 30 TUE 31

Good thru August 31 in Lubbock, Plainview, Levelland, Slaton, Post, Brownfield, Littlefield.
Quantity Rights Reserved. No Sale to Dealers.

Compare And Save

Coca-Cola
Asst. 6 pk. 12 oz. cans
2 for \$3

GROCERY

Keekler Zesta Crackers
Asst. 16 oz. **.88**

Fine Fare Tomato Sauce
8 oz. **6 for \$1**

Hostess Twinkies or Cupcakes
Multiplk, Regular or Lite **\$1.98**

Crisco Shortening
Regular or Butter Flavored
\$1.78
3 lb.

Ocean Spray Cranberry Juice Cocktail
Asst. 48 oz. **2 for \$4**

Pillsbury Cake Mix Regular or Lite Asst. 18.5-19.2 oz. **.78**

American Beauty Macaroni Shell/Roni, Elbo/Roni or Roni/Mac 24 oz. **.88**

Ragu Spaghetti Sauce Asst. 27.5-30 oz. **\$1.68**

Keekler Chips Deluxe Cookies
Regular, Rainbow, Pecan or Bakery Crisp 15-18 oz. **2 for \$4**

Bell Fruit Drink Asst. 1 gallon **.88**

Fine Fare Margarine 1 lb. **3 for \$1**

Fine Fare Soft Oleo Tub 1 lb. **.58**

United Buttermilk 1/2 gallon **\$1.18**

Borden Milk

Homogenized, Hi Protein or Lite Line **.98**
1/2 gallon

Fine Fare Grade A Cut Broccoli 16 oz. **.78**

Banquet Dinners All Varieties 9-12 oz. **.98**

Fine Fare Apple Juice 12 oz. **\$1.18**

Field Trial Ration Dog Food 20 lb. bag **\$2.98**

Playtex Tampons Asst. 22 ct. **\$2.98**

Salon Selectives Shampoo or Conditioner Asst. 15 oz. **\$1.69**

Old Spice Deodorant Solid 2-2.25 oz. **\$1.59**

Northern Bathroom Tissue 9 ct. **\$3.98**

Golden Ripe Premium Quality Bananas
4 lbs. \$1

NEW CROP Texas Sweet Potatoes 2 lbs. **\$1**

United Extra Lean Brisket Market Trimmed **\$1.69** lb.

Washington Extra Fancy Red Delicious Apples lb. **.69**

United Premium Quality Cooked Ham 10 oz. pkg. **\$1.98**

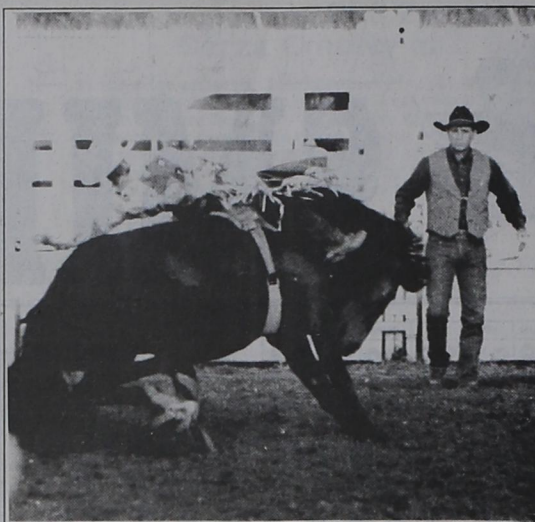
Fresh Fryer Leg Quarters
Approximately 10 lb. bag **.35** lb.



Dispatch Photo by John Cordson

Dicksons latest winners in "Yard of the Week"

THE MOST RECENT "Yard of the Week" honors go to the Bob Dicksons for their beautiful yard at 111 SAve O.



Dispatch Photo by John Cordson
JOHN ED SINGLETON of Seagraves completed his ride Thursday in the Post Stampede Rodeo. He failed to place in the top five though.

Laura Williams graduates from Angelo State

Laura Williams of Post was among the 231 Angelo State University students who received degrees during the summer commencement exercises at the university. Williams received a Bachelor of Science degree with a major in Early Childhood.

A promise made is a debt unpaid.
—Robert William Service

226. E. Main
Post, Texas 79356



WINNIE



APPLE

HAPPY
18TH
BIRTHDAY
FROM MOM,
DAD
AND SISTER

All New Fragrances with Wicks!

Hand Mixed & Hand Poured Candles
from Aspen Bay. 25 Fantastic Fragrances from 1st
Come in and Browse!

Little Luxuries... *Jan's* Small Indulgences...
211 E. Main 495-3311

Garza Theatre

Telephone
1-800-846-3706
Or 806/495-4005

Presents

A Summer Romance
by
William Inge

"PICNIC"

Directed by DAVID WEAVER, Jr.

• STARRING •
Steve Sever * Jane Prince Jones
Christy Morris * Cherri Brooks
Doug Burns * Emily Hataway
Marci Hill * Cory Fortenberry
Bill Woodard * Heather Harris *
Joan Fariello

Only 9 Performances
August 27-29, September 3-5 and 10-12, 1993

Curtain Times: Friday and Saturday, 7:45p.m.
Sunday, 2:30p.m.

Tickets: Adults, \$7.50, Children 6-12 years, \$4.50

Box Office Hours: Monday - Friday, 12 noon - 5p.m.
Saturday & Sunday, performance weekends only, noon-showtime
ASK ABOUT OUR SPECIAL GROUP RATES

This Sword Says
We're Your
American
Cancer Society



Look for it before you
give. For more information
call 1-800-ACS-2345.

AMERICAN
CANCER
SOCIETY
THERE'S NOTHING
MIGHTIER THAN THE SWORD

TO ALL INTERESTED PERSONS
AND PARTIES: GRAHAM CO-OP
GIN has made application with the
Texas Air Control Board for Permit
No. 22889 to authorize the
expansion of a Cotton Gin in
Graham Chapel, Garza County,
Texas. The location of the existing
facility is the Intersection of
Highway 1313 and Highway 399.
Additional information concerning
this application is contained in the
public notice section of this
Newspaper. This notice is to be
published on August 18, 1993
and August 25, 1993.

All New Shipments!

Miniature Clocks. Musical Clocks
Musicals
Come in and Browse!

Little Luxuries...
211 E. Main

Jan's

Small Indulgences...
495-3311

PAINT ALONG with BOB CHENNAULT

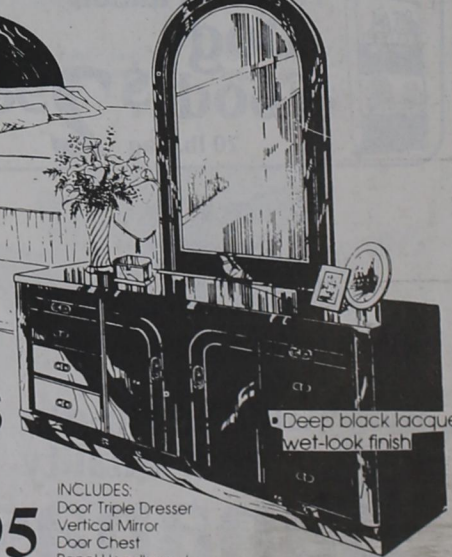
August 26,
September 2,9
Thurs., 10 am-4pm
Algerita Arts Center
only \$12.00

Take it from HUDMAN FURNITURE.... YOU CAN'T FIND A BETTER CONTEMPORARY BEDROOM



EXTRA
LARGE STORAGE
PIECES!

- Simulated brass accent trim and hardware
- Extra deep storage in case pieces



• Deep black lacquer wet-look finish

Choice of Black Lacquer or
Malachite Green Finish
Regular \$799⁹⁵

AT THIS
PRICE:

Your Choice \$699⁹⁵

INCLUDES
Door Triple Dresser
Vertical Mirror
Door Chest
Panel Headboard
Night Stand.

Hudman Furniture Co.

301 E. Main

495-2615

HATS OFF! Post EMS Volunteers!

for 14 years of outstanding service to our community!

Beginning in 1978, through the leadership and determination of a group of dedicated folks, guided by former Mayor Giles McCrary, the Post EMS Association was founded with the purpose of providing top quality emergency assistance to the people of Garza County.

Over the past 14 years, volunteers of the organization have given both of themselves and their money to see that when people here need help, someone is there to respond. They aren't just sitting, waiting around for a call. They come from their homes and their place of business to respond to the need of many. HATS OFF!

Members of the Post EMS Association are all volunteers, they pay their own money for the basic training, advanced training and paramedic training.

The basic EMT course costs volunteers \$250 and requires 112 hours of training. Special skills training costs an additional \$500 and includes 50 hours of ambulance training and a total of 112 hours of specialized training.

The paramedic course is 220 hours of intensive training and requires an investment of \$1,200 from volunteer EMTs.

We are indeed fortunate to have these dedicated folks willing to give of themselves to respond during times of emergencies.

We offer our appreciation and special thanks to them for their contributions during this observance of EMS Week in Post!



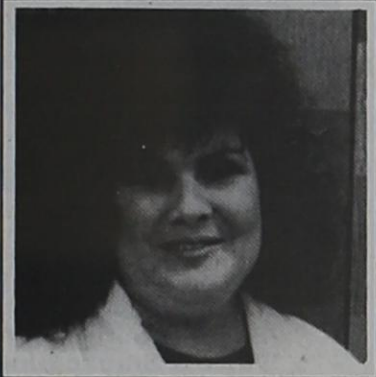
Jane Redman, President EMT Club



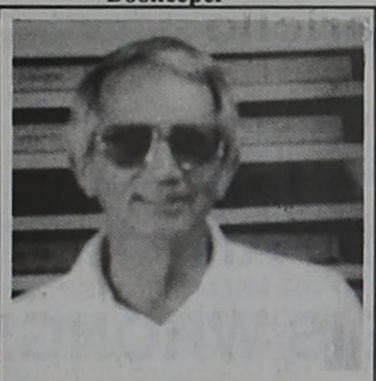
Karen Jones



Lynn Herridge



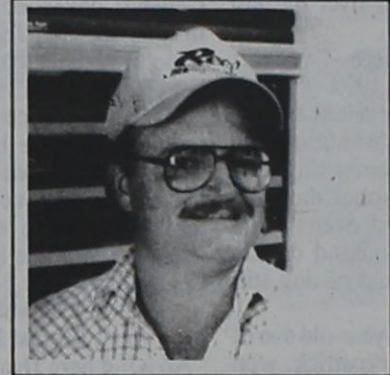
Debbie Jenkins
Bookkeeper



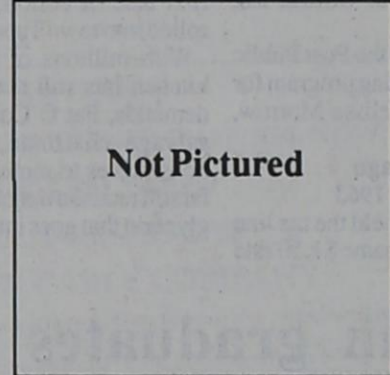
Wayne Thomas



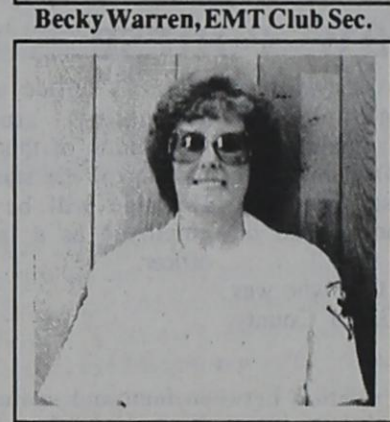
John Redman, EMS Admin.



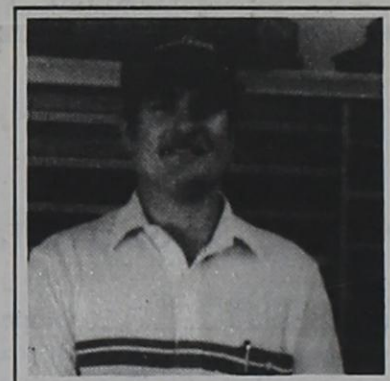
Jim Schooler, VP EMT Club



Not Pictured

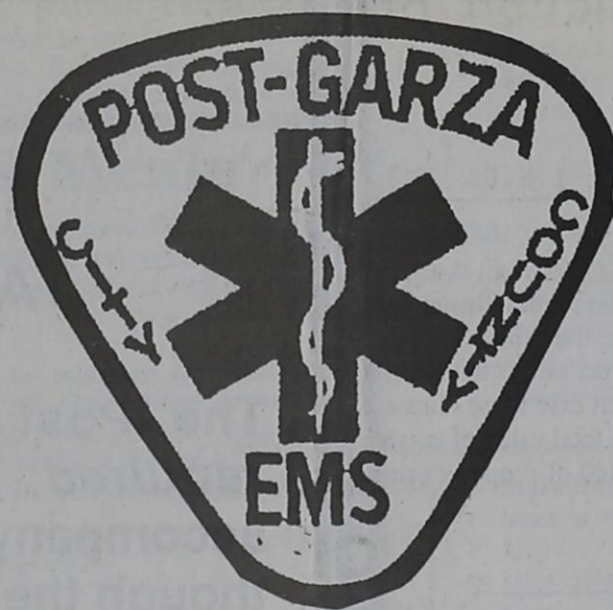


Becky Warren, EMT Club Sec.



Ivan Line

- ★ Lynn Herridge
- ★ Debbie Jenkins
- ★ Karen Jones
- ★ Ivan Line
- ★ Betty Posey
- ★ Jane Redman
- ★ John Redman
- ★ Jim Schooler
- ★ Wayne Thomas
- ★ Becky Warren



GARZA
MEMORIAL
HOSPITAL



LUBBOCK
METHODIST HOSPITAL
SYSTEM

Wallace Lumber Co.
119 N. Ave H 495-2835

Giles McCrary

**Justice-Mason
Funeral Home**
Dee, Janet, Bryan and Brent
301 W. Main 495-2833

Wells Pharmacy
132 W. Main - 495-2535

**Higginbotham-Bartlett
Lumber Co.**
110 S. Broadway - 495-2080

Golden Plains Care Center
605 W. 7th - 495-2848

Twin Cedar Nursing Home
107 W. 7th - 495-2022

Dr Jeff and Syan Young
894-3141

Post Health Care Clinic
318 W. 8th - 495-3573



Hudman Funeral Home
615 W. Main 495-2821



**THE FIRST
NATIONAL BANK**

P.O. BOX 430 POST, TEXAS 79356 • 806/495-2804



MEMBER FDIC

Yesteryears

Gleaned from the files of the Post Dispatch. Microfilm copies are available at the Post Public Library

10 years ago
August 24, 1983

Following the basketball camp held here last week, 72 girls scrimmaged before an audience Saturday morning followed by awards ceremonies.

Special treatment for restoring the old Double U building in downtown Post was applied earlier this week, partially shutting down City Hall, which is temporarily located in the front of the building.

Garza Memorial Hospital, with Maritta Reed as hospital administrator, has been involved with many new and updated improvements over the last several months.

20 years ago
August 23, 1973

Post Public Library trustees entered into a contract with Wardrup and Associated, Lubbock contracting firm, last Thursday to construct the final library addition planned, even though this means several thousand dollars worth of additional fund raising still lies ahead.

Cliff Kirkpatrick, 12-year-old son of Mr. and Mrs. Jack Kirkpatrick, won the "world champion calf roper, age 12 and under" title at Odessa last weekend.

The busiest reader in the Post Public Library's summer reading program for boys and girls was Melissa Morrow, who read 134 books.

30 years ago
August 22, 1963

The City of Post has held the tax line for another year at the same \$1.50 rate

and 35 cents per cent of true valuation, which has been in effect since 1958 or longer.

The aluminum Texas Tourist marker that is to be erected in Garza County is now under construction, according to Julian F. Smith, resident engineer for the State Highway Department.

All except one of the U.S. highways and farm-to-market roads in Garza County will get the new 70-65 miles per hour speed limit that went into effect Friday, resident highway engineers said today.

40 years ago
August 27, 1953

Bobby Dunlap of Post was among 16 boys from district nine of the Baptist General Convention of Texas who were in Atlanta, Ga., for the first worldwide Royal Ambassador Congress, held Tuesday thru Thursday.

J.D. King, justice of the peace here since 1947, finds himself this week with new jurisdiction. It is over the new "small claims court," which goes into operation as a result of House Bill 495, passed at the last session of the Legislature.

50 years ago
August 26, 1943

Arriving here five days earlier than the first bale of cotton for 1942, the first bale of cotton in Post this year rolled into town Tuesday, August 24.

With millions of pounds of waste kitchen fats still needed to meet war demands, Pat O'Connor, county war salvage chairman, recently urged housewives to remember even rancid fat still retains a majority of the valuable glycerin that goes into war production.

The Post Dispatch
495-2816

Tax 'n Facts

by Terri S. Cash, CPA

Buy a Car? Lease a Car?

There was a time not so long ago that car buyers could deduct the steep interest they paid on car loans and leasing only made sense for business and professional people who could write off the cost, subject to certain limitations.

Today, leasing is far more popular for anyone; one in four new cars will be leased rather than bought this year. For those people who are used to trading in one car for another before the first one is wholly theirs, leasing looks good. Down payments are minimal and the monthly fee is lower; leasers can either spend less or trade up to a fancier car. But if you normally pay off the car and then keep it for a few years free of debt, leasing is expensive because, at the end of the payments, at the end of the lease, you don't have a car.

A relatively new financing method for purchasing, balloon financing, makes buying more desirable and has many of the same financial advantages of leasing, plus ownership of your vehicle.

If leasing looks good to you, read the fine print. Be sure you understand the terms of the lease: the capitalized cost of the car, the residual value, the interest rate built in and the penalties for excess mileage, damage, or breaking the lease.

Need help with the number-crunching? Talk to the finance experts

at Mason, Warner & Co., P.C.

SON, WARNER & COMPANY, P.C.

MW&C

CERTIFIED PUBLIC ACCOUNTANTS
Jimmie Lee Mason
J. Reid Warner
Larry Anderson
Douglas C. Moore
Mark Dickson
Greg Freeman
Pat Harris
Gary Lane
Greg Moore
5202 Indiana
Lubbock - 797-3251

Terri Cash
108 S. Ave I
Post
"Around the corner from Danish Imports"

495-2872

BIG COUNTRY CHEVROLET DEALERS



Robert Hall

Chevrolet - Olds - Geo
Jayton, Texas
806 - 237 - 2182
Three Generations of Excellence
and 39 Years of Experience

1954 - 1993
39
YEARS OF EXCELLENCE
ROBERT HALL
CHEVROLET/OLDS, INC.

NEW 1993 Vehicle Close-Out SALE



1993 Chevrolet Caprice LS 4DR
White-Ruby Red Cloth
FULLY LOADED

Sticker \$ 22,248
Discount \$ 2,598
Rebate \$ 1,500
or 2.9% GMAC

Close-Out SALE PRICE... **\$18,150**



1993 Chevrolet Lumina 4DR
Medium Blue-Blue Cloth
V/6 Automatic
FULLY LOADED (Groupe 3)

Sticker \$ 16,131
Discount \$ 1,841
Rebate \$ 1,250
or 5.9% GMAC

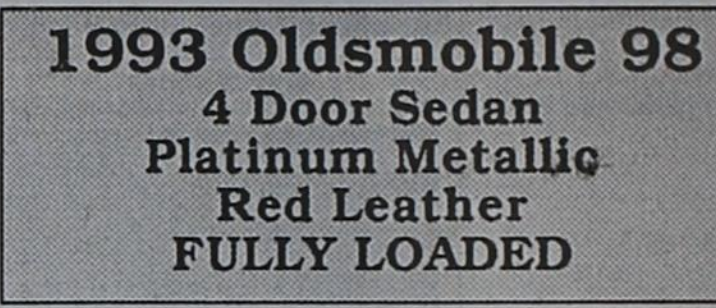
Close-Out SALE PRICE... **\$13,040**



1993 Geo Storm Coupe
Air, 4Cyl, 5 Spd, Compact Disc
Blue-Blue Cloth

Sticker \$ 13,246
Discount \$ 1,040
Rebate \$ 1,500
or 2.9% GMAC

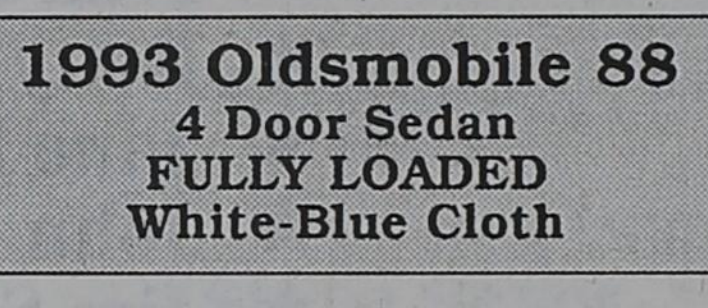
Close-Out SALE PRICE..... **\$10,706**



1993 Oldsmobile 98
4 Door Sedan
Platinum Metallic
Red Leather
FULLY LOADED

List Price \$ 23,995
Discount \$ 682

Close-Out SALE PRICE **\$23,313**



1993 Oldsmobile 88
4 Door Sedan
FULLY LOADED
White-Blue Cloth

List \$ 18,995
Discount \$ 645

Close-Out SALE PRICE... **\$18,350**



1993 Texas Stagecoach Conv. Suburbans
Security System
4 Captains Chairs & High Gloss Wood
1 1/2 in Stock (Same paint scheme)
-Silver & Silver Cloth-
White & Smoke Blue-Blue Cloth

List over \$30,000 Close-Out Price... **\$27,500**

Gail man graduates from SPAG law course

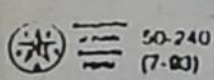
The South Plains Association of Governments Regional Law Enforcement Academy graduated 23 students from the 400 hour basic Peace Officer course. The class began on June 7 and ended on August 13.

Patrick Herridge of Gail who was sponsored by the Garza County

Sheriff's Office was one of the graduating students. Upon completion of this course and the passing of the state required test, Herridge will be eligible to be employed as a law enforcement officer.

Marriage is that relation between man and woman in which the independence is equal, the dependence mutual and the obligation reciprocal.

—Louis Kaufman Anspacher



1993 Property Tax Rates in Post I.S.D.

This notice concerns 1993 property tax rates for Post school district. It presents information about three tax rates. Last year's tax rate is the actual rate the school district used to determine property taxes last year. This year's effective tax rate would impose the same total taxes as last year if you compare properties taxed in both years. This year's rollback tax rate is the highest tax rate the school district can set before it must hold a rollback election. In each case these rates are found by dividing the total amount of taxes and state funds by the tax base (the total value of taxable property) with adjustments as required by state law. The rates are given per \$100 of property value.

Last year's tax rate:

Last year's operating taxes	\$ 1,859,589.96	
Last year's debt taxes	\$ -0-	
Last year's total taxes	\$ 1,859,589.96	
Last year's tax base	\$ 433,817,330.	
Last year's total tax rate	\$.431580	/ \$100

This year's effective tax rate:

Last year's adjusted taxes (after subtracting taxes on lost property)	\$ 1,855,345.80	
+ This year's adjusted tax base (after subtracting value of new property)	\$ 392,501,750.	
- This year's effective tax rate	\$.472697	/ \$100
x 1.03 = maximum rate unless the school district publishes notices and holds hearing	\$.486878	/ \$100

This year's rollback tax rate:

School maintenance and operations component	\$ 5,485,030.	
+ This year's tax base	\$ 393,808,920.	
- This year's local maintenance and operating rate	\$ 1.39280	/ \$100
+ \$.06 cents = this year's maximum operating rate	\$ 1.45280	/ \$100
+ This year's debt rate	\$ -0-	/ \$100
- This year's rollback rate	\$ 1.45280	/ \$100

Schedule A

Unencumbered Fund Balances

The following estimated balances will be left in the unit's property tax accounts at the end of the fiscal year. These balances are not encumbered by a corresponding debt obligation.

Type of Property Tax Fund	Balance
General Fund	\$2,425,000.

This notice contains a summary of actual effective and rollback tax rates' calculations. You can inspect a copy of the full calculations at Garza County Appraisal District 124 E. Main, Post, Texas

Name of person preparing this notice Billie Y. Windham
Title Chief Appraiser
Date prepared August 23, 1993

THE ACCOMPANYING TAX NOTICE IS WRONG!

The Post Independent School District is required by state law to publish the accompanying tax notice in this form, even though the notice is deceptive.

Because of an omission in the recently enacted state law, Post I.S.D. may not include revenue collected by the county education district in the calculation of taxes for the 1992-93 school year. The effect of this is to understate last year's actual school tax rate and produce an inaccurate comparison of last year's tax rate to this year's tax rate.

The correct comparison of tax rates is as follows:

Last year's (1992-93) total school tax rate (including county education district taxes):
\$ 1.35788

This year's (1993-94) proposed school tax rate:
\$1.35788

Percentage of change: **None**

FEET FIRST...
early exit from Stampede Road

Voters
Action by this general voters across 2 to decide agricultural funding authority to \$100 m Commission...
"Of all the Legislature re this measure for creating local economic as we propel the 21st cent...
If appro constitutional allow the Tex Authority, additional commercial the state's TAFAs was Legislature processing companies operations. funding app TAFAs has across the st fiber-related processors project to c or indirectly to the gross

Post In reduce school interest

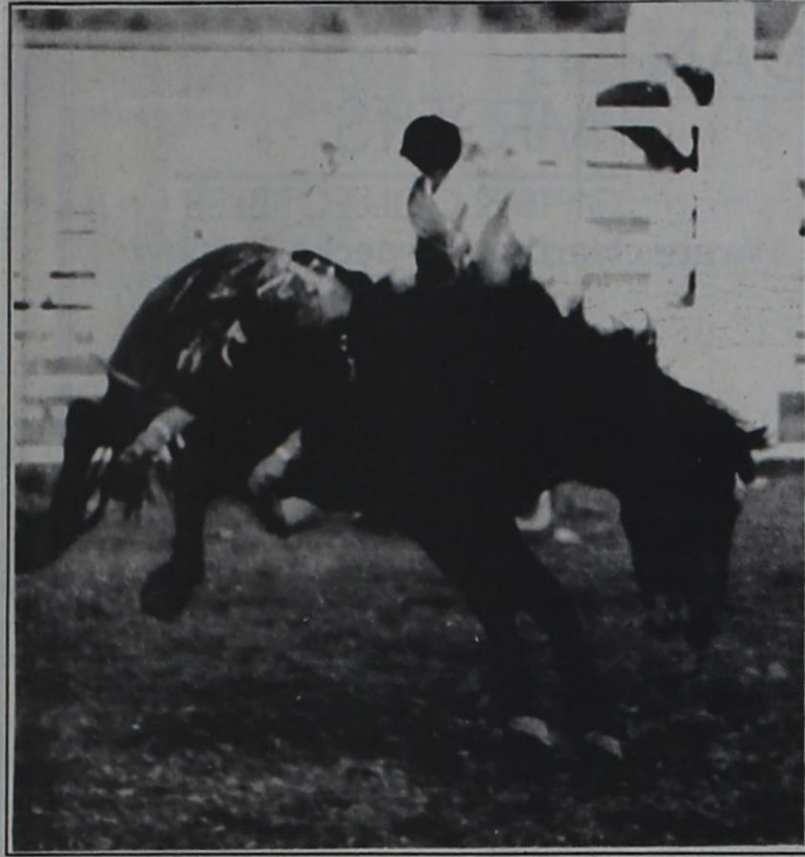
The ho eligibil is at o childre for ben for the

Apply house term days. Apply and re open: schoo ment. I two car or s 488-45 house BUILD tam downpa. Ous Homes tol. h SINGLETUS ings: 24.30cu 30r60r.12no 50r100r.14 Mini-warch ing. Fast de QUICK CA financed cou of trust. Asy 2389.

LAND LIQU homesites acro ern. Call now f 800-364-6612 American Lan

LOCAL PAY week potential Minimum inv Vending Corp LOCAL VEN week potential minimum inv Vending Corp

OTR DRIVE ma * Paid loa 401K retirem door policy * Long haul * S



Dispatch Photo by John Cordson
FEET FIRST. Bareback rider Shawn Thompson of Pampa made an early exit from his mount Thursday night during the annual Post Stampede Rodeo.



Dispatch Photo by John Cordson
SADDLE BRONC rider Justin Lane of Morse used this ride Saturday night to win the event in the three day Post Stampede Rodeo.

Voters to decide financing

Action by the Texas Legislature this general session will allow voters across the state on November 2 to decide on increasing an agricultural finance program's funding authority from \$25 million to \$100 million, Agriculture Commissioner Rick Perry said.

"Of all the action taken by the Legislature regarding agriculture, this measure has the most potential for creating jobs and strengthening local economies throughout the state as we propel Texas agriculture into the 21st century," Perry said.

If approved by voters, constitutional Proposition 16 would allow the Texas Agriculture Finance Authority, or TAFE, to raise additional funds by issuing commercial paper notes backed by the state's bonding authority. TAFE was established by the Texas Legislature in 1987 to help ag processing and ag diversification companies start up or expand operations. With \$25 million in funding approved by voters in 1989, TAFE has assisted 34 businesses across the state—including nurseries, fiber-related industries and food processors. These companies project to create 4,700 jobs directly or indirectly and to add \$463 million to the gross state product.

"With the initial \$25 million in funding, this finance program has given taxpayers more than their money's worth with a 1,800 percent return on their investment," Perry said. "It pays off by creating or retaining jobs and adding dollars to the gross state product."

TAFE works through public-private partnerships that involve local banks or other private lending institutions cooperating with the finance authority to provide loans to ag processing or ag diversification businesses.

To qualify for TAFE assistance, businesses must use their equipment and other assets as collateral. As a loan is repaid, the money goes back into the TAFE, which uses the state's authority to issue commercial paper notes that partially fund and guarantee a portion of loans made to businesses.

"No one wants to see our state take on more debt—especially me," Perry said. "However, we have successfully structured the program to prevent debt to the state's taxpayers. The fund is self-supporting and backed by the state's strong credit rating. TAFE is an investment in the future of Texas that will pay tremendous dividends for years to come."

Area politicians named to worker's comp committee

Lt. Governor Bob Bullock recently announced the appointment of Senators Don Henderson of Houston, John Montford of Lubbock and Jim Turner of Crockett to the Workers' Compensation Legislative Oversight Committee.

The committee is charged with coordinating a variety of agencies engaged in protecting the income, health and medical care of Texans injured on the job. The panel of three Senators and three House members reviews the system to ensure that it is fair and efficient and issues a report every two years. The next report will be in 1994.

"Workers' compensation promises top be a major issue facing lawmakers next session when the Texas Workers' Compensation Commission comes up for Sunset Review," Bullock said. "The report of this oversight committee will

DOWE MAYFIELD, C.L.U.
C.D. Rates Too Low?
 CALL
1-800-658-6130 (toll free)
 3305 81st, Suite F, Lubbock

DON'T MISS THE DISNEY CHANNEL'S FREE PREVIEW!

Heidi
 Fleetwood Mac: Going Home
 Glenn Frey: Strange Weather
 Adventures in Wonderland

Thursday, August 26 - Monday, August 30.

Programs subject to change. ©Disney

SAVE 75%
CONNECT TO THE DISNEY CHANNEL NOW!
FOR ONLY \$5.00
CALL 1-800-783-5709
MISSION CABLE COMPANY

Free gift for new subscribers! Receive a coupon to get a FREE Special Edition "Aladdin" lithograph in a custom mat when you call 1-800-847-9000 during this preview. You must install The Disney Channel between August 26 and September 30, 1993. New subscribers only. See coupon for details.

Some restrictions may apply, including additional charges for installation, basic service, and/or converter. Preview available only to subscribers in participating cable systems and home satellite dish owners who have a descrambler or an IRD and subscribe to at least one programming service. Please contact your local cable company for details.

Free and Reduced Priced Meals

Post Independent School District today announced its policy for providing free and reduced price meals for children served under the National School Lunch Program. Each school and/or the central office has a copy of the policy, which may be reviewed by any interested party.

The household size and income criteria identified below will be used to determine eligibility for free and reduced price benefits. Children from households whose income is at or below the levels shown are eligible for free or reduced price meals. Foster children that are the legal responsibility of a welfare agency or court may also be eligible for benefits regardless of the income of the household with whom they reside. Eligibility for the foster child is based on the child's income.

INCOME CHART			
Household size	Annual	Monthly	Weekly
1	12,895	1,075	248
2	17,446	1,454	336
3	21,997	1,834	424
4	26,548	2,213	511
5	31,099	2,592	599
6	35,650	2,971	686
7	40,201	3,351	774
8	44,752	3,730	861
For each additional member add....	+4,551	+380	+88

Application forms are being distributed to all households with a letter informing households of the availability of free and reduced price meals for their children. Applications also are available at the principal's office in each school. To apply for free and reduced price meals, households must fill out the application and return it to the school. Applications may be submitted anytime during the school year.

For school officials to determine eligibility for free and reduced price benefits, households receiving food stamps or AFDC only have to list their child's name, food stamp or AFDC case number and an adult household member must sign the application. Households who do not list a food stamp or AFDC case number must list the names of all household members, the amount and source of the income received by each household member who signs the application. If neither household member has a Social Security number, the household member must indicate that a social security number is not available. The application must be signed by an adult household member.

Under the provisions of the free and reduced price meal policy will review applications to determine eligibility. Parents and guardians dissatisfied with the ruling of the principal may wish to discuss the decision with the reviewing official on an informal basis. Parents wishing to make a formal appeal for a hearing on the decision may make a request either orally or in writing to the Principal.

Households that list a food stamp or AFDC case number must report when the household member received these benefits. Other households approved for benefits based on the information must report increases in household income of over \$50 per month per year and decreases in household size. Also, if a household member becomes employed or if the household size increases, the household should contact the principal. Such changes may make the children of the household eligible for benefits if the household's income falls at or below the levels shown above.

operation of child feeding programs administered by the U.S. Department of Agriculture, no child will be discriminated against because of race, color, sex, national origin, age or handicap. If any member of a household believes they have been discriminated against, they should write immediately to the Secretary of Agriculture, Washington, D.C. 20250.

50-212 (Rev. 8-937)
 1993
 City of Post
Property Tax Rates in

This notice concerns 1993 property tax rates for City of Post. It presents information about three tax rates. Last year's tax rate is the actual rate the taxing unit used to determine property taxes last year. This year's effective tax rate would impose the same total taxes as last year if you compare properties taxed in both years. This year's rollback tax rate is the highest tax rate the taxing unit can set before taxpayers can start tax rollback procedures. In each case these rates are found by dividing the total amount of taxes by the tax base (the total value of taxable property) with adjustments as required by state law. The rates are given per \$100 of property value.

Last year's tax rate:

Last year's operating taxes	\$	278,519.	
Last year's debt taxes	\$	-0-	
Last year's total taxes	\$	278,519.	
Last year's tax base	\$	81,362,090.	
Last year's total tax rate	\$.342320	/100

This year's effective tax rate:

Last year's adjusted taxes	\$	278,263.44	
(after subtracting taxes on lost property)			
+ This year's adjusted tax base	\$	82,799,120.	
(after subtracting value of new property)			
= This year's effective tax rate	\$.336071	/100

In the first year a hospital district or city collects the additional sales tax to reduce property taxes, it must insert the following lines unless its first adjustment was made last year:

- Sales tax adjustment rate	\$	N/A	/100
= Effective tax rate	\$	N/A	/100

x 1.03 = maximum rate unless unit publishes notices and holds hearing

	\$.346154	/100
--	----	---------	------

This year's rollback tax rate:

Last year's adjusted operating taxes	\$	278,263.44	
(after subtracting taxes on lost property and adjusting for transferred function)			
+ This year's adjusted tax base	\$	82,799,120.	
= This year's effective operating rate	\$.336071	/100
x 1.08 = this year's maximum operating rate	\$.362957	/100
+ This year's debt rate	\$	-0-	/100

= This year's rollback rate

\$.362957	/100
----	---------	------

A hospital district or city that collects the additional sales tax to reduce property taxes, including one that collects the tax for the first time this year, must insert the following lines:

- Sales tax adjustment rate	\$	-0-	/100
= Rollback tax rate	\$	-0-	/100

Schedule A
Unencumbered Fund Balances
 The following estimated balances will be left in the unit's property tax accounts at the end of the fiscal year. These balances are not encumbered by a corresponding debt obligation.

Type of Property Tax Fund	Balance
General Fund	\$ 265,000.

This notice contains a summary of actual effective and rollback tax rates' calculations. You can inspect a copy of the full calculations at Garza County Appraisal District, 124 E. Main, Post, Texas
 Name of person preparing this notice Billie Y. Windham
 Title Chief Appraiser
 Date prepared August 17, 1993



Mike Macy and Kellie Frost

Macy and Frost announce September wedding plans

TED and Carolyn Kyle of Quanah announce the engagement and forthcoming marriage of their daughter, Kellie Frost, to Mike Macy of Post. The future groom is the son of Bob Macy of Post and Nancy Beard of Lubbock. He is the grandson of Mary Belle Macy of Lubbock. The bride-elect is the granddaughter of Merle Monkres of Quanah. The couple plan a September 25 wedding in Post.

New test explains stomach pain

A simple new test may quickly explain the cause of stomach pain in millions of Americans, says a parasitologist at Baylor College of Medicine in Houston.

The Giardia antigen test checks for giardiasis, the most common water-borne disease in the United States. People with giardiasis suffer from stomach cramps, gas, nausea, diarrhea and bloating. The symptoms usually appear one to two weeks after infection. In many cases, no symptoms are present.

"The chances of finding Giardia with this new test are greatly enhanced because it is more sensitive than the conventional method," said Dr. Cynthia Chappell,

an assistant professor of family medicine at Baylor.

In the Giardia antigen test, byproducts of the Giardia parasite are detected. Once spread mainly by drinking water from mountain streams and other untreated bodies of water, the bug also is present in poorly filtered water supplies and food, and is passed on by hand-to-mouth contact.

With the old method, the stool was examined microscopically to look for oval-shaped cysts harboring the Giardia parasite. Chappell says in the past, it has taken repeated testing to confirm the presence of Giardia.

Emergency feed program implemented in Garza Co.

Due to continuing weather conditions, the Garza County ASCS Committee has been given the authority to implement the Emergency Feed Program. An application will be accepted anytime it is believed that part of the grazing or crops normally produced to feed livestock have been lost because of a natural disaster. As a general rule, it is to the owner's advantage to apply as soon as possible.

The applicant must own or have the livestock under a lease agreement. The lease agreement must require the applicant to furnish all feed and clearly provide authorization to market a share of offspring produced by the livestock. Purchased or leased livestock cannot be included until they have been owned or leased for at least six

months, unless, the owner is prepared to show that an equal number of the same type and weight of livestock were purchased or leased during the same time period for at least four of the last five years. The offspring of eligible livestock and livestock purchased, leased, or inherited as part of a complete livestock operation become eligible immediately.

Final payment under the emergency feed program cannot exceed one-half of the smaller of the value of feed loss, the value of additional feed needs, or the cost of purchased feed fed during the feeding period. Livestock producers who are having to feed their livestock are encouraged to contact the ASCS office at 208 West Main for more information.

The mind of man is capable of anything—because everything is in it, all the past as well as all the future.

—Joseph Conrad

How Many Chances Do You Get To Prevent Cancer?

Every Time You Eat!

A low-fat diet including plenty of fresh vegetables, fruits, and whole grain foods may help lower your family's risk of cancer.

The American Cancer Society can send you information on healthy eating. For a free brochure, call 1-800-ACS-2345 and join the Great American Food Fight Against Cancer.



There's Nothing Mightier Than The Sword

DANISH IMPORTS

GIFTS & COLLECTIBLES

We are clearing our decks for new merchandise.

SALE BAIT!

No Gimmicks...No Fishy Business, Just the lure of Great Stuff Marked down alot!

Gift Selections

Kristi Stone and Cody Carruthers

201 E. Main

Mon-Sat 9:00 to 6:00

806-495-2314

VISA/MasterCard/Discover

Post Channel 31

SCHEDULE
Post Channel 31
AUGUST 25-31, 1993

TIME	WEDNESDAY	THURSDAY	FRIDAY	SATURDAY	SUNDAY	MONDAY	TUESDAY
6 AM	STARS OF GOSPEL MUSIC	MEET THE LOPES	STARS OF GOSPEL MUSIC	BOLD GOLD FOOTBALL	POST ON SCREEN	STARS OF GOSPEL MUSIC	CITY COUNCIL
9 AM	BOLD GOLD FOOTBALL	CONGRESSMAN SARPOLIS	SCHOOL BOARD	Scrinnage vs Floydada	NAZARENE CHURCH	BOLD GOLD FOOTBALL	COMMISSIONER'S COURT
10 AM	Scrinnage vs Floydada	CONGRESSMAN SARPOLIS	SCHOOL BOARD	CITY COUNCIL/COMMISSIONER'S COURT	NAZARENE CHURCH	Scrinnage vs New Deal	COMMISSIONER'S COURT
11 AM	BAPTIST CHURCH	METHODIST CHURCH	STARS OF GOSPEL MUSIC	TEACHER'S LUNCHEON	Joint Session	CHURCH OF CHRIST	CHURCH OF CHRIST
12 PM	COMMISSIONER'S COURT	Girl's Journey at Post	LOPES	MEET THE LOPES	NAZARENE CHURCH	CHURCH OF CHRIST	CHURCH OF GOD
1 PM	COMMISSIONER'S COURT	Girl's Journey at Post	LOPES	MEET THE LOPES	NAZARENE CHURCH	CHURCH OF CHRIST	CHURCH OF GOD
2 PM	COMMISSIONER'S COURT	Girl's Journey at Post	LOPES	MEET THE LOPES	NAZARENE CHURCH	CHURCH OF CHRIST	CHURCH OF GOD
3 PM	SCHOOL BOARD	RIG TEX VIDEO SHOW	CONGRESSMAN SARPOLIS	MEET THE LOPES	BAPTIST CHURCH	TEACHER'S LUNCHEON	Scrinnage vs New Deal
4 PM	SCHOOL BOARD	RIG TEX VIDEO SHOW	CONGRESSMAN SARPOLIS	MEET THE LOPES	BAPTIST CHURCH	TEACHER'S LUNCHEON	Scrinnage vs New Deal
5 PM	MEET THE LOPES	SCHOOL BOARD	CITY COUNCIL/COMMISSIONER'S COURT	VIDEO SHOW	CHURCH OF GOD	DE. PROPHECY	BIG TEX VIDEO SHOW
6 PM	MEET THE LOPES	SCHOOL BOARD	CITY COUNCIL/COMMISSIONER'S COURT	VIDEO SHOW	CHURCH OF GOD	DE. PROPHECY	BIG TEX VIDEO SHOW
7 PM	CONGRESSMAN SARPOLIS	BOLD GOLD FOOTBALL	Joint Session	New Deal	Scrinnage vs Floydada	Joint Session	SCHOOL BOARD
8 PM	CONGRESSMAN SARPOLIS	BOLD GOLD FOOTBALL	Joint Session	New Deal	Scrinnage vs Floydada	Joint Session	SCHOOL BOARD
9 PM	NAZARENE CHURCH	BAPTIST CHURCH	MEET THE LOPES	STARS OF GOSPEL MUSIC	Scrinnage vs Floydada	CHURCH OF CHRIST	METHODIST CHURCH
10 PM	CHURCH OF GOD	POST	POST	POST	POST	POST	POST
11 PM	CHURCH OF GOD	POST	POST	POST	POST	POST	POST
12 AM	ON-SCREEN	ON-SCREEN	ON-SCREEN	ON-SCREEN	ON-SCREEN	ON-SCREEN	ON-SCREEN
UNTIL	ON-SCREEN	ON-SCREEN	ON-SCREEN	ON-SCREEN	ON-SCREEN	ON-SCREEN	ON-SCREEN
8 AM	ON-SCREEN	ON-SCREEN	ON-SCREEN	ON-SCREEN	ON-SCREEN	ON-SCREEN	ON-SCREEN

1993 Property Tax Rates in Southland I.S.D.

This notice concerns 1993 property tax rates for Southland school district. It presents information about three tax rates. Last year's tax rate is the actual rate the school district used to determine property taxes last year. This year's effective tax rate would impose the same total taxes as last year if you compare properties taxed in both years. This year's rollback tax rate is the highest tax rate the school district can set before it must hold a rollback election. In each case these rates are found by dividing the total amount of taxes and state funds by the tax base (the total value of taxable property) with adjustments as required by state law. The rates are given per \$100 of property value.

Last year's tax rate:

Last year's operating taxes	\$ 140,883.15
Last year's debt taxes	\$ -0-
Last year's total taxes	\$ 140,883.15
Last year's tax base	\$ 36,130,060.
Last year's total tax rate	\$.3922 /\$100

This year's effective tax rate:

Last year's adjusted taxes (after subtracting taxes on lost property)	\$ 140,727.87
+ This year's adjusted tax base (after subtracting value of new property)	\$ 36,213,090.
- This year's effective tax rate	\$.388610 /\$100
x 1.03 = maximum rate unless the school district publishes notices and holds hearing	\$.400269 /\$100

This year's rollback tax rate:

School maintenance and operations component	\$ 458,855.
+ This year's tax base	\$ 36,223,100.
- This year's local maintenance and operating rate	\$ 1.266747 /\$100
+ \$.06 cents = this year's maximum operating rate	\$ 1.326747 /\$100
+ This year's debt rate	\$ -0- /\$100
- This year's rollback rate	\$ 1.326747 /\$100

Schedule A Unencumbered Fund Balances

The following estimated balances will be left in the unit's property tax accounts at the end of the fiscal year. These balances are not encumbered by a corresponding debt obligation.

Type of Property Tax Fund	Balance
General Fund	\$290,856

This notice contains a summary of actual effective and rollback tax rates' calculations. You can inspect a copy of the full calculations at Garza County Appraisal District 124 E. Main, Post, Texas

Name of person preparing this notice: Billie Y. Windham
Title: Chief Appraiser
Date prepared: August 20, 1993

THE ACCOMPANYING TAX NOTICE IS WRONG!

The Southland Independent School District is required by state law to publish the accompanying tax notice in this form, even though the notice is deceptive.

Because of an omission in the recently enacted state law, Southland I.S.D. may not include revenue collected by the county education district in the calculation of taxes for the 1992-93 school year. The effect of this is to understate last year's actual school tax rate and produce an inaccurate comparison of last year's tax rate to this year's tax rate.

The correct comparison of tax rates is as follows:

Last year's (1992-93) total school tax rate (including county education district taxes):
\$ 1.31850

This year's (1993-94) proposed school tax rate:
Not Available

Percentage of change: **Not Known**

Classified Advertising

Private Party Classified Rates

PAYABLE IN ADVANCE
All private party classified ads must be paid in advance.

Rate Per Word 25¢
Minimum \$3 per ad

NO BUSINESSES AT THIS RATE.
STRICTLY NON-COMMERCIAL, PRIVATE PARTY RATE.

Cards of Thanks
Up to 50 words free.
All words over 50 at 25¢ each.

DEADLINE FOR COPY AND PAYMENT IS
Mondays at 5 p.m.

Commercial Classified Rates	
Number of Times	Rate Per Word Per Time
1	.35
Bold faced copy	.50

Card of Thanks

We wish to extend our deepest appreciation for your prayers and friendship during our time of sorrow.
The family of Bonnie Johnson

We wish to thank the EMS, Betty Posey, John Redman, Wayne Thomas, Garza County Sheriff's Department and the Highway Patrol for the help with the funeral procession.

We would also like to thank Darla Davis and Leisa Farquhar for the tender loving care and help with the loss of our loved one.

W.S. Johnson
Allen Johnson and family
Robert E. Johnson and family

We wish to thank the EMT's, hospital, Dr. Nelson & nurses, our church, Calvary Baptist, Pastor Mike and all our friends and family for your help and prayers during our sickness and most of all God for his mercy and healing.
George and Cindy Nelson

To all our friends,
"Thank you" doesn't really express the gratitude we feel for all the love and kindness extended us during Punk's recent illness.

We appreciate the flowers, food, calls, visits and especially your prayers during this time.

We cannot tell you enough how much we love and appreciate each of you.
Punk, Juanita and children

Personals

Amazing, all-natural nutritional supplement. Look and feel better - lose weight or have more energy. Available at your local independent pharmacy. Trial packs \$3.00.

Public Service

TO ALL INTERESTED PERSONS AND PARTIES:

You are hereby notified that GRAHAM CO-OP GIN has applied for Texas Air Control Board (TACB) Permit No. 22889. This permit, if approved, will authorize the expansion of a Cotton Gin in Graham Chapel, Garza County, Texas. The location of the existing facility is the intersection of Highway 1313 and Highway 399. This facility will emit the following air contaminants: Particulate matter, sulfur dioxide, nitrogen oxides, carbon monoxide, and unburned hydrocarbons.

A copy of all materials in the public file is available for inspection and reproduction at the TACB Lubbock Regional Office at 4630 50th Street, Suite 600, Lubbock, Texas 79414, telephone (806) 796-3494, and at the TACB Central Office, 12124 Park 35 Circle, Austin, Texas 78753, telephone (512) 908-1000. The facility's compliance file, if any exists, is available for public review in the regional office of the TACB. Inquiries about the permit application should be directed to the TACB Permits Program in Austin or the TACB Lubbock Regional Office.

You may submit written comments concerning the permit application to the TACB Executive Director in Austin. All written comments received within 30 days after the second publication of this notice shall be considered by the Executive Director in determining whether to issue or not issue the permit. All written comments will be made available for public inspection at the TACB Central Office in Austin. This notice is to be published on August 18, 1993 and August 25, 1993.

Any person who may be affected by emissions of air contaminants from the proposed facility may request the Board to hold an informal public meeting and/or contested case hearing on the permit application pursuant to Section 382.056 (d) of the Texas Health and Safety Code. The Board is not required to hold a contested hearing if the basis of a request is determined to be unreasonable. All requests for a contested case hearing must be received in writing within the 30-day comment period regardless of whether an informal public meeting has been held or scheduled on this matter.

Before a permit can be issued for this facility, the applicant must demonstrate that all emission sources are in compliance with all TACB Rules and Regulations and all applicable Federal Regulations. This includes the application of "best available control technology" to each new or modified emission source and compliance with all ambient air quality standards.

Public Service

City County Drug and Alcohol Abuse

A non-profit service organization to assist with treatment placement, referrals, and confidential counseling for the substance abuser, alcoholic or family members concerned about their loved ones drinking or drug addiction. For information or appointment call office 495-3173 or 24 hour number 495-3788. All call strictly confidential. We Care. Director Colleen Tyler CADAC, Assistant Director Suzy Stargel.

Weekly Alcohol-Drug Education Awareness Seminars

8 p.m. Monday's. Open to the public, no charge. Postex Plant Conference Room, 7th and Ave. C. City County Drug and Alcohol Abuse.

Post Group of Alcoholics Anonymous meets every Thursday night at the First Presbyterian Church, 910 W. 10th at 8 p.m. Closed meetings are held except on the last Thursday night of the month, which is an open meeting. We have supper at 7 p.m. and the speaking starts at 8 p.m. Anyone who wishes to talk or ask about an alcohol problem, call 495-3667 or 629-4393.

Post Independent School District invites the Senior Citizens of the district to come by the Superintendent's office and receive a gift of a complimentary general admissions pass that will admit you to all school functions. (You will be asked to present identification so that a pass can be issued in your name).

Spanish Speaking AA

Spanish speaking AA meetings will be held every Tuesday night at the Catholic Church from 8-9 p.m. Come one, come all.

Services and Repairs

CARPENTRY - Remodeling, repairs. Call Bo Hutchins at 495-3307.

Help Wanted

Needed: pump truck & vac truck operators. Apply in person at Bergstein Oilfield Services, Lubbock Hwy. 495-3805.

ATTENTION STUDENTS:

National retail firm filling summer opening in Post. \$9.25 to start, must be 18. Interview in Lubbock. 806-793-0536.

Counselor Intern

Part-time position for staff assistant and facilitator for children and adolescent programs. Minimum requirements are: College credits in counseling or social work, experience working with children, computer skills and willingness to work with addictive clients. Send resume and references to City/County Drug & Alcohol Abuse program, Attn: Colleen Tyler, P.O. Box 622, Post, TX 79356.

Wanted: Office Manager - Post Insurance Agency. Apply in person - 106 N. Broadway.

Homes for Sale

Farm house for sale w/ 3 acres, landscaped, good well. Nedra Shults 495-2796 or 788-0449.

2 bedroom, new central air heat pump and insulation, lovely fenced back yard, one block from schools, large producing pecan tree in back yard, \$20,000. Call Barbara, 495-3987; Kim, 495-3719 or Mike and Wanda, 495-3104. Mitchell Real Estate.

Miscellaneous for Sale

ULTIMATE 21 DIET, 100% natural, 100% satisfaction guarantee. Burn fat, reduce inches, increase natural energy. For more information call 915-659-4946.

DOG GROOMING: wash and dip. Lanora - 495-4092.

3 year old Ludwig snare drum w/ case, stand and bells. Call 495-4032 after 6.

COMPUTER - Tandy 1200 HD. Excellent condition, comes with MS Word, MS/DOS, Desk Mate and Tandy 100 portable. Ideal for student beginning to learn keyboarding. \$250. 495-3884.

Garage Sales

Moving sale: Kenmore sewing machine, \$200; contemporary dining table, chairs, \$400; Englander trundle-bed couch, \$250; Stereo music system, 33 rpm records, classical, variety - offer considered; chairs; complete double bed. 806/495-2283, 5-8 p.m.

Huge garage sale: Friday and Saturday, 8-5, 415 W. 12th. Fishing and camping equipment, dishes, curtains, clothes and a little bit of everything else. Everything priced to sell.

2 family garage sale, Saturday, 8-5 at Vibes. Baby, children & adult clothes. Baby items, lamps, recliner, coffee table and household items.

4 families, Thursday, 8/26, 1010 Camden. Drapes, playpen, car seat, black & white t.v., misc.

Porch sale - 123 N. Ave. L, 8-12, Saturday, August 28.

Frontyard sale: 510N. Ave. G., Friday, 8 a.m. to 4 p.m. A little bit of everything.

3 family yard sale - lots of clothes, all sizes, misc. 911 W. 11th, Saturday, 8-?

Pets and Supplies

Free to a good home, 1/2 Australian Shepherd pups. Call Paul Simpson at 495-3660.

AKC Registered Chihuahua puppies for sale. 996-5689 in Southland.

Feed & Seed & Livestock

For sale: 12 choice 2 1/2 year old Angus Heifers. Heavy springers, 5 calves on the ground. Call 806-271-3112.

Wanted to Buy

Good small car or pickup - must run good, low mileage in \$3,000 price range. Call Lewis or Jody Ammons after 4 p.m.

Lost and Found

REWARD: kids spur lost at Rodeo Friday night, 495-4046.

LOST: 9 week old female Cocker Spaniel, tan in color, tail recently docked. Disappeared on August 14th. Call 495-2626.

Legal Notices

PUBLIC NOTICE

CITY OF POST TEXAS COMMUNITY DEVELOPMENT PROGRAM
The City of Post will hold a second public hearing at 6:00 pm. on August 31, 1993 at City Hall, 105 E. Main Street in regard to the submission of an application to the Texas Department of Housing and

Legal Notices

Community Affairs for a Texas Community Development Program (TCDP) grant. Topics to be discussed will include the application for a City-Wide housing rehabilitation program in the amount of \$250,000 and the estimated amount of funds proposed for activities that will benefit low and moderate income persons. After approval of the City Council, the application will be available for review at City Hall during regular business hours. Handicapped individuals that wish to attend this meeting should contact City Hall to arrange for assistance.

NO. 1552

ESTATE OF SAM S. ELLIS, DECEASED, IN THE COUNTY COURT OF GARZA COUNTY, TEXAS

NOTICE TO CREDITORS
Notice is hereby given that Letters Testamentary as Independent Executrix of the Estate of SAM S. ELLIS, Deceased, were granted to RUBY ELLIS on the 10th day of August, 1993, in Cause Number 1552, in the County Court of Garza County, Texas. All persons, firms or corporations having claims against said Estate may file said claim with RUBY ELLIS, Independent Executrix, Route 2, Box 85, Southland, Texas 79364. Any such claim must be filed within the time and limits prescribed by law.

Respectfully Submitted,
RUBY ELLIS
HURLEY & SOWDER
1703 Avenue K
Lubbock, Texas 79401
Ph. No. 806/763-0409
Fax No. 806/763-0644
BY: MADISON SOWDER
Bar Card No. 18864000
ATTORNEYS FOR THE ESTATE

Used

Offset Disk Plows
17-21' Chisel Plows
IH 295 ctn Stripper
NEW
Rhino 4R Shredders
Roll-A-Cone t. bars
LubTex Sweeps & Disk

ADAMS

Farm Equipment Co.
Idalou Hwy - Lubbock
(WE NEED USED FARM TRACTORS)
762-2510

Birthday - Anniversary - Wedding
"Special Occasion Cakes"
Jimmella Simpson
After 5 p.m.
806-495-3318
Post, Texas

Foillis Heating & Air Conditioning
Sales, Installation & Service
TRANE EQUIPMENT
FREE Estimates
Dial 628-6371
Insured and Licensed

Hookups Now Available
for Mobile Homes and Travel Trailers.
Enquire at P.E.D.C.
495-2818

Need more space?
We'll store your stuff!
Low rates
420 S. Broadway
Self Storage
495-4063

Germania Farm Mutual Insurance Association
Locally served by
Jerry Taylor
115 N. Ave. H
Post, Texas 79356
495-3330
OR
495-3875

Post Insurance
Serving Post Since 1911
• All Your Insurance Needs
Auto - Home - Commercial - Bonds
• Quotes available by phone
106 N. Broadway 495-2894

Post Manor Apartments
302 w. 15th Street
Post, Texas 79356
(806) 495-2952

Several Vacancies
Come in and see if you qualify
Rental Assistance Available To Qualified Applicants
* One Bedroom Units
* Wall to Wall Carpet
* Central Heat and Air
* Mini-blinds
* Washer/ Dryer Connections
* On site Laundry Facilities
* Water, Sewer, & Trash Paid
* Individual storage Units
* Community Room
* Handicap Accessible Units

The Post Dispatch for all of your
Photo Copy needs
ONLY **10¢** per copy
Convenient and affordable...great quality. Reducing or enlarging.
123 E. Main
495-2816

TEXAS SCAN

Statewide Classified Advertising Network
312 Texas newspapers for \$250. Call this newspaper for details.

INSULIN-DEPENDENT DIABETICS receive testing supplies with your medicare/private and supplemental insurance. Fast, free delivery! Assignment accepted! Call today. Diabetes Home Care: 1-800-544-5433.

BASEBALL NUT? RELEASE tension! Play personal computer major league schedule. Cost: \$50.00. Send name, address for description. Barron Software, P.O. Box 867296, Plano, Texas 75086.

GOT A CAMPGROUND membership or time-share? We'll take it! America's largest resale clearinghouse. Call Resort Sales International. 1-800-423-5967 (24 hours).

TEXAS P & M ANTLER Report 93-94 Season. ATTN: Deer Hunters. Texas Big Buck information video, antlers, spreads, and more. Send check/M.O., \$24.95, total to: Antler Report, P.O. Box 588, Rocksprings, Tx 78880 or 1-800-636-DEER.

77 YEAR OLD custom lubricant company interested in area sales reps. Paid field training. Contact Primrose Oil, P.O. Box 29665, Dallas, TX 75229, 214-241-1100.

FINANCIAL PARTNER WANTED. \$600,000 investment plus credit line required. South Texas manufacturer with international sales. Contact Paul 8-5 weeks 512-358-7670.

FRIENDLY HOME PARTIES now has openings for demonstrators. No cash investment. Part time hours with full time pay. 1 wo catalogs, over 700 items. Call 1-800-488-4875.

BUILD YOUR OWN home now! No downpayment on Miles materials, below market construction financing. Call Miles Homes today, 1-800-343-2884 ext. 1.

SINGLETON SUPPLY METAL Buildings: 24x30x10, \$3,050; 30x40x10, \$4,200; 30x60x12, \$5,995; 40x75x12, \$8,150; 50x100x14, \$12,550. Call for other sizes. Mini-warehouse systems. Competitive pricing. Fast delivery. 1-800-299-6464.

QUICK CASH! TOP price for your owner financed contract of sale, mortgage, or deed of trust. Any state. Call Ken at 1-800-874-2389.

LAND LIQUIDATION SALE. Lots and homesteads across Texas all for sale by owners. Call now for free information. Sellers 1-800-364-6612. Buyers 1-800-480-0090. American Land Liquidators.

LOCAL PAY PHONE route: \$1,200 a week potential price to sell 1-800-488-7632. Minimum investment \$9,000, Universal Vending Corp.

LOCAL VENDING ROUTE: \$1,200 a week potential. Must sell. 1-800-653-VEND minimum investment \$4,500. Universal Vending Corp.

OTR DRIVERS 22-1/2¢/mile sign-on bonus * Paid loaded/empty * Paid vacation * 401K retirement * Hospitalization * Open door policy * Personalized fleet dispatch * Long hauls * Scheduled raises * Paid weekly

1-800-727-4374. EOE.

HAROLD IVES TRUCKING hiring drivers. Free driver training. Students welcome. Excellent benefits, excellent equipment, excellent training, excellent opportunity. Come grow with us: 1-800-842-0853.

DRIVERS: EXPERIENCED FLATBED OTR. 48 states. Benefits, assigned new conventional tractors, sign on bonus, flexible time off and more! Call immediately. Roadrunner Trucking 1-800-876-7784.

COVENANT TRANSPORT, THE road to your future. Last year our top team earned over \$85,000. • Starting at \$.27 to \$.29 per mile with plus bonuses to \$.38 per mile. • Paid insurance • Motel, layover pay • Loading/unloading pay • Vacation, deadhead pay. Requirements: • Age 23 • 1yr. verifiable over-the-road • Class A CDL with hazardous materials 1-800-441-4394/915-852-3357.

WOLFF TANNING BEDS, new commercial-home units from \$199. Lamps, lotions, accessories. Monthly payments low as \$18. Call today free new color catalog. 1-800-462-9197.

FREE ANIMAL SUPPLY catalog. Wholesale prices. Everything for your livestock, pet and horse. 24 hour shipping. Huge selection. 30 years in business. Omaha Vaccine, 1-800-367-4444.

WHY LEASE? RUGGED hunting land, 70 acres north of Del Rio. Heavy cover, Oak, Pinon Pine, Cedar, Deer, turkey, hogs. \$1,000/down, \$140/month, TX-VET (7.99%-30yrs). 210-257-5626.

RAPID WEIGHT LOSS: Lose pounds/inches, safely and quickly * Specializing in difficult cases * Increases metabolism * Stops hunger. Guaranteed fast results!!!! Call now and get 20% off. United Pharmaceuticals 1-800-733-3288 (COD's accepted).

UNLIMITED EARNING POTENTIAL! Nationwide wholesale long distance company utilizing AT&T Network. No experience necessary. Company training. Part/full time. 214-601-6635 (24 hour message).

FORECLOSURES - SAVE 20% to 60% - buy direct. Single family homes, condos, co-ops, townhouses, commercial property, office complexes, undeveloped land, apartment buildings. No HUD or RTC - thousands available. 24 hours - 1-800-618-6969.

ADOPTION: JOAN, A Texas elementary art teacher and David, a successful professional, wish to give your infant a wonderful life filled with love and stability. Call 1-800-484-9408 Code(3158). It's illegal to be paid for anything beyond legal/medical expenses.

CHILDLESS WHITE TEXAS couple desire to adopt a baby! We promise to love, nurture and cherish your baby. We know this is a difficult time, but if we can help each other, please call us 1-800-657-9217. It's illegal to be paid for anything beyond legal/medical expenses.

Tact is the art of making a point without making an enemy.
—Howard W. Newton

Call us for REPAIR on
• Refrigerators • Washers • Dryers •
Vacuum cleaners
We now honor Discover Credit Cards!
495-3190
Seals Furniture and Appliances
720 N. Broadway
We pick up and deliver. All labor and parts guaranteed.

3/2 Large living room and kitchen, storage house, green house and wonderful back yard.
3/2 LUXURY, Brick FP, Good Location, under \$70M
3/2/1 Brick, very nice. Great location for children. Nice carpet. Fenced yard
3 unit rental. \$3,000 down with good credit. Near schools. Present income: \$475 /mo.
REDUCED \$3,000
3/2/1 Reduced to Sell! Great Location! Newly painted inside and outside. Central air and heat. Fenced yard with lots of fruit trees.
2 bedroom, 1 1/2 bath mobile home.
2 BDR, 3 to choose from, all \$20,000 or less. one w/ centr H/A; one w/appliances; 2 w/fenced yds.
GOOD LOCATION, low move in.
Commercial bldg. on three lots. Downtown. Good Condition.
Commercial lots for sale, Six Lots. Vicinity of N. Ave. H and 12th street
Mitchell Real Estate
Kim 495-3719 Travis 806-353-0866 Barbara 495-3987
Mike and Wanda 495-3104



Mrs. Dewayne Teague

Davenport, Teague wed in August 14, 1993 ceremony

Wendy Davenport and Dewayne Teague were married August 14, 1993 in a double-ring ceremony at First Baptist Church in Post with Joel Home officiating.

The bride is the daughter of Chris and JoAnn Stelzer of Post and Cecil and Jean Davenport of Winnsboro.

The groom is the son of Earnest and Debbie Teague of Lamesa.

The bride was given in marriage by her father, Cecil Davenport and step-father, Chris Stelzer. She wore an elegant gown of satin and chantilly lace designed by Mori Lee. The bodice was heavily covered with beads and sequins with a Victorian neckline, puffed sleeves and a princess waistline. The full ball gown skirt with sequin and beads flowed to a cathedral train. The hemline was finished with scalloped chantilly lace. A large satin bow accented the back waistline. She wore a pearl beaded floral wreath headband with a pouf fingertip veil. The bouquet was a silk nosegay with red roses, baby's breath, and English ivy, with black, red and white streamers.

Following tradition, the bride carried a lace handkerchief, given by her great-grandma Sizemore, for something old; something new was a lace bible given by her grandma Faye Ogle; something borrowed was her pearl and diamond earrings given by her grandma Stelzer; and a blue garter worn under her dress was something blue. She carried a sixpence in her shoe given by her grandfather Ogle.

The church was decorated with two seventeen branch candelabras using red tapers.

Serving as maid of honor was Reyes Anaya of Lubbock. Bridesmaids were Jenni Gast of Cotton Center, Christine Burris of Lubbock and Manda Thomison of Levelland. They wore red satin, off the shoulder, fitted straight gowns.

Nieces of the bride, Samantha Edwards of Garland and Christa Edwards of Ogden, Utah served as flower girls. They were dressed in red satin, dropped waist, gathered skirts which were made by Karen Nichols of Post.

Jeff Riddle of Lamesa served as best man and Jason Johnson of Brownfield, Brandon Blount of Lamesa and Chris Borland of Ropesville served as groomsmen. They all wore black tuxedos with

tails, red bow ties and cummerbunds. Serving as ushers were friends of the bride, Derek Thomison of Levelland, Byron Waldrip of Knox City and Shane Davenport of Winnsboro.

Candlelighters were Lindsey Davenport, sister of the bride, of Winnsboro and Justin Edwards, cousin of the bride, of Slaton. Readers were Pam and Jay Brown of Levelland.

While the candlelighters lit the candles, Laura Johnson of Brownfield, sang "The Lords Prayer" and while guests were being seated she sang "Through the Eyes of Love". "The Rose" was sung by Becky Allison of Lamesa during the lighting of the unity candle. Pianist was Ann Chaffin of Southland.

The registry table was tended by Shelia Brown, sister of the groom, of Big Spring. The bouquet was placed on the registry table.

The reception was held at the First Baptist Church Hall. The three-tiered bride's cake, made by Jimella Simpson of Post, was decorated with silk red roses entwined through each layer. The unity candle was placed on the bride's table. Pennie Burt of Lubbock, Laura Johnson of Brownfield and Becky Allison of Lamesa hosted the bride's table.

The groom's table was hosted by Marilyn Teague, aunt of the groom, of Lamesa. The groom's cake was chocolate with the Texas/New Mexico Pipeline symbol atop. An oil derrick replica was used as decoration on the grooms table.

The rehearsal dinner was given by Earnest and Debbie Teague at the Garden Room of the Chaparral. Following the dinner, a birthday cake was presented to the groom's grandmother, Thelma Teague of Lamesa who was celebrating her 80th birthday.

The bride is a 1990 graduate of Southland High School and attended South Plains College. She will attend Angelo State University.

The groom is a 1991 graduate of Lamesa High School and attended South Plains College. He will attend San Angelo State University and is employed by Texas New Mexico Pipeline in San Angelo.

The couple took a wedding trip to Ruidoso, New Mexico and now reside in San Angelo.

Letters to the Editor

Dear Editor,
Something has gone terribly wrong with our once-proud American way of life. It has happened in the area of values. A key ingredient is being eroded, and I think I know what it is-- ACCOUNTABILITY.

Accountability isn't hard to define. It means that every person is responsible for his or her own actions and liable for the consequences.

Of the many values that hold civilization together--honesty, kindness, generosity, decency, ACCOUNTABILITY may be the most important of them all.

Without it there can be no respect, no trust, no law and, ultimately, no society. We have become a society of endless excuses where no one accepts responsibility, much less ACCOUNTABILITY, and have all the reasons why. It is difficult to impose accountability on people who refuse or have never learned to impose it on themselves.

There are external controls that may be enforced on people's behavior, but they are far less effective than internal restraints such as guilt, shame and embarrassment. Fortunately there are still some communities, smaller towns and families that maintain a strict code

of discipline where parents hold up standards that proclaim in this family certain things are not tolerated -- they simply are not done. These parents have planted the seeds of character in their children. They instill in their youngsters the capacity to feel shame by letting them know that just as there are actions for which they can win praise there are others like lying, cheating, and stealing that are unacceptable for which they will be punished.

Thirty years ago if a crime was committed, society was considered the victim. NOW, in a stunning reversal, it is the criminal who is

considered victimized by his underprivileged upbringing, by the school that didn't teach him to read or write, by the church who failed to reach him with moral guidance, by the parents who didn't provide a stable home.

This trend toward permissiveness-- spinelessness might be a better word for it--can only be reversed when we instill that one word-- "ACCOUNTABILITY" -- in our homes, in our schools, and in our legal system. Then, and only then can the once-proud American way of life be restored.

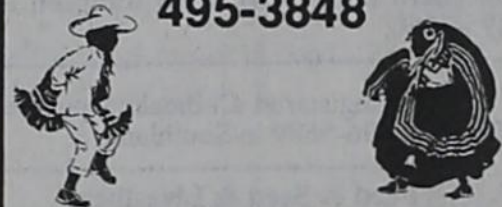
Ken Knowles

"Your Hometown Supermarket"



Sunday Buffet
11:30 a.m. - 1:30 p.m.
402 S. Broadway
495-2844

El Matamoros
701 N Broadway
495-3848



JIM WHITNEY
915/573-2083
ENERGY RAY GUNN
LECTRIC 806/495-3963

TOTAL OILFIELD

2401 Ave. T Snyder, Texas
1-800-725-1884 (Snyder)

The Norman Agency
495-3050

* Insurance you can count on...from the people you can trust *

Auto • Health • Commercial
• Property • Residential

Now Serving Allstate

204 E. Main after hours, 495-2504

South Plains Answering Service

495-3069

Justice-Mason Funeral Home
Dee, Janet,
Bryan and Brent
301 West Main
495-2833

This Service Directory is brought to you by area businesses that encourage you to attend worship services this Sunday

Baptist

Calvary Baptist Church 210 E. 6th, Post 495-2342
First Baptist Church 402 W. Main, Post 495-3554
First Baptist Church Wilson 628-6333
Templo Bautista 315 W. Main, Post 495-2416
Trinity Baptist Church 915 N ave O, Post 495-3038
Justiceburg Baptist Church Sunday @ 11:00, Don Blacklock, Pstr

Catholic

Holy Cross Catholic Church Ave K, Post 495-2791

Christian

First Christian Church 812 W 13th, Post 495-3716

Church of Christ

Church of Christ 108 N ave M, Post 495-2326
Graham Chapel Church of Christ 7 miles west on Tahoka Hwy 1 mile south

Church of God

Church of God of Prophecy 602 W 14th, Post 495-3644
Power House Church of God and Christ Pine Ave, Post

Church of the Nazarene

Church of the Nazarene 202 W 10th, Post 495-3044

Lutheran

St. John Lutheran Church 1305 Dickson, Wilson 628-6573
Parsonage 628-6244
St. Paul Lutheran Church Wilson 628-6471

Methodist-United

First United Methodist Church 216 W 10th, Post 495-2942
Graham Chapel United Methodist Rt. 3 Post 495-3492

Non-Denominational

Caprock Christian Fellowship 220 E. Main, Post 495-2765

Presbyterian

Presbyterian Church 910 W 10th, Post 495-2135

"If your church is not mentioned in this please send us their information"

From the Pulpit About losing or finding our focus

In the 19th century when the steam-driven locomotive became practical, enterprising visionary people could see its potential. They pooled their resources and began to form railroad companies. These companies flourished as they opened up the West and many fortunes were made because of the need and the important functions in transportation they performed. They continued to flourish up through the first half of the 20th century, but in recent years they have fallen on hard times. Many have gone broke or consolidated in order to survive. Many lines have been closed and the tracks taken up because they were no longer needed, or were not economically feasible to operate or support. Today most railroads depend upon government subsidy or support to survive and are barely surviving because trucks, busses, cars, airplanes, etc. have cut into the transportation business and do it better and cheaper than the railroads can.

The object of this illustration is to point out the basic mistake the owners of the railroad companies made in the very beginning. Their mistake was that they didn't realize what business they were in. They thought they were in the railroad business, when they were actually in the transportation business. Because they thought they were in the railroad business, they focused all their energy and creative attention on that business. And they did well. They developed the railroads and the technology to a fine state until other means made the railroads too slow, rough, limited in delivery and expensive.

Had they realized they were in the transportation business and focused their creative attention and energy on developing that business, perhaps they would have been involved in developing cars, trucks, airplanes, busses, etc., and incorporated these other devices in their business. My point is, when a business focuses on one facet and forgets, or just does not realize, what they are really about, they are destined to cease to be, or fall into relative obscurity, or, at best, struggle for

their very existence.

I wonder if maybe too many of our church organizations have made the same mistake. I wonder if perhaps we have forgotten what business we are in, or even worse,

never knew what business we are in. I am afraid we get so caught up in propagating our numbers just so we can survive as an organization, or out of a certain tradition. Or maybe we view our purpose to preserve our precious buildings, or property, or resources, without considering why we have them to start with. Or perhaps we view the church as something to better ourselves and make us feel secure in our relationship with God. I am afraid that we view other denominations, etc., as "competition", and rejoice when we appear to do better than them or when they fall on hard times. We get nervous when they do better, and we try harder just to show them up.

While I believe Jesus is pleased to see our efforts to "do it right", I think He is appalled at our petty squabbling and our attitudes of competition with our brothers and sisters in other denominations. I am convinced that Jesus grieves and when Christian group fails, or falls on hard times, or perishes. An if He grieves and would move in to aid the struggling group, should we not also? If we are all part of the "Body of Christ", it seems to me that we should quit viewing others as competitors and rather regard them as partners in the same business. While we might each do our jobs differently, we are all in the business of sharing the love of Christ and thereby bringing all into the body.

If I am right, and we are all in the same business, and we all have the same CEO and the same sales manager and the same maintenance engineer, we are defeating our purpose by competing with one another. I am afraid that rather than focusing upon our Lord and His glory, we are focusing upon our own glory, whether it be personal or denominational.

Well, perhaps it's something to think about anyway.
Yours in Christ,
Bob



Bob Green

CHAPARRAL
Steak House & Bar-B-Q

OPEN 7 DAYS A WEEK

Catering for Small or Large Parties

JIM JACKSON, Owner

Ph. 495-3622



Lubbock Hwy.



Phone
1.915.573.1133
1.800.552.0891

JAY STRAWN
495-2385

STRAWN

TRANSPORT & ACID CO.

KILL TRUCKS

(806) 495-2422

POST, TEXAS 79356

JIM W. STRAWN, Owner

"Give thanks to the Lord, because He is good; His love is eternal!"

Psalm 107:1

We welcome you and your family to worship with us this Sunday.

H&M Dirt Contractors, Inc
Clairmont Hwy 495-3293

Dozers • Maintainers
Backhoes • Roustabouting

• Dump Trucks • Loaders
• Excavators

• Frac Tank Rentals

Jack Hair Owner

West Texas Precision

Clairmont Hwy

495-2401

THE FIRST NATIONAL BANK



806/495-2904

P.O. BOX 430 POST, TEXAS 79356

HOTEL GARZA

"Bed & Breakfast"

Weddings - Receptions
Meetings - Retreats
Reunions - Catering

806/495-3962

WANTED!
pesky items
using up space
SELL IT IN
THE
CLASSIFIEDS
495-2816.

Miracle-Ear

• Rural Service • In-Home Tasting
• Economy • Extended Warrantly
• Hearing Aids • Extended Trial • Lay-a-way

• Financing available
• Free Battery Program
• Factory Authorized Dealer

ALL evaluations performed and administered by a dispenser licensed by Texas Health Board. Call 1-795-0188 for available appointment times.

All New Jewelry Selections!

Swarovski, Sterling Silver,
European Estate, Rosemary Nelson
Come in and Browse!

Jan's

Little Luxuries...
211 E. Main

Small Indulgences...
495-3311