

CRP rewrite leaves Texas an endangered state

BY RICK WHITE
Managing Editor

It's a better kept secret than the formula for Coca-Cola.

The actual guidelines for the proposed overhaul of the Conservation Reserve Program remain a mystery, but estimates are alarming for West Texas farmers.

Some estimates project 1.5 billion Texas acres — and 14 million nationally — being re-

moved from the program.

The new proposals appear to be slanted toward water erosion and environmental issues, rather than wind erosion and agricultural concerns, critics claim.

The proposed rules were published in the Federal Register Sept. 23. The public has until Nov. 7 to comment on the rules, which Congress then has 60 days to consider and possi-

bly amend.

U.S. Rep. Larry Combest (R-Lubbock) is urging producers and landowners to write the USDA.

Of the 4 million-plus CRP acres in Texas, 40 percent are in Combest's congressional district, which covers 20 counties in the Panhandle-South Plains.

"The USDA has been very guarded about saying how

much consideration they will give to wind erosion and conservation of ground water once they begin to accept new contracts," Combest said. "Already, I am alarmed at how last year's scoring system severely discriminated against lands eligible for new CRP contracts, making it extremely difficult to continue effective conservation measures that have significantly reduced dust

storms throughout the region."

Nationally, 36 million acres are enrolled in the program, which pays farmers rent over a 10-year contract. The bulk of those contracts, covering 24 million acres, will have expired by next fall.

The thrust behind the rewrite, said Agriculture Secretary Dan Glickman, is to

Continued on page 5

States at risk

States at risk to lose the most Conservation Reserve Program acreage under rule changes proposed by the U.S. Department of Agriculture.

State	Lost acreage
Texas	1,507,992
North Dakota	1,363,850
Minnesota	1,140,863
Kansas	1,124,413
South Dakota	986,619
Washington	714,336
Iowa	664,309
Montana	660,546
Georgia	583,544
Oklahoma	579,580

SOURCE: University of Missouri's Food & Agriculture Policy Research Institute

Friona downs Mules behind big first half

By RICK WHITE
Managing Editor

FRIONA — Muleshoe stirred to life in the fourth quarter, startling heavily-favored Friona in the process.

The Mules scored twice in a one-minute span early in the fourth quarter, turning a rout into a nervous laugher before the Chieftain prevailed, 34-14, in a District 1-3A game between the long-time rivals.

It took quarterback Kyle Grimsley's second touchdown, a 15-yard scamper with five minutes left, to put the game out of reach in a matchup between the top and bottom shelf teams in the district.

The win, coupled with Dimmitt's 31-28 loss to Dalhart, gives the Chieftains (5-1 overall) sole possession of first place in the district at 3-0. Muleshoe (0-6) is tied with Perryton for last-place at 0-3.

Friona, ranked 19th in the latest Harris Ratings, exploded for 27 points in the second quarter and held Muleshoe without a first down until late in the third quarter.

Then Muleshoe drove 82 yards in 14 plays, with the

help of two personal foul penalties, for its first touchdown in nine quarters.

Matt McClanahan found Manuel Campolla in the back of the end zone on second-and-goal from the nine to make it 27-7 30 seconds into the fourth quarter. Campolla made a diving catch just inside the backline.

Three plays later, junior cornerback Carlos Del Toro scooped up a Shane Blackburn fumble and raced 40 yards for a touchdown to make it 27-14.

"We scored 14 points in the fourth quarter, and with a few more breaks, who knows what could have happened," Muleshoe head coach David Wood said. "The kids rose to the occasion in the second half and I'm proud of them."

Wood wasn't such a proud papa at halftime.

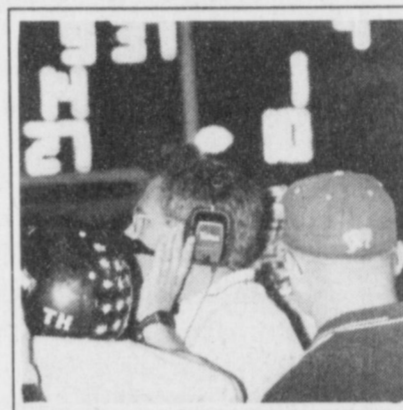
Friona gained 293 of its 405 yards by halftime compared to Muleshoe's 18 yards in the first two quarters.

"I put it to them at halftime," Wood said. "I challenged them to come out and lay it on the line. And they



Holding on

Muleshoe senior cornerback Cory Williams tackles Friona's Angel Vega after a first-quarter catch Friday during a District 1-3A game at Friona. The Chieftains won, 34-14.



■ MHS head coach David Wood talks to the troupes after Muleshoe scored 14-straight points to make it 27-14 early in the fourth quarter.

4-H Week recognizes members, leaders

By SAMUEL VILLARREAL
Journal staff writer

The search for leadership and responsibility for today's youth may be as close as their local 4-H club.

The national youth-oriented program, recognized during National 4-H Week Oct. 6-12, encourages today's youth to be-

come responsible leaders.

Dr. Steve Kennedy, a local veteri-

narian, has been involved in 4-H for more than 30 years. He values the skills 4-H teaches.

"4-H is a really good program that has a lot to offer," Kennedy said. "Many people see 4-H as showing animals at livestock shows. 4-H has a lot more options for kids who join."

"The travel that 4-H involves provides exposure and opportunity to learn about new things from many different people."

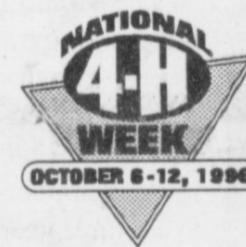
There are more than 60 4-H members in two Bailey County 4-H clubs located in Muleshoe and Maple.

"Members learn responsibility through their projects," said Bailey County Extension agent Curtis Preston, who oversees the clubs. "They put the projects together themselves as well as keeping their own record books."

"Club officers also gain leadership through the running of the club. Most of what goes on is done by the members and officers."

Members who share the same interest learn to work together for a common goal. Former 4-H members who have gone on to leadership positions include country music singers Johnny Cash and Dolly Parton as well as politicians Luis Montano, Mayor of Santa Fe, and Alfred Schroeder, Chief Justice of the Kansas Supreme Court.

The Bailey County 4-H club also has personal letters on file from former 4-H members Orville Redenbacher and former First Lady Rosalynn Carter.



Early voting begins Oct. 16 at courthouse

Early voting for the Nov. 5 general election is from Oct. 16-Nov. 1 at the Bailey County Courthouse.

Also on the Nov. 5 ballot are elections for the U.S. Senate, state and district offices.

On the local level, only the office of Precinct 1 constable is a contested race, between Gary Don Gartin and write in candidate Rich Magby.

The incumbent district attorney, county attorney, sheriff, county tax assessor/collector, two county commissioners and three constables are running unopposed.

Early voting by personal appearance will be conducted each weekday at the county clerk's office between 8 a.m. and 5 p.m. Lowe's Marketplace will also

Voting locations

Locations of polling places for the Nov. 5 general election are:

Precinct 1 — Bailey County Courthouse

Precinct 2 — Bailey County Coliseum

Precinct 3 — Three Way School and Bailey County Extension office

Precinct 4 — Bula Community Center, Needmore Community Center, and Muleshoe City Hall

serve as a one-day early voting place Oct. 26 from 8 a.m. to 9 p.m.

Applications for ballot by mail shall be mailed to: Billie Downing, county clerk, 300 S. 1st Street, Muleshoe, TX, 79347. Applications for ballot by mail must be received no later than the close of business on Oct. 29.

Setting Sunflowers



Sunflowers turn their faces to the setting sun in a field in southern Bailey County.

AROUND MULESHOE

County Commissioners meet Monday

The Bailey County Commissioners' Court will meet in regular session in the Bailey County Courthouse, Monday, Oct. 14 at 10 a.m.

The agenda includes departmental reports, application for Dry Hydrant Grant, and approve county payroll, bills, and tax roll.

School Board meeting Monday

The Muleshoe Independent School District Board of Trustees will also meet on Monday at 7 p.m. in the MISD administration building. Items on the agenda include approval of the tax roll, and administrative business reports.

City Council meets Tuesday

The Muleshoe City Council will hold a meeting Tuesday, Oct. 15 at 8:30 a.m. at Muleshoe City Hall.

Items on the agenda include consultation on city projects. The council will also receive consultation on pending litigation involving the City of Muleshoe.

October Soup and Sandwich Luncheon

The Soup and Sandwich Luncheon meeting for October will be held this Thursday, Oct. 17, from noon to 1 p.m. at the fellowship hall of the 16th and D Church of Christ in Muleshoe.

The program will include a video presentation on the topic of the separation of church and state.

Community members, business people, and anyone else interested, are invited to enjoy this monthly soup and sandwich luncheon. The meal is offered on a free-will donation basis. Call 272-4619 for more information.

National Breast Cancer Awareness

October is National Breast Cancer Awareness Month, and the American Cancer Society is encouraging women to learn everything they can about breast cancer.

Breast cancer is the most prevalent form of cancer among women, and it is second only to lung cancer in its deadliness.

An estimated 184,300 new cases of breast cancer will be diagnosed in women during 1996. About 44,300 women will die of the disease this year.

Risk factors include: age over 40, personal or family history of breast cancer, and never had children or had children late in life.

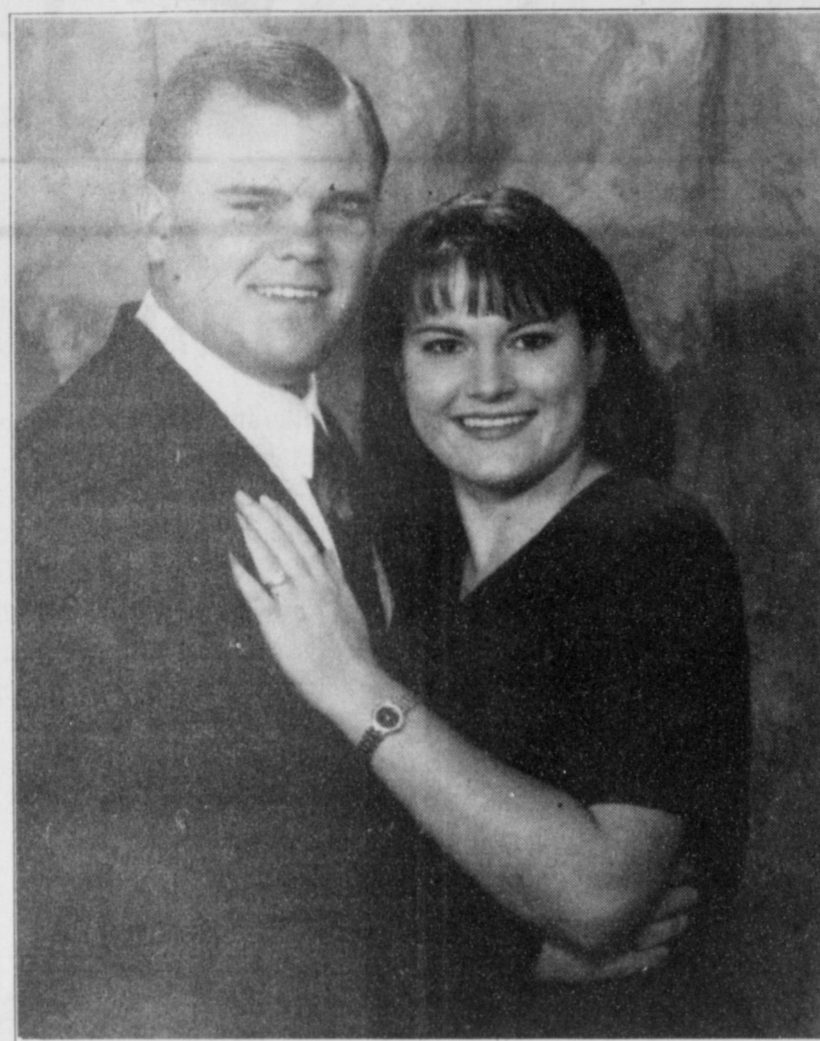
Through education and early detection, survival can be increased greatly. For breast cancers that are detected early enough, the survival rate approaches 100 percent.

The Society recommends that women have a screening mammogram by age 40; women 40 to 50 should have a mammogram every 1-2 years; asymptomatic women age 50 and over should have a mammogram every year.

A doctor should also conduct a breast examination every three years for women 20 to 40 and every year for those over 40. The society also recommends monthly breast self-examination for women 20 years and older.

For more information on breast cancer and treatment, contact your American Cancer Society office, (806) 792-7126.

ENGAGEMENT



Dereck Owen and Gail Copley

Mr. and Mrs. Wayne Copley, of Muleshoe, announce the engagement and approaching marriage of their daughter, Gail Copley, to Dereck Owen, son of Mr. and Mrs. George Owen of Alamogordo, NM. Gail is a 1994 graduate of Faith Temple School in Portales, NM and is currently enrolled at Eastern New Mexico University. Dereck is a 1992 graduate of Portales High School and is currently employed by Daymon Associates Inc., Stamford, CT. The couple plan a March 15, 1997 wedding.

TOPS NEWS

TOPS Chapter No. 34 met Oct. 3 at the Muleshoe Church of Christ.

Betty Jo Davis, weight recorder, called the roll with 14 member answering with the amount of weight they had either lost or gained. Minutes of the previous meeting were read by Alma Robertson, acting secretary, and were approved as read. Ruth Clements, treasurer, gave the treasurer's report.

Jewell Peeler was named best loser for the week. Runner up was Janie Hughes.

Monthly best losers were Jewell Peeler, best loser; Loretta Lloyd, first runner-up and Ruth Clements was sec-

ond runner-up.

A quiz on fashion was given by Leader Laverne James, on how to dress slimmer.

A get well card was sent to Evelyn Harris and Molly Davis reported that her grandson, who had a kidney transplant, was now home.

The FTD® Best Boss™ Bouquet



Decorators Floral & Gifts

616 S. 1st 272-4340

Bailey County Journal USPS 040-200

Established March 31, 1963. Published by Triple S Publishing, Inc. Every Sunday at 304 W. Second, Box 449, Muleshoe, TX 79347.

Second Class Postage paid at Muleshoe, TX.

POSTMASTER: Send address changes to the Bailey County Journal, P.O. Box 449, Muleshoe, TX 79347.

We are qualified members of:
 Panhandle Press Association, National Newspaper Association,
 West Texas Press Association and Texas Press Association

WEST TEXAS PRESS ASSOCIATION



PPA
 Panhandle Press Association

Scot Stinnett, Publisher
 Lisa Stinnett, Vice-President/Comptroller
 Rick White, Editor
 Holly Millsap, Classifieds
 Pat Durben, Advertising

© 1990



SUBSCRIPTIONS: Muleshoe Journal and Bailey County Journal
 By Carrier Yearly - \$22.00
 Bailey and surrounding counties: by mail - \$24.00
 Elsewhere - \$26.00
 Advertising Rate Cards on Application

Advertisers should check their ad the first day of insertion. The Journals will not be liable for failure to publish an ad or for a typographical error or errors in publications except to the extent of the cost of the ad for the first day of insertion. Adjustment for errors will be limited to the cost of that portion of the ad where the error occurred.

MR. COTTON PRODUCER

Don't take a chance!
 Trust your cotton seed with the most experienced and qualified delinter, Levelland Delinting.



124 Years Combined Experience!



Call Levelland Delinting or your local gin to have your cotton seed delinted and we will reward you with a beautifully loomed 100% cotton "Cotton Country" Afghan! The 51" x 69" Cotton Country afghan illustrates the 7 primary steps in growing cotton.

For 22 years, Levelland Delinting has been providing:

- Quality Delinting - Both Standard and Custom
- Prompt Service and Competitive Prices
- Complete Tests on All Seed
- Free Pickup, Delivery and Storage
- Ask About Our Bulk System
- Complete Fumigation Program
- All Seed Treated With Captan & Lorsban at no charge
- All Warehouses And Seed Fully Insured

Levelland Delinting, Inc. and All-Tex Seeds, Inc.
 806-894-4901 • 1-800-7ALLTEX (725-5839)
 Box 1057 Levelland, Texas 79336



Come celebrate with

North Plains Mall

CLOVIS, NM

It's Our Eleventh Anniversary!

Register at mall stores for a Las Vegas trip to be given away Oct. 19th

11% OFF

Selected Merchandise at All Mall Stores Oct. 18th - 20th

In Keeping with our anniversary celebration, Sears will have 50% Off Clearance apparel Oct. 19th & 20th. Look for other great savings throughout the mall!

Oct. 19th, the New Mexico Lottery will be celebrating with us by kicking off Power Ball plus come take a chance to win several prizes to be given away. Plus Live Entertainment starts at 1:00 p.m. Free Refreshments!



Jennyslippers to the rescue

Luncheon raises \$1,470 for Meals on Wheels

A luncheon Tuesday sponsored by the Muleshoe Jennyslippers raised more \$1,470 for the local Meals on Wheels program.

Program director Berta Combs was worried that Meals on Wheels, which delivers meals to 531 people in and around Muleshoe, would run out of money before receiving government funding due in December.

So the Jennyslippers volunteered to hold a Sun Valley beans and corn bread luncheon, which drew 275 townfolk.

"The credit goes to the local people," said Combs, who is also director of the Bailey County Office of the Aging. "It's just amazing."

Lowes Marketplace donated food and LaVonne Henderson of A Carousel of Good Food in Muleshoe prepared the meal. Jennyslippers volunteers helped serve.

Meals on Wheels delivers meals once a day to those who cannot prepare them.

Last year, they served more



Get it while it's hot

Jennyslipper volunteers Ruby Green (left) and Anne Camp load a plate full of Sun Valley beans and cornbread Tuesday during a fundraising luncheon for Meals on Wheels at the Rebekah Lodge. The Jennyslippers served 275 townfolk while raising \$1,470.

More than 10,000 meals are served themselves. Last year, Meals on Wheels received more than \$17,000 in local donations. Local donations made up 40 percent of the budget last year, with 37 percent coming from the government.

Want a Real Investment Return? Invest in Prayer!

Prayer can evidently pay dividends that even the most devout Christians might find surprising!

According to the Associated Press, a Spanish businessman named Eduardo Sierra was in Stockholm, Sweden, recently on a business trip. A devout Roman Catholic, Sierra took the time to stop at a local church and pray. Inside the church, he found him-

phone call informing him that he was a millionaire, that the man who had died, Jens Svenson, had been a 73-year-old realty dealer with no close relatives and that he had directed in his will that "whoever prays for my soul gets all my belongings."

Amazing! I don't know what sort of "return" Eduardo Sierra had envisioned from the time he spent in prayer in that Stockholm church, but I'm quite sure this was one that had never occurred to him!

I know this: In a day when the only things longer than some major sports figures' financial statements are their criminal records, when well-known actors with moral standards lower than those of your neighbor's tomcat can get caught in sex scandals one week and make millions on their next movie two heartbeats later, I find it a bit heartwarming to hear about a man of obvious faith becoming a millionaire simply because he cared enough to pray.

I've never met Eduardo Sierra, but it seems to me that he probably knew something about what really makes a man wealthy a long time before he ever knelt to pray in Stockholm.

May we be so wise. May we, no matter what our bank balances may say, be so wealthy.

Curtis Shelburne is minister of the 16th & D Church of Christ in Muleshoe.



Focus On Faith
Curtis Shelburne

self alone, or, well, almost alone, except for the coffin and remains of an individual who was, of course, a complete stranger to the 35-year-old Sierra. For twenty minutes, nevertheless, Sierra prayed for the deceased.

On his way out, Mr. Sierra noticed a registry book and a note requesting that anyone who stopped to pray for the deceased individual should sign the book with their name and address. Complying with the request, Sierra observed that at that point no one else had signed. He was the first.

According to the news report, it was several weeks later when Sierra received a

Young wheat growers awards available

Young Texas wheat farmers are eligible to compete for leadership development awards.

Forty recipients are honored nationally, two of which are selected from Texas.

The awards, which total more than \$1000 each, are to defray the cost for the winners to participate in their choice of either the National Association of Wheat Growers 1997 Annual Convention, held Jan. 15-18, 1997, in Orlando, Fla. or the NAWG Summer Leadership Conference, June 29-July 3, in Portland, Ore.

Any Texas wheat farmer between the age of 20 and 35 years, who has not previously participated in either of the NAWG meetings mentioned above is eligible to enter.

Entry forms may be obtained by either writing or calling Dawn DeBerry of the Texas Wheat Producers Association, 2201 Civic Circle, #803, Amarillo, Texas 79109, Telephone - (806) 352-2191. The deadline for submitting the completed form is Nov. 29, 1996.



When it comes to home health care, we put ourselves in your shoes.



Our home health program is in step with what patients need most. HomeHealth Preferred from University Medical Center and St. Mary Hospital gives you quality care in the warm, comfortable surroundings of your own home. Working closely with your family physician, our team of highly trained medical professionals coordinates the medical care and support you need to maintain your health. You won't find another home health program that can fill our shoes. And now, HomeHealth Preferred has arrived in Plainview, Littlefield and Levelland.

HomeHealth Preferred
SERVICES OF UMC AND ST. MARY HOSPITAL

2401 SOUTH HALL • LITTLEFIELD, TEXAS 79339 • 806-385-5754 • 800-298-4554

NOTICE OF GENERAL ELECTION (AVISO DE ELECCION GENERAL)

To the Registered Voters of Bailey County, Texas:
(A los votantes registrados del Condado de Bailey, Texas:)

Notice is hereby given that the polling places listed below will be open from 7:00 a.m. to 7:00 p.m., on the 5th day of November, 1996, for voting in a general election to elect presidential electors, Members of Congress, Members of the Legislature, state and district officers, and the following county and precinct officers:

(Notifíquese, por las presente, que las casillas electorales sitados abajo se abrirán desde las 7:00 a.m. hasta las 7:00 p.m., el cinco de noviembre de 1996, para votar en la elección general para elegir electores presidenciales, Miembros del Congreso, Miembros de la Legislatura, oficiales del estado y distrito, y los siguientes oficiales del condado y del precinto:)

County Attorney; Sheriff; County Tax Assessor/Collector; Constable, Precinct #1; Constable, Precinct #2; Constable, Precinct #3; County Commissioner, Precinct #1; County Commissioner, Precinct #3
(Procurador del Condado; Sherife; Asesor-Collector de Impuestos del Condado; Condestable, Precinto Núm. 1; Condestable, Precinto Núm. 2; Condestable, Precinto Núm. 3; Comisionado del Condado, Precinto Núm. 1; Comisionado del Condado, Precinto Núm. 3)

LOCATION(S) OF POLLING PLACES (DIRECCION(ES) DE LAS CASILLAS ELECTORALES)

- Precinct #1 - Voting Box #1 - Bailey County Courthouse
- Precinct #2 - Voting Box #2 - Bailey County Coliseum
- Precinct #3 - Voting Box #3 - Threeway School
- Voting Box #4 - Bailey County Extension Office
- Precinct #4 - Voting Box #5 - Bula Community Center
- Voting Box #6 - Needmore Community Center
- Voting Box #7 - Muleshoe City Hall

Early voting by personal appearance will be conducted each weekday at the County Clerk's Office, Bailey County Courthouse, 300 S. 1st, Muleshoe, Texas, between the hours of 8:00 a.m. and 5:00 p.m. beginning on October 16, 1996, and ending on November 1, 1996; and on Saturday, October 26th, at Lowe's Marketplace, 401 W. American Blvd., Muleshoe, Texas, between the hours of 8:00 a.m. and 9:00 p.m.

(La votación adelantada en persona se llevará a cabo de lunes a viernes en la oficina de la secretaria del Condado, 300 S. 1st, en Muleshoe, Texas, entre las 8:00 de la mañana y las 5:00 de la tarde empezando el dieciséis de octubre, 1996, y terminando el primero de noviembre, 1996; y el veintiséis de octubre, 1996, en Lowe's Marketplace, 401 W. American Blvd., Muleshoe, Texas, entre las 8:00 de la mañana y las 9:00 de la tarde.)

Applications for ballot by mail shall be mailed to:
(Las solicitudes para boletas que se votarán adelantada por correo deberán enviarse a:)

Billie Downing, County Clerk
(Name of Early Voting Clerk)
Nombre de la Secretaria de la Votación Adelantada)
300 S. 1st Street
(Address) (Dirección)
Muleshoe, TX 79347
(City) (Ciudad) (Zip Code) (Zona Postal)

Applications for ballots by mail must be received no later than the close of business on October 29, 1996.
(Las solicitudes para boletas que se votarán adelantada por correo deberán recibirse para el fin de las horas de negocio el veintinueve de octubre, 1996.)

Issued this the 19th day of September, 1996.
(Emitada esta día 19 de septiembre, 1996.)

Marilyn Cox
Signature of County Judge
(Firma del Juez del Condado)

TPA Member 1996
TEXAS PRESS ASSOCIATION

Bailey County Journal

PPA
Publishers Press Association

SPORTS EXTRA

Volume 35, No. 41

Published every Sunday at Muleshoe, Bailey County, Texas 79347

Sunday, October 13, 1996

8th Mules post 46-0 shutout

Zack Barrett passed for two touchdowns and Chris Vela ran for two, leading the Watson Junior High 8th-graders to a 46-0 win over Friona Tuesday at Benny Douglass Stadium.

Vela scored on runs of 5 and 70 yards in the third quarter when the Mules (4-1) scored 20 points to break open the game.

Barrett hooked up with Danny Ramirez for a 60-yard touchdown pass on the Mules' first play from scrimmage. His 10-yard pass to Jeffrey Shelburne made it 13-0 at halftime.

Jonathan Pacheco (5 yards), Darrell Lewis (18 yards) and Stephen Woodard (20 yards) scored in the second half.

7th Mules stay perfect with 34-0 win

Michael Johnson ran for two touchdowns and Lincoln Riley ran for one and threw for another, leading the Watson Junior High 7th-grade Mules to a 34-0 win over Friona Tuesday.

Johnson scored on runs of 20 and 40 yards in the first quarter to give the Mules (3-0) a 14-0 lead. A 40-yard pass from Riley to Stephan Shelburne gave the Mules a 20-0 halftime lead.

Riley scored on a 70-yard run in the third quarter and Jaime Mendoza closed out the scoring with a 40-yard touchdown run late in the game.

Michael Norman had an interception and a 30-yard return in the first half and Mendoza had a fumble recovery.

Friona rumbles past Mule JV, 42-8

Friona jumped out to a 22-point halftime lead and beat the Muleshoe junior varsity, 42-8, Thursday at Benny Douglass Stadium.

Friona improves to 4-1-1. Muleshoe falls to 3-3.

Gilbert Vela's 7-yard run and a two-point conversion pass from Breck Brown to Alfredo Ortega gave the Mules an early 8-6 lead.

Academic casualties and the call up of fullback/linebacker Greg Pena left Muleshoe with just 13 players. Muleshoe head coach David Wood said the Mules will continue to play a junior varsity and freshman schedule.

Chieftains rally for 42-12 frosh win

Friona scored just before halftime and then returned the second half kickoff for a touchdown, turning a close game into a 42-12 rout.

Muleshoe took a 12-6 lead late in the second quarter on a 17-



Reaching

Freshman Mitch Mason goes high for a pass Thursday during a home game against Friona. Friona won, 42-12.

yard halfback option pass from Clint Black to Michael Dan Lopez. Black's 5-yard run gave the Mules (1-5) a 6-0 first-quarter lead.

The Muleshoe freshman and JV play Perryton Friday at Canyon Randall High School.

The freshman game starts at 5 p.m. and the JV game at 7.

Chieftains

Continued from page 1

did."

Andy Kendrick gained 166 yards on 16 carries for Friona. His 46-yard run starting the Chieftains on the warpath to a 27-point second-quarter.

Grimley's 46-yard run on a counter-option and a 60-yard pass to Angel Vega with 50 seconds left completed the rampage. Grimsley finished with 95 yards rushing on 14 carries and completed 4 of 8 passes for 80 yards.

"We didn't play well in the second half, but a lot of credit has to go to (Muleshoe)," Friona head coach James

Morton said. "It's something we will talk about, but I want the kids to feel good about the win."

Sophomore Greg Pena, playing in his first varsity game, gained 16 of his 24 yards on the Mules' scoring drive.

McClanahan completed just 3 of 15 passes for 20 yards, but had little time to throw. Dustin Cleavinger again did a good job punting, averaging almost 40 yards on seven punts despite heavy pressure.

Muleshoe hosts Perryton in a rare Saturday game (2 p.m.) next week.

FRIONA 34, MULESHOE 14

Muleshoe	0	0	0	14	14	Passes	3-17-0	4-9-0
Friona	0	27	0	7	34	Punts-avg	7-39.6	3-33.7
SCORING SUMMARY								
F — Andy Kendrick	46	run (kick failed)				Fumbles-lost	0-0	9-2
F — David Shelby	13	run (run failed)				Penalties	5-30	8-95
F — Kyle Grimsley	46	run (Kendrick run)				INDIVIDUAL		
F — Angel Vega	60	pass from Kendrick (Vega kick)				Rushing		
M — Manuel Campolla	9	pass from Matt McClanahan (Ricko Aguirre kick)				Muleshoe: Louis Hines 11-27, Matt McClanahan 9-(-3), Greg Pena 4-24, Chris Shelburne 3-18. Friona: Andy Kendrick 13-166, 1 TD; David Shelby 11-39, 1 TD; Kyle Grimsley 14-95, 2 TD Daniel Cuevas 6-20, Aaron King 2-4.		
M — Carlos Del Toro	40	fumble return (Aguirre kick)				Passing		
F — Grimsley	15	run (Vega kick)				Muleshoe: McClanahan 3-15, 20 yards, 1 TD; Hines 0-2. Friona: Grimsley 4-8, 80 yards, 1TD; King 0-1.		
TEAM TOTALS								
		MUL		FRI		Receiving		
First downs	7		17			Muleshoe: Manuel Campolla 1-9, 1 TD; Shelburne 1-4, Pena 1-6. Friona: Angel Vega 2-67, 1 TD; Ellis 2-4.		
Rushes-yards	27-66		46-324					
Passing yards	20		80					
TOTAL YARDS	86		405					

St. Clair leads LHS past Eagles, 56-42

LAZBUDDIE — Justin St. Clair rushed for 149 yards and three four touchdowns, leading Lazbuddie to a 56-42 win Friday in the District 3-1A opener for both teams.

Lazbuddie (6-0, 1-0) scored 16 unanswered points in the fourth quarter, with St. Clair's four-yard run giving the Longhorns the lead for good, 48-42.

Sophomore quarterback Josh Morris threw

for 129 yards and three touchdowns for Lazbuddie.

Jesus Perez gained 397 total yards for Three Way (4-2, 0-1). Perez completed 15 of 24 passes for 297 yards and three touchdowns and rushed for 157 yards and another score.

Lazbuddie led, 32-30 at halftime. A 13-yard pass from Perez to Chris Soliz in the third quarter gave Three Way a 42-40 lead.

School Menus

For the week of Oct. 14-18

MULESHOE

Dillman & DeShazo

Breakfast

Monday — NO SCHOOL. Tuesday — waffles, fruit or juice, milk.

Wednesday — biscuit w/ gravy, fruit or juice, milk. Thursday — breakfast pizza, fruit or juice, milk. Friday — cinnamon roll, fruit or juice, milk.

Lunch

Monday — NO SCHOOL. Tuesday — creole spaghetti, Italian bread, sliced peaches, Italian veggies, milk.

Wednesday — hamburger, lettuce, tomatoes, oven fries, birthday cake, milk.

Thursday — corn dog, veggie soup, cinnamon roll, sliced peaches, milk. Friday — chicken fried steak, mashed potatoes, gravy, crinkle cut carrots, hot roll, milk.

Jr. High and High School

Breakfast

Monday — NO SCHOOL. Tuesday —

waffles, fruit or juice, milk.

Wednesday — biscuit w/ gravy, fruit or juice, milk. Thursday — breakfast pizza, fruit or juice, milk. Friday — cinnamon roll, fruit or juice, milk.

Lunch

Monday — NO SCHOOL. Tuesday — pizza & fries, hamburger & fries, enchiladas, pinto beans, Spanish rice, sliced apples, milk. Wednesday — pizza & fries, hamburger & fries, foot-long chili dog, veggie stix, pineapple tidbits, milk. Thursday — pizza & fries, hamburger & fries com dog, veggie soup, cinnamon roll, sliced peaches, milk. Friday — pizza & fries, hamburger & fries, chicken fried steak, mashed potatoes, gravy, crinkle cut carrots, hot roll, milk.

THREWAY

Breakfast

Monday — NO SCHOOL. Tuesday — breakfast pockets, juice, milk. Wednesday — assorted cereal or oatmeal,

juice, milk. Thursday — sausage, biscuit, juice, milk. Friday — two waffles, juice, milk.

Lunch

Monday — NO SCHOOL. Tuesday — chicken strips, gravy, corn, baked potatoes, wheat rolls, peaches, milk.

Wednesday — cheeseburger, fries, apple, milk. Thursday — enchiladas, refried beans, crackers, fruit cocktail, milk. Friday — pizza, salad, carrots, banana pudding, milk.

LAZBUDDIE

Lunch

Monday — buffet, steak fingers, mashed potatoes, milk. Tuesday — buffet ELEMENTARY- chicken nuggets, macaroni & cheese, JR. HIGH & HIGH SCHOOL- Teryaki chicken, rice pilaf, milk. Wednesday — buffet, baked potatoes, chili, broccoli & cheese, (no green beans), milk. Thursday — buffet, fajitas, refried beans, milk. Friday — buffet, soup, cheese toast, milk.

Home Folks Caring For Folks At Home.



MULESHOE AREA HOME HEALTH

Agency

Featured Employee

Amy Smith has lived in Earth for a year, since moving from Turkey, TX. She is married to Brandon Smith, a coach at Earth High School.

Amy enjoys doing crafts, shopping and being with friends and family. She and Brandon go to Springlake Baptist Church.

A nurses aide with the Muleshoe Area Home Health Agency, Amy enjoys working with the people there. She also loves working with the homebound people in the Muleshoe area.



Amy Smith

To receive Home Health Services, talk with your physician or talk with hospital personnel when you are hospitalized.

24 Hour # 272-3346
Local Nurse on call 24 hours a day to offer prompt service.

We accept Medicare, Medicaid and Private Insurance
It Is Your Right To Choose The Home Health Agency You Prefer.



Affiliated with

LUBBOCK METHODIST HOSPITAL SYSTEM

FREE Information On Advance Directives

Also known as Living Wills or Right To Die Directives.

You may call our agency 272-3346 for these directives. You may also obtain these forms and assistance at 623 West 2nd Street.

TODAY'S KIDZ CLUB
OCTOBER 26TH at
North Plains Mall
CONTEST FOR KIDZ ONLY
Ages 5-12

We are looking for an art design to be our logo for Today's Kids Club. Winner will receive a \$50 gift certificate. Send all art designs to North Plains Mall Office before October 25th. If your school is interested in being involved in the search for a logo, please let us know by contacting the North Plains Mall Business Office at 769-2308. It's The Most Fun Kids Can Have For FREE!

Today's Kids Club monthly events will include movies, guests and activities! Free Birthday Gift! Quarterly Today's Kids Club Newsletter! Sponsored by Taco Box • North Plains Mall • Clovis Fire Dept. & Kids Safety

CLOVIS, NM



Almost ready

Some cotton farmers have begun to harvest what could be a bumper crop this year. Pictured here is a field just south of Muleshoe.

CRP

Continued from page 1
shield the most environmentally sensitive land while returning to production land less prone to erosion.

"Gone are the days of retiring productive farmland," he said.

Under the original system, the first to sign up and bid in land earned the contracts. Little weight was given the quality of the farmland.

"A lot of good land was taken out of production," said Bill Liles of Federal Land Bank, a major agricultural lending institution in Muleshoe. "But it turned out to be a pretty good program. A lot benefited from it."

Jim Lutz of the Natural Resource Conservation Service in Muleshoe believes most of the more than 100,000 Bailey County acres enrolled in the CRP 10 years ago is marginally productive, and should remain in the program.

"Some of the land should have never been broken out in the first place," Lutz said.

Lutz said the program has

drastically reduced wind erosion.

Gone are the days when dust would roll in like a giant ocean wave, turning the sky so black that the streetlights would come on at high noon.

Now its down to just a handful of days a year when West Texans can "taste" the air quality.

Comments should be addressed to Cheryl Zavodny, Conservation and Environmental Protection Division, FSA, P.O. Box 2415, STOP 05143, Washington, D.C. 20250-0513.

Classifieds
sell
Call 272-4536

The Fig Tree
220 Main 272-7561
Owners: Shanna Glover - Sharon Williams
Next Door To Something Special

Ali Miles
20-30%
OFF
Early Fall

Shop Early For Christmas!

Mighty 'M' Band shows improvement at Tech

By SAMUEL VILLARREAL
Journal staff writer

LUBBOCK—The Mighty 'M' Marching Band Tuesday received a second division rating at the Texas Tech Marching Festival.

Band director Rob Lovett saw improvement.

"I was really pleased with the band's performance," Lovett said. "There was much improvement over the performance at Denver City. I saw

lots of improvements in the players. I think the show just keeps getting better and better and we progress.

"The judges all have positive comments. They realize that we are playing difficult music and marching difficult drills."

Bands are given division ratings on a scale of one through five. A first division is the highest division rating awarded.

Bands were also given

scores of 1-100, with points scored in the areas of marching performance, music performance, and overall effect. Muleshoe scored in the 80s.

The band competed at the University Interscholastic League regional marching competition Saturday.

All bands that received a first division rating will qualify to advance to the area competition to be held in Lubbock Oct. 26.

**THE \$67 PER BALE
ADVANTAGE FOR COTTON
PRODUCERS**

More than \$67 per bale paid in cash for the 1995 crop.

Your local and regional cotton cooperatives offer a vertically integrated system that takes your cotton from the field to the textile mill. It's a system that adds valuable income to your farming operation. Ginning, warehousing, marketing, textile manufacturing, and cottonseed processing all work to increase the value of your cotton crop every step of the way. For the 1995 cotton crop, combined cash payments from the local and regional cotton cooperatives averaged \$67.29 per bale, over and above the value of your lint cotton. Thus, the more cotton you send through the cooperative system, the more you can add to your net profits. Consider the cooperative advantage for your cotton crop - it's just good business. See your local or regional cotton cooperative today.

*This Message Brought to You by Local Cooperative Gins
With Support From These Regional Cooperatives*

PLAINS COOPERATIVE
OIL MILL

FARMERS COOPERATIVE
COMPRESS

PLAINVIEW COOPERATIVE
COMPRESS

PLAINS COTTON
COOPERATIVE ASSOCIATION

Prices So LOW It's
ALLSUP'S
SCARY!

<p>ALL VARIETIES PEPSI 6 PK. 12 OZ. CANS Pepsi \$1.99</p>	<p>COMBO MEAL BBQ Sandwich Potato Wedges and Tallsup \$1.99</p>
<p>ALL VARIETIES Fritos Corn Chips REG. \$2.09 SIZE \$1.69</p>	<p>DECKER Meat Franks 12 OZ. PKG. 69¢</p>

FALL INTO SAVINGS!

<p>ALLSUP'S Canadian Bacon Egg & Biscuit EACH 99¢</p>	<p>FILLED WITH YOUR FAVORITE DRINK ALLSUP'S Honcho 44 OZ. CUP 89¢</p>	<p>ALLSUP'S Sausage on a Stick EACH 99¢</p>
<p>SOFTN' GENTLE Bath Tissue 4 ROLL PKG. 89¢</p>	<p>SANTA FE Corn Tortillas 20 CT. 99¢</p>	<p>VALLEY FARE Paper Towels ROLLS 2\$1 FOR</p>
		<p>WELLS' BLUE BUNNY Nutt'n Better Bars PKG. 2\$1 FOR</p>

6 OZ. SUNNY COOKIES **2/\$1** 13 OZ. CAN FOLGER'S COFFEE ... **\$2.99**

Store #34 318 W. American Blvd. 272-4862 MULESHOE

LOW PRICES,
GREAT PRODUCTS
24 HOURS A DAY

ALLSUP'S
Always

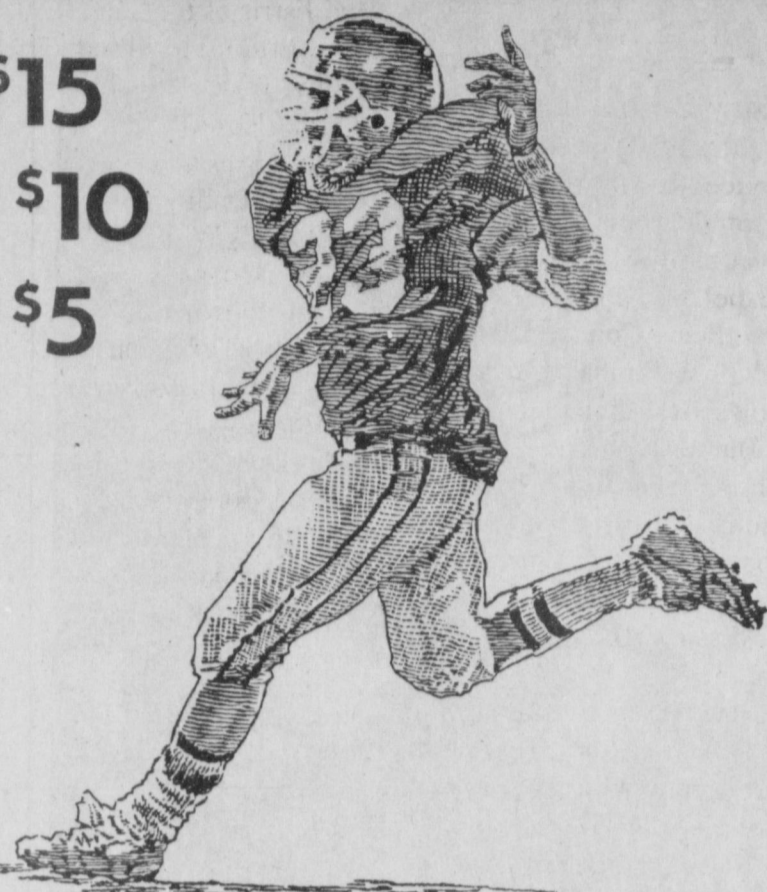
PRICES EFFECTIVE OCTOBER 13-OCTOBER 19, 1996 OFFER GOOD WHILE SUPPLIES LAST

Bailey County Journal's

FOOTBALL CONTEST

\$30 awarded each week!

1ST PRIZE \$15
2ND PLACE \$10
3RD PLACE \$5



Name _____
 Address _____
 Phone () _____

GAMES OF
 OCTOBER 18-21, 1996

TIE BREAKER

Oakland at San Diego

Combined total of both teams _____

— RULES —

1. Circle your choice as the winning team in each of the 18 games.
2. The entry with the most correct selections will win. In the event of a tie, the entry which picks the closest to the actual tie breaker score will win.
3. Entries may be mailed to Muleshoe Journal, P.O. Box 449, Muleshoe, TX 79347 or drop off at the office during business hours (8:30-5:00). Please mark the envelope FOOTBALL CONTEST.
4. Entries for this week's contest must be received by the Muleshoe Journal or postmarked by 5:00 p.m. Friday, October 18, 1996.
5. Muleshoe Journal employees are not eligible for the contest.
6. Decision of the judges will be final.

Adrian Photography
 218 W. 2nd
 272-3487

Perryton at Muleshoe
Gabriel Juarez

Bruce Electric
 Bill Bruce
 Muleshoe
 272-5114

Baltimore at Denver
Jason Thomas

James Crane Tire Co.
 322 N. 1st
 272-4594

Lazbuddie at Silverton
Don Burch

Wes Tex Feed Yards
 Custom Cattle Feeding
 272-7555

Nebraska at Texas Tech
Cameron Turner

Sudduth Field & Co.
 104 W. 2nd St.
 272-4291

Kansas State at Texas A & M
Seth Black

Bailey County Farm Bureau
 Ricky Barrett, Mgr.
 Dale Vise, Agt. Allen Mount, Agt.
 1612 W. American Blvd. 272-4567

New England at Indianapolis
Bobby Martha

Muleshoe Co-Op Gin
 Manager Charles Moraw
 272-4794

Whitharral at Three Way
Michael Carson

Bob Stovall Printing
 221 E. Ave. B
 272-3373

Nazareth at Springlake-Earth
Brice Foster

Bailey Gin Co.
 Sudan
 946-3397

USC at Arizona State
Jeffery Seaton

West Camp Gin, Inc.
 West Camp
 925-6681

NY Giants at Washington
Blas Martinez

Muleshoe Feed Barn
 311 W. American Blvd.
 272-5626

Sanford-Fritch at River Road
Dustin Weir

McCormick Seed, Inc.
 400 E. Ash Ave.
 272-3156

Seminole at Slaton
Deon Gallman

Decorators Floral & Gifts
 616 S. 1st 272-4340

Iowa at Penn State
Edward Terry

Wilson Drilling
 W. Hiway 84
 272-5521

Atlanta at Dallas
Brice Redwine

Hi-Tek Automotive
 215 N. 1st
 272-3480

Frona at Dalhart
Josh Morris

Leals Restaurant
 1010 W. American Blvd.
 272-3294

Tulia at Dimmitt
Justin St. Clair

Ag Aviation, Inc.
 Friona Hwy.
 272-3534

Pittsburgh at Houston
Juan Salazar

Western Drug Co.
 114 Main
 272-3106

Miami at Philadelphia
Jason Jesko

PUBLIC RECORD

OBITUARIES

Mary Emma Kidd

MULESHOE — Funeral services for Mary Emma Kidd, 75, of Muleshoe were held Oct. 11 at the Ellis Funeral Home Chapel of the Chimes, with Rev. Stacy Conner, pastor of the First Baptist Church of Muleshoe, officiating.

Burial followed in the Citizens Cemetery in Clarendon under the direction of the Robertson Funeral Directors of Clarendon.

Miss Kidd died Oct. 9 after an illness.

She was born March 17, 1921 in Iowa Park, Texas and had been a resident of Muleshoe since 1983, moving here from Amarillo. She was a graduate of Henrietta High School and graduated from St. Anthony's School of Nursing. She was a registered nurse at High Plains Baptist Hospital for many years before her retirement in 1983.

She was a Veteran of World War II and Korea. She was also retired from the National Guard Reserve. She was a member of the Retired Nurses Association and a member of the First Baptist Church of Muleshoe.

She was preceded in death by two sisters, Ruby Jo Kidd in 1980 and Margaret Sue Naylor in 1990.

Survivors include two sisters, Billye K. Rhea of Richardson and Faye K. Slade of Oakland, Calif.; two brothers, Hubert Kidd of Muleshoe and Henry I. Kidd of Wichita Falls; several nieces and nephews.

Dorothy Patton

MORTON — Funeral services for Dorothy Patton, 63, of Morton, were held Saturday at the First Baptist Church of Morton with the Rev. Aaron Garrett officiating.

Burial followed in the Morton Memorial Cemetery under the direction of the Ellis Funeral Home of Morton.

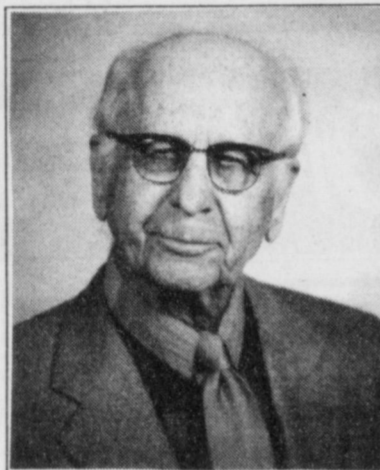
Mrs. Patton died Oct. 8 in the Methodist Hospital of Lubbock after an illness.

She was born March 22, 1933 in Center, Texas. She married Farris Patton Jan. 11, 1952 in Center. She had lived in the Morton community since 1966, moving from Center. She was a member of the Morton Senior Citizens and was a homemaker.

She was preceded in death by one son, Bobby, in Dec. 1990 and four brothers.

Survivors include her hus-

band Farris of the home; four sons, Elton Patton of The Colony, Texas, Troy Patton of Dallas, Ronnie Patton of Hondo, Texas and Roy Glenn Patton of Dallas; six daughters, Dorothy Whitefield, Edna Patton, Doretha Shelton, Sharon Patton, Joy Lynn Patton, all of Dallas, and Vickie Patton of Morton; four brothers, William Moore of Sudan, Willie Glenn Moore of Morton, Robert Moore of Center and James Joyce of Morton; two sisters, Zelma Hightower of Center and Ann Freeman of Henderson, Texas; 22 grandchildren and six great-grandchildren.



Joe T. Salem

SUDAN — Funeral services for Joe T. Salem, 92, of Sudan, were held Saturday at the First United Methodist Church of Sudan with Rev. Wendell Horn, pastor of the First United Methodist Church of Olton, Rev. Vance Roberts, pastor the First United Methodist, Sudan and the Rev. John Ballard, associate pastor of the First Baptist Church of Lubbock, officiating.

Burial followed in the Sudan Cemetery under the direction of the Ellis Funeral Home of Sudan.

Mr. Salem died Oct. 9 at the Methodist Hospital in Lubbock after an illness.

He was born March 25, 1904 in Kafaracab, Lebanon. He immigrated to the United States with family in 1912 at the age of 8. He married Beth Harkey

Sept. 3, 1928 in Ranger, Texas. She died March 26, 1991.

He moved from Ranger to Sudan in 1931. He operated Salem Dry Goods in Sudan for 23 years, 1931-1954. He has given himself to volunteer benevolent service from 1954-1991.

He was a long-time Methodist Lay Leader in the Sudan Methodist Church and the Northwest Texas conference. He made numerous Methodist Evangelistic Missions to many foreign countries.

He was one of the original inspirators of the Methodist Hospital of Lubbock when it was acquired by the Northwest Texas Conference of the Methodist Church from its proprietary owners in 1954 and served on the Board of Trustees for over 30 years.

He received the prestigious Henry Denman Evangelistic Award in 1991 for his volunteer ministry in working with under privilege boys and girls through LOTWS (Love Overcometh The World) a corporation he founded in 1963.

He was past president of the Sudan Chamber of Commerce and also active in the Rotary Club, Masonic Lodge and Boy Scouts of America. He was recognized by Eleanor Roosevelt in a nationally syndicated column in 1956 for his work in promoting the United Nations in the cause of World Peace.

Casket bearers will be grandsons. Honorary casket bearers will be the boys and girls of LOTWS Inc. and Board of Directors of LOTWS, Inc.

Survivors include one son, Robert J. Salem, M.D. of Lubbock; one daughter, Betty Korieth of Dallas; nine grandchildren and nine great-grandchildren.

HOSPITAL ADMISSIONS

The Muleshoe Area Medical Center has reported the following admissions:

Oct. 4 — Novalene Seaton, Naomi Black, Mary Kidd, Margaret Graves

Oct. 5 — Novalene Seaton, Naomi Black, Mary Kidd, Margaret Graves, Ethel Gipson

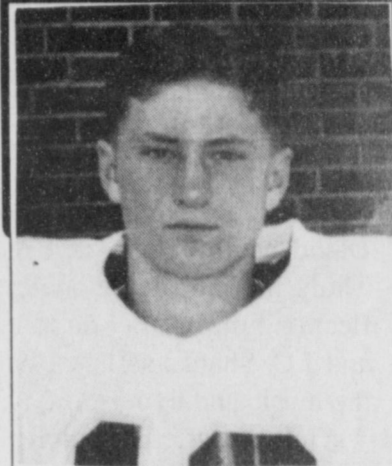
Oct. 6 — Novalene Seaton, Vanell Phipps, Naomi Black, Mary Kidd, Ethel Gipson

Oct. 7 — Osvaldo Avila, Sam Damron, Novalene Seaton, Joyce Thompson, Vanell Phipps, J. Don Kube, Naomi Black, Mary Kidd, W.M. Daniel, Ethel Gipson

Oct. 8 — Osvaldo Avila, Sam Damron, Novalene Seaton, Dorena Proudfoot, Joyce Thompson, Margaret Graves, Tracy Torres, J. Don Kube, Ruth Lackey, Naomi Black, Mary Kidd, W.M. Daniel, Ethel Gipson

Oct. 9 — Naomi Black, Novalene Seaton, Dorena Proudfoot, Joyce Thompson, Margaret Graves, Clarissa Caraveo, J. Don Kube, Ruth Lackey, W.M. Daniel, Ethel Gipson

Western 66 Congratulates the Mule & Lady Mule of the Week!



MATT McCLANAHAN
Sophomore Matt McClanahan rushed 94 yards in the football game against Dalhart last week. Matt is the son of Mark and Robin McClanahan.



STACY LOCKER
Freshman Stacy Locker has been running real well. She placed 41st out of 401 runners in the Lubbock Invitational Meet. Stacy is the daughter of Fred and Ruth Locker.



The CardStop
24 Hour Fuel Service
715 W. American Blvd., Muleshoe
To apply for a card, contact WESTERN 66
272-4556
We have diesel!

Federal Land Bank Association
316 Main St., Muleshoe
806-272-3010
Long Term Financing for Farms, Ranches, Rural Housing, Operating and Improvements.
Current Variable Rate 7.95%.
Fixed rates are available.
Call for quote.
A Property Rights Advocate and Equal Opportunity Lender.

Re-Elect RICH MAGBY
as Bailey County Constable Precinct 1
as a Write-In Candidate
On Nov. 5th

Tired Of The Same Old Tune?
A GM Goodwrench Engine Tune-Up can revitalize the performance of your GM car or light truck:
• Engine diagnosis • Install AC Spark Plugs and AC PCV Valve • Check ignition system, timing and belts • Set idle
• Check fuel filter and air filter • inspect battery terminals
\$69⁹⁵ + tax
John Raley's AutoCenter
LITTLEFIELD
Goodwrench Service 385-6464

The Laney Agenda for Texas

- Balance the state budget without raising taxes
- Monitor the new, expanded prison system and continue cutting parole for violent offenders
- Ensure that agriculture and agribusiness have a strong voice at the Capitol
- Continue creating jobs in the Panhandle and the South Plains so there can be better opportunities for future generations
- Improve our schools by promoting more local control and bringing technology to the classroom
- Keep taxes down so the economy grows

Pete Laney
State Representative

Paid Political Ad. The James E. "Pete" Laney Campaign, Route 2, Box 115, Hale Center, TX 79041

NURSING HOME NEWS

By Joy Stancell

Mrs. Gibbs' son, Boyd, from Lubbock, visited Thursday and took her out for lunch.

Tuesday afternoon the Beauty Shop volunteers gave the residents shampoos and hair sets and some hair cuts. The ladies all looked beautiful.

Wed. afternoon Glenda Jennings and Jonessa Brockman came to entertain with their puppets and to lead the group in a sing-a-long.

Wednesday morning Buster and Wanda Kittrell hosted coffee/donut and table talk. Following this Buster lead the gospel sing-a-long and devotional time. Bobbie Johnson assisted on the piano. Jim Claunch and Tennie McCormick also participated.

Elizabeth King, Lillie Wuerflein returned to the Care Center, after being hospitalized. Naomi Black, Margaret (Modean) Graves and Ruth Lackey are currently patients in the local hospital.

You are invited to a Christmas Around the World Party, at 10 a.m. Monday, Oct. 21 hosted by the residents.

Thursday morning, Pastor David McIntire directed our Thurs. morning devotional/reflection time. Clara Lou Jones and J.C. Shanks assisted with the music and hymns.

Thursday afternoon the residents' council met with Robin Dickerson, dietary manager, to plan the special day menu. The meal that was planned was:

fish or ham, honey glazed squash, wheat rolls, green beans, cabbage slaw and coconut cream pie.

Saturday, Tennie McCormick had lunch in the employee dining room with her husband, Leonard McCormick, to celebrate his birthday.

Joyline Costen had our patio embellished with colorful fall plants, set out by Kirsty's Plants, last week.

Jean Paul Jarman, of Jarman Seed, sent us several nice fly swatters via Clinton Rogers.

Mr. and Mrs. Oscar Merriott picked, washed and brought us mustard and turnip greens, Buster Kittrell brought us nice home grown tomatoes.

The Watson Junior High

Choir performed for the residents Thursday morning. They sang songs from the movie, Lion King.

Bob Phillips took nine of

the residents out to Ben Romings' pumpkin patch Friday. Each resident came back with a nice pumpkin and a smile on their face.

Notice To Creditors

NOTICE TO ALL PERSONS HAVING CLAIMS AGAINST THE ESTATE OF TERRY JAMES HUTTO

Notice is hereby given that original Letters Testamentary for the Estate of TERRY JAMES HUTTO, Deceased, were issued on the 8th of October of 1996, in Docket No. 2097 pending in the County Court of Bailey County, Texas to:

DEBBI DARELLE HUTTO
The address of such Debbi Darelle Hutto is:

1809 West Avenue I
Mulshoe, Texas 79347

All persons having claims against the Estate which is currently being administered are required to present them within the time and in the manner prescribed by law.

DATED the 8th day of October, 1996.

Carrissa A. Cleavinger
Attorney for the Estate
State Bar No. 04351100
42s-1tc

**Bridal Selections
Have Been Made For:**

Betsy Lunsford
Bride-Elect of
Mark Holeman

The Art Loft

272-3485

BAILEY COUNTY DEVOTIONAL PAGE

Scoggin Ag Center, Inc.
"Where Fertilizer Is Our Business"
1532 W. American Blvd.
272-4613

**IRRIGATION
PUMPS & POWER**
ZIMMATIC CENTER-PIVOTS
W. Hwy. 84 272-4483

MAPLE COOP GIN
927-5501
Maple, Texas

Leal's Tortilla Factory, Inc.
"Serving West Texas since 1957"
107 E. Ash 272-5772 Mulshoe, TX

**Mulshoe Country Club
& Golf Shop**
900 Country Club Dr. 272-4250
Swimming, Dining, Golf Golf Accessories
Lessons Available & Clothing

**Henry Insurance
Agency**
111 West Avenue B
Mulshoe, TX 272-4581

**BOBO INSURANCE
AGENCY**
108 E. Ave. C 272-4264

Shipman's Body Shop
Auto Painting • Wrecker Service • Free Estimates
Tractor Glass & Windshields
410 N. 1st Mulshoe, TX
272-4408 FAX 272-3366

SAIN IRRIGATION & MACHINES
Complete Pump Service
W. American Blvd. 272-4397
Walt Sain Mulshoe, TX 272-4148

Bob STOVALL Printing
Quality -- Service
221 E. AVE. B 272-3373
C.R. & EVA NELL DALE MULESHOE

Ellis Funeral Homes
Mulshoe - Morton - Earth - Sudan
Texas

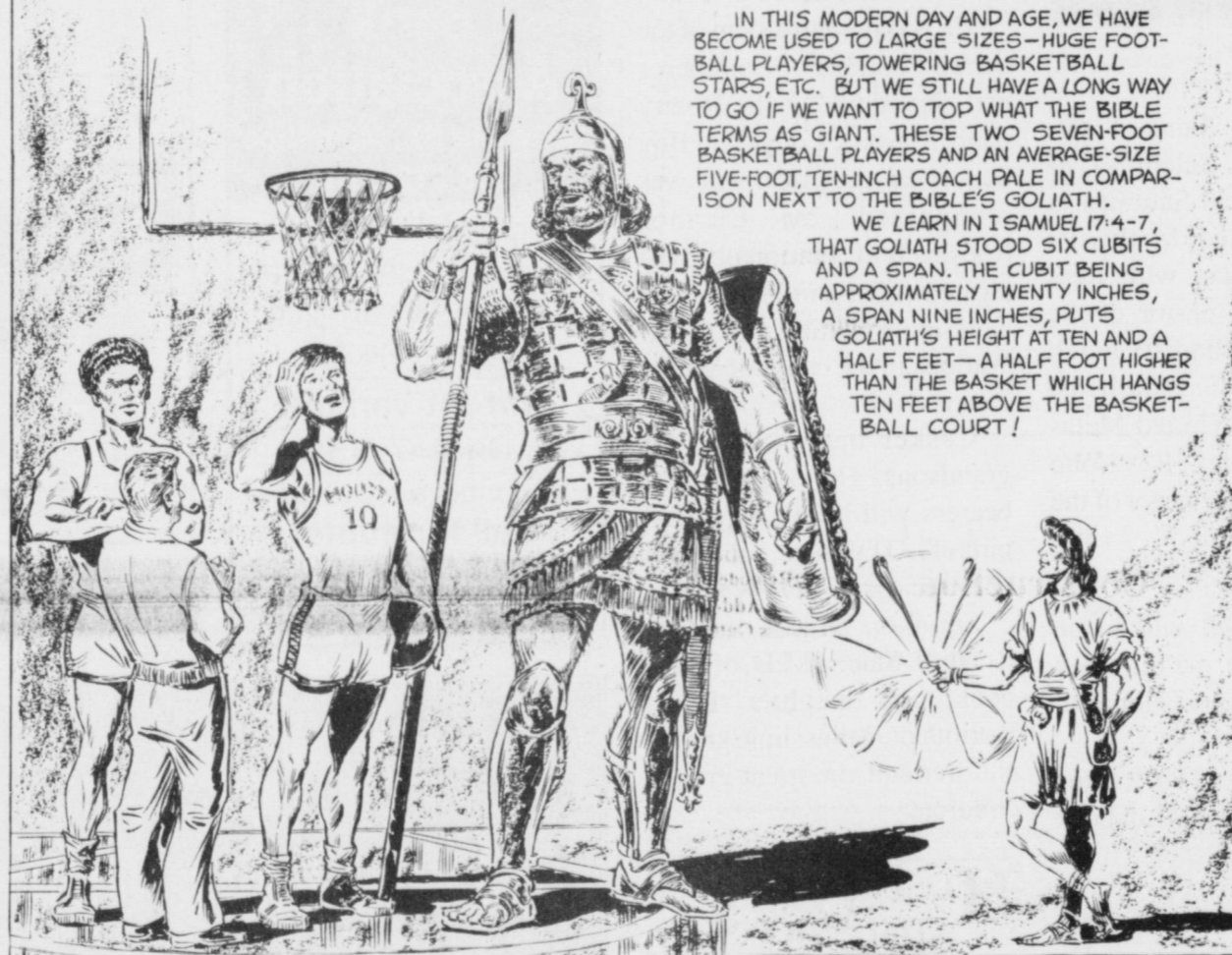
RONNIE HOLT INSURANCE AGENCY
Specializing in Crop, Life
& Health Insurance
Western 66 Office Bldg.
272-4271 Mulshoe, TX

PACO FEED YARD, INC.
Commercial Cattle Feeders
P.O. Box 956 265-3281
Friona, TX
Feller Hughes-Mgr.

WEST CAMP GIN, INC.
Better Ginning & Courteous Service
Rt 2, Box 1000
925-6681 Mulshoe, TX
James Shepard • Phyllis Shepard

**JAMES CRANE
TIRE CO., INC.**
322 N. First 272-4594
Mulshoe, TX

Facts About The BIBLE BY JOHN LEHTI



IN THIS MODERN DAY AND AGE, WE HAVE BECOME USED TO LARGE SIZES—HUGE FOOTBALL PLAYERS, TOWERING BASKETBALL STARS, ETC. BUT WE STILL HAVE A LONG WAY TO GO IF WE WANT TO TOP WHAT THE BIBLE TERMS AS GIANT. THESE TWO SEVEN-FOOT BASKETBALL PLAYERS AND AN AVERAGE-SIZE FIVE-FOOT, TEN-INCH COACH PALE IN COMPARISON NEXT TO THE BIBLE'S GOLIATH.

WE LEARN IN I SAMUEL 17:4-7, THAT GOLIATH STOOD SIX CUBITS AND A SPAN. THE CUBIT BEING APPROXIMATELY TWENTY INCHES, A SPAN NINE INCHES, PUTS GOLIATH'S HEIGHT AT TEN AND A HALF FEET—A HALF FOOT HIGHER THAN THE BASKET WHICH HANGS TEN FEET ABOVE THE BASKETBALL COURT!

GOLIATH'S COAT OF MAIL, THE BIBLE TELLS US, WEIGHED FIVE THOUSAND BRASS SHEKELS—WELL OVER A HUNDRED POUNDS. THE IRON SPEARHEAD WEIGHED MORE THAN FIFTY POUNDS AND THE STAFF OF THE SPEAR WAS AS THICK AS A WEAVER'S BEAM, WHICH IS A LITTLE THICKER THAN AN AVERAGE MAN'S WRIST—A FEARSOME FOE IN EVERY RESPECT!

HOWEVER, THE SPRY AND AGILE YOUNG LAD, DAVID—WHO, NOT BEING FULL-GROWN, COULD HARDLY HAVE STOOD MORE THAN FIVE FEET AT THE TIME (JUST HALF GOLIATH'S HEIGHT) TAUGHT GOLIATH AND THE WORLD A BIG LESSON—THAT NO MATTER HOW FORMIDABLE THE ADVERSARY, ONE CAN OVERCOME IF HE IS FILLED WITH COURAGE AND A FIRM BELIEF IN THE RIGHTNESS OF HIS CAUSE!

NEXT WEEK: A BIBLICAL EFFICIENCY EXPERT—IN NO UNCERTAIN TERMS!

SAVE THIS FOR YOUR SUNDAY SCHOOL SCRAP-BOOK

This devotional & directory is made possible by these businesses who encourage all of us to attend worship services.

ASSEMBLY OF GOD
FIRST ASSEMBLY OF GOD
521 South First Street • 272-3017
Jack Stone, Min. • 272-3984
S.S. 9:45 a.m., W.S. 11 a.m. & 6:30 p.m., Wed. 7:30 p.m.

BAPTIST
CALVARY BAPTIST
1733 W. Ave. C.
Ben Davis, Min.
CIRCLE BACK BAPTIST
Intersection FM 3397 & FM 298
Jessie Shaver, Min • 946-3676
EMMANUEL BAPTIST
107 East Third
Isaias Cardenas, Min.

FIRST BAPTIST
220 West Ave. E.
Stacey Conner, Min.
FIRST BAPTIST
Lazbuddie • 965-2126
PRIMERA IGLESIA BAUTISTA
223 E. Ave. B
Roy Martinez, Min.
PRIMITIVE BAPTIST
621 South First
Elder Cleveland Bass, Min.
PROGRESS BAPTIST
Progress, TX
PROGRESS SECOND BAPTIST
Arthur Hays, Min.
1st & 3rd Sundays
RICHLAND HILLS BAPTIST
17th & West Ave. D
Brad Gathright, Min.

ST. MATTHEWS BAPTIST
Corner of W. Boston & W. Birch
Floyd R. Monroe, Min.
TRINITY BAPTIST
314 E. Ave. B
Robert Brown, Min.

CATHOLIC
IMMACULATE CONCEPTION
CATHOLIC
805 E. Hickory
Joseph Augustine, Min.
CHRISTIAN
THE CHRISTIAN CENTER
Morton Hwy. • 272-5105
Reydon Stanford, Min.

CHURCH OF CHRIST
LARIAT CHURCH OF CHRIST
Sam Billingsley, Min.
S.S. 10 a.m.; W.S. 11 a.m. & 6 p.m.; Wed. 7 p.m.
LAZBUDDIE CHURCH OF CHRIST
Nathan Crawford, Min.
S.S. 9:30 a.m.; W.S. 10:20 a.m. & 5 p.m.; Wed. 7 p.m.
MULESHOE CHURCH OF CHRIST
22nd & W. American Blvd.
John Knox, Min.
S.S. 9:30 a.m.; W.S. 10:20 a.m. & 6 p.m.; Wed. 7:30 p.m.
SIXTEENTH & AVE. D
CHURCH OF CHRIST
Curtis Shelburne, Min. • 272-4619
W.S. 10:30 a.m. & 6 p.m.; Wed. 7:30 p.m.

LUTHERAN
ST. JOHN LUTHERAN
Lariat, TX
Richard Greenhaner, Min.
S.S. 10:30 a.m.; W.S. 9:30 a.m.

METHODIST
EL DIVINO SALVADOR
METHODIST
E. 5th and E. Ave. D
Guadalupe Ballinas, Min.
FIRST UNITED METHODIST
507 W. 2nd St.
John Wagoner, Pastor
9 a.m. Holy Communion-Chapel,
9:45 a.m. Sunday School,
11 a.m. Morning Worship
LAZBUDDIE METHODIST
965-2121

NAZARENE
NEW VISION CHURCH OF
THE NAZARENE
814 W. Ave. C • 272-3622
David R. McIntire

PENTECOSTAL
IGLESIA PENTECOSTAL
UNDIA
207 East Ave. G • 272-3636
Wencelado Trevino, Min.

OTHER
NEW COVENANT
Plainview Hwy.
Jimmy Low, Min.
W.S. 10 a.m.; Wed. 7 p.m.

1ST BANK MEMBER FDIC
202 South First 272-4515

WES-TEX FEED YARDS, INC.
Custom Cattle Feeding
272-7555 Mulshoe, TX

AMERICAN AVI West
11445 Hwy 84
272-4266
Mulshoe

BAILEY GIN COMPANY, INC.
946-3397
Sudan, TX
Peanut Hawkins, MGR

**WESTERN
DRUG**
114 Main 272-3106 Mulshoe

Church's 272-5581
CHICKEN
1411 W. American Blvd., Mulshoe

HERITAGE HOUSE INN
2301 W. American Blvd. 272-7575
Mulshoe, Texas
Clint & Evelyn Peat - Resident Owners
Reservations 1-800-253-5896

BRUCE, INC.
AIR CONDITIONING
Hwy. 214 North 272-5114
Mulshoe, TX
TAOL-B003360C. LP08638

MULESHOE COOPERATIVE
GINS
P.O. Box 569
272-4794 Mulshoe, TX

**MULESHOE AREA
HEALTHCARE**
Center
"Committed to Caring"
106 W. Ave. H Mulshoe 272-7578

MULESHOE MOTOR CO.
1225 W. American Blvd. 272-4251

**"THE FIVE AREA TELEPHONE
COOPERATIVE ORGANIZATION"**
West Plains Telecommunications Co.
Five Area Systems, Inc., Plateau-Cellular Network
Five Area Long Distance - Five Area Internet
302 Uvalde Mulshoe, USA (806)373-5533

**WANDA BROWND
INSURANCE AGENCY**
104 W. 12th Mulshoe 272-7548

Since 1957 - The Original
Leal's Mexican Restaurant
1010 W. American Blvd. 272-3294
Mulshoe, TX Victor & Debbie Leal

Risinger Plumbing
Serving Mulshoe Area
All Plumbing Repairs
272-6772

Journal Classifieds

Call 272-4536 Deadlines: For Thursday, 5 p.m. Monday; for Sunday, 5 p.m. Thursday Call 272-4536

Wanted

\$\$\$WANTED\$\$\$
We buy used mobile homes. We pay top dollar, any year, any condition. We need your used mobile home. Please call 1-800-404-1321.
7t-tfc
Wanted: Custom No-Till Wheat Drilling, 30 ft. Great Plains and Supporting Equipment.
806-257-3325
or 806-638-6545.
40t-4tpd
Wanted: Someone to haul off old appliances and other odds and ends. Call after 5 p.m. 272-3147
42s-tfc

For Sale

Singer
1996 New unsold Heavy Duty School Models. Sews silk, canvas, leather, knits & Jeans. Sews straight, zigzag, buttonholes, monograms, serge seam finish. 10 year Factory warranty, \$198 w/ad; \$498 w/out. Free UPS statewide.
Singer Sewing Center
5418 Slide Rd.
Lubbock
806-788-0608
37t-tfc
For Sale: GE washer and dryer - almond color, \$175.00 Call (505) 985-2239 or (505) 799-4757, leave message
40t-1mc

Help Wanted

Help Wanted! Office position. Phone and public relation skills. Computer Skills. Send resume to Boc 449, Muleshoe, Texas 79347
40t-tfc
The City of Muleshoe, a home rule municipality, is taking applications for the position of Chief of Police. Applicants must be TCLEOSE certified with an Intermediate Certificate. Applicant should have at least 2 (two) years of college education. Should have a minimum of 5 years supervisory experience in law enforcement. Salary D.O.Q. Applications taken until Dec. 2, 1996. Send resumes to Mary Hicks, City Secretary, 215 South First, Muleshoe, Texas 79347.
42s-2tc

Mobile Homes

Let's trade during the month of Sept.!
Mustang Mobile Home's would like to trade for your used home.
Call for details
800-333-8803
Just In!
1997 Oakcreek 4-3
2300 sq. ft. wonderful oak cabinets, ceramic tile entry, T&T walls luxury at its best. Shown by Appt. please!
800-333-8803
37s-7tc

Booth Spaces Available!
Antiques and Craft Mall is expanding.
Treasurers From The Heart is moving to the former Ben Franklin location. 5 sizes of booth spaces available.
Call Now
To Get Your Name On The Contact List
272-4217
41s-2tc sun

Byrd Realty
Ronald Byrd
Farwell, Texas
Licensed Broker

Crista Bass
Sales Associate
Home (806) 925-6464

Office (806) 481-3846
Mobile (505) 760-1495
308 Third St., Farwell, TX

78 Acres NW of Muleshoe, Highway Frontage. Excellent development property. Owner will sell as one unit for \$40,000 or will divide into 5 or 10 acre tracts at \$750.00 per acre. If you have wanted a small acreage, this is your prime opportunity

320 Acres N.E. of Muleshoe. 4 wells, 2-Electric sprinklers, large 2 story stucco house, large barn, lays well

160 Acres South of Lazbuddie, excellent water - 1-8" well with 100 hsp electric motor, circular sprinkler

Farm Land For Sale

For Sale: Country Get Away Place - RELAX! Great for horses and gardens, 100 A., 8 in., irr. well and a livestock well. Purchase TX GI Plan - \$2,300 down and 30 yr. loan. On pavement 6 miles - Earth, TX. Call 1-512-836-7104
40s-4tc

Automobile

1993 Ford OLT Supercab 4x4 pickup. Very clean. \$9,500 OBO. 272-3102 or 925-6766.
31s-tfc
'91 Ford Mustang GT, convertible, red in color, \$10,200. (505) 359-1775, Portales, NM
'96 Chevy extended cab, 4x4, diesel, automatic, 40,000 miles, \$25,500 (505) 359-0947, Portales, NM
'89 Chevy extended cab, long wheel base, 75,000 miles, \$10,800. (505) 359-1775, Portales, NM
'92 Ford Aerostar Mini-Van, extra clean, 56,000 miles, loaded, \$10,900. (505) 359-0947, Portales, NM
'91 Ford one ton dually, 5 speed, flat bed, \$9,995. (505) 359-1775, Portales, NM

PRIMESTAR

\$50 off installation
call Gabriel for details
272-3072 or
1-800-815-2358
pin 9240
38s-tfc

TOP QUALITY HAY

German millet hay, haygrazer and large round bales.
Delivery available discounts on quantity.
Call (505) 276-7522, 477-2220, 359-0947, 276-7527
41t-tfc

BETTER LIVING
MOBILE HOMES
CLEARANCE
All '96 Models Must Go!
Come Check Us Out - Fantastic Savings On All Homes
1-800-404-1321 Portales, NM (505) 356-5448
Lic. # D00681 'Se Habla Espanol'

James F. Hayes & Co.

AGRICULTURAL REAL ESTATE SERVICES

656 Acres of C.R.P. - Clays Corner Hub Area. Two years left on contract. 3 irrigation wells, 1 domestic well. 90% lays good with good soils. Will be productive farm when it comes out of C.R.P.

640 Acres Oklahoma Lane - 2 Sprinklers, 4 irrigation wells, 115 Acres of pasture, modest home, 2 domestic wells

120 acres west of Muleshoe. 2 wells. Good soil. Lays good. Immediate possession available. \$250.00 per acre.

160 Acres Northeast of Muleshoe in Parmer County. Excellent water. Excellent soil. Electric Center Pivot Sprinkler. New set of bowls on pump. Top Notch Farm

317 Acres in Lamb County on Bailey County line. 3 wells, 1 sprinkler, lays good. Call for details!

Vic Coker, Agent
310 Main St. Suite 103 Muleshoe
Office 272-3100 Home 965-2468
WHEN LAND INVOLVES COWS AND PLOWS

Real Estate

House For Sale
Nice 3 bdrm, one bath, in Lenuau addition. Call 272-3920 or Lubbock collect, 806-745-0902.
38s-4 sun c
House For Sale to be moved, 9 miles west of Muleshoe. 925-6489
40s-4tpd
For Sale By Owner: 3 bdrm, 1 3/4 bath, single garage in Richland Hills addition of Muleshoe. For more information call 806-965-2477.
40t-tfc

Rawsen-Koenig, Inc.
PICKUP TOOL BOXES

AMERICAN EQUIPMENT & TRAILER
3707 M.L.K. Jr. Blvd - Lubbock, TX
806-747-2991

Feed & Grain
Alalfa Dairy & Wheat
Millet & Straw
For Sale
Current Market Prices
Can Deliver
Hi Country Hay
Brush, Colorado
1-800-320-6509
42s-tfc

Attention: Potential Homebuyers
If you have had bankruptcy or other credit problems, there is a good chance we can help you with the purchase of a home.
- No Application fees.
For a Pre-Approval Appointment
Call 806-796-8354
Local Representatives
Dianne Gonzales Beverly Parker
806-272-5192 806-272-3152
Funded primarily by

Consumer Finance Co., Inc.
38s-8tc

Classifieds Sell!
Get Results With Classifieds - They Work!
272-4536

Rempel Construction
Metal Buildings & Roofing Siding Windows Doors Remodeling Add-ons Seamless Gutters
JAKE REMPEL
915-758-6600 P.O. Box 1441
1-800-854-5735 Seminole, Texas
49s-8tpd 79360

Subscribe to the Muleshoe Journal 272-4536

Nieman Realty
116 E. Ave. C George Nieman, Broker 272-5285 or 272-5286

RICHLAND HILLS
JUST LISTED-IMMACULATE 3-2-2 Brick Home, Geo. Heat Pump, Built-ins, FP, Nice landscaped yd., Stor. Bldg., MORE!! \$70's!!! RH3
NICE 3-3-1 Brick, cent. Heat, Evap. Air, built-ins, 2000' + lv. area, fenced yd., stor. bldg., MORE!! \$60's!!! RH-2
NICE 3-2-2 Brick, cent. A&H, built-ins, FP, approx. 2150' lv. area, fenced yd., MORE!!! \$69K!!! RH-7
VERY NICE 3-2-1 Brick, Cent. A&H, built-ins, fans, new paint, carpet, & drapes, fenced yd. \$60K!!! RH-1
HIGHLAND AREA
2 Bdrm, 1 bath home, fenced yard. \$16,500!!! HL-4
VERY NICE 3-2-2 Brick, Cent. A&H, built-ins, fenced yd., spklr. sys., MUCH MORE!!! \$60's!!! HL-1
3-2-2 home, Cent. A&H, built-ins, fenced yd., corner lot. \$30's!!! HL-2
VERY NICE 3-2-1 carport Home, heat pump, built-ins, nice carpet, fans, storage-workshop! MUCH MORE!!! \$40's!!! HL-6
NICE 3-2 Home, Heat Pump, FP, fenced yd., stor. bldg. \$30's!!! HL-3
NICELY REMODELED 3-2-1 Brick, Cent. A&H, built-ins, FP, nice carpet & tile, fenced yard, storage building, MORE!!! \$60's!!! HS-8

PARKRIDGE - NICE 3-2-2- Brick, Cent. A&H, built-ins, FP, cov. patio, fenced yd. \$50's!!!
COUNTRY CLUB - 2-1-1 Carport Home, wall furnace heat, nice carpet, storm shelter, stor. bldg., fenced yd. \$20's!!!
RURAL HOMES
NICE 3-2-2+2 Carport Brick Home on 2.5 acres on pavement, close to town, Heat Pump, built-ins, FP, MUCH MORE. \$70K!!! HR-3
JUST LISTED -3-2-2 Home 1.36 ac. on pavement, Cent. A&H, built-ins, freshly painted interior & exterior, fans, fenced yd., 31' x 40' barn!!! \$40's!!! HR-2
2-2-1 carport Mobile Home on .665 acres on pavement close to town, Cent. heat, evap., air, DW, large barn, stor. bldg. and MORE!! \$25K!!! HR-5
VERY NICE 3-11/2-1 Home on 8 acres, on pavement close to town, Cent. A&H, built-ins, sun room, concrete cellar, storage bldgs., fenced yd., RV cover, mobile home hookups, stock pens, fenced acreage, & MORE!!! \$50's!!! HR-6

ASK ABOUT OUR COMMERCIAL LISTINGS!!!
160 acre tract, 8" well, circle spklr. w/drops, fully allotted!!
PARMER - BAILEY CO. Area-Elevator & Cleaning Facility - 12 million lb. Capacity, Scales, Dryer, & Office on approx. 6.5 acres!!! PRICED TO SELL!!! POSSIBLE OWNER FINANCING!!!

We Promise You: The Best Deal Anywhere!

ALL NEW 1997 FORD F-250 3/4 Ton SuperCab
•5.4 Tritan - Most Torque In Industry
•Only Standard Equipped 3 Door
•Most Interior Headroom Of Any Truck In Its Class

Arriving Daily

NEW 97 ESCORT
•Air •PS •Rear Wiper •Rear Window Defrost •AM/FM Cassette •Automatic •Remote Keyless Entry: #1725
\$229* Down
\$229 Month

NEW 97 CONTOUR
20 To Choose From Starting At
•Air •Cruise •Tilt •Power Door Locks •Power Heated Mirrors •And Much More
\$249* Down
\$249 Month

Low, Low Monthly Payments!

95 Mitsubishi Galant Was \$14,995 Now \$13,995 \$238/mo	96 Ford Crown Victoria LX 3 To Choose From: #T108, 106, 107 Was \$19,995 Now \$18,995 \$334/mo	95 Ford Escort #T414 Was \$10,995 Now \$9,595 \$150/mo	96 Ford Explorer #T1109 Was \$25,995 Now \$24,495 \$442/mo	94 Ford F-150 XLT #T416 Was \$16,995 Now \$15,495 \$266/mo
96 Thunderbird #T114 Was \$17,995 Now \$16,995 \$295/mo	96 Mustang Convert. #T109 Was \$19,495 Now \$17,950 \$314/mo	91 Ford F-250 #4712102 Was \$9,995 Now \$8,495 \$163.74/mo	96 Ford Contour 2 Choose From: #T110, 111 Was \$14,495 Now \$12,995 \$216.02/mo	93 Mercury Cougar #P94081 Was \$11,495 Now \$9,995 \$167/mo
95 Lincoln TownCar #T108 Was \$25,495 Now \$23,995 \$433/mo	95 Jeep Wrangler 4x4 #T419 Was \$15,995 Now \$14,495 \$246/mo	94 Ford Ranger #T377 Was \$14,995 Now \$13,495 \$226/mo	93 Chevy Beretta #T2351 Was \$10,995 Now \$9,495 \$157/mo	96 Pontiac Grand Am #T382 Was \$16,995 Now \$15,195 \$260/mo
93 Thunderbird #T0501 Was \$12,995 Now \$11,495 \$199/mo	96 Ford Escort #T104 Was \$13,995 Now \$12,495 \$207/mo	91 Ford Club Wagon XLT #T381 Was \$12,995 Now \$11,495 \$240/mo	91 Pontiac Grand Am #T2391 Was \$8,995 Now \$7,495 \$139/mo	95 Dodge Caravan #T355 Was \$15,995 Now \$14,995 \$256/mo
95 Ford Windstar #T380 Was \$17,995 Now \$16,495 \$285/mo	96 Pontiac Grand Am #T383 Was \$15,995 Now \$14,495 \$246/mo	94 Ford Tempo #T70801 Was \$9,995 Now \$7,995 \$118/mo	96 GMC Stepside SLE #P83031 Was \$18,995 Now \$16,995 \$294.62/mo	94 Ford F-150 #T416 Was \$16,995 Now \$15,495 \$267/mo

HAMILTON big country FORD
2400 Mabry Dr
CLOVIS, NM 762-4427
"Where You Can Pocket Our Change!!!"

Ford Credit

Finance rates: all payments based on 60 mos @ 9.75% apr. All rates apply to lease + tax. title & license with approved credit. subject to prior sale. Contour balloon \$5,850. Escort balloon \$4,475. Used cars: *72 mos @ 12%; **48 mos @ 12%; ***36 mos @ 14%; ****24 mos @ 16%; all payments based on \$2,000 down + tax & license, subject lender's approval and prior sale. Monthly terms and interest rates controlled by the lending institution, your personal creditworthiness and other approved credit.

Stock Up & Save

ALL TYPES PEPSI
12-Pack
12 Oz. Cans **2²⁵**

ALL TYPES PEPSI
2 Liter
Bottles **89¢**

THAT'S THE SAME AS TWO 6 PACKS FOR \$1.12 EA!

Meat

Bar S, 12 oz. pkg. **\$2⁷⁹**
Cooked Ham

Bar S, 12 oz. pkg. **\$1⁷⁹**
Chopped Ham

Decker Mesquite, Maple or Regular **\$1⁶⁹**
Sliced Bacon 12 oz. pkg.

Decker, 1 lb. pkg. **\$1⁷⁹**
Smoked Sausage

Decker Jumbo, 1 lb. pkg. **\$1⁰⁹**
Meat Franks

Decker, 12 oz. pkg. **99¢**
Meat Bologna

**Pilgrim's Pride
Boneless Skinless
Chicken Breast**
\$1⁹⁹
lb.

Produce

**New Crop Fall Acorn,
Butternut or Spaghetti
Squash**
2 lbs. for \$1

Wrapped
Cello Lettuce ea. **69¢**
 Giant Sno-White
Cauliflower ea. **99¢**
 Crisp Stalk
Celery ea. **2/\$1**
 Del Monte Gold Costa Rican
Pineapples **2/\$3**

**New Crop Washington
Red/Golden Delicious, Rome,
Granny Smith, or Gala**
-- MIX N MATCH
Apples
2 lbs. for \$1

**Value Pack, Bone-In
Pork Steak**
\$1²⁹
lb.

**Value Pack, Bone-In
Pork Butt Roast**
99¢
lb.

**Cook's Bone-In
Shank Portion
Ham**
99¢
lb.

**Cook's Bone-In
Butt Portion
Ham**
\$1¹⁹
lb.

Wilson
Smoked Sausage
\$5⁵⁹
3 lb. pkg.

Wilson 2 Lb. Chunk
Just For Us Hams
\$7³⁹
each

Wilson 1.75 lb. Sliced
Just For Us Hams
\$7⁹⁹
each

Casserole
**Pinto
Beans**
\$1⁸⁸
4 lb. bag

Presenting A Special Offer On This Beautiful, Contemporary Stoneware...
Now On Sale!
Touch of Elegance
FINE DINNERWARE
**4-PC. PLACE
SETTING ONLY** WITH EACH \$10.00 PURCHASE
Coordinate Accessories Also Available...See Store Display For Complete Details, And Start Your Set Today!
At Participating Affiliated Foods Member Stores

Sunny Delight Florida or California
Citrus Punch
\$1⁷⁹
128 oz. jug

*Cut/French Sliced Green Beans • Golden Corn CS/WK or Vacuum Pack • Sweet Peas, Del Monte Selected Regular or No Salt Added
Vegetables
10/\$3⁹⁹
12-15.2 oz. cans

Hormel Regular or Hot
**Chili No
Beans**
89¢
19 oz. can

SAVINGS! Lower SAVINGS! Lower

ITEM OF THE WEEK
SNACK SIZE
Hershey's
Candy **1⁸⁸** each

HOUSEHOLD GOODS!

BONUS PACK REGULAR OR GLASS & SURFACE
409 Cleaner 32 oz. **2\$4**

BONUS PACK
Clorox Clean-Up 32 oz. **2\$4**

BONUS PACK REGULAR OR LEMON
Pine-Sol Cleaner 48 oz. **2\$4**

REDUCED FAT, THIN PRINT, DOUBLE STUF OR REGULAR
Oreo Cookies
2\$5
20 oz. pgs. For

REGULAR OR LESS SALT
Spam Luncheon Meat
1⁶⁹
12 oz. 3" can

ASSORTED INSTANT
Quaker Oatmeal **2\$5**
10 ct. pgs. For

QUAKER PARA TORTILLAS
Harina Preparada **3⁹⁹**
8 lb. bag

CRUNCH BERRIES
PEANUT BUTTER CRUNCH
Cap'n Crunch Cereal **1⁸⁹**
15-16 oz. box

ITEM OF THE WEEK
Del Monte Fruit
79¢
15-15.2 oz. can

SOFTN GENTLE
ASSORTED OR WHITE
Bath Tissue
79¢
4 roll pkg.

AUNT JEMIMA BUTTERMILK OR ORIGINAL
Complete Pancake Mix **2\$3**
32 oz. box

SKIPPY LOW FAT CREAMY, CREAMY, OR CHUNKY
Peanut Butter **1⁷⁹**
16 oz. jar

ASSORTED UNSWEETENED
Kool-Aid Mix **6\$1**
Makes 2 qts.

HUNT'S
Manwich Sauce **1³⁹**
15.5 oz. can

REGULAR, LIVER, OR BEEF
Bolo Dog Food **5\$1**
15 oz. cans For

FROZEN & DAIRY

BANQUET CHICKEN, TURKEY, OR BEEF
Pot Pies **59¢**
7 oz. pkg.

BLUE BUNNY ASSORTED
Ice Cream **4⁹⁹**
5 qt. pail

COUNTRY CROCK
Shedd's Spreadable Sticks **59¢**
16 oz. box

Buttermilk Waffles
Eggo **2\$3**
11 oz. pgs. For

ASSORTED
Budget Gourmet Entrees **2\$3**
10 oz. pgs. For

WEIGHT WATCHERS
Ultimate 90 Yogurt **2\$1**
8 oz. ctns. For

BUTTERBALL ASSORTED
Chicken Requests **3⁷⁹**
14 oz. pkg.

TROPICANA ASSORTED
PURE PREMIUM Orange Juice **1⁸⁸**
64 oz. ctn.

QUAKER OATMEAL
PREPARED TORTILLAS
Harina Preparada **3⁹⁹**
8 lb. bag

STILWELL
Breaded Cut Okra **2\$3**
24 oz. pkg. For

QUICK & EASY MEAL!

CRUNCH BERRIES
PEANUT BUTTER CRUNCH
Cap'n Crunch Cereal **1⁸⁹**
15-16 oz. box

HEALTH & BEAUTY

WESTERN FAMILY
Cotton Swabs **1³⁹**
300 ct. pkg.

TYLENOL PM
EXTRA STRENGTH
Tylenol PM **2⁶⁹**
24 ct. pkg.

ASSORTED
Listerine Mouthwash **2⁹⁹**
16.9 oz. bot.

DEL MONTE ASSORTED
Spaghetti Sauce **79¢**
26-28.5 oz. can

SKINNER ELBOWS OR
Thin/Long Spaghetti **2\$1**
12 oz. pkg. For

WESTERN UNION | MONEY TRANSFER™
"The fastest way to send money"

Pay-n-Save

Lowie's MARKETPLACE

515 W. American Blvd.
401 W. American Blvd.
Muleshoe 272-4585
Muleshoe 272-4406

PRICES EFFECTIVE OCT. 9-15, 1996
OPEN MONDAY-SATURDAY 7:30 A.M. - 9:00 P.M., SUNDAY 8:00 A.M. - 8:00 P.M.

WE RESERVE THE RIGHT TO LIMIT QUANTITIES IN TEXAS