

The Merkel Mail

Thursday, September 11, 1986 . . . Merkel, Texas

Our 98th Year

Council sets tax rate at .2969, plans meeting on water contract

The Merkel City Council set a new tax rate, discussed the proposed new water contract with the City of Abilene and heard the police report at their regular meeting Monday night at the Merkel Emergency Medical Service Building.

City Manager J. A. Sadler and water department head Robert Harris will meet with Abilene officials Friday at 10 a.m. to go over fine points on the new water contract. The city has a few items they would like to see changed in the proposed water contract and Sadler discussed those changes with council Monday night.

The new tax rate is slightly higher than last years. The new city tax rate will be .2969 per \$100 evaluation. The old rate was .2934.

Sadler delivered the new rate to the Central Appraisal District Tuesday morning so they could begin preparing the tax rolls and start printing tax statements.

Concerning the proposed water contract, Sadler said he had a few problems with some of the

wording and provisions in the new contract. Sadler discussed those portions of the contract he'd like to see changed. They included a proposal that would allow the City of Abilene to terminate the contract after a six month notice. The city manager told council members the city would have a hard time passing a water improvement bond with that six month limitation.

Sadler and councilmen have also questioned a 20 cent per 1,000 gallon charge on water usage above or below 230,000,000 gallons. Abilene feels that charge is necessary in that they have to have that much water available for the city of Merkel's usage, whether we use that amount of water or not. Sadler said he'd like to have that portion of the contract changed in times of water rationing. If the city used less than the 230 million gallons, and were forced to do so by mandatory water conservation procedures, the city manager and council agreed that charge

would not be fair.

New Merkel police chief Bob Jones presented his first police report to council. Jones told councilmen he is beginning to settle in to the job and was beginning to know more of the town's people.

In his report, the department worked a total of 42 cases in August.

They included seven traffic accidents, two counts of disorderly conduct, three assaults and four cases of criminal mischief.

Also, police worked five thefts, one possession of a prohibited weapon, a burglary of a motor vehicle, one case of resisting arrest and three cases of public intoxication.

They also worked a case each of telephone harassment and forgery, answered five dog calls, issued six citations and made one arrest for driving while intoxicated.



The Trent High Bold Gold band participated in the West Texas Fair & Rodeo parade last Saturday (Photo by Rebecca Sharp)

Badgers drop opener, face Cisco next

by Cloy A. Richards

Abilene Reporter News sports writer Bill Hart was wrong about the Sweetwater Mustangs in his predictions last week. He said the Mustangs would look like state champions against Merkel.

The Mustangs did manage a 20-0 win over the Badgers but it did not come easy as the Badgers played well defensively in their season opener Friday night.

Badger head coach Dick Lepard told *The Mail* Monday "Even after we watched the game films this weekend, I was pleased with the way the kids played."

The Badgers were held to less

than 60 yards on offense during the contest and Lepard said he learned a couple of lessons. "I should have played the split end closer to the tackle to help block their defensive end and we should have thrown the football more."

Lepard said the Badgers used a conservative game plan and said Sweetwater did an excellent job defending the wishbone offense. "They have run out of that formation for the past seven years so their defense knew how to play it."

Lepard praised the play of his defense and mentioned linemen Chris Biera, Chris Reyna and Tim Harris, as well as Doug Taylor.

Offensively, quarterback Jowers punted extremely well as he held a 41 yard average, even with a 25 yard kick. Lepard said the punt coverage was weak and said he would change a few things this week in practice to improve coverage.

This week, the Badgers travel to Cisco for an 8 p.m. kickoff. Cisco lost their season opener 7-6 to Anson last week.

The Lobos run the veer offense and a split 6 defense (The Badgers have run against that defense in both pre-season scrimmages).

Lepard said the Lobos don't have much size but they are quick and like to run outside from the

passes and he said he looked forward to getting the Badgers' wishbone cranked up.

Cisco does not have a freshman team so the only game here tonight will be the JV contest. It starts at 6:30 p.m.

Around the district last week, Brad, Coahoma and Clyde lost while Colorado City tied Slaton. Wins included Ballinger and a supring Willie team who downed Breckenridge.

Lepard concluded by saying "We'll have anything to prove to none, but ourselves. The team did not back off, they displayed a lot of character."

Do You THINK HE WATCHED THE SAME GAME WE DID?



Badgers, band, railbirds, more students

by Cloy A. Richards

I would imagine a lot of people were shocked when they turned to the Reporter News sports page Saturday morning and saw the Merkel-Sweetwater score. After all, the Mustangs tore up Abilene Cooper and Brownwood in scrimmages, prompting the ARN predictor, Bill Hart to write "The Mustangs will look like state champs against the Badgers."

Nothing could have been further from the truth. And don't think the Mustang coaching staff was just being kind to 'poor ol' Merkel', they tried every way they could to score in the second half, and kept their starters in the entire contest. Fact is, the Badgers are just a better football team than a lot of people give them credit for.

Admittedly, the Badgers did not look good on offense. It was hard to tell whether we were not performing that well, or Sweetwater's defense is that good. Regardless, the Badgers not only survived the Sweetwater contest, they earned a lot of respect in the process.

This week, the Badgers travel to Cisco and coach Dick Lepard wants the wishbone offense to work well in that contest. If they get the defensive performance we had last Friday night, it will be a long nich for Cisco fans.

Congratulations are in order to the Trent Gorillas as they squashed Grady 52-6 in a game cut short by the 45 point rule in the third quarter.

While I am on football, there is no doubt in my mind who has the best team in College football right now. It's the Sooners of OU. They tore up UCLA last week, even with

the second string. The Oilers played excellent football against Green Bay Sunday (or is Green Bay that awful) but my fun starts Saturday as the Aggies travel to the Tiger Den at LSU for their season opener. I was ready for that game during the 3rd quarter of last year's Cotton Bowl, which is where the Aggies should play their final game this season.

The Merkel High Band started off the year right as they took top honors at the West Texas Fair & Rodeo parade Saturday. If you watched KTXS-TV's coverage of the parade, you got a good look at The Purple Pride Band and we can excuse Laurie Bishop's comment about this being the first year for the Band.

Many thanks are in order to my wife, daughter and Cathy Pack for putting out the paper last week. The flu is no fun at all. There is quite a bit of it going around and another new 'victim' is Badger Coach Dick Lepard. He seemed to be trying to take it Monday during our interview.

Dale Hammond's cartoon poked fun at the story ran in Saturday's paper about the Sweetwater-Merkel game. You have to consider the Reporter News takes those stories from 'stringers' who represent the home team each week. Obviously, the stringer in Sweetwater or the re-write person at the ARN let some adjectives slip in that didn't quite belong. Anyway, Dale told me Monday that since he is the president of the Merkel Railbirds's Association (Those are the guys that lean on the rail near the concession stand at home football games) he predicts the Badgers won't win a district

championship until they start wearing purple and gold uniforms again.

As they say, traditions die hard but the football tradition I have seen here in the past nine years needed burial.

MISD superintendent Bill Everett may have to update his prediction for enrollment this year.

As of Tuesday morning, 1,473 students were attending Merkel Schools That included 219 at Tye

Lawson is new pastor Trent's FBC

Rev. Sherman Lawson has accepted position as pastor with the First Baptist Church in Trent. Sherman and his wife, Willie, are from Queen Creek, Arizona, near Phoenix, where Sherman was pastor at Queen Creek Chapel.

Mrs. Lawson is a popular speaker teacher with Christian women's groups throughout Oklahoma, Arizona, and Texas. She recently was a feature speaker at the National Womens Aglow Con-

Trent community club welcomes teachers, f

An ice cream supper was held for the September meeting, sponsored by the Trent Community Club, last Thursday night the 4th, to welcome the 86-87 school teachers. Rosemary Bland, President of

Elementary, 508 at Merkel Elementary, 361 at Merkel Middle School and 385 at Merkel High School.

Ty's problems the district is having with the state mandated 22:1 student-teacher ratio is at Tyedergarten classes. Two classes have a total of 49 students and the district will probably have to build a classroom to handle the additional class.

Homecoming activities get underway next Friday

The schedule of activities for Merkel's Homecoming has been released by the Merkel Ex-Students Association.

Activities will get started Friday Sept. 19th with registration at Heritage Hall from 9 a.m. until 4 p.m. The parade will start at 4:15 p.m. and a pep rally will follow downtown. The football game starts at 8 p.m. and coffee and a visitation period are planned after the game at Heritage Hall.

On Saturday a visitation and continental breakfast will be held at Heritage Hall from 9 a.m. until noon. A business meeting will be

Homecoming parade will start at 4:15 next Friday

You are cordially invited to participate in the Homecoming Parade, which will be held Friday, September 19th at 4:15 p.m. downtown Merkel.

Prizes to be given away are: Bicycle Division- 1st place trophy, 2nd place ribbon, 3rd place ribbon; Best Dressed Horse- 1st place trophy, 2nd place ribbon, 3rd place ribbon; Floats- (may

held at 10:30 a.m. to elect officers for 1987.

Coming Home Queen and Candidates have been selected. They are, from the Class of 1936: Alvin Wozencraft and Louella Hughes. From the Class of 1966 are D. A. Bishop and Minyon Beard Seymour.

Ex Students who want to vote and are not able to attend may write their choices on LB piece of paper and send it to the Merkel Ex Students Association, P.O. Box 683, Merkel 79536. You are asked to include \$1.

include pickups, trailers, etc.) 1st place \$30.00, 2nd place \$15.00, 3rd place \$10.00. Winners Will Be Announced At The Football Game.

If you wish to reserve a place in the Merkel Homecoming parade, or if further information is needed, you may contact: Kim Satterwhite Smith 696-1155 home or 677-1711 work, or Cathy Holloway Sparks 692-7765 home or 676-4967 work.

Contel's new switching computer is on line

Installation and final testing of Continental Telephone's new switching center in Merkel have been completed and the computer is now handling calls. The existing electro-mechanical switching office has been disconnected. Engineers and technicians

worked hard to insure that the changeover to the new equipment went smoothly. M.L. Brownlee, supervisor, reported that the new computer operates without a hitch. "This change is only a part of a massive effort throughout the Contel System to adopt the latest

digital technology," Brownlee said. "These new digital machines are the state-of-the-art in terms of speed, accuracy and reliability." Local calling is faster because the called phone will ring instantly after the last digit is dialed. Dial tone, ringing signals, and busy signals sound different. Contel is adopting nationwide frequency tone standards with said. "These new digital machines dial all seven digits when placing local calls. Supervisor Brownlee explained that the switching computer has a stored program. Solid state components have eliminated moving parts reducing maintenance and improving reliability. The computer has an ongoing test

program which looks for faulty circuits within the switch. Should it find one, the computer automatically reroutes calls to other circuits and alerts technicians by displaying a message on an electric typewriter built into the system. Area telephone services manager Mickey Maritan added, "Now that the new switch is in service, Touchtone phones are available to all customers and customer calling features are available to one-party customers. Touchtone is faster than dialing, and most people find it to be more accurate. Custom calling features include speed calling, call waiting, call forwarding and three-way calling.

Trent opens with 52-6 win over Grady, Rule is next

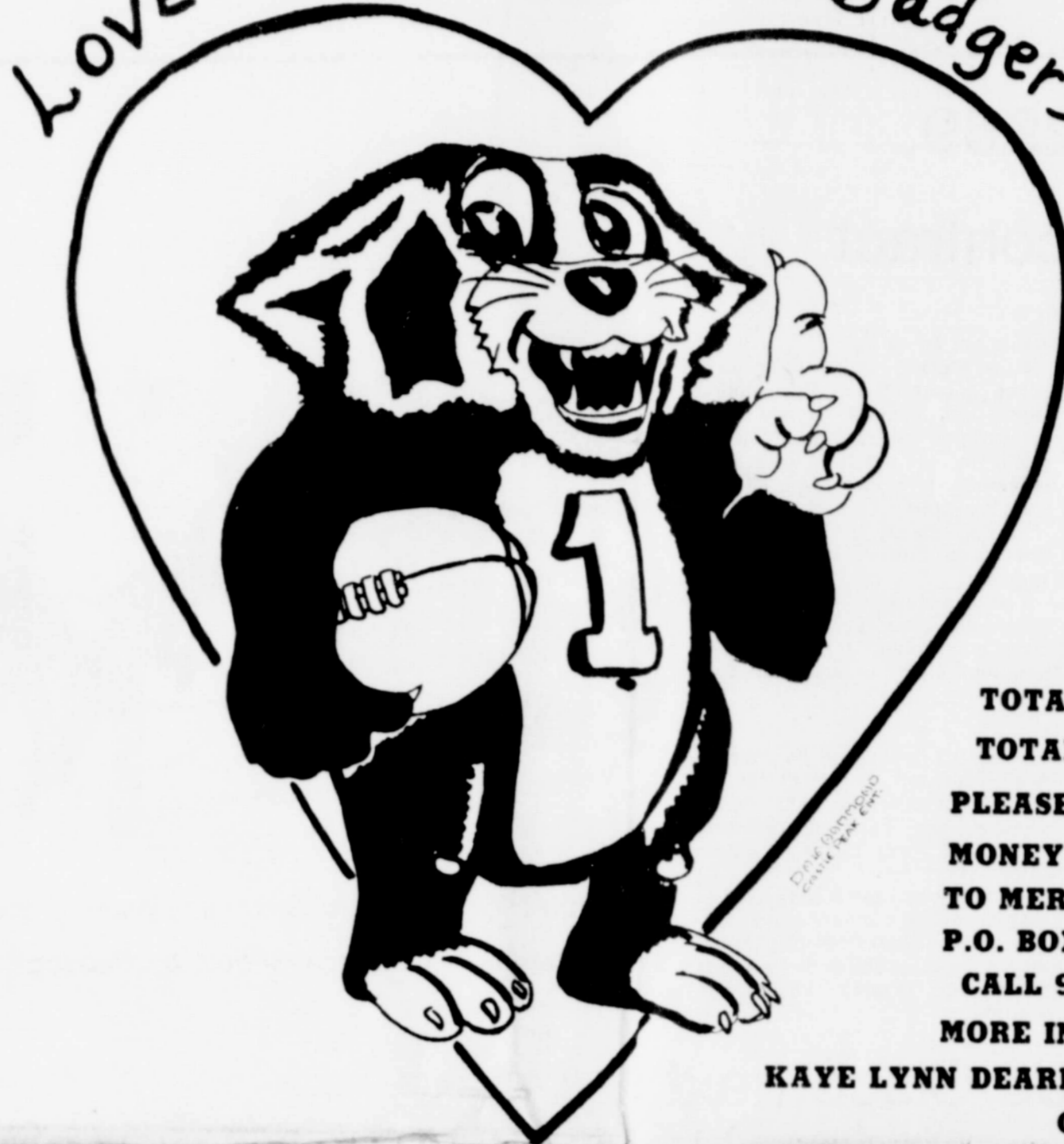
The Trent Gorillas opened the 1986 Football Season with a big win over the Grady Wildcats last Friday night in Trent. Trent opened the scoring early in the 1st period and blew the game open by half time with a lead of 40 to 6.

Lewis Knapp led the Gorilla offense by rushing for over 100 yards and contributing 3 touchdowns. He also passed to Dock Carriker for another T.D. Chris Simpson also had a big night offensively rushing for over 100 yards, and adding two touchdowns. He also completed a pass to Sam Jones for another 6 points. The final points ending the game came early in the 4th quarter, when back-up quarterback Brian Massey, fired a pass in the end zone to Freshman Chris Jones who made a spectacular diving catch for the points.

In less than four quarters of play, the Gorilla offense gained nearly 400 yards of total offense and 17 first downs. Grady's only points came late in the first quarter, when they recovered a fumbled Trent quick pitch in Trent's end zone.

The stout Gorilla defense, which allowed the Wildcats only 2 first downs, was lead by defensive end Sam Jones and middle linebacker Chris Simpson, both seniors. Head coach John Grimland was pleased with the progress, however, stated the road from here out was pretty well up hill, because of a strong schedule, in a competitive district. Next Friday, Trent will face the Rule Bobcats in a non-district game in Trent at 8:00.

 LOVE THOSE Badgers!



THE 5th GRADE CLASS AT MERKEL ELEMENTARY IS SELLING MERKEL BADGER T-SHIRTS. THE SHIRTS ARE PURPLE WITH A PURPLE AND GOLD EMBLEM AND ARE 50% COTTON & 50% POLYESTER

SHIRTS ARE \$8.00 EACH TO ORDER PLEASE FILL OUT THIS FORM

SIZE	ADULT
YOUTH	S _____
S _____	M _____
M _____	L _____
L _____	XL _____

TOTAL NUMBER OF SHIRTS ORDERED _____

TOTAL COST _____

PLEASE TURN IN YOUR ORDER FORM & YOUR MONEY TO ANY 5th GRADE TEACHER OR MAIL TO MERKEL ELEMENTARY 5th GRADE P.O. BOX 430 MERKEL, TEXAS 79536 OR CALL 928-4705 AND ASK FOR KATHY DOAN

MORE INFORMATION AVAILABLE FROM KAYE LYNN DEARING 928-5312 JAN WHIZENHUNT 928-5941 OR CATHY MALONE 928-5550

GO BADGERS

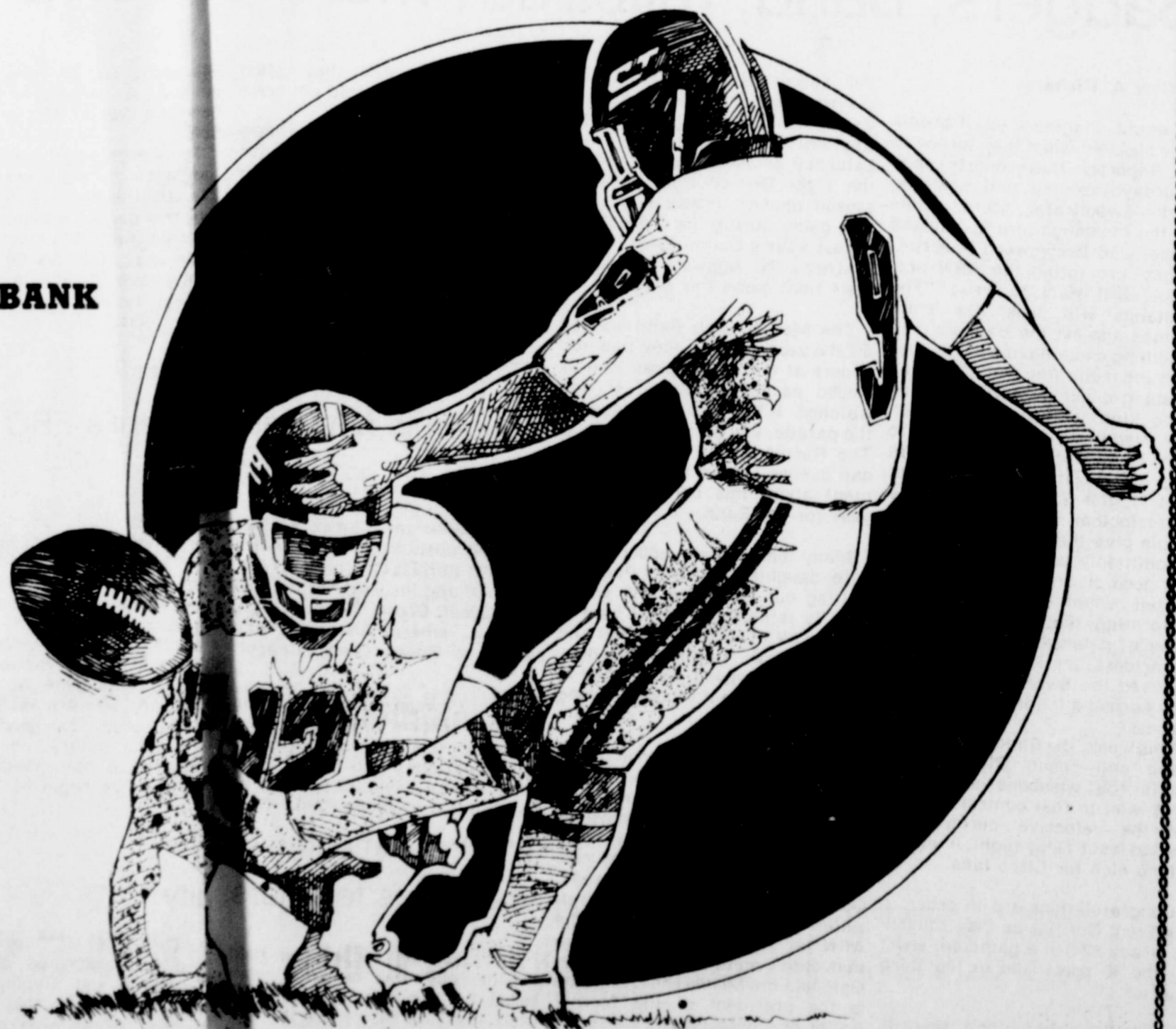
MERKEL VARSITY AT CISCO 8 P.M. FRIDAY
 THURSDAY CISCO IV HERE AT 6:30 P.M.

GO GORILLAS

VARSIY RULE HERE AT 8 P.M.



- BEN FRANKLIN'S**
- FARMERS & MERCHANTS NATIONAL BANK**
- PALMER PONTIAC & GMC**
- P & L AUTO PARTS**
- DUBOSE TEXACO**
- INDEPENDENT AMERICAN SAVINGS**
- MERKEL DRUG**
- WYLIE TRUCK STOP**
- STARBUCK FURNITURE**
- TAYLOR ELECTRIC**
- HICKS AUTO SUPPLY**
- CARSONS SUPERMARKET**
- HOME STATE BANK**
- TODAY'S VIDEOS**
- MERKEL BRICK & LUMBER**
- THE MERKEL MAIL**



Silly game
taken seriously

Art Lawler



Nobody was supposed to take this game serious. It was therapy for lunatics who had gone berserk when their croquet games began to slip.

The sheep looked on in amusement from Scotland's pastures, but nobody but a few shepherds paid sheep any mind back then.

There is no logical explanation for why we are swatting the little ball several hundred years later, though. You're not even considered a lunatic if you participate now. You can do it in broad daylight in front of important

people. Sheep aren't even allowed in the same pasture.

To make the whole exercise more difficult, humans have constructed kidney-shaped sand piles and water hazards. Greens are so smooth that striking the ball into the hole is like hitting a ball on a coffee table.

These obstacles are harmless-provided you swat the ball correctly. Unfortunately, almost nobody does. So

skin divers are dispatched to the bottom of the water hazards after closing hours.

The little balls are retrieved, taken to the pro shop and placed in big jars to be re-sold the next day - often to the same people who put the balls in the water in the first place.

Sometimes it's hard to tell whether a stroke has been taken or not. Grim faced officials have to be summoned to trees and sand traps. A crowd gathers and a national television audience looks on.

Did the swatter actually draw sand with his swatter before it addressed the ball setting directly on top of the sand?

Millions of arm-chair lunatics at home watch replays in slow motion. Did the spec of sand fly prematurely? Grown men in suits whisper into microphones, trying to explain the proper procedure for avoiding premature sand flippage. They caution against accidentally making contact

with the little ball while measuring it from just behind tree trunks, too. Somebody out there is always ready to assess a penalty.

After watching all this excitement on Sunday afternoon, the arm-chair lunatics go out to their favorite country clubs or many courses and try to emulate the pro swatters.

Husbands leave wives and wives leave husbands to swat the little ball for four or five hours a day. Children can either raise themselves or start swatting the little ball, too.

Continued obstinance on the part of the ball usually results in swatters hating pro swatters to watch them swing their swatters. Why does the ball fall with such depressing regularity?

Swat courses are becoming war zones, what with all the little balls flying in all sorts of unpredictable directions at 100 miles per hour. For some reason, when your ball is about to decapitate somebody you're supposed to yell, "Four." It doesn't make any sense, but it does get people's attention.

The physical knowledge can help for a while. But eventually technique alone is useless. By and large, this is a mental game. Men with long couches in their offices make \$60 an hour listening to people with perfect techniques weeping about their neurotic hooks and slices.

The problem with this game is that it ought to be easy.

Nobody lines up in front of a swatter to block his shot. Nobody throws the ball at the swatter. Nobody spits on it to make it more difficult to hit. People just stand back quietly an allow the swatter to humiliate himself.

For reasons known only to swatters, they're always barking commands at the ball while it's in mid-flight.

"Come back, come back."
"Fade sucker,"
"Get down, get down, (expletive deleted)."

The ball, being more sensible than humans, ignores the commands and goes wherever it pleases, seldom drawing applause for its independent spirit.

People justify this madness by saying it is good, gentlemanly (gentlewomanly), exercise.

Not a word of truth to it. People who fight losing battles with tiny balls for four straight hours are not gentle. As for exercise, the hardest thing most of them do is turn on the switch to the battery-powered riding cart. Or freeze their hands in the ice chest while looking for refreshments.

I know what I'm talking about when it comes to this swatting madness. With the exception of the 31 times I've retired, vowing never again to expose myself to such ridicule, I've been swatting for 20 years now.

If you're going to live in a world of lunatics, I suppose it's only logical to be a part of the global funny farm.

Copyright @ 1986, Art Lawler

THE STATE OF TEXAS To: DON DAVENPORT, dba Don Davenport Operating Address Unknown Defendant, Greeting:

You are hereby commanded to appear by filing a written answer to the Plaintiff's Petition at or before ten o'clock A.M. of the first Monday after the expiration of forty-two days from the date of the issuance of this citation, same being Monday the 6th day of October 1986, at or before ten o'clock A.M. before the Honorable 350th District Court of Taylor County, Texas, at the Court House of said County in Abilene, Texas.

Said Plaintiff's Amended Petition was filed in said court on the 9th day of July, 1985 and Supplemental Petition was filed on June 18, 1986, in this cause numbered 750-D on the docket of said court, and styled, SAFARI DRILLING CORPORATION Plaintiff, vs. DON DAVENPORT dba Don Davenport Operating Defendant.

The names of the parties to the cause are as follows: SAFARI DRILLING CORPORATION are Plaintiffs and DON DAVENPORT dba

Don Davenport Operating are Defendants.

A brief statement of the nature of this suit is as follows, to-wit: Plaintiff delivered certain goods and services to the Defendant in accordance with the terms of a drilling contract entered into between the Plaintiff and Defendant. Defendant has failed and refused to pay for the goods and services furnished, and Plaintiff ask for judgment against the Defendant for the sum of \$59,632.31, for attorneys fees as cited in the petition, for pre-judgment interest as permitted by law, for an order of sale, for costs of suit, and for such other and further relief as Plaintiff may be entitled either by law or in equity, as is more fully shown by Plaintiff's Petition on file in this suit.

If this citation is not served within ninety days after the date of its issuance, it shall be returned unserved.

The officer executing this process shall promptly execute the same according to law, and make due return as the law directs.

Issued and given under my hand and the Seal of said Court, at office in Abilene, Texas,

this the 22nd day of August A.D. 1986.

Attest: Rilla Mahoney, Clerk, 350th District Court, Taylor County, Texas, By JoAnn Lackey Deputy. 180-4tc-100

CITATION BY PUBLICATION

THE STATE OF TEXAS TO: GEORGE PATRICK MCDONALD, Address Unknown, Respondent:

GREETINGS:

YOU ARE HEREBY COMMANDED to appear and answer before the Honorable 326th District Court, Taylor County, Texas, at the Court-house of said County in Abilene, Texas, at or before 10 o'clock a.m. of the Monday next after the expiration of 20 days from the date of service of this citation, then and there to answer the petition of LINDA S. MCDONALD, Petitioner filed in said Court on the 26th day of Aug. 1986, against GEORGE PATRICK MCDONALD, Respondent, and said suit being numbered 13,697-C on the docket of said Court, and entitled "In The Matter of The Marriage of LINDA S. MCDONALD and GEORGE PATRICK MCDONALD."

The nature of which suit is a request That the Court grant a divorce and such other relief requested in this petition.

The Court has authority in this suit to enter any judgment or decree dissolving the marriage and providing for the division of property which will be binding on you.

The Court has authority in this suit to enter any judgment or decree in the child interest which will be binding upon you. If this citation is not served within ninety days after the date of its issuance, it shall be returned unserved. The officer executing this writ shall promptly serve the same according to requirements of law, and the mandates hereof, and make due return as the law directs.

Issued and given under my hand and the Seal of said Court at Abilene, Texas, this the 26th day of Aug., 1986.

Rilla Mahoney, District Clerk, 326th Dist. Court Taylor County, Texas, By Patricia Henderson, Deputy. 180-4tc-80

Senior Citizens will elect officers

The Merkel Senior Citizens will meet Wednesday, Sept. 17th for a covered dish luncheon.

New officers for the year will be elected and new members are welcomed to attend.

Mulberry Canyon-Blair reunion set

The Mulberry Canyon and Blair reunion will be held Oct. 4th at the Senior Citizens Building.

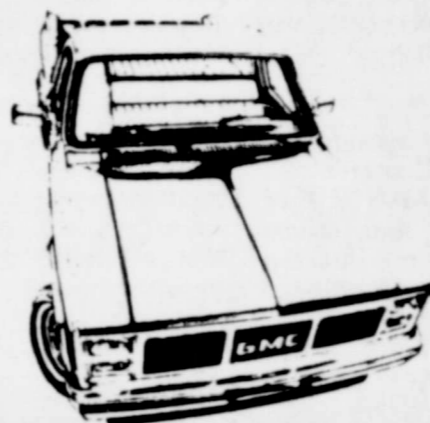
You are asked to bring a covered dish. Further information is available by calling 928-5074.

\$99 OVER DEALER INVOICE ON ALL 1/2 TON GMC PICKUPS
(Suburbans Not Included)

PLUS **2.9% GMAC FINANCING**

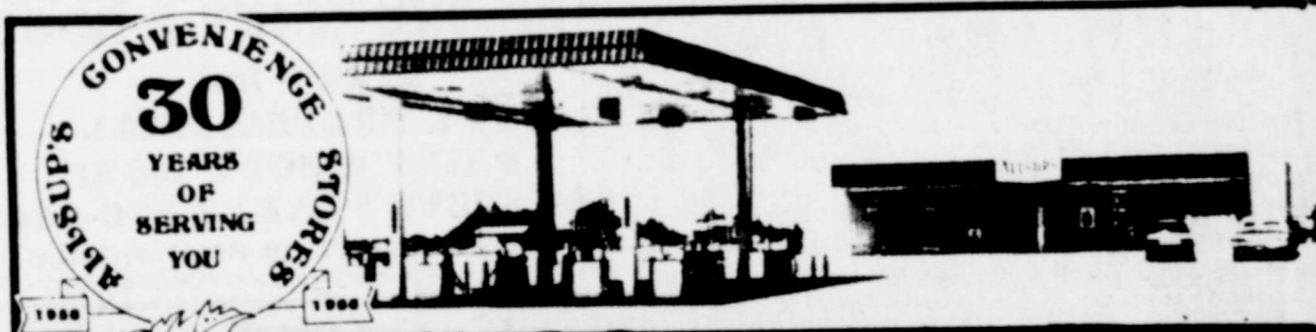
HUGE SELECTION

OR **CASH REBATES UP TO \$700**



FREE AIR CONDITIONING ON ALL SIERRA CLASSICS **\$750 VALUE**

MERKEL I-20/LOOP 39 FIRST EXIT
"YOU'LL LIKE OUR PRICES" "WE SELL 'EM - WE LEASE 'EM"
PALMER PONTIAC & GMC
RON PALMER KENT SATTERWHITE BOB PAZOUR
673-1182 ABILENE - 676-8931 MERKEL PHONE 928-5113



30 YEARS OF SERVING YOU
FRESH & HOT **Breakfast Burritos** FOR **299¢**
ALLSUP'S **Hot Links** 2 FOR ONLY **99¢**

ALLSUP'S CONVENIENCE STORES

WOLF BRAND PLAIN **Chili** 15 OZ CAN **99¢**
WOLF BRAND W BEANS **Chili** 15 OZ CAN **79¢**
FOR GOOD COOKING **Wesson Oil** 38 OZ BTL **\$1.89**
HUNT'S WHOLE PEELED **Tomatoes** 2 14 1/2 OZ CANS **99¢**
HUNT'S TOMATO **Juice** 46 OZ CAN **79¢**
LIBBY'S VIENNA **Sausage** 2 5 OZ CANS **89¢**
GERHARDT'S JUMBO **Tamales** 28 OZ CAN **\$1.29**
MADE WITH 99% PURIFIED WATER **Allsup's Ice** LARGE BAG **\$1.09**
DEL MONTE IN IT'S OWN JUICE **Pineapple** 2 15 1/2 OZ CANS **\$1.19**
KRAFT STACK PACK AMERICAN SINGLES **Cheese** 6 OZ PKG **\$1.19**
KRAFT HALFMOON COLBY **Cheese** 16 OZ PKG **\$2.49**
PILLSBURY BUTTERMILK COUNTRY STYLE **Biscuits** 5 10 1/2 OZ CANS **\$1.00**
ALLSUP'S ASST. FLAVORS **Ice Cream** 1 GAL PND CTN **\$1.59**

16 OZ. CUT GREEN BEANS
15 OZ. SPINACH
17 OZ. SWEET PEAS
17 OZ. WH. KERN. GOLD CORN

Del Monte Vegetables

3 \$1
CANS

30 Year Anniversary Special
Allsup's Tallsup FOR ONLY **39¢** 32 OZ CUP

MEMBERSHIP \$1
MONDAY WEDNESDAY RENT 1 GET 1 FREE
2 MOVIES FOR \$3
VCR RENTAL \$6 PER DAY

Enjoy **Coke** SIX PACK **\$1.99**

ELEC. PERK AUTOMATIC DRIP COFFEE
Folger's **\$2.59**

PRICES EFFECTIVE SEPT. 11, 12, 13, 1986
WATER PAK CHICKEN OF THE SEA LIGHT **59¢**
ENRICHED FLOUR **89¢**

Trent ISD picks up 31 students, new principal

The 1986-87 year for the Trent School System this year was a growing one with 184 students starting classes. This is an increase of 17 percent from last year when the 86 classes closed with an enrollment of 153.

Kindergarten teacher Mrs. Linda Varner was pleasantly surprised when the 12 children who had pre-registered turned into 17 opening day. Mrs. Varner is beginning her 7th year teaching Kindergarten in Trent.

New Principal Arnold Evans was very encouraged by the increase. "We certainly like to see those bigger classes, especially in our Grade School," said Evans. "The main growth was with the younger classes, but we have also had some new High School kids as well."

Mr. Evans was previously Principal with Beaumont Christian Schools, where he worked for the past 4 years. His wife, Shirley works full time at ACU, and his 4 children attend school in Trent.



New Trent principal Arnold Evans

Why haven't we heard about homecoming sooner?

Dear Editor:

I just learned yesterday that Merkel's Homecoming is September 19th. Why hasn't there been any publicity on it in the Merkel Mail? We out of town subscribers like to know about these events in advance so that we can arrange our schedules to attend.

Local art group holds meeting

The Merkel Art Association met September 8th at Taylor Telephone Cooperative. A business meeting was presided over by Bonnie English, Club President. The art program for the 1986-87 year was planned, and the year books were distributed for approval. Dot Ciker was welcomed as a new member. Dorothy Whisenhunt will give the October Art Demonstration. All art members were invited to attend the Fortnightly Study Club meeting Sat. Sept. 13 at the Heritage Hall.

The following members were present: Marie Beard, Christee Barnett, Ruth Buster, Imogene Coleman, Ruth Cox, Dot Coker, Bonnie English, Pat Neff, Ethel Pee and Betty Toombs.

Preceptor Eta Omega holds recent meeting

Preceptor Eta Omega, Chapter of Beta Sigma Phi met September 2, at the REA meeting room.

Committee Chairmen gave reports on upcoming events.

Awards were presented to Kathy, Mamie, Betty and Blanche for perfect attendance and Ruth Tipton for 1985-86 program of the year.

Plans were made to work on cookbooks at the next meeting.

Program for the evening was presented by Mamie Steck, on Rules and By Laws of Beta Sigma Phi and Responsibilities of Committees.

Refreshments were served by Mamie to guest Sandra Wurst and members Jane Carson, Betty Conley, Liz Eager, Blanche Hewitt, Kathy Leverich, Opal Garner Y Sadler, Betty Lu Satterwhite, Ruth Tipton and Connie Ybarra.

Local club holds Skip-Bo party

Preceptor Eta Omega Chapter of Beta Sigma Phi met August 28, in the home of Betty Conley for a "Skip-Bo Party."

Guest of honor was Louise DuBose, past president, who was presented the chapter scrapbook for 1985-86.

Finger foods were served to the following: Louis Dubose, Charlotte Starbuck, Opal Garner, Jane Carson, Betty Lu Satterwhite, Y Sadler, Kathy Leverich, Blanche Hewitt, Connie Ybarra, Ruth Tipton, Kay Lynn Dearing, and Betty Conley.

MISD lunch menu

The Merkel school menu is as follows:

Monday September 11: meatloaf, blackeyed peas, seasoned spinach, cornbread twist, jello with fruit.

Friday September 12: Hamburgers, french fries, lettuce, tomato, pickle, onion, peanut butter cookies.

Monday September 15: Fish nuggets, cole slaw, macaroni & tomatoes, corn bread, pineapple tidbits.

Tuesday September 16: Fiesta, pinto beans, lettuce, tomato, rice, cherry cobbler.

Wednesday September 17: Burritos, cheese wedge, lettuce & tomato salad, mixed vegetable, whipped jello.

Thursday September 18: Bar-B-Q links, fried okra, baked beans, corn bread, sliced pears.

Friday September 19: Hamburgers, lettuce, tomato, pickles, onion, french fries, walk to school cookies.

Garden club

The Merkel Garden Club will resume meeting at 12:00 noon Thursday, September 18th, ending the summer break.

A covered dish luncheon is scheduled at the home of Jewel Criswell, 1510 Sunset Drive, with Leota Sherrill and Billie Hartley as co-hostesses.

LET'S TUMBLE

WHERE :
FIT 'N FIRM
123 KENT
WHEN:
REGISTRATION
BEGINS

SEPT 15th 10-12 & 2-6
WHO: CHILDREN FROM
FROM AGES 2 TO
9 YEARS OLD

PRICE:
\$20 A MONTH
(1 DAY A WEEK)



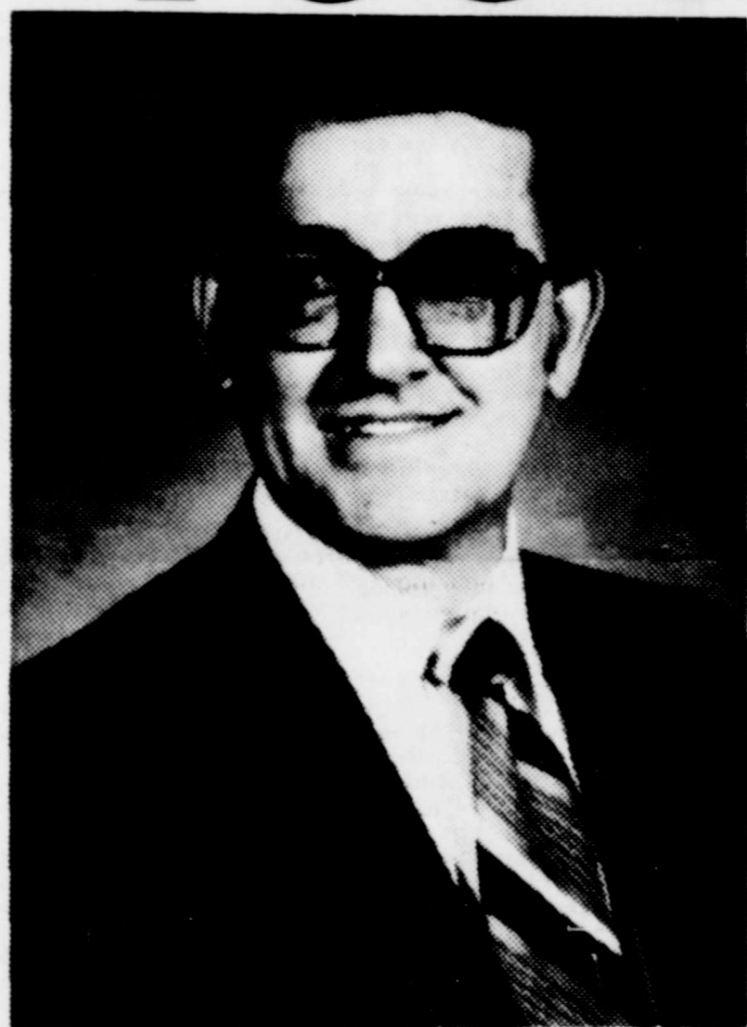
IF YOU WOULD LIKE TO INQUIRE
ABOUT OUR CLASS, CALL KAREN 928-5561
OR CALL FIT 'N FIRM 928-4026
CLASSES WILL START SEPT. 17th

★ NOW OPEN ★
**MELBA'S PASTRY & SILK
FLOWER ARRANGEMENTS**
INSIDE TRAILER AT 105 RUNNELS 928-4330
NOW TAKING ORDERS FOR
FOOTBALL MUMS

I passed the news of the upcoming Homecoming on to another ex-Merkel High graduate who lives in this area. We talked of how disappointed we had been in the past when we had driven several hundred miles to attend Homecoming or Class Reunions and then to find that so many of you who live in or near Merkel didn't attend. We go hoping to see you so don't disappoint us this year.

Hoping to see all of you at Homecoming, especially you classmates who graduated in 1938.
Fredia Farmer Egger
Rt. 3, Box 413
Bastrop, Texas 78602

YOU ARE INVITED



BIOGRAPHICAL SKETCH OF
ED C. WHARTON
Teacher at Sunset School of
Preaching, Lubbock, Texas.

Have been engaged in preacher training for 22 years.

Formal education at Abilene Christian University, Florida Christian College, and Lubbock Christian College.

Author of five text books, three course guides (all published), and tracts for use in schools of preaching, colleges, and Bible classes. Recent publications, Christianity, A Clear Case of History, A defense of the Christian faith on historical grounds written for the general reading public, and Christ and the Church: The Fulfillment of Purpose and Prophecy, a presentation of the historical, doctrinal, and interpretive divisions of the scheme of Redemption, with special study on Premillennialism and guidelines for a correct interpretation of Prophecy.

Numerous missionary trips to Europe and Asia for intensive Bible teaching and evangelistic work. Annual trips to Eastern Europe for special teaching in Poland.

Teacher annually in the Macquarie School of Biblical Studies in Sydney, Australia. Conduct about 18-25 gospel meetings and intensive Bible schools annually.

Wife Martha and four children. Address in Lubbock, Texas.

TO HEAR
GUEST EVANGELIST
ED C. WHARTON

DATES: SEPT. 21-24

LOCATION: MERKEL CHURCH

OF CHRIST 818 ASH STREET

SERVICES: SUNDAY 9:45 a.m.

Bible Study 10:30 a.m.

Worship 6:00 p.m.

Monday-Weanesday Evenings

at 7:30 p.m.

Theme: *The Distinctive Nature of the New Testament Church*

Sunday Bble Study: *"The Undenominational Church"*

Sunday Vorship: *The Distinctive Pattern of the New Testament Church*

Sunday Vorship: *The Identity of the New Testament Church*

Monday evening: *The Distinctive Nature of the New Covenant*

Tuesday evening: *The Distinctive Nature of the One Baptism*

Wednesday Evening: *Fortifying the Body of Christ for additional information, call 928-5024*

Bob J. Brandon, Minister

September is deadline for crop insurance

Texas farmers have until the last day of September to buy multi-peril crop insurance for small grains.

"Crop insurance is basically a risk management strategy in which a farmer pays a premium to protect against large, unpredictable yield losses," says Dr.

Ashley Lovell of Stephenville, economist with the Texas Agricultural Extension Service, The Texas A&M University System.

"Crop insurance can assure a farmer of a minimal cash flow in case of a major crop loss so that he will have a chance to farm the new year," adds the economist.

Producers who insured their small grain crops last year will have their contracts renewed automatically unless they cancel them, Lovell points out. However, any changes in the level of coverage or price election must be made by September 30.

Multi-peril crop insurance for 1986-87 wheat, oats and barley will

be available only under the Actual Production History (APH) program, Lovell explains. Under APH, yield guarantees are based on actual production records of the insured or grower rather than on county average yields as was the case previously under the area coverage plan. This means that a farmer must provide evidence of previous years' production and acreages.

Selecting crop insurance requires choosing a price election and a yield guarantee of either 50, 65, or 75 percent of the insurable yield which reflects the past production history, explains the economist. Price elections are \$1.00, \$1.25, or \$1.50 a bushel for barley; 60 cents, 80 cents or \$1.05 for oats; and \$1.50, \$2.00, or \$2.60 a bushel for wheat. The combination of yield guarantee and price election determines the level of insurance coverage and cost of the premium.

Lovell reminds farmers that the premium cost for this insurance reflects the federal subsidy of the premium.

Interested producers can obtain additional information by contacting a local firm that offers multi-peril crop insurance.

Fortnightly group meets Saturday

The Fortnightly Study Club will meet Saturday morning Sept. 13 at 10 o'clock in Heritage Hall for our Sesquicentennial Program. Mary Lou Gilbreath, of Stamford, will review Martha Ann Turner's, "The Yellow Rose of Texas: her

saga and her song". The interested public is invited for this guest day program.

Recently a group of club members attended a Mesquite District T.F.W.C. Tea honoring the new district president, Mrs.

Archie Nichole hosted by the Wednesday Club in Baird. Those attending from Merkel were Anna Lou Ferguson, Ruby Hammonds, Joyce Ja. Allene Knight, Alice King, Alwyne Sandusky, Anna Belle Shouse and Maurine White.

Xi Nu Chi starts off year

Beta Sigma Phi's International Chapter, Xi Nu Chi, held its first meeting of the 1986-87 year at Judy Elliott's home. The Saturday morning brunch was conducted by President Anita Allen.

Program had been planned during the summer and were ready to hand out to members. Judy Elliott discussed the contents and all were accepted as presented.

Refreshments of a center fruit display with breakfast rolls were served to Mary Hill, Connie Harris, Barbara Gardner, Anita Allen, Nancy Duncan, Donna Lang and Judy Elliott.

Trent lunch menu

The Trent School menu is as follows:

Thursday September 11: Lunch: bar-b-q beef patties, creamed potatoes, fried okra, jello with fruit, rolls, milk. Breakfast: donuts, juice, milk.

Friday September 12: Lunch: hot dogs, cheese sticks, french fries, pear slices, peanut butter cookies, milk. Breakfast: Donuts, juice, milk.

Monday September 15: Breakfast: Juice, Cereal, Milk; Lunch: Steakfingers, gravy, mashed potatoes, green beans, chocolate cake, rolls, milk or tea.

Tuesday September 16: Breakfast: juice, cheese toast, milk; Lunch: spaghetti with meat sauce, english peas, salad, ice cream, rolls, milk or tea.

Wednesday September 17: Breakfast: Juice, biscuits with sausage, milk; Lunch: fish, macaroni with cheese, cole slaw, jello with topping, rolls, milk or tea.

Thursday September 18: Breakfast: juice, donuts, milk; Lunch: Mexican fiesta, corn, salad, cinnamon rolls, crackers, milk or tea.

Friday, September 19: Breakfast: juice, oatmeal, milk; Lunch: Barbeque on bun, french fries, fruit salad, milk or tea.

To start your subscription, call 928-5712 CALL IN YOUR CLASSIFIEDS 928-5712

CANS 6 PACK HOT ONLY

Dr. Pepper \$1.49

Hi-Dri PAPER TOWELS 65¢

Bacon FRESH SMOKED \$1.99

SLICED SLAB LB

Coffee MAXWELL HOUSE \$2.95

1 LB

1400 N 1ST 928-4912

HANDY FOOD STORE

HOMECOMING SEPT. 19th

GET IN THE FOOTBALL SPIRIT WITH ANN'S FLOWERS. HURRY IN FOR YOUR SILK & FRESH FOOTBALL MUMS, GARTERS & SPIRIT BUGS. MAY BE PURCHASED THROUGH THE HIGH SCHOOL OR ANN'S FLOWERS A WIDE SELECTION OF ACCESSORIES TO DECORATE YOUR MUMS OR GARTERS. OUR SPIRIT BUGS WILL GIVE YOU FOOTBALL FEVER ANN'S FLOWERS 928-4742 1025 N 2nd

Joe's Boots

JUSTIN ROPERS FOR MEN & WOMEN \$69.95

★ SOME ROPERS AS LOW AS \$49.95 WE ALSO HAVE

EVERY DAY SPECIALS ON BOOTS BY LARRY MAHAN, TONY LAMA & HONDO

★ YOU CAN'T BEAT OUR PRICES OR QUALITY

I-20 WEST - MERKEL

MHS classes of 47,48 &49 will meet

The classes of 1947, 48 and 49 are having class reunions at the Merkel Senior Citizens Building Saturday night from 7-10. Persons attending are asked to bring chips and dips.

Copeland's have new daughter

Chelsea Marie Copeland arrived August 17, 1986 and boosted the population of Trent up one more notch. Her parents are Mark and Rebecca Copeland and she has an older brother, Chance. Welcome Chelsea. Glad to have you.

BETTY, BOBBY & BILLY INVITE YOU TO SHARE GROVER C. GILBERT'S 80th BIRTHDAY PARTY SATURDAY SEPT. 13th 2-4 p.m. MERKEL SENIOR CITIZENS CENTER

PUBLIC NOTICE BRIEF EXPLANATORY STATEMENTS OF PROPOSED CONSTITUTIONAL AMENDMENTS GENERAL ELECTION NOVEMBER 4, 1986

PROPOSITION NO. 1 ON THE BALLOT

Senate Joint Resolution 15 proposes a constitutional amendment that would permit the legislature to provide by general law for the apportionment of the value of railroad rolling stock among the counties in which the property of the railroad is located for purposes of property taxation, and would delete the requirement that the Comptroller participate in making the allocation. To comply with both statutory and constitutional law, the apportionment currently is being made by the State Property Tax Board in conjunction with the Comptroller.

The proposed amendment will appear on the ballot as follows:

"The constitutional amendment to allow the legislature to provide by general law for the apportionment of the value of railroad rolling stock among counties for purposes of property taxation."

PROPOSITION NO. 2 ON THE BALLOT

Senate Joint Resolution 33 proposes a constitutional amendment that would replace the constitutional requirement that the subject of a bill be expressed in its title with a mandate that each house of the legislature adopt rules of procedure that would require the subject of each bill to be expressed in its title in a manner that gives the legislature and the public reasonable notice of that subject. Determining compliance with the rule would be the responsibility of the legislature. Currently, a law is invalidated if a court finds its caption is defective. The amendment would provide that past and future enactments may not be held void on the basis of an insufficient title.

The amendment also would eliminate the suggestion that the state's laws be revised every ten years, and instead would provide for continuing revision of state laws.

The proposed amendment requiring each house to include in its rules of procedure a rule that each bill contain a title expressing the bill's subject, and providing for the continuing revision of state laws."

PROPOSITION NO. 3 ON THE BALLOT

House Joint Resolution 73 proposes a constitutional amendment that would permit the Legislature to authorize any county, city, town, or other political subdivision to use public funds or credit to pay insurance premiums on nonassessable life, health, or accident policies. Due to the prohibition in the constitution against the lending of credit and granting of public money, political subdivisions currently are prohibited from becoming shareholders in associations such as mutual insurance companies, in which policyholders are shareholders. A nonassessable mutual insurance policy does not allow a company to raise capital by assessing the policyholder an extra amount on a pre-

mium. This amendment will allow mutual insurance companies and stock companies to bid for life and health group policies of political subdivisions. Public liability will be limited to the payment of premiums specified in the contract.

The proposed amendment will appear on the ballot as follows:

"The constitutional amendment allowing political subdivisions the opportunity to engage in and transact business with authorized mutual insurance companies in the same manner as with other insurance companies."

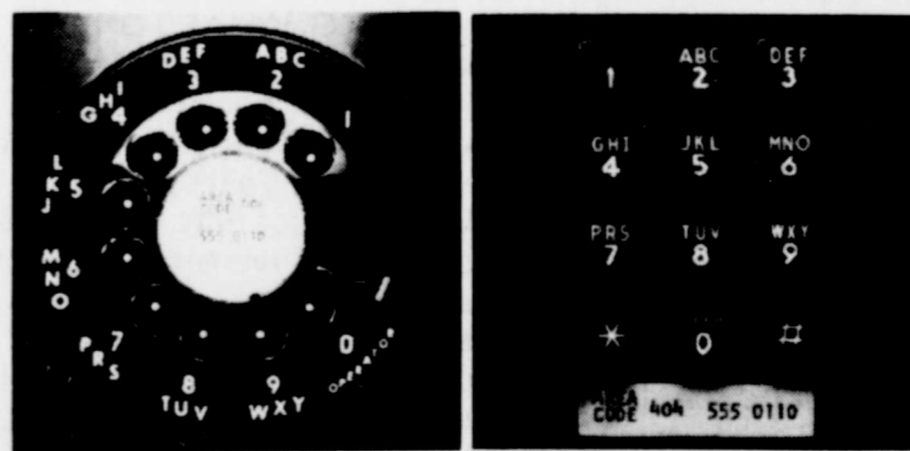
PROPOSITION NO. 4 ON THE BALLOT

Senate Joint Resolution 4 proposes a constitutional amendment that would repeal the prohibition against branch banking by state banks and would allow state banks and national banks domiciled in this state to establish and operate banking facilities at locations within the county or city where they are domiciled. The amendment would also authorize the Legislature to permit a state bank or a national bank domiciled in this state to engage in business at more than one place if it acquires a failed state bank or national bank domiciled in this state.

The proposed amendment will appear on the ballot as follows:

"The constitutional amendment to provide that a bank may offer full service banking at more than one location within the city or county where its principal facility is located, subject to limitations and restrictions provided by law."

Estos son los informes explicatorios sobre las enmiendas propuestas a la constitucion que aparecerán en la boleta el dia 4 de noviembre de 1986. Si usted no ha recibido una copia de los informes en español, podrá obtener una gratis por llamar al 1/800/558/8683 o por escribir al Secretario de Estado, P.O. Box 12887, Austin, Texas 78711.



On which phone would you rather dial 999-9999?

Dial such a number on a rotary phone and it seems to take forever to finish.

But with Contel's Touchtone service, you can dial 999-9999 as quickly as 111-1111. In fact, you'll be able to dial any number faster than with a regular rotary dial.

Plus, with Touchtone you'll also have easier access to such convenient features as Call Waiting, Call Forwarding, Speed Calling, Automatic Credit Card Dialing, and Three-Way Calling.

So use your rotary phone to dial one last number—Contel's. And order the phone service that will have you dialing faster than ever before.

CONTEL Telephone Operations

Lower cotton prices keep sales moving

A drop in U.S. cotton prices has sales moving briskly, and that means farmers need to keep a wary eye on market developments.

U.S. cotton prices dropped about 40 cents a pound at the beginning of August, says Dr. Carl Anderson, economist with the Texas Agricultural Extension Service, The Texas A&M University System. This, combined with a weaker dollar, is expected to substantially increase world trade, discourage foreign competitive production and increase cotton consumption.

Thus Anderson sees improved prospects for a fairly reasonable U.S. cotton supply-demand balance by the end of the 1987 crop year.

"Recently announced provisions for implementing cotton certificate programs on inventory adjustment and first handler certificates have added momentum to the potential of a 14 million bale offtake this year," says Anderson. "This compares to an offtake of 8.4 million bales in 1985. With a new crop potential of 10 to 11 million bales, 1986 ending carry-over may decline 3 to 4 million bales from the 9.3 million 1985 carryover."

The volume of cotton certificates to fulfill from the CCC loan during the certificate's nine month life is sizeable, adds the economist. Each of the estimated 2.5 million bales of "free" cotton on Aug. 1 generated a certificate

value equal to two to four bales. This "free" cotton alone should boost loan equity demand substantially because it will equal to nearly all the remaining 6.85 million bales of old cotton under CCC loan.

Further, under current world price levels each first handler certificate for a 1986 bale purchased will result in a value of about one to two bales, notes Anderson. On August 1 the adjusted world price of U.S. cotton was 22.37 cents, with a coarse count adjustment a minus 3.33 cents. Much of the Texas cotton crop has a 5-to 15-cent per pound adjusted world price value.

"All this suggests heavy trading in the equity market to redeem a

large amount of certificates during the 1986 cotton season," the economist points out. "The world cotton price is probably overreacting on the downside, so continued wide swings in prices may occur. If the market makes a noticeable upturn by early 1987, expect renewed interest in forward contracting."

"Since cotton commodity options are available for roughly 15 to 17 months ahead, producers and buyers have considerable flexibility in pricing opportunities," says Anderson. "They can use pricing strategies such as options and futures to accomplish price insurance and at the same time benefit from a possible upward price move."

Cemetery donors

The Merkel Cemetery Donations are as follows:

LaVerne West in memory of Sidney Foy; Mr. and Mrs. Billy Bob Toombs in memory of Henry Ueckert; Mrs. Audre McLeod in memory of Henry Ueckert; Esther Sunday School Class in memory of Minnie Farr; Mr. and Mrs. Earl Palmer in memory of Henry Ueckert; Mrs. Wilmer Criswell in memory of Weldon McAninch; Mr. and Mrs. D.J. Richie in memory of Henry Ueckert; Jo Barnett in memory of Minnie Farr and Henry Ueckert; Mr. and Mrs. Robert Campbell in memory of Henry Ueckert; Mr. and Mrs. H.G. Mitchell in memory of Henry Ueckert; Mr. and Mrs. Pat Cypert, O.H. Davis in memory of Henry Ueckert; Geraldine Hettler in memory of Henry Ueckert; Mrs. B.M. Ueckert in memory of Henry Ueckert; Mrs. W.B. Toombs in memory of Henry Ueckert; Bonnie & George English, Hazel Pack in memory of Minnie Farr; Mr. and Mrs. Robert Higgins in memory of Minnie Farr; Oscar and Nell McLean in memory of Ray Reynolds; George and Marie Derrick in memory of Ray Reynolds; C.E. Farmer; William & Edith Bond; Mr. and Mrs. Earl Palmer in memory of Ray Reynolds; Willie Reynolds in memory of Ray Reynolds; Margaret McAninch in memory of Minnie Farr; Fannelle Boney in memory of Minnie Farr; Mr. and Mrs. Joe E. Lassiter in memory of Minnie Farr; Mr. and Mrs. Henry Howard in memory of Minnie Farr.

Also: Mrs. Jewell Criswell in memory of Minnie Farr; Mark and Billie Malone in memory of Services held here

for 'Al' Griffith

Jessie Allen (Al) Griffith, 80, of Noodle, died Sept. 5th at Hendrick Medical Center in Abilene.

Funeral services were held Sunday at the Trent Baptist Church with Carl Rea and Bobby Fred officiating. Burial followed at Rose Hill Cemetery here under the direction of the Starbuck Funeral Home.

Born Jan. 29th, 1906 in Haskell County, he was a retired farmer and rancher. He married Fay Cook June 30th, 1953 in Miami, Ok. He was a Baptist and had lived in the area most of his life.

He is survived by his wife of Noodle; two sons, Douglas and Dick, both of Noodle; a daughter Lettie Rea of Noodle; a sister Faye Daniel of Abilene; five brothers, Roy, Jack and Woodrow of Abilene and Bill and Sammie of Paint Creek and seven grandchildren.

Pallbearers included Albert Rhodes, Terry Benningfield, Steve Best, Eulan Hatfield, Lloyd Mitchell, Jerry Sanders, James Isreal and Jimmy Martin.

Ann Irvin's services held here

Ann Irvin, 46, of Merkel, died Wednesday at an Abilene hospital.

Services were at 2 p.m. Saturday at First United Methodist Church in Merkel with the Rev. John Waggoner officiating. Burial was in Rose Hill Cemetery under the direction of Starbuck Funeral Home.

She was born in Hillsboro. She moved to Merkel in 1978. She lived in Abilene for 20 years before moving to Merkel. She was a member of the Church of Christ and Beta Sigma Phi.

Survivors include her husband, Wayne Irvin of Merkel; five daughters, Martha Burdell of Dallas, Carol Burdell Morris and Gail Parker, both of Abilene, and Amy Irvin and Abby Irvin both of Merkel; three brothers, Leonard Taylor of Fort Worth, Kenneth Taylor of Brownwood and Jack Taylor of Korea; two sisters, Jean Dunn of Houston and Judy Snow of Graham; and four grandchildren.

Minnie Farr; Ted Wilson in memory of Minnie Farr & Lamoyan Hughes; Rubye Moorhouse; Cy & Ethel Pee; Gladys Breaux in memory of Bill Merritt; June Toombs; Alvin & Mattie Lou Wozencraft in memory of Weldon McAninch; Mrs. V.E. Eller; Mr. and Mrs. Earl Palmer in memory of Henry Lee Stout; Lou-McDonald in memory of Vincent Barnett & Mary Cleo Sadler; Mr. and Mrs. Ray Orsborn in memory of Henry Lee Stout; Comer and Lucy Haynes in memory of Engal Meadow Tippett; Mr. and Mrs. F.R. Stanford in memory of Henry Stout; Mr. and Mrs. W. Fred Yardell; Nina Orsborn in memory of Mrs. Edna Brown; Mildred Rister in memory of Mrs. Lillie M. Dean; Lila M. Touchstone in memory of Weldon McAninch, Vincent Barnett, Mary Cleo Sadler; Mr. and Mrs. Ray Cox in memory of Lamoyan Hughes; Ted Wilson in memory of Chock Hutcheson and Henry Stout.

JUNIA LEE'S DONUTS ETC GOOOD KRISPY FRIED CHICKEN WHOLE OR BY THE PIECE



DONUTS
CINNAMON ROLLS
BEAN BURRITOS
MEAT BURRITOS
HOMEMADE PIES
MADE TO ORDER
COLE SLAW
& POTATO SALAD
HOMEMADE AND
MADE FRESH DAILY
ORDERS TAKEN FOR
SPECIAL OCCASIONS
OPEN MONDAY-
FRIDAY 6:30 am -
ASSORTED COOKIES
1105 N 5th MERKEL
928-5087

DON'T MISS THE Battle of Songs



THE MASTERS V
JAMES JAKE STEVE J.D.
BLACKWOOD HESS WARREN SUMNER LISTER

Special Added Attractions.

The Kingsmen Qt.
The Gold City Qt.
Friday Sept. 19th 8:00 P.M.
Abilene Civic Center
Tickets \$7 and \$8 available
At Civic Center Box Office
676-6211.

WHAT'S YOUR EXCUSE FOR NOT LOSING WEIGHT?

Excuse #12:
"Nothing seems to work."

Forget all the fad diets, the how-to books, and helpful hints from family and friends. Millions of people have lost millions of pounds with Weight Watchers. And you can too. Why? Because with Weight Watchers Quick Start! Plus, you get results which motivate you to stick with it. After that, you can lose quickly and easily. And learn how to keep it off.

Excuse #63:
"It costs too much."

Weight Watchers is always affordable. Especially now. Because now through September 28, just \$7.00 covers your registration fee and your first meeting. You save \$13.00. And you take the first step to a trimmer, healthier you.

Join Now...Only

Offer Ends September 28, 1986.

Come to the Weight Watchers meeting nearest you.



MERKEL
Church of Christ Family
Center
818 Ash Street
Mon. 5:30 pm

NOTHING WORKS LIKE WEIGHT WATCHERS
1-800-692-4329

FIT-N-FIRM
MORNING AEROBIC CLASSES
STARTING SEPT 8
EVERY MON-WED-FRI
AT 10 AM
ALSO AEROBIC CLASSES
AT 5:30 PM
COME JOIN THE FUN!
AEROBIC CLASSES \$15 PER MONTH

"RITE-WAY PLUMBING CO."
For all your plumbing needs!
anytime day or night and weekends
Call 928-5541
Servicing Merkel, Trent,
& surrounding areas!
P.O. Box 637 Merkel, Tx. 79536

A FULL SERVICE AGENCY
HAMMOND
INSURANCE
AGENCY
★ HOMEOWNERS ★ AUTOMOBILE
★ COMMERCIAL FIRE & CASUALTY
★ LIFE ★ HEALTH
YOUR HOME TOWN INDEPENDENT INSURANCE AGENT
WE ARE HERE
WHEN YOU NEED US
BOX 547 MERKEL 928-4122
PERSONAL ATTENTION

**DON'T SHOOT
AT POWER
LINES!**

NEVER SHOOT AT POWER LINES or the insulators that hold them, because the result could be a dangerous downed electric line. A severed line could cause a serious electrical outage, and the downed line itself could be extremely hazardous.

ADDITIONAL SAFETY TIPS:
• **Use Power Tools Wisely**
Be sure wiring is in good condition and all circuits are grounded. Never use electric tools in the rain or on wet surfaces. Also, when buying new equipment, look for the "UL" seal of approval from Underwriters Laboratories.

• **Keep Children Away from Electrical Outlets**
Don't let small children play near electrical outlets. A child could put some object in an outlet when you're looking away. A wise safety precaution would be to put safety caps in all wall outlets.

• **Always Disconnect Cords by Pulling on the plug**
When disconnecting electrical items, be sure to pull on the plug — not the cord! If you pull on the cord, you'll eventually wear it out and expose hazardous wires. Also, don't overload extension cords or outlets.

WEST TEXAS UTILITIES COMPANY
WTU
A Member of The Central and South West Energy

Remember **REDDY** Supplies the energy — but only YOU can use it safely!

PARADE SPECIAL

Fav Festival Value!

PRICES GOOD
WED-THRU-SAT
6pt. 10-11-12-13th
STORE HOURS
7:30 a.m. - 6:30 p.m.
MON THRU SAT
CLOSED SUNDAY

MOUTHWASH
18 OZ BOTTLE
SCOPE \$2.49 EACH

IDEAL SPRAY
ANTI-PERSPIRANT
SURE
4 OZ CAN \$1.89

TOOTH PASTE
4.6 OZ TUBE REG-MINT
CREST \$1.09

HEAD & SHOULDERS
7 OZ REG
SHAMPOO \$1.89

DETERGENT
CHEER
GIANT BOX \$1.79

SOFTNER
DOWNY
64 OZ JUG \$2.29

PARADE WAFFLE SYRUP
32 OZ JUG 89¢

FROZEN FOODS
CITRUS HILL
ORANGE JUICE 12 OZ CAN 99¢

PARADE OLEO SPREAD
3 LB TUB 89¢

LIQUID
TIDE
96 OZ JUG \$4.99

TISSUE
CHARMIN
4 ROLL CRTN 99¢

PARADE PEANUT BUTTER
18 OZ JAR 99¢

FARM SELECT CRINKLE CUT POTATOES 2 LB BAG 49¢
GREEN GIANT 4 EAR BAG CORN ON COB EA 99¢
PILLSBURY MICROWAVE POP CORN ASST BOX \$1.59

KRAFT 1/2 MOON CHEESE
16 OZ \$2.59 PKG

LIQUID
IVORY
22 OZ BOTTLE 99¢

COOKING OIL
CRISCO
32 OZ JUG \$1.59

PARADE H. B. SLICED DILL PICKLES
32 OZ JAR 79¢

PARADE ALL-VEGETABLE SHORTENING
3 LB CAN 99¢

INSTANT COFFEE
FOLGERS
4 OZ JAR \$2.69

DISHWASHER
CASCADE
50 OZ BOX \$2.39

PARADE FLOUR
5 LB BAG 69¢

PARADE MUSTARD SQUEEZABLE
16 OZ SIZE 59¢

B. P. I. ASSI SODA POP 2 LITER 69¢

DUNCAN HINES BLUEBERRY MUFFIN MIX 13 OZ \$1.29

CHOICE BEEF ROUND STEAK
TENDER EXTRA TRIM LEAN
\$1.69 LB

CHOICE BEEF RUMP ROAST LEAN LB \$1.79

CHOICE BEEF BONELESS SIRLOIN TIP STEAK LEAN LB \$2.29

GOOCH B. R. FRANKS ALL MEAT ONLY 12 OZ PKG \$1.09

ARMOUR STAR CHICKEN FRIED BREADED BEEF PATTIES LB \$1.79

ARMOUR STAR WITH GRAVY TURKEY ROAST 24 OZ PKG WHITE \$2.49 MIXED PACKAGE \$2.39

OSCAR MAYER COOKED HAM 6 OZ PKG \$1.73

PARADE BACON NO 1 LB \$2.15

OSCAR MAYER BOLOGNA BEEF OR ALL MEAT 8 OZ PKG \$1.19

TOWELS
BOUNTY
JUMBO ROLL 69¢

COFFEE
FOLGERS
1 LB CAN \$2.39 1 LIMIT
WITH \$15 IN TRADE OR MORE EXCLUSIVE OF CIGARETTES WITHOUT \$2.59 PER CAN

PAMPERS ULTRA DIAPERS 64-96 COUNT BOX \$16.99

PARADE 12 OZ BOX VANILLA WAFERS BOX 59¢

PARADE INSTANT TEA
3 OZ JAR \$1.79

PARADE CRACKERS
1 LB BOX 49¢

PARADE 303 CAN PEACHES SLICED OR HALVES 2 FOR 99¢

PARADE APPLE JUICE 64 OZ JUG \$1.19

W.K. PARADE or C. S. GOLDEN CORN CUT GREEN BEANS MIX OR MATCH 3 CANS 89¢

SWEET PEAS PARADE 300 **PORK & BEANS** 3 CANS FOR 79¢

FRESH BARTLETT PEARS
SWEET JUICY POUND 59¢

FRESH CELERY STALK 59¢

GOLDEN BANANAS LB 39¢

FRESH CUCUMBERS 2 FOR 39¢

FRESH CELLO CARROTS LB 2 FOR 69¢

FRESH CAULIFLOUR LB 59¢

FRESH YELLOW ONIONS LB 19¢
RUSSET SPUDS 10 LB BAG \$1.49

FOREMOST ICE CREAM 1/2 GAL CRTN \$1.69

DAIRYLAND HOMO MILK GAL JUG \$1.98

FOREMOST BUTTER MILK 1/2 GAL CRTN \$1.09

FOREMOST LOW FAT MILK GAL JUG \$1.89

DOUBLE GIFT BOND STAMPS EACH WED'S WITH \$5.00 IN TRADE OR MORE

WE WELCOME FOOD STAMPS

CARSON'S SUPER MARKET

Fresh Vegetables Best Meats in Town



Merkel, Texas