

The Merkel Mail

Thursday, April 19, 1979...Merkel, Texas

15 cents

City adopts 79-80 budget, approves plat for Cedar Hills Addition

The Merkel City Council met in a regular session Friday morning at City Hall and approved the 1979-1980 budget as well as approving a plat for the Cedar Hills Estates addition.

The council also canvassed election returns from April 7th and swore in Lou David Allen as mayor and council members Kent Satterwhite and Emma Lois Sugart.

The plat that was approved is for a development north of Interstate Pipe just outside the east Merkel City Limit. The addition is owned by John Schreck and Bill Black. The plat was approved by the Taylor County Commissioners Court on March 20.

The City Council also unanimously adopted the

new city budget and City Manager J.A. Sadler said "I think it will be a real tight budget and I think we will have to be real careful with our money."

Included in the budget is a seven percent pay raise for city employees.

The council also approved payment of current bills and heard a report on the Farmers Home Administration housing that was contracted for Friday morning in Abilene. Contracts were to have been signed Thursday but were delayed one day due to administrative problems.

Council will hold their next session April 27th at 7 a.m. at City Hall.

(The text of this year's budget is printed on page two of this week's Mail)

Groundbreaking set Sunday at 2:30

Groundbreaking ceremonies are set for Sunday afternoon for building sites for new facilities for the Merkel Independent School District and are scheduled to begin at 2:30.

Voters approved the construction of a new high school, vocational agriculture center, multi-purpose room and a middle school gym in a September bond

election.

Haney and Silvey Construction Company of Abilene was awarded the bid in a special meeting of the Merkel ISD board earlier this month.

The district has invited everyone to the ceremonies Sunday afternoon in the area near the Superintendent's Office.

McGlothlin taking over Home State Bank from retiring J. G. Wilks

Bruce McGlothlin of Roscoe will succeed J.G. Wilks as the President and Chief Executive Officer of the Home State Bank in Trent.

McGlothlin is currently the cashier at the Roscoe Bank and is a graduate of Hermleigh High School. He also attended the School of Banking of the South at Louisiana State University.

McGlothlin served seven years on the Roscoe City Council, and has held many posts with the Lions club and the Jaycees.

He serves on the Nolan County Museum Board, the Volunteer Fire Department, among other organizations and attends the Church of Christ.

J.G. Wilks is a native of Cordell Oklahoma and is a 1931 graduate of Abilene Christian University. He did graduate work at the University of Oklahoma and moved to Trent in 1934. He became an assistant cashier in 1938, cashier in 1947 and was elected president in 1951.

Wilks served on the Trent School Board from 1935-1941 and also served on the Taylor County School Board for 28 years. He also served in the Navy in 1945.

Home State had had one other officer in the 72 year history of the bank. L.E. Adrian established the bank in 1907. Wilks succeeded him in 1951 and now McGlothlin.

Wilks will continue to serve the bank as Chairman of the Board. The other bank officers are Betty Freeman, who has been with the bank for 24 years and Betty Hamner, who has been at the bank for 22 years. Mrs. John Hamner is a part-time employee. Directors of the bank include McGlothlin, Wilks, James L. Wilks, Don G. Wilks, H.H. McLeon and Betty Hamner.

The Wilks' plan to travel, saying they have seen 49 of the 50 states and would like to see Alaska and the other 49 again.

Merkel seniors raising money for Mike Moreno

The senior class at Merkel High School is conducting a fund-raising effort for Mike Moreno who was injured in a car accident earlier in the year. Many local businesses have cans at their stores

you can make donations to and you may also contact any member of the Senior Class to contribute.

The class is raising the money to help offset medical expenses.

Merkel has civil defense plans for severe weather, tornadoes

by Cloy A. Richards

What type of civil defense does Merkel have for tornadoes was one of my first reactions to the terrible tornado that ravaged north Texas and Southern Oklahoma last Tuesday.

According to City Manager J.A. Sadler, who is also chief of Civil Defense for Merkel, there are plans to cope with those types of emergencies.

As far as warnings go, the city depends on spotters organized by Merkel Volunteer Fire Department Chief Waymon Adcock. When threatening weather approaches Merkel sends out spotters surrounding the town to watch threatening clouds.

Those spotters stay in contact with City Hall and if a funnel cloud is spotted that appears to have a chance of hitting the city, the two Civil Defense sirens will sound as well as sirens on the three Merkel Police Department cars and the rescue unit of the Merkel Volunteer Fire Department. The warning signal will be a continuous blast and if you hear that sound you should seek shelter immediately.

According to the National Weather Service Office in Abilene, if you don't have a storm shelter designed for tornado protection, you should seek shelter in a bathtub or in a large closet. They also say that if a tornado is going to hit your house, you will hear a tremendous noise before it hits.

They suggest that, if you have time, to open as many doors and windows in the house as you can to relieve pressure that a tornado will cause to build up in your house and get a mattress from your bed to place over you. The mattress will provide some cushion in case of roof collapse and will also protect

you from flying glass and other debris.

If you are outside find a ditch, if one is not available, lay flat on the ground. Do not take refuge in a car, the Weather Service advises, or under a car.

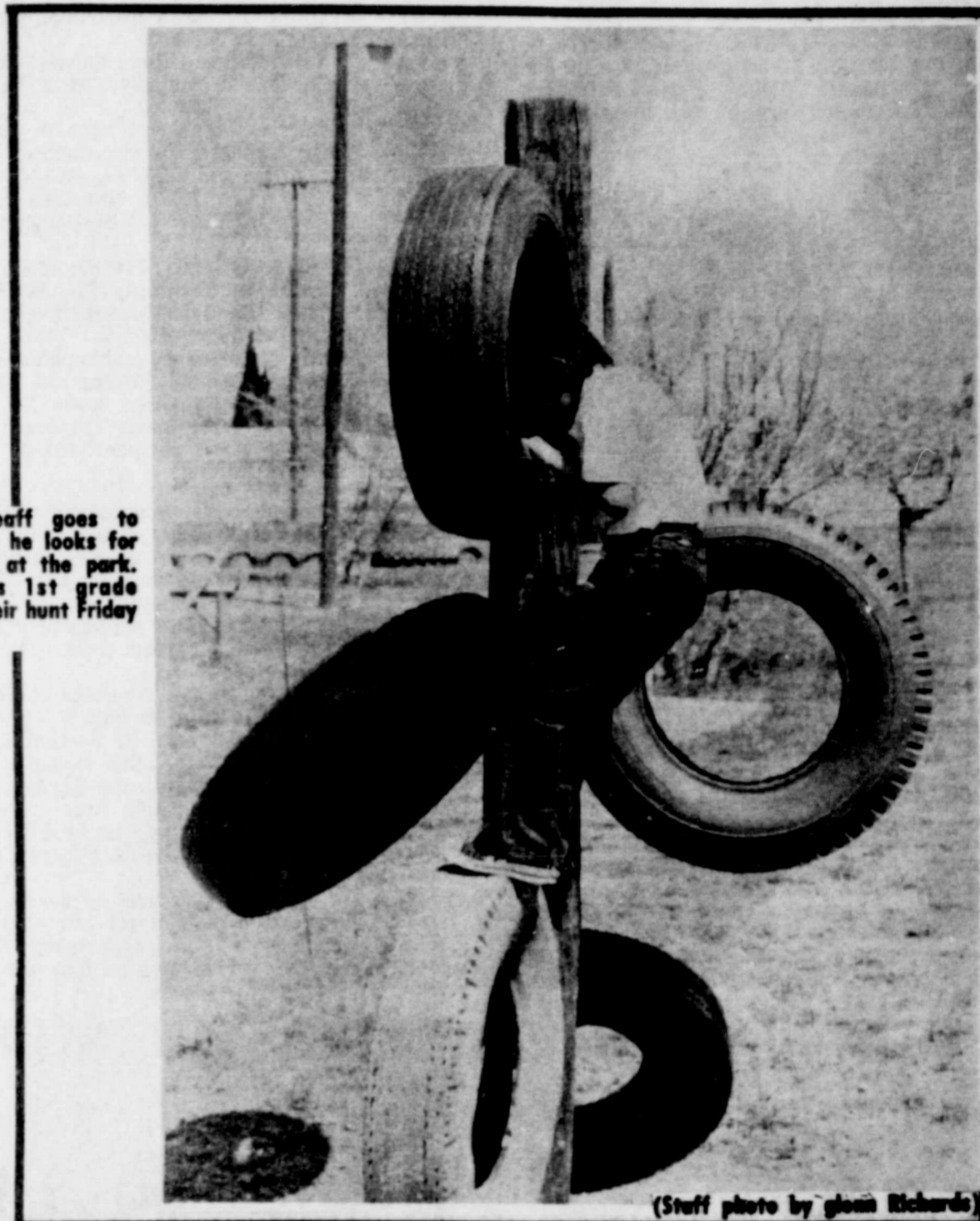
This area is also protected by the Taylor County Sheriff's Department. During the last two hail storms that passed through the area, county deputies, along with Merkel officials were located all around the area, checking out reports from citizens, and watching clouds that get close to the ground.

As far as the media goes, the Abilene stations all have direct hookups to the National Weather Service. In Tuesday's storm, the Weather Service was running a little late. They did not pass along the wind, heavy rain and hail warnings for the Merkel area until the storms were out of the area and on top of Abilene.

J.A. Sadler also told the Mail that if threatening weather arrives in the early afternoon he makes school officials aware of the situation and they will adopt their emergency procedures. Sadler added "you can have all types of plans, but you can't plan for every situation."

Merkel's location close to Abilene would help in the event a tornado does strike the area. The Department of Public Safety has a regional headquarters in Abilene, Dyess Air Force Base and all of their resources are very close, as well as medical facilities in Abilene.

The best way to protect yourself is to turn on the radio or television if threatening weather approaches and if you hear the sirens sound, take immediate refuge. It is also a good idea to have a transistor radio in case power lines are downed (which probably would happen if a tornado hits) and to heed official warnings.



Eric Teaff goes to extremes as he looks for Easter eggs at the park. Mrs. Peel's 1st grade class had their hunt Friday afternoon.

(Staff photo by Glenn Richards)

Teachers air complaints concerning contracts at Tuesday board meeting

by Cloy A. Richards

A crowded session of the Merkel School Board met Tuesday night, as more than 30 teachers attended to find the outcome of an appeal filed by the Merkel Classroom Teachers Association to have a clause removed from their contract.

The outcome, as far as the board is concerned, is that the stipulation permitting the board to review all contract if deconsolidation occurs, will remain. (See related story directly below ... "Classroom Teachers discuss contract".)

The issue became official Tuesday night when Jerry McLeod, president of the one year old Merkel Classroom Teachers association, presented the board with a request that basically asked for the removal of the clause to review contracts.

McLeod told the board, before reading a request to

them, that his organization was not questioning the authority of the board, they were asking the board to hear their concerns.

McLeod then read a statement to the board that asked for a removal of the contract stipulation, and asked the board to reconsider their position because the local teaching community is shook up, and their confidence and trust in the administration is shook up.

McLeod also told the board that the association has 42 of 70 teachers as members and McLeod added that the number "wasn't bad after only a year in operation".

Board President Charles Jacobs responded by thanking the teachers in attendance for coming to the meeting, and after his assessments of the future

(Continued on page three)

Classroom teachers discuss contract

The Merkel Classroom Teachers Association met at the Merkel School Auditorium Thursday night and voiced their opposition to the stipulation that is included on the 1979-1980 teachers' contracts.

The association voted to seek a spot on the agenda of the next regular session of the Merkel School Board (last night) and seek removal of the clause or at least an explanation of the clause and how it would effect local teachers.

The association has a membership of 42 of the certified instructors of the Merkel Independent School District.

Athletic Director Jerry McLeod is the president of the Merkel Association. The Classroom Teachers Association is a statewide organization and the local association has contacted the state office to see if the clause that is being added to the contracts is legal. The state association lawyers informed the local association that the clause is legal.

The clause in question states that if deconsolidation of the Merkel Independent School District becomes a reality, the board reserves the right to cancel any teacher contracts.

About 25 members of the association attended Thursday's meeting.

Taylor Co-Op annual meeting today

Approximately 1100 delegates attending the annual meeting of the Taylor Electric Cooperative are attending sessions today at the Taylor County Coliseum at the annual co-op meeting.

The Merkel based Taylor Co-op serves eight counties, 5,000 members and more than 9,000 meters.

Activities got underway at 9 a.m. Thursday morning with registration and entertainment. The luncheon started at 11:30 a.m. to be followed by business sessions at 1 p.m.

Among other speakers at the business session was Taylor Co-op manager Don Hart.

Merkel's tax rebate totals \$3,204.31

Merkel's share of the one percent sales tax in March was up an impressive 45 percent over last March as the city's share totaled \$3,204.31.

The payment for last March was \$519.27. Total payments to date total \$12,807.13, an increase of 45 percent over last year's payments to date.

Tye will receive a check for \$2,063.65 and has received \$11,592.58 thus far in 1979. That total represents an increase of 15 percent over last year. State Comptroller Bob Bullock said Friday that the

local one percent sales tax rebates were up over the same month last year.

Bullock said city allocation statewide for March totaled \$34.9 million during March of 78.

The 1979 payments to date to cities reached \$135.2 million this month, compared to \$121.6 million over the same three month period last year.

The sales tax is collected by merchants and other tax permit holders along with the state sales tax and is rebated monthly to some 916 Texas cities in which it is collected by the Comptroller's Office.

Have you ever wondered where your city tax dollar goes?

Editors note: If you have ever wondered where your city tax dollar goes, the following is the text for the 1979-1980 City of Merkel Budget. All figures are listed in dollars and cents.

General Executive Fund, Income: Utility Franchise Tax, 20,000; fines, 3,000.

General Executive Fund, Expenditures: City Council, 15,000; City Secretary, 7008.00; City Judge, 2,400; City Health Officer, 120.00; City Attorney, 900.00; City Auditor, 1100.00; Expense Allowance, 1800.00; Dues-Memberships, 200.00; Social Security, 500.00; Payments in lue of overtime, 2400.00; Street Lights, 4200.00.

General Fund, Income: Property Tax, 80,000; Sales Tax, 35,000; Inspections, 300.00; Fines, 500.00; Miscellaneous Income, 5,000; Transfer of General Revenue Sharing Funds, 10,000; Fiscal 15,000.

General Fund Expenditures: Tax Office: Tax Assessor-Collector, 8100.00; Clerk 4590.00; Janitor, 900.00; Social Security, 1400.00; Postage-Supplies, 3000.00; Utilities, 1800.00; Insurance-Workmen's Compensation, 3000.00; Dues and Memberships, 4500.00; Expense Allowance, 1200.00.

Police Department: Salary 1, 10,920.00; Salary 2, 9600.00; Salary 3, 9600.00; Social Security, 1800.00; Dispatcher, (included in Fire Department Budget); Vehicle Expense, 10,000.00; Maintenance and Supplies, 800.00; Utilities, 1500.00; Training-Dues, 100.00; Radio Expense, 800.00; Misc.-Uniform Expenses, 700.00.

Fire Department: Salary, 10,920.00; Salary Part Time, 4800.00; Fire Marshall Training, 1000.00; Maintenance and Equipment, 1000.00; Vehicle Expense, 1800.00; Utilities, 2400.00; Radio Expense, 400.00; Miscellaneous Expenses, 400.00; Social Security, 900.00.

Street Department: Salary, 8040.00; Social Security, 450.00; Vehicle Expense, 2500.00; Maintenance-Supplies, 2000.00; Spraying Expense, 400.00; Miscellaneous Expenses, 1000.00; Patching Expense, 5000.00.

Parks and Recreation, 500.00 for Utilities. Bond Payments from Tax Dollars: Water Sewer Bond, 30,000.00; Land Payment, 3000.00.

Water-Sewer-Sanitation Income: Water-Sewer, 255,000.00; Sanitation, 22,000.00; Water-Sewer Taps, 2500.00; Equipment Rentals, 300.00; Interest, 1500.00; Miscellaneous Income-Landfill, 4000.00; Fiscal, 6000.00.

Water-Sewer-Sanitation: Water Production, 83,000; Water-Sewer-Sanitation Office, 15,098.00; Water Department, 36,090.00; Sewer Department, 15,565.00; Sanitation Department, 15,940.00; Bond Payment, 25,600.00.

Water Production: Water Purchase, 72,000.00; Water Pumping Cost, 11,000.00.

Water-Sewer-Sanitation Office: Supervision, 7008; Clerk, 4590.00; Social Security, 700.00; Postage, 600.00; Unitab Billings, 2200.00.

Water Department: Salary 1, 9500.00; Salary 2, 8340.00; Social Security, 900.00; Contract Labor, 500.00; Maintenance and Supplies, 4000.00; Vehicle Expense, 2000.00; Dues, 200.00; New Line Construction, 8000.00; Utilities, 2200.00; Miscellaneous Expenses, 450.00.

Sewer Department: Salary, 7740.00; Social Security, 425.00; Maintenance-Supply, 3200.00; Vehicle Expense, 1200.00; New Line Construction, 3000.00.

Sanitation Department: Salary, 7740.00; Social Security, 400.00; Maintenance and Supplies, 3000.00; Vehicle Expense, 2500.00; Equipment Expense, 2500.00; Miscellaneous Expenses, 300.00.

Bond Payments: Water-Sewer, 10,800.00; Water Sewer 2, 10,800.00; Land payment, 500.00; Vehicle Payment, 3,500.00.

In more general terms, 85 percent of the general executive operating funds comes from Utility Franchise Tax and 15 percent comes from fines.

96 percent of that money pays for city executives and four percent goes to operations.

The General Fund gets 55 percent of it's money from property taxes, 24 percent from sales tax and 21 percent from other sources.

The General Fund spends 17 percent of it's money for the tax office, 31 percent for Police, 16 percent for fire, 13 percent for streets, 22 percent for bond payments and 1 percent for other expenses.

In the Water-Sewer-Sanitation Department, 81 percent of it's income comes from water-sewer billing, 12 percent from sanitation billings, 1.5 percent from water-sewer taxes and 6.5 percent from other.

The Water-Sewer expenditures 44 percent goes to water production, 8 percent for the water-sewer office, 19 percent to the water department, 8 percent to the sewer department, 8 percent to sanitation and 13 percent for bond payments.

Best buys at Texas markets

Best buys at Texas grocery markets this week include poultry items, canned fruits and vegetables and some fresh vegetables.

Also, features appear on pork cuts, says Gwendolyn Clyatt, a consumer marketing information specialist with the Texas Agricultural Extension Service, The Texas A&M University System.

This week's price-quality trends are the following: POULTRY - Turkey prices are attractive. Buy a turkey a bit larger than you can use in one meal - you'll probably pay less per pound and get more meat for each pound.

Whole fryer chickens and parts have special prices. Best specials on parts include breasts, drumsticks and mixed parts.

Egg prices are rising, but eggs are still an economical protein choice.

GROCERY MARKET AISLES - Canned fruits and vegetables have feature prices. Especially good prices appear on tomato products.

Since distributors are moving last summer's pack of fruits and vegetables off the shelves - to make room for the upcoming pack, consumers should watch for many specials.

FRESH VEGETABLES - Reasonable prices appear on mustard, collards and spinach - with greens now in peak season.

Other good values are carrots, potatoes, onions and squash.

Fresh asparagus prices are trending down slightly, but its prices are never cheap.

However, the asparagus season - currently underway - is short, so buy now.

FRESH FRUITS - This is a rather "slack" season for fresh fruits. Those at fairly reasonable price levels include pineapple, apples, bananas, oranges and grapefruit - along with pears and strawberries.

PORK - Look for some features on end chops, whole and half loins, bacon and quarter-loins cut into chops.

CONSUMER WATCHWORDS: With meat prices at relatively high levels, consumers can do two things to stretch the meat budget.

gidley and hunt
Realtors and Builders
928-5831

- 17.1 acres on FM 1235, city water, close to interstate.
- 3 bedroom brick, 2 acres, low fifties.
- Two 3 bedroom brick homes, fireplace, 6 & 7 acre lots. See us about no down payment VA financing for qualified veterans.
- Country Club Fairway lot... \$7500

102 LAMAR • MERKEL MLS

CRAWFORD'S
17th BIRTHDAY
SELL-A-BRATION

REGISTER FOR PRIZES
EVERY DAY - FREE TV
BIG SELECTION OF NEW SPRING
AND SUMMER STYLES FOR MEN-
WOMEN

MENS SUITS VALUES TO \$99 **\$59.00**

SHORT SLEEVE SPORT SHIRTS VALUE TO \$13.99 **\$13.99**

WRANGLER JEANS **\$13.99**

LADIES SANDALS **\$13.99**

DRESSES **\$22.99 UP**

NEW LENGTH SLIPS \$6.00 VALUES **\$3.99**

It's Twice As Nice To Shop
CRAWFORD'S
135 EDWARDS 928-5612



Congressman
Charles W. Stenholm

Congressional Comment

Washington, D.C. - The most complicated language of them all is not Russian, or Latin, or Greek. In fact the most difficult language in the world is all too familiar to Americans during this time of year. I am referring to that compilation of prolific verbosity known as the Internal Revenue Code. The following subsection 1023(b)(1) which illustrates my point: If \$60,000 exceeds the aggregate bases as determined after any adjustment under subsection (h) (c) of carryover basis property, the basis of each appreciated carryover basis property (after any adjustment under subsection (h) or (c) shall be increased by an amount which bears the same ratio to the amount of such excess as the net appreciation in value to such property, bears to the net appreciation in value of all such property.

too simple and logical. So the Congress in 1976 passed the carryover basis which carried over the decedent's basis to his estate. Thus the heirs will pay capital gains taxes from the time the property was bought by the decedent until the inherited property is sold. Also the law is written with a number of exceptions and some areas are vague and subject to bureaucratic and judicial interpretation. This provision is scheduled to be implemented in 1980 and will significantly increase taxes for nearly all citizens. Those especially hard hit would be our farmers and small businessmen. People who inherit farm real estate will really feel the pinch because the price of farm land has appreciated rapidly in recent years.

While a necessary change was being attempted to increase deductions and exemptions for estate tax purposes, the carryover basis was attached as a sort of "reform" measure. But the provisions of this law have caused such a public outcry that even the Congressmen who originally sponsored this bill is now interested in its repeal. I also believe we should stop the implementation of the carryover basis and preserve the simpler and less burdensome "step-up" basis. I have cosponsored legislation to accomplish this goal. This would be a major step toward preventing more government regulation, paperwork, and taxes and preserve the right to private ownership of property.

David Liggins killed Wichita twister hits home

Survivors include his wife; a son, Lonnie of the home; four daughters, Heather and Amanda, both of the home, and Sharon and Jennifer, both of Abilene; a brother, Marty, of Albuquerque, N.M.; three sisters, Julie, Teresa and Debbie, all of Quincy, Mich.; and his parents, Mr. and Mrs. Martin Liggins of Quincy.



During Mrs. Pursley's 2nd grade Easter egg hunt out at her land, the students got a little help by an un-invited guest. The intruder quickly hunted up his find and devoured it on the spot. (Staff photo by Glenn Richards)

Bran discussed at club

"Bran" new ideas and recipes were exchanged when the Stith Extension Homemakers Club met in regular session Wednesday, April 11, 1979 at the community center with Mrs. Ophelia Mergel as hostess. Members brought muffins, bread and cookies made with some kind of bran cereal. Bran is a good source of B vitamin and the nutritive value of cereals in your diet is very important.

Different parts of a watch were answered to questions asked by recreation leader Mrs. Daisy Mashburn. It was a fun game enjoyed by everyone.

Plans were made for a Bake Sale, Saturday, April 14th.

Roll call was answered by Margaret Dickerson, Louise Hudson, Mae Jones, Daisy Mashburn, Annie Lee Sledge, Hazel Lay, Ophelia Mergel, Vada Hudson, and a possible new member, Mrs. Sue Townsend. The next meeting will

WHO ARE YOU KIDDING

When a man says he can't keep awake through a thirty-minute sermon, and stays home with his 700 column newspaper, who is he kidding?

When a man says Sunday is his only day to rest, and gets up at 4:30 a.m. to go fishing, or spends the day on a golf course, who is he kidding?

When a man says the church seats are too hard and uncomfortable, then goes some Saturday to sit on a bleacher for hours in drizzle watching 22 men push one another back and forth across a mud lot... who is he kidding?

When a man says he can't afford to tithe but lives in a comfortable home, drives a new car, eats well, clothes his family comfortably and stylishly, who is he kidding?

When a man says he doesn't have time for Christ and His church, then spends evenings shopping, bowling, watching television, going to clubs, playing cards and having evenings out... who is he kidding?

NOT GOD...

FIRST ASSEMBLY OF GOD
NEED A RIDE?
PHONE 928-5154

For MOM with LOVE!

TEST COOK
30 DAYS

Meal-In-One™
model 560

The Litton Home-Trial Offer - Buy a Litton Microwave Countertop here and use it in your kitchen for 30 days.

If you're not satisfied return it to this store and we'll OFFER ENDS May 31, 1979 refund your purchase price.*

LITTON
Microwave Cooking

Litton...changing the way America Cooks.
*Dated proof of purchase required.

Castille's Hardware & Gifts
928-5310 214 Edwards

\$100 CASH REFUND
Direct from General Electric when you buy a GE Executive Central Air Conditioning system or a GE Weathertron® Heat Pump...NOW!

\$100 CASH REFUND
High-efficiency Executive Model Weathertron® Heat Pump
Reduce your electric heating bill 34% to 68% compared to ordinary electric heating, depending on where you live. One system heats and cools... replaces both a conventional furnace and a central air conditioning system. Available in capacities from 42,000 to 58,000 BTUH. Models WR942A thru WR960A only.

\$100 CASH REFUND
High-efficiency Executive Model Central Air Conditioning
The most economical to operate of any GE central air conditioner. Features unique Climatuff™ compressor and exclusive Spine Fin™ condenser coil. Available in capacities from 41,000 to 58,000 BTUH. Models TN942A thru TN960A only.

\$75 CASH REFUND when you buy one of these models now
Executive Model Central Air Conditioning System available in capacities from 22,000 to 35,000 BTUH. Models TN924A thru TN936A only.
Executive Model Weathertron® Heat Pump available in capacities from 25,000 to 36,000 BTUH. Models WR924A thru WR936A only.

GENERAL ELECTRIC WILL SEND THE CASH REFUND DIRECT TO YOU when you add central air conditioning or modernize your existing warm-air heating system with a GE Weathertron® Heat Pump purchased between March 1 and April 30, 1979 (with installation by April 30).

CALL TODAY FOR FREE HOME SURVEY & ESTIMATE. and ask about General Electric's National Service Agreement covering the second thru fifth year.

Amerine Heating & Air Conditioning
502 Kent 928-4876

Board denies teacher request

(Continued from page one)

of the district said, "I regret we have this situation, it was not our doing. After saying the clause was placed on the contracts because of circumstances beyond the boards control, Jacobs added "We fell like we have an excellent staff, that is why we renewed all contracts."

Jacobs went on to say "The board has a great deal of respect for our attorney's advice, he has kept us out of a lot of hot water. We need more time to study (the request for removal) and we will take it under advisement. We will get back with you in the next few days for an answer, or very soon."

The board, after other business went into a scheduled executive session for approximately 30 to 40 minutes.

When the board returned from executive session, Jacobs said "The board has decided to stand by the attorney's recommendations (keeping the clause on teachers contracts) and the board has instructed the superintendent to personally deliver the contracts to each teacher."

School superintendent Dr. Raymond Etheridge told the Mail later Tuesday evening that the teachers were required to sign the contracts by May 1st.

Under Article 6252-17 of the Revised Civil Statutes of Texas, and quoted word for word in the handbook for school board members and school administrators section 4, it reads "Authorized closed or Executive session: To consider the appointment, employment, evaluation, reassignment, duties, discipline, or dismissal of a public officer or employee or to hear complaints or charges against a public officer or employee unless such officer or employee requests a public hearing." (underscored for emphasis)

The teachers' association met immediately following the meeting and instructed the president to seek legal counsel from state teachers association and other state education oriented organizations concerning the boards' action.

The board also discussed school financial affairs, learned of a pre-construction briefing that was held Wednesday afternoon (Details on that in next week's Mail), and hear a report from Dr. Etheridge that covered contestants in weekend Regional U.I.L. competitions and groundbreaking ceremonies for new school facilities set for Sunday at 2:30 p.m.

Diesel shortages discussed

The following is an excerpt from an Agriculture Subcommittee hearing on March 29th dealing with the current shortages of available diesel supplies for agricultural production. Mr. Barton is Director of the Office of Energy, Department of Agriculture and is being questioned by Congressman Charles W. Stenholm.

Mr. Stenholm. I notice on page 5 of your comments, Mr. Barton, you emphasize that we need to have the ability to meet our fuel requirements for full food and fiber production. My question to you is this: Why do we continue to emphasize massive production of food and fiber in this country when we are unable to sell what we are raising now? We have the price levels to our farmers on commodities below the cost of production. We also have an energy crisis. In West Texas, particularly, the supplies of diesel are extremely tight. And, I am sure that, based on the figures we have, it will be all around the nation before too long, yet we continue to emphasize full production. The Secretary, in this morning's paper, is quoted as saying that we may have to subsidize our wheat exports in order to hold our share of the world market. This means we will have to spend more taxpayer's money. We are going in the wrong direction, I think. What good does it do us to continue to use our scarce resources for full production when we cannot sell what we are already raising?

Mr. Barton. Mr. Congressman, the immediate reason that we are following full food and fiber production is that the Natural Gas Policy Act, in fact, Section 401, expressly states that the protection should be at a level sufficient for full food and fiber production. I suppose one question that could be raised is whether you want to mix in any way this problem of assuring energy supplies and the question of managing levels of farm production. We certainly recognize the problem of current insufficient markets in agricultural commodities.

Mr. Stenholm. All of my farmers are telling me that they do not see the logic in farming all of their acres and producing crops that they cannot sell for a profit when they are having a hard time finding diesel and when they are facing the threat that the price of diesel might go up from its 52 cent price today to 60 or 65 cents after April 1. It would make more sense if we had a cooperative program between the energy and production forces. We need to recognize this. For instance, do you acknowledge that, if we were to increase our set aside for one year to 30 percent and reduce our production some 20 percent, we would save over 200 million barrels of oil? Do you agree with that?

Mr. Barton. Yes, I think in that case, certainly, that would be the case.

Mr. Stenholm. Might there not be a little bit of logic in pursuing the total program by re-examining whether or not it is in our national interest to continue on full production at a time when we may not have the energy to do so? That is my question.

Mr. Barton. Congressman, it certainly makes sense to consider carefully how much land should be placed into production. Every acre that you do not devote to fossil fuel intensive production you save on energy, of course. In that sense, you clearly take energy supplies into consideration in setting set-aside amounts. This certainly makes sense.

Mr. Stenholm. Based on your current assessment of all the facts and figures that you have with you today, what is your assessment of the seriousness of the diesel fuel situation, that is the 60-day outlook and the remain part of this year?

Mr. Barton. I think all one can say about diesel is that we have got to be ready for significant shortages. That may or may not occur. You have read the statements in this morning's Washington Post, the statements by the Under Secretary of Energy on the supply situation and the positive assessment of the oil supply situation. I think there is too much uncertainty at this point in terms of the supply situation in order for me to say anything that would have any real meaning. It is probably more meaningful for me to say that we need to be ready through the ASCS offices and the state energy offices and otherwise to cope with shortages when they occur.

Mail Bag, news from 70 years

Merkel's newest enterprise fills a long felt want in the hearts of our little and big, young and old citizens. It is a moving picture show and vaudeville entertainment, the Majestic Theatre, which provides an evening of solid amusement and all for the sum of 10 cents. The amusement place is located in the brick building of Dr. J.A. Adkisson on Front Street. The patronage since last Saturday when the show was opened insures the proprietors that their investment is sure of profitable returns.

The Mail announces in this issue the candidacy of Mayor W.W. Wheeler for re-election next Tuesday. Mayor Wheeler is known to most every voter in this country as well as city and needs no commendation at our hands. His friends and those acquainted believe that his work for the city in the past entitles him to re-election and they ask the favorable consideration of his claims and qualifications of our readers.

The Mail is in receipt of a card from Dr. George L. Miller who is in Chicago taking a special course on diseases of the stomach. Dr. Miller has purchased an automobile but owing to his lack of experience he has decided that he will ship the machine and make the return trip to the City in Clover on the train next week.

Keen Kutter Pocket Knife Blades are made of highest grade English steel. They are made by skilled workmen. And for quality, style and finish, are the best knives made. We do not warrant them not to wear out or break if they are abused. They are not made for opening cans or drawing nails. And should not be sharpened on a dry stone.

It's easy enough to be pleasant when life goes along like a song. But the man worth while is the man who can smile when everything goes dead wrong.

Merkel Bike-A-Thon for St. Jude's April 21

Merkel, April 21, Lee Presswood, chairman for the St. Jude Children's Research Hospital Wheels for Bike-A-Thon, today asked residents of Merkel to volunteer their time and energy for the April 21 ride. Volunteers are needed to help conduct the Wheels For Life Bike-A-Thon on April 21 to raise funds to support the world-famous research center in its battle against catastrophic childhood diseases.

"We're looking for people who are willing to contribute a little of their time to help us help children live," Presswood said. "Our biggest need is for riders since they are the ones who will make this event a success."

"Those who want to ride should pick up their registration-sponsor forms at Merkel Elementary School now and start getting sponsors," Presswood said. "Everyone who raises \$25.00 will get a St. Jude Children's Research Hospital t-shirt, and those who raise \$75.00 or more will get a special biker's back pack."

"We'll have special prizes for top riders," Presswood said.

At St. Jude's doctors and scientists are studying leukemia, Hodgkin's Disease and other forms of childhood cancer as well as other deadly diseases that strike the young. The results of research conducted there are freely shared with doctors and scientists all over the world, enabling stricken children to have a better chance to live.

Founded by entertained Danny Thomas, St. Jude's is the leader in the battle against these diseases.

"But as long as children are still dying," Presswood said, "St. Jude Children's Hospital must keep fighting. We need your help."

Volunteers can contact Lee Presswood, 411 Oak, or telephone 928-5815 to help.

The directors and employees of Home State Bank, Trent, Texas are honoring their new president, Bruce McGlothlin and Mrs. McGlothlin at a reception at the home of Mr. and Mrs. B.W. Hamner, South Main Street, Trent, from 2 to 4 p.m. Sunday, April 22nd. Customers and friends of the bank are invited.



NOW MA... YOU WOULDN'T WANT THIS PRECIOUS LITTLE CRITTER TO CATCH HIS DEATH OF NOOMONIA BEFORE WE GOT TO TH' SALE BARN....?

Fortnightly study club holds meeting

Mrs. Don Dudley was hostess for the April 10 meeting of the Fortnightly Study Club at the Big Country Inn.

A report on the work at the Merkel Library was given by Mrs. Aaron Sudderth. She thanked those who had worked at the library cataloging the books in behalf of Mrs. Evelyn Martin, the Merkel Librarian.

Mrs. S.C. Dixon brought a very interesting and enjoyable book review for the program.

She chose "The Starrs of Texas" by Warren Leslie to be reviewed. It is the author's latest book. Mrs. Dixon said the names and places used in the book were fictitious.

This is a story of a family in the merchandising business, and the use of money, power and influence in the town where they lived. As the story unfolds it tells of problems that arise and how they are dealt with throughout the lives of three generations of Starrs in

building one of the most exclusive department stores in Texas.

Members present were Mary Collins, Mrs. Johnny Cox, Avis Deavers, Mrs. S.C. Dixon, Mrs. Don Dudley, Mrs. Charles Eager, Mildred Hamm, Mrs. Johnny

Hammond, Mrs. Comer Haynes, Mrs. Carl Hughes, Mrs. C.B. Knight, Mrs. Earl Hughes, Mrs. Ed Sandusky, Mrs. Andy Shouse, Mrs. Aaron Sudderth, Mrs. Ray Wilson, Maurine White and Mrs. Allen Forbis.

Mrs. Jessie Smith dies

Mrs. Jessie N. Smith, 80, died in her home in Azle, Texas, January 28, 1979. Born November 2, 1898 in Averado, Texas. She married Julius M. Smith August 16, 1913. They lived in Thurber, Texas during the coal mining days. From there to Oklahoma then to Merkel, Texas. They lived in the Mulberry Canyon, Butman Community for many years where they raised their family. Moving to Fort Worth, Texas in 1952 and to Azle, Texas in 1954.

Texas; four sons, Calvin Smith, of Fort Worth, Texas, Foy Smith of Crowley, Texas, Loyd Smith, Irving, Texas, Douglas Smith of Weatherford, Texas; 36 grandchildren; 36 great grandchildren; 8 great great grandchildren.

Survivors include four daughters, Mrs. Willie Martin, Lubbock, Texas, Mrs. Dorothy Fazio, Baton Rouge, La., Mrs. Bertie Hargrove, Carrollton, Texas, Mrs. Novis Mayhugh, Athens.

CUSTOM HAY BALING, HAULING & PLOWING
Hay For Sale
Satisfaction Guaranteed
CALL ELAM,
ABILENE 1-915-673-1307

TOP QUALITY
HYBRID
GRAZERS
85 GERM
98 PURITY
STARTING AT
\$115 PER 100

CHECK OUR
MILO HYBRID
PRICES
STARTING AT
\$26 PER 100

ED'S
FEED & SEED

L & W SNACK BAR
TUESDAY NIGHT, APRIL 24, FROM 5:00 ON

TACOS	3 FOR \$1.00	PLUS TAX	
FISH BASKET	\$1.90	PLUS TAX	
FISH, FRIES, TARTAR SAUCE			
FRIED CHICKEN PLATE	\$1.99	PLUS TAX	
TWO PIECES CHICKEN, FRIES, SALAD			
DAILY BUFFET	\$3.00	PLUS TAX	
CHOICE OF MEATS, VEGETABLES, SALAD, TEA, DESSERT			

CALL IN YOUR WANT ADS 928-5712

Open up a world of Opportunity... MERKEL MAIL Want Ads

FOR SALE

FOR SALE: Camper shell for L.W.B. Pick-up after 4. Call 928-5324.

FOR SALE 69 Chevy pickup LWB, air, standard, 67,000 miles, head rack, all or part. 928-5324 after 4.

FOR SALE: Used Evap. coolers and Refrig. coolers. Also new Dearborn Air Coolers.

FOR SALE: Peanut, Candy & Gum vending business in Merkel. Requires \$1,435.90 cash and few hours weekly. TEXAS KANDY COMPANY, 1327 Basse Rd. San Antonio, Tex. 78212 include phone no.

Honda Scrambler CL360 76'GD. Cond. Low mileage, \$800.00. Phone Roy Sharp 862-3284, after 6.

GUARANTEED TOP QUALITY ANGUS BULLS FOR SALE: These bulls at Trent. Call Kerry Gardner after 4 p.m. 915-573-3979. Papers available.

HOUSE FOR SALE: 412 Edwards. 1 1/2 lots, 2 bedroom, fully carpeted \$8,500. Call 698-3981 after 4:0.

BRICK HOME FOR SALE: Call Faye Uckert at 928-5765.

COUNTRY BUTTER FOR SALE. 928-5276.

RACING MOTORCYCLES!! 2 1978 Suzuki RM 125's, 1 with Fox air shocks, 1 1978 Suzuki RM100, raced twice, real fast, and one 1978 Suzuki RM50, great "pit bike" or child's bike. All in good condition. Call 928-5712 or 928-4827 after 5.

FOR SALE: 1977 Chevy 1/2 ton Silverado p.u., red & white, fully loaded, lots of extras! extra nice. Call 928-4827 after 5. See at 211 Oak.

BUSINESS FOR SALE: 131 Kent. Call 928-5100 days or 928-5027 at night.

FOR SALE: Hand sculptured clay doll & canopy bed. Perfect for girls rooms, showers, etc. Orders taken for specific color scheme. Sample at Circle A on I-20.

FOR SALE: 1966 CHEVY, 4 door, in good running condition. Call after 5 p.m. 928-4813.

FOR RENT

BUILDING FOR RENT OR SALE: 5,000 sq. ft. including air conditioning, heater, and water heater. Including parking area 40' x 100'. Call Ray Wilson, 928-5615, 1033 North 2nd. Formerly Wilson Food Store.

Bedroom and Private Bath for rent. Call 928-5777

SHANNONSIDE apartments-1, 2, and 3 bedroom apartments, shag carpet, all electric, dish washer, garbage disposal, central cooling and heating. For more information call 928-5038.

ROOF COATING SERVICE. Rapid Roof, unlayered, flexible, weather resistant, acrylic latex roof coating for all roof surfaces. Conkint distributor and applicator, Chip Meroney, Call 915-823-3044 after 5 p.m. for free estimate or inform.

Remodeling, additions, plumbing, electrical, small appliances. Free estimates. 928-4935.

NEED YOUR LAWN MOWED? Call Justin Dupont at 928-5629.

Boot and Shoe Repair. Drop you footwear repair needs at Handy Food Store. 928-4912. One Week Service.

CHIMNEY NEED CLEANED? Have top hat, wire brushes, and high volume vacuum. Experienced and insured. Jim Lawless, 862-3171.

CERAMIC TILE: No job too big or small. Call 928-4871 between 6 p.m. to 10 p.m. Work Guaranteed.

Services

GARAGE SALE

GARAGE SALE: Sat. April 21 only. Small boy-teenage boy, girl and mens clothing, some furniture, pictures and etc. Jerry Russell F.M. 126 N. 2nd road to left, 3rd house on right.

HELP WANTED

HELP WANTED: Experienced nurses aid needed on 6 to 2 and 2 to 10 shift. Please apply in person at the Starr Nursing Home.

LOST & FOUND

LOST DOG: Male silver and white poodle. Red collar with ID tag. Answers to Romper. Offering a \$50.00 reward for return. Belongs to Fanelle Boney. 1412 Herring. 928-5151, 928-5141.

REWARD: return of credit cards and wallet belonging to Jack Hickam. Call 692-6312 or 692-8234.

REAL ESTATE

Approximately 1 1/2 acres on I-20 for sale by owner. 928-4717 or 928-4910.

LAND FOR SALE? Call Collect - Bill Largent, Farm and Ranch Mgr. at Frances McClure Inc. Realtors, 3157 South 27th Abilene, 698-3211, Night, 698-2375.

MISCELLANEOUS

Need responsible person to keep 2 children ages 3 & 4 in their home Monday thru Fri. Call 736-6737 after 5:30, anytime weekends.

PUPPY TO GIVE AWAY. 1/2 dachshund. 512 Locust. Ph. 928-5321.

NOTICE: Adcock Cleaners will be closed Monday, April 23 only. Open Tuesday April 24th for business.

WE PAY

150 Per Cent Over Face Value For All Silver Coins. (\$2.50 for \$1.00 Silver) (We Pay 25c for silver dimes) PRATTS COIN & STAMP SHOP 2155 S. 1st Abilene, Texas

RABBITS, Equipment, feed. One stop rabbit service. Selling USDA Rabbit Fryers and Roasters. Buying live fryers, top market price paid. Buffalo Rabbit Farm. Phone 915-928-5175.

MERKEL VFW POST 5683 Monthly Reg. Meeting 8:30 p.m. Second Thursday Post & Ladies Auxiliary

CALL COME NOW!

MERKEL ELECTRIC FRANK CAMPBELL Phone 928-5291 BILL CAMPBELL Phone 862-3591

NEED A New Water Well Drilled? Also Install Meyers Subs & Jacuzzi Jets ROBERT HIGGINS

SEAT COVER CENTER SEAT COVERS TRUCK CUSHIONS DOOR PANELS ARM RESTS HEADLINERS 1056 BUTTERNUT 677-1349 ABILENE

CENTRAL AIR CONDITIONING? Buy the name you know and trust General Electric AMERINE HEATING AND COOLING Commercial and Residential Sales And Service 1108 N. 2nd St. Merkel, Texas 79536 Phone 928-4876

AUTHORIZED DEALER Lawn & Garden Equipment Allis-Chalmers-Owatonna Hay Machinery Farm Equipment and Forey Welding Equipment Shafer Plows - Continal Belton Products 677-4349 DOTY FARM EQUIPMENT CO. 366 Chestnut Nights-5 days-Holidays 673-3681 - 698-3872

CONCRETE TRUCKS LOADER DUMP TRUCKS MAINTAINER PAVING EQUIP NO JOB TOO BIG OR SMALL FREE ESTIMATES BISHOP READY MIX & CONTRACTORS CALL DAY OR NIGHT 928-5769 PATIOS SIDEWALKS DRIVES CAULCH ROADS TOPSOIL

STANFORD'S 123 KENT-MERKEL-928-5762 TELEVISION SALES-SERVICE SCANNER

FOR ALL YOUR INSURANCE NEEDS... SEYMORE INSURANCES 102 EDWARDS 928-5379

PRE-PAID FUNERAL PLANS CEMETERY HEADSTONES BURIAL INSURANCE LIFE INSURANCE STARBUCK FUNERAL HOME

Professional Saw & Tool Sharpening 122 South St. Box 332 Tye, Texas 79563 Philks & Harold Boyd (915) 692-5184

KEN'S RADIO & T V KEN KRAATZ - OWNER REPAIR ALL MAKES & MODELS OF TV'S & RADIOS F.C.C. LICENSED REASONABLE RATES PICK - UP & DELIVER CALL 862-3501, TRENT

Toombs Real Estate FREDDY TOOMBS (Broker) 116 EDWARDS PH. 928-5821 RES. 928-5088 PEGGY DENNISON RES. 622-6727 Geneva Watts 928-5334 3 bedroo SOLD room, den, 1 1/2 bath, on lot and FHA or VA. Country Living "CONTRACT PENDING" bath. 1 CONTRACT PENDING. FM Rd 1 1/2 mile from city limits. Brick: 3 bedroom, 2 bath, den, 2230 square feet or more than an acre. Has all the extras. 2 bedroom, large old house on good street. Water well. Two lots on FM 126 North, close to Country Club. Excellent building site. VACANT LOTS FOR SALE: For trailer and buildings in all sections of town. Reduced for quick sale. HOUSE FOR SALE: 2 bedroom, near school, carpet, fireplace, fence, central air, water well. 3 New Homes Available

SEE THE NEW 1979 PONTIAC TODAY! GOOD SELECTION of USED CARS 76 Olds Cutlass Supreme Wagon Air power, real nice \$3895 77 PONTIAC CAN AM 2 dr. air and power, tilt wheel, cruise, tape, Rally II wheels, 14,000 miles. Nice, only \$5895 78 CHEVY MONTE CARLO Air and power, tilt wheel, cruise, am fm tape, power windows, power door locks, sun roof, sport wheels, 19,000 miles. Red white landau top. Real nice \$5795 77 PONTIAC GRAND PRIX air and power, cruise control, Rally II wheels, landau top, 14,000 miles, nice \$5495 72 Pont. Catalina Safari Wagon Air & power. Only \$1395 74 PONTIAC BONNEVILLE was \$1995 now \$1795 4 dr., loaded, blue with white vinyl top. 74 CHEVY MONTE CARLO Air and power, tape, Gray with black landau top. Clean \$2695 74 OLDS DELTA "38" 4-door, air and power, cruise, white with green vinyl top. ONLY \$1995 73 CHEVY MONTE CARLO air and power, cream with white vinyl top. Only \$2395 78 PONTIAC BONNEVILLE BROUGHAM landau top. Real nice \$7995 75 CHEVY IMPALA WAGON Air and power. Clean \$2995 4 PONTIAC LEASE CARS 4 DOOR SEDANS 1974, 75 and 76 Models, all have been reconditioned and checked, no better buy anywhere, priced from \$1695

Member of the Texas Press Association and West Texas Press Association The Merkel Mail Publishers Statement Established 1889 Published weekly at 916 N. Second St., Merkel, Tx. Entered at the Post Office at Merkel, Texas 79536 as second class mail. Cloy A. Richards Melanie Richards Glenn Richards Suzy Rister Tanya Castille Co-Publisher-Editor Co-Publisher-Adv. Mgr. Writer-Photographer Production Production SUBSCRIPTION RATES: \$4.50 Per Year Taylor County \$7.25 Per Year outside of Taylor County. For Classified Rates: \$1.50 minimum for the first four lines (18 words). Excess of 4 lines will be charged at the rate of 8 cents per word. TERMS: 25 cents discount if bill is paid prior to first insertion. Card of Thanks: \$3.00 minimum for the first 50 words. 6 cents per word for each additional word. TERMS: Cash in advance unless account is established. NOTICE: Typographical or other errors must be given before the second insertion or claims for refund or extensions will not be recognized.

WE HAVE BUYERS AND NEED LISTINGS FOR HOUSES, FARMS, & RANCHES

PALMER PONTIAC & GMC Merkel 928-5113 Abilene 673-1182

MASON SHOES AUTHORIZED DEALER Alfred Flores 1412 N. 2nd Merkel, Tx. 928-5137 Over 300 Styles for Men and Women

GREGG FISHER PLUMBING ALL TYPES OF PLUMBING WORK QUALITY WORK AND REASONABLE PRICES CALL 928-5379 OR 928-5627

Your Message Gets Across Better IN WANT ADS

CAN HAUL DIRT, ROCK & GRAVEL LEVEL & REPAIR DRIVEWAYS CALL EVENINGS Harold Walker PHONE 928-5872 202 CHERRY

Merkel news at a glance



Diane Whitsel

Whitsel-Hernandez engaged

Mr. & Mrs. Jimmy Salazar of Merkel of Merkel have announced the engagement of his stepdaughter, Diane Whitsel to Johnny Hernandez, son of Mr. & Mrs. Frank Hernandez of Merkel.

A June 30th wedding date has been set and both attended Merkel High School. Johnny is employed by Cloya Drilling Company in Bryan and the couple will live in Bryan following the wedding.

Red Cross gives course

Joe Howser, First Aid Chairman has announced: Taylor County Chapter, American Red Cross, is offering a Cardiopulmonary Resuscitation Course given in two sessions at the Chapter House, 1610 N. 2nd St., Tuesday, April 17 and Thursday, April

19, 6:05 P.M. to 10:00 P.M. Time: approximately 8 hours. Requirement: 13 years of age or completion of 7th grade.

Anyone interested in taking the training may call the Chapter House, ph: 677-2622 for further information.

Compere Cemetery meets

The Compere Cemetery will meet on Saturday the 21st, for a business session. Also for the purpose of working the cemetery. Work will begin at 9:00. There will be lunch served at noon.

All interested parties are urged to be present, with necessary equipment for the working, and visitors will be welcomed.

Child injured in accident

Edwin Etheridge, son of Dr. and Mrs. Raymond Etheridge of 1311 S. 3rd in Merkel was hit by a car at approximately 6 p.m. Thursday. Edwin was playing baseball when he was struck.

He was listed in satisfactory condition by Hendrick Medical Officials Friday afternoon. Edwin was transported to Hendrick Medical Center by the Merkel Ambulance Service.

Bike-A-Thon

The Cystic Fibrosis Foundation will have a Bike-A-Thon Saturday, April 21, 1979 at 9:00 a.m.

The children will be coming around for pledges for each mile ridden.

Please be generous & support this cause. If you would like to have lots of fun for a very good cause - call

Iris Amerine - 928-4876 for your pledge card.

Look who's here

Mr. & Mrs. Karl Irvin announce the birth of their daughter, Ginger Michelle, on March 31st in Arlington.

Mr. & Mrs. Carl Irvin of Merkel are the parental grandparents.

Art club meets

Merkel Art Association met April 6th at Senior Citizens. Plans for a show June 2nd were discussed.

The next meeting will be Tuesday April 24th at 7:00 p.m., in the United Savings Bldg.

Those present were: Ann Doan, Frankie Smith, Ruth Hogan, Marie Beard, Ruth Tipton, Cora Reeves and Ruth Cox.

Fires

The Merkel Volunteer Fire Department had a busy Easter Sunday as they responded to two fire calls.

Firefighters put out a burning telephone pole on Merkel's south side and then responded to a burning barn in the Stith area.

Mulberry 4-H

Mulberry Canyon 4-H April meeting was held the 16th with six members attending. We had a new member join, Russell Morgan. Shelia Swinney was

elected sweetheart for the contest in the West Texas Fair this year, good luck Shelia.

We had a business meeting then refreshments and then adjourned. The next meeting will be May 12th. It will be for electing new officers, and a skating party in Abilene.

by: Johnna Talent

West elected mayor

Jerry West, former Merkel resident was elected Mayor of Henrietta, Texas in local elections there last week. West, who has lived in the city for three years, gave up his city council post to run for mayor against the incumbent and won by only 22 votes.

Jerry and his wife Jo Ann both attended Merkel High School, and Jerry's parents George and Veda West of 1212 No. 4th still reside here in Merkel.

OOP'S

Mrs. Leon Harris called in and told the Mail that her address is wrong in the new Merkel phone book. Her correct address is Rt. 2 Box 332. She is listed as Box 3.

If your listing is wrong, call us and let us know.

C&W Musical

There will be a Country and Western Musical

Saturday, April 21, 1979 at 7:30 at the Stith Community Center. It is good, clean, family entertainment and everyone is welcome. All bands and singers are invited to come join the fun.

Snack Bar will be open around 6:30 p.m.

New baby

Mr. & Mrs. Darel Bunch of 800 Locust are

proud to announce the birth of their daughter, Stephanie Marie, born April 9 at 9:40 p.m. She weighed 8 lbs. 12 ozs. and is 21 1/4 inches long.

Upon arriving home Stephanie was welcomed by her 3 1/2 year old sister Amanda Lynette.

Maternal grandparents are Mr. & Mrs. Billy Fisher and great grandparents are Mrs. Marie Fisher and the late Gaines A. Fisher all of Merkel, and Mrs. Iva M. Wells of Sweetwater.

Paternal grandparents are Mr. & Mrs. Clyde Bunch and great grandparents are Mrs. Ruth Jones and the late C.E. Jones and Mrs. Bill Lambert; great, great grandmother is Mrs. Lela Winters, all of Merkel.

Visitors

Mr. & Mrs. L.J. Dillon of DeBeuke, Iowa will be spending a couple of weeks here in Merkel with their son and his family, Dave Dillon.

Meet our new head salesman T-E-Y-I-O-I-R

Greenbug resistant

Best yielder in any season. Massive, extensive roots resist drought and anchor sturdy stalks. Wide, dark green leaves make the most of moisture and nutrients. Resists greenbugs, MDM and most smuts. Well exerted, open heads dry fast and harvest easily. Big bronze berries fill the bin with quality grain.

Golden Acres

"Golden Acres" is a brand name registered by Taylor Evans Seed Company, a subsidiary of Diamond Shamrock Corporation, Tulsa, TX 74068. T-E names or numbers are variety designations.



ED'S FEED & SEED

APRIL SALE DAYS

WINNER OF EASTER HAM
BILLY WILLIAMS
MERKEL

PURINA
MOIST & CHUNKY 5 LB \$1.98
HUNTS
KETCHUP 24 OZ 79¢
TEXAS SPECIAL
DOG FOOD 50 LB BAG \$7.98
KRAFT
BAR B QUE SAUCE 18 OZ 79¢
GIANT
TIDE \$1.49
GOOD NEWS BY GILLETTE
RAZORS 19¢

FOLGERS OR MARYLAND CLUB
COFFEE \$1.98
WITH \$7.00 PURCHASE
WITHOUT PURCHASE \$2.29

TONY'S PIZZA
30¢ OFF

GERMAN SAUSAGE
GOOCH 12 OZ PKG
\$1.29



OSCAR MAYER JUBILLE
BOILEDHAM LB \$2.59
SLICED SLAB
BACON 98¢
SLICED
BOLOGNA LB \$1.39

FRANKS 98¢
GOOCH 12 OZ

FAMOUS CHILI RECIPES FROM
MARLBORO COUNTRY WITH
CARTON PURCHASE OF MARLBOROS

PREMIUM CRACKERS 1 LB BOX 59¢
OREOS 15 OZ 99¢
SLUSH PUPPIES LARGE 29¢
CIGARETTES CTN \$5.49
BIC LIGHTER 49¢
DELTA CORNET TISSUE 4 ROLL PACK 98¢
INSULATED CONTAINERS
LO BOY ALL SIZES
1 G MILK \$1.98 GAL
VIT D \$1.98 GAL
2% \$1.98 GAL
LOW FAT 1% \$1.89 GAL

NINTH STREET GROCERY

WE WELCOME
USDA FOOD
COUPONS

1207 S 9th

PRODUCE SPECIALS

CALIFORNIA
ORANGES LB 39¢

LETTUCE
HEAD OR 35¢
3 for \$1.00

FLORIDA
GRAPEFRUIT 98¢
5 LB BAG

YELLOW
ONIONS LB 19¢

RUSSET
POTATOES 89¢
10 LB BAG

RED ROME
APPLES 98¢
3 LB BAG

WATERMELONS



John Townsend

Students compete at UIL in Lubbock

This weekend in Lubbock the regional UIL competition will take place. Merkel High School will be represented in the Literary meet by John Townsend in the prose reading division and Judy Castille in the typing competition. Both will be Saturday.

In the various spring sports, high school girls that will compete include Pam Crenshaw in the discuss Saturday. Gina Farmer and Sherry Ascencio will be strong contenders in the tennis meet to be held both Friday and Saturday. The girls varsity golf team will also compete regionally when Lisa Hart, Cindy Boone, Becky Watts and Carla Gardner leave Wednesday for two rounds Thursday and Friday at the Municipal Golf Course in Lubbock.

Stenholm announces funds

Congressman Stenholm announces the approval of funds for the AISD, the Merkel ISD and the Wylie ISD by the office of education. The funds are for fiscal year 1979 and are available under public law 874, providing assistance for schools in Federally affected areas. Abilene will receive a tentative entitlement of \$811,833.94. Merkel will receive 7,185.46 and Wylie will receive 3,482.57. The full amounts have been certified for immediate payment and districts should receive the checks within the next week or so.

Legal notice

An ordinance fixing and establishing a budget for the City of Merkel, Texas, for the fiscal year beginning the 1st day of May, 1979, and ending the 30th day of April, 1980, making tax levy for the purpose of payment thereof and fixing the time and terms of payment of city taxes.

WHEREAS: the City secretary of the City of Merkel, Texas in obedience to the laws of the State of Texas, submitted to the City Council of said city a proposed budget covering the proposed income and expenditures of said city for the fiscal year beginning the 1st day of May, 1979 and ending the 30th day of April, 1980.

WHEREAS: notice of said proposed budget hearing, on the 29th day of March, 1979 and the 13th day of April, 1979 was duly advertised in the local newspaper and duly posted in the City Hall.

now therefore be it ordained by the City Council of Merkel, Texas, that the following budget is hereby adapted as follows to-wit:

General Executive Fund: Income - 23,000.00
Operating - 0.00, total - 23,000.00.

General Executive Fund: Expenditures - 22,128.00, To Operating - 872.00.

General Fund: Income - 130,800.00, Operating - 15,000.00, Total - 145,800.00.

General Fund: Expenditures - 145,770.00, To Operating - 30.00, Total - 145,800.00.

Water - Sewer - Sanitation: Income - 185,300.00, Operating - 6,000.00, Total - 191,300.00.

Water - Sewer - Sanitation: Expenditures -

191,293.00, To Operating - 7.00, Total - 191,300.00.
Bond Payment: Interest & Sinking Fund: Tax Income (with S. bond) - 32,000.00, Revenue Income (with s. bond) - 21,600.00, Total - 53,600.00.

Bond Payment: Interest & Sinking Fund: Tax Expenditure (with s. bond) - 32,000.00, Revenue Expenditure (with s. bond) - 21,600.00, Total - 53,600.00.

Be it further ordained by the City Council of Merkel, Texas, that the transfer of funds set out in the budget are in all things approved.

Be it further ordained by the City Council of the City of Merkel, Texas, that there is hereby levied against all real and personal property situated within the corporate limits of the City of Merkel, Texas, on the 1st day of January, 1979 on ad valorem tax for the current year 1979 as follows to-wit:

1. One dollar and fifty cents (\$1.50) on the one hundred dollar valuation based on 60 percent of market value is hereby set aside, levied and appropriated to pay the expenses of the city known and referred to as the general fund (61 percent) and the interest and sinking fund (39 percent).

Be it further ordained by the City Council of the City of Merkel, Texas, that said taxes, hereby levied shall become due on the 1st day of October, 1979 and shall become delinquent on the 1st day of February, 1980. Interest at the rate of 6 percent per annum shall be collected and after said date there shall be a



Judy Castille

Kelso reception

The children & grandchildren of Mrs. Edd (Mimmie) Kelso, will host a reception Sunday April 22, 1979 from 2 till 4 p.m. at Mrs. Kelso's home at 641 Victoria St. Abilene, Texas in honor of her 100th birthday. All friends and neighbors are invited to attend.

Mrs. Kelso was born on a farm outside Nashville, Tennessee to Mr. & Mrs. O.O. McCormick April 21st, 1879. She moved to Texas at age 16. She married Edd L. Kelso in Coryell County in 1899.

They farmed many years in the Stith Community in Jones County, moving to Abilene in the forties. Mr. Kelso died in 1968. Mrs. Kelso still maintains her home & takes care of her farming interest and other business.

penalty thereon, to-wit: 1. during February, 1980, 1 percent; 2. During March, 1980, 2 percent; 3. During April, 1980, 3 percent; 4. During May, 1980, 4 percent; 5. During June, 1980, 5 percent; 6. During July, 1980, 8 percent.

On said taxes and cost as provided by law in the collection of state and county taxes of the state of Texas.

It is provided that if 1/2 of the 1979 taxes be paid prior to February 1980, than the unpaid balance of such taxes may be paid any time prior to the 1st day of July 1980, without payment of interest, penalties, and cost therein provided for.

In the event such unpaid balances of taxes for the year 1979, be not paid on or before the 30th day of June, 1980, these such unpaid balances of taxes shall bear interest from the 1st day of July 1980, and a penalty of 8 percent shall be added, and cost, and shall be subject to collection in the same manner for collection of state and county taxes of the state of Texas.

It shall be further ordained by the City Council of the City of Merkel, Texas that any and all residential homestead owners may receive a 10 percent discount on the 1979 city ad valorem tax levy by request and pay much of said taxes between October 1, 1979 and January 31, 1980.

Passed and approved this 13th day of April, 1979. Lou David Allen Mayor
J.A. Sadler City Secretary

Passing thoughts

by Cloy A. Richards

Teachers at Merkel Independent School District classrooms have found themselves to be in a difficult situation recently.

Part of an issued statement the board read at a trustee meeting on March 20th read, "Because of recent actions, including a law suit, our attorney advises us to take action on teacher contracts with the following stipulation; the renewal of contracts will be subject to the pending deconsolidation movement, and a provision shall be added to renewed contracts making continuing employment subject to the outcome of the deconsolidation election such that the contract may be terminated in the event the deconsolidation is approved by voters and a reduction in teaching staff becomes necessary."

That "reduction is teaching staff" is what the members of the Merkel Classroom Teachers Association are concerned with, to say the least.

They were so concerned they passed a motion at an association meeting last Thursday to seek removal of that stipulation from their 1979-1980

contract at Tuesday's meeting of the school board. To most this may seem as a bold move on their part. This writer feels teachers are right in this case, for one main reason.

A contract is something you sign promising your service to the persons you are signing it with for a set amount of time, or vice versa. (Webster says basically the same thing, in fact, it is paraphrased.)

The teacher contracts being offered to Merkel ISD teachers are not of much value.

If you were in a profession, or job, that required you to sign a contract for your services for a year, and the persons holding your contract had a right to cancel it at any time, you would have that constant fear, much like a turkey in November.

This editorial was written Monday afternoon, the day before teachers carried their problem to the board.

If the board rescinded their stipulation placed on teacher contracts for 79-80, then we agree.

If they hold fast to their position, for what it's worth, this writer does not agree.

The Mail would also like to invite any citizen to voice their opinion on this issue by writing a letter to the Editor to P.O. Box 428.



Comptroller of the Currency
Administrator of National Banks

REPORT OF CONDITION

Consolidating domestic and foreign subsidiaries of the
The Farmers & Merchants National Bank of Merkel
Name of Bank City
In the state of Texas, at the close of business on March 31, 1979
published in response to call made by Comptroller of the Currency, under title 12, United States Code, Section 161.
Charter number 7481 National Bank Region Number 11

Statement of Resources and Liabilities		Thousands of dollars
ASSETS		
Cash and due from depository institutions		3,289
U. S. Treasury securities		100
Obligations of other U. S. Government agencies and corporations		-0-
Obligations of States and political subdivisions in the United States		2,539
All other securities		20
Federal funds sold and securities purchased under agreements to resell		-0-
Loans, Total (excluding unearned income)	11,198	
Less: Allowance for possible loan losses	43	
Loans, Net		11,155
Lease financing receivables		-0-
Bank premises, furniture and fixtures, and other assets representing bank premises		94
Real estate owned other than bank premises		-0-
All other assets		287
TOTAL ASSETS		17,484
LIABILITIES		
Demand deposits of individuals, partnerships, and corporations		6,665
Time and savings deposits of individuals, partnerships, and corporations		6,976
Deposits of United States Government		-0-
Deposits of States and political subdivisions in the United States		2,375
All other deposits		-0-
Certified and officers' checks		123
Total Deposits		16,139
Total demand deposits	7,197	
Total time and savings deposits	8,942	
Federal funds purchased and securities sold under agreements to repurchase		-0-
Interest-bearing demand notes (note balances) issued to the U. S. Treasury and other liabilities for borrowed money		-0-
Mortgage indebtedness and liability for capitalized leases		-0-
All other liabilities		201
TOTAL LIABILITIES (excluding subordinated notes and debentures)		16,340
Subordinated notes and debentures		-0-

NAME OF BANK: The Farmers & Merchants National Bank CHARTER NUMBER: 7481
BALANCE SHEET at the close of business on March 31, 1979
month day year

INFORMATION ABOVE LINE NOT TO BE PUBLISHED
Statement of Resources and Liabilities (Cont'd)

MEMORANDA EQUITY CAPITAL			
Preferred stock	No. shares outstanding	-0-	(par value) -0-
Common stock	No. shares authorized	132,000	
	No. shares outstanding	132,000	(par value) 330
Surplus			330
Undivided profits and reserve for contingencies and other capital reserves			484
TOTAL EQUITY CAPITAL			1,144
TOTAL LIABILITIES AND EQUITY CAPITAL			17,484
Amounts outstanding as of report date:			
Standby letters of credit, total			-0-
Time certificates of deposit in denominations of \$100,000 or more			1,888
Other time deposits in amounts of \$100,000 or more			101
Average for 30 calendar days (or calendar month) ending with report date:			
Total deposits			16,282

We, the undersigned directors attest the correctness of this statement of resources and liabilities. We declare that it has been examined by us, and to the best of our knowledge and belief is true and correct.

ATTESTATION: Place below final "MEMORANDA" entry

Don W. Hensley
Directors

Betty Jane Tittle
Vice President-Cashier

of the above named bank do hereby declare that this Report of Conditions is true and correct to the best of my knowledge and belief.

Betty Jane Tittle
April 6, 1979

Spouse beatings go unreported

An estimated 80 percent of the spouse abuse cases in Texas go unreported - primarily due to fear of reprisal.

This was one of the findings of a study conducted by the Criminal Justice Center at Sam Houston State University.

Dr. Raymond H.C. Teske Jr., Director of the Survey Research Program, said his conservative estimate is that 483,000 women and 88,000 men in Texas have been abused at some time by a spouse.

His figures indicate that 208,000 women may have experienced abuse within the past 18 months, with 97,500 of that number being subjected to "serious" physical abuse. The 18 month estimates for men is 37,000, with 17,000 cases considered "serious" physical abuse.

Teske's estimates are derived from a random survey of 1,500 Texans conducted by research assistant James S. Stachura, under Teske's direction. A total of 682 persons from 138 counties returned completed questionnaires.

The study was unusual in that prior studies involved only those who reported the abuse to some social service agency. Prior studies were also limited in their concentration on abuse directed against women.

The most prevalent type of abuse acknowledged by persons who said they had been victims of spouse abuse was pushing or shoving, followed by slapping, striking with fist, assault while pregnant, and striking with object.

Some 26.9 percent of the victims also checked "other" listing abuses such as verbal or mental harassment, choking, threats with knife or acid, scratching or pulling hair, biting, kept from sleeping, and extramarital affairs.

Teske said that a significant indication of the problems of identifying and combatting spouse abuse was that only 20 percent of the victims indicated that they had called the police for help.

"Many of those who did not call the police made it clear through their written comments that they thought that reporting the abuse would only have caused more violence by upsetting the spouse," said Teske.

While not wanting to involve police in most cases, over two-thirds of the victims did try to fight back or defend themselves. Many of those who did not also said they thought it would have only made matters worse.

Another significant area of questioning concerned cause of abuse with victims allowed to list any cause which came to mind. Drinking or alcoholism was listed by 30.1 percent of the victims. Others included depression, lack of self esteem, instability, emotional problems (10.8 percent); temper (10.8 percent); jealousy (9.7 percent); and financial problems, stress and work problems (each 6.5 percent).

Another question asked more directly about alcohol, and 61.3 percent of the victims said that attacks took place either occasionally, usually, or all the time when the spouse was drinking. One of every four victims said "all the time".

"It is clear that victims perceive alcohol as a major factor in their situations along with other variables," said Teske. "Alcohol may then be a spark which sets off the abuse."

Another section of the questionnaire attempted to determine the validity of the "cycle of violence" theory, in which it is believed that abusive behavior is modeled or imitated and passed through successive generations.

Almost half (48.5 percent) of the victims reported that they had heard or seen their mother of father being abused. A number of the victims did not know whether there had been physical abuse between their spouse's parents, but 31.3 percent said they knew of such abuse taking place.

Almost three of every five victims (59.1 percent) said they had been physically disciplined by parents, and over two of every five (41.9 percent) said their abusing spouse had been so disciplined.

Several of the victims wrote that their being physically disciplined should not be construed as abuse, and that the question of parental discipline was not applicable to their present situation as victims of spouse abuse.

Teske concluded, however, that "the evidence lends support to the idea of a 'cycle of violence' where spouse abuse is concerned."



Jeremy Judge eyes an Easter egg rather skeptically during the hunt at Mrs. Pursley's. The students hunted eggs, played games and ate lunch for their Easter party. (Staff photo by Glenn Richards)

WTU buys land for power plant

West Texas Utilities Co. Thursday announced the purchase of a site eight miles southeast of Vernon for construction of a new coal-fired electric generating plant.

The plant will be built on a 1920-acre tract purchased from the W.T. Waggoner Estate. Center of the site is about three miles southwest of Oklaunion and the same distance from the Fort Worth and Denver Railway.

The land purchase agreement was signed Thursday, April 12 at

the Waggoner Building in Vernon by Jerry J. Johnson, WTU vice president and director of administrative services, and by Killen Moore, trustee of the W.T. Waggoner Estate. Other WTU representatives present were Walter Meller, manager of Systems Operations; J.B. Jordan, Jr., chief right-of-way agent; and Sherwyn McNair, director of Information Services, all from Abilene; and Sam Russell, the company's local manager in Vernon. Meller, whose re-

sponsibilities include general supervision of all WTU power plants, said the site near Oklaunion was chosen after an exhaustive study of possible locations by Tippet and Gee, an Abilene consulting engineering firm.

The first of the generating units is expected to be in commercial operation by 1987.

The construction work force is expected to include about 300 persons in the early stages and increase to around 1,000 prior to completion

of the first unit. The permanent plant operating staff will consist of from 100-125 WTU employees, many of whom will begin arriving before the first unit is completed.

The decision to turn to coal for future generation was made after the Railroad Commission of Texas ruled that natural gas could not be used as boiler fuel in new plants, and that the use of gas in existing plants must be reduced beginning in 1981.

BUMPER TO BUMPER.
Auto Parts Professionals

SPRING TUNE-UP SALE and Bicycle Sweepstakes

Win a 26-in. 10-Speed Bike!

During the BUMPER TO BUMPER Bicycle Sweepstakes each participating store will be giving away a FREE 26-in. 10-speed bike. To enter, just drop by any BUMPER TO BUMPER Auto Parts Store and fill out an entry form. No purchase necessary. Entries must be in by 4 p.m., April 29. A drawing will be held on May 5 to determine the winners. You need not be present to win.

10% OFF COUPON

Gates 10% OFF Gates® Cooling System Products
Plus FREE* Dial-Your-Mileage/Trouble-Shooter Guide

Save 10% on the regular selling price of any Gates belts, hoses or other cooling system products. And with the purchase of a Gates cooling system product, get a FREE dial to help you compute gas mileage and cooling system trouble-shooting guide.

BE SURE TO REGISTER IN THE BICYCLE SWEEPSTAKES

Champion® Spark Plugs
Hot-firing plugs for quick starts, improved performance. Tune up with Champions and save gas. Most U.S. cars.

89¢
Resistor type 1.09 ea.

Berryman Chemical Cleaners
Your Choice!

99¢ ea.

Havoline Motor Oil
Protects your car like a trooper. Gives excellent wear protection. SAE 30.

59¢ qt.

Glumatic® Pen
Makes without mess. Hours out stop-leaking - start stop drop by drop. 3 1/4 x 3 1/4 in. 30-4.

2.49 ea.

Remember to register for the Bicycle Sweepstakes. 140 bikes to be given away - absolutely free.

MERKEL AUTO PARTS

921 North 2nd Street
Merkel, Texas
928-5671

Available at participating BUMPER TO BUMPER Auto Parts Stores and Service Centers.

CALVARY BAPTIST CHURCH
JUST SUPPOSE

Just suppose the Lord would begin tomorrow to make people as sick as they claim to be on Sunday.

Just suppose the Lord should take away the child whom the parents use as an excuse for staying away from church.

Just suppose the Lord should make people as poor as they claim to be when asked to help finance His program.

Just suppose the Lord should have everyone stoned to death for covetousness as was Achan.

Just suppose the Lord should let some parents look into the future and see what their example and lax control did for their children.

Just suppose - and then, by the help of the Lord, go forth and live and serve as if eternity was soon coming.

It is! "I come quickly", says the Lord.

Need a Ride? Call 928-5120 selected

Let's open our eyes, But not to evil
Let's open our eyes, and see
the good in people, and open them
to read God's word!
Open our ears? Yes, but only to Truth.

Close them to gossip,
and things that can harm.
Keep our mouths shut? How then can we
proclaim the word of God?
Alas, lets not close our mouths,
but use them to
proclaim the word,
and rejoice,
and confess,
and sing praises!

HEAR "THE PRIME OF LIFE" WEEKDAYS
AT 7:50 a.m. ON KBBG RADIO

MERKEL CHURCH OF CHRIST
818 ASH
Larry Gill, Minister
John McKeel, Youth Minister

SUNDAY
Bible Study 9:45 a.m.
Worship 10:30 a.m. & 6:00 p.m.
WEDNESDAY
Bible Study 7:30 p.m.

Spring Clearance

RCA XL-100 25" diagonal
\$88⁰⁰

RCA Black & White Sportable 12"
\$298⁰⁰

RCA XL-100 25" diagonal
\$599⁰⁰
with trade

SAVE DOLLARS SAVE ENERGY
on selected RCA color TV models with XtendedLife chassis

CASTILLE'S HARDWARE & GIFTS

928-5310 214 Edwards

Trent News

Regionals, GAs and Easter happenings

The Girls in Action group at Trent is having a parents day April 29th on the lawn at the First Baptist Church in Trent. Members and their parents are invited, brothers and sisters in the families are welcomed also. Activities will begin at 2:30 with races and games, ending at 4:30 with a hotdog supper. All parents must enter with their daughters in the races in order to be eligible for prizes. So limber up mom and dad, and bring your tennis shoes. Mothers are asked to bring sweets for the dessert and palets to sit on ... don't forget your camera as ... in case of heavy rain, it will be postponed. Call Rebecca Sharp: 862-3284 if you have any questions.

Trent 5th grade celebrated Easter with an Easter egg hunt and a short program that ended with the other elementary students judging the Easter bunnets we made. Missy Simpson got the most votes for her bonnet.

All of the 5th graders made the bulletin board for having a paper that was "Eggsactly Right". Missy Simpson, Kim Wallis, and Benjamin Beaver had two selections.

We are finishing up our Texas unit. This week we'll be studying "Historical Texas," and we're beginning a unit on "Endangered Species" for science.

Under the direction of Miss Margaret Cooper, the Trent School will present their Spring

Concert on April 24, at 7:00 p.m. The public is cordially invited to attend.

Immediately after the concert, there will be an open house for all interested persons of the community.

Yesterday, Debbie Jackson of the girls golf team competed in the regional match at the Municipal Golf Course in Abilene.

Academic

Tomorrow at McMurry College in Abilene Todd Richardson will compete in the slide rule contest at 2:30. The pre-lims for the 440 relay team of Herbert, Gilbert, and Richard Beaver and Greg Beasley will also be held Friday at 2:00.

John Stevens will read his poetry interpretation Saturday at 9:00 also at McMurry for regional competition. And finally on Saturday Eddie Patterson will run the mile for Trent while his teammates, if they make the finals, will run their 440 relay at 1:30. Results of all competitions will be in next week.

Tennis

The Trent High School calendar has a full slate of District and Regional competition this week.

Last Tuesday the boys tennis team traveled to San Angelo to participate in the District Tournament there. In singles, John Stevens and Lester Moses competed while in doubles Kenneth Dunn and Kerry Patterson teamed up as did Danny Freeman and Riley West.

'Abilene Opry' presented by Rehab Center

Dave and Sugar, popular country music trio, will headline a concert Tuesday, April 24, to benefit the West Texas Rehabilitation Center, Shelley Smith, WTRC director announced.

The show, titled "Abilene Opry", also will feature the progressive country group Brazos, the Angle Sisters, the Maines Brothers, and Abilene Christian University vocalist Holly Dunn.

Dave and Sugar, individually known as Dave Rowland, Melissa Dean and Sue Powell, formerly sang backup vocal and were the opening act for Charley Pride. They have appeared on the Grand Old Opry, the Merv Griffin Show, Dinah Shore Show, Mike Douglas Show, Phil Donahue Show and the Midnight Special. Their latest single, "Golden Tears" so far has reached the number five spot on the Top 100 on national country surveys.

Brazos, a popular progressive country group in Abilene two years ago is reuniting for the

Abilene Opry. Group members, Mark McCord, Chris Harris, Steve Galloway, and Jeff Huckabee are all Abilene Christian graduates now living in various parts of the country. They have sung in Texas, Tennessee, Kansas and Colorado and have done warm-up acts for Jerry Lee Lewis, Dave Loggins, Jerry Jeff Walker and Dotsy.

The Angle Sisters, Gwen and Stacy, are known to Abilene area residents as regular guests on the Rehab Telethon. They are natives of Knox City.

tives of Knox City.

The Maines Brothers' music is hard to place in one category. It is mostly country and western, spiced with country-rock and folk, or as the Lubbock boys say themselves, just good "West Texas music".

The Opry will begin at 8 p.m. Tuesday, April 24. Tickets, which are \$5 in advance and \$5.50 at the door, are on sale at the Abilene Civic Center, Sound World, Sears and Record Town in the Mall of Abilene. Proceeds benefit the Rehab Center.

Superwalk

It's that time of year again. Time to put on your walking shoes for the SUPERWALK for the March of Dimes.

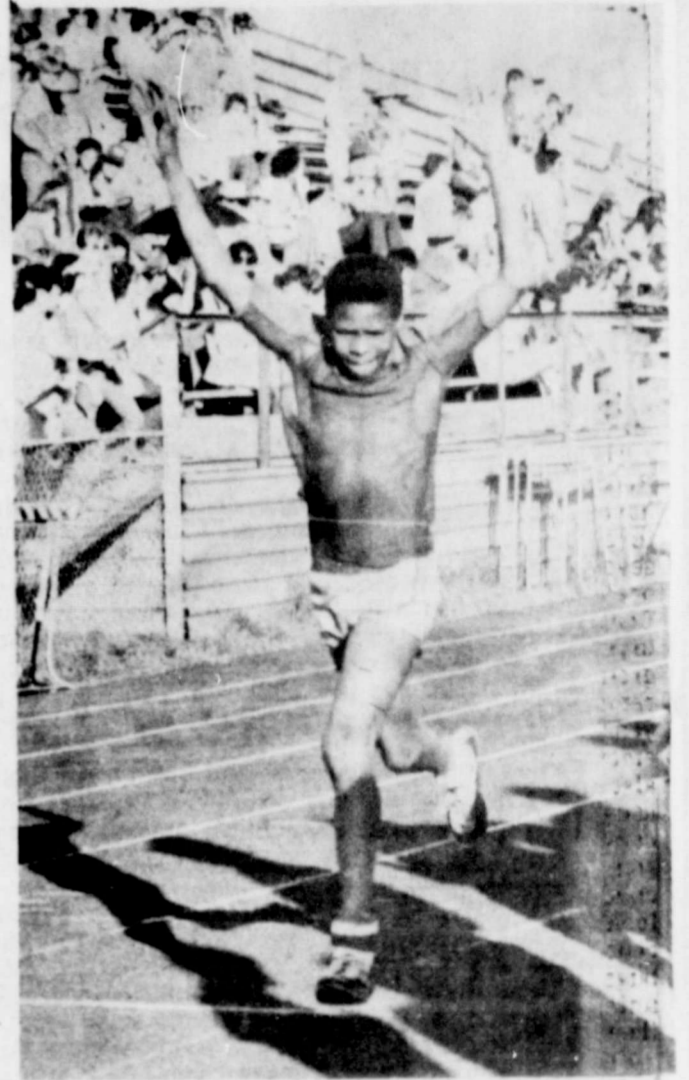
The Superwalk is set for Saturday, April 21. Registration for the 20-mile walk begins at 7:30 a.m. on the west side of the Mall of Abilene. Beginning at 8:30 a.m., participants in the Superwalk will leave the Mall by way of the S. Danville frontage road, take Pioneer to Lee Elementary, to Sears Park, stopping at Will Hair Park for lunch. The second half of the walk will follow Judge Ely Blvd., to Oldham Lane and S. 27th and then up Buffalo Gap Road to the Mall of Abilene.

Posters and pledge sheets are being distributed now and any interested walker or jogger can participate. Participants in Superwalk are given pledge sheets to record sponsor's donations per number of miles walked. Distances covered are recorded as the walkers pass each check station and later, participants return to their sponsors to pick up pledged donations. In other words, the more miles walked, the greater the donations to the March of Dimes.

Fire Chief James Pogue is the Superwalk chairman this year and is coordinating all details. "We had over 800 walkers last year and we're hoping for a thousand this year," he added.

Besides working toward the eradication of birth defects with their efforts and donations, Superwalk participants have other incentives to keep them walking. Prizes will be awarded for outstanding walkers who turn in the most donations, who finish the walk first and who have the most sponsors. There is also a free skating party for all walkers who have turned in their donations by April 28, where there will be a drawing for more prizes.

In addition to \$100 cash from Southwest Savings, Mall of Abilene merchants have donated several prizes including a bicycle from Penny's, a \$50 gift certificate from Grissom's, a three-piece boys suit from Dillard's and a Pronto Camera from Wilson's.



Freddie Patterson of Trent crosses the finish line at the District track meet as he won the Junior High mile division. He beat his nearest competitor by 20 seconds. (Staff photo by Cloy A. Richards)

Planters Gin
Where Your Business is Always Appreciated
M. Red Shafer (mgr.)
TRENT

CAL TEX
BUYERS OF
CATTLE MILO AND
HAY
ROUTE 2 BOX 128
TRENT, TEXAS
915-862-2951
CUSTOM CATTLE FEEDING

Foreman given new assignment

Ed Aiken, Jr., president of Sweetwater Savings Association, has announced the appointment of Bruce Foreman as assistant controller for the savings and loan association.

Foreman was formerly a senior accountant with the certified public accounting firm of Riggs, Wootan & Company. He is a graduate of Sweetwater High School and the University of Texas where he received a BBA degree in accounting.

HOME STATE BANK
TRENT 862-2151

Star Hardware
Striving to Serve our Community Better
TRENT 862-2727

ALLSUP'S CONVENIENCE STORES
STORE SPECIAL PRICES EFFECTIVE APRIL 19-21, 1979

EXTRA SAVINGS IN EVERY BAG!

VAL VITA PEACHES 29 OZ. CAN 59¢	HUNT'S KETCHUP 32 OZ. BTL. 89¢	HUNT'S WHOLE PEELED TOMATOES 14 1/2 OZ. CAN 39¢
HUNT'S TOMATO JUICE 46 OZ. CAN 59¢	STORE SPECIAL	HUNT'S TOMATO SAUCE 5 OZ. 8 OZ. CANS 89¢

BORDEN'S CHOCOLATE MILK 69¢
RATH'S BOLOGNA 99¢
RATH'S FRANKS 99¢
SNOW DRIFT SHORTENING \$1.49
ALLSUP'S ASSTD. FLAVORS ICE CREAM 1/2 GAL. RD. CTN. \$1.29
BORDEN'S YOGURT 3 OZ. CTNS. 89¢

COOKED FOODS OF THE WEEK
BURRITOS 3/99¢

Tye Times

Kindergarten news

First grade studying biology

The children in Mrs. Reed's first grade class have been learning interesting facts about several kinds of bugs, one of which is the June beetle. The June beetle lays its eggs underground in the summer to remain there from 1-2 years before ever emerging. The children also learned that a bee usually will not sting a person unless that person teases it. Many children made adorable looking bright orange construction paper lady bugs with wire legs and antenna to decorate their folders.

Following the study of bugs, we went into a study of plants and flowers including the parts of a plant and what a plant needs to survive. We studied the beautiful symbol of fra-

grance and loveliness - the rose. We learned that some roses are climbers, some grow on bushes, and some bloom more than once in a single season. An interesting fact about the Dandelion is that the name comes from France where it was called dent-de-lion, meaning teeth of the lion. The name refers to the toothed leaves. We will be continuing our study of plants this week as well as planting beans to watch them grow into lovely green plants.

Following our study of plants, we will go into a study of birds to include the Oriole, Blue Jay, Bald Eagle and Mallard Duck. As usual, each child will have his own folder, writing sheet, and coloring sheet.

Chocolate cream cheese pies

1 cup chopped pecans
1 cup flour
1 stick margarine, melted

Mix together and pat to bottom of 13" x 9" pan. Bake 20-25 minutes at 350. Let cool.

1/2 oz. pkg. cream cheese
1/2 cup powdered sugar
1/2 cup Cool Whip

Let cream cheese soft-

en. Mix ingredients and pour over cooled crust.

2 small packages Instant Chocolate Pudding
3 cups milk

Mix together and let set 5 minutes. Pour over cream cheese layer.

Over with Cool Whip. Top with grated Hershey bar and chopped pecans.

Cow Belles share recipes

by: Mrs. C.L. McElmurray, 1st Vice Pres. Big Country Cow Belles.

MEET CHALLENGE OF COOKING FOR ONE OR TWO WITH CAREFUL CHOICE OF NUTRITIOUS MEAT.

Cooking exciting and nutritious meals for one or two diners is a challenge that begins at the market and continues in the kitchen. Frequently time, money, preferences and lack of enough variety make preparing large roasts and full recipes impractical.

Fortunately, many meat choices adapt well to serving one or two, according to Reba Staggs, home economist for the National Live Stock and Meat Board. For example, beef sirloin steak is an appropriate cut to but for two meals. When cut in half, one piece can be cubed for kabobs and the other section broiled for a hearty steak dinner.

Pork chops are another item that can be purchased in small quantity for braising or broiling. The cook's seasoning touches can make them gourmet fare.

Careful creativity is essential in planning tantalizing menus and imagination is an important ingredient when converting leftovers into new dishes.

Some recipes, such as the following two, are easily divisible to serve one or two.

Sirloin-Pepper Kabobs

1 beef sirloin steak, cut 1 1/2" thick

1/2 cup salad oil
1/4 cup lemon juice
1 teaspoon salt
1/2 teaspoon paprika
1/2 teaspoon dry mustard
1 tablespoon brown sugar
1/4 teaspoon onion powder

12 squares sweet red or green pepper (1 1/2 x 1 1/2 inches)

Remove bone and cut steak into sixteen 1 1/2" cubes. Combine oil, lemon juice, salt, paprika, dry mustard, sugar and onion powder. Add marinade to beef cubes. Cover and refrigerate 4 hours of overnight. Alternate beef cubes with pepper squares. Place on grill making certain coals have burned down. Grill 15 to 20 minutes, turning occasionally until brown. 4 servings.

Beefy Green Peppers

1 pound ground beef
2 large or 4 small green peppers, cut in half and seeded
1/2 teaspoon salt
1/2 cup water
1/2 cup instant rice, uncooked
1 tablespoon instant minced onion
1/2 teaspoon salt
1/2 teaspoon pepper
1/2 cup catsup

Cook green pepper halves in boiling salted water 5 minutes. Invert and drain thoroughly. Combine ground beef, rice, onion, salt, pepper and catsup. Spoon into the peppers. Place peppers in a shallow baking dish and bake in a moderate oven (350 degrees F.) for 30 minutes. Top with catsup or cheese the last 5 minutes of baking, if desired. 4 servings.

SOME PART-TIME JOBS CAN BE EXCITING.

Learn to repair a radio, drive a tank, or operate a bulldozer, in the Army Reserve. It's a good way to earn an extra income while you serve your country 16 hours a month. Call your local unit to see what's available. It's listed in the white pages of the phone book under "U.S. Government."

Kindergarten Mrs. Paige

All the children in the kindergarten had a nice surprise last week. We were gifted with a nice new sandbox. Our old one was full of splinters. The new one is painted purple and gold and says "Little Badger Sandbox" on the side. Our thanks to Hayden Reeves from all the kindergarten boys and girls. We even received some new sand too.

Everyone had a grand time on our Easter egg hunt. Lots of colored eggs to find and a prize egg was given to the child finding the most eggs. Refreshments were served by the roommothers after the hunt.

The kindergarteners have been studying about strange things on animals and insects. Here are some questions they would like you to answer.

How did you do with your answers? Did you make 100 percent? I hope so but I doubt it. Most people don't think much about these things. Here are the answers.

1. A frog's ears are hard to find. The big circles in back of a frog's eyes are its ears.
2. A grasshopper's ears are under its wings.
3. Whales do not have ears on the outside of their bodies. They have sensitive hearing canals inside their bodies.

4. A starfish has one eyespot at the tip of each arm. As the starfish climbs around on rocks in search of food, his many eyes tell him where to find it.
5. Large ears or small ears, they hear the same.

Guess everyone is hating the winds but we better be thankful because when the wind stops it sure will get hot. Hope everyone had a nice Easter and not too many visiting relatives.

The Little Brown Jug

BEER-WINE-LIQUOR

Open 10 A.M. - 9 P.M.

1 1/2 Mile North of Conoco Truck Stop, Tye, Tx.

Save Gas And Money

Closed Sunday 692-6036

Westico Travel & Gift

Specializing in:

- Turquoise Jewelry
- Texas Instrument Watches
- Nocona & Texas Boots
- All Types Western Wear
- Ogala Sioux Moccasins
- We Never Close

Westico Travel Shop

Abilene Truck Stop - Tye, Texas



Tye happenings

Tuesday, April 10 the City Council met in regular session. Three new council persons were sworn in by acting city secretary James Snowden. Council persons then were seated and the meeting was opened. The important items were discussed, tax collector, plumbing code and purchase of a new garbage truck. The later was tabled for further discussion and investigation. "M" sanitation presented a proposal for refuse collection and is to be taken under further discussion. There was several people in attendance with is showing that people are concerned about Tye and its future. The City Council then went into executive session on personnel matters. Also Mr. Snowden assigned as acting secretary so again the city council will be seeking applications for this job.

roller skating party to end their activities for the year. Receiving badges for the year were Kathy Corbin, daughter of Sharon Corbin - "My Community", Sally Stout - "Hospitality, Housekeeping", Christine Patterson - "Community and Hospitality", Maria Terrell, daughter of Doris Terrell - "Community, Hospitality", Kelly Orr, daughter of Barbara Orr - "Community, Housekeeping, Needlecraft, Hospitality", Teresa Maddox, daughter of Cinda Maddox - "Community and Hospitality", Sandra Kotlik, daughter of Barbara Kotlik - "Community", Betty Grubby, daughter of Betty Shugart - "Community, Housekeeping, Needlecraft, & Hospitality", Tracy Brown, daughter of Teera Franklin - "My Community", Stephanie Boyd - "Hospitality, Housekeeping, Community, and Needlecraft". Mrs. Boyd hosted the scouts this year. Congratulations girls and keep scouting, Tye needs good people like you. Again, congratulations to all.

preciated by most. When you folks see the two men, give them your personal thanks.

Being that the elections are over now let's bury our hatchets and start pulling toward a better relationship amongst one another and begin building the hopes and dreams of tomorrow. If not for ourselves, then for the younger generation. Let's not put burdens on them, but to give them goals to keep going on.

We would like to greet the Hinderman family to Tye. They are living at 208 Nolan Street. A big welcome to you.

Well, for another week, be kind to your neighbor, yourself and pray for a better tomorrow, we'll see you next week. Support your sponsors, advertisers of the "Mail".

The fire dept. hosted an egg hunt Sunday, April 15th and a turnout of some 85 little ones showed up. It is pleasing to be of service to the community and the fire department will be doing more things as time goes on through the year everyone. Will keep you posted. Again, plans are under way for June Fun Day. Get your group together, set up a booth. Will need everyone's help on this to make it a success and in hopes that it will be an annual event for Tye and its surrounding towns. We don't care how long as it is a group of non-profit. If there are a flea market man you'll be welcome also. Just \$5.00 serves you a spot.

Troop 319 of the Girl Scouts had a rally day receiving their badges and having a

As I've strolled around town have you noticed how many people's yards are getting into order. There are plenty of people that still have pride and this is an asset to our community.

No news on the sewer systems as of this writing, but will report the information as soon as we get something.

A word to DeWit Isom and Art Herrera, from many citizens of Tye, thank you both for your devotion, unselfishness and contribution during your tenure on the city council for a fine job. You have been ap-



TELEPHONE AREA 915 692-9500
4001 SOUTH FIRST ST. ABILENE

8 - 6 Mon.-Sat.

SAVE DURING OPEN HOUSE

Up To \$300 Discount On Ford Explorer Pick-Ups.

Over 200 trucks in stock to choose from.

"WE'LL SHOOT STRAIGHT WITH YOU"
Where You'd Send A Friend



STILL GIVING S & H GREEN STAMPS

CARRY SOUTHLAND BATTERIES

GOODYEAR TIRES

FIX FLATS - NEW, USED TIRES FOR SALE - ANTI FREEZE \$3.99 GAL

Raymon Milligan Texaco

FM 707 & I-20 Tye, Texas

TYE TRANSMISSION

ALL WORK GUARANTEED

271 AIR BASE RD. 698-7205

MOBILE HOMES

COME SEE THE MOST FABULOUS DISPLAY OF DOUBLE WIDES IN THE BIG COUNTRY. SIZES UP TO 1904 SQ. FT.

AT LEAST 25 SINGLE WIDES TO CHOOSE FROM \$8395 & UP.

WE DELIVER, SETUP, AND SERVICE WHAT WE SELL AT NO ADDITIONAL COST.

EL TYE O TRAILER & SALES CORP.

TYE, TX. Ph-AC 915-698-2180

Do you plan to build a new home, or remodel your present one?

If so, you can save money on your future electric energy bills - if you follow WTU'S ENERGY SAVING RECOMMENDATIONS

When your home meets the proper requirements to be awarded the "Energy Efficiency Award", you'll know your home is well insulated, weather-stripped and equipped with an efficient heating and cooling system.

Trained WTU Energy Consultants are available to advise you on proper energy management. Call WTU and arrangements will be made for one of our consultants to assist you, FREE OF CHARGE.




Fresh Cut PRICES



SAVINGS to SMILE ABOUT

SKINNERS 12 OZ BAG
MACARONI
2 FOR 69¢

WITH SPRAYER 22 OZ
GLASS PLUS EA 83¢

\$1,000 FREE GIVEAWAY
REGISTER EACH TIME
YOU'RE IN CARSONS
FREE-MICROWAVE OVEN
FREE-T.V. RCA PORTABLE
FREE-10 SPEED BICYCLE
FREE-7 PIECE COOKWARE
FREE-\$10⁰⁰ EACH WEEK

PRICES GOOD THURS-FRI-SAT APRIL 19-20-21
STORE HOURS MON THRU SAT 7:30 a.m. to 6:30 p.m.
NABISCO
Vanilla Wafers 12 OZ BOX 79¢

CREAMY
CRISCO
3 LB CAN \$1 49
WITH \$10⁰⁰ IN TRADE OR MORE
EXCLUSIVE OF CIGARETTES

HEFTY BAGS
TRASH LINER 20 CT BOX \$1 59

VIP
PLUM PRES. 16 OZ JAR 59¢

CAMPBELL'S NO 1 CAN
TOMATO SOUP 2 FOR 43¢

BAMA 18 OZ
PEANUT Butter JAR 89¢

HUNTS 300
Fruit COCKTAIL 2 FOR 93¢

VIP 303
PEACHES 2 FOR 79¢

HI-C ASSORTED
DRINK 46 OZ CAN 53¢

DEL MONTE 303 WHOLE
TOMATOES 2 FOR 89¢

DEL MONTE 303 CS
Golden CORN 2 FOR 69¢

VIP 46 OZ
TOMATO Juice CAN 69¢

LIBBYS FRENCH STYLE
Green BEANS 2 FOR 69¢

VAN CAMP 300
Pork BEANS 2 FOR 59¢

VIP
CATSUP 20 OZ BOTTLE 53¢

A&W
ROOT BEER 16 OZ BOTTLE 6 PACK \$1 39
NO DEPOSIT

FRENCH
MUSTARD 24 OZ JAR 59¢

CRACKER
JACKS 43¢

JUMBO BOX
LIBBYS VIENNIA SAUSAGE 5 OZ CAN 2 FOR 83¢

IG DAIRY FRESH
HOMO MILK GAL JUG \$1 95

IG DAIRY FRESH
LOW FAT MILK GAL JUG \$1 85

BORDENS
ICE CREAM 1/2 GAL CRTN \$1 39

FOREMOST 1/2 GAL
Butter MILK CRTN 95¢

SPILLMATE
TOWELS CLEAN & SHINE JUMBO ROLL 53¢

MOP&GLO QT BOTTLE \$1 59

CLEANSER
COMET PLASTIC GT SIZE 39¢

LIQUID
PALMOLIVE DISHWASHER 22 OZ BOTTLE 83¢

FROZEN FOODS
TATER TOTS 2 LB BAG 79¢

TROPHY 10 OZ
STRAWBERRIES 33¢

AUNT JEMIMA
WAFFLES 10 OZ PKG 53¢

MRS SMITH 9 IN
PIE SHELLS PKG 79¢

DRUG SPECIAL
GILLETTE TRAC II BLADES REG '1''

HEAD & SHOULDER SHAMPOO 2.5 TUBE

RIGHT GUARD DEODORANT 3 OZ

INTENSIVE CARE LOTION REG '1''

TAKE YOUR PICK 98¢ EACH

COFFEE

FLOUR GOLD MEDAL 5 LB BAG 83¢

WESSON COOKING OIL 48 OZ BOTTLE \$1 93

LIPTON TEA BAG 24 OZ COUNT \$1 43

TAB - 7 UP OR
COKE COLA 32 OZ BOTTLE 6 PACK \$1 49 PLUS DEPOSIT

CARNATION

COFFEE MATE 16 OZ JAR \$1 49

KRAFT

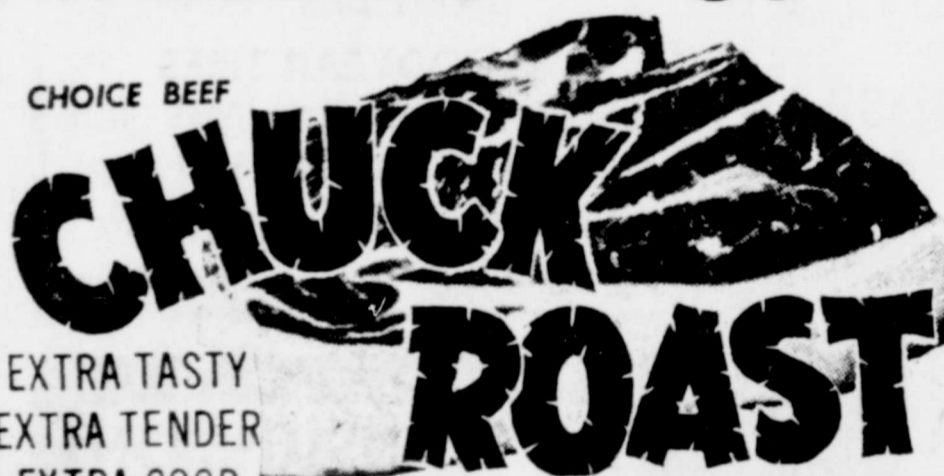
VEL VEETA CHEESE LB BOX \$1 39

M-J-B LB CAN \$1 59

GOLD MEDAL 5 LB BAG 83¢

COOKING OIL 48 OZ BOTTLE \$1 93

TEA BAG 24 OZ COUNT \$1 43



CHOICE BEEF
EXTRA TASTY
EXTRA TENDER
EXTRA GOOD

ROAST

BLADE CUT

CORN DOGS 5 COUNT PACKAGE \$1 25

EXTRA LEAN LB \$1 69

FRANKS 12 OZ PKG \$1 09

BACON ARMOUR STAR POUND \$1 49

FRESH SPLIT FRYER BREAST LB \$1 19

FRESH PORK STEAK LB \$1 59

FRESH MEATY SPARE RIBS LB \$1 69

HORMEL 12 OZ PKG LITTLE SIZZLERS \$1 19

GOOCH BR SAUSAGE GERMAN STYLE PKG \$1 39

MOP&GLO QT BOTTLE \$1 59

CLEANSER COMET PLASTIC GT SIZE 39¢

LIQUID PALMOLIVE DISHWASHER 22 OZ BOTTLE 83¢

LIPTON TEA BAG 24 OZ COUNT \$1 43

WESSON COOKING OIL 48 OZ BOTTLE \$1 93

FLOUR GOLD MEDAL 5 LB BAG 83¢

TAKE YOUR PICK 98¢ EACH

COFFEE

WESSON COOKING OIL 48 OZ BOTTLE \$1 93

LIPTON TEA BAG 24 OZ COUNT \$1 43

WESSON COOKING OIL 48 OZ BOTTLE \$1 93

FLOUR GOLD MEDAL 5 LB BAG 83¢

TAKE YOUR PICK 98¢ EACH

COFFEE

WESSON COOKING OIL 48 OZ BOTTLE \$1 93

FLOUR GOLD MEDAL 5 LB BAG 83¢

TAKE YOUR PICK 98¢ EACH

COFFEE



FRESH GRAPEFRUIT

FLORIDA RUBY RED

5 LB BAG 98¢

FRESH LETTUCE LB 23¢

COLD ROME BEAUTY 3 LB BAG

RED APPLES 89¢

FRESH CELLO CARROTS 2 LBS 33¢

YELLOW ONIONS LB 19¢

RUSSET SPUDS 10 LB BAG 89¢

BROASTED CHICKEN 8 PIECES FEEDS 4

WE GIVE GIFT BOND STAMPS

Double on Wednesday with \$5.00 or more

WE WELCOME FOOD STAMPS

CARSON'S SUPER MARKET

FREE Delivery On \$7⁰⁰ in Trade Or More