

Taylor County's  
Only Legal  
Weekly Newspaper

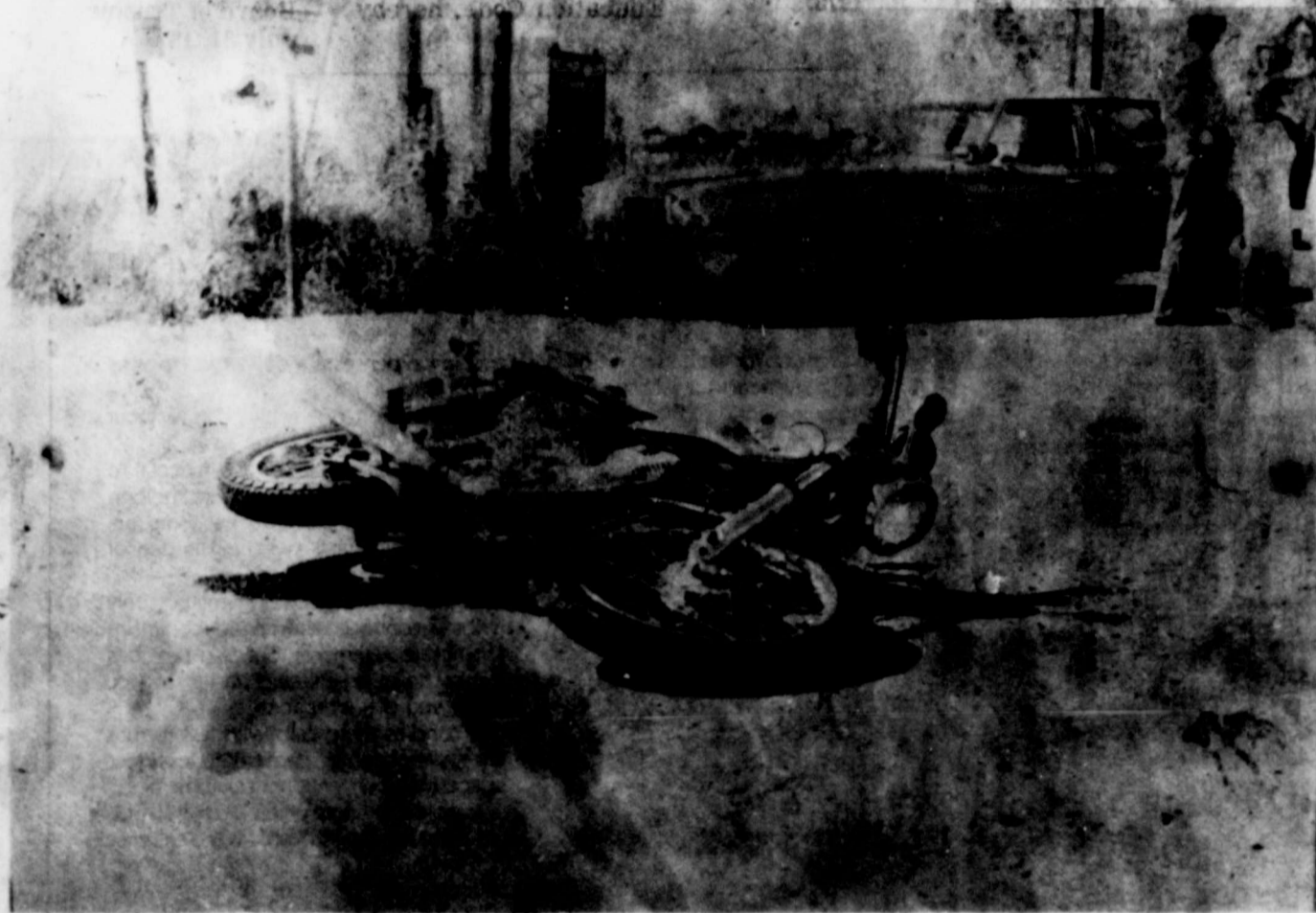
# The Merkel Mail

15¢

Published Weekly

Thursday August 3, 1978

Vol. 89 No. 24



Motorcycle-car wreck last Tuesday. One person was injured in the mishap.



Handy's Food Store ...drive-in grocery???

## Accidents Do Happen

The events of last Tuesday and Thursday proved that accidents do happen. Last Tuesday afternoon a car motorcycle accident injured one person. The accident

occurred when the car driven by Kathryn Murrell collided with the motorcycle driven by Mr. Dewey Nichols. Nichols was traveling North on FM 126 and Murrell was west bound on Interest

20 access road. Nichols was rushed to Hendrick Medical Center for treatment and then released. Thursday afternoon a car driven by a local man ran into the front part of Handy's Grocery

when the brakes on his car failed. The accident damaged the front of Handy's and the store received some inside structural damage. No one was hurt in the accident.

## Hunter Safety Class To Be Offered

The Hunter Safety Class will be at the Taylor Electric Building in Merkel, August 15, 17, and 20, 1978 at 8:00 p.m. (1:00-Aug. 20).

Any person wishing to learn safe handling of firearms are eligible. Classes will be approximately 3 hours in length

with live firing and other demonstrations on August 20.

Each person to qualify will be certified by the Texas Park and Wildlife as a safe hunter. This is a mandatory requirement for buying a hunting license in 27 states

at this time.

For more information contact: Justin D. Sandusky, Rt. 3 Box 150, Merkel, Texas, 79536, Phone 915-928-5170, or Texas Parks and Wildlife Dept. 279 N. Willis Street, Abilene, Texas, 79604 phone 915-673-3333.

## Celebrities Announced For West Texas Fair

The West Texas Fair brings in some of the most sought-after performers of today as free entertainment for its visitors:

**EDDIE RABBITT**, 1977 Best New Entertainer of the Year in Country Music with his hits "Drinkin' My Baby (Off My Mind)", "Rocky Mountain Music" and

his latest release "Hearts On Fire" and **THE KENDALLS**, Country Music's "Hot-test" act in 1978 with hits such as "Heaven Is Just A Sin Away", "It Don't Feel Like Sinner To Me" and their newly released "Pittsburgh Stealers" will highlight the free midway to the rodeo, at 6:00 and 10:00

p.m. (Eddie Rabbitt, Saturday and Sunday; The Kendalls, Monday and Tuesday).

In addition, the Fair offers more free fun for everyone:

**T. G. SHEPPARD**, known for his hits "Devil In The Bottle", "Solitary Man" and "Mr. D.J." will appear on Wednesday, September

13 at 10:00 p.m. on the outdoor stage.

"Europe's Fastest Hypnotist", **THE AMAZING VANDERMEIDE**, will provide shows every evening at 10:00 on the outdoor stage.

**WERNER HIRZEL**, "The Musical Pied Piper" of Guinness Book of World Records fame, will appear on the mid-

way daily with his 49 different instruments.

And for the kids—"Mr. Pockets", direct from Clown Alley, will be walking the midway daily from 4:00 - 6:00 p.m., and the **ZOOLAND PETTING ZOO** will give your youngsters the opportunity to pet and feed over 60 different kinds of animals and birds.

## Football Season

### Starting To Roll

The calendar of events for the football players of the 1978-79 school year has been announced by Coach Jerry McLeod and are as follows:

Saturday, August 5, Physicals will be given to high school and Jr. high school players at the high school gym beginning at 8:00a.m. Come in shorts and "T" SHIRTS. "You must have a physical exam

and have it signed by your parents before you can practice.

Wednesday, August 9- All sophomore, junior, and senior football players report to field house to receive shoes. Report in following order. Seniors-5:00, Juniors-5:30, Sophomores-6:00.

Monday, August 14- First Practice- all sophomore, junior, and senior players on the field

ready to go at 7:00. A.M. Practice- All morning practices will begin at 7:00 sharp. P.M. Practice- all evening practices will begin at 6:00 sharp. Skull Practice- will be announced daily.

Friday, August 25- J.V. and Varsity will scrimmage at Hamlin.

Friday, September 1- J.V. and Varsity will scrimmage Dublin, here.

## Tejanitos Win

The Merkel Tejanitos beat Ben's Clean Up of Abilene by the score of 15-2 Sunday on the Harlin-Simmons diamond.

The Tejanitos launched a 19-hit attack led by Ramon Moreno and Richard Hernandez. Ramon was 3 for 3 and

Richard was 3 for 4, one a home run over the 365 foot mark.

John (Boy) Biera and Juan Ybarra pitched for Merkel allowing only six hits. John Boy got credit for the win and Juan was credited with a save.

The Tejanitos will host the Snyder Redlegs on Sunday August 6.

## Fiftieth Celebration

### August 6

Mr. and Mrs. Cyrus Pee will be honored by a celebration of their fifty years of work in Merkel Sunday, August 6, 1978 at the First United

Methodist Church of Merkel from 3:30 p.m. to 5.00 p.m. Everyone is invited to attend. No gifts please.

## Nine Attend Cub Scout Day Camp

The summer camping season at Camp Tonkawa officially closed with the end of the second week of Cub Scout Day Camp. Three hundred and twenty-four Cub Scouts and one hundred and sixty-five staff members (adults and Boy Scouts) attended. Attending from Mer-

kel were:  
First Session, July 10-13, 1978: Chris Horton, Larry Wayne Johnson, Thomas Santee, and Todd Lee Yaddow. Second session, July 17-20, 1978: David Doan, Ricky Doan, Chris Horton, Lee Leverich, and Bryan Robertson.

## Blackwell Revival Set

The Gospel Continentals of Franklinton, Louisiana will be holding a four day community wide revival at the Blackwell School Audi-

torium, August 7,8,9,10 at 8:00 p.m. They will be in full charge of the services, both singing and preaching. Everyone is cordially invited.

The Merkel Mail apologizes for the bad pictures on the front page of the paper run last week. The problem was due to difficulty in the printing. The pictures are reprinted through out this weeks paper.

## PRCA Rodeo Scheduled Sept. 9 - 12

Van Boozer and Dennis Templeton, President and General Manager of the West Texas Fair respectively, announce today that the PRCA Rodeo will be held the first four nights of the Fair this year, September 9-12, at 7:30 p.m. in the air-conditioned Taylor County Coliseum.

The purse is anticipated to be approximately \$25,000 and National Championship Cowboys are expected at each night's performance. This truly competitive sport, nationally popular, offers a brand new contest, a different outcome with each performance.

Tickets go on sale on August at Luskey's Western Wear, Brand's Western World (formerly Abilene Western Town), the Coliseum box office and Sears. Notice of ticket sales will appear in your local newspaper. Box seats for all four nights, \$5.00. General Admission (bal-

cony) Saturday and Sunday, \$4.00, Monday and Tuesday, \$3.00.

And remember, your rodeo ticket gets you into the Fair free that same night (not including parking) where a variety of top-notch free entertainment will be appearing for your enjoyment.



New Dairy Queen ...hopefully opening in October.

## Blood Drive

A blood bank drive will be held at Anson General Hospital Thursday, August 3, from 1 to 5 p.m., according to Wendell O. Barber, Anson General Hospital administrator. The purpose of the drive is for replacement blood taken from the local bank in Abilene residents. Blood can be donated anyone or to be kept for use at the blood bank. Barber said. Donors are





**LOTS OF FISH...** These boys had a fairly good fishing trip this past weekend at Albany. The boys brought back 250 pounds of live weight. The largest fish weighed between 55-60 pounds. Pictured from left to right is: Randy Carson, Lonnie Riggan, Jerry Byrd, Bill Whisenhunt, and Raymon Moreno. Not pictured is Juan Ybarra.

### Xi Nu Chi Meets

Xi Nu Chi sorority sisters and their families met at Abilene State Park on Saturday July 29.

Everyone had a good time enjoying swimming, a picnic, horse-shoes, and baseball.

Those attending were: Mr. and Mrs. Billy Bob Neff and Pam, Mr. and Mrs. Lee Yaddow and Todd, Mr. and Mrs. Larry Teaff, David and Eric, Mr. and Mrs. George Starbuck and John, Mr. and Mrs. Paul Moore, Dusti and Christie, Mrs. Jimmy Leve-rich, Randy and Lee.



Merkel Middle School Twirlers who attended twirling camp at Angelo State University are from left to right: Back row, Kim McCasland, Kim Gurganus, and Denise Pack. Front row is Windi Whisenhunt.

### Senior Citizens Meet

Ross Merritt was president for the month of July. The directors met the 3rd of July for a short business meeting, before the first Monday night singing.

There was a good crowd for the singing. Some visitors from Mcu-alley. We always welcome visitors from any where. Also we had a good crowd for the luncheon the 11th of

July. Mrs. Maude Watts from Nugent, came and brought her two grand-daughters, Jannell and Terri Watts, who played the piano and sang for us, which was enjoyed by all and we welcome them back anytime. Also the Methodist Pastor, Floyd Richardson from Trent and Jim Lawless, the Baptist pastor from Trent, were guest. We welcome them back. A

very good covered dish meal was served and enjoyed by all. There was three people at the birthday table. Mrs. Easter Carson made the lovely birthday cake.

After lunch, games were played and a quilt finished. For talent night, the 30th of July was singing by the Senior citizens.

Dennis Butler will be president for August, we

are planning a month of activities. The monthly singing will be the first Monday night the 7th of August, so everyone come and sing with us. Our luncheon day is August 8th, so everyone come and bring a covered dish and fellowship and eat together. If you have a birthday during August, eat at the birthday table. Third Thursday night at 7:30 will be talent night, come bring your talent and get on the program. The 31st of August will be the fifth Thursday night, so come bring a covered dish and we will have supper together to eat at 7:30.



The oldest museum in the world is the Ashmolean Museum in Oxford, England, built in 1679!

**GREGG FISHER PLUMBING**  
ALL TYPES OF PLUMBING WORK  
QUALITY WORK AND REASONABLE PRICES  
CALL 928-5379 OR 928-5627

### SHUFFLEBOARD TOURNAMENT

THURSDAY STARTING AT 8:30

### DANCE

FRIDAY NIGHT  
HALF BREED  
8:30 TIL 12  
Queena Hearts Club

### HOW WOULD WE FEEL...

...if God gave us the same amount of time and attention that we devote to Him?

...if God offered as many excuses as we do, and if the excuses were no more justifiable than ours?

...if God's promises were no more certain than ours?

...if God withheld His blessing from us as we withhold our offerings from Him?

### FIRST ASSEMBLY OF GOD

N. 2ND & RUNNELLS  
NEED A RIDE? CALL 928-5761

## Merkel ISD Plans No Rate Change

The Merkel I.S.D. tax rate is \$1.57 per \$100 assessed value. There are no plans to change this tax rate for the fiscal school year of 1979 other than a bond issue proposal for school building purposes that will be presented to the resident voters on September 16, 1978.

To maintain the same general level of revenue as was generated last year the Board of Trustees of the Merkel I.S.D. would have to adopt a tax rate of \$1.53. The Board of Trustees, in accordance with the requirements of Section 20.03 (d) of the Texas Education Code, hereby

announces its intent to adopt a tax rate which will exceed \$1.53 per \$100 of assessed value. A public hearing on this action will be held at the Merkel Middle School on August 15, 1978 at 6:30 p.m.

Charles Jacobs  
President  
Board of Trustees  
July 31, 1978

### Digital Switching

**We're using it to hold the line on higher phone rates.**

Every dollar we can shave off our operating expenses is a dollar that helps us delay the need for rate increases.

Our objective, of course, is to hold the line on operating costs without reducing the quality of your telephone service.

Sometimes this requires Continental to invest large sums of money in technological advancements that, in the long run, save money. Digital switching is one of these advancements.

Digital switching equipment not only helps us control costs with reduced maintenance requirements, but also provides better noise levels and faster service when you dial a number.

It handles more calls with fewer trunk lines, yet occupies about 80% less floor space than conventional equipment.

Installed in areas where fast growth is expected, the new equipment will let us meet the growth without the expense of building new facilities.

Because the rates you pay for telephone service are based on our costs of doing business throughout our system, digital switching works in your behalf wherever we install it.

It's one of the ways we're doing our best to do more for you.

**Continental Telephone of Texas** Doing our best to do more for you

Comptroller of the Currency  
Administrator of National Banks

### REPORT OF CONDITION

Consolidating domestic subsidiaries of the  
Consolidating domestic and foreign subsidiaries of the  
The Farmers & Merchants National Bank of Merkel, Texas  
In the state of Texas at the close of business on June 30, 1978  
published in response to call made by Comptroller of the Currency, under title 12, United States Code, Section 161  
Charter number 7181 National Bank Region Number 11

I, Betty Jane Tittle  
Vice-President-Cashier  
of the above-named bank do hereby declare that this Report of Condition is true and correct to the best of my knowledge and belief.  
Betty Jane Tittle  
July 19, 1978

We, the undersigned directors attest the correctness of this statement of resources and liabilities. We declare that it has been examined by us, and to the best of our knowledge and belief is true and correct.

Directors  
Dennis Zinsley  
John G. ...  
John G. ...

NAME OF BANK The Farmers & Merchants National Bank CHARTER NUMBER 7181  
BALANCE SHEET at the close of business on June 30, 1978

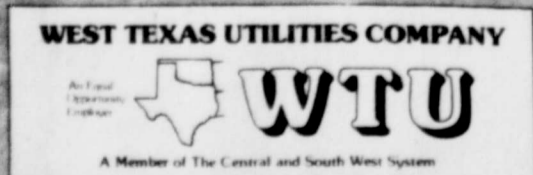
| Statement of Resources and Liabilities                                                             |       | Thousands of dollars |
|----------------------------------------------------------------------------------------------------|-------|----------------------|
| <b>ASSETS</b>                                                                                      |       |                      |
| Cash and due from banks                                                                            |       | 3,082                |
| U.S. Treasury securities                                                                           |       | 100                  |
| Obligations of other U.S. Gov't. agencies and corps                                                |       | 13                   |
| Obligations of States and political subdivisions                                                   |       | 1,300                |
| Other bonds, notes and debentures                                                                  |       | none                 |
| Federal Reserve stock and corporate stock                                                          |       | 20                   |
| Trading account securities                                                                         |       | none                 |
| Federal funds sold and securities purchased under agreements to resell                             |       | none                 |
| Loans, Total (excluding unearned income)                                                           | 9,617 |                      |
| Less: Reserve for possible loan losses                                                             | 18    |                      |
| Loans, Net                                                                                         |       | 9,599                |
| Direct lease financing                                                                             |       | 97                   |
| Bank premises, furniture and fixtures, and other assets representing bank premises                 |       | none                 |
| Real estate owned other than bank premises                                                         |       | none                 |
| Investments in unconsolidated subsidiaries and associated companies                                |       | none                 |
| Customers' liability to this bank on acceptances outstanding                                       |       | 228                  |
| Other assets                                                                                       |       | 14,106               |
| <b>TOTAL ASSETS</b>                                                                                |       | 5,721                |
| <b>LIABILITIES</b>                                                                                 |       |                      |
| Demand deposits of individuals, partnerships and corps                                             |       | 6,168                |
| Time and savings deposits of individuals, partnerships, and corps                                  |       | 16                   |
| Deposits of United States Government                                                               |       | 925                  |
| Deposits of States and political subdivisions                                                      |       | none                 |
| Deposits of foreign govts. and official institutions                                               |       | none                 |
| Deposits of commercial banks                                                                       |       | 44                   |
| Certified and officers' checks                                                                     |       | 13,224               |
| <b>TOTAL DOMESTIC DEPOSITS</b>                                                                     | 6,060 |                      |
| Total time and savings deposits                                                                    | 7,164 |                      |
| Total deposits in foreign offices                                                                  | none  |                      |
| <b>TOTAL DEPOSITS IN DOMESTIC AND FOREIGN OFFICES</b>                                              |       | 13,224               |
| Federal funds purchased and securities sold under agreements to repurchase                         |       | none                 |
| Liabilities for borrowed money                                                                     |       | none                 |
| Mortgage indebtedness and liability for capitalized leases                                         |       | none                 |
| Acceptances issued by or for account of this bank and outstanding                                  |       | 169                  |
| Other liabilities                                                                                  |       | 13,393               |
| <b>TOTAL LIABILITIES (excluding subordinated notes and debentures)</b>                             |       | 13,393               |
| Subordinated notes and debentures                                                                  |       | none                 |
| Preferred stock - No. shares outstanding 2000 (par value)                                          |       | none                 |
| Common stock a. No. shares authorized 132,000 (par value)                                          |       | 330                  |
| b. No. shares outstanding 132,000 (par value)                                                      |       | 330                  |
| Surplus                                                                                            |       | 153                  |
| Undivided profits                                                                                  |       | 200                  |
| Reserve for contingencies and other capital reserves                                               |       | 200                  |
| <b>TOTAL EQUITY CAPITAL</b>                                                                        |       | 1,023                |
| <b>TOTAL LIABILITIES AND EQUITY CAPITAL</b>                                                        |       | 14,106               |
| <b>MEMORANDA</b>                                                                                   |       |                      |
| Average for 30 calendar days ending with report date                                               |       |                      |
| Cash and due from banks                                                                            |       | 2,503                |
| Fed. funds sold and securities purchased under agreements to resell                                |       | 1,277                |
| Total loans                                                                                        |       | 10,181               |
| Time deposits of \$100,000 or more in domestic offices                                             |       | 864                  |
| Total deposits                                                                                     |       | 13,679               |
| Fed. funds purchased and securities sold under agreements to repurchase                            |       | none                 |
| Liabilities for borrowed money                                                                     |       | none                 |
| <b>TOTAL ASSETS</b>                                                                                |       | 15,227               |
| Standby letters of credit (outstanding as of report date)                                          |       | none                 |
| Time certificates of deposit in denominations of \$100,000 or more (outstanding as of report date) |       | 864                  |
| Other time deposits in amounts of \$100,000 or more (outstanding as of report date)                |       | none                 |

80° — 15% less  
79° — 8% less  
78° — Recommended temperature setting  
77° — 8% more  
76° — 16% more  
75° — 23% more  
74° — 32% more  
73° — 41% more  
72° — 50% more  
71° — 59% more  
70° — 68% more

The lower you set your thermostat, the higher your energy consumption.

You can lower your cooling bill 50% this summer by raising the temperature in your home from 72° to 78°

NOTE: This chart is based on average residential usage for cooling in a typical residence.



Remember REDDY Supplies the energy — but only YOU can use it wisely.



# summer of values

## MR PIBB

6 BOTTLE \$1 59  
CARTON 32 OZ PLUS DEP

## FOLGER'S COFFEE

\$2 49  
1 LB CAN

PRICES GOOD  
THURS — FRI — SAT  
AUG 3-4-5

## CRISCO

3 LB CAN

\$1 89

**BACON** GOOCH BLUE RIBBON **\$1 39**  
LB

**FRANKS** GOOCH'S **79¢**  
12 OZ PKG

**HAMBURGER** FRESH GROUND **79¢**  
LB

**CHUCK ROAST** 7-BONE **\$1 29**  
LB

**CHUCK ROAST** BLADE CUT **\$1 09**  
LB

**ROUND STEAK** TOP CUT **\$1 98**  
LB

IMPERIAL 1 LB BOX **39¢**  
**Brown Sugar**  
LIPTONS INSTANT **\$1 79**  
**TEA** 3 OZ JAR  
GLADIOLA 6 OZ PKG  
**Corn Bread Mix** **39¢**  
A-1 STEAK **99¢**  
**SAUCE** 10 OZ  
SHASTA 12 OZ CAN **\$1 15**  
6 PACK DRINK

KOOL AID PKG **10¢**  
LIQUID **79¢**  
**JOY** GIANT SIZE  
KRAFT'S BLUE CHEESE **59¢**  
**DRESSING** 8 OZ BOTTLE  
KRAFTS 10 OZ **69¢**  
**BAR-B-Q SAUCE**

FROZEN PATIO  
**MEXICAN DINNERS OR ENCHILADA BEEF DINNER** EACH **59¢**

BAYER  
**ASPIRIN** 100 COUNT **\$1 19**

**KLEENEX** 200 SIZE **59¢**

**CLOROX** HALF GAL **45¢**

**CLING FREE** 24'S **\$1 19**

**TIDE** GIANT SIZE **\$1 29**

hot weather  
**FROZEN FOOD SALE**

GOLD KING HUSH 1 LB PKG PUPPIES **59¢**

KEITH'S FISH STIX 8 OZ PKG **59¢**

KEITH'S KRINKLE CUT 2 LB BAG POTATOES **49¢**

CREAM OF THE CROP  
**PRODUCE SALE**

Tomatoes **45¢**  
LB

CANTA-LOUPES **25¢**  
LB

CALIFORNIA PEACHES **49¢**  
LB

TEXAS Cucumbers **25¢**  
2 FOR

MISSOURI CORN **25¢**  
2 FOR

**CATSUP** HUNT'S 32 OZ BOTTLE **79¢**

HUNTS WHOLE NEW **POTATOES** 300 SIZE **25¢**

**COCKTAIL** DEL MONTE 300 SIZE 2 FOR **89¢**

BAMA **APPLE BUTTER** 28 JZ **79¢**

NO 2 CAN **GRAPEFRUIT JUICE** **29¢**

SWIFTS **VIENNAS** 2 FOR **83¢**

HONEY BOY CHUM **SALMON** 16 OZ CAN **\$1 39**

**CAKE MIX** DUNCAN HINES BOX **69¢**

**FLOUR** GOLD MEDAL 5 LB BAG **79¢**

PRESTON'S **MILK** LOW FAT 1 GAL **\$1 59** REG HOMO **\$1 65**

PRESTONS **MILK** LOW FAT 1/2 GAL **89¢** REG HOMO **93¢**

FOREMOST **COTTAGE CHEESE** 24 OZ CRT **89¢**

KRAFTS **CHEESE** HALF MOON 16 OZ LONGHORN PKG **\$1 49**

**BISCUITS** DOTTIES 2 FOR **25¢**

**OLEO** KRAFTS PARKAY LB **53¢**

USDA APPROVED TO REDEEM FOOD STAMPS

DELIVERIES TUESDAY & FRIDAY AT 10:00 AM

\$5.00 MINIMUM DELIVERY



Where Customers Send Their Friends  
PHONE 928-5713

### SAVE

LOWER OVERHEAD  
CHEAPER PRICES



# EVERY DAY IS SALE DAY IN THE CLASSIFIEDS!

### REAL ESTATE

THREE BEDROOM home, bath and 1/2, redecorated through out, storm windows, carpet, large lot and store house. See to appreciate. Reduced to \$30,000. Call 928-5079. 24-1tp

### GARAGE SALE

IF YOU LIKE GARAGE sales you'll like THINGS IN GENERAL. We're open from 2:00 til 6:00 every day except Tuesday and Sunday. We're located at 122 Edwards, across from West Texas Utilities. Phone 928-4932. 23-4tp

### FOR SALE

FOR SALE: Trained Registered six year old gelding "Glo's Pot Luck" by Lynn's Glo and King Glo. Contact Dave Gamble at Merkel Drug. 22-tfc

### MISCELLANEOUS

LAND FOR SALE? call Collect Bill Largent, Farm and Ranch Mgr. at Frances McClure Inc. Realtors. 3157 South 27th Abilene. 698-3211, Night 698-2375. 46-tfc

### Services

FOR REPAIRS on washers, dryers, dishwashers, power mowers, small appliances, small motors, call 928-4932. Bill Booth at THINGS IN GENERAL. 23-4tp

BIG GARAGE SALE: Friday and Saturday, 8 til 8; early American Couch, Bucket seats, bedroom suite, golf clubs, and back to school clothes. 1517 Sunset. 24-1tp

FOR SALE: 1974 Vega, air conditioner, tape deck, CB, clean, Call 928-5571 after 1:00. 18-tfc

SHANNONSIDE apartments-1, 2, and 3 bedroom apartments, shag carpet, all electric, dishwasher, garbage disposal, central cooling and heating. For more information call 928-5038. 8-tfc

CORR. Last week this ad read trained babysitter. It should have read licensed babysitter. The Merkel Mail regrets this error.

GARAGE SALE: 601 Edwards, Thursday and Friday. New items added. Tools, dishes, jewelry, dolls and misc. 24-1tp

FOR SALE: 66 Chevy, power steering, brakes, air, \$600 or best offer. call 928-5520. 24-1tp

BEAUTIFUL 6 week old puppies to give away. call 928-5017 or come by 1407 Herring Drive. 24-1tnc

LICENSED babysitter: 7 days a week, also nights. Age preschool and infants. Phone 928-5962 512 El Paso Street. 23-4tp

GARAGE SALE: 1001 Locust Street, 2 couches and a chair, small whirlpool, childrens clothes, and shoes. 24-1tp

BOOK SALE: Friday and Saturday, August 4th and 5th, 9 til 6. 1407 Herring. We buy, sell or trade all kinds of books. 24-1tnc

FREE PUPPIES one half doxon, 512 Locust or call 928-5321. 24-1tp

Boot and Shoe Repair Drop your footwear repair needs at Handy Food Store 928-4912 One week service.

TWO FAMILY garage sale: reconditioned trombone-bargain, levis and jeans, drapes-92-64, hub caps, radio, stereo speakers, lots of odds and ends. Friday only at the corner of Trundy and FM 126 south. 24-1tnc

FOR SALE: 71 VW Campmobile, Call Jerry McLeod, 928-5571 after 1:00. 17-tfc

CUDDLY KITTENS to give away. Call 928-5401. 24-tfenc

FINE FURNITURE, fabrics at better prices. Professional upholstery available. Randy's Fabrics, 1190 Butternut, 673-2238. 22-tfc

INSIDE SALE: Several families. Noodle Community Center, Saturday Only, 8:00-4:30. Clothes, dishes, and misc. items. 24-1tp

FOR SALE: Coppertone frost free refrigerator freezer, \$125; lighted gun cabinet, \$90; male AKC Irish Setter puppy, \$35. Call 928-5069 or 928-5231 Tom. 24-1tp

NEED HALF BED with mattress and box springs in good condition. Call 928-5033 after 3 p.m. 24-1tp

NEED A ROOF? Call Victor Lerma for a free estimate. 928-5841. 24-1tp

FOR SALE: 72 Honda 350 Call 'B' Moreno at 928-4736 before 5:30 p.m. 23-1tp

FOR SALE: German antique clocks. 928-4965. 24-1tp

MERKEL VFW POST 5683 Monthly Reg Meeting 8:30 p.m. Second Thursday Post & Ladies Auxiliary

PAINTING: houses, barns, tool sheds, fences etc. call 928-4898. 24-2tp

NOTICE OF INTENTION TO INCORPORATE WITHOUT CHANGE OF NAME Overhead Door Company of Abilene, 3040 S. 7th, Abilene, Texas, intends to incorporate. The corporate name will be Overhead Door Company of Abilene, Inc., 809 S. San Jose, Abilene, Texas. Dated July 13, 1978. 22-4tp

FOR SALE: 72 Honda 350 Call 'B' Moreno at 928-4736 before 5:30 p.m. 23-1tp

Y'ALL COME NOW!

GRANNY'S Playhouse. Licensed Day Care Center. Operated by LVN. Open from 6:30 a.m. to 6 p.m. Drop Ins Welcomed. 207 Orange. 24-tfc

Public Notice Trent Independent School District will hold a budget hearing for the physical year 1979 at a meeting of the Board of Education on Monday, August 14, 1978 at 8:00 p.m. Meeting will be conducted at the school Tax Office. All interested persons are urged to attend. 24-1tp

FOR BEST RESULTS AT LOWEST COST USE MERKEL MAIL 'Quick Action' Classified Ads JUST TELEPHONE MERKEL 928-5712

SEAT COVER CENTER SEAT COVERS TRUCK CUSHIONS DOOR PANELS ARM RESTS HEADLINERS 1056 BUTTERNUT 677-1349 ABILENE

### HELP WANTED

NEED PART TIME house keeper at 1011 Yucca. Call 928-5938. 21-1tp

Public Notice Trent Independent School District will hold a budget hearing for the physical year 1979 at a meeting of the Board of Education on Monday, August 14, 1978 at 8:00 p.m. Meeting will be conducted at the school Tax Office. All interested persons are urged to attend. 24-1tp

FOR ALL YOUR INSURANCE NEEDS SEYMORE INSURANCES 102 EDWARDS 928-5379 Auto, Property, General Liability, Crop, Health, Life, Disability, Tax-sheltered retirement, Educational plans FARMERS UNION SERVICE POINT

FOR ALL YOUR INSURANCE NEEDS SEYMORE INSURANCES 102 EDWARDS 928-5379 Auto, Property, General Liability, Crop, Health, Life, Disability, Tax-sheltered retirement, Educational plans FARMERS UNION SERVICE POINT

HELP WANTED: Part time waitresses and cook. Call 928-4923 after 2. 16-tfc

Public Notice Trent Independent School District will hold a budget hearing for the physical year 1979 at a meeting of the Board of Education on Monday, August 14, 1978 at 8:00 p.m. Meeting will be conducted at the school Tax Office. All interested persons are urged to attend. 24-1tp

### FOR RENT

TRAILER SPACE for rent. Call 928-4876. 24-1tp

MEMBER 1977 TEXAS PRESS ASSOCIATION

The Merkel Mail PUBLISHER'S STATEMENT Established in 1889

Published weekly at 916 N. Second St., Merkel, Texas. Entered at the Post Office at Merkel, Texas, 79536 as second class mail.

Any erroneous reflection upon the character, standing or reputation of any person, firm or corporation, which may appear in the columns of the newspaper will be corrected, gladly, upon being brought to the attention of the publisher.

SUBSCRIPTION RATES: \$5.50 Per Year Taylor County \$6.25 Per Year outside of Taylor and adjoining counties.

Member of the Texas Press Association and West Texas Press Association.

Steve Lanham Publisher Lillian Pack Advertising Sales Manager

For Classified Rates: \$1.50 minimum for the first four lines (18 words.) Excess of lines will be charged at the rate of 8 cents per word. TERMS: 25 cents discount if bill is paid prior to first insertion. Copy of Thanks: \$3.00 minimum for the first 50 words, 6 cents per word for each additional word. TERMS: Cash in advance unless account is established. NO REFUND: No technical or other errors must be given before the second insertion or claims for refund or extensions will not be.

DOZER FREE ESTIMATES LOADERS DUMP TRUCKS MAINTAINERS WATTS & BISHOP DIRT CONTRACTORS 915-928-5769 ROADS SAND LEVELING DRIVES GRAVE CLEARING WATERWAYS CALICHE TERRACING

CAN HAUL DIRT, ROCK & GRAVEL LEVEL & REPAIR DRIVEWAYS CALL EVENINGS Harold Walker PHONE 928-5872 312 CHERRY

ALL TYPES OF INSURANCE BONEY INSURANCE AGENCY Phone 8-5151

WE PAY 150 Per Cent Over Face Value For All Silver Coins. (\$2.50 for \$1.00 Silver) (We Pay 25c for silver dimes) PRATTS COIN & STAMP SHOP 2155 S. 1st Abilene, Texas

WHEAT SEED Taking Orders For August Delivery Certified \$6.50 bu. Non-Certified \$5.75 bu. Imp. Early Triumph Sturdy-Caddo Tam 103 Hybrid Milo \$30 p.h. Red Top Cane \$17 p.h. High Gear \$12.50 p.h. Big Red \$15.50 p.h. Most Other Seeds Available 928-5359 After 5 P.M. 915-672-3366 CROWN QUALITY SEED CO

WE SPECIALIZE IN SEPTIC SYSTEMS ROADS & DRIVES L. R. MCGEE BACKHOE SERVICES RT. 3 BOX 94 928-5423

PRE-PAID FUNERAL PLANS CEMETERY HEADSTONES BURIAL INSURANCE LIFE INSURANCE STARBUCK FUNERAL HOME

KEN'S RADIO & TV KEN KRAATZ - OWNER REPAIR ALL MAKES & MODELS OF TV'S & RADIOS F.C.C. LICENSED REASONABLE RATES PICK - UP & DELIVER CALL 862-3501, TRENT

Toombs Real Estate FREDDY TOOMBS (Broker) 116 EDWARDS PH. 928-5921 RES. 928-5696 PEGGY DENNISON RES. 672-6727 Brick: 3 bedroom, 2 bath, den, 2230 square feet on more than an acre. Has all the extras. 2 Bedroom, large old house on good street. Water well. FOR SALE Mobile Home 12 X 65 on good lot, water well, garden spot, improvements. Two lots on FM 126 North close to Country Club. Excellent building site. VACANT LOTS FOR SALE - for trailer and buildings in all sections or town. Reduced for quick sale. 4 bedroom, 2 stories, 2 baths, 3 car garage. Nice location. WE HAVE BUYERS AND NEED LISTINGS FOR HOUSES, FARMS, & RANCHES

LOCAL RCA & MITTON MICROWAVE DEALERS Castille Hardware & Gifts 214 EDWARDS 928-5310

Roads Drives Foundations Septic Systems Watts Backhoe Services & Construction PH. 928-5534 Sand Gravel FREE ESTIMATES Dirt Caliche

CAL TEX BUYERS OF CATTLE MILO AND HAY ROUTE 2 BOX 128 TRENT, TEXAS 915-862-2951 CUSTOM CATTLE FEEDING

Tiara Exclusives Hand Pressed and Hand Made Blown Glassware SPECIAL SHOWING Thursday Afternoon From 2:30 til 6:30 at 806 Yucca 928-5446

Buddy's Trim & Furniture I Recover Furniture, Auto, Pick-up, & Truck Seat Covers Anything That Can Be Covered Buy Sell & Trade Everything Used Furniture For Sale BUDDY POINTER TYE, TEXAS 118 RUNNELS 692-0529 JUST ON WEST SIDE O. TYE SCHOOL

CUSTOM HAY CUTTING & BALING HANE 14 FT. SWATHER CONDITIONER SATISFACTION GUARANTEED 2 HANE WIRE. CALL ELAM. ABILENE 1-915-673-1307

AUTHORIZED DEALER Lawn & Garden Equipment Allis-Chalmers-Owatonna Hay Machinery Farm Equipment and Forney Welding Equipment Shafer Plows - Continel Belton Products 677-4349 DOTY FARM EQUIPMENT CO. 366 Chestnut Nights-Sundays-Holidays 672-2451 - 698-2572

MERKEL One bedroom house rents for \$125. Duplex rents for \$75 each apt. This property on a 100 X 140 lot with a water well. Priced below \$29,000. Owner carry s m a l l Down payment. Two bedroom home new paint in side and out. Will sell V.A. Priced below \$11,000. Two bedroom house on large lot priced below \$15,500. MILLIORN REALTORS 677-1326, nights

WESTERN AUTO Now Has Authorized Repair Service For All Western Auto Appliances And Will Make Repairs On Any Other Major Appliances, Refrigerators Washers Dryers Air Conditioners PHONE 928-4727

NEED A New Water Well Drilled? Also Install Meyers Subs & JACOZZI JECS ROBERT HIGGINS 928-5998



**"TENT REVIVAL"**  
**LIGHTHOUSE FELLOWSHIP**  
 PRESENTS  
**THE REVEALING WORD MINISTRIES**  
**REVIVALS OF**  
**EVANG. JACK ODEN**  
**SERVICES TWICE DAILY**  
**7:30PM NIGHTLY —**  
**AUG. 4th UNTIL?**  
**LOCATION —**  
**DOWNTOWN — TRENT, TEXAS**

**Daisy Mashburn**  
**Hosts Stith H-D Club**

The Stith Home Demonstration Club met Wednesday, July 26 with Daisy Mashburn as hostess. The devotion was reading the THDA creed and prayer by all members. Samatha Mashburn directed our games. Roll call and reading of the minutes were approved. Mrs. Mashburn read the council report.

We will have an exhibit booth and a float in the parade at the Anson Fair. It is August 17 through the 19.

In our business meeting we elected new officers for another year. They are: president, Mrs. Margaret Dickerson, vice-president, Mrs. Daisy Mashburn, council delegate, Mrs. Lenora Wilburn, sec-treasurer, Mrs. Vada Hudson.

Our program was brought by Mrs. Wilburn on New Professional Serving Tips, all members joining in.

There were 7 members and 3 visitors.

Mrs. Amy Price was one of our visitors, we enjoyed having her from the Goodman Club. Bryan Giles of Abilene and Samatha Mashburn were visitors.



New Dentist Office in Merkel at 501 Edwards.

**Garden Club News**

The members of the Merkel Garden Club wish to thank these contributors to the Merkel Garden Club Cemetery Fence Fund. Without the continued interest of friends, they could not have built the fence, maintained it, and continued building, as it is needed to enclose our loved ones.

Mrs. Allen D. King in memory of Judd Reynolds.

Mrs. Allen D. King in memory of Lena Meeks. A.A.A. Printing Company, Elaine and Dave Brombeau.

Mrs. Earl Hughes in memory of Marsha Reed.

Mrs. Tom Russom in memory of Odie Clark. Mrs. Ray Wilson, in memory of Dr. C.B. Gardner.

Mrs. Earl Hughes in memory of Odie Clark. Dr. and Mrs. Jarrett Williams in memory of Odie Clark.

Dr. Chester Gardner. Marsha Reed. Lottie Butman Everett in memory of Odie Clark.

Mr. and Mrs. Buster Horton in memory of Marsha Reed. Chester Collinsworth. Orien Higgins.

**You Are Invited**

**PURINA HORSE MEETING!**



**THE AUGUST MEETING OF THE MERKEL RIDING CLUB WILL FEATURE A HORSE CLINIC AT THE TAYLOR ELECTRIC CO-OP BUILDING, 8:00PM, THURSDAY, AUGUST 3RD**

**POT—LUCK SUPPER**

Bring your family and friends to our Purina Horse Health and Nutrition Clinic. You'll increase your "horse sense," learn about Purina's fine line of Horse Chow® feeds and health care products and share a good time with interested horse owners like yourself.

**ABILENE AG SERVICE & SUPPLY**

731 WALNUT 677-5296  
 ABILENE, TEXAS



Sap does not rise and fall. It moves out towards the surface in the spring, in towards the center in the autumn.

**Mrs. Winter Hosts Goodman H-D Club**

The Goodman Home Demonstration Club, met in the home of Mrs. J. Winter July 28, with eight members present.

The meeting was brought to order by the president, Mrs. Garland Price, presiding. Prayer was by Mrs. J. Winter and a game by Mrs. J. Winter. Roll call was

answered with: "Sewing equipment I have found useful". Mrs. Frank Carter gave the council report.

The Jones county fair was discussed and plans were made to start work on the club's education exhibit. Goodman Club will work the 19th of August at the fair, which will be 18-19 of August. Officers were elected. They are: Mrs. Garland Price, president, Mrs. Dennis Butler, vice president, Mrs. Mae Seago, sec-treasurer Mrs. Frank Carter, council delegate.

The meeting was turned over to Mrs. Garland Price who gave the program: New Professional Sewing Tips.

As August is vacation month, there will be no meetings until the 8th of September. The meeting was adjourned and refreshments were served to Mrs. Dan Butler, Mrs. Karl Bonneaux, Mrs. Dennis Butler, Mrs. Mae Seago, Mrs. Minnie Carey, Mrs. Garland Price, Mrs. Vivian Winter.

Everyone is welcome to the meeting regardless of national origin, race, color, creed or economic circumstance.

**BACK TO SCHOOL SALE CRAWFORDS**

PRICE MARK DOWN **40% TO 60%**

BLOUSES REG \$6<sup>99</sup> SALE PRICE \$3<sup>99</sup>

JEANS SIZE 7 TO 18 REG \$12<sup>99</sup> SALE PRICE \$9<sup>99</sup>

SOFT PURSE REPEAT OF A SALE PRICE \$7<sup>99</sup>

BRUSH RAYON GOWN REG \$7<sup>99</sup> SALE PRICE \$5<sup>99</sup>

28X54 BEACH TOWEL REG \$4<sup>99</sup> SALE PRICE \$3<sup>29</sup>

MENS TRACK SHOES REG \$10<sup>99</sup> SALE PRICE \$7<sup>99</sup>

WRANGLER FASHION JEANS REG \$12<sup>99</sup> SALE PRICE \$9<sup>99</sup>

JARMAN SHOES REG \$29<sup>00</sup> SALE PRICE \$13<sup>99</sup>

IT'S TWICE AS NICE TO SHOP

**CRAWFORD'S**

MASTERCHARGE 30 DAY CHARGE  
 135 EDWARDS PHONE 928-5612

**Six Sobering Facts**

1. Everyone will not be saved. Matthew 7:21
2. The majority of people will be lost. Matthew 7:13,14
3. Many who expect to be saved will be lost. Matthew 7:21-23
4. No one can be saved after death. Hebrews 9:27
5. Only those who obey the gospel will be saved. Hebrews 5:8,9; 2nd Thess. 1:8
6. Today is your opportunity. 2nd Corinthians 6:2.

Hear "The Prime of Life" on KBBG Radio Weekdays at 7:50 a.m.

**MERKEL CHURCH OF CHRIST**

818-ASH  
 LARRY GILL, MINISTER  
 SUNDAY  
 Bible Study 9:45 a.m.  
 Worship 10:30 a.m. & 6:00 p.m.  
 WEDNESDAY  
 Bible Study 7:30 p.m.



**Beats Treasury Bills**

**We'll beat Uncle Sam's (and any insured bank) offer by 1/4 of a percentage point!**

Who needs a rich uncle? Sweetwater Savings will pay you one-quarter percent more than Uncle Sam (or an insured bank) on 6 month certificates of deposit of \$10,000 or more. That's the legal maximum allowed by law! Treasury bill rates are announced weekly and may vary from week to week. Call us we'll quote the latest U.S. Treasury Bill rate AND WE'LL PAY YOU 1/4 PERCENT MORE!



| ANNUAL RATE                      | ANNUAL YIELD* |
|----------------------------------|---------------|
| 8.00% 8 Year Cert — \$1,000 min. | 8.33%         |
| 7.75% 6 Year Cert — \$1,000 min. | 8.06%         |
| 7.50% 4 Year Cert — \$1,000 min. | 7.79%         |
| 6.75% 30 Mo Cert — \$1,000 min.  | 6.98%         |
| 6.50% 1 Year Cert — \$1,000 min. | 6.72%         |
| 5.75% 90 Day Cert — \$1,000 min. | 5.92%         |
| 5.25% Passbook — \$5 minimum     | 5.39%         |

\*based on daily compounding of earnings for 12 months. A substantial interest penalty is required for early withdrawal of certificate accounts.

**ALLSUP'S**  
CONVENIENCE STORES

**OPEN 24 HOURS**

**NEW! NOW AVAILABLE ALLSUP'S ICE CREAM**  
CHOCOLATE, VANILLA OR STRAWBERRY

**\$1 19**  
1/2 GAL. RD CTN.

**GIGANTIC CUP OF FOUNTAIN COKE, ROOT BEER, ORANGE**

**25¢**

**BORDEN'S Cottage Cheese 69¢** (16 OZ. CTN.)

**ALL GRINDS Folger's Coffee \$2 79** (1 LB. CAN)

**HOT LINKS 3 FOR 99¢**

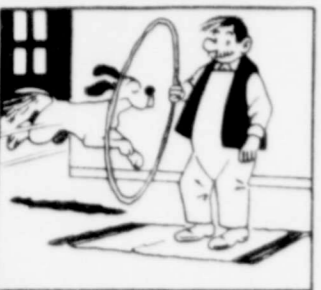
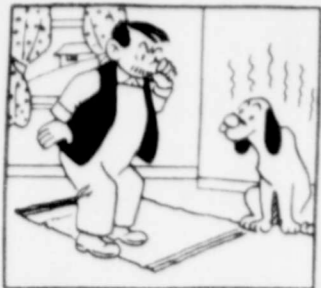
**MILD LINKS 3 FOR 99¢**

**TUFF & READY 3 FOR 79¢**



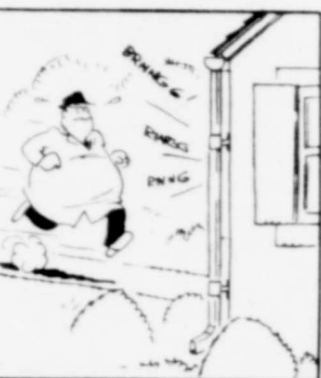
LITTLE FARMER

By KERN PEDERSON

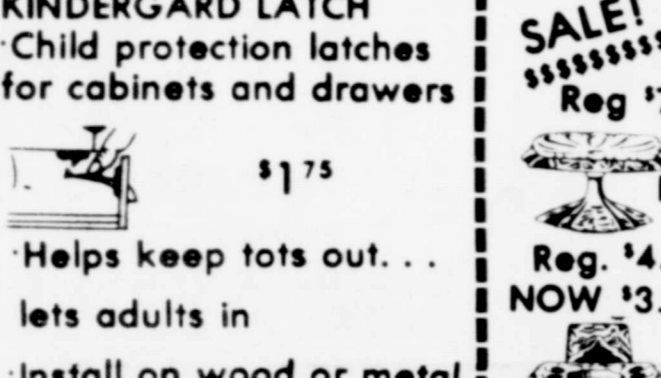
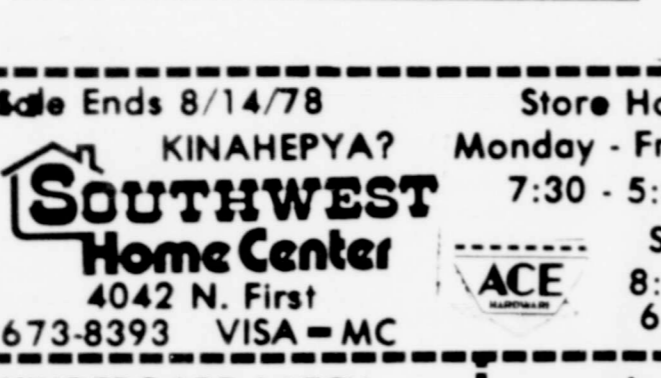
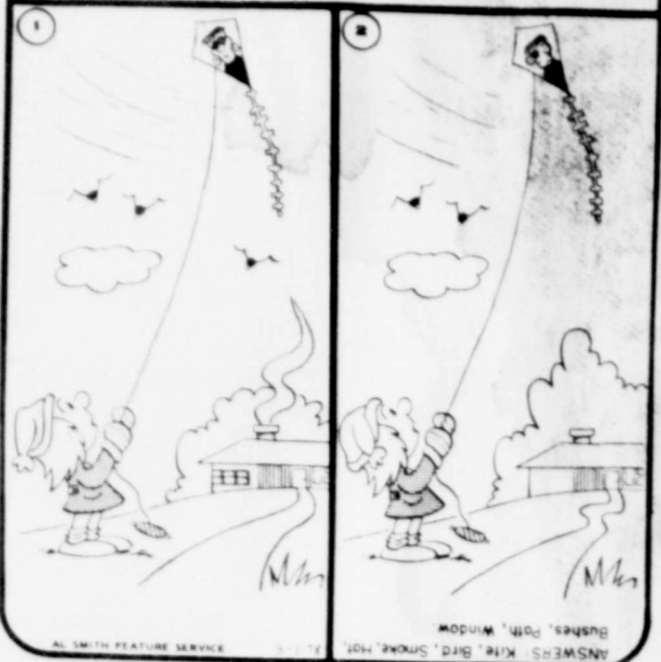


POPS

By George Wolfe



FUN BUG by RANDS



Funeral Held For Wilma Sliter

Funeral services for Mrs. Wilma Joyce Sliter of 7826 Aurora, Dallas, were held at 9 a.m. Saturday in St. Augustine Catholic Church with entombment in Calvary Hill Mausoleum. Mrs. Sliter, the daughter of the late Mr. and Mrs. W.T. McAninch of Merkel, is survived by her husband Erwin E. Sliter, one daughter, Ellen, one son, Thomas, all of Dallas, four brothers, Curtis, Weldon, and Ted of Merkel, Cal

Doan: Reunion Set

The Doan Reunion will be August 13th at Lytle Shores. Everyone bring a covered dish.

More wine is drunk in Italy than any other country in the world.

Public Notice

NOTICE The Merkel Independent School District will hold a budget hearing for Fiscal year 1979 at the Merkel Middle School on August 15, 1978, at 7:00 p.m.

MOBIL GASOLINE REG OR UNLEADED 46 OZ CAN HI-C DRINKS 59c FLOTILL NO 2 1/2 CAN PEACHES 2 FOR \$1.00 GOOCH BACON SLICED SLAB LB 98c 32 OZ BOTTLE PLUS \$1.59 PEPSI Cola DEPOSIT CIGARETTES CRTN \$5.29 MR. PIBB 12 OZ CANS \$1.39 CTN COMPLETE SHAKLEE PROGRAM SHAKLEE INSTANT PROTEIN SHAKLEE ENERGY BARS NINTH STREET GROCERY

DANCE SATURDAY NIGHT 9 TILL 1 COME DANCE TO THE MUSIC OF THE HALFBREED SHOW AND DANCE BAND MERKEL VFW

C.B. RADIOS REPAIR SUPPLIES TV REPAIR C.B. ANTENNAS PRICES ARE VERY DEFINITELY COMPETITIVE STEROS CHANGER & 8 TRACK PLAYERS STANFORD'S ELECTRONICS 123 KENT MERKEL

Southwest Home Center 4042 N. First 673-8393 VISA-MC

Store Hours Monday - Friday 7:30 - 5:30 SAT 8:00 - 6:00 ACE

6" BARREL BOLT Reg. \$2.10 NOW \$1.78 CD1078

STANLEY BRASS PLATED BUTT HINGE 3 1/2" \$1.17 PR

\$5.39 EACH CD2060 R.H. 4" x 4" Satin Brass AUTOMATIC DOOR CLOSING HINGE

KINDERGARD LATCH Child protection latches for cabinets and drawers \$1.75

SALE! Reg. \$7.25 NOW \$5.25

Reg. \$5.66 NOW \$4.19

Reg. \$10.93 NOW \$7.95

Reg. \$13.72 NOW \$9.95 TOWEL BAR

Reg. \$2.66 NOW \$1.95

BENSON'S DOWN- SPOUT O-MATIC DRAIN Reg. \$5.95 NOW \$4.95

JO ANNA window shade 37 1/2" Wx6' White no. 11060 \$1.69

WE HAVE THE MOST COMPLETE MAIL BOX STOCK IN TOWN! JACKES-EVANS \$1.99

Available in Wrought Iron, Black or Aluminum or colors REG MB1 1/2 \$10.77

31 GALLON REG \$11.29 NOW \$8.28

JACKES EVANS BLACK NO. 5 HANDY TUB \$3.79

REG \$3.47 (With This Coupon) \$2.69

2-CYCLE MIXING GAS CAN 6 1/2 GAL. \$7.35

"CATCH 'EM ALIVE ANIMAL TRAPS" ANIMALS, FISH OR BIRDS, SEVERAL STYLES AND SIZES NOW \$34.95

YARD-N-GARDEN NO. 57 CART 5" Molded Plastic Wheels \$10.95

ACE COUPON Kordite LARGE TRASH/LAWN BAGS

33 gallon bags can really take on a load! 2 mil. thick plastic won't give. 20/pkg. E3-1580 GOOD THRU 8/14/78

DO IT YOURSELF WEYERHAEUSER PANELING at Cash N' Carry Prices

Homelite. The Chain Saw King. TRY BEFORE YOU BUY! XL 12 \$109.95 (BLADE GUARDS NOW AVAILABLE) \$4.99 EA

UTILITY KNIFE \$2.12 STANLEY 26" Blade Cross Cut Saw No. 1528 \$6.99

SOLID WOOD EXTERIOR DOORS. Prestained HAND CARVED 36"x80" Only REG \$154.99 NOW \$149.95

Decorate Your Plain Doors With Our Decorative Door Panels \$2.36 and \$4.34

\$6.99 Orchard Chantique Oak \$6.59 Cliffhanger Goodview \$6.59 Cliffhanger Crestline \$6.92 Vacationeer Tahoe \$8.10 Burluxe Nutmeg \$4.85 Colortone Lauan (Woodgrain Color)

Panel Adhesive-Liquid Nails .89' tube Paneling Nails-.69' and .89' Mouldings available to match your paneling.

STOPS STICKS AND SQUEAKS WD-40 No. 10714 \$1.89

Flashlight Waterproof Dependable Rust resistant Rugged IT FLOATS! Heavy duty waterproof switch Complete with 2 heavy duty super all batteries \$3.19

Weed Control CONTAX Weed and Grass Killer Top Kills Weeds and Grasses on contact around trees, shrubs, buildings. In walks, patios, along fences. 1 QT. Reg. \$4.99 Now \$3.99

HUDSON CLIPPER sprayer Big value • Handy 2-gallon size • Long-life brass pump • Nozzle adjusts for any spray • Instant on-off control • Puffs spray right on target. \$12.47

AMES MORTAR MIXER HOE NOW \$12.47

DIG-EZY Mattock Hoe NOW \$7.89

Fill-Pro Ballcock • Fill valve for toilet tank • Fits all tanks • All parts included • Built in filter screen and adjustable wire valve. \$3.99

Tired of Clogged Drains? DRAIN KING Can Eliminate Your Problem \$4.84 No. 43228

SHOWERS Remove drain plate, insert "DRAIN KING" into drain approximately 8 inches and turn on water.

Record tells you how to install it!

EVAPORATIVE COOLER PADS 30"x36' \$1.99 32"x40' \$2.34 22"x30' \$1.53

Fill-Pro Ballcock • Fill valve for toilet tank • Fits all tanks • All parts included • Built in filter screen and adjustable wire valve. \$3.99

Fill-Pro Ballcock • Fill valve for toilet tank • Fits all tanks • All parts included • Built in filter screen and adjustable wire valve. \$3.99

Fill-Pro Ballcock • Fill valve for toilet tank • Fits all tanks • All parts included • Built in filter screen and adjustable wire valve. \$3.99





The planet Neptune is 17.3 times larger than the earth.

### ZELDA ORR'S INTRODUCTORY SPECIALS

**MEN'S HAIR CUTS**  
\$4.00  
**SHAMPOO AND SET**  
\$4.50

**SONJA'S  
BEAUTY SALON**  
CALL NOW FOR AN APPOINTMENT  
SONJA TOLIVER,  
OWNER



Patti McLeod  
... Farm Bureau Queen

### Farmers Increase Importance In Economic Structure

Farmers in Taylor County have been doubling as statisticians in completing questionnaires which become essential links in the sophisticated economic

structure of Texas agriculture. Commissioner Reagan V. Brown said today.

The county's producers were part of some 30,000 farmers across the state who recently responded to the mid-year survey on summer acreage and production conducted by the Texas Crop and Livestock Reporting Service. The results of the survey will be issued in an August 10 crop report which is available free of charge.

"Without the availability of unbiased, accurate figures through cooperation between Texas farmers and the Reporting Service, business and government agents from one end of the state to the other would suffer in their ability to predict coming trends and act accordingly," Commissioner Brown said.

He explained that farmers themselves use the estimates as work-

throats during the second quarter (April - June) of this year.

That is a 24 percent increase over the same quarter last year and pushes mixed drink sales for the first half of 1978 to \$321 million.

"It must be the dry weather," Bullock said in attempting to explain the increase in mixed drink sales.

Bullock said the sales for the second quarter generated some \$16.7 million in revenue.

His office has mailed checks totaling \$4.8 million to 342 Texas cities and 201 counties as their share of the tax. The balance—\$11.8 million—has been deposited in the state General Revenue Fund.

The tax, which is collected by the Alcoholic

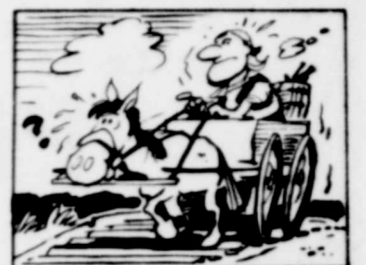
Beverage Commission, represents 10 percent of all gross receipts from the sale of mixed drinks. The tax is rebated quarterly to the cities and counties by the Comptroller's office.

Texas counties and cities get 15 percent of the mixed drink tax collected within their boundaries and the balance goes into the state General Revenue Fund.

### THEN

and

### NOW



THEN: In the early 1700s, American colonists had to travel in rough, springless wagons and carts over dirt roads that were muddy in winter, dusty in summer and unsafe and uncomfortable all year round. Sometimes the roads were "improved" by having logs laid along them. These were called corduroy roads.

### Back To School Summer Special

Dave Sez: Let Us Align The Front End On  
Your Car \$1430 AND

He Will Balance Both  
Front Tires FREE

INCLUDES MOST AMERICAN CARS & PICK-UPS

Try To Beat This  
Special Tune Up  
Quality Minor Tune Up

Parts & Labor

8 cylinder \$3906

6 cylinder \$3382

4 cylinder \$2845

Includes Safety Check, Brakes Checked

Exhaust Checked, Steering Checked,

and a Complete Visual Inspection

of the Vehicle at No Extra Cost

Max Murrel Chevrolet

MISSION  
CONFERENCE TO BE  
HELD WEDNESDAY  
THRU SUNDAY  
AUGUST 9th THRU  
AUGUST 13th.

SERVICES NIGHTLY  
EVERYONE IS INVITED TO  
ATTEND THESE SPECIAL

SERVICES  
MISSIONARIES WILL BE OUR  
SPECIAL SPEAKERS

**CALVARY  
BAPTIST  
CHURCH**

N. 5th & RUNNELLS  
NEED A RIDE?  
CALL 928-4846

### TAYLOR COUNTY TREASURER'S QUARTERLY REPORT ENDING JUNE 30, 1978

| Funds                             | BALANCE<br>LAST QTR' | RECEIVED<br>THIS QTR' | DISBURSED<br>THIS QTR' | BALANCE<br>THIS QTR' |
|-----------------------------------|----------------------|-----------------------|------------------------|----------------------|
| Preinct 1.                        | \$ 139,005.02        | 6,167.17              | 28,703.23              | \$ 116,468.96        |
| Preinct 2.                        | 131,864.14           | 5,624.69              | 32,341.65              | 105,147.18           |
| Preinct 3.                        | 122,383.57           | 5,814.55              | 26,800.38              | 101,398.14           |
| Preinct 4.                        | 117,351.85           | 6,173.20              | 25,415.12              | 98,109.93            |
| General                           | 852,722.55           | 502,034.93            | 715,037.99             | 639,719.49           |
| Lateral Road.                     | 32,639.57            | 00                    | 00                     | 32,639.57            |
| Coliseum Skg.<br>Ser'67.          | 47,917.49            | 00                    | 00                     | 47,917.49            |
| F.I.C.A. Tax.                     | 2,150.11             | 48,625.61             | 48,625.69              | 2,150.03             |
| Law Library                       | 4,760.77             | 6,854.00              | 4,554.44               | 7,060.33             |
| Federal Revenue<br>Sharing.       | 131,458.59           | 89,685.34             | 101,271.56             | 119,872.37           |
| State Criminal<br>Justice Plan.   | 16,207.53            | 8,137.50              | 7,231.88               | 17,113.15            |
| Permanent School.                 | 9,994.77             | 1,846.29              | 646.29                 | 11,194.77            |
| Courthouse & Jail<br>Skg. Ser'67. | 63,778.24            | 2,617.73              | 00                     | 66,395.97            |
| Payroll Account.                  | 1,061.53             | 410,527.95            | 410,527.95             | 1,061.53             |
| Anti-Recession.                   | 1,535.53             | 3,101.00              | 2,331.89               | 2,304.64             |
| Law Enforcement.                  | 2,680.70             | 2,920.00              | 4,223.70               | 1,377.00             |
|                                   | \$ 1,677,511.96      | 1,100,130.36          | 1,407,711.77           | \$ 1,369,930.55      |

|                           |               |
|---------------------------|---------------|
| Abilene National Bank     | \$ 100,000.00 |
| Citizens National Bank    | 103,366.17    |
| First State Bank, Tuscola | 199,508.07    |
| F. & N. National, Merkel  | 105,147.18    |
| First National Bank       | 418,340.30    |
| First State Bank, Abilene | 443,568.83    |

|                        |               |
|------------------------|---------------|
| Total Bank Balances    | 1,369,930.55  |
| Total Time Deposits    | 1,162,700.00  |
| Total Checking Account | \$ 207,230.55 |

### Securities Owned by Taylor County Permanent School Fund.

| Buffalo Gap School Bonds                  | \$ 1,200.00       |                   |                      |
|-------------------------------------------|-------------------|-------------------|----------------------|
| Everman Independent School Bonds          | 8,000.00          |                   |                      |
|                                           | \$ 9,200.00       |                   |                      |
| ISSUE                                     | ORIGINAL<br>ISSUE | BONDS<br>REDEEMED | BONDS<br>OUTSTANDING |
| Courthouse &<br>*all Skg.<br>Series '67.. | \$3,000,000.00    | 1,255,000.00      | 1,745,000.00         |
| Coliseum Skg.<br>Series '67               | \$1,750,000.00    | 00                | 1,750,000.00         |

The Requirement of Art. #401 P.C. have been complied with and a statement has been filed as required.

*Best Chapman* Commissioner Precinct 1. *Joe McDiff* Commissioner Precinct 2.

*John Johnson* Commissioner Precinct 3. *J. I. Mc Miller* Commissioner Precinct 4.

*Ray Keagan*  
Taylor County Judge

*Mrs. Meats Hitchcock*  
Taylor County Clerk

### MERKEL ELECTRIC

We do commercial and residential electric work. Need a house rewired or just a little work. Call us for a free estimate. You don't have to wait for work you want done at a reasonable price.  
FRANK CAMPBELL  
512 CHERRY  
P.O. BOX 163  
928-5291

### CAKES GALORE

WEDDING,  
BIRTHDAY  
ANNIVERSARIES,  
SPECIALTY  
928-5508

MOM DO YOU  
KNOW WHERE  
YOUR KIDS ARE?

FENCE  
THEM IN—

Call Steve Cottron with MAC Fencing Co. Abilene 677-2112. Free estimate financing available. Chain link and privacy fence.

### New high-yield certificates!

■ 6-MONTH "MONEY MARKET" CERTIFICATES

\$10,000-minimum. Fixed Rate. 0.25% higher than the most recent average weekly auction price of 26-week U.S. Treasury Bills, compounded daily.

■ EIGHT-YEAR, 8.00% CERTIFICATES WITH EFFECTIVE ANNUAL YIELD OF 8.33%  
\$1,000 minimum.

Also available:

| TERMS               | STATED RATE | EFFECTIVE ANNUAL RATE | *minimums: DAY TO DAY \$5. 90 DAY \$50. 6 mos. \$10,000. ALL OTHERS \$1,000. CERTIFICATES ARE AUTOMATICALLY RENEWABLE AND REQUIRE SUBSTANTIAL PENALTIES FOR EARLY WITHDRAWALS. |
|---------------------|-------------|-----------------------|--------------------------------------------------------------------------------------------------------------------------------------------------------------------------------|
| 6 YRS.              | 7.75%       | 8.06%                 |                                                                                                                                                                                |
| 4 YRS.              | 7.50        | 7.79                  |                                                                                                                                                                                |
| 2½ YRS.             | 6.75        | 6.98                  |                                                                                                                                                                                |
| 1 YR.               | 6.50        | 6.72                  |                                                                                                                                                                                |
| 90 DAYS             | 5.75        | 5.92                  |                                                                                                                                                                                |
| DAY-TO-DAY ACCOUNTS | 5.25        | 5.39                  |                                                                                                                                                                                |

CALL FOR CURRENT RATES ON \$100,000 MINIMUM BALANCE CERTIFICATES.

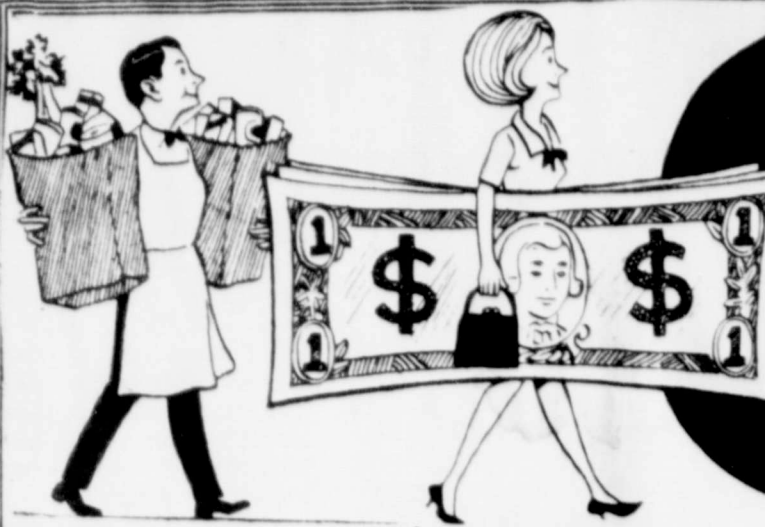


### United Savings OF TEXAS

FORMERLY ABILENE SAVINGS  
DIVISION OFFICE: 402 CEDAR STREET ■ (915) 673-5171  
A COMPANY OF SOUTHWESTERN GROUP FINANCIAL, INC. (ASE SGP)







# You Take Home MORE MONEY

PRICES GOOD THURSDAY FRI & SAT AUGUST 3-4-5th Store Hours Mon Thru Sat 7:30AM - 6:30PM

SUDDEN BEAUTY HAIR SPRAY

CREAMY **CRISCO** 3 LB CAN \$1.49 WITH 10% IN TRADE OR MORE EXCLUSIVE OF CIGARETTES

WISH BONE FRENCH DRESSING LOWCAL 8 OZ **49c**

PRINGLES Potato Chips TWIN PACK PKG **79c**

HUNTS **CATSUP** 20 OZ BOTTLE **59c**

**FROZEN FOODS** WHOLE SUN ORANGE JUICE 12 OZ CAN **65c**

BORDEN **ICE CREAM** 1/2 GAL CRTN **\$1.29**

SWIFTS VIENNA SAUSAGE 5 OZ CAN 2 FOR **79c**  
VLASIC KOSHER 24 OZ JAR **69c**

TEXAS BRAND **CHILI** 15 OZ CAN **59c**

Cool WHIP TUB **59c**  
JENO'S ASSORTED PIZZA PKG **89c**  
VIP 12 COUNT DONUTS BOX **79c**

HI-C - ASSORTED FLAVORS **Powder DRINK** 29 OZ CAN **\$1.29**

SPEAR Pickles HUNTS 300 2 FOR **79c**  
PEARS DEL MONTE NO 2 2 FOR **79c**  
Pineapple DEL MONTE 303 CAN **55c**

DELSEY **TISSUE** 4 ROLL CRTN **79c**

I.G. DAIRY FRESH **HOMO MILK** GAL JUG **\$1.73**  
I.G. DAIRY FRESH **LOWFAT MILK** GAL JUG **\$1.65**

FAMILY TEA **LIPTONS** 24 CT BAGS **\$1.49**

Sweet PEAS GREEN GIANT W K 2 FOR **65c**  
Golden CORN HUNTS 8 OZ 2 FOR **59c**

HOUSE & GARDEN **Hot Shot** FLY SPRAY AEROSOL 11 OZ CAN **\$1.29**

**FLOUR** GLADIOLA 5 LB BAG **73c**  
**COFFEE** MAXWELL HOUSE 1 LB CAN **\$2.39**

HUNTS - ASSORTED **SNACK PUDDING** 4 PACK SHELF **69c**

TOMATO SAUCE VAN CAMP NO2 2 FOR **39c**  
Pork & Beans BAMA - 18 OZ 2 FOR **79c**

NABISCO **RITZS** LB BOX **79c**

**SHASTA** ASSORTED (24 LIMIT) 6 FOR 12 OZ CAN **79c**  
**CHEESE** KRAFTS 1/2 MOON 16 OZ PKG **\$1.53**

PEANUT **BUTTER** 89c  
**ROUND STEAK** CHOICE BEEF FULL CUT POUND **\$1.89**

FOREMOST 1/2 GAL CRTN **Butter Milk** **85c**

TEXAS **WATERMELONS** RED SWEET EACH **\$1.49**

**STEAK** CHOICE BEEF FAMILY LB **\$1.19**  
**ROAST** CHOICE BEEF ARM-RUMP OR ENGLISH LB **\$1.39**

PIONEER 24 OZ **Cornbread MIX** CAN **45c**

FRESH **TOMATOES** VINE RIPE LB **49c**

FRESH **GROUND BEEF** LB **69c**  
**BACON** ARMOUR STAR POUND **\$1.43**  
**FRANK** ARMOUR STAR HOT DOGS 12 OZ **89c**

SPRAY DEODORANT **LYSOL** 12 OZ CAN **\$1.39**

FRESH **PEACHES** LB **49c**

**HAM** BONELESS COOKED 3 LB CAN **\$5.69**

**WOOLITE** MACHINE WASH DETERGENT GT BOX **\$1.09**

FRESH **LETTUCE** LB **25c**

**SAUSAGE** RED CHAIN 2 LB BAG **\$2.59**

BESTMAID **SALAD DRESSING** QT JAR **73c**

VINERIFE **CANTALOUPE** LB **23c**

**CHEER** FAMILY SIZE **\$4.09**

FRESH **CORN** 2 EARS **25c**

FRESH **CUCUMBERS** 2 FOR **25c**

**JOY** KING SIZE **\$1.05**

SOFTNER **Downy** GT SIZE **83c**

BLEACH **Purex** 1/2 GAL BOT **49c**

WE GIVE GIFT BOND STAMPS Double on Wednesday with \$5.00 or more

WE WELCOME FOOD STAMPS **CARSON'S SUPER MARKET**

Vertical text on the right edge of the page, likely a page number or index.