

PAGE ONE

A QUICK READ OF THE NEWS

Advertising deadlines change

Due to the Thanksgiving holiday, the Muleshoe and Bailey County Journals are temporarily changing the deadline for display and classified advertising.

To advertise in the Muleshoe Journal on Thursday, Nov. 27, the deadline is 5 p.m., Monday, Nov. 24.

To advertise in the Bailey County Journal on Sunday, Nov. 30, the deadline is noon, Wednesday, Nov. 26.

The staff at the newspaper wishes everyone a happy and safe Thanksgiving weekend.

MEETING

School board meeting — The Board of Trustees of the Muleshoe Independent School District will be meeting at 7 p.m., Monday, Nov. 24, at the district office located on 514 West Ave. G.



Members of the Muleshoe Volunteer Fire Department gear up to battle a grass fire Wednesday afternoon about two miles south of Muleshoe.

Grass fire burns pasture

Muleshoe and Sudan firefighters battled a wind-swept grass fire south of Muleshoe Wednesday for close to three hours before bringing the blaze under control shortly after sunset.

The fire started about three p.m. in a pasture about 2 1/2 miles south of the Muleshoe city limits along Highway 214, according to Wayne Wauson, captain of the Muleshoe Volunteer Fire Department.

Driven by wind gusts of up to 30 mph, the fast-moving fire burned a path east about one mile wide and three miles long through the dry pasture land.

The blaze jumped across Highway 214 and spread another mile before fireman could completely control the blaze.

A total of six units from the Muleshoe Volunteer Fire Department, four from Sudan and three Bailey County road graders were used in extinguishing the blaze.

Fire officials believe the fire was accidentally started by the pickup truck of a real estate agent who was driving through tall grass in one of the pastures while showing off the property.

Yanis added to all-star cast

Watson Junior High was notified earlier this week Zac Yanis was named to the All-Star One-Act Play cast.

He was mistakenly left off the original list.

Yanis portrayed Booby in the schools production of "The Little Mermaid", which was awarded first place in the District 1-3A South Zone One-Act competition held last Saturday at Muleshoe High School.

LOCAL WEATHER

	High	low	Pre.
Sunday	49	18	—
Monday	61	18	—
Tuesday	60	24	—
Wednesday	67	24	—
Thursday	63	25	—
Total to date	20.11 inches		

EXTENDED FORECAST

Fair, clear and dry through Wednesday. Highs in mid 70s, lows in upper 30s.

CHRISTMAS IS COMING

Sales, 40-foot tree highlight Chamber Holiday celebration

Rumors have been floating around that the local Christmas season will be so festive this year that even Santa is thinking about moving his headquarters to Muleshoe to join in the holiday spirit.

The local Chamber of Commerce is working hard to bring some of the time honored traditions of the Christmas season back to Muleshoe, said chamber member and local business owner Dawn Williams.

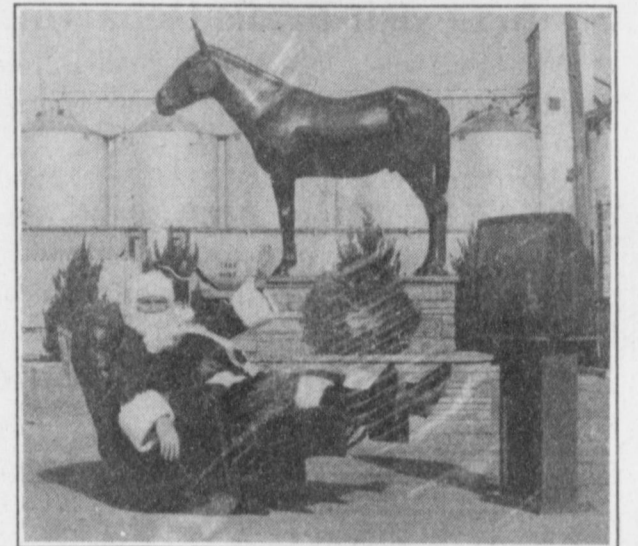
The Chamber is initiating the start of the holiday celebration, Friday, Nov. 28 with the

lighting of a 40-foot Christmas tree in the Mule lot.

But the community tree will not be the only thing brightening up Muleshoe. Throughout the town, businesses will also be plugging in their holiday lights to kick off the official start of the holiday season.

As the lights come on, over 20 stores will be opening their doors to offer Muleshoe shoppers not only extended hours, but also extended sav-

see **CHAMBER** on page 2



Santa shows off the prizes being raffled off by the Muleshoe Chamber of Commerce as part of the Moonlight Madness sales.

MODEL COWBOYS



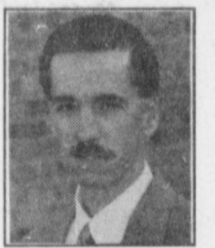
Brothers Cruz (left) and Christian Casterona model off Western wear Thursday with the help of their mother Marie during the Muleshoe DECA club's Fall Fashion Show at the United Methodist Church. The clothing was provided by Joe's Boot Shop.

Carter named police chief

By **RICK WHITE**
Managing Editor

Acting swiftly and with a sense of urgency, the Muleshoe City Council Thursday hired County deputy Don Carter as police chief.

The hiring comes three weeks after Rick Henegar suddenly resigned over a personality conflict with



Don Carter

the city manager. Henegar's second in command, sergeant Randy Smith, also resigned.

The Council voted unanimously to hire Carter following an executive session meeting.

"Don Carter has the 100 percent support of the city manager and the Council," City Manager James Fisher said. "We felt a need to fill the position as quick as possible."

Fisher said a statewide search would have taken up to eight months and the police department couldn't continue to operate without a police chief indefinitely.

"We felt we chose the best man for the job," Fisher said. "He is qualified and well respected in the community."

Carter, 32, has worked as chief deputy for the Bailey

see **CARTER** on page 2

'Horns foil Follett

GROOM — Lazbuddie pulled the plug on the highly-rated Frazier Show.

Behind an inspired defensive effort that kept Follett start Courtney Fraizer in check most of the night, the Longhorns earned a 46-22 win Friday in a six-man Region I semi-final game.

Lazbuddie (10-1) rolled to 477 total yards and forced five turnovers while knocking off the previously undefeated Panthers.

The No. 3-ranked Longhorns will play undefeated Ackerly Sands (12-0) in the regional finals, probably Friday in the Lubbock area.

Sands beat Westbrook 52-44 in the semifinals.

Lazbuddie limited Frazier to 117 yards on 21

see **'HORNS** on page 9

County Sheriff issues warrants for two suspects in 'gypsy burglaries'

By **RICK WHITE**
Managing Editor

The Bailey County Sheriff's Department issued warrants Thursday for two remaining suspects in the theft of Muleshoe grocery store.

The suspects, who allegedly were driving a second car involved in the Nov. 7 theft of Pay-N-Save and made off with more than \$16,000, are believed to be in the Chicago area.

Bailey County Sheriff Jerry Hicks said that if the suspects are located, "they will be extradited to Bailey County."

Five other suspects connected to the case remain in custody at the Bailey County Jail on charges of organized criminal activity and felony theft.

They were apprehended shortly after the mid-day robbery traveling west on U.S. 84 just outside Farwell.

All of the suspects are known to be part of what police describe as a 300-member crime ring based in Illinois that specializes in diversion thefts.

The two fugitives were identified by

see **SUSPECTS** on page 3

Defense down stretch keys Mule win

By **RICK WHITE**
Managing Editor

Only Crazy Glue could have done a better job of keeping the crowd stuck to their seats during Muleshoe's 71-62 win over Littlefield Tuesday at WJHS gym.

Just seconds before halftime, with Muleshoe in midst of one of its now trademark scoring frenzies, there were no lines at the concession stand. Not a single fan dared.

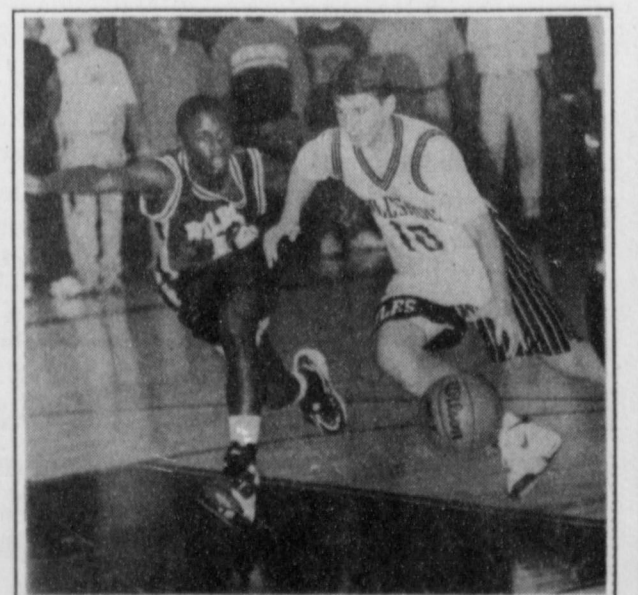
Down by 11 points midway through the second quarter, Muleshoe scored the last eight points

of the period and took a 38-37 halftime lead.

Included in the 8-0 spurt was a tough offensive rebound and putback by Douglass Field, Layne Kemp's steal and layup with 30 seconds left, and Dustin Cleavinger's layup off Matt Mason's feed five seconds before halftime.

After a seesaw third quarter which ended with Littlefield up 54-52, the Mules turned up the defensive pressure in the final eight minutes and pulled away.

see **MULES** on page 7



Matt Mason drives by a Littlefield defender

Around Muleshoe

Lazbuddie ISD holds public meeting

Lazbuddie ISD has called a public meeting for 8 p.m., Tuesday, Nov. 25 in the school cafeteria.

The meeting will include reviews of the AEIS-accreditation system and the Lazbuddie ISD 1996-1997 report card.

All interested persons are invited to attend.

Santa to visit Bealls Department Store

Santa Claus will be visiting with children from 9 a.m. to noon, Saturday, Nov. 29 at Bealls in Muleshoe. Pictures will be available.

Also from Nov. 29 to Dec. 13, children 12 and under can drop off their letters to Santa at Bealls. Bealls will give a \$50 gift certificate to one local participant. Company wide, Bealls will select three children who will each be awarded a \$500 savings bond. Judging will be Dec. 14.

Muleshoe Elementary PTA meeting

Muleshoe Elementary PTA will hold its first meeting at 6:30 p.m., Dec. 1 in the Dillman Elementary School gym.

Second grade students and teachers will present a skit on the new Shurley English program. Please plan to join us and invite your family and friends.

Breast cancer screening in Muleshoe

The Women's Center of the Don and Sybil Harrington Cancer Center and Baptist/St. Antony's Health System will conduct a Breast Cancer Screening Clinic at Muleshoe Area Medical Center, 708 South First Street, Muleshoe on Dec. 1, 1997.

Participants will receive a low-cost screening that includes a

mammogram and instruction in self-examination by a registered nurse. The total cost is \$75. Funding is available through the Texas Department of Health for Texas residents who qualify for assistance. All exams are done by appointment only. Call 1-800-377-4673 for more information.

Jennyslippers annual holiday dinner

The Jennyslippers Annual Holiday Dinner will be from 11:30 a.m. to 2 p.m., Friday, Dec. 5 at the Bailey County Coliseum in conjunction with the Arts and Crafts Bazaar.

Jennyslippers will serve a Mexican Fiesta meal, with tea and dessert included, for \$6 per plate. Jennyslippers will also have a concession stand open Friday evening and all day Saturday during the Bazaar.

Christmas project benefits nursing home

The Christmas Card volunteers at Muleshoe Area Healthcare Center are seeking donations from community members and businesses for the annual fund raiser.

Donations will be used for Spring patio renovations to include a new patio cover, repainting patio furniture, and new plants for the garden. Also, extra chairs and card tables for the nursing home will be purchased with extra funds.

Donations can be dropped off at the local banks, or to Joyce Stancell at the nursing home. Also, donations can be mailed to Christmas Card Project, P.O. Box 202, Muleshoe, Tx. 79347.

Donations need to be made by Wednesday, Dec. 17. All contributors will be individually recognized in the annual Christmas Card to be published in the Bailey County Journal Dec. 22. For more information contact, Lona Embry or Joyeline Costen.

Lazbuddie, Farwell natives inducted into Golden Key

Several area natives were inducted into the Golden Key National Honor Society at the annual reception Monday, Nov. 17, at Texas Tech University.

Area students selected for induction were Rachele Rice, Joanna Gallman, and Leland Brockman all of Lazbuddie and Melissa Schwertner of Farwell.

The Golden Key Organization recognizes the top 15% of junior and senior students at more than 250 universities in the United States, Puerto Rico, and the Virgin Islands, Australia and Canada.

As lifelong members of the Golden Key Society, the students become eligible for scholarships. Also, the membership is recognized by major corporations and graduate programs as special distinction.

Rachele Rice is a junior majoring in Elementary Education. She was accompanied to the reception by Linda Rice of Lazbuddie.

Joanna Gallman is a junior majoring in English Education with a minor in Spanish. Robert and Ellen Gallman accompanied her to the reception.

Leland Brockman is a De-

Sherlock Holmes and Thanksgiving

In a recent issue of *Leadership* journal, Chris T. Zwingelberg observes that though everyone is familiar with Sir Arthur Conan Doyle's Sherlock Holmes and his amazingly keen powers of observation, few of us are aware of Holmes' belief that deduction and observation are even more necessary in faith

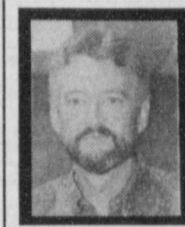
'Our highest assurance of the goodness of Providence seems to me to rest in the flowers. All other things, our powers, our desires, our food, are really necessary for our existence in the first instance. But this rose is an extra. Its smell and its color are an embellishment of life, not a condition of it. It is only goodness which gives extras, and so I say again that we have much to hope from the flowers.'"

Think about it. (By the way, the root word from which "thanksgiving" comes is also the root for "think." To really think is to be truly thankful.)

God has absolutely showered us with extras. With His brush He has painted a world dripping with color when, for most things, a few shades of gray would do. He has given us the ability to enjoy an astonishing variety of tastes. He has populated our lives with wonderfully interesting people not even the most creative author could have envisioned. (We tend to be the dullards who dislike variety and difference; God absolutely exults in them!)

Thanksgiving is Thursday and will soon be over, but as the "extras" keep right on coming from the hand of God, every day is a good day for gratitude.

Curtis Shelburne is minister of the 16th & D Church of Christ in Muleshoe.



Focus On Faith

Curtis Shelburne

and religion than they are in detective work.

In Sir Arthur Conan Doyle's *The Adventure of the Naval Treaty*, Doyle pictures his famous sleuth studying a simple rose. Holmes' famous sidekick Watson observes, "He walked past the couch to an open window and held up the drooping stalk of a moss rose, looking down at the dainty blend of crimson and green. It was a new phase of his character to me, for I had never before seen him show any interest in natural objects.

"There is nothing in which deduction is so necessary as in religion," said he, leaning with his back against the shutters....

Have a Great Day!

CHAMBER

From page 1

ings during the Moonlight Madness celebration.

Stores will be open from 6 p.m. to midnight on Nov. 28, Dec. 6 and Dec. 20.

To entice people to shop, the businesses and the Chamber are sponsoring a drawing for up to \$1400 in prizes. With every \$25 spent in town during the extended hours, shoppers can register to win a Berklene recliner and a 27 in. RCA television with remote control. The drawing will be Dec. 20.

Festivities will continue on Dec. 6 as the Chamber host the annual Christmas parade. This year's theme is a "Children's Christmas." Prizes will be awarded for "Best float" pertaining to the theme. First place will be awarded \$250, second

place, \$100, and third place, \$75. Float entry fee is \$10. For more information contact David Tipps at 272-5871.

Also on Dec. 6 the Chamber of Commerce and the Muleshoe Heritage Center are welcoming Santa and Mrs. Claus to town. They will be greeting children at the Heritage Center. Pictures will be available.

With the Chamber and local businesses working hard to decorate Muleshoe for the season, Muleshoe High School DECA students want to also encourage people to decorate their homes. The DECA chapter will be sponsoring a residential decorating contest. Cash prizes will be rewarded.

CARTER

From page 1

County Sheriff's Department since 1989 and is a former city patrolman.

Carter said his main goal is repair the tarnished image of the Muleshoe Police Department.

"I'd like to get the City of Muleshoe out of the mud pit its been dragged through," Carter said. "I want to get back to the point where the Muleshoe Police Department is respected."

He said he expects few changes.

"The main objective is to make sure to set the goals and objectives of the department and make sure everybody is on the same page."

Carter submitted his resignation to the County Friday effective Dec. 5. He is expected to start with the city shortly thereafter.

One of his priorities will be restoring the undermanned department to full strength.

The Police Department nor-

mally operates with a seven-person staff, but has been operating with just three police officers since the resignation of Henegarand Smith.

County constables and deputies have been filling in.

Sheriff Jerry Hicks fully supported the hiring of his longtime employee.

"He'll do an outstanding job," said Hicks, who is expected to retire at the end of the year. "He's one of the most capable people I've ever worked with and has a well-rounded law enforcement background."

Carter said it was on Hicks' recommendation that he took the job.

"I put a lot of stock in what Jerry says," Carter said. "He told me this was the best thing to do for everyone concerned."

Carter was planning to run for Sheriff.

"But I'll essentially be working for the same people who hopefully would have voted me into office," Carter said.

Retiring? Liquidating? Need Cash?

Think Auction

AUCTION? Who Needs It?

You... If You Are:

- Considering Retirement
- Discontinuing Business
- Dissolving Partnership or Corporation
- Liquidating Joint Venture
- Settling an Estate
- Liquidating Surplus Equipment

What Are the Advantages?

- Sell For CASH to YOU
- Sell When You Are Ready
- Bring the Buyer to Your Market
- Your Price Determined by Competitive Bidding
- Your Complete Sale is Over in a Matter of Hours

Your decide the time, place and terms of the sale.

For a Confidential, No Obligation Consultation Contact:

Cullen Johnson
EQUIPMENT
& Auction

(806) 298-4607
Rt. 2 Box 116C
Abernathy, TX 79311
Cullen Johnson, Lic. 11859

Home Folks Caring For Folks At Home.

MULESHOE AREA HOME HEALTH Agency

November is National Home Care Month

We, as employees of Muleshoe Area Home Health Agency, would like to take this opportunity to thank our current and former patients for allowing us the privilege to care for you at home.

Muleshoe Area Home Health Agency was established in the Spring of 1993. The agency opened with a staff consisting of: one RN, one LVN, one office manager, one home health aide and one physical therapist. Since that time, the agency has grown to employ 25 people serving approximately 50 patients in eight counties within a 50-mile radius of Muleshoe, excluding New Mexico. The agency provides skilled nursing, IV therapy, speech therapy, medical social worker services, home health aide services and physical therapy. The agency accepts referrals from family members, hospitals, physicians and prospective patients themselves. Acceptable payment methods include Medicare, Medicaid, Workmen's Compensation and private insurance. Muleshoe Area Home Health Agency has an RN on call 24 hrs. a day.

Our agency is hospital based and is an entity of Muleshoe Area Hospital District. We are proud to say that your tax dollars allow our services to be utilized by all citizens.

Our agency strives to provide the highest standard of nursing care. The choice is yours in selecting a home health care provider, and Muleshoe Area Home Health Agency would appreciate you deciding to let us handle all your current and future home health needs.

Home Care
Home is where the heart is

To receive Home Health Services, talk with your physician or talk with hospital personnel when you are hospitalized.

24 Hour # 272-3346
Local Nurse on call 24 hours a day to offer prompt service.

Affiliated with Lubbock Methodist Hospital Systems

Subscribe today!

Call 272-4536

THE ALL RANCH RODEO



**BAXTER
BLACK**

ON THE EDGE OF COMMON SENSE

'Twas a matchup made in Elko for the cowboys in the know
Called the Rough and Ready Knock Down Finals All Ranch Rodeo.
Now the Texans entered up a team they thought could never lose
When they bet their reps against the Jordan Valley Buckaroos.
You could tell from where they hailed if you put 'em up for bids,
All the buckaroos wore fancy scarves and Amish lookin' lids
While the Texans wore their jackets for the brush down in the draws

And them twenty dollar roller-own cheap Guatemalan straws.
It was Blucher versus Leddy, it was leggin's versus chinks
It was rye versus tequila, it was leppies versus dinks,
It was sagebrush versus cactus, it was ear tick versus fly,
It was Poco Bueno versus sloggers raised on alkali.
The Texans took an early lead, at ropin' showed their stuff,
But the buckin' horse fandango showed the buckaroos were tough.
They branded in a dead heat, but in deference to the crowd

Each side was harshly penalized for cussin' so dang loud.
So the teams were standin' even when the final contest came,
UNTAMED UNGULATE EXTRACTION, wild cow milkin', by name.
They loosed the beasts together, left their calves to bawl and mill
And the two teams fell upon 'em like hyenas on a kill.
The buckaroo a 'horseback threw his forty-footer right.
He dallied just about the time the Texan's rope came tight.
Their trajectories collided in a

bawlin', buckin' wreck,
the ropes and cows got tangled and they wound up neck to neck.
In the meantime two big muggers plus two others brave and bold
Attacked the knot of thrashing hide and tried to get ahold
Of somethin', hoof or horn or foot or spur or can of snooze.
Then, by accident some dummy turned the bawlin' calves a loose!
There was hair and teeth and eyeballs in the picture now and then,
There was moustache lips and

swingin' bags, some thought they saw a hen
Flashin' briefly through the dust cloud. Wild images remain;
A painting done in cow manure, a mating sandhill crane.
To describe the cataclysm would create an overload,
But a photograph was taken and this is what it showed;
At the summit pointed skyward were the Texas mugger's toes,
One arm around a buckaroo, his

fingers in his nose,
Who, in turn was mounted sideways splayed across a bally black
Who was layin' on a milker who was smashed flat on his back.
The braymer cow was balanced on her head amidst the jag,
While a Texan fought her baby for possession of the bag.

Cattle on feed numbers up over Nov. '96

AUSTIN — Cattle and calves on fed for slaughter market in Texas feedlots with capacity of 1,000 head or more totaled a record 2.84 million head on Nov. 1, up 14 percent from a year ago. According to the monthly report released by the Texas Agricultural Statistics service, the estimate was up 11 percent from the Oct. 1 level. Producers placed a record 810 thousand head in commercial feedlots during Oct., 1 percent from a year ago and up 16 percent from the Sept., 1997 total.

Calves on feed in the Northern High Plains, 81 percent of the states total. The number on feed across the area increased 15 percent from last year and was up 12 percent from the Oct. total.
Oct. placements in the Northern High Plains totaled 671 thousand head, up 21 percent from the Sept. total. Markings were unchanged for last month at 414 thousand head.
Cattle and calves on feed for slaughter market in the United States in feedlots with a capacity of 1,000 head or more totaled 10.99 million head on Nov. 1, 1997. The inventory was 9 percent about Nov. 1, 1996.
Placements in feedlots during Oct. totaled 2.90 million, 4 percent below 1996, during Oct. placements of cattle and

calves weighing less than 600 pounds were 816,000; 600-699 pounds were 715,000; 700-799 pounds were 745,000; 800 pounds and greater were 620,000. Markings of fed cattle during Oct. totaled 1.78 million, 5 percent above 1996.
Feeders in the historical seven monthly states with feedlots having a capacity of 1,000 head or more reported 9.39 million head on feed Nov. 1, up 10 percent from last year and up 12 percent from Nov. 1, 1995.
Oct. placements totaled 2.43 million head, 4 percent below 1st year but 7 percent above 1995. Markings during Oct., at 1.53 million head, were up 7 percent from last year but slightly below 1995.

Higginbotham-Bartlett Co.
215 Main St. • Muleshoe, TX • (806) 272-3351

Invites you to come check out our **GREAT GIFT IDEAS!**

FOR MOM  **FOR DAD** 

AND FOR THE KIDS!  

Want to See More?
Come on in Friday, Nov. 28th 6 pm till . . . ?
MOONLIGHT MADNESS
A great way to shop

Register Daily for Weekly Turkey Drawings!

Best
All Across America

SUSPECTS

From page 1

eye witnesses using photos in a 200-page profile the Illinois State Police have complied on the group, Hicks said.
The suspects have been identified as Recep Tekin and Mikro Petrovic. No ages were given.
No money has been recovered and the only way it probably will ever be recovered is through "restitution," Bailey County Chief Deputy

Don Carter said.
A request for a bond reduction for the five suspects in custody was turned down Wednesday by 287th District Court Jack Young.
Defense attorney David Martinez requested their bonds be lowered to \$10,000.
Sheriff Hicks said he considered the five high flight risks.
The U.S. Border Patrol has

placed a hold on two of the male suspects in custody and they will likely be deported following the court proceedings, according to an immigration official.
The Bailey County Sheriff's Department also received a request to add an additional \$500,000 bond on one of the female suspects from law enforcement officials in Wisconsin.

Announcing New Management of

OUTPATIENT SERVICES CLINIC

Muleshoe Area Medical Center has assumed responsibility of services for the Outpatient Services Clinic in Muleshoe.

Services available BY APPOINTMENT
Well Child Physicals
Prenatal Care
Family Planning

◆◆◆◆◆◆◆◆◆◆

IMMUNIZATIONS are available daily without appointment.

Helping make tomorrow's Doctors well today.

Clinic Hours:
Monday through Friday
8 am to 5 pm

OUTPATIENT SERVICES CLINIC

118 W. Ave C
272-5561

ALLSUP'S Visit Allsup's Forest
• Fresh Cut • Scotch Pine

CHRISTMAS TREES

\$14.99 EA.

All Fresh Cut

Allways Available • Allways Fresh
Allsup's Allways

CHECK YOUR FRIENDLY ALLSUP'S STORE FOR ADDITIONAL HOLIDAY SPECIALS!
Store #34 • 318 W. American Blvd.
272-4862 • Muleshoe

PRICES EFFECTIVE NOVEMBER 23-29, 1997 • OFFER GOOD WHILE SUPPLIES LAST

MHS flashes depth, desire

By RICK WHITE
Managing Editor

It was a mismatch from the outset, but Muleshoe still showed several positive signs in Tuesday's season-opening 53-28 win against Littlefield at WJHS gym.

The Lady Mules showed surprising depth and more versatility in the easy win. But most of all, the Lady Mules played hard.

Sophomore Lindsey Field tossed in a game-high 17 points and the Lady Mules also got 15 points from an improved and deeper bench.

Field stepped up her game in the third quarter when junior all-district post Erin Wilhite picked up her fourth foul two minutes if the second half.

Field scored six-straight points to end any ideas of slicing into the Lady Mules' 17-point halftime lead.

Going to the hoop with a vengeance, Field twice drove the baseline for buckets. Junior Melissa Williams (8 points) scored six-straight later in the quarter and Kellie

MULESHOE	53
LITTLEFIELD	28

Morris' steal and layup gave Muleshoe a comfortable 45-20 lead after three quarters.

"I feel good about this bunch," Muleshoe head coach Jim Gruhlkey said. "We might look different when we go to the bench, but we don't lose a whole bunch."

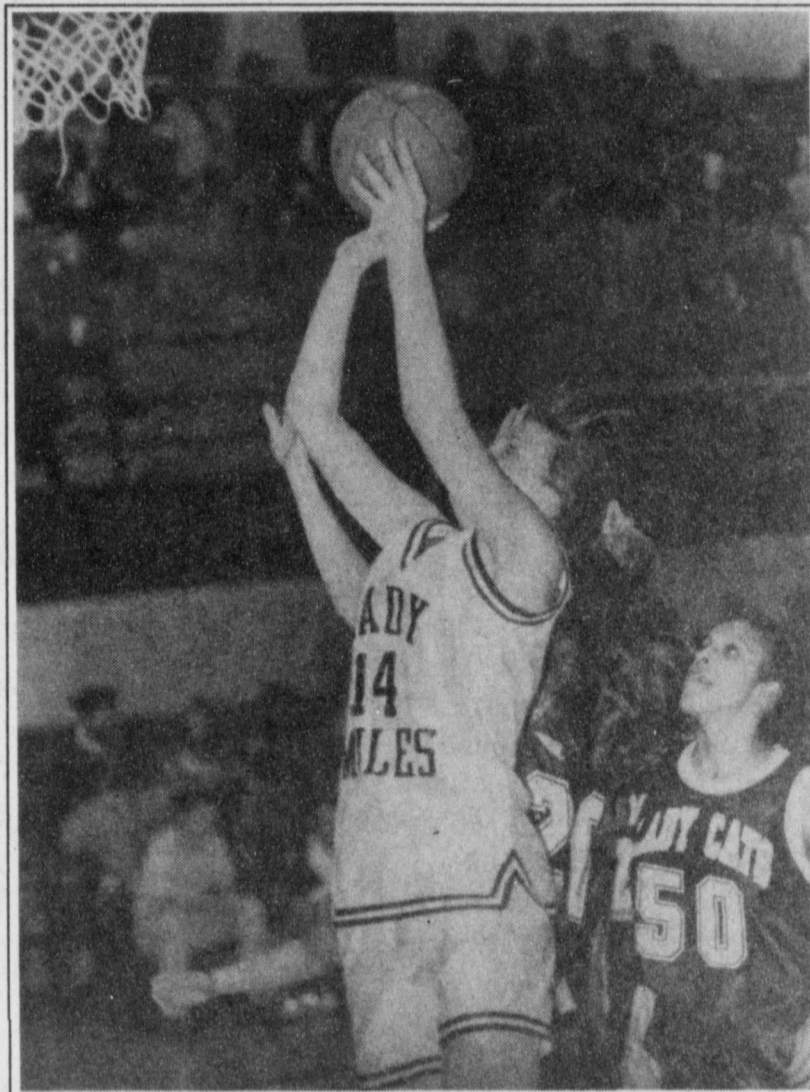
Paced by senior Kendra Benham (7 points, 8 rebounds) the Lady Mules worked the offensive boards for 18 rebounds. Benham had seven.

Muleshoe didn't shoot particularly well (34.9 percent), but was aggressive in looking for its shots, Gruhlkey said.

Muleshoe jumped out to a 16-5 first quarter, hitting their first three shots and scoring the first seven points of the game.

Wilhite scored all eight of her points in the quarter and added six rebounds.

Littlefield had success in breaking the Lady Mules' full-



Lindsey Field drives for a layup against Littlefield

court pressure but wasn't able to finish at the offensive end.

The Lady Wildcats (0-1) crept within 20-9 midway through the second quarter as Muleshoe appeared to tire, but the Lady Mules finished the half with a 10-2 spurt, keyed by senior Mandy Myer's four points.

Littlefield (28) — Lacy Devoll 0 0-0, Crystal Soria 3 0-0, Latosha Durham 1 0-2, Tanja Moore 1 1-2, Kemia Dancer 1 2-5, Lori Ingram 1 0-0, 2,

Timbra Walden 1 0-0, LaToya Abeyta 2 0-0, Beatrice Rodriguez 1 2-6, 4, Totals 11 5-15 28. 3-pointers: Durham.

Muleshoe (53) — Mandy Myers 12-44, Lindsey Field 7 3-4 17, Keisha Whitt 0 0-0, Rhonda Copley 1 0-0, Kellie Morris 2 1-2, Amy Hooten 1 0-0, Amy Locker 0 0-0, Melissa Williams 3 2-2, 8, Kendra Benham 3 1-3, 7, Erin Wilhite 4 0-2, 8. Totals 22 9-17 53. 3-pointers: none. Turnovers: 17

FG: 22-63. 3-point FG: 0-2. Rebounds: 47, 18 offensive (Wilhite 12). Blocked shots: 1 (Wilhite). Steals: 14 (Field, Benham 4). Assists: 8 (Field 3). Littlefield 5 6 9 8 28 Muleshoe 16 12 17 8 53

Lady Longhorns flatten Plains 55-42 in opener

LAZBUDDIE — Roxann Warren led four Lady Longhorns in double figures with 12 points Tuesday in Lazbuddie's 55-42 win against Plains.

Holly Engelking and Scottie Brown added 11 points each for the Lady Longhorns. Kia Morris chipped in 10.

"We played pretty well for the first time out," Lazbuddie coach Carey Sudduth. "We did what we practiced. That was the best part."

Jolene Burgess led Plains (0-1) with 13 points. Shiloh Wynn added nine points on a trio of 3-pointers.

Leading by four at halftime, Lazbuddie outscored Plains 32-23 in the second half.

Hoping to push the pace,

Sudduth said the Lady Longhorns got a little sloppy in the second quarter when Plains outscored Lazbuddie 15-13.

"We were trying to force the tempo and made some mistakes," Sudduth said. "But anytime you can beat a 2A school it's good."

Plains (42) — Lisa Parrish 0 1-2 1, Sandy Warren 21-66, Shiloh Wynn 3 0-0 9, Lindsey Six 3 1-1 7, Kayla Redmond 3 0-1 6, Jolene Burgess 4 5-12 13. Totals 15 8-22 42. 3-pointers: Wynn 3, Warren.

Lazbuddie (55) — Roxann Warren 5 2-4 12, Holly Engelking 4 2-2 11, Kia Morris 5 0-3 10, Rachel Rodriguez 0 1-2 1, Scottie Brown 3 5-8 11, Staci Foster 1 1-2 3, Laura Jo Via 1 1-4 3, Maria DeLeon 1 0-0 2, Leah Turner 0 0-0. Totals 20 12-25 55. 3-pointers: Engelking.

Plains	4	15	8	15	42
Lazbuddie	10	13	14	18	55

Garcia, Lewis pace Mule frosh

ABERNATHY — Darrell Lewis and Moises Garcia scored 17 points each as Muleshoe beat Abernathy 61-46 Thursday in a boys freshmen game.

Down by one at halftime, Muleshoe pulled away in the second half with the help Garcia's five 3-pointers.

Sonny Chavez added 9 points for the Mules.

Muleshoe	17	10	18	16	61
Abernathy	15	13	7	16	46

Muleshoe: Dan Williams 3, Brandon Broyles 4, Danny Ramirez 4, Moises Garcia 17, Sonny Chavez 9, Darrell Lewis 17, Jeff Shelburne 7, Jerrell Otwell, Landon Nichols. 3-pointers: Garcia 5, Ramirez.

Abernathy: Coley Ambrise 5, Tyler Wilson 14, Michael Johnson 5, Mirl Hamilton 2, Dax Loper 6, Curtis Graham 2, Kendrick Dixon 2, Daniel Nelson 10. 3-pointers: Ambrose 3, Wilson. Records: Muleshoe 1-0

AREA HOOPS

Boys

JUNIOR VARSITY

Muleshoe 53, Littlefield 33

Kyle Hahn led a balanced attack as Muleshoe beat Littlefield 53-33 Tuesday in a boys junior varsity game at the high school gym.

Delwyn Latham added nine points for the Mules (1-0) and John McClanahan chipped in six points.

All 10 Muleshoe players scored.

Littlefield (33) — Allen 4, Campbell 2, Douglas 4, Pratt 1, Lohse 8, Patton 4, Kirby 1, Walls 6. 3-pointers: Pratt.

Muleshoe (53) — Ryan Hodge 4, Eric Posadas 5, James Barrett 2, Delwyn Latham 9, Clint Black 5, Chris Vaughn 2, Jesse Reyes 4, Mitch Mason 4, John McClanahan 6, Kyle Hahn 10. 3-pointers: Posadas, Latham, Hahn.

Littlefield	9	8	7	9	33
Muleshoe	15	16	9	11	53

Records: Muleshoe 1-0.

Girls

JUNIOR VARSITY

Muleshoe 40, Littlefield 32

Muleshoe rallied from a five-point deficit in the fourth quarter and beat Littlefield 40-32 Tuesday in a girls junior varsity game at the junior high gym.

Lynsie Black led a balanced Lady Mule attack with nine points, including five in the game-breaking fourth quarter.

Stacy Locker added seven points for the Lady Mules (1-0) and Lela Hancock and Michelle Toscano chipped in six points each.

Littlefield (32) — Cowen 1, Vargas 1, Martinez 8, Smith 2, Sibora 5, Huey 6, Carter 9. 3-pointers: Martinez, Sibora.

Muleshoe (40) — Lynsie Black 9, Kala Johnson 4, Lela Hancock 6, Stacy Locker 7, Robin Cowart 2, Brandi Whitt 4, Michelle Toscano 6, Christi Adrian, Bobbie Benham. 3-pointers: none.

Littlefield	7	6	13	6	32
Muleshoe	9	8	4	19	40

Records: Muleshoe 1-0.

FRESHMEN

Muleshoe 57, Bovina 4

Muleshoe routed over-matched Bovina 57-4 Monday in a freshman game at the junior high gym.

Myndi Heathington led Muleshoe with 13 points. Tommie Hernandez added 12 points and Melissa Flores finished nine.

Muleshoe (57) — Megan Tipps 2, Shari Alanis 4, Melissa Flores 9, Chyla Torres 7, Myndi Heathington 13, Roxann Garcia 2, Tasha Norman, Melinda Scott 2, Tommie Hernandez 12, Rhea Gonzales, Michelle Parker. 3-pointers: Heathington.

Bovina	0	0	0	4	4
Muleshoe	22	12	11	12	57

Records: Muleshoe 1-0.

Boys

WJHS 8th 48, Portales 29

PORTALES, N.M. — Watson Junior High pulled away in the fourth quarter Monday and beat Portales 48-29 in an 8th-grade game Tuesday.

Lincoln Riley scored 9 of his game-high 20 points in the fourth quarter as the Mules outscored Portales 19-2.

Daniel Johnson added 10 points for the Mules.

WJHS	13	8	8	19	48
Portales	12	8	5	4	29

WJHS: Kyle Atwood 2, Michael Norman 3, D.J. Dominguez 4, Lincoln Riley 20, Roddy Spradling 2, Geraldo Reyes 2, Daniel Johnson 10, Stephan Shelburne 2, A.J. Buhrman, Landon Kerby 0. 3-pointers: none.

Portales: Gallegos 5, Banister 2, Gossett 4, Reeves 1, Dodd 2, Brown 5, Creighton 3, Gerig 3. 3-pointers: Brown

Records: WJHS 1-0

WJHS 7th 48, Portales 29

PORTALES, N.M. — Philip Field scored 19 points and Brennan Broyles added 11, leading the Watson Junior High

7th-grade Mules beat Portales 47-24 Monday.

Field and Broyles combined for all 17 of WJHS' points in the fourth quarter.

Ryan Powell added six points for the Mules.

WJHS	12	10	8	17	47
Portales	6	5	8	5	24

WJHS: Cory Hunt 2, Ryan Powell 6, Philip Field 19, Valentin Colunga 2, Abraham Baeza 2, Luis Sanchez 2, Andy Scott 2, Brennan Broyles 11, Jordan Dale, Jeremy Alfaro. 3-pointers: none.

Portales: Massey 7, Guy 7, Villalobos 2, Goynes 4, Leaflier 4. 3-pointers: none.

Records: WJHS 1-0.

Girls

WJHS 8th 33, Portales 29

Candace Hutto scored 11 points and Rendi Hodge added 10 as the Watson Junior High 8th-grade Lady Mules held on for a 33-29 win against Portales Monday at the junior high gym.

WJHS took a 19-12 half-time lead with the help of Hutto's five points in the second quarter.

Jessica Carpenter added eight points for the Lady Mules.

Portales	5	12	6	11	29
WJHS	8	11	6	8	33

WJHS: Rendi Hodge 10, Kayla Glover 2, Amanda Bell 2, Jessica Carpenter 8, Candace Hutto 11, Laura Wood, Megan Barrett, Suzanne Messenger, Britni Gartin. 3-pointers: none.

Portales: Buzard 3, Salas 18, Urioste 1, Zamora 7, Culpepper 4, Boar 6. 3-pointers: Buzard. Records: WJHS 1-0.

WJHS 7th 33, Portales 29

Tiffany Flores poured in 27 points, leading the Watson Junior High 7th-graders to a 51-6 rout of Portales Monday at the junior high gym.

Kylie Henderson and Gradee Adrian added six points each for the Lady Mules.

Continued on page 9

Stocking Savings!

Stuffer Shirts

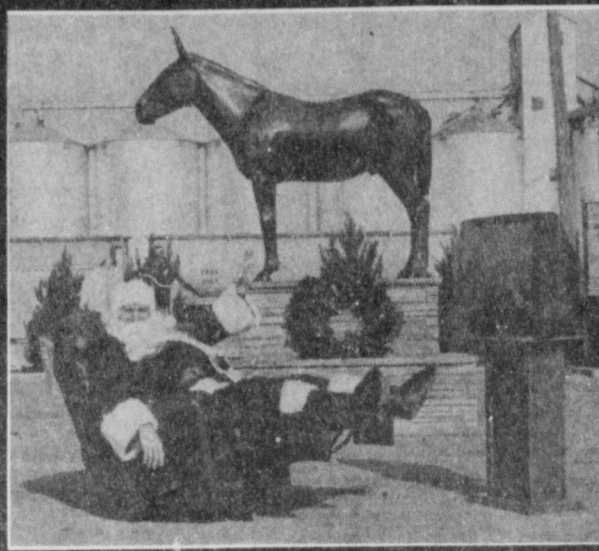
Coats
Caps

NASCAR:
Dale Earnhardt, 7 Time Champion
Jeff Gordon, Last Year Winston Cup Champion
Terry Labonte, Mark Martin,
Bill Elliot, Driver of the year

We have:
NHRA, John Force
Cory Mac & Others

BENDER CHEVROLET PARTS

2500 Mabry Drive • (505) 762-4755



With every purchase of \$25 or more (up to \$500), don't forget to register at these Muleshoe businesses during Moonlight Madness. Only purchases made from 6 pm to Midnight on Friday, Nov. 28th will entitle you to fill out an entry form. You can win a VIBRATING, MASSAGE RECLINER OR TELEVISION just for shopping with Muleshoe merchants. What a GREAT town!

MOONLIGHT MADNESS

"Shop Till The Cows Come Home"

Coming • Nov. 28
Dec. 6 • Dec. 20

Come Help Us
Mooooove Merchandise At . . .

TREASURES FROM THE HEART
2105 W. American Blvd. • 272-4217

Nov. 28 • Open till Midnight

Owners Inventory
10 • 20 • 30% Off

Storewide Sales with Participating Vendors
With Every \$10 purchase, register for Door Prizes you'll "Treasure"

Mon-Sat. 10 am to 5:30 pm
Tues 10 am to 7 pm
Layaways Welcome
M/C, Visa, Discover

WEBSITE • www.maroon.com/treasures

DECORATORS FLORAL & GIFTS
616 S. 1st St. • 272-4340

EXTENDED MADNESS HRS.
NOVEMBER 28
6 pm until ?



1/2 PRICE
FALL MERCHANDISE

Silk Arrangements
Stuffed Animals
Candles
Containers

FREE
1998
CALENDAR

JOE'S BOOT SHOP & COUNTRY JUNCTION
106 E. American Blvd.
272-7504 • 1-800-658-6378

Nov. 28 Open till Midnight
Entertainment provided by HOME COOKIN' BAND, John & Jill Mulhair

PLAY "LET'S MAKE A DEAL"
(chance to win \$500 Gift Certificate)

All Boots & Sport Lacers
(including sale Boots)
Go on Sale at 6 pm
6 pm ~~10~~ \$6 Off
7 pm ~~10~~ \$7 Off
8 pm ~~10~~ \$8 Off
9 pm ~~10~~ \$9 Off
10 pm ~~10~~ \$10 Off
11 pm ~~10~~ \$11 Off

Earn Boot Bucks For Our FREE Auction OVER \$3000 IN PRIZES TO BE GIVEN AWAY DEC. 20TH

1225 W. American Blvd.
272-4251
1-800-432-7617

Moonlight Madness
Open till Midnight

November 28th is devoted to CUSTOMER APPRECIATION
We'll have refreshments & Door Prizes!



ALCO

1401 W. American Blvd. • 272-5525

20% OFF
Any One
Regular Priced
Item

November 28
We'll Be Open From
7 am until 10 pm

THE FIG TREE
220 Main St. • 272-7561

November 28
Open 10 am to Midnight

All Merchandise
Marked Down
10 • 20 • 30% Off
(Regular Price)

Twistavant Candles
(\$15 value)

FREE with any
\$100 purchase

Refreshments will be available for Moonlight Madness!
Free Gift Wrapping • Layaways Welcome



Shop at Santa's Favorite Store
Sheree's Attic
1519 W. American Blvd. • 272-3459

Moonlight Madness 6 pm until Rudolph's nose won't glow!

Special Reductions Storewide
All Fall & Winter Merchandise
& Sterling Silver
20%•30%•40% Off (Reg. Price)

New Shipment Brighton Belts,
Watches & Accessories **20% Off**

Purchase children's outfit
at regular price get the 2nd
one Free (of equal value)

Free Sterling Silver Jewelry (\$15 Val.)
when you purchase \$100 in goods

Secret Surprize Drawing

Drawings to be held
Nov. 28 • Dec. 6 • Dec. 20

FREE Gift Wrapping

HARVEY BASS APPLIANCE
122 S. 1ST • 272-3030

Come in and see our large selection of vibrating, massage recliners by **Berkline**.
We know our prices are as good as you'll find!

Come in and see tomorrow's technology - The Neptune by Maytag. This FRONT LOAD washer & dryer are fantastic!
November 28th
Open 8 am to 9 pm

We'll be open for Moonlight Madness November 28

We have
• Birds • Reptiles • Fish
And More!

Remember Circle E Pets when you need your dog or cat groomed or boarded for the holidays!

Come in and take a look at our IN-SHOP specials!
Register for C. of G. Grand Prize Drawing with purchases!

CIRCLE E PETS

224 W. 2nd
272-4118

FRY & COX TRUE VALUE
401 S. 1ST • 272-4511

Moonlight Madness
Nov. 28 6 pm to 9 pm

1/2 PRICE BARGAINS
ALL OVER THE STORE!

25% Off on All
Christmas Trees,
Lights & Decorations

Nov. 24 - 28 With every purchase receive a chance to win a **TOOL BAG** with a selection of tools!

BEALLS
321 Main St. • 272-3478

Nov. 28th Hours
7 am to 11 pm

NOVELTY GIFT SELECTIONS
• Christmas Decorations

• Angels
• Crystal

• Cologne w/FREE gifts
EXTRA 15% OFF

EVERYTHING
7 AM TO 11 AM

Gentlemen
Shop for yourself & your special someone!

• HAGGAR Coats

• Lingerie

• Fine Jewelry

Nov. 29 - Santa Arrives
9 am to 11 am

PIZZA HUT
1412 W. American Blvd. • 272-4213

Any Large 2
Topping Pizza
\$10⁹⁹ (plus tax)

Medium
The Edge

\$8⁹⁹ (plus tax)

November 28th
Extended Hours
11 am to Midnight

FIVE AREA TELEPHONE COOPERATIVE, INC.
P.O. Box 448
(806) 272-5533 or
1-800-741-6925

It is our pleasure to help support the community, the Muleshoe Chamber of Commerce and all our wonderful, hometown businesses.

WEST PLAINS TELECOMMUNICATIONS, INC.
P.O. Box 1012
(806) 272-5533 or
1-800-741-6925

CUT YOUR OWN DEAL
starts at
6 pm to ?

numbers 6-10
15% Discount
J-Q-K
25% Discount
numbers 2-5
10% Discount
ACE
40% Discount

J & L FASHIONS
202 Main • Muleshoe, TX
272-3000

DECEMBER 6, 1997
In Support of Muleshoe and Moonlight Madness, the Heritage Foundation is opening the Heritage Center (located behind Treasures from the Heart) December 6th for afternoon and evening tours. You can also enjoy Christmas carolling and refreshments on this evening. Have your picture taken with Mr. or Mrs. Claus for only \$5⁰⁰. The proceeds from pictures will help support the Heritage Foundation.

Leal's
1010 W. American Blvd.
272-3294

We're Open
Tuesday through Sunday
11 am to 9 pm

CATERING & BANQUET FACILITIES AVAILABLE



HIGGINBOTHAM-BARTLETT CO.
215 MAIN • 272-3351

We have everything from gifts to necessities for your home.

Don't forget to register for our Annual Turkey Drawing. The drawing will take place every Saturday from Now until Christmas.

Best
All Across America

Higginbotham-Bartlett Co.

did somebody say ?

We're cookin' Breakfast for you every day
★ 6 am to 10:30 am. ★



1 2 3 4 5

Pick up a Bonus Card at your Muleshoe McDonald's!

El Nino Specials

Lady Mules & Mule Socks
\$4⁹⁵ (reg. \$6⁹⁵)
Men's Light Filled Jacket
\$67⁹⁵ (reg. \$84⁹⁵)
Hooded Jacket
\$79⁹⁵ (reg. \$99⁹⁵)

One Rack Men's Polo Shirts
20% OFF

Ladies Windsuits **15% OFF**

Register to win a \$25 Gift Certificate with \$25 or more purchase
Kids Reversible Jackets
\$69⁹⁵ (reg. \$89⁹⁵)

For Toddlers • Flapcap & Mitten Gift Box
\$19⁹⁵ (reg. \$23⁹⁵)

WILLIAMS ATHLETICS
322 Main • 272-6853

BAILEY COUNTY JOURNAL'S FOOTBALL CONTEST

NAME: _____
 ADDRESS: _____
 PHONE: (_____) _____

GAMES OF NOV. 28-Dec. 1, 1997

• RULES •

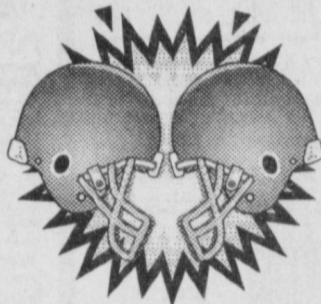
- Circle your choice as the winning team in each of the 18 games below.
- The entry with the most correct selections will win. In the event of a tie, the entry which picks the closest to the actual tie breaker score will win.
- Entries may be mailed to Muleshoe Journal, P.O. Box 449, Muleshoe, TX 79347 or dropped off at the office during business hours (8:30-5:00). Please mark the envelope FOOTBALL CONTEST.
- Entries for this week's contest must be received by the Muleshoe Journal or postmarked by **5 P.M. WEDNESDAY, NOV. 26, 1997.**
- Muleshoe Journal employees are not eligible to win the contest.
- Decision of the judges will be final.

1ST PRIZE \$15

2ND PLACE \$10

3RD PLACE \$5

TIE BREAKER



**MINNESOTA
 AT
 GREEN BAY**

Combined Total
 of Both Teams: _____

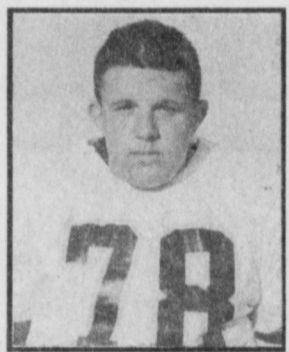
CATCH THE EXCITEMENT!

\$30 AWARDED EACH WEEK



EARLY DEADLINE!

Entries must be turned in by 5 pm
 Wednesday, November 26th!



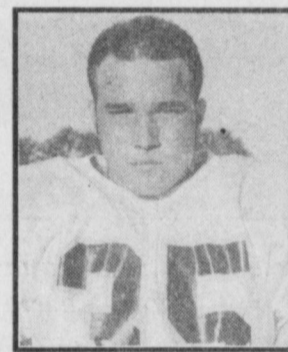
**DECORATORS
 FLORAL & GIFTS**
 616 1st • 272-4340
**BALTIMORE
 AT
 JACKSONVILLE**

Matt Turney



**AG
 AVIATION, INC.**
 Friona Hwy. • 272-3544
**TAMPA BAY
 AT
 NEW YORK GIANTS**

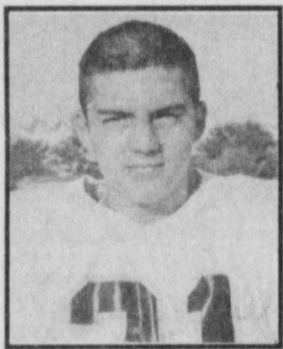
Dustin Cleavinger



**SUDDUTH
 FIELD & Co.**
 104 W. 2nd • 272-4291
**SAN FRANCISCO
 AT
 KANSAS CITY**

Greg Pena

**WES TEX
 FEED YARDS**
 Custom Cattle Feeding • 272-7555
**NEW ORLEANS
 AT
 CAROLINA**



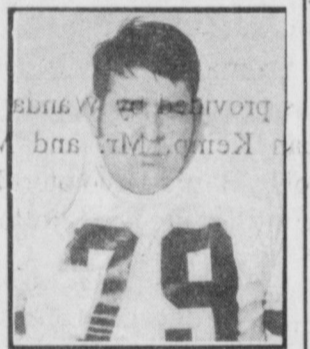
Carlos Del Toro

**BOB STOVALL
 PRINTING**
 221 E. Ave. B • 272-3373
**NEW YORK JETS
 AT
 BUFFALO**



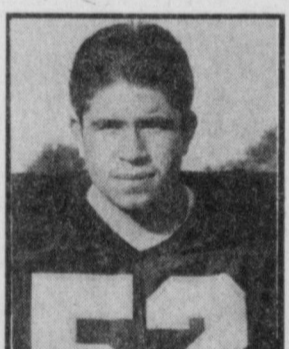
Joe Garcia

**JOE'S
 BOOT SHOP**
 106 E. American • 272-7504
**MIAMI
 AT
 OAKLAND**



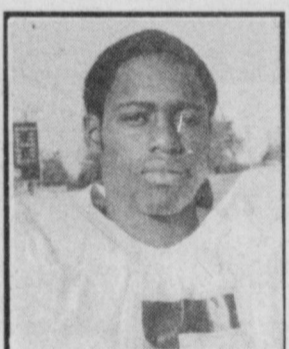
Ricko Aguirre

**HI-TEK
 AUTOMOTIVE**
 322 N. 1st • 272-3480
**ATLANTA
 AT
 SEATTLE**



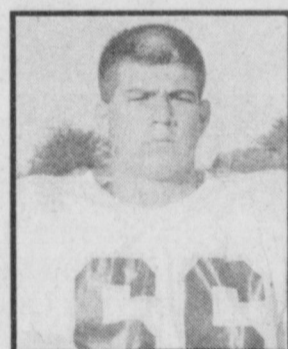
Michael Martinez

**MULESHOE
 FEED BARN**
 311 W. American • 272-5626
**ARKANSAS
 AT
 LSU**



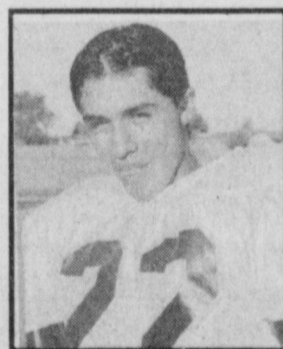
Carlton Lewis

**LEAL'S
 RESTAURANT**
 1010 W. American • 272-3294
**ARIZONA
 AT
 ARIZONA STATE**



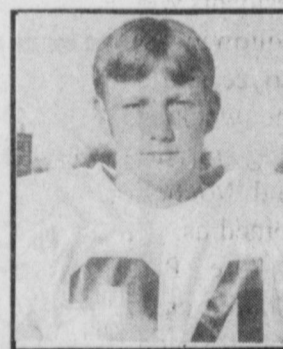
Joey Mata

**MULESHOE
 COOP GIN**
 Mgr. Charles Moraw • 272-4794
**NEBRASKA
 AT
 COLORADO**



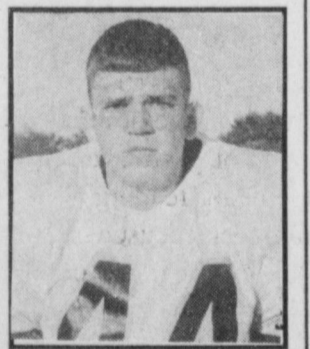
Gilbert Vela

**WILSON
 DRILLING**
 West Hwy. 84 • 272-5521
**GEORGIA
 AT
 GEORGIA TECH**



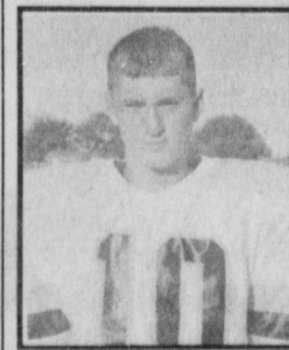
Aaron Purdy

**MULESHOE
 JOURNAL**
 304 W. 2nd • 272-4536
**NOTRE DAME
 AT
 HAWAII**



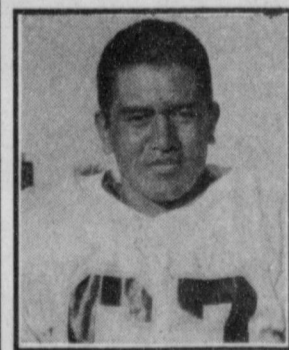
Douglass Field

**WESTERN
 DRUG Co.**
 114 Main • 272-3106
**PENN STATE
 AT
 MICHIGAN STATE**



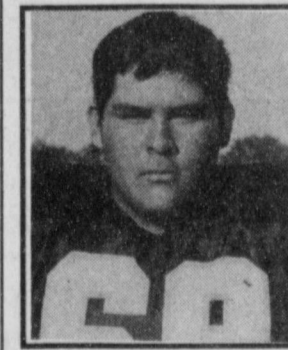
Matt McClanahan

**MULESHOE AREA
 HOSPITAL DISTRICT**
 708 S. 1st • 272-4524
**SYRACUSE
 AT
 MIAMI**



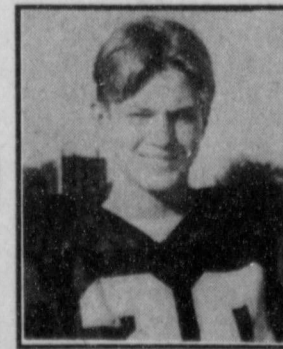
Jonas Alfaro

**WEST CAMP
 GIN, INC.**
 West Camp • 925-6681
**MISSISSIPPI
 AT
 MISSISSIPPI STATE**



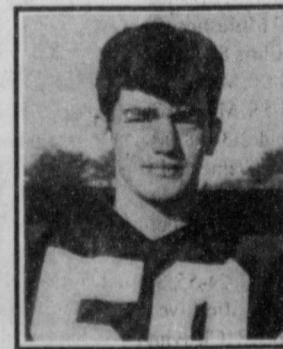
Billy Martinez

**MCCORMICK
 SEED, INC.**
 400 E. Ash Ave. • 272-3156
**PITTSBURGH
 AT
 WEST VIRGINIA**



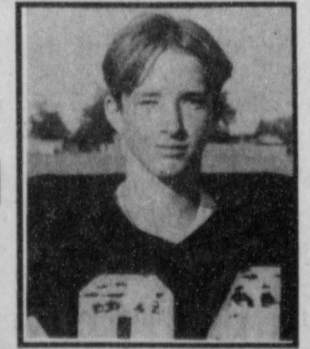
Judd Glover

**BAILEY COUNTY
 FARM BUREAU**
 1612 W. American • 272-4567
**TEXAS
 AT
 TEXAS A&M**



Timothy Madrid

**MAPLE
 COOP GIN**
 Maple • 927-5501
**VIRGINIA TECH
 AT
 VIRGINIA**



Tyson Purdy

Lazbuddie Students of the Month

Lazbuddie High School and Junior High recognized Rachel Rodriguez, Dustin Weir, Robby Martin and Crystal Myers as November students of the month.

Rachel Rodriguez, 16, is the daughter of Bernardo and Biolanda Rodriguez.

She enjoys going out to eat and to the movies. Her favorite meal includes double meat, double bacon cheeseburgers

with a Dr. Pepper. Her favorite songs include "How do I Live?" by Lee Ann Rimes and "Foolish Games." Her favorite movie is "My Best Friend's Wedding," while "Party of Five" is her favorite TV show. Her favorite book is *A Separate Peace*.

Rodriguez is involved in Band, FHA, One-Act Play, National Honor Society, choir, and athletics. Chemistry is her area of academic specialty. She

plans to attend Texas Tech University and become a Registered Nurse or a Physician's Assistant.

Dustin Weir, 18, is the son of Doyle and Debbie Weir.

He enjoys playing the guitar and skiing. Pasta and Coke are foods he enjoys. "Sway" is Weir's selection for top tune. While *Braveheart* typifies his

Continued on page 9



Lazbuddie students for November
Lazbuddie School's students of the month for November are (from left) Dustin Weir, Robby Martin, Rachel Rodriguez and Crystal Myers.

Lazbuddie Honor Roll

"A" Honor Roll

2nd Grade — Crescent Crawford, Jason Davis, Jonathon Lennon, Regina Mata, Chelsey Nichols, Brianna Sanchez, Brittney Schacher, and Shayla Scisson.

3rd Grade — Castle Crawford, Brandy Hudson, Jennifer Pesch, Amberlee Steinbock, and Montana Steinbock.

4th Grade — Kirby Kimbrough, Nathan Pesch, Madison Smith, Roper Smith, and Richard Welker.

5th Grade — Matt Gammon, Mandy Haney, and Matthew Mvers.

A-B Honor Roll

2nd Grade — Mary Hendrickson, Samantha Hudson, Megan McGuire, Rochelle Smith, Rowdy Smith, and Dakota Williams.

3rd Grade — Bryce Haney, Kyra Kimbrough, and Kayla Whitesides.

4th Grade — Felicia Glover, Leslee Martin, and Samantha Sterling.

5th Grade — Kaylee Burnett, Taryn Burnett, Chris DeLeon, Tanner Gartin, Bessie Hendrickson, Ana

Hernandez, Susie Juarez, Holly Little, Brett Mimms, Cory Puckett, Garrett Scisson, and Melanie Winders.

Jr. High Honor Roll

6th Grade — Shonnah Black, Katy Loudder, Robby Martin, Shawndee Nichols, and Sterling Via.

7th Grade — Jonah Hendrickson, Andy Martin, Brady Mimms, Cystal Myers, and Tobin Redwine.

8th Grade — Savannah Black, Jodie Coker, Candice Randolph, Shannon Redwine, and Jay Seaton.

High School

9th Grade — Kati Mimms
10th Grade — Amy Angeley, Scottie Brown, Veronica Mata, and Leah Turner.

12th Grade — Brice Foster, Deon Gallman, Roxann Warren, and Dustin Weir.

A and B Honor Roll

Jr. High School

6th Grade — Suzanne Aragon, LaTasha Glover, Kelli Harris, Nicole Lewandoski, Kera Lewandoski, Amanda Martinez, Raul Mata, Bethenie Sanchez, Michelle Scott, and Kolby Wilkerson.

7th Grade — Brittany Brakebill, Lucas Deleon, Lucinda Guzman, and Michelle Puckett.

8th Grade — Brittany Englant, Lindsey Free, Jeffrey Guillen, Kelsey Jones, Michael Martinez, Trey Nickels, Colt Richardson, and Triston Thorn.

9th Grade — Kendra Gallman, Fabian Guzman, Clifton Harris, Crystal Scott, and Laura Via.

10th Grade — Randy Bohler, Desirae Brakebill, Kristen Carson, Aspen Hendrickson, Jason Jesko, Zulema Marquez, Bobby Martha, Brandon Randolph, and Laramie Wood.

11th Grade — Seth Black, Holly Engelking, Brandon Foster, Jill Hodges, Rosie Marrufo, Joshua McDonald, Josh Morris, Kia Morris, Cade Morris, Rachel Rodriguez, Shena Seaton, and Adam StClair.

12th Grade — Melissa Aguirre, Don Burch, Sarah Cardona, Tracy Damron, Heather Hudson, Brice Redwine, Hector Reyes, Chris Smith, Jason Thomas, and Cameron Turner.

Nursing Home News

Elsie Tarr, Birdie Warren, and John L. Seaton, were honored at the November Birthday party hosted by the Lariat Church of Christ.

Entertainment for the party was provided by Wanda and Jean Kemp, Mr. and Mrs. Bobby Burris. Decorators Floral and Gift provided the flower corsages.

Thursday morning Nancy Lemons directed the Ceramic Class. Residents participating were Nettie Quesenberry, Helen Tinskey, Bootie Tiller, Kathrine Rogers, Rose Sneed, Jackie Davenport, Florence Harvey, Hazel Riddle, Lora Dale, and Lillie Wuerflein. Aline Locke came down to give morale support.

Pastor David McIntire, J.C. Shanks and Clara Lou Jones directed our devotional and reflection time Thursday morning.

Pat Watson came Friday morning for musical therapy. This is a time of remembering songs of yester-year and also poems and readings. The theme this week focused on Veterans Day and the music of the era of World War I and II.

Friday evening the youth group of the Mennonite Church of Farwell came to sing gospel songs and to visit.

The New Covenant Church came Sunday afternoon for Bible stories and singing.

Joe Embry and Mr. Stancell were among those visiting the Care center this week.

Friday, Jackie Davenport's daughter took her out for lunch and a little shopping.

Netti Quesenberry was visited by Anna B. Lane, Michelle and Tiffany and Elsie Damron recently.

Melvin Griffin, Harald and Mary Jo Burge directed the Bingo game Saturday afternoon.

Clara Lou Jones rejoined the reading group and exercise class Monday. Welcome back Clara, we've been missing you on Mondays.

Ada Murrh and Vivian White brought us a big box of beautiful lap throws that our friends from the community made for us.

John Graves visited John L. Seaton on Tuesday afternoon. John's daughter Jackie Scoggins, visits him several times a day.

Leonard McCormick was visited by his wife Tennie McCormick on Tuesday. Van and Betty McCormick visit him several times a week.

Tuesday afternoon Claudine Embry, Lanell Stancell, Pat

Watson, Mary Jo Burge, Beverly Wagon, Jennifer Walls, Ozell Cherry, Chickie Henderlter and Joy Stancell shampooed and set the ladies hair and gave nail care. Beverly trimmed some of the ladies hair.

Sam and Juanita White celebrated their 65th wedding anniversary on Monday, Nov. 17. Congratulations!

Clark Price baked and brought cookies for the residents during the Bingo party Saturday.

Holly Millsap attended the Wednesday afternoon sing-along with Glenda Jennings and Jonessa Brockman. Anna B. Lane, Michelle Christen and Tiffany also attended.

Buster and Wanda Kittrell, Harold and Mary Jo Burge and Loyce Killingsworth served coffee, do-nuts and juice to the residents Wednesday morning. Following coffee time Buster, Loyce and Jim Claunch lead the weekly Devotional and sing-spiration. Anna B. Lane and Michelle Standard also joined us.

The Primitive Baptist Church came to sing gospel songs Sunday afternoon.

Happy Thanksgiving to you and yours from the residents and staff of M.A.H.C.C.

MULES

From page 1

Muleshoe held Littlefield to just one point for the first 51/2 minutes of the quarter and sank 9 of 13 free throws to foil the Wildcats' upset bid.

"Littlefield played better than I thought they would," Muleshoe coach Ralph Mason said. "But the kids believe in what we're doing. They've been in this situation before and know that in our system, things can change in a hurry."

Muleshoe forced 23 turnovers and had 18 steals.

Mason said he talks to his team all the time about wearing teams down with defensive pressure and depth.

"The fourth quarter is when it

really starts to show," Mason said. "Our goal is to be the best conditioned team on the floor every night."

In the fourth quarter, Muleshoe put the clamps on lightning-quick sophomore guard E.T. Redmond, who had darted through and around Muleshoe for 17 points through three quarters before finishing with 21.

Littlefield had eight 3-pointers through three quarters and finished the game 9 of 20 from behind the arc.

Cleavinger led a balanced Muleshoe attack with 24 points, 14 rebounds and three blocked shots. Mason added 12 points, five steals

and six assists.

Littlefield (62) — E.T. Redmond 7-4-7 21, Kevin Reed 0-0-0, Matt Hood 3-0-1 7, Jason Brashear 3-0-0 8, Eric Garcia 3-1-3 10, Welton Wormley 2-0-0 4, Daryl Ingram 5-0-2 10, Steven McCain 1-0-0 2. Totals 24-5-13 62. 3-pointers: Rosemond 3, Garcia 3, Brashear 2, Hood, Turnovers: 23.

Muleshoe (71) — Carlton Lewis 1-2-2 4, Chris Shelburne 1-2-3 4, Mason Sinclair 0-0-0, Matt Mason 3-5-7 12, Cyrus Norman 2-4-5 9, Manuel Campolla 0-0-0, Douglass Field 2-3-6 8, Matt McClanahan 0-2-6 2, Bret Clements 1-0-0 2, Layne Kemp 3-1-1 7, Dustin Cleavinger 11-2-5 24. Totals 24-21-36 71. 3-pointers: Mason, Norman. Turnovers: 20.

FG: 24-55, 3-point FG: 2-5. Rebounds: 37, 11 offensive (Cleavinger 14). Blocked shots: 3 (Cleavinger 3). Steals: 18 (Mason, Kemp 5). Assists: 17 (Mason 6).

Littlefield 18 19 17 8 62
Muleshoe 13 25 14 19 71

**Smart Santas Shop Early
Don't Spend Your Silent Night
Rounding Up Last Minute Gifts
and Fighting the Crowds!**

Free Gift with Purchase

Thank you for shopping with us this holiday season. A picture frame with attached clock is your free gift with \$350 in mall receipts. Simply collect \$350 in mall receipts beginning November 22nd from any of our fine stores and restaurants. Bring your receipts to the mall management office. Shop early! This offer is only good while supplies last. One free gift per family, please.

**Come and Enjoy
Breakfast with Santa
8:30 am
November 29th**

NORTH PLAINS MALL
2809 N. Prince St. • Clovis, NM
"One good thing after another"

PREVIEW TERRIFIC THANKSGIVING SAVINGS STOREWIDE!

**PRE
THANKSGIVING
SALE**

**ALL DAY
WEDNESDAY**

**10% OFF
YOUR TOTAL
PURCHASES!***

**INCLUDING REGULAR-PRICE, SALE
& CLEARANCE MERCHANDISE!**

*Excludes cosmetics, fragrances, Levi's® 501® jeans, JNCO® jeans, apparel by Nike®, Guess®, Calvin Klein®, Polo Jeans Co., Chaps® and men's collections. Additional 10% savings will be applied at the register to regular prices or already reduced sale prices.

www.beallsstores.com

BEALLS
We're all about you!

**Muleshoe #649
321 Main
272-3478**

CHARGE IT!
GET 10% OFF
ALL DAY
When you open a new store account.
Exclusions may apply. Subject to credit approval.

BAILEY COUNTY DEVOTIONAL PAGE

Risinger Plumbing
Serving Muleshoe Area
All Plumbing Repairs
272-6772

Springlake Potatoes, Inc.
P.O. Box 280 • Springlake, TX
262-5542

EASTER GRAIN, INC.
Easter 276-5255 Labuddie 965-2817

WEST CAMP GIN, INC.
Route 2 Box 1000
Muleshoe, TX • 925-6681
James Sheppard • Phyllis Sheppard

LLD LANDMARK LABEL & DESIGN
218 Main Street
(806)272-6767

IRRIGATION PUMPS & POWER
ZIMMATIC CENTER-PIVOTS
W. Hwy. 84 272-4483

MAPLE COOP GIN
927-5501
Maple, Texas

Leal's Tortilla Factory, Inc.
"Serving West Texas since 1957"
107 E. Ash 272-5772 Muleshoe, TX

O & C OSONS
Erection Sprinkler Ser. Welding & Repair
Repair & Assemble
Lupe 272-5018 909 W. American Blvd. 272-3475
Olivarez

Discount Computer & Repair Service
CompuTeK
206 Main 272-5404
1-800-687-3816

BOBO INSURANCE AGENCY
108 E. Ave. C 272-4264

Shipman's Body Shop
Auto Painting • Wrecker Service • Free Estimates
Tractor Glass & Windshields
410 N. 1st Muleshoe, TX
272-4408 FAX 272-3366

SAIN IRRIGATION & MACHINES
Complete Pump Service
W. American Blvd. 272-4397
Walt Sain • Muleshoe, TX 272-4148

Bob STOVALL Printing
Quality -- Service
221 E. AVE. B 272-3373
C.R. & EVA NELL DALE MULESHOE

TERRA INTERNATIONAL, INC.
272-4203
Muleshoe, Texas

RONNIE HOLT INSURANCE AGENCY
Specializing in Crop, Life & Health Insurance
Western 66 Office Bldg.
272-3614 Muleshoe, TX

PACO FEED YARD, INC.
Commercial Cattle Feeders
P.O. Box 956 265-3281
Frona, TX
Feller Hughes-Mgr.

Jarman Seed
801 W. American Blvd.
Muleshoe, TX • 272-5985

PIONEER

Facts About The **BIBLE** *BY JOHN LEHTI*

THE FORGOTTEN ONES

THE STORY OF ABRAHAM'S WIFE, SARAH, AND HIS BELOVED SON ISAAC, IS WELL RECORDED—AS IS THAT OF HAGAR, WHO BORE ABRAHAM'S FIRST SON, ISHMAEL, BUT LITTLE IS SAID OF THE WIFE THAT ABRAHAM TOOK AFTER SARAH'S DEATH, KETURAH. THIS FINE WOMAN GAVE ABRAHAM NOT ONE—NOT TWO—NOT FOUR—BUT SIX SONS!



FOUR TERSE VERSES (GENESIS 25:1-4) GIVE SHORT SHRIFT TO KETURAH AND HER SONS:
ZIMRAM, JOKSHAN, MEDAN,
MIDIAN (FOUNDER OF THE MIDIANITE NATION)
ISHBAK, AND SHUAH.

BUT ABRAHAM, FATHER OF EIGHT SONS, LOVED BEST THE ONE OF WHOM GOD SAID, "I WILL MAKE OF HIM A GREAT NATION", FOR, AS GENESIS 25:5 REPORTS: "ABRAHAM GAVE ALL THAT HE HAD TO ISAAC."!

NEXT WEEK: THE IMPORTANCE OF CONCUBINES!

SAVE THIS FOR YOUR SUNDAY SCHOOL SCRAPBOOK

This devotional & directory is made possible by these businesses who encourage all of us to attend worship services.

ASSEMBLY OF GOD
FIRST ASSEMBLY OF GOD
521 South First Street • 272-3017
Jack Stone, Min. • 272-3984
S.S. 9:45 a.m., W.S. 11 a.m. & 6:30 p.m.,
Wed. 7:30 p.m.

BAPTIST
CALVARY BAPTIST
1733 W. Ave. C. Rev. Jeff Coffman
CIRCLE BACK BAPTIST
Intersection FM 3397 & FM 298
Jessie Shaver, Min • 946-3676
FIRST BAPTIST
220 West Ave. E.
Stacey Conner, Min.
FIRST BAPTIST
Lazbuddie • 965-2126
PRIMERA IGLESIA BAUTISTA
223 E. Ave. B Roy Martinez, Min.
PRIMITIVE BAPTIST
621 South First
Elder Cleveland Bass, Min.
PROGRESS BAPTIST
Progress, TX
PROGRESS SECOND BAPTIST
Arthur Hays, Min.
1st & 3rd Sundays
RICHLAND HILLS BAPTIST
17th & West Ave. D
George Malis, Pastor
ST. MATTHEWS BAPTIST
Corner of W. Boston & W. Birch
Floyd R. Monroe, Min.
THREE WAY BAPTIST
927-5467
James Sinclair, Pastor
TRINITY BAPTIST
314 E. Ave. B
Robert Brown, Min.

CATHOLIC
IMMACULATE CONCEPTION
CATHOLIC
805 E. Hickory
Joseph Augustine, Min.
CHRISTIAN
THE CHRISTIAN CENTER
Morton Hwy. • 272-5105
Reydon Stanford, Min.

CHURCH OF CHRIST
LARIAT CHURCH OF CHRIST
Sam Billingsley, Min.
S.S. 10 a.m.; W.S. 11 a.m. & 6 p.m.,
Wed. 7 p.m.

LAZBUDDIE CHURCH OF CHRIST
Nathan Crawford, Min.
S.S. 9:30 a.m.; W.S. 10:20 a.m. & 5 p.m.;
Wed. 7 p.m.

MULESHOE CHURCH OF CHRIST
22nd & W. American Blvd.
John Knox, Min.
S.S. 9:30 a.m.; W.S. 10:20 a.m. & 6 p.m.;
Wed. 7:30 p.m.

SIXTEENTH & AVE. D CHURCH OF CHRIST
Curtis Shelburne, Min. • 272-4619
W.S. 10:30 a.m. & 6 p.m.;
Wed. 7:30 p.m.

LUTHERAN
ST. JOHN LUTHERAN
Lariat, TX
Richard Greenhaner, Min.
S.S. 10:30 a.m.; W.S. 9:30 a.m.

METHODIST
FIRST UNITED METHODIST
HISPANIC MINISTRIES
E. 5th and E. Ave. D
Pastor Benito Cavazos
FIRST UNITED METHODIST
507 W. 2nd St.
Pastor Brad Reeves
LAZBUDDIE METHODIST
965-2121
EL DEVINO SALVADOR
814 W. Ave. C, Muleshoe, TX
Guadalupe Ballinas, Min.

NAZARENE
NEW VISION CHURCH OF THE NAZARENE
814 W. Ave. C • 272-3622
David R. McIntire

PENTECOSTAL
UNITED PENTECOSTAL CHURCH
207 East Ave. G • 1-800-454-6051
Pastor McKibben, 3 pm Sunday Service

INTER DENOMINATIONAL NEW COVENANT
Plainview Hwy. Jimmy Low, Min.
S.S. 9:30 a.m.; W.S. 10:15 a.m.;
Wed. 7 p.m.

WINKLES TRUCKS, INC.
Box 757 (806) 247-2724
Frona, TX

Lowe's MARKETPLACE *Pay'n-Save*
401 W. American Blvd.
Muleshoe 272-4585
515 W. American Blvd.
Muleshoe 272-4406

Decorators Floral & Gifts
616 South First 272-4340
Muleshoe, TX

SHERLEY-ANDERSON LAZBUDDIE ELEVATOR
965-2922 Lazbuddie, TX

THE BANK MEMBER FDIC
202 South First 272-4515

WES-TEX FEED YARDS, INC.
Custom Cattle Feeding
272-7555 Muleshoe, TX

AMERICAN AVI INC. West Valley
Hiway 84 272-4266
Muleshoe

BAILEY GIN COMPANY, INC.
946-3397
Sudan, TX
Peanut Hawkins, MGR

WESTERN DRUG
114 Main 272-3106 Muleshoe

B/S & More Family Fun Center
123 Main • Muleshoe • 272-3828

HERITAGE HOUSE INN
2301 W. American Blvd. 272-7575
Muleshoe, Texas
Clint & Evelyn Peat - Resident Owners
Reservations 1-800-253-5896

BRUCE, INC. AIR CONDITIONING
Hwy. 214 North 272-5114
Muleshoe, TX
TACL-B003350C, LP08638

MULESHOE COOPERATIVE
GINS
P.O. Box 569
272-4794 Muleshoe, TX

MULESHOE AREA HEALTHCARE Center
"Committed to Caring"
106 W. Ave. H Muleshoe 272-7578

MULESHOE MOTOR CO.
1225 W. American Blvd. 272-4251

"THE FIVE AREA TELEPHONE COOPERATIVE ORGANIZATION"
West Plains Telecommunications Co.
Five Area Systems, Inc., Plateau Cellular Network
Five Area Long Distance - Five Area Internet
302 Uvalde Muleshoe, USA (806)272-5533

WANDA BROWND INSURANCE AGENCY
118 E. Ave. C Muleshoe 272-7548
Since 1957 - The Original

Leal's Mexican Restaurant
1010 W. American Blvd. 272-3294
Muleshoe, TX Victor & Debbie Leal

FIRST TEXAS FLBA MULESHOE
"Serving Farmer & Bailey Counties"
272-3010 • Fax 272-5388
316 Main • P.O. Box 424 • Muleshoe, TX

JAMES CRANE TIRE CO., INC.
107 Main 272-4594
Muleshoe, TX
Mike Hahn

KATS KORRAL
Family Restaurant
"Home Cooking"
121 Main • Muleshoe, TX • 272-5563

MULESHOE LIVESTOCK AUCTION
Muleshoe, TX • Sale Every Saturday
Clayton Myers • 272-4201

LAND BANK
"Serving Farmer & Bailey Counties"
272-3010 • Fax 272-5388
316 Main • P.O. Box 424 • Muleshoe, TX



Lazbuddie's Seth Black breaks free late in Friday's 46-22 win against Follett

HORNS

From page 1

carries and pressured the Panther senior into a 5 of 26 passing performance. Frazier had racked up 589 yards of total offense Panthers' first round win.

No. 8 Follett finished with 377 yards.

"We worked on defense all week," said senior safety Cameron Turner, who intercepted his seventh pass of the year and returned a punt 35 yards for a touchdown early in the fourth quarter. "Defense is what wins championships."

Brice Foster led the Longhorns' balanced attack with 165 yards and a touchdown on 11 carries. Josh Morris completed 13 of 22 passes for 197 yards.

Adam St. Clair scored on three short runs in the first half, helping Lazbuddie build a 28-14 lead.

The Longhorns scored 18 unanswered points in the second half to seal their ninth-straight win.

HOOPS

From page 4

Portales 0 2 2 2 6 Wyndolyn Allison, Shauna Kitchens, WJHS 1716 10 8 51 Mindy Locker, Crystal Bailey. 3-pointers: none.
WJHS: Eva Pylant 2, Jodi Hawkins 4, Tiffany Flores 27, Shani Rasco 4, Johnna Cleavinger 2, Kylie Henderson 6, Gradee Adrian 6, Portales: Dockert 1, Jones 1, Salaz 2, Kemp 2. 3-pointers: none. Records: WJHS 1-0.

Homeowner's Insurance

Securing...
what matters most



The security of your home is important to you & your family. Protection from damage caused by accident or nature is critical.

We're the friends and neighbors you can depend on. The Texas Farm Bureau Insurance Companies stand behind you with quality, proven homeowner's protection.



Phone today...
(806) 272-4567

Texas Farm Bureau Mutual Insurance Co. • Texas Farm Bureau Underwriters Southern Farm Bureau Casualty Insurance Co. • Southern Farm Bureau Life Insurance Co.

OBITUARIES

MARY SEAMAN

MORTON — Mary Seaman died Thursday, Nov. 20, 1997 in Morton. Services are pending under the direction of Ellis Funeral Home in Morton.

HOSPITAL ADMISSIONS

The Muleshoe Area Medical Center reported admitting the following patients last week.

Nov. 14 — Gordon Waldrop II, James Robertson, Alice Williams, Armando Devila, Naomi Austin, Betty Rhinehart

Nov. 15 — Gordon Waldrop II, James Robertson, Alice Williams, Betty Rhinehart

Nov. 16 — Gordon Waldrop II, James Robertson, Alice Williams, Michelle Rosa, Betty Rhinehart

Nov. 17 — Gordon Waldrop, Alice Williams, Freida Foss, Dominga Olivas

Nov. 18 — Brandy Nelson, Alice Williams

Nov. 19 — Lorenzo Mendoza, Melissa Dominguez, Baby girl Brittany Dominguez, Morris Nowlin, Julia Hernandez, Alice Williams

Nov. 20 — Lorenzo Mendoza, Melissa Dominguez, Baby girl Brittany Dominguez, Morris Nowlin, Julia Hernandez, Alice Williams

truck load sale on trucks!



Used truck inventory reduction sale

<p>1986 Chevy 1/2 Ton Pickup Reg. Cab #5249 Sale \$5,995 Reg. \$6,995 Price</p>	<p>1989 Chevy 1/2 Ton Pickup Reg. Cab #76370A Sale \$4,995 Reg. \$7,500 Price</p>	<p>1990 Chevy 1/2 Ton Pickup Reg. Cab #86028B Sale \$8,550 Reg. \$9,995 Price</p>	<p>1995 Chevy S10 Pickup Extended Cab #5203A Sale \$9,995 Reg. \$12,995 Price</p>
<p>1995 Chevy Reg. Cab #76385D Sale \$9,995 Reg. \$11,995 Price</p>	<p>1995 Chevy 1/2 Pickup Extended Cab 4x4 #86018A Sale \$17,500 Reg. \$18,995 Price</p>	<p>1996 Chevy 3/4 Ton Pickup Reg. Cab 4x4 #5171A Sale \$17,500 Reg. \$18,995 Price</p>	<p>1996 Chevy 1/2 Ton Pickup Extended Cab #76384A Sale \$17,500 Reg. \$18,995 Price</p>
<p>1996 Chevy 1/2 Ton Pickup Extended Cab 3 Door #86036A Sale \$17,995 Reg. \$19,995 Price</p>	<p>1997 Chevy 1/2 Ton Pickup Extended Cab 3 Door #5245 Sale \$22,500 Reg. \$24,995 Price</p>	<p>1997 Chevy 1/2 Ton Pickup Reg. Cab #76028A Sale \$16,500 Reg. \$17,995 Price</p>	<p>1997 Chevy 1/2 Ton Pickup Extended Cab 3 Door 4x4 #8607A Sale \$24,500 Reg. \$25,995 Price</p>
<p>1996 Dodge 1/2 Ton Pickup Reg. Cab #76446A Sale \$16,500 Reg. \$17,995 Price</p>	<p>1991 Ford 1/2 Ton Pickup Reg. Cab #76299A Sale \$7,500 Reg. \$8,500 Price</p>	<p>1993 GMC 1/2 Ton Pickup Extended Cab 4x4 #76426A Sale \$11,500 Reg. \$12,995 Price</p>	<p>1995 GMC 3/4 Ton Extended Cab 4x4 #86060A Sale \$18,500 Reg. \$19,995 Price</p>
<p>1996 GMC 1/2 Ton Pickup Reg. Cab #76050B Sale \$15,500 Reg. \$16,995 Price</p>	<p>1996 GMC 1/2 Ton Pickup Extended Cab #76076A Sale \$17,500 Reg. \$18,995 Price</p>	<p>1993 Nissan Pickup Reg. Cab 4x4 #76296A Sale \$9,995 Reg. \$12,995 Price</p>	<p>1994 Nissan Pickup Reg. Cab 4x4 #76209B Sale \$9,995 Reg. \$12,995 Price</p>

BENDER CHEVROLET
2500 Mabry Drive

BENDER
CHEVROLET OLDSMOBILE CADILLAC
2500 Mabry Drive • (505) 763-4465

BENDER
CHRYSLER PLYMOUTH DODGE
3400 Mabry Drive • (505) 762-4511

BENDER
HONDA NISSAN
3000 Mabry Drive • (505) 762-3701

Federal Land Bank Association

316 Main St., Muleshoe
806-272-3010

Long Term Financing for Farms, Ranches, Rural Housing, Operating and Improvements.

Current Variable Rate 7.95%

Fixed rates are available. Call for Quote.

A Property Rights Advocate and Equal Opportunity Lender.

Bahlman, Bradshaw wed in double-ring ceremony

Cara Joyce Bahlman and Casey Wayne Bradshaw were married on Sept. 13, 1997 at the North Main Church of Christ in Winters, Tex. Rick Cobb performed the double-ring ceremony.

Care is the daughter of Charles and Jeanie Bahlman of Winters. Casey is the son of Lloyd and Janice Bradshaw of Lazbuddie.

Grandmother of the bride is Joyce Bahlman of Winter. Grandparents of the groom are Neal and Skeet Bradshaw of Muleshoe.

The church pews and podium were decorated with candles and white tulle. Greenery accented the candelabras and entryway.

Music for the ceremony was provided acappella by friends of the bride's family. Selections were "Faithful and True", "The Lord Bless You and Keep You" and "Sweet, Sweet Spirit".

Given in marriage by her father, the bride wore a white bridal gown featuring a scoop neckline, short contessa sleeves and basque waistline. The bodice was beaded with pearls and the full ballgown skirt of silk-illusion was accented by satin trim on the bottom. The train featured a large satin bow. The bride carried a bouquet of hand-tied roses.

Something new was her veil made by Ruth Cooper a friend of the bride. Something old was the wedding rings of the bride's great-great-grandmother and great grandmother. Something borrowed were pearls of Joyce Bahlman, grandmother of the bride. Something blue was her garter

made by Eloise Brown a friend of the bride. The bride also wore in her shoe, a penny given by Ashley Vasquez, a special little friend of the bride.

Maid of Honor was Jaime Bahlman of Winters, sister of the bride. Bridesmaids were Rhonda Bahlman of Winters, sister-in-law of the bride, Ashley Allcorn of Winters, Robyn Jansa of Wall, Tex. Stacey Jones of Conroe, Tex. Kendra McCown of San Angelo and Kim Thompson of Winters.

The maid of honor and bridesmaids wore peach crepe tea-length dresses and carried nosegays of hand-tied roses. The dresses had scoop necklines with a low back featuring a bow.

The Best Man was Andy Laughlin of Del Rio, Tex. Groomsmen were Steve Bradshaw of Brownfield, cousin of the groom, Mike Chuch of Wilder, Idaho, Michael Jones of Dallas, Trey Poage of Rankin, Tex., Scott Talbot of Booker, Okla., and Colin Tanksley of College Station.

The groom wore a traditional black notched full dress coat with tails and satin lapels, black pants, a white vest, white bow tie and cummerbund. His boutonniere was peach rose.

The bride's mother wore a mint green floor length two piece dress and the mother of the groom wore a light pink floorlength dress and light pink beaded jacket. Both mothers wore peach rose corsages.

Serving as ushers were Kevin Braden of Liberal, Kan., Josh Bahlman of Winters,



Cara Joyce (Bahlman) and Casey Wayne Bradshaw

cousin of the bride and John Robison of Edmondson, Tex.

Candlelighters were John Bahlman and Jena Bahlman of Winters, cousins of the bride.

A reception followed at the newly renovated "Rock Hotel" in Winters.

The bride's four tiered white cake was decorated with white buttercream icing, peach roses and topped with a Precious Moments Wedding figurine given by the groom's parents. The groom's red velvet cake with white icing was decorated with a maroon Texas A&M logo and had the graduating years of the bride and groom on top.

Special guests attending were Mr. and Mrs. C. W. Bradshaw of Muleshoe, and Donnie Mae Bradshaw of Abilene.

A rehearsal dinner hosted by the groom's parents was held at the fellowship hall of the

church. Steaks from Excel were served along with baked potatoes, salad, fresh homemade rolls, cobbler and chocolate cake.

A luncheon, honoring the bride and her attendants, was given by Mrs. Allcorn of Winters.

Casey is a 1991 graduate of Lazbuddie High School. He received his Bachelor of Science Degree from Texas A&M University in May, 1996. He is employed by the Procurement Division of Excel Corporation in Dodge City, Kan.

Cara is a 1993 graduate of Winters High School. She received her Bachelor of Art Degree in Speech Communication from Texas A&M University in May, 1997. She is employed by Foulston & Sieskins Law Firm in Dodge City, Kan. as a legal secretary.

After their honeymoon in Jamaica, the couple will make their home in Dodge City, Kan.

TOPS NEWS

TOPS Chapter No. 34 met at the Muleshoe Church of Christ on Thursday, No. 20, 1997, at 6 p.m. Leader Laverne James called the meeting to order with the TOPS PLEDGE, Fellowship a prayer.

Alene Bryant, weight recorder, called the roll with 15 members answering with the amount they lost or gained.

Minutes were read by Janie Hughes, secretary, and were approved as read.

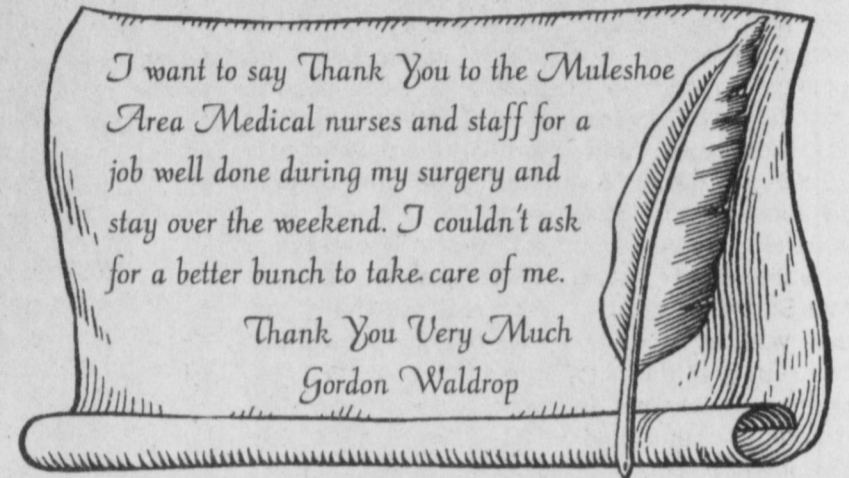
Alene Bryant was named Best Loser for the week.

First Runner-up was Teresa Stone and Second Runner-Up was a tie, Jewel Peeler and Laverne James.

Some tips and suggestions about weight loss by Richard Simmons were read.

Tops will not meet next Thursday, Thanksgiving Day.

The Meeting was adjourned with the singing of the Good Night Song.



I want to say Thank You to the Muleshoe Area Medical nurses and staff for a job well done during my surgery and stay over the weekend. I couldn't ask for a better bunch to take care of me.

*Thank You Very Much
Gordon Waldrop*

HAPPY 90TH BIRTHDAY MYRTLE CREAMER!

A Celebration to be held at
MULESHOE PRIMITIVE BAPTIST CHURCH
November 29, 1997
1 pm to 4 pm

The children of Myrtle Creamer will be holding an open house in honor of her 90th birthday. We sincerely hope that all her friends will be able to attend this celebration honoring a tremendous milestone. However, if you are unable to attend, she would greatly appreciate cards and calls. Mom requests that you do not purchase gifts. Your kind thoughts are gift enough.

Rex Harris, American Valley, Inc. honored

Rex Harris of Muleshoe was awarded the President Circle's award from Valmont Irrigation at the company's regional sales meeting in Omaha last month.

Harris is the owner of American Valley Inc. in Muleshoe and Amherst.

Jim Eiting vice president of sales at Valmont Irrigation, said the President's Circle Award is earned by an elite group of Valley dealers.

"This award is difficult to attain," Eiting said. "In customer service surveys, each winning dealership must earn a 96.5 or higher in three key areas of sales, service and parts.

"Our customer surveys show



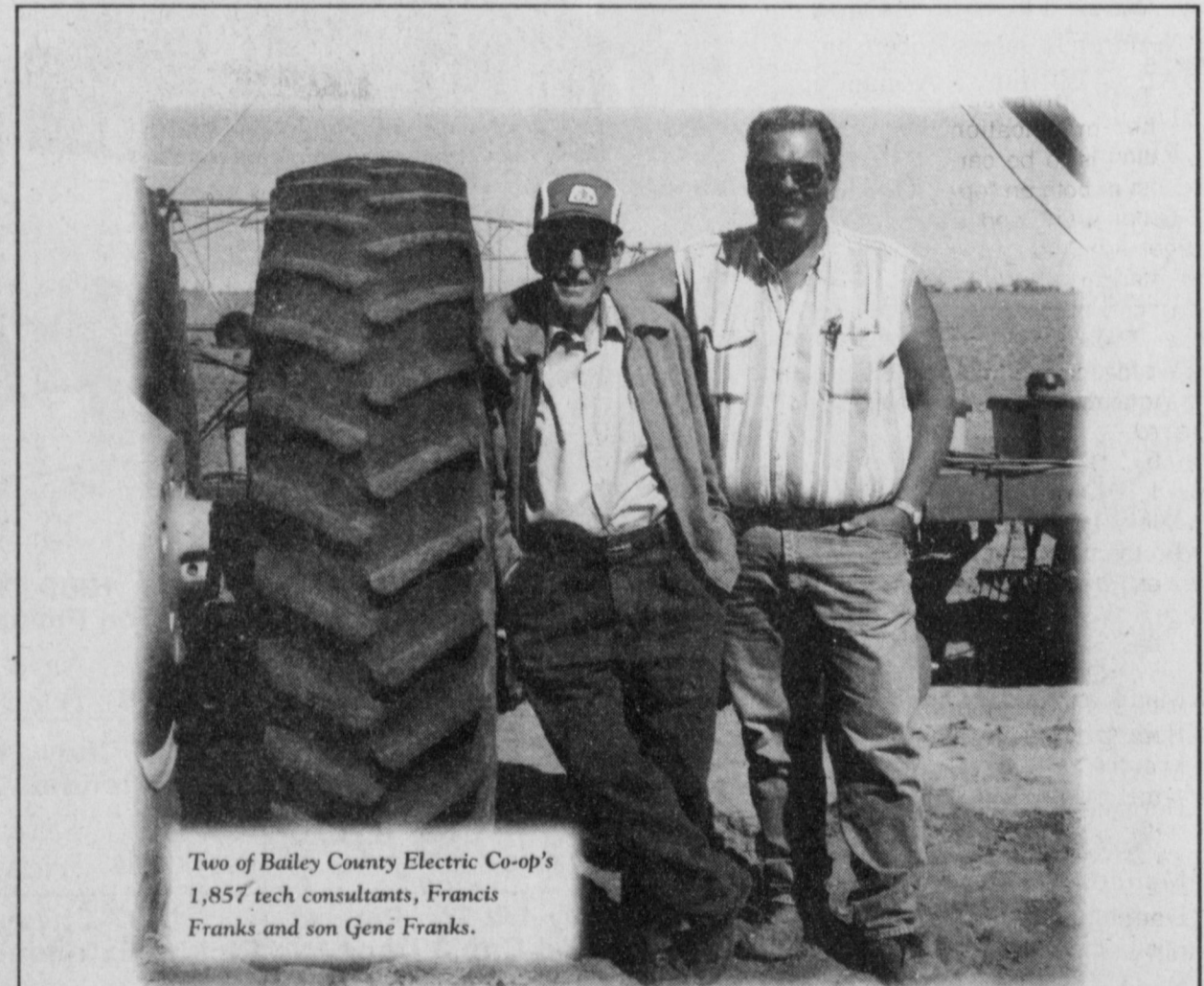
Rex Harris (center) of American Valley, Inc. of Muleshoe and Amherst was recently honored by Valmont Irrigation. Also pictured are Doug Dale (left) and Joe Goecke of Valmont.

that the quality of their dealer is one of the farmer's most important considerations in the buying decision," Eiting said.

"At our meeting, we shared information on new remote control technology, 'smart computer' controls, advanced water conservation practices and other ways

to increase profits for irrigators. The local dealer plays a critical role in bringing new ideas to market by delivering information, technology and service to the producer."

Harris has lived in Muleshoe for 19 years, and has owned and operated American Valley Inc. for the past 18 years.



Two of Bailey County Electric Co-op's 1,857 tech consultants, Francis Franks and son Gene Franks.

All New Technology Must Pass Our Tech Consultants

Each new technology we consider is put to a simple test: If it helps us to serve you better or helps control costs, we're for it.

We're looking at new ideas every day. And tomorrow will bring even more ways to improve service.

We've got our priorities straight. Your electric co-op answers to no distant corporate tower. It serves no investors, only members like you. It's an idea we feel at home with.



BAILEY COUNTY ELECTRIC COOPERATIVE
THE HOME TEAM ADVANTAGE

SCHOOL MENUS

Nov. 24 - Nov. 28

MULESHOE JUNIOR HIGH & HIGHSCHOOL

Breakfast

Monday — breakfast on a stick, fruit or juice, milk. **Tuesday** — sausage biscuit, fruit or juice, milk. **Wednesday** — no school. **Thursday** — no school. **Friday** — no school.

Lunch

Monday — chili, cornbread, whole kernel corn, carrot stick, milk. **Tuesday** — sub sandwich, lettuce and tomatoes, french fries, peanut butter cookie, milk. **Wednesday** — no school. **Thursday** — no school. **Friday** — no school.

DILLMAN & DESHAZO

Breakfast

Monday — breakfast on a stick,

fruit or juice, milk. **Tuesday** — sausage biscuit, fruit or juice, milk. **Wednesday** — no school. **Thursday** — no school. **Friday** — no school.

Lunch

Monday — soft taco, lettuce and tomatoes, ranch beans, apple crisp, milk. **Tuesday** — cheeseburger, lettuce and tomatoes, oven fries, peanut butter cookie, milk. **Wednesday** — no school. **Thursday** — no school. **Friday** — no school.

THREWEAY ISD

Breakfast

Monday — Malt O'Meal, Lucky Charms, toast, fruit juice, graham crackers, milk. **Tuesday** — Donuts, Trix, fruit juice, graham crackers, milk. **Wednesday** — no school.

Thursday — no school. **Friday** — no school.

Lunch

Monday — ham & cheese sandwich, Doritos, pickle spears, orange, milk. **Tuesday** — turkey, dressing, candied potatoes, green beans, cranberry sauce, wheat rolls, Italian cream cake, milk. **Wednesday** — no school. **Thursday** — no school. **Friday** — no school.

LAZBUDDIE ISD

Lunch

Monday — pizza, subs, (PK-1) ham, fried okra, au gratin potatoes, black eyed peas, salad, fruit, jello, cottage cheese, milk. **Tuesday** — corn dogs, pork-n-beans, fries, corn, salad, fruit, jello, milk. **Wednesday, Thursday, Friday** — no school.

Journal classifieds

REAL ESTATE
AUTOMOBILES
HELP WANTED
GARAGE SALES

STOP & SHOP

Deadlines are 5 p.m. Monday and Thursday

Call 272-4536

Deadlines are 5 p.m. Monday and Thursday

LEGAL

NOTICE OF INTENTION TO CONDUCT WEATHER MODIFICATION OPERATIONS IN THE STATE OF TEXAS

1. Notice is hereby given the High Plains Underground Water Conservation District No. 1, a political subdivision of the State, 2930 Avenue Q, Lubbock, Texas 79405, has filed an application with the Texas Natural Resource Conservation Commission for a State permit to conduct weather modification operations to change or attempt to change the natural development of clouds for the purpose, objective, period, and by the method summarized hereinbelow unless a written hearing request is filed within 30 days after first newspaper publication of this notice.

2. High Plains Underground Water Conservation District No. 1 submitted an application for a Texas weather modification license on November 6, 1997.

3. The purpose of the weather modification operation is to increase rainfall. The period of the permit is for January 1 through December 31 in each of the years of 1998, 1999, 2000, and 2001.

4. The proposed weather modification operation is to be conducted for and on behalf of the High Plains Underground Water Conservation District No. 1, a political subdivision of the State, 2930 Avenue Q, Lubbock, Texas 79405.

5. The proposed weather modification operation is to be carried out in both an "operational area" and a "target area" to cause the intended effects to occur only in the target area. The operational area is that area including Armstrong, Bailey, Castro, Cochran, Crosby, Deaf Smith, Floyd, Garza, Hale, Hockley, Lamb, Lubbock, Lynn, Oldham, Parmer, Potter, Randall, Terry, and Yoakum Counties, which is the target area and those portions of the following counties within 30 miles of the outer boundary of the target area: Gaines, Dawson, Borden, Garza, Dickens, Motley, Moore, Briscoe, Swisher, Hartley, Carson, and Kent Counties and Quay, Roosevelt, Curry, and Lea Counties in New Mexico.

6. The area to be affected by the proposed weather modification operation is the target area. The target area is that area described as the southwestern part of Armstrong County and all of Bailey, Castro, Cochran, Crosby, Deaf Smith, Floyd, Garza, Hale, Hockley, Lamb, Lubbock, Lynn, Oldham, Parmer, Potter, Randall, Terry, and Yoakum Counties.

7. The methods and materials to be used in conducting this operation are summarized herein: A licensed meteorologist will select cumuliiform

clouds or other appropriate clouds for cloud-seeding using a weather radar display, standard meteorological analyses, forecasting techniques, surface weather observations, and pilot reports to initiate the release of the seeding particles, such as silver iodide crystals, from airplanes equipped with flare racks and/or generators.

8. Persons interested in knowing more about the technical aspects of the proposed operation should contact the applicant or George Bomar, MC 158, TNRCC, P.O. Box 13087, Austin, Texas 78711-3087, (512) 239-0770.

9. Requests for hearing on this application must be submitted in writing during the 30 day-notice period to the chief clerk's office, MC 105, TNRCC, P.O. Box 13087, Austin, Texas 78711-3087, (512) 239-3300. The petition must contain (1) the signature, full name, address and phone number of each person requesting the hearing; (2) a statement that each person is at least 18 years of age and resides, or owns, property in the operational area; and, (3) a description of each person's interest and how that interest would be adversely affected. Requests for hearing must be received by the Commission within 30 days of the date of the first publication of this notice. If at least 25 eligible persons make written request, the Commission will hold a public hearing on the application prior to issuance of the permit. For more information concerning citizen participation, contact Blas J. Coy, Jr., Public Interest Counsel, MC 103, TNRCC, P.O. Box 13087, Austin, Texas 78711-3087, (512) 239-6363. Published in the Muleshoe Journal and the Bailey County Journal November 13, 16, 20, 1997.

Notice is hereby given that Letters to Temporary Administration for the ESTATE OF JOE T. GONZALES, deceased, were issued on November 5, 1997, in cause number 2129, pending in the County Court of Bailey County, Texas to CAROLYN GONZALES, Temporary Administrator. The address of record for JOE T. GONZALES is: Administrator, Estate of Joe T. Gonzales, Deceased c/o J.A. "Trey" Didway P.O. Drawer 53310 Lubbock, TX 79453

All persons having claims against this Estate required to present their claims within the time and in the manner prescribed by law.

DATED November 19, 1997

J.A. "TREY" DIDWAY State Bar No.: 00783965

WARD, FREELS & COOK, L.L.P. P.O. Drawer 53310 Lubbock, Texas 79453 Telephone: (806) 798-7282

Telecopier: (806) 798-7286

Attorney for Estate Published in the Bailey County Journal November 23, 1997.

LEGAL

FOR SALE

1994 GMC SLE with short bed. 350, V-8, automatic, tilt, air, cruise, power windows and lock. \$14,000. (505) 356-5509. 45t-1tnc

1995 Chevy Cheyenne short bed pickup. Tilt, cruise, air, auto., 4.3 Vortec engine, silver color. Under 13,000 miles. Very sharp! \$14,000 (505) 356-5509 45t-1tnc

ATTENTION!!
Kirby Sales & Service
207 W. 7th next to Sonic Drive-in. (505) 762-4991
Call for FREE Home demonstration or Repair work.
Clovis, NM 35t-tfc

For Sale Trailers
Firewood
Stone Ground
Corn Meal
Whole Wheat Flour
272-3715. 47t-4tch

8 pairs ladies slacks-New. Size 36 waist, \$15.00 each pair. Call 272-4069. 48s-3tpd

1993 Chevy Blazer S-10, V6, automatic, 4 wheel drive \$1800.00. Call 272-4069. 48s-3tpd



BETTER LIVING
Mobile Home Sales
Larry Poole - Owner
Sherry Hadley - Manager
DL Lic # 00681
Winter Hours
OPEN: Mon.-Thurs • 8 A.M.-7 P.M.
Fri-8 A.M.-6 P.M.
Sat 9 A.M.-6 P.M. • Sun 12 P.M.-6 P.M.
002 NM 467 (on the Clovis Highway)
1-800-404-1324 or (505) 356-5448

Byrd Realty
Box 156 • 308 3rd St. Farwell, TX 79325

Price Reduced,
Country Living at it's Best - 6 miles West of Muleshoe on Highway 1760. Approx. 3500 sq. ft. Gorgeous 3-3-3 Brick home with lots of built-ins, fireplace, central heat, ref. air, sunroom with hot tub, lots of storage, large family room and utility room, every woman's dream. All on 2 1/2 acres. Also 30x50 metal barn with corrals. If you want it! This place has it!

- 481 ac., Nice 3-2-2 Brick, Home, 6 wells, 3 electric sprinklers, grain storage, hay barn.
- 640 ac. 5 wells, 1/2 mile sprinkler system, 3 bedroom stucco house and domestic well..
- 320 ac. NE of Muleshoe, 2 story stucco house, very large barn, 2 sprinkler systems, 4 wells, lays well. Out of Area Owner says "Sell it!"
- 160 ac. SE of Lazbuddie, Excellent water area, Circular sprinkler, 100 hp elect. Motor. Excellent cash lease in effect on this farm.
- 207 ac. NW of Lazbuddie, 125 hp Elect Motor, electric sprinkler. Domestic well.
- 323 ac. S. of Lazbuddie, good water area! 3-wells, 1 valley electric sprinkler. Domestic well.
- 656 ac. N. of Clays Corner. 3"-8" wells, Brand New 1/2 mile Zimmatic Sprinkler. Priced at \$850 per acre. 1997 CRP ck goes with immediate sale! Wheat crop and Cattle Lease agreement also! Over \$100K income will go to this farm.

In Contract

(806) 481-3846 • Toll Free: 1-888-999-3846
Ronald Byrd, GRI Licensed Broker
Home: (806) 481-9318
Crista Bass, Sales Associate • Home: (806) 925-6464

HELP WANTED

Certified Nurse Aid
54 - bed medicaid approved nursing home. Competitive salary. Excellent benefits. Contact Terri Brown, D.O.N. at Muleshoe Area Health Care Center, 106W. Ave. H, Muleshoe, TX 79347. 806-272-7578. 48s-6tsun

MOBILE HOMES

BETTER LIVING HOMES
LAND HOME SALES
DL Lic. # T-0473
Top 10 Reasons To Buy A BETTER LIVING HOME

Better Living Homes	(NO) Competition
• 2x6 exterior walls	• 2x4 exterior walls
• 2x4 interior walls	• 1x3 interior walls
• ceiling vents	• floor vents
• 5/8" sheetrock	• 1/4" sheetrock
• tape & textured walls	• wall paper
• brass/glass light fixtures	• plastic light fixtures
• porcelain sinks	• plastic sinks
• tongue & groove plywood floors	• particle board floors
• real oak cabinets	• laminated particle board covered cabinets
• real rock fireplaces	• simulated rock fireplaces

Ask For Bowie Howard
These are only some of the reasons why our 1st name is BETTER!

002 NM 467 (on the Clovis Highway)
1-800-404-1321 or (505) 356-5448

HELP WANTED

Experienced plumber, capable of running company truck. Will pay \$10 per hour to qualified person. 933-4472. 46t-4tch

Feed truck driver needed. Good benefits, pay negotiable, depending on experience. Apply in person to Coyote Mitchell at Coyote Feedyard. 48s-2tc

MOBILE HOMES

MOBILE HOMES

IS THIS YOU ?
* Renting ?
* A first time buyer ?
* In an older, too small, manufactured home that is paid for ? (or close ?)
* Own your own lot ?
* Have good job time ?
* Able to afford \$250 per month ?
If any of the above describe your situation... you can own a new manufactured home. This is a new, limited time program.
Call for your free information pack. 1-800-306-1211

UV homes
4500 E. Mabry Dr. Clovis, NM 88101

Better Living Homes
1997 Singlewide Mobile Home. \$19000. Please Call (505)356-5448. 17t-tfc

Nice 1979 14x70
Redman mobile home trailer to be moved. Includes porches & new Carrier Heating and Cooling System. (Can be bought separately). 806-925-6664. 32s-tfc

16 X 60 Skyline mobile home 2 brm, 2 Bath Needs to be moved. Air condition and heat included, take over payments. 965-2967.46t-tfc.

REWARD

Three Way I.S.D.
Is offering a \$1,000 reward for information leading to the arrest and conviction of the person or persons involved in a theft on Thursday, November 6th.
Any information can be forwarded to the Bailey County Sheriff's Office at 806-272-4268 or the school office at 806-927-5531. 47t-4tch

Service

Counseled Handgun Course
Dec. 6. 8 a.m. - 6 p.m. in Muleshoe. Contact Toby Turpen 806-367-6362. 48s-3tc

REAL ESTATE

3 Brm, 1 bath, and 1/2 bath. New kitchen, carport, fenced back yard, with large storage in back. 311 West 7th 272-3834. 46t-4tpd

3BRM house in Lenau addition. Possible owner-finance with good credit and down payments. (915) 524-5055 45s-4tsun

Service

House Cleaning Weekly, bi, or monthly. House, real estate, business. Renee 272-5119 48s-4tpd

James F. Hayes & Co.
AGRICULTURAL REAL ESTATE SERVICES

390 Acres with 3 bdrm Austin stonehouse. Stegall area. 70 acres of native grass. 320 Acres of CRP just renewed for 10 yrs @ \$39.50 per acre. House and 70 acres can be sold separately.

240 Acres in northwestern Lamb County near Bailey County line. Good soil, Lays good, 3 wells.

Parmer County 1 Section with new half mile sprinkler 600 gallon to 800 gallon water. Immediate cash flow.

160 Acres in northwestern Lamb County near Dodd.

280 Acres near Earth. 3 wells, strong water. center pivot.

Vic Coker, Agent
310 Main St. Suite 103 Muleshoe
Office 272-3100 Home 965-2468
WHEN LAND INVOLVES COWS AND PLOWS



Jo Ann Chester Realty
806-227-2368

177 - acre dryland farm- Circle Back

BRICK - 3 bedroom, 1 3/4 bath, family room, w/fireplace, kitchen w/built-ins, dining, utility, double garage, central heat/air, fenced corner lot. 1815 W Ave I.

BRICK - 3-1-1, 1200 sq. ft. with 300 sq. ft. Garage, dual fuel heat pump, storm windows, patio, fenced yard, near school. 318 W Ave. K.

Nieman Realty
116 E. Ave. C • George Nieman, Broker • 272-5285 or 272-5286

RICHLAND HILLS
3-3-1 Brick, cent. Heat, Evap. Air, built-ins, 2000' + lv. area, fenced yd., stor. bldg. MORE!!! \$60K !!! RH-2

PARKRIDGE - NICE 3-2-2 Brick, Cent. A&H, built-ins, FP, cov. patio, fenced yd. \$50's!!

HIGHLAND AREA
3-2-2 Brick, Cent. A&H, built-ins, gas log FP, fenced yd., stor. bldg., MORE!! Price Reduced!! HL-5

2-1-1 Home, vinyl siding, wall furnace heat, fenced yd. \$17,000!!! HL-1

LENAU - COUNTRY CLUB AREA
2-1-1 Carport Home, wall furnace, nice carpet, storm shelter, stor. bldg., fenced yd. \$20's!!! CC-3

NICE 3-2-1 Home, Elec. Heat pump, DW, nice carpet, fans, fenced yd., MORE!!! \$30's!! L-2

2-1-1 Home, Cent. Heat, built-ins, Hardwood floors! \$19,500! L-3

2-1-1 Home, floor furnace, win. fer. air, fenced yd, stor. bldg., \$19,500 !!! L-1

Commercial Bldg. & Lot, Approx. 1790' area, Numerous uses!! \$22K!!!

HIGH SCHOOL
3-1-1 Brick, Cent. Heat!!! \$25K!!! HS-4

Nice 3-2-2 Brick, Cent. A&H, built-ins fenced yd., MORE !!! \$40's !!! HS-5

Very Nice 3-1-1- Brick Home, cent. Heat & Air, built-ins, fans, woodburning stove, nice carpets, storage bldg., fenced yd., More !!! \$40's!!! HS-7

NICE 2-1-1 Brick, Heat Pump, nice carpets, well insulated, storm windows & doors. \$30's!!! HS6

BUSINESS FOR SALE-SNACK SHACK - Lot, Buildings, furniture, and fixtures!!!!

NICE R.V. STORAGE, 14' X 40' metal bldg. 12 doors, corner lot!!

RURAL
3-2-2 Home on .92 acre at edge of town, Cent. Heat, evap. air, DW, storage bldg., fenced yd., & MORE !! \$30K!!

W. of SUDAN-NICE 3-3-2 Brick Home, 5 acre tract on Hwy. 298, Cent. Air & Heat, built-ins, large Quonset Barn, MORE!!!! \$95K!!!

JUST LISTED- NICE 4-1-2 Home, Heat Pump, Built-ins fenced yd., 2 Stor. bldgs., approx. 10 acre tract, on pavement close to town!! \$ 50's !!!

5 Acre tract on pavement close to town!

W. of Sudan- 177 acre tract in CRP !!! Price To Sell !!!

Needmore- 1.44 ac., 3 bldgs., \$5k!!!

Classifieds Sell!
Call The Muleshoe Journal Today! **272-4536**

We will be **CLOSED** Thanksgiving Day to allow our Employees to spend the Holiday with Family and Friends

Savings Aplenty

PRICES EFFECTIVE NOVEMBER 19-26, 1997

MEAT

- ALL SIZES
SHURFINE TURKEYS.....LB **35¢**
 HORMEL SPIRAL SLICED
HALF HAMLB. **\$2.59**
 COOK'S
BUTT PORTION HAMS ...LB. **\$1.39**
 COOK'S
SHANK PORTION HAM...LB. **\$1.19**
 BEEF BONELESS
RUMP ROAST.....LB. **\$1.68**
 FRESH PORK (SAVE OVER #60 LB.)
BUTT ROASTLB. **99¢**
 BEEF BOTTOM POUND BONELESS
ROASTLB. **\$1.89**
 FRESH BONE-IN (SAVE OVER 30# LB.)
PORK STEAK.....LB. **\$1.49**
 COUNTRY STYLE BONE-IN
PORK RIBSLB. **\$1.59**
 EXCELLENT FOR
 CHICKEN FRIED STEAK
BEEF CUBED STEAKS....LB. **\$2.49**
 GREAT FOR PORK ASADO
PORK STEW MEATLB. **\$1.69**
 SUPERB GROUND ROUND
GROUND BEEFLB. **\$1.89**
 CORN KING BONELESS
WHOLE HAMLB. **\$1.79**
 HORMEL CURE 81 BONELESS
MINI HALF HAMLB. **\$3.49**
 SUNDAY HOUSE WHOLE 8-12 LB. AVG.
SMOKED TURKEYS.....LB. **\$1.39**
 TIP TOP GRADE A FROZEN
BAKING HENSLB. **89¢**
 YOUR CHOICE • SAVE ON ANY SIZE
 BUTTERBALL OR HONEYSUCKLE
TURKEYSLB. **99¢**
 GRADE A BASTED FROZEN
MARVAL TURKEY BREAST..LB. **\$1.39**
 TURKEY
WINGS.....LB. **89¢**
 TURKEY
DRUMSTICKS.....LB. **79¢**
 PILGRIM'S PRIDE FRYER
LIVERS OR GIZZARDS..LB. **99¢**
 BAR S BONELESS
WHOLE HAMLB. **\$1.49**

- HORMEL LINKS
LITTLE SIZZLERS12 OZ. PKG **99¢**
 HORMEL BLACK LABEL REG.,
 MESQUITE OR LOW SALT
BACON1 LB. **2/\$5**
 PEYTON'S
MEAT BOLOGNA.....12 OZ. PKG **89¢**
 PEYTON'S
MEAT FRANKS12 OZ. PKG **59¢**
 PEYTON'S
CHORIZO8 OZ. PKG **99¢**
 PEYTON'S REG. OR POLISH
SMOKED SAUSAGE ..14 OZ. PKG **\$1.29**
 WILSON JUST FOR US
SLICED HAM1.25 LB. PKG **\$4.49**
 WILSON
VARIETY PACK12 OZ. PKG **\$1.69**
 OWENS MILD, HOT, REG.
 OR SPECIAL SEASONING
COUNTRY STYLE SAUSAGE 1 LB. ROLL **\$1.99**
 OWEN'S REGULAR OR HOT
COUNTRY STYLE SAUSAGE 2 LB. ROLL **\$2.99**
 DECKER BONELESS
SMOKED HAM.....2 LB. PKG **\$5.99**
 DECKER
CHOPPED HAM12 OZ. PKG **\$1.99**
 DECKER
CHOPPED HAM10 OZ. PKG **\$1.69**
 DECKER
COOKED HAM18 OZ. PKG **\$2.29**
 SHURFINE
MANDARIN ORANGES111 OZ. CANS **2/\$1**
 SHURFINE CRUSHED, CHUNK OR SLICED
IN NATURAL JUICE
PINEAPPLE15.2 OZ. CAN **59¢**
 LOWE'S
BROWN 'N SERVE ROLLS .12 CT. PKG **2/\$1**
 SHURFINE JELLIED OR WHOLE
CRANBERRY SAUCE16 OZ. CANS **2/88¢**
 DEEP PAN RECTANGLE OR OVAL E-Z FOIL
RACKN' ROAST FOIL PANEA. **79¢**

PRODUCE

- RED DELICIOUS
APPLESLBS. **2/\$1**
 GIANT SNO WHITE
CAULIFLOWEREA. **99¢**
 DOLE
SALAD MIX1 LB. PKG **99¢**
 GARDEN FRESH
BROCCOLILB. **59¢**
 GREEN
ONIONS3/\$1
 GOLDEN RIPE
BANANASLBS. **4/\$1**

- SWEET
POTATOESLBS. **2/\$1**
 YELLOW
ONIONSLBS. **4/\$1**
 NO. 1 BAKING
POTATOESLBS. **4/\$1**
 NEW CROP LARGE
NAVEL ORANGESLBS. **2/\$1**
 FRESH SMALL SIZE STALKS
CELERY4/\$1

FROZEN & DAIRY

- HEARTY PUMPKIN OR PUMPKIN CUSTARD
MRS. SMITH'S PIES 37 OZ. PKG **\$1.99**
 MRS. SMITH'S
PECAN PIES.....24 OZ. PKG **\$3.99**
 APPLE, DUCTCH APPLE,
 CHERRY, PEACH OR MINCE
MRS. SMITH'S PIES26-37 OZ. PKGS **2/\$5**
 GREEN GIANT MIXED VEGETABLES,
 SWEET PEAS OR BIBLET'S CORN
VEGETABLES16 OZ. BAG **99¢**
 SHURFINE 9"
PIE CRUST SHELLS .2 CT. 15 OZ **99¢**
 SHURFINE DEEP DISH
PIE SHELLS2 CT. 12 OZ **99¢**
 SHURFINE HALFMOON CHEDDAR OR COLBY
LONGHORN CHEESE 16 OZ. PKG **\$1.99**
 SHURFINE
 • SOUR CREAM
 • FRENCH ONION DIP
 • GREEN CHILI DIP
DIP1/2 PINT **2/\$1**
 REGULAR
PARKAY SPREAD3 LB. TUB **\$1.69**
 SHURFINE ULTRA
WHIPPING CREAM....1/2 PINT **2/88¢**

- PILLSBURY ALL READY
PIE CRUSTS.....15 OZ. PKG **\$1.69**
 SENECA
APPLE JUICE12 OZ. CAN **99¢**
 MINUTE MAID ASSORTED
ORANGE JUICE.....64 OZ. CTN **\$1.88**
 SHURFINE
CRESCENT ROLLS ..8 OZ. CAN **99¢**
 • 30 OZ. OLD FASHIONED CINNAMON ROLLS
 • 48 OZ. 36 CT. REGULAR/LIGHT DINNER ROLLS
 REGULAR WHEAT ROLLS
 • 24 CT. TEXAS DINNER ROLLS
RHODES ROLLS.....2/\$5
 SHURFINE REG. OR LITE
WHIPPED TOPPING....8 OZ. **2/\$1**
 PILLSBURY ASSORTED
GRANDS! BISCUITS17.3 OZ. CAN **99¢**
 FROZEN YOGURT OR
 ASSORTED REG./LIGHT/DIET
 BLUE BUNNY 1/2 GAL ROUND WHERE
 BLUE BELL NOT AVAILABLE
BLUE BELL
ICE CREAM1/2 GAL **\$2.79**

- SHURFINE
CHICKEN BROTH 14.5 OZ. CANS **3/\$1**
 ASSORTED
 • 8-10 OZ. SNACK CRACKERS
 • 9-10 OZ. WHEAT THINS
 • 6.75-7 OZ. BETTER CHEDDARS
 • 8.5-9.5 OZ. TRICUITS
 • 7.8.5 OZ. AIR CRISPS/HONEY MAID CRISPS
NABISCO SNACK CRACKERS2/\$3
 SHURFINE
 • 10 OZ. SWEET MIDGET PICKLES
 • 16 OZ. BREAD & BUTTER SLICES
 • 16 OZ. WHOLE DILL
 • 16 OZ. SWEET GHERKINS
 • 16 OZ. WHOLE SWEET PICKLES
 • 24 OZ. FRESH PACK DILL SPEARS
 • 24 OZ. KOSHER DILL SPEARS
PICKLESYOUR CHOICE **2/\$3**
 SHURFINE FANCY
WHOLE YAMS23 OZ. CAN **69¢**
 LIPTON ONION
SOUP MIX.....2 CT. PKG **99¢**
 WHEAT, RICE, CORN OR MULTI BRAN
RALSTON CHEX CEREAL 12-16 OZ. PKG **\$2.79**
 SHURFINE
STUFFED SPANISH OLIVES5.75 OZ. CAN **99¢**
 SHURFINE LARGE PITTED
RIPE OLIVES6 OZ. CAN **99¢**
 MORRISON BIS-KITS, PAN-KITS OR
 YELLOW/WHITE/HONEY SWEET
CORNBREAD MIX ..6 OZ. PKGS **3/\$1**
 OCEAN SPRAY BERRY, APPLE CRAPE OR RASPBERRY
CRAN DRINKS64 OZ. BTL **\$2.79**
 LEA & PERRINS
WORCESTERSHIRE SAUCE 10 OZ. BTL **\$1.79**
 OCEAN SPRAY JELLIED OR WHOLE
CRANBERRY SAUCE16 OZ. CAN **99¢**
 MCILHENNY CO. TOBACCO
PEPPER SAUCE.....2 OZ. BTL **89¢**
 SCHILLING
GROUND CINNAMON 1 OZ. CAN **\$1.69**
 SCHILLING BROWN, COUNTRY, CHICKEN OR TURKEY
GRAVY MIXES ..87-2.75 OZ. PKGS **2/\$1**
 ORIGINAL
MINUTE RICE28 OZ. BOX **\$2.59**
 HEAVY DUTY REYNOLDS
ALUMINUM FOIL.....18X37 FT. **2/\$3**
 CRYSTAL CLEAR REYNOLDS
PLASTIC WRAP100 FT. **\$2.49**

- 8 OZ. GROUND GINGER • 1.1 OZ. GROUND NUTMEG •
 .65 OZ. POULTRY SEASONING • 1.12 OZ. PUMPKIN PIE • .6
 OZ. GROUND SAGE • .5 OZ. RUBBED SAGE • 1 OZ. VANILLA
 EXTRACT
SCHILLING SPICES **\$1.99**
 KRAFT PHILADELPHIA REG. OR 1/3 LESS FAT
CREAM CHEESE8 OZ. BOX **88¢**
 POST CEREAL
TOASTIES CORN FLAKES ...18 OZ. BOX **\$1.59**
 KRAFT ASSORTED REG. OR FREE
SALAD DRESSING.....16 OZ. BTL **\$1.99**
 • 16 OZ. ORI. OR W/ALMOND HONEY
 BUNCHES OF OATS • 13 OZ. COCOA OR
 FRUITY PEBBLE • 24 OZ. GRAPENUTS
POST CEREAL2/\$5
 KRAFT ORIGINAL DINNERS
MACARONI & CHEESE.....7.25 OZ. BOX **69¢**
 .3 OZ. SUGAR FREE OR 3 OZ. REG
JELL-O GELATIN DESSERT ..SM. BOX **3/\$1**
 ASST. 2.93.9 OZ. REG. OR 1.31.5 OZ. SUGAR FREE
JELL-O INSTANT PUDDINGSM. BOX **59¢**
 KRAFT REG. OR LIGHT
CHEEZ WHIZ16 OZ. JAR **\$2.79**
 KRAFT ASST. 100% GRATED
PARMESAN CHEESE 8 OZ. CAN **\$2.99**
 KRAFT ASSORTED
SHREDDED CHEESE4-8 OZ. PKGS **2/\$3**
 • MILD MEXICAN • 2% MILK • AMERICAN • SWISS •
 PIMENTO • AMER. SUPER SLICE • PIZZA FL. SUPER SLICE
KRAFT CHEESE SINGLES ...12 OZ. PKG **\$1.89**
 CLAUSSEN KOSHER
MINI DILL PICKLES 20 OZ. JARS **2/\$5**
 OSCAR MAYER
MEAT BOLOGNA12 OZ. PKG **\$1.19**
 SHURFINE HEAVY DUTY COMPARTMENT
PAPER PLATES15 CT. PKG. **99¢**
 SHURFINE GRAVY STYLE
DOG FOOD40 LB. BAG **4.99**

HEALTH & BEAUTY

- TABLETS
PEPCID AC18 CT. **\$4.99**
 WHITE SHURFINE
BATH TISSUE9 ROLL PKG **\$1.69**

- PEPPERIDGE FARM HERB
 SEASONED OR CORNBREAD
STUFFING.....8 OZ. PKGS **2/\$3**

- VP SUMMER CRISP GOLDEN CORN
 • CUT/FRENCH SLICED GREEN BEANS
 • CS/WK GOLDEN CORN • SWEET PEAS
 • SLICED BEETS • SLICED CARROTS
 • WHOLE NEW POTATOES • SAUERKRAUT
 • CHOPPED/WHOLE SPINACH
 • MIXED VEGETABLES
DEL MONTE VEGETABLES11-15.25 OZ. CANS **98¢**
 SHURFINE GRADE A
LARGE EGGSDOZ. **68¢**

- ALL TYPES
 6 PK-12 OZ. CANS
 OR 2 LITER BTL.
PEPSIYOUR CHOICE **88¢**
 BAKER'S REAL
CHOCOLATE CHIPS .12 OZ. PKG **89¢**
 BAKER'S ANGEL FLAKE
COCONUT14 OZ. PKG **\$1.19**

- BETTY CROCKER ASSORTED REG. OR LIGHT
READY TO SPREAD
FROSTING12-16 OZ. CAN **\$1.39**
 BETTY CROCKER ASST. SWEET REWARDS OR
SUPERMOIST CAKE MIXES18-18.25 OZ. BOX **79¢**

- SHURFINE
PUMPKIN15 OZ. CANS **3/\$1**
 SHURFINE PURE GRANULATED
SUGAR4 LB. BAG **\$1.29**
 HALVES, PIECES OR BITS
ELLIS PECANS6 OZ. PKG **\$1.99**

- SUN-MAID ORI. OR GOLDEN
SEEDLESS RAISINS15 OZ. PKG **2/\$3**
 KEEBLER GRAHAM CRACKER ORI.,
 REDUCED FAT OR BUTTER FLAVOR
READY CRUST6 OZ. PKG **79¢**

- EAGLE BRAND
CONDENSED MILK ..14 OZ. CAN **\$1.99**
 GOLD MEDAL ALL PURPOSE
FLOUR5 LB. BAG **79¢**
 SHURFINE
EVAPORATED MILK...12 OZ. CANS **2/\$1**

- SHURFINE
SWEETENED CONDENSED
MILK14 OZ. CAN **99¢**
 SHURFINE BROWN OR
POWDERED SUGAR .2 LB. PKG **79¢**
 SHURFINE APPLE OR CHERRY
PIE FILLING21 OZ. CAN **99¢**

- SHURFINE REGULAR OR
MINI MARSHMALLOWS10-10.5 OZ. PKGS **2/\$1**
 SHURFINE
CORN SYRUP32 OZ. BTL **99¢**
 OSCAR MAYER HAM & TURKEY
VARIETY PAK9 OZ. PKG **\$2.19**
 KRAFT REG. OR LIGHT
VELVEETA SPREAD..32 OZ. BOX **\$3.99**

- STOVE TOP ASST.
STUFFING MIX6 OZ. BOX **99¢**
 KRAFT COLBY, COLBY-JACK OR CHEDD. LONGHORN
HALFMOON CHEESE 10 OZ. PKG **\$1.79**
 ALL TYPES 6 PK, 12 OZ. CANS
DR. PEPPER **\$1.59**

- ALL TYPES 3 LITER BTLs
DR. PEPPER2/\$3
 15 CT.-9" PLATES OR 20 CT.-16 OZ.
CUPS.....YOUR CHOICE **99¢**
 2 PLY ASST./DECORATED
SHURFINE PAPER TOWELS...ROLLS **2/\$1**

- SPARKLE
DECORATED NAPKINS120 CT. PKG **89¢**
 SHURFINE HEAVY DUTY
ALUMINUM FOIL18X37 **99¢**
 • 400 GOLD PLUS GC 135 • 200 GOLD PLUS GB 135
 • 400 ROYAL GOLD 135 • 200 ROYAL GOLD 135
KODAK FILM24 PXP. **\$4.99**

WESTERN MONEY UNION TRANSFERSM
 "The fastest way to send money"

Lowe's

MARKETPLACE

515 W. American Blvd. Muleshoe 272-4406

401 W. American Blvd. Muleshoe 272-4585

WE RESERVE THE RIGHT TO LIMIT QUANTITIES IN TEXAS

