

PAGE ONE

A QUICK READ OF THE NEWS

Home is where the heart is

A 48-year-old man who spent years behind bars stole a six-pack of beer and told the clerk to call police so he could be sent back to jail.

"I took the beer because I want to go to jail," Robert Fremer said, according to an arrest report in Inverness, Fla. "Take me to jail. I can't succeed in this world. They won't give me a chance."

Fremer was sitting in the parking lot of the Circle K when an officer arrived, the stolen six-pack at his side.

Who's in charge here?

The tiny town of Brinson, Ga., has just one full-time employee, so it's understandable when something slips through the cracks — like an election.

Brinson was supposed to elect two town council members last November, but officials thought the terms expired later this year. Now there's no one to replace the outgoing members.

"Our faces are red, but it was an honest mistake," said Sharon Foulk, clerk for the town of 225.

Time to evict the rodents

Among the top priorities for Washington state's newest millionaire: Get rid of the rat-infested car.

Donna McCoy of Everett still hasn't disposed of a rat she exterminated in her car, but now that she's won \$2.2 million in the Washington State Lottery, she'll just get a new set of wheels.

McCoy, 39, said a rat moved into her old Subaru and wouldn't leave, so she poisoned it but hadn't gotten around to removing the carcass. "I'm a millionaire, and I'm getting into a car with a dead rat," McCoy joked.



Drawing date: Wednesday, Jan. 30
Winning numbers: 10-28-33-37-47-53
Estimated jackpot: \$6 million
Winners: 0
Next drawing: Saturday, Feb. 2
Estimated jackpot: \$10 million

On this date in history

Feb. 1 — Baylor University receives its charter at Independence, Texas (1845), eventually moving to Waco in 1886.

Also on Feb. 1 — The Ordinance of Secession from the Union is adopted by Texas' Secession Convention (1861).

Also on Feb. 1 — The groundbreaking ceremony is held for the present Texas capitol building (1882).

LOCAL WEATHER

As of Friday, the National Weather Service was predicting a cloudy Sunday morning, clearing to sunny skies in the afternoon. Fairly mild temperatures also are forecast, reaching about 50 Sunday, 54 Monday and 50 Wednesday before warming to near 60 for Thursday and Friday. Morning lows also should warm from about 22 Sunday to about 28 Thursday.

Editor Ronn Smith can be reached at 272-4536 or ctyankee@fivearea.com

Missed your paper? Call carrier Yolanda Martinez at 272-6719 during business hours, 8:30 a.m.-5 p.m.

Hospital X-ray department getting new machine

JOURNAL STAFF REPORT

Muleshoe Area Medical Center's X-ray department should soon have a new fluoroscopy unit.

Fluoroscopy is a procedure that allows the production of a continuous series of X-ray views.

The hospital district's board approved the replacement of the old unit during the Jan. 17 meeting after Dr. Bruce Purdy expressed some urgency about the issue.

The hospital's current fluoroscopy unit

apparently has been in use for more than 20 years, and it was only a refurbished unit when it was installed.

Consideration of the replacement was on the board's December agenda, but was tabled after medical staff expressed interest in getting a digital unit rather than the conventional type.

At the January meeting Purdy told the board, "I'm not concerned about what we have — I'm just concerned that we have it."

The district has applied for a grant to cover most of the cost of the unit, and should find out Feb. 7 whether or not the grant will come through. Jim Bone, district administrator, expressed optimism because the situation's urgency "cannot be ignored."

The district hopes to have the unit installed by Feb. 28.

"If we get the grant, then it will be an outright purchase," said Sharon Novak, the district's chief financial officer. "Otherwise, it will be a capital lease."

Lady Mules getting close to playoff berth

By DELTON WILHITE Journal sportswriter

The Lady Mules pounded Littlefield into submission, 56-30, by forcing 27 turnovers (18 in the second half) Tuesday night.

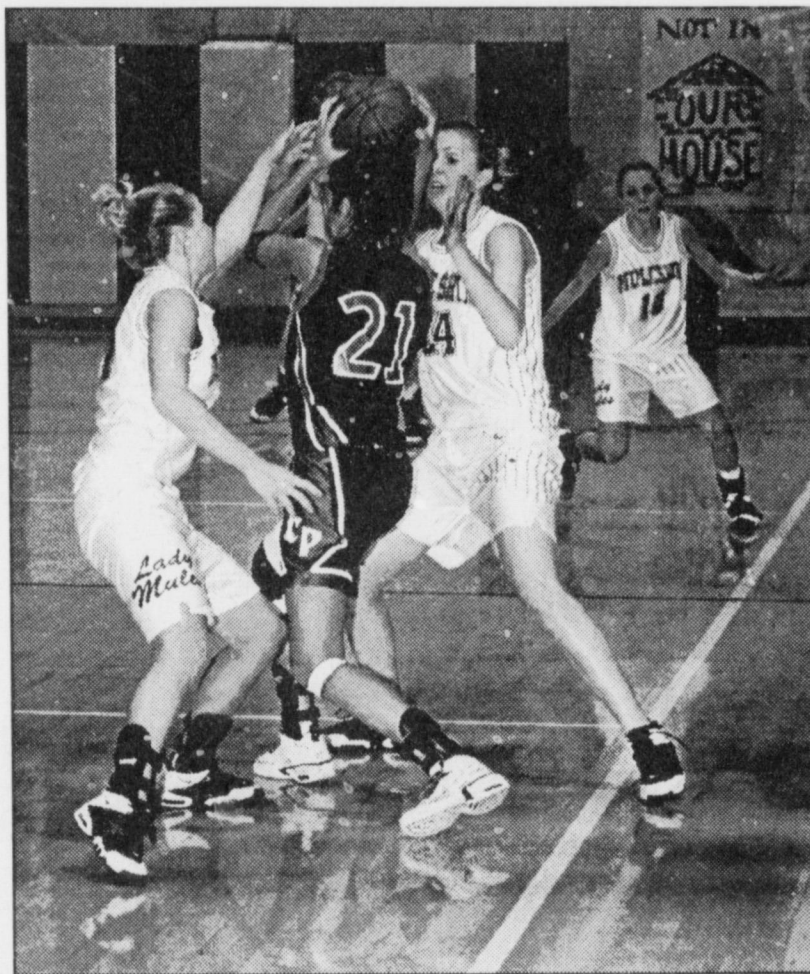
With the win, Muleshoe clinched at least a second-place finish in the District 2-3A girls' basketball race.

One obstacle — a formidable one — remained before the Lady Mules' shootout with the Shallowater Lady Mustangs, scheduled for Feb. 5 in the Muleshoe Athletic and Convocation Center.

That obstacle is the Dimmitt Bobbies. The Lady Mules must defeat them to have a chance to grab a share of the district title from Shallowater and force a playoff game to determine seeding for the state playoffs.

Muleshoe all but shut out the Lady Cats in the first period. Littlefield made its first basket of the game only three seconds before the period ended.

The Lady Mules struggled with their own offense during the initial quarter. Kayla Glover beat her defender off the dribble and drove the lane with 3:20 on the clock and then hit a 20-foot jump shot to give the Lady



Journal photo: Mike Hahn

A Lubbock Cooper player tries to penetrate the defense of Muleshoe's Britni Gartin (left) and Mindy Locker.

Mules a 7-0 lead.

Late in the first quarter, Britni Gartin swiped a Lady Cat pass and got the ball ahead to Annie Cox, who drove the left side of the lane and used her body as a shield as she sank a left-hand layup.

Gartin began the second quarter as she had finished the first by taking the ball from Littlefield without permission and finding Cox open to give Muleshoe an 11-2 advantage.

The Lady Cats regrouped and put the next seven points on the

board to cut Muleshoe's lead to two.

Candace Hutto connected with Shani Rasco on the baseline for two, and on the Lady Mules' next possession, Rasco drove the lane to complete Muleshoe's first-half scoring at 15.

Tawannami Mitchell scored six points in the second period to keep Littlefield close (15-13) at intermission.

"We missed our first two or three shots and let it get to us, but this was our best defensive game we have played all year," Lady Mule coach Shana Simms said.

"Our plan was to double on Mitchell as soon as she got the ball, and the girls did an almost perfect job on her. We talked things over at half, especially about getting in an offensive rhythm and as a team they responded. Our press really got to them in the second half and then our shots began to fall."

Mitchell tied the game at 18 by the five-minute mark of the third period, but Gartin drained a three from the corner to ignite a 16-point Lady Mule run. That put 15 points between the two

see **GIRLS** on page 3

Boys lose district squeaker No. 4

By DELTON WILHITE Journal sportswriter

The Mules' basketball season may be best described as a soap opera: one heart-break after another.

Lubbock Cooper point guard Landon Tanner made two free throws with less than a second showing in the final period to break a tie — and the Mule fans' hearts — as the Pirates claimed a 48-46 victory Jan. 25 in Woodrow.

The loss dropped the Mules to 1-4 in district play, with each loss coming in a close game.

The Pirates tried to dig a hole for the Mules in the first period by jumping out to an 8-2 lead in the first three minutes of the game. Lincoln Riley rallied the Mules, making a bucket a minute in a three-minute span to draw the Mules close.

Brennan Broyles hit a turn-around jump shot as the first quarter ended to give the Mules a 12-11 edge. Cooper hit its only bucket of the second period as the quarter opened. The Mules stepped up their defense to super glue the Pirates to a score of 13 for just less than five minutes.

Kyle Atwood got back-to-back assists as he dealt Riley the ball to overtake the Pirates, and D.J. Domínguez stepped out beyond the arc to nail a three as the Mules began to add to their lead.

Cooper added a free throw but managed only three points in the second period.

Landon Sheets chased down a long

see **BOYS** on page 2

Sheets picked for academy

Muleshoe school superintendent Gene Sheets is one of 29 superintendents in Texas to get a scholarship to attend the Lamar University Superintendent Academy.

Funded by a grant from the Texas Education Agency, the year-long academy provides senior-level executive training for superintendents recognized as leaders among

their peers.

Sheets' scholarship will pay all tuition, fees, training costs, materials and any out-of-state travel associated with the academy.

During the year, superintendents meet on five different weekends at Lamar University in Beaumont. Half the training will occur when school is not in session.

Duane Lloyd retiring

JOURNAL STAFF REPORT

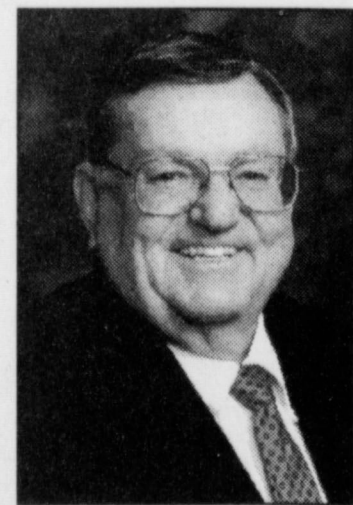
Duane Lloyd has announced his plans to retire after 31 years with Bailey County Electric Cooperative.

The cooperative has a retirement age of 65, which he will reach this year. He plans to retire Feb. 28.

He first worked as an engineering assistant for the telephone and electric cooperatives from 1956 to 1959.

In 1973, he returned to the electric cooperative as an office engineer, and in 1977 became the assistant engineer.

In 1978, he was promoted to engineer, and in 1983



Lloyd

became administrative assistant. He has been the cooperative's manager since 1986.

He said he plans to stay involved in the community and do some fishing.

Ag commodity conference set

SPECIAL TO THE JOURNAL

AMARILLO — The 2002 Ag Outlook and Marketing Strategies Conference will showcase much of what's ahead with pricing, markets and pending farm bill legislation, among other issues.

The Feb. 12 conference is scheduled for the Texas A&M University Agricultural Research and Extension Center, 6500 Amarillo Boulevard West.

Early registration is recommended, according to Steve Amosson, agricultural management economist with Texas Cooperative Extension and host for the event.

A \$50 per person fee includes materials and lunch. Participants may pay at the door, but lunch or materials cannot be guaranteed without an advance registration.

The conference is part of the nationally recognized Master Marketer Educational System. At 8:30 a.m., sign-in and refreshments begin. The program will begin by 9 a.m.

More information and forms are available from county Extension offices.

AROUND MULESHOE

Shelter funds available

South Plains Community Action Association announces the receipt of Emergency Shelter Grants program funding to assist the homeless in Bailey County.

The program's purpose is to improve the lives and safety of the homeless, with special emphasis on the elderly, handicapped and families with children.

Information is available from Janie Posadas or Leonor Arrieta at 804 W. American Blvd., or by calling 272-7537.

Valentine cookie orders being taken

Orders for the annual Calvary Baptist Church youth Valentine cookie sales are being taken.

The giant-size cookies are \$5 apiece and orders will be taken through Feb. 11.

More information is available by calling 272-4012 (afternoons only), 272-4071 or 272-3163.

Life support/first aid class planned

Muleshoe Area Medical Center and Amarillo College have scheduled a class called "First Responder/Industrial" for 9 a.m. to 5 p.m. Feb. 7-8 at the hospital.

The course includes eight hours of basic life-support instruction and eight hours of first aid.

More information is available by calling Margaret Heathington at 272-4524, Eileen Morton at 272-4524 or Mitzie Brockman at (806) 945-2246.

School news

Parents and others interested in activities in the Muleshoe Independent School District can learn about changes in the current week's activities by calling 272-7669. The information line is also updated for changes in the school schedule due to bad weather.

Correction

A story on page 1 of Thursday's *Journal* referred to City Manager David Brunson as "Don Brunson." The real Don Brunson, an old friend of the editor, still lives in Iowa and has not expressed any interest in becoming Muleshoe city manager.

The *Journal* regrets the error.

Public calendar

Feb. 5 — 7 p.m. Muleshoe Roping Club, at the roping arena. Information, Buddy Embry: 272-4111, 946-7363.

Feb. 9 — 1 p.m. to 1:45 p.m. Muleshoe Area Library Storytime, "Valentine's Day." All elementary students.

Feb. 11 — 7 p.m. Muleshoe School Board, in the board room of the administration office, 514 W. Avenue G.

Feb. 26 — 7 p.m. to 8:30 p.m. Practical parenting program in Spanish; presenter to be announced. In the high school cafeteria.

BOYS

from page 1

rebound, then launched a shot from three-point land to give the Mules a 22-14 margin at the break.

The Pirates returned after the intermission and tied the game at 24 with five minutes left in the third period.

Stephan Shelburne untied the knot with a three-pointer to ignite a 15-2 scoring blast that pushed the Mules to their largest lead of the night, 39-26.

The Pirates managed to trim five off the lead by the quarter break to trail the Mules 39-31 as the final period began.

Cooper continued its offensive run in the final period to take a 41-39 lead with only four minutes remaining. Riley got the ball to Sheets coming through

the Pirates' back door for the Mules' first points of the period to knot the game at 41.

Riley made a charity toss to give the Mules their final lead of the game, 44-43, with just under two minutes left. The Pirates made three-of-four from the line before a post-to-post pass from Dominguez to Riley tied the game for the final time at 46 with six seconds in the contest.

LETTER TO THE EDITOR

Dear Editor,

During the Jan. 24 "state of the industry" presentation at Clovis Community College, the Dairy Producers of New Mexico applauded Curry County dairies for their contribution to the local economy.

Yes, they have had an impact in recent years.

However, we citizens are concerned that the net economic impact of the dairy industry in Eastern New Mexico and West Texas ultimately will be negative. This would be due to the restriction of further economic development because of water pollution and depletion effects of the CAFO (concentrated animal feeding operations) industry, coupled with quality-of-life issues linked to CAFOs (flies, mosquitoes, rodents, odor, more nitrate in the water, and a wide range of health risks).

What other industries will EVER move into a region that has let industry emissions run wild? Whether it is smoke from a power plant or cow manure, industry emissions are industry emissions. Some smell worse than others.

Several dairy owners who live on the dairy property claim they don't mind the smell. But they are making huge profits for this sacrifice — some said to be raking in well over \$100,000 per month.

The rest of us have to live with the byproducts of their profit structure. And when anyone complains, as Al Jacobs of Ranchvale did,

about the ruined property value he may suffer if a dairy is placed next to his property, he is told that if he doesn't like what's built next to him, he can move.

This is actually what Pat Woods of Grady, a member of the Curry County Farm Bureau (and of the board of Farmers' Electric Cooperative), told Jacobs in the public meeting.

We believe in free enterprise, but not at the cost of an entire community.

As long as you are pursuing the American Dream and not trampling on the rights of other Americans, more power to you. But when your personal pursuits hurt the American Dream your neighbors are pursuing, you must be stopped.

And as for Woods' comments: Does he really think it is fair for 42,000 people (many natives with pioneer ancestors) to have to move so that two dozen dairymen can move into our area, take over our water supply, and pollute our fresh, clean air?

The federal government, in its efforts to help the family farmer, has inadvertently added to pollution problems by funding large-scale CAFOs through farm-subsidy programs intended to

help the family farmer. According to an online database of compiled USDA statistics, dairy operators rake in taxpayer bucks.

According to these public records, from 1996-2000, Randy Vanderdussen of Rajen Dairy (west of Clovis) got \$672,974. Wayne Palla of Palla Dairy (north of Clovis) got \$629,339.

And Paul Barnes of Barnes Farms at Pleasant Hill, who has applied for a wastewater discharge permit with the state, got \$282,465; Vincent DeMaio of Running M Land & Cattle and DeMaio Farms, who also applied for a discharge permit (northwest of Clovis) got \$442,714.

So ask: Whose economic development? And HOW MUCH is it costing our community? Visit Concerned Citizens for Clean Water's website at www.SaveOurWaterSupply.com for more on local dairy subsidies and what you can do to help protect our water.

PAUL ELDERS
Clovis

(EDITOR'S NOTE: Elders can be reached by writing to 1415 State Road 311, Clovis 88101, or by calling (505) 985-2180.)

February Sweetheart Deals
On Used Vehicles In Stock

6.95% APR
W.A.C.

Plus Great Prices!

'00 F150 Supercab
4x4, XLT, Loaded!
\$16,900
Sik #2742A

'00 Mustang Convertible
Loaded!
\$13,700
Sik #09C63

'98 Ford Explorer
4x4, Leather Seats
\$13,500
Sik #0111A

'99 Mercury Grand Marquis
Loaded! Clean
\$12,900
Sik #1721A

'97 Lincoln Continental
Good Miles, Phone, Leather
\$10,750
Sik #850A

'97 F150 Regular Cab
V8, Automatic
\$7,900
Sik #898

'00 Ford Escort
26K Miles
\$7,900
Sik #09C56

'97 Mercury Sable
Loaded! Good Miles
\$7,500
Sik #1183A

'96 Ford Windstar
Loaded!
\$5,900
Sik #18130A

'95 F150 Regular Cab
6 Cylinder, Automatic
\$3,500
Sik #11733A

'86 Lincoln Town Car
\$1,400
Sik #8C6A

1125 W. American Blvd.
272-4251 • 1-800-432-7617

END OF GAME NOTICE

These are About To Be Scratched for Good!

Game #126 (15) **Double Dollars** *Overall Odds are 1 in 3.27

Game #160 (12) **Singo** *Overall Odds are 1 in 3.29

These games will close on March 2, 2002. You have until August 29, 2002 to redeem any winning tickets for these games.

Game #234 (12) **Pot O' Gold** *Overall Odds are 1 in 3.63

Game #237 (11) **Aces High** *Overall Odds are 1 in 4.76

Game #229 (12) **Weekly Grand** *Overall Odds are 1 in 4.56

You can claim prizes of up to \$599 at any Texas Lottery retailer. Prizes of \$600 or more are redeemable at one of the 22 Texas Lottery Claim Centers or by mail. Questions? Call the Texas Lottery Customer Service Line at 1-800-37-LOTTO (1-800-375-6886).

NOTICE: A Scratch Off game may continue to be sold even when all the top prizes have been claimed. *The odds listed here are the overall odds of winning any prize in these games, including break-even prizes. Must be 18 years or older to purchase a ticket. © 2002 Texas Lottery.

ED'S SNOWCONE

would like to thank both young and old for making our job so enjoyable over all of these years. We will miss all of you, but due to age and bad health, we are retiring from the snowcone business. We will miss you all dearly. Love you kids!

Mr. and Mrs. Ed (Ziegenfuss)

At A Loss About What To Do For Your Valentine?

Put A Love Poem In The Muleshoe Journal!

Let the Muleshoe Journal deliver your special Valentine's Day message! Send a photo of your Valentine along with a four line poem and \$15 (for a 2x2 ad similar to the one below) to P.O. Box 449, Muleshoe, Texas 79347. Or drop your Valentine's messages by our office at 304 W. 2nd Street. We'll put your poem in a Valentine's border and publish it in the Valentine's Day edition. **Deadline to have photos and poems in our office is Tuesday, Feb. 12 at noon.** Arrangements must be made to have your photo returned by mail.

This Valentine's I'd Just Like To Say I Love You More Each Passing Day!

Love, Snuggles

Make your poem funny or serious! Just make sure it's printable!

Roses Are Red...
Violets Are Blue...
No One Hugs As Good As My Honey Do!

Love, John Doe

(Poems may be edited for objectionable content)

THE PROFESSIONAL BODY SHOP

Wrinkle Free

BODY WORKS INC.

David Mount-Owner

Ask Us About **LIFETIME PAINT GUARANTEE**

sikkens **VISA** **MasterCard**

- Auto, Truck (Small & Large)
- Frame Alignment
- Windshield Replacement
- Fiberglass Repair (Cars, RVs, Boats)
- Truck Painting (Large Shop Area)
- Compare Our Prices
- Insurance Work Welcome

505-762-0432
1600 East 1st, Clovis, NM

Bailey County Journal USPS 040-200

Established March 31, 1963. Published by Triple S Publishing, Inc. Every Sunday at 304 W. Second, Box 449, Muleshoe, TX 79347.

Periodicals Postage paid at Muleshoe, TX.

POSTMASTER: Send address changes to the Bailey County Journal, P.O. Box 449, Muleshoe, TX 79347.

We are qualified members of:
Panhandle Press Association, National Newspaper Association, West Texas Press Association and Texas Press Association

WEST TEXAS PRESS ASSOCIATION MEMBER 2001

PPA Panhandle Press Association

Scot Stinnett, Publisher
Lisa Stinnett, Vice-President/Comptroller
Ronn Smith, Editor
Beatrice Morin, Classifieds
Leah Bell, Advertising
© 1990 Yolanda Martinez, Office Assistant

SUBSCRIPTIONS: Muleshoe Journal and Bailey County Journal
By Carrier Yearly - \$22.00
Bailey County — by mail - \$24.00
Elsewhere - \$26.00
Advertising Rate Cards on Application

Advertisers should check their ad the first day of insertion. The Journals will not be liable for failure to publish an ad or for a typographical error or errors in publications except to the extent of the cost of the ad for the first day of insertion. Adjustment for errors will be limited to the cost of that portion of the ad where the error occurred.

COUNTRY CLUB LADIES



Left to right are Linda Elder, Helen Templeton, Pat Kirk, Jerie Flowers, Ronda Box, Claudine Elliott and Deborah Noble.

The Muleshoe Country Club Ladies Association held its first meeting of the year on Jan. 16. The weather was cold, so members played cards.

President Jerie Flowers presented last year's president, Anita Allgood, with a gift of appreciation and called the meeting to order.

Secretary Pat Kirk called the roll and read the minutes of the last meeting. Deborah Noble gave the treasurer's report. Allgood installed the officers this year, listing each officer's duties. Officers in addition to Flowers include Noble as vice president, Kirk as secretary, and Darlene Henry as treasurer.

The association will be offering card games as well as luncheons and other activities to try to increase membership. New golfers will enjoy scrambles that will be two Wednesday playdays a month.

The door prize was won by Dorothy St. Clair.

Attending the luncheon were Allgood, Noble, Flowers, Kirk, Ronda Box, Laverne Winn, Helen Templeton, Analita Haley, Dorothy St. Clair, Claudine Elliott, Sheryl Engelking, Evelyn Riley, Jo Rempe, Judy Wilbanks, Sherri Shipman, Neats Foster, Jeanetta Precure, Pamela Miller, Linda Elder and two guests, Cade Box and Treg Box.

Mammograms to be available

Breast-cancer screenings will be offered during February at the following sites:

- Feb. 4 — Muleshoe Area Medical Center.

- Feb. 19 — South Plains Health Care Provider, Muleshoe.

- Feb. 20 — Parmer County Hospital, Friona.

A minimum of 15 people must pre-register in order for the service to be provided.

Appointments may be made by calling (800) 377-4673.

GIRLS

from page 1

teams after three periods.

The Lady Mules then outscored weary Littlefield 20-9 in the final quarter.

The Lady Mules held Mitchell to only eight points while Rasco paced the Lady Mules with 11, followed by Gartin with 10. Cox made nine, Glover seven, Sara Benham and Jessica Carpenter six each, Tiffany Flores, Tori Barton and Mindy Locker two apiece and Hutto one for the Lady Mules.

**Muleshoe 65
Lubbock Cooper 37**

WOODROW — The Lady Mules burned the Lubbock Cooper Lady Pirates' ship 65-37 Jan. 25.

Mindy Locker provided the spark by giving the Lady Mules a 10-point cushion to start the final half.

Sara Benham came into her own during the second half, scoring 19 of her game-high 29 points.

Lady Mule coach Shana Simms said after the game, "Sara's 29 points were outstanding — especially after only scoring one point Tuesday night at Roosevelt. Tonight she was more relaxed; she jumped and then shot the ball."

"The guards did a great job of recognizing who was hot tonight and got her the ball," she added.

As the game started, Britni Gartin got a hand on a Cooper pass to deflect the ball to Jessica Carpenter. Gartin continued to run the floor, and Carpenter gave the ball back to Gartin for the layup and first points of the game. Locker blocked back-to-

back shots in the first period to hold the Lady Pirates to only four points in the period. Cooper took its only lead as the clock ticked past the quarter's midpoint.

After a defensive stop by the Lady Mules, Benham made a layup to complete a fast break and put Muleshoe on top to stay. Flores put the Lady Mules up 7-4 at the end of the first period.

With four minutes remaining in the second period, Annie Cox put back a rebound and dropped in the freebie after being fouled. Carpenter drained a three to cap a Lady Mule seven-point scoring burst.

Benham scored a buzzer to push the Lady Mules to a 23-15 advantage at the half.

Locker then started the second half with a post-to-post pass to Shani Rasco for an easy bucket.

Rasco added fuel to the flickering flame with a three-point play by dropping in a charity toss after being fouled putting back a rebound.

The Lady Mules outscored Cooper 18-11 in the third period for a 41-26 cushion.

In the final frame, Benham scored 10 of her 12 points for the quarter in a span of less than 90 seconds.

Shannon Henderson set the pace for the Lady Pirates

with 18 points.

For Muleshoe, Flores had eight, Gartin seven, Cox and Carpenter six each, Rasco five and Locker four.

Melt Their Heart This Valentine's Day.
Everything you want for that special someone is here.

Layaway Now. Now Closed Sundays.
Antiques & Fine Things
2104 W. American Blvd. • 272-4217

Carolyn's Christmas Creations Presents Her First

VALENTINE'S EXTRAVAGANZA

Feb. 6th - 14th

Move Valentine's Day

Carolyn and her pool of artists have been working overtime developing fresh new gift ideas for everyone you love—mom, dad, grandparents, friends, children, secret pals, co-workers, bosses and of course...sweethearts!

Get the latest fashion craze—The Magic Tube, or the latest jewelry trend—Cha Cha Bracelets, or elegant home decor and creative heart strings at Carolyn's! She has made up a big batch of her famous **HOMEMADE CANDIES** especially for the Extravaganza—Drunk Apricots, Pralines, Brandy Alexanders, Butter Cream Filled or Creme de Mint Truffles!

Or go more traditional with world famous **GODIVA CHOCOLATES**—get them while they last!

Carolyn has a **NEW SELECTION OF UNIQUE, HANDMADE STAINED GLASS ITEMS** perfect for your gift giving needs. One-of-a-kind crystal hearts and crosses will enchant your Valentine. Or celebrate your hometown with a stained glass mule shoe!

A shipment of new **WILLOW TREE ANGELS** has arrived, including *Angel of Courage—the Susan B. Komen Breast Cancer Angel*.

The Extravaganza begins with a preview gala and refreshments on Wed., February 6th from 5 - 9 p.m. Carolyn's will be open every day from February 7th through February 14th, 10 a.m. to 7 p.m. and on Sunday, February 10th, from 1-7 p.m.



With **EACH VISIT** to Carolyn's during her Valentine's Extravaganza, **REGISTER TO WIN HER VALENTINE'S GETAWAY DOOR PRIZE** which includes a chauffeur-

driven limousine ride from Anzaldua's Limo Service which will carry the winner and their guest to the "For Lovers Only" Dinner Concert at the County Line Pavilion in Lubbock. The couple will enjoy their choice of drinks, hors d'oeuvres and music during the limousine ride. At the County Line, a table will be reserved especially for the couple, where an elegant prime rib dinner will be served, followed by a concert featuring the Cactus Theatre entertainers. The chauffeured ride home completes the evening!

Gifts Like You Can't Find Anywhere Else!

Carolyn's Christmas Creations
224 W. 2nd St. • Muleshoe, Texas

Sealed Bid Auction
On Select Antiques, Furniture and Bronzes

Minimal bids will be posted and each piece is guaranteed to go to the highest bidder. Take advantage of this one-time opportunity to own some of Carolyn's finest pieces! Bids will be opened at noon on Wednesday, February 13th.

Some of the items up for auction...



The Gift of Talk



ONLY
\$59*

DIGITAL PREPAID includes an NEC 2600 digital phone, 45 anytime minutes and activation.

ANALOG PREPAID includes FREE accessory pack (\$19.95 value), Audiovox 480 analog phone, 45 anytime minutes and activation.

PLATEAU
Wireless
"A CLOSER CONNECTION"

1-877-PLATEAU • www.plateauwireless.com

MULESHOE: Connection Warehouse • 117 Main St. • (806) 272-5532
MULESHOE: Five Area Telephone Coop. • 302 Uvalde • (806) 272-7700
FRIONA: WT Services • 1010 Columbia • (806) 250-5555

*certain restrictions may apply. Limited time offer, while supplies last. Available at participating locations.

No Contract

No Credit Check

No Age Limit

Large Calling Area

BAILEY COUNTY DEVOTIONAL PAGE

MULESHOE ANIMAL CLINIC
GENERAL PRACTICE
M S
1430 US Hwy. 84 • Muleshoe Office: 272-4990

1ST BANK MEMBER FDIC
202 South First 272-4515

MULESHOE MOTOR CO. FORD MERCURY
1125 W. American Blvd. 272-4251

SAIN IRRIGATION & MACHINES
Complete Pump Service
W. American Blvd. 272-4397
Walt Sain Muleshoe, TX 272-4148

- Two locations to serve you -
1900 W. American Blvd. 272-5337
107 E. American Blvd. 272-3978
Town & Country Muleshoe, TX

IRRIGATION PUMPS & POWER
ZIMMATIC CENTER-PIVOTS
W. Hwy. 84 272-4483

Leal's 107 E. Ash Muleshoe, TX 272-5772
Tortilla Factory, Inc.

WEST CAMP GIN, INC.
Better Ginning & Courteous Service
James & Phyllis Shepard Rt. 2 Box 1000 • 925-6681 Muleshoe, TX

FIRST AG CREDIT Muleshoe
272-3010 • Fax 272-5388
1601 W. American Blvd. • P.O. Box 424 • Muleshoe, TX

Muleshoe Country Club

FARMERS INSURANCE GROUP
AUTO • HOME • LIFE • BUSINESS • HEALTH
104 W. 12th Street • 272-7548
Laurie Winchell, Insurance Agent Muleshoe, Texas

1315 W. American Blvd. 272-3333
Muleshoe, TX **McDonald's**

THE TRINITY COMPANY
MULESHOE, TEXAS

"THE FIVE AREA TELEPHONE COOPERATIVE, INC."
West Plains Telecommunications, Inc.
Five Area Systems, Inc., Plateau Wireless
Five Area Long Distance - Five Area Internet
302 Uvalde Muleshoe, USA (806) 272-5533

New Tex Truck Parts & Service
107 E. 5th St. • Muleshoe 272-4106 or 800-918-9048
4200 Mabry Drive • Clovis, NM (505) 762-7186 or (877) 762-9112

United Supermarkets

McCormick Seeds, Inc.
400 East Ash • Muleshoe 272-3156
A complete line of field seeds
Tim McCormick Roland McCormick

MULESHOE PEA & BEAN, INC.
1680 CR 1044 272-5589 Muleshoe, TX

Boehning Dairy DRINK MORE MILK.
Brian Boehning Earth, Texas

Decorators Floral & Gifts
616 South First 272-4340 Muleshoe, TX

288 **Facts About The BIBLE** BY JOHN LEHTI

This is a dramatized version of facts taken from the Book of 1Chronicles Chap. 24 and 1Kings Chap. 12 consolidated

ZECHARIAH A YOUNG PROPHET

SINCE THE HIGH PRIEST, JEHOSHAP, DIED, KING JOASH, WITH NO ONE TO GUIDE HIM, HAS TAKEN THE ADVICE OF HIS YOUNG PRINCES AND NOW, JUDAH IS WORSHIPPING IDOLS AND ONLY THE KING'S COUSIN, ZECHARIAH, OBJECTS.

WHAT IS THE DESIRE OF MY COUSIN, ZECHARIAH, THAT HE COMES TO SEE THE KING?

WOE UNTO THE HOUSE OF JUDAH! AND WOE UNTO THE KING!

... ZECHARIAH INFORMS THE KING IN NO UNCERTAIN TERMS!

THOU HAST SINNED BEFORE THE LORD! THOU HAST TURNED AWAY FROM THY GOD! THOU HAST SET UP IDOLS IN THE TEMPLE AND DO WORSHIP THEM!

STILL THY FOOLISH TONGUE AND KNOW THAT WE HONOR THE GODS OF OUR NEIGHBORING KINGDOMS SO THAT, IN TIME OF WAR, THEY SHALL BE OUR FRIENDS AND ALLIES!

DID OUR FATHER ABRAHAM HONOR FALSE GODS TO SAVE HIS LIFE? DID MOSES BOW DOWN TO PHARAOH? DID THEY LOOK TO THE LORD FOR THEIR SAFETY AND THE LORD DID SAVE THEM!

DID NOT GIDEON DEFEAT THOUSANDS OF MIDIANITES WITH BUT THREE HUNDRED MEN BECAUSE HE KEPT FAITH WITH THE LORD?

I LIKE THIS NOT! ZECHARIAH MUST NOT INFLUENCE THE KING—OR ALL THAT WE HAVE GAINED WILL BE LOST!

Next Week
PROPHETS FROM OUT OF THE WILDERNESS!

SAVE THIS FOR YOUR SUNDAY SCHOOL SCRAPBOOK

This devotional & directory is made possible by these businesses who encourage all of us to attend worship services.

- ASSEMBLY OF GOD**
FIRST ASSEMBLY OF GOD
521 South First Street • 272-3017
Jack Stone, Min. • 272-3984
S.S. 9:45 am, W.S. 11 am & 6:30 pm, Wed. 7:30 pm
- EL BUEN PASTOR**
415 E. Ave. F • Pastor Felix Cadena
S.S. 9:45 am, W.S. 11 am & 6 pm; Wed. 7 pm
- BAPTIST**
CALVARY BAPTIST
1733 W. Ave. C. Rev. Jeff Coffman
- CIRCLE BACK BAPTIST**
Intersection FM 3397 & FM 298
Circle Back • 946-3676
- FIRST BAPTIST**
220 West Ave. E., Dr. Stacy Conner
- FIRST BAPTIST**
Lazbuddie • 965-2126
- PRIMERA IGLESIA BAUTISTA**
223 E. Ave. E, Rev. Greg Guzman
- PRIMITIVE BAPTIST**
621 South First, Elder Cleveland Bass, Min.
- PROGRESS BAPTIST**
Progress, TX
- PROGRESS SECOND BAPTIST**
Arthur Hays, Min.
1st & 3rd Sundays
- RICHLAND HILLS BAPTIST**
17th & West Ave. D, Bruce Cotton, Interim Pastor
- ST. MATTHEWS BAPTIST**
Corner of W. Boston & W. Birch
Floyd R. Monroe, Min.
- THREE WAY BAPTIST**
927-5467
- TRINITY BAPTIST**
314 E. Ave. B, Robert Brown, Min.
- CATHOLIC**
IMMACULATE CONCEPTION
CATHOLIC CHURCH
805 E. Hickory, Joseph Agustine, Min.
- CHARISMATIC EPISCOPAL**
ST. CLEMENTS
1536 W. American Blvd. • 272-5954
Father Sergio Leal
Sun. W.S. 10:30 am
- CHRISTIAN**
TRINITY CHRISTIAN CENTER
1723 W. American Blvd. • 272-3877
Reydon Stanford, Min.

- CHURCH OF CHRIST**
LARIAT CHURCH OF CHRIST
Sam Billingsley, Min.
S.S. 10 a.m.; W.S. 11 a.m. & 6 p.m., Wed. 7 p.m.
- LAZBUDDIE CHURCH OF CHRIST**
Nathan Crawford, Min.
S.S. 9:30 am; W.S. 10:20 am & 5 pm; Wed. 7 pm
- MULESHOE CHURCH OF CHRIST**
22nd & W. American Blvd.
Harry Riggs, Min.
S.S. 9:30 am; W.S. 10:20 am & 6 pm; Wed. 7:30 pm
- 16th & AVE. D CHURCH OF CHRIST**
Curtis Shelburne, Min. • 272-4619
S.S. 9:30 am; W.S. 10:30 am; Growth Gr. 1:30 pm; Wed. 7:00 pm
- LUTHERAN**
ST. JOHN LUTHERAN
Lariat, TX-David Symm, Min.
S.S. 10:30 am; W.S. 9:30 am
- METHODIST**
FIRST UNITED METHODIST
HISPANIC MINISTRIES
E. 5th and E. Ave. D
Pastor Benito Cavazos
- FIRST UNITED METHODIST**
507 W. 2nd St.
Pastor Brad Reeves
- LAZBUDDIE METHODIST**
S.S. 9:30 am; W.S. 10:30 am
Rev. Randy Thomas • 965-2121
- EL DIVINO SALVADOR U.M.C.**
619 E. 5th Street & Ave. G, Muleshoe
Javier Rodriguez, Pastor
272-6888
- NAZARENE**
NEW VISION CHURCH OF THE NAZARENE
814 W. Ave. C • 272-3622
Vance Roberts, Pastor-S.S. 10 & 11 am; W.S. 7 pm
- PENTECOSTAL**
UNITED PENTECOSTAL LIGHTHOUSE
207 East Ave. G • 1-800-454-6051
S.S. 10 am; Thursday, Bible Study 7 pm
- INTER DENOMINATIONAL**
NEW COVENANT
Plainview Hwy.
Steve Claybrook, Pastor
W.S. 10 am; Wed. 7 pm

MAPLE COOP GIN
927-5501
Maple, Texas

WESTERN DRUG
& Something Special Gifts
1411 W. American Blvd. 272-3106 Muleshoe

AGRO DISTRIBUTION
Hwy. 84 • 272-4203
Muleshoe, Texas Bruce Bruns - Mgr.

Igginbotham-Best Bartlett Co. Manager Bruce Hartline
215 Main Muleshoe 272-3351 FAX 272-6860

AG AVIATION
2 1/2 miles North on HWY 214
272-3066 FAX 272-8981
P.O. Box 68 • Muleshoe, TX

GOOD YEAR JAMES CRANE TIRE CO., INC.
107 Main 272-4594
Mike Hahn Muleshoe, TX

CENTRAL COMPRESS & WAREHOUSE
SUDAN, TEXAS

Henry Insurance Agency
"Serving You Since 1964"
111 West Avenue B 272-4581 Muleshoe, TX

But they that wait upon the Lord shall renew their strength; they shall mount up with wings as eagles; they shall run, and not be weary; and they shall walk, and not faint. -Isaiah 40:31

Muleshoe Feed Barn
311 W. American Blvd. HI-PRO Muleshoe, TX 272-5626

MV ALLEY INC.
2601 W. American Blvd. P.O. Box 631 Muleshoe, Texas
(806) 272-4266 Mobile (806) 946-8763 mvalley@fivearea.com

WES-TEX FEED YARDS, INC.
Custom Cattle Feeding
272-7555 Muleshoe, TX

BLACKWATER AGRI ASSN. INC.
West Hwy. 84 Muleshoe, Texas 272-4962

TEXAS FARM BUREAU INSURANCE CO. FARM BUREAU INSURANCE
1612 W. American Blvd. • 272-4567 • Muleshoe

Little Real Estate & Appraisal Services
Residential • Commercial • Farm & Ranch Walter B. "Jack" Little
272-4805
MOBILE: 946-7965 Muleshoe FAX: 272-3729

VIOLA'S
Mexican Food Restaurant
Open: Tues.-Sat. till 8:30 pm; Sun. till 2 pm; Closed Monday
2002 W. American Blvd. • Muleshoe • 272-3838

Antiques & Fine Things
of Muleshoe
2104 W. American Blvd. • 272-4217

RONNIE HOLT INSURANCE AGENCY
Specializing in Crop Insurance
218 Main, Muleshoe TX 272-4271

PACO FEED YARD, LTD.
Commercial Cattle Feeders
P.O. Box 956 265-3281 Friona, TX
Feller Hughs-Mgr.

MULESHOE LIVESTOCK AUCTION
Muleshoe, TX • Sale Every Saturday
Clayton, C.L. & Thurman Myers • 272-4201

BAILEY COUNTY ELECTRIC COOPERATIVE ASSN.
Muleshoe — 272-4504 Morton — 266-8800

minsa corporation
P.O. Box 484 272-5545 Muleshoe, TX
FAX (806) 272-5135 (800) 852-8291

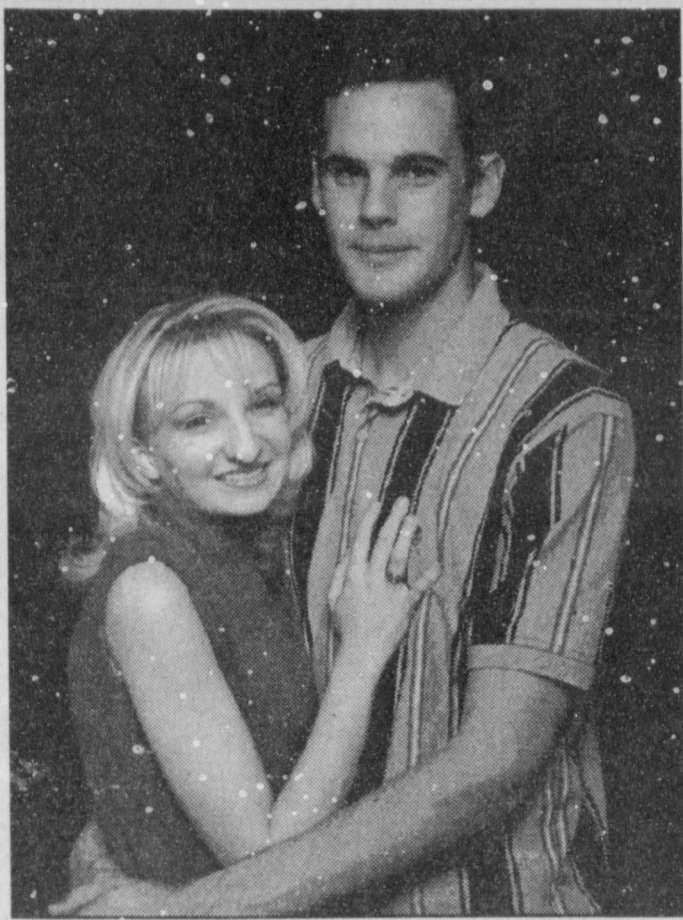
FARMERS CO-OP ASS'N of ENOCHS
"Your Farmers Owned Gin"
Chemicals • Seed • Fuel & Oil • Fertilizer
806-927-5511 Wade Baker, Mgr.

Lowe's MARKETPLACE
401 W. American Blvd. • Muleshoe • 272-4585

WINKLES TRUCKS, INC.
Box 757 (806) 247-2724 Friona, TX

Jarman Seed PIONEER
801 W. American Blvd. Muleshoe, TX • 272-5985

ENGAGEMENT



HICKS-GORE

Mr. and Mrs. Clifford Lee Hicks of Midland and Mr. and Mrs. Billy Wayne Gore of Sudan announce the approaching marriage of their children, Lisa Ann Hicks and Dennis Carter Gore. The wedding is scheduled for Feb. 16 at the First United Methodist Church in Sudan. The bride-elect attended Midland Lee High School, while the prospective groom attended Sudan High School and is a graduate of Odessa College. He is employed by West Texas CAT in Midland. They will live in Odessa.

PUBLIC RECORD

MULESHOE POLICE

Jan. 20
Fermín Toscano, 19, assault — family violence.
Jan. 22
José Sotero Holguín, 27, unlawful carrying of a weapon.
Jan. 23
Rogelio Noe Anzaldúa, 46, DWI (first).
Jan. 26

Atocha Márquez Chacón, 35, no driver's license, tanning stop sign and no insurance.
Jan. 28
Anthony Gilbert Buenrostro, 19, driving while license suspended.
Jan. 29
Joann Linares, 18, shoplifting — warrant.
SHERIFF'S OFFICE

Jan. 23
Joann Linares, 18, Bee County warrant for burglary of habitation (bonded out).
STATE POLICE
Jan. 20
Chad Brannon Wiley, 29, DWI (first).
Jan. 29
Perfecto J. Gutiérrez, 29, DWI (third).

HOSPITAL NEWS

The Muleshoe Area Medical Center reports the following patient load:

Jan. 24 — Elmer Anglin Jr., Nima M. Bryant, Johnnie M. Eubank, Mary Franklin, Jack R. Hicks, Connie Z. Nigh, Isaac Ramírez, Eva Terrazas and Ina M. Wilemon.
Jan. 25 — Elmer Anglin Jr., J.G. Arn, Nima M. Bryant, Daena Campolla, Johnnie M. Eubank, Mary Franklin, Jack R. Hicks, Connie Z. Nigh, Isaac Ramírez, Eva Terrazas and Ina M. Wilemon.
Jan. 26 — None reported.
Jan. 27 — None reported.
Jan. 28 — Elmer Anglin Jr., Megan Baca, Nima M. Bryant, Mary Franklin, Crystal M. Galván, Barbara Hall, Jack R. Hicks, Clarence Johnson, Fermín Rosas, Virginia Sheets, James C. Warren, Ina M.

Wilemon and Ronnie Wilkerson.
Jan. 29 — None reported.
Jan. 30 — Richard Cunningham, Crystal M. Galván, Barbara Hall, Jack R. Hicks, Morris G. Kil'ough, Morris Nowlin, Virginia Sheets,

Leona R. Whitworth and Ina M. Wilemon.

HONORS

HOOTEN
Amy Hooten of Muleshoe was among those making the president's honor list at Lubbock Christian University for the fall 2001 semester.
In order to be eligible for the honor, a student has to be enrolled full-time and earn a 4.0 grade-point average.
She is the daughter of Gary and Holly Hooten.

OBITUARIES

THELMA GRIPPANDO

Services were held Jan. 25 at St. Joseph's Catholic Church in Krebs, Okla., for Thelma Marie Grippando, 91, of Krebs.
Mills Funeral Home of McAlester, Okla., handled arrangements.
Mrs. Grippando was born Feb. 26, 1910, in Waldron, Ark. She died Jan. 22 at McAlester Regional Health Center.
She had lived in Krebs since marrying Basilio "Big Joe" Grippando, who preceded her in death. She worked as a waitress at Pete's Place in Krebs for 25 years, and at St. Mary's Hospital in McAlester for 10 years. For several years, she worked at the two places simultaneously after the death of her husband. In retirement, she enjoyed gardening and quilting.
She was a member of St. Joseph's Catholic Church.
Mrs. Grippando is survived by five sons and four daughters-in-law, Tom and Peggy Grippando and Charles and Wyna Grippando, all of Krebs, John David and Joyce Grippando of Muleshoe, Carl and Sarah Grippando of Jack-

son, Miss., and Basil Grippando of McAlester; a stepson, Frank Grippando of Kansas City, Kan.; six daughters and three sons-in-law, Josephine Cristel of Mustang, Okla., Norma Jean and Bill Ferrell of McAlester, Dorothy and Ralph Byington of Troy, Mo., Sylvia Lewis of Krebs, Betty and Tom Madrigal of Blue Island, Ill., and Barbara Ann Beall of Muleshoe; a brother, V.J. Wooldridge of Phoenix; two sisters, Mae Murray and Bethel Blankenship of Oklahoma City; 35 grandchildren; 53 great-grandchildren; and 14 great-great-grandchildren.
She also was preceded in death by three sons, Jack Grippando, Paul Grippando and George Grippando; two daughters, Maxine Runyan and Shirley Ryan; and two brothers, Foy Wooldridge and George

Wooldridge.
Pallbearers were grandsons, Thomas Grippando, Paul C. Grippando, Gregory Grippando, Jeffery Grippando, J.B. Beall and Brent Crandall.
BILLYE WINDER
Services were held Saturday at the First Baptist Church of Morton for Billye Winder, 70, of Morton. The Rev. Paul Lively officiated. Burial was in Morton Memorial Cemetery.
Ellis Funeral Home of Morton handled arrangements.
Mrs. Winder was born June 3, 1931, in Quanah. She died Thursday in Covenant Hospital Levelland.
She married Jerry Winder on Oct. 17, 1952, in Morton. They moved to Morton that some year from Childress.
She was a 1952 graduate of Texas Tech. She was a homemaker and a member of First

Baptist Church, where she was a member of Mary Martha Sunday School Class. She also was a member of the Order of Eastern Star and the Y.M. Study Club.
Mrs. Winder is survived by her husband; two daughters, Sue Clayton and Ann Crockett, both of Lubbock; and four grandchildren, Amy Albus, Marcy Bohanan, Kim Turney and Candace McNutt.
She was preceded in death by a sister, Marie Walker, and a brother, T.K. Williamson.
The family suggests memorials to First Baptist Church (202 S.E. First, Morton 79346).



Grippando

CD Alternative
The Bankers Annuity **2.5% 1st Year Bonus!**
8.00%* 1st year, guaranteed
5.50%* 2nd—5th year, guaranteed
The Bankers Annuity offers these additional benefits:
• Systematic monthly interest payments
• Checkbook access
• Access up to 95% of your cash value
*This annuity has limitations. Annuity issued by Bankers Life Insurance Company, 10031 5th Street North, St. Petersburg, FL 33702. Rates subject to change. Penalty may apply for early withdrawal. Neither Bankers Life Insurance Company nor any of its agents give tax/legal advice. For tax/legal advice, consult a qualified advisor.
For costs and complete details of the coverage, please call
Rick Hunter Insurance
1-888-613-7425
Lubbock, Texas

MorLé
knows there is no one else quite like you...
... and Prom Night, everyone else will know it, too!
Open Sundays! Now through April 1-5 pm
Monday through Saturday 10-6
Thursdays 10-8
The personal service and attention you receive at MorLé truly gives meaning to the phrase: "Special Occasion."
Choose your Prom Dress from an exclusive selection of the country's top designers.
These beautiful gowns are not available anywhere else in the region! And since we protect exclusivity, you know you will be the only one at the prom wearing your special dress.
After all, there really is no one else like you!
82nd & Slide in Rock Ridge Plaza
Lubbock, Texas
(866) 783-8887
www.morlefashion.com
Tuxedo Rentals Available

50% Off Sale!
Classic Expanded Basic Cable TV Service
Free Installation! 50% Off for 3 months!
Save up to \$90!
PLUS: Receive service on up to 3 TV's in your home at no additional monthly charge.
- Local broadcast channels at no additional charge -
- Free cable related service calls - No binding long term contracts -
- Cable in multiple rooms with no additional equipment or activation charges - No need to purchase equipment -
LOCAL CHANNELS
abc NBC CBS
PBS
CABLE CHANNELS
ESPN TNT DISCOVERY USA NETWORK
Lifetime CNN THE HISTORY CHANNEL
PLUS MUCH MORE!
CALL US TODAY TOLL-FREE AT 1-800-999-6845
ATTENTION!
DISH NETWORK/DIRECT TV OWNERS:
Get ALL of your Local Channels from Classic Cable for just \$9 per month for one year!
Classic CABLE®
www.classic-cable.com

Quality Built
SERVICE BODIES

AMERICAN EQUIPMENT & TRAILER
3707 M.L.K., Jr. Blvd.
Lubbock, TX
806-747-2991

Name Brand Appliances & Electronics Available Through Our
SELECT BUYERS CLUB
DVD PLAYER with Hi-Speed Motion Scan
• On-Screen Menu Icons
• Still Picture Display
• CD-R/RW Playback
• Remote Control
• ABCD Features for Enhanced Theater
• Much, much more!
See store for details.
By Panasonic
Select Products for Select Customers
\$39 Per Month
0% DOWN! 100% FINANCING! LOW MONTHLY PAYMENTS!
• TVs • VCRs • DVD Players • Camcorders
• Stereos • DVD/CD Changers • Microwaves
• Computers • Refrigerators • Gas/Electric Ranges
• Washers/Dryers • Heating/Cooling Units
SE HABLA ESPAÑOL MON-THURS: 9:00-5:30, FRI-SAT: 9:00-5:00
CONTINENTAL CREDIT
LOANS \$100-495 • WHILE YOU WAIT OR BY PHONE
206 S. Main • Muleshoe • 272-3673

Do You Want to Be a Teacher?
Are you a college graduate who does not have a teaching certificate but would like to pursue a teaching career?
Apply to the
West Texas A&M University Panhandle Alternative Certification for Educators (PACE) Program.
Initial admission requirements include:
• a four-year degree from an accredited college or university;
• 2.5 overall grade point average on a 4.0 scale; and
• passing the TASP test.
Eligible participants may select a teacher certification program in elementary education, secondary education, generic special education, bilingual education or English as a second language.
Application deadline is April 1.
For more information, call (806)651-2599.
A Member of The Texas A&M University System

ENGAGEMENT



HAZEN-LATHAM

Gaylord and Linda Latham of Muleshoe announce the approaching marriage of their son, Lance Latham of Dalhart, to Billie Hazen of Canyon, daughter of Jerry and Donna Hazen of Mosquero, N.M. The prospective groom is a graduate of Muleshoe High School and West Texas A&M University in Canyon and is employed at UAP of Dalhart as an assistant manager and sales representative. The bride-elect is a graduate of Roy (N.M.) High School and West Texas A&M University. She is a finance representative at Cingular Telephone in Amarillo. The wedding is scheduled for 6 p.m. March 2 at Grace Baptist Church in Canyon with a reception following. The couple will live in Canyon.

ROTARY NEWS

The Muleshoe Rotary Club met Jan. 29 at the Bailey County Coliseum with President Wanda Hooten presiding.

Dr. Stacy Conner led the prayer and David Brunson led the Pledge of Allegiance.

January student of the month Nikki Bonds was introduced by Rotary sweetheart Candace Hutto. Jesús Tovar, the other student honoree, was unable to attend.

Other visitors were Tim McCormick with George Nieman, Ben Brock with Wanda Hooten and Don Wood with Gene Sheets. Visiting Rotarians Charles Aycock, Johnny Atkinson and Jeff Atkinson of the Texico-Farwell Rotary Club also were present.

Members in charge of upcoming programs are Jeff Mullins, Feb. 5; Nieman, Feb. 12; and Thurman Myers, Feb. 19.

Hooten reminded members about the club's mentoring program with the Boy Scouts, the Cub Scout Pinewood Derby on Feb. 2 at the DeShazo gym, the membership drive that con-

tinues through March 31 and the Muleshoe basketball games.

She also informed the members that a new scholarship application form has been approved by the board. Katharine Schroeder led the project to update and revise the application process.

Hooten also reported that the club missed the grant-application deadline for 2002 funds from the Chapman Forestry Project. She said the City Park still will receive trees from the Texas Department of Transportation due to the widening of Texas 214 south. City Manager David Brunson is scheduled to meet with TxDOT officials Feb. 5 to start the process, she said.

Mark Morton was in charge of the week's program and invited Cal Brints of Lubbock to speak.

Brints is one of Rotary District 5730's speakers and brought the club ideas for membership development and recruitment. He is the nephew of Harvey and Marie Bass and has been a visitor and speaker with the Muleshoe club in the past. He also

got reacquainted with Vic Coker, with whom he was a Saddle Tramp at Texas Tech

"a few" years ago. Mullins was the Hunger Plus winner for the week.

UNLIMITED NIGHTS & WEEKEND MINUTES
For **\$40**
Other Plans Available • Free Accessories with New Activation

CELLULAR 2000
605 West American Blvd. Muleshoe
M-F 10-5:30
Late appts. available

272-7523 or 272-5153

To the Employees of Muleshoe Area Healthcare Center

We would like to say a big "Thank You" and "God Bless You" for all the care and love shown to our mother in the last three years, and especially the last four months. You are special people and we want you to know how much we care for you and appreciate all you have done.

God bless and keep you,
The Rosa Martin Family

SCHOOL MENUS

MULESHOE ELEMENTARIES

- Feb. 4**
Breakfast — Cheese toast, cereal with graham cracker, assorted juice and milk.
Lunch — Sausage and cheese pizza, ham and cheese sandwich, peanut-butter and jelly sandwich, seasoned corn, tossed salad, peach cup and milk.
- Feb. 5**
Breakfast — Scrambled eggs with bacon, cereal with graham cracker, assorted juice and milk.
Lunch — Chopped barbecue on bun with pickle, chef salad, peanut-butter and jelly sandwich, campfire baked beans, cheesy macaroni, fruit cup and milk.
- Feb. 6**
Breakfast — Waffles with syrup, cereal with graham cracker, assorted juice and milk.
Lunch — Corn dog, Bologna and cheese sandwich, peanut-butter and jelly sandwich, potato rounds, Rice Krispie Treat and milk. Dillman: baked beans. DeShazo: vegetable soup.
- Feb. 7**
Breakfast — Breakfast pocket, cereal with graham cracker, assorted juice and milk.
Lunch — Chef salad, peanut-butter sandwich, tossed salad, mixed vegetables, pineapple tidbits and milk. Dillman: baked potato. DeShazo: BLT chicken sandwich.
- Feb. 8**
Breakfast — Glazed doughnut, cereal with graham cracker, assorted juice and milk.
Lunch — Super sack lunch meal, assorted chips, carrot sticks, chocolate-chip cookie and milk.
- MULESHOE JR/SR HIGH**
- Feb. 4**
Breakfast — French-toast sticks with syrup, cereal with graham cracker, assorted juice, assorted fresh fruit and milk.
Lunch — Rib sandwich with pickle, hamburger, pepperoni pizza, tossed salad, hamburger fixings, oven fries, baked beans, assorted chilled fruit, fresh fruit, chocolate-chip cookie and milk.
- Feb. 5**
Breakfast — Scrambled eggs with toast and jelly, cereal with graham cracker, assorted juice, assorted fresh fruit and milk.
Lunch — Rotisserie chicken, super sack lunch meal; pepperoni pizza, tossed salad, potato rounds, cheesy

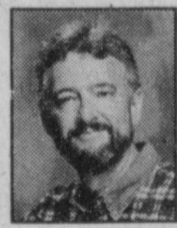
- macaroni, assorted chilled fruit, fresh fruit, Blue Bell cherry freeze bar and milk.
- Feb. 6**
Breakfast — Blueberry muffin square, cereal with graham cracker, assorted juice, assorted fresh fruit and milk.
Lunch — Burrito with chili and cheese, hamburger, pepperoni pizza, tossed salad, hamburger fixings, pinto beans, oven fries, assorted chilled fruit, fresh fruit, Blue Bell mini ice cream sandwich and milk.
- Feb. 7**
Breakfast — Buttermilk biscuits, cereal with graham cracker, assorted juice, assorted fresh fruit and milk.
Lunch — Corn dog, super sack lunch meal, pepperoni pizza, potato rounds, tossed salad, vegetable soup, fresh fruit, assorted chilled fruit, Rice Krispie Treat and milk.
- Feb. 8**
Breakfast — Cinnamon roll, cereal with graham cracker, assorted juice, assorted fresh fruit and milk.
Lunch — Chicken-cheddar barbecue on bun, hamburger, pepperoni pizza, tossed salad, hamburger fixings, oven fries, mashed potatoes, assorted chilled fruit, fresh fruit, chocolate pudding and milk.
- THREE WAY**
- Feb. 4**
Breakfast — Pancakes, sausage, syrup, cereal, graham crackers, juice and milk.
Lunch — Pig-in-a-blanket, carrot sticks, Tater Tots, pears and milk.
- Feb. 5**
Breakfast — Doughnut, Canadian bacon, cereal, graham crackers, juice and milk.
Lunch — Taco, Spanish rice, refried beans, applesauce and milk.
- Feb. 6**
Breakfast — Breakfast pizza, cereal, graham crackers, juice and milk.
Lunch — Salisbury steak, mashed potatoes, green peas, hot roll, Jell-O and milk.
- Feb. 7**
Breakfast — Sausage, biscuit and jelly, gravy, cereal, graham crackers, juice and milk.
Lunch — Steak fingers, Smiley Faces, corn, bread, pineapple dream and milk.
- Feb. 8**
Breakfast — Scrambled eggs, toast and jelly, cereal, graham crackers, juice and milk.
Lunch — Barbecue on bun, potato salad, onion rings, mixed

- dessert and milk.
- LAZBUDDIE**
- Feb. 4**
Lunch — Steak patty, pizza (pre-k-1), submarine sandwiches, mashed potatoes, corn, carrots, applesauce, salad, Jell-O, cottage cheese, yogurt and milk.
- Feb. 5**
Lunch — Fiesta pile-on, burritos (pre-k-1), tuna sandwiches, pinto beans, rice, hominy, pears, salad, Jell-O, cottage cheese, yogurt and milk.
- Feb. 6**
Lunch — Chicken spaghetti, hamburgers (pre-k-1), Hot Pockets, green beans, mixed vegetables, pineapple, salad, Jell-O, cottage cheese, yogurt and milk.
- Feb. 7**
Lunch — Pizza, fish (pre-k-1), egg rolls, black-eyed peas, okra gumbo, macaroni and cheese, peaches, salad, Jell-O, cottage cheese, yogurt and milk.
- Feb. 8**
Lunch — Manager's special.

God's Measure of Worth & Value Really Matters!

In the Kingdom of God, measures of worth and value are always turned wonderfully upside down and set apart from the dreary measurements we are so accustomed to in our society where we ogle and drool and waste far too much time wishing we were like the folks whose photos are splashed across smarmy magazine covers.

You know the kind of magazines I mean. Case in point:



Focus On Faith
Curtis Shelburne

People magazine, which may claim to be about, well, people, but a look inside will quickly reveal that it's pretty much totally about the rich, seemingly glamorous, beautiful or handsome, unbelievably athletic, and just generally too-famous-for-their-own-good sort of people whose fifteen minutes of fame is generally over in less than ten, and who, sadly, and ironically—ironic because just about everyone wants to be just like them—are generally an uncommonly unhappy, mixed up, direction-less, and, too often, fairly disgusting lot. Magazines like *People* are not at all about real people, the kind you meet at the store, at school, or down the street. But they do focus on the people our society values—even those who hurt us far more than they help us.

Who really has value in this world? Our world, and most notably our corner of it, says only the rich, wealthy, beauti-

ful, or athletic.

But God's view, in wonderful contrast, stands out like a bluebird on a dung heap. Was it Robert Farrar Capon who said that in God's sight, those who are most precious in this world are "the little, the least, the last, and the lost"? Whoever said it uttered that which is deeply true, I'm convinced.

If we want to be really wealthy, in terms of the only wealth that lasts and matters—in blessed disregard of anything the Federal Reserve or the stock market may do; if we want to be really beautiful—in contrast to once glamorous models vainly and desperately looking for all manner of creams, tucks, and surgeries to hang onto the only thing they think gives them value; well, we have to take a higher, more divine view.

Beauty, real beauty, is far more than skin deep. Though they were written centuries ago, the wisdom of these words still stands: "Charm is deceptive, and beauty is fleeting; but a woman who fears the LORD is to be praised. Give her the reward she has earned, and let her works bring her praise at the city gate" (Proverbs 10:30-31).

Speaking of well-deserved praise, when I want an example of real beauty, I think of one of the most beautiful people I know, a dear lady to whom I preach every Sunday whose lovely life is a far more powerful sermon than any I could ever pen. Tinnie McCormick lives right here in Muleshoe, and she'll turn 95 this Monday. She's lived a life of genuine value that should bring her praise in this and any "city gate" that values real beauty!

What God values matters!
Curtis Shelburne is minister of the 16th & D Church of Christ in Muleshoe

You are invited to an
80th Birthday Party
for
Andy (Henley) Wilson
Sunday, February 10, 2002
from 2-4 p.m.
at the Wheeler Care Center
(10th & Kiowa in Wheeler, TX)
No gifts, please. Your attendance is gift enough.

HOROSCOPES

FEBRUARY 3-9

- Aries — March 21/April 20**
You've been quite a skeptic lately, Aries. Why the pessimism—you're usually a very confident individual. Trust your instincts, they've never let you down in the past.
- Taurus — April 21/May 21**
Have you been feeling stir-crazy, Taurus? Make the most of days spent indoors by keeping in touch with family and friends via the Internet. It could lead to a friendship.
- Gemini — May 22/June 21**
It's time to shed those post-holiday pounds, Gemini. Too many rich foods have left you feeling soft in the middle. Recruit a close friend to be your workout buddy.
- Cancer — June 22/July 22**
It seems that the new project you hoped to start is not going to work out, Cancer. The finances are just not there at this time. Bide your patience—you may be surprised in a few months.
- Leo — July 23/August 23**
The holidays have left you feeling weary, Leo. It's probably best if you take a small vacation to refresh and relax. You might want to fly solo—your partner won't handle the quiet.
- Virgo — Aug 24/Sept 22**
Have you been thinking about a home remodeling project, Virgo? This is just the time to start one. When the weather doesn't cooperate invite over friends for fun.
- Libra — Sept 23/Oct 23**
If you've been speeding through your life, Libra, it could be time to step on the brakes. Take a few moments to enjoy the scenery—a snow-covered mountain or a frozen pond.
- Scorpio — Oct 24/Nov 22**
You've been in a slump, Scorpio, which is usually not your typical behavior. Get rearing to go with a new hobby to jumpstart your interest. Start a club or join a class.
- Sagittarius — Nov 23/Dec 21**
If you've been feeling academic, Sagittarius, it could be the right time to sign up for school to continue a degree. Make the most of the slow economy to expand your education and prepare for the future ahead.
- Capricorn — Dec 22/Jan 20**
If you've been in a festive mood, Capricorn, spread your cheer to others who could benefit from a friendly smile. Volunteer at a senior center or at a local pet shelter. A loved one approves.
- Aquarius — Jan 21/Feb 18**
The beginning of the year has started out on the wrong foot for you Aquarius, but there is a silver lining to every cloud. Re-assess your goals and you'll feel more secure.
- Pisces — Feb 19/March 20**
If you're not a fan of winter weather, Pisces, you may want to make a trip to a warmer locale. Plan a romantic rendezvous with your sweetie as an early Valentine's Day gift.

ADOPTION

Note: It is illegal to be paid for anything beyond medical and legal expenses in Texas adoption.

ABC'S OF LOVE - Adoption. We promise to adore, believe in and cherish your baby forever.

ADOPTION COMES NATURAL to us...Michael is himself adopted! Karen is a nurse, but now a full-time mom.

BUSINESS OPPORTUNITY

ALL CASH BIZ! Local Vending Route. \$4K/month potential. Minimum investment \$7K.

EXCELLENT PROFITS. LOG Home Wholesalers. Join proven 23 year log manufacturer.

COMPUTER SOFTWARE

PLAY STOCK MARKET. Make money like the big boys. Software on sale.

DRIVERS WANTED

A+ CAREER! C. R. ENGLAND needs drivers. Will Train.

CFI NEEDS TEAMS and O/O. Loads with miles available immediately.

DRIVER - COMPANY & Owner/Ops - Regional - Home Weekly.

DRIVER - COVENANT TRANSPORT now offering per diem pay for experienced Teams.

DRIVERS: OTR DRIVERS needed. Class A CDL w/experience required.

DRIVERS WANTED

port, Ltd., 1-800-395-3331 or visit our website.

DRIVERS - READY TO run? 2-day orientation. Friday paydays.

DRIVERS: SOLOS UP to .34 cents, teams up to .48 cents.

DRIVER TRAINEES NEEDED at Dick Simon Trucking.

DRIVER TRAINEES NEEDED at KLLM! No experience needed.

DRIVER - YOUR EXPERIENCE pays at SRT. Now hiring experienced OTR drivers.

EDUCATION

EARN YOUR COLLEGE Degree quickly. Bachelor's, Master's, Doctorate by correspondence.

EMPLOYMENT INFORMATION

FEDERAL POSTAL JOBS. Job opportunities. Free call for application/examination information.

FINANCIAL SERVICES

BE DEBT FREE - years sooner. Low payments. Reduce interest. Stop late fees.

\$\$\$CASH\$\$ - IMMEDIATE CASH for structured settlements, annuities, real estate notes, private

FINANCIAL SERVICES

mortgage notes, accident cases, and insurance payouts.

CREDIT CARD DEBT? Stop collection calls. Cut finance charges.

\$1000 UNTIL PAY-DAY! Bad credit? No credit? No problem!

FOR SALE

NEED A COMPUTER but no cash? You're approved. Financing guaranteed.

HEALTH & FITNESS

ONLINE EXERCISE EQUIPMENT. Free shipping. www.wonderfulbuys.com.

HELP WANTED

AVON - ENTREPRENEUR WANTED! Must be willing to work whenever you want.

LOOKING FOR A CHANGE?

LOOKING FOR A CHANGE? We have an answer. Set own hours.

REAL ESTATE

LOW RATES ON Florida beachfront accommodations. Destin, Ft. Walton, Navaree.

PANAMA CITY BEACH

PANAMA CITY BEACH. Best selection of luxury condominiums & beach houses.

TIME SHARE UNITS and Campground Memberships. Distress sales - cheap.

AUCTION

2 DAY AUCTION SAME LOCATION

Friday & Saturday, February 8 & 9, 2002 - Sale Time 9:07 a.m.

Tommy Sinclair, James Warren & Others - Owners

Friday, February 8, 2002 - Sale Time 9:07 a.m.

Saturday, February 9, 2002 - Sale Time 9:07 a.m.

TRACTORS * ANTIQUE TRACTORS * TRACTOR PARTS * COTTON HARVEST EQUIP *

Cruce & Fletcher Auctioneers and Real Estate Broker

LEGAL

NOTICE TO CREDITORS

Notice is hereby given that original Letters Testamentary for the Estate of Lowell I. St. Clair.

AGRICULTURE



GTM Custom Farming

FROM START TO FINISH All of your plowing needs! Reasonable Rates!

AGRICULTURE

Wanted to buy, lease or rent - 1/2 section irrigated land.

GARAGE SALES

GREAT STUFF! D&W SURPLUS, all kinds govt. surplus & garage sale merchandise.

The ball is in your court!

HELP WANTED

Amarillo Case Management Case Manager in Muleshoe area RN, BSN-RN, LSW or SWA.

Weekend RN needed immediately! \$27.00/hour Apply in person, please.

LOST AND FOUND

Lost - 9-month-old Border Collie-Australian Shepard mix, brown with white chest.

PET GROOMING

Connie, formerly of Connie's Classic Canine, would like to invite all of her loyal Muleshoe customers to visit her.

DEADLINES FOR CLASSIFIEDS

Monday 5 pm for Thursday's issue. Thursday 5 pm for Sunday's issue.

Subscribe Today!

Muleshoe and Bailey County Journal, \$22 Carrier (year), \$24 in-county (mail-year), \$26 out-of-county (mail-year).

HAVING A GARAGE SALE?

Advertise it in the Muleshoe Journal Classifieds! CALL TODAY! 272-4536

Shop the classified and grab a great deal on a great deal of items!

- Autos
Appliances
Furniture
Real Estate

REAL ESTATE

2700 sq.ft. living area. Paved drives, storm cellar, 2 BR, double garage, extra nice home in Earth.

For Sale: Country Home 2100 plus sq.ft. 3 BR, 2 bath, living room, den, office & utility with one acre.

Laz. Area - 640 acres, 4 wells, 300-500 gal./well. 4 sprinklers, 3 houses (2 good), 2 large barns.

3 Bedroom, 2 Bath, Dishwasher, Fireplace & Ceiling Fans. 8/10 Acre. 20x24 Barn.

Call 806-965-2895, mobile: 806-946-9413

40 ACRE TRACTS: 2 1/2 Mi. N. of city limits on Hwy 214 & 1/2 Mi. E. to SW corner.

For Sale or Rent 3-1-1 House, Central Heat/Air, Fenced, Storage Bldg., Corner Lot.

2 Farms - Fieidton. 1000 gpm & 800 gpm. 2 Farms - Earth. LOTS MORE FARMS! Farra & Associates

3- 1 1/2-1 Brick Home. Office or 4th Bdrm., Utility Room, Central Heat, Storm Windows, Fenced Yard.

House For Sale By Owner 3-2, Carport, Lg. Storage & Apt. Bldg., Brick Veneer, Fenced & Cable Hook-ups.

MOVING? Find a new place or sell your old one with the Journal Classifieds

It is better to be happy than wise!

TALK TO US about building or leasing a new dairy or BUYING a farm or ranch. Choice locations in Texas and New Mexico from 160 acres to 4755 acres.

Vic Coker Land Co. Agricultural Real Estate

- 160 Acres of dryland Northeast of Muleshoe. Lays Good. Has Allotments.
Bailey County - Nice Brick Home on 320 Acres, Large Barn, 2 Sprinklers.
Bailey County - 315 Acres Northeast of Muleshoe. 2 Sprinklers, 5 Wells, Very Reasonably Priced. Qualified person can assume seller's loan.

310 Main Street, Suite 103 Muleshoe, Texas Office 806-272-3100 Home 806-965-2468

Nieman Realty 116 E. Ave. C • George Nieman, Broker • 272-5285 or 272-5286
RICHLAND HILLS - PARK RIDGE AREA
NICE 3-3-1 Brick, Cent. heat, evapor. air, built-ins, fans, 2000+ lv. area, fenced yd., patio, stor. bldg. \$57.5K!! RH-1
NICE LOTS AVAILABLE. CALL FOR DETAILS!!!
HIGHLAND AREA
NICE 3-2-1+2 carports, Cent. heat, evapor. air, built-ins, storm windows and doors, stor. bldg., fenced yd.!!! MORE!! PRICE REDUCED!! \$49.5K!! HL-5



Lowe's Marketplace

401 W. American Blvd. Muleshoe, Texas 272-4585

WE RESERVE THE RIGHT TO LIMIT QUANTITIES IN TEXAS


WESTERN UNION MONEY TRANSFER™
"The fastest way to send money"

AFFILIATED FOODS INC.
MEMBER STORE AT PARTICIPATING STORES




SPECIAL X-TRA SAVINGS PRICING GOOD THRU FEB. 5, 2002

- Pre-Priced \$2.99
LAY'S® POTATO CHIPS
46 oz. jar Whole
- VLASIC DILL PICKLES**
Asstd. Wishbone 16 oz. btl.
- SALAD DRESSING**
Asstd. 16-26 oz. jar Ragu
- PASTA SAUCE**
22 oz. pkg. Toast'em
- BREAKFAST PASTRIES**
6 ct. pkg.
- NATURE'S GRAIN BAGELS**
3 ct. pkg. Orville Redenbacher's
- MICROWAVE POPCORN**
10.5 oz. box New York Brand
- GARLIC BREADSTICKS**
19.5 oz. pkg. Three Layer
- PEPPERIDGE FARM CAKES**
10 lb. bag U.S. No. 1
- RUSSET POTATOES**
5 lb. bag
- TEXAS GRAPEFRUIT**
6 oz. Pillow Pack
- DECKER PEPPERONI**
12 oz. pkg. Peyton's
- BEEF FRANKS OR BOLOGNA**
12 oz. jar or can Planters
- DRY ROASTED PEANUTS**
Asstd. 6 ct. pack
- JELL-O PUDDING OR GELATIN CUPS**

- 

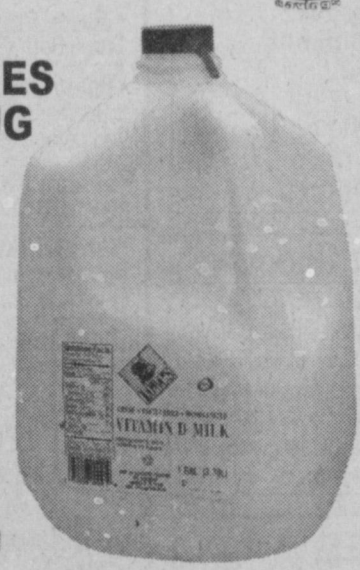
1



EACH WITH 1 REWARD COUPON
1 ITEM PER COUPON
- 12-15 oz. pkg. 3 Minute **INSTANT OATMEAL**
 - 24 oz. can Dinty Moore **BEEF STEW OR CHICKEN & DUMPLINGS**
Tenders, Fillets or Sticks 11 oz. pkg.
 - GORTON'S BREADED FISH**
Select Group 9.5-11.5 oz.
 - HEALTHY CHOICE DINNERS**
Family Size 24 ct.
 - LIPTON TEA BAGS**
Instant 10 ct. pkg.
 - SWISS MISS HOT COCOA MIX**
Asstd. 12 ct. pkg.
 - JUICY JUICE DRINKS**
Peyton's 1 lb. pkg.
 - CHORIZO**
7 lb.
 - BAG OF ICE**
Original Formula 44 or Pediatric 4 oz. btl.
 - VICKS COUGH MEDICINE**

- 1.7-2.6 oz.
DOVE ANTI-PERSPIRANT
25 oz. btl. Dawn Ultra
- LIQUID DISH SOAP**
12 oz. Twin Pack
- PRINGLES POTATO CHIPS**
Asstd. 48 oz. btl. Wesson
- COOKING OIL**
6 pack cans
- COCA-COLA, SPRITE OR DR. PEPPER**
Wright's 16 oz. pkg. Original or Honey
- SLICED HAM**
5 lb. bag
- RED DELICIOUS APPLES**
32 oz. box Aunt Jemima
- PANCAKE MIX**
Asstd. 18 oz. jar Peter Pan
- PEANUT BUTTER**
11-13 oz. can (Excludes Decaf.)
- MAXWELL HOUSE COFFEE**
Double Roll 4 Roll pkg.
- CHARMIN BATH TISSUE**
1 dozen Rolling Pin Premium
- GLAZED DONUTS**
24 oz. loaf Extra Thin or Large White (Where Available)
- MRS. BAIRD'S OR RAINBOW IRON KIDS BREAD**
Red Baron 12 Inch Original (Excludes Rising Crust)
- PIZZA**

LOWE'S OR SHURFINE MILK
ALL VARIETIES
GALLON JUG



NAVEL ORANGES
8 LB. BAG

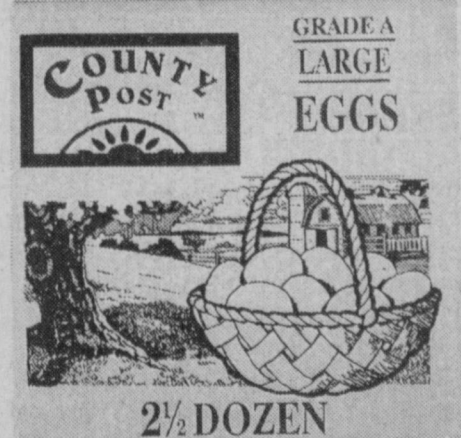


HORMEL BLACK LABEL BACON
16 OZ. PKG.



IMPERIAL SUGAR
PURE CANE
4 LB. BAG

GOLD MEDAL FLOUR
ALL PURPOSE
5 LB. BAG



COUNTY POST EGGS
30 COUNT

Here's How It Works! Lowe's is giving you deep discounts on many of the items you purchase everyday! For each dollar you spend at Lowe's, we will give you a point. After 50 points (or \$50), you will receive a Lowe's X-tra Savings Reward Coupon. This coupon can then be redeemed for deep discounts on selected items. Each month, Lowe's will select from our most popular items in the store and deeply discount them for our X-tra Savings Reward Coupon holders. Present your coupon and receive incredible savings on selected items. X-tra Savings Reward Program - Each Dollar You Spend is Worth ONE (1) Point - After you earn 50 points, you will receive a Lowe's X-tra Savings Reward Coupon - Use your Lowe's X-tra Savings Reward Coupon to get deep discounts on one of the selected items. * Only ONE (1) item can be purchased with each Reward Coupon. * Items will be changed monthly. THE X-TRA SAVINGS REWARD PROGRAM GOOD AT LOWE'S MULESHOE, CANYON AND TUCUMCARI STORES ONLY! Points are not transferable between stores. No substitutions please on X-tra Savings Reward items. Only one item may be purchased at the special deep discount per Reward Coupon.

QUALITY MEAT	
BONELESS BEEF RUMP OR BOTTOM ROUND ROAST	LB \$1.79
PREVIOUSLY FROZEN BONELESS SKINLESS CHICKEN BREAST	LB \$1.79
BONELESS COUNTRY STYLE PORK RIBS	LB \$1.49
HEINZ TOMATO KETCHUP	24 OZ. SQUEEZE BTL 99¢
SELECT GROUP FOR ALL COFFEE MAKERS FOLGERS COFFEE	34.5-39 OZ. CAN \$4.99
CHUNK LIGHT, OIL OR WATER PACK STAR KIST TUNA	6 OZ. CANS 2/\$1
BETTY CROCKER ASSTD. MICROWAVE POP-SECRET POPCORN	3 PACK 2/\$3
ALL TYPES 6 PACK 1/2 LITER BTL. OR 3 LITER BTL. COCA-COLA, SPRITE OR DR. PEPPER	YOUR CHOICE 3/\$5
HILLSHIRE FARMS ALL VARIETIES SMOKED SAUSAGE	1 LB \$1.99
BAR S SLICED BACON	12 OZ. PKGS 2/\$3
OSCAR MAYER ASSTD. FUN PACK LUNCHABLES	10.8-13.1 OZ. 3/\$5
SELECT GROUP 100 OZ. LIQUID OR 73-78 OZ. POWDER GAIN ULTRA DETERGENT	YOUR CHOICE \$3.99
APRIL FRESH OR TROPICAL BLOOM DOWNY SOFTENER	64 OZ. 2/\$5
REG. ONLY WITHOUT BEANS HORMEL CHILI	19 OZ. CAN 99¢
ASSTD. SHURFINE SALTINE CRACKERS	15-16 OZ. BOX 79¢
PRE-PRICED \$2.99 LAY'S® POTATO CHIPS	BUY ONE, GET ONE FREE
ORIGINAL OR SEASONED SANTA FE TORTILLA CHIPS	14-20 OZ. 2/\$4
MILD, MED. OR HOT PACE PICANTE SAUCE	16 OZ. 2/\$3

PRODUCE	
RED RIPE TOMATOES	LB 69¢
FARM FRESH YELLOW SQUASH	LB 99¢
COLORADO BAKING POTATOES	LBS 2/\$1
CRISP STALK CELERY	2/\$1
RED OR GREEN CHILEAN SEEDLESS GRAPES	LB \$1.29
EXTRA LARGE CALIFORNIA NAVEL ORANGES	LBS 2/\$1
SWEET AND JUICY CANTALOUPE	LB 69¢
WASHINGTON EXTRA FANCY RED OR GOLDEN DELICIOUS APPLES	LB 79¢
WHITE OR ULTRA DOUBLE ROLL BATHROOM TISSUE KLEENEX COTTONELLE	4 ROLL PKGS 2/\$4

FROZEN & DAIRY	
MANGO, PLUS CALCIUM, CARIBBEAN, CALIFORNIA OR FLORIDA SUNNY DELIGHT	64 OZ. BTL 99¢
ORIGINAL 20-24 OZ. PKG (EXCLUDES RISING CRUST) REG. \$4.69 EACH RED BARON 12" PIZZA	BUY ONE, GET ONE FREE
PEPPERONI OR COMBINATION TOTINO'S PIZZA ROLLS	19.8 OZ. 2/\$5
SHEDD'S SPREAD ORIGINAL, CHURN STYLE, PLUS CALCIUM OR LIGHT COUNTRY CROCK	3 LB. 2/\$3
ASSTD. FLAVORS BLUE BUNNY ICE CREAM	5 QT. PAIL \$4.99
JALAPENO, GREEN CHILI OR FRENCH ONION PLAINS DIPS	16 OZ. TUBS 2/\$3
KLEENEX VIVA PAPER TOWELS	ROLL 89¢

WEEKLY PRICES EFFECTIVE JAN. 30-FEB. 3, 2002