





**Marriage Licenses Issued**

The following marriage licenses have been issued by the county clerk's office in Farwell:

July 19 -- Robert B. Harris, Cannon AFB, N.M., and Kathleen L. Orben, Clovis.

July 19 -- George Lewis Haines, Friona; and Hazel Katherine Smith, Friona.

July 21 -- Ernest Elton Huddleston, Friona, and Carol Ann Scales, Friona.

July 22 -- William Edward Bryson, Clovis, N.M., and Loyce Suzanne Joyner, Clovis.

July 24 -- Joby Doll Claborn, Friona, and Ruby Janet Buckley, Friona.

July 25 -- Camilo Espinoza, Lazbuddie, and Maria Guadalupe Orozco, Lazbuddie.

**All-Stars Win Sportsmanship In Tourney**

The sportsmanship trophy and fourth place were honors earned by all-stars from Bovina's Little League in Portales tournament last weekend. Players on the team were from all six teams in the league here.

Coaches were Bill Meeks, Harold Carpenter and Don Cumpton.

In opening game for the locals Thursday night, they won over a Portales team, 12-2. In Friday night's semi-finals, they lost to another Portales team, 0-13. In Saturday night's game for third place, they were beaten by still another Portales aggregation, 3-14.

There were eight teams in the meet.

**Highlights and Sidelights From Your State Capital**

AUSTIN -- Texas Legislative Council, research agency for the Legislature, is in the curious position of being asked to take a close look at the ethical standards of its own boss.

Council, meeting in Austin, agreed on a proposed study of conflict of interest questions affecting State officials and employees. Gov. John Connally and Atty. Gen. Waggoner Carr suggested the study as a result of investigations into the private business affairs of former Railroad Commissioner W. J. Murray Jr.

A Travis County grand jury found Murray innocent of any violation of criminal laws during his terms of office. Carr observed in a later report that the Murray case raised "a serious question of a conflict of interest" between official duties and private interests.

Carr's report said Murray grossed \$1,700,000 during his 16 years on the Commission -- most of it from oil and gas ventures. Attorney general recommended "adequate laws" to control "any deviations from (ethical) standards . . ."

Council will be responsible for conducting research and investigation of possible conflict of interest cases among all State officials -- including the law-makers themselves -- with a view toward "improving our present code of ethics."

MORE REPUBLICANS? -- Another action by the Legislative Council had interesting "two-party" implications.

Rep. Bob Johnson of Dallas was named executive director of the Council, succeeding Read Granberry who died last year. Johnson has resigned his Dallas legislative post to accept the \$15,500-a-year assignment -- creating still another vacancy in the eight-man Dallas delegation to the House of Representatives.

This leaves only one Democrat, Rep. Ben Atwell, lined up against the six incumbent Republicans.

Dallas Republicans surprised themselves and stunned Democrats last year by winning all the legislative races they entered. Speculation then was that the three remaining Democrats on the Dallas House delegation -- Reps. Bob Hughes, Johnson and Atwell -- would be in for a rough 1964 general election should Dallas Republicans oppose them, and an even rougher time if it Barry Goldwater were chosen to head the GOP ticket as presidential nominee.

Hughes recently resigned his legislative post to accept appointment to a judgeship. This caused more speculation about a possible 1964 election sweep by the Dallas Republican organization.

Johnson's resignation has intensified the "Republican sweep" fears.

GRAM COURSE ON AN-

NEXATION -- Texas Municipal League will conduct a special one-day "Institute" in Austin on August 5. It will be a cram course for Texas municipal officials on the new law limiting city annexations.

William Olson, attorney for the League, will moderate a question-and-answer program, followed by a panel discussion featuring Mayor James McCrocklin of Kingsville, City Manager H. P. Clifton of Abilene, Planning Director William Anderson of Corpus Christi, and Steve Matthews, executive director of the League.

New law takes effect on August 23. But a provision in the Act requires that annexations pending or initiated after March 15 (1963) must meet terms set out in the measure. Furthermore these in-the-works annexations must be completed by November 23 or become null and void.

RAPID ERADICATING -- Few eradication programs have produced such prompt and effective results as the U. S. Department of Agriculture's screwworm eradication plan. A year ago scientists and field workers started the "saturation" release of sterilized flies to conquer screwworm population explosion.

Texas Animal Health Commission reported only 28 screwworm cases confirmed in a 5-day period -- as opposed to nearly 3,000 cases recorded during a comparable period in 1962.

As further encouragement, the Commission noted that of last week's 28 reported cases, only five were in areas where the program's "controls" were in full effect.

HOW TO BE A COMMISSIONER -- Frank Miskell, Texas' first Regulatory Loan Commissioner, is faced with the massive task of creating the agency.

Since state office buildings are filled his first job is finding office space.

Another immediate problem concerns selection of a deputy commissioner. He will assume much of the detailed work involved in establishing a budget and an organizational plan, setting salaries for employees, hiring employees from the third-ranking executive down to the secretarial pools and file clerks, purchasing office equipment and furnishings, and so on.

Miskell still hopes to have the agency set up by August 23. That is the effective date of the new law governing the licensing and practices of lending firms who charge more than 10% interest.

A flood of applications is expected from Texas loan companies seeking licenses and inquiring about specific provisions in the new lending regulations.

PROSPERITY, OR WHAT? (Continued on Page 8)

**Wilson's Weekend**  
Thursday-Friday-Saturday  
August 1-2-3

**Shurfine Canned Pop**  
Assorted Flavors  
12 Oz.  
12 Cans \$1

**Kraft Miracle Whip Salad Dressing** Quart Jar **45¢**

**Luncheon Meat SPAM** 12 Oz. Can **39¢**

**Soflin Toilet Tissue** 4-Roll Pkg. **29¢**

**Food Values**

**LIPTON TEA** THE 'BRISK' TEA  
1/2 lb. Pkg. **75¢**

**Scott Towels** Jumbo Roll **29¢**

**Star Kist Tuna** Chunk Style Flat Can **25¢**

**Morton's POTATO CHIPS** 10 Oz. Reg. 59¢ Bag **49¢**

**Mrs. Tuckers** PURE VEGETABLE SHORTENING  
3 Lb. Can **59¢**

**Lowest Prices on PRODUCE**

**POTATOES** US No. 1  
Red 10 Lb. Bag **49¢**

**No. 1 ONIONS** Texas Lb. **9¢**

**Texas CABBAGE** Lb. **8¢**

**Winesap APPLES** Washington Extra Fancy Lb. **19¢**

**Bargains in BEEF**

**QUALITY PORK AND GOOD CHEESES**

**Pinkney Sun-Ray Lean Smoked PICNICS** Lb. **35¢**

**Longhorn Lasso FRANKS** 2 Lb. Bag **69¢**

**Sun-Ray All-Meat BOLOGNA** 1 Lb. Pkg. **49¢**

**Norbest Grade 'A' TURKEYS**

Hens Lb. **47¢**

Toms Lb. **35¢**

**Shurfine Sour PICKLES** 22 oz Jar **29¢**

**RANCH STYLE BEANS** Husband Pleasin' No. 300 Cans **25¢**

**FOR FRESH...TASTY...MEALS FROZEN FOODS**

**Banquet TV DINNERS** 11 Oz. Size **39¢**

**Banquet FRUIT PIES** CHERRY APRICOT PEACH 22 Oz. Size **\$1**

**Ore-Ida Tater Tots** 1 lb PKG **29¢**

**Shurfresh SLICED CHEESE** 2 6 oz Pkg. **49¢**

**Shurfine Hominy** 2 No. 303 Cans **19¢**

**Shurfine Mustard** 20 Oz. Jar **19¢**

**Powdered Detergent Trend** Giant Box **45¢**

**Shurfine SLICED PINEAPPLE** No. 2 Can **35¢**

**Shurfine PEAS & CARROTS** 2 No. 303 Cans **43¢**

**Welchade** 3 QUART CANS **\$1**

**MATERIAL Solids & Prints**  
Guaranteed Washable

Reg. 45¢ Yd. **39¢**

More Materials Arriving Regularly Start Sewing Now For Back-To-School

ALWAYS SOMETHING NEW!  
**BOVINA VARIETY**  
MAIN STREET

**WILSON'S** SUPER MARKET  
PARMER COUNTY'S FINEST BOVINA

Phone 238-4781



# THE HIGH PLAINS FARM AND HOME

A SUPPLEMENT TO FARMER COUNTY NEWSPAPERS

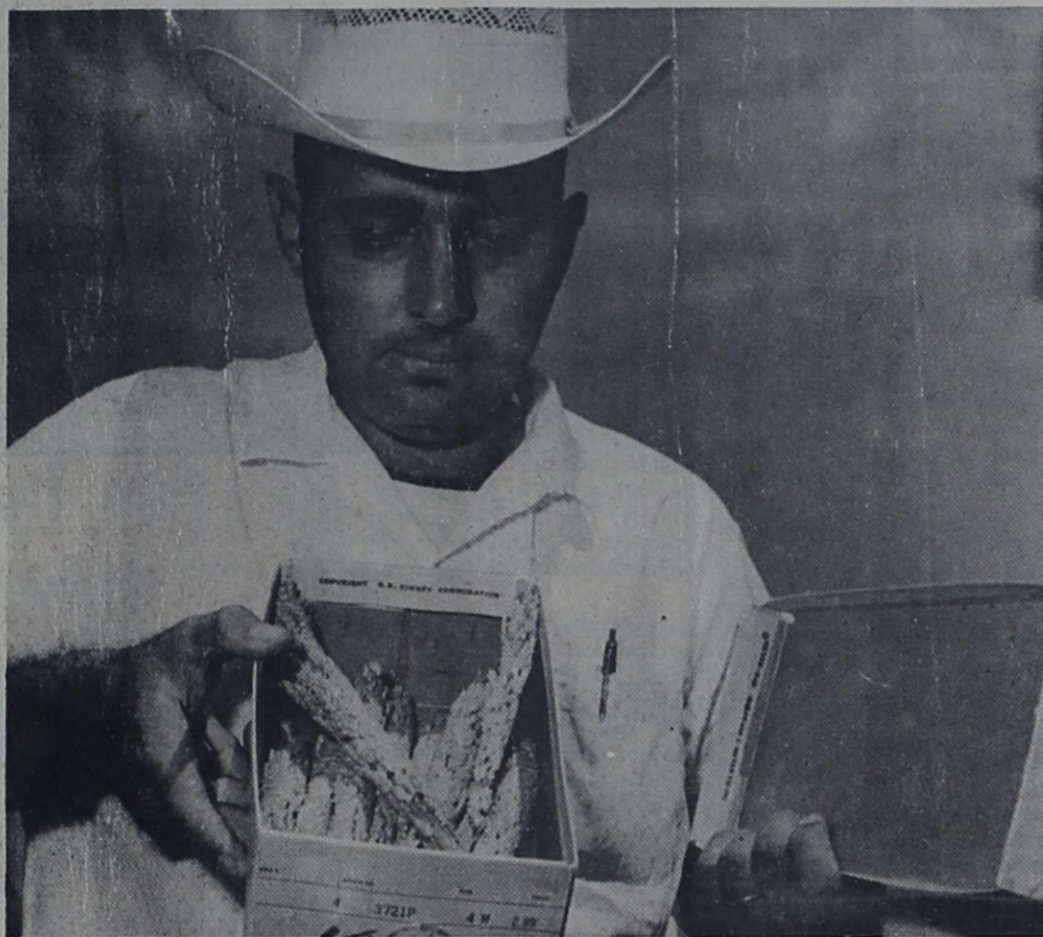
## First Midge Signs Seen In County

Definite signs of sorghum midge in Parmer County have been reported by County Agent Deryl Coker.

"The midge season is now more of a threat to our county. Farmers should keep a close watch on their fields, and report any actual findings of the midge to me," said County Agent Deryl Coker.

He suggested that farmers construct a "midge detector" to satisfy themselves as to whether or not they have midge. "The small orange midge gnat is always present. By using a shoe box with a small glass vial in an opening, a farmer can soon tell if he has midge in his grain," Coker said.

He explained that the insect (Continued On Page B)



COUNTY AGENT Deryl Coker demonstrates a shoe box "midge detector" which he recommends that county farmers use to see if they have midge flies in their grain.

**New & Rebuilt Electric Motors**  
For All Purposes

Electric Motor Rewinding  
Generators & Starter Service

**Crown Electric**  
PO 3-5433  
1320 W. 7th. Clovis

**Dr. William Beene**  
Optometrist

Phone 4051 13th. & Cleveland  
Friona, Texas (South Of Hospital)

**JONES ELECTRIC MOTOR SHOP**  
Electric Motor Specialist

Starters-Generators-Electric Hand Tools

Day Phones 762-0831 Night Phones 762-0548 or 763-4025

Prince And 21st. Clovis, N.M.

"Sure Sign of Flavor"

**QUALITY CHEK**  
DAIRY PRODUCTS

Butter Milk  
Cottage Cheese Sour Cream

In No-Wax--No-Leak  
Plastic-Coated Cartons

**CLARDY CAMPBELL** Quality Chek DAIRY PRODUCTS

**On The Farm In Parmer County**

By **DERYL COKER**  
County Agent

Recent results of the sorghum midge survey in the High Plains area have shown a steady population increase of the midge in certain "uncultivated" grasses. It is generally agreed among workers in this area that grain sorghum "heading out" after August 1 will be most susceptible to midge infestation.

Questions from persons interested in grain sorghum production indicate that further explanation concerning chemical control of the midge is needed.

Previous work has shown that the heaviest egg-laying by midge usually begins about the third day following sorghum head emergence from the boot. Chemical control depends upon the destruction of the adult female before egg-laying begins. Thus each sorghum head must be covered with insecticide within three days after emergence from the boot to prevent egg-laying within its sprikelets.

Under ideal conditions of uniform heading, a single well-timed insecticide application should give good midge control.

However, it is realized that many fields will not head uniformly and two to three applications at three to four day intervals may be necessary for effective control.

Both Endrin and Toxaphene may be applied only once each season to grain sorghum. If either of these chemicals are used for the first spraying, Sevin should be used for additional applications.

It is now time to consider plans for fertilizing wheat land to be planted this fall. Parmer County soils do vary in their ability to supply plant nutrients and the most logical starting point for determining fertilizer needs is the soil test. Our office can supply information on how to collect and mail the samples. By sampling early the report will be received in plenty of time for making the final

(Continued On Page B)

**KIRBY VACUUM CLEANER**  
Sales and Service--Rebuilt Cleaners and parts for Most Makes. Box 612--909 W. Plains or Phone 762-2121 for Free Showing in Home. Clovis N. Mex.

**ABSTRACTS**

See **JOHNSON ABSTRACT COMPANY** in Farwell Fast, Accurate Ph. 481-3878 Box 88

**Complete Brake And Bear Front-End Service**

TIRE TRUING  
WHEEL BALANCED AND OVERLOAD SPRINGS  
MONRO-MATIC SHOCKS  
Guaranteed Mufflers  
Free Installation  
**BOYD'S BRAKE SHOP**  
221 W. Grand PO 3-4326

**THE INVESTIGATORS**  
Phone PO 3-5362

**COMPLETE CONFIDENTIAL SERVICES**

**From Any Angle**

**Oklahoma Lane Farm Supply is Your Best Source!**

**Oklahoma Lane Farm Supply**  
Phone Sharp 225-4366

**Used Machinery**

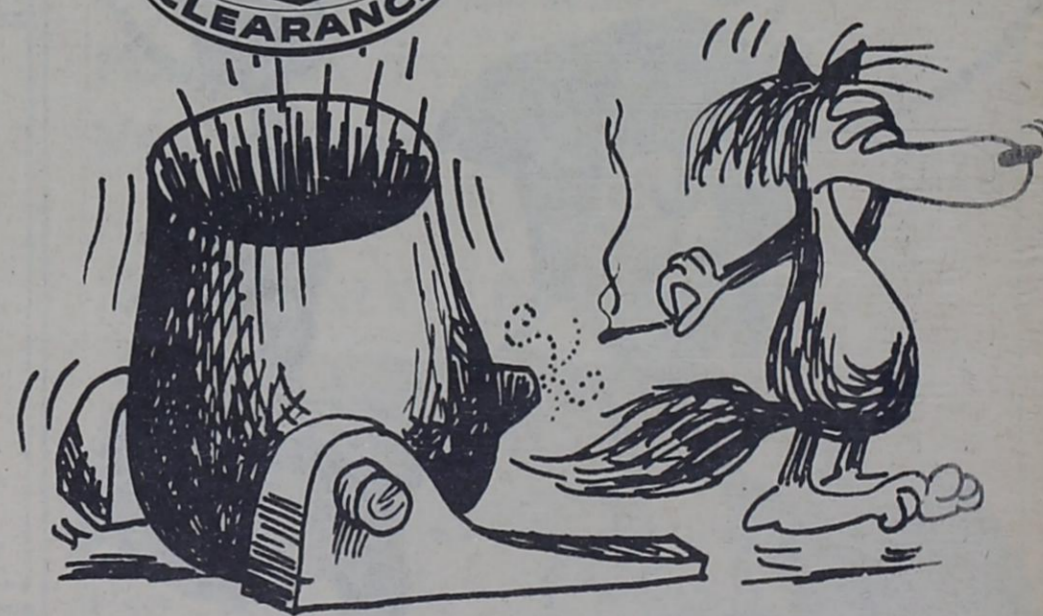
**Insecticides Fertilizers**

**Timberib Farm Buildings**

**Farm Hardware**

**If It Has To Do With Farming - And We Don't Have It - We'll GET IT!**

# BLASTS OFF TODAY!



This is it! Your chance to save a bundle on Falcons, Fairlanes, and Super-Torque Fords (Ford Trucks, and cream-puff used cars, too!). These are Total Performance cars! The rugged yet beautiful cars whose amazing record of wins in durability tests here and abroad has skyrocketed them to the top of best-seller lists everywhere. This is it! The A-OK time to drive a beautiful bargain at your neighborhood Ford dealer's

# OFFICIAL FORD CLEARANCE

**Farm And Ranch Loans**  
 Long Term  
 Low Interest  
**ETHRIDGE-SPRING Agency, Friona**  
 Phone 8811

THERE IS NOTHING "JUST AS GOOD"  
**DRY ACID**  
 Reg. U. S. Pat. Off.  
 Proven best since 1949.  
 To Get More Water from your Well See your LOCAL WELL MAN and use **DRY ACID** in the green steel pail.  
**COTEY CHEMICAL CO.**  
 Lubbock Texas

## County Students To Attend Seminar

Parmer County Farm Bureau is one of 77 county Farm Bureaus over the state that will send local high school students to a Citizenship Seminar to be held August 20-23 on the campus of Sam Houston State Teachers College at Huntsville, according to Harry Hamilton, president of the local Farm Bureau, and Mrs. Vernon Symcox, chairman of the Citizenship Committee.

Attending from this county will be Linda Rector, granddaughter of Mr. and Mrs. Foster Rector of Friona, and Jane Bradshaw, daughter of Mr. and Mrs. Buck Bradshaw of Farwell.

its kind sponsored by the Texas Farm Bureau. Last year, TFB and some local Farm Bureaus sent a delegation of students to a seminar in Oklahoma City. Instruction at the seminar will consist of lectures and films explaining the workings of American competitive enterprise system and contrasting it with Communism.

Speakers will include John Noble of Wheaton, Illinois, who was prisoner in Russian slave labor camps for nine and one half years; Dr. Nicholas Nyaradi of Bradley University at Peoria, Ill., a former Minister of Finance in the Hungarian government cabinet, who had direct dealings with the Soviet government; Dr. Harry Love of Virginia Polytechnic Institute, a well known teacher and lecturer on economics; and Drs. George S. Benson and Clifton Ganus, Jr., who are associated with the School of American Studies at Harding College in Searcy, Arkansas.

Students attending the seminar were selected on the basis of scholastic attainment.

## NEWS FROM THE FARM BUREAU

BY RAYMOND EULER

Farm Bureau President Harry Hamilton is going to Dallas for the Texas Farm Bureau Annual Leadership Institute, July 30 to August 2. We hope others are going, but don't know of them at this time. Prominent speakers on Americanism, capitalism, free enterprise and similar subjects will teach classes. Several hundred Farm Bureau people usually participate in these institutes.

Wheat farmers should, we believe, be writing their congressmen urging passage of the Wheat and Feed Grain Act of 1963, (HR 6617--S-1617 and similar bills). Passage of one of these bills would eliminate the probable "punishment tactics" threatened by power hungry USDA people because of the overwhelming defeat of the shackling May 21 wheat referendum. It is necessary that protection be provided the wheat producer until government "surpluses" are properly disposed of, and removed as a threat to markets for wheat and feed grains. Your congressman will, we believe, be glad to hear from you.

It is very evident that the family farm has been disappearing more rapidly as government regimentation on the farm has increased. The more corporate size operations are able to accumulate enough cash subsidies to capitalize and expand on, while the average farmer receives only enough to partially replace the necessary operating and living expenses resulting from production restrictions. Consequently, the marginal farmer either leaves the farm, or takes a job to supplement his meager income.

The following is a non-partisan statement of fact: The cotton marketing season now ending has seen exports dwindle from seven million bales prior to the New Frontier, to less than three million five hundred thousand bales. Domestic consumption has fallen to just over eight million bales and "surplus" has increased by three million bales in this same period. Farm Bureau believes a change is needed; more specifically, a change that would require the administration to return to the intended administration of the program actually now in effect.

There's still time to file for gas tax refund, both state and federal, even though some of your invoices may be too old for the state refund.

CONSIDER THIS: The hand of the diligent shall bear rule; but the slothful shall be under tribute. Proverbs 12:24.

The first Livestock and Meat Marketing Institute will be held at Texas A&M College, August 1-2. All sessions are scheduled for A&M's Memorial Student Center.

### The Cottage

SERVING "THE WEST'S BEST FRIED CHICKEN"  
 Also Steaks And Sea Foods  
 Boxed Orders To Go PO 3-4605  
 Hiway 60 2 Miles West

### Complete Automotive

### Machine Shop SERVICE

Valve Work - A Specialty  
 Crankshaft Grinding  
**MOTOR LAB**

311 W. 7th.

## At Home In Parmer County



Cricket

By CRICKET B. TAYLOR  
 County HD Agent

"Many women never realize what a poor loser they are until they go on a diet."

How true this is. We Americans are better nourished than ever before, and still we have an unnecessarily large number of nutritional problems. A wide and plentiful variety of food is available to most of us. The big question is what to choose from the many available foods.

Do you have a weight problem? And should you be concerned about your weight? Both extreme underweight and extreme overweight are detriments of you and your health. Excess weight may shorten life because overweight people are poor surgical risks, show less resistance to infection, and are prone to have diabetes, high blood pressure, heart and blood vessel diseases, arthritis or strokes.

Do you know that in regard to blood vessels, every five pounds of extra fat calls for three additional miles of blood vessels?

The death rate for persons over 45 who are 10 to 90 pounds overweight, are eight to 116 per cent greater than persons of normal weight.

Underweight is apt to mean poor health, lower resistance to diseases and the vital organs.

Good health really means more than freedom from pain and disease. It means individual efficiency at its peak - a being radiant with energy and enthusiasm. This is how all of us would like to live.

The meals we eat, day by day, slowly but surely determines our state of nutritional health and perhaps the length of our lives.

There is so much "food quackery" going around that one wonders what to believe. Recently in a Medical Conference held in Dallas, Dr. Frederick J. Store, Professor of Nutrition of the Harvard University School of Public Health spoke on "Nutritional Nonsense" and his statements were: "There is more nutrition sense than nonsense though one may wonder if this is so with the nonsense one hears today. One must have an understanding of nutrition to recognize nutritional quackery statements. How do you tell a quack? He usually promises his product is good for many, many illnesses and that you will get quick and sure results."

Whether you are eating to lose weight or gain weight, you need three meals daily.

Crash diets or liquid diets do not answer the weight reduction problem. A reducing diet should be well balanced to include the necessary nutrients to meet the body's needs. The selection of calories is important; they should come mainly from lean meats as beef, pork, fish, poultry, and eggs, fruits, vegetables and milk. Eat not only to add years to

your life, but to add life to your years. This is a good rule to remember.

If you would like further information on food for weight control come by the Home Demonstration office or write for information. The booklet "Food for Fitness Guide" is a publication available without cost.

### ON THE FARM

(Continued From Page A)

decision as to what kind and how much fertilizer to apply.

Nitrogen is the fertilizer element likely to be in shortest supply. Organic matter as measured by soil tests is one of the guides for determining how much nitrogen will be needed. However, factors such as amount and stage of decomposition of previous crop residue, physical condition of the soil, ability to irrigate adequately, and intended grazing practices will all influence the nitrogen need of the crop.

Research data of the Texas Agricultural Experiment Stations clearly indicates that where wheat is grown on Pullman soils for grain only, the time of nitrogen application is of little importance. When wheat is to be grazed it is important to apply all or part of the nitrogen preplant. Adequately fertilized wheat forage can contain 20 per cent protein or three per cent nitrogen on a dry basis.

### MIDGE--

(Continued From Page A)

would seek the light, so that by closing up several heads of maize in the shoe box. If there were midge present, the insects would crawl into the vial in search of light.

"Farmers should prepare three or four different boxes, and leave the heads in the boxes at least a week," Coker said.

He added that if a danger of midge-infestation in the county should develop, he would broadcast warnings during his radio programs over station KZOL in Farwell.

**Boyd's Muffler Shop**  
 Complete Muffler & Tail Pipe Service Behind  
**Boyd's Brake Shop**  
 221 W. Grand PO 3-4326

## 4-H Club Bake Show Scheduled

The Parmer County 4-H Club bake show will be held August 8 at 2 p.m. at the Friona State Bank Community Room.

All 4-H Club girls are urged to participate in the bake show. Those entering the show must bring both plain butter cake and whole wheat rolls to qualify for judging.

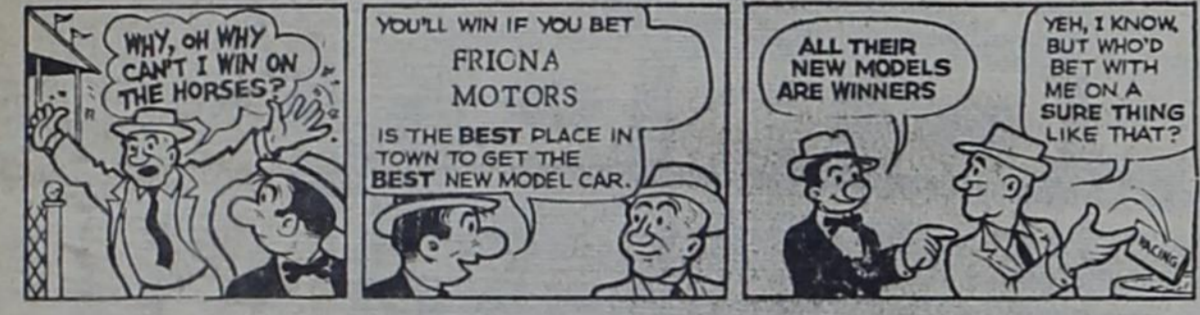
Parents are also invited to attend.

I Get 5% Dividends On My Money At.....

**FIDELITY SAVINGS & LOAN**  
 416 Mitchell St. PO 2-2917  
 Clovis, N. Mex.

**ADAMS DRILLING CO.**  
 WATER WELL DRILLING  
**LAYNE DIAL 2921 PUMP & GEAR PUMPS, INC.** NIGHTS 2951 HEAD REPAIRS  
 Sales & Service Friona Texas

## "SPEEDY Ford" by FRIONA Motors



See And Choose From Our Big Selection Of Used Cars. You Will Find Just The Car For You, And Glenn Or Darrell Will Be Glad To Show It To You.

**FRIONA Motors**  
 Sales • Service • Parts  
 WE SERVICE ALL MAKES • A-1 USED CARS  
 W. HIWAY 60 & GRAND FRIONA, TEXAS  
 Phone 2341 & 8901

**ALL IS WELL (OR IS IT?)**

Some may wonder! When government operates 19,000 businesses, in direct competition with its taxpayers, they cannot be blamed for wondering. A case in point is the electric industry. Already over 15% of the nation's electricity is generated by the federal government. If you don't think all is well, write to your elected representative. He'll be interested in hearing your view.



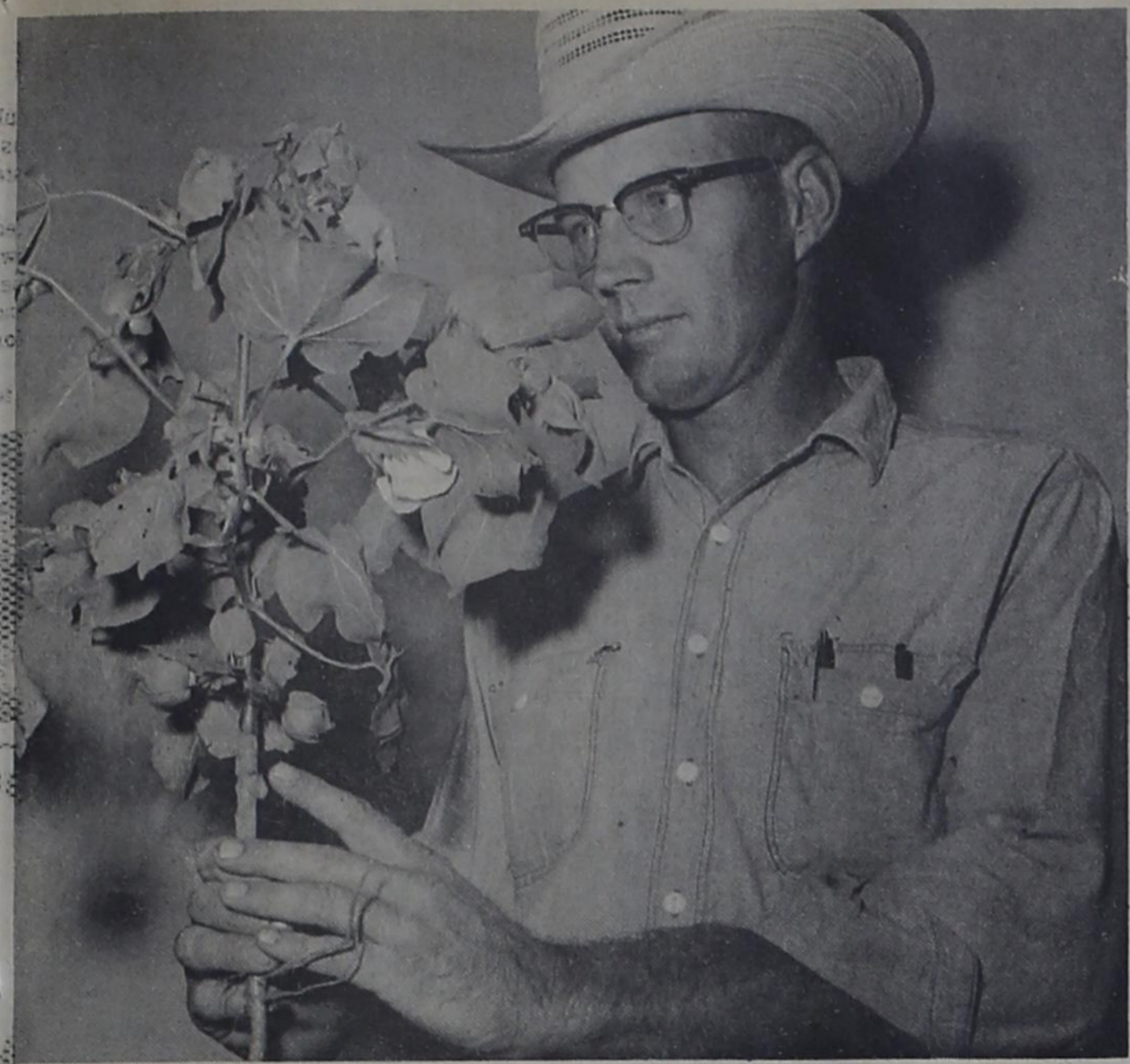
**Complete Automotive Machine Shop SERVICE**  
 Valve Work - A Specialty  
 Crankshaft Grinding  
**MOTOR LAB**  
 At Rear Of Elliott Auto Parts  
 Clovis

**REAL ESTATE LOANS**  
 • HOME LOANS  
 Conventional  
 F.H.A.  
 G.I.  
 Home Improvement  
 • BUSINESS BUILDING LOANS  
**First Federal Savings & Loan**  
 HOME OFFICE 4th & FILE CLOVIS, N.M.  
 BRANCH OFFICE 2nd & ABILENE PORTALES, N.M.

**Don't Wait Until The Last Minute, ARRANGE FOR YOUR SPRAYING WITH US - - NOW ! BENDER AIR PARK**  
 Friona Ph 9001

**WE HAVE MOVED ! TO OUR NEW BUILDING ON U.S. 60 WEST OF FRIONA**  
**Parmer County Implement Co.**  
 FRIONA PH. 2201

Bake Meduled... county 4-H Club... held August... Friona State Room... girls are urged... the bake show... the show must... water cake and... to qualify for... also invited to... 5% On My At... CITY & LOAN PO 2-2917 N. Mex.



EARLY BOLLS . . . Monty Barrett, who farms six miles south and three and one-half miles east of Bovina, displayed this cotton stalk with two bolls near the bottom last Friday. The stalk also had a couple of blooms and several squares. Barrett has 75 acres of cotton, which escaped damaging hail early in June.

# WANT ADS

FOR SALE . . . Ford Tractor with cement mixer mounted on it. See at Smith's 66 Service Station. 5-3tc

FOR SALE: 3 bedroom, carpeted, fenced yard, 1428 square feet home. Ph. 238-2071 or see Don Owens. 2-tnc

BUY YOUR **KRAUSE** At Bovina IMPLEMENT CO. BOVINA IMPLEMENT CO. Hwy. 60 - 238-2541

FOR SALE -- Extra length double bed with mattress and box springs. D. R. Bushnell, 238-3611. 5-2tc

**Electrical Installations And Repairs**  
★  
**Plumbing Repairs**  
★  
**BOVINA ELECTRIC**  
Odus White - Ph. 238-3871

Am interested in buying first and second lien notes secured with farm or ranch lands.

J. J. STEELE  
Citizens Bank Building  
Clovis, New Mexico  
Dial PO 3-3521 or PO 3-6455

**NOTICE**  
Bids will be accepted on two school busses, one 1951 Chevrolet 36-passenger and one 1958 Chevrolet 48-passenger by Bovina Independent School District until 5 p.m. August 12. These busses are in fair condition and may be inspected by contacting Warren Morton, superintendent of schools, Bovina, Texas. Please address bids to the superintendent. 2-6tc



Glen Mayben  
of  
**Superior ELECTRIC CO.**  
Industrial - Commercial - Residential Wiring  
Main St. - Bovina - 238-2751

**Offers Fast, Guaranteed Television and Radio Repair Service.**  
**Phone 238-2751**  
Next Time You Need Service

FOR SALE -- Used Maytag washer and dryer, matched set, in good condition. Total price for both \$125. Call Bud Crump or see at Farmer County Farm Supply. 5-2tc

FOR SALE: Three-bedroom house in Bovina with double garage and fenced-in yard, \$8000, McCallum Real Estate, Phone 238-2081 or 238-4381. 52-tfnc

Fish scales are formed of bone-like material and are confined in pockets in the skin of a fish.

As early as 1887, apples produced in Washington County, Ark., were winning prizes in world agricultural expositions.

## Let's look at the RECORDS!

By LINDA NORRIS  
DRAWN from all corners of June Christy's formidable recording repertoire are her most famous songs in a new Capitol Star Line LP titled "The Best of June Christy" . . . This bombshell's greatest hits, dating back to her days with Stan Kenton, include "How High the Moon," "Midnight Sun," "My Heart Belongs to Only You," "Willow Weep for Me," "Sing Something Simple," "Something Cool" and others . . . This is a terrific album by the swinging queen bee of the vocal world.

Cranberries keep so well that the American fruit shipped to London in 1830 was said to be as fresh as when first gathered from the Eastern seaboard marshes.

By July 1 of 1963 almost \$600 million in Federal funds will have been spent or obligated under the National Defense Education Act since its passage in 1958, the U. S. Office of Education reports.

As finally passed by both Houses of Congress in late July, the Children's Bureau appropriation for fiscal 1963 included \$2,853,000 for salaries and expenses -- an increase of almost \$200,000 over the amount for '62.

The U. S. Public Health Service reported that 441,000 cases of measles occurred in the first eight months of the year, up 55,000 cases from the same period of 1961.

This year 25 million needy Americans will receive nearly 2.3 billion pounds of donated food through the U. S. Department of Agriculture's direct distribution program.

### PUBLIC NOTICE Proposed CONSTITUTIONAL AMENDMENT NUMBER THREE ON THE BALLOT

PROPOSED CONSTITUTIONAL AMENDMENT TO BE VOTED ON AT AN ELECTION TO BE HELD ON NOVEMBER 9, 1963.

SENATE JOINT RESOLUTION NO. 26 proposing an amendment to Article XVI, Section 62 of the Constitution of Texas, by adding thereto a new subsection authorizing all political subdivisions of Jefferson County, Texas, to provide retirement, disability and death benefits for all appointive officers and employees of all political subdivisions within Jefferson County; providing for the necessary election, form of ballot, proclamation and publication.

BE IT RESOLVED BY THE LEGISLATURE OF THE STATE OF TEXAS:

Section 1. That Section 62 of Article XVI of the Constitution of the State of Texas, be amended by adding thereto a new subsection (c), reading as follows:

"(c) Each political subdivision within Jefferson County, Texas, shall have the right to provide for and administer a Retirement, Disability and Death Compensation Fund for all appointed officers and employees of all political subdivisions within Jefferson County, Texas; or said political subdivision may elect to join the County Retirement System of Jefferson County; provided that same is authorized by a majority vote of the qualified voters of such political subdivision and after such election has been advertised by being published in at least one (1) newspaper of general circulation in said county once each week for four (4) consecutive weeks; provided that the amount contributed by the said political subdivision to such Fund shall at least equal the amount paid for the same purposes from the income of each such person and shall not exceed at any time seven and one-half per centum (7 1/2%) of the compensation paid to each such person by the political subdivision.

"All funds provided for the compensation of each such person, or by the political subdivision of Jefferson County, Texas, for such Retirement, Disability and Death Compensation Fund, as are received by the political subdivision within said county, shall be invested in bonds of the United States, the State of Texas, or counties or cities of this state, or in bonds issued by any agency of the United States Government, the payment of the principal and interest on which is guaranteed by the United States, provided that a sufficient amount of said funds shall be kept on hand to be determined by the agency which may be provided by law to administer said Fund; and providing that the recipients of benefits for said Fund shall not be eligible for any other pension retirement fund or direct aid from the State of Texas, unless the Fund, the creation of which is provided for herein, contributed by the political subdivision is released to the State of Texas as a condition to receiving such other pension aid."

Section 2. The foregoing Constitutional Amendment shall be submitted to a vote of the qualified electors of this state at the General Election in November, 1964, at which election each ballot shall have printed thereon the following words:

"FOR the addition of subsection (c) to Section 62 of Article XVI of the Constitution, to authorize all political subdivisions within Jefferson County, Texas, to establish, after approval of its voters, a Retirement, Disability and Death Compensation Fund covering all appointive officers and employees of said political subdivisions."

"AGAINST the addition of subsection (c) to Section 62 of Article XVI of the Constitution, to authorize all political subdivisions within Jefferson County, Texas, to establish, after approval of its voters, a Retirement, Disability and Death Compensation Fund covering all appointive officers and employees of said political subdivisions."

Section 3. The Governor shall issue the necessary proclamation for said election to be held on the first Saturday after the first Monday in the month of November, 1963, and have notice of said proposed amendment and of said election published as required by the Constitution of Texas and laws of this state.

**MAC DIVOT** Keefe & Lansky

DON'T "HANDICAP" YOURSELF - START BUYING U.S. SAVINGS BONDS NOW.

A "BIG" HIT - U.S. SAVINGS BONDS THROUGH PAYROLL SAVINGS

**REMODEL! REPAIR!**  
Nothing Down - 60 Months To Pay  
Complete Line Building Supplies  
**Cicero Smith Lumber Co.**  
238-2671 Bovina

**Going someplace? Shipping something?**

See your nearest Santa Fe Agent or traffic representative

Printed Pattern 9469  
SIZES 12 1/2 - 24 1/2



Printed Pattern 9469: Half Sizes 12 1/2, 14 1/2, 16 1/2, 18 1/2, 20 1/2, 22 1/2, 24 1/2. Size 16 1/2 takes 2 1/2 yards 54-inch.  
FIFTY CENTS in coins for this pattern -- add 15 cents for each pattern for 1st-class mailing and special handling. Send to 170 Newspaper Pattern Dept., 232 West 18th St., N. Y. 11, N. Y. Send 50c for our new Spring-Summer Pattern Catalog. Coupon inside good for One Free Pattern.

"Treaty Oak" in Austin, Texas, was selected by the American Forestry Association as the most perfect specimen of a tree in the United States.

**BEE GEE**

THIS GAS, ON WHICH YOU CAN DEPEND, IS YOUR TRUE SERVANT AND A FRIEND



**CHARLES Oil Co.**  
Phone 238-4321  
BOVINA TEXAS

FOR SALE -- AKC Miniature poodle pups of champion stock. Black or silver. Will sell at reduced price. Ph. 238-2582 or see at 708 Ave. D, in Bovina. 4-2tc

LOST -- Universal joint and shaft in front of Tom Paine home on Ave. C. Ph. 238-3302. 5-1tc

Custom weed shredding by the hour. Have tractor and shredder. Tom Paine, phone 238-3302. 1-4tp

**CARD OF THANKS**  
I want to take this opportunity to thank all my friends for the kindness they extended to me during my recent illness. I deeply appreciated the flowers, cards and kind words I received from each of you.

Boye Taylor 5-1tp

The community was in the grip of a prolonged drought and so a prayer meeting was called and Parson Brown was pleading, "O Lord, send us down blessings."

"Amen," intoned Brother Smithers.  
"Send us 20 sides of meat."  
"Amen," from Brother Smithers.  
"And five barrels of flour" -- and there was a fervent "Amen."  
"And send us a barrel of salt."  
Again came the resounding "Amen."  
"And a barrel of pepper."  
"That's too much pepper, Lord; five pounds will be a plenty."

**Dilger's CLEANERS**  
Farmer County's Finest Cleaning  
BOVINA, TEXAS

The American Automobile Association's border office at Laredo, Texas, reports that tourist cars entering Mexico through May 31 this year totaled 17,504, compared with 17,134 for the same period last year.

**FARMERS!**  
Get  
**HAIL INSURANCE**  
On **MILO**  
Only \$3.75 Per \$100 Of Coverage  
**BOVINA INSURANCE**  
JIM WARE --- BANK BLDG.  
Phone 238-4383

**Notice - Citizens of City of Bovina**

In Order That We May Offer You Better Trash Hauling Service, You Are Hereby Requested To NOT Burn Trash In Barrels. Every Effort Will Be Made To Pick Up Trash Weekly And Burning Will Not Be Necessary Under This Set-Up. Also, And More Important, It Is Highly Dangerous To Haul Burning Trash. Burning Trash Barrels Will Not Be Emptied!

\*\*\*\*\*  
**Your Cooperation Will Be Greatly Appreciated**  
\*\*\*\*\*  
**City Of Bovina**

