



AROUND MULESHOE

People registered in another county desiring to vote a limited ballot in Bailey County may do so at the County Clerks office in the Court House during the period of absentee voting, which ends Oct. 31, 1986, according to Barbara McCamish, county clerk.

A Girl Scout Service Unit meeting is scheduled for 7:15 p.m. Monday in the community room of Muleshoe State Bank. Martha Couch, Field Service Director of Plainview, will be in charge of the meeting. All leaders, assistant leaders and workers are urged to attend.

The Chamber of Commerce and Agriculture has declared Halloween night, Oct. 31 as children's Trick or Treat Night. "Kids dress up as your favorite ghost or goblin or what ever and have lots of fun" said Toni Eagle, chamber manager.

The chamber urges safety precautions need to be used in the selection of your child's costume. Also remember to watch out for the Trick or Treaters when you are out and about.

St. Ann's Catholic Church of Bovina is sponsoring their annual turkey and trimmings dinner Sunday, Nov. 2 from 11:30 a.m. to 2 p.m. at St. Ann's Parish Hall on 3rd Street.

The dinner will include turkey and dressing, creamed potatoes and gravy, home canned green beans, homemade slaw, cranberry sauce, homemade bread, coconut and pumpkin cakes, and tea or coffee.

Plates will be \$5 for adults, \$2.50 for children under ten, and take out plates will be 25 cents extra per plate.

Door prizes will be awarded. A quilt will also be given away at the dinner.

Airman Robert A. Rule, son of James E. Richardson of Canyon, and grandson of J.C. Parvin of Friona has graduated from Air Force basic training at Lackland Air Force Base, Texas.

During the six weeks of training the airman studied the Air Force mission, organization and customs and received special training in human relations.

In addition, airmen who complete basic training earn credits toward an associate degree through the Community College of the Air Force.

Airman 1st Class Clifford C. Miller, son of Clifford S. and Wanda L. Miller of Amherst, has graduated from Air Force basic training at Lackland Air Force Base, Texas.

During the six weeks of training the airman studied the Air Force mission, organization

Cont. Page 8 Col. 3



1986-87 THREE WAY HOMECOMING KING AND QUEEN-During halftime activities Friday night Elva Flores was crowned Homecoming Queen of the Three Way High School and Jose Rubalcava was named Homecoming King. The Three Way Eagles was victorious over the Texline Tornados 58-12.

Rubalcava, Flores Homecoming Royalty

The Three Way Eagles put the frosting on the cake for their homecoming activities and added another victory to their belt Friday night with a 58-12 victory over the Texline Tornados. The six man game ended in the third quarter due to the 45 point rule, which ends the game when either team pulls ahead 45 points.

School Sets

Income Guidelines

For School Lunches

The Three Way Independent School District issued the following guidelines used by the school system to determine eligibility for free or reduced meals for the 1986-87, school year.

A family of one earning \$6,986 annually may receive free meals and the same family with an annual income of \$9,916 could receive reduced price meals. A family of two with an annual income of \$9,412, free meals and \$13,394 reduced; family of three, \$11,856 free and \$16,872 reduced; family of four \$14,300 free and \$20,350 reduced price; family of five \$16,744 free and \$20,350 reduced; a family of six \$19,188 free and \$27,306 reduced.

And a family of seven earning \$21,632 can receive free meals and with earnings of \$30,784 reduced meals; a family of eight earning \$24,076 free meals and \$34,262 reduced prices.

Each additional family member adds \$2,444 for the free meals and \$3,478 for the reduces prices.

Saul Guillen, Three Way quarterback, had his usual productive passing night, connecting with 9 of 13 passes for 304 yards and six touchdowns. Oscar Guillen caught TD passes of 47, 40 and 2 yards.

In the first quarter John Davidson connected with Mitchell Bezner on a 20 yard pass putting the Texline Tornados on the scoreboard, and the extra point was no good.

The Three Way Eagles came back with a 76 yard pass by Saul Guillen to Shawn Walls, with Curtis Tucker kicking the extra point, making the score 7-6 Three Way.

Guillen connected with Walls on a 21 yard pass with Tucker kicking the extra point giving the Eagles another seven points. Three Way moved further ahead as Jose Rubalcava ran 62 yards for another TD and Tucker kicked the extra point.

Keeping it a Three Way game Saul Guillen passed the ball 2 yards to Oscar Guillen for another score. Extra points were made by a pass from Saul Guillen to Matt Sowder, making the score 22-6 Three Way.

Texline had a 60 yard kick off return by Lonnie Ashford bringing the score to 22-12 Eagles. The extra point was no good.

Three Way came back with a 47 yard pass from Guillen to Oscar Guillen and Tucker kicked the extra point. The Eagles also scored on a 1 yard run by Jose Tucker.

A 30 yard pass from Saul Guillen to Robert Zamora moved the Eagles still farther ahead in the game. The extra point was no good.

The game ended in the third quarter when Three Way's Saul

Guillen passed to Oscar Guillen for 40 yards, bringing the score to Three Way 58-Texline 12.

Three Way Eagles had 15 carries for 60 yards and connected on 10 of 15 passes for a total of 324 yards.

Texline had 36 carries for 146 yards rushing and completed 3 of 10 passes for 36 yards.

During the halftime activities, Jose Rubalcava, a senior, was named 1986-87 homecoming king and Elva Flores, also a senior, was crowned homecoming queen.

Other king and queen candidates were Oscar Guillen, senior; Robert Zamora, senior; Saul Guillen, junior; Lydia Gomez, sophomore; and Shelia Tucker and Melinda Turney, freshmen.

Homecoming festivities began Monday with a "Backwards

Cont. Page 8 Col. 5

Gifted/Talented

Parent Meeting

Held Monday

Parents of identified gifted and talented students met Monday evening at Mary De-Shazo Elementary with Elizabeth Watson, Assistant Superintendent for Curriculum and Instruction, conducting the meeting.

Following the welcome and introductions by Mrs. Watson, the Gifted and Talented program on each campus was presented and discussed.

P. Gayle Fuller serves as the itinerant teacher for both elementary schools with the following team leaders: Jan King, kindergarten; Helen Grigs elementary schools with the following team leaders: Jan King, kindergarten; Helen Grigsby, first grade; Lenda Trussell, second grade; Sue Gibson, third grade; Joyline Costen, fourth grade; and Beth Skipworth, fifth grade.

Alice Liles is in charge of the Jr. High program and John Gulley coordinates the High School program.

All of the Gifted and Talented programs are stressing the importance of extended thinking and creativity. Other components of the programs include brainstorming, mental sketching and mental flexibility.

Parents attending the meeting also had an opportunity to ask questions concerning the program and to provide input for the program.

Approximately 40 parents and teachers attended this meeting. Anyone desiring more information about the district's gifted and talented program should contact Mrs. Watson at 272-3325.

New Tax Laws Effect On Business' Explained

Second in a series of three new tax laws for 1987. By Randy Field, CPA, Sudduth, Field & Co.

The historic rewrite of the tax code, signed by President Reagan this week, is the most drastic overhaul of taxes in the past 40 years. The new law will change the rules by which Americans spend, save, borrow, and invest. In the article last week, the provisions most important to individuals were summarized. This week's article will cover a few of the tax provisions that effect business.

FOR BUSINESS
Corporate Rates. The corporate tax currently has five brackets taxed at 15% to 46%. The new law will have a top rate of 34%.

Small businesses with income up to \$50,000 will be taxed at 15%; income between \$50,000 and \$75,000, 25%; and income over \$75,000 34%. The benefits of the lower rates will be

phased out for companies earning over \$100,000, by putting a 5% surcharge on income over that amount until the tax equals the 34% rate. The benefit of the lower rates is fully phased out for companies with taxable income over \$335,000.

The rate cut will take effect July 1, 1987, so calendar-year corporations will have a blended top rate of 40% in 1987.

Corporate Capital Gains. Capital gains, now taxed at an alternative tax rate of 28%, will be taxed at the regular rates under the new law.

For tax years beginning after December 31, 1985 and ending in 1987 before the new rates are fully effective, the top corporate capital gains tax rate will be 34%.

Tax planning tip: Since individual rates on capital gains will be lower than corporate rates in most cases, it may pay for shareholders to retain ownership of business assets and lease the assets to the company. This would minimize the tax on any gain if the assets are sold.

Business Meals and Entertainment. Current law allows the deduction of all ordinary and necessary business expenses. The new law will limit the deduction for business meals and entertainment to 80% of their value. The present law regarding substantiation of meals is retained. Phase-out of deductions for luxury skyboxes will be effective for tax years beginning in 1987. Rules for home office expenses and hobby losses have been tightened.

Most business travel expenses are deductible. Deductions for travel on cruise ships are limited, while educational travel deductions have been eliminated. Travel and other costs associated with attending investment seminars are not deductible. No deduction is allowed for charitable travel expenses unless there is no significant amount of pleasure travel included.

Tax planning tip: If you plan to purchase season tickets for your business for next season, do it before the end of the year to get the full tax benefit. And if you've wanted to attend an investment seminar, do it now.

Investment Tax Credit. Under current law, corporations can claim an investment tax credit as high as 10% of the cost of certain tangible personal property. The new law repeals ITC.

Cont. Page 8 Col. 1

Wildcats Win Big Over Muleshoe Mules

Last Friday night saw another football game in Benny Douglas Stadium and another loss for the Muleshoe Mules. The Mules watched as the Littlefield Wildcats took home another victory making their record 8-0 while the Mules dropped to 4-4 for the season and 0-3 in district play.

On the opening kick of the game, Todd Bessire returned the ball 40 yards and gave the Mules a good advantage until a fumble early in the game. The Littlefield team was not able to capitalize on this mistake until a touchdown in the middle of the quarter when Jody Nelson ran the ball 11 yards for the TD. Louis Williams added the extra point.

Going into the second period with a score of 7-0, the Mules ran several plays that resulted in a short gain of yardage and turned the ball back to the Wildcats. Littlefield's possession of the ball did not last long though, when the ball was fumbled back to Muleshoe with 8:20 on the clock. Nothing seemed to help and the second quarter ended with no points scored by either team.

The Mules returned to the field in an added burst of energy and enthusiasm and kept the Wildcats from doing serious damage until :57 remained to play in the third period. Tommy King ran 1 yard for another 6 points and Louis Williams racked up another point on the kick to make the score 14-0 going to the last quarter.

Littlefield's possession lasted until the middle of the fourth quarter when another touchdown by Williams made the score 21-0.

Even this did not deter the Mules as they came back and scored a TD with Michael Angeley running 21 yards to hit paydirt for the Mules. The attempt for a two point conversion failed leaving the score 21-6.

The Wildcats still had one more surprise to play and let loose in the last two minutes of the game to score on a 5 yard

touchdown.

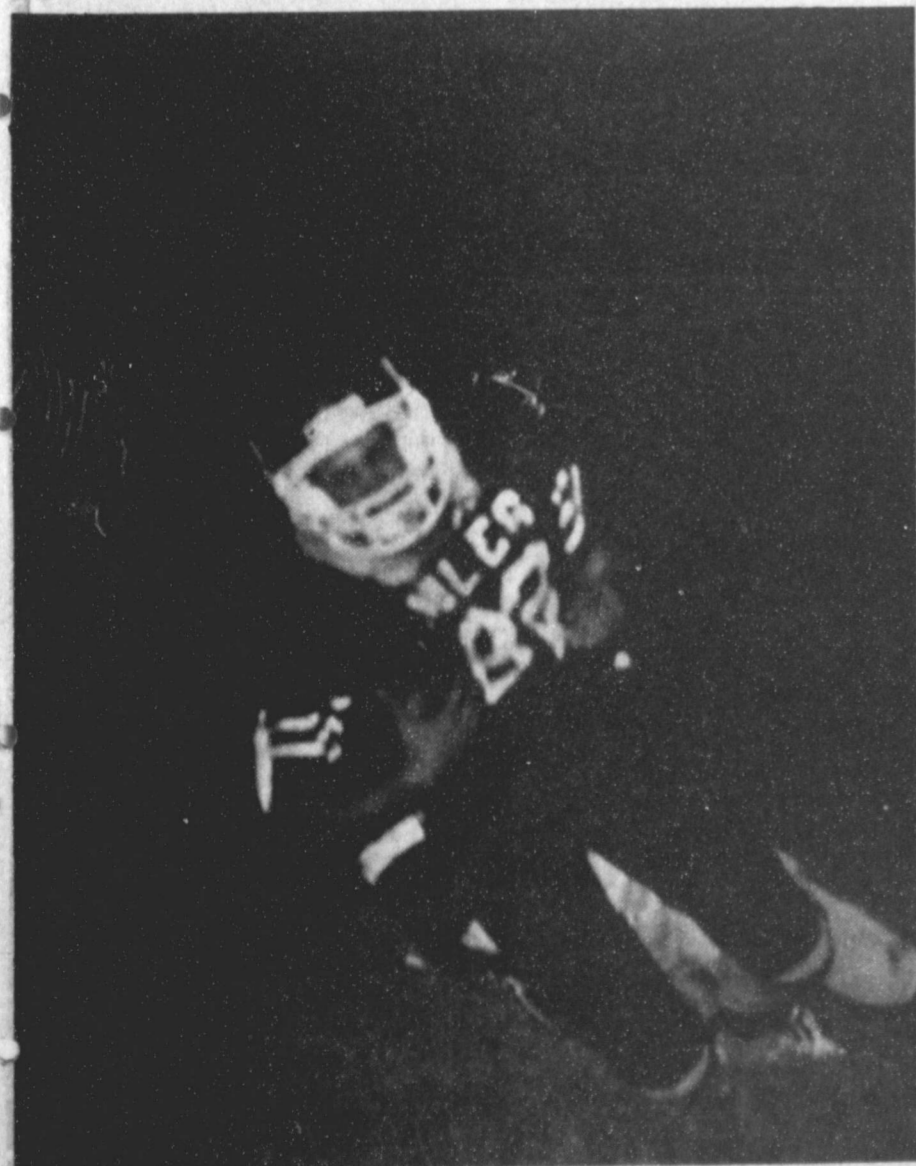
The last few seconds of the game saw Muleshoe trying to do something spectacular, but the final score was still 28-6.

The leading rushers for Muleshoe included Armando DelToro with 9 carries for 41 yards, Todd Bessire with ten carries for 40 yards, and Michael Dunham with 20 yards in 7 carries.

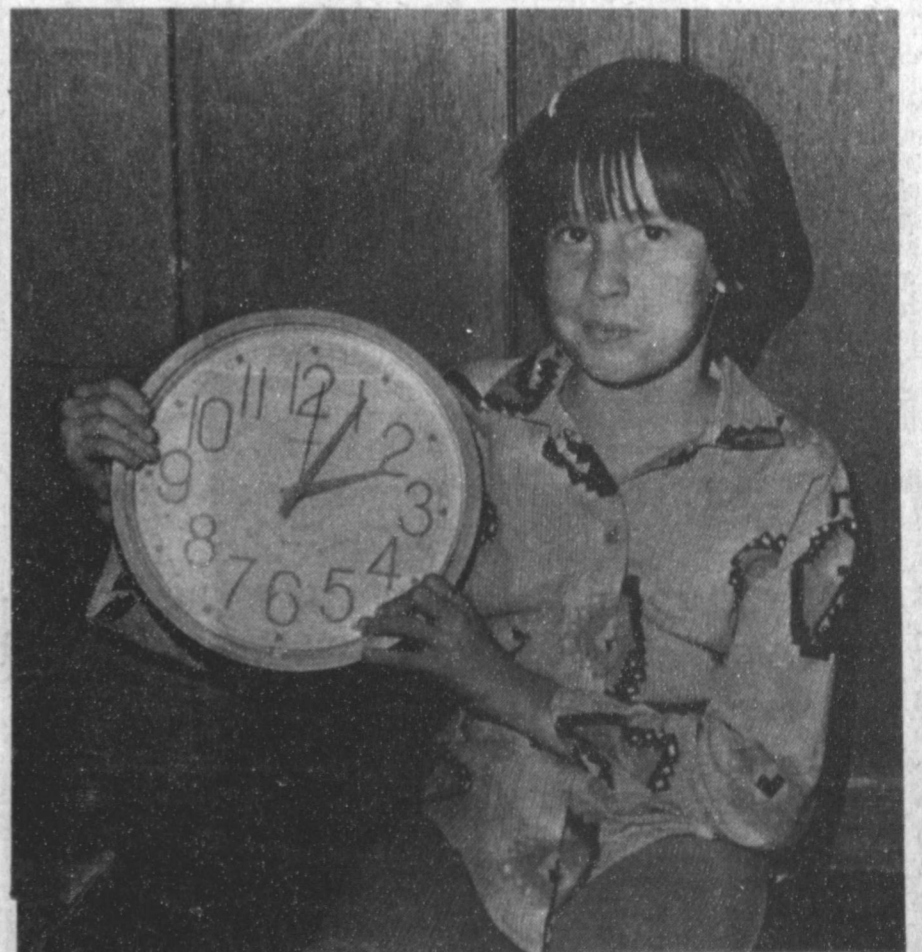
Receiver reception included Todd Bessire with 5 for 72 yards, Shawn Bussey 6 for 56, and Sergio Gonzalez who carried 2 times for 26 yards.

Next Friday the Mules will play at 7:30 in Tulia. All fans are asked to go to Tulia and show your support for the Mules.

Cont. Page 8 Col. 6



TACKLED FROM BEHIND--A Muleshoe Mule was tackled from behind by a Littlefield Wildcat during the football game Friday night in Benny Douglass Stadium here. The Wildcats were victorious over the Mules to the tune of 28-6.



DID YOU FORGET?--Kimberlee Casebolt, daughter of Pat Casebolt, didn't forget to run her clock back one hour before going to bed Saturday night. If you forgot to turn your clock back, you were probably one hour early for church. Time officially moved back one hour at 2 a.m. this morning.

Gas Tax Keeps Highway 84 Commitment

The highway department will have \$78 million less to spend on road work next year despite an eight-month, five-cent gas tax increase approved in the special legislative session.

"The state's general budget just ran out of money," Highway Engineer-Director Raymond Stotzer Jr. said.

"However, we feel that the Legislature has responded appropriately to the dual responsibilities of maintaining the state's 1984 commitment toward improved transportation systems and addressing the immediate cash shortfalls.

"Since 1984, the department has been involved in a twofold program of rehabilitating and upgrading many miles of rural highways and unclogging the massive congestion problems in the major urban areas. Lack of adequate funding had prevented the department from addressing these problems earlier."

The Legislature, in its recently completed special session,

Jack Fisher Services Held

In Sudan

Funeral services for Jack L. Fisher, 73, of Sudan were held at 2 p.m. Thursday, Oct. 23 in the Sudan Church of Christ with James Withrow officiating, assisted by Mike McDonald, minister.

Burial was in Littlefield Memorial Park under the direction of Ellis Funeral Home of Muleshoe. Fisher died at 4:45 p.m. Tuesday in South Plains Hospital at Amherst.

Born Dec. 12, 1912, in Mills County, Fisher had been a resident of Sudan since 1926, moving from Mills County. He married Evelyn Stephens on June 8, 1938, in Sudan. He was a farmer and a member of the Sudan Church of Christ.

Survivors include his wife, Evelyn; three sons, Steve Fisher of Seattle, Wash., Jan Fisher of Sudan and Kim Fisher of Lubbock; two sisters, Mrs. Beulah Hodges and Mrs. Velma Hodges, both of Bakersfield, Calif.; three brothers, Carl Fisher of Brownwood, Waldo Fisher of Zephyr and Joe Fisher of Sudan; and six grandchildren.

Former Lazbuddie Resident Dies At Lubbock

Funeral services for Georgia E. Matthews, 91, of Lubbock were held at 11 a.m. Saturday, Oct. 25 in Resthaven Chapel with Bruce Logue, pastor of Green Lawn Church of Christ, officiating, assisted by Horace Coffman, pastor of the Broadway Church of Christ.

Interment was in Resthaven Memorial Park under the direction of Resthaven Funeral Home. Mrs. Matthews died at 2:55 a.m. Thursday at her residence following a lengthy illness. She had been under a doctor's care.

Born in Knoxville, Tenn., she had been a Lubbock resident since 1972, moving from Lazbuddie. She married Clarence C. Matthews Sr. on Sept. 16, 1916, in Sherman. He died in 1984. She was a homemaker and a member of the Church of Christ.

Survivors include two daughters, Evelyn and Jo, both of Lubbock; a son, C.C. Jr. of Lazbuddie; two brothers, Malcolm Bradshaw of Sherman and Cecil Bradshaw of Phoenix; two sisters, Hazel Davis and Faye Cates, both of Irving; three grandchildren; and five great grandchildren.

The family suggests memorials be made to the Children's Home in Lubbock.

Thank You

The Children & Grandchildren Of Hallie Biscoe
Sincerely Thank You, Our Friends & Neighbors For
The Prayers, Food & Flowers & Other Acts Of
Kindness Shown Us During The Loss Of Our
Loved One.

Eva & Earl Morris, Family
Billie & Merriman Vise, Family
Bobby & Bob Hardy, Family
Rex & Doris Biscoe, Family

eliminated \$269.7 million from the highway department's current funding. The five-cent fuel tax, during its temporary tenure between January and August, will generate an estimated \$188.9 million for the department next year. The department will also receive a portion of the sales tax on motor lubricants. The temporary sales tax increase on motor lubricants will produce approximately \$2.7 million next year.

The Legislature has redirected funds from transportation to the Department of Public Safety, the state's general revenue fund, and the tuition shortfall fund.

The gas tax increase will put Texas near the middle of the states in cents-per-gallon fuel taxes. Colorado, Delaware, Kentucky, Montana, North Carolina, Tennessee, Virginia and Wisconsin have already increased their gas taxes in 1986.

Since 1984, the department has made substantial progress in moving highway improvements from the drafting board to the construction site. Major road improvements are under way throughout the state.

"The loss of funds will require some shifting of the department's work schedule, but we will continue a very active construction program to improve the transportation System in Texas," Stotzer said.

Junior High Honor Roll

FIRST SIX WEEKS HONOR ROLL

WATSON JUNIOR HIGH

6th Grade
Amanda Ashford, Dora Barera, Michael Cearly, Kristin Chitwood, Sonya Cisneros Amelia Flores, Mike Garcia, Rose Marie Gloria, Chad Green, Rebecca Green, Stacie Harris, Becky Hawley, Mark Hicks, Robin Hovland, April Hugg, Jennifer Johnson, Kyle Kenmore, Angie King, Stacey Langfitt, Virginia Lira, Jimmy Mardis, Aida Martinez, Albert Mendoza, Laura Mendoza, Steven Noble, Gilbert Rennels, Paula Ruthardt, Mandy Shipman, Douglas Snell, Natalie Stout, Adam Yourazeris, April Watkins, Jon Robin Watkins, Steven Wauson, Cory Welch, Summer Wiley, Michelle Wilkerson and Courtney Williams.

7th Grade
Maria Almanza, Tiffany Angeley, Audree Anzaldua, Mita Bhakta, Tina Copley, Andy Crawford, Patricia Del Toro, Dustin Elliott, Laurie Estrada, Jody Field, Ricky Flores, Jill Foster, Jason Harmon, Gracie Heredia, Corley Hutton, Chanda Heredia, Corley Hutton, Chanda Kemp, Shane Kirk, Galin Latham, Heather Leal, Dusty Lee, Tory Matthews, Justin Morris, Berta Muyschondt, Jill Noble, Jessica Orozco, Margarita Posadas, David Quintana, Julie Recio, Michael Richardson, Baldeemar Rodriguez, Isabel Rojas, Misty Sawyer, Ronda Scott, Dawn Taylor, Melissa Toombs, Bertha Torres, Mickey Trussell, Celia Villalobos, Shea Wilbanks and Audrey Williams.

8th Grade
Kristyl Albertson, Robin Berry, Wendi Bland, Jeremy Bruns, Jimmy Cain, Greg Combs, LaTavia Copley, Patrick Counterman, Michelle Dent, Rose Espinoza, Brandi Estep, Blain Ferris, Hector Flores, Noel Florey, Steve Garcia, Sheila Garner, Marie Godinez, Rebecca Gonzalez, Sally Guzman, Dayna Hamilton, Erin Kelly, Jaimee Kelton, Stacy Knowlton, Christine Lewis, Jesus Martinez, Victor Marts, Jeff McGuire, Mary Ann Nunez, Tami Randall, Burnley Riley, Collin Robinson, Danny Rodriguez, Heath Scott, Shawna Smith, Candy Tigue, Amy Turner, Ella Wilkerson, Marsha Wilson, LeAnn Wisian and Michael Wright.

Child Abuse Causes Concern For Texas Women

Child abuse emerged as the issue of most concern to nearly 10,000 Texas women responding to a survey circulated between November 1985 and September 1986 by the Governor's Commission for Women.

Carol Nasworthy, executive director of the commission, said almost 40 percent of those surveyed rated child abuse as one of the most critical of 25 issues important to women.

Preliminary results show the following rated as the 10 most critical problems confronting women in Texas: child abuse followed by teenage pregnancy, comparable worth, stress, poverty, child support, child care, unemployment, rape, and unequal job opportunities.

"This survey accurately reflects the very high degree of interest women have regarding issues affecting them. The Women's Commission and dedicated women throughout the state have made this one of the most comprehensive surveys ever conducted concerning women's issues. The results will be incorporated in an interim report and presented to the 70th legislative session. We hope it will make an impact on the Legislature and, in turn, help

Drivers Of TDPS Reminds Winter Hazards

The Texas Department of Public Safety reminds motorists that the winter season is upon us, and it's time once again to get both the driver and the vehicle in the best possible condition for this most grueling driving season.

Major V.J. Cawthon, Commander of the Texas Department of Public Safety, Region 5, said, "Winter driving can be very hazardous. Drivers are faced with many dangerous obstacles: nights are longer, freezing temperatures, snow, sleet, and ice covered roads, all creating handicaps for the driver.

The most important safety tip for winter driving is to "slow down". On ice covered roads, only drive when it's necessary and realize that it's going to take you at least twice as long to cover that same distance that you drove when the road was dry and clear of ice. So, remember to set more time aside for driving under winter conditions.

When temperatures drop below the freezing point, drivers must guard against reduced visibility caused by frosted windows and windshields. Allow your car's engine to warm up and for the defroster to become effective before driving. Be sure your windows and headlights are clear and free of any obstructions like snow and mud. Do all this in advance, before you hit the road.

The Texas Department of Public Safety reminds you that the hazards of winter driving can be reduced. It's in your hands, the defensive driver, to make for a safer winter.

create positive changes in public and private policies affecting women in Texas," said Nancy Grams, issues coordinator of the project and a member of the Governor's Commission for Women.

The survey is part of a major research study being conducted by the School of Social Work at the University of Texas at Austin, the Lyndon B. Johnson School of Public Affairs, and the Governor's Commission for Women. According to Dr. Martha Williams and Dr. Laura Lein of the University of Texas School of Social Work, and Dr. Susan Hadden of the L.B.J. School of Public Affairs, a second survey now underway and an analysis of 1985 legislation affecting Texas women will also be part of the project. The project will be completed in the summer of 1987.

To date, 9,576 women and 516 men have completed the first survey. All ethnic and racial groups and geographical areas in Texas are represented. The average respondent is a white 41-year-old female with 2.3 children living in an area with a population between 250,000 and 1,000,000. She is employed full-time and has completed two years of college.

Sharon Scott, a graduate student at West Texas State University in Canyon, Texas, performed the statistical analysis for the survey, which was circulated among persons attending conferences and events sponsored by the commission and other women's groups.

For more information, contact Nancy Grams at (806) 358-2087.

Three-Way News by Mrs. H.W. Garvin

Mrs. Rodger Hatcher and daughter is visiting her parents the Jack Lanes.

The Three Way had a fish fry Wednesday night at Church.

Dr. and Mrs. Bradley from Plainview were dinner guests in the Jack Lane home Sunday. Dr. Bradley preached at Three Way Baptist Church Sunday.

Mr. and Mrs. Robert Shuck from Arizona spent Friday night with his aunt Mrs. Minnie Dupler also Leona Dupler from Andrews visited his mother, Mrs. Minnie Dupler Saturday.

Mrs. Jack Lane and Mrs. Rodger Hatcher and daughter visited in Muleshoe with her mother Mrs. Quisenberry and with the Buck Ragsdales Friday.

Mrs. Jack Lane and Mrs. Bud Huff from Three Way Baptist Church, Mrs. Rose Nichols and Mrs. Bill Key from Enochs had a birthday party at the Morton Nursing Home in Morton Thursday.

Rev. and Mrs. John Cockrell and Mr. and Mrs. Jack Robinson spent the week end in Georettia, N.M., a Baptist Retreat.

Interest
The bonds of matrimony are worthless if the interest isn't kept up.
-Sentinel, Onawa, Ia.

Oil, Gas Leases Rental Rates Increases Delayed

Secretary of the Interior Don Hodel today directed the Bureau of Land Management BLM to take further action to promote exploration of the Nation's domestic energy resources by delaying for one year increases in rental rates for certain oil and gas leases on public lands.

"As a Nation, we need to focus on two major objectives. One is a technologically advanced and financially strong oil and gas exploration capability. Second, we need a positive investment atmosphere for the oil and gas industry. By delaying rental rate increases, we hope to avoid abandonment of these leases, thereby encouraging exploration," Hodel said.

Current regulation call for a rental rate of \$1 for the first five years of a lease issued under "simultaneous" procedures, increasing to \$3 per acre for each remaining lease year. Under the action today, the rate would remain \$1 per acre for all tracts for the sixth year. Rental is not collected on leases for which royalty is being paid.

Hodel noted that the policy change is in response to an increase, both in oil and gas lease terminations for failure of lessees to pay annual rentals and in voluntary lease relinquishments which BLM is experiencing.

"We want to provide an incentive for lessees to continue to hold these leases, thereby encouraging further exploration and development during this downturn in our domestic oil and gas industry, and, hopefully, paving the way for future production when oil prices rise again," he added.

During the first half of the current fiscal year, Federal lessees gave up about \$6,800 leases involving more than 11 million acres. This is 55 percent greater than the number of leases returned during the first half of FY 1985. There are about 105 million acres of Federal lands currently under oil and gas leases.

Wyoming and New Mexico, two major oil and gas states, have had an even greater increase in lease terminations

and relinquishments. A comparison of the first half of FY 1985 and FY 1986 finds that the number of leases being returned to BLM increased by 89 percent in Wyoming, while in New Mexico the number of leases given up increased 126 percent.

This policy change would affect 3,120 leases covering 2.5 million acres in 24 states during Fiscal Year 1987.

The Department took action earlier this year to allow for the suspension of production for federal oil and gas leases with stripper or marginal wells that may have otherwise been abandoned prematurely because of fluctuating prices.

Advice on Children

One of the facts of life parents should appreciate is that there's an over-abundance of advice, much of it half-baked, on rearing children. One constantly reads magazine and newspaper articles by various "authorities" telling us how to rear Junior.

There's really not very much complicated in this worthwhile task. Common sense, love and time will enable most parents to do a fine job.

A good book on medical care in the home is advisable, but the current spate of psychological digging, overdone worrying over junior's reaction, his (or her) frustrations, resentment, etc., is often misleading or worse.

All children must learn discipline and the sooner the better,

if it isn't allowed to crush their spirit and initiative. All will have some frustrations, some resentments. Fine and good. That's life.

All must be curbed at times, sometimes punished. Consistency and love, however, in guiding them along are recognized and understood by children.

And if he or she doesn't turn out just like parents expect, it isn't necessarily the parents' fault. There's no need for these parents to consider themselves failures and wallow in a sea of remorse.

Too many sorry influences today lure youngsters from the proper path of life--including television, films, associates, etc.

Thank You
I want to thank all our Neighbors & friends for their concern and offers to help Billie & I while I was in the hospital.
Elvis & Billie Powell

Whitt-Reid

201 Main 272-3611

Real Estate Insurance - Investments

"We Try Harder"

- Life Insurance That Fits Your Needs
- Health Insurance Blue Cross-Blue Shield (Compare Prices)
- Estate Planning - most good for you and your heirs
- Home Owners - inflation guard
- Auto - Fair Way Plan
- Farm and Ranch - Property and Liability Protection
- Annuities Tax Deferred - guaranteed income
- Mutual Funds - A better way to save and earn
- Government Securities Backed by U.S. Government, Presently yield over 11% APR

REAL ESTATE 272-3611

Home Phone
Roy Whitt-Broker 272-3058
Thursie Reid 272-5318
Joy Whitt 272-3058

"Come See Us - We Can Help You"

NATIONAL FARMERS UNION INSURANCE COMPANIES CHUBB

Free Gift Wrap Lay-A-Way Now

6.99 True Value Collector's Bank is a miniature 1918 Ford Roundabout of die-cast metal with cloth top and spoke wheels. 9386EO

3.99 14-in. True Value Indy Racer is ready to take on any course. Features sleek design and authentic detailing. C072

17.99 Each Pound Puppies* are lovable and huggable and need a special home. Complete with collar, puppy care sheet, more. 7805

VISA MasterCard

Fry & Cox

401 S. 1st 272-4511

Veterans Land Board Permanently Triples Veterans Benefits

The Texas Veterans Land Board made permanent a dramatic increase in benefits for Texas Veterans, benefits that will expand from \$20,000 to \$55,000, said Garry Mauro, Chairman of the Texas Veterans Land Board.

"By adopting these recommendations, the number of state benefits for Texas Veterans has been permanently tripled," Mauro said. "Because the programs are financed through the sale of federal tax exempt general obligation bonds, it doesn't cost Texas taxpayers a single penny."

In unanimous action Tuesday, the Texas Veterans Land Board agreed to make permanent a four-month trial program that broadens guidelines to allow qualified Texas Veterans to use all three—rather than only one—of the Texas Veterans benefit programs.

"This will allow Texas Veterans to participate in all three Texas Veterans programs, greatly increasing the state benefits now available to Texas Veterans," Mauro said.

What this means is Texas Veterans can now get a \$20,000 loan to buy a house AND get a \$20,000 loan to buy land AND get a \$15,000 home improvement loan to make repairs to their residence," Mauro said. "Let me urge all Texas Veterans who've always wanted to use more than one of our fine programs to act now to take advantage of our low interest rates."

In the past, Texas Veterans were limited to only one loan with the Texas Veterans Land Board. "Now, after overwhelming acceptance of the public and our Texas Veterans over the four-month trial period," Mauro said, "the board gave unanimous approval to the expansion of benefits."

A Texas Veteran who has already received one loan will now be eligible to apply for a loan from one or both of the remaining programs as well. For example, a Veteran who

Children Design Cards Raise Money For Patients

The Don and Sybil Harrington Cancer Center Circle of Friends is now sponsoring the annual sale of the "Caring Touch Collection." Five designs were selected from a Pan-handle-wide contest for school children. Where does the money go? According to Barbara Waligora-Serafin, who chairs the group's Financial Support Advisory Committee, funds may go to "any individual or families receiving cancer care services in the Amarillo service area." Over \$10,000 has been distributed to patients and their families.

At this point the group focuses on assisting persons struggling with the burden of non-medical, Waligora-Serafin said. "Not only is cancer medical care expensive, but one-of-pocket expenses can be extremely high. Of course this is true for all patients, but we are especially concerned with lower income patients who simply have no other source of support for such costs."

Typical non-medical needs of cancer patients are: travel expenses, food, shelter, clothing, home health care, and medications (other than chemotherapy). At this point, assistance is provided for crisis situations and/or on short-term basis.

Cards are now on sale through the Harrington Cancer Center and local community organizations. If any group is interested in assisting with this project, contact Charlotte Rhodes at the Harrington Cancer Center, 378-4673.

had already received a Texas Veterans land loan could now apply for a Texas Veterans housing or home-improvement loan.

--The Texas Veterans Land Program offers eligible Texas Veterans a \$20,000 loan at 8.75 percent to purchase a minimum of five acres.

--The Texas Veterans Housing Assistance Program offers eligible Texas Veterans a \$20,000 loan at 9 percent to apply to the purchase of a home.

--The Texas Veterans Home Improvement Program, the newest benefit program, makes available up to \$15,000 at 11.5 percent to make substantial repairs to a Veteran's residence.

To find out how to participate in these programs, Veterans can call toll-free to 1-800-252-VETS for assistance.

Three Way Honor Roll

First Six Weeks Grade Kindergarten

Jonathan Kindle, Scott Pollard, Joshua Robinson, Celia Garcia, Janice Martha & Victor Pina.

First

Elizabeth Duarte, David Graves, Russell Pollard, Renan Rodriguez, Joshua Tooley, Kamy Williams, Shane Cockrell & Jessie Lopez.

Second

T.J. Davis, Kyle Kindle, Hugo Luna, Melanie McCaul, Diana Salamanca, Ricky Medina, Carlos Rubalcava & Joe Tobar.

Third

Keith Kindle, Brittany Kirby & Olivia Martha.

Fourth

Natalie Barker, Chad Cockrell, Nick Duarte, Juana Garcia, Greg Medina, Marcelo Rodriguez, Lisa Salamanca, Erin Sowder, Rolando Suarez, Simon Tobar, Monty Turney & Joe Zapata.

Fifth

Melissa Bennett, Tony Haros & Roxana Rodriguez.

Sixth

Sammy Belez, Malisa Guillen, Barney Haros & Paul Williams.

Seventh

Denise Duarte

Eighth

Norma Rubalcava & Carrie Kindle.

Ninth

Sheila Tucker & Melinda Turney.

Tenth

Dolle Barker & Jarrod Sowder.

Eleventh

Kelly Tucker

Twelfth

Linda Belez, Charles Latimer, Monica Locke, Jose Rubalcava, Matt Sowder & Robert Zamora.

ENMU Offers Workshop

Eastern New Mexico University is offering a workshop on "Alcohol Education and Counseling" on Saturday and Sunday, Nov. 1-2. The workshop will meet in Room 104 of the College of Business on Saturday from 8 a.m. to 8:30 p.m., and on Sunday from 8 a.m. to 5 p.m.

Some of the topics and scheduled activities include "DWI Enforcement," "Alcoholics Anonymous in Action," "Affective and Psychosocial Components of Alcohol Abuse," "Group/Family Counseling," films, discussion, and question and answer sessions.

This workshop presents the basic facts regarding problem drinking and the essential components of education and counseling to achieve responsible drinking. The workshop director is Dr. Natividad Macaranas, ENMU professor of psychology.

Participants may receive one credit hour in psychology 468/569, or 1.5 continuing education units. The fee is \$47.

For more information, contact the ENMU Office of Continuing Education at 505-562-2165.

Eternal question:
Death—the end or the
beginning of life?

Exercise Care Buying Flood Damaged Vehicles

Because of recent flooding in the Midwest, Southwest and other areas, new car and truck dealers are warning consumers to exercise care in buying vehicles that may have been flood damaged, said Gene Fondren, president of the Texas Automobile Dealers Association.

"Lately, there has been severe flooding in several areas and some flood-damaged cars may be turning up in the Texas market," Fondren said. "Consumers should carefully inspect the car or truck they are considering buying for signs of water damage."

Fondren said anyone selling a flood-damaged vehicle should disclose any and all damage or impairments caused by water "no matter how much the vehicle has been reconditioned." Fondren suggested a five-point check list for looking for possible flood damage.

Consumers should check all dashboard gauges for accuracy. "Look for signs of water in the gauges," he said. "Beware. Any automobile that has been in water up to its dash is likely to be dangerous regardless of how much it has been reconditioned."

"Corrosion under the hood, inside and under the car bumpers, behind the hubcaps or around the gas cap indicates flood damage," Fondren said. Corrosion of metal may cause a weak spot.

Check lights, the windshield wipers, the turn signals, the cigarette lighter, the radio, the heater, fans and the air conditioner several times. "Make sure they work repeatedly," Fondren said. "Also flex some wires under the dash to see if

they bend or crack. Wet wires and rubber hoses will become brittle after they dry and they could crack or fail."

Start the car several times and "look for white smoke, which may mean that the engine has been cleaned recently. Drive the car to make sure it accelerates, shifts and stops smoothly. Mud or sand in the fuel, cooling or lubrication systems may cause extensive and expensive damage," Fondren said.

"Finally," Fondren said, "check the interior and the trunk for signs of mud or water." The back seat can be removed easily so the stuffing and the upholstery can be inspected. Also check the carpet for dampness.

"Your nose may be your best guide," Fondren said. "Musty odors, along with water marks, could be a sign that the upholstery, stuffing or carpet have been wet and may rot."

V.A. News

Q -- I am a member of the Selective Reserve. Does the Selective Reserve G.I. Bill allow me to pursue my high school equivalency diploma?

A -- No. Educational assistance under the Selective Reserve G.I. Bill is not available for elementary or high school training, deficiency or remedial courses, apprenticeships, on-the-job training, cooperative courses, farm cooperative courses, flight training, correspondence courses and graduate or post-graduate training.

Q -- I receive VA compensation and I wish to claim an adopted child as a dependent. What type of documentation does the VA require?

A -- You should provide the VA with a certified copy of the final decree of adoption or the adoptive placement agreement. In areas where court records of adoption are not readily available, a certified copy of the revised birth certificate showing the name of the veteran may be acceptable.

Miss Rachel Oliver named new Miss Black America.

Sudan Lions Met Oct. 8

Max von Roeder, Governor of Lions District 2-T-2, was the special speaker Wednesday, October 8, at the Sudan Lions Club. There were 12 regular Sudan Lions and 14 honored guests attending from Sudan, Littlefield and Snyder.

von Roeder first inducted two members, John Humphreys and Lee Ray into the club, encouraging them to remember the motto adopted in 1917 at the Lions first convention, "We Serve."

Following the induction, von Roeder held up a picture of Lions Club International President, Sten Akestam, who calls himself "the Skipper". Akestam chose the symbol of a Viking ship and the slogan "Bring Quality to Life" to symbolize his challenge, encouraging Lions to "step aboard the Viking ship and sail out in the sea of opportunity to help bring quality to life."

von Roeder stressed there are many Lions Club projects available to this club to help bring quality to life. Included are the Texas Lions Camp for handicapped children, the Leader dog school in Rochester, Michigan, where Lions can send any blind person to be paired up with a seeing-eye dog, the Lions War on Drugs, Youth Exchange, Girlstown, Boys Ranch, and the Lions Club International Foundation which gives emergency funds to worthy recipients. Through these and other programs, Lions can help bring quality to lives in this community.

von Roeder challenged the local Lions members with the question, "Is this community a better place to live because this Lions Club is here?" He concluded that bringing quality to another person's life, will come back to bring quality to our own lives.

Following the presentation by von Roeder, Lion Johnny Clayton, Deputy District Governor at Large, presented former Lion Tim Nix with the 100% President Award for his service in 1984-85 as President of the Sudan Club. Tim was also awarded a Lifetime Membership to Girlstown in Whiteface.

Sudan Hornet Bzzz

School was out Monday for a Holiday.

Bzzz

The Hornet Band had practice Tuesday night.

Bzzz

The candidates for homecoming queen are Cindy Brotherton, Kim Crawson, and Lorrie Gonzales.

Bzzz

FFA had a District meeting at Whitharrel Wednesday afternoon.

Bzzz

The Junior High football team played Petersburg here Thursday afternoon.

Bzzz

The JV football team played Farwell here Thursday night.

Bzzz

The Junior class looked at senior rings Friday morning.

Bzzz

The Varsity football team played Petersburg Friday night at Petersburg.

Bzzz

The JV Hornets were ready to face the Sundown Roughnecks Thursday night. With their skill and spirit, they stomped the Roughnecks with a score of 14-6.

George Salinas got the spirit going as he recovered a fumble on the 17 yard line. But no one could score the 1st quarter.

The second quarter started out with more determination than ever. We held them on their first possession, so they had to punt. With dynamic speed, Elliot King exploded into the end zone from the 10 yard line. The PAT was no good. But on the Roughnecks first play, the broke through and scored with only 31 seconds to go before half. The PAT was no good.

Both the Hornets and Roughnecks came out to win in the second half. Both teams had terrific defense throughout the 3rd quarter.

In the 4th quarter, Elliot King dashed into the end zone with 7:47 left on the clock. King ran for the PAT, and it was good. The final score was 14-6.

Junior High Hornets Lose 14-6
Breathaker
The Junior High Hornets lost a heart-stopping game against Anton Thursday afternoon.

Q. Lee, #41, started the 2nd quarter by returning a punt for

40 yards, but they could not seem to make a TD. At half the score was 0-0.

The Hornets came out to fight. During the 4th quarter Joe Flores rushed into the end zone with 7:54 left. The PAT was no good.

The Bulldogs rushed with their possession of the ball. They made a TD with 6:06 left. The PAT was no good.

With 1:14 left, Anton scored again. This time the PAT was no good.

The Hornets really got their heads into the ballgame. Q. Lee, #22, ran the kickoff return all the way to a TD, but the PAT was no good. The final score was 14-12.

Hornets Crush Bulldogs

The Sudan Hornets dominated the Anton Bulldogs Friday night. The Hornets crushed their confidence by beating them 27-0.

Before the Bulldogs knew what hit them, Johnny Taylor ran for a TD on the opening play. The PAT was no good. The Bulldogs could not get their stature back. On their first possession, they had to punt. The Hornets took advantage of the situation. Ronald Williams ran for a TD. The PAT was good.

During the 2nd quarter, Brent Kirkland was intercepted, but the Bulldogs could not move with the ball. They had to punt it. With only 30 seconds left, Brent Kirkland passed to David Wood for a TD. The PAT was good. This ended the second quarter.

At the beginning of the second half, there was an enormous downpour, but it did not dampen the Hornets' spirit. The Hornets could not get it in the end zone, but they still did a great job on defense. They held Anton all quarter.

The rain stopped by the 4th quarter, but it did not help the Bulldogs offense. Anton had the ball only 2 times. With 4:55 seconds left, Kirkland rushed in for a TD. The PAT was good. The final score was 27-0.

Legal

The chief trouble with this country is too darned many legal ways to steal.

-Constitution, Atlanta.

He Is

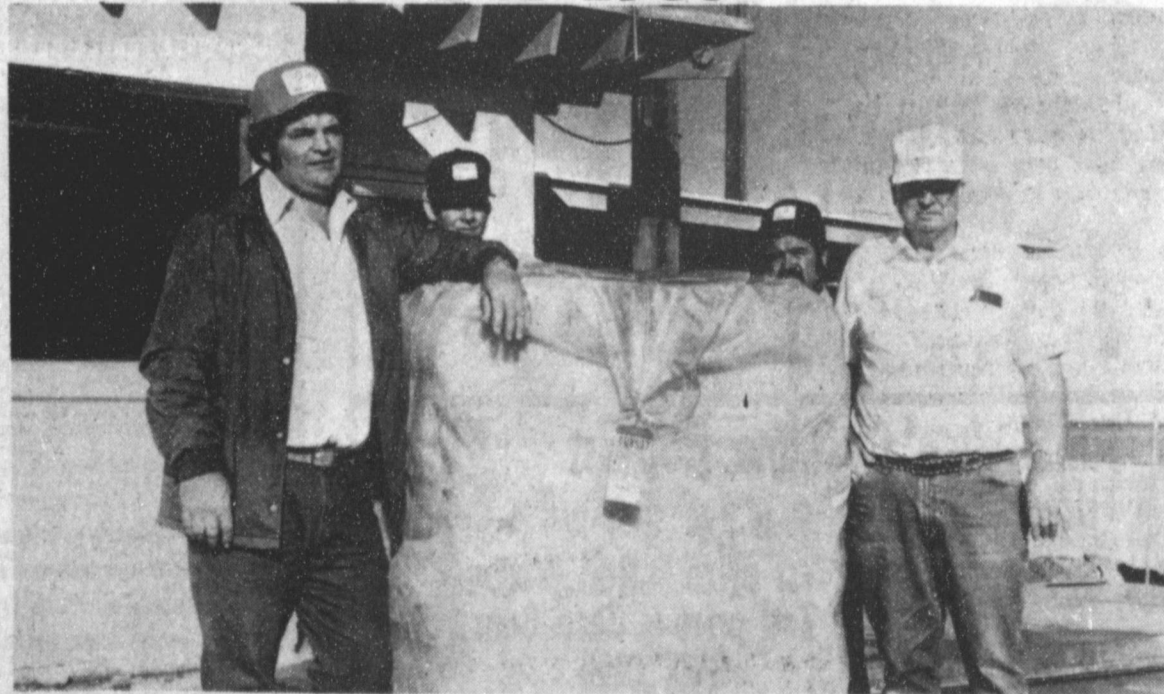
A citizen is a man who demands better roads, bigger schools, a new post-office, and lower taxes.

-Lumberman, Nashville.

Congratulations

Al Duesterhaus

For Producing The First Bale Of Cotton Ginned In Bailey County For 1986



FIRST BALE IN COUNTY -- Al Duesterhaus, left, brought the first bale of cotton for Bailey County to the Farmer's Co-op Association in Erochs, Saturday, October 18. Al planted Camd-E about May 13 on dry land in the Pep Community. The bale was ginned the first of the week and weighed 540 pounds. Also pictured, from left to right, are: Quinton Nickols, gin hand; Gilbert Zapata, gin hand; and Bob Newton, gin manager.

Bale Weighed 540 LBS.

Farmer's Co-op Assoc.

Of Enochs

Ed Scarbrough

Is now handling

all Hochheim Prairie Farm Mutual

& Casualty Insurance

formerly handled by Barbara Scarbrough.

For More Information Call:

Ed Scarbrough

806-293-5485

Bailey County Journal

Established March 31, 1963. Published by Muleshoe Publishing Co., Inc. Every Sunday at 304 W. Second, Box 409, Muleshoe, Texas, 79347. Second Class Postage paid at Muleshoe, Texas 79347.



1986
L.B. Hall, President & Publisher
Sammy Hall, Vice President & Controller
Celia Williams, News
Fylene Harris, Socky
Holly Milkup, Advertising
Lilla Nims, Bookkeeping

SUBSCRIPTIONS:
Muleshoe Journal and Bailey County Journal
Bailey and surrounding counties \$14.75
Muleshoe Journal and Bailey County Journal
Elsewhere in Texas \$14.75
Muleshoe Journal and Bailey County Journal
Outside of Texas \$16.50
Yearly by Carrier \$12.50
Advertising rate card on application.



ACCEPTING DONATION--Pam Atwood, left, is accepting Monica Henry's donation to Alpha Zeta Pi and will give Ms. Henry a ticket to be used in a drawing for a trip to Las Vegas, to be taken at the winners convience. For each \$5 donation you will be given a chance to win a trip, three days and two nights, air fair and hotel. The drawing will be held on Nov. 18. Donations may be made to any Alpha Zeta Pi member. Some of these proceeds will go to community activities such as the July 4th Kids Day Activities.

Marissa Newsom Feted With Bridal Shower

Marissa Newsom, bride-elect of Kevin Peterson, was honored Saturday with a bridal shower in the Community Room of the First National Bank in Sudan.

The table was covered with a white lace over pink cloth tied up with pink bows and centered with a burgandy and pink floral arrangement with pink votive cups in a brass footed candleabra, flanked on either side with tall pink tapers surrounded with burgandy and pink flowers.

Pink punch, cookies, mints and coffee was served from crystal and silver appointments. Burgandy and pink napkins carried out the decorations in the brides' chosen colors.

The registering table was covered with a white linen cloth and centered with a burgandy candle in a crystal ball surrounded with a burgandy and pink floral candle ring.

Angie Carson assisted in opening and recording gifts and Tosha, sister of the honoree also assisted.

Special guests included the mother of the honoree, Pat Newsom and her grandmother,

Mrs. Polly Hargrove both of Sudan; Mrs. Sandy Peterson and Mrs. F.L. Brown of Muleshoe, mother and grandmother of the prospective groom. Other special guests were her sisters and neices, Sonja King, Diedra and Courtney, Tosha Snell and Tony all of Lubbock, Nicole Newsom of Sudan and Aunt, Janelle Hargrove also of Sudan.

Hostess gift was a vacuum cleaner with the attachments. Hostesses for the occasion were: Elmarie King, Pam Bellar, Dora Black, Ann Carson, JoAnn Chester, Polly Chester, Mechele Edwards, Kathy Gatewood, Francis Groom, Virginia Harlin, Floy Arnold, Ann Hill, Kathy Humphreys, Barbara May, Yvonne Pierce, Connie Ray, Ginger Richey, Jan Smith, Jodee Tennyson and Pam Wiseman.

The merchants are already licking their chops over prospective Christmas dollars.

Creative Living

by Sheryl Borden

Three interesting topics will be presented on "Creative Living" on Tuesday, October 28 at 12 noon and repeated on Saturday, November 1 at 2:00 p.m. All times are Mountain Standard. A variety of citrus frozen desserts will be demonstrated by B.J. Doerfling, Supervisor of the Consumer Test Kitchen for Sunkist Growers in Van Nuys, CA. She will share several delicious and easy recipes for citrus frozen desserts, talk about the availability of lemons, and explain how to get more juice from a lemon. B. J. will also show how to use the lemon shells for serving containers.

There's a new approach to pattern alteration, and it's called the Repositioned Seam Allowance method. Della Potberg Steineckert, a clothing instructor at Brigham Young University in Provo, UT developed this system and she will explain how to make the necessary changes on the pattern pieces to accomplish whatever alterations are needed for each fitting problem.

Finally, we'll learn what can be done to evaluate and treat the problem of insomnia in the elderly.

On Tuesday, October 28 at 9:30 pm, Karen Dillion, a clothing instructor for Palmer/Pletsch Associates, will demonstrate custom tailoring vs. the use of fusible interfacings. Karen is from Fallbrook, CA.

The basics of microwave cooking will be presented by Nancy Boyle, Sharp Electronics from Paramus, NJ. And, finally, the paper bag lady, Butch Krutchik, will be back to offer more offbeat charm with paper bag art. Butch is from New York.

On Thursday, October 30 at 12 noon, "Creative Living" will present information on soft toys to stitch and stuff, and ways to handle personal stress.

Jean Benson is from Pasco, WA, and she makes all sizes, all kinds and all colors of soft, furry toys to stitch and stuff -- in fact, she's written a book by that name. It's a Farm Journal Craft Book, and it features more than 40 furry critters to delight children and adults. Jean's business is called "Crittter Crafts". She makes all of her own patterns and will show several examples of projects from this book.

How do you handle personal stress? The first guest on the show will be Mary Ellen Payne, the State Coordinator for the Family/Community/Leadership Project with the New Mexico Cooperative Extension Service in Las Cruces. She will talk about ways to handle personal stress, demonstrate a very simple exercise that can be done to relieve tight muscles, and discuss what stress does to us.

"Creative Living" is produced and hosted by Sheryl Borden. The show is carried on more than 95 PBS stations in the United States, Canada, Guam and Puerto Rico, and is distributed by Pacific Mountain Network, Denver, CO.

FRESH LEMONS...THE YEAR ROUND FAVORITE

Lemons are tangy, colorful, fragrant and available the year round. Good cooking and good eating are enhanced with fresh lemons...from appealing appetizers through refreshing beverages and salads, flavorful vegetables and fish entrees to delicious desserts.

EASY LEMON MERINGUE PIE
1 (3 oz.) pkg. lemon pudding and pie filling
¼ cup sugar
Juice of 1 lemon
1½ cups water
Grated peel of ½ lemon
1 (8-in.) baked pie shell

In saucepan, combine pie filling mix and sugar. Gradually blend in lemon juice and water until smooth. Stir in egg yolks. Bring to a full boil over medium heat. Boil 1 minute, stirring constantly. Add lemon peel and pour into baked pie shell. Top with meringue, sealing well at edges. Bake at 350 degrees F. for 12 to 15 minutes. Cool 2 hours before serving. Makes 6 servings.

MERINGUE
3 egg whites
¼ tsp. cream of tartar
6 Tbsp. sugar

Beat egg whites until foamy; add cream of tartar and continue beating to soft peak stage. Gradually add sugar, beating until egg whites are

stiff, but not dry.
REAL OLD FASHIONED LEMONADE
Juice of 6 lemons (1 cup)
¼ cup sugar or to taste
Ice cubes
4 cups cold water
1 lemon, unpeeled, sliced in cartwheels

In large pitcher, combine lemon juice and sugar; stir to dissolve sugar. Add remaining ingredients; blend well. Makes 6 cups (six 8-oz. servings). Variation: Substitute honey to taste for sugar.

LEMON SESAME BUTTER FOR VEGETABLES
¼ Cup butter or margarine
Grated peel and juice of ½ lemon
1 Tbsp. toasted sesame seed
¼ tsp. onion or garlic salt
Cooked vegetables

In small saucepan, melt butter. Add lemon peel, juice, sesame seed and salt; heat. Serve over cooked vegetables. makes about ½ cup sauce.

Sudan Booster Club News

The Sudan Booster Club met Monday night for their regular meeting. Gene Bartley, President, called the meeting to order and Bob DeLoach, project chairman, gave an updated report on the club's projects.

Coach McAdams reviewed the film and asked questions afterwards. He commented on the upcoming game with Petersburg and asked that everyone come out and support the team for this very important district game.

Patty DeLoach served refreshments to 17 members in attendance. Verenna McAdams will be serving next week.

The club is still selling Booster jackets. You can place your order with SPS.

Sudan Fire Department Auxiliary

The Sudan Firemen's Auxiliary met October 13th for their regular monthly meeting.

An excellent program on ceramics was presented by Louise Legg of MeMa's Place. Plans were made for the concession at the Sudan and Bovina football game. The upcoming Halloween Carnival was discussed with tentative plans to have a project. The pecans are in and were distributed to members and should be delivered soon. Members will be taking more orders thru October. LaRhonda Hill served refreshments to other members present: Norma Burnett, Louise De LaRua, Ana Carson, Shonda Hill, Dorothy Hill, Linda Summer, Jimmie Lou Humphreys, and Mary Ann Gordon.

Serve over: Cooked asparagus, broccoli, cauliflower, lima beans, summer squash (zucchini, yellow, pattypan), spinach.

Journal Policy

A processing charge of \$3 is made when a photo accompanies any wedding, engagement, or anniversary with the exception of anniversaries of 50 years or more.

Five dollars will be charged for any shower picture taken by the Journal and \$3 charged for any shower picture accompanying a story. Pictures may be picked up after the article appears in the paper.

Wedding, engagement, and anniversary stories must be in the Journal office by Monday noon for the Thursday paper, and by Thursday noon for the Sunday paper.

After that time, stories will be run on a space available basis. Any wedding more than two weeks old, when received, will be edited and only the basic information will be included.

Shower pictures will not be taken without a 24 hour notice and copy must be in the office by 5 p.m. Monday for the Thursday paper and 5 p.m. Thursday, for the Sunday paper.

In Fashion

If you're an avid jogger or walker, use care in selecting shoes. Be sure your shoes have a soft lining and cushioned insoles for comfort.

EXCELLENT OPPORTUNITY WANDA'S HOLIDAY OF FASHIONS

FOR SALE

WELL ESTABLISHED. GOOD CUSTOMER BASE. EXCELLENT POTENTIAL. GOOD LOCATION. OWNER WILL FINANCE TO QUALIFIED BUYER. FOR FURTHER DETAILS CALL (505) 762-1201 OR (505) 763-7393 FOR APPOINTMENT.

Holiday Fashions

Mon-Sat **Ben Franklin** 8 a.m.-8 p.m. Sunday 12-5 p.m. 2104 W. Amer. Blvd. 272-3855

Clorox 1 gallon \$1.00 (1st 2 - thereafter \$1.27)

Cascade 50 oz. box \$2.00 (Reg. or Lemon scent)

Kleenex Tissue 73¢ (175 count)

Swiss Miss Hot Cocoa Mix Milk Chocolate, Mini Marshmallow, Lite Cocoa Mix 12 Envelope Box \$1.33

Halloween Costume Contest Friday Oct. 31 6 p.m.

Toddler - 4 yrs.	1st prize - Red Wagon
	2nd prize - Care Bear
5 yrs. - 8 yrs.	1st - BMX Bike
	2nd - Fluppy Dog
9 yrs. - 13 yrs.	1st - Sharp Cassette Player
	2nd - Stage II Trivia Game

Hershey's Milk Chocolate, Almond Bars - 12 oz. bag
Snickers, Milky Way, 3 Musketeers, M&M's (plain or peanut) 1 lb. bag \$2.22 each
Mr. Goodbar, Krackel, Nestle 100 Grand - 12 oz. bags

52 piece Bubble Gum bag	99¢
Fresh, Hot Buttered Popcorn Regular	39¢
Jumbo	55¢
Texas Size	75¢

Is someone else waiting for your Government check to arrive?

Over a million Government checks are reported lost or stolen every year. Don't take chances with yours. Sign up for Direct Deposit. Your payments will go straight into your account. Quickly and safely. Ask about Direct Deposit wherever you have a checking or savings account.

Direct Deposit
You'll never have to wait for your money.

Muleshoe State Bank
Each deposit insured to \$100,000
FDIC

ONCE-A-YEAR VALUES! RCA WEEK

NOW'S THE TIME TO BUY RCA - THE LEADER IN HOME VIDEO

Come in and see a festival of values devoted entirely to the kind of quality, reliability and performance only RCA can offer.

RCA Video Cassette Recorder with Infra-red Remote Control ONLY **399⁹⁵**

19" diagonal XL-100 Color TV with Push-button Remote Control ONLY **399⁹⁵**

SPECIAL BONUS OFFER! GET A CUDDLY RCA NIPPER FREE WITH AN RCA REMOTE CONTROL TV OR VCR

Wilson Appliances, Inc. 272-5531
We Have Trained Technicians To Service Our Products

Open Mon-Sat 8-6 117 Main



OCTOBER BIRTHDAYS—Four residents of the Muleshoe Nursing Home celebrated their birthdays during the month of October and were honored with a birthday party Thursday afternoon in the day room of the nursing home. Needmore Community Club hosted the party and Decorators Nursery and Floral provided the flowers. Mrs. Odessa Shanks, pianist, accompanied the group as they sang the birthday song and gospel music. Those having birthdays included (L-R) Lynn Brathcer, who was born Oct. 28, 1908; Retta Shipp, born Oct. 23, 1910; and Myrtle Sullivan, born Oct. 16, 1894. Not pictured Murphy Berry, born Oct. 21, 1906.

Dian Thomas To Be In Portales, Nov. 6

You have seen her on the NBC Today Show. She has appeared on such talk shows as Johnny Carson, Phil Donahue, Mike Douglas, and Good Morning America. And, she has been a guest on a multitude of other network programming. Now, you can see Dian Thomas in person in Portales, N.M. on Thursday, November 6 at 7:00 p.m. (MST), in the Eastern New Mexico University, College of Business building, Room 104. This event is sponsored by Portales Woman's Club and pre-registration is \$10.00 per person, if paid by October 31. (The charge will be \$15.00 per person at the door.) Registration can be mailed to Mona Belmont, 516 E. 17th, Portales, N.M. 88130.

For eight years, Dian Thomas has bettered the day, the show, or event for millions of people worldwide. Her success? A commodity perhaps not common enough -- fun. Simply fun. Dressed in a tip for easier living, a hint for a livelier camping trip, an outrageous surprise for a child's birthday that is budgetwise, a zany idea for Halloween -- that's Dian.

It isn't complicated to Dian. Her creativity in making the common place uncommon has to do with the way her mind works. Her theory is "Why not do something unusual with usual items?" Instead of buying solutions, why not create a few? Dian simply has a great time giving people ideas for great times, great trips, and really good food.

Perhaps the best part about what Dian does is Dian. She's laughing while she demonstrates cooking hotdogs on a pitch fork or frying an egg in a paper sack. She clearly enjoys her cleverness and the audience

reaction. That's part of the fun. The charisma? Dian Thomas is just what you see on television. The most uncontrived, natural, clear person you're likely to meet. And, the reaction? She communicates clever strokes of creativity to an amazingly diverse cross-section of people who, as her success indicates, enjoys every minute of it.

Dian Thomas has a way of bringing the best in living, the fun of creativity, and the welcome relief from highly stressful lifestyles to a wide range of people who discover a little about priorities each time they see her. Dian is entertaining. She's clever. But most of all, she's fun. And, the best part is that she will be in Portales for an exciting hour and a half presentation.

Don't be left out! For more information, you can contact Sheryl Borden, President of Portales Woman's Club, at 505-356-8700 (after 5:00 p.m.) or 505-562-2112, during the day.

RECIPE

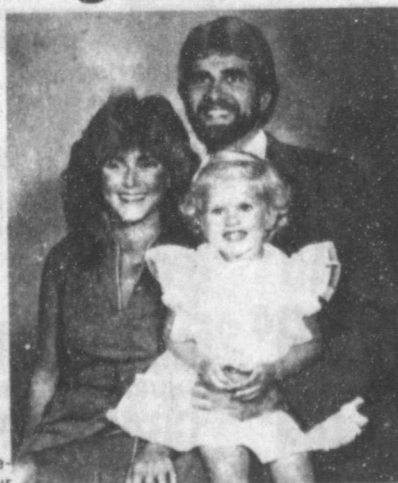
By Sarah Ann Sheridan

Pear Marmalade

- 1 pk of pears grated
- 5 lb sugar
- 1 qt grated pineapple
- 1 pt marachino cherries

Mix pears and sugar. Let boil 3 hours. Add pineapple and cherries which have been cut fine. Let cook 5 minutes. Pour into sterilized glasses and seal.

**11 x 14
Wall Portrait
in
Living Color**



Never before offered at this Price!

AT **99¢**
Plus 76¢ for handling

This very special offer is presented as an expression of our thanks for your patronage.

Compare at \$25.00!

- FREE to all Senior Citizens
- NO EXTRA CHARGE for groups
- LIMITED OFFER one per subject, one per family

Damron Drug

Wed. Oct. 29th 10-1 & 2-5
308 Main Muleshoe, Texas

My Trip To Australia

My trip to Australia is one that will be remembered forever. I left Lubbock International Airport on July 10 heading for the Land Downunder. My flights consisted of: Lubbock to Dallas Love Field where I took a bus to Dallas-Fort Worth. I left DFW for Denver, Colo. on Continental Airlines, then on to Los Angeles International, then on to Honolulu, Hawaii. From there we flew into Sydney, Australia and on to Adelaide, South Australia on Australian Airlines. Having crossed the date-line we lost a day in our Journey.

Adelaide began the most unforgettable six weeks of my life. My host mother from the Soroptimist International Club met me at the airport. I stayed with Margaret Trudinger the entire six weeks.

I believe that I saw the most beautiful sights in the world, mile after mile of Eucalyptus forests, the calmest lakes, and an ocean shore that was the most beautiful blue colored surrounded by the white sands of the beach. Being their winter season, the temperatures were mild. It was too cold to water ski, but I attempted it anyway, with a wet suit.

I met many people and made lots of new friends. Speaking of the people, they remind me of Sudan even though there are over one million people in the city of Adelaide. They are easy going and have no worries about rushing around. On the streets they were friendly and courteous. I found that the Australian people tried to model their lives to be American. They often called me a "Yankee" just because I was from the U.S., but I explained to them that the "Yankee" was from the north and that I was a "Southerner". When I left, my new friends were calling me a "Rebel" or "Southern Gentleman". They were extremely curious about the U.S. I was asked often about President Reagan and the Big Yacht Race, most of all how big things are suppose to be in Texas. In a way I believe they were disappointed when they learned that the state of South Australia is bigger than Texas and that the continent of Australia is bigger than the continental U.S.

A few facts of Australia-One that is quite incredible is that for a city of over one million people, there was no slum area. Houses are cheap compared to the U.S. Australia is populated by 15 million people of which 7 million are immigrants mostly from Italy, Greece, and Germany. They drive small cars on the left hand side of the road. Drinking age is 18. Higher

education is free upon qualification. The seasons (winter, summer, etc) were just opposite. Their main diet consisted of lamb and fish for meat and vegetables that are in season.

A few of the things I did were-help on a roundup, not of cattle, but sheep; traveled over most of South Australia; visited a high school and private high school; gave talks about Texas and U.S. to service clubs.

There were 78 Texas kids as well as 80 kids from Arkansas that participated in the Texas/Arkansas - South Australia Young Exchange celebrating 150 years anniversary.

A few Australian terms: "G'Day mate," "Good on ya mate," "No Worries."

Odd facts: I was offered \$150.00 for my letter jacket. Ford is the major car bought. A major highway, which was called a freeway compared to our FM 303. They call a hood of a car a bonnet, the trunk of a car is the boot, a traffic circle is a round a bout, and cigarettes are fags.

Before returning we were able to visit and tour Sidney and Auckland, New Zealand. On the

New Arrivals



Brant Sterling Wedel

Jami Lachelle Wedel, 16 months old, would like to announce the arrival of her baby brother, Brant Sterling. He was born to Susan and Jimmy Wedel of Muleshoe, October 21 at 12:15 p.m. in the Methodist Hospital in Lubbock.

Brant weighed 6 pounds and 7 ounces and measured 21 inches in length.

Grandparents are Mr. and Mrs. James P. Wedel of Muleshoe, and Mr. and Mrs. Don R. Kidd of Lubbock, and a great grandmother Mamie Kidd of Lubbock.

flight from New Zealand to Honolulu we crossed back over the date line and gained our day back that we had lost. We had a good flight home, everyone was tired but had a lot to talk about, each had to exchange their experiences. I made a lot of new friends which I am grateful. I was glad to get back on Texas soil that Sunday morning with my prized Australian souvenirs, (opals and black hat.) If I had the opportunity again, I would go back to Australia.

I want to thank the Lions Club for making this opportunity possible and my having the trip of a lifetime.



GORDON MARTIN

What really flatters a man is that you think him worth flattering.

-George Bernard Shaw.

When he who everyone else flatters, flatters me, I then am truly happy.

-Samuel Johnson.

Miss Texas U.S. Pageant In Dallas

Applications are now being accepted from girls 13 through 19 for the 1987 Miss Texas U.S. Teen Pageant.

The Texas winner will receive \$300 in cash, partial four year college scholarship, all expense paid trip to the national pageant including airfare, watch, diamond pendant, color portrait, crown, banner, trophy, and a host of gifts and products.

The Texas pageant will be held in Dallas at the airport Amfac Hotel. Judging is based on poise, personality, and school and community involvement.

The Texas pageant will be held in Dallas at the airport Amfac Hotel. Judging is based on poise, personality, and school and community involvement.

Over \$100,000 in cash and tuition scholarships will be offered at the national pageant. Miss U.S. Teen will receive a \$5,000 cash scholarship, a four year college scholarship, including, one week Caribbean vacation at Frenchmen's Reef Resort in St. Thomas, Virgin Islands, watch, fur coat, diamond pendant, perfume, thousands of dollars in products and gifts, complete modeling portfolio, wardrobe, T.V. and personal appearances, crown, banner, trophy, and a year of travel and excitement. The national pageant will be videotaped for television.

For further information, contact: Carole Clements, National Director, Miss U.S. Teen, P.O. Box 1299, Auburn, Al 36830 or call (205) 745-6875.

HALLOWEEN HUL-LA BAL-LOO!

We Have Those Halloween Balloon Bouquets For Your Parties!

Balloon Creation

109 E. Ave. B 272-4152

Annex Sale

(Old Western Auto Building)

Home Furnishings Open 8-6 Childrens Savings

20% to 50% off

Mens Ladies Reduced Prices

Annex Sale Will Run

Mon. Oct. 27 - Sat. Nov. 1

ANTHONY'S

272-3478 Sun. 1-5 Mon. - Sat. 8-6 321 Main

Caring Parents Should Immunize

Unlike children in the past, today's youngsters don't have to suffer from common childhood diseases and their consequences, if they receive immunizations. Still, many parents don't get shots for their children. Why?

Some parents mistakenly believe that childhood diseases are under control, so there is no need for immunizations. That's not true. Only smallpox is controlled in the country. Children can still get mumps, measles, and even polio.

Other parents simply don't know about the many diseases that vaccinations can prevent, especially the newer class of immunization such as measles and mumps. Parents may believe that because they had these diseases, it's natural and normal for their children to have them too.

A few parents think possible side effects from immunizations outweigh the risks of childhood diseases, when the opposite is true.

The rate of immunization for young children has fallen and as a result, disease rates have gone up. For example, the incidence of pertussis (whooping cough) in Texas increased 532% from 1984-1985. Almost a 3rd of the youngsters who got the disease had no history of immunizations.

Although the state of Texas requires children to be immunized before enrolling in kindergarten, parents shouldn't wait that long. Check with your doctor or community health clinic to see that your child has the necessary immunizations for good health.

If you have trouble keeping track of your children's immunizations, call or write to County Extension office, 300 S. 1st Street, Muleshoe, 79347, for a copy of "Family Health Medical Record", a booklet for recording important medical information. Deana Finck, CEA-HE

Tax Laws

Con't From Page 1

effective for equipment placed in service after December 31, 1985. There is a transition rule for contracts entered into before 1986.

ITC on transitional property and ITC carryovers is reduced by 35% for tax years beginning after July 1, 1987. For taxpayers with tax years that straddle July 1, 1987, ITC will be subject to a partial reduction. Example: a December 31, 1987 year-end will have ITC reduced by 17.5%.

For transitional property placed in service after December 31, 1985, the basis must be reduced by 100% of the reduced ITC, rather than the 50% of ITC as under current law.

Depreciation. New depreciation rules will limit the write-off to seven categories of assets. Essentially, the depreciation periods have been lengthened, but bigger percentage write-offs are permitted in the first years.

Some short-lived assets are depreciated over three years. Automobiles and light trucks are written off over five years, compared to three years now. Most manufacturing equipment will be depreciated over seven years, compared to five now. Some longer-lived equipment will be written off over 10 years.

Most equipment depreciation must be calculated by the 200% declining balance method, which allows faster depreciation in the first years after an investment is made.

Investments in residential rental property must be written off straightline over 27 years, instead of the current 19 years. Nonresidential real estate, will be depreciated over 31 years. These rules apply to property placed in service after December 31, 1986.

The first-year write-off of assets under Section 179 increases to \$10,000 from \$5,000.

Natural Resources. Oil and gas producers retain most of their write-offs. The one-year write-off for certain intangible costs of drilling for oil and gas was retained, although 30% has to be amortized straight-line over five years.

The business solar energy credit is retained at 15% for 1986, 12% in 1987 and 10% in 1988. The geothermal credit is also extended to 15% in 1986, and 10% in 1987 and 1988. The credit for wind projects expired.

Corporate Minimum Tax. A company that uses write-offs to reduce its tax liability will be subject to the alternative minimum tax if AMT is higher than the ordinary tax. The AMT is 20% of alternative minimum taxable income.

An exemption of \$40,000 is allowed for small businesses, but the exemption is phased out beginning with more than \$150,000 in taxable income and is eliminated entirely at \$310,000.

Tax preferences include: 1987 through 1989: 50% of the excess of pre-tax book income over the alternative minimum taxable income.

After 1989: 75% of excess of current adjusted earnings over the alternative minimum taxable income.

Tax exempt interest on newly issued private activity bonds effective August 7, 1986 or September 1, 1986, depending on the bonds.

ITC can be used to offset 25% of AMT.

Dividends. Dividends paid by a corporation will remain non-deductible. Corporations can now deduct 85% of the dividends they receive from domestic corporations. That amount is cut to 80% in the new law.

Tax planning tip: Despite the reduction, consider deferring the receipt of dividends to 1987 to take advantage of the lower tax rate.

R&D Tax Credit. The credit allowable under current law for

increases in certain research and experimentation expenditures will be extended for three years by the new law. The credit will be cut from 25% to 20%, and qualified expenditures are modified.

Accounting Changes. The law cuts back on the use of the cash method of accounting by most businesses except farmers, timber businesses, qualified personal service corporations and companies with under \$5 million in annual gross receipts. It also requires amortizing costs such as those incurred in producing inventory, construction costs and interest on debt to finance construction.

The law limits the use of the installment sales method of deferring tax. The bad-debt deduction for both financial and nonfinancial institutions is now allowed only for actual losses.

Partnerships and S corporations are required to adopt the same tax year used by the principal partners, or partners owning the majority of profits and capital, effective for tax years beginning after 1986. When the new law requires a change in income of the partners, the adjustment is ratable over four years.

Rehabilitation Tax Credit. The law reduces the tax credit for rehabilitating old buildings. For nonhistoric buildings placed in service before 1936, the credit is 10%, the credit is 10% of rehabilitation costs. For certified historic structures, the credit is 20%. These rates apply to rehabilitation completed after December 31, 1986.

TARGETED JOBS CREDIT. The targeted jobs credit has been extended for three years for employers who hire economically disadvantaged individuals. The extension, which provides a 40% credit on first-year wages, is retroactive to January 1, 1986. The credit is not available if the employee worked fewer than 90 days - or 14 days for summer youth employment.

TAX-exempt bonds. States will be limited in the amount of mortgage-revenue and private-purpose bonds that can be issued. Initially, the limit is the greater of \$75 per capita or \$250 million; that will drop to \$50 per capita or \$150 million after 1987. Hospitals, universities and solid-waste facilities are exempt from this provision.

Industrial development bonds financing private projects like sports facilities are no longer tax-exempt. Provisions applicable to bonds generally apply to bonds issued after August 15, 1986. However, there are numerous transitional exceptions.

Income from newly issued, private-purpose bonds will be taxed under the regular tax rates. Income from tax-exempt, private-purpose bonds will be subject to the alternative minimum tax. Banks can no longer deduct interest expenses used to purchase and carry tax-exempt bonds. Property and casualty companies may be taxed on income from tax-exempt bonds.

The law also limits fees paid to lawyers and underwriters dealing with tax-exempt issues.

CONCLUSION. Every effort has been made to be accurate, but this is only a summary of complex tax legislation and interpretation can vary. While the law has been called a great reform, it does not promise tax savings for all. In fact, many taxpayers will experience a tax increase, thanks to the blended rates and curtailed deductions scheduled for 1987.

The phasing out of certain deductions and other tax changes make tax planning more important this year than ever before.

If you are in doubt about a transaction, you will be wise to consult your tax professional. The article next week will cover what to do before year end.



SUPERIOR RATING—Jim Swanner, Administrator of Muleshoe Nursing Home, was notified this week that the Muleshoe Nursing Home had again qualified for a Superior Rating, as a result of a recent inspection of the nursing home by the Texas Department of Health. This superior rating will remain valid until a re-determination is made pursuant to rules and procedures governing grading. Swanner and Joy Stancell, activity coordinator at the nursing home are admiring the certificate which is now hanging in the nursing home.

Young Seedlings Now Available

The Blackwater Valley SWCD is again providing reasonable priced windbreak tree seedlings for wind erosion control, stated Warren Givens, Soil Conservation Service Technician.

Farmstead windbreaks reduce heating and cooling costs in the home, while increasing property values. A two or three row windbreak creates an environment that is beneficial to wildlife and people year around. Windbreaks reduce wind speed, also snow accumulation around the house, and will lower heating costs. In summer months the trees provide shade to help reduce cooling costs.

The species with rapid growth rates that are most adaptable to Bailey County are, Red Cedar, Arizona Cypress, Afghan Pine, Honey Locust and Green Ash.

Windbreak tree seedlings need protection from rodents

Muleshoe...

Con't From Page 1

and customs and received special training in human relations.

In addition, airmen who complete basic training earn credits toward an associate degree through the Community College of the Air Force.

Julius R. Briscoe, son of Pearl Johnson of Muleshoe, has been promoted in the U.S. Air Force to the rank of senior airman.

Briscoe is an electronic communications equipment systems specialist in West Germany with the 1964th Information Systems Group.

He is a 1981, graduate of Muleshoe High School.

Jobless rate rises to 7 percent in September.

Homecoming...

Con't From Page 1

Day", Wednesday was "Cowboy Day", while Thursday was "Kiddy Day" and all of the students dressed like little kids. Friday was "Sunglasses and Bandana Day". Friday's Pep Rally and football game concluded the homecoming activities for the 1986-87 school year. The seniors served a chicken and fish dinner before and after the game.

Mules...

Con't From Page 1

Littlefield	7 0 7 14-28
Muleshoe	0 0 0 6-6
	<i>Litt Mule</i>
First Downs	17 10
Rushes-yards	344 91
Passing yards	137 211
Passes	10-26 46-15
Punts	5-141 7-245
Fumbles Recovered	1 0
Penalties-yards	4-50 2-30

Individual Leaders

Rushing-Littlefield, Williams 8-96, Heffington 10-95. Muleshoe, DelToro 9-41, Bessire 10-40.

Receiving-Littlefield, Farmer 3-34, Nelson 3-22. Muleshoe, Bessire 5-72, Bussey 5-54.

Sudan News

by

Evelyn Ritchie

Visiting with Mr. and Mrs. Bobby Carson and Angie has been her sisters, Arlene Grigsby of Optima, Olka., and also Mrs. Jane Ball of Arlington. They were also here to be with their mother, Mrs. Frieda Cunningham who has been hospitalized in serious condition at St. Mary's Hospital in Lubbock. It was reported Thursday morning that Mrs. Cunningham is improving slowly.

Homecoming Bonfire will be held on Wednesday night instead of Thursday, this year. It will begin at 9:00 p.m. behind the football stadium.

Come on out and help boost the Hornets to a victorious Homecoming!!!!

and strong winds the first year, according to Givens. Wooden shingles on three sides for wind protection and net wire for rodent protection usually solve these problems.

Small trees, during the first three years of growth, need supplemental watering. A trickle or drip irrigation system will insure a good survival rate for the trees by applying the right amount of water near the root zone.

Drip irrigation systems are also available through the Blackwater Valley SWCD. For more information you may contact Warren Givens, SCS Technician, at 111 E. Ave. D. Muleshoe.

Gene Berngardt

Named Station Manager

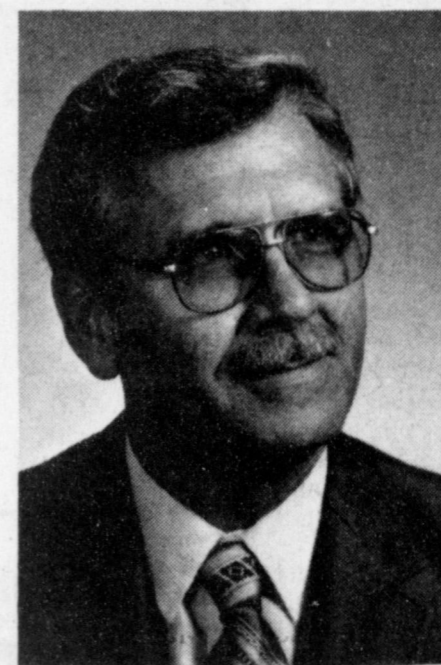
Gene Bernhardt, controls superintendent at Southwestern Public Service TOLK Station power plant since 1980, has been named manager of SPS' Cunningham Station power plant near Hobbs, N.M.

He previously worked at Cunningham as an instrument journeyman and foreman from 1965 to 1975.

Bernhardt began with SPS in 1960, as a plant operator at the former Tuco power plant near Abernathy. He has also help positions at Plant X near Earth and at Harrington Station near Amarillo. He and his wife, Marilyn, have two sons.

Cunningham Station is a 281,000-kilowatt, natural gas-fueled power plant 12 miles west and one mile north of Hobbs. Its initial generating unit went on line in 1957.

Southwestern Public Service Company primarily provides electric service to a population of approximately one million in a 52,000-square-mile area.



Gene Berngardt

Soviets sign 5-year agreement to buy grain from Canada.

Yuri Orlov, Soviet activist freed arrives in U.S.

Contra supply plane shot down, American survivor captured.

I would Appreciate Your Vote & Support In The November 4, 1986 General Election Rudolph Moraw Bailey County Commissioner Precinct 4

Pd. Pol. Adv. By: RUDOLPH MORAW

AUCTION SALE

Saturday November 1 10:30 a.m.
Old John Deere Building 1516 American Blvd. Muleshoe
Items For Sale Will Include

- Shop Equipment
- Lathe
- New Parts
- Accessories/Used Parts
- Autos
- Office Equip

TERMS: Cash (Checks Accepted)

All purchases must be paid for on day of sale. While descriptions are believed correct, the Auctioneers or Owners make no warranties or guarantees as to the genuineness, authenticity or, or defect in any lot and will not be held responsible for advertising discrepancies or inaccuracies. All sales are final, when awarded to successful bidder. Buyer accepts full responsibility for all purchases made and hold the Auction Company and Owners free of any liability in the event of theft or disappearance of any items purchased.

ANY ANNOUNCEMENT MADE BY AUCTIONEER SUPERSEDES ANY PRINTED MATTER PERTAINING TO THIS AUCTION

JAMES and BUTCH PRIEST — AUCTIONEERS

James Priest & Associates - W & J Auction

LICENSE NM 50154640 OUR KNOWLEDGE IS YOUR SECURITY™

505)763-7311 - 1009 E. 1st - Clovis, N. M. 88101 (505)762-9249

Dr. Jack McCarty

ANNOUNCES THAT HE IS NOW IN PRIVATE MEDICAL PRACTICE OF FAMILY MEDICINE, OBSTETRICS, ALLERGIES, FLIGHT PHYSICALS AND PEDIATRICS. HIS OFFICE IS STILL LOCATED AT

WEST PLAINS MEDICAL CENTER 708 S. FIRST MULESHOE, TEXAS

Hospital Affiliation
West Plains Medical Center
South Plains Hospital - Amherst

Office Hours
Weekdays 9-5 And By Appointment 272-5041

Sudan News
by
Evelyn Ritchie

Arlene Grigsby of Optima, Okla., visited recently and was here to meet her new grandson, Dagan Lee Provenge, new infant son of Mr. and Mrs. Darren Provenge and also to be with her mother, Mrs. Freida Cunningham who has been hospitalized at St. Mary's Hospital in Lubbock.

Jeff Taylor was a weekend visitor with his family, Mr. and Mrs. Gail Gregg and family.

Mary Williford of Abernathy visited Sunday with her father, Clayton Wells

Donald Doty visited during the weekend with his parents, Mr. and Mrs. Wayne Doty.

Weekend visitors with Mr. and Mrs. Jay Ford were his parents, Mr. and Mrs. Bob Ford and they brought their daughter, Mackelyn, home after she spent the past week here in San Angelo with them. Jay had been a patient in the Amherst hospital for a few days.

Christa and Danielle Nettles of Lubbock visited during the weekend with their grandparents, Mr. and Mrs. Glen Cardwell.

Mrs. and Mrs. L.S. Fields visited recently in Stephenville with their son, Gary, who is a student at Tarleton State University there.

Mr. and Mrs. Elray Rasco and Gayla were in Ruidoso, N.M. during the long weekend holiday from school.

Six year old Dustin and 3 1/2 year old D.J. Provenge announces the arrival of their new brother, Dagan Lee who was born at 5:23 p.m. Wednesday, Oct. 8, in the Amherst Hospital.

Dagan Lee weighed 9 lbs. and 10 oz. and was 20 inches long. Their parents are Mr. and Mrs. Darren Provenge of Sudan and grandparents include; Mr. and Mrs. Theron Hill and Bud Provenge all of Sudan and Arlene Grigsby of Optima, Great grandparents include; Mr. and Mrs. Herman Welkener and Mrs. J.V. Hill all of Sudan and Mrs. Frieda Cunningham of Littlefield.

Mr. and Mrs. Billy Chester have returned from visiting their daughter, Mr. and Mrs. Dale Masten and family in, Evans Co.

Visiting for the past several days with Mr. and Mrs. Joe Kent has been her mother, Mrs. Maurine Barnett and aunt, Eloise Boyd both of Arlington. They left Wednesday morning to go back to their homes.

Visiting during the weekend with Mr. and Mrs. David Quisenberry and girls were her dad, Jerry McKibbin of Tahoka.

Sudan and area received some winter during the weekend. It snowed-although it did not stick to the roads or streets it did snow and the temperatures were in the low 30's. Much damage was done to the crops with some reports of total damage done to many cotton farmers.

West Plains Hospital Report

PATIENTS IN WEST PLAINS MEDICAL CENTER, INC.

OCTOBER 23
Debbie Lueras, Nellie Garza, Chris Reyes & Modesto Garcia.

OCTOBER 22
Debbie Lueras, Nellie Garza, Chris Reyes & Modesto Garcia.

OCTOBER 21
Debbie Lueras, Gene Davis, Nellie Garza, Jay Burge & Modesto Garcia.

**I Would Appreciate Your Vote
And Support In The
November 4, 1986
General Election
Gordon H. Green
Democratic Candidate For County Judge
Bailey County, Texas**

Pol. Adv. Pd. For By Gordon H. Green

Mary Hill Davis State Mission goal has been set and offering will be extended through the month of October.

Young Adults Bible study will be held Thursday at 7:30 p.m. in the home of Mr. and Mrs. Rick Hill.

Work is underway for the new carpet and new pew cushions. Worship services will be held in the Fellowship hall Sunday. More money is needed to help cover the cost of the re-upholstering and carpet.

Mr. and Mrs. Sam Serratt of Lovington, N.M., visited last week with Louzell Serratt.

The Homecoming Bonfire will be held Wednesday night at 9:00 p.m. instead of Thurs. Come on out and boost the Hornets to a Homecoming victory.

Mr. and Mrs. Tom Rigsby and Kelly have returned home from Austin where they went during the weekend to attend the wedding of Julie's sister.

Sherry Capers has been in Dallas this week to take her state exam following her nursing training.

SUDAN OCT 19 HOME-COMING QUEEN CANDIDATES FOR 1986-87 are:

Kim Crowson, Cindy Brotherton and Lorrie Gonzales.

Lorrie Ann Gonzales was among the finalists for Queen candidates, and is a senior and the daughter of Mr. and Mrs. Joe Gonzales. She has been active in Band, basketball, and FHA. She has also been a cheerleader for two years. She was chosen as class favorite her freshman year and was also chosen as class representative in her junior year. Lorrie attends the Immaculate Conception church in Muleshoe.

She will be escorted by her brother, Danny John Gonzales who is also a senior.

Sonja King, Diedre and Courtney and Tasha Snell and Tony of Lubbock were here during the weekend and attended the bridal shower for their sister, Marissa, bride elect of Kevin Peterson, of Muleshoe.

Mr. and Mrs. Marvin Tollett have returned from visiting in Fort Worth with their grandson, Raymond Shafer who is a student at Parkland Hospital in Dallas, and they also attended the Regional Branch of National Archives. They visited in Beaumont with their daughter, Mr. and Mrs. Ray Shafer and also Mr. and Mrs. Geoffrey Kemble. Enroute home they visited in Lubbock with their son, Mr. and Mrs. Burke Tollett and Zach.

Shawni Nix has been in Rupert, Idaho, to visit her mother, Mrs. Beulah Moody who has been ill.

Among college students home for the weekend were Stephanie Bickett, Missy Fisher, Sherri Powell, Dean Richards, Lisa Wood, Blake Lacwell, Lee Bartley, Gordon Martin, Jeff Kinnie, Mike May, Jerry Dodson and Kim Rylant.

Waymon Bellar took his mother, Mrs. Ed Bellar to Grand Prairie last week to attend funeral services for her brother, Billy Joe Cardwell, 60, who died earlier in the week.

Doris Harper has returned home from a two week visit in Reklaw with her daughter Mr. and Mrs. Bill Traweck.

Mr. and Mrs. Glen Chester, Mr. and Mrs. John Chester, Mr. and Mrs. Curtis Chester and Mr. and Mrs. Dorman Chester were all in Tulia Thursday afternoon to attend funeral services for the father of Mrs. Mitch Dolly Chester.

At Times
The times we are living in are wonderful times to live in at times.

-Post, Washington.

WTSU Takes Steps To Prevent Alcohol Abuse

Responding to changes in state law and a wave of national publicity regarding substance abuse on college campuses, West Texas State University has announced its intentions of stricter enforcement of university and state alcohol regulations combined with positive steps to prevent the problems of alcohol abuse among its students.

State law now makes it illegal for persons under the age of 21 to consume alcoholic beverages except in the presence of a parent or guardian. Persons 21 or older who give alcohol to minors also face arrest and stiff fines.

West Texas State University's policy for many years has gone even further. No one may possess or consume alcoholic beverages on campus. A person over 21 caught drinking is subject to the university's disciplinary code and, if publicly intoxicated or exhibiting abusive behavior, subject to arrest.

Mary Hill, dean of student services, recently sent a letter to the WTSU Board of Regents outlining plans to step up enforcement of existing university regulations and state laws regarding alcohol consumption, while at the same time offering positive alternatives to students.

Her plans begin with instructions to Campus Security to enforce all WTSU policies and state laws involving beverage alcohol. Additional security guards will be present at large social events held on campus. Also, residence hall directors and staff will go through a special orientation to learn procedures to follow when a student is breaking regulations.

"For years we've looked the other way," Hill said. "But it's state law, not just WT regulations anymore."

She pointed to the dangers to the intoxicated student, as well as the university's liability should some sort of tragic incident occur on campus as a

Cotton Staffs Confer On Promotions

Staff representatives of Cotton Council International, the overseas arm of the National Cotton Council, and Cotton Incorporated have begun working out details for hard-hitting U.S. cotton promotions in Japan, Korea, and Europe under the new Targeted Export Assistance program.

The group met at the Council's Washington office with FAS Director Harry Bryan of the Tobacco, Cotton, and Seeds Division and three members of his staff in attendance. A total of \$2.2 million has been earmarked for direct consumer promotions, which will include television commercials and special events designed to boost retail sales of products containing U.S. cotton.

Council executive vice president Earl Sears told conferees that cotton's competitive challenges demand a new level of teamwork, and the TEA program provides an unusual opportunity to strengthen U.S. cotton's ability to compete. CI President Bob Boslet said he was confident that the coordinated effort will add up to a big effect for U.S. cotton in overseas markets.

Total export sales commitments for U.S. upland and American Pima cotton reached 4,811,000 running bales by Oct. 2.

Meanwhile, the National Cotton Council reports that 18 percent of that cotton has now been shipped to overseas customers, with total export shipments now at 870,200 running bales.

Thirty textile mill executives from nine Far Eastern countries will participate in an intensive Cotton Belt orientation tour Oct. 11-26. The group will come from Bangladesh, Indonesia, Japan, Korea, Malaysia, the Philippines, Singapore, Taiwan, and Thailand which are projected to buy about 4.5 million bales of U.S. cotton this year.

The tour, sponsored by Cotton Council International with the cooperation of USDA's Foreign Agriculture Service, begins in San Francisco. Stops include Memphis, Greenwood, Raleigh, Dallas, Lubbock, Phoenix, Bakersfield, and Fresno.

result of excessive alcohol consumption.

But Hill stressed, the university's efforts are far more positive than a simple "get tough" approach. In fact, she said, the thrust of her plan is to prevent the problems before they occur. Preventing arrests, certainly, but also protecting students from the life devastation of problem drinking.

The school's plans on the positive side begin with signs around campus prohibiting alcohol consumption and promoting alternative behavior. A student government-sponsored "Alcohol Awareness Week," Oct. 20-26, will attempt to educate the student body on the dangers of alcohol abuse and the necessity of responsible decision making. Also, the Student Services offices will sponsor seminars where presidents and sponsors of all student organizations can discuss the ramifications of the new laws.

Those students who are already problem drinkers or victims of drug abuse will be referred to WTSU's Counseling Center. But WTSU officials hope to head off the problems long before they reach that stage. One innovative approach is to encourage students to join wellness programs as a positive alternative to alcohol consumption.

Alcohol abuse, Hill acknowledges, is not a problem with quick solutions. It often begins on high school and junior high campuses, not just on the college campus. But Hill and others at WTSU hope their plans will reduce any college peer pressure to abuse alcohol while offering in alcohol's place some positive, life-enriching experiences.

Study shows many patients don't take prescribed medicine.

Letter To The Editor Policy

The Muleshoe Journal and Bailey County Journal welcomes letters to the editor on issues of concern to readers. Such letters must meet certain qualifications in order to be considered for publication.

Letters must bear the writer's signature, address and phone number in order that the authorship may be confirmed. Under some circumstances we will delete the name of the writer, if, in our judgement, the request to do so is justified.

Letters should not exceed 250 words and must meet standards of good taste as well as legal guidelines. Letters attacking another person, a church or specific religion will not be published. Comments on issues are encouraged in order to maintain a forum for discussion of public views.

Nursing Home News
by Joy Stancell

Clara Weaver went out to her home in Lazbuddie Sun. She visited with her daughter on the phone. Among those visiting her this week were Mr. McCormick, Nina Jennings and Glenda Jennings.

Cordelia Cochran was visited by Jewel Strong and Mr. and Mrs. Gordon Wilson.

Lois Ethridge was visited by Peggy Burhman and Clara Lou Jones. We still believe that Lois makes the best pot of coffee in town.

Among those visiting Alpha Laney this week were Mrs. Pruitt and Lola Crim.

We really appreciate the Truth Seekers of the First Baptist Church for their donation to our Activity Fund.

The family and friends of Myrtle Sullivan helped her celebrate her 92nd birthday Thurs. Oct. 16th. She received many cards, visits and gifts.

Murphy Beny received many cards on his birthday, Tues. Oct. 21st.

Members of The Assembly of God hosted the Devotional in the Day Room Fri. afternoon. Pastor Dysart read the scripture and shared his thoughts and feelings. Mrs. Dysart played the piano. Some special songs were sung. Mrs. Dysart played as the residents and visitors sang. Refreshments of cake and punch were served.

Susie Whatley visited the nursing home Wed. and brought the nursing home a new plant.

Jimmie Crawford is keeping us in watermelons, which we are enjoying.

Claudia Cannon was visited by her son and daughter-in-law Mr. and Mrs. Aubrey Cannon, and her Great Grandson John Matthew and Jason Cannon.

Allie Barbour was visited by her son Pinkie and his wife and her two little great granddaughters over the weekend. She was also visited by Lindsey and Gil Lamb.

Among those visiting Clemmie Ladd this week are her husband Earl Ladd, Ellen Ladd, and Clara Lou Jones.

Stella Morgan was visited by Jo, Bobbie McCray, Elsie and Lloyd Williams, Ruby Elder and Mrs. Reeder.

Jay Burge returned to the nursing home Wed. after being hospitalized in W.P.M.C. for a few days. Welcome back Jay.

Among those visiting Ora Roberts were J.D. Duncan, Chuck and Connie Haight, Geniva and Linda and April Winegart of Farwell, Cozette Blackwood, Mr. and Mrs. Gordon Wilson. Mrs. Roberts attended the services at the Muleshoe Church of Christ Sun. with Winnie Beny.

Ruth Briscoe and Francis Bruns visited Edith Bruns Wed. Congratulations to Mrs. Bruns in the birth of her new grandson Trent Black.

ONE MINUTE SPORTS QUIZ

1. Name the four teams vying for the World Series.
2. Name the AL batting champion.
3. Who is the NFL's all-time leader in receiving yards?
4. Who set a record for catching a pass in consecutive regular season games?
5. Maureen Connolly was known in what sport?

Answers to Sports Quiz

1. Boston Red Sox, New York Mets, Houston Astros and California Angels.
2. Wade Boggs.
3. Charlie Joiner, San Diego.
4. Steve Largent, Seattle Seahawks.
5. Tennis, also named AP woman-athlete-of-the-year three times.

To Customers Of
Hochheim Prairie Farm Mutual Insurance
&
Hochheim Casualty Insurance
Robert Wilson Is Still Selling & Serving
Your Needs For Insurance Here In Muleshoe,
At
Wilson Agency
201 W. Ave. C. 272-4159 or 272-4069



Attention Farmers!!
Muleshoe Co-Op Gin
Is Now Handling
Soybeans
55 off Either November Or January Futures
You Call The Day
For More Information
Call
272-4794 or 272-4791
We Are Now
Contracting For Cotton

Bailey County Journal

Classified

Call 272-4536

CLASSIFIED RATES
 First Insertion
 Per Word.....\$1.15
 Minimum Charge \$2.30

Consecutive Insertions
 Per Word.....\$.13
 Minimum Charge \$2.00

CLASSIFIED DISPLAY RATES
 \$1.75
 Per Column Inch

Blind Ad Rates
 50% More

DEADLINES
 12 Noon Tues.
 For Thursday Paper
 12 Noon Fri.
 For Sunday Paper
 We reserve the right to classify, revise, or reject any ad. Not responsible for any error after ad has run.

1. Personals

Do you need someone dependable and experienced to doctor and tend your pasture cattle? Will also do fencing. Call Dennis 965-2871. s1-38t-tfc

STORAGE
 Rooms Available For Storage \$25.00 - \$30.00 per month
 Ted Barnhill 272-4903
 b1-42s-stfc

DAVIS COMMERCIAL PUMPING SERVICE
 Cess pools, Grease pits, Mud pits, Septic tanks. 20 ft. elevator boots. Bacteria & Enzyme. Digestant stocked.
 We stress maintenance for your best results. Call us.
 806-272-4673
 806-272-3467
 Muleshoe, Texas
 TX. Dept. of Health reg. #TDH-02009
 1-8s-stfc

3. Help Wanted

Process mail from Home!!! \$1.00 per envelope per instructions!! No experience necessary. As long as you know how to read and write english you can do it. Work part time or full time!!! For Free Details enclose self addressed envelope. Nikolaos, T. Thyris 74269, Athens 161 21 Greece. t3-43s-8tp

REGISTERED NURSES-Roosevelt General Hospital has regular full time openings on the 11-7 shift. In the O.B. and S.C.U. Units. Received differential pay for working S.C.U. The work is challenging and we offer good salary and benefit package. Contact Wendy Toombs - 1700 S. Ave. O-Portales, N.M. 88130 505-356-4411 EOE r3-42s-3tc

EXPERIENCE MECHANIC excellent pay plan and fringe benefit. Stevens Chevrolet Oldsmobile Hereford, Tx 1-364-2160. 3-42t-4tp

INTRA & INTER State Truck Driver Wanted, 3 yrs. experience, clean driving record, Call Valley Grain Products, Inc. for interview. 272-5545. v3-39s-tfc

Plains Memorial Hospital RN position available, shift preference, salary negotiable, new progress management, increased utilization, excellent staff & working conditions. Contact Vicki Buckley RN, BSN, DON, Dimmitt. 806-647-2191. 3-43s-4tc

4. Houses For Rent

RUIDOSO CHALET: 4 bedroom for rent by day, weekend, or weekly. Call 505-257-2622. Owner Dr. Albertson. a4-49t-tfc

5. Apts. For Rent

FOR RENT unfurnished 2 bedroom apartment call 965-2188 or 272-4754. s5-37t-tfc

8. Real Estate

HOUSE FOR SALE 3 bedrooms, 2 bath, double garage, new central heating, air conditioning, plumbing, fixtures, roof drive way, carpet. In the high school area reasonable price 272-4446. d8-37t-tfc

FOR SALE BY OWNER 3 bedroom, 2 bath and large double garage. Sprinkler system, central heat and air conditioning. Priced to sell. Owner - licensed Realtor call 272-5629. 8-42s-8tp

WEST TEXAS largest selections of repossessed mobile homes 2 & 3 bedrooms available, low down payments. Call 1-800-792-0032. Mustang Mobile Homes. m8-16t-tfc

HOUSE FOR SALE - 3 bedroom, 1 1/2 bath, single garage brick, located in Lenau Addition at 301 E. Dallas. Large corner lot, fenced with young trees. Asking \$37,000. Current loan assumable, to qualified buyers. Shown by appointment. 272-3701. d8-42t-4tp

FOR RENT or sale 3 bedroom house, in the country. Call 946-3417. k8-41s-tfc

FOR SALE - Nice 3 bedroom, 1 1/4 carport, large utility, cent. heat, evap. air, new patio cover, PRICE TO SELL, 507 W. 5th, 272-5038. w8-40s-stfc

FOR SALE 3 bedroom house reduced price, small down payment will carry papers 272-4005. p8-40t-tfc

2,048 SQ. FT. Brick 3-2-2 1 acre tract 30x40, fab steel barn, paved drives, 6 ft. block fence. Nicely landscaped. Located Intersection highway 54 & Farm market 1731- 1/2 north of Maple. 806-927-5418. 18-43s-tfc

IMMACULATE 18x70 double wide mobile home to be moved. 3 bdrm., 2 bath, den, family room, dining room, large wash room. Also 6 month old geothermal heat pump. Very economical to heat & cool. Call 272-5400 or 272-4419. b8-43s-2tc

HOUSE FOR SALE located in Lazbuddie 3 bdrm, 2 baths, utility, garage, brick, big lot, private well. If interested call 965-2126 or 965-2191. f8-32s-tfc

ENERGY EFFICIENT BRICK HOME

Beautiful view on top of hill. Southside of Muleshoe Park. 3300 Sq. Ft. under Roof, 3-2-2. Den with fireplace kitchen/dining room, finished basement, study, attached shop, 2 porches. 1515 W. Ave. J. 272-5334. b8-25s-stfc

8. Real Estate

JAMES F. HAYES & CO. AGRICULTURAL REAL ESTATE
 Vic Coker-Agent
 (806) 965-2468

80 Irrigated Acres in Lamb County on Bailey County Line. Good prospect for part time cattleman or farmer. \$400/Acre. ***

639 Acres Northwest of Earth very good water, good soils, 2 electric sprinklers, Home, corrals, small feed lot. Barn & other out buildings. \$550/Acre. ***

330 Acres near Lazbuddie on pavement. Very good soils, excellent water Brick home & other improvements. \$775/Acre. ***

BRICK home and acreage East of Lazbuddie. Nice country living. ***

640 Acres in Southern Parmer County excellent water, home, barn & other improvements. 2 sprinklers. \$700/Acre. ***

SMALLWOOD REAL ESTATE BROKER

232 main 272-4838
 3-Bedroom, 2 Bath Stucco, Central heat, Evaporative cooling, all carpet \$26,550.

3-Bedroom, 1 Bath, detached, 2-car garage, fenced back yard. Make offer. ***

BINGHAM & NIEMAN REALTY

116 E. Ave. C.
 272-5285--272-5286
 We now have homes for as little as \$600.00 total move-ins cost with payment scheduled according to income for qualified buyers!!!!!!

COUNTRY LIVING HOMES

3-1-1 home on 1 acre, close to town, nice workshop-storage bldg. & attached shed. \$30's..... ***

3-1-2 home on 1 acre. Cent. heat, storage bldgs., on pavement close to town. \$30's!!!! Possible Owner Financing! ***

3-2-2 Brick on approx. 3.3 acres, built-ins, barn & corrals. Close to town. Priced to sell!!!! ***

3-3-2 Brick home, Geothermal heating & cooling, loads of built-ins, ash woodwork, nice office, utility & pantry area. Pella windows, whirlpool tub, skylights, fireplace w/heattilator, ceiling fans, water softener, & much more on approx. 3.86 acres at the edge of town!!!\$90's ***

3-2-3 carport home on approx. 11 acres, built-ins, Geothermal A&H, fireplace, storm cellar, barns, corrals, fish pond, & more!!!! ***

RICHLAND HILLS

JUST LISTED-IMMACULATE-3-2-2 Brick home on corner lot, Cent. A&H, built-ins, fireplace, loads of storage & closet space energy-efficient, fenced yard, sprinkler system, storage bldg. & much more!!!! ***

JUST LISTED-3-1-1 Brick, Cent. heat, Evap. air, built-ins, fenced yard, walk to school. \$40's!!!!!! ***

COUNTRY VIEW WITH CITY CONVENIENCES-3-1 1/2-2, Brick, home on corner lot, total electric, built-ins, Cent. A&H, nice large storage room, approx. 2150 sq. ft. of lv. area. \$90's!!!! ***

3-1 1/2-2 Brick home, Cent. heat, Evap. air, fireplace, nice carpets, large fenced yard, walk to school. \$50's!!!! ***

3-1 1/2-2 Brick, corner lot, Cent. A&H, built-ins, fireplace, utility, fenced yard, very nice. \$70's!!!! ***

LENAU ADD.

3-1 1/4-1 carport home, nice carpet, fenced yard, neat. \$30's!!!! ***

JUST LISTED-Nice 2-1 1/2-2 Brick, Cent. A&H, built-ins, fireplace, utility, sprinkler system, fenced yard, PRICED TO SELL!!!! ***

2-1-1 home, wall furnace heat, evap. air, carpeted, fenced yard. \$20's!!!! ***

4-2-2 carport home, Cent. A&H, built-ins, fireplace, nice carpets, office, sewing room, utility, Cent. Vac. system. Super Nice. \$50's!!!!!! ***

JUST LISTED-3-2-2 carport home, corner lot, fenced yard, utility, storm windows & doors, concrete cellar. \$30's!!!! ***

HIGH SCHOOL AREA

3-1 1/2-2 Brick, Cent. A&H, built-ins, fenced yard, nice finished basement with fireplace. PRICED TO SELL!!!!

8. Real Estate

J. B. Sudderth Realty, Inc.
 Realtors/Auctioneers
 Farwell, Texas
 481-3288
 Drawer 887 109 5th St
 Licensed in Texas, New Mexico and Oklahoma
 Certified Appraisers
 J.B. Sudderth, Broker Daren Sudderth, Broker
 Jimmie Mace, Sales Associate

SOLD OUR LISTINGS!
 WE NEED YOUR HOME OR FARM LISTINGS NOW!

Country living at it's best. 10 acres with extra nice brick, 4 bedroom, 3 bath 2 car garage, T.V. Dish, large shop building, barn with fence, storm cellar, sprinklers pipe. Located near Muleshoe City limits. Priced to sell immediately.

On one acre nice 2 bdrm, 1 bath home with garage, large shop building and large storage building on hwy West of Muleshoe priced for immediate sale. ***

316 acres on Hwy lays good appr. 9 miles North of Bovina, priced to sell at 325.00 per acre. ***

BINGHAM & NIEMAN REALTY

116 E. Ave. C.
 272-5285--272-5286
 We now have homes for as little as \$600.00 total move-ins cost with payment scheduled according to income for qualified buyers!!!!!!

NICE 3-1+1 carport home on corner lot. Nice carpets, wall furnace heat, evap. air, fenced yard and storage bldg. \$30's!!!! ***

PRICED REDUCED-3-1 1/2 Brick home, with approx. 2750 sq. ft. of lv. area, Cent. A&H, built-ins, beamed ceiling in living room, nice den with ash paneling, large utility, fenced yard, storage bldg. & more \$70's!!!! ***

IMMACULATE 2-1-1 carport home on corner lot, nice carpets, lots of cabinet space, built-ins, large utility, lots of storage, fenced yard. \$20's!!!!!! ***

MAKE AN OFFER-3-1-2 home, wall furnace heat, evap. air, and more. \$20's!!!! ***

3-1-1 home, corner lot, Cent. heat, Evap. air. \$30's!!!! ***

2-1 home on 20 acres, 20 hp. sub. pump domestic well, large barn & corrals, 1/4 mile sprinkler pipe & more. \$42,500.... ***

JUST LISTED-3-2 1/2-2 carport home, nice carpet & vinyl flooring, large utility, office, sewing room, concrete cellar, and much more. Approx. 1900 sq. ft. of lv. area \$40's!!!! ***

JUST LISTED-NICE CATTLE SETUP. Approx. 40 acre tract at edge of town, domestic well for home site & cattle water, irrigation well with hi-pressure line, risers, hydrants, gated pipe, etc., fenced, barns, corrals, chute, heated cattle waterer, approx. 28 acres in Jose Wheat grass. LET'S LOOK TODAY!!!! ***

3-1-1 home, stucco exterior, carpet & vinyl flooring. \$20's!!!! ***

3-2 home with approx. 1940 sq. ft. of lv. area, Cent. A&H, fenced yard, gas grill, storage bldg. & more. \$30's!!!! ***

BUILDING ON 2 LOTS, approx. 2350 sq. ft., paved parking..... ***

NICE office bldg. in excellent location across from courthouse. PRICED TO SELL!!!! ***

Y&L-Approx. 400 acres, 4 wells, underground tile, 3-1 1/2-2 home, 2 large barns, 2-1 tenant house. \$750.00 per acre. ***

PRICE REDUCED 3-1 1/2 home, Cent. A&H, built-ins, fireplace, fenced yard. 16'x32' insulated workshop - garage. \$38,500.00! ***

3-1 1/2-2 Brick, Cent. A&H, built-ins, utility, workshop, & more. \$50's!!!!!! ***

3-1 1/2 home, corner lot, Cent. A&H, built-ins, utility, large rooms, loads of closet & storage space. \$50's!!!!!! ***

"WE APPRECIATED YOUR BUSINESS"
 GEORGE NIEMAN, BROKER
 DIANNE NIEMAN, BROKER

EATING OUT

By Rose Hughes

HOAGIES are popular sandwiches, often overlooked in comparisons of hamburgers. But hoagies can be fine eating.

AND hoagies are nutritionally equal to burgers and other fast-food. They can be quite tasty and a welcome change. The extra long bun usually contains cheese and meat, plus vegetables; there are many varieties.

AT a recent stop the writer tried a beef hoagie priced at \$2.29. The impression was that this chain attempted to give the customer too much for two bucks.

THE beef patty was almost half inch thick and five inches long. It doesn't take a genius to know one can't get this much quality beef for that price. And on taste, this fact of life was apparent.

THE taste was that of low-quality meat loaf, probably not all beef. One would much prefer a beef patty half that width, of quality beef.

THE melted cheese, lettuce and tomato and onion (and a little garlic if desired) were all fresh and tasty. Since several varieties are offered at sub stations and hoagie outlets, the suggestion here is to try ham, bacon or something other than the ground beef.

BUSINESS OUTLOOK

By Edward Thorlund

It's hard to understand why anyone is shying away from tax-free municipal bonds these days. Some of the bonds, and the better funds, are paying eight percent or in that vicinity.

With interest on other bonds down, with Ginnie Maes, which are taxable, down to nine or in that vicinity, and with money market funds paying six percent or in that vicinity, and CD's likewise, how can one beat a tax-free eight percent-unless through appreciation?

There has been some loose talk about the new tax law and municipal bonds. The new law will restrict them somewhat, but they can still be issued after the new law takes effect.

Those now holding some of the better municipal bond funds, especially those which are not subject to early repayment, are enjoying a bonanza, comparatively. Some of these funds issued a few years ago are still paying holders close to ten percent tax-free.

That arouses envious emotions among some who didn't buy them then. But eight percent is still a good buy for tax-free bonds and comparatively perhaps more attractive than ten percent four years ago.

BIBLE VERSE

He that hath two coats, let him impart to him that hath none; and he that hath meat, let him do likewise.

1. Who made the above statement?
 2. To whom was he speaking?
 3. What happened just after this?
 4. Where may this statement be found?
- Answers to Bible Verse
1. John the Baptist.
 2. The people who were listening to his sermon.
 3. He introduced Jesus as the long promised Messiah of the Jews.
 4. Luke 3:11.

Bailey County Journal

Classified

Call 272-4536

8. Real Estate

CHARLOTTE PIERCE
BROKER
400 Craig Street
Texico, N.M.
(505) 482-9188
Fully Licensed
In New Mexico & Texas

PIERCE
REAL ESTATE
482-9188
TEXICO, N.M.

RAISE YOUR KIDS IN THE COUNTRY! CONSIDER THESE:

Very nice 3-bedroom brick home located at 914 Hickory.

3 Bedroom home on 2 acres, tract, with double garage, shop building in back, grape arbour & fruit trees. Located 8 miles Northwest of Muleshoe on paved West Camp Road.

3-bedroom home approx. 3 1/2 miles West of Muleshoe, on Clovis highway, on small tract with room for horses.

JIMMIE CRAWFORD
Real Estate & Ins.
1725 W. Ave. E.
Muleshoe, Texas
Phone 272-3666

3-1/4-2 stucco house with chain link fence across from Nursing Home.

3-2-2 brick house on 1.1 acres at Clay's Corner. Real nice country home.

4-1 house with 5.3 acres and tractor & Equip. and irrigation pipe. 5 H.P. 2" well.

COMMERCIAL PROPERTY-3 lots on Highway 84 with 125' frontage.

Have farm listings. Call for details.

HENRY REALTY
111 W. Ave. E.
Muleshoe, Texas
272-4581

BRICK Home North of Muleshoe on Hwy 214. 3 bedroom, 2 bath, fireplace, central air/heat. One acre. Large Hobby Shop and apartment on premises. Fruit Trees.

4 Br, 2 bath, 2 car garage, central heat/air, large utility, carpet, near down-town. Excellent condition.

ONE ACRE sites for home construction. 3 miles East of Muleshoe on HWY. 3 lots remain.

JUST COMPLETED 3 bedroom, 2 bath, large living room, kitchen and dining. Excellent condition, near high school. Priced to sell.

COMPLETELY remodeled 2 bedroom home. Ideal first home, must see to appreciate. Nice location with F.H.A. loan.

COMMERCIAL PROPERTY on Main Street, over 4,000 sq. ft., income producing property.

COMMERCIAL PROPERTY-Excellent rental income from 4 separate offices. Lease agreements in force.

3 Br, 2 bath, spacious home outside city limits, near city on highway. 29'x40' metal building. Lot 85'x62'.

3 Br, 1 bath, completely remodeled, edge of city on highway.

VACANT LOT for Mobile home immediate possession.

COMMERCIAL PROPERTY on West American Blvd. ideal location Building ready for occupancy.

9. Automobiles For Sale

1986 **PLYMOUTH** Turismo 2.2 Liter engine manuel 5 speed transmission with over drive all power, AM&FM Stereo. Still covered by basic warranty. Call 272-3868 after 6 p.m. 9-43s-2tp

FOR SALE OR trade 77 Chevy Van. Trade for small Pick-up. 965-2391 19-43s-2tc

11. For Sale Or Trade

1-10-TOWER ZIMMATIC sprinkler. Excellent condition. Call 272-3191. k11-42t-tfc

8. Real Estate

House of furniture and other household items. Lawn tools and mower, in Muleshoe. Appointments only, 946-3443. Call early or late. r11-43s-tfc

1-7-TOWER GIFFORD HILL sprinkler. Good shape. Call 272-3191. k11-42t-tfc

FOR SALE: New posts and rails for wood yard fence. Call after 6 p.m. 965-2732. p11-31t-tfc

There is no substitute for brains regardless of what you may be using.

House of furniture and other household items. Lawn tools and mower, in Muleshoe. Appointments only, 946-3443. Call early or late. r11-43s-tfc

1-7-TOWER GIFFORD HILL sprinkler. Good shape. Call 272-3191. k11-42t-tfc

FOR SALE: New posts and rails for wood yard fence. Call after 6 p.m. 965-2732. p11-31t-tfc

There is no substitute for brains regardless of what you may be using.

House of furniture and other household items. Lawn tools and mower, in Muleshoe. Appointments only, 946-3443. Call early or late. r11-43s-tfc

1-7-TOWER GIFFORD HILL sprinkler. Good shape. Call 272-3191. k11-42t-tfc

FOR SALE: New posts and rails for wood yard fence. Call after 6 p.m. 965-2732. p11-31t-tfc

There is no substitute for brains regardless of what you may be using.

17. Seed & Feed

ATTENTION FARMERS We are buying corn. Birdwell Cattle Feeders. Phone 946-3321. b17-36s-tfc

18. Legal

Public Notice
The Muleshoe Independent School District is accepting bids for roof replacement at Mary DeShazo Elementary School, approximately 356 squares. Sealed bids must be received by 3:30 p.m., Monday, November 3, 1986.

Specifications are available from Tom Jinks at the School Business Office at 514 West Avenue G, Muleshoe, Texas 79347. Bids received after the stated time will not be considered.

The Board reserves the right to reject any and/or all bids, and to waive formalities. m18-42s-5tc

Public Notice
Muleshoe Independent School District, Muleshoe, Texas, is accepting bids for the construction of an all-weather track and field events facility at Muleshoe High School. Sealed bids must be received by 1:30 p.m. on Monday, November 3, 1986, at the Business Office of Muleshoe Independent School District, 514 West Avenue G, Muleshoe, Texas 79347. Bids received after the stated time will not be accepted and will be returned unopened. All bids shall be submitted in an opaque envelope clearly marked in the lower left corner: "Sealed Bid: Athletic Track Construction" along with the time and date of opening.

Muleshoe Independent School District reserves the right to accept or reject any and/or all bids, and to waive formalities.

Plans and specifications are available from Tom Jinks, Assistant Superintendent, Muleshoe Independent School District, 514 W. Avenue G, Muleshoe, Texas 79347. m18-42s-5tc

The Cost

Football is probably the most exciting of all sports--assuming boxing to be more of a business than a sport. But like the business boxing, football can claim lives. Its violence is one big reason fans are attracted to the game.

The possibility of death or injury is a big attraction in auto racing. It's a big draw for dangerous stunts and exhibitions. Ghoulish, morbid fascination is a reality.

But team sports, especially team sports at our educational institutions, shouldn't be so violent death or permanent injury is a certainty for some each year.

Watching football this season we have seen serious, permanent injuries to students. Some die each year in practice or as a result of game injuries. This is the grim thought that runs through one's mind as he or she watches a player lying still on the field, then carried off on a stretcher.

Perhaps your husband is just having a fling and will realize what he is doing before it is too late.

Louisa

LOUISA'S LETTER

Dear Louisa,
I have been happily married for twenty years--that is until this year. As long as my husband and I were hard up for money we worked together and made the best of what we had. But this past year, a relative died and left us quite a lot of money.

My husband is very smart and he has been able to use it to make much more. But, this money has not brought us happiness. It has given us comforts and luxuries that we never had before but I feel that it has taken my husband from me. He has time now for all the sports and cocktail parties.

Instead of a family group as we were before this inheritance, enjoying simple pleasures together as we could neither afford expensive trips nor baby sitters at that time--we are either whooping it up with the drinking crowd or I am at home alone trying to keep a watch on our two teenagers.

I don't approve of drinking--I think it is a dangerous and an insidious habit to get into.

What can I do? My husband has me worried. Distressed--Ill.

Answer:
Riches certainly do not make for happiness. The trouble with many people is that their values are all wrong. They have the idea that high society means a round of social gatherings with money thrown around. They try to keep up with a fast crowd and destroy all of the worthwhile things that make for real happiness in their effort to keep up with or to out-do the Jones's.

Perhaps your husband is just having a fling and will realize what he is doing before it is too late.

Louisa

18. Legals

LOCAL CERTIFIED PUBLIC ACCOUNTANT TO ADDRESS THE TAX REFORM ACT OF 1986

Michael R. Caldwell, a Muleshoe Certified Public Accountant and Tax Attorney, will present three fall seminars on The Tax Reform Act of 1986. Mr. Caldwell has recently returned from an intensive review of the new law in Dallas. The seminar was sponsored by the National Center for Professional Education. First Bank of Muleshoe will sponsor Mr. Caldwell on Friday morning, October 31, at 9 AM in the lower lobby of the Bank. First State Bank of Morton will sponsor Mr. Caldwell on Friday morning, November 7, at 7 AM in the Cochran County Activity Building. A complimentary breakfast will be provided. Muleshoe State Bank will sponsor Mr. Caldwell on Monday evening, November 10, at 7 PM in the Community room of the Bank. Reservations are requested by calling the Bank at 272-4561. Each of these banks is sponsoring these seminars as a public service for their customers and friends. A question and answer period will be conducted by Mr. Caldwell in conjunction with each Seminar. A 32-page booklet explaining major provisions of the new tax law will be given each attendee. Mr. Caldwell will present many color slides to visually demonstrate the dramatic effects of the Tax Reform Act. Anyone with further questions may contact Mr. Caldwell's office at 272-7535. c18-43s-2tsc

Public Notice
Muleshoe Independent School District, Muleshoe, Texas, is accepting bids for the construction of an all-weather track and field events facility at Muleshoe High School. Sealed bids must be received by 1:30 p.m. on Monday, November 3, 1986, at the Business Office of Muleshoe Independent School District, 514 West Avenue G, Muleshoe, Texas 79347. Bids received after the stated time will not be accepted and will be returned unopened. All bids shall be submitted in an opaque envelope clearly marked in the lower left corner: "Sealed Bid: Athletic Track Construction" along with the time and date of opening.

Muleshoe Independent School District reserves the right to accept or reject any and/or all bids, and to waive formalities.

Plans and specifications are available from Tom Jinks, Assistant Superintendent, Muleshoe Independent School District, 514 W. Avenue G, Muleshoe, Texas 79347. m18-42s-5tc

Public Notice
Muleshoe Independent School District, Muleshoe, Texas, is accepting bids for the construction of an all-weather track and field events facility at Muleshoe High School. Sealed bids must be received by 1:30 p.m. on Monday, November 3, 1986, at the Business Office of Muleshoe Independent School District, 514 West Avenue G, Muleshoe, Texas 79347. Bids received after the stated time will not be accepted and will be returned unopened. All bids shall be submitted in an opaque envelope clearly marked in the lower left corner: "Sealed Bid: Athletic Track Construction" along with the time and date of opening.

Muleshoe Independent School District reserves the right to accept or reject any and/or all bids, and to waive formalities.

Plans and specifications are available from Tom Jinks, Assistant Superintendent, Muleshoe Independent School District, 514 W. Avenue G, Muleshoe, Texas 79347. m18-42s-5tc

Public Notice
Muleshoe Independent School District, Muleshoe, Texas, is accepting bids for the construction of an all-weather track and field events facility at Muleshoe High School. Sealed bids must be received by 1:30 p.m. on Monday, November 3, 1986, at the Business Office of Muleshoe Independent School District, 514 West Avenue G, Muleshoe, Texas 79347. Bids received after the stated time will not be accepted and will be returned unopened. All bids shall be submitted in an opaque envelope clearly marked in the lower left corner: "Sealed Bid: Athletic Track Construction" along with the time and date of opening.

Muleshoe Independent School District reserves the right to accept or reject any and/or all bids, and to waive formalities.

Plans and specifications are available from Tom Jinks, Assistant Superintendent, Muleshoe Independent School District, 514 W. Avenue G, Muleshoe, Texas 79347. m18-42s-5tc

Public Notice
Muleshoe Independent School District, Muleshoe, Texas, is accepting bids for the construction of an all-weather track and field events facility at Muleshoe High School. Sealed bids must be received by 1:30 p.m. on Monday, November 3, 1986, at the Business Office of Muleshoe Independent School District, 514 West Avenue G, Muleshoe, Texas 79347. Bids received after the stated time will not be accepted and will be returned unopened. All bids shall be submitted in an opaque envelope clearly marked in the lower left corner: "Sealed Bid: Athletic Track Construction" along with the time and date of opening.

Muleshoe Independent School District reserves the right to accept or reject any and/or all bids, and to waive formalities.

Plans and specifications are available from Tom Jinks, Assistant Superintendent, Muleshoe Independent School District, 514 W. Avenue G, Muleshoe, Texas 79347. m18-42s-5tc

Muleshoe School Menu

October 27-31
BREAKFAST MONDAY
Milk, Cereal, Toast, Fruit
TUESDAY
Milk, Toast, Jelly, Fruit
WEDNESDAY
Milk, Honey Buns, Juice
THURSDAY
Milk, Cheese Toast, Fruit
FRIDAY
Milk, Biscuits, Gravy, Sausage, Fruit

LUNCH MONDAY
Milk, Steak & Gravy, Creamed Potatoes, Green Beans, Hot Rolls, Fruit
TUESDAY
Milk, Juicy Burgers, Lettuce & Tomato, Pickles & Onions, Tater Tots, Fruit Cobbler
WEDNESDAY
Milk, Chalupas, Cheese, Lettuce & Tomato, Corn, Crackers, Fruit
THURSDAY
Milk, Hot Dogs, Pork. & Beans, Tater Tots, Cake
FRIDAY
Milk, Bar-B-Que, Beans, Potato Salad, Corn Bread, Fruit

COMBO LINE MONDAY
Milk or Tea, Pizza, Mixed Vegetables, Pickles, Fruit
TUESDAY
Milk or Tea, Hamburgers, Lettuce & Tomato, Pickles & Onions, Tater Tots, Fruit Cobbler
WEDNESDAY
Milk or Tea, Taco's, Beans, Cheese, Lettuce & Tomato, Crackers, Fruit
THURSDAY
Milk or Tea, Burritos, Cheese Stick, Whole Tomatoes, Crackers, Fruit
FRIDAY
Milk or Tea, Fish, Macaroni & Cheese, English Peas, Hot Rolls, Fruit

Three-Way Menu

October 27-31
MONDAY BREAKFAST
Hot Oats, Juice, Milk
LUNCH
Bar-B-Que on Bun, Blackeyed Peas/Salad, Milk, Fruit
TUESDAY BREAKFAST
Toast/Jelly, Juice, Milk
LUNCH
Baked Chicken, Gravy/Green Beans/Cream Potatoes, Hot Rolls/Butter, Milk, Honey
WEDNESDAY BREAKFAST
Cinnamon Toast, Juice, Milk
LUNCH
Pinto Beans, Macaroni/Tomatoes/Spinach, Corn Bread, Milk, Prunes
THURSDAY BREAKFAST
Biscuit / Bacon / Gravy / Jelly, Juice, Milk
LUNCH
Goulash, June Peas/Salad, Hot Rolls, Milk, Cake
FRIDAY BREAKFAST
Pancakes/Syrup, Juice, Milk
LUNCH
Hamburger & Cheese, Frys / Lettuce / Tomatoes / Pickles / Onions, Buns, Milk, Cookies

ABOUT YOUR HOME

By April Rhodes

If you are planning an overseas trip it is a good idea to take a clean blouse or shirt and necessary toilet articles in a carry-on tote bag in case luggage is delayed.

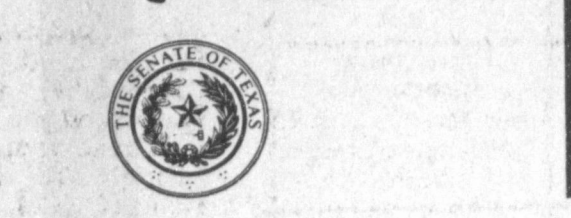
Rake leaves around the base of shrubs and trees as they begin to fall to form a protection blanket as the weather gets colder.

Support newly planted small trees or tall shrubbery in the fall with guide wires. Cover the wire around the tree with a rubber hose.

Give children carrot sticks, cheese, a cracker, or a glass of milk or fruit juice for between-meal snacks.

As the weather cools get out in the open this fall and enjoy walking, and the color and beauty of this season. Comfortable shoes are a must.

Senator Bill Sarpalius Reports



MORE TROUBLE COMING

AUSTIN — Now that the two budget sessions are behind us we can relax right? Unfortunately, no. Just around the corner lies a regular session and a plenitude of trouble with it.

Early projections indicate the Legislature will face a deficit of anywhere from \$1 billion to \$6 billion when it convenes in regular session next January. That means we must either slash spending or raise revenues by a like amount if we are to fulfill our constitutional obligation and write a balanced budget for the 1988-89 biennium.

We discussed at length during the budget sessions the problem with slashing our budget too deeply. Texas is not a big-spending state; counting for inflation and population growth, the state budget has grown by less than 5 percent annually during the last decade. Any serious spending reduction would cripple state services.

Revenue enhancement is not an easy matter, either. The same oil slump that has gutted state revenues has struck the average citizen with an equal fury. Money is tight for many, and taxes have been increased twice in the last three years. We can't go much higher without putting an unbearable burden on the state taxpayers.

Therein lies the quandary we will face next January and all governments face at one time or another — new revenues are needed most when people can afford them least.

There already is much speculation around Austin as to what the Legislature will do. Will we slash the budget and let the temporary sales and gasoline taxes sunset in September as scheduled? Will we let the budget continue to grow and delay sunset of the new taxes? Will we raise the taxes to an even higher level? Will we broaden the sales-tax base while holding the line on the budget and the sales-tax rate?

As of yet, no one knows the answer for sure. Our leadership has given only a few clues as to what its intentions are, and most lawmakers are waiting at least for some small signal before setting their own agendas.

We do know that all our leaders are set against cutting the budget to the point where essential services are crippled. There seems to be some sentiment in favor of broadening the sales-tax base. If there is a division it is over whether to let the temporary tax increases sunset as scheduled.

Surprisingly, very little of what we do hinges on the outcome of the November elections. The problems and possible solutions will not be broadened or narrowed by the

Lazbuddie School Lunch

October 27-31
MONDAY BREAKFAST
Cereal, Juice, Milk
LUNCH
Pizza, Corn, Green Salad, Pudding, Milk
TUESDAY BREAKFAST
Toast, Sausage, Juice, Milk
LUNCH
Fried Chicken, Gravy, Green Beans, Hot Rolls, Fruit, Milk
WEDNESDAY BREAKFAST
Cinnamon Rolls, Fruit, Milk
LUNCH
Chili and Beans, Cheese Sticks, Crackers, Cookies, Peach Halves, Milk
THURSDAY BREAKFAST
French Toast, Bacon, Juice, Milk
LUNCH
Ham, Baked Potatoes, Broccoli and Cheese, Garlic Bread, Cobbler, Milk
FRIDAY BREAKFAST
Doughnuts, Juice, Milk
LUNCH
Hamburgers, French Fries, Lettuce, Pickles, Cake, Milk
THE SALAD BAR IS SERVED DAILY

November 4th General Election

Elect James Warren

Bailey County Judge

Your Vote Is Appreciated

Conservative & Dependable

The Taxpayers Friend

pd. pol. Adv. by JAMES WARREN

A&M FivePoint

\$9.00

50 Lb. Bag

HI PROTEIN DOG FOOD

- A 26% crude protein dog food
- Formulated for hard working dogs
- For Peak conditioning and performance.