



**WEATHER**

May 14	84	42
May 15	89	43
May 16	93	51
May 17	89	43

# BAILEY COUNTY JOURNAL

*'The Community Of Opportunity-Where Water Makes the Difference'*

Vol. 24 No. 20

12 Pages Today

Published Every Sunday at Muleshoe, Bailey County, Texas 79347

Sunday, May 18, 1986

## Live Entertainment Set For Celebrity Auction



According to a note from Thomas D. Johnson, principal, Three Way Schools: "Due to new legislation, Three Way ISD needs the names of children who will be four years of age on September 1, 1986. If you live in Three Way School District, and if there are children in your family, or if you know of children who will be four years of age, please notify the principal as soon as possible, Thomas D. Johnson, P.O. Box 60, Maple, TX or phone 806/927-5315."

Cappy Gatewood, caretaker at Bailey County Memorial Park, said he would like to thank all of the people of Muleshoe who bought rose bushes for the Bailey County Memorial Park cemetery.

"They have been planted and look very nice," he said. "We have room for more bushes if they are bought for the cemetery."

Fred Mardis, retiring Watson Junior High School principal, will be honored with a reception today, Sunday, 1:30-3:30 in the WJHS library, for "his 23 years of service to education."

Former students, faculty and friends are invited to attend.

A reception will honor Bill Taylor, who is retiring from the Muleshoe School system this year after 32 years with the school system. He is a former coach and currently principal of DeShazo Elementary.

The reception will be 2-4 p.m. Sunday, today, at the Bailey County Civic Center.

During a board meeting Thursday at noon, the Muleshoe Chamber of Commerce and Agriculture voted to give a big award to the CoC member obtaining and signing up the most new members during the big membership drive this month prior to May 31.

The CoC member signing up the most new members will be given a trip to see a Dallas Cowboy football game in October. The prize includes the bus, room and tickets to the game.

There will be a meeting of the Muleshoe Roping Club on Monday, May 19, at 8 p.m. at the Muleshoe Livestock Auction Co.

All members and interested individuals are encouraged to attend the meeting.

Cindy Gayle Turner Hardy is among the 424 candidates who will complete graduation requirements from Eastern New Mexico University this spring and will be eligible to participate in spring commencement ceremonies at 8 p.m. on May 16 in Greyhound arena.

She will receive a bachelor of business administration degree, summa cum laude.

Belinda Ann Clayton of Muleshoe was among the Western Texas College students graduating in commencement exercises held May 9.

She received the Associate in Applied Science degree. Miss Clayton was graduated magna cum laude with a grade point average of 3.79. She has been a member of the WTC chapter of Phi Theta Kappa, a national honor fraternity for students in junior community colleges.

Nearly 150 University of Science and Arts of Oklahoma University at Chickasha, Okla. received acclaim for their academic work during the recently-concluded spring trimester, as they were named to the USAO Honor Roll released this week by the USAO admissions office.

Listed from the Muleshoe area was Janna L. Wuerflein.

On Wednesday, May 21, at 1 p.m. women golfers are invited to participate in the Naomi/Marie Memorial Golf Tournament at the Muleshoe Country Club.

Call the pro shop at the Muleshoe Country Club for additional information.



**BUCKLE-UP WEEK PROCLAIMED HERE**--As Muleshoe Mayor Darrell Turner, seated, signs a proclamation designating the week of May 22-29 as Texas Buckle-Up Week, he is joined by local officers, from left, Lacey Kirk, Texas Department of Public Safety; Bailey County Deputy Sheriff Jerry Hicks and Muleshoe City Police Department Lt. Wayne Holmes. The officers are agreeing that the increased usage of seat belts is saving more and more lives after an accident.

## Local Officers Are Boosting 'Texas Buckle-Up Week'

The "big push" in on and state-wide, all law enforcement officers and the State Department of Highways and Public Transportation, have joined with the Texas Safety Association and the National Highway Traffic Safety Association in celebrating Texas Buckle-Up Week and "All American Buckle Up" May 22-29. This special week will kick off 101 travel days of summer, as proclaimed by Texas Governor

Mark White. In Bailey County, the city police, sheriff's office and Department of Public Safety will be taking very close looks at motorists as they go about their every day job of assuring, as much as possible, driver safety.

Thursday afternoon, Muleshoe Mayor Darrell Turner signed a proclamation, designating the week of May 22-29 as "Buckle Up Week" for this area.

In 1985, Texas experienced its lowest recorded death rate of 2.6 per 100 million miles traveled in spite of a significant increase in vehicular miles traveled, according to officials.

A large contributing factor to the decrease in the death rate can be attributed to increased usage of safety belts due to the new law and public education on the lifesaving monetary benefits of belt usage, added the officials.

Fatalities in the seating positions covered by the law

decreased an average of 14 percent in September through December, the first four months after the effective date, compared to the same period in 1984 statewide.

Lubbock, which had a buckle-up rate of approximately three and one half percent in December of 1984, according to a survey taken by the Community Occupant Program of Texas Tech University, has increased its usage to 40.8 percent according to another survey by the Tech program taken earlier this year. According to a recent report by the city of Lubbock, the usage rate has been increased to 48 percent.

With Texas Buckle-Up Week, Texas is joining other states in an "All American Buckle-Up" to remind travelers to use their safety belts for themselves and their belts and child safety seats for young passengers.

**FREEDOM OF CHOICE**  
\*It has long been recognized.

Cont. Page 6, Col. J

## Prospective Jurors Will Report For Court Duty

A total of 108 prospective jurors have been summoned for possible service in district court. Ordered to report for service at 10 a.m. on Tuesday, May 20, to hear three cases are the following:

Jo May Head, Stephanie Jan Barrett, Marcella Pingel Ellis, June Thompson McNeill, Esparanza M. Martinez, Melba Hiner McCamish, Lori Ivy Hanks, Boyd Magby, Gary N. Stancell, Letha Rierson Morris, Vivian Noland Gowens, Edgar Herbert Langfitt, Barry Dwain Jones, Verla Beckett Donaldson, Debra Ann Hartline, Rhonda Kay Mills, Pauletta Fannon Crawford, Kerry Grant Moore, Cleta Joy Robertson and Robert Alton Morris.

And Danny Powell Middlebrooks, Charles L. Smith, Margaret Ybarra Alarcon, Theresa Jungman Feagley, Grace McClain Whitley, Donald Carrol Green, Rosalea Little Sain, Linda Garcia Flores, Tami Dawn Bratcher, Beverly Biggerstaff Parker, Bobby Lee Tipton, Isabel Posadas, Karen Kanselman Clawson, Jane Ann Reeder, Lesa Francis Johnson, Ramey Joe Neel, Gwyn Louise Murray, Jennifer Myers Givens and Diane Solis Gonzales.

Also Evelyn Johnson Davis, Cynthia Gable Noble, James Weldon Crane, Margaret Noble

Saturday, May 24, is expected to be a "really big" day in Muleshoe, one that will long be

## Special Olympics Students Bring Home Medals

Wednesday, at noon, the Muleshoe Lions Club honored the Special Olympians from Muleshoe who attended the Regional meet in Lubbock last weekend.

Special recognition was given Cari Ann Kidd, who was named Special Olympian of the Year and Nancy Kidd, Cari's mother, who was designated Parent of the Year.

The awards were presented during the brunch prior to the beginning of the meet.

Cari Ann's award was the highlight of the Area XVII Special Olympics meet at Estacado High School in Lubbock. Cari competes as an independent and is supported and funded by the Muleshoe Lions Club.

She has participated and competed in Special Olympics for the past 14 years in New Mexico and Texas. She has been to the state meets for nine years, and was elected to the National meet one year.

Cari graduated from Muleshoe High School in 1984, and says she plans to continue competing in future years.

Her mother, Nancy, received the Parent Volunteer plaque for 14 years of volunteer work with Special Olympics on local and state levels.

The opening ceremony at the Olympics was at 10 a.m. and was very impressive. During the ceremony, Cari led the Special Olympians in the creed. An Honor Guard from Reese Air Force Base presented the flags of the fifty states and the lighted torch that was carried was the one used in the Olympics in Los Angeles.

Muleshoe athletes took part in the softball throw, long jump, 50 meter run and 100 meter run.

Winners were Elisa Martinez, first place, gold medal in the softball throw; Leticia Garcia, second place, silver medal in the softball throw; Frank Garcia, second place, silver medal, in the softball throw; Cari Kidd, second place, silver medal, in the long jump; Frank Garcia, first place, gold medal, in the 100 meter run; Cari Kidd, second place, silver medal, 50 meter run; Lisa Martinez, fourth place in the 100 meter run and Leticia Garcia, fifth place in the 100 meter run.

Attending with the Special Olympians were Terri Fortenberry and Mary Nell Blecker, coaches; Kay Griswold and Shain Berry, assisting; Hubert and Nancy Kidd, and Betty Jennings.

remembered. This will be the day of the "Celebrity Auction" to be produced live, and shown on Channel 6 in Muleshoe.

More than sixty items have been catalogued in from the famous, the near famous, and the later to be famous, people and groups. The items will be auctioned to the highest bidders in an event that gets underway at 7 a.m. and is expected to last until 10 p.m. on Saturday night.

Muleshoe Heritage Foundation is sponsoring this event in order to continue restoring some of the historic buildings now located at the Muleshoe Heritage Center. Recently, the historic Janes Ranch House was moved to this site, joining the Muleshoe Santa Fe Depot which has been moved to the Heritage Center location just east of the Bailey County Civic Center and Coliseum.

Many individuals, as well as clubs in the Muleshoe area, have joined together to make this one of the most successful events ever staged in Muleshoe. One such group is the Student Community Action Club, with president Loy Triana, of Muleshoe High School.

With the help of their sponsors, John Gulley and Jean Allison, they are organizing a program to be presented in conjunction with the "Celebrity Auction." This group has worked very hard to secure some

Cont. Page 6, Col. 4

## City Sales Tax Rebate Check Has Decrease

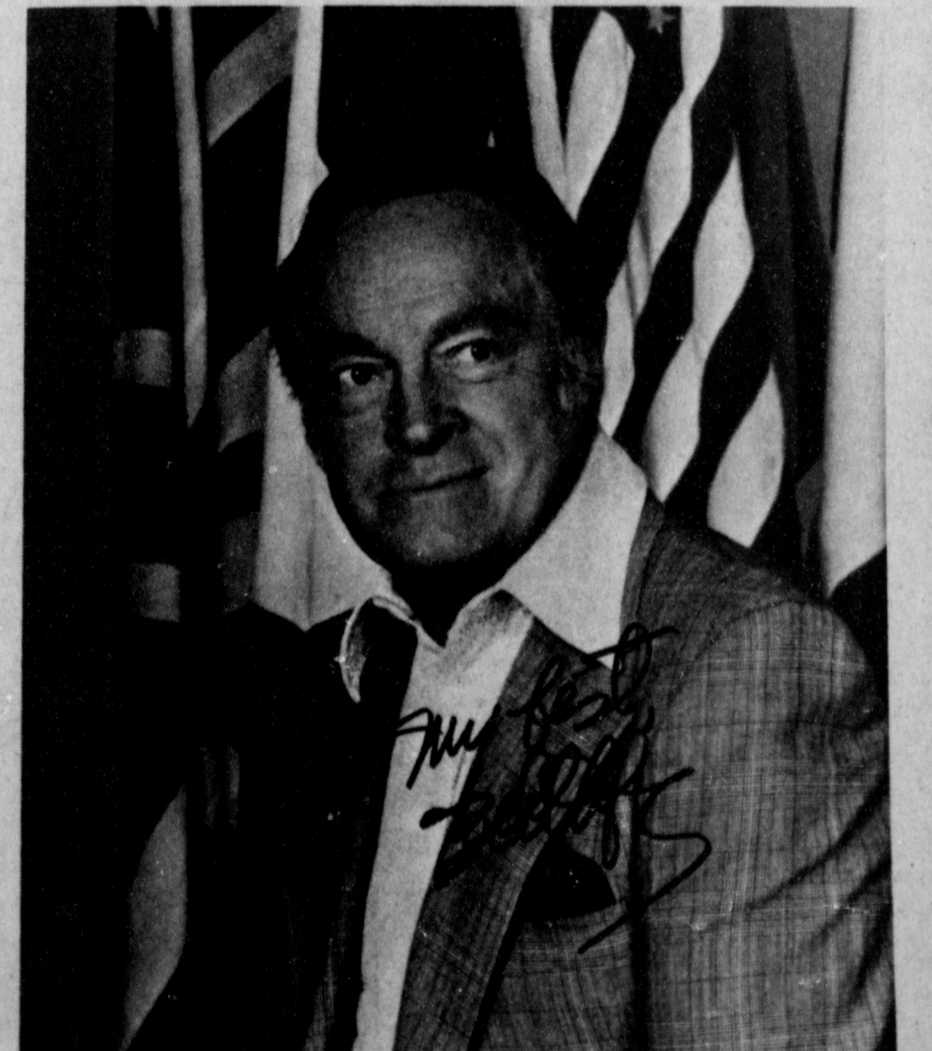
State Comptroller Bob Bullock last week sent checks totaling \$108.1 million in local sales tax to the 1,015 cities that levy the one-percent city tax.

To date for the year, Muleshoe is 4.54 percent behind total received at this same time a year ago. At this time last year, Muleshoe had received \$93,844.62, compared to the \$89,580.14 received to date this year. Their current payment was \$22,489.71, a slight decrease from the 1985 payment at this time of \$23,789.39.

Morton shows a 5.17 increase in sales tax rebates for the year, with a current total of \$23,792.04, compared to the \$22,622.63 at this time a year ago. Their current payment was \$5,201.22, compared to the payment of a year ago of \$6,020.67.

In Lamb County, Littlefield's current check was \$29,502.70, down from the \$32,243.46 a year ago at this time. They show a decrease for the year of 4.97 percent, with payments at this time last year showing \$117,493.24, down to the cur-

Cont. Page 6, Col. 3



**YOU COULD OWN THIS AUTOGRAPHED PHOTO**--This personally autographed 8x10 photograph from Bob Hope could be yours next Saturday. It is just one of the more than 60 items in the Celebrity Auction for next weekend. The auction will benefit the Muleshoe Heritage Foundation for restoration work at the Muleshoe Heritage Center.



BECKY SCHACHER



# IGA MULESHOE IGA

402 Main Street Muleshoe, Texas  
DATE EFFECTIVE: SUNDAY, MAY 18 THRU WEDNESDAY, MAY 21, 1986.



BELL DAIRY  
**Ice Cream**  
\$3.69  
5 QT. BUCKET



BELL DAIRY  
**Cottage Cheese**  
\$1.15  
24 OZ. TUB



BELL DAIRY  
**Onion Dip**  
2 \$1  
8 OZ. TUBS



IMPERIAL  
**Sugar**  
\$1.69  
5 LB. BAG



MARYLAND CLUB  
**Coffee**  
\$3.29  
1 LB. CAN



HUNTS  
**Tomato Sauce**  
5 \$1  
8 OZ. CANS



BE A PEPPER!  
**Dr. Pepper**  
.99  
6 PK. CANS



TIDE  
**Laundry Detergent**  
\$1.99  
42 OZ. BOX



CRISCO  
**Shortening**  
\$2.39  
48 OZ. CAN



RAINBOW CUT  
**Green Beans**  
4 \$1  
16 OZ. CANS



NORTHERN  
**Bath Tissue**  
\$1.09  
4 ROLL



RAINBOW  
**Peas**  
4 \$1  
16 OZ. CANS


## GOLD BOND SUPER SAVERS

WITH ONE FILLED GOLD BOND SUPER SAVER BOOKLET



**White Bread**  
1 1/2 LOAF  
.09

WITH ONE FILLED GOLD BOND SUPER SAVER BOOKLET



GRADE A MEDIUM  
**Eggs**  
1 DOZ.  
.09

WITH ONE FILLED GOLD BOND SUPER SAVER BOOKLET



CELLO  
**Tomatoes**  
EACH ONLY  
.39

WITH ONE FILLED GOLD BOND SUPER SAVER BOOKLET



FRESH CRISP  
**Lettuce**  
EACH HEAD  
.39

WITH ONE FILLED GOLD BOND SUPER SAVER BOOKLET



DEL MONTE CUT  
**Green Beans**  
16 OZ. CANS  
2.39





**SIX MAN PUMPER TEAM**--Members of the six man pumper team for the Muleshoe Fire Department, competing in Amarillo this weekend, including from left, back row, include Charles Lowrance, Raul Torres, Mark Tutt and J.O. Parker. From left, front are Larry Rasco, alternate and Alton Parker. Not pictured is Smoky Martin.

**Western Supper Honors Graduation Class**

The 1986, graduating class of Sudan High were honored Thursday with the annual Barbecue Western Supper held at the First United Methodist Church by the ladies of the church.

The church fellowship hall was decorated with a "Covered Wagon", a real campfire and a "lazy cowpoke" along with other western scenes hanging on the walls. Red and white checked clothes covered the tables which were centered with lanterns, and Texas placemats and programs were used. Ice tea was served from Mason fruit jars.

Fried chicken, beans, potato salad and a salad plate were served by Bonnie Newman, Dawn Gaston, Cindy Brotherton and Teena Newman. They were dressed in western attire.

Class members were picked up and taken on a hay ride by Pam Humphreys and Ann Gaston.

Nell Lane, president of UMW gave the welcome and Gordon Martin gave the senior response with Pitts Davis, pastor of the church, giving the invocation.

Other special guests included Mr. and Mrs. Willie McAlpin, Mr. and Mrs. Buddy Lowrance, and class sponsors, Mr. and Mrs. Kenn Carr and Mr. and Mrs. Bo Lance.

The Anchor Brothers of Sudan, Kenneth Richards, Reydon Stanford and Dean Richards provided the special entertainment for the evening.

**Independence Day Celebration Being Planned At Sudan**

The Sudan Pioneer Independence Day committee met Thursday, May 1 at 7:30 p.m. in the community room of the First National Bank, with Norma Burnett presiding over the meeting.

The rules and regulations for the outhouse race were discussed. Teams may consist of three men or women or any combination thereof. There is also no age limit. The three members who start the race must finish the race. Plans at this time are for the outhouse race to be held at 4:30 p.m. or immediately after the parade.

For further information on the outhouse race, you may contact chairmen Wayne and Wanda Swart at 933-4427; or parade co-chairmen, Sammy Crowson at 227-2172 or Mike McDonald at 227-2006.



When we think of "quality" clothing, most of us think of high quality fabrics, workmanship, style and price. But in fact, there are no features that are absolute marks of clothing "quality."

For example, not too long ago, polyester was thought to be a fabric suitable for inexpensive clothes, while natural fibers such as cotton, wool and silk were for expensive clothes. Now even expensive designer dresses are made out of 100% polyester, and natural fibers and fiber blends are found in clothing in all price ranges. Which type of fabric is the higher quality?

Or consider the fact that you can buy a sequined or beaded dress for hundreds of dollars, yet you would be unable to either wash or clean the garment without damaging it. Is that quality?

Many people paid extra for the style of designer-label jeans, only to find that they lasted about the same length of time as "plain" jeans they bought for much less. Which is the quality product?

Clothes made outside the U.S. were once considered to be inferior products. Yet it's now difficult to find clothes fully made in this country. And many garments manufactured overseas are made from Texas cotton, wool, and mohair. Which place of manufacture shows quality? The point is that

**Brazos County history documents colorful past**

COLLEGE STATION — The creak of leather as a weary cowboy shifts in the saddle, the metallic jingle of the harness as a horse-drawn wagon crunches over a dirt road, the grunt of laborers as they strain to build the foundations of a new university and the snappy cadence of Texas A&M University cadets as they walk across the new campus — these are the images that the editor and writers of a new book on the history of Brazos County hope to evoke.

The book's format is unique for a county history, said editor Glenna Brundidge, because the authors go beyond the usual pioneer family treatment of a county history and include 22 separate chapters which encompass all phases of the history of Brazos County.

The 465 pages of text in the "History of Brazos County, Rich Past - Bright Future" include chapters on lawmen, outlaws, dentists, churches, schools and the migration of ethnic groups into Brazos county, Brundidge said.

An example of the extra effort that went into the work can be seen in the section on cemeteries, a map to the locations of all 83 cemeteries in the county past and present and directions to them are included in the chapter, Brundidge said.

An entire chapter has been devoted to the history of blacks in the Brazos County from slavery to the civil rights movement.

The book is priced at \$50 or \$100 tax deductible if the buyer chooses to donate it to a library or non-profit organization. For more information contact Brundidge or The Brazos County Heritage and History Council, P.O. Box 4305, Bryan, Texas 77805 or call (409) 696-3014.

judging clothing quality is relative. As consumers we need to know why we're buying a certain item of clothing and then we can make judgements about quality.

For a party dress that will be worn once or twice, perhaps flimsy fabric that won't hold up well to washing is appropriate. But for a skirt that you expect to wear to work often, a good quality, washable fabric and classic style may be necessary.

Once you know the level of quality you need for a certain garment, then you can shop more carefully both for the item and a suitable price.



**Morgan Leigh May**

Mr. and Mrs. Brian May of Ozona are the proud parents of a daughter, Morgan Leigh, who was born Friday, May 2 at the Shannon Hospital in San Angelo.

Morgan Leigh weighed seven pounds and six ounces and was 20 and a half inches long. She is the first child for the couple.

Grandparents are Mr. and Mrs. Harold May of Sudan and Mr. and Mrs. Billy Ralph Bynum of Sterling City and great grandparents are Mr. and Mrs. Bill Davis of Sterling City.

**Bailey County Journal** USPS 040-200  
 Established March 31, 1963. Published by Muleshoe Publishing Co., Inc. Every Sunday at 304 W. Second, Box 449, Muleshoe, Texas, 79347. Second Class Postage paid at Muleshoe, Texas 79347.  
**MEMBER 1986**  
**TEXAS PRESS ASSOCIATION**  
 L.B. Hall - President & Publisher  
 Sammy Hall - Vice President & Controller  
 Ceta Williams - News  
 Evelyn Harris - Society  
 Holly Milburn - Advertising  
 Lillie Nino - Bookkeeping  
**SUBSCRIPTIONS:**  
 Muleshoe Journal and Bailey County Journal  
 Bailey and surrounding counties \$13.45  
 Muleshoe Journal and Bailey County Journal  
 Elsewhere in Texas \$13.45  
 Muleshoe Journal and Bailey County Journal  
 Outside of Texas \$14.75  
 Yearly by Carrier \$12.50  
 Advertising rate card on application.

**Sudan CofC Plans Palo Duro Canyon Trip**

The Sudan Chamber of Commerce met Tuesday, May 6th at 7:30 p.m. in the community room of the First National Bank. Jerry Ray, president, presided over the business meeting.

"The community is invited to bring their picnic baskets and come to the county wide picnic in the Sudan City Park today, Sunday, May 18 at 1 p.m. The Chamber will furnish the drinks" said Evelyn Ritchie.

"At the picnic, the winners of the essay contest for high school and junior high school students will be announced. A contest will be held at that time to judge the best man's, woman's, boy's and girl's costumes. You may dress in the period of your choice from 1836 to 1986, you do not have to dress up to come to the picnic. Just come and join in the fun. The Anchor Brothers will provide entertainment during the afternoon.

The Chamber urges the citizens of Sudan to make plans to attend "Sudan Night" at the production of "Texas" at Palo Duro Canyon on July 18th.

There will be a block of seats reserved for Sudan supporters in the left seating section at \$6.50 each. If 20 seats are reserved at one time, in one name there will be a 10 percent reduction per ticket. The barbecue meal is priced at \$5.00 with no reduction. The Anchor Bro-

thers will provide the entertainment on the patio during the barbecue.

"If you would like to make the trip, please sign up at the Senior Citizens Center or at the bank. It is hoped that we will have the use of two local buses to make the trip to Palo Duro."

The annual trip to a Dallas Cowboy's game was discussed. Muleshoe Chamber of Commerce had suggested that Sudan and Muleshoe Chambers go together. Details will be worked out at a later date.

**Texas A&M scientists use laser technology to aid timber industry**

COLLEGE STATION — Texas A&M University forest scientists have developed a method which uses a laser to measure the trees in an entire forest.

Using light beams shot from an airplane that hit the ground one second and tops of trees the next, the researchers say they can measure forest stands and even determine how much wood is in the trees. Laser measurements compare favorably with traditional field work and may help cut production costs in the lumber industry.

"Laser technology can decrease the time it takes to measure forest stands from traditional field work considering the time it takes workers to get to the field, take their measurements, get back to their offices and make their estimates," says Dr. Robert Maggio, project leader and assistant professor of forest science in Texas A&M's College of Agriculture.

"In the low profit margin industry that we're in, we have to cut costs every way we can," he said.

**Ben Franklin**  
**Better quality for less**  
 2104 W. Amer. Blvd. 272-3855 Mon-Sat. 8 am - 8 p.m. Sun 1-5 pm

<b>Bedding Plants</b> Flowers & Vegetables <b>77¢</b> 6 pk.	<b>Fruit, &amp; Shade Trees</b> <b>\$9.97</b>
<b>6' - 8' Hanging Baskets</b> <b>\$5.77</b>	

**The Junior Class of M.H.S.**  
 Would like to thank all the people who contributed so much to this year's Junior & Senior Banquet.  
 Your support is appreciated very much.  
**M.H.S. Juniors**

**West Texas Battery Service**  
**Truck, Tractor & Other Commercial**  
**6 or 12 Volt Batteries**  
 Also Available At Approximately  
**1/2 list price**  
 (with exchange)  
**Your Own Batteries Can Also Be Reconditioned At Economical Prices And With A New Battery Type Guarantee!**

After 6 p.m.  
**Billy Owen** 272-3334  
**Ernest Ramm** 925-6421  
**Clayton Ramm** 965-6773

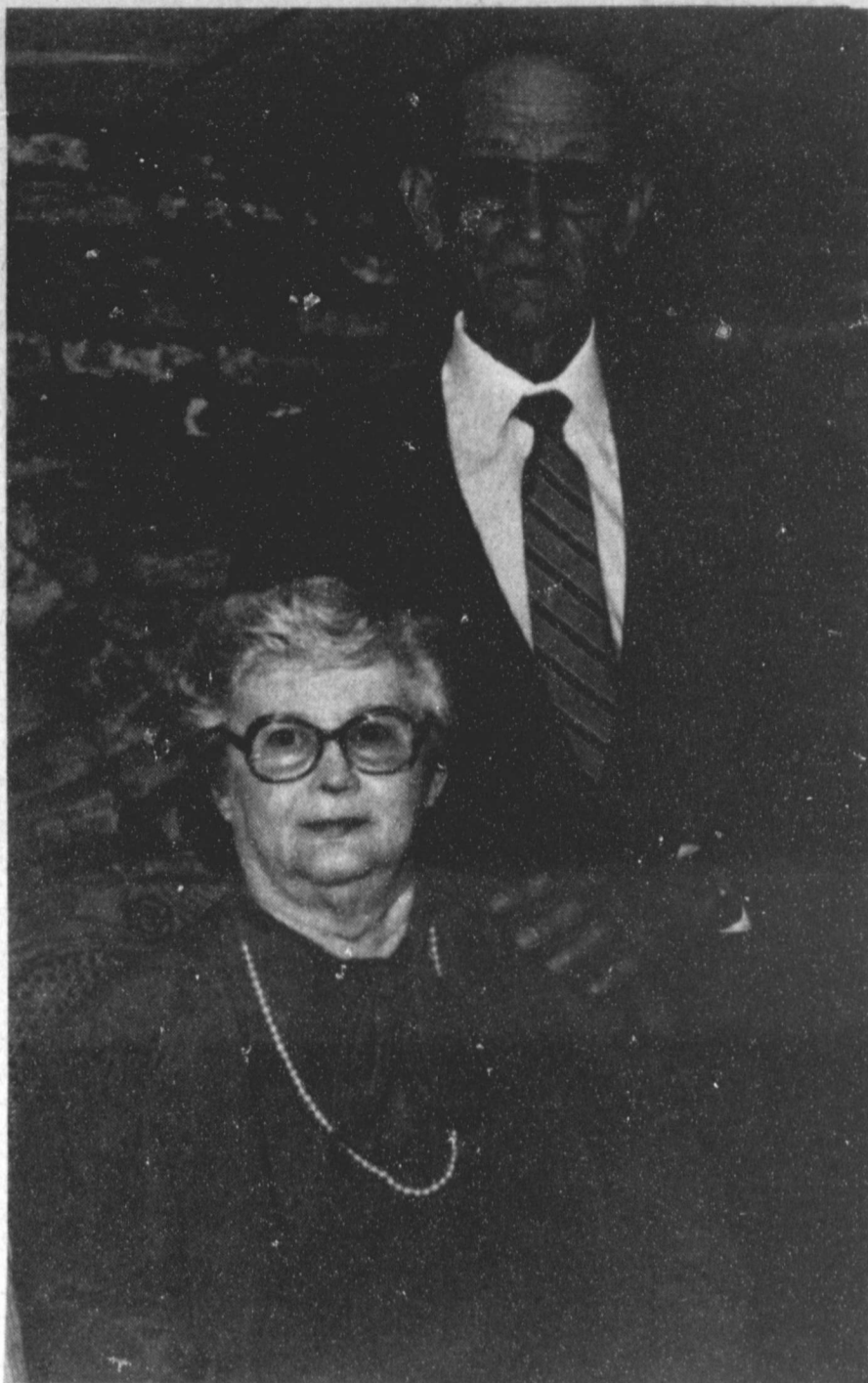
Paymaster & Lankart are the #1 brands in Texas & Oklahoma.  
**Here's how we figure...**  
**It pays to plant Paymaster & Lankart certified seed!**  
 For example: say your average yield is

500 lbs. per acre  
 Could be 15% → x 10% potential yield gain with Paymaster/Lankart certified seed  
 = 50 lbs. more lint per acre  
 x 55¢ per lb. for your lint  
 = \$27.50 more income per acre with Paymaster certified seed  
 Just 14 lbs more lint per acre will pay the difference → - 8.00 additional cost for certified seed per acre  
 = \$19.50 potential per acre more in your pocket

Plus a cash discount, Paymaster certified seed means certified for varietal purity and genetic identity by U.S.D.A. State inspected and Vitavax treated.  
 See your ginner or your Paymaster Seeds dealer today and see what the Paymaster certified potential could put in your pocket this year.

**Paymaster SEEDS** **LANKART** Cotton Seed  
 Southwestern Sales Office Plainview, Texas 79072 (806) 652-3312  
 Paymaster warrants that the seeds conform to the descriptive statements on the seed tag, within recognized tolerances. This express warranty excludes all other warranties, express or implied, including any warranty of merchantability or fitness for a particular purpose. Paymaster's liability on this warranty is limited in amount to the purchase price of the seed. ©1985 Paymaster Seeds.





**ANNIVERSARY CELEBRATED**—Mr. and Mrs. Quinn Weaver of the Lazbuddie community were honored with a golden anniversary luncheon at noon April 12 at K-Bob's Steak House in Clovis, N.M. Hosting the event were their children, Patsy Henson and Linda Harness, both of Ft. Worth, Jimmy Weaver and Jerry Weaver, both of Lazbuddie. Guests present were Mr. and Mrs. C.W. Dale and Helma Rojas, all of Muleshoe. Weaver and the former Clara Mac Wilson were married April 11, 1936, in Larkin, Ark. and moved to Lazbuddie from Lacrosse, Ark. in 1955. They have seven grandchildren, who were all present at the celebration.

**So True**  
Today it costs more to amuse a child than it used to cost to educate his father.  
—Santa Fe Magazine.

**Silence**  
There is no wholly satisfactory substitute for brains, but silence does pretty well.  
—Leader, Garner, Ia.

## Bowlings To Enter Missionary Service

Dean and Trudy Browning of Friona, along with their two sons, Johnathan and Derek, will be leaving soon to join the Home Mission Board of the Southern Baptist Convention.

They will be sent to South Texas to serve with the Mission Service Corps along the Texas and Mexico border. They have lived in Friona four years and operated different businesses as well as Mrs. Browning serving as a teacher in the Friona School system.

The Brownings were members of the First Baptist Church while living in Friona. They were active in Men's Brotherhood and Women's Missionary Organizations, the Brownings contributed their time and talents to the ministry of the First Baptist Church of Friona, having traveled with young people as sponsors on church mission trips and local missions.

Mrs. Browning has shared her talents in singing and participating in the ladies handbell choir.

Dean and Trudy have together accepted a two year assignment with the Mission Service Corps Personnel of the Home Mission Board of the Southern Baptist Convention. Their term of service will begin June 1 and their first position of responsibility will be in the lower Rio Grande Valley.

Browning's new assignment will be maintenance assistant under the Missions Director, Jerry D. Johnson of the Rio Grande Valley Baptist Association headquarters in Weslaco, Texas. His major responsibilities will be to minister to and assist in whatever needs may be found in 110 church congregations that comprise the entire association. The total of 110 churches includes 44 Anglo, 64 Hispanic and two black congregations. Twenty-eight of these are located in Old Mexico.

They have plans to build an additional 90 new churches in the next five years. While living in Weslaco and raising their two young boys, Trudy will be teaching school and working with the Woman's Missionary Leaders from the different churches in the Association, coordinating their clothing ministry.

They will make their home at the Cone Oasis Retreat located at La Feria, Texas.

Bowling is the grandson of Grady and Allie Browning of Muleshoe.

## Muleshoe Young Homemakers

Muleshoe Young Homemakers met Tuesday, May 13 for their last regular meeting until September. Members answered roll call by recalling something they learned in Young Homemakers this year.

Those present included: Sheila Black, Terry Byers, Jo Ellen Cowart, Rose Crosswhite, Terree Donaldson, Pam Hancock, JoAnna Harroll, Kay Lepard, Terry Maricle, Beverly Parker, Kim Nickel and Nonette Robinson.

Dr. Tom Bonds, D.D.S. presented a program on new dental techniques. He showed before and after slides of patients who had benefited from bonding treatment. A question and answer session followed the program.

During the business meeting members voted to purchase Zig Zigler's new book "Raising Positive Kids in a Negative World" for the Muleshoe Public Library.

Secret ballot votes were cast for "Most Valuable Member" and "Most Valuable New Member" of the Year. These will be revealed May 20 during Ladies Night Out. The club will be traveling to Portales, N.M. where they will dine at Cattle Barons.

Newly elected officers will be installed during the evening. Terree Donaldson won the door prize and hostesses Pam Hancock and Sheila Black served berry shortcake and iced water to the members.

## Rebekah Lodge

Muleshoe Rebekah Lodge No. 114 met in regular session Tuesday, May 13 at 7:30 p.m. in the Oddfellow Lodge Hall. The members welcomed the American Flag at attention. The Bible was presented and the opening prayer was given by the chaplain.

Lodge was called to order by Noble Grand Proteem, Sandi Robinson. Roll was called and minutes of the previous meeting were read and approved.

District Deputy President, Fern Davis, was introduced and welcomed by the Lodge. It was reported that she gave an interesting school of instructions that all members benefited from.

The meeting was closed with a prayer by Louise Allen. Refreshments were served by Lillian Sims.

All members are urged to attend next Tuesday night at 7:30 and every Tuesday night.

## April Beale

### Wins Contest

April Beale, 11 year old daughter of Mr. and Mrs. Bobby C. Beale of Wolfforth and the granddaughter of Mrs. Arlie Aycok of Tahoka and Mr. and Mrs. Olan Beale of Sudan, is the winner of the National Cloth World and Simplicity Pattern Coloring Contest. There were 500,000 entries in the contest nationwide. She received \$1,000 which she plans to use for her college education.

She applied fabric, ribbons and artificial grass to a picture to create a wedding scene featuring the Easter bunnies for her entry in the contest.

## Study Club

The Muleshoe Study Club met Thursday evening, May 8 in the home of Mrs. Wilson Witherspoon for an installation dinner and also to present the annual scholarship award for the year.

Dinner was served to the following members: Mrs. T.R. White, Mrs. John Agee, Mrs. Wilma Thompson, Mrs. Charles Shain, Mrs. Barry Lewis, Mrs. Betty Carpenter, Mrs. Wesley Glover, Mrs. J.G. Arnn, Mrs. H.S. Sanders, Mrs. Rufus Gilbreath and Mrs. Joe Costen.

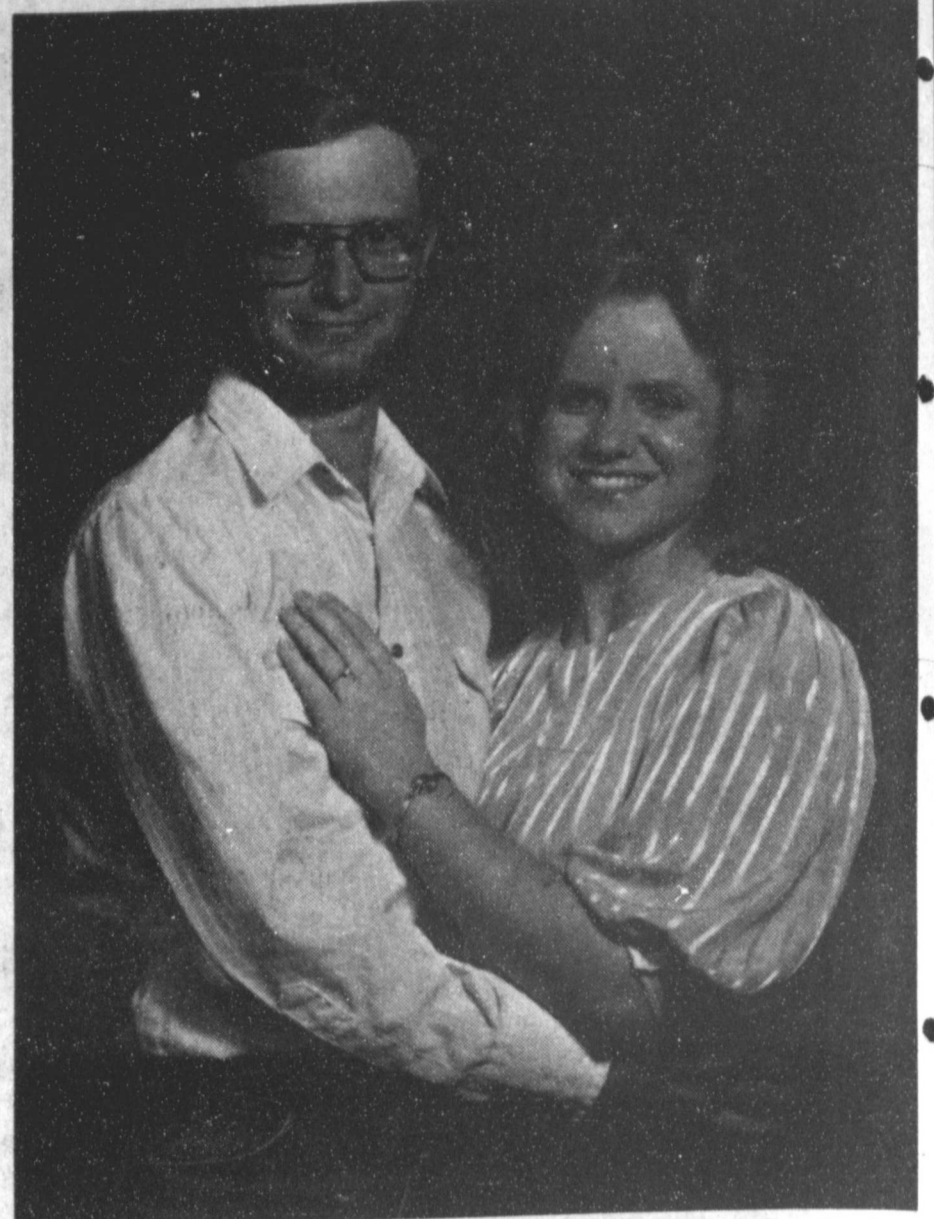
Also Mrs. R.O. Gregory, Mrs. Roland McCormick and the hostess, Mrs. Witherspoon. Guest attending were: Brian Houston, his mother, Mrs. Eugene Houston; his grandmothers, Mrs. Pauline Houston; Mrs. Mildred Meyers and Mrs. Lucy Faye Smith.

Following the dinner, Mrs. Witherspoon presented the scholarship to Brian Houston for his dedication to his school work and to be used for college tuition.

Mrs. Smith installed the officers for the coming two year period. She used the Texas Sesquicentennial as the theme having each member to light a candle to symbolize unity and diversity in service for the club.

Mrs. T.R. White was installed as president; Mrs. John Agee, first vice president; Mrs. Roland McCormick, second vice president; Mrs. Wilma Thompson, treasurer; Mrs. Barry Lewis, secretary; historian, Mrs. Charles Shain; parliamentarian, Mrs. J.G. Arnn; Federation consular, Mrs. H.S. Sanders; recording secretary, Mrs. Witherspoon, press reporter, Mrs. Carpenter; radio and TV reporter, Mrs. Turner.

A short business meeting was held and dues were paid. The club was then adjourned for the summer.



**ENGAGEMENT ANNOUNCED**—Mr. and Mrs. H.P. Hagins announce the engagement and approaching marriage of their daughter, Nicki Renee Hagins to James Lynn Strickland, son of Mr. and Mrs. James Strickland of Tahoka. The bride-elect is a 1984, graduate of Muleshoe High School. She is presently employed at Galbraith Steel in Lubbock. Strickland graduated from Tahoka High School in 1983, and is currently engaged in farming in Tahoka. Marriage vows will be exchanged at 3 p.m. Saturday, July 12 at the Muleshoe Church of Christ.

**19** WALLET SIZE COLOR PHOTOS  
WE USE KODAK PAPER **99¢**  
No limit on this offer



HAVE YOUR GRADUATION PICTURES TAKEN NOW  
**ONE DAY ONLY**



Kodak paper. For a Good Look at the Times of Your Life. TM

**SPECIALS FOR THE GRADS**  
Summer  
**Sweaters 20% off**  
*Lookin' Good*  
206 Main Phone 272-5052

<b>Ben Franklin</b> Better quality for less 2104 W. Amer. Blvd. 272-3855 Mon - Sat. 8 am - 8 pm Sun 1-5 pm	
<b>Gift Ideas FOR YOUR GRADUATE!</b>	
Norelco Rolatract Triplehead Razor \$49.99	Sewart Stereo AM/Fm Head phone Radio \$14.97
Speidel I.D. Bracelets \$8.95 & up	Royal Checkbook Calculator LCB830 \$16.88
Assorted Styles Wallets \$5.48	Lynx PPL500XL 35M w/carrying Case, Flash & Strap Camera \$12.88
Gold Star 5" Black & White w/ Am/Fm Stereo Radio TV \$89.88	Clicker Portable Butane Curling Iron \$14.94
Brand Name Watches 1/2 price	Cosmetic Bag w/Free Clutch \$9.99
Credit Card FM Radio \$16.99	Luggage \$22.97
Cosmetic Case.....\$44.97	Wardrobe.....\$44.97
	Weekender.....\$34.97

**Time To Insure Your Crops!**  
**New Rates**  
Corn \$ 4.93 per hundred  
-----  
Insure Cotton, Wheat, Soybeans, Milo  
Call **Ronnie Holt**  
272-4581 Nights 965-2842  
or come by,  
Henry Insurance 111 W. Ave. B.



## Musical Awards For Year Presented At Piano Recital

All musical awards for the year were presented to piano pupils of Elaine Damron at their recitals held Sunday afternoon, April 27th, at the First United Methodist Church Fellowship Hall.

Receiving the top awards for the entire group were the following: highest guild grade: Mason Conklin, fourth-grade son of Mr. and Mrs. Norris Conklin, making a superior plus on a twenty-piece program; highest theory awards on state theory test: grades 1-3--Aimee Hugg, first-grade daughter of Mr. and Mrs. Gary Hugg, making a 98½; grades 4-8--Mason Conklin, making a grade of 99 7/8; grades 9-12--Lisa Hamilton, eleventh-grade daughter of Mr. and Mrs. Charles Hamilton, with a grade of 96; most practice hours: Gilrobert Rennels fifth-grade son of Mr. and Mrs. Jack Rennels with a total of 133 hours and 30 minutes for the year.

Gold medals were presented to those making a "1" or "Superior" rating in the WTSU Festival. They were Jeremy

Bruns, Michelle Finney, Julie Crittenden, Stacy McElroy, Heather Hutton and Lisa Hamilton. Certificates were presented to those placing at the Lubbock Sonata-Sonata Festival.

Theory medals were awarded to those taking the theory test on their school-grade level through the Texas Music Teachers Association and making a grade of 90 or higher. Those receiving gold medals (grade of 98-100) were the following: Aimee Hugg, Cyle Marr, Emily Bomer, Russell McGuire, and Mason Conklin. Receiving silver medals (grade 95-97) were Reagan McElroy, Jeanne Cox, Kelly Conklin, Michelle Finney, Heather Hutton and Lisa Hamilton. Those receiving bronze medals (grade of 90-94) were Holly Hutton, April Hugg, D'Anne Box, Corley Hutton, Jeremy Bruns and Selina Gonzales.



PIANO RECITALS HELD---Sunday afternoon, April 27 piano students of Elaine Damron were presented in a recital in the United Methodist Church. (From Left) Lisa Hamilton, highest theory award, grades 9-12; Gilrobert Rennels, most practice hours; Mason Conklin, highest Guild grade and highest theory award grades 4-8; and Aimee Hugg, highest theory award, grades 1-2.



BAILEY COUNTY 4-H'ERS---More than 140, 4-H Club members will represent the 20 counties of the South Plains Extension District in the Texas 4-H Roundup on June 10-12 in College Station. To compete in state competition a youth must be in the senior division, aged 14-19. Youths earned the trip by competing in district contest held at Texas Tech University. Some 300 boys and girls competed in the district events which included 31 contests. Four-H'ers from Bailey County who participated were: Zana Huckaby, Holly Huckaby (first place in the category of Citizenship in Action) and Carol Copley (third place in Open Class).

### Jennyslippers

### Regular Monthly

### Meeting Held

The Jennyslippers met at noon Tuesday May 13 for their regular monthly meeting.

There were thirty five in attendance including three guests.

In the business meeting it was decided that the walk-a-thon prizes would be given away on May 24. They will be presented at the Heritage Auction as a part of the special events.

The Jennyslippers agreed to help with the Heritage Foundation auction. They also agreed to help contact merchants for donations to the auction.

The Jennyslippers will have a team in the Mule-Putt golf tournament on May 29.

Several members will be going to a Chamber of Commerce luncheon in Littlefield on June 6.

Next regular meeting of the Jennyslippers will be June 10, 1986.

Five-year piano guild pins went to those playing a national program (ten or more memorized pieces) for five or more years. Students receiving these pins were Lisa Hamilton (9 years), Heather Hutton (8 years), Jeremy Bruns (7 years), Dayna Hamilton (7 years), Kelly Conklin (6 years), Selina Gonzales (6 years), Stacy McElroy (5 years), and Corley Hutton (5 years). National piano playing guild certificates from the auditions held in Muleshoe April 25th and 26th were presented to 100 percent of Mrs. Damron's pupils.

#### ABOUT YOUR HOME

Have you noticed lime deposits in your teakettle? You can remove them by heating vinegar in it and allowing it to stand overnight. Rinse before using the next day.

Overwatering can kill many jade plants. Once a month watering from September to April is usually enough.

To reduce the calorie content and add zest to vegetables, cook them with either chicken or beef bouillon cubes.

## Creative Living

with Sheryl Borden

Information on packaging trends for the 80's, yo-yo quilting and making homemade squeeze margarine will be presented on "Creative Living" on May 20 and 24. Helen Hatton is a consultant to the recycled paperboard division of the American Paper Institute, and she will discuss what can be seen today in regard to packaging trends for the 80's--and exploring the use of recycled paperboard for food and grocery packaging. Helen is from Toronto, Canada.

Yo-yo quilting will be demonstrated by Mary Ellen Payne, the Family/Community/Leadership State Coordinator with the NMSU Cooperative Extension Service in Las Cruces. She will demonstrate the step-by-step process for doing yo-yo quilting and explain some used for the finished product.

Connie Moyers, Marketing Home Economist with Southwestern Public Service Co., Clovis, will share a recipe for making homemade squeeze margarine, and save money at the same time.

Three additional topics will be presented on the show on May 22. Information on the Reynolds Cooking Fold, pain clinics and buying a hot water heater will be covered. Cathy McCreery, home economist with Reynolds Metals Co. in Dallas, TX will demonstrate a fast, easy way to prepare delicious healthy meals. It's called the Reynolds Cooking Fold, and it is a high temperature cooking method for preparing light individual entrees.

One of the guests is Dr. Richard Sternbach, La Jolla, CA, and he is recognized as one of the country's foremost experts on pain and pain management. He will be joined by Dr. David Schwartz, who is the Director of the Margaret W. Strong Pain Clinic in Santa Fe, and they will talk about pain clinics and what they hope to accomplish.

Vickie Jones, Marketing Home Economist with Southwestern Public Service Co. in Roswell will discuss some important considerations for buying a hot water heater.

"Creative Living" is produced and hosted by Sheryl Borden. The show airs on KENW-TV, Channel 3 in Portales on Tuesday and Thursday at 12 noon and at 2:00 pm on Saturday. (All times are Mountain Standard). Viewers can request copies of printed materials offered on the show by calling on KENW-TV's toll-free telephone lines. In New Mexico, the number is 1-800-432-2361, out-of-state: 1-800-545-2359, and Portales and Roosevelt County: 562-2112.

"Creative Living" is carried on more than 90 stations in the United States, Canada, Guam and Puerto Rico. The show is distributed nationally by the Pacific Mountain Network, Denver, Colorado.

#### QUICK COOKING WITH REYNOLDS COOKING FOLD

For a fast, easy way to prepare delicious healthy meals, just try this: the Reynolds Cooking Fold. This high temperature cooking method allows you to cook light individual entrees, ready in minutes. As a bonus, these meals are low in calories and cholesterol. Some of the basic guidelines include:

\*Cook only one serving in each Fold. To cook more than one, increase the number of foil packets cooked at once, but do not increase the quantity of food inside each packet.

\*Wrap each serving in Heavy Duty Aluminum foil before cooking.

\*Preheat the oven to insure that the food will be cooked within the recommended time.

As the food cooks, steam is produced. This causes the packet to puff.

\*For best results, cook only light entrees such as boneless chicken of fish. Beef, fresh pork or veal will toughen if cooked in this manner. Cook only thinly sliced or julienne cut vegetables.

\*For best flavor penetration, sprinkle seasonings directly on the chicken or fish layer. Top with vegetables and season again to taste.

\*Handle hot cookie sheet and foil packet carefully. Transfer foil packet to dinner plates before opening with hot pads or oven mitts.

\*To open, hold corner of foil packet with hot pad, cut an X across the top and fold foil back. Start at outside corners and cut toward the center with a sharp knife.

#### LIGHT 'N EASY CHICKEN

2 onion slices (divided into rings), 2 boneless chicken breast halves (skin removed), basil leaves, paprika, salt, pepper, 1 tablespoon margarine (diced), 1 medium carrot (cut in julienne strips), ½ cup zucchini (sliced), 4 fresh mushrooms (sliced) and 1 tablespoon water.

Preheat oven to 450 degrees F. Place onion rings on 12x18-inch sheet of Heavy Duty Aluminum Foil. Place chicken on onion, sprinkle with basil, paprika, salt and pepper to taste. Top with vegetables, margarine and water. Sprinkle with additional seasonings to taste. Wrap in the Cooking Fold. Place foil packet on cookie sheet. Cook 18 minutes. Makes: 1 serving.

#### How About You?

Anyone who thinks he knows all the answers isn't up to date on the questions.

-Tribune, Chicago.

#### Do You

Do something every day to make other people happy, even if it's only to let them alone.

-Tribune, Chicago.



Happy 40th Anniversary

Love  
All Your Kids

## GIFTS for the GRAD!

SHORT SLEEVE

KNIT SHIRTS

REG. \$12.99

\$10<sup>97</sup> 2 FOR \$20<sup>00</sup>

SELECT GROUP  
COMFORTERS

VALUE TO \$55.00

\$19<sup>97</sup>

SEAGULL  
3 PC TOWEL SET

REG. \$17.97

\$13<sup>97</sup>

SUMMER

HANDBAGS

20% OFF

ENTIRE STOCK  
FRAGRANCES  
(LAUREN, ANAIS, CIARA & VANBERBILT)

20% OFF

SELECT GROUP  
BEACH TOWELS

REG \$3.99

2 FOR \$7<sup>00</sup>

**ANTHONY'S** AMERICAN EXPRESS VISA WELCOME  
272-3478 Mon.-Sat. 8 a.m.-6 p.m. Sun. 1-5 p.m. 321 Main

'86 For The Graduate  
Other Gifts For The Grad From \$4.00  
Lindsey Jewelry 272-3955  
202 Main

NEED MORE ROOM?  
see us for a...  
Home Improvement Loan.  
Muleshoe State Bank  
Muleshoe, Texas  
MEMBER FDIC  
EQUAL HOUSING LENDER



## Texas Buckle-Up

Cont. from Page 1

ed that the power to regulate and control the use of the public roads and highways is primarily the exclusive responsibility of the state.

\*The power to regulate and control the operation of motor vehicles on public roads is the responsibility of the state.

\*Recognizing the irrefutable facts concerning the societal benefits of wearing seat belts, the legislature has a responsibility in this area to require seat belt use. Little doubt exists as to the constitutionality of such a requirement.

\*There is no doubt that such a requirement will save lives.

\*There is no doubt that such a requirement will injuriously reduce the number of fatalities.

\*There is no doubt that such a requirement will protect and promote public health and general welfare.

\*All the arguments of fact, when sufficiently researched, show that a belt use law is advantageous to the community.

\*The privilege, not the right, of holding a drivers license already requires conformity with many rules which are a loss of freedom to the individual. A belt use law is, therefore, nothing new in principle.

### CRASH DYNAMICS STATISTICS

\*The chances of you being involved in a serious automobile accident are 1 in 3 in your lifetime.

\*When unbelted, it takes seven-tenths of a second to lose your life in an automobile crash. The split-second chronology of what happens when a car collides with a tree at 55 MPH is:

-At 1/100th of a second, front end collapses.

-At 2/100ths of a second, the hood crumbles, rises, smashes into the windshield and grill work disintegrates.

-At 3/100ths of a second, the driver is sprung upright from his/her seat, knees pressed against the dashboard, the steering wheel bends under the driver's grip.

-At 4/100ths of a second, the

driver's hands bend the steering column into an almost vertical position and the head and chest absorb most of the force of the impact.

-At 6/100ths of a second, the impact rips the shoes off the driver's feet. The chassis bends in the middle and the driver's head is slammed into the windshield or windshield pillar.

-At 7/100ths of a second, the entire body of the car is deformed out of shape.

FACT: Every 8 hours, an unrestrained citizen dies in an automobile accident in Texas.

FACT: Every 2 minutes, an unrestrained citizen was injured, crippled or maimed in an automobile accident in Texas.

FACT: The odds of being fatally injured in an automobile accident are 2500 percent greater when ejected from the vehicle.

FACT: Ejection is nearly eliminated by using the seat belts.

## SPS Feedlot Report Says Cattle 'Decline'

In 1985 more than five million cattle moved through the feedlots, and 4.8 million were slaughtered in the packing plants located in Southwestern Public Service Company (SPS) service territory, reports the electric utility's most recent annual Fed Cattle Survey.

This includes 103,600 head in Bailey County; 479,526 in Parmer County; 52,500 in Cochran County and 161,530 in Lamb County, with the largest number being in Deaf Smith County, showing 791,350 head of fed cattle.

SPS serves a 52,000-square-mile area in parts of the Panhandle and South Plains of Texas, eastern and southeastern New Mexico, the Panhandle of Oklahoma and southwestern Kansas. The feedlots in the territory fed 5,077,338 head last year, down somewhat from the record 5,259,779 fed during 1984.

Total one-time capacity of the feedlots surveyed in 1985 was 2,619,775 head, up from the

## Pumping Plant

### Inefficiency

#### Can Really Cost

By: Warren Givens  
Soil Conservation Service

Pumping Plant efficiency is how efficiently the motor and bowls or pump get the water to your irrigation delivery system, whether it is furrow, siddler or pivot.

Low efficiencies of 35 percent or less cost producers \$4 to \$5 to put one inch of water on one acre, a high efficiency greater than 70 percent usually costs in the \$1 to \$2.25 range.

Irrigators in Bailey County usually apply 20 inches per year on cotton, 32 inches per year on corn. The cost differences between low and high efficiency can be as much as \$2.47 for every inch on every acre.

Pumping plant efficiencies are a non-cost service the Soils Conservation Service provides for you. In some case, we can determine column pipe leaks;

worn bowls and motor overloads the day of the evaluation.

Average efficiencies of the irrigation wells checked in Bailey County this year is 55 percent as opposed to 30-35 percent in previous years.

If you are concerned about an irrigation well and want an evaluation on it, contact Warren A. Givens at the Soil Conservation Service, located at 111 East Avenue D in Muleshoe.

## Auction...

Cont. from Page 1

unusual musical and variety acts to be heard and seen throughout the day over Channel 6.

The auction will continue throughout the day interspersed with some of the following entertainment:

Roy Whitt and his organ will be featured periodically, with Whitt performing at least one comedy routine; Laura Leal will be at the keyboard at various times; and Ron Linebarger, Circle Back minister and ventriloquist will be appearing periodically, with short routines. Some of Elaine Damron's piano students will be presenting piano selections.

Other groups in the line up are Jenny Oliver's Jazzercise group; Mr. and Mrs. Brock Sanders, the Barry Cawarts, Mr. and Mrs. Bobby Curtis, the Gospel Oaks and the Darrel Martin group.

Muleshoe High School Jazz Band will begin an evening of entertainment at approximately 5:30 p.m. followed by special out of town groups, the Larry Buchanan Band from Floyd, N.M. and the Bordertown Four of Farwell.

### BIBLE VERSE

*Be strong and of a good courage: be not afraid, neither be thou dismayed.*

1. By whom was the statement made?
2. To whom was it made?
3. Whom did he succeed?
4. Where may this exhortation be found?

### Answers

1. The Lord.
2. Unto Joshua, the son of Nun.
3. Moses.
4. Joshua 1:9.

## Three-Way News by Mrs. H.W. Garvin

Mr. and Mrs. Bill Dolle attended the funeral of an uncle Roy Dolle in Littlefield Tuesday.

Mr. and Mrs. Mike Sowder visited his parents, the Joe Sowders, Monday. Mike and wife live in Brownfield.

Mrs. Buelah Toombs underwent surgery in Methodist Hospital Tuesday.

Mr. and Mrs. Robert Sanders from Muleshoe visited the

Rayford Masten family Tuesday evening.

Mr. and Mrs. Kenneth Fox from Clovis spent Saturday with her mother, Mrs. H.W. Garcia. Rev. and Mrs. James Gillentine from Lubbock spent Saturday and Sunday with their mother, Mrs. H.W. Garvin.

Mr. and Mrs. Elmer Lee from Goodland were supper guests in the George Tyson home Wednesday night.

Ima Roberts visited Mrs. Minnie Dupler Thursday.

Troy Tyson from Levelland visited her parents the George Tysons Sunday.

The Kindle family all had lunch in the James Kindle home Sunday.

## PIZZA, SALAD & SOFT DRINK, \$2.99

It's a delectable lunch for less! Come to your home town Pizza Hut\* restaurant and order a Personal Pan Pizza with a single topping. Take one trip to the salad bar. Have a martin-

dium soft drink. And pay only \$2.99! Or go for a Supreme Personal Pan Pizza and your meal deal is only \$3.49. Come back several times.

272-4214  
1422 W. Amer. Blvd.  
Muleshoe



Offer good between 11 a.m. and 4 p.m. at participating Pizza Hut restaurants. Not valid in combination with any other offer. © 1985 Pizza Hut Inc.

## Sheriffs Office Report

Reports on the jail book at the Bailey County Sheriff's office since May 1 include the following arrests:

Four individuals picked up on outstanding warrants, cleared with fines paid; one for public intoxication; one on a writ from Roosevelt Co., N.M.; one for driving while license suspended; two for revocation of probation and one for indecent exposure.

Also, the following were held on driving while intoxicated charges: Beverly Billington Green, 46, \$750 bond; Waymon C. Palmer, 44, in jail and Michael C. Lopez, 18, \$750 bond.

## Jurors...

Cont. from Page 1

Oralia DeLaRosa, Robert James Klutts, Bertha Pauline West, H.P. Hagins, Adelina D. Flores, Murrell Glen Watkins, Esther Contreras, Paula Foley, Gerald K. Reid, Imogene Bryan Claunch, Mary Helen Gutierrez, Ninfa Castorena, Cordelia Velasquez Aguirre, Lorene Stewart Hysinger, William Frank Taylor Jr. and Elma Davila Daniel.

Nelda Merriott, District Clerk, asks all the prospective jurors to call 272-3165 after 5 p.m. on Monday, May 19, for a recorded message as to whether or not to report for jury service.

## Check...

Cont. from Page 1

rent total of \$111,650.50. For Friona is a reduction in total receipts for the year of 7.92 percent. Their payments to date for last year were \$51,185.39, decreasing to the current total of \$47,132.93. Payment for this period in 1985 was \$14,699.25, and for this year, for the same period, Friona received a check for \$12,544.85.

Houston's check was the largest--\$17.7 million--bringing total payments in 1986 to \$64.8 million, down two percent over 1985. Dallas received \$12.5 million for a total of \$46.1 million in total payments for this year, a decrease of five percent.

San Antonio's payment of \$6.9 million increased that city's 1986 payment to a total of \$25.1 million, up five percent over last year. Austin's check for \$4.9 million pushed payments to \$18.5 million for 1986.

Fort Worth received \$4.1 million for a 1986 total of \$15.5 million, up eight percent. El Paso's payment of \$2.5 million brought its total to \$9.6 million, an eight percent increase over last year's payment.

Bullock also sent checks totaling \$51.1 million to the state's six Metropolitan Transit Authorities. Houston's MTA check for \$21.1 million pushed 1986 payments to \$75.5 million. Dallas' DART payment of \$11.2 million brought its total of \$70.8 million this year. Austin's Capitol Metro received a \$4.9 million check, for a yearly total of \$18.3 million. VIA in San Antonio received \$3.8 million for a total of \$13.7 million in 1986. Corpus Christi MTA received a check for \$886,800 increasing total payments this year to \$1.6 million. Fort Worth's MTA payment for \$1 million increased the city's 1986 total to \$3.6 million.

May checks represent taxes collected on sales made in March and reported to the Comptroller by April 20.

Read a good book once in a while even if you doubt that you can understand it.



## 33rd Annual Stockholders Meeting of

## Muleshoe Co-Op Gins

Will Be

Thursday May 22, 1986

8 p.m.

Muleshoe High School Cafeteria

BBQ & All the trimmings will be served, followed by business meeting & election of New Directors.

### Board Members:

Curby Brantley, President

Tim Campbell, Vice-President

Bobby Redwine, Secretary

Charles Morau, Manager

### Directors

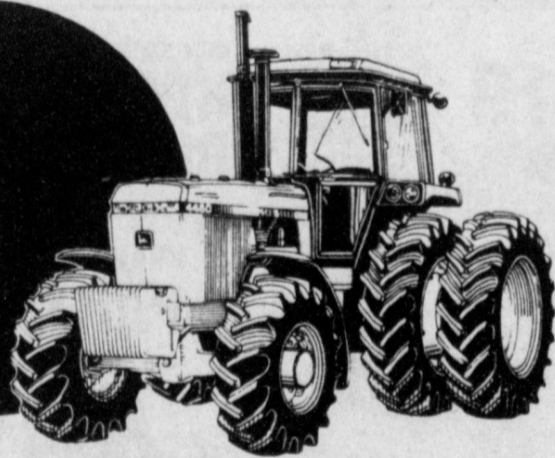
James Brown, Stephen Bell,

M.W. Vise & Preston Cargille

See You There!



"The sooner you buy the bigger you save" SALE



## John Deere row-crop tractor savings countdown

We have a good selection of John Deere 4050 through 4850 Row-Crop Tractors that you can buy at huge savings. The earlier you buy, the more you can save. See us for details.

- Interest-free financing\* until January 1, 1987 on new models. (October 1, 1986 on used models).
- Discount in lieu of finance waiver on new models.
- Very attractive factory discounts passed on to you.

\*Availability of John Deere financing subject to approval of credit.

See us right away--the sooner the better



## Dent & Co.

W. Hwy. 84

272-4296



# MANAGING for SURVIVAL 1986



Texas Agricultural Extension Service  
By: Spencer Tanksley  
People Helping People

### Meat Issues

Will beef consumption continue to drop in the United States?

## Courthouse News

### COUNTY COURT

Ramon Morales Bustillos, DWI, \$250.00 fine, 2 years probation.  
Gary Dean Turner, DWI, \$250.00 fine, 2 years probation.  
Michale Camey Lopez, DWI, 250.00 fine, 1 year probation.  
Waymon Charles Palmer, DWI second offence, \$500.00 fine, 15 days in Bailey County Jail.

### DISTRICT COURT

Tammy Sue Flores and Freddie Doran Flores and in the interest of Johathan Wayne Flores, Rebecca Denise Flores and Gabriel Doran Flores, Children. Temporary Orders.

Barbara Puckett VS Atex Oil Co., Inc., NUNC PRO TUNC Summary Judgement.

Laura Powell and Brian Powell and in the interest of Richard Conway Powell, a child, Agreement incident to Divorce.

Laura Powell and Brian Powell and in the interest of Richard Conway Powell, a child, Decree of Divorce.

Laura Powell and Brian Powell and in the interest of Richard Conway Powell, a child, Employers order to withhold income.

### Alliene Moses Local Woman's Mother Dies

Services for Alliene Moses, 75, of Ralls were held at 2 p.m. Thursday, May 15 in the First Baptist Church of Ralls with the Rev. Lee Fuller, the Rev. Floyd Haddock and the Rev. John Goff officiating.

Burial was in the Ralls Cemetery under the direction of Carter-Adams Funeral Home. Mrs. Moses died at 2:50 a.m. Tuesday in the Methodist Hospital at Lubbock following at lengthy illness.

A native of Merkle, she married Randolph Moses in 1930, in Ralls. He died in 1965. She moved to Ralls in 1929. She was past matron of the Order of the Eastern Star and a member of the Needlepoint Club. She was a member of the Ralls First Baptist Church and a former Sunday school superintendent.

Survivors include a son, R.H. "Smoky" Moses of Wilcox, Ariz.; two daughters, Bettye Noble of Muleshoe and Ann Kinney of Houston; a brother, A.D. Armstrong of Phoenix, Ariz.; two sisters, Mrs. Marvin Carlyle of Tulsa and Mrs. Frances Appleton of Midlothian; seven grandchildren; and eight great grandchildren.

### States?

Beef consumption has dropped about 3% in the past year, and a recent study has shown that the number of meat lovers in the U.S. has declined drastically. Most people are defined as being in either the diet-health category or the active life-style category, and both of these groups are consuming lesser amounts of meat. Although beef consumption is down, the decline can change with a change in the type of beef cattle being produced, increased promotion and development of a product that the consumer wants.

Consumers want leaner meat, and this means raising cattle that are leaner and trimming more fat off meat cuts in the grocery case. The most efficient way, of course, is for the cattle industry to produce a leaner product through breeding and management programs.

What can the cattle industry do to defend negative diet/health related issues regarding beef?

First of all, the cattle industry needs to educate itself and to find out what really is in red meat. It's not as high in cholesterol, calories, and salt as was originally thought. Recent research shows that beef has no more cholesterol than chicken and fish and actually less than shellfish. One serving of cooked, trimmed beef has about 192 calories, which is quite a bit lower than most people perceive.

The method of preparing beef for consumption has a marked effect on the number of calories as well. Frying, for instance, adds to the total calorie content, so most people have gone to other cooking methods. Broiling and grilling have become popular methods of beef cooking. However, cooking does not affect the amount of cholesterol in meat or any other product. Cholesterol is mostly in the muscle of the meat and not in the fat, as many people think. So fat content has little to do with the cholesterol level.

How much salt put on meat during preparation affects the total salt level, of course. One teaspoonful of salt has about 2,000 milligrams of sodium while one serving of beef has only 2 milligrams. The National Academy of Science recommends no more than 3,300 milligrams of sodium per individual on a daily basis. So beef is an excellent item for individuals on low sodium diets.

Regarding cholesterol, the American Heart Association recommends that an individual consume no more than 300 milligrams a day, and one serving of beef has about 85 milligrams of cholesterol. So, again beef fits in well for those on restricted diets.

This is the story that needs to be told to the consuming public, particularly to the diet health professional. About 80% of all

doctors get their nutrition information from popular magazines rather than medical journals, and they need to base their diet recommendations on research such as that just completed by the U.S. Department of Agriculture. This would be a major effort in counteracting the negative information being circulated about the diet-health aspects of beef.

Will beef production systems change in the next few years with respect to grain/forage practices to reflect leaner carcasses and consumer acceptance?

There will be some changes with regard to grain/forage feeding. Most of the change will come with producers becoming more aware of the kind of beef their herds are producing. Getting carcass data on the steers they are producing can be a big help. Also, it's likely that feeding periods will be

shortened so that high yield grade animals (No. 3 and 4) will not be produced. Often animals are left in a feedlot until the price improves and they get too fat. This results in carcasses that are too heavy and wasteful. Feedlot cattle will likely be turned around faster in the future.

As far as grass-fed beef is concerned, a strictly "Grass-fed" product will likely not have much demand in the future. A combination of grass and grain feeding seems to produce the type of beef that most consumers prefer. Of course, a lot depends on consumer demand, and cattlemen need to be attuned to that. But currently consumers are looking for choice grade beef with a small amount of fat. So producers need to gear their breeding and selection programs to that end, and feeding periods need to be such that animals are not

overfinished.

What can a cattleman do in the short-term to increase profits?

Producers need to pay attention to what they are producing, to what kind of carcasses go on the rail from their herd. This means collecting carcass data from their animals through the USDA beef carcass data service. Through this service, producers can purchase ear tags and tag their animals. When these tagged animals are slaughtered, carcass data will be returned to the cattleman. This service costs a total of \$2 per head and can provide the producer with a lot of valuable information as to the kind of beef he is producing. The information can be used with regard to sire and heifer selection, cow culling and other management practices. Once a producer has sound carcass data on animals from his herd, he

can use this in marketing calves to order buyers of feedlots.

### Enochs News by Mrs. J.D. Bayless

Tuesday afternoon the auxiliary shampooed and set the ladies hair and gave manicures and played Skip-Bo. Our thanks to Irene Steinbock for helping in the Beauty Shop.

Among those visiting Inez Allgood were Jackie Johnson, Kendra and Julie and Dr. and Mrs. Homer Allgood.

Among those visiting Josephine Wenner this week were Doris Ashford, Lonnie and Nelda Merriott, Ida and Dorothy Wenner.

### Thank You

We wish to express our thanks and deep appreciation to all our many friends who were there for us with loving support & prayers, then with so much delicious food & beautiful flowers during our loved ones illness & death.

May God Bless Each One Of You.

Mrs. W.E. Latimer  
Charles Latimer Family  
Paul Wylie Family

### Spring Planting Time

For The Best Garden  
or Flowers, Get Your  
Bedding Plants Now!

## Kristy's Plants

703 W. Ave. J. 272-5134



# True Value

HARDWARE STORES

Your local independently owned True Value® Hardware Store has national chain-buying power.

# Memorial Day Savings

Stop in and pick up your FREE copy of our Memorial Day Circular

 <p><b>3.5-HP 20-Inch Mower</b> includes quality features like lever-action height adjusters, standing/folding handle, underdeck baffle. Saddle-type blade stabilizer/adaptor and high-lift blade combine for smooth and even cutting.</p> <p><b>159.88</b></p>	 <p><b>99.99</b></p> <p><b>Dual-Burner Gas Grill</b> has easy Lite-A-Matic ignition, post-mounted dual controls. Stay-cool handles, 20-lb. gas tank.</p>	 <p><b>9.44</b></p> <p><b>60-FT. Nylon Reinforced Hose</b> is built to stay flexible and stand up to cold weather year after year. With 3/4-in. I.D.</p>	
 <p><b>9.99</b></p> <p><b>12-Qt. Cooler &amp; 1/2-Gal. Jug</b> is the perfect combination for your family outings. With thick polyurethane insulation, more.</p>	 <p><b>6.88</b></p> <p><b>Lawn Food W/Weed Control</b> is specially formulated with slow-release nitrogen. Feeds approximately 5,000 sq. ft.</p>	 <p><b>7.98</b> Gallon</p> <p><b>Supreme Tru-Seal</b> is a clear, waterproofing formula for use on wood, masonry and concrete. Helps prevent moisture damage.</p>	 <p><b>6.99</b></p> <p><b>U.S. Flag Kit</b> comes complete with a 3 x 5-ft. flag, 6-ft. pole, complete mounting hardware and a beautiful eagle ornament.</p>
 <p><b>99¢</b> with coupon without coupon 1.49</p> <p><b>Clear-Vu® Rain Gauge</b> for ground or post mounting measures up to 5 in.</p>	 <p><b>4.99</b></p> <p><b>Sprinkler</b> in your choice of 59-position oscillator, water-saving impact, or turret sprinkler with 5 patterns.</p>	 <p><b>5.97</b></p> <p><b>1.79</b> (all Sizes)</p>	 <p><b>1.49</b></p> <p><b>Alkaline Batteries</b> are long lasting. Choose 2-pk. C, D or one 9V battery.</p>

## Don't gamble



with HAIL

Insure today with Farmers Union crop hail insurance!

NATIONAL FARMERS UNION INSURANCE COMPANIES

for complete insurance needs

SEE

**ROY WHITT**  
Insurance

201 Main

272-3611



401 S. 1st.

# Fry & Cox, Inc.



272-4511



# Bailey County Journal

# Classified

Call 272-4536

**CLASSIFIED RATES**  
 First Insertion Per Word.....\$15  
 Minimum Charge \$2.30  
 Consecutive Insertions Per Word.....\$13  
 Minimum Charge \$2.00

**CLASSIFIED DISPLAY RATES**  
 \$1.75 Per Column Inch

**BLIND AD RATES**  
 50% More

**DEADLINES**  
 12 noon Tues. For Thursday Paper  
 12 Noon Fri. For Sunday Paper

*We reserve the right to classify, revise, or reject any ad. Not responsible for any error after ad has run once.*

**1. Personals**

**FRANK'S REFRIGERATION AND APPLIANCE SERVICE**  
 Parts and Repair  
 104 E. Ave. B  
 Muleshoe, Texas  
 Bus. Ph. 272-5090  
 Home Ph. 272-3822

**3. Help Wanted**

**WANTED:** Car salesman, experience not necessary, new & used car sales, paid vacation, medical benefits, highest commission paid, contact Ken James 272-4588 after 2 p.m. g3-19s-3tc

**PART TIME LVN, RN, or EMT** to take health history for insurance companies in Muleshoe call Portamedic 806-747-3223. p3-20t-2tc

**GOVERNMENT JOBS** \$16,040 - \$59,230/yr. Now Hiring. Call 805-687-6000 Ext. R-6226 for current federal list. 3-20t-16tp

**GENERAL SHELTERS** of Texas, Inc. The fastest growing manufacturers of portable buildings, is seeking a dealer in the area for retail sales of portable buildings. Lot and small investment required. Excellent opportunity to expand existing business with low risk. Contact Mike Wulf General Manager 817-422-4547 g3-20t-6tp

**1. Personals**

**HOME REPAIRS** F.M. Saldana Construction, licensed and bonded plumber. Specialized in cement, carpenter work, remodeling, painting, acoustical ceilings. 272-4955. s1-16s-tfc

**FURNITURE** Upholstering & repairs. Burrows Upholstery Shop 209 W. 2nd Phone 272-4255 Home Phone 272-5722. b1-41t-tfc

**MARY KAY COSMETICS** Josie Flowers 272-3865 1-40s-tfc

**CUSTOM ROUND BALING.** Call Larry Freec. 925-6739. 1-16s-10tp.

**WANTED** Interior & Exterior painting. Call Tommy Hall. 272-4874. h1-20t-5tp

**PARTY TIME** Boones Burger U.S.A. now booking private parties any night buffet, bar-b-que or chicken fried steak or fish - BYOB. Call Boone. Springlake. 986-4242. b1-20s-4tsc.

**DAVIS COMMERCIAL PUMPING SERVICE**  
 Cess pools, Grease pits, Mud pits, Septic tanks, 20 ft. elevator boots. Bacteria & Enzyme. Digestant-stocked. We stress maintenance for your best results. Call us. 806-272-4673 806-272-3467 Muleshoe, Texas TX Dept. of Health reg. # TDH-02009 1-8s-stfc

**STORAGE** Rooms Available For Storage \$25.00 - \$30.00 per month Ted Barnhill 272-4903 b1-42s-stfc

**Kenneth Evans' Handyman Service**  
 Painting Remodeling Repairing. And more Call: 965-2759 Muleshoe, Texas 79347

**CONCERNED** About Someone's Drinking? HELP IS AVAILABLE through Al-Anon Call 227-2350 or 965-2870 or call 227-2350 or come to visit Tuesday nights, 8:00 p.m. or Saturday mornings at 10:30 a.m. at 1116 W. American Blvd., Muleshoe.

**APPLICATIONS** now being taken the Bailey County Sheriffs Office will have two openings for Jailers, starting June 1, 1986. For information come by 300 South 1st St. High School or GED required. No criminal record. s3-20s-3tc

**EASY ASSEMBLY WORK!** \$714.00 per 100. Guaranteed payment. No sales. Details--send stamped envelope: ELAN-6469 3418 Enterprise, Ft. Pierce, FL 33482 3-18t-9tp

**AN EXPERIENCED** bartender waitress needed, apply in person Muleshoe Country Club. m3-20s-4tc

**4. Houses For Rent**

**RUIDOSO CHALET:** 4 bedroom for rent by day, weekend, or weekly. Call 505-257-2622 or 915-943-9021. Owner Dr. Albertson. a4-49t-tfc

**5. Apts. For Rent**

**FOR RENT** one large bedroom apartments. Call 965-2188 or 272-4754. s5-17t-tfc

**8. Real Estate**

**FOR SALE** by owner-4 bdrm - 2 bath- 2 carport. Central heat & air, fireplace, built-ins, and more. In Lenau Add. \$4,000 down and no qualifying on assumable mortgage. Call 272-3330. 8-17t-8tp

**WEST TEXAS** largest selections of repossessed mobile homes 2 & 3 bedrooms available, low low down payments. Call 1-800-792-0032. Mustang Mobile Homes. m8-16t-tfc

**8. Real Estate**

**FOR SALE:** by owner 3 bdrm, 1 bath, garage, Country Club Addition. \$35,000.00 272-5414. j8-6s-stfc

**OWNER MOVING! MUST SELL!** 3 Br, 2 bath Brick Home, Co. Country Club Addition. Den. FP. Formal DR. bookshelves. 2 car garage with electric openers. Covered patio, trees, fenced. Central A&H. 906 Juniper. 272-5421 or (806) 637-6616. m8-16t-stfc

328 acres being the E/2 of Section 128, Block A. Melvin, Blum & Blum, Bailey County. Approximately 300 acres in cult., \$82,000. 83.6 ac. cotton base 265# yield; 147.7 ac. sheat base 18 bu yield; 74.7 grain sorghum base 43 bu yield. Contact the Federal Land Bank Association of Muleshoe. Ph. 806-272-3010. f8-16s-tfc

**OWNER-REAL** nice, 3 bedroom, 2 bath, brick, great location, appointments only. 946-3443. r8-18s-stfc

863.8 acres out of Section 107, Block A and Sections 2 & 3 of Block F. Leon Blum & Blum Subdivision, Bailey County. Approximately 80 ac. of cultivatable land. \$86,500. Contact the Federal Land Bank Association of Muleshoe. Ph. 806-272-3010. f8-16s-tfc

**8. Real Estate**

480 acres being the W/2 and the SW/4 of Section 21, Block Z, W.D. & F.W. Johnson Subdivision, Bailey County. \$216,000. Contact the Federal Land Bank Association of Muleshoe. Ph. 806-272-3010. f8-16s-tfc

**TAKE UP** payments on 1982 3 Bedroom mobile home - would consider renting-272-3693 or 272-3759. 8-20s-2tp-

**40 ACRE HORSE FARM** on paved west camp road 8 miles northwest of Muleshoe, in the Muleshoe School District. Nice 3 bdrm. home, double garage, barn, corral, stalls, metal shop bldg. 15 acres of permanent grass, remainder in wheat for grazing. Good 6" irrigation well & motor & side roll sprinkler, plus other various pieces of equipment. Call Pierce Real Estate, Texico, N.M. 505-482-9188. p8-20s-tfc.

**TOP QUALITY HOME!**  
 Beautiful custom-built, brick home only 6 yr. old! Approx. 2500 Sq. Ft. Living area; plus enclosed, insulated shop area. Many extra-walk-in closets, custom cabinetry, sprinkler system, 2 covered patios, beautiful view. 1515 W. Ave. J. 272-5334. b8-9s-stfc

**8. Real Estate**

**REAL ESTATE BROKERS**-The Farmers Home Administration (FmHA) has from time to time various inventory Real properties for sale through brokers having executed a non-exclusive listing agreement with the agency. Licensed real estate brokers may obtain additional information by writing or visiting the local FmHA Office located at 115 E. Ave. D, Muleshoe, TX. 79347 or telephoning (806) 272-5549. f8-20t-4tcs

**Krebbs Real Estate**  
 1004 W. 6th  
 Telephone 272-3191  
 \*\*\*  
 Choice quarter section, good terms, 30 a hog farm, automatic, too cheap.

**15. Misc.**

**HOUSE TO BE MOVED:** Nice 3 bedroom, call 272-3566 or 272-4201. m15-17s-tfc

**16. Livestock**

**CALL YOUR LOCAL** Used Cow Dealer for 7-day a week free dead stock removal. 806-965-2903 collect 1-800-692-4435. h16-33t-tfc

**18. Legals**

**NOTICE**  
 Change of Officers and Registered Agent for: LAMB COUNTY SPRAYING SERVICE, INC. As of January 23, 1986, the above named company had a special meeting at which Micky Price, 215 SW 1st Street, Earth, TX., 79301 was removed as the registered agent and officer of Lamb County Spraying Service Inc. Micky Price NO LONGER has any affiliation with Lamb County Spraying Service Inc., and has no authority to contract for or bind the corporation, and has no affiliation with J.L. Cox Spraying Service!! The NEW PRESIDENT and Registered agent of Lamb County Spraying Service, Inc., is JERRY COX, Route one, Box 146, Sudan, Texas, 79371, and he is the ONLY PERSON AUTHORIZED to contract for or bind the corporation!! Dated this twelfth day of May 1986. Jerry Cox, President Lamb County Spraying Service, Inc. c18-20s-2tc

The good citizen who helps build his community is leaving something worthwhile to his children. \*\*\*\*  
 Every special group has special reasons to justify its special demands for special privileges.

**8. Real Estate**

**JAMES F. HAYES & CO. AGRICULTURAL REAL ESTATE**  
 Vic Coker - Agent  
 (806) 965-2468

335 Acres-5 miles east of Lazbuddie. Pavement on 2 sides. Good soil, good water. House & acreage can be sold separately. \*\*\*

480 Acres near Lazbuddie. Very good soils & water. 3 electric sprinklers, assumable note. \$825/Acre. will divide. \*\*\*

668 acres Northwest of Muleshoe Excellent water. Very good soils. House barn. 2 Electric sprinklers, make offer. \*\*\*

**SMALLWOOD REALESTATE BROKER**

232 Main 272-4838

3 Bedroom, 2 Bath, Stucco all carpeted. \*\*\*

3 Bedroom, 1 Bath, Stucco with large storage building. \*\*\*

APTS. 2 Bedroom, 2 Bath, Small downpayment. Owner will finance. \*\*\*

2 Bedroom, 1 Bath house for rent. 8-9s-stfc

**Jb Sudderth Realty, Inc.**  
 Drawer 887  
 Farwell, Tx 79325  
 Ph. 806-481-3288

177 acres irrigated with automatic sprinkler near Lazbuddie. Good water area. Owner says sell.

**JUST LISTED AT VERY REASONABLE PRICE.** Country living at its best. 10 acres with very nice family home, lots of extras. 4 bdrm, 2 1/2 bath, brick, with spacious kitchen and dining combo. Extra large family room with fireplace, 2 car garage, satellite dish with remote, large stucco shop, storm cellar, lots of shade and fruit trees, grape vines, barn with fence, sprinkler system and aluminum pipe to water acreage. Immediate possession, located west of Muleshoe. Seller says "let's get it sold."

City home with country view very nice brick 3 bdrm, 2 bath, 2 car garage, fireplace, central heat & refrigerated air, underground sprinkler system, must be to appreciate owner says sell. \*\*\*

320 acres irrigated, 2 circle sprinklers, excellent home, large steel barn, good farm. Owner says SELL IMMEDIATELY.

**HENRY REALTY**  
 111 W. Ave. B  
 Muleshoe, Texas  
 272-4581

**COUNTRY** living, close to town. A 3-Bedroom, 2-bath, large den with fireplace, central air/heat, located on one-acre tract. Carpet through-out, many built-in appliances in kitchen. TV-Cable. See to appreciate. \*\*\*

**4 BR. 2 BATH.** 2 car garage, central heat/air, large utility, carpet, near downtown. Excellent condition. \*\*\*

**150 ACRES** with 6 inch well and 4 inch well. On highway close to Muleshoe. Underground line connects both wells. \*\*\*

**ONE ACRE** sites for home construction. 3 miles East of Muleshoe on HWY. 3 lots remain. \*\*\*

**JUST COMPLETED** 3 bedroom, 2 bath, large living room, kitchen and dining. Excellent condition, near high school. Priced to sell. \*\*\*

**COMPLETELY** remodeled 2 bedroom home. Ideal for investment, must see to appreciate. Financing with F.H.A. loan. \*\*\*

**APARTMENT** complex, mobile home park, vacant land for expansion. Terms available. \*\*\*

**COMMERCIAL PROPERTY** on Main Street, over 4,000 sq. ft., income producing property. \*\*\*

**COMMERCIAL PROPERTY** - Excellent rental income from 4 separate offices. Lease agreements in force. \*\*\*

**3 BR. 2 BATH.** spacious home outside city limits, near city on highway. 29'x40' metal building. Lot 85'x60' \*\*\*

**3 BR. 1 BATH.** completely remodeled, edge of city on highway. \*\*\*

County Club Addition - 3 BR - 2 bath - Brick Veneer Corner Lot and Central H/AC, well insulated with storm doors and windows. Call today for an appointment.

**8. Real Estate**

**BINGHAM & NIEMAN REALTY**  
 116 E. AVE. C  
 272-5285---272-5286

**COUNTRY LIVING HOMES**

3-1-1 home on 1 acre, close to town, nice workshop-storage bldg. & attached shed. \$30's.... \*\*\*

1-3 bdrm. & 1-2 bdrm. homes on approx. 1 acre on pavement close to town. PRICED TO SELL at \$32,000!!!! \*\*\*

3-1-2 home on 1 acre, Cent. heat, storage bldgs., on pavement close to town. \$30's!!! Possible Owner Financing! \*\*\*

**RICHLAND HILLS**

3-1 1/2-2 Brick, Cent. heat, Evap. air, built-ins, nice earth tone carpets, new vinyl flooring, fenced yard & lots more!!! \$60's \*\*\*

**NICE** 3-2-2 Brick, (energy Efficient-Total Electric), Cent. A&H, built-ins, fireplace, storm windows & doors, utility, nice patio & more!!!!!! \*\*\*

**IMMACULATE** 3-1 1/2-2 Brick, Cent. A&H, built-ins, fireplace, fenced yard, storage bldg. & more. \$50's!!!! \*\*\*

**LENAU ADD.**

3-1-1 home corner lot, Cent. heat, Evap. air fenced yard. \$30's.... \*\*\*

**NICE** 2-1-1 home, wall furnace, evap. air storm windows & doors, utility, fenced yard & storage bldg. \$30's!!!! \*\*\*

3-1 1/2-1 carport home, nice carpet, fenced yard, neat. \$30's!!!!!! \*\*\*

2-1-1 home, wall furnace heat, evap. air, carpeted, fenced yard, \$20's!!!!!! \*\*\*

**HIGH SCHOOL AREA**

**IMMACULATE** 3-1 3/4-1 Brick home, built-ins, Cent. A&H, 2 fireplaces, nice finished basement, earthtone carpets, undergrd. sprinkler, & much more. \$50's!!!!!! \*\*\*

**JUST LISTED**-3-1 1/2-1 carport home on corner lot, wall furnace heat, evap. air, nice location, close to school. \$29,900!!!! \*\*\*

**NICE** 3-1-1 carport Home on corner lot, Nice carpets, wall furnace heat, evap. air, fenced yard and storage bldg. \$30's!!!!

**'WE APPRECIATE YOUR BUSINESS'**  
 GEORGE NIEMAN, BROKER  
 DIANNE NIEMAN, BROKER



### Lazbuddie School Lunch

**BREAKFAST**  
**MONDAY**  
 Toast, Bacon, Juice, Milk  
**TUESDAY**  
 Cinnamon Rolls, Fruit, Milk  
**WEDNESDAY**  
 Cereal, Juice, Milk  
**THURSDAY**  
 Toast, Bacon, Fruit, Milk  
**FRIDAY**  
 Pancakes, Juice, Milk  
**LUNCH**  
**MONDAY**  
 Burrito's, Corn, Green Salad, Pudding, Milk  
**TUESDAY**  
 Chicken Pattie on Bun, French Fries, Lettuce, Pickles, Fruit, Milk  
**WEDNESDAY**  
 Chopped Ham and Bologna Sandwiches, Potato Chips, Pork and Beans, Brownies, Milk  
**THURSDAY**  
 Enchilada Casserole, Pinto Beans, Green Salad, Chips, Fruit, Milk  
**FRIDAY**  
 Hamburgers, Tater Tots, Lettuce, Pickles, Cobbler, Milk  
**SALADS**  
**MONDAY**  
 Chef Salad with Ham  
**TUESDAY**  
 Cottage Cheese Salad  
**WEDNESDAY**  
 Chef Salad with Turkey  
**THURSDAY**  
 Fruit Salad  
**FRIDAY**  
 Cottage Cheese Salad



**WOMEN'S PUMPER TEAM**--Competing in Amarillo this weekend, as a part of the pumper team competition are these three auxiliary members of the Muleshoe Fire Department, from left, Cindy Magby, Sondra Parker and Brenda Stephens. They were attended the Regional Fire Department convention.



**SPECIAL OLYMPICS WIN AT REGIONAL**--Last weekend, the members of the Special Olympics team from Muleshoe traveled to Lubbock for regional competition and brought home many medals and ribbons. Making the trip to Lubbock were from left, top row, Nancy Kidd, Kay Griswold, Mary Nell Blecker and Terri Fortenberry, coaches; and lower row, from left, Cari Kidd, Lisa Martinez, Shain Berry, coach; Leticia Garcia and Frank Garcia.

### Muleshoe School Menu

**BREAKFAST**  
**MONDAY**  
 Milk, Cereal, Toast, Fruit  
**TUESDAY**  
 Milk, Honey Buns, Juice  
**WEDNESDAY**  
 Milk, Pancakes, Syrup, Sage, Fruit  
**THURSDAY**  
 Milk, Cheese Toast, Fruit  
**FRIDAY**  
 Milk Cooked Cereal, Toast, Fruit

**LUNCH**  
**MONDAY**  
 Milk, Spaghetti With Meat Sauce, Buttered Corn, Green Beans, Corn Bread, Fruit  
**TUESDAY**  
 Milk, Juicy Burgers, Lettuce & Tomato, Pickles & Onions, Tater Tots, Cookies  
**WEDNESDAY**  
 Milk, Taco's, Lettuce & Tomato, Cheese, Beans, Crackers, Fruit  
**THURSDAY**  
 Milk, Corn Dogs, Pork & Beans, Potato Salad, Cinnamon Rolls, Fruit  
**FRIDAY**  
 Milk, Frito Pie, Cole Slaw, Fried Okra, Crackers, Fruit Jello

**COMBO LINE**  
**MONDAY**  
 Milk or Bar-B-Que'd Franks, Buttered Corn, Beans, Corn Bread, Fruit  
**TUESDAY**  
 Milk or Tea, Hamburgers, Lettuce & Tomato, Pickles & Onions, Tater Tots, Cookies  
**WEDNESDAY**  
 Milk or Tea, Chalupas, Cheese, Salad, Crackers, Fruit  
**THURSDAY**  
 Milk or Tea, Hot Dogs, Pork & Beans, Potato Salad, Cinnamon Rolls, Fruit  
**FRIDAY**  
 Milk or Tea, Fish, Eng. Peas, Macroni & Cheese, Hot Rolls, Fruit Jello

### West Plains Hospital Report

**PATIENTS IN WEST PLAINS MEDICAL CENTER, INC.**  
**MAY 13**  
 MULESHOE-Mozelle Rippee, Burrell Black, Gladys Wilson, Debbie Vaughn, Jose Lopez and Yolanda Bara. FARWELL-Johnnie Copeland. TEXICO-Thomas Nieto.  
**MAY 14**  
 MULESHOE-Mozelle Rippee, Burrell Black, Gladys Wilson, Debbie Vaughn, Jose Lopez, Sylva Vandiver, Arthur Landers and Kayla Newton. EARTH-Lillie Wuerflein. FARWELL-Johnnie Copeland. TEXICO-Thomas Nieto.  
**MAY 15**  
 MULESHOE-Mozelle Rippee, Debbie Vaughn, Sylva Vandiver, Arthur Landers and Juanita Regalado. EARTH-Lillie Wuerflein. FARWELL-Johnnie Copeland. LUBBOCK-Slettie Jane Snelgrove.

**Best of Press**  
 It is The only international language that has endured is double talk.  
 -News, Dallas.

## It Pays To Use A Child Safety Seat

Child safety seats save lives. Farm Bureau lets you save money on a child safety seat. So it pays to use a child safety seat for your child.

If you are a Farm Bureau member, you can purchase a Cosco Safe-I Seat for only \$20 Through Farm Bureau's Child Saver Program. When you're finished using the seat, Farm Bureau will buy it back for \$20. Can you think of a better insurance offer?

Contact your Farm Bureau Office today for information on all of the programs available.

Office Phone: 272-4567  
**Farm Bureau**

### 8. Real Estate

**JIMMIE CRAWFORD**  
 Real Estate & Ins.  
 1725 W. Ave. E  
 Muleshoe, Texas  
 Phone 272-326

2-1 3/4-2 brick house, 3 acres with many improvements. In country home.  
 \*\*\*  
 4-1 house on 18 acres 9 Mi. N.E. of town. Lots of barns. Make offer.  
 \*\*\*  
 3-1 3/4-2 stucco home, nursing Home, Chain link fence, storage Bldg.  
 \*\*\*  
**COMMERCIAL PROPERTY**- 3 lots on highway 84 with 125' frontage west of town.  
 Have other dryland & irrigated farm listings. Call for more details.

### 18. Legals

**BID NOTICE FOR PHARMACY SERVICES**  
**SOUTH PLAINS HEALTH PROVIDER ORGANIZATION, INC** is seeking bids from registered pharmacists for the distribution and restocking of pharmaceuticals for six class D in-house pharmacies on a bi-monthly basis from June 1, 1986 through May 31, 1987. Contract may be renewed for an additional one year period, subject to available funding. Pharmacists must be registered with FDA. Bids will be received until 5:00 p.m., Friday, May 23, 1986. To receive a copy of bid specifications and other information, contact Nellie Lindsey, South Plains Health Provider Organization, Inc., 2801 West 8th Street, Plainview, Texas 79072, or call (806) 293-8561, s18-20s-1tcts \*\*\*\*\*  
 Young people don't have to copy the examples of their parents, fortunately.

## WHITT-REID

Real Estate & Insurance  
 201 Main - Ph. 272-3611

- Homes
- Farms
- Ranches
- Commercial

3 bedroom brick home, Highland Addition, 1 1/4 baths, fireplace, over 2000 S.F. living space 75x140 ft. lot, 56,000. 50H9  
 \*\*\*  
 3 bedroom, brick home, Park Addition, 1 1/4 baths fireplace, central heat, evap. air over 1850 S.F. storage, fenced, 55,000. 50H13  
 \*\*\*  
 3-2 Double carport Brick, huge patio, corner fireplace free standing fireplace, dishwasher, range-oven, disposal, storage building. 50H-4  
 \*\*\*  
 New Listing 3-1-1 carport, new comp roof, panel rag heat, stucco a good starter home. 0H-11  
 \*\*\*  
 We have several-2 house on one lot, live in one rent the other one, or make good rent property. Call today.

**"If You Want It Sold - See Us"**

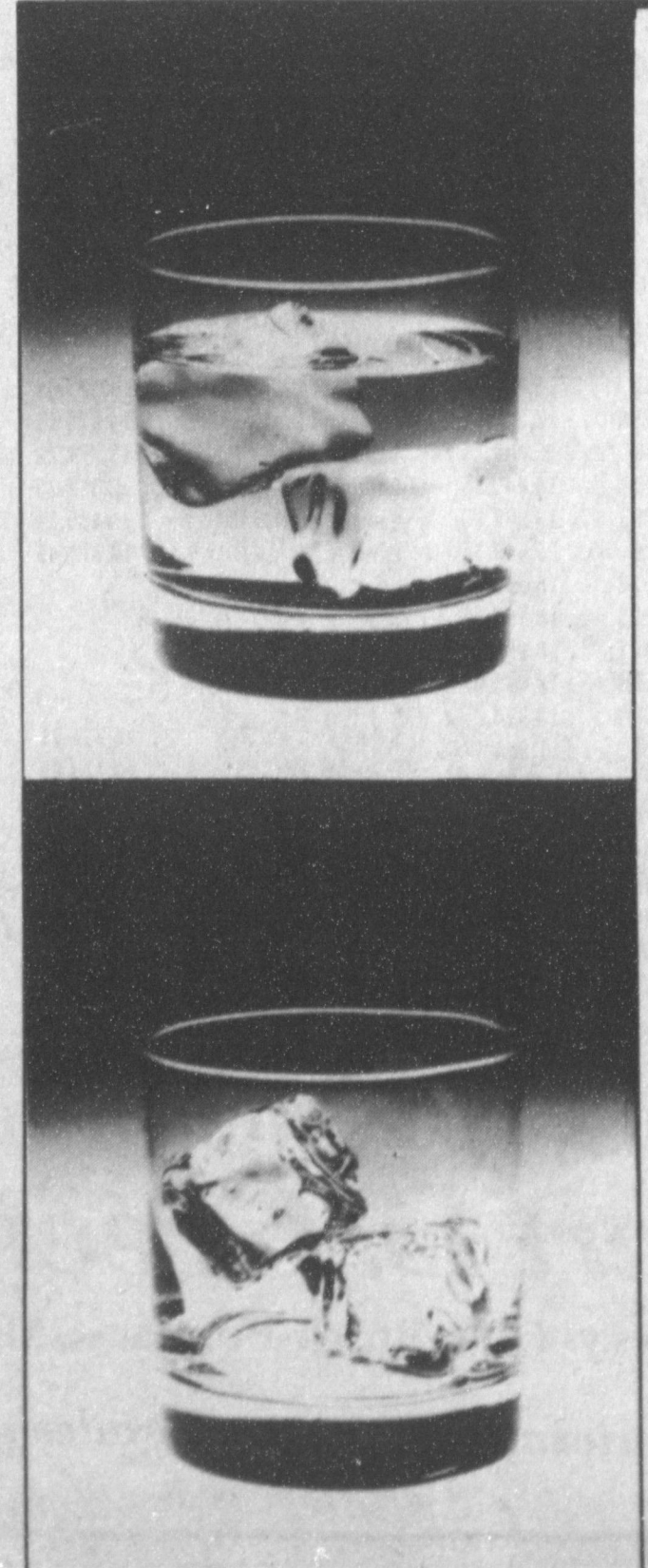
H.C. Reid Broker  
 Roy Whitt 272-3058  
 Thursie Reid 272-5318  
 Joy Whitt 272-3058  
 Lucille Harp 272-4693

15 Misc.      15 Misc.

SHOP AROUND FOR THE BEST PRICE THEN SEE OUR PRICES  
 60% OFF 14K GOLD & DIAMONDS EVERY DAY

**Bi-Wize Health Mart**  
 902 Main      Friona, Texas  
 247-3010

THINK CLASSIFIED



## Now you see it... Now you don't.

**Daybreak.**  
 The Chemical Dependency Program from Clovis High Plains Hospital.

You can't make an alcohol chemical dependency problem disappear like magic. The effective, practical solution you need comes from Daybreak, the new intensive outpatient treatment program from Clovis High Plains Hospital.

Daybreak brings hope for a normal family life to those with an alcohol chemical dependency problem. Our outpatient program allows you and your family to participate in treatment together while continuing to meet responsibilities at work and at home. With Daybreak, your hope for a new beginning becomes a reality.

You and our professional staff work together to plan an individual program of education and counseling. Daybreak's medical director supervises all treatment and works with your family physician to resolve any medical problems. Our aftercare plan is designed to help you continue on the road to recovery.

Call us for information and a brochure at 763-5534.

**DAYBREAK**  
 An affiliate of  
**Clovis High Plains Hospital**  
 1600 W. 21st St., Suite B      Clovis NM 88101      505 763-5534





**AWARDED AT SPECIAL OLYMPICS**--Nancy Kidd, left, was presented the Volunteer Parent of the Year plaque, and her daughter, Cari Ann, right, was designated Special Olympian of the Year, last weekend. They were in Lubbock for the Regional Special Olympics meet.

# FBI

By Watson Junior High

## Amy's Anecdotes

The month of May has gotten off to a good start. Cheerleading and Student Council tryouts were held on May 1. The Annual Staff has successfully completed the 1985-86 annual, and there was an annual signing party on May 1. A special thanks goes out to Mrs. Albertson and Mrs. Williams for all of their hard work in organizing the activities for Sesquicentennial week, and to all of the teachers who helped in making the props. Various activities took place during the week of April 21-25. April 22, "Hats Off to Texas Day." April 23, "Texas Hero Day." April 24, "Program." April 25, "Sealing of the Time Capsule."

## WJHS Tennis Team Is First At District Meet

The Muleshoe Junior High tennis team went to the district meet at Dimmitt, Friday, May 2. They won first place with 140 points. Dimmitt won 2nd; Littlefield won 3rd; Friona 4th and Floydada 5th. In 7th grade Tadd Young and Brian Bush won 1st place. Jason Morris and Rodney Reynolds 2nd. In singles, Hector Flores won 2nd; Danny Rodriguez 4th, and Monica Swint 4th. In 8th grade, Brett Pylant and Doug Chitwood won 1st; Rocky Flores and Frank Precure 2nd. In singles, Amy Montgomery and Wendy Green won 2nd; Lisa Triana and Noel Vourazeris 3rd; and Amy Harrison and Stacy McElroy 4th. In singles, Shonda Strahan won 2nd. This is the 2nd year in a row that Muleshoe has won 1st place; congratulations Mules and Mullettes!

## Sesquicentennial Program At JH Is Big Success

The Sesquicentennial program of Watson Jr. High was held on April 24, 1986. It

consisted of skits that told about the six flags that flew over Texas (Spanish, French, Mexican, Texas, U.S., Confederacy). One hundred sixty-two students took part in this program. At the close of the program Mr. Mardis was presented a Sesquicentennial flag for his years of service to our school and his continual support of his students.

## ANNOUNCEMENTS

Next years cheerleaders will be: Erin Kelley, Tiffany Angeley, LaTavia Copely, Jaimee Kelton and Monica Pacheco. The mascot will be Monica Swint.

Next years student council officers will be President, Hector, Flores; Vice President, Jill Foster; Secretary, Lupita Pineda; Reporter, Monica Swint; Historian, Steve Garcia and Parliamentarian, Amy Turner.

The Jr. High Band Concert will be May 20, at the high school auditorium.



He is bare of news who speaks ill of his mother. -Irish Proverb.

## Ellis Funeral Home

Pre-Need Funeral Plans  
Supervised By Texas Department of Banking  
Price Frozen At Time Of Purchase

## STANDOUT SORGHUM

You'll notice a field of NC+ Hybrid grain sorghum-

Excellent Plant Health and High Yield Potential-

NC+ STANDS OUT ABOVE THE REST.



Matt Phelps

Rt. 5 925-6485

## Nursing Home News

By: Joy Stancell

We all were so pleased to receive a visit from Eva Ashford Tuesday afternoon. Mrs. Ashford visited with the residents in the Day Room and visited with Mrs. Ragsdale in her room.

Monday afternoon Laverne James and Ruth Clements from the auxiliary played Bingo with the residents. Bananas were served, donated by our local Super Markets.

Greetings from the Muleshoe Nursing Home.

Mother's Day appeared to be a special event for the mothers of the Nursing Home. They

were thrilled to receive, flowers, corsages, gifts, cards and phone calls, from their children and friends. It is always nice to be remembered.

Thank you Cub Scout Dens Two and Three for their lovely Mother's Day cards that you made for us.

Emma Schuster received a visit from her son from Tucumcari, N.M., Mr. and Mrs. Elmer Schuster, also Mr. and Mrs. Otto Schuster of Portland, Tex., her daughter, Mr. and Mrs. Roy Wrinkle of Muleshoe. They all honored their mother with a lunch at K-Bob's on Sunday.

Lois Ethridge attended the Mother's Day Luncheon at the Progress Baptist Church Saturday. She was the guest of Laverne James. Lois received a card and a phone call from her son Ron in Texline, also a greeting card and visit from Wayland and Janet Ethridge.

God could not be everywhere so He made mothers.

-Yiddish Proverb.

The mother's heart is the child's schoolroom.

-H.W. Beecher.

Definition  
Propaganda: The other side presented so convincingly it makes you mad.

-News, San Francisco.

SAVE SAVE SAVE SAVE SAVE SAVE SAVE SAVE SAVE SAVE

ROBERT D. GREEN, INC.

2 Weeks Only Sale!

3.9% OVER Invoice

Expires May 17

**Sid Turner**  
Service Mgr.  
For Service work on cars, to large trucks.  
Call Sid at 272-4588.

**Don Stagner**  
Parts Mgr.  
For any parts needed on Pontiac, Buick, GMC, Chevy or Oldsmobile.  
Call Don at 272-4588

**ASK ABOUT GMAC**  
5.4% 24 Mon. Lease Financing.

5.9% 36 Mon. Finance on selected models of Pontiac, GMC, Chevy Trucks, Oldsmobile, Buicks.

72 to choose from!

GMC	Chevy Trucks	Chevy Cars	Oldsmobile
Classic 1/2 No. 762 . . . . . '12,601.81	Silverado 1/2 No. 293 . . . . . '14,439.58	Caprice 4 Dr. No. 319 . . . . . '14,025.02	85 Delta LS No. 412 . . . . . '14,088.60
Classic 1/2 No. 760 . . . . . '11,945.24	Silverado 4x4 No. 296 . . . . . '13,218.64	Caprice 4 Dr. No. 320 . . . . . '14,025.02	Calais 4 Dr. No. 447 . . . . . '12,446.29
Classic 1/2 No. 761 . . . . . '12,601.81	Crew Cab 1/2 No. 298 . . . . . '16,449.25	Z28 <b>SOLD</b> . . . . . '13,774.22	Calais Cpe. No. 449 . . . . . '12,462.30
Classic 1/4 No. 763 . . . . . '14,304.74	Crew Cab 1/2 No. 299 . . . . . '16,449.25	Caprice 4 Dr. No. 328 . . . . . '12,517.75	98 Brm. 4 Dr. <b>SOLD</b> . . . . . '17,060.46
Suburban 1/2 No. 777 . . . . . '18,748.74	Silverado 4x4 No. 303 . . . . . '13,562.18	Cavalier RS No. 331 . . . . . '9435.11	Cutlass Cpe. No. 460 . . . . . '13,391.51
Suburban 1/4 No. 778 . . . . . '18,748.74	Crew Cab 1/2 No. 314 . . . . . '16,449.25	Cavalier Z2 <b>SOLD</b> 47 . . . . . '10,671.46	98 Brm. 4 Dr. <b>SOLD</b> . . . . . '17,577.98
Suburban 3/4 No. 779 . . . . . '18,320.68	Crew Cab 4x4 No. 322 . . . . . '18,675.57		Cutlass Cpe. No. 465 . . . . . '13,303.20
Classic <b>SOLD</b> No. 781 . . . . . '13,222.81	Crew Cab 4x4 No. 325 . . . . . '18,998.34		
Safari Van No. 79 <b>SOLD</b> . . . . . '14,472.49	Crew Cab 4x4 No. 327 . . . . . '18,998.34		
Classic 1/2 No. 801 . . . . . '11,617.99	Suburban 4x4 No. 330 . . . . . '18,463.43		
Classic 1/2 No. 803 . . . . . '12,117.55	Suburban 4x4 No. 338 . . . . . '18,324.25		
Sierra 1/2 No. 804 . . . . . '10,738.95	Silverado 1/2 <b>SOLD</b> 9 . . . . . '11,661.92		
Classic 1/2 No. 806 . . . . . '11,864.97	Suburban 1/2 <b>SOLD</b> 1 . . . . . '16,873.24		
Classic 1/2 No. 807 . . . . . '11,774.01	Silverado 1/2 No. 342 . . . . . '11,661.92		
Classic <b>SOLD</b> '09 . . . . . '11,583.76	Suburban <b>SOLD</b> 144 . . . . . '16,873.34		
	Suburban 4x <b>SOLD</b> 15 . . . . . '18,324.25		
	Suburban 1/2 No. 346 . . . . . '16,734.06		
	Silverado 1/2 No. 348 . . . . . '11,951.29		
	Suburban 4x4 No. 349 . . . . . '18,463.43		

**Ken James**

**A.L. Nuttall**

**Terry Yell**

**Jerry Vaughn**

**Weldon Stevenson**

Parts, Service and Sales Hours -8:00 AM til 6:00 PM Open Sat. 8:AM - 5:PM

Robert D. Green, Inc.

Chevy- Olds-Buick-Pontiac-GMC

2400 W. American Blvd.
Muleshoe
272-4588

SAVE SAVE SAVE SAVE SAVE SAVE SAVE SAVE SAVE SAVE