

EASTLAND TELEGRAM

AND WEEKLY CHRONICLE

Eastland County Record, established in 1931, consolidated Aug. 31, 1951. Chronicle established 1887, Telegram established 1923. Entered as second class matter at the Post-office at Eastland, Texas, under the act of Congress of March 3, 1879.

O. H. Dick, Manager
Ray McCorkle, Editor Mrs. Don Parker, Associate Editor
110 W. Commerce Telephones 601-223

TIMES PUBLISHING COMPANY
O. H. Dick—Joe Dennis, Publishers
Published Daily Afternoons (Except Saturday) and Sunday

SUBSCRIPTION RATES
One Week by Carrier in City20
One Month by Carrier in City85
One Year by Mail in County2.95
One Year by Mail in State4.50
One Year by Mail Out of State7.50

NOTICE TO THE PUBLIC
Any erroneous reflection upon the character, standing or reputation of any person, firm or corporation which may appear in the columns of this newspaper will be gladly corrected upon being brought to the attention of the publisher.

MEMBER
United Press Association, N E A Newspaper Feature and Photo Service, Meyer Both Advertising Services, Texas Press Association, Texas Daily Press League, Southern Newspaper Publishers Association.



Tulips Glorify Spring in Front Yard Flower Gardens

The front yard flower gardens which attractively frame and decorate so many new ranch-type houses throughout our country can display flowers in bloom during seven to eight months every year. Annual flowers alone will provide color from early summer until the winter freeze-up; but for flowers before the annuals bloom it will be necessary to plant fall bulbs. For almost six spring weeks tulips will provide a variety of coloring which not even June can surpass, provided all the available kinds of tulips are used.

Early tulips have clear bright colors, with blossoms held firmly on strong stems 7 to 9 inches tall. All flowers of a variety are the same height and blossom at the same time. They are intended to be planted in masses, 4 to 6 inches apart, and when they bloom there is no doubt of their effect in the garden display.

Before the early tulips flower, species tulips bloom. They are wild flowers native to eastern Europe. Red Emperor, one of the largest of all tulips, is the most popular variety. Following the early tulips and overlapping with their season come a class known as Triumph tulips, hybrids produced by crossing Darwin and Early varieties. Before they fade the Darwin tulips begin, and usually their flowers last until June.

Early tulips include both single and double varieties, both bred for mass planting in formal patterns. These are the flowers to use to border paths, in parkways, or corner beds. The tall late tulips, of which Darwins are only one type, are best planted in the border where there is a background for them, arranged with 8 to 25 bulbs of one variety in a group. All tulips are most effective when the colors of adjoining groups are in strong contrast: blue-violets separating reds and yellows, and the pinks grouped with pale yellow and lilac varieties to bring out their coloring.

It is impossible to plan an effective tulip display without studying the several tulip clans which bloom last. These are not all Darwins, though often so classified in garden conversation. Each clan has unique qualities, the Darwins soft pastel coloring, the Cottage tulips bright colors and long pointed petals, and the Breeder tulips, oldest of all, richly blended coloring in which there is always a touch of brown.

The newest tulip varieties are found among named varieties of Parrot tulips, and tall, late flowering double varieties. All these blossom with the Darwins, but they're so different in form, that they stand out in the planting, and should be used at focal points. Late double tulips rival petunias in size and beauty, while the parrots can fairly be compared to orchids, in size and color brilliance.

Will He Have to Go Through This Every Four Years?



Vic Vet says

CERTAIN DISABLED VETS RELEASED FROM SERVICE ON OR AFTER APRIL 25, 1951 MAY APPLY FOR SPECIAL GI LIFE INSURANCE WITHIN ONE YEAR AFTER VA RULES THEIR DISABILITIES ARE SERVICE-CONNECTED



For full information contact your nearest VETERANS ADMINISTRATION office

BARBS

BY HAL COCHRAN
THE number of horse races won by a nose should teach us to keep our heads up.

The answer to what scribbling means on a business man's telephone pad: his wife is on the other end of the phone.

If the modern American city had any feelings, the first thing



it might complain about its joints.

Prisons are never too crowded for inmates to do a long stretch.

CROSSWORD PUZZLE

Answer to Previous Puzzle

1	2	3	4	5	6	7	8	9	10	11
12	13	14	15	16	17	18	19	20	21	22
23	24	25	26	27	28	29	30	31	32	33
34	35	36	37	38	39	40	41	42	43	44
45	46	47	48	49	50	51	52	53	54	55
56	57	58	59	60	61	62	63	64	65	66

Comedienne

1	2	3	4	5	6	7	8	9	10	11
12	13	14	15	16	17	18	19	20	21	22
23	24	25	26	27	28	29	30	31	32	33
34	35	36	37	38	39	40	41	42	43	44
45	46	47	48	49	50	51	52	53	54	55
56	57	58	59	60	61	62	63	64	65	66

Horizontal

- 3 Incarnation of Vishnu
- 4 Preposition
- 5 Shield
- 6 Baton
- 7 Angers
- 8 French article
- 9 Kind
- 10 Ester of oleic acid
- 11 Wealthy men
- 13 Before custody
- 17 Chief priest of a shrine
- 25 Memorandum
- 26 "Emerald Isle"
- 27 Handle
- 28 Erect

Vertical

- 1 Swamp
- 2 Arab

FUNNY BUSINESS



"He built himself a tandem pipe! When one bowl burns empty he lights the next one and eliminates constant filling!"

HOW LONG HAS IT BEEN

Since you had your watch inspected by a competent watchmaker. The average watch should be cleaned and oiled at least once a year, and some small ladies watches should be cleaned every eight to ten months. For a limited time only BSKOW JEWELRY will offer the following special

Your watch will be cleaned, timed, oiled, and adjusted—your case will be buffed and polished to look like new—and we will also fit your watch with a thick rock crystal in your choice of color or clear. This complete job now . . .

Only \$4.95

BESKOW JEWELRY
Eastland Since 1919 Texas

The Finest in Portraiture LIVE FOREVER

FOR YOUR FAMILY . . .

Just think of the pleasure you get when you receive a photo of some one dear to you! Give that very same pleasure to your dear ones, with a camera-portrait of you.



CANARIS STUDIO

Joe Canaris Phone 647 Bill Jacobs

VIC FLINT

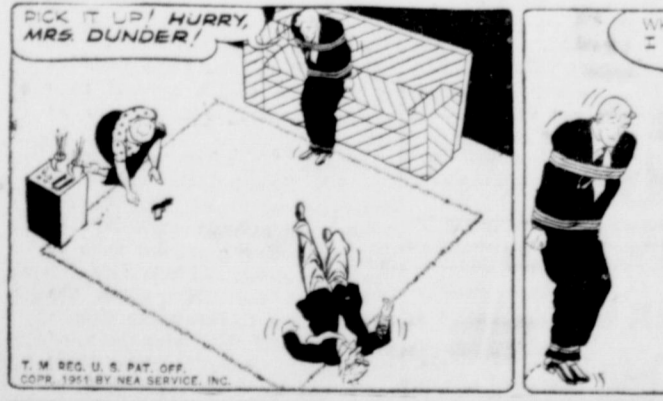


By Michael O'Malley and Ralph Lane



FRECKLES AND HIS FRIENDS

By Merrill Blosser



ALLEY OOP

By V. T. Hamlin

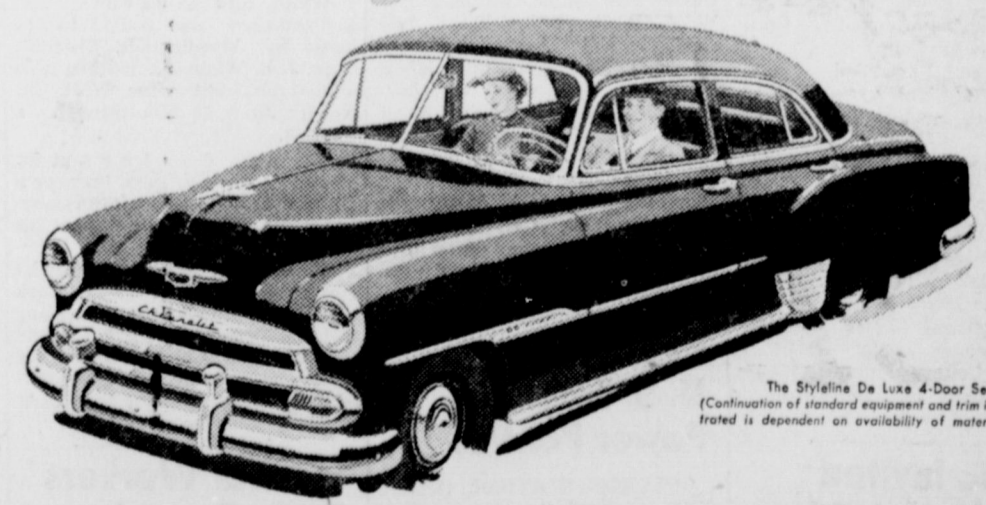


Size it up and you'll see why More People Buy Chevrolets Than Any Other Car!

Longest of the Lot
Chevrolet looks longest, Chevrolet is longest . . . a swank and sweeping 197 1/2 inches over-all that tops any other car in the low-price field. Size up Chevrolet's greater length, and you'll find it hard to settle for less.

Most Road-Hugging Weight
Gives you more road-hugging, road-smoothing weight . . . a hefty 3140 pounds! In the model illustrated that no comparable car in the field can match. Get the feel of this big car, and you won't settle for less. (Shipping weight.)

Widest Tread in Its Field
Here's the steadiness of the widest tread in the field . . . 58 3/4 inches between centers of rear wheels. Once you've known the better roadability of Chevrolet's wider tread, you wouldn't settle for less.



The Styline De Luxe 4-Door Sedan (Continuation of standard equipment and trim illustrated is dependent on availability of material.)

Finest Comfort Features
Luxury of Body by Fisher . . . cradled ease of unitized Knee Action . . . smooth control of Center-Point Steering!

Biggest Brakes of Any Low-Priced Car
Big, powerful Jumbo-Drum brakes—largest in the low-price field! Use the car's own momentum to increase stopping power.

Way Ahead with Valve-in-Head
The trend's to valve-in-head. And Chevrolet's had it for nearly 40 years! Get sparkling performance and real over-all economy.

Join the Shift to No-Shift **POWER GLIDE** Automatic Transmission[®]
Sensationally smooth! Excitingly easy! It's a new experience in driving, the modern way to drive. Costs little more—or even less than many a car with standard gearshift!
[®]Combination of Powerglide Automatic Transmission and 105-h.p. Engine optional on De Luxe models at extra cost.



LAMB MOTOR COMPANY

Sales—CHEVROLET—Service

305 EAST MAIN

PHONE 44

