



Dulin-Daniel Post No. 70 AMERICAN LEGION BOB BURKETT, Post Commander Mrs. Earl Francis, Auxiliary Pres.

Arrangements are progressing for our annual Christmas party for all members, their wives, sweethearts and Auxiliary members...

Courtesy costs nothing, but it pays big dividends. Our scientists have been working on and we as a country should lead the world in combat weapons...

Miss Dorothy Sims very graciously consented to represent the Legion at the Civic League's annual party last Tuesday evening...

Two old gentlemen were setting comfortably in their easy chairs at the club, enjoying an after-dinner cigar. Said one to the other: "Every time I come here my wife thinks I'm out chasing women. Gad—I wish she was right."

When the GI Bill was being considered and it hung in the balance high drama entered the climax of the long legislative fight for the bill. Representative John S. Gibson, of Douglas, Ga., raced 850 miles by relays of fast cars and a plane in 7 hours and 22 minutes...

Mrs. Bill Lamb and son, Freddie of Houston have returned home after visiting with Mrs. Lamb's parents, Mr. and Mrs. Pete Cline. The Lambs expect to make Houston their permanent residence...

Our second regular meeting of this month comes on our Christmas party night so it was voted to dispense with the meeting in favor of the party. The next regular meeting will be held in January.

We are always at the crossroads of choice. One way is right, the other is wrong. One way is fair, the other unfair. In one way lies happiness, in the other ultimate sorrow. One way leads to creative progress, the other to destruction of all that is worth while. One is the way of love, the other the way of selfishness.

There has been some question as to the eligibility of veterans who served with other nations associated with our country in the war. Our constitution provides that any citizen of the U. S. enlisting and serving honorably with any allied nation is eligible for membership in the Legion.

Sergeant Sweetly addressing his men at the end of an exhaustive hour of drill: "When I was a little child I had a set of wooden soldiers. There was a poor little boy in the neighborhood, and after I had been to Sunday School one day listening to a stirring talk on the beauties of charity, I gave them to him. Then I wanted them back and cried, but my mother said, 'Don't cry, Bertie; some day you'll get your wooden soldiers back.' And believe me, you lopsided mutton headed, goofus brained set of certified rolling pins, that day has come."

Unit member Mrs. Ita Parrish and her mother, Mrs. W. R. Ross visited Mrs. Parrish's son and daughter-in-law, Mr. and Mrs. Billy Jack Parrish in Ft. Worth this week. Mrs. Parrish had as house guests Mrs. Thomas Branch and son Tommy Wayne of Oklahoma City. Mrs. Branch is a niece of Mrs. Parrish.

All-out support of the work of the American Legion during 1947 was pledged by Mrs. Earl Francis, President of the Dulin-Daniel Unit of the American Legion Auxiliary. The Auxiliary is strengthening its membership, she said, so that it can aid more effectively in the Legion efforts for veterans and in civic and patriotic activities. "Auxiliary women welcome the opportunity to serve side by side with the war veterans of their families in the work of the American Legion. We hope you will assign us a full part in your serious activities as well as permitting us to share in your social events during 1947." Mrs. Francis stated the Auxiliary was building up its membership strength to match the greatly increased strength of the Legion. We regret the passing of another veteran of World War I, Buddy F. A. Beskow, local jeweler for 17 years, died suddenly last Monday morning, and was buried Wednesday afternoon. The American Legion and Auxiliary express their deep appreciation to the Beskow family in their great affliction. We wonder why Russia has made such a sudden change towards a softer attitude on the atom bomb control. We don't worry about the outcome as we have men who are wide awake looking after our interests regarding our a-bombs. Some think Russia is stalling for time in order to give the Soviet scientists a chance to work out the formula. Our country has over 200 German scientists who voluntarily are exiled over here and are working on experimental supersonic flight, infra-red combat photography and rocket-propelled weapons. We know these Germans...

CATTLE GRUB TAKING TOLL OVER COUNTY

The world's most expensive animal parasite-cattle grubs — are now taking their toll in loss of fresh and reduced milk flow among cattle in Eastland County according to word from the county agent's office. Beginning life as an egg which his parent the heel fly laid on hairs on the legs or stomach early last spring, he now shows up in the backs of the cattle just underneath the skin. When infested cattle are slaughtered the meat around the encrusted grubs in the back must be trimmed out and discarded averaging a loss of at least two pounds per animal. Hides from such an animal with five or more holes are discounted. The hide is thickest over the back and unfortunately contains most of the tiny air holes of the grubs. Cattle free of the grubs, gain on the average of one-fourth a pound more than those infested when on feed according to experiments. The milk flow of dairy cattle is considerably reduced when infested. Rottenone, and sulphur have been successfully used to kill this grub for the past several years. Three applications at 25 day intervals are necessary. Eastland County Cattle owners are being urged now to combat this parasite.

ANNOUNCES APPOINTMENT OF OFFICER

James M. Brown, senior contact representative in charge of the Veterans Administration Contact Office, whose headquarters are located in the Sinclair-Pratt Building at Eastland, Texas, announced today that Hollis A. Welch, VA Training Officer, had been assigned to the Eastland Texas VA Office.

Welch served as a Chief Petty Officer in the Navy for three and one half years, is a native of Texas whose home is in Arlington. Welch attended the North Texas State College, and his background has been in the teaching field. Prior to his entry into the service, Welch was teaching school at Olney, Texas.

Welch will work in cooperation with Harry J. Walter and Lonzo M. Gober, local training officers. He will render service specifically to the Counties of Shackelford and Stephens, while Walter will render service to the counties of Eastland and Callahan. Gober, who is the Agricultural training officer, will continue to render service to the six county area of Callahan, Shackelford, Stephens, Eastland, Throckmorton, and Young.

The assignment of Welch to this office, Brown said, is in line with the Dallas regional office policy of carrying the service of the Veterans Administration to the veteran wherever he may be, and will relieve, to some extent, the tremendous work load that Walter has been carrying, and will now make it possible for both Walter and Welch to cover their respective territories more thoroughly and render greater services and assistance to the veterans. The VA staff at Eastland now includes the following:

James M. Brown—senior contact representative; A. D. Modisett, contact representative; Harry J. Walter, training officer, Lonzo M. Gober, agricultural training officer, and Hollis A. Welch, training officer.

This office, which has jurisdiction over the four-county area of Callahan, Shackelford, Stephens, and Eastland Counties, is prepared to assist the veteran and his dependents in all the benefits administered by the Veterans Administration. The benefits include: insurance, compensation, retirement pay, vocational rehabilitation, educational training, veterans readjustment allowance, medical treatment, hospital care, domiciliary care, and guardianship matters.

Production Line Speeds Plane Reservations

CHICAGO (UP) — A production line method for assembling plane reservations, involving the use of a conveyor belt and an "availability board" like the "big board" of major stock exchanges, has improved the handling of plane reservations here 300 per cent, it is estimated by D. F. Magarrell, United Air Lines vice president of passenger service. The conveyor belt carries reservation cards and other records to specialized control stations making up specific flights. There are telephone positions on each side of the belt. The "availability board" provides up-to-the-minute view of all flights 31 days in advance. Magarrell said that the streamlined system has proved so successful that it is being installed in eight other major cities.

Jobless Vets Found To Scorn Chiseling

COOS BAY, Ore. (UP) — The typical unemployed veteran is well along in his thirties, semi-skilled, lives in town, has been out of work eight or nine months and is no "chiseler." That is the picture drawn by the Oregon state unemployment commission on the basis of a survey. The survey showed that the typical veteran has contacted several employers and the local employment office, but hasn't found suitable work where he can get housing.

Silas Gaiser, veteran administrator, revealed that only three cases of "chiseling" have been uncovered in the filing of unemployment claims in Oregon. States.

Lip Reading Held Essential LOS ANGELES (UP) — Deaf children must be taught to speak and read lips instead of relying on sign language if they are to be absorbed in society, according to Mrs. Louis Tracy, founder of the John Tracy Clinic for the Deaf.

43 STATES SHARE TAX MILLIONS WITH CITIES

CHICAGO (UP)—Forty-three states currently are returning to their municipalities nearly \$400,000,000 a year in state-collected tax revenue, according to a survey of shared tax just completed by the American Municipal Association.

The sum does not include other multi-millions in state tax aid to local schools. The association's survey, first of its kind published, reveals that only five states, Florida, Kentucky, Nevada, Texas and Vermont, do not share some of their taxes with cities. In total, wine, liquor, gasoline, and automobile or highway user revenues are the "big three" of state taxes shared with municipalities.

New York leads in tax sharing by returning more than \$87,000,000 in state-collected revenues to its cities. The funds allocated on a per capita payment basis under provisions of the so-called Moore Plan, which became effective last July 1.

Massachusetts, runner up in tax sharing, returns almost \$45,000,000 annually to municipalities. Ohio is third with \$41,500,000 and New Jersey ran a close fourth with \$41,100,000. Wisconsin returned \$37,500,000 and Michigan returned \$24,200,000. Wisconsin's \$22,500,000 municipal share of the state income tax is the nation's largest local share of a single state tax revenue. Allocations of this share are made proportionate to where the income was earned.

In Massachusetts where \$22,300,000 is returned to cities and towns as the local share of the state individual income tax, municipal shares are based on local assessed valuation of real estate. Liquor taxes are shared with municipalities in 17 states, with local shares totaling well over \$55,000,000. In Michigan, alone, more than \$8,000,000 in liquor sales taxes were returned to cities out of total state collections of \$11,300,000. Virginia returned \$7,000,000, or about half, of its 1945 liquor store profits. More than \$52,000,000 in gasoline taxes are being returned to municipalities in 18 states, and a total of 30 states share gasoline

or some kind of motor vehicle tax revenues.

Largest local share of the gasoline tax is in California, where municipalities last year received almost \$9,000,000 of some \$54,000,000 in state gasoline tax collections. Largest allotment of the motor vehicle and related taxes was made in New Jersey, where cities and towns received nearly \$11,000,000. Other state collected taxes shared with cities include fire-insurance taxes, pari-mutuel or racing taxes, chain store taxes, cigarette taxes, banks and financial institutions taxes, and taxes on public utilities, railroads, corporation franchise, outdoor advertising and water craft tonnage.

There are 3,400 steel balls of various sizes in the bearings of a heavy bomber.

But Who Wants To Play Baseball On The Moon?

CHICAGO (UP) — If a baseball game were played on the moon, a hit would send the ball a quarter of a mile beyond the outfield and the batter would take 18-foot strides in making his home run.

This looney kind of sport was dramatized in a lecture entitled "All Aboard for the Moon," given in the Chicago Natural History Museum by Payl G. Dalwig, a layman lecturer for the museum. The exaggerated results of such a game on the moon, Dalwig explained, would be due to the lesser pull of gravity there.

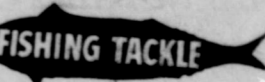
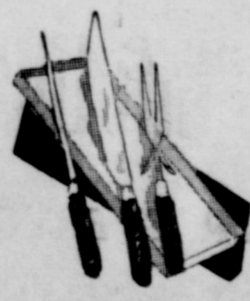
—READ THE CLASSIFIEDS—



Linkenhogger's Offers Large Savings On HARDWARE Gifts For Christmas Prices Cut

On Such Items As

- Pressure Cookers, Electric Churns, Garbage Cans, Thermos Jugs, Gas, Kerosene, Electric Lanterns, Sleeping Bags, Air Foam Cotton Mattresses, Electric Heaters, Kitchen Cutlery, Large Stock, Rods, Reels, Fishing Tackle



These Items Can Be Had At -

20% To 40% Savings

Give Useful Hardware For Gifts

CLOSE OUT ON WRENCHES — HAMMERS SOCKET SETS



SALES AND SERVICE International Trucks Farmall Tractors 300 W. Commerce Phone 620

MUSHROOM EXTRACT TESTED IN BATTLE ON TUBERCULOSIS

By Rene Balbaud
United Press Staff Correspondent
PARIS (UP) — A chemical substance obtained from the mushroom plant may prove of value in medical science's battle against tuberculosis.

The substance, which has been named "clitocybin," originally was isolated from a certain species of mushroom by Prof. Charles Hollande, microbiologist on the faculty of the Montpellier School of Pharmacy, who is now conducting preliminary experiments to determine its effectiveness as an agent against certain disease microbes.

But both Hollande and officials of the Pasteur Institute caution against jumping to the conclusion that clitocybin can be used in the treatment of human diseases—especially tuberculosis.

"There is no doubt that clitocybin produces an action against a certain number of microbes, among them the Koch tuberculosis bacillus," Prof. Louis Aublant, secretary general of the Pasteur Institute, told the United Press. "But there is some question—and Prof. Hollande would be the first to concur—that it is still too early to think of using it in the treatment of humans."

Hollande, who for the past 15 years has been conducting experiments for tuberculosis, made his discovery accidentally one day during a walk in the mountains. He noticed that certain mushrooms were surrounded by a "dead area" where all vegetation had died out.

Hollande concluded that this was a mushroom of the "clitocybe candida" species and that it contained a substance capable of killing all life within a certain radius about it. He confirmed this opinion by experiments in which he planted carrot and radish seeds next to the mushrooms in question. The seeds did not sprout.

He then proceeded to isolate the substance and conduct extensive experiments on its possible applications in the fight against microbes.

A "center of culture" has been set up in Grenoble, where, during the past three months, several thousands of liter flasks of the substance have been isolated monthly.

With the creation of a sufficient supply of purified clitocybin, experiments have already been conducted on guinea pigs, previously injected with tuberculosis bacilli. These studies, according to the Pasteur Institute head, have already brought "favorable results" but conclusions will not be made public until they are absolutely verified by repetition and precise control.

He revealed, however, that experiments thus far conducted on guinea pigs, have proven that clitocybin is not fatal to the life of the animal itself. In this respect, it is superior to the "vitamin PP" which kills the guinea pig before destroying the microbe.

No attempt has yet been made to experiment with clitocybin on human beings.

19 Counties Rough on Rats
LAFAYETTE, Ind. (UP) —Nineteen Hoosier counties have declared war to the death against their rat population. Poison made at Purdue University is being distributed to farmers under supervision of the United States fish and wildlife service at Purdue.

Post-War Juries Condone Crime Experts Find

By Bette Moorehead
United Press Staff Correspondent
DENVER (UP) — A wave of jury verdicts across the country is showing unprecedented leniency towards defendants in criminal trials of violence. It is explained by Denver psychiatrists as a direct result of the war.

District Attorney James T. Burke said he has received reports from prosecutors elsewhere indicating a marked turn to extremes in leniency on the part of juries.

Denver psychiatrists, who say present conditions make a similar trend which followed the first World War "look like a rehearsal" explain that most of the verdicts are the result of a lack of personal control on the part of the juror. The jury verdicts show a subconscious revolt against man-made restrictions, the scientists explain.

When a juror, faced with passing on a case, makes his decision, he draws on his own personal experience rather than taking an objective view in forming his reaction to the trial evidence presented. He must call upon his own conscience in testing the facts of the case, and it is this conscience which has been warped by the long suffering and privations of war, combined with the constant fear of death and the sight of violence.

The long war years, with increased restrictions and tendency to make people subservient to a central force, helped to destroy individual thinking which governs a person's conscience or sense of what is right or wrong.

These conditions brought on by the war only aggravated an overall tendency among modern men to retreat from an individual philosophy of right and wrong and to depend on man-made laws to govern their actions.

A mass of man-made restrictions has been enacted and enforced which govern the modern man's life to the point where his individual knowledge of right and wrong has been deadened, psychiatrists continue.

The sudden death, uncontrolled hate and fear and long periods of personal privations suffered during the war further tend to warp the thinking of individuals from its normal form. The person's conscience has been deadened.

"Individuals are becoming less individualistic and are losing their own self-respect," one psychiatrist said. "In the early days, pioneers, seeing crimes committed, felt a personal responsibility to do something about it. Now, for the most part, they are content to rely on the mass of absolute restrictions to uphold their social structure."

Five Devours Meat
INDIANAPOLIS (UP) — The meat supply here was not helped any when \$10,000 worth of meat went up in flames at a packing plant. In addition, 320 lockers of meat were destroyed by a fire in New Richmond.

The oldest penal institution of its kind in the United States still in use is the 141-year-old Massachusetts State Prison at Boston.

Iranian Crisis Grows



This map shows where the Iranian government troops invaded Azerbaijan, northernmost Iranian province, in an attempt to enforce Premier Ahmed Ghavam's authority over the rebellious region. Main column was aimed along the Tehran-Tabriz railroad toward Mianeh, indicated by the arrow. (NEA Telephoto).

About 90 per cent of the corn grown in Illinois is fed to livestock to convert plants into meats and other animal products. Poisonous plants are a constant threat to livestock health, especially in spring and summer months.

Extra! Big Pacific Crisis Solved

MAJURO, Marshall Islands (UP) —The Navy's military government setup on Majuro Atoll is providing its administrative officers with some laughs along with the headaches.

Lt. William Rogers, a military government official from Paducah Ky., outlined for reporters touring the Pacific Island what the natives believed was a "crisis."

The principal village on Laura is in the unfortunate position of having two kings. King Lainlon is recognized by the Navy as the hereditary king of the village. King Jitan is head of the minority party.

Red Cross. When King Lainlon's following found out about the contribution, they all kicked in with a dime.

Jitan countered by taking a large supply of bananas and coconuts to Red Cross Headquarters. That was too much for Lainlon, who sent word by boat to Majuro that trouble was brewing in the village.

Trouble in the village was touched off when King Jitan's 40 subjects each gave a nickel to the Red Cross. He was met at the pier by his kings who wanted to tell their side of the story first. In diplomatic bargaining fashion, Rogers arranged separate conferences with each king.

On the next day, the kings, their chiefs, heads of families and local police all met at the government house with Rogers.

Good Bear Hunting
PHILLIPS, Me. (UP) —Curtis Lawrence has caught 17 bears in his traps in the past 10 months. One weighed over 400 pounds.

Christmas Is The Time for Flowers

SEE OUR ASSORTMENT OF
Poinsettias—Azalias
Pegonias and Potted Mums

Surprise her on Xmas Morning with one of our Beautiful Potted Plants or a Corsage.

POE FLORAL SHOP
612 1/2 W. Mulberry Phone 96

NOW AVAILABLE

A VERSATILE COLLECTION OF ORIGINAL OIL PAINTINGS by SIMON G. MICHAEL

Special reduction on all paintings for the Christmas Season
This Christmas make your gift a thing of lasting beauty and distinction.

OFFICE 227
BAKER HOTEL, MINERAL WELLS, TEXAS
MRS. J. R. HARVEY—At above address

PRACTICAL ELECTRICAL Gifts

6-TUBE RADIOS
Famous Learadio, "The Radio Men Fly By" . . . in solid mahogany cases—
38⁹⁰

ELECTRIC ROASTERS
Hollywood cast aluminum, an ideal gift for mother—
19⁹⁵

NICKEL SILVER SETS
Service for six; a quality buy—
12⁹⁵

ELECTRIC HOT PLATES
Singles
4⁵⁰

CHILD'S DESK And CHAIR
Combination with blackboard—
9⁹⁵

HOSTESS COFFEE SETS. Electric coffee makers with tray and matching accessories. . . . **8.95**

GRIDDLE TRAYS. La Bra Utility Trays (plus tax). . . . **4.95**

Chamberlain Motor Co.
Kaiser-Frasier Sales-Service
511 W. Main Eastland Phone 296

Santa's Pack has GIFTS Galore

At Your Eastland Furniture Store

It's Here! The "Merry-Go-Sound!"
SEE IT! HEAR IT!
A thrill, Christmas Day, for any child or teen-ager. Perfect in mechanism and tone. Simple to operate; unique in design. Not a toy but a Joy! To any lucky boy or girl.

Youth's Desks
Hand rubbed, with matching chairs in maple and mahogany. Desk and chair—
16⁵⁰

Telephone Sets
Hand rubbed . . . in walnut, mahogany or blond leatherette seats—
14⁹⁵

New Shipment
Table Lamps, China Bases, Shades of Spun Glass . . . for Better Light and Illustrious beauty.

ARRIVED IN TIME FOR CHRISTMAS!
Early American Solid Maple Bedroom Suite
Chest-on-chest design, large poster suite, five-drawer chests, heavy and beautiful spool, 4-poster four-piece suite. Large, plate glass mirror; two massive, 5-piece, rich, walnut Bedroom Suites.
See these for yourself! Priced \$20-\$30 BELOW regular price for Christmas.

Now you can afford all the lovely, sturdy lamps you need for yourself and that special gift.

3-WAY LAMP
Bronze base, large, white shade, globe included.
\$14.95

7-WAY LAMP
Bronze or white base, large white shade, only—
\$18.95

HEAVY TORCHIERES
At the price you wish to pay.

All Metal White Enamelled UTILITY CABINETS
Three compartments; will stand on floor or hand, lengthwise or cross-wise. Buy one, two, or as many as you need for kitchen, bath or storage. Special this week, each for only—
5⁹⁵

See for Yourself the Unusual Array of Furniture and Gifts at Sensational Prices at—

COLORFUL COCOA MATS, this week \$1.69

Eastland Furniture Co.
CHAS. C. FAGG ON THE SQUARE PHONE 574

L.P.I.C.
Your Interstate Theatre

TODAY — FRIDAY
Adolph Meniu
Gail Russell
Claire Trevor
"Bachelor's Daughters"
Plus Woody Woodpecker Cartoon Community Sing

SATURDAY ONLY
Sunset Carson
"El Pasc Kid"

SUNDAY and MONDAY
Rosalind Russell
Alexander Knox
"Sister Kenny"
Plus Latest World News

TUES. and WED.
"Wife Of Monte Cristo"
John Loder
Lendre Aubert
EXTRA! Popular Science with Fibber & Molly
Paramount News Presents All American Football Selections

TOTAL DISABILITY INS. AVAILABLE FOR VETS

Veterans Administration today reminded veterans who have National Service Life Insurance they now may be insured against total disability.

Total disability income benefits authorized by recent legislation may be added to any plan NSLI upon application, proof of good health, and payment of an extra premium. A. D. Modisett, local contact representative, said.

Premium rates for the disability coverage range from 6 cents to 94 cents a month per \$1,000 of insurance, depending on the insured's age and type of policy.

Disability benefits are at the rate of \$5 a month for each \$1,000 of insurance and are payable after the veteran has been totally disabled continuously for 6 months or more. The monthly benefits will continue to be paid as long as the insured remains totally disabled. However, the disability must commence before the veteran's 60th birthday.

One of the principal features of the new disability benefits, the VA announced, is that the face value of the veteran's policy will not be reduced by any disability payments that he might receive.

Veterans with service-connected disabilities less than total in degree are not prevented from taking advantage of the new provision, provided they apply for it before Jan. 1, 1950. In these cases, such disabilities are waived if they are the only bar to meeting the health requirements.

Veterans who wish to obtain full information regarding the new disability income feature should contact their nearest VA office.

Record Wheat Crop In Kansas Due In Summer

By Tom-W. Miller
United Press Staff Correspondent
TOPEKA, Kan. (UP)—Kansas, the nation's top producer of winter wheat, is looking forward hopefully to a big crop, and with factual basis for the rosy forecast.

Several factors in the early season outlook compare with the late autumn of 1930, when with a good start, the wheat thrived through the winter and spring and gave the all-time record harvest the following summer of 251,000,000 bushels.

It is too early for an official prediction in terms of yield per acre and total number of bushels for this heart-of-the-wheat-belt state. That will come shortly before Christmas from the U. S. Department of Agriculture.

But Hubert L. Collins, federal-state agricultural statistician for Kansas, believes the first facts and figures forecast will widen the smile of wheat growers who have just harvested the state's second biggest crop of 215,000,000 bushels—and at prices six and a half times as great as for the record 1931 yield.

Right now he says that "Soil moisture in Kansas wheat fields is close to a record depth. The outlook is quite similar to the fall of 1930, preceding the record harvest. Plant development is well along, root development is excellent, tillering is good, and color is most favorable."

Harsh of the winter and the spring are yet to be hurdled by the crop, of course. In the cold months ahead there is the possibility of an ice sheath to smother the wheat or rapid alternate freezing and thawing, or of extreme

cold without a protective coating of snow.

Collins, however, doesn't fear too great damage during the winter.

He points out that the single biggest factor for the making of a winter wheat crop is soil moisture, and the ground is wet in the western two-thirds of the state down as far as 47 inches in the October monthly report. Furthermore, there has been considerable rain since that time.

In fact, the federal weather bureau reports that Kansas as a whole had the third wettest October on record and the western part of the state—where wheat is king—had the wettest October ever.

Collins, going back to the subject of winter wheat damage, said

that the crop "never has been destroyed by those adverse winter situations I mentioned."

U. S. Joys Their Memory
CHICAGO (UP)—The regional United States immigration office is rounding up 25 to 30 Mexicans in Illinois, Wisconsin, Minnesota, North and South Dakota each week and returning them to Mexico by airplane. The Mexicans contracted to work in this country during the war-time man-power shortage, but have "forgotten" that they must go home.

The army quartermaster corps has developed mobile laundries, bakeries, shower-baths and repair shops so light in weight that they can be transported by plane.

USE OUR LAY AWAY PLAN

LOOK OVER OUR DEPT.

OPEN TILL 9 o'clock



STEP-ON CAN
Modern—Sanitary—Rust-Resistant
3.25

MIRRORS
With ornamented gold frames, true plate glass
21.90

UTILITY CABINETS
all STEEL, white enamel
17.75

LAWNMOWER
Reading-Flexmor Deluxe
28.45

BOYS' WAGON
All heavy gauge steel. Color, red—
14.25

Extra Large TRICYCLE
27.95

CARRIAGE STROLLER
Folding—Only One
20.00

JUNIOR SEWING MACHINE
4.00

DROP IN AND SEE OUR DISPLAY OF FOOD FREEZERS

30 CUBIC FOOT FREEZER
LARGE CAPACITY
Provides food freezing and storage for 1000 to 1200 pounds of food. Upright Style, eliminates stooping, no shelf too high—none too low.

6-CUBIC FOOT—DEEP FREEZER
DEEP FREEZER
Reynolds
ESKIMO FREEZER
White enameled
60 1/2 inches deep
Inside Depth 20 x 32

The Pullman Store
East Main on Highway Phone 270

PERSONALS

Dick Harbin, of 116 East Burkett Street, is in the Baylor Hospital in Dallas, undergoing a major operation on his face. He was accompanied to Dallas by Mrs. Wiley Harbin, and a nephew, Lee Alto Harbin, and wife.

J. A. Beard, official weatherman reports Eastland has had 1.25 in. rain from the 9th up to noon Wednesday.

Mr. and Mrs. Earl Bender had as guests the past week end Mrs. Bender's brother Barney Arnold and family of Knox City.

Mrs. L. E. Carbell president of West Ward P.T.A. School announces a meeting December 17 at the school auditorium. Mrs. Carbell wishes to thank the Lions club and the Civic League and Garden Club for the funds donated by them for improvements at the school grounds.

Jimmy Mahon son of Mr. and Mrs. Ralph D. Mahon of Connecticut and formerly of Eastland, was a guest in the home of Mr. and Mrs. Frank Sparks as guest of their son Dick recently. Mahon is attending the State University with Sparks.

Messrs Clyde Karkalits, Earl O'Brien, E. F. Altom, J. R. Lanier, J. C. Allison, attended a chili supper and brotherhood meeting in Cisco Friday night, December 6 at the First Baptist Church. Rev. Joe Allison was principle speaker. He is a son of Mr. and Mrs. J. C. Allison.

Mr. and Mrs. C. N. Lindley of Eastland are parents of a son born

Keep Pullets, Eat Older Hens, U. S. Advises

WASHINGTON (UP)—An agriculture department poultry specialist believes poultry growers would be far better off if they kept their pullets for egg production and consigned their older exposed to older birds which may be carriers. In addition, chickens normally produce about 20 per cent more eggs during their first birds to the frying pan.

T. C. Byerly pointed out that health and feed costs are the two main reasons behind the all-pullet policy.

The danger of disease is cut because the younger pullets are not exposed to the older birds.


Most of the vitamin A disappears from hay if the hay is carried over for a year.

Tuesday morning in the Eastland Hospital. Weight at birth, 8 pounds and 3 oz.

Mrs. Alva Jones, tiny daughter Donna Kay, and Mrs. Jones' mother, Mrs. J. L. Roper visited Mrs. J. W. Jones at Houston this week and were to return by Ft. Worth to visit relatives and friends. Mrs. J. W. Jones is the mother-in-law of Mrs. Alva Roper.

GIVE Entertainment THIS YEAR!

"THE BOSS IS GOING TO GIVE US A BOOK OF THE YEAR FOR A CHRISTMAS PRESENT!"



Gift BOOK OF THE YEAR

The pages of the Book of the Year contain coupons that are Redeemable in many Priceless Hours of Theatre Entertainment!

ON SALE AT THE BOX OFFICE OF ANY INTERSTATE THEATRE

\$1.00 * \$2.50 * \$5.00 * \$10.00 * \$15.00

Christmas Gift SUGGESTIONS

Make Your Christmas Dollars Go Further With Our SALE PRICES

SMART DRESSY COATS
For Cold Days Ahead
Furs—100% Wools—All Whites

1/3 To 1/2 Off

100% wool
FLEECE COAT
Was 45.00 Now—
32.50

A Beautiful Suit
1/3 Off

HATS AND SHOES
To Complete Your Ensemble

A New Dress For The Holidays
1/2 OFF

A PAULA BROOKS 2-piece 100% wool dress was 24.95, Now **12.50**

GIFT SUGGESTIONS

- Blouses
- Sweaters
- Skirts
- Purses
- Lingerie
- Gloves
- Handkerchiefs
- House Shoes
- Costume Jewelry
- Warm Bunny Slides
- And Shearlings
- Robes

GIFT WRAPPING — SEE OUR WINDOW

ALTMAN'S
EASTLAND

SEND YOUR CLEANING NOW

AVOID THE HOLIDAY RUSH

Have your Christmas Clothes SANITONE Cleaned and Note the Difference!

MODERN DRY CLEANERS

Phone 132
For Pick-Up and Delivery

WTCC GIVES DETAILS OF COLLEGE BUILDING PLAN

ABILENE, Dec. 11 (SPL.) — The West Texas Chamber of Commerce has released a financial prospectus setting out in detail its plan for supporting urgent building needs of Texas state supported colleges, an activity called for by its board of directors at their referendum assembly last month.

The document contains nine amortization and statistical tables in support of the WTCC's contention that, for adequately and quickly financing building plans of all 16 state schools, \$37,000,000 in bonds can and should be floated from the revenues of the University of Texas permanent land fund. The chamber contends that this maximum funding program would produce \$14,800,000 for the University and Texas A&M College and \$22,200,000 for the 14 other institutions under a 60-60 per cent division as between them and the two big schools, against \$15,000,000 they would receive through a 5-cent state ad valorem tax levy as proposed by administrative heads and recent boards of the colleges.

Custard of Cleburne declaring the chamber's participation in the colleges' building problem "honestly springs from a group who are staunch patrons and supporters of higher education in Texas and who recognize that the urgent building needs of the schools should be discharged now."

Custard has transmitted the 16-page document to all WTCC affiliates, with the observation that "it is the most penetrating and fair analysis we have yet had on the building fund problem." The chamber's Educational Committee is sending it to all college administrative heads and regents; while a committee composed of state Representative Preston Smith of Lubbock, original author of the Trust Fund Plan, and Rep. Harley Sadler of Sweetwater, Sen. Pat Bullock of Colorado City and Sen. Sterling Parrish of Lubbock is seeing to its distribution among all members of the upcoming 50th Legislature.

Of the prospectus, Rep. Smith said: "It doubly assures me of the soundness of my position for the division of the Permanent University Fund. I will never subscribe to its utilization for the benefit of only one-eighth of our educational system but shall insist that it be used for all of our institutions of higher learning."

I GIVE YOU TEXAS

By Boyce House

The old-time writers, in sketching the life of some great man, would write, "He was born of poor but honest parents." Why "poor BUT honest?" Most folks are poor and honest, too. The fact that a man is poor is a pretty good sign he's honest because if he was dishonest and stole very much, he wouldn't be poor, would he?

A note from Frank Baldwin, colorful Waco, editor: "If you ever get in trouble, call me collect. Get in trouble, too. My experience has been that it's a lot of fun."

Fact of the matter is, controversy appeals to me, especially when there is an opportunity to render public service, along with the joy of a good scrap. As an illustration:

Winding through the great East Texas oil field is the Sabine River. Under that riverbed, nature stored a vast amount of oil, which belongs to the State Permanent School Fund. The State invited bids from oil companies so that

W. D. McGraw Optometrist

Eyes Carefully Examined, To Fit

Glasses Guaranteed
New Location 506-7
Exchange Building
Phone 20

RAWSON'S

REFRIGERATOR AND
ELECTRIC SHOP
BREWER BUILDING

114 N. Seaman
Phone 86

Dr. G. W. Griswold

Practice Limited
Eye-Ear-Nose
Throat
Glasses Fitted
Office Over Anthony's Store
Breckenridge, Texas
—Phone 1194—

NOTICE

Photo-Copies of your Discharge, Ocular Rapid printer in Black, Blue or Red Lines for maps and legal documents.

Safeguard your important maps and papers by having them reproduced.

W. C. WHALEY

Reproduction Dept.
5th Floor Exchange Bldg.

NEWS FROM Desdemona

(by Special Correspondent)

DESDEMONA, Tex. Dec. 9 — Mr. and Mrs. W. L. Moore and daughter of Longview visited his father, W. L. Moore, Sr., during the week.

Mrs. Wayne Ottwell of DeLeon visited her parents, Mr. and Mrs. W. A. Lindsey, Saturday.

News was received here this week that Mrs. Emma Brown of Ranger was real sick with "flu". She is the mother of M. C. M. Browning. At this writing her condition was reported as improved some.

Mrs. Lucile Holder of Houston is visiting her sister, Mrs. J. W. Honeycutt.

Burley Saint returned Tuesday from San Antonio on an extended furlough.

R. H. Rogers returned from Germany Wednesday, where he had served nine months with the American Army of Occupation. His wife is the former Miss Murren Peak.

Mrs. Dunlap of Georgetown is visiting her daughter, Mrs. J. W. Honeycutt.

Miss Virginia Honeycutt of Ft. Worth visited her mother this week.

Miss Johnnie Pearl Smith and Jack Sharp visited Mrs. R. H. Rogers, Tuesday.

Mrs. R. C. Koonce and Mrs. J. C. Peak were shopping in DeLeon, Saturday.

Only \$2.45 In Seven Weeks Not Enough Wife Says

LOUISVILLE, Ky. (UP) — An itinerant preacher who said he could not be judged "by laws of man" was given a 30-day jail sentence in juvenile court for failing to provide for his children.

The man, who also vowed to "let God take care of my children," was told he must stay in jail unless he provided the proper food and clothing for his family. His wife told officers he had given her only \$2.45 in seven weeks.

Relief At Last For Your Cough

Creomulsion relieves promptly because it goes right to the seat of the trouble to help loosen and expel germ laden phlegm, and aid nature to soothe and heal raw, tender, inflamed bronchial mucous membranes. Tell your druggist to sell you a bottle of Creomulsion with the understanding you must like the way it quickly allays the cough or you are to have your money back.

CREOMULSION For Coughs, Chest Colds, Bronchitis

THE STAR DRAPERY SHOP

"In the Star Merchandise Mart"

1290 Butternut Street Abilene Ph. 4833

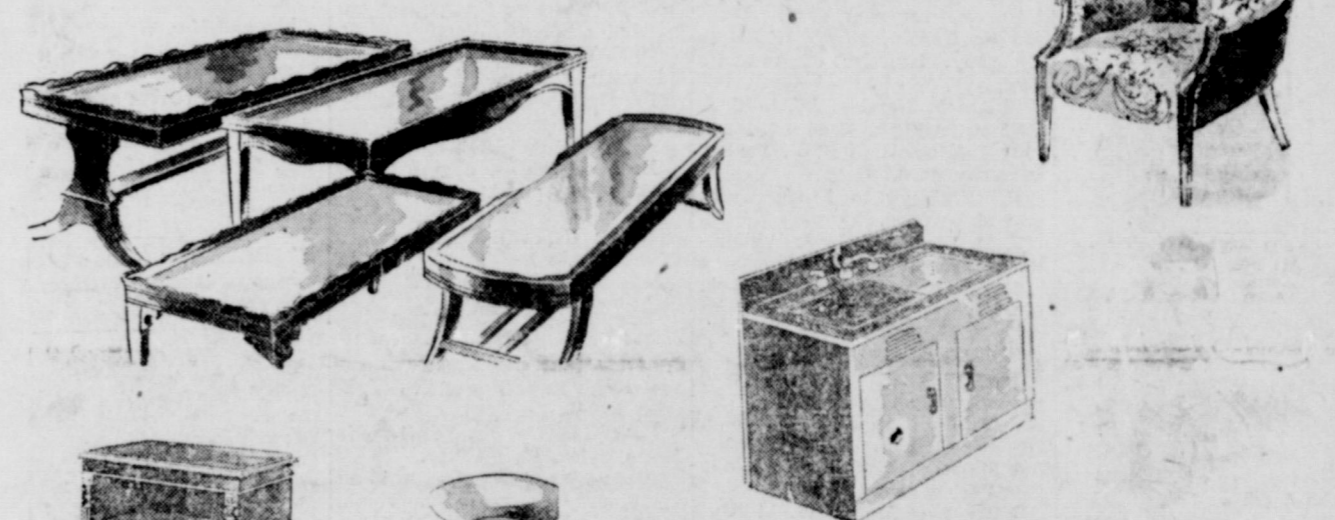
Custom Made Slip Covers
Curtains, Draperies, Bed Spreads
Wide Selection, new fabrics
Satisfaction Guaranteed on all Work

We Invite You to Visit Our Shop For Estimates

Eunice B. Hurd Vera Williams

BUILD UP RESISTANCE TO COLDS With Your Daily Quota of Delicious **Kilgore's** Pasteurized MILK

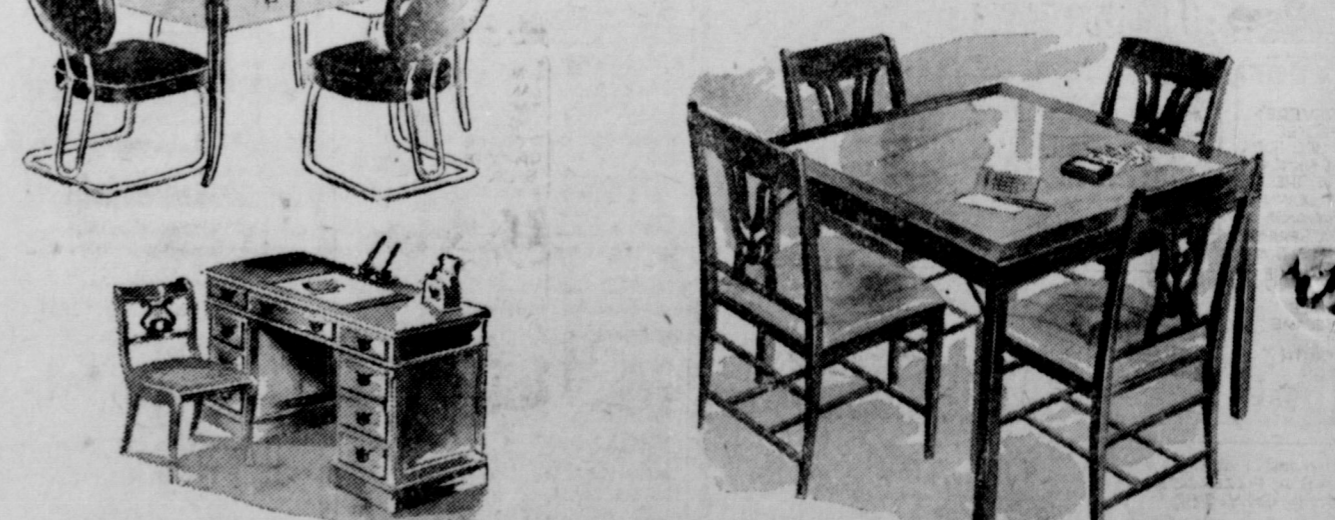
Willy-Willys Offers Furniture "The Ideal Christmas Gift For All"



A FEW SUGGESTIONS And More In Our Store

- (a) BARREL and WING Chair, upholstered in tapestries and velours..... 49.50
- (b) COFFEE TABLES, sturdy and attractive priced at 9.95
- (c) STEEL KITCHEN Cabinets, with built-in sinks 149.50
- (d) Sectional BOOKCASES 14.95
- (e) FLOOR LAMPS, 6-Way 19.95
- (f) MIRRORS, beautiful plate glass 12.95
- (g) CHROME DINETTES 64.50
- (h) KNEEHOLE DESKS, in walnut or mahogany 74.50
- (i) DESK CHAIRS in Mahogany 12.95
- (j) BRIDGE SETS, 5-piece metal sets 19.95

"Lower Overhead Means Lower Prices"



Willy-Willys Furniture Mart

Willy Brashier 305-7 South Seaman Eastland
Willys Smith Phone 585

WANT IT **WHITE?**
BLUE IT **RIGHT!**
WITH Mrs. STEWART'S **BLUING**

RECORDS

- Popular
- Classical
- Hill Billy
- Race Records
- Complete Selection

EASTLAND FURNITURE COMPANY "On The Square"

Read Alley Oop, Red Ryder, Freckles In Chronicle Each Week

SEARCHERS GIVE UP HUNT FOR STAGE LOOT

POP'S IDEA OF JOINING THE BANDIT GANG TO LEARN THE HIDING PLACE OF THE LOOT IS CLEVER, BUT WILL IT WORK?

IT SHOULD, UNLESS SOME- BODY STUBS HIS TOE!

OH, LOOK AT ALLEY!

YEH, BUT YOU'LL GET USED TO IT-- WE'RE NOW IN 1876 AN' THAT BUNCH OF SHACKS SHOULD BE GORY GULCH... NOW WHAT?

WITH THE CALENDAR TURNED BACK 70 YEARS, ALLEY OOP AND POP FISH HOPE TO LOCATE 80,000 IN GOLD TAKEN IN THE HOLDUP OF THE GORY GULCH STAGE.

AHH! MY GLAMOR BOY'S REALLY A KING NOW-- KING OF THE COWBOYS!

IS THERE ANY DAMES IN GORY GULCH, POP?

NOT AS I KNOW OF.

WHAT A HEAVENLY PLACE! C'MON, LET'S GET THERE QUICK!

YEH BUT THE ACT'S NO GOOD IF YOU END UP IN THE CEMETERY!

I'LL STAY WITH SUE!

NOW LOOK, THIS IS A ROUGH COUNTRY FULL OF TOUGH PEOPLE--SO TO GET INTO THIS OUT-LAW CROWD YOU GOTTA BE MEANER'N A SIDEWINDER!

FOR ME THAT'S A CINCH.

OKAY, POP, THE TIME MACHINE'S READY TO LAND YOU IN GORY GULCH, AUGUST 3, 1876!

GOOD! WE'LL NEED SEVEN DAYS BEFORE THE HOLDUP TO BE-- COME PART OF THE BANDIT GANG! WHOA, SUE!

STEADY, WILLIE... QUIET, NOW!

...AND I FIGGER ANOTHER DAY TO LEARN WHERE THEY HID THE LOOT BEFORE THE SHER- IFF'S POSSE SHOT 'EM UP!

EIGHT DAYS IN ALL... THEN I SNAP YOU BACK HERE.

SO LONG, BOYS AND GOOD LUCK!

EASY, NOW, ED, THAT'S A BLACKBERRY LOW-DOWN COLLECT!

TOUGHEST HONKRE I SEE SINCE WE BURIED ALAMOSA SUM!

BETCHA HE DOWN'S A QUART OF MULE AT A GULP!

GIMME A BEER!

MAKE MINE MILK!

YEH, BUT YOU'LL GET USED TO IT-- WE'RE NOW IN 1876 AN' THAT BUNCH OF SHACKS SHOULD BE GORY GULCH... NOW WHAT?

THAT'S RIGHT, GENTLEMEN, I SAID MILK! WHAT'S WRONG WITH MILK?

IT'S GOOD FOR YOU--IT MAKES STRONG BONES AN' MUSCLE--AN' I LIKE IT!

HERE'S YOUR MILK!

REMEMBER, OOP--YOU'RE A TOUGH HONKRE!

YEH! Y' KNOW, POP, IT'S KINDA CROWDED IN HERE!

OUTA MY WAY, YOU SIDEWINDERS-- GANGWAY!

WHO'S GOT ME! GORY GULCH, AN' HE?

YEH--HE MUST BE QUICK ON THE DRAW TO HAVE LIVED SO LONG!

UNLESS WE KEEP MC SLEW AND HIS MEN OUT OF OUR LAND, THEY'LL RUN US AWAY FROM OUR HOMES!

YOU'LL LIGHT DAWE'S HAIR!

I'M IN FAVOR OF KEEPIN' EVERYBODY OUT OF NESTER VALLEY, EXCEPT PEOPLE WHO LIVE HERE!

MC SLEW AIN'T ABOVE HIRIN' GUNMEN POSIN' AS STRANGERS TO DRIFT INTO THE VALLEY AND LIVE STAGE A MASSACRE!

WHY BAR STRANGERS, DAWE?

MC SLEW MIGHT HIRE SOMEONE WE DIDN'T KNOW TO COME HERE TO CAUSE TROUBLE!

SOON AS IT'S DARK WE'LL START RUSTLIN' RIDERS' HORSES.

AND LEAVE A TRAIL RIGHT TO NESTER VALLEY, SAMPLE!

LET UP RIVERICK PUNK WITH ME-- RED RYDER.

YOU LITTLE BEAVER! BUT ICKING DULL SLEEPING OUTDOORS!

THAT'S RIGHT, BUCK-- PANTHER MILK PUTS HAIR ON YOUR CHEST--DRINK HEARTY!

OH, BROTHER!

SOON AS IT'S DARK WE'LL START RUSTLIN' RIDERS' HORSES.

AND LEAVE A TRAIL RIGHT TO NESTER VALLEY, SAMPLE!

LET UP RIVERICK PUNK WITH ME-- RED RYDER.

YOU LITTLE BEAVER! BUT ICKING DULL SLEEPING OUTDOORS!

AFTER RAIDING RIDERS' HERD, MC SLEW DRIVES THE STOLEN CATTLE TO THE MANK LINE--STEAD!

NE'LL TAKE ALL THE DOGGIES AND HAWKS FOR TROUBLE!

THESE AIN'T EVEN EARMARKED, MC SLEW!

THEY'LL HELP STOCK THE VALLEY AFTER RED RYDER DRIVES OFF THE NESTERS FOR US!

MEAN- WHILE, KICK-UP BULL GONE, RED RYDER! RUSTLERS TAKE UP YOUR HORSES, TOO!

WHY BAR STRANGERS, DAWE?

MC SLEW MIGHT HIRE SOMEONE WE DIDN'T KNOW TO COME HERE TO CAUSE TROUBLE!

SOON AS IT'S DARK WE'LL START RUSTLIN' RIDERS' HORSES.

AND LEAVE A TRAIL RIGHT TO NESTER VALLEY, SAMPLE!

LET UP RIVERICK PUNK WITH ME-- RED RYDER.

YOU LITTLE BEAVER! BUT ICKING DULL SLEEPING OUTDOORS!

WHY BAR STRANGERS, DAWE?

MC SLEW MIGHT HIRE SOMEONE WE DIDN'T KNOW TO COME HERE TO CAUSE TROUBLE!

SOON AS IT'S DARK WE'LL START RUSTLIN' RIDERS' HORSES.

AND LEAVE A TRAIL RIGHT TO NESTER VALLEY, SAMPLE!

LET UP RIVERICK PUNK WITH ME-- RED RYDER.

YOU LITTLE BEAVER! BUT ICKING DULL SLEEPING OUTDOORS!

WHY BAR STRANGERS, DAWE?

MC SLEW MIGHT HIRE SOMEONE WE DIDN'T KNOW TO COME HERE TO CAUSE TROUBLE!

SOON AS IT'S DARK WE'LL START RUSTLIN' RIDERS' HORSES.

AND LEAVE A TRAIL RIGHT TO NESTER VALLEY, SAMPLE!

LET UP RIVERICK PUNK WITH ME-- RED RYDER.

YOU LITTLE BEAVER! BUT ICKING DULL SLEEPING OUTDOORS!

ARE YA POSITIVE, YOUNG SURE? WEREN'T JUST SEE- ING THINGS?

THE GUY SAID HE REALLY SAW IT! I HOPE ITS NOT JUST A GAG! WE GOTTA CHECK ON IT TO MAKE SURE! GET ON THE MIKE, ED, AND BROADCAST THIS TO CAR 4!

OKAY--BUT THEY WONT BELIEVE IT!

--- CAR 4---SEARCH THE RIVER ROAD FOR A RUNAWAY HORSE! THE JOCKEY IS PAUL REVERE!

ARE YA POSITIVE, YOUNG SURE? WEREN'T JUST SEE- ING THINGS?

THE GUY SAID HE REALLY SAW IT! I HOPE ITS NOT JUST A GAG! WE GOTTA CHECK ON IT TO MAKE SURE! GET ON THE MIKE, ED, AND BROADCAST THIS TO CAR 4!

OKAY--BUT THEY WONT BELIEVE IT!

--- CAR 4---SEARCH THE RIVER ROAD FOR A RUNAWAY HORSE! THE JOCKEY IS PAUL REVERE!

WHY BAR STRANGERS, DAWE?

MC SLEW MIGHT HIRE SOMEONE WE DIDN'T KNOW TO COME HERE TO CAUSE TROUBLE!

SOON AS IT'S DARK WE'LL START RUSTLIN' RIDERS' HORSES.

AND LEAVE A TRAIL RIGHT TO NESTER VALLEY, SAMPLE!

LET UP RIVERICK PUNK WITH ME-- RED RYDER.

YOU LITTLE BEAVER! BUT ICKING DULL SLEEPING OUTDOORS!

WHY BAR STRANGERS, DAWE?

MC SLEW MIGHT HIRE SOMEONE WE DIDN'T KNOW TO COME HERE TO CAUSE TROUBLE!

SOON AS IT'S DARK WE'LL START RUSTLIN' RIDERS' HORSES.

AND LEAVE A TRAIL RIGHT TO NESTER VALLEY, SAMPLE!

LET UP RIVERICK PUNK WITH ME-- RED RYDER.

YOU LITTLE BEAVER! BUT ICKING DULL SLEEPING OUTDOORS!

ARE YA POSITIVE, YOUNG SURE? WEREN'T JUST SEE- ING THINGS?

THE GUY SAID HE REALLY SAW IT! I HOPE ITS NOT JUST A GAG! WE GOTTA CHECK ON IT TO MAKE SURE! GET ON THE MIKE, ED, AND BROADCAST THIS TO CAR 4!

OKAY--BUT THEY WONT BELIEVE IT!

--- CAR 4---SEARCH THE RIVER ROAD FOR A RUNAWAY HORSE! THE JOCKEY IS PAUL REVERE!

ARE YA POSITIVE, YOUNG SURE? WEREN'T JUST SEE- ING THINGS?

THE GUY SAID HE REALLY SAW IT! I HOPE ITS NOT JUST A GAG! WE GOTTA CHECK ON IT TO MAKE SURE! GET ON THE MIKE, ED, AND BROADCAST THIS TO CAR 4!

OKAY--BUT THEY WONT BELIEVE IT!

--- CAR 4---SEARCH THE RIVER ROAD FOR A RUNAWAY HORSE! THE JOCKEY IS PAUL REVERE!

WHY BAR STRANGERS, DAWE?

MC SLEW MIGHT HIRE SOMEONE WE DIDN'T KNOW TO COME HERE TO CAUSE TROUBLE!

SOON AS IT'S DARK WE'LL START RUSTLIN' RIDERS' HORSES.

AND LEAVE A TRAIL RIGHT TO NESTER VALLEY, SAMPLE!

LET UP RIVERICK PUNK WITH ME-- RED RYDER.

YOU LITTLE BEAVER! BUT ICKING DULL SLEEPING OUTDOORS!

WHY BAR STRANGERS, DAWE?

MC SLEW MIGHT HIRE SOMEONE WE DIDN'T KNOW TO COME HERE TO CAUSE TROUBLE!

SOON AS IT'S DARK WE'LL START RUSTLIN' RIDERS' HORSES.

AND LEAVE A TRAIL RIGHT TO NESTER VALLEY, SAMPLE!

LET UP RIVERICK PUNK WITH ME-- RED RYDER.

YOU LITTLE BEAVER! BUT ICKING DULL SLEEPING OUTDOORS!

FRANKLY, MR. FROST, OUR PLAY WAS A FIZZLEBOP, WE TOOK IN ONLY \$82!

NOW WE CAN'T PAY YOU THE \$500 WE OWE YOU FOR YOUR PAINTING!

HMM-- TOO BAD!

PERHAPS YOU'LL BE ABLE TO RAISE THE BALANCE---IT'S ONLY A MERE \$418!

LOOK, MEATBALL! READING FROM LEFT TO RIGHT--- LINCOLN, WASHINGTON AND JEFFERSON!

HERE?

FRANKLY, MR. FROST, OUR PLAY WAS A FIZZLEBOP, WE TOOK IN ONLY \$82!

NOW WE CAN'T PAY YOU THE \$500 WE OWE YOU FOR YOUR PAINTING!

HMM-- TOO BAD!

PERHAPS YOU'LL BE ABLE TO RAISE THE BALANCE---IT'S ONLY A MERE \$418!

LOOK, MEATBALL! READING FROM LEFT TO RIGHT--- LINCOLN, WASHINGTON AND JEFFERSON!

HERE?

AS SOON AS THE HORSE BOLTED I HAULED THE CURTAIN DOWN!

WHAT'LL WE DO NOW, MISS RAY?

GET ON STAGE AND TELL THE AUDIENCE TO BE PATIENT UNTIL WE GET THE PLAY ORGANIZED AGAIN!

CREEDERS! THE PLACE IS EMPTY! WHERE DID EVERYBODY GO?

THEY WENT OUT TO HELP OLD MAN DUNTLEY LOOK FOR HIS HORSE!

AS SOON AS THE HORSE BOLTED I HAULED THE CURTAIN DOWN!

WHAT'LL WE DO NOW, MISS RAY?

GET ON STAGE AND TELL THE AUDIENCE TO BE PATIENT UNTIL WE GET THE PLAY ORGANIZED AGAIN!

CREEDERS! THE PLACE IS EMPTY! WHERE DID EVERYBODY GO?

THEY WENT OUT TO HELP OLD MAN DUNTLEY LOOK FOR HIS HORSE!

JEPPERS! WHERE'D YOU GET ALL THAT FOLDING STUFF?

SOME- BODY GENT US A CASHIER'S CHECK FOR \$418!

HOLY TOLEDO!

THAT'S SIMPLY SOME- TOO, TOO LITTERLY HAVE HEARD ABOUT OUR PLAY FLOPPING AND TAKEN PITY ON US!

WHO WAS IT?

SEARCH ME! THE CHECK CAME IN THE MAIL, MADE PAYABLE TO THE STUDENT BODY!

WAS THE CHECK ANY GOOD?

WHAT DO YOU THINK? WE TOOK IT TO THE BANK AND IT CAME OUT LOOKING LIKE THIS!

JEPPERS! WHERE'D YOU GET ALL THAT FOLDING STUFF?

SOME- BODY GENT US A CASHIER'S CHECK FOR \$418!

HOLY TOLEDO!

THAT'S SIMPLY SOME- TOO, TOO LITTERLY HAVE HEARD ABOUT OUR PLAY FLOPPING AND TAKEN PITY ON US!

WHO WAS IT?

SEARCH ME! THE CHECK CAME IN THE MAIL, MADE PAYABLE TO THE STUDENT BODY!

WAS THE CHECK ANY GOOD?

WHAT DO YOU THINK? WE TOOK IT TO THE BANK AND IT CAME OUT LOOKING LIKE THIS!

SHADYSIDE S

PAUL REVERE RIDES AGAIN HIGH SCHOOL PLAY ENDS ABRUPTLY

PAUL REVERE GALLOPED ALONG LOCAL ROADS LAST NIGHT, BUT IN SPITE OF HIS EFFORTS, THE HIGH SCHOOL PLAY RAISE ONLY \$82. IN THE FIRST ACT, IT SEEMS LARD SMITH'S HORSE WANTED TO GO PLACES AND SO HE DID, OUT OF THE AUDITORIUM, AND DOWN MAIN STREET, FINALLY HU-

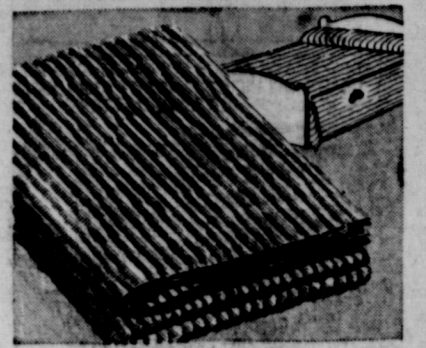
THE PLAY WAS STAGED IN ORDER TO RAISE \$500 FOR A PAINTING BY JACK FROST.

HOW'LL WE RAISE THE BALANCE OF \$418?

THAT'S JUST WHAT I WAS GONNA ASK YOU!

We've Gifts Galore For Everyone on Your List! at **BURR'S**

Choose from our sparkling collection of new Christmas gift items! You'll be delighted with the many novelty gifts for men and women . . . with perky, lovable dolls and a bright array of toys for children. And if you're looking for something pretty and practical in gift wear, you'll find warm sweaters, glamorous gowns and robes . . . slippers, ties, scarfs, and such!



Easy to keep fresh and lovely
SOFT CHENILLE SPREADS
Pastel Colors

\$12.95

WOMEN'S HOUSE SLIPPERS

Values to 3.79

\$2.49



DOLLS

Pretty little dolls, were 6.98, now—

4.98



LADIES' SCARFS

printed rayons and solid wools, up from—

\$1.00



Lovely Chenille Robes

So pretty and toasty warm, exciting and new, in choice of pastel colors—

7.98

SEERSUCKER HOUSE COATS

Zipper fronts, 5.95 values.....**3.00**

LADIES' PRINTED Handkerchiefs

3 in a box

49c

WOMEN'S FUR Mittens

2.39 values, now only—

1.49



Girl's Coats

A good selection, in sizes from 7 to 12, to go at the one price—

11.00

Clearance! Ready-to-Wear

A clearance sale right at Christmas time brings you exceptional SAVINGS on Dresses, Coats and Suits you'll need for the holidays and on into the New Year, Shop this sale.

Dresses

A good selection in five groups . . . all from this season's fresh, new stock, and all reduced to sell quickly.

- 5.95 Values **3.00**
- 8.90 Values **4.00**
- 9.90 Values **5.00**
- 12.90 Values **7.00**
- 16.90 Values **10.00**



Blouses

One large group, 2.70 values, to close out at only—

\$1.00



Suits

Remember, you're always right in a suit. Not a large group but definitely smart in style and RIGHT in price. Checks and plain colors—

- One group, values to 18.40 **11.00**
- One group, values to 29.50 **23.77**

Coats

One look and you'll know they are winners. Shorties, box and fitted styles. Go smartly warm in a becoming new coat at these attractive prices.

15.00

18.77

26.77

29.77

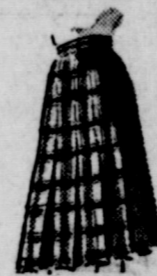
34.77



WOMEN'S SKIRTS

Checks, plaids, and plain colors, reduced, in four groups—

- 2.00 2.49**
- 3.00 4.00**



Rayon Satin Slips
Bias fronts, straight sides, lace trim, a lovely gift at

3.49

Others at 1.50 up



RAYON PANTIES

In tea rose at

79c

Others 89c and 98c

MESH CURTAIN PANELS

Ecu color, 1.64 values,

79c

Blankets

Army khaki, all wool, thoroughly sterilized,

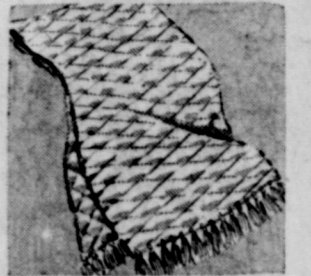
3.95



Ties For Him

Many colorful patterns.

1.00 to 2.50



Men's Scarfs

Rayons and all wools.

1.00 to 3.95

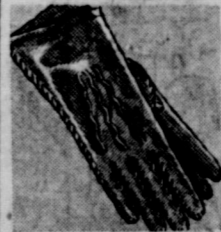


MEN'S ROBES

All wool flannels, made by skilled craftsmen, of finest materials; they'll give unlimited satisfaction—

15.95

Others—**22.95**



GLOVES

Capeskin with 100 per cent wool lining

2.98



HICKOK

Billfolds, Belts, Tie Chains, Suspenders, and Garters.



MEN'S SOX

Rayons at **35c** Others, **25c** and up



Boy's WORK PANTS

1.98 values, now—

1.00

Boy's DRESS PANTS

3.90 values, **1.85**



Boy's POLO SHIRTS
Knit, striped, special at only—

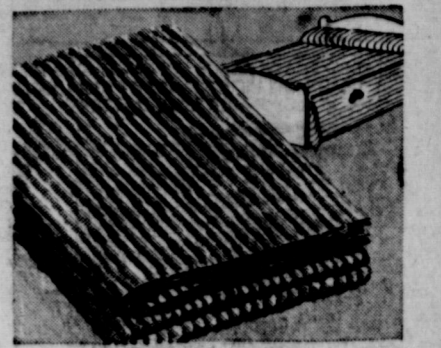
1.00

Give the Boy something to wear from Burr's.

Burr's
EASTLAND

We've Gifts Galore For Everyone on Your List! at **BURR'S**

Choose from our sparkling collection of new Christmas gift items! You'll be delighted with the many novelty gifts for men and women . . . with perky, lovable dolls and a bright array of toys for children. And if you're looking for something pretty and practical in gift wear, you'll find warm sweaters, glamorous gowns and robes . . . slippers, ties, scarfs, and such!



Easy to keep fresh and lovely
SOFT CHENILLE SPREADS
Pastel Colors

\$12.95

WOMEN'S HOUSE SLIPPERS

Values to 3.79

\$2.49



DOLLS

Pretty little dolls, were 6.98, now—

4.98



LADIES' SCARFS

printed rayons and solid wools, up from—

\$1.00



Lovely Chenille Robes

So pretty and toasty warm, exciting and new, in choice of pastel colors—

7.98

SEERSUCKER HOUSE COATS

Zipper fronts, 5.95 values, now— **3.00**

LADIES' PRINTED Handkerchiefs

3 in a box

49c

WOMEN'S FUR Mittens

2.39 values, now only—

1.49



Girl's Coats

A good selection, in sizes from 7 to 12, to go at the one price—

11.00

Clearance! Ready-to-Wear

A clearance sale right at Christmas time brings you exceptional SAVINGS on Dresses, Coats and Suits you'll need for the holidays and on into the New Year, Shop this sale.

Dresses

A good selection in five groups . . . all from this season's fresh, new stock, and all reduced to sell quickly.

- 5.95 Values **3.00**
- 8.90 Values **4.00**
- 9.90 Values **5.00**
- 12.90 Values **7.00**
- 16.90 Values **10.00**



Suits

Remember, you're always right in a suit. Not a large group but definitely smart in style and RIGHT in price. Checks and plain colors—

- One group, values to 18.40 **11.00**
- One group, values to 29.50 **23.77**



Coats

One look and you'll know they are winners. Shorties, box and fitted styles. Go smartly warm in a becoming new coat at these attractive prices.

15.00

18.77

26.77

29.77

34.77



Rayon Satin Slips

Bias fronts, straight sides, lace trim, a lovely gift at

3.49

Others at 1.50 up

Blouses

One large group, 2.70 values, to close out at only—

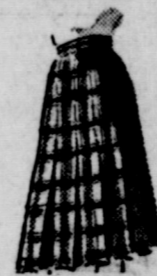
\$1.00



WOMEN'S SKIRTS

Checks, plaids, and plain colors, reduced, in four groups—

- 2.00 2.49**
- 3.00 4.00**



RAYON PANTIES

In tea rose at

79c

Others 89c and 98c



MESH CURTAIN PANELS

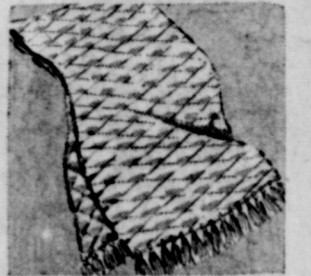
Ecru color, 1.64 values,

79c

Blankets

Army khaki, all wool, thoroughly sterilized,

3.95



Ties For Him

Many colorful patterns.

1.00 to 2.50

Men's Scarfs

Rayons and all wools.

1.00 to 3.95

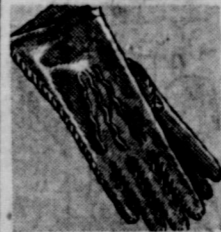


MEN'S ROBES

All wool flannels, made by skilled craftsmen, of finest materials; they'll give unlimited satisfaction—

15.95

Others—**22.95**



GLOVES

Capeskin with 100 per cent wool lining **2.98**



HICKOK

Billfolds, Belts, Tie Chains, Suspenders, and Garters.



MEN'S SOX

Rayons at **35c** Others, **25c** and up



Boy's WORK PANTS

1.98 values, now—

1.00

Boy's DRESS PANTS

3.90 values, **1.85**



Boy's POLO SHIRTS

Knit, striped, special at only—

1.00

Give the Boy something to wear from Burr's.

Burr's
EASTLAND