



THE WEEKLY CHRONICLE

Established Nov. 1, 1887

Entered as second-class matter at the postoffice at Eastland, Texas, under the Act of Congress of March 3, 1879.

Published Every Friday

Office of Publication: 106 East Plummer Street, Eastland, Texas

NOTICE TO THE PUBLIC

Any erroneous reflection upon the character, standing or reputation of any person, firm or corporation, which may appear in the columns of this paper, will be corrected upon being brought to the attention of the publishers.

Obituaries, cards of thanks, notices of lodge meetings, etc., are charged for at the regular advertising rates, which will be furnished upon application.

Elections—Then What?

There have been few elections that have meant so much to the American people as that of Nov. 5, 1940, will mean.

The election of 1860 comes close, perhaps. That was the year the nation elected a Republican, Lincoln, to lead them in a civil war that was to preserve the nation.

Perhaps it is the egotism of each incumbent generation that regards the events of every current epoch as the most important the world has ever known—each dilemma as the most critical civilization has ever faced.

There is a feeling among many persons that the present pre-election period is a truce in American foreign policy, precariously maintained by both sides.

Whether or not we enter that war depends not so much on the citizens of the United States or their government as it does on the conduct of the other nations already involved.

We must play our cards the right way. There can be no mistakes, no fumbling.

That is the issue on election day. It would be a simple matter to plunge this nation into war after Nov. 5.

The voters will have the right to choose which of the two candidates they feel will be more likely to save American democracy—and American peace.

Real name of Buffalo Bill was Giovanni Tambini, says Italian press, which pretty soon, now, will reveal the buffalo was imported, too.

Adolf and Benito pat Franco on the back and tell him to take over Gibraltar. "It's all yours—help yourself."

Interior of Guatemala still uses the Maya calendar of 18 months to the year. Those of us who have to dodge the installment man only 12 times yearly should feel fortunate.

VENERABLE WRITER

Crossword puzzle grid with clues for horizontal and vertical words. Includes a small portrait of a man.

ALLEY OOP



CLASSIFIED RANGER

FOR SALE: Electric refrigerator, good condition, priced reasonable. Call at 210 S. Oak St.

CLASSIFIED WANTED—Reliable couple or lady, preferably middle aged, to live with widow alone.

NOTICE TO BIDDERS Notice is hereby given that the Commissioners Court of Eastland County, Texas, will, on the 11th day of November, 1940, at 10 o'clock a. m. in its usual meeting place in the court house at Eastland, Texas, proceed to receive and consider competitive bids for the purchase of the following described road machinery:

WANTED—Share expenses on trip to Oklahoma City. Reference exchange. Phone 618-W

WHERE A ROUND DOLLAR GETS A SQUARE DEAL. Balton Bros. Tank Cleaning Contracting building new tanks. We also do terracing. See us before dealing with any one else.

EASTLAND'S NEWEST STUDIO Now Open. PUBLIC CORDIALLY INVITED! Special Attention to PORTRAITS OF ALL KINDS. Commercial Photography Solicited. EASTLAND PHOTO CO. 211 South Seaman St. Eastland

This Thing of Being Prepared ... We usually associate the term Preparedness with the Military, but it covers much more territory than that. Economic, physical, moral, educational—and many other forms of Preparedness are necessary, all of them vitally concern the individual.

EARL BENDER & COMPANY Abstracts — Insurance — Real Estate — Rentals

The Texas Farm & Home Hour

The Texas Farm and Home Program, which is sponsored by the Texas A. & M. College Extension Service in cooperation with the United States Department of Agriculture, and presented over radio stations WBAP, Ft. Worth, KPRC, Houston; and WOAI, San Antonio from 6:15 to 6:30 a. m. Monday through Thursday, offers the following program for the week, which is of interest to farmers, poultrymen, home keepers, stockmen, and others:

SHOW DRAWS THROUG Featuring the finest array of talent, oddities, shows and rides to be seen in Eastland this season, the T. J. Tidwell shows have been playing to capacity through this week at the carnival grounds.

Folk Dances To Be Held At Mineral Wells Sat. Oct. 26

There has been a change of place for the free folk dance festival at Mineral Wells, Saturday, October 26th. Instead of being held at the Convention Hall it will be held on the roof of the Baker Hotel. This is sponsored by the WPA Recreation Projects of Eastland, Cisco, Ranger and Mineral Wells.

Cyrus Frost Jr. Member Of The T. U. Glee Club

AUSTIN, Oct. 21.—University of Texas Glee Clubs will give their annual fall concert Tuesday night, November 19, at Hogg Memorial Auditorium.

Congressman Elect Visits Washington

STEPHENVILLE, Oct. 23.—A special judge is on the bench in 29th Judicial District Court this week in the absence of Judge Sam Russell, congressman-elect, who has gone to Washington, D. C. This is the final week of the August term of this court and ends the 12 year tenure of Judge Russell as district judge in Erath county.

To Relieve Misery of COLDS take 666 LIQUID, TABLETS, SALVE, NOSE DROPS.

Hamner Undertaking Co. Phones 17 and 564 DAY OR NIGHT AMBULANCE SERVICE

Dr. W. L. Simmons Glasses of Style and Quality! \$8 - \$10 and \$12.50 312 South Seaman St. EASTLAND, TEXAS

CLOVER FARM STORES CABBAGE Mountain Grown 1c Apples, lg. size 2 doz. 29c Onions 3 lbs. 10c Oranges, Calif. 2 doz. 35c Green Beans lb. 10c Lemons, lg. Sunkist, doz. 19c Green Pepper lb. 5c Apples, Delicious, 2 doz. 35c Celery stalk 10c Turnip and Tops, bunch 5c Greens 3 bunches 10c PINTO BEANS 3 lbs. 13c Pumpkin, 2 no. 2 cans 19c Mince Meat 3 boxes 25c Cherries 2 no. 2 cans 25c Prunes 2 lbs. 15c Cranberry Sauce, 2 cans 25c Raisins 2-lb. pkg. 18c FOLGERS COFFEE Per 21c Peas Glendale 2 NO. 2 CANS 19c Milk, C.F. 3 tall or 6 sm. 25c Corn Glendale 19c Peanut Butter qt. 23c Beans Glendale 19c Salad Dressing qt. 25c Spinach Glendale 19c Pickles 100-oz jar 25c TOMATOES Hand Packed 5c Flour Gladiola 6 Lb. Sack 25c Sugar, powdered 2 pkgs. 15c Meal 5-lb. sack 15c Grape Fruit Juice 46-oz. 19c Coconut moist can 9c Tuna Flakes 2 cans 27c LUX TOILET SOAP Per 5c RED CUP COFFEE 3 lbs. 37c Bologna 3 lbs. 25c BACON, Sugar Cured, Not Sliced Lb. 19c PORK ROAST, Lean Shoulder Lb. 15c PORK SAUSAGE Per 10c SLICED BACON, Sugar Cured Lb. 21c SEVEN ROAST, Fancy Baby Beef Lb. 18c PORK STEAK OR CHOPS Pound 19c MARGARINE, Clover Farm, None Better 2 lbs. 25c LOIN STEAK, Fancy Baby Beef Lb. 25c HENS, FRYERS, TURKEYS, OYSTERS

# BETTER BARGAINS



**FOR BIGGER FALL APPETITES**

On cool, crispy days like these, eating is fun. Here you'll find just the foods that hit the hungry spot... at prices that hit the "thrill" spot.

PURE GRANULATED  
**SUGAR**  
10 Lb. Bag ..... **41c**

RED PITTED  
**CHERRIES**  
Per Can ..... **10c**

RATLIFF'S GOLD MEDAL  
**TAMALES**  
Per Can ..... **10c**

GARDEN TIME  
**CORN**  
3 No. 2 Cans ..... **19c**

BROWN'S ASSORTED  
**CANDIES**  
1 Pound Bag ..... **10c**

OXYDOL 25c Size ..... **15c**  
**CRACKERS** 2 Lb. Box ..... **15c**  
FRENCH'S BLACK  
**PEPPER** 1/2 Pound Box ..... **15c**  
**SUNBRITE** 2 Cans ..... **9c**

STAR PURE  
**LARD** 4 Lb. Crts. .... **29c**  
RELISH DISH FREE WITH  
**3 BARS LUX SOAP**  
CHOICE RE-CLEANED  
**PINTO BEANS** 10 Lbs. .... **39c**  
SEM FACIAL  
**TISSUES** 500 Count .... **21c**  
TALL CANS  
**MACKEREI** . . . . **10c**  
TRUE AMERICAN  
**MATCHES** 6 Box Crts. . . . **13c**

DRIED  
**PRUNES** 3 Lbs. .... **19c**  
GOLD MEDAL  
**CHILI** With No. 2 Beans Cans ..... **19c**  
NATIONAL PREMIUM  
**OATS** Large Pkg. .... **25c**  
ALL 5c SIZE  
**CANDY BARS** 3 for **10c**  
SEEDLESS  
**RAISINS** 2 Lb. Pkg. .... **15c**  
SEMINOLE  
**TISSUE** 3 Rolls .... **19c**

PLYMOUTH Pleasing Aroma  
**COFFEE** Delightful Flavor 2 Lts. **25c**

PICKFAIR  
**PUMPKIN** 3 No. 2 Cans **19c**

HAND PACKED  
**TOMATOES** No. 2 Cans (Limit) **5c**

PIPKIN'S BEST CASH for your CHURCH! ASK US!  
**FLOUR** 12 Lb. Bag 38c 24 Lb. Bag 70c **48 Lbs. \$1.35**

DEER BRAND  
**Green Beans** 3 No. 2 Cans **19c**

## CHOICE MEATS STEAK

SELECT BEEF Seven Pound **29c**  
**PORK ROAST** Pound **15c** **SLICED BACON** Lb. **19c**  
NOT JOWLS—  
**BACON SQUARES** Lb. **18c**  
Bologna  
Pig Liver PER **10c**  
Calf Brains LB.  
SHOULDER  
**PORK STEAK** Pound **19c**  
LONGHORN  
**CHEESE** Pound **21c**  
BEEF  
**SHORT RIBS** Pound **15c**

## Roast

SELECT BEEF Seven Cut . . . Lb. **18c**  
Round Bone . . . Lb. **20c**

Mary Lee Taylor's  
**RADIO RECIPE**  
**Chocolate Marshmallow Pie**  
Broadcast by Mary Lee Taylor October 17, 1940  
22 vanilla wafers, 2 inches across  
1 package chocolate pudding powder  
16 marshmallows (1/4 lb.)  
1 cup Pet Milk diluted with 1 cup water  
1 teaspoon vanilla  
1/2 teaspoon salt

Rub with vegetable oil a deep 9-inch pie pan. Line bottom and sides with vanilla wafers. Put pudding powder in saucepan. Stir in diluted milk gradually. Bring to a boil, stirring constantly. Continue to stir and boil for 30 seconds. Remove from heat and stir in vanilla and salt. Cover and cool. Cut 12 marshmallows into quarters. Arrange pudding in prepared pan in alternate layers with the quartered marshmallows, beginning and ending with the pudding. Have 3 layers of pudding and 2 layers of marshmallows. Cut remaining 4 marshmallows into strips and garnish top of pie as desired. Cover with a larger pan so as not to disturb the wafers around the edge and chill until firm. Serves 6.

For This Recipe You'll Need:  
Chocolate PUDDING POWDER, Fkg. **5c**  
MARSHMALLOWS **10c**  
VANILLA WAFERS **10c**  
Irradiated PET MILK 3 Tall Cans **21c**

WE ARE SORRY WE RAN OUT—BUT HERE IT IS AGAIN. GET YOURS NOW!  
HINDS  
**HONEY AND ALMOND**  
50c Size . . . 39c Both For . . . **40c**  
50c Size . . . 1c

CAMPBELL'S  
**TOMATO JUICE**  
47 Oz. **19c** 20 Oz. **10c**  
Can . . . . .

PLYMOUTH SALAD  
**DRESSING**  
Quart Jar . . . . . **19c**

## FRUITS AND VEGETABLES

JUCY SUNKIST  
**ORANGES** Dozen . . . . . **25c**  
**POTATOES** 10 Pounds . . . . . **13c**  
**CARROTS** 3 Large Bunches . . . . . **10c**  
**GREENS** 2 Bunches For . . . . . **5c**  
**JONATHAN APPLES** Medium Size Dozen . . . . . **10c**  
**YAMS** 6 Pounds . . . . . **15c**  
**TOMATOES** 3 Pounds . . . . . **19c**  
**RUTABAGAS** Pound . . . . . **3c**

CLABBER GIRL  
**BAKING POWDER** 25c Size . . . . . **19c**

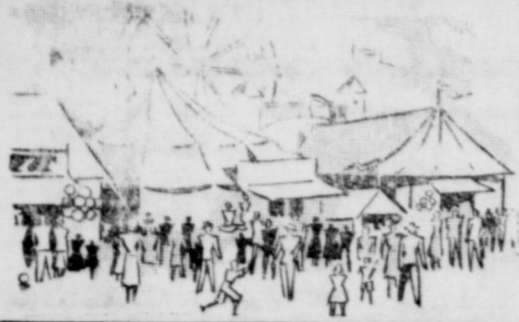
Make Delicious Jelly Now With  
**WELCH'S GRAPE JUICE**  
Buy a Quart For **45c** Get a Pint For **1c** Both For . . . . . **46c**

ARMOUR'S "STAR" TOP QUALITY  
**PEANUT BUTTER** Full Quart . . . . . **25c**

# PIGGLY WIGGLY

Prices For  
FRIDAY &  
SATURDAY  
Oct. 25 & 26  
Eastland  
Texas

WE RESERVE THE RIGHT TO LIMIT QUANTITIES!

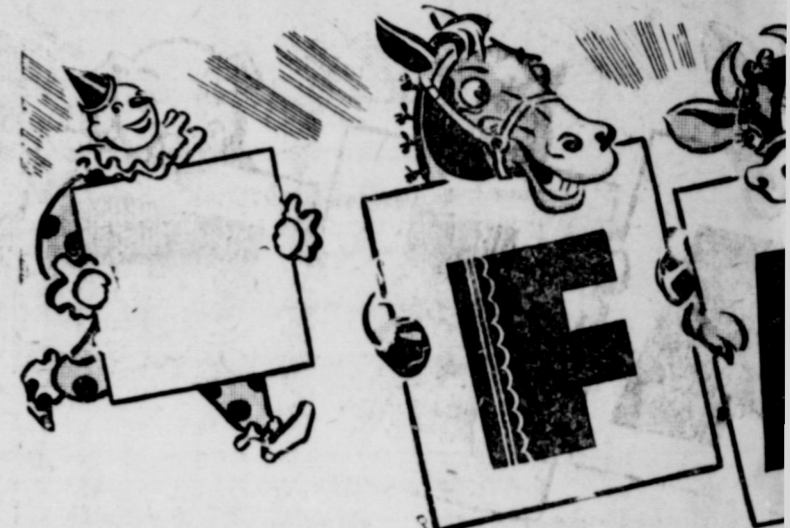


# COME TO THE EASTLAND

## THURS. - FRI. - SAT. OCT. 24-25-26

It's a pleasure to have all the good folks of this entire county to visit Eastland and the Eastland County Fair. Come and visit us while here.

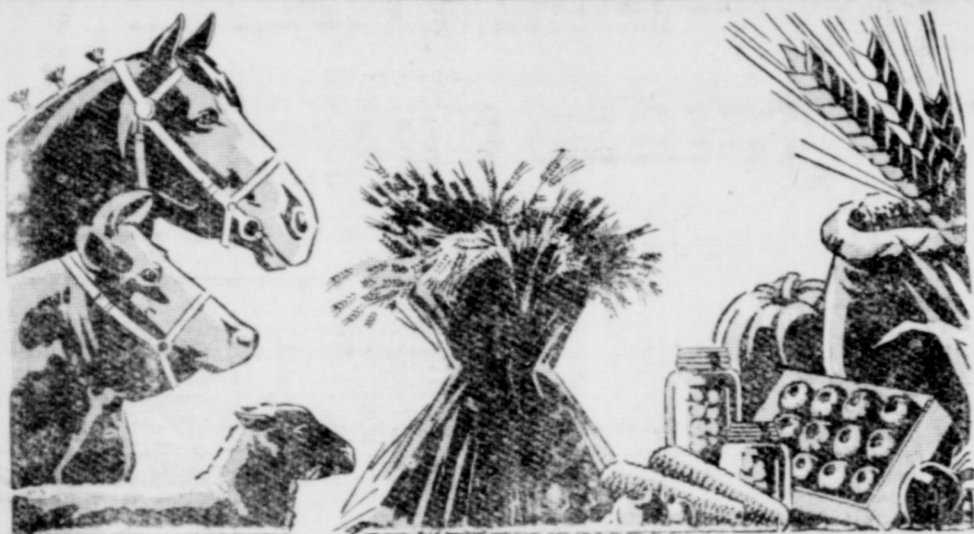
Community Natural Gas Company



### Drink Refreshing Coca-Cola



## BIGGER 'n' BETT



THE SECURITY OF OUR GREAT NATION IS STILL IN ITS SOIL!

This Bank believes that it can contribute no greater service to this community, or to the nation at large, than by co-operating to the utmost of our ability with our FARMERS and STOCKMEN.

Although our bank isn't the biggest in the country by a great deal, we are equipped to give the same careful attention to everyone . . . big enough to serve all, small enough to serve YCU.

We are eager to extend our guidance and support to your problems. Stop in when you're in town.



# EASTLAND



# NATIONAL BANK

With a good wish for all people and a cooperative spirit of service to the community we extend all Fair visitors a cordial invitation to visit us during the Fair!

Good Electric Service Doesn't Just Happen!



Years of research . . . years of training men, and years of service are the combinations that make our tribute to the community trustworthy. A turn of a switch is all you need for useful and comfortable Electric Service.

### TEXAS ELECTRIC SERVICE COMPANY



See the new 1941 Fords, Mercury and Lincoln Zephyr models now on display in our showrooms. We will be glad to have all visitors come to our plant and let us serve you while visiting the Fair.



SEE OUR BIG USED CAR BARGAINS!

### KING-BALL MOTORS

On the Square — Phone 42

Flowers at this time of the year are hard to get but not at our floral shop. We always have a complete assortment of beautiful and lovely flowers for any occasion. Be sure and visit our nursery while attending the Fair.

### PARKER FLORAL SHOP

Corner Green and White St. — Phone 140

It is a pleasure to extend greetings to all Fair visitors. We hope you will enjoy it and we are always glad to cooperate with the growers and livestock industries of this entire section.

### BEN HAMNER

Drive in to any Magnolia Service Station now, have your chank case drained and your oil and grease cleaned out and refill with MOBIL OIL and MOBIL GAS. All Magnolia Service Stations will extend you every courtesy while visiting the Fair.

### HAL JACKSON

Distributor Magnolia Products

### WELCOME TO THE FAIR AND DON'T FORGET MIDNITE SHOW 11:30 P. M. SATURDAY

JOE E. BROWN In  
"SO YOU WON'T TALK"  
EASTLAND THEATRES

On this year of apparent plenty in Eastland county we are truly celebrating the event of the Eastland County Fair by bringing together the greatest group of agricultural and livestock displays in our history. The entire program of the Chamber of Commerce is for the enhancement and prosperity of our people. For any information and courtesies, we invite you to visit the Eastland

### CHAMBER OF COMMERCE

For all good things to eat, whether ready to eat or short orders come to us during the Fair. Our foods are delicious and palatable. Most folks eat here.

### ANDREWS CAFE

East Side of Square — Eastland

We welcome you to the finest and most attractive little city in West Texas. We hope you will enjoy yourself to the full limit while visiting the Fair and invite you to cooperate in avoiding accidents and observing traffic rules while in our city. Our city officers will be glad to extend you every courtesy and assistance.

### CITY OF EASTLAND

Our store is now beautiful to show you a complete line of Glassware, Silverware, a variety of brands of watches. We have modern facilities in equipment section for testing and fitting eyes. Be sure and pay us at the Fair.

LET US FIT

### DR. E. A.

Jewelry and  
Next to Pen

Visit us during the Fair to discuss with you any problem whether it is a chicken or

### CROWELL

W. Main St. Ph

### IT'S

The greatest Chevrolet is Chevrolet, the grandest, put on display.

BE SURE A

### HARVEY CH

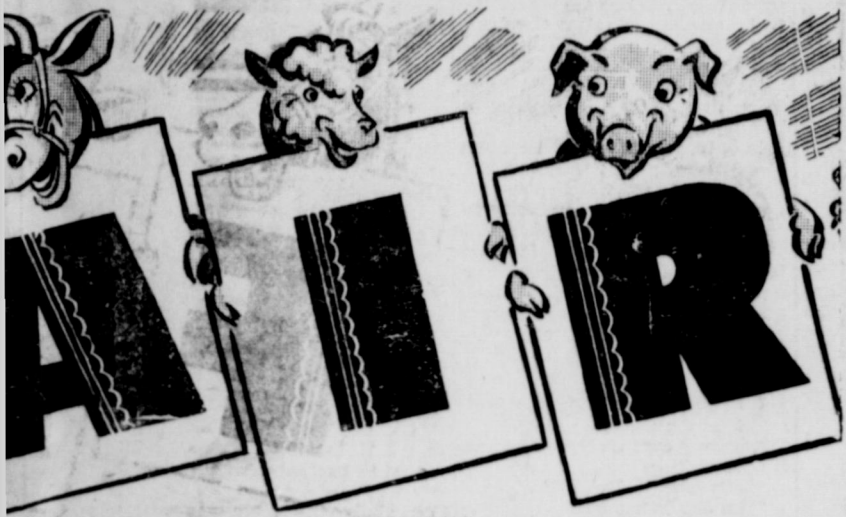
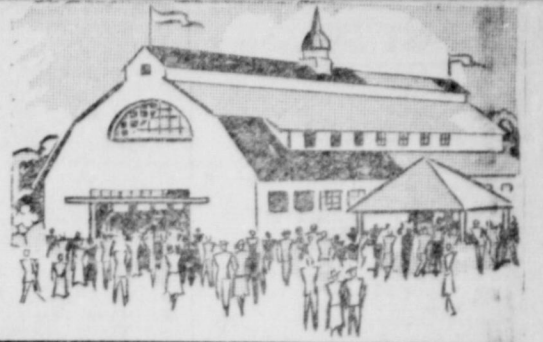
115 E. Mai

Our complete line of 1944 Chevrolet, General Electric and other fascinating that we urge you to make a visit while attending the Fair. The full qualities of these vehicles are the best terms at which

### HARPER

110 W. Com

# EASTLAND CO.



As Usual The  
**Eastland Telegram**  
and the  
**Weekly Chronicle**

Has had a share of the pleasure of rendering valuable service to the interests of the Eastland County Fair. Read the Daily Telegram and the Weekly Chronicle for up-to-the-minute news and incidentally it is the most widely read paper in this entire community.

## BETTER THAN EVER!

### PROGRAM

Programs will be held at the Firemen's Softball Field on North Seaman Street, starting at 7:45 P. M.  
**THURSDAY, OCT. 24th**  
**FUN DAY**  
Entertainments sponsored by the Junior Chamber of Commerce of Eastland  
Miss Virginia Weaver, Director  
Band concert by Eastland Band  
**FRIDAY, OCT. 25th**  
**CISCO AND RANGER DAY**  
Entertainments sponsored by the Chambers of Commerce, of Cisco and Ranger.  
Band concerts by Cisco and Ranger Bands  
**SATURDAY, OCT. 26th**  
**EASTLAND COUNTY COMMUNITIES DAY**  
11 A. M. — **PARADE**  
Committee—Monte Rowe, Mrs. C. W. Hoffmann, Mrs. O. L.

Hooper, James Reid, Bailey Hinton, Chief G. A. Murphy of Ranger, Gordon Davis of Cisco.  
The parade will feature bands, floats, pets, bicycles, pioneer and spectacular costumes.  
Best float prize ..... \$25.00  
Pet prize ..... \$3.00 - \$2.00  
Costume prize ..... \$5.00  
Largest Eastland County family over 10 members in parade ..... \$5.00  
Eastland County school room prize ..... \$5.00  
Best decorated bicycle ..... \$3.00  
Most dilapidated bicycle that can be ridden ..... \$2.00  
Decision of the judges is final. All judges will come from outside Eastland County.  
7:45 P. M.—Band concert by Eastland Band  
Local community entertainments  
Boxing and wrestling matches in the arena erected in center of soft ball field.

Always Glad to Co-operate With Everything Worthwhile... and We're Happy to Welcome Everybody—

## C. W. HOFFMANN

ally and attractively arranged line of jewelry, Novelty Gifts, and all nationally advertised have the most complete and experience in this of proper glasses for your as a visit while attending the

**YOUR GLASSES!**  
**A. BESKOW**  
Optical Company  
ney's - Eastland

While visiting the Fair see our beautiful line of new Fall and Winter Coats, Hats, Dresses, Shoes and accessories. All are nationally advertised brands and popular price.

## THE FASHION

North Side Square — Eastland

Come in and visit with us while in Eastland. We extend greetings to all visitors and home folks and will be glad to discuss with you any of your insurance problems.

REMEMBER WE INSURE ANYTHING!

## FREYSCHLAG INSURANCE COMPANY

North Side Square — Eastland

To be in business in one community over 22 years we must be good. There is hardly a home in this entire section that hasn't got the Higginbotham mark of quality in some manner of its products involved in its construction. We extend our grateful thanks for your confidence in our service and will appreciate a visit to our store from all people of this entire section while visiting the Eastland County Fair. We will be glad to consult with you on your building problems without cost or obligations.

**Higginbotham - Bartlett**  
**Lumber Company**  
301 W. Main — Phone 112

We will be grateful for you to pay a visit to our plant while in Eastland attending the Fair. Our cleaning and pressing department is modern in every respect. Be sure and let us do your work. Dusty clothes need expert cleaning to preserve the cloth and look your best.

## HARKRIDER CLEANERS AND DYERS

Phone 20 — W. Main Street

## BEST BUICK YET!

NOW ON DISPLAY IN OUR SHOWROOM!

See the new 1941 models Buick and Pontiac automobiles here. The greatest automobile engineering achievements in history.

## MUIRHEAD MOTOR CO.

Cold weather is on the way, now it is the time to let us check your plumbing and electrical wiring. While attending the Fair we will be glad to have you visit our showrooms and let us demonstrate to you the new 1941 line of hot water heaters, electrical fixtures and remember we install complete system of bathroom fixtures and can furnish any color to match your scheme.

## SMITH PLUMBING ELECTRICAL - TINNERS

Phone 100 — Eastland

When visiting the Fair come in and let us show you the newest lines of men's Suits, Hats and Shoes for Fall and Winter wear. Our men's accessories are complete in every detail. For many years we have catered exclusively for men's wear. All popular priced.

## MEN'S SHOP

SOUTH SIDE SQUARE

For many years we have served the people of this state with the finest foods available. Our customers have always been satisfied. We have large, long roomier counter service and spacious table service. Our cafe is conducted along the most modern lines. We serve regular meals and short orders, all kinds of sandwiches soft drinks. Be sure and visit us during the Fair.

## MAJESTIC CAFE

South Side of Square — Eastland

WHEN YOU VISIT THE FAIR COME SEE OUR MODERN PLANT AND—

Take This Timely Temperature Tip Today...

GET YOUR WINTER CLOTHES CLEANED NOW --

Cold weather is near at hand with its blustery winds and low temperatures, bringing the time of year when your heavy clothes not only feel mighty comfortable, but are essential to preserve your health. So if your winter coat isn't clean and ready for wear, send it to THE MODERN today for Sanitone Cleaning, along with winter suits and dresses of the entire family. Our prices are reasonable, unusually so, considering the high quality of the work we do! We also clean sweaters, gloves and jackets. PROMPT SERVICE!

SEND US YOUR LAST SEASON'S FELT HAT!  
WE'LL MAKE IT LOOK LIKE NEW!



**MODERN** DRY CLEANERS  
DYERS  
HATTERS  
PHONE 132  
South Seaman Street



## EASTLAND IRON & METAL COMPANY

Henry Pullman, Prop.



HERE!

in History. See the new 1941 the greatest car that was ever

AND VISIT US!

**CHEVROLET CO.**  
in — Phone 565

1941 General Electric Refrigerators, Radios, Philco Radios, are so you without fail to pay our nding the Fair. Let us explain se products as well as the con- they can be bought.

**MUSIC CO.**  
merce — Phone 335

First County Draft

(Continued from Page 1.)

- 226-Marion Roy Tate
- 240-Walter C. Denton
- 241-L. B. Carlie
- 242-Alvin Lawrence Jensen
- 243-George Hudson Wright
- 244-Ray Lonie Burns
- 245-William Sybert Copeland
- 246-A. C. Underwood
- 247-Clyde Lewis
- 248-Harold Franklin Kimmel
- 249-Edgar Eddie Bernolski
- 250-Walter Will Tomme
- 251-A. G. Love
- 252-Thomas Theodas Weaver
- 253-Glen Ekel Mohaffey
- 254-Milnes Ruffard Blackwell
- 255-Harold Johnson Brewster
- 256-Jesse James Milburn
- 257-Brady Cecil Townsend
- 258-Arthur Neal Powell
- 259-Thomas Eldridge Garrett
- 260-B. Nichols
- 261-Fred Garland Schickley
- 262-Herbert Monty Lewis
- 263-William Royce Rainbolt
- 264-Freeman Lee Barber
- 265-Jay Jones
- 266-Byde Lucien Manell
- 267-Loyan Merrill Patterson
- 268-Harland Marshall Kenner
- 269-Johnnie Wallace Grimes
- 270-Bernard Lee Fackel
- 271-Clifford Hudson Moore
- 272-Beth Edgar Bowles
- 273-Erdi Helandini Hogan
- 274-Wallace Benavides Suarez
- 275-Joseph Otto Thompson
- 276-Gena Edwards Hogan
- 277-Barnest Milton Brewer
- 278-William George Hammett
- 279-Charles Theodore Henderson
- 280-Harry Daniel Maspin
- 281-Harold James Webb
- 282-John Earl Gonyea
- 283-Adness Claude Peck, Jr.
- 284-Laiph Ole Miller
- 285-George Willie Cleveland
- 286-O. A. Montgomery Johnson
- 287-Thomas Alvin Johnson
- 288-Edmond Elmer Henderson
- 289-Willie Paul Hamilton
- 290-L. B. Mann
- 291-Eugene William Woods
- 292-John Daniel May
- 293-J. H. Loda
- 294-Edward Lee Grubbs
- 295-Homer Hamilton Pittman
- 296-John Sidney Waynick
- 297-Garner Howell Alton
- 298-Andrew Bailey Kenner
- 299-John Lawrence Roach
- 300-Stanley Clark Payne
- 301-Berry Thomas Roysen
- 302-Thurber E. Clark
- 303-Willie Ernest King
- 304-Clifton Davis
- 305-Carl Clinton Garner
- 306-Cecil Alford
- 307-Roy Edwin Russell
- 308-T. G. Jackson, Jr.
- 309-Lionie Thomas Jordan
- 310-Hugh Smith
- 311-Francis MacInerney Page
- 312-Dwight Alton Johnson
- 313-Jasper Odell Brooks
- 314-Delbert Payne
- 315-Gene Edward Scott
- 316-Hollis Ole Peary
- 317-Jack Robert Gayder
- 318-Joe Walter Chambers
- 319-William Thomas Chambers
- 320-Alvin J. McCuin
- 321-Glenn Cecil Crocker
- 322-William Taylor Dunham
- 323-Troy Eunice Wright
- 324-Marion Thomas Brumfield
- 325-James Monroe Alton
- 326-James Dan Notaras
- 327-Truman William Robinson
- 328-Remer Iwan Robinson

- 329-Wallace Loyd Marchman
- 330-Robert Henry Ferriss
- 331-Deville Morton Ross
- 332-Abelino Flores Garcia
- 333-Floyd Lacey Campbell
- 334-Nickie Curtis Smith
- 335-Ray Olan Hill
- 336-Harold Lloyd Burleson
- 337-Lewis Cremo Godwin
- 338-Lee Edward Wheat
- 339-Monard Vernon Warren
- 340-Martin Van Eckman, Jr.
- 341-Ewing Langston, Jr.
- 342-Audy Moore
- 343-Johnnie Charles Brown
- 344-Marvin Franklin Hays
- 345-William Edgar White
- 346-Lester M. Westburn
- 347-St. T. Capers
- 348-Rosecoe Gordon Milling
- 349-J. T. Carson
- 350-Johnnie Jackson Foster
- 351-Otis Daniel Ferguson
- 352-Deward Belmont Warren
- 353-Wardell Billie Griffith
- 354-Oscar Clinton Barnhill
- 355-Hugh Chas. Brown
- 356-Tod Weldon Neidham
- 357-Daniel Robert Hesthew
- 358-Gaymon Robert Horton
- 359-Cecil Sherman Bates
- 360-Carl Eugene Rales
- 361-James William Burns
- 362-Floyd Craft
- 363-James VanBuren Clemmer
- 364-Jeff Talk
- 365-Dual Eugene Steele
- 366-Charles Holland Nix
- 367-Charles Mason Adams
- 368-Willie Carl Manzie, Jr.
- 369-Andy J. Taylor
- 370-Donald Augustus Lee Areher
- 371-Charles Louis Sylvester
- 372-Daniel Miller
- 373-Glen Lewis Stone
- 374-John Andrew McInerney
- 375-Sam Bennett Jones
- 376-James Edwin Bates
- 377-Mary Thomas Brown
- 378-Ron Carl Weaver
- 379-Harmon Columbus Ailes
- 380-Melvin Charles Ailes
- 381-John Newton Preston
- 382-Francis Swan Scott
- 383-Charles Day Simpson
- 384-John Taylor Baird, Jr.
- 385-Lindsay Poe Barnett
- 386-Charles Peter
- 387-Rubens Raymond Barton
- 388-Glendon Patrick Miller
- 389-Raymond Thaddeus Copeland
- 390-John W. Keenan
- 391-Thomas Aubrey Key
- 392-Joseph William Hale
- 393-George William Kraber
- 394-Mike Alvarez
- 395-Guy S. Quinn, Jr.
- 396-Rosie Chiffie Manzie, Jr.
- 397-Delbert Clarence Haack
- 398-Walter Daniel Roberts
- 399-J. D. Eames
- 400-James Will Weathers
- 401-Ollie Roy Mitchell
- 402-Mary Camie Armstrong
- 403-John Andrew Lanster
- 404-Wiley Nash Soward
- 405-Yann Joseph McDonald
- 406-Johnnie Suber Harvey
- 407-Louise Lawrence Prescott
- 408-James Houston Birmingham
- 409-J. B. Adams
- 410-Vernon Clement Steyer
- 411-Rupert Venson
- 412-Johnnie Robert Robinson
- 413-Roland Raymond Nix
- 414-Charles Claude Rose
- 415-Gall Warren Tomasa
- 416-Herbert Merrill Rapp
- 417-Albert Jessie Harvey
- 418-Roy Bunton
- 419-Joe Weldon Small
- 420-Claude Ralph Thompson
- 421-E. T. Haddall
- 422-Fred Monroe Stewart
- 423-Rupert Morris Buntin
- 424-Richard Alfred Bearman
- 425-Floyd James Gosan

NEW YORK JUNGLE BY WRAY WADE SEVERN

YESTERDAY, Maria faints and the men behind the eye gets away. Sidney rouses the house. No one has heard anything unusual. Nella says she has had a dream, she saw Adam's distorted face, like an animal's, hunt prey.

"Yes, there were," Sidney admitted. "Murphy believes that Miss Hemphill helped herself to a gun at the gunrack, and when she got opposite Mr. Langdon—whom she had seen when the lightning made him visible for a second—she fired and then faked a faint."

"It is a solution that will occur to many," Sidney granted, "but it fails to hold water. Only the hem of Miss Hemphill's skirt was blood-stained, and there were brushlike marks which her long dress had made in sweeping away from the pool at Langdon's feet when she fell. That proves that the blood had already formed in a pool before she fainted. It takes a little time for blood to seep from a man's shoulder, through his clothing to the floor."

"I DIDN'T agree with Murphy," Barks reassured Sidney. "Here's my own theory—for what it's worth."

"Let's hear it, Barks."

"The Jap looms up."

"For many reasons, he told me Langdon had promised to remember him in his will. Men change their wills after marriage."

"Sidney knew this to be true, but he made no comment."

"That Jap didn't like the marriage. A new mistress seldom keeps old servants connected with her husband's bachelor life."

"You score there. What else?"

"Togi searched the furnace room while Mr. Gundrum looked around the storeroom. He could have slipped back into the jungle, done the murder and then have joined you upstairs. He could have locked the door when he brought in the lamps, too."

"Possible, but I hardly think Togi's the type."

"Type or not, that little gun which Murphy claims was on the rack when the murder weapon was on the rack when I cleaned it yesterday morning."

"You saw the Lilliput on the rack?"

"I certainly did. I wasn't engaged to do maid's work but the Jap had to get the house in some kind of order before the family arrived so I finally turned in and helped him. I admit I grumbled at it."

"What else favors your theory?"

"Before Mr. Langdon rang for him, Togi must have been upstairs. He had an opportunity to go into Langdon's bedroom and look for money, or a possible new will. Who else was there with a similar chance?"

"No person, since you have an

RED RYDER By Harman



ALLEY OOP By Hamlin



By Harman

- 327-Alfred Cecil Shugart
- 328-Jesse Marion Locklear
- 329-Cecil Riley
- 330-Clifton Edward Jarect
- 331-Alton Ben Hightower
- 332-Jack Samuel Burkhead
- 333-Jeff Montague Richardson
- 334-Benjamin Moore
- 335-Lynn Marjorie Holland
- 336-Cornelius Andrew Nevill
- 337-Richard Jerome Clayton
- 338-William Wilson
- 339-Carl Leslie Pease
- 340-Charles Dalton Wooten
- 341-Clyde Bagshaw
- 342-George Jay Burnside
- 343-George Jay Burnside
- 344-George Jay Burnside
- 345-George Jay Burnside
- 346-George Jay Burnside
- 347-George Jay Burnside
- 348-George Jay Burnside
- 349-George Jay Burnside
- 350-George Jay Burnside
- 351-George Jay Burnside
- 352-George Jay Burnside
- 353-George Jay Burnside
- 354-George Jay Burnside
- 355-George Jay Burnside
- 356-George Jay Burnside
- 357-George Jay Burnside
- 358-George Jay Burnside
- 359-George Jay Burnside
- 360-George Jay Burnside
- 361-George Jay Burnside
- 362-George Jay Burnside
- 363-George Jay Burnside
- 364-George Jay Burnside
- 365-George Jay Burnside
- 366-George Jay Burnside
- 367-George Jay Burnside
- 368-George Jay Burnside
- 369-George Jay Burnside
- 370-George Jay Burnside
- 371-George Jay Burnside
- 372-George Jay Burnside
- 373-George Jay Burnside
- 374-George Jay Burnside
- 375-George Jay Burnside
- 376-George Jay Burnside
- 377-George Jay Burnside
- 378-George Jay Burnside
- 379-George Jay Burnside
- 380-George Jay Burnside
- 381-George Jay Burnside
- 382-George Jay Burnside
- 383-George Jay Burnside
- 384-George Jay Burnside
- 385-George Jay Burnside
- 386-George Jay Burnside
- 387-George Jay Burnside
- 388-George Jay Burnside
- 389-George Jay Burnside
- 390-George Jay Burnside
- 391-George Jay Burnside
- 392-George Jay Burnside
- 393-George Jay Burnside
- 394-George Jay Burnside
- 395-George Jay Burnside
- 396-George Jay Burnside
- 397-George Jay Burnside
- 398-George Jay Burnside
- 399-George Jay Burnside
- 400-George Jay Burnside