

WEATHER

August 3	92	65	.00
August 4	92	60	.00
August 5	90	61	.00
August 6	91	59	.00

# BAILEY COUNTY JOURNAL

The Community Of Opportunity Where Water Makes The Difference



Vol. 26, No. 31

12 PAGES TODAY

Published Every Sunday At Muleshoe, Bailey County, Texas 79347

20°

Sunday, August 7, 1988

## Mule Day, Trail Ride, Mule Show Plans Finalized

### Three Day Celebration Will Benefit West Plains Hospital

Next weekend will be quite a 'busy' weekend in the Muleshoe area, as it's time for the annual Mule Day Festival. It has been stretched to three days this year.

Activities will kick off with the Muleskinners sponsoring a trail ride.

It will begin at 8 a.m. from the arena located three miles east of Muleshoe on Highway 70.

Those who complete the all-day trail ride will be treated to a special meal.

Activities on Saturday morning get underway with the ever-popular turtle races and arts and crafts show at Jeff Smith's big blue barn one-quarter mile south of the arena.

Then at 8:45 a.m., the parade (or parraid) will start forming at the Boy Scout grounds on South Main Street in Muleshoe.

The parade, and entries will be accepted until the parade starts moving out, will cover the old parade route.

This will be to travel north on Main Street to Avenue B, turn west on Avenue B to South First, and back south to the Boy Scout grounds.

With very little time to work on the parade this year, look for the unusual and the unexpected.

Four local women, Nelda Merriott, Kathryn Taylor, Billie Downing and Eobbie Harrison, have been 'burnin' the midnight oil' to make sure there is a parade -- and be sure to look for the 'Parraid Offise' -- it is very different.

Awards will be presented at the conclusion of the parade at the Boy Scout Grounds.

This will be followed by the luncheon at the barn. Mike Ellis of Friona will be preparing and serving his famous fajitas with all the trimmings. Serving will be from 11 a.m.-3 p.m.

At 1 p.m., an open playday gets underway in the arena. It will include both mules and horses, and entrants are invited and encouraged.

Winding up Saturday will be a barbecue and dance at the barn. Serving gets underway at 7:30 p.m. at Jeff's barn.

And remember, not only will you have a great time, but all proceeds will be given West Plains Medical Center in Muleshoe.

It has been determined that proceeds can best be used locally -- so the entire community is invited and encouraged to participate. You will have a 'fun' day and benefit the hospital at the same time.

But, that's not all! Sunday morning, at 9 a.m., the annual Mule Show, hosted by the Muleskinners, will be held at the arena three miles east of Muleshoe.

Entry fee for the Mule Show is \$5 and judge will be Kenney Gillespie.

Events in the halter division include youth showmanship; mule foals and yearlings; donkey foals and yearlings; jennets; jacks; donkeys; matched pair (donkey or mule); mules up to 48 inches; mules up to 56 inches; mules 56 inches and over; grand champion halter (mule) and grand champion halter (donkey).

Events in performance will be donkey pleasure; mule pleasure; youth pleasure; donkey trail; mule trail; youth trail; pole bending (donkey/mule); youth straight away barrels; straight away barrels; clover leaf (mule);

Cont. Page 8, Col. 3



Funeral services for Lester Baker, 76, longtime Muleshoe resident, were pending at presstime with Ellis Funeral Home of Muleshoe.

He died at 3:36 a.m. Saturday in Methodist Hospital in Lubbock following a lengthy illness.

Bailey County Civic Center manager Joyce Holmes said the first fall youth skating is Friday, September 16. It will be sponsored by the Jennyslippers.

More fall sponsors are needed. If your organization is interested in sponsoring a Friday night youth skating, call Mrs. Holmes at 272-4051.

Mike Richards of Ben Richardson Post 463, American Legion, said the Post clean-up date has been postponed for one week to August 13 at 8 a.m.

Your presence to help with the clean-up will be appreciated, he said.

Then, a special meeting will be held Monday, August 15, at 7:30 p.m. for all members spouses and any women interested in forming an American Legion Auxiliary.

Especially invited are those who are relatives of veterans born between the following dates, April 6, 1917-November 11, 1918; December 7, 1941-December 31, 1946; June 25, 1950-January 31, 1955; and December 22, 1961-May 7, 1975. Refreshments will be served.

The Lazbuddie varsity cheerleaders will attend a National Cheerleaders Association (NCA) camp at Wayne Baptist University in Plainview.

Mia Jennings, Jonessa Jennings, Britt Engelking, Lynn Proctor, Holley Morris, and Adrienne Willingham will leave tomorrow, August 8 and return on Thursday, August 11.

C. W. Williams, head football coach at Lazbuddie, said two a day workouts begin for the

### In Profile

## Galante Picante Sauce Recognized In Wide Area

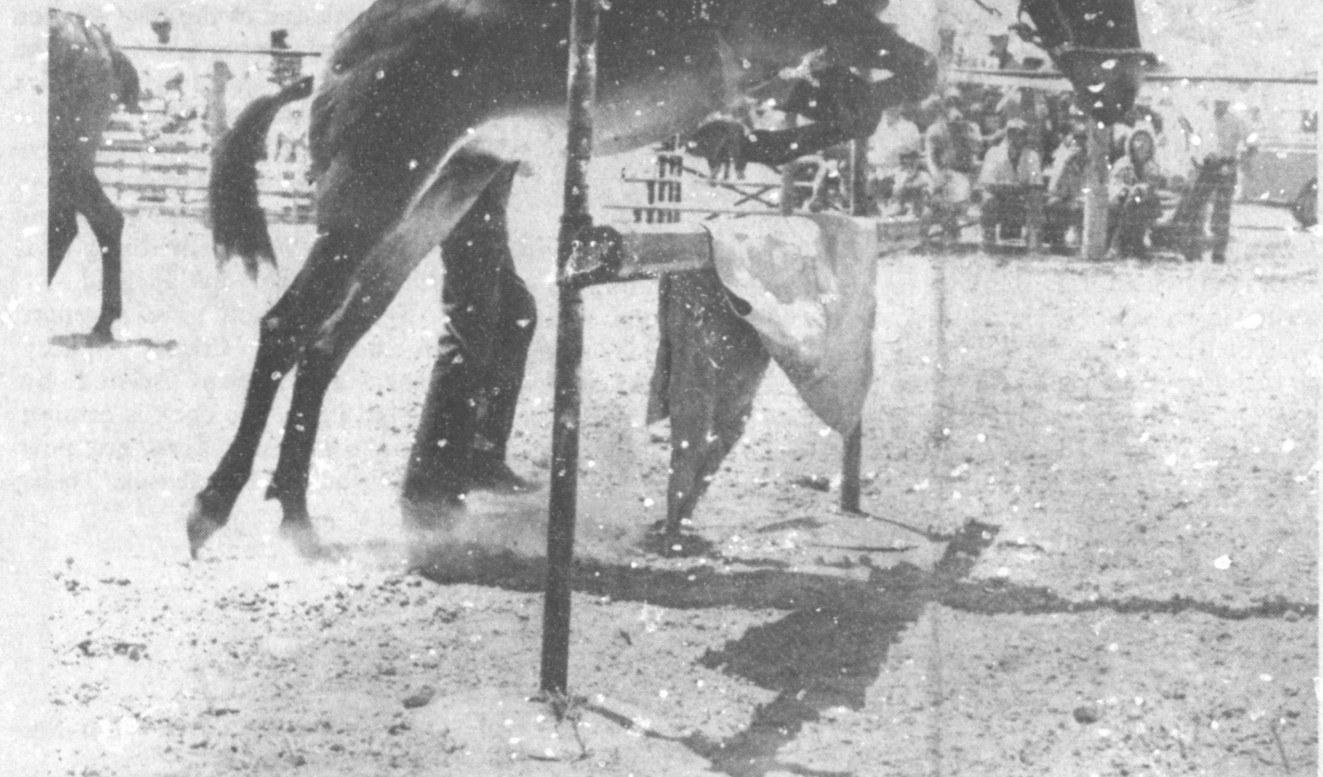
(Editor's note: The following story was written by Texas Tech journalism student Leigh Rudy, provided to this newspaper by Tech's School of Mass Communications through a grant from the Reader's Digest Foundation.)

If you believe you should "fight fire with fire" to battle the heat this summer, you might try Galante picante sauce.

"Galante is a family-run operation," says Hope Free, daughter of Bob Free, owner and president of Bobby G. Free Farms Inc. Hope is the secretary and is involved in the farming and processing operations.

Bobby G. Free Farms Inc. produces the Galante picante sauces, including medium and mild versions for people who don't like it too hot. Other Galante products include diced jalapenos and 'nacho' jalapeno strips.

The Free family got involved in the picante sauce business after diversifying a part of their land from corn to peppers. "We were planning to sell the peppers in 30-gallon drums to canning companies," Hope said. "But, they didn't sell too well."



COON JUMPING POPULAR MULE EVENT---Sunday during the annual Muleskinners Mule Show at the arena three miles east of Muleshoe on Highway 70, coon jumping will be one of the more popular events, as evidenced by this mule coon jumping photo from the 1987 mule rodeo. The weekend starts off at 8 a.m. Friday with an all day trail ride; and various events are scheduled all day on Saturday and Sunday evening. The Sunday mule show will close out the three day celebration, with all proceeds from the Mule Day Festival scheduled to go to West Plains Medical Center.

## Mixed Drink Tax Rebate Check Comparable To 1987 Locally

State Comptroller Bob Bullock last Friday sent checks totaling \$10.8 million to 221 counties and 440 cities that tax mixed drink sales.

The checks represent the counties' and cities' share of the state's 12 percent mixed drink tax collected during the second quarter of 1988.

Bailey County received a check in the amount of \$797.52 on reported taxes of \$6,380.14. Muleshoe's share was \$563.48 of the reported \$4,507.84 in taxes.

Cochran County reported taxes of \$1,237.45, and received a check in the amount of \$154.68.

From Lamb County, they reported taxes of \$5,780.28, and the county received a check for \$722.54, while the City of Littlefield received \$385.22 on reported taxes of \$3,081.72.

Parmer County's check in the amount of \$50.37 was rebated on

tax reports of \$402.96.

Bullock said that the state

### Football Prices

### To Be Discussed

A meeting is scheduled on Monday for the board of trustees of the Muleshoe Independent School District in the school administration building at 7:30 p.m.

Following formal opening of the session, including informational reports, financial reports will be given on bank balances, fund balances and payment of current bills.

A tax collection report will be given and prices will be set for football season passes.

Under personnel considerations will be resignations and employment contracts.

Board President Julie Cage will give special reports.

collected \$45 million in mixed drink taxes for the second quarter, compared to \$45.3 million collected during the same period in 1987.

According to state law allowing the sale of mixed drinks, cities and counties each receive a 12.5 percent share of the states tax collected on mixed drinks sold within their boundaries.

Of the total \$45 million in state collections, counties received \$5.6 million, the same amount that was rebated for the 1987 second quarter collections. Cities received \$5.2 million this quarter, a slight drop from last year's allocation of \$5.3 million for the same period.

Bullock said the remaining \$34.2 million balance was deposited in the state's general revenue fund. Last year, \$34.4 million from second quarter collections was deposited into the fund.

The picante sauce market was more appealing. "All the peppers are grown on our farms. We grow three types of peppers, long green chilies, bell peppers and jalapeno peppers. We get the onions and tomatoes from California," she said. "Everything is from the U.S.A."

"We usually plant the peppers in two different fields. If one is damaged by hail, we have the other as a backup," she explained. "This year, 30 acres of peppers were planted. The land is also planted with corn, cotton, soybeans and a small amount of wheat."

"The pepper seeds were planted in the middle of June and we will start harvesting in September. Different types of jalapenos are used. The two hot varieties and a mild variety were developed by Dr. Ben Villalon at Texas A&M University."

And, how are the sauces made to consistently fit into the heat levels of hot, medium or mild? The Frees follow recipes and combine different peppers with the tomatoes and onions. "Mild jalapenos are used in the mild sauce, with no hot peppers added. "We also use bell

peppers, which are not in the medium or hot sauces," added Hope.

"Picante sauce is made year-round, but the harvest is in September. The peppers are mechanically harvested, but extra employees must be hired to process the peppers. They are de-stemmed by hand and washed. After being mechanically diced, they are brined and mixed before going into the barrels."

"There are usually three employees in the kitchen and each morning, they will make batches of picante sauce. They pour the sauce into jars or jugs and label each one individually."

"We have eight and 16-ounce jars and one-gallon jugs. The jugs are selling better now. They are purchased by such companies as White Swan, Affiliated or Fleming Foods, who sell them to restaurants."

Hope says, "It takes a long time to get something going like this, especially with competition like Pace. They are so big everyone automatically picks up a jar (of Pace)."

The individual grocery stores select the shelf space for Galante products, but Galante has hired

Marvin Garrett Company Inc. and Northcutt Brokerage in Lubbock to help in the marketing process.

Galante does not do much advertising, but they take part in community events. They have entered floats in parades and donated picante sauce. "Sometimes we'll take some picante and donate to different things around here," Hope said.

The jars and jugs of Galante products are easy to recognize. Look for the bright yellow and orange labels. They use red, green or blue in addition to the other colors to distinguish between the hot, medium or mild sauces.

As a company brochure points out, "Gimme Galanta" is all that one needs to say, to get a jar of quality picante sauce which has received individual attention from the Free family and the employees of Free Farms.

Galante is located approximately three miles east of Muleshoe on Highway 70. This is their second location. When they first started several years ago, it was about three to four miles



FELIZ CARRION-GALANTE CHIEF COOK

Cont. Page 8, Col. 2

## 4-H--An Investment ..... In The Future

Today's 4-H program is for all youth--rural and urban--from all racial, economic and social backgrounds.

4-H reaches girls and boys in a variety of ways as members of organized 4-H clubs, as participants in special interest groups, as enrollees in short-term projects, said Spencer Tanksley, county 4-H program leader with the Texas Agricultural Extension Service. It reaches them through television, workshops and other educational methods, and pro-

grams are planned to meet specific needs of youth in communities where they live. Girls and boys "learn by doing" in 4-H.

4-H involves young people everywhere--in big cities and little towns, in the country and in the suburbs. Activities are typically conducted in the homes of members or their leaders, in schools or in other community buildings. Opportunities for individual, club, community, state, national and international projects and activities are available through 4-H, Tanksley said.

Today's 4-H gives young people an opportunity to take an active part in learning about and solving problems that face them and their communities. These include problems of environment, health and the use of drugs.

4-H members participate in projects that give them knowledge of science, agriculture, home economics, personal development, community service, leadership and citizenship. Often this knowledge helps open the door to a future career. But the main purpose of 4-H is to help youth become effective citizens, said Tanksley.

Among 4-H projects popular with youth are: food-nutrition, clothing, home improvement, crafts, recreation, health, safety, leadership and livestock projects.

In 4-H it's kid that count...and that's investment in the future! Bailey County 4-H Club will re-organize in September. All youth between the ages of 9 and 19 are eligible to join 4-H. More information on this action-oriented youth program is available from the Bailey County Extension office located in the Bailey County Courthouse.

### Hobby Club

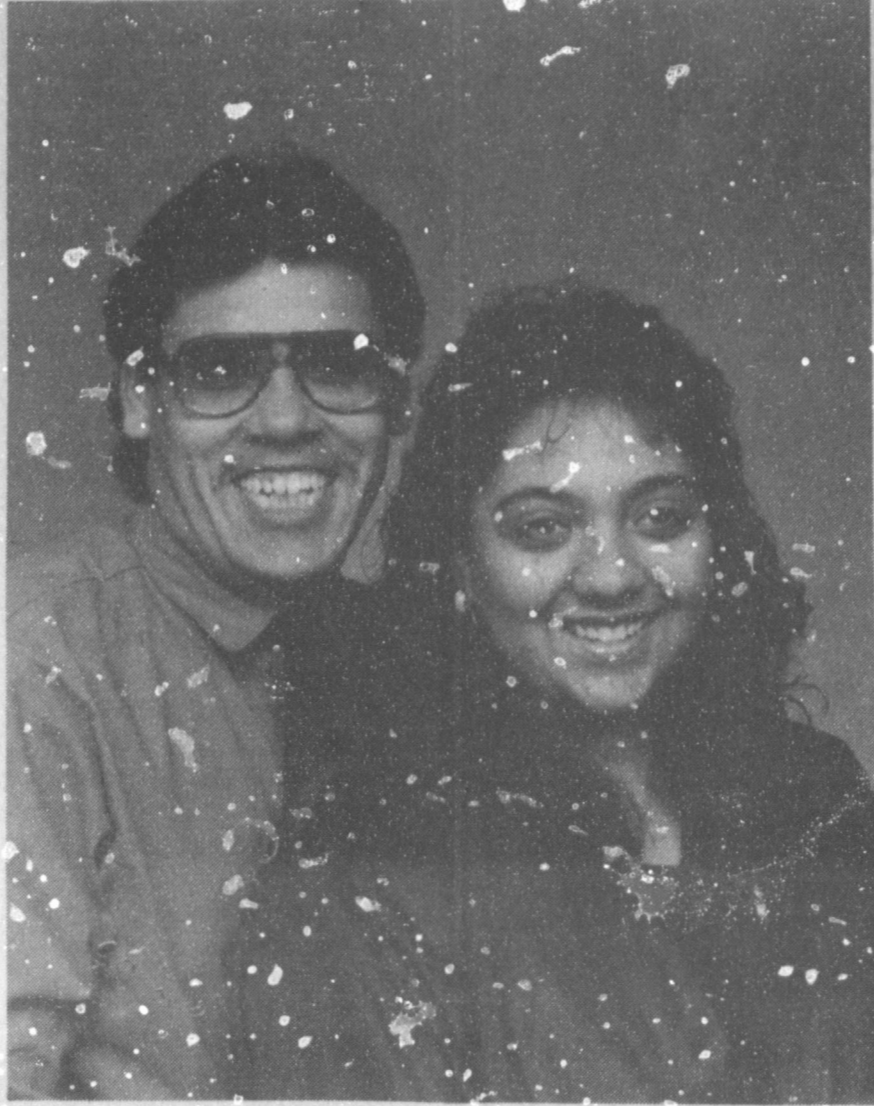
Muleshoe Hobby Club met on Thursday, August 4 in the Senior Citizen Complex with Blanche Aubrey as hostess.

The twelve members present included: Frances Bruns, Glenda Morris, Hazel Reeder, Blanche Aubrey, Edith Fox, Laura May Stansell, Ruby Lambert, Mabel Caldwell, Vickie Hendricks, La-Dema Wright, Sammie Ethridge, and Mattie Benton.

Minutes of the previous meeting were read and approved as read.

Sammie Ethridge took a quilt to show the members. She had pieced and quilted the quilt. Mattie Benton took a poinsettia centerpiece, in Christmas colors, Edith Fox took a bouquet of dalias, Mable Caldwell also took flowers.

The group decided to go to Clovis, N.M. on Aug. 18, their next meeting, and eat at Furs Cafeteria. Anyone wishing to go ask to meet at the Complex at 10:45 a.m. so they can leave at 11



**ENGAGEMENT ANNOUNCED**--Mr. and Mrs. Concepcion C. Rejino wish to announce the engagement and approaching marriage of their daughter, Eva Rejino to Tony Flores, son of Mr. and Mrs. Juan Antonio Flores of Muleshoe. The couple plans a September 3 Wedding. (Guest Photo)

## Creative Living

by Sheryl Borden

Three interesting topics will be presented on "Creative Living" on Tuesday, August 9 at 12 noon and repeated on Saturday, August 13 at 2 p.m. on KENW-TV. (All times are Mountain.)

Mario Ramia is a spokesperson for the Idaho Potato Commission,

and her topic is "From Picnic to Parties with Potatoes", and the message has to do with the versatility and good taste of potatoes. She will show how to combine potatoes in a fun way to entertain and surprise your guests. The Idaho Potato Commission is in Boise, ID.

For many people, cooking with wine is very confusing. This is not the case with guest, Rose Hansen, a food and wine consultant from Sausalito, CA. Ms. Hansen will tell when and how to break the traditional rules regarding which wines to cook with and which ones to serve with which foods.

June Schlossberg, an interior decorator from Carmel, IN will explain how an interior decorator or designer can be very helpful when you have to make a major move across the country. Ms. Schlossberg has her own decorating business called Designers' Collaborative.

On Tuesday, August 9 at 9:30 p.m. and on Thursday, August 11 at 12 noon, Joy Schrage, Public Information Director for the Whirlpool Corp. in Benton Harbor, MI will discuss how to winterize home appliances.

Mary Jo Bergland, home economist with Swift and Co. in Glen Ellyn IL will demonstrate a new product: brown and serve rolled sausage.

Also, Ann Hurt, author of *Country Samplers*, will show how to make a sampler from layout to finished sampler. Ms. Hurt lives in New York.

"Creative Living" is produced and hosted by Sheryl Borden.

**GEM STATE SKILLET BREAD**  
1 pkg. (12 oz.) corn muffin mix, 1 C. dehydrated instant potato flakes, 1 C. milk, 1/2 cup water, 2 eggs, lightly beaten, 1 C. chopped pepperoni (about 1/2 pound)

In large bowl combine corn muffin mix and potato flakes; make a well in the center. In small bowl beat together milk, water and eggs; pour into well and stir just to combine. Stir in pepperoni. In 10-inch skillet, heat oil over low heat. Pour in cornbread mixture. Cover. Cook 25 to 35 minutes or until cornbread is firm in the center. Cool 5 minutes. To serve, cut into wedges. YIELD: 6 to 8 servings.

### Rebekah Lodge News

Muleshoe Rebekah Lodge No. 114 was opened on Tuesday, August 2 with Louise Allen, Noble Grand, in charge of the meeting. Seventeen members answered the roll call and the opening prayer was given by Pat Langfitt. June Green read the minutes of the previous meeting, and they were approved as read.

It was reported that Trista Green is home and improving, but is still in a body cast. "We were sorry to learn that Bill Franklin shows no improvement" said Adele Tompkins.

The members practiced for initiation which will be held on Aug. 9. Frances Burrows will be initiated as a new member. This will be a formal affair and a pot luck supper will be served.

The "Evening Prayer" was sung and lodge was dismissed by Terie Snell.

Refreshments was served by Linda Tosh and Louise Allen.

To: Judy and Paul Wilbanks To: Homer and Anita Allgood To: Cindy Purdy To: Max and Pat King

To: Charles Lewis To: Doyce and Janelle Turner

We're all getting older of that there is no doubt  
And we all have aches and pains older people talk about  
Some of us are turning gray  
Some of us are getting larger  
Some of us can't get started without a battery charger  
But in spite of all these problems  
I feel a certain sense of glee  
Cause it doesn't matter how old I get  
You'll all still  
Be older than me!  
From, Guess who??

## Getting You Back In the Game...

The Sports Medicine Center of the Southwest is a comprehensive treatment program for the competitive athlete as well as the general sports enthusiast. It features a state-of-the-art diagnostic and rehabilitation facility equipped to care for most any sports related injury. The center is operated under the direction of a team of physician specialists, plus registered physical therapists and an exercise physiologist. The entire team is in tune with the special needs of athletes and their desire and determination to excel. They understand the frustration an injury can impose on them. But more important, this team has the know-how to treat an injury and put the athlete back in condition as quickly as possible.

- Pre-season Physical Exams
- X-ray Equipment
- Body Composition Assessment
- Body Mechanics Evaluation
- Rehabilitation
- Sport Specific Screenings
- Sport Specific Injury / Fitness Clinics
- Weight Training
- Physical Therapy
- Diet & Nutrition Counseling
- Coach / Trainer Clinics

### SPORTS MEDICINE CENTER of the Southwest

6602 South Quaker Avenue  
(806) 792-0777



SATURDAY MORNING INJURY CLINIC OPEN  
EACH WEEK 8AM-NOON MINIMAL CHARGE



Outside Lubbock Call 1-800-942-5111



**CELEBRATING FIFTY YEARS**--Horace and Irene Hutton will be honored with a golden wedding anniversary reception on Sunday, August 28 in the Bailey County Civic Center. This event will be hosted by the couple's children, grandchildren, and great grandchildren. Mr. and Mrs. Hutton will receive their friends and relatives between the hours of 2-5 p.m. (Guests Photo)

### BIBLE VERSE

"The wise man's eyes are in his head, but the fool walketh in darkness."

1. Who was the author of this wise saying?
2. Who was his father and mother?
3. For what architectural masterpiece is he best known?

4. Where may the above saying be found?
- Answers to Bible Verse**
1. King Solomon.
  2. King David and Queen Bathsheba.
  3. Solomon's temple, at Jerusalem.
  4. Ecclesiastes 2:14a.

**EASY CARE CUTS & PERMS**  
by cutter **ROD** at **Charly's HAIR DESIGN STUDIO**  
CALL (806) 797-0926  
82nd & Quaker Lubbock

**Ben Franklin**  
Better quality for less  
2104 W. American Blvd. Mon-Sat. Sun.  
272-3855 8 a.m.-8 p.m. 12 p.m.-5 p.m.  
For Your Shopping Convenience

## Back-to-School Sale!

School Lunch Kits with thermos vacuum bottle cartoon characters <b>\$4.79</b>	12 Wooden Pencils no. 2 Lead <b>77¢</b> a box
Elmers Glue-All for all porous materials, no harmful fumes net 4 fl. oz. <b>39¢</b>	Elmers School Glue washes out in soap & water non-toxic - safe for kids net 4 fl. oz. <b>39¢</b>
2 pocket Folders assorted colors <b>8 for \$1.00</b>	School Hand Writing Tablets for the 1st thru 4th grades, lined, school approved <b>77¢</b> each
Mead Trapper Keeper portfolio notebook 3 trapper portfolio special notebook pocket pinchless notebook rings 36 sheets note pad and pencil clip, velcro tab closure <b>\$4.44</b> each	Construction Paper 96 sheets Asst. Colors <b>\$1.99</b> Mead Organizer 6 filing pockets 36 sheets note pad pad clip & pencil holder <b>\$4.44</b> each
School List Items Red Pencils Erasers Rulers Scissors Jumbo Pencils Crayola Crayons Plastic Zipper Pockets Kleenex	

**Bailey County Journal** USPS 040-200  
March 31, 1983. Published by Muleshoe Publishing Co., Sunday at 304 W. Second, Box 448, Muleshoe, Texas. Second Class Postage paid at Muleshoe, Texas.

**MEMBER 1988**  
TEXAS PRESS ASSOCIATION

Members: NEWSPAPER ASSOCIATION, PAPER ASSOCIATION, PAPER ASSN., WEST TEXAS PRESS ASSOCIATION

Editor: Hall, President & Publisher  
Clerk: Williams, Secretary  
Editor: Harris, Secretary  
Advertiser: Benches Advertising  
Lille: Non-Bookkeeping

**SUBSCRIPTIONS:**  
Muleshoe Journal and Bailey County Journal  
Bailey and surrounding counties  
Muleshoe Journal and Bailey County Journal  
Elsewhere in Texas: \$12.75  
Muleshoe Journal and Bailey County Journal  
Outside of Texas: \$16.50  
Yearly by Carrier: \$12.50

Advertising rate card on application.  
Advertisers should check their ads at the first day of insertion. The publisher will not be liable for failure to publish an ad or for a typographical error or error in publication, except to the extent of the cost of the ad for the first day insertion. Advertisers for errors will be limited to the cost of that portion of the ad where the error occurred.

## Muleshoe Squares

By Elizabeth Ann Tabor

New officers for the Muleshoe Squares include the following: Jerry and Louise Engelking, president; Chester and Elinor Yerby, vice-president; Keith and Linda Turner, secretary-treasurer; Elizabeth Ann Tabor, reporter; Wilbert and Mary Kalbus, historian; Bill and Betty Barker, first year delegate; J.W. and Gloria Herington, second year delegates; and Norman and Helen Head, delegate-at-large.

"Our thanks and appreciation to outgoing president Ernest and Mary Alice Ramm and their slate of officers, and to our club members for their support" said Ms. Tabor.

It was reported that the June graduation added two couples to the membership, Tom and Jackie Boutell and Joe and Gayla Gear. Plans are now being made for another set of square dance lessons beginning in January of 1989. Everyone is asked to mark their calendars, the date will be announced later, or you may contact one of the club officers or members.

Muleshoe Squares have been quite active, both at club dances and visiting area clubs, seven

couples attended Clovis Circle 5 Moonlight Park Dance, a square enjoyed Circle 8 Summer Special with Caller Rex Coats, Andrews, and Cuer Jack Orio of Clovis. Nearly three squares traveled to Littlefield July 21st, and danced with Circle 8's. We brought their traveling club banner home with us, also.

At the regular club dance this past week our guest were LASRDF President Ray Tyler and Joann Stewart, Vice-President-Central Bob and Frances Baker, Exhibition Chairman Reed Yandeli and Nell Kilpatrick, also, John and Dorothy Coleman from Albuquerque, N.M. A young clogger from picayune, Mississippie, Michelle Pruitt, daughter of George and Lawanda Pruitt, clogged several exhibition numbers.

Members please note we will continue to dance on the second, fourth and fifth Thursday night, 8:00 p.m., at the American Legion Hall. Several members are on vacation and several are on the sick or recuperating list. May we see you all soon.

### AREA DANCE DATES AUGUST 11

8 p.m. Muleshoe Squares Club Dance

August 13, 7:30-9 p.m. Country Western Dance instruction, Don Dillard, instructor, 9-11 p.m. Country Western Dance LASRDF Building, Lubbock

August 12, 13, and 14, Kuideso Square and Round Dance weekend

August 18, 8 p.m. CDT, Roosevelt County Fair Square Dance, Portales, N.M.

August 25, 8 p.m. CDT, Muleshoe Squares Club Dance

August 26, LASRDF Fund Raiser, 2305 120 th St. Lubbock, TX

8 p.m. Squares Caller Andy Petre, Greenwood Springs, LA

7:30 p.m. Rounds Cuer Dave and Nita Smith, Lubbock

August 26, Curry County Fair Square Dance, Clovis, N.M. (Muleshoe night)

August 27, Curry County Fair Square Dance, Clovis, N.M. (Clovis, night)

Our advice to you this week is to take care of your heart, and live a while.

Every person should be willing to listen to others—at least as much as he talks.

Balanced judgment is a rare commodity, and one of the highest forms of human progress.



**A DOUBLE CELEBRATION**—Saturday afternoon R.A. Bradley, left, and Jim Cox were honored with a celebration, complete with cake and balloons, at Fry and Cox. Cox celebrated his 80th birthday on Sunday, July 31. Born in Amarillo, he moved to Muleshoe in 1921, the year Fry and Cox established. Bradley was honored for 40 years of service as an employee of the store. Cox's family presented both Cox and Bradley with an etching on glass done by Clifford Black. (Journal Photo)



**THIS WEEK'S GARDEN SPOT**—The front yard of Eugene and Gladys Black at 1911 West Ave. H. proudly sports the "Garden Spot of the Week" sign. With its pretty red flowering plants, trees and fresh cut grass, it's easy to see why it caught the eye of the Jennislipper judges this week. If you haven't nominated your favorite garden spot you may do so by calling the Muleshoe Chamber of Commerce by noon on Wednesday. Yards are judged on Wednesday afternoon. (Journal Photo)

## TOPS CLUB

Muleshoe TOPS Club chapter No. 34 met at 6:30 p.m. Thursday, August 4 in the Heritage Thrift Shop. Laverne James, leader, called the meeting to order with the TOPS pledge, fellowship song and a prayer.

Minutes of the previous meeting were read by Jewell Peeler, in the absence of the secretary, Thesia Davis. Ruth Clements gave the treasurer's report.

Orvidie Burris, weight recorder, called the roll with nine members and two visitors, Ruby Lambert and Alene Byrant, present.

Ernestine Steinbock was named best loser for the week. Runners-up were Ruth Clements, first, and Evelene Harris, second.

Monthly best loser was also recognized. Best loser for the month was Evelene Harris, and Inez McWilliams was first runner-up and Jewell White was second runner up.

Evelene Harris received a charm for losing weight.

The meeting was closed with the singing of the goodnight song.

## Local Youth Place In District Fashion Show

Carolyn Schuster and Lori Hodges, Bailey County 4-H'ers, each placed third in the dressy category of their respective age divisions at the South Plains 4-H Fashion Show held Thursday, July 28 on the Lubbock Christian University campus.



### Amanda Nichole Ledgerwood

Mr. and Mrs. Wayne Holmes are the proud grandparents of their fourth grandchild.

Amanda Nichole Ledgerwood was born Tuesday, August 2 at 8:24 a.m. in Newwells Hospital in Dundee, Scotland to Cpl. Van and Jacqueline Ledgerwood who are stationed at the U.S. Navy Base in Edzell, Scotland.

She is the couple's first child and weighed six pounds, 15 and three fourths ounces.

Paternal grandparents are Mr. and Mrs. Robert Morris of Tahuya, Washington.

Their address is: U.S.N.S.G.A. Box 26 F.P.O., N.Y. 09518-1099

### Party Honors

#### Lindsey Robinson

Lindsey Robinson was honored on her third birthday with a party on Saturday, July 16 in the home of her parents, Mr. and Mrs. Mike Robinson of Lubbock.

A "Mickey Mouse and Friends" theme was carried out in decorations and the cake. Ice cream, cake and punch were served.

Attending were Glen, Joanna and Ronnie, Rachelle Coie, Jennifer Ronnie and Jessica Salinas, Pat, Brandi and Kerri Lewis all of Lubbock, and Sherri and Kimberly Doty of Sudan.

Special guests were Lindsey's grandparents, Pat and Julia Robinson of New Deal and Fern Doty and Verdine Gann, both of Sudan.



### American Made For Comfort.

Extra narrow to extra wide SIZES 6-15/A, B, C, D, E, EEE Sizes/widths vary by style. MADE IN U.S.A.

### Fair Dept. Store

120 Main 272-3500



## Entire Remaining Stock Of Summer Merchandise

# 1/2

Lookin' Good

206 Main

Phone 272-5052

# Rip's

WESTERN WEAR IN TEXICO



314 Wheeler Avenue

Open 8:00 a.m.-6:30 p.m. C.D.T.

482-3333

## BACK TO SCHOOL SALE-A-BRATION

FREE! FREE! FREE! FREE!  
BALLOONS, POSTERS, GUM, CANDY  
As Supplies Last

- ROCKY MOUNTAIN JEANS.....26.98
- LADY WRANGLERS.....19.98
- 13 MWZ WRANGLERS (DENIM).....14.98
- 13 MWZ WRANGLERS (COLORS).....19.98
- STONE WASHED WRANGLERS.....19.98
- 501 LEVIS (Shrink-to-fit).....14.98
- 501 LEVIS (Pre-Shrunk).....19.98
- 557 LEVIS.....14.98
- ALL HANES UNDERWEAR, Sizes 2-52.50% off

### LAYAWAYS WELCOME

We Accept: Visa, Mastercard, American Express, Discover  
SALE STARTS AUGUST 8 - ENDS AUGUST 13

- 1- 10x13 (Wall Photo)
- 1- 8x10
- 2- 5x7
- 2- 3x5
- 16- King Size Wallets
- 8- Regular Size Wallets

30 Color Photos

99¢ Deposit  
\$10.00 Due at Pick up (plus tax)

**\$10.99**

WE USE KODAK PAPER

AT

Anthony's

321 Main

Thursday, August 11

Photo Hours 9 a.m. - 6 p.m.



Shugart's inc.

Group charge 99¢ per person



## Around Muleshoe

Cont. from Page 1

Lazbuddie Longhorns on Monday, August 8.  
Workout times are 7 a.m. and 7 p.m.  
for the football programs this year.  
If you would like to be included, at a one time cost of \$10, call Doris Palmer at 272-3734.  
Or, you may mail your \$10 to Muleshoe Athletic Booster Club at 1610 West Avenue B, Muleshoe.

A Muleshoe Chamber of Commerce and Agriculture event "Business After Hours" will be held Tuesday, August 9, at 7 p.m.  
It will be at Barrett Produce and will feature a tour of the facility. Comfortable clothing and walking shoes are advised.  
Blunk Studios will be at Lazbuddie High School on August 31 to take pictures of

seniors, administrators, varsity cheerleaders, and football players, beginning at 8:30 a.m.

Bailey County Commissioners Court will meet in regular session on Monday, August 8, at 10 a.m.  
Bailey County Judge Gordon H. Green said the following items will be considered following approval of minutes and payment of routine county bills:  
Review county treasurer and departmental reports; appointment of election judges; designation of election precincts; approval of sheriff's bond; personnel matters and miscellaneous items.

Airman Johnny D. Bevers, grandson of Ray M. and Alma Bevers of Muleshoe, has grad-

### Three Way Grad Shows Up 'Well' In All-Star Game

Three Way Coach Greg Jeffcoat said 1988 Three Way graduate Saul Guillen participated in the annual Six-Man All-Star Football game at Stephenville two weeks ago.  
Saul had six unassisted tackles; 10 assisted tackles; recovered one fumble and caused two fumbles.  
This is the seventh consecutive year for a Three Way Eagle to play on the All-Star team.  
Although six-man football is traditionally known to be high scoring, the final score was West 8-East 6. Guillen played defense on the West team.  
Coach Jeffcoat also said coaches had agreed to have girls' Six-Man All-Star basketball -- for the first time.

### Galante...

Cont. from Page 1  
north of Muleshoe on the Friona highway. Their first location was a barn.  
Galante quickly outgrew the big barn, and purchased a former flying service on the Plainview highway.  
The former hangars are used for warehouse storage, and a spic and span bright, shiny clean kitchen was added to hold the large vats used for processing the picante sauce.

uated from the communications-computer systems management specialist course at Keesley Air Force Base, Miss.  
The course covered preparing, receiving and processing systems requirements and other related documents. Students were also trained to process requests for telephone service.  
He is a 1987 graduate of Muleshoe High School.

All former students of West Texas High / Demonstration School are urged to meet for a reunion on August 20, in the cafeteria on the campus of West Texas State University, Canyon. Starting time is 2 p.m., with a dinner at 7 p.m.  
Send \$20 per person for reservations to: Dorothy Inman, Box 684, Canyon, TX 79015.

The South Plains Association of Governments (SPAG) Law Enforcement Academy will offer a 40-hour Basic Jail Operations class for Jail Correctional Officers.

This class is scheduled for August 8-19, from 6-10 p.m., Monday through Friday. The class will be held at the SPAG Academy located at 1323 58th Street, Lubbock.  
Completion of the class and successfully passing the Texas State Certification test will meet the minimum requirements for employment as a County Jail Corrections officer in Texas.  
Cost of the class is \$30, and to register or for further information, call or go by the SPAG Academy.

A fund has been started at First Bank to benefit 23-month old Mason Williams, who has

### Mule...

Cont. from Page 1  
youth barrels cloverleaf; con jumping; single hitch driving pleasure (donkey or mule); multi hitch (donkey or mule) and jackpot walk, trot, run.  
Be sure to keep next weekend open for all the activities during the three day Mule Day Festival for 1988.

been in a coma in Lubbock General Hospital for the past five weeks.

He is the son of Kevin Williams, grandson of former Muleshoe resident L. Wayne Williams and great-grandson of R. O. Gregory.

According to Debbie Tillem, a fund has been set up at Muleshoe State Bank to benefit six year old Laramie Wood, son of Lonnie Wood and Shera Wood.

He was accidentally shot in the eye with a pellet gun last Friday and was taken to St. Mary's Hospital in Lubbock for preliminary treatment.

He was expected to be transferred to Dallas for additional treatment and surgery.

The Texas Department of Agriculture would like to know who would be willing to donate hay from CRP acres, if they are able to recover their baling costs of approximately \$30 per ton.

Secretary Lyng has made this allowance in Minnesota and the TDA expects Texas farmers will also be allowed to help their neighbors, too.

So that TDA can know how much acreage will be available,

please call the 1-800-DIAL HAY program.

Mer's on Wheels is seeking drivers for Thursday noon and Friday noon.

If you have one to one and a half hours you can volunteer on these days, please contact Robin Taylor at 272-3196.

Your pay will be the satisfaction of knowing a senior citizen or disabled person, or persons, receives a hot meal at noon.

### ONE MINUTE SPORTS QUIZ

1. How old is Mike Tyson?
2. How many pro fights has he had?
3. In what sport is Bill Kennedy famous?
4. How old is Sparky Anderson?
5. Where did Anderson first manage?

#### The Answers:

1. 22.
2. 35, never defeated, having won 31 by K.O.
3. Golf.
4. 54.
5. Toronto--1964.



HOPE FREE-BOBBY G. FREE FARMS INC.

### NOTICE!

For those people who are policy owners of Vic Benedict and Southwestern Life-- If agents contact you about changing your policies to other companies, please call or contact me.

**Vic Benedict**

721 W. Ave. C

272-5266

## Going Back To School Is Very Expensive!!



Fill your pockets with a loan from the First Bank.



202 S. 1st.

Member FDIC

272-4515

## CONFUSED ABOUT MEDICARE SUPPLEMENTS?

If you own a Medicare supplement which implies that you will owe nothing READ THE FINE PRINT!

Most policies today pay 100% of approved charges or USUAL AND CUSTOMARY charges. These terms protect policies from paying entire bills. This means you could be out of pocket hundreds or even thousands of dollars!

Finally-What you have been asking for -A Medicare supplement which pays "100% of the provider of services (physician or hospital) and the Medicare payment." And best of all, it is priced lower than a lot of "fine print" policies.

Take the surprise out of your Medicare supplement.

Write or call Wilson Agency

P.O. Box 431 Muleshoe, Texas or call

806-272-4159 or 806-272-4069

# SUPER \$2 REBATE

## ON SUPER PREMIUM 15 YEAR WARRANTY JONES • BLAIR PAINT!

Polyflex Latex House Paint

Fade Resistant Resists Flaking, Peeling and Blistering

Glamor Latex Satin Enamel

Finest Latex Wall & Trim Paint Available Splatter Resistant One Coat Coverage



Satin-X Latex Wall Paint

Easy to Apply Splatter Resistant Washable One Coat Coverage

Polyflex Latex House & Trim

Medium Gloss Finish Fade Resistant Resists Flaking, Peeling and Blistering

Save \$2 per gallon Up to \$20 on 10 gallons Only through August 26, 1988

SEE DETAILS IN OUR STORE



"Professional Advice and Service"

Higginbotham-Bartlett

215 Main

"The Friendly Ones"

272-3351

# White Grubs Become Summer Lawn Problem

White grub control in lawns is important during the summer season.

May or June beetles are emerging from the soil now and are starting to swarm in late evenings. Females are laying eggs and white grub worms that hatch will soon be feeding on the roots of bermudagrass and St. Augustinegrass in home lawns. Once grubs begin feeding, control measures should be taken, said Spencer Tanksley, county agent with the Texas Agricultural Extension Service.

Treatment time varies with the particular area of the state and ranges from early July in South Texas to mid-August in the Panhandle. Homeowners in Ba-

iley County will need to treat between late July-early August. Timing of application is critical for adequate control.

White grubs in excessive numbers can heavily damage lawns, said Tanksley. Check for white grubs by cutting a square foot section of sod with a shovel and examining the roots and soil to a depth of four inches. Examine at least one square foot of sod for 1,000 square feet of lawn area. Chemical treatment is needed if there are more than four grubs per square foot of sod.

Diazinon, Dursban or Dylox provide adequate control and should be used at recommended rates given on the chemical container label. The granular

form is easier to apply and to wash into the soil than liquid or spray formulations. After using granules, drag the grass with a tow sack or water hose to knock them down to the soil. Then apply enough water to soak the granules into the soil.

Apply diazinon sprays at the rate of 25 gallons of water, including the insecticide, per 1,000 square feet to wash the insecticide into the soil. Wetting the lawn before spraying also helps. Always keep children and pets off the treated lawn until the grass is dry.

The key to white grub control in home lawns is proper timing of chemical applications and getting the insecticide through the grass to the root zone where grubs are feeding, said Tanksley.

Further information is provided in the publication, "White Grubs in Texas Turfgrass" available at the county Extension office.

## Enochs News

By Mrs. J. D. Bayless

Dinner guests in the home of Mr. and Mrs. E.N. McCall Thursday was her sisters, Mr. and Mrs. Fred Locker of Littlefield and Berniece and Richard Lytle of Conroe, and their brother and wife, Mr. and Mrs. Lee Kelly, of Plainview. In the afternoon they drove to Portales, N.M. and visited relatives, the J.E. Wise and the Johnny and Hubert Morgans.

Mrs. Susie Shields and son,

Daric, of Lelia Lake and a daughter, Roslyn Seller, and children, Teffany, Kinsey and Daylan, of Seagraves visited in the home of Susie's mother and brother, Mrs. Rosella Jones and Wendell, Tuesday till Friday.

Tom Byars of Seagraves and John Tucker of Three Way visited Tom's mother, Mrs. Winnie Byars Sunday afternoon.

Rain received north of Enochs, during last Sunday, Monday and Tuesday was an inch and 8 tenths. West of Enochs before you get to Dale Nichols' the road was closed one day.

Rain received north of Enochs was over two inches Sunday night, with some hail.

Mr. and Mrs. Craig Kirby and children of Three Way visited her parents, Mr. and Mrs. Goldman Stroud Sunday afternoon.

**GRAIN PRICES**  
 YELLOW CORN.. 5.08 cwt  
 YELLOW FOOD CORN.. call  
 WHITE FOOD CORN.. call  
 MILO..... 4.28 cwt  
 SOYBEANS... 7.64 cwt  
 NEW WHEAT.. 3.17 cwt  
**COMMODITY CERTIFICATES**  
 100 1/2 %  
 Prices-August 7, 1988  
**MARKETS COURTESY OF FARMERS CO-OP ELEVATORS**  
 272-4335 Muleshoe, Texas

### 19 88 Property Tax Rates in CITY OF MULESHOE

This notice concerns 19 88 property tax rates for City of Muleshoe. It presents information about three tax rates. Last year's tax rate is the actual rate the taxing unit used to determine property taxes last year. This year's effective tax rate would impose the same total taxes as last year. If you compare properties taxed in both years. Compare it to the tax rate the taxing unit proposes for this year. This year's rollback tax rate is the highest tax rate the taxing unit can set before taxpayers can start tax rollback procedures. In each case these rates are found by dividing the total amount of taxes by the tax base (the total value of taxable property) with adjustments as required by state law. The rates are given per \$100 of property value.

**Last year's tax rate:**

Last year's operating taxes	\$ 498,747.00
+ Last year's debt taxes	\$ -0-
= Last year's total taxes	\$ 498,747.00
÷ Last year's tax base	\$ 91,513,211.00
= Last year's total tax rate	\$ .5450 /\$100

**This year's effective tax rate:**

Last year's adjusted taxes	\$ 498,747.00
(after subtracting taxes on lost property and taxes to correct appraisal roll errors)	
÷ This year's adjusted tax base	\$ 86,780,965.00
= This year's effective tax rate	\$ .5747 /\$100
× 1.03	
= Maximum rate unless unit publishes notices and holds hearings	\$ .5919 /\$100

**This year's rollback tax rate:**

Last year's adjusted operating taxes	\$ 498,747.00
(after subtracting taxes on lost property and taxes to correct appraisal roll errors and adding taxes lost in court suits)	
÷ This year's adjusted tax base	\$ 86,780,965.00
= This year's effective operating rate	\$ .5747 /\$100
× 1.08	
= This year's maximum operating rate	\$ .6206 /\$100
+ This year's debt rate	\$ -0- /\$100
= This year's rollback rate	\$ .6206 /\$100

### SCHEDULE A: Unencumbered Fund Balances

The following balances will probably be left in the unit's property tax accounts at the end of the fiscal year. These balances are not encumbered by a corresponding debt obligation.

Type of Property Tax Fund	Balance
Unencumbered Funds	-0-

### SCHEDULE B: 19 N/A Debts Service

The unit plans to pay the following amounts for long-term debts that are secured by property taxes. These amounts will be paid from property tax revenues (or additional sales tax revenues, if applicable).

Description of Debt	Principal or Contract Payment to be Paid	Interest to be Paid	Other Amounts to be Paid	Total Payment
Total required for 19 debt service			N/A	
- Amount (if any) paid from funds listed in Schedule A			N/A	
- Excess collections last year			N/A	
= Total to be paid from taxes in 19			N/A	
+ Amount added in anticipation that the unit will collect only % of its taxes in 19			N/A	
= Total Debt Service Levy			N/A	

### SCHEDULE C: Expected Revenue from Additional Sales Tax

(For counties and cities with additional 1/2 cent sales tax)

In calculating its effective and rollback tax rates, the unit estimated that it will receive \$ N/A in additional sales and use tax revenues.

This notice contains a summary of actual effective and rollback tax rate calculations. You can inspect a copy of the full calculations at 104 E. Ave. C.  
 Name of person preparing this notice Carl S. Gilbreath  
 Title Chief Administrator  
 Date prepared July 29, 1988

TRUTH IN TAXATION/1988

### 19 88 Property Tax Rates in BAILEY County

This notice concerns 19 88 property tax rates for Bailey County. It presents information about three tax rates. Last year's tax rate is the actual rate the county used to determine property taxes last year. This year's effective tax rate would impose the same total taxes as last year if you compare properties taxed in both years. Compare it to the tax rate the county proposes for this year. This year's rollback tax rate is the highest tax rate the county can set before taxpayers can start tax rollback procedures. In each case these rates are found by dividing the total amount of taxes by the tax base (the total value of taxable property) with adjustments as required by state law. The rates are given per \$100 of property value.

	General Fund	Farm-to-Market/ Flood Control Fund	Special Road/Bridge Fund
<b>Last year's tax rate:</b>			
Last year's operating taxes	\$ 754,094.00	\$ 147,949.00	\$ N/A
Last year's debt taxes	\$ -0-	\$ -0-	\$ "
= Last year's total taxes	\$ 754,094.00	\$ 147,949.00	\$ "
Last year's tax base	\$ 232,028,923.00	\$ 227,613,846.00	\$ "
= Last year's tax rate for each fund	\$ .3250 /\$100	\$ .0650 /\$100	\$ " /\$100
Last year's total tax rate		\$ .39 /\$100	

**This year's effective tax rate:**

Last year's adjusted taxes	\$ 750,624.29	\$ 147,415.92	\$ N/A
(after subtracting taxes on lost property and taxes to correct appraisal roll errors)			
÷ This year's adjusted tax base	\$ 228,657,089.00	\$ 224,286,709.00	\$ N/A
= This year's effective tax rate for each fund	\$ .3282 /\$100	\$ .0657 /\$100	\$ N/A /\$100
This year's total effective tax rate	\$ .3939 /\$100		
Sales tax adjustment rate	\$ .0376 /\$100		
= This year's adjusted effective tax rate	\$ .3563 /\$100		
× 1.03			
= Maximum rate unless unit publishes notices and holds hearings		\$ .3669 /\$100	

**This year's rollback tax rate:**

Last year's adjusted operating taxes	\$ 750,654.29	\$ 147,415.92	\$ N/A
(after subtracting taxes on lost property and taxes to correct appraisal roll errors and adding taxes lost in court suits)			
÷ This year's adjusted tax base	\$ 228,657,089.00	\$ 224,286,709.00	\$ N/A
= This year's effective operating rate	\$ .3282 /\$100	\$ .0657 /\$100	\$ N/A /\$100
× 1.08			
= This year's maximum operating rate	\$ .3544 /\$100	\$ .0709 /\$100	\$ N/A /\$100
This year's debt rate	\$ -0- /\$100	\$ -0- /\$100	\$ " /\$100
= This year's rollback rate for each fund	\$ .3544 /\$100	\$ .0709 /\$100	\$ " /\$100
This year's total rollback rate	\$ .4253 /\$100		
Sales tax adjustment rate	\$ .0376 /\$100		
= Maximum rate before taxpayers can start rollback election process		\$ .3877 /\$100	

### SCHEDULE A: Unencumbered Fund Balances

The following balances will probably be left in the unit's property tax accounts at the end of the fiscal year. These balances are not encumbered by a corresponding debt obligation.

Type of Property Tax Fund	Unencumbered Funds:	Balance
General Fund		393,441.99
Farm-Market Road		662,199.20

### SCHEDULE B: 19 N/A Debts Service

The unit plans to pay the following amounts for long-term debts that are secured by property taxes. These amounts will be paid from property tax revenues (or additional sales tax revenues, if applicable).

Description of Debt	Principal or Contract Payment to be Paid	Interest to be Paid	Other Amounts to be Paid	Total Payment
Total required for 19 debt service			N/A	
- Amount (if any) paid from funds listed in Schedule A			N/A	
- Excess collections last year			N/A	
= Total to be paid from taxes in 19			N/A	
+ Amount added in anticipation that the unit will collect only % of its taxes in 19			N/A	
= Total Debt Service Levy			N/A	

### SCHEDULE C: Expected Revenue from Additional Sales Tax

(For counties and cities with additional 1/2 cent sales tax)

In calculating its effective and rollback tax rates, the unit estimated that it will receive \$ 87,558.00 in additional sales and use tax revenues.

This notice contains a summary of actual effective and rollback tax rate calculations. You can inspect a copy of the full calculations at 104 E. Ave. C.  
 Name of person preparing this notice Carl S. Gilbreath  
 Title Chief Administrator  
 Date prepared July 29, 1988

TRUTH IN TAXATION/1988

# Iron Chlorosis Serious Problem This Summer

This year's growing conditions on the High Plains, which resulted in early growth, have accelerated the onset of iron chlorosis on trees, turf grasses, and ornamentals, said Dr. Michael G. Hickey, soil chemist and director of the Texas Agricultural Extension Service Soil Testing Laboratory in Lubbock.

Hickey said the condition is usually caused by alkalinity of soil and water. West Texas soils and water fall in this category, and the presence of early growth has made the problem more widespread this summer.

"The leaves of chlorotic plants range from light green to yellow to almost white, usually accompanied by striping," said Hickey. However, Hickey added that leaf veins will remain green on an affected plant.

Members of the grass family, particularly common Bermuda; flowers and ornamentals, and some shade trees are usually attacked by iron chlorosis. "This summer, we're seeing chlorosis on trees we haven't seen it on before," Hickey noted.

Hickey recommended foliar applications of iron sulfate coppers or iron chelate. For spraying lawn and turf grasses, iron chelate should be mixed at a ratio of three level tablespoons per gallon of water; for ornamentals, one level tablespoon of iron chelate per gallon of water; and for fruit trees, two level tablespoons of iron chelate per gallon of water.

Foliar applications of iron

sulfate can also be made on lawn and turf grasses, iron sulfate should be mixed at a ratio of four level tablespoons per gallon of water; ornamentals should be sprayed with a mixture of three level tablespoons of iron sulfate per gallon of water; fruit trees require a mixture of five pounds iron sulfate for every 100 gallons of water.

Hickey added that when mixing a foliar spray, some type of surfactant, or sticking agent, should be added. One or two drops of dishwashing detergent is sufficient to insure that the spray will cling to the leaves. Leaves and plants should be sprayed until thoroughly saturated. Results will be noted within several days.

Hickey recommended limiting soil applications to turf grasses. Grasses will respond more readily to iron chelate applied at a ratio of one pound per 1,000 square feet. Although trees and ornamentals can also be treated with soil applications, Hickey noted that there is not enough time for effective soil treatments at this time. "Right now, we're trying to get a quick fix to the problem," said Hickey.

The problems of life are usually those matters which, after all, don't amount to very much.

What with corn on the cob, watermelons and peaches, this life isn't so bad

## Enochs News By: Mrs. J.D. Bayless

Guests in the home of Mr. and Mrs. D. M. McBee Sunday were their children, the Terry Webbs' of Wolfforth and the Scott Freds' of Pettitt.

Mrs. Winnie Byars attended the funeral of Robby Roller of Lubbock Saturday at the Rlx Funeral Chapel at 1 p.m. Burial was in Lubbock Cemetery.

Mrs. Bell Calvert, Lillie Mae and Calvin Calvert of Lufkin, Texas visited friends in the community also E.N. McCall at the elevator.

## County Agent To Help Judge Fair Show Beef

Premiums totaling \$13,410 will be offered to exhibitors in the beef cattle show at the 71st annual Panhandle South Plains Fair here September 24-October 1, according to general manager Steve L. Lewis.

Angus breeds will go into the arena on September 27 while Shorthorns are due for judging on the following day.

Lewis said Mark McClintock of Fort McKavett would judge the entries.

The entry deadline is September 6 and a \$5 entry fee will be charged for every head.

Competition will be in 50 classes for Angus entries and 38 for Shorthorns. Premiums include \$85 for first place, \$65 for second, \$50 for third, \$40 for fourth and \$30 for fifth.

John Farris will serve as superintendent. Assistants will include Sam Field and Spencer Tanksley.

Richardson Cattle Co. of Fairland, Oklahoma, exhibited the 1987 grand champion Angus female, while Rockdale Shorthorns of Okeene, Oklahoma, showed the grand champion Shorthorn bull. Buchholz Shorthorns of Bradwell had last year's grand champion Shorthorn female.

Livestock events annually are among the most popular on the fair's judging calendar.

Seven shows have been selected for the stage of Fair Park Coliseum during the eight-day run.

The lineup includes Dan Seals and Kathy Mattea, 4 p.m. and 7 p.m. on September 24; The Oak Ridge Boys, 4 p.m. and 7 p.m. September 25; Highway 101 and Sweethearts of the Rodeo, 7 p.m. only September 26; Exile, 7 p.m. only September 27; Michael Martin Murphy and Holly Dunn, 7 p.m. only September 29; Ray Stevens, 7 p.m. only September 30 and Merle Haggard and The Strangers, 7 p.m. only October 1.

Tickets for all shows are \$10 each. They are on sale at the Fair Office at 105 E. Broadway. Mail order requests may be sent to Show Tickets, P.O. Box 208, Lubbock, Texas 79408. Mail requests will be processed in the order in which received and must be accompanied by a stamped, self-addressed envelope. For further details, call 744-9557.

Harold Dean Nichols of Idalou visited relatives and friends at Enochs. He also stopped at the elevator and visited E.N. McCall.

Mrs. Mamie Adams is a patient in the Morton Memorial Hospital. Get well soon Mamie!

Mrs. Ima Roberts and Ryan and Mrs. Bill Key visited Mr. and Mrs. Bobby Adams Saturday evening.

Visiting Mr. and Mrs. E.N. McCall Tuesday afternoon was his cousins, R.H. and Brenda Anderson from Many, Louisiana.

Mrs. Bill Key and Mrs. Ima Roberts attended the bridal shower of Wayne Parkman Sunday evening at the home of Mrs. Sammie Simpson. They also visited Mrs. Karheryn Wittner.

Mrs. Brenda George and son, Brent, of Lubbock and Kelly Mosser of Slaton had dinner with Mr. and Mrs. E.N. McCall Saturday. Brenda and Kelly spent the night and the McCalls took them home Sunday, and had dinner with the Georges'.

Bill and son, Sid, Key were in Lubbock Wednesday on business.

Visiting Mrs. Dean McBee and other relatives were her daughters, Mrs. Bob Spell of Chattanooga, Tenn. and Mrs. Doris Childers of Wolfforth. Sunday they went home with Doris and spent the night.

## Golden Gleams

Let no man deceive you with vain words.

-Ephesians 5:6.

A blow with a word strikes deeper than a blow with a sword.

-Robert Burton.

Deliver your words not by number but by weight.

-H.G. Bohn.

Words are the most powerful drug used by mankind.

-Rudyard Kipling.

## Three-Way News By: Mrs. H.W. Garvin

Mr. and Mrs. Ralph Davis from Lubbock spent Monday with their daughter, the Bill Dolle family.

## Boys, Girls All-Sports Physicals Set

Physicals for all boys who will be involved in school sports are scheduled at 3 p.m. Sunday, August 7 at the Muleshoe High School gym.

Girls' physicals will be at 3 p.m. on Sunday, August 14, also at the MHS gym.

Varsity football players will begin working out twice a day on Monday, August 8, with workout times being 8 a.m. and 5 p.m. each day, Monday through Friday.

Shoes and helmets were issued to grades 9-12 football players at MHS on Wednesday (yesterday).

Athletic Director Dale Keeling said the Mules will scrimmage the Canyon Eagles in Muleshoe on Friday, August 26, with the JV and ninth grade games getting underway at 5 p.m., followed by varsity around 6:30 p.m.

Coach Keeling said they are still seeking a location for a scrimmage with Sanford-Fritch on Friday, August 18. The location will be released as soon as confirmed, he added.

Melissa and Jonathan Bennet spent Sunday with the Bud Huff family.

The community farmers are very busy in the crops and we need rain again.

Mrs. Roger Hatcher from Clovis and Mrs. Jack Lane from Three Way visited Mrs. Lanes' mother, Mrs. Nettie Quisenberry, in Muleshoe Saturday.

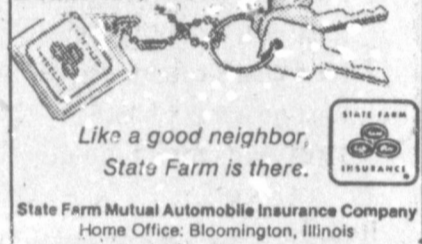
Mr. and Mrs. J.W. Tyson visited his uncle and aunt, Mr. and Mrs. George Tyson Saturday.

Mr. and Mrs. Bill Sekero and daughter spent the past week visiting her parents, Mr. and Mrs. Rayford Mastens.

Mrs. D.A. Williams from Enochs spent Sunday with her parents, the George Tyson's.

## Money-saving news for State Farm drivers 50 and over.

State Farm's new reduced car insurance rate is saving money for many State Farm Mutual policyholders 50 and over. Call and see if you qualify. F.L. Newton Agent 128 East 10th Phone 385-3055 Littlefield, Texas



State Farm Mutual Automobile Insurance Company Home Office: Bloomington, Illinois

## FREE HEARING TESTS FOR SENIOR CITIZENS

WESTERN DRUG - MULESHOE  
MEET AT  
Wednesday, August 10, 1988  
COME BY OR CALL 272-1106 9:30 a.m. - 10:30 a.m.  
10 DAY FREE TRIAL 12 BRANDS TO CHOOSE FROM  
SATISFACTION GUARANTEED

Sponsored by  
**LIVINGSTON HEARING AID CENTER**

1903 19TH LUBBOCK, TX 79401 806-762-2951

606-B QUINCY PLAINVIEW, TX 79072 806-793-887



RICHARD R. DAVILA  
CERTIFIED HEARING AID AUDIOLOGIST

## 9. Automobiles For Sale

FOR SALE: 1983 Club Cab Ford Pickup. Very clean. \$4,800. Call 946-3628. 9-31s-4tp

## 9. Automobiles For Sale

FOR SALE 1980 Chevy Suburban. Call 272-3774 after 5 p.m.

## 15. Misc.



## Storm Cellars

Concrete & Iron Reinforced Ref. in Muleshoe.

Lynn Miller Littlefield, Tx 385-6801

## 15. Misc.

RED RIVER FISH FARMS  
STOCKING CATFISH, BASS, HYBRID BLUEGILL, AND FATHEAD MINNOWS FOR YOUR LAKES AND PONDS. WE WILL BE IN MULESHOE AT BAKER FARM SUPPLY ON THURSDAY, AUGUST 11th, FROM 4 p.m. TO 5 p.m. CONTAINERS WITH OXYGEN PROVIDED FOR TRANSPORTING FISH. FOR MORE INFORMATION CALL 915-529-4277, ABILENE, TEXAS. r15-32s-1tc

You said it was cold... He thought you called him old.



To someone with a hearing loss, a casual remark can often lead to misunderstandings and hurt feelings. Feelings you may never be able to set right. Because even though a friend or relative may hear what you say, he or she may have trouble understanding certain words. And one misunderstood word is all it takes.

Why take the chance? Be a good friend. Show someone how much you care. Call Bellone and make an appointment for a loved one now. Many hearing problems can be helped.

Friday, August 12, 1988

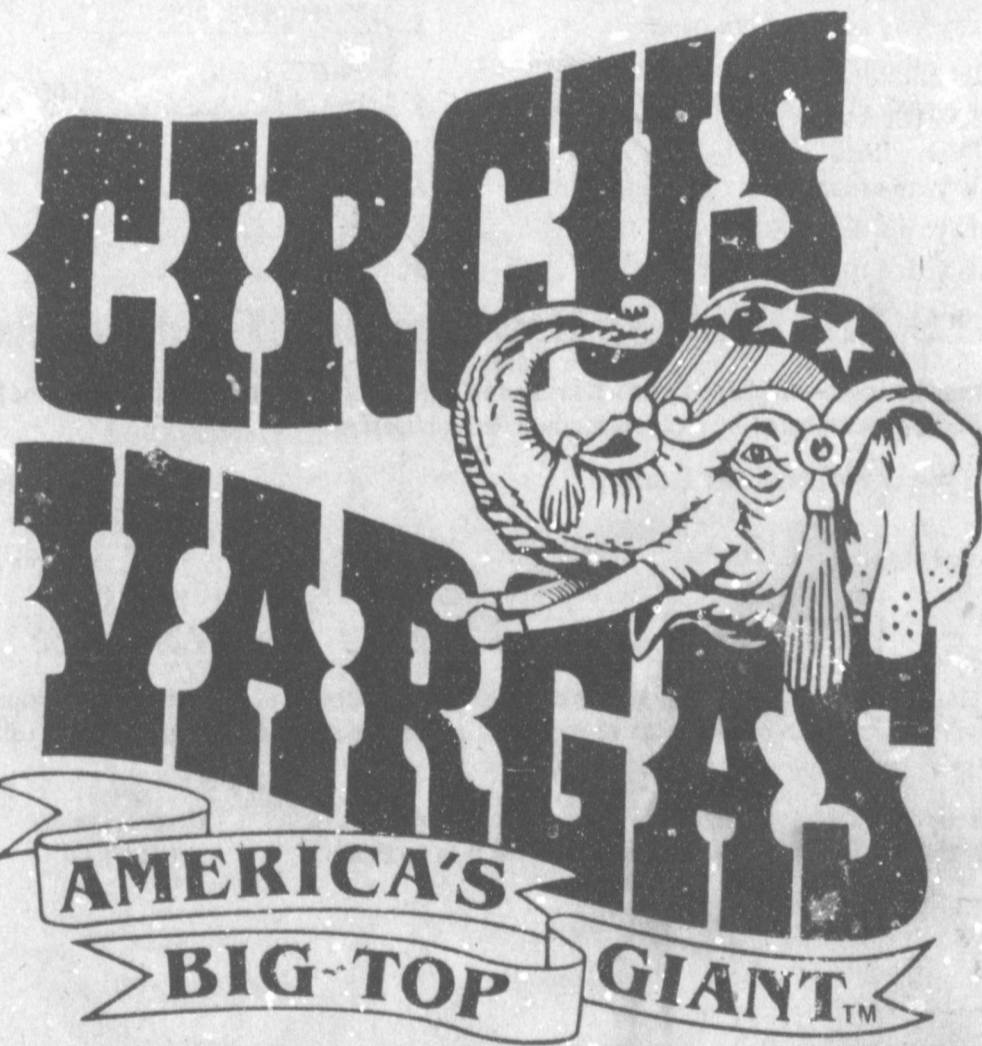
10 A.M.-12 P.M.

**Bellone**

Call Now For An Appointment To Avoid Waiting

Bailey County Coliseum 272-4114

## WELCOME



NORTH PLAINS MALL  
PRINCE ST. at MANANA  
Clovis

Show Schedule

Monday  
Aug. 15  
4:30 to 7:30

Tuesday  
Aug. 16  
4:30 to 7:30

For More Information Call Now: 762-7322

ADULTS ONLY  
2 CIRCUS TICKETS FOR THE PRICE OF 1!

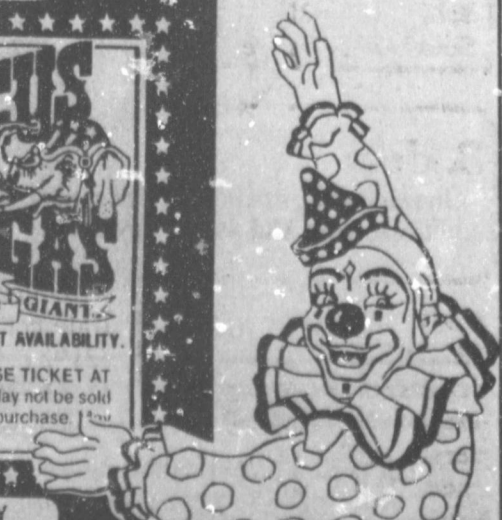
PREFERRED FRONT SIDE

2 FOR 21

North Plains Mall  
Prince St. at Manana  
Clovis, NM  
Monday, Aug. 15  
4:30 to 7:30

TO RECEIVE DISCOUNT ON THIS COUPON, PURCHASE TICKET AT CIRCUS MAIN ENTRANCE. Property of Circus Vargas. May not be sold or distributed on circus premises. One coupon per ticket purchase. Not to be used with any other discount offer.

VALID FOR UNDERLINED PERFORMANCES ONLY





# Play It Smart... Get Into THE CLASSIFIEDS

272-4536

**CLASSIFIED RATES**  
Minimum Charge \$2.30

Consecutive Insertions  
Minimum Charge \$2.00

**CLASSIFIED DISPLAY RATES**  
\$1.75  
Per Column Inch

**DEADLINES**  
12 noon Tuesday For Thursday Paper  
12 noon Friday For Sunday Paper  
We reserve the right to classify, revise, or reject any ad. Not responsible for any error after ad has run once.

**3. Help Wanted**

**LICENSED VOCATIONAL NURSE**  
South Plains Health Provider Organization, Inc. A private, non-profit, medical organization is seeking a Licensed Vocational Nurse for the (WIC) Women, Infants, and Children program in the Muleshoe Clinic. Work hours 8-5, Monday-Friday; Salary commensurate with experience plus excellent fringe benefits package. Requirements: graduation from an accredited school of Vocational Nursing; license to practice Vocational Nursing in the state of Texas; Work experience or course work in nutrition related field desirable, but not required. Bilingual in English/Spanish, and possess good communication skills to allow interaction with a variety of people. For more information call personnel director 806-293-8561.  
**EQUAL OPPORTUNITY EMPLOYER**  
s3-32s-3tc

**3. Help Wanted**

**GENERAL SHELTERS**  
Of Texas, Inc.  
The fastest growing manufacturers of portable buildings is seeking a dealer in the area for retail sales of portable buildings. Lot and small investment required. Excellent opportunity to expand existing business with low risk.  
Contact Mike Wulf  
General Manager  
1-900-634-8103  
3-29t-8tpts

**8. Real Estate**

**NEED A HOME?**  
Down Payment A Problem? Little or no credit? Bad credit? Let me help! Call Dale collect 806-763-5319.  
a8-32s-2tc

**8. Real Estate**

**SMALLWOOD REAL ESTATE**  
232 Main Muleshoe 272-4838

3 Bedroom, 1 Bath, 1 Car Garage, Brick. Estimated Closing Cost \$650.00 For Qualified Buyers. Small Down Payment If Not Qualified.

1,000 Gallon Tank on skids with electric pump, \$450.00

3 Bedroom, 2 bath, 2 car carport, stucco house, 150 foot lot. Owner will finance.

**8. Real Estate**

**NEW HOMES FOR SALE:**  
THREE BEDROOMS, TWO BATHS, LIVING ROOM, DINING ROOM, UTILITY ROOM, AIR CONDITIONED, AND MANY MORE FEATURES.  
NO MONEY DOWN,  
100% FINANCING AVAILABLE.  
OPEN 8:30 a.m. to 6:00 p.m.  
AFTER 6:00 p.m. CALL (806) 793-0103  
a8-31s-tfc

**8. Real Estate**

**JAMES F. HAYES & CO.**  
**AGRICULTURAL REAL ESTATE**  
Vic Coker-Agent  
806) 965-2468

\* 160 ACRES South of Clovis lays good, good water, good Center Pivot Sprinkler Fully A.I. A nice one!

2 LABORS SOUTH OF MULESHOE Lorgview Area, Good Soil, fully allotted Call for more details.

460 ACRES WEST OF BOVINA on State Line. 300 gallon, good soils, 70 Acres of grass, good allotments, terms available!

313 ACRES on Farmer County-Castro County line. 2 wells, 2 tailwater pits, good allotments, steel barn, terms available.

2-160 Acre tracts north-western Lamb County good water-2 wells on each farm good soil; lay good, immediate possession.

1-210 Acre Farm-Lamb County: Steel barn & other improvements, 2 wells lots of underground pipe good soil & lvs good. Immediate possession available.

120 Acres - Bailey County - West of Muleshoe. Allotted, will accommodate a circle sprinkler. Some terms possible.

640 ACRES NORTH OF LAZBUDDIE- ON PAVEMENT, 1 sprinkler, good soil, water, some grass.

80 ACRES East of Muleshoe with center pivot sprinkler, wheat & alfalfa, good opportunity.

107 ACRES East of Muleshoe, center-pivot sprinkler, many improvements, wheat & alfalfa. NICE

2311 Acres Lamb County Southeast of Earth. 1100 Acres irrigated, 1200 Acres grass. 2 electric pads for 4 more sprinklers. Excellent water. Terms Available.

15,000 head capacity feed yard with rolling stock. 200 Acres of irrigation with 2 sprinklers. Good soil & water. Rare opportunity.

\* In cooperation with New Mexico Broker.  
Call Vic for Farm & Ranch Appraisals

**1. Personals**

**FRANK'S**  
Refrigeration & Appliance Service Parts & Repairs.  
817 Gum  
Muleshoe, Texas  
79347  
PHONE  
Business 272-5090  
Home 272-3822  
fl-6s-tfc

DO YOU NEED A wood fence or a chain link fence installed? Call for free estimates, 272-4344.  
jl-31t-3tc

**STORAGE ROOMS & office space for rent call 272-4754.**  
sl-53s-stfc

**PIANO FOR SALE WANTED:** Responsible party to assume low monthly payments. See locally. 1-800-288-4260.  
1-27t-10tp

**STORAGE Rooms Available For Storage \$25.00-\$30.00 Per Month Ted Barnhill 272-4903**  
b1-42s-stfc

**SILAGE CHOPPING WANTED CORN OR FORAGE 30"-40" ROWS NO JOB TO SMALL WES MYERS PH. 316-376-4510**

**CONCERNED About Someone's Drinking? HELP IS AVAILABLE through Al-Anon Call 272-2350 or 965-2870 or come to visit Tuesday nights, 8:30 p.m. or Saturday mornings at 11:00 a.m. and through AA call 965-2870 or come visit Tuesday nights, 8:30 at 620 W. Second, Muleshoe.**

**3. Help Wanted**

**NOW TAKING APPLICATIONS** for truck drivers, mechanics and shop help. Apply in person at: Friona Transport, Hwy. 60 East, Friona.  
f3-31t-4tc

**TOWN & COUNTRY**  
Food Stores is taking applications for full time & part time positions as store clerk. Starting pay for store clerk position is \$4.00 per hr. If you are aggressive and willing to work, learn & contribute apply at 1900 W. Amer. and 107 E. Amer. Blvd.  
t3-30t-4tc

**4 BDRM. home in good location fenced in yard with storage building. 1621 W. Ave. C. Call 894-3889.**  
s8-15t-tfc

**8. Real Estate**

**NICE 3 bedroom, 2 bath house, 2 miles west of Muleshoe. With large barn. Nice location. Call 946-3340.**  
d8-25s-tfc

**FOR SALE by owner**  
Richland Hills 3 bdrm, 2 bath, fireplace, storm windows, central air & heat, large storage building. 272-5194.  
f8-27t-16tc

**ONLY \$99 DOWN**  
1985, 3-2 double wide, all new carpet and appliances. \$298 a month, 10 years, 11 percent APR. Call Dale collect 806-763-5319.  
a8-32s-2tc

**GREAT STARTER**  
home, cute. 14X66, 2-1. \$99 down, \$192 a month, 10 years, 11 percent APR. Call Dale collect 806-763-5319.  
a8-32s-2tc

A new broom won't sweep clean unless someone uses it.

**8. Real Estate**

116 E. Ave. C. BINGHAM & NIEMAN REALTY 272-5285 or 5286

PRICES REDUCED UP TO \$7,000 on 2 & 3-1-1 Brick Homes, Cent. heat, Energy Efficient.

PRICED FROM \$23,500!!! Approx. \$600.00 total move-in, payments based on income for qualified Buyers!!!

**RICHLAND HILLS**

**IMMACULATE 3-2-2** Brick, corner lot, Cent. A&H, built-ins, FP, loads of storage & closet space, much more!  
PRICE REDUCED-3-1-1 Brick, Cent. Heat, Evap. air, built-ins, fenced yard....  
JUST LISTED-Very nice 3-2-3 Home, Cent. A&H, built-ins, FP, fans, splkr. sys., fenced. PRICED TO SELL!!!!

**HIGHLAND & STEWART**

**JUST LISTED-VERY NICE-3-2-2** Brick, Cent. A&H, newly remodeled kitchen with built-ins, storm windows, fenced yard, storage bldg. and much more!!!!

**NICE-3-2-2** Brick Home (2 story), on corner lot, Cent. A&H, built-ins, and much more. LET'S LOOK TODAY!!!!

**JUST LISTED-3-2-1** carport Brick, Cent. A&H, built-ins, fenced yard, & much more. PRICED TO SELL!!!!

**JUST LISTED-Nice 5-3** Brick Home, Cent. A&H, built-ins, utility earhtone carpets, covered patio, fenced yard, & much more \$60's!!!!

**HIGH SCHOOL**

**3-2-1** Brick+2 carport, Cent. A&H, built-ins, fenced yard. Eff. Apt. or workshop & storage area. \$40's!!!!

**JUST LISTED-Very well kept 3-1 1/2** Home, Cent. heat, nice carpets, storm windows, storage bldg. & more. \$40's!!!!

**3-1-1** home, corner lot, Cent. A&H, built-ins. \$30's....

**3-1-1** home, new carpets, floor furnace, evap. air, built-ins, storage. Completely repainted interior & exterior \$20's.

**IMMACULATE-3-2-1 1/2** carport, Brick Home, Cent. A&H, built-ins, nice finished basement with fireplace, sprklr. sys., & much more!!!!

**8% A.P.R. FINANCING TO QUALIFIED BUYER** on this 3-2 Brick, Cent. A&H, built-ins, 2 fireplaces, nice large rooms, sprinkler sys.!!!!

**JUST LISTED-3-1** carports, new roof, stucco, & much more. \$20's  
**DIANNE NIEMAN, BROKER**

**8. Real Estate**

**JUST LISTED-VERY NICE-3-2-2** Brick, Geothermal Sys., built-ins, nice carpets, fenced. PRICED TO SELL!!!!

**JUST LISTED-NICE 2-1-1** home, wall furnace heat, earhtone carpets. \$19,500.00! LENAU ADDITION

**VERY NICE-2-1-1 1/2** carport home, Cent. Heat, evap. air, nice carpets, wood stove, storm windows & doors. Large storage-workshop. \$20's!!!!

**JUST LISTED-COZY 3-1 1/2-1** home, Cent. heat, nice earhtone carpets, fenced yard, storage bldg., & more!!!!

**JUST LISTED-3-1-1** home, Cent. A&H, utility, storage bldg., cellar, gas grill & more. \$20's!!!!

**COUNTRY HOMES**

**JUST LISTED-2-2-1** brick home on 1 acre on pavement, close to town, Cent. A&H. \$40's!!!!

**2-1-1 1/2** carport home on 1 acre on pavement close to town, built-ins, wall furnace heat, evap. air, satellite system, and fenced area for horses or calves. \$20's!!!!

**2-1** home, 20 acres, sub. pump, sprinkler, barns & corrals. \$40's!!!!

**JUST LISTED-Nice, well maintained Self-Service Laundry.** 34 washers, 16 dryers in nice, modern building, excellent location. Books available to qualified Buyer.

**SALE OR LEASE** nicely remodeled office bldg. with over 3,000 sq. ft. of area, excellent location across from Courthouse. PRICED TO SELL!!!!

**PRICE REDUCED-Nice 4-2-1** Brick on 1.267 acres, built-ins, fireplace, Heat & Air, ceiling fans, many improvements, fruit trees!!!! 70's

**APPROX. 3,000 sq. ft. bldg.** Railroad frontage. CASH PRICE \$15,000.00.

**JUST LISTED-69+** acres, improved pasture, 8" well, undgrd. line, fenced, plus nice 3-2-2 home, Cent. A&H, built-ins, utility, storm cellar, nice shop bldg. & much more, close to town!!!!

**VERY NICE-3-2-1** Home on 1 acre, close to town, Cent. Heat, Evap. air, nice carpets, nicely remodeled. \$30's!!!!

**JUST LISTED-3-2** Home, Cent. A&H, built-ins, FP., sprklr. sys., Satellite, plus nice metal office bldg. Cent. A&H, plus mobile home for rental unit on .466 ac. at edge of town. PRICED TO SELL!!!!

**GEORGE NIEMAN, BROKER**

**8. Real Estate**

**36 INCH ELECTRIC** range with grill on top. Call 965-2658.  
d15-31t-4tc

**11. For Sale Or Trade**

**FOR SALE:** Ford Factory Camper Sale Fiberglass Sliding Window. \$275.00. Call 965-2131 or 965-2917.  
f11-31s-3tc

**FOR SALE OR TRADE**  
Mans Emerald Ring 1+ carats Cali 272-5865  
v11-32s-2tc

**8. Real Estate**

**116 E. Ave. C. BINGHAM & NIEMAN REALTY 272-5285 or 5286**

PRICES REDUCED UP TO \$7,000 on 2 & 3-1-1 Brick Homes, Cent. heat, Energy Efficient.

PRICED FROM \$23,500!!! Approx. \$600.00 total move-in, payments based on income for qualified Buyers!!!

**RICHLAND HILLS**

**IMMACULATE 3-2-2** Brick, corner lot, Cent. A&H, built-ins, FP, loads of storage & closet space, much more!  
PRICE REDUCED-3-1-1 Brick, Cent. Heat, Evap. air, built-ins, fenced yard....  
JUST LISTED-Very nice 3-2-3 Home, Cent. A&H, built-ins, FP, fans, splkr. sys., fenced. PRICED TO SELL!!!!

**HIGHLAND & STEWART**

**JUST LISTED-VERY NICE-3-2-2** Brick, Cent. A&H, newly remodeled kitchen with built-ins, storm windows, fenced yard, storage bldg. and much more!!!!

**NICE-3-2-2** Brick Home (2 story), on corner lot, Cent. A&H, built-ins, and much more. LET'S LOOK TODAY!!!!

**JUST LISTED-3-2-1** carport Brick, Cent. A&H, built-ins, fenced yard, & much more. PRICED TO SELL!!!!

**JUST LISTED-Nice 5-3** Brick Home, Cent. A&H, built-ins, utility earhtone carpets, covered patio, fenced yard, & much more \$60's!!!!

**HIGH SCHOOL**

**3-2-1** Brick+2 carport, Cent. A&H, built-ins, fenced yard. Eff. Apt. or workshop & storage area. \$40's!!!!

**JUST LISTED-Very well kept 3-1 1/2** Home, Cent. heat, nice carpets, storm windows, storage bldg. & more. \$40's!!!!

**3-1-1** home, corner lot, Cent. A&H, built-ins. \$30's....

**3-1-1** home, new carpets, floor furnace, evap. air, built-ins, storage. Completely repainted interior & exterior \$20's.

**IMMACULATE-3-2-1 1/2** carport, Brick Home, Cent. A&H, built-ins, nice finished basement with fireplace, sprklr. sys., & much more!!!!

**8% A.P.R. FINANCING TO QUALIFIED BUYER** on this 3-2 Brick, Cent. A&H, built-ins, 2 fireplaces, nice large rooms, sprinkler sys.!!!!

**JUST LISTED-3-1** carports, new roof, stucco, & much more. \$20's  
**DIANNE NIEMAN, BROKER**

2 & 3-1-1 Brick homes that have been reduced \$4,000.00 to \$7,000.00 now ranging from \$23,500.00 to \$25,750.00 Estimated closing cost \$650.00 if you qualify. They can be bought Conventional & F.H.A. loans or for cash

**NICE 3-1-1** Brick approximately 1288 square feet, large lot with storage building. For only \$27,500.00  
25H-33

**3-1 detached 2 car garage** separate dining room. Has been plumbed & wired for gas or electric stove.  
25H25

**3-1-1 Carport stucco** with furniture. Let's look at this one  
25H34

We need more farm listings & house listings.

**Whitt-Reid**  
**Real Estate**  
**BROKER AND CERTIFIED REAL ESTATE APPRAISER**  
CALI ROY  
HOME 272-3058  
OR THURSIE OR GEORGE  
272-5318 272-4047

**Sudderth Realty, Inc.**  
109 FIFTH STREET  
(806) 481-3288 (806) 481-9194  
FARWELL, TEXAS  
Realtors/Certified Appraisers  
WE NEED FARM LISTINGS

**Who Knows?**

1. Define the word parascelerate.
2. Which state first ratified the Constitution of the U.S.?
3. Name the highest mountain in Africa.

mountain in Africa.

**Answers to Who Knows**

1. A bright moonlike spot on a lunar halo.
2. Delaware.
3. Mount Kilimanjaro.



A pressure canner testing clinic will be held on Tuesday morning, August 9 from 9 a.m. until noon in the Bailey County Extension office.

This service is being sponsored by the Bailey County Home Economics Committee of the Bailey County Extension Program Council.

Gauges on pressure canners need to be checked on a yearly basis to insure proper food processing.

With the canning season in full swing, it would be a great time to check your equipment.

If your canner is used frequently or if the lid is dropped or receives a hard knock, the gauges should be checked more than once a year.

If you are unable to bring your pressure canner in for testing during the time scheduled but would like to have it tested, please feel free to bring it by the office at another time for testing.

For testing of the gauges, only the lid to the pressure canner is needed. If you have a canner with a weighted gauge, you need to bring the weighted gauge with the lid for the testing.

Remember the pressure canner testing clinic on Tuesday, August 9 from 9 a.m. until noon in the Bailey County Extension office, located in the Bailey County Courthouse 300 South

First Street. This is a free service offered by the Bailey County Extension Service.

If you need additional information on home food preservation, please contact the Extension office at 272-4583.

**Progress**  
Genius: The guy who gets out of work by doing a job right the first time.  
—Scoop, Winter Harbor

**A Fact**  
Tact: To lie about others as you would have them lie about you.  
—Gospert, Pensacola

**Windshields**



We specialize in windshield replacements.

Call on us!

**J. W.'s Auto Service**

501 W. American Blvd.

272-3452

The parents and grandparents of Laramie Wood wish to thank all of those who extended their time helping us get the best of care for him and above all your love, support and prayers.

We thank God for friends who care.

God Bless all of you in our prayers.

Lonnie Wood

Shera & Charlie Wood

Willis & Neel Wood

**19 88 Property Tax Rates in THREEWAY I.S.D.**

This notice concerns 19 88 property tax rates for Threeway I.S.D. It presents information about three tax rates. Last year's tax rate is the actual rate the taxing unit used to determine property taxes last year. This year's effective tax rate would impose the same total taxes as last year if you compare properties taxed in both years. Compare it to the tax rate the taxing unit proposes for this year. This year's rollback tax rate is the highest tax rate the taxing unit can set before taxpayers can start tax rollback procedures. In each case these rates are found by dividing the total amount of taxes by the tax base (the total value of taxable property) with adjustments as required by state law. The rates are given per \$100 of property value.

<b>Last year's tax rate:</b>	
Last year's operating taxes	\$ 480,539.20
+ Last year's debt taxes	\$ -0-
= Last year's total taxes	\$ 480,539.20
÷ Last year's tax base	\$ 40,044,933.00
= Last year's total tax rate	\$ 1.20 /\$100

<b>This year's effective tax rate:</b>	
Last year's adjusted taxes (after subtracting taxes on lost property and taxes to correct appraisal roll errors)	\$ 479,892.88
÷ This year's adjusted tax base (after subtracting taxes on new property)	\$ 41,304,410.00
= This year's effective tax rate	\$ 1.1618 /\$100
× 1.03	
= Maximum rate unless unit publishes notices and holds hearings	\$ 1.1966 /\$100

<b>This year's rollback tax rate:</b>	
Last year's adjusted operating taxes (after subtracting taxes on lost property and taxes to correct appraisal roll errors and adding taxes lost in court suits)	\$ 479,892.88
÷ This year's adjusted tax base (after subtracting taxes on new property)	\$ 41,304,410.00
= This year's effective operating rate	\$ 1.1618 /\$100
× 1.08	
= This year's maximum operating rate	\$ 1.2547 /\$100
+ This year's debt rate	\$ .0064 /\$100
= This year's rollback rate	\$ 1.2611 /\$100

**SCHEDULE A: Unencumbered Fund Balances**

The following balances will probably be left in the unit's property tax accounts at the end of the fiscal year. These balances are not encumbered by a corresponding debt obligation.

Type of Property Tax Fund	Balance
Unencumbered Funds	113,434.00

**SCHEDULE B: 19 88 Debts Service**

The unit plans to pay the following amounts for long-term debts that are secured by property taxes. These amounts will be paid from property tax revenues (or additional sales tax revenues, if applicable).

Description of Debt	Principal or Contract Payment to be Paid	Interest to be Paid	Other Amounts to be Paid	Total Payment
Bonded Indebtness	40,000.00	2,000.00	-0-	42,000.00

Total required for 19 88 debt service	42,000.00
- Amount (if any) paid from funds listed in Schedule A	39,447.00
- Excess collections last year	-0-
= Total to be paid from taxes in 19	2,553.00
+ Amount added in anticipation that the unit will collect only % of its taxes in 19	134.37
= Total Debt Service Levy	2,687.37

**SCHEDULE C: Expected Revenue from Additional Sales Tax**

(For counties and cities with additional 1/2 cent sales tax)

In calculating its effective and rollback tax rates, the unit estimated that it will receive \$ N/A in additional sales and use tax revenues.

This notice contains a summary of actual effective and rollback tax rate calculations. You can inspect a copy of the full calculations at 104 E. Ave. C

Name of person preparing this notice Carl S. Gilbreath  
Title Chief Administrator  
Date prepared July 29, 1988

TRUTH IN TAXATION/1988

**19 88 Property Tax Rates in MULESHOE I.S.D.**

This notice concerns 19 88 property tax rates for Muleshoe I.S.D. It presents information about three tax rates. Last year's tax rate is the actual rate the taxing unit used to determine property taxes last year. This year's effective tax rate would impose the same total taxes as last year if you compare properties taxed in both years. Compare it to the tax rate the taxing unit proposes for this year. This year's rollback tax rate is the highest tax rate the taxing unit can set before taxpayers can start tax rollback procedures. In each case these rates are found by dividing the total amount of taxes by the tax base (the total value of taxable property) with adjustments as required by state law. The rates are given per \$100 of property value.

<b>Last year's tax rate:</b>	
Last year's operating taxes	\$ 1,413,617.34
+ Last year's debt taxes	\$ -0-
= Last year's total taxes	\$ 1,413,617.34
÷ Last year's tax base	\$ 174,545,350.00
= Last year's total tax rate	\$ .81 /\$100

<b>This year's effective tax rate:</b>	
Last year's adjusted taxes (after subtracting taxes on lost property and taxes to correct appraisal roll errors)	\$ 1,405,232.07
÷ This year's adjusted tax base (after subtracting taxes on new property)	\$ 169,525,045.00
= This year's effective tax rate	\$ .8289 /\$100
× 1.03	
= Maximum rate unless unit publishes notices and holds hearings	\$ .8537 /\$100

<b>This year's rollback tax rate:</b>	
Last year's adjusted operating taxes (after subtracting taxes on lost property and taxes to correct appraisal roll errors and adding taxes lost in court suits)	\$ 1,405,232.07
÷ This year's adjusted tax base (after subtracting taxes on new property)	\$ 169,525,045.00
= This year's effective operating rate	\$ .8289 /\$100
× 1.08	
= This year's maximum operating rate	\$ .8952 /\$100
+ This year's debt rate	\$ -0- /\$100
= This year's rollback rate	\$ .8952 /\$100

**SCHEDULE A: Unencumbered Fund Balances**

The following balances will probably be left in the unit's property tax accounts at the end of the fiscal year. These balances are not encumbered by a corresponding debt obligation.

Type of Property Tax Fund	Balance
Unencumbered Funds	840,833.77

**SCHEDULE B: 19 N/A Debts Service**

The unit plans to pay the following amounts for long-term debts that are secured by property taxes. These amounts will be paid from property tax revenues (or additional sales tax revenues, if applicable).

Description of Debt	Principal or Contract Payment to be Paid	Interest to be Paid	Other Amounts to be Paid	Total Payment

Total required for 19 debt service	N/A
- Amount (if any) paid from funds listed in Schedule A	N/A
- Excess collections last year	N/A
= Total to be paid from taxes in 19	N/A
+ Amount added in anticipation that the unit will collect only % of its taxes in 19	N/A
= Total Debt Service Levy	N/A

**SCHEDULE C: Expected Revenue from Additional Sales Tax**

(For counties and cities with additional 1/2 cent sales tax)

In calculating its effective and rollback tax rates, the unit estimated that it will receive \$ N/A in additional sales and use tax revenues.

This notice contains a summary of actual effective and rollback tax rate calculations. You can inspect a copy of the full calculations at 104 E. Ave. C

Name of person preparing this notice Carl S. Gilbreath  
Title Chief Administrator  
Date prepared July 29, 1988

TRUTH IN TAXATION/1988