



### THE WEEKLY CHRONICLE

Established Nov. 1, 1887

Entered as second-class matter at the postoffice at Eastland, Texas, under Act of March, 1879.

Published Every Friday

Office of Publication: 106 East Plummer Street Phone 601

#### NOTICE TO THE PUBLIC

Any erroneous reflection upon the character, standing or reputation of any person, firm or corporation, which may appear in the columns of this paper, will be gladly corrected upon being brought to the attention of the publisher.

Obituaries, cards of thanks, notices of lodge meetings, etc., are charged for at the regular advertising rates, which will be furnished upon application.

### This American Answer Is the Right Answer

It is a commonplace saying today that democracy is under attack all over the world. It is freely said that it is on trial for its life, and it is certainly clear that the German, Italian, and Russian state philosophies have condemned it as an antiquated relic in a world they believe to be inevitably striding on to new techniques of public administration.

How best answer these attacks? By bitter words condemning in turn the systems and beliefs of others? By military alliances aimed at curbing them by force?

No. There is only one sure defense of democracy, at home and before the whole world, and that is a ringing and convincing demonstration that it works and that life is better when lived in the democratic way.

How answer the religious and minority persecutions abroad? By checking resolutely the growth of any such feelings here, and by achieving constantly broader freedom at home to worship God as one wills, and to hold against no man his race, his color, his external circumstances.

How answer the regimented labor of totalitarian countries, whose appointed-from-above leaders boast that they tolerate no labor disturbances to interrupt production? By showing that a free labor movement can accept responsibility, and that free employers can deal with it smoothly and justly.

How answer the reputed centralized efficiency of one-man countries? By showing that a government responsive to the people's will is still more efficient.

How answer the propaganda flooding in from totalitarian lands? By creating such achievements in this one that their sheer glory will be its own propaganda.

How answer the threat of aggression and military might? By calmly and effectively taking measures making our own land secure, and then observing good faith and justice toward all nations, cultivating peace and harmony with all. (Those last are George Washington's words).

In short, how answer threats to democracy? By achieving more and better democracy. How answer threats to freedom? By achieving more freedom, and such conditions as will show the world this way is best.

That is why it is good to read the annual report of the Civil Liberties Union, titled "The Bill of Rights—150 Years After." This careful survey shows in detail "unprecedented support of our constitutional guarantees," "a more favorable interpretation by the courts in general of civil rights," mob violence at a new low, "extraordinarily little interference" with public meetings, and a decline of censorship of movies, radio, theatre, and literature.

Keep up the good work, America! That is the right answer, and the only answer, to the challenge!

### BRUCE CATTON - IN WASHINGTON

BY BRUCE CATTON  
NEA Service Staff Correspondent

WASHINGTON.—For several weeks, the report has been current here that President Roosevelt will eventually make a public appeal—probably via a fireside radio chat—to the rank and file of organized labor in both groups to compel a peace settlement between the A. F. of L. and the C. I. O.

It is known that the President has such a step in mind. If he decides to take it, however, there will be some advance warning in the way of a build-up. If and when high administration officials—such as Secretary of Labor Frances Perkins, for instance—start issuing public statements that the prospects for labor peace are hopeless, you can expect the President's appeal to follow. But as long as Miss Perkins keeps making optimistic statements like the one she recently made in Denver, you can take it for granted that the move is still "under consideration."

Miss Perkins, apparently, has stopped trying to get William Green and John Lewis together and is relying on Dan Tobin and Sidney Hillman. Incidentally, one observer close to the situation has suggested that the best way to bring about peace would be to stop talking about it; Lewis, he remarks, likes to see politicians squirm, and will postpone the reopening of negotiations as long as high New Dealers exhibit their anxiety publicly.

Anyway, New Dealers feel that the President can force a settlement if he wants to take drastic action. They build this feeling principally on the fact that letters and telegrams representing the feelings of more than 3,000,000 union members have been received at the White House and Labor Department in the last few months calling for an end to hostilities.

The attempt was made, or at least was prepared for, by inner circle New Dealers; the vehicle was to have been the American Labor Party in New York.

Plan was to bring the Labor Party into the Democratic Party as the "official" party organization in the metropolis. Tammany, which has been roundly beaten in city and national elections of recent years, was simply to have been disowned, with the idea that the Labor Party could step right into its place—and, incidentally, provide the New Deal with a fervent and dependable set of party workers in New York.

Probable result of this would have been to make Congressman James H. Fay leader of the Manhattan Democracy. Fay, as you may remember, is the man who beat the New Deal foe, O'Connor, in the last election, giving the Roosevelt purge its one victory.

Meanwhile, a struggle for control between ultra left-wingers and mild left-wingers is going on within the Labor Party. Purchase of the New York Post by George Backer helps the milder group. Under Backer, the Post will not merely speak for the Labor Party, but will speak for the moderate wing of the party; the leftists, it is understood, will find their voice in the new picture-paper which is soon to be started.

Various inner circle administration people are beginning to look just a bit dubiously at Attorney General Frank Murphy. Murphy enjoyed a good build-up after he took office last January; what is worrying the inner-circles is that the build-up keeps going on and on, with the attorney general grabbing an ever-increasing share of the spotlight.

Nobody on Pennsylvania avenue would be especially disquieted if he stopped going around the country so much, made fewer speeches, and buried himself a little deeper in his job. Theory seems to be that it's all right for a cabinet officer to be a hero, but if he becomes too big a hero you can't be sure just where it is going to end.

### Suggestions for That Library at Hyde Park



### I Give You Texas

By BOYCE HOUSE

It used to be that it was a most embarrassing circumstance if a man's shirt-tail was out. Now, half the young fellows are running around looking like Chinese laundrymen. Times do change—as a philosopher pointed out when he said, "A few years ago, you could have all the gold you wanted but if you had a pint of liquor, they'd put you in jail; now you can have all the liquor you want but they'll lock you up if you have any gold."

For ages, men have been poking fun at women's fashions. This shirt-tail craze would seem to be a good chance for the women to get even—except that a large percentage of them are walking around wearing unsightly slacks.

Which calls to mind the story of an occurrence in deep East Texas. A native was indignantly telling a friend about driving along in his jalopy and of being overtaken by a "city feller" who slowed down his limousine and yelled, "Why don't you get over and give me half the road, you snuff-dipping so-and-so?"

The friend asked, "Why didn't you cuss him back?" The man who had been insulted said, "I couldn't; my mouth was full of snuff at the time."

Not long ago, I dropped a nickel in one of these music machines to play "A Penny Serenade" but I didn't get back four cents in change.

While in Mexico, our Lions' group had the honor of being accorded a reception in the home of the governor in charming Cuernavaca and later were formally welcomed in his office in the 300-year old palace built by Cortez. It is a town of lovely gardens, vines with purple, pink and white blossoms spilling their beauty over the walls. You can sip a glass of wine on a broad, cool porch overlooking the Borda Gardens where the Emperor Maximilian and Empress Carlotta once strolled, and where Lindbergh courted Anne Morrow.

The Diego Rivera murals on the second story balcony of the Cortez palace are, in some respects, even more remarkable than the Rivera murals in Mexico City. The faces—in the National Palace and in Cuernavaca—have expression and, through masterly shading, give the effect of depth. At Cuernavaca, the eyes of the patriot Morales are fixed upon you, no matter from what point you look. Another painting, on the flat surface of a column, has been given a dark gray background, creating the illusion that the figure is in a niche. The white head and mane of Zapata's horse seem to stand out from the wall. At the foot of the mural are miniature sketches done in gray, so skillfully executed that they seem to have been carved in stone.

"Oldest joke" contest entry: A tourist asked a little boy, "George, how far is the next town?" "How did you know my name was George?" the boy inquired. "I guessed it," was the stranger's answer. "Then guess how far it is to the next town."

"There are no 'unavoidable' accidents," declares a bulletin issued by the Texas Safety Council, of which Pierce Brooks is director. "Death takes no holidays! 1610 individuals flashed into eternity on Texas streets and highway in 1935 to the dirge of screaming brakes and breaking glass. Not one should have died!"

### County Officials At Gorman Celebration

Sheriff Loss Woods and Tug Underwood and L. A. White, deputy sheriffs, attended the Gorman Indian Trail Festival, Thursday.

### Washington Letter

(Continued from page 1)

efficiently the animal puts on weight. Together they make a record-of-performance test by which beef herd sires may be "proved." The herd owner knows whether or not the offspring of a "proved" sire are likely to make efficient gains and yield carcasses of good quality. The greatest drawback for such tests has been the lack of a simple method for determining carcass grades of test animals before slaughter. Only trained cattle graders could do the job. The two-measurements method, which makes it possible for the farmer to do his own grading on the farm, was devised by the animal husbandman of the United States Department of Agriculture, after studying weights, measurements, and grades of 167 slaughter steers, including Herefords, Shorthorns, Aberdeen-Angus, and steers of abey breeding. The grade or score as determined by the two measurements for the most part tallied with the grade given the same animals by two competent graders. As an example of how the slaughter grade is arrived at by height at withers and weight: An animal 45 inches in height at the withers must weigh 1,016 pounds or more to grade prime, 873 to 1,009 pounds to grade choice, 755 to 872 pounds for good, 652 to 754 pounds for medium. All below 651 pounds grade plain. They have prepared a table giving the range of weight for each height at half-inch intervals. Where scales are not available, a similar table for weight at withers and heart girth has been prepared. Both tables are given in Circular No. 524 of the United States Department of Agriculture. A copy may be obtained by writing to my office.

#### \$376.55 JUDGMENT

Judgment of \$376.55 has been rendered by county court in favor of the First National Bank of Cisco, plaintiff in a case against J. A. and C. C. Carey.

Sports shirts are being worn outside the pants this year. The wiser and more economical men are just using their pajama coats.

### She's Prosecutor



Maryanne Bell, daughter of Federal Judge Robert Bell of St. Paul, Minn., is special assistant prosecuting attorney in Chicago wage-hour cases, resulting in indictment of four companies, seven company officers.

### Pensions Tie Up Old Prospectors Lives

TUCSON, Ariz.—Aged prospectors admit they like to receive old-age pensions, but complain that "it cramps our style."

Under pension laws, if a pensioner leaves town he loses his pension. So prospectors petitioned the Social Security board to let them use their government allowance to search the hills for gold.

The Tucson council of the Arizona Small Mine Operators backed the prospectors' pleas and declared the Federal government should let the desert rat use his pension for a grubstake for "just one more try" in the hills.

### Hog Creek Ex To Meet

A re-union of the school ex-students from 1905-10 who were teachers, will be held at Desdemona on July 11 at Desdemona with the Desdemona W. N. Koonce, president of the association. Announcement and program is being arranged.

### VISIT EASTLAND

Among Ranger Eastland Tuesday was F. M. Prock, Foy Murphy, Dick Cantrell, Isbell, K. C. Edmonds, et al., G. C. Love.

### JUDGMENT

Judgment of \$376.55 has been rendered by county court in favor of the First National Bank of Cisco, plaintiff in a case against J. A. and C. C. Carey.

### MARRIAGE LICENSE

The following marriage licenses were issued by County Clerk V. Galloway, over the objections of Andrew H. Bruce and D. D. Dodd of Freer, Texas, and Miss Mary Moore, also of Freer, Texas.

Nevada's legislature enact any tax this year. Members will be next campaigns on "memory" platform.

### CLASSIFIED

AMERICAN CAFE, 75c per cup, Haynes.

FOR RENT—6 room house, Phone 18, call 18.

FRYERS for sale, each, See Jess Taylor, west of States Oil Co. Eastland.

ELECTRIC APPLIANCES, Texas Electric Supply.

# MID-SUMMER TIRE SALE

# 25% DISCOUNT

TEN DAYS ONLY  
July 20th  
July 29th

## ON THE FAMOUS GOODYEAR

### "G-3" ALL-WEATHER TIRES

SALE PRICE 4.40-4.50x21 <b>\$750</b>	SALE PRICE 4.75-5.00x19 <b>\$775</b>
SALE PRICE 5.25-5.50x18 <b>\$895</b>	SALE PRICE 5.25-5.50x17 <b>\$990</b>
SALE PRICE 6.00x16 <b>\$1075</b>	SALE PRICE 6.25-6.50x16 <b>\$1295</b>

INCLUDING YOUR OLD TIRE

## Lucas Service Station

300 East Main Phone 50

Here's grand news for vacation budgets! For ten days—TEN DAYS ONLY—you can buy the world's most popular tire—the Goodyear "G-3" All-Weather—AT 25% OFF the regular list price.

This is the same famous Goodyear All-Weather that has gone out as original equipment on millions upon millions of new cars. This is the same tire that more people have purchased for renewal purposes than any other kind.

Only this year it's a new, tougher, longer wearing tire delivering MORE MILES—by actual test—than even last year's great model is giving its millions of users.

Buy a pair. Buy a set—at these remarkable bargain prices. Buy them on our Easy Pay Plan.

Come In Today — While Your Size Is Still In Stock

**BUY ON EASY TERMS**

You don't need to pay cash. You can open a convenient Budget Account and pay as you ride. Use your credit. You can buy these tires for as little as **75¢ A WEEK**

PIGGLY WIGGLY

PIGGLY WIGGLY

Outstanding  
**FOOD VALUES**  
For the Week

CHECK EVERY ITEM



**FOODS**  
You Want

AT PRICES  
You'll Like!

**LIMES**

Dozen **12 1/2c**

**BLACK EYE PEAS**

TENDER FRESH ..... Pound **3c**

**ONIONS**

SWEET 3 LBS. **10c**

**AVACADOS**

LARGE SIZE 2 For **25c**

**RHUBARB**

2 Pounds **19c**

**EGG PLANT**

Pound **9c**

**PEACHES**

LIBERTA Doz. **19c**

LIBBY'S  
**Apple Butter**  
2 26 Oz. Jars ..... **25c**

LIBBY'S FANCY  
**CORN**

Country Gentleman Or Whole Kernel Golden Bantam No. 303 Can

**10c**

LIBBY'S SLICED  
**PEACHES**  
TALL CAN **10c**

SURE-JELL

OR PEN-JELL

2 PKGS. **23c**

**BABY FOODS**  
LIBBY'S HOMOGENIZED  
2 CANS ..... **15c**

**MATCHES**  
FEDERAL No. 5's 4 BOXES **15c**  
SATIN TIP No. 4's 4 BOXES **10c**

Libby's DEVEILED HAM 3 Oz. Can ..... **13c**

APPLE JUICE Hartman's Lge. 20 Oz. Can . 3 for **25c**

OXYDOL, Regular 25c Size ..... **19c**

ARMOUR'S STAR **PEANUT BUTTER** QUART JAR **25c**

CLABBER GIRL BAKING POWDER 25 Ounce Can **21c** 10 Ounce Can **9c**

DRY BLACK EYE PEAS 4 Pounds **20c**

LIBBY'S SOUR PICKLES FULL QUART FANCY PICKLES **19c**

APPLE SAUCE WHITE HOUSE 2 No. 303 Cans **17c**

**Pickles** Libby's Rosedale 2 22 Oz. JARS **25c**

**PINEAPPLE** LIBBY'S CRUSHED or TIDBITS 2 9 OZ. BUFFET CANS **15c**

**Compound** 4 LB. CART. **35c**

PURE CANE  
**SUGAR**  
10 Lb. Bag **47c**

NEW SUPER CREAMED  
**CRISCO**  
3 Pound Can **50c**

TEXAS KING  
**FLOUR**  
24 Pound Bag **57c**

**ICED COFFEE WEEK**  
July 17th to 22nd

GOLD MEDAL Lb. Vacuum Packed Can **23c**

PLYMOUTH 2 Lbs. **29c**

FOLGERS Per Pound **25c**

FACE TISSUE CHANTALLY 200 Count 3 Boxes **25c**

Red Pitted CHERRIES 2 Cans **23c**

HUSKIES 2 PACKAGE DEAL **15c**

KWIK INSECT SPRAY Pint **15c** Quart **25c**

White DYANSHINE .... Bot. **19c**

THOMPSON'S SEEDLESS  
**GRAPES**

2 Lbs. .... **25c**

**CARROTS**

**RADISHES**

**GREEN ONIONS**

**CORN** 5 Ears **10c**

FLORIDA  
**ORANGES** Per Doz. **39c**

2 Nice Bunches **9c**

**Apricots** Libby's Rosedale No. 2 1/2 Cans **15c**

LADY ALICE TOILET **Soap** 3 BARS **10c**

**BROOMS** each **25c**

**SYRUP** BRER NO. 10 CAN **59c** RABBIT NO. 5 CAN **33c**

MAXWELL HOUSE  
**TEA**  
1/4 Lb. Pkg. **19c** GLASS FREE!

TEXAS KING  
**MEAL**  
5 Lb. Bag **12c** 10 Lb. Bag **19c**

P & G  
**SOAP**  
5 GIANT BARS **19c**

**Hens Fryers and Fresh Fish**

SLICED **BACON** Armour's Star .. lb. **29c** Faultless ..... lb. **23c**

**OLEOMARGARINE** 2 LBS. **25c**

**BOLOGNA** Per Pound **10c**

**DRY SALT** Per Pound **12c**

**CHEESE** Per Pound **19c**

**JOWLS** Per Pound **10c**

**ROAST** Baby Beef Seven - Lb. **18c**

**GROUND MEAT** Pound **15c**

**VEAL SEVEN STEAK** Lb. **19c**

**BACON SQUARES** Pound **14c**

**LUNCH LOAVES** Assorted Pound **25c**

WE SLICE IT  
**SUGAR CURED BACON** lb. **19c**

**HAMS** TENDERED HALF or WHOLE ..... LB. **24c**

**PIPKIN'S PIGGLY WIGGLY**

EASTLAND, TEXAS

We Reserve the Right to Limit Quantities

JULY 21st and 22nd

PIGGLY WIGGLY

PIGGLY WIGGLY

LOCAL—EASTLAND—SOCIAL

PHONE 601

BESSIE TAYLOR, Editor

GEORGE H. JEWELL BOOSTS SOUTHERN SELECT BEER HERE



George H. Jewell, with warehouse at 823 N. Breckenridge Avenue, Breckenridge, is now wholesale distributor of Southern Select Beer in Callahan, Eastland, Shackelford and Stephens Counties...

Auxiliary Units Of American Legion Will Meet In Waco

WACO, Tex.—One hundred and fifty American Legion Women's auxiliary units over the state are booking delegates this month for what promises to be the biggest convention in the auxiliary's history...

His Range Wide



R. D. Berkheiser's jacket is covered with badges of previous competition as he and other members of United States rifle team prepare for Pershing Challenge Trophy Match with British on range near Richmond, Surrey, England

Attempts to Revive Desdemona Field Now are Underway

Two more attempts to revive the famous old Desdemona Oil Field in Eastland and Erath Counties with deep production, will be made at locations staked this morning...

Ranger Fireman Is Attending Course At A. & M. College

Day Mace, member of the Ranger Fire Department, left Sunday for Texas A. & M. College, where he will attend the firemen's short course, being conducted there throughout this week...

No Damage In Two Fires Ranger On Site

The Ranger Fire Department answered two calls although no damage was done from either blaze. Shortly before noon a fire broke out at the home on Desdemona...

Former Residents Eastland Visitor Mrs. Faye Taylor and her daughter, Mrs. B. F. Reeves and son, Michael Reeves, all of Longview, are visiting in Eastland...

Three Factors Are Making Problem of Youth More Acute

AUSTIN, Tex.—Three factors are operating in the field of "youth" today to make the American Youth Problem as acute as the hands of the aged; (2) collapse of the theory that education means professional employment; (3) the changing nature of the "farm" or "labor" problem...

To Serve Rotary Club The Martha Dorcas Class of the First Methodist church school will serve the 12 o'clock luncheon to the Rotary Club in the lower assembly room of the Church Monday, July 24, it was announced today...

Leave Monday for Stay in Glenrose The members of the Sub-Deb Club will leave Monday morning, July 24th, for Glenrose, where they plan to spend the week, returning Friday, it was announced today by their sponsor, Mrs. Jack Ammer...

Funds for the trip have been raised by the girls bake sale held Saturday in Piggly Wiggly store, which was reported as very successful, and by selling theater tickets this week. At Saturday's sale, a total receipt of \$23.77 was recorded...

The club will meet in regular session Saturday afternoon in the home of Fannie Pitzer. Club members to leave Monday for Glenrose are: Dorothy Perkins, Glenna Johnson, Betty Hyer, Maxie O'Neal, Frances Crowell, Mava Lou Crossley, Nannette Tanner, Beverly June Smith, Fannie Pitzer, Louise Davis, Betty Wiegand and Marilyn Larner.

His Sky Love Note Blew Away



Sky's the limit in love life of Oscar Wigenjost, lower, sign painter of Lincoln, Neb. In high hope of reconciliation, he hired Pilot Joe Jacobs to sky-write "Wiggie loves Helen" above Omaha, Neb., home where estranged wife, Helen, top, is staying. Mean wind blew smoke letters away as they were formed—but "Wiggie" will try, try again.

With Our Wildlife By JOHN R. WOOD, State Game Warden

Fishermen Urged to Be Careful Too many times has the author noticed this year the careless fishermen in the overloaded boats. Many small crafts venture far out into the large lakes of this section of Texas loaded with fisherman without provisions having been made in case of a turn over. Nearly all boats go out for a day's fishing with too many passengers and in most cases too few life savers (either cushions, intertubes, or life jackets)...

Bathina Beauty



Nowadays it takes more than figure and bathing-suit to win beauty contest, judging by Victorian demureness displayed by Doris Geisinger, Quaker school-teacher who won out as "Miss Atlantic City." She will be hostess to contestants for title of "Miss America, 1939."

Just a Bit Personal...

Mr. Jack Cameron of Houston is a guest in the J. LeRoy Arnold home. Mr. and Mrs. J. P. Collins left last Tuesday for McCombe, for a vacation trip. Mrs. Roy Birmingham, Miss Verma Johnson and Miss Joan Johnson have just returned from a vacation trip to Corpus Christi. Mr. and Mrs. C. W. Geue will leave today for a vacation trip to Yellowstone Park and other vacation points. Enroute to their home in Midland from a vacation spent in Galveston, Mr. and Mrs. George Bennet stopped for a visit with her parents, Mr. and Mrs. J. A.

DANCE to Musical Ramblers LEGION HALL RANGER Every Friday Night 9 'Till

A Penny Saved, is a Penny Made!

... and one way to know you are on the right track is to put your savings into something that has the least chance for a diminishing value. Always apply this test and it will help you to save. We recommend homes as an ideal investment. Put your pennies into home investments, and watch your savings grow. Then it is smart, too, to own your own home, and what a delightful feeling!

EARL BENDER & CO. Abstracts - Insurance - Real Estate - Rentals

Come Get It Folks Happy To Serve You—

- BACON, Armour's Star, Home Sliced . . . . . Lb. 29c
BACON, Decker's Iowa, 1 Lb. Pkg. . . . . 27c
BACON, Armour's Faultless, 1 Lb. Pkg. . . . . 23c
BACON Squares . . . . . Lb. 17c
SALT PORK, No. 1 Sides . . . . . Lb. 11c
SALT PORK JOWLS . . . . . Lb. 8 1/2c
BIG BOLOGNA . . . . . Lb. 10c
BABY BEEF ROAST, Choice Cuts . . . . . Lb. 18c
BABY BEEF STEAK, Loin Chops, T-Bone . . . . . Lb. 25c
BABY BEEF STEAK, Chuck Cuts . . . . . Lb. 18c
CHEESE, Armour's Cloverblock . . . . . Lb. 19c
HAMS, Tenderized, Half or Whole . . . . . Lb. 25c
HAMS, Center Slices . . . . . Lb. 35c
HAMS, Picnics, 4 to 6 Lb. Avg. . . . . Lb. 19c
HOT BARBECUE, ASSORTED LUNCH MEATS!

PHONE 70 OWNED AND OPERATED BY S. L. (LEON) BOURLAND Market Located in A. & P. Store

Two Girls Held In Ranger Released to Monahans Sheriff

Two girls, who gave their names as Mildred Billingsley, 18, and Maybell Harp, 18, both of Monahans, were arrested in Ranger Saturday on suspicion by Chief of Police Guy Pledger and Patrolman G. C. Love, and were later turned over to Monahans authorities. The girls, who were riding in an automobile, were held by the officers for investigation, after they said the automobile in which they were riding was borrowed. The sheriff at Monahans was contacted and he told the Ranger police that the car and the girls were being sought there. The two were kept in the Ranger jail until Sunday, when they were released to the Monahans sheriff, who left with the two for that city.

No Tree Chopping Asked By Official

To those who have been chopping down trees at Lake Ringling near Eastland recently, Chief of Police W. J. Peters of Eastland today issued a plea for abandonment of the practice. Chief Peters said there is no apparent reason for the destruction except that it is probably being done mischievously.

State Police Seek Reason for Traffic Deaths Week-Ends

AUSTIN—State police today sought an explanation as to why nearly half the people killed in traffic are fatally injured on Saturdays and Sundays. The death toll is far out of proportion to the volume of traffic on those days, even though week-end travel is high. Much of the blame, state police believe, must be laid to the "week-end driver" thoughtless, careless joy-riding, sometimes drunk and often inexperienced. He must shoulder responsibility for an appalling toll which in five months this year has claimed 279 lives out of a total of 567 fatalities for that period, they declared. The five-month survey disclosed that 49 per cent of the traffic deaths occurred on week-ends, 21 per cent on Sundays, 23 per cent on Saturdays. But less than 3 per cent of all traffic moves on week-ends—18 per cent on Sundays, 15.7 per cent on Saturday; state officers pointed out. The

Methodist Revival At Mountain School Is Ended On Sunday

The Methodist Revival that has been held at Mountain School for the past eight days closed Sunday with six conversions and two additions to the church. Rev. J. R. Slaughter of Eastland conducted the services with the assistance of Rev. J. C. Collins of Olden.

FEVER TICKS NEAR SPOKANE

SPOKANE, Wash.—Ticks carrying the dreaded spotted fever disease have invaded woods close to Spokane. As a result of bites by the insects, two persons have died thus far this summer. City and county health authorities urge all persons who go into the woods to be inoculated with anti-tick toxin first.

OPEN HOUSE Money-Saving Values Come in and visit us! See our attractive clean stores. Admire our complete fresh stocks of quality merchandise—and take home enough of them to last all week. Clover Farm SALAD DRESSING Quarts . . . 32c - Pints . . . 19c FRESH FRUITS and VEGETABLES ICE COLD MELONS Large Heads LETTUCE . . . . 2 for 9c OKRA . . . . . lb. 10c Green Beans . . 2 lbs. 19c EGG PLANT . . . lb. 12c CELERY, 1ge stalk . 15c ORANGES . . 2 Doz. 35c LEMONS . . . . Doz. 21c LIMES . . . . . Doz. 10c BANANAS . . 2 Doz. 25c AVACADOS . . . Ea. 10c FRESH and CURED MEATS Fancy Baby Beef STEAK, Loin, T-Bone . . Lb. 25c JOWLS . . . . . lb. 9c Decker's Tall Corn Sliced BACON . . lb. 22c Fancy Seven ROAST . . . . . lb. 15c Radio Bacon SQUARES . . . . . lb. 17c MARGARINE . 2 lbs. 25c Armour's Star Sliced BACON . . lb. 25c Assorted LUNCH MEATS . lb. 25c LOAF MEAT . . . lb. 15c Plenty of Nice Dressed FRYERS . . . . . Lb. 23c CLOVER FARM CORN FLAKES 2 Large Packages for . . . . . 17c Red Cup COFFEE . . . . . 2 lbs. 29c MILK, 3 tall or 6 small 19c Fireside BEANS . . . . . 2 Cans 19c Glendale TUNA FISH . . . Can 14c No. 2 Standard Pack TOMATOES 3 Cans 19c Clover Farm JELL . . . . . 4 pkgs. 19c Glendale Broken Slice Pineapple . No. 2 Can 15c CREAM of WHEAT FLOUR . . . 48 Lb. Sack \$1.19 CLOVER FARM STORES

### Eastland County's Day Will Be On Aug. 25th

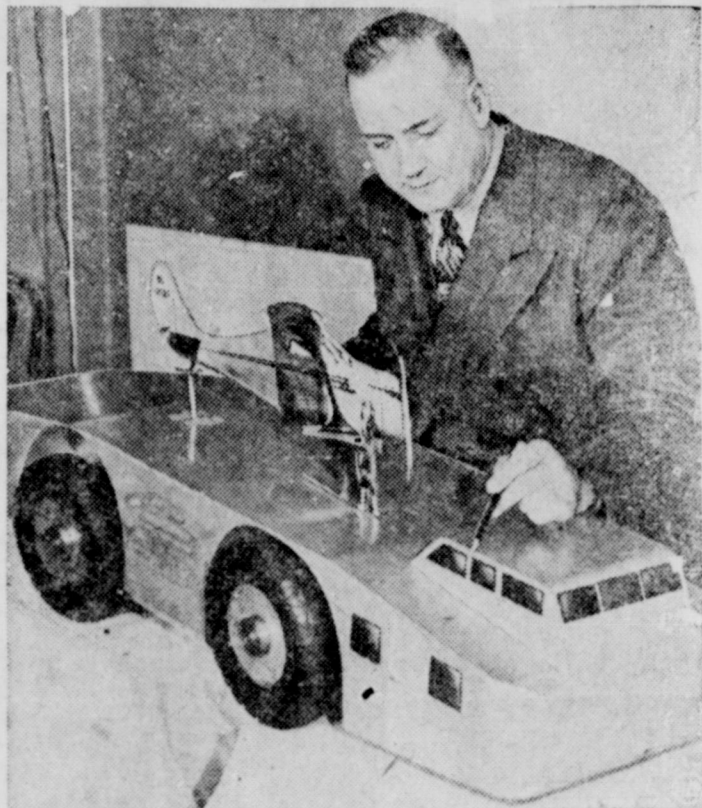
Eastland County goat day will be held at the Terrell Ranch, east of Eastland on Friday, August 25, according to an announcement by Elmo V. Cook, County Agent, who has conferred with specialists A. & M. College Extension and Eastland County agents concerning plans for the program.

W. R. Nisbet, Extension Animal Husbandman, will discuss goat management and will classify and score breeding goats brought by breeders. The score card used will be similar to the one being used in classifying dairy cattle.

Dr. I. B. Boughton, veterinarian, Texas Agricultural Experiment Station, Sonora, will discuss diseases and parasites effecting goats and how to control them.

A committee of Eastland County goat raisers working with the County Agent on plans for the goat day is Dr. R. H. Hodges, Ranger, J. F. Donley, Ranger, and John Thurman, Eastland, who is manager of the Terrell Ranch.

### Show Cruiser for the Antarctic



Dr. Thomas Poulter, Chicago technologist, demonstrates model of his \$150,000 snow cruiser, key transport unit for U. S. expedition to Antarctic in October. Cruiser will resemble huge trans-continental bus, will be 55 feet long, 15 feet high, and will have two 200 horse-power Diesel engines. Pneumatic-tired wheels will be driven by own motors quarters for from four to six men, scientific laboratory. Five-passenger quarters for from four to six men, scientific laboratory. Five-passenger "flying laboratory" will be carried on cruiser's roof.

### Summer Heat is Hard on Tires Says Seiberling Dealer

"A tire tread wears out twice as rapidly when the mercury is at 90 degrees than when it is at 60," Jim Horton of Jim Horton Tire Service, local Seiberling tire dealer at E. Main street, said today in warning Eastland motorists about holiday and hot weather driving.

Heat is hard on tires, Mr. Horton says, an extreme care must be exercised during the summer months to insure long mileage and safe and trouble free driving. Mr. Horton gives six hints to motorists on tire care. They follow:

1. Keep your tires adequately inflated, measuring the pressure when the tire is cold. An under-inflated tire will flex more and generates more heat than one which is properly inflated. Do not let air out of a tire if it shows excessive pressure when hot; heat increases the pressure in a tire.
2. Try to avoid abusing your tires by driving them over stones or holes in the road or by bruising them against curbs or sidewalks. Have cuts and bruises promptly attended to.
3. Keep wheels in alignment and properly balanced, have brakes equalized.
4. Switch the wheel position of the tires every 5000 miles or thereabouts and give the spare tire its regular turn on the rolling wheels.
5. Long, unbroken driving at excessively high speeds increases strain on a tire.
6. Replace tires that are worn smooth. They puncture and bruise more easily and provide little traction when the streets are wet.

"If the motoring public would take the advice of a tire man as they take that of a lawyer, a dentist or a doctor there would be fewer accidents and less loss of life on the highways each year. We believe that if motorists will follow the hints above that motoring would be made vastly safer and more dependable," Mr. Horton concluded.

### TRY Our Want-Ads!

### Takes Dunking but Not a Drubbing



Billy Conn cools off quickly by immersing his head between rounds of his battle with Julio Etzana, during which he won the lightweight championship at Madison Square Garden.

### Trench Silos Will Be Talked At Cisco Meeting July 24th

Trench silos will be the topic of the program when Eastland county farmers, ranchers, business men, and others meet at the Cisco City Hall at 8:30 p. m., Monday, July 24th. Plans will be made for a county-wide trench silo campaign and contest which will be open to everyone in Eastland county from the smallest farmer to the largest rancher. Livestock raisers who

have filled trench silos in the past will tell what their results have been and agricultural workers will tell how to properly dig and fill a trench silo.

Speakers on the program will include M. E. McMurray, manager Texas Dairy Products association, Fort Worth, Otis Larner, field representative of the Comanche cheese plant, Dr. F. E. Clark, Cisco doctor and rancher, Floyd Pool, Moran banker, Homer E. White, Cisco livestock farmer, J. B. Eberhart, Rising Star dairyman and president of the Dairyman's association of Eastland county, and others.

The meeting and campaign for more and better feed in Eastland

**Hamner Undertaking Co.**  
Phones 17 and 564  
DAY OR NIGHT  
AMBULANCE SERVICE

**Constipation**  
**Nyal Mineral Oil**  
A non-habit forming relief for constipation and irregular movements. Pure, natural and odorless.  
Full Pint 59¢

**Corner Drug Store**  
Eastland  
**Rotary Program At Eastland Outlined**  
An outline of the year's program was presented by Jack W. Frost, club president, at the weekly meeting of the Eastland Rotary club, Tuesday.  
county is being sponsored by the Dairyman's association of Eastland county. Vocational agriculture teachers, representatives of the Farm Security administration, the county agent, and other agricultural workers are cooperating in the movement.

**WORLD'S FAIR VACATION SALE!**  
**4 FOR 3**  
**SALE!**  
on the new  
**SEIBERLING SAFETY TIRES**

Yes, sir—four tires for the price of three! You can enjoy a vacation trip by driving on a complete new set of four Seiberling Safety Tires. You pay for ONLY THREE plus your old tires. The fourth new Safety Tire is included absolutely FREE!

A new Safety Tire will add to your enjoyment. It's a long-lasting, streamlined beauty built on entirely new safety principles.

"Heat Vented"—the only tire in the world with patented "heat vents" that cool the blowout danger zone. It has the quick-acting "Saw Tooth" tread. And it's built with "Saf-flex"—the new Seiberling cord that can stand an almost unbelievable amount of heat, wear and abuse.

Get into the Safety Zone  
Equip your car in the "safety zone" by equipping it all around with new Seiberling Safety Tires. Our easy-plan allows you to pay as you go. So there's no need to wait for the savings of this sensational 4 for 3 sale. Come in NOW.

**SEIBERLING TIRES**  
**JIM HORTON TIRE SERVICE**  
Main St. Phone 258 Eastland

### Stephenville Grid Star Given More Honors This Year

STEPHENVILLE, Tex.—Hugh Wolfe, one of the numerous Texas boys who have gained football fame throughout the nation, has been accorded a new honor.

He has been invited to coach an all-star combination of grid stars from the continental United States who will meet selected teams of Hawaiians in a series of games on the Hawaiian Islands in September and October.

Wolfe, who made things tough for Southwest Conference opponents while he was at the University of Texas, will begin his new, short-time job in Honolulu about September 1, and will remain in the islands about two months. But after that he is coming back to Stephenville to be his father's partner in the nursery business.

A nursery, he says, is a better business bet than professional football, even to a man who got \$4,000 for playing three months with the New York Giants last year and was offered \$5,000 for the coming season with the Philadelphia Eagles.

The team that Wolfe will take to Honolulu will be made up of stars from all sections of the United States. They will practice together a week in San Francisco before sailing. In Honolulu, Wolfe will share the coaching of a combined Inland-Continental team with Bob Patrick, former star at Oregon State who now is director of athletics at the University of Hawaii. The combined

### Pioneer Resident Is Buried Sunday

Funeral services were conducted at Mt. Zion Church, north of Ranger, Sunday afternoon at 4 o'clock for N. P. Hames, 73, who died Saturday night at his home north of Ranger.

The services were conducted by Rev. G. Alfred Brown, pastor of the First Methodist Church of Ranger, assisted by Rev. H. B. Johnson, pastor of the First Christian Church of Ranger, and Rev. Otis Brown, pastor of the Mt. Zion Church. He joined the Methodist Church when he was 18 years of age.

The decedent was born in Yell County, Ark., June 20, 1866 and had lived near Ranger practically all his life. He was married Nov. 8, 1886, to Miss Nancy Dempsey.

Survivors include his widow, four children, Miss Nellie Hames, Mrs. Dellie Mayhall, Dewey Hames and Mrs. Ollie Miller, 10 grandchildren and two great-grandchildren. Two daughters preceded him in death.

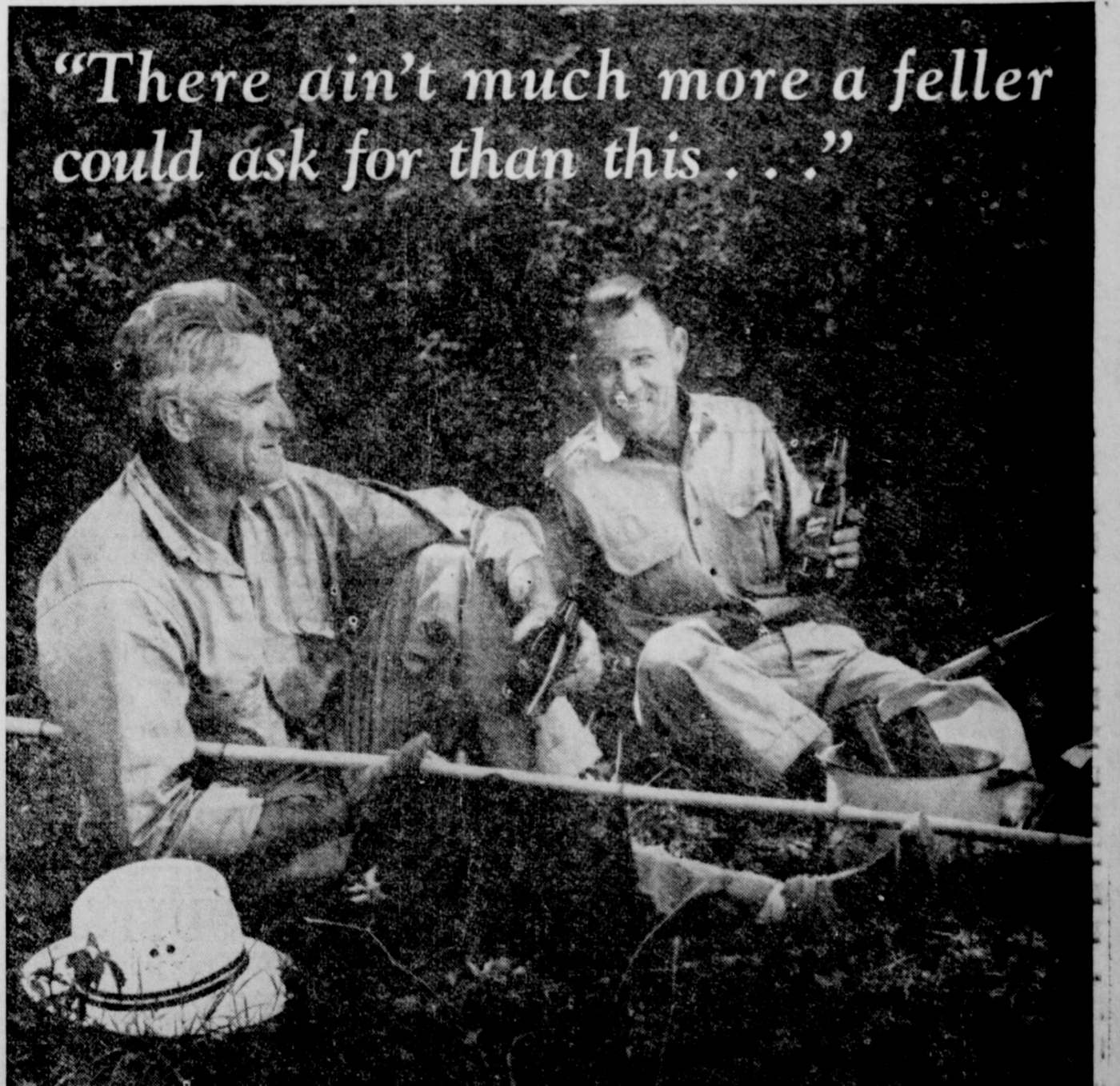
team will be made up of the 11 players who accompany Wolfe from San Francisco and 15 players from the University of Hawaii.

The combination team will tour the Islands, meeting established elevens, including, probably, the one at the army base.

Besides coaching while in the Islands, Wolfe will give a series of lectures at the University of Hawaii on athletics and physical education programs in continental United States.



Drink **Coca-Cola**  
Delicious and Refreshing  
**Coca-Cola goes along...for the pause that refreshes**  
When you're out for an outing, you're in for a good time, but a thirsty one. Make it perfect with ice-cold Coca-Cola...for the pause that refreshes. It does things for thirst that you'll like.  
TEXAS COCA-COLA BOTTLING CO.



**"There ain't much more a feller could ask for than this..."**  
There's a heap o' goodness in each bottle  
There's a calm sort of satisfaction about a shady bank, a good companion and SOUTHERN SELECT—a sort of solid friendliness that grows with time. That's the way most folks feel about SOUTHERN SELECT. We don't claim it's the best beer made, because that's a matter of personal taste. But we do know that it's a fine beer and that after most folks have tasted a couple of bottles of SOUTHERN SELECT they are mighty partial to it and mighty hard to switch to any other brand. We think you'll feel that same way, too.  
**GEO. H. JEWELL, Distr.**  
823 N. Breckenridge, Breckenridge, Texas  
**Southern Select**  
THE SOUTH'S ONLY DISTILLED WATER BREW  
GALVESTON-HOUSTON BREWERIES, INC. Galveston



# DOWN GOES PRICES at the MEN'S SHOP

# July Clearance SALE

**AMAZING July SAVINGS**

**IT'S HERE!  
BIGGER--BETTER  
AND GRANDER  
SAVINGS**

*Values that make your Dollars go farther!  
Take advantage of these low prices!*

Summer is not near over but here we are offering a clean sweep sale of all summer merchandise and we've got prices to move them. This should interest every man and young man to the extent of real buying action. There are many items which are limited and we urge early attendance on the opening of this July Clearance Sale!

**GRAB THESE HOT SHOTS--THEY'RE REAL VALUES**



<b>One Group Dress SHIRTS</b> Odds and Ends—Slightly Soiled Values to \$2. SALE PRICE <b>99c</b>	<b>ONE LOT LEFT-OVER SHOES</b> VALUES TO \$5.00 ODD SIZES—SPECIAL NOW <b>\$1.95</b>	<b>One Lot Odds and Ends—Straw HATS</b> <b>49c</b>
--	---	---

TENNIS SHOES, SOFTBALL SHOES, \$2.00 Values—NOW .....

**SHIRTS - SHIRTS - NOW ON SALE.. COME AND GET 'EM**

FOR THE FIRST TIME WE'VE INCLUDED WHITE SHIRTS AT SALE PRICES! SAVE DURING THIS EVENT



**One Lot "Shelkirk" Cotton 2 - Piece Suits—Reg. Val. \$9.85—SALE PRICE .. **3.99****  
 BROKEN SIZES—NO ALTERATIONS  
 SIZES.... 1-35; 2-36; 1-37; 2-38; 1-39; 1-40

**ONE LOT SUITS**  
 Summer Fabrics  
 Mohair Cloth in Colors of white, brown, gray, blue and tan.  
 Values To \$19.75  
**11.99**  
 2-PIECE GARMENTS NO ALTERATIONS  
 SIZES 3-37 — 3-38 — 2-40  
 1-39 — 1-42 — 1-46

**ALL OTHER SUITS**  
 Values To \$35.00  
**25-30% DISCOUNT**  
 BEAUTIFUL SUITS—SAVE MONEY

**ARROW and JAYSON MESH CLOTH**  
 Values to \$2.00  
 Now **\$1.69**  
 Only .... **1**  
 3 for \$4.00

**ONE GROUP DRESS SHIRTS**  
 Values to \$1.65  
**99c**

Our Regular Stock Broadcloth, Madras, Rayon Stripes  
 \$2.00 Value SALE PRICE **\$1.69**  
 \$2.50 Value SALE PRICE **\$1.89**  
 \$3.50 Value SALE PRICE **\$2.49**

**SPORT SHIRTS**  
 \$1.00 Value SALE PRICE .....  
 \$1.50 Value SALE PRICE .....  
 \$1.75 Value SALE PRICE **\$1.19**  
 \$2.00 Value SALE PRICE **\$1.49**

Special Offer  
 Jayson and Ritz  
 WHITE SHIRTS  
 \$1.65 to \$1.95 Values  
 Specially **\$1.19**  
 Priced ... **1**

**STRAW HATS**  
 Panamas and Body  
 Reg. \$5.00 Val. SALE PRICE **\$3.49**  
 Reg. \$3.50 Val. SALE PRICE **\$2.99**  
 Reg. \$2.95 Val. SALE PRICE **\$1.99**  
 Reg. \$1.95 Val. SALE PRICE **\$1.19**

**All Sailor HATS**  
**\$1.00**

**ALL SUMMER TIES**  
 VALUES TO \$1.50 .....  
 One Lot Summer TIES, NOW **49c**  
 Reg. 35c Value Seersucker TIES **19c**

Our Special Brand "Old Rip" FELT HATS  
 (Made by John B. Stetson Co.)  
 These hats are staple styles for the man who likes a conservative large brim. In brown, belly and bisque. Regular \$5.00 value. Every hat guaranteed to give satisfaction  
**\$3.89**

**One Lot Summer BELTS**  
 \$1.00 and \$1.50 Values **69c**  
 Values To 50c NOW **39c**

All Shirts, Shorts, Pajamas, Union Suits—Rayon, Broadcloth  
**20% OFF!**  
 SEE US FOR SPECIAL LOW PRICES ON MEN'S LUGGAGE

**SPECIAL OFFER DR. SCHOLL'S ARCH SUPPORTS**  
 To Close Out, Ladies Men. Regular \$3.50  
 \$5.00 Values  
**\$1.99 and \$3.99**

**ALL SUMMER PANTS**

Values \$1.95 to \$6.50

Cotton, "So Kool," Rayons, Worst-ers, Seersuckers, Congo, Palm Beach, etc.

**20% OFF!**

**One Lot WHITE PANTS**

Regular \$3.75 Value **\$2.29**

**ONE GROUP PANTS**

Val. to \$2.45 Sale Price **\$1.29**

**ALL ENSEMBLE SUITS IN THE HOUSE**

**20% DISCOUNT**

**LADIES LUGGAGE SPECIAL!**

Fortinglite Hat Boxes, Wardrobe Cases, Fitted Cases, Unfitted Cases, Airplane Stripes and Plain Colors. Canvas and Leather. Sizes 18 to 26

\$5.95 to \$40.00 Values  
**\$3.95 to \$22.50**

# SAVE ON QUALITY SHOES

**JARMAN and CROSBY SQUARE DRESS SHOES**

Ventilated, tutone, guaraches, crepe and leather soles, in gray on gray, blond on tan, tan on white, black and white and solid colors.

**\$3.95**

**JARMAN**  
 Regular Tan and Black Reg. \$5.00 and \$7.00 Val.  
**\$4.45 and \$4.95**

**CONNOLLY HI-TOPS AND OXFORDS**  
 \$6.00 Value SALE PRICE **\$4.99**  
 \$7.00 Value SALE PRICE **\$5.99**

**Florsheim SHOES**  
 Kid, Kangaroo, Calf and Scotch Grain.

Tan, Black, Brown, Tones, White, Cordovan  
 \$8.75 Values SALE PRICE **\$7.85**  
 \$10.00 Values SALE PRICE **\$8.85**

**WOLVERINE WORK SHOES**

An unusual event for give any reduction on shoes. Soft cap or soft Genuine horsehide. Every guaranteed. Don't miss all sizes are guaranteed.

\$5.00 Value SALE PRICE **\$3.95**  
 \$6.95 Value SALE PRICE **\$4.95**

**FOR MEN AND YOUNG MEN—FALL SUITS REDUCED!**

Carry overs and new arrivals. SELECT YOUR TOPCOAT NOW!

If you're taking a trip to cool climates, or for school use BUY NOW!

**20% off**

# THE MEN'S SHOP

EAST SIDE SQUARE

EASTLAND, TEXAS

20% OFF

**Beach ROBES**

Values **\$1.95 to \$3.95**

Ladies Swim **SUITS**

Values to \$5.00

**\$1.69**

MEN'S **SHIRTS**

\$1.95 Values  
 \$2.95 Values  
 \$3.95 Values

# Eastland Consolidated Theatres Celebrate Sixth Anniversary of Service

### Set Aside Appreciation Many Patrons

### Barham Points Out City of Gratitude

Eastland Consolidated theatres, under the management of Cecil Barham, launch a week-long celebration of appreciation.

Barham, designated by choice of the citizens and by proclamation of the mayor, is called Appreciation Week.

Barham marks the sixth anniversary of Texas Consolidated Theatres in Eastland, and has designated by special theater appreciation of Eastland and as a gesture of appreciation of the city.

Barham said, "We, also, stand in proud, wish to pause and show the Eastland county that as Eastland has theaters have increased their services. We are proud of the city, in which we have had our

Theatres under the management of Cecil Barham have had a steady increase in interest in this entire community bringing many people to their amusement at this appreciation week. It will add a stimulus to the city, and inspire determination and more pictures.

## BARHAM RECEIVES PROCLAMATION



Photo by E. Hinrichs

Mayor C. W. Hoffmann (foreground) is shown here handing to Cecil Barham, city manager Texas Consolidated Theatres, copy of proclamation the Mayor issued designating the week starting Friday, July 21st, as Appreciation Week in the two Eastland theatres, Connellee and Lyric. The week will be observed by special film program.

## LYRIC CASHIER



SYLVIA BAGGETT

Sylvia Baggett (above), assistant treasurer and head cashier of the Eastland theatres, started her theatre work in 1938 as cashier of the Connellee theatre and at the present time is considered one of the most efficient cashiers in the Texas Consolidated Theatres. She received her present assignment in February of this year. Miss Baggett is a graduate of the local schools and lives with her parents here in Eastland.

importance of good citizenship. He said that no man could be a good theatre man unless he was a good citizen first. He urged all his men to be active in the interests of the community in which they live and in the welfare of the nation. He stressed the importance of exercising their rights at the polls.

In connection with community co-operation by the theatres plans are now being formulated for safety campaigns in all schools to tie in with the state-wide traffic education movements. The promotion of interest in music by school children is another of the community activity ideas being made by the Interstate and Consolidated managers.

His interest in civic matters brought him into the newspaper publishing business. With the consolidation of the Dallas Journal and the Dallas Dispatch, last year, he became president of the company now publishing the Dallas Dispatch-Journal. This and a directorship of the Republic National Bank of Dallas are his only business interests outside the theatre.

### Born in St. Louis.

Karl Hobbeltzelle was born in St. Louis in 1878 the son of Clarence Linden Hobbeltzelle and Ida Knapp Hobbeltzelle.

He organized the Interstate Amusement company in 1905 and pioneered a tag of attractions through the South and Southwest.

As he erected theatres in this territory each became known as the most modern and unique in the country. Many of the larger theatres throughout the nation embody features first seen in Hobbeltzelle showhouses.

With the exception of several years he has always been active in the operation of his theatres. Hobbeltzelle is an old and honored name in Switzerland, and dating from the 15th century.

Members of the family were governors of Swiss cantons, jurists, writers, warriors and political figures from the 15th century. Several of the family were active in the American revolution.

Known as Philanthropist. Mr. Hobbeltzelle lives in Dallas with Mrs. Hobbeltzelle, who, before her marriage, was Esther Thomas, known theatrically as Esther Walker and at that time reigning favorite songstress of Broadway revues.

Karl Hobbeltzelle is known throughout the state as one of Texas' most generous philanthropists. He is an ardent patron of the arts. He is particularly interested in the restoration of a collection of his which he has lent to the Dallas Art museum. The Hobbeltzelle collection of old silver and china is nationally famous. The promotion of symphony and opera seasons as civic necessities also occupy him.

## RAY BEALL



Ray Beall is Advertising Director of Texas Consolidated Theatres. Mr. Beall now makes his home in Dallas with Mrs. Beall.

## APPRECIATION WEEK PROCLAMATION

BY MAYOR C. W. HOFFMANN

As Mayor of Eastland, I wish to congratulate Cecil Barham and his personnel on the administration of Texas Consolidated Theatres in Eastland and to proclaim July 21st to 28th as Eastland Theatres Appreciation Week. And also to join with the citizenship in extending congratulations on the sixth anniversary of the Texas Consolidated Theater operations here. I have found Mr. Barham, the local manager, a good citizen and liberal and responding more than his share to the needed charities of Eastland and to all civic projects.

Texas Consolidated Theatres are among the major employers in Eastland having eleven Eastland people on their payroll. Last year they paid out \$9,000 for Eastland people in salaries and at Christmas distributed \$400.00. They paid out to local merchants and other miscellaneous things, \$5,000.

Texas Consolidated Theatres paid out \$800 in city, state and county taxes in Eastland last year and in addition to this they rent two theatres on which a great amount of taxes are paid. Texas Consolidated is one of our best water users, and one of the greatest consumers of electric power.

As Mayor of Eastland, I am grateful to Mr. Barham for bringing us the best selection of motion pictures obtainable, and for his constant endeavor to improve the theatres here through his superiors.

It will be by the patronage of the people of this entire community that will make such improvement and more comfortable theatres possible.

I wish for Mr. Barham and the Texas Consolidated Theatres many happy Appreciation Weeks and happy birthdays; to the people of Eastland and for the Texas Consolidated Theatres a continued serving of the people with the best diversified film obtainable.

## Assistant Manager Lyric-Connellee



Photo by E. Hinrichs

Aubrey Van Hoy, (above) assistant manager of the Eastland Theatres, came to Eastland two years ago from Plainview, where he was connected with the Griffiths Theatre for 15 years as operator and assistant manager.

He is married and has two children, a son and daughter, and is a member of the First Baptist Church.

## Life In Theater Business Is Spent By Noted Texan

Actual direction of operation of the Eastland theatres, through City Manager Cecil Barham, falls to R. J. O'Donnell, known to most of the folks in show business as 'Bob'. He's vice president and general manager of the Texas Consolidated circuit and his job is operation of the many houses scattered throughout Texas.

Like most other successful showmen Mr. O'Donnell has spent practically his entire life in the theater. Born in Chicago some 40 odd years ago he began as a part-time usher while going to school. His first boss was Bryant Washburn, who later became a star of the silent films and who recently has been heard on radio programs. Out of school he became a full-time usher and it wasn't long before he was an assistant manager. From this he leaped into New York as a box office assistant and in a short while became treasurer. Here he began the climb that was to make him active head of the Texas Consolidated theatres.

### In Texas Since 1924.

In New York, after becoming a Broadway figure as treasurer of several legitimate theatres he became manager of the city's largest vaudeville theater. After several years at this task branched out for himself as an artist's representative. Alternately then he became booking agent, manager, production chief and agent.

He first came to Texas in 1924. Fort Worth was his first port of call. Here he managed the Majestic theater, which at that time was the city's vaudeville theater. His stay in Fort Worth was short, however, and he soon moved into the general office of interstate in Dallas. Here he became supervisor of theater operation of all the Hobbeltzelle playhouses.

### Good 'Mood Feeler'.

Bob O'Donnell is considered one of the theater's best "mood feelers." He gauges public likes and dislikes in entertainment to a fine point.

He works most of the time he isn't asleep. Early morning finds him at his desk or out on the circuit looking over theaters and

theaters. In 1927 he became managing director of the New Majestic Theatre in San Antonio and when Interstate Circuit took over the IKO theatres in that city he became city manager of the Interstate holdings, a position he held until he was made district manager of the Texas Consolidated theatres.

In his present position Willie supervises the operation of 40 theatres in Eastland, Abilene, Amarillo, Breckenridge, Ranger, Brownwood, Denison, Denton, Paris, Tyler, Vernon, San Marcos and Wichita Falls. He now makes his home in Dallas with Mrs. Willie and their son, Raymond, Jr.

## DISTINGUISHED SHOWMAN



R. J. O'DONNELL

R. J. O'Donnell, as vice president and general manager, has active charge of Interstate and Consolidated Theatres in Texas. He has been in the show business for many years and is known throughout the country for his ability in this field. He lives in Dallas.

## Frank O. Starz



Frank O. Starz, (above), former newspaper man, heads the advertising and publicity department of Interstate and Consolidated Theatres. Starz lives in Dallas with Mrs. Starz who before her marriage was Johnnie Jungman of San Antonio. They have two daughters.

helping his managers solve problems of operation. When in Dallas he is a familiar figure in the downtown and suburban theaters chatting with patrons and employees. His duties carry him from coast to coast. You talk to him

## WOMAN HEAD



Bess Short (above) native of Bartlett, heads the special short subject department of Interstate Theatres in Dallas. She had her first theatre experience with the original Little Theatre of Dallas, and worked on Dallas newspapers before being selected in 1934 to head this Interstate Consolidated department.

at his desk this afternoon and tomorrow may bring you a call from Hollywood or New York. Airplanes, automobiles and trains carry him on his jaunts in interest of business. He's on the go all the time.

## ED TEXAS PHILANTHROPIST



KARL HOBLITZELLE

Interstate Theaters is Karl Hobbeltzelle (above), promoter who has been identified with many Texas projects and in Dallas. He is also a well-known philanthropist.

## INTER MAN IS WELL-KNOWN

### FOR WORKS OVER TEXAS

Eastland Consolidated theatre sixth anniversary for a week here, celebrating their opening Saturday, pay tribute

## CONNELLEE THEATRE



Photo by E. Hinrichs

Connellee theatre is the largest theatre between Fort Worth and El Paso and is under the care of any kind of stage show. The seating capacity is 1400 and is now showing action pictures.

## Executive Active In Business for More Than Thirty Years

Raymond Willie, district manager of the Texas Consolidated Theatres, entered show business in 1916 and in a few short weeks he became a regular usher and later doorman of the Hippodrome theatre. From this job he moved to the old Majestic as assistant manager and from there to Dallas as assistant manager of the Majestic.

His first managerial assignment was the Palace Theatre at Creburne in 1919 and in rapid succession he was transferred to Hillsboro, Galveston and Waco. In 1921 he was moved to Dallas as assistant manager of the Palace.

In 1923 he went to San Antonio to manage the new Palace and from there to the Jefferson in Dallas and after three years there he went to Birmingham, Ala. as manager of the Interstate Theatres.

## Local Manager of Shows Has Career In Public Dealings

Cecil Barham, city manager of the Eastland theatres, started work for the Interstate Circuit, Texas Consolidated Theatres in 1933 as advertising manager of the Capitol Theatre in Dallas. He held this position for ten months and was promoted to the management of one of the Dallas theatres where he remained for 15 months and was then transferred to Navasota, Texas, as city manager of the company's three houses there and then to San Marcos, Texas, where he handled three houses and from there was transferred to Amarillo as manager of the Capitol. He came to Eastland from his Amarillo assignment.

## LYRIC THEATRE

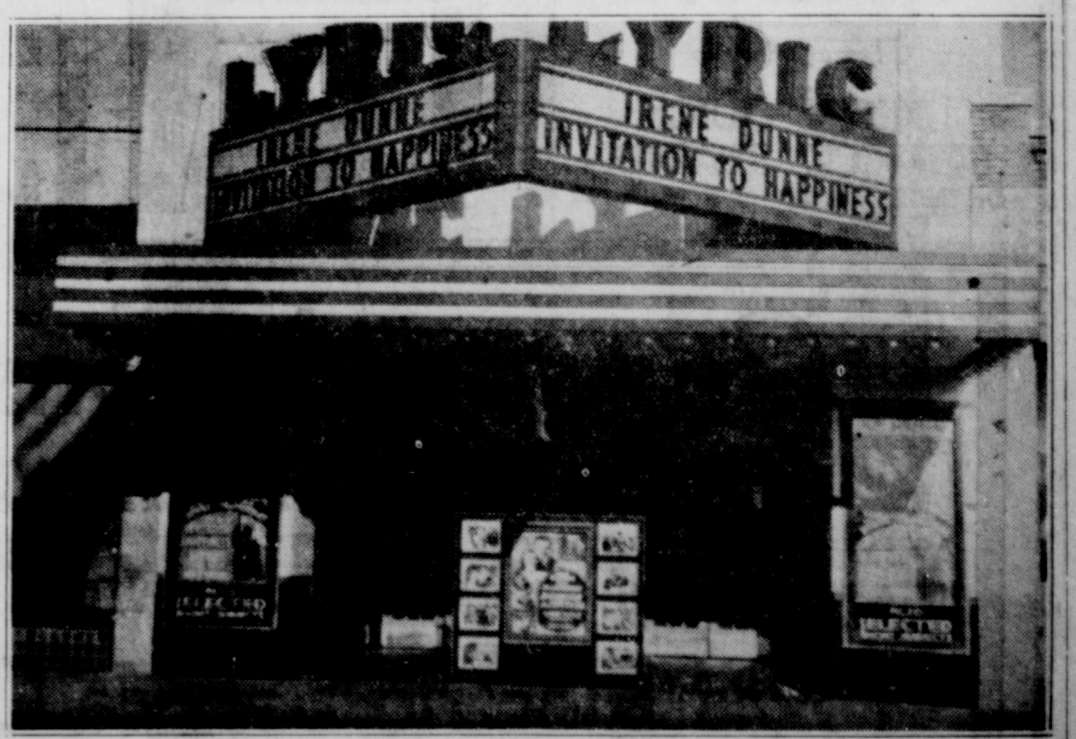


Photo by E. Hinrichs

The Lyric Theatre was recently remodeled at a cost of \$12,000 is equipped with the best type of seats that are on the market, it is small but comfortable and neat, and is the home of the finest pictures that Hollywood produces.

# APPRECIATION WEEK STARTS

## LYRIC & CONNELLEE

THE CO-OPERATING BUSINESS INTERESTS ON THE  
YOUR AMUSMENT AND SHOPPING CENTER---AL

*It takes the  
CAKE*



TEXAS  
CONSOLIDATED THEATRES

6<sup>th</sup>

*Anniversary*

EASTLAND OWNERSHIP  
LYRIC CONNELLEE THEATRES

EASTLAND CHAMBER  
OF COMMERCE

Extends congratulations to the Texas Consolidated Theatres. Eastland and community and its progress has been enhanced by the high type of motion picture entertainment presented by the Lyric and Connellee Theatres.

ATTEND THE ATTRACTIONS DURING APPRECIATION WEEK

### WE DON'T "SHINE" YOUR CLOTHES

Harkrider cleaning gives you the appearance you want! There's no objectionable shine when we do the job. Try our superior service— you're sure to like it.

CONGRATULATIONS TEXAS CONSOLIDATED THEATRES

### HARKRIDER CLEANERS AND DYERS

West Main St. Phone 20 Eastland



### ANGEL FOOD



Get A Quart For Your Family!



Let the Kiddies eat it every day!



Eat Ice Cream P.M. Let-down!

EAT ANGEL FOOD ICE CREAM BEFORE AND AFTER THE SHOW—

KENNY'S CORNER DRUG STORE  
ANGEL FOOD IS MADE EXCLUSIVELY BY US

### PHONE 17

FOR AMBULANCE SERVICE

Congratulations to Texas Consolidated Theatres

### BEN HAMNER

When In Town Attending Good Entertainment, Come to See Us For TEXACO PRODUCTS Washing and Greasing Our Specialty Storage Service

### DICK'S QUICK SERVICE STATION

On the Square Eastland

1839 — 1939

Celebrating Our "CENTURY OF SERVICE"

Eastland Theaters Demand Quick Service YOU, TOO, CAN HAVE IT! SHIP VIA

### RAILWAY EXPRESS

Phone 337 L. P. Stambaugh, Agent.

No Evening Is Complete Without Visiting Our Air Conditioned Cafe For the Finest of Foods. Eat With Us Before or After the Show During Appreciation Week. Regular Meals or Short Orders.

### ANDREWS CAFE

East Side Square Eastland



### SALE

This Week

Be sure and visit the Fashion Shop Clearance Sale now in progress. It will make you feel better to be dressed up with the best at the lowest price when you attend the Appreciation Week Motion Picture Entertainment.

### THE FASHION

North Side Square Eastland

## Congratulations To

TEXAS CONSOLIDATED THEATRES

AND BEST WISHES FOR A SUCCESSFUL APPRECIATION WEEK IN ATTENDANCE TO EASTLAND THEATRES.

Texas Electric Service Company

MANY THANKS FOR YOUR PATRONAGE OF THE LYRIC AND CONNELLEE DURING THE PAST YEAR

— AND —

WE HOPE TO SEE YOU DURING OUR APPRECIATION AND ANNIVERSARY WEEK

- Cecil Barham ..... City Manager
- Aubrey Van Hoy ..... Asst. Manager
- Sylvia Baggett ..... Lyric Cashier
- Adele Kuykendall ..... Connellee Cashier
- Margaret Gibson ..... Relief Cashier
- Leslie Cook ..... Lyric Doorman
- Fred Frost ..... Lyric Doorman
- Bailey Hinton ..... Connellee Doorman
- Gena Bowles ..... Confectionery
- Jack Cliatt ..... Lyric Operator
- Lloyd Almire ..... Connellee Operator

### NEW PICTURE BENNY'S BEST

Picture Jack Benny surrounded by twenty perfect Petty Girls, the living counterparts of artist George Petty's magazine girl! Imagine Dorothy Lamour singing as only she can sing! Think of Edward Arnold as an industrial tycoon who finally becomes convinced that Jack is in love with his wife! Add three new hit songs and the result is just a faint conception of the hilarity, song and romance blended into the new Paramount comedy with music, "Man About Town," opening at the Lyric Theatre. Jack's a producer who is about to present a show in London. Dorothy Lamour, his leading lady, seems to prefer the male juvenile to Jack. Then Jack meets an English lady and the fun really begins. She wants to make her husband jealous, and Jack is bent on making Dorothy feel the same way. Binnie Barnes, Phil Harris, Betty Grable, "Rochester," E. E. Clive and Matty Malneck and His Orchestra are involved in the proceedings in important supporting roles. Direction was by Mark Sandrich.

### LYRIC

TUES. - WED.

One l-o-u-g LOUD Laff!



"Merrie Melody Cartoon"

Zane Grey Sport Reel

"POPULAR SCIENCE"

### SCENES FROM



Dorothy Lamour as she appears in Jack Benny's "Man About Town." The cast includes Phil Harris and the Connellee mid-night show Saturday and at the Lyric Monday.



A scene from "Blondie Meets the Boss" one of the attractions of the Lyric and Connellee.

### LYRIC AND CONNELLEE

THURSDAY ONLY

The Bumsteads Are Grander Than Ever

### "BLONDIE MEETS THE BOSS"

Penny Singleton as Blondie Arthur Lake as Dagwood Larry Simms as Baby Dumpling Skinny Ennis and his Band A Columbia Picture Based on CHIC YOUNG'S Comic Strip.

CONNELLEE Opens At 7:30

### "DEAD END" GIRLS

Tomorrow - 8:45 a.m.

Love hungry.. innocent victims, the prey of beastly guards!



### "DEAD END GIRLS"

## PRISON WITHOUT BARS

FRIDAY - SATURDAY



# FRIDAY JULY 21st THRU JULY 28th THEATRES OFFER OUTSTANDING ATTRACTIONS

MAKE YOUR ATTENDANCE TO EASTLAND THEATRES AND TO VISIT THEIR STORES. MAKE EASTLAND THEATRES AT ECONOMY PRICES TO ALL. CHECK THIS PAGE FOR PROGRAMS--WE'RE HAPPY TO SEE YOU

### WEEK PICTURES

CONNELLEE - SUNDAY



Robert Preston (Star of Union Pacific) with Mary Carlisle in "Illegal Traffic" Connellee, Sunday.

CONNELLEE - SUNDAY



Loretta Young, Walter Brennan and Richard Greene in "Kentucky" at the Connellee-Sundays.

## CONNELLEE Fri. - Sat.

HERE'S OUR APPRECIATION SPECIAL!

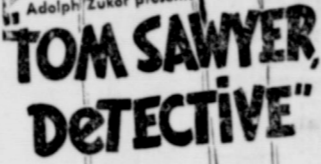
### Double Feature Program

FEATURE NO. 1

FEATURE NO. 2

**SMASHING ACTION!**

**SHUCKS!** Detectin' is easy as pie. All you do is ketch the criminal...



— PLUS CHAPTER ONE —  
**"LONE RANGER RIDES AGAIN"**



Mountain Rhythm - Smiley Burnette at the Connellee-Sundays.



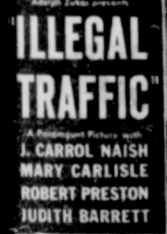
Tom Sawyer Detective - Tom Sawyer, Smiley Burnette, June Storey, and Billy Cook at the Connellee-Sundays.

### CONNELLEE

MONDAY

FEATURE NO. 1 (Run)

HE SELLS SAFETY TO KILLERS!



FEATURE NO. 2

COLOR!

**Kentucky**

Loretta Young, Richard Greene, Walter Brennan, Douglas Dumbrille, Karen Morley, Moroni Olsen  
20th Century-Fox Pictures

at men!

DEFIANT! BRANDED! IN THE HELL THEM!



Smith in "HAMS"

"News"

## ROCHESTER SPEAKING, BOSS!!

Mistah Benny, Phil Harris says you sho' is a lad, killer... says you talk 'em to death. An' he just drove off with your Maxwell — an' Miss Lamour an' Miss Barnes was in it!



SONG HITS!  
"STRANGE ENCHANTMENT"  
"THAT SENTIMENTAL SANDWICH"  
"MAN ABOUT TOWN"  
"RIDGEY JOE"

## Jack Benny · Dorothy Lamour · Edward Arnold "MAN ABOUT TOWN"

Binnie Barnes · Phil Harris · Betty Grable · Rochester · E. F. Clive  
Matty Malneck and His Orchestra · A PARAMOUNT PICTURE · DIRECTED BY MARK SANDRICH

"CARTOON" - "NEWS"  
Jan Garber, in "Music Through the Years"

Midnite Show Saturday

**LYRIC** SUN. - MON.

EXCITING! DELIGHTING!  
Six great stars of screen and radio... four top tune-sensations... a bevy of those gorgeous Betty girls... and a million laughs!



MEN'S SUMMER SUITS



LADIES' SUMMER DRESSES



PERFECTLY CLEANED THE SANITONE WAY

Don't you envy people who always look cool and smart even in the warmest weather? You needn't, because the secret of their good appearance lies in keeping their cool clothes ready for wear. You can do that, too, by sending them to MODERN DRY CLEANERS for cleaning. We clean all types of summer suits and dresses perfectly, without the slightest damage to delicate fabrics.

CONGRATULATIONS TEXAS CONSOLIDATED THEATRES

Phone 132 MODERN DRY CLEANERS AND DYERS

S. Seaman Street

Keep Your Perfect Health and Make the Kiddies Happy With

**MELOTOAST BREAD**  
Baked in Eastland By

**STAR BAKERY**

W. L. Trammell, Owner  
Bakery on West Main St., Eastland

We're Glad of the Opportunity to Serve the Texas Consolidated Theatres With Their Lumber and Building Needs. Visit Us When Attending the Attractions During Appreciation Week.

**Higginbotham - Bartlett Lumber Company**  
West Main St. Eastland

Before and After The Show or Any Other Time! REFRESH — WITH — DELICIOUS

**Coca-Cola**



**YOUR MOST VALUABLE ASSET — YOUR EYES**  
Protect Them By Using Our Expert Service!

Money, Bonds, Real Estate—None of These Nor All of Them Lumped Together Can Outweigh Your Eyes In Value. Beskow Gives 21 Point Analytical Examination

BE SURE YOUR EYES ARE COMFORTABLE WHEN YOU VISIT THE MOVIES

## BESKOW JEWELRY AND OPTICAL COMPANY

West Main, Next to Penney's

Eastland

We keep the plumbing service in perfect condition for the Texas Consolidated Theatres in Eastland. They demand the best... The same service is here for all people of this entire community. Call 100

**Smith Plumbing-Electric and Tiners**  
Eastland  
PHONE 100

COMPLIMENTS OF  
**COMMUNITY NATURAL GAS COMPANY**

Attend the Eastland Theatres During Appreciation Week

We all profit by good entertainment. Eastland Theatres offer one for recreation. PIPKIN'S PIGGLY WIGGLY offers the other by making it possible to serve the best foods at lowest prices around the table of good fellowship.

**PIPKIN'S PIGGLY WIGGLY**  
Eastland, Ranger, Breckenridge, Olney, Graham, Odessa and Monahans.

In This Day and Time Every Automobile Owner Wants the Very Best Gasoline Where Miles and Engine Safety Count

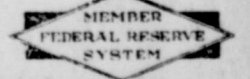
## GET ARAB GASOLINE

IT MEETS EVERY REQUIREMENT FOR PERFECTION  
BEST WISHES TO THE TEXAS CONSOLIDATED THEATRES

## ARAB GASOLINE CORPORATION

Office Exchange Bldg.

Eastland



CONGRATULATIONS TEXAS CONSOLIDATED THEATRES

WE JOIN THE COMMUNITY IN RECOMMENDING ATTENDANCE AT EASTLAND THEATRES DURING APPRECIATION WEEK

## EASTLAND NATIONAL BANK

VALUE THRILLS START THURSDAY, JULY 20th. FOR EVERYBODY

# PENNEY'S BARGAIN DAYS

Amazing And Sensational Selling Of Merchandise That Is Tops In Quality -- Low In Price

SANFORIZED

## KHAKI PANTS

A big value—a big saving! Full cut and extra quality at this low price to you—

**89c**

## BLEACHED SHEETS

Size 81x99, hemmed. You will agree with us its a big value.  
Come early and save at Penney's!

**47c**

## SLIPS

Women's taffeta slips, adjustable straps, bias cut and a big value!

**25c**

## SILK REMNANTS

Close out of silk and rayon remnants, solid colors, prints. Lengths from one to three yards. Don't miss it!

**10c Yd.**

## CURTAIN SCRIM

All colors, large assortment. Buy all you need at this low price—

**5c yd.**

## Flour Sacks

Bleached, unhemmed sacks. Buy all you need at this low price

**5c Each**

## CLOSE OUT CURTAINS

PRISCILLA STYLE

Solid colors and pattern effects—While they last—

**19c Pr.**

## Facial TISSUES

500 to the box. We are offering two big boxes at a bargain price—buy two boxes at a saving!

**2 Boxes 35c**

MEN'S

## Polo Shirts

White knit with colored border—a value!

**25c**

WOMEN'S

## SUMMER SHOES

Reduced to clear. Odd sizes in whites, patents—Out they go!

**\$1.00**

## Towels

A limited quantity left. A splendid value at this price! Don't fail to buy this towel

**4 for 37c**

BRING THE ENTIRE FAMILY TO THIS EVENT! PLENTY SALES FORCE PLENTY VALUES!

# PENNEY'S

ACROSS FROM CONNELLEE HOTEL

WEST MAIN STREET

EASTLAND

IT'S PENNEY'S HOT SHOT TIME AND EVERY ITEM HITS THE BULL'S EYE!