

## Santa Claus Pays Another Visit on Saturday

### EMPLOYMENT OF ADDITIONAL WORKERS CONTRIBUTING TO EXTRA HOLIDAY CIRCULATION

Contributing to the increased circulation of money during the Christmas season throughout the nation is the employment of extra clerks; that likewise is true of Eastland merchants.

Many extra clerks and other workers have been engaged by Eastland merchants to handle the holiday business transactions.

The additional employees are now on hand to serve buyers.

Many of the added workers have been on the reserve list of workers and have been trained to assist Christmas shoppers through years of employment at this time of the year.

A large per cent of the extra employees are those who only work at this time of the year to earn money to buy gifts for friends and relatives.

Expectancy of business and the desire to assist the early and late shoppers prompts the hire of extra workers.

The extra workers who have not been working previous Christmas seasons have, as in many of the cases, spent several days or weeks getting acquainted with the new stocks and learning the proper methods of serving the patrons.

The extra workers not only help serve the extra shopper but help when the late shoppers make last minute purchases.

It has been estimated approximately 600,000 extra employees are added each year by stores and concerns of the nation in their assistance to the shopper.

In Eastland not only are the stores prepared to serve the needs of the shoppers by extra workers but by added stocks and conveniences which have been arranged for months.

Representing heavy investments, stocks especially large have been arranged by Eastland businesses. For days clerks have been busy unpacking, sorting and tagging and preparing for display of the goods.

Prices in Eastland this year, according to all reports, are as low as those found in the large cities and in many instances will be lower due to lower overhead expense in operating the stores.

The combination of unexcelled stocks, low prices and concerted effort on the part of Eastland business men to draw trade to Eastland points to one of the largest buying seasons here in years.

### Petit Jurors to Report Monday at Eastland Tribunal

Following is a list of petit jurors summoned for service the week beginning Monday in 88th district court:

Robert Webb of Eastland; J. C. Kinard of Carbon; R. S. Surles of Eastland; L. B. Parks of Carbon; D. L. Langston of Cisco; D. P. Middleton of Olden; T. L. Brown of Carbon; Pink Stafford of Ranger; J. W. Nobel of Cisco; W. E. Reid of Gorman; K. K. White of Eastland; R. H. Walker of Cisco; Oliver Canest of Eastland; J. H. Jenkins of Rising Star; A. A. Robertson of Carbon; H. H. Harrison of Nimrod; J. R. Coop of Carbon; J. E. Caffrey of Cisco; Claude Strickland of Eastland; Cecil McBeth of Cisco; M. A. Vann of Carbon; M. M. Watkins of Rising Star; James Ward of Olden; L. F. Reese of Carbon; D. Lewis of Gorman; J. B. Hunnington of Pioneer; B. H. Westerman of Rising Star; M. H. Carroll of Cisco; Weaver Hague of Eastland; O. D. Brodgon of Gorman; Earl L. Armstrong of Cisco; M. P. Starr of Ranger; Amos Akers of Gorman; Rex Outlaw of Ranger; Gus Hart of Cisco and Carl Butler of Olden.

### Jews Pay Fourth of Big German Fine

BERLIN, Germany, Dec. 15.—Tens of thousands of German Jews handed over to the Nazi government a \$100,000,000 installment on the \$400,000,000 fine levied on them because of the assassination of a secretary in the German embassy at Paris by a 29-year-old Jew.

### Christmas Program For WPA Nursery In City Outlined

Mrs. Joe Stephen, supervisor of the WPA nursery school at Eastland, announced today that the annual Christmas program for children will be held Thursday, Dec. 22.

At the Christmas program a visit of Santa Claus is scheduled. A meeting of the Mother's Club will be held at 2 p. m. preceding the program. After the program the nursery closes for the holidays and resumes Monday, Dec. 26. The public has been invited to attend the program.

The nursery, said Mrs. Stephen, has served 90 children since its opening in October, 1937. Of that number 40 have been graduated and 50 remain enrolled. Average attendance is 45 children each day.

Miss Elna Lind of San Antonio, state supervisor of the WPA nursery program, visited recently in Eastland and expressed hope for its continuance indefinitely, it was stated.

### PROGRESS ON R. E. A. WORK IS REPORTED

A total of 325 Eastland county farmers have signed applications for rural electrification, it was disclosed at a meeting of directors and committeemen of the Eastland County Rural Electrification project at the county courtroom at Eastland.

At the meeting A. C. Thomas of Washington, REA coordinator, said in a completed map of the proposed routes of the lines to the homes of applicants would be sent to Washington REA offices for approval, together with applications for a loan.

Thomas anticipates the application to be approved and a loan made at an early date.

Eastland county citizens who still want service but have not made request may make their application and leave a deposit with R. R. Bradshaw at the county agent office in Eastland up to Dec. 20. Later applications may be wired to Washington. It was also stated application would be made by contracting E. E. Blackwell of Alameda, or I. S. Echols of Staff or W. B. Starr of Dan Horn, members of the board of directors of the Eastland County project.

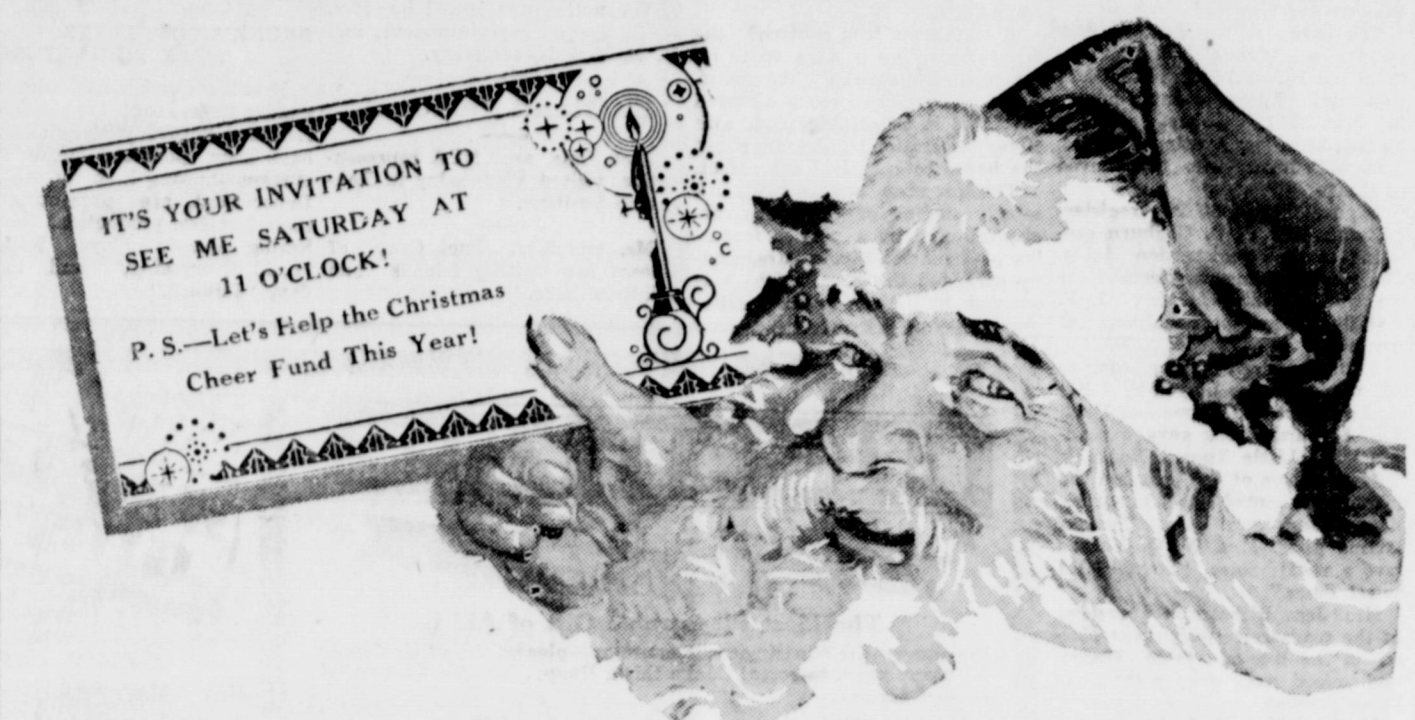
### Acid Is Fatal to A New York Man

NEW YORK, Dec. 15.—Harry Heniz, 24, who threw a pint of acid into his neighbor's face for spite, was to be arraigned today for homicide.

Blinded, his mouth and throat burned away, Harold Johnson, 36, died within two hours. Some of the acid sprayed Mrs. Johnson and Richard, four, youngest of their four children.

### Workers Protest Upon Relief Cuts

WASHINGTON, Dec. 15.—Forty Works Progress Administration workers from 26 states arrived today to protest relief cuts after an official announcement that WPA rolls declined 45,514 during the week ended Dec. 10.



### DECORATION FOR HOLIDAY SEASON FAVORED HERE BY BUSINESS AND CITIZENS

Christmas season is always associated with colored lights, decorations and unusual arrangements which distinguish it from other seasons of the year.

In the home the season is typified by a tree, small lights, mistletoe and many kinds of decorations.

By business houses the season is reflected by merchants in the same manner as in the home, but on a more elaborate scale.

Christmas lights have outlined the courthouse for several days. It is visible for miles from Eastland. This year the arrangement differs somewhat from plans of former years.

Until this year usually lights were strung from stores to poles on the courthouse square.

Show windows, the interiors of stores, too, reflect the holiday and buying season. It has often been stated that Eastland is one of the best decorated and lighted cities in this section during the holidays.

From all indications, the lighting and decoration of homes, businesses and streets is one of the most elaborate in Eastland for several years.

Many of Eastland's citizens secure their Christmas trees from the area near Strawn. Others, however, choose to purchase their trees from local merchants.

### 4-H Club Aides To Organize at Parley Saturday

Mabel Caldwell, assistant county home agent, announced today that organization of an Eastland county girls' 4-H club sponsors will be effected Saturday afternoon at a meeting at 2 o'clock in the county courtroom.

A chairman who will represent the sponsors at county home demonstration council meetings will be chosen.

The sponsors also will be instructed in a 4-H poultry program they will conduct at club meetings during January.

Eligible to attend are 14 persons.

### Two More States To Join Compact

FORT WORTH, Texas, Dec. 15.—Representatives of two oil producing states, California and Michigan, predicted today that their states would join the Interstate Oil Compact Commission, as the commission voted unanimously to ask Congress to extend its power for two years more.

The expressions at the commission meeting prompted Gov. E. W. Marland of Oklahoma to eliminate from his prepared address a proposal that a federal oil conservator be appointed unless the compact could be extended to all the states.

Saturday, Dec. 17, the Sub-Debs have their Christmas party at the home of Mrs. Jack Ammer.

Sunday, Dec. 18, at the twilight hour, the First Baptist church will hold vesper services at their Christmas program.

### EASTLAND REMEMBERS ITS LESS FORTUNATE CITIZENS DURING CHRISTMAS SEASON

Its less fortunate citizens are not forgotten by Eastland. For many years civic organizations, individuals and others have taken care that the unfortunate and underprivileged children and their parents are remembered with gifts which otherwise would not be received had not the benevolent spirit of Eastland been manifested.

Although there are many governmental agencies which seek to relieve the poor and underprivileged, those units are not sufficient to care for the need.

So the various Eastland organizations had individuals each year without fail come to the front.

Through the majority of Eastland organizations, many in Eastland will receive aid this year. Called the Christmas Cheer Fund Association by cooperating organizations, the groups will remember all possible.

Some families need food. Some need food, clothing and some gifts for the children. And the Christmas Cheer fund group will do its earnest to provide everything needed. To do this it needs the hearty cooperation of all.

Those who have old clothing and shoes have been asked to leave them at the chamber of commerce. Anything that will add cheer to some family or individual is requested. Money, too, will be turned into needed articles by the Christmas Cheer Fund Association.

By the association's concerted work useless duplication of efforts by organizations in Christmas aid work is avoided.

The fire department and auxiliary, following an annual custom, is preparing old and new toys for distribution to children.

Sunday, at the evening services, the Methodist church gives its annual Christmas cantata, "The Christmas Story," with the choir of 40 voices.

Monday night, Dec. 19, the young women's auxiliary of the Baptist church have their Christmas party, hosted by Misses Syble Holder and Geneva Finley, at 7 o'clock.

Tuesday evening, Dec. 20, the Thursday afternoon club celebrates the Yule season with a dinner party honoring their husbands, at the clubhouse.

Tuesday evening, the Order of Eastern Star will meet in the home of Mrs. Howard Brock for a Christmas party. Mrs. Robert Wynne will be co-hostess.

Tuesday evening, the Pythian Sisters entertain with a holiday affair, a covered dish dinner, to be held in the home of Mrs. Herbert Reid.

Wednesday evening, Dec. 22, G. A. girls of Baptist church will go Christmas caroling.

Thursday, Dec. 23, Readers Luncheon club celebrates the holiday season with a progressive dinner beginning at 7:30 p. m.

Dec. 29, Las Lealas club sponsors a holiday dance at the Connelley roof.

Dec. 31, Amoma class of Baptist church school holds a watch party at the home of Mrs. Gustafson.

Jan. 1, Band Booster club has scheduled a benefit dance on the Connelley roof.

WASHINGTON, Dec. 15.—The white house announced today the resignation of Secretary of Commerce Daniel Roper, effective Dec. 23.

The announcement was made in a brief exchange of letters between President Roosevelt and Roper. Roper's letter explained that he desired to return to private life to give attention to private affairs.

For several months Roper had denied his resignation was impending. It was learned, however, that he contemplated resigning after Mr. Roosevelt's first term, but the president prevailed upon him to remain.

Roper's resignation created the second vacancy in the cabinet. Attorney General Homer Cummings has resigned effective Jan. 1 and no successor has been named. Secretary of Interior Ickes has been asked by Chicago politicians to resign and run for mayor of that city.

### ALL OF TERRITORY INVITED TO VISIT EASTLAND, AGLOW WITH FESTIVE AIR, AT 11

Eastland this morning experienced the strong realization that the Christmas season was in sway with all the traditional rush beginning to be an actuality.

"Only eight shopping days until Christmas" was the thought of majority of citizens.

Children of the area were promised another visit of Santa Claus here Saturday morning at 11 o'clock. He will arrive on one of the Eastland Fire department trucks.

Of all of Santa's pre-Christmas visits to Eastland the visit tomorrow promises to be the one of which attention is more closely focused.

Again, stated H. J. Tanner, secretary-manager of the Chamber of Commerce, Santa Claus will distribute Saturday the kind of sandy children like.

Santa Claus' visit is being sponsored by the Eastland Chamber of Commerce through cooperation of Eastland merchants. Santa Claus' visits here before Christmas this year were made possible by special arrangement by Eastland merchants.

Several weeks ago when they learned of the tremendous interest shown in pre-Christmas visits by Santa Claus to Eastland they immediately made arrangements with his North Pole headquarters.

Tanner stated at the Chamber of Commerce Thursday afternoon that children of Eastland and its trading territory were immediately fortunate that such visits were possible.

"Many, many towns attempted to secure Santa Claus for a visit to their own towns tomorrow but he added 'Santa Claus could not break faith with the Eastland merchants who have shown such a cooperative and unselfish desire for those of our area to see him.'

Eastland children and their parents, it has been pointed out, may see and buy all variety of gifts in the stocks of Eastland merchants. There is a gift for everyone at every price range.

Quality has not been sacrificed by merchants of Eastland in offering values at unusually low prices. The Christmas season finds majority of the Eastland business and professional men optimistic over Christmas trade and the coming year.

It has been pointed out that Roger W. Babson, noted statistician (his predictions are 90 per cent correct), and other officials versed in economics predict that business next year in the nation will be one of the best in several years.

All Eastland stores are prepared to give extraordinary service.

Officials of the Civic League and Garden Club this morning looked forward to a heavy attendance at the Folk Festival on the roof of the Connelley Hotel.

Adding great interest to the event will be the appearance of several Anson square dancers. Anson has a nation-wide reputation for its old-fashioned dancers, largely due to the re-enactment of Larry Chittenden's Cowboy Christmas Ball.

Eddie Liles' Fiddle Band of Breckenridge will furnish the music for the occasion.

Delegations are expected from Gorman, Carbon, Ranger, Breckenridge, Albany, Abilene and other cities.

The festival is being sponsored to aid the Christmas Cheer Fund Association in Eastland.

Admission will be 50 cents each. The program, beginning at 9 p. m.:

Grand March, twice around the room. Waltz.

Heel and Toe Polka; New Shoe, Schottische, Square, Waltz. Anson square sets (special feature).

Virginia Reel, Heel and Toe Polka; Schottische; New Shoe, Square, Waltz, Virginia Reel, Request.

Playground Chief Attends Training Meet at Ft. Worth

Playgrounds used by the WPA recreational project at Eastland were closed Thursday and also will be closed today because Supervisor Mrs. Winnie R. Grady is at Fort Worth attending a district recreational training school.

Before leaving for the training school Mrs. Grady declared that the City Park playground will be open Saturday from 9 a. m. to 12 noon for the regular activities. Pictures of the participants and activities will be taken.

Third Protest Sent By U. S. to Germany

WASHINGTON, Dec. 15.—Acting Secretary of State Sumner Welles revealed today that the United States has sent a third note to Germany requesting immediate assurance American Jews will not be discriminated against.

The note expressed "disappointment" over failure of Germany to give these assurances which were requested twice previously.

High Officials Are Eastland Visitors

H. H. Williamson of College Station, chief director for the extension service in Texas, and W. I. Glass of College Station, district 7 extension agent, were visitors Thursday morning with County Agent Elmo V. Cook and Assistant Sam Rosenberg.

Later all left for Abilene to attend the opening of the Taylor county ag school building.









# The Smile That Won't Come Off

## MEANS SHE'S BOUGHT HER HOLIDAY FOODS AT PIGGLY WIGGLY

With a million things to do between now and Christmas, the experienced housewife shrugs off her food worries — goes to Piggly Wiggly and gets everything she needs. She knows that quality will be "top;" that prices will be economical; that she will find everything she wants, including those hard-to-find items, and a wide variety of fresh fruits and vegetables. Did we mention self-service? It's a first essential always, more so than ever now, when time means so much to the busy shopper.

**PINEAPPLE** Libby's Sliced or Crushed 3 Flat Cans 25c  
**RED PITTED CHERRIES** 2 Cans 25c  
**APRICOTS** Del Monte Whole Libby's Peeled 2 Large Cans 35c

**TOMATOES** STANDARD 4 No. 2 Cans 25c  
**CORN** SCOTT COUNTY Country Gentleman— No. 2 Cans 9c  
**SPINACH** STAFF-O-LIFE No. 2 Cans 8 1/2c  
**SWANSDOWN** CAKE FLOUR— Per Package 25c

**GREEN BEANS** STAFF-O-LIFE No. 2 Cans 7 1/2c  
**CRACKERS** SALTED 3 1-Lb. Boxes 25c  
**CRISCO** SUPER-CREAMED 3 Lb. Can 49c

**PEANUT BUTTER** 15c Quarts 25c  
**PRESERVES** "Bama" Brand "PURE FRUIT" Apricot — Peach Blackberry 2 Lb. Jar 33c

**FRUIT COCKTAIL** Libby's Tall Cans 12 1/2c  
**AMITA TALL** Fruit Mix Cns. 10c

**CHOCOLATES** "WAYSIDE INN" ASSORTED Pound Box 25c  
**FRUITS & NUTS** CHOCOLATE Lb. Box 25c

**POPPING CORN** Black Beauty— 14-Ounce Can 10c  
**CHOCOLATE DROPS** 2 Lbs. 25c  
**DATES** PITTED 1 Lb. Package 19c  
**PINEAPPLE JUICE** Libby's— No. 211 Cans 8 1/3c

**Apple Juice** 20 Oz. Cans 10c  
**Ovaltine** Large Cans 63c  
**Extracts** French's Penant 12 Oz. Bot. 15c  
**Honey** Burleson's Comb 2 Lb. Jar 39c  
**Olives** Fancy Stuffed 4 1/3 Oz. Jar 19c  
**Calumet** Baking Powder 1 Lb. Can 23c

**SUGAR** Pure Cane Cloth Bags 10 Lbs. 49c

**COCOA** Baker's Southern Style 4 Oz. Can 9c  
**COCOA** Hershey's 1 Lb. Can 13c  
**SOUP** Campbell's Vegetable Can 9c  
**CAMAY** 3 Bars 19c  
**P.&G. Soap** 5 Gt. Brs. 19c  
**OXYDOL** 25c Size 19c

**TOMATO JUICE** Libby's or Campbell's 2 14-Oz. Cans 15c  
**PICKLES** HEINZ Fresh Cucumber Jumbo Jars 19c

**COMPOUND** 4 Lb. Cart. 41c

**FLOUR** —PIPKIN'S BEST!— 6 Lbs. 23c 12 Lbs. 39c 24 Lbs. 69c

EASTLAND, Texas We Reserve the Right to Limit Quantities! DEC. 16-17!

TEXAS MARSH SEEDLESS  
**GRAPE FRUIT**  
 96-size 6 for 10c

Calif. Navel 288 Size Sunkist  
**Oranges** Per Dozen 19c  
 Extra Fancy Winesap  
**APPLES** Fine for Baking—Doz. 15c

**BULK DATES** 2 Lbs. 25c  
**LARGE CELERY** Per Stalk 14c

U. S. No. 1 IDAHO  
**POTATOES**  
 10 lbs. 22c

**CARROTS** 2 Bunches 9c

Fancy Delicious  
**APPLES** Extra Large 6 for 23c  
 Large Juicy  
**LEMONS** Per Dozen 19c

**TEXAS ORANGES** 2 Doz. 25c  
**COCOANUTS**, Large Size 2 for 15c



All Select Birds!  
 Place Your Order Early . . . Get the Exact Size You Want!



Christmas Mixed  
**CANDY**  
 2 Lbs. 25c



**WALNUTS** Lb. 19c  
**BRAZILS** Lb. 19c  
**ALMONDS** Lb. 25c  
**PECANS** Lb. 19c  
 Fancy Soft Shell  
**WALNUTS** Lb. 25c



**Pride of Jersey Cranberry Sauce**  
 2 Cans 25c



**Imperial Mince Meat**—9 Oz Pkg. 9c



HOME-MADE PURE PORK  
**SAUSAGE** Per Lb. 20c

ARMOUR'S STAR  
**SLICED BACON** Sliced Here— Per Lb. 32c

**BOLOGNA** Per Lb. 10c

**ROAST** Veal Chuck 15c Baby Beef '7', Per Lb. 18c

**STEAK** BABY BEEF Loin or T-Bone— Per Lb. 25c

**HENS** Per Lb. 18c

**OYSTERS** Large Baltimore— Per Lb. 35c

**'7' STEAK** Lb. 19c

**OLEO** Per Lb. 15c

**PIG LIVER** Lb. 15c

**JOWLS** Per Pound 10c

**FRESH TROUT & CAT FISH**

**COFFEE**  
 PLYMOUTH Per Lb. 15c 3 Lbs. 43c  
 SANKA Per Lb. 39c  
 BLISS 1 Can 20c  
**"THE BEST YET"** Per Lb. 22c





**DR. R. C. FERGUSON**  
 208 Exchange National Bank Building — Eastland, Texas  
 Diseases of Children and Infant Feeding  
 Office Hours: 9:30 to 12—2:30 to 5  
 Office Phone 191 Residence Phone 190

**EMERSON RADIOS**



**\$9.95 to \$39.95**

Give yourself one of these small  
 "personal" radios for Christmas!

EASY PAYMENTS!

**JIM HORTON TIRE SERVICE**  
 E. Main St. Eastland

TRY A WANT AD—IT ALWAYS PAYS!

**SANTA SAYS**  
*Merry Christmas*  
 WITH GIFTS FOR EVERY MEMBER OF THE FAMILY

**AIR CHIEF RADIOS**

**11 TUBE CONSOLE** \$99.50  
 Dial-Matic Station Selector, P.M.T. harmonic Speaker, and Photo-Eye Tuning.

**7 TUBE TABLE MODEL** \$44.95  
 All-Wave—3-band tuning, Photo-Eye Tuning, and Precision Station Selector.

**5 TUBE TABLE MODEL** \$24.95  
 Nine tuned circuits, 2 Band Tuning, Accurate Station Selector, Full Tone Control. Other features.

**HEATERS** \$15.95 UP  
 Individual Foot Warmers for driver and passenger and 50% Greater Heat. Custom-fit defroster available.

**AUTO ROBES** \$3.95 UP  
 Soft, warm robes in a wide array of handsome colors. Their use is unlimited.

**DRIVING GLOVES** \$1.69 UP  
 Superior gloves of fine imported leather. Lined or unlined. Slip-on style. Brown or black.

**HORNS** \$6.95  
 Great replacement horn. Superb tone and tremendous blast commands attention. Ready to install.

**FLASHLIGHTS** 89¢ UP  
 Beautifully designed flashlight. Has spare bulb carrier. Crystal clear lens.

**SEAT COVERS** \$1.29  
 Complete selection in fabric or fiber. Neatly tailored to fit your car. Coupes.

**BOY'S BICYCLE** \$39.95  
 Streamlined to finest detail. Latest deluxe equipment. Chrome trim, three color combinations.

**SENTINEL BICYCLES GIRL'S MODEL** \$25.95  
 Ideal bike for girls and women—smart chrome equipment and sturdy construction.

**BOY'S MODEL** \$24.95  
 Exceptional value. Full balloon tires, chrome trim, baked red or green enamel finish.

**WAGONS** \$2.19 UP  
 Good looking and serviceable. Solid steel wheels and solid rubber tires.

**SCOOTERS** \$2.49 UP  
 Steel frames, rubber tires and ball bearing wheels. Parking standards and brakes.

**VELOCIPEDES** \$3.59 UP  
 Strong frames and comfortable saddles. Fully streamlined. Long wearing solid rubber tires.

**SKATES** \$4.49  
 Finest quality tubular hockey skates for boys and girls. Tempered blades. Sizes 6 to 11 inclusive.

**SLEDS** \$1.59 UP  
 Real pacemakers for speed and durability. Streamlined with finest quality steel runners.

**Firestone TRIPLE-SAFE TIRES**  
 For safe driving and long, economical mileage, equip your car with these famous tires.

**Firestone**  
 Park and Shop Here — Away From Downtown Crowds

*Listen to the Voice of Firestone featuring Richard Crooks and Margaret Sparks, Monday evenings over Nationwide N. B. C. Red Network*

**Jim Horton Tire Service**  
 Phone 258 East Main Street Eastland

**"OUT OUR WAY"**



**Japanese Admit to Chinese Advances**

SHANGHAI, China, Dec. 15.—A Japanese army spokesman admitted today the Japanese army,

navy and air force were fighting Chinese units in the Shanghai, Nanking and Hankow areas, all nominally under Japanese domination.

**Sheep and Goat Growers Due To Meet December 16**

Sheep and goat raisers of Eastland and the surrounding 17 counties who are members of the Midwest Wool Marketing association have been invited to attend a meeting of the organization in the clubhouse at Eastland, Friday, Dec. 16, at 1:30.

Discussion of a membership drive as well as selection of one of the members of the wool and mohair marketing cooperative.

County agents of the counties of the area also will attend with

the members to the wool and mohair marketing cooperative. W. I. Glass, district 7 extension service agent; C. E. Bowles, specialist in cooperative marketing of the extension service, and W. R. Nisbit, sheep and goat specialist of the extension service, all of College Station, also plan to attend, said County Agent Elmo V. Cook.

**Marvin Jones Urges Research Support**

WASHINGTON, Dec. 15.—Marvin Jones of Texas, chairman of the House committee on agriculture, today urged all farmers and business men in the "southern and western belt" to support the new federal cotton experimental laboratory, awarded to New Orleans.

Jones deplored that the laboratory was not to be established in Texas, but added that the "work rather than the location is the primary thing."

**By Williams ALLEY OOP**



**Parents, Teachers Report Money Is Cleared at Event**

The Morton Valley Parent-Teacher Association met Tuesday, Dec. 13 at 3:45 o'clock in the school auditorium. The president, Mrs. Eubanks, presided. A song, "Silent Night," was led by Mrs. H. Pounds, followed by prayer by Mrs. Nix. Mr. N. A. Smith's seventh grade pupils presented the program of songs, piano solo, and a short play. Mrs. Nix, finance chairman, reported \$24 realized from "Country Store" recently. Mrs. Geo. Robinson led a round table discussion of "Movies," in the absence of the main speaker,


Miss Opal May Hearn, who was ill and couldn't attend. Miss Pickett's room won the \$2 prize for having most mothers present.

Present at the meeting: Misses Ruth Carter, Adele Kuykendall, Gladys Hicks, Inez Pickett Mmes. Lee Littleton, H. Pounds, O. D. Dabbs, Dee Williamson, Glenn Adams, O. H. Williamson, J. J. Hamilton, Ted May, Joe Butler, N. A. Smith, Roy Harbin, Victoria Harbin, H. Tankersley, W. E. Tankersley, D. B. Woods, Gordon, Austin Williamson, Burl Houston, Edd Houston, W. E. Hensley, J. M. Coplen, Cecile Miller, Florence Davis, Paul Hodge, O. N. Ramsower, Jake Garrison, M. E. Kuykendall, Thad Henderson and Mr. N. A. Smith.—Reporter.

**Baldwin Backing Policies of Eden**

LONDON, England, Dec. 15.—Earl Baldwin, regarded as most influential conservative in Great Britain, is backing Anthony Eden's demand for firmer foreign policy, it was understood today. Baldwin was Neville Chamberlain's predecessor as prime minister. It was he who created crisis when he announced British frontier was the Rhine, the English Channel. He handled the abdication of the of England.

Follow the Crowds  
 ... Buy Seiberlings



**SEIBERLING**  
**1/3 DOWN!**

ALWAYS BUY —

Balance  
 Equal  
 Monthly  
 Payments

USE OUR MONTHLY PAY PLAN—ONE-THIRD DOWN BALANCE MONTHLY.

**Jim Horton Tire Service**  
 EAST MAIN ST. PHONE 258 EASTLAND

**It's Christmas Time and We're Here to Give You the Best! ... Keep Coming Folks!**

Extra Fancy Baby BEEF ROAST Lb. 18¢  
 Extra Fancy Baby BEEF STEAK Lb. 25¢

**BACON**  
 Armour's Star HOME SLICED Lb. 32¢  
 Keystone Sliced Lb. 25¢  
 1 LB. PACKAGE 25¢  
 Squires SWIFT'S RADIO Lb. 21¢  
 JOWLS Lb. 11¢  
 NO. 1 SALT FORK Lb. 18¢

BIG BOLOGNA Lb. 10¢  
 PORK ROAST SHOULDER CUTS Lb. 18¢  
 PORK CHOPS, Lean Cuts Lb. 23¢  
 PORK SAUSAGE, Extra Good Lb. 20¢  
 CHEESE, Kraft's Mello-cure Lb. 22¢

Don't Forget to Give Us Your Order for a Turkey, Ham, Pork Roast, Chickens, etc., So We May Fill Your Order to Your Satisfaction!

**S. L. (LEON) BOURLAND**  
 Market Located in A. & P. Store

**XMAS PRESENTS**  
 Aunt Mary  
 Uncle Joe

**Put Yourself Down for One!**  
**A Holiday Trip By GREYHOUND**

Plan now to make your holiday trips by Greyhound. You will find Greyhound's convenient schedules fit your needs. And you will enjoy your trip in a Greyhound Super-coach, at low, money-saving fares. For helpful information on any trip near or far call your local Greyhound agent.

Greyhound Terminal  
 CONNELLEE HOTEL  
 West Main Phone 306

**GREYHOUND**



# Come To Eastland Daily For Your Entertainment

## ANGELS WITH DIRTY FACES' POWERFUL DRAMA

### CRAMMED WITH THRILLS AND HUMAN EMOTION

James Cagney, Pat O'Brien, "Dead End" Kids, Humphrey Bogart, Ann Sheridan, George Bancroft, Give Electrifying Performances In Important Film Document Opening At Lyric Sunday

Dedicated to the thousands of slum boys who next year must choose between crime and honesty, "Angels With Dirty Faces" is a powerful human document dramatically enacted by James Cagney, Pat O'Brien, the "Dead End" kids, Humphrey Bogart, Ann Sheridan and George Bancroft, will come to the screen of the Lyric theatre on Sunday and Monday.

It tells the story of two boys—dirty-faced kids—brought up in the teeming slums of a great city who take a violent road to the shadowy realms of the underworld, the other to priestly scene light. The conflict between these two characters, with its strong dramatic and carries with it a deep message.

The film starts out with the boys committing a petty crime, then turning for freedom police in hot pursuit. A series of close-ups—and there was made into a killing spree to the streets—gives the audience on the world—a big roller leading hundreds of thousands of lives.

James Cagney and Pat O'Brien are the stars of the film and each makes the most of his character. Cagney, the hard-boiled, daring, invulnerable character, and O'Brien, the sensitive, earnest, and hater of Cagney at his best O'Brien's fighting priest, serenely faces his personal happiness and that his slum boys may go into good and useful work, show his extreme reaction as an actor.

Highlighting their unique talents both comedy and drama are shown, and then serving as driving motivators of the soul-searing climax are the "Dead End" kids, Billy Halop, Jordan, Leo Gorcey, Gail, Huntz Hall and Bert Funtley, whose fame has been by leaps and bounds since they first assembled to play gutter-rat roles in Sidney

Kingsley's stage play, "Dead End," Humphrey Bogart and George Bancroft create memorably sinister underworld characters, and beautiful Ann Sheridan displays a remarkable talent for emotional acting, in the role of Cagney's sweetheart.

Based on a story by Richard Lee, which was treated for the screen by John Wexley and Warden Duff, the production was directed by Michael Curtiz, who recently won world-wide fame for his work in the recent hit, "Four Daughters."

#### COLBERT STARTING NEW STOCKING END

Negative stockings are the new fashion in Hollywood today, and Claudette Colbert is taking the bows for their creation. Obligated to do intimate boudoir scenes with Herbert Marshall for "Zaza," the Paramount star decided to wear stockings with her sheer negligee. It was out of the question to support them with the usual garters, because of the delicate nature of her gown, so she hit on the idea of cutting off evening "sandal" so that they did not show above the slope line, and saving the sheer edge. Thus the effect of a stocking is obtained for the foot peeping through the open slipper, and the illusion of a sheer stocking up the rest of the leg follows. Now it's a vogue in Hollywood.

#### RECORD BATHING

Director Mitchell Leisen, who got his start in the movies designing bathhouses for Cecil B. DeMille, outdoes his preceptor in Paramount's "Artists and Models Abroad." Leisen features a "Bubble Bath" 52 feet long, 6 feet wide and 4½ feet deep.

#### OLD WELL HOLDS GASOLINE

UKIAH, Calif. — Probably the world's only gasoline well has been discovered here. Workers razing an old service station came upon a walled water well which contained about 100 gallons of gasoline. It had presumably leaked in from the pumps and was preserved in the airtight condition of the well.

THIS GREAT BIG BEAMING PICTURE IS JUST WHAT THE WORLD NEEDS NOW!

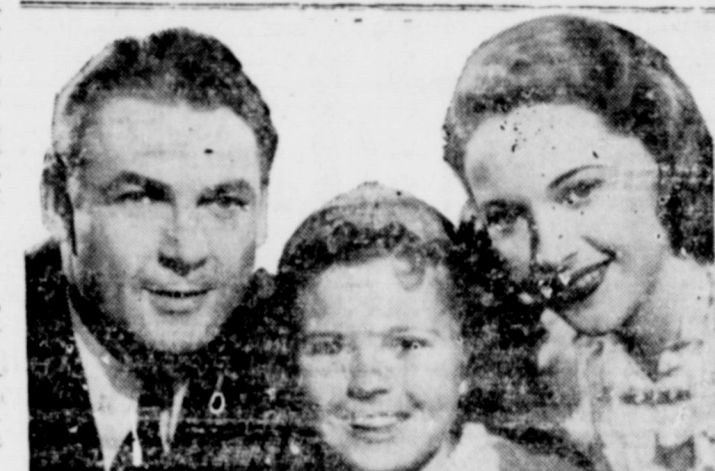
Shirley Temple  
in  
**JUST AROUND THE CORNER**  
CHARLES FARRELL  
JOAN DAVIS  
AMANDA DUFF  
BERT LAHR  
BILL ROBINSON  
FRANKLIN PANBORN  
CORA WITHERSPOON  
BENIE BARTLETT  
CLAUDE GILLINGWATER  
Extra-Comedy-Cartoon  
News  
RI.-SAT.  
**LYRIC**

Shirley thinks she's discovered "Uncle Sam" ... and the way she hurries to "help him out of trouble" makes a glorious story for us all!

## Scenes From Current And Coming Attractions . . . Lyric



PIRIST VS. KILLER—when the boys of the "Dead End" kids, James Cagney is the Killer, Pat O'Brien the priest, and the "Dead End" kids as the pawns in "Angels With Dirty Faces," Sunday and Monday.



Charles Farrell, Shirley Temple and Amanda Duff in a scene from "Just Around The Corner" playing at the Lyric today and Saturday.

## Errol Flynn And Bette Davis Co-Star In 'The Sisters' Based On Famous Novel

The Lyric Theatre, in line with its policy of providing the best in motion picture entertainment for its patrons, announces that "The Sisters," adapted for the screen from Myron Brin's best-selling novel of the same name and co-starring Bette Davis and Errol Flynn, will be the feature attraction starting Friday, Dec. 23.

Physically, it was one of the most imposing jobs ever undertaken by the Warner Bros. Studio, for it not only creates a period that is well-remembered by everyone above the age of thirty-five today but it ranges from a little town in Montana to San Francisco, New York and London. And for good measure there is thrown in a vividly terrifying reproduction of the disastrous San Francisco earthquake and fire of 1906 as seen and experienced by the heroine of the tale.

The Warner studio has embellished the production with one of the finest casts ever assembled in Hollywood by it or any other studio. Completing, with Miss Davis, the trio of sisters whose varying fortunes are the theme of the story, are Anita Louise and Jane Bryan. Their parents are portrayed by Beulah Bondi and Henry Travers—the latter comparatively new to pictures but long famed on the stage. The other important roles are filled by Ian Hunter, Donald Crisp, Alan Hale, Dick Foran, Patric Knowles, Lee Patrick and Laura Hope Crews.

Only one of the sisters of the tale is content to lead the humdrum life offered by the town in which they were born. That is the youngest, who marries the son of the town's leading banker after that young man has been jilted by her oldest sister. The second sister, rather cold and calculating young miss in everything but her relations with her own family, makes use of her beauty to marry a succession of

#### "GIRLS' SCHOOL" OFFENS

TUESDAY AT LYRIC  
Hailed as one of the most charming and romantic pictures of the year, Columbia's "Girls' School" with an all-star cast supported by a bevy of talented young girls of high school age, will open on Tuesday at the Lyric Theatre. Anne Shirley, Ralph Bellamy, Nan Grey, Doris Kenyon, Gloria Holden, Margaret Tallichet and Heather Thatcher are among the principals. "Girls' School" tells what transpires at an exclusive finishing school on the day and night of the annual senior prom. The picture was directed by John Brahm, from a screenplay written by Tess Slesinger and Richard Sherman.

The program also includes the latest issue of The March of Time entitled "Uncle Sam . . . The Good Neighbor" it takes you behind the scenes with Secretary of State Cordell Hull's Foreign Service officers and tells the adventurous inside story of Uncle Sam's 300 scattered diplomatic outposts.

#### Mickey Rooney and the Hardy Family as they appear in "Out West With the Hardys" Lyric Xmas Day.



A bevy of Beautiful Girls that appear with Anne Shirley, Nan Grey in "Girls' School" playing Tuesday and Wednesday.



Errol Flynn and Bette Davis Co-Star In 'The Sisters' Based On Famous Novel

## Errol Flynn And Bette Davis Co-Star In 'The Sisters' Based On Famous Novel

she not only becomes an efficient and valuable secretary to a prosperous department store owner but she also, involuntarily, wins the heart of her employer. Meanwhile Louise's husband, having deserted her and slipped as a seaman on a vessel bound for the Orient, comes back to find her when he learns of the San Francisco earthquake. Their reunion, many months later forms a dramatic climax to a forceful, human document.

#### First Woman Holds Big Labor Post

MADISON, Wis. — Mabel E. Griswold, a member of Gov. Philip F. La Follette's secretarial staff, has become the first woman industrial commissioner in Wisconsin history. She was appointed to a vacancy on the three-member commission last month by La Follette, who was defeated in his bid for an unprecedented fourth term. She formerly was an aide to John J. Blaine through his career as attorney general, governor and U. S. senator.

#### COMING XMAS DAY "OUT WEST With the HARDYS"

FRIDAY - SATURDAY  
**WILLIAM POWELL**  
**MYRNA LOY**  
**"DOUBLE WEDDING"**

SUNDAY - MONDAY  
**CLARENCE E. MURFORD**  
**"PARTNERS OF THE PLAINS"**  
Starring **WILLIAM BOYD**  
A Paramount Picture

## HERE AND THERE BY CECIL BARHAM

It has been some time since I personally recommended a picture to you and I never do recommend one unless I know that it will please at least 75% of the people seeing it and in order for a picture to please that large per cent of an audience it must have in its theme, Action, Love, Heart-break, Deep and Tense Drama, Thrills and be morally suitable for everyone to see, so that regardless of the type entertainment that you like, you'll find enough in the picture of your favorite type of entertainment to please you. "Angels With Dirty Faces" is just this type of picture and I urge everybody in Eastland see it and if you don't enjoy it the cashier will gladly refund your price of admission. Take my word for it, it is good.

Here's another chance for you to have yourself a swell time and at the same time help the underprivileged people of Eastland. The Civic League is giving a "Folk Festival" on the Connellee roof Friday night. They are planning lots of good old fashion square dances and carousels. Admission is only 50c a person and the money will be used for the Civic League Charity activities. . . . Mrs. Jim Horton and Mrs. Frank Hyatt are handling the arrangements and ticket sales. Make your plans to be there to-night. . . . The Band Boosters are giving a dance on the Connellee roof the night of December 31 and the money will be used to buy new uniforms for the band members, and of course you are expected to be there and they assure me that you will have a good time.

Hollywood Flashes. . . . Wayne Morris has had to learn to milk a cow for his role in "Broadway Cavalier"—and he isn't very contented. . . . Boots Mallory, former Ziegfeld beauty and wife of Bill Cagney, is being tested at Warner Bros. . . . The melancholy rule in "I'm from Missouri" held up production for several hours because it brayed out its sadness. . . . Helen Twelvetrees and Marlene Dietrich will try out Hollywood again. . . . The jitterbugs in "Always Leave Them Laughing" must wear specially re-enforced pants when they go through their antics. . . . Geraldine Fitzgerald has joined Bonita Granville's "Navy Draw" all-girls basketball team. . . . Dick Barthelmess will return to the screen in "Plane No. 8". . . . Jimmy Cagney has spent over 200 hours in the saddle since he started production in "Oklahoma Kid". . . . All the leading characters in "Watering Heights" are heavies—except David Niven.

Production Jots. . . . With production reaching a new peak at the studios there will be a daily average of 62 star and feature players and 330 bit and extra parts for the next four weeks. . . . Over 5000 extras worked in "Juarez" and "Oklahoma Kid" last week. . . . Ann Sheridan draws the feminine lead opposite Jimmy Cagney in "Each Dawn I Die". . . . Richard Dix will play Sam Houston in "Wagons Westward". . . . Margaret Lindsay goes into "Hell's Kitchen To Hollywood". . . . "Burton of Arabia" is being readied for Tyrone Power. . . . Carol Lombard will make "Memory of Love". . . . "Dead End" kids and Janet Chapman have starring berths in "A Little Child Shall Lead Them". . . . The Lions Club of Eastland and The Texas Consolidated Theatre are making plans for a big free show to be held at the Connellee at 10 a. m., Saturday, December 24th for the under privileged people of Eastland county and if you know of anyone in your neighborhood who is not financially able to attend the movies please send their name and address to me and we will mail them an invitation to attend this big show. The Lions Club is doing good work with the Eastland kids who have had eye sight. Last week they bought glasses for a little girl and this week they have made arrangements to take care of three other children. (These children's parents are unable to buy glasses for them). There will be a big midnight show at the Connellee, New Year's Eve and we are planning to have the Sensational Midnight Ride of "Lady Godiva" on the stage and there will be no advance in the price of admission. Tell you more about this next week.

#### Dog Just Refuses To Be Given Away

By United Press  
EL PASO, Tex. — Squeegems, a dog owned by Mr. and Mrs. A. M. Reed, just won't be given his name away—even to the dog-catcher. Four times Mr. and Mrs. Reed gave Squeegems to friends, but each time he came back. Finally they called the city dog-catcher, who took him away. But Squeegems returned to M. Reed, just won't be given his home the same day.

## "ANGELS WITH DIRTY FACES"

"... THAT AMERICA'S DIRTY-FACED KIDS MAY NOT GROW UP WITH DIRTY SOULS!"  
We hopefully dedicate this picture to the thousands of boys who today must choose between crime and honesty!

WARNER BROS' dynamic dramatic hit, with  
**JAMES CAGNEY**  
**PAT O'BRIEN**  
THE 'DEAD END' KIDS  
**HUMPHREY BOGART**  
**ANN SHERIDAN**  
**GEORGE BANCROFT**  
'CAPTAIN AND KIDS'  
'CAREY WILSON'  
'PARAMOUNT NEWS'  
**SUN.-MON. LYRIC**  
**LYRIC THURSDAY**  
**PETER LORKE**  
**MYSTERIOUS MR. MOTO**  
**MARY MAGUIRE HENRY WILCOXON**  
**ERIK RHODES HAROLD HUBER**  
A 20th Century-Fox Picture  
COUNTRY STORE NIGHT — ADM. 10c and 15c

# STARTING AT THE LYRIC CHRISTMAS DAY "OUT WEST WITH THE HARDY'S" STARRING MICKEY ROONEY



## FSA Program Is Explained Before Group at Eastland

A meeting was held this week at Eastland by the county personnel of Farm Security Administration for the purpose of explaining the program to new applicants and explanation of new methods of making farm and home plans in groups to new and previous clients.

George I. Lane, rural supervisor, discussed the eligibility of applicants and gave a general outline of the FSA.

Mrs. Ita R. Parrish, home supervisor, explained the work of the women and the importance of cooperation of the homemaker.

Miss Roberta Ricketts, assistant home supervisor, explained the keeping of records and what would be considered a well-kept record book.

Truman E. Fambrough, assistant rural supervisor, discussed the farm plan and its importance to the family.

Clyde W. Mainer, A. A. A. advisor.

ministrative assistant, explained the A. A. A. program in brief.

Elmo V. Cook, county agent, Miss Ruth Ramey, county home demonstration agent, Sam Rosenberg, assistant county agent, and Miss Mabel Caldwell, assistant county home demonstration agent, assured the farm families they were willing and eager to cooperate with FSA clients.

Group meetings were scheduled for Cross Roads and Colony on Thursday and Friday of this week. There were 165 people present.

## Gordon Ex-Students To Have a Banquet

The 10th annual banquet of the Gordon Ex-Students association will be held Tuesday evening, Dec. 27 in the Gordon High school auditorium, when a good program will be presented.

Officers of the association are W. E. Jones, president Roy Keown vice president; Clarice Pitts, secretary; Robert M. Barton, treasurer and Mrs. Ella Barrett, sponsor.

## Rural Club Group Feted Wednesday At Eastland Event

Home demonstration members of the county were entertained Wednesday at an all-day Christmas party given by the county home demonstration council at the First Methodist church in Eastland.

A recreational program Wednesday morning was arranged by Mrs. Calvin Swan of Gorman, W. E. Tankersley of Morton Valley and Cam Lee of Alameda.

A meal at noon and a gift exchange also were session features.

Total attendance was 115. Eleven of the county's 15 clubs were represented. They were Reich, Morton Valley, Word, Ranger Co-Workers, Base Lake, New Hope, Staff, Romney, Alameda, Kokomo and Flatwood.

In a stunt contest the three high clubs, Morton Valley, Romney and Flatwood received a scrap book for the reporter of the clubs to keep clippings of all news stories.

## Eastland County Agents Confer On 1939 Broadcasts

Ruth Ramey, county agent, and her assistant, Mabel Caldwell, were in Abilene Thursday morning to confer with Maurine Hearn of College Station, district 7 home agent, upon radio programs in which they will participate the first half of 1939 over an Abilene station.

Misses Ramey and Caldwell were among nine home agents and assistants of the area who conferred with the district agent the same morning. Others were Hattie Tacker of Abilene, Clara Brown of Baird, Zelma Ruth Munroe of Breckenridge, Christine Trowbridge of Coleman, Gladys Martin of Anson, Myra Tankers-

Mrs. H. E. Seago of the New Hope club won first in a reporter's contest.

The council voted thanks to the Methodist church for use of its downstairs auditorium at that and other meetings this year.

## Eastland Student On JTAC Program

Mrs. Olivette Killough Bicknell of Eastland was presented recently in a program given by the Fine Arts Club of John Tarleton College. Mrs. Bicknell, a piano student of Charles Froh, played "When Shadows Fall" by Monti.

The Fine Arts Club is made up of students in the Fine Arts Department.

## Eastland Man's Son Voted Grid Letter

Jack Hinrichs, son of E. Hinrichs of Eastland, is one of 21 Hardin-Simmons university football players at Abilene voted a letter for work the past season.

Young Hinrichs, a senior, played in the backfield.

ley of Ballinger and El Fleda Harrison of Albany.

That afternoon the group attended the opening of a county agricultural building at Abilene. Director of the Extension Service in Texas H. H. Williamson of College Station was scheduled to be one of the speakers.

Here's your



SWANK

Gifts

AS FEATURED at the MEN'S SHOP



1. Set of Personalized cravat chain, key chain, Elbo-Links and collar holder. Yellow gold finish, \$5.50; white gold finish, \$5.
2. Set of cravat chain, Airway Links and collar holder. 1/20th 12 kt. gold filled, \$8.50. Other sets \$3.50 and up.
3. Set of Sultan pearl (white or smoked) Elbo-Links and studs, \$3.50; with vest buttons to match, \$5. Other sets \$2.50 and up.
4. Faceted stone Airway Links, 1/20th 12 kt. gold filled. Simulated garnet, sapphire, blue

- moonstone and black onyx. \$5. Others \$1 and up.
5. White pearl full dress set and smoked pearl tuxedo set with yellow gold finish stem-winder key chain. \$10.
6. Set of buckle cravat chain and collar holder, 1/20th 12 kt. gold filled, \$10. Other sets \$3.50 and up.
7. Set of knife and waldemar chain, 1/20th 12 kt. gold filled, \$8.50. Other sets \$2.50 and up.

8. Set of genuine marcasite initial cravat chain and Elbo-Links, yellow or white gold finish, \$4.50.
9. Set of Gothic initial Ty-Swing and Airway Links, yellow gold finish, boxed, \$2.50.
10. Set of birthstone tie clip and Elbo-Links, with simulated birthstone for each month, boxed, \$2.50.
11. Jeweled ensemble of Elbo-Links, money clip and tie clip, yellow gold finish, in a variety of stone colors, boxed, \$4.

## PARTICULAR MEN PREFER

Practical GIFTS From



### MEN'S ROBES

Silk, Wool and Washables!  
\$3.95 - \$5.95 - \$8.85  
\$9.85 - \$12.50 - \$15

### MEN'S JACKETS

California Sportswear Suedes and Goatskins! Just what he wants!  
\$7.95 to \$18.50  
Swank and Hickok BELT SETS

Black and brown with white or gold plated initial!  
\$2 - \$2.50 - \$3

### EVANS HOUSE SLIPPERS

Kid, pigskin, wool and mocha!  
\$1 \$1.50 \$2 \$2.50 \$3.50  
Such style and luxurious ease found only in Evans. Guaranteed hand-turned.  
\$2.50 - \$3.50  
\$3.95 - \$4.50

### Wilson & Holeproof SOX

35c, or 3 for \$1  
Others 50c 75c \$1 pr.

### TIE AND H'CHIEF SET

Beautifully Matched, in gift boxes.  
\$1.00 and \$1.50

### Hansen and Wilson Brothers GLOVES

Kid, pigskin, wool and mocha!  
\$1 \$1.50 \$2 \$2.50 \$3.50

### Arrow and Ritz MEN'S SHIRTS

All new colors and patterns, including the new stripes and quality white shirts!  
\$2.00 - \$2.25  
\$2.50 - \$3.50

### MEN'S PAJAMAS

Silk, broadcloth, sateen and flannel. They are beautiful gifts for men.  
\$2.00 \$2.50 \$3.95 \$4.95  
\$5.95 \$7.50 \$8.85 \$9.85

### MEN'S SCARFS

Silk, wool and challis. Every man appreciates this added gift.  
\$1 - \$1.50 - \$2.50

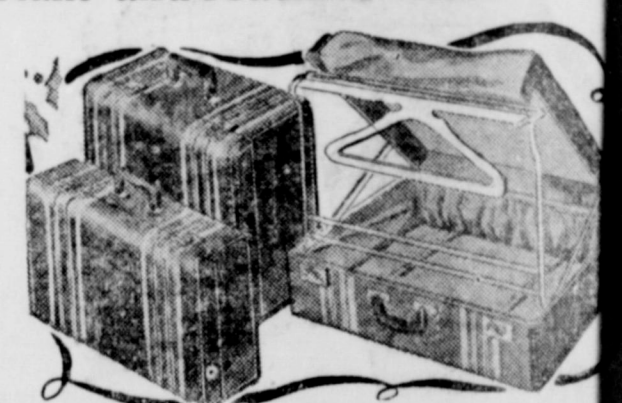
### MEN'S TIES

Cheney, Beau Brummel, Botany and Nor-East! Don't forget to include a tie!  
\$1 - \$1.50 - \$2 - \$2.50

## give fine LUGGAGE

For Most Important and Practical Xmas Gifts

We picture only a few of the highlights... there are dozens more... for Christmas! Ready collections are teeming with fine pieces to delight every man and woman.



### MEN'S ZIPPER BAGS

In Top Grain Cowhide! Black or brown..... \$12.85 Others..... \$2.95 and up

### GLADSTONE BAGS

..... \$6.95 to \$32.50

### WOMEN'S FITTED OVERNIGHT CASE

in black or brown leather..... \$7.50 to \$45.00

### FITTED MAKE-UP CASES

..... \$11.50

### 21-INCH WARDROBE CASE, in brown,

grey, blue or tan canvas..... \$13.50 (Others \$12.50 to \$20)

### 18-INCH OVERNIGHT CASE

..... \$3.95 to \$17.50

### 21-INCH OVERNIGHT CASE

..... \$6.50 to \$20.00

### PULLMAN CASES

..... \$10.00 to \$15.00

### FORTNIGHTER CASES

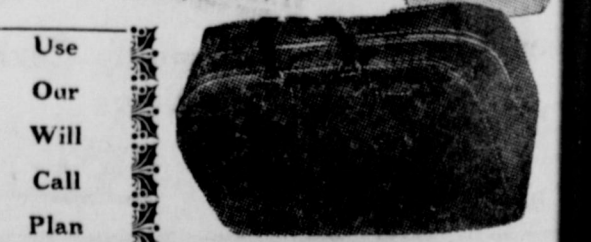
..... \$20.00 to \$25.00

### BRIEF CASES

..... \$3.95, \$5.00, \$5.95, \$6.95, \$9.50, \$10

### TRAVEL SETS

..... \$1.00, \$3.00, \$4.00, \$5.00, \$7.50



## The Men's Shop

East Side of Square

Eastland, Texas

# The MEN'S SHOP

East Side of Square

Eastland, Texas



# **DANGER MAN URGED FOR K. OF P. POST**

T. J. Powell of Ranger, member of the Eastland Knights of the Ku Klux Klan, has been recommended by the lodge for appointment to the position of district deputy and chancellor to serve from May 1939, to May 1940. Powell, if given the appointment, will succeed Robert Reed of Eastland. Eastland, Gorman and Breckinridge lodges recommended his appointment. Ordinarily the grand chancellor appoints a district deputy favored by the lodge of the area in which he would serve.

## **BRUNK'S COMEDIANS**

FRIDAY NIGHT  
Aspen Fire Department

"HOLD  
EVERYTHING"

SATURDAY NIGHT  
(Farwell Show)  
"JAIL BIRD"  
All Comedies  
BIG HEATED TENT AT  
SOFT BALL GROUNDS

10 Cents  
To All!  
NO RESERVE SEATS

Show Starts ..... 7:45 P. M.  
Show Open ..... 6:45 P. M.

## **FRECKLES and HIS FRIENDS-By Blosser**



## **Play to Be Staged By Olden PTA On Friday Evening**

The Olden Parent-Teacher association will present, "The Scarecrow Creep" starring Alphas Robinson, Bro. Campbell, Louis Edwards, W. O. Barrett, Walton Brauseum, Mrs. Frank Fidler, Misses Robertson, Martin, Morton and Renfro.

This play is a mystery comedy in three acts. It will be presented at the high school auditorium Friday at 7:30 p. m.

## **Olden P.T. A. Study Club Has Meeting**

The Olden Parent-Teacher Study club met in the home of Mrs. C. O. Bragg on Wednesday, Dec. 14.

Mrs. Campbell had charge of the study on the Manual.

After the lesson a lovely plate of coffee, ambrosia and wafers was served to a large number of ladies.

## **Eastland Men at Meeting In Cisco**

Congressman Clyde L. Garrett, speaking on preparedness, was principal speaker Monday night at a meeting of the American Legion at Cisco.

Others from Eastland included H. Pullman, V. O. Hatcher, H. J. Tanner, George I. Lane, P. L. Crossley and R. E. Brown.

## **Estate Is Valued At \$18,530 Figure**

Estate of T. E. Downtain, who died recently at Eastland, has been appraised at \$18,530, according to county court records.

## **Deer In Eastern Part of County Will Be Protected**

Elmo V. Cook, county agent, announced today formation of a game preserve organization in the Allen Ranch area.

A total of 16,838 acres have been pledged thus far in the preserve and later addition of 15,000 acres by J. O. Allen is anticipated, according to indications.

C. F. Jones has been elected president of the organization and Mrs. Walter Mitchell the secretary-treasurer.

Some of the rules promulgated by members in the organization is that there is to be no hunting with hounds, deer will be protected and hunting and trapping fur-bearing animals will only be allowed those of the area.

## **FINALLY GOT IT**

J. F. Milwee of Rising Star served as a special venireman in a criminal case ten years ago in 91st district court at Eastland.

This week he received \$6 for his six days service as a special venireman.

He explained to court officials that he had forgotten the matter and had never received his pay. They found his claim valid.

## **Eastland Man In Hospital at Dallas**

Ben Sears of Eastland, who recently experienced a slight paralysis stroke, is recovering satisfactorily in the Baylor Hospital at Dallas, friends said Wednesday.

## **Recreation Head For NYA Projects Arrives In Ranger**

C. R. Squires, recreational director for the National Youth Administration, has arrived in Ranger, where he will be located permanently, to plan and direct the recreational activities of the two resident training projects.

Squires stated upon arrival that he would plan activities for both the boys and girls' homes, organizing basketball teams, volleyball teams, musical organizations and entertainments of various kinds. He also stated that ping pong sets would be secured, tables would be made by the boys in the Ranger workshop and installed in both the boys' and girls' residences for their use.

## **AT YOUR FAVORITE .. CORNER DRUG STORE .. YOU'LL FIND**



**Complete Selections**

FAMOUS BRANDS  
In gift boxes!

EVENING IN PARIS  
VANTINE COTY'S  
and  
LUCIEN LELONG

\$2.75 up

**PRACTICAL ELECTRICAL APPLIANCES**

- Silex Coffee Makers
- Waffle Irons
- Irons
- Toasters
- All Reasonably Priced!

**O-Boy-O-Boy**

SANTA'S  
First Choice!

Whitman's and King's Candies!

**Buy Now!**

Beautiful Assortment of  
TABLE LAMPS

\$1 up

**Buy Now!**

**PACKED IN GIFT BOXES**

- DESK SETS**
- PEN AND PENCIL SETS**
- LIGHTERS**
- NOVELTY POTTERY**
- Complete Line Greeting Cards and Stationery**
- CREAMS**
- COMPACTS**
- LOTIONS**
- BATH SET**
- WINDSOR LINE OF SHAVE SETS**
- For Her Lovely Cut Glass jars and atomizers. Colors.**

**FOODS CLOVER FARM STORES MEATS**

WALNUTS, ALMONDS, PAPERSHELL PECANS—Lb. 23c

BRAZIL NUTS ..... Lb. 19c

APPLES, Winesap ..... Doz. 15c

ORANGES, Texas ..... Doz. 12 1/2c

APPLES, Delicious ..... Doz. 30c

Special Prices on Boxed Apples and Boxed Oranges!

Grapefruit ..... Doz. 19c

**FIVE ROSES FLOUR** 48 Lb. Sack ..... 89c

**SUGAR** 10 Lbs. .... 47c

TOMATOES ..... All

CORN ..... No. 2 Cans

SPINACH ..... 2 for

TURNIP GREENS ..... 15c

MUSTARD GREENS.....

HOMINY .....

Clover Farm MILK, 6 small or 3 tall 19c

Clover Farm Cake Flour .... Box 25c

**COFFEE** THE BLEND TO SUIT YOUR TASTE!

Red Cup ..... 15c

Green Cup ..... 19c

Clover Farm, lb. 25c

LET US HAVE YOU ORDER NOW FOR A CHRISTMAS TURKEY! WE GUARANTEE YOU A FANCY DRY-PICKED BIRD ... AND (Believe It or Not) THERE WILL BE NO PINFEATHERS!

Salt Jowl ..... lb. 10c

Seven Roast .... lb. 16c

Oleo ..... Lb. 15c

Lamb Chops .... lb. 25c

Pork Sausage ... lb. 15c

Hens ..... lb. 18c

Sliced Bacon .... lb. 29c

Pork Chops ..... lb. 25c

**FOODS CLOVER FARM STORES MEATS**

**Corner Drug Store**

Main & Lamar Phone 588 Eastland



## MANY FROM EASTLAND AT WTOG PARLEY

Eastland was well-represented Saturday at the annual convention of the West Central Texas Oil and Gas association at Abilene.

A. J. Frazier of Abilene was named president to succeed J. C. Hunter of Abilene. C. K. West of Breckenridge was elected first vice president and Charles J. Kleiner of Cisco as the second vice president.

R. C. McCarter of Rising Star was one of the new directors added to the board.

A telegram expressing regret that he was unable to attend was read by Hunter from C. W. Hoffmann of Eastland at the banquet Saturday evening.

Among those from Eastland at the meeting were Joe Weaver, Judge Clyde Grissom, Congressman Clyde L. Garrett, State Representative and Mrs. P. L. Crossley, C. E. Lafon, A. H. Johnson, State Representative Omar Burkett, Harry Wood, Leroy Patterson, Jack Lewis, Jr., F. W. Burnside, I. J. Killough, E. C. Satterwhite, A. L. Agate, Jack W. Frost, Milburn McCarty, T. E. Warden, Mr. and Mrs. H. J. Tanner, and Guy Hale.

D. J. Jobe of Brownwood, formerly of Eastland, also was noted at the meeting, as well as W. O. Butler of Abilene, formerly of Eastland.

R. L. Ponsler of Cisco and W. E. Tyler of Rising Star were among representatives of their cities at the convention.

Governor Lehman tells the voters that he has raised prices for the milkman, but Thomas E. Dewey, it must be remembered, has raised the rewards for yeg-men.

## MYRA NORTH, Special Nurse -- By Thompson and Col



## Poultry Course Is Called Profitable

Extension service officials at Eastland view as highly profitable a one-day poultry short course held Saturday at Breckenridge.

They also reported a similar course would be held at Eastland next spring.

Among those from the county at the school were A. A. Hyatt of Carbon, Neil and Verda Mae Eaves of Kokomo, Assistant Agents

Sam Rosenberg and Mabel Caldwell and County Agent Elmo V. Cook.

W. R. Lacey, Stephens county agent, assisted extension service experts and others in conducting the course.

## Cotton Ginnings Reach 342 Total

A total of 342 bales of cotton have been ginned in Eastland county to date this year, according to a report released Wednesday by the government at Washington.

## FINAL DRAFT OF DEFENSE IS GIVEN TODAY

LIMA, Peru, Dec. 15.—A final draft of the United States project for a united American defense front against foreign political or military invasion, revised to meet objections of Argentina, was submitted privately today to the 21 delegations at the eighth Pan-American conference.

The revised draft, which is almost certain to be adopted, disclosed changes in the original document, prepared by U. S. Secretary of State Hull.

A United States project to be submitted shortly to the conference will lay down a four-point program designed to bolster trade in the western world and emphasize Hull's argument that free commerce is the key to world peace.

## O'Daniel Will Visit At Firestone Plant

DEARBORN, Mich., Dec. 15.—Gov.-elect W. Lee O'Daniel of Texas, his wife and daughter were to be guests of Henry Ford at church services in Greenfield Village today before leaving for Akron, Ohio, to visit the Firestone rubber plant.

## YOUTH KILLS ANOTHER WHO IS IN HOSPITAL

SAN FRANCISCO, Dec. 15.—A youth forced his way into San Francisco hospital today, shot and killed Morris Cornpropst, 24, a patient, and critically wounded a policeman guarding Cornpropst.

An orderly overpowered the youth and a woman companion. The youth said he was a brother of Cornpropst's wife. He was identified as George Dally, 21. Police quoted him as saying, "I wanted to get even with that guy for stabbing all my family." Cornpropst was in a hospital recovering from two bullet wounds inflicted when his wife shot him after he had knifed Mrs. Cornpropst's mother, a sister and a friend last month. He was under police guard on charges resulting from the stabbing. The policeman, Walter Salisbury, was not expected to live.

What ever became of the old-fashioned Hun?

## Ranger Rotarians Meet at Oakley at Noon Wednesday

The Ranger Rotary Club met at Oakley today at the home of Mr. and Mrs. J. W. Harmon in one of their community gatherings at which neighbors of the community were present. The discussion centered around the problems of the farmer. Luncheon was served to 30 Rotarians and their guests.

Dr. C. L. Jackson was voted into the club at the meeting.

Those who attended were Dr. W. L. Downtain, O. L. McGahey, Edwin George, Jr., F. P. Brashier, W. F. Creager, Rev. Charles T. Tally, Jr., E. T. Eubank, Ken Ambrose, C. B. Pruet, Dr. L. B. Gray, D. Joseph, C. E. May, J. V. Harrell, H. P. Earnest, C. C. Goforth, H. C. Wilkinson, Dr. C. L. Jackson, Clifford Goforth, A. H. Bonson, D. S. Hamer, George Miller, Alvin Mayhall, Charles H. Bell, C. E. Beck, J. W. Harmon, G. P. Morris, T. A. Cross, W. A. Watson, Mrs. Weldon Webb and B. C. Johnson.

Secretary Wallace with his 57-cent corn loans beat the President to the draw on the Thanksgiving proclamation.

## POWER OF GAS RATE PROBE IS RULED VALID

AUSTIN, Dec. 15.—The state railroad commission's power to carry on gas rate investigations at Dallas, El Paso, Olney and other places was sustained by District Judge H. D. Moore here today. He sustained a general demurrer to the suit of the Lone Star Gas Company, which complained that commission expenditures for rate investigations were illegal.

The main issue was the status of utility tax funds. A tax one-fourth of one per cent of gross receipts is levied on pipelines. The Lone Star Company had paid \$9,000 into the state treasury under protest, contending that the railroad commission had no right to use that money for rate investigations.

Prime Minister Chamberlain who wants to be known as a go-getter for peace, may be remembered in some quarters as a go-giver.

## U. S. DEFICIT IS 4 BILLION SINCE JUL

WASHINGTON, Dec. 15.—The treasury announced today government spending this year has passed the \$4,000-mark.

There already was spending when the announcement was made as to whether Vice President Roosevelt would attempt to conserve economy bloc to curb spending.

He and Mrs. Garner were expected to return Saturday for the forthcoming session, and soon thereafter will join the ranks of legislative leaders in the white house.

The treasury announced exact expenditures between July 1 and Dec. 15, at \$4,002,400,533.

## GET DIVORCE

Divorce was granted by 91st district court to tellie Rich from Zein Edwards.

# GIFTS FROM THE FASHION

## MAKE THE MERRIEST CHRISTMAS

### OUR 6TH ANNIVERSARY

PRE-CHRISTMAS CLEARANCE

## DRESSES



Regular Values  
\$5.95 to \$27.50

NOW REDUCED!

\$2.98 TO \$19.98

Shawls, Capes, Shoulderettes

98c to \$2.98

### GLOVES

Kid, suede, fabric

\$2.98 to \$4.98

### TRAVEL KITS

Make fine gifts! Specially priced

\$2.98 to \$4.98

### SCARFS

Wool, silk, velvet

69c to \$1.98

### EVENING BAGS

\$1.00 to \$6.95

### SWEATERS

Sweater Sets All wool!

98c to \$6.50

## LINGERIE

LOVELY GIFTS Made by Barbizon, Vanity Fair, Kick-a-Nick and Rollins!



### GOWNS

### PAJAMAS

### PANTIES

### SLIPS

59c to \$5

AS SEEN IN Vogue



ANOTHER SMOOTH

As Shown \$6.95

Other House Coats \$1.98 to \$12.95

Chenille, dove suede, dove rest, satin and silk!

PRE-CHRISTMAS CLEARANCE

## COATS

Regular Values  
\$12.95 to \$69.50

Now Reduced!

\$6.98 TO \$39.98

## HANDKERCHIEFS

LINEN in White, Pastel and Street Colors 25c to \$1

### LINEN SETS

Cocktail napkins

Madeira napkins

Breakfast sets

Pillow cases

Dinner sets

Bridge sets

50c to \$9.85

### BAGS

Selection of to match your costume

\$1 to \$5.95

### COSTUME JEWELRY

\$1 to \$2.95

### IMPORTED PERFUMES

\$1 to \$3.95

## HOSIERY

### MOJUD

in Screenlite

Shades

79c to \$1.65

### HOUSE SHOES

The Ideal Xmas Gift

\$1.45 to \$2.95

# HOUSE SHOES

# The FASHION SHO

North Side Square

Eastland,

## WE ADD BY SUBTRACTING, WE MULTIPLY BY DIVIDING

The writer once heard this subject discussed as a Sunday School theme by a noted and deep thinker, and the thought he developed was that we got more out of giving than we do receiving. The two ideas exactly coincide when put together, and is one that we should all be thinking about at this time of year.

Last week we suggested to the men who are paying rent every month that they give homes as Christmas presents to their wives this year. We have since had several calls from the ladies complimenting us on the suggestion, and we believe, too, that it was a good one.

Why rent anyway? Homes were never built to rent, and there is just something lacking in a rented house. So give the perfect gift this year—a home—and what a happy Christmas it will be for the whole family.

## EARL BENDER & COMPANY

Abstracts — Insurance — Real Estate — Rentals

# A SPECIAL Christmas SALE



## DRESSES

Right now when the savings is most needed Burr's comes along with Dress values that are thrilling and every dress is beautiful.

Regular \$3.95 Values

\$2.77

Regular \$5.95 Values

\$3.77

Regular \$7.95 Values

\$5.77

## COATS

Nothing should keep you away from this startling price reductions on the seasons most wanted coats. Ideal for gifts and most important for yourself. Come see the colorful selections.

One Rack, Values to \$9.90!

\$6.47

Values to \$14.90

\$8.88



## MILLINERY

For once Burr is giving the women a real break for that hat you need for your holiday trip or special occasion. Don't pass up this opportunity to save on hat fashions of the season!

ONE GROUP Values to \$1.49

49c

All others to \$1.98 Fall Hats . . . Choice

98c

See Our Windows!

# Burr's

DEPARTMENT STORE

WEST SIDE SQUARE

EASTLAND