

Tests Indicate 'Pep Talks' Do Key Up Athletes

By FRANK DOSSE
United Press Staff Correspondent
MINNEAPOLIS, Minn.—Many a spectator has wondered what actually brings about a change in an athletic team when the coach roars between halves "to get in

there and win this game." The trick words, too, often as not, and Dr. Ancel Keys, who heads the University of Minnesota project for studying the effect of athletics on the human body, has an explanation: "The coach's speech goes to the players' adrenal glands, located near the kidney, according to Dr. Keys. Whenever a person is afraid, angered, excited or otherwise emotionally upset, the adrenal glands release a substance known

as adrenalin. This, which likewise may be injected artificially into the body, causes the liver to secrete more sugar than ordinarily used. Thus the body has more than the usual supply of fuel to burn. "Adrenalin," Dr. Keys said, "also raises the blood pressure. The heart is working harder to supply the muscles with more oxygen. You can hit harder, run faster, work harder, stand a greater shock than under normal conditions.

Entertainment Is Planned by Clubs For Friday, April 1

The two organizations, the Rip and Sip Club and the Junior Class of E. H. S., have planned a party similar to one the same organizations gave last year. The event is to be held in the gymnasium on April Fool's night.

It promises to outshine the other by no small margin. It will combine the best features of the carnival, the night club, the old fashioned bazaar and the bridge club. There will be a floor show featuring the school orchestra and various student entertainers. Various concessions will grace the mid-way. Many different kinds of games will be provided and one

of the many features will be the old-fashioned cakewalk. There will be no dancing so there will be plenty of room for the games to be carried on without any difficulties. To climax the evening the coronation of the boy and girl with the best personalities in Eastland High School will take place.

Dates For Annual Eastland Cleaning Week Are Changed

At a recent meeting of the City Commission it was decided to change the dates of the City-Wide Clean-Up Week to March 28 to April 2. This was deemed advisable for the convenience of the citizens of Eastland, and in order to enlist the aid of the various ladies clubs in the city, asking them to cooperate by giving all assistance possible in making this year's clean-up week the most effective campaign that Eastland has ever had, it was stated.

house," it was declared by an official. Trash wagons will be around daily to pick up this accumulated trash, and the city commission, working in conjunction with the various ladies organizations, will appreciate the citizens getting all rubbish ready to be hauled off. This will mean so much to the appearance and the health of the city.

It is also requested that the citizens living adjacent to vacant lots gather up any trash that may have accumulated there and place it in piles so that it may be disposed of daily. Any cooperation in this work will be greatly appreciated, and we earnestly solicit your help in making this the most thorough clean-up that the city has ever had.

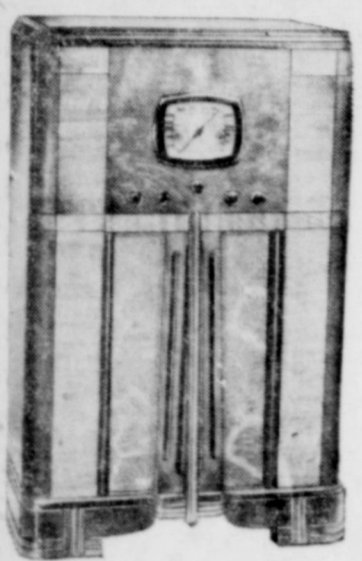
Printers and linotypers are reported ready to believe that withdrawal from the A. F. of L. would be a typographical error.

For Complete Market Financial News THE WALL STREET JOURNAL Relied upon by business and investors everywhere for free sample copy. 44 Broad St. New York

Hotel Garage MAGNOLIA PRODUCTS G. H. KINARD, Manager Storage and Tire Service West Main

ELECTRIC APPLIANCES Texas Electric Service

"ANY HOME CAN BE PROUD TO OWN an EMERSON RADIO"



SAYS... Mrs. Arreva D. French, who will conduct the Cooking School on the roof of the Connellee hotel starting Thursday.

14 Tubes — High Fidelity AC Superheterodyne Complete American and foreign — 16 to 555 meters. 15-inch dynamic speaker. Automatic volume control. Tone control. 15 watts output. Full-scale compensated volume control. Phonograph pick-up terminal. Hand-rubbed figured walnut console.

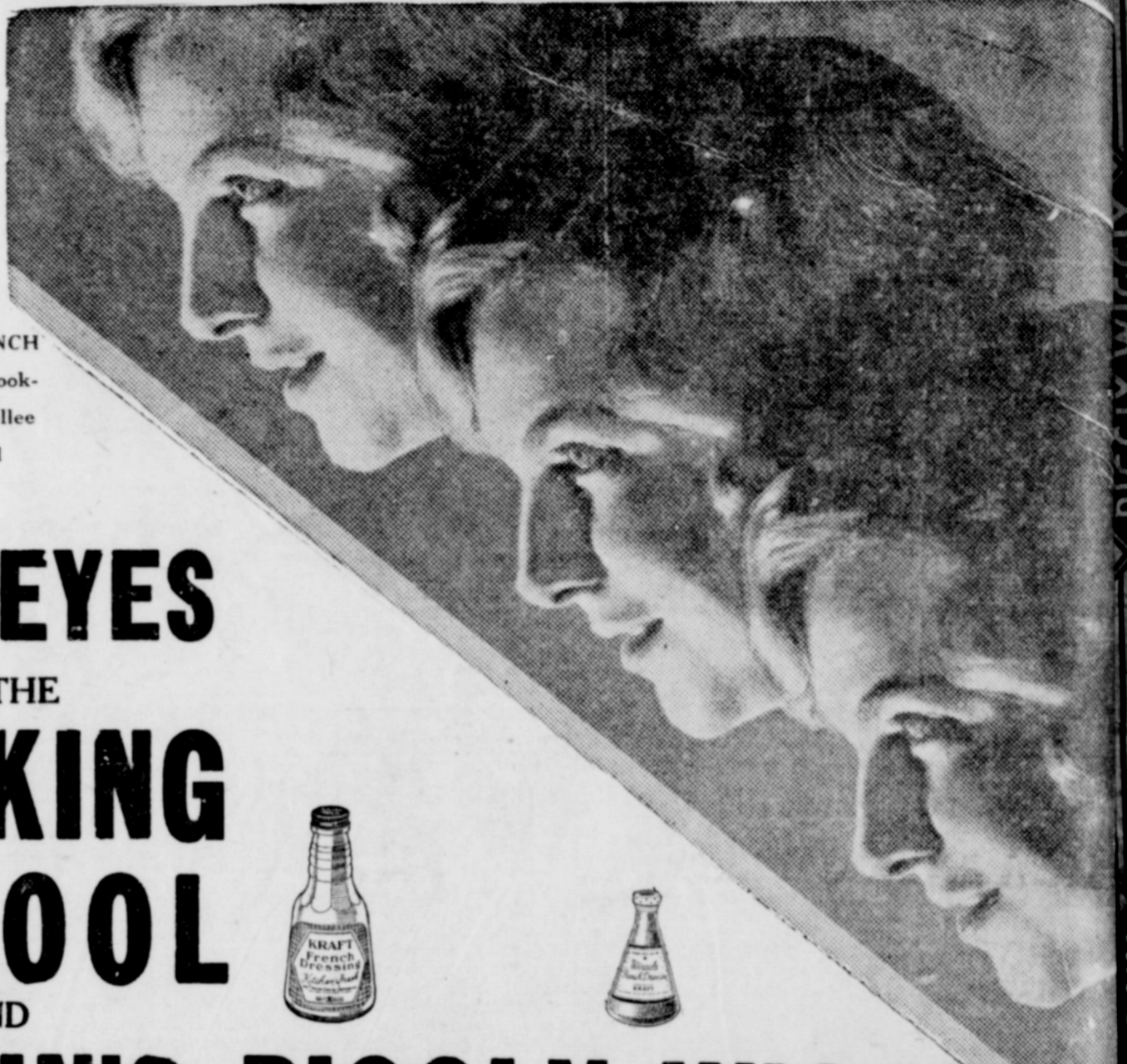
\$89.95

OTHER MODELS \$14.95 to \$139.95

JIM HORTON TIRE SERVICE East Main Phone 258 Eastland



MRS. ARREVA D. FRENCH conducting the daily cooking school on the Connellee hotel roof, today and tomorrow.



ALL EYES ON THE COOKING SCHOOL

PIPKIN'S PIGGLY WIGGLY

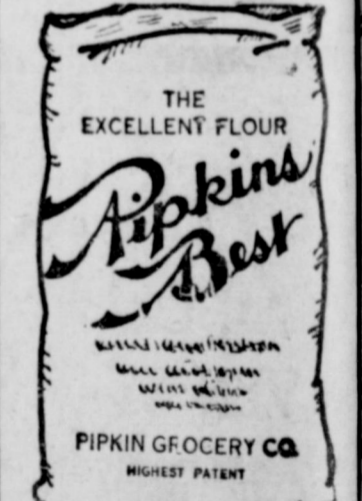
QUALITY MEATS --- FRUITS --- VEGETABLES --- GROCERIES



Walker's Austex TAMALES No. 300 Cans	15c	Walker's Austex SANDWICH SPREAD, Can	10c	LaFronterra CHILI No. 1 Can	10c
Walker's Austex CHILI, Plain No. 300 Cans	19c	LaFronterra TAMALES No. 1 Can	10c	Mexene CHILI POWDER 1 1/4 OZ. CAN	13c
				2 1/2 OZ. CAN	23c

KRAFT CHEESE

WONDERFUL ZESTFUL TASTY DISHES CAN BE MADE FROM THE MANY VARIETIES!



SPECIALY PRICED THIS WEEK 12 Lb. Bag 50c 24 Lb. Bag 90c 48 Lb. Bag \$1.69

A&P ESTABLISHED 1859 FOOD STORES	PINK SALMON 2 Tall Cans	23c
	Ann Page SPAGHETTI MACARONI NOODLES 18 OZ. PKG.	5c
	8 O'CLOCK COFFEE 1 Lb.	17c
	3 Lbs.	49c
	A&P Soft Twist BREAD 2 Loaves	15c
	PEERLESS FLOUR 48 Lb. Bag	\$1.25
OXYDOL Large Pkg.	SUNNYFIELD CORN FLAKES Large Package	7c
19c	SUGAR In Cloth Bag 10 Lb. Bag	52c
TOMATOES, No. 2 Cans		15c
Iona SPINACH, No. 2 Cans		7c
Fruits and Vegetables	Iona Corn or Peas NO. 2 CANS	9c
Grapefruit 3 for	K. C. Baking Powder 25 OZ.	18c
10c	Pinto Beans 4 lbs.	25c
Oranges Doz.	Whitehouse Milk 3 LARGE or 6 SMALL	20c
20c	CAMAY or PALMOLIVE Soap 3 for	17c
Strawberries Pt.	Evergood Crackers 2 LB. BOX	15c
12c		
New Potatoes 3 lbs.		
10c		
Green Beans 2 lbs.		
11c		
Celery Stalk		
10c		
BEST MEATS... HIGHEST QUALITY... TASTES WONDERFUL		
3 to 5 Lb. Average HAM PIECES	Armour's Star Sliced BACON	Lb. 35c
Lb. 20c	Corn Fed Baby BEEF STEAK	Lb. 25c
4 to 6 Lb. Average PICNIC HAMS	Sliced Bacon	Lb. 25c
Lb. 22c	Pork Sausage	Lb. 20c
Corn Fed Baby BEEF ROAST	Veal Steak	Lb. 28c
Lb. 18c		
Cheese, No. 1		
Lb. 20c		
Salt Jowls		
Lb. 12 1/2c		

A. & P. MARKET DEPARTMENT OWNED AND OPERATED BY S. L. (LEON) BOURLAND SEE OUR WINDOWS FOR ADDED SPECIALS

GOOD ON ANYBODY'S TABLE IF IT COMES FROM PIGGLY WIGGLY

PIGGLY WIGGLY

PIGGLY WIGGLY



You've seen the first robin weeks past! Crocuses have come and gone. Jonquils are in bloom, AND SPRING VEGETABLES ARE HERE! They come to you from fields and orchards in the South and from those tremendous hothouse areas in the North such as the one at Cleveland, where more than a thousand acres are under glass! Yes, and from far away Tropical lands. Our Produce Department is in full bloom, loaded with a wide variety of those health-building, pep-restoring natural foods. And the prices are delightfully economical. Come in and take home a basketful of health!

SELECT QUALITY

GREEN BEANS 2 LBS. . . 15c

No. 1 Select **NEW POTATOES** Per Pound 5c

FANCY WINESAP **APPLES** 100 Size— PER DOZEN **30c**

U. S. No. 1 WHITE

Potatoes 10 lbs. 18c

ORANGES LUNCH SIZE—DOZ. 18c

CARROTS and RADISHES 2 BUNCHES 5c

LETTUCE LARGE HEADS—2 FOR 13c

Quality Meats

REAL CORN-FED BEEF

SEVEN ROAST LB. 18c

VEAL CHOPS & SEVEN STEAK pound **19c**

HENS pound **18c**

SLICED **BACON** DECKER'S LB. 25c
MORRELL'S PRIDE LB. 35c

CHEESE lb. **20c**

FANCY SKINLESS

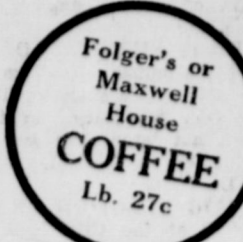
WEINERS Lb. **20c**

DRY SALT JOWLS
Large **BOLOGNA**—LB. **12 1/2c**

OLEO

ARMOUR'S

—LB.—
15c



CATSUP 12 1/2c
JERSEY 14 Oz. Bottles

Pure Cane
SUGAR
10 LB. BAG **52c**

DEL MONTE
Tuna No. 3/4 Cans **19c**

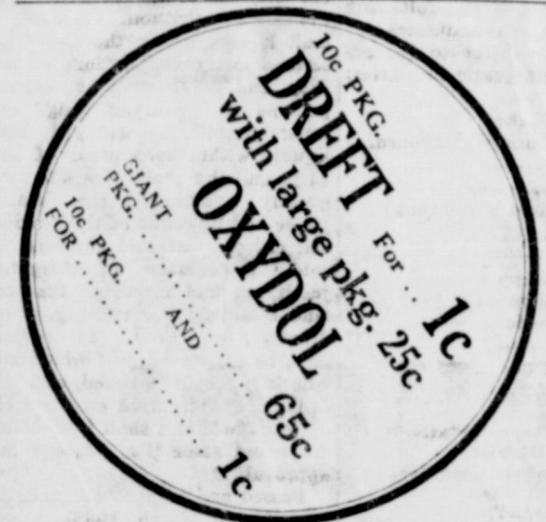


"START THE WARM WEATHER RIGHT"
"OUACHITA" LARGE 24-OZ. BOTTLES — ONLY— **11c**
FOR THE CHILDREN (Plus 4c Dep. on Bottle)
Orange Soda — Grape Soda — Ginger Ale — Lime Rickey — Club Soda!

PINEAPPLE VITA GOLD DESSERT CUTS — Large Cans **19c**

PIPKIN'S SPECIAL
COFFEE GROUND FRESH
SAVE 10c PER POUND ON YOUR COFFEE NEEDS POUND **17c**

CRISCO
3 Lb. Pail **55c**
ALL BRANDS 3 Tall Cans **21c**
MILK 6 Small Cans **21c**



CORN Libby's Whole Kernel 2 12 Oz. CANS **29c**
HOMINY 2 Large Cans **19c**

SAXET **CRACKERS** 2 lbs. **17c**
Libby's or Campbell's
TOMATO JUICE
2 Cans **15c**

TOMATOES No. 1 Cans **5c**
SOUPS Gibb's Assorted CAN **5c**
SPAGHETTI Gibb's Prepared CAN **5c**

FLOUR PIPKIN'S BEST
12 LB. BAG **50c** 24 LB. BAG **95c**
TEXAS KING
24 LB. BAG **85c**

SUNBRITE, 2 Can 9c
CAMAY SOAP, 3 Bars **19c**
MATCHES, 6 Box Ctn. **19c**

CHERRIES Red Pitted— No. 303 Can **15c**
FRESH PRUNES Sunburst No. 2 1/2 Cans **15c**
PUMPKIN Olmito— No. 2 1/2 Cans **10c**

ROSEDALE—Halves or Sliced
PEACHES 2 Large No. 2 1/2 Cans **35c**

VAN CAMPS—16-Oz. Cans
PORK & BEANS 4 for **25c**
SPINACH Staff O' Life 3 No. 2 Cans **23c**

GREEN BEANS Deer Brand 3 No. 2 Cans **23c**
QUAKER OATS Large Package **19c**

POP-PING **CORN** 1 Lb. Bag **10c**
Libby's **FRUIT COCKTAIL** No. 1 Cans **15c**

APPLE JUICE 3 TALL CANS **29c**
PINEAPPLE JUICE 3 Tall Cans **25c**
ORANGE JUICE 3 TALL CANS **29c**

FANCY BULK **RICE**
5 Lbs. **25c**

2 Tall Cans **25c**

CUTRITE WAXED **PAPER**
2 40-Ft. Rolls **15c**

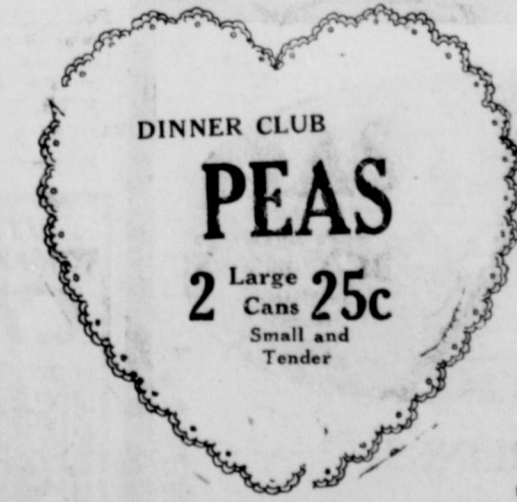
GREEN BEANS Deer Brand 3 No. 2 Cans **23c**

QUAKER OATS Large Package **19c**

POP-PING **CORN** 1 Lb. Bag **10c** | **PRUNES** Size 80-90 4 Lbs. **25c**

TOMATOES 2 No. 2 Cans **15c**

Regular 19c **UNUSUAL** Value ON PEAS and CORN!



BUY A Supply of These Peas and Corn at this Attractive Low Price and Save!

PIPKIN'S PIGGLY WIGGLY

WE RESERVE THE RIGHT TO LIMIT QUANTITIES!
PRICES GOOD FOR FRIDAY AND SATURDAY, MARCH 25-26!

EASTLAND, TEXAS

PIGGLY WIGGLY

PIGGLY WIGGLY

ITS CURRENT COST DEEPER THAN EVER!

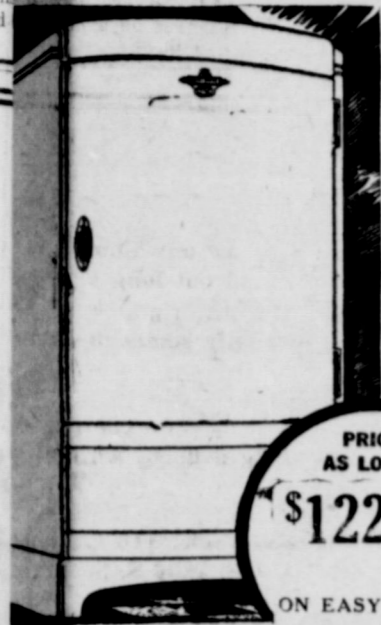
FRIGIDAIRE

WITH NEW SILENT METER-MISER

Saves More not only on Current, but on Food-Ice-Upkeep!

SAVE ALL 4 WAYS...

or you may not Save at all!



When you buy a refrigerator, be sure that it saves in ALL 4 WAYS... on current, food, ice, upkeep! For some refrigerators may save you money in one, two or even three ways... only to waste it in some "hidden extravagance"! Play safe! Come in and see the 1938 Frigidaire with NEW Silent Meter-Miser that saves you more in every way there is to save! Saves ALL 4 WAYS... You see the Proof before your eyes, before you buy! See, too, Frigidaire's NEWLY-Styled 9-Way Adjustable Interior! NEW "Double-Easy" Quickcube Trays throughout! NEW Moisture-Seal Hydrators! NEW Close-Bar Sliding Shelves... and dozens more exclusive advantages. To be sure of full 1938 value in a refrigerator—SEE FRIGIDAIRE FIRST!

COME IN! LISTEN TO THE NEW SILENT METER-MISER

Uses so little current—You can hardly hear it run! Simplest refrigerating mechanism ever built! Saves up to 25% MORE on electricity than even the current-saving Meter-Miser of 1937. Completely sealed. Automatically oiled and cooled. Comes with 5-Year Protection Plan backed by GENERAL MOTORS. Come In. See—hear—the PROOF of its money-saving simplicity.

NEW "DOUBLE-EASY" QUICKCUBE TRAYS

1. RELEASE CUBES INSTANTLY—SAVE 20% MORE ICE! Only one lever to lift and cubes are released—2 or a trayful! All-metal for faster freezing! No melting under faucet!

2. TRAYS COME FREE AT FINGER-TOUCH... with exclusive Frigidaire Automatic Tray Release. Every tray, in every model, a "Double-Easy" Quickcube Tray! No other like it! See PROOF!

Only Frigidaire has them!

SEE OUR 4-WAY SAVING DEMONSTRATION

HAIL TYPEWRITER CO.

SEE OUR DISPLAY AT THE COOKING SCHOOL
West Main PHONE 33 Eastland

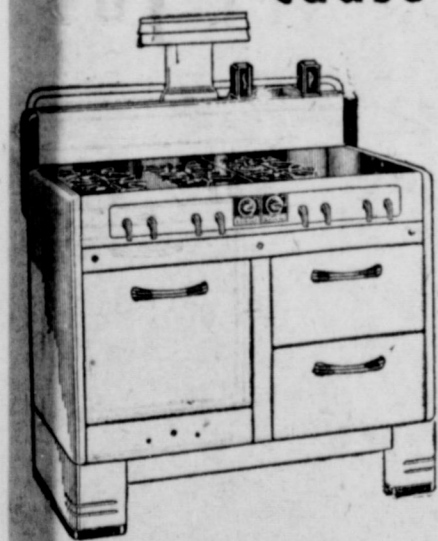
PRICES AS LOW AS \$122.50

ON EASY TERM.



DON'T FIRE Your COOK

kind or age of range can be the cause of her many cooking failures



Your cook is not to blame for those roasts with a flat "steamed" flavor and colorless, tasteless vegetables she has been serving your family. That worn-out or experimental range you have her use is probably the cause. For neither has the ventilated fresh-air oven or flexible boiling heat of today's gas range.

Proper roasting requires an oven in which excess moisture is allowed to escape if meats are to be juicy and crisp. Today's gas range oven is not only ventilated but insulated. It alone provides an unlimited range of automatically controlled temperatures with even distribution of heat.

Boiling vegetables with little water preserves their color and valuable mineral and vitamin content. Needed is a highly flexible heat. Only today's gas range simmer burners provide the exact shade of instant heat for every boiling job.

Don't fire your cook. Make her happy instead. Get her today's perfect cooking gas range. You'll have better cooked meals at less cost.

Attend... **COOKING SCHOOL**
Thursday - Friday
Saturday

Community Natural Gas Co.

Underprivileged Children Will Be Happy May Day

AUSTIN.—More than 5,000 underprivileged crippled children will spend a happier May Day this year because of the work of the crippled children's division of the Department of Education, which has helped restore them to a more normal life, according to Dr. Geo. W. Cox, state health officer, whose department is cooperating with the May Day-Child Health Day statewide movement.

Among the twelve divisions of the Department of Education is the crippled children's division, whose work is the correction of physical deformities and the training to overcome such handicaps. Through ministrations of this division, the child who has watched his friends at play may be able to join them. What greater happiness may be brought to a child?

In the enthusiasm to do good, many blame this division for failure to take every call, without realizing that this division is bound by legislative act to the definition of a crippled child as "any person of normal mentality under twenty-one years of age, whose physical functions or movements are impaired by reason of a joint, bone, or muscle defect or deformity, to the extent that the child is or may be expected to be totally or partially incapacitated for education or remunerative occupation. To be eligible for service under this act, the child's disability must be such that it is reasonable to expect that such child can be improved through hospitalization, medical or surgical care, artificial appliances, or through a combination of these services." A child is not eligible if his parents are financially able to pay for the necessary treatment.

The United States Children's Bureau, through the Social Security Act, matches dollar for dollar the appropriation of the state legislature for this work. Surgeons and hospitals are approved by the State Board of Health on compliance with standard requirements. Do you know that, first, 2,037 crippled children were hospitalized? Second, over 1,200 crippled children were examined by orthopedic surgeons? Third, over 700 children eligible for treatment wait on sufficient funds for further treatment?

Of every hundred crippled children, 24 are born crippled, 11 are crippled because of accidents, 55 because of disease, and 10 are crippled because even in Texas they have lacked sunlight and proper food. The crippled children's program is four-fold—a program of prevention, early discovery, treatment, and vocational training.

The state May Day committee lists with pride this member, the crippled children's division of the Department of Education, Dr. Cox said.

A Scottish couple have been married 75 years—probably since they first found out that two could live as cheaply as one.

Asks Libel Damages of Million Dollars



COL. William C. Neblett, Los Angeles politician, asks a million dollars damages in a suit filed against opposition Democrats. He charges that Carl Pustau, a defendant, planned to collect \$250,000 in connection with a WPA appointment.

Strange Twin Lamb Born Near Comanche

By United Press
COMANCHE, Tex.—A strange "twin" lamb recently born on a ranch is being mounted by a taxidermist for Keith Lane of Comanche.

The "twin," killed in birth, has two separate normal necks and two heads, only two front legs and one breast bone, but two perfectly formed hind quarters with four hind legs. The ewe still is living.



The Shortening Featured in the Cooking School

Factory-Fresh Creamy-Smooth

Choice Vegetable Oil Makes Delicious Foods That Digest Quickly, Easily

Mrs. Tucker's Silver Anniversary



SPOONS 10¢

With face from any carton of Mrs. Tucker's SHORTENING THE SHORTENING WITH THE SILVER (Allophane) LINING

Safety First!

You Can SAVE SAFELY

... with Eastland Steam Laundry services! Have your clothes laundered in our economical manner. Economical because we launder your clothes scientifically, making them wear longer... last longer!



Your Choice of These SERVICES

1. Damp Wash: Clothes returned ready for you to hang up to dry. 10 pounds for .. 40c
2. Dry Wash: All flat work pieces ironed including handkerchiefs. 10 pounds for .. 60c
3. De Luxe: Your entire laundry including shirts. Flat, Lb. 6c All Others, Lb. 18c

EASTLAND STEAM LAUNDRY

FRANK ROY, Prop.
E. Commerce St. Phone 101 Eastland

EASTLAND TELEGRAM COOKING SCHOOL

is conducted for your benefit. It will pay you to attend MRS. ARREVA D. FRENCH

will discuss problems of the home and the merits of products she uses in the school. Be sure and notice the special demonstration of the double-tested double-action

KC BAKING POWDER

ECONOMICAL AND DEPENDABLE

Same Price Today AS 47 YEARS AGO!

25 OUNCES FOR 25c

★ Manufactured by Baking Powder Specialists who make nothing but Baking Powder—under supervision of expert chemists of national reputation.

KC is economical: Because of its high leavening strength only 1 level teaspoonful to a cup of flour is sufficient for most recipes.

It is a time saver: That's due to the double action. One action in the mix and the second, a stronger action, in the oven. You can prepare dough for biscuits, muffins, etc., hours in advance, set in a cool place and bake when desired. No need for hurry when using KC.



Hundreds of Thousands of women have received THE COOK'S BOOK. You can get a copy of this beautifully illustrated book—full of practical, tested recipes that will please you. Mail the certificate from a can of KC Baking Powder with your name and address and your copy will be sent postage paid.
Address: **JAQUES MFG. CO.** Dept. C. B. — Chicago, Ill.
Name _____
Address _____

MILLIONS OF POUNDS HAVE BEEN USED BY OUR GOVERNMENT

BABY CHICKS!

English White Leghorn Baby Chicks. Guaranteed to live, grow and lay. Hatched from pedigreed stock. \$8.00 per 100. Liberal discount on large quantities. Custom hatching in individual trays, 2 cents per egg.

Bell-Hurst Ranch
Eastland, Texas

First Aid

for

Constipation

Nyal Mineral Oil



A non-habit forming relief for constipation and irregular movements. Pains, flatulency and odorless.

Full Pint 59¢
Corner Drug Store
Eastland

Hamner Undertaking Co.
Phones 17 and 564
DAY OR NIGHT AMBULANCE SERVICE

New LYRIC

FRIDAY and SATURDAY

**Big in LAUGHS!... Big in RHYTHM!
Big in ROMANCE!... It's the biggest
"BIG BROADCAST" of them all!**



12-scintillating stars-12!
Count 'em, my friends, count 'em!

W.C. FIELDS

"THE BIG BROADCAST OF 1938"

- | | |
|--|--|
| MARTHA RAYE
One vast vocal chord! | DOROTHY LAMOUR
She palpitates my heart! |
| SHIRLEY ROSS
A treat for the eyes and ears! | BEN BLUE
I got him in the bosky-batch! |
| BOB HOPE
Ah, he's a droll customer! | LYNNE OVERMAN
What a balmy jackknape! |
| RUFÉ DAVIS
The pretzel-faced buffoon! | LEIF ERIKSON
My romantic understudy! |
| GRACE BRADLEY
I'm torn 'twixt her and Lamour! | TITO GUIZAR
He rips off the rumbas! |

ADD !!!

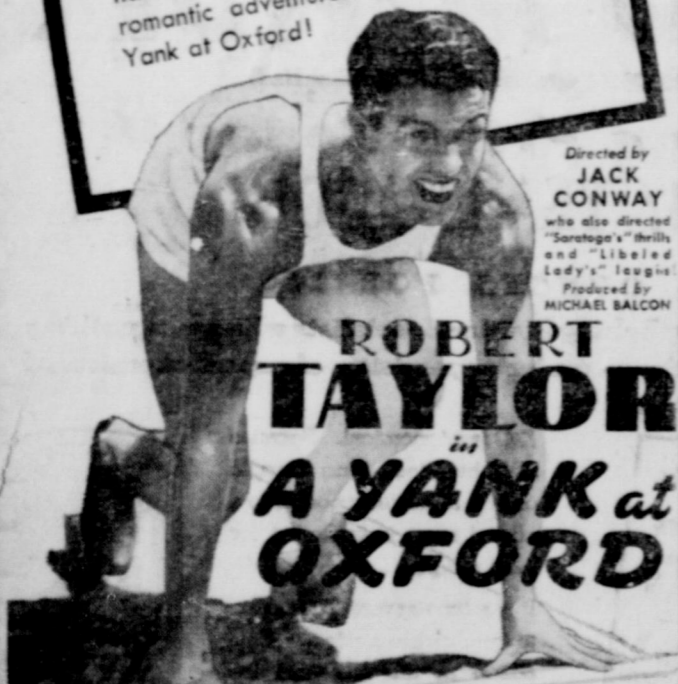


FLOYD GIBBONS
"TRUE ADVENTURE"
"ALIBI MARY"

SUNDAY and MONDAY

**THE WHOLE WORLD'S CHEERING
BOB TAYLOR'S MIGHTIEST HIT!**

The raves are rolling in... you'll join the hot-waving, too, when you thrill to the romantic adventures of this two-fisted Yank at Oxford!



Directed by JACK CONWAY who also directed "Saragosa" Thrills and "Liberated Lady".
Produced by MICHAEL BALCON

ROBERT TAYLOR "A YANK at OXFORD"

LIONEL BARRYMORE
MAUREN O'SULLIVAN • LEIGH EDMUND GWENN • GRIFFITH JONES



LIONEL BARRYMORE will win your heart as Bob's loyal father!

"BETTY BOOP"
"PETE SMITH"



These are scenes from Robert Taylor's latest picture "A Yank at Oxford." Featured in the cast with Robert Taylor are Maureen O'Sullivan and Lionel Barrymore who appear above. "A Yank at Oxford" will be the attraction extraordinary at the Lyric theatre for two days starting Sunday.

Due On Connellee's Stage Here



The Original "Arkansaw Hillbillies" have been booked for a one-day (Sunday) engagement at the Connellee Theatre, it was announced today by E. J. Aylesworth, manager.

These rube funsters with Uncle Cy, Bashful Elmer, Percy and Zeke made their first appearance some ten years ago at Civic Club entertainments in Little Rock, Arkansas. They were encouraged by the leading men of the city to make a tour, and on their first theatrical appearance, they were pronounced a hit. After playing a number of big time vaudeville circuits, they succeeded in capturing additional specimens of the genus hillbilly male and have added them to their troupe. Prominent among the new members are Luther and his trick fiddle, Virgil the village cut-up, and Junior with his accordion.

This troupe is said to be one of the most entertaining troupes of its kind on the road. Percy, the master of ceremonies in his clever rube jokes, and Elmer, the very bashful youngster, has attracted critics wherever they have appeared.

Included in their selections are a number of solos, duets, and ensembles on their many home-made and novelty instruments, such as saws, brooms, fly-sprays, spoons, jug, wah-board, toy balloon, and many other household and farm implement.

There have been numerous hillbilly bands touring the stage for several years, but the Original Arkansaw Hillbillies are offering something new and different in novelty entertainment, it is stated. They will be presented in connection with the regular screen program.

KC Baking Powder Assures Success In the Baking of Cakes

Knowing that baking powder leavens cake it is natural to assume that adding an extra half teaspoon to the amount specified in a recipe will give a cake greater lightness. However, that is not true, and the best plan to follow is to use the amount recommended on your baking can.

Because of the increased efficiency of KC and some other baking powders in use today, representing about 80 per cent of the baking powder consumed, they should be used properly to insure successful bakings. The following rules will be helpful in bringing about desired results: First, always use the amount specified on your baking powder can. This proportion has been worked out as best for that particular type. With KC, one level teaspoonful to a cup of sifted flour is sufficient for most recipes.

Second, measure carefully—remember that an excess amount of any baking powder does not produce best results. A level teaspoonful means that you must level off with a knife.

KC Baking Powder, the brand used in the cooking school, is one of the most economical and efficient products entering the kitchen. Properly used it will produce for you, the finest of baked goods. You can be convinced of this by giving it a fair trial and observing results obtained.

You can get additional helpful information and a number of practical, tested recipes by sending for the KC Cook's Book. A copy will be mailed, postage paid, if you will send your request together with the slip taken from a can of KC Baking Powder, to Jaques Manufacturing Company, Chicago, Ill.

CONNELLEEE

SUNDAY ONLY!

AMERICA'S GLAMOUR GIRL... IN THE ARMS OF THE PERFECT TARZAN... Facing a Thousand Jungle Terrors Together!



TARZAN'S REVENGE

The Perfect Tarzans
GLENN MORRIS

ELEANOR HOLM

GEORGE BARBER C. HENRY GORDON HEDDA HOPPER

Produced by 501 Lenses
Directed by E. Ann Leighton

Screen Play by Robert Lord Johnson and Jay Van...
A Famous Republic Production
Released by 20th Century Fox

CONNELLEEE

SUNDAY ONLY!

This Show has had Successful Engagement in Abilene, Amarillo and Lubbock.

ORIGINAL ARKANSAW HILLBILLIES



ADULTS 25c
KIDS 10c

OLD TEACHERS DEFENDED
CLEVELAND.— "Don't trade in the old teachers too soon," warns 68-year-old James O. Gordon who will retire in June after 47 years in the Cleveland public schools. Gordon protested against the tendency of lower retirement ages for teachers who He said he thought the schools. Gordon protested against teacher was valuable reached 70.

IN THE COOKING SCHOOL Mrs. Tucker's



CAKE CONTEST 25 SILVER QUARTERS for the Best Cake

Made with Creamy-Smooth Mrs. Tucker's SHORTENING Recommended by Cooking Experts

- | | |
|------------------|-------------------|
| 1. FACTORY-FRESH | 3. EASY-TO-DIGEST |
| 2. MULTI-CREAMED | 4. MORE ECONOMIC |

Mrs. Tucker's Silver Anniversary SPOONS 10¢

With face from a package of Mrs. Tucker's SHORTENING THE SHORTENING WITH THE SILVER (Allophane) LI Mail 10¢ and Face to Mrs. Tucker, Sherman, Texas, She Will Send your Spoon Postpaid. PRINT NAME and ADDRESS

ELECTRICITY BRINGS YOU



Cool Cookery with an Automatic Electric Roaster

Preparing hot meals in warm weather is a problem that can be solved simply and easily with a modern electric cooker. You can turn on the cooker and leave home, knowing that when you return, your meal will be ready for the table.

See the demonstration of the automatic electric cooker at the Eastland Telegram Cooking School, which continues through Saturday afternoon.

TEXAS ELECTRIC SERVICE COMPANY

J. E. LEWIS, Manager.

Try Our Want-Ads!

ST. MARY'S KITCHEN

Gaynor Maddox Service Staff Writer
MOTHER was a gentle
her cakes were very
what was good enough
should delight your
husband.

Tomorrow's Menu
BREAKFAST: Pineapple
and lime juice, boiled eggs,
oatmeal muffins, apple grape-
fruit marmalade, coffee, milk.
LUNCHEON: Spanish ome-
lette, hard rolls, walnut cookies,
tea, milk.
DINNER: Veal chops, mush-
room sauce, boiled new pota-
toes, asparagus with butter,
radish roses, canned peaches,
spice cake with mocha icing,
coffee, milk.

Siren! Where's Fire? In His Own Trailer

By United Press
CARNEYS POINT, N. J.—A. C.
Smith, Kinderhook, N. Y., motor-
ing through here with his trailer
in tow, heard the wail of a siren.
"A fire," he said to his wife.
He was right. The fire was in
his trailer. As he drove into town,
smoke was seen pouring from the
trailer. A telephone call sent fire-
men in hasty pursuit and they
caught him—just in time.

Asks Clerk Job



Claude (Curley) Maynard, 43-
year-old salesman, who today an-
nounced his candidacy for dis-
trict clerk of the county, subject
to the action of the Democratic
primaries.

Cleaning Evaporates \$130 In Man's Pants

By United Press
BOSTON—When Clayton Hart-
ford sent his trousers to the
tailors they received a thorough
cleaning.
He told police that he left \$130
in the watch pocket. Hurrying to
the cleaners he found the trousers
—cleaned in the progress of the
\$130.

TRY Our Want-Ads!

Claude Maynard In Race For Election As District Clerk

Claude (Curley) Maynard of
Eastland announced today that he
is a candidate for election as dis-
trict clerk of Eastland county,
subject to the action of the Demo-
cratic primaries.
Maynard, 43, native of East-
land county, is well and favorably
known in the county. Since Aug-
ust 1, 1931, he has been employed
as a salesman by the Harvey
Chevrolet Company in Eastland.
For three years he was employed
with the Bohning Motor Com-
pany.
Maynard for five years operat-
ed a service car and transfer busi-
ness in Eastland. Married and the
father of an 11-year-old daughter,
Maynard has never before sought
public office.
He has been active in Eastland
and county interests, known al-
ways to serve when called.
"As the campaign progresses I
will more further outline my plat-
form," said Maynard. "If elected
I shall endeavor to give the utmost
of services to the judges of the
two district courts, the lawyers
and the public, for in the office
are kept records open at all times
to the public. I invite any investi-
gation of my life and will appre-
ciate with all my sincerity your
consideration and vote. I intend,
if elected, to serve as an official
whom no one will regret for hav-
ing voted."

Borger Names New Assistant Coach

By United Press
BORGER, Tex.—Steven Mat-
thews, assistant coach at Childress
High School for the last two years
was named assistant football
coach at Borger High School.
Matthews will succeed "Cat-
fish" Smith, who was named head
coach here when Carl Moulden de-
clined to apply for renewal of his
position.
Matthews and Smith are form-
er teammates on the East Texas
State Teachers College squad.

Bottle Bobs Along For 9,000 Miles to Set a True Course

By United Press
WASHINGTON — Almost ex-
actly two years after it was cast
overboard off San Jose, Costa
Rica, a bottle was recovered at
Samar, Philippines Islands, a dis-
tance of about 9,000 miles.
The bottle was cast from the
steamer, K. R. Kingsbury on Dec.
21, 1935, by Second Officer M.
E. English. It was picked up at
Samar on Dec. 17, 1937, accord-
ing to the Hydrographic office of
the Navy Department.
The two points are almost on a
bee-line along the 10 degrees
North Latitude line in the Pacific
Ocean.

A BREAD FOR EVERY TASTE



ASK FOR Buttercrust BY NAME Get it from your Grocers
BAKED BY EASTLAND BAKERY J. U. JOHNSON Eastland

SAMPLE QUESTIONS AND UNDERSTANDABLE ANSWERS ABOUT YOUR BANK PART NUMBER FOUR:

much of its deposits
a Bank loan?
he demand for loans by business concerns
individuals governs, to a considerable ex-
the amount of money which a bank loans.
bank, however, cannot loan all of its de-
posed funds.
portion must be kept in cash to meet the
needs of customers. A portion must be
side as reserves which are required by law.
portion is kept in other banks to facilitate
clearing" of checks from one city to an-
other.
part is invested in government bonds and
readily marketable securities that can
turned into cash as the bank may need it.
balance of the bank's funds is available
sound loans.
This bank has money to loan for sound pur-
that safeguard the deposits entrusted to the
care. In this way we can perform the
amount of useful service in the business life
his community.
decides whether a Bank
should be granted?
In most banks there is a loan committee
which passes on loan applications. This com-
tee is made up of bank officers specializing
in loan work. In many instances this com-
tee includes some of the bank directors.
ns up to a certain amount are usually passed
by a single officer of the bank in the loaning
department.
In a broad sense most decisions on loans are
made by banking laws and regulations, and
recognized principles of sound bank man-
agement. Generally speaking, character, credit
rating and collateral are the three most im-
portant factors to be considered in making
decisions on loan applications.
This bank welcomes the opportunity to
make sound and useful loans.
my banking affairs
confidential?
It is an unwritten law observed in this bank
that no employee shall discuss the affairs of our
customers with anyone except properly author-
ized persons. This is one of the first rules that
every employee of this bank understands and
obeys.
Banking, like medicine or law, is a confiden-
tial relationship. Not only must bank officers
protect a customer's confidence when that cus-
tomer gives information about his business or
personal finances, but tellers, clerks and other
employees do not discuss customers' affairs
outside the bank—and in the bank only in-
so far as is necessary.
Strict adherence to this policy is one of the
basic principles in the management of this
bank. We know that the only way we can
continue to merit the confidence of our cus-
tomers is by respecting fully their private
business matters with us.
Why do Banks charge higher
interest than they pay?
We believe these facts will readily indicate
why the interest which a bank charges on
loans must be at a higher rate than that which
the same bank can pay on savings or time
deposits—
1. A considerable proportion of a bank's
resources, at any given time, are un-
invested; they must be kept available to
meet the possible demands of depositors.
2. A large proportion are invested in gov-
ernment bonds, which pay an extremely
moderate return.
3. Operating expense—including rent,
salaries, equipment, taxes, and occa-
sional losses—must be covered largely
by earnings from loans and investments.
... to say nothing of a moderate return
to the bank's stockholders on their invest-
ed capital.
Why do Banks expect a loan
to be paid when due?
A loan is a contract between the bank and
the borrower. If it is not repaid when due, the
contract is broken. Ability to repay is the best
proof that the loan is good.
There are, however, circumstances which
sometimes justify renewal. But bankers know
from experience that the longer a loan is
repaid the weaker it usually gets. Bank ex-
pectations are, in fact, very critical of a loan
which does not turn over at least once a year.
Prompt repayment is also better for the
bank—for it strengthens his credit.
A bank cannot tie up its funds for long
periods because most of its deposits are sub-
ject to withdrawal on demand. Furthermore,
bank credit is for the use of the whole com-
munity and regular repayments are necessary
or making fresh loans.
KEEP YOUR VALUABLES IN A SAFE DEPOSIT BOX!
MAKE ALL YOUR BANKING CONNECTIONS WITH THE

Eastland National Bank
MEMBER FEDERAL RESERVE SYSTEM



"You Can Make Cakes As Good As Mine!" SAYS MRS. FRENCH.
IN A CAKE Or BISCUITS...
... fluffiness, richness and texture that make the differ-
ence—and that's where Eastland Dairy Grade A milk
can help a lot! It is always uniformly rich in cream. It never
varies from bottle to bottle or from day to day. That's why
you never take a chance on recipes when you use Eastland
Dairy. That's why cakes, cookies
and puddings made with East-
land Dairy always taste so good!

Eastland Dairy Products Co. PHONE 36

VISIT THE COOKING SCHOOL... THEN COME TO US FOR VALUES!
WONDERFUL SELECTIONS
80 SQUARE PRINTS
Prints of every possible color in the very newest patterns. 19c yd
SILKS
Silks You'll see in the smartest spring frocks. 79c yd
ALPACA ALL COLORS!
A remarkable and brilliant array of selections. 98c yd
ALL THAT'S NEW IN HATS ARRIVED TODAY!
ECONOMY STORE
North Side Square CARL JOHNSON, Mgr. EASTLAND

YOUR DOLLAR NOW BUYS MORE In a General Electric Refrigerator than ever before!
TODAY'S GENERAL ELECTRIC MODELS CLIMAX 12 YEARS OF EVER INCREASING VALUES!
PRICE
OPERATING COST
COLD CAPACITY
FAST FREEZING
QUIET
LOOK AT THE PRICE TAGS! COMPARE VALUES!
And Check The Multiple Savings of a New 1938 General Electric
The new 1938 G-E Triple-Thrift Refrigerators are now on display. A dozen beautiful superbly styled models offering the greatest values in General Electric history. Last year America bought more General Electric Refrigerators than ever before—and today's G-E is even a bigger buy! It climaxes a 12 year record of ever increasing values.
SEE THEM AT THE TELEGRAM COOKING SCHOOL ROOF CONNELLEE HOTEL — THURSDAY, FRIDAY, SATURDAY
HARPER MUSIC COMPANY
E. Commerce St. EASTLAND Telephone 335

TWO MORE DAYS OF THE

EASTLAND TELEGRAM---WEEKLY CHRONICLE

COOKING SCHOOL

AND MERCHANTS' SPRING FAIR

HUSBANDS --- AND THE BOY FRIEND --- ARE WELCOME AS THE FLOWERS IN MAY ... COME EVERY DAY AND ENJOY THE FINE LECTURES AND DEMONSTRATIONS BY ONE OF THE NATION'S OUTSTANDING CULINARY ARTISTS ...



Mrs. Arreva D. French

Mrs. Arreva D. French, southern home economist and food authority who will conduct the Eastland Telegram-Weekly Chronicle cooking school in this city, is an outstanding lecturer in her profession and will bring a wealth of knowledge to housewives who will attend the school, on many phases of cookery, home budgeting, household hints, and new cooking secrets.

New suggestions, new recipes, new dishes and many new ideas on the kitchen will be brought by the lecturer, to the attention of the housewives.

Mrs. French, while a native Texan, received her principal education in Oklahoma, studying at the Southwestern State Teachers College at Durant, Okla., with all major studies being confined to foods. She has taken several specialized courses in the art of cake baking, cake decorating, bread baking and meat cookery. She is an expert in home canning and is an authority on this subject. Before conducting cooking schools, Mrs. French did civic organization and county home demonstration work.

She will make her lectures while actually doing the things she is talking about. The dishes, both of the plain and fancy variety, which she prepares, will be on display at the close of each lecture, and you are invited to remain after the lecture and discuss your personal problems in cookery and home management.



MRS. ARREVA D. FRENCH

When the housewife is confronted with the knowledge that her cooking is in a rut, that she is always serving "the same old thing," it is wonderful to see what an inspiration she can receive from the practical demonstrations given by Mrs. French.

There's a lot more to cooking than just dashing into the kitchen and starting to boil, fry and bake. Menu planning, buying judgment, food selection, and economical preparation all occupy a place of extreme importance.

Then, too, in every home there is always a supply of leftover foods that can be made as pleasing and palatable as the original dish, thus varying the menu and at the same time creating new economy in feeding the family.

All of these subjects and more too will be discussed by Mrs. French in her series of lectures. Remember, the lectures are free, and a cordial, urgent invitation is extended to every woman of the community to come and take advantage of the opportunity offered.

Remember the dates, and make a date with yourself to attend each day. We have been fortunate in securing the Connellee Hotel Roof as the scene of the cooking school. Although no seats can be reserved, every effort will be made to provide comfortable seats for all who attend, as it is expected that a large crowd will be on hand each day.

ROOF CONNELLEE HOTEL

MARCH 25, 26

BE ON HAND EARLY EACH DAY FOR CHOICE SEATS

NO SEATS RESERVED---LECTURES BEGIN AT 2 P. M. SHARP

FREE!

ADMISSION --- GIFTS --- SOUVENIRS --- SAMPLES

FREE!



Information For Eastland Dogs Is Offered by Chiefs

and officials Thursday is their annual appeal for the elimination of dogs against rabies. The method by which animals may receive a serum at the city hall.

Monday for a charge which is declared the

actual cost of the services—E. Witt, sanitary officer will inject the serum into the dogs, registrations made and tags issued.

Hours when Witt will be available at the city hall were announced as from 12:45 p. m. to 2 p. m. each day. Several weeks will be given Eastland residents to comply with the regulations after which officers will pick up unlicensed dogs. Immediate compliance was recommended, however.

Try Our Want Ads!

Eastland Youth Is Elected to "Frat"

Donald Russell of Eastland has been elected to membership in Phi Eta Sigma, honorary freshman fraternity at The University of Texas in Austin.

Initiation will be followed by a banquet honoring new members of Phi Eta Sigma and of Alpha Lambda Delta, freshman honor society for girls.

He is the son of Mr. and Mrs. P. G. Russell.

GROUP NAMED TO FORMULATE SOFTBALL RULES

A committee to draw up rules for play in this year's city league softball season and report Tuesday night, March 29, was appointed Wednesday night at a meeting of prospective managers and sponsors at the city hall in Eastland.

The committee was named by 15 persons who attended and is composed of R. S. Railey, Earl Weatherby, C. C. Street, Roy Birmingham and Charles Fields.

After presentation of the rules Tuesday night a date for opening of the season will be set. Organizations, businesses or persons planning to sponsor a team this season were urged to notify the committee prior to or at the next meeting which likewise will be at 8 o'clock.

To Lead Meet



Rev. Mr. Wilson, well-known evangelist, who is to lead a revival beginning Sunday at 2:30 p. m. at the Nazarene church in Eastland.

EASTLAND KP MEMBERS AT GORMAN MEET

Twenty-eight members of the Eastland Knights of Pythias lodge attended Monday night at Gorman a meeting for the presentation of a picture won by the latter organization at an attendance contest in Abilene recently.

The picture, of Supreme Chancellor Fred H. Jones, Los Angeles, Calif., was given by the Abilene lodge. Among officials present were John Lee Smith of Throckmorton, deputy supreme chancellor; Frank E. Smith of Abilene, grand prelate, and Theo Yarbrough, Weatherford, grand keeper of records and seals.

From Eastland were the following: H. S. Slatton, C. L. McCoy, C. F. Shepperd, John D. Harvey, Guy Robinson, A. J. Blackwell, J. L. Dorsey, J. S. Echols, Claude Maynard, John Rawson, J. F. Lewis, Karl K. White, O. L. Pollard, Jack W. Frost, F. C. Williamson, D. B. Roark, C. C. Street, E. W. Underwood, J. W. Ramsey, Dr. R. C. Ferguson, R. M. Hillburn, S. L. Bourland, Eugene Tucker, Clyde H. Wiley, T. C. Williams, B. R. H. Ferriss, Oscar Lyster, Herbert Reed.

Also present was A. B. Gullie, Throckmorton, who accompanied the official from that city.

Controversy about the TVA merely another argument over power.

Methodist Church Scene for Rites of Thomas Bennett

Final rites for Thomas Bennett, 72, who died Saturday at Eastland of a heart attack, were conducted Tuesday afternoon at the First Methodist church in Eastland with Rev. M. A. Walker, Fort Worth, officiating, assisted by Rev. P. W. Walker, pastor of the church, assisting. Interment was in Eastland cemetery.

Mr. Bennett, resident of Eastland 18 months and former resident of Carbon, is survived by his wife, three sisters and one brother.

Mr. Bennett formerly operated the Carbon Motor Company. Previously he was an oil well driller. Lodge affiliations included the Masonic in which he held the 32nd degree, his membership at Wichita, Kansas.

Hammer Undertaking Company was in charge of funeral arrangements.

Decline Is Seen In New Corporations

AUSTIN—There was a decline in both the number of capitalization of new corporation chartered in Texas during February, the University of Texas Bureau of Business Research has reported.

Data compiled by the Bureau from records of the Secretary of State show a total of 120 new charters granted during February, a decline of 13.7 per cent from the preceding month and of 7.1 per cent from the corresponding month last year. Capitalization totaled \$1,804,000, a drop of 20.4 per cent from the preceding month and of 15.5 per cent from February last year.

The decline from both comparable periods was the result entirely of fewer charters granted to out-of-State firms, the Bureau's report said.

WE ARE GLAD TO INVITE EVERY WOMAN ATTENDING THE COOKING SCHOOL TO VISIT OUR STORE AND SEE OUR ---

FURNITURE

High Quality - Low Price!

YOU PAY NO PREMIUM for QUALITY HERE!

We sell only quality furniture—yet our prices are as low as sometimes asked elsewhere for inferior products! Because of our high standards we are able to unreservedly guarantee the values listed below!

Let us figure with you on any of your Spring furniture needs . . . porch furniture for instance or Venetian blinds and awnings . . . living room . . . bed room . . . breakfast room . . . dining room suites!

NOW IS AWNING and VENETIAN BLIND TIME!

ALWAYS GLAD TO SHOW YOU!

TYSON FURNITURE CO.

West Main Street Eastland

Eastland Rotary Ann Banquet Set For April Fourth

Plans for the Eastland Rotary club's annual meeting with Rotary Anns, wives of the members, at the Connellee hotel Monday, April 4, are being formed, it was announced Thursday.

Date for the meeting, which will feature a banquet and entertainment on the night, was set this week by the club's directors and entertainment committee following the regular luncheon. Because of the night session the noon luncheon for the week of April 4 has been waived.

At this week's luncheon Rosemary Bruce of Ranger played two violin numbers and J. E. Lewis, Sr., discussed international affairs. R. N. Wilson was program chairman.

J. A. Smith, Eastland, guest of Judge W. P. Leslie, and H. E. Robinson, Brownwood, deputy state school superintendent, were visitors.

Finish of Modern Roque Court at Eastland Nearing

Completion of a new regulation roque court at the city park in Eastland with a new type of arches—through which the balls are shot — is nearing, according to members of the Eastland Roque club.

The court is being built through the cooperation of the City of Eastland. Roque players state that most arches are placed in cement but usually after their use the supports become weakened and a ball hitting them at angles will go through regardless.

The new arches are set in steel and the steel placed in the cement. According to the club members, since the arch supports have better grounding better playing will be required. The arches are being welded electrically to the steel and if hit the ball will be deflected because of the strong support.

Aged to Convene At Gorman Parley

Cecil Lotief of Eastland and E. A. Ringold of Ranger are to speak at a meeting of the Old People's Security League of the county at Gorman Saturday afternoon.

Due to illness of Rev. J. H. Taylor, chairman of the organization, R. O. Russell will have charge of the meeting.

Hoag Condition at Oklahoma City Is Reported Serious

Condition of W. F. Hoag, Sr., who has a large interest in the Texas Gas Engine and Tool Shop at Eastland, seriously ill in a clinic at Oklahoma City, Okla., remained unchanged Thursday. Hoag is a resident of Guthrie, Okla.

Acreage Quota On County Is Decided

County Agent Elmo V. Cook announced Saturday that he has been advised by the state Agricultural Adjustment Administration headquarters at Texas A. & M. college that the county's 1938 cotton acreage quota has been set at 12,278.

ORDERED TO EVACUATE

By United Press MOSCOW, Russia, Mar. 21.—The American-Russian Chamber of Commerce has been ordered to evacuate its offices within two weeks, it was understood today. No information was available as to the reason.

Coca-Cola

IS A NATURAL PARTNER OF GOOD THINGS TO EAT ... IT BELONGS IN YOUR ICEBOX AT HOME

Says Mrs. Arreva D. French famous food authority of the Telegram Cooking School!!



DON'T MISS MRS. FRENCH'S interesting demonstrations at the ROOF CONNELLEE HOTEL



MRS. FRENCH will give you many helpful hints in planning, preparing, and serving foods and refreshments. She will show you how serving ice-cold Coca-Cola is always the refreshing thing to do. Delicious by itself, it is a natural partner with many varied foods. Pure refreshment . . . ice-cold Coca-Cola is a sparkling drink of natural flavors . . . and belongs in your icebox at home. You can buy Coca-Cola at your favorite dealer's.


What to serve for refreshment at home is never a problem if you have frosty bottles of Coca-Cola in your icebox. Coca-Cola in the handy six-bottle carton is easy to buy . . . easy to carry home. Get one today.



COCA-COLA BOTTLING CO

EASTLAND TEXAS

"ARAB GAS PLEASE"



AND BE SURE IT IS "ARAB"

IT'S THE GAS THAT ASSURES YOU OF SMOOTH FLOWING POWER PLUS THE UT-MOST IN ECONOMY!

VISIT THE COOKING SCHOOL Then FILL UP WITH ARAB

Refined By **ARAB GASOLINE CORP.**

Main Office Exchange Building Eastland

BETTER HOMES Have Better Medicine Chests!



... Especially if they come from us . . .

It's important to have the purest of everything on hand including everything for milady's beauty needs—

VISIT THE COOKING SCHOOL THEN VISIT OUR STORE!

KENNY'S CORNER DRUG STORE

Northwest Corner of Square Phone 588 Eastland

MRS. FRENCH WAS DELIGHTED WITH THE MANY BEAUTIFUL AND USEFUL ARTICLES OF JEWELRY AND SILVERWARE . . .



.. AND WHAT-NOTS WE HAVE HERE . . . YOU WILL BE TOO!

Ask About Our Special Down Payment Plan

A GIFT THAT LASTS A LIFE TIME . . . VISIT US AFTER THE SCHOOL!

Silverware

If she serves memorable meals . . . give her a memorable gift! Extra heavy quality silverware in modern or period designs. Guaranteed. Service for eight.

BESKOW JEWELRY & OPTICAL CO.

WEST MAIN ST. EASTLAND

Last Key Is Gone To a Stagecoach Loot of \$80,000

COLORADO SPRINGS, Colo.—Another secret of the Old West seemed destined to remain an unsolved mystery with the death here of Raymond McLaughlin, 88, pioneer Colorado rancher.

With McLaughlin dead the last clue to the purported hiding place of \$80,000 in loot taken in the historic Como, Colo., stage robbery in the summer of 1863.

Although the band of 12 bandits was captured and later shot, they all died without revealing what had become of the stolen

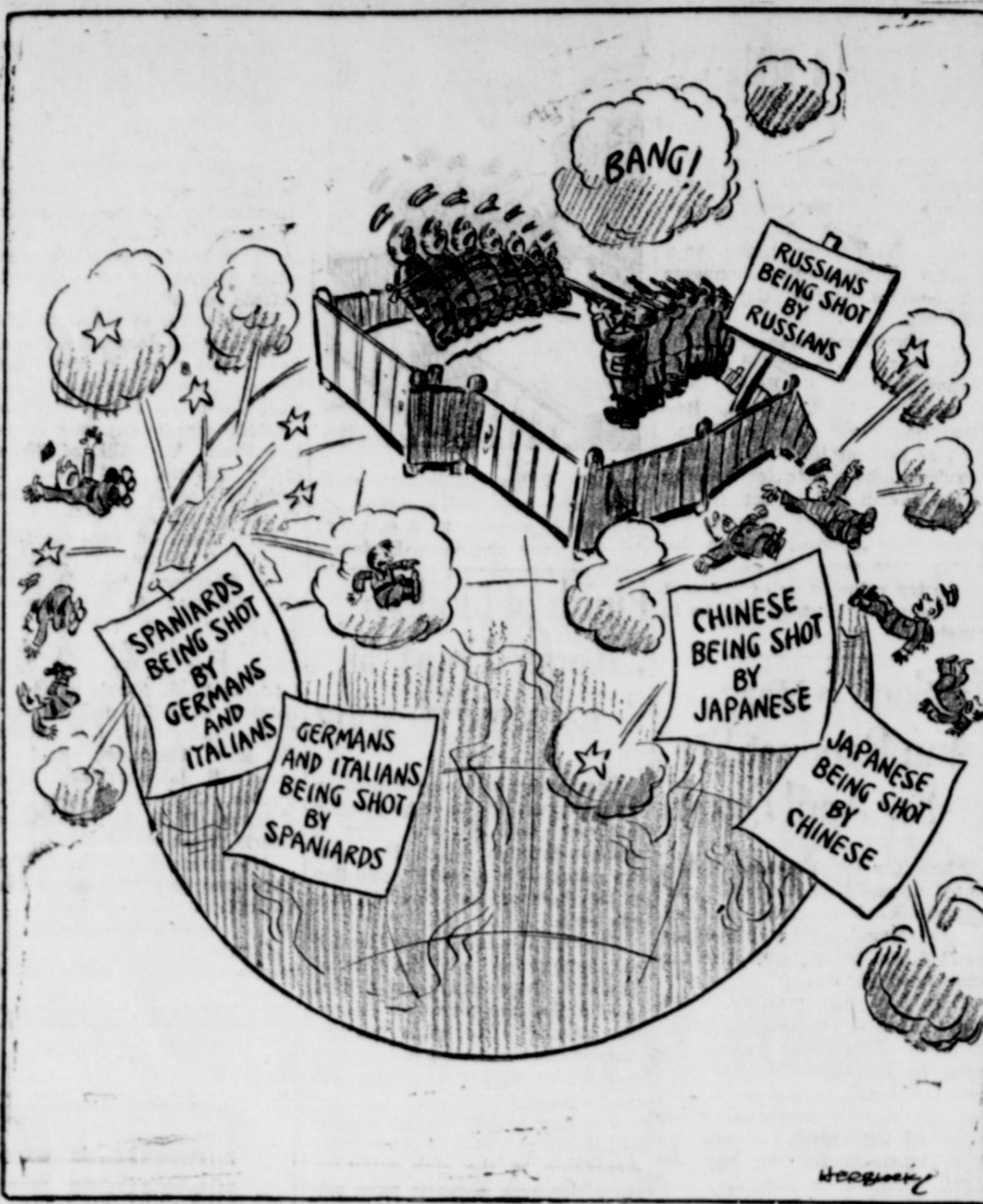
fortune in gold and greenbacks. McLaughlin was 14 years old at the time of the robbery. The bandits, he said, had visited his father's ranch, forced his mother to cook them a meal and then commandeered his father's horses, on which they robbed the stage at Como.

He never would reveal the exact burying spot of the hidden loot, and local residents and "old-timers" always thought that McLaughlin "knew more than he was tellin'" about the treasure.

Legend says that the robbers hurriedly buried it at the foot of a tree before they were set upon by a posse. The tree was marked by a bowie knife stuck in its trunk.

The stage coach had left Fairplay, Colo., headed for the Ute Pass over the Rocky Mountains. At Como, Colo., 12 bandits, armed

NATIONAL SELF-SUFFICIENCY IN RUSSIA



with revolvers, rifles and knives, attacked the coach, killed the driver and guard and seized the money box.

When the passengers could release themselves, they spread an alarm, and heavily armed posses, including two troops of federal cavalry, took up the chase. One group of possemen surprised the bandits in camp the following night, killed six of them and captured the remaining six. The loot was never found.

GIRL CONQUERS HANDICAP

DAVENPORT, Wash.—Hilda Louise Ralfs, 19, suffered almost complete loss of hearing during a childhood illness, but it did not affect her ambition to go out and do things. Now she has several medals, won as a dancer.

MOVE TO EASTLAND

J. H. Giles, district representative of the Singer Sewing Machine company, formerly of McCamey, has moved to Eastland with his family, locating at 201 College street.

The Giles family is composed of his wife and two children.

Two Committees On NYA Will Meet to Discuss Program

AUSTIN—Two committees of Texas school men will meet soon to discuss the National Youth Administration Student Aid program of 1937-38, under which more than 14,000 students have earned a portion of their expenses by parttime work while continuing in school.

The School Aid ommittee, of which John P. Manning, Superintendent of Robstown Schools, is chairman, will meet in Austin on March 26.

The College Aid Committee, of which Dean V. I. Moore of the University of Texas is chairman, will meet in Dallas on April 1, following the meeting of the Association of Southern Colleges.

These two committees will discuss administrative problems of the NYA Student Aid program, and will make recommendations regarding its place in the educational scheme. Under the Student Aid program, students who otherwise could not attend school are selected by the participating in-

Hardin-Simmons Has Four Grid Captains

By United Press
ABILENE, Tex.—The practice of electing co-captains for a football team is common, but the Hardin-Simmons Cowboys have named four captains for their 1938 season.

The leaders will be Bud Reeves, end, of Wichita Falls; Edgar Bigelow, center, of Amarillo; Luther Raley, quarterback, of Hamlin, and Clarence Headstream, half-back, of Roby.

They will take turns about as captains for full game periods.

TRY Our Want-Ads!

65,000 BASEBALL FACTS AND FIGURES 1938
BASEBALL DOGS BOOK NOW READY
Better Than Ever—New Features
Contains Major and Class AA Schedules; Roster of Major Clubs; Ages, Heights and Weights; Points, Wins, Clubs Since 1926; The Salaries; Leading Batters and Pitchers in Season; 1937 Records Made Last Year; How to Score; 1937 All-Star Game and Complete Announcements; How to Compute Averages; Base Ball's Hall of Fame, etc., etc.
Price 15 Cents 128 PAGES
C. C. SPINK & SON, ST. LOUIS, MO.

For Better CLEANING and PRESSING

SEND TO HARKRIDERS

To make sure of completely satisfying our customers, Harkrider adheres to standards of quality as high and as rigid as those of any business! This means that your clothes can be kept fine looking, smart, as long as they're in service!

PHONE 20

Harkrider Cleaners & Dyers

West Main Eastland

IT'S HOW YOU LIVE THAT COUNTS---

Let us figure with you on your building, repairing and general needs.

PAINTS - VARNISHES WALL PAPER

Always glad to advise with you free of charge.

HIGGINBOTHAM - BARTLETT COMPANY

Everything to Build Anything EASTLAND

GET YOUR SUIT NOW!

VALUES \$12.95 to \$19.50

One-Half Price

SEE OUR DISPLAY AT THE COOKING SCHOOL!

NEW FALL SHOES

\$2.95 --- \$6.50

SPECIAL SALE!

ODD LOT SHOES

FRIDAY and SATURDAY

Values to \$3.95 **\$1.00**

The FASHION

NORTH SIDE SQUARE EASTLAND

Penneys

TODAY'S FEATURE

Printed House Dresses

Large selection printed cottons in Spring Colors! Don't fail to see these outstanding values!

98c

Penneys

JUST RECEIVED NEW SHIPMENT OF

Tomato Plants

Also Plenty of Fresh Beans . . . Squash . . . Carrots . . . Beets . . . Radishes . . . all kinds of Greens . . .

Plenty of Fruits of all kinds.

Also we will have a Fresh carload of Valley fruits and vegetables Monday.

GREEN GROCERY & FRUIT MKT.

EAST SIDE SOUTH LAMAR
Half Block Off Square
MRS. VIOLA BROWN, Prop.

Starts Today

BIGGEST VALUES
BIGGEST SELECTIONS
BIGGEST DEPT. STORE
EMPLOYEES SALE

West Side Square Eastland

MODERNIZE THE KITCHEN

MODERN PLUMBING MEANS ECONOMY IN TIME & EFFORT You'll find that a modern sink with running water will repay the original investment many times over in increasing convenience and time-saving. Call today and let us explain how easy it is to have a modern water system.

SEE OUR DISPLAY AT THE COOKING SCHOOL

SMITH PLUMBING & ELECTRIC

Phone 100 — Eastland

NORGE Leads Again!

ONLY NORGE GAS RANGES GIVE YOU THE FUEL-SAVING CONCENTRATOR BURNERS

NEW STYLING! NEW CONVENIENCE!
NEW EFFICIENCY! NEW ECONOMY!

THESE exciting new Norge Gas Ranges give you exclusive styling, safety visual oven heat regulator, automatic clock control...all the ultra-modern conveniences...plus the famous Concentrator burners that cook faster and use less fuel. Come in and see the Norge—see the Norge before you buy!

NORGE CONCENTRATOR BURNER

Directs heat toward center of cooking vessels; saves gas by greatly increased efficiency. Exclusively Norge.

AS LITTLE AS \$1000 DOWN PAYMENT

SEE OUR DISPLAY AT THE COOKING SCHOOL

C. I. HYATT

Eastland — Olden — Ranger

stitution for part-time employ- while high school students. College students may earn a wage not in excess of an average wage of \$15 a month, a month.

"PERMUTIT"

What Is It?
SEE IT AT THE COOKING SCHOOL

Enjoy its hundreds of benefits in your home!

THE HAIR . . . A woman's hair has been her crowning glory. But hard-water-wash hair is dull, sticky, brittle and dead. Washed with Permutit, will perform its softening benefits.

THE HANDS . . . Soft hands again with soft water—hands like those that men love to hold. Cuticle becomes soft once more, nails become strong and glistening. Dishwashing and laundry have no more terrors.

THE BATH . . . Bathing becomes a pleasure. You feel the exhilaration of pure water. You feel refreshed. You feel clean. No more soap curds—no ring around the tub. All irritation is gone. Your skin is soft and smooth.

THE TABLE . . . With Permutit softened water may have not only personal beauty—but beauty at your table. You know what water has done to your china, your glass and silverware. Even the most vigorous scrubbing will not remove the grease, dullness, the soap curds.

THE LAUNDRY . . . Dainty lingerie and fine fabrics simply cannot retain their beauty nor shine as long as they should when laundered in hard water. With soft water you not only save half the soap and save your hands from irritation, but you restore your clothes to their original newness and prolong their life.

C. I. HYATT

Eastland — Olden — Ranger