

THE WEEKLY CHRONICLE

Eastland County's Own Progressive Publication For All The People

The Chronicle is the only weekly newspaper in Eastland having a paid subscription list

(Established November, 1887)

EASTLAND, TEXAS, FRIDAY, MARCH 18, 1938

NO. 20

INCREASE IN TAXES SHOWN BY COMPILATIONS

While John Bull courts Malame pays daily, he should recall that it was maintained Italian who wrote an opera with the song, "Woman is Fickle."

The government now takes in many for each \$1 it collected in the year 1937. Back at the beginning of the year, E. Ferguson's first term as many error.

It was shown in a compilation made by John T. Smith in the Texas Tax Journal, based on the compilation of the comptroller's office, including the 1937 report issued by Comptroller George H. H. E. Ferguson.

According to reports furnished County Agent Elmo V. Cook, Montgomery's dairy herd fed on silage in 1937-38 produced four pounds more each than when fed of dry feed previously.

Cook and Hugh F. Barnhart, assistant agent, are inviting farmers, livestock men, 4-H club boys and others to attend the meeting.

When Chancellor Kurt Schuschnigg finally capitulated before the iron-fisted ultimatum of Hitler, Nazis who previously had been rioting burst into a wild celebration such as pictured in the striking photograph above. Mounted police found their job almost as difficult as during the earlier street clashes, so riotous were the demonstrations of the victorious Nazis. Similar scenes were enacted all over Austria.

Over three-quarter of a million dollars of work has been done through the sponsorship of projects by Eastland county in cooperation with the Works Progress Administration since September, 1935, through January this year, according to a report compiled by County Engineer A. F. Taylor at the direction of commissioners court. The exact figure was \$791,346.99.

The report will be compiled for WPA authorities of Texas and the nation. Other units of government must also have compiled similar reports.

The report shows 133.8 miles of lateral road, including 279 stone masonry bridges and culverts with re-enforced concrete top slabs, were built. Federal funds for the work was \$475,873.53 while the sponsor contribution aid or help valued at \$119,106.96. Man hours involved in the work was 1,133,648.

Six sewing rooms have made 111,390 garments through federal funds of \$169,388.39. A total of 449,085 man hours resulted in the work.

One cannery run two seasons resulted in 45,604 cans of food. The federal government spent \$11,478.34 while it cost the county \$642.85 for the work which required 19,321 man hours of work.

A library serving 17 public schools cost the WPA \$4,176 and the county \$1,225 and produced 10,400 man hours of labor.

National youth administration work resulted in terracing of 6,199 acres of land, 70 acres of pasture demonstration, manufacture of 5,043 feet of garden tile, checking of 75 tank dams and tracing of 500 maps. This work, done under the supervision of County Agent Elmo V. Cook cost the government \$2,685.50 and the county \$580, producing 13,428 man hours of work.

Total of 1,625,882 man hours of labor was involved in all the work, which cost the government and county \$781,346.99. The county's share was \$127,745.13 and the WPA's share was \$663,601.86.

Wright Ligon is new sales chief at bottling firm.

Appointment of Wright Ligon, formerly of Abilene, as sales manager at the Texas Coca-Cola Bottling company plant in Eastland was announced Tuesday by officials.

Ligon succeeds A. A. Cowan, transferred to Stamford to occupy the same position there. Mrs. Cowan, former office manager at Eastland, continues the same work at Stamford.

Ligon was a salesman at Abilene prior to his promotion. Under the new arrangement he is sales manager at the Eastland plant and is also in charge of the office management.

Ligon is the son of Mrs. C. C. Ligon of Eastland.

185 Attend Mason Meet at Eastland

One hundred and eighty-five Masons of this area were present Saturday night at Eastland when a master's degree was conferred at the meeting of Eastland lodge No. 467.

A 32nd degree team from Dallas attended. Twenty-four Masons from Dallas registered.

Four of Eastland On U. T. High List

Nina Belle Smith, Clyde Irwin Chaney, James Mahon and Ralph Mahon, Jr., Eastland students at the College of Arts and Sciences at the University of Texas in Austin, made grades during the fall semester entitling them to places on the honor roll, it was announced Monday.

TRANSFER SUIT

Case of L. A. Warran against J. A. Hoover and others, an action for collection on a note, has been transferred from 88th district court to 91st district court.

ESTATE VALUED

Estate of Mrs. Florence Stewart has been appraised at \$2,592, according to records on file in the office of County Clerk R. V. Galoway. There was no claim on the estate.

DIVORCE GIVEN

Divorce has been granted by 88th district court to Eunice Smith Levitt from Edward S. Levitt, a judgment on file Monday showed.

BOND IS POSTED

Weaver, charged with intoxication, has posted bond, officials announced.

PEANUTS WILL BE SOLD FOR \$1.15, NOT \$1.00 PER BUSHEL

Through a typographical error price of seed peanuts at the rising star bonded houses was put at \$5 per bushel, when it should have been \$1.15 per bushel.

of peanuts will be conducted at the Ranger Warehouse on Friday, Tuesday and Wednesday, April 4, 5 and 6, and at the Star Warehouse the last days of the week, the sale on April 7, 8 and 9.

SCHOOL OFFICIAL TO INSPECT IN COUNTY

H. E. Robinson of Brownwood, deputy state school superintendent, will visit all affiliated and rural aid schools in the county immediately after April 1, Supt. C. S. Eldridge has been advised.

WED AT EASTLAND

Nevadne Reynolds and Lucien W. Hurst, both of Eastland, were married Saturday night at the home of Justice of Peace E. E. Wood at Eastland.

Trench Silo Meet Set For Mar. 23 At Ranger Dairy

E. R. Eudaly, extension service dairyman, is to conduct a trench silo meeting Wednesday morning, March 23, at the S. O. Montgomery dairy one mile east of Ranger, it was announced Tuesday by extension service officials.

Eudaly will discuss silos, the use of silage and other features of trench silos at the meeting, a feature of which will be inspection of feed that has been buried in the ground for nearly a year and is good for livestock consumption.

According to reports furnished County Agent Elmo V. Cook, Montgomery's dairy herd fed on silage in 1937-38 produced four pounds more each than when fed of dry feed previously.

Cook and Hugh F. Barnhart, assistant agent, are inviting farmers, livestock men, 4-H club boys and others to attend the meeting.

C. B. WELLMAN, C. T. LUCAS IN EASTLAND RACE

The names of C. T. Lucas and C. B. Wellman have been registered with City Secretary M. H. Kelly as candidates for reelection in the Tuesday, April 5, municipal election at Eastland.

A statement issued by other members of the commission was in part as follows:

"H. O. Satterwhite, L. J. Lambert and C. W. Hoffmann are well-pleased to feel they will have the assistance of Mr. Lucas and Mr. Wellman to help carry on the affairs of the city. These two gentlemen are entitled to a great deal of credit and their membership means continued cooperation among the city commission and further effort will be made to make Eastland a still better city in which to live."

"The citizens of Eastland should feel very fortunate having such men as Mr. Lucas and Mr. Wellman offer their service for a second term as they have given freely of their time and money for the good of Eastland during their present term of office than has been accomplished in many years."

Ranger Man Invents Shaking Apparatus Used In Hospitals

An instrument for shaking serologic tests, which was invented by J. H. Holt of the West Texas Hospital of Ranger, is described in the February issue of the Journal of Laboratory and Clinical Medicine, published in St. Louis. The article reads:

"The shaking apparatus described in this article was designed to fill the need for a simple, yet efficient and inexpensive means of shaking test tubes."

"The apparatus consists of a complete motor vibrator, such as is used by many beauty parlors and barber shops for massage. The motor is clamped to a ring stand by an adjustable clamp, or may be bolted to a wooden base. The end of the vibrator, to which the rubber tip is attached, has a small threaded hole. By means of a screw passed through the bottom of the motor and into the threaded hole, a soda can is attached firmly to the end of the vibrator and the junction soldered. Washers are used to reduce the strain on the thin bottom of the carton. When in use the tubes are placed in the carton, the lid screwed on and the motor started. This imparts a vigorous shaking motion the speed of which may be controlled by means of a rheostat."

"An apparatus, such as described above, has been used by the writer (J. H. Holt) for many months, and the results have been entirely satisfactory in every respect."

Many Are Present At Carbon Singing

A large crowd of Eastland county citizens attended the singing held at Carbon Friday night.

Local quartets from the different communities have been conducting these affairs for the past several weeks and each Friday for the next few months will see similar events held in Carbon. The public is invited to attend.

On the fifth Sunday in May an all-day singing will be held with dinner on the ground and in addition to several local singers the Stamps and Rippetoe quartets will be on hand to sing for the gathering. The public is reminded to keep these dates in mind and make arrangements to attend any or all of the singings held at Carbon.

Eastland Student Helps at Exhibition

Dalton White of Eastland was one of the John Tarleton College agricultural students who helped conduct the Fifth Annual Future Farmers' Meat Identification Contest held at the Fat Stock Show Saturday at Fort Worth, contest superintendent A. J. Spangler of Tarleton announced.

White is a junior in the Department of Agriculture Education.

As Nazi Riots Turned to Thunderous Celebration



When Chancellor Kurt Schuschnigg finally capitulated before the iron-fisted ultimatum of Hitler, Nazis who previously had been rioting burst into a wild celebration such as pictured in the striking photograph above. Mounted police found their job almost as difficult as during the earlier street clashes, so riotous were the demonstrations of the victorious Nazis. Similar scenes were enacted all over Austria.

Former Maverick Gridders Attend Arkansas School

Tommy Samuels, "Boob" Daniels and Roy Taylor, Eastland High school students, have transferred to the Hope, Ark., high school.

The youths, some of the star performers of the last season's Eastland football team, are understood to have transferred to the Arkansas school because state rules their permit playing until 21 years of age.

The Arkansas town is experiencing a great interest for football, according to reports.

New Hope Club Is Told of Ventilation And Good Windows

Windows should be built as near the ceiling as possible, in order to give ventilation, stated Miss Ruth Ramey at a meeting of the New Hope Home Demonstration club, held at the home of Mrs. E. Barron.

The fumes and hot air go up, and if you have the windows closer to the top they go out. If your windows are high or half windows you have more wall space in your kitchen for your large equipment.

Twenty per cent of the floor space in windows is best, it was stated.

Curtains for your kitchen windows should be of a good fast color material, and made so they will be up out of the way. For large lower windows, just to use shades is considered best.

Miss Ramey also tested a cooker for defects and found that the pressure gauge was inaccurate.

Those present at the meeting were Meses. John Bennett, Levi Harrison, E. E. Murray, Cullen Rogers, Bernard Eison, Ernest Weaver, V. W. Weaver, Floyd Wood, and a visitor, Mrs. Emma Nunn of Big Spring, and the hostesses.

Trustees Will Be Named by School Areas of County

Election of trustees is scheduled for Saturday, April 2, in 39 common school districts, according to records in the office of County Superintendent C. S. Eldridge. All terms are for three years.

Number of trustees to be elected by schools is as follows: Flatwood, 2; Central, 1; Lone Cedar, 1; Union, 1; Colony, 1; Cross Roads, 1; Triumph, 1; Tudor, 1; Kokomo, 1; Alameda, 2; Sandy, 1; Hallmark, 1; Shady Grove, 1; Reich, 1; Long Branch, 1; Cottonwood, 1; Bluff Branch, 1; Friendship, 1; Mountain, 1; Morton Valley, 3; Elm, 1; Crocker, 1; Grandview, 1; Okra, 2; Salem, 1; New Hope, 1; Dothan, 1; Bullock, 1; Romney, 2; Pleasant Hill, 1; Davis, 1; George Hill, 1; Cook, 1; Center Point, 1; Bedford, 1; Grapevine, 1; Mangum, 1; Reagan, 1.

Cotton Referendum Barely Carries In Vote Over County

The cotton referendum in Eastland county barely carried in favor of participation in the crop control measure with a vote of 253 for and 222 against.

Vote by the six individual boxes showed:

	For	Against
Cisco	44	50
Rising Star	58	55
Eastland	43	17
Gorman	53	55
Carbon	35	51
Ranger	20	14

County Agent Elmo V. Cook, Montgomery's dairy herd fed on silage in 1937-38 produced four pounds more each than when fed of dry feed previously.

Cook and Hugh F. Barnhart, assistant agent, are inviting farmers, livestock men, 4-H club boys and others to attend the meeting.

When Chancellor Kurt Schuschnigg finally capitulated before the iron-fisted ultimatum of Hitler, Nazis who previously had been rioting burst into a wild celebration such as pictured in the striking photograph above. Mounted police found their job almost as difficult as during the earlier street clashes, so riotous were the demonstrations of the victorious Nazis. Similar scenes were enacted all over Austria.

Over three-quarter of a million dollars of work has been done through the sponsorship of projects by Eastland county in cooperation with the Works Progress Administration since September, 1935, through January this year, according to a report compiled by County Engineer A. F. Taylor at the direction of commissioners court. The exact figure was \$791,346.99.

The report will be compiled for WPA authorities of Texas and the nation. Other units of government must also have compiled similar reports.

The report shows 133.8 miles of lateral road, including 279 stone masonry bridges and culverts with re-enforced concrete top slabs, were built. Federal funds for the work was \$475,873.53 while the sponsor contribution aid or help valued at \$119,106.96. Man hours involved in the work was 1,133,648.

Six sewing rooms have made 111,390 garments through federal funds of \$169,388.39. A total of 449,085 man hours resulted in the work.

One cannery run two seasons resulted in 45,604 cans of food. The federal government spent \$11,478.34 while it cost the county \$642.85 for the work which required 19,321 man hours of work.

A library serving 17 public schools cost the WPA \$4,176 and the county \$1,225 and produced 10,400 man hours of labor.

National youth administration work resulted in terracing of 6,199 acres of land, 70 acres of pasture demonstration, manufacture of 5,043 feet of garden tile, checking of 75 tank dams and tracing of 500 maps. This work, done under the supervision of County Agent Elmo V. Cook cost the government \$2,685.50 and the county \$580, producing 13,428 man hours of work.

Total of 1,625,882 man hours of labor was involved in all the work, which cost the government and county \$781,346.99. The county's share was \$127,745.13 and the WPA's share was \$663,601.86.

Wright Ligon is new sales chief at bottling firm.

Appointment of Wright Ligon, formerly of Abilene, as sales manager at the Texas Coca-Cola Bottling company plant in Eastland was announced Tuesday by officials.

Ligon succeeds A. A. Cowan, transferred to Stamford to occupy the same position there. Mrs. Cowan, former office manager at Eastland, continues the same work at Stamford.

Ligon was a salesman at Abilene prior to his promotion. Under the new arrangement he is sales manager at the Eastland plant and is also in charge of the office management.

Ligon is the son of Mrs. C. C. Ligon of Eastland.

185 Attend Mason Meet at Eastland

One hundred and eighty-five Masons of this area were present Saturday night at Eastland when a master's degree was conferred at the meeting of Eastland lodge No. 467.

RESULTS OF PROJECTS COUNTY SPONSORS IN PROGRAM IS DISCLOSED

Over three-quarter of a million dollars of work has been done through the sponsorship of projects by Eastland county in cooperation with the Works Progress Administration since September, 1935, through January this year, according to a report compiled by County Engineer A. F. Taylor at the direction of commissioners court. The exact figure was \$791,346.99.

The report will be compiled for WPA authorities of Texas and the nation. Other units of government must also have compiled similar reports.

The report shows 133.8 miles of lateral road, including 279 stone masonry bridges and culverts with re-enforced concrete top slabs, were built. Federal funds for the work was \$475,873.53 while the sponsor contribution aid or help valued at \$119,106.96. Man hours involved in the work was 1,133,648.

Six sewing rooms have made 111,390 garments through federal funds of \$169,388.39. A total of 449,085 man hours resulted in the work.

One cannery run two seasons resulted in 45,604 cans of food. The federal government spent \$11,478.34 while it cost the county \$642.85 for the work which required 19,321 man hours of work.

A library serving 17 public schools cost the WPA \$4,176 and the county \$1,225 and produced 10,400 man hours of labor.

National youth administration work resulted in terracing of 6,199 acres of land, 70 acres of pasture demonstration, manufacture of 5,043 feet of garden tile, checking of 75 tank dams and tracing of 500 maps. This work, done under the supervision of County Agent Elmo V. Cook cost the government \$2,685.50 and the county \$580, producing 13,428 man hours of work.

Total of 1,625,882 man hours of labor was involved in all the work, which cost the government and county \$781,346.99. The county's share was \$127,745.13 and the WPA's share was \$663,601.86.

Wright Ligon is new sales chief at bottling firm.

Appointment of Wright Ligon, formerly of Abilene, as sales manager at the Texas Coca-Cola Bottling company plant in Eastland was announced Tuesday by officials.

Ligon succeeds A. A. Cowan, transferred to Stamford to occupy the same position there. Mrs. Cowan, former office manager at Eastland, continues the same work at Stamford.

Ligon was a salesman at Abilene prior to his promotion. Under the new arrangement he is sales manager at the Eastland plant and is also in charge of the office management.

Ligon is the son of Mrs. C. C. Ligon of Eastland.

Profit Is Reported By Empire Southern

Empire Southern Gas company, which operates at Gorman, Desdemona and Carbon in Eastland county, has filed its report for the year ending Dec. 31, showing gross earnings of \$349,906.03, as compared to operation cost of \$343,372.70.

The report filed by the utility in the office of the county clerk stated floating indebtedness, including all bills payable, totaled \$1,628,204.67, as compared to a valuation of \$2,009,609.84 on visible tangible property.

Eastland Oilman at Coffeyville, Kansas

P. G. Russell, geologist at the Lone Star Gas company district office in Eastland, has left for Coffeyville, Kans., where he will meet Samuel Butler of Eastland, for geologic work in that area. He is on a short leave of absence from the Lone Star.

Public Weigher Is Appointed by Court

Succeeding G. C. Branton, resigned, J. R. Bucy has been appointed public weigher in precinct 7, which embraces Rising Star, it was announced Saturday by commissioners' court.

Team Wins Fourth In Dairy Judging At Ft. Worth Show

Eastland county's dairy judging team won fourth place in competition Monday at 4-H day at the Southwestern Exposition and Fat Stock show in Fort Worth, it was announced Tuesday by Assistant County Agent Hugh F. Barnhart.

The team is composed of L. C. Love, James Dean and James Calvert, all of Alameda. Van Zandt county placed first, Ellis county second and Tarrant county third in the judging.

A total of 130 county club boys and girls attended the show. Miss Ruth Ramey, county home agent her assistant, Miss Mable Caldwell and Barnhart attended the show also.

County Group at Meeting Declares Farm Poll Results

Members of the county agricultural conservation committee, meeting Monday at Eastland, canvassed votes in the Saturday election for marketing quotas and declared the result as 253 votes for and 222 against.

The committee also made final budget for administrative expense in the 1937 farm and range program which showed a total of \$3,926.35. This included the expense for work of the county committee, community committeemen, range inspectors, performance supervisors, clerks and miscellaneous supplies.

A preliminary budget for the 1938 program from Mar. 1 to July 1 was set at \$2,000. It was pointed out that 15 committeemen are in the field, five clerks are working at Eastland to arrange records in order to give farmers information on their cotton, peanut and general acreage allotments for 1938.

Members of the county committee also filed a request with state officials that farmers in the county be allowed to exchange a cotton allotment for peanut acreage allotment.

County Group at Meeting Declares Farm Poll Results

Members of the county agricultural conservation committee, meeting Monday at Eastland, canvassed votes in the Saturday election for marketing quotas and declared the result as 253 votes for and 222 against.

The committee also made final budget for administrative expense in the 1937 farm and range program which showed a total of \$3,926.35. This included the expense for work of the county committee, community committeemen, range inspectors, performance supervisors, clerks and miscellaneous supplies.

A preliminary budget for the 1938 program from Mar. 1 to July 1 was set at \$2,000. It was pointed out that 15 committeemen are in the field, five clerks are working at Eastland to arrange records in order to give farmers information on their cotton, peanut and general acreage allotments for 1938.

Members of the county committee also filed a request with state officials that farmers in the county be allowed to exchange a cotton allotment for peanut acreage allotment.

Truck Drivers and Chauffeurs Urged To Obtain Licenses

State police today urged truck drivers and chauffeurs to obtain their chauffeurs' licenses at the Eastland county courthouse well in advance of expiration dates to avoid an expected rush at examination headquarters over the state.

About 30 per cent of the commercial permits in effect before last Nov. 15, when the law requiring the examination of drivers was made effective, will expire in March and early April, officials said. With a limited field force available to conduct the physical, mental and driving tests it was pointed out that applicants may facilitate the issuance of the permits by applying a month or so before their present licenses expire. The new licenses will become invalid one year from the expiration date of the former license.

Ralph L. Buell, chief of the license bureau at Austin, has said examiners of the safety department in every county seat city of the state are now examining an "almost capacity" number of drivers who are making early applications.

"There are over 150,000 licensed commercial drivers in Texas," Mr. Buell pointed out. "For that reason we can give them better service if they will report for the tests sometime before their present permits expire."

Eastland Student On UT High List

Donald Russell, son of Mr. and Mrs. P. G. Russell of Eastland, is listed among honor students for the spring semester of the last long session, according to an announcement made Thursday by the engineering department of the University of Texas.

The group in which Russell is listed has records of almost "straight A."

Wright Ligon Is New Sales Chief At Bottling Firm

Appointment of Wright Ligon, formerly of Abilene, as sales manager at the Texas Coca-Cola Bottling company plant in Eastland was announced Tuesday by officials.

Ligon succeeds A. A. Cowan, transferred to Stamford to occupy the same position there. Mrs. Cowan, former office manager at Eastland, continues the same work at Stamford.

Ligon was a salesman at Abilene prior to his promotion. Under the new arrangement he is sales manager at the Eastland plant and is also in charge of the office management.

Ligon is the son of Mrs. C. C. Ligon of Eastland.

185 Attend Mason Meet at Eastland

One hundred and eighty-five Masons of this area were present Saturday night at Eastland when a master's degree was conferred at the meeting of Eastland lodge No. 467.

A 32nd degree team from Dallas attended. Twenty-four Masons from Dallas registered.

Four of Eastland On U. T. High List

Nina Belle Smith, Clyde Irwin Chaney, James Mahon and Ralph Mahon, Jr., Eastland students at the College of Arts and Sciences at the University of Texas in Austin, made grades during the fall semester entitling them to places on the honor roll, it was announced Monday.

TRANSFER SUIT

Case of L. A. Warran against J. A. Hoover and others, an action for collection on a note, has been transferred from 88th district court to 91st district court.

ESTATE VALUED

Estate of Mrs. Florence Stewart has been appraised at \$2,592, according to records on file in the office of County Clerk R. V. Galoway. There was no claim on the estate.

DIVORCE GIVEN

Divorce has been granted by 88th district court to Eunice Smith Levitt from Edward S. Levitt, a judgment on file Monday showed.

BOND IS POSTED

Weaver, charged with intoxication, has posted bond, officials announced.

PEANUTS WILL BE SOLD FOR \$1.15, NOT \$1.00 PER BUSHEL

Through a typographical error price of seed peanuts at the rising star bonded houses was put at \$5 per bushel, when it should have been \$1.15 per bushel.

of peanuts will be conducted at the Ranger Warehouse on Friday, Tuesday and Wednesday, April 4, 5 and 6, and at the Star Warehouse the last days of the week, the sale on April 7, 8 and 9.

SCHOOL OFFICIAL TO INSPECT IN COUNTY

H. E. Robinson of Brownwood, deputy state school superintendent, will visit all affiliated and rural aid schools in the county immediately after April 1, Supt. C. S. Eldridge has been advised.

WED AT EASTLAND

Nevadne Reynolds and Lucien W. Hurst, both of Eastland, were married Saturday night at the home of Justice of Peace E. E. Wood at Eastland.

Formulas Given For White Water Paint

B. E. Rigby, who has been asked a number of times about a white water paint, gives the following formula for the convenience of his many friends who have inquired about it, and for others who might be interested in making up the paint.

Slack and quantity of stone lime by putting in a tub and covering to keep in the steam. When slack pass through a fine sieve.

To each six quarts of slack lime add one quart of rock sale in powdered form and one gallon of water, boil all together and skim

clean. To each five gallons of this liquor add one pound of powdered alum, one-half pound of powdered copperas and add very slowly three-quarters of a pound of powdered caustic potash and four pounds of fine sand. The sand is optional.

Thoroughly mix and apply with a brush. If painting tree trunks use an old household broom.

This paint is on iron pipe that was painted seven or eight years ago and is also fine for the trunks of fruit trees, pecan trees or trees that might be attacked by borers or other boring insects.

The paint also will stop seeping in stone or brick walls in cellars, when sand is used in the formula.

For perfect success the formula should be followed strictly.

New LYRIC

FRIDAY and SATURDAY

HERE IS A COMPLETE SHOW

WHAT IS A SHOW !!!



DAVID COPPERFIELD * NOTHING SACRED *

The Best Of
David O. Selznick's
10 Best Pictures



Selznick International presents
MARK TWAIN'S BELOVED CLASSIC
THE
ADVENTURES
OF
TOM SAWYER
IN TECHNICOLOR

DIRECTED BY NORMAN TAUBOG * RELEASED THROUGH UNITED ARTISTS

MIDNIGHT SHOW SATURDAY NIGHT 11:30
SUNDAY and MONDAY

Even a butler gets to like nice things

AND SHE'S SO VERY, VERY NICE ... !



William POWELL
and
ANNABELLA
(in her first American-made picture)

"The BARONESS
and the BUTLER"

A 20th Century Fox Picture with
HELEN WESTLEY • HENRY STEPHENSON
JOSEPH SCHILDKRAUT • NIGEL BRUCE
J. EDWARD BROMBERG • LYNN BARI

Directed by Walter Lang
Darryl F. Zanuck in Charge of Production



Above are scenes from "The Adventures of Tom Sawyer," David O. Selznick's All Technicolor production of Mark Twain's beloved classic, which will be shown at the Lyric theatre starting Friday. In the top section is Jackie Moran and Tommy Kelly in the dead cat sequence, and at the right David Holt and Mae Robson. In the lower left is Tommy Kelly and the rest of the youngsters who play with him in the knife swapping scene. While at the lower right Tommy Kelly is shown as the bashful schoolboy swain.

Returning Vets To Employment Is Aim of Campaign

Every effort to return jobless war veterans to employment for which they are qualified will be made by the Texas State Employment Service in the Abilene district.

trict in connection with the nation-wide veterans' employment campaign, H. L. Maufrais, field supervisor of this district, announced Saturday at Abilene. The campaign is being sponsored by the three major veterans' organizations chartered by Congress, the American Legion, the Disabled American Veterans of the World War, and the Veterans of Foreign Wars of the United States.

Employment offices will undertake complete registration of all unemployed veterans in this area, and will contact as many employers as possible in behalf of veterans qualified to efficiently perform specific jobs, Maufrais said. "Employers who place orders for workers, including veterans, with the employment service, will be sent the best qualified persons available," he stated.

Maufrais anticipated the program will yield a more complete record of veterans' work qualifications and experience, and more numerous job opportunities for such workers.

A total of 803 veterans are now actively seeking work through state employment offices in this district, records in the Abilene district office revealed. During the past year and January and February of this year, of the 40,015 total placements made, 1,238 jobs were filled with experienced workers who were war veterans. During the same period, those offices received 649 new applications from veterans.

State employment service offices in this district are located at Abilene, Breckenridge, Eastland, Coleman, Brownwood, San Angelo, Midland, Big Spring, Sweetwater, Odessa and McCombs, and serve a combined area of forty-four counties.

CONNELLEE

SUNDAY ONLY!

RETURN ENGAGEMENT!
Greater drama has yet to be filmed!
Greater stars have yet to be born!



IMPROVED PERFORMANCE

Of any motor results from the continued use of Pyroil. Added by the ounce to gasoline and regular lubricating oil, it frees valves, seals rings, saves on oil and gas, provides many extra miles of "silky" trouble free car operation. CUT REPAIR BILLS. Repays its small cost over and over. Absolutely harmless to finest alloys. Endorsed by thousands of users everywhere. Ask for it at

Ligon's Sinclair Station
Harvey's Filling Station
Roberson's Garage

First Aid

for

Constipation

Nyal
Mineral Oil



A non-habit forming relief for constipation and irregular movements. Pure, tasteless and odorless.

Full Price ... 59c

Corner Drug Store
Eastland

Hamner
Undertaking Co.
Phones
17 and 564
DAY OR NIGHT
AMBULANCE SERVICE

Easter Seal Sale To Aid Crippled Children of State

DALLAS The Texas Society for Crippled Children, which has helped thousands of Texas youngsters overcome physical handicaps in past years, is again organizing every Texas county for the annual Easter Seal sale for crippled children.

Charles F. Ashcroft of Sulphur Springs, President of the Texas Society, plans to raise \$50,000 in Texas to aid crippled children in hundreds of counties. Seals go on sale April 1, and the campaign will be pressed until Easter Sunday. All money raised by the sale of the seals is spent to aid Texas children who are crippled by accident, by disease or at birth. No distinction is paid to creed, color, religion or age. From babies in arms to adults of 21 years old, the Texas Society for Crippled Children renders its services. Money received from the sale of Easter seals is applied to buying braces and crutches for crippled children, to the nearest hospital where skilled surgical work is performed free of cost, and to enter them in lines of vocational training which will fit them with suitable employment in years to come.

The Texas Society for Crippled Children has as its principal support the sale of Easter Seals from Crippled children, says Charles F. Ashcroft, President of the society. We have awaiting list of crippled children over 800 names long. The purchase of Easter Seals will bring these children, patiently waiting for help, a step nearer to being self sustaining and valuable citizens rather than charge on the state.

There is probably an Easter Seal sale committee in your county. I urge support of the local committee in the sale of seals. If no county organization has been formed as yet, I ask everyone interested to write the Texas Society for Crippled Children, 326 Wilson Building, Dallas, for information concerning this effort to aid children who cannot help themselves.

Ice Fishermen Say Bass Hard to Get

SUDBURY, Mass.—Ice fishermen contend that the bass, because of its extreme youth, is more difficult to catch in winter than are other fish.

Scientifically speaking, the bass is many million years younger than pike or pickerel, which

For Complete Markets and Financial News
THE WALL STREET JOURNAL
Relied upon by business men and investors everywhere. Send for free sample copy.
44 Broad St. New York

ELECTRICAL
APPLIANCES
Texas Electric Service Co.

Hotel Garage
MAGNOLIA PRODUCTS
G. H. KINARD, Mgr.
Storage and Tire Service
West Main Phone 42

Rules to Minimize Kite Flying Danger Given by Company

With spring breezes and sunshine; days at hand, youngsters thought are turning to kite flying, and power and light company officials Saturday issued an appeal to parents to warn children regarding precautions which should be taken in the pursuit of this popular pastime. Each year brings many serious accidents because of carelessness in flying kites in the vicinity of electric power lines.

In order to avoid accidents in this community, these five precautions are suggested, which, if observed, will minimize the hazards of kite flying.

1. Don't fly kites in the vicinity of electric power lines.
2. Don't climb a pole or use a stick in order to dislodge a kite or string entangled in power wires.
3. Don't fly kites with metal strings.
4. Don't fly kites with wet strings.
5. Don't pick up a wire which might have fallen to the ground.

The local power and light company representatives expressed their desire to cooperate to keep down accidents. If kites become entangled in electric power lines, a company employee will be glad to help in retrieving it. But the best rule possible is to not fly kites near power lines.

Two From County On Tech High List

Two Eastland county students made the fall semester honor roll at Texas Technological College at Lubbock, according to an announcement Saturday from the institution.

Melrose Jo Henderson, daughter of Mr. and Mrs. R. A. Henderson of Eastland, had an average grade of A while Ouida Sanderson, daughter of Mr. and Mrs. E. A. Sanderson, Lone Star Plant No. 4, had an average grade of B.



FRESH COUNTRY
Eggs Doz. 17c
ENGLISH
Peas 3 NO. 2 CANS 25c
Tomatoes 2 No. 2 CANS 15c
MELLO WHEAT
BREAKFAST CEREAL
Large Pkg. 15c

8 o'CLOCK
COFFEE, Lb. ... 17c; 3 Lbs. ... 4
A. & P. SOFTWIST
BREAD, 2 Loaves ... 1
SPARKLE
GELATIN DESSERT, 3 Pkgs ... 1
ANN PAGE
SANDWICH SPREAD, 8 Oz Jar ... 1

SUGAR
Cloth Bag
10 Lbs. 52c
FLOUR
Peerless Quality
48 Lbs. 125

FRUITS and VEGETABLES
WINESAP APPLES
2 Doz. 15c
GRAPEFRUIT
3 For 10c
NEW POTATOES
FLORIDA'S
2 Lbs. 7c
CARROTS
2 bunches ... 5c
GREEN BEANS
2 pounds ... 15c

EXTRA SPECIAL
ANN PAGE SALAD DRESSING
8 Oz. Jar ... 10
Pints ... 17
Quarts ... 27
SUNNYFIELD Large Package
Corn Flakes ... 7
Oxydol 1g. pkg. 19
WHITEHOUSE
Milk, 3 sm or 6 lg. 20
IONA MACARONI OR
Spaghetti pkg. 5

Your Favorite Meat Cuts Are Always Here ... Branded Quality
4 TO 6 LB. AVERAGE
PICNIC HAMS
THEY ARE TENDERIZED
POUND ... 22c
Steak CHOICE CUTS Lb. 25c
Bacon ARMOUR'S STAR Lb. 35c
Roast CHOICE CUTS Lb. 18c
Hens Dressed ... Lb. 18c
A. & P. MARKET DEPARTMENT OWNED AND OPERATED BY
S. L. (LEON) BOURLAND
SEE OUR WINDOWS FOR ADDED SPECIALS

CLASSIFIED

DO YOUR WASHING at G. HELPY SELFY LAUNDRIES, cents an hour. Back of Sandwich Shop, West Com.

FOR SALE—Model A Ford up, \$65.00. 1935 Tudor \$295.00, or will trade for pipe. A. C. SIMMONS.

FOR SALE: Garage, filling station, beer parlor, cafe, quarters under one roof. R. J. RECTOR, Olden, Tex.

FOR RENT: 4 Rooms, nice furnished apartment; private Apply 612 W. Patterson.

FOR SALE: 1935 Tudor sedan \$295.00; good condition. A. C. SIMMONS.

FOR SALE: Will sell grand piano now stored in land at sacrifice rather than ship. For information write SMITH, P. O. Box 861, Texas.

VISIT Gary's Helpy-Selfy dry. Conveniently arranged of Gary's Sandwich Shop Commerce Street.

ABSTRACTOR: Legal work formed; Notary Public. S. D. HORN, Courthouse.

WANTED: Settled, reliable for housework. Call between 5 p. m. on afternoons, 24 lawn, Hillcrest.

FOR RENT or SALE: Only one roomed. Call between 5 p. m. on afternoons, 24 lawn, Hillcrest.

WANT to exchange for small living quarters work. Call at 708 South St.

FOR SALE—Select Rhode Red eggs, 50c for 15. 310 street, phone 500.

FOR SALE: Gasoline pump, compressor, hydraulic lift equipment.—K. D. Hanes 747.

FOR SALE—One 6-room 4 out houses, \$250.00. McCuskey lease. See H. E. 926 Carolina St., Graham.

PIGGLY WIGGLY

PIGGLY WIGGLY

MEATS ALWAYS FRESH

ROAST

Baby Beef
Seven Cuts—Lb. 16c

STEAK

Loin, Veal and
T-Bone—Lb. 25c

PORK CHOPS

LEAN CENTER
CUTS—LB. 25c

FISH, OYSTERS AND POULTRY

BOLOGNA, DRY
SALT JOWLS
LB. 12½c

BACON

Sugar Cured 19c DECKER'S SLICED—LB. 25c

CHEESE

Full Cream Longhorn—
Per Pound 21c

OLEO

Armour's Sweet Sixteen—
Per Pound 15c

LIVER

Fresh Pig—
Per Pound 15c

Serve these

BARGAIN FOODS

PORK & BEANS

VAN CAMP'S 4 NO. 1 CANS 25c

BLACKEYE PEAS

PECAN VALLEY NO. 300 CANS 10c

SPAGHETTI

HURFF'S PREPARED 4 NO. 300 CANS 25c

SALMON

CHUM Tall Cans 2 for 27c

SPINACH

Staff-O'-Life! 3 No. 2 Cans 25c

PIMENTO, 4 Oz. Can 9c

PEELED GREEN CHILI . . 4 Oz. Can 12c

WHEATIES

2 Packages 23c

OVALTINE

Medium Size 35c Large Size 63c

CRACKERS

Brown's Saxet 2 Lb. Box 17c

COCOANUT

Long Shred Cellophane 1 Lb. Pkg. 25c

PRUNES

SIZE 80-90 4 Lbs. 25c

JELLO

6 DELICIOUS FLAVORS! — Per Pkg. 5c

ACE DOG FOOD

5 No. 1 Cans 25c

LIBBY'S CRUSHED OR TIDBIT

PINEAPPLE 2 8-Ounce Cans 15c

PINEAPPLE JUICE 3 No. 211 Cans 25c

FRUIT COCKTAIL Libby's Tall Cans 15c

PINK GRAPEFRUIT 2 No. 2 Cans 25c

Lynn GRAPEFRUIT JUICE 3 NO. 2 CANS 29c

ROSE-DALE SLICED PEACHES 2 Tall Cans 25c



2 Cans 25c

3 Cans 25c



"KQUALITY" NARROW GRAIN

CORN 3 No. 2 Cans 25c

LIBBY'S GOLDEN BANTAM CREAM STYLE ALL THE FLAVOR 2 17 OZ. CANS 25c

DINNER CLUB PEAS 2 No. 2 Cans 25c

LIBBY'S Country Gentleman CORN, No. 2 Can 15c

CORN-ON-COB Del Monte—Large Cans 17c

"WHOPPER" LARGE TENDER GIANT PEAS A RARE TREAT IN FLAVOR No. 2 Cans 15c

HOMINY TEXAS SPECIAL 5 MED. CANS 25c

KRAUT HAMILTON NO. 2 CANS 10c

PIPKIN'S SPECIAL COFFEE Per Pound 17c

MAXWELL HOUSE FOLGERS LB. 27c

PURE CANE SUGAR

10 LB. BAG 52c

FANCY BLUE ROSE RICE

5 LBS. 25c

SWIFT'S JEWEL

SHORTENING

4-Lb. Carton 43c

8-Lb. Carton 85c

MEDIUM OXYDOL 19c

LARGE POST TOASTIES 3 for 25c

PEANUT BUTTER Armour's—Quarts 29c

PIPKIN'S BEST FLOUR 12 Lb. Bag 50c

24 Lb. Bag 95c

TEXAS KING

FLOUR 24-Lb. Bag 85c

MEAL 5 LB. BAG 15c

Fruits - Vegetables

LARGE TEXAS

GRAPEFRUIT 3 for 10c

TEXAS

ORANGES Per Dozen 20c

Fancy California

ORANGES Per Dozen 25c

No. 1 WHITE

POTATOES

10 LBS. 19c

Fancy Golden Fruit

BANANAS Per Pound 5c

No. 1 Porto Rican

YAMS 4 Pounds 19c

Extra Fancy Delicious

APPLES 125 Size—Per Dozen 25c

ALL BUNCH VEGETABLES

3 FOR 10c

STRAWBERRIES 2 Pints 25c

SPINACH Fresh—Per Pound 5c

Dependable QUALITY

Real ECONOMY

Tea

MAXWELL HOUSE BLISS

1 LB. 4 PKG. 19c
1 LB. 4 PKG. 13c

OLIVES

CROWN BRAND QUEENS

Quart 35c

FACIAL TISSUE

200 PACK 10c

RAISINS

Kraft Bag 4 Pounds 29c

DRIED APPLES

2 Pounds 25c

GRAPE JUICE

Rosemary Widmars Pint 17c

PICKLES

HAPYDA SOUR Quart Jar 15c

MARSHMALLOWS

POUND PKG. 15c
½ LB. BOAT 9c

TOMATO JUICE

CAMPBELL'S 14 OZ. CANS 7½c

HY-PRO

Pints 10c Quarts 19c

HUDSON LYE

3 Cans 25c

P&C SOAP

5 Giant Bars 19c

CAMAY SOAP

3 Bars 19c

"Kate Smith" BAKE SET

EACH 29c

PIPKIN'S PIGGLY WIGGLY

WE RESERVE THE RIGHT TO LIMIT QUANTITIES!

EASTLAND, TEXAS

PRICES GOOD FOR FRIDAY AND SATURDAY, MARCH 18-19!

10c Box OXYDOL 1c
With GIANT SIZE
OXYDOL 65c

PIGGLY WIGGLY

PIGGLY WIGGLY

THE WEEKLY CHRONICLE

Established Nov. 1, 1887
Entered as second-class matter at the postoffice at Eastland, Texas,
under Act of March, 1879

Published Every Friday
Office of Publication: 106 East Plummer Street. Phone 601

NOTICE TO THE PUBLIC

Any erroneous reflection upon the character, standing or reputation of any person, firm or corporation, which may appear in the columns of this paper, will be gladly corrected upon being brought to the attention of the publisher.

Obituaries, cards of thanks, notices of lodge meetings, etc., are charged for at the regular advertising rates, which will be furnished upon application.

It's a Great Moment for an Epigram, Adolf

Some years back there was a play running on Broadway and then touring the smaller cities of the United States. It had a catchy line at the end of the first act, a line that became the play's title and became also a well-known by-phrase throughout the country.

Three men in this play, a famous baritone, a judge and a speakeasy proprietor, become the impromptu guardians for the night of a lovely, unsophisticated young woman, whose escort has left in a huff, and the baritone offers her sleeping quarters in his apartment. As the girl ascends the stairs, accepting the offer, the three men look at each other. The judge and the bartender turn accusingly to the baritone and ask in one voice:

"What are your intentions?"

Herr Hitler has finished the first act of his sudden drama of taking over Austria. A sudden coup, backed by a display of armed force at the border, put him in control of the Austrian cabinet. From that position he moved on to seek dominance of the military, and of Austria's fatherland "Front," the only legal political organization since 1934.

Already his influence has started an anti-Semitic campaign which will result in the persecution of thousands of Jews, both native of Austria and those who fled there to escape the German pogrom. Already Austria is being wheeled into the lineup of the Rome-Italy axis, ready to take her place in the mid-European totalitarian team.

It is considered a foregone conclusion that Austria will now become a "vassal state" of Germany, for until Chancellor Kurt Schuschnigg capitulated to the Nazis, Austria had been independent of foreign domination since 976 A. D.—almost 1000 years.

Now England and France turn to Germany and with the utmost seriousness inquire:

"What are your intentions?"

And it all comes back, just as clearly! The baritone in the play turned to the bartender and the judge with a whole-hearted, enthusiastic smirk, and replied:

"Strictly dishonorable."

The play was a farce. You can write your own curtain lines for Herr Hitler.

The 1940 census will cost \$50,000,000, showing that even the U. S. has big stakes in the numbers game.

Pet Parade Plans For Safety Parley Made by Group

Preliminary plans for the pet parade at the Oil Belt Safety Conference at Eastland Friday, May 6, were discussed at a meeting of a committee for that event in the Chamber of Commerce office Tuesday afternoon.

It was stated that school children from over the district are to be urged to enter pets in the parade for which prizes will be awarded. Safety, as in other phases of the conference, will be stressed in the parade.

NOTICE OF ELECTION

BE IT SO ORDERED by the City Commissioner's of the City of Eastland, that an election be held on the FIFTH DAY OF APRIL, 1938, at which election there is to be elected two Commissioner's to succeed Commissioner's C. B. Wellman and C. T. Lucas, whose term of office expires at that time, and

BE IT FURTHER ORDERED that the names of all candidates for said office shall be filed with the City Secretary, at the City Hall, not later than five o'clock p. m., on the 15th day of March A. D. 1938.

SAID ELECTION SHALL BE HELD at the City Hall, in the City of Eastland, Eastland County, Texas, and the following named persons are hereby appointed managers and clerks of said election, to-wit:

OSCAR WILSON

Presiding Judge and Clerk.

R. B. BRALEY

Judge and Clerk.

J. F. McWILLIAMS,

Clerk.

SAID ELECTION SHALL BE HELD under the provision of the Special Charter of the City of Eastland, Texas, adopted by a vote of the people of said City, on the sixteenth day of May, 1919, and under the Constitution and Laws of the State of Texas only qualified voters shall be allowed to vote.

A COPY OF THIS ORDER, signed by the Chairman of the Board of City Commissioner's of the City of Eastland, Texas, Attested by the City Secretary of said City, and same to be published according to Article Seven, Section Eight, of the City Charter.

ATTEST:

(Signed) M. H. KELLY,

Secretary.

(Signed) H. O. Satterwhite,

Vice Chairman, Board of City

Commissioner's.

March 11-18-25.

Orchard Spraying Demonstrations Slated Next Week

Spraying of peaches and plums to control insects and diseases which attack them will be demonstrated at seven places next week by County Agent Cook. All fruit growers are invited to attend one or more of these demonstrations to witness how such peach and plum pests as curculio, brown rot, scab, and leaf curl can be controlled by timely spraying.

General orchard management will also be discussed at the demonstrations. A schedule of demonstrations in spraying follows: J. D. W. Jones, Rising Star, 10 a. m., Monday, Mar. 21; Doss Alexander, Pioneer, 2 p. m., Monday, Mar. 21; George P. Fee, Cisco, 10 a. m., Monday, Mar. 22; H. B. Lane, Scranton, 2 p. m., Tuesday, Mar. 22; W. F. Bryant, Kokomo, 10 a. m., Thursday, Mar. 24; T. A. Eison, Jr., New Hope, 2 p. m., Thursday, Mar. 24; Dick Weekes, Alameda, 2 p. m., Friday, Mar. 25.

Rufus McNurlin Is Indicted In Mail Robbery

By United Press

FORT WORTH, Mar. 16. — Eight men were indicted by the federal grand jury today in connection with the theft of a mail-pouch containing \$28,950, from a train at Tahoka last Nov. 5. The cases will be tried at Lubbock.

Indictments were returned against Jack Cathey, Roy Cathey, M. L. Cathey and Oscar Petty of O'Donnell; Carl Williams of Brownwood; Sidney Miller of Dallas; Rufus McNurlin of Ranger, and James Morris of Goldthwaite.

The indictments charged that Hack Cathey took the mail pouch from the train and the others were accused of concealing or receiving the money, which was consigned to the First State Bank at O'Donnell.

Ranger Man Gets Rank at Meeting Of Eastland Club

The third rank was conferred upon K. E. Falls of Ranger at a meeting of the Eastland Knights of Pythias Tuesday night in Castle hall.

Visiting Gorman knights invited Eastland members to attend, a meeting there Monday night when a picture of Supreme Chancellor Fred H. Jones of Los Angeles, Calif., will be presented in recognition of the Gorman lodge's winning first prize in an attendance contest at a recent regional session in Abilene.

Grand Prelate Frank E. Smith of Abilene will be one of the officials to attend the meeting at Gorman.

Hearing On Plea Agreement Is Made

Hearing on a plea of privilege filed by Graham Mill and Elevator company, one of the defendants in a case of J. U. Johnson and others against Frank Castleberry and others, has been continued by agreement of parties until the next term of county court.

GETS DIVORCE

Divorce was granted Friday by 88th district court to Mrs. Violet Ann Colwell from Paul W. Colwell. Her maiden name, Violet Ann Pohle, was restored.

Political Announcements

The Weekly Chronicle is authorized to publish the following announcements of candidates for public offices, subject to the action of the Democratic primaries:

For County Treasurer:
Mrs. Frances (Holbrook) Cooper.

For County Judge:
W. S. Adamson.
(Re-Election)

For Sheriff:
Virge Foster.

For Floterial Representative:
107th District
Eastland, Callahan Counties.
T. S. (Tip) Ross.
(Re-election).
Wayne Sellers.
Omar Burkett.

For Assessor-Collector:
C. H. O'Brien.
(2nd term).

COTTON GIN ASSURED IN EASTLAND THROUGH C. OF C. ARRANGEMENTS

Securing a cotton gin for Eastland, described as one of the Eastland Chamber of Commerce's major objectives this year, is due from plans just completed, Secretary H. J. Tanner announced on Wednesday.

Tanner stated that through co-operation of the city commission and Eastland business men, D. O. Simpson of Goldthwaite will move his four-stand continental gin to Eastland shortly after April 1.

Simpson on a previous visit to

Eastland described himself as favorably impressed with Eastland and planned to make it his permanent home.

Officials of the chamber of commerce also stated that Simpson, long experienced in cotton ginning business, would have his machinery ready for this year's crops. He also will engage in buying of cotton.

According to records, Eastland has been without a cotton gin since 1929.

Agent Outlines Ways to Control Garden Cutworms

The following method has been recommended for controlling cutworms in the garden by County Agent Elmo V. Cook:

Make a mash by mixing one pound of white arsenic, 20 pounds of coarse wheat bran, six finely ground lemons, using rind, juice, and all, two quarts of molasses, and enough water to make the mixture slightly moist but not sloppy.

Put one-fourth teaspoonful at the base of each plant on land infested with cutworms. The mash should be applied late in the afternoon as the worms feed at night. The above method is very effective if directions are properly followed.

Ranger Negro Puts Up Bond on Counts

Jerry Lewis of Ranger, negro, has posted bond in two cases, Deputy Sheriff Tug Underwood announced Wednesday.

Underwood said that Lewis posted \$750 bond each on a charge of assault and burglary.

Dr. Lee Clark Is Speaker at Meet Of Eastland Lions

Dr. Lee Clark of Eastland, district supervisor of the Works Progress Administration adult education program, stated Tuesday in address at the Eastland Lions club luncheon that three nurseries operated by the agency in this county are proving a model for others in the state.

Dr. Clark, who has 22 counties in his district, also stated that \$1,400 is the amount of the monthly payroll of teachers in the county for projects of the educational program.

E. H. Jones and Maurice Harkins were in charge of the program. H. S. Slatton, formerly of San Marcos and now of Eastland, was a visitor.

A case charging theft over \$50 against Gerald Moore has been dismissed in 91st district court upon motion of Criminal District Attorney Earl Conner, Jr., who showed that the defendant previously was assessed a prison sentence on a charge of burglary growing out of the same transaction.

To Speak at Meet Of 9:49 Bible Class



J. E. Hickman, member of the supreme court commission of appeals, who will be chief speaker Friday night, Mar. 18, at the annual 9:49 Bible class father-son banquet at the First Methodist church.

Red Cross to Meet At Cisco Tuesday

There will be a called meeting of the Eastland county chapter of the American Red Cross at the chamber of commerce office in Cisco Tuesday, Mar. 22, at 2:30 p. m., it was announced today by R. C. Kinnaird, county chairman. Every member of the Red Cross is urged to be present at the meeting.

A mistrial resulted Monday in 88th district court, when jurors were unable to agree in the case of Felix Cantu, charged with the alleged burglary, Feb. 27, of the house of Mary Menoz.

Mrs. Arreya French To Hold Cooking School This

Mrs. Arreya D. French, an home economist and a thority who will conduct paper's cooking school in this is an outstanding lecturer profession and will a wealth of knowledge to wives who will attend the on many phases of Cooking, budgeting, household his new cooking secrets.

New suggestions, new new dishes and many new on the kitchen will be the lecturer, to the other the housewives.

Mrs. French while a Texan, received her education in Oklahoma, at the Southeastern State er's College at Durant, Ok with all major studies best fined to foods. She has tal aral specialized courses in of cake baking, cake de bread baking and meat e. She is an expert in home and is an authority on the ject. Before conducting Schools, Mrs. French di Organization and County Demonstration work.

Mrs. French is on the staff of Southern New Features, Dallas, Texas, conducted Cooking Sch the past several years thro the country.

WOMAN JUROR TOO AG

By United Press
CLEVELAND — The a of a feminine juror to dig evidence outside the co prompted the discharge second all-woman jury on in common pleas court he

CONDENSED STATEMENT OF CONDITION OF

Eastland National Bank

AS MADE TO THE COMPTROLLER
AT CLOSE OF BUSINESS MARCH 7, 1938



RESOURCES

Loans and Discounts	\$175,302.01
Bills of Exchange	6,154.40
Trade Acceptances	500.00
Stock in Federal Reserve Bank	1,500.00
Banking House	20,000.00
Furniture & Fixtures	5,400.00
U. S. Bonds	86,500.00
Other Bonds & Warrants	53,612.59
Customers' Bond Account	17,400.00
Federal Deposit Insurance Corp.	1,051.69
Other Resources	200.00
Cash & Exchange	133,997.03
	\$501,617.72

The Above Statement is Correct.

GUY PARKER, Cashier.

LIABILITIES

Capital Stock—	
Preferred	\$ 15,000.00
Capital Stock—	
Common	35,000.00
Surplus &	
Undivided Profits	6,916.19
Customers' Bond Account	17,400.00
DEPOSITS	427,301.53
	\$501,617.72

OFFICERS

W. C. CAMPBELL
President
ALBERT TAYLOR
Vice-President
GUY PARKER
Cashier
RUSSELL HILL
Assistant Cashier

DIRECTORS

W. C. CAMPBELL
ALBERT TAYLOR
WALTER MURRAY
GRADY PIPKIN
MILBURN MCCARTY
J. A. BEARD



666 COLDS
in 3 days
FEVER
Liquid, Tablets
Solve, Nose Drops, Headache, 30 minutes
Try "Rub-My-Tam"—World's Best Liniment

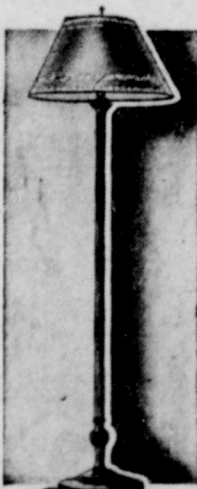
ELECTRICITY IS SO CHEAP THAT
GOOD LIGHT FOR READING
ALL EVENING COSTS LESS
THAN ONE NEWSPAPER



• Just imagine being able to read your evening newspaper from front to back and then spend a couple of hours with your favorite magazine for less than the cost of the newspaper alone!

Yet with Reddy Kilowatt's cheap electricity, you can do just that—and you are assured of eyesight protection all of the time. I. E. S. Better Sight lamps provide just the right amount of glareless light that entirely eliminates eyestrain.

If you're not using Better Sight lamps now, don't put off getting enough so that every member of the family has one available when there is visual work to be done.



• The lamp pictured here is of the more popular low-priced Better Sight lamps. It is a lounge model and is appropriate for any home.

TEXAS ELECTRIC SERVICE COMPANY

J. E. LEWIS, Manager

B-3A

WOMEN IN ALL WALKS OF LIFE IN THIS ENTIRE COMMUNITY ARE CORDIALLY INVITED TO VISIT
THE FOURTH ANNUAL

EASTLAND TELEGRAM---WEEKLY CHRONICLE

COOKING SCHOOL

AND 'MERCHANTS' SPRING FAIR

HUSBANDS --- AND THE BOY FRIEND --- ARE WELCOME AS THE
FLOWERS IN MAY ... COME EVERY DAY AND ENJOY THE FINE
LECTURES AND DEMONSTRATIONS BY ONE OF THE NATION'S
OUTSTANDING CULINARY ARTISTS ...



Mrs. Arreva D. French

Mrs. Arreva D. French, southern home economist and food authority who will conduct the Eastland Telegram-Weekly Chronicle cooking school in this city, is an outstanding lecturer in her profession and will bring a wealth of knowledge to housewives who will attend the school, on many phases of cookery, home budgeting, household hints, and new cooking secrets.

New suggestions, new recipes, new dishes and many new ideas on the kitchen will be brought by the lecturer, to the attention of the housewives.

Mrs. French, while a native Texan, received her principal education in Oklahoma, studying at the Southwestern State Teachers College at Durant, Okla., with all major studies being confined to foods. She has taken several specialized courses in the art of cake baking, cake decorating, bread baking and meat cookery. She is an expert in home canning and is an authority on this subject. Before conducting cooking schools, Mrs. French did civic organization and county home demonstration work.

She will make her lectures while actually doing the things she is talking about. The dishes, both of the plain and fancy variety, which she prepares, will be on display at the close of each lecture, and you are invited to remain after the lecture and discuss your personal problems in cookery and home management.



MRS. ARREVA D. FRENCH

When the housewife is confronted with the knowledge that her cooking is in a rut, that she is always serving "the same old thing," it is wonderful to see what an inspiration she can receive from the practical demonstrations given by Mrs. French.

There's a lot more to cooking than just dashing into the kitchen and starting to boil, fry and bake. Menu planning, buying judgment, food selection, and economical preparation all occupy a place of extreme importance.

Then, too, in every home there is always a supply of leftover foods that can be made as pleasing and palatable as the original dish, thus varying the menu and at the same time creating new economy in feeding the family.

All of these subjects and more too will be discussed by Mrs. French in her series of lectures. Remember, the lectures are free, and a cordial, urgent invitation is extended to every woman of the community to come and take advantage of the opportunity offered.

Remember the dates, and make a date with yourself to attend each day. We have been fortunate in securing the Connellee Hotel Roof as the scene of the cooking school. Although no seats can be reserved, every effort will be made to provide comfortable seats for all who attend, as it is expected that a large crowd will be on hand each day.

ROOF CONNELLEE HOTEL

MARCH 24, 25, 26

BE ON HAND EARLY EACH DAY FOR CHOICE SEATS

NO SEATS RESERVED---LECTURES BEGIN AT 2 P. M. SHARP

FREE!

ADMISSION --- GIFTS --- SOUVENIRS --- SAMPLES

FREE!



SCHEDULE OF LITERARY EVENTS FOR LEAGUE'S ANNUAL MEETING SET

P. B. Bittle, director general of the county interscholastic league meeting to be held Mar. 24, 25, and 26, in Eastland, Thursday announced the schedule for literary events.

Several of the events are programmed before the official start of the league meeting, the schedule showed.

Bittle stated that 2000 tickets have been distributed to Eastland

school children for sale to care for expenses in staging the meeting. Cooperation of Eastland citizens in buying the tickets was asked.

An admission charge of 10 cents will be made to the rhythm band, one-act play, choral singing and debate contests, part of the literary schedule, which is as follows:

Rhythm band, Saturday, Mar. 19, 10 a. m., high school auditorium.

One-act play, Wednesday, Mar. 23, 1 p. m., high school auditorium.

Choral singing, Wednesday, Mar. 23, 7 p. m., high school auditorium.

Declamations, Thursday, Mar. 24, 9 a. m., high school auditorium and study hall 20.

Extemporaneous speaking, Thursday, Mar. 24, 10 a. m., study hall 25.

Debate, Thursday, Mar. 24, 1 p. m., study hall 25, and 8 to 9 p. m., high school auditorium.

Music memory, Thursday, Mar. 24, 7 p. m., junior high school auditorium.

Commercial work, Friday, Mar. 25, 9 a. m., high school cafeteria.

Typewriting, Friday, Mar. 25, 12 noon, shorthand, commercial department.

Number sense, Friday, Mar. 25, 9 a. m., study hall 25.

Ready writing, Friday, Mar. 25, 9 a. m., study hall 20.

Picture memory, Friday, Mar. 25, 9 a. m., study hall 25.

Three R's, Friday, Mar. 25, 10 a. m., study hall 25.

Spelling, Friday, Mar. 25, 1 p. m., junior high study hall and rooms 1 and 2, junior high.

Story telling, Saturday, Mar. 26, 9 a. m., study hall 20.

Conservation of game during the two months period prior to the official start of the season, May 1 was given as reason for closing the lake from fishermen.

Arrangements were made by the Hamner Undertaking Co., Eastland.

Arrangements were made by the Hamner Undertaking Co., Eastland.

Arrangements were made by the Hamner Undertaking Co., Eastland.

Arrangements were made by the Hamner Undertaking Co., Eastland.

Arrangements were made by the Hamner Undertaking Co., Eastland.

Arrangements were made by the Hamner Undertaking Co., Eastland.

Arrangements were made by the Hamner Undertaking Co., Eastland.

Arrangements were made by the Hamner Undertaking Co., Eastland.

Arrangements were made by the Hamner Undertaking Co., Eastland.

Arrangements were made by the Hamner Undertaking Co., Eastland.

Arrangements were made by the Hamner Undertaking Co., Eastland.

Arrangements were made by the Hamner Undertaking Co., Eastland.

Arrangements were made by the Hamner Undertaking Co., Eastland.

Arrangements were made by the Hamner Undertaking Co., Eastland.

Arrangements were made by the Hamner Undertaking Co., Eastland.

Arrangements were made by the Hamner Undertaking Co., Eastland.

Arrangements were made by the Hamner Undertaking Co., Eastland.

Arrangements were made by the Hamner Undertaking Co., Eastland.

Arrangements were made by the Hamner Undertaking Co., Eastland.

Arrangements were made by the Hamner Undertaking Co., Eastland.

Arrangements were made by the Hamner Undertaking Co., Eastland.

Arrangements were made by the Hamner Undertaking Co., Eastland.

Arrangements were made by the Hamner Undertaking Co., Eastland.

Arrangements were made by the Hamner Undertaking Co., Eastland.

Arrangements were made by the Hamner Undertaking Co., Eastland.

Arrangements were made by the Hamner Undertaking Co., Eastland.

Arrangements were made by the Hamner Undertaking Co., Eastland.

Arrangements were made by the Hamner Undertaking Co., Eastland.

Arrangements were made by the Hamner Undertaking Co., Eastland.

Arrangements were made by the Hamner Undertaking Co., Eastland.

Arrangements were made by the Hamner Undertaking Co., Eastland.

Arrangements were made by the Hamner Undertaking Co., Eastland.

Arrangements were made by the Hamner Undertaking Co., Eastland.

Arrangements were made by the Hamner Undertaking Co., Eastland.

Arrangements were made by the Hamner Undertaking Co., Eastland.

Arrangements were made by the Hamner Undertaking Co., Eastland.

Arrangements were made by the Hamner Undertaking Co., Eastland.

Arrangements were made by the Hamner Undertaking Co., Eastland.

Arrangements were made by the Hamner Undertaking Co., Eastland.

Arrangements were made by the Hamner Undertaking Co., Eastland.

Arrangements were made by the Hamner Undertaking Co., Eastland.

Arrangements were made by the Hamner Undertaking Co., Eastland.

Arrangements were made by the Hamner Undertaking Co., Eastland.

Arrangements were made by the Hamner Undertaking Co., Eastland.

Arrangements were made by the Hamner Undertaking Co., Eastland.

Arrangements were made by the Hamner Undertaking Co., Eastland.

Arrangements were made by the Hamner Undertaking Co., Eastland.

Arrangements were made by the Hamner Undertaking Co., Eastland.

Arrangements were made by the Hamner Undertaking Co., Eastland.

Arrangements were made by the Hamner Undertaking Co., Eastland.

Arrangements were made by the Hamner Undertaking Co., Eastland.

Funeral Is Held For Briggs Owen In Eastland Rites

Funeral services for Briggs Owen, 67, Eastland county livestock man who died Wednesday morning of a heart ailment, were conducted Thursday afternoon at the First Baptist church in Eastland with Rev. J. I. Cantledge, pastor, officiating, assisted by Rev. P. W. Walker, Methodist pastor.

Burial was in Eastland cemetery.

Mr. Owen, who lived five miles west of Eastland, was born Sept. 26, 1879, in Weakley county, Tennessee, and came to Texas in 1885. He had lived in the county since he came to Texas.

Mr. Owen had been a member of the Baptist church many years. He also was a member of the Masonic lodge.

Mr. Owen had married twice. His first wife, the former Nanny Lewis, died January 9, 1900. Three children of that marriage, Mrs. Paul C. Keyes of New Orleans, Mrs. C. Scarborough of Dallas and Talton Lee Owen of Eastland, survive.

Also he is survived by his second wife, the former Leona Dulin, whom he married Nov. 22, 1903, and another son, Orval Briggs Owen, Eastland. Lee Owen of Cisco is a brother. One grandson, C. B. Owen, Dallas, survives.

Arrangements were made by the Hamner Undertaking Co., Eastland.

Arrangements were made by the Hamner Undertaking Co., Eastland.

Arrangements were made by the Hamner Undertaking Co., Eastland.

Arrangements were made by the Hamner Undertaking Co., Eastland.

Arrangements were made by the Hamner Undertaking Co., Eastland.

Arrangements were made by the Hamner Undertaking Co., Eastland.

Arrangements were made by the Hamner Undertaking Co., Eastland.

Arrangements were made by the Hamner Undertaking Co., Eastland.

Arrangements were made by the Hamner Undertaking Co., Eastland.

Arrangements were made by the Hamner Undertaking Co., Eastland.

Arrangements were made by the Hamner Undertaking Co., Eastland.

Arrangements were made by the Hamner Undertaking Co., Eastland.

Arrangements were made by the Hamner Undertaking Co., Eastland.

Arrangements were made by the Hamner Undertaking Co., Eastland.

Arrangements were made by the Hamner Undertaking Co., Eastland.

Arrangements were made by the Hamner Undertaking Co., Eastland.

Arrangements were made by the Hamner Undertaking Co., Eastland.

Arrangements were made by the Hamner Undertaking Co., Eastland.

Arrangements were made by the Hamner Undertaking Co., Eastland.

Arrangements were made by the Hamner Undertaking Co., Eastland.

Arrangements were made by the Hamner Undertaking Co., Eastland.

Arrangements were made by the Hamner Undertaking Co., Eastland.

Arrangements were made by the Hamner Undertaking Co., Eastland.

Arrangements were made by the Hamner Undertaking Co., Eastland.

Arrangements were made by the Hamner Undertaking Co., Eastland.

Arrangements were made by the Hamner Undertaking Co., Eastland.

Arrangements were made by the Hamner Undertaking Co., Eastland.

Arrangements were made by the Hamner Undertaking Co., Eastland.

Arrangements were made by the Hamner Undertaking Co., Eastland.

Arrangements were made by the Hamner Undertaking Co., Eastland.

Arrangements were made by the Hamner Undertaking Co., Eastland.

Arrangements were made by the Hamner Undertaking Co., Eastland.

Arrangements were made by the Hamner Undertaking Co., Eastland.

Arrangements were made by the Hamner Undertaking Co., Eastland.

Arrangements were made by the Hamner Undertaking Co., Eastland.

Arrangements were made by the Hamner Undertaking Co., Eastland.

Arrangements were made by the Hamner Undertaking Co., Eastland.

Arrangements were made by the Hamner Undertaking Co., Eastland.

Arrangements were made by the Hamner Undertaking Co., Eastland.

Arrangements were made by the Hamner Undertaking Co., Eastland.

Arrangements were made by the Hamner Undertaking Co., Eastland.

Arrangements were made by the Hamner Undertaking Co., Eastland.

Arrangements were made by the Hamner Undertaking Co., Eastland.

Arrangements were made by the Hamner Undertaking Co., Eastland.

Arrangements were made by the Hamner Undertaking Co., Eastland.

Arrangements were made by the Hamner Undertaking Co., Eastland.

Arrangements were made by the Hamner Undertaking Co., Eastland.

Arrangements were made by the Hamner Undertaking Co., Eastland.

Arrangements were made by the Hamner Undertaking Co., Eastland.

Arrangements were made by the Hamner Undertaking Co., Eastland.

Arrangements were made by the Hamner Undertaking Co., Eastland.

Arrangements were made by the Hamner Undertaking Co., Eastland.

Arrangements were made by the Hamner Undertaking Co., Eastland.

Arrangements were made by the Hamner Undertaking Co., Eastland.

Arrangements were made by the Hamner Undertaking Co., Eastland.

Arrangements were made by the Hamner Undertaking Co., Eastland.

Arrangements were made by the Hamner Undertaking Co., Eastland.

Arrangements were made by the Hamner Undertaking Co., Eastland.

Arrangements were made by the Hamner Undertaking Co., Eastland.

Arrangements were made by the Hamner Undertaking Co., Eastland.

Arrangements were made by the Hamner Undertaking Co., Eastland.

Arrangements were made by the Hamner Undertaking Co., Eastland.

Arrangements were made by the Hamner Undertaking Co., Eastland.

Arrangements were made by the Hamner Undertaking Co., Eastland.

Arrangements were made by the Hamner Undertaking Co., Eastland.

Arrangements were made by the Hamner Undertaking Co., Eastland.

Arrangements were made by the Hamner Undertaking Co., Eastland.

Official Count Shows County Wet By 223 Votes; Hearing Is Called On Applications for Licenses

Commissioners court Thursday canvassed votes in the Saturday beer election, finding that there was a wet total of 2,477 and 2,254 votes dry, a wet majority of 223 votes.

The canvass showed a discrepancy from unofficial returns, which had shown a margin of 201 votes for beer sale proponents.

Meanwhile, machinery for the selling of beer again in the county was being put in form. At 9 a. m. Friday in the county courtroom officials will meet with County Judge W. S. Adamson to discuss the reputation of applicants who have filed applications to sell beer. To attend will be Guy Hale, Eastland, representative of the Texas Liquor Control Board, Sheriff Loss Woods and chiefs of police from Cisco, Eastland and Ranger.

Through a misunderstanding, publicity had been given to an impression that beer would be sold next week, but this was untrue, it was stated Thursday. While County Judge Adamson will grant or deny applications to sell beer, final approval rests with the State Liquor Control Board.

When applications are granted by Adamson, then an order of the hearing is sent to Austin. There the board makes decision whether final approval shall be given and the applicant in the county is advised later. Officials were unable to determine how long it would take.

Should Judge Adamson refuse to grant an application then appeal may be made to district court.

Applicants thus far for sale of beer are: Nick Nicklas, Cisco; Ernest Halkias, Eastland; S. A. Vleas, Eastland; E. A. Snowden, Cisco; A. P. Anderson, Ranger; Mrs. Charles L. Kimmel, Ideal Cafe; Vivian McCleskey; Pete Theous; Eastland; S. M. Root, Eastland; Jim George, Eastland; Roy McNamara, Cisco; O. N. Nicols, Eastland; Mrs. Ocie Wilson, Cisco; J. D. Yardley, Cisco; James Battle, Ranger; R. E. Yeager, Ranger; C. M. Cox, Eastland; Mrs. Stella Alexander, Ranger; Mrs. Bess Sloan, Ranger; E. R. Chandler, Eastland; H. C. Gary, Eastland; Ray Northcutt, Ranger; W. C. Deigh, Cisco, and Mrs. Frank McDonald.

Applicants thus far for sale of beer are: Nick Nicklas, Cisco; Ernest Halkias, Eastland; S. A. Vleas, Eastland; E. A. Snowden, Cisco; A. P. Anderson, Ranger; Mrs. Charles L. Kimmel, Ideal Cafe; Vivian McCleskey; Pete Theous; Eastland; S. M. Root, Eastland; Jim George, Eastland; Roy McNamara, Cisco; O. N. Nicols, Eastland; Mrs. Ocie Wilson, Cisco; J. D. Yardley, Cisco; James Battle, Ranger; R. E. Yeager, Ranger; C. M. Cox, Eastland; Mrs. Stella Alexander, Ranger; Mrs. Bess Sloan, Ranger; E. R. Chandler, Eastland; H. C. Gary, Eastland; Ray Northcutt, Ranger; W. C. Deigh, Cisco, and Mrs. Frank McDonald.

Applicants thus far for sale of beer are: Nick Nicklas, Cisco; Ernest Halkias, Eastland; S. A. Vleas, Eastland; E. A. Snowden, Cisco; A. P. Anderson, Ranger; Mrs. Charles L. Kimmel, Ideal Cafe; Vivian McCleskey; Pete Theous; Eastland; S. M. Root, Eastland; Jim George, Eastland; Roy McNamara, Cisco; O. N. Nicols, Eastland; Mrs. Ocie Wilson, Cisco; J. D. Yardley, Cisco; James Battle, Ranger; R. E. Yeager, Ranger; C. M. Cox, Eastland; Mrs. Stella Alexander, Ranger; Mrs. Bess Sloan, Ranger; E. R. Chandler, Eastland; H. C. Gary, Eastland; Ray Northcutt, Ranger; W. C. Deigh, Cisco, and Mrs. Frank McDonald.

Applicants thus far for sale of beer are: Nick Nicklas, Cisco; Ernest Halkias, Eastland; S. A. Vleas, Eastland; E. A. Snowden, Cisco; A. P. Anderson, Ranger; Mrs. Charles L. Kimmel, Ideal Cafe; Vivian McCleskey; Pete Theous; Eastland; S. M. Root, Eastland; Jim George, Eastland; Roy McNamara, Cisco; O. N. Nicols, Eastland; Mrs. Ocie Wilson, Cisco; J. D. Yardley, Cisco; James Battle, Ranger; R. E. Yeager, Ranger; C. M. Cox, Eastland; Mrs. Stella Alexander, Ranger; Mrs. Bess Sloan, Ranger; E. R. Chandler, Eastland; H. C. Gary, Eastland; Ray Northcutt, Ranger; W. C. Deigh, Cisco, and Mrs. Frank McDonald.

Applicants thus far for sale of beer are: Nick Nicklas, Cisco; Ernest Halkias, Eastland; S. A. Vleas, Eastland; E. A. Snowden, Cisco; A. P. Anderson, Ranger; Mrs. Charles L. Kimmel, Ideal Cafe; Vivian McCleskey; Pete Theous; Eastland; S. M. Root, Eastland; Jim George, Eastland; Roy McNamara, Cisco; O. N. Nicols, Eastland; Mrs. Ocie Wilson, Cisco; J. D. Yardley, Cisco; James Battle, Ranger; R. E. Yeager, Ranger; C. M. Cox, Eastland; Mrs. Stella Alexander, Ranger; Mrs. Bess Sloan, Ranger; E. R. Chandler, Eastland; H. C. Gary, Eastland; Ray Northcutt, Ranger; W. C. Deigh, Cisco, and Mrs. Frank McDonald.

Applicants thus far for sale of beer are: Nick Nicklas, Cisco; Ernest Halkias, Eastland; S. A. Vleas, Eastland; E. A. Snowden, Cisco; A. P. Anderson, Ranger; Mrs. Charles L. Kimmel, Ideal Cafe; Vivian McCleskey; Pete Theous; Eastland; S. M. Root, Eastland; Jim George, Eastland; Roy McNamara, Cisco; O. N. Nicols, Eastland; Mrs. Ocie Wilson, Cisco; J. D. Yardley, Cisco; James Battle, Ranger; R. E. Yeager, Ranger; C. M. Cox, Eastland; Mrs. Stella Alexander, Ranger; Mrs. Bess Sloan, Ranger; E. R. Chandler, Eastland; H. C. Gary, Eastland; Ray Northcutt, Ranger; W. C. Deigh, Cisco, and Mrs. Frank McDonald.

Applicants thus far for sale of beer are: Nick Nicklas, Cisco; Ernest Halkias, Eastland; S. A. Vleas, Eastland; E. A. Snowden, Cisco; A. P. Anderson, Ranger; Mrs. Charles L. Kimmel, Ideal Cafe; Vivian McCleskey; Pete Theous; Eastland; S. M. Root, Eastland; Jim George, Eastland; Roy McNamara, Cisco; O. N. Nicols, Eastland; Mrs. Ocie Wilson, Cisco; J. D. Yardley, Cisco; James Battle, Ranger; R. E. Yeager, Ranger; C. M. Cox, Eastland; Mrs. Stella Alexander, Ranger; Mrs. Bess Sloan, Ranger; E. R. Chandler, Eastland; H. C. Gary, Eastland; Ray Northcutt, Ranger; W. C. Deigh, Cisco, and Mrs. Frank McDonald.

Applicants thus far for sale of beer are: Nick Nicklas, Cisco; Ernest Halkias, Eastland; S. A. Vleas, Eastland; E. A. Snowden, Cisco; A. P. Anderson, Ranger; Mrs. Charles L. Kimmel, Ideal Cafe; Vivian McCleskey; Pete Theous; Eastland; S. M. Root, Eastland; Jim George, Eastland; Roy McNamara, Cisco; O. N. Nicols, Eastland; Mrs. Ocie Wilson, Cisco; J. D. Yardley, Cisco; James Battle, Ranger; R. E. Yeager, Ranger; C. M. Cox, Eastland; Mrs. Stella Alexander, Ranger; Mrs. Bess Sloan, Ranger; E. R. Chandler, Eastland; H. C. Gary, Eastland; Ray Northcutt, Ranger; W. C. Deigh, Cisco, and Mrs. Frank McDonald.

Applicants thus far for sale of beer are: Nick Nicklas, Cisco; Ernest Halkias, Eastland; S. A. Vleas, Eastland; E. A. Snowden, Cisco; A. P. Anderson, Ranger; Mrs. Charles L. Kimmel, Ideal Cafe; Vivian McCleskey; Pete Theous; Eastland; S. M. Root, Eastland; Jim George, Eastland; Roy McNamara, Cisco; O. N. Nicols, Eastland; Mrs. Ocie Wilson, Cisco; J. D. Yardley, Cisco; James Battle, Ranger; R. E. Yeager, Ranger; C. M. Cox, Eastland; Mrs. Stella Alexander, Ranger; Mrs. Bess Sloan, Ranger; E. R. Chandler, Eastland; H. C. Gary, Eastland; Ray Northcutt, Ranger; W. C. Deigh, Cisco, and Mrs. Frank McDonald.

Applicants thus far for sale of beer are: Nick Nicklas, Cisco; Ernest Halkias, Eastland; S. A. Vleas, Eastland; E. A. Snowden, Cisco; A. P. Anderson, Ranger; Mrs. Charles L. Kimmel, Ideal Cafe; Vivian McCleskey; Pete Theous; Eastland; S. M. Root, Eastland; Jim George, Eastland; Roy McNamara, Cisco; O. N. Nicols, Eastland; Mrs. Ocie Wilson, Cisco; J. D. Yardley, Cisco; James Battle, Ranger; R. E. Yeager, Ranger; C. M. Cox, Eastland; Mrs. Stella Alexander, Ranger; Mrs. Bess Sloan, Ranger; E. R. Chandler, Eastland; H. C. Gary, Eastland; Ray Northcutt, Ranger; W. C. Deigh, Cisco, and Mrs. Frank McDonald.

Applicants thus far for sale of beer are: Nick Nicklas, Cisco; Ernest Halkias, Eastland; S. A. Vleas, Eastland; E. A. Snowden, Cisco; A. P. Anderson, Ranger; Mrs. Charles L. Kimmel, Ideal Cafe; Vivian McCleskey; Pete Theous; Eastland; S. M. Root, Eastland; Jim George, Eastland; Roy McNamara, Cisco; O. N. Nicols, Eastland; Mrs. Ocie Wilson, Cisco; J. D. Yardley, Cisco; James Battle, Ranger; R. E. Yeager, Ranger; C. M. Cox, Eastland; Mrs. Stella Alexander, Ranger; Mrs. Bess Sloan, Ranger; E. R. Chandler, Eastland; H. C. Gary, Eastland; Ray Northcutt, Ranger; W. C. Deigh, Cisco, and Mrs. Frank McDonald.

Applicants thus far for sale of beer are: Nick Nicklas, Cisco; Ernest Halkias, Eastland; S. A. Vleas, Eastland; E. A. Snowden, Cisco; A. P. Anderson, Ranger; Mrs. Charles L. Kimmel, Ideal Cafe; Vivian McCleskey; Pete Theous; Eastland; S. M. Root, Eastland; Jim George, Eastland; Roy McNamara, Cisco; O. N. Nicols, Eastland; Mrs. Ocie Wilson, Cisco; J. D. Yardley, Cisco; James Battle, Ranger; R. E. Yeager, Ranger; C. M. Cox, Eastland; Mrs. Stella Alexander, Ranger; Mrs. Bess Sloan, Ranger; E. R. Chandler, Eastland; H. C. Gary, Eastland; Ray Northcutt, Ranger; W. C. Deigh, Cisco, and Mrs. Frank McDonald.

Applicants thus far for sale of beer are: Nick Nicklas, Cisco; Ernest Halkias, Eastland; S. A. Vleas, Eastland; E. A. Snowden, Cisco; A. P. Anderson, Ranger; Mrs. Charles L. Kimmel, Ideal Cafe; Vivian McCleskey; Pete Theous; Eastland; S. M. Root, Eastland; Jim George, Eastland; Roy McNamara, Cisco; O. N. Nicols, Eastland; Mrs. Ocie Wilson, Cisco; J. D. Yardley, Cisco; James Battle, Ranger; R. E. Yeager, Ranger; C. M. Cox, Eastland; Mrs. Stella Alexander, Ranger; Mrs. Bess Sloan, Ranger; E. R. Chandler, Eastland; H. C. Gary, Eastland; Ray Northcutt, Ranger; W. C. Deigh, Cisco, and Mrs. Frank McDonald.

Applicants thus far for sale of beer are: Nick Nicklas, Cisco; Ernest Halkias, Eastland; S. A. Vleas, Eastland; E. A. Snowden, Cisco; A. P. Anderson, Ranger; Mrs. Charles L. Kimmel, Ideal Cafe; Vivian McCleskey; Pete Theous; Eastland; S. M. Root, Eastland; Jim George, Eastland; Roy McNamara, Cisco; O. N. Nicols, Eastland; Mrs. Ocie Wilson, Cisco; J. D. Yardley, Cisco; James Battle, Ranger; R. E. Yeager, Ranger; C. M. Cox, Eastland; Mrs. Stella Alexander, Ranger; Mrs. Bess Sloan, Ranger; E. R. Chandler, Eastland; H. C. Gary, Eastland; Ray Northcutt, Ranger; W. C. Deigh, Cisco, and Mrs. Frank McDonald.

Applicants thus far for sale of beer are: Nick Nicklas, Cisco; Ernest Halkias, Eastland; S. A. Vleas, Eastland; E. A. Snowden, Cisco; A. P. Anderson, Ranger; Mrs. Charles L. Kimmel, Ideal Cafe; Vivian McCleskey; Pete Theous; Eastland; S. M. Root, Eastland; Jim George, Eastland; Roy McNamara, Cisco; O. N. Nicols, Eastland; Mrs. Ocie Wilson, Cisco; J. D. Yardley, Cisco; James Battle, Ranger; R. E. Yeager, Ranger; C. M. Cox, Eastland; Mrs. Stella Alexander, Ranger; Mrs. Bess Sloan, Ranger; E. R. Chandler, Eastland; H. C. Gary, Eastland; Ray Northcutt, Ranger; W. C. Deigh, Cisco, and Mrs. Frank McDonald.

Applicants thus far for sale of beer are: Nick Nicklas, Cisco; Ernest Halkias, Eastland; S. A. Vleas, Eastland; E. A. Snowden, Cisco; A. P. Anderson, Ranger; Mrs. Charles L. Kimmel, Ideal Cafe; Vivian