

# THE WEEKLY CHRONICLE

Eastland County's Own Progressive Publication For All The People

The Chronicle is the only weekly newspaper in Eastland having a paid subscription list

VOL. 50

(Established November, 1887)

EASTLAND, TEXAS, FRIDAY, FEBRUARY 4, 1938

NO. 14

## Home Accidents More Numerous Than On Highways

There were more home accidents in the United States during 1936 than on highways and by automobiles, L. H. Taylor of near Ranger, safety supervisor in this section for the Lone Star Gas company, stated Monday at an address at the Rotary club luncheon in Eastland. More than 36,000 were killed in 1936 due to automobile accidents.

Industry has led the way in prevention of accidents, said Taylor. The speaker asserted that organization for the prevention of accidents in homes and on highways is not comparable to the steps taken by industry to prevent accidents in that work.

A. H. Henderson of Olden was program chairman, assisted by Dr. J. H. Caton, other member of the program committee.

New members of the club include Henry Pullman, Jack W. Frost and Hal Jackson.

D. Joseph of Ranger was a visitor.

## Room for Assembly Will Be Provided by Partition Removal

Removal of a plaster partition between two rooms of the top floor of the South Ward grammar school in Eastland will result in space for an auditorium, K. B. Tanner, president of the school board, stated Saturday.

Heretofore the school has been without an auditorium. Space created by the partition removal will result in room for an assembly of 120 persons, it was estimated.

While creating more convenient quarters for a gathering of students in the school for programs and for parent-teacher association meets, it also will enable instruction of a large number of students when less individual attention required for certain subjects, officials stated.

## 34 Records To Go On Auction at Mitcham 1st Sale

Fifty-four Prince Domino registered heretofore will be on sale at the first annual G. P. Mitcham and Son ranch auction Tuesday, Feb. 8, 12 miles northwest of Cisco.

Earl Gartin, well-known in livestock circles, will be auctioneer. The auction, only one of its type in this county, is attracting wide interest, according to reports.

O. R. Peterson, representative of Drovers Telegram, and Frank Farley, representative of the Hereford Journal, are to attend and assist in the auction.

Sale is to begin at 12:30 p. m. It had been announced that persons may attend the sale in event of bad weather by taking a train from Cisco at 11:10 a. m., the date of the event. The train will stop at the ranch and in the afternoon one will stop to take buyers and others back to Cisco.

## Former Pastor at Eastland Sent to Fort Worth Church

Abolishment of the Gatesville district in the Central Texas Methodist conference and absorption of churches in the district with the Waco and Cleburne districts has been announced by Methodist church officials.

Rev. E. R. Stanford, former pastor of the Methodist church at Eastland, was the presiding elder of the Gatesville district and now become pastor of the Matthews Memorial Methodist church at Fort Worth.

## Wichita, Brownwood Want ASAA Tourney

Brownwood and Wichita Falls have promised to have representatives at a meeting next Sunday at the Chamber of Commerce in Eastland when towns will be designated as sites for district Amateur Softball Association of America tournaments this year, Earl Weathersby, regional commissioner, reported Saturday.

There are 25 counties in Weathersby's region.

The meeting is to be called at 10 a. m. Notification of other towns that they will be represented is expected.

## School Strikes for Their Love



The right of pretty Mary Grubbs, top, 18-year-old senior, to date Coach Hugh Wynn, below, whom she plans to marry after graduation, precipitated a strike in Dothan, Alabama's high school and threats to bomb the building. The football coach, resigned on request, but after students struck he announced he would fight for re-instatement.

## Eastland Musician Plays Violin Solo At Venth's Funeral

A violin solo was played Tuesday by Miss Wilda Drago of Eastland at the funeral service of Carl Venth, who died Saturday at San Antonio. Venth was a former instructor of Miss Drago and was the friend of several of her students in this section. The solo was one of Venth's compositions.

Last summer the Eastland woman was a guest of Professor and Mrs. Venth at the artist colony at Bella Vista, Ark. She was accompanied there by Miss Alma Williamson, Miss Clara June Kimble, John Allen Mouser, all of Eastland, and Miss Gloria Graham of Cisco. During their stay there Mr. Venth composed a suite for four part violins, titled, "Wilda, Alma, Clara and Gloria," dedicating it to them.

Miss Drago studied four years with Venth, receiving her B. M. and artist degrees under his instruction and had played his compositions in Texas and several Eastern states.

Also from this area attending the funeral were Mrs. E. L. Graham of Cisco and Wanda Drago Beall of San Angelo.

## 18 Indictments Are Returned by Jurors Ending Term's Work

Eighteen indictments were returned Friday by the 91st district court grand jury after its final session of the December term.

Total felony indictments for the term was 23.

A. H. Johnson, foreman, and Herman Rushing, Jr., secretary, reported 92 witnesses had been examined by jurors since their organization.

Offenses charged Friday were: Burglary, four; theft of \$20 in currency, one; assault to murder, two; forgery, five; theft over \$50, three; automobile theft, one; rape, one; and driving intoxicated, one.

## Breckenridge Host To WPA Conference

Mrs. Medora S. Pitcock of Eastland, area supervisor of WPA women's and professional projects held the second of a series of eight conferences in the Stephens county sewing room Saturday afternoon at Breckenridge.

Representatives from Eastland, Callahan, Shackelford, Stephens, Young, Haskell and Throckmorton counties attended.

DISMISSED

Case of Mrs. Maude B. Hittson and others against Cisco Mortgage Loan company has been dismissed in 91st district court.

## Pumping To Final Lone Star Cozart Well Is Reported

Lone Star Gas company No. 1-B. T. Cozart, northwest corner of section 478, S. P. survey, which apparently extended the Ellenberger production of the lower Ordovician of Eastland county almost a mile to the northwest, may have to be completed as a pumper.

The test found saturation in the Ellenberger from 3,946 to 3,971 feet. The test was acidized with 1,000 gallons and swabbed 35 barrels of oil in six hours. It was shut down for 12 hours and when opened failed to flow, but swabbed 60 barrels of oil in 12 hours. The test was reported not to have sufficient pressure to make it flow.

This test was completed April 27, 1931, as a gas well with flow of 600,000 cubic feet daily in lime pay from 3,754 to 3,817 feet.

## Eastland Banker First to Purchase 1938 Auto Plates

W. C. Campbell, Eastland National Bank president, bought the first 1938 automobile license sold for this year Tuesday morning at the county assessor-collector's office. Campbell registered two cars.

C. H. O'Brien, assessor-collector, stated that April 1 will be the final date for use of 1937 automobile license plates and that 1938 licenses may not be placed on cars until March 1.

Others who obtained licenses Tuesday morning included C. B. Wellman of Eastland, H. S. Livingston of Eastland, Mrs. Nadine Aylesworth of Eastland, Dr. L. C. Brown of Eastland and Miss Viola LaMunyon of Eastland.

## Dates for Annual County Fair Set By Chamber Group

September 29 and 30, and October 1 were set as dates for the twelfth annual county fair at Eastland by a committee meeting Friday afternoon at the chamber of commerce in Eastland.

The dates are on Thursday, Friday and Saturday.

The setting was made by the Eastland Chamber of Commerce fair committee. Members of the committee are C. J. Rhodes, Earl Woody, County Agent Elmo V. Cook, T. E. Richardson and H. J. Tanner.

## Mahon Is Named to Offer Aid In Exams

AUSTIN, Jan. 29.—To aid University of Texas students in preparing for recent final examinations, a list of tutors and coaches approved by department heads was compiled by Mortar Board, honorary senior girls' organization.

Ralph Mahon of Eastland was listed as a coach for History 9, "Western Civilization in Medieval and Modern Times." Mahon is a member of Phi Eta Sigma, scholastic fraternity for freshmen men, and has served as historian of the organization. He is a member of Alpha Epsilon Delta, honorary pre-medical fraternity, and has been active in the work of the University Young Men's Christian Association.

## Youth from Eastland On Newspaper Staff

AUSTIN, Tex., Jan. 29.—Jimmy Mahon of Eastland is a member of the staff of the newspaper to be published by the Freshman Fellowship Club of the University of Texas Young Men's and Young Women's Christian Association.

The first edition of the paper will be out on February 1. The paper will be published twice monthly and will include "Y" announcements, feature columns and cartoons.

## Rabbit Drive Being Planned at Cheaney

A rabbit drive will be launched at Cheaney Friday, Feb. 4, it was announced here today, and the public is cordially invited to participate.

The group will meet at the Cheaney Church of Christ at 8 o'clock, and to bring along a lunch. The drive will last all day.

## DIVORCE GIVEN

Divorce was granted Friday by 91st district court in the case of Marion Wright against Leonard Wright. Custody of child was awarded the plaintiff.

## Eastland to Observe National Boy Scout Week Starting February 6

The twenty-seventh annual anniversary of the founding of the scout movement in the United States will be observed in Eastland and the nation during the week of February 6 through February 12, it was announced Tuesday.

Several features of the Eastland observance have already been mapped and others are being planned.

A union scout memorial service is planned for Sunday at the First Methodist church. Rev. P. W. Walker, pastor of the Methodist church, is to deliver the sermon. Rev. R. E. Bowden, pastor of the Church of God, is to give the invocation and Rev. J. I. Cartledge,

## Lions Decide Not To Sponsor Show After Discussion

Lions of Eastland, meeting for their regular luncheon Tuesday at Connelley hotel, discussed sponsorship of a home talent show and decided not to attempt the production.

W. P. Pickens and R. V. Galloway were appointed by F. M. Kenny, club president, as members of the program committee for February.

K. E. Canfield, representative of a "home talent" production company, was a visitor.

R. S. Searls, tail twister, warned that next Tuesday members not wearing Lions buttons will be fined.

## Contract Is Let On W.T.C.C. Building

By United Press  
ABILENE, Texas.—Contract has been let to H. L. Rice of Abilene for \$200,000 worth of improvements on the building which serves as headquarters for the West Texas Chamber of Commerce.

The remodeling will include the arrangement for a museum and resources exhibit on the first floor of the building and official for WTCU officials on the second second floor. Dr. H. W. Morelock of Alpine, president of Sul Ross College, said that the permanent exhibit of West Texas resources "promises to be the most unique and interesting display of its kind in the country."

Ten booths will be provided. The panhandle booths will display wheat and grain for which the sections is famous; the South Plains, land resources and cotton; North Texas, oil Fort Worth, industry; Central West Texas, cotton and feed; Midland and Big Spring ranching; El Paso, minerals; the oil country around Kerrville, wool and mohair; and the Big Bend, recreational and scenic possibilities.

Museum throughout the area will be invited to exhibit one case of their collections in the WTCU headquarters.

## Making Lumber From Timber Demonstrated

Approximately 300 persons Friday witnessed a demonstration in the use of a portable saw mill in converting native timber into lumber at Kokomo, County Agent Elmo V. Cook reported today.

Wood from the demonstration is being used in construction of a 4-H clubhouse at the community. The machine, it was stated, has been left in the community for the next two weeks.

## Maryland Firm Pays \$21,000 Cash For Property North of Eastland

L. R. Smith, superintendent for the Aarco Oil and Gas company of Baltimore, Md., said Saturday that the firm for \$21,000 cash has purchased the Dorothy Oil company, Eastland, 120 acre Holcomb heirs lease three miles northeast of Eastland.

On the property are two producing wells. One, the No. 1-B Holcomb, was completed by Aarco Oil and Gas company following its purchase from the Dorothy Oil company. No. 1-B Holcomb was tested for 2,000,000 cubic feet of wet gas daily from a sand, 1,285-1,300 feet. Total depth of the well was 1,625 feet.

Arab Gas company of Eastland has contracted with Aarco to take one-half of the gas production of the No. 1-B Holcomb.

Completed some time ago on the property was the No. 1-A Holcomb which is capable, it was said, of

producing 25 barrels daily but has a railroad commission allowable of 13 barrels daily.

The property involved in the transaction is in section 1, block 4, H. & T. C. survey.

At the head of Aarco Oil and Gas company is Aaron Cohen of Baltimore, Md., who has extensive oil interests in Texas. The purchase of property in Eastland county, however, does not mark Cohen's first investment in the county. Cohen has production in the Pumpkin Center area south of Eastland.

Smith stated that recent developments in this section promise more for the future, referring specifically to oil pay from deeper horizons and from depths passed up in the rush for production of great volume years ago. Smith is to make headquarters at Rising Star in the immediate future, he said.

## Scouters Promise Help For Youths In Work On Cabin

Assistance in securing lumber for the completion of a cabin being constructed by boy scouts of troop No. 6 was offered Tuesday night by J. B. Johnson and Dr. J. H. Caton, troop committee members, at a meeting of scouts and Scoutmaster Bill Jessop at the First Presbyterian church in Eastland.

Securing of lumber has held up the completion of the 20 by 20 cabin, located on the south side of the city park in Eastland, it was explained. About 75 per cent of the work on the cabin had been completed.

Members of the troop are doing all construction work.

## Failures in State Grow Moderately

AUSTIN, Texas.—Commercial failures in Texas during December increased moderately over the preceding month and sharply over the corresponding month last year, the University of Texas Bureau of Business Research has announced. According to Dun and Bradstreet, Inc., there were nineteen failures in December, compared with fifteen in November and eleven in December, 1936, increases of 26.7 per cent and 72.7 per cent respectively. For the entire year 1937, failures totaled 166, a decline of 2.9 per cent from the preceding year.

Total liabilities, \$280,000, were up 37.9 per cent from November and 115.4 per cent from December a year ago. For the entire year 1937, liabilities aggregated \$3,027,000, up 45.3 per cent over the preceding year. Average liability per failure was \$15,000, up 7.1 per cent over November and 25 per cent over December, 1936.

## Judge Upholds Right To Bet Upon Cards

BOSTON.—Municipal Judge Joseph Donovan has upheld the right to play cards for money.

"People have a right to play cards for money, so long as they are not in a place that is a gambling nuisance and regularly resorted to as such," he ruled in dismissing charges against 16 defendants.

## Echols Is Given Pythian Rank Work

I. S. Echols of near Ranger was given the first rank at a meeting of Knights of Pythias at Eastland Tuesday night.

## Annual Red Cross Meet For County Is Due at Cisco

Annual meeting of the Eastland county chapter of the American Red Cross has been set for Friday afternoon at 4 o'clock in the chamber of commerce office at Cisco, it was announced here on Saturday.

J. E. Spencer, county chairman, called the meeting which will be marked by selection of officers, delivery of reports and discussion of methods to promote Red Cross activities in the county.

Officers to be chosen will include a county chairman, vice chairman, a treasurer and board members.

A representative attendance of local Red Cross workers, officials and the public was urged.

## Fire Threatens a Ranger Lumber Yard Thursday

A fire in the Higginbotham-Bartlett lumber yard in Ranger, which threatened for a few minutes to cause considerable damage was quickly put out by the Ranger Fire Department at 11:20 Thursday morning.

The fire started, according to fire department members, from an asphalt barrel, which boiled over, throwing hot asphalt over a shed. The auxiliary pumper, which was purchased nearly a year ago, extinguished the flames before a line could be laid to the nearest fire plug, south of the yard.

Damage in the fire was negligible, it was reported.

## New Constitution Will Be Submitted At Teacher Parley

Submission of a revised constitution and by-laws, which, if adopted, will clear the way for the organization's becoming a unit of the State Teachers association, headlines the business for a meeting of the Eastland County Teachers association Saturday morning, Feb. 19, at the Eastland high school.

The constitution and by-laws of the county association were recently revised by a committee whose members carried out the prescribed form of the state association.

The committee, appointed by R. N. Cluck, Cisco, superintendent and president of the association, was composed of H. D. Thomason, Carbon superintendent; O. L. Stamey, Cisco high principal; H. B. Self, Rising Star superintendent; C. O. Bragg, Olden superintendent; W. T. Walton, Ranger superintendent; and C. S. Eldridge, the county superintendent.

Full program for the Feb. 19 meeting is to be outlined soon.

## Funeral Held For Mrs. H.S. Slatton at Eastland Church

Funeral services for Mrs. Mary Sue Rumph, 30, wife of H. S. (Pete) Slatton, who died Tuesday night at Cisco after a short illness, were conducted Thursday morning at the First Methodist church of Eastland with Rev. P. W. Walker, Eastland, and Rev. Hamilton Wright, Baird, officiating.

Burial was Thursday afternoon in the Mount Olivet cemetery at Fort Worth beside the body of her father, Dr. S. P. Rumph, following a brief service at the home of an uncle, Dr. D. M. Rumph, in that city.

Mrs. Slatton's death was said to have occurred from pneumonia and complications. She became ill at Eastland last week after she and her husband had attended funeral services for an infant of Mr. and Mrs. G. H. Kinard.

She was born at Carbon, October 12, 1907. For several years she was a teacher in one of Eastland's public schools and also an expression teacher. She was married June 14, 1931, and for several years had resided with her family at San Marcos where Mr. Slatton is in business.

Her husband and two children, James Hoyt, 5, and Linda, 3, are survivors in the immediate family. Her mother, Mrs. S. P. Rumph, who made her home at San Marcos, a sister, Polly Rumph, Putnam, two aunts and three uncles are also survivors.

Clayton Todd, Lone Cedar school principal, who is a patient at Payne hospital in Eastland, spent a restful night Wednesday it was stated Thursday.

## Sweden's Tribute to U. S. Colonists



A ship with full blown sails, scudding along a sea in whose depths fishes swim, surmounts a great marble pedestal to commemorate the founding of the first Swedish colony in America 300 years ago. S. J. Edstrom, chairman of the celebration committee, chats with King Gustav of Sweden as they inspected the monument, which is a gift from the Swedish public, erected in Fort Christina State Park at Wilmington, Del.

## Ft. Worth Medicos To Speak at Meet of Society Feb. 8

Dr. Porter Brown of Fort Worth and Dr. B. C. Ball of Fort Worth are to speak at a meeting of the Eastland-Callahan Medical society Tuesday night, February 8, at the Connelley hotel in Eastland, it was announced.

Subject of Dr. Brown's paper is "General Observations on Superficial X-Ray Therapy" and Dr. Ball is to discuss "Determination of Activity in Pulmonary Tuberculosis."

Dr. Sam E. Thompson of Kerrville, past president of the State Medical association, is expected to be a visitor as he will speak the following night at a meeting of the Civic League. Several visitors from Dallas also are expected to attend.

Opening feature of the meeting will be a meal at 7 p. m.

## Funeral Is Held At Carbon Sunday For Mrs. Abbott

Funeral services for Mrs. W. S. Abbott, 75, resident of the county 40 years, who died Saturday at Carbon of pneumonia, were conducted Sunday at the Methodist church in Carbon.

Revs. D. T. Martin and W. A. Tate officiated at the service. Burial was in the Romney cemetery.

Mrs. Abbott had been a resident of Carbon 24 years. Last week she fell in her home, breaking a hip.

Survivors include her husband and several children.

## Child's Funeral Held Saturday at Eastland Service

Funeral services of Nancy Elaine Kinard, daughter of Mr. and Mrs. G. H. Kinard of Eastland, were conducted Saturday morning at the family home, with Rev. P. W. Walker, pastor of the First Methodist church, officiating.

Burial was in Eastland cemetery.

The child was two years of age, born Dec. 24, 1935. Survivors are her parents and a sister.

Hammer Undertaking company, Eastland, had charge of arrangements.

## County Home Near Eastland Is Leased To Ex-Supervisor

Lease of the county home for indigents and 35 acres of land to W. L. Woods, former superintendent, was announced Monday by County Judge W. S. Adamson.

Judge Adamson stated that Woods is to farm the 35 acres and plans to board several aged persons at the home. The officials also stated that the arrangement is being given a trial because most the inmates at the home are receiving old age pension checks.

It was also stated that under the arrangement Woods will still continue to care for persons without funds sent there by the county.

The home, two and a half miles south of Eastland, has been operated by the county for about 15 years. At some times as many as 15 persons were cared for at the home.

A saving to the county is expected under the new arrangement.

## New Home Agent Arrives to Begin Work In County

Miss Mabel Caldwell of Galveston arrived Sunday in Eastland to begin work as Eastland county assistant home demonstrator, succeeding M. Stewart, transferred to Stratton agency.

Miss Caldwell has been a student at Texas State College for Women at Denton, where she being graduated.

The first connection in an official position with the extension service, Miss Caldwell formerly was active in 4-H club work member at Garland.

## Last Rites Held Near Carbon For T. D. Whitehorn, 39

Funeral services for T. D. Whitehorn, 49, district supervisor for the state comptroller's department, who died Friday after an automobile accident between Rowena and Miles, were conducted Saturday afternoon at the family home five miles northeast of Carbon. Burial was in Carbon cemetery.

Mr. Whitehorn's body was found lying on the highway between Rowena and Miles about 1 a. m. Friday. He apparently had a motor accident and lost control of his car. He was in a ditch. Mr. Whitehorn was conscious when found, and asked to be taken to Ballinger hospital where he died soon after reaching it.

Mr. Whitehorn left the Texas Ranger force to join the comptroller department in 1932 and moved from Abilene in 1936 to make his home at Carbon. Born in 1889 in Tennessee, he came to Texas as a young man to become widely known as a peace officer. He had been an officer at Sweetwater, Lubbock and Borger. It was said he was one of the first officers to be sworn when martial law was declared at Borger.

Survivors include his wife; four daughters, Mildred, Dorothy, Mary Evelyn Whitehorn of Carbon and Mrs. V. S. Moore of Dallas; and one son, T. D. Whitehorn, Jr., of Carbon.

## New Callahan Seeks Ellenburger Near Cross Plains

J. V. Howell No. 1 E. I. Ve aimed at the Ellenburger lower Ordovician series in Callahan county, two miles north Cross Plains, is a new test area.

Location is southwest of other deep projects, which favorable showings of oil, so which are said to have p for long periods. It is 1 1/2 from the east an d1,000 f from the north line of the Jess survey No. 751.

## Saturday Favor As Club Meets

Members of the Eastland Town- send club voted Friday night to change time for meetings from every other Friday to every other Saturday, it was announced.

Next meeting is set for Saturday afternoon, Feb. 12, at 3 o'clock, at the Courthouse in Eastland.





Honestly - You can't Beat these

# FOOD VALUES



**PURE CANE SUGAR 10 LB. PAPER BAG 52c**

SWIFT'S JEWEL

**Shortening 4 LB. CTN. 45c 8 LB. CTN. 79c**



IF ITS GOOD TO EAT PIGGLY WIGGLY HAS IT!

Try Piggly Wiggly First!

FRESH YARD EGGS Dozen 19c

FRESH YARD EGGS Dozen 19c

FANCY JONATHAN

APPLES Larger—125 Size. Dozen 10c



### FRUITS and VEGETABLES

LETTUCE 2 Large Heads ..... 9c  
CELERY Bleached Stalks ..... 14c

Carrots, Beets .....  
Radishes, Turnip Tops .....  
Green Onions .....  
**3 bunches 10c**

POTATOES Strictly U. S. No. 1 Whites 10 LBS. 19c

ORANGES California Sunkist — Doz. .... 20c

KILN DRIED EAST TEXAS YAMS Strictly No. 1's— Per Pound ..... 4 1/2c

APPLES FANCY WINESAPS— Large 125 Size. Dozen 15c  
DELICIOUS— Size 88. Per Dozen... 40c

BANANAS CHOICE FRUIT—LB. .... 4 1/2c

TOMATO SOUP CAMPBELL'S 3 Cans ..... 19c

CAMPBELL'S SOUPS Except Chicken 3 Cans 25c

TOMATOES 4 No. 2 Cans ..... 27c

FRANCO-AMERICAN SPAGHETTI 3 Cans ..... 25c

ORANGE JUICE Tree Sweet— 12-Ounce Cans ..... 10c

TUNA Light Meat— No. 1/2 Cans ..... 17c

MEAL Texas King Cream 5 Pounds... 15c

POST TOASTIES 2 Large Pkgs. 25c

FIGS Pressed White 6 Ounce Package... 5c

CAMPBELL'S

TOMATO JUICE

3 14-oz. Cans 23c 2 20-oz. Cans 19c 50-oz. Can... 23c



Now's the Time for GOOD BEEF!

TRY THESE TASTY SPECIALS!

SWIFT'S BRANDED BEEF

SEVEN ROAST PER POUND ... 18c

DECKER'S SLICED BACON Per Pound 25c | BEST GRADE SLICED BACON Per Pound 35c

STEAK CHOICE CUTS POUND ..... 25c

PORK LOIN ROAST or CHOPS POUND ..... 22c

SAUSAGE PURE PORK HOME MADE, LB. ... 20c

CHEESE FULL CREAM POUND ..... 22c

FISH -- SLICED OCEAN CAT, LB. .... 19c  
GULF TROUT, LB. .... 21c

LARGE BALTIMORE OYSTERS Per Quart 35c

### ---COFFEE VALUES---

PIPKIN'S SPECIAL Fresh ground before your eyes. Guaranteed to please! 2 lbs. 35c

BLISS VACUUM PACKED Per Pound .... 23c

FOLGER'S Per Pound ..... 26c

MAXWELL HOUSE Per Pound ..... 26c

# PIGGLY WIGGLY

WE RESERVE THE RIGHT TO LIMIT QUANTITIES!

EASTLAND, Texas PRICES GOOD FOR FRIDAY AND SATURDAY, FEB. 4 and 5

### BUY NOW - for WEEKS AHEAD!

P&G SOAP 6 GIANT BARS 23c

OK SOAP 5 80 Size Bars... 17c

LIFEBUOY 3 Bars ..... 19c

PALMOLIVE 3 Bars ..... 19c

STALEY'S GOLDEN SYRUP NO. 5 CAN ..... 35c

American Sardines, 2 Cans .... 9c

Potted Meat, 2 Cans ..... 5c

Vienna Sausage, Can ..... 5c

Matches TRUE AMERICAN 6 BOX CTN. .... 19c

Waldorf Tissue, 3 Rolls ..... 13c

Dried Apples, 2 Lbs. .... 25c

Dried Peaches, 2 Lbs. .... 25c

Bulk Rice, PER POUND ..... 5c

## FLOUR

PIPKIN'S 12 Lb. Bag ..... 50c

BEST 24 LB. Bag ..... 95c

TEXAS 12 Lb. Bag ..... 47c

LONG 24 Lb. Bag ..... 85c



Looking for VALUES? CHECK THESE!

LIBBY'S OR DEL MONTE PINEAPPLE JUICE 3 No. 211 Cans 25c

ROSEDALE CHOICE PEACHES OR PEARS--- 2 TALL CANS 25c

CORN ILLINOIS BEST 3 No. 2 Cans 25c  
GREEN BEANS DEER BRAND 3 No. 2 Cans 25c  
SPINACH STAFF-O-LIFE 3 No. 2 Cans 25c

PEANUT BUTTER Armour's Star— PER QUART ..... 25c

MILK Pet or Carnation 2 Tall or 4 Small Cans .... 15c

SAXET CRACKERS 2 Pound Box ..... 19c

OXYDOL Small Size Package ..... 9c  
Large Size 24-Ounce Package ..... 23c



GIVING AWAY 200 Waffle Irons A DAY FOR TWENTY DAYS IN BISQUICK CONTEST Large Size

BISQUICK ..... 33c

WHEATIES 2 Pkgs.

with milk or cream and almond

BANANAS 23c

# THE WEEKLY CHRONICLE

Established Nov. 1, 1887  
Entered as second-class matter at the postoffice at Eastland, Texas,  
under Act of March, 1879

Published Every Friday  
Office of Publication: 106 East Plummer Street. Phone 601

**NOTICE TO THE PUBLIC**  
Any erroneous reflection upon the character, standing or reputation  
of any person, firm or corporation, which may appear in the columns  
of this paper, will be gladly corrected upon being brought to the at-  
tention of the publisher.

Obituaries, cards of thanks, notices of lodge meetings, etc., are charged  
for at the regular advertising rates, which will be furnished upon ap-  
plication.

## Taking Stock of the Child Labor Problem

Child labor has been an issue in the United States for so long that it is helpful once in a while to pause and take stock of the situation.

The child labor amendment to the constitution has been pending before the states for 14 years. Thus far, 28 state legislatures have ratified it—eight less than the three-fourths majority needed to place the amendment in the constitution.

Meanwhile, hundreds of bills have been introduced in Congress proposing other amendments or seeking to remedy child labor faults through straight legislation. The latest of these is the Wheeler-Johnson bill, which would prohibit shipment across state lines of goods produced by child labor. The measure has passed the Senate, but not the House.

The most recent survey of the child labor situation was made by the National Child Labor Committee. The study was based partly on information gathered by the committee, partly on government records and census figures.

Whether you believe in child labor or not, the survey showed, among other things:

That almost 700,000 children between 10 and 15 years of age (inclusive) were engaged in child labor in 1930.

That the number increased between 1930 and 1933, then decreased markedly during the NRA period.

That child employment increased as much as 100 per cent during the year after NRA was invalidated, as shown by government figures.

That a large percentage of children applying for work permits are "physically unfit" for labor.

And that "the areas of the most illiteracy, the most child labor, and the least school attendance are almost identical."

The committee asserted that the child labor amendment has been kept out of the constitution thus far by a "powerful and well-financed" campaign of opposition by manufacturers.

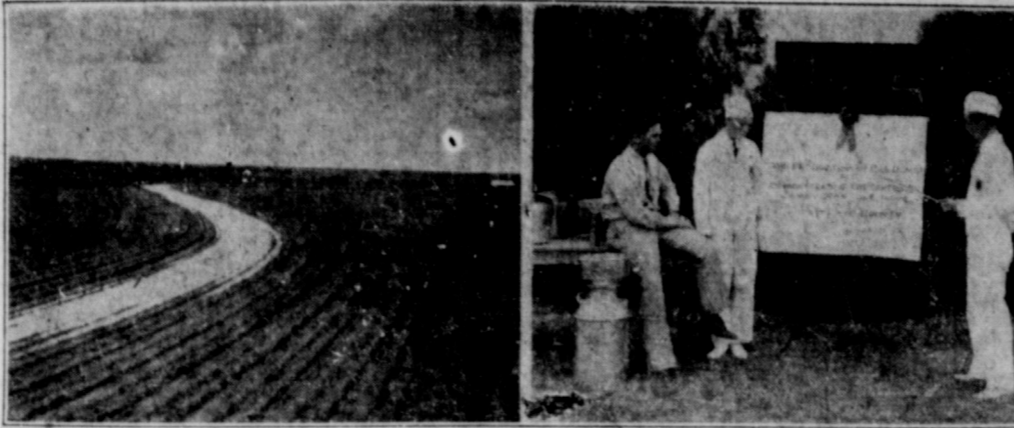
Opponents, on the other hand, contend that the amendment, giving the federal government power to "limit, regulate, and prohibit" the labor of persons under 18, would place too much power in the hands of government to interfere with the private lives of boys and girls.

These charges and counter-charges have been made many times in the last 14 years, of course, and probably will be reiterated many more times before the issue is finally settled.

Whether Congress, by changing the wording of the amendment, might make it more acceptable to present opponents is problematical. The National Child Labor Committee expresses hope that the Wheeler-Johnson bill will pass, but serves notice it will continue to fight for the amendment regardless of the outcome of the measure now before Congress.

Among the events they might arrange for the Duke of Windsor when he visits America is a grand get-together of all the girls who danced with the Prince of Wales.

## Progress In Two Lines During Extension Year



The scene on the Joe Reid farm south of Clyde in Callahan county is typical of the work done in extension service district 7, where 98,134 acres were terraced in 1937 under the supervision of county agricultural agents. Right, the Eastland county 4-H club dairy demonstration team, which won the state contest at Texas A. & M. College and represented Texas.

**COLLEGE STATION.**—The year 1937 saw a big increase in the volume and quality of 4-H club work, soil conservation, cotton improvement, trench silos and other activities supervised by county agricultural agents in District 7 of the Extension Service of Texas A. & M. College, the annual report of District Agent W. L. Glass shows.

District 7 is composed of 19 counties in Central West Texas and includes Jones and Palo Pinto on the north and Gillespie and Blanco counties on the south.

Boys' 4-H club work featured the Extension Service program, and a total of 1,743 boys were enrolled in the district. Among the club boys who won statewide recognition were Walter Lange, Jr., of Runnels county, Richard Winters of McCulloch county, Gordon Grote of Mason county, and Dale Martin of Taylor county, all of whom were awarded trips to Chicago during the National 4-H Congress for excellence of demonstrations in various lines. Marvin McMillan of Mason county was awarded a gold watch for the best meat animal demonstration in the state.

The Kokomo 4-H boys' club of Eastland county was declared the best boys' club in the state; Taylor county's 4-H cotton club was

one of four clubs to win regional honors in the state cotton contest, and the dairy demonstration team of Eastland county, L. C. Love and James Dean, won the state contest at Texas A. & M. College and represented Texas at the National Dairy Show in Columbus, Ohio.

Mason county again took top honors in the 4-H classes of the major livestock shows as well as showing well in the open classes. Gordon Grote exhibited the grand championship carload of calves at Fort Worth and the open grand championship calf at Denver. J. D. Jordan returned from Kansas City with the open grand championship.

The year saw 98,134 acres of land terraced on 1,610 farms, a substantial increase over 1936, when county agricultural agents terraced 76,000 acres. In addition 24,949 acres of pasture and range land were terraced.

Glass gave the major credit for the excellent terracing record to county commissioners' courts who furnished road machinery for terracing at cost of operation.

In addition to terracing and contouring, county agricultural agents, their assistants, and farm committees carried on a large volume of work under the agricultural conservation program,

as at the National Dairy Show in Columbus, Ohio. Left to right, Hugh F. Barnhart, assistant county agricultural agent, L. C. Love and James Dean.

There were 654 trench silos, filled with 54,000 tons of silage valued at \$150,000 in the district at the end of 1937 as compared with 262 in 1936. Trench silos were dug in every county, with Jones county high with 65 and Taylor a close second with 62.

Cotton improvement work was prominent in the year's program, and 483 farmers organized 12 one variety cotton communities in six counties. Other activities in the district included 464 dairy, 408 beef cattle, 196 sheep, 170 swine and 289 poultry demonstrations.

The counties in the district, with their county agricultural agents are: Blanco, R. B. Jenkins; Brown, C. W. Lehmburg; Callahan, R. H. Brison; Coleman, C. V. Robinson; Comanche, N. E. Scudder; Eastland, E. V. Cook and H. F. Barnhart, assistant; Erath, G. D. Eveterr; Gillespie, H. F. Grote; Jones, Floyd Lynch; Llano, D. D. Steele; Mason, F. N. Newsom; Mills, W. P. Weaver; Palo Pinto, J. H. Jameson; Runnels, J. A. Barton; San Saba, C. E. Tisdale; Shackelford, W. T. Magee; Stephens, W. R. Lacey; Taylor, J. K. Parr, and L. C. Ranson, assistant.

of four years, and the pay is \$21.00 to \$157.00 per month, depending on rank and length of service. There are now vacancies for enlistment.

The Marine Corps offers Travel, Health, Trade Learning, Education and Retirement after twenty years of active service. Further information may be obtained from the postmaster or by writing the U. S. Marine Corps Recruiting Station, 822 Allen Building, Dallas, Texas.

Qualifications to be met by the applicant are:  
"Must be between the ages of 18 and 25, not less than 64 inches nor more than 74 inches tall, white, native born or fully naturalized citizen. Must pass a rigid physical examination, be unmarried, with no one depending upon them for support. High school graduates preferred, but not absolutely necessary. Ex-members of the Army or Navy must have had an excellent discharge."

All enlistments are for a period

of four years, and the pay is \$21.00 to \$157.00 per month, depending on rank and length of service. There are now vacancies for enlistment.

The Marine Corps offers Travel, Health, Trade Learning, Education and Retirement after twenty years of active service. Further information may be obtained from the postmaster or by writing the U. S. Marine Corps Recruiting Station, 822 Allen Building, Dallas, Texas.

Qualifications to be met by the applicant are:  
"Must be between the ages of 18 and 25, not less than 64 inches nor more than 74 inches tall, white, native born or fully naturalized citizen. Must pass a rigid physical examination, be unmarried, with no one depending upon them for support. High school graduates preferred, but not absolutely necessary. Ex-members of the Army or Navy must have had an excellent discharge."

All enlistments are for a period

of four years, and the pay is \$21.00 to \$157.00 per month, depending on rank and length of service. There are now vacancies for enlistment.

The Marine Corps offers Travel, Health, Trade Learning, Education and Retirement after twenty years of active service. Further information may be obtained from the postmaster or by writing the U. S. Marine Corps Recruiting Station, 822 Allen Building, Dallas, Texas.

Qualifications to be met by the applicant are:  
"Must be between the ages of 18 and 25, not less than 64 inches nor more than 74 inches tall, white, native born or fully naturalized citizen. Must pass a rigid physical examination, be unmarried, with no one depending upon them for support. High school graduates preferred, but not absolutely necessary. Ex-members of the Army or Navy must have had an excellent discharge."

## January Pension Checks Decrease To \$12,339 Total

January pension checks, totaling \$12,339, have been received by 827 persons, according to a report from the State Old Age Assistance Commission on file Monday in the office of County Clerk R. V. Galoway.

The amount of checks and number of recipients was less than the December checks, which were received by 848 persons and amounted to \$12,643.

A table for comparison of payments the last ten months is as follows:

Month	Persons	Amt.
January	827	\$12,339
December	848	12,643
November	863	12,858
October	852	12,754
September	882	13,121
August	868	12,887
July	942	13,841
June	942	13,924
May	942	13,850
April	889	13,157
March	803	9,151

## Employment Found For 408 Persons Last Year by TSE

A total of 408 jobs were filled by the Eastland office of the Texas State Employment Service during 1937, it was announced on Tuesday by J. Syd Lowry, junior interviewer in charge.

Private industry provided 129 openings filled by the employment service while the remainder of the jobs filled last year were in public works, including highway and building construction.

Jobs providing regular employment filled by the office totaled 331, while openings providing work of one month or less in duration accounted for 77 placements, Lowry said. Farm work provided ten jobs filled by the office.

Most of the placements made

last year were in public works projects and commercial and professional pursuits.

The 1937 placement record showed that 408 jobs were filled with 332 men and 76 with women workers. Placements of war veterans made last year by the Eastland office totaled 32, Lowry's records showed.

In obtaining orders for workers staff members of the office made 222 initial contacts with employers, 295 revisits to employers last year.

On Dec. 31, 1937, applicants actively seeking employment through the Eastland office totaled 1337 compared with 1109 in the active files of the same office one year previous. During 1937, the office received 877 new applications, Mr. Lowry said.

Each opening is filled solely on the basis of the workers' qualifications and the employer's requirements, Lowry emphasized.

The employer makes the final selection of the workers he wishes to employ, and no charge is either to the employer or worker, he said.

## Sign Language Used In Accident Case

FORT WORTH.—Sign language testimony of four deaf mute witnesses recently brought a conviction and \$25 fine to the principal in a negligent collision case. Through an interpreter, the deaf and dumb witnesses told how the accident occurred.

**666 COLDS**  
in 3 days  
**FEVER**  
first day  
Liquid, Tablets  
Salve, Nose Drops, Headache, 20 minute  
Try "Rub-My-Tum"—World's Best Liniment

## FOR YOUR PARTIES JUST RECEIVED!

The Nicest Assortment of Tallies and Favors for  
**Bridge — Valentine**  
**Washington's Birthday**  
**St. Patrick's Day**  
**Easter**

... And many others! ... We will be glad to show them to you when you come down ... and they're not expensive!

## THE SPECIALTY SHOP

Mrs. Vera McLeroy, Prop.  
Connelllee Hotel Bldg. Eastland

## U. S. Marines Will Recruit Members

DALLAS.—The U. S. Marine Corps Recruiting Station, 822 Allen Building, Dallas, Texas, is open daily, except Sunday, from 8:00 a. m. to 4:00 p. m. to receive applicants for enlistment. It was announced here by the Officers in charge.

Qualifications to be met by the applicant are:  
"Must be between the ages of 18 and 25, not less than 64 inches nor more than 74 inches tall, white, native born or fully naturalized citizen. Must pass a rigid physical examination, be unmarried, with no one depending upon them for support. High school graduates preferred, but not absolutely necessary. Ex-members of the Army or Navy must have had an excellent discharge."

All enlistments are for a period

of four years, and the pay is \$21.00 to \$157.00 per month, depending on rank and length of service. There are now vacancies for enlistment.

The Marine Corps offers Travel, Health, Trade Learning, Education and Retirement after twenty years of active service. Further information may be obtained from the postmaster or by writing the U. S. Marine Corps Recruiting Station, 822 Allen Building, Dallas, Texas.

Qualifications to be met by the applicant are:  
"Must be between the ages of 18 and 25, not less than 64 inches nor more than 74 inches tall, white, native born or fully naturalized citizen. Must pass a rigid physical examination, be unmarried, with no one depending upon them for support. High school graduates preferred, but not absolutely necessary. Ex-members of the Army or Navy must have had an excellent discharge."

All enlistments are for a period

of four years, and the pay is \$21.00 to \$157.00 per month, depending on rank and length of service. There are now vacancies for enlistment.

The Marine Corps offers Travel, Health, Trade Learning, Education and Retirement after twenty years of active service. Further information may be obtained from the postmaster or by writing the U. S. Marine Corps Recruiting Station, 822 Allen Building, Dallas, Texas.

Qualifications to be met by the applicant are:  
"Must be between the ages of 18 and 25, not less than 64 inches nor more than 74 inches tall, white, native born or fully naturalized citizen. Must pass a rigid physical examination, be unmarried, with no one depending upon them for support. High school graduates preferred, but not absolutely necessary. Ex-members of the Army or Navy must have had an excellent discharge."

All enlistments are for a period

of four years, and the pay is \$21.00 to \$157.00 per month, depending on rank and length of service. There are now vacancies for enlistment.

The Marine Corps offers Travel, Health, Trade Learning, Education and Retirement after twenty years of active service. Further information may be obtained from the postmaster or by writing the U. S. Marine Corps Recruiting Station, 822 Allen Building, Dallas, Texas.

Qualifications to be met by the applicant are:  
"Must be between the ages of 18 and 25, not less than 64 inches nor more than 74 inches tall, white, native born or fully naturalized citizen. Must pass a rigid physical examination, be unmarried, with no one depending upon them for support. High school graduates preferred, but not absolutely necessary. Ex-members of the Army or Navy must have had an excellent discharge."

All enlistments are for a period

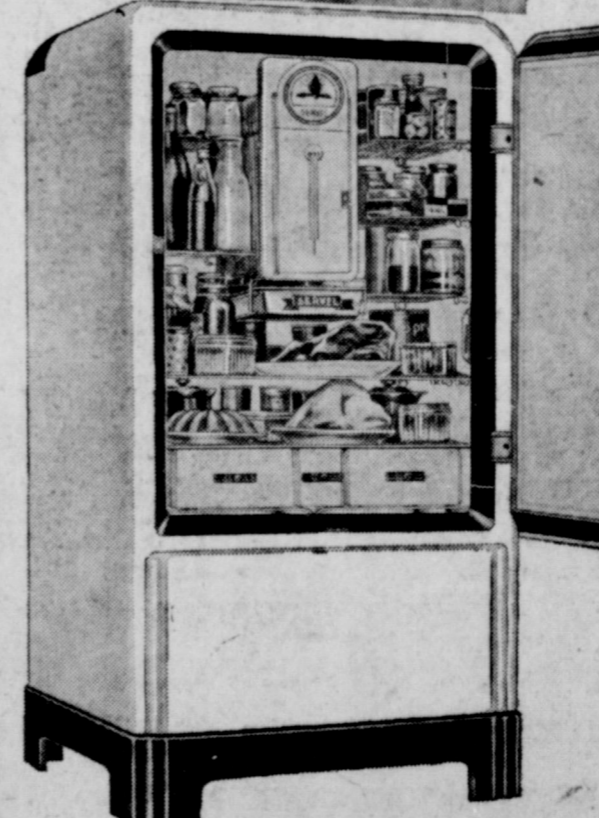
of four years, and the pay is \$21.00 to \$157.00 per month, depending on rank and length of service. There are now vacancies for enlistment.

## Ballot Fraud Costs Prison Sentence

UTICA, N. Y. — Because he registered under assumed names in eight election districts, George Flansburg, Utica painter, must spend the next 5 to 10 years in prison. He was found guilty after testifying that he was intoxicated and did not know what he was doing.

**(HEALTHY? SURE! I'M A 'LECTROLUX BABY!**

**70% OF ALL ILLNESS CAUSED BY WHAT YOU EAT**



**MAYBE** you can't smell or taste the spoilage; but does that mean it's not there? A noted Eastern hospital says: "70% of ALL ILLNESS is caused by what you eat or drink!" Why does so much of this illness come in winter? Well, remember this: it's always summer, in your kitchen. At 70 degrees or higher, food and milk spoil fast. And milk is most dangerous just before it tastes sour!

Your family deserves the protection of Servel Electrolux—the Gas or Kerosene refrigerator—winter and summer. NOW, Servel Electrolux is the one refrigerator which supplies steady, unvarying cold. And it won't dry out meat and leftovers. Nor wilt vegetables. Servel Electrolux is different from all others—a different kind of refrigerator. It has no moving parts. Nothing to wear. No noise—ever. A tiny gas or kerosene flame takes the place of all machinery—and operates here for as little as 3 cents per day! A small down payment puts Servel Electrolux in your home; savings pay the rest. Why not start them NOW?

**Mrs. Roy McCarty, Rt. 3, Houston, Texas** declares her Servel Electrolux paid for itself in two years' time: "I wish to express my appreciation, so far as words are possible, for my Servel Electrolux. I know of no other investment that pays greater dividends. I have learned from experience that for a family of three a Servel Electrolux will pay for itself in two years."

"I live 12 miles from a vegetable market, yet I have fresh vegetables the year round, thanks to my Servel Electrolux. Vegetables taken out of the garden cannot be compared to the crisp freshness of vegetables taken out of our Electrolux. Milk or cream will remain sweet in our Electrolux for days, even during the hot summer. This is an essential advantage in homes where there are children. It is surprising what I have learned to do with 'leftovers', which would have been thrown out, before our Servel Electrolux came to live with us. It is one piece of kitchen equipment which really saves. It is easily cleaned inside and outside. The automatic defroster is a time-saver every housewife admires. The cost to operate, compared to other appliances, is too little even to think about."

**Mrs. S. E. Doyle, of El Paso, Texas**, declares she has waste from deterioration, etc. in raw or cooked foods— "Servel Electrolux is a blessing to our land. I consider it my best investment, because of the saving in food costs and food preservation."

"Servel Electrolux preserves food of all kinds indefinitely, keeps raw foods fresh until ready to cook and keeps my cooked foods ready to serve. I have no waste in either one. It furnishes plenty of ice for drinks at all times, also freezes cream, chills custards, salads and all other delicacies in the food line. My Servel Electrolux is perfect in operation, noiseless, odorless, beautifully finished, easy to keep clean and requires attention only once a week to fill with kerosene. The cost of operation is as low as a mere trifle—about four cents a day."

**SERVEL ELECTROLUX**  
THE Gas REFRIGERATOR (OR KEROSENE)

- Operates on . . .
- KEROSENE (Coal Oil)
  - BOTTLED GAS
  - BUTANE GAS
  - NATURAL GAS

## RANGER FURNITURE EXCHANGE

Local Showroom West Main Street  
EASTLAND, TEXAS PHONE 552

**BOY! What a Tire!**

THE BEST TO HAVE . . . ON ANY CAR! . . . AND SAFE . . . ON ANY TRIP!

**ALWAYS BUY**

**SEIBERLING**

USE OUR MONTHLY PAY PLAN - ONE-THIRD DOWN BALANCE MONTHLY.

**Jim Horton Tire Service**

EAST MAIN ST., PHONE 258 EASTLAND

PIONEERING in tire making has made SEIBERLING synonymous with DURABILITY and SAFETY . . . They are built to give service . . . GOOD SERVICE!

### Highway Engineer's Figures Show \$385,740,000 Needed to Complete the Vast Highway System of Texas

AUSTIN, Texas—Robert Lee Bobbitt, Chairman of the Texas Highway Commission, stated today figures prepared by Highway Department Engineers showed it would require \$385,740,000 to complete the present highway system without recognizing the need for expansion of existing facilities.

These data were included in information Bobbitt will take to Washington for presentation to the roads committees of the House and Senate holding hearings on bills to authorize \$200,000,000 in Federal Aid for highways in each of the years 1940 and 1941. Bobbitt, Julian Montgomery, State Highway Engineer, and Datus E. Cooper, Executive Manager of the Texas Good Roads Association, were invited by Rep. Nat. Patton, Texas Member, House Roads Committee and Rep. Wilburn D. Cartwright, Chairman of the House Roads Committee to present factual data on Texas roads to guide the Committee in making a decision. They will be accompanied by Harold La Font, of Plainview, J. J. Loy, of Sherman and W. H. Nelson, of Carthage, representing the Texas County Judges and Commissioners Association.

The Roads Committee also has before it a proposal that Federal Aid for highways be reduced approximately one-half.

"Be believe that when the Roads Committee and Congress get a complete picture of the road needs of Texas and other states that the proposed authorization will be passed," Chairman Bobbitt stated. "It is inconceivable that any reduction will be ordered by the Congress when the comprehensive data that has been gathered is presented. Factual information compiled by the Highway Department's Engineers shows conclusively that there is a great need for a continuation of the highway program in Texas. It will be many years before Texas reaches the point where its highway system will be complete.

"It will be our intention to give such facts as we have to the Congress as an aid in passing on this important measure. We will show that the highway users of Texas and the other states are more than paying their way in the form of road appropriations.

Federal Treasury collects millions of dollars more than the

### CLASSIFIED

HURST Baby Chicks, Cus-hatching, two cents an egg. Monday, Chicks Tuesday. Registered Irish setter pups for sale. HURST RANCH, Eastland, Texas.

ave shared near Eastland grand piano, studio upright and a good slightly used piano. Will sell these for the balance against them. For information write G. H. Jackson, Credit Manager, 1101 Elm Street, Dallas, Texas.

For "Spencer Corsetiere" see Mrs. Stella Morrow, Gorman, Texas, agent for Eastland, Olden, Gorman, Carbon and Desdemona.

FOR LEASE: Service station completely equipped with wash rack, hydraulic lift and grease guns. See HAL JACKSON, Magnolia Agent.

COUPLE with regard for others' property desires neat, reasonable-priced furnished apartment. Describe fully in letter to Box X, care of Eastland Telegram.

FOR RENT—Three-room furnished apartment. Lamar Apartments, South Lamar street.

MARES FOR SALE, all good young stock; See them at Clatts Dairy, 3 miles northwest of Eastland on Old Yellow Mound Road.

For Complete Markets and Financial News THE WALL STREET JOURNAL. Relied upon by business men and investors everywhere. Send for free sample copy. 44 Broad St. New York

ELECTRICAL APPLIANCES Texas Electric Service Co.

Hotel Garage MAGNOLIA PRODUCTS G. H. KINARD, Mgr. Storage and Tire Service West Main Phone 42

DR. R. C. FERGUSON, Md. 208 Exchange Bldg. Special attention to diseases of children and infant feeding. Telephone 191

### Terracing Work On 17 Farms In County Reported

In spite of rainy weather, terrace and contour lines have been run on 360 acres of field and pasture land on 17 farms in Eastland County since January 1 by County Agent Elmo V. Cook and his assistant, Hugh F. Barnhart.

The county agent also reports that he has requests from 40 additional farmers who wish to terrace more than 1600 acres of field and pasture land and that lines are being run as rapidly as possible with the assistance of a group of young men representing the National Youth Administration.

Cook reports that many of the requests this year are from livestock farmers and ranchers who want to terrace or contour list their pasture land to hold water and this increase the growth of grass. Last year pasture demonstration were completed for Dr. M. L. Stubblefield of Gorman, Dr. W. S. Carter of Rising Star, and George Fee of Cisco who reported an increase in growth of grass in spite of dry summer.

This year pasture contour listing work has already been completed by Dr. R. H. Hodges of Ranger and M. P. Cain of Gorman. Pasture contour listing tests at the Spur Experiment Station have yielded more than twice as much grazing as unlisted pasture land.

The increasing interest in contour listing in Eastland county is resulting in more requests than usual for terrace lines on orchard sites. Realizing that land with a slope is more suitable than level land for an orchard but that such land holds little water unless it is terraced, L. F. Miears of Gorman and P. M. Rhyme of Carbon have recently had terrace lines run on such land by the County Agent.

Farmers who cannot terrace should have contour lines run and should then follow these with their rows the County Agent advises. Although contoured rows will not take the place of terraces, they are much better than straight rows in lessening loss of water and soil both from rain and wind erosion.

Those who plan to terrace in the winter when field land is idle nearly always find that winter rains force them to put the job off year after year. Cook suggests that such farmers run terrace lines before planting then plant their earliest maturing crops in strips about 35 feet wide on the terrace.

However, the fact that large bodies of troops and supplies could be moved long distances in these United States stands as a major obstacle and a comforting bulwark, to a successful invasion.

### A GOOD PAIR TO DRAW TO



Hans Wagner shows Babe Ruth the hands that helped make him baseball's all-time shortstop. The Flying Dutchman and the former home run king cut up old touches at the baseball writers' dinner in New York.

lines, with later maturing crops such as peanuts and cotton between the lines. As soon as the crop is off the terrace strips terraces can be built without interfering with the later crops between.

It has been estimated that more terraces were constructed in Eastland county in 1937 than during any previous five year period. This was because of the increasing general interest in soil improvement in the county and assistance rendered by the A. & M. College Extension Service and the National Youth Administration. A few reports taken at random from a large number on file in the County Agents office are as follows:

Dr. R. H. Hodges, Ranger—"I terraced 80 acres in 1925. The first visible results were noted when I was able to get a team across some of the ditches that had been in the fields. I am strong for this land improvement."

O. P. Wheeler, Nimrod—"My terraces stopped washes that were injuring my farm and also increased crop yields."

H. O. Hearn, Eastland—"I have been building terraces four years. I have saved my farm by terracing. I have stopped my farm from washing and have increased crop production."

Y. W. Wood, Gorman—"After the soil has washed off it takes quite awhile to gain it back, if ever. My old terraced land is gradually building back."

### WASHINGTON NEWS



FROM CONGRESSMAN CLYDE L. GARRETT

Local Boy Makes Good Our office force feels slightly good this week, for on last Friday Sam Conner was called to Fort Myer to take the record of a court martial case. Sam passed his examination as a court reporter before he left Texas and when his qualifications were learned here on the hill he got a call for this work. Several other such calls have been received since then and he is getting some fine experience.

Mailings This Week The office this week mailed several hundred farm bulletins to our farmer friends who had requested them. Crop outlook reports, all that were available, were sent to various chambers of commerce. Interesting decisions of the Supreme Court were mailed to a group of the lawyers of the district and "baby books" to the number of 150 were sent to the mothers of the district. There is never a large enough supply of these books and occasionally some folks have to be overlooked.

Help! Help! Help! If you do not use a printed letterhead when writing be sure that the address is plain, for we have had to go back to the envelope many times to see where a letter came from. With the volume of mail we are receiving it is quite a help to have plainly addressed at the beginning or end of a letter.

who is in charge of the university's typewriting and shorthand courses and who also serves as state director of the typing and shorthand tournament for the Texas Interscholastic League.

The conference will be held at the time of the State Interscholastic League meet, which is also to be held at the University.

### Typing, Shorthand Pupils Will Meet

AUSTIN, Texas.—Teachers of typing and shorthand in Texas public schools will be invited to an all-state Secretarial Conference to be held at The University of Texas May 6 and 7, according to Miss Florence Stulken, assistant professor of business administration,

If you sign your name we will always answer. Don't send us postage, for that is provided by the government.

Busy Session for Committees Congressional committees are facing a busy session and have started to deal with a wide variety of subjects that include taxes, appropriations, investigations of ship subsidies, judicial fitness of nominees to the Supreme Court, and wire tapping.

Ratification Amendment Senator Connally of Texas spoke before the Senate judiciary committee on the Norris resolution for an amendment to the Constitution to change the method of ratifying constitutional amendments. Senator Connally suggested that the projected constitutional amendments be submitted to popular vote at special elections. This differs from the Norris plan in that the latter would submit them at general elections.

Anti-Lynching Bill The Federal Government would have the power to fine and imprison any local policemen who are negligent in protecting a prisoner from a mob and also to make a county in which the lynching takes place pay a fine up to \$10,000 to the victim's family, according to the Wagner-Van Nuys anti-lynching bill.

Champion Filibusterer When Senator Allen Joseph Ellender, Louisiana's junior senator, spoke 27 hours against the anti-lynching bill on Jan. 20, he beat the 18-hour record held by the elder La Follette in the Senate. Both were interrupted several times, however. Senator Ellender has served less than two years in the upper house of congress. Reed Smoot of Utah still holds the record for continuous uninterrupted filibustering speech of 11 hours.

Scientific Farming By writing to my office and asking for a list of publications on agricultural research any farmer interested in scientific development of his property can keep advised of what is done by federal and state researchers.

Sodium Nitrate Uses Described in New Publication Sodium nitrate should be applied early in the spring to crops that need a prompt early start, according to the circular 436, "Production and Agricultural Use

of Sodium Nitrate," recently issued by the U. S. Department of Agriculture. Crops that are to be eaten raw of used as salads, such as lettuce, early cabbage, spinach, kale and early tomatoes, are benefited by early applications of sodium nitrate as it induces growth rapidly, which insures succulence. Copies of this publication may be obtained by writing to my office.

### Consumption of Power Holds Up Throughout State

AUSTIN, Texas.—Consumption of electric power in Texas during December held up well in comparison with that of the country at large, according to the University of Texas Bureau of Business Research. Reports to the Bureau from sixteen large power companies show total consumption of 187,105,000 kilowatt hours, a decline of 2.2 per cent from November, but an increase of 12.3 per cent over December, 1936. For the entire year, 1937, consumption was 17.6 per cent greater than during the year before.

Commercial consumption during December increased 15 per cent over the corresponding month the year before, but declined 0.3 per cent from the preceding month. Industrial consumption increased 3.7 per cent over the year before and decline 3.9 per cent from the preceding month. Residential consumption increased 16 per cent over 1936 and 0.8 per cent over November. Compared with 1936, commercial consumption during 1937 increased 15.9 per cent; industrial consumption gained 17.7 per cent, and residential consumption was up 16.1 per cent.

# Revolution ... On Main Street

Give a thought to Main Street as you scan today's headlines! All the world's excitement isn't in Europe.

For, in our town ... and towns like ours clear across the country ... there's a daily revolution going on. Changes in dress styles and food prices ... the rise of a hat crown ... the fall of furniture prices — these matters vitally affect our daily living ... And the news is ably, fully covered in advertisements. Here, in concise, meaty form, makers of the world's goods tell you what's new, what's good ... and how to make your dollars S-T-R-E-T-C-H.

Smart people who like to be up-to-the-minute in living and current events, follow advertisements as closely as headlines. They know what's doing in Europe and America ... but they also know where money buys most!

## I AM AN ADVERTISING MAN

For over thirty years I have been writing advertisements for national advertisers — shoes, soap, cereals, automobiles, radios, tobacco, blankets, tooth powder.

To me it is the most fascinating work in the world — learning about the merits of merchandise and then telling people about them — bringing greater comfort, and enjoyment, into people's lives — introducing people to new pleasures, helping them to get the most for their money.

Besides being fascinating, it is satisfying! My intimate experience with advertisers has shown me that, except for rare exceptions, the manufacturers and merchants of this nation lean over backwards to be sincere and honest.

The law of advertising is simple once one understands its working — the more people know about the merit of a product, the more people buy it. The greater the volume of sales, the less the cost to manufacture. Savings in making mean either lower prices to the consumer or greater value put back into the merchandise.

As an advertising man I can sincerely affirm that it pays to read the advertisements in the newspapers — for news of new things, for bargains and savings.

There are thousands of other men — and women — devoting their lives to advertising writing, who will tell you the same thing. THEY KNOW!

### THE WEEKLY CHRONICLE

Established Nov. 1, 1887  
Entered as second-class matter at the postoffice at Eastland, Texas,  
under Act of March, 1879

Published Every Friday  
Office of Publication: 106 East Plummer Street. Phone 601

#### NOTICE TO THE PUBLIC

Any erroneous reflection upon the character, standing or reputation of any person, firm or corporation, which may appear in the columns of this paper, will be gladly corrected upon being brought to the attention of the publisher.

Obituaries, cards of thanks, notices of lodge meetings, etc., are charged for at the regular advertising rates, which will be furnished upon application.

### Taking Stock of the Child Labor Problem

Child labor has been an issue in the United States for so long that it is helpful once in a while to pause and take stock of the situation.

The child labor amendment to the constitution has been pending before the states for 14 years. Thus far, 28 state legislatures have ratified it—eight less than the three-fourths majority needed to place the amendment in the constitution.

Meanwhile, hundreds of bills have been introduced in Congress proposing other amendments or seeking to remedy child labor faults through straight legislation. The latest of these is the Wheeler-Johnson bill, which would prohibit shipment across state lines of goods produced by child labor. The measure has passed the Senate, but not the House.

The most recent survey of the child labor situation was made by the National Child Labor Committee. The study was based partly on information gathered by the committee, partly on government records and census figures.

Whether you believe in child labor or not, the survey showed, among other things:

That almost 700,000 children between 10 and 15 years of age (inclusive) were engaged in child labor in 1930.

That the number increased between 1930 and 1933, then decreased markedly during the NPA period.

That child employment increased as much as 100 per cent during the year after NRA was invalidated, as shown by government figures.

That a large percentage of children applying for work permits are "physically unfit" for labor.

And that "the areas of the most illiteracy, the most child labor, and the least school attendance are almost identical."

The committee asserted that the child labor amendment has been kept out of the constitution thus far by a "powerful and well-financed" campaign of opposition by manufacturers.

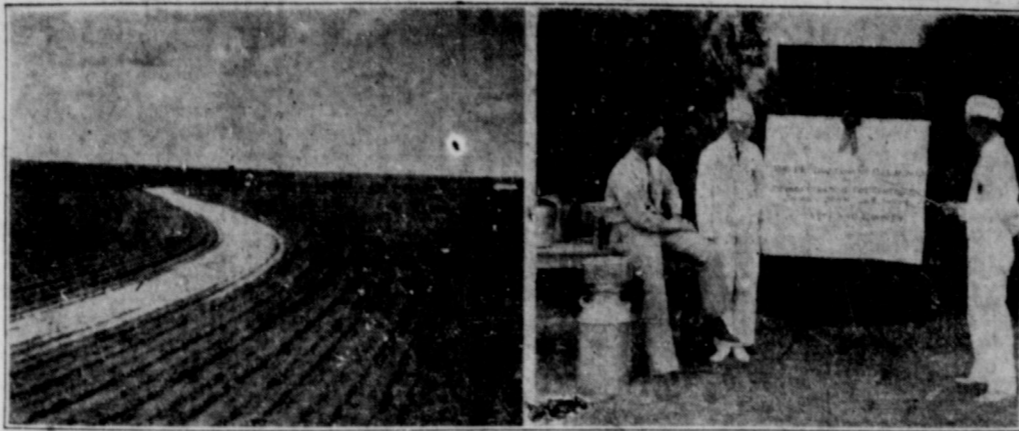
Opponents, on the other hand, contend that the amendment, giving the federal government power to "limit, regulate, and prohibit" the labor of persons under 18, would place too much power in the hands of government to interfere with the private lives of boys and girls.

These charges and counter-charges have been made many times in the last 14 years, of course, and probably will be reiterated many more times before the issue is finally settled.

Whether Congress, by changing the wording of the amendment, might make it more acceptable to present opponents is problematical. The National Child Labor Committee expresses hope that the Wheeler-Johnson bill will pass, but serves notice it will continue to fight for the amendment regardless of the outcome of the measure now before Congress.

Among the events they might arrange for the Duke of Windsor when he visits America is a grand get-together of all the girls who danced with the Prince of Wales.

### Progress In Two Lines During Extension Year



The scene on the Joe Reid farm south of Clyde in Callahan county is typical of the work done in extension service district 7, where 98,134 acres were terraced in 1937 under the supervision of county agricultural agents. Right, the Eastland county 4-H club dairy demonstration team, which won the state contest at Texas A. & M. College and represented Texas as at the National Dairy Show in Columbus, Ohio. Left to right, Hugh F. Barnhart, assistant county agricultural agent, L. C. Love and James Dean.

COLLEGE STATION. — The year 1937 saw a big increase in the volume and quality of 4-H club work, soil conservation, cotton improvement, trench silos and other activities supervised by county agricultural agents in District 7 of the Extension Service of Texas A. & M. College, the annual report of District Agent W. L. Glass shows.

District 7 is composed of 19 counties in Central West Texas and includes Jones and Palo Pinto on the north and Gillespie and Blanco counties on the south. Boys' 4-H club work featured the Extension Service program, and a total of 1,743 boys were enrolled in the district. Among the club boys who won statewide recognition were Walter Lange, Jr., of Runnels county, Richard Winters of McCulloch county, Gordon Grote of Mason county, and Dale Martin of Taylor county, all of whom were awarded trips to Chicago during the National 4-H Congress for excellence of demonstrations in various lines. Marvin McMillan of Mason county was awarded a gold watch for the best meat animal demonstration in the state.

The Kokomo 4-H boys' club of Eastland county was declared the best boys' club in the state; Taylor county's 4-H cotton club was

one of four clubs to win regional honors in the state cotton contest, and the dairy demonstration team of Eastland county, L. C. Love and James Dean, won the state contest at Texas A. & M. College and represented Texas at the National Dairy Show in Columbus, Ohio.

Mason county again took top honors in the 4-H classes of the major livestock shows as well as showing well in the open classes. Gordon Grote exhibited the grand championship carload of calves at Fort Worth and the open grand championship calf at Denver. J. D. Jordan returned from Kansas City with the open grand championship.

The year saw 98,134 acres of land terraced on 1,610 farms, a substantial increase over 1936, when county agricultural agents terraced 76,000 acres. In addition 24,949 acres of pasture and range land were terraced.

Glass gave the major credit for the excellent terracing record to county commissioners' courts who furnished road machinery for terracing at cost of operation.

In addition to terracing and contouring, county agricultural agents, their assistants, and farmer committees carried on a large volume of work under the agricultural conservation program,

of four years, and the pay is \$21.00 to \$157.00 per month, depending on rank and length of service. There are now vacancies for enlistment.

The Marine Corps offers Travel, Health, Trade Learning, Education and Retirement after twenty years of active service. Further information may be obtained from the postmaster or by writing the U. S. Marine Corps Recruiting Station, 822 Allen Building, Dallas, Texas.

Qualifications to be met by the applicant are:

"Must be between the ages of 18 and 25, not less than 64 inches nor more than 74 inches tall, white, native born or fully naturalized citizen. Must pass a rigid physical examination, be unmarried, with no one depending upon them for support. High school graduates preferred, but not absolutely necessary. Ex-members of the Army or Navy must have had an excellent discharge."

All enlistments are for a period

of four years, and the pay is \$21.00 to \$157.00 per month, depending on rank and length of service. There are now vacancies for enlistment.

The Marine Corps offers Travel, Health, Trade Learning, Education and Retirement after twenty years of active service. Further information may be obtained from the postmaster or by writing the U. S. Marine Corps Recruiting Station, 822 Allen Building, Dallas, Texas.

Qualifications to be met by the applicant are:

"Must be between the ages of 18 and 25, not less than 64 inches nor more than 74 inches tall, white, native born or fully naturalized citizen. Must pass a rigid physical examination, be unmarried, with no one depending upon them for support. High school graduates preferred, but not absolutely necessary. Ex-members of the Army or Navy must have had an excellent discharge."

All enlistments are for a period

of four years, and the pay is \$21.00 to \$157.00 per month, depending on rank and length of service. There are now vacancies for enlistment.

The Marine Corps offers Travel, Health, Trade Learning, Education and Retirement after twenty years of active service. Further information may be obtained from the postmaster or by writing the U. S. Marine Corps Recruiting Station, 822 Allen Building, Dallas, Texas.

Qualifications to be met by the applicant are:

"Must be between the ages of 18 and 25, not less than 64 inches nor more than 74 inches tall, white, native born or fully naturalized citizen. Must pass a rigid physical examination, be unmarried, with no one depending upon them for support. High school graduates preferred, but not absolutely necessary. Ex-members of the Army or Navy must have had an excellent discharge."

All enlistments are for a period

of four years, and the pay is \$21.00 to \$157.00 per month, depending on rank and length of service. There are now vacancies for enlistment.

The Marine Corps offers Travel, Health, Trade Learning, Education and Retirement after twenty years of active service. Further information may be obtained from the postmaster or by writing the U. S. Marine Corps Recruiting Station, 822 Allen Building, Dallas, Texas.

Qualifications to be met by the applicant are:

"Must be between the ages of 18 and 25, not less than 64 inches nor more than 74 inches tall, white, native born or fully naturalized citizen. Must pass a rigid physical examination, be unmarried, with no one depending upon them for support. High school graduates preferred, but not absolutely necessary. Ex-members of the Army or Navy must have had an excellent discharge."

All enlistments are for a period

of four years, and the pay is \$21.00 to \$157.00 per month, depending on rank and length of service. There are now vacancies for enlistment.

The Marine Corps offers Travel, Health, Trade Learning, Education and Retirement after twenty years of active service. Further information may be obtained from the postmaster or by writing the U. S. Marine Corps Recruiting Station, 822 Allen Building, Dallas, Texas.

Qualifications to be met by the applicant are:

### January Pension Checks Decrease To \$12,339 Total

January pension checks, totaling \$12,339, have been received by 827 persons, according to a report from the State Old Age Assistance Commission on file Monday in the office of County Clerk R. V. Galoway.

The amount of checks and number of recipients was less than the December checks, which were received by 848 persons and amounted to \$12,643.

A table for comparison of payments the last ten months is as follows:

Month	Persons	Amt.
January	827	\$12,339
December	848	12,643
November	863	12,858
October	852	12,754
September	882	13,121
August	868	12,887
July	942	13,841
June	947	13,924
May	942	13,850
April	889	13,157
March	803	9,151

### Employment Found For 408 Persons Last Year by TSE

A total of 408 jobs were filled by the Eastland office of the Texas State Employment Service during 1937, it was announced on Tuesday by J. Syd Lowry, junior interviewer in charge.

Private industry provided 129 openings filled by the employment service while the remainder of the jobs filled last year were in public works, including highway and building construction.

Jobs providing regular employment filled by the office totaled 331, while openings providing work of one month or less in duration accounted for 77 placements, Lowry said. Farm work provided ten jobs filled by the office.

Most of the placements made

last year were in public works projects and commercial and professional pursuits.

The 1937 placement record showed that 408 jobs were filled with 332 men and 76 with women workers. Placements of war veterans made last year by the Eastland office totaled 32, Lowry's records showed.

In obtaining orders for workers staff members of the office made 222 initial contacts with employers, 295 revisits to employers last year.

On Dec. 31, 1937, applicants actively seeking employment through the Eastland office totaled 1337 compared with 1109 in the active files of the same office one year previous. During 1937, the office received 877 new applications, Mr. Lowry said.

Each opening is filled solely on the basis of the workers' qualifications and the employer's requirements, Lowry emphasized.

### Sign Language Used In Accident Case

FORN WORTH. — Sign language testimony of four deaf mute witnesses recently brought a conviction and \$25 fine to the principal in a negligent collision case. Through an interpreter, the deaf and dumb witnesses told how the accident occurred.

**666** COLDS in 3 days  
**FEVER** first day  
Liquid, Tablets  
Salve, Nose Drops, Headache, 30 minute  
Try "Rub-My-Tim"—World's Best Liniment

### FOR YOUR PARTIES JUST RECEIVED!

The Nicest Assortment of Tallies and Favors for

Bridge — Valentine  
Washington's Birthday  
St. Patrick's Day  
Easter

... And many others! ... We will be glad to show them to you when you come down ... and they're not expensive!

### THE SPECIALTY SHOP

Mrs. Vera McLeroy, Prop. Eastland  
Connelllee Hotel Bldg.

### U. S. Marines Will Recruit Members

DALLAS.—The U. S. Marine Corps Recruiting Station, 822 Allen Building, Dallas, Texas, is open daily, except Sunday, from 8:00 a. m. to 4:00 p. m. to receive applicants for enlistment. It was announced here by the Officers in charge.

Qualifications to be met by the applicant are:

"Must be between the ages of 18 and 25, not less than 64 inches nor more than 74 inches tall, white, native born or fully naturalized citizen. Must pass a rigid physical examination, be unmarried, with no one depending upon them for support. High school graduates preferred, but not absolutely necessary. Ex-members of the Army or Navy must have had an excellent discharge."

All enlistments are for a period

### Ballot Fraud Costs Prison Sentence

UTICA, N. Y. — Because he registered under assumed names in eight election districts, George Flansburg, Utica painter, must spend the next 5 to 10 years in prison. He was found guilty after testifying that he was intoxicated and did not know what he was doing.

(HEALTHY? SURE! I'M A 'LECTROLUX BABY!

**70% OF ALL ILLNESS CAUSED BY WHAT YOU EAT**

MAYBE you can't smell or taste the spoilage; but does that mean it's not there? A noted Eastern hospital says: "70% of ALL ILLNESS is caused by what you eat or drink!" Why does so much of this illness come in winter? Well, remember this: it's always summer, in your kitchen. At 70 degrees or higher, food and milk spoil fast. And milk is most dangerous just before it tastes sour!

Your family deserves the protection of Servel Electrolux—the Gas or Kerosene refrigerator—winter and summer. NOW, Servel Electrolux is the one refrigerator which supplies steady, unvarying cold. And it won't dry out meat and leftovers. Nor wilt vegetables. Servel Electrolux is different from all others—a different kind of refrigerator. It has no moving parts. Nothing to wear. No noise—ever. A tiny gas or kerosene flame takes the place of all machinery—and operates here for as little as 3 cents per day! A small down payment puts Servel Electrolux in your home; savings pay the rest. Why not start them NOW?

Mrs. Roy McCarty, Rt. 3, Nocona, Texas declares her Servel Electrolux paid for itself in two years' time!

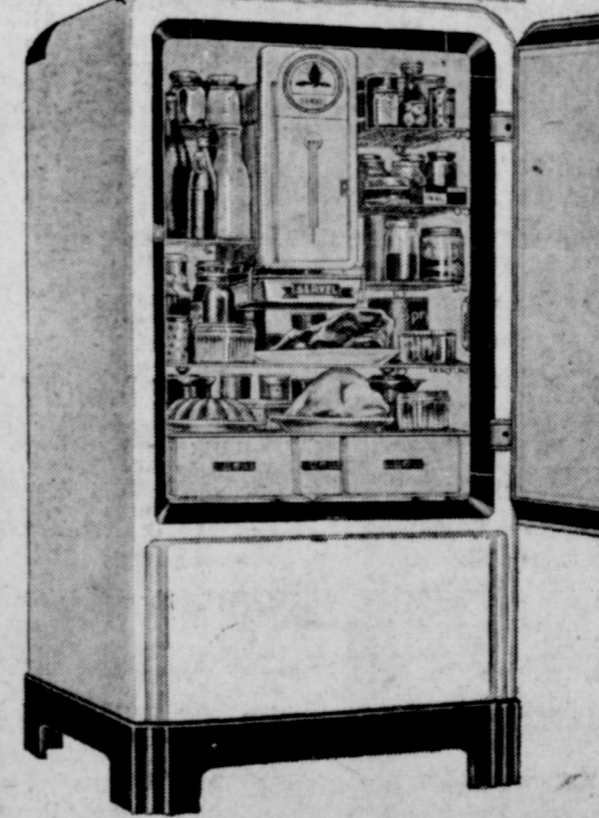
"I wish to express my appreciation, so far as words are possible, for my Servel Electrolux. I know of no other investment that pays greater dividends. I have learned from experience that for a family of three a Servel Electrolux will pay for itself in two years."

"I live 12 miles from a vegetable market, yet I have fresh vegetables the year round, thanks to my Servel Electrolux. Vegetables taken out of the garden cannot be compared to the crisp freshness of vegetables taken out of our Electrolux. Milk or cream will remain sweet in our Electrolux for days, even during the hot summer. This is an essential advantage in homes where there are children. It is surprising what I have learned to do with 'leftovers', which would have been thrown out before our Servel Electrolux came to live with us. It is one piece of kitchen equipment which really serves. It is easily cleaned inside and outside. The automatic defroster is a time-saver every housewife admires. The cost to operate, compared to other appliances, is too little even to think about!"

Mrs. S. E. Boyce, of Blaine, Texas, declares she has waste from deterioration, sit in raw or cooked foods—

"Servel Electrolux is a blessing to our land. I consider it my best investment, because of the saving in food costs and food preservation."

"Servel Electrolux preserves food of all kinds, indefinitely, keeps raw foods fresh until ready to cook and keeps my cooked foods ready to serve. I have no waste in either one. It furnishes plenty of ice for drinks at all times, also freezes cream, chills custards, salads and all other delicacies in the lead line. My Servel Electrolux is perfect in operation, requires no oil, is beautifully finished, easy to keep clean and requires attention only once a week to fill with kerosene. The cost of operation is so low it is a mere trifle—about four cents a day."



**SERVEL ELECTROLUX**  
THE Gas REFRIGERATOR (OR KEROSENE)

- Operates on . . .
- KEROSENE (Coal Oil)
  - BOTTLED GAS
  - BUTANE GAS
  - NATURAL GAS

### RANGER FURNITURE EXCHANGE

Local Showroom West Main Street  
EASTLAND, TEXAS PHONE 352

**BOY! What a Tire!**

THE BEST TO HAVE . . . ON ANY CAR! . . . AND SAFE . . . ON ANY TRIP!

ALWAYS BUY

**SEIBERLING**

USE OUR MONTHLY PAY PLAN—ONE-THIRD DOWN BALANCE MONTHLY.

**Jim Horton Tire Service**

EAST MAIN ST., PHONE 258 EASTLAND

PIONEERING in tire making has made SEIBERLING synonymous with DURABILITY and SAFETY . . . They are built to give service . . . GOOD SERVICE!