

THE WEEKLY CHRONICLE

Eastland County's Own Progressive Publication For All The People

A candid camera fiend says infinity is anything beyond 100 feet, but any Soviet suspect knows it's exactly 20 paces—at dawn.

The Chronicle is the only weekly newspaper in Eastland having a paid subscription list

VOL. 50

(Established November, 1887)

EASTLAND, TEXAS, FRIDAY, NOVEMBER, 26, 1937

NO. 4

Case Transferring Is Denied Blanton At Abilene Court

ABILENE, Nov. 22.—A plea of privilege was heard Saturday by Judge W. R. Chapman in 104th district court in a \$100,000 libel suit brought by former Congressman Thomas L. Blanton against the Dallas News.

An earlier case heard here in which a plea of privilege decision was granted the defendants, was that of Blanton against Rep. Clyde L. Garrett and J. W. Cockrill. The hearing ran 11 days. It was before a jury in 42nd district court.

That Saturday required scarcely more than two hours. Judge Chapman denied the defense plea of privilege request, which would have sent the case to Dallas county for trial on its merits, and heard a notice of appeal.

Blanton was assisted by his son, Bill Blanton, in the hearing. Representing the defense were J. C. Muse of Dallas and Carl Springer of Eastland.

Less than an hour was needed for presentation of evidence, and little more than an hour was necessary for arguments. Attorneys' clashes which marked the course of the earlier hearing were not duplicated.

Funeral Held For Ed Graham, Former Eastland Resident

Funeral services for Ed Graham, former resident of Eastland, who died Friday night at Graham, were conducted Sunday afternoon at the family home.

The body was shipped after the service to Coffeyville, Kan., for burial at 2:30 p. m. Tuesday.

Mr. Graham was manager of the Mook Oil company at Eastland until his departure with Mrs. Graham two years ago.

Survivors include his wife and three children, Mrs. George McKinney of Dallas, Floyd Graham of Coffeyville, and Mrs. Loyd Foster of Pennsylvania.

Among friends from Eastland attending the funeral were Mrs. C. W. Hoffmann, Mrs. Tom Johnson, Mr. and Mrs. George Cross, Mr. and Mrs. J. W. Miller and daughter, Mr. and Mrs. Howard Miller, Mr. and Mrs. Ross Cook, Mrs. L. A. Cook, Mr. and Mrs. W. B. Harris, Mrs. George Brogdon, Mrs. J. J. Killough, Mr. and Mrs. Clyde McFee, Mrs. Iola Mitchell, Mr. and Mrs. R. E. Sikes, Mrs. E. R. Townsend, Mrs. Anna Townsend, Mrs. Maggie Dulin and Mabel Hart.

Unified Efforts for Projects Is Urged

Correlation of efforts to secure funds for water conservation and irrigation projects in the state is an aim of the Texas Watershed association, according to Frank Sparks, Eastland, who attended a recent meeting of the organization at Austin.

Sparks, chairman of the board of the Leon River Flood Control District, also recently attended a public hearing on the Texas Brazos River Watershed at Waco. U. S. Army engineers conducted the meeting.

Attending the Austin meeting, Sparks said, were representatives from officials of proposed conservation projects in the state.

Youths Participate In Kemper Football

Clyde Garrett and Gilbert Clark of Eastland are participating in football activity at Kemper Military school at Boonville, Mo., according to an announcement received Monday from the school.

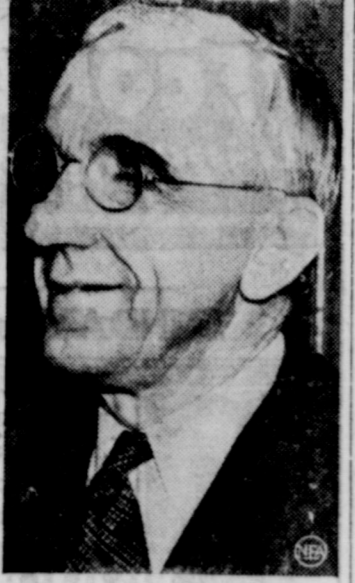
Garrett, who plays at fullback, has been handicapped by injuries, but is a reliable player, the announcement stated. Clark plays at right end on the "B" team.

Eastland Girl Is Aiding In Survey

DENTON, Texas, Nov. 23.—Miss Joyce Newman of Eastland is assisting in a survey of the cost of an average college wardrobe under the supervision of Miss Gladys McGill, associate professor of home economics at Texas State College for Women.

The daughter of Mr. and Mrs. Milton Newman, Miss Newman will aid in compiling accurate figures on clothing expenses and the final analysis will include a comparison of apparel costs at uniform and non-uniform schools.

Run Industries, He Advises U. S.



Individual wealth would be limited to \$500,000 and the government would control all railroads, factories, banks, insurance companies, utilities and natural resources if John Vesceky, above, new head of the National Farmers Union, had his way. Vesceky, of Salina, Kan., was elected at an Oklahoma City convention which overwhelmingly approved a resolution calling for nationalization of industry.

Masonic Program Of Grand Lodge Meet Is Received

An outline of the advance program of the Centennial Communication of the Grand Lodge of Texas of the A. F. & A. M., to be held in Waco the latter part of this month, has been received here.

The program is outlined as follows:

Tuesday, November 30th, 7:30 p. m., Conferring of the Master's Degree.

Wednesday, December 1st, 9:00 a. m., Opening Program of the M. W. Grand Lodge of Texas, A. F. & A. M.

At 7:30 p. m., the big Reception and Presentation of Grand Masters.

At 5:30 p. m., a free dinner will be served at Cotton Palace Park to all Master Masons.

At 7:30 p. m., the mammoth Tableau, "100 Years of Free Masonry in Texas" in the Cotton Palace Coliseum. This mammoth program will be most interesting and entertaining.

Thursday, December 2nd, 9:00 a. m., election officers in Grand Lodge Temple.

Friday, December 3rd, 9:00 a. m., installation officers.

All Master Masons desiring to attend the Cotton Palace Program and dinner must notify the Waco Committee, through their Secretary by November 24th.

Special voting tickets will be used this year and all Masters, Wardens and Past Masters must register with the Credentials Committee and receive official voting tickets. If you are a Representative of your Lodge, you must have an official proxy. If Master and Wardens of a Lodge are present, proxies are unnecessary.

Secretaries are urged to send in list of all those desiring to attend, showing each Brother's title, including the Official Representative, if Master and Wardens cannot attend or won't vote.

Sister, Brother Reunion After 45-Year Period

Mrs. W. H. Winnegray and Dr. Ben Griffith, Vincennes, Ind., brother and sister, were reunited for the first time in 45 years last week at her home in Olden.

Mrs. Winnegray left with her husband from Paducah, Ky., 45 years ago. In the years following her departure she and her brother thought the other dead.

His practice as a physician had taken him to Indiana. She is over 65 and Dr. Griffith over 75.

Through a descendant at Waxahatchie, Texas, in contact with Paducah, Ky., friends recently, Mrs. Winnegray learned her brother lived at Vincennes. Correspondence and the visit followed.

Others who joined the reunion group at Olden were Mrs. J. S. Lowry of Eastland and Mrs. John Watson of Olden, daughters of Mrs. Winnegray, and Mrs. Griffith, wife of Dr. Griffith, who accompanied him to Olden.

Committee Votes Slated Next Week

Five meetings for the election of committeemen to serve in the 1938 farm and range program will be held next week, County Agent Elmo V. Cook announced Monday.

The meetings, dates to be announced later, will be at Ranger, Cisco, Carbon, Gorman and Rising Star, the agent stated. Committeemen for this year's program are being consulted by Agent Cook upon plans for the 1938 elections.

Plans for the meeting will include talks on peanut grading and peanut harvesting.

Committeemen named at the elections next week on Dec. 13 and 14 will attend a district meeting at Brownwood for explanation of the new farm and range program. County agents and assistants in agriculture conservation also will attend.

90 Loans Asked In F.S.A. District

District No. 11 headquarters of the Farm Security Administration has received 90 applications for 1938 loans which aggregate \$36,776.17, Louise Johnston, secretary, stated Saturday at Eastland. Applications for loans were from Callahan, Scurry, Nolan, Mitchell, Erath, Comanche, Eastland, Bosque, Taylor, Fisher, Hamilton counties, it was stated.

A total of \$330,000 has been allocated for loaning in the district for the year.

Applications from Hood, Somervell, Jones, Brown and Coleman counties had not been received.

In Eastland county one check for the new year has been received by the County Rural Supervisor, George J. Lane. Approximately 200 persons in the county are expected to receive 200 loans this year.

Types of loans include money for crop operation, purchase of capital goods and subsistence.

Note Suit Is Filed By Gorman Bankers

Suit against Carbon Peanut Company, Inc., alleging non-payment of a portion of a \$17,975 note, has been filed in 91st district court by the First National Bank of Gorman.

The petition states that \$8,488.70 is due on the note and that the court foreclose various deed of trust liens and chattel mortgage liens executed to secure the loan and that the property be sold to satisfy the sum allegedly due.

Road Improvement Project Approved

Work will begin Monday on a \$17,069.10 works progress administration road improvement project in the precinct of County Commissioner Arch Birt, County Engineer A. F. Taylor announced Tuesday.

The project is for improvement of 4.6 miles of the Dothan-Bluff Branch road. The improvements, surfacing and cutting rock hills, will begin one mile west of Dothan, then north and east to the Dothan and Cottonwood road and to the Callahan county line.

T. M. Gordon of Cisco will be project superintendent, and S. B. Cox, also of Cisco, the timekeeper. A total of 121 men will be employed for three months. Man hours involved in the project is 29,376. The project is in precinct four.

Civil Cases Set In County Court

Two cases have been set for trial by County Judge W. S. Adamson for the week beginning on Monday, Dec. 13. Petit jurors for the week will be summoned.

The cases are Star Finance corporation against C. F. Kimbrough and Hanover Fire Insurance company against the M. K. & T. Railroad company.

Thanksgiving Talk Given by Justice

W. P. Leslie, chief justice of the Eleventh Court of Civil Appeals, discussed origin of Thanksgiving and enumerated things for which citizens might be thankful this year, at a meeting of the Rotary club Monday at the Connely Hotel.

Carl Springer, president, presided.

A song period with music by Miss Clara June Kimble, club pianist, preceded the opening of the meeting.

They Introduced Bedaux to Windsors



What might have been a pleasant reunion had the Duke and Duchess of Windsor come to America as planned, was an uneventful homecoming for Mr. and Mrs. Herman Rodgers, pictured on arrival in New York for their annual visit to America. It was the Rogers who made their villa at Cannes the haven of Wallis Simpson after her flight from England prior to King Edward's abdication. Later they introduced the Windsors to Charles Bedaux, whose connection with the proposed American tour led to its cancellation.

SANTA AND REINDEER DUE NEXT MONDAY ON SQUARE AT EASTLAND

Arrangements for a visit of Santa Claus and two of his reindeers at Eastland on his reindeers at Eastland on Monday morning at a meeting of the merchant's division of the Chamber of Commerce in the C. of C. office.

Time for Santa's visit was fixed at 3:30 Monday, Nov. 29. To accompany Santa will be his two reindeers who will pull a golden sleigh and eight life-size stork characters. Three thousand sticks of stick candy will be distributed by Santa Claus.

West Offset to Hickok Ellenburger Producer Rigged Up by Lone Star

Lone Star Gas company's No. 1 M. Thomas, 1,340-foot west offset to Hickok Producing & Development company No. 1 Van Parmer, 1,000-barrel Ellenburger producer about eight miles northwest of Cisco, was being rigged up this week-end.

Location is 660 feet west of the east line, 668 feet south of the north line, S. P. R. R. company survey, southeast quarter section 478. The Thomas 160 acres adjoins to the west the Van Parmer land.

The Lone Star well marks the second initiated following the completion of the Van Parmer. Hickok has already started work on a well a mile and a half southeast of its producer.

Holding interest in the same area was G. D. Chastain et al No. 1 Bob Weddington, three and one-half miles north of Cisco and about four and a half miles southwest of the Hickok, which was understood to be drilling ahead after topping Caddo line at 3,307 feet to a total depth of 3,350 feet. Drilling to the Ellenburger line as found in the Hickok is viewed as probable.

Spudded during the week was J. D. Beckelman No. 1 C. Murphy, H. & T. C. R. R. company survey, section 114, block 3, about one and one-half miles south of Nimrod and about 10 miles west of Rising Star, Eastland County. It is a 500-foot test.

After having a slight show of oil at 2,040 feet, States Oil Corporation at 2,065 feet was drilling in shale in the deepening of No. 9 G. T. Parrack, about seven miles north of Eastland, section 7, block 4, H. & T. C. R. R. survey. The show was in a sand.

In Callahan county, it was reported, showing of oil in liney formation at 1,661-91 feet in the Phillips Petroleum company No. 1 Cozart, 4,000-foot test, has been tested for five barrels daily. The well will be drilled ahead as to original plans, it was also reported.

In Erath county, about three miles southeast of the Hickey et al Desdemona extension well, the Southwest Production company was to shoot with 160 quarts.

lme formation at 2,902-3,065 feet. Inner string was set at 2,870 feet.

About two and one-half miles east of Desdemona, Eastland county, but also in Erath county, the Arnold oil company was drilling on No. 1 McMillen, 1,700 feet west of the Hickey completion, at 3,000 feet.

Galagher-Lawson et al No. 1 Terry in the area of the old Desdemona activity and projected as a 5,500-foot test, continued to underream 6 5-8 inch casing at 4,445 feet. It is in Comanche county.

Also in Comanche county, near Sipe Springs, Dobbs No. 1 Hodges was drilling below 2,000 feet to the Marble Falls lime. If this formation fails, it was stated, operators may deepen to the Ellenburger found productive by the Hickok company Eastland county well northwest of Cisco.

James D. Kittrell No. 1 Mrs. L. B. Reynolds heirs, 8 1-2 miles southeast of Eastland, was fishing below 963 feet.

Judgment Goes to Mrs. Ollie Davis

Judgment of \$3,700.50 was given Friday by the Palo Pinto district court for Mrs. Ollie Davis in a suit against the Southern Underwriters Insurance company of Houston.

Mrs. Davis is the widow of David A. Davis, who died after an accident when a truck with a load of casing was going through an underpass February 24 last year in Dallas county. Davis, an employee of the Oil Field Transportation company of Ranger and a resident of Ranger with Mrs. Davis, was going to Arp with the load when the accident occurred.

Allen D. Dabney of Eastland was one of the attorneys for Mrs. Davis.

Peanut Warehouse Open Twice Weekly

Announcement was made today by Dick Weekes, manager of the Ranger Bonded Warehouse, that in the future peanuts will be purchased on Tuesday and Friday only.

The decision to have the warehouse open only two days in the week was reached because peanuts are now coming in slowly and the business can be handled on this basis.

PEANUT CO-OP SUCCESS SAYS ITS PRESIDENT

Objective of the Southwestern Peanut Growers association, pegging of prices, has been obtained and work this season is viewed as highly satisfactory, W. B. Starr of Cisco, president, declared Saturday at Eastland.

The Southwestern Peanut Growers association is one of three organizations of its kind in the United States formed this year. The associations in addition to the Southwestern group are the Virginia-Carolina and the GFA southeastern states of Georgia, Florida and Alabama. Territory of the Southwestern Peanut Growers association is Texas, Oklahoma and Arkansas.

The GFA and Southwestern associations are credited, with the cooperation of the marketing division of the Department of Agriculture, to have increased income by \$18,000,000 to 250,000 growers. Cost of increasing the income was \$1,500,000 which will be secured from a \$130,000,000 fund representing 30 per cent of import duties. The sum was approved by Congress after the U. S. Supreme Court invalidated the processing taxes.

Starr stated growers in the Southwestern association territory were faced with a 50 to 55 cents a bushel price prior to organization. Price paid by the association was 93 cents a bushel and 87 cents a bushel. The association price was followed by commercial buyers, he stated.

Pointing to a communication from Roy E. Parrish, manager of the GFA, Camilla, Ga., Starr explained that although operation of the Southwestern was not on a large scale as the GFA the objective attained by both was the same—maintenance of higher prices for peanuts.

The Southwestern buying season is believed practically over. Approximately 50 tons have been purchased at warehouses in Ranger, Brownwood and Rising Star. Number of members is 150.

The GFA association bought approximately 30,000 tons from approximately 5,000 members at last reports. It maintained 59 warehouses in 48 towns.

The organizations will function again next year, it is stated. Prices the associations pay was set at a conference in Washington, D. C., of organization officials, officials of the marketing division of the agriculture department, shellers and others interested.

Olden Hunter Kills Buck While Hunting

Word was received here today that Curley Baker of Olden, who went to South Texas at the opening of the deer hunting season, had killed a large buck while on his trip.

Eastland county hunters who have been on deer hunts this year have had exceptionally good luck and a large number of bucks have been brought back to the county by the hunters.

Olden Hunter Kills Buck While Hunting

Word was received here today that Curley Baker of Olden, who went to South Texas at the opening of the deer hunting season, had killed a large buck while on his trip.

Eastland county hunters who have been on deer hunts this year have had exceptionally good luck and a large number of bucks have been brought back to the county by the hunters.

Insurance is ahead of the same period last year, it was stated, because 1938 is a year of state elections.

Egypt's Next "Cleopatra"



Beauty as dazzling as Cleopatra will reign again in Egypt when Farida Zulficar, above, 17-year-old daughter of an Alexandria judge, becomes queen by marriage to young King Farouk on January 20, 1938. A love match in which his ministers have had no hand, the betrothal is popular with Farouk's subjects.

Removal of Duck Blinds at Season End Is Requested

Cooperation of duck hunters who have or will build blinds at Lake Ringling was asked Tuesday by Eastland city officials.

A spokesman for the city commission stated "Hunters are welcome to build duck blinds at Lake Ringling but members want to ask that they be removed at close of the season."

The officials explained that the city the past summer had brush removed and the bed of the lake cleaned, and it was the desire the banks and the water of the lake remain in a clean condition.

The duck season opens Nov. 27 and ends Dec. 26. Bag limit on ducks is 10 a day.

Christmas Party Plans Discussed

Plans for their annual Christmas party to be given Dec. 5, were discussed recently at a meeting of the Flatwood Home Demonstration club at the home of Mrs. C. A. Webb.

A report of the year's work was given and Miss Ruth Ramey, the county home demonstration agent, aided in completing work to be given to the bedroom and garden demonstrators.

Luncheon was served to the following visitors: Mmes. J. E. Ramsey, M. H. Byrd, M. A. Justice, Miss Ramey, and the following members: Mmes. D. E. Webb, A. C. Justice, J. S. Turner, M. L. Foster, M. W. Grieger, J. H. Pittman, H. E. Wilson, T. E. Robertson, C. A. Webb and W. F. Arnold.

Dairy Short Meet Set For Dec. 6-9

E. R. Eudaly, extension service dairy husbandman, has advised County Agent Elmo V. Cook that the annual dairy short course sponsored by the service has been set Dec. 6-9, at Texas A. & M. College, at College Station.

Named Executrix

Mrs. Alice Jones has been appointed by County Judge W. S. Adamson as executrix of the estate of W. J. Jones, who died recently in the Alameda community.

Mrs. Jones also was named administratrix of the estate of Mrs. L. C. Odle due to the death of her husband who formerly was administrator of the estate.

MAKES BOND

Bill Johnson of Rising Star, charged in justice court at Eastland with alleged speeding and reckless driving, has made \$250 bond in each case, Deputy Sheriff Tug Underwood reported Tuesday.

Verdict is expected this week in the damage suit of C. M. McClelland against the M. K. & T. Railroad company, which County Judge W. S. Adamson took under advisement Monday. It was a non-jury case.

McClelland alleges three of his cattle died as the result of eating Johnson grass on the company's right-of-way and the damage was \$190. He lives northwest of Cisco.

D. K. Scott, Cisco, is attorney for plaintiff, and Milburn McCarty, Eastland, for the railroad.

Eastland, Olden Citizens' Sister Buried at Byers

Funeral services for Mrs. Susie Victoria Harbin, 81, sister of Mrs. M. J. Harbin of Eastland and H. G. Ellison of Olden, who died on Friday afternoon when her home was destroyed by fire half a mile northwest of Byers, were conducted Saturday afternoon at the First Baptist church in Byers.

Rev. George Thompson, pastor of the Byers Baptist church, conducted the service for Mrs. Harbin, who had lived south of Eastland from 1883 to 1907, when she moved to Byers.

Other relatives of Mrs. Harbin in this section include D. H. Harbin of Flatwood, J. V. Harbin of Flatwood, R. A. Harbin of Eastland, nephews, who attended the service; Wiley Harbin of Eastland, unable to attend, also a nephew. Also attending were Mrs. M. J. Harbin of Eastland, Z. Armstrong of Clovis, N. M., Mrs. Wiley Harbin of Eastland and Mrs. J. V. Harbin of Flatwood.

Mrs. Harbin was the widow of T. F. Harbin, who died Dec. 24, 1936. Charles Harbin of Byers, O. D. Harbin of Byers, Mrs. William Senter of Byers and Mrs. H. L. Spann of Wichita Falls are children. Two children, a son and daughter, preceded her in death.

The octogenarian came to Eastland county in 1883 from Georgia. In 1907 she moved to Byers. She was alone in the house when the fire of unknown origin broke out. Presumably she made an effort to fight the flames and in so doing failed to save her life. Her body was found on the front porch of her home.

Funeral services for Mrs. Susie Victoria Harbin, 81, sister of Mrs. M. J. Harbin of Eastland and H. G. Ellison of Olden, who died on Friday afternoon when her home was destroyed by fire half a mile northwest of Byers, were conducted Saturday afternoon at the First Baptist church in Byers.

Rev. George Thompson, pastor of the Byers Baptist church, conducted the service for Mrs. Harbin, who had lived south of Eastland from 1883 to 1907, when she moved to Byers.

Other relatives of Mrs. Harbin in this section include D. H. Harbin of Flatwood, J. V. Harbin of Flatwood, R. A. Harbin of Eastland, nephews, who attended the service; Wiley Harbin of Eastland, unable to attend, also a nephew. Also attending were Mrs. M. J. Harbin of Eastland, Z. Armstrong of Clovis, N. M., Mrs. Wiley Harbin of Eastland and Mrs. J. V. Harbin of Flatwood.

Mrs. Harbin was the widow of T. F. Harbin, who died Dec. 24, 1936. Charles Harbin of Byers, O. D. Harbin of Byers, Mrs. William Senter of Byers and Mrs. H. L. Spann of Wichita Falls are children. Two children, a son and daughter, preceded her in death.

The octogenarian came to Eastland county in 1883 from Georgia. In 1907 she moved to Byers. She was alone in the house when the fire of unknown origin broke out. Presumably she made an effort to fight the flames and in so doing failed to save her life. Her body was found on the front porch of her home.

THE WEEKLY CHRONICLE

Established Nov. 1, 1887 Entered as second-class matter at the postoffice at Eastland, Texas, under Act of March, 1879

Published Every Friday Office of Publication: 106 East Plummer Street. Phone 601

NOTICE TO THE PUBLIC

Any erroneous reflection upon the character, standing or reputation of any person, firm or corporation, which may appear in the columns of this paper, will be gladly corrected upon being brought to the attention of the publisher.

Obituaries, cards of thanks, notices of lodge meetings, etc., are charged for at the regular advertising rates, which will be furnished upon application.

Carbon Man Moves To Eastland Home

W. C. Wilkinson, formerly agent of the railroad station at Carbon, has retired and is making his home

at 605 West Moss street in Eastland. Mrs. Wilkinson and her sister, Mrs. Pohle, are at the same address.

Try Our Want Ads!

Employment In Texas Is Above October Last Year

AUSTIN, Tex. — Employment and payrolls in Texas during October were well above the corresponding month last year, but employment declined a fraction of one per cent from September while payrolls remained unchanged, the University of Texas Bureau of Business Research has announced.

Reports from more than 1,700 Texas establishments gave a total of nearly 89,000 workers in these plants during October, an increase of 7.5 per cent over the like month last year, but a decline of .7 per cent from the preceding month. Total weekly payrolls of these firms, \$2,262,371, were up 18 per cent from a year ago but there was no change from the month before.

Cities in which the percentage gains in both employment and payrolls over both the month before and October last year were above the state average were: Abilene, Amarillo, Beaumont, Dallas, Fort Worth, Houston and Wichita Falls.

Industries whose percentage increase in employment and payrolls were above the state average during the comparable periods were: chemicals, cotton oil mills, meat packing and business and personal service.

Hog Raising Has Returned to Dalhart

DALHART, Texas—After a lapse of five years, hog raising has returned in earnest to the Dalhart area.

Prominent Dalhart county stock farmers have proved that grain sorghums, almost a sure crop in this area, will fatten hogs as well as corn in this climate.

Introduction of 60-day maize-enabled farmers to wait until summer was well underway for favorable planting moisture, if necessary, and complete their harvest before the first frost, usual.

Horned Frogs Not Natives of Texas!

DALLAS. — The horned frog, scampering along through rocks and cacti, is accepted by most Texans as a native of the Lone Star State. But William S. Kinchloe of Washington recently told a woman's club here that the reptile was brought to Texas from Mexico to rid a farm of ants.

Dr. Gideon Linecum, great grandfather of Kinchloe, owned some land in Texas and red ants were about to take the place, Kinchloe said. Dr. Linecum while on a medical and botanical expedition into central Mexico, saw the horned toads devouring ants and other crawling insects.

"The doctor gathered hundreds of the hardy toads and brought them back to Texas," Kinchloe said. "It not only solved his ant problem but those of surrounding landowners, because the toads began multiplying and soon scattered in all directions."

Tech Judging Team To Bid For Honors

LUBBOCK, Tex.—Making a bid for world honors in livestock judging, the Texas Technological College team which won first place at Kansas City in October will compete in the International Livestock show at Chicago Nov. 27.

Members of the team are Lewis Dunlap, Spur; Clifton Cole, Lubbock; Walter Coulson, Amherst; Dean Harman, Tulla; G. C. Shearer, Tulla, and M. J. Williams, Meadow.

The international contest, Coach Ray C. Mowery says, will include judging of breeding and fat cattle, sheep, and hogs, and breeding draft horses.

ly late in October. Other grain sorghums mature almost as fast.

Until five years ago, when feed conditions forced farmers to reduce the number of hogs produced each year in this area, stock buyers were paying approximately \$750,000 annually for hogs produced in the Dalhart trade territory.

Rex Beach Novel Is Now a Movie

"The Barrier," one of the most popular novels ever written by the master of outdoor fiction, Rex Beach, has been made into a motion picture by Producer Harry Sherman.

It took seven long years of negotiations before Sherman could get the screen rights to the book, which he considers the best material for an outdoor film that Beach has ever turned out. "The Barrier," which shows at the Connelle Theatre, is the story of a romance between a West Point graduate on duty in Alaska (James Ellison) and a young Alaskan girl, (Jean Parker), who is believed to be half Indian. An absorbing photoplay lies in the way the two overcome the obstacle of mixed blood, and work out their happiness together.

In the cast of "The Barrier" are Leo Carrillo, Jean Parker, James Ellison, Otto Kruger, Robert Barrat, Andy Clyde and Sara Haden. The film was directed by Les Selander.

Livestock Tick Eradication Project Continues In Texas

AUSTIN.—The Livestock Sanitary Commission of Texas in conjunction with the Bureau of Animal Industry conducted activities for the prevention and eradication of the fever carrying tick in 89 counties in Texas for the month of October.

23 whole and parts of 4 other counties are engaged in systematic tick eradication work.

24 whole and parts of one county are released from both Federal and State quarantine but still contain a small number of quarantine herds that are being systematically treated.

The remaining 29 counties and part of one are also released from quarantine but are counties in which inspections or dippings of both are done in accordance with State or Federal requirements.

139,671 herds and 2,011,915 cattle, horses, mules, jacks and jennets were dipped or inspected.

106 herds and 349 livestock were upon inspection found to be infested with the fever tick.

36,373 herds and 437,145 livestock are being held for further systematic treatment.

Try Our Want Ads!

NURSERY VISITORS

The Eastland nursery under the supervision of Mrs. Joe Stephen had several visitors the last week. They were Miss Hoskin of Child Welfare Association in Austin; Mr. Francisco of the Emergency Education Department in Fort Worth; Miss Lind, state supervisor of nursery school, San Antonio, who conducted a three day training course on dietetics and child psychology; Baldrige, supervisor of San Angelo district; Miss Glover, supervisor of Brownwood nursery and Mrs. Hancock of the Coleman nursery.

666 COLDS in 3 days FEVER in 1 day Liquid, Tablets, Salve, Nose Drops, Headache, 30 minutes Try "Rub-My-Tum"—World's Best Liniment

Hamner Undertaking Co. Phones 17 and 564 DAY OR NIGHT AMBULANCE SERVICE

First Aid for Constipation

Nyal Mineral Oil A non-habit forming relief for constipation and irregular movements: Pains, twinges and colic. 59c Corner Drug Store Eastland

Livestock Survey To Be Conducted In Eastland Area

Postmaster Frank A. Jones states Thursday that another of the semi-annual livestock surveys made the past several years through the cooperation of the Post Office Department with the Department of Agriculture is scheduled for this coming December 1.

Cards will, within the next few days, be distributed in a limited number of rural delivery boxes on routes one and two out of Eastland, upon which farmers may supply the information required to make these surveys, and those receiving these questionnaires are urged to fill them out promptly and return them to their mail boxes in order that the information may not be delayed in reaching the proper authorities.

Eastland county farmers and stockmen, Mr. Jones states, have always co-operated in this work and this is greatly appreciated by the Post Office Department, the Department of Agriculture and postmasters.

The semi-annual livestock surveys have proven of inestimable value to intelligent farmers in planning future production and in marketing current supplies, it was explained.

\$42.50 Is Brought By Romney Affair A pie supper Friday night brought \$42.50 in receipts to the Romney school.

LUMBER SHINGLES, TIMBERS, HOUSE BILLS High quality, close prices. Quick truck or all delivery. Mail or wire list of items. We guarantee the grade and count. New Way Lumber Co. HOUSTON, TEXAS

LYRIC TODAY - SATURDAY LOVE AT SECOND SIGHT! Tyrone POWER Loretta YOUNG IN SECOND Honeymoon 20th Century-Fox Picture SUNDAY and MONDAY Irene is a dream and Cary's a scream... in the Merriest Romance Ever Seen! IRENE DUNNE CARY GRANT THE Cowful Truth RALPH BELLAMY Also Selected Shorts! TRY A WANT-AD - IT ALWAYS PAYS!

MAKE YOUR CHRISTMAS SHOPPING EASY! Begin now to do your Christmas Shopping... Use our LAY-AWAY PLAN!... A small down payment will hold any item for you! MILLER'S 5c - 10c - 25c STORE West Side Square Eastland

CAPE COD 'TURKEY' Dipping into brown swells that champed hungrily at the frosted strakes of his dory, the Cape Codder crouched to his cold work with wet, streaming lines till a catch of fish had been made. Good cod was his Thanksgiving "turkey." With dull skies sinking heavily upon him and the first ghostly shafts of a nor'easter hissing from a smoky horizon, he would lift his crinkled eyes shoreward, thankful for the fish that meant both food and feast. Sometimes, it seems, we come by our blessings too easily. We take the gifts a more progressive civilization has brought us with a complacency that robs us of deeper thrills. And the thrills are there, with but a slight exercise of imagination. Try a slow exploration through the advertising in this newspaper. Behind each advertisement is a story. Behind each story is a service or a product that may mean pleasanter living for you. Behind it all is the stirring life of the world in action—for here the producers of the world are offering you their wares.

Table with columns for Currants, Dates, Figs, Cherries, Almonds, Walnuts, Brazil Nuts, SUGAR, COMPOUND JEWEL, SALAD OIL, COCOA, COFFEE, Tomato Juice, Grape Juice, Tomato Soup, Grape Jelly, FLOUR, FRESH FRUITS and VEGETABLES, REAL QUALITY MEATS. Includes A & P logo and 'TRY A WANT-AD - IT ALWAYS PAYS!' slogan.



Check these GREATER Food SAVINGS

PIGGLY WIGGLY AFTER

Thanksgiving Sales

Friday, Nov. 26 - Sat., Nov. 27

SUGAR

CLOTH BAG

10 LBS 52c

COMPOUND 8 LB. Carton 82c

CRANBERRY SAUCE Ocean 17-oz. 15c
Spray Cans

PINEAPPLE JUICE Del Monte 3 Cans 25c

PUMPKIN Libbys—No. 2 Cans 10c Olmita—Large Cans 12c

Enjoy its Richer Flavor at this New Low Price!
COCOA 2 1-LB CAN 25c

CRISCO 3 LB. CARTON 55c

PINEAPPLE Del Monte 2 8-oz. 15c
Crushed Cans

PEACHES Rosedale 2 No. 1 25c
Sliced Cans

PEARS Rose-dale 2 No. 1 25c
Cans

'Nor-Pac' Fresh **PRUNES**
No. 10 Cans 43c

PIPKIN'S BEST
FLOUR
6 Lbs. 29c
12 Lbs. 50c
24 Lbs. 95c

SWANSDOWN CAKE FLOUR 4-oz. Can Cocoanut Free—Regular Package 29c

Best-yett **SALAD DRESSING** Qt. 27c 8-oz. 9c

APPLE BUTTER White House—QUART JAR 23c

Cutrite Waxed Paper 40 Ft. ROLLS 2 for 15c

Calumet BAKING POWDER 1 LB. CAN 21c

Macaroni or Spaghetti 3 Pkgs. 14c

Sunbrite Cleanser Can 5c

NO. 16 SIZE **Mops, Linen Mops** 19c, **Cotton Mops** 25c

Wash Boards Each 29c

Brooms SUPERIOR YELLOW HANDLE Each 35c

COFFEE Pipkin's Special. Lb. 19c

MILK Pet or Carnation 2 Tall or 4 Small 17c

FOLGER'S Per Lb. 29c

EAT MORE CANNED FOODS SAVE MORE

STAFF-O-LIFE Spinach, 3 NO. 2 CANS 25c
SLIVER FLOSS MED. CANS Kraut, 3 NO. 2 CANS 25c
CAMPBELL'S Tomato Juice, NO. 5 CANS 25c
GREEN Beans NO. 2 CANS 8c
DEL MAIZE Niblets
CORN 2 12-oz. Cans 25c

LIBBY'S GOLDEN BANTAM Corn, 17 Oz. Can 10c
DELMONTE MIDGET Peas, NO. 1 CANS 15c
LIBBY'S Tomato Juice NO. 10 CANS 49c
LIBBY'S CUT Beets NO. 2 CANS 10c
HAPPYVALE Peas NO. 2 CANS 10c

FRESH FRUITS and VEGETABLES

CELERY Stalk 15c

CRANBERRIES Lb. 17c

POTATOES 10 Lbs. 19c

GRAPES, Lb. 8c

YAMS, Pound 3c

COCOANUTS 3 For 25c

NUTS

WALNUTS LB. 18c

ALMONDS LB. 23c

BRAZIL LB. 24c

JUMBO PECANS .. LB. 25c

APPLES WINESAP Dozen 20c

TEXAS SWEET ORANGES Dozen 19c

BANANAS LB. 5c

TEXAS SEEDLESS GRAPEFRUIT 3 for 10c

Sweet Spanish **ONIONS** Lb. 4c

Chocolate Covered **PINEAPPLE CANDY** 1 Lb. 29c

Get this beautiful **LITTLE MISS TRILBY DOLL**

for Only \$1.00 POSTPAID

—and SIX Wrappers or Bands —from Blue Barrel Laundry Soap or Trilby Bath Soap

Mail wrappers or bands and \$1.00 to Haskins Bros. & Co., Sioux City, Ia.; doll will be mailed you, postpaid, at once.

Little Miss Trilby will bring joy to any little girl's heart... and the greater cleaning, longer lasting qualities of BLUE BARREL White Laundry Soap will be a joyous surprise to you. Its exceptional purity means an abundance of richer suds—for whiter clothes and sparkling dishes or glassware.

For a cleaner skin—for a fragrant refreshing, soothing bath—use TRILBY SOAP. Carelessly kind to the tenderest skin.

A Perfect Christmas Gift!

Worth \$2.00 or MORE

Girls—have Mother get this Little Miss Trilby doll for you! Dressed in organdie and lace—with bonnet, shoes and half-socks. Goes to sleep. Says "Mamma". Rubber arms. 16 inches tall. Hurry!

At Your Grocer's... Get the giant, economical, 1-lb. bar of Blue Barrel White Laundry Soap—and Trilby Bath Soap today! Per bar 10c, 3 bars 25c.

MEATS OF QUALITY SAVE NOW!

STEAK Lb. 25c

PORK CHOPS Lean Center Cuts — Lb. ... 28c

BABY BEEF ROAST OR STEAK '7 Cut' LB. 19c

ROLL ROAST Vegetable or Spiced Per Lb. ... 23c

Breakfast BACON Lb. 38c

BOILED HAM Per Pound 49c

CHEESE Craft's Elkhorn Lb. 27c

HOME MADE PURE PORK SAUSAGE Lb. ... 25c

BEEF SHORT RIBS LB. 15c

BOLOGNA LB. 15c

PIGGLY WIGGLY

EASTLAND, TEXAS FRIDAY AND SATURDAY, NOVEMBER 26 & 27!

We Reserve the Right to Limit Quantities!

SPEAKS THE

Prophet Of Profit

THE CRYSTAL IS CLEARING. I SEE A DARK MAN . . . A VERY DARK MAN. YOU ARE PAYING HIM MONEY, AND HE IS GIVING YOU SOMETHING. NO, I CAN'T SEE WHAT IT IS. SOMETIMES IT LOOKS LIKE A THIMBLE. SOMETIMES IT LOOKS LIKE AN AUTOMOBILE. I SEE BY YOUR SMILE THAT YOU THINK YOU HAVE A BARGAIN. I KNOW BY HIS SMILE THAT YOU HAVE NOT.

NOW HE IS LEAVING THE STORE. HE IS GOING TO DINNER AND THE THEATRE. THEN HE WILL GO TO THE CLUB. HE IS DOING HIMSELF WELL ON YOUR MONEY. THE ARTICLE YOU BOUGHT? TOO BAD. A BLIND BARGAIN.

BUT THE SCENE CHANGES. THE DARK MAN IS GONE. YOU ARE READING THE ADVERTISEMENTS IN THIS PAPER. YOU KNOW THE HONEST PRICES, THE QUALITY BRANDS. YOU ARE FINDING WHERE TO BUY. YOU ARE GETTING YOUR MONEY'S WORTH . . . AND MORE. YOU HAVE DISCOVERED THAT ADVERTISEMENTS ARE YOUR TRUE PROPHETS OF PROFIT!

State Welcome To Industry Is Seen Necessary

DALLAS—Belief that Texas could easily meet any "challenge" of other states in bidding for industrial growth by moderating its seeming official aloofness to industry—which at present contrasts with its unofficial but widely-evident sentiment for courting new business—was expressed today by Homer Mitchell,

outstanding Texas insurance authority, and Hubert M. Harrison, manager of the East Texas Chamber of Commerce. This was the general consensus of business leaders reflected in a survey by the All-South Development Council as to what the recently announced co-operative drive of nine southeastern states to promote their industrial expansion, individually and collectively, means to Texas' ambitions to become adequately industrialized. "Of course, we have plenty of outstanding physical advantages here in climate, resources, labor,

fuel, population and purchasing power," said Mitchell. "But we can't feel really sincere about inviting our industrial friends to invest here, on the basis of these fine potentials, without warning them of their liability to having help carry the load of an unnecessarily expensive state government, and admitting frankly to them that the trend of legislation in recent sessions has posed grave problems for not only new industry, but for the industries which have contributed to the upbuilding of Texas to date. Obviously, the record as it relates increasing burdens placed upon industry may be credited with nullifying, in the minds of many potential converts to Texas, the state's other attractions.

"Drawing up a program of objectives similar to that of the southeastern governors group would be helpful, whether any special board—which would cost money—were organized to promote it or not; because just going on record, as they have done, would perforce bring a realization that we would have to exercise sufficient business acumen and restraint, as a state, to make our claims stand up under test. But surely we—a state—can't brag much about our business acumen right now."

Harrison maintained that "Texas has been and is getting plenty of advertising, from its expositions and from commercial organizations and industries interested in attracting investors and 'population' here. And it looks as though we're starting on an 'economy in government' cycle. That, unquestionably, would be our very best publicity.

Pointing out that "we have no established policy affording industry that security which invites investment of capital and personnel, which is what these other states are seeking to establish," Richard Davy, Corpus Christi chemical engineer, said "in subsequent new industry, when it analyzes what has gone before, approaches us with extreme caution."

Clyde V. Wallis, industrial development manager of the Dallas Chamber of Commerce, is one of many who see the recent taxless session as possibly marking a "turning point" which, if true, will brighten the industrial outlook. "While we cannot say the session was completely pleasing, because it revealed distressingly the cumbersome and inefficiency of the machinery, nevertheless it was encouraging, to some extent as showing that at least it's much harder to pile on new taxes than it has been heretofore. And unquestionably it helps our sales talk to prospects, to show them that here was one time, at least, that some sort of official resistance to 'slapping it on' was put in to the record."

Stork Did Not Have Business Depression

By United Press FORT WORTH.—The stork assigned to Fort Worth didn't hear about the depression, or didn't pay any attention to it. Here's what the birth statistics revealed: 1925, fair financial year, 2,741 births; 1928, good financial year, 2,977 births; 1934, depression year, 3,041 births; 1936, return to prosperity, 2,878 births.

Claustrophobia Not So Very Unusual Physician States

DALLAS, Texas.—If you have claustrophobia, fear of being locked up, don't give it a thought, is the advice of Dr. M. H. Blend of the Dallas emergency hospital. "You'd be surprised at the number of persons who are afflicted with some phase of claustrophobia," Dr. Blend said. "It affects persons in different ways. For instance, one person may have a dread of being caught in an elevator, another may have a desperate fear of being underground or still another cannot sleep in a room with the windows closed."

There's nothing organic about the malady, Dr. Blend said. It's purely emotional and the phase of it which affects a person probably developed from some childhood experience, he added.

He explained that a child might have accidentally become locked in a closet or caught in some place in which he could not get out with out help and which gave him a sub-conscious fear of ever again being in such a situation.

The name itself describes the malady. Claustro comes from the greek word "cloister," also a good English word, which means to confine, and phobia, which is Greek for fear. In other words, fear of being confined.

New German pact guarantees inviolability of Belgium. That will be a great comfort to all the Belgians who can't remember as far back as 1914.

Kingman Reef To Get Colony

SEATTLE.—The battered old sailing vessel, Margaret F. Sterling, long destined to a watery grave, is being refinished and will serve as a station ship for Pan-American Airways, at Kingman Reef, 1,000 miles southwest of Honolulu.

Giant clipper ships, winging their way between San Francisco and New Zealand, will use the windjammer as a supply base. Diesel engines, propelling twin screws, are to be installed aboard the schooner as auxiliary power, but she will proudly billow her

Cisco Doctor Buys 600 Head of Sheep

CISCO, Nov. 23.—Purchase of 600 head of sheep to stock his ranch five miles north of Cisco was consummated last week by Dr. G. M. Stephenson. The sheep were bought in Nolan county.

An earlier experiment with sheep on the ranch, Dr. Stephenson said, was very successful and induced this purchase to increase the original flock.

PLUGGED Plugging record has been filed in the Railroad Commission office at Eastland for the Texas Pacific Coal & Oil company No. 115 J. N. Stuart, section 71, block 4, T. & P. R. R. company survey, Palo Pinto county. Total depth was 1,690 feet.

sails to the wings in the voyage to the reef, an uninhabited coral atoll, about 7 miles long and 5 miles wide.

The ship will be equipped with a short-wave wireless set, radio beam apparatus and powerful electric searchlights to direct flights of the big clipper ships. And the name, Margaret F.

Sterling which she has borne since being shot down the greased ways in Victoria, B. C., in 1919, will give way to Four Winds.

Just before a new Douglas 371 mast, 108 feet long, was lifted over the side of the vessel's deck to be fitted, her master, Capt. Eivor Mikkelsen, placed a new 10-cent piece in the heel of the big stick.

"That'll keep away the jinx," he said.

The clippers will hop from San Francisco to Honolulu, 2,410 miles; from Honolulu to Kingman Reef, 1,100 miles; from Kingman Reef to Tutuila Island of the Samoan group, 1,600 miles, and from Tutuila to Auckland, N. Z., 800 miles.

WINTER DRIVING CAN BE COMFORTABLE THE NEW 1938 SPECIAL! AUTO HEATERS

Make your car comfortable for winter. See our complete line before you buy. Supreme heaters have higher quality and more lasting value than any other make.

SUPREME I
Sensational new four-way heat distribution, 40% greater heat, individual passenger and driver foot warmers, heat throughout the car, and a custom-fit defroster that really defrosts. The Supreme I is the outstanding auto heater of 1938. Beauty, performance, and value.

REGAL I
Regal I with the same patented construction features gives even and properly diffused heat, overcoming unpleasant zero-zones found with the ordinary heaters. Custom-fit defroster is available for all popular cars.

PREMIER I
A Quality Heater in all respects. Directional control of heat. Never before such heater efficiency at so low a price.

40% GREATER HEAT
47 WAY HEAT DISTRIBUTION
CUSTOM-FIT DEFROSTER

SUPREME-I \$19.95

REGAL-I \$15.95

PREMIER-I \$9.95

USE OUR BUDGET PAY PLAN . . . AS LOW AS 50c PER WEEK!

JIM HORTON TIRE SERVICE

East Main — Eastland

Don't spoil your holiday trips with tire blowouts . . . Equip now with

NEW SEIBERLING TIRES!

USE OUR EASY PAYMENT PLAN—
1/3 DOWN . . . BALANCE MONTHLY!

JIM HORTON TIRE SERVICE

East Main Street Eastland

There is still time to enter the Photo contest

WE WANT to buy one hundred photos showing interior views of homes of this section. Each photo submitted must include a view of gas heating equipment. Note the sample below and read the five simple rules of the Contest conducted by your gas company.

A prize of \$10 will be awarded EACH of the TEN BEST PHOTOS submitted each week. At the close of the TEN WEEK PHOTO CONTEST four additional grand prizes of \$100, \$75, \$50 and \$25 will be awarded the four best photos submitted.



This sample heating photo illustrates a radiant circulating type gas heater in the home of one of our customers.

5 Simple Rules of the "Heating Photo Contest"

1. All photos must include a view of the gas heating equipment used to heat the room or adjoining room in which the photo is taken. (See sample).
2. The house in which you reside must receive its gas service from one of the companies of Lone Star Gas System and all photos submitted in the TEN WEEK CONTEST must be taken in a home served by one of the companies of Lone Star Gas System. These companies are: — Lone Star Gas Company; The Dallas Gas Company; County Gas Company; Community Natural Gas Company; Texas Cities Gas Company.
3. Employees of any company of Lone Star Gas System and their immediate families and professional photographers or persons engaged in the business of making photographs for commercial purposes are not eligible to enter this Heating Photo Contest.
4. All photos submitted must have your name and address (including the town) PRINTED PLAINLY ON A SEPARATE PIECE OF PAPER AND PASTED ON THE BACK OF EACH PHOTO ENTERED IN THE CONTEST.
5. All photos submitted should be delivered to your local gas company office or mailed to LONE STAR GAS SYSTEM, ADVERTISING DEPARTMENT, 305 S. HARWOOD ST., DALLAS, TEXAS.

The contest is for a TEN WEEK Period from October 11, 1937 to December 18, 1937 (inclusive). All photos submitted will become the property of Lone Star Gas System to be used as desired by the company. Photos entered in the contest will not be returned and weekly prize winners will be advised by letter. At the close of the ten week contest a complete list of prize winners will be available for your inspection at your nearest gas company office.

Listed Below are the Names of Those Whose Photo Entries Were Awarded \$10.00 Prizes During the First Four Weeks of the Contest:

FIRST WEEK	SECOND WEEK
ROBERT SCHULTZ 2108 Jones Street Wichita Falls, Texas	MRS. J. D. COULTER 210 East Wise Bowie, Texas
MRS. STANLEY FAIRLY 514 South Fifth Street Waco, Texas	S. A. BURTON Taylor, Texas
ALFRED B. EMRICK 4560 Lorraine Street Dallas, Texas	REV. DWIGHT A. SHARPE Pastor, First Presbyterian Church Ballinger, Texas
J. W. BLANTON 3420 Princeton Dallas, Texas	MRS. GEO. A. ADAMS 408 E. 27th Street Bryan, Texas
M. TRUMAN SEALE 2117 Eighth Street Wichita Falls, Texas	ROY THOMAS 2201 Avenue C Brownwood, Texas
J. D. HALL, JR. 314 Fry Denton, Texas	MRS. C. B. LOCKE 1619 Lucille Street Wichita Falls, Texas
A. G. KOENIG 3640 Southwestern Blvd. Dallas, Texas	B. J. KORMAN, JR. 215 W. 7th Street Taylor, Texas
GEO. T. HUDSPETH 4004 Wycliff Dallas, Texas	A. BURLE JOHNSTON 1123 N. Orange Street El Paso, Texas
EMMETT H. KARRER 3622 Crestline Road Fort Worth, Texas	MRS. A. J. BEAUPRE 1102 Newport Dallas, Texas
MRS. MARY PARKS 928 N. 23rd Street Waco, Texas	GEO. I. FETZER 213 S. Waverly Drive Dallas, Texas
THIRD WEEK	FOURTH WEEK
MISS TOOTS CAMPBELL 307 S. 11th Street Frederick, Okla.	MISS MARGUERITE B. GROW 5324 Willis Avenue Dallas, Texas
W. J. MCINTOSH 404 N. 10th Street Frederick, Okla.	JOHN C. MORROW 6024 Hudson Street Dallas, Texas
PEGGY HAGENS Box 726 Anson, Texas	G. R. NEWBY Bonham, Texas
WM. D. PERCY 2926 Sparlock Dallas, Texas	U. S. MARINE HOSPITAL 4406 Deere Street Dallas, Texas
ANA PERLE HUFFHINES 2429 Forest Ave. Dallas, Texas	CLARK McELFRESH 4406 Deere Street Dallas, Texas
JAMES LEE HYLES 2906 Alabama Dallas, Texas	MRS. C. B. LOCKE 1619 Lucille Street Wichita Falls, Texas
ROBERT SCHULTZ 2108 Jones Street Wichita Falls, Texas	MRS. RUBY F. CLEMENTS 2217 Mistletoe Ave. Fort Worth, Texas
MRS. F. W. EDWARDS 3708 Clifton El Paso, Texas	CLARENCE E. GILMORE, M. D. 204 Liberty National Bank Bldg. Paris, Texas
METTIE AZALEE RODGERS 3028 Cumberland Waco, Texas	GEO. I. FETZER 213 S. Waverly Drive Dallas, Texas
H. L. O'CONNELL 509 S. 3rd Street Waco, Texas	WILLIAM H. CAMP 1601 Austin Ave. Brownwood, Texas

If you haven't entered the photo contest don't delay any longer. If you have submitted a photo and failed to win a \$10.00 prize—try again. The more often you submit photos the better your chances of winning one of the weekly awards.

Remember, there are no letters to write . . . nothing to buy. No matter what type of gas heating equipment you prefer—floor furnaces, radiant heaters, gas circulators, gasteam radiators, central furnaces—it is a simple matter to enter the contest. However, be sure to include a view of some type of gas heating appliance.

LONE STAR
Community Natural Gas Co.
GAS SYSTEM

FIVE MEETINGS FOR NAMING GROUPS TO ADMINISTER '38 FARMING PROGRAM ARE SET

Five meetings of farmers and ranchers of Eastland county to elect committees for the 1938 farm and range program were announced Wednesday by County Agent Almo V. Cook for next week.

All farmers, ranchers and landlords in Eastland county were urged by Cook to attend the meeting in their respective section of the county and vote in their election.

The committees elected at the meetings must derive the principal part of their income from farming or ranching and must be a resident of the section of the county for which they are elected to serve. They are not eligible to

hold office as committeemen if they are holding or become a candidate for an elective or appointive county, state or federal office, it was explained.

Any person who solicits election as a committeeman is not eligible to serve.

The five divisions of Eastland county for the purpose of electing committeemen and conducting the agricultural conservation program for 1938 are the same divisions as those used in the 1936 and 1937 programs. Farmers and ranchers bordering on the boundary lines may vote in either election but may not vote in both elections.

The five divisions of the county are described, briefly as follows:

Section 1—All of county com-

missioners precinct No. 1, including Eastland and Ranger. Election meeting to be held at Ranger at 2 p. m. Tuesday, in the Gholson hotel.

Section 2—All of county commissioners precinct No. 4, including Ciseo, plus a strip of land from the north end of the Rising Star commissioners precinct cut off by the road running east and west through Cook community. Election meeting will be held at Ciseo at the City Hall, Monday at 2 p. m.

Section 3—The eastern half of county commissioners precinct No. 2, including Gorman and Desdemona. Election meet will be at Gorman at the theatre Wednesday at 2 p. m.

Section 4—The western half of county commissioners precinct No. 2, including Carbon. Election meeting will be held at Carbon at the Methodist church Thursday at 2 p. m.

Section 5—All of county commissioners precinct No. 3 except the northern part cut off by the road running east and west. Election meeting will be at the Rising Star theatre at 2 p. m. Friday.

Every farmer, ranches and landlord of the county in Eastland

county was urged to attend one of the meetings and vote as all are eligible regardless whether they were signers in the 1937 program. Ranchers were reminded that the one set of committeemen elected will administer both the range and farm program.

At each meeting, after committeemen are elected, a discussion on grades and quality of peanuts will be held. The discussion will include ways to improve grades also, it was stated.

Group to Consider Peanut's Place In 1938 Farm Program

The Eastland County Agricultural Conservation committee will meet Saturday at 10 a. m. in the office of County Agent Almo V. Cook to consider recommendations on peanuts in the 1938 conservation program.

The meeting was called by Cook on suggestions of E. N. Holmgreen, administrative officer of the state committee, College Station, who stated the group is considering making recommendations to national officials in regard to including commercial peanuts in the general soil depleting base, rather than maintaining a special base for the crops, in minor peanut counties outside of or bordering on commercial peanut areas.

Farmers have been advised to tell their committeemen their opinion before the meeting.

Members of the county committee are Dick Weekes of Alameda, J. D. Guy of Carbon and W. A. Williams of Rising Star.

Points to be considered by the committee will include:

1. The average rate of pay per acre for diversion from the peanut base as compared with the average rate of pay for diversion from the general base.
2. The number of peanut farms in the county with a home needs requirement small enough to enable them to divert from the general base after it has been revised to include commercial peanuts.
3. The number of farms in the county with a peanut acreage history so small that the producers are penalized if held to a peanut quota.
4. Simplification of the program by eliminating one of the special bases, which will give counties one less quota to meet in 1938.

MOVE FROM RANGER
Mr. and Mrs. Roscoe Stewart, formerly of Ranger, and two sons, have moved to 502 South Daugherty street in Eastland. She is an employe of the Farm Security Administration. Mr. Stewart is a salesman.

APPRAISED
Community and personal property of W. J. Jones, who died recently in the Alameda community, has been appraised at \$3,120. John White and E. H. Jones were appraisers.

CLASSIFIED

MAN WANTED for Rawleigh Route of 800 families. Write Rawleigh's, Dept. TXK-222-SAB, Memphis, Tenn., or see W. A. Bucy, Rising Star, Texas.

FOR SALE—Choice White Leghorn pullets ready to lay. Mrs. J. F. Trott, Lone Star Gas Plant No. 3.

FOR SALE: Coolerator Refrigerator; good as new. \$35.00. See Mrs. Petros, 409, S. Daugherty.

MALE, instruction. Will personally interview men willing to work hard by training for good pay positions in Air Conditioning and Refrigeration business. Prefer men with fair education, mechanically inclined, now employed, willing to devote some spare time to primary study followed by shop practice to become installation experts. Write fully, giving age, present occupation. Utilities Inst., care of Eastland Telegram.

FOR RENT—Three room furnished apartment. Lamar Apartments.

FOR RENT—Three room furnished apartment. Lamar Apartments.

FOR RENT: Houses and apartments, furnished or unfurnished. Phone 28.

FOR SALE—cold drink and cigar fixtures, Exchange Bank Building, Eastland, Texas. Quitting business by the 10th. See Miss Virginia Boles, Exchange Bank Bldg.

For Complete Markets and Financial News THE WALL STREET JOURNAL. Relied upon by business men and investors everywhere. Send for free sample copy. 44 Broad St. New York

ELECTRICAL APPLIANCES
Texas Electric Service Co.

Former Eastland Man's Home Burns

The home of Leroy Stone, superintendent of the Blackwell public schools and formerly head of the mathematics department of Eastland High school, was totally destroyed by fire last week, friends were advised Wednesday.

Mr. and Mrs. Stone and their daughter, Sandra, were at the school attending a basketball tournament when the fire occurred.

The fire originated, it was stated, in the top of the house, apparently from defective wiring, and neighbors were able to save some of the furniture. Clothing, kitchen ware, silver and other household items were a total loss and were not covered by insurance.

ARE VISITORS
Mrs. Drue Cook of Colorado, mother of County Agent Almo V. Cook, is spending Thanksgiving with her son and his wife at East-

CHINESE RIOT IN SHANGHAI, MANY STARVE

By United Press
SHANGHAI, Nov. 24.—Chinese refugees, many at the point of starvation, rioted throughout the day in the French concession after they heard reports that new stores of rice had been landed.

Many were injured in demonstrations before rice shops. A few refugees were found starved to death.

The Chinese government capitulated to Japanese demands and prepared to suspend its chief

land. Other relatives spending the holiday at the Cook home, all from Colorado, are Mr. and Mrs. J. C. Cook, Mr. and Mrs. Farris Lipps (Mr. and Mrs. W. B. McGill and Bray Cook.

functions in Greater Shanghai. The Japanese threatened to use force, if necessary, to end anti-Japanese activities in conquered areas.

Continued rains were reported to have held up the advance on Nanking, the evacuated capitol.

NANKING, Nov. 24.—The Japanese war machine opened its major offensive on Nanking today, when the capitol was bombed for the first time since Sept. 8.

Eight planes dropped bombs in the heart of the city, killing at least 40 persons, including five children.

Kokomo Club Has Interesting Meeting

Mrs. L. R. Higginbotham, Kokomo 4-H club sponsor, met with the girls Nov. 18. At the meeting the clothing inventories were checked and the home food supply demonstration report and the girls wardrobe demonstration report was taken.

A Christmas party was planned for the club. Those present were

Phyllis Jean and Wanda Donaldson, Ima Timmons, Louise Eaves, Ernest Jumper, Ima Mae Smith, Vinda Mae Eaves and Mrs. L. R. Higginbotham.

Ex-Postmaster General Is Dead

By United Press
AUSTIN, Nov. 24.—Former Postmaster General Albert Sidney Burlason, 74, died of a heart attack today at his home here.

He had suffered a number of heart attacks recently, but previous ones were not considered serious.

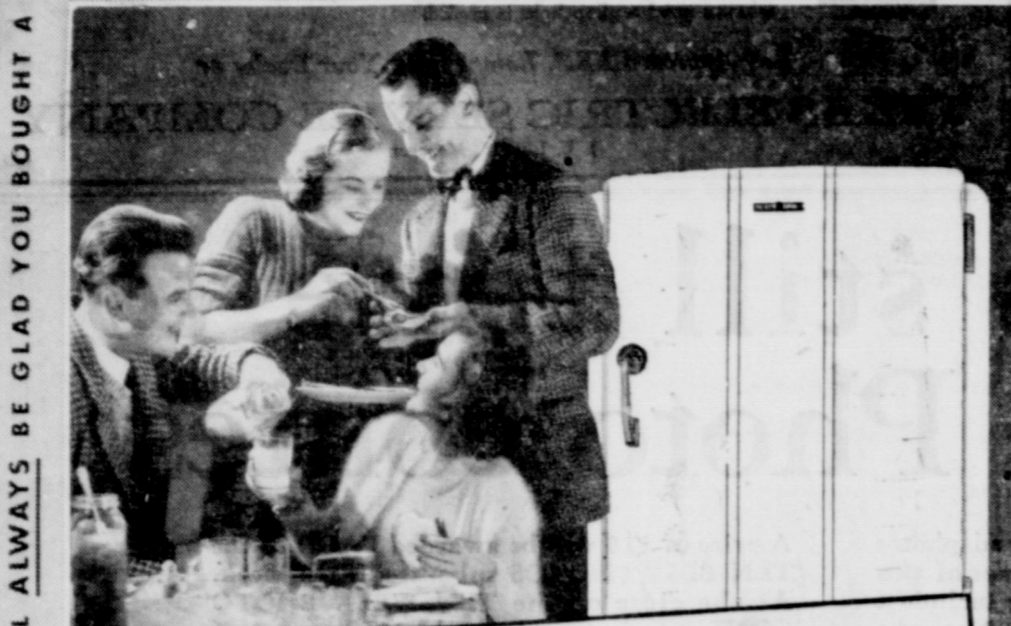
The funeral will be private and the family requested that no flowers be sent. The service was in a private chapel in Austin at 5 p. m.

The service was read by Rev. James Allen of St. David's Episcopal Church here.

Surviving are his widow, three daughters and two sisters.

Try Our Want Ads!

GENERAL ELECTRIC REFRIGERATOR



YOU'LL ALWAYS BE GLAD YOU BOUGHT A

IS YOUR KITCHEN READY FOR HOLIDAY GUESTS?

LOW PRICES AND EASIEST TERMS Now Available on

• There is no better time than right now to get a big, new G-E Triple-Thrift Refrigerator. You'll pocket extra savings out of your food budget every month this winter—and be prepared to royally entertain at less cost.

See this thriftiest of all refrigerators. You save on price, on current, on upkeep

Automatic THRIFT UNIT sealed-in-steel with OIL COOLING that means faster freezing, less current cost, enduring economy.



Harper Music Co.

E. Commerce St. PHON E 335 Eastland

SOMETHING TO BE THANKFUL FOR...

JUDGE LESLIE'S address at the Rotary Club last Monday on the subject of Thanksgiving was a masterpiece in both subject matter and delivery. Speaking feelingly of the Constitution as one of the blessings of humanity, he pointed out that many nations today do not enjoy liberty of thought, or action, or even conscience. How true, and what a tragedy!

AMERICANS, while they enjoy more liberties than any other nation on the Globe, need to do some sober thinking and continue to stand guard at the Crossroads.

WHAT IS TRUE in our American life today was also true in the lives of these unfortunate nations, to some degree, only a few years ago.

YES, we have lots to be thankful for this year. We are at peace with the world. We have our Democratic Institutions. We have the American Home—even these and no more would make us a great nation.

THIS COMPANY joins with your friends and ours in wishing that you may fully enjoy this Thanksgiving Season.

Sibyl Truly Abstract Department Earl Bender Property Management Adrienne Flurry Insurance Department

EARL BENDER & COMPANY

Abstracts — Insurance — Real Estate — Rentals

Penney's Pre-Holiday CLEANUP

Making Way For Santa — Grab These Wonderful Bargains!

Men's Heavy UNIONS A new low price, and what a Value! — All sizes. SAVE NOW AT PENNEY'S! 57c	Men's Dress SHIRTS A new low price. New patterns—fine quality. SEE THESE VALUES! 67c	Women's Outing GOWNS While they last at this low price. Solids and fancy patterns. 50c	BLANKETS Beautiful blankets! Indian design. Full double bed size. 1.49
Boy's UNIONS Long leg heavy quality unions. Sizes 8 to 16. While they last— 49c	Boy's Dress SHIRTS Fast colors—Solids and prints. Extra values! SAVE NOW! 49c	OUTING White and fancy patterns and what a value at a new low price! 9c	Dress LENGTHS Close out of dress lengths in a large selection. Printed silks, solids. They'll go fast at 3- to 4- yard lengths— 69c

BRING THE KIDDIE! PENNEY'S TOY FAIR IT'S A KINGDOM OF FUN

<p>Tots' Red Wagon Easy to Steer! 89¢ A 19"x9 1/2" sturdy steel wagon with rubber tires and disc wheels. A big Toy Fair value!</p>	<p>Roller SKATES Full Ball Bearing! 98¢ They've ankle pads and rubber turning cushions! Bright finish! Adjustable from 6 3/4" to 11".</p>	<p>NURSING DOLL 98¢ She drinks her bottle — wets her diaper! A 10 1/2" doll with movable head arms and legs</p>
<p>Streamlined TRIKE For 1 to 3 Year Olds 1.98 Red steel trike with rubber pedals, rear steps. Adjustable spring seat and handlebars.</p>	<p>Two-in-One Desk and Blackboard Sturdy Oak! 98¢ Large drawing surface and 3 panel roll chart. Drop front forms desk with letter rack!</p>	<p>12" CUDDLE BEAR 98¢ A cute toy! Mohair plush bear kapok stuffed.</p>
<p>A Little RED CHAIR 25¢ Youngsters' sturdy little 17" chair with seat 7 1/4" from the floor. Attractively finished!</p>	<p>RUBBER CRY BABY 49¢ 10 1/2" doll with movable head, arms and legs.</p>	<p>FOUR POSTER BED 98¢ For dolls up to 23" Comes complete with slats for mattress. Cedar veneer finished!</p>

AND THOUSANDS OF OTHERS TOO NUMEROUS TO MENTION!

USE Penney's LAY-AWAY PLAN!

J. C. PENNEY COMPANY, INC.

Across From Connellee Hotel Eastland, Texas