

THE WEEKLY CHRONICLE

Eastland County's Own Progressive Publication For All The People

The Chronicle is the only weekly newspaper in Eastland having a paid subscription list

Uncle Sam's latest is a flair for dentistry, taking care of that big Fort Knox, Ky., cavity with a gold filling.

VOL. 49

(Established November, 1887)

EASTLAND, TEXAS, FRIDAY, JUNE 18, 1937

NO. 33

BEER, WINE SALE LEGAL AS BEFORE

The May 1 county-wide election to outlaw sale of all liquors was held null and void Wednesday by Judge R. H. Atchison, Breckenridge, who presided in 91st district vote in the case contesting the vote.

In Judge Atchison's judgment, he also declared null and void the commissioners' court order of May 27 which declared the result of the election.

The status of Eastland county will remain as it was prior to the election, Judge Atchison ruled. Prior to the election malt and vinous beverages up to 14 per cent alcoholic content had been sold, as they were legalized April 18 last year.

Commissioners' court, the members of which were among the contestants in the case, gave notice it would appeal to the Eleventh Court of Civil Appeals after expiring the court's ruling. The contestants have 20 days to file their appeal.

The court in its order holding null and void the election, did not give its reasons upon which its ruling was based. Beer retailers and wholesalers, who filed the suit, had alleged notices in the election were improperly posted, and challenged the validity of the ballot, asserting an election to outlaw what was legal prior to the May 1 voting should have specifically covered that issue—beverages up to 14 per cent alcoholic content—and not for and gainst prohibition of all liquors as worded upon the ballot.

The case, styled G. Connally et al vs. W. S. Adamson, county judge, et al, had its beginning when the contestants' attorney, Milton Lawrence, was granted a temporary injunction which May 6 prevented canvass of the vote and declaration of the result.

May 27, 91st district court sustained contestants' motion for dissolution of the injunction forbidding the vote canvass, holding it was without jurisdiction.

Judge George L. Davenport, regular jurist for the court, disqualified himself before the hearing of the case upon its merits, giving his reason because of a first-cousin relationship to County Commissioner Henry Davenport.

Earl Conner, Jr., criminal district attorney, was counsel for the contestants.

Contestants in the case included G. Connally, Ernest Halkias, Nick Nicklas, J. T. Harness, W. B. Anderson, Jim George, Nick Yotis, Roy McNamara, J. J. Litchfield. They reside in Cisco, Ranger and Eastland.

Bank Nights to Be Discontinued Here

Effective at once bank nights will be suspended in the local theatre until a final court determination of their legal status, it was announced here today.

The Court of Criminal Appeals held last week that bank nights come within provisions of the lottery law, and a rehearing will be asked of the court.

Discontinuance of bank nights here was precipitated by a telegram received by the local manager. The communication was from Karl Hoblitzelle of Dallas, president of the Interstate Circuit. The commission from the office of Hoblitzelle read:

"In deference to the legal interpretation of the courts and to the enforcement officers of this state, we hereby announce that bank night and similar activities will be discontinued indefinitely until such time as their legal status is finally determined."

The statement from Interstate headquarters meant cessation of bank night in 120 Texas theatres of the circuit.

Flatwood Girl Is Chosen Best 4-H Club News Scribe

Rosa Mae Harbin of Flatwood is the best girls' 4-H club reporter in Eastland county, announced Miss Cornelia Faye Stewart after her reports for April and May were judged by an Eastland newspaperman Tuesday morning.

Miss Harbin, who this year had her first experience as a club reporter, will be entered in the district contest, the winner of which will be a staff member of the "Daily Star," paper to be published at the annual farmers' short course, August 16-19, at College Station.

Miss Stewart planned Tuesday to immediately send Miss Harbin's club reports to Miss Maurine Hearn, district agent, who will choose in the winner in her territory. Miss Harbin's reports on meetings were judged best over all submitted on April and May sessions in the county.

Lions Hear City Lauded at Meeting

Albert Gleason of Gleasondale, Mass., visiting in the home of his daughter, Mrs. Joseph M. Perkins, told Lions at the weekly luncheon Tuesday he is particularly impressed with the advantages of Eastland and West Texas.

Eastland Has Nine in Texas Who's Who

Nine citizens of Eastland are listed in the Texian Who's Who, biographical dictionary of prominent Texans published this week at Dallas, an announcement received Saturday stated.

The dictionary contains brief biographical sketches of more than 2,700 men and women in Texas. According to the introduction, persons selected for the book were named by four editors of the publication, assisted by advisory sources with knowledge of the accomplishments of those chosen.

The Texian "Who's Who" is planned as a publication in two-year intervals.

The Eastland citizens listed are: Wilbourne B. Collier, state senator. George A. Davison, Jr., state representative. O. C. Funderburk, associate justice of the 11th Court of Civil Appeals.

Clyde Grissom, associate justice of the 11th Court of Civil Appeals. Frank Allen Jones, postmaster and former newspaperman. B. W. Patterson, district judge. Mrs. Joseph M. Perkins, club woman. Carl P. Springer, attorney. John W. Turner, attorney.

Eastland Presby Church To Greet Its New Pastor

Alvin K. Bailey is the new pastor of the First Presbyterian church at Eastland, officials announced Saturday, stating his first appearance in his new post will be Sunday, June 20.

The new pastor succeeds Rev. Charles W. Estes, who recently assumed the pastorate of the First Presbyterian church at Winters. Bailey, a graduate of Washington and Jefferson university of Washington, Pa., comes to Eastland from the seminary of Princeton, N. J., where he received studies under Dr. Makaye. Bailey has been organist at the Princeton University seminary and has had experience in the training of voices and the direction of choirs.

The public has been cordially invited to attend services of the Presbyterian church. While no preaching services will be held today, Sunday school will begin at 10 o'clock.

Eastland Delegates Back From Session Of State Firemen

Delegates from Eastland to the state firemen's and marshals' convention in Port Arthur stated Saturday after their return next year's meeting was awarded to Amarillo.

Searching for Trace of Victim



Apprehensively, police searched every possible hiding place on and near the Parsons estate at Stony Brook, L. I., where Mrs. Alice Parsons might have been concealed by kidnapers. State troopers above examine an abandoned well, which failed to produce any trace of the wealthy society matron.

Judge B. W. Patterson and Wife Injured in New Mexico Car Mishap

News of the injury from an automobile accident last Thursday near Magdalena, N. M., of B. W. Patterson, judge of 88th district court, and Mrs. Patterson was received here Tuesday.

Judge Patterson, cut about the head and face, was taken to a hospital, according to a letter received by Mrs. J. H. Caton of Eastland, from Mrs. Patterson at Magdalena, and 40 stitches were required to sew up the wounds.

Mrs. Patterson was badly bruised on her right side. The accident occurred, it was stated, after a tire blew out as Judge and Mrs. Patterson were negotiating a curve, and the car skidded and turned over one and a half times. The crash threw Mrs. Patterson from the front seat into the rear of the car.

Judge Patterson lapsed into unconsciousness from loss of blood. It was 15 minutes before aid came. Plans were to have someone drive the automobile to Eastland and the jurist and his wife continue to Eastland by train after their recovery.

The condition of Patterson, although severely injured, was not considered dangerous. It was indicated Mrs. Patterson had already been released from the hospital.

Hickok to Drill 4,000-Ft. Well Eight Miles Northwest of Cisco In Try For Gas Found In Test During 1935

Attention of Eastland county oilmen this week-end was directed eight miles northwest of Cisco, where Hickok Producing and Development company will drill to 4,000 feet No. 2 Grover S. Cleveland for prospective gas production.

The test is 650 feet from the west line and 350 feet from the south line of the N-1-2 of the NE 1-4, section 477, SPRR company survey.

No. 1 Cleveland, the same footage as the No. 2, although it was in the S 1-2 of the 80-acre lease, was completed March 29, 1935, as a 1,985,000-foot gas well between 2,804-62 feet. Possibly the county's most eagerly watched test, Gallagher and Lawson et al No. 1, Bobbie I. Terry, one-half mile south of Dedmore, but over 100 feet in Comanche country, was making rapid progress, drilling at the last report below 725.

Guardian of Kid's Pool Is Designated

Miss Betty Joe Brown, Eastland, has been designated by city officials as guardian and life-guard for children swimming in the small pool at the city park.

Mothers can feel assured of safe care, it was stated, to leave their children in the care of Miss Brown to swim at the small pool, separate from the larger pool.

Wichita Girls Beat Group from Eastland

The books were evened Friday night at Wichita Falls when the girls' team sponsored by the Fire Department of Eastland was defeated 15 to 13 by the Wichita Falls Rookies.

In a game at Eastland recently the Eastland girls won over the Rookies, 7 to 6.

Flatwood Pledges Aid In Eastland July Fourth Fete

Cooperation in Eastland's July 3, 4 and 5 celebration was pledged Friday night by the Flatwood agricultural club which was host to a group of 5 citizens from Eastland.

Oscar Lyster, a resident of Flatwood and chairman of the Eastland County Democratic Executive committee, stated a string band from the community would be sent to the Eastland celebration. The community also plans to send a representative to the bathing beauty contest at the city park during the celebration.

The program held at the school house includes the following Flatwood entertainment: James Luther Pittman, guitar solo; Mrs. Graham, piano numbers and a box supper with receipts going toward a fund to send a Flatwood 4-H club boy to the annual short course during July at College Station.

Speakers at the meeting from Eastland included H. J. Tanner, secretary of the Chamber of Commerce, and K. B. Tanner, chairman of the school board. A. E. Herring led songs. Misses Mava Lou Crossley and Betty Wiegand were heard in a saxophone duet, accompanied by G. W. Collum, at a piano. Jerry Bailey executed a tap dance, Edmond Herring played an accordion while Leslie Cook played a violin and Herring sang in a trio number, and Nanette Tanner delivered a declamation.

One hundred and fifty attended.

May Pension Cash Received by 944

Recipients in Eastland county of grants from the Texas Old Age Assistance commission numbered 944 in May, according to a list of payments filed with County Clerk R. V. Galloway.

The May checks totaled \$13,850. In April 889 persons in the county received checks totaling \$13,157. March checks from the commission numbered 803 and totaled \$9,151.

Prospective Dairy Team Given Advice

Training to prospective members of the county's boys 4-H club dairy demonstration team to be entered in the annual farmers' short course at College Station, August 16-19, was given Tuesday by G. G. Gibson, assistant extension service dairyman from Agricultural & Mechanical College.

Gibson was working in cooperation with County Agent Elmo V. Cook and Assistant Agent Hugh F. Barnhart, in charge of boys' 4-H club work.

In training for the team, which will be composed of two boys, are Elbert Bennett of Kokomo, James Dean of Alameda, Jack Walker of Alameda, L. C. Love of Alameda, Buster Wheat of Morton Valley and Glenn Justice of Flatwood.

What Transpires Behind Mike Told

What goes on behind the microphone and the preparation necessary for an appearance was told Monday at the Rotary club luncheon in Eastland by W. T. Walton, superintendent of the Ranger schools, who Mother's Day in New York City broadcast an experience over a national chain.

Walton, discussing his appearance, told how the director of the program, Phillip Lord, sacrificed minor accuracy in order to better sell the show.

In pointing out how Madam Schumann-Heink "sold" herself to an audience because of her love as a mother Walton was scheduled to tell how the singer obtained a glass of water for a child when his cries interrupted her concert in a college at Abilene, where Walton was a student.

Walton read the script at a rehearsal, but eliminated the sugar being placed in the rehearsal. Lord asked him after the rehearsal why he had not read it, Walton replying he did not because it was inaccurate. Then he consented after Lord explained persons in New York City would better understand the demonstration of a mother's love had sugar been placed in the water.

The club voted to eliminate the Monday meeting next week because of the annual inter-city meeting Wednesday night at the Gholson Hall in Ranger. Jim Horton, Ben Hamner and Carl Johnson were appointed to arrange Eastland features for the program.

J. E. Meroney, secretary of the Chamber of Commerce at Ranger, announced William McCraw, attorney general, will speak twice Thursday at Ranger and invited the Rotarians to attend.

A. H. Henderson of Olden was introduced as a re-instated member. A contribution for the club's Boy Scout troop for its delegates to attend the National Jamboree at Washington was referred to the board of directors after an announcement on the subject by Dr. J. H. Caton.

THREE DAYS TO BE CELEBRATED IS DECISION

What will be Eastland's and this area's biggest celebration in years took definite shape Wednesday morning at the Chamber of Commerce when budgets for committees steering the July 3, 4, and 5th affair were adopted.

The celebration will provide a crowded three-day calendar of events which will move in whirlwind fashion from Saturday until the climax of the event Monday night with a bathing revue and gamutant fireworks display.

Albert Taylor, permanent chairman of the celebration presided. Variety of the program will be the keynote, reports of the committees disclosed. The expenditure on the program will be a little less than \$1,000.

The event will be publicized as none other in this section has been. Newspapers will carry ads, circulars will be distributed, the band will accompany Eastland citizens and other channels of advertising mobilized in a mammoth fashion to attract the citizens of this area to attend this celebration.

The publicity angel of the celebration was the first item to receive the attention of the committees and contributors at the meeting. R. S. Searls read the various plans of publicity for the celebration and one was adopted which will result in expenditure of approximately \$150.

Decision was reached to offer \$75 for bathing beauty prizes. Added to the bathing beauty revue and publicity committee of which E. Hinrich's is chairman were Mrs. Art H. Johnson, Mrs. James Horton, Miss Ruth Ramey, county home demonstration agent, Miss Cornelia Faye Stewart, her assistant, L. J. Lambert and C. T. Lucas.

The bathing revue program will be completed at 9:30 a. m. Friday at a meeting of the committee in the Chamber of Commerce.

H. J. Tanner, secretary of the Chamber of Commerce, who will be Saturday's program and loud-speaker chairman, was allowed \$64 for his budget.

A. W. Hennessee, fire chief, pledged the cooperation of the volunteer fire department in decoration of the town, emphasizing merchants who use the decoration service regularly will be served first.

Approximately \$60 was allowed A. E. Herring, singing chairman, for an all-day singing meeting Sunday, July 4, in the high school auditorium. To attract all the singers in the area Stamps, Huffstutler and Rippeet quartets are being invited. R. L. Rust, said Herring, is aiding materially in the singing event.

Raid at Pioneer Reported by Wood

Eight half-gallons of non-tax-paid liquor was seized in a raid reported Monday by Sheriff Loss Woods. The case has been adopted by federal authorities, who were to file charges at Abilene against the owner of the liquor, said Woods.

Eastland All-Star Team Beats Throck

The Eastland All-Stars, sponsored by the Arab Gasoline corporation, made it two in a row Saturday night by defeating the Throckmorton entry in the O. I. Belt softball league, 12 to 1 at the Fire Department field in Eastland.

Eastland Roquers Beat Center Team

An Eastland Roque club team composed of John Rawson and Claude Maynard defeated in two games Tuesday night at the City Park in Eastland a team from Pumpkin Center.

Pluggings

George Callihan No. 1 Whitten and Moore, four miles south of Eastland, Eastland county. W. G. Sawyer No. 2 L. J. Shore, James C. Ryan survey, Brown county.

Catons Attend Meet Of Doctor's Society

Dr. and Mrs. J. H. Caton of Eastland attended Monday night an annual barbecue and scientific program of the Brown-Mills County Medical society at Brownwood.

TOWN GETS WELLS

PLAINVIEW, Texas. — Three artesian wells to supply water for Plainview's new waterworks extension have been completed and accepted by Mayor Tom Shelton on behalf of the city. The wells range in depth from 297 to 301 feet.

Youth of Eastland County Into Navy

S. C. Rino, 18 year-old son of Mr. and Mrs. S. E. Rino, Eastland, Route 1, recently enlisted in the U. S. Navy at the recruiting station in Dallas was transferred to the Naval training station at San Diego, Calif., for a three-month period.

THE WEEKLY CHRONICLE

Established Nov. 1, 1887
Entered as second-class matter at the postoffice at Eastland, Texas,
under Act of March, 1879

Published Every Friday
Office of Publication: 106 East Plummer Street. Phone 601

NOTICE TO THE PUBLIC

Any erroneous reflection upon the character, standing or reputation of any person, firm or corporation, which may appear in the columns of this paper, will be gladly corrected upon being brought to the attention of the publisher.

Obituaries, cards of thanks, notices of lodge meetings, etc., are charged for at the regular advertising rates, which will be furnished upon application.

Why Political Reform Often Fails to Last

Last fall the city of New York adopted a new city charter. In the charter was a provision that city elections hereafter be held under the proportional representation system.

This system is about as complicated a method of electing public officials as could well be imagined, but its chief purpose is to hamstring machine politicians by giving every citizen the chance to vote for candidates in the order of preference. If the man the voter likes best loses, or if he wins by such a wide margin that many of his votes are not needed, ballots cast for him are counted for the citizen's second choice, and so on down the line.

Tammany Hall, which has fallen on lean years of late, vigorously opposed this feature of the new charter. It went to court to get it thrown out; and the other day it met final defeat when the state court of appeals upheld proportional representation and okayed the disputed charter.

Now the surface conclusion to be drawn from all of that is that machine politics, as exemplified by Tammany, has met a crushing defeat and that political life in the metropolis will be cleaner, clearer and most wholesome hereafter.

But people who take this hopeful view of things might well remember what happened in Cleveland some 15 years ago.

Cleveland then adopted a new charter, with proportional representation. Citizens breathed deeply in relief; this new electoral setup would be too much for the old-line political gangs, the bosses would be checkmated, good men would be elected in place of subservient ward-healers, and everything would be very rosy.

But something happened. The "god men" figured that the city political life had been reformed forever and a day, and began thinking about other things. The politicians, who worked at politics day in and day out, knuckled down and mastered the intricacies of proportional representation. And the first thing anybody knew the same old gang was back in the saddle, the great reform had misfired—and, eventually, the citizens in disgust threw out the new charter and went back to the old way of doing things.

The point is that political reforms usually fail because the reformers, and the people who support them, are so short-winded. Some one big reform is put through, and everyone assumes that the battle has been won permanently. The bosses rally their forces, try a new method of attack—and presently are sitting in the driver's seat as they always did.

That happened in Cleveland; it will happen in New York, unless the people who are interested in decent government stay just as wideawake and determined as the politicians.

There is only one cure for misgovernment in America; unflagging, day in and day out vigilance on the part of all the people. Our tendency to put on one big push and then relax is the greatest safeguard and machine politician could ask for.

An Ontario physician is working on a device to measure human brain waves. It should be delicate enough to gauge the radio comedian's ripples.

Century Plant Is Going Into Bloom

BY E. HINRICHS

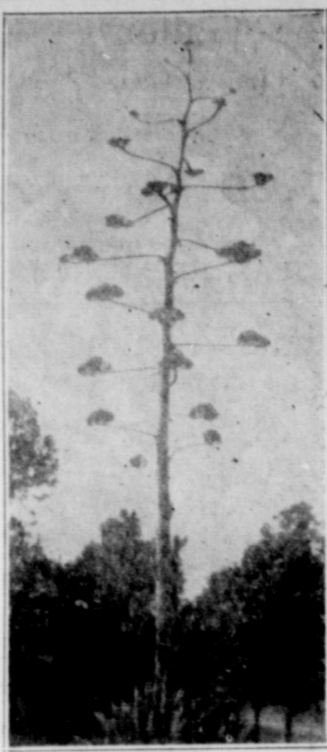
Tourists and local community citizens are seeing for the first time in this section the marvels and beauty of a blooming giant century plant, or known in botanical language as "Agrave Americana Medio-picta," located on highway No. 1, Broadway of America, in the cactus park bordering on the city limits west of Eastland.

The plant was transplanted in the park by Guy Quinn, reputed to be the largest shipper and grower of cacti in the nation. Quinn states that two small plants were brought to Eastland in 1918 by Mrs. H. L. Owen from Richland Springs in San Saba county. Mrs. Owen's father, E. N. Taylor of Richland Springs had brought the plants from Mexico in 1912, the plants being about one year old at the time.

In 1935, Quinn bought these plants from Mrs. Owen and transplanted one in the Cactus park at Eastland and the other in the City park at Ranger.

The Eastland plant is now 30 feet high and has 24 cluster buds spreading from the stem.

According to Mr. Quinn, the giant century plant is a native of Western Mexico, with some distribution in extreme Southwest Texas. Its blooming time is when



The above scene is in Eastland—it is not seen in many other points in Texas.

The plant is from 10 to 25 years old. From the time the blooming stem first starts its shoot from the center of the plant to full bloom

is four months. The blooms to mature before seeding consumes about four weeks. The lower bracket of buds make the first blooms and it continues from the bottom and blooms toward the top.

Immediately after the blooms go to seed the plant dies. There are 77 varieties of the century plant, and belong to the Amarillis family.

Quinn states that when the two plants were dug up to be transplanted they weighed 1800 pounds. The century plant is cultivated in Mexico and from it they get pulque, mescal and make the famous Mexican Tequila, which is high in alcoholic content.

It is doubtful if any part of Texas, other than the extreme southwest part, has a giant century plant that is developing into full bloom except the ones as in Eastland at this time.

Citizens of this community can well take time off to see the remarkable century plant in action, and if you have a camera, get a picture of it and send it to your folks and friends away from home.

EGGS SHAPED LIKE PEANUT

By United Press
CLEVELAND.—Mrs. J. R. Dean owns a hen which regularly lays eggs the size and shape of a peanut.

Try Our Want Ads!

BANANAS LARGE SIZE PER DOZEN 10c

EXTRA FANCY—SUNKIST Lemons, Doz. 30c
WINESAP—138 SIZE Apples, Doz. 30c

4—NO. 1 CANS OR 3—NO. 2 CANS
Tomatoes 25c
BLUEBONNET QT. JAR Salad Dressing 25c

PURE CANE SUGAR Imperial Brand 10 Pound Cloth Bag 52c

PARAMOUNT 3 1/4 OZ. CAN Potted Meat 3c
PARAMOUNT 3 1/4 OZ. CAN Vienna Sausage 6c

Light Crust Flour
24 Lbs. 95c
48 Lbs. \$1.69
MARSHALL'S 20 OZ. CAN Pork & Beans 10c

YUKON'S BEST 6 LBS. 30c; 24 LBS. 90c
FLOUR 12 LBS. 55c; 48 LBS. \$1.64

YUKON'S QUEEN OF THE WEST 24 LBS. 85c
EVERY SACK GUARANTEED 48 LBS. \$1.59

NO. 1—RED Potatoes, Lb. 3c
TABLE Salt, 3Lb. Box 5c

GENUINE Jello, Box 5c
Packed in Syrup No. 2 1/2 Can 2 FOR Green Gage Plums 25c

COFFEE CARNIVAL! 1 LB. CAN 33c
FOLGER'S 2 LB. CAN 63c

P. & G. 6 GIANT BARS 3 BARS WITH 1 BOTTLE PERFUME
LAUNDRY SOAP 25c CAMAY SOAP 21c

LICHTHOUSE CLEANSER 3 14-Ounce Cans 10c

WALTER'S CASH GROCERY & MARKET

PHONE 14 NORTHWEST CORNER SQUARE! EASTLAND FREE DELIVERY

SHOPPERS' Specials!

WE LEAD IN PRICES! OTHERS FOLLOW
Compare these prices with what you have been paying for Groceries before we opened!!!
THE SPOT CASH GROCERY IS THE PEOPLE'S FRIEND!



SUGAR — IMPERIAL PURE CANE 10 POUND CLOTH BAG 50c

SHORTENING ALL BRANDS 8 LBS. . . \$1.03

POTATOES 10 LBS. . . . 14c

MORNING BRACER COFFEE What a Price! LB. 19c

LIGHT CRUST FLOUR 48 LBS. \$1.65

Light Crust, 24 Lbs. . . 89c Light Crust, 12 Lbs. . . 49c

Minimax Flour 48 LBS. \$1.44 Minimax, 24 Lbs. . . . 77c

Sugar Pure Cane 10 Paper Bag LBS. 49c Meal, 20 Lbs. 69c

Vinegar, Gallon . . . 19c FRESH COUNTRY Eggs, Doz. 17c

Bran, 100 Lb. Sack . . \$1.64 Meal, 10 Lb. Sack . . 39c

LETTUCE 2 HEADS 9c

JELLO PKGE. 5c

DEL MONTE Pineapple Juice 46 oz. 29c

CANNED MILK SMALL 4c TALL 7c

MACARONI SPAGHETTI BOX 4c

SOAP MEDIUM BARS O. K. 10 BARS 35c

COMET RICE 2 LB. PKG. 17c

CRACKERS 2 LBS. 19c



Bologna, Per Lb. 12c

Ground Meat, Per Lb. 12 1/2c

ASSORTMENT OF Luncheon Meats, Lb. 23c

Sliced Bacon, Lb. 23c

Longhorn Cheese, Lb. 18c

Beef Roasts, Lb. 15c

Fryers—at a Bargain!!!

DEL MONTE TOMATO JUICE 46 OZS. 24c

BLACK PEPPER BOX 5c

Spot Cash Gro.

FRIDAY AND SATURDAY LAMAR & COMMERCE ST.

COMBAT THE DRYING EFFECT OF SUMMER SUN AND WIND WITH Colonial Dames All-Purpose Cream \$1.00 & \$2.00

The secret of many a lovely complexion is merely a few minutes' night and morning use of Colonial Dames All-Purpose Cream. Rich in fine, penetrating oils, this scientifically prepared cream combines the merits of both a cleanser and tissue cream, and in addition has an abundance of Sunshine Vitamin D to help discourage dryness and premature lines. Use it regularly — and begin a lasting friendship with beauty now.

MISS GERTRUDE HOUSMAN
Colonial Dames Representative

... will be in our Toiletries section from June 14 to 19. She will be glad to have you visit her and will advise you personally in regard to the proper care of your skin.

TOOMBS & RICHARDSON DRUG CO.

East Side Square Eastland

WHILE THEY LAST . .



THESE MODERN ELECTRIC PERCOLATORS AT THE Special Price of **\$2.95**

Never before have we offered such a high quality electric percolator at such a low price. This is a Westinghouse percolator, 6-cup size, made of copper with chromium plating. Buy one or more of these percolators while the limited supply lasts to make your own coffee or to use for attractive wedding or anniversary gifts. Convenient terms if you wish.

TEXAS ELECTRIC SERVICE COMPANY
E. LEWIS, Manager.

A WANT AD IN THIS PAPER WILL BRING QUICK RESULTS!

DESDEMONA

For three days beginning Friday and ending Sunday night, the Methodists of Desdemona were hosts to a large crowd of visitors who came to the home-coming at the new Methodist church, the cornerstone of which was laid Satur-

day afternoon with impressive ceremonies. On Friday night the sermon was preached by Rev. Z. L. Howell of Gordon, who was pastor of the church here from November, 1932 to November, 1935. His daughter, Miss Lois Howell, came with him. At 11 o'clock Saturday morning, the sermon was delivered by Rev. W. T. Jones of Blum, Hill county, who was pastor here from November, 1923, to November, 1927, a four-year term. Rev. Jones was accompanied by Mrs. Jones and their youngest daughter, Ruby, who is now a teacher in a high school. Saturday night the sermon was by Rev. R. A. Walker of Arlington, who was pastor here from November, 1930 to November, 1932, at which time he took the super-annuate relation to the conference. Mrs. Walker, whose health is not at all good, was unable to come, and their daughter, Miss Aline Walker, remained with her. On Sunday morning the presiding elder, Rev. J. E. Curry of Cisco, preached the sermon, and at night the pastor, Rev. O. D. McDonald, whose tireless efforts have made the new building possible, preached to the large congregation. At noon Sunday a picnic dinner was served and enjoyed by all who had come to help celebrate the formal opening of the beautiful church building.

T. I. Long left Tuesday for his home at Plainville, after an extended visit with his daughter, Mrs. Howard Williams, and family. Mrs. Long will remain with her daughter until after the annual home-coming in August. Dr. and Mrs. P. M. Kuykendall

and their daughter, Miss Alla Rae Kuykendall, who lived here from 1919 until 1929, when they moved to Ranger, were among the large number who came Sunday to the home-coming at the new Methodist church. Dr. Kuykendall was president of the board of stewards several years and was very active in helping to get the debt of several thousand dollars on the old church paid off. Mrs. Kuykendall and Miss Alla Rae were also very active workers in the church. Mr. R. B. Elliott of Barnsdall, Okla., father of Mrs. Kuykendall, came with them to the home-coming.

Mr. and Mrs. Guy Patterson and children of Eastland were among the number of former Desdemona Methodists who came Sunday to the home-coming. They visited her parents, Mr. and Mrs. Tom Nabers, and also his brother and sister-in-law, Mr. and Mrs. George Patterson.

Mr. and Mrs. C. E. May and daughter of Ranger visited his brother and sister-in-law, Mr. and Mrs. Walter May, and also attended the Methodist home-coming on Sunday.

Mrs. Harris Key of Lamesa was the week-end guest of Mr. and Mrs. Howard Williams and family. Mrs. Edwin Sneed of Dublin, who is district secretary of the Cisco district missionary societies, attended the Methodist home-coming Sunday.

G. S. Bruce and J. E. Heeter drove to Thurber Lake and spent Monday fishing.

Mrs. J. McDonald of Marshall has been the guest of her son and daughter-in-law, Rev. and Mrs. O.

Strikeout Victim



Homespun, earnest Bernard Wittenaner, Hubford, O., employe of the Youngstown Sheet & Tube Co., is pictured above as he voluntarily appeared before the Senate Labor Committee and told members the plant's steel strike, but threw only 509 employes, but threw 15,000 out of work. He praised the company unions, said he had spent his last dollar to make the Washington trip.

D. McDonald, since Wednesday.

On Tuesday of last week, Mrs. Bobbie Terry of Stephenville came over to see the deep test well that is being drilled on her land by Gallagher and Lawson. It was her first visit here since the well was spudded in on May 12. Mrs. Terry was accompanied by her daughter, Mrs. Kizzie Shuler of Stephenville, and by Mrs. Terry's daughter and son-in-law, Mr. and Mrs. Loomis Morehead of Austin. While here they also visited some of their old friends and neighbors.

Mrs. David Parks enjoyed a few days visit last week from her brother and sister-in-law, Mr. and Mrs. A. C. Williams of Big Spring, and her father, C. C. Williams of Pyote. Her father went from here to his old home at Meridian. Guy Bruce returned several days ago from Hobbs, N. Mex., where he had visited relatives for two weeks.

Mr. and Mrs. Henry Gentry were guests of Mr. and Mrs. Ford Reid on Thursday night, as they were no their way to Knox City to attend the funeral of his mother, who had made her home with him and his family at Robstown until a week before, when she went to Knox City and died just after getting there. We extend sincere sympathy.

The Methodist Missionary society met at the church Monday afternoon and had the monthly Bible study and also had the bulletin of missionary news presented. Roll call responses were answers to questions on the book of Ezra. The Bible lesson from Heart Messages of the Psalms, was taught by Mrs. S. E. Snodgrass. The psalms studied were the 84th and 122nd. Mrs. W. H. Whitworth presented the bulletin. Those present were Miss Mollie O'Rear and Mmes. Charles Lee, G. S. Bruce, W. H. Whitworth, S. E. Snodgrass, O. D. McDonald and W. C. Bedford.

Monday morning a group of Desdemona business men went to Eastland to meet with the county judge and the commissioners for the purpose of discussing the road that they have been trying to get built between here and Strawn. Those who went were L. E. Clark, J. H. Rushing, Jr., Tom Nabers, T. H. ey, Joe Quinn, W. H. Davis and W. C. Bedford.

Mr. and Mrs. A. E. Duncan and Mrs. M. A. Cunningham of Martha, Oklahoma, and Mrs. S. H. Orendorff and daughter of Mangum, Oklahoma, were here Saturday and Sunday looking after their interest in some oil leases and also visiting the grave of their grandmother, Mrs. Mary E. Lewis. Miss Audrey Lane, who spent

Rogue's Gallery Gets the Bird



A peek of trouble was in store for this bluejay when it came around for its morning drink "on the house" in a Seattle residential neighborhood. For several weeks householders found tops of their milk bottles punctured, the cream drained off. Then one of the victims rigged a fake bottle so it would photograph the culprit in the act—and here is the picture of the guilty bird!

her childhood here but now lives at Longview was the guest of her brother, Horace Lane and family Sunday night. She was accompanied by her friend, Mrs. Ray, also of Longview.

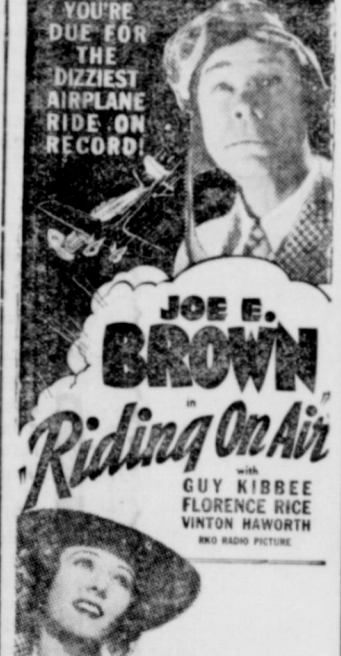
Mrs. Sallie Ervin of Rising Star came over Saturday for a visit with her daughter, Mrs. Wiley Powers and family.

Mr. and Mrs. Paul Baker of Coahoma, came Saturday for a short visit with her parents, Mr. and Mrs. Hugh Abel.

Mr. and Mrs. Bailey Stark and baby, Jane Anne, spent the week-end at Oiden with her parents, Mr. and Mrs. C. H. Everett and his parents, Mr. and Mrs. W. C. Stark. The Everett family had several family gatherings last week in honor of their oldest son's visit. This son, Charles Jr., is an officer in the U. S. Navy, stationed in California. He came by air-

CONNELLEE

LAST TIMES TODAY



CONNELLEE

SATURDAY

He could pack a six-gun and pick a mean guitar!



Gene AUTRY "THE YODELING KID FROM PINE RIDGE"

plane from Los Angeles to Dallas, making the trip in 6 hours.

Mr. and Mrs. Horace Lane and daughter, Bobbie Jean and Mr. and Mrs. W. A. McMillan enjoyed a picnic Saturday night at Lake Cisco. Mr. and Mrs. W. J. January of Oiden went with them.

Mrs. Travis Hilliard left Monday night for Freer where Mr. Hilliard is working. Gallagher & Lawson No. 1, Bobbie Terry down to 1050 feet Monday afternoon. Misses May, Rennie and Olive Moffett of Midland, D. O. Moffett of Leuders, spent the week-end at the home of their father, F. M. Moffett, on the Texas company lease.

Mr. and Mrs. Oscar Oakley of Ranger were here on business Friday.

Mr. and Mrs. S. T. Stover and their grandson, A. D. Jones Jr., drove down to De Leon on business Friday.

Mrs. J. H. Rushing Sr., who has been ill for several days was taken to the Blackwell Sanitarium Saturday just for examination. We are glad to report that she is improving. Her niece, Mrs. J. H. Rushing Jr., took her over there. Mrs. Hughes of Dallas, was the

Texas Gets Second Watershed Project

MARLIN, Texas—Texas receives the second of only ten Watershed Studies projects of the U. S. Department of Agriculture, soil conservation Service to be established in the U. S. planned for more detailed observation in erosion, rainfall, water control, run-off, soils and conservation methods.

"This project is known as the 'Brushy Creek Watershed Studies' and located in Falls County, Texas about 9 miles north of Marlin includes 841.3 acres purchased by the government at cost of \$76,000.00.

The government has just called for bids on eight structures to be built at the administration headquarters on the site, at a cost of \$100,000.

Mr. and Mrs. Wilson Robinson, of Ranger are here for a few weeks while he works for the Prairie-Sinclair company.

estimated to be about \$50,000. These will be fireproof, semi-Spanish architecture and includes a dormitory, laboratory, kitchen, gas and oil storage, meteorological building, implement shed, motor vehicle shed and maintenance building. Other buildings are scheduled in the plans later at this headquarters to include homes also for engineers and employees necessary on the location at all times.

This is a new introduction into the field of soil erosion control research. It is not a relief program project and is designed to continue operations for 20 to 30 years, or longer. An annual payroll of \$50,000 will be necessary for the operations, during the time.

Hamner Undertaking Co. Phones 17 and 564 DAY OR NIGHT AMBULANCE SERVICE

First Aid for Constipation Nyal Mineral Oil A non-habit forming relief for constipation and irregular movements: Pure, tasteless and odorless. 59c Eastland Corner Drug Store

A. & P. BREAD SLICED WHITE 16 OZ. LOAF 2 FOR 15c ANN PAGE DRESSING SALAD 1/2 Pint 11c Pint Jar 19c Quart 33c 8 O'CLOCK COFFEE 2 LBS. 33c NECTAR TEA 1/2-LB. 15c 1-LB. 27c CHUM SALMON Tall Can 2 For 21c CRUSHED PINEAPPLE 8 OZ. 3 For 20c IONA CORN 3 NO. 2 CANS 29c PAN ROLLS, Pkg. 5c PUREY, BLEACHER, Quart Bottle 15c IONA COCOA, 2 Lb. Can 17c

OATS SUNNYFIELD 5 LB. PKG. 23c TOWELS SCOTT or RED CROSS ROLL 10c QUART MUSTARD 10c TISSUE PACIFIC TOILET 6 FOR 25c Pineapple Juice 12 OZ. CANS 25c Baking Powder SULTANA 2 LB. CAN 19c QUALITY FRESH FRUITS and VEGETABLES New Potatoes, 10 Lbs. 17c Bananas, Golden Ripe, Lb. 4c White Bermuda Onions, Lb. 2c Lettuce, Green Crisp Hd. 3c Squash, White or Yellow, Lb. 2c Carrots or Beets, 2 Bunches 5c

QUALITY MEATS AT REASONABLE PRICES Roasts, Fat Veal Chucks, Lb. 15c Veal or Baby Beef Chops, Lb. 18c Odd Sliced Bacon, Lb. 19c Cheese, Wisconsin's Best, Lb. 23c Palace Sliced Bacon, Lb. 33c Picnic Hams, 4 to 6 lbs., Lb. 23c Hams, half or whole, Lb. 28c Center Slices, Lb. 39c We have a good variety of Lunch Meats and Cheese Pen Fed Hens and Fryers. We dress them. The price will be right. See them!!! SALT Jowls, Lb. 17c BIG Bologna, Lb. 10c SUGAR CURED Bacon, Lb. 30c

A. & P. MARKET DEPARTMENT OWNED AND OPERATED BY S. L. (LEON) BOURLAND SEE OUR WINDOWS FOR ADDED SPECIALS

ELECTRICAL APPLIANCES Texas Electric Service Co.

Hotel Garage TEXACO PRODUCTS Storage and Tire Service West Main Phone 42

ROSS HODGES Doctor of Veterinary Medicine, Veterinary Surgery, specializing in all diseases of livestock, poultry and pets. 906 CHERRY STREET RANGER PHONE 115

vitamin sale MAINTAIN YOUR HEALTH VITAMIN MEATS --- AT LOW COSTS!! HORMEL SLICED BACON 1-LB. PKG. 30c FANCY VEAL CHOPS LB. 22c LARGE BOLOGNA LB. 10c VEAL CHUCK ROAST LB. 15c FANCY VEAL STEAK LB. 25c FRESH DRESSED HENS AND FRYERS VITAMIN FRUITS AND VEGETABLES Roasting Ears, 6 for 19c White Rose Potatoes, 10 Lbs. 25c Lettuce, Firm Heads 4 1/2c LONG GREEN Cucumbers, 3 Lbs. 10c HOME GROWN Green Beans, Lb. 4c 35 TO 40 LB. AVERAGE Watermelons 59c Cantaloupes, 2 FOR 15c Blackeye Peas, 3 LBS. 10c Tomatoes Fancy Pink 2 LBS. 15c Bananas FOUND 4 1/2c Lemons Fancy Sunkist Doz. 25c White Onions, 3 LBS. 10c Pineapple LARGE FRESH 19c Potatoes, 10 LBS. RUSSETT 19c Eat and Grow Healthy; Save and Be Happy! GREEN BEANS (Deer Brand) 3 NO. 2 CANS 25c 8-LB. CARTON SPECIAL COMPOUND 98c Pinto Beans, 2 Lbs. 15c Salmon Fcy Pink 2 Cans 25c No. 2 CANS TOMATOES 2 for 15c Jello, 3 Pkgs Any Flavor 15c LIBBY'S Pineapple Juice, 3 FOR 25c PINEAPPLE (Broken Slices) 2 NO. 2 CANS 25c PIPKIN'S SPECIAL COFFEE LB. 17c Soap P. & G. or O. K. 6 Bars 25c LIBBY'S Tomato Juice 3 Cans 23c PURE CANE SUGAR 10 Pound Bag 49c Corn Flakes, Pkg. 10c Crisco, 3 Lbs. 59c Flour LAND OF GOLD 24 Pound Sack 75c 48 Pound Sack 1.39 Pipkin Bros. PIGGLY WIGGLY

Japanese Songs Are Coming to U.S.

NEW YORK—To the casual observer, there would appear to be no connection between Japanese music and 1937 but Vincent Lopez, band leader and numereologist has found one. Every five years or so, it seems this country embraces a new type of music. Hawaiian songs in 1917, jazz as a national pastime in 1922, the tango in 1927, and the rumba in 1932 have been milestones in America's musical progress. Lopez believes the new vogue may be the music of Japan.

Japanese music is built on two five-tone scales, generally in minor, but not always. It is intensely melodic and is almost always built on a "swingable" rhythm. Old books of Japanese songs reveal that popular music across the Pacific employed all the tricks of syncopation before they had been used in the Western world in any form other than classical music, but probably to the fact that the banjo-like samisen is the most popular instrument in Japan.

Convinced that Japanese music had the qualities necessary to create a vogue in this country, Lopez set about locating some of it and discovered the scores of all the Japanese "smash hits" of recent years were already in this country, brought over by Burton Crane, an American newspaperman who had spent 11 years in Japan. Since Crane had already fitted English-language lyrics to the numbers nothing remained but to play them.

"Rare Are These Hours," is a composition by Masao Koga, the most popular of all Japanese composers. Still played in Japan although introduced in 1931, this song sold more than 500,000 copies in phonograph records, thus becoming the outstanding hit of all time.

Many Questions Sent Tax Collector

WICHITA FALLS, Texas—Wichita county taxpayers like to ask questions, especially of Tax Collector Jim Robinson. They are prone to forget to inclose stamp envelopes and thus collector Robinson's office shells out \$900 yearly for stamps.

"It isn't right, that we are forced to spend the money that belongs to taxpayers in such an outrageous fashion," Robinson said. But what can a fellow do?

Jim isn't complaining about tax collections, far from it. "Payments for 1936 are coming in just dandy," he said. The fault is Robinson's, that the failure of persons writing his office to enclose stamped envelopes has cut heavily into his yearly budget.

For instance, Jim explained, a prospective taxpayer will send him a note to find out how much his taxes will be. The questioner neglects to send also a self-addressed and stamped envelope. After he determines and amount of the tax, Jim must use a stamp to notify the person. The taxpayer remits but again sends no stamped envelope. Result—another stamp for the receipt. And the same thing happens dozens of other times.

One thing Jim is glad of—he doesn't have to lick the \$900 worth of stamps.

Trotsky Recommends Democracy In Russia

MEXICO CITY, June 17.—Leon Trotsky, the exile regarded by Soviet Russia as its arch enemy today urged a return to democracy of the Soviet Union in a telegram sent to the Central Executive Committee of the Union.

Measured by record sales, since the sheet music industry is in its infancy and the government-controlled radio plays little popular music, devoting most of its time to lectures intended to strengthen the people of their patriotism or to educate them.

Mysterious Calls Continue Two Years

By United Press ST. LOUIS.—For two years Dr. and Mrs. Glenn R. Northrup silently endured a series of mysterious telephone calls here. Finally their patience gave out and they complained to police.

For the first 16 months, when Mrs. Northrup answered one of the calls, she heard a torrent of abuse, sometimes from a man and others from a woman, ending suddenly without a revelation of identity. When Dr. Northrup answered, he was summoned to a vacant building or lot.

Eight months ago, the callers changed tactics. Dr. or Mrs. Northrup would answer the phone and wait in vain for a response until a click indicated the caller had hung up. When eight such calls came through in half an hour, the Northrups decided that enough was enough and notified police.

Desdemona Club to Meet This Friday

The Desdemona Home Demonstration club will have its regular meeting June 18, Friday afternoon at 2.30, at the home of Mrs. Hattie Tate.

The program will be on "Vegetable Parade," given by Miss Ruth Ramey, home demonstration agent of the county. Each member is asked to bring one of the following to be scored: one container of fruit or vegetables. For the fresh vegetables or fruit such as potatoes, peaches or such, 4 or 5 each. Beans, peas, okra or such, one quart.

All members are asked to be present, and visitors are always welcome.

NYA Proves that Students Who Earn Make Best Grades

By United Press AUSTIN, Texas—Reports from colleges and universities of Texas which participated in the National Youth Administration College Aid program last session tend to support the oft-expressed theory that students who earn part of their expenses make better grades than students who have all expenses paid.

Sixty-eight of the 87 colleges participating in the program have already filed annual reports with J. C. Kellam, State NYA Director. In 38 of the reporting colleges, students provided with NYA employment made better average grades than the entire student body. In 20 colleges the average grades of the two groups were reported to be approximately equal, while in nine colleges NYA workers were making slightly lower average grades than the student body. One school did not answer the question.

The reports that have been tabulated indicate that 66 per cent of the students employed were assigned to work which directly facilitated the teaching program. These students worked as clerks, teachers' helpers, library assistants, stenographers, and laboratory and shop assistants. About eight per cent of the students were employed on campus improving the school. And seven per cent in assistance in the athletic department. The remaining students were assigned to various other jobs. About one-half the colleges reported that NYA employment was responsible for increases in enrollment.

The students employed on the College Aid program were selected by the college officials for employment because they needed assistance in order to enter or remain in school properly. They were assigned to socially desirable work under the supervision of their teachers and were paid at prevailing hourly wage rates. Their earnings were limited to an

LEGAL RECORDS

Marriages
J. T. Foster and Miss Maudeline Smith, Cisco, Route 4.
Alfred Dewey Williams and Baibara Belle Dennison, Okra.
Frank Hallmark and Miss Cormie Seago.
Worth Ford and Miss Mabel Merritt.

New Cars Registered
1937 Chevrolet coupe, Gus Leng, Cisco; A. G. Motor Co., Cisco.
1937 Packard Sedan, Hawkins, Cisco; Burnside Motor Co., Eastland.

1937 Chevrolet coupe, Miss Wilda Drago, Eastland; Whitaker White Motor Co.
1937 Chevrolet coupe, Dr. Walter L. Jackson, Ranger; Anderson-Pruett Inc., Ranger.

1937 De Luxe Touring Ford, Mrs. W. T. Roat, Ranger; Evans Motor Co.

Suits Filed
91st. Estelle Cowley vs. Lewis Cowley, divorce.
Goldie Smith vs. Travis Smith, divorce.

The State of Texas vs. Hickory Oil Co., et al. Inj.
88th. T. B. Busbee vs. R. A. Horton, To dissolve partnership.

Irene Lindley vs. Edwin Lindley, divorce and custody of two minor children.

Marriage Licenses
E. B. McCuiston and Mrs. Emma McCuiston.
M. T. Allison and Miss Lottie Bristow.

I. N. Poyner and Edna Earl Whitlock.
Jessie C. White and Beatrice Bernice Hazelwood.

Bill White and LaFaye Gleetwood of Enice N. Mex., Box 379.
W. M. Morris and Carol Bernice Johnson, Monahans, Box 114-A.

New Cars Registered
1937 Chevrolet sedan, Charles Rutherford, Pioneer, A. G. Motor Co., Cisco.
1937 Chevrolet truck, Frank Castleberry, Eastland, Harvey Chevrolet Co.
1937 Chevrolet coach, B. H. Greer, Ranger.

1937 Ford pickup, Norvell & Miller, Cisco, Nance Motor Co., Cisco.
1937 Chevrolet truck, Magnolia Petroleum Co., Olden. Gorman Sales, Gorman.

1937 Duick sedan, C. H. Fee, Cisco. Muirhead Motor Co., Eastland.

Canada Forms First G-Man Department

MONTREAL—The first Canadian investigation and law-enforcement agency patterned after the United States "G-Men" is being formed here.

It is a squad of "special operators" who will work under the jurisdiction of the Province's attorney general's department, in cooperation with, but independent of, the provincial police force.

The squad will be composed of experts in different fields of police work. Its main function will be to investigate reported racketeers. The operatives also will cooperate with the provincial police in vice and gambling raids, investigate labor disputes and troubles, collect "independent" evidence in criminal trials and obtain special information for use in drives on illegal businesses.

Each of the special operators will be put in charge of a certain field of investigation, for which his previous training best fits him. One man will have charge of all labor investigations, another vice and gambling, and another business racketeers. Others will be held for special investigation into complaints which reach the department.

Authorities believe that the work of special operators will result in better prepared criminal cases being brought before the courts.

Retail Store Sales In April Were Up
DALLAS—Retail sales of 780 independent stores in Texas showed an increase of 10.5 per cent in dollar volume in April compared with the corresponding month last year, the U. S. Department of Commerce bureau reported.

Sales in cities with a population of 10,000 to 25,000 increased 21 per cent and the sales of the 25,000 to 50,000 group increased 16 per cent. Sales in areas of less than 2,500 increased 17.5 per cent. April business showed a volume of \$14,224,600 as compared to \$22,875,800 a year ago.

Befogged Mind of Youth Is Cited

SPRINGFIELD, O.—Many high school graduates would do well to enter college, if only to clear minds befogged with superstition and jammed with misconception, Dr. A. J. Arnold concluded from tests given to freshmen entering his psychology class at Wittenberg College here.

Dr. Arnold said students entering college are still "victims of numerous misconceptions, fallacies and biased judgments with reference to the many accepted facts of psychology, reflecting most of the fallacious beliefs and popularization."

Asking freshmen joining psychology classes to submit to examinations on their beliefs and misbeliefs, he discovered 50 per cent of more than 200 believed women have powers of institution with which men are not equipped; that expectant mothers can mark their unborn by undergoing frightening experiences; that beavers know when to prepare for a long cold winter; that red makes a bull wild and a wild bull wilder, and that chess-playing develops powers of concentration.

From a third to a half believed howling dogs foretell death; long slender hands indicate an artistic nature; modern civilization is almost entirely a product of the white race and if some one stares long enough at a person's back he will turn around.

As many as 25 per cent still cling to the idea a receding or "streamlined" chin denotes lack of will power; silent men are deep thinkers; fat people are always good-natured, and you can read character by bumps on the head, or by depressions in the skull.

"Obviously there are dangers in such weird thinking," said the psychologist. "A bull may catch up with someone fleeing in a pea-green bathing suit, and he may damage the suit; a chess-player may be able to concentrate only on chess."

"Certainly there is much yet to be done to steer all of us past thinking that is along the sensational, the bizarre and grotesque."

WPA Eligibles In Texas Has Dropped To 100,000-Mark

SAN ANTONIO.—The number of destitute Texans eligible for employment on Works Progress Administration projects has dropped to 100,000-mark for the first time since the inception of the WPA, State Administrator H. P. Drought has announced.

The Texas case load of persons eligible for WPA work was 99,769 last week, Drought declared, the lowest figure in the two-year history of the organization.

"This week's report that less than 100,000 Texans are eligible for employment on WPA projects is an encouraging milestone in our efforts to reduce unemployment in Texas," Drought said. "The case load has declined steadily since the beginning of the fiscal year when more than 170,000 persons were certified as destitute and eligible for employment on Federal Works Program projects."

Cow Suffering a Strange Malady Finally Rescued

Editor's Note: The following story is reprinted from the May number of Safety Councillor. The writer is an operator at Plant No. 108, Lone Star Gas Co., at Ranger.

I have heard of traps and nets being set to catch animals, both large and small, but I never heard a thing about tying a bunch of weeds and grass on a cord and fishing in a pasture for a cow. It happened this way: The other afternoon about sundown, as I was going out to our residue gas riser about 200 yards from the plant, I noticed a cow standing by the path looking rather strangely at me. After I observed her closely I noticed a large cord, about the size of a large fishing line, hanging from her mouth.

I looked around and noticed quite a bit of this cord on the ground, so I walked closer to the cow to observe her. Her ears seemed to be drooped as though she were in trouble. I took hold of the cord which was hanging from her mouth and gave it a pretty good pull but it failed to budge. I pulled a second time with no result, and seeing that I was getting nowhere I decided to pull until the cord broke . . . or else. So I really pulled hard on the cord the next time and it slipped a little. Continuing the pull, I finally extricated about ten feet of the double cord from the old cow's throat, together with a bunch of weeds and grass all matted on the end of the cord.

Feeling that no one would believe anything of this sort (fishing for a cow in a pasture) I brought the line with the weeds and grass bait still on it down to the office for proof of my story. I hope the party who finds his "catch" taken from his line does not get as sore as some fishermen do when they find their lines robbed, because I believe if you had seen this poor old cow as I did you would have helped her loose, too.

Hints On Seams Are Given at 4-H Meet

COLLEGE STATION, Texas—State and federal workers have begun a campaign to control th grasshopper infestation in Texas this year. R. R. Reppert, state leader in the grasshopper control work said the pests likely will be as numerous as in 1924.

Federal sources have allotted 10,000 gallons of sodium arsenite 50 tons of mill run feed and 75 tons of sawdust for the work in Texas.

Hardest hit sections in the state are the Panhandle, the northwestern and the central portions.

Those present at the meeting were Mrs. J. B. Rayfield, Miss Cornelia Fay Stewart, Jo Jane Nix, Ruby Yarbrough, Johnnie Nix, Glenn Duncan, Eula Fay Harbin. Visitors were Miss Mary Elizabeth Rayfield and Mrs. Duncan.—Reporter, Eula Fay Harbin.

Colors, they say, express our feelings, which explains why most of us are in a brown study around tax-paying time.

Noise of a plane in flight is mostly from propellers beating the air, just like a mosquito getting ready to make a landing.

Tom Lovelace Now Johnson Line Agent

Announcement is made today that Tom Lovelace is now the authorized agent for the Johnson Motor Lines, operating in Texas, Oklahoma and Kansas.

Tom has been in the transfer, storage and heavy hauling business for the past 15 years and is thoroughly experienced in the work necessary to give the best service.

All Johnson motor trucks are closed in steel and fireproof manufacture, which gives the safe, possible method for handling a kinds of freight.

Tom says, "I am better equipped now than ever to handle every possible kind of freight shipments. We specialize in moving household goods and heavy hauling, and there is no job too big or too small for us to give it the strictest handling and attention."

Tom is assisted in his office work by his efficient wife, and between them they do the job well. They have made their home in Eastland for the past 17 years.

Tire Agency Goes To George H. Hipp

George Hipp, operator of the service station with that name, announced Thursday he has secured the Eastland agency for Goodrich tires.

"Now," said Hipp, "we can supply you with the famous Goodrich Safety Silvertowns—the only tire in the world with the Golden Fly Blowout protection. You actually pay less for Silvertown than for other super-quality tires—so Golden Fly Blowout protection is free."

Hipp stated that he has a complete new stock of the Goodrich tires, fitting and size and shape. Beside handling Goodrich tires Hipp's station offers a full service in the service station line.

Grasshopper War Started by A. & M

By United Press COLLEGE STATION, Texas—State and federal workers have begun a campaign to control th grasshopper infestation in Texas this year. R. R. Reppert, state leader in the grasshopper control work said the pests likely will be as numerous as in 1924.

Federal sources have allotted 10,000 gallons of sodium arsenite 50 tons of mill run feed and 75 tons of sawdust for the work in Texas.

Hardest hit sections in the state are the Panhandle, the northwestern and the central portions.

CLASSIFIED

FOR RENT: 3 room furnished apartment, 1020 West Commerce.

FOR SALE: Piano; real cheap Kelley place, 2 1-2 miles on Car bon Highway.

WANTED—Man with car to take over profitable Rawleigh Route Established customers. Must be satisfied with earnings of \$30 week to start. Write Rawleigh's Dept. TXF-222-101, Memphis Tenn.

Bridal Showers Fill June Hours

Isn't it thrilling to think that this month so many of your friends are honeymooning? Joan and Nancy and Peg and Grace—grand girls all of them—and soon to be happy brides.

Give them the send-offs they deserve. A bridal shower can be a wonderful help to a girl awaiting marriage—if the gifts are chosen wisely.

You can make your contributions to these affairs both useful and attractive. And you don't need to spend more time or money than you can afford! Just look over the advertisements in today's paper. They're brimming with ideas for better home-aking. Hundreds of practical gadgets to lighten household tasks are offered for your choice—all moderately priced.

It's easy to shop—either for bridal gifts or for your own needs—if you make it a habit to read the advertising pages first. Before you set out you'll know exactly what to get, where to get it, and how much—or how little—to pay!

average wage of \$15 a month. During the month of May 8,336 students were employed in the 87 Texas colleges and universities participating in the program.

PENNEY'S
SOCKS
Men's Fancy Rayon Socks—All colors and patterns, 2 Pair . . . **19c**

PANTS
Men's Wash Pants. All pre-shrunk and fast color. A large selection of patterns and sizes **98c**

SHIRTS
Men's fine quality dress shirts in white and fancy patterns **\$1.49**
A real value

PAJAMAS
Men's summer weight fancy pajamas. A large selection of patterns **\$1.49**

TIES
Men's Fancy Patterns in a large selection of summer neckwear. The right gift for Father's Day **49c**

PENNEY'S
Across from Connellee EASTLAND

Gift SUGGESTIONS FOR Father's Day

SPECIALS AT LOTIEF'S
PANTS
SPECIALLY PRICED
Just what you would like to have.
98c

SHIRTS
The very latest patterns in desired fabrics. Get him 2 or 3.
SPECIALLY PRICED
89c

Ladies' Dresses **99c**
Ladies' Sandals **98c**

LOTIEF DRY GOODS CO.
EAST SIDE SQUARE EASTLAND

BARNETT WELL WITHIN EASTLAND AREA GETS OIL AT 1,455-63 FEET

A producer one and a half miles southeast of Eastland was a certainty Thursday, but the amount of its production was a matter of conjecture.

The well is the Barnett Petroleum corporation and J. L. Reeves No. 1A L. C. Downtown, section 2, E. T. R. R. survey, block 6, 1,000 feet from the east line and 1,250 feet from the south line.

Oil was found in the Strawn sand from 1,455 to 1,463 feet. The well was shut down after bailing a quantity of oil to await the arrival of operators, who plan Friday to set 6 1/2 inch casing to the producing depth and cement the pipe. It will be several days before the cement is sufficiently dry to complete the well and learn the exact production, although various estimates were made that it was capable of producing from

25 to 50 barrels a day. Several bailers of oil Thursday morning disclosed the production is of high gravity. The well was drilled with a Wichita Falls spudger.

Among visitors at the well on Thursday were C. W. Hoffmann and Karl Page of Eastland, who in 1926 drilled a gasser about 950 feet northwest of the No. 1A Downtown.

Operators on the Downtown have 966 acres blocked in the area. The well is open hole from 825 feet, the depth to which extends 10-inch pipe from the surface. The well is in an old area which is said to have yielded production 20 years ago. Several wells were drilled then.

It was believed the showing will result in other activity in the area.

Presbyterian's Sunday Program

The First Presbyterian Church of Eastland is resuming its full program of activities with Alvin Bailey, student at The Theological Seminary at Princeton, filling the post of supply pastor. Starting Sunday, June 20, there will be offered to the public a complete program of worship and all are cordially invited to attend.

There has been considerable activity about the church this week in an endeavor to get this program under way. Under the supervision of David B. Vermillion, and with the fine assistance of William Jessup and his Boy Scouts, the church property and equipment is being repaired and improved. With the loyal leadership of Conrad Reeves, the young people of the church are being organized into an active association, and Carl Johnston is to continue as Superintendent of the Sunday School in which position he has proved himself extremely capable in the past months. Mrs. Cyrus James, heading the ministry of music of the church, announces that while there is an abundance of fine talent now active, anyone interested in music is urged to

join in making the music of the church the best possible.

For his opening sermon here next Sunday, Mr. Bailey has chosen for his text Ezra 7:10—"For Ezra had set his heart to seek the law of Jehovah, and to do it, and to teach in Israel statutes and ordinances." The sermon, titled "The Design for Working," is aimed to present Ezra in the light of an ideal worker from whose example we may all well benefit. In order to survive successfully in an era such as we are now experiencing, it is essential that we understand how to actually work, as did Ezra.

Mr. Bailey's study is located in one of the church parlors which may be conveniently reached through the south entrance of the church. He invites any and all to call on him at any time, and promises a fine worshipful service every Sunday to which all are invited.

The program for Sunday, June 20th:

10:00 A. M. Sunday School; Superintendent, Carl Johnston. Subject, "The Gospel According to St. Matthew."

INDEPENDENCE DAY

TIRE SALE



★ **Don't Spoil a Glorious 4th of July Trip with Smooth Dangerous Tires ... Equip your Car Today with New SEIBERLINGS**

★ Thousands of motorists are killed every year on smooth dangerous tires. Take no chances—bring your car to our store, tell us what you think your old tires are worth and if your proposition is reasonable we will allow what you ask as a trade-in allowance on new Seiberlings.

★ This offer is good for four days only. We have a tire for every purse and purpose.

SEIBERLING

Vapor Cured TIRES

Genuine SEIBERLINGS As Low As \$4.85

Jim Horton Tire Service

EAST MAIN STREET PHONE 258 EASTLAND

Breck Jurist to Preside In 88th

R. H. Atchison, judge of 90th district court at Breckenridge, has been assigned by George L. Daventon, judge of 91st district and judge of the eighth administrative judicial district to preside in 88th district court for the seventh week of the May term beginning Monday.

Judge B. W. Patterson, regular jurist of 88th court, is in Magdalena, Ariz., recovering from an automobile accident.

Following is the jury list:

E. P. Kilbarr, Eastland; Billie Bacon, Cisco; E. L. Anderson, Desdemona; E. R. Trimble, Eastland; Guy Brogeon, Romney; K. B. Tanner, Eastland; Ben Stephenson, Carbon; A. E. Wright, Eastland; H. L. Capers, Gorman; W. H. Collins, Olden; Rufus Been, Carbon; R. A. Jamison, Ranger; A. V. Clark, Cisco; Ben Landreth, Rising Star; W. B. Bennett, Eastland; E. C. Bethany, Carbon.

T. A. Bandy, Eastland; Arthur Cone, Cisco; J. LeRoy Arnold, Eastland; T. E. Bankston, Ranger; R. Gray, Carbon; R. D. Abskin, Gorman; R. O. Jackson, Rising Star; Earl Bender, Eastland; Oscar Schaefer, Nimrod, Route 2; Homer Lane, Seranton; W. Y. Reed, Carbon; J. M. Irby, Rising Star; O. D. Brogdon, Gorman; E. E. Jones, Cisco; S. A. Landers, Ranger; T. L. Johnson, Desdemona; E. H. Jones, Eastland; W. E. McCall, Carbon; I. E. Ramsey, Carbon; Karl K. White, Eastland.

Opening Sentence, Doxology, Invocation.

Hymn No. 278, "Come, Holy Spirit, Heavenly Dove," Dykes."

Pastoral Prayer.

Responsive Reading, Selection No. 29.

Gloria Patri. Offertory: Anthem, "Satisfied" Steinhoff; John Pope and his girls.

Hymn No. 388 "O Jesus, I Have Promised," Mann. Scripture Reading, Ezra 7:1-10. Sermon, "The Design for Working," Alvin Bailey. Hymn No. 365, "Lead On, O King Eternal," Burnap. Benediction; Silent Prayer. Postlude, "Melody in F," Rubinstein.—Reporter.

Body of Boy Who Drowned Arrives For Final Rites

The body of Alton Clark, 18-year-old son of Mr. and Mrs. Frank Clark of Celeste, who was drowned in East Texas Wednesday night, arrived by train Thursday morning in Eastland for burial Friday.

The youth was a grandson of Mr. and Mrs. Charlie McFadden, who live southeast of Eastland. Funeral services are to be held at 3:30 Friday afternoon at the Church of Christ and interment will follow in the Eastland cemetery.

Full information of the tragedy had not been received in Eastland Thursday.

Hanner Undertaking company of Eastland will be in charge.

91st Court Jury List Is Announced

Following is the petit jury list for the third week of the June term of 91st district court starting Monday.

R. A. Gowan, Gorman; Oscar Wilson, Eastland; Roy Acker, Carbon; F. W. Hoffmann, Eastland; Doss Alexander, Pioneer; J. E. Martin, Carbon; T. J. Reynolds, Cisco; S. B. Mize, Cisco; J. M. Thurman, Carbon Rt. 2; R. A. P'Pool, Eastland; W. M. Medford, Carbon; Dave Wolf, Eastland; J. S. Davis, Carbon; F. E. Langston, Ranger; F. L. Boland, Seranton; J. S. Burkhead, Eastland; G. C. Pence, Cisco, Route 1, H. B. Self, Rising Star; Jack Muirhead, Eastland.

J. V. Heyser, Cisco; S. R. Herndon, Cisco; Fred Michael, Eastland; R. L. Mosley, Gorman; H. H. Harrelson, Nimrod; E. E. Blackwell, Ranger Rt. 1; A. A. Norton, Olden; H. F. Claborn, Carbon; P. R. Warwick, Cisco; O. O. Mickle, Eastland; W. P. Moore, Rising Star Rt. 1; J. C. Allison, Eastland; C. A. Cannon, Rising Star; W. M. Blair, Gorman; Eugene Day, Eastland; Dixon Boggs, Rising Star; T. T. Notgrass, Ranger; R. C. Mahaffey, Gorman; Charles D. Ballew, Rising Star, Z. B. Morgan, Ranger.

Eastland Losers In Oil Belt Game

Despite three homers netted by Tully, the Eastland All-Stars were defeated on their home field in an Oil Belt Softball League game Wednesday night by the Abilene team.

The score of the game was 11 to 6.

Meeting at Morton Valley Is Planned

H. D. Blair, Baptist Association Missionary of the Cisco Association will begin a revival meeting at the Morton Valley School house on Sunday night, June 20th.

Services will be held each evening beginning at 8 o'clock.

Child's Habits Are Responsible For Mental Actions

AUSTIN.—A child's habits are responsible, in a large measure, for their mental actions in later life, according to Dr. George W. Cox, state health officer. A child of five or six years may have a bad temper. He can be taught as he grows older, to exercise self-control so that it will not often be manifested. It would be better for him had he acquired a good temper instead of a bad one.

Today the medical profession understands more fully the enduring influence of habits that begin in the earliest years of life, in the nursery, or even in the cradle. In the young child, as a result of habit, certain types of behavior become established.

Perhaps the child had learned while yet an infant, that he could get what he wanted if he cried long and hard. Perhaps he had learned, when a little older, that bad behavior, as tantrums, screaming, rolling on the floor or sulking, brought him what he wanted after his request had been refused or ignored.

If he had this experience once,

Boys Save Dog From Old, Caved-In Well

VICTORIA, B. C.—A dog's yelp enabled two Parkville boy scouts, Albert Transfield and Harry Burton, to do a good turn.

The boys were wandering near an old well, half caved in and 45 feet deep, when they heard the dog's cry. Looking down into the well, they saw it at the bottom.

Baiting a box with a sandwich, they lowered it into the well with strong wire. The dog jumped in and they pulled it up.

Farmers Are Told Chemurgy Is Not Cure for All Ills

ROCHESTER, Minn.—Fear that agriculturists may become too optimistic about development of new commercial uses for farm products was expressed by F. W. Peck, director of agricultural extension and vice-director of agricultural research of the University of Minnesota farm.

There is danger that possibilities in the field of farm chemurgy may be overdone, Peck said. He explained that chemistry at work with farm products has attracted a great deal of attention among industrialists, chemists and farm leaders, but that farmers may rush into production of commodities intended for commercial use but for which no adequate market has been developed. Industry may not be able to pay high enough prices to justify production of such products by farmers, Peck said.

He warned farmers to consider whether new industrial products may not actually compete on the market with other established products of the farm. Food and fiber products now being most prominently considered for industrial utilization were cited as examples.

Large Vessels Will Navigate the Volga

MOSCOW.—The Volga-Moscow canal, the largest river canal in the world, solves three important national economic tasks.

The first—to insure the population of the capital with drinking water from the Volga. The canal will add daily 100,000,000 pails of water to the Moscow water supply. The residents of the Soviet capital will receive daily 600 liters of water per capita.

The second task is to supply water to the Moscow river and its tributaries, flowing within the bounds of the city. For that purpose, 280,000,000 pails of water will be supplied daily.

The third and the most important task, is to link the Soviet capital with Volga and to transform Moscow into a port accessible to steamers with deep sea displacement.

The canal represents a gigantic system of complicated structures. Its length is 70 miles, of which about 20 represent navigable water reservoirs.

Construction of the canal was begun at the beginning of 1932, and assumed full swing in the spring of 1933.

Blood Pressure Is Found Affected by Couple of Glands

ST. LOUIS.—High blood pressure is due to a lack of balance between the sympathetic system governing the circulation of the blood and the energy-controlling adrenal and thyroid glands, according to Dr. George W. Crile, one of the founders of the Cleveland Clinic.

Dr. Crile told the American College of Physicians meeting here that a close relation between the two is found in all animals and in man.

He said the relation exists because the glands, in speeding up oxidation and increasing energy through a substance poured into the blood stream, create a demand for an increased supply of atmospheric oxygen brought to the tissues by the blood stream. Relief from high blood pressure consequently may be obtained by reducing the activity of either the glands or the sympathetic system, depending upon which is the offending mechanism.

Dr. Crile reported that in 84 operations, high blood pressure had been reduced by first reducing activity of the sympathetic system. However, he said further observation of the patients would be necessary before a final judgment on the value of the operations could be made.

Moth Balls Replace Air Rifle In Drive Against Sparrows

DALLAS.—T. P. (Red) Williams has switched from air rifle shots to moth balls in his campaign to rid the Dallas county courthouse of sparrows and their accompanying mites.

Well placed volleys from his gun only partially succeeded in driving away the birds that have caused judges, jurists and county officials to spend much of their time scratching because of the mites the birds carry.

Williams has learned of the success of another building manager in ridding his structure of mites by use of moth balls. It was explained that the odor of the moth balls drives away the sparrows.

About 50 pounds of moth balls will be necessary to begin the second "anti-mite" drive, Williams said.

Caution Urged In Account Numbers For All Employees

AUSTIN.—Get the right number when you list employees on your information reports, M. D. Dewberry, manager of the Austin field office of the Social Security Board today cautioned commercial and industrial employers throughout the Austin area who are seeking to obtain the social security account numbers of wage earners no longer in their employ.

Under Treasury regulations, Dewberry explained, employers must list employe account numbers on their information reports. Post offices are requesting that if an employe has failed to report his social security account number, the employer should file an application form (SS-5) with sufficient supporting information to establish the employe's identity beyond reasonable doubt. This application will be checked against the files to see if an account number has already been issued. If the employe has no account number, the employer must then file an application for an account number on behalf of his employe, stating on the form the reason for

his filing such application. Mr. Dewberry also urged all employes who have not yet reported their social security account numbers to their employers to do so promptly. This applies also to workers who have worked for more than one employer since January 1, 1937, even though the period of their employment may have been one day or less.

Account numbers are being issued to workers through the facilities of more than 45,000 post offices, which are being utilized in the assignment of account numbers until June 30. On July 1, and thereafter, application forms for account numbers can be obtained at any local post office, and at regional and field offices of the board, but assignment of account numbers will be made by the board through field offices. The Austin field office is located at 104 Old Federal Building.

WE HAVE

A number of folders left, which explain Chiropractic, Radio-Therapy, conditions treated, case histories and other interesting data. If these notices have not answered your questions, call on us or write for one of the folders mentioned above.

DRS. DEIS & DEIS
Chiropractors
Beard Building Eastland

Here's a Special SUMMER LAUNDRY SERVICE

FOR MEN!

ENJOY the comfort of perfectly laundered clothes, and the appearance that results from fine professional laundering . . .

Linen Suits	40c
Trousers	20c

CALL 101

EASTLAND STEAM LAUNDRY

Frank Roy, Prop.
E. COMMERCE ST. EASTLAND

Announcing the appointment of

TOM LOVELACE

NEW AGENT IN EASTLAND FOR

Johnson Motor Lines

SERVING SUBSIDIARY POINTS IN TEXAS-OKLAHOMA-KANSAS

Fast day and overnight service to and from all points.

Early morning deliveries to all stores.

All Steel Fire-Proof Trucks.

To assure early morning delivery Phone 314 by 2 p. m. each day—Use our telephone service on all orders.

See us for household moving in closed Steel Vans or special heavy hauling in local or to any outside points.

I take this means to announce to my many customers and friends that I will appreciate your future business. I am better equipped to handle your order than ever before.

Respectfully,
TOM LOVELACE.

STORAGE - CRATING - PACKING

NO JOB TOO BIG - NO JOB TOO SMALL

EAST COMMERCE ST.	PHONE 314	EASTLAND
-------------------	-----------	----------

Tax-Free Use of Public Roads Has A Big Increase

WASHINGTON — Although privately-owned motor vehicles have increased only 6% in number since 1930, those owned by federal, state, and local governments have increased 70%.

The federal government now operates 100,000 motor vehicles, or one for every nine employees. Texas-exempt gasoline used by these vehicles last year totaled 147,000,000 gallons, or 1,670 per vehicle. This consumption is more than twice the average annual consumption of private vehicles.

The courts have held that the states cannot tax the federal government, so federally owned motor vehicles pay no registration fees or gasoline taxes, causing a tax loss to the states of about \$10,000,000 annually, thus shifting to motorists the cost of building and maintaining roads over which the government-owned motor vehicles pass tax-free.

Motor vehicles owned by state, city and county governments now number 200,000. A substantial part of them pay neither registration fees nor gasoline taxes. However, the current trend in gasoline taxation is away from exemptions for local governmental units, and municipalities are now required to pay the gasoline tax in 41 states.

Exemptions or refunds upon gasoline create serious problems in the administration of the gasoline tax, and an investigation by the New York State Department of Taxation and Finance disclosed that considerable tax-free gasoline, supposedly consumed in performance of essential governmental functions, actually was being used by municipal employees in private automobiles for pleasure driving.

Last year 59,681,000 gallons of tax-free gasoline was used in New York state. If used by motorists that fuel would have yielded \$2,880,000 in state and federal taxes. Of that amount federal employees used 11,880,000 gallons, and the states and its political subdivisions used 47,801,000 gallons.

Fifty Will Ride Mountain Trail

By United Press
BANFF, Alberta.—Mount Assiniboine, long known as the Matterhorn of the Canadian Rockies, will be the objective of the annual five-day ride from Banff starting July 30 and ending Aug. 3. The trip, arranged by the band of outdoor enthusiasts known as the Trail Riders of the Canadian Rockies, will be headed by their new president, R. H. Palenske, of Chicago.

Riding trail by day and sleeping under canvas at night, the group will spend two nights in the camp at the base of the 12,000-foot mountain, with plenty of extra time for fishing in nearby Marvel Lake or for hiking.

This cavalcade will set out along Brewster Creek for Brewster Camp, where the first night will be spent, and then continues to Mr. Assiniboine, remaining there the next two nights. The fourth day's trek is through the Simpson Range and over the 7,000-foot Simpson Pass to Sunshine Camp. On the following morning the group follows Healey Creek into the Bourgeau Range for the annual Pow-Wow before re-entering Banff. The party will consist of 50 riders, plus a crew of guides, cooks, horse-wranglers and a pack train of 50 horses to carry camping gear and supplies.

The Trail Riders' membership of more than 1,200 is scattered on all the five continents, and includes representatives of the arts, professional and business worlds. Ramsay MacDonald, and the ex-king and Queen of Siam are active members.

Long known as the Matterhorn of the Canadian Rockies, Mr. Assiniboine (11,870 ft.) probably was seen in 1841 by the early explorer Sir George Simpson, and later named for the tribe of Assiniboine or Stoney Indians who inhabit the region. The mountain's first accredited visitor was R. L. Barrett, who reached it in 1893 under the guidance of the late Tom Wilson of Banff. The first to climb this peak was Sir James Opatram, who in 1901 stood on its summit, looked down its sheer wall

Britain to Try Out 18-Ton Planes On Atlantic Flights

LONDON—Characteristic British thoroughness, caution and reliability mark Imperial Airways empire air services, now largely operated with the same "C" class flying boats Britain expects to use across the Atlantic to America. Operation of the ships and their schedules is governed first, by safety; second, by comfort. Speed comes last.

This correspondent embarked as an ordinary passenger from London to Brindisi, via Marseilles and Rome, and return, to observe the performance of the new flying boats and the British method of operating long-distance flying routes. Both the African and the Indian lines of Imperial use this route from England before diverging south and east.

The Cassiopeia, outbound, and the Courtier, inbound, are identical with the Caledonia and the Cambria, which will fly the Atlantic this summer, except for interior arrangements to increase fuel capacity.

Leave by Night Train.
London passengers must leave by train the evening before for Southampton. Imperial provides a special pullman and hotel accommodation on Southampton dock, at no extra cost.

Arriving at Southampton, each passenger is handed a printed card of "arrangements" for the next day—meals, stops, etc.—and this is repeated at each overnight stop on the trip. There is no night flying.

to the shining glacier 6,000 feet below and counted a dozen lakes in the ranges that stretched before him. A dozen years ago the peak was scaled by Harry Pollard, Canadian photographer and charter member of the Trail Riders. Its most recent conquest was made in 1934 by young Miss Georgia Engelhard of New York, also a member of the Trail Riders and member of the American Alpine Club.

Felons Taxed to Finance a Bureau

RALEIGH, N. C.—A scientific crime-prevention laboratory, authorized by the 1937 North Carolina legislature, is being financed by convicted criminals.

Under provisions of the enabling act, \$1 is collected from each person convicted in state criminal courts to apply toward operating costs of the bureau and for dependents of law officers killed while on duty. The division is 50-50.

The new bureau will be established with ballistic, blood analysis and poison investigators. Its officers will co-operate with the attorney-general in investigating lynchings, mob violence, election frauds and other crimes which may take place in the state.

It is the second step in the two-fold program to make the state unhealthy for criminals.

A new radio broadcasting system will be opened before early summer for the use of the highway patrol and county officers. Five stations with the central broadcasting transmitter located at Raleigh are under construction and ready for testing. Each of the 100 automobiles and 103 highway patrol motorcycles will be equipped with radio receiving sets, and sheriffs' offices will tune receiving sets to the highway broadcasting system.

Health Festival Is Being Planned By Mineral Wells

MINERAL WELLS.—Plans for the first annual Health Festival and Homecoming celebration, to be held here July 16-17-18, are being formulated rapidly by various committee heads under the direction of the Mineral Wells Junior Chamber of Commerce. A full three-day program is being arranged to call attention to the most widely known health and pleasure resorts in the United States. The general theme of the festival will be the curative value of the renowned mineral water discovered here some 58 years ago.

A prominent highlight of the occasion will be the mammoth "Pageant of Health," climaxed with the crowning of the health queen. Outstanding state officials will be present to take part in the ceremonies, and unless important official duties conflict, Governor James V. Allred will place the crown upon the head of the young lady who is to rule the festival for the three days. A cast of approximately 100 will be presented in giving the history of Mineral Wells from the time of discovery

of the first mineral water well to the present. Based on historical facts, the pageant will be presented in a natural setting among the famous hills of Palo Pinto county. Memorial Field, acclaimed as one of the most beautiful athletic fields in the state, is the site. Realistic props, to be built at a cost of \$500, will add to its natural beauty.

Another important feature of the festival will be a gigantic "sham battle," presented by the combined units of the 56th Cavalry Brigade, in session at Camp Wolters during the celebration. Local officers are working out details to make this feature the most realistic ever to be witnessed outside of actual war. Every modern implement of warfare will be utilized.

Other features will include street parades, band contests, health contests, tennis, roque, horse-shoe pitching, golf, swimming and diving contests, air circus, bathing beauty revue and outdoor motor boat races.

The course has been indorsed by the Texas highway patrol, Gov. James V. Allred's traffic safety committee, the Texas Department of Education and other safety and educational organizations. It will teach instructors how to instill in their pupils principles of automobile driving and traffic safety. The course will include daily classroom study and laboratory work in automobile driving. To obtain a certificate showing completion of the course, each student must teach someone to drive who has never driven before.

OWNERSHIP THRU INSTALLMENTS

Last week we recommended buying homes on the installment plan and suggested it was a good course to follow where the owner had a job and a reasonable, steady income.

Taxes and insurance are paid by the month along with the monthly loan payment, and in many cases the combined payment is no more than the rent on the house we sell.

Under our plan Eastland is rapidly becoming a city of home owners. See us today for the home you would like to own.

EARL BENDER & COMPANY

ABSTRACTS INSURANCE REAL ESTATE RENTALS

Driver Education Offered As Course

COLLEGE STATION.—A new course in driver education and training in the interest of traffic safety will be conducted at Texas A. & M. College from June 8 to July 18.

Hendricks Funeral Is Held at Kokomo

Funeral services were held last week at Kokomo for S. P. Hendricks, 83, father of Mrs. Dollie Henley and Jess Hendricks of Eastland, who died in that community after a short illness.

The funeral was held at the family home with Revs. Willie and Frank Scagg officiating. For many years Hendricks had been a member of the Baptist church.

Other survivors are his wife and two other children, June Hendricks of Austin and Sarah Hendricks of Kokomo.

Try Our Want Ads!

The Housewife

Research Professor of Economy

She's not a Ph. D. or an LL.D. She hasn't a diploma or a cap and gown. Her research is not done in the laboratory or the library. As a matter of fact, her findings are made, usually, in the street car, in the subway, in the suburban commuter's train.

She reads the advertisements in this paper with care and consideration. They form her research data. By means of them she makes her purchases so that she well deserves the title of "Research Professor of Economy." She discovers item after item, as the year rolls on, combining high quality with low.

It is clear to you at once that you... and all who make and keep a home... have the same opportunity. With the help of newspaper advertising you, can graduate from the school of indiscriminate buying into the faculty of fastidious purchases!

LOOK

WHAT A LITTLE MONEY WILL BUY IN HOME SUPPLIES AT

MICKLE'S

COMPARE OUR PRICES WITH ANYBODY'S!!!

You can Save Money on high quality Merchandise—And we invite you to come in and avail yourself of this opportunity to Save. Hundreds more Items reduced!!!

DAIRY SUPPLIES

- Cotton filter disks— Per 100 69c
- Bottle Brush 75c and 50c
- Bottle Caps— 500 in tube 29c
- 50c Oblong Butter Mold 39c
- Strainers, large size 29c
- Strainers, small size 19c
- 49c Milk Pail 39c
- Stone Churns, 2-gallon 39c
- 35c Tin Milk Pail 25c
- Heavy Milk Pail, hooded ... \$1.00
- \$1.50 Milk can steel strainers \$1.29
- \$1.00 Wire Bottle Carriers ... 69c
- \$1.75 Dairy Fly Spray, gallon \$1.39

MILK SEPARATOR

A marvel for separating cream from milk. Use cold water. Deep cone bottom allows diluted milk to be drawn off before cream reaches the bottom. Made of heavy tin plate. Lock-seamed glass gauges show separating process.

Regular \$5.50 Value— **\$4.59**
ON SALE

3-GALLON CANS

Full weight bright charcoal plate. Extra deep inside cover. Riveted wire handle. Black enameled wood grip. Air-tight cover. **75c Value — ON SALE ... 63c**

CHURNS

- Earthenware churns of clear pottery. All have lids with them.
- 45c value — 2-gal. 45c
- 60c value — 3-gal. 60c
- 75c value — 4-gal. 75c

FRUIT JARS

- KERR MASON— QUARTS— doz. 69c
- BALL GLASS TOP— QUARTS— doz. 75c
- BALL GLASS TOP— PINTS— doz. 65c
- BALL GLASS TOP— 1/2 PINTS— doz. 59c
- BALL GLASS TOP— 1/2 GALLON— .. doz. 99c
- Glass tops and caps, doz. 25c
- Kerr flat lids & caps, doz. 20c
- Kerr flat lids regular, doz. 10c
- Rubbers to fit all jars, doz. 5c

PRESSURE COOKERS

National cookers, approved by all housewives and home demonstrators. We have all sizes, and the prices you will note are real low.

- 18-QUART COOKER \$11.95
- 21-QUART COOKER \$12.95
- 25-QUART COOKER \$14.95
- AUTOMATIC SEALER \$15.85
- BURPEE SEALER \$9.95

Preserving KETTLES

Heavy blue porcelain preserving kettles, large sizes. You will find these handy around the house.

- \$1.85 Value— SALE PRICE ... **\$1.59**
- \$1.50 Value— SALE PRICE ... **\$1.29**

LIGHT BULBS

15 to 60 in extra quality light globes that give excellent service. Note these low prices and save difference here. 10c, 3 for **25c**

SUCTION WASHER

Draws soap through the fabric — sucks out dirt. Cop-R-Loy-Cone rippled inside. Rapid washer. 8-inch diameter. Handle 38 inches.

90c Value— **79c**
ON SALE

ENAMELS

Four-hour high-grade enamel, flows freely. Has rich glossy finish and is easy to apply.

- QUARTS, Reg. \$1— **69c**
- SALE PRICE
- PINTS, Reg. 60c— **49c**
- SALE PRICE

AUTO ENAMEL

J. B. quick-drying auto enamel. Highest quality. Beautiful finish. Flows freely and is easily applied.

PINTS — 85c VALUE— **SPECIAL PRICE— 63c**
ON SALE

HOUSE PAINT

Coverwell house paint is what the name implies. It covers well! A standard quality paint of lead, zinc oxide and other wear-resisting pigments mixed with oil. Regular price \$2.50 gallon— **SALE PRICE — gallon \$1.79**

MICKLE HARDWARE AND FURNITURE COMPANY
"ASK YOUR NEIGHBORS — THEY KNOW!"
MICKLE BLDG, 400-2-4-406 W. MAIN ST. EASTLAND, TEXAS