

THE WEEKLY CHRONICLE

Eastland County's Own Progressive Publication For All The People

The Chronicle is the only weekly newspaper in Eastland having a paid subscription list

VOL. 49

(Established November, 1887)

EASTLAND, TEXAS, FRIDAY, JUNE 4, 1937

NO. 31

OPERATION IN EASTLAND AREA DRILLS AT 230

Eastland county's newest operation, launched during the week, the States Oil Corporation No. 9 G. T. Parrack, seven miles north of Eastland, Saturday was drilling below 230 feet.

Location is 610 feet of the company's No. 8 Parrack, completed last week as a 10-barreler from 1,856 to 1,860 feet.

The No. 9 Parrack is in SE 1/4 section 7, H. & T. C. R. R. company survey, block 4, 280 feet from the west line and 250 feet from the south line of the W. 2 of SE 4, section 7. Contract depth on the No. 9 Parrack is 2,000 feet.

Deepening of the L. L. Welborn et al No. 1 W. U. Fox, six miles southeast of Eastland and southwest of Ranger, from 1,400 to 1,850 feet as an exploratory experiment was begun. Located in leagues 3 and 4, block 49, McLennan county school land, Parson field, the test is 150 feet from the east line.

Hickok Producing and Developing company filed application with the Railroad Commission office to acidize No. 1 T. J. Amis, section 29, block 4, H. & T. C. R. R. company survey, in the Marble Falls lime topped at 3,310 and bottomed at 3,350 feet with two quarts of acid per foot in an effort to bring production.

L. A. Thompson spudded No. 1 Carodie Fox, league 2, McLennan county school land, block 28, seven miles south of Ranger. The test is 150 feet from the east and south lines of the Carodie Fox 60-acre tract.

Gallagher & Lawson et al's deep test to determine production strata to 5,500 feet, the No. 1 Bobbie Terry one-half mile south of Desdemona, was halted at 110 feet because of a fishing job.

The 2,500-foot test to be drilled one mile southeast of Eastland by Barnett Petroleum Corporation and J. L. Reeves one mile southwest of Eastland, No. 1A Downtain, section 2, E. T. R. R. survey, block 6, 1,000 feet from the east line and 215 feet from the south line, was spudded and shot down.

Also spudded had been M. M. Moon & L. W. Barrett's No. 1 C. W. Foste, section 9, H. & T. C. R. R. survey, block 2, eight miles southwest of Eastland.

Anderson-Drewery No. 1 Kate Grist, section 36 Lavaca county school land, block NW 1/4, 14 miles southwest of Cisco, was reported drilling ahead at 2,935 feet after casing was set.

Out of county papers filed for the week in the Railroad Commission office included:

Application to Drill
Stewart & Egan No. 2 B. F. Rankin, Jacob Ash survey, 330 feet from the west line and 660 feet north of No. 1 Rankin, Jack county.

K. Z. Oil corporation No. 1 Bert Fletcher, E. C. Good survey, 190 feet from the south line and 114 feet from the east line, Runnels county.

Donald P. Kenyon No. 1 Ben Stone, tract 72 of Ben Stone ranch survey, 150 feet from the east line and 300 feet from the south line, Brown county.

Fox & Adams No. 12 W. L. Burns, block 1, Asa Wickson survey, 150 feet from the north line and 600 feet from the nearest well, Coleman county.

J. D. Beckelman No. 1 Frank & J. P. Kirk, Dina Hope donation, John Talbot survey No. 220, abstract 941, four miles north of east Sipe Springs, Comanche county.

Application to Shoot.
Kewanee Oil & Gas company No. 29, Hickman, section 801, McGloin survey, now producing six barrels oil, to shoot in sand from 1,290 to 1,305 feet, Brown county.

Pluggings
Texas & Pacific Coal & Oil company No. 7 W. M. Myers, E. Finley survey, Eastland county.

Breckenridge Salvage & Supply company No. 3 J. G. Christmas "B," block 42, E. Miller Preemption survey, Eastland county.

Magnolia Petroleum company No. T. W. Connelley, John York survey, Eastland county.

W. G. Sawyer No. 2 Lucy J. Shore et al, James C. Ryan survey, two miles west from Thrifty, Brown county.

PATROLMAN TOO DILIGENT

ALAMEDA, Cal.—Patrolman Lloyd Trebe, trying door-knobs to see that the doors were properly locked, tried one so hard that he sprained his wrist.

Strikes Beset His Steel Mills



Phillip D. Block, above, is president of the Inland Steel corporation, with headquarters in Chicago, one of the independent steel corporations involved in strikes ordered by the C. I. O. because written contracts were refused by the union.

Teachers Trained Showing Increase

According to the "With Texas Public Schools," issued by the division of information and statistics of the State Department of Education, Myrtle L. Tanner, director, the number of teachers holding degrees has increased.

Over a period of six years, beginning in 1930, the percentage of elementary teachers with bachelor of arts degrees or higher has increased from 14.4 to 36.69. In 1935-1936 there were 26,481 elementary teachers, 91.5 with two years or more of college training. A total of 36.3 had bachelor of arts or higher degrees.

High school teachers with bachelor of arts degrees or higher increased from 65.1 to 87.4. In 1935-1936, 9,648 high school teachers showed a percentage of 98.6 with two years or more of college work. A total of 87.4 had bachelor of arts degrees or higher.

Youth Burned When Extinguishing Flame

Claud Williams, son of Mr. and Mrs. J. F. Williams, was painfully burned Friday afternoon at Eastland when he attempted to extinguish a flame in a half-gallon pitcher of tar used in the roofing of a home.

The youth stated the flames and tar came were blown outside the neck of the pitcher and burned him. The burns, on his arm and face, were not considered dangerously serious.

Names Are Drawn For 91st Juries

A commission appointed by Judge George L. Davenport has selected jurors for the June term of 91st district court which begins Monday.

Names of citizens for petit jury service, were drawn for the weeks beginning June 14, 21 and 28. The grand jury will be formed Monday at 10 o'clock.

The grand jury will be composed of 12 of the following: L. C. Cash, Pioneer; Karl F. Page, Eastland; H. O. Satterwhite, Eastland; I. C. Underwood, Gorman; W. R. Usery, Carbon; Tom Butler, Jr., Rising Star; O. A. Kountz, Desdemona; N. T. Johnson, Eastland; Wyatt Jacobs, Cisco; Clarence May, Ranger; Frank Walker, Cisco; Nick Higginbotham, Rising Star; Elzo Been, Carbon; M. O. Hazard, Eastland, Route 2, and Fred Gertz, Olden.

The jury commission was composed of B. E. McGlamery of Eastland, P. V. Tunnell of Rising Star and Oscar Wilson of Eastland.

Auto Registrations In Mixed Tendencies

AUSTIN.—Reports from 13 representative Texas counties show automobile registrations during April totaled 5,848, 25.1 per cent below those of March and 2 per cent under those of April last year, according to the University of Texas Bureau of Business Research. Aggregate registrations in these counties during the first four months of the year were 23,699 cars, an increase of 1.5 per cent over the corresponding period last year.

Cars in the lowest price bracket were the only ones to make an unfavorable showing in comparison with last year although all groups showed a decline from March.

Veteran of Wars Tells Experiences At Rotary Meeting

K. K. White, a captain in the World War, recalled experiences at the weekly meeting of the Rotary club members in the Connellee hotel. White also is a veteran of the Spanish-American war.

Ben Hamner was in charge of the program. T. E. Richardson, club president, announced Dr. Thomas H. Taylor, president of Howard Payne college, Brownwood, would speak at the Lions club program this week.

CC MONTHLY TRADE DAY IS MONDAY

Plans were being completed Thursday for the monthly Trades, Auction and Swap Day to be sponsored Monday in Eastland by the Chamber of Commerce, Secretary H. J. Tanner announced.

Dick Bell of De Leon has again been hired as the auctioneer at the grounds across from the Castleberry store, on North Seaman street.

Street music will probably be an additional feature of the program, said Tanner.

Visitors were urged by merchants to bring articles of swappable or auctionable nature and participate in those features of the program.

The trades day Monday marks the second consecutive program which has included swapping and auction features in Eastland.

Merchants are preparing to offer bargains as inducements to shoppers on the special day.

Lightning Strikes In Desdemona Area

Three Desdemona citizens received electrical shocks Sunday night during the electrical storm it was learned here Wednesday.

Mr. and Mrs. Tom Nabers crumpled to the floor and were unconscious after lightning apparently struck their home.

T. C. Acrea, notified by Nabers of the occurrence after restoratives were applied to his wife, fell from his porch as he was preparing to leave to aid the Mrs. Nabers.

The injuries to Mr. and Mrs. Nabers and Acrea were described as not serious.

Softball League Launched Tuesday In the Oil Belt

The Oil Belt Softball League was launched on its schedule Tuesday night with Breckenridge winner over Eastland, Eliasville defeating Throckmorton and Abilene topping Albany.

Breckenridge came from behind to defeat Eastland, 3-2. The Eastland team, composed of star players, got five hits from the visitors and Breckenridge obtained four hits from their hosts.

Ramsey pitched for Eastland and Whitley and Goodwin handled the assignment for the Breckenridge team, which wore the Hanlon banner.

The Abilene team defeated Albany at Albany, 4-3. Eliasville played at Throckmorton and had the easiest time of all the league teams. Score was 15 to 1.

The Oilbelt league was perfected Sunday at a meeting of team representatives in Breckenridge. The eight teams in the league, Breckenridge, Abilene, Eastland, Cisco, Ranger, Albany, Throckmorton and Eliasville, will play one game a week at home and one game away each week. Each team will play 20 games.

President of the organization is T. A. "Tommy" Wright of Breckenridge; A. W. Hennessee, Eastland fire chief, is vice president; Cain Kirk of Breckenridge is secretary-treasurer.

Designate Special Day at Show Event

Secretary of the Chamber of Commerce, H. J. Tanner has been advised Fort Worth Frontier Fiesta officials have designated Monday, July 26, as "Eastland Day."

War in the U. S. — Just in Fun



It was only a part of Oklahoma City's Memorial Air Show, but nothing could have been more realistically dangerous than this power dive bombing in which Maj. Al Williams destroyed a miniature fort—explosion and plane being both caught in this remarkable picture. Major Williams pointed the nose of his ship at the fort, went into a dive, released the bomb and pulled up "only when the grass looked too darned green."

Rain Delays Swimming Pool's Opening Until Friday Night

The swimming pool in Eastland will be opened formally "rain or shine" Friday night, officials announced Thursday, explaining rain prevented the observance as scheduled Wednesday night.

While rain prevented the presentation of the formal opening program it did not dampen the enthusiasm of 128 persons who entered the pool.

Ninety-four of the first bathers were children and the remainder adults. First to enter was Billy Hoffmann, son of Mayor and Mrs. C. W. Hoffmann.

The early bathers were permitted to swim 30 minutes before the previously arranged time of 6 o'clock.

The program for the opening will include a short explanation of construction of the pool by Mayor C. W. Hoffmann, who will be introduced by city commissioner; a concert by the Eastland High school band beginning at 8 o'clock and a fireworks display beginning at 9:45.

Officials also announced Mrs. Edna Metcalf will operate the soft drink, sandwich, candy and ice cream concession at the former location of the community kitchen cottage, J. W. Greathouse is caretaker for the pool and Ike Butler the park caretaker.

Hard Luck Follows Desdemona's Test

So far, bad luck has followed the Gallagher and Lawson deep test at Desdemona.

First it was necessary to skid the rig east after tools were lost, and then to top the bad luck, lightning struck, operators on the test well one-half mile south of Desdemona ruefully reflected Wednesday.

Mrs. W. C. Bedford, Desdemona correspondent for this paper, described the lightning occurrence: "The lightning Sunday struck the gin-pole on the top of the rig of the Gallagher and Lawson et al No. 1 Bobbie Terry well and ran down the corner of the rig until it reached the guy wire and went into the ground. All of the light globes on the rig were shattered and the wiring destroyed."

Last week it was necessary to skid location for the 5,500-foot test several feet east after the bit was lost at 110 feet.

County Judge Will Move to Eastland

County Judge and Mrs. W. S. Adamson and their daughter, Marguerite, next week will move to Eastland. They will occupy the former home of County Surveyor William Shirriffs, 411 South Oaklawn in Hillcrest. Shirriffs and family moved several months ago to Austin, where he is a draftsman in the land department office.

The Eastland residence will be more convenient for Adamson in his work as county judge.

See Big Attendance For Masonic Session

Officials Thursday anticipated a large attendance at the meeting of the Eastland Masonic lodge No. 467, A. F. & A. M., set for Friday night, when Marcus Weatherford of Coleman, immediate past grand master, will confer a master's degree.

Members of lodges in this district, composed of Stephens and Eastland counties, have been invited.

Eastland to Be Lauded Friday On Radio Broadcast

The advantages and attractions of Eastland will be publicized on Friday morning at 6:30 on the Red Hawk program over radio station WFAA-WBAP.

Information on Eastland's transportation facilities, its railroad and highway location, the courthouse, the town's establishment in 1885, recreational opportunities, industries and other items, was furnished by H. J. Tanner, secretary of the Chamber of Commerce.

The Economy Store, Carl Johnson, manager, is exclusive dealer in Eastland of Hawk Brand overalls and khaki pants. The manufacturers of the clothing sponsor the broadcast.

The Friday program is part of a campaign, "Know Your State Better," conducted by the clothing company.

HONOR ROLL IS ANNOUNCED AT JR. HIGH

E. E. Layton, principal, Tuesday announced the Junior High school honor roll for the 1936-37 term.

A total of 64 students were listed by the principal.

Following are the students:

Sixth Grade
Honors: Elaine Altom, Freddie Ben Basham, Frances Beskow, Nelda Bishop, Faye Butler, Burton Clifton, Bobby Freeman, Chas. Freyschlag, Virginia Ferguson, Elma Ruth Gattis, Laura Lee Herring, Lillian Hennessee, Dan Hightower, Johnnie Lou Hart, Peggy Anne King, Helen Lucille Lucas, Dorothy McGlamery, Homer Meek, Marjorie Murphy, Wilma Dean Pierce, Ruth Reed, Eloise Sherrill, Ethel Sparr, Patsy Sparks, Cordelia Settles, Thelma Truly, Beulah Faye White, Mary Wright.

High Honors: Elaine Crossley, Joelle Coffman, Marjorie Harpner, Julia Lawson, Mary Page.

Seventh Grade
Honors: Julia Beth Bettis, Lillian Bishop, Marlin Cagle, Mava Lou Crossley, Frances Crowell, Jack Germany, Thomas Haley, Maude Hancock, Edith Horn, Betty Hyer, Marilyn Larner, Lenora Lewis, Jo Camille Lough, Missy Mundy, Dorothy Nabors, Fannie Pitzer, Frankie Mae Pierce, Jerry Railey, Winnie Robinson, Fannie Belle Samuels, Virgil Seaberry, Nancy Seaberry, Beverly Smith, Nanette Tanner, Betty Wiengard.

High Honors: Pete Andrews, Louise Davis, Glenna Johnson, Maxine O'Neal, Dorothy Perkins, Gloria Reed.

Plugging Is Due On No. 1 W. U. Fox

L. L. Welborn et al No. 1 W. U. Fox, deepened recently after operation initially as a gasser from a higher level, will be plugged, according to an application on file Wednesday in the Railroad Commission office at Eastland.

Location of the well, which found water at total depth of 1,700 feet, is about six miles southeast of Eastland, lot 49, leagues 3 & 4, McLennan county school land.

A small showing of oil was encountered in sand, 1,420 to 1,428, according to the well record.

Jefferson Davis' Birthday Is Noted

The birthday of Jefferson Davis, president of the Confederacy, was noted Thursday by the Eastland National Bank, which closed its doors in observance of the legal holiday.

Davis' birthday is noted as a legal holiday or public holiday in Alabama, Arkansas, Georgia, Louisiana, Mississippi, South Carolina, Texas and Virginia. Tennessee observes the day as Confederate Memorial Day.

Eastland Gets Over Half-Inch of Rain

Rainfall Wednesday night in Eastland was recorded by Official Weather Observer J. A. Beard at .52 inch.

Steel Executive in Labor Crisis



Veteran of many years with the Youngstown Sheet and Tube Co., Frank Purnell, above, the company's president, was confronted with one of the gravest problems of his career when strikes in five plants suburban to Youngstown, took 8500 men off their jobs.

Lucas Tells Body Of Proposed Act

Fifteen persons Thursday morning at Eastland heard H. G. Lucas, Brownwood, president of the Texas Agricultural association, explain the proposed 1937 Agricultural Adjustment act which his organization aided in framing.

The discussion was in 88th district court room.

Lucas asserted the act aims to secure and maintain parity prices on agricultural crops, to maintain a normal supply through the ever-normal granary plan in the interest of the consuming public and to conserve the soil by adjusting production.

Cooperating farmers, the speaker said, will receive under the proposed act price adjustment payments and soil building payments instead of diversion payments and will also be eligible for loans. The payments will be regulated by the supply and the market price.

Other points in the bill enumerated by Lucas include: (1) Parity prices for farmers insuring parity purchasing power. (2) Soil building and soil conserving practices are required. (3) Diversion is required when the supply exceeds normal demand. (4) Marketing quotas for all farmers go into effect when the supply exceeds normal by 15 per cent. (5) Loans are available to cooperating farmers when the quotas go into effect and when needed. (6) Adequate supplies are assured consumers at all times through adjusted production and the ever-normal granary plan at stable prices. (7) Contracts are made with farmers. The first one for a three-year plan. (8) Import tariff automatically reduced when prices go above parity. (9) The bases will be adjusted in accordance with tillable acreage, topography, type of soil and production facilities and (10) Benefit payments will be materially increased so that the farmers will attain parity.

A committee representing the association, represented by its president at the meeting, recently returned from Washington and described the proposed program as the greatest legislation ever suggested for Texas farmers.

R. F. C. Stock In Bank Is Retired

Announcement was made by Albert Taylor, vice president of the Eastland National Bank, today, that as of May 28th, \$10,000 of the Reconstruction Finance corporation preferred stock has been retired from the earnings of the bank since its opening, reducing the preferred stock from \$25,000 to \$15,000.

The reduction increases the common stock from \$25,000 to \$35,000.

The present capital stock of the bank stands at \$15,000 preferred owned by the Reconstruction Finance corporation, and \$35,000 in common stock, owned by individual stockholders.

New Hope Club Is Guest of Bass Lake Club on Thursday

The New Hope club was the guest of the Bass Lake club on Thursday, May 27.

"Wool is the best material for hooking rugs," said Miss Ruth Ramay, home demonstration agent, who gave a very interesting talk on home made rugs and their materials. She also demonstrated some rugs and mats, and how to cut materials for making same.

After the program the Bass Lake ladies served very delicious refreshments to Miss Ruth Ramay, home demonstration agent; Miss Cornelia Faye Stewart, assistant demonstration agent, and Misses John Bennett, E. E. Murry, Henry Murry, John Guy, Cullen Rogers, Tom Taylor, E. Barron, V. W. Weaver, A. A. Creaghead, Levi Harrison, Floyd Woods, Roy Bennett, Hubert Seago, Floyd Nunley, Marvin Dorset, and Misses Modell Montgomery, Lavella Creaghead, Marie Creaghead, Marnia Nell Murry.

Pueblo, Colo., Is On Deep Snow Rim

PUEBLO, Colo.—Apparently, the deep snow country is in Pueblo's own back yard.

According to a report received by F. J. Poch, supervisor of the San Isabel National forest from Val Staley, superintendent of the St. Charles dam project near San Nsabel City, there was a fall of 36 3-4 inches for March.

Date Changed For Dipping of Goats

The goat demonstration to be conducted by W. R. Nisbet, College Station, extension service animal husbandman, at the Dan Childress ranch nine miles north of Eastland, has been changed from June 11 until June 12, County Agent Elmo V. Cook announced Saturday.

EXPENDITURES ON RELIEF IN APRIL LISTED

The various governmental agencies in April spent \$56,598.55 for "relief" in Eastland county, according to figures compiled and released Saturday by the Texas Relief Commission.

The Works Progress Administration meant expenditure of the largest amount. A total of 1,931 workers, men and women, were paid \$36,000. Seventy-five youths at work for the National Youth Administration meant expenditure of \$646.70.

Pay of the Texas Relief Commission employes amounted to \$200. Seventy-five boys in Civilian Conservation Corps camps brought \$1,875, each drawing \$25 a month.

Food and clothing commodities were issued to 312 family groups, representing 1,297 persons. The food and clothing items amounted to \$4,729.85, including in the commodities were beef, 882 one and one-half pound cans, \$205.50; 4,445 pounds of grapefruit, \$117.80; 954 fourteen and one-half ounce cans of milk, \$66.78; 1,858 cans of vegetables, \$242.96; 3,972 garments, \$3,892.56; and \$17 household items, \$204.25.

Grants were issued by the Texas Old Age Assistance Commission to 889 persons, totaling \$13,157. Jewell Reeves, the Texas Relief Commission worker announcing the figures, states: "The federal government demands that certain rules and regulations be strictly adhered to and that the supervision be done by the Texas Relief Commission. The duties of your county workers are to keep accurate and up-to-date reports on all persons receiving assistance, to take applications from boys for CCC camps, to take applications from youths for their program, to accept applications where eligible for all persons for WPA work."

"They should also keep in close touch with all government agencies to the end that all your citizens may derive the benefits of any and all programs."

R. F. C. Stock In Bank Is Retired

Announcement was made by Albert Taylor, vice president of the Eastland National Bank, today, that as of May 28th, \$10,000 of the Reconstruction Finance corporation preferred stock has been retired from the earnings of the bank since its opening, reducing the preferred stock from \$25,000 to \$15,000.

The reduction increases the common stock from \$25,000 to \$35,000.

The present capital stock of the bank stands at \$15,000 preferred owned by the Reconstruction Finance corporation, and \$35,000 in common stock, owned by individual stockholders.

New Hope Club Is Guest of Bass Lake Club on Thursday

The New Hope club was the guest of the Bass Lake club on Thursday, May 27.

"Wool is the best material for hooking rugs," said Miss Ruth Ramay, home demonstration agent, who gave a very interesting talk on home made rugs and their materials. She also demonstrated some rugs and mats, and how to cut materials for making same.

After the program the Bass Lake ladies served very delicious refreshments to Miss Ruth Ramay, home demonstration agent; Miss Cornelia Faye Stewart, assistant demonstration agent, and Misses John Bennett, E. E. Murry, Henry Murry, John Guy, Cullen Rogers, Tom Taylor, E. Barron, V. W. Weaver, A. A. Creaghead, Levi Harrison, Floyd Woods, Roy Bennett, Hubert Seago, Floyd Nunley, Marvin Dorset, and Misses Modell Montgomery, Lavella Creaghead, Marie Creaghead, Marnia Nell Murry.

Pueblo, Colo., Is On Deep Snow Rim

PUEBLO, Colo.—Apparently, the deep snow country is in Pueblo's own back yard.

According to a report received by F. J. Poch, supervisor of the San Isabel National forest from Val Staley, superintendent of the St. Charles dam project near San Nsabel City, there was a fall of 36 3-4 inches for March.

Date Changed For Dipping of Goats

The goat demonstration to be conducted by W. R. Nisbet, College Station, extension service animal husbandman, at the Dan Childress ranch nine miles north of Eastland, has been changed from June 11 until June 12, County Agent Elmo V. Cook announced Saturday.

THE WEEKLY CHRONICLE

Established Nov. 1, 1887 Entered as second-class matter at the postoffice at Eastland, Texas, under Act of March, 1879

Published Every Friday Office of Publication: 106 East Plummer Street. Phone 601

NOTICE TO THE PUBLIC

Any erroneous reflection upon the character, standing or reputation of any person, firm or corporation, which may appear in the columns of this paper, will be gladly corrected upon being brought to the attention of the publisher.

Obituaries, cards of thanks, notices of lodge meetings, etc., are charged for at the regular advertising rates, which will be furnished upon application.

"SIT-DOWN" THIEVES

PORTLAND, Ore.—"Sit-down" thieves broke into the home of Helen Warner, 814 Southwest Tenth Avenue, and stole two dining room chairs, she reported to police officers.

CLASSIFIED

FOR SALE CHEAP: Two story six-room house. North Walnut Street. Inquire Root's Barbecue Stand.

MEN (2)—Must be able to travel; small offer good pay and transportation furnished. See Mr. Rinnie, Alhambra Hotel, 6 to 8 p. m., Eastland.

GIRLS (2) for circulation work must be unincumbered and able to travel can earn at start 15.00 to \$30.00 weekly transportation paid, see Mr. Rennie evenings only Alhambra Hotel, Eastland.

WANT TO BUY—Second hand trailer house. C. T. Ford, Eastland, Route 2.

GIRLS (2) for circulation work must be unincumbered and able to travel can earn at start 15.00 to \$30.00 weekly transportation paid, see Mr. Rennie evenings only Alhambra Hotel, Eastland.

FOR SALE: Choice blackberries and dewberries. See J. R. Niver, RE 2, Eastland.

FOR RENT—Furnished apartments, also garage. See Mrs. Harris, 612 Gilmer St.

TRAILER HOUSE FOR SALE—Burton Lingo Lumber Co., Eastland.

FOR SALE—House and lot at a bargain. Address Box H, care Telegram.

FOR RENT—Six-room house. Call at 608 South Lamar St., or telephone 37.

FOR RENT—Five-room residence on paved street. All modern conveniences. See Milburn McCarty, Phone 176 or Connellee hotel.

Merchants Supply Benches at Park

Acknowledgement to 16 merchants for the furnishing of wooden benches at the city park was made Saturday by city officials to the following merchants:

Higginbotham-Bartlett Lumber Co., Majestic Cafe, Hoffmann & Pace Co., Texas Electric Service Co., Harrison Grocery, Kimbrell Hardware Co., Pigzly Wigzly, Earl Bender & Co., Inc., Walters Grocery, Harvey Chevrolet Co., Men's Shop, Guy Patterson Tire

SWIMMING CLASS TO START WEDNESDAY

Mary Ellen Seddall of Denton will give special swimming lessons from 7 to 9 a. m. each morning beginning Thursday to adults and from 8 to 9 to children. The city has employed Miss Seddall as life guard on afternoons. For details as to special swimming class rates call 317 or see Miss Seddall at Conner Apartments EASTLAND

WEST TEXAS FIRE EXTINGUISHER CO.

Distributor Fyr-Fyter Sales and Service Recharges and Refills all Types Fire Extinguishers

EASTLAND — MIDLAND Box 747 K. D. Hancock

Fashion Shop to Hold Combined Stock Sale June 3

Women of this entire community are centering their interest on an opportunity that seldom presents itself on an occasion of making selections from two big stocks of exclusive ladies ready-to-wear and shoes combined into one at the special sale at the Fashion Shop of Eastland which opens on Thursday morning, June 3.

Recently the Fashion Shop closed their Ranger store and have moved the stock into their Eastland store. The Fashion has closed their store today to prepare for this unusual occasion. Mrs. Dave Wolk of the Fashion states: "The merchandise in our Ranger store was all new with every latest fashion. Naturally the stock we have in Eastland is also of the very latest arrivals. We handle only nationally advertised merchandise and make absolutely no misrepresentations as to quality and former prices in our sale advertising, and back up every purchase that is made by the customer. Two stocks are too much merchandise for us to carry and in order to reduce this tremendous overage we have thrown the entire stocks on sale at prices exceedingly low."

Plenty of sales force will be on hand to make shopping and selections convenient and pleasant. Mr. Dave Wolk states that the shoe department offers a most attractive variety of styles for every occasion of wear.

Mr. and Mrs. Wolk add: "We are deeply appreciative of the co-operation we have received here in Eastland and will confine all of our activities here with the purpose of serving the women of this section with the best merchandise and service possible."

Leisure, Recreation Features Many at Eastland City Park

Complete recreational features are offered at the city park, the elevation of which is over 1,539 feet. That is approximately 199 feet higher than other parts of the city.

The natural surroundings of the city park, dotted throughout Service, Eastland National Bank, Eastland Roccue club; Palace of Sweets, Lucas Service Station.

with oak trees, make for the convenience and enjoyment of those who seek relaxation or amusement.

The swimming pool is the newest of the park's attractions. Those who do not want to swim may watch the bathers comfortably from the club house.

There are tables and benches for picnic use. Four barbecue pits are available to picnickers who have a little time to prepare their meal.

Two roque courts are used consistently at the park. Another recreational feature of the park will be a tennis court and a new roque court. The tennis court and roque court are to be prepared in the near future by the city through the W. P. A.

Small children may find other amusement by the swings and see-saws located in the park.

The Boy Scouts are erecting a log cabin for meetings at the south end of the park.

Used Car Sale to Start Thursday

Gradually accumulating a stock of used cars that will give the people of this section a real opportunity to get what they want, The Muirhead Motor Company, after giving every used car in their stock a complete reconditioning and service job, will stage the largest used car sale in their history starting tomorrow (Thursday) morning.

In this issue of the Telegram there appears a full page advertisement giving the description of many of the used cars that are on sale. The list is only a few of the many others that one can select from.

Jack Muirhead states, "We could have staged this sale without regard to the condition of the car, but we have held it off until we could get every car that would go on sale in the exact condition that it is represented to the customer. This delay has been of course a little expensive but we would rather have it in a condition where the customer is absolutely satisfied and pleased and take the extra loss in time and labor to keep up our standard of making no misrepresentations on any sale that we make."

It's now vacation time and folks are beginning to feel the urge to go places. But even if they stay at home a car is a necessity. The Muirhead Motor Co., used car sale offers an unusual opportunity to get the best for the least money. Jack adds, "We've of course got too many used cars and we're selling them at prices

that will move them and I'll guarantee that anybody that gets a used car during this sale will get the biggest and best bargain they ever had in an automobile for

their business and pleasure. I want everybody to at least come down and let me prove it." Completing the entire service and garage department the new-

est model washing and greasing rack has been installed. The rack is of the latest mechanical safety devices and is the only one of its kind in this section. All kinds of

motor testing equipment are installed and the department is manned by men of long experience on all makes of automobiles.

Announcing the Opening of Spot Cash Gro. FRIDAY-SATURDAY, JUNE 4-5

NOW THE PEOPLE OF EASTLAND can buy their Groceries as cheap as their friends and neighbors in the surrounding towns!



Honey! We can buy this little home now—

Oh, John! I am so glad you got the raise—

I didn't get the raise, but the Spot Cash Grocery is opening and we can save enough on our grocery bill each month to make the payments.



Fresh FRUITS and VEGETABLES

See and enjoy the New Refrigerated Vegetable Case! Not another one like it west of Fort Worth. Everyone else who handles your vegetables from the time they are gathered keep them on ice. Why not demand that your grocer do likewise!

- Bananas, Per Doz. 10c
Lemons, Per Doz. 15c
Fresh Tomatoes No. 1 Grade, lb. 7 1/2 c
Limes LIMEADE, THE SUMMER DRINK Ea. 1c

WASHED CALIFORNIA Potatoes WHITE ROSE 10 Lbs. 27c

FRESH OKRA, CELERY, BELL PEPPER, FRESH PINEAPPLE, CAULIFLOWER, CUKES, SQUASH—ALL UNDER REFRIGERATION.

To Our Rural Friends And Customers

COME AND MAKE OUR STORE YOUR HEAD-QUARTERS WHEN IN EASTLAND. MEET YOUR FRIENDS HERE OR LEAVE WORD FOR THEM—THEY WILL BE HERE.

- Wheat Bran, 100 Lb. Sack \$1.75
Corn Meal, Full Cream, 20 Lbs. . 69c
AMERICAN BEAUTY Flour, 48 Lbs. \$1.80
Hen Scratch 100 Lbs. \$2.75
Vinegar, None Better, Per Gal. . 19c
Fruit Jars HALF GALLON SIZE Per Doz. 99c
Ovaltine, Large Size . 55c
Bayer Aspirins, Reg. 15c Size . 10c
Sugar Bud Syrup FANCY RIBBON CANE 65c



1-LB. CAN.. 28c
3-LB. CAN .. 81c

FREE!!!

Music and entertainment by the Melody Boys' Band of Radio fame, from 4 til 5 o'clock at our Store! Come and enjoy them!!

SPOT CASH GROCERY

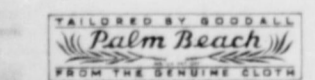
HACK MILLER, Local Manager COMMERCE and LAMAR EASTLAND

This is the newest and most up-to-date grocery store in Eastland county. We have a complete stock of new and fresh merchandise. The coolest and best lighted store in Eastland county. We invite you to come and inspect it!!!

PALM BEACH SUITS

Introducing for the first time the new Sea Foam White... a handsome light weight shape retaining Palm Beach weave... quite different from anything we've ever shown... You'll prefer it to lots of whites that cost much more both in looks and performance—for it sheds the dirt and washes or dry cleans perfectly.

Single breasted, Double breasted and sport backs \$1675



THE MEN'S SHOP

E. Side Sq. - Eastland



CONNELLEE FRIDAY & SATURDAY

MEET THE GIRLS Who Get in the RACKET!



BETTE DAVIS

in "MARKED WOMAN"

WE WARN YOU! Don't come unless you really want to know danger, excitement, adventure! And if you want to know the truth about the other side of life—run, don't walk to this theatre!



ADULTS ONLY Children under 16 must be accompanied by their parents.

DESDEMONA

Miss Ruth Browning of Freer, visited her grandmother, Mrs. John Browning at her home at Ellison Springs, west of town last week.

Rev. and Mrs. O. D. McDonald accompanied by Mrs. W. H. Whitworth, drove to Fort Worth Monday to attend the commencement exercises at Texas Wesleyan College. Mrs. Whitworth's daughter, Miss Mignon Whitworth is one of the graduates and has made a splendid record at the college, being an honor-roll pupil the whole year. She was chosen as one of the princesses to attend the May Queen at the annual May Festival last week.

Mr. and Mrs. W. H. Davis were at Gorman Wednesday night.

Mrs. Jake Smith who has lived in San Antonio for several months came Thursday to visit friends and to look after her property.

Married at Big Spring on Thursday, May 27th, 1937, Miss Ruth Abel of Desdemona became the bride of Paul Baker of Coahoma. The bride is the daughter of Mr. and Mrs. Hugh Abel and was reared here. He was graduated from high school two years ago. The bride groom lives at Coahoma, where he has a good job with one of the oil companies.

The bride had been visiting friends at Coahoma several days before her marriage. They came home Saturday for a short visit with her parents. Mr. Baker returned to Coahoma Sunday evening, but his bride will remain several days. Their many friends are extending congratulations and best wishes to the happy couple.

Mrs. Style McEntire and baby, James Edward, left several days ago for Odessa to make their

home. Mr. McEntire had been there for several weeks working with a casing crew.

Mr. and Mrs. A. C. Moore and daughters and Mrs. J. H. Rushing Sr., drove to Gorman Wednesday night.

Friday afternoon Scout Master Preston Sparks, accompanied by nine members of the Scout Troop hiked to Herrington Lake, four miles north of town, where they enjoyed fishing, swimming and games. The boys carried coffee, bacon, bread and other things for their meals which they cooked over the camp fire. They returned Saturday morning. The boys who went with Mr. Sparks were: Jack Powers, Calvin Williams, Max Bailey, Neil Maltby, Forrest Keith, Donald Collins, Charles Nicholson, Charles Warren, Joe David Lohman.

J. H. Rushing Jr., and Earl Abernathy returned Thursday afternoon from Freer, where they had visited for a few days. Mrs. Roy Rushing who had been visiting here and at Salem, went home with them. During the time Mrs. Rushing was here she spent one afternoon at Olden, where she went with Mrs. I. N. Williams to visit Mrs. W. C. Starks, who was seriously ill. Mrs. Stark, Mrs. Williams and Mrs. Rushing are members of Desdemona Eastern Star chapter.

The Methodist Missionary Society met on Monday of last week at the home of Mrs. Charles Lee who was assisted in entertaining by Mrs. C. O. Bragg. It was the first time the members had met at the Lee home since it was remodeled a few months ago

Jailed in Echo of Speer Death



Thomas Edw. Elder, above, dean of the Mount Hermon, Mass., school for boys when Headmaster Elliott Speer was mysteriously slain almost three years ago, was jailed on a charge of assault with intent to kill when S. Allen Norton, former cashier of the school, charged that Elder menaced him with a shotgun. The arrest recalled to police the Speer murder committee with a shotgun.

and they were interested in seeing the many improvements that had been made. It was always comfortable and convenient, but is more so now as well as more attractive. After a short devotional and business meeting, the hostesses passed needles, thimbles and thread and tea-towels that were embroidered by the members. The towels will be given to the church for use in the little kitchenette. Those present were Miss Mollie O'Rear, Mmes. S. E. Snodgrass, G. S. Bruce, W. H. Whitworth, O. D. McDonald and four visitors, Mrs. M. R. Turner of Fort Worth and Mrs. Winfield Gallagher and Mrs. Dick Cutting and Mrs. C. C. Evans, the hostesses, Mrs. Lee and Mrs. Bragg and two children of the Society, Charles Bragg and Valla Whitworth. The hostesses served dainty and appetizing refreshments of congealed salad on lettuce, saltines and ice tea with a second course of cake and ice cream.

Mrs. M. R. Turner of Fort Worth came last week for a visit with her brother, John O'Rear and her sisters, Miss Mollie O'Rear and Mrs. Annie Daniel.

On Thursday night Desdemona Masonic Lodge entertained a large crowd of visitors from several other towns at a special meeting which had been called for the conferring of the Master's degree on Rev. H. N. Balderee. The meeting was presided over by Gifford Acres who is closing his year as worshipful master. A. D. Baker is secretary of the lodge and he and the other officers have assisted the worshipful master in making this a very success-

ful year for the lodge. During the social hour that followed the conferring of the degree, refreshments of cake and ice cream were served.

Raymond Arthur of Coahoma, spent the week-end here with relatives and friends. Miss Agatha Genoway returned Saturday from Post where she had been for several months with her sister, Mrs. Luther Harper and family.

Mr. and Mrs. Aaron Henslee, of Fort Worth spent Sunday here with her parents, Mr. and Mrs. W. H. Davis.

Mrs. R. J. Krapp drove down to Fort Worth Monday to take her daughter, Miss Rubalee Krapp to enter Draughn's Business College. Miss Rubalee won a scholarship by her good grades in the Desdemona high school where she graduated ten days ago and is taking advantage of the award. On Tuesday afternoon of last

BETTE DAVIS AS "MARKED WOMAN" CONNELLEE FILM

Bette Davis, who won last year's Academy award as the screen's greatest actress, makes

week a large crowd of friends gathered at the home of Mrs. H. N. Balderee for a party and miscellaneous shower honoring Mrs. Sam Fincannon (nee Frances Battle whose marriage had recently been announced. As a feature of entertainment there was a contest of cut up pictures to be fitted together. The honoree was declared winner of the contest and was given the prize which proved to be the large number of gifts. After the packages had been opened and inspected, delicious punch and vanilla wafers were served. Mrs. Fincannon has taught English in our High school the past three years and is one of our most popular teachers.

her 1937 bid for renewed honors in a gripping story taken from headlines that have flashed across the front pages of America's newspapers for many months. This picture, declared by Miss Davis to give her the most powerful role she has ever portrayed, is "Marked Woman," the first National production booked for the Connelle theatre beginning today.

The film is said to take audiences behind the scenes of certain metropolitan night clubs, long suspected of being owned or affiliated with nationally notorious gangsters of the type now fleeing from racket investigations. It is the story of those beautiful girls who serve as hostesses in these joints, and whose lives themselves are forfeit if they disobey the orders of their ruthless exploiters.

The chief racketeer in this picture is played by that super-villain, Eduardo Cian-

nelli, who gained such fame in both stage and screen versions of "Winteret."

The special prosecutor who puts the finger of the law on the racketeer and his whole gang is played by Humphrey Bogart, who does heroes as well as he does villains.

The night club girls are Bette Davis, Isabel Jewell, Jane Bryan, Rosalind Marquis, Lola Lane and Mapo Method. Led by Bette, they take their lives in their hands when the prosecutor induces them to expose the boss's methods.

The strong and vivid story gives Miss Davis ample opportunity for the sort of diversified emotional acting that won her the award of the Academy of Motion Picture Arts and Sciences last year for the best performance by any actress.

"Marked Woman" was written especially to fit Bett's talents by Robert Rossen and Abem Kinkel, and was directed by Lloyd Bacon.

ELECTRICAL APPLIANCES

Texas Electric Service Co.

Hotel Garage

TEXACO PRODUCTS

Storage and Tire Service West Main Phone 42

Hamner Undertaking Co.

Phones 17 and 564 DAY OR NIGHT AMBULANCE SERVICE

ROSS HODGES

Doctor of Veterinary Medicine, Veterinary Surgery, specializing in all diseases of livestock, poultry and pets. 906 CHERRY STREET RANGER PHONE 115

RED CIRCLE COFFEE

LB. 19c



ANN PAGE SALAD DRESSING

8 OZ. 11c
PINTS 19c
QUARTS . 33c

Dill or Sour PICKLES, 2 Qt. 29c

Rosedale Sliced PINEAPPLE, 1 1/2 10c

A. & P. BREAD, 2 Loaves 15c

OXYDOL Smll, 2 Pkg., 17c Large 21c

P. L. KETCHUP 14 Oz. 10c

LIPTON'S TEA 1/4 Lb. 23c

LITTLE RASCAL SPINACH No. 2, 3 Cans . 25c

ENCORE OLIVE OIL Smll. Bottle, 15c

IONA LIMA BEANS 28 Oz. 2 Cns. 23c

BULLHEAD PORK & BEANS 16 Oz. Can ... 5c



CARAMEL NUT BARS 2 FOR 25c Made of Purest Ingredients

Bananas, Lb. 4c

Lettuce, Firm Heads 5c

Calif. Oranges, Lge Sz., Doz. . 35c

Green Beans, 2 Lbs. 15c

Fresh B. E. Peas, Lb. 5c

OVALTINE Small 33c Large 63c

COMPOUND 8 LB. CTN. \$1.05

RITZ BUTTER CRACKERS Small 14c Large 23c

WHEATIES 2 PKGS. 25c

QUALITY MEATS—PRICED RIGHT

YELLOW BUFFS Fryers, 2 Lb. Avg. We Dress Them ea. 45c

Roast BABY BEEF CHUCK Lb. 15c

NICE AND FAT Hens WE DRESS THEM Lb. 15c

Picnic Hams 4 TO 6 LB. AVG. Lb. 23c

Salt Pork REAL QUALITY Lb. 23c

SUGAR CURED Bacon IN THE PIECE—A REAL BUY Lb. 30c

Assorted Lunch Meats and Cheese. All kinds of bulk Pickles.

FULL CREAM Cheese .. Lb. 22c

SUGAR CURED BACON Squares . Lb. 25c

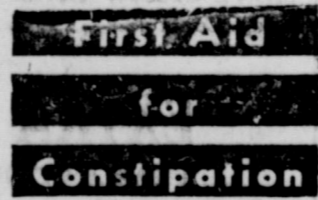
BIG (Round or Square) Bologna . Lb. 12c

GROUND Meat ... Lb. 15c

CHOICE CUTS Roast ... Lb. 18c

Boneless Cured—Sliced Ham ... Lb. 49c

CERRO SLICED Bacon .. Lb. 25c



Nyal Mineral Oil

A non-habit forming relief for constipation and irregular movements; Pure, tasteless and odorless.

Full Pint 59c

Eastland Corner Drug Store



Ladies and gents! Meet the Meatmaster (my new title). I'm supposed to know what you want before you tell me and give it to you so you'll come back for more. And I'll do it, too! That's not boasting, as you'll see when you come in. If I miss my guess three times out of ten I owe a new hat to the store manager, so get in on the fun, folks, and let's make this week the biggest and best this store ever saw!

SLICED BACON
ARMOUR'S GLIDER — POUND ... 25c
HOME SLICED— PER POUND 35c

STEAK
FANCY VEAL ALL CUTS — PER LB. 25c

ROAST
Veal Chuck, Lb. . . 15c
FANCY (SEVEN) Baby Beef, Lb. . . 19c
Prime Rib, Lb. . . 20c

BOLOONA PER POUND 12c CHEESE FULL CREAM LONGHORN — LB. 21c

CALIFORNIA POTATOES FANCY QUALITY 10 LBS. 25c

Large Heads 2 FOR LETTUCE 9c

LIBBY'S CRUSHED PINEAPPLE 3 Flat Cans 25c

PORK & BEANS Phillips 16-oz. cans 2 for 13c 4 for 25c

FRESH TENDER GR. BEANS 5c

JELLO All Flavors Reg. Pkg. 5c

TEA Lipton's 1/4-lb. Pk. 22c Glass Free

FRESH TENDER WAX BEANS 8c

LIBBY'S PINEAPPLE JUICE!! 3 Cans 25c

LIBBY'S ROSEDALE SOUR OR DILL 22 Ounce Jar 15c

White or Yellow SQUASH 10c

WHEATIES 12c

KELLOGG'S L.G. PKG. CORN FL'KS 11c

FRESH GREEN CUCUMBERS 7c

EARLY VARIETY ROSEDALE PEAS 16-Ounce Can 15c

WILSON'S ADVANCE SHORTENING 8 LB. CTN. \$1.05

FIRM PINK TOMATOES 15c

BEST YETT SALAD DRESSING 29c

PURE CANE SUGAR 10-POUND CLOTH BAG 55c

Fresh Snap Blackeye PEAS 2 POUNDS 9c

Best Yett—Quart Jar .. 29c

REGULAR OXYDOL 24-OUNCE PACKAGE 19c

FRESH CORN 3 EARS 10c

Challenge—Quart Jar .. 25c

FRUIT COCKTAIL Natur- Made 2 Tall Cans 27c

Fresh, ea. 19c Pineapple Large Limes, doz. 13c

FLORIDA GRAPEFRUIT Large Size 6c

PIPKIN'S SPECIAL COFFEE PER POUND 17c



FOR YOUR BEDROOM—With \$10 Purchase — ONLY \$6.95

SPINACH Deer Brand 3 No. 2 Cans 25c

FLOUR WHITE CREST 12 Pound Bag 49c

PINTO BEANS Per Pound 7 1/2c

6 Pound Bag 28c

CERTO Per Bottle 23c

24 Pound Bag GLADIATOR 75c

Pipkin Bros.

PIGGLY WIGGLY

THREE W. P. A. PROJECTS BROUGHT CONSTRUCTION OF \$23,000 SWIM POOL

Construction of the swimming pool at the city park and auxiliary improvements represent three Works Progress Administration-financed projects which total \$23,770.36.

Actual construction of the swimming pool and wading pool was provided in the first of the three WPA projects, July 6, 1936. The project provided for expenditure of \$11,095.85 in construction of a swimming pool 45 by 120 feet and a children's wading pool 45 by 20 feet. Seventy-seven men were employed for a total of 33,040 man-hours.

Next came the project on April 20 of this year which provided for building of two concrete tables with benches of concrete, installation of a drain line for the swimming pool and building of a concrete walk around the pool. Forty men were given employment in the WPA \$2,598.20 financed project for a total of 3,520 man-hours. The tables included in the project are three feet wide, the benches 18 inches wide and the benches and tables 10 feet long. Height of the tables is 30 inches. The benches are 18 inches high. There are 1,300 lineal feet of drain from the swimming pool and 4,600 square feet

JIM FARLEY AND PARTY HERE SUNDAY

Postmaster General James A. Farley, on the concluding end of a tour of the Southwest, paused for a brief ten minutes' Sunday May 19 of this year. The work provided in this project is a continuation of the second swimming pool project. While the No. 3 project is yet not completed, the operations will not interfere with bathers and those who go to the city park for recreation.

The project included construction of a bath house 36 by 38 feet, relocating and repairing the caretakers' dwelling, 26 by 40 feet; building of concrete walks, building of bleachers, drainage and fencing. A total of 5,036 square feet of concrete walk was to be laid, and 500 lineal feet of bleachers constructed. Four hundred and sixty-five lineal feet is the measurement of the galvanized fencing. There is 4,225 lineal feet of drainage in the No. 2 project. Also approved in the project were installation of a pump and fittings and landscaping of the park. Total number of workers was 80, who were given a total of 13,120 man hours of labor.

Equipment for the big pool includes one slide which is 11 1/2 feet high, two oakwood diving boards and one Hunter water top.

Goes To Ennis



Having formally turned the management of the Community Natural Gas Company, Eastland district to his successor, L. D. Black and family left for his new post which is the management of the district centering at Ennis. R. N. Wilson of Abilene is the new manager of the Eastland district. Black had been vice president of the Rotary club and active in Knight of Pythias and Chamber of Commerce work.

CITY PARK IN WHICH SWIM POOL LOCATED WAS OPENED BY OFFICIALS DURING 1925

The Eastland city park, focused into public attention by arrangements for opening of the swimming pool Wednesday night, was opened in 1925.

The approximate seven-acre lay-out was designed by H. E. Lawrence, then chief of police, and W. E. Dakan, city secretary who since has died the late J. H. Cheatham was city manager. City commissioners when the park was opened were G. G. Hazel, J. M. Sherrill, O. P. Morris, J. W. Williams and J. H. Harrison. The original cost of the park was \$19,000.

The land for the park was secured from several parties and the Texas & Pacific Railroad company. Fourteen lots were obtained by the city from K. A. Crowley—now is solicitor general for the postoffice department—J. A. Templeton and R. F. Milam. Fifteen lots were secured from Mr. and Mrs. J. F. McWilliams, 12 other lots were obtained from

SPOT CASH GROCERY TO OPEN ON FRIDAY

"Profit small — sales great. That's the way we operate." So was described Thursday the manner in which the Spot Cash Grocery, to be opened Friday morning at 7 o'clock at the location on the southwestern corner of the square, will be operated.

Finishing touches were being added Thursday in preparation for the opening of the grocery store, Eastland's newest business, which will be operated by S. R. Wood and J. H. Hyatt.

Hyatt and Wood are established business men, having operated the Hyatt and Wood Grocery at Cisco for the past nine years. Wood has been an Eastland county resident nine years, Hyatt for 25 years.

Many Eastland citizens are acquainted with Wood by his connection as a dealer of Maytag washing machines.

Everything in the store, representing an investment of \$7,000, is new. The latest type of refrigeration has been installed. Described as the first of its type in Eastland county is a Koch Refrigerated Vegetable Case. The customer will serve himself from the case which is glass enclosed. The ordinary vegetable case, it was explained, does not enclose the vegetables while refrigeration is in progress.

Also a Koch installation is the meat case. A fan forces circulation throughout the meat case.

An innovation in connection with the vegetable case, the idea of Wood, is a case at which the customer may wrap products taken from the case. Moisture encountered while obtaining the vegetables may be eliminated by sanitary paper towels nearby.

"We're going to sell standard and nationally known products at a price people can afford to pay," Wood states Thursday for himself and Hyatt as he pointed to the merchandise.

HOT WEATHER IS HERE . . .

. . . . And many of you are already wishing you had a cooler place in which to spend the summer months just ahead.

. . . . You will be delighted with many of the nice, cool homes we have on the market for sale, and the price and terms will prove to your liking.

There is no use spending the hot summer months crowded up in ill arranged houses when we have just what you want in desirable, well-located, ideal homes.

See us for prices on homes and rental properties in any part of the city.

EARL BENDER & COMPANY

ABSTRACTS INSURANCE REAL ESTATE RENTALS

Plans Perfected For Goat Dippings

Four demonstrations in goat dipping to control lice are scheduled by the County Agent. The first demonstration will be held on the Dan Childress ranch, 9 miles Northwest of Eastland on the Cisco-Breckenridge Highway beginning at 9 a. m. Saturday, June 12th. At this demonstration W. R. Nisbet, Extension Animal Husbandman will discuss all phases of successful goat raising in Eastland County. He will be assisted by the County Agent. 500 goats will be dipped.

The second dipping will be conducted by the County Agent and C. L. Wilson, Rising Star teacher of vocational agriculture and will be held at 9 a. m. Wednesday, June 16th on the Cecil Shults ranch, 1 mile northwest of the Branton Gin. The gin is located about 5 miles north of Rising Star on the Cisco Highway. 250 goats and 100 sheep will be dipped.

On Thursday, June 17th at 1:30 p. m. the County Agent and Dr. R. H. Hodges will conduct a dipping demonstration on the Old Norwood place, 2 miles north of Olden. 450 goats and 500 sheep to 500 people crowded about the special car in which the Farley party were travelling, each one eager to personally meet and greet the distinguished visitors. Mr. Farley, wearing that famous Farley smile and a healthy West Texas suntan, did not disappoint them. Greeted as he alighted from his car by Mayor C. W. Hoffmann, Herbert Tanner, secretary of the Eastland Chamber of Commerce; O. E. Lyster, Democratic county chairman; Judge Geo. L. Davenport of the 91st district court; R. E. Sikes; Carl Garrett; Will M. Wood; Cecil Lotief; E. Hinrich, publisher of the Eastland Daily Telegram; Frank A. Jones, postmaster, and members of the local postoffice staff. Mr. Farley quickly took up a position readily accessible to the crowd and began shaking hands as the crowd passed by him. This was continued until the last minute for the train's departure and the visitors boarded their car waving goodbye as the train pulled away.

As he shook their hands a d greeted the large crowd of men, women and children passing by him, Mr. Farley kept up a conversation with Postmaster Jones and others about him and as photographers appeared and began preparations to take pictures he posed with Mr. Jones as pictures of the two shaking hands were snapped.

Karl Crowley, solicitor of the postoffice department, who a number of years ago resided in Eastland, where he practiced law, made a brief talk from the steps of the car platform. He expressed the appreciation of the party for the reception given them and said that Mr. Farley was the "greatest fellow on earth and that he would make a good citizen of Eastland."

Smith W. Purdum, fourth assistant postmaster general, was greeted by members of the Eastland postoffice staff and inquired of them as to the new federal building just completed here and whether or not the furniture and fixtures for it had all been received, etc.

The time being so short, Mr. Farley did not make any address. At another appearance on his tour he stated the President's "reform plan for the supreme court is generally approved by the people" and "President Roosevelt will carry out to the end his program as outlined."

Mayor Hoffmann and Mr. Tanner took occasion of Mr. Farley's brief visit to express to him and through him to all others responsible, the appreciation of Eastland people for the new federal post-office building just finished here and for other like expenditures for the benefit of the people of this section.

The Farley party made brief stops at Cisco and Ranger.

Plans Perfected For Goat Dippings

Work was started toward the actual construction of the pool was initiated by the city commission in 1935.

Perhaps it was the heat of July which emphasized the proposal but the city commissioners were attracted by the possibility of construction of a Works Progress Administration financed swimming pool for Eastland. It has been about 15 years since the city had a pool. The old pool was privately operated for about one year 15 years ago on East Plummer street off of South Seaman street.

The WPA district office was contacted. After that came the approval of the project for construction of a pool July 6, 1936. City Commissioners at the time work was begun in earnest for the swimming pool were Mayor C. W. Hoffmann, H. O. Satterwhite, C. T. Lucas and T. M. Johnson, deceased. The swimming pool was the first WPA project obtained by those city commissioners.

CHRONICLE and FRIDAY . . . MEN WANTED for Rawleigh Routes of 800 families. Reliable Hustler should start earning \$25 weekly and increase rapidly. Write today.—Rawleigh's, Dept. TXF-222-S, Memphis, Tenn.

CAN WE HELP YOU?

In the third edition of the Chiropractor's Ready Reference Guide, by John F. Ross, D. C., there are 413 diseases and ailments listed, with 48 areas of pain, all of which have been classified for adjustment. Chiropractic is not a cure-all. Chiropractic does remove the cause. Nature alone does the curing. An examination will soon disclose whether your condition would respond.

DRS. DEIS & DEIS
Chiropractors
Beard Building EASTLAND

MISS LORRAINE TAYLOR

WILL OPEN HER STUDIO IN

PIANO AND SPEECH ARTS

JUNE 7 — 702 S. SEAMAN

Degree Texas Tech. Four Years Teaching Experience.

Look what you get WHEN YOU BUY SEIBERLING STANDARD SERVICE TIRES!

• If you are looking for a first-line quality tire at second-line prices, let us show you this Seiberling Standard Service tire.

Here is a tire with a larger cross-section, more weight, broader, flatter tread, stronger cords, rugged center traction tread design, and tread of Affinite rubber, vulcanized into a single unit by the patented Seiberling Vapor-Cure process.

We unhesitatingly say that the Seiberling Standard Service tire is a better tire than many competitive first-line tires, yet we are selling it at second-line prices.

SEE OUR USED TIRE SPECIALS!

Come in today and let us show you all these extra features and you will agree that you get more for your money with Seiberling Standard Service tires.

Our trade-in allowance on your old tires will be liberal.

Jim Horton Tire Service

EAST MAIN STREET PHONE 258 EASTLAND

Friday-Saturday AND TRADES DAY Specials!

PLENTY OF BARGAINS

A FEW ITEMS LISTED BELOW ARE WELL WORTH COMING AFTER!

1 Table of Ladies' SUMMER SHOES — Values to \$2.98—now \$1

1 Table of Summer SHEER GOODS — Val. to 69c yd. — YD. 25c

BATHING SUITS FOR THE WHOLE FAMILY 89c TO 1.98

MEN'S WASH PANTS— Values to \$1.49 NOW 98c

MEN'S STRAW HATS— Keep Cool! 98c

EXTRA SPECIAL

1 TABLE OF ODDS AND ENDS!

Items selected from all over the store — You might find just what you want here—

PRICED 1c TO 19c

THE ECONOMY STORE

Eastland, Texas. Carl Johnson, Mgr.

LATEST SUMMER FASHIONS PRICED TO SUIT EVERYONE

BEAUTIFUL ASSORTED COLLECTION WASH FROCKS

Made By VIRGINIA HART And MARY LOU

\$1.98 To \$3.98

Your opportunity is here! Now you can get several of those new cool, delightfully feminine models that everyone wants. Here they are . . . a gorgeous array. New patterns and colors, and they are washable. Be sure you make an early choice while the stocks are complete. Women's and Misses' sizes for street and afternoon wear.

COME TO THE OPENING OF EASTLAND'S NEW SWIMMING POOL, WEDNESDAY, JUNE 2

ECONOMY STORE

Carl Johnson, Manager
No. Side Square Eastland

USED CAR SALE!

SMALL DOWN PAYMENT
On Any USED CAR

HERE'S A REAL SALE OF

USED CARS

EVERY CAR ON OUR FLOORS MUST GO

JUST AT VACATION TIME — WHEN YOU'RE THINKING OF GOING PLACES AND DOING THINGS — DON'T PUT IT OFF ANOTHER MINUTE — COME DOWN AND SEE US AND LOOK OVER SOME 35 ODD USED CAR BARGAINS WE HAVE. WE'LL TRADE WITH YOU AND DO IT TO YOUR SATISFACTION — AND YOU'LL GET ALL THE BENEFIT. WE'RE GOING TO SELL THESE CARS BECAUSE WE WON'T CARRY THEM ANY LONGER. YOU MAY NOT CAN AFFORD A NEW CAR, BUT ANYBODY CAN AFFORD A GOOD USED CAR AT PRICES AND TERMS WE ARE MAKING.

FIRST COME FIRST SERVED --- BEAT THE OTHER FELLOW TO IT!

LOOK! LOOK! Let's Talk and Trade!

1935 PONTIAC
DE LUXE SIX
SPORT COUPE

Radio equipped, new paint. Lots of extras.
RUNS AND LOOKS LIKE NEW!

\$550

SALE STARTED
THURSDAY!!!
COME GET BARGAINS!

1933 DODGE COUPE
LOOKS AND RUNS
GOOD—GOOD TIRES

\$250

MILES and MILES
of
**USED CAR
VALUE**

1934 Plymouth
Deluxe 4-Door
Sedan

New paint. Quiet motor.

\$385

1932 Buick 4-Door
Sedan

New paint. In perfect condition.

\$295

1935 Chevrolet
Town Sedan

Not a scratch. Spotless upholstery. Quiet motor and good tires.

\$495

1934 Buick 61
Sedan

6 Wheels. Here is a dandy. Will have to be seen to be appreciated. Runs and looks like new.

\$275

1931 Willis Sedan

See it for a bargain.

\$135

1934 Ford Deluxe
Sedan

With built-in trunk.

\$350

1934 Pontiac
Coupe

A good buy. See it.

\$325

1934 Pontiac
4-Door Sedan

With built-in trunk. Good tires. Smooth, quiet motor.

\$450

1931 Chevrolet
Coach

New Duco paint job. New seat covers. New top and practically new rubber. Clean throughout.

\$195

1934 DODGE
COUPE
A-1
THRUOUT!

\$325

1931 Buick 4-Door
Sedan

Motor has just been recently overhauled. Good throughout.

\$275

1934 Pontiac
4-Door Touring
Sedan

New tires. Runs and looks like new. A dandy!

\$495

1934 Pontiac
4-Door Touring
Sedan

Nice family car.

\$425

1933 DODGE
4-DOOR SEDAN
PERFECT CAR!

\$325

All Cars have been reconditioned in our service department. We make no misrepresentations and back up each and every sale we make!

1930 BUICK SEDAN
4-DOOR—GOOD
CLEAN CAR!

\$185

Muirhead Motor Co.

EASTLAND, East Main St. AVE. D at 9TH CISCO

CASH — TRADE OR TERMS — YOU WIN!

YOU'LL SAY SO, TOO!

USED CAR SALE!!!

USED CAR SALE!!!

USED CAR SALE!!!

A USED CAR WITH
NEW CAR
GUARANTEE

THE BETTER GRADE OF
USED CARS

WHY NOT FOLLOW THE SIGNS OF SPRING?

SIGNS OF SPRING CANNOT BE OVERLOOKED, EVEN BY THE MOST SELF-CENTERED INDIVIDUAL. THEY ARE TOO MANY, TOO VARIED AND INSISTENT. BIRDS THAT RETURN, HEDGES THAT POP INTO LEAF, AND A RESTLESS STIRRING IN HUMAN HEARTS.

BUT THERE ARE OTHER SIGNS OF SPRING THAT POINT THE WAY TO INCREASED HAPPINESS ALONG THE TRAILS OF SUMMER--THE ADVERTISEMENTS IN THIS NEWSPAPER. THINK OF THEM AS THE GUIDEPOSTS TO VALUE. IF YOU OVERLOOK THESE SIGNS, YOU WILL SPEND WITHOUT ADEQUATE INFORMATION ABOUT THE NEW THINGS, BETTER PRODUCTS, MORE BEAUTIFUL AND SATISFYING MERCHANDISE. THESE ADVERTISEMENTS, TRULY, ARE THE OFFICIAL REPORTS TO YOU BY THE BEST MANUFACTURERS OF THE NATION, WHO SEASON BY SEASON COMBINE SCIENCE AND ART WITH VAST RESOURCES TO PLACE BETTER THINGS AT YOUR DISPOSAL.

AND EVERY TIME, THE ADVERTISEMENTS SPEAK WITH AUTHORITY. THEY ARE SIGNED BY FIRMS OF STANDING AND REPUTE. YOU CAN TRUST THEM . . . AND PROFIT WELL BY THEM.

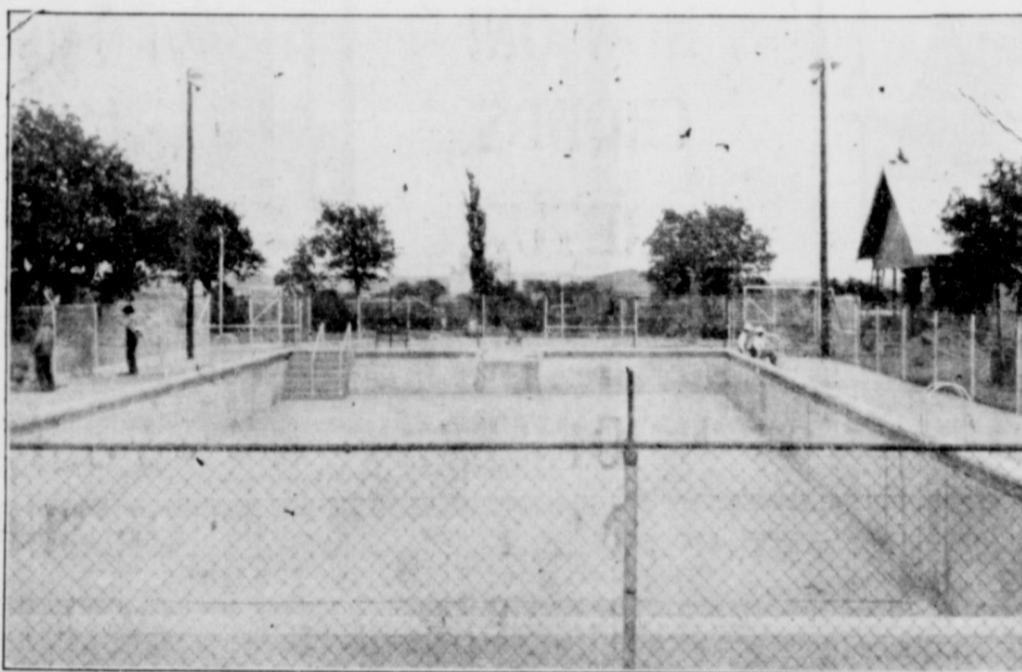
Coollest Spot in the West! SWIM FOR HEALTH AT THE EASTLAND MUNICIPAL SWIMMING POOL

AT CITY PARK

DUE TO RAIN WEDNESDAY NIGHT, FORMAL OPENING WILL BE HELD FRIDAY NIGHT, JUNE 4th RAIN OR SHINE

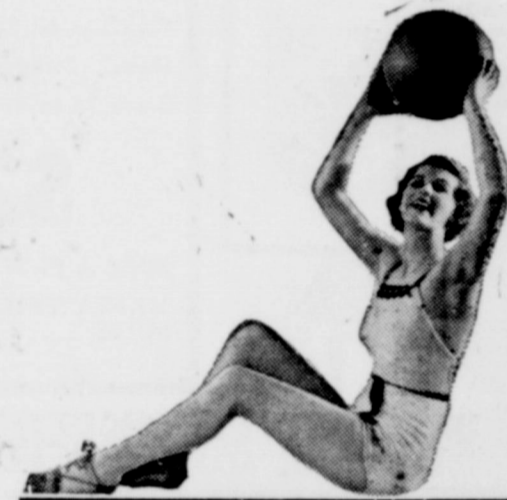
BAND CONCERT — ADDRESS BY MAYOR C. W. HOFFMANN
8:00 P. M.

FIREWORKS DISPLAY 10:00 P. M.



MUSIC BY
EASTLAND
HIGH SCHOOL
BAND

PLENTY OF
SEATS
FOR
EVERYONE



THE FOLLOWING BUSINESS INTERESTS COOPERATING WITH THE CITY OF EASTLAND SPONSOR THE INVITATION

Crowell Lumber Co.
Rupert's Bakery
Foxworth Wholesale Grocery, Cisco
States Oil Corporation
Arab Gasoline Corporation
Eastland National Bank
C. D. Hartnett Wholesale Grocery, Ranger
Texas Electric Service Co.
Community Natural Gas Co.
The Men's Shop
Eastland Steam Laundry
Smith Plumbing and Electric
The Fashion
Freyschlag Insurance Agency
Eastland Abstract Co.
Walter's Cash Grocery & Market
Cecil Hibbert, Connellee Hotel Barber Shop
The Specialty Shop, Vera McLeRoy, Prop.
CONNELLEE HOTEL
Majestic Cafe
Higginbotham Bartlett Lumber Co.
Tyson Furniture Co.
Harkrider Cleaners & Dyers
Corner Drug Store
Eastland Dairy Products Co.
Gold Medal Quality Ice Cream

Ben Hamner
Earl Bender & Co.
John Simms, Jr., Agent, Sinclair Ref. Co.
Kimbrell Hardware Co.
Lucas Service Station
Tom's Transfer
Agent Ft. Worth Warehouse & Storage Co.
Guy Patterson Tire Service
Lotief Dry Goods Co.

10 — 2 AND 4
Bottled By
ZIM'S BOTTLING WORKS
STRAWN, TEXAS

Muirhead Motor Co.
Buick — Pontiac
Donald Kinnaird Insurance Agency
Burnside Motor Co.
Coca Cola Co.
Nehi Bottling Works
ZIM'S BOTTLING WORKS
Hotel Garage & Storage
Open Day and Night

FOR PERFECT REFRESHMENT
DRINK

THE NATION'S FAVORITE

Modern Dry Cleaners & Dyers
(Sanitone Cleaners)
Harper Music Co.
J. U. Johnson's Eastland Bakery
Butternut Bread
Harvey Chevrolet Co.
Harrison Grocery & Market
Tom Flack, Agent, Gulf Products
Eastland Drug Co.
Beard & Taylor
Toombs Richardson Drug Co.
Root & Rhodes
Jarecki Manufacturing Co.
Oil & Gas Well Supplies
Parker Floral Shop
Piggly Wiggly
Connellee Hotel

Eastland Iron & Metal Co., H. Pullman.
Texas Pacific Coil & Oil Co.
M. L. Keasler, Distributor.
Jim Horton Tire Service — Seiberling.

COMBINING TWO BIG STOCKS IN ONE!



EASTLAND MONEY



RANGER TALKS



WE HAVE CLOSED OUR STORE IN RANGER AND MOVED THE STOCK TO EASTLAND! COME TO THIS GREAT-----

at The FASHION'S SALE of SALES

CONSOLIDATION



LINEN SUITS
 Guaranteed imported, 100% pure linen. Swagger and short coats. Sizes 12 to 42. Values to \$5.95.

\$2.98

JUST A FEW 100% PURE LINEN MANLY TAILORED SUITS **\$1.88**



SALE NOW ON! CROWDS ARE COMING!



ONE GROUP GIRDLES
 Combination reducing garments, taken from our regular stock. Value to \$6.95.

ONE-HALF PRICE!



WE MAKE NO MISREPRESENTATIONS AS TO QUALITY AND VALUES. WE BACK UP EVERY ITEM AND EVERY SALE MADE

EVENING DRESSES
 The very opportunity you have been looking for, and no woman should be without an evening dress in her wardrobe... They are so necessary and here is a grand chance to do a lot of saving.

7 Dresses \$5.95 VAL. \$2.98	16 Dresses Val. to \$12.95 \$4.88
7 Dresses Val to \$16.50 \$7.88	Choice of the House \$15.88



WASH FROCKS
 One group Betty Joyce, La Grace, Queen Made. Linens, Batiste, Laces. Sizes 12 to 46.

\$1.95 VALUES \$1.28	\$2.95 VALUES \$1.78
--------------------------------	--------------------------------

AND WHAT A SALE OF HATS
 110 Hats from our regular stock to go in 2 groups. Straws and Felts—

48c & 98c
 Other Values \$3.95 to \$8.95
\$1.98 & \$4.98

DOBBS HATS
 \$5.00 to \$10.00 Values — \$3.88 to \$7.88



DRESSES Keep your Budget and Temperature
 HUNDREDS OF THEM! EVERY STYLE AND DESCRIPTION

Sacrificing the most beautiful models, fashions and styles at prices that will appeal to the most discriminate woman and certainly to the thrifty shopper. Come into this bargain event prepared to take care of your entire summer needs.

ONE GROUP SELECTED FROM OUR REGULAR STOCK. SILKS AND SILK LINENS SALE PRICE— **\$2.88**

85 DRESSES Values to \$10.95 \$4.88	56 DRESSES Values to \$18.50 \$7.88
65 DRESSES Values to \$22.50 \$9.88	CHOICE OF THE HOUSE Values to \$29.50 \$15.88


Included in the \$7.88 and \$9.88 groups there are dresses made by Franklin, Reach, LaVine, Souder, Knit, Madam Rinaud, Bloomfield and others.



5,000

Down

Down



5,000 PAIRS TO SELECT FROM!



ONE TABLE BROKEN LOTS. ALL SIZES. SANDALS. ALL COLORS AND COLOR COMBINATIONS. Reg. \$1.88 Values CHOICE— **89c**

One Table SUMMER SHOES White and Comb. Colors. Reg. \$3.95 and \$4.95 Values \$1.89	LARGE SELECTION FROM OUR REGULAR STOCK Reg. \$4.95 Values All Sizes and Styles \$3.49
---	---

Natural Poise and Air Tred not included in these sale prices!

BLOUSES In 4 Groups! Val. \$1.19 to \$2.98. 58c - 88c \$1.48 - \$1.88 Batiste, Silk, Linen	GLOVES Know Your Size NO FITTING Val. to \$3.95 \$1.00 One lot of kid and novelty linen, white and eggshell and beige	Silk Negligees Creme trimmed with lace and tailored. \$2.98 Others \$3.88 to \$5.88.
BAGS Beaded kid and patent. White, pastel black, navy, red. \$1.78 ONE LOT White and Colors 48c	FABRIC Maize and White 68c	JONCAIRE COSMETICS Perfumes, creams and powder. Old customers save, new ones try our splendid preparations. ONE-THIRD OFF!

**NO REFUNDS
 NO EXCHANGES
 ALL SALES FINAL!**

THE FASHION
 NORTH SIDE SQUARE EASTLAND

**NEVER SUCH A SALE!
 NEVER SUCH BARGAINS!
 EVERYTHING NEW!**