

County Officer Salary Fund Had Deficit In 1936

Eastland county had a deficit of \$15,662.50 in the officers' salary fund for the year ending December 31, 1936, according to figures compiled by Auditor Don Parker.

The deficit in the fund was made up from the general fund. The state was to have paid 14 cents per capita as its portion of the salary fund to the county, as reimbursement for the handling of criminal cases, and 70 per cent of the district attorney's salary, but only seven cents was paid on the per capita proposition. That helped the county to the extent of about \$2,300.

No appropriation was made by the legislature for its aid on the district attorney's salary.

Fees from the different offices put \$47,130.57 into the officers' salary fund, from which the officials and deputies were paid with the additional \$15,662.50 from the general fund. That much was provided the officers and deputies under the law.

Eastland has been under the officers' salary fund type of payment with other Texas counties for a year. The constitutional amendment abolishing fees for certain offices was voted in 1935.

Commissioners' court, which had the option of allowing precinct officers, constables and justices of peace, their remuneration by salaries or fees decided upon the latter method.

Mother of Ranger Woman Dies After A Long Illness

Mrs. W. J. Elmsner, mother of Mrs. R. A. Disney of Ranger, died at her home at Chickasha, Okla., Saturday morning after a lingering illness which has kept her confined to her bed for the past four months.

Services were conducted at Chickasha Sunday afternoon.

The decedent, who was 79 years old, is survived by her husband and daughters, Mrs. Disney of Ranger, Mrs. Iva Ferguson of Mineola and Gladys Jones of Dallas, and sons, Jim Roach of Chickasha and Bryan Roach of Fort Worth, and other immediate relatives including a group of step-children.

She has paid visits to the home of her daughter in Ranger, and has friends in the city who regret to learn of her passing.

Mrs. Disney will return home during the early part of the week.

Grand Jury Panel Members Are Listed

Following is the personnel of a panel summoned for Monday, March 1, for formation of a grand jury for the March term of 88th district court:

W. H. Starr, Cisco; Frank Hightower, Eastland; Vernon Deffenbach, Ranger; M. W. Hague, Eastland; Henry Stroebel, Cisco; W. A. Tate, Carbon; Frank Morrow, Gorman; J. D. Lauderdale, Cisco; T. J. Anderson, Ranger; Jim Ray Buey, Rising Star; J. E. Gilbreath, Eastland; Garland Nance, Cisco; Joyce Webb, Cisco; Floyd B. Joyce, Rising Star.

Former Resident Of City Succumbs

Mrs. Horace B. Horton, resident of Eastland and Ranger in 1923 and 1924 when her husband was associated with a brother, James, in service station businesses in those cities, died Saturday night at Chicago, Ill., after an illness of pneumonia.

Her brother-in-law, James and Mrs. Horton left Eastland Sunday. At St. Louis, Mo., Mrs. Horton will go to Booneville, Mo., to visit their son, Horace, who is a student at Kemper Military Institute, while Mr. Horton continues to Chicago for the rites.

Morton Valleyites Girl Cage Champs

In an exciting climax to the county girls' basketball tournament concluded Saturday night at the Eastland gymnasium, Morton Valley defeated the Rising Star team, 27-25.

To practice game before the championship match the Pioneer five swamped Desdemona 38-11. Edith Rosequest of Eastland, was named on the all-county team selected by officials.

McNutt Up for New Deal Post



An administration post awaited Paul V. McNutt, above, former governor of Indiana, Washington observers said after President Roosevelt received McNutt in private conference. As governor, McNutt backed the New Deal. He was mentioned for several positions, including those of war secretary, and Philippines commissioner.

Oil Belt Exes of University to Meet At Cisco March 2

Annual Independence Day banquet of the Texas Texas Exes association of the Oil Belt will be held Tuesday night March 2 at Cisco.

Ex students of the university from Cisco, Eastland, Ranger, Breckenridge and Albany compose membership in the association.

F. D. Wright of Cisco is president. Vice presidents are John A. Bates, Breckenridge; V. T. Seaberry, Eastland; B. H. Peacock, Ranger, and Elmer Smith, Albany.

Name Eastland Girl College Club Head

AUSTIN, Texas, Feb. 22.—Virginia Neil Little of Eastland has been elected president of the Texas State College for Women Club at the University of Texas. Miss Little is a graduate student in psychology. She is a member of the University Curtain Club, student dramatic organization.

At Texas State College for Women, Miss Little was an honor student and was active in the English Club and in speech work. She is a graduate of Eastland High School. There she frequently made the honor roll and participated in work of dramatic club. Her parents are Mr. and Mrs. J. F. Little of Eastland.

85 Register Autos In Assessor Office

Eighty-five automobiles have been registered for 1937, County Assessor-Collector C. H. O'Brien reported Monday. Sale opening Feb. 1, will conclude April 1.

DISMISS CASE

Case of C. H. Yeager against C. M. Root has been dismissed in 91st district court.

POSTS BOND

James Smith, indicted Feb. 15 by a 91st district court grand jury, on a charge of tapping a pipe line has posted \$750 bond, record showed Saturday in District Clerk P. L. Crossley's office.

DEFAULT JUDGMENT

Eighty-eighth district court has ordered First State Bank of Rising Star to recover \$1,026.50 from Charles L. Gotcher. The defendant did not appear in the case.

Aged Resident of Desdemona Buried

Details of the funeral services, held several days ago for Mrs. J. M. Sparks of Desdemona, have been received here.

The decedent, who was 70 years old at the time of her death, was buried in the Howard Cemetery, north of Desdemona, after funeral services were conducted at her home.

BECOMES ONE OF COUNTY'S BIGGEST FIRMS

The Carbon Peanut Company, Inc., which annually buys the majority of the county's "biggest crop," peanuts, is increasing its capitalization from \$30,000 to \$200,000.

Started in Oct., 1931 by G. C. Atkins at Carbon and Dallas, the company has grown continually and is one of the largest industries in Eastland county.

The rapid and consistent growth of the company is shown in the following figures on sales for the fiscal years ending Dec. 31:

1932—\$122,565.08,
1934—137,120.90,
1935—\$240,955.85,
1936—\$371,892.03.

On July 12, 1932, Atkins and A. H. Groulx and W. W. Hillbrand formed a corporation with a total authorized capital stock of \$5,000. The stock was increased to \$15,000 on May 9, 1933. Groulx and Hillbrand transferred their stock to Charles E. Darden and Houston Flowers of Carbon. The volume of the business became so great as to necessitate a further increase to \$30,000 which was done by charter amendment May 21, 1934.

During the first year of the company's operations, its principal activity was the buying of farmers' stock peanuts and the shelling and manufacturing into shelled Spanish peanuts and their sale to the trade in the Dallas area and the filling of some orders from Kansas City and St. Louis. The earnings during the first four years of its existence amounted to approximately six times its first issued capital more than \$50,000.

The company maintained a branch office and warehouse at Dallas where it has conducted a branch office business, catering principally to the Dallas trade territory and manufacturing interests requiring the company's shelled peanuts.

In Carbon the company has a two-story building, together with an office building, feed and milling house and elevators, milling facilities including shellers, graders, conveyors and sacking facilities.

The firm employs approximately 100 men and women as mill employees, together with four men and women in the Carbon office. About 15 men and women are employed in the Dallas office and mill. The company also operates a division of the Atkins Popcorn Co.

The set-up of the company is unique, it is observed, in that it has a ready market for all its finished products. Many times they have had to refuse bona fide orders for their products, in as much as 10 and 15 carload-lot orders.

The company buys peanuts and popcorn direct from the farmers and producers in Eastland county, and the adjoining territory, Bexar county and in the adjoining precinct territories all of which raw material has been shipped to the milling plant at Carbon and there processed and sold by freight routes direct or through the Dallas warehouse.

The company has one of the best up-to-date peanut and popcorn shelling plants at Dallas.

The management of the company is in the hands of Atkins, resident and member of the board of directors, who has had considerable experience in the business. He is the son of Center Atkins, a well-known in San Antonio and Dallas.

Charles E. Darden is an office manager, bookkeeper and executive of the company with an understanding of marketing products and of the peanut and popcorn markets and trends.

Houston Flowers is in charge of the milling and shelling operations at Carbon.

Darden is secretary-treasurer and director; Flowers, vice president and director; Paul H. Gunther, director, and A. H. Groulx, director.

The company has maintained a policy of selling quality products direct to the food manufacturers and consumers. The consuming market has never reached a saturation point and it has never been necessary for the company to seek for outlets for new orders for their products.

ROAD TO LINK REICH AND ITALY

By United Press
ROME—Plans for a \$50,000, 900 highway-linking Munich to Rome are being drawn up by Italian, German and Austrian engineers. The highway will be the most modern motor road in the world.

NEW MR. AND MRS. MUSSOLINI



At ease despite attentions showered on her because of her entry into the family of Italy's dictator, Orsola Duvoli chats animatedly with her nervous-looking bridegroom, Lieut. Vittorio Mussolini, eldest son of Premier Benito Mussolini, on emerging from the Church of San Giuseppe in Rome after the wedding.

Drys Vote to Prepare Petition for Vote Removing 3.2, 14% Beverages

Commissioners' court will be asked to call an election for removal of 14 and 3.2 per cent alcoholic beverages from the county executive committee members of the United Dry Forces voted Monday morning in county courthouse at Eastland.

The vote was made upon the recommendation of G. M. Meglason of Cisco, president, who presided.

Range Program to Be Explained at Series of Meets

A schedule of meetings for explanation of the 1937 range program was announced Tuesday by County Agent Elmo V. Cook.

Agent Cook stated "Any farmer or rancher who has 200 or more acres in pasture will be interested in the range program and should attend."

He said those having less acreage are eligible to participate in the program, but indicated that payments would not warrant.

The meetings: Rising Star, 10 a. m., Friday, Feb. 26, Chamber of Commerce. Cisco, 2 p. m., Friday, Feb. 26, Chamber of Commerce. Ranger, 10 a. m., Saturday, Feb. 27, Chamber of Commerce. Eastland, 2 p. m., Saturday, Feb. 27, county courtroom.

The county agent will offer the explanation.

Dust Storm Alarm Brings a Request For Big Fund

By United Press
AMARILLO, Feb. 23.—Alarmed by dust storms described as "worse than in the spring of 1935," a subcommittee of the great plains advisory committee decided today to ask the Government for a \$1,000,000 emergency fund to combat erosion.

Dan Arnold, chairman of the subcommittee, told the regional committee there was "need for quick action if valuable plains land is to be saved."

Resettlement administration experts already had told the committee government farm agencies had "contributed to land misuse rather than in aiding better farming conditions."

Eastland To Vote on Three City Dads at Election Ordered April 6

Eastland voters will go to the polls Tuesday, April 6, to select three city commissioners.

Order for the election was passed Monday night at a meeting of the city commissioners.

On the voting date terms of three commissioners, Chairman C. W. Hoffman, H. O. Satterwhite and the late T. M. Johnson, expire.

RANGER POST BANQUET HAS LARGE CROWD

Approximately 150 guests from Ranger, Eastland, Mineral Wells and other surrounding towns were present at the annual George Washington Birthday Banquet of the Carl Barnes post of the American Legion, held in Ranger on Monday night.

The program was probably the best ever offered at one of the annual banquets.

Rev. Bryan Kestley, D. D., national chaplain of the American Legion, was the principal speaker, whose subject was "The Challenge of Fleethers."

The address was a beautiful tribute to those who made the supreme sacrifice for their country in the World War, and the chaplain's interpretation of what their message would be to those who survived and are now carrying on in their own country.

Keynotes in his address were three words, peace, liberty and faith, on which he spoke eloquently. His address was interspersed at times with humorous bits that brought many laughs from the audience.

Dr. Harry A. Logsdon, post commander of the Carl Barnes Post, was toastmaster at the banquet. After singing "Smiles" and "America" by the assembly, Rev. H. H. Stephens pronounced the invocation before the meal was served.

Judge L. H. Flewellen delivered a short address of welcome, after which the junior quartet of Cooper school, composed of Homer Smith, Jimmie Smith, Clint Taylor and Billy Mack Meroney, presented several numbers, with their director, Mrs. Homer Smith, at the piano. Little Miss Ellie Ellen Hummel presented two beautiful xylophone solos which were roundly applauded.

Mrs. Larry Daniels of Abilene, past district committeewoman of the Ladies' Auxiliary, made a brief talk on "Education of the Public on Auxiliary," in which she pointed out many of the accomplishments of the auxiliary and urged those who were eligible for membership and who had not joined, to do so, even if they could not take an active part in the work.

F. P. Brasher presented citations of service to B. H. Peacock, A. J. Baum and Mrs. Al Tune for their work for the Legion and the Legion Auxiliary during the past year, and presented Peacock with the past post commander's button.

Music during the meal was by the Musical Trio, which drew much applause from the banquet guests.

Gardening Topic At Home Meetings

General gardening principles will be discussed at home demonstration club meetings in Eastland county this week by Agent Miss Ruth Ramey.

Laying of cement tile as demonstrated on sub-irrigation is planned at the sessions.

Monday afternoon Miss Ramey will be at Elm with the club which convened at the home of Mrs. Ollie Mason.

Class Play to Be Presented March 1

The new curtain and fixtures are being installed at the New Recreation building and on March 1 the equipment will be presented to the public and dedicated by the presentation of the annual Senior Class play.

This play "Girl Shy," a three act comedy has a cast of twelve boys and girls chosen from the Senior Class. It is clever, breezy and a full evening of entertainment. All proceeds from play will be given to the School board to complete the payment on the curtains.

Farnsworth Denied Right to Change Plea Before Court

WASHINGTON, Feb. 23.—District Federal Court Justice James Proctor, today denied the request of John Farnsworth that he be allowed to plead not guilty and stand trial on charges of selling naval secrets to Japan.

Judge Proctor said Farnsworth must stand on his plea, which, in effect, admitted guilt and threw himself on the mercy of the court.

After being returned to his jail cell, Farnsworth announced that he intended to retain another attorney and appeal from Judge Proctor's ruling.

Admits Infant Died 88th Court Jury Lists Prepared by His Violence



Clyde Proctor (above), 27-year-old truck driver, faces slaying charges at Ontario, N. Y., as a result of the death of Mrs. Thomas Hinkle, who left the infant in his charge. Proctor is reported to have confessed, shaking the baby until its neck snapped when it hit him as he attempted to still its crying.

Registered Bull's Service Available

The service of a registered bull, purchased by the Eastland Chamber of Commerce, to improve the Eastland county stock, is available to farmers and ranchers.

The animal, half-brother of the sire of a bull acclaimed as the grand champion of the United States, is kept at Louis Pitzer's farm south of Eastland.

A charge of \$3 is assessed for services.

Schools Receive Funds from State

Allocation of \$9,996.80 from the State Department of Education to 18 schools for transportation aid in the 1936-37 term was announced Saturday by County Superintendent C. E. Eldridge.

The schools will share as follows:

Sheridan	2740.24
Morton Valley	740.24
Reagan	172.87
Okra	310.27
Cisco	1,175.60
Ranger	638.28
Carbon	1,179.04
Alameda	545.20
Colony	487.57
Eastland	221.62
Romney	245.79
Desdemona	376.77
Gorman	811.15
Flatwood	132.97
Pioneer	762.59
Cross Roads	191.09
Rising Star	1,327.81

Eastland Relative's Funeral Conducted

Funeral services for J. L. Anthony, brother-in-law of Mrs. Jennie Reik of Eastland, were conducted Monday afternoon at Abilene.

Anthony died at 5 a. m. Monday morning in an Abilene hospital of injuries received in an automobile accident.

Eastland Girl On J.T.A.C. Honor Roll

STEPHENVILLE, Feb. 22.—Lona Faye Hearne, of Eastland was named to the third preliminary honor roll at John Tarleton Agricultural College in an announcement today from Registrar Gabe Lewis. Miss Hearne earned her place by making grades of eighty or above during the last six weeks work.

RELEASE APPROVED
Commissioners court granted an application of Commercial State Bank Ranger, for release of \$30,000 in securities pledged by the county depository to secure funds on deposit. The securities were 20 \$1,000 U. S. treasury bonds and 10 \$1,000 U. S. treasury bonds. The court was assured sufficient securities remained to safeguard the county's funds.

Members of a panel from which 12 will be chosen as grand jurors for the March term of 88th district court, starting Monday, March 1, have been selected by a commission appointed by Judge B. W. Patterson.

Officials indicate an investigation will likely be made into the recent death of J. B. Ames, Ranger rancher who was fatally shot.

The commission, composed of T. L. Overby of Eastland, E. F. Crawford of Cisco and A. J. Rutliff of Ranger, also selected names of petit jurors for possible service the second, third and fourth weeks of the term. The petit jury weeks begin March 8, 15 and 22.

Dangers of Flying Kites Explained

With the kite flying season at hand, Texas Electric Service Company issued Saturday its annual appeal to parents to warn children flying kites to keep away from electric lines.

"That the innocent pastime of kite flying can be exceedingly dangerous is brought out forcibly by the fact that fatal accidents occurred in the year just past because of children getting their metalized kites tangled in power lines," according to J. E. Lewis, district manager of Texas Electric Service Company.

"Too often children use metal wire in the place of string on their kites and when the wires come in contact with a power line the result is instantly disastrous. Even plain kite strings sometimes carry current, especially if the string is wet. The best idea, regardless of how the kite is built or what kind of string is being used, is to see that it is flown in open spaces where no power lines are located," Lewis stated.

"If a kite should become entangled in power lines, be sure that children do not climb the poles or use long sticks to try to get the kite down. Call our company office and a trained lineman will be sent to rescue the kite if it is possible to do so."

Employees of the electric company will pay their annual visit to local schools shortly and will make a detailed explanation of the dangers of flying kites near power lines.

Name Ranger Bank County Depository

The Commercial State Bank of Ranger has been accepted as depository of county school funds and county funds for the 1937-1938 period, Judge W. S. Adamson announced Saturday.

The Ranger bank's bid to act as the depository was accepted by Judge Adamson and other members of the commissioners court—H. V. Davenport of Ranger, N. C. Crawley of Gorman, S. N. Snearely of Rising Star and Arch Bitt of Cisco.

It has been the county depository continuously since 1932.

Traveling Solons Stop at Eastland

Fourteen members of the legislature, going from Austin to the annual banquet of the West Central Texas Oil & Gas association at Breckenridge Saturday night, stopped in Eastland for an afternoon luncheon with business men and officials. The luncheon was held at the Connelley hotel.

Traveling by bus, the party was to remain overnight at Breckenridge and return to Austin Sunday morning.

Seeks Collection of Insurance Money

Winnie Tichenor has filed in 88th district court a suit for collection of \$1,000 insurance from Maryland Casualty Company on Nov. 12, 1936, death of Henry Langford Moberly, who she claimed named her as the beneficiary in a policy.

The plaintiff set out the original policy issued to Moberly had been misplaced, but the company has a duplicate.

CASE SETTLED

An agreed judgment of payment of \$50 to Claude L. Murry by Metropolitan Insurance Company was approved Saturday by 88th district court. The plaintiff, Murry, was to surrender a group insurance policy to the defendant.

EASTLAND COUNTY NEWS

PUBLISHED EVERY FRIDAY AT RANGER, TEXAS

Established December 3, 1926

NOTICE TO THE PUBLIC

Any erroneous reflection upon the character, standing or reputation of any person, firm or corporation, which may appear in the columns

Entered as second-class matter January 3, 1934, at the post office at Ranger, Texas, under the Act of March 3, 1879.

Subscription Rate \$1.50 Per Year, Payable in Advance

of this paper, will be gladly corrected upon being brought to the attention of the publisher.

Obituaries, cards of thanks, notices of lodge meetings, etc., are charged for at the regular advertising rates, which will be furnished upon application.

Puny Man Can 'Take It' When Nature Punishes

That man can do nothing to prevent floods such as the one which has just moved disastrously down the Ohio Valley is the depressing contention of Dr. Charles P. Berkey, professor of geology at Columbia University.

Here, in substance, is Dr. Berkey's argument: When there is an oversupply of rain or melting snow, river systems are bound to be flooded. Special reforestation, levees, and a few dams at best can compound but little of this surplus water. The rest must flow down into the rivers.

In normal times, the inner channel of each river carries the stream. During a flood, however, the valley bottom also is covered; and, in great floods, even the lower terraces may be reached.

The point is, Dr. Berkey indicates, these lands form the right of way of one of Nature's giants; and men who live on these valley bottoms are, in effect, trespassers.

Such people are in yearly danger, he continues, and will learn by experience, if not otherwise, that Nature is still master.

Eventually, he maintains, populations crowded along the river bottoms should be moved beyond reach of danger; and cities even replanned.

"Instead of praying . . . or attempting to dispute the right of way of one of Nature's giants," Dr. Berkey concludes, "it would show great wisdom to accept the situation and turn back to the river such portion of the river bottom as it must occupy on occasion."

There seems no question but that Dr. Berkey's suggested solution, if carried out, would prevent future flood mortality and property loss. But the first move to uproot human beings from the side of a river which has, in the main, treated them kindly, would surely bring a thundering protest.

People chose to live beside a river because it is an artery of trade, and the soil near it is rich, of all which spells prosperity.

The river finally becomes a part of them, in much the same way as midwestern farmers come to love their prairie land, which first attracted them because of its fertility.

And occasional floods are not going to drive away the inhabitants of bottom lands any more than occasional tornadoes or dust storms will frighten off the farmers.

For most human beings are gamblers at heart, and gluttons for punishment. They always have been willing to take whatever Nature could hand them, and come up fighting, providing they thought they had a chance to win out.

Man is puny, says Dr. Berkey, and he should not dispute the right of way of one of Nature's giants. Man, however, doesn't seem to realize how puny he is, as his conquests of the Colorado, Columbia, Tennessee, and other rivers reveal. And he is just stubborn enough to go ahead and conquer, or at least try to tame, the mighty Ohio and Mississippi, too.

"Canal Zone military band has found a man who can play a bombardon." There are, however, a number of critics who are adept at bombarding a play.

"RADIUM WEDDING" MARKED MELBOURNE—Mr. and Mrs. J. Frederick, aged 100 and 93 respectively, have celebrated their "radium wedding" at Shepparton, Victoria. They were married 70 years ago in the Ballarat gold fields.

RATS OVERRUN CAPITOL. By United Press. LITTLE ROCK, Ark.—An SOS for rats was sent out by Secretary of State C. G. Hall. He explained that Arkansas' state capitol is being overrun with rats.



Representative Tip Ross' attitude is positive and more than a little reminiscent as he watches his colleagues at work. "Why, the 33rd beat this a mile," might be the thoughts of the West Texas son who with 11 friends pulled the midnight coup that kept Joe Bailey from going back to the United States senate.

LAWMAKING TODAY TAME TO Ross Helps Keep Bailey From Senate MEMBER OF 33RD SESSION

AUSTIN, Feb. 20.—The House of Representatives of the 45th Legislature is a caper-cutting body in many respects, but anything that happens will seem pretty tame to Tip Ross.

You see, he served in the 33rd. When that session was over, he decided to go back to West Texas and catch his breath. It took a mile longer than he had calculated, but now, 24 years later, he is back in the legislative wars, having answered the clarion call to do something for pensions and taxation.

The raw-boned representative, 63 years old and upright as a prairie windmill, hails from Gorman, deep in Eastland county, and, as he puts it, he's "in lumber." Back in the 33rd, he was one of that midnight-caucusing group that put Morris Sheppard in the United States Senate.

The whole story takes a deal of background politics; novices would do well to study it, but in brief it begins with discovery of oil around Corsicana, continues through the days when the kerosene price was the big thing in Texas and certain companies ran afloat of the anti-trust laws, and goes on to the Waters-Pierce case. That, of course, brings Joe Bailey into a picture he was long to dominate. Tip Ross

By vote the people had expressed a choice for either Morris Sheppard, then a congressman, or Jake Walters, but the preference was complimentary rather than mandatory in that unprecedented interval lying between the old and new means of senatorial balloting.

"When the 33rd convened, a group of us—there were 11 besides myself—took a secret poll the day the session opened, and we found 76 Sheppard men. It took 72 to elect," Ross explained.

The Sheppard men caucused at midnight in the state supreme courtroom, where the lights were kept extinguished so that opponents would not get wind of what was happening. As each of the 12 reported on the members he had contacted, the Sheppard list grew to certain victory. Newly pledged members were then invited to the caucus.

While this session was going on, a group of newsmen pounded at the door. "What's going on and why aren't we in there?" was the theme of their demands.

"Well, sir, one man stalled them while we finished our business of getting our list complete. Then we let the reporters in on promise they wouldn't violate confidence. Of course, we had to have the help of the newspapers to do what we were doing. And I want to tell you now a newspaperman can be trusted."

The story was released in time for morning editions, and, as Ross remembers it, Texas dailies dusted off their "War-Declared" type and played the Sheppard vote for all it was worth. Legislators reading it over their morning coffee dashed off in uproar before the stuff was sauced and blowed.

The sequel? Sheppard, 76; R. M. Johnson, 35; Walters, 15, and a scattering of other votes making up the then 142 legislative total. Ross recalls the whole business fondly as the "best coup this capitol ever saw."

And one of the sweetest side-lights to the story is the fact that it was his roommate who was to have nominated Joe Bailey.

Mountain Sheep On Steady Increase

ALPINE, Texas.—A large increase in the number of mountain sheep during the last six years under protection of the Texas Game department was reported by State Game Warden Ray Williams, stationed here.

Less than 100 of the wily animals were in the Trans-Pecos country six years ago. Now there are approximately 300 head of them.

The mountain sheep range the foothills of the Guadalupe, Delaware, Diable and Beech mountains northwest of Van Horn, Williams said. A few are found in the Eagle mountains of Hudspeth and Cul-

bertson counties. Hunted constantly, the mountain sheep has developed a method of defense whereby, when alarmed, he will blend into the color scheme of the surrounding terrain. A slight sound unnatural to his ear

will cause him to "turn tail" and stand motionless, his head not visible until the danger is past. It requires the eye of a practiced hunter to pick one out when he is thus hiding.

The rams of the species grow to huge proportions. One ram killed recently weighed nearly 200 pounds. This ram had horns measuring 33 inches in length and 16 3-4 inches in circumference at the base of the skull.

Advertisement for Exide Battery Co. featuring a refrigerator and a battery. Text includes: 'Now on demonstration NEW SUPER-DUTY FRIGIDAIRE WITH THE METER-MISER CUTS CURRENT COST AMAZINGLY', 'BRINGS COMPLETENESS NEVER KNOWN BEFORE in ALL 5 BASIC SERVICES FOR HOME REFRIGERATION', 'Come in. See the Proof!', '1. GREATER ICE-ABILITY', '2. GREATER STORAGE-ABILITY', '3. GREATER PROTECT-ABILITY', '4. GREATER DEPEND-ABILITY', '5. GREATER SAVE-ABILITY', 'NEW INSTANT CUBE-RELEASE IN EVERY ICE TRAY', 'EXIDE BATTERY CO.', 'J. S. (SPUD) REYNOLDS', 'RANGER', 'PHONE 60'.

Large advertisement for Camel cigarettes. Features a grid of photos of famous people with testimonials. Text includes: 'Why I Choose CAMELS', 'I'M A SECRETARY, says Joselyn Libby, "and I often eat in a hurry. When I enjoy Camels with my food I feel on top of the world."', 'I WANT A CIGARETTE that doesn't jangle my nerves, says master welder Dan Rafferty. "And Camels don't. Camels are mild!"', 'JIMMIE FOXX slugging first baseman of the Boston Red Sox says: "I stick by Camels and Camels stick by me. Camels set me right. I smoke Camels for their refreshing "lift," and for the aid they give my digestion. Camels help me feel my food agrees with me.'', 'At mealtimes Camels are an aid to digestion—speeding up the flow of digestive fluids—increasing alkalinity—bringing a sense of well-being. Steady smokers prefer Camels. They are so mild!', 'GOING DOWN the compression locks, Sidney S. Wetzel, tunnel engineer says: "My work involves danger. But Camels don't frazzle my nerves.'', 'THE LIGHTNING SWORD PLAY of Bela de Tuscan, fencing instructor, is faster than the eye. He says: "I welcome the "lift" in energy I get with a Camel.'', 'THE CHAMPION GIRL bronco-buster and rodeo star, Rose Davis, says: "The Camels I smoke with my meals and after are most enjoyable.'', '"MARK ME DOWN as a man who appreciates how mild and tasty Camels are," says all-events bowling champion, Jabony Murphy.', 'N'TL OUTBOARD MOTOR-BOAT CHAMPION, Fred Jacobs, Jr. "My condition is important! That's why Camel is my cigarette," says Fred.', '"CAMELS help keep me pepped up," TWA hostess, Betty Steffen, says. "I see many famous people. And most of them smoke Camels.'', 'TUNE IN every Tuesday night. Hear "Jack Oakie's College"—a full-hour show! Benny Goodman's "Swing" Band! Hollywood stars! College songs! 9:30 pm E.S.T., 8:30 pm C.S.T., 7:30 pm M.S.T., 6:30 pm P.S.T., WABC-CBS Network.', 'COSTLIER TOBACCOS', 'Camels are made from finer. MORE EXPENSIVE TOBACCOS. Turkish and Domestic. than any other popular brand.', 'Copyright, 1937, B. J. Reynolds Tobacco Company, Winston-Salem, North Carolina'.

Advertisement for Joseph's Dry Goods and Furniture. Text includes: 'YOU'LL SAVE IF YOU SEW', 'MAKE YOUR SPRING DRESS FROM OUR CRETIFIED SILK DRESS LENGTHS AND BE INDIVIDUAL', 'Most varied assortment of new Spring Silk and Acetate fabrics is to be found in this assortment.', '1 3-4 to 2 7-8 Yard Lengths 98c A LENGTH', 'Children's Dresses, Blouses, Skirts, Slips, Scarfs, etc., can be made of these lengths. Wide assortment of Colors.', '3 1-2 to 4 Yard Lengths \$1.98c A DRESS LENGTH', 'Beautiful and economical Spring Dresses can be made from these lengths. The leading materials and colors.', 'JOSEPH'S Dry Goods Furniture'.

— for Digestion's sake — smoke Camels!

Questions About Church Answered

BY REV. S. E. BYRNE
Question: Is the Church Christ established a visible or invisible society?

Answer: Historic Christianity is without a question a social organism, plainly set forth as such in the Acts of the Apostles. From the beginning it appeared in corporate form, a perfect social organization exercising full executive, legislative and judicial powers.

Those who hold that the church is an invisible society seem to forget that the Incarnation itself was nothing less than the visible manifestation of God to man. The fact that the Second Person of the Blessed Trinity assumed human form and became man is surely of some significance.

Just why God chose to save us through the visible mediation of His Son, made man, is a mystery, something that we are not able fully to fathom.

Jesus, having come as a visible mediator, we naturally would expect that the means wherewith He would perpetuate His mediation and apply the merits of the same to the souls of men down through the ages would likewise be of a visible nature.

Jesus, having come as a visible mediator, we naturally would expect that the means wherewith He would perpetuate His mediation and apply the merits of the same to the souls of men down through the ages would likewise be of a visible nature.

One fact of life that is not as well known as it should be is that its quick and inexpensive to make your last year's car look new.

SCOTT'S PAINT AND FENDER WORKS OF 116 South Marston Street, do expert refinishing of every kind from scratches and worn spots to complete re-paint jobs of gleaming beauty.

HAIRCUTS FOR CHILDREN Our Specialty! We specialize in children's haircuts and you'll find that you'll have less trouble with them if you bring them in to Love Bros' Barber Shop.

LOVE BROS. Barber Shop

therefore, teach ye all nations" (Matt 28:18); "As the Father hath sent Me, I also send you" (John 20:21); "He that heareth you, heareth Me, and he that despiseth you, despiseth Him that sent Me" (Luke 10:16).

It is evident, then, that Christ had in mind a real society, visible and perfect even to details, possessing full authority and empowered to exercise jurisdiction in all matters of religion.

U. S. treasury executives now have their own restaurant." It is wondered if the tabeleths will be wide enough to accommodate all the ciphers.

An old maxim had it that, during his lifetime, every man sowed his peck of dirt. But that, of course, was before the days of trash novels and dust storms.

TRY Our Waat-Ads!

NOTICE! TO BUICK OWNERS: We have secured the services of Mr. Frank King, formerly with Sivells Motor Co., of this city.

MUIRHEAD MOTOR CO. BUICK, PONTIAC, G. M. C. TRUCKS DEALER EASTLAND, TEXAS

Scott's Paint & Fender Works

One fact of life that is not as well known as it should be is that its quick and inexpensive to make your last year's car look new.

SCOTT'S PAINT AND FENDER WORKS OF 116 South Marston Street, do expert refinishing of every kind from scratches and worn spots to complete re-paint jobs of gleaming beauty.

HAIRCUTS FOR CHILDREN Our Specialty! We specialize in children's haircuts and you'll find that you'll have less trouble with them if you bring them in to Love Bros' Barber Shop.

LOVE BROS. Barber Shop

There Is Nothing Like a Dash of Color for Spring

STEPHENVILLE — There is nothing like a dash of color to pep up your entire costume, says Mattie Walker, head of the John Tarleton College home economics department.

Spring styles are featuring bright accessories. Red, vivid blue, yellow or green hat, shoes and purse will transform the conservative dress of brown, navy-grey or

bioge, which is the best buy of the season, into a costume of reflecting glory. Spring hats are unusual. The off the face is in favor, and there are attractive little hats made of nothing but flowers.

People have the tailored suit fever again this spring. For women who prefer tailored clothes, the severely cut suit of navy or a faint pin-stripe grey is smart.

design are swirling about. Flowers, figures, and even name designs splash the materials on the market. One best seller is a design using the name "Wally."

Smartly dressed women long ago learned the axiom that simplicity equals style, Miss Walker says, "and especially this season is simplicity important."

People have the tailored suit fever again this spring. For women who prefer tailored clothes, the severely cut suit of navy or a faint pin-stripe grey is smart.

Steer Lasts Three Meals at College, Head Chef Finds

FORT WORTH — A steer lasts just three meals in the cafeteria of Texas Christian University.

"Steam and roast beef are the diners' favorite dish," says Jim Montgomery, chef.

can't "learn" the students to eat sweet potatoes. They shy away from liver and hamburger meat too, he reports.

Second to steak and roast beef in popularity are Jim's special sandwiches—chicken salad, bacon and tomato, and toasted cheese.

And he doesn't take a "post-man's holiday" when he has a day off.

"Yes, sir; I let my wife do the cooking at home," he says. "I get enough of it here!"

FIREARMS WILLED TO PACIFIST DAUGHTERS PASADENA, Calif. — Pacifists have different ideas as to the best ways of attaining their ideals.

WARDS FEBRUARY SALES for the HOME

Last few days! Avoid Disappointment! Shop Now Before Prices Go Back to Regular!

Sensational Sale Value! A Fine Ward Mattress! 182 Innercoils 1188 Blue and white striped ticking with new, clean felted cotton upholstery!

SPOTLIGHT SPECIALS POSTER BED 8.88 JENNY LIND BED 8.88 \$6.95 WARDROBE \$14.95 DRESSER

WARDS BARGAIN SPECIAL! Extra Large—Overlay Carvings! Big 3 Piece Bedroom—Plate-Glass Mirrors! \$44.88

Beat the BIG Price Rise Our Last at This Price! Compares with any \$90 Range! \$6 DOWN carrying charge \$59.95

With an Insulated Oven! Gas Range \$5 DOWN Carrying Charge 53.88

It's Big, Fast, and Safe! Gasoline Range \$5 DOWN Carrying Charge 64.88

Full porcelain! Fast burners! Automatic heat control and top light. Complete with lamp, electric clock, minute minder, 2 jars. Unusually low priced!

Listed "Class A" for safety! Full porcelain finish. Quick, porcelain lined, insulated oven. New, round, instant-lighting cast iron burners.

Unpainted Chair Reg. \$1.00 94c

END TABLES 5 Styles! 3.88

Big! Comfortable Hi-Back Rocker 7.88

Paint them the color you like best! Solid hardwood! Cathedral type shaped backs!

Compare \$5 tables! Fancy inlaid veneer tops and marquetry designs!

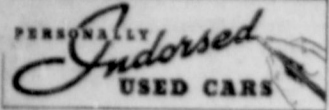
High, shaped form-fitting back! "No-Sag" spring seat! Rayon tapestry upholstered!

Prices Still Reduced in This Record Breaking MONEY SAVING SALE!

Full Size Wards Special... With Triple Cleansing Action \$3 DOWN, Small Carrying Charge \$34.95

Gas Engine Model With 5-hp. in Biggs & Shatto Gas Engine 69.95 Damascus Electric Rotary \$5 DOWN, carrying charge 59.95

We Are the Only Dealers in Town Selling



Have you examined the cars offered under this plan? Have you talked with the well-satisfied owners who have bought any of these cars? Let us explain the plan to you—the soundest used car selling plan FROM YOUR STANDPOINT that has ever been devised. Save money and get a good used car.

1935 Hudson Custom Brougham 26,000 miles, Radio, Heater, Dual Horns, Lights, Tires. Also has trunk. Better than lots of new cars **\$685**

1935 Terraplane Coach. Electric Hand. Try this car and see if it isn't the **\$515**

1935 Terraplane Coupe. Black color; good tires, motor in A-1 shape **\$495**

1934 Terraplane Coach. 22,000 miles. Owned locally. Try it out **\$435**

1934 Ford Coach. Tan color and Good Little V-8 **\$375**

1933 Chevrolet Coach. New paint, good tires, and runs O. K. **\$325**

Others worth the money but not personally inspected.

C. J. MOORE AUTO MART

RANGER

Call Howard Durham for a Demonstration.

Railroads Aided Evacuation Work During Big Flood

BY J. J. PELLEY, President, Association of American Railroads

The greatest mobilization of transportation for rescue and relief work ever known was carried out by the railroads of the United States, in helping to meet the emergency created by the recent unprecedented floods along the Ohio and Mississippi rivers.

Approximately 200,000 refugees were carried to places of safety on rescue trains. Hundreds of special trains were rushed into the flooded area loaded with relief workers and supplies of all kinds—drinking water, food, fuel, tents, bedding, clothing and medicines among them. Thousands of freight and passenger cars were mobilized in the vicinity of threatened areas to meet anticipated emergencies and to house refugees and workers at critical points.

The vital part played by the railroads in the great national effort to aid the flood regions is shown in reports just received from the various rail lines by the Association of American Railroads.

From practically the entire length of the Atlantic coast to well into the heart of the Middle West and Southwest, the railroads were mobilized into one gigantic relief organization. That there was no greater loss of life and more intense suffering from the effects of the floods can be attributed in no small degree to the prompt movement by the railroads of the refugees from the stricken areas and the dispatch with which the rail carriers transported relief supplies into the flood zones.

The exact number of refugees evacuated by the railroads will never be known, since no effort was made to collect tickets. Refugees were taken not only to the immediate safety of nearby high ground, but many train loads were carried on to cities and towns throughout a wide area on both sides of the Ohio and Mississippi rivers, where problems of food and shelter were less acute than in the immediate vicinity of the flood. As conditions permit, they are being returned to their homes.

Lounge cars in numerous instances were stripped of their furnishings and fitted up as hospital cars for the movement of sick. In one instance an entire hospital staff, together with patients—many of them in critical condition

—were transferred from a hospital in the danger zone to another removed from the flood area. Special passenger and freight trains carrying boats and members of the Coast Guard stationed at many points along the Atlantic coast from Maine to Florida, and on the Great Lakes, moved on fast special schedules into the stricken areas.

Seamen, policemen, United States Army engineers, soldiers, navy yard employees, Red Cross officials, physicians and other relief workers rushed in special trains to the flood-besieged cities and communities from scores of cities throughout the East, South and West. On one special train were nearly 200 volunteer seamen from New York, who were sent to Louisville, Kentucky, to engage in relief work. Two contingents of officers and men with boat, radio and general equipment were sent from the Philadelphia Navy Yard to Memphis, while a complete United States Army field hospital with ambulances and full equipment was forwarded from Carlisle, Pennsylvania, to Louisville, Kentucky. Fire engines and firemen from Philadelphia, Harrisburg, Altoona, Erie, Pittsburgh, Chicago, and many other cities were also sent on special trains to Louisville and other points.

At the same time there were dispatched into the flood areas trains carrying free of charge all supplies shipped by the American

Red Cross and consigned to that organization for sufferers in the flood zone. These supplies included not only medicines, but milk, food, clothing, blankets, tents, cooking utensils, bedding, batteries, boots and shoes, and other supplies needed by the flood sufferers.

Because water in the flood zone had been contaminated, great quantities of pure water were shipped by rail into Cincinnati, Louisville, Evansville and other cities along the Ohio river. Trains of tank cars, which had been sterilized and loaded with drinking water, were sent from Chicago, Indianapolis and other cities. Nearly every train, passenger and freight, which moved into the flood area from nearby cities, included one or more tank cars filled with drinking water. In order to have available an adequate supply of tank cars to be used for this purpose, a special train of 50 empty tank cars was given preferred movement from Philadelphia to Indianapolis. Locomotive tenders, after being sterilized, also were used in order to supply drinking water to flood victims in many localities.

"Clarksville has many things to thank you and your railroad for," said the chairman of the Red Cross at Clarksville, Tennessee, in a letter to H. W. Stanley, president of the Tennessee Central Railway Company. "What we would have done without the water each day I do not know. It is practically furnishing the city in drinking water. The supply of eatables (lard, sugar and canned goods), and shoes, which you sent us yesterday will help to fill many orders for families who were driven from their homes by the high water."

NOTICE

TO BUICK OWNERS:

We have secured the services of Mr. Frank King, formerly with Sivells Motor Co., of this city. He will be glad to have his friends and customers call on him in the Service Department at—

MUIRHEAD MOTOR CO.

BUICK, PONTIAC, G. M. C. TRUCKS DEALER EASTLAND, TEXAS

JOB DEPENDS ON DIVORCE

By United Press
SAN FRANCISCO—The Board of Education has advised a former school teacher to get a divorce. She gave up her job to marry. Her husband couldn't support her. She reapplied for her job. The board's rulings prevent the employment of married women in certain branches of teaching. They advised her to get the divorce.

Try Our Want-Ads!

One-Man Strike Ties Up Project

BRECKENRIDGE, Texas—H. L. Stevens, WPA worker, formed a one-man "sit down" strike. Far from ineffectual, it tied up a Works Progress Administration truck and a dozen workers for several hours.

Stevens complained to Foreman G. L. Christian that the WPA crew should not be made to go to work at 7:30 a. m. Stevens said work should not begin until 8 a. m. Christian maintained that the ruling was eight hours for a 24-hour period, starting time being optional.

Christian ordered Stevens to go with the workers to WPA project. Stevens refused to go. Christian promptly fired him.

Stevens, sitting in a WPA truck, sprawled out on the cushion and stated that he was remaining. Local officials, upon query, said no law existed under which they could oust Stevens from the truck. Christian resorted to a telegram to Abilene to secure a University States Marshall with authority to force Stevens to leave the truck. After a complaint of holding up a government truck was filed against him, Stevens finally was dislodged from the truck.

WILL PICK UP vertical and baby grand piano, also studio upright piano stored near Ranger. Rather than haul to Dallas, will sell for balance due. G. H. Jackson, Credit Manager, 1101 Elm St., Dallas, Texas.

SORE THROAT! TONSILITIS! Instantly relieved with Anesthesia-Mop—the guaranteed sore-throat remedy. A real mop that relieves pain and kills infection. Prompt relief guaranteed or money refunded by

OIL CITY PHARMACY

DON'T SCRATCH! Paracide Ointment is guaranteed to relieve any form of Itch, eczema, ringworm or other chronic skin irritation or money refunded. Large 2 oz. jar 50¢ at

OIL CITY PHARMACY



SAFETY---OR THIS?

DEATH, in the guise of heavily loaded motor trucks, rides the highways of Texas every day and every night. The toll of human death and injury of these vehicles is appalling.

In the five-year period, 1932 to 1936, inclusive, trucks in Texas have participated in 8,416 highway accidents in which 2,195 persons were killed and 11,962 injured. In 1936 alone, their record stood 2,208 accidents with 3,323 persons injured and 576 killed. These actual records of people killed, as shown by Texas newspapers, compared with the number of deaths resulting from all motor vehicle accidents, as given by the Bureau of Vital Statistics in Austin, show that the average Texas truck participates in twice as many fatal accidents as the average passenger car.

Likewise, as might be reasonably expected from their greater weight and size, and as shown by the records of the Texas Railroad Commission, the Carrier-for-Hire truck accidents, during 1936, have resulted, vehicle for vehicle, in three times the number of fatalities as for the average passenger car.

Increased liability to highway accident forms an inseparable result of BIG truck operation. But even now, the threat of greater highway hazards hangs over the people of Texas. Newspapers report that operators of BIG trucks have organized for the purpose of securing an increase in weight and speed limits, already too large. These are the elements, weight and speed, which, in highway accidents, spell "D-E-A-T-H."

The right to grant, condition or deny the use of the highways for profit, belongs to you, the people of Texas, notwithstanding the attempts of the operators of BIG trucks to take it away and give it to the federal government instead. Your present laws, limiting the size, weight and speed of trucks, were enacted by reason of your insistence, and by your insistence they have remained on the statute books. Their amendment would serve the sole purpose of increasing the profits of operators of the BIG trucks, with the certain results of also increasing the mounting injuries, deaths and property losses now taking place on your highways.

Public welfare and public safety demand that existing highway regulations shall be retained and enforced.

THE TEXAS RAILROADS

- Atlantic & North River
- Boston & Maine
- Chicago, Rock Island and Gulf
- Colton Belt
- Ft. Worth & Green Bay
- Galveston, Houston & Henderson
- Gulf Coast Lines
- Gulf Colorado & Santa Fe
- Kansas City Southern
- International & Great Northern
- Louisiana, Arkansas & Texas
- Louisiana, Missouri & Gulf
- Missouri, Kansas, Texas
- Missouri Pacific Lines
- Pasadena & Santa Fe
- Paris & Mt. Pleasant
- Quinn, Adams & Pacific
- Southern Pacific Lines
- Texas & Pacific
- Texas Southwestern
- Wichita Falls & Southern
- Wichita Valley

NOTICE!

WE ARE NOW SERVING MEALS FAMILY STYLE AT 309 ELM STREET, ACROSS FROM FIRE STATION.

YOUR BUSINESS ALWAYS APPRECIATED.

MRS. STOKES' Boarding House

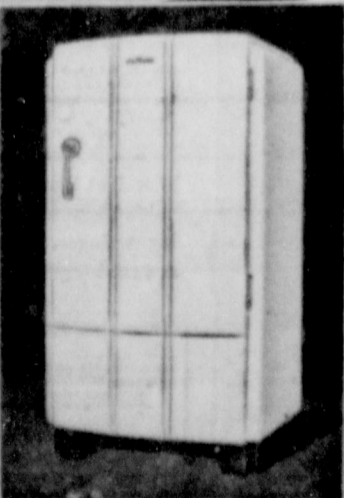
SEE FOR YOURSELF!

NEW Triple-Thrift REFRIGERATORS

With Automatic GENERAL ELECTRIC THRIFT UNIT Sealed-in-steel

General Electric offers greatest refrigerator value in 19 years. More ice cubes, more storage space, more cold capacity, more conveniences AT NEW LOW PRICES!

Save on PRICE! Save on CURRENT! Save on UPKEEP!



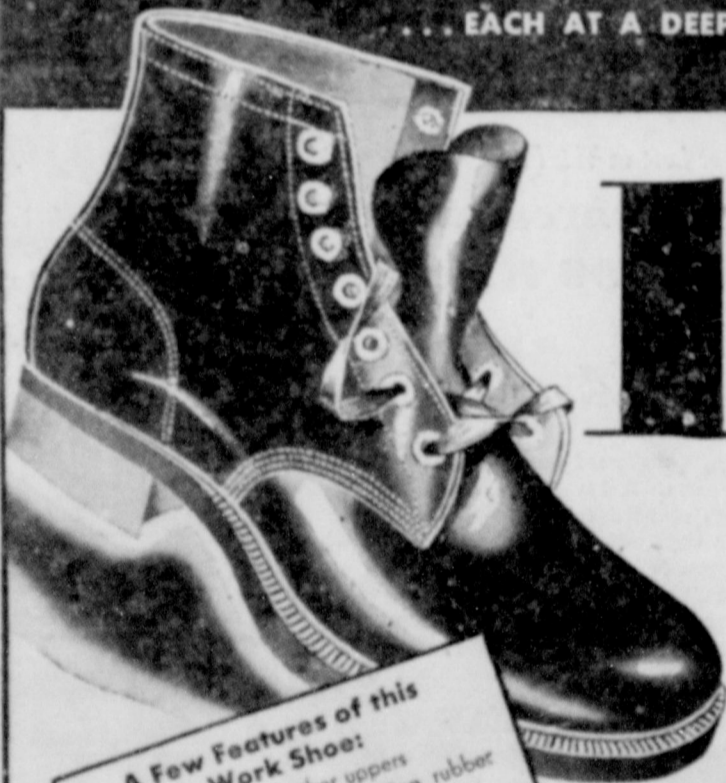
MODEL J. B. 5 \$159.00 Cap'y 5.2 cu. ft.

Visit our New Electrical Department and SEE the 1937 G-E Refrigerators, Radios, Washers and Vacuum Cleaners.

JOSEPH'S DRY GOODS — FURNITURE

MEN! GET IN, ON THIS GREAT WORK SHOE SALE!

A WORK SHOE FOR EVERY PURSE A WORK SHOE FOR EVERY USE EACH AT A DEEPLY CUT PRICE



144 REDUCED FROM 1.59

A Few Features of this Work Shoe:

- Soft re-tanned leather uppers
- Heavy, durable composition rubber soles.

What makes this reduced price possible when Wards price is already so remarkably low? Just this: this bargain offer being made at the same time in hundreds of Ward stores, will result in the sale of 25,000 or more pairs of work shoes in four days. Thus, once again, thousands of people, buying ONE or TWO pairs each, save because Wards bought THOUSANDS of pairs.



REGULARLY 1.98 **1.84**

Tough double soles, soft elk uppers. Superior nailed and sewed construction.



REGULARLY 2.49 **2.34**

Oak leather soles, the toughest made! Long-lasting Goodyear welt construction.



REGULARLY 2.98 **2.64**

Solid leather, double oak leather soles. Goodyear welt—just three BIG features.

Montgomery Ward

407-09 MAIN STREET RANGER, TEXAS



YOU'LL WANT TO Dress Up for Daytime

EMPHATICALLY SUITS

And Emphatically, The Fashion for Suits, for we've known for months that this was going to be the biggest Suit season in years and we're Fully Prepared!

MANLY TAILORED "Lester Square"

Worsted Materials as good as any \$15.00 suit in bankers grey, navy, light gray, brown. Special **10.95**

OTHER SUITS \$9.95 to \$24.50

SWAGGER SUITS

Just what you are looking for. You need not look elsewhere.

\$16.50 to \$24.50

SPRING COATS

Do not fail to see our coats before you buy. Nifty Toppers, short and full length.

\$7.95 to \$22.50



We sincerely urge you to visit our Store and see our display of Suits, Coats, Dresses, Hats, Shoes.

The FASHION

NEXT TO WOOLWORTH

RANGER

A WANT AD IN THIS PAPER WILL BRING QUICK RESULTS!

Sonja Henie, Queen of the Silvery Skates, Introduces New Dance Beauty in Film Debut, "One in a Million"

SONJA HENIE'S DANCE ON ICE NEW ART FORM

OLYMPIC FIGURE-SKATING QUEEN TELLS THE WHY AND WHEREFORE

"Ice skating is not alone a sport—it is an art, too. I try to put some of the beauty of the dance into my skating. You see, at first I wanted to be a ballet dancer, and I studied ballet dancing until I was twenty years old."

Radiant Sonja Henie, holder of more world's skating honors than she can remember, whose first screen triumph, the twentieth Century-Fox spectacular musical smash, "One in a Million," opens Friday at the Arcadia theatre, twinkled as she confided the secret of her grace on the ice.

Sonja does twinkle when she talks, which non-Scandinavian trait Mrs. Henie explains easily—Sonja's grandmother was Irish. Impulsive, with expressive face and accompanying gestures of the hands, Sonja recalled how, just like any other beginner, she spent most of her first days on the ice in a sitting position.

Not long afterwards, following in the flying skate-steps of her father, the second fastest speed skater in Europe, Sonja began to win honors on the ice and her first award came when she was only nine years old. At eleven she was the Norwegian figure-skating champion.

Figure skating to Sonja being really ballet on ice, Sonja studied with the famous Russian Ballet, and a brilliant performance of dancing on ice in London resulted in a command performance for the King and Queen. Command performances for most of the monarchs of Europe followed, for by that time Sonja was twice Olympic figure-skating champion.

Pert, five feet two inches tall, weighing one hundred and ten pounds, blonde and attractive, Sonja was widely sought as a film actress, and her highest ambition, a breath-taking winter ballet on ice, is a spectacular highlight in her first picture, "One in a Million."

Adolphe Menjou, Jean Hersholt, Ned Sparks, Don Ameche, the Ritz Brothers, Arline Judge, Borrah Minevitch and his gang, Dixie Dunbar, Leah Ray and Shirley Deane are featured with Sonja in

GARBO FUSSY ABOUT "CAMILLE" DANCING PARTNERS—SAYS "IT'S ROBERT TAYLOR OR NO ONE"

Garbo has revealed she is very particular about her dancing partners. She had an appointment with Val Raset, dance director at Metro-Goldwyn-Mayer, to begin rehearsals for a waltz she dances with Robert Taylor in "Camille," coming Sunday to the Arcadia theatre.

On time, she appeared for the first rehearsal and found a male dancing partner awaiting her. Garbo looked around the rehearsal hall, and then refused to dance.

"Where is Mr. Taylor?" she asked.

Taylor, off for the day, was packing his luggage for a Labor Day week-end at Lake Arrowhead. "I dance with Mr. Taylor in the scenes and I will dance with nobody but him," said Garbo.

Taylor was located. Garbo waited half an hour later when Taylor reached the studio, Garbo danced... with nobody else but Taylor.

Dancing is but one of several surprising talents revealed by the famed Swedish star in her new characterization or the "Lady of the Camellias." For she also sings for the first time in her career on the screen, and also plays the piano.

"Camille," based on the celebrated novel and play by Alexandre Dumas, was directed by George Cukor of "Romeo and Juliet" and "David Copperfield" fame.

Dallas, Texas—A new feature of semi-pro baseball in Texas this year will be the selection of an All-State team, A. H. Kirksey, of Waco, Texas, commissioner of semi-pro baseball has announced.

The team, composed of 16 players, will be picked at the state semi-pro tournament to be held in Waco in July. These players will be eligible for the All-American team which will tour Hawaii. The players selected on the All-State team will be awarded certificates from Honus Wagner, high commissioner of semi-pro baseball.

Mount Pleasant won the Texas semi-pro title last year. The team competed in the national finals at Wichita, Kansas, where it won game and lost two.

All-State Semi-Pro Nine to Be Picked

1937's wonder show, Sidney Lanfield directed with Raymond Griffith associate producer.

LOUDSPEAKER CALLS FAITHFUL TO WORSHIP

SINGAPORE—The muezzin of the Masjid Sultan Mosque here

now calls the faithful to prayer by loudspeaker. Instead of standing on the topmost minaret to chant his call, he now stands before a microphone, and his voice

is amplified to such an extent that it can be heard more than a mile away.

A Colorado man has dislocated his jaw 2 times by yawning. That should teach him to ignore those European war scare items.

An actor refuses to gaze at himself on the screen for fear of becoming sick of himself. And making it unanimous.

TRADERS GROCERY AND MARKET

Walnut & Rusk We Deliver Phone 191

DRESSED HENS 5 to 5 1/2 Lb. Average. LB. 13c	BRANDED BEEF CHUCK ROAST LB. 15c	BIG BOLOGNA HAMBURGER Meat... lb. 10c
SMALL WEINERS LB. 17c	BRANDED BEEF NO. 7 STEAK 2 LBS 35c	PORK SAUSAGE LB. 15c
NICE AND LEAN SLICED BACON LB. 25c	ROLL ROAST, PRIME RIB BONELESS LB. 25c	NO. 1. POTATOES 10 LBS 35c
DRY SALT JOWLS LB. 14c	Round, Loin, T-Bone STEAK POUND 25c	GREEN CABBAGE LB. 1 1/2c
NICE AND LEAN PORK CHOPS LB. 23c	VIMPEP DOG FOOD, 1 Lb. Can 5c	CARROTS 3 Bunches 10c
WHOLE GRAIN BULK RICE 5 LBS. 25c	Challenge SALAD DRESSING 1 QT. 20c	BANANAS 2 DOZEN 25c
PRUNES 4 LBS. 25c	SALTED CRACKERS 2 LBS. 15c	JONATHAN APPLES 3 DOZEN 25c
PURE CANE SUGAR 10 LBS. 55c	BLUE MILL COCOA 2 LBS. 15c	SIZE 288 CALIFORNIA ORANGES 2 DOZEN 35c
BLUE RIBBON SEEDLESS RAISINS 15 OZ. PKG. 9c	LINEN MOPS 17c	GRAPEFRUIT MARSH SEEDLESS MEDIUM SIZE, DOZEN 19c
PEANUT BUTTER FULL QUART 25c	MONAX OATS Plate, Bowl, Cup and Saucer 23c	K. B. SHORTENING 8 LBS. \$1.09
TOMATO CATSUP 14 OZ. 12c	Chase and Sanborn DATED COFFEE 1 LB. 23c	CRISCO 3 Lb. Can 59c
PALMOLIVE SOAP 3 For 17c	CRISCO 3 Lb. Can 59c	IVORY SOAP 1 Large Bar 17c
CRYSTAL WHITE SOAP 6 Bars 25c	OXYDOL Large Size 22c	FLOUR GOLD MEDAL 24 Lbs. \$1.05
SUPERSUDS 2 Boxes 19c		12 Lbs. 57c

"My life was a search for love. And now it comes in full measure..."

Thrill... as Garbo, beloved of many men, finds love undying in the arms of Robert Taylor! Open wide your heart... to romance so glowing and glorious, its soul-stabbing drama will become one of your most memorable experiences!

GRETA

GARBO

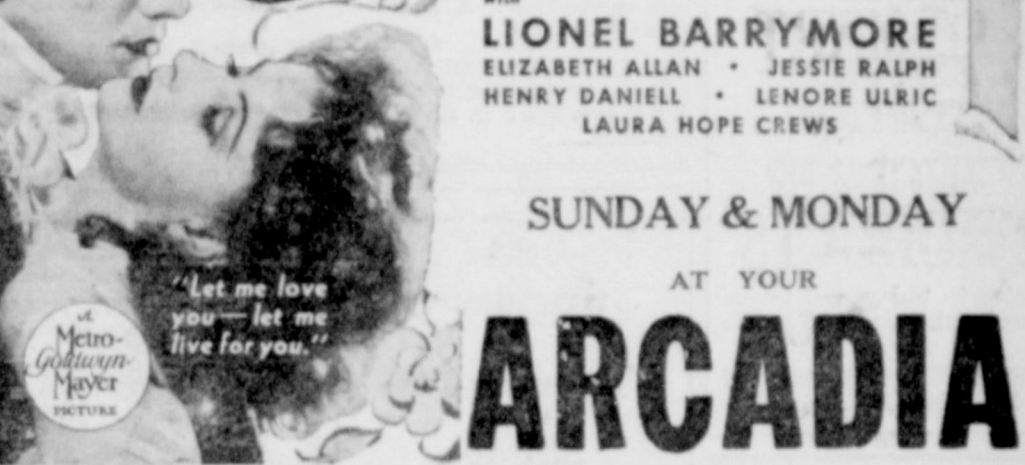
loves

ROBERT

TAYLOR

IN

Camille



with LIONEL BARRYMORE
ELIZABETH ALLAN • JESSIE RALPH
HENRY DANIELL • LENORE ULRIC
LAURA HOPE CREWS

SUNDAY & MONDAY

AT YOUR

ARCADIA

IF YOU LIVE TO BE A MILLION

YOU'LL NEVER HAVE A THRILL LIKE THIS AGAIN!

A dazzling winter wonderland! Hundreds of gorgeous girls in sensational ice-revels! Glittering luminaries from five great show-worlds! Breath-taking beauty! Stirring rhythm! Stars... songs... glamor... laughs... love... drama... to make you gasp and marvel!

Entertainment enough for a million hits... with something exhilaratingly new... someone excitingly different... to make it the hit in a million!

One in a Million

Introducing to the screen THE QUEEN OF THE SILVERY SKATES SONJA HENIE

She sets the ice afire... and your heart aflame... as she eclipses the triumphs that brought the world to her feet!

ADOLPHE MENJOU • JEAN HERSHOLT
NED SPARKS • DON AMECHE

ARLINE JUDGE - BORRAH MINEVITCH
AND HIS GANG
DIXIE DUNBAR - LEAH RAY - SHIRLEY DEANE

1937's SPECTACULAR MUSICAL SMASH with the songs you'll remember as the hits of the year!
"One in a Million"
"Who's Afraid of Love?"
"The Moonlit Waltz"
"We're Back in Circulation Again"
"Lovely Lady in White"

ARCADIA

FRIDAY
SATURDAY

See These USED CAR Values Today!

1929 Plymouth Sedan, Cash	\$25.00
1928 Ford Coupe	\$95.00
1928 Chevrolet Coach	\$45.00
1930 Chevrolet Coupe	\$165.00
1930 Chevrolet Coach	\$165.00
1935 Chevrolet Sport Sedan	\$535.00
1934 Chevrolet Town Sedan	\$435.00
1934 Ford Coupe	\$350.00
1933 Chevrolet Coach	\$295.00

Anderson-Pruet Incorporated
SALES SERVICE

CHEANEY

We are having a few days of nice sunshine that's real acceptable around Cheaney.

Mr. and Mrs. Leroy Thomas and Grandmother Thomas have returned from a visit to New Mexico and Northwest Texas.

Grandpa Dunlap, father of Mr. Henry Dunlap, who lives at the section house, died Sunday morning at 8:30, with pneumonia. He was buried at Dublin Monday evening. The family has the sympathy of the community.

Born to Mr. and Mrs. Joe Blackwell, Feb. 2, a son, Billy Clyde. Mother and son are doing fine.

E. M. Mason of Stamford is at Cheaney this week on business.

Mr. Louis Andrews of Gorman was at Cheaney this week buying horses.

J. M. Robinson, wife and daughter, of Ranger, were visiting R. R. Browning and wife Wednesday.

Mrs. E. L. Yardley is on the sick list again this week. We all hope for her a speedy recovery.

Jack Oakie's College Gets "No Study" Plan



YOU can tell from the picture that Jack Oakie, radio and screen comedian, has just thought of a new way to increase enrollment at his mythical Oakie Doakie College.

"What we need is a new 'no study' plan," he says. And Miss Penny, his secretary, thinks that's just too, too wonderful.

Oakie and his college are featured on Tuesday evening broadcasts over Columbia's coast-to-coast network. Benny Goodman's swing band, guest stars and host of real undergraduate musical talent selected from colleges and universities throughout the country are also contributing to the success of this sensational air show.

ed breaking his arm Thursday, as Arlie Elrod's car backfired when he was cranking it.

Mr. and Mrs. Leroy Thomas and daughter have moved to the J. H. Ainsworth home, so P-2 can be handy to his work on the section at Jake Hammon.

The Hale Brothers and J. R. Blackwell visited Uncle Tom Kimbrough over near rattlesnake mountain Friday.

Mr. and Mrs. Bob Crafton visited Mr. and Mrs. Sid Blackwell on Sunday evening.

Mrs. John Bishop and Mrs. Bird of Ranger were to see Mrs. Lee Yardley Sunday.

Another rabbit drive will be staged soon and a prize will be offered for the person killing the most rabbits. We understand they drive every Wednesday, so let's all get in.

Mrs. W. E. Davis of Mingus was at Cheaney Sunday evening visiting old friends. They lived here three years and have many friends who were glad to see her.

Mr. Rose of Cross Roads was in our community of late, looking for a work horse, as he had the misfortune to lose a good mule.

W. F. Barton and wife of Ranger visited in the Yardley home on Sunday evening.

Mr. Levey and family are moving to South Bend this week for railroad work there.

As 27 Were Saved in 60-Mile Gale



While the storm-driven waves threatened to break up the coastwise steamer Cottoneva, 26 members of the crew and Capt. Eberhard Stahlbaum, slid to shore and safety on a breeches buoy, as shown above. The buoy was rigged by coast guardsmen. The vessel was driven aground in a 60-mile gale near Port Orford Ore.

Advances registrations indicate the largest attendance in the history of the short course.

Among subjects to be considered will be problems of ice cream making, processing market milk, refrigeration, butter making, plant engineering and other topics. The staff of lecturers will include: F. E. Hansen, associate in dairy manufacturing and a specialist in cheese manufacture; F. W. Renner, associate professor; C. W. Rink, assistant professor; J. C. Harrison, engineering expert-station staff; J. S. Hopper, mechanical engineering department.

CLASSIFIED

7-SPECIAL NOTICES

BROWN'S TRANSFER & STORAGE CO., BONDED, 111 S. Marston St., Ranger.

✓ **MONEY TO LEND** on autos. C. E. Maddocks & Co.

11-APARTMENTS FOR RENT

FOR RENT - Furnished Apartments. 325 Elm Street.

12-WANTED TO BUY

WANTED - Chickens - Eggs - Cream - Hides. We retail poultry, live or dressed. RANGER POULTRY. Phone 25.

WANTED - To buy your chickens, eggs, hides, cream, cattle and hogs. Sig Faircloth.

13-FOR SALE, Miscellaneous.

FOR SALE - Modern four room plaster house, corner lot, good location. C. E. Maddocks & Co.

FOR SALE - Wool and mohair bags standard size. A. J. Ratliff, phone 82, Ranger.

FOR SALE - Four gallon Jersey milk cow with young heifer calf. A real cow. See F. D. Hicks, Ranger Times.

Making of Cheddar Cheese Included In Dairying Program

COLLEGE STATION - Cheddar cheese making has been included on the program of the 10th annual dairy manufacturing short course to be held at Texas A. & M. College Feb. 15-19.

The short course will be conducted by the department of dairy husbandry, of which Prof. Charles N. Shepardson is head.

T. L. DUPREE SERVICE STATION
PHONE 9
Sinclair Products

Washing, Greasing, Cars
Called for and Delivered.
NEW HIGHWAY
Opp. Main St. Crossing.

Mothers!
In treating children's colds, don't take chances... use **VICKS VapoRub**
PROVED BY 2 GENERATIONS

ATTENTION!
4-H CLUB BOYS
FOR THE ONE DAY STOCK SHOW TO BE HELD IN RANGER, MARCH 12TH

We will give \$2.00 cash for first prize Beef Type Calf; \$1.00 for second; \$2.00 First Prize Milk Strain Calf; \$1.00 Second Prize Milk Strain Calf.

A. J. Ratliff
ALL KINDS OF FEED
PHONE 82 RANGER

NEW! ROUNDER RADIUS SAUCE PAN SET \$1.69
1 Qt., 1 1/2 Qt. and 2 Qt. sizes. Smart, flat head, Streamline handles. Round, easy-clean corners. Cover Set, 65c extra.

SPRING SALE
Wear-Ever
ALUMINUM

(A) MODERNIZED, NEW SIZE 3-WAY COOKER
A covered sauce pan, double boiler and a baking dish. 2 Qt. size \$1.89. REG. \$2.25

(B) LARGE UTILITY POTS
2 QUART Easy-clean dome cover. Streamlined. 10 Qt. size \$2.75. REG. \$2.25 (Reg. \$3.25).

(C) TEA KETTLES
Wide flat bottom for quick heating. 2, 4 and 5 Qt. also on sale. REG. \$2.25

(D) MATCHED SAUCE POT SET
\$4.39 Covered pots; 2, 4 and 6 Qt. REG. \$4.88 Same style as 8 Quart Utility Pot above.

WATCH OUR WINDOWS
KILLINGSWORTH, COX & CO.
RADIO FURNITURE HARDWARE



Don't Wear a Soiled Hat!
We clean and block them so reasonably, and so expertly, that there is no excuse except carelessness for wearing a soiled hat. Send yours regularly. It is a worthwhile investment in good appearance.

PHONE 452
For Pick-up and Delivery Service.

Ranger Dry Cleaning Plant
S. P. BOON

LIBERTY SHOE SHOP
Second door South Arcadia Theatre.
AARON BELL, Prop.

Bring me your sole-worn shoes and I will renew them with solid, serviceable soles of real leather. New rubber heels make walking a pleasure. New soles will keep your feet dry. All work guaranteed.

GOLDEN FLORIST
for Flowers
HOME OF FINE FLOWERS
MASTER DESIGNING
Phone 279

Furniture Repairing and Upholstering
Grunow Radios
Radio Repair Service
A. B. C. Washers
A. B. C. Ironers
EASY PAYMENTS
New and Used Furniture
Furniture Repairing Our Specialty.

Texas Furniture Company
401 Main St. - Ranger
Phone 365

KEEP-U-NEAT Tailors-
Cleaning, Pressing and Alterations
Agent for Royal Tailors
Phone 3
We pick up and Deliver
118 Main St., Ranger

Where Do You Wash?
It costs you less to wash the Help-Yourself Way, or send your washing to

LAUNDRY in Searcy candy building,
315 Hunt Street
Clothes dried inside windy and rainy weather.

KNITTING Instruction and Yarns
MRS. LESTER CROSSLEY
PHONE 278-J
1208 Spring Road

TRY OUR **Home Made Pies**
THEY ARE DELICIOUS!
MRS. HIGDON'S EAT SHOP
107 SOUTH AUSTIN

Special Prices on all Beauty work.
Eye Brow Lash Dye ... 25c
Plain Shampoo, Set and Dry, Glo Rinse ... 50c
Drene or Oil Shampoo, Set and Dry ... 50c
Machineless Permanent Two For ... \$10.00
See Me on Machine Permanents
Beauty Shoppe IZETTA

Bent Fenders
Make your car look bad all over. We can make them look like new at a small cost.
DAY PHONE 511
NIGHT PHONE 308-M

Clarke's Radiator & Body Works
207 S. RUSK, RANGER

PATTERSON & CALVERT SERVICE STATION
SINCLAIR PRODUCTS
Drive in today and let us service the car the Sinclair Way.
PRAIRIE CROSSING and BLACKWELL ROAD

A WELL-ICED REFRIGERATOR GUARDS YOUR FAMILY'S HEALTH THE YEAR AROUND
SOUTHERN ICE
PHONE 389 RANGER

SEE **BROWN'S Transfer and Storage**
FOR MOVING & STORAGE
Agents For **T. & P. TRANSPORT**

"HELP" YOURSELF AT NEAL'S LAUNDRY
300 North Austin.
Hot water at all times for your washing. Good laundry service. We wash and dry quilts and blankets 15 cents each.
PHONE 113

IT'S TIME TO Let Us Fix Your Car for Winter.
Prestone Anti-freeze Zerone
No. 10 Oil, Any Kind.
COME TO SEE US
Al Tune & Son
New Highway
Just North of Main Street

A. H. POWELL Grocery - Market
901 PERSHING STREET
Phone 103

THE FRIENDLY STORE WE DELIVER
We want to buy your cows and hogs.
Our Prices are in Line
PAY US A VISIT.

H. H. VAUGHN SERVICE STATION
100% T-P Products
PINE AT AUSTIN
Washing - Greasing - Storage

APARTMENTS FOR RENT
1-2 Room; 1-3 Room; 1-4 Room.
Furnished or Unfurnished.
Phone 521 or Apply Room 229.
JOSEPH'S APARTMENTS

ELECTRICAL APPLIANCES
Texas Electric Service Co.

IT PAYS TO LOOK WELL!
Try us for your next Haircut, Shave, Shampoo, Massage, and all kinds of scalp treatments.
GHOLSON BARBER SHOP
L. E. GRAY, Owner

SPRING TONIC FOR YOUR AUTOMOBILE

Every human being takes a spring tonic. Why not give your car the same consideration in the form of a Buick Authorized Service check-up? The most severe winter of many years has exposed your car to extra hardships. It deserves expert attention in preparation for spring and summer driving. Our factory-trained servicemen know how to do the work as it should be done. And our prices are right. We will be glad to give you an estimate on any or all the work your car may need.

Our Service Department
Is in charge of Mr. J. M. Gray, foreman; Mr. Frank King, mechanic; Mr. S. A. Green, mechanic; Mr. Joe Cagle, body department. These attendants are trained, courteous and efficient. They want you to feel free at all times to drive in and let them give your car a thorough check-up.

MUIRHEAD MOTOR COMPANY
TELEPHONE: 692 306-7 EAST MAIN STREET EASTLAND, TEXAS
BUICK-PONTIAC AND G. M. C. TRUCK DEALER