

THE WEEKLY CHRONICLE

Established Nov. 1, 1887

Entered as second-class matter at the postoffice at Eastland, Texas, under Act of March, 1879

Published Every Friday Office of Publication: 106 East Plummer Street. Phone 601

NOTICE TO THE PUBLIC

Any erroneous reflection upon the character, standing or reputation of any person, firm or corporation, which may appear in the columns of this paper, will be gladly corrected upon being brought to the attention of the publisher.

Obituaries, cards of thanks, notices of lodge meetings, etc., are charged for at the regular advertising rates, which will be furnished upon application.

Deadwood In the Schools

Texas is buying \$100,000 worth of deadwood so as to throw it away.

It has started a survey of the public school curriculum, with a view of modernizing it and getting rid of antiquated subject-matter and obsolete practices.

The survey follows one made of the colleges, which dealt primarily with procedural and administrative obsolescence and inefficiency, and which, its sponsors say, already have paid the state back several times over.

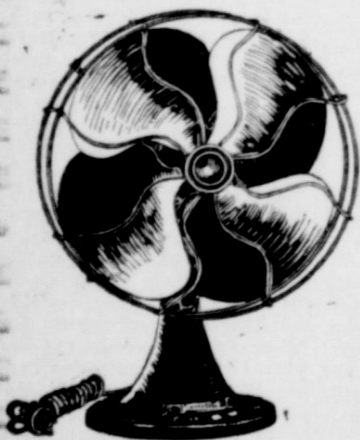
Progressive educators for years have considered the schools were giving too much emphasis to old-line, strictly formal or classical elementary and high school education, and have been urging liberalizations in the direction of practical and vocational subject-matter.

A new danger-signal recently was raised, when the federal government began spending huge sums in a part to an economic view of training and accomplishment, all of which seemed to be public needs and a well-discerned public demand, might break down all the old formal standards and regulations, and deeply encroach upon the financial support of the school system.

The survey, when made, will produce a voluminous report, dealing with the whole field of elementary and high school education. It no doubt will carry recommendations, or conclusions as to desirable or needed shifts of emphasis. Educators now believe it will cause a far-reaching change in the subject-matter of public schools, and in the method of teaching, such as greater latitude in optional subjects, dropping of much of the difficult algebra, geometry, Latin and foreign languages, and much greater emphasis upon such subjects as civics, history, modern English, economics, business, semi-vocational and purely vocational subjects and modes of training.



KEEP COOL WITH AN ELECTRIC FAN



When the home or office is stuffy and the heat seems almost unbearable, plug in an electric fan and blow the heat away. Day or night, an electric fan is the best insurance against hot weather discomfort.

And the cost of operation is low. With your cheap electric rate, an average-sized fan costs only about 1/4 cent an hour.

Convenient Terms

SEE YOUR ELECTRICAL DEALER OR

TEXAS ELECTRIC SERVICE COMPANY

J. E. LEWIS, Manager

TO THE VOTERS of Eastland County

I appreciate with all my heart the good vote my friends and supporters gave me on July 25th.

I shall never forget the good work done by a host of my friends in interest of my candidacy and shall always cherish in my memory their loyalty to me.

While I lost by the unusually small margin of only 23 votes, yet I want every person who did not vote for me to know that I feel no ill will toward them and that I am and will be as good a friend to them as ever and I want to enjoy the same measure of their friendship as I have in the past.

Sincerely, Clyde S. Karkalits.

Learned new "roll-your-own" wrinkle when he switched to this tobacco



FRED WHITSON always takes his "makin's" tobacco with him on his sketching jaunts. Fred says: "That Prince Albert 'crimp cut' tobacco whisks into a neat, spick-and-span cigarette in practically no time." It's nice going in pipes too!



"SEEMS they've got a special 'no-bite' process that takes all the harshness and sting out of Prince Albert," Fred says. "Leaves only a satisfying smoke comfort that lasts right down to the very last puff."

YOU CAN SEE from this picture that Prince Albert is packed in tin. As Fred says: "It stays prime and tasty until you've got your enjoyment out of every flake."

Advertisement for Prince Albert tobacco, featuring a pack of cigarettes and the text: "70 fine roll-your-own cigarettes in every 2-oz. tin of Prince Albert. 30 'makin's' smokes free if you don't say Whitson's right. Roll yourself 30 swell cigarettes from Prince Albert. If you don't find them the finest, tastiest roll-your-own cigarettes you ever smoked, return the pocket tin with the rest of the tobacco in it to us at any time within a month from this date, and we will refund full purchase price, plus postage. (Signed) R. J. Reynolds Tobacco Co. Winston-Salem, North Carolina. PRINCE ALBERT THE NATIONAL JOY SMOKE. CRIMP CUT LONG BURNING PIPE CIGARETTE TOBACCO. THE BIG 2 OUNCE TIN."

Advertisement for Goodyear tires, featuring a tire and the text: "They're BLUE RIBBON VALUES every one! AS LOW AS 46c a week. LOOK! Big, Husky, Safe GOODYEAR SPEEDWAYS. SIZE PER WEEK: 30 x 3 1/2 CI 46c, 4.40-21 51c, 4.50-20 54c, 4.75-19 59c, 5.00-19 63c, 5.25-18 70c. Other sizes in proportion. THE GREATEST NAME IN RUBBER. GOODYEAR. LUCAS SERVICE STATION. C. T. LUCAS, Prop. Phone 50 300 East Main St."

OFFICIAL TABULATION OF FIRST PRIMARY VOTES

Large table with multiple columns listing candidates for various offices (U.S. Senator, Governor, etc.) and their vote counts across different precincts (Eastland, Westland, etc.).

Funds Flow to the Federal Savings and Loan

WASHINGTON—Reports from federal savings and loan associations throughout the country during the month of July show a total of \$7,544,700 in savings invested by the public in local private institutions for promotion of thrift and home ownership.

The amount represents savings of old and new shareholders, indicates growing appreciation of the safety offered to savers by these federally chartered institutions, in each of which all shares are protected by insurance up to \$5,000. The reporting associations have a total of 568,000 individual investors holding an aggregate of \$409,829,100 in savings.

Dividends at an average rate of 4 per cent annually were paid to 85 federal associations during the last six months of the year, after provision for reserves, totaling \$1,200,000. Of the total, \$720,000 was paid in dividends, \$480,000 was paid to private investors and \$770,000 to the Federal Reserve.

The associations not declaring dividends were chiefly privately chartered organizations, including about 50 which had not completed their organization at the end of December, 1935.

During June, lending by the 1017 reporting federal associations registered a substantial increase over previous months, largely as a result of increased interest in home ownership, improved collections, and the augmented loan funds on hand at these institutions. The proportion of lending for new building held its recently attained lead over loans for refinancing of existing mortgages.

The total of \$19,691,500 loaned was distributed as follows: \$6,025,300 for the construction of new homes, \$5,156,800 for the purchase of dwellings, \$5,242,500 for refinancing, \$1,371,900 for repairs and reconditioning and \$1,895,600 for other purposes. As of June 30, these associations held an aggregate of \$444,446,100 in mortgage investments, chiefly in small homes. The June figures do not include the activities of 112 other federal associations which were chartered in the past few months.

Many individual associations report striking increases month by month in investments from the public and in lending since they began operating under federal supervision.

Loans by federal associations are made on a long-term basis, providing for monthly payments including principal and interest that will completely retire the debt at the end of the period, which is normally up to 15 or 20 years. To repay a \$1,000 loan at 6 per cent interest over 15 years requires a monthly installment of \$8.44.

No Change Seen In Engineer For Highway Dept.

By Gordon K. Shearer
United Press Staff Correspondent
AUSTIN, Tex.—Gibb Gilchrist, state highway engineer since 1924 is expected to have a long tenure of office as a result of developments in state politics.

Interests that at first expressed fear that Gilchrist might be removed if Governor Allred were re-elected, turned wholeheartedly to Allred's support in the closing days of the primary campaign.

This was taken to indicate that their fears for Gilchrist's continuation as the head of the highway forces had been quieted.

The state highway engineer is named by the State Highway Commission. The commission is a three-member body and two votes elect the engineer. A governor has one highway commission appointment for each term. In his first term he named Harry Hines, Wichita Falls, to succeed W. R. Elph. In January he will have another appointment. Hines was reported to have opposed Gilchrist. D. K. Martin, commissioner from San Antonio, who favors Gilchrist holds a term that expires in January.

No promise about political appointments can be made by a Governor until after his election in the general election. When he is inaugurated he must swear that he has made no promise of office to obtain a vote. But there are legal ways in which surety could be given for Gilchrist's retention.

Commissioner Hines, for instance, might say that he now will favor retention of Gilchrist. Commissioner John Wood, appointed by Gov. Miriam Ferguson will have two years more to serve. His vote, with that of Hines, would retain Gilchrist, regardless of who might be named third commissioner.

That the Governor did not plan to reappoint Commissioner D. K. Martin, San Antonio, was inferred from his campaign speech at Corpus Christi, pledging completion of the Kenedy county short cut to the Lower Rio Grande Valley—a project Martin has not considered pressing.

If the Governor has decided to appoint Martin, Martin will have a record of appointments by four Governors. Gov. Pat M. Neff gave him his first term. Govs. Dan Moody, Ross Sterling reappointed him. Reappointment with such a short time was made possible because Governor Moody shifted the long term in making his appointments.

Boop Boop-Bazooka



Bob Burns shows the amazed Bing Crosby how his famous musical instrument, the bazooka, is operated. It's a scene from "Rhythm on the Range," at the Connellee Theatre Now.

Lake Ship Sunk In '95 May Be Found

by United Press
SOUTH HAVEN, Mich.—Plans are underway to search for the ship, Chicora, which sank with 24 persons in a storm over Lake Michigan on Jan. 31, 1895.

The water-soaked hulk has been reported seen several times by airplane pilots. Allan Chesebro, under whose direction the search will be made, said "than an airplane will be used in an effort to locate the ship, believed lying in about 80 feet of water, three miles west of here."

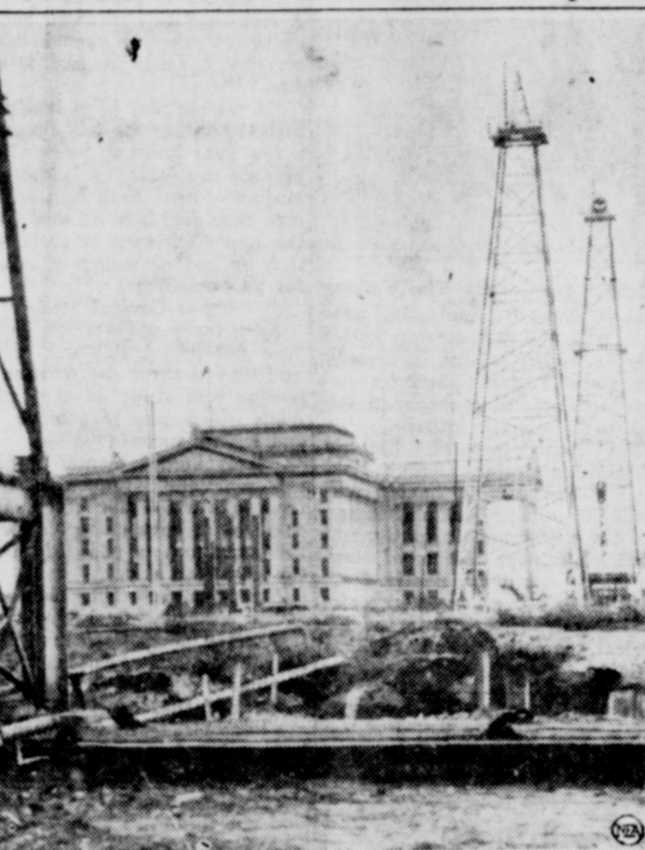
The Chicora carried a cargo of 30 carloads of flour and money estimated to have amounted to about \$30,000.

LYRIC Now Playing



Gene Autry in "Red River Valley"—A Republic Picture

Derricks Reach Oklahoma Capitol



The march of the oil derricks goes on in Oklahoma City. Several of them, as pictured above, are springing up on state-owned property surrounding the capitol, latest step in the long controversy between city and state. Anxious to preserve the beauty of its capitol grounds, the city had forbidden such drilling, though private operators were permitted to drill nearby. Maintaining that the state should have the benefit of oil it owns, and that companies operating adjoining wells might drain state pools by drilling at an angle, state officials have fought for the right to sink wells on this property.

HOUSTON, Tex.—Of 103,784 cattle inspected in Harris county for fever ticks during June, only 184 comprising herds 12 out of 3,862 were found to be infested according to L. J. Wardlaw, chairman of the State Livestock Commission.

Bishop Is Enthroned At a Beauty Shop

By United Press
LONDON — When Dr. Neville Lovett was enthroned Bishop of Salisbury he donned his robes in a beauty parlor.

In doing this, he conformed to ancient tradition. In 1220, Bishop Poore, the first bishop of New Sarum, assumed his vestments on this spot, the site of which is now occupied by a woman's hairdressing shop.

Business was suspended at the shop while Dr. Lovett donned his robes before the ceremony.

Joke Succeeds As Pickpocket Robs Famed Detectives

By United Press
SARAJEVO — Ninety of Europe's most famous police chiefs and ace detectives, attending an international police conference here, were robbed by a pickpocket.

The detectives went out to buy presents in Sarajevo Oriental market. They stuffed the small articles in their pockets and returned to the hotel. Then came the discovery. Nearly every man's pocket had been picked.

The hotel manager was told. He rushed to the telephone to call the police. He had barely asked for the number when Dr. B. Vidovitch, a Sarajevo lawyer and former deputy, appeared with a sack containing the stolen goods.

Dr. Vidovitch had successfully "pulled the legs" of the pick of the world's police forces. He had hired a convicted pickpocket to follow the detectives and rob them.

An Ohio health expert suggests that people who suffer from the heat take a pinch of salt, advice which any perspiring cynic will take with a pinch of salt.

Nectar TEA

2 oz. 8c
1/4 Lb. 15c
1/2 Lb. 27c

Del Monte
Sliced Pears, No. 2 - 2 Cans ... 25c

Iona No. 300 Peas, 2 Cans ... 9c

Sunnyfield Corn Flakes	White House Milk
Small 6c	4 Small or 2
Large 9c	Large Cans 15c

For Energy! LARGE WHITE 16 oz. **7¢**

Fresh FRUITS and VEGETABLES

NEW YAMS lb. 4c
IDAHO POTATOES 5 lbs 19c
CARPOTS 2 bunches 9c
lb. 8c
BANANAS lb. 5c
ORANGES, medium size doz. 25c
LIMES dozen 12c

PEANUT BUTTER COMPOUND
Pt. Jar 15c
Qt. Jar 25c
8 Lb. Carton 95c

Brooms 25c size 19c

Ann Page Preserves 16 oz. 17c

Rajah Mustard 9 oz. 9c

Iona Flour 48 lb. bag \$1.50

A. & P. COFFEE
8 o'Clock lb. 17c
Red Circle lb. 17c
Bokar lb. 23c

MEAT Special

CREAM CHEESE lb. 25c
Decker's Tall Korn sl. Bacon lb. 31c
Baby Beef Seven Roast lb. 18c
No. 1 Dry Salt Bacon lb. 20c
Loin or T-Bone Steak lb. 25c
Veal Chops lb. 23c

A&P MARKET OWNED AND OPERATED BY
ZED KILBORN

Pope Welcomed to Summer Villa



From this three-story-high balcony of Castle Gandolfo's beautiful, ornate Villa Barberini, Pope Pius XI solemnly conferred his benediction on villagers, gathered joyfully below to welcome the pontiff to his summer residence. Formally ceded to the Holy See by the Lateran treaty, this 17th century villa is in the picturesque Alban Hills, 20 miles from the Vatican.

2 Lb. Fryers Dressed
35 Cents Each
Bell Hurst Ranch

"Outlaw Gets Life Term For Hamm Kidnaping." A serious offense in these days of high meat prices.

THE FASHION'S

Final SUMMER CLEARANCE

Continues With Great Values

DRESSES
LESS than 1/2 Price
\$3.33 \$5.55 \$7.77

ALL SUMMER SHOES
ONE - HALF PRICE

MILLINERY
38c TO \$1.98

The FASHION
North Side Square Eastland

PIGGLY WIGGLY
QUALITY & ECONOMY

PRICES FOR

Kellogg's
2 Large Pkgs. Corn Flakes - 1 Pkg. Pep ... **22c**

Land of Gold
FLOUR, 48 Lbs. **\$1.39**

Miracle Whip
SALAD DRESSING Pint **25c**

Happy Vale Peas No. 2 Can	Early June 12c	Tomatoes 3 No. 2 Cans	25c
Locust Blossom Corn No. 2 Can	10c	Hershey's Chocolate Syrup Large Size	10c
Libby's Cut Beets No. 2 Can	10c	Queen's Olives No. 10 Cylinder	10c

Quachita Brand
GINGER ALE - LIME RICKEY 4c Deposit **10c**

Pipkin's Special COFFEE 3 Lbs.	50c	Golden Ripe Bananas Lb.	5c
TEA Tasty - 1/4 Lb. Pkg.	10c	Thompson Seedless Grapes Lb.	10c
OVALTINE Large Size	59c	Home Grown Tomatoes 3 Lbs.	10c
Del Monte COFFEE 2 Lb. Can	49c	California Sunkist Lemons Doz.	27c
MUSTARD Quart Jar	10c	Gravenstine Apples Doz.	25c
Libby's PINEAPPLE JUICE 3 For	25c		

MEATS

Jell-O 2 Pkgs. **13c**

1 Lb. Pkg. MARSHMALLOWS **15c**

Quart Jar OLIVES **35c**

Banner POTTED MEAT 3 For **10c**

Pork & Beans 16 oz. Can **5c**

A Plus SOAP 3 Bars **10c**

Fresh Dressed **FRYERS LB- 20c**

BOLOGNA LB. 15c

Fancy Veal **CHOPS LB. 23c**

Real Fancy **BACON LB. 35c**

Loin or T-Bone **STEAK LB. 25c**

PIPKIN BROS. **Piggly Wiggly**

WATCH OUR WINDOWS For ADDED SPECIALS

PRESBYTERIAN CHURCH
Charles W. Estes, Pastor
Sunday, Aug. 9—Sunday school
at 10 a. m. The public invited.
The pastor goes to Strawn this
Sunday for regular services.

A fast-stepping tale of a mil-
lionaire twenty-three times over,
who had to squander his fortune
before he found the right girl, is
told in the Walter Wanger pro-
duction for Paramount, "Spend-
thrift," coming Saturday night to
the Connellee theatre.

The picture boasts a cast of fea-
tured players headed by Henry
Fonda, Pat Patterson, Mary Brian
and George Barbier. Fonda, the
screen player who leaped to im-
mediate stardom in his first pic-
ture two years ago, "The Farmer
Takes a Wife."

The W. C. T. U. is to use a ro-
bot to demonstrate the evils of
drink. The head probably will con-
tain stripped gears for the morn-
ing-after effect.

First Aid
for
Constipation

Nyal
Mineral Oil

A non-habit
forming relief
for constipation
and irregular
movements.
Pure, tasteless
and odorless.

Full Pint . . . **59c**

Corner Drug Store
Eastland

Hamner
Undertaking Co.
Phones
17 and 564
DAY OR NIGHT
AMBULANCE SERVICE

LOOK LIKE
THIS . . .



Be COOL
and FRESH LOOKING!

The picture above tells the story! When you're
wearing newly cleaned and freshly pressed clothes
you can enjoy yourself far more than if you wore
soiled, wilted, bedraggled clothes! You'll look bet-
ter and feel fresher in clean clothes because clean
clothes are actually cooler! Get over on the cool
side!

Men's 2 and 3-Piece Suits

Regular and summer weight suits. Special care ta-
ken of sports backs and light colors. All work guar-
anteed.

Women's Silk and Wool Dresses

Thoroughly cleaned and carefully pressed. Before
cleaning, belts, buttons, etc., are removed and later
firmly replaced.

We Pick-up and Deliver Free of Charge
Anywhere in the City.

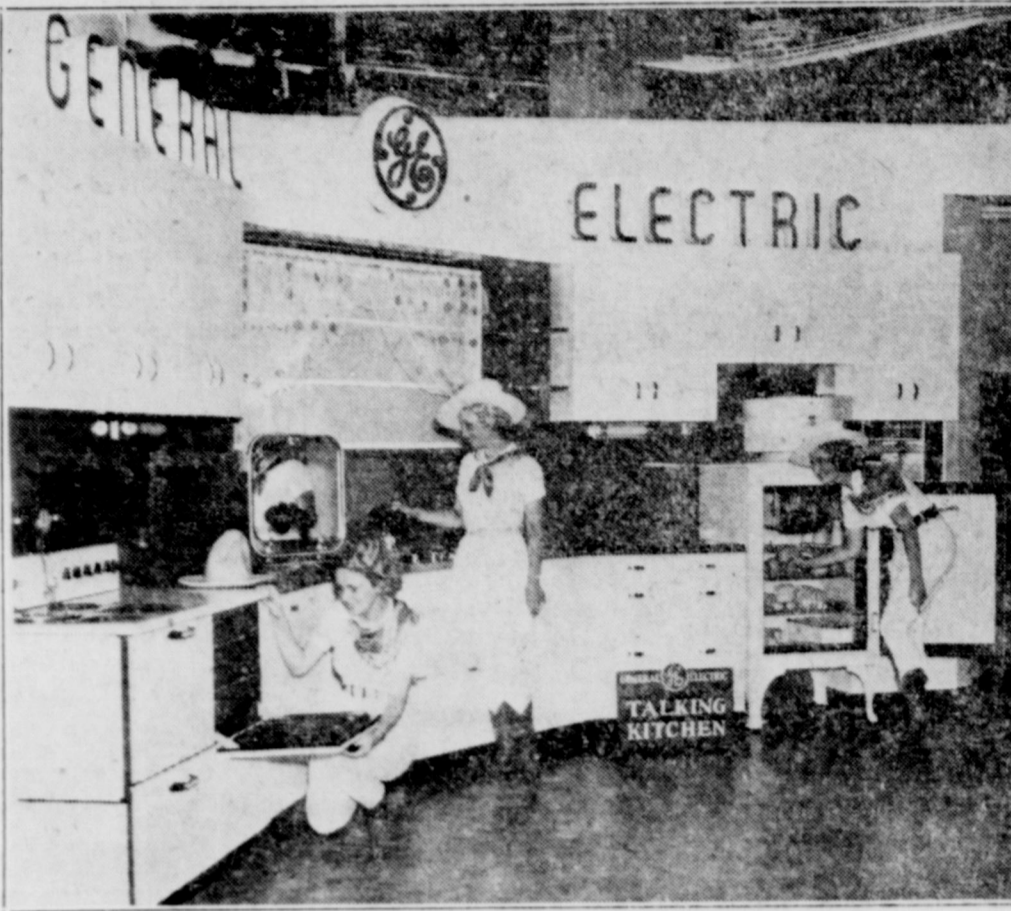
ALWAYS LOOK YOUR BEST

MODERN
Dry Cleaners

South Seaman Street

Phone 132

"Kitchen Talks to Rangerettes"



Star exhibit of the Century of
Progress, the General Electric
Talking Kitchen, stops the crowds
at the Texas Centennial expo-
sition at Dallas.

Speaking for themselves, the
modern electric refrigerator, range
and dishwasher, vie with each
other for public attention. Mys-
teriously the appliances go into ac-
tion, illuminated arrows go on and
off, spotlights dart from one fea-
ture to another—all automatically,
for there is no attendant in the
kitchen.

Texas Rangerettes Helen Ram-
sey, LaVee Killman and Mabel
Rooks endeavor to solve its mys-
tifying operation. Captain Helen
Ramsey, after watching and listen-
ing to the appliances go through
their acts, exclaimed that she'd
never come out of the kitchen if
she owned one like the Talking
Kitchen.

Operation of the kitchen is con-
trolled by an automatic switch
such as is used in the dial tele-
phone systems which synchronizes
special recordings and illumina-
tions.

As the electric range talks, its
individual features are pointed
out. The hi-speed Calrod surface
unit lights up with a red hot glow
as do also the Calrod oven units.
The electric timer-dial lights up
and actually turns the oven units

on and off automatically, showing
how a meal may be cooked with-
out the housewife present.

Likewise, the G-E dishwasher
tells how it has eliminated the
drudgery of dishwashing. As it
talks, it starts automatically and
at the same time the interior of
the machine is illuminated and the
spectators can see for themselves
how the dishes, silverware and
even pots and pans are washed
speedily and hygienically in tor-
rents of piping hot water. The
dishes, as the dishwasher explains,
dry themselves by their own heat.

Aside from the beauty of this
all-electric kitchen, the most strik-
ing feature is that the voice and
synchronized effects automatically
shift from appliance to appliance
to heighten the illusion of the re-
frigerator, range and dishwasher

actually conversing. The Talking
Kitchen closes its interesting pro-
gram with the refrigerator, range
and dishwasher joining in a song,
as the result of the sheer joy ex-
perienced preparing meals in the
modern all-electric kitchen.

The local General Electric
refrigerator dealer, George Har-
per, invites every one in this com-
munity to see the Talking Kitchen
also the performances of General
Electric's famous "House of Mag-
ic" which are given hourly from
11 a. m. to 9 p. m. in a large air-
conditioned auditorium in the El-
ectrical and Communications
Building.

"An absent-minded Norfolk, Va.,
bandit, who tried to rob a shoot-
ing gallery, learned that the pro-
prietor knew his business.

Old-Fashioned Newlywed



Mary Boland and Charlie Ruggles marry after an engagement of
twenty years, then set out for a honeymoon at a sanatorium in their
latest farce, "Early to Bed," coming Monday to the Connellee Theatre.

**SISTER MARY'S
KITCHEN**

BY MARY E. DAGUE
SEA Service Staff Writer

"It will all come out in the
wash."
Everyone knows the old, old
saying, but mothers of lively fam-
ilies know they can't depend on
it—not 100 per cent—when it
comes to grass stains, fruit juice
stains and similar laundry ills.
Most of these disturbing marks
can be removed if the right pro-
cess is followed. It should be
done, though, before the clothes
go into the regular wash.

Ice cream and frosted drink
stains are common in the summer
months. These need two treat-
ments before they will disappear.
They are usually caused by a
combination of sugar, cream and
fruit juice coloring. First of all,
the cream must be treated with a
grease solvent, such as carbon
tetrachloride. Then, if the fruit
juice is deep-seated, pour boiling
water through the spot. If the
color left is very faint, washing
in soap and warm water will re-
move it.

To Remove Marks of Oil
Mayonnaise and salad oil are
extremely penetrating and oil
may even be unnoticeable when
wet but show in grease spots or
grayish-brown stains when the
fabric is ironed. After careful
laundering, oil is almost impos-
sible to remove, so it is essential to
remove all traces of grease before
putting the fabric into water.
Treat mayonnaise and oil stains
with carbon tetrachloride before
washing.

If you set to work to remove a
grass stain while it's fresh it can
usually be done with soap and
water. If it is a day or more old,
sponging with denatured alcohol
usually is effective. Unwashable
materials, of course, should be
given the alcohol treatment.
Mildew is another summer
stain that is hard to combat. Ev-
ery once in a while I find that

Tomorrow's Menu

BREAKFAST: Grapes, cer-
eal, cream, soft cooked eggs,
toast, milk, coffee.

LUNCHEON: Creamed
tuna fish with Chinese noo-
dles, mixed fruit salad, gra-
ham bread, hermits, lem-
onade.

DINNER: Broiled ham with
pineapple slices, creamed
kohl-rabi, spinach and egg
salad, graham cracker ice-box
pudding, milk, coffee.

somebody has thrown a damp
towel into the clothes hamper and
traces of mildew make their ap-
pearance. In the early stages of
its growth, this stain usually
comes out by washing first in
cold water, then in hot suds. If,
however, the stains are stubborn,
white cottons and linens may be
bleached with a chlorine bleach
such as Javelle water. Small
scattered spots can be stretched
over a bowl of hot water contain-
ing a few drops of ammonia.
Then, with a dropper, put the
bleach right on the stain and im-
mediately rinse the material in
the water in the bowl. You may
need to repeat this several times.
Large spots are more easily re-
moved if they are soaked in a so-
lution of two tablespoons Javelle
water to one quart of clear water.

Rinse the Fabric
After using a bleach it is very
necessary to rinse all articles
thoroughly because the bleach
weakens the fabric if it's allowed
to remain.

Sunshine is a splendid bleach,
too. If you have a place in the
sun, try wringing the clothes from
the last rinsing water not as dry
as you do when you wring from
the other waters. The sun will
whiten the clothes beautifully as
they dry.

**PHYSICIAN WARNS DANGERS LIE
IN TACTLESS SICK ROOM VISITS
AND JOKES TO CHEER PATIENTS**

By United Press

CHICAGO — Hearty visitors
who enter the sickroom with
booming, well-intentioned refer-
ences to the morgue or operating
room actually may become a con-
tributing factor to a patient's
death, according to Dr. George B.
Lake, editor of Clinical Medicine
and Surgery.

"Few people except experienced
physicians know how to talk to an
acutely sick man," he said, writing
in the Radiologic Review.

"Lugubrious anecdotes all too
frequently contribute to an unfa-
vorable outcome."
The patient who worries, or is
afraid, always has an uphill fight
to recovery, the physician said.

"This fear or worry need not be
with regard to physical condition.
A man may be distressed because
he is not carrying enough life in-
surance; because his rent is over-
due.

"A woman may be violently per-
turbed because she has discovered
a few gray hairs or 'crow's feet';
because she fears she is losing her
husband's love. Both men and wo-
men have died because they feared
the loss of friends or social posi-
tion or had a feeling of remorse
for past mistakes.

Urges Careful Study
Such fears and worries, he said,
"are not immaterial and foolish
and they deserve the earnest at-
tention and study of the physi-
cians who aspire to achieve high
and lasting success."

Deeply hidden mental or phys-
ical reactions frequently result
from acts which the individual re-
cognizes as opposed to his own or
the community's code of morals,
the physician said.

Emotional instability caused by
faulty heredity or dysgenic mat-
ings often is an important factor
in causing and perpetuating dis-
tressing symptoms, Dr. Lake said.

Most of these persons, he said,
are "chronics" who for years have
been going from one physician to

another with but little relief.
Some have been inadequately pre-
scribed for, others have been dis-
missed brusquely and told nothing
was wrong.

"In the latter case it is unsci-
entific and untrue to declare that
nothing ails the patient. If he were
not ill he would not have sought
medical advice. His psyche is as
much a part of his organism as is
his thorax or abdomen and, until
it has been painstakingly exam-
ined, the study of the case is
incomplete," the physician said.

Fears Must Be Minimized
The emotionally unstable per-
son frequently finds himself un-
able or unwilling to face the true
cause of his distress, he said.

The man who "cannot tell a lie"
has no place in the medical pro-
fession, according to Dr. Lake.

"Many a man has recovered
from pneumonia or gastric ulcer,
because his medical attendant had
the good sense to assure him that
he suffered from bronchitis or
gastritis, when a knowledge of the
true nature of his disease would
have excited so strong a fear as
to break down his powers of re-
sistance."

CLASSIFIED ADS

SACRIFICING 20,000 papershell
budded peach trees to pay debts.
Free peach trees with peach trees,
to unload. No better trees. Best
bank references. Request prices.
Bargain Nursery, Box 922, Abi-
lene, Texas.

MEN WANTED for Raleigh
Route of 800 families. Write to-
day. Rawleigh's, Dept. TXH-222
-SA, Memphis, Tenn.

CHRONICLES
FOR SALE—1 fine saddle horse,
4 registered Jersey cows, 3000
White Leghorn pullets from ped-
igreed stock, ready to lay. Priced
reasonable. Bell-Hurst Ranch,
Eastland, Texas.

LYRIC TODAY and SATURDAY

YOUR SINGING SON OF THE
SADDLE BRAVES DYNAMITE
DEATH TO CLEAR HIMSELF
OF THE BANDIT BRAND!



Plus
TARZAN SERIAL — POPEYE CARTOON

SUNDAY ONLY

MEET...
a happy, sappy,
scrappy family!

**"EVERY
Saturday NIGHT"**

WITH
**JUNE LANG
THOMAS BECK
JED PROUTY
SPRING BYINGTON**

20th Century-Fox
Picture

Plus
**"THE
BLACK NETWORK"**
Grantland Rice's
**SPORTS ON THE
RANGE**

GOLD MINE SPRAWLS
By United Press
GRASS VALLEY, Cal.—Either
underground autos or railways
seem to be the next necessary
step for gold mining. The Empire-
Star Company in its mines here
already have 140 miles of under-
ground workings for gold diggers
to traverse.

"Kidnaping is one crime the
American people will not
ate." Which cuts the list
about 9999.

ST. LOUIS—Jonathan
22, holds a record of some
sentence, despite his youth.
He is serving his fourth
in the Leavenworth prison
conviction of transporting an
automobile from Illinois to
souri.

CONNELLEE NOW PLAYING
A galloping roundup of mirth and mel-
ody out where the West begins...with
**BING singin'...the gals swingin'...and
BOB BURNS tootin' the old bazooka!**



A Paramount Picture with
**BING CROSBY
FRANCES FARMER
BOB BURNS
MARTHA RAYE**
Directed by NORMAN TAUROG

Seven Big Song Hits:
"You'll Have to Swing It"
"I Can't Escape From You"
"Empty Saddles" in addi-
tion to four others.

PLUS
POPEYE in "WHAT, NO SPINACH?"
LEW KELLY in "LISTEN TO FREEZON"

**Midnight Matinee 11 p. m. Saturday
Nite and SUNDAY ONLY**

"EVERY GAL'S PAL"
Society's favorite play-
boy flings a million on a
sky-larking hunt for
romance!



Plus Howard
**ABSORBINE
JUNIOR**
NOVELTY
NEWS

A Paramount Picture with
HENRY FONDA
Pat Paterson • Mary Brian
George Barbier
A WALTER WANGER Production
Directed by Raoul Walsh

MONDAY ONLY
MARY BOLAND — CHARLEY RUGGLES
in
"EARLY TO BED"

TUESDAY — WEDNESDAY
IRVIN S. COBB
in
"EVERYBODY'S OLD MAN"

THURSDAY ONLY
HERBERT MARSHALL
in
"FORGOTTEN FACES"

AS PENITENTIARY METHODS BE CHANGED TO CONFORM TO THE MODERN DAY NEEDS

Richard M. Morehead, Staff Correspondent
 DALLAS, Tex. — Texas' prison systems may find the new classification program now being developed by Frank Loveland, Massachusetts expert whose work began in 1928, a step toward more effective methods change with each generation. Loveland's theories back of them are more slowly being adopted. From the ancient "eye for an eye" to modern methods at rehabilitation of the unfortunate environment and theories have greatly changed under which classification and segregation is being carried out at Texas prisons is this: "Individual treatment depends upon accurate diagnosis of problems presented by the individual, and a valid diagnosis is dependent upon a complete history of the offender and description of the symptoms."

The theory that one kind of treatment is effective for all offenders has proved false, Loveland said. Prisons operating under the plan have turned out hundreds of thousands destined to commit further crime at an appalling toll in life and property. "Strangely enough," said Loveland, "we have been content to place hundreds and even thousands of criminals in the same institution, give them the same treatment . . . then become disappointed when we see so few cures. We would have little regard for the doctor who prescribed the same treatment for every ailment."

Two cases from the Texas prison at Huntsville were used to illustrate the necessity for information about each individual offender. One man, under a five-year sentence for burglary, said he had no previous criminal record and a check-up indicated he told the truth. A small, mild appearing man in his middle years, the convict was transferred to a prison farm after being "checked in" at Huntsville. He stabbed and killed a fellow inmate and soon afterward was discovered with another hand-made knife, intended for use on a prison official.

"Spendthrift" Principals



Henry Fonda, the "Spendthrift" in Walter Wanger's film by that name at the Connellee Theatre Saturday night and Sunday, and Mary Brian, the Southern lass who helps him waste a fortune, are seen above. Pat Patterson is featured in a romantic role.

All, Non-Stars to Play Here Saturday

A double-header will be played Saturday night at the Fire Department Soft Ball Field between the Eastland All-Stars, and the Non-Stars. The teams represent the Eastland fans' idea of the No. 1 and No. 2 teams of the city.

Eastland Group Back From Day At Centennial

The majority of 200 Eastland citizens who Monday afternoon attended the Frontier Centennial on the city's special day at Fort Worth had returned today. The Eastland delegation made the trip in a motor caravan headed by the high school band, directed by G. W. Collum. With H. C. Davis, secretary of the Chamber of Commerce, in charge of general arrangements, the group arrived with "Old Rip" identification cards and folders

supplying information about Eastland. The motorcade was met on Camp Bowie Boulevard by a welcoming group from Fort Worth, including Mayor Van Zandt Jarvis, Mrs. Edwin Phillips, official hostess; Lionel W. Bevin, Fort Worth Chamber of Commerce president; Roger Motherall, assistant manager of the W. T. C. C.; and Boyce House, assistant public relations director for the Frontier Centennial. A police escort led the group of automobiles to the entrance of the grounds where the band played. The band members then marched through the grounds and played in front of the W. T. C. C. exhibit. Miss Ellen Pearson, selected as "Miss Eastland," accompanied the group and at the closing of the first performance at Casa Mangana, was introduced by Maestro Paul Whiteman. She wore a white printed taffeta gown with touches of blue on the sash. Milburn McCarty, first vice president of the W. T. C. C., went to Fort Worth ahead of the delegation with "The Vacationers," local 10-piece orchestra under the direction of Horace Horton. This group broadcast a program over a Fort Worth radio station. Transportation was furnished by business men and citizens of Eastland, including the following: Chief of Police W. J. Peters, City Manager J. F. Little, Mayor C. W. Hoffmann, C. T. Lucas, Hamilton McRae, Early Jones, O. E. Harvey, C. B. Welman, C. J. Rhodes, Wm. H. McDonald, Rev. C. W. Estes, Senator W. B. Collie, Albert Taylor, Ben S. Scott, Mr. Collum, Grady Pipkin, J. K. McLaughlin, Jim Horton, Gilbert Clark, R. E. Sikes, Ed Sanderson, Everett Harris, John H. Harrison, Carl Johnson, Roy Allen, George Utz, Frank Dyer, P. L. Parker, Chas. M. Estes, George Haynie, Dick Mays, C. D. Germany, Joe Weaver, and P. L. Crossley. The Chamber of Commerce Tuesday expressed appreciation to the trustees of the Morton Valley Independent School District for the use of a school bus in which members of the band were transported.

IT'S CHEAPER TO OWN THAN TO RENT

Every thoughtful person now realizes that the consumer pays every conceivable form of tax that can be levied by those who have that power.

For instance, the tenant pays the property tax chargeable against all real estate. He pays the insurance, which all property owners carry as a protection against fire, windstorm and hail. He pays for the depreciation of the property each month, which is regular and certain.

Incidentally, but hidden under the chip, he pays interest on the capital investment, and many other costs too numerous to mention. However, very few consumers, tenants, included, take note of what is going on, because the tax is mostly indirect and is administered in small doses.

The next time you pay rent analyze your rent receipt. All things considered, you will be compelled to admit that

IT'S CHEAPER TO OWN THAN TO RENT!

Standard Savings & Loan Association
EARL BENDER & COMPANY
 Local Representative—Phone 15

An investigation of the man's life revealed: His maternal grandmother was insane; his father was serving a prison sentence for murder when the subject was born. As a boy, the prisoner had been to reform school—in all, he served 25 years in prison after he was 10 years old, had committed numerous crimes and killed one man. But no record has been kept of his activities. The second man was of about the same age and was serving a two-year sentence for theft. His worst fault, Loveland said, was that the man was led easily. He had a wife and four children and took a boarder to help pay expenses. The boarder could not pay however, and the landlord was penniless. The boarder suggested that they "go get some food." The two returned with ten chickens and a "borrowed" saddle. Members of the state legislature and others have written that "A— is not a criminal, but on the point of starvation when he committed the crime." "Is there anyone who would say that these two men should be placed in the same institution, given the same treatment and released after the same portions of their sentences have been served?" Loveland asked.

Save Feed With Trench Silos Says Expert In Talk

"Save everything. Don't let any feed go to waste on the farm," advised E. R. Eudaly in a talk to 125 farmers and ranchers at a trench silo demonstration in Eastland Friday, July 31st. Eudaly stated that the most important part of farming was to save the soil by terracing and planting soil improving crops, but next in importance comes the saving of feed, more than half of which goes to waste or is harvested in such a way as to be of doubtful value for feed. Eudaly showed how to dig a trench, put the feed in, apply necessary water, and cover with soil. He stated that feed "canned" in such a way has been kept for 11 years perfectly. There are several thousand such trench silos in Texas, where all kinds of weather prevail. Granting that cured feed keeps perfectly, the same feed made into silage has twice the feeding value, but it often happens that cured feed either rots in the field or molds in the stack because of rainy weather. Weevils, rats and fires also take a big toll from the cured feeds. Water will not damage silage but does it good, and there never has been any damage to silage from weevils, rats or fire. It takes less labor to ensilage feed than to cure it, as the job of shocking in the field is eliminated. Any feed raised on the farm can be put into the trench silo, even heads of grain sorghums, ears of corn, johnson grass, sudan, careless weeds and other weeds, sweet potato vines, peanuts, cowpeas and soybean vines. The quality of the silage is determined by the quality of the feed put into the trench. The best grade of silage is made from bundled red top, hegari, milo, corn or other feed crops. Silage should be fed to animals when the green pasture begins to dry up, allowing them to eat their fill. It is readily eaten by work stock, cattle, sheep, goats and hogs. The heads or ears on silage can be cut and fed to chickens, turkeys and hogs. Dairy cows drop in milk production in dry, hot and cold weather, not because of the weather but because they do not consume enough water. Silage supplies this water and holds the production up. Seven hundred trench silos in one dairying county in Texas is ample evidence that silage is a life-saving feed. Three trench silos have been filled in Eastland county this season and several are being planned. It is suggested that anyone interested in a trench silo have one of the county agents or vocational agriculture teachers figure suitable dimensions and help stake off the trench to correspond with the number of animals it is anticipated to feed. A Texas bulletin on trench silos is available at the county agent's office. The 2-ton trench silo which was filled at the demonstration in Eastland on July 31 was financed by the Eastland Chamber of Commerce and will be opened during the county fair, Sept. 16-19.

TRY Our Want-Ads!

Why Gulf is the Gas for August

"'C'MON IN, FELLAS, and cool off!" Most days are hot in August. Gasoline must be refined specially for this weather. If it isn't, part of the fuel goes out the exhaust unburned, wasted . . . and you don't get the mileage you should. Use That Good Gulf Gasoline in August. It's refinery-adjusted for summer weather—"Kept in Step with the Calendar"—all of it goes to work, none of it goes to waste.

"Kept in Step with the Calendar" THAT GOOD GULF GASOLINE

Just Arrived!

A FRESH SUPPLY OF SEIBERLING VAPOR CURED TIRES

FOR OUR BIG SALE



Why let tire trouble spoil your trip? Replace those thin, doubtful tires on your car with safe new Seiberlings. Remember, all Seiberling tires are vulcanized by the exclusive Seiberling Vapor Cure process which assures you of from 10% to 30% more mileage. Yet Seiberling Vapor Cured tires cost you NOT ONE CENT EXTRA! Compare our low prices, then drive in today and let us show you how to save money on your tire purchases. All tires mounted free and checked carefully for correct air pressure.

SIZE	PRICE
30 x 4.50	\$ 7.35
19 x	7.75
18 x 5.25	9.25
17 x 5.50	10.15
16 x 6.00	11.30

Other sizes in Proportion.

TAKE THE TRAIN AND SAVE MONEY

Sample Low Fares

Now you can travel anywhere by train—in safety and comfort—and save money. Here are a few samples:

From Eastland	Round Trip To	Coach	1st	2nd
	Chicago, Ill.	\$38.15	42.40	
	Dallas, Texas	4.15	5.50	
	Denver, Colo.	21.80	27.25	
	Ft. Worth, Tex.	3.15	4.20	
	Los Angeles, Calif.	43.50	44.40	
	Mexico City, Mex.	59.25		
	Minneapolis, Minn.	36.80	36.80	
	New Orleans, La.	24.05	26.30	
	St. Louis, Mo.	28.26	31.40	
	St. Paul, Minn.	36.80	36.80	
	San Francisco, Calif.	48.00	57.90	
	Portland, Ore.	56.40	84.55	
	Seattle, Wash.	59.70	89.55	

*Sleeping car space charge extra.
 A Tourist Sleeping Car Fare is \$47.65.
 B Tourist Sleeping Car Fare is \$57.60.
 C Tourist Sleeping Car Fare is \$71.65.

Famous Hunter Is Bank On Rio Grande

RIO GRANDE CITY, Texas — Lieut. Col. John A. "Tiger Jack" Considine, big-game hunter and world traveler, has returned to the Texas-Mexican border and taken command of the United States cavalry post at Fort Ringgold here. Col. Considine spent his first days on the border in 1916-17 during the famous border bandit raids. Since that time he has followed his hunting hobby in many far-away places of the globe. He earned his name of "Tiger Jack" by his tiger hunts in Africa and India. He has followed other big game trails in the Philippines and Central America. All of his hunting it done with regulation army rifles and pistols.



TAKE THE TRAIN AND SAVE MONEY

Fares lowest in history—substantial reductions on round trip tickets—for the world's finest transportation in sleeping cars or coaches. And remember—when you take the train you know in advance exactly what the trip will cost. Western railroads slashed fares in 1933. They presented air-conditioned service in 1934. By 1935 all principal trains were air-conditioned. For 1936 they have greatly increased the number of air-conditioned cars, including coaches, sleeping cars and diners. Western railroads also offer economy meals, dependability, and faster schedules with safety. When you add these to low fares, you can't afford to overlook the greater comfort and independence of train travel. . . . Ask the railroad agent about travel or shipping to any part of the world. Shippers: Use new Free pick-up-and-delivery of LCL freight.

Proud of our achievements, we appreciate the public's good will and increased patronage, and pledge continued progress

WESTERN RAILROADS
 AND THE PULLMAN COMPANY

JIM HORTON TIRE SERVICE

East Main Street Eastland

Campaign Expense Accounts Records For 33 District, County Aspirants

The county clerk Monday had received the following candidate expense accounts which were filed after the July 25 primary.

George A. Davison, Jr., candidate for 10th representative, \$294.50 total.

R. O. Jacobs, candidate for county commissioner of precinct No. 3, \$102.45 total.

Arch Birt, candidate for county commissioner of precinct No. 4, \$110.42 total.

T. M. Collie, candidate for county clerk, \$327.85.

William Shirriffs, candidate for county sheriff, \$5.

W. S. Adams, candidate for county judge, \$338.65.

Aaron Bryant, candidate for constable of precinct No. 5, 75 cents since last report.

M. N. Seaborn, candidate for constable of precinct No. 1, \$15 total.

Newt C. Crawley, candidate for county commissioner of precinct No. 2, \$110.25 total.

Henry V. Davenport, candidate for county commissioner of precinct No. 1, \$151.75 total.

R. O. Jacobs, candidate for county commissioner of precinct No. 3, \$92.45 total.

Grady Owen, candidate for criminal district attorney, \$331.60 total.

A. D. (Red) McFarlane, candidate for sheriff, \$330.00 total.

M. Newman, candidate for justice of peace, precinct No. 1, \$27.50 total.

J. F. Mitchell, candidate for justice of peace, precinct No. 2, no expense since last report.

W. H. Whitworth, candidate for justice of peace, precinct No. 8, \$2.65 total.

E. E. Wood, candidate for justice of peace, precinct No. 1, \$45.85 total.

Joe Clements, candidate for county commissioner of precinct No. 4, \$94.70 total.

Cecil A. Lotief, candidate for 107th representative, \$226.51 total.

G. W. Dick Rust, candidate for sheriff, \$318 total.

Clyde L. Garrett, candidate for congressman, \$1,608.19 total.

W. D. R. Owen, candidate for county judge, \$298.32 total.

Loss Woods, candidate for sheriff, \$35.80 since last report.

A. L. Lee Barton, candidate for constable of precinct No. 6, \$21.63 total.

R. Miles, candidate for constable of precinct No. 8, \$1 total.

John Barnes, candidate for constable of precinct No. 2, no expense since last report.

Clyde S. Karkalits, candidate for assessor-collector, \$420.46 total.

Garland Branton, candidate for public weigher of precinct No. 7, \$20 since last report.

Earl Conner, Jr., candidate for criminal district attorney, \$473.05 total.

Steele Hill, candidate for sheriff, \$336.55 total.

A. D. Carroll, candidate for sheriff, \$220.95 total.

Wilbourne B. Collie, candidate for senator of the 24th district, \$771.80 total.

All-Stars Saved From Defeat By Taylor's Homerun

His club trailing 5 to 4 in the final period of a seven inning game, Troy Taylor saved the face of the Eastland All-Star team Tuesday night at Fire Department Field when he hit a home run which brought two men in and resulted in a 7 to 5 victory against the Non-Stars. The final scores resulted from the runs of Weathersby and Harkrider, the men on base, and Taylor.

The teams, choice of Eastland fans as the best of the softball players, meet in a double header Saturday night.

Scores In Shooting At Club Are Listed

Skeet scores registered at the O. Belt Gun Club Sunday were announced Wednesday by C. J. Rhodes, secretary and treasurer of Eastland, as follows:

W. H. Dean—68 x 75.
Jim Horton—59 x 75.
Rop Allen—45 x 75.
A. H. Rhodes—35 x 75.
Wm. Purdue—45 x 75.
Mrs. Horton—31 x 50.
Neal Moore—41 x 50.
C. J. Rhodes—32 x 50.
Guy Ewing—36 x 50.

Rotary Club Aids In Construction Of Negro Church

Donation of 10 sacks of cement for a church to be constructed by Eastland negroes was voted for by Rotarians at their weekly luncheon at the Connellee hotel Monday noon after the proposal was suggested by Ben Hamner.

L. D. Black gave a classification talk. Earl Bender was program chairman.

T. E. Richardson, club president, presided.

Visitors were Rotarians D. Joseph, W. F. Creager and Ray Newnham, all of Ranger.

Eastland Girls Beat Breck Team

The Burrettes and the Breckenridge Advertisers put on a 7 inning game at Fireman Field Tuesday night which was a good exhibition of feminine softball in all but the second inning when the Advertisers made several errors which, mixed with two Burette hits produced four runs.

Both pitchers pitched heady ball. The Advertisers made their two runs in the fifth on two hits, a walk and an error by the left fielder.

Score by innings: R H E
Advertisers 000 020 0—2 4 6
Burrettes 140 000 x—5 6 3

Batteries, Roark and Everett; Walsh and Fry. Summary: 2 base hit, Everett; base on balls, off Roark 2, Walsh 3. Struck out by Roark 3, Walsh 3. Left on base, Advertisers 5, Burrettes 8. Umpires, Hughes and Cook. Time, 55 min.

Good Games Result From Contests at Field Wednesday

Unheralded games at the Fire Department softball field developed into two of the best of the season Wednesday night when Highway and Morton Valley won by one-point margins.

Highway beat Baptist, 1 to 0. Only three hits each were obtained from Ed T. Cox, Jr., Baptist pitcher, and Smith, who handled the sphere for Highway.

A picked team substituted for the Lone Star Gas group which was to meet Morton Valley. Morton Valley won the game from the picked team, 5 to 4. Pitchers were T. Taylor for the picked team and Carter for Morton Valley.

Lions Agree Upon Date of Game With Rotarian Members

The Lions club, meeting in regular session Tuesday noon at the Connellee hotel, set next Tuesday as the date for its members' game against Rotarians on the Fire Department softball field.

Donald Kinnaird, club president reported on his and Lion W. S. Poe's trip to the International convention at Providence, R. I.

T. E. Richardson of Eastland was a visitor.

Big Spring Citizen Takes Charge of L.C. Burr Store Here

W. B. Robinson, who has been connected with the Burr organization for four years, arrived Wednesday from Big Spring and assumed management of the Eastland Burr Store. Mrs. Robinson accompanied her husband to Eastland.

Third Rank Given Two by Pythians

Weldon Gary and R. E. Richardson received the third rank at the Knights of Pythias meeting in Castle Hall Tuesday night. Thirty attended the session, at the close of which refreshments were served.

Plans Go Forward For Presbyterian Service August 16

A "Rural Life Sunday" service has been announced for Sunday, Aug. 16, at the First Presbyterian Church in Eastland. The pastor, Rev. Charles W. Estes, has invited members of the 4-H clubs of the county to come to Eastland.

Rev. Estes' sermon Sunday morning will be "The History of Agriculture, the Divine Background of Land."

In the afternoon a basket lunch will be held in the city park at Eastland. At 1:30 a program has been arranged which will include numbers by the Eastland High School Band and speakers from the county agent's office.

Construction On Azucar Dam Starts

Actual construction work on the great Azucar Dam across the San Juan river 75 miles west of Reynosa got under way as excavating crews started work on locations for concrete footings of the big structure, according to an announcement of government officials.

The dam will bring under control the waters of the San Juan river basin, extending many miles south and southwest of the Rio Grande, will prevent the dumping of San Juan floodwaters, which usually flood simultaneously with the Rio Grande, into the boundary stream at critical times, and will provide irrigation waters for a 250,000 acre farming project the Mexican federal government will start in northern Tamaulipas.

The structure will cost 15,000,000 pesos (about \$3,950,000) and will impound many millions of gallons of water. The dam will be 135 feet high and will form a reservoir three and a half miles long. The spillways will be the largest of any dam ever constructed, according to Mexican government engineers in charge of the project. They have been designed to discharge 60,000 second-feet of water per minute from

Indictments U. Anti-Trust L. Are Annou

WASHINGTON, Aug. 10.—A sweeping Sherman anti-trust, the justice department made public details of indictments of 23 major oil companies, individuals and three public charges of price fixing and fixing gasoline purchases.

It was one of the most severe allegations of anti-trust violations in recent years.

Plans Go Forward For Presbyterian Service August 16

A "Rural Life Sunday" service has been announced for Sunday, Aug. 16, at the First Presbyterian Church in Eastland. The pastor, Rev. Charles W. Estes, has invited members of the 4-H clubs of the county to come to Eastland.

Rev. Estes' sermon Sunday morning will be "The History of Agriculture, the Divine Background of Land."

In the afternoon a basket lunch will be held in the city park at Eastland. At 1:30 a program has been arranged which will include numbers by the Eastland High School Band and speakers from the county agent's office.

Traffic Increase On Highway Noted

A notable increase in intrastate traffic through this section on the Broadway of America was reported Thursday by Secretary H. C. Davis of the Eastland Chamber of Commerce.

Driving Wednesday with O. E. Harvey, vice president of the Eastland chamber, from Abilene to Eastland in a period of an hour

TO THE VOTERS of Eastland County

I wish to take this opportunity to express my sincere thanks and appreciation for the vote of confidence given me in the election of July 25th.

I shall do my utmost to show my appreciation of your confidence by giving you the most courteous and efficient service of which I am capable.

Sincerely yours,
C. H. (Harl) O'Brien

Resinol

Poison Ivy Sunburn Chafing Itching
Torment soothed-healing oiled by

Calotabs

For Biliousness Sour Stomach, Flatulence, Nausea and Sick Headache, due to Constipation.

GUS GULFSPRAY

HE ALWAYS GETS HIS BUG!

GULFSPRAY

TO KICK NOT A FLY ON YOUR BALD HEAD!

GULFSPRAY

IT'S BETTER THAN TO KILL THEM DEAD!

GULFSPRAY

Gulfspray kills flies, mosquitoes, moths, roaches, and other insects. Stainless. Mild, pleasant odor. 49c pint at neighborhood and department stores and Good Gulf Dealers.

ELECTRICAL APPLIANCES

Texas Electric Service Co.

Hotel Garage

TEXACO PRODUCTS
Storage and Tire Service
West Main Phone 42

CLERK ON VISIT

Miss Winifred Pentecost, deputy district clerk, was to leave on Tuesday for Kilgore, where she will visit her brother, H. L. Pentecost.

You'll Only Find Values Like These at Burr's

Final Clearance

Summer's Values You Have Now at Prices You Can Afford to Pay.

Out They Go - Complete Clean-up Ladies' Summer Dresses

DRESSES Values to \$9.90 Choice \$2.77 Laces, Sheers, Crepes	DRESSES Values to \$5.95 At The Low Price Of \$1.77 Most all sizes and colors. You will marvel at the quality.	DRESSES Fine Lot Belray House Dresses DRESSES Regular \$1.50 Value 98c Most All Sizes
--	--	---

Entire Stock Summer **MILLINERY** Values to \$1.98 - Now **25c**

All Ladies' WHITE SHOES Sandals, Strap and Ties —Most all Sizes. Values to \$3.98 \$1.49 One Lot Ladies' Sample Shoes in Black and Brown. Values to \$3.98 \$1.98 Not all sizes in all styles—Pumps, Strap and Ties.	Ladies' Hosiery 47c Summer colors, full fashioned and Pure Silk. Most All Sizes.	Men's White Caps 15c A Real Value in good run of Sizes.
---	--	---

A Big Bargain Table of Odds Reduced to Close Out

Children's Anklets 3c Pair White and White With Fancy Tops	Ladies' Organdy Blouses Values to \$1.49 25c All Sizes
--	---

Burr's DEPARTMENT STORE
EASTLAND'S PROGRESSIVE DEPT. STORE

AT TODAY'S LOW PRICES

The New **Firestone STANDARD** IS THE BEST Buy IN TOWN!

FIRST GRADE QUALITY—The new Firestone Standard Tire is built of first grade materials by skilled workmen, and embodies the Firestone patented construction features of Gum-Dipping and two extra layers of Gum-Dipped cords under the tread.

GUM-DIPPED CORD BODY—Every cotton fibre in every cord in every ply is soaked in liquid rubber by Gum-Dipping. This is the only process that prevents internal friction and heat, providing greater strength, blowout protection and longer life.

TWO EXTRA LAYERS OF GUM-DIPPED CORDS UNDER THE TREAD—This patented Firestone feature binds the whole tire into one unit of greater strength, cushions road shocks and gives extra protection against punctures.

LONGER NON-SKID MILEAGE—The new scientifically designed non-skid tread is wider, flatter, with more and tougher rubber on the road, giving long even wear and thousands of extra miles.

LOW PRICES—These low prices are made possible by volume production in the world's most efficient factories.

THE FIRESTONE NAME AND GUARANTEE—Every Firestone Standard Tire bears the Firestone name, your guarantee of greater safety, dependability and economy.

FOR TRUCKS AND BUSES

FIRST GRADE MATERIALS AND EXPERT WORKMANSHIP—The Firestone Standard Truck Tire gives long mileage—blowout protection—dependable service.

GUM-DIPPED CORD BODY—Gum-Dipping prevents internal friction and heat, giving greater blowout protection.

TWO EXTRA LAYERS OF GUM-DIPPED CORDS UNDER THE TREAD—Binds the tread and cord body into one inseparable unit. Specially compounded rubber in two outer plies from head to head rivets sidewalls securely to cord body.

TWIN BEADS WITH CORD REINFORCE—In larger sizes twin beads are used to give tire firm seat on rim. The beads are tied into the cord body by the special Firestone method of cord reinforcement.

FIRESTONE NAME AND GUARANTEE—Assures truck and bus owners greater safety, dependability and economy.

TO SEE IT—IS TO BUY IT—Drive in today—See the extra values.

Firestone SENTINEL
An outstanding value in tire price class—backed by the Firestone name and guarantee. Made in sizes for passenger cars and trucks.

Firestone COURIER
A good tire for owners of small cars giving new tire safety at low cost.

SPARK PLUGS 58c EACH in Sets
BATTERIES Greater starting power. Longer life. \$6.95
BRAKE LINING Gives positive brake control in wet or dry weather. \$3.80 up
SEAT COVERS 79c
AUTO SUPPLIES Tool and Tank Base, 60c up
Tire Valve, 40c up
Lubrication, 50c up
Fender Guards, 10c up
Cigar Lighters, 10c up
Spare Tires, 10c up
Spare Tires, 10c up

Listen to the Voice of Firestone—featuring Margaret Sparks, Soprano, with the Firestone Choral Symphony, and William Daly's Orchestra—every Monday night over N. B. C. Nationwide Network

GUY PATTERSON TIRE SERVICE
MAIN AND SEAMAN PHONE 60