

THE WEEKLY CHRONICLE

Eastland County's Own Progressive Publication For All The People

The Chronicle is the only weekly newspaper in Eastland having a paid subscription list

VOLUME 48 (Established November, 1887)

EASTLAND, TEXAS, FRIDAY, MAY 29, 1936

NUMBER 30

TRC AID TO UNEMPLOYABLES IN COUNTY WILL CLOSE JULY 1

The state-wide program of general relief for unemployed persons under the Texas Relief Commission will close July 1, W. H. Seale, executive secretary at the county office in Eastland, announced Wednesday.

Seale made the following announcement: "C. J. Sweeney, district relief administrator with headquarters in Abilene, who has immediate supervision of Callahan, Coke, Eastland, Fisher, Jones, Kent, Mitchell, Nolan, Scurry, Shackelford, Stephens and Taylor counties is making arrangements to transfer all clients under his care to the welfare boards in the various counties.

"One check will be mailed all clients from our state office in Austin the first week in June. Heretofore two checks per month were sent out, but as the program must close on June 30, with records completed, only one check for the full allotment will be the rule this coming month," Mr. Sweeney stated.

"It is to be hoped that all citizens, as well as public officials, will realize the seriousness of the burden that we are transferring to their shoulders. In the three or more years that the Texas Relief Commission has been taking full charge of these unfortunate citizens, we have managed to keep their condition from public notice. The federal government ceased to allocate funds for the unemployed clients last year, and for the last six or seven months state funds have been used, but now they are exhausted. The WPA program continues to take care of our clients who are able to work, and it now becomes the problem of the local political subdivisions to shoulder the responsibility of those who cannot help themselves, due to physical and mental handicaps of women who have small children, with no bread winner in the group.

"A drastic reduction in personnel takes place on June 1, many offices being closed and all but three case workers in the district being dropped. Mrs. Bertha Plath will have supervision of Shackelford, Stephens, Callahan and Eastland counties, with her office in Sweetwater. By July 1 even these will cease to be employed, and all activities of the Texas Relief Commission will be a thing of the past. Mr. Sweeney will retain his office in Abilene until the program is over.

"Our duties will now be to refer all needy cases to the county welfare boards. Our job of relief has been completed. We are making ready to fold our tents, thankful for an opportunity to have been able to render assistance when most necessary to the community.

"There are 1,039 cases, or approximately 4,692 persons now in the district as unemployed, 291 of which reside in Eastland county. The local office of the Texas Relief Commission wish to again take advantage of the opportunity to thank those persons who have assisted the welfare agency in many ways, the press, city and county officials and many others."

Plans Formulated For Dress Event By Flatwood HDC

The Flatwood Home Demonstration Club met May 21, at the home of Mrs. Bessie Justice. Miss Ramey, county home demonstration agent, and Miss Faye Stewart, assistant county home demonstration agent, were present at the meeting.

Plans for the dress contest to be held June 10 at Eastland were discussed. More work was done on the quilts which the club are making.

Miss Stewart discussed the plans for the encampment to be held for the boys and girls of the 4-H club.

The place for the next regular meeting will be at the home of Mrs. Cyrus Lyerla. Visitors present were Mrs. Hale of Gorman and Mrs. C. F. Cornwell.

Refreshments of cake and iced tea were served to the following ladies: Mmes. O. Clark, M. H. Boyd, J. S. Turner, T. E. Robertson, Burl Turner, Cyrus Justice, J. R. Ramsey, C. A. Webb, M. A. Justice, Lucille Huddleston, Cyrus Lyerla, Kenneth Garrett, J. H. Thomas, and hostess, Bessie Justice.

Eastland Golfing Matches Rained Out

A match of Eastland and Brady golfers at Eastland was cancelled Friday because of rain. No date has been set for the games.

Meetings Mapped Of All Boy And Girls 4-H Club

Formation of dairy calf clubs and the annual encampment to be held at Eastland June 19 and 20 will be discussed by Assistant County Agent Hugh F. Barnhart at meetings of all girls' and boys' 4-H clubs next week.

Agent Barnhart also will check records of members on demonstrations. The following schedule has been mapped:

Monday, June 1, Colony, 8:30 a. m.; Morton Valley, 10:30 a. m.; Kokomo, 1:30 p. m.; Alameda, 3:30 p. m.
Tuesday, June 2, Okra, 8:30 a. m.; Carbon, 10 a. m.; Grandview, 1:00 p. m.; New Hope, 3:00 p. m.
Wednesday, June 3, Romney, 8:30 a. m.; Seranton, 10:30 a. m.; Flatwood, 1:00 p. m.; Olden, 3:00 p. m.; Ranger, 3:30 p. m.
The girls' and boys' meetings will be combined.

Jurors Who Were Excused Are Told Case is Continued

Eighty-eighth district court jurors who were excused Monday and instructed to report Friday were notified by cards Tuesday that a case scheduled for that date has been continued for the term.

The case originally scheduled for Friday was First National Bank of Strawn against Peter Hallmark and others.

States Oil Will Drill on Bristol

An application to drill will be filed last week by States Oil Corporation in the railroad commission office at Eastland.

The well will be the No. 1 Bristol Corp., Section 42, Block 2, T. & T. C. Railway survey. The company has an 80-acre lease and intends to drill to 1,500 feet unless water or oil is found in paying quantities at a lesser depth.

Other applications to drill made recently in the commission office are as follows:

Hickok Producing & Development Company No. 2 of Cisco, Section 84, Block 4, H. & T. C. Railway survey, Eastland county. Depth, 3,650 feet. The company has a 90-acre lease.

Ansel Oil Corporation No. 18 M. T. Overall Estate, J. M. Barclay survey, Coleman county. Depth, 2,500 feet.

Official Believes Centennial, Bonus Cause FHA Interest

The forthcoming payment of the soldiers' bonus and a Centennial-minded West Texas are contributing to an increased interest in the Federal Housing Administration program, R. E. Sikes, executive assistant in the Fort Worth office, observed Monday at Eastland.

Sikes stated there is an increased interest in all phases of the housing act, including the procedure for loans to modernize, repair and new construction.

Sikes corrected the impression of some that the act provided for the purchase of farms. He stated, however, there are provision for the modernization and repair of farms.

Sikes conferred with citizens interested in the act at the Eastland National Bank in Eastland. From Eastland he went to Abilene.

Eastland Chosen For 4-H Meeting

Selection of Eastland as the site for the annual 4-H club boy and girl encampment, June 19 and 20, was announced Tuesday by Assistant County Agent Hugh F. Barnhart.

Dates Candidates Must File Told

Persons desiring to file for county offices must file their names with Earl Conner, Jr., chairman of the Eastland County Democratic Executive committee, by June 13, it was announced Monday.

A statement from the committee was as follows: "For your information the committee desires to advise that any person desiring to have his name appear on the ballot as candidate for nomination of Chief Justice or Associate Justice of the Court of Civil Appeals, or for representative in Congress, or for representative, or district judge in representative or judicial districts composed of more than one county, shall file request to go upon the ballot with the chairman of the county executive committee of each county not later than June 1, 1936.

"Candidates desiring to file for any office, the nomination of which is to be controlled by the qualified voters of a county or portion thereof, shall file such request with the county chairman not later than June 13, 1936.

"Blanks are available at the office of the county chairman or at county clerk's office.

"The county executive committee will meet on June 15, 1936, to arrange the ballot and levy the assessments of all candidates. June 22, 1936, will be the last day on which candidates will be allowed to pay assessments.

Very truly yours,
Eastland County Democratic Executive Committee,
By Earl Conner, Jr., chairman.

'DROWNED' BOY FOUND SAFE IN RANGER HOUSE

Considerable excitement was created in Ranger Tuesday afternoon when a group of young boys, who had been swimming in a stock tank in the eastern part of the city, reported that Houston Pugh, 9, who had been swimming with them, had not returned from the swimming hole and it was feared that he had drowned.

When the report was received a number of men gathered at the tank and grappled for some time. When all grappling measures failed and those who had entered the tank failed to locate the boy, the dam, which had recently been constructed to impound the water in the tank, was cut and the pond drained. When this failed to reveal the boy a search was started for him in the nearby houses.

At 9 o'clock that night the boy was located in a home in Lackland addition, where he had stopped to dry his clothing. He explained that when the other boys left, he remained in swimming for a time and got dressed to return home just as a hard downpour started. His clothing got so wet that he stopped at the house to let them dry and to wait until the rain stopped. He did not realize that any search had been conducted for him.

Says Salt Water Ruined His Land, Sues for \$4,000

Because salt water from producing oil wells of the States Oil corporation has allegedly ruined productivity of his adjacent acreage, G. W. Thompson of Abilene filed suit Tuesday in 91st district court asking judgment from the company of \$4,000.

The land in which Thompson owns the fee simple was described as six miles northeast of Eastland. The asserted salt water allegedly followed a stream course to Thompson's land.

The central exhibit committee at Dallas will receive from the railroads all specimens and, under the direction of staff architects and geologists, work them into a comprehensive and interesting display of Texas' resources. Those acquainted with details of the program are convinced it will be such a presentation of latent resources as will challenge the active attention of capital and industry.

Letters mailed by Mr. Mitchell listed among known resources of this county the following:

Brick clay, porcelain clay, pottery clay, refractory clay, tile clay, coal, glass sand, and sandstone.

It asked, also, that other resources not included in this catalogue, but known to exist here, be included in the shipment of this county's representative resources.

Funeral Is Held For Betty Hunt at Merriman Church

Funeral services for Betty Jean Hunt, 9, daughter of Mr. and Mrs. I. D. Hunt of Olden, were conducted at Merriman Wednesday afternoon at 3 o'clock. Interment was in the Merriman cemetery following the services.

The child died in a Ranger hospital, after a long illness, at 8:00 o'clock Tuesday morning.

RESETTLEMENT LOANS OVER MILLION DOLLARS IN THIS DISTRICT FOR FARM NEEDS

Loans totaling \$1,194,038.79 for purchase of seed and livestock have been made to 2,788 Resettlement Administration clients in Region No. 11 since Jan. 1, according to Robert W. Fisher, supervisor whose headquarters are at Eastland. This region is composed of 23 counties.

Number of persons benefitting by these loans is 13,452. With these loans clients purchased 339 horses, 1,092 mules, 1,100 mares, 1,055 cows, 1,432 hogs and 76,112 chickens. Number of acres these clients have been enabled to purchase by the Resettlement Administration is 197,201.

The Resettlement Administration loans money for a one to five-year period.

By counties the statistics were compiled as follows:

Fisher—Ross J. Newton, supervisor; 164 loans; 794 persons benefited; \$88,606.33 loaned; 15,441 acres; horses, 74; mules, 126; mares, 80; cows, 77; hogs, 102; chickens, 5,114.

Callahan—J. S. McKnight, supervisor; 232 loans; 1137 benefited; \$82,242.10 loaned; 12,686 acres; horses, 85; mules, 58; mares, 59; cows, 63; hogs, 92;

chickens, 762.

Hood—David C. Fawcett, supervisor; 155 loans; 732 benefited; \$82,154.60 loaned; 7,984 acres; horses, 60; mules, 68; mares, 71; cows, 129; hogs, 184; chickens, 10,053.

Somervell—David C. Fawcett, supervisor; 46 loans; 212 benefited; \$24,371.03 loaned; 2,134 acres; horses, 17; mules, 9; mares, 29; cows, 20; hogs, 55; chickens, 2,953.

Mitchell—Vernon Slocomb, supervisor; 85 loans; 405 benefited; \$28,044.28 loaned; 8,450 acres; horses, 17; mules, 75; mares, 37; cows, 26; hogs, 28; chickens, 1,523.

Scurry—Vernon Slocomb, supervisor; 163 loans; 755 benefited; \$84,681.77 loaned; 17,069 acres; horses, 143; mules, 86; mares, 88; cows, 62; hogs, 103; chickens, 4,328.

Garza—Vernon Slocomb, supervisor; 29 loans; 122 benefited; \$9,953.69 loaned; 2,966 acres; horses, 29; mules, 11; mares, 15; cows, 6; hogs, 6; chickens, 270.

Taylor—Clarence Symers; 148 loans; 730 benefited; \$69,940.31 loaned; 10,827 acres; horses, 84; (Continued on page 2)

Breck C of C to Refute Rumor of Road 89 'Tacking'

BRECKENRIDGE, May 28.—Activities of the Breckenridge Chamber of Commerce with reference to restoring signs west of Abilene calling attention to the route east through Breckenridge have brought information of rumors of alleged unfair play from some residents along the southern route.

As a result Hunter Jones, secretary of the local chamber, is drafting a letter to chambers of commerce along that route explaining the situation and saying that nothing is being done other than in fair competition with them for the tourist business.

An example of one rumor offered is that Breckenridge representatives have poured tacks and nails on the route leading to Strawn. It is to quell such unfounded rumors that the Chamber of Commerce is addressing the letters.

A sign has been selected to be erected west of Abilene. It reads: "Highway 80A, shortest all paved route, via Albany and Breckenridge to Fort Worth," drawn in fancy design.

That sign is to take the place of a sign that has always been there reading to the same effect but which recently disappeared. Thousands upon thousands of tourists will travel that route, and the signs give them the choice of either route.

September 16-19 Set as Fair Dates

September 16-19 have been set as dates of the annual Eastland County Fair which will be held at Eastland, the Eastland Chamber of Commerce announced Thursday.

Sheriff to Auction Bonded Liquor at Sale On June 10

Bonded liquor seized under Texas liquor control board laws will be sold at auction by the sheriff's department at Eastland between 10 a. m. and 4 p. m., June 10.

Only wholesale liquor dealers may bid for the spirits.

Dress Contest Is Fixed For June 10

Miss Ruth Ramey, county home demonstration agent, announced Thursday the annual home demonstration dress contest will be held at Eastland, Wednesday, June 10.

Mrs. Dora R. Barnes, clothing specialist of the extension service, of College Station, will judge and be assisted by Miss Ellen Stevens, home demonstration agent of Erath county.

Entries are prospective from 16 demonstrators and 310 cooperators of the county.

Highway Beautification Awards Are Made After Committee Judges Entries

A group of judges from Ranger, Eastland and Cisco reviewed the entries in the highway beautification contest, a project sponsored by the state highway department, Wednesday afternoon and awarded bronze tablets to the winners.

The tablets are to be kept by the winners for one year, and if won three years in succession, will become the property of the winner.

The contest judges inspected only those placed eligible on federal or state highways, covering 188 miles in the scoring of homes in the contest. All homes under \$5,000 in valuation, filling stations and rural schools were inspected.

The committee was composed of Mrs. T. L. Lauderdale and Mrs. Rex Outlaw of Ranger; Mrs. G. B. Kelly and J. E. Spencer of Cisco, and H. C. Davis of Eastland. Accompanying the judges were Mrs. James Horton, Eastland; Joe Blankenship, county engineer; Elmo V. Cook, county agent; and Miss Ruth Ramey, home demonstration agent.

After the trip the following awards were announced by the committee:

Highway beautification winners: Home under \$5,000—(1) Viewmount, B. E. Rigby, Ranger, on Eastland-Ranger highway; (2) George Fee, Cisco, on Cisco-Breckenridge highway.

Production Credit Organization Aid To State's Farmers

Production Credit Associations were established strictly for the use and benefit of American farmers. They are non-profit cooperative organizations designed to assist farmers in becoming financially independent. Borrowers are the only ones that can vote; they elect their own officers.

For many years farmers over the United States have been urging the federal government to organize agencies which would be adapted to meet farmers' requirements. The extreme need for a new type of farmers' credit organization was demonstrated during the depression of 1920 and 1921, and in 1923.

Congress provided for the establishment of 12 federal intermediate credit banks over the country to supply this need. It was found that only in a very few farming communities could sufficient capital be raised to organize a credit agency; therefore the federal intermediate banks were unable to be of much assistance to the great mass of farmers.

In 1933, after farmers had gone through four years of severe depression, congress decided that the situation was serious enough to warrant its assistance in capitalizing local farmers' credit agencies. In the farm credit act of 1933, congress provided for the organization of Production Credit Associations all over the United States, for the purpose of establishing a permanent dependable source of cheap operating credit for American farmers and stockmen. These associations were not organized to make profit, but to render service to agricultural producers.

Farmers are awakening to the fact that this is the farmers' own organization. It loans money to its borrowers at 5 per cent, and they pay for the money only for the time it is used.

The Stephenville association serves this section, and it is in fine condition, as its business has increased over 200 per cent in 1936 over the same period in 1935.

Those interested in information concerning the loans may see Rufus Cox, Rising Star, or Milton Newman, Eastland.

Federation to Meet At Gorman Church

The Eastland County Federation of Womens Clubs, scheduled to meet Saturday at Bass Lake, near Gorman, will convene at the First Presbyterian Church in that city, Mrs. N. A. Brown, president, has announced. The meeting is to begin at 2 o'clock.

Industrial Board Ruling Protested

Setting aside of an award April 30 by the industrial accident board of Texas to J. R. Reeves was asked Wednesday in a suit filed in 88th District Court by Standard Accident Insurance Company. Reeves alleged he sustained injuries Dec. 17, 1935, while in employ of Hickok Producing & Development Company.

Judging in the district Centennial Farm and Home beautification contest will be made in June. Miss Ruth Ramey, county home demonstration agent, announced Thursday.

Judging will be done by Miss Kate Adelle Hill of College Station, District 6, Home Demonstration Agent, and E. C. Martin, district agent of No. 6.

Eastland County is in District 7 of the extension service, but the contest, sponsored by the Semi-Weekly Farm News and Dallas News and the extension service, was inaugurated when Miss Hill was stationed in this sector.

First place winner in the district will receive \$75.

Transfer Liquor Cases to County Court in Eastland

Three cases against Hollis and Emmett Houston, alleging violation of state liquor laws in connection with seizure of distillery equipment near Leerer, have been transferred from justice court at Eastland to county court.

91st Grand Jury Will Form Monday

A grand jury for the June term of the 91st District Court will be formed Monday at 10 a. m., in Eastland.

CASE DISMISSED

Judgment dismissing a suit of Eastland County Lumber Company against A. B. Cornelius was on file Thursday in county court. The parties agreed on a settlement.

FARMERS ARE GIVEN EXTRA SIGNUP TIME

Producers of Eastland county have been granted a final extension to file work sheets in the soil conservation program. County Agent Elmo V. Cook announced Tuesday. The new deadline date is June 10.

Producers who want to sign the sheets must do so at the county agent's office, Cook stated. "We are told with emphasis that this will be the final extension," Cook stated, the extension is state-wide, declared.

Approximately 675 farmers have signed the work sheets. This represents 28 per cent of the county's producers. It is expected this percentage to 30 per cent.

Approximately 90 per cent of the county's producers participated in the Agricultural Adjustment Administration program before its invalidation.

Liquor Inspectors Figure Fines Paid In Eastland County

A checkup of cases filed and fines collected under the Texas liquor control laws in this county since the organization was formed was compiled Wednesday at Eastland by two inspectors. The inspectors were L. F. Krueger and J. W. Coates of the Abilene district office of the liquor control board.

The information will be sent to Austin headquarters.

Ranger Woman Make Hole-in-One

Mrs. G. H. West of Ranger made a hole-in-one on the seventh hole at the Ranger Country Club Sunday, it was reported Monday.

Dallas Man Named G. O. P. Chairman

FORT WORTH, May 25.—George Hopkins, Dallas, internal revenue collector during former President Herbert Hoover's administration, was named temporary chairman and keynoter at the meeting of the Republican state executive committee here today.

The Republican state convention will open tomorrow.

Republican leaders assembled here were optimistic over prospects for shoving Texas into the G. O. P. column in the coming presidential election.

"If all the Republicans in Texas will act as they talk, we will carry Texas," Orville Bullington, Wichita Falls, predicted.

Judges Will Score In Rural Beauty Event Next Month

Judging in the district Centennial Farm and Home beautification contest will be made in June. Miss Ruth Ramey, county home demonstration agent, announced Thursday.

Judging will be done by Miss Kate Adelle Hill of College Station, District 6, Home Demonstration Agent, and E. C. Martin, district agent of No. 6.

Eastland County is in District 7 of the extension service, but the contest, sponsored by the Semi-Weekly Farm News and Dallas News and the extension service, was inaugurated when Miss Hill was stationed in this sector.

Transfer Liquor Cases to County Court in Eastland

Three cases against Hollis and Emmett Houston, alleging violation of state liquor laws in connection with seizure of distillery equipment near Leerer, have been transferred from justice court at Eastland to county court.

91st Grand Jury Will Form Monday

A grand jury for the June term of the 91st District Court will be formed Monday at 10 a. m., in Eastland.

CASE DISMISSED

Judgment dismissing a suit of Eastland County Lumber Company against A. B. Cornelius was on file Thursday in county court. The parties agreed on a settlement.

THE WEEKLY CHRONICLE

Established Nov. 1, 1887

Entered as second-class matter at the postoffice at Eastland, Texas, under Act of March, 1879

Published Every Friday Office of Publication: 106 East Plummer Street. Phone 601

NOTICE TO THE PUBLIC

Any erroneous reflection upon the character, standing or reputation of any person, firm or corporation, which may appear in the columns of this paper, will be gladly corrected upon being brought to the attention of the publisher.

Obituaries, cards of thanks, notices of lodge meetings, etc., are charged for at the regular advertising rates, which will be furnished upon application.

Congressman Thomas L. Blanton Has Filed His Name For Re-election To 17th Congressional District Position

In filing as a candidate for re-election, I offer to my constituents: (1) twenty years of ripe experience in handling governmental problems; (2) the same earnest, painstaking and tireless attention to their business which I have always given in Congress and out, and to all requests from everybody, rich and poor alike; (3) a thorough knowledge of parliamentary rules, precedents, and procedure, which constitute the working tools of a congressman, and without the intimate knowledge of which he is helpless and impotent; (4) detail familiarity with the inside workings of every commission, bureau and department of government, and knowing when and how to stop the waste, extravagance, and in instances graft, constantly growing in all of them; (5) a knowledge of the history of all important laws and their changes, and the menace of thousands of old claims involving millions constantly asserted against the Government during each session; (6) unlimited energy, love of work, and an unbroken record of never straddling or evading; and (7) active, determined, vigorous, fearless, and dependable representation in Congress, before departments, and at all times, either during sessions or recess.



As one of the business managers for the United States, I have made it my concern to know all about its complex business affairs, to learn which of its agents are dependable, to bring charges against those who are not, and to know when unreasonable demands are made for enlargements and increases in annual expenses and how to stop abuses.

In Congress, the prestige of seniority, acquired only through long, uninterrupted service and experience, is most important. It means everything. The longer service a member has, the greater is his influence. Any district that passes its office around in rotation simply to honor some aspiring politician, who has spent a lifetime holding court-house positions, suffers the loss of having practically no recognition whatever in Congress.

If I am reelected, next January I would become the chairman of the powerful War Appropriations committee, enabling me to save annually about \$75,000,000 in waste and extravagance, without any reduction in adequate National Defense, and if emergencies should arise at any time, I would be in a most strategic position to help keep our country out of war. I have made a close detailed study of all war projects both in the United States, and in Hawaii and Panama. I shall perform my duties here until Congress adjourns and then I will campaign my district.

Sincerely, Thomas L. Blanton.

The item about the Englewood, N. J., young man, into whose lap a young woman plunged from an upper story, is another illustration of the perils of Leap Year.

SKIN IRRITATIONS Burns, Scalds, Scratches, etc. To relieve soreness—hasten healing—help prevent infection—apply at once. Mild, reliable Resinol

Gilbert Entering Senatorial Race



To my friends in Eastland and adjoining counties:

It is with pleasure that I announce that I am making the race for State Senate which includes Eastland and eleven other counties. I need no introduction to the vast majority of you having served as County Judge of Callahan County for four years, voted and sold the bonds and constructed road through the county, cooperating with the road building program of the country in lifting it out of the mud; six years your Representative from the Eastland-Callahan District and for four years with the Motor Transportation Division of the Railroad Commission during which time I formed the friendship and acquaintance of many of the leaders and outstanding business men of the State, which contact I feel sure will assist me in rendering you the best service should you promote me to the Senate. Through cooperation, constructive statesmanship and close attention to duty much can be done to promote the welfare and prosperity, reduce the ever mounting tax burdens and provide for the gainful employment of our citizenship.

I solicit your vote and well wishes upon the promise that I will give to you and the people of Texas the best there is in me of service and loyalty to the end that happiness and prosperity may return to us.—Victor Gilbert.

Resettlement—

(Continued from page 1)

mules, 65; mares, 49; cows, 60; hogs, 78; chickens, 3,435.

Jones—Clarence Symers, supervisor; 134 loans; 640 benefited; \$56,968.05 loaned; 10,651 acres; horses, 62; mules, 100; mares, 57; cows, 53; hogs, 81; chickens, 5,156.

Nolan—Ross J. Newton, supervisor; 125 loans; 612 benefited; \$47,656.07 loaned; 5,518 acres; horses, 57; mules, 34; mares, 40; cows, 49; hogs, 60; chickens, 5,513.

Stephens—S. Monroe Copeland, supervisor; 33 loans; 159 benefited; \$11,731.59 loaned; 1,801 acres; mares, 30; cows, 15; hogs, 11; chickens, 1,065.

Shackelford—S. Monroe Copeland, supervisor; 21 loans; 98 benefited; \$7,631.09 loaned; 1,214 acres; mares, 15; cows, 12; hogs, 8; chickens, 1,627.

Palo Pinto—S. Monroe Copeland, supervisor; 115 loans; 538 benefited; \$51,453.22 loaned; 7,475 acres; mules, 25; mares, 136; cows, 44; hogs, 68; chickens, 3,999.

Erath—C. W. Legion, supervisor; 193 loans; 964 benefited; \$74,373.49; 10,286 acres; horses, 91; mules, 65; mares, 97; cows, 53; hogs, 88; chickens, 5,572.

Comanche—C. W. Leigon, supervisor; 125 loans; 989 benefited; \$54,023.72 loaned; 6,460 acres; horses, 93; mules, 36; mares, 43; cows, 48; hogs, 112; chickens, 11,567.

Dickens—Dale S. Campbell, supervisor; 86 loans; 399 benefited; \$30,650.77 loaned; 8,640 acres; horses, 103; mules, 11; cows, 17; hogs, 57; chickens, 890.

Motley—Dales S. Campbell, supervisor; 39 loans; 196 benefited; \$17,731.65 loaned; 4,022 acres; horses, 44; mules, 21; cows, 16; hogs, 21; chickens, 468.

visor; 84 loans; 425 benefited; \$28,780.33 loaned; 5,258 acres; horses, 28; mules, 32; cows, 9; hogs, 18; chickens, 684.

Parker—Carl Davis, supervisor; 254 loans; 1,227 benefited; \$78,547.35 loaned; 12,782 acres; horses, 78; mules, 71; mares, 29; cows, 38; hogs, 36; chickens, 1,937.

Eastland—George I. Lane, supervisor; 301 loans; 1,533 benefited; \$134,733.25 loaned; 17,507 acres; horses, 108; mules, 137; mares, 126; cows, 143; hogs, 167; chickens, 18,253.

Biscoe—George Hulsey, supervisor; 91 loans; 395 benefited; \$46,302.65 loaned; 9,685 acres; horses, 42; mules, 27; mares, 22; cows, 30; hogs, 18; chickens, 86.

Floyd—George Hulsey, supervisor; 49 loans; 249 benefited; \$19,862.25 loaned; 5,336 acres; horses, 33; mules, 3; mares, 16; hogs, 16; chickens, 191.

Crosby—George Hulsey, supervisor; 116 loans; 521 benefited; \$72,000.08 loaned; 13,009 acres; horses, 91; mules, 32; mares, 61; cows, 68; hogs, 28; chickens, 566.

KC BAKING POWDER Manufactured by baking powder specialists who make nothing but baking powder—under supervision of expert chemists. ALWAYS Uniform Dependable Same price today as 45 years ago 25 ounces for 25c FULL PACK NO SLACK FILLING MILLIONS OF POUNDS HAVE BEEN USED BY OUR GOVERNMENT

Formal Statement Of Cox Submitted

Ed T. Cox, Sr., candidate representative for the 106th district, comprising Eastland only, has made the following statement to the voters:

Indications are that the legislature will have to take more important questions any session for many years. Among the matters of importance is the financing of age pensions, which was when the Constitutional amendment providing for it, was by the citizens of Texas. I favor amending the pension law so that all meeting its requirements receive equal payments.

The payment of pensions require a large increase in taxes to be collected, and should not be called upon more than your fair share burden.

The varied interests of state make it difficult for legislature to agree on a plan and one adopted will be or less a compromise. Do you need a man of experience has helped in the development your county for years and your needs to look after your interests in the next legislature. Your legislators, not your honor, will have to solve your lens.

I was one of the first of this county to advocate roads and better schools and their further development useful and practical lines.

The present \$17.50 per state apportionment should maintained and increased if tical.

Your support is earnestly cited and will be appreciated. Respectfully,

ED. T. COX, Sr. Candidate for the Legislature for the 106th District, Eastland County, only.

BUY ON PROOF OF PERFORMANCE for their Safety THE New Firestone HIGH SPEED TIRE for 1936

AVOID accidents—take no chances—buy your tires on Proof of Performance. Make sure that you and your family will be safe! Skidding, blowouts and punctures caused more than 37,000 accidents last year. Many of these accidents could have been avoided with safe tires.

The new Firestone High Speed Tire for 1936 is the safest driving equipment you can buy. Here is your proof:

PROOF OF GREATEST NON-SKID SAFETY

A leading university made 2,350 tire tests and found that the new scientifically designed Firestone High Speed tread stops a car up to 25% quicker than other tires.

PROOF OF GREATEST BLOWOUT PROTECTION

Every year, since Firestone developed the Gum-Dipped Balloon tire, Firestone Tires have been on the winning cars in the gruelling blowout test of the Indianapolis 500-Mile Race.

PROOF OF GREATEST ECONOMY

Firestone engineers designed the new Firestone High Speed Tire for 1936 to give you up to 50% longer non-skid mileage. This is proved by our own test fleet records and the fact that the world's largest transportation companies, such as Greyhound, to whom safety and tire economy means business efficiency, use Firestone Tires. This is further proof that they are the safest, most economical tires ever built.

Why risk an accident when it costs so little to protect lives worth so much? Equip your car today with new Firestone High Speed Tires—the Masterpiece of Tire Construction.



THE MASTERPIECE OF TIRE CONSTRUCTION

Table with tire sizes and prices: HIGH SPEED TYPE 4.50-21 \$8.60 4.75-19 9.10 5.25-18 10.85 5.50-17 11.90 6.00-16 13.25 6.00-17H.D. 15.90 6.00-19H.D. 16.90 6.50-17H.D. 18.40 7.00-17H.D. 21.30 7.50-17H.D. 31.75 FOR TRUCKS 6.00-20 \$18.85 7.50-20 39.10 30x5 Truck Type 18.75 32x6H.D. 40.25

THE New Firestone STANDARD

Designed and constructed by Firestone skilled tire engineers — a first quality tire built of all first grade materials, embodying the many exclusive Firestone patented construction features. Its exceptional quality and service at these low prices are made possible by large volume production in the world's most efficient tire factories. Made in all sizes for passenger cars, trucks and buses. Let us show you this new Firestone tire today.

Advertisement for Firestone tire services including prices for Standard Type, Sentinel Type, Courier Type, Auto Radio, Seat Covers, Batteries, Brake Lining, Spark Plugs, Fan Belt, Radiator Hose, Auto Supplies, Sun Glasses, Flash Lights, Micro Horns, Auto Cushions.

In a class by itself for VALUE. Image of a Ford V-8 car.

STEEL MAKERS say—"Ford buys the best steel." Other suppliers of materials and parts will tell you—"Nobody checks up so closely on quality and price as Ford." This means a great deal to you as a motorist. It is our way of safeguarding the interests of every purchaser and it leads to this—"The mechanical depreciation on a Ford is less than on most cars, especially after the first year." This is one sign of the extra value in the Ford V-8. Accuracy in manufacturing is another. (The Ford is made to unusually close precision limits.) And there is a long list of fine-car features that are exclusive with Ford in the popular field.

Let's check over a few of these: Have you a V-8 engine in your car? It is still the newest development in motors — you pay \$1645 for it in any other car. Does your car have Center-Poise Riding? Ford gives you this modern feature—"a front-seat ride for back-seat passengers." Does your car have reliable, fool-proof Super-Safety Mechanical Brakes? The Ford V-8 gives you this proved, dependable design, with 186 square inches of braking surface. Does your car have a genuine steel body structure? Does it have Safety Glass all around? Ford is the only low-price car that gives you this extra protection without extra cost.

You get these fine-car features — and many others — in the Ford V-8 because of Ford manufacturing methods and the Ford low-profit policy. Savings in purchasing, production and selling are put back into the car and passed on to you in extra quality and extra value. \$25 A MONTH, after usual down-payment, buys any model of the 1936 Ford V-8 car — from any Ford dealer — anywhere in the U. S. Ask about the new UCC 1/2% per month Finance Plan.

FORD V-8

BE OUR GUESTS... Ford Sunday Evening Hour, Columbia Network. Fred Waring and His Pennsylvanians on Tuesday nights (Columbia) and Friday nights (N.B.C.). See radio page for details

GUY PATTERSON TIRE SERVICE AUTHORIZED FORD SERVICE AND DEALER

Corner Seaman and Main Phone 80 Eastland

GUY PATTERSON TIRE SERVICE

MAIN AND SEAMAN PHONE 801

Surplus of Tax Money Looms As New Problem for State Legislators as Some Specials Funds Have Excess Money

By United Press
AUSTIN.—Prospects of an overflowing state treasury have some so bright that—were it for old age pensions—the session of the legislature would have a greater worry over finding existing taxes than in kicking up new ones.
 Even now, distribution of taxes is almost as much worry as setting them. State funds are segregated rigidly by law. One fund is for overfunding and another, or worse. The state cannot dip into any one of its 80 separate funds to pay demands of another.
 Acuteness of this situation was demonstrated recently. So much money was reported in the available school fund that an additional disbursement was made. At the same time, Confederate pension warrants were being paid at face value only if they were issued prior to July, 1934—or prior to July, 1934, if they had passed to others than the pensioners.
 General debts against the state, including employes' salaries, were

The Choice of Millions
KC BAKING POWDER
 Double Tested — Double Action
 Manufactured by baking powder specialists who make nothing but baking powder—under supervision of expert chemists.
Same Price Today as 45 Years Ago
 25 ounces for 25c
 You can also buy
 A full 10 ounce can for 10c
 15 ounce can for 15c
Highest Quality — Always Dependable
 MILLIONS OF POUNDS HAVE BEEN USED BY OUR GOVERNMENT

Rajah SALAD DRESSING
 8 oz. 10c
 Pints 18c
 Quarts 31c

Sunnyfield **Sultana**
Corn Flakes **Peanut Butter**
 Sm., 2 pkgs. 11c 1 lb. 15c
 Lrg., 2 pkgs. 17c 2 lbs. 25c
 60-70 Prunes lb. 5c
Camay or Palmolive Soap 3 br. 14c
Pink Salmon, No. 1 11c

FRESH FRUITS and VEGETABLES
 Fresh Corn 3 ears 10c
 Lettuce, firm heads ea. 5c
 Carrots 3 bunches 10c
 White Bermuda Onions, 3 lbs. 10c
 Black-Eyed Peas lb. 5c
 Apples, Winesap doz. 15c
 White or Yellow Squash 3 lbs. 10c
 Calif. Oranges doz. 27c

Angelus Marshmallows . . lb. 14c
Pacific Paper 6 rolls 19c
Penn-Rad Motor Oil . . 2 gal. \$1.00
Cracker Jack pkg. 4c
 IONA—Sliced or Halves
Peaches, No. 2 1/2 2 cans 25c
Encore Olive Oil pts. 27c
Ovaltine 31c
Silver Dust 2 pkgs. 25c
Grandmothers Bread . . . loaf 7c

See Our Prices on FLOUR, SUGAR and COMPOUND
Your Economy Market Specials!
 Smoked Bacon Squares . . . lb. 22c
 No. 1 Salt Bacon lb. 19c
 Baby Beef 7 Roast lb. 18c
 Deckers Full Korn Sliced Bacon . 28c
 Rib or Brisket Roast lb. 15c
 Full Cream Cheese lb. 22c
 A&P MARKET OWNED AND OPERATED BY
ZED KILBORN
 WATCH OUR WINDOWS For ADDED SPECIALS

payable in cash only to Jan. 26, 1936.
 Increased payment of special taxes has been so great that recipients doubt their good luck. The board of education took a "show me" attitude when told that the school fund had a \$4,000,000 surplus in sight for the fiscal year. That much surplus would justify paying \$2.50 for each public school pupil. The board ventured to pay an additional \$1. One member still believes the \$4,000,000 figure is largely a myth.
 "Someone took a campaign statement too seriously," the board member said.
 The \$4,000,000 surplus may not be reached, but none can deny that liquor, cigaret, gasoline and oil taxes are producing more than was anticipated.
 The first year under the new cigaret tax law, collections have totaled \$5,167,847. This is \$916,062 more than for the preceding year. State Comptroller George Sheppard estimates that if oil prices keep their existing status, the state's annual income from the oil production tax will be \$9,028,210.
 Both quantity and price figure in the estimate. The tax is 2 cents a barrel when oil sells for \$1 or less. When it sells for more than \$1, the tax changes to 2 per cent of the market value. If the same sliding plan is used for the 15-cent oil tax proposed by one candidate for governor, the income would be \$67,711,575 at the present production and price.
 Some other state funds present a less rosy middle-of-May status. In mid-May the highway fund held first place with a \$9,343,000 surplus; while the state general fund labored under a \$7,603,236 deficit.
 The Confederate pension fund was \$4,727,824 in the red. The available school fund had a \$2,107,995 surplus, but a distribution of the regular scholastic apportionment cleaned it out.
 Old age assistance funds then were \$1,123,521, with the first distribution of pensions scheduled to begin July 1.
 Faced with a possible re-arrangement in tax distribution by the next legislature, the various interests are planning to protect themselves.
 School men will battle to see that the present occupation taxes are not made excise taxes. The substitution of that one word would take one-fourth of the income now going to public schools. Highway builders also are alert to protect road funds. They have seen one cent of the gasoline tax diverted to redeem county and district road obligations, without a very loud murmur. They also have seen the state indirectly switch highway funds to pay Confederate pensions by authorizing the investment of highway money in pension warrants. As the old pension warrants are redeemed the money is re-invested in new warrants—so there virtually is a continuing loan.
 The surplus in the state highway fund therefore becomes a menace, in view of a likely shortage of money to meet the demand for old age pensions. Matching federal funds, and payment for work already contracted, likely will reduce the highway fund more rapidly than the new revenue increases.
 Highway mileage to be maintained also will be increased sharply in a year or so. Much mileage was taken off the state system to make it available for participation in federal road aid. It is to be returned to the state system as soon as construction is finished.
 How the ad valorem taxpayer will share in the bettered condition is uncertain. The school ad valorem tax was reduced 15 cents last year to 20 cents on the \$100 property valuation. The general tax rate for state purposes re-

maintained at the maximum, as did the Confederate pension levy.
 A pipe line intangible tax and a chain store tax, both counted upon to help reduce the ad valorem burden, have yielded nothing. Both are tied up in unsettled court contests.
 A full treasury will not necessarily men relief for the taxpayer. Many already are planning to dip into the treasury as soon as there is anything to draw out.
 An increased building program for eleemosynary institutions, particularly the hospitals for the insane, is being drafted. Educational institutions plan a united attack in presenting a joint budget. In the past, each school has scrambled for itself.
 State departments hope to recoup some of the appropriations cut during the depression years. At least one new state department is being fostered.
BUILDING BOOMS ON THE RAMP
 By United Press
JOHANNESBURG, South Africa.—A building boom is in progress in the Rand, and the busiest people in the famous mining area are builders, contractors and architects. An acute shortage of skilled labor has developed as contractors are busy putting up skyscrapers and modern villas.

maintained at the maximum, as did the Confederate pension levy.
 A pipe line intangible tax and a chain store tax, both counted upon to help reduce the ad valorem burden, have yielded nothing. Both are tied up in unsettled court contests.
 A full treasury will not necessarily men relief for the taxpayer. Many already are planning to dip into the treasury as soon as there is anything to draw out.
 An increased building program for eleemosynary institutions, particularly the hospitals for the insane, is being drafted. Educational institutions plan a united attack in presenting a joint budget. In the past, each school has scrambled for itself.
 State departments hope to recoup some of the appropriations cut during the depression years. At least one new state department is being fostered.
BUILDING BOOMS ON THE RAMP
 By United Press
JOHANNESBURG, South Africa.—A building boom is in progress in the Rand, and the busiest people in the famous mining area are builders, contractors and architects. An acute shortage of skilled labor has developed as contractors are busy putting up skyscrapers and modern villas.

maintained at the maximum, as did the Confederate pension levy.
 A pipe line intangible tax and a chain store tax, both counted upon to help reduce the ad valorem burden, have yielded nothing. Both are tied up in unsettled court contests.
 A full treasury will not necessarily men relief for the taxpayer. Many already are planning to dip into the treasury as soon as there is anything to draw out.
 An increased building program for eleemosynary institutions, particularly the hospitals for the insane, is being drafted. Educational institutions plan a united attack in presenting a joint budget. In the past, each school has scrambled for itself.
 State departments hope to recoup some of the appropriations cut during the depression years. At least one new state department is being fostered.
BUILDING BOOMS ON THE RAMP
 By United Press
JOHANNESBURG, South Africa.—A building boom is in progress in the Rand, and the busiest people in the famous mining area are builders, contractors and architects. An acute shortage of skilled labor has developed as contractors are busy putting up skyscrapers and modern villas.

maintained at the maximum, as did the Confederate pension levy.
 A pipe line intangible tax and a chain store tax, both counted upon to help reduce the ad valorem burden, have yielded nothing. Both are tied up in unsettled court contests.
 A full treasury will not necessarily men relief for the taxpayer. Many already are planning to dip into the treasury as soon as there is anything to draw out.
 An increased building program for eleemosynary institutions, particularly the hospitals for the insane, is being drafted. Educational institutions plan a united attack in presenting a joint budget. In the past, each school has scrambled for itself.
 State departments hope to recoup some of the appropriations cut during the depression years. At least one new state department is being fostered.
BUILDING BOOMS ON THE RAMP
 By United Press
JOHANNESBURG, South Africa.—A building boom is in progress in the Rand, and the busiest people in the famous mining area are builders, contractors and architects. An acute shortage of skilled labor has developed as contractors are busy putting up skyscrapers and modern villas.

First Aid
 for
Constipation
Nyal Mineral Oil
 A non-habit forming relief for constipation and irregular movements. Pure, tasteless and odorless.
 Full Pint 59c
Corner Drug Store
 Eastland

Hamner Undertaking Co.
 Phones 17 and 564
 DAY OR NIGHT
 AMBULANCE SERVICE

SISTER MARY'S KITCHEN

BY MARY E. DAGUE
 NEA Service Staff Writer
RARE June days are here again and picnic statistics are in order.
 Here's a list of calculations that may help when the family decides to betake itself to the nearest picnic spot with well-filled basket.
Table of Servings
 One large cake ten inches in diameter will serve 16 persons.
 One loaf of sandwich bread will make 24 sandwiches which will be eaten cut in half.
 Two-thirds cup creamed butter will spread both sides of 24 sandwiches.
 One pint of sandwich filling will fill 24 sandwiches.
 One quart of salad will serve eight persons.
 One 4-pound chicken will yield about 2 cups of clear diced meat.
 One 2 1/2-pound lobster will yield, when boiled enough meat for one quart of salad combined with other material.
 One-half pound coffee and 4 quarts of boiling water will make enough of the beverage for 16 people.
 One and one-half dozen lemons will make enough lemonade to serve 20 to 25 persons, depending largely on the size and juiciness of the fruit.
 One quart of a frozen mixture will serve 6 to 8 persons. When a good idea to put the salad together when ready to serve, keeping each ingredient in a container by itself. Meantime, this means crisp lettuce and a fresh, perfect dressing.

Tomorrow's Menu
BREAKFAST: Strawberries, cereal, cream, ham omelet, cinnamon toast, milk, coffee.
LUNCHEON: Asparagus soufflé, romaine with Russian dressing, sliced bananas in apricot jelly, milk, tea.
DINNER: Casserole of salmon and potatoes, buttered spinach, jellied cucumber salad, pineapple up-side down cake, milk, coffee.
 or baked ham will serve 6 to 8 persons, and one pound of meat loaf will provide for about the same number.
Maintain Proper Balance
 It's quite as important that a picnic meal contain all the necessary food elements as for any other meal. Fruit and tomatoes are easy to carry and easy to serve. The carrying properties and serving qualities of picnic foods must be considered, too, because usually one plate must answer for all courses. Fruit pies are hard to carry and juicy to serve. Many salads, too, resent rough handling, becoming wilted and watery if shaken about.
 If you have plenty of room to carry several hampers, it's a good idea to put the salad together when ready to serve, keeping each ingredient in a container by itself. Meantime, this means crisp lettuce and a fresh, perfect dressing.

SPECIAL SERVICE BUREAU
 Room 305, 461 Eighth Ave., New York, N. Y.
 Enclosed find cents in coin, for which please send me copies of "50 DESSERTS," by Sister Mary, at 10 cents per copy.
 Name _____
 Street _____
 City _____
 Name of Paper _____

THIS CURIOUS WORLD By William Ferguson
INDIA EXPORTS ABOUT 2,500,000 SNAKE SKINS ANNUALLY, FOR MAKING LADIES' BAGS, SHOES, ETC.
THE ELEPHANT HAS A "FINGER" ON THE END OF HIS TRUNK.
SHEEP TICKS, ALTHOUGH INSECTS, DO NOT LAY EGGS, BUT BRING FORTH THEIR YOUNG ALIVE.
 © 1936 BY NEA SERVICE, INC.

Piggly Wiggly DISHES
 ANOTHER CARLOAD JUST ARRIVED!
 Be Sure To Get Yours NOW!
 20-Piece Sets SHARON ROSE
 7-Piece Green UTILITY SETS
 7-Piece GLASS BAKE SETS
 Whistling Copper TEA KETTLE
Ask Any Clerk!

Bank Will Close On Memorial Day
 The Eastland National Bank will be closed Saturday in observance of Memorial Day. Other businesses which will close Saturday include the postoffice.
 A New York society of gourmets "requires absolute silence throughout its dinners, instead of for only the minute or so when the waiter holds out the check."

Twelve Students Get Awards For Perfect Records
 Certificates for perfect attendance in high school the past semester were awarded to 12 students this week by Supt. P. B. Bittle. Awarding the certificates to students who had been neither tardy nor absent, Superintendent Bittle expressed school officials

hope that others would follow their examples.
 Students who received the certificates were: Seniors, Tommy Hammon, Juniors, Gates Breisford, Roy Bennett, Leo Hatten. Sophomores, Opal Bargsley, James Daniels, Ruby Lee Pritchard. Freshmen, Mary Nell Crowell, Lois Bennett, Jack Johnson, Sidney Scott, Martin Jean Lister.
 Before writing their reviews, German dramatic critics have been ordered to take a night's sleep. And they can't count that obtained during the performance.

Let's Get Away from it All!

 A meal outdoors is worth two indoors! You find the place. We'll supply the good things to eat—at the right price.
Picnic Suggestions
 Pickles, Olives, Potato Chips, Grape Juice, Sandwich Spreads, Krispy Crackers, Cheese, Cakes, Fruits, Lunch Meats, Salad Dressing, Paper Plates, Napkins, Cups, Etc.

Libby's PEACHES Large Can 15c
SHORTENING 8-Pound Carton 90c
CORN Locust Blossom 2 No. 2 Cans 15c
DEL MONTE COFFEE 1-2-3- lb. cans 25c
Dr. Price's 1 1/2-oz. Bot. **Extract** 22c
Pillsbury's Reg. Pkg. **Cake Flour** 25c
Mackerel 8 oz. **Sardines** 5c
Libby's SPINACH 2 No. 2 Cans 23c
PIMENTOS 7-oz. can 10c
K. C. BAK. 2 1-lb. 25c
JOWDER Cans
SUGAR 10 Lb. Bag 50c
THE TASTE TELLS
Pipkin's Special COFFEE lb. 17c
 Colorado Cloverbloom Extract
HONEY 5-lb. pail 50c
Fresh CORN 3 for 10c
Black-Eyed PEAS 2 lbs. 9c
TOMATOES 3 lbs. 25c
CARROTS 3 lrg. bus. 10c
CUCUMBERS 3 lbs. 10c
SQUASH 3 lbs. 10c
LETTUCE head 4 1/2c
ORANGES doz. 23c
No. 1 White Potatoes 5 lbs. 17c
Dairy Maid BAKING POWDER Cup and Saucer Free 23c
QUALITY MEATS
NICE FAT HENS Pound 19c
GROUND MEAT PORK ADDED Pound 15c
PIPKIN BROS.
Swift's Branded BEEF ROAST lb. 18c
Heavy Sugar-Cured BACON lb. 25c
No. 1 Full Cream Longhorn CHEESE lb. 23c
Dry Salt BACON lb. 19c
RAISINS 2-lb. pkg. 15c
 Lipton's TEA 1/2 lb. 42c
 2 Tea Glasses FREE
CHOICE RE-CLEANED PINTO BEANS 5 lbs. 19c
DEER BRAND KRAUT large cans . . 9c
Camay . . . bar 5c
Oxydol Lrg. Pkg. 21c
P&G SOAP 6 big bars . . 25c
Piggly Wiggly

It's Vacation Time

Let's Go!
THE CAREFREE WAY

By **GREYHOUND**

SAMPLE ONE-WAY FARES

FORT WORTH	\$2.10
DALLAS	2.70
CALVESTON	7.10
NEW ORLEANS	10.40
LOS ANGELES	21.00
SAN DIEGO	21.00
MEMPHIS	9.65
CLEVELAND	21.60
WASHINGTON	21.60
NEW YORK	25.80
BOSTON	29.50

The carefree way to vacation spots throughout all of America is by Greyhound bus. When you step aboard you leave your cares behind, and the thrill of going places to see new sights begins to take hold of you. You sink down in a soft, deep cushioned seat, and before you know it you are completely relaxed.

If you have a long trip in mind . . . then your Greyhound bus ticket will cost you less than the oil and gas for your car. If you've planned a short trip . . . then go by Greyhound and stay longer with the difference you save.

No matter where you are planning to go on your vacation . . . plan to go by Greyhound. You will like the frequent schedules . . . liberal stop-over privileges . . . luxurious comfort . . . choice of going one way and returning another . . . and, above all, the exceptionally low cost. Call your local Greyhound Agent for helpful vacation information on any trip.

Connellee Hotel
West Main St.
Phone 306



Torture Lash of Terrorists



This triple-tongued whip of heavy leather, fastened to a stout hickory stick three foot long, was the official instrument of torture of the Black Legion, Michigan authorities charge. The whip, police say, was found in the home of Ray Ernest, alleged to be a "brigadier general" in the organization. Members wore hoods and robes of the type donned by the officer posing with the lash. Skull and crossbones were the insignia with the costume. The organization is suspected of causing the deaths of a number of persons which had been called suicide.

MAYOR STATES TUESDAY, JUNE 2, IS DEADLINE

"Records at the city hall disclose increasing number of taxpayers taking advantage of their taxes before the deadline which is Tuesday, June 2, thereby saving penalty and interest which the city commission intends to add to the taxes when they are turned over to the attorneys with instructions to file suit as quickly as possible," Mayor C. W. Hoffmann announced Wednesday.

"The city commission has decided to keep the tax collectors office at the city hall open until 9 p. m. the balance of this week, including Saturday, in order to help accommodate the taxpayers desiring to pay their taxes," Mayor Hoffmann continued.

"The city commission met in extra session last Monday night, and some sixty tax payers met with them for the purpose of discussing their tax problems, and in each case satisfactory arrangements were made concerning their taxes. The city commission will meet again next Monday night, June 1st, at 8:00 p. m., and any tax payer having difficult problems to solve concerning their taxes will find the city commission very glad to discuss their taxes at that time.

"Up to this time the delinquent tax payers of the city have shown their willingness to cooperate with the city commission, which is very pleasing to both the tax payer and the commission as everyone knows it is an unpleasant task to have its tax payers sued, and very few tax payers want to be sued as it adds penalty, interest, and court costs to the amount which they now owe, but the city commission is very definite in having suits filed for the collection of delinquent taxes that are not taken care of by next Tuesday, June 2nd."

NEW MANAGER IS NAMED FOR PENNEY STORE

R. S. Searls of Beaumont had assumed duties Wednesday as manager of the Eastland Penney store.

Searls succeeded George H. Hipp, manager for the store three years, who resigned.

The new manager has been connected with the Beaumont store of the Penney organization for eight years and comes highly recommended to his new post.

Searls stated he was having his household goods moved to Eastland and his family, which consists of his wife and two sons, will come when a house is located.

Hipp's plans for the future were undecided.

Hipp has been active in the Chamber of Commerce. Hipp also was a member of the Lions Club. He came here from Claremore, Okla., three years ago.

Mrs. Hipp has been a member of the Adelpian and other clubs.

Experienced in the dry goods business 27 years, Hipp has been with the Penney group for ten years.

Eastland Man Is Named Alternate Delegate of GOP

F. A. Blankenbecker of Eastland was named an alternate delegate to the national convention of the Republican party at the state meeting Tuesday in Fort Worth.

Cattle Purchase by Club Boys Put-Off

Members of the agricultural committee of Eastland Chamber of Commerce deferred Monday a proposition for the purchase of Jersey heifers for 4-H boys to display at the Dallas Centennial Exposition. It was decided the group will discuss the purchase with their parents. The meeting was held at the Eastland National Bank.

NEW ORLEANS, May 25.—

Louis Klein, 19-year-old singer, made an unheralded 155-leap into the water from the new Mississippi river bridge Sunday, "because somebody had to show the world it could be done," he said today.

The youth was expected to be dismissed today from a hospital where he was treated from minor shock and submersion.

War Talk Spreads Over Europe Italy Is U

ROME, May 26.—War talk renewed today while Haile Selassie approached on his way to London.

Mounting anger seemed clearly to a new period of tension. Great Britain put a spotlight once more on policies inimical to Italy.

Anger was expressed, because Britain put a veto on the disposal of Selassie, a prospect which Italy with rival London will become a point for a campaign Italian propaganda.

Indications are that leaders are really alarmed they consider the alarming European situation may explain why Mussolini's attitude yesterday with U. Hassell, German ambassador.

CAUGHNAWAGA, Qu

nawaka Indian Reserve here deprived Chief Goo his title and sent him to He aroused the ire of by accusing them of trouble with their white on the reservation in a fore Parliament.

Miss Ellen Pearson Chosen Eastland Entry for Fort Worth Beauty Event

Miss Ellen Pearson Monday looked forward to May 30, when she will try out for the Fort Worth Frontier Celebration follies with 50 beauties of West Texas.

Miss Pearson was chosen Eastland entry in the contest by three judges before a crowded audience Saturday night at the Connellee Theatre.

Judges were Brice Taylor, Eastland; J. T. Hughes, Breckenridge, and B. E. Garner, Ranger.

Eighteen of the beauties were eliminated before Miss Pearson was awarded the decision. She and other entries who paraded on the stage were in evening gowns.

Miss Ella Mae Taylor was chosen the Eastland Lions club selection for the district Lions convention beauty contest at Cisco next month.

The Eastland contest was staged by John A. Burke, Eastland theatre manager. It was sponsored by the Chamber of Commerce in cooperation with the Fort Worth Centennial officials.

The winner of the Fort Worth contest will be given a six months film contract with the Metro-Goldwyn Mayer studios in Hollywood. Others will be offered contracts to appear in the Frontier Follies in Fort Worth.

Oklahoma Pastor To Open Church Of Christ's Meet

Rev. John H. Bannister of Elk City, Okla., will preach at the Church of Christ revival which will begin Thursday, June 4, it was announced Wednesday.

Services will be held each day from 12:15 p. m. to 12:45 p. m. Night services are slated at 8:15 p. m.

WTCC OFFICIAL GIVES REPORT ON CONVENTION

The recent West Texas Chamber of Commerce convention at Amarillo was reported to Eastland Rotary club members Monday by Milburn McCarty, who was elected vice president.

The responsibility West Texas owe to the organization which is waging "this great empire" battles was stressed by McCarty.

Responsibility to the regional organization, which he said was the greatest in the world, however, should come after the support given the local chamber, the speaker pointed out.

McCarty complimented Secretary H. C. Davis, stating that his work is being observed by other cities in this section.

Referring to the Fort Worth Centennial Celebration, McCarty declared the West Texas is primarily interested in that exposition as officials are giving this section the opportunity to display exhibits which will depict its progress and resources.

"The Centennial at Fort Worth is the one in which we are particularly interested in. It is going to be a credit to Fort Worth and West Texas."

McCarty was introduced by Carl Johnson, program chairman.

The Rev. Charles W. Estes discussed participation in a benefit for new members.

Secretary H. C. Davis urged participation in a motorcade to the Broadway of America meeting at Colorado on Thursday.

Visitors were Tom Caton of Clarksville, guests of his brother, Dr. J. H. Caton; R. L. Ponder of Cisco; R. E. Sikes, Fort Worth; McCarty, Eastland; H. C. Davis, Eastland; R. E. Sikes, Fort Worth; B. L. Davis of Dallas, guest of Dace Myers.

Report Is Made On Nominations

Judge B. W. Patterson, chairman of a committee for the nomination of new Lions Club officers, made the report at the weekly luncheon Tuesday on the Connellee hotel roof garden.

Installation of new officers is scheduled the first Tuesday in July.

The initiation of Joe McLade was held at the program.

Donald Kinnaird, chairman of the entertainment committee for the club at the district convention in Cisco next month, reported Miss Ella Mae Taylor has been selected as their representative in a beauty contest.

School District Will File Suits For Tax Collection

Officials announced Wednesday that the Eastland independent school district board will institute suit against citizens who have unpaid school tax accounts.

This was decided by the school board at a Saturday meeting.

It's Easier to Iron with an Automatic Iron

UNIVERSAL
Automatic Electric Iron

Everything you need in an electric iron is built into the new Universal adjustable automatic electric iron. You'll find that it irons easier, faster and does better work than an old iron. We'll deliver a new iron and you can make small monthly payments with your electric service bill.

\$4.95 Convenient Terms

TEXAS ELECTRIC SERVICE COMPANY
J. E. LEWIS, Manager

LOOKING BACKWARD!

We have folks tell us every week that had they bought a home when they began paying RENT years ago they would have had a home or two paid for by this time. This is "looking backward" and serves no purpose except as a reminder to others who can and should begin paying out a home.

It's better to "look forward" and make the effort than to "look backward" with a heart full of regrets.

We have the home you will like, the easy payment plan . . . and the desire to give you YOUR money's worth. See us first!

Standard Savings & Loan Association
EARL BENDER & COMPANY
Local Representative—Phone 15

Twenty Five Cars To Form Eastland Part of Motorcade

One hundred Eastland citizens are expected to participate in a motorcade to Sweetwater Friday when County Judge Clyde L. Garrett will speak in his candidacy for congressional representative from the seventeenth district, according to the Eastland Chamber of Commerce.

The Eastland departure is slated at 1 p. m.

Gorman and Carbon cars will feed into the motorcade at Eastland while Rising Star will join a Cisco group.

The Eastland band will accompany the motorcade, McCarty stated. Judge Garrett will speak at Sweetwater at 8 p. m.

SOFTBALL FIELD WET

When softball play will resume on the Fire Department field remained a question Wednesday as weather threatened further precipitation.

HOPE SPRINGS ETERNAL
in the Human Heart

Perhaps half the disappointments in the world are occasioned by people trying to get more than they pay for. Regardless of the laws of economics, the striving for a bargain is ceaseless. Yet, the dollar sign is the quality sign. You get what you pay for. La Salle, for instance, is a quality car—built to the highest Cadillac standards. It does not sell—and cannot sell—in the low-price field. Yet, day after day, people try to find La Salle quality in the price range below. Of course, they are disappointed. If you want La Salle style, beauty and quality, you must buy a La Salle. There is no substitute.

Month's payments to suit your purse on the G.M. Installment Plan.

La Salle \$1175
PRICES LIST AT DETROIT, MICH.

MUIRHEAD MOTOR COMPANY
Phone 692

GULFSPRAY

HE ALWAYS GETS HIS BUG!

"AHA, THE PURPLE GANG AGAIN!"

"WE'LL FOIL THEM, NEIGHBOR!"

"THEIR HIDEOUT!"

"MOTHS!"

"COME ON NEIGHBOR, LET'S GET 'EM!"

WHEN YOU SHOOT MOTHS WITH GULFSPRAY THEY STAY DEAD!

Gulf Spray mows down any bug smaller than a bug! And they stay down!

For Gulf Spray is sudden death to moths, mosquitoes, flies, roaches, etc. Harmless to pets. Won't stain upholstery, curtains or even the most fragile fabrics and has a mild, pleasant odor.

It goes farther, too. A generous can costs only 49¢—at your neighborhood or department store or at Gulf Dealers. Keep a supply in your house, spray it on all household pests—and you will live in peace!

GULFSPRAY INSECT KILLER

Spreading Bible School Opening For Monday

Following letter has been by Mrs. Fred C. Eastham, president of the vacation bible school of the school, which conducted at the Baptist church:


Friend: I have heard no doubt of the Vacation Bible School in the Baptist church next Monday morning and two weeks, five days a week, 9:30 to 11:30, that it is open for all of the community between 5 and 17. There will be no tuition and will need no books. No fee is required. Every child needs will be free of cost. We shall teach the children of the Bible suited to their ages, have scripture memorized, tell them many interesting stories, have supervised play periods, periods for music, note book work and handwork.

"Does not this program appeal to you? Will you not cooperate with us in helping your children?"

"Sincerely yours,
Mrs. Fred C. Eastham, principal."

A downtown parade of students will be held at 4:30 Saturday afternoon.

Mrs. Byrta Rose Maxey of Eastland, president of the American Society of X-Ray Technicians, will leave Saturday for the eleventh annual convention at Cleveland, Ohio, June 2-5.



GOODYEAR
RIBBON VALUES

HOW MUCH MORE GIVE YOU FOR YOUR MONEY

Goodyear dealers sell the most tires—millions! So expect for your money in a year—you'll get it us with another our real service!

Year Margin of Safety quickest stopping—43% more miles of non-skid grip—proved by customers' records!

Goodyear dealers sell the most tires—millions! So expect for your money in a year—you'll get it us with another our real service!

Year Margin of Safety quickest stopping—43% more miles of non-skid grip—proved by customers' records!



GOODYEAR ALL-WEATHER
America's biggest seller—latest approved edition!

RIDE ON YOUR CREDIT
Don't miss the money saving in small sums on EASY BUDGET PLAN TERMS

Gas Service Station
Oils and Gasoline
Washing and Greasing
Eastland Phone 50

ELECTRICAL APPLIANCES
Electric Service Co.

Hotel Garage
Tire Service
Phone 42

Help us advertise the school, visit us when we get going. Pray for us and don't forget to ask us about anything you do not understand.

"We wish to enroll the children at the church at 4 o'clock Saturday afternoon. When we enroll them we will have an automobile ride. Let us work together."

GUS GULFSPRAY HE ALWAYS GETS HIS BUG!



GUS ARRIVES IN THE MICK OF TIME!!

TOUGH NOT A FLY ON YON BALD HEAD!!

IT'S BETTER THIN TO HILL THEM DEAD!!

Gulfspray kills flies, mosquitoes, moths, roaches, and other insects. Stainless. Mild, pleasant odor. 49c pint at neighborhood and department stores and Good Gulf Dealers.

GULFSPRAY INSECT-KILLER

Registration In Summer Schools To Start Monday

Registration for instruction in summer school will begin Monday morning, Supt. P. B. Bittle announced Thursday.

The school will begin for ward, junior high and high school students Monday and continue through July 31. Instruction in ward and junior high school grades will cost \$10. For one subject at high a student must pay \$10, for two subjects, \$12.50, and for three subjects, \$15.

Classes will begin at 7:30 and end at 12:30 p. m. There will be no school on Saturdays or Sundays.

Mrs. A. E. Herring will be in charge of registration for grade school students at West Ward beginning at 9 a. m., Monday.

W. G. Womack, high school principal, will be in charge of junior and high school registration Monday morning at 9 a. m. Junior high school students will also attend at the high school.

Registration In Summer Schools To Start Monday

Registration for instruction in summer school will begin Monday morning, Supt. P. B. Bittle announced Thursday.

The school will begin for ward, junior high and high school students Monday and continue through July 31. Instruction in ward and junior high school grades will cost \$10. For one subject at high a student must pay \$10, for two subjects, \$12.50, and for three subjects, \$15.

Classes will begin at 7:30 and end at 12:30 p. m. There will be no school on Saturdays or Sundays.

Mrs. A. E. Herring will be in charge of registration for grade school students at West Ward beginning at 9 a. m., Monday.

W. G. Womack, high school principal, will be in charge of junior and high school registration Monday morning at 9 a. m. Junior high school students will also attend at the high school.



You'll endorse these checks

Newly arrived...a fresh note in men's summer wear...Palm Beach midget checks in handsome light shades; also club checks and boating checks... for those who like a dash of daring.

Wear them for week-ends and for sport; you'll endorse their smartness and their coolness.

We have them in sport-backs and plain-backs, double or single breasted. And of course...a great variety of Palm Beach Suits in the new DARKER SHADES for business.

You needn't empty your check book to afford their comfort and good looks: Palm Beach Suits are only—

\$16.75

Slacks \$5

See the New Palm Beach White!

THE NEW PALM BEACH


MEN'S SHOP

East Side Square Eastland

THE NEW PALM BEACH

MEN'S SHOP

East Side Square Eastland




1861 - 1865

71 years ago! ONLY 71 years! Gray haired men and women remember hearing Lincoln . . . seeing Lee. 71 years are as but a moment in a lifetime. 71 years ago! Children gaze at them unbelievably. "Did you REALLY see LINCOLN?" He's only a name to them . . . one of the many names and dates and places that they must know for tomorrow's lesson. History has blurred the outline of years long past.


Yes, it's history. Many things have happened in 71 years. Expansion . . . progress . . . depression . . . peace . . . prosperity . . . many things. History—our history.

Today we pause to honor the men who decided the history of our nation. Today we rejoice . . . a new birth of freedom, a freedom made possible by the iron bands of unity and understanding that were forged in the four years, 1861-1865!

Following the custom of National Banks over the Nation this bank will be closed **SATURDAY MAY 30TH** Account



Those who desire change and other service are urged to do so **FRIDAY!**



Eastland National Bank

Following the custom of National Banks over the Nation this bank will be closed **SATURDAY MAY 30TH** Account

Those who desire change and other service are urged to do so **FRIDAY!**

Those who desire change and other service are urged to do so **FRIDAY!**



Eastland National Bank

Registration In Summer Schools To Start Monday

Registration for instruction in summer school will begin Monday morning, Supt. P. B. Bittle announced Thursday.

The school will begin for ward, junior high and high school students Monday and continue through July 31. Instruction in ward and junior high school grades will cost \$10. For one subject at high a student must pay \$10, for two subjects, \$12.50, and for three subjects, \$15.

Classes will begin at 7:30 and end at 12:30 p. m. There will be no school on Saturdays or Sundays.

Mrs. A. E. Herring will be in charge of registration for grade school students at West Ward beginning at 9 a. m., Monday.

W. G. Womack, high school principal, will be in charge of junior and high school registration Monday morning at 9 a. m. Junior high school students will also attend at the high school.

SOUTH WARD HONOR ROLL ANNOUNCED

Pupils of South ward, whose averages at the close of the last semester entitle them to honors and high honors, are as follows, officials announced:

1-A—Honors, Bill Arther, Wilma Brinkly, Geraldine Curtis, Jimmie Doss, Evan Heed, Charles Lucas, Georgia Steele, Betty Jean Walker, Reba Jean Wright, Alta Fay Donaldson, Edward Hart, Dora Dean Hooper, Neil Hart, Jim Tom Warden; high honors, Dan Collier, Betty Ann Cheatham, Emily Jean Grisson, Billy Dukes, Billy Joe Richardson.

2-B—Honors, Eula May Swindall.

2-A—Honors, Earlene Arterburn, Sue Crossley, Bennie Mitchell, Edgar Alford, Joe Bob Davis, Melvin Duffield, A. E. Fox, Carl Franklin, Walker Hart, Steen Herring, James Kellett, Virgil Nichols, Billy Guy Patterson, Ben Sparks, Bobby Wayne Warren; high honors, Modan Donaldson, Ellen Mae Geue, Grady Allison, Burl Coffey, Jack Coffman, Gordon Wayne Cooper, Garrell Donaldson, Jimmie Praterly, Bobbie Lawrence Rutherford, James Sherrill.

3-B—Honors, James Henry Swindall, Virginia Lee Hibbert, Majorie Truly; high honors, Jane Knox, Beth Reimeman, Beth Reimeman.

3-A—Honors, Wesley Hooper, Bobby Ray Ramsey, Kathleen Collier, Willa Fae Dennis, Wade Butler, Beryl Dean Dukes, Marvin Hood, Tommie Tucker, Lois Hoffman, Martha Lou McDonald, Estelle Tucker; high honors, Catherine Cornelius, Julia Brown, Estes Halkias, Dick Brogdon.

4-B—Honors, Harry Andrews; high honors, Edith Allison, Sarah Wood.

4-A—Honors, Beatrice Macy, Bender, Norma Jean Maynard, Marlene Ross, Callie White, Jimmie Brock, Harold Wellman; high honors, Patty Nell Hood; Jamie Bigby, Joe Mayo.

5-B—Honors, Margie Box, Bessie Gilky, Betty O'Rourke, Helen Saavedra, Vernon Franklin, Robert Grogan, Drexel Guyton, John Halkias, W. L. Swindal, Charles Thomas, Charlie Paul Williams, Earl Weathersby; high honors, Elouise Sherrill; Louise Brunette Doris Curtis, Joye Pitzer, Connie Lee Wood.

5-A—Honors, Jack McDonald, Jack Knox, George Brelsford, Naomi Coffey, Patsy Sparks, Elna Ruth Gattis, Johnnie Lou Hart, Charles Freyschlag, Reuben Smith, Warren Ray Pryor, Wilma Dean Pierce; Louise Taylor, Donald Smith, Marjory Ray, Thelma Truly, Ruth Reed, Mary Wright, Jannie Richardson, Lola Mae Dennis; high honors, Fay Butler, Joe-cile Coffman, Elaine Crossley, Dan Hightower, Virginia Ferguson, Helen Lucile Lucas, Dorothy McGlamery.

Postoffice Will Not Be Open Saturday

Postmaster Frank A. Jones reminded Thursday that the postoffice will be closed Saturday in observance of Memorial Day. The office usually closes at 1 p. m., Saturdays.

Delivery will be suspended on rural and city routes and the service adopted on Sundays and holidays will prevail, Postmaster Jones explained.

Officers Destroy 200 Gallons Liquor

The sheriff's department this week by order of 88th District Court destroyed 200 gallons of corn liquor. The liquor had been retained as evidence in the prosecution of cases under old liquor laws. These cases were recently dismissed.

Officers Destroy 200 Gallons Liquor

The sheriff's department this week by order of 88th District Court destroyed 200 gallons of corn liquor. The liquor had been retained as evidence in the prosecution of cases under old liquor laws. These cases were recently dismissed.

CLASSIFIED

FOR SALE—Five room residence in excellent condition. Lot 50 by 220 feet on paved street. Price reasonable. Call 56 or 469. Carl Springer.

SACRIFICING 20,000 papershell budded peach trees to pay debts. Free peach trees with peach trees, to unload. No better trees. Best bank references. Request prices. Bargain Nursery, Box 922, Abilene, Texas.

BLACK LEGION SUSPECTS ARE DETRIOT POLICE

DETROIT, May 28.—Five Detroit policemen were added today to the list of persons suspected of affiliation with the Black Legion and ordered to appear before police commissioner Heinrich Pickert.

Authorities awaiting the appointment of a grand jury to begin its formal investigation of the Black Legion in Wayne county, disclosed they were inquiring into reports that 60 or more members of the police department had taken the blood oath and undergone initiation into the terroristic



This spring you'll give a good view of **Mojud Clari-phane** SILK STOCKINGS 89c to \$1.95

Skirts are shorter so the texture and color of your hose is most important this season. That's why you'll like our clear, flattering Clari-phane stockings. Their exclusive **Screenlite Shades** were especially created by Orry-Kelly, famous Hollywood designer, to be worn by Warner Bros. screen stars. Form the habit of wearing Mojud Clari-phanes and you'll be sure of consistent hosiery satisfaction.

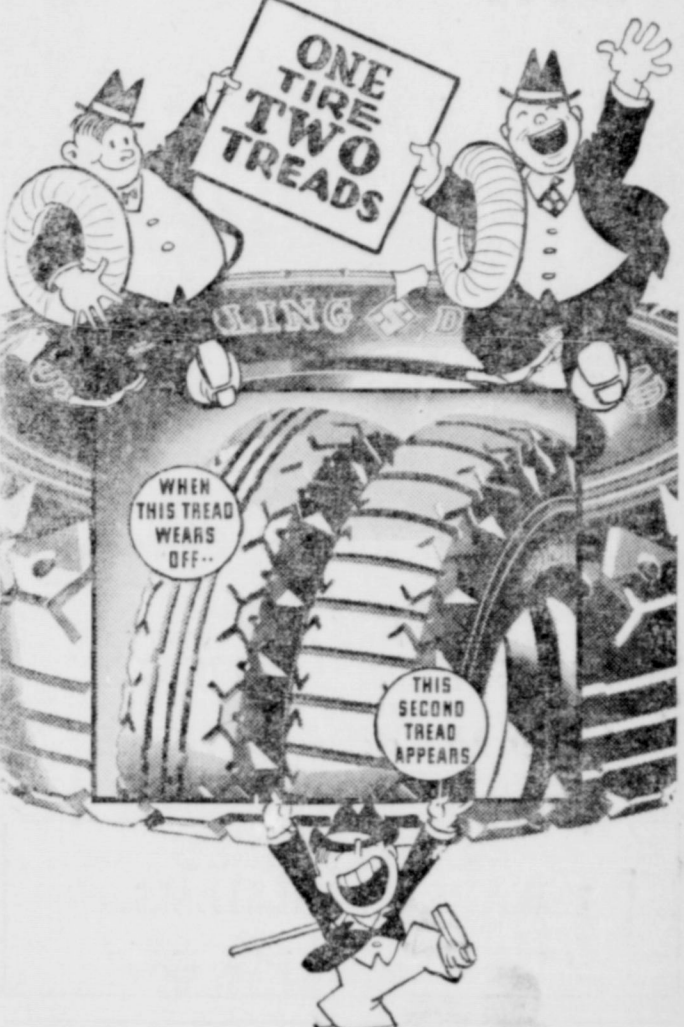
Sally Sage Mojud Specially Priced 69c

THE FASHION

North Side of Square Eastland

IT'S OUTRIGHT WASTEFUL

FRANKLY, once you know the truth you will agree that it's outright wasteful to buy ordinary tires with their one skimpy anti-skid tread. . . . Here at our store, at today's thrift prices, you can buy Seiberling Air Cooled tires, with two treads—double resistance to puncture and blowout—the tire that smashes all mileage records—NEVER WEARS SMOOTH. . . . Find out about this tire. Find out, too, how little it will cost you to equip your car by trading in the unused mileage in your present tires.



ONE TIRE TWO TREADS

WHEN THIS TREAD WEARS OFF—

THIS SECOND TREAD APPEARS

SEIBERLING Air Cooled TIRES

JIM HORTON TIRE SERVICE

East Main Street Eastland

Prosecutor Duncan McRea said he had urged the cooperation of Pickert and other high police officials in ascertaining how many members of the force were affiliated with the vigilante band. The Wayne county official awaited a letter from federal bureau of investigation officials at Detroit, replying to his request for aid in the widespread inquiry.

Truck Buyers are saying "THAT'S THE TRUCK"



1/2 TON \$425

1 1/2-2 TON MANY-FEATURE GMC ONLY \$525

MUIRHEAD MOTOR CO.
East Main St. EASTLAND Phone 692

General Motors Trucks and Trailers
GENERAL MOTORS TRUCK COMPANY • PONTIAC, MICHIGAN 1/2 TO 15 TONS

BIG—126" wheelbase. Pick-up body has loading space 86" long, 45 1/2" wide (54" at fenders) and 16" high.

MODERN—Advanced streamlined appearance plus up-to-the-minute chassis features.

SAFE—Big weatherproof hydraulic brakes of the latest double-jointed anchor type. Self-equalizing. Easy to adjust. Economical.

ECONOMICAL—Such features as electro-hardened aluminum pistons, down-draft carburetor, removable crankshaft bearings, complete full-pressure lubrication, harmonic balancer and GMR cylinder head.

DRIVING COMFORT—Provided by the weatherproof all-steel "helmet top" cab with its wide doors, roomy interior and many other modern features.

See this exceptional GMC value! Drive it! Compare it! Learn how much your dollars will buy in a GMC quality truck.

CONNELLEE TODAY and SATURDAY



Plus . . . Betty Boop Cartoon

SUNDAY ONLY MARGARET SULLAVAN HENRY HENRY in 'THE MOONS OUR HOME' with CHARLES BUTTERWORTH

MONDAY ONLY WARREN WILLIAMS in 'Times Square Play Boy'

Tuesday & Wednesday ROBERT YOUNG in '3 WISE GUYS' A Damon Runyon Story Thursday 'PERSONAL MAID'S SECRET' with ANITA LOUISE

Lyric Sunday Only



The semi-maniacal publicity stunt which is a basis of "Another Face," exciting comedy-drama, meets a snag. In this tense scene Brian Donlevy, gangland killer, has at bay Wallace Ford, press agent, and Phyllis Brooks, screen beauty.



Our troop No. 43 of Brownwood, scoutmastered by Hilton Gilliam, went on a swimming hike to Hot Wells, week before last. This past week we had five new boys join our troop. This week the troop will meet Thursday evening at 6 p. m., to study first aid. Next week all members in good standing are going on an all night hike to Lake Brownwood. Our troop motto is: "Every member a swimmer." We are all making plans and getting ready to attend Camp Billy Gibbons.—Troop Reporter.

Scout masters and assistant scoutmasters had a good meeting in Eastland recently. All of those of the North Section of the council were in attendance.

Registrations — Troop No. 34 of Richland Springs is re-registering. Registration papers for Troop No. 4 of Cisco are in the office; Troop No. 16 of Brownwood has turned registration papers for the coming year. De Leon is renewing interest in scouting and from all indications a troop will be registered there soon. Mullin is organizing a troop, with Mr. C. T. Perry as Scoutmaster.

Billy Gibbons opens July 15th 22nd, and 23rd to 30th. Plan now to attend.

Our council rated 7th out of forty councils in this region during the first four months of this year. You helped to make our standing this high by doing scouting. Invite your friends to become scouts, cubs, sea scouts. "Scouting marches on."

NEW PROGRAM CHANGE POLICY STARTS THIS WEEK AT CONNELLEE

The current week inaugurates a new program change policy at the Connellee. Five changes of program will be made in place of four as has been the policy since this theatre opened.

Opening Friday and continuing its run through Saturday the attraction, "Mr. Deeds Goes to Town" will be shown. Starring Gary Cooper and Jean Arthur under the directorial genius of Frank Capra, whose "It Happened One Night" was selected as the most entertaining film of the past year. "Mr. Deeds" will present one of the outstanding films of the year to the theatre patrons of Eastland. The supporting cast includes George Baneroff, H. B. Warner and Douglas Dumbrille.

Showing Sunday for one day only the attraction, "The Moon's Our Home," starring Margaret Sullivan and Henry Fonda, will be shown. This is a comedy-drama which is a basis of "Another Face," exciting comedy-drama, meets a snag. In this tense scene Brian Donlevy, gangland killer, has at bay Wallace Ford, press agent, and Phyllis Brooks, screen beauty.

Our Home," starring Margaret Sullivan and Henry Fonda, will be the attraction. The fiery role of a temperamental film star offers Miss Sullivan an exceptional role in which to display her talent and her performance is outstanding in this film. Henry Fonda, whose outstanding work in "Trail of the Lonesome Pine" brought him into the cinema limelight, score heavily in the leading male role opposite Miss Sullivan. Charles Butterworth heads a strong supporting cast and adds much to the picture with his dry humor. The screen play was adapted from Faith Baldwin's Cosmopolitan serial of the same name.

On Monday, for one day only, the attraction, "Times Square Playboy," starring Warren Williams, will be shown. A light comedy with a fast moving plot; this attraction offers exceptional entertainment. The supporting cast includes June Travis, Barton McLane, and Gene Lockhart.

On Tuesday and Wednesday the attraction will be "Three Wise Guys," co-starring Robert Young and Betty Furness. On Thursday only the attraction "Personal Maid's Secret," starring Margaret Lindsey, will be shown. Ruth Donnelly and Warren Hull have prominent parts in this picture.

COMEDY SCENE IN COOPER FILM ONCE REAL LIFE DRAMA

"Who's looney now" is a phrase made popular several years ago when a certain millionaire named Chaloner, accused by his relatives of being slightly cracked, beat them in a law suit and triumphantly uttered the quoted words. One is reminded of the occasion now when considering Columbia's new Frank Capra picture "Mr. Deeds Goes to Town," showing today at the Connellee theatre, in which Gary Cooper, as a young man who has recently inherited \$20,000,000 is put on trial for his sanity because some people don't like the way he is spending his money.

Before the trial is over Cooper turns the tables and practically convinces the judge, jury and spectators that everyone is looney but he.

Among the many things that those who had him arrested and the psychiatrists who ultimately examine him represent as evidences of his mental disability, are his feeding doughnuts to a horse in an effort to ascertain how many the animal will eat before asking for a cup of coffee; his playing the tuba to help him concentrate; his wanting to give his \$20,000,000 to impoverished farmers; his chasing fire-engines; his habit of throwing out of the house guests he doesn't like; and his dashing madly through New York's streets in his underwear.

Two feeble-minded spinsters from his home town give evidence that Cooper, as Mr. Deeds, is "pizzillated." "Pizzillated" means cuckoo in their vernacular. Mr. Deeds soon disposes of the sisters' testimony; proves that everyone does crazy things to help them concentrate, like penciling peculiar designs on a scrap of paper and filling in O's and P's; admits he was drunk when he fed doughnuts to the horse and ran out in his shorts and reminds the court that there are thousands of so-called "crazy" people who chase fire-engines; and gives a lot of sensible reasons why he should be allowed to give his money to needy folk, especially if he himself gets very little pleasure out of it.

It is easy to realize that the court sees his point and dismisses the case!

Featured with Cooper in "Mr. Deeds Goes to Town," is Jean Arthur.

"THE MOON'S OUR HOME" GAY COMEDY ROMANCE

"The Moon's Our Home," Walter Wanger's latest production for Paramount, opens Sunday at the Connellee Theatre with that capable screen actress, Margaret Sullivan, in the star role.

Directed by William A. Seiter from a Faith Baldwin story, "The Moon's Our Home" deals with two international celebrities who have learned to hate each other merely on the strength of their reputations.

As a fiery-tempered, pampered, though beautiful screen star, Miss Sullivan refers to a noted world explorer-author over whom millions of women have gone mad, as the "kind of person who would be lost without his hot water bottle."

Henry Fonda, as the globe trotter, refers to the screen star as a "phony blonde with a face that resembled French pastry."

They eventually meet under assumed names, and, without knowing each other's real identity, fall in love. They are married, but, almost immediately, their temperaments clash. The bride leaves the bridegroom flat. Relenting, they make a frantic search for each other and teaming situations which arise from the search, and the manner in which the scrappy pair become reconciled make "The Moon's Our Home" lively screen entertainment.

Others supporting Miss Sullivan are Henrietta Crosman, Beau

lah Bondi, Lucien Littlefield and Dorothy Stickney. The story was adapted for the screen by Dawn and Boyce

LYRIC TODAY SATURDAY



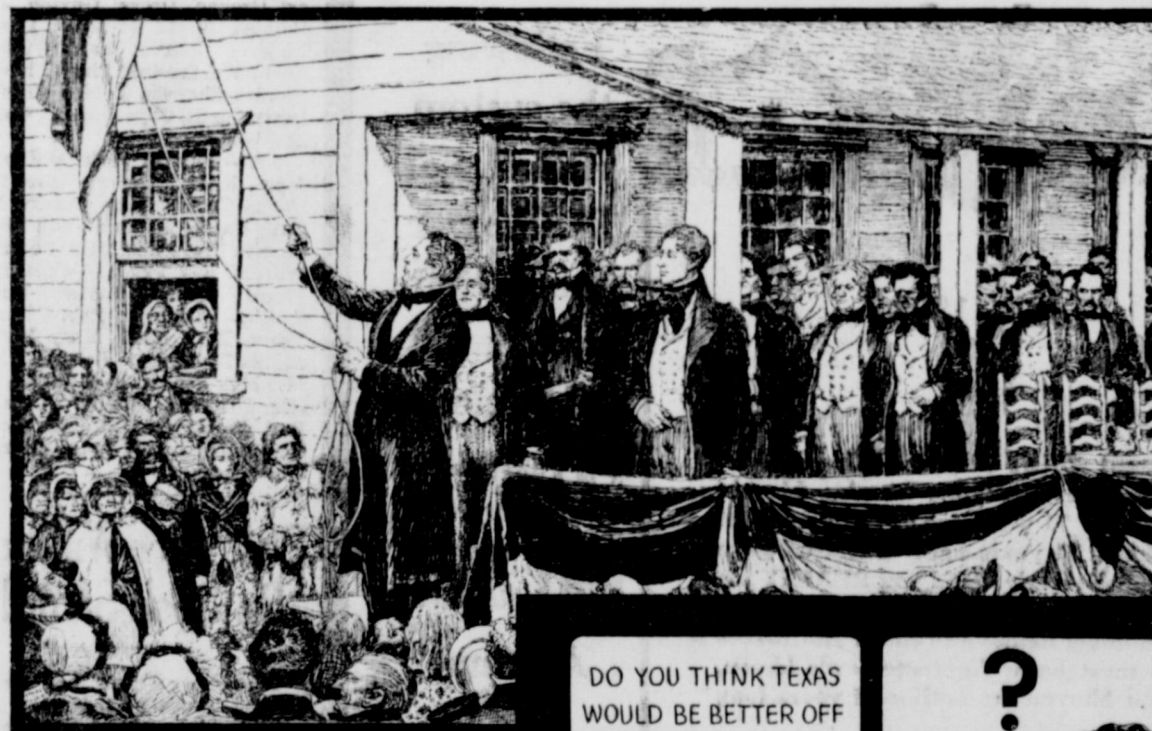
PLUS! "FIGHTING MARINES" POPEYE THE SAILOR CARTOON

SUNDAY ONLY

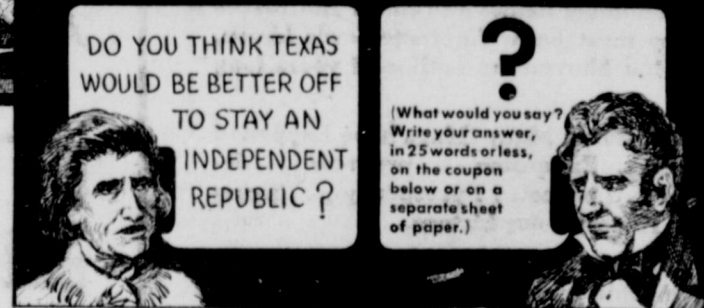


PLUS INA RAY HUTTON in "ACCENT ON GIRLS" "Between the Lines"—Come

\$5,000 IN PRIZES! Get this Historical Picture Free!



THIS PICTURE of the stirring Annexation Ceremony of February 19, 1846, shows President Jones delivering his valedictory address when Texas became a member of the Union. If you had been present at this ceremony, what answer would you have made to the question in the small sketch to the right?



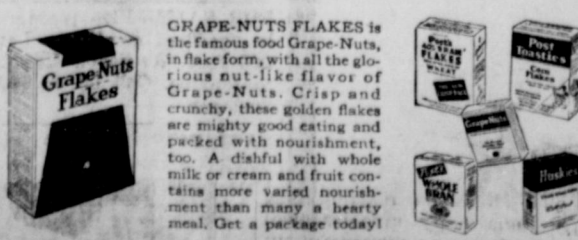
Hurry! Hurry! This is Your Last Chance to Win a Big Cash Prize!

DON'T delay! Get into this exciting, easy contest today! There are 60 cash prizes to shoot at! Just think of it . . . you may win \$100.00 by simply writing 25 words! So sit down right now and write your answer.

And don't forget—this is your last chance to win one of these big cash prizes! For this is the ninth and last contest. So get busy writing your answer immediately! A few minutes easy work may bring you a check for \$100!

General Foods is sponsoring these contests to better acquaint you with two things . . . the stirring episodes of Texas history and the variety and tempting flavor of the six Post Cereals. We hope you'll win a prize . . . and we know you'll like the Post Cereals. Try them all. They're swell with fruit or berries!

THE ALL-STAR FAVORITE CEREALS OF THE LONE STAR STATE!



C. W. POST, A SON OF TEXAS, ORIGINATED POST CEREALS

YOUR LAST CHANCE IN THIS SERIES OF 9 CONTESTS

RULES

- 1 Read what the first Texan is saying in the picture to the left. Then decide what your answer would be.
2 Write your answer in 25 words or less on a sheet of paper or in the proper space on the coupon below.
3 Write your name and address on the paper or the coupon below.
4 Attach your entry to one package top from any of the six Post Cereals shown below and mail to Contest, P. O. Box No. 1616, Dallas, Texas.
5 Prizes will be awarded for the answers which, in the opinion of the judges, best express the spirit of bravery and self-sacrifice that characterized the Texas patriots. Literary skill or "fancy" writing is not counted. Do not send any drawings or elaborately prepared entries.
6 Judges in the Texas Centennial Contest are: Mr. C. C. Mann, General Manager, Houston Post, and Victor H. Schoffeleers, President, Texas Great Society. All entries shall become the property of General Foods and may be used as it sees fit. All decisions of judges are final. In the event of ties, duplicates will be awarded.
7 Entries in this week's contest must be postmarked later than midnight of June 5, 1936.
8 No employee of General Foods, or member of his family may compete in these contests.

60 CASH PRIZES THIS WEEK! FIRST PRIZE . . . \$100.00 SECOND PRIZE . . . 75.00 THIRD PRIZE . . . 50.00 Ten Prizes of \$10.00 each Forty Seven Prizes of \$5.00 each

FREE! To everyone who enters this Texas Centennial Contest. I enclose a reproduction of this picture of the Annexation Ceremony, when Texas joined the Union, drawn by Newman 9 x 12 inches. Suitable for framing. There is a new picture every 9 weeks (list of others sent on request). If you want the picture without entering the contest, send your name and address on one top from any family-size Post Cereal Package.

Centennial Contest, P. O. Box No. 1616 Dallas, Texas. Here is my entry in the Texas Centennial Contest. I enclose a package top from the Post Cereals shown on the left. Name: Street: City: State: Envelope containing this coupon must be marked not later than midnight of June 5, 1936.

THE ECONOMY STORE

North Side Square Eastland

THREE-DAY SPECIALS!

FRIDAY -- SATURDAY -- MONDAY

North Side Square Eastland, Texas

1 lot House DRESSES Values to \$1.98 Mostly Small Sizes, 2 for \$1.00

1 lot Ladies' SHOES White, Blond While They Last, pair \$1.00

Extra Special Men's Sanforized 8-oz. OVERALLS All Sizes A \$1.25 Value 98c

Men's Straws HATS All Shapes Values to \$1.49 98c

1 lot Ladies' DRESS SHOES and Sandals White Only \$1.98 values on sale at \$1.69

MEN'S SUITS Gaberdines New Styles Grey or Brown Regular \$27.50 values, now \$22.50

Weather permitting we will sponsor a Free Rodeo First Monday! COME! YOU ARE INVITED!

CARL JOHNSON, Mgr.