

THE WEEKLY CHRONICLE

Eastland County's Own Progressive Publication For All The People

The Chronicle is the only weekly newspaper in Eastland having a paid subscription list

VOLUME 48

(Established November, 1887)

EASTLAND, TEXAS, FRIDAY, APRIL 17, 1936

NUMBER 24

County Singing Convention Chooses Mangum For Next Quarterly Meeting

By attendance that capacity of the Eastland school auditorium, the Eastland Singing Convention a two-day session Sunday choosing Mangum as the quarterly session site.

East of Eastland was re-elected president; A. E. LeClaire was named vice president; Artie Liles of Eastland was chosen secretary and Euell D. Bond of Eastland was chosen secretary.

The convention was attended by 100 from counties which include Eastland, Erath, Callahan and Shackelford.

Parties attending included the Ernest Rippetoe group of Eastland and the Ernest Rippetoe group of Eastland.

The convention head said many had from a territory from Dallas to the east to Winters to the west.

CHIMES NOT FOR JAZZ

By United Press

BERKELEY, Cal.—Charles C. Weikel, chime master of the famous chimes in the Campanile on the campus of the University of California has ruled that the chimes will never play "The Music Goes 'Round and Round." His nearest concession to date on popular music has been "The Last Roundup."

Eastland Wins First Honors In Band Meet

Members of first prize in the annual Hardin-Simmons contest Saturday at Abilene, Texas. G. W. Collum and members of the Eastland band were the winners.

Qualifying Rounds For Ladder Place Slated This Week

Members of the Eastland Golf and Country Club have until Sunday to play qualifying rounds for their position on the ladder. Sam Conner, secretary, reminded members Wednesday afternoon.

Eastland, Strawn Pastor Is Named Presbytery Clerk

The Rev. Charles W. Estes, pastor of the Eastland and Strawn Presbyterians churches, Wednesday was elected state clerk of the Abilene Presbytery at the final session of the semi-annual meeting in Snyder.

Regular Shoots at Gun Club Planned

Since the shooting season has opened, the Oil Belt Gun Club will hold regular Sunday contests, officials announced Thursday.

Divorce Granted

Divorce to Lela Mason from Juan P. Mason was granted Tuesday by 88th District Court. The plaintiff's maiden name, Lela Latch, was restored.

Trustees Elect Tanner As Chief Of School Board

Installing Milburn McCarty and Grady Pipkin, re-elected members in the April 4 election, trustees of the Eastland Independent School Board renamed K. B. Tanner as president at its meeting this week.

PROGRAM FOR DISTRICT SIX MEET MAPPED

Program for the District 6 Interscholastic League meeting to be held in Breckenridge Friday and Saturday has been announced here. The one-act play contest is scheduled Thursday.

Friday Morning

9:30 Debate, drawing, room 22, Senior High School building.

Friday Afternoon

1:00 Choral singing, auditorium Senior High School building.

Saturday Morning

Track and field events, west of Buckaroos Stadium. Coaches and spectators are asked to stay back of the field fence and in the stands.

Preliminaries

9:30 Rural Pentathlon.

Literary Events

11:00 Typing, room 5, Senior High School building. There are thirty-five machines in the Senior High School Commercial Department, but contestants may bring their own machines if they so desire.

Saturday Afternoon

1:00 120-yard high hurdles.

Desdemona Makes Burglary Bail Bond

Jonah White, indicted Dec. 4, 1935 by a 91st district court grand jury for alleged burglary, made \$1,000 bond this week.

CRATES MADE INTO DESKS

SAN BERNARDINO, Cal.—The city school management has attained the high peak in economies. Teachers' desks are made at \$22 each from packing crates as against the factory produced article at \$30. The desks are serviceable, money is saved and employment given to local cabinet makers.

"Centennial" Abstract To Title of Land Granted by Republic in 1836 Prepared

An abstract to title of land in Wise county 100 years ago—prepared in Texas' Centennial year—will be sent by R. L. Rust, Eastland attorney, to a client, J. H. Hughes, at Colorado Springs, Colo.

Court Reversed Self In Giving Doggett Ruling

Withdrawing a former opinion affirming his sentence of death, the court of criminal appeals Wednesday granted a new trial to Clifford Doggett, from Eastland county. "Former jeopardy" was the reason given by the court in its unique reversal of itself.

County Group In New AAA Program Named By Assts.

Committeemen for the administration of the government's soil conservation program in Eastland county were complete Tuesday with the announcement of election of a county committee Saturday.

Tax Survey Worker Gets Appointment to Abilene Offices

Notice of appointment as office manager of the typing department of the district works progress administration tax survey office in Abilene has been received by L. L. Powell of Cisco, who has served as statistician and foreman of the county project for which headquarters are in Eastland.

Inventory Filed of John McRae Estate

Property of an approximate value of \$16,423.50 is shown in inventory and appraisal of the estate of John D. McRae, who died in Eastland Feb. 25.

Judgment Rendered For Ranger Bank

Ninety-first District Court has rendered judgment of \$1,101.87 plus interest for Commercial State Bank of Ranger against K. C. Jones.

Farm Experts of 19 Counties Invited To 4-H Club Rally Slated Saturday

Agricultural agents and home demonstration agents of District 7 of the extension service, which includes 19 counties, have been invited to attend the county-wide 4-H club boys and girls rally at Eastland Saturday.

THREE TOWNS' STRENGTH IS THOUGHT 4,539

With Eastland, Ranger and Cisco having votes estimated at 4,539 and other towns and communities with poll strengths believed highest in several years, indications Thursday pointed to a record vote in the county-wide election Saturday to ban or legalize 14 per cent malt and vinous beverages. It is estimated there are 7,000 votes in the county.

County Group In New AAA Program Named By Assts.

Committeemen for the administration of the government's soil conservation program in Eastland county were complete Tuesday with the announcement of election of a county committee Saturday.

Tax Survey Worker Gets Appointment to Abilene Offices

Notice of appointment as office manager of the typing department of the district works progress administration tax survey office in Abilene has been received by L. L. Powell of Cisco, who has served as statistician and foreman of the county project for which headquarters are in Eastland.

Inventory Filed of John McRae Estate

Property of an approximate value of \$16,423.50 is shown in inventory and appraisal of the estate of John D. McRae, who died in Eastland Feb. 25.

Judgment Rendered For Ranger Bank

Ninety-first District Court has rendered judgment of \$1,101.87 plus interest for Commercial State Bank of Ranger against K. C. Jones.

THREE TOWNS' STRENGTH IS THOUGHT 4,539

With Eastland, Ranger and Cisco having votes estimated at 4,539 and other towns and communities with poll strengths believed highest in several years, indications Thursday pointed to a record vote in the county-wide election Saturday to ban or legalize 14 per cent malt and vinous beverages. It is estimated there are 7,000 votes in the county.

County Group In New AAA Program Named By Assts.

Committeemen for the administration of the government's soil conservation program in Eastland county were complete Tuesday with the announcement of election of a county committee Saturday.

Tax Survey Worker Gets Appointment to Abilene Offices

Notice of appointment as office manager of the typing department of the district works progress administration tax survey office in Abilene has been received by L. L. Powell of Cisco, who has served as statistician and foreman of the county project for which headquarters are in Eastland.

Inventory Filed of John McRae Estate

Property of an approximate value of \$16,423.50 is shown in inventory and appraisal of the estate of John D. McRae, who died in Eastland Feb. 25.

Judgment Rendered For Ranger Bank

Ninety-first District Court has rendered judgment of \$1,101.87 plus interest for Commercial State Bank of Ranger against K. C. Jones.

Eastland County Farmers Borrow Nearly \$170,000 From Land Bank

SAN ANTONIO, April 13.—During the period from May 1, 1933, through Dec. 31, 1935, 113 Federal Land Bank and Land Bank Commissioner loans, amounting to \$169,050, were closed in Eastland county, according to an announcement made by H. P. Draught, state director of the National Emergency Council for Texas. Of this number, 21 loans, amounting to \$52,800 were made by the Federal Land Bank, and 92 loans, amounting to \$116,250, were made by the land bank commissioner.

Eastland Funeral Director Enrolls In Higher Course

Ben E. Hamner, funeral director of Eastland, has enrolled in the Post-Graduate School of Advanced Embalming and Restorative Art to be held in Houston from April 27 to May 9.

Dog Vaccination Arrangement Made By Eastland Body

Dogs will be vaccinated at the city hall Wednesday, Thursday and Friday of next week by arrangement of the Eastland city commission. Mayor C. W. Hoffmann announced Thursday.

Rain Proves Help For Planting; Is Gauged at .65 Inch

Rainfall Thursday morning was of especial benefit to grain sorghum planting and all crops, according to Assistant County Agent Hugh F. Barnhart.

Funeral for V. W. Blanchard is Held

Funeral services for V. W. Blanchard, 58, who died in Ranger Wednesday night, were held Thursday afternoon from the First Methodist Church in Ranger with the Rev. T. E. Bowman, pastor of the church, officiating.

Accused in McBee Case Under Bond

Lynn Smith, accused in an accomplice in the H. L. McBee death at Rising Star May 1, 1933, was at liberty Monday under \$1,000 bond. Frank Judkins, appointed by 88th district court as Smith's attorney, arranged bond.

Bids Are Requested By Road Department

The highway department advertised Thursday for sealed proposals for construction of 1.8 miles of road from .9 miles west of Cisco to Avenue F in Cisco on Highway No. 1.

COURT FIXES SCHEDULE FOR APRIL TERM

Following is a list of assignments by Judge George L. Davenport in 91st District Court for the April term which includes April and May:

Tax Survey Head Asks Cooperation

Cooperation of farm and ranchmen in compilation of statistics for the state-wide tax survey has been solicited by T. L. Overby of Eastland, supervisor of the tax project in Eastland county.

Desdemona Makes Burglary Bail Bond

Jonah White, indicted Dec. 4, 1935 by a 91st district court grand jury for alleged burglary, made \$1,000 bond this week.

CRATES MADE INTO DESKS

SAN BERNARDINO, Cal.—The city school management has attained the high peak in economies. Teachers' desks are made at \$22 each from packing crates as against the factory produced article at \$30. The desks are serviceable, money is saved and employment given to local cabinet makers.

Farm Experts of 19 Counties Invited To 4-H Club Rally Slated Saturday

Agricultural agents and home demonstration agents of District 7 of the extension service, which includes 19 counties, have been invited to attend the county-wide 4-H club boys and girls rally at Eastland Saturday.

Inventory Filed of John McRae Estate

Property of an approximate value of \$16,423.50 is shown in inventory and appraisal of the estate of John D. McRae, who died in Eastland Feb. 25.

Judgment Rendered For Ranger Bank

Ninety-first District Court has rendered judgment of \$1,101.87 plus interest for Commercial State Bank of Ranger against K. C. Jones.

of Eastland Dies On Date When Marriage Set

Miss Florence Tingle, 19-year-old daughter of Mr. and Mrs. J. H. Tingle and niece of C. T. Lucas of Eastland, died at four days at her home in Nacogdoches, looked Saturday to Easter Sunday.

Trustees Elect Tanner As Chief Of School Board

Installing Milburn McCarty and Grady Pipkin, re-elected members in the April 4 election, trustees of the Eastland Independent School Board renamed K. B. Tanner as president at its meeting this week.

Desdemona Makes Burglary Bail Bond

Jonah White, indicted Dec. 4, 1935 by a 91st district court grand jury for alleged burglary, made \$1,000 bond this week.

CRATES MADE INTO DESKS

SAN BERNARDINO, Cal.—The city school management has attained the high peak in economies. Teachers' desks are made at \$22 each from packing crates as against the factory produced article at \$30. The desks are serviceable, money is saved and employment given to local cabinet makers.

Farm Experts of 19 Counties Invited To 4-H Club Rally Slated Saturday

Agricultural agents and home demonstration agents of District 7 of the extension service, which includes 19 counties, have been invited to attend the county-wide 4-H club boys and girls rally at Eastland Saturday.

Inventory Filed of John McRae Estate

Property of an approximate value of \$16,423.50 is shown in inventory and appraisal of the estate of John D. McRae, who died in Eastland Feb. 25.

Judgment Rendered For Ranger Bank

Ninety-first District Court has rendered judgment of \$1,101.87 plus interest for Commercial State Bank of Ranger against K. C. Jones.

Bids Are Requested By Road Department

The highway department advertised Thursday for sealed proposals for construction of 1.8 miles of road from .9 miles west of Cisco to Avenue F in Cisco on Highway No. 1.

THE WEEKLY CHRONICLE

Established Nov. 1, 1887

Entered as second-class matter at the postoffice at Eastland, Texas, under Act of March, 1879

Published Every Friday Office of Publication: 106 East Plummer Street. Phone 601

NOTICE TO THE PUBLIC

Any erroneous reflection upon the character, standing or reputation of any person, firm or corporation, which may appear in the columns of this paper, will be gladly corrected upon being brought to the attention of the publisher.

Obituaries, cards of thanks, notices of lodge meetings, etc., are charged for at the regular advertising rates, which will be furnished upon application.

Why Not a West Point For Civil Service?

Common sense is supposed to be what its name implies—common. But there are fields of human activity in which common sense is used so rarely, that when someone gets up and proposes to apply a little he seems to be making a breath-taking proposition.

Thus, for instance, when Congressman Wesley Disney of Oklahoma suggests that the federal government establish a government school for civil service training, the idea seems strange and fantastic. It is only after we let it percolate around for a while that we begin to discover that it is nothing but plain, everyday common sense.

Congressman Disney's argument runs like this: We maintain elaborate training schools for the officers of our army, our navy, and our coast guard. We send promising young men to these schools, pay all their expenses and give them the very finest training our experts can devise, so that they may serve us well.

We have had such success with these schools that very rarely does a man who has not been graduated from one of them attain command in our military forces.

Uncle Sam employs a lot of other people, outside army, navy, and coast guard. And instead of maintaining special schools for them, we hire them on a catch-as-catch-can basis.

Good old Joe Doakes, for instance, who carried the banner through rain and snow for Congressman Hoozies in the 12th ward is a deserving party man; so we'll just find a place on the government payroll for him, and if he is too dumb to come in out of the wet nobody much will know the difference.

So Joe Doakes gets hired, by the hundred and by the thousand; and once in a while we wonder, wistfully, why it is that some of our government services cost so much and are so inefficient.

Announces



A. D. (Red) McFarlane, ex-ranger, tool dresser, driller, and contractor, who makes his formal announcement for sheriff.

To the Voters of Eastland County:

Regarding my candidacy for the office of sheriff of Eastland county, I wish to state briefly my qualifications and solicit your vote and influence.

I am 39 years of age and have been a citizen of the county 17 years, during which time I have worked as tool dresser, driller and spudder contractor. I also served for two years as special ranger in the East Texas oil fields.

I am of the opinion that four years is long enough for any man to serve in one office. I consider it my duty if elected to serve all the people with equal justice and special favors for none.

I promise an efficient business administration with a complete new force of deputies selected from various parts of the county.

I am trying to see each voter personally but if I fail to see you please consider this my personal solicitation of your vote and influence.

Respectfully submitted, A. D. (Red) McFARLANE.

DIVORCED TWICE IN NINE DAYS

SENECA, Kan.—Two divorces from the same man in nine days with no intervening marriage is the record of Mrs. Ella Marie Connell. After the first divorce was granted, Judge C. W. Ryan discovered the petition was filed one day short of the required 60 days and therefore invalid. A second petition was filed and another divorce granted.

PARIS.—A synthetic "Stradivarius," copied from a famous example owned by Yehudi Menuhin, the violinist, has been perfected by Emile Francais, a Parisian violin maker. The process will be useless for commercial purposes, however, says Menuhin.

First Survey Shows How National Old Age Pension Plan Is Working

By NEA SERVICE

More than 100,000 men and women in 17 states today are regularly drawing down old age pension checks under the joint plan of federal and state support which went into effect three months ago.

A survey of this old-age pension situation today under the Social Security act shows the following facts:

The 100,000 who are actually drawing federal-state checks are only the advance guard of a vast army, and only a third of those who have already applied. Any figures must be approximate, as thousands of applications and acceptances are going through state boards daily.

A detailed canvass of 13 typical states of the 17 to which the first federal checks went out in February and March shows general approval of the old age pension plan so far as it goes, but a general feeling that it doesn't go far enough.

It shows that, of the flood of applicants, many do not understand the law.

It shows definite improvement is being made in states which formerly had old age pension systems of their own, as 35 of them did.

27 States in Line It shows that 27 states have now brought their old age pension laws into line so as to share in federal benefits, but that 10 of these have been approved so recently that the flow of federal funds to them has not begun.

It shows that most states are beginning their pensions at 65 immediately, and not beginning with 70 and reducing that to 65 by 1940, as the law permits.

It shows considerable variation among states as to how they are to raise their share of the money, and as to who is eligible for pensions.

Of course the figure of 100,000 does not include the total number of people drawing old age pensions in the United States.

Ohio, for instance, has 85,000 drawing the state pension today. Ohio's law has just been adjusted to meet federal requirements, and approved. When federal funds start coming in, these 85,000 and many more—like Colorado's 26,000, Massachusetts' 25,000—will be immediately added to the total number of beneficiaries coming under the federal law. The grand total will certainly be well above 250,000 by midsummer.

17 States Get Money

Alabama, Delaware, District of Columbia, Idaho, Iowa, Maine, Maryland, Michigan, Mississippi, Missouri, Nebraska, New Hampshire, Rhode Island, Vermont, Washington, Wisconsin and Wyoming are the states which were already receiving federal money to supplement their approved old age pension plans as of March 30.

The other approved states, which will begin to receive the federal contribution soon, probably this month, are Arkansas, Connecticut, Massachusetts, Minnesota, New Mexico, North Dakota, Ohio, Oklahoma, Oregon and Utah.

Other states are struggling to get bills through their legislatures before they adjourn this winter. Budgetbalancing Kansas failed to get its plan approved because it was optional with counties, which were also to raise the money, thus keeping the state budget clear.

Kansas may have to call a special session of its state legislature to provide the necessary changes and taxes.

New York in Jam New York's legislative action has jammed, and meanwhile the complaint is made that New York City alone is losing \$10,000 a day in disbursements it would be getting if the law had been passed.

The federal-state plan provides that the federal government will put up a dollar for every dollar raised by the state up to \$15 a month, making a \$30 pension. States can add as much more as they like.

Illinois, for instance, though it has as yet no law approved by the federal social securities board, is already laying plans for pensions for 50,000, payments to start as soon as federal money begins flowing.

Criminals are Excluded

Some states, such as Idaho, Washington, Alabama, specially provide that the pensions may go only to state citizens. Other states, like the Townsendsites themselves, exclude persons convicted of crime within a given number of years. Michigan and Alabama are strict about this.

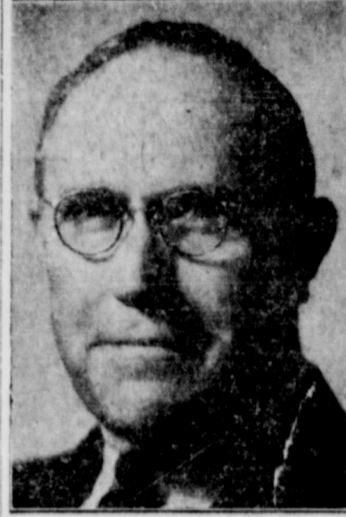
Generally speaking, the states have moved to exclude from pensions all who have suitable incomes or property. In the District of Columbia allotments are purely on a basis of need. Maryland, Washington, and Idaho admit that those whose income is plainly insufficient; and Vermont and Michigan specially mention those whose incomes are less than \$30 a month.

Several states, Nebraska and Maryland especially, provide that applicants must show they have no one legally responsible to care for them. In several states the applicant is paid only the difference between the maximum pension amount and whatever income he has. If he has an income of \$28 a month and the maximum pension was \$30, he would only get \$2 from the fund.

Majority Favor Plan

Despite high hopes aroused by the Townsend movement, and despite the low average of the pension thus far granted, most people in Washington, Rhode Island, Michigan, Wyoming, Vermont and Nebraska are shown by the survey to be favorable to the pensions.

IS CANDIDATE



Judge B. W. Patterson, who has announced his candidacy for re-election to the bench of the 88th district court. Judge Patterson is now serving his first term as judge of the court.

as put in operation, as in Idaho, where the average benefit is estimated at \$21.44 a month.

Yet in Michigan, first state whose law was approved by the federal government, 500 letters were received from Detroit alone expressing gratitude for the pensions granted, though the average was around \$16.50 a month.

Criminals are Excluded

Some states, such as Idaho, Washington, Alabama, specially provide that the pensions may go only to state citizens. Other states, like the Townsendsites themselves, exclude persons convicted of crime within a given number of years. Michigan and Alabama are strict about this.

Generally speaking, the states have moved to exclude from pensions all who have suitable incomes or property. In the District of Columbia allotments are purely on a basis of need. Maryland, Washington, and Idaho admit that those whose income is plainly insufficient; and Vermont and Michigan specially mention those whose incomes are less than \$30 a month.

Several states, Nebraska and Maryland especially, provide that applicants must show they have no one legally responsible to care for them. In several states the applicant is paid only the difference between the maximum pension amount and whatever income he has. If he has an income of \$28 a month and the maximum pension was \$30, he would only get \$2 from the fund.

Majority Favor Plan

Despite high hopes aroused by the Townsend movement, and despite the low average of the pension thus far granted, most people in Washington, Rhode Island, Michigan, Wyoming, Vermont and Nebraska are shown by the survey to be favorable to the pensions.

In states where there is active criticism, it is usually based on the fact that the pensions allowed are too small to provide a decent living.

This first three months of the federal-state plan, with applications flooding in, investigations to be made, new states joining the plan or debating it, is a confused period.

The first 100,000 now getting federal-state checks draw pensions often pitifully inadequate, but better than nothing.

Creaking and bare, the framework of a structure of security for the aged is being slowly raised.

Judge Patterson To Be Candidate In July Primary

Judge B. W. Patterson, judge of the 88th judicial district, who is now serving his first term on the bench of the court, is announcing his candidacy for re-election. Judge Patterson succeeded Judge Elzo Been, who was judge of the court for several terms.

Since going into office Judge Patterson has established an enviable record and upon several occasions he has been called upon to preside in other district courts of the state.

In announcing his candidacy Judge Patterson stated that he solicited the votes of the voters in the county in the democratic primary of July 25.

Judge Patterson was well qualified, both by training and experience to hold the position to which the people of Eastland county elected him, as has been attested by the splendid manner in which he has conducted his court throughout his first term.

FRANKELL

By MRS. C. D. STAGNER A large crowd gathered at the J. P. Morris place Sunday and spread lunch and hunted eggs.

Butch Wilson, who has been at Andrews, is visiting his parents, Mr. and Mrs. A. L. Wilson.

C. D. Stagner called on F. A. Dean Sunday morning.

Maudine Johnson entertained with a party Saturday night.

Minnie Belle Roberson and Tina Knight visited Jessie B. Morris Friday afternoon.

Butch Wilson and Elmer Morris visited Day Stagner Saturday afternoon.

Mr. and Mrs. Clarence Ledbetter of the Acker community passed through this community Sunday morning.

C. D. Stagner and G. P. Morris were in Ranger Friday on business.

Mr. and Mrs. Dave Dupree and

family visited Mr. and Mrs. M. Polan Sunday night. M. Polan and G. P. Morris over in the Oakley and E. communities Sunday night. Mrs. Coleman Brown on the sick list.

Forty Years Spent Learning Geog.

LYNN, Mass.—Maurice Barofski, 50, took his teachers' word 40 years ago when he couldn't master the contents of a geography book as a boy.

Barofski borrowed a 6,000-page geography book as a boy. He resolved to learn it by heart, returned to book recently, offered to take a test in it before the school committee.

Political Announcements

The Weekly Chronicle is authorized to announce the candidates for office, subject to the Democratic Primary of July 25, 1936.

For Judge 91st Judicial District: GEORGE L. DAVENPORT

For Judge 88th District Court: BURETTE W. PATTERSON

For Criminal District Attorney: EARL CONNER, Jr., GRADY OWEN

Floterial Representative, District (Eastland and Counties): T. S. (Tip) ROSS

For District Clerk: P. L. CROSSLEY

For County Judge: T. L. COOPER, W. S. ADAMSON, W. D. R. OWEN

For Sheriff: STEELE HILL, LOSS WOODS, A. D. CARROLL, G. W. (DICK) RUST, A. D. (RED) McFARLANE, J. W. (JESS) NOBLE

Tax Assessor and Collector: C. H. O'BRIEN, CLYDE S. KARKALITS

For County Clerk: TURNER COLLIE, R. L. (Bob) DAVENPORT

For Commissioner, Precinct: H. V. DAVENPORT (Re-election)

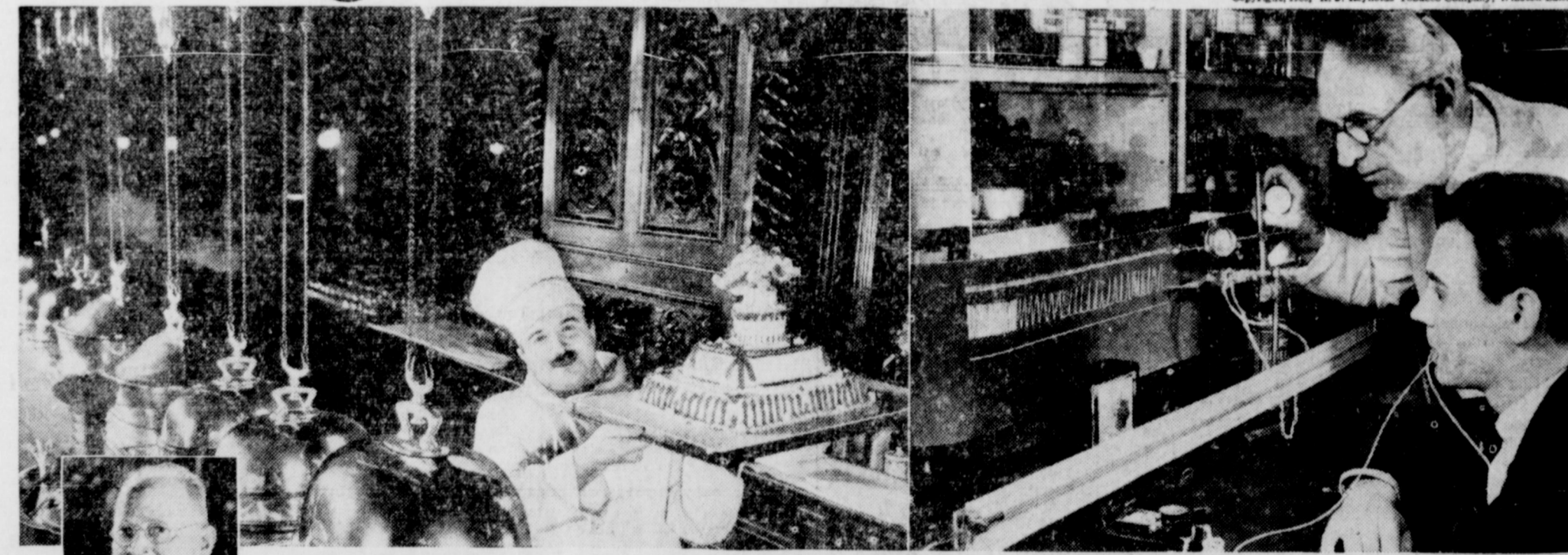
It's an ill flood, etc. Due recent inundation, no one inburgh was arrested for jumping or rowing past a light.

The New Jersey governor be courting political suicide there is danger of losing that of all those Hauptmann wis

Advertisement for NORGE Matched Unit Kitchen, featuring a woman and kitchen appliances. Text: Save TIME & MONEY with a NORGE MATCHED UNIT KITCHEN. Buy range and refrigerator both for as little as 19¢ a day.

Advertisement for NORGE Rollator refrigeration, featuring a woman and a refrigerator. Text: An investment in comfort, convenience, better health, better tasting foods... 10 YEAR WARRANTY ON ROLLATOR COMPRESSION UNIT. C. I. HYATT, Norgie Products Dealer.

for Digestion's sake... smoke Camels



BARONIAL DINING at the Winter Place Tavern in Boston. Theodore Roosevelt, Enrico Caruso, Henry Cabot Lodge praised its famous fare. Here Camels reign supreme. Nick Stuhl (left), maitre d'hôtel, says: "Camels have the gift of making great dishes more enjoyable. Camels are the most popular cigarette at the Winter Place Tavern."

MEASURING THE EFFECT on digestion of smoking Camels (above). Delicate machines measure the flow of digestive secretions. The evidence shows that smoking a Camel increases the secretion of digestive fluids. The importance of this extra secretion in facilitating digestion is a matter of common knowledge. So smoke Camels... for digestion's sake... and for their costlier tobaccos. Camels set you right!



PARACHUTE JUMPER. Miss Uva Kimmey says: "My life depends on making no mistakes. I smoke Camels for digestion's sake. They encourage digestion in a pleasant way. Camels set me right!"



WORKING AGAINST TIME. Bob Duffey, steam-shovel operator, says: "Work comes first—eating, second. You grab a bite when you can. But trust Camels to make even a quick meal taste good and feel good."

Smoking Camels Promotes Enjoyment of Good Food and Stimulates Digestion. Our nervous modern life often affects digestion. Mental effort—physical rush—slow down the flow of the digestive fluids. Smoking Camels restores and increases this necessary flow. Scientific research definitely confirms the fact that Camels encourage digestion in this pleasant way. Enjoy Camels as much as you like. They never frazzle your nerves.



Costlier Tobaccos!

Camels are made from finer, MORE EXPENSIVE TOBACCOS—Turkish and Domestic—than any other popular brand.

Search for "Black Gold" Puts to Sea

By United Press
HOUSTON.—The search for "black gold" has put out to sea. The Salt Dome Oil-California company's joint exploration of 60,000 acres of subsea land beneath Galveston Bay waters started when 10 geologists, 17 seismologists and help of a number of sailors, cooks, mechanics and other crew members cast off at Barbours Cut.

The scientific party will "shoot" 6,000 acres thoroughly. It may require as long as 18 months, said Kark Hasselmann, president of Salt Dome.

Hasselmann; Ken Regan, vice-president of Salt Dome; and G. D. Bass, general superintendent of the state land commissioner's office, the Texas Agency which has the land to California and Salt Dome, inspected the "floating party" before its departure.

The geophysical exploration marks the active entry of California into the Gulf coast. Fisher Synolds, president of the Seismic

LYRIC SUNDAY ONLY



Captivating songs, gay dances and comedy mark the new Fox picture, "Paddy O'Day," with JANE WITHERS playing a wistful little colleen, and PINKY TOMLIN and RITA CANSINO in romantic roles. 2PB

Among "Colleen's" 12 Stars



Much of the delirious laughter evoked by "Colleen," the Warner Bros. musical at the Connellee Theatre Saturday night, 11 p. m., is due to the antics of Louise Fazenda and Hugh Herbert, shown above. Heading the big all-star cast are Dick Powell, Ruby Keeler, Jack Oakie and Joan Blondell.

Explorations, Inc., will direct the geophysical work.

The "headquarters boat," a house-boat capable of holding 28 persons, was stocked for a month's stay on Galveston Bay waters. It will put back into its base from time to time for provisions.

From this boat, the men will go daily in small motorboats, cabin powerboats and a barge to drill "shot" holes, load them with dynamite, touch off the charges, and take recordings.

On a barge is a light drilling rig

capable of going 1,200 feet, although no such depth will be attempted, Reynolds said.

Another boat, painted a bright red, is labeled "Oynamite, Danger." It serves as the magazine for the party's explosives, and is given as wide a berth as possible.

Two cabin powerboats are the "exploding" and "receiving" ends of the geophysical operation.

From one the "shots" will be exploded. Aboard the other, the progress through the earth of the seismic disorder set up by the

"shots" will be received and traced.

"All the comforts of home," observed Regan as he entered the lounge of the headquarters boat. The boat was equipped with a piano, radio, center table for card games, desks, and even a vase to hold seaweeds.

Provision has been made for wildcatting any prospect the geophysical work uncovers beneath the bay by Salt Dome and California.

Honey Making Less Arduous For Bees

By United Press
SAN MATEO, Cal.—California bees hereafter will be spared any excessive fatigue in looking about for their supply of raw materials for manufacturing honey.

The policy adopted by California bee owners now is a migratory system of taking the bees to the raw material source itself.

San Mateo County is experiencing the greatest influx of bee owners in its history. To date 24 commercial raisers, bringing with them more than 2,500 colonies or hives, have established themselves about the peninsula.

The immediate attraction is that it is the season for the eucalyptus blossoms.

The new tendency of taking the bees to the flowers instead of letting the bees loose to search for them, fulfills predictions here that the system of "bee pasturage" eventually would develop in the

same degree as the old time western system of range pasturage for cattle.

The bee raisers expect to stay here for about three months until the eucalyptus blossoms are exhausted and then move on to some other part of California where a fresh supply of some other kind of blossoms will insure feeding grounds for another period.

BLUE LOVE BIRD DEVELOPED

By United Press
GEELONG, Australia.—The objective of hundreds of bird fanciers has been achieved by A. Anderson, a young factory worker here. He has produced a blue "budgerigar" with yellow wings. These little Australian parakeets, or love birds, have been the subject of experiment for years.

SAFE DRIVERS TO BE CITED

By United Press
SALINAS, Cal.—The "Valiant Volunteers for Safety" will try civic righteousness hereafter instead of civic censure. Any auto driver seen doing a courteous act or taking pains to be safe will be cited to the society's committee.

POLICE JOB POPULAR

By United Press
FINDLAY, O.—Twentythree men took the competitive examination for one vacancy on the police force, created when a patrolman resigned to become a farmer.

Maybe that order deposing Kentucky colonels wasn't such a bad one, at that. A few million of them must be tired by now of inhaling juleps through goatees.

First Aid
for
Constipation

Nyal Mineral Oil

A non-habit forming relief for constipation and irregular movements. Pure, tasteless and odorless.

Full Pint **59c**

Corner Drug Store
 Eastland

FREE! about STOMACH TROUBLE

Explains the marvelous Willard Treatment which is bringing thousands of relief. Sold on fractional money-back guarantee.

PRICELESS INFORMATION

For those suffering from STOMACH OR DUODENAL ULCERS, DUE TO HYPERACIDITY, POOR DIGESTION, ACID DYSPEPSIA, SOUR STOMACH, GASTRITIS, HEARTBURN, CONSTIPATION, BAD BREATH, SLEEPLESSNESS OR HEADACHES, DUE TO EXCESS ACID.

Ask for a free copy of Willard's Message.

Sold Exclusively By
Corner Drug Store
 Phone 588 Main & Lamar

SAVE at the big new Western Auto Associate Store

BUY GENUINE WESTERN AUTO SUPPLIES

AT

Tucker Brothers and Clifton

Eastland, Texas

Lipton's TEA

Small 9c
 1/2 lb. 21c

Tiny **Green Lima Beans, No. 1.2 for 25c**

A. & P.	SUNNYFIELD FLOUR
GRAPE JUICE	6 lb. bag . . . 21c
Pts 15c	12 lb. bag . . . 40c
Qts. 29c	24 lb. bag . . . 79c

Iona Flour 48 lb. bag \$1.55

Fresh FRUITS and VEGETABLES

Lettuce, firm heads 5c
 New Potatoes, No. 1 lb. 5c
 Carrots 3 bunches 10c
 Squash, white or yellow . . lb. 5c
 Green Onions 2 bunches 5c
 Cali. Oranges, med. size doz. 20c
 Lemons doz. 20c
 Apples, Winesap 2 doz. 29c
 Bananas lb. 5c

K. B. CREAM MEAL	BISQUICK
5 lb. bag . . . 13c	Small pkg. . . 17c
10 lb. bag . . . 24c	Lrg. pkg. . . . 33c
20 lb. bag . . . 45c	

Grandmother's Bread . . . loaf 7c

Pure Cane **Sugar 10-lb. cloth bag 52c**

Compound 8-lb. carton 98c

California Peaches, DelMonte Sliced or Halves, No. 2 1/2 cans . . 15c

- Quality Market Products**
- Full Cream Cheese lb. 22c
 - Seven Roast, baby beef . . lb. 18c
 - Sugar-Cured Sliced Bacon lb. 27c
 - Loin or T-bone Steak . . . lb. 25c
 - Weiners or Frankfurters . . lb. 18c
 - Short Ribs or Brisket lb. 15c

A&P MARKET OWNED AND OPERATED BY **ZED KILBORN**

WATCH OUR WINDOWS For ADDED SPECIALS

A European judge decided that, just because she tried on hats for nine hours straight, a woman wasn't necessarily insane. But then he didn't see the hats.

A contributor to a Nebraska paper tells of lighting a match to see if he had any gas in his tank. There are, however, better ways to become a ghost writer.

Nazi election theory: an affirmative vote is a vote against persecution; vote "no" and see what happens to you.

Federal expert says the United States is the least map-conscious country in the world. Has he ever seen us gazing in fascination at Joe E. Brown?

REPORTED IMPROVED
 Cecil Hibbert, who has been a patient in a Cisco hospital following an operation, has been transferred to his home in Eastland and is reported improving rapidly.

"In Spain, Scot Gives Away Mine." Catch him giving away his.

"Ali Baba wins Detroit wrestling match for fifth straight victory." If it's the same Ali Baba, it's a swell break for his 40 managers.

Hamner Undertaking Co.
 Phones 17 and 564
 DAY OR NIGHT AMBULANCE SERVICE

General Foods WEEK

ALL the products of this great firm are on parade here this week at attractive prices—your opportunity to buy economically these deservedly famous products—Jell-O, Maxwell House Coffee, Post Cereals, Baker's Chocolate, and a lot of others.

MUSKIES POST'S NEW WHOLE WHEAT FLAKES	SWANSDOWN CAKE FLOUR Pkg. 27c	JELLO 3 Figs. 17c
SOUTHERN STYLE COCOANUT Moist Long Shreac Can 9c	LIBBY'S FINE FOODS PEACHES Large Cans 15c	MAXWELL HOUSE COFFEE 3 Pound Can 81c
PINEAPPLE 3 Flat Cans Crushed 25c	TOMATO JUICE 3 Cans 23c	TEA Bliss 1/2 Lb. 13c

Best-Yett **Salad Dressing** Quart 29c
 Thousand Island Sandwich Spread qt. Jar 29c

PIPKIN'S SPECIAL COFFEE Found 17c

POST TOASTIES Large Pkg. 11c

SHORTENING 8 Lb. carton 98c

Small Size **Ovaltine** 31c

Hershey's 1/2 Lb. **CHOCOLATE BARS** 10c

Celo. Bag **RAISINS** 2 Lbs. 17c

Mapes Peas 3 No. 2 cans 25c

Libby's Country Gentleman **Corn** 2 No. 2 cans 25c

14-oz. Bot. **Catsup** 10c

PICKLES Dill or Sour Qt. 15c

Hurif's Prepared **SPAGHETTI** 2 Cans 17c

SPINACH Deer Brand 2 No. 2 Cans 17c

1-Lb. CALUMET Can 21c

FLOUR LAND OF GOLD 48 Lbs. \$1.45
 Texas King 24 Lbs. 89c

Lipton's TEA
 TEA GLASS FREE WITH EACH 1/4 POUND
 1/2 Lb. 43c 1/4 Lb. 22c

FRESH STRAWBERRIES

QUALITY MEATS

Fresh **CATFISH** Pound 29c

Large **BOLOGNA** Pound 15c

O. K. SOAP 5 Bars 19c

PIPKIN BROS.

NICE TENDER **VEAL CHOPS** Lb. 24c

CHEESE Full Cream Lb. 23c

ROAST Fancy Fed Baby Beef Lb. 18c

SLICED BACON Pound Pkg. 30c

"Wear-Ever" Aluminum Fry Pan
 Extra heavy 7 inch fry pan for one S.O.S. package top and 35c, sent to the S. O. S. Company Chicago, Illinois. 15c

FREE while they last!
 INTRODUCTORY PACKAGE **AUNT JEMIMA PANCAKE FLOUR**
 when you buy a can of **LOG CABIN SYRUP..**

Piggly Wiggly

NECESSITY

The Singing Convention which was held Sunday was well attended. The singers from all over the country were present and from several other counties.

Mrs. R. C. Moore was a Dallas visitor Wednesday visiting her children, R. C. and Gladys. R. C. returned home with her to spend the week end.

We are sorry to lose Mr. and Mrs. Casey from our community. They have moved back to Frankell county.

The wedding bells are ringing for Mr. and Mrs. Wayne Yoes and wife, Mrs. Satterwhite, of the former Mary Frances Black, of Breckenridge. They will make their home in Necessity.

Connie Morris is spending several days with Louise Hughes.

Mr. Loys Morgan, Sammie Tenie, Bernice Tenie visited Smokey Hughes Friday night.

Several from this community attended the dance at Shorty Sherro's Saturday night.

Mr. and Mrs. Jimmie Boyd and son, Alton, spent Wednesday night with his brother, Mr. and Mrs. Dan Boyd.

Mr. Jim Jackson, Max and Carl Wiloth, Jeff Collins, J. R. Green, James Williams, Connie Morris, Glenn Knight were visitors in the W. A. Hughes home Sunday evening.

The little niece of Mr. and Mrs. Telchick who has been ill is somewhat improved at this writing.

Mr. and Mrs. Fannie Yoes and children who formerly lived here and moved to Olden attended the singing convention Sunday.

Miss Smokey Hughes spent several days with Sorty Morris.

Mr. and Mrs. Bro. Stalcup and children, Mr. and Mrs. Fred Truesdell were visitors in the D. W. Deaver home Wednesday evening. A nice crowd attended the dance in the home of Johnnie Smith Saturday night.

Mrs. Gordie Langford visited her sister, Mrs. Jonell McGowan, Sunday.

The little niece of Mr. and Mrs. Selchick, who has been ill, has returned to her home in Strawn.

Mildred Langford spent Sunday with Winona Satterwhite.

Edd Dennison was a Ranger visitor Friday.

Several from this community attended the party in the home of Modene Johnson Saturday night in Frankell.

Henry Knight of Moran is spending several days with Meredith Hughes.

Lois Morgan was on the sick list the first of the week.

Mr. and Mrs. Lee Ivey entertained their relatives with an Easter egg hunt Sunday.

Mr. and Mrs. Clinton Knight visited Mr. and Mrs. Carl Knight and family Sunday.

UNITY

There has been an epidemic of flu in our community for the past 10 days but glad to report all on the road to recovery.

Rev. E. E. Barber of Dublin filled his regular appointment here Sunday and was dinner guest in the home of Mr. and Mrs. Bennett Goodloe.

Mrs. Lilly Gibson, primary teacher of this place, treated her pupils to an Easter egg hunt Friday afternoon.

Several people were treated to an exceptional good music treat Monday night in the home of Mr. and Mrs. George Foster by the Mexican band of Mingsus. They were accompanied by Henry Obiles of Mingsus.

Unity was well represented at Trades Day in Gordon Saturday.

A large crowd from here attended the school program at Russell Chapel Friday night. All who attended from here reported a splendid program.

Mrs. May Minnick of Abilene was a week-end visitor in the home of her sister, Mrs. Ona Davis and family.

Home Blue and Bailey Wylie of the CCC camp at Dublin spent the week-end with home folks.

Mr. and Mrs. Gomer Minnick and little son, Charles Jodeo of Sonora, arrived here Saturday for a visit with friends and relatives.

Mr. and Mrs. Bennett Goodloe and children accompanied by Homer Blue, Ora Belle Blue, Billy Davis and Edwin Gibson were in Strawn Saturday night to attend the musical program rendered by Professor Lewis and band.

The many friends here of Jim Nixon of Grafrod were indeed sorry to hear of his death, which occurred Wednesday of last week. He was an uncle of Mrs. Claude Cole of this place and sympathy is extended to all the family in the loss of their loved one.

Hale Foster of Strawn spent Friday night in the home of his grand parents, Mr. and Mrs. H. F. Foster.

Mr. and Mrs. M. N. Singleton had as Sunday guest in their home, Mr. and Mrs. Jodie Singleton and little daughter, Mary Joe of Ranger and Mr. and Mrs. Earl Singleton of Stephenville.

We are glad to report Mrs. Claude Cole able to be home after several days stay at Ranger under the care of a physician.

Tom Sawyer is visiting at Quitman, Texas, this week in the home of his sister, Mrs. Ruby Grice.

Unity was well represented at Trades Day in Gordon Saturday.

Miss Izetta Woods, who teaches at Ranger, spent week-end in the home of her parents, Mr. and Mrs. Tom Woods. She was accompanied by her little niece, Margaret Ann Woods of Ranger.

Farm Program—

(Continued from page 1)
tility. These crops include all main kinds of old seedlings of legumes such as alfalfa and grasses such as sudan pasture if only grazed or clipped green; and winter cover crops if plowed under, or, if harvested, followed by summer legumes. Forest trees planted since 1933 also class as soil conserving. "Soil building crops" are legumes plowed under as green manuring crops; biennial and perennial legumes seeded in 1936; summer legumes with forage left on land; and winter cover crops plowed under and followed by summer legumes. Trees planted in 1936 count as soil builders this year.

Farmers who qualify for government grants of money in the new AAA soil conservation program must have at least one acre of soil conserving or soil building crops for every five acres of soil depleting crops in the base acreage, says Elmo Cook, county agricultural agent.

A farmer who had 100 acres of corn and cotton (soil depleting crops) in the base period must have planted on his farm in 1936 at least 20 acres of conserving and building crops to participate in the program.

Up to 35 per cent of the base acreage of cotton he may shift from cotton to soil improving or protecting crops and be eligible for payments.

He may shift as much as 15 per cent of the wheat, corn, grain sorghum, potato or fruit and vegetable base acreage to legumes, cover crops or approved soil building practices and receive payments.

In the case of peanuts the greatest shift of acreage for which payment may be made is 20 per cent.

No payments will be made in Texas for food and feed crops like corn or grain sorghums shifted to soil improvement uses unless it can be shown that these crops have been produced in excess of home needs. In that case the only diversions for which payment will be made are on the portion of the acreages which are in excess of home needs.

Soil conserving payments may be granted to help recompense the farmers for the sacrifice involved in giving up a part of their soil depleting cash crops in order to give a chance to improve the land.

"Taken as a whole, the new program helps a farmer shift to a good sound farming plan without loss of income and buying power while the changes are being made," Mr. Cook states.

"Better soil—better citizens, is the way I see it," said Jack Shelton, vice director and state agricultural agent of the Texas Extension Service, in discussing the new agricultural program which concerns itself chiefly with soil conservation and good land use.

"It is provenly true that rural communities surrounded by rich farming lands are centers of prosperity, while these situated in the midst of lands that have lost their fertility and no longer produce bountifully are on the down grade and gradually lose, either through bankruptcy or moving away, many of the commercial establishments which prospered when the lands were productive," Shelton said.

"When you find people living on a fertile soil you find them living in the better type homes, riding in better cars, driving the best teams. On poor soils you find them in poorer homes, with very little paint on the buildings and fences."

"The soil reflects itself on the people who live on it and on their crops and livestock. As soil becomes depleted you grow cattle on that soil that have small bones, lacking the weight and bloom that are found on cattle grown on good soil. If the soil is that important, why shouldn't it be one of the main objectives of the farm program to build up that soil? How are we going to accomplish that? With terraces, pastures, legumes and livestock."

"The Soil Conservation and Domestic Allotment Act gives Texas farmers and ranchmen a great opportunity to reorganize their business so as to rebuild the wasted lands and re-establish prosperity on the farms and ranches of Texas."

"The reception given the program as it has been presented to the people by the county agricultural agents shows that the situation has been realized, and the new act came at a time that it was very welcome," Shelton said.

"Make the new farm program table talk in every farm home in Texas," is the suggestion to rural home makers made by Miss Mildred Horton, vice director and state home demonstration agent of the extension service. Miss Horton pointed out that the program being established under the Soil Conservation and Domestic Allotment Act is one in which every home maker is interested, and that developing details of the plan would be of interest to the whole family as they meet around the dining table three times a day.

The better cropping plans and land use systems to be instituted under the act include consideration for the farm family's needs of food for themselves and food for the farm work stock, Miss Horton stated.

"It is probably the first national agricultural plan offered in any country which makes such definite provision for the welfare of the family.

"No payments will be made for soil building crops planted on any

News From 4-H Clubs of County

Romney Boys' 4-H Club Meets

The Romney Boys' 4-H club met at the school on March 24 at 10 a. m. At this meeting Hugh Barnhart, Assistant County Agent, talked to the club on the subject, "How to Conduct a 4-H Club Meeting." After Mr. Barnhart's talk the following officers of the club were elected: Earl Frye, president; Earl Frye, vice president; Glenn Pharr, secretary and treasurer; Hoyle Reed, reporter, and Mr. Bruce Younger, club sponsor. At this meeting the club decided to make the Romney boys' 4-H club the best in the county. The following boys were present: Doyle Reed, Glenn Pharr, Burleson Clark, Larkin Akers, Forrest Frye, Earl Frye, Jr., Gregg, Roy Lee Smith, Royce Burnett, Floyd A. McClaim, Doval Bilfrey, Neal Marsh, Garland Pharr, Homer Harcar, and the club sponsor, Mr. Younger.—Hoyle Reed, Reporter.

Flatwood Boys' 4-H Club Meets

The Flatwood 4-H club met on March 24 at the Flatwood school building. The following officers were elected at this meeting: Glenn Justice, president; Guy Lyleria, vice president; Cecil Caudle, secretary and treasurer; Harold Duncan, reporter, and Mr. T. E. Robertson, club sponsor.

Hugh Barnhart, Assistant County Agent, gave a very interesting talk on how to conduct a meeting. Those present were: Glenn Justice, Guy Lyleria, Cecil Caudle, Billy Ray Lyleria, Lee Alton Harbin, Elbert Bennett, Vernon Bennett, Vernon Foster, Ford Byrd, Wilburn Caudle, Harold Duncan, and the club sponsor, Mr. Robertson.—Harold Duncan, reporter.

Raymond Rogers Tells of Trip To Fort Worth Stock Show

On the day of March 16, 1936, most of the New Hope 4-H club boys attended the Fat Stock Show at Fort Worth, Texas. We left Eastland at six o'clock in the morning, going by way of Mineral Wells. We arrived at the Fort Worth airport at 9:45 a. m. We were shown through the airport and from there we went to Swift and Armour packing houses where we saw many interesting sights. Being a man at every door in the packing house to show us through, we went through and got back on the outside all right.

While in the stock show grounds we saw many interesting things, such as beef cattle, dairy cattle, hogs, sheep, automobile show, merchants exhibits, rodeo horses, and many other things to numerous to mention.

The trip I made to Fort Worth Stock Show was very interesting to me and I am looking forward to next year so I can go again.

Flatwood Boys' 4-H Club Hears West Virginia Man Talk

The Flatwood Boys' 4-H club met at the Flatwood school on April 8, 1936 at ten o'clock. Mr. Barnhart brought with him Mr. T. J. Hastings from Wolf Summit, W. Va., and Miss Maurine Hearn, the District Agent, from College Station, Texas, to talk on "The Work the 4-H club members were doing in West Virginia. Miss Hearn talked to the club on the subject, "The nine goals of a good 4-H club boy or girl should strive to reach this year." Miss Stewart, Assistant Home Demonstration Agent, was introduced to the club.

Plans were made at this meeting for every member of the club to attend the Club Rally Day to be held in Eastland on Saturday, April 18th.

The club members present were: Glenn Justice, Guy Ray Lyleria, Cecil Caudle, Robert Ray Lyleria, Lee Alton Harbin, Elbert Bennett, Ford Byrd, Vernon Bennett, Wilburn Caudle, Harold Duncan and the club sponsor, Mr. Robertson; also the visitors, Mr. Hastings and Miss Hearn.—Harold Duncan, reporter.

4-H Club Notes

W. H. Bohannon Jr., Carbon 4-H club boy, was in the Morton Valley community Saturday to purchase his club pig for his demonstration this year.

Ewell Allison, Carbon 4-H club boy, has received some good seed corn from the Texas Experiment Station to be planted this year.

Edward Walker, Grandview 4-H club boy, has moved to the Romney community, where he will be enrolled in the Romney club.

Carbon Girls' 4-H Club

Cornelia Faye Stewart, Assistant Home Demonstration Agent, met with the Carbon 4-H club girls Thursday, April 2.

The girls discussed their aprons in detail and examined an apron from another club. Miss Stewart

showed the girls how to fold the aprons when they were finished. All aprons are to be finished by the next meeting, and kept for exhibit.

The slips were discussed briefly as to materials and patterns.

The following club members were present: Willie Pate Alford, Ladell Bethany, La Rue Bohaman, Billie Eldridge, Christine Giebert, Margaret Jackson, Charlene Jordan, Willie Maude Martin, Bonnie Jean Poe, Nannie Reynolds, Clarice Sims, Anna Fay Snodgrass, Lottie Sue Snodgrass, Rae June Stubblefield and Mary Evelyn Taylor.—Reporter.

Colony Girls' 4-H Club

The Colony Girls' 4-H club met at the school on April 7 at 8:45. The aprons were examined by the girls. They will be finished by the next club meeting. Cornelia Faye Stewart, Assistant Home Demonstration Agent, showed the girls how to score their aprons. Materials and patterns for the slips and dresses were discussed.

The following girls were present: Loretta Thompson, Joyce Alderson, Ovada Anderson, Norma Jean Hadley, Mildred Harrell, Dorothy Bowen, Opal Holliman, Imogene Stuard, Clara Jane Harmon, Christine Akers, Wynema Loper, Jessie Morton, June Ekin, and Paul Ridding.—Reporter.

Okra Boys' 4-H Club Meets

The Okra Boys' 4-H club met at the schoolhouse on April 2. Af-

ter the business meeting Hugh Barnhart, assistant county agent, talked to the club on the subject, "The Value of Terracing to a Farm and How to Terrace Land in Eastland County." After his discussion we went on the school ground, where Mr. Barnhart showed the club how to set up a terracing machine, and how to run terrace lines.

The following club members were present at the meeting: Robert D. Drizzal, Herman H. Claborn, Otis Adams, Jr., Billie F. Claborn, Norman R. Grisham, Ward Claborn, Bob R. Foster, and Marvin U. Claborn, and the club sponsor.—Otis Adams, Jr., reporter.

New Hope Girls 4-H Club

The New Hope Club Girls met Thursday, April 9, at the school building. At this meeting Cornelia Faye Stewart, Assistant Home Demonstration Agent, showed the girls where to put their names on the aprons and how to fold them. All aprons are to be finished by the next meeting. The girls were shown how to place a slip pattern on the material. The dresses to be made were discussed as to becoming patterns and materials.

The following girls were present: Verna Smith, Mary Lee Smith, Janice Smith, Commie Seago, Neil Hallmark, Kathryn Dixon, Glenda Merle, Emma Jane Cunningham, and Effie Campbell.—Reporter.

GRANDVIEW

By Antha Prestidge
Farmers are very busy with their field work, but are in need of rain.

Mr. and Mrs. Calvin Brown and daughters L. V. and Ruby Dale, attended the singing convention Saturday night and Sunday at Eastland.

Mr. and Mrs. Bill Thompson and little son were guests of her parents, Mr. and Mrs. T. M. Goodwin Sunday.

Mrs. A. J. Lamb and children were guests of Mr. and Mrs. C. M.

Prestidge Sunday evening.
Mr. and Mrs. Lon Capen and children spent the day with Mr. and Mrs. Jessie Moore Leon.
Mr. and Mrs. Nugin Hans Duster were in our community Friday evening.
Everyone enjoyed the given at the home of Mr. and Estus Browning Friday night.

KC BAKING POWDER

Manufactured by baking powder specialists to make nothing but baking powder—supervision of expert chemists.

ALWAYS Uniform Dependable

Same price today as 4.5 years ago
25 ounces for 25c

FULL PACK NO SLACK FILLING

MILLIONS OF POUNDS HAVE USED BY OUR GOVERNMENT

SKIN IRRITATIONS Burns, Itches, Stings, Scratches, etc.

To relieve soreness—hasten healing—help prevent infection—apply at once. Mild, reliable

Resinol

At the first SNIFFLE ..

Quick!—the unique aid for preventing colds. Especially designed for nose and upper throat, where most colds start.

VICKS V-A-T-R-O-NOL
30c double quantity 50c

NORTH TEXANS, GO SOUTH! SOUTH TEXANS, GO NORTH!

Travel Texas, Know Your State during
CENTENNIAL YEAR



VISIT THESE INTERESTING CENTENNIAL CELEBRATIONS

- (April 14 through April 21. Revised to April 1)
- APRIL 12-21—HOUSTON**—San Jacinto Association Celebrations. (Ten-day festival will include brilliant parades, banquets, concerts, and patriotic events. A public ball will be held the night of April 20 on Main Street at site of old capital of Texas.)
 - APRIL 15-21—EL PASO**—Schools' Centennial. (Historical pageantry and panoramic exhibition devised to stimulate interest of school children in Texas history.)
 - APRIL 17—TEMPLE**—Bell County Music Festival. (Miss Central Texas and her court of honor to be acclaimed in splendid presentation.)
 - KINGSVILLE**—Historical Celebration. (South Texas city in heart of world's greatest cattle domain, the King Ranch, turns back the pages of history.)
 - RAYMONDVILLE**—Texas Onion Fiesta. (Harvest festival will attract Texas visitors with another of State's great products.)
 - APRIL 17-18—DECATUR**—Wise County Centennial Carnival. (Schools and civic organizations contribute in two-day colorful celebration.)
 - APRIL 19—GEORGETOWN**—Agricultural and Cultural Fair. (Economic and educational advancement portrayed in historic Texas community.)
 - FORT WORTH**—Texas Under Six Flags' Pageant. (Pageant featuring massed chorus of 3000 voices, presented at T.C.U.)
 - APRIL 20-25—SAN ANTONIO**—Fiesta de San Jacinto. (Gay festival of San Jacinto annually attracts many thousands of visitors. Climax comes in the Battle of Flowers parade on April 24.)
 - APRIL 21—ANNIVERSARY** of Battle of San Jacinto observed in colorful Celebrations in:
 - KILGORE**—Centennial Pageant and Celebration.
 - SAN FELPE DE AUSTIN**—Colonial Capital Centennial Celebration.
 - BOWIE**—Centennial Folk Festival.
 - DENTON**—Texas Through the Years' Pageant.
 - PALESTINE**—"A Century of Texas" Pageant.
 - BIG SPRING**—"Rose Window" Operetta.
 - RALLS**—Crosby County Centennial Celebration.
 - SNYDER**—Heart of West Texas Centennial Pageant.
 - LULING**—Coldwell County Centennial Round-Up.
- For dates beyond April 21, write State Headquarters TEXAS CENTENNIAL CELEBRATIONS Dallas, Texas

Centennial year is travel year in Texas.

An opportunity for every Texan to know his own state; its scenic beauties, historical background and amazing resources!

The month of April is especially eventful. Houston, San Antonio, Kilgore, Taft-Sinton, Victoria and other communities invite you to interesting historical celebrations; observances that will be cherished and long remembered by patriotic Texans.

Make your plans to attend these celebrations and other observances to be held throughout the year. Pack the family into the car, go by train or bus—really SEE Texas. You'll find Texas offers every vacation pleasure—and it's all right here in your own state.

See the calendar at the right. Write the Chamber of Commerce at the various cities for detailed information on events you are interested in.

LOOK AT THE ENGINE

LOOK AT THE CAR

THEN LOOK AT THE PRICE

CONSIDERING what you get, the Ford V-8 is the lowest priced car in America.

No other car with a V-8 engine can be had within a thousand dollars of its price.

These are just plain facts. Price is not the most important thing about a car. But in the Ford V-8 you get a big, roomy car with a V-8 engine, a 112-inch wheelbase, and a low price too. A car with fine quality in the unseen parts as well as where it shows. A car that is economical to run and stays out of the repair shop.

Check up on what you get and what it costs and you will find it pays to put your hard-earned money in a Ford V-8. No extra charge for Safety Glass all around or 6-inch air-balloon tires. This applies to all Ford cars.

\$25 A MONTH BUYS ANY NEW FORD V-8 CAR after the usual low down-payment

Low monthly payments on authorized UCC $\frac{1}{2}\%$ per month Finance Plans. Any Ford dealer will be glad to arrange this for you, with liberal allowance for your present car.

FORD V-8

\$510

UP. F. O. B. DETROIT. STANDARD ACCESSORY GROUP, INCLUDING BUMPERS AND SPARE TIRE, EXTRA.

TEXAS CENTENNIAL 1936

GUY PATTERSON TIRE SERVICE

AUTHORIZED FORD SERVICE AND DEALER

Corner Seaman and Main Phone 80 Eastland

EASTLAND SOON TO HAVE LIGHTED SOFT BALL FIELD BECAUSE OF COOPERATION

The field will have a brilliance of 24,000 watts, Hennessee said. Lighting of the field was planned by John Hume, lighting expert of the Texas Electric Service company.

Permanence was aimed for in erection of all equipment. The poles are imbedded securely in eight feet of concrete.

Stands constructed of six-inch pipe line will seat 400 to 450 persons. The fire department which is to maintain the field, plans assessment of a small admission fee.

One feature of the Eastland field which is attracting commendation is the ample parking space and standing room.

Beside the many Eastland merchants who contributed to cost of the project, the following firms have either donated pipe or sold, and many both, for the field:

Magnolia Petroleum Company, Hoffmann & Page, States Oil Corporation, Lone Star Gasoline Company and Texas Electric Company.

Majority of the work has been donated by soft ball enthusiasts, but some has been paid.

Chief concern of the soft ball field project sponsors has been treatment of the ground. By raking, watering and other work the field is rapidly being whipped into shape. The fire department expects to issue a call soon for a general cleaning-up of the ground.

In order that the actual season will be as well organized as have workers on the field project, a non-partisan group is being named as an executive committee. Members of the committee to date are L. A. Hightower, T. H. Landon and A. W. Hennessee, fire department chief.

Teams which have signified their intention to enter the league are Highway Department, Lone Star Gasoline Company, Piggly Wiggly, Economy Store, Hi-Y Club, and the Fire Department.

A team composed of Magnolia employees at Olden is understood in storage of organization.

Eastland is inviting rural communities to form teams which will be given privilege to play on the lighted field. Managers of these teams have been requested to contact the fire department by April 25 if possible.



When You Spine's Out of Line

One man out of line spoils an army formation. One vertebral joint out of line interferes with your health. We, as expert Chiropractors, are able through simple adjustments to correct the fault and restore your health to normal. Often a single visit will convince you.

DRS. DEIS & DEIS
Chiropractors
Radio Therapy Alpine Sun Lamps

Lions Move to Aid Band In Trip For Big Spring Event

A committee to arrange transportation for members of the Eastland High School Band which will compete in the Texas Band Teachers Association's contest Saturday in Big Spring was appointed at the Lions Club meeting Tuesday.

Members of the committee are Ernest Jones, chairman, E. A. Herling and F. M. Kenny.

The government's new agricultural program of soil conservation should prove of more value than the invalidated AAA, County Agent Elmo V. Cook told the club members.

He stated cotton—which is second to peanut production in this county—payments were small in proportion to other West Texas counties.

Secretary of the Chamber of Commerce H. C. Davis was a visitor.

"COLLEEN," LATEST WARNER MUSICAL AT THE CONNELLEE

That inimitable team of screen lovers, Dick Powell with tuneful songs on his lips, and Ruby Keeler with her rhythmic dancing, together with Joan Blondell and Jack Oakie, head the cast of Warner Bros.' latest spectacular musical comedy, "Colleen," which comes to the Connellee Theatre Saturday night at 11 p. m.

In addition to the four stars, the cast, which is one of the most notable ever assembled for a production of this type, includes Hugh Herbert, Louise Fazenda, Paul Draper, Marie Wilson, and a score of other famous names besides 200 beautiful chorus girls and dancing youths.

There are two big, spectacular specialty numbers created and staged by Bobby Connolly, formerly dance director for the Ziegfeld Follies and other New York shows.

Dick Powell is the serious minded young manager of an estate for a rich and flirtatious uncle, who had purchased a modiste shop for a "girl friend."

Dick falls in love with the efficient secretary of the shop, and manages to win her heart after a series of entanglements filled with hilarious comedy for the audience, although heartbreaking to the young lovers. He also sings three songs.

Miss Keeler has the role of the secretary, and introduces some remarkable tap dancing, both by herself and with that dizard of the stage, Paul Draper.

Jack Oakie and Joan Blondell portray a pair of goldiggers, out for all the loot they can get out of the millionaire, a role played by Herbert. His wife, a hysterical society woman, constantly upset by her husband's philanderings, is portrayed by Louise Fazenda.

Draper, the famous interpretative dancer of Broadway, makes his film bow in this picture. He has been the rage of New York, and in this picture, is said to do some of his finest lyric dancing.

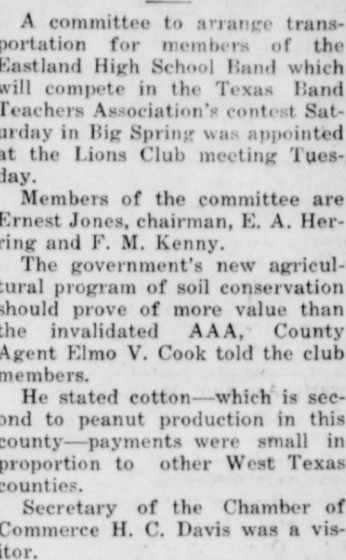
Other important members of the cast include Marie Wilson, Luis Alberni, Hobart Cavanaugh, Bertton Churchill, J. M. Kerrigan, Spencer Charters, Addison Richards, Mary Treen and Charles Coleman.

The picture was directed by Alfred E. Green.

Returns From Spring Hill Revival Meeting

The Rev. Fred C. Eastham, pastor of the First Baptist Church at Eastland, and Mrs. Eastham, have returned from Spring Hill, where

Connellee Now Playing



Rochelle Hudson and Harry Richman in "The Music Goes 'Round'"
A Columbia Picture

It should be said immediately that this film takes its place with the best of them. Right up to the minute in thought and action; serving up the newest jazz craze, "swing" rhythm; brimming over with gay songs, light romance, lovely dancing girls, and genuine comedy, it provides an hour and a half of complete diversion.

Harry Richman is a welcome addition to film ranks. He is a born entertainer, an engaging personality, and gives a song everything

Church of God's Revival Continues With Good Interest

The series of revival services continue with good interest and increased attendance at the local Church of God, Lamar and Valley streets, under the direction of the evangelist, Rev. G. W. Pendleton of Neodesht, Kansas, and the pastor, Rev. Robt. E. Bowden of Gorman.

Several have been attending from Ranger, Olden, Gorman and Cisco. Rev. Mood, pastor at Cisco, attended Tuesday evening.

Services start promptly at 8:00 each evening, and the day services will convene each morning at 10:00 except Saturday and Mondays.

Special vocal selections are being rendered during each service, guitar accompaniment also being used. The public is invited.—Reporter.

Six Attend Abilene K.P. Lodge Meeting

Six members of the Knights of Pythias of Eastland attended a meeting of the Abilene lodge Tuesday night.

Speakers were John W. Birdwell of Mineral Wells, grand chancellor of Texas; Theo. Yarborough of Weatherford, grand keeper of records and seal; and John Lee Smith of Throckmorton, representative from the supreme lodge.

Eastland knights attending were Judge Clyde Grissom, Judge Clyde Garrett, C. F. Shepperd, L. D. Black, W. H. McDonald, and Secretary of the Chamber of Commerce H. C. Davis.

When This Tread WEARS OFF



THIS Tread Appears

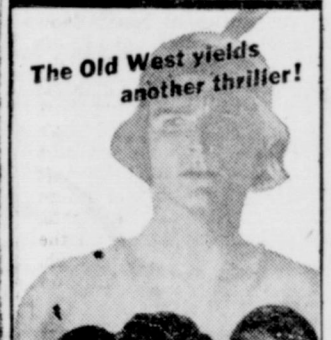
PATENTED Seiberling Air Cooled tires deliver safe anti-skid miles at half the cost. Have double resistance to puncture and blowout. * * * Before you buy—take a look—ask for proof and demonstration—get our price. * * * Ask, too, about our liberal trade-in offer for your present tires.

SEIBERLING
AIR COOLED TIRES

JIM HORTON
TIRE SERVICE
East Main Eastland

LYRIC

Today - Saturday Sunday Only

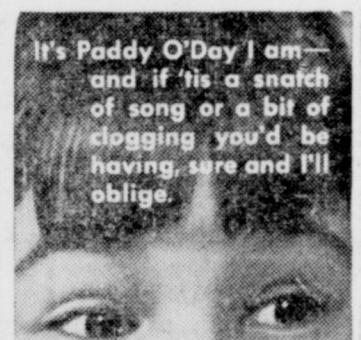


Zane Grey's "DESERT GOLD"

with Larry "Buster" Crabbe
Robert Cummings, Marsha Hunt, Tom Keene, Glenn Erikson, Monte Blue, Raymond Hutton
A Paramount Picture

Plus
THE FIGHTING MARINES
GRANT WITHERS
A Paramount Picture

HUMAN TARGETS



Paddy O'Day

with JANE WITHERS
PINKY TOMLIN
RITA CANSINO
JANE DARWELL
GEORGE GIVOT
Executive Producer Sol M. Wurtzel
Directed by Louis Selzer
A Fox Picture

CONNELLEE TODAY AND SATURDAY

...90 MARVELOUS MINUTES OF MIRACLE ENTERTAINMENT!

The First Big Musical Smash of the New Year!

Columbia's glorious show of shows! Aglitter with Stars! Afire with romance! Throbbing with 8 sensational tunes!

Topped by SINGING WITH THE STARS—
First new screen-and-audience idea since the talkies were born!



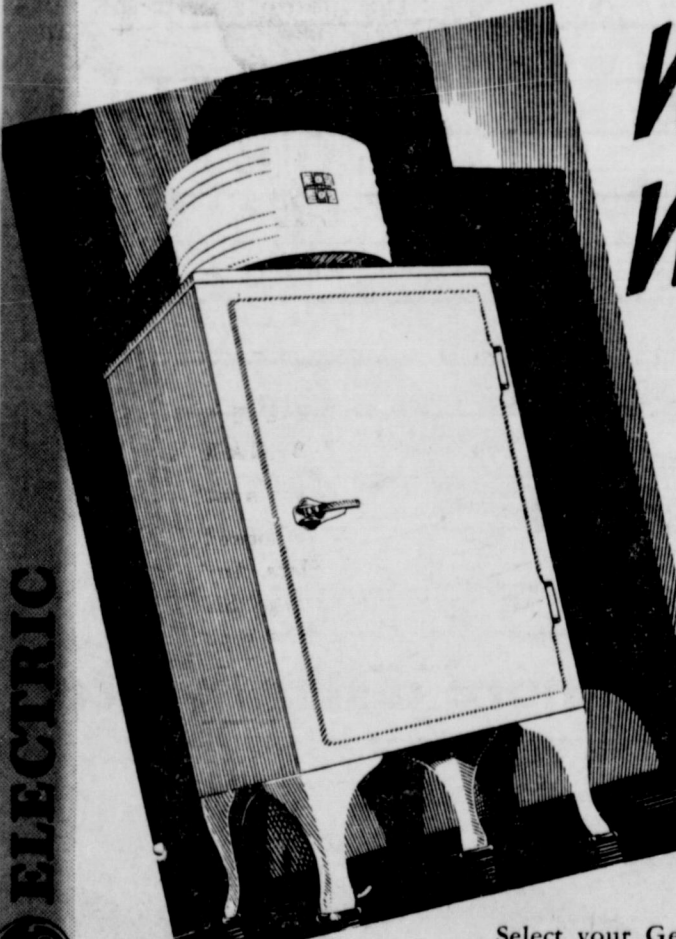
See FARLEY & RILEY
who wrote "The Music Goes 'Round and Around'"

HARRY RICHMAN
ROCHELLE HUDSON
WALTER CONNOLLY
FARLEY & RILEY
and their "Round and Round Music"
Michael Bartlett • Douglas Dumbrille
Lionel Stander • and thousands of others!

Screen play by Ju Swerling • Story by Lew Brown, Harry Akst and Victor Schertzinger.
Directed by VICTOR SCHERTZINGER

GENERAL ELECTRIC

You need a General Electric Refrigerator in your kitchen NOW ...



WHY WAIT?

The modern convenience and money-saving advantages of a G-E Refrigerator know no seasons! It's always summertime in the kitchen.

Select your General Electric now and let us show you how to save an extra \$20 to \$30 before summer.

Four distinctive cabinet styles. Monitor Top, Flatop and Liftop models with the "ageless" General Electric sealed-in-steel mechanism that now gives "DOUBLE THE COLD" AND USES 40% LESS CURRENT!

HARPER MUSIC & BATTERY CO
212 West Main Street Phone 335 Eastland

CONNELLEE

Midnight Show SATURDAY! Sunday & Monday

Truck On Down And See These Great Stars Go To Town-In Warner Bros.' First Big Musical In A Year!

DICK POWELL in 3 new songs!

JOAN BLONDELL Director Top Tunes!

JACK OAKIE in 3 songs! "Under the Stars" "Star from the Stars"!

RUBY KEELER singing it in lavish dance numbers!

PAUL DRAPER the new dancing partner from Broadway!

LOUISE FAZENDA "Lover that she was in Broadway Comedies"!

HUGH HERBERT and a host of others!

COLLEEN

And 100's Of Hollywood's Choicest Collections

CONNELLEE TODAY AND SATURDAY

...90 MARVELOUS MINUTES OF MIRACLE ENTERTAINMENT!

The First Big Musical Smash of the New Year!

Columbia's glorious show of shows! Aglitter with Stars! Afire with romance! Throbbing with 8 sensational tunes!

Topped by SINGING WITH THE STARS—
First new screen-and-audience idea since the talkies were born!

See FARLEY & RILEY
who wrote "The Music Goes 'Round and Around'"

HARRY RICHMAN
ROCHELLE HUDSON
WALTER CONNOLLY
FARLEY & RILEY
and their "Round and Round Music"
Michael Bartlett • Douglas Dumbrille
Lionel Stander • and thousands of others!

Screen play by Ju Swerling • Story by Lew Brown, Harry Akst and Victor Schertzinger.
Directed by VICTOR SCHERTZINGER

Extra!

THE NEW EXCITING ISSUE OF **MARCH OF TIME**

1. Japan Boils Over! 2. Devil's Island Today
3. Fishing Becomes Big Business!

"Blues" Father To Be Given Honor

MEMPHIS, Tenn.—Beale Street, famous throughout the world because of W. C. Handy's "Beale Street Blues," will honor the Negro composer at a cotton carnival here May 12-16.

Handy, who wrote the "St. Louis Blues," "Memphis Blues," and "Beale Street Blues," has accepted an invitation to be guest of honor at the Negro division of Mid-South cotton carnival.

Handy now lives in New York and will visit Memphis for the first time in five years. The last time he was here Handy Park, bordering Beale Street, was named for him.

It was Handy who wrote the first blues tune. Birth of the blues brought in the jazz age, with Paul Whiteman and other jazz exponents pepping up the mournful honors torn on Beale.

In 1909 when E. H. Crump was elected mayor of Memphis, Handy heard three Negroes with string boxes plunking out a mournful tune about "Where the Southern Crosses the Dog."

He saw that people liked the tune and returned here and made it into a political blues tune. He called it "Crump Blues." It went on about "Mr. Crump—don't 'low no easy riders here."

Later he changed the title to "Memphis Blues," and the haunting melody spread.

His "St. Louis Blues" probably has been played as many times as any popular piece ever written.

A Negro insurance man here, Lieut. George Lee, has this to say about Handy:

"His blues tunes are the most distinctive contribution to American music. They are even more so than the Negro spirituals. Handy operates his own publishing house in New York. He wrote me last month that he cleared more than \$10,000 in 1935 from royalties on his songs."

Handy will lead the Negro carnival parade as it twists about Wellington, Vance, Second and Beale Friday night, May 15. Gaily dressed Negroes will accompany him.

THIS CURIOUS WORLD By William Ferguson



AN EXPLOSION ON THE SUN, LOUD ENOUGH TO REACH THE EARTH, WOULD NOT BE HEARD BY US UNTIL ABOUT FIFTEEN YEARS AFTERWARD.

A LUNGFUL OF HYDROGEN WILL CHANGE A BASS VOICE TO A TENOR. THE VIBRATION OF SOUND IS GREATER IN LIGHTER GASES.



IN THE UNIVERSITY OF PENNSYLVANIA, THERE IS A PRESSED SPECIMEN OF A PEA PLANT GROWN BY GREGOR MENDEL, FAMOUS AUSTRIAN BOTANIST, AND USED BY HIM IN THE DISCOVERY OF "MENDEL'S LAW," A PRINCIPLE GOVERNING THE INHERITANCE OF CHARACTERS IN ANIMALS AND PLANTS.

BY breeding pea plants, Mendel discovered that certain characters depend on the presence of determining factors, and that the second and later generations of crossbreeds exhibit these characters in definite proportions.

Art Of Tinting Bronze Will Live

CANTON, O.—The process developed by C. Walter Clewett, Canton craftsman, duplicating nature by aging bronze with a beautiful incrustation of blue salts will be lost with his death. The American Federation of

Arts has asked to be made trustee of the processes and formula, of which Clewett is believed to be the sole possessor, so they can perpetuate his work of reproducing the blue effect which nature sometimes gives to bronze exposed under the right conditions for a long period.

Clewett has been interested in the patination of bronze for 35 years and in his home workshop has produced many art objects

which have been purchased for museum display. Others have been bought for the homes of some of the country's wealthiest men, several pieces having been selected for the home of Edsel Ford in Detroit.

The Canton craftsman saw a copper vessel which had been cleaned with a green cloud covering the surface. He at once began ex-

periments to obtain color effects which would show interesting variations and found that shades of green were comparatively easy to obtain.

In his search for new colors he came upon a small wine jug in the Piermont Morgan collection in the Wadsworth Atheneum in Hartford, Conn., which showed shades of blue ranging from light tones through turquoise to shades

which were almost black. The piece had been found at Boscoreale, Italy, during excavations which led to the findings of the famous silver treasure of the Louvre and was accredited with an estimate date of 200 B. C.

With this as his inspiration he set to work in a effort to duplicate the effect. It was original experimentation since textbooks gave no help and there was no

record of the production, except by nature.

After two years work and several trips to Hartford to compare his work with the original his blue bronze was complete.

You never know what they're going to use next in making a road. Michigan is testing a cotton road, and the tobacco one has proved successful.

FRATERNITIES WARNED

SAN FRANCISCO.—Greater fraternities have been newly suspected possibility, determining American uni-life. The local Interfraternity conference has warned all fraternalists to guard against communists attempting to enthrone themselves in local fraternities.

A LIGHT SMOKE OF RICH, RIPE-BODIED TOBACCO

Each Puff Less Acid

I smoke for pleasure, my mind's at rest
I smoke Luckies a Light Smoke of rich, ripe-bodied tobacco "it's toasted"
Luckies are less acid

Recent chemical tests show that other popular brands have an excess of acidity over Lucky Strike of from 53% to 100%.

Excess of Acidity of Other Popular Brands Over Lucky Strike Cigarettes	
Brand	Excess of Acidity (%)
Lucky Strike	0
Brand B	53
Brand C	75
Brand D	100

Results verified by independent chemical laboratories and research groups.

Luckies — "IT'S TOASTED"

Your throat protection — against irritation — against cough

Copyright 1936, The American Tobacco Company

Take the Ache Out of Kitchen Chores with an Electric Mixer

How many minutes a day do you spend mixing batter, creaming potatoes or doing some other tiring kitchen job that an electric mixer will do better in one-fourth the time? See the new model electric food mixers at our store and let us demonstrate how efficient they are in saving time and energy, and how much better job they do than can be done by hand. The cost of operating an electric food mixer is very low—only about 1/4 cent an hour on your cheap electric rate.

\$22.50
(Complete with Juice Extractor)

Terms—\$2.50 Down, \$2.50 per Month

TEXAS ELECTRIC SERVICE COMPANY
J. E. LEWIS, Mgr.

FARM RELIEF

that is practical AND LASTING!

There is health, happiness and economy in Maytag helpfulness—health, because it removes the drudgery of hand-rubbing the clothes—happiness, because it releases many washday hours for other things—economy, because its careful washing makes the clothes last longer. The one-piece, cast-aluminum tub, the Gyrtator washing action, originated by Maytag, the Roller Water Remover and other Maytag developments are combined with highest grade materials and expert workmanship throughout.

Free demonstrations in city or country. Ask the nearest dealer for easy payment plan.

S. R. WOOD
S. R. Wood Refrigerator Sales Co.
Eastland

MAYTAG

THE MAYTAG COMPANY, MANUFACTURERS
FOUNDED 1887 NEWTON, IOWA

Only \$615

... to satisfy yourself with something better

The 1936 De Luxe Eight Coupe—\$730*

You will search the world in vain for a more distinctive car

NO CAR at any price looks like a Pontiac—the most beautiful thing on wheels. The Silver Streak is the reason—and it identifies one of the most economical and dependable cars ever built... winner in its class of the famous Yosemite Valley Economy Run*, with an average of 23.9 miles per gallon (no oil added)... the latest of a line of cars that often pile up over 200,000 trouble-free miles.

If you are tired of cars that all look alike... if you want to ride with genuine pride—you'll buy a Silver Streak Pontiac—the only car that gives you true distinction, plus championship economy.

Triple-Sealed Hydraulic Brakes Smooth and sure in any weather	THE MOST BEAUTIFUL THING ON WHEELS..
Knee-Action Ride For safety and comfort on any road	<h1>Pontiac</h1> *OFFICIAL PRICE CLASS ECONOMY CHAMPION
"Turret-Top" Fisher Bodies The smartest, safest bodies built today	
No-Draft Ventilation For fresh air, clear vision, perfect comfort	
Level Floors—Front and Rear Foot room for all	

*List prices at Pontiac, Mich., begin at \$615 for the Six and \$730 for the Eight (subject to change without notice). Safety plate glass standard on De Luxe Six and Eight. Standard group of accessories extra. Offered on G.M.A.C.'s new 6% Tie Payment Plan.

MUIRHEAD MOTOR CO.

305 East Main
ENTER PONTIAC'S NATIONAL ECONOMY CONTEST—FREE CARS—164 CASH PRIZES

Phone 692

VOTE FOR BEER AND PENSION REVENUE



Vote for Her Support

Beer revenues from licenses and taxes will help to pay the Old Age Pensions without sales taxes on necessities or additional taxes on real estate. Without this support by the State, which has been voted by the people, but for which there are no funds available, many who deserve pensions must depend upon charity.

By Voting for Beer

You will also cast your vote for support of the aged. You will vote to have a controlled system of sales from which the State will derive revenues. You will vote against the illegal manufacture and sale of home-brew, which brings revenue ONLY TO THE BOOTLEGGER!

By Voting Against Beer

You will also cast YOUR vote to deprive many old people of pensions from the State, for WITHOUT Beer revenues there WILL NOT BE ENOUGH MONEY TO PAY PENSIONS to all who are eligible for them UNLESS revenues are derived from a GENERAL SALES TAX or additional property taxes.

YOU WILL ALSO VOTE TO LET THE BOOTLEGGER CONTINUE TO DOMINATE THE BUSINESS WITH LIQUOR WITHOUT PAYING TAXES OR LICENSE FEES!

--- DRY COMMUNITIES WILL REMAIN DRY ---

AND AT THE SAME TIME RECEIVE ALL THE BENEFITS OBTAINED THROUGH REVENUES DERIVED FROM THE WET COMMUNITIES. CISCO, RANGER AND EASTLAND ARE THE ONLY TOWNS THAT WILL BE WET IF THE ELECTION CARRIES!

Vote Dry and You Vote Against the Support of Deserving People

Voting against Beer will throw several hundred people out of employment.

Since Beer is not sold in Eastland County legally traffic is being routed around through the north loop in wet territory and according to statements from hotel men, cafe proprietors and filling station operators, business has dropped off one-third.

Beer will in all probability enable some to be rented.

AND KEEP OUR PEOPLE AND TAX MONEY AT HOME—ALSO OUR TOWNS ON THE HIGHWAY

County Retail Beer Dealers Association

W. E. CONNELL, Secretary

ganized Bible classe... Baptist district perfe... gathering at the first... Lueders. Approximately 175... Officers were named as follows... E. S. Cummings, Abilene, presi... W. F. Walker, Cisco, vice... John F. Odor, Abilene, secretary-treasurer. L. H. Welch of Breckenridge, president of the Lueders encampment... Rev. A. J. Morgan of Breckenridge was the afternoon speaker. The Baptist churches in the following towns were represented: Albany, Anson, Breckenridge, Aspermont, Swenson, Lueders, Haskell, Rule, Cisco, Eastland, Stamford West Side, Rochester, Hamlin, Bethel, and Abilene First University, Sunset and Immanuel churches.

Delinquent Tax Property Owners Face Suits by City Commission

Filing of suits against delinquent tax property owners will be undertaken by the city commission if the prospective defendants do not "make every effort to pay their delinquent taxes at once."

This notice was served by the commission in a public statement issued Thursday.

The statement was as follows:

It is the sincere desire of your City Commission to do everything possible for the good of Eastland in every way that is at all possible consistent with the city's financial condition. Your City Commission, up to this time, has caused to be graveled more than 75 per cent of all the streets in the city, and when the present project is completed 90 per cent of the streets of Eastland will be topped with gravel. This means that the occupants of nearly every house in Eastland will be provided with a graveled street upon which to travel to and from town. Your City Commission gave preference to this project because it undoubtedly benefited more people and improved the city more than would any other project that we could have undertaken, and it is the City Commission's opinion that good judgment was exercised in performing as much as possible of the Government relief work in Eastland, as the Federal Govern-

ment provides about 85 per cent of the cost of this work, the city being required to pay only about 15 per cent either in money, material, truck hire, etc.

As you all know the present Government relief will not continue a great deal longer and it is our desire to get as much of the government money as possible spent in the city, as it permits us to improve the city in a way that would be impossible if the city had to pay the entire cost. This work also brings a considerable amount of money into the city in addition to providing needed assistance for eighty families, from each of which some member is working on the city project.

There are a number of property owners in the City of Eastland who have not paid their city taxes the last few years, and a considerable number who have not paid for a greater period of time. The City Commission, up to this time, has not imposed any penalty and interest on these delinquent taxes (which the Commission has the authority to do), in an effort to help the tax payers pay their taxes; however, it appears that a change must be made in this policy. We wish to urge you to make every possible effort to pay your delinquent taxes at once, and thus avoid the additional expense of court costs and attorneys fees

which is attached to any suit for taxes.

It is not the desire of your City Commission to impose hardships upon anyone, but it is also not the intention of the Commission to have a large number of property owners to permit their taxes to become delinquent, and to ignore them altogether, thereby imposing on the property owner who pays his taxes promptly the burden of furnishing the money to maintain the streets, and provide police protection, fire protection, sanitary service and other benefits. Unless, therefore, the delinquent tax payers make every effort to pay their delinquent taxes at once, in fairness to everyone concerned, it will be the duty, and it is the intention of your City Commission to file suit in the very near future to enforce the collection of these delinquent amounts.

Very respectfully,
The City Commission.

Voters Get Bargain For Their Poll Tax Receipt This Year

AUSTIN.—The chance to vote on the New Deals six amendments to the state constitution, state officers, and local political heads all at the price of one is proving attractive to Texas voters, whose poll tax payments indicate a near-record vote for 1936.

Poll tax experts of the state comptroller's office believed 1,350,000 would be eligible to vote. Largest number of voters in Texas was in 1924 when approximately 1,350,000 were qualified.

Normally Democratic Texas will be closely watched for its reaction to the New Deal, since its 1928 vote for Republican Herbert Hoover. More important locally is the Nov. 3 constitutional election when amendments to establish a state monopoly liquor sales system will be considered along with increases in salary for most constitutional state officials.

The gubernatorial race with incumbent Gov. James V. Allred against the field will give voters a chance to express their views on the sales tax, increased natural resources taxes and other forms of revenue. The current 44th or the 45th legislature which takes office next January will be called upon to choose some tax to raise money for paying old age pensions.

First statewide election will be July 25 when the first Democratic primary is scheduled. The second party primary will be Aug. 22 with the national and final state election set Nov. 3.

An unusually large turnout of voters past 60 years of age is expected in the state elections, in view of the interest in old age pensions. Voters past 60 may vote without poll tax payment, and those living in towns of less than 10,000 population need not even be reported to the state comptroller's office.

Tabulations from 237 of the state's 254 counties on March 20 showed 993,983 paid poll taxes. Supplementary reports plus the totals from the 17 counties still uncounted were expected to swell the paid poll tax number to 1,175,000. The long-standing method of figuring exemptions is to add 15 per cent to the poll tax total, making about 1,350 qualified voters in Texas this year.

Counties still "out" include El Paso and Bexar, two of the five largest. Others whose collectors have yet to report pre-February payments are Kaufman, Smith, Eastland, Limestone, Nueces, Brazoria, Bee, Briscoe, Henderson, Hidalgo, Limestone, Navarro, Starr, Titus, Willacy, Victoria and Duval.

Largest number of paid poll taxes reported was Harris county with 83,556. Dallas county had only 62,364 and Tarrant 40,000 at the first report.

Lumber Business Shows An Increase

AUSTIN.—Lumber statistics in the South during March made favorable comparisons both with the preceding month and the corresponding month last year, according to the University of Texas Bureau of Business Research.

Reports from the Southern Pine Association show an increase in average weekly production per unit of 12 per cent over the preceding month and 33 per cent over March last year; weekly shipments per unit were up 20 per cent from the month before and 37 per cent from a year ago; and unfilled orders per unit on March 31 were 8 per cent above the preceding month and 50 per cent above those of the corresponding date last year.

Commerce Smoker Is Due Friday Night

Final arrangements were being made Thursday by H. C. Davis, chamber of commerce secretary, for the smoker to be held at the Connelley hotel Friday night, April 17. Hamilton McRae, re-elected as president last week, will announce members of the trade extension committee for this year.

In Zane Grey Movie



Tom Keene, Marsha Hunt and Larry "Buster" Crabbe are the leading players in the new Zane Grey film, "Desert Gold," which comes Saturday to the Lyric Theatre. It's a story of an Indian Chieftain and his desert mine, for which warring factions of white men battle.

Knife Blade Length Set By Ordinance

WEST MEMPHIS, Ark.—"Arkansas toothpicks," favorite weapon of negroes, have been banned from this city by the passage of a new city ordinance by the council. "Toothpicks," under the new ordinance, are knives with a blade measuring more than two inches in length. Knives with blades measuring

five and six inches with an edge of razor sharpness have been the chief weapon used by negroes in fights.

Fines for carrying long-bladed knives range from \$25 to \$500 under the new ordinance.

If and when Dohner reaches Detroit, he expects to get a new machine—free from an automobile manufacturer for his feat in driving his 1913 model to the Michigan metropolis.

Dallas Trippers Are Due Friday

Eastland will be host Friday afternoon, April 17, to members of the 35th annual business tour of the Dallas Chamber of Commerce and the Dallas Wholesale Merchants association.

A special train of 70 Dallas citizens will arrive at 3:35 p. m. and remain one hour.

City Manager J. F. Little is reception chairman of a group which will meet the trippers at the station and escort them to the south side of the square where Hamilton McRae, president of the chamber of commerce, will deliver an address of welcome.

Entertainment of the group is provided by musicians under the direction of Alexander Keese, program director of a Dallas radio station.

Part of the musical group includes members of the Early Birds, feature Dallas radio attraction.

Mustache Contest Reaches Now 'Long'

PECOS, Texas.—With the mustache contest between the Rotary Club and the Lions Club reaching a new "long," club members accost each other with strange measuring devices—the notched stick being the most popular.

One club is discussing the legality of importing the gentleman from Snyder who made Ripley's "Believe It or Not" column a year ago, because his whiskers could be tied together behind his neck.

Dye To Expose The Travel Habits Of Many Mosquitoes

MEMPHIS, Tenn.—A few billion mosquitoes are expected to turn blue and carmine this summer and in these new coats they will work under the banners of science.

Plans to dye several countless number of the pests rainbow hues to aid in tracing their migratory activities are underway in the U. S. Public Health Service. Mosquitoes are to be sprayed with aniline dye at breeding places and later recaptured to discover extent of their cross-country trekking.

Chicago will lead the van with a program calling for spraying of some 50,000,000 of the pests.

Various spots over the country will be assigned individual colors. Public health officials want to know if mosquitoes pursuing their natural tasks in, say, Atlanta or Richmond, have Memphis or Houston as their hatchplace.

The system is not a new one. J. A. LePrince, head of a Public Health Service investigation in Memphis, recalled the first known instance of the process' use.

In the Panama Canal Zone in 1912, mosquitoes were making life miserable for workers. They harassed laborers and spread vicious diseases.

LePrince and an assistant, A. R. Proctor, decided to ferret out

breeding spots and chart sects' movements.

"It was a tedious job," declared. "We used Negro 'bait' and paid them 10 a hour."

They captured the mosquitoes and sprayed them with filled atomizers. They later re-captured the insects, logged the distance and of flight common to particular types.

Tested in Far East Since that time the process spread to Europe and East.


It was given an aerial trial in South Carolina but was thought important to whether North American mosquitoes travel as far as Canal Zone cousins.

Memphis health authorities want to learn the breeding of mosquitoes in this section.

larva-type mosquitoes are particular about their breeding places. They are contented in ditches, pools, automobile tires, wet places with water with vegetation on it.

"Most malaria could be if the public really would how easy it is to control LePrince. "In tropical where up to 80 per cent people have malaria and as 30 per cent of the natives are in bed at times with chills and fever, housewives have lived in periods—and kept their free of malaria."

It seems that control of business, at least, has gone Duce.



What It Takes Costs As Low As 50% Less at MICKLES

We handle a complete line of House Paint, Roof Paint, Inside Enamels, Floor Paint, Decorative Enamels, Auto Enamels, Truck and Tractor Enamels, Marine Boat Paint, Varnishes, Varnish Stains, Paint and Varnish Remover, Linseed Oil, Turpentine, etc.

If you want to do any kind of painting we can furnish you with the celebrated J-B Brand of Paints, made by the Jones-Blair Paint & Varnish Co. Made in Texas to suit our Texas climate. Paint for the house outside, paint for the roof, paint for the floors or lawn chairs. Paint for the car or the truck. Paint for the fisherman's boat. Clear varnish to brighten up old things. Any of these kinds of paint we can furnish you and at prices that will be a real saving to you. Come and see our line. PAINT UP.

CENTENNIAL CHAIRS

The kind folks used in the Texas Pioneer Days—they last a long-long time and are the most comfortable and durable chair you can buy. These chairs come unfinished—you can stain them to match your furniture. Solid oak, genuine cowhide bottoms—no tacks—no ropes—just cowhide. . . . AND LOOK HOW REASONABLE—

DINING CHAIRS	Regular \$2.00	\$1.49
LOW ROCKERS	Regular \$3.00	\$2.49
BABY ROCKER	Regular \$1.75	\$1.49
GRANDFATHER ROCKER	Regular \$7.50	\$5.95

MICKLE

HARDWARE & FURNITURE CO.

"Ask Your Neighbors, They Know"
West Main St. Eastland

Alluring... as a "Summer Night"

Mojud Clariphane SILK STOCKINGS

Women — OF GENUINE

- PALM
- BEACH
- CLOTH

If you've always wished you could find hose as flattering in their sheer clearness and skin-smooth fit as those you see in the movies... the answer is our Mojud Clariphane, the "stockings the stars wear". Their Screen-like Shades are created by Orry-Kelly, designer of fashions for Warner Bros. stars, and we have them for you at no more than you pay for ordinary stockings.



Worn by COLLEEN COLEMAN in Warner Bros. Picture "COLLEEN"

Worn by RUBY KEELER - JOAN BLONDELL and in Warner Bros. beauties in "COLLEEN"

Warner Bros.' great new musical — AT — CONNELLEY Saturday Midnight SUNDAY and MONDAY

\$16.95

Passaroli Palm Beach

BEAUTIFUL SANDALS Just Received All Wanted Colors and Combinations



\$1.29 to \$4.95

The FASHION

North Side Square Eastland

Hotel Garage

TEXACO PRODUCTS Storage and Tire Service West Main Phone 42

ELECTRICAL APPLIANCES

Texas Electric Service Co.

CLASSIFIED ADS

SPECIALS—Oil Permanents, two for \$1.00 up; Shampoo, Set, Dry, 25c. Brileys, 212 N. Lamar.

SACRIFICING 20,000 paper-shell budded peach trees to pay debts. Free peach trees with peach trees, to unload. No better trees. Best bank references. Request prices. Bargain Nursery, Box 922, Abilene, Texas.

BELL-HURST Hatchery & Poultry Ranch. Quality baby chicks produced from our own eggs. All chicks from pedigreed cockerels. We offer A-AA-AAA matings. Custom hatching every Monday. Eastland, Texas. Phone 705.

ALEXANDER'S improved cottonseed, ginned in private gin; re-cleaned and sacked; \$1.50 per bushel at Diamond Ranch. F. W. Alexander, Albany, Texas.

SPRING COTTONS

In Clever Styles Visit Burr's Cotton Shop

98c



We have gathered together a attractive and unusual group of "dies" Wash Dresses to sell at 98c. This group are percales, linens, crepe, sheer batiste with organdy fls, flock dot organdy and but... also many other novelty fabrics. Sizes 14 to 12.

Some of these are very dressy others are sport dresses and the garment for the warmer weather. Buy them early when you have opportunity to select from a large group. . . . All the dresses are guaranteed washable—a new one if fades.

Burr's

DEPARTMENT STORE

GET READY FOR BURR'S

Sale

MEN'S SUITS

For Spring and Summer

Now is the time to grab of the greatest value of the year in Suits for men and young men. Plains and fancy backs; single- and double-breasted. We bought a flock of them. All sizes. SAVE NOW TO WEAR IN SUMMER!

10.50

