



Plan to Build Cabin
The Rotary Club and Lions Club of San Saba are working in cooperation with the local Scout leaders to build a Scout cabin. It is to be located in the city limits where it will be used for regular troop meetings.

Hallowe'en Party
Scouters, their wives and sweet-

hearts had a most enjoyable time last Monday night at a Hallowe'en party for the Central District. Scouting games and stunts having the flavor of "spookism" to lend to the spirit of the occasion were used. This party took the place of the regular scouters' pow-wow which is held monthly. J. K. Wilkes as general chairman of the affair was helped by a corps of workers, who gave able assistance. The next regular pow-wow of the Central District will be held the third Monday night in November.

Sea Scouts
Reports coming in state that the Sea Scout ship SSS Texan is well along toward final organization. The Breckenridge fire department has donated to this ship a solid brass bell.

Reports from the Sea Scout Patrol of Troop No. 2, Brownwood, are that two more of their members are in uniform. They are working toward a hundred per cent uniformed patrol, and will not have much difficulty in accomplishing this since a very small per cent of the members do not have uniforms.

Rally
Scouts from Lampasas, San Saba, Lometa and Richland Springs will gather in San Saba for a Scout rally Nov. 8. The Scouts of Troop No. 36, San Saba, will act as hosts for the evening. There will be contests in various events such as first aid, signaling, fire building, knot tying and other Scout contests.

Good Turns
Troop members should be thinking about just what their troop good turn will be during the coming Thanksgiving and Christmas holidays. Every troop should be able to report a definite good turn during each holiday.

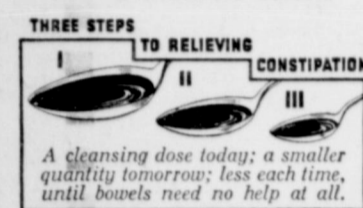
HELPS PREVENT MANY COLDS

Especially designed aid for nose and upper throat, where most colds start.



NO UPSETS

The proper treatment for a bilious child



ANY mother knows the reason when her child stops playing, eats little, is hard to manage. Constipation. But what a pity so few know the sensible way to set things right!

The ordinary laxatives, of even ordinary strength, must be carefully regulated as to dosage.

A liquid laxative is the answer, mothers. The answer to all your worries over constipation. A liquid can be measured. The dose can be exactly suited to any age or need. Just reduce the dose each time, until the bowels are moving of their own accord and need no help.

This treatment will succeed with any child and with any adult. The doctors use liquid laxatives. Hospitals use the liquid form. If it is best for their use, it is best for home use. The liquid laxative most families use is Dr. Caldwell's Syrup Pepsin. Any druggist has it.

Selassie's Sons



Crown Prince Asfou, commanding Ethiopian forces on the Dessye front, is shown with his young brother, the Duke of Harrar.

by 1934 death tolls in the same cities, are: Cleburne 1, last year 0; Fort Worth 52, last year 65; Sweetwater 1, last year 4; Wichita Falls 14sal,t emfynpewfypvbg Falls 14, last year 13.

TRAFFIC IN STATE TAKES HEAVY TOLL

AUSTIN, Oct. 21.—Increase in traffic deaths for the first eight months of 1935 over 1934 was revealed by the state department of health statistics today.

There were 1,094 deaths for that portion of 1935 compared with 993 for the same period of 1934.

Deaths for first eight months this year in leading cities followed

UNION OAK LEAFLET
Published By The Union School Staff

Editor-in-Chief..... D. R. Holliday
Assistant Editor..... A. G. Crosby
Business Manager..... Miss Billie Hines
Reporters—Eula Bee Smith, Wynell Smith, Helen Fox

EDITORIAL
We feel like, as this is the first issue of the "Union Oak Leaflet," that it might be the appropriate time to state our purpose of organizing such a news item.

First, we desire that the community fully understand the teachers' aims and objectives regarding the matter. This effort does not mean less but more work on the part of the teachers. It means extra work.

Our convictions are that teachers should not be paid merely for the salary which they receive, but the service that they render toward young lives, who are under their care.

We sincerely and earnestly believe that this move is one of the most worthwhile undertakings, as yet devised. I wish to state why I consider it as such:

First, it affords the pupils an opportunity to attempt and accomplish a thing, which they may brand as their own. Thus, affording a place in our curriculum for the initiative of the pupil to expand. We also hope that this undertaking may prove fruitful in bringing about unity, ties of friendship, loyal co-operation, and a democratic spirit among patrons, pupils, and teachers, all of which must exist if an undertaking is to end in success.

LITERARY SOCIETY ORGANIZED

Our school met in joint session on Friday, Sept. 11, for the purpose of organizing a literary society. The following officers were elected: President, Florene Crosby; vice president, Adree Fox; secretary-treasurer, Helen Fox.

Time was set on Oct. 11 for our first program.

COLUMBUS DAY PROGRAM

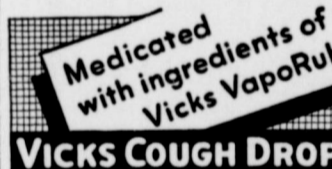
The Literary Society presented their first program on Oct. 11. The program consisted of representative speeches and dialogues. Songs were presented by Maurice Hazard and Hervey Fox. Mr. Smith and Mr. Nichols entertained the guests with music. Sonny Fox from Eastland presented a speech. We wish to express our thanks to every one who rendered a part in this program.

REASONS FOR ORGANIZING LITERARY SOCIETY

There may be several reasons presented for organizing the Literary Society, chief among which are to learn the children to appear in public in an intelligent manner, speak to be understood, dismiss timidity, and promote freedom and love of expression.

HANDICAP CONQUERED

EAST SPRINGFIELD, O.—When Adam Fisher lost his left hand and forearm 29 years ago, everyone said: "Well, Fisher's days as a carpenter are over." At 90, Fisher works daily in a small shop.



Success Palls On Author of Play

MONTREAL.—R. C. Sheriff, author of the famous hit "Journey's End," is trying to live his success down, because he believes he does not merit the acclaim that greeted his play.

"Every time I am introduced people exclaim 'Are you the chap who wrote 'Journey's End?'" he says, "and I'm tired of that. It is true that the play was a great success, but that was not due to its quality as much as to a series of psychological circumstances."

Explaining the "psychological circumstances," he said, "I wrote the play 10 years after the war. People had been fed up with the war; so fed up that they didn't want to hear or read anything that

reminded them of it in the years immediately after it. Then, quite accidentally my play was produced at a time when people were once more prepared to think about the war and the trenches and death. And so—it caught on. That was all there was to it."

Cisco Grade Crossing Order Is Cancelled

AUSTIN, Oct. 24.—New state highway 2 will miss both Temple and Belton under new routing authorized by the state highway commission today.

Former orders for railroad crossing grade separations at Cisco and Houston were cancelled. The cancellation at Cisco was because of objection to the change of route of Highway 1.

Still Cough

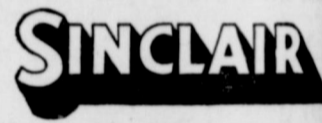
No matter how long you have tried for your cold or bronchial irritation get relief now with Vicks Vapo-Rub. It soothes and heals the membranes and the germ is loosened and expelled. Even if other remedies failed, don't be discouraged. Druggist is authorized to give you a trial. Money if you are not satisfied is returned to you.

WHAT HAS THIS DINOSAUR TO DO WITH MOTOR OIL ?



The Sinclair dinosaurs of the vast age of the crude oil into Sinclair Opaline and Sinclair vania Motor Oils. Generally speaking a longer a crude oil has mellowed in the earth, the tougher the lubricant it will produce.

Sinclair Opaline and Sinclair Pennsylvania give a lubricating film capable of withstanding more than 3 tons per square inch—protection for every moving part of your car. Look for the dinosaur on the Tamper-Proof in which Sinclair Opaline and Sinclair Pennsylvania Motor Oils are sold.



Agent Sinclair Refining Company (Inc.)

HAROLD WRIGHT

Phone 91

Ranger,

Do YOU Want To Share In

\$10,000

IN CASH PRIZES?



Simply Solve The

MISPLACED FACES OF MOVIE STARS

Now Appearing Each Sunday In The Picture Section of The Chicago Sunday Tribune. FREE To All! No Essays to Write. Just Name the Stars.

For Particulars See This Sunday's

Chicago Sunday Tribune

THE WORLD'S GREATEST NEWSPAPER

GEORGE UTTZ, Distributor Chicago Tribune

...but, after all is said and done, it's the cigarette itself that counts

... the question is, does it suit you?



Now, when it comes to a cigarette that will suit you . . . you want to think whether it's mild, you want to think about the taste

That Chesterfields are milder and taste better is no accident . . .

The farmer who grows the tobacco, the warehouseman who sells it at auction to the highest bidder, every man who knows about leaf tobacco will tell you that it takes mild, ripe tobaccos to make a good cigarette.

In making Chesterfields we use mild ripe home-grown and Turkish tobaccos.

Outstanding .. for mildness .. for better taste



TEXAS FARMS

wood six
Louise Lan, 4-H Club girl of Jarrel, in Williamson county, planted 11,998 feet to 21 varieties of vegetables in her work as garden demonstrator. She estimates the value of the produce used fresh and canned for home use to be \$127.32. The expense of the garden was \$11.21.

F. J. Smith, 4-H Club boy of Stonewall county, bought two Hereford calves in May weighing 190 and 205 pounds. The calves now weigh 430 and 465 pounds. They were not started on feed until the latter part of August.

Sixty bushels of yellow dent corn is the harvest from one acre of land worked by George Huff-

MAMA LOVES PAPA



Charles Ruggles and Mary Boland, two of the many stars appearing in Paramount's "The Big Broadcast of 1936," coming Monday to the Connellee Theatre, and featuring Jack Oakie, Burns and Allen and Lyda Roberti. Bing Crosby, Amos 'n' Andy, Ethel Merman, Bill Robinson and Ray Noble and his orchestra contribute specialty numbers in the hilarious comedy.

man, 4-H Club boy of Brannon community in Hopkins county. In the same field his father's harvest ran about 15 bushels less per acre. Young Huffman attributes his success to methods of cultivation.

GOLIAD—N. Borth of McRose community in Goliad county has made a net profit of \$117.81 from his flock during the past three months. Borth has about 266 white leghorn hens.

This poultry demonstrator adheres strictly to all the best methods of poultry production, including proper feeding methods of balanced laying mash, correct amounts of home grain, periodic worming with pure white gasoline, and shipping his eggs through the Goliad co-operative egg shipping associations.

Borth attributes much of his profit to the prices he receives for his infertile eggs. He claims that he has received about \$20 more for the period by shipping co-operatively.

JEFFERSON—R. K. Brown of the Mims Chapel community of Marion county reports that he has had good results from a few acres of pop corn which he tried this season. He sold \$117 worth of pop corn off of five acres even though rains cut down the yield.

"For the amount of labor and other expenses," Brown said, "I consider pop corn a better money crop than cotton, and I expect to increase my acreage."

MOUNT VERNON—After supplying his friends and neighbors with fruit free of charge and canning enough for home use, Jim Mote, Franklin county farmer, sold \$165 worth of peaches from a five-acre orchard. Mote says that he did not spend much time on his fruit trees this year, but since the income has come in, he is going to cultivate them next year. He also plans to prepare three acres more land for a young orchard.

CANYON—"I strained my fruit juices through milk filter and strainer to obtain clear jelly," Mrs. J. E. Park, co-operator of the Park Home Demonstration Club of Randall county, stated recently.

Mrs. Park explained that this makes clearer jelly and is much faster than when jelly bags are used.

DICKENS—Mrs. T. D. Hale, yard demonstrator in the Prairie Chapel Home Demonstration Club of Dickens county, believes in grassed front yards. "We have solid turf in our front yard," she said, "and it doesn't

that appears in the fun-provoking comedy are famous personalities who contribute specialty numbers which form a background to the main theme. Bing Crosby, film and radio star, Amos 'n' Andy, world famous for their daily comic black-face sketch on the air waves, Ethel Merman, star of radio and musical comedy hits, Bill Robinson, internationally known negro tap dancer, Larry Boland and Charles Ruggles, noted stage and screen comedians, the Nicholas Brothers, negro dancing youngsters, Willie West and Peck City, and Ray Noble, renowned English band leader and song writer, with his orchestra, all have important roles in the picture.

Directed by Norman Taurog, with dance assemblies staged by the original dance experts, "The Big Broadcast" is an hilarious romantic comedy, with most of the action set against the colorful background of an Havana bacchanal, and centers around the amusing experiences of two radio entertainers when a rich young countess enters their lives. Jack Oakie and Henry Vandyke who operate and perform their own radio station are faced with bankruptcy. Their only hope is to win an international broadcasting contest. George Burns, as a radio inventor, with his wife, Gracie Allen, brings the boys his latest invention, the radio eye, a television instrument. Suddenly Lyda Roberti, in the role of the countess, enters their lives and whisks both of them to her Cuban estate on her private yacht, to determine which one she wants to marry.

Surrounded by Miss Roberti's villainous henchmen, the boys make a desperate break for freedom, aided by Wendy Barrie, Miss Roberti's social secretary and companion. The high spirited, thrilling chase, packed with uproarious situations and climaxes, is broad-cast by Oakie through the radio eye in his call for help, in which he unwittingly competes in the radio contest.

"I Wished on the Moon," "It's the Animal in Me," "Why Stars Come Out at Night," "Why Dream," "Miss Brown to You," and "Double Trouble" are the hit tunes. Ralph Rainger, Richard Whiting, Dorothy Parker, Leo Robin, Mack Gordon, Harry Revel and Ray Noble wrote the lyrics and music for the various songs.

TIMELY FILM GIVES VIVID, TRUE PICTURE

Native tribes, native towns, community bathing, the administering of justice, scenes of the interior, including Lake Tano, whose importance to English interests in the Sudan and Egypt is undisputed, natives at work and play are but a few of the exciting sequences in the production, "Wings Over Ethiopia," Paramount release, coming today to the Connellee Theatre.

"Wings Over Ethiopia" is a timely drama, giving a complete and impressive picture of a strange, but ancient country, whose culture dates back thousands of years, and whose people are descendants of an ancient race. Their queer mixture of old and modern customs is clearly shown.

Haile Selassie, the Emperor upon whose movements, both military and political, the eyes of the world

are centered, figures importantly in the film as a vital, powerful personage. He is seen at his various duties, in public, private and social life, represented as a man of high intelligence and culture.

Photographed by L. Wechsler, a Swiss who covered Ethiopia by plane and truck with E. Berna, cameraman, and Walter Mittelehler, famous Swiss pilot, "Wings Over Ethiopia" is a stirring, accurate "inside" view of a land upon which the limelight of the world has been focussed.

DRINKERS BLAMED

PROVIDENCE, R. I.—One of every 17 drivers involved in automobile accidents in Rhode Island was intoxicated or had been drinking, according to a state motor vehicle division report.

ADMIRATION Coffee
Cellophane wrapped in paper bags Keeps it FRESH!
BUY THIS PACKAGE AND SAVE THE DIFFERENCE

Hamner Undertaking Co.
Phones 17 and 564
DAY OR NIGHT AMBULANCE SERVICE

Try a WANT-AD!

FALL Food FESTIVAL

Finest foods at fairest prices—a world of good things from the four corners of the earth... fruits, vegetables, groceries, meats... in a value-giving sale that will open your eyes and call attention again to advantages of shopping at PIGGLY WIGGLY!

KELLOGG'S PEP 2 Pkgs. 15c	CAMPBELL'S Tomato Juice 2 14-oz. cans 15c
SILC'AM PEACHES No. 10 can 30c	MISSISSIPPI CANE SYRUP No. 10 can 49c
	Libby's PINEAPPLE 2 Buffet cans 15c
	Red Pitted Cherries 2 No. 2 cans 25c
	Pineapple Juice LIBBY'S 10 oz. can 9c
	Peanut Butter 2 Lb. Jar 33c

PIPKIN'S SPECIAL COFFEE

Early June PEAS 2 No. 2 cans 15c	Recleaned PINTO BEANS 5 Lbs. 25c	Locust Blossom Sugar CORN 2 No. 2 cans 19c
-------------------------------------	-------------------------------------	---

MINCE MEAT 9 Oz. Pkg. 9c	MACKEREL Tall Cans 9c
MACARONI Comet 3 Brand pkgs. 14c	Potted Meats 3 cans 10c
Pork & Beans Phillips 16-oz. can 5c	DIXIE STYLE LOAF 16 Oz. can 10c
Wilson's VIENNA SAUSAGE 2 for 13c	PRESERVES 2 Lb. Jar 35c

La Fronteria CHILI and TAMALES

ORANGES California Red Balls 2 doz. 29c	LETTUCE 2 head 9c	APPLES Jonathan Lunch Size 2 doz. 25c
	CABBAGE lb. 2 1/2c	
	MARSH SEEDLESS TEXAS GRAPE FRUIT each 5c	
	GREEN BEANS lb. 7 1/2c	

Fancy Bulk RICE 4 Lbs. 23c	MARKET SPECIALS
SOAPS	GOOD GRADE CHEESE Special per pound 19c
CLEAN QUICK 2 1/2 Lb. pkg. 19c	PORK CHOPS or Lb. 29c
P and G 6 Giant Bars 25c	PORK STEAK 29c
SCOTCH GRANULES 2 1/2 Lb. pkg. 19c	SAUSAGE Home Made Lb. 23c
OXYDOL A Few More Deals 27c	LARGE BOLOGNA Lb. 16c
CAMAY 3 bars 14c	Sliced BACON Lb. 35c
GOLD DUST CLEANSER can 4c	ROAST Baby Beef Seven Lb. 18c

PIGGLY WIGGLY

Smith's "COFFEE HOUR" Every Tuesday, Wednesday and Thursday, Over KRLD, 6:30 P. M.

A & P COFFEE
8 o'Clock . lb. 17c
Red Circle lb. 19c
Bokar . . . lb. 23c

ES, 60-70's 2 lbs. 13c
BEANS No. 2 can 10c
String Beans, No. 2 2 cans 15c
DRN No. 2 can 10c

CRACKERS
19c 2-lb. box . . 19c

Tomato Juice . . 2 cans 9c

Fruits and Vegetables

ORANGES Doz. 18c
LEMONS, Jonathans . . doz. 12c
PINT BEANS lb. 5c
CABBAGE Head 4c
PINE FRUIT 2 for 9c

GROUND . . . 8-lb. carton \$1.00

10-lb. cloth bag 57c

Iona COCOA 2 Lb. Can 20c	Penn Rad OIL 2 Gals. \$1.08
--------------------------	-----------------------------

RICE 2-lb. pkg. 18c
BRAN box 12c

Davis Baking Powder 35c Can	Eagle Brand MILK 17c Can
-----------------------------	--------------------------

STARCH pkg. 8c
Team BORAX 12c
SALT large pkg. 23c
DUST large 18c

Quality Market Specials

BACON lb. 35c
Ground STEAK . . . lb. 25c
Roast or Steak . . . lb. 15c
Veal Loaf Meat . . . lb. 15c
HOPS lb. 23c
SIN CHEESE lb. 25c

WINDOWS FOR ADDED SPECIALS!

HEAT IS TRYING BECAUSE IT'S DRYING

• cleanse
• tone
• soothe

Elizabeth Arden makes you impervious to wind and weather. She urges you to cleanse with her fluffy, light cream, cool with her skin tonic and soothe with her delicious Velve Cream. You'll find such loveliness you'll be careful to protect it with Ardena Sun-Pruf Cream.

Ardena Cleansing Cream \$1
Ardena Skin Tonic 55c
Ardena Velve Cream, for dry skins, Orange Skin Cream \$1
Ardena Sun-Pruf Cream \$1

Corner Drug Store
Eastland

The Choice of Millions who know the high quality and better value to be had in the double-tested—double-action K C Baking Powder.

It produces delicious bakings of fine texture and large volume.

Manufactured by Baking Powder Specialists who make nothing but Baking Powder — under supervision of Expert Chemists of National Reputation. Always uniform — dependable. That insures Successful Bakings.

Women who want the best, demand the

KC BAKING POWDER
Economical and Efficient
Same Price Today as 45 Years Ago
25 ounces for 25c
You can also buy
A full 10 ounce can for 10c
15 ounce can for 15c
FULL PACK — NO SLACK FILLING

Hundreds of Thousands of Women Have Received

THE COOK'S BOOK
You can get a copy of this beautifully illustrated book — full of practical, tested recipes that will please you. Mail the certificate from a can of K C Baking Powder with your name and address and your copy will be sent postage paid.

Address JAKUES MFG. CO., Dept. C. B., CHICAGO, ILLINOIS

NAME _____
ADDRESS _____

MILLIONS OF POUNDS HAVE BEEN USED BY OUR GOVERNMENT

CLUES . . .

OFTEN THE SMALLEST OF CLUES MAY UNRAVEL PERPLEXING MYSTERIES. AN AUTO LICENSE CONVICTED POLICE LIEUTENANT BECKER. A PAIR OF TORTOISE-SHELL SPECTACLES NEAR A CULVERT SOLVED THE LOEB-LEOPOLD CASE. A TORN ITALIAN NEWSPAPER TURNED SUSPICION ON RUTH SNYDER.

ON THE PAGES OF THIS NEWSPAPER ARE HELPFUL CLUES THAT TAKE THE MYSTERY OUT OF BUYING. THEY ARE THE ADVERTISEMENTS. THEY WILL LEAD YOU STRAIGHT TO THE PRODUCTS YOU WANT . . . HELP YOU SAVE MINUTES AND MONEY!

THE ADVERTISEMENTS OFFER YOU MANY SUGGESTIONS FOR FALL BUYING. NEW FUR COATS AT FAIR COSTS. GOLF TOGS FOR NEXT SPRING AT A SAVING. BLANKETS FOR CRISP FALL NIGHTS. THE BEST COAL, OIL OR COKE FOR THE FURNACE. RELIABLE GARDEN BULBS AND SEEDS---FOR AUTUMN PLANTING. A NEW CHAIR FOR THE FIRESIDE . . . AND SO ON.

READ THE ADVERTISEMENTS CAREFULLY. LOOK FOR ALL THE CLUES THEY CONTAIN. LET THEM HELP YOU SOLVE ALL YOUR BUYING PROBLEMS.

hand, from
c fabrics. Re-
n . . . hard to
to choose from!

ork SHIRTS

What Values!

35¢

Fine yarn cham-
bray! 6 steel
button front,
two pockets!
Sizes 14 1/2-17!

S
Incorporated

CLUES . . .

OFTEN THE SMALLEST OF CLUES MAY UNRAVEL PERPLEXING MYSTERIES. AN AUTO LICENSE CONVICTED POLICE LIEUTENANT BECKER. A PAIR OF TORTOISE-SHELL SPECTACLES NEAR A CULVERT SOLVED THE LOEB-LEOPOLD CASE. A TORN ITALIAN NEWSPAPER TURNED SUSPICION ON RUTH SNYDER.

ON THE PAGES OF THIS NEWSPAPER ARE HELPFUL CLUES THAT TAKE THE MYSTERY OUT OF BUYING. THEY ARE THE ADVERTISEMENTS. THEY WILL LEAD YOU STRAIGHT TO THE PRODUCTS YOU WANT . . . HELP YOU SAVE MINUTES AND MONEY!

THE ADVERTISEMENTS OFFER YOU MANY SUGGESTIONS FOR FALL BUYING. NEW FUR COATS AT FAIR COSTS. GOLF TOGS FOR NEXT SPRING AT A SAVING. BLANKETS FOR CRISP FALL NIGHTS. THE BEST COAL, OIL OR COKE FOR THE FURNACE. RELIABLE GARDEN BULBS AND SEEDS---FOR AUTUMN PLANTING. A NEW CHAIR FOR THE FIRESIDE . . . AND SO ON.

READ THE ADVERTISEMENTS CAREFULLY. LOOK FOR ALL THE CLUES THEY CONTAIN. LET THEM HELP YOU SOLVE ALL YOUR BUYING PROBLEMS.

THE WEEKLY CHRONICLE

Established Nov. 1, 1887

Entered as second-class matter at the postoffice at Eastland, Texas, under Act of March, 1879

Published Every Friday
Office of Publication: 106 East Plummer Street. Phone 601

NOTICE TO THE PUBLIC

Any erroneous reflection upon the character, standing or reputation of any person, firm or corporation, which may appear in the columns of this paper, will be gladly corrected upon being brought to the attention of the publisher.

Obituaries, cards of thanks, notices of lodge meetings, etc., are charged for at the regular advertising rates, which will be furnished upon application.

Centennial Fund Requests Culled

AUSTIN, Oct. 21.—Nearly \$8,000,000 in requests in centennial aid had been reduced to \$759,000 today as communities made ready for local monuments to be erected for the state's 100th birthday in 1936.

Centennial control commissions, given the task of allocating local funds, kept back \$16,000, to serve meritorious projects to be determined. The remainder was allotted Saturday after many months of hearings and disputes.

"Ethiopians shave with sharp stones and bits of glass." It must be hard to decide whether wounded tribesmen are back from the front or the barber's.

Central West Texas Oil Field



ONLY ONE ACTIVE WELL IN STEPHENS COUNTY

BRECKENRIDGE, Oct. 21.—Michaels and others, who are drilling a well on the Mrs. Whitney ranch about 12 miles northwest of Breckenridge, have had the misfortune to junk four holes they have started due to a fault or crevice, they are now moving 300 feet east and starting another test. This is the only active well in Stephens county at present.

Conne & Clugley completed their No. 4 H. M. Ford at South Bend for a deep producer this week. Their total depth was 270 feet in lime and the well was flowing 40 to 50 barrel. The well was also making some water.

The H. J. Cox well on the Corbett ranch in the south part of Young county which caused some

excitement a few weeks back, is still cleaning out casing; total depth is 4340 feet.

Three well are now drilling in the vicinity of the 1300 barrel well on the Sadock which is located a couple of miles north of South Bend; this has offset the Seddon well which was on the Rodgers land. Several hundred feet deep in West are spudding in on their No. 1 Boozar and Neff & Singleton are clearing off a location on the W. A. Dennis.

War Not Likely To Increase the Sulphur Demand

AUSTIN.—Little prospect that warfare among foreign nations will increase the demand for American sulphur was seen today by L. Mims, vice president of the Freeport Sulphur company.

Such a possibility had been seen by Rep. J. Franklin Spears as an opportunity to help pay Texas old age pensions with sulphur taxes.

War will not cause such a demand, Mims said, for four reasons: 1. Modern explosives require very little sulphur except in the form of sulphuric acid, which can be obtained from many sources.

2. Foreign nations having made themselves more independent of supplies from the United States will not hazard trans-Atlantic shipments of brimstone. (Elemental sulphur).

3. The United States will pro-

Family Car for Comfortable Touring



THE FORD V-8 Tudor Touring Sedan for 1936, illustrated above, provides easy riding comfort and plenty of room for the family. The built-in trunk is a great convenience on long trips, getting luggage out of the way of passengers. The bucket-type front seats are restful and the rear seat is wide and roomy. The rustless steel running board moulding adds a touch of individuality.

hibit exportation of war materials. 4. Exports for the first six months of this year are lower than at any time in the past six years, despite increasing activity in war preparations. It is a mistaken conception that Texas produces 90 to 99 per cent of the world's supply of sulphur, Mims said. The misunderstanding is due to using figures on elemental sulphur, while 65 per cent of the world requirement is provided from two other sources, pyrites and waste smelter gases. The 35 per cent made from brimstone or elemental sulphur is produced in Texas, Louisiana, California, Utah, Japan, Italy, Norway, Russia, Sweden, Chile and Spain. Texas reserves, Mims said, do not exceed five per cent of the world total.

How Many LAMP BULBS Do You Need?

SIZE and TYPE	Price	Quan.	Total
40-W. INSIDE FROST—Should be used in ceiling clusters and in 3-socket floor lamps. Also used in closets, halls and wall brackets.	.15		
60-W. INSIDE FROST—This is the most widely used lamp in the average home, for reading lamps having two sockets, for table lamps and for the bathroom.	.15		
75-W. INSIDE FROST—This lamp also is used in two-socket reading lamps, table lamps, bathroom and in other rooms where good light is needed.	.20		
100-W. INSIDE FROST—For one-socket reading and study lamps, lamps, table lamps, bathroom and in other rooms where good light is needed.	.20		
150-W. INSIDE FROST—This size lamp should be used in kitchens one-socket ceiling fixtures, floor lamps, flood lights, front porch lights.	.35		
150-W. TYPE D INSIDE FROST—This size lamp should be used in study and lounge lamps where a good light is needed for detailed work, such as prolonged reading, sewing or other line work.	.10		
60-W. TYPE D INSIDE FROST—A popular-priced lamp that is preferred by many. It is well worth the money and will give an average of 500 hours of light.			

Make a quick Check on this Coupon!

Count the empty sockets in your home and make a note of how many lamp bulbs you need on this coupon. Phone your order to our office and we'll send them to you promptly. They'll be charged on your next month's electric service bill.

TEXAS ELECTRIC SERVICE COMPANY

J. E. LEWIS, Mgr.

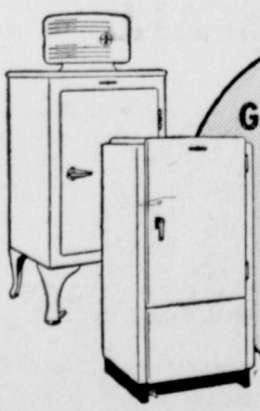
IS YOUR REFRIGERATOR 5 YEARS OLD?

● If your refrigerator is now five years old you can put a brand new General Electric in your kitchen—have all the newest convenience features—and be money ahead. The savings due to greater efficiency and lower operating costs will pay for it.

- Stainless Steel Super Freezer
- Sliding Shelves
- Interior Lighting
- Foot Pedal Door Opener
- Defrosting Switch
- Faster Freezing

The G-E Refrigerator has long been famous for dependable refrigeration at low cost. Now the G-E sealed-in-steel mechanism has double the cold producing capacity and uses 40% less current than 1930 models.

Put a new G-E in your home tomorrow and be money ahead every month.



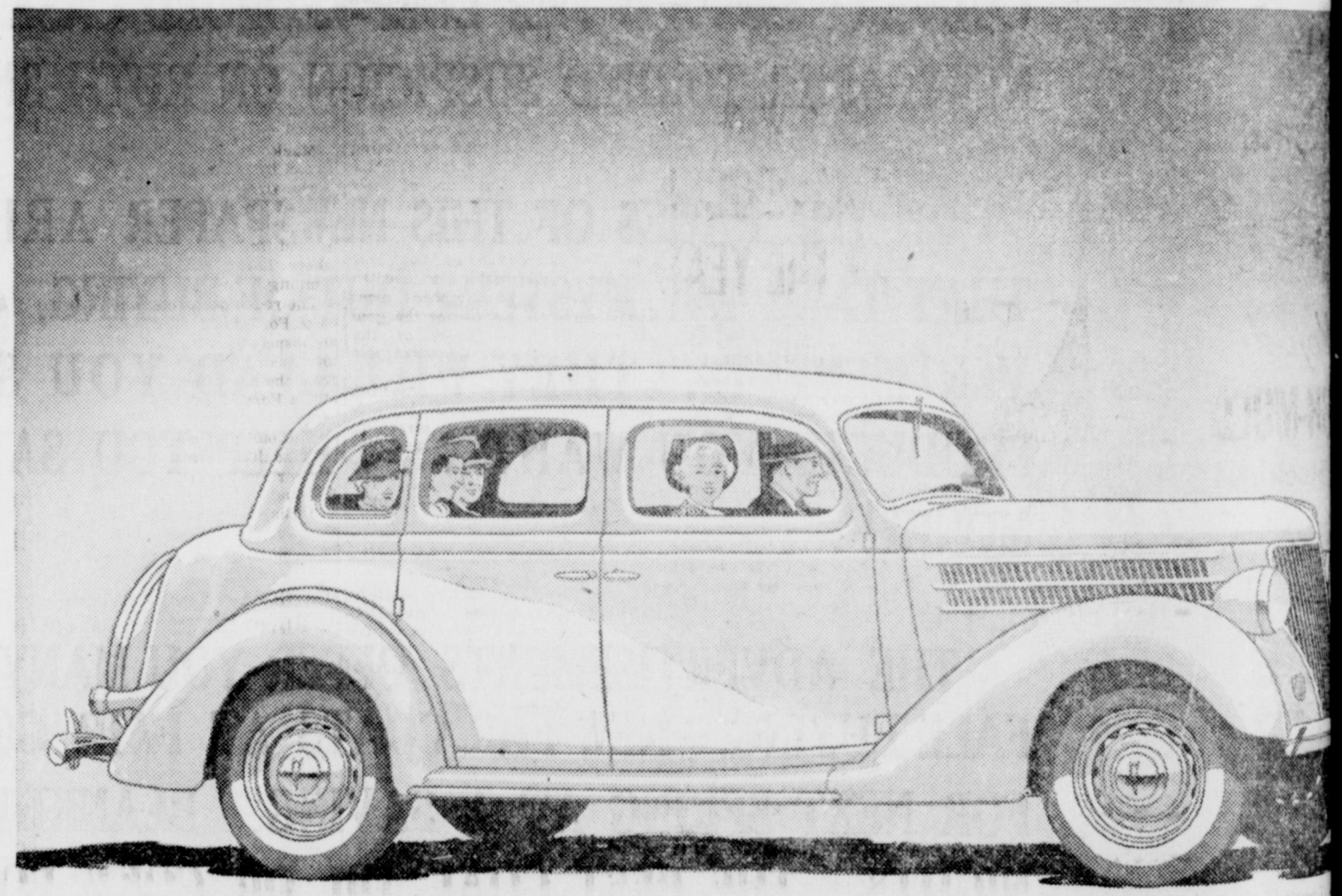
New General Electric Refrigerators USE 40% LESS CURRENT!!

- G-E MONITOR TOP MODELS (Price or terms)
- G-E FLATOP MODELS (Price or terms)
- G-E LIFTOP MODELS (Price or terms)

HARPER MUSIC & BATTERY CO

212 West Main Street Phone 335 Eastland

N O W O N D I S P L



THE NEW FORD V-8 FOR 1936

Distinguished new beauty of line has been combined with the outstanding comfort, safety and performance that have put the Ford V-8 in a class by itself. The car that led all others in 1935 has been made for the new year. It has been proved by the past and improved for the future. The New Ford provides modern feature, with the assurance of satisfactory service. There are no experiments in it—nothing has not been tried and tested. This means a great deal to motorists—especially in mechanical performance and safety. . . . The Ford gives you distinctly better performance because of its V-8 engine—powerful also because it is such a safe car. The Steel Body, Safety Glass all around and Super-Safety provide exceptional security. . . . The Ford V-8 for 1936 is the finest, safest, most reliable Ford.

New Modern Lines—New longer hood extends gracefully over the distinctive new radiator grille, accentuating the length of the car. New larger fenders, with a wide flare, contribute to the imposing front-end appearance. Horns are concealed behind circular grilles beneath the headlamps. New hood louvers. Steel wheels of entirely new design. Rich, enduring upholstery. Attractive appointments.

New Easier Steering—Steering gear ratio increased. Steering gear sector shaft mounted on roller bearings.

New Gear Shifting—Easier, quicker, smoother. Shorter distance for gear shift lever to travel. Quiet shifting. Quiet running in all speeds because of silent helical gears.

Super-Safety Brakes—Safest, most reliable type of brakes under all driving conditions. Mechanical brakes of the same proved design as have been used for years on America's finest cars. Extra large braking area. Easy to apply.

Welded Steel Bodies—The Ford V-8 has a genuine all-steel body structure—electrically welded for still greater strength.

Safety Glass Throughout—All Ford body types are equipped with Safety Glass throughout at no extra cost.

V-8 Engine—Fine-car power, speed, acceleration and smoothness. The reliability of the Ford V-8 engine has been proved in actual service by more than two million motorists—over a million Ford V-8s purchased in the last year. Figures show that the Ford V-8 is the most economical Ford ever built. Every year the Ford costs less to run.

No "Breaking In"—The Ford V-8 engine is made to such high standards of precision that it requires no breaking in. You can drive it 80 miles an hour the first day.

Efficient Cooling—The cooling system of the New Ford V-8 for 1936 circulates 5 1/2 gallons of water through a new, larger radiator. Natural thermo-siphon action is assisted by two centrifugal water pumps. New style hood louvers permit rapid flow of air around the engine.

Bodies Insulated for Quiet—The floor, dash and body panels of the Ford V-8 for 1936 are insulated with new materials that absorb and deaden sound.

Center-Poise Riding—All passengers ride near the center of the car—cradled between the soft flexible springs. Exceptional comfort on every type of road. The Ford V-8 gives a front-seat ride to back-seat riders.

Unusual Body Room—Short, compact Ford V-8 engine takes up less space under the hood and permits more of the car's length to be used by passengers. There is increased room in the 1936 Ford Sedans

because the rear quarters above the new style windows), \$510. Tudor Cabriolet (with rumble seat), \$550. Phaeton, \$590. Tudor Sedan, \$625. Tudor Touring Sedan (with built-in trunk), \$660. Convertible Sedan, \$700.

F. O. B. Detroit. Standard including bumpers and excluding tax. Cash price. No additional cost. Cash price through the University.

Judgment For Bank
County court judgment of \$45 Bank of Ranger Murray and order filed in office Monday.
Albert Hanson Surety Corporation defendants.
The court first issued the full amount costs and in order then be issued the Surety Corporation.

SAY! How those extra front counter barber shop uniform

Night O... Just rub on

HERE'S for Sale! Wherever it is surface-free Res

TO HAVE TIME TUAL WORK SINCE Y AID VOTED—McRAE

will be asked in a drive which will be started soon, McRae stated.

After the amount is raised by public spirited merchants and citizens, said McRae, Eastland can look forward to an era unprecedented for chamber of commerce activity and tangible results.

Though limited in funds recently, President McRae pointed to achievements of the body for the current year as including: passage of the Leon river flood control district with the aid of city commissioners, sponsorship of the county fair with the first livestock show in its history, sponsorship of the monthly smokers, which acted as a clearing house for discussion of Eastland's needs, and origination of many governmental projects which have been approved.

"The Chamber of Commerce," McRae stated, "is no organization which has no selfish desires. It is an organization by which Eastland citizens assume a united stand for purposes which are for the interests of all."

The chamber of commerce recently moved its main office from the Masonic building to the space in the quarters in the rear of the Eastland National Bank, facing East Commerce.

Former offices of the Masonic building have been retained for storage purposes.

Earl Woody is vice president; O. E. Harvey, vice president and H. C. Davis, secretary.

Directors who will serve for the city development board are O. E. Harvey, Earl Woody, C. J. Rhodes, K. B. Tanner, Albert Taylor, J. E. Lewis, Sr., T. E. Richardson, Hamilton E. McRae, Charles Lucas, F. M. Kenny, Earl Bender, Milburn McCarty, James Horton, Grady Pipkin and George M. Harper. Lucas is a new member, Frank Williams, who moved to McKinney.

Going Over the Top for Horse Show



Thrilling co-ordination and daring horsemanship are required to send two jumpers across an obstacle in unity as these members of the Chilean army team, Captain Eduardo Yanez (left) and Captain Enrique Franco, have. They were pictured practising at Governors' Island for the jumping events in the National Horse Show at Madison Square Garden, N. Y.

cently moved its main office from the Masonic building to the space in the quarters in the rear of the Eastland National Bank, facing East Commerce.

Former offices of the Masonic building have been retained for storage purposes.

Earl Woody is vice president; O. E. Harvey, vice president and H. C. Davis, secretary.

Directors who will serve for the city development board are O. E. Harvey, Earl Woody, C. J. Rhodes, K. B. Tanner, Albert Taylor, J. E. Lewis, Sr., T. E. Richardson, Hamilton E. McRae, Charles Lucas, F. M. Kenny, Earl Bender, Milburn McCarty, James Horton, Grady Pipkin and George M. Harper. Lucas is a new member, Frank Williams, who moved to McKinney.

it back to the Eastland four yard line in the second and to the seven yard line later in the same quarter without scoring and having the ball on the Eastland 12 yard line in the fourth. But the stiff Maverick defense held and passes that threatened to produce scores were batted down time after time to hold the Ranger threat in check.

In the fourth quarter the Bulldogs scored their first touchdown of the season and tied the game at 7-all when they finally got the ball over the goal line.

The drive started on the Ranger 40 yard line with Walsh and Jacoby doing most of the ball carrying, to place the ball on the Eastland 46, where a pass to Fox was good for a first down on the Eastland 14. Two plays lost three yards and Walsh passed to Hartin, who raced over the goal line for the only Bulldogs score. Payton kicked good for the extra point.

The Bulldogs, who were taking to the air in a desperate effort to stave off a tie, had one of their passes bounce back and pave the way to the Maverick's second touchdown. Walsh passed to Payton, who caught the ball, but Sikes in making the tackle, snatched the ball from his outstretched arms and raced 45 yards over the goal line for the last score of the game. The try for the extra point was blocked.

IS FIRST WIN FOR MAVERICKS FOR THE YEAR

Eastland's scrapping Mavericks avenged defeats of the past nine years when they turned back the heavier Ranger Bulldogs Friday afternoon at Welch Field by a score of 13 to 7 to earn the first victory over their ancient foes since the 7 to 0 victory of 1927.

It was a gala day for Eastland fans and the Mavericks, many of whom were just starting to school in the primary grades when the Mavericks last won on the Bulldogs, and on the field and in the stands they took advantage of every opportunity to score or to yell.

The Mavericks took good advantage of early breaks in the game to score their first touchdown in just five plays. After the kickoff to Ranger the ball was returned to the Ranger 39-yard line and on the first play from scrimmage Adkins fumbled and Trantham recovered on the Ranger 35 yard line. Sikes made four yards through the line, Harry Taylor made a yard on the Ranger 30 and a pass, from Key to Sikes, carried the ball down to the five yard line for a first down. Harry Taylor failed to gain, but Sikes carried the ball over for the Maverick's first score, and Troy Taylor kicked good for the extra point.

The Bulldogs threatened repeatedly throughout the first three quarters without scoring, carrying the ball to the Maverick 11-yard line in the first quarter, bringing

The Bulldogs, again resorting to the air, were stopped in their efforts to score by the scrapping Maverick line and the pass defense of the secondary, a Bulldog pass being intercepted on the Maverick 12-yard line with only 30 seconds of the game remaining to be played, and the local carried the ball back to the 23-yard line when the final whistle blew.

First downs favored the visitors 14 to six, but fumbles on five occasions, which were recovered by the Mavericks, who were playing heads-up football from start to finish of the game, halted many of the visitors' attempts to carry the ball back up the field.

The entire Eastland line was charging as hard at the end of the game as it was at the beginning, while in the backfield, R. Sikes, H. Taylor and Key were the bright and shining stars of the game.

The starting lineup: Eastland, Taylor and Garrison, tackles; Mitchell and Trantham, tackles; Dolberry and A. Taylor, guards; R. Taylor, center; B. Sikes and H. Taylor, halves; Key, quarter and Hamilton, full.

Ranger: Payton and Jacoby, ends; Bray and Sharp, tackles; Donowho and Mace, guards; Bunton, center; Walsh, quarter; Hartin and Adkins, halves, and Burnett, full.

Ranks Conferred On Three at K. P. Meet

Third rank of the Knights of Pythias was conferred on R. M. Tierce, Clifford Cook and Lee Foster when the Eastland lodge met Tuesday night.

Goats donated by H. L. Gibson and barbecued by Mike Andrews were served to 54 Eastland members and 13 from Gorman.

M. P. Herring Goes To Dallas Meeting

M. P. Herring, manager of the Eastland A. & P. store, attended the annual A. & P. Roundup meeting in Dallas Sunday. He was accompanied by Mrs. Herring.

Sermons Announced At Methodist Church

Sermon subjects for services Sunday at the Methodist church were announced Thursday as follows:

Morning, "Taking Jesus Seriously"; evening, "The Church Faces Reality." Rev. Rosemond Stanford, pastor, will deliver the sermons.

The service marks the last before holding of the annual conference in Brownwood, Nov. 6.

Lions Met Monday With Rotarians to Hear Thomas Talk

No meeting of the Lions club was held Tuesday as the organization met with Rotarians Monday to hear W. A. Thomas of Dallas, collector of internal revenue.

Visitors included A. E. Brooks with the internal revenue office at Dallas, Judge B. W. Patterson, Judge W. P. Leslie, Milburn McCarty and B. E. McGlamery.

Thomas, who spoke on the federal government offering of "baby bonds" was introduced by Earl Bender, Rotary program chairman.

Cotton Pickers Call Sounded by N. R. S. Office at Eastland

Crigger Paschall, national re-employment service director, at Eastland, can place 10 cotton pickers for jobs with a farmer who lives near Olden.

Cotton pickers interested were urged by Paschall to see him at the NRS office in the courthouse basement at Eastland.

Plans Off For Grid Game of Cisco Lions Versus Eastland Club

The Cisco Lions club has cancelled a proposed football game with the Eastland organization, it was announced in Cisco by President L. E. Smith,

**WE SELL TIRES ON TIME PAYMENTS!
THIRD DOWN, BALANCE MONTHLY!**

JIM HORTON TIRE SERVICE
East Main Street Eastland

Former Eastland Man Braves Fire To Save Animals

Hero of a conflagration which destroyed 150 mules and horses in Fort Worth Wednesday was Jack Tindall, 28, former resident of Eastland.

Jack, brother of Louis Tindall, widely known rodeo performer and also of Eastland, with a Fort Worth policeman braved the fire at the Burnett-Young Horse and Mule Barns to drive out 40 animals. The roof of the barn collapsed immediately after they were forced out by the blaze.

Mack, a five-year old bulldog owned by Louis Tindall, was killed in the fire. The bulldog had been trained to ride and round up horses and was burned to death as it headed into a section of the barn where Louis usually kept his jumping horses.

The rodeo performer had returned to Fort Worth Wednesday from an inspection of ranch properties and was in a service station across from the barn when the fire broke out, a Fort Worth newspaper stated.

The bulldog was in the tonneau of Tindall's car and leaped from the car and ran into the burning building.

Tindall ran into the barn after the dog. He opened two corrals and released 50 mules and horses.

Greek Income For George II May Be Small

By ANTHONY KEDRAS
United Press Staff Correspondent
ATHENS, Greece — Ex-King George of Greece will receive an annual income of ten million drachmas (about \$50,000) when he is restored to the throne.

According to reports here this is the sum that will satisfy him. And he will not even ask for any arrears that might be due since his abdication 12 years ago, or for any income from the former royal estates now the property of Greek refugees and peasants.

At the same time a large part of the estates not occupied by the

refugees and peasants are likely to be returned to the royal house, thus considerably augmenting George's annual income.

Among them, and probably the richest, is the Tatoi estate of roughly 125,000 acres, in which there are forests, pastures, orchards and vineyards. Only one small part of this is a refugee settlement.

The estate was bought by King George I, in 1880, and was the summer residence of the royal family. On a hill stands the small plain tomb of King Alexandros who died from blood poisoning caused by the bite of his pet monkey.

One of the first moves of the Royalists for George's return was to get parliamentary approval for the transfer of the bodies of King Constantine, Queen Sophie, and the Dowager Queen Olga, from the Russian church in Florence, Italy,

to the tomb at Tatoi.

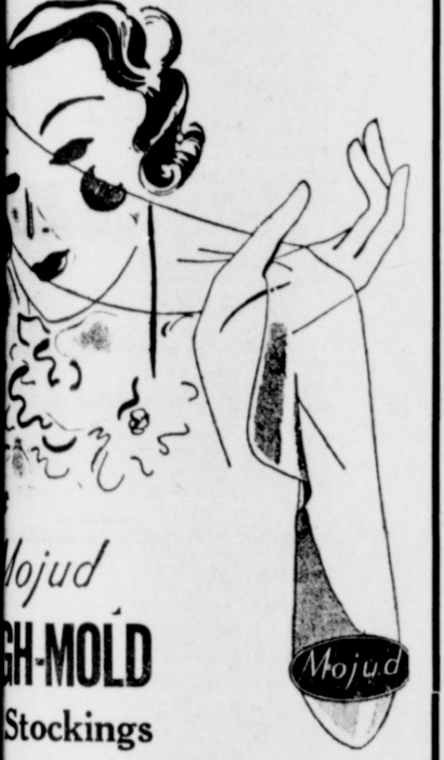
On the Island of Corfu is another royal estate surrounding the Palace "Mon Repos." The estate measures about 625 acres. King George I left it in his will to Prince Andrew, who, when it was confiscated on Georges II's abdication, started a law suit for its return. The suit is still before the Greek courts.

The estate of Manolas in the north-eastern Peloponnese, was once the property of Crown Prince Constantine. It measured about 500 acres and is entirely occupied by refugees and peasants.

There is also the Monodrendri estates in Thessaly, about 350 acres in extent.

Mrs. George L. Davenport, who has been in the West Texas Clinic at Ranger, was reported as satisfactorily improving Wednesday.

FASHION POINTS TO LEARER STOCKINGS



made with these magic strips in inter tops which absorb strain, add comfort, and prolong the life of your legs.

Mold Chiffons get their crystal sheen as a result of the patented flame ringless knitting process.

Molds are made in the new Shades, designed by Orry-Kelly—most glamorous of Hollywood

cost no more than ordinary

High-Molds as the
ery value in town. **\$1.00**

Specials You Need Most Any Time
boats that will **\$5.00**

DINE RAINCOATS
coat that **\$9.85**

Possible Style in
LITY SHOES
Natural Bridge **\$6.00**
Del Mar **\$4.95**

\$2.45 and \$3.95

and Let Us Solve Your
T TROUBLES!

phenson Labora-
We make your
special impres-

FASHION
Exclusive Ladies' Store
EASTLAND

ON YOUR NEXT TRIP



**Choose
GREYHOUND**

For unequalled dependability, comfort, convenience and genuine travel enjoyment, go by Greyhound. Nation-wide service. . . Comfortable buses. . . Convenient schedules. . . Exceedingly low fares.

CONNELLEE HOTEL
Phone 306
Eastland

**SOUTHWESTERN
GREYHOUND**

**Penney's Annual
Harvest of Values!**

**Beautiful Rondo
Dress Prints**
Real finds at this price!
19¢ yard

**Heavier than Usual
Blankets**
Values hard to equal at
\$1.39 pair

**Outstanding Value!
Blankets**
Part wool . . . extra size
\$2.69 pair

Look at this value!
DRESS PRINTS
in smart new patterns
10¢ yard
Fast color! Better quality than you'd expect for 10¢. 36" wide.

**Rayon and Cotton
SPREADS**
Real values for only
\$1.00
Jacquard pattern. Scalloped edges. Lovely colors. 80x105".

Get a
**Shirley Temple
DOLL**
\$2.95 \$3.95 \$4.95

**Shirley Temple
DRESSES**
\$1.98

Boys' Work SHIRTS
What Buys!
29¢
Fine yarn chambray, steel buttons, interlined collar, 2 pockets. Compare them!

Men's Work SHIRTS
What Values!
35¢
Fine yarn chambray! 6 steel button front, two pockets! Sizes 14 1/2-17!

**"Nursery" Birdseye
DIAPERS**
Hemmed size, 27 x 27 in.
6 for 49¢
Fine quality, smooth Birdseye cloth. . . the kind that wears so well. Very absorbent. Non-irritating in sanitary package.

**Men! A Value for You!
Handmade Ties**
The newest Fall patterns!
49¢
Every one made by hand, from the best and newest fabrics. Resilient construction. . . hard to wrinkle! Many to choose from!

PENNEY'S
J. C. PENNEY COMPANY, Incorporated

France and Japan Seeking Submarine Supremacy In 1936

By United Press
 CHERBOURG, France.—The French policy of maintaining the lead it already has established among navies of the world in submarines was advanced another stage last week when the 2,000-ton submersible Beveziers was launched here.

This vessel, when completed, will bring France's total submarine fleet to the impressive figure of 75, this including the small coastal submarine, Junion, which took the water a few weeks ago.

With the steady increase in France's submarine flotillas, the

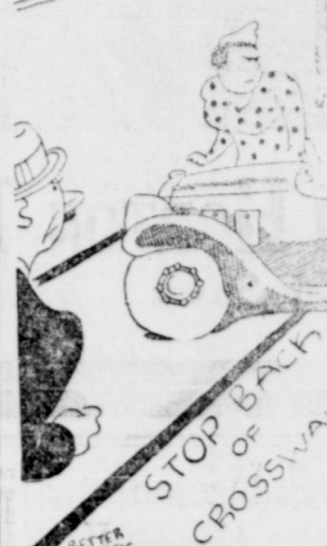
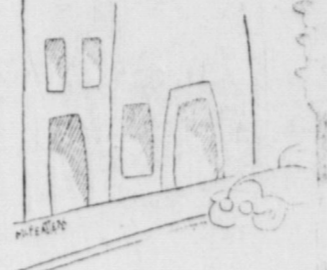
ministry of the navy becomes increasingly opposed to all moves by other naval powers to restrict or abolish undersea craft as part of the navies of the nations. The French Admiralty not only is embarked upon a program of maintaining its undersea craft strength but of increasing it.

During the next 12 months, submarine construction will go forward at a steady pace until, by the time when the Washington Treaty is due to terminate at the end of 1936, it will have the formidable total of 75,076 tons in submarines. This will be second in tonnage to the Japanese strength, but it is believed the French submarine fleet will outclass the Japanese in numbers.

U. S. To Rank Third
 The figures for submarine tonnage of the powers at that date will be:
 Japan 79,777 tons

PUBLIC ENEMIES

THE CROSSWALK CREEPER



Not so innocent as one might think is this candidate for "public enemy" of the highway honors.

By inconsiderately edging his car across the safety lines of crosswalks at street corners, the Cross-Walk Creeper forces pedestrians into danger zones. Many serious accidents result.

Good drivers are considerate of others—they obey the law by stopping back of the crosswalk.

France 77,076 tons
 United States ... 58,800 tons
 Great Britain ... 52,194 tons
 Italy 46,437 tons

In refusing to abandon the submarine as a naval weapon, France has shared the same views as the Japanese. Both nations, in resisting efforts by Great Britain to bring about an agreement for the abolition of undersea craft, have

CONNELLEE SUNDAY ONLY



William Powell and Rosalind Russell in "Rendezvous"

held that these vessels are not considered as weapons of attack, but of defense.

Both the United States and Germany recently expressed their agreement to abolish the submarine, it is believed, thereby siding with the British argument, but France and Japan have refused to participate in any conversations aimed at banishing the submersible.

Russia Leans Toward France
 It is stated that Russia is now ranging itself on the side of France and Japan and is preparing a program of large submarine construction, thus making more remote the prospect of agreement at any future naval conference on banning or severely limiting this type of warfare.

Not only in total tonnage but in individual size, France keeps the lead among the maritime powers in submarines. The giant submersible cruiser, Surcouf, of 3,500 tons, still is the largest in the world and is capable of meeting on equal terms on the surface many craft before which other submarines would be forced to retreat.

The newest addition to the fleet, the Beveziers, constitutes a powerful fighting unit, as she will be equipped with 11 torpedo tubes. Propelled by engines developing 8,000 horsepower, the Beveziers is a sister craft of the Agosta, Ouessant, Sid-Ferruch, Efax and Cas-

ablanca, all in course of completion under the 1930 program.

Assignment Not Revealed
 It is not yet revealed whether these new craft will be attached to the Atlantic or Mediterranean squadrons of the French navy. France has adopted the policy in recent times of keeping most submarines in the Mediterranean while maintaining large units in the Atlantic.

From reliable sources it is estimated that France has 50 of its 75 submarines in the Mediterranean, compared with Italy's 59. Great Britain is calculated to have 13 submarines in the Mediterranean, but is expected to increase this number if it decides further to strengthen naval plans in the inland sea in view of the Italo-Ethiopian conflict.

Of total tonnage stationed in the Mediterranean, Britain has by far the largest, it is calculated. The British Admiralty has five battleships either at Gibraltar or around the entrance to the Suez Canal, off the coast of Egypt, against three French battleships and two Italians attached to the Mediterranean fleets of these two powers.

Strength of Forces Shown
 Other figures showing Mediterranean forces are:

Battle cruisers—Britain, 2; France, none; Italy, none.
 Aircraft carriers—Britain, 2; France, 1; Italy, none.

Cruisers with 8 inch guns—Britain 8; France, 6; Italy, 6.
 Cruisers with 6 inch guns—Britain, 10; France, 1; Italy, 7.
 Destroyers—Britain, 3; France, 33; Italy, 9.
 Torpedo boats—Britain, none; France, none; Italy, 35.

As France carries through submarine construction program, thus rendering more remote agreement on restriction of this type of warfare, it is anticipated other maritime powers gradually will be forced to increase their undersea craft, unless the dim hope of the long awaited naval conference is fulfilled and results in an international agreement of submersibles.

Luther Dodd's niece of Sherman is visiting him.
 Mrs. Bill Reid and Mrs. Harry Deal visited Mrs. J. S. Brown Tuesday.

Mr. and Mrs. J. L. Brown were called Sunday from Baird. Their son, O. D. Brown's wife was very ill. She was operated on for appendicitis and is doing nicely.

Mr. and Mrs. Esther Pilgrim and Mr. and Mrs. J. L. Wilson and little daughter visited their parents, Mr. and Mrs. G. C. Pilgrim, Sunday.

Mrs. Sudd Lillian Ruth O. Patterson Roberts, Mrs. son Floyd H. Wheat

An Offer . . . an Opportunity For HEALTH RELIEF!

Take Advantage of This Great Service!

We are offering you one of the greatest opportunities of a life time to learn the exact cause of your ill health, whether it be cancer, tuberculosis, gall bladder infection, ulcers, tumors, loss of sight or hearing, or inflammation of any of the viscera. We can locate the trouble, tell the exact stage of advancement, and what is more important, effect a safe, pleasant, and sure method of relief.

Between now and Nov. 10, 1935 we are giving, at greatly reduced terms, a complete Radio-Clast diagnosis, a complete food chart with each food scientifically tested for you, 30 treatments on the Radio-Clast, that remarkable instrument that removes the guess work from diagnosis, and 30 spinal treatments scientifically applied. This offer positively ends November 10.

The diagnosis and food chart alone are worth far more than the cost of the entire course. We invite inquiries, and will be glad to explain our methods to you. No charge for consultation.

Yours for Better Health!
DRS. DEIS & DEIS
 Chiropractors
 502 South Seaman St. Eastland

ANNOUNCEMENT

At the request of several local patients, Dr. Blanche Reinhart, Dermatologist (Skin Specialist) of the Amond Institute of Electrolysis, New York, will be at the Connellee Hotel each Monday, Tuesday and Wednesday of every week. Dr. Reinhart guarantees to remove any case of superfluous hair, warts, moles and other skin blemishes. All work guaranteed, 15 years experience.

Phone Connellee Hotel for Appointment

WHEN YOU MAKE A DATE WITH BILL!

Thrills rub shoulders with laughter and romance as "Thin Man" Powell gaily solves a mystery that threatens 3,000 lives—and wins a bride—all in 48 exciting hours!

WILLIAM POWELL
 in
Rendezvous
 with ROSALIND RUSSELL
 BINNIE BARNES
 LIONEL ATWILL
 CESAR ROMIRO
 SAMUEL S. HINDS

Metro Goldwyn Mayer PICTURE

ALAMEDA

Most of the farmers in this community have their peanuts up and some have threshed. They are disappointed because it is raining.

Mr. and Mrs. L. A. Woods of Fort Worth visited Mrs. Pearl Price and Mrs. Harry Deal Sunday.

SAY! How about dropping those extra pennies in one of the little jars you will see on front counter in each store, barber shop and cafe. Help uniform our high school band

COMPARE these VALUES

COLD WEATHER SPECIALS THAT CLICK!

Suede Jackets Satsen Lined Zipper Front Coc sack or Net Bottom . . .	\$5.95	Men's Rubberized Suedine Jackets Fleece lined Water-proof Wind-proof Tan and Navy	\$2.98
Men's Brush WOOL COAT Featuring New Sheered Belted back zipper front	\$1.98	Children's All-Wool TOBOGGANS Assorted Colors; Fine for School	49c

SATURDAY, OCTOBER 26th ONLY . . . OUR BIG DOLLAR DAY

Men's Winter UNIONS Long Legs, Short or Long Sleeves 36 to 48	79c	Men's Part Wool SOX FOR DRESS A Great Value Special for	25c
--	------------	---	------------

Eastland Texas Burr's West Side Square
 DEPARTMENT STORE
 EASTLAND'S PROGRESSIVE DEPARTMENT STORE
 West Side Square Eastland

Star Light! Star Bright! The Biggest Show

A laugh-jammed story of the networks featuring the outstanding stars of motion picture, stage and radio worlds.

THE BIG BROADCAST

introducing such specialties as

- Bing Crosby** singing "I Wishd on the Moon"
- Amos 'n' Andy** "Is we regusted . . . we can't croon"
- Ethel Merman** and (Believe it or not) an Elephant Chorus
- Ray Noble** and His Band playing sweet, sophisticated rhythms
- Mary Boland** and **Charlie Ruggles** Yep! They're at it again!
- Bill Robinson** tap dancing as only 'Bojangles' can
- Plus the hilarious triple radio romance of . . .
- Jack Oakie**
- George Gracie Burns & Allen**
- Lyda Roberti**
- Wendy Barrie**
- Henry Wadsworth**

A Paramount Picture Directed by Norman Taurog

Plus Merry Melody—"Lady in Red"

CONNELLEE SUNDAY ONLY

Star Light! Star Bright! The Biggest Show

A laugh-jammed story of the networks featuring the outstanding stars of motion picture, stage and radio worlds.

THE BIG BROADCAST

introducing such specialties as

- Bing Crosby** singing "I Wishd on the Moon"
- Amos 'n' Andy** "Is we regusted . . . we can't croon"
- Ethel Merman** and (Believe it or not) an Elephant Chorus
- Ray Noble** and His Band playing sweet, sophisticated rhythms
- Mary Boland** and **Charlie Ruggles** Yep! They're at it again!
- Bill Robinson** tap dancing as only 'Bojangles' can
- Plus the hilarious triple radio romance of . . .
- Jack Oakie**
- George Gracie Burns & Allen**
- Lyda Roberti**
- Wendy Barrie**
- Henry Wadsworth**

A Paramount Picture Directed by Norman Taurog

Plus Merry Melody—"Lady in Red"

CONNELLEE SUNDAY ONLY