



# BAILEY COUNTY JOURNAL

'The Community of Opportunity-Where Water Makes the Difference'



20¢

Volume 21, No. 21

12 Pages Today

Published Every Sunday at Muleshoe, Bailey County, Texas 79347

Sunday, May 29, 1983

## Moisture Crucial To County Farmers

### Around Muleshoe

Janel Garrett, daughter of Phil and Dolores Garrett graduated from West Texas State School of Nursing with a BS degree on Saturday, May 14. She has been employed in the burn and surgical intensive care units of Lubbock General Hospital. She is the granddaughter of Mr. and Mrs. E.W. Locker and Mrs. Birda Garrett of Hartsell, Alabama. Mrs. Garrett arrived in Muleshoe May 12 to attend the ceremonies.

The Muleshoe Women's Softball League will sponsor an invitational tournament on June 4 and 5 in Muleshoe. Deadline for entering is May 30 and the fee is \$65 per team. For further information or to register call Evelyn Pope at 272-4023 or Shorty Flores at 272-3162. The tourney will be played in the new City Park.

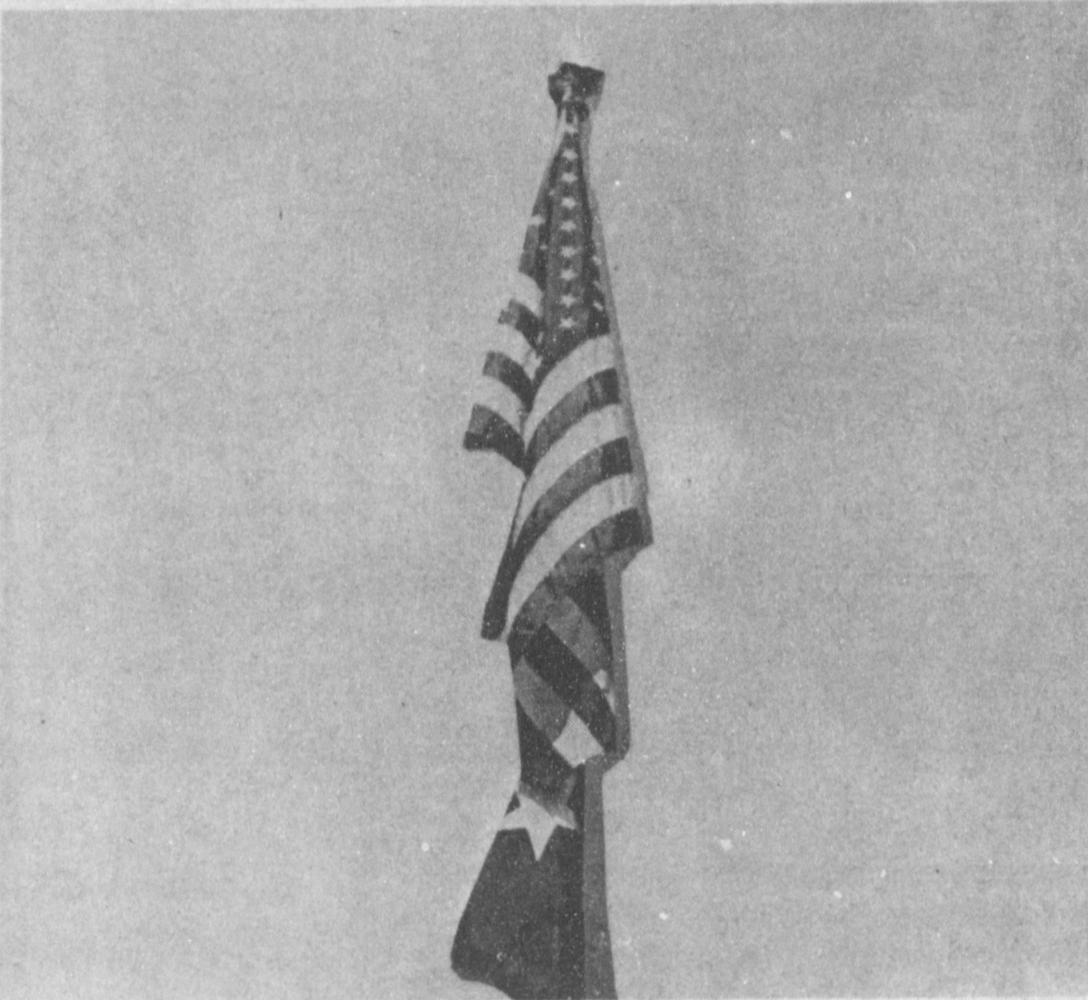
The Mule Putt Miniature Golf Course will be open on Memorial Day, May 30 beginning at 2 p.m. for all those interested in playing that day.

Wanda Parham of Amarillo, formerly of Muleshoe, has recently joined Creative Home Brokers, Inc. She has been in the real estate business for the past 12 years and a member of the Million Dollar Club for three years. Ms. Parham belongs to the Amarillo Chamber of Commerce, Women's Council Board of Realtors and on many committees and serves on the education committee on the state level. She is the Cont. Page 8, Col. 1

### Swimming Pool Opens June 6

Bob Graves, manager of the Muleshoe City Swimming Pool has announced the opening of the pool on Monday, June 6th. The pool will be open from 1:30 p.m. until 7 p.m. on weekdays, from 12:30 p.m. until 7 p.m. on Saturday and from 2 p.m. until 6 p.m. on Sunday.

The City pool will be closed each Friday, all day. Admission for swimming is \$1.50 per person with season tickets costing \$30 per person. Private parties with a two hour time limit will be charged at \$24 per party. Graves stated that Cont. Page 8, Col. 3



"LEST WE FORGET....."-Memorial Day, or the idea of it, began in the U.S.A. well over a century ago when war dead were honored during the Civil War. At the end of World War II, Memorial Day was set aside as a National Holiday to commemorate these brave men and women who gave their lives in the defense of their country. Many special services are scheduled throughout the U.S. in observance of this occasion.

### ASCS Review Gives Facts On County Farm Programs

According to notices made available by the Bailey County ASCS offices, farm program facts issued in April by the U.S. Department of Agriculture have set the rules and regulations for producers in the 1983 farm program and are set forth in the Federal Register.

The Commodity Credit Corporation has affirmed determinations for the 1983 crop of wheat, setting a national target price of \$4.30 per bushel. The national average loan rate is \$3.65 per bushel for wheat placed under a regular loan or into a farmer-owned reserve. Rules also state however, that a producer cannot place wheat into the reserve until after a regular nine month loan matures. The reserve storage rate payment for wheat will remain at \$26.5 per bushel for 1983.

Producers have been notified that those who plant one or more program crops (wheat, corn, grain sorghum, barley, or oats) and participate in and comply with the acreage reduction and land diversion program for a crop will be eligible for program benefits for that crop. This includes diversion payments, commodity loans,

target price protection and any disaster payments, that may be authorized.

The target price for corn per bushel for 1983 is set at \$2.86, with the regular loan rate set at \$2.65 per bushel. The projected deficiency rate is set at 21 cents and the diversion rate at \$1.50. Grain sorghum target price per bushel is set at \$2.72; regular loan rate at \$2.52 with the pro-

jected deficiency rate set at 20 cents. Diversion rate for corn is scheduled at \$1.50 per bushel. Rates for both barley and oats are available at the County ASCS office.

In the 1983 Upland Cotton Program, the target price for cotton is set at 76 cents per pound with a loan rate at 55 cents per pound. The loan rate ap-

Cont. Page 8, Col. 2

### '83 Memorial Day Fatalities Estimated

The Texas Safety Association said that the National Safety Council estimates that between 350 and 450 persons may die in traffic accidents during the Memorial Day weekend.

The three-day holiday begins at 6:00 p.m., Friday, May 27 and concludes at midnight, Monday, May 30.

The Council also estimates that between 17,000 and 22,000 persons may suffer disabling injuries caused by traffic accidents during the three-day holiday.

Last year during a similar holiday period, 341 persons lost their lives in motor-vehicle accidents. In 1981, the total was 420. Last year 58 persons died in Texas traffic over Memorial Day. In Texas, the Department of Public Safety gives pre-holiday estimates only on the 4th of July, Labor Day, Christmas and New Year's holidays.

### Tennis Clinic Coming To Muleshoe

The Texas Tennis Association has agreed to conduct a one day tennis clinic in Muleshoe on Monday, June 20, 1983. James Rytting, a graduate of Cornell University, and an experienced teaching pro, will provide instruction, according to Windy Williams high school Athletic Director.

The purpose of the TTA program is to provide playing opportunities for tennis Cont. Page 8, Col. 3

ject deficiency rate set at 20 cents. Diversion rate for corn is scheduled at \$1.50 per bushel. Rates for both barley and oats are available at the County ASCS office.

In the 1983 Upland Cotton Program, the target price for cotton is set at 76 cents per pound with a loan rate at 55 cents per pound. The loan rate ap-

Cont. Page 8, Col. 2

if everyone buckled up at all times. In addition, children should be fastened in child safety seats.

More safe traveling advice from Texas Safety Association is:

\* If you choose to drink, don't drive. If you go to a party or bar, designate one person to refrain from drinking. That person takes everyone home safely.

\* Maintain a safe following distance behind the vehicle in front of you, at least a car length for every 10 miles per hour of speed you are traveling.

\* Use your directional signals if you intend to pass another vehicle.

\* Check for traffic in the passing lane before pulling into it.

\* Make certain your motor vehicle is in good shape before you start out on a trip.

### Student Will Participate SPS Science Symposium

Kelly Hamblen, junior at Muleshoe High School, is to participate in the 23rd annual Texas Energy Science Symposium at the University of Texas (UT) at Austin May 31 through June 3.

Miss Hamblen is the daughter of Dr. and Mrs. John Hamblen of 306 W. Ave. J., Muleshoe. She is among 41 outstanding high school students and teachers from the Panhandle and South Plains invited to the symposium as guests of Southwestern Public Service Co. (SPS).

The symposium is expected to attract more than 400 students and their teachers from across Texas to tour the science laboratories at UT and to hear nationally known scientists and engineers discuss energy related topics. The

### July Celebration Plans Now Underway

A long-standing Muleshoe tradition will come alive once again this July 4th as the Muleshoe Chamber of Commerce and Agriculture plans another city-wide Independence Day Celebration. Entry forms for the Freedom Parade and information on Civic Center booths are in the mail to over one hundred area clubs and organizations. Any group interested in this information that does not receive it in the mail within a week should contact the Chamber office.

The sidewalk sale for this year is scheduled for Saturday, July 2. A week earlier, on Saturday, June 25, the Chamber will have a garage sale in the old Western Auto building on Main street to help raise funds for the July 4th Celebration. No clothing will be offered in the garage sale. Area residents interested in contributing items to the garage sale should contact the Chamber office.

Many traditional events will be featured on the 4th of July, including the Freedom Parade, Civic Center booths, kids activities, old settler's reunion, gymnastics and karate demonstrations, the fireworks display,

### Dealer Announces Computer Franchise

Cal Jordan Implements, Inc. of Clovis has announced that it has signed a franchise agreement to become a ValCom agricultural computer dealer. As part of the agreement they also become authorized dealers for the IBM Personal Computer.

Cal Jordan, (president) of Cal Jordan Implements, said that the new venture will specialize in serving the agricultural market and will carry a broad array of software programs and related supplies in addition to the IBM Personal Computer.

In making the announcement, Jordan said that the computer is becoming as important to many farmers and ranchers as their tractor. "We'll be able to provide the local sales and service that our customers need," continued Jordan, "and our customer will have the advantage of dealing with someone who really knows the business of agriculture."

Included among the over 50 software programs offered by Cal Jordan Implements will be financial

### Methodist Plan Church School

A new and exciting program format has been prepared by the First United Methodist Church for their Vacation Church School scheduled to begin on June 6 and run through June 10 according to church pastor Rev. Bill Kent. Classes will be held from 9 until 11:30 a.m. Monday through Thursday, with an extended program on Friday, when parents will be invited to visit the school.

### Methodist Plan Church School

Cont. Page 8, Col. 4

### Rainfall Amounts Vary In County Some Hail Reported

Threatening clouds hanging around the Muleshoe-Bailey County area for the past few days finally opened up late Thursday evening and night to dump badly needed moisture on dry West Texas lands in amounts from just under a half inch to near two inches in different sections of this area.

Some residents contacted reported intense storming and high winds with the rains, while others men-

### Mule Buck Project Starts Tuesday

Beginning Tuesday, May 31, and continuing throughout the month of June, the Muleshoe Chamber of Commerce and Agriculture will sponsor a "Mule Bucks" promotion here in Muleshoe. Muleshoe Chamber member merchants will be offering a 20% across-the-board discount on their services and merchandise.

Area citizens will be able to buy the Mule Bucks at Muleshoe banks and savings and loans for 80 cents on the dollar, in increments of \$25.00. Mule Bucks will

be honored by participating merchants for one dollar each, will be for new purchases only, and cannot be used to pay off existing accounts or layaways. In addition, they will be used for whole dollar amounts only. Mule Bucks will go on sale at the banks and at Summit Savings on May 31.

There will also be a limit of a maximum of \$250 in Mule Bucks which may be spent on any one purchase. The Mule Bucks will not be honored after June 30. Area residents are encouraged to take advantage of this exceptional opportunity to save. Further information may be obtained from John Gulley, Manager of the Chamber of Commerce.

### Producers Invited To Insect Scouting Clinic

Cotton, corn and sorghum producers in Bailey County are again receiving a special invitation to take part in the annual High Plains Scout Training Workshop to increase the effectiveness of their pest management programs.

The workshop will be held Tuesday and Wednesday, May 31-June 1, at the Hale County Agricultural Center in Plainview, Spencer Tanksley, County Extension agent, said. The center is on U.S. 87 Business Route south of the city.

The workshop, conducted by the Texas Agricultural Extension Service, was first held in 1973 to train scouts in the pest management programs conducted by Ex-

Cont. Page 8, Col. 4

tioned relatively little activity with the moisture. Some area cotton farmers received rain which will go a long way in helping them to get their dry land cotton planted. However, still others continue the wait for the critical moisture. Close to one half inch was recorded in the City of Muleshoe.

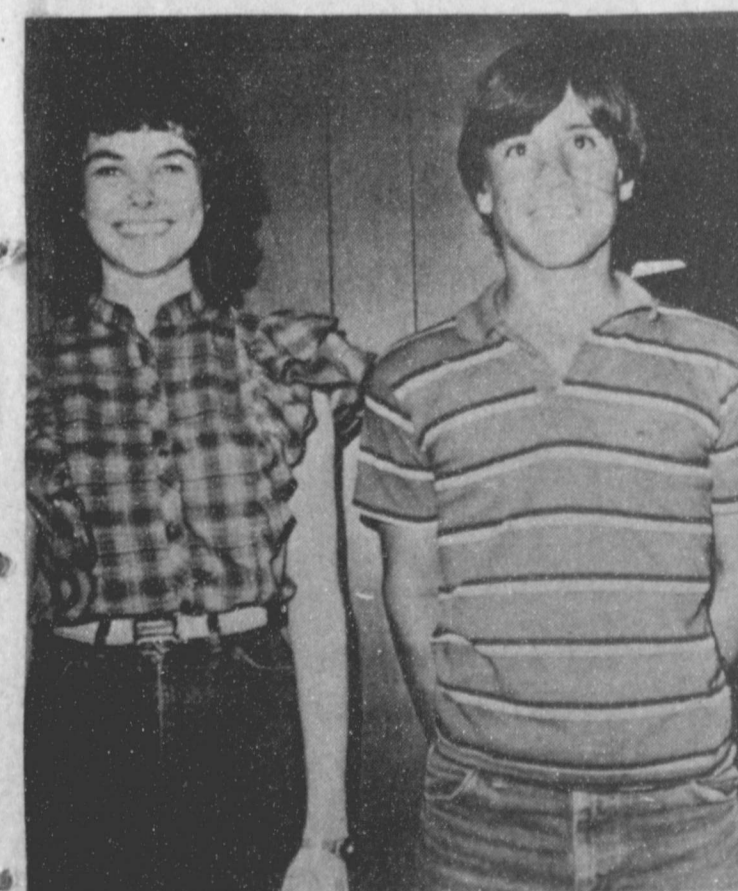
Heavy thunderstorms which were reported near the Texas-New Mexico border late Thursday evening eventually brought good rains to farmers in and around the Lazbuddie area. Jerry Don Glover, a farmer in the Lazbuddie area, reported amounts ranging from one inch to an inch and one half. Glover stated that rains were good north of Lazbuddie also.

A farmer in the YL community reported a full pasture tank on Friday morning and about two inches of rain in his rain gauge. Employees on the Purina Farms East of Muleshoe recorded one and four-tenths inches of badly needed rain on wheatlands there.

Many farmers who were watering wheat or other crop lands received enough moisture to allow them to shut off their wells on Friday morning. Water was reported to be over the farm to market roads in several parts of the county Thursday evening.

While the storms came Cont. Page 8, Col. 5

Cont. Page 8, Col. 4



OPTIMIST OUTSTANDING STUDENTS--Sandra Speck of MHS and Steve Neptune of MJHS were named as outstanding students in their respective schools recently by the Muleshoe Optimists. A boy and girl from each school was selected. Also named for this honor in high school was John Wuerflein and in Junior High, Kathy Horn; however, these two were not available for photos. The Optimists plan to make this an on-going project.



YES WEEK PROCLAIMED BY MAYOR--Mayor Charles Bratcher signed a proclamation Tuesday with YES Board Members Linda Guelker, Frank Ellis, III and Judy Bruns looking on. YES week will kick off on June 4 with plans for a full day of activities. John Gulley, Manager of the Muleshoe Chamber of Commerce has stated that the Chamber is pleased with the establishment of the YES in Muleshoe and feel that it provides a much needed service to the people in this community.



# BAILEY COUNTY JOURNAL

'The Community of Opportunity-Where Water Makes the Difference'



20¢

Volume 21, No. 21

12 Pages Today

Published Every Sunday at Muleshoe, Bailey County, Texas 79347

Sunday, May 29, 1983

## Moisture Crucial To County Farmers

### Around Muleshoe

Janell Garrett, daughter of Phil and Dolores Garrett graduated from West Texas State School of Nursing with a BS degree on Saturday, May 14. She has been employed in the burn and surgical intensive care units of Lubbock General Hospital. She is the granddaughter of Mr. and Mrs. E.W. Locker and Mrs. Birda Garrett of Hartsell, Alabama. Mrs. Garrett arrived in Muleshoe May 12 to attend the ceremonies.

The Muleshoe Women's Softball League will sponsor an invitational tournament on June 4 and 5 in Muleshoe. Deadline for entering is May 30 and the fee is \$65 per team. For further information or to register call Evelyn Pope at 272-4023. The tourney will be played in the new City Park.

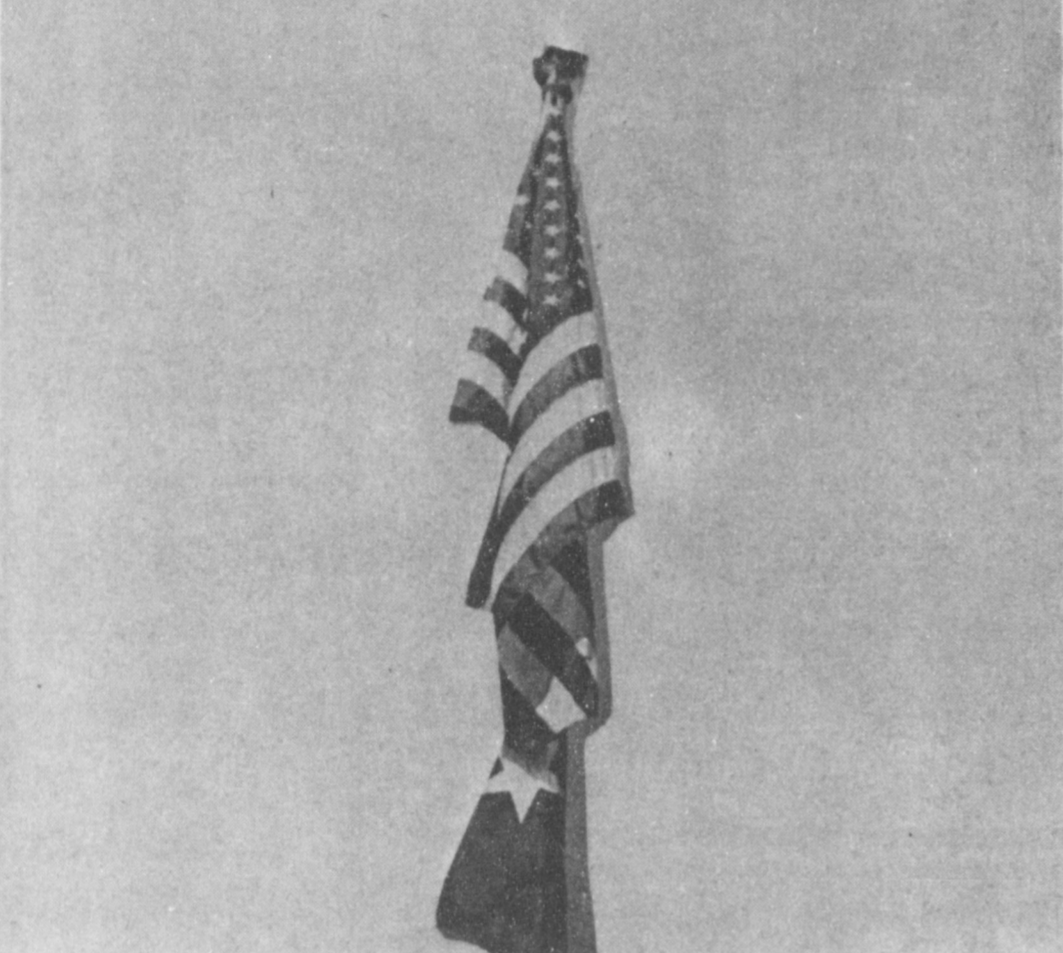
The Mule Putt Miniature Golf Course will be open on Memorial Day, May 30 beginning at 2 p.m. for all those interested in playing that day.

Wanda Farham of Amarillo, formerly of Muleshoe, has recently joined Creative Home Brokers, Inc. She has been in the real estate business for the past 12 years and a member of the Million Dollar Club for three years. Ms. Farham belongs to the Amarillo Chamber of Commerce, Women's Council Board of Realtors and on many committees and serves on the education committee on the state level. She is the

### Swimming Pool Opens June 6

Bob Graves, manager of the Muleshoe City Swimming Pool has announced the opening of the pool on Monday, June 6th. The pool will be open from 1:30 p.m. until 7 p.m. on weekdays, from 12:30 p.m. until 7 p.m. on Saturday and from 2 p.m. until 6 p.m. on Sunday.

The City pool will be closed each Friday, all day. Admission for swimming is \$1.50 per person with season tickets costing \$30 per person. Private parties with a two hour time limit will be charged at \$24 per party. Graves stated that



"LEST WE FORGET...."--Memorial Day, or the idea of it, began in the U.S.A. well over a century ago when war dead were honored during the Civil War. At the end of World War II, Memorial Day was set aside as a National Holiday to commemorate these brave men and women who gave their lives in the defense of their country. Many special services are scheduled throughout the U.S. in observance of this occasion.

### ASCS Review Gives Facts On County Farm Programs

According to notices made available by the Bailey County ASCS offices, farm program facts issued in April by the U.S. Department of Agriculture have set the rules and regulations for producers in the 1983 farm program and are set forth in the Federal Register.

The Commodity Credit Corporation has affirmed determinations for the 1983 crop of wheat, setting a national target price of \$4.30 per bushel. The national average loan rate is \$3.65 per bushel for wheat placed under a regular loan or into a farmer-owned reserve. Rules also state however, that a producer cannot place wheat into the reserve until after a regular nine month loan matures. The reserve storage rate payment for wheat will remain at \$26.5 per bushel for 1983.

Producers have been notified that those who plant one or more program crops (wheat, corn, grain sorghum, barley, or oats) and participate in and comply with the acreage reduction and land diversion program for a crop will be eligible for program benefits for that crop. This includes diversion payments, commodity loans,

target price protection and any disaster payments that may be authorized.

The target price for corn per bushel for 1983 is set at \$2.86, with the regular loan rate set at \$2.65 per bushel. The projected deficiency rate is set at 21 cents and the diversion rate at \$1.50. Grain sorghum target price per bushel is set at \$2.72; regular loan rate at \$2.52 with the pro-

### '83 Memorial Day Fatalities Estimated

The Texas Safety Association said that the National Safety Council estimates that between 350 and 450 persons may die in traffic accidents during the Memorial Day weekend.

The three-day holiday begins at 6:00 p.m., Friday, May 27 and concludes at midnight, Monday, May 30.

The Council also estimates that between 17,000 and 22,000 persons may suffer disabling injuries caused by traffic accidents during the three-day holiday.

Last year during a similar holiday period, 341 persons lost their lives in motor-vehicle accidents. In 1981, the total was 420. Last year 58 persons died in Texas traffic over Memorial Day. In Texas, the Department of Public Safety gives pre-holiday estimates only on the 4th of July, Labor Day, Christmas and New Year's holidays.

The Memorial Day weekend marks the beginning of the Council's safety belt usage campaign called Make It Click - Drive Defensively. Everyone is encouraged to use safety belts as 14,000 to 18,000 lives could be saved yearly.

### Tennis Clinic Coming To Muleshoe

The Texas Tennis Association has agreed to conduct a one day tennis clinic in Muleshoe on Monday, June 20, 1983. James Rytting, a graduate of Cornell University, and an experienced teaching pro, will provide instruction, according to Windy Williams high school Athletic Director.

The purpose of the TTA program is to provide playing opportunities for tennis. Cont. Page 8, Col. 3

### July Celebration Plans Now Underway

A long-standing Muleshoe tradition will come alive once again this July 4th as the Muleshoe Chamber of Commerce and Agriculture plans another city-wide Independence Day Celebration. Entry forms for the Freedom Parade and information on Civic Center booths are in the mail to over one hundred area clubs and organizations. Any group interested in this information that does not receive it in the mail within a week should contact the Chamber office.

The sidewalk sale for this year is scheduled for Saturday, July 2. A week earlier, on Saturday, June 25, the Chamber will have a garage sale in the old Western Auto building on Main street to help raise funds for the July 4th Celebration. No clothing will be offered in the garage sale. Area residents interested in contributing items to the garage sale should contact the Chamber office.

Many traditional events will be featured on the 4th of July, including the Freedom Parade, Civic Center booths, kids activities, old settler's reunion, gymnastics and karate demonstrations, the fireworks display,

### Dealer Announces Computer Franchise

Cal Jordan Implements, Inc. of Clovis has announced that it has signed a franchise agreement to become a ValCom agricultural computer dealer. As part of the agreement they also become authorized dealers for the IBM Personal Computer.

Cal Jordan, (president) of Cal Jordan Implements, said that the new venture will specialize in serving the agricultural market and will carry a broad array of software programs and related supplies in addition to the IBM Personal Computer.

In making the announcement, Jordan said that the computer is becoming as important to many farmers and ranchers as their tractor. "We'll be able to provide the local sales and service that our customers need," continued Jordan, "and our customer will have the advantage of dealing with someone who really knows the business of agriculture."

Included among the over 50 software programs offered by Cal Jordan Implements will be financial planning, farm accounting, commodity information, swine management, dairy management, beef management, least cost rations and crop analysis. Within the near future, ValCom will also be offering access to time share networks, including those of major agricultural universities, commodity services, and their own management service.

In addition to their agricultural programs, they will also have available other IBM programs offered for business, education and home use.

ValCom is a trade name for the Agricultural Management Systems Division of Valmont Industries of Valley, Nebraska. In agriculture, Valmont is the world's largest manufacturer of mechanized irrigation equipment and operates throughout the United States and in 35 foreign countries.

### Methodist Plan Church School

A new and exciting program format has been prepared by the First United Methodist Church for their Vacation Church School scheduled to begin on June 6 and run through June 10 according to church pastor Rev. Bill Kent. Classes will be held from 9 until 11:30 a.m. Monday through Thursday, with an extended program on Friday, when parents will be invited to visit the school. Cont. Page 8, Col. 4

### Rainfall Amounts Vary In County Some Hail Reported

Threatening clouds hanging around the Muleshoe-Bailey County area for the past few days finally opened up late Thursday evening and night to dump badly needed moisture on dry West Texas lands in amounts from just under a half inch to near two inches in different sections of this area.

Some residents contacted reported intense storming and high winds with the rains, while others men-

tioned relatively little activity with the moisture. Some area cotton farmers received rain which will go a long way in helping them to get their dry land cotton planted. However, still others continue the wait for the critical moisture. Close to one half inch was recorded in the City of Muleshoe.

Heavy thunderstorms which were reported near the Texas-New Mexico border late Thursday evening eventually brought good rains to farmers in and around the Lazbuddie area. Jerry Don Glover, a farmer in the Lazbuddie area, reported amounts ranging from one inch to an inch and one half. Glover stated that rains were good north of Lazbuddie also.

A farmer in the YL community reported a full pasture tank on Friday morning and about two inches of rain in his rain gauge. Employees on the Purina Farms East of Muleshoe recorded one and four-tenths inches of badly needed rain on wheatlands there.

Many farmers who were watering wheat or other crop lands received enough moisture to allow them to shut off their wells on Friday morning. Water was reported to be over the farm to market roads in several parts of the county Thursday evening.

While the storms came Cont. Page 8, Col. 5

### Producers Invited To Insect Scouting Clinic

Cotton, corn and sorghum producers in Bailey County are again receiving a special invitation to take part in the annual High Plains Scout Training Workshop to increase the effectiveness of their pest management programs.

The workshop will be held Tuesday and Wednesday, May 31-June 1, at the Hale County Agricultural Center in Plainview, Spencer Tanksley, County Extension agent, said. The center is on U.S. 87 Business Route south of the city.

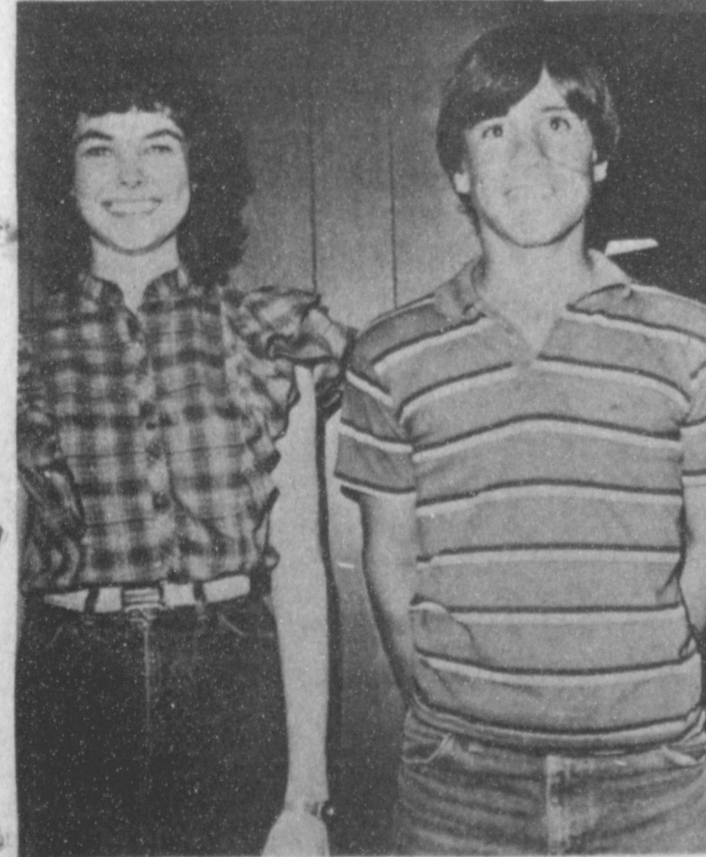
The workshop, conducted by the Texas Agricultural Extension Service, was first held in 1973 to train scouts in the pest management programs conducted by Ex-

tension, part of the Texas A&M University System.

In subsequent years, it has expanded to include scouts employed by consultants, aerial applicators and others, as well as producers who want to learn how to scout their own fields for insects. The workshop focuses on perfecting skills in identifying crop pests and making timely pest management decisions which can protect investments and yield, and hold down production costs, Tanksley said.

The May 31 session opens at 8:45 a.m. with Dr. James Leser, Extension entomologist, outlining the scope of the workshop and explaining pest manage-

Cont. Page 8, Col. 4



OPTIMIST OUTSTANDING STUDENTS--Sandra Speck of MHS and Steve Neptune of MJHS were named as outstanding students in their respective schools recently by the Muleshoe Optimists. A boy and girl from each school was selected. Also named for this honor in high school was John Wuerflein and in Junior High, Kathy Horn; however, these two were not available for photos. The Optimists plan to make this an on-going project.



YES WEEK PROCLAIMED BY MAYOR--Mayor Charles Bratcher signed a proclamation Tuesday with YES Board Members Linda Guelker, Frank Ellis, III and Judy Bruns looking on. YES week will kick off on June 4 with plans for a full day of activities. John Gulley, Manager of the Muleshoe Chamber of Commerce has stated that the Chamber is pleased with the establishment of the YES in Muleshoe and feel that it provides a much needed service to the people in this community.

**Muleshoe Young Homemakers Hold Ladies Night Out**

The Muleshoe Young Homemakers met for "Ladies Night Out" Tuesday, May 24 at K-Bob's Steak House in Clovis, N.M.

New officers were installed by Nonette Robinson. Officers installed included: Pam Zwickey, president; Terry Morrice, first vice president; Arelia Morris, second vice president; Debbie Cloud, secretary; treasurer, Pamela Thomason; historian, Linda Cogliandro; and parliamentarian, DeAnna Rasco.

Secret pals for the year were revealed and gifts exchanged. Pam Zwickey was presented a special gift and a certificate for being the outstanding member of the year.



**LITTLE BROWN JUG**--This group of students from Hawkins and Purdy's School of Dance and Gymnastics danced to the tune of "Little Brown Jug" at the recent "Spring Dance Recital" held recently. (L-R) Samantha Loflin, Jennifer Lynn, Bonnie Hall, Jennifer Stegomeller, Alexis Anderson, Sarah Reynolds, Leslee Powell, Amy Flannary, Carl Faver, Tywla Wagnon and Andee Cuevas.



**1983-84 YOUNG HOMEMAKER OFFICERS**--The Muleshoe Young Homemakers installed new officers Tuesday night at their annual Ladies Night Out. (L-R) Debbie Cloud, secretary; Linda Cogliandro, historian; Pamela Thomason, treasurer; DeAnna Rasco, parliamentarian; Terry Marris, first vice president; and Pam Zwickey, president.

**Enochs News**  
By: Mrs. J.D. Bayless

Mrs. Vida Cash of Hereford, Mrs. Juanita Snow of Muleshoe, Mr. and Mrs. Maurice Harrard from Eastland, Mrs. Irene Parker and Mrs. Etta Layton were dinner guests in the home of Mr. and Mrs. Edward Crume Sunday.

A group met at the Baptist Church Thursday to clean the church yard and some to have the old butane line dug up to have it replaced, then they enjoyed dinner in the fellowship hall of the church.

Mr. and Mrs. Tom Newton and children of Morton spent Sunday with her mother, Mrs. Myrna Turney.

Mr. and Mrs. Clarence Martin of Whitesboro spent Wednesday night with Mr. and Mrs. Johnnie Cox, Mrs. Martin was the former Ted Hall of Enochs.

Harold Layton and son Robert of Dell City spent Thursday night with his mother, Mrs. Etta Layton.

Edd Autry was transferred to Methodist Hospital in Lubbock where he is still a patient is very ill.

Mr. and Mrs. Chester Petree visited his sister,

Mrs. Edna Calvert and son, Sheryl at Rule the past week.

Mr. and Mrs. Ray Spencer and children of Friona, Mrs. Judy Cape of Lubbock, Mr. and Mrs. James Snitker and children of Eunice, N.M. all attended the graduation exercises at the Three Way High School Friday evening in which their brother, John Snitker and Maribel Zornora graduated. Then all the group and the J.C. Snitker all visited in the home of Mr. and Mrs. Clifford Snitker. Stanley Snitker and family visited them Saturday.

The Baptist women met 10:00 a.m. Tuesday the meeting opened with a song "Jesus Paid it All" a prayer by Mrs. Buford Peterson, Mrs. H.B. King of Morton, presented the book Indomitable Lady, Blanche Groves of China, by Jean S. Bond authorized biographer assigned to Southern Baptist Missionary for 30 years. Mrs. King wore a costume Blanche Groves gave her from China. Blanche Groves now lives at her home at Bridgeport.

Mrs. Fred Locker is at home from the Methodist Hospital following surgery doing good.

Jerry Nichols of El Paso has been staying with his parents The Dale Nichols for three weeks helping on the farm, Dale's brother.

Harold Dean of Idalou visited with them Monday.

Rev. and Mrs. Ray Cunningham of Fluvanna, were guests in the home of her sister, the J.D. Bayless' Friday afternoon till Saturday morning.

We wish to express our sympathy to the family of Bud Thomas and Mr. and Mrs. Guy Sanders and family in the loss of their loved one Mrs. Cherry Thomas of Morton, who died 1:30 Saturday at the Methodist Hospital in Lubbock.

Mr. and Mrs. E.N. McCall visited their daughters the Robert George's and the Steve Mosser family last Sunday afternoon at Lubbock.

Rev. Mike Heady and son Travis went for a days fishing at Caprock Canyon Lake North of Floydada Monday 23.

Mr. and Mrs. Jim Richardson, Mr. and Mrs. Jack Burke and Mr. and Mrs. Tom Burke all did some fishing at Lake Meredith last weekend.

Mrs. Winnie Byars visited Mrs. Ollie Cook in Levelland Saturday.

Mr. and Mrs. Joel Sinclair and children of Muleshoe and Mr. and Mrs. Craig Kirby of Three Way visited their parents, Mr. and Mrs. Goldman Stroud Sunday.

Mr. and Mrs. Buford Peterson visited their daughter, Rev. and Mrs. Harold Abney and family over the weekend at White Deer.

Edd Autry was admitted to the Littlefield Medical Center early Monday morning.

Revealing You can tell how old a man is by his choice between fiesta and siesta. -Press, Charles City, Ia.



**LATEST ARRIVALS**

**Maria De La Luz Monreal**

Mr. and Mrs. Antonio Monreal are the proud parents of a daughter born at 5:39 p.m. May 25.

The young lady weighed eight pounds and two ounces and has been named Maria DeLaLuz. The couple have two other children, Esmeralda, seven; and Noel, six years of age.

Grandparents are Mr. and Mrs. Antonio Monreal of Mexico and Joe and Nellie Gonzales of Friona.

Every one of us should make it a mental duty every year to study some new subject. Brains never develop without study.

**GILCO DRILLING COMPANY, INC.**

TEST HOLES  
DOMESTIC  
SMALL IRRIGATION WELLS

701 E. GRANT WAYNE GILLIAM MORTON 266-8050

For The Best Garden Or Flower Bed,  
Get Your Bedding Plants Now!  
New Stock Weekly! Hanging Baskets, Tool  
Pick Up At  
**PIVOT PRODUCTS**  
Call 272-5134  
West Of Muleshoe On Hwy. 84.  
Home Delivery Available In Muleshoe  
On Full Flat Sales.

**Bailey County Journal** (ISSN 0005-4020)

Established March 31, 1963. Published by Muleshoe Publishing Co., Inc. Every Sunday at 304 W. Second, Box 49, Muleshoe, Texas 79347. Second Class Postage paid at Muleshoe, Texas, 79347.

**MEMBER 1983**  
TEXAS PRESS ASSOCIATION

L.B. Hall President  
James Woods Vice President  
Shirley Farmer News Editor  
Evelyn Harris Society Editor  
Cora Williams Advertising Manager  
Suzanne Hall Bookkeeper

Muleshoe Journal and Bailey County Journal  
Bailey and surrounding counties..... 12¢  
Muleshoe Journal and Bailey County Journal  
Elsewhere..... 13¢

Advertising rate card on application

**BE SURE TO SEE OUR COLORFUL INSERT IN TODAY'S BAILEY COUNTY JOURNAL.**

*We're Proud To Give You More.*

<p>SHURFRESH <b>OLEO</b> 3/\$1.00 LBS. QTRS.</p>	<p>SHURFINE <b>MACARONI &amp; CHEESE</b> 4/\$1.00</p>	<p>BORDENS <b>BUTTERMILK</b> 1/2 GAL. 99¢</p>	<p>SHURFRESH <b>EGGS</b> \$1.19 18 CT.</p>	<p>DIET COKE, SPRITE OR <b>COCA-COLA</b> 12 OZ. CANS - 6 PK. \$1.59</p>
<p>SHURFINE <b>ICE CREAM</b> 1/2 GAL. SQ. CARTON \$1.29</p>	<p>BORDENS <b>TEXAS COFFEE</b></p>	<p>NICE'N' SOFT <b>BATH TISSUE</b> 6 ROLL PK. \$1.59</p>	<p>SHURFINE <b>COFFEE</b> \$1.79 LB.</p>	
<p>SHURFINE <b>SUGAR</b> PURE GRANULATED <b>SHURFINE SUGAR</b> \$1.39 5 LB. BAG</p>	<p>LIGHT CRUST <b>FLOUR</b> 5 LB. 89¢</p>	<p>BORDENS <b>CHOCOLATE MILK</b> QT. 59¢</p>	<p>GLADIOLA <b>FLOUR</b> 25 LB. \$4.99</p>	
	<p>BORDENS <b>NOVELTIES</b> POPSICLE OR FUDGESICLE 24 PK. \$1.69</p>			

**AT AFFILIATED FOODS INC. MEMBER STORE**

**DOUBLE STAMPS EVERY WEDNESDAY**

**SERV-ALL THRIFFTWAY**

We're proud to give you more!

Prices Effective May 29 thru June 4.  
WE RESERVE THE RIGHT TO LIMIT QUANTITIES.  
WE ACCEPT FOOD STAMPS

STORE HOURS:  
8:00 A.M. to 8:30 P.M. Mon. thru Sat.  
9:00 A.M. to 7:00 P.M. Sun.

401 W. American 272-4739

## GA Girls Recieve Adventure Badgess

Nineteen girls from First Baptist Church received their "GA Adventure Badges" during the morning worship services on Sunday, May 22. These girls are members of Girls in Action.

Of the Older GA group, ten girls received their Mission Adventure Badge five from their leader Karen Harris. Of the Younger GA group, nine girls received their Mission Adventure Badge two and two girls received their Mission Adventure Badge one from their leader Kay Fields. Other teachers with these groups are Marsella Jennings and Carolyn Wiseman.

Work for Mission Adventure Badges consist of reading mission stories, memorizing certain scripture verses, doing mission actions for others, and regular attendance to their GA group.

Those present to receive their Badges were Badge five Kimberly Harris, daughter of Mr. and Mrs. Rex Harris; Amy Harrison, daughter of Mr. and Mrs. Jerry Harrison; Mia Jennings, daughter of Mr. and Mrs. Hoppy Jennings.

Receiving Badge two were Summer Wiley, daughter of Mr. and Mrs. Kent Wiley; Stacie Harris, daughter of Mr. and Mrs. Rex Harris; Jennifer McManis, daughter of Mr. and Mrs. Kenneth Mc-

Manis; Misty Sawyer, daughter of Mr. and Mrs. Lehmon Jacobs; Kathy Brock, daughter of Mr. and Mrs. R.K. Brock; Mary Ann (Sissy) Morris, daughter of Mr. and Mrs. R.K. Brock; Natalie Stout, dau-

ghter of Mr. and Mrs. Paul Stout; Lori Williams, daughter of Mr. and Mrs. Windy Williams Receiving Badge one was Amy McManis, daughter of Mr. and Mrs. Kenneth McManis.



**GIRLS IN ACTION**--Nineteen girls from the First Baptist Church received their "G.A. Adventure Badges" during services Sunday morning, May 22. Back Row (L-R) Kathy Brock, Lori Williams, Kimberly Harris, Amy Harrison, and Misty Sawyer; Second Row: Sissy Morris, Stacie Harris, Summer Wiley and Jennifer McMeans; Front, Amy McMeans.

### Out To Lunch Bunch

The "Out To Lunch Bunch" will hold their first covered dish luncheon on Friday, June 3 in the meeting room of Summit Savings from 11:45 a.m. until 1:30 p.m.

This luncheon is open to all new comers to Muleshoe or any ladies who would like to attend. Officers will be elected this Friday.

For more information you may call either Glenda Duncan at 272-4143 or Dolores Scott at 272-3204.

#### Bits Of Wisdom

If you can see some good in everyone, nearly everyone will see some good in you.

-Grit.

#### At Home Too

Some husbands would welcome extension to family life of the principle of one man, one vote.

-Courier, Charleston, S.C.

Others receiving their Badges but not present were Badge five Michelle Sisemore and Tonya Sisemore, daughters of Mr. and Mrs. Tommy Sisemore; Monica Swint, daughter of Mr. and Mrs. Charles

Wales; Laurel Dillard, daughter of Mr. and Mrs. Don Dillard; Mychelle Stout, daughter of Mr. and Mrs. Paul Stout.

Receiving Badge two but not present was Allison Rhodes, daughter of Mr.

and Mrs. Carroll Rhodes, and receiving Badge one was Duvilia Anzuano.

The average adult, with all his wisdom, rarely understands how much the average child understands.

**Experienced**  
A successful executive is one who can delegate all the responsibility, shift all the blame, and appropriate all the credit.  
-Fulcrum, Boston.

### Three Way News By Mrs. H.W. Garvin

The Three Way Junior High students graduated Thursday night with the senior high school graduating Friday night.

Mr. and Mrs. H.C. Toombs spent the past week fishing at Lake Kemp.

Mrs. Bulah Toombs spent the past week in Morton visiting her daughter the Bob Vinsons.

We wish to express our sympathy to the Caton Tyson family due to the death of Mrs. Tysons Mother Mrs. Jessie Bratton of Morton.

Farmers in the community are busy watering trying to get their crop up.

Mrs. Jack Furgeson was in Levelland Thursday visiting her daughter the Mark Corkery family.

The Maple Church of Christ started there vacation Bible school Monday morning.

Mr. and Mrs. Jack Furgeson was in Lubbock Monday on business.

Mrs. H.W. Garvin visited her brother Mr. and Mrs. George Tyson Sunday afternoon.

Mr. and Mrs. Carl Dupler from Midland and their children and Mrs. Minnie Dupler spent the weekend with the Bill Dupler family.

Several from the community attended the Funeral of Jessie Bratton in Morton Monday morning.

We Will Be Open Mon. Memorial Day. **SPRING**

## PERRYS

65% Polyester/35% Cotton  
**Fashion Dots/PRINTS \$1.47** YD.  
45" Wide On Bolts Top Weight Our Reg. 1.99 yd.

**SUGAR N' THINGS MOCK EYELET**  
On Bolts 1 50% Cotton 50% Polyester 45" Wide  
**97¢** Yard

100% Polyester  
**Printed & Solid Interlock Remnants**  
60" Wide Top/Dress Weight 1-5 Yd. Lengths Our Reg. \$1.99 yd. **97¢** Yard

Poly/Cotton  
**Sweet Shoppe PRINTS \$1.67** yard  
Our Reg. \$2.29 yd.  
Top Weight 45" Wide On Bolts

Short Lengths  
**VOILES AND SEER SUCKERS 97¢** Yard  
Poly/Cotton 45" Wide

Burlington/Klopman  
80% Polyester/20% Cotton  
**Ultra Vino Fancies**  
Asst'd Stripes & Dobbies Top Weight 45" Wide On Bolts \$2.99 yd. Value **\$1.67** yard  
Our Reg. \$1.99 yd.

Dan River  
**SHERBERT PLAIDS**  
On Bolts Poly/Cotton 45" Wide Top Weight **\$1.67** yard

Cotton & Cotton  
**BLEND FABRICS**  
Short Lengths 45" Wide **\$1.39** yard

### IT'S TIME FOR Rug Doctor.

Cleans office carpets and upholstery too!  
When your business office needs a good cleaning, try Rug Doctor and save.



Rent the Rug Doctor at:

Fry & Cox, Inc.  
401 S. First

Pay & Save  
515 W. American

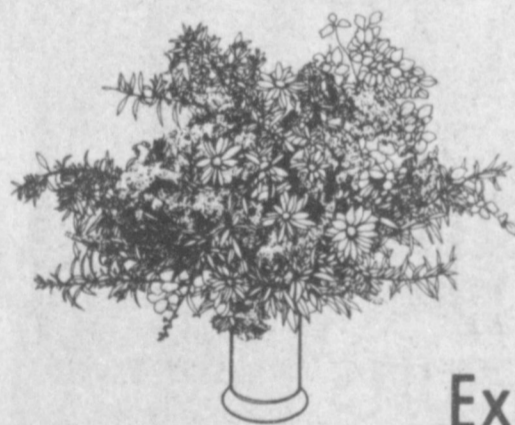
# Muleshoe Floral & Hunter Furniture

272-4287

272-4315

Have Combined at 218 Main Street To Offer You The Very Best In Elegant Living

Come See Us At Our New Address We Still Give You The Best Service And Have Expanded Our Gift Item Line:



- ★ Hallmark Cards
- ★ Party Supplies
- ★ Candles
- ★ Baskets



- ★ Stuffed Animals
- ★ Figuerines
- ★ Brass
- ★ Paintings



We Also Use FTD-AFS & Flora-Fax

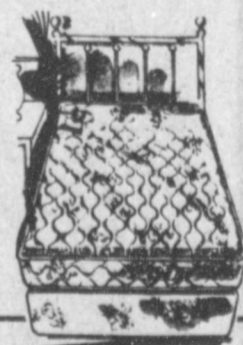
Our Introduction Sale Is Continuing Thru Sat., June 4. All Furniture In Store On Sale.

**\$100<sup>00</sup> OFF** Any Sale Price Sleeper Sofa



**\$50<sup>00</sup> OFF** Any Sale Price Love Seat

**\$100<sup>00</sup> OFF** Any Sale Price Bedroom Suite



Check Our Fantastic Supply Of Bedding- No One Can Beat Our Low Prices.

Page 2  
Mule  
Hom  
Ladi  
The Home  
"Ladie  
day.  
Steak  
N.M.  
New  
stalle  
son. t  
cluder  
sident  
vice p  
ris, s  
Debbi  
treast  
son;  
liandr  
DeAn  
Sec  
were  
chanj  
prese  
a cel  
outst  
year.



MR. AND MRS. DONALD RAYMOND BERNHAM HOWARD  
(nee Doris Lynnette Shafer)

## Miss Shafer, Howard Repeat Vows

Miss Doris Lynnette Shafer and Donald Raymond Brenham Howard were united in marriage Friday, May 20 at 6 p.m. in the Primitive Baptist Church, with Elder J.A. Powell, pastor of the Houston Grace Primitive Baptist Church, officiating.

The bride is the daughter of Mr. and Mrs. Ronnie Shafer of Muleshoe and Howard is the son of Mr. and Mrs. Derek Howard of Houston.

Vows were exchanged amid baskets of peach silk flowers and greenery.

All the tables were draped with navy under white lace. The clothes on the registration table and memory candle table were heirlooms from the groom's table.

Music for the ceremony was provided by a group of friends that the couple had grown up with.

The bride wore a full length gown of white lace and sheer over satin with a five foot train, edged in lace ruffles. She carried a bouquet of white roses and English ivy.

Dorinda Shafer, sister of the bride, served as maid of honor. Bridesmaids were Robbie Collins and Marsha Williams. They wore ankle length navy crape gowns featuring long puffed sleeves. They carried long stemmed peach roses.

The flower girl, Kacia Coty was escorted by her brother, Kyle Coty, cousins of the groom. They also wore navy.

Ward Rowell served as best man. Groomsmen were Tozi Williams and Toni Edward. The groom wore a white tuxedo with a white rose boutonniere. His attendants wore navy tuxedos.

Ushers were Ronnie Mallow of Dallas and Steve Rybus and Bryan Fogarty, both of Houston.

Carrie Kohler of Houston, sister of the groom, registered the guests.

At the reception the bride's table was covered with a navy under white lace table cloth. The

groom's table was Sue Collins. Following a honeymoon in San Antonio and Corpus Christi the couple will be in Houston for the summer. This fall they will return to Lubbock where the bride is majoring in Medical Technology. Howard is majoring in Pre-law and plans to attend Law School.

groom's table was Sue Collins. Following a honeymoon in San Antonio and Corpus Christi the couple will be in Houston for the summer. This fall they will return to Lubbock where the bride is majoring in Medical Technology. Howard is majoring in Pre-law and plans to attend Law School.



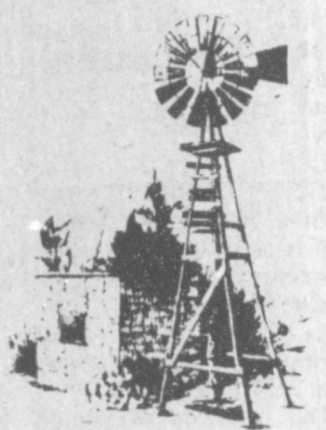
GOLDEN ANNIVERSARY—Mr. and Mrs. Robert Sanders will be honored with a golden wedding anniversary reception on Sunday, June 5 from 2 until 5 p.m. at the Civic Center. Hosting the event will be their children and grandchildren.

Democracy is not improved by the careless and indiscriminate criticism of officials.

Be charitable, if you can, in your judgment of others; save severity for your own mistakes.

**Father's Day Specials**  
Wildlife, Inc. Birds  
(Under Glass)  
Special For Men-  
Artesania Rinconada  
Bridal Selections  
For Kelly Bayless  
**Antiques & Junk**  
109 S. First 272-5275

The children and grandchildren  
of  
Robert and Katherine Sanders  
request the honor of  
your presence  
at their 50th Anniversary celebration  
Sunday, June 5, 1983  
2:00 - 5:00  
Civic Center, Muleshoe, Texas



You, their friends, are their greatest treasure.  
We request no presents please.

### Press Workshop Set June 1 In Capital City

The registration deadline for the Interscholastic League Press Conference Summer Publications Workshop in June 1.

The workshop, scheduled June 19-23 at The University of Texas, is open to any high school student involved in newspaper or yearbook production.

The registration fee is \$120 per student, which includes room, board and most supplies. All participants will be housed in Jester Center.

Bruce Watterson, adviser for award-winning yearbooks in Little Rock, Ark., will be yearbook director.

John Cutsinger of Van Buren, Ark., will be newspaper director. David Brooks, publication adviser at Austin's Anderson High School, will be the photography director. The photography portion of the program is already filled.

Other staff members are drawn from award-winning publications around the state.

For registration materials and information, write Summer Workshop Director, ILPC, Box 8028, UT Station, Austin, Texas 78712-8028.

any high school student involved in newspaper or yearbook production. The registration fee is \$120 per student, which includes room, board and most supplies. All participants will be housed in Jester Center.

Bruce Watterson, adviser for award-winning yearbooks in Little Rock, Ark., will be yearbook director. John Cutsinger of Van Buren, Ark., will be newspaper director. David

Brooks, publication adviser at Austin's Anderson High School, will be the photography director. The photography portion of the program is already filled.

Other staff members are drawn from award-winning publications around the state.

For registration materials and information, write Summer Workshop Director, ILPC, Box 8028, UT Station, Austin, Texas 78712-8028.

For registration materials and information, write Summer Workshop Director, ILPC, Box 8028, UT Station, Austin, Texas 78712-8028.

any high school student involved in newspaper or yearbook production. The registration fee is \$120 per student, which includes room, board and most supplies. All participants will be housed in Jester Center.

Bruce Watterson, adviser for award-winning yearbooks in Little Rock, Ark., will be yearbook director.

John Cutsinger of Van Buren, Ark., will be newspaper director. David Brooks, publication adviser at Austin's Anderson High School, will be the photography director. The photography portion of the program is already filled.

Other staff members are drawn from award-winning publications around the state.

For registration materials and information, write Summer Workshop Director, ILPC, Box 8028, UT Station, Austin, Texas 78712-8028.

For registration materials and information, write Summer Workshop Director, ILPC, Box 8028, UT Station, Austin, Texas 78712-8028.

For registration materials and information, write Summer Workshop Director, ILPC, Box 8028, UT Station, Austin, Texas 78712-8028.

### Wedding Reminder

Charleson Steinbock  
&  
Belinda Richardson

Will Exchange Vows

Fri. June 3 - 7:30 P.M.

Three Way Baptist Church

No Local Invitations Mailed

Something Special

Presents

## Beautiful Bridal Directions

From  
Noritake

Save 20% To 32%  
On Place Settings Or Sets

Noritake Formal China  
Sheer Ivory Bone China  
Keltcraft From Ireland  
Concept 1 Stoneware

Comparable Savings On  
Open Stock Accessories  
Some Items By Special Order

One Week Only  
Final Order Date June 4, 1983

Something Special

222 South Main - Phone 806/272-4933  
Closed Memorial Day

# MEMORIAL DAY Sidewalk Sale

FREE BALLOONS! FREE KITES TO FIRST 100 KIDS!



Entire Stock  
Ladies, Juniors, Girls  
SWIMWEAR

25% off

Junior  
FASHION SHORTS  
\$8<sup>88</sup>

Ladies and Junior  
TOPS and BLOUSES  
\$9<sup>88</sup>

Large Group

Men's  
KNIT SHIRTS ..... \$7<sup>88</sup>

Assortment  
MENS SHORTS..... \$7<sup>88</sup>

MENS KNIT SHIRTS  
\$9<sup>88</sup> and \$12<sup>88</sup>

MENS JUMPSUITS  
\$12<sup>88</sup>



Ladies and Junior Sizes  
NINO VALENTINO  
JEANS \$16<sup>88</sup>  
One Group Ladies  
SPORTSWEAR..... 1/2 price  
Milco Nylon  
PANTIES..... 6 Pair \$6  
GIRLS SPORTSWEAR  
1/3 To 1/2 Off  
Girls and Boys  
TOPS AND SHORTS  
\$3<sup>88</sup> and \$4<sup>88</sup>

Summer Sandals  
FOUR LAYER THONGS  
EXERCISE SANDALS  
2 For \$5  
SUMMER  
SANDALS..... \$8<sup>88</sup>  
Acme  
WESTERN  
BOOTS ..... \$49<sup>88</sup> and \$59<sup>88</sup>  
SALE RACKS  
\$3<sup>88</sup> \$5<sup>88</sup> \$7<sup>88</sup>

Special Group  
MENS DENIM JEANS  
\$9<sup>88</sup>  
Men's  
TUBE SOCKS 6 For \$5<sup>88</sup>  
Assorted Patterns  
SHEET SETS  
Twin ..... \$7<sup>97</sup>  
Full..... \$12<sup>97</sup>  
Queen ..... \$16<sup>97</sup>  
King..... \$18<sup>97</sup>  
BEACH TOWELS  
2 For \$12

Anthony's  
C.R. ANTHONY CO.

321 Main Street

OPEN 9 TO 6

## Pre-nuptial Shower Fetes Vicki Thomason

Vicki Thomason, bride elect of Kirk Lewis, was feted with a pre-nuptial shower Sunday, May 22 from 2:30 until 4 p.m. in the home of Mrs. John Gunter, Jr.

Guests were greeted by Mrs. Gunter, Mrs. Leon

### Sudan 4-H'ers

#### Elect New

#### Officers

The Sudan 4-H Club held a meeting Monday night, at which time awards were presented and new officers were elected. The meeting was to be a cookout but the weather did not permit.

Awards presented included: President's award to Debbie Hill; vice president, Judy Wiseman; secretary/treasurer, Sandra Hill; reporter, Linda Wiseman. Junior princess award was presented to Danette Provenance and Senior Princess to Debbie Hill.

Outstanding Junior award was presented to Linda Wiseman and Outstanding Senior Award to Debbie Hill.

Officers for 1982-83 were Debbie Hill, president; Judy Wiseman, vice president; Sandra Hill, secretary/treasurer; Linda Wiseman, reporter; Danette Provenance, Junior Princess; Debbie Hill, Senior Princess; and Judy Wiseman, County Council delegate. Leaders were the Orville Hills, Pudd Wisemans, Phillip Gordons, Bo Boyles and Pattie Miller.

The 1983-84 officers include: president, Linda Wiseman; vice president, Christi Schuster; secretary-treasurer, Jeff Gordon; reporter, Stephanie Bickett; Council Delegates, Linda Wiseman and Christi Schuster; leaders, Mr. and Mrs. Pudd Wiseman, Mr. and Mrs. Phillip Gordon, Bo Boyles, and Pattie Miller. The Senior Princess will be Stephanie Bickett and the Junior Princess is Nichole Maxfield.

The Adult Leaders Association of Lamb County voted Jeff Gordon to go to Electric Camp and Linda Wiseman to go to Leadership Lab.

Lewis and the honoree and registered by Mrs. J.R. Carter.

Mrs. J.C. Gatewood served thumbprint cookies and sherbet punch from crystal appointments. The serving table was covered with an Irish linen cloth edged in lace and enhanced by an arrangement of spring flowers. The honoree's corsage consisted of white carnations accented with blue.

Special guests included Mrs. Leon Lewis, mother of the prospective groom.

The hostesses gifts were a set of flat ware and a card table and chairs. Hostesses for the occasion included: Mrs. Ed Harp, Mrs. John Gunter, Jr., Mrs. Lester Baker, Mrs. Wendell Speck, Mrs. Charles Bratcher, Mrs. J.R. Carter, Mrs. R.G. Bennett, Bonnie Carpenter, Eva Dale Carpenter, Mrs. Bert Gordon, Mrs. J.C. Gatewood, Mrs. Gordon Wilson, Mrs. N.A. Dunlap, Mrs. Robbie Barrett, Mrs. K.H. Buhman and Mrs. Bill Millen.

### Mrs Pepper

#### Graduates

#### Summa Cum Laude

Lavayne Lloyd Pepper, daughter of Duane and Loretta Lloyd of Muleshoe, and wife of Tom Pepper, graduated Summa Cum Laude with a BA on May 6 from Central State University in Edmond, Okla. Some 1100 students graduated with Bachelor's degrees at the same time, and an additional 500 with Master's degrees.

Mrs. Pepper is a 1979 graduate of Muleshoe High School and studied at Texas A&M prior to moving to Oklahoma. Her husband also graduated from Muleshoe High School, in 1977, and Texas A&M in 1981. He is a Petroleum Engineer with Tennaco Oil Exploration and Production out of Oklahoma City, Okla.

Sometimes it would be a good idea if the people who listen to public speakers would get up and talk back.



VICKI THOMASON

### Three Grandsons of Sudan Woman Graduates

Mrs. Polly Kent has an unusual happening this graduating season when three of her grandsons will be receiving their high school diplomas.

Wade Kent, son of Mr. and Mrs. Bill Kent of Farwell, Perry Kent, son of Mr. and Mrs. Pat Kent and Robbie Kent, son of Mr. and Mrs. Tim Kent will be among the Class of '83 to graduate this week.

Wade graduates May 27 from Farwell High and was active in Band for 4 years, was named to Who's Who in Music for 1982-83 and to Who's Who Among American High School Students for 1982-83; was Reporter for FFA and was on the FFA Judging team. He played football 4 years and was named All-District Tackle on the '82 District 5-2A Championship team. He plans to attend SPC in Levelland. He is also the grandson of Mr. and Mrs. Weldon Fulgham of Friona.

Robbie was a member of the Sudan Hornet Band for four years; played football, Basketball, Track and was named to Who's Who Among American High School Students; was a member of the National Honor Society for the past 3 years and was a member

## May Family Reunion Held At Community Center

The J.O. May family held their first family reunion on May 14 in the Community Center in

Sudan. It was reported that the gathering was such a success that those attending voted to meet each year.

### Sudan FTA Banquet Held In Lubbock

The Sudan FTA banquet was held May 2 at the Road House Restaurant in Lubbock. Debbie Hill presented Pat Laceywell, sponsor, a plant from the FTA members. Carnations were presented to senior FTA members by the president, Jerry Fisher.

Mrs. Laceywell announced the new officers for 1983-84. They are Missy Fisher, president; vice president, Kim Powell; secretary/treasurer, Shawnda Masten; and Sharla Harrison, parliamentarian and reporter.

Kenzel, son of Mr. and Mrs. Ray May, acted as master of ceremonies and welcomed the group to the days festivities. He gave a brief history of the family from information gained at the Genealogical Library at Austin and Dallas.

The grandchildren of Mr. and Mrs. J.O. May were asked to introduce their immediate families and give a brief account of their activities. Marlos, son of Mr. and Mrs. Archie May, led the group singing. Rebecca, his wife, accompanied at the piano.

Burnice May gave an account of his mother and father's ambitions for their children, stressing love and

honesty. He was confident that they would be proud of their family and expressed appreciation for the May heritage.

A highlight of the family gathering was early pictures of the ancestors and family members displayed on the walls and in albums.

Attending were: Mr. and Mrs. Ralph May and Mike, Mr. and Mrs. Ray May, Mazel May and Mr. and Mrs. Harold May, all of Sudan; Mr. and Mrs. Scott Carter of Littlefield; Ethel May and Mr. and Mrs. Wayne Arp of McGregor; Mr. and Mrs. Burnice May, Mr. and Mrs. Keith May, Brad and Robin of

Oklahoma City, Okla.; Karen and Bryan Sanders of Amarillo.

Also Mr. and Mrs. Kenzel May, Melissa Meredith and Marshal Larry May and Kristen of Gardendale; Raegan May Mrs. Ardie May, Nelita May and Marlene May Rocken, Kendrick and Miles, all of Lubbock; Mr. and Mrs. Marloe May, Jason and Janie of Dimmitt; Mr. and Mrs. Johnnie Richey and Jonathan of Plainview; Kevin May of Newhaul, Calif.; Mr. and Mrs. Brian May of College Station; Bernadette May of Dallas and Mary May of San Angelo.

### Notice of names of persons appearing as the owners of unclaimed amounts held by Muleshoe State Bank

Barker, Tommy or Linda
Broyles, Bobby Lynn Route 1 Box 43 Muleshoe, Tx. 79374
Bryan, Rosemary
Camp, Kara Nealy
Collis, Hugh
Costilla, Olga
Garcia, Roman
Gonzales, Reuben
Gulley, Oral B 621 Sandia Dr. Clovis, NM 88101
Maddox, Brent
Monreal, Solomon or Ofelia
Navejar, Patricia
Yruegas, Joe H

## MAKE THIS MEMORIAL DAY A DAY TO REMEMBER

Now that you'll be planning some time off for Memorial Day, plan to take some of those excess pounds off too! At Diet Center, we'll not only show you how to lose those extra pounds, but we'll also help you to keep them off, permanently! Conquer those excess pounds and make it the last Memorial Day you'll ever have to spend with a weight problem.

Call us today for a free, introductory consultation.



The last weight-loss program you'll ever need!

# Tele Auction 1983

May 30-June 4

Each week night at 6:30 P.M.  
Saturday, June 4 at 1:30 P.M.

### List of Items

Art, Antiques, Collectibles, A car, Food, Furniture, Ski packages, Jewelry, Waterbed, Beef for your freezer, An heirloom handmade quilt, Pottery, Plane tickets, Sports equipment, Stud fees, Clothes, Flowers for a year, Trip to Kansas City Royals Baseball game

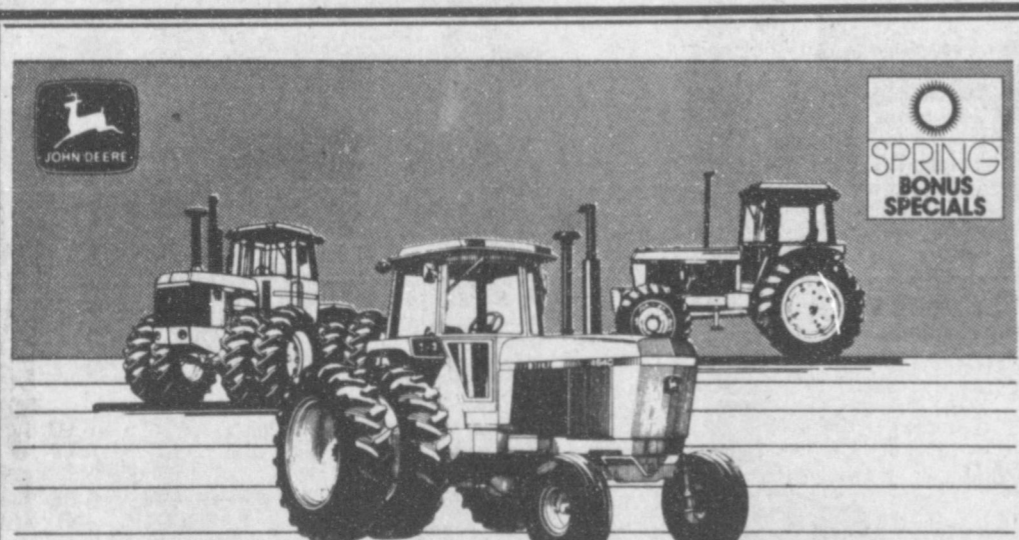
### Vacations

Park Place Condos, Breckenridge, Colo., Albuquerque Classic Hotel, Sante Fe Hilton, Angel Fire Resort, South Padre Island, Texas, Holiday Inn, Carlsbad, California Hotel/Casino, Las Vegas, Buena Vista Palace, Orlando, Fl., Anaheim International Travel Lodge, Inn of the Mountain Gods, Ruidoso, The Inn at Loretto, Santa Fe, Executive Inn, Dallas, Marriott Hotel, Albuquerque

AND MANY MORE

on Channel 3

Your Public Television Station



## DON'T MISS END-OF-MODEL REBATES UP TO \$5,200 ON 40-TO 228-HP JOHN DEERE TRACTORS

It's human nature to look for the best product at the best price. And now, with the farm economy showing signs of improving, is the ideal time for you to take advantage of special model closeout rebates on 40 Series John Deere tractors.

Cash rebates up to \$5,200 from John Deere (see chart) on top of our best deal. And remember, we're discounting from list prices that date back to 1981 on 40 Series tractors. Between our good deal and John Deere's rebate, you'll never be able to match the savings you can make right now.

Come in for details on the model closeout special offers on 40 Series tractors, including waiver of finance charge to November 1, 1983. Even if you've gone into the PIK program to the maximum this year, you won't want to pass up the bargains we're now offering on 40 Series tractors—because you won't be able to match 'em next year.

And check into special John Deere cash rebates up to \$8,200 on 50 Series 4WD tractors, too. Plus the added attraction of waiver of finance charges to June 1, 1983.

Model	Cash Rebate on Purchase	April '83 Cash Rebate In Lieu of Waiver	Maximum Rebate
228-hp 8640	\$3,200	\$2,000	\$5,200
179-hp 8440	3,000	1,600	4,600
180-hp 8440	2,700	1,400	4,100
155-hp 4640	2,300	1,200	3,500
130-hp 4440	1,700	1,000	2,700
110-hp 4240	1,500	900	2,400
90-hp 4040	600	800	1,400
80-hp 2940	1,400	550	1,950
70-hp 2640	900	450	1,350
60-hp 2440	400	400	800
50-hp 2240	100	350	450
40-hp 2040	100	300	400
300-hp 8850	\$8,200	NA	\$8,200
235-hp 8650	6,400	NA	6,400
185-hp 8450	5,700	NA	5,700

(Offer subject to tractor availability)

\*Maximum rebates on 40 Series tractors include a bonus for cash purchase, for financing with John Deere without waiver, or financing where you choose. Availability of John Deere financing subject to approval of credit. These offers may be reduced in value or withdrawn at any time.

Dent-Rempe



1516 W. American

272-4296

# Tax Refunds Up; IRA's Part Reason

Individual federal income tax refunds averaged a record \$740 for 1982, up from \$712 for 1981, according to the Internal Revenue Service.

**Nursing Home News**  
By: Joy Stancell

Monday was Clara Rickert's birthday. Her family came and took her out for lunch.

Marie Engram returned home after having surgery in Lubbock. Welcome home Marie!

Mr. Moore was visited by his wife, his son Don and granddaughter Donna Wed. afternoon.

The Mary Martha Sunday School Class of the First Baptist Church gave us a generous donation for our craft class.

Sharon Williams came to have a Devo. with the residents Thurs. morning.

Mr. J.E. Embry, Retta Shipp, Mack Bellar played 42 and dominos with the residents Thurs. afternoon.

Fri. morning Glenda Duncan came to give the residents painting lessons in ceramics. About 17 residents attended the class.

Fri. afternoon the Muleshoe Church of Christ came for a Devo. John Boor read scripture and shared his thoughts and feels. Several songs were sung. Refreshments were served of homemade ice cream and cakes.

The Muleshoe Church of Christ came to sing to the residents Sun. afternoon.

Jewell Strong fixed lunch for Alma Henley and Cordelia Cochran Fri. They drove around town looking at the flowers.

Cordelia Cochran was visited by Truman McKilip, Mrs. Murphy Berry took her visiting at the Farwell Nursing Home Mon. afternoon.

Mrs. Ed Steinbock visited Mr. and Mrs. Murphy Berry Tues. afternoon.

N.C. Moore was visited by Ruth at the exercise class Tues. morning.

Marie Engram was visited by Jean Geany of Borger, Tex. Maude Kersey, Wilma Waddle, Jessie Robinson, Jerry Hutton, Mrs. Murl Stephenson, Jeff Whately, Susie Vela, Stacey Campbell, Marjorie Precure, Ollie Sebring, Nelda Merriott.

Lisa Johnson came Wed. to have Musical Therapy with the residents.

Marvis visited her mother Ethel Whisenhunt Mon. and gave her a new perm.

Tax-deductible contributions to Individual Retirement Accounts (IRAs) were part of the reason.

At the beginning of 1982, everyone who works for a living became eligible to invest up to \$2,000 a year in an IRA, and the IRS says about 11 percent of taxpayers cut their 1982 tax liability by doing just that.

Eventually, of course, taxes are paid on IRAs, but not until withdrawals begin -- usually after retirement, when most people are in a lower tax bracket. Until then, contributions and earnings can grow untaxed, which can make quite a difference in the size of a retirement nestegg. (If you didn't put another penny in, a \$740 tax refund check paying 10 percent a year for 30 years would grow to \$12,913. The same amount placed in a taxable investment paying the same rate would grow, over the same period, to \$5,633 for someone in the 30 percent tax bracket.)

Where's the best place to invest IRA money?

According to Money's IRA Money Guide, there's "a strong argument for putting your IRA into a mutual fund family." Why? Flexibility. A family of funds encompasses several different types of mutual funds managed by the same organization; once you've put money in one, you can switch it to another virtually as often as you like, with just a simple phone call -- and generally for as little as \$5 per switch.

That means if you're in a money market fund, for example, and would like to put your money in a fund investing in common stocks, or bonds, it's easy to do.

More and more people are switching -- or putting in new money -- to the common stock funds, taking advantage of the rise in the stock market. At the end of March, the stock funds accounted for \$2.7 billion of the \$7.4 billion invested in mutual fund IRAs.

Indeed, over both the long and short term, common stock mutual funds have proven to be among the best possible investments. For the five years to the beginning of 1983, for example, such funds returned, on average, 17.1 percent annually -- with all dividends and capital gains reinvested and all charges taken out. During the same period, the stock market as a whole -- as measured by Standard & Poor's index of 500 common stocks -- rose 14.1 percent each year, and the cost of living increased 9.5 percent a year.

Always Housework is what a woman does that no one ever notices unless she doesn't do it.  
-Tribune, Des Moines.



SHOP FOR IN STORE SPECIALS

Join up now for

Shurfine's summer



SHURFINE  
**PORK & BEANS**  
4 \$1  
16 OZ. CANS

SHURFINE ASSORTED  
CANNED  
**VEGETABLES**  
3 \$1  
CANS

SHURFINE WATER  
OR OIL PAK  
**CHUNK TUNA**  
79¢  
6 1/2 OZ. CAN

SHURFINE  
**MUSTARD**  
79¢  
32 OZ. JAR

ALL VEGETABLE  
**SHURFINE SHORTENING**  
\$1.39  
48 OZ. CAN

DOUBLE SPECIAL  
WEDNESDAY

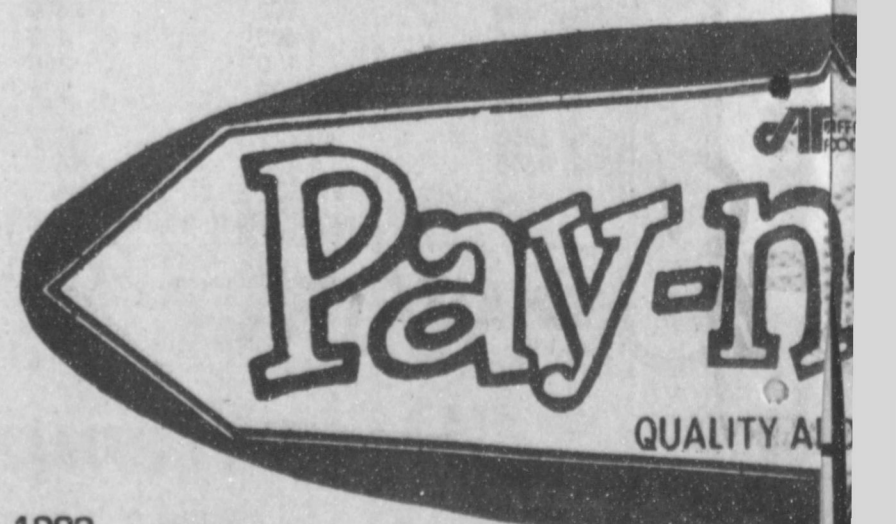
GROCERY SPECIALS			
DRESSING SHURFINE SALAD	32 OZ. JAR	79¢	
TEA SHURFINE INSTANT	3 OZ. JAR	\$1.59	
MILK SHURFINE EVAPORATED	13 OZ. CANS	89¢	2
CREAMER SHURFINE COFFEE	16 OZ. JAR	\$1.19	
DINNERS SHURFINE MACARONI & CHEESE	7 1/2 OZ. BOXES	\$1	4
APPLESAUCE SHURFINE	25 OZ. JAR SHURFINE GLASS	69¢	
COCKTAIL SHURFINE FRUIT	16 OZ. CAN	59¢	
PEACHES SHURFINE YC HLVS.	16 OZ. CANS	\$1	2
PEACHES SHURFINE YC SLI	16 OZ. CANS	\$1	2
PEARS SHURFINE BARTLETT HALVES	16 OZ. CAN	59¢	
JUICE SHURFINE APPLE	64 OZ. BTL.	\$1.69	
TOMATOES SHURFINE WHOLE PELLEDED	16 OZ. CANS	\$1	2
SAUCE SHURFINE TOMATO	8 OZ. CANS	\$1	4
SAUCE SHURFINE SLOPPY JOE	15 OZ. CAN	79¢	
PRESERVES SHURFINE APRICOT	18 OZ. JAR	99¢	
JELLY SHURFINE GRAPE	18 OZ. JAR	79¢	
PICKLES SHURFINE HAMBURGER SLICED DILL	16 OZ. JAR	79¢	
PICKLES SHURFINE FRESH PAK KOSHER	32 OZ. JAR	\$1.19	
PICKLES SHURFINE FRESH PAK POLISH	32 OZ. JAR	\$1.19	
PICKLES SHURFINE FRESH PAK PLAIN	32 OZ. JAR	\$1.19	
CATSUP SHURFINE TOMATO	32 OZ. BTL.	99¢	
CRACKERS SHURFINE SALTINE	16 OZ. BOX	59¢	
CANDY SHURFINE PEPPERMINT TWIST	4 OZ. PKG.	\$1	2
CANDY SHURFINE STARLIGHT MINTS	5 1/2 OZ. PKG.	\$1	2
CANDY SHURFINE ORANGE SLICES	9 OZ. PKG.	\$1	2
PEPPER SHURFINE BLACK	8 OZ. CAN	\$1.29	

FRESH FROM THE FARM PRODUCE

CARROTS CALIFORNIA CELLO	1 LB. PKG.	29¢	SQUASH STRAIGHT NECK YELLOW	LB.	39¢
POTATOES CALIFORNIA LONG WHITE	10 LB. BAG	\$1.79	MUSHROOMS BSKT. GOURMET'S DELIGHT		98¢
LIMES LARGE SIZE PERSIAN	LB.	79¢	ROMAINE CALIFORNIA LARGE HEAD	EACH	59¢
PEARS WASHINGTON BARTLETT	LB.	59¢	ONIONS CALIFORNIA RED SWEET	LB.	39¢

CALIFORNIA SUNKIST ORANGES 3 \$1.00  
CALIFORNIA TREE RIPENED PEACHES 69¢  
LB.

STORE HOURS:  
MON.-SAT. 8:00-9:00  
SUN. 9:00-7:00



PRICES EFFECTIVE MAY 29 THRU JUNE 4, 1983  
LIMIT RIGHTS RESERVED

True Value HARDWARE STORES

**TOOL VALUE OF THE MONTH**  
4.99  
White Supplies Last  
8-in. Cut Hedge Shears  
Steel blades w/pruning notch. Unbreakable handles. 2004  
Quantities Limited

**HARDWARE VALUE OF THE MONTH**  
turtle wax  
2.99 Price Plus Sales Tax  
-1.00 Mail In Refund Offer  
1.99 Your Final Cost  
White Supplies Last  
MINUTE WAX™  
Silicone Auto Polish  
Just spray on and wipe off for beautiful silicone protection. T15  
Quantities Limited

Fry & Cox, Inc.

401 S. 1st

272-4511

## SPS To Sponsor Basketball Camp

The week-long Texan Summer Basketball Camps at South Plains College will be June 20-24 for boys and June 27-July 1 for girls. Camp times are 9 a.m.-noon and 1-4 p.m. daily in Texan Dome. Cost is \$85. The camp is open to elementary through junior varsity students.

This is the first year that SPC has sponsored a full-length camp; previously, participants met a couple of hours daily according to age.

Participants must bring a sack lunch and provide transportation to and from the camp each day, since this is a computer camp, he said.

The basketball camps will feature video taped replays so players can critique their skills, individual instruction, one on one instruction, one on one contests, free throw contests, team play in afternoon officiated games, a written evaluation of each player's skills, and a camp t-shirt.

The camps are designed to teach offensive skills such as dribbling, passing, give and go, screens, offensive routes; defensive skills like footwork, stance, one on one, and team defense; ball handling skills such as dribbling stationary, dribbling drills and dribbling game situations.

Also shooting skills like free throw, jump shot, lay up, pivot shots and backboard shots; rebounding offensive, defensively and outlet passes; and enthusiasm for the game.

Instructors for the camp will include Perryman, who coached the West Squad at the U.S. Olympic Sports Festival in 1978, was an assistant coach for the 1979 team, coached his SPC Texans to victory at the Lon Morris Classic, Texan Classic and Cowboy Capitol Classic, and coached a national NJCAA record holder who had the most points in one game; and Dennis Harp, assistant men's basketball coach for the Texans.

High school coaches, area college coaches, and college and ex-college basketball players also will be on the staff.

He said the camp will be designed for youngsters nine years and older in elementary plus junior high

and junior varsity participants. Perryman said that according to Interscholastic League rules which govern high school participation, a camper may not be a member of a high school varsity team.

For more information on the Texas Summer Basketball Camps, write or contact the SPC Continuing Education Office, South Plains College, 1401 College Avenue, Levelland, Texas, 79337 (806) 894-9611.

Participants must bring a sack lunch and provide transportation to and from the camp each day, since this is a computer camp, he said.

The camps are designed to teach offensive skills such as dribbling, passing, give and go, screens, offensive routes; defensive skills like footwork, stance, one on one, and team defense; ball handling skills such as dribbling stationary, dribbling drills and dribbling game situations.

Also shooting skills like free throw, jump shot, lay up, pivot shots and backboard shots; rebounding offensive, defensively and outlet passes; and enthusiasm for the game.

Instructors for the camp will include Perryman, who coached the West Squad at the U.S. Olympic Sports Festival in 1978, was an assistant coach for the 1979 team, coached his SPC Texans to victory at the Lon Morris Classic, Texan Classic and Cowboy Capitol Classic, and coached a national NJCAA record holder who had the most points in one game; and Dennis Harp, assistant men's basketball coach for the Texans.

High school coaches, area college coaches, and college and ex-college basketball players also will be on the staff.

He said the camp will be designed for youngsters nine years and older in elementary plus junior high

and junior varsity participants. Perryman said that according to Interscholastic League rules which govern high school participation, a camper may not be a member of a high school varsity team.

For more information on the Texas Summer Basketball Camps, write or contact the SPC Continuing Education Office, South Plains College, 1401 College Avenue, Levelland, Texas, 79337 (806) 894-9611.

Participants must bring a sack lunch and provide transportation to and from the camp each day, since this is a computer camp, he said.

The camps are designed to teach offensive skills such as dribbling, passing, give and go, screens, offensive routes; defensive skills like footwork, stance, one on one, and team defense; ball handling skills such as dribbling stationary, dribbling drills and dribbling game situations.

Also shooting skills like free throw, jump shot, lay up, pivot shots and backboard shots; rebounding offensive, defensively and outlet passes; and enthusiasm for the game.

Instructors for the camp will include Perryman, who coached the West Squad at the U.S. Olympic Sports Festival in 1978, was an assistant coach for the 1979 team, coached his SPC Texans to victory at the Lon Morris Classic, Texan Classic and Cowboy Capitol Classic, and coached a national NJCAA record holder who had the most points in one game; and Dennis Harp, assistant men's basketball coach for the Texans.

High school coaches, area college coaches, and college and ex-college basketball players also will be on the staff.

He said the camp will be designed for youngsters nine years and older in elementary plus junior high

and junior varsity participants. Perryman said that according to Interscholastic League rules which govern high school participation, a camper may not be a member of a high school varsity team.

For more information on the Texas Summer Basketball Camps, write or contact the SPC Continuing Education Office, South Plains College, 1401 College Avenue, Levelland, Texas, 79337 (806) 894-9611.

Participants must bring a sack lunch and provide transportation to and from the camp each day, since this is a computer camp, he said.

Susie Whatley  
-Won Stamps 5/23/83

# sale!

### QUALITY MEAT SPECIALS

VAC PAK ALL GRINDS  
**SHURFINE COFFEE**

**\$1.79**

1 LB. CAN

CRY-O-VAC BONELESS PACKER TRIM  
WHOLE IN THE BAG

**BEEF BRISKET**

**\$1.19**

LB.



BONELESS HALF OR WHOLE FULLY COOKED

**SHURFRESH HAMS**

**\$1.99**

LB.

**BACON** SHURFRESH SLICED 1 LB. PKG. **\$1.49**

**SAUSAGE** SHURFRESH PURE PORK 1 LB. ROLL **\$1.09**

**HENS** SHURFRESH GRADE "A" BAKING 4-6 LB. LB. **63¢**

**FRANKS** SHURFRESH MEAT 12 OZ. PKG. **99¢**

**BOLOGNA** SHURFRESH SLICED 12 OZ. PKG. **\$1.19**

**MEATS** SHURFRESH ASSTD. SLICED LUNCHEON 6 OZ. PKG. **69¢**

**HAM** SHURFRESH SLICED COOKED 5 OZ. PKG. **\$1.39**

**SALAD** SHURFRESH POTATO 12 OZ. CTN. **79¢**

**SALAD** SHURFRESH CHICKEN 8 OZ. CTN. **99¢**

**SPREAD** SHURFRESH P.M./JALA. CHEESE 7 1/2 OZ. CTN. **\$1.19**

LE STAMPS ON  
DAY & SATURDAY

### FROZEN FOODS & DAIRY

**BISCUITS** SHURFRESH SW/BM 6 8 OZ. CANS **\$1.19**

**MARGARINE** SHURFRESH QUARTERS 3 16 OZ. PKGS. **\$1.19**

**CHEESE** SHURFRESH HALFMOON COLBY 10 OZ. PKG. **\$1.39**

**CHEESE** SHURFRESH HALFMOON CHEDDAR 10 OZ. PKG. **\$1.39**

**CHEESE** SHURFRESH SHREDDED MOZZARELLA 8 OZ. PKG. **\$1.19**

**CHEESE** SHURFRESH COTTAGE 24 OZ. CTN. **\$1.19**

**ICE CREAM** SHURFRESH ASSORTED 1/4 GAL. SQ. CTN. **\$1.29**

**CORN** SHURFINE FROZEN MINI ON THE COB 8 EAR PKG. **\$1.19**

**LEMONADE** SHURFINE FROZEN REGULAR 4 6 OZ. CANS **\$1.19**

**LEMONADE** SHURFINE FROZEN PINK 4 6 OZ. CANS **\$1.19**

**TOPPING** SHURFINE FROZEN WHIPPED 8 OZ. BOWL **59¢**

**PEAS** SHURFINE FROZEN GREEN 2 10 OZ. PKGS. **\$1.19**

**POTATOES** SHURFINE FROZEN KRINKLE CUT 32 OZ. PKG. **99¢**

**BRIQUETS** ENERGY CHARCOAL 10 LB. BAG **\$1.49**

**NAPKINS** SHURFINE ASSTD. PAPER 140 CT. PKG. **69¢**

**BAGS** SHURFINE SANDWICH W/LOCK TOP 2 80 CT. PKGS. **89¢**

**BAGS** SHURFINE GARBAGE 30 CT. PKG. **89¢**

**FOIL** SHURFINE ALUMINUM 12x25 ROLL **59¢**

**DETERGENT** SHURFINE POWDERED BLUE 49 OZ. BOX **\$1.59**

**DETERGENT** SHURFINE POWDERED ALL PURPOSE 49 OZ. BOX **\$1.59**

**SHEETS** SHURFINE FABRIC SOFTENER 40 CT. BOX **\$1.39**

**PELLETS** SHURFINE WATER SOFTENER 40 LB. BAG **\$2.99**

**SWABS** SHURFINE COTTON 180 CT. BOX **89¢**

LOOK FOR EXTRA  
BONUS TAGS IN STORE

GENERIC PAPER

**TOWELS**

**39¢**

JUMBO ROLL

SHURFINE LIQUID

**BLEACH**

**69¢**

GALLON JUG

SHURFINE ASSORTED

**CANNED POP**

**6 \$1**

12 OZ. CANS

GRANULATED

**SHURFINE SUGAR**

**\$1.39**

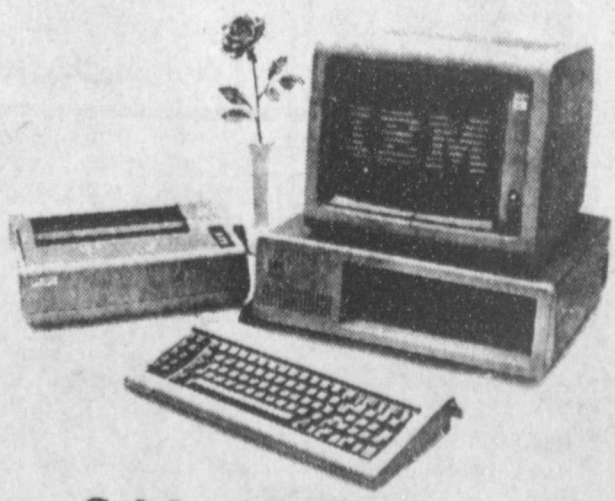
5 LB. BAG

Shur-Save



STORE ADDRESS:  
515 W. AMER. BLVD.  
272-4406

The IBM Personal Computer  
A tool for modern times



Cal Jordan Implements  
EAST MABRY DRIVE. 763-5517



### Around Muleshoe

Cont. from Page 1

daughter of Mr. and Mrs. Clinton Busby of Muleshoe.

Jeep Shanks of Muleshoe as among the 159 students who earned the honor of being listed on the Dean's Honor Roll.

Panhandle State University in Goodwell, Oklahoma as listed 159 students on the Dean's Honor Roll. The year's List each semester contains the names of those students who have carried 2 hours or more and have a 3.3 grade point average based on a 4.0 scale and have no I's or F's.

More than 900 students have received bachelor's and master's degrees during spring commencement ceremonies at West Texas State University.

Candidates for graduation numbered 125 for master's degrees and 809 for bachelor's degrees.

Graduating from Muleshoe are Stanley Black, Bachelor of General Studies; Randel Bryant, Master of Education; David Gowens, Bachelor of Business Administration; and Willie James, Bachelor of Business Administration in finance.

Mary Mata, a sophomore at West Texas State University from Muleshoe, has been awarded a \$200 scholarship during the annual School of Business awards convocation.

Mata, who is majoring in computer information systems, received one of nine scholarships awarded by Phillips Petroleum Co. to WTSU business students.

Midwestern State University had 537 students completing degree requirements for graduation in the May 1983 commencement exercises, according to Betty Bullock, MSU registrar.

Degrees were conferred Saturday, May 21 in MSU's D.L. Ligon Coliseum and included 119 associate, 348 baccalaureate and 70 master's degrees. Honor graduates included 12 summa cum laude, 19 magna cum laude and 30 cum laude.

Students graduating from Muleshoe included Julia Shain daughter of Mr. and Mrs. Walter C. Shain with a BS in Chemistry.

Martha Anthis, director of the Muleshoe Junior High School Band has notified the Journal that the MJHS Band was awarded a large trophy and the "Outstanding Band" award at the recent Levelland Band Festival in addition to the other awards received.

Three Muleshoe area students attending Angelo State University in San Angelo, are listed on the Dean's Honor Roll for the Spring Semester at the University.

Those listed on the 3.00 to 3.49 honor roll include Kristi Diane Henry, a marketing major, and Sheryl Renae Dunham, a distributive education major.

Those listed on the 3.50 to 4.00 honor roll include Robin Marcel Burgess, a finance major.

### Farm Program...

Cont. from Page 1

plies to Strict Low Middling 1-1/16 inch cotton with a micronaire of 3.5 through 4.9 at an average U.S. location. Producers were eligible to request advance deficiency and diversion payments on their 1983 crops when they signed up in the program. The 1983 deficiency payment rate is estimated at 20 cents per pound; however, advance deficiency payments will equal the intended planted acres times the farm program yield times one-half the estimated rate of ten cents per pound. The 1983 diversion rate is 25 cents per pound.

While the foregoing information is a review of the 1983 farm program facts, it is offered as a reminder of the program content for producers. Farmers still having questions on any of the information contained concerning price supports may contact the ASCS office.

The Bailey County ASCS office will be closed on Monday, May 30 in observance of Memorial Day.

TV causes no violent behavior argue networks.

### Symposium

Cont. from Page 1

security. Among the other speakers will be Dr. Edward Teller, a nuclear physicist with Lawrence Livermore National Laboratory, talking about "The Ultimate Renewable Resource," and Dr. Hubert Alyea, professor emeritus of chemistry at Princeton University, who will conduct a special workshop for teachers and speak on "Lucky Accidents, Great Discoveries, and the Prepared Mind."

The symposium is sponsored by the University of Texas and the Texas Atomic Energy Research Foundation. The foundation, organized by ten investor-owned Texas utility companies, sponsors research at UT with the ultimate goal of using energy from fusion reactions for the generation of electricity. SPS is a charter member of TAERF, and SPS board chairman and chief executive officer Berl Springer presently is president of TAERF.

### Tennis...

Cont. from Page 1

players through membership in both the USTA and the TTA. This program will benefit both the beginning players and the more advanced netters.

Rytting will hold sessions lasting from 9:00 a.m. until 11:30 a.m. and from 5:30 p.m. until 8:30 p.m. Both sessions will be on Monday, June 20, 1983 at the High School Tennis Courts located on 3rd St.

For more information contact Coach Windy Williams at 272-4054 or Bob Graves at 272-3380. Watch the newspaper for further announcements. No fee will be charged.

### Pool...

Cont. from Page 1

prices for admission and for season tickets are the same as they were last year.

Lifeguards at the pool for the 1983 season will be Benton Glaze, Jimmy Green and Sherry Ellis.

Swimming lessons will be starting at the pool on or about June 20. Further details on the lessons will be printed at a later date.

Miss Hamblen is a member of the National Honor Society and has been active in basketball and tennis.

### Workshop...

Cont. from Page 1

ment concepts. Also on the morning program are Dr. Dale Pennington, Extension soil chemist, and Dr. James Supak, Extension cotton agronomist.

The afternoon program will include Drs. Frank Petr (cq) and Kirby Huffman, Extension agronomists; Dr. Pat Morrison, Extension entomologist, and Greg Cronholm, Extension agent-entomology.

The June 1 session, beginning at 9 a.m., will focus on scouting procedures. Leading the sessions will be three county Extension agents for entomology. They are Cronholm, of Plainview; Allen E. Knutson, of Dimmitt, and Dale Spurgeon of Crosbyton.

That afternoon, participants will receive practical training on insect identification and scouting procedures during a field session.

### VBS...

Cont. from Page 1

"During the week of the school children enrolled will be studying "Ways Bible People Lived," using aspects of daily living described in Bible times to help the children identify with the Bible people," says Pam Zwickey who is in charge of the school program this year. Bible lessons, songs, crafts, filmstrips and other items will be used to help acquaint students with the lifestyles they are studying.

The church school is open to all children, ages three to those who have just completed the sixth grade in public schools. For further information or to pre-register call Sue Barron at 272-5334 or Pam Zwickey at 272-5002.

### FACTORY PRODUCTION

U.S. factories churned out goods in April at the fastest pace in nearly eight years while wholesale prices declined again, the government reported recently.

### Crop...

Cont. from Page 1

from the west, they seemed to have skipped some before depositing their moisture, as residents in the West Camp area and on FM 1760 only reported about two tenths inches of rain.

Employees at the Muleshoe Wildlife Refuge reported an official 23/100 of an inch of rain on the refuge in one place and 34/100 in another. Coffee shop talk indicated that about the same amounts were received in the Needmore area, but grew heavier as the clouds traveled west.

Wanda Thompson, bookkeeper at Claunch Gin in Bula reported that rains in that area were pretty general and ranged anywhere from 6/10 of an inch to one and one-half inches.

Heavy showers were also reported near Dimmitt and in the Sprinklake area on Thursday night. Morton received just over two inches of rain on Wednesday night along with baseball size hail which caused the cave-in of a roof of one of their school buildings.

More shower activities were forecast for Friday and through the Memorial Day weekend with chances of late afternoon and early night time thundershowers.

### EPA NEWS

The Environmental Protection Agency, emerging from months of criticism of its failures, reported a sharp drop in the levels of a toxic chemical in the bodies of all Americans.

### 1982 DEATH TOLL

The nation's death toll in transportation accidents dropped to a 20-year low last year with highway deaths down nearly 11 percent from 1981, the National Transportation Safety Board reported recently.

### County Agent Advises On Watering

When, how and how much to water are common questions asked by gardeners.

Watering is one of the most enjoyable aspects of home gardening but it is also one of the most misunderstood, points out Spencer Tanksley county agent with the Texas Agricultural Extension Service, Texas A&M University System. Misuse of water in your home garden often causes many problems, among them soil crusting, poor root growth, blossom drop, cracked fruit, nutrient deficiencies and various types of plant diseases.

Regardless of how you water your garden, remember to apply sufficient water to wet the soil to a depth of at least 6 inches, emphasizes Tanksley. How often to water will depend upon climatic conditions, rate of growth, stage of maturity of your garden, and soil type.

Check the soil, not the plants, to determine when to water your garden. Looking at plants for symptoms such as wilting to determine when to water is a serious mistake. Plants will for many reasons, such as diseases, too much fertilizer, heat or perhaps too much water. If soil is relatively moist an inch or so deep, you don't need to water. Remember, heavy soils will need watering less frequently than sandy soils.

Most gardeners water by flooding or furrow irrigation, says Tanksley. For this method to be effective, it's best to have plants on raised beds so water can go between them. With flood or furrow irrigation, apply water slowly to soak the soil thoroughly.

Watering with a sprinkler is probably the most convenient method. It's simply

a matter of placing the sprinkler where it can water the entire garden. Be sure to apply at least one inch of water at each watering. This can easily be determined by placing a coffee can in the sprinkler pattern and catching about an inch of water.

When using a sprinkler, turn it on early enough in the day to allow foliage to dry off before nighttime. Wet foliage in combination of cool nighttime temperatures often results in serious types of foliage diseases, points out Tanksley.

Drip or trickle irrigation is a relatively new concept

which is gaining popularity. This type of system literally drops water onto the soil surface near plants so that it seeps slowly into the soil. This method is much more efficient than either furrow or overhead watering although the initial cost is high. However, being more efficient, these systems generally pay for themselves within a short period of time, says Tanksley.

Paying attention to how, how much and when you water can make the difference between success or failure of your garden.

### Ranch Cowboy Roundup To Benefit Boys Ranch

"The Benefit," a Ranch Cowboy Roundup, to benefit West Texas Boys Ranch will be held June 18, 1983 at 2 p.m. at the San Angelo Fairgrounds Roping Arena. A special guest appearance will be made by Reba McEntire.

Events are to include: Bronc Riding, Team Branding, Goat Roping, Wild Cow Milking and Queen's Contest.

Participating Ranches will compete for Ralph Maynard belt buckles. Silver spurs will be given to the Hard Luck Cowboy.

"The Ride Off" - 15 of the Nation's top bullriders will match in head to head competition against the top 15 bulls in the Bad Company Rodeo string for a \$2,500 purse. Reba McEntire will perform at a special intermission performance.

Big Roundup Dance - Starring Reba McEntire will be held from 9 p.m. to 1 a.m. at the new Knights of Columbus Hall on North Bryant Blvd. in San Angelo. Tickets for the

dance will be a \$10.00 donation.

"The Benefit" tickets will be available for a \$5.00 donation at the following locations: Ashley's Boot & Shoe Repair; Ashley's Western Outfitters; M.L. Leddy's; Mr. Boots; The Hattorium and Emery's Eatery.

"The Benefit" is a Bad Company Rodeo production to benefit West Texas Boys Ranch.

### LVN Test Dates Set

June 20 is the next date for a vocational nursing pre-entrance exam at South Plains College.

The test is a requirement for entrance in SPC's one-year vocational nursing program. Test fee is \$5.

Additional testing dates are July 18, July 25, Aug. 8 and Aug. 22. Complete information on three references plus a high school diploma or GED certificate is required.

For more information on SPC's LVN program, contact SPC at (806) 894-9611.



**FARM AND RANCH SUPPLY**

**OPEN ALL DAY SATURDAY**

1601 S. Ave. D, Portales

## Open Memorial Day

### Bronco-Bustin' Bargains!

Coupons Good Thru June 4th Only

WITH COUPON ONLY



**Wrangler**  
SHORT SLEEVE WESTERN SHIRT  
BUY 2-GET 1 FREE  
Floral Or Plaid

WITH COUPON ONLY



**Wrangler**  
LONG SLEEVE WESTERN SHIRT  
BUY 2-GET 1 FREE  
Floral-Plaid-Check

WITH COUPON ONLY



**prorodeo**  
COMPETITION JEANS  
12<sup>88</sup>  
38" Inseam 13.88  
100% Cotton  
14 1/4 Oz. Heavy Weight Denim

WITH COUPON ONLY



**Wrangler**  
menswear  
STUDENT DENIM JEAN  
12<sup>79</sup>  
100% Cotton 14 1/4 Oz. Denim Pre-Shrunk

WITH COUPON ONLY



**Wrangler**  
menswear  
SLIM FIT BOOT JEAN  
14<sup>79</sup>  
100% Cotton, 14 1/4 Oz. Wrangler "No-Fault" Broken Twill Denim.

WITH COUPON ONLY



**Wrangler**  
BOYS' DENIM JEAN  
9<sup>99</sup>  
Wrangler 100% Cotton No-Fault Jean.

## CLOVIS - PORTALES - MULESHOE

# H A I L

## NO MATTER HOW IT FALLS IT SPELLS DISASTER TO GROWING CROPS...

...but you can prevent financial DISASTER from HAIL by insuring your crops before the storm.

**Just Ask Your Farm Bureau Insurance Agent About A Crop Hail Insurance Policy-He's At Your County Farm Bureau Office.**

The Farm Bureau Member's Insurance Needs Come First At Your Texas Farm Bureau Insurance Companies. You Deal With People Who Know Farming And Who Work With Farm Bureau Members Every Day. Your Crop Hail Policy Provides Quality Insurance Coverage At The Lowest Net Cost Possible. Your Claimsmen Are Specialists In Adjusting Your Loss. This Ads Up To Better Service For Farm Bureau Members.

DIVIDENDS WERE PAID EIGHT OF THE PAST TWELVE YEARS TO CROP HAIL POLICYHOLDERS INSURED THROUGH YOUR TEXAS FARM BUREAU INSURANCE COMPANIES—THE LOW NET COST COMPANIES. AND FOR 1983-15% A DEVIATION OFF CROP HAIL RATES

**ASK FOR ONE OF THESE AGENTS FOR MORE DETAILS**

**Ray Davis, CLU**

**Durk Green**

**Rickey Barrett**

**Gene Atkins**

**Texas Farm Bureau Insurance Companies**

Muleshoe, Texas



**272-4567**

# WTSU Collects Blood For 21 Panhandle Hospitals

West Texas State University collects enough blood each semester to supply 21 Panhandle area hospitals with blood for one month during the year -- a fact no other college or university

in Texas may claim. During the recent 1983 spring blood drive, workers from Coffee Memorial Blood Center at Amarillo collected 1,062 pints from WTSU students on campus. That total surpasses an all-time high for spring drives of 821 pints which were collected in 1981. Last spring WTSU students, faculty and staff members donated 761 pints.

Blood drive totals for spring semesters are lower than the totals of fall drives because the total number of students enrolled drops slightly in the spring, said Cindy Pearce, WTSU director of residential living. Each semester the blood drive features competition between students in residence halls. The hall with the highest donor percentage based upon the number of residents receives a \$200 cash prize.

Each year competition has increased as several halls have tried to beat the leading hall's total. Residents of Cousins Hall, a women's dorm, had the highest donor percentage of 72.1 percent with 101 donors from 140 residents. The hall is a seven-time winner of the contest. Brown Hall came in second with 65.2 percent or 62 donors from 96 residents. Shirley Hall came in third with 56.6 percent or 90 donors of 156 residents.

Conner Hall, a men's dorm with a donor percentage of 145.2 percent or 61 donors out of 42 residents, ended a six-semester record held by Jarrett Hall East, who came in third place with a donor percentage of 108.9 or 142 donors of 134 residents. Terrill Hall came in second with 121.9 percent, or 139 donors with 114 residents.

With the stiffening competition, dorm residents are recruiting former students and residents to give for their halls, Pearce said. Since the drive began in 1978, the number of donors has increased each year. People who have graduated from WTSU and who live in the area are coming back to donate, she said.

Campus organizations also competed for a cash

prize during the drive. The Buffalo Belles, a women's spirit organization, won with a total of 105 pints given. The WTSU Herdmen, a men's spirit organization, came in second with 45 pints donated. The organization winner is determined by the most pints donated and not by a percentage, Pearce said.

Overall, the men had a donor percentage of 90.9 compared to 51.1 percent for women. Wendy's Old-Fashioned Hamburgers of Canyon helped sponsor the spring drive.

The Coffee Memorial Blood Center reserves the motto, "Once a donor, always a donor."

## Veterans Q & A

**EDITOR'S NOTE:** Following are representative questions answered daily by VA counselors. Full information is available at any VA office.

**VA - MAY I HELP YOU?**  
Q--How does one define a "service-connected disability?"

A--A "service-connected disability" is any physical or mental disease or injury incurred or aggravated during active service in line of duty, providing the veteran was discharged or separated under the other than dishonorable conditions.

Q--If I do not agree with a decision the VA makes on an application for benefits, what can I do?

A--You may file an appeal regarding any benefit decision with which you disagree. All that is necessary to start the appeal procedure is for you to write the VA stating why you disagree with the decision and include information you believe should be considered by the VA.

Q--I have been receiving education benefits for the past three years claiming my wife and two children. Now the VA is suddenly asking for a marriage certificate and birth certifi-



**TUMBLEWEED COUNTY--Boys participating in "The Legend of Tumbleweed County" at the Hawkins and Purdy Spring Dance Recital held recently included: Back Row (L-R) John Bryan Cowart, Corey Williams, Vic Mittal, Taylor Robinson, Jason Rasco and Quint Ellis; Front Row: Colin Zwick, James Cox, Aaron Purdy, Jason Barron, Tyson Moncrief and Mark McGuire.**

icates for my children. Why are they asking now when they have already been paying me for them?

A--VA regulations now require the submission of verification for veterans' dependents. This is to insure that veterans are receiving the appropriate amount of monthly benefits for the proper number of dependents. Failure to furnish the requested documents could result in reduction of monthly benefits.

## WHO KNOWS

1. When did Lindbergh begin his well-known flight?
2. How many hours did it take to fly non-stop to Paris?
3. What was the name of his plane?
4. What is a hydrologist?
5. When was the Golden Gate Bridge opened?

## Answers to Who Knows

1. May 20, 1927.
2. Thirty-three, 29 minutes and 30 seconds.
3. Spirit of Louis.
4. Scientist who studies water, its properties, laws, geographical distribution.
5. May 27, 1937.

# Sudan Girls Little Dribblers Close Season

The fifth & sixth grade girls Little Dribblers closed out their great season here Tuesday night playing against Littlefield All Stars. The score was not known at this writing.

The Sudan All-Stars defeated Littlefield last Thursday 37-19.

The girls were separated into two teams for the most part of the season. Kelli Flowers and Shanda Vernon coached the team sponsored by Co-op Gin. This team included Mandy Carr, Amie Baker, Elizabeth Cervantez, Hyla Ford, Kay Lynn Gordon, Eva Griggs, Cheri Livingston, and Melonie Peck. Their record was not too impressive but the girls learned a great deal and are expected to be great next year. They were in games with Muleshoe, Springlake, and Littlefield.

The other group, coached by Gene Bartley was sponsored by Feeders Grain. This team included Krista Kirkland, Misty Bartley, Teena Newman, Kenna Sue Richards, Star Tennyson, Stacy Williams, Tracy Williams, Kristi Hargrove, Moneake Payne and

Lisa Bailey. This group did a great job and had a perfect record. They won first place in Sundown defeating Three Way 56-7 and Whiteface 27-23.

Their first win was in Whitarral defeating Anton 39-12 and another team from Anton 39-4. They defeated Whitarral 39-17 and went on to defeat Muleshoe 30-2; Springlake 38-5 and another team from Springlake 42-9 and Littlefield 37-5.

This group plays "team" ball and pass the ball around and look for an opening so by doing this they all scored a lot of points--not just one person doing the scoring.

Coach Bartley stated--"If you missed seeing these girls play, you missed a power house. They could be on their way to State in a few years". He added "These girls are a coaches dream." They have the ability and the proper attitude.

An ice cream supper was held following their last game Tuesday night for a seasons wrap up.

**A&M**  
**Five Point**  
**\$10<sup>59</sup>**  
**HI PROTEIN DOG FOOD**

- A 26% crude protein dog food.
- Formulated for hard working dogs.
- For peak conditioning and performance.

## Courthouse News

**WARRANTY DEEDS**  
Richard Ray Carlson and wife, Ivanell Carlson to Joe L. Smallwood--All of Lot (3), Block (6), Lakeside Addition Number (1), to the City of Muleshoe, Bailey County, Texas.

**COUNTY COURT**  
Arturo Mendez, Unlawfully Carrying Weapon \$150 fine  
Mark David Dial, Theft, \$50. fine  
David Bowley Order of Dismissal

**DISTRICT COURT**  
Debra Kay Archuleta and Robert Samuel Archuleta DV

Doris Jean Kelton and Carroll Wayne Kelton DV  
Ag Aviation, Inc. VS Bobby Broyles Judgment

**NEW VEHICLES BOUGHT**  
Teddy Harrison, 1983 GMC Sub, Robert D. Green, Inc., Bill Vinson, 1982 GMC PU, Robert D. Green, Inc., Herman Morrison, 1983 Chev PU, Robert D. Green, Inc., Sandra S. Starritt, 1982 GMC PU, Robert D. Green, Inc., City of Muleshoe, 1983 GMC PU, Robert D. Green, Inc., Gene Atkins, 1983 Chev PU, Robert D. Green, Inc., Abe J. Mallouf, 1982 Pont Sdr, Robert D. Green, Inc., Kent D. Winders, 1983 GMC Sub, Robert D. Green, Inc., W.B. Kittrell, 1983 Ford PU, Muleshoe Mtr. Co., Inc., James Glaze, 1983 Chev 4dr, Ray Jones Chev., Inc., Betty L. Barker, 1983 Honda 4 dr, Ream Imports, Inc., Daniel E. Atkins, 1983 Ford 4dr, Muleshoe Mtr. Co., Inc., Marion E. Brewster, 1984 Ford Bronco, Muleshoe Mtr. Co., Inc., Ross J. Brock, 1983 Ford 4 dr, Muleshoe Mtr. Co., Inc., Joe H. Simmacher, 1983 Ford PU, Muleshoe Mtr. Co., Inc.

**True Value**  
**HARDWARE STORES**

**Enter Our 2-in-1 Sweepstakes**  
**YOU MAY WIN TWICE HUNDREDS OF PRIZES**

**NATIONAL GRAND PRIZE:**  
1983 CHRYSLER LeBaron Town & Country Convertible Fully-equipped with the Town & Country and Mark Cross Packages

**LOCAL PRIZES:**  
Drawing July 9, 1983  
Gift Certificates  
\$500 \$300 \$200 \$100  
Gift Certificates For Paint & Paint Sundries Only

**PAINTING HELP SPOKEN HERE**  
Your Tru-Test Paint Specialist is ready to help with expert advice about all kinds of paints and how to apply them. Professional know-how for perfect color selections, complete line of finest Stop by today and let him help you paint like a Spoken Here Sweepstakes

**SPECIAL SWEEPSTAKES SAVINGS ON PREMIUM-QUALITY TRU-TEST PAINTS...**

- E-Z-Kare Latex Flat Enamel Withstands repeated scrubbing without fading or shining. 44 colors and white. REG. 00<sup>99</sup> **13<sup>98</sup>** Gal.
- Set-N-Hue Latex Flat Wall Finish Dries to velvety finish in 30 minutes. Soap-water clean-up. REG. 00<sup>99</sup> **10<sup>98</sup>** Gal.
- Weather-All Flat Latex House Paint Our finest weather-tested house paint. Fights fading, mildew and peeling. REG. 00<sup>99</sup> **11<sup>98</sup>** Gal.

**Fry & Cox, Inc.**  
401 S. 1st 272-4511

**SHOOK**  
**TIRE & SERVICE**

**LEE POLYESTER**

SIZE	SUGGESTED EXCHANGE	SALE PRICE
P165-13	\$36.95	\$26.00
P195-14	43.95	29.95
P205-14	45.95	32.95
P215-14	47.95	34.95
P215-15	49.95	35.95
P225-15	51.95	36.95
P235-15	55.95	39.95

FET: \$1.50-2.79 WHITEWALL

**LEE GS RADIAL**

SIZE	SUGGESTED EXCHANGE	SALE PRICE
P155-13	\$49.95	\$31.00
P165-13	51.95	35.00
P185-14	58.95	41.00
P195-14	59.95	42.00
P205-14	63.95	44.00
P215-14	67.95	46.00
P205-15	65.95	46.00
P215-15	69.95	47.00
P225-15	71.95	48.00
P235-15	77.95	51.00

FET: \$1.44-2.86 WHITEWALL

**LEE ALL WEATHER**  
**Steel Belted Radials**

SIZE	SUGGESTED EXCHANGE	SALE PRICE
P155x13	\$57.95	\$34.00
P185x14	69.95	45.00
P195x14	70.95	46.00
P205x14	75.95	48.00
P215x14	79.95	49.00
P205x15	77.95	49.00
P215x15	82.95	52.00
P225x15	85.95	54.00
P235x15	91.95	57.00

FET: \$1.51-2.90 WHITEWALL

**PREMIUM HIGHWAY RIB**  
**LIGHT TRUCK TIRE**  
**\$46<sup>95</sup>**  
700-15 TL 6 Ply  
FET: '3.06

**ROCKET** Wheels As Low As **\$25**

**Alignment**

- Set toe-in
- Inspect tires
- Adjust caster and camber

**\$11.99**  
Most American Cars

**Shocks**  
**Heavy Duty**  
**MONROE**

- Lifetime Warranty
- Installation Available

**\$16.99**  
Each

**Battery**  
**24 Month**

- Group 24
- 300 Cold cranking amps
- 45 Amp hours
- Hard rubber case
- 42 Plates

**\$29.95**  
Plus exchange battery

**Brake Service**  
**Front Disc**

- Pack front bearings
- Turn rotors
- Replace front disc pads

**\$59.99**  
Most American Cars

**PEACE OF MIND** Complete Road Hazard Protection  
Ask about it at Shook.

Prices good thru June 4, 1983  
**FREE MOUNTING!** Closed Memorial Day

301 North First • 272-3420  
Manager: Don Taylor

ugh linto  
Jeej as a  
nts  
nor can  
Pan ty in  
as lie D  
ean  
ontai tudei  
2 ho  
3.3  
ased ave

Mo ave  
nd r  
ng s  
eren itate  
Car ion  
nasto  
or b.  
Gr  
ihoe  
3ach  
lies;  
ster  
Gow  
ness  
Willi  
Busin

M. at V  
veris  
been  
scho  
nual  
awar  
M  
comj  
tems  
scho  
Phill  
WTS

M  
erisit  
comj  
quinn  
in t  
ence  
cord  
MSL  
Di  
Satu  
D.L.  
incl  
back  
ter's  
uate  
cum  
lauc  
S  
M  
Sha  
Mrs  
a B

### This Week In Youth Baseball

Muleshoe Youth Baseball games scheduled for the week of Memorial Day beginning on May 30 will include the Lions vs. the K Bars; Lazbuddie vs. Sox; Bears vs. Gingers; Lazbuddie vs. D.B.; Blue vs. Maroon and Lazbuddie vs. Gold.

Tuesday, May 31 will feature the Vets vs. Lions; Mustangs vs. Sox; U Bars vs. Bears; F Ball vs. D.B.; Orange vs. Blue and the Green vs. Gold.

Wednesday, of course is an open day, and Thursday June 2 will include games between the Mustangs and the K Bars; Lazbuddie vs. Vets; Gingers vs. F Ball; Lazbuddie vs. U Bars; Green vs. Maroon and Lazbuddie vs. Orange.

Friday games will include the Vets vs. Sox; Lazbuddie vs. Mustangs; U Bars vs. D.B.; Lazbuddie vs. F Ball; Orange vs. Gold and Lazbuddie vs. Green.

Reports on scores of these games and others preceding them will be given in an update on Muleshoe Youth Baseball as soon as coaches and captains file their reports with the Journal.

### Keenan Masten Named In Sudan Senior Spotlight

Keenan Dee Masten is this week's Senior. He is the 17 year old son of Mr. and Mrs. Danny Masten and was born June 15, 1965 in Lubbock, Texas.

Keenan is 6'2" has blue eyes and sandy blonde hair. Topping his list of favorites are barbequed ribs and steak; the color brown; favorite persons, his parents; Coach Boyles is his favorite teacher at SHS and Cwies is his favorite subject.

Keenan has been active in football where he was named All District offensive and defensive lineman and was captain of the team his senior year. He was a member of EFA all four years and during his Sophomore year was Reporter, Treasurer as a Junior and President his Senior year. He was elected as FHA Brain his senior year, class favorite, his sophomore year, Reporter of his junior class and Senior class Treasurer. Keenan was a member of the Student Council as a junior class member and was a band member his freshman year. He is active this year in Industrial Arts and has been a member of the National Honor Society the past three years.

Alan Alda and Victoria Principal are his favorite actor and actress with "Photograph" his favorite song and his favorite group is, Det. Leopard with Rick Springfield his favorite singer.

Keenan plans to attend TXIT studying in aircraft mechanics upon graduation. Hobbies, mechanics and listening to music are his hobbies and his goals in life are to be happy and to be the best at whatever he does.

## Local Court Dockets Quieter This Week

A total of 59 cases were filed in both Municipal and Justice courts over the past week from May 16 to May 21. Thirty five cases were finished out as paid and disposed of during this time.

Judge Linda Huckaby recorded a total of thirteen dispositions in Municipal Court with three of them being for speeding violations. Two were paid on it legal turns, two for expired license plates and one each on the following violations: had check, no drivers license, running stop sign, violation of city ordinance (open container), exhibition of acceleration and one for expired MVI sticker.

### Sudan Junior Olympica Rescheduled

The Sudan Junior Olympics Track Meet has been rescheduled for Tuesday, May 31 beginning at 3 p.m. and will be held at the Sudan High School track field.

This meet is designed for children from the age of three years through the sixth grade level and each child may participate in throwing, running and jumping events.

Participant ribbons will be given to each entry. Entry fee is \$2.50 per child.

## Farm, Ranch Cash Receipts Down By One Billion In '83

Total cash receipts from farm and ranch products in Texas were down about \$1 billion or 9 percent last year compared to 1981.

Cash receipts from agricultural production last year are estimated at almost \$9.6 billion based on figures compiled by Dr. Carl Anderson, economist with the Texas Agricultural Extension Service, Texas A&M University System.

This total figure is based on input from county Extension agents and Extension economists from the various regions of the state," says Anderson. The total estimate does not include government payments.

"1982 was obviously a tough year for Texas farmers and ranchers due to the general downturn in economic conditions and poor farm prices that resulted from huge stockpiles of agricultural commodities," notes Anderson. "Weather losses also were heavy in some areas, particularly in the South Plains where hail

violations were filed over the past week's period. Three were filed for violation of city ordinance (open container), two for failure to yield right of way and two for expired plates. Also two were filed for no drivers license. One violation each was filed on each of the following: expired sticker, violation of city ordinance (dog), backing without safety, expired MVI, unsafe backing, illegal turn and running red light.

Justice of the Peace Jack Bates filed a total of 38 cases and disposed of 22 over the period from May 17 to May 23. Cases filed included 23 for speeding, six for no liability insurance, three for expired license plates, two for no drivers license and one each for the following offenses: operating unregistered trailer, no stop lamp on trailer failure to drive in single lane, and passing in no passing zone.

Disposals in Justice Court came to a total of twenty-two for the week, with ten of them being for speeding, three for no drivers license, two for expired license plate, two for over allowed gross weight and one each for each of the following: operating unregistered trailer, fail to drive in single lane, no MVI, operating unregistered in Texas, over height load, and failure to display lease acknowledgment.

## Farm, Ranch Cash Receipts Down By One Billion In '83

destroyed more than half the cotton crop."

Cotton led the decline in cash receipts from crops, which totaled almost \$3.8 billion compared to the previous year's \$4.6 billion. Cotton receipts dropped from \$1.4 billion in '81 to \$875 million last year.

Sales of food grain crops, mainly rice and wheat, were down almost \$300 million at \$739 million. Feed crops—corn, grain sorghum, oats, barley, hay and onilage—sold for just over \$1 billion, down only slightly from 1981 levels.

Oil crops—soybeans, peanuts, sunflowers, guar and flax—contributed \$228 million to last year's receipts, up moderately from the previous year.

Receipts from vegetables were at \$364 million while sales of fruits and nuts added another \$83 million; both of these categories of crops and reduced sales last year.

Sales of all other crops totaled \$412 million, up from \$339 million in 1981.



NEW COMPUTER EQUIPMENT—Over 50 software programs will be available to Cal Jordan's implement customers with the recent addition of a franchise agreement with Val-Com Agriculture Computers.

### Schools Release Attendance Records

A list perfect attendance at Dillman Elementary for the 1982-83 has been released to the Journal. Kindergarten classes, however had no perfect attendance.

In the 1st grade, students who had perfect attendance were: Ruben Jaramillo, Chad Kemp, Misty Davenport, Astrid Guardiola and Sonya Smith.

In the 2nd grade, perfect attendance was posted for Monica Clemmons, Lizzette Guardiola, Albert Garza Jr., Mark Hicks and Brian Wilhite.

Mary DeShazo, perfect attendance for 1982-83 includes the following students in the third grade: Abel Barron, Dustin Elliott, Ross Parish, Jorge Barron, Joe Arredondo, Gloria Guillen, Kevin Morris and Gilbert Reyes.

DeShazo students with

Sales of livestock products contributed most to the overall agricultural receipts in Texas last year—more than \$5.1 billion although the total was down \$300 million from '81. This included the sale of meat animals, dairy products, poultry and eggs, and various other livestock products, such as wool and mohair.

Cash receipts from cattle and calves alone totaled \$3.8 billion or 40 percent of the state's agricultural sales.

Hog sales totaled \$113 million while sheep and goats contributed another \$65 million.

### Letter To The Editor

The March of Dimes would like to thank you for your contribution through our Mail Program.

The March of Dimes has achieved many successes over the past years. You as a supporter have enabled us to reach many of our goals.

Due to increasing costs, it is more and more difficult to maintain our ever relentless struggle to rid the world of one of its greatest problems, birth defects.

Again thanks for your help, we hope that you will continue your support. Your contribution of any amount is always greatly needed and appreciated.

Sincerely,  
B.J. McCrone  
Executive Director

### Commissioners Meet Wednesday

The Bailey County Commissioner's Court will meet in a special session in the Courthouse on Wednesday, June 1 beginning at 10 a.m.

Items on the agenda include a meeting with officials of the Mental Health Mental Retardation Center and a meeting with Debbie Hutto.

The Court will consider the adoption of a fiscal year for the County and the erectin of a sign for the

Coliseum will be on the agenda. The Bailey County Appraisal District Budget for 1984 will be reviewed by Commissioners, along with an ambulance report.

Commissioners will consider a request by the Muleshoe Chamber of Commerce for the use of the Coliseum on July 4.

Other items for consideration include vacancies for the child welfare board, typewriter repair for District Clerk's office.

ROBERT D. GREEN, INC.  
2400 West American Blvd.  
MULESHOE, TEXAS 79467

OLDSMOBILE — BUICK — PONTIAC — GMC

TERRY YELL  
Sales Representative

Business Phone 806 272-4588  
505 762-2772

Home Phone 806 272-4948

## Mr. Farmer!

See Us For Your PIK Acre Seeds

### Sorghum X Sudan Hybrid

### Sudan Grasses

### Rye Grass

### And Other Seeds

# McCormick Seeds

400 E. Ash Muleshoe, Tx 272-3156

## What Could Be Better Than Christmas in July

Except

# CHRISTMAS IN June

Purchase A New Massey-Ferguson Combine

And Receive A New Pick-up  
(Check In Store For Details)

Finance At 9.9% A.P.R.

---

Purchase A Used Combine

And Receive A Used Car  
(Wouldn't A Second Car Be Nice?)

Finance At 7% A.P.R.

See The Combines and New Pick-ups At Fry & Cox, Inc. -- NOW

# Fry & Cox, Inc.

401 S. First 272-4511

VALCOM

IBM PERSONAL COMPUTER.  
SPECIAL AG SOFTWARE.  
EVERYTHING YOU NEED.

# PERSONAL COMPUTER CENTER

## GRAND OPENING

JUNE 1-2

EDUCATIONAL DEMONSTRATIONS REFRESHMENTS

## Cal Jordan Implements

EAST MARRY DRIVE CLOVIS, N.M.

P.O. Box 1110 763-5517

COMPUTER SYSTEMS  
By Micro Mfg.'s, Inc.

Design/Repair/In-Place and Remote Business

(Texas & A.M. Schools Available in Charge)

272-4266

AMERICAN VALLEY INVESTMENTS



# Dent-Rempe, Inc.

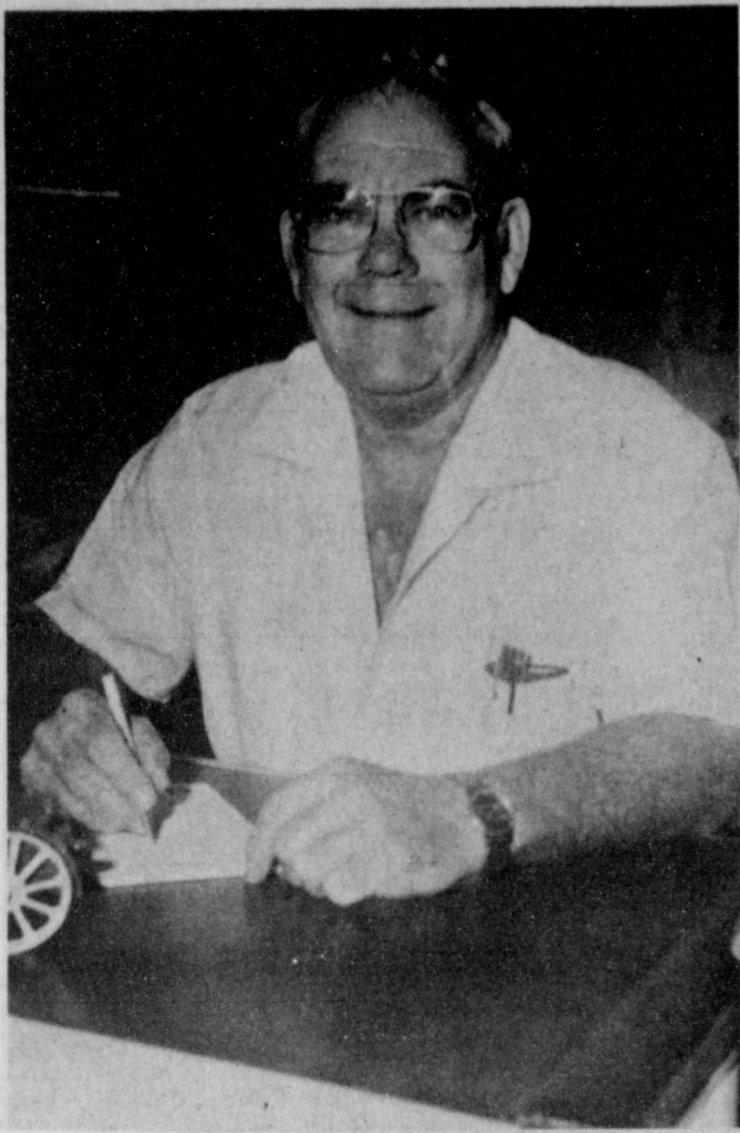
*"Your John Deere Dealer"*

(806) 272-4296

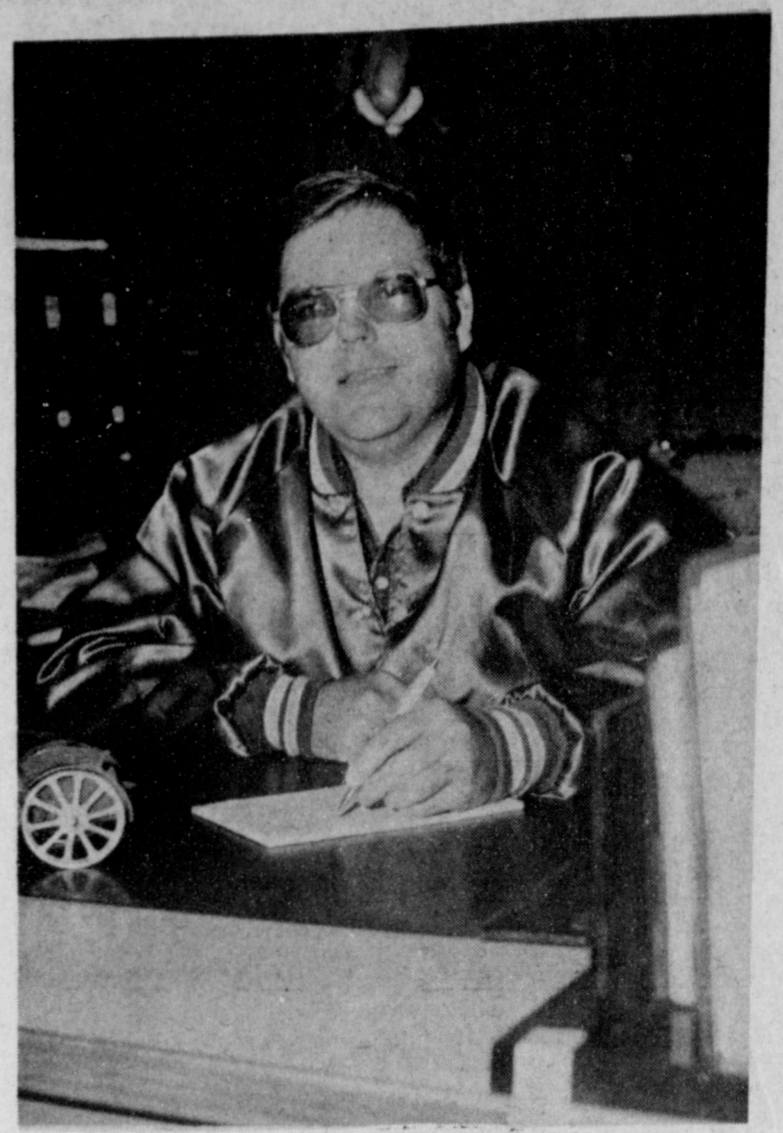
Dear Customers And Friends,

We Wish To Express Our Appreciation For Your Patronage And Support. We Assure You Of Our Desire To Continue To Serve You As A John Deere Customer. On May 27, 1983 Dent Farm Supply Of Earth And Dent-Rempe Of Muleshoe Initiated A Merger Which Resulted In The Closing Of The Earth Dealership. This Was Done So Our Customers Would Be Served More Efficiently And Practically. We Expanded Our Sales, Service, And Parts Departments To Assure You Of Quality Service In Meeting Your Needs.

Pictured Are The Members Of Our Staff Who Will Be Serving You. You're Invited To Come By And Get Acquainted.



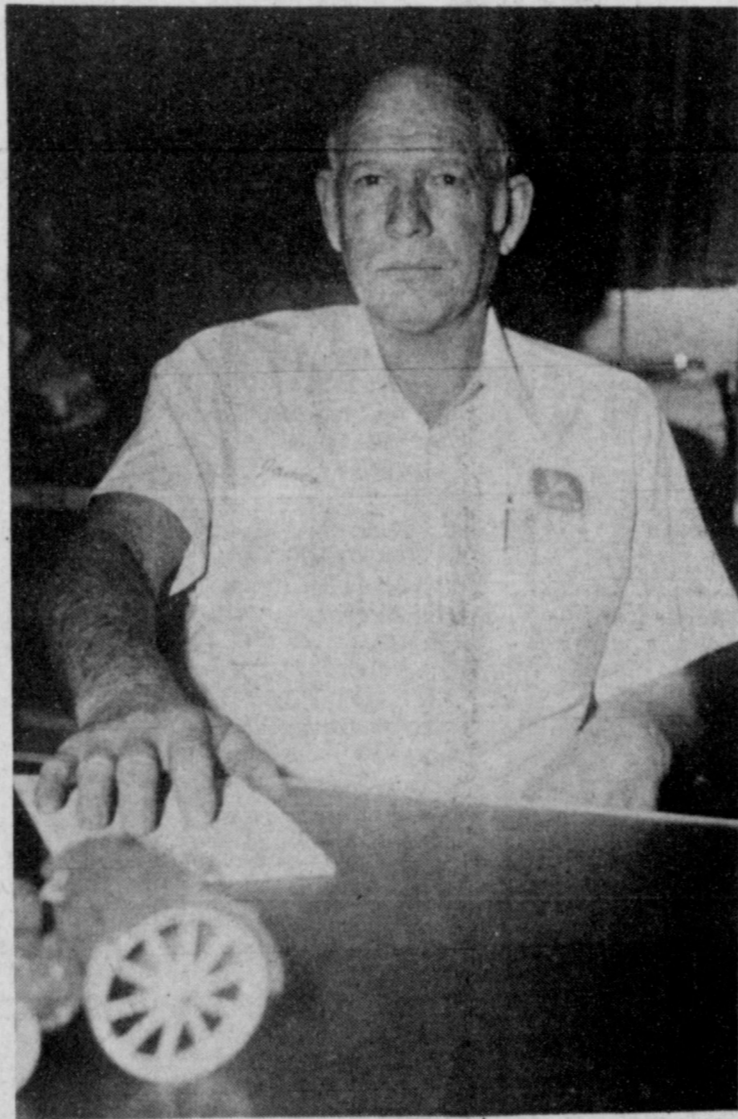
**Leon (Tuffy) Dent**  
General Manager



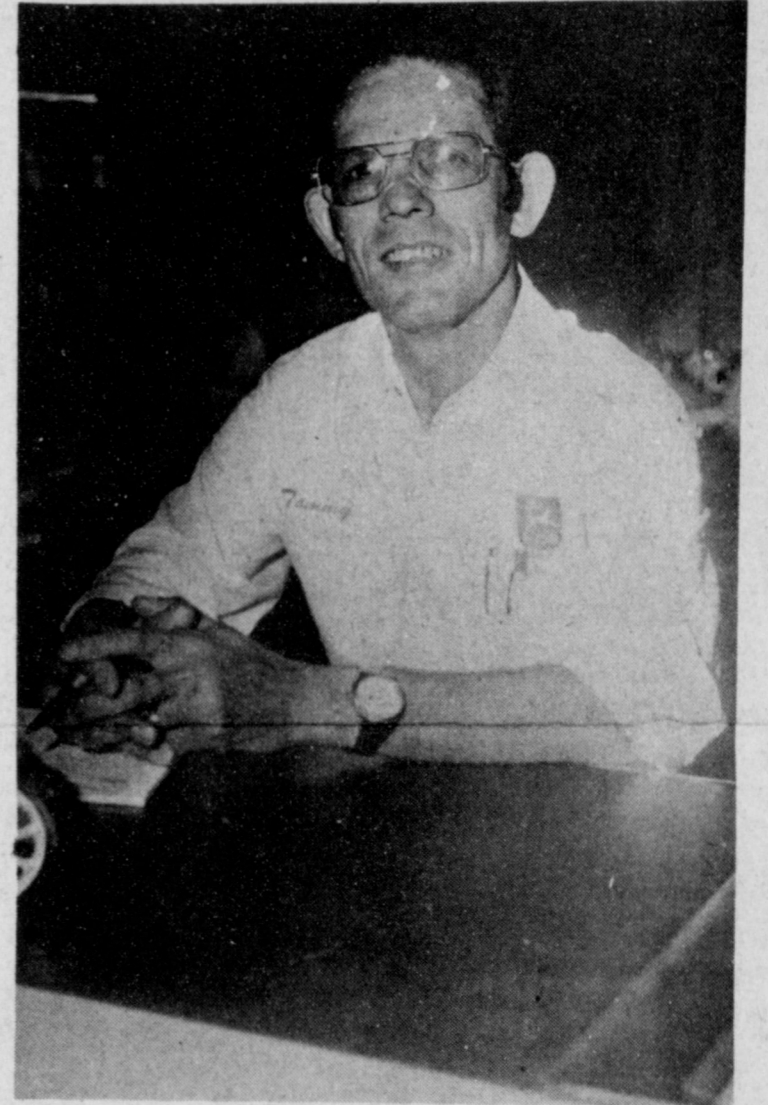
**Ronnie Dent**  
Assistant Mgr.



**Charles Hamilton**  
Parts Mgr.



**James Elder**  
Service Mgr.



**Tommy Whatley**  
Bookkeeper



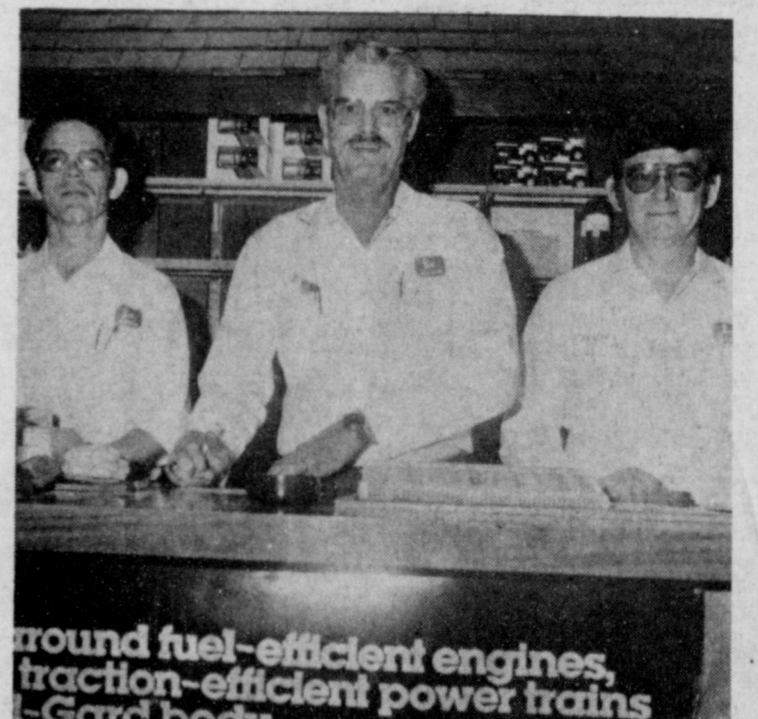
**Sales Dept.**

Leon (Tuffy) Dent, Eddie Moudy,  
Tom Sanders, Lee Lewis,  
And Ronnie Dent



**Service Dept.**

James Elder, David Gallman, Jimmy Marquez Jr., Eugene Lopez,  
Jimmy Marquez Sr., Robbie Barret, And Bill (Bullett) Pagach



**Parts Dept.**

Tommy Whatley, Lee Lewis,  
And Charles Hamilton

aug  
lint  
Jee  
as  
nts  
no  
can  
Pa  
ty  
i  
as  
I  
re  
I  
ean  
ont  
tude  
2  
hi  
3  
...  
ase  
ave  
M  
ave  
nd  
ng  
ere  
itate  
Ca  
ion  
nast  
or  
t  
Gi  
shoe  
3ae  
lies  
ster  
Gow  
ness  
Will  
Busi  
finai  
M  
at  
veri  
beet  
sche  
nual  
awa  
M  
com  
tem  
sch  
Phil  
WT  
M  
ersit  
com  
quir  
in  
t  
ence  
cord  
MSI  
D  
Satu  
D.L.  
incl  
bacc  
ter's  
uate  
cum  
lauc  
S  
Mul  
Sha  
Mrs  
a  
B