

WEATHER

April 23 81 46 68/58
April 24 84 55 69/60
April 25 72 39 69/60

BAILEY COUNTY JOURNAL

'The Community Of Opportunity-Where Water Makes The Difference'



© 1990

Vol. 70, No. 17

Published Every Sunday At Muleshoe, Bailey County, Texas 79347

Member
TEXAS PRESS
ASSOCIATION

20¢

Sunday, April 26, 1992

FFA Banquet Draws Large Crowd

around Muleshoe

Muleshoe High School's One Act Play won Regional competition Friday at Odessa and will advance to State competition in two weeks.

The Muleshoe Jennyslippers will hold their quarterly meeting Monday night, April 27 at the Old Depot. Bailey County Judge will be speaking for the meeting.

All interested women in the area are welcome to attend. You do not need to be a Jennyslipper.

The MACK buck drawing is scheduled for 2 p.m. Saturday, May 2 at the corner of Main and Ave. C.

Drawings will be for \$50.00, \$75.00 and \$100.00.

Parents of the senior class will sponsor a dance on May 8 from 9 p.m. to 1 a.m. May 9 at the American Legion Hall. Admission is \$4.00 per person.

Timmie Smith's name was inadvertently left off the UIL winners from Lazbuddie. He was a member of the Math Team that placed first at the District U.I.L. competition and placed seventh individual.

A new family of Christian believers announce the establishment of the New Christian Center Church in Muleshoe.

On March 18 a board of directors was selected and set forth to establish a "full gospel" mission with a purpose of outreach to the people of Bailey county through "spirit filled" evangelism, teaching and fellowship.

Everyone of all ages, backgrounds and national origin are welcome to attend. Services at the Christian center are currently being conducted on Sunday morning at 10 a.m. for teaching and worship service and Wednesday at 7 p.m. for "power teaching" and fellowship.

The Christian Center Church is located one half mile south on the Morton Highway.

For further information you are asked to call 295-3782.

Parents of senior girls are asked to take their garage sale items, marked and ready to sell to 302 W. Ave. J on Thursday, April 30.

The sale will be on Saturday, May 2 from 9 a.m. to 3 p.m. at 302 W. Ave. J. All proceeds will go to Project Graduation.

Notice is hereby given that a regular meeting of the governing body of the Muleshoe Independent School District will be held on April 27 at 8 p.m. in the School Administration Building. The following items will be on the agenda.

1. Call to order
2. Invocation
3. Recognition of visitors and school officials present at meeting
4. Recognition of Support Staff

Cont. Page 6, Col. 3



RED RAIDER DAY IN MULESHOE---Wiley Mudget, Darrell Embry, Randy Adair, Joe Sowder and Carlos Mainord, not in order, made up the first team of golfers on the golf course for Red Raider Day Thursday. A number of teams took advantage of the nice weather. (Journal Photo)

Earth Rodeo Scheduled May 8-9

Entries Now Being Accepted

The High Plains Junior Rodeo Association has planned another big rodeo in Earth May 8 and 9, in the Earth Rodeo Arena.

Events have been planned for boys and girls of all ages and entry fees range from \$11.00 up to \$25.00. These fees are priced per event.

Boys' ages 16 to 19 may enter the Bareback Bronc, Bull Riding, Tie Down Calf Roping, Ribbon Roping, Chute Dogging and Team

Roping, for an entry fee of \$25.00.

Girls ages 16 to 19 may enter Barrels, Poles, Goat Tying, Ribbon Roping, Breakaway Roping and Team Roping. Entry fee for these events is \$25.00.

For a \$20.00 fee, boys 13 to 15 may enter, Bareback Bronc, Bull Riding, Tie Down Calf Roping, Ribbon Roping, Breakaway Roping and Team roping.

Girls 13 to 15 may enter the Barrels, Poles, Goat tying, Ribbon

Roping, Breakaway Roping and Team Roping for an entry fee of \$20.00.

For an entry fee of \$13.00 boys' nine to 12 may enter Steer Riding, Calf Touching, Breakaway roping and Steer Stopping.

Girls and boys under eight years of age may enter the Barrels, Poles, Goats, and Breakaway Roping for an entry fee of \$11.

Entries must be accompanied by money order or check or they will be returned. Set ups will be on a first come first serve basis.

All entries need to be mailed to Pam Davis, Rt. 7 Box 938, Lubbock, Tx. 79401. For more information you may call (806) 763-8432.

Lazbuddie Students Make Wish List

The fifth grade students at Lazbuddie Elementary School have a short, but rather expensive wish list. They are interested in having a new concrete surface for their basketball court, a renovated baseball field, and an all-weather surface on the track. They also want a community swimming pool, and a snow cone machine.

This list was developed by the students for a class project. Their assignment was to write a persuasive letter to the Lazbuddie I.S.D. Superintendent, Phil Warren.

After deciding what they wanted to ask for, they had a lot of work left to do. They wrote questions and conducted a survey to determine whether other classes would be interested in the recommended projects.

They visited grades three, four, six, seven and eight. They tallied the results and developed bar graphs to illustrate the survey results. They also figured the percentages for each response. "The results were very favorable," said a spokesperson from the school.

Finding the cost for each project was interesting. Most groups found it necessary to contact businesses. They very carefully wrote out what information they needed to give and questions they needed to ask. Then they walked through the yellow pages.

"The wish list would require a great deal of money, but working on a wish list project can be a lot of fun, and the time spent a valuable learning experience."

Johnny Noble Received Booster Club Scholarship

A large crowd filled the Muleshoe High School cafeteria Tuesday night for the annual FFA Parent and Member Banquet.

Jeffrey Wheeler was named FFA Junior Member of the Year. Leadership medals were presented to Pete Bond, Jose Mendoza and Jason Barrett, District Quiz Team winners. Russell Black received a

Westwinds Brass Band To Perform At Sudan

The Westwinds Brass Band, under the direction of Dean Killion, will perform in concert Monday, April 27 at 7 p.m. in the Sudan High School auditorium. The Sudan Band Booster Club will host the event, and will have a reception after the concert.

Emphasizing that "Music is for Life", the band demonstrates through the variety of ages and professions of its members that there is "life after graduation" for those with musical knowledge. Although there are several area band directors, including Sudan band director Bruce Kenner, in the band, most of the membership is made up of non-music related people. Also, the band is composed of people from college-age to retirement-age.

Killion is the retired band director of the Texas Tech University band program. Killion came to Tech in 1959, from Fresno State, and led the "Goin' Band From Raiderland" from around 100 members to over 400 by the time of his retirement in 1983.

Killion's bands received much recognition, including several Texas Music Educators Association concert invitations, an invitation to the American Bandmasters Association convention, and recording sessions with several American band composers.

Due to severe health problems, including surgery for a brain tumor and two open heart surgeries, Killion retired to direct the Westwinds Brass Band, an organization of college and adult musicians he founded back in 1960.

Killion was recently named as the Texas Bandmaster of the Year by Phi Beta Mu, an honor fraternity of band directors. He will be honored for his contributions to music education in the state of Texas at the Texas Bandmasters Convention in July in San Antonio.

Leadership Medal and was named the Outstanding Freshman Star Greenland.

The Outstanding Chapter Award went to Andy Wilson and the Star State Chapter Award went to Steven Wauson.

Billy Williams received the Kenny Henderson Award. The Outstanding Sales Person Award went to Jose Mendoza.

Darrell and Kathy Embry were presented a Special Award. Embry is president of the Booster Club.

Johnny Noble received the Booster Club Scholarship and Pete Bond received the Little Hustler Award.

Johnny Noble, president, served as Master of Ceremonies. Following the invocation and meal, Noble assisted the other officers in giving the opening ceremony.

Steven Wauson gave the welcome and introduced the school administrators and school personnel present. He also introduced the 1992 chapter officers including: Johnny Noble, president; James Bond, vice president; Steven Debusk, reporter; J.P. Rogers, sentinel and Jim Rogers, parliamentarian.

Greenland Officers were also introduced, they include: Pete Bond, president; Jason Barrett, vice president; Rusty Black, secretary; Jose Mendoza, treasurer; Kourtnee Magby, reporter and Ronnie Viss, sentinel.

Wauson also introduced the Junior FFA officers, Jeffrey Wheeler, president; Kyle Embry, Cont. Page 6, Col. 2

Children's Theater Being Sponsored

By AAUW

The Muleshoe Branch of AAUW will sponsor their annual Children's Theater Tuesday April 28 in the high school auditorium.

Grades Kindergarten through fourth grade may see the play from 8:45 to 9:30 a.m. and grades Fifth through eighth from 10:45 to 11:30 a.m.

Cast will be Dean Black's speech class from Watson Junior High.

The play is "Don Coyote" and is Watson Junior High's UIL entry in the One Act Play contest.

The public is welcome to attend either of these presentations.

Admission will be \$1.00 and the proceeds from the play will be donated to charity.

'Miles For Muleshoe' Walk-A-Thon May 16

Get out your walking shoes or bicycle, it's time for the Miles for Muleshoe Walk-A-Thon/Bike-A-Thon.

Sponsored by the Jennyslippers, the Walk-A-Thon/Bike-A-Thon is scheduled for Saturday, May 16 at the new City Park, parking lot beside the concession stand.

You may either walk or ride your bicycle around the park (two and a half miles). Pledges are made by the hour, three hour limit.

Pledge sheets have been passed out at the schools and you may pick up additional pledge sheets at the Muleshoe Public Library.

Sign up as many sponsors as you can and take your sponsor list to the Walk-a-thon on May 16, Saturday at 2 p.m. All proceeds will go toward the purchase of fireworks for the Fourth of July celebration.

The Jennyslippers will write in the hours that you walked or biked

and give your sponsor list back to you. Return to your sponsors and collect your pledges. Checks should be made out to the Jennyslippers.

All participants will receive a "Muleshoe Spirit" Cap (with pledges). The more pledges you get the more and better prizes you may earn.

A complete list of prizes are as follows: Bring in \$700.00 and you will receive a 20 inch Zenith Color T.V. with Remote Control; Cont. Page 6, Col. 1

Jim Hartline Completes Training School

Jim Hartline, manager of the Farm Labor Housing Complex and the Harmon Elliott Senior Citizens Complex, recently completed a 36 hour Comprehensive Apartment Management Course for Managers of FmHA 515 Properties. The course was held at Austin. He began the course in October of 1991 and completed it in April 1992.

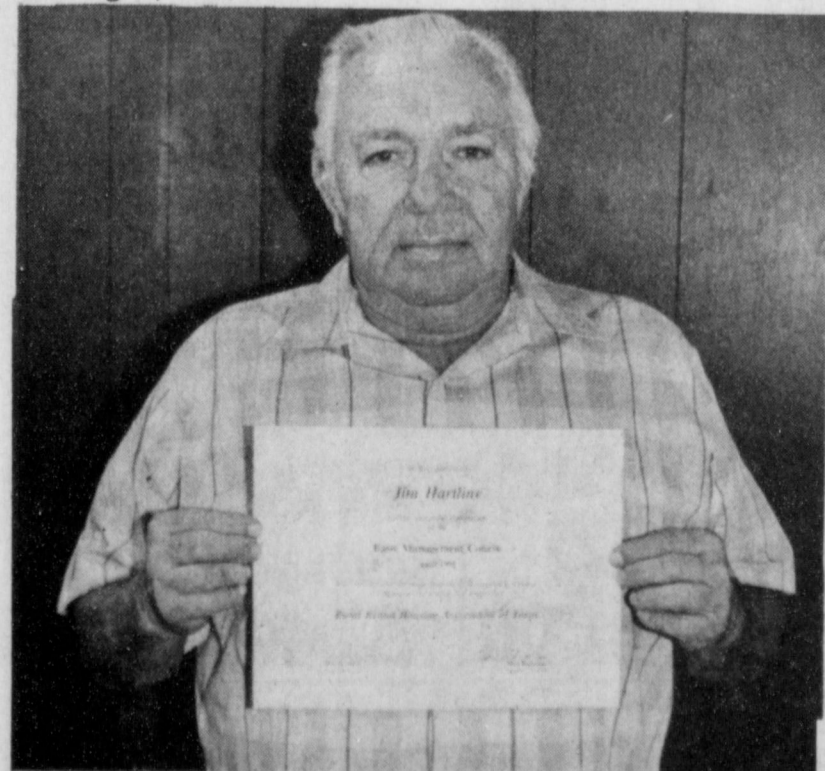
Hartline received a certificate from the Rural Rental Housing Association of Texas.

Some of the things Hartline studied included: Determining Eligibility, Rental Assistance, Lease Rental, Rules and Regulations of Farmers Home Administration, Record Keeping, Project Worksheets, Monthly Reports, Budget, Year End Reports, Year End Audit Requirements, and Eviction Proceedings.

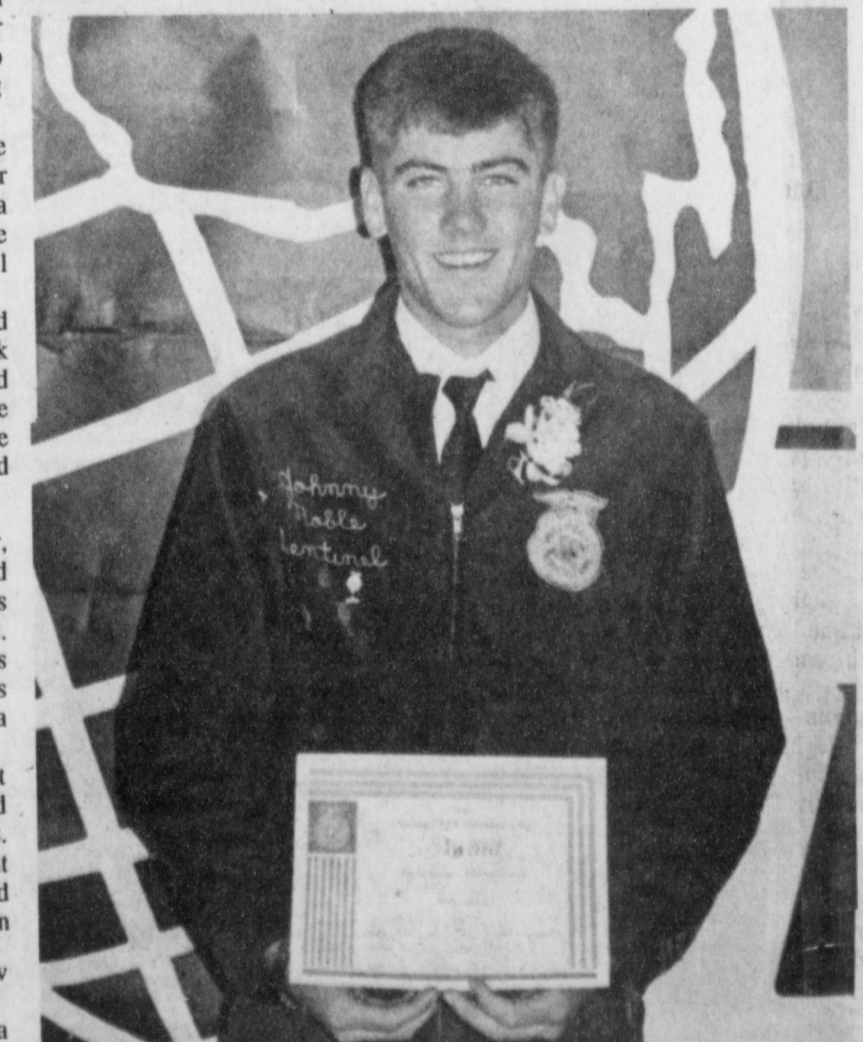
Hartline is required to attend about six days of school a year.

He stated that the Senior Citizens Complex is 100 percent full and the Farm Housing Complex is approximately 85 percent full.

Paper work is underway for an additional 16 units for the Senior Citizens Complex and 12 units for the Farm Labor Housing.



JIM HARTLINE



SCHOLARSHIP WINNER---Johnny Noble was the recipient of the FFA Booster Club Scholarship. The scholarship was presented at the FFA banquet Tuesday night. (Journal Photo)

Cure For Social Security Notch

With at least 273 cosponsors in the House of Representatives and 42 in the Senate, support to correct the Social Security Notch has reached its highest level ever in Congress. Yet the Chairman of the powerful House Ways and Means Committee continues to block a vote on it. And other opponents of a Notch correction have taken to the news media in attempts to convince the public there is no problem.

Well, try telling that to the nearly 12 million Americans who are affected by the Notch. Their benefit checks tell the true story.

The facts, based on Social Security Administration estimates, are that the "average-earning, 65

year-old retiree" born between 1917 and 1926 will receive an average of \$916 a year less in Social Security benefits than the same average worker born between 1912 and 1916, and \$480 a year less than the same worker born between 1927 to 1931.

Opponents of the Notch consensus bill pending in Congress say it's a mistake that's too costly to correct. But, analysis shows that reducing the Notch inequity can be done without harming the current or long-term financial integrity of the Social Security system, or creating another Notch. Benefit costs would peak at \$4.8 billion in 1995—a year in which Social Security is projected to have an \$88.7 billion annual surplus!

In fact, the Social Security Administration (SSA) projects a 10-year cost of \$46.1 billion—about 5 percent of the misleading \$860 billion "possible costs" cited by opponents. Even after deducting the costs of correcting the Notch, the Social Security Trust Fund reserves are expected to increase by more than \$1 trillion over the next decade. Over the entire long-range forecasting period, SSA projects that costs will be increased by less than one-third of 1 percent.

Finally, no offsetting tax or spending adjustments in federal

programs are required under the 1990 Budget Agreement since the Social Security program finally has been set aside in its own accounting category.

Legislation to correct the Notch simply would provide Notch victims with cash benefits more comparable to benefits of persons born in the late 1920s, but still less than paid to persons born in the mid-teens.

The bottom line, however, may lie in the fact that Social Security trust fund surpluses are currently combined with general fund deficits, enabling almost one-third of government deficit spending to be hidden in the 1992 federal budget. If this accounting gimmick were eliminated, perhaps there would be less resistance to correcting the Social Security Notch.

It's time to give the folks affected by this law a break. After all,

Mules Loss Brings Record To 10-8

The Muleshoe Mules baseball team played host to the Seminole Indians baseball team Tuesday, April 21st. The Mules lost the game to the Indians by a score of 9-11 bringing their record to date to 10-8. The winning pitcher was J. Alvarado of Seminole with the losing pitcher being Steven Noble.

The Seminole Indians led the Mules in scoring during the first three innings (5-0, 0-0, 1-3) with the Mules making a come back in the fourth inning adding six runs to the Indians three.

The Indians held on to the lead till the end of the game without allowing the Mules any runs.

The game Tuesday was the Mules last regular game before starting district play next Tuesday against Friona at 5:00 p.m. at Friona. The Mules first district home game is scheduled for Tuesday, May 5th against Dimmitt at 5:00 p.m.

According to Coach Ted Leps, "the Mules baseball program is off to its best start in the four-year history of the program". Some other milestones for the Mules this season, is the 72 team total stolen bases so far. Leps said that "by the end of district play the team should reach the century mark for stolen bases.

Some notable wins for the Mules this season have been against Seminole, Lubbock Christian High and Plainview Grey.

The Mules district schedule will take on a new look this season with the addition of Dimmitt and Floydada to the already competing Friona.

Texas Agency Sponsors Conference

The Texas PTA, Texas Education Agency and the Governor's Office is sponsoring a statewide parental involvement conference May 2 at the LBJ Library Auditorium on The University of Texas at Austin campus.

Featured speakers include: Henry Cisneros, former mayor of San Antonio and present chairman of Cisneros Asset Management Company; Sonia C. Hernandez, the governor's director of education; Shirley Igo, Texas PTA president; Lionel Meno, Ph.D., commissioner, Texas Education Agency; and Jay Cummings, Ph.D., executive deputy commissioner, Programs and Instructions, Texas Education Agency.

The conference is intended to create an awareness among all the components of the local school district site-based decision making committees by showcasing excellent programs.

Participations will be able to attend three of the more than 20 concurrent sessions addressing issues from parents as teachers; eliminating barriers to parental involvement; gangs, violence, suicide, crisis intervention; to the commissioner's advisory committee on site-based decision-making implementation.

Registration will begin at 8 a.m. at the LBJ Library Auditorium. The first session will begin at 9 a.m., and the conference is to conclude by 5 p.m.

There is no fee for attending the conference, but space is limited. To register, individuals should contact the Texas PTA Meetings Department at 512-476-6769.

Workshop On Media Concerns Set

University Outreach at Eastern New Mexico University will hold a workshop, "Innovative Media for Presentations and Instruction" on the Saturdays of April 25 and May 2.

This workshop will teach students, faculty and interested people useful skills in preparing professional media materials for presentations and instructions.

Participants will gain an understanding of why media is used, how to use media to introduce and reinforce instruction, how to organize media presentations for effective learning, and techniques to give media aids a professional appearance. Students will also gain basic skill in making computer graphics, transparencies, videotapes, and slides.

One academic credit will be offered at \$79 for undergraduates and \$84 for graduates. Registrations is conducted onsite at the first class meeting.

For more information, contact University Outreach at 505-562-2165 or 1-800-537-LERN.

Social Security recipients would put any increase in their monthly check back into the marketplace. This in turn would help breathe some life into our struggling economy.

Camp Program Offered At ENMU

Eastern Express, a summer camp program, is being offered through University Outreach at Eastern New Mexico University.

There are a total of five week-long camps being offered beginning June 8, each focusing on a different topic. In the first week will be Dinosaur Tales. Participants will travel back in time to the wonderful world of dinosaurs through projects, field trips, and crafts. In the second session, Tumbleweed Trails, participants will visit the days past when settlers came to the southwest.

The camps will continue throughout the summer with Pottery to Potions: Prehistoric to Present Day Chemistry, The Greyhound Outpost, where participants will use important outdoor skills, and Young Actors Guild in which the participants will put on a full-scale musical production of "Cinderella."

Those interested may register in person or by mail. Class size is limited and pre-registration is encouraged. The fee for each session is \$64 and includes materials, T-shirt, field trips, all activities and swimming.

For more information, contact University Outreach at 562-2165 or 1-800-537-LERN.

The "charge it" habit gets to be expensive in time.

Homeowners Calculate Home Energy Savings

The tough economic recession makes energy conservation all the more important. Improved home energy efficiency could mean lower utility bills and more money in the bank.

While many homeowners have considered making energy-conserving improvements to their homes, they are often left wondering what they need to do, how much it will cost and how much energy and money it will save.

The Texas Energy Extension Service's new Home Energy Checkup factsheet outlines an easy-to-follow, four-step process that helps homeowners determine the costs and benefits of different energy efficiency measures for the

home. Each step comes with its own worksheet to help homeowners gather the right information and perform calculations. By filling in the worksheets, homeowners can find out instantly the cost effectiveness of different energy-saving home improvements, as well as how soon they can expect those improvements to yield lower utility bills.

If you would like to order this free publication or have specific questions about energy efficiency in the home, call the Texas Energy Hotline at 1-800-643-SAVE. The Texas Energy Extension Service is a public service program of the Governor's Energy Office and Texas A&M University's Center for Energy and Mineral Resources.

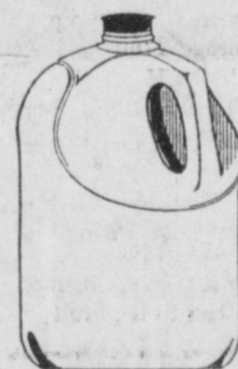
Thank You

My family and I would like to express our thanks to our good friends and neighbors for standing by us so faithfully during my illness. For all the prayers, cards, visits, phone calls, delicious food, and all the care and concern we sincerely appreciate every gesture. To the neighbor men & women who were involved plowing our land. We express our heart filled thanks to each and everyone of you.

Sincerely,
Donna & Eugene Shaw
Lynn & Delia Devenport
Mindy & Destri
Darin Shaw

ALLSUP'S

PRICES EFFECTIVE APRIL 26 - MAY 2, 1992 WHILE SUPPLIES LAST
318 W. Amer. Blvd. 272-4862



HOMOGENIZED ALLSUP'S MILK GALLON \$1.99



RUFFLES POTATO CHIPS REGULAR \$1.49 99¢

Fresh Cooked BBQ



Chicken \$2.99

ALL TYPES PEPSI-COLA 12 oz. cans 12 pack

PEPSI \$2.99

BATHROOM TISSUE NICE 'N SOFT 4 ROLL PKG. 89¢



ASSORTED FLAVORS MAMA'S COOKIES 15 OZ. PKG. 99¢

HOT FOODS MENU		AVAILABLE AT ALL ALLSUP'S LOCATIONS	
BARBECUE BEEF SANDWICH	99¢	9 PIECE BOX CHICKEN	\$5.99
BARBECUE PORK RIBS (LB.)	\$3.99	BEEF & CHEESE CHIMICHANGA (MEAT)	\$1.19
BARBECUE WHOLE CHICKEN	\$3.99	CORN DOG	69¢
ALLSUP'S BURRITO	79¢	DELICIOUS HAMBURGER	69¢
BREAKFAST BURRITO	99¢	WILSON HOT LINKS	99¢
BURRITO BEEF & SALSA	\$1.19	SAUSAGE ON A STICK	\$1.39
DELICIOUS CHEESEBURGER	89¢	SAUSAGE & BISCUIT	79¢
CHICKEN FRIED STEAK	\$1.59	SAUSAGE EGG & BISCUIT	\$1.09
3 COUNT CHICKEN STRIPS	\$1.49	SAUTEYA SAUSAGE	99¢
W/POTATO WEDGES/ CHICKEN (2 PC.) BISCUIT	\$1.99	4 COUNT STEAK FINGERS	\$1.00

CALL IN ORDERS WELCOME CHECK OUR WEEKLY SPECIALS

B-S 1 lb. pkg. Bacon 99¢

Allsup's 1 1/2 lb. loaf Bread 2 for \$1.00

Sausage & Biscuit 69¢ each

Folgers 13 oz. can Coffee \$1.79

Shurfine Corn or Green Beans 3/99¢

SPRING CELEBRATION

IN TEXICO 314 Wheeler 1-800-748-2459 or 482-3363

Rip's Justin

JUSTIN ROPERS HI-TIES \$69.99 Starting at

JUSTIN ROPERS \$64.99 Starting at

MENS' & LITTLE BOYS SHIRTS 20% OFF

Ladies' and Childrens' ROCKY MOUNTAIN & PANHANDLE SLIM JEANS & TOPS 10% Off

FREE ALTERATIONS Layaways Welcome Complimentary Gift Wrap

WE ACCEPT: VISA, MasterCard, Discover, American Express

Money Talk

By Kay Bailey Hutchison

Editor's Note: Texas State Treasurer Kay Bailey Hutchison answers questions about personal finance and state government. These questions are compiled from timely issues of concern facing Texas and Texans. Answers, however, are not intended to replace the advice of reputable financial advisers or other professional counselors.

Q. It seems that not a day goes by in which I don't receive junk mail or late night telephone solicitation calls. Is there anything I can do to try to stop these annoying calls and the junk mail?

A. I understand your frustration over receiving junk mail and unsolicited phone calls. There is a way to have your name removed from "national" direct marketing mailing lists and telemarketing lists.

The Direct Marketing Association in New York offers a **Telephone Preference Service** free-of-charge that is helpful in reducing the number of unsolicited telemarketing calls you receive from national companies. For more information about this service or to register with TPS, write:

Telephone Preference Service
Direct Marketing Association
P.O. Box 3861
11 West 42nd Street
New York, NY 10163-3861

If you decide to register with the Telephone Preference Service, you may not notice an immediate reduction in the number of calls because the list only is updated

Three Way Menu

APRIL 27- MAY 1, 1992

MONDAY BREAKFAST

Hot Cereal, Juice, Toast, Milk
LUNCH
Hamburger, Tator Round, Milk, Pears

TUESDAY BREAKFAST

Waffle, Sausage, Juice, Milk
LUNCH
Pinto Beans, Fried Okra, Corn-on-Cob, Cornbread, Milk, Peach Cobbler

WEDNESDAY BREAKFAST

Biscuit, Gravy, Juice, Milk
LUNCH
Fajitas, Salad, Refried Beans, Tortillas, Milk, Cake

THURSDAY BREAKFAST

Pancakes, Juice Milk
LUNCH
Baked Chicken, w/Gravy, Corn, Creamed Potatoes, Rolls, Milk, Banana Pudding

FRIDAY BREAKFAST

Cereal, Fruit, Juice, Milk
LUNCH
Ham & Cheese Sandwich, Lettuce, Tomatoes, French Fries, Milk, Mixed Fruit

quarterly. To have your name removed from national direct mailing lists, write to the **Mail Preference Service** at the address listed above. It also is free-of-charge.

You should be sure to provide your full name (including all variations of your name that appear on mailing labels), address, and phone number.

The best way to be removed from local direct mail and telemarketing lists is to ask the company contacting you to remove your name from their list. Most businesses will honor your request.

Lazbuddie Menu

APRIL 27-MAY 1, 1992

MONDAY BREAKFAST

Cereal, Toast, Juice, Milk
LUNCH
Pizza, Onion Rings, Salad, Peaches, Milk

TUESDAY BREAKFAST

Cream of Wheat, Toast, Juice, Milk
LUNCH
Little Smokies, Potato Salad, Pinto Beans, Cornbread, Milk

WEDNESDAY BREAKFAST

Biscuits & Gravy, Sausage, Juice, Milk
LUNCH
Steak Fingers, Mashed Potatoes & Gravy, Green Beans, Hot Rolls, Milk

THURSDAY BREAKFAST

Pancakes, Juice, Milk
LUNCH
Chili Dogs, Baked Beans, Salad, Milk

FRIDAY BREAKFAST

Cinnamon Rolls, Juice, Milk
LUNCH
Fish, Hush Puppies, Corn on the Cob, Salad, Milk

SALAD BAR SERVED DAILY

Patients in Muleshoe Area Medical Center

APRIL 20

Jonathan Davila, Ben Gibbs, Ofelia Saucedo, Mitchell Forti, Delia Davenport, Andrew McCasland, Edith Lee, Iva Smith, Christine Rios, Martina Rios, baby girl Rios, Juanita Buhman

APRIL 21

Jonathan Davila, Ben Gibbs, Ofelia Saucedo, Mitchell Forti, Morgan Templeton, Andrew McCasland, Edith Lee, Iva Smith, Christine Rios, Calvin Sharp, Martina Rios, baby girl Rios

APRIL 22

Ben Gibbs, Ofelia Saucedo, H.A. Douglas, Kimberly Griswold, Cindi Smith, Edith Lee, Iva Smith, Christine Rios, Calvin Sharp

Nursing home News

by: Joy Stancell

We all had a blessed Easter and hope that you did, too.

Friday afternoon our Day Room was overflowing with Easter happenings. We wish to thank everyone who helped make it a special time. Volunteers Plus for sponsoring it, Rev. and Mrs. Dean Reid for the special service, Frank and Trino Esponisa for entertaining, Mandy Edwards, Flo Jones, Billie Downing for making us deviled eggs, dietary for sandwiches, Nancy Kidd, Flo Jones, Melba McCamish and all those who so willingly helped us serve, Ronnie Bennett for bringing her Day Care children to hunt eggs, the employees' and residents' families children, and last but not least, the Easter bunny and our resident. We did have an egg-tra special day.

We wish to welcome our two new

Muleshoe Menu

APRIL 27-MAY 1, 1992

MONDAY BREAKFAST

Cereal, Toast, Fruit
LUNCH
Milk, Steak & Gravy, Creamed Potatoes, Green Beans, Hot Rolls

TUESDAY BREAKFAST

Milk, Cheese Toast, Fruit
LUNCH
Milk, Hamburgers, Lettuce, Tomato, French Fries, Cookies, Pickles & Onions

WEDNESDAY BREAKFAST

Milk, Blueberry Muffins, Juice
LUNCH
Milk, Hot Ham & Cheese on Bun, French Fries, Pork & Beans

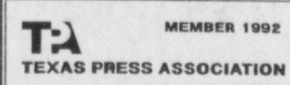
THURSDAY BREAKFAST

Milk, French Toast, Syrup, Sausage, Fruit
LUNCH
Milk, Chili Cheese, Nacho's, Beans, Salad, Corn Bread, Fruit

FRIDAY BREAKFAST

Milk, Breakfast Comdogs, Fruit
LUNCH
Milk, Turkey & Gravy, Creamed Potatoes, Hot Rolls, Fruit

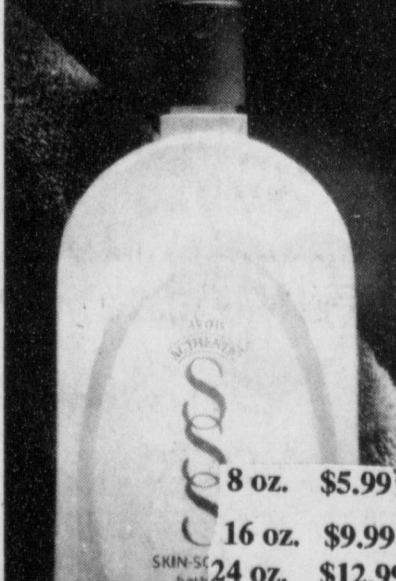
Bailey County Journal
Established March 31, 1963. Published by Muleshoe Publishing Co., Inc. Every Sunday at 304 W. Second, Box 445, Muleshoe, Tx. 79347. Second Class Postage paid at Muleshoe, Tx. 79347.



MEMBER 1992
L.B. Hall, Publisher
Sammye Hall, Vice-President/Comptroller
Evelene Harris, News
Joyce Adams, Society
Holly Millsap, Advertising
Dana Bernes, Classified
SUBSCRIPTIONS
Muleshoe Journal and Bailey County Journal
Bailey and surrounding counties
By Mail \$12.75
Muleshoe Journal and Bailey County Journal
Elsewhere
\$17.50
Muleshoe Journal and Bailey County Journal
By Carrier Yearly
\$14.00

Advertising Rate Card on Application
*Advertisements should check their ad the first day of insertion. The Journals will not be liable for failure to publish an ad or for a typographical error or errors in publication except to the extent of the cost of the ad for the first day of insertion. Adjustment for errors will be limited to the cost of that portion of the ad where the error occurred.

AVON SKIN-SO-SOFT
AMERICA'S #1 SELLING BATH OIL



THE SECRET OF SOFTER SKIN
Start the summer with Skin-So-Soft and keep sun-dried skin soft and smooth all season long.
CALL ME
Holly Millsap
Name _____
Phone **272-5607**

residents. They are Jessie Davenport and Wylie Lee. Welcome to our Healthcare Center's family.

Among those going out to be with their families for Easter were: Pearl Cox, Wilmoth Clements, Gladys Pierce, Jessie Robinson, Cordie Claunch, Lib King, Guy Kendall.

Melvin Griffin and Buster Kittrell hosted the Men's Coffee Time Wednesday morning.

Debra McIntire of the Nazarene **Luella Wilterding**

Surguine Memorial

Services Held Friday

Memorial services for Luella (Wilterding) Surguine were held Friday, April 24 at the Lahaina United Methodist Church, Lahaina, Maui, Hawaii. She died Tuesday, April 14 in her home following a cerebral hemorrhage.

Luella was born in Muleshoe December 21, 1931. She graduated from Muleshoe High School in 1948. She attended McMurry University and graduated from Scoggins Beauty School in Abilene, Texas.

She married Tom Surguine of Boulder, Colorado in September, 1953, moving to Guam where he served in the U.S. Navy. After military service, they lived in Boulder, Colorado until 1980 when they moved to Hawaii.

She was a member of the Lahaina United Methodist Church and the Maui Hospice Organization.

Survivors include her husband, Tom, of Lahaina; her mother, Mae Wilterding of Muleshoe; two sisters, Lona Embry and Maurine Hooten of Muleshoe; one brother, Reece Wilterding of Tulia, and many other relatives.

Memorials may be sent to the Lahaina United Methodist Church, 142 Baker Street, Lahaina, Maui, Hawaii, 96761, for stained-glass windows, a fund which Luella began for her church.

Church came Sunday morning to have Bible study with the residents.

Laverne James, Beth Watson, Bonnie Green, Lynda Low, Claudine Embry and Lula May Shanks came Tuesday to shampoo and set the ladies' hair. Mandy Edwards gave manicures.

Our warmest thanks to Truth Seekers Sunday School Class of the First Baptist Church for their donation to the Healthcare Center, Volunteers Plus activity fund.

Sunday afternoon, even though it was Easter, the New Covenant Church came for church services.

Melba McCamish and granddaughters Ashley and Kelsy were guests of Ruby McCamish at the Easter Party Friday.

Fred Mapes' daughter, granddaughter and great-

granddaughter were his guests Friday at our Easter Party.

Clara Weaver was escorted to the Easter party Friday by her children and grandchildren.

Mr. Hukill came with Jeanetta Hukill, Strother Walker was guest of his wife Pulma Walker, Vera Downing's son Elmer Downing was her guest at Friday's Easter party.

Nancy Kidd and Flo Jones came Wednesday morning and assisted with Women's Coffee Time and exercise class.

Hubert Kidd came Wednesday morning and gave us a wonderful telephone show.

Composure is that state of being wherein you don't bother to answer the telephone.

Revival Trinity Baptist Church

312 E. Ave B Muleshoe

May 3-6

7 p.m. Nightly

Evangelist Dennis Cawthon

Featured Singers:

Monday Night Tuesday Night

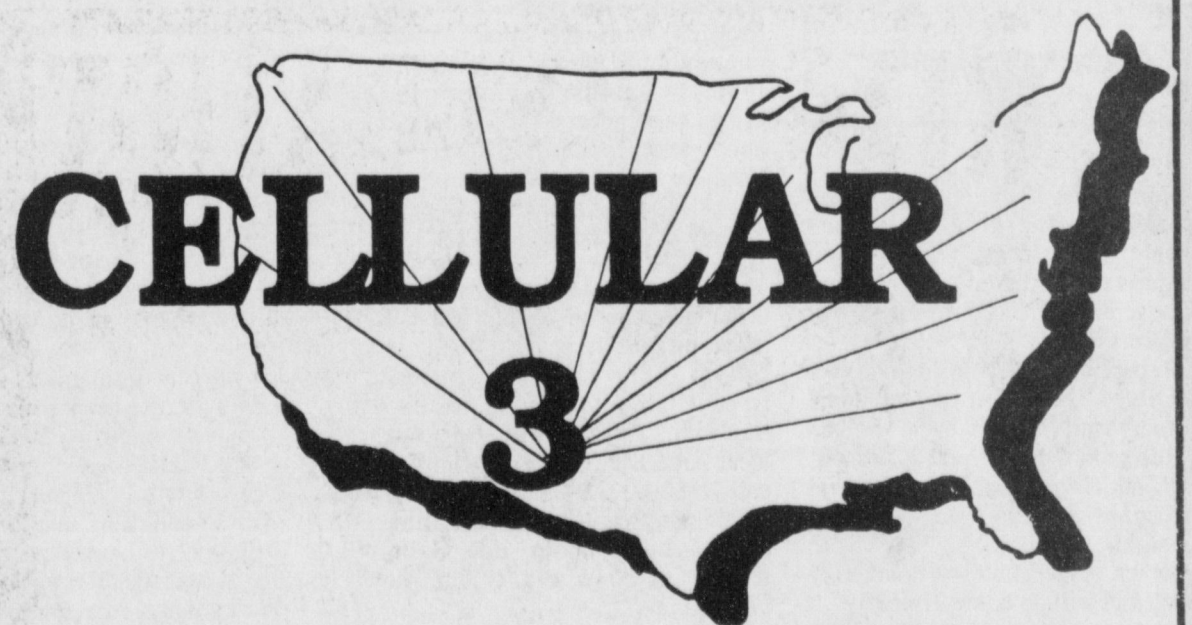
Bill Coleman Anchor Bros.

Wednesday Night

April Cawthon

Nursery Will Be Provided

As a Cellular 3 customer where can I use Cellular Communications?

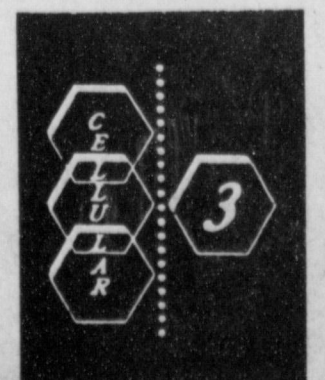


Currently Cellular 3 has major systems operating in Eastern New Mexico and West Texas. Besides this "home" area, Cellular 3 has "roaming" agreements across the entire United States and Hawaii. These Agreements make it possible for Cellular 3 customers to Communicate from virtually anywhere they happen to be.

"Always in Touch with Cellular 3"

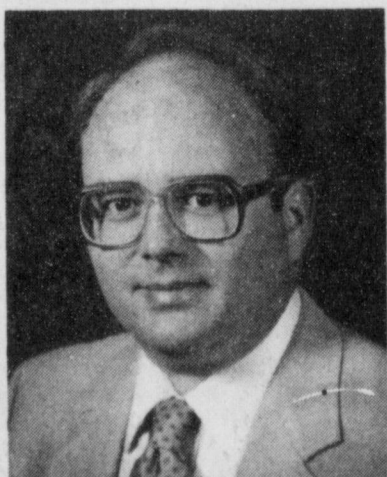
For More Information

5
Area Telephone
Cooperative
272-5533



Texas RSA-3 Cellular Partnership, operating as Cellular 3. Rate structures may vary from system to system. While roaming within a particular system, the roamer will pay the applicable roaming rate for that system.

Edwin R. Cox Candidate At Large For Muleshoe School Board



3 years on MISD Board with over 72 hours of state approved training.

Graduate of Muleshoe Schools and Texas Tech

Owner and manager of local business

Two children attend Muleshoe Schools

Past service on Southwest Hardware & Implement Association Board, Chamber of Commerce and Agriculture Board, Board of Equalization and Airport Board

ALL VOTERS---

Early Voting at the MISD Administration Office

Thru April 28 from 8 a.m.-12 noon and

1 p.m. - 5 p.m. or

Vote Sat. May 2, 1992, 7 a.m. - 7 p.m. at the

MISD High School Cafeteria

Pd. Pol. Ad. by Edwin Cox



GERMAN VISITOR--staying recently in the home of Jerri and Bill Savuto is Edith Leidenroth of Marburg, at left. The Savutos and Ms. Leidenroth served on the mission field together in Nigeria. (Journal Photo)

German Visitor Chats About Experiences

By Joyce Adams

Visiting recently in the home of Jerri and Bill Savuto was Edith Leidenroth of Marburg, Germany in the state of Hessen. Marburg is near Frankfurt. The Savutos and Leidenroth were all serving on the mission field in Gos, Nigeria at one time.

"Bill was the treasurer for the whole church and Jerri worked in the office 300 miles away from where I was serving," notes Leidenroth. "They were both wonderful in their devotion and skilled assistance on the field."

"We kept in touch once in a while and became friends," she noted. Leidenroth likes mission work because it keeps her close to people.

"Those who are helped by mission work are always so grateful. I like to work in foreign countries. You can help the people a lot with only a few means of assistance," she notes.

Asked whether anything surprised her on this her first trip to the U.S., Leidenroth said she had heard a lot about the political problems here and had been informed by reading TV and magazines such as *Newsweek* and others. Edith has an amazing facility with English already.

"The U.S. is such a big country and being from Germany I'm not used to that," she says.

She worked in Nigeria for some time prior to three years ago and returned to Germany in 1989 to begin working as a midwife.

Her trip to Texas from Marburg took her first to Frankfurt, then to

London, and on to Dallas and Lubbock. "It worked out well and the entire trip took 24 hours."

The young lady believes people interested in mission work who have families can work in the field and maintain a family. That they are mutually exclusive is, she thinks, a misconception.

"People should dare more. They are too afraid sometimes about the possibility of entering mission work. They should get more information before deciding so they can make a good decision about such a vocation."

"In order to go overseas, you don't need multiple skills, just persistence," she says. "Informing themselves is the important part," she again emphasizes. "Paperwork often scares the would-be missionary away."

Leidenroth left Texas enroute to New Mexico and will stay there for a short period before returning to Germany.

She was well-informed on progress relating to the prison proposal for our community and said that the Savutos had shown her several farms in the county and explained the economic situations attached to agriculture here. Leidenroth sees many similarities between the German and U.S. farmer and finds that often the governments of both countries are not taking care of the farmers' interests as they should.

On several other issues Leidenroth sees basis for comparison between Germany and the U.S.

Studies indicate that foods containing vitamin C seem to protect against gastric and esophageal cancers. To learn more about how foods can lower the risks for certain cancers, contact your local American Cancer Society or call 1-800-ACS-2345.

There are many factors involved in developing cancer. Diet is just one of them, but it is one that you control. You can take personal responsibility for eating well to stay well. To learn how, call your local American Cancer Society or call 1-800-ACS-2345, and tell them you want to start Eating Smart and to join the Great American Food Fight Against Cancer.

It's no use making haste; the thing to do is to set out in time.

-Jean De La Fontaine.

Retired Teachers Association News

On Friday, April 17 the Muleshoe Area Retired Teachers met in regular meeting at 3 p.m. at the Fellowship Hall of the 16th and Ave. D. Church of Christ.

Refreshments of chocolate dessert topped with Easter decorations, nuts, coffee and tea were served by the hostesses Pauline Guinn and Letha Patterson.

The president Mabel Wolfe called the meeting to order and led the group in the pledge of allegiance to the American flag and the pledge to the Texas flag.

Wilma Smith introduced the guest speaker Elizabeth Watson. She gave a very informative discussion on changes that have been made in the Muleshoe Schools, such as self-contained classrooms for lower grades, Federal Programs in all schools, up-grading of the Testing Programs, defensive driving classes, and to sum it all up, keeping all education on a much higher and interesting level.

The presentation was enjoyed by the following members: Mabel Wolfe, Wilma Smith, Letha Patterson, Mary Crane, Beulah Mimms, Maxine Ragsdale, Margie Moore, Alene Bryant, Katherine Sanders, Mary B. Obenhaus, Pauline Guinn, Jean Moore and guest Elizabeth Watson.

The next meeting will be May 15 at 12:00 noon for a covered dish luncheon and installation of new officers.

Trash Management For Families

By Kandy K. McWhorter, CEA-HE

"Recycling: Trash Management for Families and Communities" will be presented for the general public on Thursday, April 30 at 2:30 p.m. in the meeting room of the Bailey County Civic Center.

This program is being sponsored by the Bailey County Extension Service and the Extension Home Economics Committee of the Bailey County Extension Program Council.

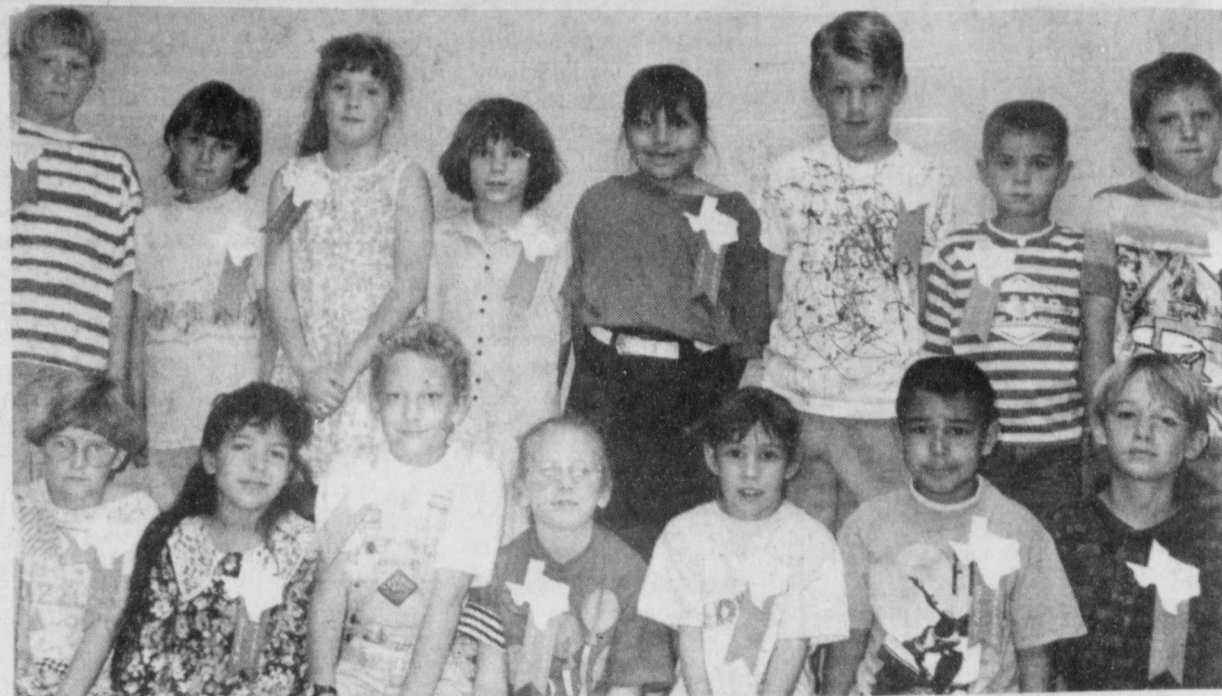
The objectives of the program are:

- *to better understand what recycling is;
- *to identify ways individuals, families and communities can reduce the amount of trash generated through recycling;
- *to identify the kinds of recyclable household trash and know where it goes in the recycling system.

This is the second in a series of public programs that are addressing the solid waste management problem that we are facing. Several additional programs are planned for the remainder of the year.

The problem of full or rapidly filling landfills is something that all of us are going to have to deal with. Senate Bill 1340 was passed during the 72nd session of the Texas Legislature. It is an omnibus recycling bill which encompasses many aspects of solid waste reduction. One of the most aggressive aspects of the bill is the goal it sets of achieving a 40 percent reduction in the state-wide waste stream by 1994. Currently, the Environmental Protection Agency (EPA) estimates that 80% of our trash goes to landfills, 10% is incinerated and 10% is recycled. This indicates that we have a long way to go in meeting the goals of this bill.

Educational programs conducted by the Texas Agricultural Extension Service serve people of all ages regardless of socio-



STORYTELLING--competitors held at Dillman April 15 in the U.I.L. are (left to right): Bradley Thomason, Amanda Burton, Laura Wood, Mylissa Thompson, Elizabeth Castorena, Stephan Shelburne, Brandon Burris, Kyle Atwood, Ashley May, Monica Chavez, A.J. Buhman, Janna Skaggs, Ashley Hartline, Matthew Lopez and James Hancock. (Journal Photo)

Lazbuddie Jr. High Student Of The Month

Roxann Warren is the 11 year old daughter of Phil and Gwen Warren. She was born August 12, 1980. Snow crab and cheese pizza are her favorite foods. "Everything I Do, I Do It For You" by Bryan Adams is her favorite song. Coke or tea are the drinks she prefers. City Slickers is her favorite movie. Her favorite TV show is Full House. Science and spelling are her favorite subjects in school. Dancing and piano are her favorite hobbies. Blue is her favorite color. Sawyer Brown is her favorite music group.

Up A Road Slowly is her favorite book.

Deon Gallman is the 12 year old son of Robert and Ellen Gallman. He was born March 14, 1980. T-Bone steak is his favorite food. "Lonesome Dove" is his favorite song. The drink of his choice is Mountain Dew. His favorite movie is "Suburban Commando." Full House is his favorite TV show. His favorite school subject is math. Riding his horse is his favorite hobby. Blue and yellow

are his favorite colors. The Judds are his favorite musical group. My Side of the Mountain is his favorite book.

Making choices for healthier eating, cooking and shopping could lower your risks for certain cancers. Find out more by joining the American Cancer Society's Great American Food Fight Against Cancer. Contact your local American Cancer Society or call 1-800-ACS-2345 for more details.



Hellen Adrian

Candidate At Large

Muleshoe Independent School District Board Of Trustees

- * Experienced In Education
- * Parent Of Young Children
- * Business Connections

Your Vote Is Appreciated

May 2, 1992

You Have Until April 28 To Vote Absentee

Pol. Ad. Pd. By Hellen Adrian

Rebekah Lodge

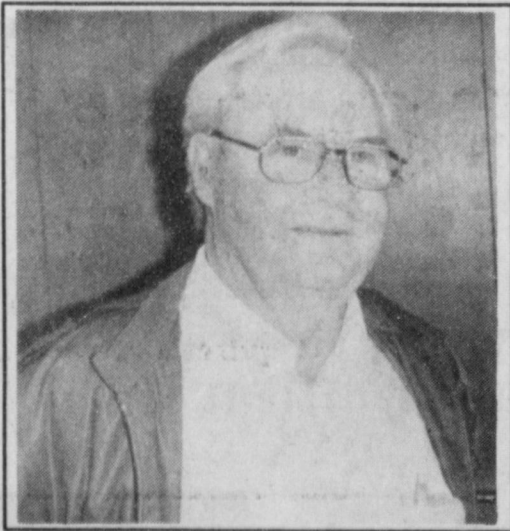
By Ina Wilemon

Mary Ann Noble Grand opened lodge. Minutes of last session and some bills read which were approved and taken care of. Our Lodge Deputy Ona gave a school of instructions.

Reported Bill Maddox and brother of Ruby Garner-Floyd was home from hospital.

Ina reported her great grandsons arrival, Memphis, Tenn. Naval Hospital at 6:05 a.m. April 21 weighing 8 lbs., 8 oz. Both mother, Angela and son doing very well and will go home Thursday.

Angela's mother Eva left Amarillo Tuesday morning to be with them for a few days. This also was Angela's birthday. We missed you that was not at the meeting. See you next time.



Re-Elect
A.V. "Woody"
Wood
Candidate For
City Council - District 2
May 2, 1992

Experience: City Councilman for 18 years
Director of Bailey County Appraisal District
1992 Voting Delegate For Bailey County Appraisal District In Austin
President- Muleshoe Heritage Foundation
A.V. & his Wife Are Members of The South Plains Genealogical Society In Lubbock
Retired Muleshoe Businessman and He and his wife are members of the First Baptist Church

pol ad pd by A.V. Wood

DO YOU WANT TO HELP YOUR CHILDREN BEAT THE ODDS?*

Pregnancy Aids Abortion Sexual disease

Our children are facing very real pressure today to have sex, and parents they need your help.

BUT,

Are you able to talk to your children about these pressures and do you know:

HOW TO HELP YOUR CHILD SAY

"NO"

TO SEXUAL PRESSURE

We will be showing the film series by JOSH MCDOWELL:

At Richland Hills Baptist Church

April 27th and 28th

At 7:00 P. M.

Free to all and a nursery will be available.

This film series is designed to provide parents the information, confidence and tools they need to help their children win the battle for sexual purity. Here is a course for ALL parents, regardless of the ages of their children.

*Statistics show that more than 50% of American teenagers ages 15 to 19 have had sexual relations. The statistics for Christian youths are just as staggering.



JOSH MCDOWELL'S WHY WAIT? CAMPAIGN



GUEST READER--Nelda Merriott shares stories with Joyce Scott's homeroom class at Dillman Elementary. The first graders enjoyed having Mrs. Merriott as their guest April 22. (Journal Photo)

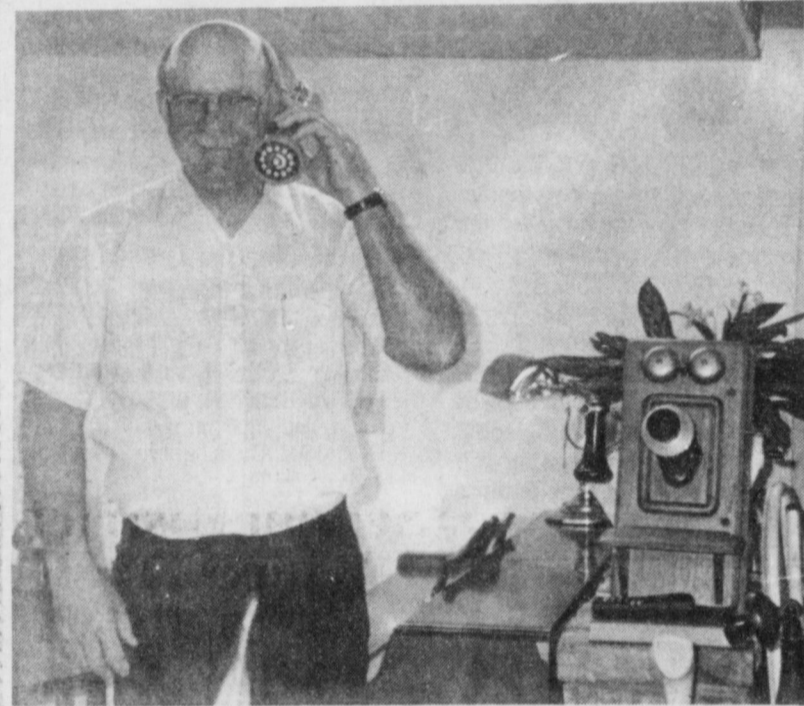
Celebrity Readers' Day

Students at Dillman Elementary were excited to hear "celebrity" readers in their classrooms on Wednesday, April 22. This annual event was started several years ago when the American Library Association appealed to librarians to have a time when local citizens were asked to come to the library to share in the joy of reading.

Each celebrity is asked to read a children's book to a class; the book can be an old favorite or one borrowed from the school library. After reading the book, the adult is asked to tell students why reading is important to his or her work or in enhancing leisure time. This is an important step in helping young

children realize that reading is a lifetime activity.

The Muleshoe "celebrities" who visited classrooms for the special reading event were: David Tipps, Buck Johnson, Elizabeth Watson, Bill Moore, Arnold Price, Richard Edwards, Barbara Turner, Janet Gracey, Al Bishop, Sally Messenger, Bary Moynihan, Stacy Conner, Barbara Finney, Jim Hailey, Liz Tipps, Cindy Purdy, Nelda Merriott, Helen Grigsby, Gayla Gear, Linda Marr, Bret McCasland and Terry Hutto. All the children at Dillman Elementary say thanks to each one who visited and will look forward to the day next year.



TELEPHONE COLLECTION-- shared by Hubert Kidd, at right, interested residents of the Muleshoe Area Healthcare Center April 22. (Journal Photo)



STUDENTS SERVE--their parents and teachers at the Muleshoe Elementary PTA meeting April 14 at DeShazo Elementary. The children had various projects on display and explained them to those attending. Door prizes were given. Here Jessica Carpenter, at left, and Jodi Hawkins, center, take direction from Ann Mount. (Guest Photo)

String Quartet To Perform

One of the offerings in the Hereford Community Concert Association's upcoming season is the Maggini String Quartet. Made up of Thomas Bowes, Michal Kaznowski, David Angel and Martin Outram, the quartet is a dazzling British Ensemble now booking Fall and Spring U.S. tours.

The London Times calls the performance one of "vertiginous excitement and brilliant accomplishment."

The Oxford Times says, "It is rare in this reviewer's experience that a performance of a Beethoven quartet by a still young ensemble should surpass in rigour, musicality and detail of execution, interpretations by more august quartets. This is exactly what happened last Sunday. The Maggini's command seemed well-nigh total-consistently accurate intonation, little or no roughness of tone and a wonderfully conveyed sense of style and authority into the bargain."

The Maggini String Quartet was formed in 1988 when violinist Thomas Bowes, whose recent London debut received unqualified acclaim from public and critics alike, gave up a flourishing solo career to join three members of the well-known Bochmann Quartet.

In a remarkably short time, the Maggini has established an artistic identity recognized and praised by critics and audiences alike, both throughout the U.K. and all over Europe. They have performed at major British festivals, broadcast extensively on the BBC, and were tumultuously received while touring Spain. Already their London following is such that they play to capacity halls whenever they perform there.

Members of the quartet have become known for their amusing and anecdotal spoken introductions at concerts. Their unique programming has ranged from an entire evening of Haydn Quartets (a program which raised eyebrows and changed many minds!) to their active commissioning and premiering of new work by British composers David Gow, Stephen Oliver and Robert Simpson and the

Lazbuddie High School Student Of The Month

Rachelle Rice is the 14 year old daughter of Doug and Linda Rice. Her birthday is October 28, 1977. The food of her choice is Italian. "Love, Me" by Colin Raye is her favorite song. Pepsi is her favorite drink. Her favorite school subject is accounting. Her hobbies include piano, reading, gardening, rollerblading and basketball. Peach is her favorite color. She likes all country music. Her favorite book is "Anne of Green Gables" series by L.M. Montgomery.

Chad Weaver was born on August 26, 1975. His parents are Jimmy and Johnny Weaver. Pizza is his favorite food. The drink of his choice is coca-cola. The Field of Dreams is his favorite movie. The TV show of his choice is Quantum Leap. Science is his favorite subject. His hobbies include yardwork. Red is his favorite color. Randy Travis is his favorite country singer. The Outsiders is his favorite book.

More
A penny scale is the only place where you get more for your money than you did 20 years ago.
--Journal, Washington, Ia.

For Your
Mary Kay Cosmetics
Josie Flowers
272-3865
8 a.m. - 12 noon
& after 6 p.m.

Jamaican composer Eleanor Alberga.

The name Maggini comes from one of the very earliest violin makers, who made part of the instrument played by quartet-member David Angel.

Symphony To Perform May 1

Palo Duro Canyon is one of this area's most awe-inspiring assets. Most residents of the region have had an opportunity to see its wonders and now they are going to have the unique opportunity to "hear" the canyon.

For the first time in thirty years, the Amarillo Symphony Orchestra has commissioned a new piece of music. Composer Samuel Jones, a professor of composition and director of graduate studies at the Shepherd School of Music at Rice University in Houston, Texas, worked almost a year on a musical masterpiece inspired by the 110-mile-long and 1,000-foot-deep canyon.

Jones has an extensive list of conducting credits, including engagements with the Houston Symphony, Detroit Symphony, Buffalo Symphony, Pittsburgh Symphony, Rochester Philharmonic, Prague Symphony and the Iceland Symphony. His original compositions include works commissioned by the Houston Symphony, the American Symphony Orchestra League and the Shenandoah Valley Music Festival. Two years ago, the Amarillo Symphony orchestra performed Jones' "Fanfare and Celebration" in concert.

Innovative projects, such as the Palo Duro Canyon Symphony, are helping the Amarillo Symphony Orchestra to continue developing a national reputation for excellence at a time when many other symphonies are being forced to disband. Noted as one of the top orchestra in the United States, the Amarillo Symphony retains a full-time, internationally recognized music director and conductor, James Setapen, and an 85 member professional orchestra.

The symphony will be premiered on the evening of May 1, in Palo Duro Canyon's Pioneer Amphitheatre. That concert will be



LIONS VISITOR--Cris Cleavinger, center, poses with Ronnie Holt, at left, and her husband Mike following her talk to the Lions Club Wednesday, April 22. Cleavinger is a recent graduate of Texas Tech University Law School. She discussed the importance of choosing alternate methods of resolving disputes emphasizing compromise and the current costs in time and money of litigation. She completed law school to Marine boot camp. She shared some anecdotes from her schooling and a joke or two about the profession. Criss is the daughter of Tuffy Dent of Muleshoe. (Journal Photo)

a unique and thrilling event: a symphony written for a canyon and premiered in the canyon. The perfect acoustics of the amphitheatre will be a perfect location for this premiere. On May 2, another concert will be held in the Amarillo Civic Center Auditorium.

Pampa is fortunate to be able to also share in this exciting

experience. The new symphony will be performed in concert on May 3 at 2 p.m. in the M.K. Brown Auditorium.

This work undoubtedly will result in greater publicity both for Palo Duro Canyon and this area. Plan now to be a part of this exciting weekend. Call 376-8782 for reservations.

Cari Kidd Receives Letter From Mrs. Bush

The White House
March 25, 1992

Dear Cari,

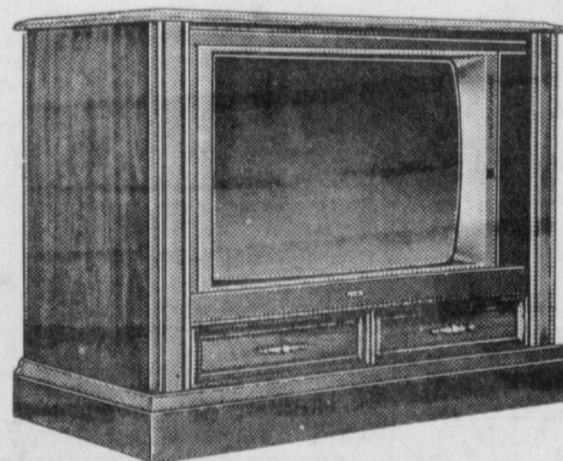
I was so delighted to receive your nice letter. Unfortunately, I did not receive it in time to respond before your trip to Washington. I do hope you and your parents had a great visit.

I am so glad to have received your wonderful invitation to meet you while you were here. It is always such a pleasure to hear from people like you who make America such a fine country.

With all best wishes,

Warmly,
Barbara Bush

Wilson Appliance Specials!!



RCA 25" diagonal
ColorTrak® TV

- 24-Button ChannelLock™ Digital Remote
- AutoProgramming 178-Channel Cable Tuning*
- 110° Reduced Depth Big-Screen Picture Tube
- Hi-Con™ Screen
- On-Screen Clock, Sleep and Alarm Timer
- Check your cable company's compatibility requirements.

\$499.95 w/t

RCA Model G25119HP
25" diagonal

Motorola Tote Phone



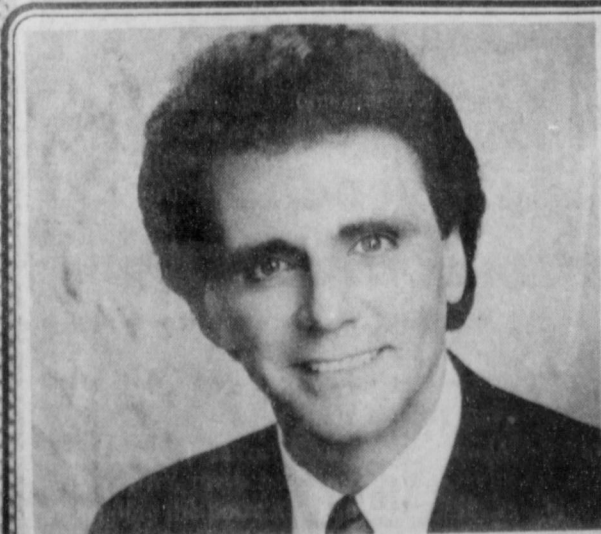
\$99.95*

*Requires Activation

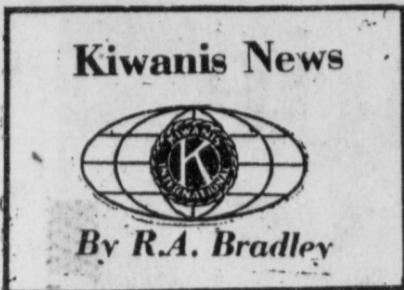
Wilson Appliance, Inc.

Liberty Cellular Agent

117 Main Muleshoe 272-5531



Gary McSpadden
In Concert
First Baptist Church
Muleshoe
Friday, May 1
7 p.m.



Bekki Bowen. We need each and everyone of you guys present next Friday, May 1st. Let us make May Day, the Day and have a 100 percent attendance. See all of you Friday, May 1st.

Banquet...

Cont. from Page 1

vice president; Mandy Myers, secretary; LeAnn Altman, treasurer; Scotty Mills, reporter; and Clay Myers, sentinel.

Carl Wheeler is Chapter Advisor. FFA Booster Club officers, Darrell Embry, president; Ronnie Altman, vice president; and Cathy Embry, secretary-treasurer, were also introduced.

Wauson also recognized the following business who employ FFA members: Muleshoe Livestock Auction, Jeremy Bush and James Bond; James Roy's Meat Market, Billy Williams; Muleshoe Animal Clinic, Scott Gray; A&M Farm and Ranch Supply, Jason Redwine; Pay-N-Save Groceries, Rodney Stevens; Mohawk Auto Parts, J.P. Rogers; and Daniels-Construction, Steven Debusk.

He also recognized the media, Jack and Magann Rennels, Channel 6; Howard Watson, West Texas Ranger; and Evelene and Wayland Harris, Muleshoe and Bailey County Journals.

Andy Wilson introduced Curt Brummet, speaker for the evening. Brummet kept the audience in tears as he told hilarious tales about his childhood, and being a cowboy.

The officers then gave the closing ceremony.

Winkler Meat catered the meal consisting of barbecue beef, barbecue chicken, barbecue hot links, beans, cole slaw, potato salad and cherry cobbler.

Hospital Board Meets In Regular Session

The board of directors of the Muleshoe Area Hospital District met in regular session Thursday, April 23 in the yellow dining room of Muleshoe Medical Center.

Minutes of the previous meeting were approved as read.

Richard Murphy, administrator, gave the hospital financial and statistical reports and Rachelle Harmon gave the Healthcare Center financial and statistical reports.

The up-coming election was discussed and the group voted to meet on Monday, May 4 at 8 p.m. to canvas the results.

Following a lengthy discussion, the board voted to pursue a Rural Health Care Center for Muleshoe.

Murphy gave a report on the Operations Audit, recently completed.

With no further business, the board went into executive session.

Walk-A-Thon...

Cont. from Page 1

\$600.00, GE- VCR-Remote control & on screen programing; \$350.00, Mountain Bike, 18 speed 24 or 26 inch, boys or girls; \$275.00, \$100.00 Gift Certificate at Joe's Boot Shop; \$225.00, Bicycle-BMX 20 inch, boys or girls; \$200.00, \$75 Gift Certificate at Anthony's; \$130.00, Jam Box-GPX AM-FM Radio-Cassette Recorder; \$75.00, \$25.00 Gift Certificate at Ben Franklins; \$50.00 Skates, Hitop, boys or girls, all sizes; \$45.00, Basketball, Michael Jordan; and \$30.00 Soccerball, or Leather Football.

If you see a prize you want, the Walk-a-thon is open to anyone any age.

Prizes will be awarded on Saturday, June 6 on the courthouse parking lot at 10 a.m.

Social Security Notch Years

Ever since the "Notch" law was put into all social security retirees born in 1917 or later are receiving less in retirement benefits than their counterparts who were born in 1916, even though persons born in 1917 and later have paid into Social Security as much as three and one-half times as much as those born in 1916.

This gross injustice is now being addressed by a Wisconsin organization, First Association for Individual Rights, Inc. (FAIR), non-profit and tax-exempt, in a national petition drive seeking the repeal of this law enacted on December 20, 1977. FAIR has received the endorsement and support of the American Legion and the Veterans of Foreign Wars at their national, state and local levels, plus many citizen groups nationwide. FAIR has set a goal of twenty (20) million signatures to be presented to the President and the Congress and therefore urges all eligible voters to sign and circulate this petition, which sends a message of fairness to our lawmakers.

The present experience, according to FAIR president, Walter Heiden.

Muleshoe...

Cont. from Page 1

Member of the Month

5. Approval of minutes regular meeting held on April 13, 1992.

6. Open Forum/Audience Participation

7. Business Items

7.1 Approve media contract with Region XVII Education Service Center for 1992-93.

7.2 Consider food service contract with ARA and take appropriate action.

7.3 Certify Bill Moore as the local representative to the Region XVII Education Service Center Advisory Committee

8. Informational Reports

8.1 Board President

8.2 Superintendent

8.3 Assistant Superintendent for Operations

8.4 Business Manager

8.4a Tax Report

8.4b Bank Balances

8.4c Fund Balances

8.4d Payment of Current Bills

8.4e Other business items

9. Personnel Considerations

The Bailey County Commissioners Court will meet in Special Session in the Bailey County Courthouse Monday, April 27.

The meeting will begin at 10 a.m. and will continue until all business is concluded, with the following items on the agenda.

1. Approve the minutes of the previous meeting.

2. Review, approve and order payment of County bills.

3. Approve payroll

4. Donald Harrison to discuss insurance and maintenance (etc.) on fire truck.

5. Discuss cemetery maintenance.

6 Consider allowing Eastern New Mexico Rural Telephone Cooperative to lease space on the

City/County radio tower.

7. Consider Budget Amendment No. 4 to FY 1992 budget.

8. Approve soil conservation worksheets.

9. Consider authorizing County Judge to sign contract with Allison & Associates on any redistricting matters.

10. Discuss and consider new mileage sheets for in-county travel expenses.

11. Consider advertising for proposals on health insurance third party administrator services.

is that of all eligible voters approached, 92 percent readily sign the petition.

Upon repeal of the "Notch" law, FAIR has prepared a new proposal which sets forth that persons born in 1917 and later would have their retirement benefits computed two ways for each year of retirement for those born in 1917 and later.

1. Using the pre-December 20, 1977 law formula.

2. Using the post-December 20, 1977 formula

The retirement benefit for each year shall be the greater amount determined under items one and two above. However, if the amount determined by the pre-1977 formula is greater than that of a person of like pay who was born in 1916 the amount will be the same as for the person born in 1916. This will have the affect of leveling off the payments of those born after 1916 payment level.

Also, the calculations for any person born in 1917 or later shall include any cost of living increase which affect those born in 1916.

3. The difference between this new amount and the amount received for each year since retirement, shall be paid in a lump sum.

4. No interest will be paid to the retiree on the lump sum amount due to the delay in payment.

5. In lieu of any interest there will be no taxation on the lump sum payment. No interest as a trade off against taxes will provide the following benefits:

a. This will prevent the placing of a retiree born after 1916 into an unfair higher tax bracket in the year in which the lump sum is received compared to the tax bracket-in the year in which the lump sum is received compared to the tax bracket that would have been the case if the proper payments had been made in the year in which it was due.

b. This will prevent the necessity of the filing of amended returns by many people for many years at a burden and unnecessary cost to the retiree.

c. This will also prevent a tremendous workload on the part of the Internal Revenue Service in the checking of amended returns, the cost of which could easily exceed the taxes collected.

d. Any retroactive lump sum payment due to a now deceased retiree will be payable to the deceased persons heirs under the same circumstance as designated in items three, four and five also no estate tax will be owing on the

lump sum payment.

The funds to cover these added payments are presently contained in the Social Security Trust fund balance which has a current surplus of over \$280 billion and this surplus fund is increasing by over \$60 billion per year.

FAIR officials invite everyone 18 years of age and over to cut out the petition, make copies, and proceed to get signatures and mail

Emergency Farm Loan Applications Available

Application for emergency farm loans for losses caused by extreme freezing weather conditions which occurred between October 1, 1991, and December 31, 1991, are being accepted at the Farmers Home Administration (FmHA) office located at 115 E. Ave. D, Muleshoe, FmHA County Supervisor G. Lanace Smith said.

Bailey County is one of 24 counties in Texas recently named by Secretary of Agriculture Edward Madigan as eligible for loans to cover part of actual production losses resulting from the freezing weather conditions.

G. Lance Smith said farmers may be eligible for loans of up to 80 percent of their actual losses or the operating loan needed to continue in business or \$500,000, whichever is less. For farmers unable to obtain credit from private commercial lenders, the interest is 4.5 percent.

"As a general rule, a farmer must have suffered at least a 30 percent loss of production to be eligible for a FmHA emergency loan," Smith said.

Farmers participating in the PIK or Federal Crop Insurance program will have to figure in proceeds from those programs in determining their loss.

"Applications for loans under this emergency designation will be accepted until December 10, 1992, but farmers should apply as soon as possible. Delays in applying could create backlogs in processing and possibly over into the new farming season," Smith said.

FmHA is a credit agency of the U.S. Department of Agriculture. It is authorized to provide disaster emergency loans to recognized farmers who work at and rely on farming for a substantial part of their living. Eligibility is extended to individual farmers who

them to the address on this page. Circulator must sign in space provided at bottom of petition.

The FAIR coordinator for the state of Texas is: Theda Peck P.O. Box 2184 Granite Shoals, TX 78654 512-598-6739

The main national office for FAIR is: First Association for Individual Rights, Inc. P.O. Box 722 Thiensville, WI 53092

are U.S. citizens and to farming partnerships, corporations or cooperatives in which U.S. citizens hold a majority interest.

The FmHA office in Muleshoe is open from 9 a.m. to 5 p.m. Monday through Friday.

Helping Children Beat The Odds

Do you want to help your children beat the odds of pregnancy, Aids, abortion, or sexual disease? The Richland Hills Baptist Church will be showing a film series by Josh McDowell Monday and Tuesday, April 27 and 28 at 7 p.m.

"This film is free and a nursery will be provided," said the Rev. Terry Taylor, pastor. "Our children are facing very real pressure to have sex and, parents they need your help."

"The film series is designed to provide parents the information, confidence and tools they need to help their children win the battle of sexual purity."

"Statistics show that more than 50 percent of American teenagers ages 15 to 19 have had sexual relations. The statistics for Christian youths are just as staggering."

Powell & Military

Gen. Golin Powell, chairman of the Joint Chiefs of Staff, said the U.S. military is prepared to strike against Iraq if President Bush gives the order.

Bankruptcy Laws

A Senate panel has approved a bill creating an independent body to review federal bankruptcy laws and encourage more individuals to seek court-supervised reorganization of their finances.

The Snack Shack

Located At 222 W. Ave. H

Announces

NEW HOURS

11 a.m. - 9 p.m. Mon. - Thurs.

11 a.m. - 10:30 p.m. Fri. & Sat.

1-7:30 p.m. Sundays

The General Public Is Welcome To Come By Or Call In Orders!

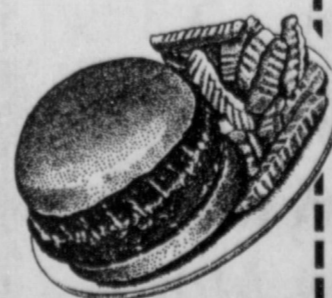
Watch For The Opening Of Our New Drive Up Window!



Phone In Orders Are Welcome!

272-3840

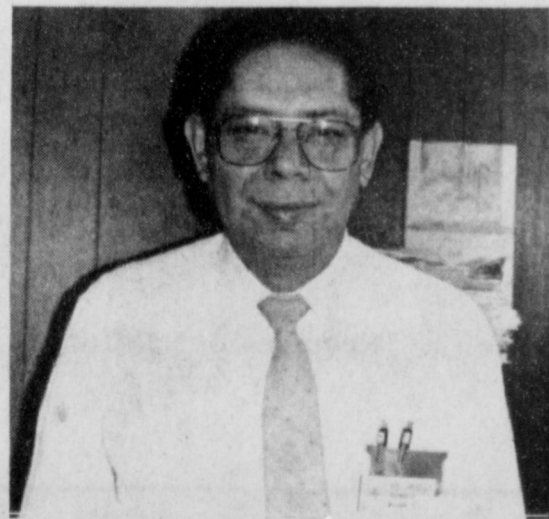
Clip The Coupon Below And Save!!!



Coupon
Hamburger, French Fries and 16oz. Drink

\$2.75 Plus Tax

Coupon Good Until May 12



Re-Elect
Abel Arguello
Candidate for
City Council - District 1
May 2, 1992

Experience: City Councilman - 3 yrs.
25 yrs. Public Servant
Treasurer of Rotary Club
Selective Service Board Member
Veteran of a Foreign War
Charter member of the Postmaster's League
Abel and his wife are members of the Immaculate Conception Catholic Church

Pd. Pol. Adv. by Abel Arguello

Activities Around Muleshoe



PREPARING DESSERTS--for the luncheon served at Holy Week were Marjorie Reid and Shannan Berry, at right. The women were two of many from various churches who assisted with the services and the meal. (Journal Photo)



AWARD WINNERS AT BANQUET--Jeffrey Wheeler, Pete Bond, Rusty Black, Johnny Noble, Andy Wilson, Steven Wauson and Billy Williams. (Journal Photo)



SHELLY TURNBOW--prepares bread for one luncheon meal served at Holy Week services here. It took a lot of bread for the crowd. (Journal Photo)



BANQUET SPEAKER---Curt Brummet spoke at the FFA banquet Tuesday night. (Journal Photo)



NELL MAGBY--was one of the kitchen crew at the recent Holy Week services held at First United Methodist Church Fellowship Hall. Here she checks the spaghetti for the large crowd attending. (Journal Photo)



RECEIVES LEADERSHIP MEDEL---Pete Bond, Jose Mendoza and Jason Barrett received medels at the FFA banquet Tuesday night. They were the District Quiz Team winners. (Journal Photo)



FFA OFFICERS---(From Left) John Rogers, James Bond, Johnny Noble, Andy Wilson, Steven Wauson and Steve Debusk. (Journal Photo)



EASTER BUCKET--gift presented by Nancy Kidd at right to Vera Downing, resident of the Muleshoe Area Healthcare Center, was part of the celebration at the Center's Easter party on Good Friday. (Journal Photo)

18. Legals

LEGAL NOTICE

The Muleshoe Independent School District, Muleshoe, Texas, is accepting bids for the following:

- *Construction of New Library for Dillman Elementary School
- *HVAC Renovation on 3 School Cafeterias

All bids must be submitted by 3:00 p.m. C.D.T., Friday, May 15, 1992, at the Superintendent's Office, 514 Ave. G, Muleshoe, Texas, or sealed bids may be mailed directly to Bill Moore, Superintendent, Muleshoe ISD, 514 Ave. G, Muleshoe, TX, 79347.

A pre-bid conference will be held on Thursday, May 7, 1992, at 4:00 p.m. C.D.T. Interested parties should meet at Muleshoe ISD Superintendent's Office at the scheduled pre-bid conference time.

Plans and Specs will be available on Monday, May 4, 1992 and may be acquired from:

- Grimes and Associates
Route 1, Box 559
Wolfforth, TX 79382
806-863-2462

A \$50.00 (per set) deposit will be required and will be refunded if plans and specs (including addendum's, if applicable) are returned to our office by 5:00 p.m., Monday, May 25, 1992.

The trustees of Muleshoe Independent School District reserve the right to reject any or all bids, and waive all formalities that are in the best interest of the school district.

G18-17s-3tc(S)

Muleshoe Independent School District is accepting proposals for the leasing of nine copy machines. Specifications may be picked up at 514 W. Ave. G., or by calling 806/272-4814. Sealed proposals must be received by 3:00 p.m. on May 15, 1992. Muleshoe ISD reserves the right to accept or reject any and/or all proposals in the best interest of the District.

M18-17s-2tc

15. Misc.

CASH FOR YOUR REAL ESTATE LIEN NOTE
If you are collecting payments,
CALL 1-800-333-8323 FOR A FREE QUOTE.

Do you need CASH for school, investments, IRS, a new car? Are you tired of collecting payments? Put CASH in the bank.
CALL TODAY! WE ARE DIRECT BUYERS!
15-15s-8tp

Enochs News

by: Mrs. J.D. Bayless

Guests in the Jack Lane home Sunday were the Rodger Hatcher family and friends, and friends from Clovis, N.M. and Mrs. Obie Standard and children from Three Way, Rev. Rodger Foot and family from Three Way, Mr. and Mrs. V.A. Lanes from Littlefield, Mr. and Mrs. Charlie Timmons from Lubbock, Mr. and Mrs. Alonzo Pierce, Kay Baldwin and children from Lubbock and Mr. and Mrs. Keith Smith from Texico.

Mr. and Mrs. Bill Key were dinner guests in the Bud Huff home Sunday.

Mr. Bobby Kindle attended a church conference in Lubbock Tuesday.

Mr. and Mrs. Scott Austin of Lubbock are the parents of a baby born Friday at St. Mary Hospital in Lubbock. Grandparents are Mr. and Mrs. Bill Dale of Maple.

National Flood Insurance Program Discussed

The cost of rebuilding your home from a flood could wipe you out. Is your home protected against flood losses? Your homeowners' policy probably doesn't cover flood losses. That's why there's National Flood Insurance.

According to Brad Harris, Regional Director for the Federal Emergency Management Agency, flooding causes more than \$2 billion in property damage each year. Estimates show there are 6-8 million uninsured buildings in the U.S. exposed to the risk of flooding. Fewer than 1/3 of these are protected by flood insurance. "You should protect your property through the National Flood Insurance Program (NFIP)," says Harris.

National Flood Insurance allows

you to be able to recover from a flood. Harris says "without insurance, assistance will be limited to loans or grants. Grants are limited to \$11,500 and available only in presidentially declared disasters." NFIP coverage for a single family residence can be purchased for up to \$185,000 for structure and \$60,000 contents.

Flood insurance through NFIP is available in cities and counties that meet minimum requirements designed to reduce loss of life and property due to flooding. There are 18,000 communities participating in NFIP throughout the U.S. Harris adds, "You do not need to live in a Special Flood Hazard Area (SFHA) to buy a policy. Over 1/3 of all claims have come from outside a designated SFHA."

The average annual premium for flood insurance protection is about \$275.00. Businesses may also be insured through NFIP. Harris urges, "You should contact your agent or broker about a flood policy." New policies take effect 5 days after you apply. Increases in coverage will take effect one day after applying. "Flood Insurance is the most economic way to protect your property and belongings from flood damage," Harris said.

Three Way News

by: Mrs. H.W. Garvin

Mr. and Mrs. Wendle Price from Ft. Worth spent the weekend with her father George Tyson. They visited her aunt Saturday, Mrs. H.W. Garvin.

Robin Kindle from Lamesa and Stack Kindle from Roswell spent the weekend with their parents, the Bobby Kindles.

Several from the community spent the weekend fishing at the various lakes.

Tuesday night a chemical company honored the farmers with a dinner at Three Way so the Three Way school had a good attendance.

Classify!

Call

272-4536

Entertaining the residents at Morton Manor Thursday afternoon were Rev. and Mrs. Rodger Foot, Mrs. Jack Lane, Mrs. Obie Standard and children and Mrs. Bud Huff.

This reporter is back on the job after several weeks in the Morton and Methodist Hospital and a week at Morton Manor and glad to be back.

R.L. Davis visited George Tyson Tuesday afternoon.

George Tyson and his daughter the Wendle Prices were in Levelland Saturday evening and had supper with his son the Troy Tysons.

CALL
Mark Morton
109 S. 1st Muleshoe
272-7519
Make Farm
Multiple Automobile
Insurance Company
Home Office
Bloomington, MO

Immaculate Conception

Catholic Church
Father Patrick Maher
Northeast of City

First Baptist Church
220 West Ave. E.
Pastor Stacey Conner

Trinity Baptist Church
314 E. Ave. B
Rev. Dale Berry

Circle Back Baptist Church
Intersection FM 3397 & Fm 298
Rev. Jessie Shaver
946-3676

Calvary Baptist Church
1733 W. Ave. C.
Rev. Rick Michael

Church of Compassion
605 W. 8th
Jimmy Williams
272-5624

Progress Baptist Church
Jeffery Lee
Progress, Texas

Richland Hills Baptist Church
17th and West Ave. D
Rev. Terry Taylor

St. Matthews Baptist Church
Corner of West Boston & West Birch
Pastor M.S. Brown

Progress Second Baptist Church
1st and 3rd Sundays
Rev. Arthur Hayes

Primitive Baptist Church
621 South First
Elder Cleveland Bass, Pastor

1st Baptist Church
Lazbuddie, Tx.
Gary Wilcox, Pastor
965-2126

Jehovah Witness
Friona Hwy
Jack Tiffin, Minister
Warren Meeks, Minister



A Very Small World

This little girl is much too young to understand the vast distances that make up our adult world. From New York to Paris or from our earth to the moon is measured in miles far beyond her comprehension. Her world extends from the sidewalk in front of the house to the backyard fence; and yet, within that space she has found treasures we all might envy.

How often it is that children in their innocence can show us the way to a true understanding of God's world. How many of us are misled into believing that happiness lies only in some far off land or distant place. Look about you; consider the bountiful blessings of God's love that are right at your finger tips. These simple flowers bursting forth in a halo of vibrant beauty...the joyous songs of the birds returning after winter or the golden warmth of the morning sun are surely riches beyond compare. Each of us, in our own small world, needs to renew our pledge to God. Attend His church regularly.

EVERYONE IN THE CHURCH
THE CHURCH IN EVERYONE

The Church is God's appointed agency in this world for spreading the knowledge of His love for man and of His demand for man to respond to that love by loving his neighbor. Without this grounding in the love of God, no government or society or way of life will long persevere and the freedoms which we hold so dear will inevitably perish. Therefore, even from a selfish point of view, one should support the Church for the sake of the welfare of himself and his family. Beyond that however, every person should uphold and participate in the Church because it tells the truth about man's life, death and destiny; the truth which alone will set him free to live as a child of God.

St. John Luthern
Sunday School and Bible
Classes 9:30 a.m.
Church Services 10:30 a.m.
Rev. Richard Greenthaner

Lazbuddie Methodist Church
965-2121
Doug Chapman, Pastor

New Vision Church of the Nazarene
814 W. Ave. C
272-3622
Pastor David R. McIntire

New Covenant Church
Plainview Hwy
Sunday 10:00 a.m.
Wednesday 7:00 p.m.
Jimmy Lowe, Pastor

Attend The Church Of Your Choice!



Dairy Queen 1204 W. Amer. Blvd. 272-3412	Throckmorton Refinishing Shop 319 E. Amer. Blvd. 272-5345	Bailey County Farm Bureau 1612 W. Amer. Blvd. 272-4567	Combination Motors & Salvage 272-4458
American Valley Inc. W. Hwy 84 272-4266	First Bank Member F.D.I.C. 202 South First 272-4515	Bratcher Motor Supply 107 E. Ave. B 272-4288	Western Drug 114 Main 272-3106
Decorator's Floral & Gifts 616 S. 1st. 272-4340	Bob Stovall Printing 221 E. Ave. 272-3373	Richland Hills Texaco 1914 W. Amer. Blvd. 272-4875	Lookin' Good 206 Main 272-5052
Irrigation Pumps & Power W. Hwy 84 272-4483	James Roy Meat Market 506 W. Amer. Blvd. 272-4361	Viola's Restaurant 2002 W. Amer. Blvd. 272-3838	5-Area Telephone Cooperative Inc. 302 Uvalde 272-5533

CLASSIFIEDS 272-4536

CLASSIFIED RATES

15 Words & Under
Minimum Charge
\$2.30
Thereafter
\$2.00
16 Words & Over
1st Insertion
15 cents per word
2nd Insertion
13 cents per word

CLASSIFIED
DISPLAY RATES
\$1.75
Per Column Inch

DEADLINES
12 noon Tues.
For Thursday Paper
12 noon Friday
For Sunday Paper

To receive the reduced
rate after the first
insertion, ad must run
continuously.

We reserve the right to
classify, revise, or reject
any ad. We are not
responsible for any error
after ad has run once.

1. Personals

CONCERNED
About Someone's
Drinking?
HELP IS
AVAILABLE
through Al-Anon
Call 272-2350 or
965-2870 or come to
visit Tuesday and
Thursday nights,
8:00 p.m. & through
AA call 965-2870 or
come visit Tuesday
nights, 8:00 at 620
W. 2nd, Muleshoe.

3. Help Wanted

Applications are being
accepted for part-time
sales clerk. Apply in
person-Muleshoe Fina.
102 W. American Blvd.
Muleshoe
F3-17s-2tc
TRUCK & TRACTOR
DRIVERS WANTED:
Monthly salary, lots of
travel. Job runs March-
December. Contact Scott
or Charles at SCB
Farms, Inc. in Bovina,
TX--(806)238-1206
S3-10s-tfc

4. Houses For Rent

FOR RENT:
2 Bedroom, 1 Bath
House. Call
272-4011
H4-16t-4tc

5. Apts. For Rent

FOR RENT:
2 Bedroom apartments,
Call
272-4622
K5-17s-tfc

APARTMENTS
FOR RENT:
Good location, 1 or 2
bedroom, furnished or
unfurnished. Water paid.
272-7575
P5-13t-tfc

11. For Sale Or Trade

Registered Male
Chow Puppies!
Call 965-2864.
\$100
L11-16s-4tc

92--35 foot Vagabond
Fifth Wheel. Slide-out,
central air, washer, dryer,
stereo, awning. Matching
tow vehicle available.
791-0345
D11-16s-6tc

FOR SALE:
Fan-Tailed Guppies.
Call 272-3607.
D11-16s-8tc

PIANO FOR SALE
Wanted: Responsible
party to take on small
monthly payments on
piano. See locally. Call
Manager at
800-635-7611.
11-16t-6tp(ts)

FOR SALE:
32 foot, 1981 Dodge
Cruise-Air Motorhome;
33,000 miles. \$17,000.
Call 806/272-3373.
EvaNell Stovall
S11-16t-8tc

FOR SALE:
To be moved; 12x24
Morgan Storage Building
Call 257-3376
L11-16t-4tc

86 Chevy Pickup, 3/4
ton, 4 wheel drive.
Call 272-3413
R11-12t-tfc

11. For Sale Or Trade

FOR SALE:
IBM Computer \$250.
272-3622
11-17s-2tp

FOR SALE:
60 ft. lot in Harvey
Addition
BEST OFFER!!
Lillian Carr
5814 Gateshead Drive
Austin, Texas 78745
(512)447-7506 or
Rebecca Nichols
(512)447-7506
C11-17s-2tc

15. Misc.

Want To Lease
Grassland Year-Round or
Summer. Large or Small
Acreage. Bailey County
Area Preferred.
Call 806-946-3336
P15-17t-8tc

FOR RENT:
Large Self Storage rooms
with 24 hour a day
access. Call J & J Self
Storage at 272-4307.
S15-13t-tfc

NEED TO HAVE
AN ESTATE SALE?
Let us do it for you!!
227-2016 or
227-2060
B15-16s-4tc

15. Misc.

Custom Plowing.
Custom Planting
30 inch rows. John Deere
Equipment. Grady Free
965-2458
946-7226
F15-14s-8tc

FOR SALE: One
Gopher-Getter; slightly
used--\$250. One Hay
Fluffer; almost new--
\$300. Call
806-364-1596
Hereford
S11-15s-5tc

8. Real Estate

LOT FOR SALE:
140 ft. by 140 ft. In
Richland Hills Addition.
Call after 6 at 272-4344.
R8-14s-tfc

FOR SALE:
3 bdrm., 2 bath home on
1 or 2 acres. 272-3318.
New roof!
S8-16s-4tc

8. Real Estate

FOR SALE:
3-2-2 Brick Home,
Central Air and Heat,
Large Storage Bldg. /
Workshop, Brick Fire-
place, Large Fenced Back-
yard, Built-ins. Country
Club Addition.
272-4887
S8-13t-tfc

8. Real Estate

HCR
REAL ESTATE
REDUCED
3 Bedroom, 2 Bath and
Carport. Beauty Shop in
the rear.
Thursie Reid
272-5318

SPECIAL COW SALE

Saturday, May 2 — 11:00 A.M.
CLOVIS LIVESTOCK AUCTION

Clovis, New Mexico

Expecting to sell 2,000 Springer Cows, Pairs, Breeding Age Bulls, Bred Heifers and Open Heifers.

EARLY CONSIGNMENTS INCLUDE:

OPEN HEIFERS

- 60 750 lb. open black whitefaced Hereford and red white face, out of one of the top cow herds in New Mexico, calfhood vaccinated.
- 22 Registered Salers heifers, O.C.V. includes: 12 purebred, 10-7/8's, weighing 600-725 lbs.
- 140 500-550# open heifers, calfhood vaccinated, originating from 2 New Mexico mountain ranches, rock footed, wintered on dry grass, includes: 30 red whiteface, 40 black whiteface, 20 Brangud & 30 exotic crosses.
- 74 open 2-year-old Brangud heifers 700-800# medium flesh, caked & grass.
- 5 Registered Limosine heifers, calfhood vaccinated, weighing 600-700 lbs.

BRED HEIFERS

- 42 Brangud springer heifers, calfhood vaccinated, bred to Brangud bulls 7 coming 3-year-old first calf registered Salers, with bulls since January 23rd
- 30 Beefmaster heifers 800-1000#, bred to low birth weight Beefmaster bulls, from one of New Mexico's top Beefmaster breeders, running on cake & grass
- 44 Brangud heifers 700-800#, calfhood vaccinated, bred to low birth weight Red Angus bulls, a nice set, don't miss these.
- 91 heifers, bred to Brangud bulls, 750-800# approximately 40 black whiteface, 30 red whiteface, balance exotic cross, caked & grass, all calfhood vaccinated.

COWS, PAIRS & SPRINGERS

- 40 black whiteface cows 4 & 5 year olds with a few 6 years, bred to Charolais bulls off of grass
- 20 Beefmaster pairs, cows 5-7 years old, off of the same ranch as Beefmaster heifers listed above
- 95 top quality horned Hereford cows, bred to Hudgen's Brahman bulls, about 65 really nice F-1 calves on the ground. Balance heavy springers, ages are 6 to 10 years old, all have good mouth.
- 90 Dehorned Hereford cows, 4-7 years, bred to a ripping good set of Brangud bulls, cows are in real good flesh, wintered on the farm and moved back to grass
- 39 Brangud cows, bred to Brangud bulls, in good flesh, 5-8 years old
- 44 Young black whiteface cows, nice, bred to black bulls
- 35 Young red whiteface cows, nice, bred to black bulls
- 78 3-7 year old crossbred cows, bred to Brangud bulls, will be sorted in small groups, a set of cows you will really like.
- 2 4 year old salers cows with 1 baby on the ground.
- 2 6-year-old Sales cows, 1 baby on the ground. Registered
- 11 Brangud and black whiteface 3-year-olds, heavy bred.
- 22 Charolais cross and English cross cows, off grass, 2nd calves up to running age, bred to registered Salers bulls.
- 30 3-6 year old purebred Longhorn cows, heavy springers, a few babies, will be sold in small groups. If you're having varmint problems, whether it is 2 legged or 4 legged a few of these high horned cattle might be of value to you.
- 51 Mostly straight 6 year old Hereford cows, dehorned, bred to Brangud bulls, a nice set, in top condition.
- 88 Mostly young cows, bred to black bulls, crossbred and English cross.
- 20 8 & 9 year old heavy springer mixed cows.
- 226 Cows, various breeds, all preg. checke, wintered on cake & grass.
- 99 5-9 year old cows, 21 calves on the ground, includes: 33 Brangud, 24 Charolais, 20 black whiteface, 22 red and red whiteface, cows are in excellent flesh
- 6 Registered Limosine cows; 3-3 years old, 2-9 years old, 1-2 years old.
- 20 Crossbred cows, 3 to 7 years old, 10 calves on the ground, balance heavy springers, bred to Limosine and Brangud bulls.
- 89 Crossbred cows - 55 babies on ground - running age
- 450 Open or short bred 3 to 7 year old cows - including crossbred - black w/f - Hereford - Brangud - a rare opportunity to buy young cows and breed to the bull of your choice.

BREEDING BULLS

- 15 Beefmaster bulls, 14-18 months old, 900-1200# from the same New Mexico producer as heifers and pairs listed above.
- 2 registered 2 year old Charolais bulls
- 4 15-month-old Charolais bulls
- 1 ¼ blood Barzona bull, 15-months-old
- 4 breeding age Jersey bulls
- 6 Purebred Charlois bulls, 15 to 18 months.
- 20 Brangud and black bulls, mostly 2-year-olds.
- 9 Limosine bulls - 2 year old - purebred
- 1 Limosine bulls - 2½ year old - purebred
- 10 yearling bulls
- 4 2 year old registered Seminal bulls
- 3 Maine Anjoy bulls 11-13 months old, weighing 800-900 lbs.
- 7 Angus bulls 15 to 18 months old - 700-900 lbs.

Several Consignments Pending

All Cows Brucellosis Tested and Preg. Tested - Mouthed For Age.
For more information or to consign livestock call
505-762-4422

Wayne Kinman
Home # 505-791-5416

Charlie Rogers
Home # 505-762-0811

Don't Forget The Big 3 Day Horse Sale On May 15, 16, 17th. Supplemental closes May 7th. This sale includes the Barrel Race Futurity Sale - \$5000.00 Added Money.
Call Annelle Moore or Del Rae Driggers at 505-762-4422 for more information or to consign horses!

WHITT APPRAISAL SERVICE

Can do appraisals in:
Real Estate, Livestock & Farm Machinery.
Schooled, Trained & Certified by:
National Association of Real Estate Appraisers
International Society of Livestock Appraisers
American Society of Farm Equipment Appraisers
We prepare a professional report-
Charge for time actually spent-
No charge for Meals & Travel!
Banks, Financing Institutions and Individuals
Call Roy Whitt,
office 272-3058
mobile 272-3505

Classify! It Pays!

8. Real Estate

8. Real Estate

8. Real Estate

8. Real Estate

Bingham & Nieman Realty

116 E. Ave. C.

George Nieman, Broker 272-5286 272-5285

RICHLAND HILLS
PRICE REDUCED-IMMACULATE 3-2-2
Brick, Cent. A&H, built-ins, newly remodeled
kitchen, FP, sunken lv. area w/cathedral ceiling,
ceiling fans, earthtone carpets, storage!!!!

3-2-2 Brick, Cent. A&H, built-ins, FP, fenced
yd., \$50's!!!

3-3-2 Brick, Cent. A&H, built-ins, FP, Spkrl.
sys., storage-w/In Contract fenced yd. Much more!!!!

3-3-1 CP HOME, Cent. A&H, built-ins, FP,
spacious lv. area, loads of closets & storage, cov.
patio, fenced yd., 2 st. bldgs.!!!!

JUST LISTED--3-2 Home on 1 acre on
pavement close to town, 2100+ lv. area, Cent.
A&H, built-ins, more!!! \$32,000 or MAKE AN
OFFER, "AS IS"

MOTIVATED SELLER WILL PAY ALL
CLOSING COSTS PLUS \$1,000 DRAPERY
ALLOWANCE--3-2-2 Brick, Heat Pump, built-
ins, FP, fenced yd. & MORE!!!!

NICE RESIDENTIAL LOTS/\$5,000 UP.....

Nice 3-2-1 Home, built-ins, heat pump, fans,
storm windows, & doors, workshop-storage,
fenced yd., & more. \$30's!!!!

PARKRIDGE-IMMACULATE 3-2-2 Brick,
Heat Pump, built-ins, nice finished
basement, cov. to insul. & wired st.-work-
shop, fenced yd. GREAT VIEW!!!!

POSSIBLE OWNER FINANCING 3-1-2 Home, wall &
floor furnace heat, evap. air, \$18,000!!!!

3-1-1 Brick, Cent. A&H, built-ins, fenced yd.,
new paint & carpet!! SOLD

JUST LISTED-IMMACULATE 3-2-2 Brick,
Heat Pump, built-ins, whirlpool, 2200' + lv.
area, loads of storage, large shop-storage, fenced
yd. \$70's!!!!

NICE 3-2 Home, nicely remodeled, heat pump,
built-ins, carpet, fenced yd., storage bldg. &
more!!!! \$20's!!!!

NICE 3-2-1 Brick, Cent. A&H, built-ins, fans,
st. bldg., fenced yd--\$30's!!!!

2-1 home, nicely remodeled kitchen & den,
Cent., heat, fenced yd., large garage-shop, \$20's!!
HIGHLAND AREA

3-2-1 Brick, Cent. A&H, built-ins, FP, Fenced
yd. 2100+ lv. area, fenced yd., & st. bldg.
MAKE OFFER!!!!

3-2-1 Home, wall furnace, window evap. fenced
yd. \$20's!!!!

LENAU ADD.
3-2-1 Home, Geothermal Heat Pump, built-ins,
FP, greenhouse, shop, cellar, storage, fenced yd.,
MUCH MORE!!!!

3-2-1 + 2CP HOME, storm windows & doors,
built-ins, fans, MUCH MORE!!!!

JUST LISTED-NICE 4-2-2 carport Home, Cent.
heat, Evap. air, built-ins, fireplace, 1900'+lv.
area, fenced yd., workshop-storage bldgs. \$30's!!

NICE REMODELED 3-2-1 Brick, Cent. heat,
built-ins, MUCH MORE, \$30's!!!!

3-1-1 carport Home, Cent. A&H, built-ins,
fireplace, fenced yd. \$20's!!!!

JUST LISTED 3-1 1/2-1 Home, Cent. heat,
evap. air, nice carpets, cov. patio, fenced yd. st.
bldg.!!!!

3-2-4 Carport home, Heat pump, built-ins, 29
acres on pavement close to town with hog barns,
& MORE!!!

VERY NICE 4-2-2 Brick Home on 6 ac., Cent.
A&H, 2300'+lv. area, storage-shop bldg.,
MUCH MORE!!!! 70's!!!

3-2-3 Carport Home on 11 ac. edge of town,
Cent. A&H, built-ins, cellar, barns & corral.
MAKE OFFER!!!!

3-2-2 carport Brick on 2 acres at edge of town,
possible owner financing. \$30,000!!!!

NICE 3-2-1 home on 1 acre close to town, Cent.
Heat, Evap. Air, Nice Carpets, Remodeled.
\$30's!!!!

NICE 3-2-2 Brick on 1 ac. tract of hwy. close to
town, Cent. A&H, built-ins, fenced yd. & more!!
Make Offer!!!!

RESTAURANT BLDG., & Equipment-
A GOOD BUY In Contract

GYMNASTICS STUDIO-BLDG., & Equipment
PRICED TO SELL!!!!

COMMERCIAL TRACT 175'x100' (HWY. 70
& 84, RR spur access, approx. 1200 sq. ft. bldg.
PRICED TO SELL!!!!

320 acres good dryland, good allotments, Three
Way area. Reduced, \$225 per acre!!!

141 ac., 8" well, In Contract brick large shop,
bam!!!!

PLEASANT VALLEY--160 acres, 8" well,
Lindsey circle, domestic well, on pavement!!!!

354 ac. S. of city, good allot. & yields!!!!!!!

Classify!

Lowe's Pay-n-Save & MARKETPLACE

All-American Values



Asst. 3 Liter
Coca Cola
\$1.39



Small Pak \$1.67 lb.
Boneless Family Pak
Chuck Roast
\$1.47 lb.



Shurfine
Ice Cream
\$1.39 1/2 gal. Asst. Sq. Cnt.



Shurfine 2% Lowfat
Milk
\$1.89 gal.

Lowe's QUALITY MEAT



Boneless
Arm Roast
Family Pak
\$1.77 lb.
Small Pak \$1.97 lb.



Boneless Family Pak
Chuck Steak
\$1.67 lb.



Boneless
Arm Steak
Family Pak
\$1.97 lb.



California Roast
\$1.87 Small Pak lb.



Whole Slab Family Pak Pork
Spare Ribs
\$1.27 lb.



Nestea 100%
Instant Tea
\$2.99 3 oz. Small Pak \$1.47 lb. or 20 oz. Tea Mix



Decker
Chopped Ham
\$1.57 10 oz.



Beef
Stew Meat
\$1.97 lb.



Ruffles
Potato Chips
99¢ \$1.49 Size



Nabisco
Mini Chips Ahoy
\$1.79 10.5 oz.

FREE TEA
BUY ONE, GET ONE FREE AT CHECKOUT any Nestea, Instant Tea Product



Dubuque
Meat Franks
67¢ 12 oz. Pkg.



Dubuque
Meat Bologna
97¢ 12 oz. Pkg.



Beef
Short Ribs
\$1.97 lb.



Dubuque
Bacon
97¢ 12 oz. Pkg.



Dubuque
Meat Franks
97¢ lb.

Introducing Freshness!



Cinco De Mayo
Refried Beans
2\$1 For 1



Campbell's Healthy Request
Spaghetti Sauce
99¢ 26.5 oz.



Mardi Gras
Towels
59¢ Jumbo Roll



Pace
Picante Sauce
\$1.49 16 oz.



Gingham Girl 7"
Tortillas
79¢ 10 ct.



Old El Paso
Pico De Gallo
\$1.89 15.5 oz.



Fresh Crisp
Broccoli
57¢ ea.



Sno White
Cauliflower
77¢ ea.



Fresh
Yellow Squash
57¢ lb.



Fresh
Carrots **3\$1** for 1 lb. Cello Pak



Hass
Avocados
Small size
3\$1 for 1 ea.



New Crop
Green Cabbage
4\$1 lbs. Texas Grown



Fresh
White Onion
2\$1 lbs.



Old El Paso
Green Chili
79¢ 4 oz.



Old El Paso
12 Taco Shells
\$1.29 4.5 oz.



Old El Paso
Salsa
\$1.89 16 oz.



Old El Paso
Enchilada Sauce
79¢ 10 oz.



Old El Paso
Taco & Tostada Shells
\$1.29 4.5 oz.



Quaker Masa Harina
Preparada
\$1.99 4lb. Flour or 5lb. Corn



Kids Pasta
Chef Boyardee
Main 15 oz.
2\$1 For 1 W/Meat Balls 89¢



Regular Asst.
Kool Aid
5\$1 For 1 Makes 2 qt.



Wrigleys Gum
Plen-T-Pak
2\$1 For 1

Frozen Foods



Pepperidge Farms
Turnovers
\$1.89 12.5 oz.



Swanson
Dinners
\$1.69 Asst.

Dairy



Blue Bonnet
Margarine
69¢ 1 lb. Quarters



Kraft Philly Light
Cream Cheese
99¢ 8 oz.



PHILADELPHIA
CREAM CHEESE
99¢ 8 oz.



Shurfine
Sour Cream
69¢ 1/2 Pint



Kraft Light Natural
Mild Cheddar
\$1.79 8 oz.

Health & Beauty



Massengill
Tooth Paste
Prepared 89¢
79¢ Asst. single



Aqua Fresh
Pump Tooth Paste
4.6 oz. Pump
\$1.39



Asst.
Gatorade
79¢ 32 oz.



Soft & Gentle
Bath Tissue
69¢ 4 Roll

Lowe's MARKETPLACE

515 W. Amer. Blvd. Muleshoe 272-4406
401 W. Amer. Blvd. Muleshoe 272-4585

Prices effective April 26 - May 2, 1992