

# The Goldthwaite Eagle

Established in 1894

And The Mullin Enterprise

Volume 77 — Number 43

Goldthwaite, Mills County, Texas 76844

Single Copy 15¢ Thursday, January 31, 1974

## 1974 Auto License Plates On Sale Friday

Auto license plates will be on sale Friday morning, Feb. 1, at the county tax office. H. G. Brooks, county tax collector, said county agents are expected to purchase 3570 sets of new plates this year.

All car owners who did not receive the proper license forms from the Highway Department should bring the auto title and current registration receipts.

If plates are ordered by mail, the license forms should be included in the request for new plates. The county also requires the fee for last year and \$1 for the postage.

Revenue from the sale of auto license plates provides the county with one of its major sources of funds, with the largest portion of the money going directly to the four county commissioner precincts.

Other types of license plates that will be distributed to Mills Co. vehicle owners are 850 sets of pickup and light truck commercial plates, series B1125-974. Also, 815 farm truck plates, series 8J9700-8K10-8K524.

## Changes In Mail Service Here Begins Saturday

Beginning Saturday, February 1, 1974, mail at the local post office will be received one (1) hour later in the mornings and dispatched one hour earlier in the afternoons. This announcement was received this week by local postmaster Norman Duren.

The change will affect not only Goldthwaite, but the Star, Priddy and Mullin areas.

## Dean Woods President Of Beacon Supply

Beaumont - Mayeaux Industries Inc., a Texas corporation with headquarters in Beaumont, has purchased all the outstanding shares of Beacon Supply Co. for a cash sum in excess of \$1 million.

Dean Woods, formerly Norvell Wilder's Odessa branch manager has been named president of Beacon Supply. B. B. Phillips, also of Odessa, and B. J. Alexander of Pampa, are vice presidents.

The purchase was announced by J. R. Mayeaux, principal stockholder and chief executive officer of the purchasing firm; E. C. Sidwell of Pampa, chairman of the board of directors of Beacon Supply, and R. W. Sidwell, also of Pampa, Beacon president.

Beacon, an oil field equipment and supply company, has store locations in Pampa, Borger, Odessa, Perryton, Crane and Andrews in Texas; also in New Mexico, Oklahoma and Kansas.

## Richard Jeske Selected For Who's Who

Richard A. Jeske has been selected for the 1973-74 listing of Who's Who in Texas. He lives in Arlington, Texas, with his wife Jo Ann and two sons, Ricky and Timothy.

Mr. Jeske is a graduate of Priddy High School and the University of Texas at Austin. He has been an Avionics Engineer at LTV for the past twelve years. He is a member of the Professional Engineers of Texas and is the president of the Prince of Peace Lutheran Church in Arlington.



## Beta Club Members

Members of the Goldthwaite High School Beta Club are pictured above.

They are, back row left to right, Nancy Gist, Diane Tischer, Gayle Berry, Jana Duncan, LaVina Casbeer, Cindy Johnson, Delilah Wilcox, Tamra Long and sponsor Robert Robertson.

Second row, left to right, Lee Ann Aldridge, Carolyn Schwartz, Sally Saylor, Tommy Standley, Randy Poer, Steven Saylor, Carla Tatum, Carol Maddux and Tammy Petty.

Front row, left to right, Rose Saplen, Camille Bryant, Gwyn Saylor, Cindy Rickel, Melissa Coats, Suzan Morrow, Marsha Henry and Valerie Stader.

Mr. Ellis emphasized that the program should be of particular interest to high school drop outs since the program is designed to meet education requirements equivalent to that of high school diplomas.

The program will be locally operated using the facilities of the Goldthwaite Independent School District.

Mr. Ellis of Central Texas College, program sponsor, will be on hand to explain the program.

Mr. Ellis emphasized that the program should be of particular interest to high school drop outs since the program is designed to meet education requirements equivalent to that of high school diplomas.

The program will be locally operated using the facilities of the Goldthwaite Independent School District.

Mr. Ellis emphasized that the program should be of particular interest to high school drop outs since the program is designed to meet education requirements equivalent to that of high school diplomas.

## GISD Receives Funds For Adult Education

Supt. Gilbert Davis announced today that Goldthwaite Independent School District has received funds for free public adult education. The program is now available for the first time in Texas and will cover basic through skills type education in the Goldthwaite Independent School District.

There are no entrance requirements and those who have high school diplomas or advanced education are eligible for the classes.

Everyone interested in exploring the program, whether residents of Goldthwaite or surrounding towns should meet to select the program on February 1, 1974 at 7 p. m. at the high school auditorium.

Mr. Ellis of Central Texas College, program sponsor, will be on hand to explain the program.

Mr. Ellis emphasized that the program should be of particular interest to high school drop outs since the program is designed to meet education requirements equivalent to that of high school diplomas.

The program will be locally operated using the facilities of the Goldthwaite Independent School District.

Mr. Ellis emphasized that the program should be of particular interest to high school drop outs since the program is designed to meet education requirements equivalent to that of high school diplomas.

The program will be locally operated using the facilities of the Goldthwaite Independent School District.

Mr. Ellis emphasized that the program should be of particular interest to high school drop outs since the program is designed to meet education requirements equivalent to that of high school diplomas.

The program will be locally operated using the facilities of the Goldthwaite Independent School District.

Mr. Ellis emphasized that the program should be of particular interest to high school drop outs since the program is designed to meet education requirements equivalent to that of high school diplomas.

The program will be locally operated using the facilities of the Goldthwaite Independent School District.

Mr. Ellis emphasized that the program should be of particular interest to high school drop outs since the program is designed to meet education requirements equivalent to that of high school diplomas.

## Mothers March For Dimes Scheduled Monday Night

The annual Mothers' March for Dimes will be held in Goldthwaite on Monday, February 4, it was announced this week by Mrs. Clyde Kerby, local campaign director, and Mrs. Jeanie Ratliff, Mothers' March chairman.

Mothers are asked to assemble at the Commissioners Court Room of the Mills County Courthouse at 6:30 p. m. to begin the march. This will be the central point of the march and the marchers will cover all areas of the county in their canvass.

According to announcement by Mrs. Ratliff, the local chapter has numerous persons with specific problems.

Other persons associated with the March of Dimes on the local level are W. P. Duren, chairman, and Raymond Casbeer, treasurer.



MRS. JEANIE RATLIFF  
... Mothers' March

## Square Dealers To Benefit Program

The Square Dealers square shooting hospitalizes Jason Gibbard

Jason Gibbard, 11-year-old son of Mr. and Mrs. Henry Gibbard of Goldthwaite, accidentally shot himself with a .22 pistol Sunday afternoon.

According to Mrs. Gibbard, Jason and a friend were hunting in a pasture east of town when the accident occurred. The boy was holding the gun in his pant's pocket when it discharged, shooting him just below the stomach. The bullet came out the middle of his left leg.

Dale Allen, the first to the scene of the accident, rushed the Gibbard boy to the Childress Hospital.

The lad, a sixth grader at Goldthwaite Elementary School, is listed in good condition.

## Notice: G'waite Senior Citizens

Evant School Starts Adult Education

Evant Independent School District set up classes in Adult Education, Jan. 21. Classes are scheduled for Tues. and Thurs. nights between the hours of 6:30 and 9:30 with G.E.D. preparation and skills offered, and others as requested later.

Interested persons still wanting to enroll are asked to report to the first class, Thursday, Jan. 21, at 6:30 in the High School Library. There will be no charge for these courses.

## Childress Clinic & Hospital News Release

TUESDAY, JANUARY 22

Admitted - James Melvin Knight, Goldthwaite  
Discharged - James W. Featherston, James M. Knight

WEDNESDAY, JANUARY 23

Admitted - Ollie E. Ball of Goldthwaite  
Discharged - Jay Lee Brooks

THURSDAY, JANUARY 24

Admitted - Grace Alexander, Goldthwaite, Martha M. Seider, Hamilton

FRIDAY, JANUARY 25

Admitted - Murl F. Alexander, Odessa, Grady E. Tullos, Goldthwaite, Rosie Gibbard  
Discharged - Ella G. Waddill

SATURDAY, JANUARY 26

Admitted - Ura V. Bryant of Goldthwaite  
Discharged - Murl Alexander

SUNDAY, JANUARY 27

Admitted - Ramonda Martinez, Goldthwaite, Betty Lou Kyle of Evant, Jason Todd Gibbard, Goldthwaite  
Discharged - Ollie E. Ball

MONDAY, JANUARY 28

Admitted - Lena Brown, Mullin, Eva Hancock, Goldthwaite, Rosa Lee Head, Goldthwaite, Elmo Dale Watson, Goldthwaite

One Central Texas television station owner has cut down so sharply on expenses that now even the weather reports are reruns.

Resolved, That the Senate of the 63rd Legislature, 1st Called Session, honor the memory of John Luther Patterson, and that when the Senate of the State of Texas adjourns this day it do so in recognition of his exceptional accomplishments.

Signed, W. P. Hobby, President of the Senate

I hereby certify that the above Resolution was adopted by the Senate on December 18, 1973, by a rising vote.

Signed, Charles Schnabel, Secretary of the Senate (Seal)



# Goldthwaite Eagle

AND THE MULLIN ENTERPRISE

Published every Thursday at Goldthwaite, Mills County, Texas

PHONE 915-648-2244

G. Frank Bridges . . . . . Editor and Publisher

AN INDEPENDENT NEWSPAPER



SUBSCRIPTION RATES -			
	Amount	Tax	Total
Mills and adjoining Counties, one year . . . . .	\$5.00	.25	\$5.25
Elsewhere in Texas, one year . . . . .	\$6.00	.30	\$6.30
Outside of Texas, one year . . . . .	\$7.00	.70	\$7.70
Single copy . . . . .	.15	.01	.16

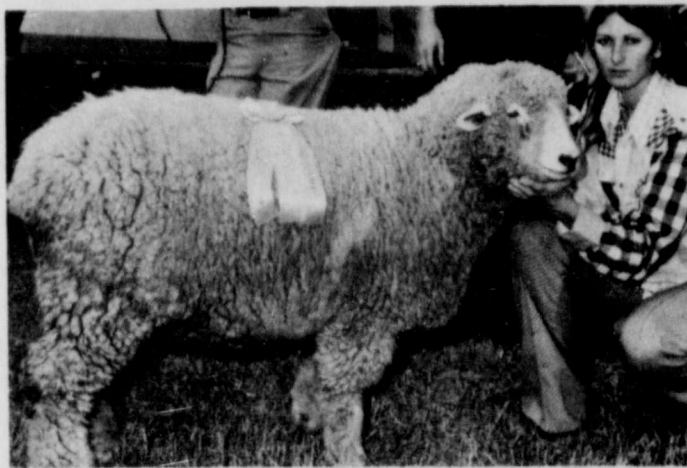
SUBSCRIPTIONS DISCONTINUED UPON EXPIRATION

Entered as Second-class Mail Matter at the Post Office in Goldthwaite, Texas 76844, under the Act of Congress of March 3, 1879.

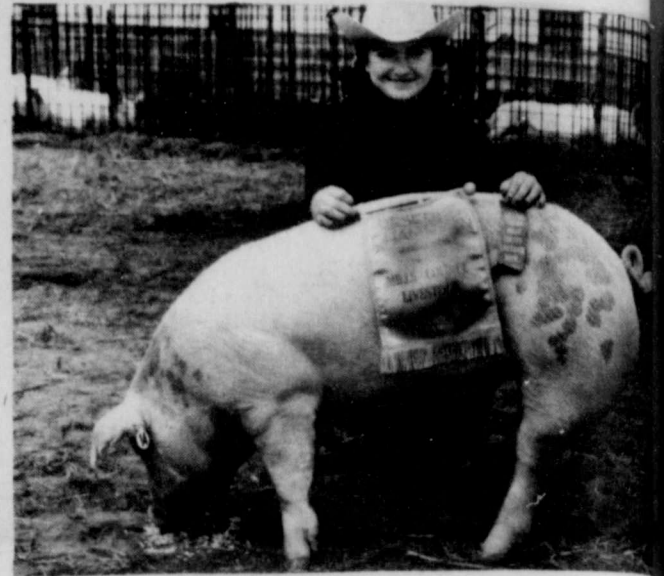
## Stock Show Photos!



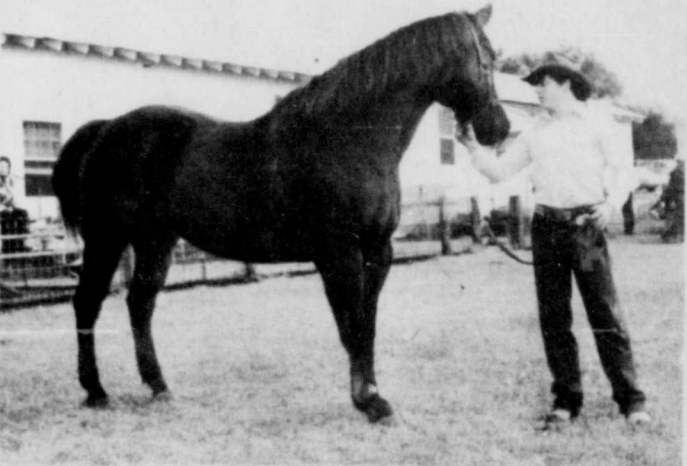
John Priddy with champion rambouillet yearling ram.



Diann Whisenhunt, daughter of Mr. and Mrs. A. R. Whisenhunt of Mullin, with reserve champion sheep.



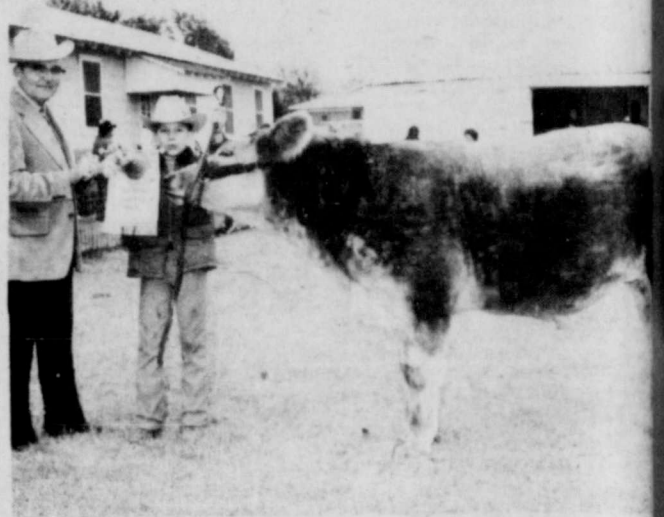
Bridget Meier with reserve champion fat hog.



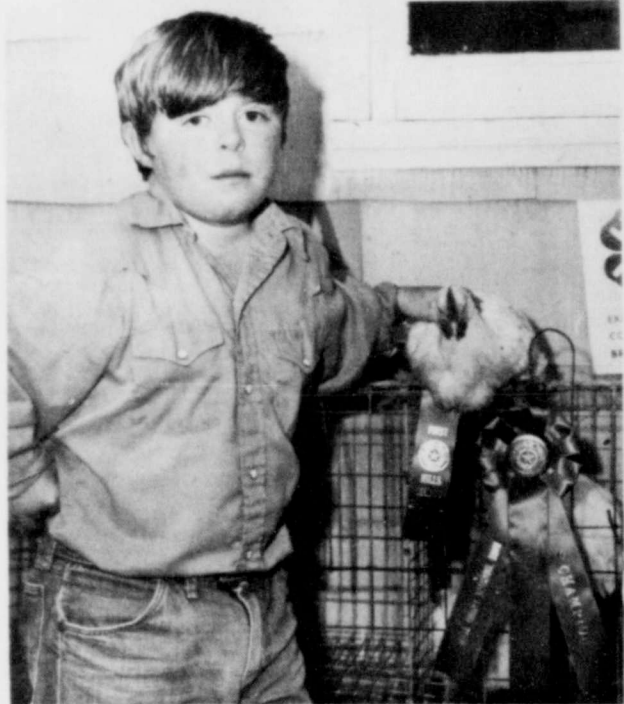
Cowboy Love's grand champion gelding shown by Richard Covington.



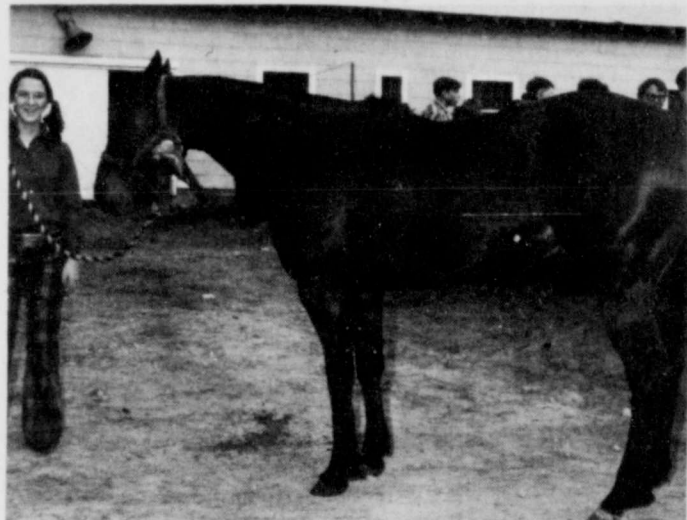
Danny Whisenhunt, son of Mr. and Mrs. A. R. Whisenhunt of Mullin, with one of his grand champion sheep.



Lee Owens with reserve champion steer.



Richard Burrus with first place broilers.



LaFreta Pyburn of Mullin showing her champion mare.

LAUGHLIN STUDIO PHOTOS

# BLUE NORTHER SALE!

## BIG SAVINGS ON BIG FORDS!



74 FORD LTD

**A FORECAST OF VALUES... AT THE YEAR'S LOWEST PRICES. NOW... AT YOUR TEXAS FORD DEALERS.**

IT'S COLD... BUT THE DEALS ARE HOT!



Landrum Ford Sales

G'waite

### QUALITY

is the difference  
Quiet, Thrifty, Dependable

**LENNOX**

Central Air Conditioning  
Enjoy it NOW!

Wilcox & Head Electric

Phone 648-3133

Goldthwaite

Fill Up With



- Farm Bureau Tires
- We Fix Flats
- Open 24 Hours

**Lock's Shamrock**

Service Center

J. A. Lock - Operator

At The North "Y"  
Goldthwaite, Texas

# A WORD OF APPRECIATION FOR YOUR FINE SUPPORT

We heartely salute the buyers who purchased animals and exhibits and paid premiums at the 1974 sale. Their enthusiastic support pushed the total sales amount over \$20,000.00 Following is a list of the firms and individuals

Huck Alldredge  
Don Geeslin  
Glynn Petty  
Jackie Fiest  
Glen Love  
Schwartz Food Store  
Cecil Egger  
Frank Cook  
T. H. Johnson  
Joe Langford  
Andy Wells  
W. V. Horton, Jr.  
Blackburn Variety  
Evant Commission Co.  
Yarborough's Dry Goods  
Ray Standley  
Boykins Feeds  
Mills County Commission Co.  
Shelton Lumber Co.  
Brownwood Cattle Auction  
Doran Lemke  
Cattleman's Production Credit  
BMW Cattle Company  
Mills County State Bank  
Doyle Duncan Liquid Feeds  
Stacy Insurance  
Harper Implement Co.  
Nathans Jewelry, Brownwood  
Dr. M. A. Childress  
Y. B. Johnson Wool & Mohair  
Saylor Chevrolet  
G. C. Head Insurance  
Melvin Pafford  
John Carl Smith  
Ferguson Garage, Mullin  
Bob Wright

Horton's Wagon Wheel Cafe  
D bar T Western Store  
Service Mill, Priddy  
Goldthwaite Eagle  
Lampasas Auction  
Mills County Lumber  
D. T. Carter  
Rancher Feed and Supply  
Zephyr Butane  
Continental Grain  
John Smith  
Ray Duren  
Locks Shamrock Station  
Jess Miles  
Rodney Carlisle  
Jim McCoy  
Robert Long  
Anderson-Nelson Shoe Store, Bwd  
Cockrum and Duren - Attorneys  
T. E. Winters  
Butch Schuman  
Edmondson's Womens Wear, Bwd  
Ranchmans Wool & Mohair, Bwd  
Barns and McCollough  
Wayne King  
Mills County Farm Bureau  
Ray Lindsey  
Charles Sherwood  
Lometa Commission Co.  
San Saba Tractor Co.  
Dr. T. C. Graves  
Roger Sanders  
Steen Hardware  
Goldthwaite Rodeo Assn.  
Wallace Hickman

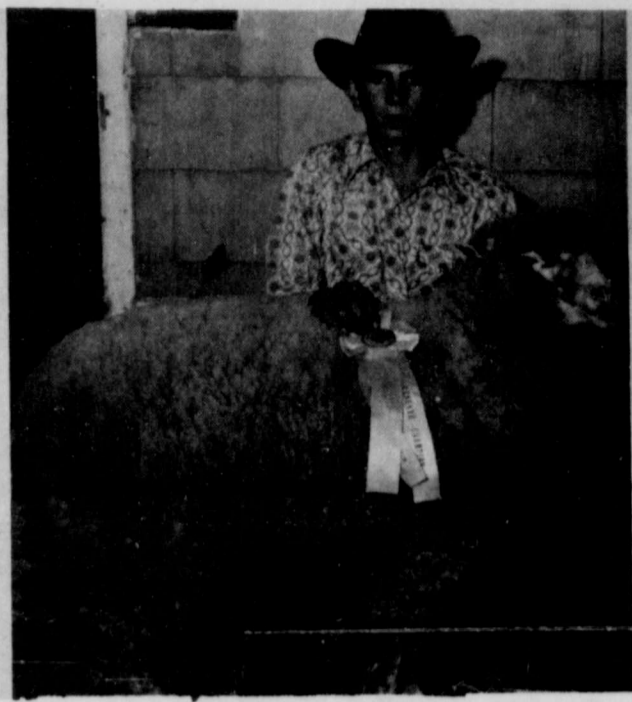
James Burrus Quarter Horse Ranch  
Farmers and Merchants Bank, Priddy  
Goldbold Feed  
Toddy House  
Glynn Sanders  
Joe Benningfield  
Layton Black  
Keith Kensing  
Mullin Rodeo Assn.  
Nutrena Liquid Feed  
Bowman Lumber Co., Bwd  
Jerry Wylie  
Spradley Furniture  
B and O Feed Lot  
Lewis Watson  
Harry's Dept. Store, San Saba  
Wilkins Funeral Home  
Longs Gulf Station  
Miller Conoco Station  
C. H. Black  
Ernest Morris Mens Wear, Bwd  
Fina Station, Mullin  
Lee Vant  
Dan Tyson  
Ira Lethco  
Jim Wells  
Swift & Co.  
Earl Wetzel  
Henry Welding Shop  
Thresa Black  
June Clifton  
A. R. Whisenhunt  
R and R Package Store  
Tiemanns Toddy House  
Kenneth Treadaway

# Mills County Livestock Raisers' Association





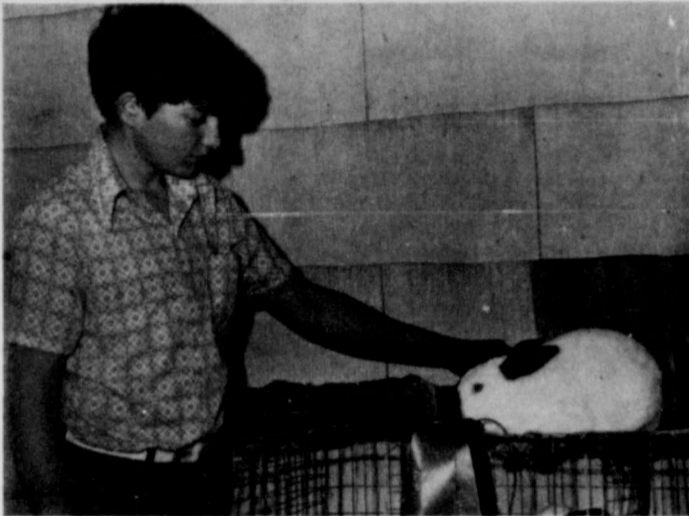
Tammy Shelton with reserve champion rambouillet ram.



Hugh Taylor, son of Mr. and Mrs. Coleman Taylor of Goldthwaite, with one of his reserve champion sheep.



Pat Wells showing her champion turkey at the livestock show.



Delton Whisenhunt, son of Mr. and Mrs. A. R. Whisenhunt of Mullin, with champion rabbit.

## Mills County FFA & 4-H Students In Houston Show

Several Mullin FFA students will be entering livestock in the judging contests at the 1974 Houston Livestock Show and Rodeo. They are: Craig Smith, Charles King, Randy Lindsey, Steve King, Carole Hickman, Phil Hickman, Sam Shelton, Clint Shelton, Tony King, Ted Hasley, Danny Whisenhunt, Diann Whisenhunt, Gary Harris, Pam Lindsey, Debbie Lindsey, Becky Lindsey, Whisenhunt Brothers, King Brothers and Shelton Brothers.

Priddy FFA members Brian Meier and Lynn Tiemann will be entering livestock in the judging contests at the 1974 Houston Livestock Show and Rodeo.

Also entering livestock are Mills County 4-H Club members Bridget Meier, Molly Winters, Brenda Geeslin, Bruce Boyd, Kelly Boyd, Steve Boyd, Charles Boyd and Randy Lindsey.

Entries in the 1974 Houston Livestock Show and Rodeo are expected to exceed 19,000 in number proving it is really the largest livestock show in the world. When the '74 show opens, the Livestock Exposition Building will be bulging at the seams again with classes provided for 12 beef cattle breeds, 5 dairy cattle breeds, 5 swine breeds, 11 sheep breeds, 6 horse breeds, 5 rabbit breeds, 22 poultry breeds, and Angora goats. In addition, a record number of 19 auction sales will be held during the two weeks of the show.

John Milton used 8,000 different words in his poem "Paradise Lost."

### Hereford Motel

Goldthwaite's Newest & Finest Motel  
Color TV, Swimming Pool,  
Refrigerated Air

on Highway 84 North

Goldthwaite  
Ph: 915/648-2288

### Mrs. Grace Alexander Services Conducted

Services for Mrs. Grace B. Alexander of Goldthwaite were conducted Saturday, January 26, 1974, at 2 p. m. in the Wilkins Funeral Chapel with Rev. Ramon Sims officiating. Burial was in the Center City Cemetery. Funeral arrangements were under the direction of Wilkins Funeral Home.

Mrs. Alexander, a member of the Center City Baptist Church,

passed away Thursday, January 24, 1974, at 10:05 p. m. in the Childress Hospital.

She was born May 9, 1889, in Siloam Springs, Ark. On March 28, 1909, she was married to William Thomas Alexander in Siloam Springs, Ark. They moved to Bosque County in 1912 and to Mills County in 1937.

Survivors include one daughter,

Mrs. Kenneth Coffman, Center City; two sons, Murl F. Alexander and Lloyd Alexander, both of Odessa; nine grandchildren and eleven great grandchildren.

Pallbearers were Herbert Coffman, Charles Parker, John Seward, J. C. Wesson, Norman Duren and Michael Grelier.



## We've Got A Savings Plan to PUT YOUR FINANCIAL PICTURE TOGETHER

Puzzled? Troubled about your financial future? In this day of the unsteady dollar there is something you can put faith in... our all-together, secure savings plans.

There's our popular in-again, out-again savings account where money is compounded regularly. For depositors with an eye toward

the future there are higher interest bearing savings certificates.

Beginning with a one year plan through our recently introduced four year plan, you can see your savings dollars grow like never before. Get all the facts, soon!

## Mills County State Bank



Each depositor insured to \$20,000  
**FDIC**  
FEDERAL DEPOSIT INSURANCE CORPORATION

Goldthwaite, Texas

## Jim McCoy Announces the opening of Jim's Trailer Sales

San Saba Highway Goldthwaite

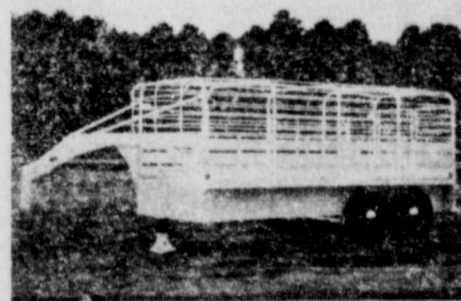
— Featuring —

Neckover Trailers

\* Livestock

\* Flatbed

\* Custom Built



Available in all sizes-16 to 32 feet long

All types of optional equipment available

Contact Jim at 938-5361 anytime

16' x 6' 20' x 6'—available now!!



# READ and USE CLASSIFIED ADS

## CLASSIFIED RATES

5c per word including name and address, for first insertion and 3c per word for each subsequent insertion. Count initials as one word.  
Minimum charge \$1.00.  
Legal notices same as above rates.  
Memorial tributes or Resolutions of Respect and all other matter not news will be charged for at regular advertising rates. No charge is made for news of Church or other public gatherings where no admission is levied. Where admission is charged or where goods or wares are offered for sale, the regular advertising rates will be applied.  
Cards of Thanks, \$4.00.  
All advertising is cash with order except where accounts have been established.

## FARM & RANCH

**DEAD ANIMAL SERVICE** - As near as your nearest telephone. Phone (Area Code 817) 386-3303, if no answer try 386-3642. Service charge \$3.00 under 50 miles and 15c per mile over 50 miles from Hamilton. Hamilton Rendering Co., Inc. Hamilton, Texas. 2-22-tfc

**FOR SALE** - Several choice young horned Hereford bulls. All registered and reasonably priced. Oran Carothers, 948-3615 Star exchange. 1-3-tfc

**FOR SALE**  
Good quality coastal bermuda grass hay.  
\$1.25 per bale  
**Hill Country Store**  
Telephone  
915/6482737

**HAY FOR SALE** - Good, bright coastal and peanut hay for sale. Cockrell's Riverside Nursery. Phone 938-5575. 1-17-tfc

New brilliant grass seeder. Klein lovegrass seeding. Also coastal springing. Call Willard Partin, 372-4646 Pottsville tx. 1-10-tfc

**HAY FOR SALE** - Johnson grass, and plenty good peanut hay. Call Robert Doak, Big Valley, 938-5538. 12-20-tfc

**IRRIGATION EQUIPMENT**  
A complete line of irrigation equipment. Pump, pipe, fittings, volume guns and circular systems.  
Let us help you with your irrigation needs. Largest supply in Central Texas. KIMMELL IRRIGATION SUPPLY INC. HIGHWAY 16 DELEON, TEXAS 76444 PHONE 817 893-6266 1-31-tfc

**RENFRO CABINET SHOP**  
1101 Parker St., Goldthwaite  
Phone 648-3254  
• Custom-Made Cabinets  
• Store Fixtures

JUNE CLIFTON - T. W. WINTERS - T. E. WINTERS  
**Lampasas Livestock Auction**  
Lampasas, Texas  
**CATTLE**  
WEDNESDAYS 12:00 O'clock Noon  
Phone, Day or Night  
Area Code 512-556-3611  
Or Mills County Area,  
Big Valley Ex. 938-5388

## FOR SALE

Second hand furniture for sale.  
**A. A. CLINE REAL ESTATE**  
Phone 648-2292, Res. 648-3177 Goldthwaite, Texas 76844 2-8-tfc

**FOR SALE** - Metal Storage Tanks, Dal-Worth Paint. Tischler's House of Color Goldthwaite, Texas 76844

**FOR SALE** - 1971 Republic Mobile Home. 14 X 52. In excellent condition. Contact Sam Watson. 938-5598 after 5 p. m. 8-23-tfc

Asphalt paving, parking lots and drive ways. Free estimates. Call Gaillyan Smith at 372-3057, San Saba. 7-26-tfc

**FOR SALE** - Singer sewing machine. Zig-Zags, mends and darns, sews on buttons. \$34.15 Portable.  
We also clean and adjust all makes and models. Call 648-2591. 1-10-tfc

**FOR SALE** - 7 room house on 1/2 block corner lot. See Mrs. Alma Williams or call 648-2665. 1-10-tfc

**FOR SALE** - 16 ft. Glastron Boat with 90 H. P. Evinrude motor. Price \$900.00. See Ronnie Cline. 1-10-tfc

**SPECIAL** - Loe Latex Paint. \$3.19 a gallon. Barnes & McCullough Lumber Co., Goldthwaite. 3-1-tfc

**FOR SALE** - 1968 Chevrolet Impala, two-door hardtop. Air cond., all power, low mileage. Lloyd Laughlin, 648-3235. 1-24-tfc

**FOR SALE** - One owner, 1967 Ford Custom 500. 289 V8 engine, air, radio, heater and power steering. Will trade for cattle. Phone 948-3345. 1-17-tfc

**FOR SALE** - One gentle, 6 year old horse. One 180 cc Yamaha motorcycle. One 20 cc Kawasaki motorcycle. Call Dale Allen at 648-2563. 1-31-tfc

**FOR SALE** - '72 model camper with all fixtures, good condition, sleeps 4; Round oak table; Large oak desk; old cabinet; 1 bedroom set; chest of drawers; dresser; table & chair sets; 1 bunk bed set; 2 half beds - complete; Singer treadle machine; antique couch; drop-leaf table; end tables; coffee table; high chair; car seat; 3 cook stoves; one ice box; 4 bathroom heaters; roll-away bed; 2 bicycles; iron bed stands and springs; 2 iron forges; insulators glassware; books; clothes in all sizes; antiques and odds and ends; good cotton rags - cheap. Come browse. THE TRADING POST, 1510 Priddy Rd., Goldthwaite. 1-31-tfc

**FOR SALE** - 100 to 1000 bales of fertilized, hybrid sudan hay. Heavy bales. Kenneth Coffman, Center City. 1-31-tfc

**WHY WORK FOR WAGES** when you can own a business of your own? Nice business for sale.  
**A. A. Cline Real Estate**  
Phone 648-2292 - Res. 648-3177 Goldthwaite, Texas 76844 7-13-tfc

## REAL ESTATE

**See Us For All Your REAL ESTATE NEEDS**  
Your Real Estate Sales Is Our Business, Not A Side Line.  
We give our Full Time and Attention to serve your needs.

Listings wanted and appreciated.  
**A. A. CLINE REAL ESTATE BROKER**  
Phone 648-2292, Res. 648-3177 Goldthwaite, Texas  
**FLORIE BURRUS Real Estate Sales**  
Phone 938-5327 6-29-tfc

**FARM AND RANCH Sales or Trades.** Listings appreciated. If interested contact Joe Green, Center City, Rt. 3, Goldthwaite, Texas. Phone 948-3321. 1-3-tfc

**FOR SALE** - 5 room house for sale to be moved 12 miles south of Goldthwaite on Lometa Highway. Ulen Laughlin, Lometa, 752-3528. 1-17-3tp

**FOR SALE** - Good house. FHA loan. Will sell with small equity down payment. Take up FHA loan if they will qualify. Homer Beard house on Front St. CLINE Real Estate, Ph. 648-2292. 1-31-tfc

## BUSINESS SERVICES

**ALL WORK GUARANTEED** - If you have plumbing problems call -  
**Britten Plumbing**  
Phone 648-2523 Goldthwaite, Texas 10-18-tfc

For any and all kinds of carpenter work plus efficiency call Pete Miles. 648-3569. 9-27-tfc

**BACKHOE SERVICE** - Brand new John Deere equipment. Experienced operators for digging foundations, sewer lines and septic tank installations.  
**HAULING** - Yard dirt, cliche, concrete gravel and washed mortar sand. Prompt daily deliveries.  
**FOR RENT** - Steel scaffolds and plywood forms. Truett Auldridge. Phone 648-2424. 1-11-tfc

**NOW'S THE TIME** to get to that REMODELING job you've been planning. For dependable, top quality carpenter and cabinet work, call Otha Peoples at 985-3364. 1-17-tfc

**CALL A. W. Brumbalow** for tree spraying, termite pest control, and septic tank cleaning and repairing. For licensed exterminator phone 386-5028 or write P. O. Box 403, Hamilton, Texas 76531. 5-31-tfc

## LOST AND FOUND

**LOST** - Male Border Collie sheep dog. Lost Thursday, January 24, in the Priddy area. Is wearing collar with no name on it. Answers to the name of Rip. Reward. If found call Troy Duncan at 512 752-3128 or 752-3444 or call Doyle Duncan at 648-3565 or 648-3205. 1-31-tfp

**AMBULANCE SERVICE**  
PHONE 648-2255  
**Roy Wilkins Funeral Home**  
GOLDTHWAITE, TEXAS

**QUALITY REUPHOLSTERY**  
Furniture and Auto Free Pickup and Delivery  
**Spradley's Upholstery Shop**  
Dial 648-2261  
Fisher St. - Goldthwaite

## MISCELLANEOUS

**ANTIQU & GIFT SHOP NOW OPEN** - Come see! Mills Co. Lumber & Supply, Phone 648-3400, Goldthwaite. 2-22-tfc

**GIFTS** - Frames, glassware, bisque porcelain birds, large and miniature frames, western art, paper weights, custom made frames and books. Wicker Studio. 1-10-tfc

**UPHOLSTERY WORK**  
For all your needs. Furniture Cars, Boats, Etc. Extra large stock of fabrics to choose from to fit your budget. Come see us or call 648-2261. Spradley's Furniture & Upholstery, on Fisher Street in Goldthwaite. 1-3-tfc

**UPHOLSTERY**  
ALL TYPES, furniture, cars, pickups, boats. See our samples at Rind's Upholstery, Phone 648-2717, 1208 Hanna Valley Road. 6-19-tfc

**NOW** is the time to spray your fruit and pecan trees with dormant oil. For tree spraying contact Ronnie Davis after 5 at 648-2461. 1-17-tfc

**Trees! Trees!**  
Gain a Year!  
Plant now for early fruit. Large bearing size trees, plus smaller sizes. In newest varieties. We have apricot, peach, plum, nectarine, apple, pear, cherry, figs and berries.  
Pecan trees, new govt. crosses Indian named varieties plus others. Get them now while we have several kinds to select from. Cockrell's Nursery, Ph. 938-5575. 1-17-tfc

**FOR SALE** - 1969 Ford Ranger pickup with short, wide bed. Automatic. Call 648-2716. 1-24-tfc

**Start the New Year off right!** Rework your bookkeeping system for more efficiency. The Eagle Office can help you with your problems. Come by or call 648-2244. 1-31-tfc

**FISH BAIT:** Live minnows, worms, goldfish, and crawfish. Frozen shad gizzards, shad, liver, shrimp. Also blood bait. A. C. Williams Bait Station on Waco Highway, Goldthwaite. 4-18-tfc

**KEYS** made while you wait. Brass or Colorite. BLACKBURN'S Variety Store, Goldthwaite, Texas. 1-31-tfc

Slightly used Singer Touch N Sew. Works button holes, sews on buttons, appliques, decorative zig-zag, etc. Guaranteed. Pay balance of \$72.38 or take over small monthly payments. Call 948-3666. 1-31-tfc

**CARPENT SALE** - February 1 and 2. Appliances, furniture, odds and ends. Mrs. J. H. Hale residence, 1703 Reynolds St. 1-31-tfc

**JUST RECEIVED** - Over 2000 yards of brand new fabrics for your spring sewing. BLACKBURN'S Fabric Department, Goldthwaite. 1-31-tfc

**BLACKBURN'S TRADING POST** will open February 1. Buy and sell all types of items - bicycles, tools, furniture, etc. Located in corner building (Oliver TV Shop) north of bank. 1-31-tfp

## FOR RENT

**FOR RENT** - House for rent. Mrs. Arthur Wilcox. 1-31-tfc

**FOR RENT** - Two bedroom bungalow 7 miles out on Bulls Creek Road. Ideal for retired couple. Phone 648-3268 after 6 p. m. 1-31-tfp

**FOR RENT** - Three bedroom house. Available February 1, 1974. Call Dale Allen, 648-2563. 1-31-tfc

## WANTED

**WANTED** - Responsible party to take up payments on a used electric organ, now in storage. Can be seen in this vicinity. Cash or terms to responsible party. Write: Credit Manager Plano-Organ Mart, 2124 Highland Mall, Austin, Texas 78752. 4-26-tfc

**WANTED** - Old coins of all descriptions. U. S. or foreign. Will pay 50 cent above face value for U. S. coins before 1964. Pay \$20.00 for 1909S Indian Head Cent. Pay \$50.00 for good 1877 Indian Head Cent. Pay \$2.50 for good U. S. Silver Dollars. I will make offer on any gold coins. Contact Jack Morgan at 648-3401. 902 1st St. 6-14-tfc

## EMPLOYMENT

**WAITRESSES NEEDED** - Start immediately. Apply at Carr's Cafe. Phone 648-2277. 1-17-3tc

Now taking applications for Nurse's Aides and Cooks. Apply in person or call 648-2247. Hickman Nursing Home. 1-10-tfc

**AVON** -  
EVEN IF YOU'RE OVER 55 but still want to be active - Investigate the Avon representative opportunity. As an Avon Representative, you'll sell quality products in your spare time on a flexible schedule and meet new people too! For more information, call collect 817 840-2614. 1-24-2tc

**Dealer for Ft. Worth Star Telegram** in Goldthwaite. Excellent part-time earnings. Good transportation needed. Apply Box 249, Goldthwaite Eagle. 1-31-tfp

**WANTED** - Mechanic or carpenter to teach and work with students at the Boys Ranch. Must have High School degree at least. Call Del Barnett, 915 938-5355 or 648-3139. 1-31-tfc

**HELP WANTED** - Apply at Johnson Bros. Texaco. 1-24-2tc

**Needed** - Nurses Aids. Excellent salary and fringe benefits. Apply in person or call 648-2258 Heritage Nursing Home. 1-31-2tc

**Needed** - LVN. Excellent salary, working conditions, fringe benefits. Apply in person or call 648-2258, Heritage Nursing Home. 1-31-2tc

## CARDS OF THANKS

With the deepest gratitude we wish to express our thanks to everyone for the many acts of kindness shown to us during the passing of our beloved mother. The prayers, visits, cards, lovely flowers and nice food were deeply appreciated.  
May God bless each of you.  
The Family of Maude Dennard Landers 1-31-tfp

We want to thank everyone for the kindness shown us in the loss of our loved one. Thanks for the beautiful flowers, the food, the cards and the words of comfort.  
You have helped us through this very difficult time and we appreciate all of you so much.  
The Charles Manghams Mullin 1-31-tfc

We take this opportunity to thank everyone for the kindness shown us during the loss of our mother and grandmother, Mrs. Grace Alexander. Thank you for the nice food, flowers, cards and words of comfort. These have helped us through a very difficult time. And may God richly bless each of you.  
Mr. and Mrs. Kenneth Coffman and Family  
Mr. and Mrs. Muri Alexander and Family  
Mrs. Margie Alexander and Family 1-31-tfc

**Acco**  
**Paymaster Range Cubes**  
**\$125 per ton**  
**Ranchers Feed & Supply**  
**Goldthwaite, Texas 76844**

## LEGAL NOTICES

A Hearing Commission of the Texas Water Quality Board will hold a public hearing beginning at  
Council Chamber  
City Hall  
110 S. Greenleaf  
Brownwood, Texas  
10:00 a. m.  
February 21, 1974

In order to consider evidence relative to Waste Load Evaluations for Segment No. 1417 and Segment 1410 of the Colorado River Basin. The evaluations have been made pursuant to Title 40, Code of Federal Regulations, Part 130, Sections 130.24, 130.25, and 130.26, and the State of Texas Continuing Planning Process which requires a waste load allocation for those segments classified as water quality limiting. Segments classified as water quality segments are defined as those segments in which the measured instream quality does not meet the Texas Water Quality Standards.

The purpose of the Waste Load Evaluation is to define waste treatment levels that will result in the stream segment meeting applicable stream standards. The general approach followed is: a) describe the stream segment, b) define the water quality problem, c) calculate the segment assimilative capacity, d) define the localized assimilative capacity by mathematical modeling, and e) establish acceptable waste discharges and schedules of implementation.

Segment No. 1417 consists of that portion of Pecan Bayou from the Colorado River confluence to Lake Brownwood Dam. Segment No. 1410 consists of that portion of the Colorado River from the San Saba River confluence to E. V. Spence Reservoir (Robert Lee Dam).  
Copies of the evaluations are available upon request. Persons having questions or desiring to make comments in regard to this matter may contact Mr. Jerry Mullican, Administrative Operations Division, Texas Water Quality Board, P. O. Box 13246, Capitol Station, Austin, Texas 78711; telephone 512 475-3454. This hearing may be continued if necessary.

Issued this 17th day of January, 1974.  
Signed Jack J. Allis for Hugh C. Yantis, Jr., Executive Director, Texas Water Quality Board  
Published Goldthwaite Eagle, Thursday, January 31, 1974.

**NOTICE TO ALL PERSONS HAVING CLAIMS AGAINST THE ESTATE OF CYNTHIA ANN LOCKLEAR, DECEASED**

Notice is hereby given that original Letters Testamentary for the Estate of CYNTHIA ANN LOCKLEAR were issued on January 29, 1974, in Cause No. 1925, pending in the County Court of Mills County, Texas, to: ALMA LOCKLEAR WILLIAMS  
The residence of such Executrix is 1208 Reynolds, Goldthwaite, Mills County, Texas. The post office address is:  
ALMA LOCKLEAR WILLIAMS Goldthwaite, Texas 76844

All persons having claims against this Estate which is currently being administered are required to present them within the time and in the manner prescribed by law.  
DATED the 29th day of January, 1974.  
Signed, Alma Locklear Williams  
Published, Goldthwaite Eagle January 31, 1974.

**Dr. Merle M. Ellis**  
**OPTOMETRIST**  
308 Citizen's Nat'l Bank Bldg. Brownwood, Texas  
Glasses - Contact Lens  
Call 646-8778 or write P. O. Box 149 For Appointment

## CITY PROPERTY

**RESIDENTIAL** - Building lots for sale. All utilities available. Will build to suit. Contact Jim Smith. Phone 648-2411 or after 6 p. m. call 648-2475. 1-4-tfc

Building Lots for sale. Call Mills County Lumber Company. Telephone 648-3400. 6-29-tfc

**FAST, DEPENDABLE**  
**Film Developing**  
**Hudson Drug**

## CHECK THESE

1275 acre ranch on Pecan Bayou in Mills County. 1 mile frontage on Bayou. Deer and turkey are in great abundance.  
646 acres on Colorado River near Bend. 1/2 mile river frontage, 2 bedroom rock house and 2 wells.  
831 acres on Pecan Bayou near Mullin with 1/2 to 3/4 mile Bayou frontage. Rough hills, creeks and lots of timber.  
1338 acre ranch SE of Brady has 2 miles of Brady Creek running through it. Deer and turkey. Catfish and bass in Brady Creek.  
155 acres 4 miles south of Mullin has good fences, 2 wells, 2 tanks, some deer.  
1113 acre ranch in Kerr County, very rugged country that is heavily wooded making excellent deer hunting.

**Terry Smith Real Estate**  
Box 622 Goldthwaite, Texas  
Office (915) 648-2767  
Home (915) 938-5393

**Transparent Plastic**  
**Easy-On**  
Easy To Install Inside Or Outside!  
73" x 34" SHEET PLASTIC WITH AND NAILS  
**39¢**  
**STORM WINDOW KIT**  
**BARNES & McCULLOUGH**  
Goldthwaite, Texas

**Stacy's Insurance Agency**  
Lee Roy Stacy-Cecil Campbell  
We remind you to keep your house insured to value and double check to see if your household goods are covered. Remember you are only half insured if you only have coverage on your house.

**PADGETT FLORAL**  
For All Your Flower Needs  
CALL  
Phone 648-2618  
**FTD Wire Service**

CALL  
**L. J. PIGG**  
For Septic Tank Cleaning and Concrete Tanks for sale and installed.  
Call after 5:00 p.m. 386-3873  
Route 3, Hamilton, Texas

**Cook's**  
Water Well Drilling & Well Service  
GOLDS PUMPS SALES & SERVICE  
**Frank & Andy**  
Call 948-3523



**Square Dealers**

**Enlisting New Students Now**

The Square Dealers square dance club danced this past Monday night at the Heritage Nursing Home.

New classes have been started and anyone wishing to take square dancing lessons should meet with the group at the American Legion Hall Monday night at 8 o'clock, February 4th. This will be the closing night for taking new students.

Square dancing is for everybody, so come join and see how much fun it can be!

**Brownwood Cattle Auction**

Brownwood, Texas  
WAYNE MAY, Owner  
January 23, 1974

**MARKET:** Steady with last week on all classes of stocker, feeder, and slaughter cattle. Cow & calf pairs scarce and in strong demand. Bulk of the stocker cows \$3 to \$7 higher.

**ESTIMATED RECEIPTS: 1519**

- Stocker Steer Calves, Wts. 250-425-lbs. — 58.00-72.00
- Stocker Heifer Calves, Wts. 250-425-lbs. — 50.00-60.00
- Stocker Yearlings, Wts. 500-700-lbs. — 50.00-58.00
- Bull Yearlings — 45.00-53.00
- Heifer Yearlings — 45.00-48.50
- Plain Feeder Steers, 43.00-50.00
- Plain Feeder Heifers, 40.00-46.00
- Cows & Calves — Pairs: Good — 350.00-450.00 Plain — 300.00-400.00 Stocker Cows — 35.00-46.00

**SLAUGHTER CATTLE:**

- Fat Calves — 42.00-47.00
- Fat Cows — 33.50-36.00
- Utility and Cutter Cows — 30.00-34.00
- Canners — 24.50-30.00
- Shells — 23.00 Downward
- Stocker Bulls — 38.50-50.00
- Slaughter Bulls — 41.50-45.50
- Hogs (top) — None

**REPRESENTATIVE SALES:**

- Charles Sherwood, Goldthwaite, 1300-lb. Char. Cow 35.20
- B. A. Cooper, Mercury, 1970-lb. Wf. Bull 44.50
- J. B. Simpson, Blanket, 970-lb. Wf. Cow 40.00
- Carl Hohertz, Mullin, 650-lb. Wf. Cross Str. 49.25
- Shelia Vawter, Brownwood, 700-lb. Wf. Str. 53.50
- Southwest Leasing, Brownwood 445-lb. Blk. Wf. Hfr. 52.00
- C. T. McClatchey, Bangs, 375-lb. Wf. Str. 66.00
- C. F. Jeske Estate, Priddy, 345-lb. Wf. Str. 68.00
- Lawrence Stumpier, Priddy, 745-lb. Wf. Str. 53.00
- R. L. Smith, Rochelle, 635-lb. Wf. Hfr. 54.50
- R. B. Cason, Bangs, 1325-lb. Blk. Pair 460.00
- Rusty Burkett, Hamilton, 885-lb. Brn. Wf. Cow 42.00
- Carrol Strobel, Rising Star, 280-lb. Blk. Wf. Str. 69.00
- S. D. Cupps, Santa Anna, 410-lb. Blk. Wf. Str. 63.00

We sold 1519 cattle for the total amount of \$326,518.27, an average of \$214.95 per animal. Our commission and yardage was \$5096.30. This was an average of \$3.35 per hd. At 3 percent the commission would have been \$6.45 per hd. You could have saved \$3.10 on every one you sold at Brownwood Cattle Auction today.

Our volume of cattle attracts more buyers, this makes more bids, and this means more dollars for your cattle. Try us!

**BURIAL INSURANCE**

**For All Ages**  
Infants Through Old Age  
Reasonable Rates  
Payable Monthly, Quarterly or Annually

Stop in, Write or Phone for Application Blanks or Information.

**WILKINS Burial Association**  
Phone 648-2255  
GOLDTHWAITE, TEXAS

**Mullin Community News**

BY: Lorene Holland

Funeral services were conducted last Thursday afternoon from Wilkins Funeral Home in Goldthwaite for Delbert Hicks with Bro. M. L. Emmert from the Duren Methodist Church conducting the services. He was in Illinois when he passed away. His wife was the former Erma Warren, sister of Mrs. August Wasserman, Mrs. Tobe Cox and Mrs. Wilburn Keating all of Mullin.

Delbert grew up in the Duren community and was well known here. Interment was in the cemetery at Duren.

Mrs. Joe Holland and Mrs. M. R. Wylie, both of San Angelo, visited in Brownwood and in Mullin the past weekend with relatives.

Mr. and Mrs. Jim Ethridge, Randy and Brad of Leander visited here over the weekend with Mr. and Mrs. Howard Ethridge and in my home. Randy

and Brad were really enjoying the sunshine Sunday. They have been confined inside due to so much rain. We need some of the rain they have been getting down there.

Mrs. Charlie Wrinkle of Comanche spent the weekend here with Mrs. Lillian Plummer. Her husband is in a nursing home in Brownwood and is quite ill at this time.

Mr. Ray Dennett, professor of history at Howard Payne, has been called as interim pastor for the Baptist Church in Mullin.

Mr. Albert Jenke and Ginny Beckham of Austin were visitors here Sunday in the Will Sanders home; also they visited with other relatives and friends.

Mrs. Jack Davee of Ozona visited here recently with her parents, Mr. and Mrs. Frank Spinks. Her son Tony visited with friends in Dublin while she was here.

Larry Phillips of Austin was here the past weekend visiting with his parents, Mr. and Mrs. Elbert Phillips. He attended church services at the East Side Church of Christ Sunday morning.

Mrs. W. H. Simpson is spending the next few weeks in Midland with her son Connie and family. It would be nice to get away from the high price of heating fuel for the next few weeks. Let's hope the weather doesn't get too cold.

Mr. and Mrs. Bob Parker and Donna Jean of Kermit visited in Mullin over the weekend with Mr. and Mrs. Grady Hancock.



**ROBERT WORTLEY TO HOLD HEARING AND CONSULTATION AT GOLDTHWAITE**

**YES!**

WE WILL BE AT MAUNEY MOTEL

**MONDAY**

**Feb. 4**

**RADIOEAR**  
for better hearing... naturally!  
**BROWNWOOD Hearing Aid Center**  
109 E. Anderson, Ph. 646-8226  
Robert Wortley, Owner

**Mullin Senior Citizens Meet**

The Mullin Senior Citizens postponed their meeting due to a funeral and met Tuesday, Jan. 22, at the Community Center with a large crowd attending. Visitors included Mrs. Elva McNeil of Goldthwaite, Mr. and Mrs. C. C. Wright of Bangs and Mr. Earl Dumas of Lake Merritt. Also, the four-county coordinator Mrs. Mildred Anderson and Mrs. Gladys Cockrum were present. Lunch was served at the noon hour with Mr. Dumas giving the invocation.

One birthday was honored by singing "Happy Birthday" to Mrs. Elva McNeil.

The work period consisted of crocheting. At the next meeting Mrs. Anderson will bring different kinds of crafts.

Games were played and those winning grand prizes in Bingo were Miss Martha Calder who won three, Mrs. Pearl Jenkins, Mrs. Alma Calder, Mrs. C. C. Wright and Mrs. Fred Ethridge who all won one prize each.

The next meeting will be held at the Community Center on Monday, Feb. 4th, and visitors are welcome. Bring a covered dish and join the group for fun and games!

**The Lasting Tribute... MEMORIALS**

**Stacy's Monument Co.**

Phone 648-2481 Goldthwaite

**CORRAL DRIVE-IN**  
FRIDAY AND SATURDAY FEBRUARY 1-2  
LIVE MUSIC  
KING OF THE HILL  
LADY OF THE KING  
RINGSIDE  
LIVE MUSIC

**The Young Nurses**  
SUNDAY & MONDAY  
FEBRUARY  
JEAN MANSON  
ANGELA GIBBS

Big 64 Oz. Bottle SAVE 39¢  
**2 For 99¢**  
No - Deposit  
No - Return  
**Compare! Compare! Compare!**  
Chiquita  
**Bananas lb. 10¢**

Bake-Rite 3 lb. can  
**SHORTENING 99¢**  
Fresh Firm, green  
**Cabbage lb. 9¢**

Heinz Strained Baby Food Jar  
**10¢**

Carnation INSTANT HOT COCOA MIX  
Just add hot water  
**5¢ pkg.**

Kraft's Pourable Lo-Cal Dressings 3 8 oz. Size  
**\$1**

Duncan Hines  
**39¢**  
Limit 3

Anti-Perspirant New 9 oz. Can Reg. \$1.75  
**Sure \$1.19**

Facial Tissue 200 ct.  
**3 Boxes \$1**

SCHWARTZ FOOD STORE 4060  
**save 76¢**  
WITH THIS COUPON WHEN YOU BUY THE 2 LB. CAN OF **MAXWELL HOUSE COFFEE**  
AT SCHWARTZ FOOD STORE  
2 LB. CAN ONLY 1.49 WITH COUPON  
ONE COUPON PER FAMILY • OFFER EXPIRES 2-6-74

22 oz.  
**49¢**

**96¢**

**99¢**

**6¢**

**6¢**

**99¢**

**88¢**

**79¢**

**96¢**

**98¢**

**\$1.09**

**98¢**

**\$1.09**

**98¢**

**98¢**

**98¢**

**98¢**

**98¢**

**98¢**

**98¢**

**98¢**

**98¢**

**98¢**

**98¢**

**98¢**

**98¢**

**98¢**

**98¢**

**98¢**

**98¢**

**98¢**

**98¢**

**98¢**

**98¢**

**98¢**

**98¢**

**98¢**

**98¢**

**98¢**

**98¢**

**98¢**

**98¢**

**98¢**

**98¢**

**98¢**

**98¢**

**98¢**

**98¢**

**98¢**

**98¢**

**98¢**

**98¢**

**98¢**

**98¢**

**98¢**

**98¢**

**98¢**

**98¢**

**98¢**

**98¢**

**98¢**

**98¢**

**98¢**

**98¢**

**98¢**

**98¢**

**98¢**

**98¢**

**98¢**

**98¢**

**98¢**

**98¢**

**98¢**

**98¢**

**98¢**

**98¢**

**98¢**

**98¢**

**98¢**

**98¢**

**98¢**

**98¢**

**98¢**

**98¢**

**98¢**

**98¢**

**98¢**

**98¢**

**98¢**

**98¢**

**98¢**

**98¢**

**98¢**

Prices good Thursday January 31 thru Wednesday, February 6, 1974



**SCHWARTZ FOOD STORE**

Goldthwaite, Texas





**QUALITY DRY CLEANING CITY CLEANERS**  
 Member Dry Cleaners Institute Of Texas  
 Phone 648-2260  
 Goldthwaite, Texas

**Services For Winifred Sheldon Held**

Final rites for Winifred L. Sheldon of Star were conducted Friday, January 25, 1974, at 2 p. m. in the Wilkins Funeral Chapel with burial in the Hurst Ranch Cemetery. Rev. Jesse Long of Eden officiated with Rev. John Stanislaw and Rev. Delmar McBeth assisting. Wilkins Funeral Home was in charge of arrangements.

Mr. Sheldon, a member of the United Methodist Church at Star, passed away Wednesday, January 23, 1974, at the Scott and White Hospital in Temple. Born June 8, 1911, in Hamilton County, he was the son of

David Wales Sheldon and Ida Waddell Sheldon.

On January 21, 1939, he was married to Florence Soules in Eant, Texas.

Mr. Sheldon was a member of the Masonic Lodge and a member of the Order of the Eastern Star.

He is preceded in death by two brothers, Fred, May 1950 and Chester, June 1973.

Survivors include his wife Mrs. Florence Soules Sheldon; two daughters, Mrs. Doyle (Barbara) Channell, Vernon; and Mrs. Huntis (Betty) Black of Giddings; three grandchildren, Cindy and Bobby Channell and Chance Black; two brothers, Clair Sheldon, Snyder; Charlie Sheldon, Star; four sisters, Mrs. Velvin Carroll, Lometa; Mrs. Eunice Steele, Odessa; Mrs.

Edna O'Bannon, Hamilton; and Mrs. Edith Schmidt, Corpus Christi.

Pallbearers were Leslie Sheldon, Elbert Sheldon, Sheldon Perkins, Eldon Perkins; Phil Sheldon and Foy Sheldon.

Honorary pallbearers were Hardy Collier, Lyndon Cook, Bill Sanders, Russell Boyd, Wilson Head and Otha Knowles.

Psychiatrist to patient: "You are quite right. A man is following you constantly. He's trying to collect the \$200 you owe me."

Sign in an art gallery: "We hung this picture because we couldn't find the artist."

**Breeding Sheep Division Winners Announced**

**BREEDING SHEEP**

Delaine Ewe Lambs - 1st, Benningfield Bros.  
 Delaine Ewe Lambs - 1st, Benningfield Bros.  
 Delaine Yearling Ewes - 1st & 2nd, Benningfield Bros.  
 Grand & Reserve Champions, Benningfield Bros.  
 Delaine Ram Lamb - 1st & 2nd, Benningfield Bros.  
 Delaine Yearling Rams - 1st, Benningfield Bros.  
 Grand & Reserve Champions, Benningfield Bros.  
 Rambouillet Ewe Lambs - 1st & 2nd, Tammy Shelton, 3rd, David Miller.  
 Rambouillet Yearling Ewes - 1st, Tammy Shelton, 2nd, John Priddy, 3rd, Tammy Shelton, 4th, John Priddy.  
 Grand & Reserve Champions -

Tammy Shelton and John Priddy  
 Rambouillet Ram Lambs - 1st, Tammy Shelton, 2nd, David Miller  
 Rambouillet Yearling Ram - 1st, John Priddy  
 Grand & Reserve Champions, John Priddy and Tammy Shelton  
 Columbia Ewe Lambs - 1st, 2nd, & 3rd, Hugh Taylor  
 Grand & Reserve Champions, Hugh Taylor  
 Columbia Ram Lambs - 1st, Hugh Taylor  
 Columbia Ram Yearlings - 1st, Hugh Taylor  
 Grand & Reserve Champions, Hugh Taylor  
 Corriedale Ewe Lambs - 1st, & 2nd, Danny Whisenhunt, 3rd, Diane Whisenhunt, 4th, Delton Whisenhunt  
 Corriedale Yearling Ewes - 1st, Danny Whisenhunt  
 Grand & Reserve Champions, Danny Whisenhunt and Diann Whisenhunt  
 Corriedale Ram Lambs - 1st, Danny Whisenhunt, 2nd, Diann Whisenhunt, 3rd, Delton Whisenhunt  
 Corriedale Yearling Ram - 1st, Delton Whisenhunt, 2nd, Danny Whisenhunt  
 Grand & Reserve Champions, Delton Whisenhunt and Danny Whisenhunt  
 Shropshire Ewe Lambs - 1st,

Whisenhunt  
 Corriedale Yearling Ewes - 1st, Danny Whisenhunt  
 Grand & Reserve Champions, Danny Whisenhunt and Diann Whisenhunt  
 Corriedale Ram Lambs - 1st, Danny Whisenhunt, 2nd, Diann Whisenhunt, 3rd, Delton Whisenhunt  
 Corriedale Yearling Ram - 1st, Delton Whisenhunt, 2nd, Danny Whisenhunt  
 Grand & Reserve Champions, Delton Whisenhunt and Danny Whisenhunt  
 Shropshire Ewe Lambs - 1st,

SINGING - - -  
 A singing will be held at the Ridge Schoolhouse, Sunday, February 3 from 1:30 until 4 p. m. The public is invited to attend.

PAGE 6 THE GOLDTHWAITE EAGLE-MULLIN ENTERPRISE  
 Goldthwaite, Texas, Thursday, January 31, 1974

**Goldthwaite**  
 FIRST METHODIST CHURCH  
 Rev. J. Gordon Talk  
 Church School, 9:45 a.m.  
 Morning Worship, 10:50 a.m.  
 Youth Fellowship, 5:00 p.m.  
 Evening Services, 7:30 p.m.  
 W.S.C.S. each Monday, 3:00 p.m.  
 Wednesday, Prayer Meeting, 7:30 p.m.  
 Men's meeting, 1st Thursday of each month, 7:00 p.m.

FIRST BAPTIST CHURCH  
 Rev. Dan Connally, Pastor  
 Sunday School, 9:45 a.m.  
 Morning Worship, 11:00 a.m.  
 Training Union, 6:00 p.m.  
 Evening Worship, 7:00 p.m.  
 Wednesday, Prayer Meeting and Bible Study, 7:00 p.m.  
 W.M.U., 3:45 p.m. Monday

ST. PETER'S CATHOLIC CHURCH  
 Rev. Ben Goertz  
 St. Mary's Catholic Church  
 504 West Wallace St.  
 San Saba, Texas  
 Phone 372-3679  
 First Sunday, 9:45 a.m.  
 Sunday Mass, 11:15 a.m.

CHURCH OF CHRIST  
 Joe Woodrum, Minister  
 Bible Study, 10:00 a.m.  
 Morning Worship, 10:50 a.m.  
 Evening Worship, 6:00 p.m.  
 Wednesday Prayer Meeting, 7:00 p.m.

ASSEMBLY OF GOD  
 Rev. Jack Vaughn, Pastor  
 Sunday School, 10:00 a.m.  
 Preaching, 11:00 a.m.  
 Sunday Night, 7:30 p.m.  
 Wednesday Night, 7:30 p.m.

POMPEY MT. (DUREN) CONGREGATIONAL METHODIST CHURCH  
 Rev. Martin L. Emert, Pastor  
 Church Each Sunday (Except on Fifth Sunday)  
 Sunday School, 10 a.m. Each Sunday  
 Preaching Services, 11:00 a.m. and 7:00 p.m.  
 Prayer Meeting, Thurs. Night  
 Singing each 4th Sat. Night, (except months of July & Aug.)

**Priddy**  
 ZION LUTHERAN CHURCH  
 Rev. Andrew E. Mild, Pastor  
 Sunday School, 9:30 a.m.  
 Worship Service, 10:30 a.m.  
 BAPTIST CHURCH  
 Dean Shepard, Pastor  
 Sunday School, 10:30 a.m.  
 Morning Worship, 11:15 a.m.  
 Evening Services, 7:00 p.m.

PRIMITIVE BAPTIST PHILADELPHIA CHURCH  
 CARADAN  
 Elder Elmer Isham  
 Of Comanche  
 Services Every First Sunday in Each Month and on Saturday before.

LONG COVE BAPTIST CHURCH  
 Rev. B. F. Sheppard, Jr., Pastor  
 Sunday School, 10:00 a.m.  
 Morning Worship, 11:00 a.m.  
 Evening Worship, 8:00 p.m.

SCALLORN BAPTIST CHURCH  
 Billy Don Rogers, Pastor  
 Sunday School, 10:00 a.m.  
 Evening Worship, 8:00 p.m.

PRIMITIVE BAPTIST CHURCH  
 MT. OLIVE  
 Elder James C. Robertson  
 Route 2 - Box 663  
 Abilene, Texas  
 Services each 3rd Sunday at 11:00 a.m. and each Saturday preceding at 8:00 p.m.

**Mullin**  
 BAPTIST CHURCH  
 Rev. Richard Beckham, Pastor  
 Sunday School, 9:45 a.m.  
 Morning Worship, 10:50 a.m.  
 Bible Study, 6:00 p.m.  
 Evening Worship, 7 p.m.  
 Wednesday Prayer Meeting, 8:00 p.m.

**Center City**  
 METHODIST CHURCH  
 Rev. Darrell Carr, Pastor  
 Morning Worship, 9:30 a.m.  
 Sunday School, 10:00 a.m.  
 2nd and 4th Sundays

BAPTIST CHURCH  
 Services Every Sunday  
 Russell Crosby, Pastor  
 Sunday School, 10:00 a.m.  
 Morning Worship, 11:00 a.m.  
 Evening Worship, 7:00 p.m.  
 Wednesday Prayer Meeting, 7:00 p.m.

CHURCH OF CHRIST  
 R. L. Roberts, Pastor  
 Bible Study, 10:00 a.m.  
 Morning Worship, 11:00 a.m.  
 Evening Worship, 7:00 p.m.

PLEASANT GROVE METHODIST CHURCH  
 Rev. Darrell Carr  
 Church School each Sunday, 10:00 a.m.  
 Morning Worship, 2nd, 4th and 5th Sundays, 11:00 a.m.

**Big Valley**  
 BAPTIST CHURCH  
 James Looby, Pastor  
 Sunday School, 10:00 a.m.  
 Morning Worship, 11:00 a.m.  
 Evening Worship, 7:00 p.m.

**Star**  
 CHURCH OF CHRIST  
 Pat Brooks, Pastor  
 Bible Study, 10:00 a.m.  
 Morning Worship, 11:00 a.m.  
 Evening Worship, 7:00 p.m.  
 Wednesday Prayer Meeting, 8:00 p.m.

BAPTIST CHURCH  
 John D. Stanislaw, Pastor  
 Sunday School, 10:00 a.m.  
 Morning Worship, 11:00 a.m.  
 Evening Worship, 6:30 p.m.

METHODIST CHURCH  
 Rev. Darrell Carr  
 Church School, 10:00 a.m.  
 Preaching Services 1st and 3rd Sundays, 11:00 a.m. and 7:00 p.m.

**"Religion? How square!"**



PHOTO BY HAROLD HALMA

Some people do make religion seem as if it ought to be put in mothballs.

Does that mean you have to?

Sure you're full of social protest. New ideas. Feelings about integrity and justice and today's values.

So is religion.

And your church or synagogue can become—if you help—the place where the action is—in solving the important problems in the world, in your community, in your life.

Don't knock it. Join it.

Worship this week. And put your Faith to work.



This Series of Ads is Being Published in The Eagle Each Month Under the Auspices of the Mills County Ministers' Association and is Sponsored by the following Individuals and Business Establishments.

- Central Texas Tel. Coop.
- Yarborough's
- City Cleaners
- Geeslin Gas Company
- Horton's Wagon Wheel Cafe

- Roy Wilkins Funeral Home
- Mills County State Bank
- Woody Drug Store
- Barnes & McCullough
- Goldthwaite City Utilities

- Johnson Bros. Texaco
- Kauhs Variety Store
- Heritage Nursing Home, Inc.
- Childress Clinic & Hospital

- Mills County Lumber
- Hickman Nursing Home
- Patty's Of Texas
- The Goldthwaite Eagle
- Economy Welders

**Market Report**

Lometa Commission Co.  
 Lometa, Texas  
 BUD HARRELL, Owner  
 January 25, 1974  
 RECEIPTS: 782

Light Weight Steer Calves 60.00-74.00; Medium Weight Steer Calves, 54.00-62.00; Heavy Weight Steer Calves, 55.00-58.50.

Light Weight Heifer Calves 55.00-65.00; Medium Weight Heifer Calves, 48.00-52.00; Heavy Weight Heifer Calves 45.00-50.00.

Feeder Heifers - 38.00-42.00  
 Feeder Steers - 50.00-57.00  
 Heiferettes - 38.00-45.00  
 Stocker Cows - 33.00-40.00  
 Cows and Calves, 300.00-425.00  
 Bull Calves - 55.00-65.00  
 Bull Yearlings - 46.00-50.00  
 Packer Bulls - 38.00-45.00  
 Packer Cows - 29.00-32.00

Choice light weight steer and heifer calves were fully steady to \$2 higher. Medium weight steer and heifer calves were steady to \$1 higher. Heavy weight steer and heifer calves were fully steady. Yearling weight calves were fully steady. Cows and calves were steady to \$20 per pair higher. Packer bulls were fully steady to \$1 higher.

We had a very active market and sharp active bidding.

Our first SPECIAL COW SALE of this year will be Saturday, February 9 at Brady, Texas. REMEMBER, Our Sale Starts At 12:00 Noon On Friday.

**Land Clearing and Dirt Work**  
**J. C. Partin**  
 Phone 966-3710  
 Priddy, Texas

**Portraits, Weddings, Copies & Frames**  
**WICKER STUDIO**  
 North Parker Street  
 Goldthwaite, Texas  
 Phone 648-2471  
 Open 8 a.m. to 7 p.m.  
 Monday thru Saturday

**Dr. Earl Day, D.O.**  
 Opening  
 Chiropractic  
 Offices At  
 300 E. North  
 Main-Brownwood  
 On March 1, 1974



# WHO PAYS FOR TRADING STAMPS?

Have you seen or heard of any retailer who takes money out of his savings to buy trading stamps?

Stamps are purchased with the money from sales of merchandise. You pay the price for the groceries you buy.

Last year approximately \$30,000 went into trading stamps from Mills County alone.

We are going to put all we can of that money back in your pocket. Starting Jan. 30, we will sell our groceries

at cheaper prices.

In this time of rapidly rising prices we are doing everything possible to lower prices including discontinuing trading stamps. You will pay less shopping at our store here in Goldthwaite.

We will offer the finest and freshest meat and produce that is available.

Your patronage is appreciated and your best service will continue to be our goal.

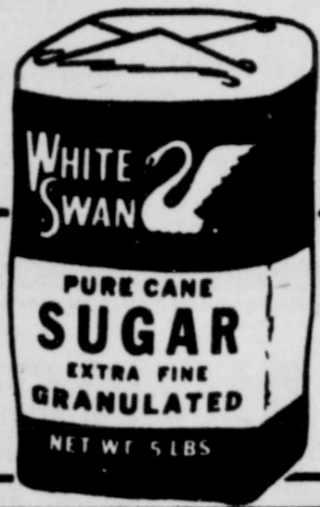
Look for the many items on which we have lowered and flagged the prices.

Owned & Operated by  
Jack and Patricia Ferguson

**SUPER \$AVE**  
MARKETS

KRAFT PARKAY  
MARGARINE  
1-Lb. Ctn. **39¢**

QUANTITY RIGHTS  
RESERVED



**FOOD SAVINGS**

WHITE SWAN  
SUGAR  
5-Lb. Bag **59¢**  
LIMIT 1 WITH \$7.00 OR MORE GROC. PURCHASE. EXCLUDING CIGARETTES



HUNT'S  
FRUIT  
COCKTAIL  
15-Oz. Can **29¢**

CRISP HEAD LETTUCE	Each	<b>19¢</b>
GOLDEN RIPE BANANAS	2 lbs.	<b>25¢</b>
FIRM GREEN CABBAGE	lb.	<b>8¢</b>
CHOICE NAVEL ORANGES	Pound	<b>25¢</b>



FOLGER'S  
COFFEE  
Lb. Can **89¢**  
with coupon

ARMOUR'S STAR BACON	Lb. Pkg.	<b>\$1.29</b>
Reg. or Hot RATH'S PURE PORK SAUSAGE	1-Lb. Bag	<b>79¢</b>



FIRESIDE  
CRACKERS  
Lb. Box **29¢**

SAMMY'S PRIDE FRANKS	12-Oz. Pkg.	<b>59¢</b>
CHECKERBOARD FARM CORNISH 20-Oz.	Each	<b>99¢</b>
GAME HENS		
RATH CEDAR FARM BACON	Lb. Pkg.	<b>99¢</b>
ARMOUR'S STAR PURE BEEF FRANKS	12-Oz. Pkg.	<b>79¢</b>
FRESH SLICED BEEF LIVER	Pound	<b>99¢</b>
FRESH PORK STEAK	Pound	<b>89¢</b>
RATH BBQ GLAZED CANNED HAM	5-Lb. Can	<b>\$7.69</b>
BU-TTERSALL TURKEY HENS	Pound	<b>69¢</b>

RATH CEDAR FARM  
CANNED  
PICNIC  
3-Lb. Can **\$3.89**



RANCH STYLE  
CHILI  
19-Oz. Can **79¢**

"MIX or MATCH"

RANCH STYLE BLACKEYE PEAS	15-Oz. Cans	<b>\$1.00</b>
WHITE SWAN MUSTARD CHOPPED MIXED or		
DEL MONTE SPINACH		



Frozen Foods  
SWISS MISS  
WAFFLES  
2 6-Oz. Pkg. **25¢**

GOLDEN NIP  
ORANGE JUICE  
5 6-Oz. Cans **\$1.00**



**Jack's Supermarket**



**--Hickman Notes--**

The Square Dancers came Tuesday night and put on a show that was enjoyed by all -- especially Mrs. Kattes, Mrs. Johnson and Mrs. Lucas. There's no way to express our thanks to them for sharing this activity with us.

We enjoyed a surprise visit from the Mullin G.A.'s last Tuesday. They visited and sang from room to room. We enjoyed having each one. The G.A.'s and leaders were: Sharlene Hill, Kathleen Hill, Darlene Hill, Maggy Dickson, Becky Roberts, Beverly Roberts, Margaret Roberts, Terry Wilkins, Evy Smith, Michelle Donowho, Angie Sims, Tina Womack, Laura Stamps, Jeanne Smith, Linda Mosier and Audra Anderson.

Mr. Henry Egger says the singing Wednesday night sponsored by the Men's Downtown Bible Class was the best ever and certainly enjoyed by all. Tommy and Glenda Collier

**Chappel Hill**

BY: Pearl Crawford

We have been enjoying some nice weather lately and the health in our neighborhood is satisfactory.

Mrs. C. V. Whately visited at the Heritage Home Wednesday and found those residents doing nicely.

Visitors of Mr. and Mrs. Pearl Shipman included Mr. and Mrs. Stone Shipman and Mr. and Mrs. Howard Rummels and family.

Mrs. Freddie Dale Perry and son visited Mr. and Mrs. B. B. Perry Saturday.

I was sorry to hear of Mrs. W. T. Alexander's death. I have visited her home many times and found her to be a nice and kind neighbor.

Mrs. C. V. Whately visited Mr. and Mrs. Hugh Nowell Sunday afternoon.

Mr. and Mrs. William G. Crawford and Letricia were Sunday visitors of Mr. and Mrs. A. L. Crawford.

Mrs. Pearl Shipman reported all three of her sisters have been on the sick list -- one in the San Saba Hospital. Also her brother has been in the hospital at Temple. We hope they are all well soon.

Mrs. Leora Barton, a long time resident who fell recently and received injuries, is at a Waco hospital.

Sunday visitors of Mr. and Mrs. O. L. Harris were Mrs. Winnie Brown and Mr. and Mrs. Warren Harris.

Mr. and Mrs. Jimmy Partin and son were Sunday visitors of Mrs. Sally Partin at Priddy.

Scotty Ratliff of Johnson City is visiting his grandparents Mr. and Mrs. W. W. Ratliff.

Mr. and Mrs. Andy Wells and Pat attended church Sunday. They have grandchildren visiting them this week.

squeezed us into their busy schedule again this week. Aren't teenagers wonderful?

Thanks to Mrs. Bertha Smith of Brownwood for bringing us three lovely new aprons that she had made.

Alice Waggoner's group reading last Thursday was enjoyed by all. It's nice to have a reader in our home group.

Barbara Jernigan came Thursday afternoon and brought with her a story from the life of Margaret Mead, some games, some poems, a song, a joke, and she almost told us her age. But best of all, she said that she'd come back next week.

Melissa Duren showed something new to do with tissue paper. We thought it was just used to line gift boxes. Melissa brought us some pictures done with different colors of tissue paper and also a candle holder with beautiful stained glass effect.

Mrs. Kattes and Mary Garza tried it and liked it. So, we are gonna get some colored tissue paper and try it again next week. Thank you, Melissa.

A welcome this week to Mrs. Myrtle Clinkscapes. We hope that you will be happy with us.

The Priddy Juniors did their usual good job. We always enjoy having them.

**G'waite, Richland Springs Meet In Basketball**

Goldthwaite basketball teams played the Richland Springs teams at the local high school gym this past Monday night.

Goldthwaite B team girls defeated the RS girls 16-8. Scoring for Goldthwaite were Edna Davis, 2; Peggy Long, 2; Darla Watson, 6; Terri Slagle, 4 and Kristi Miller, 2.

The local B team boys won their game over RS boys by only one point, 20-19. Jim Smith scored 8 points for the Eagles; Robert Berry, 4; Mark Lewis, 2; Standley Odom, 2; Dean Humphries, 2; and Sammy Padilla, 2. Scoring for Richland Springs were Gibson, 9; Scoggins, 4; Pappas, 4; and Moore, 2.

Goldthwaite A team girls rolled pass RS 15-7 with Nickola Davis scoring 9 points; Ruth Ann Johnson, 12; Sandra Derrick, 12; Shelia Vaughan, 12; Dedra Long, 2; and Carrie Gray scoring 4.

Richland Springs A team boys defeated the local team 56-22. Mike Lee scored 10 points for the Eagles; Mike Connally, 4; Jay Sims, 2; Jett Johnson, 2; Randy Benningfield, 2; and Charles Davis, 2. RS scorers were Burleson, 28; Till, 10; Robends, 10; Alston, 6; Fikes, 2.

A basketball game will be staged at the high school gym Monday night, February 4, with the local teams playing against Priddy.

**Fifty-Eight Respond To Recent Blood Drive Here**

Fifty-eight pints of blood were collected recently when the mobile blood unit of Scott and White Hospital came to Goldthwaite. This was a special drive to help Mrs. Sonny Robbins and the M. Stewart baby. Four people donated to Mills County Assurance Plan, two to Blood Assurance and the rest of the units were designated to go to individuals.

Jay Brooks and Donald Irvine were also benefited by the blood drive.

The following individuals donated blood: James Hammond, Neale Dellis, Charles Hale, Roy Watters, Robin Reid, Jesse Beard John Kirby Moore, Rodney Dutton, Reggie Robbins, Brenda Robbins, Jerry Probst, Truett Aldridge, Don Connally, Billie Jernigan, Shirley Ellis, Larry

Ellis, Jimmie Huffman, Cecil Stewart, Clark Dellis, Bertice Stewart, Aldridge, Artie Mammmond, Blake English, Ora Williams, Robert McCoy, Hazel McCoy, Jo Spradley, Norvell Saathoff, Betty Scott, D. C. Phillips, Leon Turner, Charles Studer, James Smith, Walter Bryant, Glynn Johnson, Tommy Kendrick, George Kirby, Judy Beavers, Robert Ballinger, Becky Long, Donna Stewart, Robert Stewart, Clarence Blodgett, Ronnie Vaughn, Marvin Childress Oma Dale Connally, Felton Wright, Fredy Johnson, J. D. Hunt, Andy Cook, Robert Long, Carroll Bunting, Fannie Lewis, James Dean, Marjorie Dean, Thomas C. Aves, Gregg Thompson and Garry Miller.

Preparations are being made for the regularly scheduled blood drive sponsored by the Goldthwaite Lions Club, Mills County Young Homemakers, Volunteer Fire Department and the Goldthwaite Garden Club. The drive will be scheduled during the 1st or 2nd week in April.

Blood Services of San Angelo will bring their mobile unit. According to Charles Studer, Lions Club Blood Drive Chairman, 228 units of blood were used by Mills County last year, which were secured from Blood Services and only 40 units were replaced by Mills Countians.

Already in 1974, 19 units of blood have been used and none replaced.

"This blood has to come from someone and I feel we have a moral obligation to take care of our blood needs and replace that amount used by Mills Countians," stated Studer.

If anyone has any questions pertaining to the blood program in Mills County please contact a member of the Lions Club Blood Drive Committee which are: Charles Studer, Marvin Childress, James Reese, T. C. Graves, Tom Cody Graves, Blake English, Dan Connally and Gordan Talk.

**Final Rites For M. D. Fallon Sr. Conducted Tuesday**

Final rites for M. D. (Deward) Fallon, Sr. of Goldthwaite were conducted Tuesday, January 29, 1974, at the Wilkins Funeral Chapel with interment in the Goldthwaite Memorial Cemetery.

Rev. Gordon Talk officiated with funeral arrangements under the direction of Wilkins Funeral Home. Rev. Dan Connally assisted with the services.

Mr. Fallon, a lifetime resident of this community and a member of the Methodist Church, passed away Sunday,

January 27, 1974, in the Veterans Hospital in Big Spring, Texas.

Born September 18, 1917, in Mills County, he was the son of the late James D. Fallon and Eva Della Queen Fallon.

In 1946 he was married to Nell Stewart in Goldthwaite.

Mr. Fallon, a veteran of World War II, is preceded in death by a son, Alvin Glynn. Survivors include a son, M. D. Fallon, Jr., Odessa; one daughter, Bettie Sue Fallon of Ranger; grandchildren; three brothers, James Pat and Johnny Fallon, both of Goldthwaite and Elmo Fallon, Mena Ark.; two sisters, Mrs. Eva Higgins, San Benita and Mrs. Julia B. Allen, Houston.

Pallbearers were Dale Allen, G. R. Mullings, Chuck Todd, James Knight, Jimmy Huffman and Joe Lara.

Jimmie Dee Newsom and his children, Jim and Karon of Dallas, spent the week with us. Also, Shirley Brooks and daughter of San Angelo.

Lester Maxcey of Brownwood visited in our home Friday morning.

A. R. Rowlett visited Harold Lock of Mullin Thursday. They went fishing, but had no luck.

Norman Hardman of Spring Creek visited us Tuesday night. He and Alton played dominoes.

Ruth Jones of Cherokee spent the week with Mae Egger. They visited Mr. and Mrs. Charles Higgins Saturday afternoon.

Mr. and Mrs. Lehman Teal Sr. of Brownwood visited us Wednesday afternoon.

We went to Goldthwaite Friday evening and visited my uncle, Dee Rutherford. He recently moved there. He lives with his daughter, Mrs. Elton Hendricks.

We have some new neighbors, Mr. and Mrs. Raymond Hard, who moved here from Houston. They bought the Charles Higgins place. We welcome them.

A. R. Rowlett went to Copperas Cove Thursday where she teaches school. She became ill and had to come home, but was able to return this week.

Mr. and Mrs. Ed Creech of Waco visited Mr. and Mrs. Charles Higgins Thursday.

James Bailey of Brownwood is building cabinets in the new home of the Higgins. Mrs. Bailey made a business trip to San Saba Saturday.

Regency News  
BY: Mrs. J. A. Jones

Talent Show  
The Goldthwaite Garden Club will sponsor a talent show, March 2, at the High School Auditorium. Anyone interested in entering the show should contact Mrs. N. M. Coats or Mrs. R. Glynn Raley.

Proceeds from the event will be used for the courthouse plaza project.

**POLITICAL ANNOUNCEMENT CALENDAR**

The following have authorized the Eagle to announce their candidacies for public office subject to the Democratic Primary Election on May 4, 1974.

**--COUNTY--**

FOR COUNTY JUDGE  
CECIL EGGER  
(Re-Election)  
HERBERT FAULKNER

FOR COUNTY TREASURER  
JEWEL YEAGER  
(Re-Election)

FOR JUSTICE OF THE PEACE  
Precinct One  
Ernest Thorne  
(Re-Election)

FOR COUNTY-DISTRICT CLERK  
WALTER A. (TOBY) BRYANT  
(Re-Election)

FOR COUNTY COMMISSIONER  
Precinct Two  
Fred Wall  
(Re-Election)

Lewis Watson  
Precinct Four  
Hawley Jernigan

**--STATE--**

FOR REPRESENTATIVE  
DISTRICT 43  
Camm Lary, Jr.  
(Re-Election)

**--FEDERAL--**

FOR REPRESENTATIVE  
DISTRICT 11  
W. R. (Bob) Poage  
(Re-Election)

**G'waite, Zephyr Take Tournament Honors**

Goldthwaite won the championship in the girls division of the Junior High Tournament held here this past weekend. Goldthwaite pulled the game off over Mullin for the championship by only one point, 28-27.

Zephyr took the boys division of the tourney by a 58-25 win over Mullin.

Girls consolation went to Zephyr who had a 23-19 win over Star. Boys consolation was awarded to Goldthwaite as they defeated Star 37-19.

Lindsey from Mullin was high point girl with 27 points and Biggs of Zephyr was named high point boy with 34 marks.

Goldthwaite girls won the first game played in the tournament Thursday afternoon. Mullin pulled a 26-16 game over the Star girls while Goldthwaite girls defeated Zephyr 25-18. Mullin boys rolled over Star 26-16 and the Zephyr boys turned Goldthwaite around with a 39-11 score.

Now open at new location  
- Highway 84 North -  
Watch for grand opening coming soon  
LANDRUM FORD SALES

**LAMPASAS FEDERAL SAVINGS**

**AND LOAN ASSOCIATION**

**STATEMENT OF CONDITION**

AFTER THE CLOSE OF BUSINESS

DECEMBER 31, 1973

**OFFICERS**

JEAN ANN PAINE MUNN  
President

RAY ALLEN  
Vice-President

MONA POOLE  
Secretary-Treasurer

BILLIE PATTERSON  
Ass't. Secretary-Treasurer

**DIRECTORS**

Jean Ann Paine Munn J. V. Hamnett  
Bob M. Sutton J. B. Cass  
William F. Cassidy

**OFFICE STAFF**

Jean Ann Paine Munn  
Ray Allen  
Mona Poole  
Billie Patterson  
Ruth Carroll  
Nelda Campbell  
Glynda Chapman  
Chris Munn  
Clovia Gibson

**ASSETS**

Mortgage Loans and Other Liens	
on Real Estate	\$11,351,197.96
All Other Loans	446,623.96
Loans and Contracts Made to Facilitate Sale of Real Estate	15,747.13
Cash on Hand and in Banks	1,179,053.85
Investments and Securities	105,000.00
Fixed Assets Less Depreciation	19,473.70
Deferred Charges and Other Assets	628,458.96
<b>TOTAL</b>	<b>\$13,745,555.56</b>

**LIABILITIES AND NET WORTH**

Savings Accounts	\$12,345,380.93
Loans in Process	5,919.10
Other Liabilities	1,642.85
Specific Reserves	478,957.93
General Reserves	\$864,735.73
Surplus	48,919.02
<b>TOTAL</b>	<b>\$13,745,555.56</b>

Call or come by our office and let us explain the many advantages of an insured savings account



**LAMPASAS FEDERAL SAVINGS**

AND LOAN ASSOCIATION

405 East Second Street

Phone 556-3627

**January CLEARANCE SALE**

Group

Ladies and Misses Shoes

Ladies Coats

Ladies Sweaters,

Dresses and Pant Suits

Mens and Boys Long

Sleeve Sport Shirts

Mens and Boys Jackets

1/2 Price

Odd Sizes

Ladies and Girls Boots \$2 Pair

Yarborough's