

# The Goldthwaite Eagle

Established 1894

And The Mullin Enterprise

Volume 79 — Number 27

Goldthwaite, Mills County, Texas 76844

Thursday, December 14, 1972

## Early, Gustine Take Honors At 1972 Eagle Tournament

### Santa Fe Agency Discontinued

Local Santa Fe Agent Hollis Wiggins was notified by telegram that effective Friday, December 8, 1972, the Goldthwaite agency was closed and his position was abolished.

The Railway Commission of Texas authorized the discontinuance of the Goldthwaite Texas Agency and Establishment as a non-agency prepay station in freight tariff for handling of carload

freight only. The Goldthwaite operations will be handled through the agency at Lometa.

### New Budgeting Procedure Review Dec. 18

The State Department of Public Welfare is requesting that all recipients of aid to Families with Dependent Children and interested officials be present in a meeting to be held in the Mills County Courthouse, Commissioners Room on Monday, December 18, 1972, at 3 p.m., so that a new budgeting procedure to be effective with the February, 1973 warrants may be explained. It is felt that this meeting will be most beneficial.

### Mullin Livestock Show Scheduled December 16

The Mullin Livestock Show is scheduled for Saturday, December 16.

Judging will begin at 9 a.m. Judging will be conducted in the following order: horses and hogs (before noon) and sheep and steers (after noon).

A meal will be served during the noon hour. Everyone is invited to attend the Mullin Livestock Show.

### Cold Weather Ices Roads, Closes Schools

The weather got to be winter time in Mills County Sunday and the temperature remained below freezing most of Monday and Tuesday with schools closed and travelers witnessing hazardous driving conditions.

Schools reopened Wednesday morning as the weather headed for more normal conditions.

Numerous automobile and truck accidents occurred in the county due to the icy roads and bridges, however, no injuries were reported.

According to official report by weatherman, Glenn Dewitt the temperature dropped to 21 degrees for several days the first of the week. Only a trace of precipitation has been recorded during the month of December.

Precipitation for the months of September, October and November amounts to 7.15 inches.

### David Schwartz 11-A All Dist.



David Schwartz

David Schwartz has been named to the 11-A All District Football team as first team defensive tackle.

The coaches from the 11-A district wrote in their nominations for the all district teams.

David, a senior at Goldthwaite High School, was the only boy from the Eagle Squad to be named to the All District team.

He has lettered two years in football and was named to "honorable mention" last year.

David is the son of Mr. and Mrs. Milton Schwartz of Goldthwaite.

### Lions Slate Ladies Night

The annual Goldthwaite Lions Club Ladies night and Christmas Party will be held Tuesday, Dec. 19.

Couples are asked to bring children's underwear as gifts for the needy. Items need not be wrapped but sizes should be plainly shown according to Lions Club president, Horace Brooks.

All Lions are urged to attend this annual affair.

The Goldthwaite Eagles, unlike the past did not excel in their Invitational Tournament this year.

Both the girls and boys fought it out for third place but failed to gain a trophy for their efforts.

The girls were beaten 29-24 by Zephyr and the boys 42 to 20 by Mullin.

Both the Early girls and boys took the championship trophies home, plus four all tournament trophies, two girls and two boys.

Gustine captured both second place trophies, Lometa took both consolation trophies and Zephyr girls and Mullin boys won third place awards.

Both the Goldthwaite girls and boys have been the team to beat in the tournament the last few years but this year both are rebuilding and having their problems in early season play. The girls are 3-4 for the year and boys are 2-3. The Eagles will play in the Priddy Tournament this weekend and will open against Priddy Thursday, the girls playing at 7:25 and the boys at 8:45.

Six girls and five boys were chosen to the all tournament teams. The girls awards were presented to guards, Rhonda Appleton, Lometa; Holloway, Early and Reinert, Pottsville. Forwards were Jacobson, Early; Oliver, Gustine and Carolyn Schwartz, Goldthwaite.

Jacobson was high point girl scorer with 57 points for the tournament. Thirty-two of the fifty-seven points were in the finals against Gustine.

The boys all-tournament team was Stephens, Gustine; Horton, Lometa; Watkins, Early; Whisenhunt, Mullin and Blackwell, Early.

High point boy was Danny Whisenhunt of Mullin with 66 points for the tournament.

SANTA LIKES 'EM ALL — One of the littlest of Santa's children (right photo) chewed on his hood strap and took everything in stride as he visits with jolly 'Ole Saint Nick. Below one of Santa's long time "kids" seems to be pleading with Santa but in reality is really talking to Santa about what to do with some of the sacks of goodies left over after more than 100 kids came to see Santa Claus.

(Laughlin Studio Photo)



### Santa Visits Goldthwaite



### Fire Safety Deserves Special Action During Holidays

COLLEGE STATION — Accidents never take a holiday — not even on Christmas.

"Fire safety deserves special attention during the holidays when additional fire hazards may be created with combustible trees and decorations or faulty lighting sets. Careful attention to a few simple safety suggestions will help keep your holiday safe and happy," reminds Wayne Keese, agricultural engineer for the Texas Agricultural Extension Service, Texas A & M University.

First of all, select a fresh-looking and firm-needed tree, suggests Keese. Saw off the base of the tree at least one inch above the original cut, stand the tree in water, and keep it in water until it is taken down. Check the water level daily. Be sure to place the tree away from all sources of heat—fireplaces, radiators, or other heaters.

Don't rely on "do-it-yourself" the engineer. Test indicate that some of the coatings available in aerosol cans are partly effective if the coating is thick enough. "In short, there is no satisfactory home treatment which will retard fire in Christmas trees."

Artificial trees should be clearly marked as made of slow burning materials. If the tree has "built-in" lighting, look for the Underwriters' Laboratories (UL) label. Use only indirect lighting on metal trees to avoid the possibility of electric shock.

"Check lighting strings for loose connections, broken sockets and frayed insulation. Replace lighting sets with UL — labeled equipment. Bulbs made in the United States are usually safest as some imported bulbs may have

dangerous hot spots. Outdoor lighting should be UL — approved for outdoor use. Always turn off all decorative indoor lighting when you leave the house or retire for the night," emphasizes Keese. Use noncombustible materials—metal, glass and asbestos—for decorations wherever possible. Cotton batting, flock and decorating paper should be flameproofed. Keep natural evergreen decorations away from candles, the fireplace and other heat sources. Don't use polystyrene foam candle holders or polystyrene decorations near lighted candles.

Remove combustible gift wrappings as soon as possible and place them in a covered metal trash can. "Never leave children alone or without proper supervision. Be especially careful to keep matches and cigarette lighters out of their reach during the holiday period when your home contains more "fire hazards" than usual."

"And, have a family escape plan for use in case fire does strike. Be sure doorways and stairs are not blocked by the tree or other holiday decorations," cautions the engineer.

### Dec. 15 Entry Deadline For Stock Show

Entries for the Mills County Livestock show must be turned in no later than Friday, December 15. Livestock entries must be turned in to secretary of the Livestock Raisers Association, Jack Edington, and comment cards for the clothing division must be turned in to Mrs. Patti Johnson, superintendent of that division.

The Livestock Show which is sponsored by the Mills County Livestock Raisers' Association, is scheduled for January 12th and 13th. The show is open to members of the 4-H, FFA and FHA. An adults craft division and canned goods division will also be included in the show.

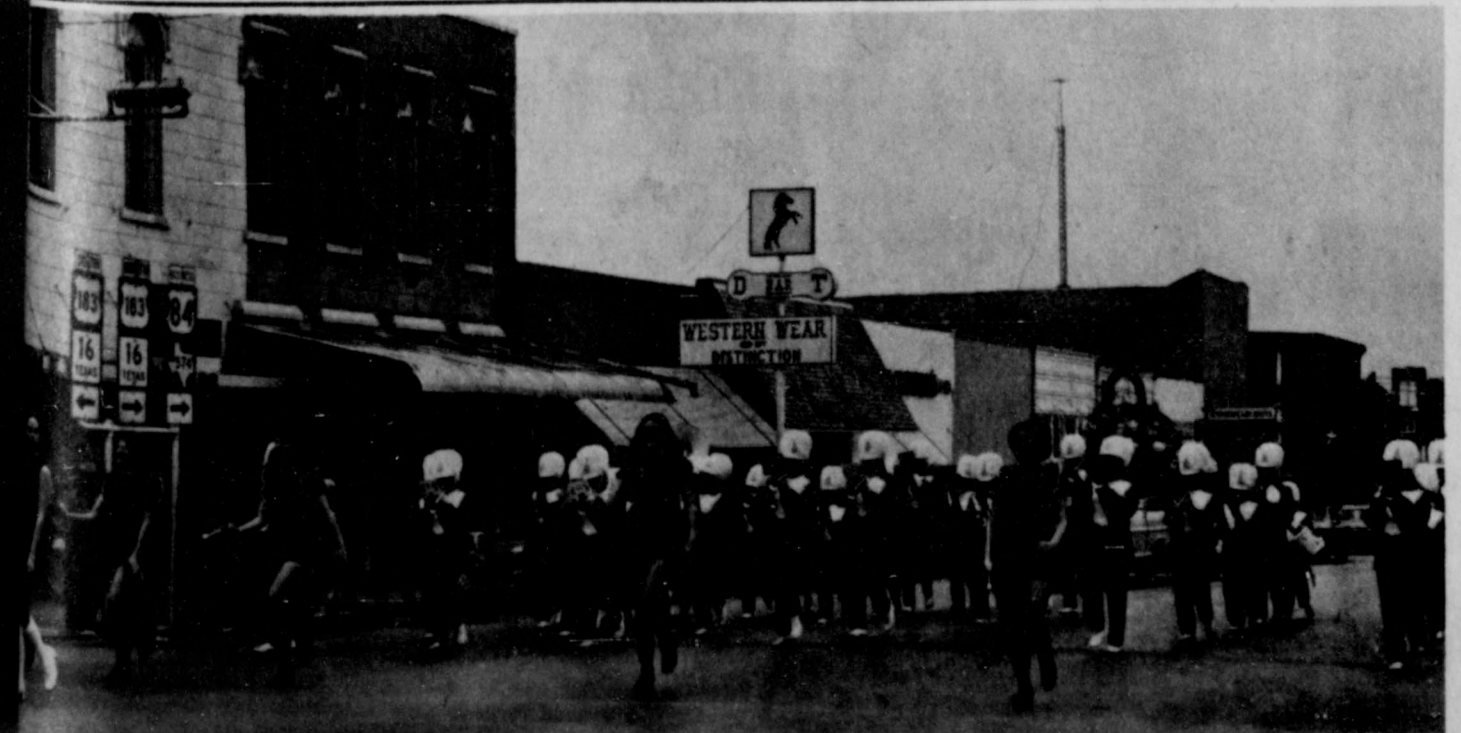
### Elementary Students To Meet At TUB Friday

Activities scheduled at the TUB Friday Night, December 15, will be for Grade School Students Only between the hours of 7 to 9 o'clock. Chaperons will be provided but all parents are welcome to come.

### Square Dealers Dance Saturday

The Square Dealers Dance Club will sponsor a dance Saturday night, December 16 at 8 p.m. at the American Legion Hall. Everyone is invited to attend and spectators are welcome.

William Henry Harrison, died at the end of his first month as president, serving the shortest term on record.



### Step High To Keep Warm

Goldthwaite Eagle band braved the cold weather Saturday afternoon and participated in the annual Santa Claus Day affair. Band director is Richard Haddock. Twirlers are

left to right, Phyllis Davis, Camilla Bryant, Melissa Coats, Kathy Koen, and Liz Truitt. Drum major is Elaine Harper. (Laughlin Studio Photo)



ater Under  
e Bridge  
y G.F.B.

# The Goldthwaite Eagle

Established 1894

And The Mullin Enterprise

Volume 79 — Number 27

Goldthwaite, Mills County, Texas 76844

Thursday, December 14, 1972

## Early, Gustine Take Honors At 1972 Eagle Tournament

### Santa Fe Agency Discontinued

Local Santa Fe Agent Hollis Wiggins was notified by telegram that effective Friday, December 8, 1972, the Goldthwaite agency was closed and his position was abolished.

The Railway Commission of Texas authorized the discontinuance of the Goldthwaite Texas Agency and Establishment as a non-agency prepay station in freight tariff for handling of carload

freight only. The Goldthwaite operations will be handled through the agency at Lometa.

### New Budgeting Procedure Review Dec. 18

The State Department of Public Welfare is requesting that all recipients of aid to Families with Dependent Children and interested officials be present in a meeting to be held in the Mills County Courthouse, Commissioners Room on Monday, December 18, 1972, at 3 p.m., so that a new budgeting procedure to be effective with the February, 1973 warrants may be explained. It is felt that this meeting will be most beneficial.

### Mullin Livestock Show Scheduled December 16

The Mullin Livestock Show is scheduled for Saturday, December 16.

Judging will begin at 9 a.m. Judging will be conducted in the following order: horses and hogs (before noon) and sheep and steers (after noon).

A meal will be served during the noon hour. Everyone is invited to attend the Mullin Livestock Show.

### Cold Weather Ices Roads, Closes Schools

The weather got to be winter time in Mills County Sunday and the temperature remained below freezing most of Monday and Tuesday with schools closed and travelers witnessing hazardous driving conditions.

Schools reopened Wednesday morning as the weather headed for more normal conditions.

Numerous automobile and truck accidents occurred in the county due to the icy roads and bridges, however, no injuries were reported.

According to official report by weatherman, Glenn Dewitt the temperature dropped to 21 degrees for several days the first of the week. Only a trace of precipitation has been recorded during the month of December.

Precipitation for the months of September, October and November amounts to 7.15 inches.

The Goldthwaite Eagles, unlike the past did not excel in their Invitational Tournament this year.

Both the girls and boys fought it out for third place but failed to gain a trophy for their efforts. The girls were beaten 29-24 by Zephyr and the boys 42 to 20 by Mullin.

Both the Early girls and boys took the championship trophies home, plus four all tournament trophies, two girls and two boys. Gustine captured both second place trophies, Lometa took both consolation trophies and Zephyr girls and Mullin boys won third place awards.

Both the Goldthwaite girls and boys have been the team to beat in the tournament the last few years but this year both are rebuilding and having their problems in early season play. The girls are 3-4 for the year and boys are 2-3. The Eagles will play in the Priddy Tournament this weekend and will open against Priddy Thursday, the girls playing at 7:25 and the boys at 8:45.

Six girls and five boys were chosen to the all tournament teams. The girls awards were presented to guards, Rhonda Appleton, Lometa; Holloway, Early and Reinert, Pottsville. Forwards were Jacobson, Early; Oliver, Gustine and Carolyn Schwartz, Goldthwaite.

Jacobson was high point girl scorer with 57 points for the tournament. Thirty-two of the fifty-seven points were in the finals against Gustine.

The boys all-tournament team was Stephens, Gustine; Horton, Lometa; Watkins, Early; Whisenhunt, Mullin and Blackwell, Early.

High point boy was Danny Whisenhunt of Mullin with 66 points for the tournament.

SANTA LIKES 'EM ALL — One of the littlest of Santa's children (right photo) chewed on his hood strap and took everything in stride as he visits with jolly 'Ole Saint Nick. Below one of Santa's long time "kids" seems to be pleading with Santa but in reality is really talking to Santa about what to do with some of the sacks of goodies left over after more than 100 kids came to see Santa Claus. (Laughlin Studio Photo)



Santa Visits Goldthwaite



### David Schwartz 11-A All Dist.



David Schwartz

David Schwartz has been named to the 11-A All District Football team as first team defensive tackle.

The coaches from the 11-A district wrote in their nominations for the all district teams.

David, a senior at Goldthwaite High School, was the only boy from the Eagle Squad to be named to the All District team.

He has lettered two years in football and was named to "honorable mention" last year.

David is the son of Mr. and Mrs. Milton Schwartz of Goldthwaite.

### Lions Slate Ladies Night

The annual Goldthwaite Lions Club Ladies night and Christmas Party will be held Tuesday, Dec. 19.

Couples are asked to bring children's underwear as gifts for the needy. Items need not be wrapped but sizes should be plainly shown according to Lions Club president, Horace Brooks.

All Lions are urged to attend this annual affair.

### Fire Safety Deserves Special Action During Holidays

COLLEGE STATION — Accidents never take a holiday — not even at Christmas.

"Fire safety deserves special attention during the holidays when additional fire hazards may be created with combustible trees and decorations or faulty lighting sets. Careful attention to a few simple safety suggestions will help keep your holiday safe and happy," reminds Wayne Keese, agricultural engineer for the Texas Agricultural Extension Service, Texas A & M University.

First of all, select a fresh-looking and firm-needled tree, suggests Keese. Saw off the base of the tree at least one inch above the original cut, stand the tree in water, and keep it in water until it is taken down. Check the water level daily. Be sure to place the tree away from all sources of heat—fireplaces, radiators, or other heaters.

Don't rely on "do-it-yourself" the engineer. Test indicate that some of the coatings available in aerosol cans are partly effective if the coating is thick enough. "In short, there is no satisfactory home treatment which will retard fire in Christmas trees."

Artificial trees should be clearly marked as made of slow burning materials. If the tree has "built-in" lighting, look for the Underwriters' Laboratories (UL) label. Use only indirect lighting on metal trees to avoid the possibility of electric shock.

"Check lighting strings for loose connections, broken sockets and frayed insulation. Replace lighting sets with UL — labeled equipment. Bulbs made in the United States are usually safest as some imported bulbs may have

dangerous hot spots. Outdoor lighting should be UL — approved for outdoor use. Always turn off all decorative indoor lighting when you leave the house or retire for the night," emphasizes Keese.

Use noncombustible materials—metal, glass and asbestos—for decorations wherever possible. Cotton batting, flock and decorating paper should be flameproofed. Keep natural evergreen decorations away from candles, the fireplace and other heat sources. Don't use polystyrene foam candle holders or polystyrene decorations near lighted candles.

Remove combustible gift wrappings as soon as possible and place them in a covered metal trash can.

"Never leave children alone or without proper supervision. Be especially careful to keep matches and cigarette lighters out of their reach during the holiday period when your home contains more "fire hazards" than usual."

"And, have a family escape plan for use in case fire does strike. Be sure doorways and stairs are not blocked by the tree or other holiday decorations," cautions the engineer.

### Dec. 15 Entry Deadline For Stock Show

Entries for the Mills County Livestock show must be turned in no later than Friday, December 15. Livestock entries must be turned in to secretary of the Livestock Raisers Association, Jack Edgington, and comment cards for the clothing division must be turned in to Mrs. Patti Johnson, superintendent of that division.

The Livestock Show which is sponsored by the Mills County Livestock Raisers' Association, is scheduled for January 12th and 13th. The show is open to members of the 4-H, FFA and FHA. An adults craft division and canned goods division will also be included in the show.

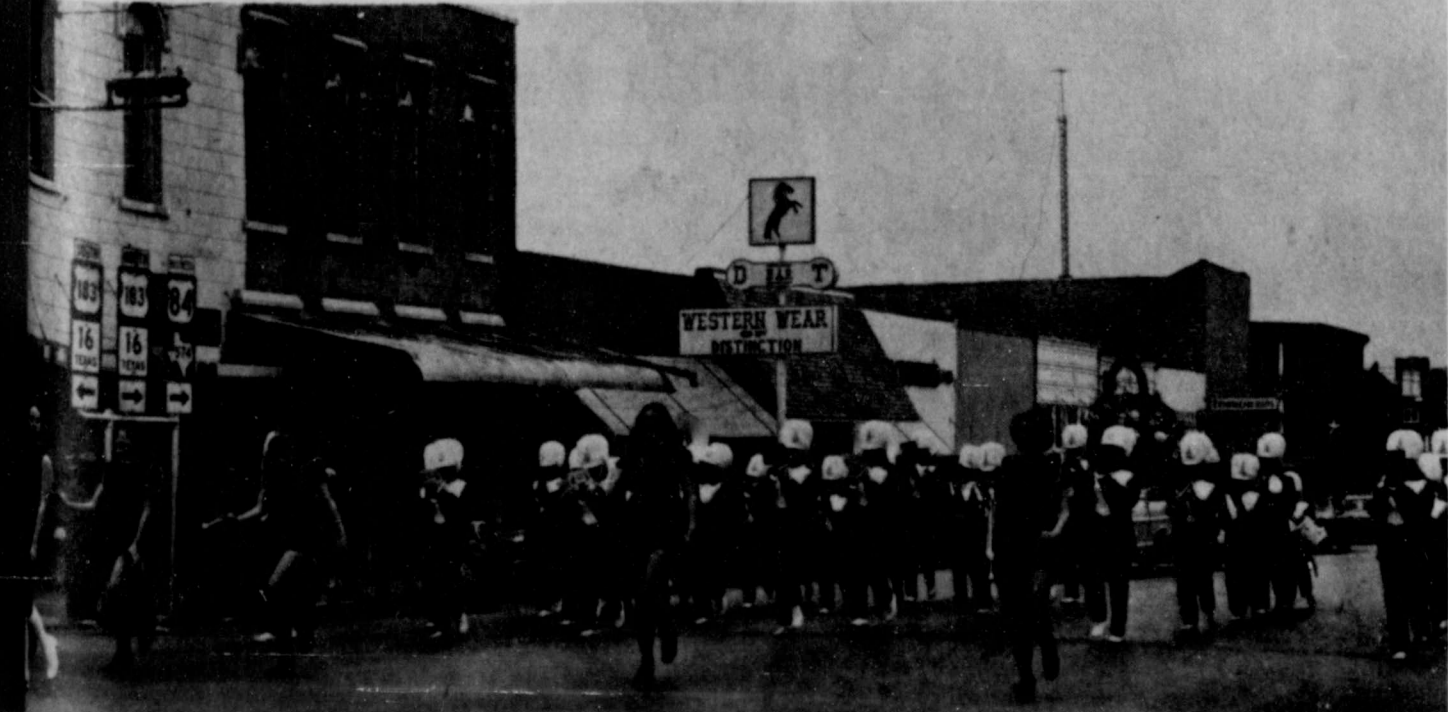
### Elementary Students To Meet At TUB Friday

Activities scheduled at the TUB Friday Night, December 15, will be for Grade School Students Only between the hours of 7 to 9 o'clock. Chaperons will be provided but all parents are welcome to come.

### Square Dealers Dance Saturday

The Square Dealers Dance Club will sponsor a dance Saturday night, December 16 at 8 p.m. at the American Legion Hall. Everyone is invited to attend and spectators are welcome.

William Henry Harrison, died at the end of his first month as president, serving the shortest term on record.



Step High To Keep Warm

Goldthwaite Eagle band braved the cold weather Saturday afternoon and participated in the annual Santa Claus Day affair. Band director is Richard Haddock. Twirlers are left to right, Phyllis Davis, Camilla Bryant, Melissa Coats, Kathy Koen, and Liz Truitt. Drum major is Elaine Harper. (Laughlin Studio Photo)



**THE GOLDTHWAITE EAGLE**

AND

**THE MULLIN ENTERPRISE**

Published Every Thursday at Goldthwaite, Mills County, Texas  
PHONE 915/648-2244

G. Frank Bridges Editor and Publisher

**AN INDEPENDENT NEWSPAPER**

SUBSCRIPTION RATES:	Amount	Tax	Total
Mills and Adjoining Counties, One Year	\$5.00	.20	\$5.20
Elsewhere in Texas, One Year	\$6.00	.24	\$6.24
Outside Texts, One Year	\$7.00	.28	\$7.28
Single Copy	.15	.01	.16

SUBSCRIPTIONS DISCONTINUED UPON EXPIRATION  
Entered as Second-class Mail Matter at the Post Office in Goldthwaite, Texas 76844, under the Act of Congress, March 3, 1879.

**Thirty-three**

**Attend Mullin**

**Sr. Citizen Meet**

The Mullin Senior Citizens held their last meeting for the month Monday, November 27, with thirty-three present for the occasion.

A delicious luncheon was served at the noon hour with Henry Long giving the invocation.

Crafts of different kinds were worked on as well as games being played through out the day. Grand prize winners included Mrs. Pearl Jenkins, Mrs. G. V. Dunlap and Miss Martha Calder.

A gift was presented to Birthdays honorees, Miss Martha Calder, V. G. Dunlap and Mrs. Blassengame.

At a short business meeting it

was decided by the group to exchange gifts at the next meeting. Ladies are to bring gifts for the ladies and men bring gifts for the men.

Several visitors attended the meeting and are welcomed at all times. They were Mr. and Mrs. Marcos Denson of Early, Mrs. Bertha Spinks of Glen Rose, Mrs. Junita Sweet of Portales, New Mexico, Mr. and Mrs. C. C. Wright of Bangs and Mrs. Blassengame.

The Goldthwaite Senior Citizens invited the Mullin Senior Citizens Group to attend their Christmas Luncheon December 13. The Mullin Citizens are really looking forward to this big event.

Drafts and notes differ in that the former is a written order to pay; the latter a written promise to pay.

**STATE CAPITAL**  
*Highlights*  
**AND**  
*Sidelights*  
by Bill Boykin  
TEXAS PRESS ASSOCIATION

AUSTIN, TEXAS — Proposals for major "reform" statutes and changes in the House and Senate rules have been drawn by Texas Legislative Leaders.

Rep. Price Daniel Jr., Liberty, slated to be the next Speaker of the House of Representatives, has announced a nine-point "reform" program.

Several Senate members and Lt. Gov.-elect Bill Hobby, Houston, have discussed proposals to change some of the "reform" rules adopted by the fourth called session of the 62nd Legislature.

Speaking to a seminar sponsored by the Texas Society of Association Executives, Daniel listed these proposed changes in state statutes which he feels are necessary because of a "mandate" of Texas voters this year:

1. A one term limit for the Speaker of the House of Representatives.

2. Elimination of the pledge card system for election of the House Speaker — where pledges are exchanged for support of legislation.

3. Disclosure by the Speaker of contributions to support his campaign for that office.

4. A limit on the number of conferees on tax bills.

5. A new "open records" law which would provide more access to public documents — with certain guidelines and safeguards.

6. Improvement of campaign contribution laws.

7. Tightening of the laws governing lobbyist registration.

8. An ethics code for legislators.

9. Changes in the state's "Open Meetings" law to provide the public with more information about actions of governmental bodies.

Daniel said these proposed "reform" measures should not be tagged with "liberal" or "conservative" labels.

Liberal and conservative labels are unfair to the 77 new members of the Legislature. They have not yet cast a vote. The new members will be more independent and reform minded, because that's what the voters demanded in the primary, run-off and general elections this year," he added.

"I don't believe we should overreact to the problems of the past," he said when he discussed major changes in House rules which will

be introduced.

**CITIZENS' CONSTITUTIONAL COMMISSION WILL BE SELECTED** — Elected leaders of the three branches of state government — executive, legislative and judicial — will be appointing 36 Texans to a citizens' commission to study needed constitutional changes and report its recommendations next November.

A resolution to create this citizens' commission will be introduced in the 63rd Legislature, and the 36 appointees will be selected by a committee of the elected leaders of state government.

This committee will probably include the Governor, Lt. Governor, Speaker of the House of Representatives, Chief Justice of the Supreme Court and Presiding Judge of the Criminal Appeals Court.

At a recent meeting of leaders in the drive for constitutional reform, the addition of the Attorney General to that committee was supported.

**LAWMAKERS LOOK AT BUDGET** — Key lawmakers who make up the Legislative Budget Board met here this week to take a look at multi-billion-dollar state spending plans the legislature must pass on soon.

Other signs of preparation for a vital and stormy 63rd legislative session are apparent.

Lt. Gov.-elect Hobby has moved into temporary offices and has assembled a staff.

Speaker-elect Daniel also is putting together a staff.

Both the incoming Lieutenant Governor and Speaker are working on their assignments to key standing committees which process legislation, although they prefer not to talk too much publicly about this important chore.

The Legislature, under new leadership and with a near-record crop of freshmen members, faces a staggering array of tasks.

In addition to the usual problems of making spending fit income, lawmakers have assigned themselves a monumental task of furthering legislative reform.

A hangover from the 1971 session is House of Representatives redistricting which must be redone or left to a federal court for boundary realignment.

Big decisions will also be necessary in the education field if the U. S. Supreme Court upholds a

December 1971 decision invalidating the present Texas system of financing public school education. "SHIELD LAW" BACKED — Speaker-to-be Daniel has informed newspapers, radio and television stations he will back a bill in the Legislature next year to protect confidentiality of news sources.

Daniel's letter to publishers and station heads noted the U. S. Supreme Court has held newsmen do not have constitutional rights to protect their news sources.

"It is my firm belief that, in the face of the recent ruling, and without statutory protection, the inevitable result will be loss of confidential sources of information," said Daniel. "News sources will dry up, thus depriving the public of the fullest news coverage possible. For the press to be an effective watchdog over public affairs and government officials, newsmen should not be required to disclose confidential news sources."

Daniel's bill provides that no newsmen may be required to disclose information or sources of information obtained in confidence in the course of news gathering and distribution. The privilege conferred would not extend to actions for libel, slander or invasion of privacy.

**IMPORT CURB PLEA RE-STATE** — The Interstate Oil Compact Commission again urged strengthening of the federal mandatory oil import control program.

However, U. S. Sen. Henry M. Jackson of Washington told the 34-state group at a meeting in Houston a special Senate committee already has determined domestic oil and gas reserves are inadequate.

IOCC further called for a comprehensive national energy policy to assure dependable domestic supplies and lessen the need for foreign oil and gas imports.

**APPOINTMENTS** — Gov. Preston Smith named Guy H. Barnett of Freeport and R. L. (Jimmie) Bounds of Mexia to the Texas Vending Commission.

Smith appointed William D. Lawrence Jr. of Tyler and Jack E. Ray of Austin to the Texas Motor Vehicle Commission.

He designated John H. McCoy of New Boston Texas Water Development Board chairman.

Atty. Gen.-elect John L. Hill picked James Bushala Jr. of Corpus Christi as his staff legal assistant; Colin Carl of Austin as assistant for constitutional and legislative matters; David Kendall of Dallas head of the opinions division; Lawrence E. Merriman of Austin head of the tort claims section; Joe K. Longley of Austin consumer protection division chief and John Michael Willatt head of the environmental protection division.

Lt. Gov.-elect Bill Hobby appointed Steve Oaks of Houston his executive assistant and Dr. June Hyer of Houston executive assist-

ant for research and legislation. Tom Hagan of Houston and Bill Jenkins of Amarillo will serve as administrative assistants and Bob Cargill as press secretary.

Mrs. Bonnie Griebel of Austin is new executive director of the Texas Cosmetology Commission.

**COURTS SPEAK** — While upholding a 1,001-year sentence for rape, the Court of Criminal Appeals pointed out such sentences serve no purpose, since those under them are eligible for release on parole in 20 years.

The Court of Criminal Appeals approved Governor Smith's commuting 11 death penalty cases to life imprisonment. One judge dissented, holding the defendants were entitled to new trials.

The Third Court of Civil Appeals upheld an injunction granted by an Austin district judge against a corporation that made alleged illegal finance donations to political campaigns.

The State Supreme Court upheld a 1961 decision of the State Board of Registration for Professional Engineers revoking the license of an engineer charged with offering Kermit city officials money in an effort to get a contract.

**AG OPINIONS** — A law making it a penal offense to provide alcoholic beverages to inmates of the Texas Prison System does not apply to county jails, Atty. Gen.

Crawford Martin held.

In other recent opinions concluded:

The State Department of Welfare may contract with Building Commission and Control for renovation of H. Reagan State Office Building fifth floor to install computer improve a defective computer system.

The Welfare Department fund money advanced to public or private agencies for providing the non-federal share of estimated costs of social service programs when actual costs less than anticipated.

A Water Quality Board may sell transcripts of official board meetings as the work doesn't interfere with duties as a state employee.

Where income from agricultural use is exceeded by income from still obtain agricultural use for tax purposes if it is a "business" which is a primary occupation and so owner income.

**Cockrum Attends Seminar**

Clyde Cockrum, Jr., local attorney, attended a seminar in Antonio December 8.

The seminar was held at the Del Rio on divorce during and after.

**DRESS UP YOUR HOUSE WITH**  
*Flowers*  
**THIS CHRISTMAS**

Give Us A Call or Come By To

- See Our**
- Poinsettias
  - Azaleas
  - Artificial Arrangements
  - Cemetery Wreaths

We Have Nice Stock  
Cut Flowers and Potted Plants

Phone 648-2612

**Padgett Floral**

**HUNTERS!**  
**INSURE**  
Before  
You Go!

SEE US FOR YOUR NEEDS!  
**STACY'S INSURANCE AGENCY**  
INSURANCE — REAL ESTATE — LOANS  
Phone 648-2481 Goldthwaite, Texas

**You are Invited to attend the annual Christmas Party at Heritage Home Friday, Dec. 22 - 6:30 p.m.**

Bring your gifts...but make sure they are correctly labeled. No aerosol cans please.

Santa will be there!

Marie Hamilton, Administrator  
**Heritage Home**  
Goldthwaite, Texas

**ANYONE WANT A HOT, DELICIOUS PIZZA**

Eat Here Or Call 2250 For Orders To Go For A Fresh, Piping Hot Pizza Treat!

Another New Specialty  
**Dairy Cup Pizza Menu**

	Medium	Large
CHEESE	.85	1.25
PEPPERONI	1.10	1.59
GROUND BEEF	1.10	1.59
SAUSAGE	1.10	1.59
JALAPENO	1.00	1.49
COMB. of 2	1.30	1.79

**OUR PIZZAS ARE NOT FROZEN -- THEY ARE BAKED FRESH TO YOUR ORDER**

**DAIRY CUP**  
Hollis Wiggins



## When The Old Bird Was Younger

### 10 Years Ago —

From The Eagle Files Of December 13, 1962

Duren Equipment Company will dress away a frozen hog if anyone can guess the correct weight. The contest must be in by 4 p.m. Saturday.

Head's Grocery and Service Station at Center City has done some improving by adding on a 18 x 35 building. Owner of the firm is Darrell Head.

Kenneth L. Poer, 22, son of Mr. and Mrs. Grover Poer of Caradan community, has been commissioned a second lieutenant in the United States Air Force upon graduation from Officers Training School at Lackland Air Force Base.

Miss Odene Ward became the bride of Charles L. Porter, Jr. on Saturday evening, December 1, at 8 o'clock in the First Baptist Church of Goldthwaite. Rev. Dwaine Greene, pastor of the church, performed the ceremony.

Terry Pribble, student at Tarleton State College, Stephenville, spent the weekend with his father, Mr. and Mrs. A. M. Pribble and other relatives.

### 25 Years Ago —

From The Eagle Files Of December 12, 1947

Mr. and Mrs. Johnnie Boykin and Mrs. Bertha Boykin took dinner Sunday in the Boots Boykin home. A. M. Burkes, son of Mr. and Mrs. Margin Burkes of Goldthwaite, was elected parliamentary leader of the Aggie Club on the University of Corpus Christi Campus.

Mrs. T. C. Graves and children were in Dallas last weekend with relatives.

Miss Floy Dene Killion of May and Troy N. Berry of Goldthwaite were married Saturday, November 23, 1947, at 6:30 p.m. at the First Baptist Church in May. Rev. Charles Noble of Austin performed the ceremony.

Mrs. A. M. Rose was surprised Sunday, Dec. 7, by a birthday dinner given at her home. She was 57 years old.

Mrs. Jerry Walker very ably gave the outline of conditions in Dallas at the Woman's Society Circle No. 1 meeting. She was assisted by Mrs. Ray Blackburn.

On December 5, 1947, a host of friends and relatives of Mrs. Gene Walton gathered at the home of Mrs. Paul Lee of Moline, with number of beautiful gifts for the respective mother.

Mr. and Mrs. Warren Duren had a Sunday guest in their home her parents, Mr. and Mrs. W. T. Fisher, her sisters and brother, Mr. and Mrs. Earl Fisher of Mullin and Miss Aline Fisher of San Antonio; Miss Minnie Moore of Big Springs and Mrs. Battle Walker of Dalhart.

### 30 Years Ago —

From The Eagle Files Of December 9, 1932

Bill Anderson is able to be around, after cutting his foot with an axe several weeks ago. (Mid-City News)

County Clerk Porter has issued marriage license to S. A. Couch of Mullin and Miss Ruth Tully of Nolan Gap, Hoover Hodges and Miss Viola Soules, both of Moline. He also has an application for license for Henry Hopper and Miss Ella Steigmoller, both of Priddy.

Those who spent Sunday afternoon in Grandma Westerman's home were Mr. and Mrs. Weeks, Mrs. Lowe, Mrs. Dorman Westerman and little daughter. (Rabbit Ridge)

J. W. Flatt of the Live Oak community had the misfortune to


lose his barn and contents by fire last Thursday night. There is no clue to the origin of the fire. Judge and Mrs. J. C. Darroch of Brownwood were here the first of the week, when he looked after professional business and his farming interests.

Entertainment was given in the home of Mrs. R. V. Littlepage Saturday evening in the form of a dinner party. The turkey served was killed earlier by Mr. Littlepage.

Miss Jewel Vaughn was elected president of the Trigger Mountain singing class. Miss Mabel Littlepage, secretary; Jack Davis, Miss Lee Ruth Graves, Miss Ella Vaughn, song leaders; and Misses Opal Petty and Jewel Vaughn, pianist were also elected.

Sixty-nine relatives and friends attended the fifteenth wedding anniversary celebration for Mr. and Mrs. W. A. Hollis. The honorees were surprised to find a five dollar gold piece under each of their plates. The gold pieces were made in 1882.

through the kitchen window . . . with Weedon



BY WEEDON WASH

No matter how firm the resolution to get a head start on the Christmas season, it seems to creep up sooner than expected—and the shopping itself can be quite a chore.

"Efficient shoppers take time to do a little planning to get the job done and prevent frustration or haphazard buying."

First, they start as early as possible while stores are still well stocked and not so crowded with shoppers.

Then they take time to plan each

### Personal —

Recent visitors in the home of Mrs. Annie Armstrong were her son and family, Mr. and Mrs. Bill Armstrong and children, Nancy and Billy of Temple.

You can't get a good job without experience.

We'll give you both.

There are plenty of jobs in the want ads. Unfortunately, almost all the good ones ask for experienced help. But, in today's Army, we'll hire you at \$288 a month to start. No experience necessary. We'll give you free meals, free medical and dental care, and 30 days paid vacation a year. And the training and experience in almost any job you want. A job you can make a career of. In the Army, or out of it. To get complete details talk it over with your local Army Representative. Today's Army wants to join you. Call 915-646-9490 311 Fisk Street Brownwood, Texas 76802



MISS PENNY MAY PATE

### Engagement

Mr. and Mrs. J. B. Pate of Goldthwaite announce the engagement and approaching marriage of their daughter, Penny May Pate, to Mr. Novis O. Williams, Jr., son of Mr. and Mrs. Novis O. Williams, Goldthwaite.

The bride-elect is a student at Central Texas College and the prospective groom is a 1972 graduate of Central Texas College.

The wedding is to be Friday, January 5, 1973, at 7 p.m. in the First United Methodist Church of Goldthwaite.



trip—gifts they intend to buy, amount they can spend, and where they're going to make the purchases.

Shopping should start at home by making a list of all the gift receivers.

Wise choices are gifts that receivers would like to have—gifts that will be "easy to live with."

"Gifts of comparatively small value, of short life duration, or those which can be put away and used as occasion demands can be pleasing and very satisfying to the receiver."

Gifts that imply daily—and often conspicuous use—can be "hard to live with" unless the shopper really knows the receiver's desires and needs.

"As the list is made, money should be allocated to fit it. Remember to stay within spending limits—overspending can spoil Christmas."

Group gift ideas for planned shopping without backtracking or making so many trips.

Study ads in newspapers to help find the best buys.

"If some gifts can be ordered from home, the shopper may cut down shopping time. However, it's wise to know the merchandise quality of gifts ordered sight-unseen to avoid disappointment."

Commentary Cards for the Clothing Division of the Mills Co. 4-H and FHA Show are to be turned in to Mrs. Patti Johnson by 4 p.m. December 15.

Entries for the Foods Division, Crafts Division, and the Adult Canned Goods will be accepted on January 11, 1973. There is no pre-registration for these divisions.

### Market Report

Lometa Commission Company  
Lometa, Texas

BUD HARRELL, Owner

December 8, 1972

RECEIPTS: 997

Light Wt. Steer Calves, 57.00-69.00; Medium Weight Steer Calves, 52.00-57.00; Heavy Weight Steer Calves, 46.00-50.00.

Light Weight Heifer Calves, 48.00-57.00; Medium Weight Heifer Calves, 41.00-48.50; Heavy Weight Heifer Calves, 37.00-46.00.

Feeder Heifers — 35.00-41.50  
Feeder Steers — 38.00-46.50  
Heiferettes — 25.00-32.50  
Stocker Cows — 25.00-31.00  
Butcher Calves — 36.00-41.00  
Cows and Calves, 270.00-400.00

Bull Calves — 40.00-56.00  
Bull Yearlings — 37.00-44.00  
Packer Bulls — 28.50-32.50  
Packer Cows — 18.00-26.30

Our choice light weight calves were fully steady. Our medium weight steer and heifer cattle were fully steady to stronger. Our heavy weight steer and heifer cattle were steady to strong. Packer cows were steady to \$1 higher. Cows and calves were steady to \$20.00 per pair higher.

We had a good run of cattle with excellent buyer attendance.

Remember, Sale Starts At 12:00 Noon On Friday.

## Garden Club Conducts Last 1972 Meeting

The Goldthwaite Garden Club met on December 6 in the lovely home of Mrs. C. A. Keeler. Mrs. J. B. Pate, Mrs. W. P. Duren and Mrs. B. C. Wicker were co-hostesses. Mrs. Keeler made the arrangement of the month.

Each member brought table and tray decorations for the nursing homes to be used at the discretion of the dietitians.

Plans were laid for a bazaar and bake sale on Friday, December 15, at Mills County State Bank. Mrs. Alta Fritzel will take orders for materials.

Mrs. Ozelle Cornelius, chairman of the Christmas Lighting Contest, announced that plans were being made for the judging of the "Christmas Glamour — Old and New" contest on December 18th from 7 p.m. to 12 p.m. Those entering the contest are to send entry blanks to Mrs. Cornelius before the final date.

Announcement was made by Mrs. McCoy that the courthouse project was judged last week. Results of the judging are not yet known.

"Christmas Fantasy," the tour of homes December 16th, was discussed and plans were completed. The public is invited to visit the following homes between the hours of 7 p.m. and 10 p.m.: Mrs. N. M. Coats, Mrs. W. P. Duren, Mrs. James Boykin and Mrs. Robert McCoy.

The president closed the meeting and the year with this thought: What does the season of Christmas mean to us? What do we emphasize most? In our giving at Christmas we can give three things: Time, Talent and Treasure.

1. Time to be considerate of others.
2. Time to help those in need.
3. Time to worship God and thank Him for the gift of the Saviour.

Talent has been given to us by God — Use it wisely to help our fellow man.

Treasure is to be used wisely to because we are trustees of God's treasure so we must administer it to bring joy to others.

## LAST MINUTE Gift Ideas

### Toiletries and Cosmetics

#### FOR HER

- Dorothy Perkins
- Lenel
- Clairol
- Alo
- Max Factor
- Helen Ayars

#### Also

- Musical Boxes
- Diaries
- Compacts
- Purses

- Perfumes
- Billfolds

- Brush & Comb Sets
- Fine Stationery

- ☆ Billfolds
- ☆ Razor Sets
- ☆ Ronson Lighters
- ☆ Electric Razors

#### FOR HIM

- ☆ British Sterling
- ☆ Kings Men
- ☆ Russian Leather
- ☆ Italian Lime
- ☆ Royal Regiment
- ☆ Currier & Ives
- ☆ Lenel
- ☆ Esquire

#### Many More

#### ALSO

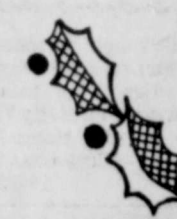
- ☆ Shaving Supplies
- ☆ Radios
- ☆ Smoking Sets
- ☆ Tape Recorders
- ☆ Flashlight Batteries



## HUDSON DRUG

"WHAT YOU WANT, WHEN YOU WANT IT!"

GOLDTHWAITE, TEXAS



Don't count on finding hidden treasure . . .



START PILING UP SOME RICHES OF YOUR OWN WITH A SAVINGS ACCOUNT!

Maybe you WILL be the lucky one to stumble across a hoard of pirate's treasure . . . but don't hold your breath! You'd be much wiser to open a savings account and begin setting aside certain amounts on a regular basis if you want to have your own private treasure chest. Our high earnings will really help it pile up!



Goldthwaite

## Mills County State Bank

Serving Mills County Over 83 Years

## CORRAL DRIVE-IN -SAN SABA

Opens at 6 — Starts at Dusk

Double Features Show Once — Regular Features Show Twice

Thurs., Dec. 14 Double Feature

All Spanish Movie

"El Cristo Del Oceano"

2nd Feature

"Rosa La Tequilera"

Fri. & Sat., Dec. 15 & 16

"Elvis on Tour"

Sat. Late Show Adults Only 11:15

— Rated x — "Teenie Tulip"

Sun., Dec. 17 (R)

"The Secretary"



# CLASSIFIED \* ADS \*

## Classified Rates

5c per word including name and address, for first insertion and 3c per word for each subsequent insertion. Count initials as one word.  
Minimum charge \$1.00.  
Legal notices same as above rates.  
Memorial tributes or Resolutions of Respect and all other matter not news will be charged for at regular advertising rates. No charge is made for news of Church or other public gatherings where no admission is levied. Where admission is charged or where goods or wares are offered for sale the regular advertising rates will be applied.  
Cards of Thanks, \$4.00.  
All advertising is cash with order except where accounts have been established.

**FAST DEPENDABLE**  
**Film Developing**  
**Hudson Drug**

## Employment

NOW TAKING applications for LVN's and Nurses Aides for all three shifts. New wing to open soon. Apply in person. Betty Yates RN, Heritage Nursing Home Inc., 1207 Reynolds, Goldthwaite, Texas 76844. 11-23-4tc  
WANTED - Registered nurse and LVN for 3 to 11 shift. Contact Mrs. Sara Kilpatrick, Director of nurses, Childress Clinic and Hospital. Phone 648-2212. 11-30-4tc  
WANTED - Service Station Attendant. Apply at Hudson Service Station. 12-14-tfc

**Dr. Merle M. Ellis**  
**OPTOMETRIST**  
306 Citizen's Nat'l Bank Bldg. Brownwood, Texas  
Glasses - Contact Lens  
Call 646-8778 or write P. O. Box 149 For Appointment

**J. C. Partin**  
● Bulldozing  
● Chaining  
● Soil Conservation Work  
NEW TELEPHONE NUMBER 966-3710 FRIDDY

**Manuel's**  
**Carpenter Shop**  
**Floyd Manuel**  
● CABINETS  
● ANYTHING OF WOOD  
● SAWS RECONDITIONED  
FREE ESTIMATES ON YOUR NEEDS  
All Material and Workmanship Guaranteed  
PHONE 648-2521  
8 1/2 Miles West of Goldthwaite

JUNE CLIFTON - T. W. WINTERS - T. E. WINTERS  
**Lampasas Livestock Auction**  
Lampasas, Texas  
**CATTLE**  
WEDNESDAYS 12:00 O'clock Noon  
Phone, Day or Night  
Area Code 512-556-3611  
Or Mills County Area,  
Big Valley Ex. 938-5388

## Real Estate

**WE HAVE BUYERS!** In Dallas-Fort Worth Area who want farms or acreage in a friendly community like I know yours to be.  
**If you have land to sell: Call Marie Reynolds Bogges**  
3610 West Pioneer Parkway Arlington, Texas  
817/265 6421

**FARM AND RANCH** Sales or Trades. Listings appreciated. If interested contact Joe Green, Center City, Route 3, Goldthwaite, Texas. Phone 948-3321.  
FOR SALE - The Luther Booker house on the south side of the courthouse square in Goldthwaite. Campbell-Stacy Real Estate Corner of Fourth and Fisher Phone 648-2481 - Goldthwaite 11-2-tfc  
RETIRED - Rock House for sale on Lake Travis near Austin. CH and CA, carpet and fireplace. Call Del Barnett. Telephone 648-3139. 11-23-tfc  
FOR SALE - Three bedroom house with 1 1/2 baths at 1312 6th Street in Goldthwaite. In process of complete remodeling. Remodeling supplies already purchased. Will sell as is or after completion. Contact Pat Vanpelt, Goldthwaite, telephone 648-3417. 11-16-tfc  
See Us For All Your REAL ESTATE NEEDS Your Real Estate Sales Is Our Business, Not A Side Line. We give our Full Time and Attention to serve your needs.  
Listings wanted and appreciated. A. A. CLINE REAL ESTATE BROKER Phone 648-2292, Res. 648-3177 Goldthwaite, Texas FLORRIE BURRUS Real Estate Sales Phone 938-5327 6-29-tfc

## Real Estate

Building Lots for sale. Call Mills County Lumber Company. Telephone 648-3400. 6-29-tfc  
WHY SLEEP two in a room when everyone can have a room of their own. Saylor Hotel for sale.  
A. A. CLINE Real Estate Ph. 648-2292. Res. 648-3177 Goldthwaite, Texas 8-10-tfc  
FOR SALE - Lots and nice house. A. A. CLINE REAL ESTATE PHONE 648-2292 RES. 648-3177 GOLDTHWAITE, TEXAS 11-9-tfc  
FOR SALE - Some nice houses and ranches. Come see us! CAMPBELL-STACY REAL ESTATE Corner of Fourth and Fisher Phone 648-2481 - Goldthwaite 7-1a-tfc

## Cards of Thanks

Words cannot express our deep appreciation for the words of comfort, prayers, flowers and every act of kindness bestowed upon us at the passing of our infant son, Jason Wayne Ward.  
Also a very special "Thank You" to Roy and Rachel Wilkins for their kind and loving service.  
May God Bless everyone who helped us in any way.  
Wayne and Brenda Ward  
Mr. and Mrs. Glendon Benningfield  
Mr. and Mrs. Herbert Shipp 12-14-tfc

## Announcements

**DEAD ANIMAL SERVICE**-As near as your nearest telephone. Phone (Area Code 817) 386-3303, if no answer try 386-3642. Service charge \$3.00 under 50 miles and 15c per mile over 50 miles from Hamilton. Hamilton Rendering Co., Inc. Hamilton, Texas. 2-22-tfc  
FISH BAIT: Live minnows, worms, goldfish, and crawfish. Frozen shad gizzards, shad, liver, shrimp. Also blood bait. A. C. Williams Bait Station, Waco Highway, Goldthwaite. 4-18-tfc

## Personal

Engraved wedding invitations and bride's accessories. New catalog just arrived. Inquire at the Eagle office or phone 648-2244.

## PADGETT FLORAL

For All Your Flower Needs  
CALL  
Phone 648-2612  
FTD Wire Service

## FILL UP WITH



● Farm Bureau Tires  
● We Fix Flats  
● Open 24 Hours  
**Lock's Shamrock Service Center**  
J. A. Lock - Operator  
At The North "Y" Goldthwaite, Texas

## For Sale

FOR SALE - Orange plastic upholstered swivel chair, very comfortable, good condition, \$15.00. See at 807 Reynolds Street. 12-14-1tp  
FOR SALE - Baby calves. Pick up Thursday thru Monday. Contact Hill Country Store, Box 369, Goldthwaite, Texas 915-648-2737. 10-26-tfc  
FOR SALE - 20 weeks old Ideal 236 Pullets. Call 985-3544. 12-14-1tc  
FOR SALE - Metal Storage Tanks, Dal-Worth Paint, black lights, posters, gag gifts, bumper stickers.  
TISCHLER'S HOUSE OF COLOR Goldthwaite, Texas 76844 7-20-tfc  
FOR SALE - 12x64 foot mobile home located in San Saba. Three bedroom. Call Bill Burnham, Telephone 938-5397. 11-30-tfc  
FOR SALE - Three bedroom house. Good location at 1509 Parker Street. Call or write D. W. Arnold, Box 970, Lampasas, Texas 76550. Phone 512-556-3688 day-time or 512-556-6626 nite. 10-19-tfc  
FOR SALE - House to move. 4 rooms and bath. Located 14 miles north of Goldthwaite. L. C. Howard, 2503 Pinewood Terrace, Austin, Texas 78757. Telephone 453-8243. 12-14-4tc  
CRACKED EGGS at Johnson & Johnson Egg Farm. 20c dozen. Pick up from 1 p.m. until 5 p.m. 2-24-tfc  
FOR SALE - Several nice heaters. A. A. CLINE Real Estate Phone 648-2292 Res. 648-3177 Goldthwaite, Texas 76844 12-14-tfc  
FOR SALE - 1972 12 X 60 foot Fleetwood Mobile Home. Excellent condition. Call 648-2710. 12-7-3tp  
FOR SALE - 10X12 Building for \$500.00. Can be used for store-room or office. Carpeted and paneled. Telephone 558-2546. 12-7-12tc

## Business Services

ELECTRICAL and air conditioning sales and service. Central Texas Electric and Air Conditioning, Goldthwaite. Phone 648-3452. 24 hour service. 5-18-tfc  
HAULING black soil, sandy loam, cliche concrete gravel, pea gravel and washed motar sand. Prompt delivery. 4-20-tfc  
BACKHOE service also lot cleaning and dirt fills. Good equipment. Experienced operators. Call 648-2424, Truett Aldridge. 2-3-tfc

COLOR TV SETS - Before you buy a new color TV set check into the following facts: 1. Is the firm a local or foreign retailer? 2. Will they stay behind the product? 3. And most of all check the ability to maintain the set properly. R. G. Kelly TV and Appliance. Telephone 648-3390 12-14-tfc

## WANTED

WANTED - Land to lease. Pasture land. Call 648-3535 or 948-3549 or see Roger or Elton Horton, Goldthwaite. 11-23-tfc

## AMBULANCE SERVICE

PHONE 648-2255  
**Roy Wilkins**  
**Funeral Home**  
GOLDTHWAITE, TEXAS

## QUALITY DRY CLEANING CITY CLEANERS

Member Dry Cleaners Institute of Texas  
Phone 648-2260  
Goldthwaite, Texas

## Miscellaneous

Used Singer Sewing Machine for \$26.10. We also clean and adjust all makes and models. Call 648-2591. 11-23-4tp  
NEW CONSTRUCTION, remodeling, repairs, cement finishing. Expert Work. Call Jim Smith Construction, 648-2411 or 648-2475. 8-3-tfc  
JUST RECEIVED - Truck load of Motorola Quasar color and black and white Television sets. Best selections in the area. Come see us.  
WILCOX & HEAD ELECTRIC GOLDTHWAITE, TEXAS  
UPHOLSTERING ALL TYPES, furniture, cars, pickups, boats. See our samples at Rind's Upholstery, Phone 648-2717, 1208 Hanna Valley Road. 6-19-tfc  
USED COLOR TV SPECIALS - Several nice console sets in stock. These were on Motorola-Quasar TVs. We have been re-conditioned and are ready to go.  
WILCOX & HEAD ELECTRIC GOLDTHWAITE, TEXAS  
SUBSCRIPTIONS to the Goldthwaite Eagle make ideal Christmas gifts. And it's happiness last all year long. The Eagle...better than a letter from home. Call 648-2244 for full information.  
OVERLOADED with used appliances and TVs. Some good and some not so good. Let's talk trade.  
WILCOX & HEAD ELECTRIC GOLDTHWAITE, TEXAS 11-2-tfc  
CUSTOM FRAMING: Portraits, paintings, needlework. Over 50 mouldings to choose from. Velvet liners. For Christmas, orders must be placed by Dec. 16. Call Harvey Parker, 648-2681 after 6 p.m. and weekends. 11-16-5tc  
UPHOLSTERY WORK For all your needs. Furniture, Cars, Boats, Etc. Extra large stock of fabrics to choose from to fit your budget. Come see us or call 648-2261. Spradley's Furniture & Upholstery, on Fisher Street, Goldthwaite. 1-8-tfc

## City Property

LOT FOR SALE - One and one-third acres. Contact Randal Raliff. 6-22-tfc  
FOR SALE - New 3 bedroom, 1 1/2 bath rock front home on 4th Street in Goldthwaite. See Jim Smith or call 648-2411 or 2475. 4-20-tfc

## Business Opportunities

WHY WORK FOR WAGES when you can own a business of your own? Nice business for sale.  
A. A. CLINE REAL ESTATE Phone 648-2292 - Res. 648-3177 Goldthwaite, Texas 7-13-tfc  
OFFICE SUPPLIES FILING CABINETS Fast delivery out of warehouse. Representing all major lines. All sizes, discount prices. Call 648-2244, Eagle Office.  
+2 Underwood Standard Manual Typewriters in excellent condition.  
Also several strong, lightweight typewriter stands in stock. Come by and inspect this good used merchandise, priced at substantial savings. The Goldthwaite Eagle Phone 648-2244

## Rites Conducted For Mrs. Mary Sue Evans December 8

Funeral services were conducted Friday, December 8, 1972, at 10 a.m. in the First United Methodist Church of Goldthwaite for Mrs. Mary Sue Evans. Rev. Gordon Talk officiated. Interment was in the Goldthwaite Memorial Cemetery. Wilkins Funeral Home was in charge of arrangements.  
Mrs. Evans passed away at 11:30 a.m. Wednesday, December 6, 1972 in the Childress Hospital in Goldthwaite following a short illness. She was 103 years of age.  
She became a member of the First United Methodist Church at the age of 12. She taught a Sunday School class for many years and was also a long time member of the choir. Mrs. Evans was a long time member of the Self Culture Club and formerly an active member of the Eastern Star Chapter.  
Born October 29, 1869, in New Hope, Alabama, she was the daughter of the late James David Nichols and Eliza Southall Nichols. The family moved to Coleman County, Texas, when Mrs. Evans was still in her teens.  
On January 22, 1894, she married to John C. Evans, 1914; daughter, Mrs. Mary McEwen 1952.  
Survivors include one daughter, Mrs. Leon K. Patterson, San Antonio; three sons, Conway Houston; Butler E., Locust Grove, Okla.; and Julian D., Goldthwaite; two grandchildren, John Paul Elroy, Dallas; and Mrs. Lang, Tulsa, Okla. and five great grandchildren.  
Pallbearers were Lewis T. Jackson, John L. Patterson, Carlos Patterson, Clyde Cockrum Sr., Bill Yarbrough and Fred Reynolds.

## Brownwood Cattle Auction

WAYNE MAY, Owner  
Brownwood, Texas  
December 6, 1972

## Childress Hospital Report

TUESDAY, DECEMBER 5

DISCHARGED - Julius Grover Boatwright.

WEDNESDAY, DECEMBER 6

ADMITTED - John W. Hendrick and Albert Otto Sommerfeld, Goldthwaite.  
DISCHARGED - Lee R. Dobyns and Margurite Sherrard.

THURSDAY, DECEMBER 7

ADMITTED - Angelina Martinez and Robert Frank Langham, Goldthwaite and Henry G. Gibbard of Mullin.  
DISCHARGED - Gordon Jones and Ocie E. Belt.

FRIDAY, DECEMBER 8

ADMITTED - Nettie Fox and Billie Fallon, Goldthwaite.  
DISCHARGED - Walter Weatherby.

SATURDAY, DECEMBER 9

ADMITTED - Albert Earl Hill, Winters and Elsie Weatherby of Goldthwaite.  
DISCHARGED - Angelina Martinez.

SUNDAY, DECEMBER 10

ADMITTED - Ima Hudson and Ruby Pearl Hunt, Goldthwaite.  
DISCHARGED - John W. Hendrick.

MONDAY, DECEMBER 11

DISCHARGED - Cecil Clayton Leatherman.

**Order your bookkeeping supplies for the new year from the Eagle Office NOW!**

## Livestock

STRAYED - December 3 two black white faced heifers with sales tag No. 725 and No. 951. Tags may still be attached. Notify Dr. M. A. Childress. 12-14-tfc

MARKET: Buyer attendance was normal. Market was active. Stocker and slaughter bulls steady. Slaughter cows steady to \$2.00 higher. Stockers and feeders steady to \$1.00 lower. Choice kinds fully steady. Plainer kinds showing the decline. Stocker cows fully steady. Cows and calves steady.

Estimated Receipts: 809

Stocker Steer Calves, Wts. 250-425-lbs. -	46.00-65.00
Stocker Heifer Calves, Wts. 250-425-lbs. -	39.50-50.00
Steer Yearlings, Wts. 500-700-lbs. -	39.50-45.00
Bull Yearlings -	38.50-45.00
Heifer Yearlings -	38.50-45.00
Plain Fdr. Steers -	38.00-45.00
Plain Fdr. Heifers -	36.00-45.00

Cows and Calves - Pairs:  
Good - 325.00-375.00  
Plain - 250.00-330.00

Stocker Cows - 197.50-300.00 per head or 26.25-30.00 per lb.

SLAUGHTER CATTLE:

Fat Calves -	37.50-39.50
Fat Cows -	25.75-28.50
Utility and Cutter Cows -	25.00-28.00
Canners -	23.25-27.75
Shells -	21.50 downward
Stocker bulls -	32.00-35.50
Slaughter bulls -	26.50-32.00
Hogs -	none

REPRESENTATIVE SALES:

S. H. Rodgers, Brownwood, 350-lb. wf. str.	\$7.50
Joe Johnson, Rising Star, 320-lb. wf. str.	\$8.00
J. D. Brown, Bangs, 1550-lb. wf. bull	\$1.00
Buckeer Boyd Ranch, Burnet, 500-lb. blk. wf. hef.	\$8.50
Herman Bennett Ranch, Burnet, 5 wf. hefrs. 363-lb. average wt.	\$43.00 and 8 wf. hefrs. 663-lb. avg. wt. \$286.00 per hd.
B & E Dairy, Comanche, 1605-lb. hol. cow	\$7.00
W. B. Seymore, Bangs, Blk. wf. cow and calf	\$40.50

See Us For

## AUTOMOTIVE PARTS

JOBBERS AND DISTRIBUTORS

**SHELTON AUTO PARTS**  
Phone 648-3312  
2nd & Fisher Goldthwaite, Texas

## New Dearborn Heaters

And We Still Feature The Rheem Water Heaters  
See Us For Gas Hardware  
**Geeslin Gas Company**  
Virgil Geeslin  
Phone 648-2712, Goldthwaite, Texas

**D J's FARMER-RANCHER MEAT CO.**  
Lometa, Texas  
Top Quality Meats  
Slaughter Processing  
Telephone 752-3337

**REN FRO Cabinet Shop**  
1101 Parker St., Goldthwaite  
Phone 648-3254  
● Custom-Made Cabinets  
● Store Fixtures  
● Complete Remodeling  
FREE ESTIMATES GIVEN ON NEW WORK OR REMODELING



ENTERPRISE  
4, 1972

Mrs.  
ember 8

o Coleman  
s, Evans was

22, 1894, she  
C. Evans,  
waite to make

r in death ar  
Evans in  
Evans, 1914;  
Mary McE

ude one daugh  
atterson, Sa  
ons, Conwa  
E., Locust Gro  
n D., Goldthwa  
n, John Paul  
and Mrs. Ma  
la. and five

re Lewis T. B  
rson, Carlos P  
ockrum Sr., Bill  
Fred Reynolds.

Cattle Auction

wner

as

72

attendance  
as active. Stea  
s steady. Slight  
to \$2.00 high  
rs steady to \$1.00  
nds fully steady  
wing the declin  
y steady. Cows

809

ives,  
— 46.00-60.00  
alves,  
— 39.50-55.00  
— 39.50-60.00  
— 38.50-60.00  
— 38.50-60.00  
s — 38.00-60.00  
rs — 36.00-60.00

Pairs:  
375.00  
330.00

— 197.50-300.00  
25-30.00 per lb.

FILE:

— 37.50-50.50  
— 25.75-30.50

— 25.00-30.00  
— 23.25-29.75  
21.50 downward  
32.00-33.50  
— 26.50-32.00

SALES:

rownwood,  
\$7.50  
ng Star,  
\$6.00  
gs,  
\$4.00  
ch, Burnet,  
\$6.50  
Ranch, B  
lb. average  
hefrs. 66  
\$286.00 per  
anche,  
\$7.00  
angs,  
alf 402.50

rs

e

rs

vare

y

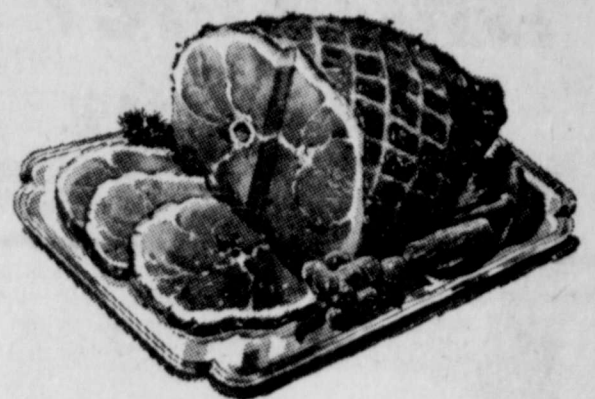
Texas

# Season's Best Foods

PAGE 5 THE GOLDTHWAITE EAGLE-MULLIN ENTERPRISE  
Goldthwaite, Texas, Thursday, December 14, 1972

## Schwartz Food Store

Goldthwaite, Texas



**OVEN READY**  
**Turkeys**



Prices Good Thursday, December 14 Through Wednesday December 20.

Prices Good Full Week.

Tender White  
10-14 lb. Size  
U. S. D. A. Inspected

**Hens** Lb. **39¢**

Swift's Premium, Deep Basted  
**Butterballs** Lb. **59¢**

Affiliated, Premium Quality  
**Bacon** Lb. **88¢**



PURE VEGETABLE  
PREMIUM QUALITY  
**59¢**

"Holiday Helpers"  
Adams  
**Vanilla** 8 OZ. SIZE **\$1.19**

Mc/Cormick Spices  
Poultry Seasoning 25¢ BOX Sage 7/16 OZ. 25¢

Hershey Chocolate Chips  
6 OZ. PKG. **25¢** 12 OZ. PKG. **49¢**

Save on 1/2 Portions-No Center Removed

Butt Portion **79¢** Lb. Shank Portion **69¢** Lb.

These are 9 to 11 lb. Size, Good Buys

Small Christmas Wrapped Hams Available

GRADE A WHOLE  
**Fryers** Lb. **35¢**

"Special Holiday Produce"

OCEAN SPRAY FRESH  
**Cranberries** Lb. **39¢**

EXTRA FANCY GOLDEN DELICIOUS  
**Apples** Lb. **25¢**

EXTRA LARGE CALIFORNIA  
**Celery** STALK **25¢**

TEXAS SWEET  
**Oranges** Lb. **15¢**

CALIFORNIA SUNKIST NAVEL  
**Oranges** Lb. **19¢**

SHURFINE CANNED  
SAVE ONE THIRD OVER OTHERS  
**Milk** 6 TALL CANS **\$1**

SHURFINE  
IN HEAVY SYRUP  
BIG 2 1/2 CAN  
**3** FOR **\$1**

SHURFINE, CUT GREEN  
303 CANS  
**BEANS** 5 FOR **\$1**

SHURFINE  
5 Lb. Bag  
**Flour** **39¢**

DIAMOND  
Large  
**Walnuts** POUND BAG **66¢**

KRAFT'S PHILADELPHIA  
**Creme Cheese** 8 OZ. PKG. **35¢**

KRAFT'S SOFT MAXI-CUP  
**Margarine** Lb. **39¢**

Brown Rabbit  
SAVE 20c  
**Syrup** 43 OZ. JAR **69¢**

Shurfine  
"Non-Dairy  
Frozen Whipped"  
**Topping** 10 OZ. CTN. **39¢**

"Big Non-Food Savings"

FOIL PAK  
Alka-Seltzer REG. \$1.25 **78¢**

HAIR SPRAY  
AQUA-NET OR **Style** REG. 79c **56¢**

COLD CAPSULES  
Contac REG. \$1.69 **88¢**

ONE-A-DAY  
Vitamins REG. \$1.96 **\$1.38**

SCHWARTZ FOOD STORE

SAVE 60¢ WHEN YOU BUY A  
10 oz. Jar of  
**INSTANT FOLGER'S  
COFFEE CRYSTALS**

SPECIAL PRICE  
WITH THIS COUPON  
**99¢**

WITHOUT COUPON \$1.59  
Coupon cash value 1/20 of 1¢

GOOD THRU 12-20-72



# Attention To Men Nearing Retirement Age

(EDITOR'S NOTE: This is the 2nd part of a series of articles on the new law that have been prepared by Glen McNatt, social security manager in social security operations. Men nearing retirement age are especially interested in this next change in social security operations.)

PAGE 6 THE GOLDTHWAITE EAGLE-MULLIN ENTERPRISE  
Goldthwaite, Texas, Thursday, December 14, 1972

**TEXACO**  
**Sky Chief**  
**GASOLINE**  
**JOHNSON BROS. TEXACO**  
Wholesale — Retail Goldthwaite



**Christmas Special!**  
**Bar-Be-Qued Turkey**  
**\$1.39 lb.**  
Place Your Order Now!  
**Every Day Specials**  
Homemade Bread 45¢ Loaf  
Sweet Rolls & Dinner Rolls 69¢ Pkg.  
**Make A Pit Stop and**  
**Have Lunch With Us.**

tions. Beginning in 1973, computations for men's retirement benefits will use age 64 rather than age 65 as the "retirement age"; in 1974, age 63; in 1975, age 62. This series of changes will, in 1975, result in retirement benefits being calculated exactly the same for men as for women. There are no retroactive effects; only persons born in 1911 or later will benefit.

Until this change, women had their retirement benefits calculated by using three years fewer in averaging their best years up to age 62, while men had their years counted up to age 65. The drop-out of 5 years of low or no earnings was not changed.

Persons who keep on working past age 65 will get their retirement benefits increased one-twelfth of one per cent for each month between ages 65 and 72 that their retirement benefits were not payable because of their earnings. 1971 will be the first year usable for such increases. These added benefits will not pass on to the dependents or survivors. Thus, a man's normal retirement benefit of \$150 at age 65 would go up by three per cent (4.50) if he got no checks before age 68; his wife's benefit would still be based on the \$150.

A new special minimum benefit equal to \$8.50 times the number of social security coverage in excess of ten years is now provided. That would bring in at least \$170 per month retirement benefit for anyone in the social security system for 30 years. A sliding scale of earnings that qualify for a year's credit is provided, ranging from \$900 per year in the 1937-53 period to \$2700 in 1972.

# Kathi Head Honored With Bridal Tea

Miss Kathi Head, bride elect of Mr. Sam Campbell, was complimented with a bridal tea Saturday afternoon, November 25, at the Fellowship Hall of the Methodist Church.

Receiving guests with the hostesses, Mrs. Ray Standley and Mrs. Glyn Collier, were the honoree, her mother, her grandmother, Mrs. Charlie Miller and the groom's mother, Mrs. Campbell.

Mrs. Danny Spradley registered the guests.

The tea table was laid with a white net cloth with accents of the brides chosen color of green. The center piece was of purple and pink carnations and heather. Other floral arrangements in the room were purple and white chrysanthemums.

Serving at the tea table were Misses Dianne McKenzie, Nicola Tully, Chris Berry and Mrs. Ronnie Auldridge.

Other hostesses for the tea were Mmes. Theron Blackburn, Hoyt Cockrell, Wallace Johnson, Hubert Berry, Don Geeslin, Mark Wash, George Reese, Jessie Moreland, Bobby Baird, Bill Bishop, Danny Spradley, Glen Petty, Charlie McLean, Philip Nickols, J. D. McKenzie, Marvin Childress, Bobby Lee, Ed Thornton and J. D. Berry.

# Steps To Follow When Buying Toys

COLLEGE STATION — Santa may have two lists he checks twice, and toy shoppers might follow his example. Dr. Jennie Kitching, family life education specialist with the Texas Agricultural Extension Service, Texas A&M University, suggested a checklist on toy construction, safety, and suitability. "The lure of the toy counter is sometimes overwhelming," she observed, "so before you buy,

1. Is the toy well made? If it isn't, don't buy it.
2. What will the toy do for the child—or to the child?
3. Why should the child be interested in it? Keep in mind the child's age, interests and abilities.
4. How long will he be interested in it?
5. Is the toy safe, strong, durable, sanitary and attractive?
6. Is it simple in construction—not too large, too small, too heavy, too complicated, or too difficult to handle?
7. Can the toy be used in a variety of ways—mechanical toys often limit the things a child can do with them.
8. Can the child manage the himself?
9. Is the toy suited to the stage of development?
10. Does the toy offer variety to meet some of the child's needs? For instance, does it stimulate imagination and make believe, encourage quiet play or vigorous activity, or include experience with nature, such as pets, gardening, water, sand?
11. Is the toy designed for individual or for group activity?
12. Is the toy suitable for play space and storage facilities?
13. And finally, are you buying the toy for a child or for yourself?

# Moline News

BY LEMON SQUEEZER

Mr. and Mrs. Paul Kincheloe visited with Mr. and Mrs. Royston House Saturday evening.

Mrs. Cleda Arrowood of Goldthwaite and daughter and son-in-law, Mr. and Mrs. Britt Brittingham of Odessa called in the Mrs. Chock Duncan home Saturday afternoon.

Mr. and Mrs. Alvis Lee and two little daughters of Arlington spent several days with his parents, Mr. and Mrs. Paul Lee this week.

Mr. and Mrs. Frank Adams, Jay and Sister of Brownwood spent Saturday with her parents, Mr. and Mrs. Haskell Alexander.

Mrs. Cleda Arrowood and Mr. and Mrs. J. C. Brittingham called in the Webb Laughlin home Saturday afternoon.

Mr. and Mrs. Frank Adams, Jay and Sister of Brownwood spent Saturday with his parents, Mr. and Mrs. Clem Adams.

Mrs. Inez Spaeth of Star called in the Webb Laughlin home Friday morning.

Mr. and Mrs. Paul Lee spent from Friday until Monday visiting her sister and family, Mr. and Mrs. Leo Barker at Seminole and other relatives. Then they visited his brother at Odessa.

Mr. and Mrs. Lloyd Laughlin of Goldthwaite spent Sunday with his parents.

# Health News

## yours for a laugh

A few moments after his daughter announced her engagement, the father questioned, "Does he have any money?" "Oh, you men are all alike," the girl replied. "That's just what he asked about you."

Tommy chuckled when the teacher read the story of a man who swam a river three times each morning before breakfast. "You don't doubt that he could do that, do you?" asked the teacher. "No, ma'am," replied Tommy. "But I wonder why he didn't make it four times and get back to the side where his clothes were."

Waiter: "You're not eating your fish. What's wrong with it?" Diner: "Long time, no sea."

A mother writes... "Although my 14-year-old daughter washes regularly and has tried a variety of soaps and astringents, she can't seem to eliminate blackheads from the lower part of her face." Fortunately the skin problems of adolescence are self-limiting and should subside by about 18 years of age.

Thus, the object of treatment is to keep the problem under control so that no scarring takes place. Comedones (blackheads) can be treated by a comedone remover. Also recommended is a 0.05 percent topical solution of tretinoin (vitamin A acid). However, since this may cause some initial skin irritation, treatment should be under medical supervision.

# Christmas Gift Guide

FOR HIM

- ☆ Guns
- ☆ Gun Racks
- ☆ Shells
- ☆ Fishing Tackle
- ☆ Hunting Bags
- ☆ Knives
- ☆ Barbecue Sets
- ☆ Radios
- ☆ Hammers
- ☆ Tool Chests
- ☆ Skil Saws
- ☆ Electric Drills
- ☆ Flashlights
- ☆ Head Lights
- ☆ Sleeping Bags
- ☆ Gun Scabbards
- ☆ Electric Tools
- ☆ Insulated Underwear
- ☆ Dominoes
- ☆ Binoculars
- ☆ Gloves
- ☆ Rain Suits or Wind Breakers

FOR HER

- ☆ Dishes
- ☆ Silverware
- ☆ T. V. Trays
- ☆ Corning Ware
- ☆ Mixers
- ☆ Toasters
- ☆ Club Aluminum
- ☆ Kitchen Stools
- ☆ Bar Stools
- ☆ G. E. Hair Dryers
- ☆ Electric Blankets
- ☆ Electric Clocks
- ☆ Teflon Ware
- ☆ Mixing Bowls
- ☆ Covered Bowl Sets
- ☆ Vacuum Cleaners
- ☆ Bath Room Scales
- ☆ Card Tables & Chairs
- ☆ Pop Corn Poppers
- ☆ Blenders
- ☆ Kromex Ware
- ☆ Pottery
- ☆ China
- ☆ Electric Scissors

Here Are A Few Suggestions: AT STEEN HARDWARE

**STEEN HARDWARE**  
Goldthwaite, Texas

# SAVE \$500 ON...

# 100% CHASSIS

**MOTOROLA Quasar**  
WORKS IN COLOR TV  
A DRAWER COLOR TV

All chassis tubes eliminated! Instead... Motorola gives you Solid State components and plug-in circuit modules! And the plug-in modules in the Quasar Works In A Drawer TV can be replaced by a service technician... usually in the home!

INCLUDES ONE YEAR IN-HOME SERVICE

**25" DIAGONAL PICTURE**

Model WJ904W  
Handsome Contemporary console!  
Motorola Matrix Bright picture tube  
Instant picture & sound • Pushbutton UHF tuning • Lighted channel indicators

**NO CHASSIS TUBES!**

**\$579<sup>95</sup>**

WAS \$629<sup>95</sup>

**FEATURES:**

- Brightness
- Automatic Fine Tuning
- Color Hue
- Color Intensity
- CONTRAST
- INSTA-MATIC COLOR TUNING
- Just push one button and you automatically balance color intensities, hue, contrast, brightness and can even activate automatic fine tuning if already not in use. It's that easy!
- PLUG-IN CIRCUIT MODULES
- Most chassis components are replaced, an exchange module can be plugged in by a service technician... usually in the home!

**BIG, BRIGHT 25" diagonal picture size in 20" cabinet!** Color TV, 25" diagonal picture with solid color and sound in the Motorola Matrix Bright line. A set each matrix surround each color set.

"We Service What We Sell"

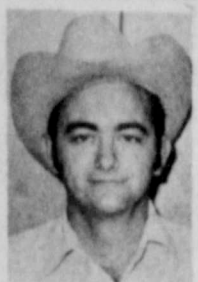
# Wilcox & Head Electric

Raymond Wilcox — Johnny Head  
1109 Parker — Phone 648-3133 Goldthwaite, Texas



# Doings by DANIEL

BY LARRY DANIEL  
COUNTY AGENT



farmers and ranchers: The government trapper will work on any operator's land in the county when contacted for such assistance, but preference will be on the operator's which have donated to the program. Donations can be mailed to the Mills County Program Building Committee, Box 248, Goldthwaite, Texas.

Predators are a problem in Mills County. Put a pencil to the loss of one lamb compared to the cost of a donation and possible prevention of predator losses.

## School Menu

Copy Furnished By Goldthwaite Young Homemakers

Monday, Dec. 18 - Fried chicken, Snowflake potatoes, Buttered corn, Celery sticks, Hot rolls, Butter, Syrup and Milk.

Tuesday, Dec. 19 - Soup, Vegetable salad, Apple cobbler, Cornbread, Crackers and Milk.

Wednesday, Dec. 20 - Hot dogs with chili, Lettuce-tomato salad, French fries, Raspberry Jello and Milk.

Thursday, Dec. 21 - In-Service.

Friday, Dec. 22 - Christmas Holiday.

# Farm Bureau's New Property Owner's Protection

A news story concerning Mills County Farm Bureau's new Property Protection "rural crime fighter" program contained an error that needs to be corrected, according to DeWayne McCasland of Rt. 1, Indian Gap, president. The story, released from Texas

McCasland said that the reward program which is offered to County Farm Bureaus on an optional basis by the Texas Farm Bureau has proven to be exceptionally popular. Already, more than 170 counties have signed up for the program, he said. The county leader said the program should act as a deterrent to the increasingly serious problem of break-ins and burglaries in rural areas.

All members in a participating county who have the official "No Trespassing" signs posted on their property are protected against trespass and other offenses. This reward program is provided by the TFB and its affiliated companies.

## Mullin News

BY MRS. JOHNNIE HOLLAND

Old man winter finally made his appearance, but things aren't nearly so bad at Mullin as they are other places. Dallas is almost paralyzed in traffic and Ft. Worth, and Brownwood is also bad.

I got locked out of my house early this morning of all times. I went out my back door to the pump house, and when I came back the latch had flipped over and hooked on my screen door, but the good Samaritan came along and helped me out.

Recent visitors with Mrs. Milton Stanley and Mr. and Mrs. Melvin Bessent were Mr. and Mrs. Don Hicks, Mr. and Mrs. Ray Hicks and baby, Mrs. Henry Enger and her daughter and grand daughter all of Austin.

Mrs. Jay Roberts (Vicki Mosier) daughter of Mrs. Charlene Mosier

Talkative tourist to bus driver: "How will I know when to get off at my street?"

Driver: "Just look for the big smile on my face."

New types of fishing lures are introduced every year, and the fishermen continue to bite.

has received her degree from Howard Payne in Brownwood. Also Mrs. Mosier's son, Lynn, has received his Master's Degree from Sam Houston State College at Huntsville.

Mrs. Ruth Tullos is home after spending two weeks in Waco with Mr. and Mrs. Jimmy Rex Tullos and Natalie and Mr. and Mrs. Rex Tullos and Sam.

Mr. and Mrs. Bert Lockett went to Lubbock Saturday to be with Carroll and family. They plan to stay through the month of January. Mrs. Winona Murray accompanied them to Lubbock. She plans to visit there through Christmas with relatives and friends.

Graveside services were conducted an afternoon last week at the Mullin Cemetery for Mr. Taylor Rascoe. Mr. Rascoe was living in Brownwood at the time of his death. He was a former Mullin citizen.

Mrs. Jewell Baskin and her son, Joe and wife of Dallas, spent last Saturday in Brownwood shopping. They all attended an auction of a house and its contents.

I just don't have the Christmas Spirit as yet. When I was a high school student all it took to give me the Christmas Spirit was to hear "Jingle Bells" a few times.

Mrs. Dew Shelton is at her home and slowly improving from recent surgery.

Mrs. Vesta McCormick returned home from Ft. Worth last Thursday. She plans to go to Houston soon and spend the rest of the winter months there with her son, Bobby.

No school in Mullin today and according to weather reports the students will get a rest again tomorrow.

## ★ LAUGHLIN STUDIO ★

--: PORTRAIT - COMMERCIAL --:

DIRECT COLOR - BLACK & WHITE  
WEDDINGS • COPY WORK & REPRINTS  
SPECIAL EVENTS • LEGAL PHOTOGRAPHY  
WEDDING & FAMILY ALBUMS

Studio Hours: 8 A.M. to 6 P.M. Monday Thru Saturday.

In Your Home, Studio or on Location by Appointment Day or Night.  
1509 Cline St. - Goldthwaite - Phone 648-3124

## TEXAS FARM BUREAU'S

### Property Protection Program

FOR COUNTY FARM BUREAU MEMBERSHIP

Member Service Through TEXAS FARM BUREAU

and TEXAS FARM BUREAU INSURANCE COMPANIES

**NO TRESPASSING**  
\$200 REWARD

FOR INFORMATION LEADING TO THE ARREST AND FINAL CONVICTION OF PERSONS COMMITTING TRESPASS, FELONY THEFT, ARSON, MALICIOUS MISDEAMOR AS DEFINED BY ARTICLE 1.230 ON PROPERTY OF A CURRENT MEMBER OF TEXAS FARM BUREAU, TEXAS FARM BUREAU IS THE SOLE JUDGE OF ANY OFFERS ARISING OVER THE REWARD.

TEXAS FARM BUREAU AND INSURANCE COMPANIES

## POST THE SIGN

at main entrance and other places of entry to your Farm - Ranch and Property

Get your signs at your County Farm Bureau Office.

## Farmers-Ranchers Time To Look At '72 Tax Situation

COLLEGE STATION - Yes, the end of the year is rolling around once again, and farmers and ranchers should take a critical look at their tax situation before the final curtain goes down on 1972. "Agricultural producers can save numerous tax dollars by taking a careful look at their business

transactions since January 1 of this year and by taking certain steps before December 31," points out Michael Sprott, economist in management for the Texas Agricultural Extension Service, Texas A & M University.

According to Sprott, the main objective of producers should be to attempt to level their income from year to year so as to avoid a drastic increase or decrease in their taxable income.

"Since farm prices have been somewhat higher this year than in past years, farm income may be up considerably in some instances. If this is the case, a number of legitimate devices may be used to lower taxable income," notes the economist.

A key means is to accelerate deductible expenses by buying all or part of next year's feed, seed, fertilizer and other farm supplies before the end of this year. There are certain guidelines to follow regarding such purchases and Sprott advises producers to contact a tax consultant on these.

Several key expense items to consider in reviewing your tax situation include costs for soil and water conservation, and land clearing. Soil and water conservation costs are deductible up to a maximum of 25 per cent of gross income from farming in any year. Land clearing costs can only be deducted up to a total of \$5,000 or 25 per cent of the net farming income.

Paying off all interest that is allowed is another means of reducing taxable income, points out the economist. Of course, these deductions are limited to the current year plus on year.

Producers may also want to consider purchases of farm machinery and equipment to take advantage of certain tax-reduction incentives under present laws, such as fast depreciation and investment credit.

Another means of reducing tax dollars for 1972 is to delay income from this year to the next, advises Sprott. For instance, grain and livestock can be sold under deferred sales contracts before the end of the year with payment made next year.

Installment sales can also help spread taxable income over a period of years so that a prorata part of each payment can be taxed yearly at a lower rate. Such sales must involve either real property or personal property over \$1,000.

If producers are confronted with a considerably higher income this year than in the past few years, the technique of income averaging may be applied so that excess income is taxed at a lower than normal rate.

Regardless of what tax management methods are used to lighten the tax burden for 1972, Sprott emphasizes that good records of all transactions are "a must."

"Record keeping is a vital part of the overall management aspect of a farming or ranching operation," points out the economist. "Producers must be able to identify the source of all their receipts, regardless of whether cash or property, and they must have a record of all expenses. Anything less than that can be a serious handicap when the time comes for filing your income tax return."

# TO THE MERCHANTS OF GOLDTHWAITE, TEXAS

## The 1 Per Cent CITY SALES AND USE TAX will become effective JANUARY 1, 1973

### All ITEMS that are STATE TAXABLE will ALSO be CITY TAXABLE.

You will receive a COMBINED STATE AND CITY Quarterly Report that you will complete and return to the Comptroller of Public Accounts in Austin, Texas. The Comptroller will return the 1 per cent City Sales Tax monies to the City.

## City of Goldthwaite Utilities

## WE HAVE THE GENUINE LONG LASTING Warps Top Quality WINDOW MATERIALS

- Only 36¢ FLEX-O-GLASS
- Only 20¢ GLASS-O-NET
- Only 48¢ WYR-O-GLASS
- Only 69¢ SCREEN-GLASS
- Only 78¢ FLEX-O-PANE

## STEEN HARDWARE

Phone 648-2515 Goldthwaite

## Easy-On® 39¢

Easy To Install Inside Or Outside! 72" x 34" PLASTIC SHEET BOUNDING WITH AND NAILS

## STORM WINDOW KIT BARNES & McCULLOUGH

"Everything To Build Anything!" Phone 648-2411 Goldthwaite, Texas

## STOP COLD WINTER DRAFTS! Warps Easy-On Storm Kits

For WINDOWS And DOORS  
STORM WINDOW KIT Only 39¢  
STORM DOOR KIT Only 49¢  
Complete Kit in a box 36" x 72" tough plastic sheet, 18 ft. fibre moulding and nails.  
Warp Bros. Chicago 60651 Pioneers in Plastics Since 1924  
AT YOUR HARDWARE, LUMBER & BUILDING SUPPLY STORE



## PICTURE FRAMES

For Christmas Giving

Regular  
Stock  
Or  
Made  
To Order

Wide Selection  
and Price Range



Come In Early For

### DIRECT COLOR PORTRAITS

Dry Mounting of Pictures, Diplomas, Documents

LIGHT AND HEAVY OIL PORTRAITS

★ GUEST REGISTERS ★ WEDDING ALBUMS

★ 50TH ANNIVERSARY BOOKS

PHONE 648-2471

## WICKER STUDIO

Open 8 a. m. To 7 p. m., Monday Through Saturday  
North Parker Street Goldthwaite, Texas

### Our Christmas Special!

For Friends, Employees, and Customers

#### "The Gift Pack"

only \$12.95 Includes:

- 1 Fully Cooked Smoked Turkey 6-8 lbs.
- 6 ozs. Beef Jerky or 2 lb. Fruit Cake
- 1/2 lb. Smoked Cheese
- 1/2 pt. Jalapeno Jelly
- 1/2 pt. Jalapeno Sauce
- 1/2 pt. Honey

All packed in a "Treasure Chest" gift box.

2 lb. "Homemade Fruit Cakes" only \$2.95

## Hill Country Store

Goldthwaite, Texas 76844

Area Code 915-648-2737



### New Addition At First Baptist Church

You might have noticed a new addition on the parking lot of the First Baptist Church, while passing the church. That long yellow bus is a real answer to many prayers of the members of F.B.C. The church purchased the bus under the leadership of the Bus Committee of the church, Hoyett Browning, chairman. Others on the committee are Billy Hale, F. W. Lewis, N. S. Ward, J. D. Harper and Wincee Page.

The addition of the bus to the church will make it possible for all kinds of activities. There will be a route run each Sunday morning for all the people who need a ride to and from church. Also the bus will assist the young people on the summer trips they have taken each summer. This next summer, the young people hope to use it on a Mission trip to the valley. Also there will be

special trips for many other groups in the church, such as the Senior adults, Sunday School classes and others. Dan Connally, the pastor of the church says that the possibilities are really unlimited to the way we can serve the Lord

through the use of the bus. Also an added word, the pastor states that anyone wanting to go to any church in town might be picked up by the bus and taken both to and from their church.

### More Cattle Reported On Feed

COLLEGE STATION — There were more cattle on feed across the nation in October, so downward pressure on fed beef prices should continue for the rest of 1972 due to the larger available supplies. "Prices will probably change a little, though, until the first of the year, and there will not be too noticeable a difference until the spring months," said Dr. Ed Uvacek, livestock marketing specialist for the Texas Agricultural Extension Service, Texas A & M University.

"The October 1 cattle on feed report shows 11.8 million head in the 23 major feeding states, a 10 percent increase over last year. At the same time the number of cattle on feed in Texas was 30 percent above a year ago," commented Uvacek.

Cattle and calf placements into lots during the July-September quarter dropped to 6.2 million head, a slight drop from the comparable period last year. However, in Texas feedlot placements during the same quarter were 23 percent above last year, noted the specialist.

Fed cattle marketings in the October-December quarter of this year are estimated at 6.6 million head, seven percent more than were marketed in the last quarter of 1971. Expected marketings from

Texas lots are estimated to be 30 percent greater in the October-December quarter of this year. "Texas cattle feeding continues to grow in leaps and bounds," said the specialist.

#### Christmas Supper

At Ridge Friday

A Christmas Party will be held at the Ridge Schoolhouse Friday, December 15.

A covered dish supper will be served. Following the turkey supper a program will be conducted.

Christmas in Scandinavian countries begins on December 13 and ends January 11.

George Washington was the first inaugurated to the Presidency in New York City on April 30, 1789.

Millions of tiny plants give the Red Sea its color.

### Retired Teachers Enjoy Dinner

The Retired Teachers and their guests welcomed in the Christmas season December 1, with an afternoon of fun at the Ranch Home of Mr. and Mrs. Delton Barnett.

Mr. and Mrs. Leroy Beard and Mr. and Mrs. Erle D. Roberson were co-hosts.

O. B. Hale, president, presided during the business session.

Mrs. Euna V. Barnett, program chairman, directed the activities for the party which included gifts, singing of Christmas Carols and Mrs. Lillian Stokes gave the story, "The Other Wise Man."

The Christmas theme was carried through out the ranch home.

Turkey, salads, desserts, coffee and tea was served to Mr. and Mrs. Leroy Beard, Mr. and Mrs. O. B. Hale, Mr. and Mrs. B. F. Rainey, Mr. and Mrs. George Reese, Mr. and Mrs. Erle D. Roberson, Mr. and Mrs. M. Y. Stokes, Jr., Mr. and Mrs. Willie Wasserman, and

### Patterson To Speak At Men's Bible Class Sunday

John Patterson will be speaker at the Men's Bible Class Sunday, December 17, at 9:30 a.m. in the Community Room of Mills County State Bank.

One good thing about change nowadays doesn't change as much as he used to.

Reduce errors at Arrive late, leave early.

Mmes. Mamie Palmer, Gladys Cockrum, Teral Neely, Miss Laura Nelson, Marie Wallace, Miss Neely and Mr. and Mrs. Barnett.

The next regular meeting will be February 2, 1973, in the Community Room of the Mills County State Bank at 2:30 p.m. The program will be on Social The association will meet in January.

## Gifts Galore

FOR EVERYONE

On Your

CHRISTMAS

LIST!

WOODY DRUG STORE

YOUR REXALL STORE

## Christmas Gifts that speak for themselves.

An extension phone is a unique gift when you give it. And a practical one from then on.

You can choose from a variety of colors and models including mod phones, delicate phones, plain phones and even elegant decorator phones. There's a style just right for your loved one.

And, to make your shopping easier call our gift specialist.

She'll reserve the phone you want.

Then, just pick it up at our business office and put it under your tree.

We'll install your gift right after the holiday is over.

It will keep Christmas bells ringing throughout the year.

GENERAL TELEPHONE



The people you can talk to One-to-One.



## Santa Sale

All Antiques & Gift Items

-- 10% OFF --

All Light Fixtures 20% OFF

Including Decorative Styles

All Tre Wax Products

Liquid Wax, Paste Wax, Wood Cleaner, Wax Off

-- 20% OFF --

Good Supply of Fluorescent Light Bulbs

All Vacuum Cleaner Bags 30¢ per bag

— for most major brands —

Warp's Grip Mats

Big 27' x 6' plastic rugs

Regular \$7.<sup>59</sup> Now Only \$3.<sup>99</sup>

## Mills County Lumber & Supply

Phone 648-3400

Goldthwaite



# THE VALUE LEADER leads the way to great savings

PAGE 9 THE GOLDTHWAITE EAGLE-MULLIN ENTERPRISE  
Goldthwaite, Texas, Thursday, December 14, 1972



**Shortening**

GOOD VALUE  
Limit One With \$5.00 Purchase Or More, Please

3 LB. CAN 49¢

NESTLE'S SEMI-SWEET  
**Chocolate Morsels**  
12 OZ. PKG. 49¢

**Fruit Cocktail**

HUNT'S

15 OZ. CAN

25¢

**Towels**

CHIFFON

3

JUMBO ROLLS

\$1



LB. 69¢

FIRST PICK

**Aluminum Foil**

REG. ROLL 25¢

LIBBY'S

**Pumpkin**  
303 CAN 19¢

VALUE PRICED

OCEAN SPRAY  
**Cranberry Sauce**  
16 OZ. CAN 25¢

FOR GREAT SAVINGS

VALUE PRICED

NONE SUCH  
**Mince Meat**  
9 OZ. PKG. 39¢

FOR GREAT SAVINGS

VALUE PRICED

KRAFT'S  
**Marshmallow Creme**  
7 OZ. JAR 29¢

FOR GREAT SAVINGS

**Pineapple**

LIBBY'S  
CRUSHED, SLICED OR CHUNKS

15 1/2 OZ. CAN

25¢

**Tomatoes**

RAINBOW

3

303 CANS

69¢

**Coconut Cookies**

DURKEE SNOWFLAKE

14 OZ. PKG.

49¢

**Club Crackers**

KEEBLER'S

1

LB. BOX

49¢

**FROZEN FOODS**

**Dinners**

PATIO, CHEESE, MEXICAN, TAMALES COMBINATION AND BEEF ENCHILADA

12 OZ. DINNER

39¢

**Orange or Grape Juice**

5

6 OZ. CANS

\$1

**Waffles**

DOWNY FLAKE ROUND

12 OZ. PKG.

45¢

**Potatoes**

GOOD VALUE

5

LB. BAG

99¢

**Pie Shells**

PET RITZ

2

COUNT PKG.

39¢

**THE VALUE LEADER HELPS YOU SAVE!!!**

**Dairy Foods**

**Sour Cream**

PURE MILK

3

FOR

\$1

**Buttermilk**

PURE MILK

1/2 GALLON

49¢

**Cottage Cheese**



16 OZ. CTN.

33¢

**Margarine**

GOOD VALUE

5

1 LB. PKGS.

\$1

**Orange Juice**

BORDEN'S

QUART

43¢

**WEEK LONG SALE**

PRICES GOOD THURSDAY, DECEMBER 14 THROUGH WEDNESDAY, DECEMBER 20, 1972

**Panty Hose**

2 PAIR PKG. \$1

**Your Friendly Family Food Store**

We Give Buccaneer Stamps  
Double Stamps on Wednesdays  
With \$2.50 Purchase or More

**Loy Long's**

1312 FISHER Goldthwaite, Texas



**THE VALUE LEADER**



Large Stalk

CRISP AND CRUNCHY

**CELERY**  
EACH 23¢

**Cranberries** 1 LB. BAG 39¢  
**Carrots** 2 CELLO BAGS 25¢  
**Oranges** 5 LB. BAG 45¢  
**Radishes** 2 CELLO BAGS 25¢  
**Onions** FRESH BUNCH 10¢  
**Yams** EAST TEXAS LB. 19¢

VITALIS  
**Dry Texture Hair Groom**  
3 OX. TUBE 99¢

**Lipton**  
FLO-THRU tea bags  
ORANGE PEKOE & PEKOE CUT BLACK TEA CHOICEST BLEND  
100 CT. BAGS \$1.09

MORRELL FULLY COOKED  
**HAMS**  
Whole lb. 79¢ Butt Half lb. 79¢  
Full Shank HALF lb. 79¢  
Shank Portion 7 TO 9 LB. AVG. LB. 59¢  
Center Cut HAM ROASTS 1 LB. 99¢  
Breakfast Slice CENTER SLICES LB. \$1.19

**Hams** CUDAHY BAR S BONELESS FULLY COOKED 3 LB. CAN \$3.29  
**Roast Chuck** LB. 79¢  
**Steak Chuck** LB. 89¢  
**Pork Chops** CENTER CUT LB. \$1.09  
**Bacon** JACK'S OLD FASHIONED NUMBER ONE LB. 89¢

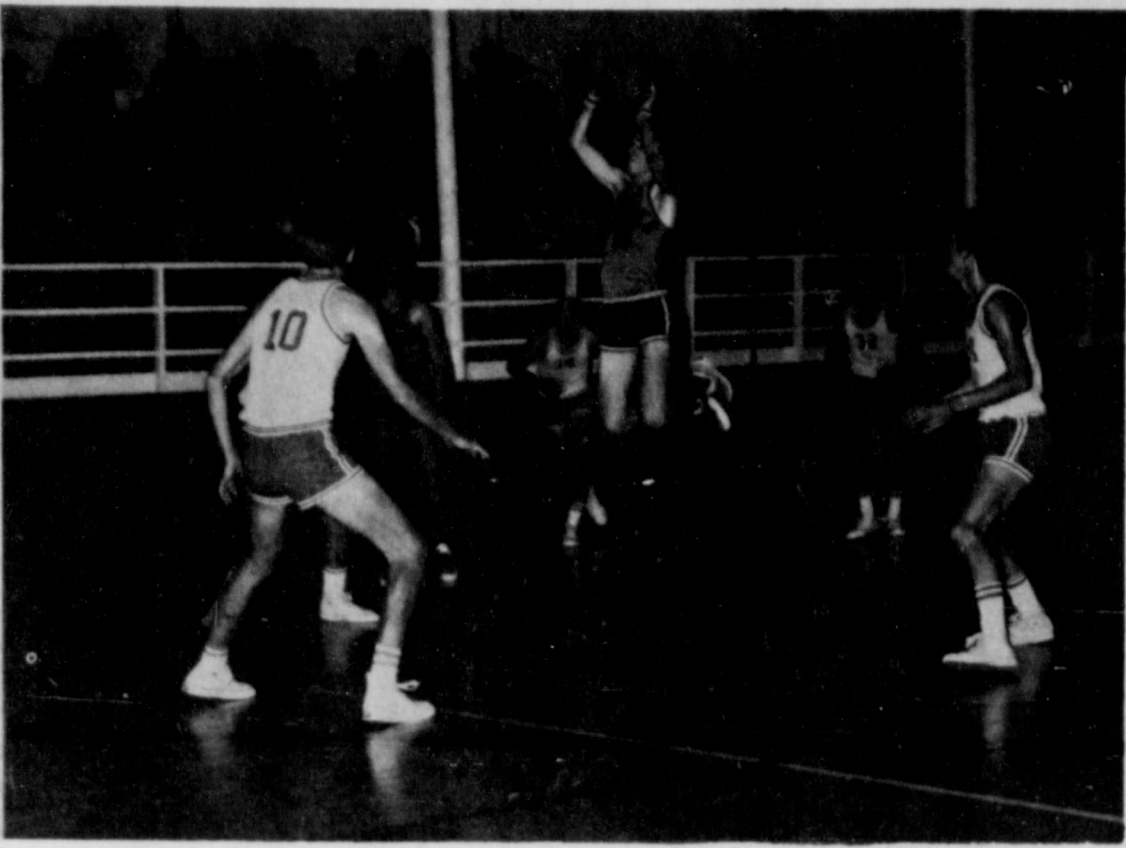
Call in early for Swift's Butterball Self-Basting Turkey!

LOY LONG'S MINIMAX  
SAVE 29¢  
**MAXWELL HOUSE COFFEE**  
1 LB. only 69¢ with this coupon  
98¢ without coupon  
Limit-one per family • offer expires 12-20-72

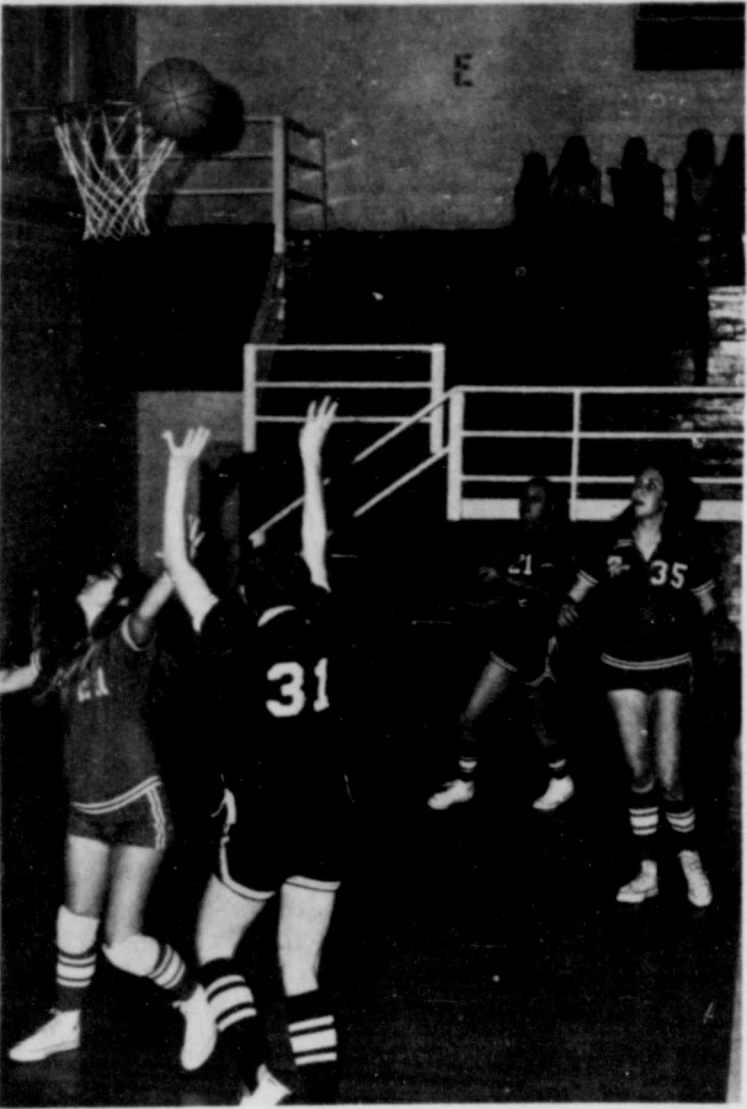
LOY LONG'S MINIMAX COUPON  
save 60¢  
WITH THIS COUPON WHEN YOU BUY A 10 OZ. JAR OF INSTANT MAXWELL HOUSE COFFEE  
\$1.89 without coupon  
10 OZ. JAR ONLY \$1.29 WITH COUPON  
ONE COUPON PER FAMILY • offer expires 12-20-72

LOY LONG'S MINIMAX  
SAVE 19¢ WITH THIS COUPON  
**Gladiola FLOUR**  
5 LB. BAG 48¢ WITH COUPON  
67¢ WITHOUT COUPON  
one coupon per family  
offer expires 12-20-72





**Eagle Tournament Action—**



**GOOD FORM** — GHS's Lee Browning (above photo) tries jump shot from the free throw lane in Goldthwaite's annual Basketball tournament held Thursday, Friday and Saturday at the high school gym. Carla Tatum (left photo) attempts shot from up close against the Tigers in tournament action. All tournament forward Carolyn Schwartz of Goldthwaite battles for the ball in tourney action against Star.

Early boys and girls teams took home the first place tournament trophies while the Gustine boys and girls walked away with the second place trophies. (Laughlin Studio Photo)

**CARD OF THANKS...**

I take this opportunity to thank everyone for the kindness shown me during my recent stay in the Methodist Hospital in Houston.

For the many cards, letters, visits and food I am very grateful.

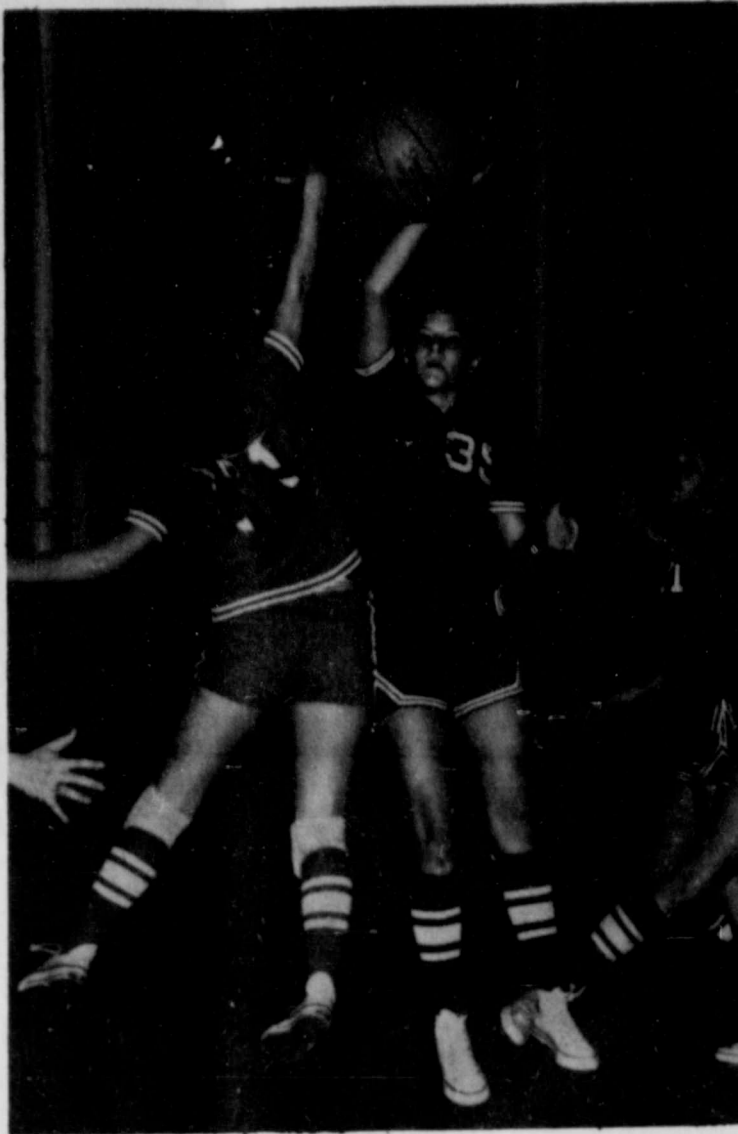
May God bless each of you.

Mrs. Dew "Dimples" Shelton  
12-14-Itc

Neighbor: "Your husband says he has a dog's life."

Wife: "Yes, as a matter of fact. He comes in with muddy feet, makes himself comfortable by the fire, and waits to be fed."

Oklahoma is the only state whose capital, Oklahoma City, bears the state name.



**G. C. HEAD  
INSURANCE**

- Fire
- Automobile
- Windstorm
- Hail
- Life Insurance
- Bonds
- General Liability
- Workman's Compensation

**We Have Monthly Installment Plans Available!**

G. C. HEAD                      GERRY HEAD  
PEGGY NOWELL                BILLIE LEE

PHONE 648-2262  
NORTH SIDE OF SQUARE      GOLDTHWAITE

**Mary Robbins Service Held**

Funeral services for Mrs. Mary Letrice Robbins of Lometa were held Sunday, December 10, 1972, at 2 p.m. in the Wilkins Funeral Chapel. Interment was in the Pleasant Grove Cemetery. Rev. Bill Sanderfer of the First Methodist Church of Lometa officiated. Mrs. Robbins passed away Friday, December 8, 1972, at 5:50 p.m. in the Rollins-Brooks Hospital in Lampasas.

Born February 18, 1911, in Pleasant Grove she was the daughter of Elam Berry and Mary Robertie Ross Berry.

She was married to Arthur D. Robbins on July 14, 1934, in Lampasas, Texas.

Mrs. Robbins, a member of the Methodist Church, is preceded in death by her father, Elam Berry, a niece, Greta McKenzie and a grandson, Joe Davis Robbins.

Pallbearers were Hubert Berry, Britt Berry, Jesse Moreland, Robert Butler, Jesse Belt and Bill Whittenburg.

Survivors include her husband, Arthur D. Robbins; one son, Gary of Lometa; one grand daughter, Roberta Michelle Robbins; her mother, Mrs. Elam Berry of Lometa; two sisters, Mrs. Marvin Nesbit of Lometa and Mrs. Dutch McKenzie of Sinton; a nephew, a great nephew and a great niece.

**If It's Christmas You're Worried About . . .**

(WORRY NO MORE!)

**Come To Marj's !!**



Lance Barnett  
22-Month-old  
son of Joy and  
Del Barnett  
of Goldthwaite  
models a

"Nightmare"  
Shirt with  
matching jeans.

See these  
Rob Roy  
children's  
fashions at . . .

**Marj's TOTS 'n TEENS**

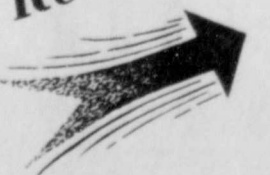
Phone 648-2264

**Santa Suggests:**

**Gifts For The Home**

- \* Blankets
- \* Sheets & Pillow Cases
- \* Bed spreads
- \* Towels & Bath Sets
- \* Table Linens

Remember



Best Bet For The Hard-To-Please



**Yarborough's**

*...Your Christmas Gift Headquarters!*

The sound is sweet.  
And so is the price.



Hurry in...  
limited quantities!

**Electrophonic**  
CORPORATION OF AMERICA

Incredibly Smooth Sound In This ELECTROPHONIC Total Stereo System

Featuring a Built-in 8-track stereo tape player Garrard record changer AM/FM/FM multiplex radio...completely organized in a functionally designed home entertainment center and built with matching mar resistant walnut finish cabinet...at only

**\$199<sup>95</sup>**

Hurry in... they'll go fast!



**SPECIAL BONUS OFFER**  
With each purchase:  
One set of stereo headphones  
One smoke-tinted dust cover.

"We Service What We Sell"

**Wilcox & Head Electric**

Raymond Wilcox - Johnny Head

1109 Parker - Phone 648-3133

Goldthwaite