

The Goldthwaite Eagle

ESTABLISHED 1894

AND THE MULLIN ENTERPRISE

74 NO. 19

GOLDTHWAITE, MILLS COUNTY, TEXAS

SINGLE COPY, 15¢

THURSDAY, OCTOBER 22, 1970

Students Homecoming

Only the officers of the Ex-Teachers Association of the Goldthwaite Schools met to make for Homecoming, which is being planned for the November 28, at the County Youth Center. Those present were Orville B. ...

Those attending the affair had a first hand opportunity to get a good look at the park facilities and the many improvements that have been made and others that are still in process of being carried out.

Goldthwaite FFA & FHA Participate In Youth Day

Goldthwaite FFA and chapters participated in Youth Day at the State of Texas in Dallas last Saturday. The two chapters left the high school at 4:00 a.m. and returned that night at 11:00 p.m. Goldthwaite FFA Chapter ...

Appreciation Barbecue For Park Boosters Monday Is Well Attended

The appreciation barbecue dinner honoring boosters of Mills County Park held here Monday evening was well attended with a group representing a cross section of citizens of the community.

Those attending the affair had a first hand opportunity to get a good look at the park facilities and the many improvements that have been made and others that are still in process of being carried out.

Mrs. G. C. Head, president of the Garden Club, welcomed the group to the affair. She introduced Mrs. M. F. Horton, chairman of the Garden Club park committee, who spoke words of appreciation to all who have had a part in the park project.

Mrs. Horton introduced City Manager W. C. Barnett who touched on a few highlights of the park development and he presented W. P. Duren, chairman of the Park Committee. Duren expressed thanks to those who have been faithful through the years by contributing their cash in the annual finance drive for the \$1,200.00 to maintain the park.

Rev. M. O. Childress, gave the invocation before the dinner. Hawley Jernigan was in charge of preparing the barbecue.

The dinner was sponsored by the City Park Committee and

Goldthwaite Garden Club. The get-together also served as the regular meeting of the Lions Club which was moved up one day from Tuesday night to Monday night this week.

Members of the Garden Club park committee working with Mrs. Horton are: Mrs. V. Z. Cornelius, Mrs. J. B. Pate and Mrs. R. Glynn Raley.

Serving with Duren on the City Park Committee are the following: Charles Conradt, Houston Duren, Lee Roy Stacy, Lewis T. Hudson, Harold Yarborough and S. E. Thornton.

The Lions Club played a major role in the park development program for a number of years after the property was first acquired by the city back in 1952.

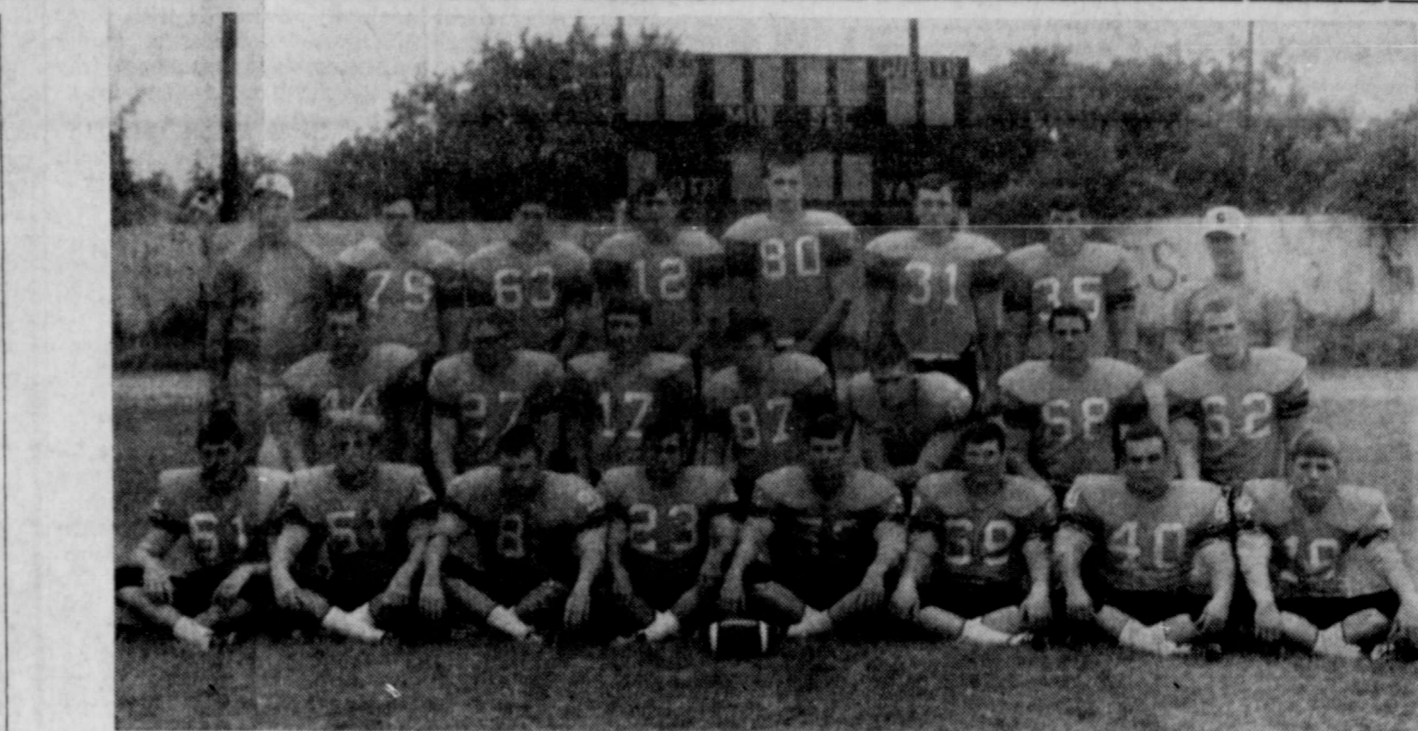
Garden Club park committee has been the guiding influence through the years in carrying out the overall landscaping and improving program of the park. The Park Committee has been looking after the matter of park maintenance through the years by seeing that a minimum of \$1,200.00 was raised each year to pay for caretaker for the park.

Then, of course, the City has carried much of the load of park development with roads and the many other chores that need attention as time goes on.

Men's Bible Class To Hold 21st Annual Anniversary Sunday

This Sunday, October 25, the Men's Downtown Bible Class will celebrate their 21st anniversary. At 10:00 a. m., a program will be held in the Goldthwaite High School Auditorium and lunch will be served in the high school lunchroom at 12:15 p. m. The ladies are asked to bring salads and sweets.

The annual anniversary program, luncheon, and afternoon singing session is open to everyone who wishes to attend.



GHS 1970 EAGLE VARSITY SQUAD AND COACHES—The twenty-one members of the Goldthwaite High School Eagle Varsity Football Squad for 1970 are pictured here with their coaches. Seated on the front row, left to right, are: Gary Summy, Scott McLean, Jeff Stewart, Joe Dan Hardgrave, Gerald Hale, Mark Geeslin, Reggie Robbins, and Johnny Miller. Second row, from left: Sam Watson, Danny Sutherland, Johnny Johnson, Randy Wright, Gary Weidebusch, Lynn Knight, and Eric Wright. Back row, from left: Head Coach Leslie Johnson, Bill Fisher, Roy Watters, Kennon McLean, James Miller, Bennie Humphries, Joe Hudson, and Assistant Coach Robert James. —(Eagle Photo by Wicker Studio)

Eagles Open District Play With 60-0 Win Over Longhorns For Homecoming

Change In Time Will Take Place Sunday Morning

It's that time, again, and the time is this coming Sunday morning. The time change from daylight savings to central standard time will go into effect this coming Sunday morning, October 25, at 2:00 a. m. At that time, clocks, and watches, will be moved back one hour from 2 a. m. to 1 a. m. to be with the central standard time schedule for the next six months.

There are some choices available to keep up with the time. One can turn the clock back one hour before going to bed on Saturday night, get up at 2 a. m. and turn it back one hour, or just leave it alone and get to Sunday School or church an hour early the next morning. That would be a new twist, to say the least.

SCHWARTZ ATTENDS DALLAS BOARD MEETING
Milton Schwartz spent Tuesday in Dallas where he attended a meeting of the board of directors of Affiliated Food Stores. The one day session was held at the buying and warehousing headquarters for the member Affiliated Stores.

ATTEND MEN'S MARKET IN DALLAS
Harold Yarborough and James Leonhard spent Sunday and Monday in Dallas where they attended the fall men's market at the merchandise mart. They spent two days buying for Yarborough's here.

TYSONS ATTEND DALLAS MARKET
Mr. and Mrs. Dan Tyson attended the fall men's market in Dallas this week. They spent Sunday and Monday at the market where they were buying for their Western Wear store here.

W. P. DUREN ATTENDS HPC TRUSTEE MEETING
W. P. Duren spent Tuesday in Brownwood where he attended a regular meeting of the Howard Payne College board of trustees. Duren, a member of the board, serves on the finance committee.

Rhonda Cook Named To Who's Who From Tarleton St. College



RHONDA COOK

Rhonda Lee Cook is one of the 32 students of almost 3,000 enrolled at Tarleton State College selected to be included in "Who's Who Among Students In American Universities and Colleges." The students were nominated by leaders of the college on basis of participation, leadership, academic and extracurricular activities, citizenship, service to the school, and the promise of future usefulness.

Rhonda is the daughter of Mr. and Mrs. L. A. Cook of Star. She is a 1969 graduate of Star High School. This fall she is a Junior majoring in math and minoring in business. She represents the Mathematics Department in the Student Senate, is secretary of the Tarleton Math Club, and a member of Kappa Mu Epsilon, which is the national mathematics honor society.

More Students Attending College

Since the last Eagle issue, more names of Goldthwaite High School graduates who are attending colleges and universities have been submitted.

They are: Mrs. Larry Alexander—Tarleton State College; Jerry Lynn Duren — A&M University.

Students who are enrolled in colleges, universities or other institutions and whose names have not appeared in the paper, should be turned in at the Eagle office.

Will Travel To Cross Plains Friday Night To Battle Buffaloes

The GHS Fighting Eagles put on a great show for a large homecoming crowd Friday night as they came on strong in the District 10-A opener against the Early Longhorns.

The Golden Eagles soared over the Longhorns 60-0 which upped their season tally to 5-1 while leaving the Longhorns on the short side with 1-5.

The Eagle scores came in every quarter. Joe Dan Hardgrave picked up two scores and Johnny Johnson moved for a TD from his quarterback slot and added four points in conversions. Joe Hudson, Reggie Robbins, Eric Wright, Sam Watson, Scott McLean, and Johnny Miller added one TD each. Kennon McLean also added a successful PAT play.

Star Tigers Rip Past Mullin By Score Of 47-13

The Star Tigers rolled over the Mullin Bulldogs last Thursday night by a score of 47-13.

Glendon Sanders and Barry Miles both scored three times each for the Tigers. Sanders also kicked two extra points and passed to David Geeslin for another.

Marvin Hunt intercepted a Bulldog pass to score again for the Tigers.

Mullin Bulldog scores came on runs from Danny Cox and Danny Whisenhunt. Sammy Smith scored the Bulldogs' extra point.

Star will play Sidney Thursday (tonight) October 22, at 9:00 p. m. at Sidney. According to announcement by Coach Grant Tidwell this will be a real important game to both teams as they both stand 2-3 in district play.

| GAME AT A GLANCE | |
|------------------|----------------------|
| Goldthwaite | Early |
| 19 | First Downs 7 |
| 323 | Yards Rushing 92 |
| 105 | Yards Passing 0 |
| 9 | Passes Attempted 21 |
| 4 | Passes Completed 8 |
| 2 | Passes Intercepted 2 |
| 0 | Fumbles Lost 2 |
| 3-31 | Punts, Avg. 9-14 |
| 55 | Yds. Penalized 33 |

| SCORES BY QUARTERS | |
|--------------------|----------------|
| Goldthwaite | 20 14 14 12—60 |
| Early | 0 0 0 0—0 |

HALFTIME ACTIVITIES AT GHS HOMECOMING
Friday night's game against the Early Longhorns also featured Goldthwaite High School's Homecoming with all the traditional homecoming activities at halftime.

The GHS Marching Band and majorettes, under the direction of Ephraim Garcia, Band Master, presented a musical program for the halftime show which included the presentation of some of the football sweethearts of the past twenty years, Pep Squad Beau and Football Sweetheart for 1970.

The former football sweethearts presented at the halftime were: Gene Ann (Evans) Smith, 1954; Sarah Jane (Cockrum) Straley, 1959; Sandra (Arnold) Lengefeld, 1961; Janan (Gray) Carr, 1963; Melissa McLean, 1965; Roberta Childress, 1966; Brenda (Rind) Knouse, 1967; Frances Hammond, 1968; and Lori Miller, 1969 sweetheart. Each of the past sweethearts were presented with a bouquet of flowers by Kaye Duncan, secretary of the Pep Squad. The 1970 Pep Squad Beau, Kennon McLean, was then presented by Amy Page, pep squad president.

Beverly Childress, daughter of Dr. and Mrs. M. A. Childress, escorted by Captain Scott McLean, was crowned as the football sweetheart for 1970.

EAGLES TRAVEL TO CROSS PLAINS FRIDAY

The Golden Eagles travel to Cross Plains this Friday night, October 23, to match wits with the Buffaloes in their second district game of the season.

Last Friday night the Buffaloes were defeated by the De Leon Bearcats with a score of 56-6.

Game time at Cross Plains will be 7:30 p. m.

Bank Deposits And Sales Show Gain

West Texas area showed population increase of 6% from 1960 to 1970, according to figures released by the West Texas Chamber of Commerce. Figures are based on preliminary census figures which will change slightly when figures are released by the Bureau.

Bank sales also showed a gain of 58% and deposits were up 86%, according to F. V. Wallace of American Bank, president of the regional association.

Report compares population growth or loss with the economic trends for each of the counties in the West Texas Chamber officials explained a large percentage of increase in retail sales and deposits can be attributed to inflation. After the inflation is removed there are still substantial increases of 13% in retail sales and 44% increase in bank deposits.

Report shows that Mills County lost 9% in population between 1960 and 1970. During same period bank deposits in the county increased 153% and retail sales increased 80%.

In the eastern one-third of West Texas, the 100th meridian showed a larger growth than other areas in both population and other economic factors.

Snodgrass, Teaching Student At GHS

Snodgrass, Senior Agriculture student from A&M University and Brady, is doing part teaching in the Vocational Agriculture Department at Goldthwaite High School.



FOOTBALL SWEETHEART FOR 1970—Miss Beverly Childress was presented as the 1970 football sweetheart at the Goldthwaite High School homecoming game on Eagle Field Friday night. She was crowned during special halftime ceremonies featuring the GHS Marching Band. Scott McLean was the new sweetheart's escort. Other candidates were Barbara Bruce, escorted by Sam Watson; Debbie Dellis, escorted by Jeff Stewart; Monica Saylor, escorted by Eric Wright; Stephanie Saylor, escorted by Kennon McLean; and Nicola Tully, escorted by Joe Dan Hardgrave. Miss Childress is a senior at GHS. Her parents are Dr. and Mrs. M. A. Childress.

**THE GOLDTHWAITE EAGLE
AND
THE MULLIN ENTERPRISE**
PHONE 915 - 648-2244

Published Every Thursday at Goldthwaite, Mills County, Texas
Victor E. Koleber Editor and Publisher

AN INDEPENDENT NEWSPAPER

Member 1970
TEXAS PRESS ASSOCIATION

SUBSCRIPTION RATES

Mills and adjoining counties — one year, \$5.00; six months, \$3.00. Elsewhere in Texas — per year, \$6.00; six months \$3.50. Outside Texas and Overseas — per year, \$7.00; six months, \$4.00. No charge for changes of address.

SUBSCRIPTIONS DISCONTINUED UPON EXPIRATION

Entered as Second-class Mail Matter at the Post Office in Goldthwaite, Texas 76844, under the Act of Congress, March 3, 1879.

BOOKING ON WINTER FEED!

We Have Our

Winter Feed Prices

and are

Booking Winter Feed

Check With Us For Your Needs.

Winter Field Seeds

- Oats • Wheat • Rye
- Clover, Etc.

See Us For Your Needs and
Check With Us Before You Buy

Also Dealers For

Smith Douglas and Olin Mathieson
Fertilizer.

Fertilizer Spreader Available.

Mills County Feed & Supply

Your Checkerboard Headquarters
Phone 648-2235 - Goldthwaite, Texas

**WHEN THE OLD BIRD
WAS YOUNGER**

10 YEARS AGO—
(Taken from The Eagle
Files of October 20, 1960)

The annual Range Field Day has been set for Saturday, October 29. A barbecue meal will be furnished by the Mills County State Bank during the noon hour.

The Eagles lost their first conference game Friday night by a score of 38-0 to the powerful Mason Cowpunchers.

At a recent meeting of several of the top students of high school, it was decided to organize a National Beta Club for the high school unit.

Melvin Tiemann of Rankin spent the weekend with his parents, Mr. and Mrs. F. H. Tiemann, and Alvin Glynn.—Chappell Hill News.

Mr. and Mrs. Mavin Spinks enjoyed a barbecue supper at the Harold Johnson's Saturday night. Mr. and Mrs. Johnson are moving to Marble Falls.—Center Point News.

Mr. and Mrs. John L. Brim of Odessa visited her mother and brother, Mrs. J. D. Fallon and o'Johnnie, last week. They were going to Houston to visit relatives.—Center Point News.



ENJOY OUTDOOR LIVING!

Have your own Patio—Barbecue—
Memory Walk with—

SAKRETE®

CEMENT MIXES

Easy to do...
Fun when you're
through! Just mix
with water... Pro-
fessional results...
economical tool!



**A & H LUMBER
COMPANY**

Aubrey Muse

Phone 648-3400

Goldthwaite, Texas

A flying trip to Bermuda for two was the prize won by Truett Aldridge in a contest conducted by Texas Distributors during the past several months for GE air-conditioning sales.

Mr. and Mrs. E. G. Roby of Goldthwaite announce the marriage of their daughter, Alice Jean, to Charles Duane Todd of Goldthwaite.

25 YEARS AGO—
(Taken from The Eagle
Files of October 19, 1945)

Humble takes to the air lanes again this Saturday with three Southwest Conference games and a crack intersectional fray on the menu for football fans.

Miss Orene Smith spent the weekend in Goldthwaite with Mrs. Willie Glynn Sanders.—Jones Valley News.

Mrs. David Straley of Grand Prairie spent the weekend with her parents, Mr. and Mrs. Hugh Dennard.

Mills Co. Sheriff Fred Reynolds received a message Wednesday night from the Safety Department at Akron, Ohio, that the car belonging to George M. Fletcher of Mullin, which was stolen on August 12 while parked in front of the Fletcher home, had been found in Akron.

At a called meeting of the American Legion Post held last Thursday night at Legion Hall, the members present voted to finish the hall immediately, to order Legion Colors for the Goldthwaite Post and buttons and Legion Caps for all members, and transacted much other business.

Chaplain Henry G. Spraggins, a veteran of the European War, has accepted the invitation of the First Baptist Church of Goldthwaite to hold an eight-days revival meeting in November.

The Goldthwaite Garden Club will sponsor a Silver Tea and Flower Exhibit Saturday, October 20, in the DuBose Gas. Co. display room.

**BROWNWOOD
CATTLE AUCTION
WAYNE MAY**
Brownwood, Texas

October 14, 1970

Market steady on the lighter cattle. Packer cows 50c lower. 450-lb. to 550-lb. steer calves 50c to \$1.00 lower. Cow and calf pairs fully steady and stocker cows fully \$10.00 per head higher.

Estimated Receipts: 1,404
Stocker Steer Calves,
Wts. 250-425-lbs. 37.75-52.00
Stocker Heifer Calves,
Wts. 250-425-lbs. 31.75-44.00
Steer Yearlings,
Wts. 500-700-lbs. 30.50-33.50
Bull yearlings 25.00-31.50
Heifer yearlings 28.00-31.50
Plain fdr. str. 28.00-30.00
Plain fdr. hfrs. 26.00-29.00
Cows & Calves, Pair:
Good: 225.00-285.00
Plain 180.00-260.00
Stocker cows 18.50-23.90
Fat calves 28.00-31.50
Slaughter Cattle
Stocker cows 28.00-31.50
Fat cows 17.50-23.00
Utility and
Cutter cows 17.00-18.75
Canners 14.00-17.50
Shells 7.00-14.75
Stocker bulls 21.00-27.60
Slaughter bulls 19.00-26.75
HOGS (Top) \$17.50

Representative Sales

Ray Weatherman, Mercury,
8 Char. hfrs., 496-lb. avg., 33.10
Mrs. L. B. Turner, Lohn, 11
blk. hfrs., 400-lb. avg., 33.70
Howard Payne Col., B'wood,
10 wf. hfrs., 308-lb. avg., 37.50
Gene Tongate, Brownwood,
920-lb. blk. wf. cow, \$240.00 hd.
Joe Sanchez, Zephyr,
470-lb. blk. wf. hfr. 31.75
Vernon Holleman, Brownwood,
395-lb. wf. str. 38.00
Dale Reid, Goldthwaite,
1060-lb. wf. cow, 21.90; and 1085-
lb. Char. cow 21.50
Betty Bucy, B'wood, 5 wf. str.,
254-lb. avg., 45.75, 9 wf. hfrs.,
220-lb. avg., 44.00; and 9 wf.
steers, 169-lb. avg. wt. 52.00
A. W. Boenicke, Banks,
340-lb. wf. str., 40.25; and 16 blk.
wf. hfrs., 350-lb. avg. wt. 35.40
Joe Paul McCullough, Coman.,
460-lb. blk. wf. str. 35.50
Wayne Powell, Mercury,
425-lb. blk. wf. hfr. 33.50
R. E. Basham, Dublin, 320-lb.
wf. hfr., 35.00; and 400-lb. wf.
steer 36.40
Pam Whitesid, Comanche,
830-lb. blk. cow 22.90
Morrison Carpenter, Zephyr,
1495-lb. Char. bull 27.00
D. G. Stoves, Rising Star,
1020-lb. blk. cow & calf, \$272.50;
& 1035-lb. wf. cow & calf, \$277.50

40 YEARS AGO—
(Taken from The Eagle
Files of October 24, 1930)

The recent high water did considerable damage to the approach on the east side of the bridge across Pecan Bayou at the Slack Crossing. There was a considerable caving of the bank at the abutment of the bridge and a large fill was necessary.

M. L. Fleming and Miss Lucille Edwards, both of Junction, drove to Goldthwaite last Saturday evening, accompanied by Mrs. J. T. Fleming of Scaflorn. They were united in marriage at the Baptist parsonage.

The following were visitors in the Bruno Schrank home Sunday: Mr. and Mrs. Frank Lubke

of Eden, Mr. and Mrs. Will Pax, and Mr. and Mrs. Ed Schrank.—Priddy News.

Ernest Fisher has accepted a position with L. L. Wilson's Garage. The many friends of Mr. Fisher are indeed glad that he has decided to remain in their midst.—Mullin News.

Taken from Little's Store Ad—Men's Suits, only \$10 & \$15.

G. H. Frizzell had business in San Angelo the early part of the week and found the people in that section very optimistic. They had had fine rains and prospects are as good as could be desired.

Taken from Yarborough's Store Ad—36" brown domestic, 8¢ yd.

Mrs. Bettie Bowden of Fort Worth, accompanied by her

niece, a daughter of John Graydy of Brownwood, made the Eagle an appreciated call today this week. Mrs. Bowden formerly lived in Goldthwaite and is kindly remembered by many friends here.

J. C. Partin

- Bulldozing
 - Chaining
 - Rolling Chopper
 - Bermuda Grass Planting
- Phone 966-2637, Priddy

Save On Taxes

3 PER CENT IF PAYMENT IS MADE IN . . . OCTOBER
2 PER CENT IF PAYMENT IS MADE IN . . . NOVEMBER
1 PER CENT IF PAYMENT IS MADE IN . . . DECEMBER

These discounts will be allowed on 1970 taxes for State, County and the following Schools: Zephyr, Priddy, Mullin, Pottsville, Star, and Brookesmith.

Tax statements have been mailed. If you failed to get a statement, send us the legal description of your property, and a statement will be sent to you.

**Taxes are payable as of this date—Pay early and Save!
Please Bring Your Tax Statement With You.**

VOTER REGISTRATION

New laws require that all persons register to be eligible to vote in 1971 elections, regardless of their ages. You may register now or any time before Feb. 1, 1971. We have registration forms.

**H. G. BROOKS - Tax Assessor - Collector
Mills County**

Just Arrived from **MOTOROLA**...

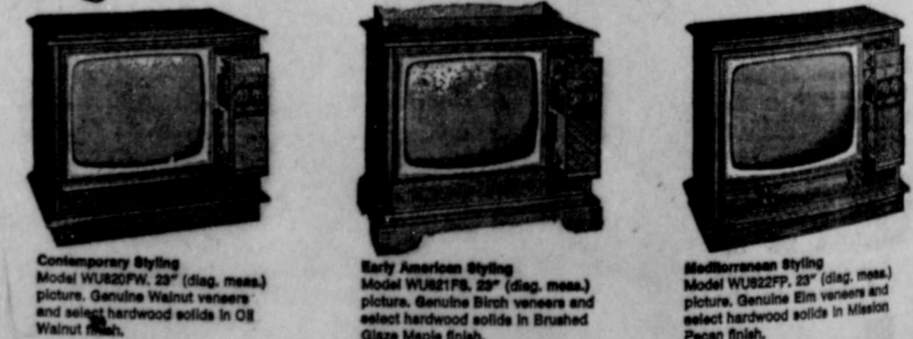


Quasar II
"Works in a drawer."
COLOR TV
only \$499.95

Value Priced

- ★ **REPLACEABLE PLUG-IN PANELS**
If one should ever fail, a new one can be easily and quickly replaced, usually right in the home, in minutes.
- ★ **AUTOMATIC FINE TUNING**
Helps deliver the best picture signal automatically each time you change channels.
- ★ **SIMPLIFIED TUNING**
Slide action control levers make color picture adjustments easy, simple.
- ★ **SOLID STATE UHF/VHF TUNERS**
Even the tuners are tubeless for excellent reliability performance.

Magnificent Credenza Creations... Value Priced, Too!



Great Stay-at-Home Entertainment Values! Come in Today!
"We Service What We Sell"

Wilcox & Head Electric
Raymond Wilcox - Johnny Head
1109 Parker - Phone 648-3133 Goldthwaite, Texas

Looking for a Loan?

Let us develop a
personal loan for you



Need a loan for a new car, for a vacation or for improving your home? Why not stop in today and let us plan a loan to meet your budget. Our plans for loans are designed to meet individual needs.

FULL SERVICE BANKING

**MILLS COUNTY
STATE BANK**
Goldthwaite, Texas
Serving Mills County Over 81 Years

84 DRIVE-IN THEATRE

GOLDTHWAITE, TEXAS

SATURDAY & SUNDAY

"The Brain"

WITH

DAVID NIVEN
ELI WALLACH

RECENT GUESTS
Mr. and Mrs. Elmo Fallon and
Mrs. Michael Shane Fal-

CALL

PADGETT
FLORAL

For All Your
Flower Needs

Phone 648-2612

FTD Wire Service

Area Recognition Day For TOPS Clubs October 24

The Area Recognition Day for TOPS Clubs for this area will be held at the Riverside Motel in Brownwood Saturday, October 24, for a day of fun, entertainment, business, and fellowship.

The Hawaiian Holiday Area Recognition will be hosted by the Brownwood Thinning TOPS Club. This is one of the two ARD's held each year. Each member is urged to attend.

Those from the Go-Weight TOPS Club who have reservations are: Leader, Ruby Nell Berry; Co-Leader, Verba Lee Auldridge; Secretary, Evelyn Reid; Treasurer, Billie Helen Jernigan; and Weight Recorders, Ruby Shelton and Faye Kight. Also attending will be Eula Heatherly, Donna Berry, Geneva Rind, and Rena Smith.

Pat Fallon, visited Mr. and Mrs. Pat Fallon.

While here, he also visited a number of old friends before departing for home in Mena, Arkansas.

Lunchroom Menu

Goldthwaite
Schools



Monday, October 26

Soup
Green Salad
Apricot Cobbler
Cornbread — Butter
Milk

Tuesday, October 27

Hamburgers
Lettuce-Tomato Salad
French Frys
Cherry Jello
Milk

Wednesday, October 28

Oven-Crusty Chicken
Steamed Rice
Buttered Corn
Celery Sticks
Hot Rolls — Butter
Syrup — Milk

Thursday, October 29

Barbecued Weiners
Pinto Beans
Pepper-Slaw
Ice-Box Cookies
Cornbread — Butter
Milk

Friday, October 30

Turkey and Dressing
With Giblet Gravy
Green Beans
Fruit Salad
Biscuits — Butter
Milk

ATTEND CABINET MEET AT BUCHANNON DAM

Mr. and Mrs. Walter A. Bryant, and their daughter, Camille, and Raymond Casbeer attended a Lions Club Cabinet meeting at Buchannon Dam last Saturday night.

The meeting was for Lions Club officers from this zone.

Bryant and Casbeer represented the Goldthwaite Club as president and secretary, respectively.

SINGING AT RIDGE SCHOOLHOUSE THIS FRIDAY, OCTOBER 23

There will be a Singing at the Ridge Community House this Friday night, October 23, at 7:00 p. m.

This will be their annual anniversary and refreshments will be served.

Everyone is invited to attend.

— IT PAYS TO ADVERTISE —

FHA'ers Draw "Secret Sisters" For The Month

By JOYCE ROBERTSON

The Goldthwaite FHA Chapter met Tuesday, October 13.

The Chapter's project for this month is called "Secret Sister."

Each member of the FHA drew a name. The object of the "Secret Sister" project is for each member to do things for the person whose name she drew without getting caught. At the next meeting the members will tell their secret sister.

The meeting was opened with the program, "Stable Home-Stable Life." A panel consisting of Mrs. James Boykin, Mrs. Dale Allen, Mrs. Gerry Head, and Mrs. John Pat Rudd answered questions about the advantages and disadvantages of marriage during the teenage years. Everyone enjoyed the program very much.

The FHA made plans to make candy for Christmas and send it to the servicemen overseas. This is one of the many projects done each year by the Chapter.

Hunting Law Digest For 70-71 Is Now Available

AUSTIN — The Texas Parks and Wildlife Department's Texas Hunting Guide/70-71 and Migratory Game Birds Hunting Digest are now available at Department offices and license deputies.

The Hunting Guide lists seasons and bag limits and special provisions for all game birds and animals except migratory birds and quail, which are listed in the Migratory Game Bird Digest.

The two publications are free upon request.

FRANK COOK DRILLS A. W. JOHNSON A NEW WATER WELL

Mr. Frank Cook drilled a water well in the pasture on the A. W. Johnson ranch.

It is untrue that Mr. Johnson lost livestock from bad well water.

The new well gauged 10 gallons per minute.

NEW FRESH SHIPMENT JUST ARRIVED

SHOP and SAVE — Our Special
Department Featuring Big Selection

Nylon Hosiery



- ☆ Regular Hose
- ☆ Cantrece II Hose
- ☆ Stretch Hose
- ☆ Panty Hose
- ☆ Cantrece II Panty Hose
- ☆ Stretch Panty Hose
- ☆ Thigh Hi Hose
- ☆ Gentle Support Hose
- ☆ Sheer Support Hose
- ☆ Fling Support Hose
- ☆ Panty Support Hose



Elastic Hose, and
Men's Support Hose

From

99¢

HUDSON DRUG

"What You Want When You Want It."

Senior Citizens Of Mullin Meet For Luncheon October 26

A luncheon will be held at the Mullin Community Center sponsored by the Senior Citizens on Monday, October 26. Everyone is invited to attend.

At this meeting during the working hours the main interest will be on making curlier bags, fish and butterflies.

Singing and games of different kinds will also be included in the afternoon activities.

At the last meeting on October 12 the meeting was well attended even though the weather was bad and everyone reported a very enjoyable time.



HUNTERS!

INSURE

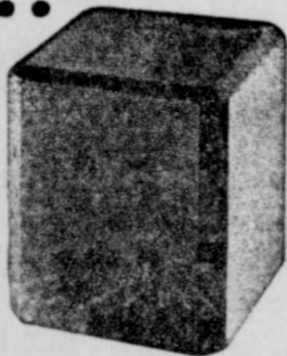
Before
You Go!

See Us For Your Needs!

STACY'S INSURANCE AGENCY

INSURANCE — REAL ESTATE — LOANS
Phone 648-2481 Goldthwaite, Texas

Now ...



YOU NEED TO FEED ONLY ONCE A WEEK

Let us show you how to eliminate six out of seven feeding trips each week this year.

There's no need for daily feeding when you switch to Paymaster Range Blocks, the easy-handling protein blocks that save time and labor as they provide sound nutrition.

The "automatic feeder" principal built into every Paymaster Range Block regulates feed intake ... even keeps "boss cows" from over-eating ... gives the shyest little heifer the chance for a full share every day.

We have other tips on fall and winter range feeding, too. See us today.



Phone 648-3311

Your
PAYMASTER
Feed Dealer

We Are Now Booking

Check With Us For Prices

Boykin Feed Store

Goldthwaite, Texas

Specials

Pre-Finished Mahogany

Paneling

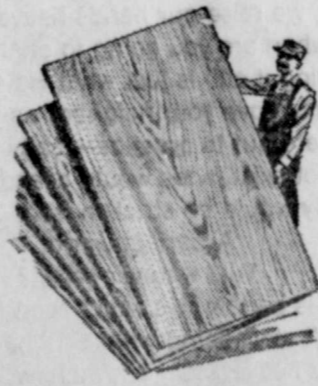
Golden
Mahogany

4' x 8' Sheet

Only

\$2.79

Each



Latex

Wall Paint

White and Colors

Only \$2.88 Gallon

BARNES & McCULLOUGH

Phone 648-2411

"Everything To Build Anything."

Announcing Consignment Equipment SALE

All Consignments Welcome

Saturday, Oct. 31, 1970

STARTING 12:00 NOON

Cafe Will Be Open For Lunch

Mills County
Commission Company

Phone 648-2285

Goldthwaite, Texas

Glen Love
948-2412

David Smith
648-2594

**Childress
Clinic & Hospital
News Release**

Tuesday, October 13
Admitted — Alwin L. Tischler, Priddy; Bruce Buchanan Perry, Goldthwaite.
Discharged — Wm. Howard Farr.

Wednesday, October 14
Admitted — Merl Brown, Lometa; Mrs. Ola S. Parker, Goldthwaite; Winne Mae Brown, Goldthwaite; Manuel L. Barrera, San Saba.
Discharged — James E. Duncan.

Friday, October 16
Discharged — Mrs. Ola S. Par-

ker; Bruce B. Perry.

Saturday, October 17
Admitted — James Walter Featherston, Goldthwaite; Henry Luther Egger, Goldthwaite; James H. Earles, Goldthwaite; Mrs. Opal Allison, Lubbock.
Discharged — Mrs. Helga Stegemoller.

Sunday, October 18
Admitted — James S. Weatherby, Goldthwaite.
Discharged — Mrs. Opal Idell Allison.

Monday, October 19
Admitted — Mrs. Edith Faulkinberry, Goldthwaite; Mrs. Julia Atnip, Goldthwaite.
Discharged — Walter Lee Barker; Ruth Johnson.

**Run The Dogs, But,
Don't Shoot Birds**

AUSTIN — Bird hunters about this time of year are getting the itch to run their dogs in order to train them for the upcoming quail season.

Bob Cross, law enforcement coordinator for the Texas Parks and Wildlife Department, says dogs can be run any time of the year as long as no effort is made to shoot the quail.

Pen-reared quail, purchased from licensed game breeders, may be used in training dogs, but these birds may not be shot. Once they are released the quail gain the same status of wild birds and cannot be shot during the closed season or re-trapped at any time.

**Sen. Wayne Connally Is Speaker
For TS&GRA Annual Meet Saturday**

Senator Wayne Connally, 21st district state senator from Floresville, will be the main speaker when the Texas Sheep and Goat Raisers' Association meets in tri-annual session this Saturday, October 24. The one-day meeting will be at the high school in Brady.

Senator Connally will discuss the details of Amendment Three with the delegation.

"Amendment Three, to be voted on November 3, deals with taxation, informs T S & G R A President Louis L. Farr III of

tee meetings will follow at 9 a. m. until noon. A luncheon will be available before the general session at 1:30 p. m. Connally's speech will come during the afternoon session.

Ladies activities will include a tour of the Brady Combing Plant at 9:00 and the Association's general meeting at 10:30 a. m. Arrangements are being handled by McCulloch County directors. The noon meal will be hosted by the McCulloch County TS&GRA directors and members of the Association.

feed

Mol-Mix

Liquid Feed Supplements
\$88.00 Per Ton Delivered
E. E. Norwood
Phone 938-2520 — Goldthwaite, Texas

Goldthwaite

FIRST METHODIST CHURCH
Rev. Albert R. Peterson

Church School, 9:45 a.m.
Morning Worship, 10:50 a.m.
Youth Fellowship, 5:00 p. m.
Evening Services, 7:00 p. m.
W.S.C.S. each Monday, 3:00 p.m.
Wednesday, Prayer Meeting, 7:30 p. m.
Men's meeting, 1st Thursday of each month, 7:00 p.m.

FIRST BAPTIST CHURCH
Rev. Dale Gore, Pastor

Sunday School, 9:45 a.m.
Morning Worship, 11:00 a. m.
Training Union, 6:00 p. m.
Evening Worship, 7:00 p. m.
Wednesday, Prayer Meeting and Bible Study, 7:00 p. m.
W. M. U., 3:45 p. m., Monday

ST. PETER'S CATHOLIC CHURCH
Fr. William Evers Oml

St. Mary's Catholic Church
504 West Wallace St.
San Saba, Texas
Phone 372-3679
Sunday Mass, 11:00 a. m.

CHURCH OF CHRIST
Joe Woodrum, Minister

Bible Study, 10:00 a.m.
Morning Worship, 10:50 a.m.
Evening Worship, 6:00 p. m.
Wednesday Prayer Meeting, 7:00 p.m.

ASSEMBLY OF GOD
Rev. V. E. McGinn, Pastor

Sunday School, 10:00 a.m.
Preaching, 11:00 a.m.
Sunday Night, 7:30 p. m.
Wednesday Night, 7:30 p. m.

**POMPEY MT. (DUREN)
CONGREGATIONAL
METHODIST CHURCH**
Rev. Martin L. Emert, Pastor

Church Each Sunday
(Except on Fifth Sunday)
Sunday School, 10 a.m. Each Sunday
Preaching Services—
11:00 a. m. and 7:00 p. m.
Prayer Meeting, Thurs. Night
Singing each 4th Sat. Night—
(except months of July & Aug.)

Priddy

ZION LUTHERAN CHURCH
Richard F. Winkelmann, Pastor

Sunday School, 9:30 a. m.
Worship Service, 10:30 a. m.

BAPTIST CHURCH
David Stringer, Pastor

Sunday School, 10:00 a.m.
Morning Worship, 11:00 a. m.
Evening Services, 7:00 p. m.

**PRIMITIVE BAPTIST
PHILADELPHIA CHURCH
CARADAN**
Elder Elmer Isham
Of Comanche

Services Every Second Sunday
in Each Month and on Saturday
before.

**LONG COVE
BAPTIST CHURCH**
Rev. B. F. Sheppard, Jr., Pastor

Sunday School—10:00 a.m.
Morning Worship, 11:00 a.m.
Evening Worship, 8:00 p.m.

**SCALLORN
BAPTIST CHURCH**
Steve Bolton, Pastor

Sunday School, 10:00 a. m.
Evening Worship, 8:00 p. m.

**MT. OLIVE
PRIMITIVE BAPTIST CHURCH**
Elder James C. Robertson
Route 2 — Box 663
Abilene, Texas

Services each 3rd Sunday at
11:00 a. m. and on Saturday
preceding at 11:00 a.m. and 8:00
p. m.

**Mullin
BAPTIST CHURCH**
Rev. James Rogers, Pastor

Sunday School, 9:45 a. m.
Morning Worship, 10:30 a. m.
Training Union, 7:00 p. m.
Evening Worship, 8:00 p. m.
Wednesday Prayer Meeting, 7:30 p. m.

METHODIST CHURCH
Rev. Ernest Roper

Morning Worship, 9:30 a. m.
Sunday School, 10:30 a. m.
Evening Worship, 8:00 p. m.
2nd, 4th, and 5th Sundays

CHURCH OF CHRIST
J. A. Krisell, Minister

Bible Study 10:00 a.m.
Morning Worship, 11:00 a.m.
Evening Worship, 7:00 p.m.

Center City

BAPTIST CHURCH
Services Every Sunday
Russell Crosby, Pastor

Sunday School, 10:00 a.m.
Morning Worship, 11:00 a.m.
Evening Worship, 7:00 P. M.

METHODIST CHURCH
Rev. E. C. Young

Church School each Sunday
10:00 a.m.
Morning Worship, 2nd, 4th &
5th Sundays, 11:00 a. m.

Big Valley

BAPTIST CHURCH
Ronnie Horton, Pastor

Sunday School, 10:00 a.m.
Morning Worship, 11:00 a.m.
Evening Worship, 7:00 p. m.

CHURCH OF CHRIST
Wed. Bible Study, 7:30 p. m.

Star

CHURCH OF CHRIST
Wayne Harrell, Minister

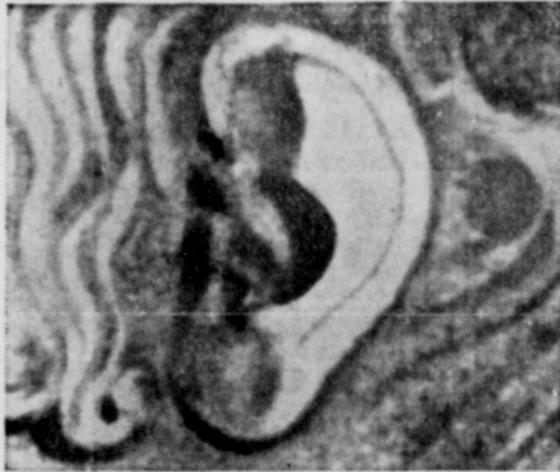
Bible Study, 10:00 a.m.
Morning Worship, 11:00 a. m.
Evening Worship, 7:00 p. m.
Wednesday Prayer Meeting, 7:30 p.m.

BAPTIST CHURCH
Alfred McCurdy, Pastor

Sunday School, 10:00 a.m.
Morning Worship, 11:00 a.m.
Evening Worship, 6:30 p. m.

METHODIST CHURCH
Rev. E. C. Young

Church School, 10:00 a.m.
Preaching Services 1st and 3rd
Sundays
11:00 a. m. and 7:00 p. m.



Gendreau Photo

**God has
listened to you enough times.**

Now how about listening to Him?

More than a few things are troubling our cities,
our world, our souls.
Sometimes, we raise our hands heavenward and say,
"When oh when are you going to change it all, Lord?"
And "changing it all" is just what He expects us to do!
Listen: "Love your neighbor as yourself."
If that were put to practice—really to practice—
ghettos would not exist, wars would cease, hunger would end,
inhumanity would be stricken from the dictionary,
A perfect world.
Will we ever see it?
One thing is certain, we won't even begin to see it,
if we don't start doing what God has asked of us
for heaven only knows how long.



Advertising contributed for the public good

Presented as a public service

This Series of Ads is Being Published in The Eagle
Each Month Under the Auspices of the Mills County Ministers' Association
and is Sponsored by the following Individuals and Business Establishments

- Goldthwaite City Utilities
- Childress Clinic & Hospital
- RV's Cafe
- Shelton Bros. Auto Parts
- Ferguson Garage — Mullin
- A&H Lumber Company
- Patty's Of Texas
Goldthwaite Blouse Factory

- Blackwell Wool & Mohair
- Central Texas Tel. Coop.
- Yarborough's
- City Cleaners
- Pure Milk Company
DOUG COLLIER, DISTRIBUTOR
- Horton's Wagon Wheel Cafe

- Johnny Truitt's Gulf Station
- Hi-Way Garage—Priddy
- Roy Wilkins Funeral Home
- Mills County State Bank
- Woody Drug Store
- Heritage Nursing Home, Inc.
- Kauhs Variety Store

- Johnson Bros. Texaco Sta.
- Barnes & McCullough
- Metal Master Machinists, Inc.
- The Goldthwaite Eagle
- Economy Welders
- Campbell Gas Co. No. 2
VIRGIL GEESLIN

Free Financial Incentives Recommended To Lure New Industry

By VERN SANFORD
Texas Press Association

AUSTIN, Tex.—Tax-free financial incentives are recommended by Texas' top officials to lure new industry to the Lone Star State.

Gov. Preston Smith came out with the added attraction at no cost to taxpayers. Lt. Gov. Ben Barnes said he agreed that revenue bonds to help industry locate would be the preferred route for legislation.

Both spoke here at the governor's annual conference on industrial expansion.

Smith also advocated a pre-employment industrial training program to fill the need for skilled labor. He pledged his efforts to maintain a favorable climate for industrial development.

James W. McGrew, Texas Research League director, underscored the importance of the recommendations when he told the conference that Texas will need to provide 600,000 new jobs

because of the predicted population increase during the next decade.

Sponsored by the Texas Industrial Commission and hosted by Governor Smith, the conference honored six industries for expansion and economic impact on their communities during 1969.

Award-winning industries were Johnson Manufacturing Company of Lubbock, Kilgore Ceramics Corporation, Celanese Chemical Company of Clear Lake, Missouri Beef Packers of Friona, Laredo Packing Company and Friedrich Refrigerators Inc. of San Antonio.

At a meeting before the conference, the Industrial Commission reviewed plans for a 24-page section on Texas Industry in Business Week Magazine on March 13. Also discussed was a computerized, finger-tip data bank on industrial development opportunities in 438 Texas communities over 1,000 population.

Football Receipts
Goldthwaite vs. Marble Falls
The receipts of the game played against Marble Falls at Marble Falls, October 2, totaled \$1,335.50, according to Supt. Gilbert Davis. After total disbursements of \$120.00, Goldthwaite received \$607.75 and Marble Falls received \$607.75.

Goldthwaite vs. Mason
According to announcement by Supt. Davis the receipts of the game played against Mason on Eagle Field, October 9, totaled \$1,258.02. After total disbursements of \$117.00, Goldthwaite received \$570.51 and Mason received \$570.51.

Goldthwaite vs. Early
Supt. Gilbert Davis has announced that receipts of the game played on Eagle Field against Early, October 16, totaled \$847.75. After total disbursements of \$97.00, Goldthwaite received \$375.37 and Early received \$375.38.

Paint and Body Shop
AUTOMOTIVE REPAIRS

Gene Shelton Body Shop And Garage
Phone 648-3226
On San Saba Highway

FILL UP WITH



WE GIVE GREEN STAMPS

- Farm Bureau Tires
- We Fix Flats
- Open 24 Hours

Lock's Shamrock Service Center
J. A. Lock — Operator
At The North "Y"
Goldthwaite, Texas

AMBULANCE SERVICE
PHONE 648-2255

Roy Wilkins Funeral Home
GOLDTHWAITE, TEXAS

Lometa Commission Company

CATTLE!

To Buy or Sell, Lometa, Texas
Sale Every Friday
Remember
Our Sale Starts At 12:00 Noon

Bud Harrell — Mrs. J. H. Harrell
Brady, Texas Lometa, Texas
915 - 597-2981 512 - SK2-3168

Don't Forget Our Special
Cow Sale
At Brady
Saturday, October 24, - 11:00 A. M.

2500 Or More Cows
Now Consigned.

We Will Have Every Kind of Cow
You Would Want, Selling
10 Head or More.

With \$5.00 Purchase




69¢

3 Lb. Can Limit One

Food King Quart


Salad Dressing 33¢



4 Cans \$1

Del Monte Dried 2-Lb. Bag Large Size

Prunes 79¢



DEL MONTE® PRUNE JUICE Full Quart

53¢



GLADIOLA FLOUR 48¢

5 Lb. Bag

22-Oz. Size



SAVE 17c

48¢

Green Light Box of 4 Baits

Rat Bait 89¢



Giant Box

59¢

Limit One

Buy Here Save More

"Non-Foods"
Stock Up Now For Colds

Ben Gay 69¢

Reg. 98c

CURAD
Flesh Pad

Bandages 59¢

Pkg. of 45

St. Joseph's

Aspirin 44¢

Bottle of 100 Reg. 65c

Hair Spray

Style 59¢

You Pay Only Can

SCHWARTZ FOOD STORE

SAVE 20c WHEN YOU BUY A 6 OZ. JAR OF INSTANT FOLGER'S COFFEE CRYSTALS

SPECIAL PRICE With This Coupon



99¢

Without Coupon \$1.19
Coupon cash value 1/20 of 1¢

Good Thru 10-28-70

Shurfresh Orange Slice


Candy 25¢

14-Oz. Bag

Shurfrost Frozen

TV Dinners 38¢

Ea.



300 Can

14¢

Affiliated, Grade A, Medium

Eggs 3 doz. \$1

"Budget Savers"

Fresh Pork Pound

Spare Ribs 49¢

End Cut Pound

Pork Chops 49¢

Silver Spur Tra-Pak

Bacon 58¢

Lb.

Watt's Pure Pork 2 Lb. Bag

Sausage \$1.39

MEMBER AFFILIATED FOOD STORES

Prices Good Thursday, October 22, Through Wednesday, October 28

Schwartz Food Store



* CLASSIFIED * ADS *

Classified Rates

¼ per word including name and address, for first insertion and 3¢ per word for each subsequent insertion. Count initials as one word.
Minimum charge \$1.00.

"Black face" readers, 50¢ per line. Minimum charge \$1.00.
Legal notices same as above rates.

Memorial tributes or Resolutions of Respect and all other matter not news will be charged for at regular advertising rates. No charge is made for news of Church or other public gatherings where no admission is levied. Where admission is charged or where goods or wares are offered for sale the regular advertising rates will be applied.

Cards of Thanks, \$4.00
All advertising is cash with order except where accounts have been established.

**Fast, Dependable
Film Developing
Hudson Drug**

Announcement

ANNOUNCEMENTS, and Invitations, printed or engraved. Good line of samples to choose from. Reasonable prices. Phone 648-2244, Eagle office. 1-1-tf

FISH BAIT: Live minnows, worms, goldfish, and crawfish. Frozen shad gizzards, shad, shrimp, liver. Also blood bait. A. C. Williams Bait Station, Waco Highway, Goldthwaite. 4-18-tfc

DEAD ANIMAL SERVICE—As near as your nearest telephone. Phone (Area Code 817) 386-3303. If no answer try 386-3642. Service charge \$3.00 under 50 miles and 15¢ per mile over 50 miles from Hamilton. Hamilton Rendering Co., Inc., Hamilton, Texas. 2-32-tfc

OFFICE SUPPLIES
Good stock, staplers and staples, several sizes bond paper and Klapal envelopes. Memo paper and stencils. Steno books, stamp pads, order books, index card files and guides. Expanding files, clip boards and many other items. Phone 648-2244, Eagle office. 1-1-tf

AUTOMOTIVE

THREE WHEEL SCOUTERS
47 Three Wheel Scouters formerly used by Post Office. Your Choice, \$225.00 Each. Johnston Truck & Supply 725-2181
Cross Plains, Texas 10-1-5tc

Business Services

RUBBER STAMPS — reasonable prices and fast service. No orders too small or too large to receive our special attention. Phone 648-2244 or stop at the Eagle office. 1-1-tf

MILLS COUNTY ELECTRIC
Serving residential, commercial and industrial needs. 24-Hour Service. Phone 648-3452. Bill Gholson, Goldthwaite. 9-17-tfc

QUALITY REUPHOLSTERY

Furniture and Auto
Free Pickup and Delivery

Spradley's Upholstery Shop
Dial 648-2261
Fisher St. — Goldthwaite

TEXACO GAS AND OILS

Firestone Tires and Tubes
Washing & Greasing
ROAD SERVICE

TEXACO Service Station

Dial 648-2585 — Goldthwaite
Johnson Brothers

Card Of Thanks

CARD OF THANKS
We wish to express our deepest thanks and gratitude to all the friends, neighbors, and relatives for their expressions of sympathy shown us in the passing of our Mother, Mrs. L. E. (Mattie) Booker. For the floral offerings, food, and kind words, to the doctors and nurses at Childrens Clinic and Hospital and the Heritage Nursing Home Staff.
Your kindness has been greatly appreciated and may God bless you.
Mr. and Mrs. James W. Booker, Dr. and Mrs. James L. Booker and Children. 10-22-1tc

City Property

FOR SALE: House and Lot at 709 South Lee Street, P. O. Harris, 648-2756. 10-15-2tp

FOR SALE: Three bedroom house and two acres in city limits. Good well, 1301 Trent St., near high school. Mrs. Loretta Long, Goldthwaite. 10-15-tfc

EMPLOYMENT

NEED MEN and WOMEN to take orders for Fuller Brush Company. Write Mr. Pennison, 410 Motley, Grand Prairie, Texas 75050. 10-1-tfc

WANTED: Cook or Waitresses, evening shift. Apply Dairy Cup, Goldthwaite. 9-24-tfc

WANTED: Reliable party to distribute morning newspaper in Goldthwaite. Must have car and be able to post small bond. Nice supplemental income.
For retired or young person. Contact Circulation Department, San Angelo Standard-Times, P. O. Box 5111. 10-15-2tc

SEMI DRIVERS NEEDED
Experience helpful but not necessary for local and over the road hauling. You can earn \$10,000 to \$15,000 per year if you are willing to learn. For application, call 214-742-2924, or write Safety Dept., United Systems, Inc., 4747 Gretna, Dallas, Texas. 75207. 10-15-2tc

Farm and Ranch

Ideal Bookkeeping System — for farm and ranch. Easy to use, small and compact. Only \$5.95 at the Eagle office. 1-1-tf

FOR SALE: 175 Acre ranch, well fenced, plenty water, lots of grass, some Lamapasas River front. Priced to sell. Better hurry for this one.
A. A. CLINE REAL ESTATE
Phone 648-2292, Res. 648-3177 Goldthwaite, Texas 9-3-tfc

FARM LOANS
FARM AND RANCH LONG-TERM CREDIT FOR ANY WORTHWHILE PURPOSE. Buy land, equipment, finance new buildings, pay off short term farm and ranch debts with a flexible Federal Land Bank loan. For complete details see W. E. Burleson, Manager, Federal Land Bank Assn. of Brownwood, Wilcox & Head Elect. Bldg., Goldthwaite, Texas. 10-8-4tc

FARM FOR SALE: 154 Acres at \$175 per acre, located 5 miles north of Goldthwaite on Highway 16. Write R. C. Petty, 503 Jamacia St., Aurora, Colo., 80010. Telephone 303 — 364-3763 evenings. 10-22-4tc

FFFD AND SEED

FOR SALE: Sturdy Seed Wheat. Call Ewell Pirddy, 995-2592. 10-1-5tp

LIVESTOCK

BULLS FOR SALE: 21 big rugged Polled Herefords at the 19th Annual Central Texas Polled Hereford Association Sale, Clifton, Texas, 1:30 p. m., October 31. Also 11 quality registered heifers. For information or catalog contact Kenneth Radds, Rt. 1, Meridian, Texas. Phone AC 817 435-2571. 10-15-3tp

FOR SALE: Rambouillet yearling Rams and registered polled Hereford bulls. Phone Big Valley, 938-2512, Clayton Egger. 10-15-3tc

FOR SALE: Registered Bulls, ready for heavy service. One outstanding herd bull, 4 years old. J. W. Shook, Phone 372-3072, San Saba, Texas. 10-15-2tc

FOR SALE: 60 Rambouillet Ewes, Western type, big boned open face. Fred Wittenburg, Lometa. 10-22-1tc

FOR SALE

FOR SALE: One only New Oak Hutch. Regular \$149.95 value for only \$99.50 at Spradley's Furniture & Upholstery, on Fisher Street, Goldthwaite. 10-22-tfc

THRASHING POLES
Genuine Calcutta Poles, 18 to 20 Ft. length, only \$2.50 at Steen Hardware, Phone 648-2515, Goldthwaite. 10-15-tfc

PADGETT FLORAL will make daily delivery of flowers to hospital. Call 648-2612 and place your order. 9-11-tfc

TEXAS ALMANAC — New 1970-71 Edition now out. Phone 648-2244 to get your copy. Paperbound \$1.95; Clothbound \$2.50. Eagle Office, Goldthwaite. 12-4-tf

NEW HOME ELECTRIC SEWING MACHINES
NOW IN STOCK: The oldest trouble-free Sewing Machine in America, it does everything and carries a Lifetime Guarantee. Portables, Desk Models and Cabinet Models. Special introductory offer. Regular \$379.50 values, only \$169.95, with working trade-in machine. Spradley's Furniture & Upholstery, On Fisher Street, Goldthwaite. 8-13-tfc

FOR SALE: Samsonite Card tables and chairs. New supply in stock for the fall and winter season ahead. Steen Hardware, Phone 648-2515, Goldthwaite. 10-15-tfc

CLOSE-OUT: Sale on 2-piece plastic living room suites. Large selection at only \$139.50. Spradley's Furniture & Upholstery, on Fisher Street, Goldthwaite. 10-22-tfc

FOR SALE: T. A. M. Wintergreen Harding grass. Tagged and tested. Custom Planting. Jimmy Wigley, 948-2442 or Maurice Knight, Route 3, Goldthwaite. Phone 948-2402. 10-22-2tc

ALL KINDS OF GREETING & Christmas Cards for Sale. 1711 Fisher Street, Phone 648-2578, Mrs. H. O. Loudamy. 10-22-2tp

FOR SALE: 1 Yamaha 250 Endura. 1 Gibson Electric Guitar with amplifier. Both like new. Contact M. L. Heath. Pohn 948-2197. 10-22-tfc

Miscellaneous

DINETTE SUITES — 7-Piece Dinette Suite, Table with six upholstered chairs, for only \$69.95. Spradley's Furniture & Upholstery, on Fisher Street, Goldthwaite. 10-22-tfc

2 REPOSSESSED STEREOS
1970, 1 walnut, 1 Early American Style. Guaranteed, Solid State, 4 speed changer. \$49.95 or \$8.00 a month. Write Credit Manager, Box 1292, Abilene, Texas. 10-8-4tc

GARAGE SALE: Four families, Friday and Saturday. Clothes—adult and children, toys, bottles, picture frames, lots of miscellaneous. 1518 Parker Street. 10-22-1tp

BICYCLE SALE: Lay-Away now for Christmas gifts. Two new factory shipments, large selection to choose from. Big stock ready for you at Steen Hardware, Phone 648-2515, Goldthwaite. 10-15-tfc

COLUMNAR PADS—All popular sizes. Legal ruled pads, account books and stock receipt books to fit your needs. Phone 648-2244, Eagle office 1-1-tf

FOR LEASE: 336 Acre place east of Goldthwaite. Mrs. H. P. Harris. Phone 648-2402. 10-22-2tp

FILING SUPPLIES
Transfer or storage files. File folders, Filing Guides, Roll labels. Get your needs at the Eagle office or phone 648-2244. 1-1-tf

REPOSSESSED SINGER
1970, makes buttonholes, fancy stitches. Guaranteed. \$39.95 or \$8.00 a month. Write Credit Manager, Box 1292, Abilene, Texas. 10-8-4tc

UPHOLSTERY WORK
For all your needs. Furniture, Cars, Boats, Etc. Extra large stock of fabrics to choose from to fit your budget. Come see us or call 648-2261. Spradley's Furniture & Upholstery, on Fisher Street, Goldthwaite. 1-8-tfc

TRACTOR SPECIAL
Save several hundred dollars on a new imported Ford Tractor. Large selection in stock now. Come see them and Save Money on a New Tractor.
San Saba Tractor Company
Phone 372-5146
San Saba, Texas 4-16-tfc

STADIUM SEATS: See the football game in comfort with a new stadium seat. Regular \$4.45 value only \$2.95. Steen Hardware, Phone 648-2515, Goldthwaite. 9-24-tfc

POODLES
SIKES AKC KENNEL
Grooming Puppies — Stud Service. Phone 648-1267.
1706 Ave. A, Brownwood
Call For Appointment. 10-1-tfc

STENO POSTURE CHAIRS — and steel typing tables in stock for immediate delivery. Discount prices and freight paid. Phone 648-2244, Eagle office. 1-1-tf

UPHOLSTERY
ALL TYPES, furniture, cars, pickups, boats. See our samples. Rind's Upholstery, Phone 648-3350, South Side of Square, Goldthwaite. 6-19-tfc

IDEAL BOOKKEEPING System for most all business classifications. Complete in one book, easy to keep. Only \$5.95 at the Eagle office. 1-1-tf

HAULING: Prompt delivery. Concrete gravel, mortar sand, crushed rock and drive-way gravel, sandy loam and black soil. Call 648-2424 or see Truett. 9-24-5tc

RECLINER SPECIAL
Kroehler Deluxe Recliner Chairs, regular \$150.00 retailer for only \$129.50. Other Recliner Chairs from \$59.50 up. Spradley's Furniture & Upholstery, on Fisher Street, Goldthwaite. 10-22-tfc

PERSONAL

FILING CABINETS
Representing all major lines, fast delivery out of warehouses at discount prices. Call Vic at the Eagle office. Phone 648-2244. 1-1-tf

FOR FREE: Home Demonstration of the Slim-Gym. Call Brownwood 646-7960. 10-22-5tp

1970-71 TEXAS ALMANAC NOW IN STOCK. Paperbound \$1.95; Clothbound \$2.50. Get your copy at the Eagle Office. Phone 648-2244, Goldthwaite. 12-4-tf

REAL ESTATE

FOR SALE: 579 acres, more or less, two miles south of Center City. Plenty water, pecans. Good improvements. Phone 648-3567. D. T. Carter, Goldthwaite. 6-25-tfc

FARM AND RANCH Sales or Trades. Listings appreciated. If interested contact Joe Green, Center City, Route 3, Goldthwaite, Texas, Phone 948-2114. 9-4-tfc

See Us For All Your REAL ESTATE NEEDS
We'll give you full time service, whether you want to buy, sell or trade.
Listings Appreciated.
A. A. CLINE REAL ESTATE
Phone 648-2292, Res. 648-3177 Goldthwaite, Texas 4-30-tfc

POST BINDERS
Ledger sheets, Indexes and extension posts. All popular sizes in stock. Get your supplies at the Eagle office. Phone 648-2244. 1-1-tf

RIBBONS
Big stock of Typewriters and Adders. Type cleaner, eraser liquid, paper pencils, auditor pens and many office supplies in stock. Phone 648-2244, Eagle Office, for your office supply needs. 1-1-tf

RAY DUREN
Bookkeeping,
Income Tax Service
and
Real Estate
Box 543 Phone 648-2500
1108 Parker Street
Goldthwaite, Texas

RENTALS
FOR RENT: Furnished Trailer House, air conditioned, 712 East Front Street. Phone 648-2418, Mrs. M. L. Lindsay. 10-8-tfc

Quasar Color TV
by MOTOROLA




"We Service
What We Sell"

Wilcox & Head Electric
Raymond Wilcox — Johnny Head
1109 Parker — Phone 648-3133
Goldthwaite, Texas

Chappell Hill

By PEARL CRAWFORD

We received ½ inch of rain over the weekend. We have some warm sunshine at present.
Mr. and Mrs. W. W. Ratliff and Mrs. Betty Dufner of Austin were visitors of Mrs. G. J. Ratliff at San Saba, Saturday. Grandma Ratliff went home with Mrs. Dufner for a short visit.

I visited Mr. and Mrs. R. F. Daniel, Mrs. Joe Burdette, and Mrs. Fritz Schwartz. I found them all doing nicely.

Visitors of Mr. and Mrs. Jerry Davis included Floyd E. Burkett, Jim, Idellie, and Jamie Burkett; Irene Cadney, Mr. and Mrs. Jake Davis, Mr. and Mrs. A. E. LaBoy, Mr. and Mrs. A. L. Henderson, Mr. and Mrs. Stoddard Gerald, Marla Gerald, Mrs. Lois Petty, Mr. and Mrs. K. S. Farris, Mrs. Melvin Faught and son, and Stella Baker.

Mr. and Mrs. W. A. Daniel were at their farm Wednesday working with their livestock.

George and Pearl Crawford visited Mr. and Mrs. A. L. Crawford Wednesday.

I visited Mr. and Mrs. Perry Harris Saturday, and a number of other relatives. They were selling their household goods and home in Goldthwaite. They are on their way to their new home in California. Mr. Harris is a former resident of this community. Mr. and Mrs. O. A. Evans also visited at the Perry Harris home.

Mrs. Len Price and Stevie took Mr. and Mrs. V. T. Stevens to the Veterans Hospital to see Henry Stevens, Sunday. His health remains the same. They also saw Noel Ledbetter.

Mr. and Mrs. Omer Grams of San Angelo spent Saturday with Mr. and Mrs. Hugh Nowell. They were all dinner guests of Mr. and Mrs. H. O. Porter.

Mr. and Mrs. A. L. Crawford visited Mr. and Mrs. V. T. Stevens and Miss Lola Stevens Sunday afternoon.

Mr. and Mrs. R. M. Morrow were visitors at their farm. They also visited Mr. and Mrs. Andy Wells and Pat.

Mr. and Mrs. Pat Fallon visited Miss Florence Jones and Gordon Jones Friday. Mr. Fallon took Gordon to see the doctor. We wish all the sick folks a speedy recovery.

OFFICE SUPPLIES

POST BINDERS
Ledger sheets, Indexes and extension posts. All popular sizes in stock. Get your supplies at the Eagle office. Phone 648-2244. 1-1-tf

RIBBONS
Big stock of Typewriters and Adders. Type cleaner, eraser liquid, paper pencils, auditor pens and many office supplies in stock. Phone 648-2244, Eagle Office, for your office supply needs. 1-1-tf

CALL
L. J. PIGG
FOR
SEPTIC TANK CLEANING
and
TERMITE CONTROL
Guaranteed
To Kill Termites
Call After 5:00 P. M.
Ph. 386-3873
Route 3, Hamilton, Texas

Funeral Services Conducted In Big Spring For Jesse D. Stewart

Funeral services were held for Jesse D. Stewart, 83, Thursday, October 15, 1970 at 2:00 p. m. at the River-Welch Chapel in Big Spring. Officiant was the Rev. Wilbur Coffman, University Baptist Church of Lubbock, assisted by the Rev. Charles Corley. Interment was in Trinity Memorial Park under the direction of River-Welch Funeral Home.

Mr. Stewart was a retired farmer and formerly lived at Caradan. He was a member of the Baptist Church and had been a deacon of the church for forty years.

Pallbearers were Curtis Thomson, Elmer Koen, Curtis Koen, J. C. Woodard, and C. K. Price.

He is survived by his wife, Mrs. Jesse Henry Stewart of Big Spring; two sons, Henry M. Stewart of Big Spring and Wilton Glen Stewart of Houston; one daughter, Geneva Stewart of Lubbock; one brother, Melvin Stewart of Midland; two sisters, Mrs. Susie Livingston of San Francisco, California, and Mrs. Lula Horton of Goldthwaite; six grandchildren and three great-grandchildren.

Mrs. Charles W. Hill, Mrs. W. G. Saylor, and Mr. and Mrs. B. C. Wicker of Goldthwaite attended the funeral.

Hairstyles
for the life you live



Phone 648-2200
For Appointment

Open 9:00 A. M. Close
Tuesday Through Saturday
Closed On Monday

We Sell and Do
Hair Pieces.

Joy's Beauty Sal.
JOY COLLIER
906 — 3rd St.
Goldthwaite, Texas

Rats and Mice Love Cheese!

KILL-KO RAT AND MOUSE BAIT

Has **CHEESE ODOR!**



Why should you pay the high price of some baits that may not kill all Rats and Mice?

KILL-KO
Rat Bait kills ALL RATS (Brown Rat — Cotton Rat — Roof Rat — Pack Rat — Norway Rat!)

SPECIAL COW SALE
Cattlemen's Commission Co.
Brady, Texas

Saturday - Oct. 24 - 1:00 p. m.

**OVER 1,500 CONSIGNED
More Consignments
Coming In Every Day**

100 HEREFORD COWS, 3-6 Years Old, Calving Now.
105 ANGUS COWS, 3-6 Years Old, Calving Now.
145 — 3 & 4 Year Old Straight Back BRAHAMA CROSS BRED COWS, Preg. Tested and Calving Now.
110 — 2 Year Old BRAHAMA CROSS BRED HEIFERS—Calves By Side.
150 BRAHAMA CROSS BRED HEIFERS—Bred to Black Bulls — Preg. Tested.
90 HEREFORD COWS, 3-6 Years Old, Big Calves by Side.
300 HEREFORD, Black and Black White Face Cows, Consignment Cows, Preg. Tested for 6 Months Over and 6 Months or Less.
50 ANGUS COWS And CALVES.
129 BRED HEREFORD HEIFERS, 3 Years Old, Big and Good Bred To Black Bulls.
70 BRED HEREFORD HEIFERS, Weighing 800-lbs., Bred To Black Bulls.
50 — 3 & 4 Year Old HEREFORD COWS from One Of Area's Reputation Herds.

All Cows Aged and Pregnancy Tested Will Be Marked On Cows.
Over 80% Of Our Consignments Coming from 50 Mile Radius of Brady, Texas.
If Interested In Consigning or Buying Please Call

BUD HARRELL
Brady, Texas
915 597-2981 915 597-2791

Bullard Doesn't Want Everybody's Business, "Just Yours" A. Bullard Sales & Service

AT CROSS PLAINS FRIDAY NIGHT 7:30 O'clock



GHS 1970 EAGLE VARSITY SQUAD AND COACHES—The twenty-one members of the Goldthwaite High School Eagle Varsity Football Squad for 1970 are pictured here with their coaches. Seated on the front row, left to right, are: Gary Summy, Scott McLean, Jeff Stewart, Joe Dan Hardgrave, Gerald Hale, Mark Geeslin, Reggie Robbins, and Johnny Miller. Second row, from left: Sam Watson, Danny Sutherland, Johnny Johnson, Randy Wright, Gary Weidebusch, Lynn Knight, and Eric Wright. Back row, from left: Head Coach Leslie Johnson, Bill Fisher, Roy Watters, Kennon McLean, James Miller, Bennie Humphries, Joe Hudson, and Assistant Coach Robert James.

**Beat
The
Buffaloes**



Goldthwaite Eagles vs. Cross Plains Buffaloes

LET'S GO EAGLES!

The Following Civic-Minded Merchants and Individuals Urge You To Support The Eagles. Their Success Brings Credit and Recognition to Our Community — Cheer Them On To Victory.

- D Bar T Western Wear
- A&H Lumber Company
Aubrey Muse
- Mills County State Bank
- Central Texas Telephone Co-op.
- Roy Wilkins Funeral Home
- Pure Milk Co. — Doug Collier
- Wicker Studio
- Blackwell Wool & Mohair Co.
- Foremost Milk and Ice Cream
Corkey Poe — Route Man
- Johnson Turkey & Lamb Farm
- Lock's Shamrock Service Center
- Metal Master Machinists, Inc.
- Barnes & McCullough
- Childress Clinic & Hospital
- Williams Texaco Station
- Johnson's Truck Shop
- Heritage Nursing Home, Inc.
"Complete Nursing Care"
- Spradley's Furniture & Upholstery
- Leach Welding Shop
- Manuel's Carpenter Shop
- Production Credit Association
- LeRoy Miller Conoco Station
- The Goldthwaite Eagle

**SEE THE
ACTION**

- RV's Cafe
RV & ALICE GEESLIN
- Patty's Of Texas
Goldthwaite Blouse Factory
- Padgett Floral
- Economy Welders
- Wilcox & Head Electric
- Shelton Bros. Auto Parts
- Rind's Upholstery
- W. D. Henry Welding Shop
- Johnny Truitt Gulf Station
- Lloyd's Welding & Machine Shop
- Durenville Cafe
- A. Bullard Sales & Service
- Duncan's Liquid Feed & Fertilizer

**Support The Eagles!!
Attend The Games!!**



Schedule and Results

| | | |
|----------------|----------------|-----------------|
| Goldthwaite 0 | Sept. 11 Here | San Saba 7 |
| Goldthwaite 17 | Sept. 18 There | Hamilton 13 |
| Goldthwaite 33 | Sept. 25 There | Comanche 12 |
| Goldthwaite 34 | Oct. 2 There | Marble Falls 20 |
| Goldthwaite 21 | Oct. 9 Here | Mason 20 |
| Goldthwaite 60 | **Oct. 16 Here | Early 0 |
| Goldthwaite ?? | *Oct. 23 There | Cross Plains ?? |
| Goldthwaite ?? | *Oct. 30 Here | Ranger ?? |
| Goldthwaite ?? | *Nov. 6 There | Dublin ?? |
| Goldthwaite ?? | *Nov. 13 There | De Leon ?? |

** Homecoming Game
* District Games

- Woody Drug Store
- 84 Drive-In Theatre
MR. AND MRS. PHILIP NICKOLS
- Mills County Feed & Supply
- Don Geeslin Farms
- Spink's Barber Shop
- Campbell Gas Company No. 2
Sales & Service
- Evant Locker Plant
- Tom Moore — Hay & Post Man
- G. C. Head Insurance
- Robert L. Burdette — Realtor
- City Cleaners
- Harper Implement Co.
- Forrest Jernigan — Dirt Contractor
- Mol-Mix Liquid Feed
E. E. NORWOOD



Voluntary Income Tax Withholding On Pensions For '71

Beginning January 1, 1971, recipients of annuities of pension payments may voluntarily

have income tax withheld from their pension or annuity payments.

The United States Civil Service Commission has sent annuitants (former Federal employees) a letter telling them that they can furnish a Form W-4P. The specific dollar amounts requested shall be at least \$5.00 per month and shall not reduce the net amount of any annuity payment received by the payee below \$10.00.

Social Security, Veterans Administration pensions, and Railroad Retirement payments are tax exempt, and are not covered by the voluntary plan.

All other payers of annuities and pensions are required to withhold during 1971 upon the receipt of Form W-4P.

Dr. Merle M. Ellis

OPTOMETRIST

308 Citizen's

Natn'l Bank Bldg.
Brownwood, Texas

Glasses — Contact Lens

Call 646-8778 or write

P. O. Box 149

For Appointment

JUNE CLIFTON — T. W. WINTERS — T. E. WINTERS

Lampasas Livestock Auction

Lampasas, Texas

CATTLE HOGS

WEDNESDAYS

12:00 O'clock Noon

Phone, Day or Night —

Area Code 512 — 556-3611

Or Mills County Area,

Big Valley Ex. 938-2388



GRASSES—such as Coastal Bermudagrass, like that shown in this picture, provide excellent tonnage of high quality hay. Pastures having lush grass growth provide clean air, clear water and enhance the overall environment. —(SCS Photo)

Grass Growing And Planting Gains Momentum Among Area Ranchers

Grass planting and growing is gaining momentum among farmers and ranchers of the area, according to E. J. Hughes, Area Conservationist with the Soil Conservation Service at Brownwood. More than 250,000 acres of range and pasture land has been established within the nine work units of the area during the past three to five years, with the trend remaining strong, Hughes says.

Weeping lovegrass and Coastal bermuda are the leading pasture grasses being used. Each responds well to high rates of fertilizer and grows under irrigation or dryland having favorable soil-moisture qualities. High intensity management, including weed control by shredding or use of herbicidal spray, fertilization, cross fencing, and water development for rotation grazing, leads to high production. Other important grasses used in pasture planting are Blue panic, Kleingrass, K. P. Bluestem, and Wintergreen Harding grass.

Range seeding of cropland and on rangeland in connection with brush control is also on the increase. Conservation contractors are helping by developing procedures and techniques whereby depleted ranges are being rejuvenated to high producing grasses. Successful range seedings are found to require adequate seedbed preparation, good quality seed that is grown within the range of adaptability, proper seeding equipment, all coupled with objective management for establishment, Hughes

points out. Protection from grazing during the establishment period, which usually requires the first two years, seems to be the key to success. Following establishment, grazing systems that give short periods of harvest and long periods of rest while making proper use result in highest production, Hughes says.

Successful grass plantings do not just happen — they are, more often, well planned. Selection of grasses, kind of equipment, method of seedbed preparation, and fencing for protection of grazing during establishment are all important planning decisions to be made by the farmer or rancher. SCS technicians can provide alternatives for each of these steps, based on accumulated results throughout the work area, but the decisions are best made by the farm or ranch operator, Hughes reveals.

Grass varieties new to this area attracting wide interest are: Kleingrass, Old World bluestem, Wintergreen hardinggrass, and 228 Sideoats.

Kleingrass belongs to the Switchgrass family and is very high in palatability. It is a warm season grower, but is readily taken by all classes of livestock as hay or in dormant stage.

Old World bluestem resembles

K. R. and Caucasian, but is more vigorous with more leafy growth. Livestock eat Old World readily, showing slight preference for it over K. R.

Wintergreen hardinggrass is a cool season plant with very high palatability. It is a member of the Canarygrass family, native to the area. Production from Wintergreen hardinggrass will likely be determined by available moisture during the cool season.

The new strain of Sideoats grama No. 228 is on that spreads well from rhizomes or underground stems. It is a robust and quick growing grass that may or may not have advantages over present varieties of sideoats such as Coronada, Premier, Uvalde, and others.

These new grasses are being field tested for adaptation by the SCS Plant Materials Center at Knox City by Texas Agricultural Experiment Stations, Texas Research Foundation, and by many seed growers within the state. This advanced technology in plant materials is having a profound effect on the high de-

gree of success with grass plantings, Hughes says.

Before dependable seed sources were established, many plantings failed; while failures are seldom noted with adapted seed are planted in prepared seedbeds and are protected from grazing during establishment period, Hughes further comments.



GATES TIRES

Hudson
Service Station

V. A. HUDSON, Owner

Phone 648-2531

Fisher at 6th — Goldthwaite

IN THE MATTER OF THE QUARTERLY REPORT OF

JEWEL YEAGER

TREASURER, MILLS COUNTY, TEXAS

IN THE COMMISSIONERS' COURT

OCTOBER TERM, A. D. 1970

On this day, the 12th day of October, 1970, in the Regular Session of the Commissioners' Court of Mills County, Texas, came on for examination the quarterly report of Jewel Yeager, Treasurer of Mills County, Texas, for the quarter beginning July 1, 1970, and ending September 30, 1970, filed herein on the 12th day of October, 1970, and the same having been compared and examined by the Court and found to be correct.

IT IS THEREFORE ORDERED by the Commissioners' Court that the same be and is hereby approved; and it appearing to the Court that during said time the said County Treasurer had received for account and credit of, and paid out of, each of the several County funds, the amount set forth, and leaving the balance of each of said funds as follows, to-wit:

| FUNDS | BALANCE July 1, 1970 | RECEIPTS | DISBURSE- MENTS | BALANCE Sept. 30, 1970 |
|--------------------|-------------------------|--------------------|--------------------|---------------------------|
| Commodity | \$ 291.40 | \$ 1,933.23 | \$ 1,853.03 | \$ 371.60 |
| Highway 84 Sinking | 4,796.87 | 168.93 | — | 4,965.80 |
| Social Security | 154.07 | 2,334.69 | 2,488.76 | — |
| Library | 439.26 | 12.18 | 206.64 | 244.80 |
| Precinct No. 1 | 15,333.66 | 3,332.87 | 6,366.02 | 12,300.51 |
| Precinct No. 2 | 5,290.01 | 3,064.00 | 5,308.14 | 3,045.87 |
| Precinct No. 3 | 15,037.92 | 4,188.00 | 6,626.87 | 12,599.05 |
| Precinct No. 4 | 10,430.71 | 2,578.00 | 5,145.66 | 7,863.05 |
| Jury | 5,650.85 | 35.72 | 582.86 | 5,103.71 |
| Bridge Repair | 299.72 | — | — | 299.72 |
| General | 17,327.76 | 846.60 | 7,509.87 | 10,664.49 |
| Road and Bridge | 7,677.85 | 4,667.47 | 10,000.00 | 2,345.32 |
| Courthouse | 2,311.89 | 166.25 | 41.78 | 2,436.36 |
| Lateral No. 1 | 4,098.71 | 4,769.48 | — | 8,868.19 |
| Lateral No. 2 | — | 4,769.48 | — | 4,769.48 |
| Lateral No. 3 | 3,523.47 | 4,769.48 | 339.37 | 7,953.58 |
| Lateral No. 4 | 97.45 | 4,769.48 | 1,518.94 | 3,347.99 |
| Officers' Salary | 11,690.36 | 15,135.18 | 13,383.09 | 13,442.45 |
| R & B Special | 14,339.45 | 177.50 | 541.81 | 13,975.14 |
| TOTAL | \$118,791.41 | \$57,718.54 | \$61,912.84 | \$114,597.11 |

And that said amounts include balance on hand and amount received and paid out of each of the respective funds since the filing of the preceding quarterly report of said County Treasurer, and during the period above stated, and that the said separate amounts as therein shown are correct.

IT IS THEREFORE ORDERED by the Court, that the said detailed report be and the same is hereby in all things, approved, and the Clerk of the Court is hereby ordered to enter the said report, together with this order, upon the minutes of the Commissioners' Court of Mills County, Texas, and the proper credits be made in accounts of said County Treasurer in accordance with this Order.

WITNESS our hands this the 12th day of October, A. D. 1970.

/s/ Cecil Egger
County Judge

/s/ W. R. Lindsey
Commissioner Precinct No. 3

/s/ E. B. Roberts
Commissioner Precinct No. 1

/s/ A. R. Rowlett
Commissioner Precinct No. 4

/s/ Fred Wall
Commissioner Precinct No. 2

Sworn to and subscribed before me by each of the members of the said Commissioners' Court this the 12th day of October, A. D. 1970.

(SEAL)

/s/ Walter A. Bryant, County Clerk
Mills County, Texas.

Published October 22, 1970
The Goldthwaite Eagle

Wrinkles are a vicious cycle.



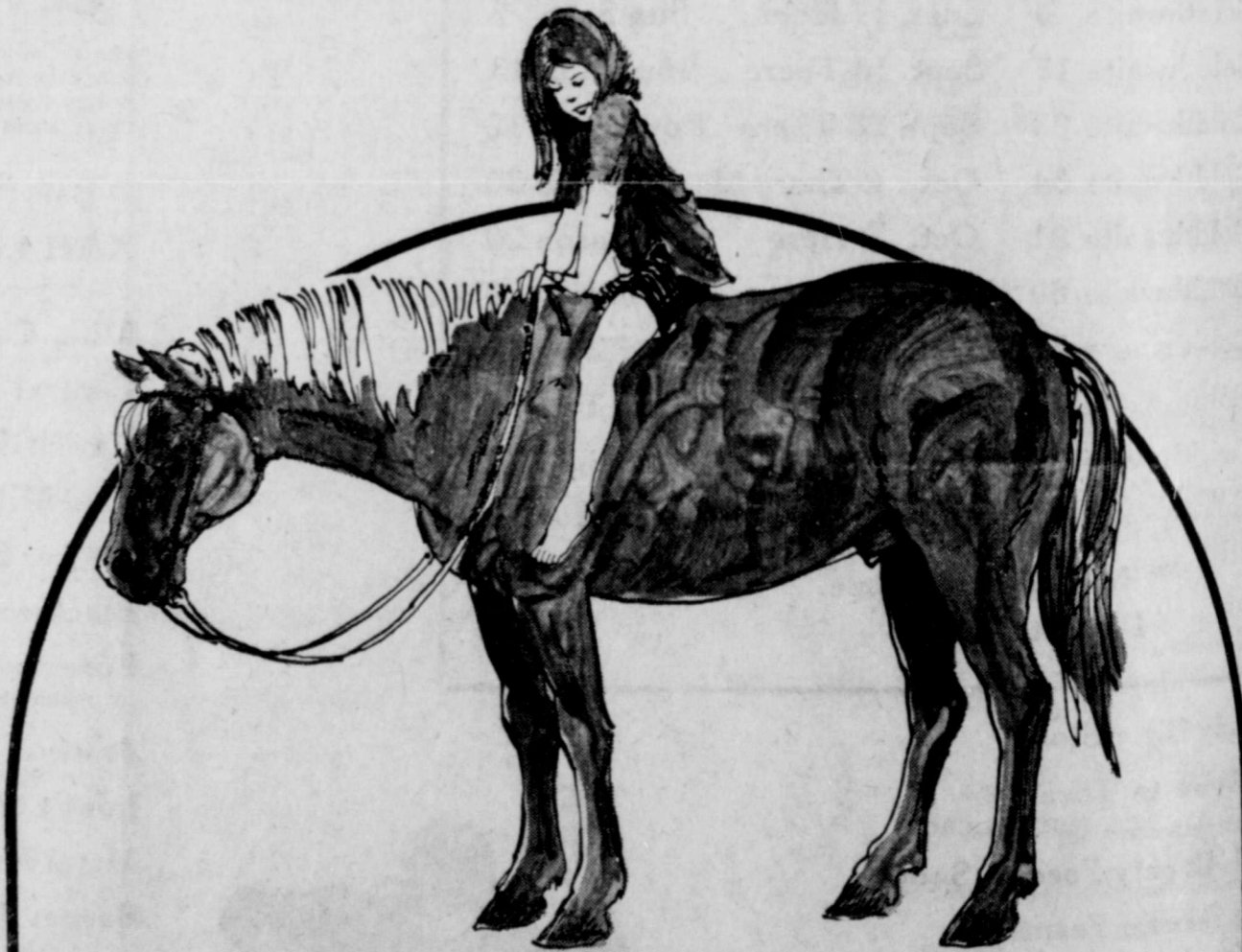
In some dryers the heat that dries your clothes also bakes wrinkles into permanent press.

But you can buy a new gas dryer with a permanent press cool-down cycle that turns off the heat and cools off your clothes.

That means modern gas dryers won't add wrinkles to your wash and extra ironing to your work load. Because they have a cycle that keeps wrinkles from becoming vicious.



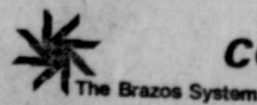
Lone Star Gas
Gas living makes sense



It's good to be back

"..... Mom and dad are great! I said I wouldn't miss the city and I didn't believe them... but it's just like they said... it's good to be back."

HAMILTON COUNTY ELECTRIC

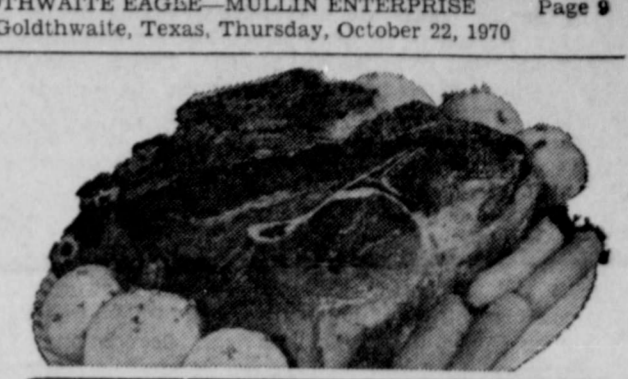
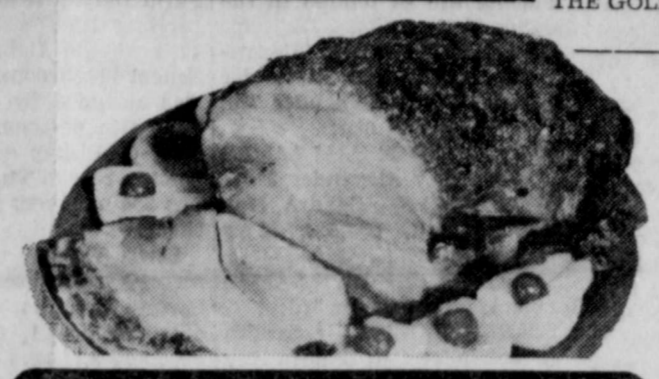


COOPERATIVE

ASSOCIATION
HAMILTON, TEXAS

IT'S FROM MINIMAX It's Fine Meat...Priced Right!

THE GOLDTHWAITE EAGLE—MULLIN ENTERPRISE Page 9
Goldthwaite, Texas, Thursday, October 22, 1970



LEAN CRISP HICKORY SMOKED
BACON
2 Lb. Box **\$1.29**

A SURE WINNER AT MEAL TIME
GROUND BEEF
Top Quality LB. ONLY **59¢**

TENDER FULLY COOKED
Dinner HAMS
Smokey Ridge Boneless Quarters Lb. **\$1.19**

PERSONALLY SELECTED
BEEF ROAST
Junior BEEF CHUCK LB. **69¢**

10¢ SALE!
JUST LOOK WHAT A DIME BUYS!!!

RAINBOW FRESH CUT
GREEN BEANS
No. 303 Can **10¢**

Mix Gladiola 6 1/2-Oz. Pkg. **10¢**
Biscuit
Gladiola Cornbread
Mix Yellow 6-Oz. Pkg. **10¢**
or White
Mix Gladiola 7 1/2-Oz. Pkg. **10¢**
Pancake
GOOD VALUE CRINKLE CUT

FRENCH FRIES
9-Oz. Box **10¢**

White or Yellow
Hominy Good No. 300 **10¢**
Value Can
Tomato Good No. 1 **10¢**
Soup Value Can
Shoe String
Potatoes Good No. 300 **10¢**
Value Can

TAKE YOUR CHOICE
Sauce Texas Magic 8 3/4-Oz. Can
Tomato
Salt First Pick 26-Oz. Box
Plain or Iodized
Gladiola Frosting
Mix White, Choc., 5 3/4-Oz. Pouch
Lemon
Gladiola Cake
Mixes White, Yellow, 6-Oz. Pouch
Devils Food

ONLY **10¢** EACH

Pork Chops Center Cut Lb. **99¢**
Franks Decker's Quality All Meat 12-Oz. Pkg. **59¢**
Cream Pies Banquet 3 14-Oz. Size **\$1.00**
Orange Juice 3 12-Oz. Cans **\$1.00**

Mayonnaize
Kraft's 32-Oz. Jar **59¢**

FLOUR
Gold Medal 5 Lb. Bag **49¢**

TISSUE
Z E E 4 Roll Pkg. **39¢**

Plums Good Value Purple No. 2 1/2 Can **25¢**
Prune
Tomatoes Hunt's 4 No. 300 Cans **\$1.00**
Shortening Bake-Rite 3 Lb. Can **69¢**

Sugar Sparkling Pure Cane 5 Lb. Bag **55¢**
Flour Magic Bake 5 Lb. Bag **39¢**

Preserves Bama, Peach, Pineapple, Red Plum 18-Oz. Jars **39¢**

HEADQUARTERS FOR HALLOWEEN TREATS!!!

Candies Kraft's Giant Bag **79¢**
TOFFEE, MIXED CANDIES, FUDGES, CARAMELS, TWISTERTOOS
Candies Lady Ann 1 1/4-Lb. Giant Bag **98¢**
CANDY APPLES, CANDY PUMPKINS, MIXED CANDIES AND GUM

Apples Rome Beauty 1/2 Bushel **\$2.49**
LB. **15¢**

Trix-Treat Lady Ann Candies and Gum Large Bag **49¢**
Listerine Antiseptic 14-Oz. Btl. **99¢**
Tooth Paste Colgate or Crest Family Size Tube **89¢**
Hair Spray Breck 13-Oz. Can **83¢**

Bananas Golden Ripe Lb. **10¢**
Turnips Rutabaga Lb. **10¢**

Drinks HI - C Assorted Flavors 3 46-Oz. Cans **\$1**
Biscuits Sweetmilk or Buttermilk 8-Oz. Can **8¢**

DOUBLE STAMPS Every Wednesday With \$2.50 Or More Purchase
WE RESERVE THE RIGHT TO LIMIT QUANTITIES NO SALES TO DEALERS

Margarine Kraft Parkay Soft 1-Lb. Ctn. **49¢**
Yogurt Borden's 8-Oz. Ctn. **25¢**

WEEK LONG SALE Prices Good October 22 Through October 28, 1970

Greater Selection...
GREATER VALUES! BUCCANEER STAMPS

LOY LONG'S
1312 FISHER
Goldthwaite, Texas

For Better Health, Serve Nutritious Foods

STORE COUPON
ROSE LOTION VEL
WITH THIS COUPON Save **39¢**
28c
with this 20¢ Coupon Without Coupon 67¢
LIMIT ONE COUPON PER UNIT PURCHASED
COUPON EXPIRES ON 10-28-1970
THIS COUPON ONLY REDEEMABLE AT LOY LONG'S MINIMAX

Workshop On Volunteer Services In Nursing Homes Set For Nov. 4

People interested in volunteer work in nursing homes are invited to a workshop at Mary Hardin-Baylor College in Belton on the afternoon of Wednesday, November 4, 1970.

The workshop, "Volunteer and Social Services in Nursing Homes," will feature a slide presentation by Mrs. Esther Trekel, Coordinator of Volunteer Services for the Texas Roadrunner Volunteers, Inc. of Austin.

Also speaking will be a panel from Harvest House of Temple;

Mr. Joe Edwards, owner of the Killen Nursing Home; and Mr. Elmo Fischer, Executive Director of the Texas Association of Homes for the Aging.

Following the main session, participants may attend any two of the discussion sessions. Topics for discussion are: Nursing Home Residents—Who they are, What to expect; the Community Volunteer Corps; Motivation for Residents; the Church's Role in Volunteer Services; Occupational Therapy

A WORD OF APPRECIATION

As director of the Goldthwaite High School Band, I wish to express my gratitude for the support which we have received from all the nice people of Goldthwaite.

You have made it possible for the band to have the best appearance of any band in the area, with its new uniforms.

In my eight years of experience I have never been in a place where the school and community support their band as well as Goldthwaite.

I just hope that we will represent your school and community to the best of our abilities, in marching, playing and performance.

I'm sure that our band students are striving to be the best.

Ephriam Garcia
Band Director

New Dearborn Heaters

And We Still Feature The
Rheem Water Heaters

And Full Line
Air - Conditioner Supplies

Campbell Gas Company No. 2

Virgil Geeslin
Phone 648-2712, Goldthwaite, Texas

Alexanders Show Delaine-Merino Sheep At Dallas State Fair

Sandra Kay and Larry Alexander of Goldthwaite showed several of their sheep on Friday, October 6 at the State Fair of Texas at Dallas.

Placing are as follows in the Delaine-Merino Sheep Division:
RAM LAMB — Larry Alexander 5th, Sandra Kay Alexander 7th, Larry Alexander 8th;

PEN OF THREE RAM LAMBS — Sandra Kay Alexander 3rd; EWE LAMB — Sandra Kay Alexander 5th, Sandra Kay Alexander 6th;

PEN OF THREE EWE LAMBS Sandra Kay Alexander 3rd;

YEARLING EWE — Sandra Kay Alexander 4th; Sandra Kay Alexander 5th;

EXHIBITOR'S FLOCK — Sandra Kay Alexander 2nd.

— Crafts; and Training Session for Volunteer Coordinators.

Both people interested in volunteering and nursing home personnel are invited to the workshop which will be held between 1:00 p. m. and 5:00 p. m. at Wells Science Hall on the Mary Hardin-Baylor campus.

The workshop is co-sponsored by the college and the Focus on Aging project of the Central Texas Council of Governments.

Registration forms are available from the Council of Governments, P. O. Box 729, Belton, Texas, 76513, or from your local nursing home.

LOCAL MARKETS

Sheep & Goat Sale

MILLS COUNTY COMMISSION COMPANY
Goldthwaite, Texas
October 15, 1970

SHEEP

(Per Hundred Weight)

Stocker Lambs, 59 Lbs. Avg. 24.00-26.10
Fat Lambs 24.25-26.60
Weighing Ewes 7.10-8.30
Weighing Bucks 7.10-8.30
Stocker Ewes, (Per Head) \$10.00-\$18.50

GOATS

(Per Hundred Weight)

Weighing Mutt. 7.00-8.30
Weighing Nannies 6-10-6.70
Stocker Nannies 3.50-4.70
Stocker Mutt. 3.50-3.80

SPANISH GOATS (per head)

Mutt. Kids \$6.50
Stocker Nannies 10.10-11.20

Mills County Farm Bureau Has Annual Meeting

Members of the Mills County Farm Bureau held their annual meeting last Saturday, October 17th at the Goldthwaite High School lunchroom. The meeting was attended by approximately sixty-five persons.

W. G. Bishop gave the membership report. The organization has 304 members at the present time.

Lewis Watson was re-elected secretary-treasurer. The following directors were re-elected: Precinct 1, Floyd Daniel; Precinct 2, Lewis Watson; Precinct 3, Glynn Sanders; and Precinct 4, M. D. Doak.

The president and his wife and Elmo Watson were named delegates to the state convention at Fort Worth November 8-11. Floyd Daniel is alternate.

State and national resolutions that were made at the Policy Development meeting were presented to the members and voted on.

Whisenhunt Bros. Show Champion Ewe At Dallas State Fair

Champion Ewe was one of the honors taken by the Whisenhunt Bros. at the State Fair of Texas, Saturday, October 15. This was exhibited in the Junior Suffolk Sheep Division. The reserve champion ewe was also owned by Whisenhunt Bros. of Mullin.

Following is a list of placings in the Junior Suffolk Sheep Division:

RAM LAMB — Whisenhunt Bros. 2nd, Whisenhunt Bros. 7th;

EWE LAMB — Whisenhunt Bros. 1st, Whisenhunt Bros. 2nd; Robin Reid, Goldthwaite, 6th; Robin Reid 10th;

YEARLING EWE — Whisenhunt Bros. 3rd.

Craig Smith Places 1st With Southdown Lamb

Craig Smith and Robin Reid, both members of the Goldthwaite FFA, exhibited lambs at the Heart of Texas Fair in Waco.

Craig placed 1st with his Southdown Lamb and 10th with Medium Wool Lamb.

Robin placed 12th with his Suffolk Ram Lamb and 12th and 14th with Suffolk ewe lamb.

Craig will show his lambs at the Dallas Fair this week.

D. T. Carter Places Several Registered Cattle At Dallas Fair

D. T. Carter, owner of C-H Hereford Ranch of Center City, placed several of his registered Herefords at the Pan-American Livestock Exposition at the State Fair of Texas, Dallas, last Tuesday, October 12.

Placings are as follows:
Junior Bull Calf — 3rd; Winter Bull Calf — 2nd; Summer Yearling Bull — 6th; Two-Year-Old Bull — 3rd; Three Bulls — 9th; Two Bulls — 5th; Junior Heifer Calf — 1st; Senior Heifer Calf — 6th; Spring Yearling Heifer — 1st; Pair of Yearlings — 3rd; Pair of Calves — 6th and 13th; and Get-of-Sire, 4 Animals — 4th.

G. H. S. Band To Travel To Stephenville Sat.

This Saturday the Goldthwaite High marching band will travel to Stephenville to march in the Tarleton State College parade and attend the H. P. C. Tarleton State football game, according to announcement by Ephriam Garcia, band director.

On October 31, the band will leave on chartered bus at 4:00 a. m. to travel to the Houston Astrodome in which they will perform at halftime in the game between the University of Houston and Tulsa University.

Although the Goldthwaite Golden Eagle band has had other invitations, the band has limited their trips due to financial problems.

Too Late To Classify

AUTUMN RED ANGUS SALE

Saturday, Nov. 7, 1970, 1:00 P. M. Blue Ridge, Texas. Cattle from 10 North Texas herds — 43 cows/calves, bred heifers, open heifers, 15 bulls. Sale location on Farm Road 549 at Valadasta between Melissa and Blue Ridge, Texas.

For catalogs write
GAYLE INGRAM,
Sole Manager
Box 579,
Quitman, Texas 75783

or
W. L. CARROLL
Host Breeder
Box 215, Melissa, Texas
10-22-17c

FOR SALE: 170 Acre Farm. 1/4 mile Sims Creek Front. 50 Acres bottom farmland, 60 pecan trees and a barnhouse. Lloyd Laughlin, Box 56, Goldthwaite. 10-22-27p

Mills County Commission Co.

Phone 648-2285
Goldthwaite, Texas

Sheep And Goat Sale
Every Friday — 12:30 P. M.

Glen Love David Smith
Owner Manager
948-2412 648-2594

Starting Monday, October 26

Cattle Sale
Every Monday — 12:30 P. M.

All Consignments Welcome
and
Cattle Buyers Invited.

Each Owner's Cattle Will Be Kept In Separate Pens As Long As Pens Are Available.

MATTRESSES

- New and Renovate
- Choice of Ticking
- Choice of Firmness
- New Innerspring Unit
- Cleaned, Felted Cotton
- New Mattress Guarantee

Visit Our Sleep Shop
1507 Austin Avenue
Brownwood, Texas
Call Goldthwaite 648-3394
WESTERN MATTRESS CO.

Johnny Truitt's
Gulf Station
Second & Fisher
Goldthwaite, Texas
Phone 648-3394
Open 7 A. M. To 9 P. M.
Mechanic on Duty


G. C. Head Insurance
Phone 648-2282 — Goldthwaite, Texas

Tights For The Tiny Tots
0 To 1, Fits Up To 20 Lbs.
12 To 18 Months, Fits 15 To 25 Lbs.
1 To 3 Fits 20 to 30 Lbs. \$200 & \$300
Sizes On Up To Girls' 14

Knee Length Socks, From 89¢ & \$1.25
Toddlers' Size to 11½

Shop Your
Tots And Teens Shop
JANE HAMILTON PHONE 648-2284

RE-ELECT BEN BARNES LT. GOVERNOR



PROVEN LEADER FOR TEXAS!

Political advertisement paid for by
Committee to Re-Elect Lt. Governor Ben Barnes, Ralph Wayne, Chairman.

Shop This SALE and SAVE!
One Week Only — Sale Ends Oct. 28

FALL Dresses
Entire Stock, Good Selection of Sizes, Reg. \$7.98 to \$19.98

20% off

Ladies' Nylon Hose
First Quality, Mesh and Plain, 2 Pr. 69¢

SHOP EARLY and avoid the rush

Select Your Christmas Gifts Now
On Our Lay-Away
No Gift Wrapping After Dec. 1

Kauhs Variety Store
Wilma and Booger
North Side Square
Goldthwaite Texas



to see
WHAT'S NEW
see
CURLEE
for fall

\$90

Yarborough's