

The Goldthwaite Eagle

ESTABLISHED 1894

GOLDTHWAITE, MILLS COUNTY, TEXAS

SINGLE COPY, 10¢

THURSDAY, FEBRUARY 7, 1963

LOCAL MARKETS

CATTLE MARKET
LONETA COMMISSION CO.
FEBRUARY 1, 1963

Market active, but lower on the classes. Feeder heifers and heavy butchering calves steady. Canner, cutter & butcher cows steady to stronger. Extreme light weight steers steady. Near-light other classes lower. Light weight steer calves, 150-225.00; medium weight steer calves, 27.00-28.50; heavy steer calves, 28.00-29.50. Feeder steers, 22.00-24.00. Feeder heifers, 21.00-23.50. Cows & Outler
Cows 10.00-14.50
Butcher Cows 15.00-17.00
Heifers 16.00-18.00
Pigs & Calves \$140.00-\$200.00

MOD Benefit Basketball Game

Monday Night

According to announcement Johnny Vaughan, there will be a basketball game for the benefit of the local March of Dimes here next Monday night at the Goldthwaite outdoor arena and the Mullin outdoor arena. Which, says Vaughan, might be "kinda interesting in more ways than one." If you just want to come out next Monday night and feel good the day because you did help support the March of Dimes.

The Best District Representative

W. C. Barnett, Colorado City, is the new district field representative for the Mills County office. It was announced by Lee Tabor, manager of the local office.

Business Population in Mills County Reported Up 1 Per Cent

Mr. A. J. Hemphill, district manager of the Fort & Bradstreet Co., Inc., announced state requests were mailed to business in Mills County, and figures obtained from a Dun & Bradstreet Reference Book for 1962 totaled 79 manufacturers, wholesalers, and retailers in the area as compared with 78 in 1961—an increase of 1 per cent for the year. According to Mr. Hemphill, January business concerns in Mills County were 8 to 10 per cent higher than last year. This year requests for business concerns are being sent to approximately 1 million business concerns in the United States as compared with 790,000 last year. Dun & Bradstreet Reference Book listings for 1962 are 79 manufacturers, wholesalers, and retail-

Mills County School Children Get Checkup During Dental Health Week

Mills County students from Goldthwaite, Star, Mullin and Priddy Schools will get their dental check-up during the month of February in observance of Children's National Health program in this county. The free dental check-up is being provided by Dr. T. C. Graves, Goldthwaite dentist, with the assistance of his staff members and the cooperation of Mrs. M. Y. Stokes, county school nurse. The program started this week Wednesday at the Goldthwaite school and will be conducted at Star, Mullin and Priddy the next two Wednesday afternoons starting at 1:00 o'clock in the afternoon.

Girl Scout Cookie Sale To Start Today

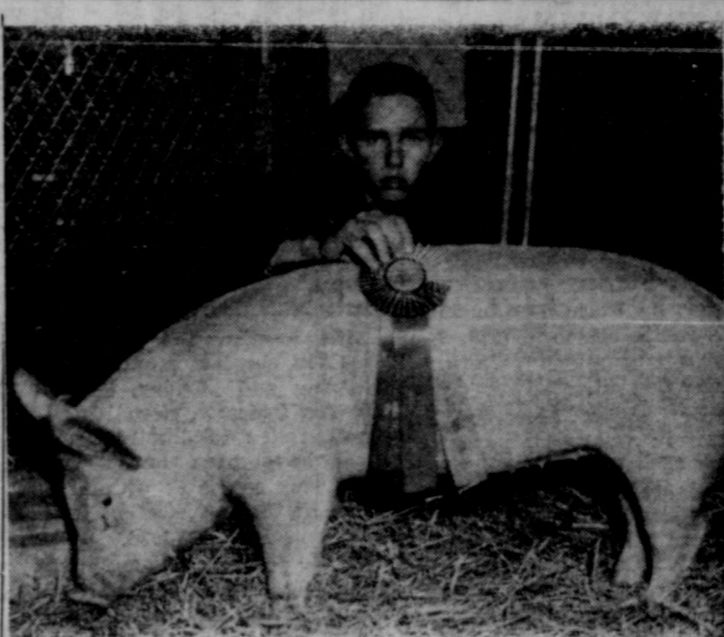
"Brownie, Intermediate and Senior Girl Scouts in Goldthwaite will take part in the 10th Annual Cookie Sale, sponsored by the Heart of Texas Girl Scout Council," Mrs. Lee Doggett, Girl Scout Cookie Chairman for Goldthwaite announced today.

The sale starts today and continues through February 16. The 1963 Council goal is to sell a total of 48,000 boxes of cookies. The quota for Goldthwaite is 960 boxes. This is a project by and for the Girl Scouts and it affords every Girl Scout an opportunity to assume responsibility while practicing sound business methods. The girls will not only add to their own troop treasury but will aid the council, of which Goldthwaite is a member, in bringing better camping to more girls. "With the development and maintenance of a first class girls' camp as a goal toward which to work, I'm sure the Girl Scouts in Goldthwaite will be working hard to sell their share of cookies. We are again asking the support of friends of Girl Scouts," Mrs. Doggett continued, "in making this Annual sale the best yet."

Beauticians Take Part In National Beauty Salon Week

Goldthwaite Beauticians will take part in the National Beauty Salon Week activities next week, February 10 through 16, stressing the theme: "There's Magic For You In A New Hair-do." This special week on a national and local level is a salute to women's beauty, and members of this professional group are taking part in this annual event with the slogan: "Dedicated to More Beautiful Women." A number of local operators are making plans to attend the All Texas Beauty Show in Dallas this coming Sunday and Monday. Establishments and operators who are taking part in calling attention to National Beauty Salon Week are as follows: Glamourette Beauty Shop—Floy Rowlett and Charlene Benningfield. Johnnie's Beauty Shop—Johnnie Wilcox. Rosebud Beauty Shop—Louise Walker and Dessie Wilcox. Coznette Beauty Shop—Frances Eilers, Edna Reed and Ozel-la Jones. Hamilton Beauty Shop—Mrs. Zelma Hamilton. Ola Mae's Beauty Salon—Ola Mae Wilkey, Shirley Lawson and Amber Fesler.

Is it really worth the effort to keep my own teeth? Aren't artificial dentures just as good? During the average lifetime, a person consumes some 38 tons of food. That is enough to provide a banquet for a capacity crowd at Madison Square Garden and for all of the guests at the world's three largest hotels. Most of that food has to be chewed; chewing is the chief purpose for which you need your teeth. Sound, healthy teeth also are essential to your appearance and for proper speech. While artificial dentures usually are attractive and function adequately, they are not just as good as your own teeth, any more than an artificial hand is just as good as your own hand. My neighbor told me her dentist says that teeth can last a lifetime. Is this possible? Yes, it is possible. Teeth are designed to last a lifetime. You and your children can keep your own teeth if you conscientiously follow the rules of preventive dentistry. The first thing to be recognized is that teeth require daily care if they are to remain in good health. This means eating a balanced diet low in sweets and always brushing your teeth immediately after eating. In addition, it is important that you visit your dentist regularly so that any dental problems that do develop can be taken care of promptly. Children who, from birth, drink water containing 1 part per million fluoride have up to 60 per cent less decay than might otherwise develop. Where the water is not fluoridated, topical applications of fluoride are of value in helping to prevent decay. I am now 30 years old and have never had any wisdom teeth. Is this unusual? No, it is not too unusual. Twenty-five per cent of the people never get third molars. Incidentally, whether or not you have wisdom teeth has nothing to do with how wise you are. The custom of calling the third molars wisdom teeth apparently arose just because the teeth appear late, usually from the 17th to the 22nd year.



CHAMPION YORKSHIRE GILT—Rodney House, member of the Goldthwaite Future Farmers of America Chapter, is shown here with his Champion Yorkshire Gilt which he showed at the Southwestern Exposition and Fat Stock Show in Fort Worth. Rodney is the son of Mr. and Mrs. Roydston House.

FFA Members Show At Fort Worth

Rodney House, G. H. S. Junior, and secretary of the FFA Chapter, exhibited the champion Yorkshire female of the Southwestern Exposition and Fat Stock Show. This gilt, a junior fall sow pig, was bred by the Circle H Hog Farm of Gold-

District Basketball Tournament Scheduled At Star February 7

Star will host an all district tournament at the Star High School Gymnasium beginning this Thursday afternoon, February 7. Both Pottsville boys and girls drew a Bye and will not play until Friday night at 8:00 p. m., when they will play the winners of the Carlton-Gustine games. Friday night games, beginning at 5:30 p. m., will be determined by the winners of Thursday's games. Finals will begin Saturday night with the girls game at 7:00 and the boys game at 8:15. Both boys and girls entered in this district tournament are Sidney, Star, Priddy, Pottsville, Carlton, Gustine and Mullin. Star and Sidney girls will open the tournament at 3:30 p. m. Thursday, followed by Sidney and Star boys at 4:45. At 6:00 p. m. Priddy and Mullin girls meet, followed by Mullin and Priddy boys at 7:15. Carlton and Gustine girls play at 8:30 followed by Carlton and Gustine boys about 9:45.

Roy T. Byrd, Assistant Coach, Resigns Position

Roy T. Byrd, assistant coach at Goldthwaite High School for the past two years, has resigned, he informed the Eagle this week. His resignation which will be effective at the end of the present school term, will be presented to the school board at their next meeting. Mr. Byrd has accepted a position with another school, he said.

January Rainfall Measures .51 Inch

Rainfall recorded here for the month January measured only .51 inch, according to official record kept by Harry Allen, weather observer. This is getting the season off to a slow start and farmers and ranchers are now beginning to talk about the need for rainfall for grain fields and grass lands. A good rain is needed now along with warmer weather to provide for spring grazing. Gary Leverett spent Saturday night with his mother, Mrs. Inez Leverett, and other relatives here en route to Lubbock, where he had received a promotion from Fort Worth.

City Council Orders Election Tuesday, April 2

The City Council meeting in regular session Monday night ordered the regular city election to be held on Tuesday, April 2, 1963. Purpose of the election is to elect two aldermen to serve for a regular term of two years. Aldermen whose terms expire this year are S. A. Edgington and F. D. Reynolds. Holdover members of the council are V. A. Hudson, Ray Duren, Lewis T. Hudson and Mayor H. B. Campbell. Candidates will have until March 2, to file and have their names placed on the official ballot for the election to be held on the first Tuesday in April.

OTHER BUSINESS

Reports of departmental receipts and disbursements for the past month were presented to the council by W. C. Barnett, city manager. Barnett reported on tax collections to date and informed the council that approximately 95 per cent of the current taxes have been paid. Report was made on progress to date on the storage shed that is being constructed near the city warehouse on the old Priddy highway and applications for office secretary were discussed.

1,041 Poll Tax Receipts Issued

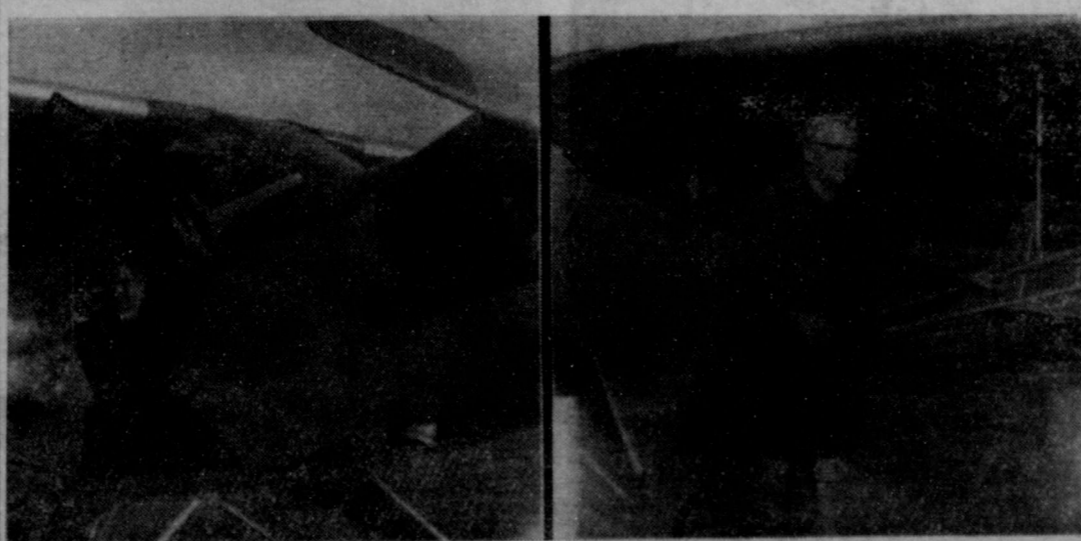
Records of the tax assessor-collector show that 1,041 Poll Tax receipts for 1962 were issued to Mills County citizens. The office experienced heavy traffic of citizens coming in to pay their poll tax during the last four days before the deadline on January 31. This year's poll tax payments reflect a loss over last year when 1,174 were issued for the year 1961. Two years ago only 943 were issued while three years ago 1,586 paid their poll tax.

Barnett Attends Short Course

W. C. Barnett, City Utilities Manager, attended a three day Electric Short Course at A&M College, College Station, last week. Mrs. Barnett visited with their daughter and family, Mr. and Mrs. W. N. McCally at Bryan while Mr. Barnett was at College Station. They returned to Goldthwaite Wednesday night.

1963 Feed Grain Program Will Feature Price Support Payment

Growers who take part in the 1963 feed grain program will receive a price-support payment in addition to the diversion payment, according to E. L. Burkett, Chairman, Mills County Agricultural Stabilization and Conservation Committee. Such growers will also qualify for regular price-support loans or purchase agreements on their 1963 corn, grain sorghum, and barley crops. The price-support payment, the Chairman explains, is a new feature of the feed grain program for 1963. (A similar payment is also available under the 1963 wheat stabilization program.) It is a payment which will be made on the "established" normal production of the acreage planted to the three feed grains in 1963. The same rates will apply throughout the country; they will not vary by counties as the regular loan rates do. Rates for the price-support payments have been established at 18 cents per bushel for corn, 16 cents per bushel (29 cents per hundredweight) for grain sorghum, and 14 cents per bushel for barley. For each bushel for barley. For each farm, the farm bases for all three grains will be combined into one feed grain base. And the rate used in determining the price-support payment—like the diversion payment rate—for a particular farm will depend on the kind of feed grain taken out of production. Mr. Burkett pointed out that the price-support payment really serves as income insurance; it will be made to growers who divert at least the minimum 20 per cent of the farm's feed grain base into a conservation use. Even if the planted crop is destroyed by natural conditions, or even if part of the feed grain is fed to the animals on the farm, the price-support payment will be made just the same. Unlike last year's feed grain program, the regular loan or purchase agreement will be available to 1963 program participants on the farm's entire 1963 production of corn, grain sorghum, and barley—it will not be restricted to the normal production of the feed grain acreage. The signup under the 1963 feed grain program is now under way in the ASCS County Office. Chairman Burkett urges growers not to wait until the last few days of the signup period to file applications to participate. The signup ends March 22.



HER FIRST PLANE RIDE—Mrs. J. H. Hale of Goldthwaite fulfilled a desire of many years one day recently when she took her first airplane ride. Pilot of the plane was Mr. and Mrs. Hale's son-in-law, Earl Dumas of Marfa, Texas, Mrs. Hale, who is 76, flew over their old home place on the Colorado River in the Jones Valley Community. After the ride she stated she enjoyed it very much and wasn't the least frightened. She is shown here in the picture at left in the plane with Dumas just before the take-off and at right beside the plane that helped to supply this "first" for Mrs. Hale.

Reference Book Listings in January, 1963	Reference Book Listing in January, 1962	Percentage Increase
60	62	- 3%
6	4	50%
9	8	13%

THE GOLDTHWAITE EAGLE
AND
THE MULLIN ENTERPRISE

Published Every Thursday at Goldthwaite, Mills County, Texas

Victor E. Koleber Editor and Publisher



AN INDEPENDENT NEWSPAPER

SUBSCRIPTION RATES

Mills and adjoining counties — one year, \$3.50, tax .07, total \$3.57; six months, \$2.00, tax .04, total \$2.04. Elsewhere in Texas — per year \$4.00, tax .08, total \$4.08; six months, \$2.25, tax .05, total \$2.30. Outside Texas and Overseas — per year, \$5.00; six months, \$2.75. Single copy, 10c. No charge for changes of address.

SUBSCRIPTIONS DISCONTINUED UPON EXPIRATION

Entered as Second-class Mail Matter at the Post Office in Goldthwaite, Texas, under the Act of Congress, March 3, 1879.

WHEN THE OLD BIRD
WAS YOUNGER

10 YEARS AGO—

(Taken from The Eagle
Files of February 5, 1953)

The City Council meeting in regular session on Monday night of this week adopted a resolution calling for an election for the purpose of submitting to the properly qualified voters of the city of Goldthwaite, Texas, the proposition of the issuance of not to exceed \$15,000.00 Park and Swimming Pool Revenue Bonds.

The City of Goldthwaite has purchased a power loader to be used in street repair and maintenance work. It was announced at the Monday night meeting

GOOD NEWS FOR
HARD OF HEARING

Say good-bye to hearing aid repair bills . . . this is what you have been waiting for:

- FIDELITY AIDS now carry a full 2 year replacement guarantee. If anything goes wrong with your aid within two years (due to no fault of your own) you receive a brand new aid absolutely free of charge.

- The FIDELITY AIDS are now 100% squeal free! No more embarrassing squeals when you put your hand up to your head.

- The FIDELITY eyeglass and behind the ear aids now have AUDIOMAG. No more outside interference when you talk on the telephone, listen to radio or T.V.

- FIDELITY AIDS now run your aid for 4 years without buying batteries. The two batteries that come with your FIDELITY AID will last over 4 years. Each one can be used 1,000 times. If they do not last that long they will be replaced free of charge.

- FIDELITY AIDS are prescription fitted and custom made for your hearing loss, either in glasses, behind the ear, or body type. It's the hearing aid that has everything . . . (but trouble).

- FIDELITY AIDS are priced so low the hard of hearing can't afford not to buy them.

Mr. Treadway will hold his regular hearing clinic at the Mauney Courts in Goldthwaite Monday, Feb. 11th from 4 PM to 6 PM. You are invited to come in and see and hear for yourself. No high-pressure sales pitch. If you are unable to come in, write or call and we will come to your home. I want everyone that is hard of hearing to see this unbelievable aid.

Our Temple office is open every day to serve you, although Mr. Treadway is there only on THURSDAYS and FRIDAYS.

Temple
Hearing Center
220 N. 3rd, Temple, Texas



Mr. Treadway

25 YEARS AGO—

(Taken from The Eagle
Files of February 4, 1938)

More street paving is in prospect for Goldthwaite when the warm weather arrives.

This week a surveying crew from the State Highway office has been surveying the route for the cut-off from the center of the business section of Goldthwaite to the new Waco highway on the mountain east of town.

Mills County has had only eleven sheriffs since the county was organized and of these eight are still living and six are living in Mills County. The list, as compiled for the Eagle by Mr. R. E. Clements, is as follows:

G. W. Cunningham, deceased; B. F. Geeslin, Edinburg; W. G. Welch, Sterling City; R. J. Atkinson, Mertzon; E. O. Priddy, Mills County; H. C. Ezzell, Mills County; J. H. Burnett, Mills County; J. E. Evans, Mills County; A. D. Karnes, deceased; Carl Bledsoe, Mills County; Hern Harris, Mills County.

After counting the poll taxes issued in the last minute rush Saturday and Monday, Sheriff and Tax Collector, Hern Harris, reports that a total of 1,950 poll taxes have been issued this year. This compares with 1,895 issued in the last election year, 1936, and 1,905 in 1934.

Steady progress is being made in drilling the oil test well on Pecan Bayou west of Goldthwaite, and another week is expected to see it in the oil bearing lime where the acid treatment will be used.

Luther Booker this week purchased the Taylor house just south of Earl Fairman's home

50 YEARS AGO—

(Taken from The Eagle
Files of February 1, 1913)

The shareholders of the Trent State Bank met in their banking house in this city Tuesday afternoon and elected directors, E. B. Anderson, W. C. Dew, Will H. Trent, Eli Fairman, M. C. Humphries, G. H. Dalton and R. M. Thompson. The directors then re-elected the officers of the bank as follows: E. B. Anderson, president, R. M. Thompson, vice-president, W. C. Dew, cashier, O. H. Yarborough and Wilbur Fairman, assistant cashiers.

County Clerk Summy has issued marriage license since last report to Austin Spivey and Miss Druella Aldredge.

Mr. Jas Taff died at his home near Warren Crossing Monday afternoon, after a two weeks illness, and his remains were interred in McMillan Cemetery in San Saba County Tuesday.

Mrs. F. H. Lindsey of Las Cruces, New Mexico and Mrs. John B. Robinson of Brownwood, arrived in this city Wednesday for a visit to their parents, Major and Mrs. Trent.

W. A. Smith was here from Indian Gap the first of the week and reported business good in that town and that a newspaper was to be established there this week by O. G. Campbell of Gustine.

Mrs. Lee Robertson, who spent several days here and at Big Valley visiting relatives and friends, left Wednesday for Bangs to visit her mother and other relatives until Monday,

and has been remodeling it. He will rent the house for the present.

Final Rites For Clarence A. Horton
Conducted Wednesday Afternoon

Funeral services for Clarence Alvin Horton, 63, of Talpa, were held in the Second Avenue and California Church of Christ at Ballinger Wednesday afternoon, January 30, at 4:30 p. m. Services were conducted by Minister J. R. Endsley of Abilene, assisted by Ralph Byers.

Burial was in the Talpa Cemetery.

Mr. Horton was born May 20, 1899 in Mills County and passed away at his home in Talpa, Tuesday morning, January 29. He was a member of the Church of Christ. He had worked for the Santa Fe Railroad for the past 41 years and was foreman for 39 years. He retired last year.

On December 28, 1927 he was married to Miss Mae Dennis in Talpa.

Survivors are his wife, Mrs. Mae Horton of Talpa; two sons,

assisted by Ralph Byers. Burial was in the Talpa Cemetery.

Mr. Horton was born May 20, 1899 in Mills County and passed away at his home in Talpa, Tuesday morning, January 29. He was a member of the Church of Christ. He had worked for the Santa Fe Railroad for the past 41 years and was foreman for 39 years. He retired last year.

On December 28, 1927 he was married to Miss Mae Dennis in Talpa.

Survivors are his wife, Mrs. Mae Horton of Talpa; two sons,

Julian of Sabinal and of Seattle, Washington brothers, M. F. Horton, Goldthwaite and Elmer Horton, Corpus Christi; one son, Henry Crawford of Odessa, grandchildren, other relatives and a host of friends.

Pallbearers were Alvin Horton, Kirk Williams, Brown, O. S. Sykes, Raymond Rush, John and Ralph Edens.

Hillside Mission
By LIDA BYERS

Are you abandoned or forsaken? God's Word tells Psalm 102:17: "He will answer the prayer of the destitute, not despise their prayer."

Bobbie's Barbecue

(Formerly Cowboy Barbecue)

South Fisher Street - Across from Bobby Johnson Texas

SIX BURGERS TO GO --- \$1.00

Good Coffee ----- 5c

SPECIAL SUNDAY DINNER

Baked Chicken
and Dressing - - - - -

90c

Complete Dinner With Drink and Dessert

Delicious Pit Barbecue
Irish Stew - - All Short Orders

Open 8 A. M. To 10 P. M. -- 7 Days A Week

There's Magic For You In A New Hairdo
If You'll Visit One Of These Beauticians During



February 10 Through 16

You can get that Spring feeling right now . . . blossom out with a new hair-do in the new trend that is fashion-right . . . a style personalized for you. Make your appointment today.

Dedicated To More Beautiful Women



FOR
A
HAIRDO
YOU'LL
LOVE



National Beauty Week -
Or Any Week,
Just Call Us - - - -



National Beauty Week -
Or Any Week,
Just Call Us - - - -

Hamilton
Beauty Shop

Phone MI 8-2649

MRS. ZELMA HAMILTON

Glamourette
Beauty Shop

Phone MI 8-2586

FLOY ROWLETT
CHARLENE BENNINGFIELD

Ola Mae's
Beauty Salon

Phone MI 8-3113

OLA MAE WILKEY
SHIRLEY LAWSON
AMBER FESLER

Johnnie's
Beauty Shop

10 Miles S. E. Goldthwaite
on Moline Highway.

Phone WI 8-2465

JOHNNIE WILCOX

Rosebud
Beauty Shop

Phone MI 8-2511

Louise Walker
Dessie Wilcox

Coznette
Beauty Shop

Phone MI 8-3314

Frances Eilers
Edna Reed
Oella Jones

Mrs. Huntis Black, Recent Bride, Complimented With Bridal Shower

Mrs. Huntis Black, the former Betty Jo Sheldon, was honored with a gift tea, Saturday afternoon, January 26, at the home of Mrs. John Soules of Star.

Guests were greeted by Mrs. Soules and presented to the honoree, her mother, Mrs. Winifred Sheldon and the bridegroom's mother, Mrs. C. H. Black, his grandmother, Mrs. Ora Black and Mrs. Layton Black.

The refreshment table was laid with an imported white cutwork cloth and centered with a beautiful floral arrangement.

ment of white stock and pink snapdragons carrying out the bride's chosen colors of pink and green. Appointments were silver and crystal. Refreshments of white cake squares decorated with a pink rose and green leaves were served by Mrs. Weldon Sheldon and Miss Ira Kay Head ladled the green punch. Mrs. Vic Prince presided at the guest book, where the 60 guests registered.

The honoree was the recipient of many useful and beautiful gifts.

Out of town guests were Mrs. C. H. Black, Ora Black, Layton Black, T. J. Kirby, Berkeley Hightower, Oren Potts, Uel Potts, Clyde Gilmap, Walter Reed and Misses Janie Gilmap, Bettie Lou Carothers and Marjory Black, all of Lometa; Mrs. G. C. Head, Mrs. Jesse Moreland and Miss Jan Moreland of Goldthwaite; Mrs. James Perkins, Fred Shave, Mitchell Winters, Otis Faubion, Elbert Sheldon, Chester Sheldon, J. Y. Hamilton, Tommy Winters, Paul Horton, and Misses Johnny Singleton, Beverly Sheldon and Sue Sheldon, all of Evant; Mrs. Lula May Prince, Granbury; Barbara Bryson and Marjory Bryson of Coleman; Mrs. C. C. Wright, Mullin; Mrs. Larry Kelso of Abilene; Mrs. Bobby Day and Melaine of McAllen and Mrs. Weldon Edwards of Clyde.

What To Do In The Garden

Watch for first leaves on roses. Feed a good rose food. Spray with fungicide and insecticide solution. Add to spray solution a non-bleach detergent to make solution stick. Repeat spraying every ten days.

Padgett Floral
Phone MI 8-2612



MISS JUDINELL BENNINGFIELD

Mr. and Mrs. L. V. Benningfield of Goldthwaite, have announced the engagement of their daughter, Miss Judinell Benningfield, to Alfred Gene Matthews, son of Mr. and Mrs. A. E. Matthews, 2506 West Avenue L, San Angelo. A fall wedding is planned. Miss Benningfield, a 1961 graduate of Goldthwaite High School, is employed as a dental assistant in San Angelo where she is also a student at San Angelo Junior College. The prospective bridegroom attended Highland Park High School in Dallas, received his B. S. from the University of Texas in 1960 and his M. S. in 1962. He is employed as a petroleum engineer for the Texaco Inc. at New Iberia, Louisiana.

Moline "Pick-Ups"

By LEMON SQUEEZER

Mr. and Mrs. Arch Kincheloe ate supper with Mr. and Mrs. Paul Kincheloe Friday night.

Mrs. Townsend Butts, Gary and Cathy of Lampasas spent Sunday with her parents, Mr. and Mrs. Clem Adams.

Mrs. Paul Kincheloe and Mrs. Webb Laughlin were in Goldthwaite Tuesday morning on business.

Mr. and Mrs. Ernie Hairston and children of Mineral Wells visited with his parents, Mr. and Mrs. Mill Hairston.

Mrs. Olie Fox of Pidcock visited her sister, Mrs. Clem Adams and Mr. Adams, also her brother, Carl Cook and wife, Wednesday.

Mr. and Mrs. Bud Kincheloe of Star called in the Paul Kincheloe home Monday night.

Mr. and Mrs. Pete Polk and her mother, Mrs. Phillips of near Adamsville and Mr. and Mrs. Webb Laughlin were guests in the Carl Cook home Thursday night awhile.

Mr. and Mrs. Ouis Adams, Pam, Terry and Paula of Fort Worth spent Saturday night with his parents, Mr. and Mrs. Clem Adams, and spent Sunday with her parents, Mr. and Mrs. Chock Duncan.

Mr. and Mrs. Paul Kincheloe visited with Mr. and Mrs. Webb Laughlin Tuesday night awhile.

Mullin 4-H Club Elects Officers

By WYNONA WASSERMAN

The Mullin 4-H Club met Monday night at 7:30 o'clock at the Community Center to elect new officers for the new year.

John Chesser was elected president; Jimmy Green, vice president; Annette Murray, secretary-treasurer; Wynona Wasserman, reporter; David Whisenhunt and Gayla Green song

Glendon Sanders Celebrates Birthday

Glendon Dale Sanders of Star was honored with a party celebrating his tenth birthday at his home January 31. Eight boys from the third and fourth grades and a cousin from the sixth grade accompanied him home on the school bus and spent the night.

Outside games were enjoyed by the group until dark. Then a bon fire was lighted and the boys enjoyed a Weiner roast with all the trimmings. More games were played, then everyone went inside to help Glendon open his nice gifts. After singing "Happy Birthday" they were served chocolate cake, decorated with the words "Hi Partner" and "Happy Birthday" and pink and yellow candy pistols holding ten candles.

Those present for the occasion were: Barney Noll, Barry Miles, David Henry, Darrell Head, John Kerby Moore, David Geeslin, Ozella Allen Berry, also Marvin and Robert Hunt, Glendon's cousins and his brother, Edward.

Glendon is the son of Mr. and Mrs. Bill Sanders of Star and grandson of Mr. and Mrs. Bob Black, also of Star, and Mr. and Mrs. W. J. Sanders of Mullin.

H.D. Club Meets Tuesday Afternoon

The Goldthwaite Home Demonstration Club met at the Youth Center Tuesday afternoon, January 22, at 1:30 o'clock with 13 members and one visitor present. Hostesses were Mrs. O. B. Bell and Mrs. J. C. Blackwell. Mrs. A. L. Reese gave the opening.

After a short business meeting the year books were filled out. Refreshments of coffee and cookies were served at the conclusion of the meeting.

Next meeting will be February 12 with the program on "Rug Making." Mrs. J. G. Boatwright and Mrs. W. W. Fox will be hostesses. Mrs. Leonhard will give the opening and Mrs. Waggoner will be in charge of recreation.

Personals

Mrs. Nellie Landblom of Ft. Collins, Colorado, visited Miss Laura Nelson over the weekend. Mrs. Landblom is the mother-in-law of the late Dr. W. Herndon Nelson and this was her first visit to Texas.

Mrs. T. J. Blackburn, Mrs. George Reese and Miss Laura Nelson attended the Interscholastic League Work Shop at Tarleton State College at Stephenville, Saturday.

Hearts Beat Faster with PANGBURN'S Western Style CHOCOLATES

BE MY VALENTINE... means MORE when you say it with a box of Pangburn's Milk and Honey Chocolates in beautiful heart packages... an inspired creation whose beauty and taste match the sentiment of the day.

SELECT FROM OUR BETTER CANDY DEPARTMENT

Big Selection To Please Every Valentine

HUDSON DRUG

"What You Want When You Want It."

PLEASANT GROVE CLUB MAKES CANCER DRESSINGS
The Pleasant Grove Homemakers Club met Thursday afternoon at the schoolhouse and the afternoon was spent making cancer dressings. Mrs. H. G. Geeslin, hostess, served refreshments to the following: Mrs. Henry Simpson, Roth Robertson, O. Z. Berry, S. W. Holcomb, Hubert Berry, J. E. Yeager, Weldon Lucas, J. W. Featherston, David Watters, Neal Rose, Charlie Berry, L. O. Kelly, Darse Kelly, W. L. Berry and Rita Laughlin. Also the five children present.

Battery Special!

☆ Republic ☆ Willard ☆ Southland

12 to 48 Months Guarantee As Low As \$725 and Up

Plus Your Old Battery

Shelton Bros. Motor Company
2nd and Fisher Goldthwaite, Texas

FINANCIAL STATEMENT - Priddy Common School District

STATEMENT OF CASH RECEIPTS AND DISBURSEMENTS FOR THE FISCAL YEAR ENDED AUGUST 31, 1962

DESCRIPTION	OPERATING FUND			Totals
	State & Co. Available	Local Maintenance	Interest & Sinking Fund	
Correcting Error 1960-1961		\$(- 8.20)		
Opening Cash Balance 9-1-61	\$(- 7.12)	\$(- 20.42)	\$(- 566.68)	\$(- 602.42)
RECEIPTS				
Local Sources		8,986.07	1,341.25	10,327.32
County Sources	96.67			96.67
State Sources	10,328.55	37,446.28		47,774.83
TOTAL CASH RECEIPTS	10,425.22	46,432.35	1,341.25	58,198.82
TOTAL FUNDS AVAILABLE	\$10,418.10	\$46,403.73	\$ 774.57	\$57,596.40
DISBURSEMENTS				
Budgetary Disbursements	10,439.15	43,661.19	1,705.02	55,805.36
Retirement of Current Loans				—
Food Service Fund				—
Student Activity Fund				—
Interfund Transfers				—
Investments Purchased				—
Inventory Purchases				—
Prior Year Payables Liquidated				—
TOTAL CASH DISBURSEMENTS	10,439.15	43,661.19	1,705.02	55,805.36
Closing Cash Balances 8-31-62	(- 21.05)	2,742.54	(- 930.45)	1,791.04
Memorandum Accounts Payable 8-31-62	—	—	—	—
Un-encumbered Balances 8-31-62	\$(- 21.05)	\$ 2,742.54	\$(- 930.45)	\$ 1,791.04

BUY OF THE WEEK

RCA Whirlpool AUTOMATIC WASHER
With Magic-Mix Dispenser Filter
Filters lint, blends in detergent

- 2 cycles, 2 speeds—correct washing for every fabric.
- One setting automatically gives right wash and rinse temps.
- Surgilator® washing action gets clothes really clean.
- Small-load water saver lets you match water level to load size.
- Washes a full 10-lb. load sparkling clean.
- Suds-Miser® saves soap and hot water. *Tmk. (Optional)

ONLY \$199.95 with trade SEE IT TODAY

We Service What We Sell
Wynona Equipment Company
Dealers For
Whirlpool • Maytag • Aermotor

TOP FLIGHT Albums

GIBSON Brides' Books Guest Books Golden Weddings

WICKER STUDIO
North Parker Street
Dial MI8-2471
Open 8 a. m. To 7 p. m. Monday through Saturday

Community News From Mullin

By MRS. JOHNNIE HOLLAND

Relatives and friends of Mr. and Mrs. Alvin Spinks and Richard met at their home last Friday night for a house-warming. Mr. and Mrs. Spinks have purchased, and moved into, a house in the north part of town which they bought from Mr. Edgar Burkett.

About sixty guests were present. Dominoes and "forty-two" were played by the group.

Mr. and Mrs. Spinks received many nice and useful gifts for their house. Several who were unable to attend sent gifts. Welcome to Mullin.

Mr. Fred Ethridge is in the hospital in Goldthwaite suffering from a bad dog bite. Mr. Ethridge was working on a fence near the road. A car came along and the dog ran out to it and was struck by the car. Mr. Ethridge went to the dog and reached down to lift its head. When he did the dog grabbed him in the wrist. He couldn't get loose from the dog until it died. The dog was a large one which made the struggle more severe. Mr. Ethridge has suffered badly from the bite.

Mrs. Tommy Shelton completed her high school studies the first semester of this school term. Tommy plans to go to barber school in Waco in the very near future. They will make their home in Waco.

Mr. and Mrs. Grady Hancock, Mrs. Fowler White and Mrs. Lindsey Kittle all spent the weekend in Kermit visiting with their children and grandchildren which included Mr. and Mrs. Bob Parker and Donna Jean, Mr. and Mrs. Bill Grady, Kim and Jamie, and Mrs. Betty Coburn, Terri, Clark and Mark.

Mr. F. A. Cobb is getting a two weeks vacation from his job with the railroad.

Mr. and Mrs. Elmo Oxley of New Mexico are here visiting with Mr. and Mrs. George Ellis and Bill, and with her parents, Mr. and Mrs. L. L. Singleton. Mrs. Oxley plans to stay for a while and help take care of her mother, who is seriously ill.

There will be a cancer film shown at the Mullin Community Center Thursday afternoon, starting at 2:30 o'clock. The Mullin Home Demonstration Club is sponsoring the project.

Mrs. Grady Hancock is spending this week in Dublin with her husband who is there for the present time working for the railroad.

Mr. and Mrs. Richard Smith and Evy of Temple, and Mr. and Mrs. Lewis Sims of Comanche spent the weekend with their parents, Mr. and Mrs. Edgar Smith, Margaret and Jimmy.

Worker's Conference will be held here tonight at the Baptist Church in Mullin. A supper will be served at 6:30. Services will get underway at 7:30 with three guest speakers from the Southwestern Seminary, and one speaker from Christian Life Commission Department, Texas Baptist State Convention, Dallas, Texas.

James Roy Smith is in a hospital in Temple suffering from

the results of a fall he received as he stepped from a train and fell while on duty at Bangs.

Also Mr. Jim Tullos is in a hospital in McAllister, Oklahoma. Mr. Tullos was involved in a car wreck New Year's Eve night, and he has been in the hospital since.

Mr. and Mrs. Jimmy Smith have a new baby daughter, born recently in a Brownwood hospital. She has been named Janae Jenine. Mrs. Smith is the former Gayle Brown, daughter of Mr. and Mrs. Speck Brown.

Bill Mac Cooksey who is attending Tarleton State College at Stephenville, was a weekend visitor in Mullin with relatives and friends.

Bobby McCormick and his niece, Sandra McCormick, both of Fort Worth, spent the weekend in Mullin with their mother and grandmother, Mrs. Vesta McCormick.

Mr. and Mrs. Kyle Smith and Mr. and Mrs. Dick Jones attended the Fort Worth Stock Show a day last week.

We were happy to learn that Janie McBride of Llano won the top honors with her calf, "Hercules," at the Stock Show. While we are not well acquainted with Janey, we are well acquainted with her mother who is the former Jean Wilson. Jean's family lived in our community (Pompey Creek) for several years. Jean finished school in Mullin in the late thirties or early forties.

Mrs. Mary Tucker of Lamesa, Mrs. E. R. Morgan of Lubbock, and Mr. and Mrs. Chester McBeth of Crews all visited Miss Lillian Baskin and Rev. and Mrs. G. C. Henry the past week.

Wool Payments Apply To Sales Before April

Wool growers were reminded today that the 1962-program payments, to be made this summer, will be made on wool and unshorn lambs which are marketed before March 31, 1963. That is the closing date for the 1962 program.

E. L. Burkett, Chairman, Agricultural Stabilization and Conservation Committee, also pointed out that applications for such payments under the 1962 wool program are to be filed before the end of April 1963.

He emphasized that the information on payment applications is to be supported by adequate records on the sales. For instance, producers' sales records for shorn wool should show name and address of buyer, date of sale, name and address of producer, net weight of wool sold, and net proceeds to producer after normal marketing deductions.

Payments to producers for the 1962 marketing year will follow the same methods employed for previous years. Shorn wool payments will be equal to a percentage of each producer's cash returns from wool sales. The percentage—to be announced later this year—will be that required to raise the national average price received by all producers for shorn wool during the marketing year up to the incentive price of 62 cents per pound.

Lamb payments will be made to each producer who sells lambs that have never been shorn. The payments will be at a rate per hundredweight of live animals marketed to compensate for the wool on them on a basis comparable to the incentive payment per pound of shorn wool.

BIRTHS

Mr. and Mrs. Howard Runnels announce the arrival of a son, Robert Craig, born February 1, at 1:46 p. m., in the Abernathy Clinic and Hospital, Abernathy, Texas. He weighed six pounds and three ounces.

Paternal grandparents are Mr. and Mrs. W. A. Runnels of Mullin and maternal grandparents are Mr. and Mrs. Stone Shipman of Goldthwaite. Maternal great-grandparents are Mr. and Mrs. Pearl Shipman of Priddy and Mr. and Mrs. C. A. Karnes of Brownwood.

Cancer Film Shown Here Monday Night

The cancer film, "The Other City," sponsored by the Mills County Unit of American Cancer Society and the Goldthwaite P-TA was shown by Dr. M. A. Childress in the high school auditorium Monday night.

Mrs. Logan Adams, chairman of the P-TA Study Course, stated that "Better Health Through Information On America's Most Dreaded Disease—Cancer," was the second program for discussion and given in connection with the showing of the film.

Mrs. R. L. Steen, Education Chairman of the Mills County Unit of the American Cancer Society, discussed the origin, work and aims of the society. She also explained how the money derived from the Cancer Crusade Drive was used.

After the showing of the film Dr. Childress conducted a very informative question and answer session.

Personals

Mr. and Mrs. Glenn Miller and James spent Sunday in Comanche with Minister and

Mrs. Rex Tilly

Mrs. Olivia Taylor, Billy Bob of Sunday with other relatives

Buyers Come To Lometa
Expecting to Pay More to Get Good Fresh Country Cattle.
Our run consists almost entirely of fresh country cattle --- and they bring More Money at Lometa.

CATTLE SALE
Every Friday at 1:00 P. M.

Under Federal Supervision
Completely Bonded.

ALWAYS A BETTER MARKET
YOUR BUSINESS APPRECIATED

Lometa Commission Co.
Lometa, Texas
J. H. (Judge) Harrell - Owner
Bus. Phone 168 - Res. Phone 13

Now In Stock

Imported Field Fence

1035 - 12 - 14 1/2 ga.

\$9.95

Per 20 Rod Roll

BARNES & McCULLOUGH
Phone MI 8-2411
"Everything To Build Anything."

NOTICE!

Starting Sunday, February 10, 1963
We Will Be Open
7 Days A Week
For Your Convenience

SERVING THE BEST IN

Sunday Dinners

Burl Holland's Restaurant
Goldthwaite, Texas

— IT PAYS TO ADVERTISE —

clothes WEAR LONGER ...with

REGULAR Dry Cleaning

CITY CLEANERS
MEMBER DRY CLEANERS INSTITUTE OF GOLDTHWAITE, TEXAS
Phone MI 8-2260

WE GIVE **BUCCANEER STAMPS** DOUBLE STAMPS ON WEDNESDAY

30 THIS COUPON IS WORTH 30¢ TO YOU!!
SAVE 30¢ WHEN YOU BUY A 10 OUNCE JAR OF INSTANT FOLGER'S COFFEE

Clip this coupon, and present with your purchase of a 10 ounce jar of INSTANT FOLGER'S COFFEE!

Special Price 89¢ with coupon

COUPON GOOD THIS WEEK ONLY

If you'd bake with pride... bake with **GLADIOLA**

4 Boxes \$1.00

Gladiola FLOUR 25-lb. Sack \$1.79

Kimbell's SHORTENING 3-lb. Can 65¢	Kraft's Salad OIL Quart
Bama Peanut BUTTER 18-oz. 49¢	CHEER Giant Box
MIRACLE WHIP Qt. 49¢	Premium CRACKERS 1-lb. Box
Jergen's SOAP 6 reg. Bars 36¢	SURF Giant Box

FRENCH DRESSING Wish Bone Deluxe 8-oz. Bottle

BISCUITS Kimbell's 3 Cans 25¢

METRECAL Qt.

NEW! MIRACLE BRAND MARGARINE by Kraft 6 sticks! 29¢

Matchless BACON Pound 43¢

Boneless BEEF ROAST Pound 65¢

2 Lb. Box

HAMBURGER lb. 55¢

Homemade SAUSAGE lb. 49¢

FRYERS Grade A lb.

OLEO Kimbell's 2 lbs.

Loy Long's Super Market
Prices Good Thurs. Noon, February 7, Thru Sat., Feb.

DOORS IN TEXAS

It has been said that ten per cent of the fishermen catch 90 per cent of the fish.

Think about your own home-own. Chances are someone you know catches fish consistently. What's his secret?

Every successful angler knows his quarry. He knows his fishing waters, and he knows how to use his equipment. Fact of the matter is, he has mastered the basic fundamentals of the sport.

There are two characteristics

which seem to mark all top-flight fishermen. One is patience perseverance. The other is attitude. Let's analyze both and unravel some of the so-called mystery which surrounds the successful angler.

Many fishermen go to their favorite lakes and streams, try their luck for an hour or so, then dejectedly quit with the attitude, "Well, they just aren't biting."

A successful fisherman, on the other hand, hits his favorite water at daybreak and sticks with it continually until dusk. Or at least until he has given the fish a reasonable time to cooperate.

His reasoning simply is this: If he keeps the bait in the water long enough, sooner or later a fish is going to take a liking to it. By moving about from one likely spot to another — and covering lots of water — he'll eventually put the bait over a fish.

To sum it up, a successful

angler is tenacious. He doesn't give up easily.

Then there's the all-important mental attitude. It is one of the most overlooked factors in successful fishing.

An Austin postman by the name of Murray Muston catches big bass about as consistently as anyone. He's one fellow who stresses the importance of adopting a "positive" attitude in fishing.

His theory is that if the fisherman believes that each cast could be the one that produces a big fish, he will work more carefully, thus presenting his bait with the utmost finesse and putting it only in the best spots.

This positive attitude also keeps the fisherman alert. Furthermore it keeps him from hurrying. Thus he avoids the greatest mistake made by most inexperienced bass anglers — that of working their baits too fast.

Muston believes that the fisherman can't work a bait too slowly.

Another popular preacher of this theory is Jim Roddie, He's an Austin insurance executive. Roddie is a constant angler. He already has caught several eight pound bass this year. To him five-pounders are rather commonplace.

"A bait must be worked slow and deep, right down near the bottom, if you want to catch big bass," says Roddie. "A lazy old grandpappy bass won't come up to grab a bait that's zipping along just under the surface. You've got to play the game his way to catch him."

Biologists have found that a growing bass needs to consume about ten pounds of food a year to add one pound of weight. On the other hand, an adult bass requires only about one pound of food a year for each pound

Goldthwaite Honor Roll For Third Six Weeks

Hoyett Browning, high school principal, has announced the honor roll for the Goldthwaite Junior and Senior High School for the third six-weeks period.

A student must have a 90 average in all subjects before they can be on the honor roll. Also a student must have an "A" in conduct from each teacher before they are placed on

of its weight.

This means that a five pound bass will eat a mere five pounds of food in a year's time.

This explains why yearling bass are always hungry, always on the prowl for food.

A lunker bass is much more selective. He is more particular about what he eats.

A large bass will lie lazily around some obstruction, maybe a stump or submerged rock, and wait patiently for something edible to wander past. He wants something he won't have to work for, something which appeals to his way of life. That, the experts say, is a bait worked slow and deep.

While the positive attitude will keep the fisherman from hurrying, it also will keep him alert. He's ready to set the hook and land the fish the moment it strikes. So he has fewer misses. And the fewer the misses, the more you catch. Natch!

Patience and confidence are the hallmarks of a successful fisherman — one of those fellows in that select 10 per cent who catch 90 per cent of the fish.

the honor roll. The following students have been named on the honor roll:

Seventh Grade: Melissa McLean, Charlotte Dalton, Debra Langford, Flossie Jordan, Dale Straley, Linda Jones, and Diane McKenzie.

Eighth Grade: Charles Blackburn, Brenda Jernigan, Mary Lou Muse, Phyllis Wesson, Marsha Lee, Clayton House, Sammy Hudson, and Kathy Leonhard.

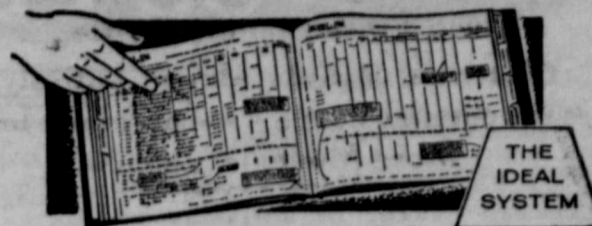
Ninth Grade: Margaret Stokes, Donna Hardgrave, Lee Robertson, Tommy Head, Jim Childress, Anita Rhoades, Jeanie Stewart, Suzanne Cockrell, Del Sears, and Phillip Nickols.

Tenth Grade: Sue Childress, Linda Ruth Geeslin, Sandra Jordan, Betty Miller, Beverly Rhoades, Janice Watters, and Marty Wrinkle.

Eleventh Grade: Clyde Cockrum, Bill Blackwell, Sammy Dennard, Donna Doggett, Saundra Arnold, and Jan Yeager.

Twelfth Grade: Charles Hardgrave, Phillip Auldridge, Arnette Sears, Ann Kemp, and Carolyn Rhoades.

How to keep books without bookkeeping experience!



The Ideal System
Bookkeeping and Tax Record Book for
Farm and Ranch or Business

Easy-to-follow sample entries show you how. Prepared especially for your needs, in one loose-leaf book, to show you at a glance how you stand. You can start any time. Meets Federal and State Tax Laws. Makes Income Taxes easy to prepare. As low as \$3.50.

The Goldthwaite Eagle

RV's CAFE and STATION
at The North "Y"
Goldthwaite Texas

The Best Food and GOOD Gulf Products
24 Hours A Day
MR. and MRS. RV GEESLIN

HORTON LUMBER COMPANY
Mr. and Mrs. M. F. Horton
Goldthwaite, Texas

Anniversary Sale
Of
Pittsburgh Paint

WALLHIDE RUBBER BASE
WALL PAINT
ALL COLORS, Qt. \$1.50 Gal. \$4.50
Matching Colors
Satinhide Enamel
ALL COLORS, Qt. \$1.80 Gal. \$6.30
Sale Starts Today

BUY GIRL SCOUT COOKIES

Sale Starts Today and Ends February 16

INVEST IN YOUTH

Buy Girl Scout Cookies
Help Bring Better Camping To More Girls and Help Provide Essential Material For Local Troop Activities

Pick Freshness



Miracle Whip
49¢
Quart

CASH SAVINGS
4 - \$1
20-oz. Bottles

Forest Pie
Apricots 98¢
Gallon

Food King
Shortening 49¢
3-lb. Can

Food King
Oleo 2 lbs. 33¢

FINEST QUALITY
Shurfresh Dry
Milk 8 qt. 49¢

Shurfresh
Biscuits 6 Cans 49¢

Tubby Time
BUBBLE BATH Each 49¢

WOLF
CHILI
59¢
Big No. 2 Can

QUALITY MEATS

U. S. No. 1 California
CARROTS 2 pkgs. 19¢

Farmer Jones Pork
SAUSAGE 2-lb. Sack 95¢

Crisp Fresh
CELERY Lge. Crisp Stalk 15¢

A. F. - Thick Sliced
BACON 2-lb. Box 98¢

Dependable
PEANUT BUTTER Big 3-lb. Jar 99¢

Fresh Lean Chili Meat or
GROUND BEEF lb. 55¢

Super Suds
59¢
This Week's SPECIAL

VELVETA
79¢
2-lb. Box

Bulk
FRANKS lb.. 39¢

Schwartz Food Store

Prices Good Thurs. Noon, February 7, Thru Sat., Feb. 9



YOU'LL FIND IT IN THE WANT ADS!

Classified Rates
 5c per word including name and address, for first insertion and 3c per word for each subsequent insertion. Count initials as one word.
 Minimum charge 75c first week and 50c each subsequent insertion.
 Legal notices same as above rates.

"Black face" readers, 25c per line. Memorial tributes or Resolutions of Respect and all other matter not news will be charged for at regular advertising rates. No charge is made for news of Church or other public gatherings where no admission is levied. Where admission is charged or where goods or wares are offered for sale, the regular advertising rates will be applied. Cards of Thanks, \$2.00.

DISPLAY ADVERTISING
 Rates on Request.
 All advertising is cash with order except where accounts have been established.

Announcement
 RUBBER STAMPS: Fast service, reasonable prices. No order too large or too small to get our personal attention. Eagle office. 1-3-tf

For an everlasting tribute to your loved one, select a monument of any description from Stacy Monuments, across from Funeral Home. (5-2-tfc)

SAVE \$40.00 on seven piece Dinette Suite, Table with extension leaf and six upholstered chairs. Was \$129.50, now only \$89.50. Spradley's Furniture & Upholstery, Fisher Street, Goldthwaite. 2-7-3tc

AUTOMOTIVE
 FOR SALE: 1957 - V8 Dodge dump truck 1955 Tandem wheel Chevrolet truck with 20 ft. steel bed. H. D. Hollis, Phone 643-3982, Rising Star, Texas. 1-31-3tc

Business Services
 A New Filing Cabinet will help you keep your records in order, make your office work easier. Reasonable prices and quick delivery on any size file. Eagle Office. 1-3-tf

FARM BUREAU INSURANCE
 Farm Bureau Office
 Every Afternoon
DAVID WATTERS, Agent

DEAD ANIMAL SERVICE—Free and Sure.—Phone 303, Hamilton, Texas. 11-19-TFC

Southside Laundry
 And
Dry Cleaning Linen Service
 506 Austin, Brownwood, Tex.
 Our Truck Is Through Goldthwaite on Monday and Thursday.
 Call Collect
Milton 3-4240
 FOR
Pickup & Delivery

Refrigerator And Washer Service & Repairs
 PHONE MI 8-3133
Wilcox Refrigeration AND Appliance Service

FOR
Pump & Windmill Service
 SEE
Frank Cook
 Phone WI 8-2380
 Also
WELL DRILLING With Hap Arrowood Rig

Business Services
MATTRESS SERVICE
 Your Old Mattress made into A Lovely Innerspring. All work guaranteed. Call Spradley's Furniture, MI 8-2261. 1-10-13tp

BOOKKEEPING SERVICE
Bruce Archer
 Home Phone MI 8-2673

Farm & Ranch Conservation Work
Mask Brothers
 P. O. BOX 277
 Richland Springs, Texas
 E. M. MASK — M. C. MASK
 Phone Phone
 45-2-3262 45-2-3271

IDEAL BOOKKEEPING SYSTEMS, for most all business classification. Good selection in stock; also extra filler sheets. Eagle Office. 1-3-tf

Card Of Thanks
 I wish to thank the friends and neighbors for the kindnesses shown me while I was a patient in Childress and Cruzcosa Clinic and Hospital. Special thanks to Dr. Childress, the nurses and hospital staff for their kind and attentive care. Also the Men's Downtown Bible Class for the pot plant. Your kindnesses are sincerely appreciated.
 Mrs. Clyde Estep. 2-7-1tp

Card Of Thanks
 I wish to thank everyone for the cards, flowers, prayers and visits I received while a patient in Childress and Cruzcosa Clinic and Hospital. Special thanks to the doctors, nurses and hospital staff for their attentive care. Your many kindnesses are sincerely appreciated and gratefully acknowledged.
 Eugene Ingram. 2-7-1tp

Card Of Thanks
 I wish to express my gratitude and thanks to the doctors and hospital staff. They were so kind and considerate during my stay in the hospital here. The card and visits from the Ladies' Bible Class was all unmeasurable pleasing as well as the visits of Minister Harold Hunt and Brother Greene. The mums from "Guess Who" were just beautiful. Such kindness helps to ease a lot of pain. May I be able some time to help some one in the same way.
 Mrs. C. C. Blackman. 2-7-1tp

Card Of Thanks
 We wish to thank the friends and neighbors for the prayers, calls, flowers, visits and each kindness shown us while our little girl, Jo Ann Sheppard, was a patient in Childress and Cruzcosa Clinic and Hospital. Special thanks to the doctors, nurses and staff for their attentive care. May God bless each of you.
 Mr. and Mrs. E. O. Shepherd, Max and Jo Ann, Mr. and Mrs. R. L. Bailey. 2-7-1tp

Card Of Thanks
 We wish to extend our sincere thanks and appreciation to the friends and neighbors for their many kindnesses, the beautiful floral offerings, delicious food, cards, and words of condolence, shown us during our recent bereavement at the passing of our loved one, Ed Hohertz. Your thoughtfulness will always be remembered and may your friends be to you what you have been to us in your hour of sorrow.
 Mrs. Ed Hohertz, Mr. and Mrs. Arthur Hohertz And Family, Mr. and Mrs. Norman Schrank, And Family, Mr. and Mrs. M. M. Bowdoin, And Family, Mr. and Mrs. Carl Hohertz And Family. 2-7-1tc

City Property
 FOR SALE: Mrs. M. E. Archer home on Hutchings Street, Five rooms, bath and large store room. Near school. Contact Mrs. Jane Hamilton, MI 8-3109. 11-29-tfc

REDUCED for Quick Sale. Neal Dickerson property, 801 Reynolds. Terms considered. See Mrs. Claude Dickerson or Horton Lumber Company. 1-17-tfc

EMPLOYMENT
 WOMAN WHO CAN DRIVE to call regularly each month on established Studio Girl Cosmetics clients in and around Goldthwaite, making necessary deliveries, etc. 3 or 4 hours per day. Route will pay up to \$5.00 per hour. Write **STUDIO GIRL COSMETICS**, Dept. 79232, Glendale, Calif. 2-7-3tc

SALESMAN WANTED: Knapp Shoe Company wants salesman. Full-time or Part-time. Liberal Commissions, Monthly Bonus, Free Insurance, Samples Loaned, No Investment, Inexpensive. Considered. Lynn Stokes, Box 13622, Dallas 24, Texas. FE7-0459. 1-31-3tp

Farm and Ranch
A. A. CLINE REAL ESTATE
 Have several good homes in Goldthwaite listed for sale at reasonable prices.
 Choice listings of Farms and Ranches in Mills and surrounding counties.
 Phone MI 8-3177, Goldthwaite. 6-21-tfc

IDEAL Farm & Ranch Bookkeeping System will help keep your records of income and expenses up for tax reporting. Only \$4.95 at the Eagle office. 1-3-tf

IF INTERESTED in Farm and Ranch Land contact Joe Green, Center City — Route 3, Goldthwaite, Texas. 6-19-tfc.

FOR NEW AND USED FORD Tractors and equipment see San Saba Tractor Company. Phone 232 for free pickup and delivery of major overhaul. 10-6-tfc.

FOR SALE
 FOR SALE: Used Maytag Gas Range in good condition; one bath room heater and one room heater. Phone MI 8-2680 or see Arnold Kelly at Eagle office. 2-7-tfc

Storage Binders, Post Binders, Ledger Sheets, A-Z Index guides, all sizes and many other bookkeeping supplies. Eagle office. 1-3-tf

FOR SALE: Household Tools, values up to \$1.69, your choice for only 99¢ each. You save up to 38% on everyday needed items. Mills County Hardware. 1-17-tfc

SPECIAL — Large Coaster Wagon full of Tide FREE with Speed Queen Automatic Washer for only \$199.50. Spradley's Furniture & Upholstery, Fisher Street, Goldthwaite. 2-7-3tc

FOR SALE: Three piece bedroom suite, bed, dresser, and chest, was \$179.50, special only \$129.50. Spradley's Furniture & Upholstery, Fisher Street, Goldthwaite. 2-7-3tc

FOR SALE: 200 Nannie Goats in the hair. Three and four-year old. Will kid in March. See or call A. A. Elms, WI 8-2361. 2-7-2tp

FOR SALE: Used Lumber, up to 24 feet long. 2 x 4, 2 x 6, 2 x 10, 2 x 12, 1 x 6, 1 x 4, and 1 x 10 shiplap. By truck load or any amount. H. D. Hollis, Phone 643-3982, Rising Star, Texas. 1-31-3tc

FOR SALE: Green Peanut Hay, \$1.00 per bale. J. D. Berry, Big Valley, WE 8-2371. 2-7-4tp

FOR SALE: Baled Peanut Hay, \$1.00 per bale, 50 bales or more delivered. Billy Hale, telephone WE 8-2370. 1-17-tfc

HAY FOR SALE, \$1.00 per bale. See or call Lewis Watson, WI 8-2422. 1-31-3tc

LIVESTOCK
 REGISTERED and PURE BRED DEBOUILLET RAMS for sale at my ranch 16 miles West of Goldthwaite. O. B. Bell, Rt. 3, Mullin, Texas. 1-10-tfc

FOR SALE: Registered Angus Bulls. Essar Ranch Breeding. Phone WE 8-2433, Delton Barnett. 7-12-tfc.

REGISTERED Quarter Horse stallion for service. See or call James Green, YU 5-2459, Mullin, Texas. 1-24-tfc

If you need drenching done for goats and sheep, contact Stone Shipman. Phone MI 8-2774. 3-16-tfc.

FOR SALE: 200 Nannie Goats in the hair. Three and four-year old. Will kid in March. See or call A. A. Elms, WI 8-2361. 2-7-2tp

Miscellaneous
 FOR SALE: 35 ft. Aeromotor Windmill tower. C. R. Hunter, Star, Texas. 2-7-2tp.

FOR SALE: Platform Rockers, regular \$29.95 value for only \$19.88, while they last. Spradley's Furniture & Upholstery, Fisher Street, Goldthwaite. 2-7-3tc

FOR SALE: Invitation trays, bride's books, 50th anniversary and guest books, albums, picture frames, also napkins imprinted. Wicker Studio, Phone MI 8-2471. 2-2-tfc

FOR MONUMENTS of Distinction and quality see or call Mrs. Jess Massey, MI 8-2491, Goldthwaite. 11-9-tfc

MIMEO Paper, all colors, 16 and 20 weight. Typing Bond, second sheets, onion skin and Erasable bond in stock at the Eagle office. 1-3-tf

FOR ALL YOUR FURNITURE and Carpeting needs, see Higginbotham Bros. at Comanche, good bargains; terms or cash; free estimates and delivery 7-7-tfc

PADGETT FLORAL will make daily delivery of flowers to hospital. Call MI 8-2612 and place your order. 6-9-tfc.

FOR SALE: Used Underwood typewriter, clean machine with lots of service. Bargain, at the Eagle office. 1-3-tf

FOR SALE: One only 5 piece modern Living Room Suite, was \$179.50, special for only \$119.95. Spradley's Furniture & Upholstery, Fisher Street, Goldthwaite. 2-7-3tc

OFFICE SUPPLIES
 Large Stock of Every Day office supply needs. Paper Clips, Rubber Cement, Staplers, staples, typewriter ribbons, ink pads, adding machine paper, columnar pads, file folders, letter files and storage files. Eagle Office. 1-3-tf

PERSONAL
 Household Budget Record Book, saves time and taxes. America's foremost simplified book, only \$1.00 at the Eagle office. 1-3-tf

WEDDING Invitations and Announcements, printed or engraved, cost no more at the Eagle office. Full line of samples to choose from. 1-3-tf

WANTED
 WANT TO BUY buildings to wreck. All kinds. H. D. Hollis, Phone 643-3928, Rising Star, Texas. 1-31-3tc

WE NEED good used home Freezers and will give liberal trade-in allowance for your old freezer on a New Whirlpool Home Freezer. See us now. Duren Equipment Company, Goldthwaite. 7-13-tfc

TEXACO GAS AND OILS
Firestone Tires and Tubes
Washing & Greasing ROAD SERVICE
TEXACO Service Station
 Dial MI8-2585 - Goldthwaite
Johnson Brothers

Manuel's Carpenter Shop
Floyd Manuel

CABINETS
WINDOW FRAMES ANYTHING OF WOOD
SAWS RECONDITIONED
 Open Saturday All Day Evenings On Week Days
 West Side Square Goldthwaite

Not Much Need For Snake Catcher
 Huntsville, (Spec.) — Officials of the Texas Department of Corrections at Huntsville frequently receive unusual requests and suggestions from inmates.
 The written reply to one such suggestion which crossed the desk of Richard C. Jones, Director of the Treatment Program speaks for itself.
 "We have your letter of December 13, 1962 addressed to Hospital Director, Dr. Hanson, in which you offer your services in catching snakes.
 "We realize the value of snake meat, hide and venom but doubt that there would be much demand for it here, and besides we have no one here who has expressed a desire to milk snakes.
 "Thank you for your interest in this subject."
 Mr. Jones says he doubts the program will be placed in practice in the near future.

Quality UPHOLSTERING
 Furniture and Auto Free Pickup and Delivery
Spradley's Upholstery Shop
 Dial MI8-2261

HONEST food BARGAIN
 PRICES GOOD FRIDAY & Sat., February 8 And 9

Velveeta CHEESE 2-lb. Box 79¢
ROUND STEAK Pound 75¢
HAMBURGER lb. 55¢
Armour Star HAM 1/2 Or Whole Pound 49¢
Wicklow Thick Sliced BACON 2-lb. Box 98¢
Pure Pork SAUSAGE lb. 39¢
FRYERS lb. 39¢

Chef Boy-Ar-Dee Spaghetti & No. 300 MEAT BALLS — 2 for 55¢
Durkee's COCONUT 4-oz. Box 35¢
All Reg. Betty Crocker CAKE MIXES 4 Boxes \$1.00

Hunt's Solid Pack Peeled TOMATOES No. 300 2 for 39¢
BISCUITS Kimbell's 3 Cans 25¢
OLEO Kimbell's 2 lbs. for 39¢

CRISCO 3 lbs.
Gladiola FLOUR 5-lb. Bag 2 - 10c Coupons
Folger's Instant COFFEE 6 oz.
Shedd's Prune JUICE Quart
Lucky Leaf - Cherry, Apple, Peach, Lemon PIE FILLING No. 2 3 for
Del Monte CORN No. 303 2 for

MIRACLE WHIP Qt.
Guardian DOG FOOD No. 300 3 for
Aurora TISSUE 2 Roll Pkg.
Kim Facial TISSUE 400-Count 2 for

Supreme CRACKERS 1-lb. Box
Sunshine Choc. Fudge S COOKIES 1-lb. Bag

Personals
 L. W. Weathers of Brownwood was a guest of his mother, Mrs. J. W. Weathers, Friday.
 Alton Williams and Junior Rucker of Austin, Texas, and their parents and Mr. and Mrs. T. L. Rucker of Goldthwaite, Texas, were guests of the Weathers family Saturday.
 Mr. E. L. Platter of Goldthwaite, Texas, was a guest of the Weathers family Saturday.
 Mr. and Mrs. T. L. Rucker of Goldthwaite, Texas, were guests of the Weathers family Saturday.

FEBRUARY SPECIAL
FREE Lubrication Job
 With
Oil and Filter Change
 Bring Your Car in Now -- Offer Good Through February
Landrum & Collins Motor
 Your Friendly Ford Dealer
 Goldthwaite, Texas

DUREN GRO.
 MI8-2614 DELIVER 9 A.M. TO 11 A.M.

Page 6 THE GOLDTHWAITE EAGLE—MULLIN Goldthwaite, Texas, Thursday, February 8, 1962

...tin, Texas —
 ...most militan
 ...85th Legislatu
 ...the flight
 ...owned planes.
 ...often is conce
 ...he considers
 ...state property
 ...airplanes whi
 ...ment of Publ
 ...posed to use fo
 ...officers to dista
 ...nes, or to site
 ...ement meetin
 ...many d
 ...often says he
 ...planes have
 ...rushing a r
 ...ne for the week
 ...g a state unna
 ...a speech; for
 ...state librarian
 ...nt on the coast
 ...how to set up d
 ...often wants to
 ...ch did these ju
 ...state pilots have
 ...Austin airpor
 ...the cost at f
 ...— depending

S & I
 GREEN ST
 Double St
 On Tues

HUME
 WELC
 Service S
 At the Sou
 Goldthwaite

Purina's "B
 age" — Progra
 cattle has n
 ing practice
 "Bull-in Ru
 as the easy
 We are equi
 Houghage"
 ... deliver i
 these labor
 manman d
 If you have
 Program for
 on his
 Program. T
 signed prim
 Purina Spec
 field, monom
 age and gra
 the Cracker
 Prove to yo

Phone M

STATE CAPITAL Highlights AND Sidelights by Vern Sanford TEXAS PRESS ASSOCIATION

... Eagle-Mullin ...
... Rucker of ...
... Mr. E. L. ...
... SPECIAL ...
... EEE ...
... ion Job ...
... th ...
... ter Change ...
... in Now ...
... ough Febru ...
... ins Motor ...
... Ford Dealer ...
... e, Texas ...

S & H
GREEN STAMPS
Double Stamps
On Tuesday.

HUMBLE

WELCH
Service Station
At the South "Y"
Goldthwaite, Texas

... GAIN ...
... y 8 And 9 ...
... 3 lbs. ...
... 5-lb. Bag ...
... ic Coupons ...
... stant ...
... 6 oz. ...
... ane ...
... Quart ...
... - Cherry, ...
... ch, Lemon ...
... ING No. 2 ...
... 3 for ...
... No. 303 ...
... 2 for ...
... E WHIP Qt. ...
... No. 300 ...
... 3 for ...
... 2 Roll ...
... Pkg. ...
... 400-Count ...
... 2 for ...
... 1-lb. ...
... Box ...
... oc. Fudge ...
... 1-lb. ...
... Bag ...
... O. ...
... TO 11 A.M. ...

... plane is used—plus pilot's time.
Now the representative from Weatherford is talking about grounding all passengers except those who are entitled to use state planes for necessary, official business.
He plans to introduce a bill that would forbid legislators from hitch-hiking rides aboard the planes unless they were on official business.

BRUCellosis TESTS
Dr. John L. Wilbur Jr., U. S. Department of Agriculture's animal disease eradication division, reported that public stockyards inspection last month revealed brucellosis infection ratios of 1 to 11 per cent.
High ratio was revealed at the Port City Stockyards in Houston. An infection ratio of only one per cent was found at San Antonio's Union Stockyards. Fort Worth Stockyards' ratio was 3.7 per cent.

NO EMERGENCY
The man who holds the state purse strings for the House of Representatives said he sees no urgency requiring fast legislative action to bolster the screwworm eradication program by \$1,400,000.
Chairman Bill Heatly of the House Appropriations Committee said his conclusion of a recent screwworm eradication project hearing is that livestock producers have raised enough money to keep the program going until March 1.
Meanwhile, an interim study committee headed by Sen. Culp Krueger of El Campo strongly recommended that the \$1,400,000 be appropriated now, and another \$1,600,000 be appropriated for the year beginning September 1.
This would make up the \$3,

000,000, members of the Southwest Animal Health Research Foundation have been seeking from the state.

TRADING STAMP TAX
As an alternate to sending "the cream of business profits to out-of-state trading stamp companies," Rep. Jim Segrest of San Antonio proposed a 10 per cent gross receipts tax on trading stamps.
"Trading stamps are the most hated of all competitive weapons by even those who use them so why not tax such an unhealthy item?" Segrest asked.
He said his bill would bring millions to the state treasury as a balance to "some fifty million dollars" taken out of Texas annually by trading stamp companies.

FUND-RAISING RESTRICTIONS
Sen. Criss Cole of Houston believes the state should keep tabs on all people who raise money for charity.
Many charitable organizations use professional money-raisers to conduct fund campaigns, and Cole proposes that the charities tell Secretary of State Crawford Martin:
1. What sort of deals they've made with their professional money-raisers;
2. What commissions the fund-raisers would get;
3. When solicitations will be held, and what will be done with the money solicited.
Annual reports of licensed organizations would be checked by a certified public accountant. Attorney general would halt the activities of organizations which try to raise cash without registering, unless they are exempt from the act.

FREE FISHING
An easing of fishing license requirements—aimed at helping unemployed persons on the Gulf Coast—has been introduced by Rep. Ed J. Harris of Galveston.
Harris proposed that citizens be allowed to fish with rod and reel in their home counties without paying \$2.15 for a license. He described fishing in one's own county or from one's own property as a "basic, human right."

END AD VALOREM TAX
Legislation to abolish the state ad valorem tax in 1968 has been introduced in the House of Representatives.
Two constitutional amendments and a bill to do the job are being sponsored by Reps. Ben Atwell of Dallas and Charles N. Wilson of Trinity.

GOVERNOR HIRES 55
Governor Connally has so far employed 55 persons.
They range from key staff personnel to domestic help at the mansion.
A staff aide said the present total of full and part-time workers is less than the previous administration's.
He also noted that the office is "not yet fully staffed."
There are new faces at nearly all desks but most have worked in and around the capitol in the past.

VOTER REGISTRATION
Annual voter registration has been proposed in the Texas Senate by Sen. Tom Creighton of Mineral Wells.

Bill was filed in anticipation of poll tax repeal this year or next.
Senator Creighton is chairman of the Interim Committee on Texas Election Law Study. His bill is said to reflect the committee's recommendations.

NO CLOSED MEETINGS
Rep. John Alaniz of San Antonio would prohibit closed meetings of state, city or county agencies.
Alaniz has introduced a bill in the House providing a \$100 to \$1,000 fine for public officials who participate in closed meetings. Two other representatives, Chester Brooks of Houston and Bill Rapp of Raymondville have introduced similar legislation. Alaniz is an attorney, Brooks and Rapp are newspapermen. The latter two also have introduced legislation calling for public records to be open to inspection by any citizen of Texas.

EQUAL RIGHTS
The perennial battle for women's equal rights will hit the limelight in the Texas Senate early in the 58th Legislative session.
Senate constitutional amendments committee set public hearing for 7 p. m., January 30, on a proposal to give women equal legal rights. Proposed constitutional amendment was submitted by Sens. W. T. Moore of Bryan and Bill Patman of Ganado.

VOTE AGE TARGET
Rep. V. E. "Red" Berry of San Antonio wants the minimum voting age in Texas lowered to 18 years.
Berry has filed a bill which would propose a constitutional amendment allowing the Legislature to make the change.
Present law requires voters to be 21 years of age.

COST CUTTING BILL
A bill to create a commission to study ways to cut costs of Texas' government is on file in the House of Representatives.
Rep. R. H. Cory of Victoria

said his bill would create a "little Hoover" commission composed of 12 members. Three members would come from the House, three from the Senate, and six would be appointed by Governor Connally, who also has recommended formation of the commission.
Cory said his bill has been passed by the House on five different occasions but never passed the Senate.

STOCKMEN RAISING FUNDS
Texas Livestock Auction Association is sponsoring a drive to help raise the \$1,000,000 still needed to meet the Southwest Animal Health Research Foundation's \$3,000,000 goal to stamp out the screwworm.
Texas' screwworm eradication program will come to a halt in March unless the million is raised.
Governor Connally recommended that the legislature quickly determine whether the screwworm eradication program is in trouble. Result was a hurriedly called hearing, attended by about 30 legislators and as many livestock producers and animal health officials.
Eradication supporters told legislators that the program reduced screwworms by 70 to 90 per cent its very first year, but the \$5,000,000 spent to date will be wasted unless the job is finished. It is viewed as a three-year program.
Three-fifths of the money spent so far has come from federal funds, and two-fifths from the livestock producers.
The \$12,000,000 program is a true, matching one: Uncle Sam will continue his payments toward the \$6,000,000 he promised, so long as the producers and the state combined are matching his payments.
So far, the state has paid nothing into the program. But the Texas Animal Health Commission has urged an immediate appropriation of \$1,400,000.
Governor Connally has stated that he would ask for such an emergency appropriation if the legislature learns that the program is in danger.

SMALL-TOWN BOOST PROPOSED
U. S. Congressman Wright Patman's worry that an "overwhelming percentage of the smaller towns and rural areas of East Texas are going downhill" is shared by at least two legislators.
Reps. Joe Cannon of Mexia and H. G. Wells of Tulla spread their concern over economic ills in East Texas to rural areas all over the state. And they have come up with a scheme to bolster the moral and economy of rural counties.
Under their plan, counties with less than 45,000 population would receive a two per cent refund of the sales tax collected by them. This money would go to county judges, who in turn would distribute it to city councils to be used to advertise for new industries and offer incentives to industry.
Wells estimated that 200 counties would be eligible to receive a sales tax rebate, and that \$1,000,000 would be distributed the first year.
Main object, Wells said, would be to save counties which recently had some prosperous small towns but which have suffered from being by-passed by highways or from an exodus of citizens who have moved to

metropolitan areas.

IMPACT IN SUPREME COURT
Waggoner Carr made his first appearance before the State Supreme Court as attorney general when the high court heard the case of the state versus the city of Impact. Impact is a satellite of "dry" Abilene which proposes to operate "wet."
Carr made a brief argument for the state, but turned the major presentation over to Tom Epien of Abilene, and former State Senator Clint C. Small, who have worked on the case for about three years.

OATH TAKEN
Crawford C. Martin of Hillsboro has been sworn in as Texas' Secretary of State.
Ceremonies were held in the Texas Senate where he served for 14 years.
He took the oath as the first constitutional state official appointed by Governor Connally.
Oath was administered by Chief Justice Robert W. Calvert of the Supreme Court.
Several hundred persons were present, including legislators, appellate judges and friends, with a delegation of more than 100 on hand from his home city and county.

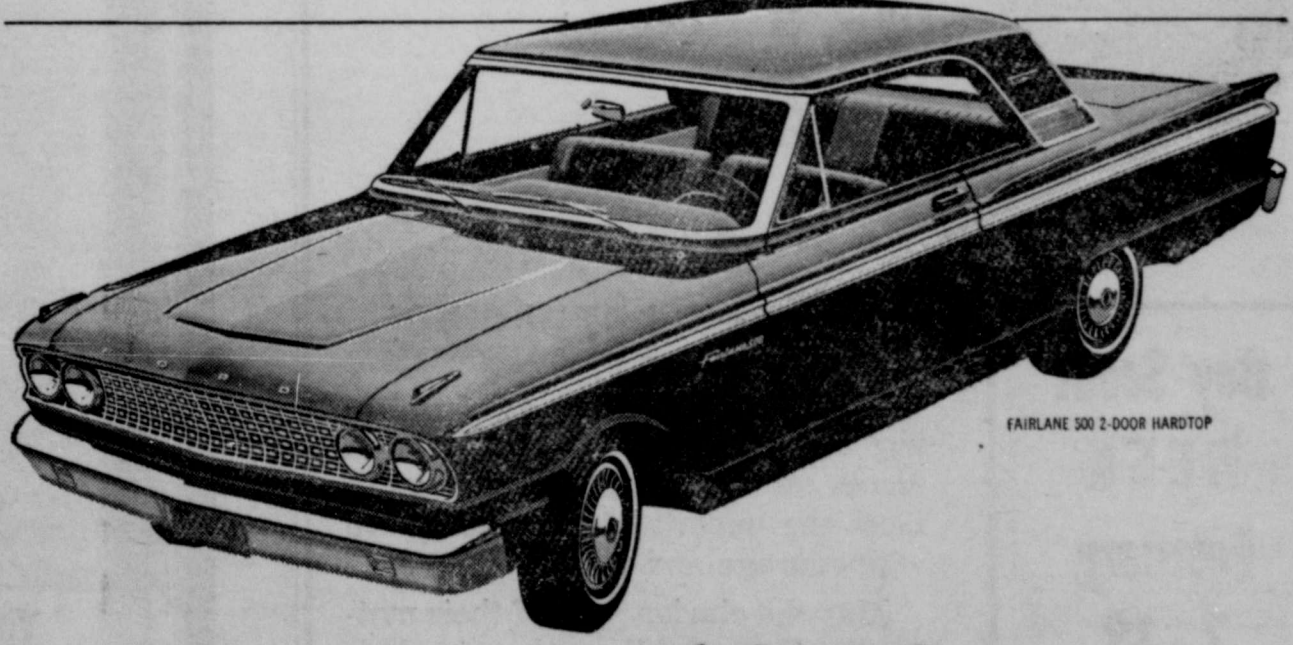
**BE SAFE!
NOT
SORRY!**

**CARRY
ADEQUATE
INSURANCE**

See Us For Your Insurance Needs
Phone MI 8-2481
Stacy's Insurance Agency
INSURANCE — REAL ESTATE — LOANS
Goldthwaite, Texas

Car Buyers' Bulletin

What do they have to compete with our middleweight Fairlane?



FAIRLANE 300 2-DOOR HARDTOP

not a thing!

Fairlane is in a class by itself. It gives you the winning combination of big-car room, ride, performance—yet it handles and costs more like the compacts!

To illustrate, let's compare the middleweight Fairlane with the compact Chevy II which some people mistakenly feel is in the same class. Fairlane is almost 15 inches longer. It has more leg room, front and rear—and 3 1/2 cubic feet more trunk space! Choice of two spanking V-8's or a spunky Six!

Next, compare the middleweight Fairlane with the big Chevy. Fairlane is a foot shorter, far easier to park and handle. Yet, amazingly, Fairlane has more effective front leg room... about the same effective head room... practically the same trunk space! Plus Ford's exclusive money-saving twice-a-year or 6,000-mile maintenance! Yet Fairlane is priced hundreds lower—even lower than some compacts! Come see your Ford Dealer... compare for yourself!

GREATEST CHOICE OF QUALITY CARS UNDER ONE ROOF...SEE YOUR



Landrum & Collins Motor Company

Goldthwaite, Texas

service bulletin

THE EASY WAY TO FEED CATTLE!

Purina's "Built-in Roughage" Program for feedlot cattle has made self-feeding practical and efficient. Self-feeding Purina's "Built-in Roughage" Program is becoming known as the easy way to feed cattle.

We are equipped to grind and mix you a "Built-in Roughage" ration using Purina Special Steer Fatena... deliver it to your self-feeder in bulk. This saves time, labor, capital investment... and it produces maximum daily gains at low cost.

If you have silage or hay, ask us about Purina's Program for building these into low-cost beef. These programs have a definite place in Purina's Growing Program. The "Built-in Roughage" Program is designed primarily for the finishing phase.

Purina Special Steer Fatena is research-proved and field-demonstrated in feedlots using various roughages and grain. Ask for it by name at our Store with the Checkerboard Sign.

Prove to yourself Purina Feeding can cost you less!

Cornelius Feed Company
Charles Cornelius
Phone MI 8-2235 - Goldthwaite, Texas

FREE INSIDE PARKING
"In the Heart of Downtown Dallas"

AAA HOTEL
\$5.00 up

Family Plan
No Charge for Children Under 18
24-Hour Coffee Shop
Radio-Television
Completely Air Conditioned
HOTEL Southland
Commerce-Murphy-Main Streets
Telephone: Riverside 2-6431
Dallas, Texas

Mills And Brown Farmers Repay \$100,000 In FHA Loans In 1962

In 1962 farm families in Mills and Brown counties repaid nearly \$100,000 in principal and interest on loans from the U. S. Farmers Home Administration, Marlis C. Barker, County Supervisor of the Agency, announced in Brownwood today.

A total of 12 farm families in the two counties completely repaid their Farmers Home Administration loans last year.

Mr. Barker said, "The record of farm families in Brown and Mills Counties using Farmers Home Administration credit proves once again that with adequate credit plus technical advice on farming problems,

small farmers can operate successfully under modern agricultural conditions.

"The family farmer is not obsolete, as some commentators charge. Given access to the best farming information available and capital to do a modern job of farming, he is and will remain the mainstay of the county's agricultural economy."

Mr. Barker also reported that in 1962 his agency had its biggest year in history. Nationwide, Farmers Home Administration lending totaled \$754 million, an increase of 17 per cent over the amount for 1961 and 24 per cent over the total for 1960.

A total of \$192,270 in loans to farm and other rural families in Brown and Mills Counties were made by Farmers Home Administration during the year. This was a 55 per cent increase over the amount for 1961 and 123 per cent over the 1960 volume of loans.

Of the \$192,270 loaned by Farmers Home Administration in the two counties during 1962, \$58,570 went to 33 farmers to buy equipment, livestock, fer-

tilizer, pesticides, feed, tractor fuel, and other supplies for farm and home.

Farm ownership loans totaling \$88,200 were made to four farm families to buy, develop, or enlarge their farms and to refinance debts. Private lenders advanced all of these funds under the Farmers Home Administration's insured loan program.

Rural housing loans totaling \$52,500 went to farmers in Brown and Mills counties to build or improve houses and service buildings on farms and in rural communities.

The Food and Agriculture Act of 1962, signed by President Kennedy in September, added a number of new loan authorizations to the Farmers Home Administration program of supervised credit in the state, Mr. Barker reported.

Farm operating and ownership loans were broadened to include the financing of recreational enterprises designed to help supplement farmers' incomes.

Small towns and associations of farmers and other rural residents now may also borrow funds to finance changes in land use, including development of recreational facilities.

The Senior Citizens Housing Act of 1962 established a Farmers Home Administration program of loans to individuals, corporations and groups to build rental housing for the elderly in rural areas. Loans were also authorized to individuals over 62 to buy, build or renovate housing for themselves.

These new authorizations were in addition to a general modernization of Farmers Home Administration existing lending program brought about by the Agriculture and Housing Acts of 1961.

All Farmers Home Administration loans are accompanied by technical advice on farm and financial management. Loans are made only to applicants unable to obtain credit from conventional lenders.

New And Renewal Subscriptions To The Eagle-Enterprise For January

Hard Jones, Route 3
R. T. Booker, Caradan
Clyde Featherston, Moline Rt.
C. E. Heatherly, City
J. R. Parker, Fort Worth
John H. Garner, Tyler
Jim A. Harris, Route 1
Joe Palmer, City
C. W. Lawson, Route 1
Dorman Hanks, Route 2
Ennis Steele, Winters
Bernard Perry, City
Ralph Perry, Sonora
R. F. Collier, Mullin
R. J. Collier, Hereford
Mrs. Luther Ellis, Hereford
Eldred Collier, Mason
Mrs. Thena Beth Davis, Fort Worth

Louis Shipp, Route 1
Ruth Utzman, Route 1
J. B. McCasland, City
Walter McFall, City
J. M. Petsick, Route 3
C. W. Jones, Route 2
Mr. and Mrs. W. W. Soules, Gloster, Mississippi
Jim Soules, Star
Ira Hutchings, Zephyr
Mrs. C. W. Law, Arlington
T. J. Collier, City
Alvin J. Hays, Winslow, Ariz.
E. D. McNutt, Midland
J. C. Blackwell, Route 1
Bessie Crews, City
Robert H. Lee, Caradan
R. C. Miller, Moline Route
E. D. Welch, Lometa
O. K. Jenkins, Mullin
F. M. Head, Caradan Route
Mrs. Alice Long, Route 1
Mrs. Cecil Williams, City
V. Z. Cornelius, City
Miss Minnie Fox, City
Horace Brooks, Route 1
W. L. Hamilton, Route 1
Paul Kincheloe, Moline Rt.
M. C. Dryman, Route 2
J. R. Cooksey, Burlington, Kansas

Mrs. D. O. Truitt, Austin
Winifred Sheldon, Star
L. R. Warren, Galena Park
Edith Covington, Moline Rt.
Clinton Miles, Fort Worth
W. L. Steinman, Comanche
D. E. Long, Route 3
Mrs. Belle Evans, Route 1
Dr. T. C. Graves, City
Roy Simpson, Caradan Route
E. K. Egger, Mullin
W. H. Hightower, Route 2
Stanley Bessent, City
Fisher Wigley, Route 3
Mrs. O. L. Woody, City
A. J. Williams, Plainview
Pete Schurba, Harlingen
C. W. Batchelor, Midland
Mrs. Jewel Slaughter, Brown-

wood
B. L. Robertson, Admore, Oklahoma
C. J. Crawford, Abilene
Mrs. Callie Higgins, Santa Rita, New Mexico
Mrs. J. W. Evans, San Angelo
Garland G. Boland, Compton, California
James W. Bowman, Witharal

Leo Edleman, City
Mrs. S. V. Roberts, Mullin
Frank Overstreet, El Paso
Mrs. Bob Hughes, Waco
C. O. Geeslin, Route 3
Mrs. Pearl Holland, Route 2
Doyle Head, Morton
Inez Leverett, Route 1
R. C. Duren, Mullin
Ernest Ince, Route 1
E. D. Ferguson, Moline Rt.
C. L. Featherston, Route 2
Mrs. Kenneth Kidd, Mason
Mrs. W. T. Moreland, Rt. 3
Green Mankin, City
Cecil Haney, Atwood, Calif.
Bruce Scott, Mullin
Geneval Howard, San Antonio
Rev. P. H. Wood, Midland
Mrs. W. K. Chaney, Dallas
R. L. Casbeer, Dallas
D. O. Simpson, Garland

Mrs. Fred N. Baker, Carisbad, New Mexico
J. W. Luker, Houston
Daphane Evans, Pasadena, California
Mrs. Vera Doggett, City
Mrs. A. A. Carter, Route 1
H. W. Boykin, Route 3
Enoch Godwin, Lometa
Charles Conradt, City
Mrs. H. T. Vaughan, Rt. 1
Mrs. John Soules, Star
Effe Egger, Mullin
Mrs. C. A. Womack, Route 1
L. H. Soules, Jr., San Antonio
Mrs. Marvin Templin, Romalnd, California
M. C. Bishop, Lometa
Mrs. D. D. Henry, Route 3
Voyd V. Henry, Euless
J. D. Lowe, Jacksonville
W. A. Shotwell, Fort Worth
Richard D. Collier, Midland
W. A. L. Graves, San Antonio
Bill Lewallen, Jal, N. M.
Mrs. Elam Berry, Route 2
Russell Boyd, Star
W. O. Holland, City
Tom House, City
Miss Exa Sanders, Mullin
Mrs. Melvin Murphy, San Saba
Bernard Farmer, Fort Worth
W. H. Freeman, Sr., Mullin
Mrs. Maudie Sherdee, Muskogee, Oklahoma

W. W. Lucas, Route 2
Rev. Ed Lovelace, Bishop
Mrs. A. A. Bostick, Rotan
Mrs. J. D. Jackson, Andrews
Mrs. Weldon, Toems, Hereford
W. S. Rudd, Hico
Judith Persian, Great Lakes, Illinois
W. L. Mahan, Ochlochlee, Georgia

Saylor Chevrolet Co., City
H. F. Bethel, City
Mrs. Liva Weaver, City
L. W. Weathers, Brownwood
J. B. Burnett, Route 2
Louis Stahke, Route 1
Billy Taylor, City
R. W. House, Route 3
Mrs. J. Hearn Harris, City
Mrs. T. L. Adams, Star
Mrs. E. T. Franks, Houston
L. W. Hill, Lometa
R. A. Garren, San Antonio
V. L. Williams, City
W. T. Simpson, Route 1
Minnie Mason, Clovis, N. M.
W. F. Virden, Indian Gap
Mrs. Kate Sykes, Ballinger
Mrs. Ed Dearson, Priddy
Walter Fairman, City
T. H. Johnson, Route 1
L. E. Booker, City

Mrs. R. W. Gesh
Kay Campbell
W. T. Forehand
J. C. Faulkner
Mrs. Cordie Jones
Elton Horton
C. C. Wesson
D. B. Aldridge
Miss Lela Holly
J. B. Lowrey
Lloyd D. Hiller
R. G. Miller
Ercher McCasland
Mrs. Irene Scribner, California
Earl W. Gummel
Roland Lindsey
Roy Letbetter
Mrs. Lawson
Worth
H. L. Berry
O. Z. Berry

Mrs. R. W. Gesh
Kay Campbell
W. T. Forehand
J. C. Faulkner
Mrs. Cordie Jones
Elton Horton
C. C. Wesson
D. B. Aldridge
Miss Lela Holly
J. B. Lowrey
Lloyd D. Hiller
R. G. Miller
Ercher McCasland
Mrs. Irene Scribner, California
Earl W. Gummel
Roland Lindsey
Roy Letbetter
Mrs. Lawson
Worth
H. L. Berry
O. Z. Berry

Mrs. R. W. Gesh
Kay Campbell
W. T. Forehand
J. C. Faulkner
Mrs. Cordie Jones
Elton Horton
C. C. Wesson
D. B. Aldridge
Miss Lela Holly
J. B. Lowrey
Lloyd D. Hiller
R. G. Miller
Ercher McCasland
Mrs. Irene Scribner, California
Earl W. Gummel
Roland Lindsey
Roy Letbetter
Mrs. Lawson
Worth
H. L. Berry
O. Z. Berry

AMBULANCE SERVICE

PHONE MI 8-2255

Roy Wilkins

Funeral Home
GOLDTHWAITE, TEXAS

A good place to buy nationally advertised TAYLOR MADE

MORNING GLORY

Mattresses, - Sofa Sleepers, Etc.

Spradley's Furniture & Upholstery
Fisher Street Goldthwaite, Texas



Boy Scout
WEEK
February
7-13

THEY'RE PREPARING!

Indeed our Boy Scouts are, in trying to live by the principles and ideals of Scouting, preparing to meet the uncertainty of the future with courage and wisdom.

May the clarion call of their motto, "Be Prepared," continue to challenge the spirit of boys everywhere!

Boy Scouts of America 52nd ANNIVERSARY



MILLS COUNTY
STATE BANK

GOLDTHWAITE, TEXAS

Serving Mills County 73 Years

CHEVROLET TRUCK QUALITY



You can see the difference wherever you look

If you believe various makes of trucks are pretty much alike, you aren't doing justice to your pocket-book. There are differences.

A Chevrolet truck welcomes comparison. Look at the little things on it—latches, hinges, stitching in the upholstery. Notice how strong the tailgate is, the rubber encased chains that keep it from sagging.

The body floor is made of select wood to eliminate the rust problem and give you better footing. The lower

side panels are double-walled; you might dent the inside but it won't show through.

Chevrolet designs suspension systems to fit your need. The light-duty type is strong on comfort. Another kind for heavier trucks stiffens up as you increase your load and vice versa. Make sense?

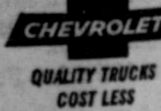
If you are going to need a new truck this year, you should look at the quality Chevrolet has to offer. May we bring over a new '63 so you can examine it?



New High Torque 230-cu.-in. Six is lighter but more powerful than its predecessor. It is standard in Series C10 through C60 models.



New High Torque 292-cu.-in. Six—most powerful truck 6 Chevrolet has ever built! Standard in Series C60, optional at extra cost in lighter models.



Just call us to test drive one of the "New Reliabilities"

SAYLOR CHEVROLET COMPANY

Phone MI 8-2588

Goldthwaite, Texas

Fisher & Third

HONOR ROLL

Of Mills County Contributors To The Screwworm Eradication Fund

V. D. Ables	\$ 16.00	Chester Berry	10.00	Mrs. W. B. Black	10.00
J. C. Adams	2.50	C. N. Berry	30.00	W. R. Blackburn	35.00
W. L. Alexander	34.97	E. B. Berry	19.00	Boykin Feed Store	40.00
Landee Allen	12.00	H. L. Berry	16.00	V. C. Bradford Ranch	25.00
Trueti Auldridge	20.00	J. D. Berry	10.00	C. H. Bramblett	10.00
R. B. Bagley & Sons	129.50	O. K. Berry	10.00	Leonard Breeding	10.00
F. E. Baird	20.00	O. Z. Berry	20.00	L. N. Brown	15.00
F. E. Baird	80.00	R. C. Berry	25.00	O. E. Brown	38.00
Delton Barnett	50.00	W. L. Berry	22.50	Mrs. Silas Burk	35.00
C. E. Bayley	5.00	Big Valley Farm	40.00	J. B. Burnett	25.00
Harold Beard	25.00	H. J. Bishop	35.70	L. B. Burnham	312.50
LeRoy Beard	15.00	William G. Bishop	25.00	L. D. Burnham	70.00
O. B. Bell	44.00	C. H. Black	25.00	M. T. Burnham	50.00
Floyd Benningfield	43.50	Irk Black	50.00	Bobby Burns	1.00

Charles R. Butler	205.00	J. D. Hunt	30.00	W. H. Reeves	100.00
Ward Carlisle	100.00	John A. Jackson	10.00	P. R. Reid	35.00
A. W. Carswell	25.24	D. T. Jenkins	14.00	F. D. Reynolds	33.00
Carl Casbeer	28.00	O. K. Jenkins	30.00	A. D. Robbins	30.00
Raymond Casbeer	13.00	Hawley & Sig. Jernigan	60.00	Erle D. Roberson	255.00
G. W. Chancellor	8.00	Malcolm & Sig. Jernigan	200.00	M. G. Roberts	1.50
C. J. Childers	7.50	M. L. Jernigan	125.00	Noema Lee Robertson	43.50
E. M. Claborn	20.00	Mrs. Carl A. Jeske	65.00	Oma Robertson	10.00
M. C. Clary	10.00	C. F. Jeske	300.00	A. R. Rowlett	130.00
Woodson Clary	30.00	Harold G. Johanson	13.80	Ross Rowlett	5.00
W. A. Cline	25.00	A. W. Johnson	10.00	W. T. Rountree	10.22
Cockrell's Riverside Nursery	21.00	Cord Johnson	10.00	J. J. Rudd	112.50
Clyde Cockrum	35.00	Earnest Johnson	6.00	Glynn Sanders	50.00
Mrs. Oleta Coffman	8.00	Leon Johnson	100.00	Roger Sanders	25.00
V. H. Collett	21.00	Mike Johnson	20.00	Salyor Chevrolet Co.	15.00
Glynn Collier	30.00	Robert C. Johnson	50.00	J. A. Schlee	12.00
H. R. Collier	14.00	Y. B. Johnson	25.00	Benjamin Schrank	35.00
M. K. Collier	20.00	Alton Jones	5.00	Clarence Schuman	25.00
Rolley Collier	10.00	Herman Jones	200.00	Herman C. Schunke	80.00
Albert H. Conradt	20.00	R. G. Jones	25.00	Emil Schuster	100.00
A. B. Conradt	50.00	P. R. Jordan Jr.	25.00	Wilford W. Schuster	50.00
T. D. Cooksey	25.00	C. A. Keeler	50.00	L. C. Schwartz	15.50
W. C. Cooksey	50.00	L. O. Kelly	25.00	Milton Schwartz	35.50
Vance Cornelius	50.00	G. L. Kemp	15.00	Paul Schwartz	20.00
Paz Corona	1.00	W. O. Kemp	20.00	John R. Seward	24.97
R. A. Cox	15.00	Clyde Kerby	25.00	C. E. Shaw	1.00
A. K. Criswell	25.00	Frank Kerby	22.00	Mohler Simpson	50.00
H. B. Curtis	15.00	Emmett M. Kincheloe	15.00	D. H. Singletary	21.40
C. W. Daniel	25.00	G. L. Kincheloe	10.00	E. T. Singleton	155.00
C. W. & W. A. Daniel	50.00	Loyd S. King	550.00	F. L. Singleton	25.00
F. B. Daniel	20.00	Talmage King	50.00	L. K. Smith	100.00
W. L. Daniel	10.78	W. G. King	25.00	Winston E. Smith	12.00
Joe A. Davis	20.00	Jack Kirby	400.00	Alva M. Soules	9.00
Perry Day	45.00	Maxwell Kirkpatrick	20.00	Fred Soules	5.00
Charles Dennard	5.00	Mrs. H. Klizer	8.00	Henry Soules	44.00
E. J. Drucekhammer	70.00	Ernest Kohler	30.00	Jim Soules	239.00
J. E. Dryman	20.00	Francis Kyle	15.00	Mrs. John Soules	25.00
Dale & Orb Duncan	75.00	Langford Bros.	67.50	L. H. Soules	62.60
H. G. Duncan	75.00	Al T. Langford	9.00	Lee Roy Stacy	25.00
J. T. Duncan	50.00	Ulen Laughlin	100.00	Insurance	50.00
Ray M. & Pearl Duncan	27.00	Webb Laughlin	30.00	Ray Standley	50.00
T. E. Duncan	25.00	A. P. Lee	27.00	A. C. Stark	49.00
Mrs. E. A. Duren	10.00	H. G. Lee	3.50	R. L. Steen & Son	45.00
Ralph Duren	30.00	Joe LeMay	30.00	Lucius M. Stephens	50.00
W. P. Duren	50.00	H. J. Leonhard	15.00	Lawrence Strumpler	10.00
S. A. Edington	425.00	Carl Letbetter	44.50	Mrs. Sam Sullivan	25.00
Henry D. Edmondson	20.00	Roy Letbetter	100.00	W. F. Sutherland	25.00
Cecil Egger	30.00	S. W. Lillie	10.00	Charley D. Swindle	15.00
Clayton Egger	102.00	Paul Limmer	10.00	Floyd Sykes	45.00
E. K. Egger	25.00	W. R. Lindsey	10.00	Lee W. Tabor	7.50
Hulon Egger	17.50	G. H. Locke	5.00	Everett Taylor	3.00
J. E. Egger	50.00	J. A. Locke Jr.	145.00	William Arden Taylor	76.50
R. D. Egger	10.00	D. A. Long	25.00	T. L. Teal	10.00
O. F. Eidson	7.50	Jack Long	16.00	D. B. Thompson	22.00
Elmer Embry	5.00	Robert Long Jr.	5.00	G. H. Tiemann	50.00
Tom Emdy	1.00	H. O. Loudamy	11.00	Raymond C. Tiemann	50.00
M. L. Ethridge	50.00	W. W. Lucas	39.14	Roy S. Timberlake	12.50
Ed Evans	50.00	Dewey Luckett	14.00	I. L. Toney Estate	25.50
K. S. Fariss	17.50	R. D. McCarty	50.00	W. A. Triplett	50.00
Clyde Featherston	50.00	Ercher McCasland	60.00	George M. Tubbs	6.00
G. T. Feazle	6.00	Homer McCasland	75.00	Walter M. Tubbs	15.00
W. H. Fox	7.00	H. W. McCasland	25.50	J. Y. Tullos	1.00
W. H. Freeman Sr.	20.00	J. B. McCasland	15.00	E. B. VanLiew	10.00
Walter Frank	25.00	S. M. McCasland	28.00	R. H. Wagner	13.70
Aubrey E. Garner	3.00	McCulloch County Electric Co-op.	25.00	Carylon Wall	25.00
R. J. Garrett	22.50	McCullough Livestock	160.00	Garth Wall	40.00
Haskell Gatlin	8.00	Raymond McCutchen	400.00	Emory Walton	8.00
Jerry Gee	25.00	W. R. McDearmon	20.00	George L. Walton	35.00
Bertram Geeslin	25.00	McKenzie Bros.	20.00	A. G. Wasserman	200.00
Delmer D. Geeslin	45.00	Charley McLean	142.00	W. H. Wasserman	100.00
R. V. Geeslin	15.00	Rex Mahan	10.00	Elmo Watson	10.00
C. D. Gerald	11.00	Myra B. Mankin	100.00	David Watters	32.50
M. H. Gilbreath	35.00	Arthur L. Manuel	10.00	J. S. Weatherby	40.00
Enoch Godwin	33.00	James Martin	30.00	A. R. Welch	12.00
T. B. Graves	32.50	Walter J. Marwitz	5.00	Harry Welch	50.00
Dr. T. C. Graves	174.60	Willie W. Marwitz	12.00	J. D. Welch	12.00
Carl E. Grell	7.00	Metal Master	10.00	Lucille Welch	6.00
Charles L. Griffin	4.00	Machne Shop	10.00	D. V. Westerman	10.00
Billy Hale	10.00	Glenn Miller	4.00	Eugene White	50.00
A. R. Haley	20.00	R. C. Miller	25.00	E. F. White	20.00
Shirley Hamilton	1.60	Mills County Cat Club No. 1	41.00	Maurice White	25.00
P. L. Harcock	152.00	Mills Co. State Bank	100.00	W. C. Whittenburg	37.50
Mrs. E. H. Hapgood	26.50	R. L. Mills	95.50	O. D. Wilkey	10.00
Allen W. Hardgrave	163.00	Thomas M. Mitchell	11.00	G. C. Wilson	25.00
J. B. Harper	50.00	Andrew Montgomery	10.00	J. C. Witty	100.00
Leroy Harper	15.10	W. C. & Wanda Monroe Ranch	41.50	T. E. Winters	250.00
P. O. Harper	24.20	Jesse Moreland	5.00	Wilford Witzsche	15.00
Sammie Harper	13.10	Jerry Morris	5.00	J. O. Wolff	10.00
J. H. Harrell	25.00	A. B. Neal	1.50	W. B. Womack	15.00
D. Hartman	10.00	J. W. Neal	25.00	J. M. Wrinkle Jr.	32.50
J. D. Hartman	11.00	Mrs. J. I. Neighbors	20.00	B. H. Yeager	100.00
Arnold Head	65.00	Fred Nowell	55.00	LIVESTOCK DONATED	
Charles R. Head	8.00	Alton O'Bannon	55.00	Odell Hopper	1 Goat
Gerald Head	10.00	R. H. Oglesby	9.10	W. W. Ratliff	5 Goats
T. A. Head	85.00	A. L. Oliver	6.50	D. V. Westerman	1 Goat
Wilson Head	35.00	Ernest O'Neal	25.00	D. V. Westerman	1 Sheep
Dale Henry	16.50	C. D. Owens	120.00	W. O. Holland	1 Sheep
E. C. Henry	25.00	J. S. Owens	250.00	J. D. Wright	1 Sheep
K. B. Henry	40.00	Padgett Floral	5.00	C. W. Wall	3 Goats
W. J. Henry	10.00	Melvin Pafford	50.00	Ercher McCasland	1 Sheep
Charles W. Hill	30.00	C. A. Page	3.00	A. W. Carswell	2 Sheep
Roy L. Hill	5.00	Winell Page	3.00	Sheril Ann Fuller	1 Sheep
E. P. Hodges	10.00	R. A. Parker	50.00	J. Bramblett	1 Sheep
E. A. Hohertz	40.00	C. L. Patterson	40.00	Lee Tabor	1 Sheep
S. W. Holcomb	48.00	Doris Patterson	20.00	W. G. Bishop	4 Sheep
H. E. Holland	20.00	J. M. Petsick	10.00	O. B. Bell	8 Sheep
Fritz Hopper	5.00	J. E. Phillips	30.00	B. F. Rainey	1 Sheep
Odell Hopper	15.00	J. M. Poer	23.60	W. W. Fox	3 Sheep
C. J. Horner	1.00	E. H. & J. H. Priddy	40.00	E. C. Henry	6 Goats
Horton Lumber Co.	17.15	Ray Priddy	50.00	Bill Sanders	1 Sheep
James E. Horton	15.00	R. L. Pruitt	19.50	W. C. Sherwood	21 Sheep
V. T. Horton	20.00	Sam H. Rahl	65.00	W. C. Whittenburg	1 Sheep
W. V. Horton	40.00	B. F. Rainey	25.00	W. C. Whittenburg	1 Goat
R. W. House	35.00	Luther Rasco	25.00	James Green	2 Sheep
T. W. Huckabee	15.00	A. L. Reese	50.00	W. W. Lucas	1 Sheep
Lewis T. Hudson	5.00			68 Head Livestock—Total	628.71
C. J. Humphries	50.00			Total Collected	\$16,036.78
E. Humphries	50.00				
McKinley Humphries	50.00				

To Livestock Producers, Sportsmen, Businessmen And All Residents Of Mills County!

Here Is THE \$1,000,000.00 STORY

THE SCREWORM ERADIATION PROGRAM IS ENDANGERED UNLESS LIVESTOCK PRODUCERS ADD \$1,000,000 TO THE \$2,000,000 ALREADY COLLECTED.

END OF PROGRAM?

Termination may become necessary before March 1 as non-federal funds are exhausted. To meet the \$3,000,000 goal a "Second Round" of contributions is required.

POLICY CHANGES

To insure that the eradication program can be continued after March 1, the trustees of the Southwest Animal Health Research Foundation have issued an urgent appeal for livestock producers to raise the required \$1,000,000. An earlier policy stating "that no one would be asked to contribute more than once," has been voided so that the program can be continued and carried to successful completion. The Foundation trusts that the livestock and wildlife industries of the Southwest will meet the challenge that faces them.

WHY FUNDS ARE SHORT

Pushing the program under way a year ahead of schedule, before financing was available from participating agencies, depleted private funds. Even though State funds become available immediately, they could not be sufficient to complete the program without producers' additional \$1,000,000.

The Mills County Animal Health Committee is presenting this urgent appeal to all Mills County citizens -- those who have not contributed and those who have already done so.

Mills County support in behalf of the Screwworm Eradication fund drive has been gratifying but is still far short of the original goal.

386 Have Contributed \$16,036.78 To The Mills County Fund While The Potential For The County Is \$24,000.00

Those who have not as yet contributed are urged to do so now and everyone who has given to the fund during the past year is asked to give further consideration to the challenge that is before the livestock industry and make an additional contribution.

This Message Is Presented In The Interest of The Screwworm Eradication Program By The Following Mills County Livestock Producers:

- | | |
|----------------|-----------------------|
| B. BURNHAM | MILLS COUNTY COM. CO. |
| JOYD KING | JIM SOULES |
| WILSON HEAD | ARTHUR GROMATZKY |
| LAYTON EGGER | L. C. SCHWARTZ |
| C. WHITTENBURG | WILFORD SCHUSTER |
| ANDY ROWLETT | SHERWOOD OWENS |

You Too - Can Help!

Join Your Friends and Neighbors NOW,
And Send In Your Contribution.

Draft Board Announces Tougher Policy For Men Who Register Late

State Draft Board No. 84, which has jurisdiction over San Saba, Mills, Burnet, and Lampasas counties, today announced a tougher policy regarding men who register late for the draft.

The new policy was announced by Shaw Norris of Lampasas, board chairman.

The policy was established after a board survey which determined that 59 youths had registered late in the past six months.

Federal law requires that young men register with the nearest draft board on their 18th birthday, or within five days thereafter.

Under the new policy, all young men who register a week late or more will be asked to submit a statement in writing explaining their tardiness. The board will give formal official consideration to declaring these

men delinquent under the law and processing them for armed forces induction ahead of other men in their age group.

The following registrars are maintained for the convenience of young men:

Mrs. Glynda C. Carpenter, board clerk, at the First National Bank Building in Lampasas; Wayne A. Barton at the County Courthouse in Burnet; Frank P. Bowman at the County Courthouse in Goldthwaite; J. L. Pickens, Lometa; Mrs. Nettie Scott at the County Courthouse in San Saba; E. E. Witten at the County Courthouse in Lampasas.

Other members of the board besides Mr. Norris, the chairman, of Lampasas, are Bruce A. Archer, Goldthwaite; Carl C. Baskin, Richland Springs; Charles H. Dickens, secretary, Burnet; Wyman W. Wilson, co-chairman, Lampasas.

Childress & Cruzcosa Clinic & Hospital News Release

(Information released with permission of patient or a member of the family.)

Tuesday, January 29
Admitted—Wanda Knight, Goldthwaite; Mrs. Clyde Estep, Goldthwaite; Mrs. Fred Schwartz, Comanche; J. Elmer Berry, Goldthwaite.

Discharged—Jeanie Taylor; Dick Standley; Mrs. B. F. Poore.

Wednesday, January 30
Admitted—Annette Murray, Mullin; William Jack Shaw, Goldthwaite.

Discharged—Mike Kinsey.

Thursday, January 31
Admitted—Mrs. J. C. Morgan, Goldthwaite; J. Russell Cobb, Mullin; Mrs. O. S. Laird, Goldthwaite.

Discharged—Mrs. Lee Long; Pauline Booker; Mrs. Fritz Schwartz; Annette Murray.

Friday, February 1
Admitted—Mrs. I. W. Mauney, Goldthwaite; Mrs. Joe Burdette, Goldthwaite; Elmo Watson, Goldthwaite; Mrs. Fritz Schwartz, Comanche; William Fritz Kauhs, Goldthwaite; James Samuel Oden, Goldthwaite.

Discharged—Mrs. C. M. Head.

Saturday, February 2
Admitted—Fred Ethridge, Mullin; John Alvin Gonzales, San Saba.

Discharged—J. Elmer Berry; George Feazle.

Sunday, February 3
Admitted—Carl Casbeer, Goldthwaite.

Discharged—Wanda Knight; Mrs. Clyde Estep; W. W. Perkins.

Monday, February 4
Admitted—Mrs. M. R. Blanton, Lometa; Jeffrey Lynn Key, Goldthwaite.

Discharged—Mrs. J. C. Morgan; Jack Shaw.

Public School Driver Education Bill Provides State Financing

State Representative Terry Townsend of Brady has introduced House Bill 276 in the Texas Legislature to provide State financing for driver education courses in Texas public schools. Mr. Townsend represents McCulloch, San Saba, Lampasas, Burnet, Llano, Gillespie, and Mills Counties in the House of Representatives.

In co-sponsoring the bill, which has wide organizational support among traffic safety groups and backers through Texas, Representative Townsend joined with State Representative George Hinson of Mineola. The same bill has been introduced in the Texas Senate by State Senator Murry Watson of Mart as Senate Bill 38.

Representative Townsend said the two bills include the recommendations made to him repeatedly in recent years by Miss Eudora Hawkins of Abilene, a leader in the long Statewide campaign conducted by the Texas Federation of Women's Clubs in behalf of State assistance for the driver education program. He said many women's organizations in his district had asked for such a measure.

Representative Townsend said the bill follows the matching-fund idea which Texas public schools have been using for the past two years in offering pre-school courses in English for non-English speaking children.

House Bill 276 provides for State financial assistance in paying the salaries of driver education instructors in 12-grade public school districts. This salary cost, the bill states, "shall be borne by the State and each participating district on the same percentage that applies to financing the (Gilmer-Alken) Foundation School Program within that respective district."

Texas Education Agency estimates that the State pays about 80% of the cost of financing Texas public schools, local dis-

tricts about 20%. This same method is being applied to the driver education assistance program. At the present time, less than half of Texas' 1,400 high schools, about 670, are offering driver education courses to about one-third of the eligible students, and such courses are being offered entirely at local expense.

Representative Townsend said over 200 Hale-Aiken County-wide Citizens' Committees approved State financing for driver education in 1957, about 20 other States now finance driver education in their schools, and in those States, graduates of the courses are being involved in 20% to 50% fewer traffic crashes than fellow students who did not take the course.

Sheep Breeders Have Annual Meet

Members of the Texas Sheep Breeders' Association met last Saturday night, January 26, at the Western Hills Motel, Fort Worth for their annual session.

They voted to have the Annual Wool Show and Sale at Brownwood May 15 through 18 this year.

Further information concerning the show and sale may be secured from W. A. (Bill) Strickland, President, Brady, Texas or Mrs. Hamilton Choat, Secretary, Olney, Texas.

Next annual meeting will be held in Brownwood. Mr. and Mrs. Glynn Sanders of Mullin attended the meeting.

Kelly News

By MRS. M. C. PARTRIDGE

I don't know much news that has been happening in the community the past week as I have been away. Juanita and I left on the bus for Houston on January 24. We arrived just in time to welcome a new comer into the James Partridge home. Miss Sarita Jo arrived at 10:22 a. m. She has a brother, Keith, 13 months old. He is spending the next two weeks with us. We returned home Saturday morning, February 2.

Mr. and Mrs. W. G. "Bill" Rose and boys of Dallas spent Sunday with his parents, Mr. and Mrs. Neal Rose.

Mr. and Mrs. J. W. Featherston visited in the M. C. Partridge home Sunday afternoon.

Mrs. J. W. Featherston visited Mrs. Hersey Featherston in Goldthwaite Saturday afternoon.

Personal

Mrs. A. L. Cole and sister, Mrs. Ola Howell of Star, were business visitors in Hamilton Wednesday.

We're having a **65th Anniversary**

SPECIAL HALF SLIPS

by **LORRAINE**

Regularly 2.95
NOW ONLY \$1.95

Lace and Embroidery Trimmed

- White
- Black
- Pastels

Small, Medium, Large
In 100% Nylon
Tricot

Little's
"SINCE 1898"



LOCAL MARI
CATTLE MARK
LOMETA COMMISSION
February 8, 1963
Market a little lower
Lasses,
about steady. Kill
ready with last week.
Light steer calves,
39.00; medium steer
35.00-38.50; heavy steer
32.50-36.00.
Feeder steers, 22.00-
Light heifer calves
1.00; medium heifer
1.00-25.50; heavy heifer
1.50-21.00.
Feeder heifers, 21.50-
tucker Cows — \$125.
Hills, by the head, 175

Tots-To-Tee
Shop Sold
Lane Hamilt

and Elaine of Dallas
end guests of Mr.
Wall.
Mrs. E. R. Henry
spent Sunday in
and Fort Worth
Mrs. J. W. Christian
and Mr. and Mrs.
Frances and Bill
Mr. and Mrs. B.
family of Fort
er home. She said
at the plans to leave
week of 10 days, a
can dispose of ot
Mrs. Hamilton is a
Goldthwaite and is
the business circle
living formerly been
has here for a number
The business will co
same location u
ma name of Tots-
shop, Mrs. Hamilton

City Electi
et For Mu

Mayor G. O. Henry 1
a city election to l
e City of Mullin on
April 2, being the first
April.
The election is for
se of electing a m
derman and a city
r regular two year
rding to official r
aring in this issue.
The election will b
e G. I. Building in
nry announced.

Central Tex
boys Evant

Central Texas Tele
crative, Inc., has
o Evans Telephone
was announced th
C. Sumner, manag
-op, at the comp

ost Office
o Have Holi
n February 2
Goldthwaite post
ve a holiday next
y, February 22, wh
ton's birthday will
as a local holiday.
There will be no r
service and only
idow service for
d, from 8 to 9 a.
All special delive
l be given promt
vice and the regu
chedule for receipt
ch of regular m
ferred.

GIVE APPLIANCES

They're the Heart of a Home!
For Valentine's Day or Any Day Throughout The Year



And Select **FRIGIDAIRE**
The Nation's First Choice In Appliances

Frigidaire Refrigerators Now Available In Lifetime Porcelain Finish

See Them On Display At **Mills County Hardware**
Claudia Cockrum

Taxpayers Reminded About The Need For Identification Numbers

Taxpayers were reminded today by Dallas District Internal Revenue Director Ellis Campbell that under a recent law they are required to enter their identifying "tax account" numbers on 1962 income tax returns filed in 1963.

For the individual, this is his social security number, or similar number issued for tax reporting purposes if he has never had employment under social security coverage.

Use of identifying numbers is essential to electronic processing of returns, now being installed nationwide by Internal Revenue, Mr. Campbell said. He added that failure to show account number may delay any refund due.

Taxpayers still needing an account number should apply at

once to the District Director's office, or to the District Office of the Social Security Administration, or by writing to Internal Revenue Service, Post Office Box 211, Baltimore, Maryland.

Director Campbell pointed out also that payers of dividends and interest are required to obtain the account numbers of their shareholders and depositors and to use them on information documents submitted to Internal Revenue.

He said receivers of income from these sources should comply promptly when they get requests for their account numbers from the paying organization. This also is required by law, he added.

Review of the early-filed Federal tax returns in the Dallas District reveals that some taxpayers are failing to fill in all required data, Director Ellis Campbell said today.

Mr. Campbell said individual and business taxpayers particularly should carry forward to proper lines on the face of the return data from any attached schedules.

Director Campbell said it is important that returns filed this year be accurate and complete. Internal Revenue is turning to electronic computers to maintain taxpayer accounts. For this system to function beneficially for the Government and for taxpayers, manual editing of defective returns must be reduced to a minimum, he said.

Mr. Campbell also called attention to the legal requirement effective this year that taxpayers enter their tax account identifying numbers on returns. For the individual, this is his Social Security number, or a similar number assigned for tax purposes. Director Campbell said his office will supply application forms for any persons still needing numbers. This also applies to business taxpayers, who must enter their Employer Identification Number on their returns.

Mr. and Mrs. Hershel Williams of Shive were guests of his parents, Mr. and Mrs. W. Williams, Sunday.

GIFTED BOYS for VALENTINE'S DAY

WE'VE FRIVOLOUS FANCIES AND PRACTICAL TREASURES TOO!



Make her heart beat faster, with one of our Gifts! We have large selection of useful and practical Gifts for your Valentine Giving.



YARBOROUGH & DUREN

"The Friendly Store Where Your Money Buys More."

reach... 

FOR EXCITEMENT through Journalism

Cape Canaveral, tourtrons, police stations, baseball diamonds; and the football gridiron are a few of the places you may go as a news writer.

For more information see or write:

- ... YOUR LOCAL NEWSPAPER
- ... HIGH SCHOOL COUNSELOR
- ... NEAREST COLLEGE JOURNALISM DEPT.
- ... TEXAS PRESS ASSOCIATION

Texas Press Association
1716 SAN ANTONIO STREET, AUSTIN 1, TEXAS
(This ad prepared by Texas Tech Journalism Department)