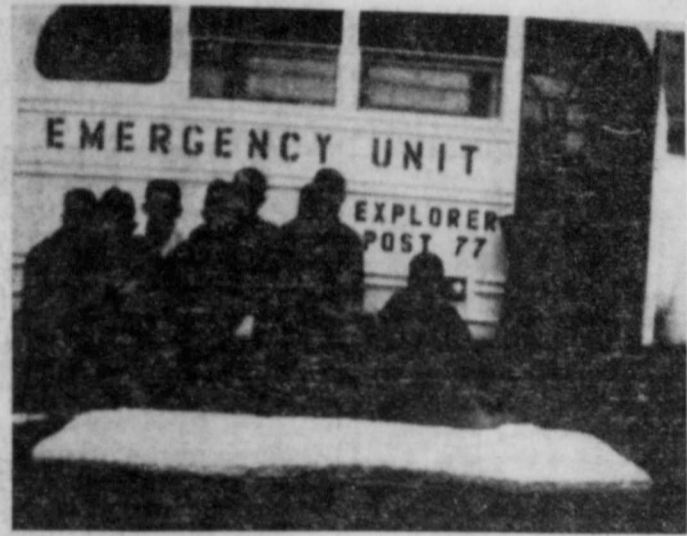


The Goldthwaite Eagle

ESTABLISHED 1894

GOLDTHWAITE, MILLS COUNTY, TEXAS

SINGLE COPY, 10¢ THURSDAY, OCTOBER 27, 1960



MOBILE EMERGENCY UNIT—The Mobile Emergency Unit pictured here is sponsored by Goldthwaite Explorer Post 77. Post members shown here with their advisor are from left: Cecil Campbell, Lynn Elliott, Jerry Duren, Jackie Burns, Gene Aldridge, L. V. Benningfield, Jr., Jerry Stanford, Terry Pribble and advisor Jack Burns.

Mobile Emergency Unit Is Being Sponsored By Explorer Post 77

Members of Goldthwaite Boy Scout Explorer Post 77, are sponsoring a mobile emergency unit for Mills County as a service project in competition with other Explorer Posts of the state in a contest that is sponsored by the Sears Foundation.

Goldthwaite Post members started their project several weeks ago when they put on a fund-raising campaign to purchase the school bus that was converted into the Emergency Unit.

All seats were removed from the bus and equipment was installed. Included in the installation are a portable electric generator, first aid equipment and supplies and short wave radio facilities. Application for permit for the short wave radio is pending.

The unit is stationed at the fire station at the city hall and will be available for any emergency in Mills County. It is designed particularly for civil defense purposes.

Operating committee for the unit in addition to Post Advisor Jack Burns, include: Dr. M. A. Childress, physician, Roy Wilkins, ambulance service, C. F. Stubblefield, sheriff, and superintendent of schools, J. T. Jones.

Members of Post 77 who took part in the project are Tom Graves, Mike Hoover, Charlie Wilkins, Gerry Head, Terry Pribble, Jerry Duren, Jerry Stanford, Glen Tabor, Jimmy Smith, Ray Pope, Gary Hammond, Jerry Skiles, Jackie Burns, Jim Musgrave, Lynn Elliott, Cecil Campbell, Steven Oliver, Clyde Cockrum, Gene Aldridge and L. V. Benningfield, Jr.

Post 77 committee members are Norman Duren, chairman, Julian Evans, Roy Wilkins, Dr. T. C. Graves and A. M. Pribble.

The project is to be completed and enter the state competition by Tuesday, November 1.

First Baptist Church To Observe Diamond Jubilee November 16-20

Annual Range Field Day Is This Saturday

Plans have been completed for the annual Range Field Day this week Saturday, according to Elgin Smith, Conservationist of the Mills County work unit of Brown-Mills Soil Conservation District.

The tour will be directed by the Soil Conservation District members, with Mills County State Bank joining in sponsoring the event and serving a barbecue dinner Saturday noon in the pecan grove on the Wilson Head farm.

Plans call for the group to meet Saturday morning at 9:00 o'clock on the north side of the courthouse in Goldthwaite. They will leave at 9:30 and will tour pastures belonging to Ray Standley, Mrs. Lee Henry and Wilson Head.

The major theme of this program will be on the use of range plants and how they influence more economical production. The tour will show the results of deferments which improved these pastures through plant succession. A portion of the tour will include talks by Soil Conservation personnel on topics such as: The response of different grasses to various degrees of utilization; Management during poor range conditions. A question and answer session will be held during and following the tour.

All interested parties are invited to participate in the field day.

The First Baptist Church, Goldthwaite, will observe its Diamond Jubilee November 16-20. The celebration will focus attention on seventy-five years of service of the church in Goldthwaite. The church was organized November 15, 1885, when Goldthwaite was still a town of tents.

Special speakers for the celebration will be Ray V. Mayfield, Jr. on November 16; Dr. W. R. White, J. T. Ayers and Dr. Charles Jackson on November 20. E. E. Dawson will be on the program for Sunday morning, November 20.

Pastor, Presnall H. Wood, has written a brief history of the church which will be distributed during the jubilee. It is entitled "Some Through The Fire."

The anniversary committee is composed of Charles Conrad, Loy Long, Mr. and Mrs. R. V. Littlepage, Mrs. E. B. Gilliam, Jr., Mrs. V. C. Bradford and Mrs. F. W. Lewis. This committee is collecting any items that would relate to the history of the church in order that they might be displayed during the celebration.

It is hoped by the committee that many former members and friends of the church will participate in this Diamond Jubilee celebration.



GRAND CHAMPION STEER—Lynda Cook, 13, Mills County 4-H Club member from Star, showed the grand champion steer at the Texas State Fair for 1960 in Dallas last week. Lynda is shown here with her 720 pound Hereford and State Fair officials and the buyer of her champion. They are from left, Ben H. Carpenter, head of the junior auction sales committee; James H. Stewart, Fair executive vice-president, and Randall Davis, manager of Sheraton-Dallas Hotel which bought the top animal for \$6,000. The hotel donated the beef to St. Paul's Hospital.

Lynda is the daughter of Mr. and Mrs. L. A. Cook of Route 3, Goldthwaite, and an eighth grade student of Star Junior High School. The champion was selected from her father's registered Hereford herd last February and fed under the supervision of County Agent George Reese.

—(Dallas News Photo)

Markets

Large sale at the Mills Commission Company showed a good increase in the head selling. The head sold last Friday with an increase of \$1.00. Monday of this week showed an increase of \$1.00 with 4,300 head through the auction.

Prices were variable for sheep and goats on sales days.

SHEEP
 Lambs, 14c to 15½c;
 yearlings, 14c to 14c; yearlings, 8c to \$11 per head;
 ewes, 7c to 11½c;
 stocker ewes, 5c per head.

GOATS
 Goats, \$8 to \$10;
 weighing kind, 4½c;
 yearlings, \$5 to \$8;
 ewes, 3c to 4c;
 \$9 per head.

Perry Is Speaker For Brotherhood

Superintendent of the school for boys at Goldthwaite will speak to the Brotherhood of the First Church next Tuesday, November 1, at 6:30 p. m. in the chapel of the school.

Breakfast will be served at the banquet room at 7:00 a. m.

All interested parties are invited to attend this service. Refreshments will be served by the ladies of the church.

Rev. Wood.

Approved For New Building Mills County State Bank

The new building for the Mills County State Bank was approved by the board of directors in regular meeting Wednesday morning, October 26, 1960.

The project is to be completed and enter the state competition by Tuesday, November 1.

Special added feature will be a community room.

board of directors rooms, book-keeping department, room for four tellers, file and storage room and kitchen.

Special added feature will be a community room.



JOHNNIE BETH ELLIOTT
HARVEST QUEEN—Miss Johnnie Beth Elliott was crowned queen of the Goldthwaite P-TA annual Harvest Festival Friday night, before a large gathering of students, friends and parents, by Mrs. Walton Daniel, P-TA president. Johnnie Beth is a Junior, a member of the Pep Squad Cheer leaders and is active in various school activities. She is the daughter of Mr. and Mrs. John Elliott and was escorted by Jerry Duren, son of Mr. and Mrs. Norman Duren.

Shelton Bros. Make Improvement

Shelton Bros. Motor Company is making some improvements in their building to enable them to better display their new Studebaker Larks.

They are moving their lubrication department to the rear of the building and using the space to build new glassed in display showroom for new cars. Changes will also be made to enlarge present showrooms that will enable the firm to display five or six new cars.

Taxes On Gasoline

In Texas You Pay 90¢ Tax On Ten Gallons Of Gasoline!

That's the lead line in a special ad appearing in this edition of the Eagle which points out the high rate of taxes paid by motorists on gasoline.

The ad shows other interesting figures with regard to gasoline taxes and how they have risen in the past ten years, compared to living costs in general and increase in price for gasoline.

This information is presented in the public interest by the Gasoline Tax Education Committee.

Eagle subscribers are urged to read the entire message presented on the subject in the ad.

Mrs. Stella Gonzales visited her grandmother, Mrs. Juanita Flores, Saturday.

Star Tigers Defeat Priddy Pirates 31-22, On Eagle Field

By LULA MAE HURST

In an exciting, spine-tingling game played at Goldthwaite last Thursday night the Star Tigers defeated the Priddy Pirates by a score of 31-22.

On a fifty yard run by Bobby Boykin, a screen pass from Karry Harper to Larry Boykin netted 40 yards. A 20 yard run by Jimmy Soules and an extra point by Donald Seward brought the score to 19-0 at the start of the second quarter. Priddy came back in the second quarter and scored two TD's and one extra point, making the score 19-14 at half-time.

Star opened the scoring in the second half in a double reverse with Jimmy Soules running 35 yards for score. Priddy returned the compliment and the score at the end of the third quarter read 25-20. Star scored again in the fourth quarter with Soules making the score.

Priddy threatened in the last quarter but was unable to cross the goal line. Star was caught behind the goal in closing play and the final score read 31-22.

Jimmy Soules and Donald Seward were outstanding on offensive for the Tigers and Wesley Schmidt and Alvis Lee on defense.

The next game for the Tigers will be on October 27 (tonight) at Star with the Pottsville team. This will be the second game played at Star and will also be the first District game for the Tigers. Everyone is invited to come out and back the Tigers in their first district game.

Eagles Play Burnet There Friday Night

After an open date last week, the Eagles are ready and in fine shape for the game tomorrow night when they journey to Burnet and meet the Bulldogs in their second conference game of the season. Last year the Eagles defeated the Bulldogs and are hoping for the same thing this year.

Coach Jackie Williams has announced that the Burnet Bulldogs are a strong team but were defeated by Copperas Cove 28-12 last week and with the Eagles all in fine shape the game tomorrow night should be very interesting for the fans who are expected to follow the team to Burnet. Game time will be 7:30 p. m. The next home game will be with Copperas Cove on November 4.

JR. HIGH TEAM LOSE TO BURNET
 The Junior High team lost 22-0 last week when they played the Copperas Cove team. The Goldthwaite Jr. High team lost to Burnet 22-0 Tuesday night.

Rev. Maeborn Sanner and family visited Mr. and Mrs. Bruce Burnett Sunday afternoon.

Cotton Growers To Vote December 13

Cotton growers will vote December 13 in their annual referendum to determine whether to use a system of marketing quotas for the upcoming crop of upland cotton, Ray Priddy of the Mills County Agricultural Stabilization and Conservation Committee announced this week.

If approved in the referendum, the system of quotas would

apply to the 1961 cotton crop. This would be the eighth successive year in which quotas have been in effect for upland cotton.

Upland cotton quotas have been proclaimed by the Secretary of Agriculture on the basis of an official determination that the estimated total supply of cotton for 1960-61 will amount to approximately 21.7 million running bales, or about 3 million bales above normal. The law requires the proclamation of quotas by Oct. 15 in any year when the total supply exceeds normal. Quotas do not take effect, however, unless approved by at least two-thirds of the growers in the referendum.

In announcing the upland cotton program for 1961, Mr. Priddy pointed out that only one allotment - price support program will be available to growers for their 1961 cotton crop. Legislation provided the so-called Choice (A) and (B) programs only for 1959 and 1960.

The national cotton allotment for 1961, he said, has been determined at 18,898,424 acres, compared with 16 million acres

in 1960. This 1961 national allotment plus a national reserve of 60,000 acres, will be broken down to States and counties, and individual farm allotments will be made available to producers before the referendum. The 1961 farm allotments as compared to 1960 may vary considerably in the extent to which they reflect the national increase, Mr. Priddy said.

If marketing quotas are approved in the December 13 referendum, price support will be available to growers who comply with their farm allotments at a level within the range of 70 to 90 per cent of parity. As in other years, the exact level of price support will be subject to penalties of 50 per cent of the June 15, 1961, parity price on the farm's excess production of the crop. In addition, none of the upland cotton produced on the farm will be eligible for price support.

If marketing quotas are disapproved for 1961, acreage allotments will remain in effect and price support will be available to cooperators at 50 per cent of parity, as provided by law.

AD FACTS
Number 19

Since 1951 the total use of newspapers by advertisers has increased 40%.

During the same period, color in newspaper ads has increased more than 100%.

TEXAS PRESS ASSOCIATION

VIC'S

SOLILOQUY



COOPERATIVE—"I've got a cow I want to sell you, Charlie."
"Yes? Would she fit into my herd?"
"No; I dunno as she would."
"Does she give lots of milk?"
"No, I can't say as she gives lots of milk, but I can tell you this: she's a kind, gentle, good natured, old cow, and if she's got any milk she'll give it to you."

A NEW BUSINESS—I don't know whether you have noticed it or not, but we have a new and growing business in Goldthwaite. Manuel's Carpenter Shop was opened on the West side of the square a while back by Floyd Manuel. Although he is not spending his full time in the shop yet, he is expanding the services available through the shop right along.

Floyd has been doing carpenter work and building in the county for many years and is still booked up with several jobs that will keep him busy for the next few months.

He hopes to get his commitments caught up in the next few months and then devote his entire time to the shop where he plans to take care of general run of carpenter shop work.

One item of interest, and new here, that he has added since opening is a machine sharpening service for all types of circular and hand saws. He has installed new equipment for this service and it should prove helpful to many who need that type of work done.

DESTROYING OURSELVES BY INCHES—Ralph T. Moore writes, in the Oregon Voter: "Our fondness for collectivism and its apurtenant togetherness serves the communist ambition well. For it weakens the sinews of our industrial power and tends to soften up the tone of our productive will. It also relieves the communist apparatus of much heavy expense since we voluntarily destroy ourselves by inches. The comrades have only to urge us on in the direction we seem to have chosen, that leading to the welfare-state."

A VISIT TO BRO. HAYS—It would be a good idea, wouldn't it, if a number of citizens would take time out and pay a visit to Rev. L. L. Hays, who is staying at Hickman Rest Home in Goldthwaite.

Bro. Hays has no doubt made thousands of visits to residents of this county and area during his many years in the ministry. Now that he has retired the table can be turned and many can return a visit, or drop him a note.

Tom Hickman, manager of Hickman Rest Home, said last week that Bro. Hays "just loves to have company, and we certainly want to extend an invitation to friends to come and visit him and also the other guests that are staying with us anytime."

Hickman Rest Home is located in the Saylor Hotel Building. **STUMPED**—Dr. Karl D. Butler, a leading agricultural economist, recently observed that the farm problem "has both presidential candidates somewhat stumped."

The two leading candidates are not alone in this predicament. It is true of the seekers of lesser office. And the reason is plain enough—it has been many years since the farm problem has been dealt with as an economic problem. Instead, it has been dealt with as a political problem. The result, as we can see today, is tragically incongruous. Farm income is down—despite the fact that the government has spent tens of billions in agricultural aids of various kinds—and the incredible surplus problem gets worse instead of better.

Past programs, then, have been utter failures. Present political proposals offer nothing really new, or anything that seems to have the ghost of a chance of success. It may be that Dr. Butler came to the root of things when he wrote: "Farm legislation will not be greatly improved until we have a better-informed citizenry willing to plow under unrealistic politicians rather than crops."

"TO SAVE, INVEST AND EXPAND"—Something like a "great debate" is going on concerning growth rate of this nation. Some argue that the rate is substantially less than it should be and could be, and that stimulation is necessary—to assure our future material well-being and to maintain and increase our strength as a world power.

The arguments aside, Secretary of Commerce Mueller recently described how increased economic growth can be achieved. His prescription is tax reform. In his words, "One of the best encouragements to growth would be a drastic tax revision that would sharpen incentives, widen the flow of savings and remove barriers to investment. The way to increase business activity and make jobs is to save, invest and expand."

The existing tax system, which places heavy penalties on success, whether of an individual or a business, is a barrier to saving, to investing and to expansion—to the detriment of everyone.

THE GOLDTHWAITE EAGLE
AND
THE MULLIN ENTERPRISE

Published Every Thursday at Goldthwaite, Mills County, Texas

AN INDEPENDENT NEWSPAPER

Member 1960
TEXAS PRESS ASSOCIATION

Victor E. Koleber Editor and Publisher
Alma Williams News Editor and Adv. Manager
Ruth Ervin Society Editor and Circulation Mgr.
Arnold Kelly Mechanical Superintendent
Roy Lee Hill Linotype Operator and Printer

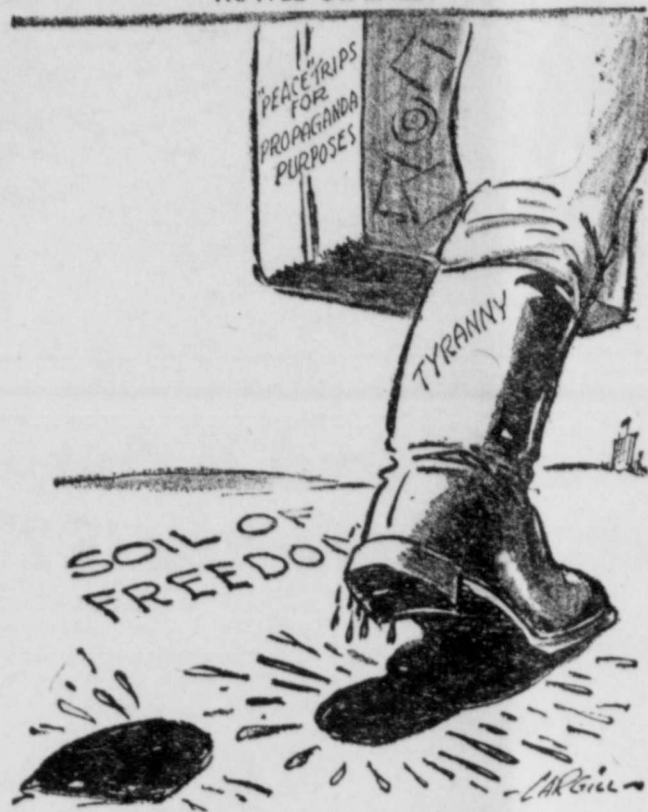
Entered as Second-class Mail Matter at the Post Office in Goldthwaite, Texas, under the Act of Congress, March 3, 1879.

SUBSCRIPTION RATES

Mills and adjoining counties — per year, \$3.50; six months, \$2.00. Elsewhere in Texas — per year \$4.00; six months, \$2.25. Outside Texas and Overseas — per year, \$5.00; six months, \$2.75. Single copy, 10¢. No charge for changes of address.

SUBSCRIPTIONS DISCONTINUED UPON EXPIRATION

TRAVEL STAINED!



WHEN THE OLD BIRD WAS YOUNGER

10 YEARS AGO—

(Taken from The Eagle Files of October 27, 1950)

Anxiety over Richard Sealy Reid, son of Mr. and Mrs. A. A. Reid, of Route 3, Mullin, was alleviated this week with receipt of official word from Washington that he was not listed among the casualties of the U. S. S. Pledge, which was sunk in mixed waters off Korea a little more than two weeks ago.

The way for widening and paving of additional farm-to-market roads in Mills County was cleared this week when County Judge Lewis B. Porter, Precinct 2 Commissioner Fred V. Wall and County Attorney A. M. Pribble obtained right of way deeds in the Moline area.

Mr. and Mrs. O. B. Bell of Route 3, Mullin have announced the engagement and the approaching marriage of their daughter, Vera Mae, to Jack Simpson of the United States Air Force. He is the son of Mrs. Elam Kelly of Goldthwaite. The wedding will be solemnized November 25 in the home of the bride's parents.

Aaron B. Kelly, 56, a native of Goldthwaite, died on October 15, in the Veterans Administration Hospital in Dallas. He was the son of the late Mr. and Mrs. P. O. "Tobe" Kelly.

J. O. Rudd of San Angelo, son of Mr. and Mrs. Jim Rudd of Route 1, Goldthwaite, was seriously injured in an automobile wreck on Thursday of last week near Lubbock while returning from a moose hunt in Utah and Colorado. He was treated in a hospital in San Angelo and then was returned to his home in a plaster cast.

B. J. Crawford, who has lived in the Chappell Hill community for 52 years and who celebrated his 88th birthday last July 14, came to Goldthwaite last Monday afternoon to attend the cattle sale, at the auction barn south of Goldthwaite.

IT PAYS TO ADVERTISE

LAFF-A-DAY



© 1960, King Features Syndicate, Inc., World rights reserved.

News From Your

COUNTY HOME DEMONSTRATION AGENT

By RACHEL B. TRENT

DATES TO REMEMBER:—Monday, October 31, 1960 — listen to Radio Station KBAL at 10:00 a. m.

Monday, October 31—3:30 p. m. to 5:00 p. m., the Mills County FHA, and 4-H girls will meet at the Goldthwaite High School auditorium to learn how to model for the Wool Show on November 19 and the County Dress Review January 8, 1961.

Wednesday, November 2—The Mills County Home Demonstration Council will meet at 2 p. m.

in the agent's office. Wednesday, November 2 — The Priddy 4-H girls will meet at the residence of Mrs. Otto Stegemoller, to work on their sewing.

Thursday, November 3 — The Food Leaders, the Club Presidents will meet at 11:00 a. m. for a demonstration on Plan, Prepare and Serve Appetizing, Nutritious Meals, which will be given by the agent, at The Methodist Fellowship Hall.

was solemnized at the residence of the bride's parents two miles east of town Wednesday evening at 7:00 o'clock, Judge G. H. Dalton officiating.

Mrs. Elizabeth Cryer, wife of Mr. R. Cryer, died at the family home three miles north of this city Monday afternoon at 4:00 o'clock and Tuesday afternoon her remains were laid to rest in the North Brown Cemetery.

Born Wednesday night to R. E. Clements and wife, a son. J. N. Keese has had an addition built to his residence.

Miss Cora Hearne writes to have the Eagle sent to her at Lamar, Arkansas.

Wiley Urquhart, the "horse dentist" of San Saba, has been here this week practicing his profession. John W. Mills, who recently moved here from Hanna Valley, has moved to Rock Springs community.

Riley Welch of Center City left last Saturday for Fort Worth to attend the Polytechnic College. Mrs. Welch came in Tuesday and ordered the paper sent to his address. Dr. Barton received a telegram Wednesday night from Kilgore announcing the serious illness of his brother, J. A. V. Barton and he left Thursday for that place. Thirty minutes after he started a message was received announcing the death of his brother. He expects to return tonight.

J. W. Roberts is employed as salesman in W. N. Bowden's store during the illness of C. C. Yarborough.

There is no doubt that this country is rapidly recovering from the depression, if it has not already recovered. There is evidence of improvement and prosperity in every direction.

Rain that commenced to fall here Tuesday and continued through Wednesday and Thursday has been general throughout this section and was heavier in some parts of the country than in Mills County, although the moisture that fell here was sufficient for present needs and has put the ground in fine shape for plowing.

Clifford Hammond and Miss Anna Beth Davis, both of the Center Point community, motored over to the Hays home last Saturday morning and were solemnly but joyously united in marriage.

60 YEARS AGO—

(Taken from The Eagle Files of October 27, 1900)

The marriage of Mr. Andrew Graves and Miss Bina Weathers

Depend on trucks?



Light and medium-duty models have V-8 engines as standard equipment.

Depend on us for the right ones!

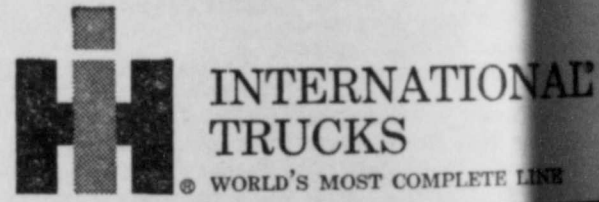
We offer the world's most complete line of trucks. We know which of our many farm-proved trucks match your needs.

We provide the most thorough truck service.

See us about trucks... we know!

DUREN EQUIPMENT CO

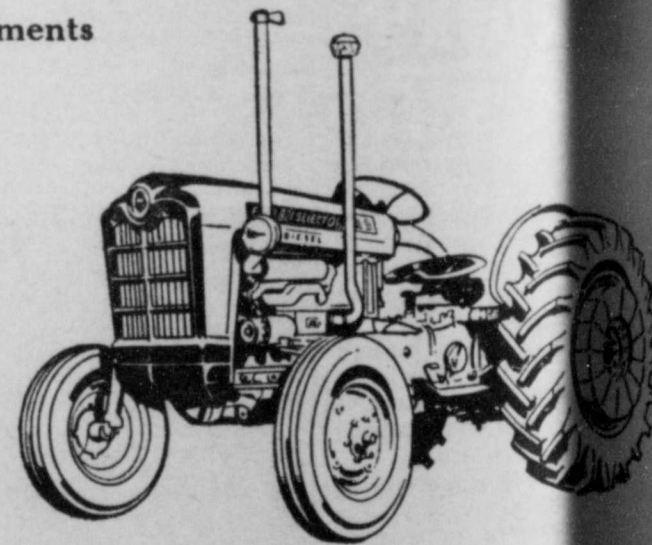
Goldthwaite, Texas



NEW CREDIT PLANS

- Lower Down Payments
- Longer Terms
- Lower Rates

On A
New
FORD
TRACTOR



Did you know? Now you can buy Ford tractors and implements with as little as 20% down! That's ONLY one-fifth of the purchase price. And more than likely your trade-in will cover the down payment. Other liberal plans are available.

Easy monthly payments can run as long as 36 months! And you can even arrange to skip payments to ease you over the low cash income periods.

Or, if you like a crop payment plan, you can now TAKE UP TO 4 CROP-YEARS TO PAY. Whatever your credit needs are, you will find your friendly Ford tractor and implement dealer ready and willing to help solve your buying problem... make it possible for you to have that new tractor or implement WHEN YOU NEED IT.

DON'T DELAY... BUY FORD TODAY!

Ford Tractors and Implements

San Saba Tractor Company

Max Mahan and Rex Mahan Jr.

Phone 232

San Saba, Texas

Barbara Dell Burns And Gayle Rider Exchange Vows



MRS. GAYLE RIDER

Miss Barbara Dell Burns became the bride of Gayle Rider, October 15, 1960, in the presence of her immediate family and close friends.

Barbara is the daughter of Jack Burns of this city and Mrs. Odell Burns of Coahoma, Texas. She graduated from Goldthwaite High School in 1958 and attended the Kansas City Art Institute, and is presently employed in the City Tax Department of San Antonio.

The bridegroom is the son of B. L. Rider of Uvalde. He graduated from Corpus Christi High School and attended A&M College, where he specialized in Architectural drawing. He is now engaged in designing homes and real estate business.

Mr. and Mrs. Jack Leech Jr. and son, Stanley Scott, of Farmington, New Mexico are guests of Mrs. Leech's mother, Mrs. Alice Vaughan.

Officers And Directors Elected At Annual Farm Bureau Meeting

The third annual meeting of Mills County Farm Bureau was held Saturday night, October 22 at the high school auditorium. The barbecue supper, with Precinct 3 as hosts this year, was served to the largest group ever assembled for a Farm Bureau meeting at the high school lunchroom. After the supper the group adjourned to the auditorium for the business meeting, with president, Homer McCasland, presiding.

The meeting was called to order by Mr. McCasland and W. W. Fox, secretary and treasurer, read the minutes of the last meeting, which were approved. Mr. McCasland gave a resume of what the Farm Bureau had accomplished in 1959-60. During the business meeting the Farm Bureau Queen, Miss Marianna Egger, was presented to the members and guests. One amendment to the By-Laws was made and approved by the members.

Following the above named business the election of Directors was held with W. G. (Bill) Bishop being elected for Precinct 1; Clyde Kerby, Precinct 2; Allen Hardgrave, Precinct 3; and Mohler Simpson, Precinct 4.

The president is elected from the directors and W. G. Bishop was elected president with J. D. Berry being elected vice-president; W. W. Fox, re-elected secretary-treasurer and Mrs. Alma Williams, re-elected reporter. Mr. and Mrs. W. G. Bishop and Mr. and Mrs. J. D. Berry were

elected delegates to the State Convention.

After the election of directors and officers Mr. McCasland reported on two projects for the Farm Bureau to consider. A motion was made and seconded for the projects to be brought up at the directors meeting and decided upon. Mr. McCasland also gave the financial report for the past year and stated that the quota for 1960 is 250 members by October 31, and that the Bureau only lacks 25 members of reaching this quota. He also introduced the Farm Bureau secretary, Mrs. Hamil Lynch and announced that if at any time any of the members needed help in their Farm Bureau work that she would be glad to help as the office is open six days weekly in the Duren Equipment Company building.

Mr. McCasland was presented a gift by David Watters in behalf of the work he had done for the Bureau the past two years.

A closing talk and reading of resolutions by V. Z. Cornelius concluded the program and meeting for the year.

Judge Shelby Cox Receives Honors

Judge Shelby S. Cox, of Dallas was surprised last Monday night with the presentation of a rare life membership in the Oak Cliff Chamber of Commerce and a life membership on the board of directors.

Judge Cox has served more than twenty years as legal counsel for the chamber thus became legal counselor emeritus.

He was born in Mullin and attended school in Goldthwaite and Temple public schools, graduating from high school in Temple.

He enrolled in the University of Texas Law Department in 1907 and in 1922 he moved to Dallas and became district attorney.

Pleasant Grove Club To Have "42" Party

Mr. and Mrs. O. Z. Berry will be hosts to the Pleasant Grove Club at the schoolhouse Saturday night, October 29, for a "42" party.

Everyone is asked to bring their card tables and dominoes. Visitors are always welcome.

HD Exhibit Committee Makes Plans For Annual Stock Show

Members of the Exhibit Committee of the HD Club of Mills County met in the home of Mrs. Lee W. Tabor Thursday morning, October 20 and discussed plans for the annual exhibit to be held in connection with the Stock Show in January.

Everyone in the Home Demonstration clubs over the county are urged to be sure and start now to prepare something to place in the exhibits; from one to three entries each.

Non-club members will be welcomed and their exhibits will be in a class by themselves and everyone is urged to bring in as many articles as they will.

Exhibits will consist of such things as crafts, hobbies, quilts, pictures, all types of handiwork, pillows, Christmas stockings, tablecloths, etc. Also all types of canned fruits, vegetables, jellies and preserves, according to Mrs. Tabor.

Entries must be in by January 10, 1961. Each entry must be labeled with name and address, name of article and name of club.

Naval Recruiter Here Thursday

U. S. Navy Recruiting Service announces the opening of a recruiting office to be located on Howard Payne campus, Naval Reserve Building, 1117 Fisk Ave., Brownwood.

The Brownwood office covers the following counties: Brown, Mills, Coleman and Comanche. Office hours are from 8 a. m. to 4 p. m., Monday through Friday.

The Naval Recruiter Richard D. Phillips will visit the post office building at each county seat each week to answer questions and give further information. He will be in Goldthwaite each Thursday, 8 a. m. to 12 noon.

PARENT PROBLEMS

Will Bright Youngster Become Gifted Youth?

By GARRY CLEVELAND MYERS, Ph.D.

YESTERDAY we presented some scientific findings about gifted youths of high school and college age.

We noted that, whereas numerous studies of gifted school children indicated that many of these children revealed giftedness before they entered school, there are no conclusive data to warrant our saying that any child who evinces precocity at three, four or five will surely reveal giftedness at eight, 12 or 20.

Appropriate Question

A practical question remains to the parent who supposes her child two to five is precocious: Will he evince the superior mental ability throughout his school life?

Parents can, of course, misjudge the mental caliber of their young child. Yet their judgment can be corrected or justified with the aid of intelligence tests. Granted a certain youngster at three or five is known to have much better than normal native mentality, what assurance will this fact give that this child will be identified as gifted later in school?

A Hazard?

Because of his precocity, is there any danger that he might acquire personality traits which could hamper his best mental development?

Suppose he does not catch on?

early in the grades at mastering good reading skills or skills in other school subjects? Suppose at school what he is expected to learn becomes boring to him and his attitude of inattentiveness to matters at hand results in his failure to master certain fundamentals? Suppose he drifts into habits of listlessness, indifference and laziness toward work?

Inclined To Loaf

Many a very bright child, finding some of his lessons at school too easy to challenge his efforts, might loaf along and fail to master certain essentials.

A great many such children have been identified early enough to salvage them and enable them to approach normal development of their native capacities. But presumably many are found rather late or not at all.

(My bulletins, "Home Helps in Reading, Spelling, Arithmetic and Handwriting", may be had by sending a self-addressed, U. S. stamped envelope to me in care of this newspaper.)

Answering Parents' Questions

Q. Sometimes our daughter, seven, denies having done what I saw or heard her do.

A. In such cases, ask no questions. Be decisive and usually more severe than if you learned of the matter otherwise.

© 1960, King Features Syndicate, Inc.

BIRTHS

Mr. and Mrs. Wayne Horton of Lewisville, Texas, announce the arrival of twin sons, Michael Paul and Myrion Edgar, born October 23, 1960. The boys have a big sister, Sharon, to welcome them home.

Grandparents are Mr. and Mrs. V. T. Horton and Mr. and Mrs. A. R. Welch, all of Route 3, Goldthwaite. Great-grandparents are Mr. and Mrs. Willis Horton and Mr. and Mrs. Hardy Collier, also of Route 3, Goldthwaite.

Personal

Mr. and Mrs. Roy Bankhead, Mr. and Mrs. U. D. Williams and Mr. and Mrs. Olen Simmons, all of Grand Prairie, Mr. and Mrs. Hershall Williams and family of Shive, Junior Rucker and his friend of Arlington and Miss Wanda Williams of San Angelo spent the weekend with their parents and grandparents, Mr. and Mrs. W. W. Williams.

Dorothy Perkins
HAND AND BODY CARE

HORMONE LOTION
Fortified with Hormones
Regular \$2.00... NOW \$1.00 PLUS TAX

1/2 Price Sale!

WEATHER LOTION
contains Glycerine for soft smooth hands.
Regular \$1.00
NOW 50¢ PLUS TAX

HAND CREAM
with Lanolin
Regular \$1.00... NOW 50¢ PLUS TAX

HUDSON DRUG
"What You Want—When You Want It."

LIMITED TIME ONLY

Personals

Mr. and Mrs. Ray Duren, Mrs. Azilee Leineweber and Harold Yarbrough spent Sunday and Monday in Dallas where they attended market and purchased merchandise for their store.

Mr. and Mrs. Joe Anderson of Midland spent last weekend on their farm east of town and attended the singing in Goldthwaite Sunday afternoon. They had as their guests Saturday night Mr. and Mrs. Carl Spinks of Briggs.

Mrs. Juanita Flores and daughters visited relatives in San Saba Sunday.

Mrs. Irea Hammond and her mother, Mrs. Gertie Jamarr, accompanied by Rube Hammond,

visited in Lampasas and Burnet Sunday afternoon.

What To Do In The Garden

Air, sunlight, plant food and water are the requirements for growing of plant life.

Now is the time for us to get air in the soil. Soil should be spaded or plowed and permitted to dry out and crumble.

When your tender young plants come up, you must air the soil by digging or plowing, or by letting the soil crack before watering.

You can not live without the basic elements, so be it with plant life.

Padgett Floral
Phone MI 8-2616

Hamilton Beauty Shop IS NOW OPEN

At My Home — Next To Ball Park
On Old Priddy Highway

Phone MI 8-2649 For Appointment
Or For Transportation If Needed.

MRS. ZELMA HAMILTON — Owner & Operator



Announcing New Saturday Store Hours Effective November 5th

The Undersigned Business Firms Have Adopted New
Saturday Store Hours Starting Saturday, November 5th.

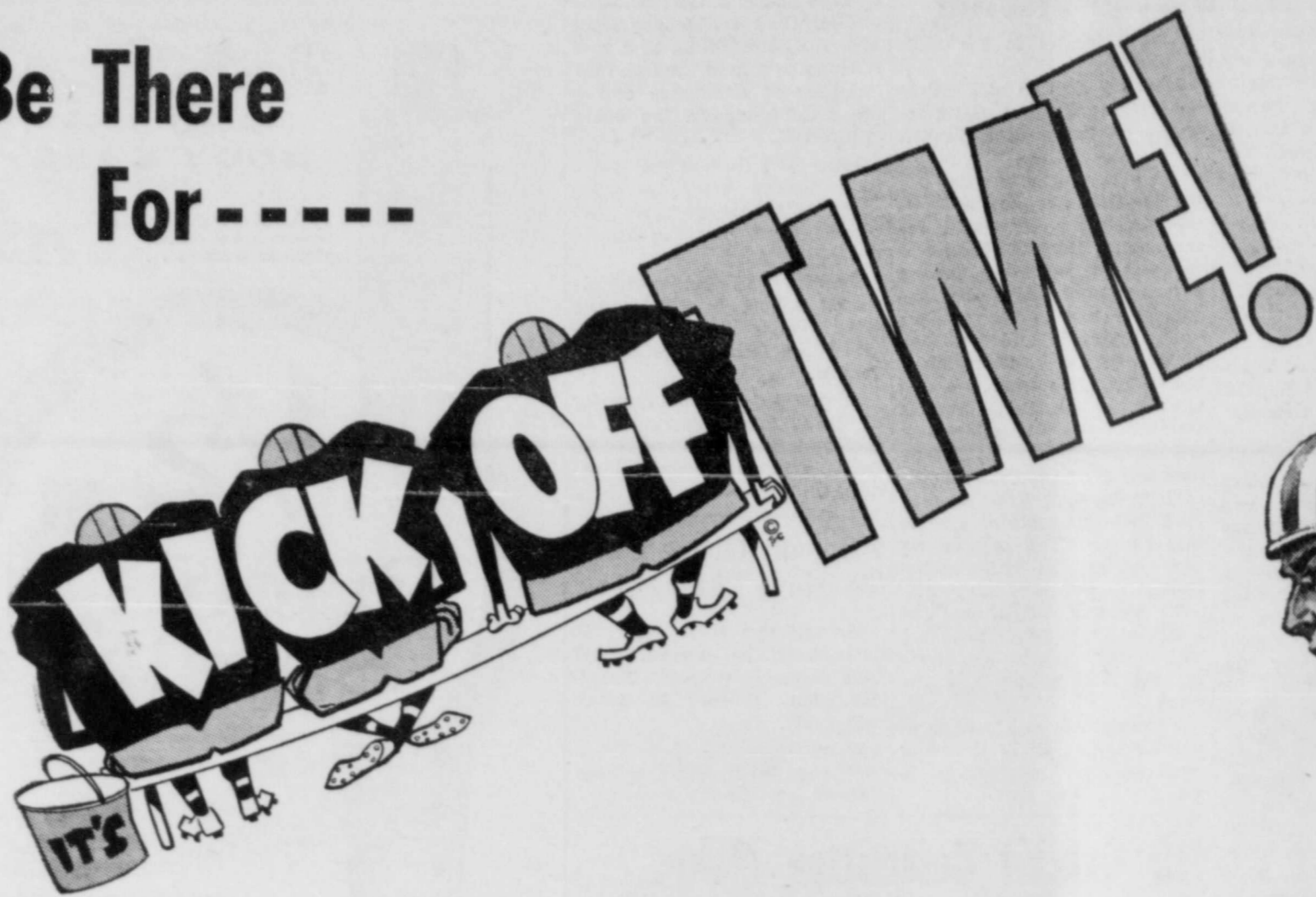
Will Close At Noon On Saturday

BARNES & McCULLOUGH
"Everything To Build Anything."
Phone MI 8-2411 Goldthwaite

A & A PAINT & SUPPLY CO.
Truett Aldridge — General Contractor
Fisher Street Goldthwaite

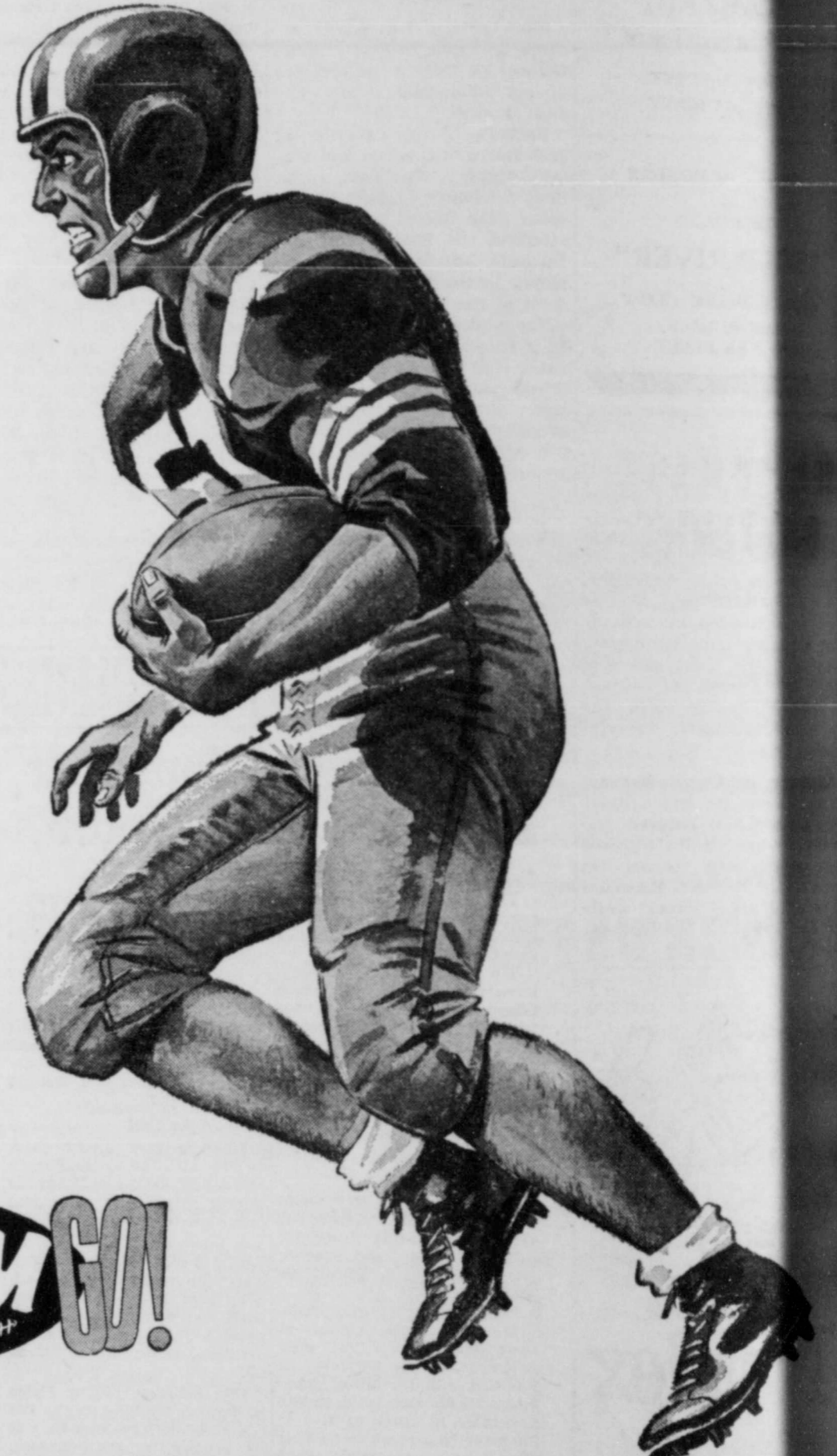
HORTON LUMBER COMPANY
M. F. HORTON
Goldthwaite, Texas

Be There
For -----



Friday Night
7:30 O'clock
At Burnet

Goldthwaite VS Burnet



The Following Civic-Minded Merchants and Individuals Urge You To Support
Our Team. Their Success Brings Credit and Recognition to Our Community.
Cheer Them On To Victory.

Schedule

- Sept. 2 - Goldthwaite 6 - Hamilton 60
- Sept. 9 - Goldthwaite 0 - Santa Anna 12
- Sept. 16 - Goldthwaite 0 - Llano 54
- Sept. 23 - Goldthwaite 0 - Evant 0.
- Sept. 30 - Goldthwaite 0; San Saba 42
- Oct. 7 - Goldthwaite 0 - Dublin 16
- *Oct. 14 - Goldthwaite 0; Mason 38
- Oct. 21 - Open Date
- *Oct. 28 - Burnet ----- There
- *Nov. 4 - Copperas Cove ----- Here
- *Nov. 11 - Marble Falls ----- There

*Denotes Conference Games

- | | | |
|------------------------------|---|---|
| Mills County State Bank | A Friend | Raley Clinic
Dr. and Mrs. R. Glynn Raley |
| Central Tex. Tele. Co-op | Barnes & McCullough | Childress Clinic & Hospital |
| Roy Wilkins Funeral Home | Manuel's Carpenter Shop
Floyd Manuel | Edgington Motor Company |
| Letbetter Machine Shop | South Side Grocery | Williams Texaco Station |
| Pure Milk Co. - Doug Collier | Moreland Feed Store | Don Geeslin Turkey Farm |
| Jack E. Burns | Shelton Bros. Motor Co. | Bobby Johnson Texaco Sta. |
| Wicker Studio | David Watters
Farm Bureau Insurance | Production Credit Ass'n |
| Burl Holland's Restaurant | Johnson Bros. Texaco Stn. | The Goldthwaite Eagle |
| Blackwell Wool & Mohair | Moore's Auto Salvage | |
| Whitley's Gulf Station | Woody Drug Store | |

Support The Eagles!! Attend The Games!!

STATE CAPITAL Highlights AND Sidelights by Vern Sanford

TEXAS PRESS ASSOCIATION

TEXAS — For years the link fence marked the boundary of the Austin grounds. It was a depressing, mile-long fence that barred wire at the sight of the people it was depressing, the long stretch of roses covering the fence, the change that state hospitals during 10 years as a re-engineering student and planted the

rose bushes. Thousands of people over the state have landscaped the grounds, redecorated the dining halls and reception rooms, built swimming pools, given parties, conducted classes, wrapped gifts and in hundreds of other ways brought beauty and warmth to state hospitals and schools.

In its fall report, the State Hospital Volunteer Services Council shows that volunteers gave 163,904 hours of time to state institutions during the past year. Figured at only \$1.00 per hour and adding in contributions of food, clothing, prizes, furniture, etc., volunteers enriched life in state institutions by more than \$538,996 during the year. This does not count considerably sums collected for all-faith chapels at several schools and hospitals.

Last year, 36,000 citizens went into 18 different state hospitals and schools to do volunteer work.

Impact of these volunteers is two-fold, says Miss Helen Colburn, coordinator of volunteer services for the State Hospital Board.

First, they help to create a pleasant environment which gives patients a better chance to respond to medical treatment.

Second, the volunteers learn the problems of the hospitals and schools and are an effective force in educating the community as to needs and goals.

"State money can't be spent for pictures or parties or swimming pools," said Miss Colburn. "It has to go for beds and food. But these other things are important. Patients respond to environment, and they respond to people. And they know the difference between people who are paid and people who come to help them out of sheer kindness."

Right now the volunteers are getting ready for their biggest undertaking of each year — Christmas. It means securing, wrapping and tagging about 26,000 gifts to keep up a three-year record of having a gift for each patient in the state system. It means decorations, trees, parties and caroling. In some cases it means setting up shops

where patients can get gifts to send to their families — often more ardently desired by the patient than a gift for himself.

Rate Decision Postponed — State Board of Insurance voted 2-to-1 not to adopt a recommended 133 per cent rate increase in certain types of auto insurance.

Board members R. W. Strain and Ned Price said they wanted to study the new state driving plan before approving any rate changes. They have been at odds with Board Chairman Penn J. Jackson who has recently advocated abolishment of mandatory merit rating. To scrap merit rating, said Dr. Strain, would penalize the 70 per cent of drivers who earn a discount for good driving records.

Board also refused by a 2-1 vote to allow insurance companies to disregard penalties against drivers involved in accidents presumably not their fault. This must be decided by a court, said Strain and Price.

Very few drivers seem to mind paying higher accident insurance rates because they are involved in accidents. But many do resent the assessment of a penalty based on traffic tickets issued. Especially tickets they feel were not warranted.

Still others contend that they are insuring their cars against accidents and not insuring themselves against traffic fines. Therefore if they are paying a premium for fines they should be reimbursed for those fines.

Average Speed Lawful—Average speed of Texas passenger cars on rural roads is 55.9 miles per hour, reports the State Highway Department.

This is below the legal limit of 60 miles per hour on most stretches of highway.

Average speed of buses, however, is 60.7 miles per hour. Trucks average 51.2 miles per hour. Legal limit for trucks and buses is 55.

Statewide speed survey is taken by the Department each year with concealed radar devices. Department found that 19.3 per cent of passenger cars were exceeding 60, a 2.6 per cent decrease from last year.

Students Galore — Texas is getting set for a bumper crop of college graduates in the sixties.

Commission on Higher Education reports the highest ever enrollment—90,035 students in the 18 fully supported state colleges and universities.

This is up 5,391 from last fall and a 60 per cent increase over 10 years ago. Biggest enrollments (in state schools) are at the University of Texas, Texas Tech, North Texas State, Ar-



By John C. White, Commissioner

PROCESSING AND FOOD DOLLARS

Explanations of why the farmer's share of the American food dollar keeps going down generally come up against the established fact that as the amount of food processing increases the farmer's share of the food dollar declines.

ington State and Texas A&M, in that order.

Biggest gains this year were UT and Arlington State.

Road Lag Averted—Release of additional federal funds will largely prevent an expected winter slowdown of highway work in Texas, State Highway Engineer D. C. Greer announced.

Only the November bid letting will be affected, said Greer.

This month the Highway Department tabulated low bids totaling \$19,030,137 for highway work. Next month the contracts are expected to total only about \$12,000,000, but by December the total should be increased again to about \$17,000,000 or \$18,000,000.

This will mean fewer workers laid off for the winter by contractors doing state highway work.

Short Snorts—Texas Railroad Commission announced that the eight-day oil production pattern will continue through November, making seven consecutive months of wells shut down 22-23 days a month. Daily allowable will be 2,667,508 barrels.

Texas cotton acreage allotment for 1961 will be 7,849,196 acres, the U. S. Dept. of Agriculture announced. This is a slight increase over this year's 7,377,151 acres.

The farmer's share of each dollar spent for food in 1959 was 38 cents. In 1940 it was 40 cents, and went up to 53 cents in the war year of 1945.

The wheat grower's share of each dollar spent for white flour is now 33 cents. When the flour is mixed with other ingredients and baked as white bread, the farmer's share for his wheat drops to 12 cents.

The corn grower receives 18 cents of each dollar spent for corn meal, but only nine cents of the dollar for cereals such as corn flakes.

On fresh green beans, the farmer receives 43 cents of each dollar. But if the green beans are processed and frozen, he gets only 19 cents of the dollar.

There are, of course, exceptions to the rule. Take citrus, for instance. For fresh oranges, the grove owner receives 32 cents of each dollar spent. This goes up to 38 cents for canned orange juice, and 43 cents for frozen orange juice concentrate.

The wheat used in baking a 20-cent loaf of bread costs less than 3 cents. In 1959, when the retail price of a one-pound loaf of bread averaged 19.7 cents, the farmer received 2.8 cents, the miller got .6 of a cent, the baker-wholesaler 12 cents, and the retailer 2.9 cents. The other 1.4 cents went for transportation, storage, handling and other processing.

The fact, of course, is that today the American housewife is buying convenience — freedom from kitchen chores. They are also buying food with less waste, needing less trimming, sorting, or washing.

Three so-called ready-to-serve meals costing \$6.70 for a

family of four could be prepared in the home kitchen for \$4.50, or \$2.20 less. The homemaker would use about 5½ hours to prepare these three home-cooked meals from start to finish, but only about 1½ hours to get the three ready-to-serve meals on the table.

The food cost saving of \$2.20 in the three home-cooked meals would represent an hourly wage of 55 cents for the four extra hours of work in preparing them.

These examples are extreme. Most families actually use a combination of foods—unprepared, partially-prepared, and ready to heat and serve.

MR. MRS. H. R. COLLIER ENTERTAIN GUESTS

Mr. and Mrs. H. R. Collier had as their guests recently, Mr. and Mrs. Loyd Hiller and children, James and Loretta, of Abilene; Mr. and Mrs. Vestus Horton, Mr. and Mrs. Darrell Head and children, Sandra, Dianne and Darrell Wayne, Mr. and Mrs. Lewis Covington, Mr. and Mrs. Lee Walton, Mrs. Carey Owens and Will Collier.

Mrs. J. Everett Evans and Gladys, Mrs. George Smith of Corpus Christi and Mr. and Mrs. Oscar Hill visited Mrs. R. L. Pike of Bangs last Thursday.

Hillside Mission

By LIDA BYRNE

Speaking of those who know better but are luke-warm, concerning souls, our Bible says:

"When I say unto the wicked, O wicked man, thou shalt surely die; if thou dost not speak to warn the wicked from his way, that wicked man shall die in his iniquity; but his blood will I require at thine hand." Ezekiel 33:8.

Save Up To 50%
A Cushioned Innerspring Mattress... For YOUR needs!
YOUR sleeping comfort!... Built for you! Using your cotton from your old bed...
WESTERN MATTRESS CO.
Box 5288 San Angelo, Texas
\$... SAVE SAVE SAVE... \$
In Goldthwaite — MI 8-2617

FULLER COVERAGE! LESS COST!
INSURANCE FOR YOUR NEW CAR
Phone MI 8-2481
Stacy's Insurance Agency
INSURANCE — REAL ESTATE — LOANS
Goldthwaite, Texas

REPUBLIC BATTERIES
POWERFUL
In Its Name
HEAVY DUTY!
DEPENDABLE!
LASTING POWER!
CLIMATIZED!
Warranted From
to 48 months
Priced From
\$6.95
up
Exchange
and get one
for this sale lasts
ELTON BROS.
Motor Company
Goldthwaite

The Falcon Wagon for '61 gives you the same winning combination of size, room, gas economy and dependable operation that makes Falcon America's No. 1 compact. Plus loadspace over seven feet long on a budget-loving price!

You never paid so little for a car that saves so much

One Year Newer, One Year Better!
Even in the tremendously popular 1960 Falcon you did get so much value as you now can buy in the new Falcon '61!
Who would believe a car so roomy... so wonderfully comfortable for six grownups... would squeeze so many miles out of your dollar? But the new Falcon does! Up to 30 miles on every gallon of regular gas!

And, you can now pick the famous Falcon Six, or the new 170 Special* for an extra dash of power.

Only Falcon gives you the winning combination of luxury and economy. The proof is at your Ford Dealer's now!
*Optional at slight extra cost

Edgington Motor Company
Goldthwaite, Texas

IN TEXAS YOU PAY 90¢ TAX ON TEN GALLONS OF GASOLINE!

How Do You Vote?
I Believe Gasoline Taxes Are Too High!
 YES NO

HOW DID YOU VOTE?
No matter how you voted, these facts on gasoline taxes are important to you:

- Everywhere in Texas, car owners pay 90¢ tax on every 10 gallons of gasoline they buy!
- Gasoline taxes across the nation amount to a 50% sales tax—and that's five times as high as the tax rate on luxuries like diamonds and mink coats!
- Since World War II, there have been three increases in the Federal gasoline tax alone. This brought the Federal tax to 4 cents a gallon, in addition to the State tax of 5 cents a gallon!
- In the last ten years gasoline taxes have skyrocketed 51%—yet the price of gasoline itself has risen only 5.5% during the same period!
- Each year the average motor vehicle owner in this state pays \$78 for gasoline taxes alone. That's just a few dollars less than the average week's pay for most people!

NATIONAL INCREASE 1950-1959

Gasoline Prices	5.5%
Living Costs	21%
Gasoline Tax	51%

GASOLINE TAXES UP 51% IN TEN YEARS

HIGHWAYS AND GASOLINE TAXES
Your gasoline retailer, naturally, favors construction of the roads that the motoring public needs. He believes in fair and reasonable taxation for this purpose but feels that taxes on gasoline have now reached unreasonably high levels. He also believes that all special taxes on the motorist should be used only for highway purposes. Yet last year, out of every automobile tax dollar collected by the Federal Government from highway users, more than 40 cents went for non-highway purposes. If these automotive tax revenues were dedicated for highway purposes, there would be no need for the latest increase in the federal gasoline tax.

The Gasoline You Buy Is Taxed Too HIGH!
Presented in public interest by the Gasoline Tax Education Committee, 575 Lexington Avenue, New York 22, N. Y.

Legal Notice

NOTICE
THE STATE OF TEXAS
COUNTY OF MILLS
NO. 31

NOTICE is hereby given that a hearing will be held on the 4th day of November, 1960 at 10 a. m. in the County Court at the County Courthouse of the above named County in Goldthwaite, Texas on the application of the herein-after named owner — for a license to sell beer at retail at a location not heretofore licensed. The substance of said application is as follows:

1. Type of license or permit Beer Retailer's Off Premise License
2. Exact location of business 1 mile Northeast of Post Office, North Side of F. M. Road No. 218, Priddy, Texas.
3. Name of owner or owners Willie B. Schoen
4. Assumed or trade

name Bill's Place
Any person shall be permitted to contest the facts stated in said application and the applicant's right to secure said license or permit upon giving security for costs as provided by law.

WITNESS MY HAND this the 26th day of October, 1960.

WALTER A. BRYANT
County Clerk,
Mills County, Texas.

Legal Notice

NOTICE
THE STATE OF TEXAS
COUNTY OF MILLS
NO. 32

NOTICE is hereby given that a hearing will be held on the 4th day of November, 1960 at 10 a. m. in the County Court at the County Courthouse of the above named County in Goldthwaite, Texas on the application of the herein-after named owner — for a

wine only package store permit at a location not heretofore licensed. The substance of said application is as follows:

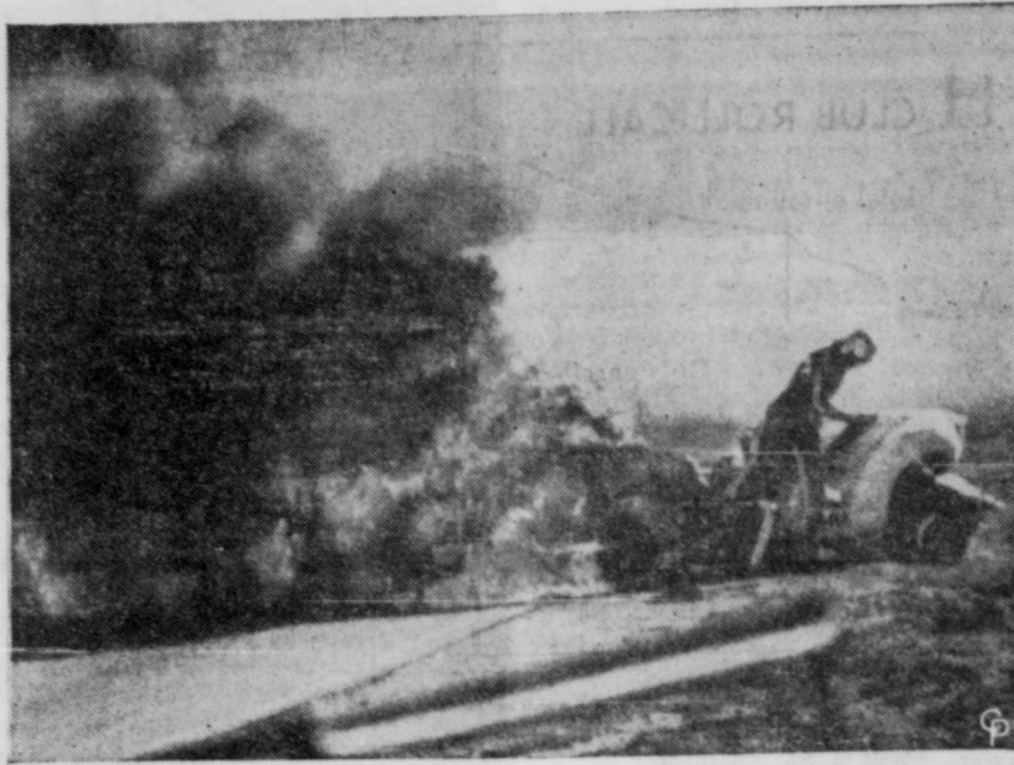
1. Type of license or permit Wine Only Package Store Permit.
2. Exact location of business 1 mile Northeast of Post Office, North Side of F. M. Road No. 218, Priddy, Texas.
3. Name of owner or owners Willie B. Schoen
4. Assumed or trade name Bill's Place

Any person shall be permitted to contest the facts stated in said application and the applicant's right to secure said license or permit upon giving security for costs as provided by law.

WITNESS MY HAND this the 26th day of October, 1960.

WALTER A. BRYANT
County Clerk,
Mills County, Texas.

Mrs. M. R. Weatherby of Fort Worth and Mrs. Dale Ackers of Abilene were guests of Mr. and Mrs. Bruce Burnett Monday.



RACER ESCAPES DEATH—Driver Don Helette, of Van Nuys, Calif., leaps from his racing car after he went wide during the tenth lap of the Riverside Grand Prix race at Riverside, Calif. The car's fuel tank exploded and it was demolished. He escaped with fractured ribs and severe burns.

Priddy Homecoming To Be November 12

Herman Kopp Jr., president of the Priddy Ex-Students Association and the various committees have announced plans for the annual Priddy High School Homecoming, November 12, 1960.

The student body of Priddy High School has selected Miss Carol Ann Sichelmeier Homecoming Queen. She is the daughter of Mr. and Mrs. Otto Sichelmeier and a senior student.

At 2:30 o'clock there will be a football game — Pirates vs. Pottsville. A barbecue supper will be served in the school cafeteria at 5:30 p. m.

Following the supper, a program will be given in the high school gymnasium, with Emory Muelhbrad of Austin, master of ceremonies. Terminating the agenda will be a dance at the American Legion Building. All ex-students and friends are invited to attend.

Priddy Pirates To Play Sidney

The Priddy Pirates will meet the Sidney Eagles in a six-man football game Thursday night, October 27 (tonight), at Sidney. Everyone is invited to come out and enjoy the game and back the Pirates.

Priddy FHA Chapter Installs Officers

Priddy FHA Chapter held installation of officers and gave a Mother-Daughter Tea, September 27, 1960.

For Halloween, the FHA has chosen the "Country Store" for raising funds. Together with the Women's Club, they will help prepare and serve the Homecoming meal, November 12, 1960.

During basketball season, the "Homemakers" are planning to serve a waffle and sausage supper prior to one of the basketball games. The supper will be open to the public.

A program committee was appointed and it was decided that chapter meetings will be held the first Tuesday of every month.

Halloween Carnival At Priddy Oct. 28

Priddy High School will sponsor a Halloween Carnival Friday night, October 28. The Wednesday Study Club will begin the activities by serving supper in the school cafeteria beginning at 6:30 p. m. A program will be presented by the Priddy Elementary School at 7:30 p. m.

Following this program the Halloween King and Queen with their escorts will be presented. Classes will open their carnival booths after the program.

Everyone is invited to attend.

HALLOWEEN PARTY AT MIDWAY OCTOBER 29

The "Spooks" will be out in full force Saturday night, October 29, at Midway Schoolhouse as there will be a masquerade party and everyone is invited to come out and share in the fun and frolic, according to announcement by Mrs. W. F. Thompson.

Mr. and Mrs. R. D. Rogers and baby of Dallas spent Sunday night with her mother, Mrs. Juanita Flores, and sisters, Misses Louisa and Eletha Flores.

Personal Paragraphs

Mr. and Mrs. C. R. Garner of Alpine were guests of George Garner Saturday night and Sunday.

Mr. and Mrs. L. W. Weathers of Brownwood were guests of his mother, Mrs. J. W. Weathers Sunday afternoon.

Mr. and Mrs. Carl Spinks and Mr. and Mrs. Joe Anderson were dinner guests of Mr. and Mrs. Marvin Spinks Sunday.

Mrs. Mattie Casbeer and Mrs. H. Y. Philan of Brownwood were guests of their sister, Mrs. E. L. Pass and Mr. Pass, Sunday. They also attended the Men's Downtown Bible Class singing Sunday afternoon.

Mrs. George Smith, the former Gladys Evelyn Evans, of Corpus Christi, visited her grandmother, Mrs. Everett Evans, her aunts, Miss Gladys Evans and Mrs. Oscar Hill and Mr.

Hill several days last week.

Mr. and Mrs. Jack Locklear and children of Brady were supper guests of their parents and grandparents, Mr. and Mrs. C. Locklear, Saturday evening.

Mr. and Mrs. L. N. Audridge of Gatesville returned home this week after spending the past ten days in the home of their son, Truett Audridge, while Mr. and Mrs. Audridge were on a trip to Bermuda.

Mr. and Mrs. Frank Casey of Bakersfield, California and Mrs. Sam Horton of Pottsville, Texas, spent Monday of the week with their brother, Mr. and Mrs. L. N. Audridge and other relatives here.

Mr. and Mrs. Raymond Latta and Mrs. Ruby Locke spent the weekend in Dallas and attended market Monday and Tuesday this week.

LAFF-A-DAY



The design staff regrets not being here for the launching. They're busy on a vastly improved model.

GOOD YEAR 3-T NYLON SALE
LOWEST PRICES EVER!
GOOD YEAR

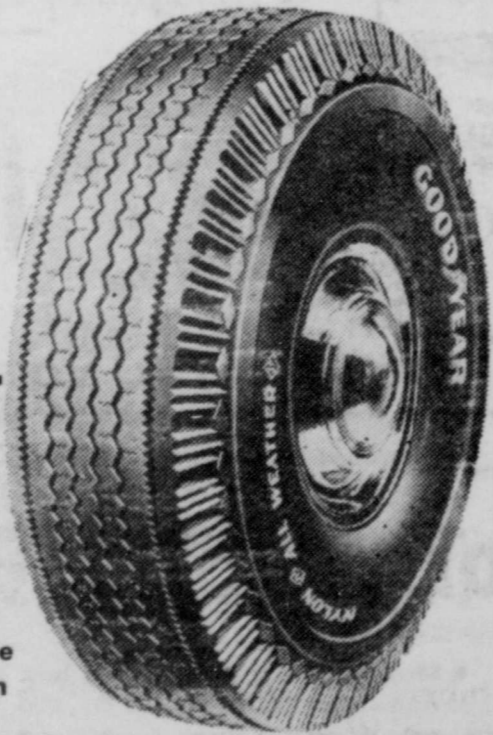
now only **\$12.95**
6.70x15 black-wall tube-type plus tax and recappable tire

3-T NYLON All-Weather

The biggest, low-priced 3-T Nylon tire value ever offered... built stronger and safer with Goodyear's exclusive 3-T-Nylon Cord. Save with safety today!

ALL SIZES VALUE PRICED!		
SIZE	Whitewall Tube-Type*	Blackwall Tube-Type*
6.70 x 15	\$12.95	\$16.50
7.10 x 15	14.95	18.95
7.60 x 15	16.95	20.95
6.00 x 16	12.95	
SIZE	Whitewall Tubeless*	Blackwall Tubeless*
7.50 x 14	\$14.95	\$18.50

Your old tire may be your down payment



World's First Turnpike-Proved Tires
MORE PEOPLE RIDE ON GOODYEAR TIRES THAN ON ANY OTHER KIND

GOOD YEAR TIRES
JACK LONG'S GULF STATION
Across From Courthouse
Dial MI8-3225 Goldthwaite, Texas

NO TRICKS HERE! **JUST LOW PRICED FOOD TREATS!**



WE GIVE **BUCCANEER STAMPS**
DOUBLE STAMPS ON WEDNESDAY



Kimbell's POP CORN 2 lb. Cello Bag 25¢ 1 lb. Bag 15¢

Kimbell's SHORTENING 3-lb. Can 59¢

IMPERIAL SUGAR 10-lb. Bag 98¢

NEW PARD KRUNCHERS—Complete Dog Dinner

4 lb. Bag 45¢ 8 1/3 - lb. Bag 89¢ 20 lb. Bag \$2.15

Sunshine KRISPY CRACKERS 1-lb. Box 29¢

DIAMOND VIENNA (Limit 10)

Sausage 2 Cans 15¢

GLADIOLA FLOUR 25-lb. Sack \$1.69

Large Crisp CELERY	Rome Beauty APPLES	Crunchy CARROTS	Tokay GRAPES
Stalk 15¢	2 lbs. 25¢	Cello Bag 10¢	2 lbs. 25¢

KORN KIST BACON Thick Sliced 2 lbs. 89¢

BONELESS ARM Or CHUCK ROAST lb. 59¢

FRESH GROUND HAMBURGER lb. 45¢

Sugar Cured BACON SQUARES lb. 29¢

Grade A Dressed FRYERS lb. 39¢

Augé's Southern Style SAUSAGE 3 lbs. \$1.00

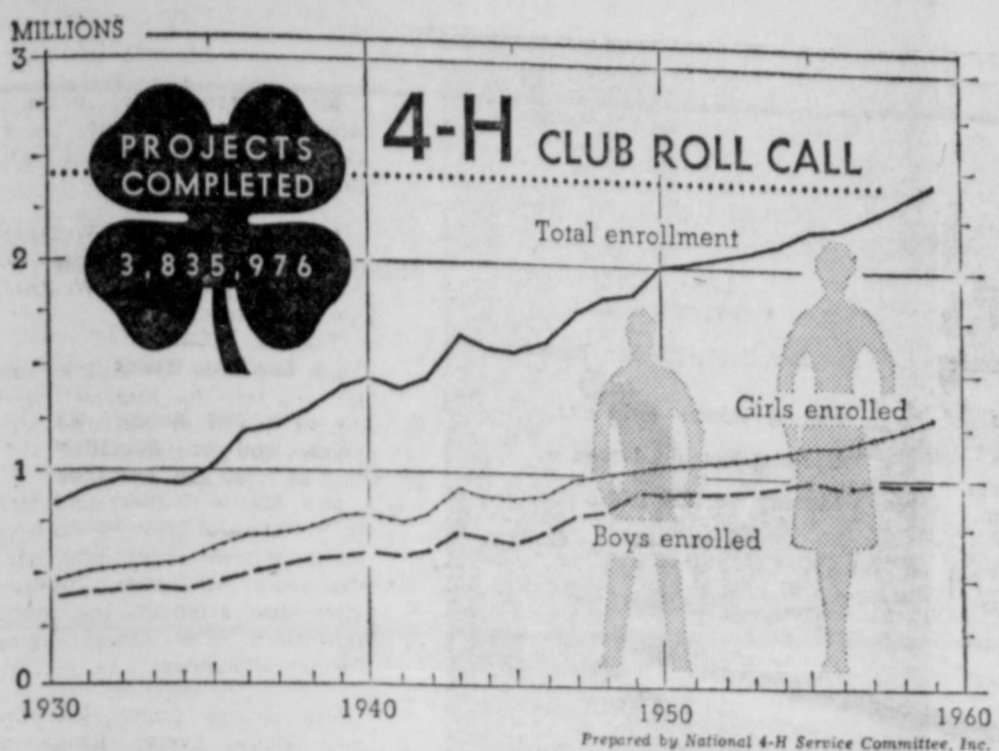
NEW IMPERIAL OLEO lb. 39¢

KIMBELL'S BISCUITS 3 Cans 25¢

Loy Long's Super Market

Prices Good Fri. & Sat., October 28 And 29

Chapter
Party
DAVEE
H. A. girls were
parents and
high
short intro-
work by the
interesting
presented by this
chairman, Sue
by a chapter
Chasey.
included a spec-
With Jesus," sung
the girls. Several
familiar to the
enjoyed by the
committee un-
Mrs. Tom
back many
days.
tea cakes
were served to
Carl Spinks of
his mother, Mrs.
home Saturday
two weeks visit
US Your
EVENTS
PERT
UTO
ODY
PAIRS
AND NIGHT
recker
ervice
MI 8-2461
Holidays
Phone
MI 8-3333
INGTON
Company
County
Dealer.
Texas
WHEAT, OATS and RYE
See Us For Bookings On
Cubes, Meal, Cake and Corn
It
Pays to Feed
Paymaster
SHEEP And GOAT DRENCH
We Buy Top Hogs
Every Day of The Week
With NO Commission
Phone MI 8-3311
Boykin Feed Store
PAYMASTER Feed Dealer
Goldthwaite, Texas



The nearly four million projects completed by 2,300,000 4-H Club boys and girls in a single year is further proof that the "learn by doing" system is keeping young minds and hands busy. As a matter of fact, youth specialists say that the hundred or so categories of 4-H projects are the very backbone of the organization which has grown steadily for more than a half century.

During the past three decades the number of girls enrolled in 4-H has topped the boys in just about the same proportion, according to figures supplied by the USDA. There are presently some 300,000 more girls than boys in club work. Ages range from 10 to 21 years.

Originally planned to help farm youngsters, the voluntary educational program now claims nearly half its membership from city and non-farm rural homes. Apparently "pride of accomplishment" is a key factor in the success of this particular brand of youth organization.

Right from the very beginning of 4-H, interested parties have donated awards in recognition of top performance in citizenship, leadership and project achievement. This fall more than a thousand expense-paid trips to the National 4-H Club Congress in Chicago will be given to state, sectional and national 4-H award winners. In addition about 200 teenagers will receive college

scholarships, and one out of 15 members will win medals in local competition.

Six persons now engaged in Extension work and who are former 4-H'ers will share \$18,000 in educational grants to be used in graduate study.

Business firms that sponsor programs and awards include: Ford Motors, achievement; Olin Mathieson Chemical, alumni recognition; E. I. du Pont de Nemours, beef; Standard Brands, bread demonstration; Oliver, dairy; Carnation, dairy foods demonstration; Simplicity Pattern, dress review; Hercules Powder, entomology; Arcadian Products Dept. of Allied Chemical, field crops; Betty Crocker of General Mills, food preparation.

Also, American Forest Products Industries, forestry; Whirlpool, frozen foods; Eli Lilly, health; John Deere, recreation; Moorman Mfg., swine; Singer Sewing Machine, clothing leader training; Wm. Wrigley Jr., community relations; Ralston Purina, dog care and training; Pure Oil, public speaking; Chicago Board of Trade, grain marketing.

College scholarships and fellowships in amounts from \$500 to \$3000 each are provided by: California Spray-Chemical, Homelite Division of Tectron, Sperry and Hutchinson, Mass Ferguson and the National 4-H Service Committee.

CHILDRESS HOSPITAL NEWS

(Information released with permission of patient or a member of the family.)

Wednesday, October 19
Admitted—Mrs. James T. Thurber, Zephyr.
Dismissed—Mrs. Ernest McGary; Carson Donald Padgett.

Thursday, October 20
Admitted—Russell John Cobb, Mullin.

Friday, October 21
Admitted—Robert D. Lee, Zephyr; Mrs. Albert Hopper, Comanche; Will Perkins, Mullin.

Saturday, October 22
Admitted—Eric Looney, Goldthwaite; Glenda Garrett, Comanche.

Sunday, October 23
Admitted—Albert Evans, Priddy.

Dismissed—Will Perkins; Eric Looney; Robert Lee.

Monday, October 24
Admitted—Mrs. Maggie Truett, Moline; Mrs. Mary Crawford, Goldthwaite; Orbie Duncan, Moline.

Dismissed—Albert Hopper.

Tuesday, October 25
Admitted—Mrs. R. F. Swindle, Goldthwaite; A. A. Cook, Goldthwaite; Mrs. Glendon Hodges and baby girl, Mullin; Ronnie Allison, Goldthwaite.

Dismissed—Mrs. Maggie Truett.

TODAY'S Menu
Tidbits To Casseroles
In Easy-Do Recipes

By ALICE DENHOFF

WHEN A late afternoon gathering includes menfolk, it is wise to provide hearty tidbits and plenty of them.

Here are some inexpensive dishes that all come in handy when you're planning such an event.

Shrimp-Bacon Rolls
A big, fat, cooked shrimp, rolled in a narrow strip of bacon, skewer-fastened with a toothpick and broiled until bacon is crisp and brown, is an item that quickly vanishes. But the shrimp-bacon rolls must be piping hot.

Tiny, well-seasoned meat balls impaled on toothpicks are always enjoyed, as are thin slices of boiled ham spread with a cream cheese-chopped onion-and-relish mixture, rolled cornucopia-fashion.

Sausage And Pineapple
Perch tiny sausage patties atop pineapple triangles for another tidbit.

Now for more substantial fare, a main dish for a good fall dinner.

A hearty casserole is always in order at this time of year and an easy one is of pork luncheon loaf combined with tart apples and sweet potatoes.

To serve 6, cook 3 large sweet potatoes in their skins until tender; then peel and slice.

Tart Apples
Core, pare and slice 3 large tart apples.

Cut one-half can pork luncheon meat into slices. Dice other half.

In greased baking dish, place alternate layers of sweet potatoes, apples and diced luncheon meat. Pour some dark corn syrup over each layer.

Top with layer of loaf slices, dot with butter.

Bake at 350° F. for about 40 min., uncovering casserole for last 15 min.

Luncheon Special
For a hearty luncheon or supper special that's quickly prepared, chop leftover meat or lightly brown some fresh ground beef.

Moisten with milk, gravy or ketchup and season with salt, pepper, minced onion and Worcestershire sauce.

Cut tops from hard dinner rolls, scoop out center and fill with meat mixture.

Replace top, pour on extra gravy and bake at 350° F. until heated through.



JOHN WAYNE is shown above receiving a wool and mohair saddle blanket from Miss Mahair, Sunda Callan of Menard, Texas, left, and Miss Wool, Jean Williams of Ballinger, Texas, right, on his arrival in San Antonio Oct. 22 for the premiere of "The Alamo," in which he stars. The presentation was sponsored by the Texas Sheep and Goat Raisers' Association.

Regency News

By MRS. J. A. JONES

Monday morning, it's cloudy and warm so guess we are going to have some more rain.

Mr. and Mrs. Bud Rowlett of Coleman and Miss Sue Rowlett of Granbury were weekend guests of Mr. and Mrs. A. R. Rowlett.

Mrs. J. M. Jones had her brother and wife, Mr. and Mrs. Claude Garner of Alpine, visit her Friday night and Saturday; also her son, R. W. Newsom of San Angelo and Bobby Bland of Temple.

Sunday afternoon visitors of Mr. and Mrs. Ed Jones were W. P. Perkins and wife, Mr. and Mrs. Willard Perkins and Mr. and Mrs. Wayne Holland, all of Brownwood.

Mrs. Butch Rowlett spent Saturday with her daughter and family, Mr. and Mrs. George Adams of Mercury.

Mrs. Clayton Phillips and daughter, Kay, and I visited

Mr. and Mrs. J. W. Whitley and Bonnie and Mrs. Dee Rutherford of Spring Creek, Friday afternoon.

Mr. and Mrs. Willard Edington visited with us until bedtime Sunday night.

Rev. and Mrs. White of San Saba and Mr. and Mrs. Arthur Whitley of Spring Creek visited with us a short time Sunday afternoon.

We are going to have some new neighbors, a Mr. and Mrs. Teal from Seagraves bought the W. O. Kirk place, here by the Regency Store. We welcome them into our community.

Mr. and Mrs. R. D. Egger are having a new house built. They spent Saturday night with her mother, Mrs. E. K. Wood in Goldthwaite, as they do not have electricity or telephone. They moved the old house back and built the new one in the place where the old house was. I know they will be happy in

their new home.

Mrs. Butch Rowlett visited Mrs. Mae Egger Thursday night. Clayton Phillips helped Cecil Egger haul hay Friday and Saturday.

Personals

Mrs. Fred Laughlin visited her daughter, Mrs. Fred Marshall in Lubbock over the weekend. She was accompanied to Post by Mrs. Hugh Nowell, who visited her son, Mr. and Mrs. Ralph Nowell, teachers in the Post School.

Mr. and Mrs. Van McCasland and children of Fort Worth brought her mother, Mrs. O. K. Berry, home Saturday morning. Mrs. Berry had spent ten days with her daughter and family, while the daughter was ill. The McCaslands also visited Mr. and Mrs. Harmon McCasland and Margie.

HALLOWEEN PARTY TREATS

We Have A Good Selection of TRICK Or TREAT GOODIES.

WOLF No. 2 Can 49¢

WOLF CHILI Save 24¢ Per Can

FREE CHILI-MACK served at Our Store This Week!!

You Will Need SKINNER'S **MACARONI SPAGHETTI** Save 11¢ 10-oz. Pkg. **10¢**

Another Example of Weekly Savings at Our Store.

Crispy CELERY Stalk **15¢**

GLADYOLA FLOUR 5-lb. Bag **39¢**

Borden's 8-qt. Size Starlac **69¢**

Tender ROUND STEAK lb. **79¢**

Lean Fresh HAMBURGER lb. **45¢**

Swift's Premium BACON lb. **59¢**

Pork ROAST lb. **43¢**

Armour's 6-oz. Pkg. CHEESE Each **25¢**

Grade A FRYERS lb. **39¢**

Kimbell's Pure Vegetable Oleo 2 lbs. **29¢**

Folgers' COFFEE Pound **63¢**

Remember **DOUBLE SAVINGS** With Double S&H Green Stamps on Wednesday. Customers are already Redeeming Green Stamps; Given More Places, Worth More, America's No. 1 Stamp.

CUSTOMERS BUY WITH CONFIDENCE AT

Schwartz Food Store

Prices Good Fri. & Sat., October 28 And 29

Goldthwaite

FIRST METHODIST CHURCH
Rev. George B. McCrary
Church School, 9:45 a.m.
Morning Worship, 10:50 a.m.
Youth Fellowship, 5:30 p.m.
Evening Service, 7:30 p.m.
W.S.C.S. each Monday, 3:00 p.m.
Wednesday, Prayer Meeting, 7:30 p.m.
Men's meeting, 2nd Thursday of each month, 7:00 p.m.

FIRST BAPTIST CHURCH
Rev. Presnall H. Wood
Sunday School, 9:45 a.m.
Morning Worship, 10:50 a.m.
Training Union, 6:30 p.m.
Evening Worship, 7:30 p.m.
Wednesday, Prayer Meeting and Bible Study, 7:30 p.m.
W.M.U., 4:00 p.m., Monday
Brotherhood, 3rd Monday night in month

ST. PETER'S CATHOLIC CHURCH
Father Leo Bujnowski, Pastor
Last Sunday in each month, 7:00 a.m.

CHURCH OF CHRIST
Rev. G. Tilly, Minister
Bible Study, 10:00 a.m.
Morning Worship, 10:50 a.m.
Evening Worship, 7:00 p.m.
Ladies Bible Class, Tuesday, 2:30 p.m.
Wednesday Prayer Meeting, 7:30 p.m.

THE CHURCH OF THE NAZARENE
Rev. E. F. Waskom
Sunday School, 9:45 a.m.
Morning Worship, 11:00 a.m.
Evening Service, 7:30 p.m.
Wednesday Prayer Meeting, 7:30 p.m.
N. F. M. S., 6:30 p. m., Sunday

ASSEMBLY OF GOD
Rev. R. E. Tyson, Pastor
Sunday School, 10:00 a.m.
Preaching, 11:00 a.m.
Sunday Night, 7:30 p. m.
Thursday Night, 7:30 p. m.

Star

CHURCH OF CHRIST
James Fry, Minister
Bible Study, 10:00 a.m.
Morning Worship, 11:00 a. m.
Evening Worship, 8:00 p. m.
Wednesday Prayer Meeting, 8:00 p.m.

BAPTIST CHURCH
Rev. Francis Miller
Services 2nd and 4th Sundays
Sunday School, 10:00 a.m.
Morning Worship, 11:00 a.m.
Evening Worship, 8:00 p.m.

METHODIST CHURCH
Rev. Glen Weimer
Church School, 10:00 a.m.
M.Y.F. each Sunday, 6:30 p.m.
Preaching Services 1st and 3rd Sundays
11:00 a.m. and 7:30 p.m.

Big Valley

CHURCH OF CHRIST
David Mathis, Minister
Bible Study, 10:00 a.m.
Morning Worship, 10:45 a.m.
Evening Worship, 7:00 p.m.
Wed.—Prayer Meeting, 7:30 p.m.

BAPTIST CHURCH
Rev. Ray Beke
Sunday School, 10:00 a.m.
Morning Worship, 11:00 a.m.
Evening Worship, 8:00 p.m.

SCALLORN BAPTIST CHURCH
Rev. Bryan Halliburton
Sunday School, 10:00 a.m.
Morning Worship, 11:00 a.m.
Evening Worship, 8:00 p. m.
Brotherhood and W.M.U. meets on Tuesday night after each 3rd Sunday at 7:00 p.m.

TRIGGER MOUNTAIN BAPTIST CHURCH
Rev. Rodger Croker, Pastor
1207 Vincent
Brownwood, Texas
Sunday School, 10:00 a.m.
Morning Worship, 11:00 a.m.
Evening Worship, 8:00 p.m.

LONG COVE BAPTIST CHURCH
Rev. Bobby Bleeker, Pastor
Sunday School—10:00 a.m.
Morning Worship, 11:00 a.m.
Evening Worship, 8:00 p.m.

PRIMITIVE BAPTIST CHURCH MT. OLIVE
Elder C. L. Casey
Rt. 1, Eastland, Texas
Services each 3rd Sunday at 11:00 a.m. and on Saturday preceding at 11:00 a.m. and 8:00 p.m.

Mullin
BAPTIST CHURCH
Rev. Ellis E. Epps, Pastor
Sunday School, 10:00 a.m.
Morning Worship, 11:00 a.m.
Training Union, 7:30 p.m.
Evening Worship, 8:15 p.m.
Wednesday, Prayer Meeting, 7:45 p.m.

METHODIST CHURCH
Rev. A. J. Wormwood, Pastor
Sunday School, 9:45 a.m.
Morning Worship, 11:00 a.m.
Evening Worship, 8:00 p.m.
Wednesday, Bible Study 8:30 p.m.

CHURCH OF CHRIST
D. W. Newton, Minister
Bible Study 10:00 a.m.
Morning Worship, 11:00 a.m.
Evening Worship, 7:00 p.m.

CHURCH OF GOD OF THE ABRAHAMIC FAITH
Richard Worley, Pastor
Sunday School, 10:00 a.m.
Worship Ser., 11 a.m. (1, 3, Sun.)
Evening Worship, (1, 3, Sundays)
Mid-Week Bible Class, 7:00 p.m.

BETHEL METHODIST CHURCH
(Caradan Road)
Rev. George B. McCrary
Services 2nd and 5th Sundays at 3:00 p.m.

Center City

BAPTIST CHURCH
Services Every Sunday
Rev. James Goforth, Pastor
Sunday School, 10:00 a.m.
Morning Worship, 11:00 a.m.
Evening Worship, 7:00 p. m.

METHODIST CHURCH
Rev. Glen Weimer
Church School each Sunday, 10:00 a.m.
Morning Worship, 2nd & 5th Sundays, 11:00 a.m.
M.Y.F., 6:00 p.m., each Sunday
Evening Worship, 2nd & 5th Sunday, 7:30 p.m.

PLEASANT GROVE METHODIST CHURCH
Rev. Glen Weimer
Church School, 10:00 a.m.
Morning Worship, 11:00 a.m., 4th Sunday
Evening Worship, 7:45 p.m., each 4th Saturday and Sunday.

Priddy

ZION LUTHERAN CHURCH
Rev. John Striepe, Pastor
Sunday
Sunday School, 9:00 a. m.
Worship Service, 10:00 a. m.
Monday
Choir Rehearsal, 7:00 p.m.
Wednesday

BAPTIST CHURCH
David T. Strong, Pastor
Sunday School, 10:00 a.m.
Morning Worship, 11:00 a.m.
Evening Services, 7:00 p.m.

DUREN CONGREGATIONAL METHODIST CHURCH
Rev. J. L. Jones, Pastor
Church Each Sunday (Except on Fifth Sunday)
Sunday School, 10 a.m. Each Sunday
Preaching Services—
11:00 a. m. and 7:00 p. m.
Prayer Meeting Wednes. night
Singing each 4th Thursday Night (except months of July & August)



Build a stronger, richer life ...

WORSHIP TOGETHER EVERY WEEK!

You know the hymn—"How firm a Foundation?" Of course you do. But it's more than a hymn. To many it is a way of life.

The foundation is faith. Faith that gives every day a shining new quality. Faith that provides a strong shelter in time of need. Faith that sustains you in sickness and trouble. Faith that makes life a great adventure, truly worth living.

You find faith as a member of a family, as a member of a community. Worshiping together every week, with those you love, with others who believe as you do—gives you strength to carry through with hope and courage.

You can build a stronger, richer life—on a firm foundation of faith. Worship together this week . . . every week!

CONTRIBUTED TO THE RELIGION IN AMERICAN LIFE PROGRAM



This Series of Ads is Being Published in The Eagle
Each Month Under the Auspices of the Mills County Ministers' Association
and is Sponsored by the following Individuals and Business Establishments

- Ferguson Garage, Mullin
- Goldthwaite City Utilities
- Childress Clinic And Hospital
- Edgington Motor Company
- Blackwell Wool & Mohair Co.
- Saylor Chevrolet Company

- Mills County Hardware
- Central Texas Tel. Coop.
- Yarborough & Duren
- City Cleaners
- Woody Drug Store
- Whitley's Gulf Service

- Roy Wilkins Funeral Home
- Mills County State Bank
- Service Mill-Priddy
- Barnes & McCullough
- Hi-Way Garage-Priddy
- Johnson Bros. Texaco Sta.

- Blackwell Feed Company
- Carothers Motor Company
- Moreland Feed Store
- The Goldthwaite Eagle
- Holland Cafe
- Bobby Johnson Texaco Station
- Locke Bros. Garage, Mullin

By MRS. JOHNNIE HOLLAND

Mr. and Mrs. Deward Chesser and Debbie were recent visitors in Rankin with Mr. and Mrs. Wilber Chesser and daughter; also they visited in Jal, New Mexico with their other son, Dewayne and family.

Russell Cobb is quite ill and is in the hospital at Goldthwaite.

Mrs. Cassie Medford and Mrs. Irvin Fisher were involved in a bad car wreck last Sunday. It is my understanding that there were seven in the station wagon, and that they are all in critical condition. Mrs. Medford is seriously injured and Mrs. Fisher was not injured seriously.

My husband, Gayla and I just barely escaped a bad car wreck last Thursday at Early. A loaded truck just miscd us by a few feet. School had just dismissed at Early and we were trying to avoid the children and cars coming out from the school. We failed to see the truck. My husband said he looked, but the sun blinded him. When I hollered "Truck!" he stepped on the brakes and we stopped right in front of the truck. The driver of the truck managed to pull out around us into the curb. What an awful experience to have. The skid marks are still on the pavement where the truck skidded. No one was injured.

Bobby McCormick of Fort Worth visited his mother here the past weekend. She returned to Fort Worth with him.

Mrs. Emma Hart is in Gatesville visiting with her daughter, Mrs. Lloyd Hancock.

Mrs. Hazel Cobb and Miss Artie Mosier both went to Temple last week.

Mr. and Mrs. Riley Phillips of Kansas visited here last week with his parents, Mr. and Mrs. J. E. Phillips. Also Jimmy Phillips and a friend of Fort Worth spent the weekend here with Mr. and Mrs. Phillips.

Scallorn News

By MRS. ORA BLACK

A nice rain amounting to near two inches fell here through last week. Now that we have a rain gauge nailed on the gate post the precipitation will be given more accurately in the future.

Dr. and Mrs. Jack A. Turman and sons, Tom and Dick, of Austin were weekend guests of Mr. and Mrs. C. H. Black.

Ed Evans, the handy man of the community, delivered some sheep to Goldthwaite auction barn for Mrs. Ida Harris, Friday.

Mr. and Mrs. T. A. Casbeer are doing repair work at the old Hufstutler place in Goldthwaite.

After attending the singing in Goldthwaite Sunday after-



MRS. VERNA LEE DUDLEY

At a recent meeting of the Mullin Home Demonstration Club Mrs. Verna Lee Dudley was elected president. Other officers who will serve with her are Mrs. Janie Dorbandt, vice-president and Mrs. W. T. Lee, secretary-treasurer.

Center Point News

By MRS. RUBY FRENCH

Mrs. Thelma Spinks visited Grandma Johnson and the John Walters one afternoon last week.

Mr. and Mrs. Fred Pafford and Wiley Mahan visited Mr. and Mrs. L. V. French Saturday night.

Mr. and Mrs. Carl Spinks of Briggs and Mr. and Mrs. Joe Anderson of Midland ate lunch with Mr. and Mrs. Marvin Spinks Sunday.

Mr. and Mrs. Pierce and Pam of Brownwood called on Mr. and Mrs. L. V. French Monday.

Miss Norma Lee Robertson ate lunch with Mrs. Thelma Spinks Thursday. In the afternoon Mrs. Willie Groth and Mrs. Daniel also visited Mrs. Spinks.

Mr. and Mrs. L. V. French visited Mr. and Mrs. L. W. Faris Friday night.

L. D. Spinks of Mesquite spent Saturday night in the Marvin Spinks home.

Several from here attended the singing at Goldthwaite last Sunday afternoon.

Mr. and Mrs. L. V. French attended church services in Brownwood Sunday.

Mr. and Mrs. C. A. Page played dominoes with Mr. and Mrs. Marvin Spinks Thursday night.

Mrs. Gladys Singleton spent Wednesday night with her sister, Mrs. Willie Curtis of Brownwood.

Mrs. Thelma Spinks called on Mrs. Ethel Davis Wednesday.

noon Mr. and Mrs. T. A. Casbeer visited in the D. L. Wheeler home and with Mrs. Harris.

Guests in our home Sunday were our sister, Mrs. S. M. Black, Mrs. Norma Ricker, her daughter, Judy, and friend, Dona Miller, all of Brownwood.

Mrs. Charles Wright of Mullin visited in our home Friday.

Leon Johnson went to Silsbee Sunday to bring Mrs. Johnson home, after a week's stay in the home of her son, Mr. and Mrs. Hermon Johnson, who are the parents of a baby daughter.

C. H. Black made a business trip to Fredericksburg Thursday.

By BETH MILES

Our boys won a hard earned victory over the Priddy Pirates last Thursday night on the Goldthwaite field, with a score of 31 to 22. This Thursday night, October 27, they will play host to Pottsville on the Star field.

We are proud of Miss Lynda Cook, who won Grand Champion with her calf at the State Fair at Dallas. Congratulations, Lynda.

The Lyndon Cooks, Woodson Clarys, and Mrs. Bertha Boykin were among those who attended the Fair this week.

Mr. and Mrs. Chas. Mitchell Sheldon and Nikki of Fogt Worth visited during the week-end with Mr. and Mrs. Charlie Sheldon.

Norris Witty, Jim Hamilton and Pete Miles attended the Hound show near Gatesville Saturday.

Rev. Kris Spengle of Brownwood preached at the Btpaist Church Sunday and had lunch with Mr. and Mrs. Bud Harper.

Mr. and Mrs. Jude Miles and boys visited in the Pete Miles home Thursday afternoon.

Mr. and Mrs. Pete Harper, Karry and Marsha, spent Sunday with Mr. and Mrs. Martin McCasland.

Mr. and Mrs. Lee Clary visited Sunday afternoon with Mr. and Mrs. Clyde Clary.

Mr. and Mrs. Albert Power made a business trip last Wednesday to Brownwood.

Sunday Mr. and Mrs. Dave Thompson had luncheon with Mr. and Mrs. Power.

Mr. and Mrs. Frank Stubbs of Abilene visited her mother, Mrs. Tennie Adams, during the weekend.

Mr. and Mrs. Jesse Barrett and Mrs. Frances Goode attended the singing at Goldthwaite Sunday evening. They also visited with Mrs. Eunice Knowles.

Mrs. Pete Miles and Charlotte also visited Mrs. Knowles and found her sitting up and looking quite a lot better. She hopes to come home soon from the hospital.

Mr. and Mrs. Van McGilvary visited Mr. and Mrs. Jim Hamilton Sunday afternoon.

Mr. and Mrs. Veilon Hurst of Boron, California, visited Sunday and Monday with Mr. and Mrs. Slim Hurst and Lula Mae.

Rev. Glenn Weimer preached at Pleasant Grove Sunday. Sheryl Casbeer accompanied him to play the piano. They lunched with Mr. and Mrs. David Watters and family.

Rev. Glenn Weimer spent the night Sunday night with Mr. and Mrs. Ray Berry.

The Methodists have been busy the past week doing repair work on their church, putting in new windows, new ceiling, painting and getting new altar furniture.

Fred Mason of Lampasas visited Mr. and Mrs. P. O. Harper Wednesday afternoon.

Mr. and Mrs. Lewis Meharg and Mrs. Travis Meharg, all of Gatesville, visited Mrs. Slim Hurst Thursday afternoon.

Danny Miles and Nan Duncan spent Thursday night with Pete and Charlotte Miles.

Mrs. Bertha Boykin and Mrs. Maurine Soules had lunch Sunday with Mrs. Hud Hamilton of Goldthwaite, then attended the singing in the afternoon.

Mr. and Mrs. Clyde Props of Beaumont visited several days last week with her mother, Mrs.



MAJORETTE — Miss Linda Booker, second year majorette of San Saba High School, is the daughter of Mr. and Mrs. Vance Booker, former residents of Goldthwaite. Linda is a sophomore, an A student and an outstanding worker in 4-H Club. She is the granddaughter of Mr. and Mrs. Chas. L. Stephan of Star and Mr. and Mrs. Mel Booker of Comanche and great-granddaughter of Mrs. J. E. Perkins.

Chappell Hill

By PEARL CRAWFORD

After so much rain most all the farmers have been watching their grain crops.

A large crowd attended the Priddy and Star football game at Eagle Field at Goldthwaite, Thursday night. Star won the game.

Congratulations to Lynda Cook of Star, 4-H Club member, who showed the top steer at the State Fair of Texas, at Dallas.

W. A. Daniel took some stock to the market at Brownwood Tuesday.

A. L. Crawford and William took livestock to Comanche recently.

Last Sunday was a happy day for Mr. and Mrs. Stone Shipman, Shirley and Nita. It was the Shipmans' 20th wedding anniversary and Mrs. Shipman's birthday. They spent the day with Mrs. Shipman's parents, Mr. and Mrs. C. A. Karnes of Brownwood. We send "Happy Birthday" greetings to Mrs. Shipman and may they have many more happy reunions with their loved ones.

Mrs. Hugh Nowell spent the weekend at Post visiting Mr.

Jim Soules, and Mr. Soules.

Mr. and Mrs. James Soules and Greg of Hamilton also visited the Soules Sunday afternoon.

and Mrs. Ralph Nowell and Mark.

Mr. and Mrs. R. F. Daniel were sick a few days with colds but are feeling much better.

Mrs. Bud Oden of the Duren community was in town Friday and reported the farmers were losing much of their grain to the Army worms. Mrs. W. A. Elms from over Mullin way reported that worms were eating the grain crop and fall gardens.

Albert Evans is a surgical patient at Childress Clinic and Hospital. We wish for him a speedy recovery—and that he will soon be able to return to school.

Mr. and Mrs. Pearl Shipman visited Mr. and Mrs. O. A. Evans Saturday night.

I drove by and visited at the W. W. Ratliff home Thursday. Their new stock culvert is sure nice.

Mr. and Mrs. W. A. Daniel built and put up a new iron

gate, which we all appreciate so much. Mrs. Daniel also painted the gate.

Mrs. Claud Evans has been at her home a few days after visiting Mr. and Mrs. Albert Evans during the week.

Personals

Mr. and Mrs. L. D. Spinks and children, Cindy and John Lynn of Mesquite spent from Saturday until Monday with his mother, Mrs. J. M. Spinks. They also visited his sister, Mrs. T. L. Hammond.

E. L. Pass received a message that his only sister, Mrs. Barbara Cary of Ontario, California, had died suddenly.

Mr. and Mrs. W. E. Harmon of Carlton visited Mrs. Harmon's mother, Mrs. J. M. Spinks, last Sunday.

See us For . . .

- Engine-Air Tire Pump ● Oilers
- Grease Guns ● Roller Bearings
- Spark Plugs ● Muffler Rain Caps

Compare Our Bolt Prices



Duren Equipment Company

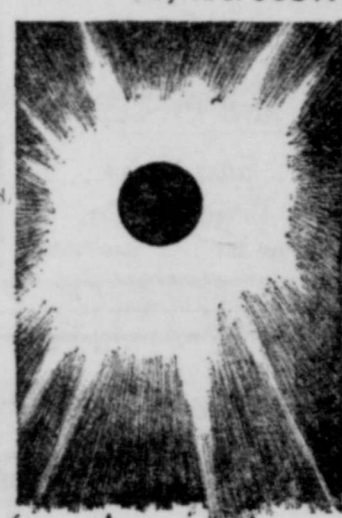
Parker Street Goldthwaite

SCOTT'S SCRAP BOOK

By R. J. SCOTT



LIME SHEARED ON THE FACE HAS A SPECIFIC MEANING AMONG BUNEL TRIBESMEN OF NEW BRITAIN NAMELY, MOURNING.



THE CORONA OF THE SUN EXTENDS OUT SOME 3,000,000 MILES. ONLY DURING A TOTAL ECLIPSE CAN THE CORONA AROUND THE SUN BE SEEN.

WINCH. A CRANK WITH A HANDLE FOR GIVING MOTION TO A MACHINE, A GRINDSTONE, ETC.

WINCH. A REEL FOR A FISHING ROPE.

WINCH. WHOLE FLINCH.

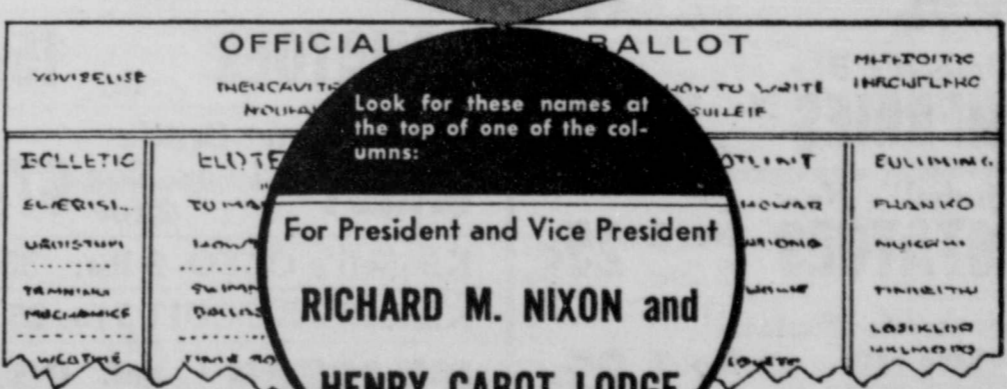
WINCH. HOW ABOUT A WOUNDED REAR?

WINCH. WHAT WILL DELAY WOUND HEALING?

WINCH. LACK OF PROTEIN IN THE DIET.

Vote as a Free American!

Vote the Ticket that is BEST FOR TEXAS
HERE'S HOW TO DO IT



1. Find the names of RICHARD M. NIXON and HENRY CABOT LODGE at the top of your ballot.
2. Leave the names NIXON and LODGE unmarked on the ballot; scratch all other names for President and Vice President.
3. To complete your ballot, leave the name of the candidate for whom you wish to vote for each office and scratch the rest.

WARNING!
You may be told that you cannot vote for Nixon and Lodge if (1) you voted in the Democratic Primary or (2) your poll tax receipt or exemption certificate is stamped "Democrat." THIS IS NOT TRUE. You CAN vote for any candidate you wish, no matter how you have voted, or not voted, in any previous primary or election. THIS IS YOUR RIGHT AS A FREE AMERICAN.

Vote November 8 for NIXON and LODGE
Texas Democrats for NIXON & LODGE, Allan Shivers, Chairman (Pd. Pol. Adv.)



HIS CAR WAS FAMILIAR—King Frederik of Denmark chats with New York Gov. Nelson Rockefeller as he pays a brief visit to the Executive Mansion in Albany. The car in which the royal visitor was shown about was the same in which the king had ridden twenty-one years ago when he was the Crown Prince.

HA Loans
Up To \$3,500.00
For BUILDING REPAIRS And IMPROVEMENTS
Sixty Months to Pay
No Money Down
See Us For
Your Building Needs
We Have Large Stock
Lumber and Building Supplies
HORTON LUMBER COMPANY
M. F. HORTON
Goldthwaite, Texas

YOU'LL FIND IT IN THE WANT ADS!

Classified Rates

5c per word including name and address, for first insertion and 3c per word for each subsequent insertion. Count initials as one word.
Minimum charge 75c first week and 50c each subsequent insertion.
Legal notices same as above rates.

Announcements

Black face readers, 25c per line. Memorial tributes or Resolution of Respect and all other matter not news will be charged for at regular advertising rates. No charge is made for news of Church or other public gatherings where no admission is levied. Where admission is charged or where goods or wares are offered for sale, the regular advertising rates will be applied.
Cards of Thanks, \$2.00.
DISPLAY ADVERTISING
Rates on Request.

Announcement

RUBBER STAMPS—Fast service, reasonable prices, no order too large or too small to get our special attention. Eagle office. 1-3-tf

AUTOMOTIVE

We Are Your Authorized Dealer For
New GMC Trucks and Pickups
San Saba Tractor Co.
Phone 232 San Saba

Announcements

For an everlasting tribute to your loved one, select a monument of any description from Stacy Monuments, across from Funeral Home. (5-2-tfc)

Factory Special on steel typing table and steno posture chair. Now on display at the Eagle Office. 1-7-tfc.

Business Services

Keep Your Records in order with a New Filing Cabinet. Several sizes in stock and priced right too. See them at the Eagle Office. 1-7-tfc.

DEAD ANIMAL SERVICE—Free and Sure.—Phone 303, Hamilton, Texas. 11-19-TFC.

FARM BUREAU INSURANCE
Office: Duren Equipment Co. Every Afternoon
DAVID WATTERS, Agent

Card Of Thanks

We wish to thank the friends for their prayers, cards, telephone calls and every consideration shown Willis while he was in McCloskey Hospital; also the Men's Downtown Bible Class for their lovely pot plant. May God bless each of you.
Mr. and Mrs. Willis A. Hill. 10-27-1tp.

CARD OF THANKS

With the deepest gratitude we wish to express our sincere thanks and appreciation to each friend and neighbor for the beautiful flowers, delicious food and every kindness shown us at the passing of our loved one, A. M. Hunt. Your loving expressions of sympathy are sincerely appreciated. May God bless each of you.
Mrs. A. M. Hunt and Children. 10-27-1tc.

Farm and Ranch

IF INTERESTED in Farm and Ranch Land contact Joe Green, Center City — Route 3, Goldthwaite, Texas. 6-19-tfc.

FOR NEW AND USED FORD Tractors and equipment see San Saba Tractor Company. Phone 232 for free pickup and delivery of major overhaul. 10-6-tfc.

FEED AND SEED

PEANUT HULLS: For a limited time we offer peanut hulls at \$10.00 per ton (subject to change). Store now for winter use. Sweet Feed and Pellets are also available. **TOPPER FEED COMPANY, Comanche, Texas. 9-22-tfc.**

FOR SALE: Big M-Wayne Mix Egg Pellets, complete laying feed. Special introductory offer, 50-lb. bag, only \$1.85. Moreland Feed Store, South Side Square, Goldthwaite. 4-14-tfc.

FOR SALE: Seed Oats, Bronco and New Nortex, Dale Reid, Phone MI 8-3193, Goldthwaite. 10-6-tfc.

FOR SALE: Seed Oats, almost any variety. See Joe Palmer, phone MI 8-2762, Goldthwaite. 10-6-5TC

City Property

FOR SALE: House and lot at 4th and Lynch Sts., \$5,000.00 cash. E. B. Adams, Box 571, Cleburne. 9-22-tfc.

EMPLOYMENT

OPENING for Two Waitresses. Apply in person at McLean's Cafe or Call MI 8-2487, 10-6-tfc

FOR SALE

FOR SALE: One Aermotor windmill, good condition, reasonably priced. Mrs. Emma A. Stegemoller, Priddy, Texas. 10-27-2tc.

Mimeo Paper, letter and legal size, regular and heavy weight, good selection of colors in stock. Eagle Office. 1-7-tfc.

FOR SALE: Re-upholstered living room suites running out of my ears, like new, all colors and all prices. Come in and give us a try. Spradley's Furniture & Upholstery, Estep Building, Goldthwaite. 10-27-2tc.

Miscellaneous

FOR ALL YOUR FURNITURE and Carpeting needs, see Higginbotham Bros. at Comanche, good bargains; terms or cash; free estimates and delivery. 7-7-tfc

BIG M Hog Feed Pellets made with Wayne Hog Supplement, \$3.35. Moreland Feed Store, Goldthwaite. 3-31-tfc.

FOR SALE: Case tractor, 49 head mixed goats, 50 yearling ewes. See Leonard Collier. 10-27-1tp.

MATTRESS SPECIAL: Morning Glory Mattress and Box Springs, complete set for only \$49.95. Spradley's Furniture & Upholstery, Estep Building, Goldthwaite. 10-27-2tc

DON'T WAIT 'til Christmas—Get that Upholstering done now before the holiday rush. Spradley's Furniture & Upholstery, Estep Building, Goldthwaite. 10-27-2tc

BIG M-Wayne Mix Dairy Ration, 16%, \$3.50. Moreland Feed Store, South Side Square, Goldthwaite. 3-31-tfc.

TYPEWRITER SPECIAL: Re-conditioned Underwood Standard, extra clean machine, reduced from \$65.00 to \$49.50. Eagle Office. 10-6-4T

FOR SALE: Good selection of used refrigerators and washers. All prices. Some real good buys. Mills County Hardware. 8-6-tfc

PADGETT FLORAL will make daily delivery of flowers to hospital. Call MI 8-2612 and place your order. 6-9-tfc.

LETTERING GUIDES — Two inch stenciling letters, now in stock, only 50c per set. Eagle Office. 3-17-tfc.

WHY ARE WANT ADS SO LITTLE? They don't need to be big to get attention and results! You'll find it so easy to place a small-but-mighty Want Ad. Just Phone MI 8-2244. 9-29-5T

OFFICE SUPPLIES

FOR SALE: Envelopes, all sizes, typing paper, second sheets, carbon paper, index cards, index guides, letter files, storage files, file folders, legal ruled pads, columnar pads and many other items in stock. — Eagle Office. 1-7-tfc.

PERSONAL

YOU can get the Best Deal on a filing cabinet from Vic at the Eagle Office. Just try him. 1-7-tfc

SAVE Money, Save Time, Save Taxes with America's foremost, simplified Household Budget Record, only \$1.00 at the Eagle Office. 10-16-tfc

DON'T WAIT 'til Christmas—Get that Upholstering done now before the holiday rush. Spradley's Furniture & Upholstery, Estep Building, Goldthwaite. 10-27-tfc.

Clementine Wilmeth Briley Writes From Temporary Home In El Paso

By CLEMENTINE WILMETH BRILEY

Street, have cut down on beautiful Balm of Gilead, we had growing out front. The trees were large and beautiful. We imagine why anybody want to cut them down.

Today's Herald Post said of the highest cotton yield the nation will probably record this year by Lyndon Barker of Dell City, Del. A near outpost of El Paso Barker estimates his 1960 crop at 5½ to 6 bales per acre, a drop from previous years. The highest yield reached in 1957 when a 2½ acre crop produced 19 bales slightly under 8 bales per acre. Mr. Barker says he has able to boost production 30 per cent hike in water irrigation, fertilizing, and pesticide program. He said this year because of the time to the project. Some plants grow to a height of feet, harvesting must be by hand.

Mr. and Mrs. Raymond of Lanes, Penn., visited uncle, Mr. James McClellan, Mrs. McClellan and family. They were returning an extended wedding trip west coast and other past interest.

Mr. and Mrs. Raymond of Lanes, Penn., visited uncle, Mr. James McClellan, Mrs. McClellan and family. They were returning an extended wedding trip west coast and other past interest.

SAVE RING-UP LOWER FOOD PRICES!

Prices Good Fri. & Sat., October 28 And 29

CRISCO 3-lb. Can	69¢
COFFEE 1-lb. Folger's	65¢
SUGAR 10 lbs.	98¢
FLOUR Light Crust 25 lbs.	\$1.59
Del Monte Pineapple JUICE 46-oz. 3 for	\$1.00
Kimbell's Pie CHERRIES No. 303 2 for	39¢
Kimbell's New POTATOES No. 2 2 for	25¢
Kimbell's Mustard GREENS No. 2 2 for	23¢
Del Monte Whole Kernel CORN 12-oz. 2 for	35¢
Rose Dale Green Lima BEANS No. 303 2 for	39¢
Shedd's Peanut BUTTER 2-lb. Jar	79¢
TUNA Del Monte Flat Can—3 for	\$1.00

Red Plum PRESERVES 20-oz. Kraft	29¢
Mrs. Tucker's CORN OIL Quart	49¢
POTATOES 10-lb. Bag	47¢
CELERY Lge. Stalk Each	15¢
TOMATOES lb.	15¢
Kraft Peanut Brittle CANDY 14-oz. Box 2 for	67¢
Kimbell's OLEO —2 lbs.	35¢
Kimbell's BISCUIT 3 for	25¢
ICE CREAM ½-gal. Frozan	39¢
Morton Frozen Fruit PIES 1-lb., 6-oz.	39¢
FRYERS lb.	39¢
Round STEAK lb.	79¢
HAMBURGER lb.	45¢
BACON —Wicklow—lb.	53¢
Home Made Pork SAUSAGE —lb.	39¢

DUREN GRO.
MI8-2614 DELIVER 9 A.M. TO 11 A.M.

LEGAL NOTICES

SEALED BIDS WANTED—Sealed Bids will be received in the office of the Superintendent until 8:00 p. m., Nov. 10, 1960 on school bus chassis being offered for sale. This equipment may be seen at Zephyr. Bid proposals may be secured by contacting R. Purvis at Zephyr School. 10-20-2tc.

LOST AND FOUND

LOST: The works out of a lady's watch, "Hyde Park" 17-jewel; finder please notify Mrs. Charlie Berry, phone Caradan WI 8-2337. 10-27-1tp.

LIVESTOCK

FOR SALE: Registered Hereford Bull, 1 year old. See D. V. Westernman. 10-20-2tc.

WANT TO BUY A Load of Mutton Goats or 1,000 head. Good Ages. Ward McKee, San Saba, Texas. Tel. 3614. 10-20-2tp

LOST: Part blackfaced ewe with twin lambs, if found call MI 8-3356 or MI 2-2424. 10-27-1tc.

FOR SALE: Have excellent Milk Cow for sale, will calf in a few days. Can be seen in town. R. T. Padgett. 10-27-1tc.

At Stud

Now Booking
for 1963
My Famous
Appaloosa Stud
"Stumbler"
Fee—
Private Treaty

LeRoy Miller
PHONE MI 8-2619
Goldthwaite, Texas

Quality Upholstering

Furniture and Auto
Free Pickup and Delivery

Spradley's Upholstery Shop
Dial MI8-2261

TEXACO

GAS AND OILS
Firestone Tires
and Tubes
Washing & Greasing
ROAD SERVICE

TEXACO
Service Station
Dial MI8-2585 • Goldthwaite
Johnson Brothers

Men's Downtown Bible Class
(Non-denominational)
MEETS EVERY SUNDAY
9:30 A. M.
Melba Theatre
All Men Invited To Attend

ZENITH

OLIVER
RADIO & TV
Selling and Service
Phone MI 8-2614

SUCCESS STORY By Alan May

PAUL "BEAR" BRYANT, ALABAMA COACH, BEGAN 1960 WITH AN IMPRESSIVE WIN OVER GEORGIA AS HE CONTINUES HIS REHABILITATION PROGRAM AIMED AT PUTTING THE CRIMSON BACK AT THE TOP OF THE SOUTHEASTERN CONFERENCE.



**James L. Simpson
J-Tac Reporter**

James Leslie Simpson, Freshman at Tarleton State College, Stephenville, was recently elected to the office of Business Manager, on the staff of the College Yearbook, "The Grass-burr"; also as a reporter on the J-Tac, a weekly publication of the college.

He is the son of Mrs. Ruby Simpson and a graduate of Goldthwaite High School, class of 1960.

PUBLIC SQUIRREL HUNT

Squirrel hunts will be permitted on the Lake Tejas area in Tyler County, a unit of the Angelina Wildlife Management area of the Game and Fish Commission, Oct. 29 through Nov. 2. There will be 175 permits issued, for a bag limit of five squirrels each. Applications will be filled on a first come basis. They should be made between 8 a. m. and 5 p. m. Oct. 26-28, by telephone to SUNset 7 3543, Hemphill, Texas.

HUNT DRAWING OCT. 31

All applications for public hunts on Game and Fish Commission wildlife management areas, must be in the Austin office by Oct. 31. A drawing for permits to hunt deer and turkey on these areas will be held in the Commission office Monday, Oct. 31. These areas include: the Black Gap, Diablo Kerr, Angelina and Engeline areas.

The more you see of Texas the more you will love it.

David Crockett Memorial—

David Crockett, the renowned Tennessee statesman and Texas hero of the Alamo, is commemorated at the David Crockett Memorial Building, located in the City Park of Crockett, Texas.

On this beautiful, colonial style memorial building, in the central portion of East Texas—in Houston County—is a monument bearing the timeless saying: "Be sure you are right; then go ahead."



Becoming more and more important to the outboard motor user is the storage battery.

This is true for several reasons, but mainly because more than one-third of the outboard motors now being sold are electric-starting.

Although marine batteries are similar to the automotive type, their use, and abuse, is quite different. Boats often lie idle for several weeks at a time. Sometimes for the entire winter. Marine batteries also are subject to more bouncing around than are car batteries. This due to more frequent periods of "rough riding."

Another factor is this: Often the boat battery is directly exposed to the elements for long periods. Much of the time it sits uncovered for weeks, even months, in the hot sun.

In many cases the boat battery is connected to a generator-less motor. As a consequence it is used without being recharged until its power is completely exhausted. This is highly injurious to the battery.

All these factors mean that the marine battery gets the roughest treatment.

Habitually the motorist will have his car battery checked regularly... or the service station attendant will do it for him without being directed to do so.

But seldom if ever does the boat owner think to add water to his marine battery, much less take time to have it recharged. Nor does the filling station man check it when the motorist drives in trailering a boat. In fact, we've yet to see a station attendant inspect a boat battery... or a boat owner ask that it be done.

Marine batteries are taken for granted, seldom inspected accessories. Not only are they subject to rougher treatment... they also get less attention.

Often we've wondered why some Texas manufacturer didn't come up with a specially built storage battery for outdoorsmen... specifically designed for electric-starting outboard motors.

It seems that a Texas battery company is doing just that. They now have factories in three Texas cities—San Antonio, Houston and Dallas, plus another in New Orleans, La.

They have been making "Sea-Going" batteries for diesel engine starting, auxiliary power and stand-by service, for many years... for systems up to 120 volts. But only recently have they gone in for marine bat-

teries for the small craft.

Their small marine batteries—in 6, 8 and 12-volt sizes, have extra heavy plates, especially built for tough marine service. Tests prove that they will retain 98 per cent of their charge after four weeks and more than 80 per cent after 14 weeks. That's over three times as long as government requirements.

Manufacturers claim that the longer life is due to larger plates, massive grids, extra heavy cross bars, and permalife insulation.

Nothing could sound sweeter to the boat owner who has had the sad experience of readying for a pleasure cruise only to encounter a balky battery—or worse yet, a dead one.

Regardless of the make of battery you use, it deserves more care than it's getting.

Mercury outboard authorities, sensing the need for more attention to marine batteries, offer some recommendations.

They suggest that you purchase an ordinary hydrometer, available at auto store for about a dollar, and check your marine battery regularly.

If the hydrometer test shows a reading of 1,150 it means that your battery is almost dead. A reading of 1,250 indicates a half-charged state; and 1,280 means it is fully charged.

You can bring your battery up to full charge on any slow charger of appropriate voltage. Rate of charge should not exceed six amperes, and charging

should be discontinued when the hydrometer reading reaches 1,280.

Check the battery's water level often and add distilled water as needed. But don't overfill.

Outboard battery trouble often is traced to poor connections at the terminals. When installing your battery, scrape or sandpaper the terminal metal to get a bright surface. A little grease or petroleum jelly, spread on the terminals after tightening, does much to deter corrosion.

Brush a mixture of baking soda and water over corroded terminals to clean them. Anytime you remove the battery rinse it off thoroughly with the solution.

Although your marine dealer will store your battery with your motor, for the winter, you can keep it at home in a cool, dry place. Put it away fully charged

and bring up the charge at 60-day intervals. If you allow it to drop down to the fully discharged state repeatedly, its life will be materially shortened. Now, as the cooler weather approaches and you go pleasure boating less frequently, your marine battery needs closer attention.

— IT PAYS TO ADVERTISE —

AMBULANCE SERVICE

PHONE MI 8-2255

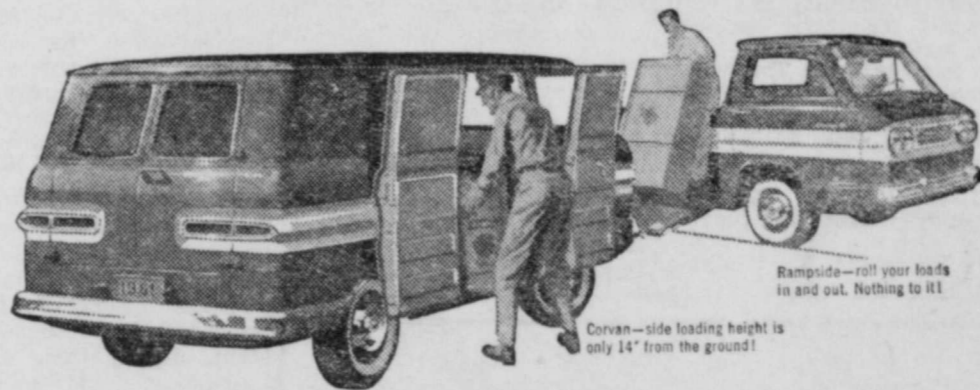
**Roy Wilkins
Funeral Home**
GOLDTHWAITE, TEXAS



CITY CLEANERS

MEMBER DRY CLEANERS INSTITUTE OF TEXAS
GOLDTHWAITE, TEXAS
Phone MI8-2260

NOW FOR '61... 2 TOTALLY DIFFERENT TYPES OF CHEVY TRUCKS!




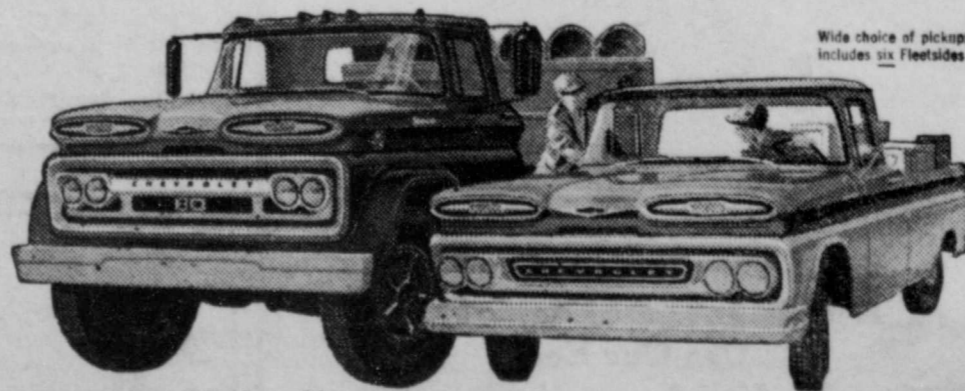
Rampside—roll your loads in and out. Nothing to lift!
Corvair—side loading height is only 14" from the ground!

1. REAR-ENGINE CORVAIR 95's—THE TRUCKS THAT BEGAN WITH 4 WHEELS AND A FRESH IDEA!

Here are high-capacity haulers that offer the most accessible load space you ever saw. Think of up to 1,900 pounds of whatever you haul riding on a highly maneuverable 95-inch wheelbase. This design's a beauty. Features 4-wheel independent suspension, integral body-frame build, thrifty air-cooled rear engine—all kinds of fresh new ideas about truck efficiency and economy.

2. TORSION-SPRING CHEVROLETS—WORTH MORE BECAUSE THEY WORK MORE!

You actually feel the advantages of independent front suspension in the almost total absence of I-beam shimmy and wheel fight. The driver rides easy, the load's better protected, tires take less abuse, the whole truck is subjected to far less damaging road shock and vibration. Efficiency goes up. Profits follow. Look over the whole line—both types of Chevy trucks. 



Wide choice of pickups includes six fleetsides!

You've never seen a heavyweight handle so easily!

SEE THE GREATEST SHOW ON WORTH NOW AT YOUR LOCAL AUTHORIZED CHEVROLET DEALER'S!

SAYLOR CHEVROLET COMPANY

Phone MI 8-2588 Goldthwaite, Texas Fisher & Third Sts.



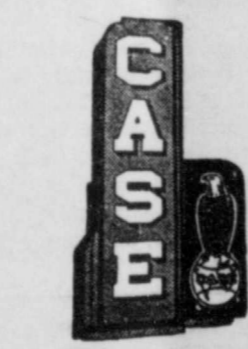
BUYING A CAR IS ONE THING!

PROPER FINANCING ANOTHER!
SEE A DEALER FOR YOUR CAR,
SEE US FOR YOUR BUDGET!

You can finance your new car as economically as possible. See US for a low-cost auto loan. Easy repayment installments to best suit your budget.

ARRANGE YOUR LOANS AT

MILLS COUNTY STATE BANK
GOLDTHWAITE, TEXAS



See Us For Farm Machinery Needs

CASE

Tractors And Equipment

Automotive Service & Repairs

Magneto Service

Hi-way Garage And Implement Co.

Your Case Dealer
Priddy, Texas

MULLIN ENTERPRISE
October 27, 1960

ey Writes
n El Paso

BRILEY
ve cut down
Balm of Gilead
growing out
trees were large
beautiful. We
why anybody
at them down.
Herald Post
chest cotton yield
will probably
year by Lynn
Dell City Dell
tmost of 31
imates his 1959
1 bales per acre
previous season
During the last
veraged 8.92 bales
highest yield
1957 when a 2.4
duced 19 bales
der 8 bales per
r says he has
post production
at hike in water
and careful time
fertilizing, and
ram. He said
this year because
to devote more
the project. Since
w to a bright
osting must be

Write or Phone
Information.
MI 8-2255
GOLDTHWAITE, TEXAS

EVERY SUNDAY
1:39 A. M.
Theatre
Invited To Attend

ENITH
Sale and Service
Phone MI 8-34

Alan May

THIS FORMER ALABAMA...
YD HAS BUILT...
QUITE A...
REPUTATION...
TAKING OVER...
INFERIOR...
MATS AND...
5 TUBS AND...
HEAVY...
GAS AND...
EXAMPLES.

Methodist Youth To Sponsor CROP Drive This Year, Oct. 31

The Methodist Youth of Goldthwaite will sponsor a drive for Christian Rural Overseas Program Monday, October 31. Everyone who wishes to participate are asked to meet in the basement of the Methodist Church at 6:30 p. m. The participating youth will be wearing some sort of identification showing that they are working for C. R. O. P. Everyone is invited.

Too Late To Classify

CARD OF THANKS
Thanks to the following people who made the Festival a success:

Mr. Ray Standley, finance chairman; Program Mrs. Charley McLean and teachers from elementary school, and Mr. Milnor and Mrs. Hoyt Cockrell from high school; Decoration, Mrs. Lee Roy Stacy, chairman, Mmes. Raymond Summy, Hollis Blackwell, Delmer Sears, Jack McKenzie, Y. B. Johnson, Don Geeslin, Joe Shelby Langford, Cruz Corona, Malcolm Jernigan, and Roy Loudermilk. Also to Howard Campbell, Don Geeslin, Yarborough & Duren, and T. J. Blackburn.

Tickets, Charles Conrad, chairman, Warren Duren, Dumble Hamilton, Raymond Casbeer, L. B. Burnham, Frank McClung and G. C. Head.

Voting, Mrs. J. D. McKenzie, chairman, Mmes. J. C. Wesson, E. D. Bradley, Al Langford, Joe Shelby Langford and Don Geeslin.

Mrs. Howard Campbell's 5th Graders who made posters which were displayed in the business houses of the town.

Bill Woody, who donated the cartons for the voting.
The Festival netted \$421.50.
GOLDTHWAITE P-TA
10-27-1tc.

CARD OF THANKS

May we express a big "Thank You" to our parents, the lunchroom ladies and to each of you who ate with us at our Chicken Supper, Friday night.

Sincerely,
The Senior Class
of Goldthwaite High School.
10-27-1tc.

CARD OF THANKS

The Girl Scout Association wishes to thank the business men of Goldthwaite and each individual for their contributions during the recent Girl Scout Finance Drive. These contributions will help greatly in promoting Girl Scout work in Goldthwaite and surrounding communities.
10-27-1tc.

PERMANENT QUARTER HORSE STALLION for Service. James Green, Mullin, Texas, phone YU 5-2609. 10-27-1tc.



Only **NINE** More Saturdays Before Christmas

Shop Early

While Our Stock is Complete—Avoid That Last Minute Rush. Use Our Easy Lay-Away Plan.

Yarborough & Duren

"THE FRIENDLY STORE WHERE YOUR MONEY BUYS MORE."

Good Report For Local ASC Office

The Mills County ASC Committee, composed of E. L. Burkett, Chairman; Ray Priddy, vice-chairman and O. B. Bell, regular member, reports that Mr. Earl Gerding of the Commodity Stabilization Service, Dallas, recently completed a two week annual audit of the Mills County ASC Office. At the close of the audit, Mr. Gerding disclosed to the county committee that there were no material findings in program or administrative operations and commended very highly the operation of the ASC Office.

In a letter received by Lee W. Tabor, county office manager, from Mr. G. F. Osborn, Texas State Administrative Officer, he made the following statement:

"I wish to commend you and the entire staff for the efficient administration of the activities of your office during the period covered by the audit."

Since no audit deficiencies were found during 1959 or 1960, the county committee is happy to report that the Mills County ASC Office is one of the few offices in Texas to receive a "no exception" audit for two consecutive years.

It is the policy of this committee to encourage efficient administration of all programs assigned to the county committee for this county and afford equal opportunity to all producers in Mills County.

Bus Chartered For Marble Falls Trip

Burl Holland and Dr. E. J. Stanford announced Wednesday that arrangements have been made for a 30 passenger chartered bus to take football fans to Marble Falls November 10 to see the Eagle-Mustang game.

The bus will leave Goldthwaite at 5 p. m., on Friday, November 10 and the round trip fare will be \$3.50 per person.

Coch Williams and Holland said that those fans wishing to ride the bus should contact Holland at the cafe for tickets and reservations, tickets are on sale now.

Drs. Weatherby and Cress were guests of Mr. and Mrs. Bruce Burnett Sunday. They also visited with Dr. Weatherby's grandmother, Mrs. J. H. Burnett, who is a patient at Childress Clinic and Hospital.

'Dream Job' Helps Crippled Tots

Dorothy Buck is so happy today in her "dream job" as a top-rank physical therapist that she's given no serious thought to marriage.

But attractive Miss Buck is more than a physical therapist, fascinating as that field is to a young woman who loves children and has a particularly warm spot in her heart for those disabled by birth defects. At famed New York University Medical Center in New York City she is administrative assistant in the Children's Division. The medical college of the University is aided by the New March of Dimes.

Here is probably the only "dream job" of its kind in the nation, she says.

"With these tots, new problems arise every hour dealing with walking and crawling, and devising new ways of doing both. And that means a challenge every hour. There's nothing routine about my job," the brunette and hazel-eyed therapist says. "And for that I'm grateful."

She tells how she made a career in physical therapy and of her interest in The National Foundation's professional education program which, in this one field alone, offers annually 103 March of Dimes scholarships of \$500 each to applicants in all 50 states and Puerto Rico.

She studied first at McGill University, Montreal, Next, this enterprising young woman enlisted in the women's division of the Royal Canadian Air Force and taught physical education and rehabilitation at the Boundary Bay Base near Vancouver. She then obtained a bachelor of science degree in physical therapy at New York University; worked at Bellevue Hospital in New York City with patients stricken with a wide variety of disabilities; and later by attending night classes



Dorothy Buck extends encouragement to Bobby Schnurr, 10, of Staten Island, N. Y., a birth defects victim.

she telescoped a two-year course into one year in guidance and personnel administration.

"What is so satisfying about the profession of physical therapy," she explains, "is that we treat the patient as a whole. We don't restrict ourselves to the immediate disability at hand. And in the case of handicapped children, we also find ourselves 'treating' and 'teaching' their parents—telling them that when the great day dawns that Susie or Tommy can leave us, rigorous physical therapy must continue and that father and mother must serve as home therapists.

"For any young woman with the normal desire to help others in difficulty, particularly children, there is no more desirable career than one in physical therapy," she says. "It's certainly far better than pulverizing a typewriter or taking someone's fractured dictation."

Finally, even if Dorothy Buck has no immediate thoughts about marriage for herself, she argues that there's no reason why a physical therapist can't have a career and a family too.



GIRL SCOUT SHOUT

By MRS. HOUSTON DUREN

Lewis Hudson, Finance Chairman, reported a total of \$390.00 from the Finance Drive.

The third and final session of the Girl Scout Leadership course was held in Lampasas Thursday, October 20. Those attending were: Mrs. W. G. Saylor, leader of the first year Brownies, and Mrs. Jerry Waller, leader of the second year Brownies. Both Mrs. Saylor and Mrs. Waller received Leadership certificates.

TROOP MEETING REPORTS

GRADE 2: Last Tuesday was a very special day for the first year Brownies. That was the day they became official Brownies, and members of the International Girl Scout organization, during their Investiture ceremony.

Mrs. Saylor, the leader, and Judy Dalton, program aide, stood by the water's edge (a mirror on the ground surrounded by greenery). Mrs. Bruce led each girl to the big mesquite tree (in the story it is an old oak tree), where she knocked and was asked to join the circle. When all of the girls were gathered around the "water," Judy asked the girls what the Wise Old Owl had said in the "Brownie Story," when the children had asked who had helped the people. The girls answered together, as they turned around and looked into the "water":

"Twist me and turn me and show me the elf, I looked in the water And saw MYSELF!"

After this the girls gave the "Brownie Promise" and sang the "Brownie Smile Song." Mrs. Bruce then pinned each Brownie's official pin on upside down, as she told her to do a good deed

before going to bed that night so she could change her pin to right side up.

The meeting closed with the girls leaving through the "Magic Tunnel."

GRADE 3: Troop 7 gained two more members last week. They are still learning new games and went out-of-doors for the games.

They made plans for the next meeting. Carolyn Kelly served "Nibbles."

GRADE 4: Troop 4 went to their program aide's home. Phyllis McAden, and made chocolate chip cookies last week when they met.

While the cookies were baking they played games and sang songs. Vicki Mosier and Phyllis helped the girls with the cookie-making.

Phillip Edgington Member of New Club

Denton, (Spec.)—Phillip Edgington of Goldthwaite is one of 23 members of Talons, newly organized men's service club, at North Texas State College.

Edgington, son of Mr. and Mrs. D. R. Edgington, Route 2, Goldthwaite, is a junior psychology major.

REV. HAYS TO CONDUCT SERVICES AT REST HOME

Rev. L. L. Hays, a resident of the Hickman Rest Home in Goldthwaite will conduct services in the home this Sunday afternoon (October 30), at 3:00 o'clock. He is a retired Baptist minister and has been pastor of a number of churches in the county.

Everyone has a most cordial invitation to attend the services.

PICTURE FRAMING
CUSTOM MADE
Good Selection in stock to choose from.
Special Attention given each job.
Phone MI 8-2411

BARNES & McCULLOUGH
"Everything To Build Anything"

Luther "Luke" Soules Receives Promotion

Mr. Luther H. (Luke) Soules, formerly vice-president and sales manager of White Swan Coffee Co., has been appointed Vice President and Manager of Sales of both Great Western Foods and White Swan Coffee Co. Mr. Soules, now on the board of directors of White Swan Coffee Co., was also elected to the board of directors of Great Western Foods. This announcement was made by Thomas M. Ryan, President of the Waples-Platter Co., parent organization.

He is a native of Goldthwaite and is the son of Luther Soules of this city.

Halloween Carnival At Star October 28

There will be a Halloween Carnival and Coronation of the Queen at the Star School gymnasium this Friday night, according to announcement by Supt. Wilson Head.

The festivities will begin at 7 o'clock and there will be food, games and fun for everyone.

The Coronation Ceremony will be held at 9:30 o'clock.

The public is most cordially invited to come out and enjoy the fun.

James Clary Exhibits Angus To Second Place

James W. Clary, Mills County 4-H member from Star, showed the second place Angus steer in the third class of the Junior Steer Show at the State Fair in Dallas.

Class three covered steers weighing from 700 to 850 pounds.

FALL'S NEWEST, SMARTEST ACCESSORIES

FASHIONABLE HANDBAGS
Many Colors and Sizes

SHAWL FUR COLLAR
Perfect for Suits and Sweaters

SEASON'S MOST BEAUTIFUL JEWELRY

STRETCH, DRIVING, AND WOOL GLOVES
Complete Assortment Styles & Colors

MINK COLLARS, WHITE FUR AND FAKE LEOPARD
Priced Surprisingly Low

Large Collection of **DRESSY AND TAILORED BLOUSES**

Smartest Ever Collection.

Little's
"SINCE 1898"



GOING STRONG—The sign on his bicycle is almost a complete biography of Conrad Dube, 31, shown in Chicago on his way home to Quebec, Can., after another marathon cycling trip. Former polio patient, Dube has pedaled his way through most of the world for a grand total of 155,000 miles, and is still going strong.



HANDS TELL THE STORY—Sen. John F. Kennedy finds eager hands reaching out to touch him on a campaign swing through Silver Spring, Md. It was his second trek into the suburbs of Washington. At right, Vice President Richard M. Nixon uses his hands to make a point in Hartford, Conn., as his running mate, Henry Cabot Lodge, Veterans' Affairs Secretary, and Vice President nominee crossed in New England after several weeks of campaigning in different areas.