

The Foreman Co.
Box 68
Monmouth Ill. 61462



BAILEY COUNTY JOURNAL

'The Community of Opportunity-Where Water Makes the Difference'

Volume 21, No. 2

10 Pages Today

Published Every Sunday at Muleshoe, Bailey County, Texas 79347

7, 1983

County Livestock Show Set For January 26

Show Board Gives Rules, Regulations

In mid-December plans were being laid for the 1983 Bailey County Junior Livestock Show scheduled to be held in the Bailey County Coliseum on January 26, 27 and 28.

School will be dismissed on the day of the show, but the teachers will have an inservice day that day.

Weigh-in and show time arrival is set between 4 and 8 p.m. on January 26, with the animals being removed following the completion of the swine show on January 28. Any exception to this rule will be made by the Division Superintendent only, and the Livestock Board requests that no exhibitor remove animals or tack from the building during judging.

Pens and other equipment for the show will be set up and handled on Tuesday, January 25, a day prior to weighing-in. The actual showing of the animals will be held on Thursday evening for steers and lambs and Friday for swine, depending upon the numbers to be judged.

The following paragraphs contain a list of rules set forth for the show: any boy or girl who is a member of the Bailey County 4-H, FFA or FHA whose projects are supervised by the County Extension Agent or FFA advisor and who attend school in Bailey County is eligible to show in the County show. An exhibitor must be nine years of age by the day of the show to participate.

Exhibitors must have owned their animals and have had them in their care not later than December 1, 1982. Steers must have been on feed and in the exhibitor's care by June 30, 1982. No animal is eligible for the Bailey County Show if that animal has passed through an auction or pre-

mium sale in connection with a livestock show. Also, exhibitors should notify their supervisor by December 1, 1982 of all livestock animals on feed. Forms were furnished to exhibitors by the Show Board.

One of the judges for this year's show is Dr. Donald Orr, assistant Professor of Animal Science at Texas Tech University.

Limitations on entries per individual will be applied as set forth here: (a) each exhibitor may enter three beef animals which shall be classified as market steers, feeder steers or heifers or any combination of the three, but not more than two of each classification. (b) each exhibitor may enter three hogs - barrows, gilts or any combination of the same. (c) each exhibitor

may enter three sheep which may be wethers or any combinations of the same.

Division rules which will apply will be as follows: steers will be divided into the following classes: British Pure Breed, American Cross, other crosses. Exhibitors must declare steer breed at scales and a classifier will be hired to classify the steers into the breed division. Heifers and feeder steer divisions are open to purebred and cross breeds.

Animals must carry their milk teeth on the day of the show, with no permanent teeth showing. Heifers may have one set of permanent teeth and shall not have calved.

Steers must weigh 725 pounds and over and must

be weighed and divided into equal classes. Reweighs will be left to the discretion of the weigher. No steer will be re-weighed if they have left the weighing area. Those steers weighing less than 725 pounds will be grouped into one class and paid the same premium scale applied to hogs and sheep. First prize will not compete for Grand Champion.

Classes for steer will be divided on the following head basis: 0-8 equals one class and each eight additional animals constitute a new class. Odd numbers of steers will be added to light weight class and then work up to heavy classes. Equal weights will be left in the same class.

Lambs must weigh 75-125 pounds on show day and a five pound tolerance will be given at both ends. They will be shown by breeds and a breed of seven or less will be shown together in one class. Each additional seven animals will constitute a new class and odd number of lambs will be added to light weight class and work up

Cont. Page 6, Col 1

Commissioners Meet Monday, January 10

The Bailey County Commissioner's Court will meet in a regular session on Monday, January 10 in the Courthouse. This will be the first official meeting of some new county officials.

Time of the meeting is set for 10 a.m. and is scheduled to continue until all business is included.

Some items earmarked for Monday's consideration are the setting of terms for Justice Court and for

Brownfield Chamber Dinner Scheduled

The annual Brownfield Chamber of Commerce Banquet will be held Saturday, January 22, at 7:00 p.m., in the Brownfield School Dining Commons located at 701 North Fir.

The theme is "Cajun Humor." Guest speaker will be distinguished Cajun raconteur Justin Wilson, widely acclaimed as one of America's foremost humorists. His droll comments on the origin of the Cajuns, those compassionate, fun-loving folk who settled in South Louisiana, do not patronize his subjects. He literally steps into their shoes and minds and thinks, speaks and acts as they do. People laugh with Cajuns, not at them!

The "Outstanding Citizen for 1982" will be recognized. Also new officers and directors will be introduced. They are: President John Duggan, Executive Vice President of First National Bank and, Vice President-Larry McVay, District Superintendent of Amoco Production Co.

New Directors, J.T. Churchwell, Don Horner, Don Ivie, Oscar Jones, Bill McGowan, Jr., Crandall Young, Lanny Webb.

New officers and directors will take office after the banquet. Retiring President is Dick Fletcher, Assistant City Manager.

Irrigation Conference Scheduled January 17

Texas Agricultural Extension Service, Blackwater Valley Soil and Water Conservation District and Bailey County Electric cooperative Association have planned a program for irrigation farmers, agribusiness agencies, power suppliers, financial representatives and all interested persons on January 17.

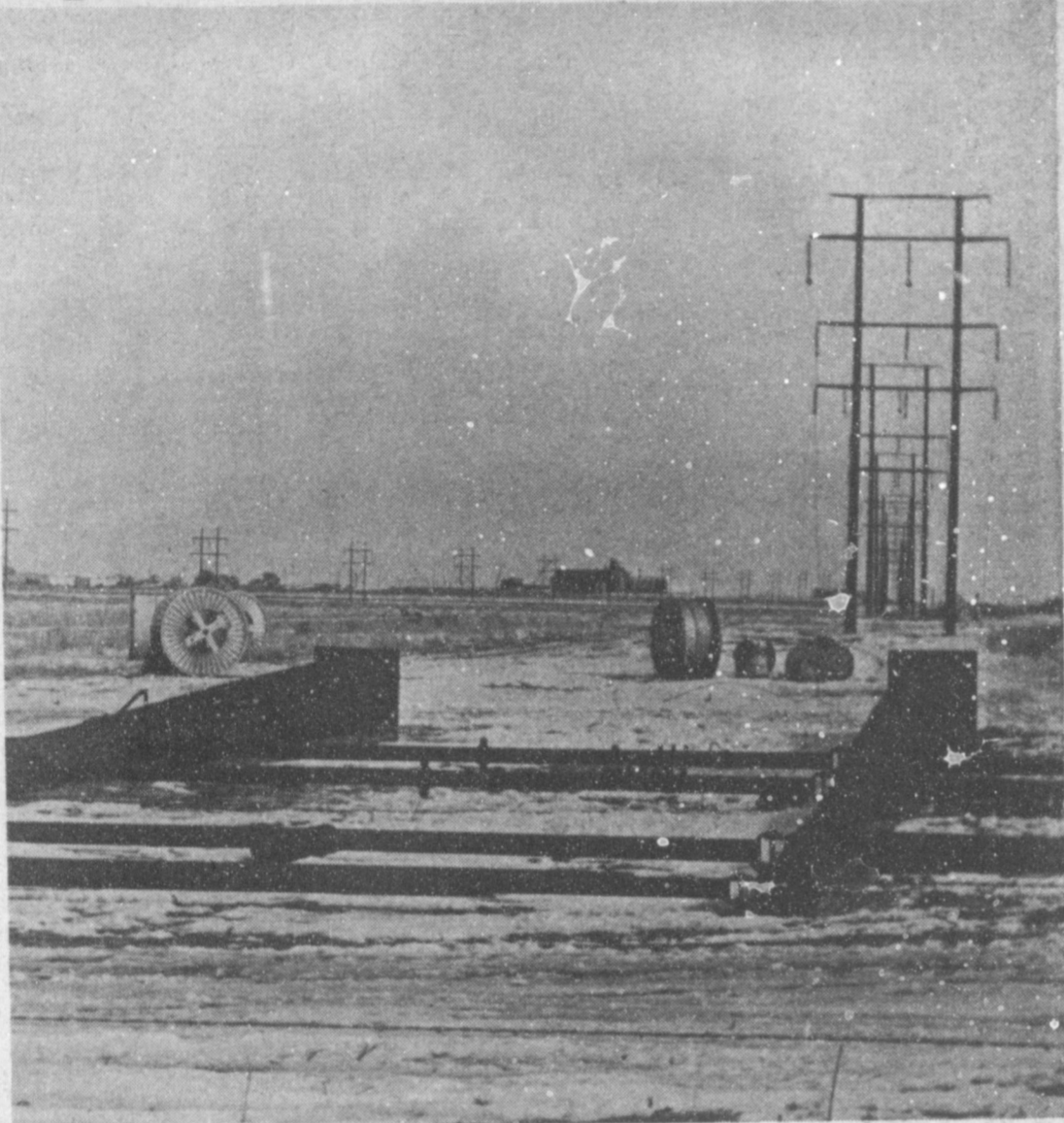
This meeting will be to discuss the cost of pumping water as it inter-relates with other "input costs" of crop production on the High Plains. The program topics will cover such items as: Conservation Tillage

and Soil Fertility; The 1983 Farm Program; Electric Energy - Future Rates - Load Management; Irrigation Requirements of Feed Grains; Irrigation Requirements of Cotton and Sunflower; Irrigation Pumping Costs and Efficiencies; Financial Management Tips; Wheat Diseases and Fungigation of Crops.

There will be time for comments and questions. Also, there will be displays, exhibits and printed "handout material".

The meeting will be held in the Bailey County Col-

Cont. Page 5, Col. 2



NEW STANDARDS BEING SET FOR LINES--Southwestern Public Service Company has been working in the Muleshoe area putting in new standards for a 230,000 volt line which will end up in Portales, New Mexico and branch out from there. This power will be coming from Tolk Station Unit One and there will be three lines where there are now only two. These standards are raised by the expertise of the man who sits in the Crane's drivers seat.

Texas FM Roads Damaged By Equipment Travel

The battle cry, "Get the farmer out of the mud," that brought Texas a great Farm to Market Road system may be heard again.

The state's rural roads in some areas are literally being pounded into un-paved routes by heavy equipment serving oil fields, timber stands and lignite and uranium dig-

ging. Engineers of the State Department of Highways and Public Transportation (DHT) have become increasingly dismayed by the rapid destruction of roads built to serve low-volume, lightweight traffic.

"You don't have to be a student of economics or transportation to realize that we have a problem that will affect every Texan," DHT Engineer Director Mark Goode said. "Without adequate roads, it won't take long for increased costs of transportation to hit everyone's pocketbook."

DHT diverted \$12.5 million from this year's budget for emergency repair of the most critically affected roads but DHT maintenance engineers believe the funds are only a fraction of the total needed.

Most of the routes on the state's FM system were

built in the 1950s and 1960s in a massive construction program to provide better roads for farmers. The Colson-Briscoe Act, passed in 1951, provided \$15 million annually for FM roads, and was the Legislature's answer to farmers' complaints about muddy, rutted roads that had to be traveled before agricultural products could get to market.

The department built 41,000 miles of FM roads, getting more miles to the dollar by designing roads for the rural traffic that needed to be served. With that design, DHT provided a network of secondary routes that carried school buses, postmen, farmers' trucks and indispensable farm equipment.

The boom in oil produc-

tion, mining and timber, with many locations in remote areas, required a drastic change in DHT plans for periodically resurfacing the rural roads.

Despite the fact that many FM roads are more than 20 years old -- con-

Cont. Page 6, Col. 2

School Still Searching For New Superintendent

A regular meeting of the Board of Trustees of the Muleshoe Independent School District has been called for January 10, Monday beginning at 7 p.m. in the School Administration office.

Scheduled on the agenda is the consideration by the

board of the moving of the Junior-Senior banquet to a different site. A number of citizens have formally requested this move, and it was turned down the first go-round.

A financial report and approval of payment of current bills will be given. Bank balances and expenditures in each school fund and each function of the school budget will be given to the Board.

Members will also hear a tax collection report and approve changes to the tax roll.

An Executive (or closed) session is scheduled for Board Members with regard to the employment of personnel and to deal with routine personal matters. This is authorized by Section 6252-17 Revised Civil Statutes, Texas.

After the special session, the Board will then reconvene in open session to consider the actions which result from the Executive session.

Board members will off-

Cont. Page 6, Col 1

SPS Builds New Lines Near Muleshoe

Southwestern Public Service workmen are busy in the Muleshoe area taking down old power lines and replacing them with the new 230,000 volt lines which will, ultimately, go into New Mexico. SPS is going down the same right-of-way as the old line went, with the new line stopping at Portales. From Portales it will branch out to other sub-stations and power supply stations in New Mexico.

The line that is presently being built is constructed from heavy gauge steel standard posts which weigh from 14,000 to 27,000 pounds each and stand 85 to 100 feet tall when locked into place. These steel structures are seated in a mountain of concrete, and when raised into place by a heavy crane can be stood up and bolted onto the concreted base.

The cost on each one of these standards runs approximately \$30,000 each. SPS will be putting in seventeen of them which run from Highway 84 east in a direct line from Tolk Station to just north of the sub-station on Highway 14, south of Muleshoe.

Standards leading out from the Tolk Station will be carrying only two lines until they cross Highway 84

West of Muleshoe then, the three lines will be carried to the substation by the seventeen steel standards. Approximately 115,000 volts of power comes from the Tolk Station Unit one to serve Bailey County and the Muleshoe area, as well as other power supplies, the 230 volts will go on into New Mexico and be distributed there, while 66,000 volts come either into or out of Littlefield.

The raising of the new poles is handled by SPS's System Construction Crew who are groups of men who are highly skilled in their professions. As one watched the heavy crane maneuver the standard to a standing position and then raise it even further to allow it to settle down over the bolts set in cement, a feeling of awe came over one. Safety is one of the major factors for SPS and all precautions are taken to insure the safety of the men and working and for others.

Besides the workmen involved with the raising of the steel standards, which by the way - will be painted after the completion there are also a number of regular SPS employees who are busy taking down old wiring and poles to remove

Cont. Page 6, Col. 1

Around Muleshoe

The Bailey County Farm Bureau will hold their Board of Directors' meeting on Tuesday evening at 7:30 p.m., January 11, 1983 in the Bailey County Farm Bureau office.

Eight students recently completed the H&R Block Basic income tax course held locally in Muleshoe, according to Doris Wedel, Franchise owner.

Graduates of the 75-hour course are trained to prepare income tax forms for themselves or for other individuals and small businesses. They are especially trained to watch for credits and accelerated cost recovery, business expenses and income averaging.

Those receiving certificates of achievement and continuing education credits were: Debby Clark, Jack Rials, Mary Wauson, Shirley Aguirre, Jacqylyn Gutierrez, Janice Snell, Barbara Haley and Cordelia Aguirre.

Community Hospital of Lubbock is sponsoring through its HEALTHLINE a lecture to the public on Stomach Stapling. This surgical technique is designed to help obese persons lose weight. Dr. M. Moriber will lecture on the technique and answer questions. The lecture will be held in the Board Room of the hospital, 5301 University Ave., at 7 p.m. on Tuesday, January 11.

Lectures and clinics are offered as a public service by Community Hospital of Lubbock. All HEALTHLINE activities take place at Community Hospital of Lubbock, 5301 University

Cont. Page 6, Col. 7

Fire Department Receives Check

The Muleshoe Volunteer Fire Department received a check for \$150.00 recently from Texas Farm Bureau Insurance Companies as an expression of thanks for the Department's work on the property of Carroll Kelton.

The money will be used for their loss prevention program.

The Texas Farm Bureau Insurance Companies pay fire departments this amount when the department works at a fire in rural areas, involving property insured by them.

The Insurance Company believes fire departments have contributed to reduce the amount of loss involved by fire and more importantly, to prevent fires. It is their hope this money will help the Muleshoe Volunteer Fire Department in their program.

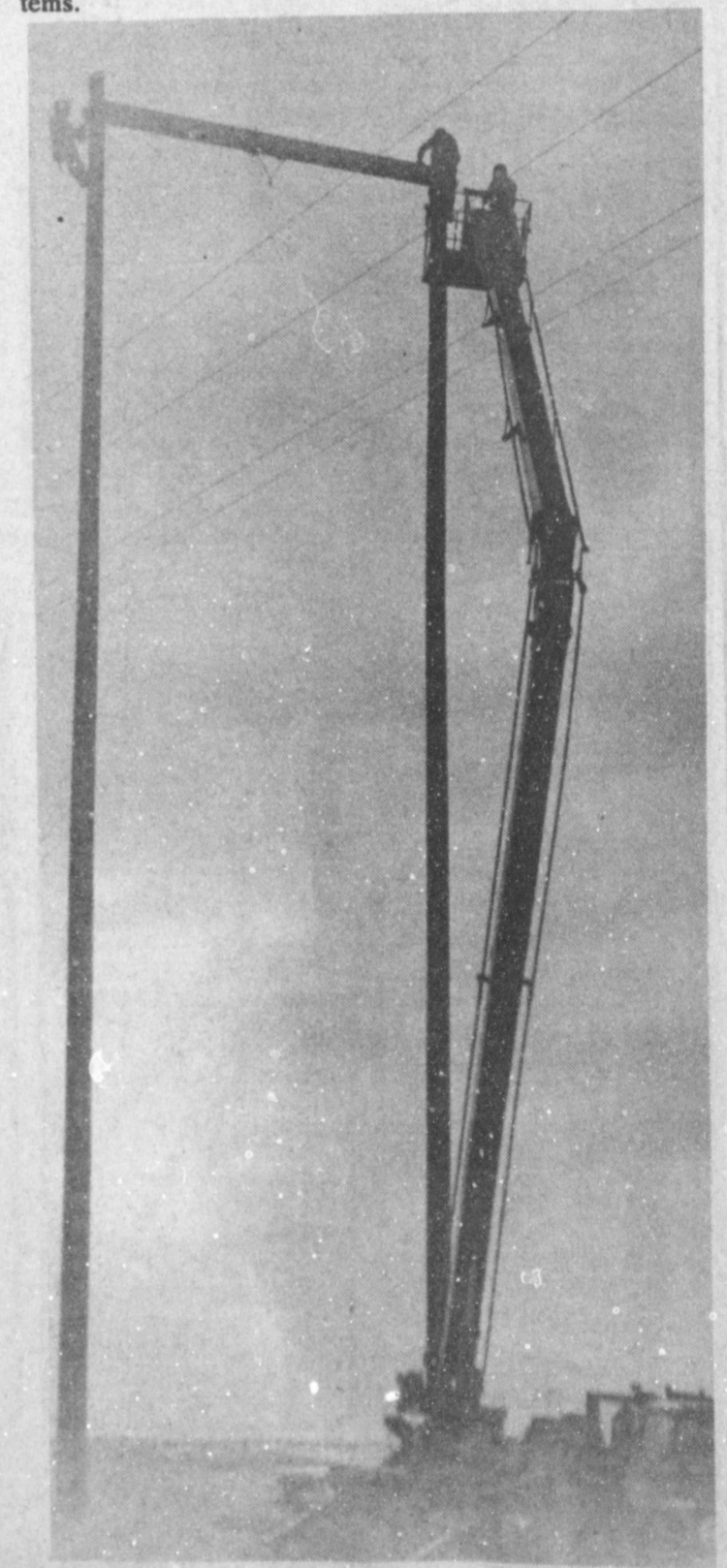


SAFETY AWARD--Postmaster Tom Lobough Friday presented Melvin Griffin with a safety award from the U.S. Postal Service. Griffin has been the safety Captain from May through December of 1982 and under his guidance, no accidents have occurred. He has been a postal employee for 21 years, serving as a carrier.

NOTICE OF HEARING

The Commissioners' Court of Bailey County will hold a public hearing at 10:00 A.M. on Monday, January 17, 1983, to consider a proposed regulation establishing load limits for a county pavement located in Precinct 3, beginning at the south end of FM 1731 and ending at said pavement intersection with State Highway 54.

-s- Gordon H. Green
Gordon Green
County Judge



A BIRD'S EYE VIEW--These SPS workers have just that...a bird's eye view of the town and surrounding country sides, as they work to take down old lines South of Muleshoe on Highway 214. This is just another part of the construction underway in the Muleshoe area by Southwestern Public Service.



MR. AND MRS. RUSSELL JONES
(nee Benetta Roming)

Artists Residencies Money Available

Applications are being accepted by The Texas Commission on the Arts from school districts and nonprofit organizations interested in sponsoring an Artists-in-Education residency. The program, coordinated by TCA for over nine years, is based on a model developed by the National Endowment for the Arts and receives funding from the NEA. During the last school year the program served nearly 49,000 teachers and children in 227 individual schools throughout Texas.

AIE residencies place working artists representing every field from ballet to architecture in direct contact with young people. Residencies, which range in length from one week to nine months, may be sponsored by either accredited school districts, Education Service Centers, government entities, or nonprofit

tax-exempt organizations such as museums and arts councils.

Program Coordinator Marilyn Schieferdecker, describing the value of the program, says that "Students learn how their creativity can be used for self-expression. Sponsors often report that AIE residencies provide inspiration and motivation to students, who then become more actively involved in other classroom activities." Teachers, she says, list personal satisfaction, self-discipline, enhanced self-esteem and improved problem solving skills as some of the direct benefits of AIE residencies for students.

Although in the past the program has operated primarily within the school system, a change in the guidelines makes it possible now for nonprofit community organizations such as museums and arts

councils to apply. Community residencies are currently underway in Austin, with the League of United Chicano Artists, and in Houston, with St. Joseph's Multi-Ethnic Cultural Arts Committee.

Funding for the program is based on a formula of declining support to encourage local sponsors to incorporate AIE into their existing art programs. First year sponsors receive 50 percent of program costs, second year sponsors receive 33 percent, and third year sponsors receive 16.5 percent. Teachers and sponsoring organizations have the opportunity to work with artists in workshop settings, where they are introduced firsthand to a variety of art materials and techniques.

TCA is available to help design an AIE residency, and will assist sponsors in selecting

Applications should be submitted by February 1, 1983, for the 1983-84 school year. A new rule allows applications to be accepted and reviewed after February 1, if AIE program funds are available. To request application forms or further information, contact Marilyn Schieferdecker, TCA, Box 13406, Capitol Station, Austin, TX 78711. Or call toll free 1(800) 252-9415 or direct (512) 475-6593.

Miss Benetta Roming, Jones Exchange Vows

In a glowing Christmas setting at the First United Methodist Church on Saturday evening December 18, Benetta Ann Roming and Russell Alan Jones were united in marriage. The doubling ceremony was performed by the Rev. Don Holliday of Farwell.

The bride is the daughter of Mr. and Mrs. Ben Roming of Muleshoe and the groom is the son of Mr. and Mrs. Joe Jones of Farwell. Grandparents of the bride are Mr. and Mrs. Gordon Murrah and Mr. and Mrs. Vernon Roming of Tow. Grandmother of the groom is Mrs. Flora Jones of Gatesville.

The alter setting before which the couple exchanged their wedding vows was centered with large multiple white poinsettias flanked by the Bible. Flanking each side were 15 branch tree shape candelabra with white tapers, urns holding large red basket poinsettias, on the lower level

stood nine branch tree shaped candelabrum with white tapers. Red and white potted poinsettias were placed around the church front. The unity candle arrangement consisted of memory candle and four tapers and was designed by the bride's great aunt and uncle. Pew markers of white feathered doves, cedar greenery and steamers lined the center aisle.

Window lights were created with tapers, fresh greenery and holly. Entrance to the sanctuary center aisle featured a large pedestal arrangement of cedar greenery, white doves, tapers and white satin streamers. Christmas music and the glowing candlelight church welcomed the guests who were seated by the side isles. Candelighters lighted the alter candles to symbolize the beginning of the ceremony.

Organist, Mrs. Bob Belew of Earth, presented Christmas selections before the ceremony. Soloists Brene Belew sang "Follow Me", as the alter candles were lighted and grandparents were seated. As "You Light Up My Life" was presented the grooms parents entered and lighted a taper on the unity candle and were seated. The brides parents entered and also lighted a taper and the mother was seated. "O Come All Ye Faithful" was the processional for the groom and wedding attendants. Chimes rang out and during the "Bridal Chorus" the bride was escorted to the alter. After exchanging vows and as the couple lighted the unity candle Brene and Biff Belew sang "Friends In Love". Recessional was "Joy To The World".

The long sheer fitted lace sleeves formed scallops over the hands. Tiny self fabric buttons accented the wrist and back enclosures.

The soft chiffon skirt fell to floor length and extended to a chapel train. She wore a matching lace coil enhanced by pearls from which silk illusion extended the full length of the gown.

She carried a long cascading bouquet of white silk azaleas, stephanotis, babies breath accented with tiny red silk poinsettias, rosebuds, tubing and lace streamers.

Completing her ensemble was something old, handkerchief of great grandmothers; something new, bridal gown; something borrowed, pearls of her mothers; something blue, garter. Pennies minted in the couples birth years were in her shoes.

Cherylee Northcutt of Lubbock served as matron of honor. Bridesmaids were Jodie Waag of Stoughton, Wisconsin; Jo Williams and Keva Long, sisters of the bride. They wore formal length white chiffon gowns featuring jewel necklines, double fabric flared sleeves and red cummerbunds. They carried cascading nosegays of tiny red silk poinsettias, holly and tubing.

The bridegroom was attired in a white ascot tuxedo with tails and wore a holly boutonniere.

Brad Jones, brother of the groom, served as best man. Groomsmen were Leslie Curtis of Farwell, Dayne Mayfield of Canyon and Tim Norton of Farwell. They wore white ashley tuxedos and red boutonnieres.

Candelighters were Matt Williams and Donnie Long,

who also serve as ushers along with Vic Christian of Farwell.

Guests were registered by Beverly Parker of Muleshoe at a white draped table holding a fresh greenery arrangement with votives.

A festive reception was held in the fellowship hall in which stood a Christmas tree decorated with white feathered doves and silver balls. The rice bag table featured Mr. and Mrs. Santa and kissing balls hung above the doorways.

Serving at the bride's table were Robbie Russell, Sharissa Hamby and Beverly Wilhelm all of Canyon. Ellen Jones, sister in law of the groom, served spiced tea, Christmas candies and a horn of cheese with crackers, from the groom's table.

Serving in the houseparty were Mr. and Mrs. Wayne Crittenden, Mr. and Mrs. Robert Martin and Mr. and Mrs. Doug Crawford.

For travel the bride chose a burgandy wool suit with matching accessories and an orchid corsage. The couple left the church via limousine service for a wedding trip to New Mexico. They are now at home in Canyon.

The bride was a spring graduate of WTSU with a BS degree in Agriculture Business and Economics. She is a member of Delta Zeta social sorority, Alpha Zeta, agriculture honor fraternity, and Alpha Chi, National Honor Society. The groom is attending WTSU as a senior majoring in Agriculture Business and Economics and is employed at Bushland Research Center in Amarillo.

A rehearsal dinner was hosted by Mr. and Mrs. Joe Jones in the fellowship hall of the church on Friday night.

Bridesmaid luncheon on Saturday was served by the bride's aunt of California and the bride's mother.

Other courtesies included wedding shower in Farwell, bridal tea in Muleshoe and a personal shower in Canyon.

Sudan Young Homemakers Holds Christmas Party

The Sudan Young Homemakers held their Christmas party on Dec. 16 in the Home Ec. Dept. of the high school. The dinner was prepared by the club members. Their husbands were their special guests.

Following the meal of holiday favorites, gifts were exchanged by secret pals and home baked goodies were exchanged by the husbands.

Attending were Deanna and Mevin Humphreys, Neal Malherbe and Phil Kent, June and Bruce Pierce, Kelli and Denni Flowers, Ann Carson, Robin and Randy Gore, Gwen and Rusty Gore, Kathy and James Humphreys, Cindy and Carroll Legg, Mary Ann and Craig Harper, Pam and Mike Morris, Rita Conley, Jodee and Terry Tennyson, Dana and Kyle Martin, Norma and Charles Burnett and Tony and Rick Wall.

Fiftieth Anniversary Dinner Honors M.E. Hickman's

Mr. and Mrs. M.E. "Doc" Hickman, Sr. celebrated their 50th wedding anniversary with a dinner Sunday, Jan. 2 at the Friendship House in Friona. All of their children and grandchildren were present to help with the celebration.

Those attending were Mr. and Mrs. B.L. West of Lubbock; Dr. Malcom E. Hickman, Jr. and John of Whitehouse, Tenn.; Mrs. Chuck Wakefield, Bill, Gregg, James, Joe and Steve Fulton of Apache Junction, Ariz.; and Mr. and Mrs. Lacy Moyer, Doug and Brad of Friona.

Mr. and Mrs. Hickman were presented a boutonniere and corsage of fresh white carnations, yellow mums and yellow rose buds tied with metallic gold ribbon and accented with a gold "50".

All guest present were presented silk rose corsages and boutonnieres trimmed in gold.

The guest table was covered with a round ecru lace cloth centered with a single white rose bud with metallic gold ribbon in a crystal vase.

The centerpiece on the head table was an arrangement of 50 white ribbon roses in a stemmed milk glass compote. It was highlighted with a gold "50" and a white and metallic gold bow.

The serving table was centered with a tiered cake, decorated by Dorothy Wakefield. Cake, punch, gold mints and nuts were served from the ecru lace covered table.

The gift from the children was an engraved brass plate. The M.E. Hickman, Jr. family, also presented them with a 50th anniversary plate.

Hickman and the former Lilla Gray were married Jan. 5, 1933 in Roswell, N.M. They moved from Ralls to Muleshoe in 1957, where they presently make their home.

ROBERT D. GREEN, INC.
2400 West American Blvd.
MULESHOE, TEXAS 79947

OLDSMOBILE — BUICK — PONTIAC — GMC

TERRY YELL
Sales Representative

Business Phone: 806 272-4588
Home Phone: 806 272-4948

<p>True Value HARDWARE STORES</p> <p>HARDWARE VALUE OF THE MONTH</p> <p>15-Ft. Spring Wire</p> <p>Master PLUMBER</p> <p>4.99</p> <p>White Supplies Last</p> <p>Heavy-Duty Drum Auger</p> <p>Spring action gets through traps, bends, etc. With pistol grip, steel drum, 8029MP</p> <p>Quantities Limited</p>	<p>True Value HARDWARE STORES</p> <p>BARGAIN OF THE MONTH</p> <p>Imperial</p> <p>Rosedawn</p> <p>Romney</p> <p>White Supplies Last</p> <p>12.88</p> <p>Service for 8 Stainless-Steel Flatware</p> <p>37-piece flatware set in choice of traditional or contemporary patterns. 25RM/RD</p> <p>Quantities Limited</p>	<p>True Value HARDWARE STORES</p> <p>TOOL VALUE OF THE MONTH</p> <p>SERVES</p> <p>8-In. Pliers</p> <p>6-In. Pliers</p> <p>2.88</p> <p>White Supplies Last</p> <p>Set of 2 Slip-Joint Pliers</p> <p>Slip joints allow adjustment of jaws for different size objects. Vinyl grips. 6800S</p> <p>Quantities Limited</p>
---	--	---

Fry & Cox, Inc.

272-4511

401 S. 1st

VISA

Viviana **Hush Puppies** **Kasual Kix**

So comfortable anything goes

FALL & WINTER

SHOES

1/2

PRICE

Our Entire Stock Of Ladies Fall & Winter Shoes Are Now Reduced To Half Price. Hurry While Selections Are Best. Sale Is Limited To Stock On Hand

Special Group

LADIES SHOES

\$2.88 PAIR

Ladies & Mens

HOUSE SHOES

\$3.97 pr. 2 FOR \$7

Anthony's
C.R. ANTHONY CO.

Reg. to \$59.99

"Select Group"

RED WING BOOTS

1/2 PRICE

Select Group

MENS WESTERN BOOTS

\$29.88

WTSU School of Nursing Offers Special Courses

The West Texas State University School of Nursing will offer three special topics courses during the 1983 spring semester.

Advanced Concepts in Critical Care will be offered for three semester hours credit for both undergraduate and graduate students. A three-hour practical also may be added.

The course will deal with advanced physiological and psychosocial concepts as the basis of nursing management and care of the critically ill patient.

The Advanced Concepts in Critical Care will be offered from 5 p.m. to 7:50 p.m. each Monday in the Harrington Auditorium at the Don and Sybil Harrington Cancer Center in Amarillo. Paula Jameson, instructor of nursing will teach the course with help from guest lecturers. Classes begin Monday Jan. 17.

Neonatology will be offered for undergraduate credit. Basic and advanced principles of neonatal nursing care, theories and current trends will be explored. Ethical and cultural issues of neonatal nursing also will be presented.

The course will be offered from 6 p.m. to 8:50 p.m. each Thursday in Room 318 of the Classroom Center at WTSU. Classes begin Thursday, Jan. 13.

LATEST ARRIVALS



Anthony Blake Dominguez

Anthony Blake was born to Stella Dominguez at 9:48 a.m. Jan. 5 in West Plains Medical Center. The young man weighed seven pounds and six ounces. He has an older brother, Adrian, two and half; and a sister, Amy D'onne, one year of age. Grandparents are Mr. and Mrs. Trinidad Lopez of Muleshoe.

Anita Carroll, WTSU, instructor in nursing, will teach the course.

"The course would be helpful to nurses working in smaller community hospitals where immediate assessment and stabilization of the high risk infant is vital," Carroll said.

Stress Management for Helping Professionals will focus on skills used in coping with stress. The course is designed for persons involved with and serving other people. Course requirements will be individually determined. Stress management is a three-hour credit course.

Patsy Britting, WTSU assistant professor of nursing, will teach the course. The course will be offered from 3:30 p.m. to 6:30 p.m. each Monday at the Psychiatric Pavilion in Amarillo. Classes begin Monday, Jan. 17.

Registration for the spring semester is Wednesday, Jan. 12, at the WTSU Activities Center. Students taking only off-campus courses may register during the first class meeting or during regular registration.

The courses are open to registered nurses and other health professionals. The courses may be audited as space permits.

Update Wardrobe With Accessories

Accessories are an easy way to update a wardrobe, but can become expensive, reminds Becky Saunders, clothing specialist with the Texas Agricultural Extension Service, Texas A&M University System.

"They are also a creative way to express your personality, and add versatility to any wardrobe," Saunders says. She explains that accessories can be used to emphasize your best features, camouflage an unfavorable one, or even just to add some flare to your everyday clothes.

"Today's clothing guidelines are more relaxed than those of the past. This provides us with a wider range of fashion options to fit any lifestyle," Saunders says. "This means we are no longer confined to matching accessories."

The overall fall 1982 fashion emphasis was toward the prairie, country-western, or menswear looks. Important colors were wine, green, brown, navy or cinnamon. Take time to look through local stores for the current accessory trends. Consider structured hand bags, mid-calf flatter heel boots, plaid mufflers or scarves as accessory choices.

When choosing accessories, consider color, texture and shape that can add variety and interest. Work around a central focal point with closely related items to create a pleasing "together" look, the specialist suggests.

"Many accessories are sensitive to change in fashion, so for the sake of your budget, avoid accessories that are seasonal. Also keep a running total of your purchases so they don't overload your budget," Saunders says.

Many outdated accessories can be recycled. For instance, costume jewelry can be restrung, belts re-

covered, buckles changed, scarves re-sized or re-shaped, in order to create a newer look.

"Don't forget," says Saunders, "that cosmetics and hair styling are important accessories that can be easily changed." In creating your "total look," remember that fashion is a form of art, and accessories can be the tools of an artist.

Mrs. Kittrell

Hosts Dinner And Social

The Searchers Sunday School class of the Sudan First Baptist Church had their Christmas dinner and social on Saturday in the home of Mr. and Mrs. Buster Kittrell with Mrs. Gaylon Barns as co-hostess. The Kittrell home was decorated throughout in a Christmas motif.

Buster Kittrell gave the invocation and following the dinner the devotional was given by Pete Phillips on Acceptation of Yourself, your everyday activities and your relation to God.

Gifts were exchanged and a time of visiting was held. The husbands of the class members were special guests and included Mr. and Mrs. Glen Cardwell, Mr. and Mrs. Calvin Ver-nen, Mr. and Mrs. Pete Phillips, Mr. and Mrs. Pat Kent, Mr. and Mrs. Dwayne and Francis Gardner, class teacher.

The truth probably is that no one today knows if Denspack will work.

Faith in anything doesn't waver with the shifting winds of fortune.

Your money won't do much good when you're dead. Put it to work now.

January Clearance!

Sale Starts 9 A.M. Mon. Jan. 10, 1983

Men's Suits

You'll find savings on men's famous label suits.

All selected from our regular stock.

Shorts, Regular, Longs & X-Longs

Values to \$125.00.....	\$84 ⁰⁰
Values to \$130.00.....	\$86 ⁰⁰
Values to \$145.00.....	\$97 ⁰⁰
Values to \$155.00.....	\$104 ⁰⁰
Values to \$165.00.....	\$110 ⁰⁰
Values to \$185.00.....	\$120 ⁰⁰
Values to \$195.00.....	\$130 ⁰⁰
Values to \$215.00.....	\$145 ⁰⁰
Values to \$250.00.....	\$168 ⁰⁰
Values to \$260.00.....	\$178 ⁰⁰

SPECIAL GROUPS 1/2 PRICE AND BELOW

Men's Dress Pants

Groups consist of woven polyesters, wool & polyester knits. Good selection of colors to choose from.

Values to \$26.00.....	\$17 ⁰⁰
Values to \$27.50.....	\$18 ⁰⁰
Values to \$30.00.....	\$20 ⁰⁰
Values to \$33.00.....	\$21 ⁰⁰
Values to \$37.50.....	\$24 ⁰⁰
Values to \$39.00.....	\$25 ⁰⁰
Values to \$44.00.....	\$29 ⁰⁰
Values to \$49.00.....	\$32 ⁰⁰

SPECIAL GROUP 1/2 PRICE & LESS

Men's Casual & Fashion

Jeans

Selections of several styles. Ideal for all casual wear fabrics consists of corduroy, khaki & denim.

Values to \$20.00.....	\$13 ⁰⁰
Values to \$26.00.....	\$17 ⁰⁰
Values to \$28.00.....	\$19 ⁰⁰
Values to \$30.00.....	\$20 ⁰⁰
Values to \$33.00.....	\$22 ⁰⁰
Values to \$35.00.....	\$24 ⁰⁰

SPECIAL GROUP 1/2 PRICE AND BELOW

Leather Coats

Save on entire stock of leather coats! All styles & colors included. Regs. or Longs. Shop early on these.

Values to \$125.00.....	\$84 ⁰⁰
Values to \$150.00.....	\$99 ⁰⁰
Values to \$160.00.....	\$107 ⁰⁰
Values to \$180.00.....	\$119 ⁰⁰
Values to \$215.00.....	\$142 ⁰⁰
Values to \$220.00.....	\$147 ⁰⁰
Values to \$235.00.....	\$152 ⁰⁰
Values to \$250.00.....	\$164 ⁰⁰
Values to \$275.00.....	\$179 ⁰⁰

Men's Sweaters

Save on large selections of cardigan, v-necks, sleeveless, ski types and suede fronts.

Values to \$16.50.....	\$10 ⁰⁰
Values to \$21.50.....	\$13 ⁰⁰
Values to \$27.50.....	\$18 ⁰⁰
Values to \$30.00.....	\$19 ⁰⁰
Values to \$33.00.....	\$22 ⁰⁰
Values to \$37.50.....	\$24 ⁰⁰
Values to \$40.00.....	\$26 ⁰⁰
Values to \$42.00.....	\$29 ⁰⁰
Values to \$50.00.....	\$34 ⁰⁰

We Will Be Closed Sat. Jan 8

To Prepare For This Sale.

Minimum Charges For Alterations

Albertson's Shop For Men

223 Main

Muleshoe

272-3000

Men's Sport Coats

An outstanding selection has been reduced to clear.

SHOP EARLY!

Values to \$100.00.....	\$69 ⁰⁰
Values to \$115.00.....	\$74 ⁰⁰
Values to \$130.00.....	\$89 ⁰⁰
Values to \$175.00.....	\$110 ⁰⁰
Values to \$220.00.....	\$148 ⁰⁰

SPECIAL GROUP 1/2 PRICE AND BELOW

Men's Dress Shirts

Enormous selections of long sleeve dress shirts in solid colors and fancies to choose from.

Values to \$17.00.....	\$11 ⁰⁰
Values to \$18.00.....	\$12 ⁰⁰
Values to \$20.00.....	\$13 ⁰⁰
Values to \$23.00.....	\$14 ⁰⁰
Values to \$24.00.....	\$15 ⁰⁰
Values to \$27.00.....	\$17 ⁰⁰

ALSO TALL MAN INCLUDED

Men's Sport Shirts

You'll see a large selection of velours, woven and knit sportshirts in solids and fancies.

Also Western styles.

Values to \$14.00.....	\$9 ⁰⁰
Values to \$16.00.....	\$10 ⁰⁰
Values to \$17.00.....	\$11 ⁰⁰
Values to \$20.00.....	\$13 ⁰⁰
Values to \$23.50.....	\$15 ⁰⁰
Values to \$26.00.....	\$16 ⁰⁰
Values to \$28.00.....	\$18 ⁰⁰
Values to \$30.00.....	\$19 ⁰⁰
Values to \$36.00.....	\$24 ⁰⁰
Values to \$39.00.....	\$26 ⁰⁰
Values to \$43.00.....	\$28 ⁰⁰
Values to \$45.00.....	\$29 ⁰⁰

ALSO TALL MAN INCLUDED

Special group at 1/2 price and below.

Men's Action Wear

Good selections of colors and styles.

REDUCED TO CLEAR

Winter Coats And Vests

You'll save on your favorite style coat now!

Selections of corduroy, poplin, downs & polyester fabrics. Ski coats included.

Values to \$27.00.....	\$17 ⁰⁰
Values to \$31.50.....	\$21 ⁰⁰
Values to \$33.00.....	\$22 ⁰⁰
Values to \$38.00.....	\$26 ⁰⁰
Values to \$45.00.....	\$29 ⁰⁰
Values to \$52.00.....	\$35 ⁰⁰
Values to \$56.00.....	\$36 ⁰⁰
Values to \$60.00.....	\$39 ⁰⁰
Values to \$66.00.....	\$43 ⁰⁰
Values to \$68.00.....	\$47 ⁰⁰
Values to \$78.00.....	\$52 ⁰⁰
Values to \$80.00.....	\$54 ⁰⁰
Values to \$88.00.....	\$59 ⁰⁰
Values to \$125.00.....	\$82 ⁰⁰

Men's Shoes

Group consists of casual, jogging and few dress type shoes. Shop early for best selections.

Values to \$26.00.....	\$16 ⁰⁰
Values to \$36.00.....	\$24 ⁰⁰
Values to \$40.00.....	\$27 ⁰⁰

Men's Robes

Large selection of colors & styles.

REDUCED TO CLEAR

SHOP EARLY!

Suits, Robes, Belts, Ties, Gloves,

Coats, Sweaters And Many Other

Items Greatly Reduced To Clear Out

Announcing The Bailey County Electric Cooperative Association's Third Annual Irrigation Conference

"Farming In The 80's"
On Jan 17, 1983

If You Are Interested In Ways To Reduce Energy Costs... Please Attend An "Irrigation Conference" To Be Held In Muleshoe, Texas, January 17, 1983. This Meeting Will Be Held At The Bailey County Coliseum-West On Clovis Road, Hwy. 84 At 21st Street, Muleshoe.

Registration Opens At 8:30 a.m. And The Program Will Begin At 9:13 a.m. Please Let Us Know If You Plan To Be There For The FREE LUNCH And We Will Plan To Finish The Formal Program By 3:30 p.m. Please Contact David Marricle At Bailey County Elec.

Coop-806/272-4504-By Noon On Wednesday, January 12, 1983

Co-Sponsored By: Blackwater Valley Soil & Water Conservation Dist. & Texas Ag. Extension Service

Tax Changes Affect Medical Expenses, Casualty Losses

Taxpayers who itemize deductions on their income tax returns need to give careful consideration to medical expenses and casualty losses as they look at their 1982 income tax situation.

"This year's tax law (the Tax Equity and Fiscal Responsibility Act of 1982) brings about some changes in filing tax returns that taxpayers need to be aware of," says Dr. Ashley Lovell of Stephenville, an economist with the Texas Agricultural Extension Service, Texas A&M University System.

Effective Jan. 1, 1983, the new tax law increases the exclusion on medical expense deductions to 5 percent of adjusted gross income from the present 3

percent. Also, all health insurance premiums paid by the taxpayer are treated as just another medical expense item and are subject to the 5 percent exclusion. This

Conference...

Cont. from Page 1

iseum and Civic Center, located on Highway 84 at 21st Street in Muleshoe, Texas, on January 17, 1983. Registration begins at 8:30 a.m. and adjournment at 3:30 p.m.

This program has been planned for the purpose of keeping producers informed on new developments and technologies that can help reduce energy costs. This will be the third such irrigation meeting co-sponsored by Bailey County Electric Cooperative. A free lunch will be served.

Please contact David Marricle at Bailey County Electric Cooperative, Drawer N, Muleshoe, Texas 79347, or phone 806-272-4504 by Wednesday, January 12, 1983, on how many there will be for lunch.

compares to 1982 and earlier years when taxpayers could deduct one-half of their health insurance premiums, up to \$150, with the balance subject to the 3 percent limitation.

The current 1 percent exclusion for drugs and medicines will remain the same in 1983, notes Lovell.

"All this means that in 1983 many individuals will not exceed the exclusion requirements and will not have deductible medical expenses except in extreme situations," the economist points out.

Thus Lovell advises cash basis calendar year taxpayers to consider paying outstanding drug, doctor and hospital bills by Dec. 31 if they intend to itemize medical expenses on Schedule A of their 1982 tax return.

Another consideration would be to move surgery and dental work scheduled for early 1983 into this year. Moving up surgery and dental work also might be advantageous from an insurance standpoint, since insurance deductible may already be met for this

IRS Tax Helps Available On Toll-Free Phone

Taxpayers who did not have enough 1982 federal tax withheld, or whose amended income estimates for 1982 changed substantially during the last quarter, are required to pay the final installment of estimated income tax by January 17, 1983, the Internal Revenue Service says.

The IRS notes that there is an exception to this rule for the final installment for those taxpayers who file their returns and pay all taxes due by February 1, 1983. This exception applies whether the declaration is an original or amended one.

Generally, taxpayers must file estimated tax if their tax is expected to be \$200 or more and if they have more than \$500 in income not covered by withholding.

For additional information, a free copy of IRS Publication 505, "Tax Withholding and Estimated Tax," can be ordered by calling the IRS number listed in the local telephone directory under U.S. Government.

tent that it exceeds the \$100 exclusion. Beginning in 1983, the total of unreimbursed personal casualty and theft losses is deductible to the extent that it exceeds 10 percent of adjusted gross income. In addition, each incidence is reduced by the \$100 exclusion.

"This means that only low-income taxpayers or taxpayers suffering large unreimbursed losses will qualify to itemize these losses on Schedule A beginning next year," says Lovell. He advises taxpayers with 1982 casualty losses to consult their tax advisors regarding such things as the new alternative minimum tax, un-settle casualty claims that fall into 1983, and carry-back of casualty losses to the previous year.

With the change in casualty loss deductions as well as inflation, the economist advises taxpayers to evaluate the adequacy of casualty insurance coverage on homes, autos and other assets. Since the federal government will be assuming a much smaller

ON CENTRAL AMERICA
Seventeen congressional Democrats have urged President Reagan to seek negotiated solutions to the political and military troubles plaguing Central America.

PUNISH VIOLATORS
The United States, facing a trade deficit that could reach a record \$75 billion next year, should be ready to take steps to punish countries that violate free trading rules according to Martin Feldstein,

US Farmers Facing Another Hard Year

Agriculture is at a crossroads due to large supplies and low prices, and farmers have few options to improve their situations in 1983.

"Just how long farmers can hang on financially is the big question," says Dr. Carl Anderson, economist with the Texas Agricultural Extension Service, Texas A&M University System. "Right now many thanks to three consecutive years of poor prices. And they can't last much longer. Only those who are virtually debt-free will be able to make it."

Returns to assets of debt-free farmers will average in the range of minus 3 to minus 7 percent in 1982, says Anderson, while returns to farmers with a heavy debt load will be a negative 14 to 18 percent. "With that kind of figures, it's easy to see that farmers must depend less on debt financing," he adds.

Farmers generally are victims of overproduction in recent years coupled with a major slowdown in farm exports and domestic demand. This has led to growing stockpiles of most crops. Present farm programs designed to reduce these stockpiles have been a flop, points out Anderson. So farmers and farm policy makers must soon decide whether or not to do something about the increasingly critical farm dilemma.

"Among options are mandatory production control and possible marketing quotas to bring supplies in line with effective demand," notes the economist. "Strong supply management likely will improve current low farm income in a couple of years. With voluntary programs, it will take much longer."

Regarding the dilemma of farmers, Anderson offers a number of observations: 1. For 1982 net U.S. farm income is projected at \$19 billion, down from \$25 billion in 1981. Cash receipts will be about equal to farm expenditures this year, so virtually all net income will come from government payments and non-money income. Income could improve some in 1983 depending on what direction farm programs take.

2. Farmland markets are expected to remain sluggish, in some areas of the U.S. and Texas, land prices likely will decline.

3. Farm exports are facing major setbacks. No noticeable progress has been made in trade negotiations with major U.S. foreign market countries such as the European Common Market, Japan, Mainland China or Russia. When economic conditions are bad,

countries want to export more and import less. A big setback to Texas cotton growers is that China intends to grow more cotton and import less from the U.S.

4. Although credit is available, farmers have difficulty in qualifying unless they still have adequate collateral. Debt restructuring will continue. Loan delinquencies, foreclosures and bankruptcies will be up although lenders seldom benefit from liquidating a borrower.

Muleshoe...

Cont. from Page 1

Ave. Speakers are available upon request. Call HEALTHLINE at Volunteer Services 795-9301, extension 45 for reservations and information. Blood pressure screenings are held each Wednesday from 1 to 3 p.m. in the hospital lobby.

Employers must provide each employee with a completed Wage and Tax Statement, Form W-2, for 1982 by February 1, 1983, the Internal Revenue Service says.

For additional information on the proper distri-

bution and handling of Wage and Tax Statements, employers may get a free copy of IRS Publication 15, "Circular E, Employer's Tax Guide," from the IRS.

ON UNEMPLOYMENT

The government said recently that new claims for unemployment benefits dropped in early December to the lowest level in five months. The new decline, the third in as many weeks, almost certainly indicated worker layoffs were slowing.

INDIAN SUMMER

The week of Indian summer at the beginning of December saved Americans \$75 million in heating bills, the government reported recently.

School...

Cont. from Page 1

ically call the school board election for 1983 in the upcoming session Monday evening.

In addition to the other items on the agenda, the Board will consider a request from the band program to have a spring trip. The meeting will end with the Superintendent's report of school activities.

Also on January 11, Tuesday beginning at 7 p.m. in the School Administration office, a special emergency meeting of the MISD will be held. The particular purposes of this meeting will be to activate an executive session, meeting with a consultant concerning the employment of a new superintendent.

The board will later reconvene in open session to consider the actions resultant from the executive session.

Stock Show

Cont. from Page 1

to heavy. Equal weights will be left in the same class.

Milk teeth must also be carried on the lambs on show day with no permanent teeth in view. All lambs must be smooth-sheared within two weeks of show from knees up with no reclopping or any part of the body. Top knots are allowed. Classes for sheep will be fine wool, fine wool cross, medium wool, southdowns and southdown

SPS...

Cont. from Page 1

them from the area or to replace them with larger ones.

Before this project is completed, SPS will have spent over one half million dollars for repairs and improvements on these lines, hoping to be able to better serve the community and the area with increased efficiency in operations.

FM Roads

Cont. from Page 1

considered the design life by engineers -- seal-coat work at a cost of about \$8,600 a mile kept the system in excellent shape.

Now the department is faced with completely rebuilding the roads pounded by the heavy equipment -- at a cost of \$61,000 per mile.

A Texas Transportation Institute study at new drilling sites in the Austin Chalk oil field in East Texas as verified the rural road

deterioration observed by DHT engineers.

At one site, TTI research engineers found, a rapid deterioration of the FM road's surface and base occurred -- even though only one oil well was being drilled in the area. In many locales, a road serves several drilling sites with a resulting increase in the depth of damage and the speed at which it occurs.

The TTI study, coupled with other studies, determined that the average FM road carrying such traffic would have to be rebuilt in slightly more than three years.


"The department's funding limits do not allow much flexibility for increases in operational costs other than for inflation," Goode said.

"The funds we are using to try to handle the problem are inadequate but they are all we can divert from other maintenance functions."

He said the diverted funds came from flood-and-bridge-damage repair monies. DHT, Goode said, also is concentrating much of its normal FM maintenance money on those roads most critically affected.

The Sunday drive in the country has become a thing of the past in these energy-conscious days.

And holiday visits to grandmother's house often end up at her condominium instead of her farmhouse -- so most Texas motorists are spared the bumpy, car-rattling rides on the state's rural roads.

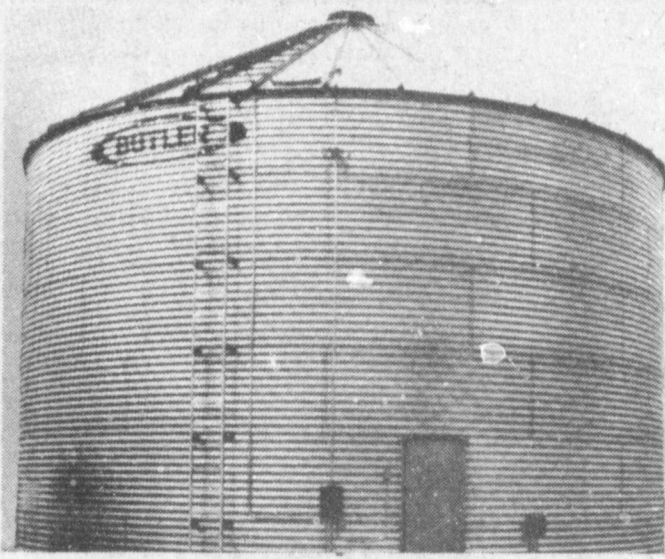


OPEN HOUSE


THURSDAY & FRIDAY JAN. 13-14

Owner Wayne Hardin Will Be Greeting Our Guests.
Gene Weaver, Territorial Representative For N.M., Texas & Oklahoma
Will Be Here To Answer Any Questions & Discuss Grain Handling For
1983. He Has Over 25 Years With Butler Agri-Builders.

You Are Cordially Invited To Come By
REFRESHMENTS BRING YOUR WIVES



Mr. Farmer,
Our most popular On Farm Storage Bin is the 3018, which is a 30' diameter - 18' eave height with a 12,300 bushel capacity for only \$9600.00. This includes bin sweep auger, freight, steel and construction.
Put it to the pencil, then you tell me how much you'll make by having your own Farm Storage Facility.
Do you want to pay someone else to build or would you rather build your own and acquire an asset?
For more information on this call the Grain Handling Specialist of Texas.



Butler Metal Buildings and Grain Bins

HARDIN CONSTRUCTION

P. O. Box 367 • West American Blvd.
JIM NICHOLS Muleshoe, Texas 79347

806-272-4647

COKER'S GREAT CORN BOOKING BONANZA!

- ★ Top hybrids.
- ★ Early selection.
- ★ Guaranteed prices.
- ★ Valuable premiums.



Early Buying Bonus!

Buy your high yielding Coker corn hybrids during **BOOKING BONANZA DAYS** from your participating Coker Dealer!

Enjoy early selection, protection against any later price increases, and a valuable premium item when you order.

Sportsman's Lock Knife...5 bags.
Western Roper Jacket...10 bags.
Rancher Vest.....25 bags.
Rancher Coat.....40 bags.

BOOKING BONANZA OFFER INCLUDES MILO!

Ag-Chem
Arch, N.M.
Ph: 505-276-8237



AUTO SPECIALS

Prices effective thru: January 16th



Cross-bed Tool Box

78⁹⁵

Model 100
Rattle proof, rainproofed and dustproofed. Heavy duty steel! Gleaming baked white enamel weather-resisting finish. Unobstructed rear window visibility.



Wheel-Well Tool Box

64⁹⁵

Model 610
This mini-utility box fits forward or behind the rear wheel well. Has all the construction and finish of the Behind-The-Cab model. Complete with lift-out tray and chrome-plated T-handle lock with 2 keys.



Havoline Motor Oil

99¢
10 W 40



WD-40 Lubricant

1⁴⁹
9 oz.



Fram Oil Filter

2⁸⁹
PH-8A. All Fram Air And Oil Filters Similarly low-priced.



Hot Shot Starting Fluid

1¹⁹
8 oz. spray.



Quaker State Motor Oil

99¢
10 W 40

TSTA Promoting New Approach To Salaries

The Texas State Teachers Association (TSTA) will be promoting an "entirely new approach" to the state-funded salary schedule for teachers and other school employees in the 68th Texas Legislature, which will open on Jan. 11.

Barbara O'Neal, President of the 95,000-member educational association, said today that TSTA's plan would raise the beginning

Long Services Conducted Friday

Services for C.H. "Hennie" Long, 64, were held at 10:30 a.m. Friday, Jan. 7 in Ellis Chapel of the Chimes with the Rev. James Williams, pastor of the Calvary Baptist Church, officiating.

Burial was in Muleshoe Cemetery under the direction of Ellis Funeral Home. Long died at 6:45 a.m. Wednesday in the Muleshoe Nursing Home.

A lifetime Bailey County resident, Long was born Dec. 22, 1918 and was a mechanic with Crow Chevrolet. He was a veteran of WWII serving with the Army Air Force.

Survivors include two sons, Don Long of Hereford and Mark Long of Houston; four sisters, Mrs. Bob Meyers of Mesa, Ariz., Mrs. Anna Mae Bearden of Lubbock, Mrs. Lucille Wright of Georgetown and Mrs. Juanita Paul of Spearman; two brothers, Sam Long of Fort Worth and Fred Long of Riverside, Calif.; and two grandchildren.

minimum teacher salary from the current \$11,110 to \$15,000 for a teacher with a bachelor's degree and from \$11,880 to \$17,000 for a teacher with a master's degree. The immediate effect on every teacher's paycheck would be an increase of at least \$1,910 annually.

TSTA's salary proposal, which O'Neal said is intended to help Texas public schools "recruit and retain top personnel," seeks significant increases for every level of the state minimum salary schedule. The state pays minimum salaries of

Sandhills Philosopher

Editor's note: The Sandhills philosopher on his Johnson grass farm on Sandy Acres looks at the recent pay raise Congress has given itself.

Dear Editor: Some people are criticizing Congress for giving itself a raise of \$8,138 a year during the lame brain, I mean lame duck, session, making a member's salary now \$69,800.

With the country in the shape it's in, the critics say, with high unemployment, inflation, lots of bankruptcies, more lay-offs feared and the government head over heels in debt, doesn't this seem like an odd time for Congress to be voting itself a pay raise?

The critics don't understand. Congressmen are fighting inflation in the only way they've figured out.

You see, nation-wide inflation is something Congress doesn't know what to do about, other than refer it to a committee. But on an individual basis, Congressmen have discovered that there are only two ways of combatting inflation: either spend less or earn more.

Choosing the latter, Congress is thus setting an example. To spend less means further drying-up of consumer buying which causes less manufacturing, which means more lay-offs, more firms going out of business.

But to earn more, that's the key, and Congress has decided to lead the way by giving itself an \$8,138 raise. Have you stopped to think what a boost it'd be to the economy if everybody got an \$8,138 raise? Why that's enough to make the downpayment on a new car.

Some people will say, "Yeah, but that Congressional pay raise comes from borrowed money, borrowed from us tax payers who're already faced with a 150-billion-dollar deficit." Such people should go stand in the corner. They should choose their corner carefully because some Congressman may be there ahead of them.

Your faithfully, J.A. Sandhills Philosopher says Congressmen giving themselves a raise are fighting inflation.

LOSES MONEY
Despite a rash of mergers intended to save ailing savings and loans, 83 percent of federally insured S&Ls lost money in the first half of 1982, according to figures obtained by The Associated Press. In 12 states, 90 percent were money losers, and in four states, not one was profitable.

paraprofessionals, counselors and teachers, superintendents, principals and other administrators.

O'Neal, a classroom teacher from Waco, said TSTA is proposing to dramatically reorganize the current salary schedule. Instead of waiting 18 years to reach the maximum salary, as the current schedule requires, educators would reach the top of the schedule in 10 years under TSTA's new plan, which would enable a teacher to double his or her beginning salary in those 10 years.

The TSTA plan "compresses" the salary schedule into fewer pay grades and experience steps, as recommended by the Subcommittee on Educational Personnel of the Senate's Select Committee on Education.

In its official report, the Subcommittee recommended

Bob Dale, Senator, (R-Kan), on make-job bill: "This is the best possible jobs bill that could be devised. These new jobs could become available beginning as soon as 90 days after enactment of the program."

mended a "compressed" schedule because it "might permit an individual to reach a higher, more competitive salary prior to mid-career rather than after mid-career."

Both the Senate Subcommittee and TSTA are attempting to end the teacher shortage currently facing many Texas school districts and to avert an even more serious and widespread shortage in the future.

TSTA's overall legislative program for the 68th program for the 68th Session of the Texas Legislature includes proposals for statewide health insurance, professional negotiations, improved sick leave provisions, increased funding for bilingual and compensatory education, and support of equalization plans, among others.

O'Neal said TSTA will also work to improve the evaluation procedures for professional educators that the Association supported in the 1981 session and to

further improve teacher preparation programs and certification standards.

"It is critical," O'Neal said, "for the 68th Legislature to take decisive action in 1983 to significantly improve Texas public schools. While we claim that our state has the strongest economy in the nation, Texas ranks 42nd in per pupil expenditures for education among the 50 states and teacher salaries are far below where they should be in order to attract and retain the best teachers for our students. That's just not good enough for Texas."

She concluded, "TSTA feels that for responsible, fiscal management the best investment the 68th Texas Legislature can make is in the students and teachers of Texas."

No matter how much money some men make, they always want to make more.

Ellis Funeral Home
Pre-Need Funeral Needs
Price Is Frozen At Time Of Purchase & Guaranteed
272-4574 Muleshoe

Honor Students		FRESHMEN	
SOPHOMORES		Monte Horne	3.2
Kristi Campbell	3.3	Mike Harris	2.8
Percilla Quintana	3.2	Caice Hendrix	2.6
Janna Wuerflein	3.1	Sherri Stovall	2.5
Kristi Heathington	3.0	Twila Downing	2.5
Jodi Cruickshank	2.8	Zanna Huckaby	2.5
Vana Pruitt	2.8	Jessie Holmes	2.8
Shelley Sain	2.6		

ONE MINUTE SPORTS QUIZ

- Who won the Sun Bowl football game?
- Who won the Aloha Bowl football game?
- Name the pro football player who recently rushed for over 10,000 career yards.
- Maurice Lucas plays pro basketball for what team?
- What was the first year Willie Mays lead the NL in home runs?

- Answers To Sports Quiz
- North Carolina 26, Texas 10.
 - Washington 21, Maryland 20.
 - Walter Payton.
 - Phoenix Suns.
 - 1955.

A&M **MasterCard** **VISA** **CHUNK STYLE** **Five Pint**

Five Point Dog Food
50 Lb. \$9.16 25 Lb. \$5.15 The dog food dogs really like.

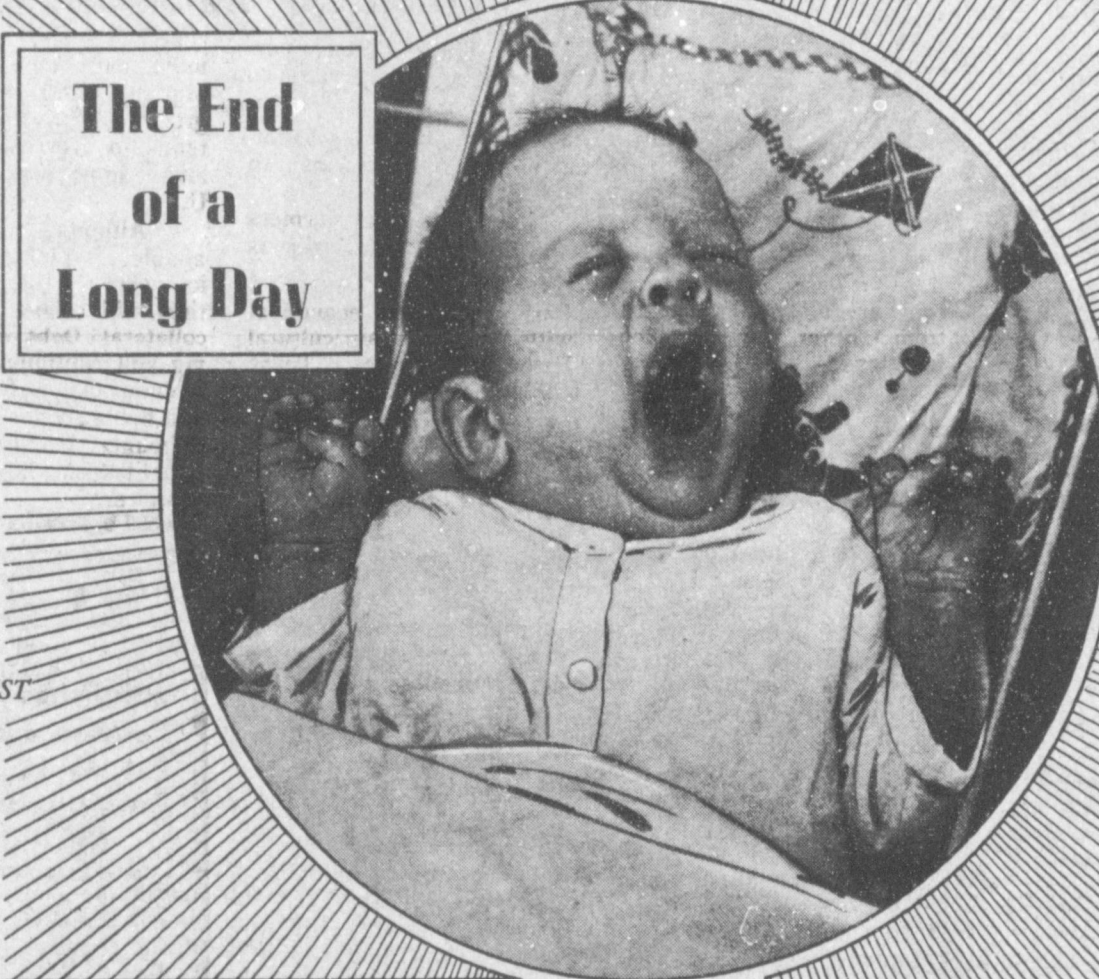
Sportsman High Protein Dog Food
\$10.89 50 Lb.

Five Point Cat Food
\$3.45 10 Lb.

ATTEND THE CHURCH OF YOUR CHOICE

Lazbuddie School Menu

- Jan. 10-14 MONDAY
- Lunch Spaghetti/Meat Sauce
 - Blackeye peas
 - Spinach
 - Corn Bread
 - Fruit
 - Milk
- Cereal Juice Milk
- TUESDAY
- Hamburgers
 - French Fries
 - Pickles, onion, lettuce
 - Pudding
 - Milk
- Toast, Jelly Juice Milk
- WEDNESDAY
- Cheese Enchilada's
 - Pinto Beans
 - Green salad
 - Jello
 - Milk
- Hot buttered pancakes Syrup Juice Milk
- THURSDAY
- Sloppy Joes
 - French Fries
 - Pickles
 - Cookies
 - Milk
- Hot Cereal Juice Milk
- FRIDAY
- Beef & Vegetable Stew
 - Fried Okra
 - Cheese sticks
 - Cake
 - Milk
 - Crackers
- Do-nuts Juice Milk



The End of a Long Day

Here is a young fellow just about ready for bed and a much deserved rest. Although he is still too young to do much more than sit in his chair, he is busy from early morning until night finding out about this new world in which he is a very important member.

He must rely upon his parents for food, warmth and protection and from those parents he also experiences the wonderful sharing of family love. As we owe this child love and devotion, so do we owe him the right to grow up in a home where God is an important part of family life. Do not deny your children the benefits of God's love which He gives you through the church. Become an active part of your church. Enjoy the peace of mind that regular church attendance can bring to you and to your family.



The Church is God's appointed agency on this world for spreading the knowledge of His love for man and of His demand for man to respond to that love by loving his neighbor. Without this grounding in the love of God, no government or society or way of life will long prosper and the freedom which we hold so dear will inevitably perish. Therefore, even from a selfish point of view, one should support the Church for the sake of the welfare of himself and his family. Beyond that, however, every person should uphold and persevere in the Church because it is the truth about man's life, death and destiny; the truth which alone will set him free to live as a child of God.

- MULESHOE ASSEMBLY OF GOD**
517 South First
Lee R. Rich, Pastor
- EMMANUEL BAPTIST CHURCH**
Iglesia Bautista Emmaneul
107 East Third
Isaias Cardenas, Pastor
- RICHLAND HILLS BAPTIST CHURCH**
17th and West Ave. D
Brock Sanders, Pastor
- SPANISH BAPTIST MISSION**
East Third and Ave. E
Roy Martinez, Pastor
- TRINITY BAPTIST CHURCH**
314 Ave. B
Don Knight, Pastor
- LONGVIEW BAPTIST CHURCH**
Phone 946-3413
B.C. Stonecipher, Pastor
- SIXTEENTH AND D CHURCH OF CHRIST**
James Johnson, Pastor
Sunday - 10:30 a.m.
Evening - 6 p.m.
Wednesday - 8 p.m.
- PROGRESS BAPTIST CHURCH**
Donald G. Proctor, Pastor
Progress, Texas
- NORTHSIDE CHURCH OF CHRIST**
117 E. Birch Street
- SPANISH ASSEMBLY OF GOD**
East 6th and Ave. F
Luis campos, Pastor
- UNITED PENTECOSTAL GOSPEL LIGHTHOUSE CHURCH**
207 E. Ave G.
George Green, Pastor
- MULESHOE BAPTIST CHURCH**
8th and Ave. G
Bob Dodd, Pastor
- FIRST BAPTIST CHURCH**
220 West Ave. E
J.E. Meeks, Pastor
- NEW COVENANT CHURCH**
Plainview Highway
Sunday - 10:00 a.m.
Wednesday - 7:00 p.m.
Jimmy Low, Pastor

- CHURCH OF THE NAZARENE**
9th and Ave. C
Jimmie Williams, Pastor
- FIRST CHRISTIAN CHURCH**
130 W. Ave. G
Dick Tarr, Pastor
Sunday School - 10:00 a.m.
Worship 11:00 a.m.
- LATIN AMERICAN METHODIST MISSION**
5th and Ave. D
R.Q. Chavez, Pastor
- THE COMMUNITY CHURCH**
Morton Highway
H.D. Hunter, Pastor
- CALVARY BAPTIST CHURCH**
1733 W. Ave. C
James Williams, Pastor
- PROGRESS SECOND BAPTIST CHURCH**
1st and 3rd Sundays
Clifford Slay, Pastor
- FIRST UNITED METHODIST CHURCH**
507 W. 2nd, Muleshoe
Bill Kent, Pastor
- ST. JOHN LUTHERAN**
Lariat, Texas
Sunday School - 10:00 a.m.
Worship Service - 11:00 a.m.
Herman J. Scheiter, Pastor
- PRIMITIVE BAPTIST CHURCH**
621 S. First
Elder Bernard Gowers
- MULESHOE CHURCH OF CHRIST**
Clovis Highway
JOHN A. BOOR, Minister
yehovah Witness
Friona Highway
Boyd Lowery, Pastor
- IMMACULATE CONCEPTION CATHOLIC**
Father Patrick Maher
Northeast of City in Morrison Edition
- ST. MATTHEW BAPTIST CHURCH**
Corner of West Boston and W. Birch
M.S. Brown, Pastor
- TEMPLO CALVARIO**
507 S. Main
Sunday - 10:00 a.m.
Sunday evening - 7:00 p.m.
Evangelistic Services
J.L. Soto, Pastor

Two different short forms this year. H&R Block can un-complicate them for you.

Two different short forms and new deductions make short form filing more complicated this year. Our preparers know the new tax laws and forms. We've studied them for months.

H&R BLOCK
The new tax laws. This year's number one reason to go to H&R Block.

224 W. 2nd
272-3302

Weekdays 9-6 Sat. 9-5

Bratcher Motor Supply 107 E. Ave. B 272-4288	James Roy Meat Market Co. 506 W. Amer. Blvd. 272-4361	White's Cashway Grocery Where Friends Meet & Prices Talk	Dent-Rempe Implement Co. John Deere Dealer 272-4297
Western Drug 114 Main 272-3106	First National Bank "Home Owned" 202 S. 1st 272-4515	Muleshoe Publishing Co.	Muleshoe Co-op Gins
Thornton Chevovlet 261 Main 272-3100	Five Area Telephone Cooperative Inc. 272-5533	Baker Farm Supply Inc.	Lambert Cleaners Steam Carpet Cleaning Drapery Cleaning 123 Main 272-4626
Dairy Queen Margie Hawkins Manager 272-3412	Farmers Spraying Service	American Valley Inc. 272-4266	Farmers Co - Op Elevators 3 Locations to Serve You 272 - 4335



MULE'S TALE

Editor: Kacy Henry

Official Publication of Muleshoe High School Written and Edited by Students of the Muleshoe Schools
Sunday, January 9, 1982



DECA Prepares For Contest

The Muleshoe chapter of Distributive Education will be attending the Twelfth Annual Career Development Conference and competition. These competitive events will be held March 4-5, on the Struggs campus of Dunbar-Struggs High School, Quirt and 24th Street in Lubbock, Texas. These contests are held to judge just how competent a student is at his or her training station. A student may enter only one contest, either in written or series events.

Those students who will be competing in the series events are: for apparel and accessories, Randall Stevens; Food Marketing, Kris Gibson and Hector Orozco; General Merchandising, David Castorena and Kevin Harris; Service Station Retailing, Steve Cavitt; Advertising services, Lori Stroud and Jimmie Lee; and finally, in Finance and Credit, Sherri Kinard.

Those students competing in the based written events are: Martina Valdez in General Merchandising; Cover design, Lynda Bell, Ginger Morris, Rosa Garza and Jackie Holmes; Collegiate Design, Shawna Kelson, and in Civic Consciousness, Robert Nowlin and Edie Balentine.

Mrs. Pylant, DECA supervisor, along with her students who are competing, will leave Friday morning, March 5 for Lubbock and return the following day. Entertainment and several other activities will be provided for the students. All students attending will prepare for the contest ahead of time. This is a time of hard work and fun for all DECA students.

DECA-Developing Future Leaders in Marketing and Distribution.

SC Members Attend District Convention

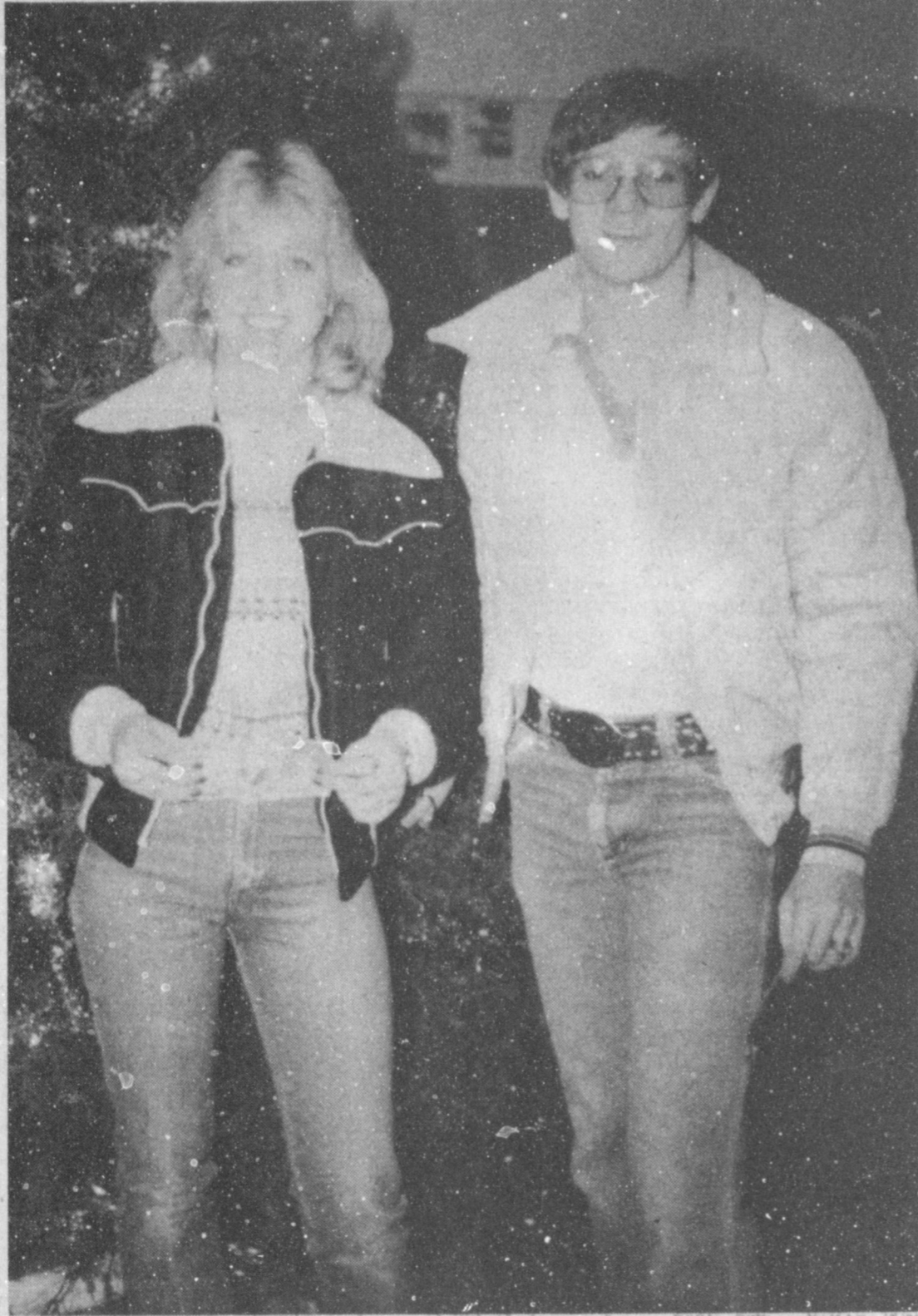
Sponsors Lola Pylant and Keith Taylor went with MHS Student Council members Zeke Contreras, Kevin Grant, Scott Campbell, Kristi Campbell, Tamara Bean, Brenda Flowers, Darin Bratcher, Laura Leal, Michael Isaac, John Isaac, Trisha Burgess, Robert Nowlin, Loy Triana, Polly Harrison, Jimmie Lee, Crista Taylor, Melissa Wilbanks, Vana Pruitt, and Jeff Hamilton to the District V Student Council Convention in Levelland on January 5.

The convention's theme was "Dreaming of Tomorrow". The speakers were former Muleshoe Coach, Coach Mike Mayberry, and the Vice Principle at Denver City, Mr. Smith. The entertainment was given by Brownfield High School while everyone ate Bar-B-Q Beef and Links, Potato Salad, Beans, Bread, and Fruit Cobbler.

Mr. Smith's and Coach Mayberry's speeches were about having a better attitude towards everything in life. Students were given different ways to be kind.

SC Sponsors Assembly

The MHS Student Council sponsored an Assembly program in the gym on Friday, December 17th. The 40 minute program called "Stampede" was on self-discipline and patience and was presented for a 75 cent admission charge. It was a showcase of contemporary music and films featuring computerized multi-media image projection and stereo sound and it was an excellent presentation.



ANNUAL WINNER--Sharla Morrison won a free 1982 Muletrain Annual for being the top saleswoman in the 1982 fall sales campaign. She sold Darin Bratcher an annual and his receipt number was drawn at the end of the sale, which entitled him to a refund also. Remember that annuals are still available at \$17 for standard and \$19 for personalized.

Play Cast Members Selected

The Speech Department cast members for the UIL One Act Play have been chosen. The contest play

will consist of scenes from Royal Hunt of the Sun by Peter Shaffer. The play details how only 167 Spanish conquistadors conquered the entire Inca Empire. The conflict between Pizarro, a Spanish General, and Atahualpa, the sun god of the Inca Empire, determines the life and death of both Spaniards and Incas alike.

The cast members of the one act play are as follows: Scott Ellard - De Soto; Perry Flowers - Diego and Domingo; Hector Garcia - Felipe and Inca Chief; Jeff Combs - Pizarro; Cheyenne Bickel - Villic Umu; Michael Isaac - Atahualpa; David Pruitt - Estete and De Nizza; Freddy Vela - Old Martin (Narrator); David Vela - Young Martin; Chad Williams - Chalcuchima and Inca Priest; Jimmie Lee - Inca Chief and Inca Priest; Danny Seales - Valverde; and Keely Hamblen, Brenda Flowers, and Tonda Gunstream as Incas. The stage crew consists of Dale Hughes, Gary Watkins, and Melissa Wagnon. People in charge of make-up are Belinda Clayton and Shelli Walker.

Rehearsals for the play will begin on Monday, January 10th and performances of the contest play will be on: February 25 at the ENMU Drama Festival; on March 12 at the Muleshoe Drama Festival; and on March 22 at the District 2-AAA Contest. The play will be presented for the general public on March 26 at a Dinner Theatre in the High School Cafeteria.

The Plainview Area UIL Contest will be held on April 9, the Odessa Regional UIL Contest on April 15, and the UIL State Competition in Austin will be on April 28.

The Mule's Tale Staff says "break a leg" to Mr. Kerry Moore, MHS Speech director, and the cast of Royal Hunt of the Sun!

Annual Staff Meets

The MHS Annual Staff met on Thursday, January 6 at the Pizza Hut. Layouts were assigned and type specs were decided on. Everyone enjoyed a delicious meal and the gathering was deemed a success.

NHS Holds Meeting

The MHS National Honor Society held their monthly meeting Wednesday, January 5, at the Pizza Hut.

Area I FFA Meeting Planned

All FFA members who are interested in planning for the FFA Area I meeting on March 4 and 5 will need to attend the FFA planning meeting. It will be held at the High School Food's Lab, Monday, January 10 at 7:00 p.m.

FTA Sponsors Student Teaching

Future Teachers of America sponsored student teaching December 6th and 7th. Thirty high school Juniors and Seniors taught in various classrooms from the Kindergarten to Jr. High. The first day they sat with their class from the beginning of school till the noon hour. December 7th, however, they taught the classes for a whole day. Some of the students commented to the Mule's Tale Staff on how they felt about their experience in teaching.

Kelly Bayless is an 18 year old Senior. She is active in FTA, FCA, and Varsity Cheerleading. Kelly lives with Paul and Patsy Poynor. She taught fifth grade students and commented; "I enjoyed teaching very much, and I liked the grade that I taught. It was a good experience and fun. The kids taught me a lot and Mrs. Johnson was a lot of help."

Tonda Gunstream is the 16 year old daughter of Tommy and Jeanine Gunstream. Tonda is a Junior and a member of FTA, and FCA. She is also a Varsity Cheerleader. Tonda said, "I learned a lot from the experience. The class was very good and cooperative and made it a lot of fun for me. Mrs. Broyles taught me more about teaching and made me feel wel-

comed. I wish I could do it every day."

Melissa Wilbanks taught the fifth grade. She comments, "I would like to thank Mrs. Skipworth for the help she gave me. I had a lot of fun and the class was very good and cooperative." Melissa is the 16 year old daughter of Paul and Judy Wilbanks. She is involved in FTA and a twirler.

Jackie Holmes is the 17 year old daughter of Mr. and Mrs. Wayne Holmes. Jackie taught seventh grade reading and commented, "I really enjoyed student teaching. It was a great experience and really fun." Jackie is in Band, Student Council, FTA and DECA where she is an officer.

Tyri Vandiver commented, "I did learn that teachers have homework, too. Also, you can see how much you did learn long ago. It was a great experience." Tyri Vandiver is the 17 year old son of Butch and Doris Vandiver. He taught sixth and seventh grade. He is on the tennis team, he works, and is a member of FFA and FTA.

Kristi Ethridge is the 17 year old daughter of Mr. and Mrs. Wayland Ethridge. She is involved in FTA, Band, Student Council, and President of CA's in the 1st Assembly of God Church. Kristi taught 6th grade reading and commented, "I plan to major in teaching and I thought this was a great experience. I hope we get to do it again before the year's over. I enjoyed this opportunity to experience teaching very much."

Melissa Wagnon taught the first grade for Mrs. Grigsby and commented, "I really enjoyed teaching. It is amazing how you can get attached to children in just two days." Melissa is the 16 year old daughter of Mr. and Mrs. W.B. Wagnon, Jr. and is involved in Band, Speech, FTA, FHA, and Flag Corps.

Robert Nowlin, a Senior, is the 17 year old son of Mr. and Mrs. Joel Nowlin. Robert taught Kindergarten for Mrs. Ellis and commented, "Teaching Kindergarten brought back memories of when I was that young. I really enjoyed working with those kids, but I don't think I could do it full time." Robert is in Band, FTA, DECA, and is a member of Student Council.

Darin Shaw taught first grade and commented, "I really had a wonderful time and it was a real learning experience. The teacher and students were very polite. I really enjoyed it." Darin is the 16 year old son of Mr. and Mrs. Eugene Shaw; he is involved in FCA, Football, Basketball and is State Representative in FTA, and

Darin Shaw taught first grade and commented, "I really had a wonderful time and it was a real learning experience. The teacher and students were very polite. I really enjoyed it." Darin is the 16 year old son of Mr. and Mrs. Eugene Shaw; he is involved in FCA, Football, Basketball and is State Representative in FTA, and

The varsity Mullettes traveled to Anton Tuesday, January 4, for their first game after the holidays. The Mullettes had a slow beginning in the first half scoring only 7 points. The second half was dominated by the Mullettes in scoring percentage, but the girls were still unable to pull out the victory. The final score was Muleshoe 39 and Anton 44 points. High scorer for the team was Denise Wilson with 12 points. Many other players scored also.

Thursday January 6, 7, and 8th the Mullettes traveled to Abernathy for a tournament. The girls took on Post in the first round. Results of the tourney were unknown at press time. The fans are also encouraged to come out and support the Mullettes next Tuesday for their district opener at Dimmitt.

a Junior Class Officer. Perry Flowers is the 18 year old son of Tom and Joella Flowers. He taught the sixth grade, Mrs. Gunter's Science. Perry commented, "Very enlightening and jovial experience." Perry is a Senior and is also a member of FCA and FTA and in Mrs. Wrinkle's Vocabulary Class!

John Wuerflein commented on his second grade teaching experience, "It was a good experience. I like working with little kids any way, so I liked it." John is a Senior and the 17 year old son of Frank and Betty Wuerflein. Besides FTA, John is also a member of FCA.

Brenda Flowers, the 16 year old daughter of Tom and Joella Flowers, taught 7th grade. She commented, "It was an experience that I will not soon forget." Brenda also participates in Band, Speech, FTA and Student Council.

Frances Garza is the 17 year old daughter of Mary Garza and a member of the band. She taught kindergarten and commented, "It was a good teaching experience and I enjoyed trying to help other children learn." Frances is a Junior.

Darin Bratcher, and 18 year old Senior, taught Mrs. King's second grade class. He said, "It was very exciting to be able to help the 2nd graders. I believe they enjoyed the days as much as I did." Darin is the son of Mr. and Mrs. Roy Bratcher. He is involved in FTA, football, treasurer of FCA and art club historian.

Cristal Taylor is 17 years old and the daughter of Otwell and Kathryn Taylor. Cristal taught first grade and said, "I love children so I enjoyed teaching the

kids. I do not know if they learned much, but I learned a lot." Cristal is a Senior and co-editor of the Muletrain annual. She is in FTA, FCA, and on the student council.

Kevin Grant, another annual staff member, is also a Senior and is the 17 year old son of Mr. and Mrs. C.E. Grant, Jr. Kevin taught 8th grade and commented, "I really learned a lot, and it was a lot of fun." He is in speech, FTA, FCA, and a member of student council.

Lisa Valle taught kindergarten and she said, "It was nice and fun teaching. The children really enjoyed it. It is nice working with children trying to help them learn." Lisa is a 17 year old Junior and the daughter of Virginia Valle. She is in FTA and a band member.

Ronald Briggs is the 16 year old son of Rosemary Francher. Ronald said, "I really enjoyed teaching the 3rd grade. The kids were great. Everyone was friendly and cooperative, which made it a fun day for everyone." Ronald is a junior and involved in FTA, basketball, and tennis.

Jimmie Lee taught 6th grade mathematics. Jimmie said, "The thrill of teaching those kids was really great since it was a new experience. They are well-mannered and I appreciate greatly the cooperation of the teacher and students." Jimmie is a Junior and the 17 year old son of Mrs. Judy Gordon. He is a member of FTA, FCA, DECA, and student council, and is very involved in speech, in debate and the contest play.

Also participating in the student teaching program were Sherri Bessire, Cheyenne Bickel, Deena Burris, Sherri Ellis, K-K Flowers, Jay Gleason, Jeff Hamilton, Candy Long, David Pruitt, Chad Williams and Denise Wilson.

Muleshoe School Menu

BREAKFAST MONDAY
Milk
Cereal
Fruit
LUNCH
Milk
Bar-B-Q Franks
Blackeyed Peas
Creamed Potatoes
Cornbread
Fruit

TUESDAY
Milk
Toast
Jelly
LUNCH
Milk
Hamburgers
Lettuce & Tomato
Pickles & Onions
Tater Tots
Fruit Cobbler

WEDNESDAY BREAKFAST
Milk
Honey Bun
Juice
WEDNESDAY LUNCH
Milk
Meat Loaf
Corn
Green Beans
Cornbread
Cookies

THURSDAY BREAKFAST
Milk
Toast
Jelly
Fruit
THURSDAY LUNCH
Milk
Hot Dogs
Potato Salad
Pork & Beans
Fruit Jello

MULESHOE SCHOOL COMBO LINE MONDAY
Milk or Tea
Pizza
Mixed Veg.
Pickles
Fruit

TUESDAY
Milk or Tea
Hamburgers
Lettuce & Tomato
Pickles & Onions
Tater Tots
Fruit Cobbler

WEDNESDAY
Milk or Tea
Chicken or Bun
Cheese Stick
Salad
Fried Okra
Fruit

THURSDAY
Milk or Tea
Burritos
Corn on Cob
Salad
Crackers
Fruit
Cheese Stick

Calendar Of Events

Tuesday 11, 1983
Plainview Christian Acad. vs Varsity Boys BB
Dimmitt vs Varsity Girls BB
Wednesday 12, 1983
Periods 1, 2, 3 Semester Exams
Thursday 13, 1983
Periods 4, 5, 6 Semester Exams
Friday 14, 1983
Inservice Workday for Teachers

1	2	3	4	5	6	7	8	9
10			11	12				
13			14					
15			16	17		18		
	19	20		21				
		22		23				
24	25	26		27		28	29	
30			31			32	33	
34		35		36	37			
38				39				
40				41				

ACROSS: 1-Farm vehicle; 5-Provide food; 10-Shun; 12-Texas shrine; 13-Detective device; 14-Musical groups; 15-Popular dessert; 16-Printers measures; 18-... whiz; 19-Unfettered; 21-Cargo weights; 22-Actor's lines; 24-Irish city; 27-Weight units; 30-Period; 31-Exclamation; 32-... a boy!; 34-Kind of wave; 36-Confused fight; 38-Elude; 39-Desert plant; 40-Curves; 41-Wallet items; **DOWN:** 1-Complain; 2-Be of use to; 3-Cowboy carnival; 4-... Juana; 5-Vehicles; 6-Winglike part; 7-Ballroom dance; 8-German city; 9-Flower favorites; 11-Attire; 17-Stable sound; 20-Shade tree; 21-Beverage; 23-Stage offering; 24-Fall or fowl; 25-Curved molding; 26-Fortification; 28-Italian city; 29-Mr. Allen; 31-Tavern stock; 33-Perceives; 35-Do arithmetic; 37-Conceit

ANSWERS ACROSS
1-Cart 22-Aside
5-Cater 24-Cork
10-Avoid 27-Tons
12-Alamo 30-Age
13-Radar 31-Aha
14-Bands 32-Its
15-Pie 34-Tidal
16-Ens 36-Melee
18-Gee 38-Evade
19-Loose 39-Agave
21-Toas 40-Bends
41-Ones

ANSWERS DOWN
1-Carp 21-Tea
2-Avail 23-Drama
3-Rodeo 24-Water
4-Tia 25-Ogive
5-Cabs 26-Redan
6-Ale 28-Milan
7-Tango 29-Steve
8-Emden 31-Ales
9-Roses 33-Sees
11-Dress 35-Add
17-Neigh 37-Ego
20-Oak

Happy Birthday

January 10 Jeff Hamilton
January 11 Luis Daniel
January 13 Dina Robledo
January 14 Loretta Kirvin
January 14 Laurett Kirvin
January 14 Lorenzo Kirven
January 15 Rod Muysmond
January 15 Marleca Cox
January 15 Denise Wilson

**BUYING?
SELLING?
CHECK OUT THE...**

CLASSIFIED ADS

**DEADLINE FOR CLASSIFIED
ADS IS TUESDAYS AND
FRIDAYS 11:00A.M**

**WE RESERVE THE
RIGHT TO CLASSIFY,
REVISE OR REJECT
ANY AD.

NOT RESPONSIBLE
FOR ANY ERROR
AFTER AD HAS RUN
ONCE.**

PERSONALS

- WILL DO sewing in my home. Call 272-3908. 1-50s-tfc
- WILL DO house cleaning. 272-5687. 1-2s-4tc
- Want to do babysitting in my home. Call 272-3222. 1-30t-tfc
- CAKE DECORATING, order in advance. 272-5637. 1-2s-2tp
- WILL DO babysitting in my home. Drop ins welcome. 272-5644. 1-2s-4tc
- THE MULESHOE Square Dance Club will begin lessons Thursday, January 20. If interested call 272-3659 or 272-4488 or 272-4913. 1-52t-tfc

WANTED TO RENT

- FOR RENT: 3 room furnished house. Couple or single only. Call before 4 p.m. 272-5366. 4-2s-1tc
- FOR RENT: small 2 bedroom house. 7 miles in country, 1/4 mile off pavement. Carpeted, stove, refrigerator, and electricity. Furnished. \$175.00 a month. Call 965-2693. 4-2s-tfc
- 1800 SQ. FT. modern energy efficient house on 1 2/3 acre for rent or sale. 3 1/2 miles north west Muleshoe, Texas. 1 1/2 miles north Wilson Drilling. 1/4 mile east south side road. Contact Bob Gage 806-745-5678, 806-797-7130. 4-2s-tfc

APARTMENTS

FOR RENT: 2 bedroom unfurnished apartment. Call 965-2188, days. After 5 call 272-4754. 5-46s-tfc

SARATOGA GARDENS
1300 N. Walnut-Friona
Phone 247-3666
NOW, 1 MONTH FREE
RENT 1, 2 or 3 bedroom apartments, modern, wall to wall carpet, heating/cooling, kitchen equipped, laundry facilities, parking. Low rent for needy families. Call Collect.

REAL ESTATE

- NICE SMALL 2 bedroom stucco dwelling in best of locations for sale. 272-4732 days, 272-4827 evenings and weekends. 8-2s-tfc
- TAKE OVER payments of \$190.95 on beautiful 14 wide home. Insurance included. Has carpet and appliances. Call 353-1280. 13-2s-7tc
- 3 BEDROOM, 1 1/2 bath, 1 car garage, brick, new paint or trim. Central heat with evaporative cooling. 1,400 Sq. Ft., 10x10 storage room on concrete slab. Sidewalk in back yard. Approximate equity \$12,000. Payments \$497.00. 704 W. Ave. K. 2-2-3612. 8-52t-tfc

HOUSE FOR SALE: 3 BR brick home for sale or rent. Hyatt Addition, Earth, Texas. Assumable loan or owner will finance. 257-3721. 8-28t-tfc

LARGE 3 BR, 2 bath home \$67,500. Immediate possession, excellent terms. Excellent financing. Call your local realtor, owner broker. 806-794-5595. 8-31s-tfc

FOR SALE: by owner. 2 bedroom house with utility and garage, newly decorated. Call 272-5578 or 272-3658, evenings and week ends. 18-45s-stfc

**SMALLWOOD
REAL ESTATE**
232 Main
272-4838

\$500.00 Down payment, \$142.00 Monthly payments for a 2 bedroom, 1 bath home.

\$1,000.00 Down payment, \$193.00 monthly payments for 2 bedroom, 1 bath home.

4 bedroom, 4 bath, owner will finance.

We have 3 bedroom, 2 bath brick home for sale.

JIMMIE CRAWFORD
REAL ESTATE & INS.
1725 W. Ave E
Muleshoe, Texas
272-3666

3 bedroom house in Lena Addition.

3 bedroom house West on 1760.

40 acres East of town with 8" well.

80 acres West of town with 6" well.

160 acres West of town with 2 wells.

320 acres N.E. of town with 3 wells.

Metal office bldg. with 4 offices and lobby.

8-42S-STFC

KREBBS REAL ESTATE
Appraisals
201 W. Ave. C
272-3191
Serving Muleshoe Area 35 Years

GOOD 1/2 section dry land, in wheat, 1/2 minerals. Small down payment. A good buy.

2 quarters - good water. Small down payment.

EXCELLENT CATTLE set up. Good terms.

BEAUTIFUL 3 br home. Will trade on farm or give terms.

160 acre irrigated, exceptionally good water. Some minerals.

160 acre irrigated, beautiful land, sell or trade for home.

GOOD BUSINESS- Will trade for land.

We have good lots and small acreages. Can build or move houses on these locations. Will give good terms. Located 1 mile East of Muleshoe on Hwy 84. Utilities available.
Trade What You Have For What You Want

Call 272-4536
To Place
Your Want Ads

REAL ESTATE

**J. B. SUDDERTH
REALTY, INC.**
Drawer 887
Phone 418-3288
Farwell, Texas

COUNTRY LIVING AT ITS BEST-3 BR, 1 1/2 bath. Brick home, all on approximately 4 1/2 acres west of Muleshoe on Highway. Possible terms available. Need immediate sale.

JUST LISTED IN PROGRESS AREA- 3-2-2 with corral, 2 wells, 2 box-cars, 1 grainary, 5 acres of established alfalfa, very nice. All on approximately 15 acres. See to appreciate.

GET THE FAMILY OUT OF TOWN and into this 3 BR, 1 1/2 bath stucco house in Lariat. Has domestic well, central heating and air conditioning, insulated with garage, incinerator, corral and small feed shed, all on approximately 7/10 of an acre. Just \$20,000.

8-48s-tfc

**BINGHAM & NIEMAN
REALTY**
116 E. AVE. C
272-5285 *** 272-5286

JUST LISTED Approx. 4.4 acres, 3 bdrm.-1 bath home (remodeled & very nice) & 2 bdrm. home for a rental unit. Has sprinkler pipe to water the acreage, ideal small truck farm, on pavement, close to town.

HIGH SCHOOL AREA
3-2-2 Brick, built-ins, fireplace, isolated master, gameroom, Cent. A&H, loads of closet & storage space, plus storm cellar.

3-1 1/2-2 Bdrm., on 6 acres, **SOLED** basement, much more!!!!

VERY NICE 4-1 3/4-2 home, completely remodeled, Cent. A&H, nice paneling, & wallpaper. Under \$40,000.....

FOR SALE OR LEASE 3-2-2 Brick, built-ins, Cent. A&H, plus large metal barn on 3 acres, near Tolk Station.....

COUNTRY LIVING 3-2-2 home, Cent. A&H, on 1 acre, 14' x 28' storage bldg., close to town on pavement.....

RICHLAND HILLS 3-1 3/4-Brick home, fireplace, fenced yard, & in immaculate condition. Priced to sell.....

3-1 home, built-ins, living room, & large den with fireplace!!!!

DESHAZO ELEM. 3-2 3/4 home, Cent. A&H, built-ins, study, large gameroom with fireplace for these cold winter nights, & basement.....

4-1 3/4-2 Brick home, Cent. A&H, large workshop. Priced to sell!!!!

60' x 130' lot with mobile home hookups. Cheaper than rent.....

4 homes-2 bdrm.-1 bath, elec. ranges & refrig., Nice starter homes or good rent property.....

EARTH-3-1 home on large corner lot, plus storage bldg., Priced to sell.....

3-1 3/4 home, nice area, new paint inside, buy equity & assume VA loan.....

We also have a good selection of farms & commercial property listed. Check with us for details on these listings.
"WE APPRECIATE YOUR BUSINESS"
George and Dianne Nieman

USED CARS • TRUCKS

FOR SALE: 1973 3/4 ton Chevrolet pickup with camper. 272-5429. 9-2s-1tc

FARM EQUIPMENT

West Texas Auction Co. Generous Finder Fee Farm & Industrial Auctions Day: Les-747-6629 Night: 797-5518 10-2s-9tc

FOR SALE OR TRADE

FOR SALE: Sweet Sue baled hay grazers \$2.00 a bale or \$65 a ton. Call 946-3664. 10-47s-tfc

FOR SALE: 1978 Honda 400cc automatic, motorcycle. Low mileage, good condition. Call 272-5604. 11-46t-tfc

FOR SALE: 2 choice crypts in Tech Memorial Park. Resthaven Mausoleum, Lubbock. 272-4096. 11-51s-tfc

FOR SALE: Nice 8 ft. pool table plus all accessories. For information call 965-2417. 11-47t-tfc

PIANO FOR SALE wanted: responsible party to assume small monthly payments on spinet/console piano. Can be seen locally. Write: (include phone number) Credit Manager, P.O. Box 478 Lockhart, Texas 78644-0478. 11-6tc

HONEY FOR SALE
Nick Landers
334 W. Ave. J.
272-3096
11-28S-TFC

REAL ESTATE

REID REAL ESTATE WEST HIWAY 84

- 189 Acres in Needmore area. Already sowed in wheat. 2-4" wells. Some minerals go with sale.
- 177 Acres. Excellent farm land with pivot sprinkler system. 2 wells tied together. Priced to sell.
- 160 Acres. Good level land. 2-6" wells with underground pipe. \$650.00/Acre.
- 160 Acres. Center pivot sprinkler. Wheat crop already growing. Assume good loan plus some owner financing.
- 114 Acres with 6" well, 2 siderolls, and underground pipe. Close to town. Plenty of depreciation. \$65,000.00.
- 80 Acres in alfalfa. Irrigated by 2 siderolls with underground pipe.
- 80 Acres. Good terms with Assumable loans. Close to town. New center pivot sprinkler. Minerals go also.
- 160 Acres. Good location, good land, good water. New center pivot sprinkler. Minerals go with the land.
- EXCELLENT FINANCING-2 bedroom home with garage. Assumable loan and Owner Financing.
- OWNER FINANCING-With small down payment. 2 bedroom home on 2 lots.
- FURNISHED HOME-3 bedroom home with furnishings. Located on 2 lots.
- CORNER LOT-Nice 3 bedroom home. Priced to sell.
- RICHLAND HILLS-3 bedroom, 2 bath home. Close to Dillman Elementary.
- SMALL HOME-Small down payment with owner financing.
- 3 BEDROOM-home with storm cellar.

272-3142
272-3565

Thursie Reid-272-3142
Karen Harris-272-5183
Lucille Harp-272-4693
Rex Harris - Broker John Craig - Builder

8-49S-STFC

PROPERTY FOR LEASE

FOR LEASE: Long Term Storage. New 60x100 flat grain storage building, A.S.C.S. approved. 3 miles North of Muleshoe on Friona Hiway, Call 272-4805, or 794-6419, or 272-4086. 15-44s-tfc

LEASE-PURCHASE a new mobile home first and last months lease. Down payment required. Call 373-9469. 13-2s-7tc

MISCELLANEOUS

WANTED TO BUY sideroll sprinklers, 2", 3", 4", sprinkler pipe. Call State-line Irrigation. 272-3450 or 385-4487. 15-49s-tfc

CUSTOM BUILT storm windows and doors. Call Carl Ellington, 272-5402 after 5:00 for appointment and estimate. 15-48t-tfc

ROOF DAMAGE? J. L. Soto, Construction. Shingles - new - repair acoustical ceilings, painting, carpentry. 272-4142. Free estimates. 15-23s-stfc

WANTED TO BUY: Used irrigation equipment. 3 in. and 4 in. x 30 ft. sprinkler pipe. Used pivots, 5 in. side rolls with 5" wheels. Massey Irrigation, Lubbock 806-793-4452 or 793-3121 Will pay cash. 15-41S-TFC

OWN YOUR own Jean-Sportswear, Infant-Preteen or Ladies Apparel Store. Offering all nationally known brands such as Jordache, Chic, Lee, Levi, Vanderbilt, Calvin Klein, Wrangler over 200 other brands. \$7,900 to \$16,500 includes beginning inventory, airfare for one to Fashions Center, training, fixtures, grand opening promotions. Call Mr. Louglin (612) 888-6555. 15-2s-1tp

MISCELLANEOUS

**FRANK'S
REFRIGERATION
APPLIANCE & SERVICE
PARTS & REPAIR**
315 W. 3rd. Ph. 272-3822 15-7T-TFC

ALEX'S TIRE SERVICE
For service 24 hours a day telephone 272-5012 or Mobile 965-2242. 224 East Fourth Street, Muleshoe, Tx. 79347. 15-51s-6tp

**WE BUY USED
FURNITURE AND
APPLIANCES
CALL 272-3030
HARVEY BASS
APPLIANCE**
18S-TFC

**BURROWS
UPHOLSTERY AND
FURNITURE REPAIR**
209 W. 2nd
phone 272-4255
12-44s-1tc

**STORAGE ROOMS
FOR RENT**
\$25.00 - \$30.00
TED BARNHILL
272-4903
15-14t-tfc

**DAVIS
COMMERCIAL
PUMPING**
"If it's part liquid & not over 20 ft. deep we'll try to drain it."
Phone 806 272-3467
P. O. Box 71
1510 W. Ave. D
Muleshoe, TX
15-29s-stfc

**PUBLIC NOTICE
NOTICE TO ALL PERSONS
HAVING CLAIMS
AGAINST THE ESTATE
OF ARNOLD EDWIN
ALCORN, DECEASED**

Notice is hereby given that original letters testamentary upon the Estate of Arnold Edwin Alcorn, Deceased, were issued to me, the undersigned on the 6th day of January, 1983, in the proceeding indicated below my signature hereto, which is still pending, and that I now hold such letters. All persons having claims against said estate, which is being administered, in the County Court below named, are hereby required to present the same to me at the address below given, before suit upon the same are barred by the general statutes of limitations, before such estate is closed, and within the time prescribed by law. My post office address is 522 East Dallas, Muleshoe, Texas 79347. Dated this 6th day of January, 1983.
-s- Wilma Tekla Alcorn, Wilma Tekla Alcorn, Executrix of the Estate of Arnold Edwin Alcorn, Deceased, No. 1531, County Court, Bailey County, Texas.

POLL & VOTERS
NEW YORK - Ronald Reagan has lost the support among moderates and political independents, the crucial middle of the American electorate that helped him forge his landslide victory two years ago, according to the Associated Press-NBC News election day poll.

MISCELLANEOUS

Garza Recycling
112 W. 6TH / CLOVIS, N.M. 88101
762-2247
"WE BUY"

Aluminum Cans 25¢ Lb./Copper/Brass
Radiators/Batteries
Mon.-Fri. 8-5 Sat. 8-12 Mountain Time

Nursing Home News By: Joy Stancell

Thursday night the young people from the Sudan FHA came to Carol the residents and serve them special Holiday "Goodies".

Dot Wiltelting was visited by her family and friends over the Holidays, among them were Glenn Head and his family.

Mrs. Bonnie Hurd was visited Tuesday by her grandson and his family from Nebraska.

Mr. Griffiths returned to the Nursing Home Monday after being hospitalized. Welcome back Mr. Griffiths.

We all at the Nursing Home have had a Very Merry and Happy Holiday. It is so easy to do this with all our lovely families and friends.

Walter Sebring had family members to visit him Wednesday.

We Congratulate Edith Bruns of the birth of a new great grandson. He is the new son of Tim and Tammie Black.

Rosemary Pool enjoyed the holidays with her family.

Wednesday afternoon Glenda Jennings, Jonessea, Jackie Johnson and Brother Louis Crenshaw of the Laz-budie Methodist Church, came to have a Sing a Long with the residents. Glenda and Jonessea did a special song for the residents.

The residents that ate Christmas dinner in the Nursing Home say it was delicious and couldn't have been better.

Thank you for combing our ladies hair Tuesday Josie.

Happy New Year to all our friends and families from the residents and staff at the Nursing Home.

Ruby Gare went out with Louise Allen Sat. and Sun. Margaret Beard went out with Ralph Glover Christmas Day... Josephine Wener went out Xmas Day with Lonnie Merriott, Bertie Hendrix was gone Xmas day. Judy came and got her. Ruby McCamish went out with Clark McCamish Christmas Day. Bonnie Hurd went out with Edd Edmiston Christmas Day. Mrs. Bellau was out Christmas with her family. Effie Smith went out with Herb Sat. Charles Long was in Hereford with his family. Mrs. Lois Ethridge is visiting her son and his family Texline.

Join us at our monthly Birthday Party Jan. 27th at 2:30 p.m. Hosted by the Needmore Comm. Club. Residents having a birthday this month are Cleo Bellar 1-4-1912, Bonnie Hurd 1-7-1894, Ray Griffiths 1-2-1895.

Lois Ethridge returned to the Nursing Home Wed. after a visit with her family in Texline. Welcome home Mrs. Ethridge We missed you.

Mr. Bellar took his wife, Cleo Bellar out for lunch

Tuesday, they celebrated her birthday.

C.W. Wilhite visited the Nursing Home Thursday. He visited residents in the Day Room and Lynn Bratcher in his room.

Mr. Laney was visited Wed. by his wife and Eva Atwood.

Our Volunteers have been so good to come even though they have had to "brave to storm" to do so. Thank you so much.

Marie Engram was visited by Wilma Waddle, Stacey Barnhill, Jeff Whattly, Mrs. Muri Stephenson, Audie Bussey, Stacey Campbell of Lubbock, Marjorie Precure, Rev. Bill Kent, Mr. and Mrs. Tim Campbell, Mr. and Mrs. Jerry Hutton, Kristie Campbell, Mr. and Mrs. George Hendrix of California.

Bertie Hendrix enjoyed the Christmas Holiday with her family. Her son and his wife Mr. and Mrs. George Hendrix returned to Calif. Tuesday.

Ora Roberts spent Christmas Day in the home of her daughter Ruby Clark.

Three Way News By Mrs. H.W. Garvin

Mr. and Mrs. H.C. Toombs was in Lubbock Wednesday on Business.

Mr. and Mrs. Bobby Kindle and girls visited her mother Mrs. J.T. Lemons part of the past week.

Mr. and Mrs. Clifford Dupler from Mississippi, Mr. and Mrs. Hugh Dupler from Oklahoma, Mr. and Mrs. Carl Dupler and Mrs. Minnie Dupler from Maple visited the Bill Duplers Thursday.

Mr. and Mrs. Jerry Simpson and family from Lake Charles La. visited his mother Mrs. Jim Simpson over the weekend. Also supper guests in Mrs. Simpons home Friday night were the W.T. Simpson family.

W.E. Latimer is a medical patient in Cochran Memorial Hospital in Morton.

Mr. and Mrs. Butch Tucker and boys spent Xmas in Ft. Worth visiting her brother.

Mr. and Mrs. George Tyson spent Thursday and Friday in Lubbock with their daughter the Tommy Durhams and to see their first great grandson who was born Wednesday in St. Mary's Hospital in Lubbock. Parents are Mr. and Mrs. George Holt of Lamasa, grandparents are Mr. and Mrs. Tommy Durham of ubbock.

Mr. and Mrs. S.G. Long spent the past week in Amarillo to be with their daughter in law. Mrs. Marvin Long who underwent Surgery Monday.

Saturday afternoon Miss De Aun Foley and Robby Autry were married in Three Way Baptist Church with Rev. Robert Edwards performing the ceremony.

The community has received about 20 inches of snow the past week with most roads almost impassible.



THEN: How did our nation's farmers in the 18th, 19th and early 20th century combat weeds? By manual hoeing and tilling. This method involved many long back-breaking hours of work and if used today, would raise the price of the food we eat exorbitantly.

Courthouse News

OIL AND GAS LEASES
Terry O. Travis and wife, Nelda A. Travis to Wayne Gill--(NE/4) of Section 47, Block Z, State Capitol Lands.

COUNTY COURT
Therman Coleman, Order of Dismissal; Billy Ray Stovall, Carrying a Handgun, \$150 fine; Phillip Hyatt, Theft, 34 days jail; Ramiro Rodriguez, DWI, \$200 fine, 3 days jail; Duvelia Saucedo, Possession of Beer, \$125 fine; Rene Reyes, Order of Dismissal, Robert Mathew Roel, Order of Dismissal; Leergers Pool, Speeding, \$15 fine.

WARRANTY DEEDS

S.P. Stockard and wife, Euleta Stockard to Frieda M. Locker--(W 1/2) of Lot (5), all of lot (6), and the (E 1/2) of Lot (7), Block (8), Highland Addition to the Town of Mulshoe, Bailey County, Texas.

Charles L. Lenau and wife, Marie Lenau and Julian E. Lenau and wife, Lois K. Lenau to Joe Robert Gonzales--All of the (S/2) of Lot Number (35), in Block Number (6), and all of the (N/2) of Lot Number (34), in Block Number (6), Lenau Subdivision to the City of Mulshoe, Bailey County, Texas.

Josephine Wenner to Delfer F. Wenner and wife, Dorothy Wenner --(SE 1/4 60') of Lots (11) and (12), Block (2), Golf Course Addition to the City of Mulshoe, Bailey County, Texas.

Gaylon Black and wife, Elizabeth Black to H.E. Graham--A tract of land containing 30 acres out of the Southwest corner of the (NW/4) of Section Number (39), Block X, WD&FW Johnson's Subdivision in

Bailey County, Texas. Gaylon Black and wife Elizabeth Black to H.E. Graham--All of the (NE/4) of Section Number (39), Block X, WD&FW Johnson's Subdivision in Bailey County, Texas.

MARRIAGE LICENSE

Russell Alan Jones and Benetta Ann Roming, Canyon; Elias Quinoez, Bovina and Dorothy Eva Chacon, Clovis N.M.; Jerry Thomas South, Portales and Barbara Ann Suto, Portales.

DISTRICT COURT

Green Bros., Inc. VS Ben Matthews, Judgement; Jodie Kay Hardage and Lacy Wayne Hardage DV; Fry and Cox, Inc., VS Roy W. Lovelady, Motion to Dismiss; Richard F. Bertram VS State Farm Mutual Automobile Insurance Company-- Order Dismissing Without Prejudice; Barry T. Lewis VS Keith Pate, Shirley Pate and Summit Savings Association Motion of Dismissal; Rhonda Louise Bookout VS Ronnie Jack Parker, Judgement; Sherry Harris VS Jimmy Harris, Judgement; Mulshoe Independent School District, Et Al Salvador Toscano Et Al, Order of Dismissal; Mulshoe Independent School District, Et Al VS Bernardo Olibas Et Ux, Order of Dismissal; State of Texas and Bailey County Et Al VS Walter F. Sain, Order of Dismissal; State of Texas and Bailey County Et Al VS Jerry Don Gregory, Et Al, Order of Dismissal; Maria Vella Flores and Raymond Salala Flores DV; Sylvia Ann Zamora and George Humberto Zamora, DV; Jerry Beasley, Doing Business as West Camp Gin Company VS Willis James, Motion to Dismiss.; E.W. and Eunice Evans, DV; Buddy Von-Dell Foster and Beverly Faye Foster, DV; Margaret A. Williams and George Elgin Williams, DV; Lubbock Nut and Bolt Co., Inc. VS Joe Orozco, Individually and

d/b/a Mulshoe Machine and Welding, Default Judgement.

NEW VEHICLES BOUGHT IN DEC., 1982

Joe L. Jerheta Rogers, 1981 Chev PU, Thornton Chev., Inc.
Joe L Mata, 1982 Chev PU, Thornton Chev., Inc.

Gary Glover, 1982 GMC Van, Robert D. Green Inc.
Carl Patterson, 1983 Chev PU, Thornton Chev., Inc.

Kerry G. Moore-Patricia A., 1983 Olds 4 dr, Bill Morris Olds, Buick, Pont.
J.W. Herington, 1983 Ford PU, Mulshoe Mtr. Co., Inc.

James Williams 1982 Chev 4 dr, Thornton Chev., Inc.

Inez F. Bobo, 1983 Buick 4 dr, Robert D. Green, Inc.

Hellen Adrian, 1982 Ford 4 dr, Mulshoe Mtr. Co., Inc.

Odell Rasco, 1982 Ford 2 dr, Mulshoe Mtr. Co., Inc.

Viss Dairy, Chev Sub, Thornton Chev., Inc.

Mulshoe Livestock Auction, Inc., 1983 Ford PU, Mulshoe Mtr. Co., Inc.

Carter Williams 1983 Buick 2 dr, Robert D. Green Inc.

Byron Gwyn, 1983 GMC PU, Robert D. Green Inc.

Dagmar Eileen Potect, 1982 Buick 2 dr, Robert D. Green Inc.

R.L. Fields, 1983 GMC PU, Robert D. Green Inc.

Rex Griffiths, 1983 GMC Hse Car, Robert D. Green Inc.

Stephen Busby, 1983 Buick 4 dr, Robert D. Green, Inc.

Mulshoe Mtr. Co., Inc., 1983 Ford PU, Ford Mtr. Co.

Inex Lozano, 1982 Ford 4 dr, Mulshoe Mtr. Co., Inc.

E.H. Garner -Marie Garner, 1983 Ford 4 dr, Mulshoe Mtr. Co., Inc.

Albert D. Lee 1982 GMC PU, Robert D. Green, Inc.

Firefighters Report

By Wayne Peterson

The old year has faded into the past buy many of the events that happened in 1982 long will be remembered. Limited space here will allow only highlights of the year, which proved to be quite busy for firemen. Total fire calls for 1981 was 141, some 1300 men hours used while running up 4700 miles on eight fire units. A run down on these calls look like this. 64 city calls with rural calls of 70 and 7 false alarms. About 12 calls were out of county, four of these were mutual aid as second department on the scene. Most frequent calls were to grass, trash and cotton related fires, which total 64 calls.

Other type fires and numbers of each were fuel fires 14, dwellings 13, small vehicles 13, smoke alarms 4, structural 5, storm watch 3, mobile homes 3, farm tractors 3, trucks 2, corn dryness 2, and rescue 1.

We hope those that suffered losses in those fires feel the department performed to the best of their ability under the prevailing circumstances present at the time of each call.

There were two fatalities due to a fuel related fire in 1982. This is a tragedy anytime, in any community and we hope a recurrence never happens. The department once again experience a great loss, when in May of 1982 June Ladd passed away after a lengthy illness.

His contribution to this community and department will long be remembered.

We want to express our appreciation to the wives of all firemen for their many contributions throughout

the year. Their understanding and support has meant a great deal to the success and moral of the department.

We feel the fire department has received a great deal of backing and support from the community as a whole and hope this understanding and appreciation will continue. We also acknowledge the help of the city manager, Mayor Councilman and Commissioners in 1982 and will rely on their help and cooperation through 83.

We will strive to give credibility to the department and Mulshoe when acting as representatives of each.

Officers for 1983 have been elected and are ready to fulfill their duties. They are, Fire Chief, Jack Dunham; Assistant Chief, Donald Harrison; Training Officer, Gary Toombs; Secretary, Fire Marshall, Owen Jones; Treasurer Tootie Middlebrooks and reporter, Wayne Peterson.

New members coming into the department in 1982 were Billy Tosh, Frank Ellis III, Charles Lorance, Gary Hugg, Brian Rudd and Larry Rasco. These young men have already made their presences known by their attendance

West Plains Medical Center

ADMITTED
Jan. 3-Nattice Bratcher and Tammy Elder
Jan. 4-Stella Dominguez, Mildred Scott and L.V. Haney
Jan. 5-Adaline Welch and Brandy Whitt
DISMISSED
Jan. 3-W.M. Vinson, O.O. Bruce, Jackie Humphreys, Maris Segura and Kathryn Hancock
Jan. 4-Frank Hernandez and Ina Bieler
Jan. 5-Terri Douglass
Jan. 6-L.V. Haney

of meetings and their willingness to work and train. Welcome to the department men.
From your volunteer Fire Department to all of you, a Happier New Year-1983.

The lack of morals among the youngsters, if it exists, is a reflection of a greater lack of morals among their elders.

Peace will not come from charters or peace treaties, but only when the peoples of the world are willing to live and let live on an equal basis.

Entire Stock
Fall, Winter & Holiday
Wear
Up To
50% OFF
Playmates
1015 W. 2nd Portales Grand & Main, Clovis

BE SURE TO SEE OUR COLORFUL INSERT IN TODAY'S BAILEY COUNTY JOURNAL

DOUBLE STAMPS EVERY WEDNESDAY WITH PURCHASE OF \$5.00 OR MORE

SHURFINE WATER/OIL-PACK
CHUNK TUNA
6 1/2 OZ. CAN
69¢

SHURFINE
PINTO BEANS
4 LB. BAG
89¢

TODDLERS/OVERNIGHT
HUGGIES DIAPERS
12 CT. PKG.
\$2.99

WELCH'S FLAVORS
SUGAR-FREE AND REG.
DR. PEPPER
6 12 OZ. CANS
\$1.29

SHURFRESH
EGGS
MEDIUM DOZEN
59¢

ENRICHED, ALL-PURPOSE SHURFINE
FLOUR
5 LB. BAG
69¢

KRAFT MARGARINE
PARKAY
1 LB. QTRS.
38¢

NORTHERN
BATHROOM TISSUE
4 ROLL PKG.
99¢

SHURFRESH
BUTTERMILK
1/2 GALLON
79¢

HI-DRI TOWELS
JUMBO ROLL
59¢

AFFILIATED FOODS INC.
MEMBER STORE
STORE HOURS
8:00 a.m.-9:00 p.m.
MON THRU SAT
SUN 9-7

SERV-ALL
THRIFTWAY
We're proud to give you more!

PRICES EFFECTIVE JANUARY 9 THRU 15, 1983
WE RESERVE THE RIGHT TO LIMIT QUANTITIES
WE ACCEPT FOOD STAMPS

404 W. American 272-4739