

Bailey County Journal

"The Community of Opportunity -- Where Water Makes the Difference"

Published every Sunday at Muleshoe, Texas 79347

VOL. 45 NO. 5

12 PAGES

MULESHOE PUBLISHING COMPANY, INC.

SUNDAY, JANUARY 29, 1967



DESTROYS DEN—Fire destroyed the den of the Raymond Precure home, Friday afternoon. Lee Raney is shown with two other unidentified firemen working inside the room after the fire was extinguished. Other rooms of the house were extensively damaged by heat and smoke.

Fire Damages Precure Home

The two-story farm home of Mr. and Mrs. Raymond Precure was extensively damaged by fire, heat and smoke about 4:30 Friday.

The Precures were away from home when the blaze started. Fire Chief Earl Ladd said the fire was of undetermined origin, however was known to have started in the den near the fireplace or television sitting nearby.

The fire had spread through the den and the roof and the outside walls were burning when Bailey County firemen arrived. The blaze was contained in the den, however heat and smoke damage to other rooms on the lower floor and furniture was extensive.

Some smoke damage was evident to the upstairs.

DeMolays Selling Zip Code Books

National Zip Code Directories are being sold here by members of the DeMolays. The books have been placed at the Chamber of Commerce Office, Williams Brothers Office Supply, Fowler Automotive Supply, and Jim's Pay and Save for the convenience of those who wish to buy one. Price is \$1. each.

The books contain "Zip Codes from Abbeville, Ala. to Wake Island, and yes, even Pago Pago, Samoa, Yasuyui, Puerto Rico; Energy, Pep, and Scurry in Texas and Elk, Moose and Wolf in Wyoming.

ZIP stands for Zoning Improvement Plan. It's use eliminates the need for large central "massing points, and minimizes possibilities of bottlenecks.

ZIP allows the Post Office to determine flow patterns using rail, highway or air routes.

See DEMOLAYS on Page 4

Girlstown USA To Accept Gifts

Manda Rush, Marsha Martenson and Linda Neal, all Girlstown residents will be at the First National Bank community room Saturday, Feb. 4 from 2 to 4 p.m. to receive linens for Girlstown.

The local members of Epsilon Sigma Alpha are hosting the come and go courtship.

Items needed include three-quarter bed sheets, pillow cases, towels and wash cloths. Laura Seales, sorority president.

See GIRLSTOWN on Page 4

Chamber of Commerce Banquet Set Monday



Melvin Munn

"The Year To Be Different" is the theme of the 17 annual Chamber of Commerce Banquet which is to be held Monday, January 30, 7:30 p.m. at the Muleshoe high school cafeteria. The dinner will be served cafeteria style and serving will start by 7:15 according to Bob Janca, Chamber manager.

Robert Hooten will be master of ceremonies and Walter Buice

Registration Deadline Near

Deadline for registering to vote during 1967 is Tuesday, January 31, according to Bailey County Tax Assessor and Collector, Jean Lovelady.

This is the first year in the history of Texas that no poll tax is required.

Last spring, the poll tax being required for voting became a thing of the past when the Texas Legislature complied with a Federal Supreme Court ruling that outlawed the tax. To date 1448 persons have registered to vote.

Last year, 2158 persons paid poll tax.

Those who have not registered are urged to do so. Registration stations have been set up at Bula school, Co-op Gin, Enoch and Three Way school in addition to the tax office at the courthouse.

See LAZBUDDIE on Page 4

Lazbuddie Men Tour Chemical Company Plants

Two Lazbuddie businessmen returned Thursday night from Joplin, Mo., where they attended the Farm Chemical Company open house and toured several feed lots and fertilizer plants.

Freeman Davis, manager of Farmers Union Co-op and J.D. Carpenter, secretary-treasurer, were among a group of 37 Texans who made this tour.

Traveling by chartered bus, the Texans arrived at Farmers Chemical company where they were welcomed by Walt Casada, the company's sales manager. Casada told the group the history of the plant and explained the process of manufacturing high analysis ammonium phosphate fertilizers. The visitors were taken on plant tours with G. Sallee, M.

See LAZBUDDIE on Page 4

will give the invocation by singing "Lord's Prayer." Hooten will welcome guests which will include Joe S. Clark, Industrial Development manager of A. T. & Santa Fe; Larry Miller, Southwestern Public Service Industrialist, Amarillo; R.Q. Botkin, Pioneer Natural Gas and Perry J. Shephard and Blake Worth, Texas A. & M. Industrialists.

George Sultemeir will present the "Farmer of the Year" award.

Retiring president Charles Lewis will present the outgoing directors plaques.

New officers and directors will be introduced by Vic Benedict, incoming president. Charles Lewis will introduce guest speaker, Melvin Munn. His subject will be "Different Somehow."

Munn, a native Texan, graduate of Texas schools is rated as one of the nation's top twenty public speakers and is heard daily over more than 44 radio stations as Life Line commentator.

For the past 20 year, Munn has traveled as much as 200,000 miles annually addressing

school, business, service and church groups through out the country he is famed for his presentation from memory of "Christ's Sermon On The Mount," quoting Matthew 5, 6 and 7. He was honored in Washington, D.C. when a city-wide service was arranged on August 23, 1966 at the Capitol Hill Methodist Church to hear his 2000th presentation of this famed message.

His topic for the local banquet will deal with a study of what it takes for modern citizens to be extraordinary Americans.

Incoming officers are Vic Benedict, president; Robert Hooten, vice-president; Jimmy Crawford, treasurer and directors are Don Harmon, Eddie Faust, Buddy Feeler and Bob Jones. Hold-over directors are Jacque Baker, D.B. Lancaster,

M.D. Gunstream, Franklin Mann, Thurman White, and Wayne Williams.

Outgoing officers are Charles Lewis, president; Horace Hutton, vice-president. Retiring directors are Boone Allison, Earl Richards and Stan Barrett.

Walter Buice will sing "God Bless America" as benediction.

Background music for the banquet will be played by Mildred Andrews. Buddy Pool is banquet chairman and Rheata White is in charge of decorations.

The dinner is to be served by Muleshoe high school cafeteria personnel. Tickets are available at the Chamber of Commerce office. Janca urges those who have not purchased tickets to call early Monday.

See CHAMBER OF COMMERCE BANQUET on Page 4

Bailey County Spelling Bee Scheduled April 10

The Bailey County Spelling Bee will be held Monday, April 10, 2 p.m. in the Muleshoe high school auditorium.

Schools in the county will hold eliminations prior to that date. The Bee is sponsored locally by the Muleshoe and Bailey County Journals. Winners will go to Lubbock to the Regional Spelling Bee scheduled for April 29 and the winner there will participate in the National Spelling Bee in Washington, D.C. Wednesday.

Lubbock Avalanche Journal sponsors the regional bee. Students wishing to enter may pick up books for practice at this office or at the schools. Prize is 15 cents each.

This annual event is designed to help boys and girls improve their spelling, increase their vocabularies, and develop correct English usage that will help them all their lives.

There are other rewards, too. These include prizes given to the winners on the local level and the regional winners rewards include a week's sight-seeing and entertainment in Washington for each local champion, prizes of more than \$5,000 in cash and a New York

trip for the national champion. The spelling books is divided into process sections beginning with "first round words" then "intermediate words" and "final words."

Fred Johnson, veteran pronouncer, will again be on hand to give out the words. Judges will be selected at a later date. Rules will remain about the same. A complete list of rules will be published in the near future.

License tags go on sale at the county tax collector-assessor's office here Wednesday, February 1.

Jean Lovelady said the vehicle title and 1966 registration will be necessary to purchase tags.

Also, a 1 1/2 percent penalty goes on all unpaid state and county taxes, effective the same date, February 1.

See LICENSE TAGS on Page 4

February 1 Is Tag Day, Penalty Day

License tags go on sale at the county tax collector-assessor's office here Wednesday, February 1.

Jean Lovelady said the vehicle title and 1966 registration will be necessary to purchase tags.

Also, a 1 1/2 percent penalty goes on all unpaid state and county taxes, effective the same date, February 1.

See LICENSE TAGS on Page 4

\$222.42 Needed For Band, Choir

Only \$222.42 to go to reach the \$1,500 goal set 10 days ago by the Fine Arts Boosters group, the amount needed to send the band choir to the Buccaneer Festival in Corpus Christi.

The Thursday night benefit 42 and bridge tournament and auction sales added \$251.03 to the funds being raised.

Additional donation total

amount on hand to \$1,277.58 which leaves a balance of \$222.42 to be raised for the trip. Gross amount of the tournament and auction was \$266.04 with expenses \$15.01.

Broken down, Indian Head pennies donated for auction by Jerrell Ottwell brought \$81.50; toy auction \$25.50; cakes and pies \$36.50 and one ash tray \$2. The remainder was from paid admissions.

Clayton Myers, owner of Muleshoe Livestock Auction Barn, was auctioneer, donating his time to the cause. Use of the hall was given by Ottwell.

See BAND AND CHOIR on Page 4

Commission Approves Paving Aid

AUSTIN—Highway Department assistance for the City of Muleshoe (Bailey County) in the reconstruction of a section of U. S. Highway 84 from Taylor Street northwest to the west city limits was conditionally approved today by the Texas Highway Commission.

Commission action follows a request for such assistance by the City of Muleshoe. The Highway Department found that the requested work will add to traffic safety on U.S. 84. The Commission authorized

Department to provide for reconstruction of pavement and its supports within the 0.2 mile section and to maintain the part of the work which is its responsibility under the present maintenance agreement.

The action is subject to acceptance by the City of Muleshoe of certain maintenance and construction responsibilities required of local governments by the Texas Highway Department.

The city has 90 days in which to take action on the approval.

See COMMISSION on Page 4

'Pipeliner' Features Mule Monument and Muleshoe

(Editors Note: The story of the Monument of the Mule continues to appear in various publications over the country long after the monument has been erected. Bob Janca brought the story below to the Journal this week. This story is a feature from "The Pipeliner," El Paso National Gas magazine. A picture of the monument was printed with the story.)

"The folks of Muleshoe knew him as Old Pete. But the name doesn't really matter. What does matter is that generations of Americans to come will know the part played in history by that much-alligned animal—the mule. And they will know because there is a fiberglass statue that stands 15 hands high, a national monument to the mule, resting on a base of Arkansas stone near the downtown intersection of U.S. Highway 70 and 84, in Muleshoe Texas.

On July 3, 1965, some 10,000 persons jammed the town of Muleshoe during and independence Day Celebration to

view the unveiling of the statue. The story behind the monument, or how they put the mule in Muleshoe, began in the spring of 1961 when V.H. Torrance of Austin mentioned in a newspaper column that virtually every animal except the mule had been represented that year at the Fat Stock Show in Fort Worth, Dr. J.B. Barnett, and old muleskinner from Marlin, Texas, read the article and decided to do something about it. He mailed a \$5. check to Torrance and told him to put it in a fund to erect a monument.

When the members of fourth grade class in Muleshoe wrote Dr. Barnett, enclosing a \$5. contribution and notifying him that they felt the monument should be located in Muleshoe, Dr. Barnett decided to go to Muleshoe. He liked what he saw and the Mule Memorial Association was formed August 25, 1961.

Most of the project speed rapidly and contributions came from every stratum of society

and every walk of life. A crumpled dollar bill from a widow who was still caring for two faithful old mules who had made her farm home possible, a sizeable check from a national oil company, executive in New York in memory of his boyhood experience with mules...

---From behind the iron curtain, a small donation to a unique free world cause...

Cynics may ask the reason for building a statue to a "dumb" animal like a mule. A mule may be stubborn, but dumb he is not. And there are many reasons for building a monument to a mule: where would the first American farmer have been without a mule to pull a plow? In addition, mules helped build the first highways and 5,000 of them died on the battlefield of World War I, and pulled cannons and carried the wounded down the muddy hills of Italy in World War II.

The mule now has his monument. The monument is inscribed: "Dedicated to the memory of all mules who had such an important role in the pioneering of America, and to the memory of the late Dr. J.B. Barnett, who would not let the mule be forgotten."

A nearby historical marker reads in part: "The Mule. Without ancestral pride or hope of offspring, the mule, along with the buffalo, bound and longhorn, made Texas history."

Oscar (Cotton) Fanning, 41, Advertising and Public Relations Director of the Plains Cotton Growers, Inc., since March of 1963, has been named Executive Assistant of the 23-county organization.

Donald A. Johnson, Executive Vice President of the Lubbock-

See FANNING on Page 4

Muleshoe FFA Chapter Wins Judging Contests

Muleshoe FFA Chapter's livestock Judging Team won the Hereford Livestock Judging Contest held during the Hereford Junior Livestock Show last week. Team members included Dean Black, Gary Little, Gus Taylor and Alec Schuster. Livestock judged included swine, sheep and beef cattle.

The team also judged at the Swisher Junior Livestock show at Tulia. Dean Black placed second and Clifford Black placed third in Swine judging. Dean Black placed sixth in the entire contest, Bill Bickel and Keith Bray, Muleshoe High School Vocational Agriculture teachers are the team coaches.



JUDGING TEAM—These are members of Future Farmers of America judging team who brought home a trophy from contests at Hereford. They are Dean Black, Gus Taylor Gary Little, Alec Schuster and Clifford Black.

Society News

PAT JOHNSON--SOCIETY EDITOR

Phone-272-4536



CELEBRATES BIRTHDAY—Mrs. Lilla Melendy celebrated her 81st birthday with a party and all the trimmings in the Muleshoe Nursing Home Tuesday afternoon. Mrs. Melendy will observe her birthday Jan. 28. She has been a resident of the Nursing Home since May and is an Aunt of Mrs. Charles Lenau, The Alpha Circle of the First Methodist Church served refreshments to the guests attending and Mrs. Robert Preston was the hostess.

HAMBURGER OR HAMBURGER?

Is hamburger keeping the American married male from starving to death? One young bridegroom thinks it is. He has been married three months and it is the only food his bride has served him. "I vary the taste with mustard, catsup, relish, onion, but no matter how you pat it, it's still hamburger," he says. His advice is: Boys, eat white with Mom, you can. Tomorrow you diet or the world's best chefs use in the West Plains Hospital die, He's not sure which. cook books. If you must have a ham-burger thing is, he was a ham-burger buff when he was home from.

Country Club Women Plan Year; Committees

Women of the Muleshoe Country Club Association met at the Country Club Wednesday afternoon to make plans for the coming year and appoint committees.

The women decided to begin their luncheons for the summer months ahead, Feb. 15. The women will have their monthly luncheons the third Wednesday of each month. They will begin their play-days, with golf and bridge when the weather permits.

Hospitality hostesses appointed by the president for the luncheon were Clay Adams, chairman, and Ruth Malone and Jo Wood will be assisting her. Other committees appointed at Wednesday's meeting were: decorating and cleanup - Lois Lenau, chairman; bridge committee, Ernestine Little, chairman; and tournament chairman, Peggy Bryant.

Winners in Wednesday's card game were Winona Myers, Enice Evans, Peggy Wash and Ruby Willman.

Members will play cards Wednesday afternoon beginning at 1:30 p.m. and will also play golf, weather permitting.



Mr. and Mrs. Larry Gene Burkhart . . . the former Diana Lynn Lorraine

Hi, World

Miss Lorraine, Mr. Burkhart Exchange Double Ring Vows

Miss Diana Lynn Lorraine and Larry Gene Burkhart were married in the Calvary Baptist Church at 3 p.m. Jan. 17 with the Rev. Bill Felts officiating the double ring ceremony. Parents of the couple are Mr. and Mrs. Ogle J. Lorraine and Mr. and Mrs. Winston Burkhart, Muleshoe.

Vows were repeated before red and white carnations with candles on either side of the archway. White bells and white satin bows completed the decor. The bride's sister, Cindy Lorraine, was the maid of honor and flower girls were cousins of the bride.

The bride was escorted and given by her father, in a long satin gown with overlay of silk organza and finger tip sleeves with appliqued flowers across the neck with seed pearl centers. The veil was scalloped and trimmed with hand made lace flower tips. She carried a bouquet of red and white carnations atop a bride's Bible. She wore a penny in her shoe, given by the bride's aunt, Mrs. Lonnie Merriott. Something new, was her dress; borrowed, her Bible and she wore the traditional blue garter.

The maid of honor wore a long white satin empire waist gown with red lace overlay on the bodice. She added red accessories with a bouquet of red and white carnations.

Candlelighters were Gary Floyd and Micky Merriott and Dickie Payne was the groom's best man.

Mrs. Dolis Felts, the pastor's wife, provided musical selections entitled, "Because," "Always," and "I Love You Truly." Lonnie Merriott sang, "Al-

ways and "I Love You Truly." The bride's table was covered with a red cloth and white lace overlay with red and white carnations forming the centerpiece. Red wedding punch was served with the wedding cake featuring a bride and groom atop the white cake trimmed with turtle doves and red roses.

For a wedding trip to Clovis, N.M., the bride chose a blue wool suit with cream accessories and lifted the corsage from her bridal bouquet.

The groom is employed at Irrigation Supply in Muleshoe.

CLUB NEWS

The Lucky Four 4-Hers prepared 2 different salads on their last meeting.

Lavern Carpenter and Patricia Grogan prepared a fruit salad the Ruth Ramm and Sheryl Bass prepared a tuna fish salad.

Members attending the meeting were Sheryl Bass, Lavern Carpenter, Patricia Grogan and Ruth Ramm. Mrs. Ernest Ramm is the leader.

The girls discussed different foods and how many servings each meal.

Girls of the Four Leaf Clover 4-H Club made a peach delight desert, orangeade, and a broiled weiner sandwich at their meeting this week. Teachers were Mrs. Carpenter and Mrs. Wheeler.

Present for the meeting were Marilyn Black, Connie Floyd, Sandra Mardis, Alta Ramm and Joie Carpenter.

Earth Baptist Church Is Scene of Wedding

Immediately following morning worship services Jan. 22 in the Earth First Baptist Church, Miss Alice Jan Jaquess, daughter of Mr. and Mrs. Travis Jaquess, Earth, became the bride of John Harvey Patterson, son of Mr. and Mrs. Everett Patterson, Earth.

Vows were repeated at 12:15 p.m. with the pastor of the church, the Rev. M. B. Baldwin, reading the double ring ceremony.

Miss Kathy Clayton, Earth, sang, "The Lord's Prayer," accompanied on the organ by Mrs. Larry Tunnell, church organist.

Escorted down the aisle by her father, the bride chose a street length ensemble designed in white brocade acetate. The fitted sleeveless dress was worn beneath a matching white broadcloth coat, belted with long sleeves and a tiny turned back collar and designed lovely in the back. She wore matching white gloves and shoes. Her shoulder length veil of tulle

fell loosely from a tiny satin pill box hat. She carried a white Bible topped with a Bridal bouquet featuring a large white orchid surrounded by feathered carnations and lilly of the valley. The long white satin streamers extending from the bouquet, were dotted with tiny white satin hearts.

Serving as maid of honor, was the bride's sister, Judy Jaquess. She wore a soft blue fitted wool dress designed with long sleeves and soft flaring pleats at the bottom of her skirt. Other attendants were Janice Bryant, San Antonio, and Kathy Aul, Reno, Nevada, both students of Wayland College. Miss Bryant chose an off-white 2 piece corduroy suit. Miss Aul was attired in a wool 2 piece deep purple tweed suit. The 3 attendants carried Bibles.

Jerry Don Sanders was best man and David Jaquess, brother of the bride and Marvin Sanders, Jr., were groomsmen. The couple departed for a

See EARTH on p. 10



Marquita Seaton . . . homemaker

TOPS Club Marquita Seaton; Lazbuddie Homemaker

Jane Vinson not only read the minutes of the previous meeting for the Muleshoe Jenny TOPS Club, Thursday night, but was also crowned queen for the past week as a result of losing the most weight. Her countesses were Evelene Harris and Selma Redwine.

The organization met in the community room of the Bailey County Electric Cooperative at 7 p.m. under the leadership of Laurantette Mason.

The regular procedure of singing the fellowship song and reciting the club's pledge was observed.

Eighteen members weighed in at the meeting and 1 guest was present, Paula Clements and her son.

At least 2 members of the organization planned to attend the Area Recognition Day which was held in Big Spring Friday and Saturday. The women were

See TOPS on p.3

Marquita Seaton, daughter of Mr. and Mrs. R. B. Seaton, Lazbuddie, by finishing first in a written homemaking knowledge and attitude examination has become Lazbuddie High School's Betty Crocker Homemaker of Tomorrow. Marquita is an active member of FHA in which she has held the offices of historian and president, and is presently vice-president. She is also an honor student at Lazbuddie High where she is a senior.

Miss Seaton is now eligible for possible state and national scholarship awards. Her test also earned her a specially designed silver charm from General Mills, sponsor for the American Homemaker of Tomorrow.

WELCOME TO MULESHOE



Jonny Ohlenburg

Meet Jonny Ohlenburg, soil Conservationist and newcomer to Muleshoe. He and his wife, Diane, live at 319 W. 9th Street and have a daughter, Jan, 8 weeks "young". They moved from Morton where Ohlenburg was soil conservationist. The Ohlenburgs attend the Presbyterian Church. The following firms extend a cordial welcome to the Ohlenburgs.

CASHWAY
GROCERY
402 Main Phone 272-4244

DAMRON DRUG CO.
REXALL
308 Main Phone 272-4210

JAMES B. GLAZE
Insurance - Real
Estate - Loans



MULESHOE STATE
BANK
Member FDIC

MULE SHOE MOTOR CO.
"At The Crossroads"

Due to The New WAGE & HOUR LAW
The Following Firms Will Close at 1 p.m. on Saturdays

Effective Saturday February 4, 1967
City Cleaners
Alsop Cleaners
Lambert Cleaners

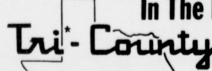
DO YOU HAVE LAZY MONEY?
WHY DON'T YOU PUT IT TO WORK
DRAWING **5%** QUARTERLY

FEATURES OF OUR SAVINGS PLAN:

- * 5% Interest, paid or compounded quarterly---Applies to ALL accounts, Regardless Of Size.
- * Savings deposits in by 10th of month earn from 1st of month.
- * Savings are protected to \$15,000.00 by an agency of the Federal Government.
- * Funds are not tied up for long periods of time to earn maximum rate.
- * Funds are available at anytime when needed.

\$480,000 DEPOSITED

In The First 10 Days of 1967



SAVINGS AND LOAN ASSOCIATION

MULESHOE, TEXAS



JAYCEE-ETTES HOST MORTON—Muleshoe Jaycee-ettes had as their guests Thursday night, the Morton Jaycee-ettes, the women met in the Production Credit Association building. Shown here is the Muleshoe Jaycee-ette president, Wanda Spain; Morton's president, Francis Bland and a Morton member, Janiece Simpson. (JOURNAL PHOTO)

Mrs. Martin Speaks to Women

Mrs. Ernest Martin presented an informative program of parliamentary procedure at the Thursday night meeting of the Jaycee-ettes who met in the Production Credit Association building. Members present participated in a question and answer period. Morton Jaycee-ettes were visitors. Attending from Morton were Genice Simpson, Wanda Shurk, Jo Ogle, Barbara Tyson, Carol Puritt, Frances Bland and Pat Hodge. Mrs. Jay Spain, presiding over the meeting, announced after voting, that the club would

have a box of Valentine candy to accept donations, and have the concession stand at the annual Jaycee Volleyball Tournament starting Feb. 20. Next meeting for the Jaycee-ettes will be Feb. 23 in the community room of the First National Bank building. Muleshoe members present were Mrs. Rocky Gralla, Mrs. James Berry, Mrs. Jerry Gleason, Mrs. Kenneth Henry, Mrs. Ernest Martin, Mrs. Marlin Mills, Mrs. Bob Stovall, Mrs. Jay Spain, Mrs. Curtis Walker, Mrs. Bill Dale is a prospective member.

Mrs. Cecile Cole Is Relected President of Muleshoe Study Club

Mrs. Cecile Cole was re-elected president of the Muleshoe Study Club for the new club year at Thursday afternoon's meeting. Motion was made by the nominating committee chairman, Mrs. T. R. White, that the same slate of officers be elected for another year. Motion carried. Other officers remaining in their positions are Mrs. Horace Blackburn, first vice-president; Mrs. W. H. Elrod, second vice-president; Mrs. G. L. Spawan, recording secretary; Mrs. E. M. Pruitt, corresponding secretary; Mrs. Rufus Gilbreath, treasurer; Mrs. T. R. White, parliamentarian; Mrs. John Farley, critic; Mrs. R. O. Gregory, historian; Mrs. O. N. Jennings, federation counselor; Mrs. Gregory, press reporter and Mrs. J. G. Arnn, radio reporter.

The club met in the home of Mrs. Robert Hooten at 4 p.m., Thursday with Mrs. Mervin Winterding, hostess. Refreshments were served 18 members as they entered the home. Mrs. Cole expressed her thanks to Mrs. Hooten for allowing the club to meet in her home. Mrs. Gregory, director, led

See CLUB on p. 10

TOPS....

Continued from p.2

to enter the club's scrap book and provide the door prize for the meeting.

Dues and measurement night was observed among members and it was announced that the queen for the month will be crowned at Thursday's meeting. Members are asked to bring fruit for the queen and also white elephant gifts which the weekly queen receives.

The weight losing contest with Amherst will begin at Thursday's meeting.

Members sang the good-night song before dismissing for the week.

Wedding Courtesies Extended At Bula

Miss Jo Linda Robertson, bride-elect of Don Bennett was honored with a bridal shower Friday in the Bula School Lunch Room.

Approximately 50 guests were registered in the bride's book by the cousin of the bride, Barbara Autry.

The serving table was laid with a white net over pink with an arrangement of pink glads and pink roses with pink satin ribbon streamers with letters, "Don and Jo Linda" in silver glitter. A miniature bride and groom completed the arrangement.

Jo Ann Autry and Janice Crockett served the pink fruit punch and white and pink cookies.

The honoree was assisted in opening her packages by her mother, Mrs. Bradley Robertson, and the groom-to-be's mother, Mrs. Bennett.

Among the many useful gifts received, the honoree was presented a set of stainless steel cooking ware by the hostesses.

Hostesses for the event were Mrs. T. A. Thomas, Mrs. Gene Bryan, Mrs. J. C. Withrow, Mrs. Edna Cash, Mrs. R. P. McCall, Mrs. L. L. Clawson, Mrs. G. B. Salyer, Mrs. Terry Blake, Mrs. Myrna Turney, Mrs. H. B. King, Mrs. Ray Seagler, Mrs. Nolan Harlan, Mrs. John Hubbard, Mrs. J. D. Rowland, Mrs. L. L. Walden and Mrs. John Blackman.

Mrs. Thompson Feted With Pink And Blue Shower

A pink and blue shower was given for Mrs. Buddy Sparks Thursday at 8 p.m. in the home of Mrs. Richard Thompson, 323 Ave. J.

Cookies, spiced tea and coffee were served from a table covered with a white cut-work linen cloth with a centerpiece of a blue bootie filled with articles for a baby. A flower spray was entwined.

Hostesses for the courtesy were Mrs. Richard Puckett, Mrs. S. M. Etridge, Mrs. Cliff Griffiths, Mrs. Avanelle Lenderson, Mrs. Ennis Galyon, Mrs. Ray Quisenberry, Mrs. Ben Higginbotham, Mrs. Wilson Witherpoon, Mrs. Rudolph Morrow, Mrs. Earnest Bass and Mrs. Ruby Garner.

Pam St. Clair Will Head Muleshoe Rainbow Assembly No. 161

Pam St. Clair, daughter of Mr. and Mrs. Irvin St. Clair will be installed Worthy Advisor of Muleshoe Assembly No. 161 Order of the Rainbow for Girls Saturday, Feb. 4 at 7:30 p.m. in the Masonic Hall here. Miss St. Clair has chosen as her theme for the coming year, Key to Happiness. Her colors are tinsel blue and ivory and her symbol is a smile. Her flower is the calla lily. The Worthy Advisor has chosen for her scripture, "Do unto others

as you would have them to do unto you."

Installing officers for the ceremony will be: Terry Lynn Bryant, installing officer; Pam Kerr, marshal; Judy Elliott, chaplain; Jeanne Gunstream, recorder; and Sonja Bass, musician.

Officers to be installed will be the new mother advisor, Wanda Newson; Pamela St. Clair, worthy advisor; Cindi Davis, worthy associate advisor; Kerry Beddingfield,

charity; Pam Seymore, hope; Lindy Kerr, fairy; Delinda Henry, recorder; Ann Newson, treasurer; Kathy Williams, chaplain; Rena Lackey, drill leader; Karen St. Clair, love; Kathy Seymore, religion; Darla Kendall, nature; Annette Williams, immortality; Norene Green, fidelity; Charlotte Davis, patriotism; Debbie Burrows, service; Debbie Wagon, confidential observer; Paula Wallace, outer observer; Trena choir director.

The advisory board for the coming term are: Wanda Newson, Louise Williams, Irvin St. Clair, Alex Williams, Melvin Seymore, Norma Seymore, Ruth Williams, and Ernest Kerr.

Harmon Elliott will give the invocation at the beginning of the program and Mrs. Louise Williams will present the installing officers.

Demolays will escort new officers to their new posts.

The drill honoring the new Worthy Advisor is written by Mrs. Eric Smith and narrated by Mrs. Ernest Kerr.

Miss St. Clair will present her family along with other special guests.

"Arvela Haberer will render "A Smile." A past worthy advisor's pin will be presented to Terry Lynn Bryant, and the benediction will be given by Irvin St. Clair.

The retiring march and the singing of "My Rainbow" will be by the Rainbow Girls.



Mrs. Larry Gene Burkhardtfeted with shower

New Bride Receives Gifts At Afternoon Shower

Mrs. Larry Gene Burkhardt, the former Diana Lynn Lorraine, was honored with a wedding shower in the home of Mrs. Spencer Beavers, 521 W. 8th, Wednesday afternoon. Calling hours were between 3 and 5 p.m.

The bride's serving table was decorated in her chosen wedding colors of red and white, with a white cloth and a centerpiece of red and white carnations.

Mrs. Daley Howell poured punch and Mrs. Beavers served cake to those attending. Nuts and mints were also served guests.

The honoree was presented a corsage of peppermint carnations with wedding bells entwined. Her mother, Mrs. Ogle Lorraine and the groom's mother, Mrs. Winston Burkhardt, along with the hostesses, wore corsages assembled from kitchen tools.

Hostesses presented the honoree with a set of melmac and a portable mixer.

Hostesses for the occasion were Mrs. Beavers, Mrs. Thurman White, Mrs. Howell, Mrs. Hazel Cunningham, Mrs. Albert Eggers, Mrs. John Hayes, Mrs. Gordon Pylant, Mrs. Burnie Cotton, Mrs. D. L. Vernon, Mrs. Ruby Garner, Mrs. Lonnie Merritt and Mrs. Bennie Nichols.

The couple were married Jan. 14 in the Calvary Baptist Church.

Hostesses presented the honoree with a set of melmac and a portable mixer.

Hostesses for the occasion were Mrs. Beavers, Mrs. Thurman White, Mrs. Howell, Mrs. Hazel Cunningham, Mrs. Albert Eggers, Mrs. John Hayes, Mrs. Gordon Pylant, Mrs. Burnie Cotton, Mrs. D. L. Vernon, Mrs. Ruby Garner, Mrs. Lonnie Merritt and Mrs. Bennie Nichols.

The couple were married Jan. 14 in the Calvary Baptist Church.

The couple were married Jan. 14 in the Calvary Baptist Church.

The couple were married Jan. 14 in the Calvary Baptist Church.

The couple were married Jan. 14 in the Calvary Baptist Church.

The couple were married Jan. 14 in the Calvary Baptist Church.



Pam St. Clairwill be Worthy Advisor.

Maria Ramirez, Mr. Flores Are Wed in Bovina

Marla Elena Ramirez and Norberto Flores exchanged double ring marriage vows at 2:30 p.m. Saturday in St. Ann's Catholic Church in Bovina.

Father Claver Giblin S. A. read the wedding ceremony. Parents of the couple are Mr. and Mrs. Pedro Ramirez, Bovina, and Mr. and Mrs. Jesus Flores, Sr., Bustland and formerly of Muleshoe.

Mrs. Beverly Christian, organist, played traditional wedding music.

Given in marriage by her father, the bride wore a floor-length gown of white satin featuring a fitted bodice of re-embroidered lace, which formed scallops around the neckline. The wide lace-covered waistband was touched with sequins. Long sleeves ended in petal points at the wrists and the bride wore fingerless lace mitts flared at the top. The controlled bell skirt was adorned with

See FLORES on p. 10

THIS WEEK'S KEY VALUE

90c Reg. 1.29

Women's COTTON BLOUSES

Perky prints and pretty solid colors have flattering spread or Bermuda collars. Sizes 32-38.

BEN FRANKLIN

128 Main Muleshoe

BROCK MOTORS Used Cars...

Double Checked ...to double your pleasure!

Come In And Check These LOW MILEAGE VALUES

DOUBLE CHECKED USED CARS

- 1-1966 DELTA OLDSMOBILE
- 1-1961 CHEVROLET IMPALAS 4 DR.
- 1-1962 BUICK ELECTRA
- 4-1965 OLDSMOBILE 98- 4 DR.
- 2-1963 OLDSMOBILE HT 4 DR.

STANDARD TRANSMISSION

SEE THEM TODAY AT

BROCK MOTOR CO.

422 N. 1st. Muleshoe Phone 272-4588

This Gold Medallion emblem on your home means...

ASK YOUR PUBLIC SERVICE MANAGER FOR COMPLETE INFORMATION

SUPPORT YOUR CHAMBER IN 1967 !

ATTEND THE C-C BANQUET, MONDAY, JAN. 30, 7:30 p.m.

You have ELECTRIC COMFORT HEATING

Dial the temperature you want in each room of your home and modern electric heating provides clean, quiet, economical comfort. Electric heating is the most modern heating available today!

You have an ALL-ELECTRIC KITCHEN

... including a modern, work-saving electric range, plus other major electric appliances. A Medallion kitchen lightens housework and gives the homemaker more time for her family.

You have FULL HOUSEPOWER WIRING

Total Electric Gold Medallion homes have plenty of circuits for present appliances, and for those you'll add in the future. Full housepower also means plenty of electric outlets—located for your convenience.

The ELECTRIC Company

3-3

Fanning...

Continued from Page 1

based PCG, said Fanning will assume more responsibility in helping to direct the PCG's overall program of research, promotion and service for High Plains cotton. "He already has been serving in an executive capacity in many respects," Johnson said. "However, his new title better reflects these duties and the added responsibility he now will assume."

Fanning will continue to direct the PCG's advertising and public relations programs and will be in charge of the office here in Johnson's absence. A native of Earth, where he has reared on a cotton and grain sorghum farm, Fanning was graduated from Texas Tech in 1949 and spent three years in Mexico working for the U. S. Department of Agriculture and the U.S. Department of Labor. Fanning later managed the Basin Growers Association at

Slanton, an organization which primarily was concerned with the contracting of farm workers from Mexico under the old bracero program, for eight years.

Johnson also announced that arrangements have been completed by the PCG's cotton spinning and fiber testing work to be continued at Texas Tech on a consultant basis with Harry Arthur, Acting Associate Director of Tech's Textile Research Laboratories.

Arthur worked closely with Jim Parker, who directed the PCG's spinning and fiber testing work at the TRL until he resigned last month to join the American Textile Manufacturers Institute, Inc., at Charlotte, N.C.

"We plan to continue this work mostly on a consultant or contract basis in the immediate future," Johnson said, "although we may again employ a full time textile engineer at some later date." The PCG uses TRL facilities to conduct free spinning tests on High Plains cotton for domestic and foreign mills in an effort to show how they can begin using or expand the

consumption of cotton grown in this area.

Fiber properties and spinning performances of different cotton varieties, along with experimental lines and breeding material, also are tested by the PCG in the Tech textile plant as part of quality improvement and market development efforts.

Ed Dean, PCG's Director of Field Services, will continue to head the 25,000-member organization's coordination of the High Plains diapause boll weevil control program.

"We expect in ensuing months to place more emphasis on direct contracts with growers and ginners in conjunction with our efforts to improve the quality of the High Plains cotton crop," Johnson said, "and this will increase Ed's responsibility."

Dean also will continue as chief of the PCG's work on farm labor problems, and these are due to become more intense with the advent of the new minimum agricultural wage which will cover some High Plains farmers beginning February 1.

Lazbuddie...

Continued from Page 1

Flinn, and R. Wilson acting as tour guides. At the conclusion of the tours, the visitors participated in a coffee break question and answer period.

Davis said before getting into Joplin, the group toured Farm-land's Feed Mill and Warehouse at End, Okla., as well as the Co-op Refinery at Coffeyville, Kan.

After the Joplin visit, they went to Kansas City where they toured Farmland Industries, Inc. facilities, including the quality of the High Plains cotton crop," Johnson said, "and this will increase Ed's responsibility."

Dean also will continue as chief of the PCG's work on farm labor problems, and these are due to become more intense with the advent of the new minimum agricultural wage which will cover some High Plains farmers beginning February 1.

ing the Home Office, and Demonstration Farm at Trimble, Mo.

Returning, they went to Cooperative Farm Chemicals Association, a huge nitrogen complex at Lawrence, Ka.

Muleshoe...

Continued from Page 1

trip at Las Vegas, Nevada. The group left Albuquerque, N. M. Friday by plane.

Mrs. Raymond Ortega is staying with her parents, Mr. and Mrs. W. H. Elrod, while she is teaching in Friona School. Mrs. Ortega's husband is stationed in Hawaii.

Mr. and Mrs. Tom Berry and Polly Otwell attended Friona Lodge's regular meeting Monday night.

The board of directors of the Muleshoe Chamber of Commerce will have Melvin Munn as guest at a luncheon at noon Monday at the Corral.

Congressman Bob Price Named to Ag Committee

It was announced Friday that Congressman Bob Price of the Panhandle has been named to the Agriculture Committee of the House of Representatives.

"Agriculture is the most important industry in the 18th District and I am very pleased to have my request for assignment to this committee honored by the House leadership," Price stated.

"In connection with his post I would like to add my support to that of a Senator Dirksen and Congressman Ford as expressed in their State of the Union address Thursday night. I will support the concept of fair farm prices in the market place, without price-depressing manipulation as practiced by the present administration."

"The mass and maze of federal farm laws, rules, regulations, and forms must be simplified. Every farmer knows

there is enough to do on the farm without a load of federal paperwork," Price added.

The 18th District representative also expressed full agreement with other points in the Dirksen-Ford report including immediate repeal of the Participation Sales Act which distorts the true status of the Federal budget.

"I will also be giving my wholehearted support to efforts to cut non-essential domestic spending and to a proposed bill which would withdraw the President's authority to obligate and spend funds appropriated by previous Congresses—until the present Congress has a chance to review them," Price said.

The Panhandle congressman also expressed the hope that the seven percent investment tax credit will be reinstated immediately and that the 90th Congress will pass the

Human Investment Act which will give tax credits to industries which hire and train unskilled workers.

"For the present, however, I hope the Congress will take the lead in channeling all the efforts of the American people toward winning the war in Viet Nam," Price concluded.

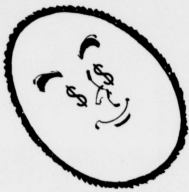
DeMolays...

Continued from Page 1

whichever speeds delivery. It's use has been estimated to save American taxpayers at least 100 million dollars a year. Money made from the sale of these books will be used to obtain a charter for the newly organized DeMolay Chapter here.

Men who are assisting the DeMolays as leaders are Chief of Police Harold White, Jim Fowler, Lonnie Bass, Larry Kirk, Alton Epling and David Cunningham. Larry Meyers is master counselor.

a neat nest-egg now...



PUTS YOU SUNNY SIDE UP TOMORROW!

It's never too early to start a savings account. It keeps growing with interest until the day when you'll want to "shell out" to make a dream come true.

Muleshoe State Bank

Member FDIC

We Feature

These

Leaders

of the

Week



CHOIR OFFICERS—These are officers of the Muleshoe A Capella Choir. The choir participated in events in Lubbock Saturday. They have won several honors this year and hope to attend the Buccaneer Festival in Corpus Christi this spring.

Support Your Chamber!

Attend The

Chamber of Commerce Banquet

Monday, January 30, 7:30 p.m. School Cafeteria

YOUR HELP IS NEEDED!



Western Drug

Student's Favorite Snack Bar!



A Friendly Place To Meet!

CARPET SALE TOP QUALITY!

by **Evans-Black**
AS LOW AS **\$5.75** Yd.

INSTALLED OVER FOAM RUBBER PADS

Johnson-Pool Furniture & Appliance

Attend The

Muleshoe C-C Banquet

Monday, Jan. 30, 7:30 p.m. High School Cafeteria

Your Chamber Needs You

THE WORD IS...
A YEAR TO BE DIFFERENT!
FIND OUT ALL ABOUT IT

ST. CLAIR'S

Dairy Delights

Hey Kids! Drive In For Your



FAVORITE SANDWICH, ICE CREAM OR SOFT DRINK Dari Delite



Queen of Diamonds Coiffure
DIAMOND LOOK HAIR FASHIONS FOR SPRING, 1967
SEE US FOR THE LATEST IN Hair Fashion
Main Street Beauty Salon
115 MAIN

OUR JANUARY CLEARANCE SALE

NOW IN PROGRESS

★★★
COBB'S

Chamber Of Commerce Banquet

School Cafeteria

7:30 p.m.

MONDAY
JAN. 30

ENCO THE FRIENDLY STATION

Let's get Acquainted!



WASH & GREASE \$3

BILL'S Enco Station

501 AMERICAN BLVD.

BILL GRAVES, MANAGER



MULE'S TALE

Official Publication of Muleshoe High School Written and Edited by Students of the Muleshoe Schools

Vol. 2 No. 15



Junior High Semester, Honor Roll

Sixty-nine students are listed on the semester honor roll, according to R. E. Everett, principal.

They are:

EIGHTH GRADE
Benna Barrington, Yvonne Berres, Suzanne Byard, Dana Cockrell, Mark Dillman, Judy Dodd, Babs Haire, Janice Head, Stan Hickerson, Vicki Julian, Gary Kinannon, Shirley Lang, Greg Little, Peggy Moore, Lew-

is Morris, Jerry Putman, Jerry Scoggin and Lee Ann Yerb.

SEVENTH GRADE
Greta Bamert, Rand Baker, Bryan Brady, Martha Jane Chapman, Peggy Carter, Lee Clodfelter, Sue Darsey, Mike Duncan, Lonnie Ferris, Randy Field and Geraldine Gray, Also Monica Griffiths, Bobba Hardaway, Johnny Hayes, Kathy Kinard, Gary King, Brenda Kimbrough, Walter Matthews,

Deanne Mick, Mike Morris, Patty Murray, Nicky Nickels, Marilyn Pool, Connie Redwine, Larry Roberts, Larry Shafer, Margie Silguero and David Spain.

SIXTH GRADE
Stephen Bell, Brent Blackman, Stephenie Bryant, Chris Byrd, Terry Burchel, LaDonna Caldwell, Tracy Cowan, Brad Davis, Jennifer Davis, Christy Ford and Susan Foster. Also

Joe Bob Fudge, Donna Grimsley, Linda Head, Kathleen Jennings, Linda Mason, Tani Murrah, Ken Patterson, Kathy Pena, Marcus Puente, Larry Vinson, Marcia Wallace and Terry Wheeler.

The honor roll students for the third six weeks are:

EIGHTH GRADE
Benna Barrington, Yvonne Berres, Debbie Bruns, Wala

Bulce, Suzanne Byrd, Dana Cockrell, Mark Dillman, Judy Dodd, Babs Haire, Janice Head, Dellinda Henry, Stan Hickerson, Vicki Julian and Gary Kinannon.
Also Shirley Lang, Greg Little, Peggy Moore, Lewis Morris, Jerry Putman, Jerry Scoggin, Kathy Vaughn and Lee Ann Yerb.

SEVENTH GRADE
Greta Bamert, Rand Baker,

Bryan Brady, Martha Jane Chapman, Renee Caldwell, Peggy Carter, Lee Clodfelter, Sue Darsey, Joann Dobbins, Mike Duncan, Lonnie Ferris, Randy Field and Geraldine Gray.

Also Monica Griffiths, Bobba Hardaway, Johnny Hayes, Wesley Hufford, Jan Jinks, Kathy Kinard, Gary King, Brenda Kimbrough, Jimmy Lambert, Walter Matthews, Deanna Mick, Mike Morris, Nanette Morris and Patty Murray.
Also Nicky Nickels, Debby

Parks, Floyd Pearson, Marilyn Pool, Connie Redwine, Larry Roberts, Mike Riley, Kathy Schuster, Larry Shafer, John Street, Margie Silguero and David Spain.

SIXTH GRADE
Stephen Bell, Steve Berres, Brent Blackman, Stephanie Bryant, Chris Byrd, Terry Burchel, La Donna Caldwell, David Carter, Janice Claybrook, Tracy Cowan, Brad Davis, Jen-

nifer Davis and William Edwards.
Christy Ford, Susan Foster, Joe Bob Fudge, Donna Grimsley, Lizan Gunter, Linda Head, Kathleen Jennings, Sharron Martin, Linda Mason, Tani Murrah, Ken Patterson and Kathy Pena.

Also Marcus Puente, Sherry Rothus, Mike Slayden, Mike Thomson, Jessie Villereal, Larry Vinson, Zan Walker, Marcia Wallace, Terry Wheeler and Johnny Williams.

Teacher Profile



Janet Schroeder and Students

Mrs. Raymond (Janet) Schroeder is the new third grade teacher in Mary De Shazo, Janet Schroeder is a graduate of Panhandle A & M in Goodwell, Oklahoma. Her husband, Raymond Schoreder, is the new basketball coach in high school. The Schroeders are members of the First Baptist Church. They have one daughter, Stacy.



Jewel Scott and Students

A new third grade teacher at DeShazo is Mrs. Jewel Scott. She comes to Muleshoe from Hart, Texas. She and her husband have bought a farm in the Muleshoe area. The Scotts have no children. Jewel says her hobbies are seeing to the various activities of busy farm life and music. The Scotts attend First Baptist church at Farwell. Mrs. Scott teaches a Sunday School Class of 10 year old boys and is Secretary-Treasurer of the church choir. She is also a member and secretary of the Farwell Study Club. Welcome, Jewel Scott!

Only \$222.42 Needed For Music Festival Trip

Ten Commandments For Parents

1. THOU SHALT love thy child with all thy heart and soul and with a mind that understandeth the ways of children.
2. THOU SHALT encourage each of thy children so that he may develop to his fullest capacity but thou shalt not expect too much, too soon.
3. REMEMBER that each child is different and compare not thy children one with another, nor thy child with thy brother's child nor with the child of thy neighbor.
4. THOU SHALT not bind thy children too closely to thee but encourage them to find friends among their playmates so they may learn to play and eventually to work and live among their peers.
5. MAY THY children find in ye, their parents, comfort in their sorrows and disappointments, joy in their accomplishments, understanding in their failures and the inspiration and faith that is ever the regenerating force in their lives.
6. THOU SHALT teach thy children right from wrong, and shalt start them in the way that wouldst have them go, through thy example. Thy behavior shall be good that thy children may pattern after thee.
7. THOU SHALT set limits for thy children in order that they may have the guidance they need.
8. THOU SHALT remember that hostility is normal when frustration occurs. It shall be thy duty to show thy children acceptable ways of getting rid of their hostile feelings.
9. REMEMBER that the deepest satisfactions in life come from the realization that one has accomplished his best and that it has been found good. Help thy children to experience this kind of inner satisfaction by thy encouragement and thy praise.
10. AND REMEMBER, always, that thou art a partner in marriage and an adult as well as a parent so thou mayest enjoy these roles to the fullest. As thine own emotional needs are fulfilled, thou wilt become a better parent.

—FREDA S. KEHM Director, Association for Family Living

Student Council

Named to Panel

The Muleshoe High School Student Council has just been selected to lead a panel discussion during the State Convention in Laredo, March 16-17 and 18.

The panel topic will be "Promoting Friendship Between Area Schools."

The honor of being selected for this purpose is due to the various projects the local council has completed during the past two years.

One of the projects was the "Plaque of Friendship" which has been presented to the opposing teams at the home football games.

Another project along this

line is a "chain" letter of ideas which the council is currently trying to start between all area schools.

Faculty-Jaycee Game on Slate

by J. D. Redwine

"Basketball" is the name of the game and the Future Teachers of America have plenty planned as they sponsor the Faculty - Jaycee Basketball game. Time of the tip-off will be 7:30 p.m., Jan. 31, in the gymnasium. Admission prices are \$3.75 for adults, and \$3.50 for students. Young and old alike will surely enjoy this exciting and amusing game.

D. E. Students Compete In Speaking Event

by Joe Puente

On Friday, January 27, contestants from the Muleshoe D E Club went to Odessa to compete with other schools in the area for top honors in the Sweetheart Public Speaking Sales Demonstration, and Job Interview contests.

The following students were among the contestants: David Alsop, Tom Jones, Diane Bryant, Becky Pedrosa, Carolyn Tiller, Velma Evans, Jimmy Bruton, Rickey Vernon, Andy Stovall, Paul Swint, Terry Kendall and Dean Sieber.

DISAPPOINTED

WICHITA, Kan. — The preschool lad who attended a Boy Scout Court of Honor in the southeast Wichita church with his mother wiggled in his seat and finally whispered a audibly "Mommy, I don't see the bottle," he persisted. "You said we were going to see a quart of honors."

Freshmen Name Class Favorites

by Betty Harbin

The Freshman Class of Muleshoe High School met on Thursday, January 26, in the high school auditorium. Class president, Dennis Beene, presided as class members selected their class favorites.

Nominated for girl favorite were Karen St. Clair, Ann Douglass, Melanie Precure, Patty Camp, Donna Locke, and Kathy Wyer. From these, the class elected Patty Camp as favorite, and as runners-up Melanie Precure and Karen St. Clair.

Nominations for boy favorite included Bill Bruns, Dennis Beene, Lionel Helweg, Alfred Bieker, Cecil Cunningham, Don Locker, Chester Clay Beavers, and Jesse Clemmons. Favorite was Bill Bruns. Runners-up were Jesse Clemmons, and Lionel Helweg.

Youth Conference On Crime Slated

The Date of February 15 has been set for the First Annual District I Youth Conference. In an effort to curb crime in their own generation, 1300 Youth will assemble in Plainview on this date. The Conference which will be presented in Plainview High School

will be one of noted speakers thought provoking films and stimulating discussion groups. A group from Muleshoe will attend, names to be announced. From an experimental group of 100 students from Austin High School the Texas Youth Conference

now involves over 100,000 students throughout Texas—all involved in delinquency prevention programs and youth citizenship development efforts. The program was originally under the sponsorship of the Attorney General's office, its phenomenal growth by 1967 resulted in the Texas Law Enforcement and Youth

Development Foundation assuming full responsibility for the program. The non-political "Texas Youth Conference" under the Foundation will follow the same format as before with Robert T. (Sonny) Davis of Austin continuing to serve as Director. Through the generous

financial support of the Hogg Foundation, Houston Endowment, Sears Roebuck Foundation,

the members of the Board of Directors of the Texas Law Enforcement and Youth Development Foundation and its sustaining members a permanent delinquency prevention program for Texas is thus assured.



CHEERLEADERS—These are the cheerleaders of Muleshoe Junior High School. They are (top to bottom) Karen St. Clair, Ann Douglass, Pam Swint, Janet Ellis and Deborah Hayes.

Sophomores Sell Mule License

by Vina Bass

The Sophomore Class is selling mule license tags for one of its money-making projects this year. The money raised by this project will be added to the Sophomore Class fund. Various projects the money will be used for are the Junior-Senior banquet next year, the Senior Class gift to Muleshoe High School in 1969, and for the class' contribution to the Student Council's beautification project.

Other money-making projects the sophomores have undertaken this year have been the Halloween Egg-Throw and the Bake Sale.

The sophomores believe that the appearance of these tags on more cars would increase the spirit in Muleshoe for not only the school and its athletic program but also for the community of Muleshoe.



MULETAG—Coach Washington has bought his mule license tag. Have You? These tags are \$1.25 each and can be bought from the sophomore class officers, Harold Campa, Johnny St. Clair, Linda Kerr, and Vina Bass.

BAILEY COUNTY JOURNAL
 Established March 21, 1943
 Published by McIntire Publishing Co., Inc.
 Every Sunday at 50¢ in Season

Member TEXAS 1967
 LARRY B. HALL, Publisher & Managing Editor
 DORA KRAMER, News Reporter
 JESSIE P. HALL, Editor

Subscription Rates: Single Copy 10¢
 3 Months \$2.50
 6 Months \$4.50
 1 Year \$8.00
 (All rates in advance)

Bula Women Holds Society Meeting

By Mrs. John Blackman
 The Woman's Society of Christian Service of the local Methodist church met Wednesday at 2:30 at the church for their weekly meeting. Mrs. Mary Landers having charge of the program, taken from the program book, entitled "Church Grows in Canada."
 Judy Kirk bringing the meditation "Christians grow in service" followed by group singing "Live for Him," and Mrs. Margie Simmons leading in prayer. Mrs. Lan-

ders bringing the first part, dealing mostly with the history of the church in Canada. Mrs. Ethel Bahlman having the second part which dealt with the early church and their problems. This proved to be a most informative lesson study. A large map was used in supplement to the lesson. Attending Mrs. Ethel Bahlman, Mrs. Mary Landers, Mrs. Judy Kirk, Mrs. Rosa Young and Mrs. Margie Simmons. Mr. and Mrs. W.L. Clawson spent the week end in Amar-

illo with her daughter and family Mr. and Mrs. James Collins and children. Attending workers conference at Hart Camp Baptist church Monday evening were Rev. and Mrs. Leo Buschur, Mr. and Mrs. P.R. Pierce, E.O. Battles, and Mr. R. Gauer. Mr. and Mrs. Roy Feltham and three daughters of Littlefield, visited Tuesday evening in the James Boylen home. Mrs. M.M. Thompson left by plane Wednesday morning from Lubbock for her home in Anaheim, Calif. after a month's visit in home of her daughter the Cecil Jones. Mrs. Thom-

son with the Jones visited Sunday at Quail, Tex. with Mrs. Thompson's sister Mrs. Olie White. Mr. and Mrs. J.C. Withrow and daughters Carla and Cynthia visited during the week end with uncle and aunt Mr. and Mrs. Bob Wheeler at Atoka, Oklahoma. Visiting Monday thru Thursday in the J.W. Layton home was his brother and wife Mr. and Mrs. John Kelly of Lubbock. Mrs. L.L. Walden accompanied by her son and wife Mr. and Mrs. Lowell Walden of Springlake, visited Saturday with Mr. Leo Nixon at the

Last Spending Directed At Education, Training

WASHINGTON -- The last spans of spending authorized by the 89th Congress was directed largely at human resource development through education and training. These new authorizations of more than \$10 billion, combined with previous expansions of education and training under the Manpower Development and Training Act and other education programs, qualify the 89th Congress as the most prodigious of all time in these fields. But while the 89th Congress literally took over responsibility for expanding and improving processes and institutions to develop our human resources, the question of how these sums will be spent is still unanswered.

Brother M.E. Blake spoke and showed slides of the Home for the aged at Gunter, Tex. Sunday evening at the local Church of Christ. Brother Blake is superintendent of the home. Mr. and Mrs. John Latham spent the week end at Tahoka with her parents Mr. and Mrs. A. T. Flowers. Six were in attendance for the W. M. U. meeting Wednesday evening. Mr. P.R. Pierce had charge of the lesson, which was a bible study taken from the regular study book. Attending were Mrs. E.O. Battles, Mrs. P.R. Pierce, Mrs. Fred Locker, Mrs. C.A. Williams and Mrs. Gauer.

Oliver Simmons, accompanied by Babe Van of Morton attended to business in Wilcox, Arizona, first of the week and also visited with Babes sister and family Mr. and Mrs. A.J. Becker.

These are questions on the future of public education which the National Chamber says should be the concern of every citizen.

Farm Employers To File Forms On Employees

Dallas -- Employers of farm workers are required to file Form 943, Employer's Annual Tax Return for Agricultural Employees -- 1966, and pay over their share of Social Security taxes plus amounts withheld from employee wages, on or before January 31, 1967, Ellis Campbell, Jr., District Director of Internal Revenue for northern Texas announced today. These taxes apply to cash wages of \$150 or more paid to each employee in 1966 or on cash wages in any amount even though under \$150 in 1966, if the employee performed agricultural labor on 20 or more days during the year, Campbell said. The rate of tax is 4.2 percent for the employer and 4.2 percent for the employee or a total of 8.4 percent on the taxable cash wages paid.

A "Crew Leader" is treated as an employer under the law for the purpose of these taxes the director said. Publication No. 225, "Farmer's Tax Guide," which gives more details on this subject may be obtained without cost by dropping a post card to District Director, Internal Revenue Service, 1600 Patterson Street, Dallas Texas 75201.

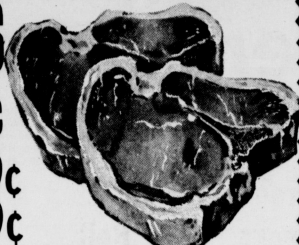
Education is essential to the maximum development of each individual, to economic growth, to peace and security, and to the management and maintenance of free society. This is the way the Chamber of Commerce of the United States, speaking for all business, regards education. The National Chamber recognizes that we are "going somewhere" -- and fast -- in changing the American education system. The Chamber, therefore, raises these questions:

Who will determine the "where" as well as the methods and equipments to be used in going there? Shall we have more private implementation of publicly planned and financed programs of education and training? If

LOWER PRICES! HIGHER QUALITY! BETTER SERVICE!

PORK CHOPS Center Cut Lb. **69¢**
PORK CHOPS First Cut 49¢
RIB STEAK USDA Good 59¢
PORK STEAK Leon & Tender 43¢
BACK BONE Country Style 59¢

SAUSAGE (Market Made) Pure Pork 3 Lb. \$1



MIRACLE WHIP KRAFT'S 49¢
EGGS Grade A Med. Doz. 43¢
BISCUITS 13 For \$1 King Size 6 Btl. Ctn.
Pepsi-Cola 39¢
TUNA Shurfine 3 For \$1



HAIR SPRAY Aqua Net 49¢
HAND LOTION So Soft 59¢
Alka-Seltzer Only 77¢
SUGAR Holly 5 Lb. Bag 49¢

FROZEN FOODS
 Patio Cheese ENCHILADA DINNERS 12 Oz. 39¢
 Patio COMBINATION DINNERS 12 Oz. 39¢
 Shurfine ORANGE JUICE 12 Oz. Can 29¢

COFFEE FOLGERS 1 Lb. CAN 69¢

GREEN ONIONS 5¢
RADISHES BUNCH 5¢
AVOCADOS Large Size 3 FOR 25¢
ORANGES 5 Lb. Bag 39¢

Be a GRAND PRIZE winner!
 Get Your CARD PUNCHED TODAY!
 THIS WEEK'S WINNERS!

WINNERS LIST:
 Mrs. J. D. Spurgion . . . Winner of 2500 stamps
 Mrs. Alex H. Williams . . . Winner of 2500 stamps
 Mrs. L. E. Savage . . . Winner of 2500 stamps
 Felo Pena . . . Winner of 500 stamps
 Mrs. E. W. Locker . . . Winner of 500 stamps
 Mrs. H. L. Blackburn . . . Winner of 500 stamps
 Rita Hawkins . . . Winner of 500 stamps
 Zorine Martin . . . Winner of 500 stamps

Willie Jacobs . . . Winner of 500 stamps
 Paula Tarter . . . Winner of 500 stamps
 Bettye Donaldson . . . Winner of 500 stamps
 Amella Madrid . . . Winner of 250 stamps
 Mrs. Harold White . . . Winner of 250 stamps
 Jose Villarreal . . . Winner of 250 stamps
 Mrs. R. K. Minkler . . . Winner of 250 stamps
 Mrs. J. E. Mathis . . . Winner of 250 stamps
 Mrs. Melvin Griffin . . . Winner of 250 stamps

Jim's Pay N' Save
 FRIENDLIEST STORE IN TOWN
 Open 7 Days A Week

YOUR GRAND PRIZE CARD MAY BE WORTH 25,000 STAMPS

Bookmobile Schedule

Wednesday	Feb. 1	
Circleback	8:45 - 9:45	
Bula #1	10:15 - 11:15	
Bula #II	12:00 - 1:00	
Thursday	Feb. 2	
Amherst #1	9:15 - 9:45	
Amherst #II	9:45 - 10:15	
Springlake #1	11:00 - 11:45	
Springlake #II	12:00 - 1:00	
Earth	1:15 - 3:45	
Friday	Feb. 3	
Pleasant Valley	10:00 - 11:00	
Sudan #1	12:00 - 1:00	
Sudan #II	1:00 - 4:00	
Saturday	Feb. 4	
Morton	9:30 - 12:00	



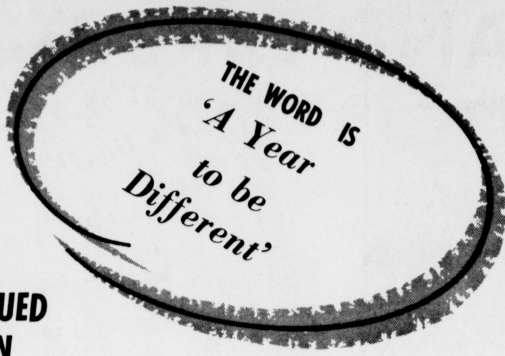
SMOKE SCREEN--Through the smoke screen, firemen drench the roof of the Raymond Precure home which was heavily damaged by fire Friday afternoon.

LET'S JOIN HANDS

TO MAKE MULESHOE A BETTER PLACE TO LIVE

Support YOUR Chamber Of Commerce
POYNOR'S WHITE STORE

BE SURE TO ATTEND THE C-C BANQUET, MON. JAN. 30, 7:30 p.m.



**WE PLEDGE
OUR CONTINUED
SUPPORT IN
1967**

CONGRATULATIONS to all of those in the Chamber of Commerce who have worked so hard to keep MULESHOE growing. It is organizations such as this that deserve the whole hearted support of the community.

YOUR CHAMBER SERVES YOU!

MULESHOE STATE BANK

MEMBER FDIC

Building The Community

Is One Of Our Main Interest Just As It Is The Main Objectives Of The Chamber Of Commerce. May We Urge Everyone To Attend The

Chamber Of Commerce Banquet

MONDAY, JANUARY 30 7:30 p.m.
HIGH SCHOOL CAFETERIA

The Word Is

'A YEAR TO BE DIFFERENT'

SUPPORT

YOUR CHAMBER

Your Help
Is Needed

**WHITE'S
CASHWAY GROCERY**

'A Year To Be Different'



**PROGRESS MEANS
Money in Your Pocket
The CHAMBER Helps
Put it There**

Don't Miss The Big Event!

C-C Banquet

**Monday, Jan. 30, 7:30 p.m.
at Muleshoe High School Cafeteria**

**May we urge you
to support your Chamber, always**

**working for the continued
GROWTH and PROSPERITY
of MULESHOE.**

**KING GRAIN CO.
and
KING FEED LOT**

*Be Sure
To Attend
the
CHAMBER BANQUET*

**MONDAY NIGHT
JANUARY 30, 7:30 p.m.**

**at the
High School
Cafeteria**

The Word Is...

**'A YEAR TO BE DIFFERENT'
it takes 2 ...**

YOUR CHAMBER AND YOU!

WEST PLAINS HOSPITAL & CLINIC, INC.
And It's Subsidiary Organization

MULESHOE NURSING HOME

WEST PLAINS PHARMACY

1967 OFFICERS AND DIRECTORS



Vic Benedict, President

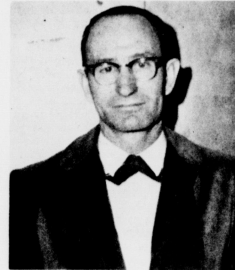
**Support Your Chamber
In 1967**



Robert Hooren, Vice-President



Jimmy Crawford, Treasurer



Wayne Williams



Buddy Peeler



D. B. Lancaster



Eddie Faust



Franklin Mann



Thurman White



Don Harmon



M. D. Gunstream



Jacque Baker



Bob Jones



Charles Lewis

THE HONOR ROLL OF UNITY

THESE INDIVIDUALS AND FIRMS ARE JOINED IN A UNITED EFFORT DEDICATED TO THE GROWTH AND PROSPERITY OF THEIR COMMUNITY

THIS IS YOUR CHAMBER OF COMMERCE

C. R. Anthony
BMG Motors, Inc.
Baker Farm Supply
Barrett Produce Co.
Bass Appliance
Vic Benedict
Beavers Flowerland
Pat R. Bobo
Bob's Safety Center
Bovell Motor Supply
Brocks Motor Co.
Cashway Grocery
Crow Chevrolet
City Cleaners
Cobb's Department Store
Corner Drug
Corral Drive-In
Cox Drive-In Theatre
Decorator's 215
Jake Diel Dirt & Paving
Douglas Imolement
Educational Testing & Research
Farmers Co-op Elevator
Fashion Shop
Federal Land Bank
W. A. Fim, Jr. (Gulf Wholesale)
First National Bank
Sam E. Fox, Texaco
Fry & Cox
James Glaze Co.
General Telephone
Gilbreath Grain Co.
Guaranty Abstract Co.
Gunn Bros. Stamp Store
Elbert Hamilton
Heathington Lumber Co.
Higginbotham-Bartlett
Holt's Oil Company
Irrigation Supply
Jennings Insurance
John's Custom Mill
Johnson Furniture
King Grain Co.
KMLL
Lamberts Cleaners
Lambert Plumbing
A. J. Lenderson
Dr. Charles Lewis
Malone Milk Co.

AAA Grain
J. K. Adams
Allison Brothers
Alsop Cleaners
Auto Phone Dispatch
Bailey County Abstract
E. O. Baker
Douglas Bales
C. C. Bamert
Buford Bates
G. A. Beddingfield
Dr. B. Z. Beaty
Berry Electric
Bill Bickel
Red's Little Giant
Bill's Drive-In
Eugene Black
Jimmy D. Black
H. L. Blackburn
Robert Blackwood
Terry M. Blake
Bristow Barber Shop
Murrell Brown
Walter Buice
Calvert Drive-In
Carl's Meat Co.
H. H. Carlyle
W. Q. Casey Insurance
Chapman Supply
A. P. Childers
City Barber Shop
S. D. Clements
Ben Cockrell
W. F. Creamer
Crossroads Cafe
Paymaster Gin
Peerless Pump
Perry's Dept. Store
Piggly Wiggly
Pioneer Natural Gas
Pool Insurance
Production Credit
Progress Gin
Dr. B. R. Putman
Ready Mix Concrete
Red Barn Chemicals
Harlon W. Redwine
Sears-Roebuck
D & G Grocery

Charles A. Daniel
Darnon Rexall Drug
Darl-Delite
Neal Dillman
Dinner Bell Cafe
Dorothy's Beauty Salon
Ralph Douglas
Rev. Brian V. Engel
Farley Insurance Agency
Albert L. Field
J. M. Forbes
E. T. Ford
Je Don Gallman
C. D. Gilbert
Bob Glass
Roger Gorrell
Byron Griffiths
Ray Griffiths & Sons
Arvis Grogan
Byron M. Gunter
John W. Gunter, Jr.
C. D. Gupton
J. M. Hall
Joe Harbin
Kenneth Henry Ins.
Highland Motel
Lester Howard
Horace Hutton
Sherman Winman
Charles V. Isaac
Jerry's Tire Co.
Johnson-Nix
Johnson-Pool Furn.
Robert L. Jones
Kelton & Shoemaker
Dallas Kinard
Leal's Tortilla Factory
L & H Grocery
Dr. Charles Lewis
L. H. Lewis
Leo Lutz Shop
Lenau Lumber Co.
Lindsey Jewelry
M. E. Little
Marion J. McDaniel
M. E. Lee & Sons Const.
W. E. Meyers
Texas Sesame Growers
Tri-County Credit Bureau

John Miller
W. T. Millen
Mills Upholstery & Body Shop
Millsap Garage
W. D. Moore
Kerry Moore
Harace Morgan
Arnold Morris
Muleshoe Abstract Co.
Muleshoe Animal Clinic
Muleshoe Antenna Co.
Muleshoe Electric
Muleshoe Elevator
Kenneth D. Nesbitt
Virgil Nowell
Jack Obenhaus
Father Robert O'Leary
Cecil Osborne Texaco
Jesse M. Osborn
Rev. Frank Peery
Williams Seed Cleaning
George E. Williams
Judge Glen Williams
Jack D. Joung
Wendy E. Young
Creamer Gulf Service Sta.
Jack Roubinek
Muleshoe FFA Chapter
Muleshoe Flying Serv.
Muleshoe Livestock Auct.
Muleshoe Shamrock Serv.
Muleshoe Wrecking Serv.
Murray's Jewelry
Williams Bros. Office
Williams & Merriman
Wiedebush & Childers
Wrinkle Welding & Mach.
Central Texaco
Singleton Funeral Home
Southwestern Public Serv.
St. Clair's Dept. Store
Union Compress
Wagnon Grocery
West Plains Hospital
Western Auto Store
Western Drug
Bailey County Electric
Cooperative Association

Santa Fe Railway
Dr. G. A. Pittman
Carl Pollard
Richland Hills Texaco
Robinson's Boot Shop
Rowland-Gordon Farm Chem.
San Francisco Cafe
Sanitary Barber Shop
Jack Schuster
W. Lewis Scoggin
J. W. Shafer
Joe L. Smallwood
Eric Smith
Joe Sooter
J. C. Spain
Spies Quality '66' Serv.
Ralph Stevenson
Stockard Construction
Bob Stovall Printing
A. P. Stovall
George Sultemeier
Sweetheart Lane
Swap Shop
A. G. Taylor
Ted Weaver
Western '66' Fertilizer
White's Auto Store
Whitt & Watts Implement
Doyce Turner
Rev. Troy Walker
James Warren
James P. Wedel
Wellborn Beauty Shop
Western Wrecking
Carl White
Mills Machine Shop
Muleshoe Co-op Gin
Muleshoe Locker
Muleshoe Publishing Co.
Muleshoe Motor Co.
Muleshoe State Bank
Dale Newsom Gin
Morris Nowlin Studio
Nickels Gin
Plains Auto Parts
Tri-County Savings & Loan Association

STATE CAPITAL Highlights AND Sidelights

by Vern Sanford

by--Vern Sanford
Texas Press Association

AUSTIN--In Gov. John Connally's "state of the state" message there was enough grit to keep the legislative mill running all of its 140 days. His proposals drew favorable comments from some, yes--and no from others, and maybe--so

Why The Christian Science Monitor recommends you read your local newspaper

Your local newspaper is a wide-range newspaper with many features. Its emphasis is on local news. It also reports the major national and international news. THE MONITOR COMPLEMENTS YOUR LOCAL PAPER. We specialize in analyzing and interpreting the important national and international news. Our intention is to bring the news into sharper focus. The Monitor has a world-wide staff of correspondents--some of them rank among the world's finest. And the Monitor's incisive, provocative editorials are followed just as closely by the men on Capitol Hill as they are by the intelligent, concerned adult on Main Street.

WHY YOU SHOULD TRY THE MONITOR. You probably know the Monitor's professional reputation as one of the world's finest newspapers. Try the Monitor, see how it will take you above the average newspaper reader. Just fill out the coupon below.

The Christian Science Monitor
One Norway Street
Boston, Massachusetts, U.S.A. 02115
Please start my Monitor subscription for the period checked below. I enclose \$ _____ U.S. funds.
 1 YEAR \$24 6 months \$12
Name _____
Street _____
City _____
State _____ ZIP Code _____ P151A

and other state officials, despite the voters' rejection of that plan in 1965.

STATE PARKS
He gave details on his proposal that would be used to buy land before its price goes up. An admission fee of \$1 per car to all state parks would retire the bond issue, he said.

AGRICULTURE
Connally said agriculture is important to Texas, but it is in trouble. The state is spending \$41,000,000 each two years on 15 different agencies. He said he will propose reorganization later to provide coordination and cooperation of efforts to aid agriculture.

WATER
Also recommended was passage of a bill to adjudge water rights by administrative procedures, through the Texas Water Rights Commission, rather than the more expensive route of going through the courts. He said more water rights are granted or claimed than there actually is surface water available. This will lead to costly fights when use comes close to supply, hence he proposed the plan advocated by the State Bar to settle the arguments now. He also advocated reorganization, strengthening and financing of the Texas Water Pollution Control Board. This is to put a stop to water pollution, plus a program of \$4,000,000 for planning regional waste treatment plants, and grants of \$12,000 a year to cities and river authorities for wastewater treatment facilities, dovetailing with federal grant programs.

BANKING
The Governor drew quick fire from financial conservatives when he advocated that branch banks be legalized by a vote of the people in the four biggest counties--Harris, Dallas, Bexar and Tarrant. He said the man small banks in these counties simply cannot

gather together the money to make the size of loans required by modern Texas industry. So he wants the big-city banks to be allowed to have branches, instead of independent banks. In all parts of the four big counties.

LABOR
Connally endorsed some of organized labor's goals--higher unemployment and workmen's compensation payments, and an industrial safety law. He pointed out that more people are hurt on the job each year--201,000--than on the highways--186,000. Death rate in Texas factories is nearly double the average rate for the other nine major industrial states. So he proposed that the Bureau of Labor Statistics be given the job of promulgating and enforcing industrial safety rules.

FINE ARTS
He suggested financing and permanent status for the Texas Fine Arts Commission, set up in 1965 to preserve and promote fine arts in Texas, headed by John Ben Shepperd of Odessa.

INTEREST RATES
State Finance Commission has had a committee working up a consumer finance code. Connally gave it general endorsement, but said he will have detailed recommendations. Report will allow banks to go into the small loan business, with higher interest rates than the traditional 10 per cent. It also will propose regulation of automobile dealers, department stores, appliance finance companies, and others who charge people for use of money. At present, only those who lend less than \$1,500 at a time, for more than 10 per cent, are under state regulation.

PUBLIC UTILITIES
Connally proposed the creation of a State Public Utilities Board to take over from the cities the regulation of gas, electric, water and telephone companies, regulation of intrastate long distance phone rate.

CRIME
Stiffening of criminal laws, including requiring convicts to serve at least 20 years on life sentences and a third of all sentences before parole, was among his recommendations, plus tough new laws against carrying pistols.

TRAFFIC SAFETY
He wants more men for the Highway Patrol, at higher pay; driver education to be made available for all junior high schools; 18-year-old minimum driving age without driver education, upon which licenses may be obtained at 16; helmet requirements for motorcycle riders; medical exams to remove unsafe drivers from highways; new tests for all drivers every four years;

12-month license suspensions for those convicted of major traffic offenses; mandatory suspensions for driving while intoxicated, and stronger motor vehicle inspection laws.

MEDICARE
Connally proposed that the voters; mandate of last fall be carried out, to give hospital and medical care to all those on public welfare rolls at federal and state expense.

CITIES
He recommended that cities be given the power to levy one per cent sales taxes, if the voters approve; that state aid be provided for "councils of government" to make regional development plans; that counties be given land-use control through building-permit issuance; that county governments be authorized to levy taxes and take over from their cities the job of providing library, health, welfare, hospital, park, airport, planning, transit, garbage disposal and flood control activities, if the voters approve of the undertakings. He also suggested a state agency to help local units of government get federal and state aid, and to allow urban counties to reorganize themselves for more efficiency.

STATE WORKERS
Connally recommended a pay raise which will average 20 per cent, including a minimum state wage of \$1.40 an hour.

FEDERAL TAXES
Governor proposed that Texas initiate an amendment to the U.S. Constitution to require that the U.S. give the states five per cent of what it collects in each state in income taxes, to be used as each state's legislature desires. It would take two-thirds of the 50 states to initiate this, and three-fourths to make it a reality.

SCHOOL TEACHERS SALARIES
He proposed a five per cent pay raise for Public School and college teachers, a little more than half of that proposed by the Texas State Teachers Association.

STATE TAXES
The Connally program would spend \$125,000,000 during the next two years which present taxes do not produce. He said he will make recommendations later as to where the Legislature should get this money.

ALLOWABLE CUT
Texas Railroad Commission called an end to several months of rising oil allowances with its order cutting February formula to 36.5 per cent of potential. Reduction by a full percentage point adds up to maximum of 3,294,440 barrels a day, a decrease of 59,091 from January. In separate action, Commission told operators in Saratoga and Sour Lake fields to stop putting salt water into reservoirs operated by Hardin County Salt Water Company.

AG OPINIONS
"In 1966, the Western Lines lost 3,160 days due to injuries compared to 7,427 the year before, for an amazing 59.9 per cent decrease," he declared. In their day-long meeting the rail executives who represent every section of the railroad reviewed the last year's safety performance and discussed methods for improving it this year.

WARNING
Persons who are highly allergic to insect stings and liable to get violent reactions to them, should avoid wearing bright jewelry at least their, which, along with certain odors, attract stinging insects, warns the United States Department of Agriculture

arrested person before a magistrate. School attendance laws are to be enforced by attendance officer but county juvenile officers may be called on in cases of habitual violation. Only restriction on \$7,500 Dallas County Hospital District bond election is that proceeds be used for district hospital enlargements and improvements.

WAGE LAW CHALLENGED
Attorney General Martin challenged constitutionality of provisions of federal act providing minimum wage and hour provisions to state institutions. Act, effective February 1, places educational system and hospital employees under hourly minimum pay scales. Martin, in federal court action, maintains that states have the right to regulate spending of public funds for salaries of their employees.

FLOTORIAL DISTRICTS TARGET
Eleven House of Representatives "floterial" districts, frowned on by federal courts, would be eliminated in a bill by Rep. L. DeWitt Hale of Cropsus Christi. Hale proposes to give representatives involved a choice between running at large in combined counties or dividing and running in specific counties. Districts now combine McLennan and Coryell counties; Travis and Burnet; Smith and Rusk; Brazoria and Fort Bend; Collin, Grayson and Rockwall; Crosby and Lubbock; Bell and Williamson; Kleberg and Nueces; Brooks, Cameron, Kenedy and Willacy; Haskell, Jones and Taylor; Ector, Loving, Reeves and Winkler.

Flores...

Continued from p. 3

separate panels at back tipped with matching lace. The bride's fingertip veil edged with lace, fell from a tiara of pearls and sequins. She carried a bridal bouquet atop a white Prayer Book.

The Prayer Book signified something old. Her wedding attire was something new and the bride chose a blue garter.

Miss Maclovia Ramirez, sister of the bride, was maid of honor. She wore a staid length white dress featuring long sleeves and white accessories.

Bridesmaids were Rosa Flores, Lazbuddie, and Irma Serna, Bovina. They wore identical street length dresses of mint green and white satin. Short veils fell from tiny princess crowns.

Irma Flores was flower girl and wore a gown identical to that of the bride's, Danny Bril lit the candles.

Benancio Rios, Hub, served as best man. Usters were Roberto Flores, Lazbuddie and Jose Torres, Sr., Hereford. Other attendants and groomsmen included Mr. and Mrs. Rosalio Ramirez, Bovina, Mr. and Mrs. Felipe Flores, Lazbuddie, Mrs. Jose Torres, Sr., Hereford, Elva Flores and Guillermo Perez, Bushland.

The attendants wore suits in combination mint green and white with white accessories. Short veils fell from small crowns.

Following the ceremony, a reception and dance were held in the American Legion Hall. The decor carried out the bride's chosen colors of green and white.

The bride's table was laid with a white cloth designed with wedding bells and an arrangement of white wedding bells and chrysanthemums centered the table. The wedding cake was topped with a miniature bride and bridegroom.

The couple will be at home in Lazbuddie.

Mrs. A. M. Wilson. The table was centered with a miniature bride and groom under an arbor surrounded with mistletoe with chrysanthemums and greenery, carrying out the bride's colors of mint green and white.

Coffee, banana bread, doughnut sets and a fruit plate were served.

Club...

Continued from p. 3

H. W. Carpenter, Mrs. Casey, Mrs. Cole, Mrs. Elrod, Mrs. Farley, Mrs. Jennings, Mrs. J. Frank Peery, Mrs. E. M. Pruitt, Mrs. S. Plawn, Mrs. Turner, Mrs. White, Mrs. Witterding, Mrs. R. F. Wright, Mrs. Effie Bray and a guest, Mrs. Hooten.

Club members are to meet in the home of Mrs. Gregory Thursday for a salad luncheon and making out year books.

Earth...

Continued from p. 2

wedding trip following the ceremony.

The groom is a sophomore student at Eastern New Mexico College in Portales and the bride is a sophomore student at Wayland Baptist College. Both are 1965 graduates of Springlake-Earth High School.

Veterans Q's and A's

Q--Are veterans whose only service was after January 31, 1955, eligible for admission to a Veterans Administration Hospital?

A--Yes, on the same basis as veterans with war-time service.

Q--A person who has no veteran status, but is in the service now, is he able to take training under the new G.I. Bill?

A--Yes. Any person on active duty in the Armed Forces of the United States who has served on active duty for educational benefits under the new G.I. Bill.

Q--Under the new G.I. Bill, can training on-the-job be approved?

A--No. Apprenticeship, or other on-the-job, or institutional on-farm training, may not be approved.

Q--Are veterans whose only service was after January 31, 1955, eligible for admission to a Veterans Administration Hospital?

A--Yes, on the same basis as veterans with war-time service.

Q--A person who has no veteran status, but is in the service now, is he able to take training under the new G.I. Bill?

A--Yes. Any person on active duty in the Armed Forces of the United States who has served on active duty for educational benefits under the new G.I. Bill.

Q--Under the new G.I. Bill, can training on-the-job be approved?

A--No. Apprenticeship, or other on-the-job, or institutional on-farm training, may not be approved.

Rail Officials Hear Reviews

Approximately 250 Santa Fe officials met at 8:30 a.m., Jan. 26, in the auditorium of the general office building at Amarillo for a system-wide safety meeting. F. N. Stupp, general manager, Amarillo, announced today.

Heading the officials were R. D. Shelton, operating vice president, and D. D. Bond, system superintendent of safety, both of Chicago.

"Our concentrated emphasis on safe working practices in 1966 has resulted in a very attractive 16.2 per cent system-wide reduction in the number of days lost because of injury," Shelton said. "Over the entire railroad," he continued, "32,934 man days were lost in 1966 compared with 27,570 in 1965, or a total reduction of 4,364 days."

At the same time, Shelton announced the Western Lines under Stupp's supervision had won first place in safety in the year-long competition among the three operating regions that comprise the Santa Fe system.

"In 1966, the Western Lines lost 3,160 days due to injuries compared to 7,427 the year before, for an amazing 59.9 per cent decrease," he declared. In their day-long meeting the rail executives who represent every section of the railroad reviewed the last year's safety performance and discussed methods for improving it this year.

REAL GOOD BUSINESS!

Available For The First Time

We are looking for a mature stable person with good management ability who is interested in owning and operating a highly profitable distributing business.

\$50,000 Cash Investment Required

Unique marketing methods can return your original investment within 12 months.

After rolling, operation should yield as much as \$25,000 before taxes per annum. This is a sound business with little competition. Company market tested with terrific consumer acceptance. Easy to operate with limited staff. Our professionally trained marketing team will assist you in setting up with a completely profitable facility. Factory provides complete blueprint for a successful operation.

ONLY ONE AVAILABLE

COLOR-GRO CORPORATION
BOX 8301, UNIVERSAL CITY, CALIF.

FOR STATE FARM Insurance, See

F. L. NEWTON
Littlefield, Texas

Representing The World's Largest Writer Of Auto And Homeowners Insurance.

State Farm Insurance Companies / Home Offices Bloomington, Ill.

BUSINESS SERVICES DIRECTORY

THE MONEY YOU SPEND AT HOME STAYS AT HOME!

FOR FHA, GI and FARM LOANS

AND THE

BEST INSURANCE

SEE

POOL INSURANCE CO.

Phone 272-4531
W. M. Pool Jr.

Muleshoe
Lee R. Pool

Save Money On Auto Parts!

BOVELL MOTOR SUPPLY
107 E. Ave. B - Dial 272-4288
MRS. W. T. BOVELL, Owner

SINGLETON FUNERAL HOME
74 HOUR AMBULANCE SERVICE
PHONE 272-4574 MULESHOE

Texans over 60 who live in cities of less than 10,000 or rural areas (except in Bexar County) do not have to register to vote in 1967, Atty. Gen. Crawford Martin says.

Martin held that applies regardless of outcome of his appeal of lawsuit to invalidate the constitutional amendment which would require all voters to register. Bexar County voters must register under a special commissioners court order.

In other opinions, Martin held that:

An officer other than the arresting officer may take an

NEWSPAPERS

MAKE A BIG DIFFERENCE IN PEOPLE'S LIVES

BERRY ELECTRIC CO.

ELECTRIC WIRING and REPAIRS

REFRIGERATION SERVICE

104 E. AVE. B
Phone 272-3375

W. O. CASEY
GENERAL INSURANCE

Let Our Complete Coverage Take Care of All Your Insurance Problems

Muleshoe State Bank Bldg. Ph. 272-4571

DON'T go into orbit about your INCOME TAX

Give us all your tax worries. Besides saving your nerves, you can probably save you dollars. Our charge is nominal and our service guaranteed. Why not come in today and discuss your tax problems with BLOCK!

\$5 UP

COMPLETE RETURNS

We guarantee accurate preparation of every tax return if we make any errors that cost you any penalty or interest. We will pay the penalty or interest.

H.R. BLOCK INC.
America's Largest Tax Service with Over 1500 Offices

125 W. AMERICAN BLVD.
MULESHOE, TEXAS

No Appointment Necessary

First Federal's New Variable Dividend Rate Structure

5.25%

ON 6 TO 12 MONTHS VARIABLE RATE SAVINGS CERTIFICATE ACCOUNTS in amounts of \$15,000.00 up.

ON 6-12 MONTHS VARIABLE SAVINGS CERTIFICATE ACCOUNTS in amounts of \$10,000.00 but less than \$15,000.00

5%

ANTICIPATED ON REGULAR SAVINGS ACCOUNTS All accounts opened by the 10th will earn from the 1st.

After the 10th earnings will start on date of Certificate.

Second Largest and One of the Oldest Federally Chartered Savings and Loans in New Mexico

FIRST FEDERAL SAVINGS & LOAN ASSOCIATION OF CLOVIS

HOME OFFICE
801 Pile Street
Clovis, N.M.

BRANCH OFFICE
Second & Abilene
Portales, N. M.

INSURED

SEPTIC TANKS & CESSPOOL SERVICE
DRILLED - REPAIRED - INSTALLED

Cesspools - Pier Holes
Boat Pits - Storm Cellars
We Drill Up to 9 Ft. in Diameter
& 45 Ft. Deep

Concrete Covers & Turnkey Jobs Available

WILSON DRILLING CO.
Dial 272-4180
NIGHT PHONE 272-3148
CLOVIS HWY. MULESHOE

SAY YES TO THE MARCH OF DIMES

THE MARCH OF DIMES
THE NATIONAL FOUNDATION

INSURE

INSURED

TRADE CLASSIFIED AD SELL BUY ADS LEASE

WANT ADS PH. 272-4536

CLASSIFIED RATES
 First insertion, per word - 6¢
 Second and additional insertions - 4¢
 Minimum charge - 65¢
 Card of Thanks - \$1.00
 Double rate for blind ads
 Classified Display - 85¢ per col inch
 95¢ col. inch for reverses

DEADLINES FOR INSERTION
 Thursday's Muleshoe Journal - 4 p.m. Monday
 Sunday's Bailey County Journal - 4 p.m. Thursday

The Journals reserve the right to classify, revise, or reject any classified ad.

Check advertisement and report any error immediately. Journals are not responsible for error after ad has already run once.

1. PERSONALS

I will not be responsible for any debt other than my own after Jan. 27, 1967. Herman White. 1-5a-3tp

AVON, Phone 3510, 1-4e-1tc

for rent, 15 ft. camper. By day or week. Call 272-3163, 1-35a-1tc

Am interested in making loans and buying first and second lien notes secured with farm and ranch lands. J.L. Steele Citizens Bank Building, Clovis, New Mexico Dial: 763-4471 or 763-6455 1-3t-4tc

Wanted: Ironing or baby sitting. Day or night. Phone 272-4006 Mrs. S. P. Phipps. 1-4t-2tc

3. HELP WANTED

WANTED MAN OR WOMAN SPARE TIME: To refill and collect money from machines dispensing HiGrade Candy, Gum and Sport Cards in this area. Excellent income. Easy to do. \$495.00 cash required for inventory. Include phone number, Write P.O. Box 1631, Amarillo, Texas.

Beautician needed. Call 272-3448. 3-16t-1tc

4. HOUSES FOR RENT

FOR RENT: 2 bedroom house newly decorated. Call 272-3038 or see Mrs. Jack Lenderson at 1818 West Ave. D. 4-2e-6tc

One bedroom furnished house. Call 4080 4-4s-1tc

For Rent: 2 bedroom house newly decorated. Call 272-3524 or see F. H. Davis 903 W. 2nd. 4-4t-1tc

5. APTS. FOR RENT

FOR RENT: 3 room furnished apartment - Newly painted, 1-4 room furnished apartment to single woman - Trailer space - Call 3181 5-5s-3tc

THREE room furnished apt. for rent. Call or see Mrs. Jack Lenderson 272-3038. 5-32t-1tc

FOR RENT: 1 and 2 bedroom apt. Furnished or unfurnished. 3 bedroom house. Call D.L. Morrison Jr., 4886 or 3421 5-31s-1tc

3 room unfurnished apt. See Spencer Beavers at Post Office. 5-10t-1tc

FURNISHED APARTMENTS
 Trailer Space, Briscoe Apartment. Phone 272-3465 5-28t-1tc

FOR RENT: 4 room furnished apartment carpeted - wall hot. Can be seen at 1412 W. Ave. C or Call 272-4463, 5-11t-1tc

For Rent: Well located furnished apartment. Large and clean. Phone 4452. Adults only. 5-4t-1tc

6. ROOMS FOR RENT

Bedroom for rent. 410 West 2nd. Rosie McKillip. 6-41t-1tc

8. REAL ESTATE FOR SALE

80 ACRES
 Close in Muleshoe. Good 2 bedroom house. Carpeted. panel ray heat, 10 inch well, electric motor, good vegetable land. Small down or Cash. See Jerry Roberts. Muleshoe or John A. Roberts. SW 50365, Lubbock. 8-4s-1tc

"Bargain" 144 acres of land. Lamb County, 52 acres cotton, 85 acres feed, 1-10 and 1-1 inch wells, Asbestos underground line. \$290.00 per acre. Gene Brown, Earth, Texas. Box 257-3951, Res. 257-3871 8-3t-1tc

For Sale: 3 bedroom Stucco house to be moved. W. J. New, Sudan. 8-4s-4tp

For Sale: 2 bedroom home near schools, nice carpet, draped, plenty of cabinet space, furnished garage apt. rents easily, basement, utility, fenced, floor furnished and air conditioned. Come by or call 272-4400, Owner 617 W. Ave D. 8-4t-1tc

FOR SALE: 290 acres good Farmer County land, 2 wells, 3 bedroom house 75 1/2 acres cotton, 690 lbs. acreage, Grain Sorghum 163 acres, 86 bushels. Price \$400. per acre. Possession. See this before you buy. Can get large loan. Exclusive listing. Cross Real Estate, Box 661, Muleshoe, Texas. 8-3s-1tc

FOR SALE: 1-4 room house and 1 3 room house on west Ave C. Good lots, well located with good loan. Both - \$5,000 Call 4463 8-21t-1tc

FOR SALE: 3 Bedroom house fenced in back yard, small downpayment. See 202 E. Cedar. Call 272-3084 8-2t-8tc

Exclusive. Choice 40 A Near Muleshoe. Allotment. 8" well, good improvements. You should see this. HOLLAND REAL ESTATE, 121 American Blvd. Phone Day or Night 272-3253. 8-3t-1tc

FOR SALE: 3 bedroom, 2 baths, living room, and den, builtins in kitchen, 2 car garage on pavement. Small down payment. Call D.L. Morrison Jr. 4886, or 3421 8-31s-1tc

For Sale: 3 brick homes; 1-3 bedroom with large den and fire place and 2-3 bedroom house with 2 baths and single garage. Phone 3558 - C.W. White. 8-2s-8tc

Will do custom listing. Call 965-2723 or 2956 or 272-3973 Lee Kimbrough. 15-4t-4tp

For Sale: Stewing hens on foot. 35¢ each. James Wedel, 1 mile West of West Camp Gro. 925-3452 or 272-3332. 15-3t-1tc

Wanted to Buy: 20 or 25 H.P. Electric Motor. Gene Caldwell 965-2663 15-3s-4tp

For Sale or Trade for Muleshoe irrigated land. 389 1/2 acres Bosque River Bottom. Stock farm located in Central Texas. Exclusive listing. Cross Real Estate, Box 661, Muleshoe, 511 South 1st. St. 8-3t-1tc

For Sale: 4 bedroom, 2 1/2 bath, den, utility room, double garage, 3000 sq. ft. on 1 acre of land ideal location. 2 miles on Friona Hi way. Priced to sell. \$16,000.00. Call 272-3492 after 6 p.m. 8-3t-1tc

Estate for Sale: 1460 A in finest grass land. 2 water wells cultivation land in soil bank. Near developing oil field, 1/4 mineral rights. Contact H. L. Richardson 325 University Drive, Fortales, N. Mexico. Phone 356-5878 or Muleshoe Texas 272-4044. No Real estate men, please. 8-4s-2tp

10. FARM EQUIPMENT

Farm Equipment for Sale: Cash for used tractors and implements, Norwood Implement - 1200 South Main 10 - 511t-1tc

FOR SALE: Good used aluminum pipe, 4" 5" 6" 7" 8" well the well known extruded alcoa aluminum pipe in all sizes. We buy used aluminum pipe. Before you trade, see State Line Iron Shop in Littlefield, Phone 385-4487. 10-3s-1tc

11. FOR SALE OR TRADE

FOR SALE: Cane and Hegari bundles - Phone 965-2751 - 11-3s-3tp

For Sale: Cheap 1963 Ford Galaxie 500 with power and air. Call 3404 or go by Wellborn Beauty Shop. 11-4s-1tc

12. HOUSEHOLD GOODS

DISHWASHER
 1963 Frigidaire portable dishwasher, with cutting board top. Not useable in new home with built-ins. Price: Very reasonable. Phone 272-4536 12-40t-1tp

Expert TV technician. 27 yrs experience. Poyner's White Store. Phone 272-3511 12-49t-1tc

13. Farm for Lease

"To party with good credit: Repossessed 1966 Singer sewing machine in Walnut console. Automatic zig-zagger, blind hems, fancy stitches, etc. Total balance \$23.76 terms. Write Credit Dept., 114 19th Street, Lubbock, Texas." 12-47t-1tc

15. MISCELLANEOUS

TREAT rugs right, they'll be a delight if cleaned with Blue Lustre. Rent electric shampoer \$1. Salvo's Auto Store, 222 Main St., Muleshoe Texas. 15-5s-1tc

Will do custom listing. Call 965-2723 or 2956 or 272-3973 Lee Kimbrough. 15-4t-4tp

For Sale: Stewing hens on foot. 35¢ each. James Wedel, 1 mile West of West Camp Gro. 925-3452 or 272-3332. 15-3t-1tc

Wanted to Buy: 20 or 25 H.P. Electric Motor. Gene Caldwell 965-2663 15-3s-4tp

HOSPITAL BRIEFS

WEST PLAINS

ADMISSIONS
 Mrs. Maggie Davis, Mrs. Nellie Norwood, Mrs. Lula White, Ferdinand LeVeque, Mrs. Min-Minerva Amallo, Charles Bleier.

DISMISSALS
 Mrs. Inese Montoya, Elizabeth Hardin, Mrs. Josephine Garcey, Birdie Paul (Nursing Home), Mrs. Cecil Amallo and Mrs. Leona Ham.

WANTED TO BUY: Grain truck with up to 18 ft. bed with lift. Dennis Taylor 1032 Chatterton St. Grinnell, Iowa Phone 515-236-4672 15-2s-6tc

Notice To All Hunters: Properties owned and operated by J. T. and Jimmie Carpenter are posted and anyone caught hunting or trespassing on these properties will be prosecuted to the extent of the law. The property is located in the West Camp area. 15-4t-3tp

Announcing a Guitar Studio for Muleshoe. Please contact Stratton School of Music, 605 Connelly, Clovis, N.M. for appointment. 15-4s-6tp

GREEN MEMORIAL

ADMISSIONS
 Cecil Osborne, Mrs. Beverly Heathington, Devonna Bradley, Marvin Carpenter, Almon Whitford, Elton Gullett, Freddie Jarmanillo, Bessie Whisenant, Ketha Simmons, and Mrs. Janie Marow.

Switchboard Switch... To Male Voice?

Men are sometimes operators, too. So if a man answers, don't hang up.

That is the word this week from General Telephone Company of the Southwest and Western States Telephone as company-wide training programs were announced. The training program is scheduled to begin this month and end about April 1.

He added that male voices could become routine in the future if an experiment underway since November 1 in General Telephone Company of California is successful. According to Porter, the experiment involves employing male college students as switchboard operators in West Los Angeles. To date, the results are favorable.

CARD OF THANKS

We wish to take this opportunity to thank each of our many friends and neighbors who were so thoughtful during our recent sorrow.

The flowers, the food, the visits, the cards and the prayers were all deeply appreciated.

A special thanks also goes to the doctors and nurses at the West Plains Hospital and the Muleshoe Nursing Home for their patience and kindness in caring for our beloved father and grandfather.

The family and relatives of Charles E. Kauffman, 5s-1tp

BIBLE VERSE

"Let your light so shine before men, that they may see your good works, and glorify your Father which is in heaven."

1. Who is the author of this statement?
2. To whom was he speaking?
3. Of what famous discourse is this verse a part?
4. Where may it be found?

Answers To Bible Verse

1. Jesus, as recorded by Matthew.
2. Disciples and the multitude gathered around him.
3. The Sermon on the Mount.
4. Matthew 5:16.

SCHOOL MENUS

LAZBUDDIE SCHOOL

Jan. 30, Feb. 3

MONDAY

Pinto beans, Spanish rice, spinach, spiced apples, cornbread, milk, and fresh pears.

TUESDAY

Frito pie, green beans, scalloped potatoes, cabbage, green pepper salad, fruit cobbler and milk.

WEDNESDAY

Fried chicken creamed potatoes, gravy, tossed salad, sliced peaches and milk.

THURSDAY

Hamburgers, tomatoes, lettuce, pickles, cheese, french fries, fruit jello and milk.

FRIDAY

Fish, tartar sauce, buttered corn, beans, tossed salad, whole wheat bread, ice cream and milk.

MULESHOE SCHOOLS

Jan. 30 - Feb. 3

MONDAY

Milk, sausage and gravy, potato chips, fruit cup.

TUESDAY

Milk, sausage and gravy, potatoes, spinach, rolls and fruit cobbler.

WEDNESDAY

Milk, salmon crockets, macaroni and cheese, English peas, cabbage and pepper slaw, bread and banana pudding.

THURSDAY

Milk, pinto beans, buttered corn, chilled tomatoes, lettuce, and apple salad, corn bread and apple sauce cake.

FRIDAY

Milk, pork chopettes, creamed potatoes, green beans, lettuce, carrot and rasin salad, rolls, butter and fresh pears.

FOR SALE:
 BEAUTIFUL LANDSCAPED RESIDENTIAL LOT
 IN RESTRICTED AREA CALL 257-3721 EARTH
 R. C. (LENA) HITE

TELEVISION SCHEDULE FOR THE MULESHOE AREA

WESTERN DRUG

Prescriptions
Drugs & Supplies

Cosmetics

for all your
Veterinarian
needs
Fountain
Service

MONDAY EVENING

6:00 - News
6:15 - Weather
6:25 - Sports
6:30 - Monkeys
7:00 - Tennis
7:30 - Branded
8:00 - Road West
9:00 - Run for Life
10:00 - News
10:15 - Weather
10:25 - Sports
10:30 - Tonight
12:00 - Sign Off

MONDAY EVENING

6:30 - Iron Horse
7:30 - Rat Patrol
8:00 - Felony Squad
8:30 - Peyton Place
9:00 - Big Valley
10:00 - News - Wea.
10:30 - Movie

MONDAY EVENING

6:30 - Gilligan's Is.
7:00 - Terrific
7:30 - Lucy
8:00 - A. Griffin
8:30 - Family Affair
9:00 - Tell The Truth
9:30 - Secret
10:00 - News
10:15 - Weather
10:25 - Background
10:30 - Big Flicker
11:00 - Big Flicker

MONDAY EVENING

5:30 - Huntley-B.
6:00 - News
6:30 - Monkees
7:00 - Andy G.
7:30 - Family Affair
8:00 - Road West
9:00 - Run For
10:00 - 10:00 report
10:30 - Tonight

MONDAY EVENING

6:30 - Gilligan's Is.
6:30 - Iron Horse
7:30 - Lucy
8:00 - Andy G.
8:30 - Family Affair
9:00 - Big Valley
9:00 - News - Wea.
10:30 - Combat
11:30 - Bronco

TUESDAY EVENING

6:30 - Movie
7:30 - Invaders
8:30 - Peyton Place
10:00 - News - Wea.
10:30 - Movie

TUESDAY EVENING

6:30 - Daktari
7:30 - Red Skelton
8:30 - P. Junction
9:00 - Wrestling
10:00 - News
10:15 - Weather
10:25 - Background
10:30 - Golden Spread
10:55 - News
11:00 - Big Flicker

TUESDAY EVENING

5:30 - Huntley-B.
6:00 - News
6:30 - Girl U.N.C.L.E.
7:30 - Occasion, Wife
8:00 - Movie
10:00 - News
10:15 - Weather
10:25 - Background
10:30 - Tonight

TUESDAY EVENING

6:30 - Daktari
7:30 - Red Skelton
8:30 - P. Junction
9:00 - Rat Patrol
10:00 - News
10:15 - Weather
10:25 - Background
10:30 - Tonight

WEDNESDAY EVE.

6:00 - News
6:15 - Weather
6:25 - Sports
6:30 - Virginia
6:00 - Bob Hope
9:00 - I Spy
10:00 - News
10:15 - Weather
10:25 - Background
10:30 - Big Flicker
10:55 - News
11:00 - Big Flicker

WEDNESDAY EVE.

6:30 - Batman I
7:00 - Monroes
8:00 - Movie
10:00 - News - Wea.
10:30 - Movie

WEDNESDAY EVE.

6:30 - In Space
7:30 - Hillbillies
8:00 - G. Acres
8:30 - Gomer Pyle
9:00 - Danny Kaye
10:00 - News
10:15 - Weather
10:25 - Background
10:30 - Big Flicker
10:55 - News
11:00 - Big Flicker

WEDNESDAY EVE.

6:00 - News
6:30 - Virginia
8:00 - Bob Hope
9:00 - I Spy
10:00 - News
10:30 - Tonight

WEDNESDAY EVE.


6:30 - Lost in space
7:30 - Hillbillies
8:00 - G. Acres
8:30 - Gomer Pyle
9:00 - Bewitched
9:30 - Love on
10:30 - Wild Wild

GOOD YEAR

BATTERIES-USED
TIRES-FAST,
EFFICIENT SERVICE

Johnson-Pool Tire Co.

MULESHOE Ph. 272-4594



For Year-Long
Enjoyment

INSTALL NOW
 Three Plans
 for Hook-Up

KBFM FM Stereo Radio,
Lubbock, 89 Meg.

KSEL FM Radio,
Lubbock, 89 Meg.

**MULESHOE
 ANTENNA CO.
 Call Now**
 Phone 272-3310

**WIEDEBUSH
 &
 CHILDERS**

VEHICLES ARE 2-WAY
 RADIO EQUIPPED
 To Assure You of
 Prompt Service in

**BUTANE
 PROPANE
 MOTOR OIL
 AMALIE
 FRAM
 OIL FILTERS
 DIAL**

272-4218

Muleshoe
 Clovis Highway
 We Deliver Anywhere

Baptist Hold Conference At West Camp Church

by Evelyn Scott

A Workers Conference was held at the West Camp Baptist Church Monday evening. The Board meeting got underway at 5:30; supper at 6:30. An "Evangelism Program" was presented and Walter Bue led the song service, Scripture and prayer by Marvin Aaron and special music by Walter Bue. Bringing the Evangelism Message was Carlos McClood. Attending from Sudan were the Rev. Willie Hazel, Homer Morris, Moses Padills, Sam Qualls.

Mrs. C. B. Alexander has been confined to a hospital in Lubbock this week. Mr. and Mrs. Jim Baccus and son of Euleus have been visiting in the home of their parents, Mr. and Mrs. M. G. Engram.

Mrs. Allen Beale entered a hospital in Lubbock this week for a check-up and treatment. Mrs. Michael Metzke and Christine visited last week in the home of her parents in Levelland.

Father's Night will be observed at the next meeting of the Sudan PTA, Feb. 14 at 7:30 p.m. In the school cafeteria when a "Founder's Day" program will be presented. Mrs. Simon Hay will speak on "Strengthening Our Heritage" aided by students. Hostesses will be first grade parents.

Mrs. T. B. Adair had a visitor in her home Sunday afternoon her daughter and husband, Mr. and Mrs. Earl C. Parrott, Littlefield.

Mrs. Keith Glover entertained with a bridge club meeting when those present were, Mrs. Glenn Gatewood, Mrs. Jerry

Bridwell, Mrs. J. B. Harper, Mrs. Jacky Van Ness, and members Mrs. Audrey West, Mrs. Gerald Chisholm, Mrs. Wayne Whiteaker and Mrs. Ralph May.

Mrs. Marvyn May was confined last week to a hospital in Littlefield.

Local band students appearing in the All-Regional Band Concert given Saturday evening at the Coronado High School in Lubbock were Sharon Wilson, Linda Patterson, Judy West, Donald Gaston, Nancy Patterson and Brenda Drake.

Among those from Sudan attending the concert were Mr. and Mrs. Bob Drake, Mrs. J. T. Agee, Mr. and Mrs. Bernard

Walker of Sanderson visited last week in the homes of Mr. and Mrs. Coleman Terrell, Mr. and Mrs. Doyle Terrell and Mr. and Mrs. Joe Salem. While here they attended the Eastern Star meeting.

Rev. U. S. Sherrill of Aberrath visited in the Joe Salem home Monday afternoon on route home after visiting his daughter and family, the Weldon Hawks in Clovis.

Joe Salem was a business visitor in Tyler last Thursday. Mrs. W. H. Lyle has returned home after an extended visit in the home of her son W. H. Lyle Jr. and family in Sumpter, South Carolina. Her

grandson, Billy Lyles, student at A & M is visiting her now in between semesters.

Mr. and Mrs. W. T. Vereen were in Lovington during the weekend to visit their daughters and families, Mr. and Mrs. Bud Crouch, and Mr. and Mrs. Joe Ruggs.

Mrs. J. S. Smith visited in the home of her son, Dr. E. N. Nichols and family in Lubbock last week.

Mr. and Mrs. Ed Williams are visiting their son and family, Mr. and Mrs. Willie Williams in Yuma, Arizona.

Mr. and Mrs. J. W. Olds visited friends in Levelland Saturday afternoon.



Get More for Your Money

Shop Our Now Complete Drug & Houseware Dept. All At Money Saving Prices

WITH FAMILY DINNER SAVINGS FROM LIBBY...
ON SALE
AT PIGGLY WIGGLY.. **NOW!**

- COCKTAIL CORN** Fruit, Libby's, Fancy. 4 No. 303 Cans **88¢**
- CORN** Libby's Cream Style or Whole Kernel, Golden. 5 No. 303 Cans **88¢**
- VIENNAS** Libby's Sausage. 4 No. 1/2 Cans **88¢**
- GREEN BEANS** Libby's Cut. 4 No. 303 Cans **88¢**
- SWEET PEAS** Libby's Garden Variety. 4 No. 303 Cans **88¢**
- PEACHES** Libby's Yellow Cling, Sliced or Halves. No. 2 1/2 Can **25¢**

SPECIAL BUYS

- MOUTHWASH** 14-Oz. Bottle **69¢**
- Hair Spray** Adorn, Red or Blue, Res. \$1.50 Value, 7-Oz. Can **99¢**
- Shampoo** Head & Shoulders, Dandruff, Reg. 98¢ Retail, 10-Oz. Pkg. **69¢**
- Contac** Reg. \$1.49 Retail, 10-Oz. Pkg. **99¢**
- Hand Lotion** Chaparral, Medicated, Reg. \$1.25 Retail, 6-Oz. Btl. **99¢**

BIG MEAT VALUES

GROUND BEEF Lean, Dated for Freshness. 3-Lb. Pkg. **\$1**

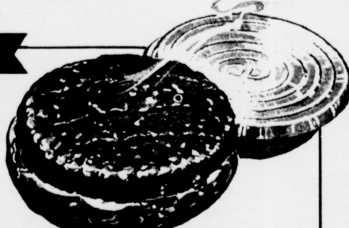
SLICED BACON Farmer 1-Lb. **59¢** 2-Lb. **\$1.17**

Fish Sticks Sea Star Brand, Easy To Fry. 4 **50¢**

Steaks Top Round, U.S.D.A. Choice, Heavy Aged Beef, Boneless. 1-Lb. **99¢**

Pork Chops Family Pack Lean Northern Pork, Full 1/4 Loin. 1-Lb. **69¢**

Short Ribs of Beef, Lean Meaty, U.S. Choice. 1-Lb. **29¢**



FILL YOUR FREEZER
U.S.D.A. Choice Heavy Aged Beef, Full Beef Loin, Approx. 50 Lb. Filets, has Porterhouse, T-Bone and Sirloin Steaks. 1-Lb. **89¢**

- Cheese** Longhorn, Kraft's, Midget Slices for Hamburger. 6-Oz. Pkg. **49¢**
- Fish Cakes** Breaded, Icelandic Brand. 12-Oz. Pkg. **39¢**
- Sliced Cheese** Kraft's American, 8-Oz. for Cheese Burgers. **45¢**
- Halibut Steaks** Tradewinds Brand, 12-Oz. Joyful Flavor. **79¢**
- FAMILY STEAK** U.S.D.A. Choice, Heavy Aged Beef, Chuck Blade Cuts. 1-Lb. **49¢**
- CUBE STEAKS** U.S.D.A. Choice, Beef, Boneless. 1-Lb. **99¢**
- LUNCHEON MEATS** Butcher Boy Brand, Bologna, Olive, Pickle, Macaroni. 4 **\$1.00**

DOUBLE WEDNESDAY
WITH A \$2.50 PURCHASE OR MORE

Store Manager's Special!
SHORTENING
Swift's Jewel 3 Lb. Can **59¢**

COFFEE
1 Lb. **69¢** 2 Lbs. **\$1.37**

- ### "FIRST OF THE MONTH BUYS!"
- Greens** Libby's, Mixed. 2 No. 303 Cans **29¢**
 - Beets** Libby's, Cut. 2 No. 303 Cans **29¢**
 - Instant Coffee** Maxwell House 10-Oz. Jar. **\$1.49**
 - Albacore Tuna** Star Kit, Water Pack, No. 1/2 Can. **45¢**
 - Pineapple Juice** Libby's. 46-Oz. Can **28¢**
 - Catsup** Libby's, Fancy. 20-Oz. Bottle **28¢**
 - Pears** Libby's, Halves. No. 303 Can **28¢**
 - Beef Stew** Libby's, Fancy. 24-Oz. Can **58¢**
 - Mellorine** All Brands. Half Gallon **39¢**
 - Tide** Heavy Duty Detergent (7¢ Off Label). Giant Box **62¢**



- ### FROZEN FOODS
- STRAWBERRIES** Adair, Sliced. 10-Oz. Pkg. **25¢**
 - Meat Pies** Sparetime Beef, Chicken, or Turkey. 4-Oz. **15¢**
 - Peas & Carrots** Libby's. 10-Oz. Pkg. **18¢**
 - Corn** Libby's, Cream Style. 10-Oz. Pkg. **18¢**
 - Black Pepper** Scilling, Ground. 4-Oz. Can. **43¢**
 - Wisk Detergent** Laundry Liquid. 43-Oz. Box. **43¢**
 - Dishwasher All** Dish Detergent. 15-Oz. Box. **83¢**
 - PEPSI-COLA** 6 Bottle Ctn. **3 for \$1**
 - Toilet Tissue** Zen, Ast. Colors. 4 Roll Pkg. **35¢**
 - Napkins** Zen, Ast. Colors. 2 80-Ct. Pkg. **29¢**
 - Deodorizer** Pleasant, Assorted Scents. 7-Oz. Can. **55¢**
 - Sugar** Holly, Best. 10 Lb. **98¢**

- ### FRESHER BY FAR!
- APPLES** Washington Red Delicious. 1-Lb. **12 1/2¢**
 - GREEN ONIONS** Garden Fresh, Large Bunch. 3 For **19¢**
 - Turnips** California Clip Top. 1-Lb. **12 1/2¢**
 - Cucumbers** Long Green Slices. 1-Lb. **22¢**
 - Tangelos** California Orlando's. 1-Lb. **18¢**

THESE PRICES GOOD Jan. 30, Feb. 1 AT YOUR PIGGLY WIGGLY IN Muleshoe WE RESERVE THE RIGHT TO LIMIT QUANTITIES.

Lowest Prices... Greatest Variety... always at...

Piggly Wiggly

