

Spring Palace

Illustrated on Pages 8 and 9.

# TEXAS LIVE STOCK JOURNAL



VOL. 11.

FORT WORTH, SATURDAY, APRIL 26, 1890.

No. 2.

James H. Campbell, President, Jerome F. Wares, Vice-President, J. H. McFarland, Sec'y and Treas., Chicago, Ill.; H. F. Parry, Manager and Cashier, National Stock Yards, Ill.; G. W. Campbell, D. L. Campbell, Managing Directors, Kansas City, Mo.

## THE JAMES H. CAMPBELL CO.,

[INCORPORATED.]

Live Stock Commission Merchants  
UNION STOCK YARDS, CHICAGO, ILLINOIS,  
NATIONAL STOCK YARDS, EAST ST. LOUIS, ILLINOIS,  
KANSAS CITY STOCK YARDS, KANSAS CITY, MISSOURI

We Solicit Your Business and Invite Correspondence.

J. H. GREER, } CHICAGO.  
F. O. MILLS, }

KANSAS CITY, } A. ADLER, }  
Manager.

## GREER, MILLS & CO.,

Live Stock Commission Merchants,  
UNION STOCK YARDS, CHICAGO, ILLINOIS,  
KANSAS CITY STOCK YARDS, KANSAS CITY, MISSOURI.

A. C. CASSIDY, } Cattle } G. W. DOERR, } W. L. CASSIDY, }  
T. F. TIMMONS, Kansas City, Mo. } Salesmen. } Cashier. } E. S. CODDINGTON, }  
A. L. KERCHLER, } Hog and Sheep Salesmen.

## CASSIDY BROS. & CO.,

Live Stock Commission Merchants and Forwarding Agents,  
NATIONAL STOCK YARDS, EAST ST. LOUIS, ILL.

## SEEDS J. C. PEPPARD, 1220 UNION AVENUE.

MILLET A SPECIALTY.  
Red, White, Alfalfa & Alsike Clovers,  
Timothy, Blue Grass, Orchard Grass, Red Top,  
Onion Sets, Tree Seeds, Cane Seed, Etc.

(One block from Union Depot)  
KANSAS CITY, MO.

A. P. NORMAN.

WYLEY T. PEARSON.

## NORMAN & PEARSON,

Commission Merchants for the Sale of Live Stock,  
STOCK YARDS, GALVESTON, TEXAS.

R. T. WHEELER.

C. JAMES.

J. S. McKINNON.

## WHEELER, JAMES & CO.,

Live Stock Commission Merchants,

UNION STOCK YARDS, ST. LOUIS, MISSOURI.

## J. T. BRENFORD,

Live Stock Commission Merchant,

STOCK LANDING, P. O. Box, 794, NEW ORLEANS, LA.

## ALBERT MONTGOMERY,

Commission Merchant for the Sale of Live Stock,

STOCK LANDING, NEW ORLEANS, LA.

Postoffice Box, 558.

No Agents or Rebates Paid.

W. D. LITTLE.

W. J. BRODERICK.

## LITTLE & BRODERICK,

LIVE STOCK COMMISSION MERCHANTS,

Office, Second Floor Exchange Building, National Stock Yards, Ill.

References—Stock Yards Bank, National Stock Yards; Beggs & Hackett, Fort Worth.

## THE LIVE STOCK MARKET OF ST. LOUIS.

## The St. Louis National Stock Yards,

Located at East St. Louis, Illinois, directly opposite the City of St. Louis.

Shippers should see that their stock is billed directly to the

## "National Stock Yards."

C. G. KNOX, Vice-President. CHAS. T. JONES, Superintendent.

S. H. WOOD.

JAMES WOOD,

R. A. WOOD,

R. NASH

## WOOD BROTHERS,

LIVE STOCK COMMISSION MERCHANTS,

UNION STOCK YARDS, CHICAGO.

[ESTABLISHED 1867.]

Special attention given to the Texas trade. Correspondence invited.

ALLEN GREGORY.

H. H. COOLEY.

L. R. MASTING.

## GREGORY, COOLEY & CO.,

Commission Dealers in Live Stock,

Rooms 58 and 60, Exchange Building, Union Stock Yards, CHICAGO, ILLINOIS.

The Pioneer House in the Texas trade. Personal attention given consignments. Business solicited.

## Chicago Live Stock Commission Company

INCORPORATED. CAPITAL STOCK, \$25,000.

Special Attention Given to the Sale of Texas Cattle and Sheep. Write us for Market Reports.  
Office 41 Exchange Building, Union Stock Yards, Chicago, Ill.

REFERENCES—Drivers' Nat. Bank, Union Stock Yards Nat. Bank, Chicago; Bank of Atlantic, Atlantic, Ia.; Bank of Roodhouse, Roodhouse, Ill.

SAM'L SCALING, St. Louis.

THOS. J. ZOOK, Kansas City, Mo.

W. L. TAMBLYN, Chicago.

## SCALING & TAMBLYN,

Live Stock Commission Merchants,

NATIONAL STOCK YARDS, CHICAGO, ILLINOIS,  
East St. Louis, Ill. KANSAS CITY STOCK YARDS, Kansas City, Mo. UNION STOCK YARDS, Chicago, Ill.

H. W. CRESSWELL, President,  
SAM LAZARUS, Vice-President,  
PAUL PHILLIPS, Treasurer,  
J. W. T. GRAY, Secretary,

ELI TITUS, General Manager.

A. P. BRAINARD, Salesman, Kansas City.

## American Live Stock Commission Co.,

KANSAS CITY STOCK YARDS,

UNION STOCK YARDS, Chicago, Ill.

NATIONAL STOCK YARDS, East St. Louis, Ill.

KANSAS CITY.

DIRECTORS—H. W. Cresswell, F. B. York, A. B. Gregory, R. M. Smith, J. H. Stephens, T. S. Bugbee, Sam Lazarus, Paul Phillips, Jot Gunter, A. Rowe, W. A. Towers.

## JOHN MUNFORD,

Commission Merchant for the Sale of Cattle, Sheep and Hogs  
STOCK LANDING, P. O. Box, 684, NEW ORLEANS, LA.

## JOHN CLAVERIE,

Commission Merchant for the Sale of Cattle, Hogs and Sheep

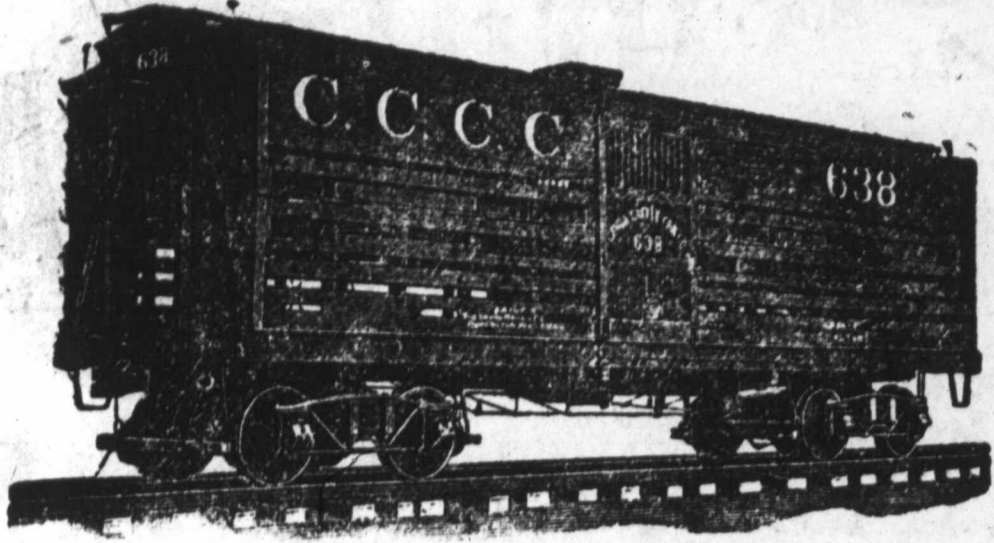
STOCK LANDING, P. O. Drawer, 222, NEW ORLEANS, LA.

CHARLES J. CANDA, President,  
A. MARCUS, Treasurer,  
F. E. CANDA, Ass't Treasurer,  
J. W. SAVIN, Secretary,  
R. N. HARRISON, Counsel,  
EDWARD A. BERN, Assistant Superintendent, 205 La Salle St., Chicago.

11 Pine St.,  
New York

W. F. ROBINSON, V.-Pres't and Gen'l Man'gr  
New York and Chicago

GEO. W. LILLEY, Superintendent,  
205 La Salle Street, Chicago



# Canda Cattle Car Company

Is prepared to furnish cars equipped with all modern appliances for the  
**Feeding and Watering of Stock in Transit.**

All cars equipped with the Chisholm Suspension Truck, guaranteeing easy riding, and with Westinghouse automatic air brakes and Janney Automatic Coupler, the latter obviating the jar caused to cattle by slack in link and pin coupling. Place orders with Railway Agents, and with

**B. R. THOMPSON, General Agt., Ft. Worth, Tex.**



**KEENAN & SONS,**  
Live Stock  
:-COMMISSION MERCHANTS:-  
Union Stock Yards,  
CHICAGO, - - - ILLINOIS.

Consign your stock direct to us; it will meet  
with  
**PROMPT ATTENTION.**

Correspondence Solicited.  
Have made the sale of Texas cattle a specialty  
for Twenty-Five Years.  
REFERENCE—The National Live Stock Bank  
of Chicago.

W. H. GODA HAS. E. HARDIN D. J. CLARK.

## GODAIR, HARDING & CO., Live Stock Commission Merchants

Room 144 Exchange Building, Union Stock Yards, CHICAGO.

Kansas City Correspondents, OFFUTT, ELMORE & COOPER. REFERENCE—National Live Stock Bank, Union Stock Yards.

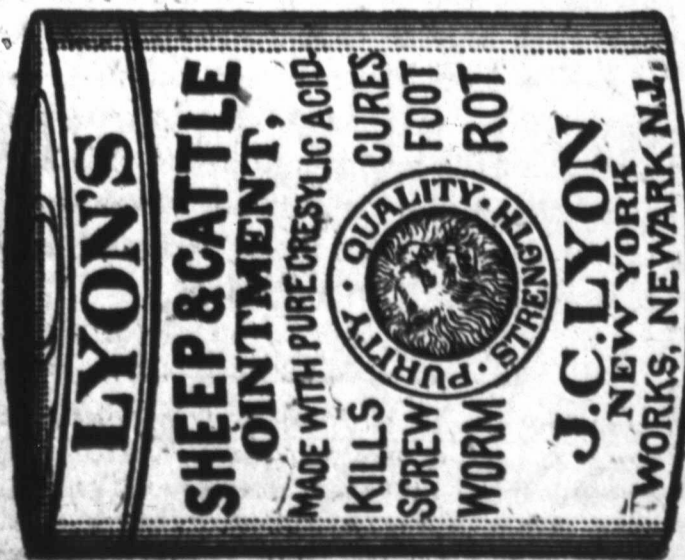
C. C. Minnis, State Agent, Temple, Texas.

## Cattle and Sheep Shippers Mallory Son & Zimmerman Co.

(Incorporated)  
Live Stock Commission Merchants,  
Union Stock Yards, Chicago, Ill.

Established 1862. Three cattle salesmen and one sheep salesman. Texas stock handled to the best advantage. Write for circulars and papers. References—National Live Stock Bank, and any other bank in Chicago; Farmers and Mechanics National Bank, Fort Worth, Texas; First National and Taylor National Bank, Taylor, Tex. H. C. Mallory, President; M. R. Zimmerman, 1st Vice-President; D. C. Mallory, 2d Vice-President; C. A. Mallory, Treasurer and Manager; F. M. Timms, Secretary. L. W. Piersol, Texas Agent, Fort Worth, Texas.

ALWAYS STANDARD:



**Death to Screw Worm.**  
**Cure for Foot Rot.**  
50 per cent. Stronger than any other  
OINTMENT.  
**Always Kills**  
**SCREW WORM.**  
Try It and You'll Use No Other.  
J. C. LYON, M.E.D., F.F.P.  
NEWARK, N. J.  
Sold by all Druggists and Grocers.

JNO. T. ALEXANDER. H. D. ROGERS. J. C. ALEXANDER.  
**THE ALEXANDER-ROGERS CO.,**  
Live Stock Commission Merchants,  
UNION STOCK YARDS, CHICAGO.

References—First National Bank, Chicago; First National Bank, Kansas City; National Live Stock Bank, Union Stock Yards, Chicago.

ROBERT STRAHORN. —Established 1861— JESSE SHERWOOD.  
**R. STRAHORN & CO.,**  
Live Stock Commission,  
Room 85, Union Stock Yards, Chicago, Illinois.

E. H. EAST, General Live Stock Agent for Texas.  
WM. EDOM, PRESIDENT, Cattle Salesman. M. S. BECKWITH, SEC. Office. C. E. WHITE, VICE-PRES. Hog Salesman.

## Western Live Stock Commission Co.

Union Stock Yards, Chicago, Ill. Kansas City Stock Yards, Kansas City, Mo. National Stock Yards, East St. Louis, Ill.

C. C. DALY, Hog and Sheep Salesman. E. A. GRIFFIN, Cattle Salesman.

## C. C. DALY & CO.,

Live Stock Commission Merchants,  
NATIONAL STOCK YARDS, - - - EAST ST. LOUIS, ILL.

C. F. REYNOLDS, A. CRILL, Cattle Salesmen. N. S. ARCHER, Hog Salesman.

## REYNOLDS & CRILL,

Live Stock Commission Salesmen,  
Room 88 Exchange Building, Union Stock Yards, CHICAGO, ILL.  
Consignments Solicited.

## C. L. SHATTUCK & CO.

Capital, \$50,000.00.

**WE DO A STRICTLY COMMISSION BUSINESS.**

The closest attention will be given your stock when consigned to us. We secure the best weights possible, as well as sell for full market values. JOSEPH COLLINS, Agent.

### CHICAGO MARKET LETTER.

U. S. YARDS, CHICAGO, ILLS., }  
April 21, 1890.

Regular Correspondence Texas Live Stock Journal.

The American Live Stock Commission Co. sold for the Espuela Cattle Co., 21 fed steers, 1144 lbs, at \$3.35; 27 do, 916 lbs, \$2.90; 25 do, 941 lbs, \$2.90; 24 do, 921 lbs, \$2.90; 21 do, 950 lbs, \$2.75; 24 cows, 915 lbs, \$2.60; 24 spayed heifers, 706 lbs, \$2.60.

The Evans-Snyder-Buel Co. sold for G. W. Sanders, 174 grass steers, 917 lbs, \$3.05; 14 tailings, 858 lbs, \$2.75; for N. Morris, 386 fed sheep, 98 lbs, at \$5.12½.

Godair, Harding & Co. sold for W. H. Godair, 898 sheep, 90 lbs, \$5.05; for Dudley, 213 Mexicans, 81 lbs, \$4.75.

Greer, Mills & Co. sold for L. J. Barry, 98 grass steers, 978 lbs, at \$3.

Reynolds & Crill sold for Crill & Moore, 154 1337-lb corn-fed Texans at \$4.15.

Sheep are coming forward much more freely than a year ago. The wonderful demand is not weakening any, but prices have lately gone down a few points on the strength of the heavy receipts.

Present prices: Natives, \$4.50@6; corn-fed Westerns, \$5@5.80; Texas shorn, \$3.60@4.10; woolled, \$4.50@5.12½; lambs, \$5@6.75.

The hog market holds up pretty well, but there are those who think it will "take a tumble" next month and in June. As this idea is being somewhat discounted by producers who are crowd-

ing their young stock forward rapidly, it may happen that the May and June runs will not be as large as expected, especially as it is the opinion of many that there will be a favorable reaction in August and September.

The live cattle exporters who buy in Chicago broke all previous records last week by taking 733 car-loads, or 13,500 head. The next largest number for one week was 534 cars, shipped the first week in March.

The cause of the rush, of course, was the arrival of the delayed boats in a lump, but the general export demand is better than ever known before at this or any other season of the year.

If our live stock export business can grow so wonderfully with the obnoxious embargo of compulsory slaughter within ten days hanging over it, who can estimate to what dimensions it would have expanded by this time if our cattle were permitted to freely go to the interior of Great Britain?

A. C. HALLIWELL.

### ST. LOUIS MARKET LETTER.

EAST ST. LOUIS, ILL., }  
April 24, 1890.

Regular Correspondence Texas Live Stock Journal.

There is but slight change to note in prices save that they are advancing a little. The supply of Texas cattle was fair for the week now ended and satisfactory figures were obtained, the range paid being from \$2.75@3.95 per 100 lbs with the bulk of sales going at \$3.40@

3.50. Some heavy grass Texas steers were shown and brought from \$3.10@3.35 per 100 lbs. The run of all kinds of stock comparatively light and the different classes of buyers must depend in a great measure on Texas cattle for supplies.

But very few Texas sheep were offered. The demand for fair to fancy muttens was large throughout at strong prices and shippers were disappointed in finding so few on sale. True, prices are not so high as a week or so ago, still sellers have no cause for complaint. Sheared sheep are now coming in quite freely and claim most attention. In fact buyers give these the preference, and it would be well to ship nothing else but sheared sheep. Shorn Texas sheep of 70 to 80 lbs are quoted at \$3.50@4.50 per 100 pounds. Woolled about 50 to 60 cents per 100 lbs more. Texas spring lambs, \$2@4 per head.

Texas horses are just starting in, and the ever reliable Samuel A. White, he of Texas horse renown, informs me that it is too early in the season to say much. Texas horsemen will readily understand this.

A daily price current of this city has the following: There have been very fair offerings of new wool, considering the earliness of the season—mostly fat sheep's stock. These wools have sold on a basis of 24c for choice medium, and have been taken almost entirely by Western mills who are buying to bridge over until receipts are more liberal. These sales are not regarded as establishing opening prices, which can only be regulated by free offerings of regularly sheared wool. It is thought that 23@23½c for choice Northern Texas medium, or similar quality of Missouri, will be about the range of values for some time to come, though the proposed increase in the tariff may possibly cause some speculation and establish a higher range. The prospects are that shipments to this market will be unusually large this season, as the net prices realized here last year were larger than those obtained in any other market. Shippers to this market can depend on quicker returns, lighter expenses and

better net prices than in any other market. Prices quoted from here are not based on the sale of a few fancy grades, but are destined to fairly cover the average run of wool. Fancy wools bring as fancy prices here as anywhere else. St. Louis is intimately connected with all the important mills in the country through local and visiting buyers, and fluctuations in prices and the changing demand for the various grades are noted here correctly every day. In all other markets a weekly report is about the only guide, outside of private advices.

RATTLER.

TELEGRAPHIC MARKETS.

Latest Reports by Wire From the Market Centers.

CHICAGO.

Special to Texas Live Stock Journal.

UNION STOCK YARDS, ILL., April 25.—Representative sales are as follow:

C. L. Shattuck Co. sold 52 corn-fed steers, 1064 lbs, \$3.25; 63 do, 1069 lbs, \$3.10; 34 do, 937 lbs, \$3; 49 grassers, 932 lbs, \$2.90; 21 cows, 822 lbs, \$2.45.

The James H. Campbell Co. sold 55 grassers, 932 lbs, \$2.75.

Gregory, Cooley & Co. sold for J. T. Thornton, 202 grassers, 913 lbs, \$3; J. W. Carson, 72 steers, 894 lbs, \$3.50; A. G. Warren, 105 fed steers, 1075 lbs, \$4.15; 7 steers, 872 lbs, \$3.50.

R. Strahorn & Co. sold for Cotton Oil Co., 317 steers, 970 lbs, \$3.60.

Godair, Harding & Co. sold for W. C. Reed, 13 fed steers, 981 lbs, \$3.65; F. J. Reed, 16 steers, 954 lbs, \$3.60; C. C. Minins, 54 steers, 1109 lbs, \$3.85; 31 steers, 956 lbs, \$3.55; S. P. Price, 1302 shorn sheep, 83 lbs, \$4.80; W. P. Hendricks, 16 steers, 935 lbs, \$3.60.

Scaling & Tamblin sold 458 shorn sheep, 60 lbs, \$3.85; 36 fine 1239-lb grassers, \$3.75; 42 fed steers, 1037 lbs, \$3.25; 24 grassers, 955 lbs, \$3; 234 grassers, 870 lbs, \$2.80; 115 grassers, — lbs, \$2.65; 24 cows, 808 lbs, \$2.40; 18 cows, 748 lbs, \$2.20.

R. Strahorn & Co. sold for A. J. Vick, Houston, 190 steers, 982 lbs, \$3.37½; 33 stags, 1242 lbs, \$2.62½.

Cattle firm, receipts light. Sheep steady.

KANSAS CITY.

Special to Texas Live Stock Journal.

KANSAS CITY, April 25.—Receipts of cattle 29,341 head for the week, comparatively few of them Texans or Indians. Native beef steers steady for choice prime, weak and 10c lower for medium to common. No special change in good corn-fed Texans and Indians; 900 to 1130-lb corn-fed steers sold for \$3.25@3.85; if choice would bring a little more and if common less. Following are representative sales: 21 corn-fed Indians, 951 lbs, \$3.50; 63 do, 1249 lbs, \$4; 9 do, 805 lbs, \$3.40; 9 do, 704 lbs, \$3.10.

The Fish & Keck Co. sold for Hall & Sherburn, 24 corn-fed Indian steers, 1130 lbs, \$3.85; Finch & Lord, 18 do Colorado steers, 1239 lbs, \$3.52½; Wm. Walker, 24 do Indian steers, 880 lbs, \$3.25; J. T. Hill, 28 do, 843 lbs, \$3.20; Millett Bros., 66 do Texas steers, 1147 lbs, \$3.40; S. J. Garvin, 256 do Indian steers, 1036

lbs, \$3.65; Jack Allen, 44 do, 955 lbs, \$3.35.

The American Live Stock Commission Co. sold for Wm. McClure, Paul's Valley, I. T., 117 steers, 959 lbs, \$3.30; 27 do, 948 lbs, \$2.75.

ST. LOUIS.

ST. LOUIS, April 25.—Nothing in today worth speaking of. Demand large for Texans. Grass steers, \$2.50@3.25; fed, \$3@3.90; cows, \$2@2.40; bulls, \$2@2.25.

Sheep steady.

NEW ORLEANS.

NEW ORLEANS, April 25.—Beeves, cows, calves and yearlings in light supply. Quotations firm. Hogs in fair supply. Sheep dull.

QUOTATIONS:—Choice c.-f. beeves, 3@3½c; choice grass beeves, per lb gross, 3@3½c; common to fair beeves, 2@2¼c; good fat cows, 2¼@3c; common to fair, \$9@14; calves, \$5@9; yearlings, \$8@12; fair to good corn-fed hogs, per lb gross, 4@4¼c; fair to good sheep, \$2.50@3.25 each.

GALVESTON.

[Reported by Norman & Pearson, Live Stock Commission Merchants].

BEEVES AND COWS—Choice per lb. gross, 2½@2¾c; common, ½ lb gross, 1½@2c; two-year-olds, choice, per head, \$8@10.00; two-year-olds, common, per head, \$6@7.00; yearlings, choice, per head, \$6@7.00; yearlings, common, per head, \$5@5.50; calves, choice, per lb, gross, 2½@2¾c; springers, ½ lb gross 4@4½ cents.

SHEEP—Choice, per lb, gross, 4@4½c. HOGS—Choice corn-fed, per lb, gross, 4@4½c.

Market for choice beeves and cows fairly active, with prices steady at quotations. Calves and yearlings in full supply and market steady. Sheep and hogs dull and sales slow.

SAN ANTONIO.

The heavy rains interfered seriously with the trade this week, and the pens are full of stock, but there is not much of it really saleable. The complaint of trashy stock continues loud and long.

CATTLE.—Steers, shippers, \$15@20, or \$2@2.25 per 100 lbs; and butchers, \$14@16; cows, fat, from \$12@15; light at 10@12; yearlings, \$4@5.50; calves, \$5@6.50.

SHEEP.—Muttons, \$1.50@2.25; goats, average stock, \$1@1.50 per head.

HOGS.—Natives, \$3@4.

News from Coleman County.

SANTA ANNA, COLMAN CO., TEX. }  
April 23, 1890 }

Editor Texas Live Stock Journal.  
We have just had a splendid rain. Grass is good and stock of all kinds doing well. Yearlings are selling for about 50 cents per head more than at this time last year—\$7 now against \$6.50 a year ago.

Some dry cows have been sold here recently for \$7 per head. I can remember when steer yearlings brought just one-half the price of a dry cow. I believe the day is coming when she cattle will have a market value. I think it will pay to buy cows at \$7, and sell steer yearlings at the same price.

I am very truly yours,

W. T. LAUGHLIN.



M. B. WRIGHT & CO

No. 600 Main Street,

The oldest jewelry house in Kansas City, solicit the patronage of Stockmen and their ladies, and will specially attend to mail orders. We keep a very large quantity of diamonds, watches and jewelry in stock; all guaranteed of the best quality and latest designs. Mention the Stock Journal.

JOHN D. DOBYNS & FIELDS,

Successors to Stephens & Dobyne,  
LIVE STOCK

Commission Merchants

Rooms 59 and 60 Exchange Building,

Kansas City, Mo., and Chicago, Illinois.

REFERENCES—American National Bank, Kansas City; Farmers' Bank of Lee's Summit, Lee's Summit, Mo.

We make a specialty of the Texas and Western cattle and ranch trade. Are prepared to make contracts for the delivery of Texas cattle for 1890. Consignments and correspondence solicited.

A. S. Nicholson,  
Cattle Dealer,

Can fill orders for one, two and three-year-old steers out of the best herds in North Texas. Parties in want of

STEERS

will do well to correspond with or call on me.

610 Main Street,

FORT WORTH, - - - TEXAS.

Chicago Wool Market.

CHICAGO, April 22, 1890.

Editor Texas Live Stock Journal:

We have been having lately a very active demand for wool and calling for all grades. This demand, and the not uncommon request of manufacturers to have the wools brought forward promptly to the mill, indorses the general understanding that most manufacturers are holding very little wool. They have been led to buy wool only as needed, owing to the reduced and uncertain demand for woollen goods. There is now a very light supply of desirable wools on our market and values are strong. As it will be from one to two months before much new wool can be received here from the wool sections of this latitude, the earlier receipts of Texas wools are likely to meet a good demand and at good prices. Truly yours,

W. A. ALLEN & Co.

Attention is invited to our card on page 8. All correspondence is promptly attended to. EVANS-SNIDER-BUEL Co., live stock commission merchants, Chicago, Kansas City, and National Stock Yards, Ill.

Fish & Keck Co.  
(INCORPORATED)

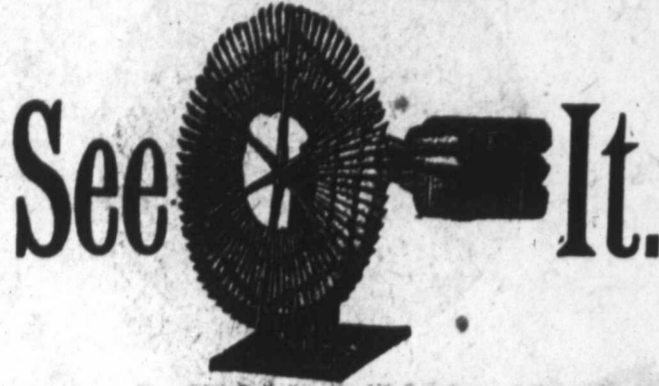
LIVE STOCK COMMISSION MERCHANTS

KANSAS CITY STOCK YARDS

EXCLUSIVELY SELECTED

U. S. Solid Wheel  
Halladay Stand'rd  
EUREKA **Wind Mills**

THE U. S. SOLID WHEEL.



It is the best and most successful  
pumping Wind Mill ever made.

LONG STROKE,

SOLID and  
DURABLE.

HORSE POWERS, tread or sweep.

PUMPING JACKS, best in market.

Feed' Cutters, Pear Cutters,

Iron Pipe, Well Casing, Engines, Farm  
Pumps, Ranch Pumps, Hose, Belt-  
ing, Brass Goods, Tanks, Well  
Drilling Machines, Grind-  
ing Machines.

If you want any of the above, or if you want  
farm or ranch fitted with a water outfit, get our  
catalogue. It will cost you but little and may  
pay you well.

**The Panhandle  
Machinery & Improvement Co.**

Corner Threemorton and First Sts.,

FORT WORTH, TEXAS.

Branch House, Colorado, Texas.

Active agents wanted in every county in the  
state.

#### ROUND-UP.

Colorado Clipper:—D. H. & J. W. Snyder brought in forty head of fine Percheron mares from Illinois, this week and have sent them to the Rendrebrook ranch.

The Ballinger Leader says that Ballinger is at present one of the best shipping points in the state, and the Santa Fe is taxed to supply the demand as fast as wanted.

The following lots of cattle were shipped to the Territory from Colorado City last week: A. P. Bush, 35 cars; Winfield Scott, 42 cars; Tutt-Harness Cattle company, 56 cars; Sawyer, McKoy & Rumery, 27 cars.

Arizona Stockman:—Another drive of about 1000 head of cattle from the Sulphur Valley range of the Chiricahua Cattle company passed through here Sunday en route to Eagle and Bonita creeks. Jim Pursley in charge.

No amount of pedigree will be of any special benefit to breeding stock unaccompanied with vigor and vitality; these latter show a power to transmit their qualities to their offspring—items of more importance than pedigree.

An exchange says that Nevada cattlemen are troubled by the cruel trait of the magpie which leads it to pick out the eyes of cattle. The spectacle of living animals with their eyes picked out is said to be a common occurrence.

Field and Farm:—The outlook for the cattle business is very encouraging. The Chicago and Kansas City houses are sending out men to make contracts for deliveries months ahead and paying prices that are somewhere near respectable.

Arizona Stockmen:—Hurst, Black, Kiehne & Wiley have bought from Isaac N. Town of the Santa Rita Land and Cattle company, 2500 head of two-year-old steers and up, to go to Kansas. The first shipment will be made from Calabasas to-day.

Childress Index:—The farmers of the Childress country should pay a great

deal of attention to the raising of hogs. There is always a brisk demand for good hogs and they bring good prices. The Panhandle will lay it over Iowa in raising hogs.

Santa Fe New Mexican:—The Sierra Land and Cattle company is rounding up several train-loads of three-year-old steers, which will be shipped to their pastures near Ellenwood, Kansas, as soon as the cars can be obtained to transport them.

San Angelo Enterprise:—During the fifteen days ending April 15, 1890, there were twenty train-loads, or 280 cars of live stock shipped from San Angelo over the G. C. & S. F. railway. Nineteen cars of freight shipments per day shows up pretty well for a frontier town like San Angelo.

Las Vegas Optic:—Great activity in both sheep and cattle markets is being demonstrated. It begins to remind one of the good old times of six years ago, when every man with 1000 head of stock was a millionaire in fact, or one in incipency. May we soon witness those times again.

Arizona Stockman:—Joe Johnson received instructions this week from Mr. Black to purchase 2000 more feeding steers, twos and up, to be shipped from here by April 20th. The colonel went to the Gila Tuesday in quest of cattle. Stockmen having steers to sell can address him at Wilcox.

El Paso Herald:—M. Smith, representing the live stock transportation in the interest of Nelson Morris & Co., beef packers and shippers of Chicago, was in the city yesterday on his way to the Pacific slope on business for his company. He states that his house is shipping large numbers of cattle from Texas and have at present 50,000 head of cattle fattening in some of the western counties of Texas. Killing and packing begin in May.

A bloody battle of vicious stock took place in the northeastern part of Bartholomew county, Indiana, lately. A heifer with a yearling calf was set upon by thirty hogs, and both were devoured. A drove of cattle in another pasture becoming infuriated at the smell of the slain cow and calf, broke the fence down, charged the hogs in their bloody work, and gored them so viciously that eighteen were killed and ten wounded. The battle field presented a sickening appearance.

The Colorado Clipper thinks that the closing of the Indian Territory to cattlemen will have a good effect on Texas cattle business and says that it will force breeders to raise fewer cattle and better ones, and they will make as much money or more in the long run. Most of the cattlemen in this section see this now, and are preparing to market large numbers this year and cut down their herds. Fine bulls will be in demand hereafter.

Drovers' Telegram:—Notwithstanding the many reports that "cattle and hogs are very scarce," the markets generally are having heavier runs than ever before. Chicago's receipts are far ahead of last year's, and Kansas City has gained more than 100,000 cattle over same time last year. With such unprecedented runs of stock it begins to look like the prognosticators of decreased receipts have been talking merely for the satisfaction of appearing in a newspaper interview.

Colorado Clipper:—Mr. Mitchell, manager of the Square and Compass ranch, was in town yesterday, and says his section was visited by the heaviest rain last Monday and Tuesday he has ever seen. It amounted almost to a flood, and all the surface waterholes were filled and the streams converted into torrents. Double Mountain was up so high that the mail hack was delayed three days. Mr. Mitchell says cattle are in perfect condition, and that now the grass is growing like wildfire. Altogether the outlook is very encouraging.

Stockman and Farmer:—There has been a good deal of wholesale stealing

of stock in LaSalle, Frio and Encinal counties since the death of Charley McKinney, but in matters of running down thieves and recovering stolen stock, Capt. J. S. McNeel of the ranger service seems to be developing into a worthy successor to the lamented McKinney. Captain McNeel has lately returned from Mississippi, where he traced up and recovered several cars of stock that had been stolen from the above named counties and shipped. The principal thief and several of his assistants are under arrest. Let the good work go on.

New York Tribune:—Buying cows instead of raising them means loss. A very successful all-the-year milkman says this is the rock on which many dairymen wreck a goodly portion of their profits. He is exceptionally shrewd at buying and selling, but he often gets bit, and has resorted to various expedients to buy cows that the owners didn't wish to sell, paying fancy prices in preference to buying such as were offered at a less price. This worked well until his friends got on to the scheme, and sold the ones they wished to get rid of by seeming anxious to sell those they desired to keep. As a rule everybody sells the poorest cows, and the man who depends entirely on buying must expect to purchase at least fifty per cent. of inferior ones.

Omaha Stockman:—From all over the state come reports to the effect that cattle are becoming scarce to what they were a year ago. It is claimed, however, that the tendency with farmers, feeders and shippers is to always underestimate the supply and that too much confidence ought not be placed in the reports originating from such a source. Be this as it may, one thing is certain, the country is rapidly gaining confidence in the cattle business, and confidence with the country always leads to the holding of stock. This of itself will go a great ways towards improving the markets, even if it should be proven in the end that there was no real shortage.

Cheyenne Stock Journal:—Utah, according to the local press, is out of fat cattle and fat sheep. This is a bad showing for a territory where irrigation is so extensively carried on and where hay ought to be abundant. Shipping beef cattle from Nebraska to Utah is good enough for Nebraska, but bad for Utah. And there is no excuse for it because Utah hay will fatten cattle in that climate as well as corn will in Nebraska. With thousands of acres of irrigable lands that will produce an average of five tons of alfalfa per acre—enough to fatten two steers—beef should be abundant all the year round and of the juiciest quality. Mend your ways, brethren.

Colorado Clipper:—Major W. V. Johnson returned from Austin last Saturday, and informs us that on the trip he closed a lease from the state of 150,000 acres of unorganized county school lands for ten years at a rental of two cents per acre per year. These lands are in the counties of Gaines and Dawson, and comprise some of the finest lands in the Panhandle. Major Johnson intends to inclose the land at once and provide for a permanent water supply by boring wells and building large tanks, and will then be ready to lease pasturage in large bodies, or take steers on season contracts. With the closing of the Indian Territory to the cattlemen there will be a great demand for pastures, and it looks as though Major Johnson has a good-sized bonanza.

#### FOR DYSPEPSIA

Use Brown's Iron Bitters.

Physicians recommend it.

All dealers keep it. \$1.00 per bottle. Genuine has trade-mark and crossed red lines on wrapper.

Electric Belt Free.

To introduce it and obtain agents, the undersigned firm will give away a few of their \$5 German Electric Belts, invented by Prof. Vander Weyde, Pres. of the New York Electrical Society (U. S. Pat. 257,647), a positive cure for Nervous Debility, Rheumatism, Loss of Power, etc. Address Electric Agency, P. O. Box 178, Brooklyn, N. Y. Write to them to-day.

UNPRECEDENTED ATTRACTION  
OVER A MILLION DISTRIBUTED.

**L.S.L.**

Louisiana State Lottery Comp'y

Incorporated by the Legislature, for Educational and Charitable purposes, and its franchise made a part of the present State Constitution, in 1879, by an overwhelming popular vote.

Its MAMMOTH DRAWINGS take place Semi-Annually, (June and December), and its GRAND SINGLE NUMBER DRAWINGS take place in each of the other ten months of the year, and are all drawn in public, at the Academy of Music, New Orleans, La.

FAMED FOR TWENTY YEARS,  
For Integrity of its Drawings, and the Prompt Payment of Prizes,

Attested as follows:

"We do hereby certify that we supervise the arrangements for all the Monthly and Semi-Annual Drawings of the Louisiana State Lottery Company, and in person manage and control the Drawings themselves, and that the same are conducted with honesty, fairness, and in good faith toward all parties, and we authorize the Company to use this certificate, with facsimiles of our signatures attached, in its advertisements."

*G. T. Dauphin*  
*J. T. Early*

COMMISSIONERS.

We, the undersigned Banks and Bankers, will pay all Prizes drawn in the Louisiana State Lotteries which may be presented at our counters. R. M. WALMSLEY, Pres. Louisiana Nat. Bank. PIERRE LANAUX, Pres. State National Bank. A. BALDWIN, Pres. New Orleans Nat'l Bank. CARL KOHN, President Union National Bank.

GRAND MONTHLY DRAWING,  
At the Academy of Music, New Orleans,  
Tuesday, May 13, 1890.

Capital Prize, \$300,000.

100,000 Tickets at Twenty Dollars each.  
Halves \$10; Quarters \$5; Tenths \$2;  
Twentieths \$1.

#### LIST OF PRIZES.

1 PRIZE OF \$300,000 is.....	\$300,000
1 PRIZE OF 100,000 is.....	100,000
1 PRIZE OF 50,000 is.....	50,000
1 PRIZE OF 25,000 is.....	25,000
2 PRIZES OF 10,000 are.....	20,000
5 PRIZES OF 5,000 are.....	25,000
25 PRIZES OF 1,000 are.....	25,000
100 PRIZES OF 500 are.....	50,000
200 PRIZES OF 300 are.....	60,000
500 PRIZES OF 200 are.....	100,000
APPROXIMATION PRIZES.	
100 Prizes of \$500 are.....	50,000
100 do 300 are.....	30,000
100 do 200 are.....	20,000
TERMINAL PRIZES.	
999 do 100 are.....	99,900
999 do 100 are.....	99,900
3134 Prizes, amounting to.....	\$1,054,800

NOTE.—Tickets drawing Capital Prizes are not entitled to terminal Prizes.

#### AGENTS WANTED.

FOR CLUB RATES, or any further information desired, write legibly to the undersigned, clearly stating your residence, with State, County, Street and Number. More rapid return mail delivery will be assured by your inclosing an envelope bearing your full address.

#### IMPORTANT.

Address M. A. DAUPHIN,  
New Orleans, La.

or M. A. DAUPHIN,  
Washington, D. C.  
By ordinary letter, containing MONEY ORDER issued by all Express Companies, New York Exchange, Draft or Postal note.

Address Registered Letters Containing  
Currency to

NEW ORLEANS NATIONAL BANK,  
New Orleans, La.

REMEMBER, that the payment of Prizes is GUARANTEED BY FOUR NATIONAL BANKS of New Orleans, and the Tickets are signed by the President of an Institution whose chartered rights are recognized in the highest courts; therefore, beware of all imitations or anonymous schemes.

ONE DOLLAR is the price of the smallest part or fraction of a Ticket ISSUED BY US in any Drawing. Anything in our name offered for less than a dollar is a swindle.

**W. HUGHES,**  
Real Estate Agent,

Tenth Street Station,

OAK CLIFF, - - DALLAS, TEXAS.

P. address, 723 Main Street

**E. S. BROOKS & CO.,**  
**WOOL**

Commission Merchants,  
100 and 102 N. Main Street, Corner of  
Chestnut,  
ST. LOUIS, MISSOURI.

We solicit consignments of Texas and South-western wools, and will make proper advances on all wools consigned to us. Correspondence promptly attended to.

W. A. ALLEN. M. EVANS.  
Established 1854.

**W. A. ALLEN & CO.,**  
142, 144 & 146 Kinzie St., Cor. La Salle Ave.,  
CHICAGO, ILLINOIS,

**WOOL**  
Commission Merchants.

Liberal advances made on consignments. Full advices of market furnished on request. Prompt and faithful attention to the interests of our consignors, is our rule.

**W. F. WARNER & CO.,**  
**WOOL**

Commission Merchants:-  
No. 308 North Main St.,  
ST. LOUIS, MISSOURI.

Cash advances made on consignments. Prompt advices of market furnished on request. Correspondence solicited.

**WOOL!**  
**WESTERN WOOL COMMISSION CO.**  
ST. LOUIS, MO.

Consignments of Wool Solicited.  
Cash returns made within six days after receipt of wool. Liberal Advances made on Consignments.  
References: Dun's and Bradstreet's Agencies and Local Banks.  
Send for Circular and Price Current.

**MOHAIR!**  
**Angora Goat Skins!**

Consignments solicited. Correct and reliable market reports and quotations given to correspondents. Quick sales. Prompt cash returns. Thorough personal attention to each shipment. Careful assortment. Write for price list and shipping tags. J. K. CILLEY & CO., Commission Merchants, 76 Gold St. New York.

**THUNDER**  
—AND—  
**LIGHTNING**  
**Hay Presses,**

—MADE BY—  
**K. C. HAY PRESS CO.**  
KANSAS CITY, MO.  
Names of our Full-Circle Hay Presses.

TRY THE TEXAS LIVE STOCK JOURNAL if you have anything to advertise.

**THE CLIP.**

On April 12th a bunch of lambs sold in St. Louis at \$7 per cwt.

San Angelo enterprise:—S. S. Sterrett sold 1400 yearling sheep to Hinde Bros. & Campbell at \$1.75.

Ballinger Leader:—Thirteen car-loads of sheep passed through the city last Sunday evening for market.

Colorado Clipper:—Harry Landers says his flock is almost done lambing, and that he will save more than 80 per cent. of lambs.

Colorado Clipper:—J. B. Lucas sold eight double-deck car-loads of sheep to Robertson & Simpson at an average price of \$2.90 per head.

Good sheep, well handled, are profitable. It does not pay to keep poor sheep. Any kind of sheep poorly handled are usually kept at a loss.

The far West seldom run their sheep until late in the winter or early spring. They are fairly rolling in luxury now, getting such good prices for sheep.

San Angelo Standard:—Ben Cusenbary bought 700 fat wethers with the wool on from James Beavit of Dolan Springs, Devil's river, at \$2.90 per head.

Colorado Clipper:—The sheepmen in this section will begin shearing now as soon as the weather settles, and within two weeks the town will be full of wool wagons.

Bosque Citizen:—That picnic and public shearing at Walnut on the 2d day of May will be an event in the history of Bosque county. What a crowd! What a dinner! What sheep! What shearing!

Field and Farm:—Wool will not be so clean of sand this year as it was last. High winds will fill the fine fleeces. The coarse and long wools will not load so bad. It's the oil that catches the grit.

Bosque Citizen:—Smith Parr reports 95 per cent. of lambs saved. Frank Logan and Frank Ide a little behind him. Such lambing will soon create a demand for more range. Who else can make such a report?

Field and Farm:—Ten years ago the sheep owners of the state were all financially distressed. To-day they are financially easy. Sheep are worth twice what they were then and there are three times as many of them.

The president and secretary of the Wool Growers' National association have issued a circular urging sheepmen to urge their representatives in congress to pass the McKinley bill in the interests of wool growers and other agricultural interests.

Bosque Citizen:—The lambing season is about over, and flockmasters are very well satisfied. There has not been a heavy crop of lambs, but what the sheepmen have are fat and looking well, and most of the breeders have saved a good per cent. of the lambs that come.

Field and Farm:—Several bunches of sheep that had been fed in Colorado the past winter have come into the market lately and have sold at from \$4.50 to \$5. These sheep had doubled in their value and increased their weight from ten to fifteen pounds each since they had been put to feeding.

Santa Fe New Mexican:—The best sale of sheep that has yet been made in Dona Ana county occurred last week, when C. Cox sold 1200 head of lambs and muttons for \$2.75 a head all round, for shipment to Omaha. The sheep were of high grade and in fat, fine condition.

A requisite that should not be overlooked in the handling of sheep on a mutton basis is that the breeding ewes are not allowed to get poor at any season. The early lambs are weaned early or taken from the sheep for market purposes, which insures a fat ewe in the fall and following winter.

Cisco Round-Up:—J. W. Cheek, a prominent sheepman of this section,

made our office a pleasant call Saturday evening. He reports sheep in fine condition, with a fair crop of lambs and a good steady market for wool. With no declines in markets sheepmen will realize a good profit off the products of their flocks.

Colman's Rural World:—Practice shows that grain rations fed to mutton sheep through the summer pays a good profit. The farm which carries a good barn of sheep should be one where a large lot of rutabaga turnips can be grown, cultivated by machinery, and having storing facilities suitable for convenient handling and feeding.

The chief wool market of Northern China is Tientsin. The wool produced in the neighborhood of Shanghai is of fine quality and some of it is exported. The exports of wool from Shanghai in 1888 were to Great Britain, 4230 piculs and 19,170 piculs camel's hair; to America, 38,864 piculs wool and 2666 piculs camel's hair, besides smaller quantities to Hong Kong, Japan and Europe.

San Angelo Enterprise:—N. T. Wilson, who ranches in Kimble and Crockett counties, was in the city Wednesday. He recently purchased 7000 head of sheep from Mrs. King of the Santa Gertrudes ranch in South Texas, at \$1.20 per head, after shearing. He will move them to Crockett county. He is now preparing to drive 1500 cattle from the Austin and Northern Land and Cattle company's ranch in Coke county to Vernon, Texas, and from there ship to the other ranch near Greeley, Colo.

Colman's Rural World:—Our home market for mutton is capable of great expansion. The profits from a band of mutton sheep are twofold. The same flock rightly handled will give two yearly incomes, besides the minor consideration of the wool product. With proper accommodations for housing, and due consideration of kind and quality of food, requisites which the understanding flockmaster will see are provided, the yearning of the lambs may be independent of the seasons, and coming along early in winter, they will be ready for market at a time when such delicacies are appreciated and command a price accordingly.

Albuquerque Democrat:—The wool crop of New Mexico will be greater this year than it has been for several years past. It will also be of better quality. Wm. McIntosh will this year clip 150,000 pounds, and it is claimed that his product is of much better quality than it was a year ago when he sold at 20 1/2 c per pound. His sale of wethers at \$2.90 per head, shorn of their coat, which will bring him \$1.50 for each fleece, will average the successful sheep raiser \$4.40 per head. He sold 5000 head at this ratio. So the total income of this sheep baron for the year 1890 will reach the snug little sum of \$50,000.

We clip the following from the Sheep Breeder. The parties agree to make a deposit of \$100 as a forfeit against a like sum, provided he shears 34 pounds. The gentlemen live in Kansas: "We have a two-year-old ram we will ship to any party, allowing them to shear or have it shorn, we guaranteeing said ram to shear 34 pounds or better, 365 day's growth, the fleece containing nothing but what nature gave it. The ram's first fleece was 24 1/4 pounds, shorn May 25, 1889. His sire (210) sheared 22 pounds in 1887, 36 1/2 pounds in 1888, and 46 pounds in 1889. His grandsire, Baby Lord, sheared 37 1/2 pounds in 1887, 44 1/2 in 1888, and 52 pounds in 1889. We will also guarantee said ram to shear as much the third fleece as the second (with no mishap), with same care, feed and climate.

National Stockman:—It is not generally supposed that the clip of wool this spring will show a very great increase in volume over that of a year ago, notwithstanding the increased number of sheep reported. It is estimated in many quarters, though, that a year later a good deal more home-grown wool will be placed on the market. Nobody seems to want to sell sheep, and there is an

unquestionable tendency to enlarge flock possessions. As to what prices the new clip will command there is much room for conjecture, but not much of positive fact on which to base calculations. The tone of trade and outlook for the season, though, are rather more cheerful than a few weeks ago. Facts as far as available show but little wool either in the country or in the seaboard markets, while imports have lately fallen off—all of which is good as far as it goes.

**WELLS, RICHARDSON & CO'S**  
**IMPROVED**

**Butter**  
**Color.**  
EXCELS IN STRENGTH  
PURITY  
BRIGHTNESS

Always gives a bright natural color, never turns rancid. Will not color the Buttermilk. Used by thousands of the best Creameries and Dairies. Do not allow your dealer to convince you that some other kind is just as good. Tell him the BEST is what you want, and you must have Wells, Richardson & Co's IMPROVED BUTTER COLOR. For sale everywhere. Manufactory, Burlington, Vt.

**BABY PORTRAITS.**

A Portfolio of beautiful baby pictures from life, printed on fine plate paper by patent photo process, sent free to Mother of any Baby born within a year. Every Mother wants these pictures; send at once. Give Baby's name and age.  
**WELLS, RICHARDSON & CO.,**  
BURLINGTON, VT.

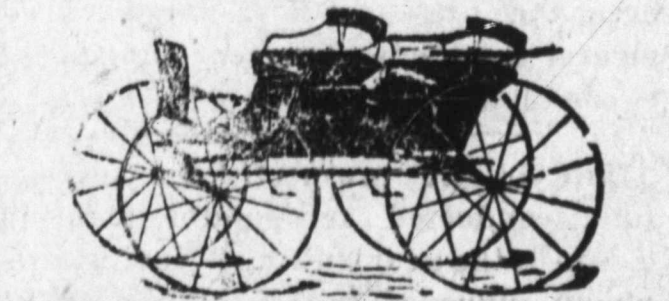
J. F. SMITH, President. W. F. CONNER, Gen. Man'gr.

**The Granitic Roofing Factory**  
—AT—  
**FORT WORTH, TEXAS.**

Better than the best, cheaper than the cheapest roofing offered in Texas. Suitable for steep or flat roofs. Cheap enough to cover a hen coop; good enough to roof a palace. Specially adapted to stockmen's barns and outbuildings. Shingles, tin and corrugated iron must give way before our goods. For further particulars write to our office.

**Fort Worth Granitic Roofing Co.,**  
11th and Rusk Sts., Fort Worth, Texas.

**E. H. KELLER**  
Salesroom 208, Shops 210 and 212 Throckmorton Street,  
FORT WORTH, TEXAS.



Columbus Buggy Co.'s Buggies, Columbus, Mo. E. M. Miller & Co., Quincy, Ill. Buckboards and Spring Wagons, Tops, Dashes, Cushions. Fine trimming, painting and repairing a specialty.

**Drs. Pollock & Keller,**

410 Main Street,  
FORT WORTH, TEXAS.

**Chronic Diseases a Specialty.**

MRS. M. E. KELLER, M. D., specialty diseases of women and children.

DR. J. R. POLLOCK successfully treats Piles, Fistula, Fissure and all diseases of the rectum.

**OXYGEN AND ELECTRICITY**

for the treatment of catarrh, bronchitis, consumption, dyspepsia, constipation, and all diseases of the nervous system.

Best of city references given upon application. Correspondence solicited.

**CANCER** & Tumors cured; no knife; cure guaranteed. Kessler Cancer Hes-Its! Grand Av. E. C. Mo. J.

## SAN ANTONIO.

**JESSE K. LLOYD,**  
Live Stock Commission Merchant  
Liberal advances made on consignments. Office and yards, 220 South Flores Street, SAN ANTONIO TEXAS.

## HEREFORDS AND SHORTHORNS FOR SALE.

400 bulls, high graded Herefords and Shorthorns, for sale. A herd of 56 head on exhibition at the fair. Every animal is Texas raised and fully guaranteed against splenic fever. For further particulars address LEE HALL, San Antonio, Texas.

Send for Catalogue of the  
**ALAMO CITY**

*Business College.*  
SAN ANTONIO, TEXAS.

How a Southwest Texas paper can oppose a tariff on hides and be a friend to its section is past understanding.

IMPROVE your stock and plant forage to keep them thriving, for they will soon be needed to keep the Texas refrigerators going every day in the year.

HOGS continue to pass through Texas from Northern markets, en route to Mexico. There is no logical reason why that demand should not be satisfied alone by the state of Texas.

WE are anxiously looking for a guaranteed live stock run of four days from San Antonio to Chicago. That would be railroad enterprise that would receive practical appreciation.

THERE have been more fine stallions sold in Southwest Texas this season than ever before, and if the McKinley bill passes and our horses are protected against the scrub stock of Mexico, it will prove a good, safe investment.

BUT one issue intervenes until the meeting at Corpus Christi of all who are interested in the establishment of a refrigerator and the creation of a home market. Let every one go who can, as even the presence of a large crowd gives a great amount of encouragement to such undertakings.

THE bright prospect for a successfully conducted refrigerator plant in Texas in the near future is having a reviving influence in this portion of the state, and stockmen feel more like making efforts to keep up and improve the business, in order to meet the demands for beef cattle all the year round.

ONE of the singular features of the Texas boom so far is that it is principally confined to city property. What would do more permanent good would be the settlement of the millions of idle fertile lands with thrifty tillers. The towns already, in most cases, are ahead of the surrounding country, and will have to take a rest, sooner or later, till the wealth-producing elements are further advanced. A permanent Texas boom can only be maintained by bringing in wealth-producers.

AS WILL be seen in another column, the prospect for refrigerators in different portions of the state, giving our

stockmen a market at their door, is now exceedingly flattering. The market for this meat will be in Europe, and free from competition at Chicago or other Northern markets. This has been the ideal destiny of the STOCK JOURNAL for our cattle industry for some years, and the nearness of its realization is already exhilarating in its effect on every hand, and soon not only Texas cattle will be slaughtered at home, but the cattle from Colorado, New Mexico, Utah, Nebraska, Kansas and the Indian Territory will pass through here in refrigerator cars to take ship in Texas harbors for the Atlantic city and European markets. In doing this it will but follow a natural law of commerce, which is to seek the cheapest transportation from the producers to the consumers. It is now laboring under abnormal laws that need but an intelligent effort to break. Deep water on the Texas coast is all that is necessary to bring about this condition, and deep water is a matter of the near future.

THE rain came copiously last week, and its benefits are incalculable in Southwest Texas. Except in a few local sections no suffering was caused from the lack of rain, and crops are fine, but there was beginning to be a feeling of uneasiness that would soon have operated very detrimentally to the rapid development of the agricultural resources of this portion of the state had much more time elapsed without rain at this time of year. But in some portions, particularly in the lower Rio Grande counties, and west of Uvalde county, sections where agriculture does not cut much of a figure, considerable losses have been sustained this spring from lack of stock water. This is all over now, as the rains appear to have been general all over the southwest and western portions of the state, filling the water holes and starting the grass, and in a few weeks the stock that can hardly crawl to a little puddle now to slake its burning thirst, will be curling its tail over its sleek back and leading the cowboy a lively race through the chaparral. No portion of Uncle Sam's domain can stand so long a drouth and recuperate faster than Southwest Texas, and now that all danger of a drouth has passed, the boom is on with renewed vigor. This fall thousands of acres of ranch lands will be thrown open to the man with the hoe at his own terms, and the vast acres that heretofore have only known the wild longhorn steer, will be clothed in spotless white of opening cotton bolls and the waving golden corn tassels. We are growing.

NEARLY all the great enterprises of the country had small beginnings, because experience is the best teacher, and the modest beginner, with business tact and energy, builds up by experience on a safe foundation. Local refrigerators in towns or cities large enough to market from 25 beeves a day and upwards, have been advocated by the STOCK JOURNAL for years, simply because the modern process of saving the offal that is wasted in small slaughter houses affords a very fair auxiliary to the aggregate profits of the business, and enables the butcher to give better and cheaper meat to the consumer, besides, under the improved ice-box system and quick railroad transporta-

## Traders National Stock Yards

Winfield & Steele, successors to Gilroy & Price, Props.

Near I. & G. N. Shipping Pens,

San Antonio, Tex.

Best and most commodious stock yards in the state. Built expressly for the accommodation of the stockmen. All pens shedded and with hay-racks and fresh water. Charges same as other yards. Best buyers on the market always on hand for good stock.

DIRECTORS—J. E. PRICE, President; J. H. PRESNALL, Vice-President; JOHN T. LITTLE, Treasurer; W. H. JENNINGS, Secretary; G. W. SAUNDERS, General Manager; JOHN BLOCKER.

## San Antonio Stock Yards Co.,

INCORPORATED. \$50,000.

## Live Stock Commission Merchants,

SAN ANTONIO STOCK YARDS.

Prompt and quick returns. Market reports and information as to shipments cheerfully given. Correspondence solicited. Telephone No. 401.

Incho, Smith & Redmon,  
Live Stock Commission Merchants,

Office and Yards opposite I. & G. N. shipping pens,

SAN ANTONIO, TEXAS.

## F. L. TUFFLY. TUFFLY &amp; KAUS, W. F. KLAUS.

## LIVE STOCK COMMISSION MERCHANTS,

Successors to J. G. Burch. At the old Simon Pest Stock Yards, 801 South Flores St., San Antonio, Tex. Liberal advances on consignments. Correspondence solicited.

tion, the small outlying towns are enabled to get a daily supply of fresh meat, that under ordinary and local circumstances they could not secure but once or twice a week. It is with pleasure, therefore, that the STOCK JOURNAL is enabled to announce the near establishment of a local refrigerator in San Antonio. Messrs. McDonald Bros., who only a few years ago started a very modest butcher stall at the mill bridge, and who through business tact and enterprise have now the two largest meat stores in the city, have already taken the preliminary steps towards putting a thorough plant into operation, including their own ice factory. The ice factory and cold storage house will be on Washington square, from which point they will furnish retail butcher stalls with good meat for less than they can kill it themselves, and take back at first cost all unsold meat. Also, they will be enabled to extend the very fair ice-box trade already worked up, to every point reached by rail from San Antonio within a radius of several hundred miles. Their fine slaughter house on the river will be largely extended and improved, so as to take advantage of all modern methods in saving and profitably utilizing what has heretofore been a waste. This institution bids fairer to give San Antonio an ideal refrigerator plant than any resolution born scheme ever offered to the people of Southwest Texas.

## San Antonio Horse Market.

The horse market is yet dull, and more so this week than usual, owing to the heavy rains and the impossibility to round up stock in the pastures. Some trades are being made and the stock held till later before shipping or till the roads are a little firmer. The demand is principally for young mares and colts and this class of stock in shipping condition find ready buyers, while all others are hard trading. The retail market is very dull, with little prospect of much renewed life for some weeks at least. It is claimed that only the poorer Mexican stock finds its way into this market, and the better class goes below towards the City of Mexico. The McKinley bill if passed will put a stop to this trade, and Texas horse raising will be more profitable, encouraging continued improvement of the blood.

Shipments for the week were 363 head, as against 360 for the previous week.

Quotations are as follows:

Scrub and poor mares, 12 to 13½ hands, \$10@ 13	
Scrub, fair conditioned, 12 to 13½ hands, 13@ 15	
Medium mares, 13 to 14 hands, fat, 16@ 18	
Medium mares, 13 to 14 hands, thin, 12@ 15	
Yearling fillies, branded, 7@ 9	
Yearling fillies, unbranded, 9@ 12	
Two-year-old fillies, branded, 9@ 12	
Two-year-old fillies, unbranded, 12@ 14	
Texas improved mares, 14 to 15 hands, 25@ 35	
American carriage horses, 15½ to 16½, 75@200	
Saddle horses, good, 13 to 14½ hands, 30@ 50	
Saddle horses, poor, 13 to 14½ hands, 18@ 30	
Unbroke horses, 13 to 14½ hands, 18@ 25	
Weaned, unbranded colts, 4.50@ 6	
Mules, Mexican, 12 to 13½ hands, 22@ 35	
Mules, improved, 13½ to 14 hands, 37@ 50	
Yearling mule colts, improved, 22@ 30	
Two-year mule colts, improved, 30@ 40	
Yearling mule colts, Mexican, 14@ 18	
Two-year mule colts, Mexican, 18@ 25	

## HORNS AND HOOF.

Mrs. H. M. King of the Santa Gertrudes ranch in Nueces county, has 125 acres of corn shoulder high, as fine a stand as could be wished, and yet the popular belief is that there is no farming country south of San Antonio.

John McAllen of McAllen & Young, rancheros in Hidalgo county, passed through here on Wednesday, en route home from a visit to New York—the first one East for 30 years. He is glad to get back to Southwest Texas, and especially to hear that there has been plenty of rain on his ranch.

F. Russek of Russek Bros., Beeville, who recently secured 30,000 acres of fine farming lands in Bee county, passed through the city home from Colorado county, his former home. The Russek Bros. are enterprising young men, who are colonizing those lands with farmers on very liberal terms, and those already on the land are exceeding their expectations.

Stock yards situated opposite the I. & G. N. railroad shipping pens in San Antonio, occupying 150x440 feet, covered pens, office, hydrant water, feed racks, hay barn, and all the accessories to a first-class business, with the good will, for sale at \$12,000. Address Winter & Co., 206 Soledad street, San Antonio, Texas.

Capt. James H. David returned from a trip to Nueces county the first of the week, and says when he left that country there had been enough rain to insure grass for the season, but no tank-fillers, but that since he hears of big rains.

Last week 19 cars of cattle were shipped from Cotulla to St. Louis, besides quite a number in small lots of one or more to Houston, Galveston and New Orleans.

Col. R. E. Stafford passed through the city on Monday, en route home

TEXAS WOOL GROWERS ASSOCIATION.

(Continued from last week.)

- |                                     |                                      |
|-------------------------------------|--------------------------------------|
| Robertson J B<br>Midland tex        | Sanders E C<br>Brady tex             |
| Rose Frank<br>Stockman tex          | Stribling J C<br>Round Mt tex        |
| Rigley Bros<br>Stockman tex         | Smith Cornelius<br>Campbellton tex   |
| Rheinhardt & Lang<br>Stockman tex   | Smith Rufus<br>Cairo tex             |
| Rodriguez J M A<br>Laredo tex       | Stephens J W<br>Lometa tex           |
| Stephens W C<br>Cranfills Gap tex   | Stanley J E<br>Lampasas tex          |
| Sarge T N<br>Walnut Springs Tx      | Schweethilm Henry<br>Kertville tex   |
| Smith Gip<br>Whitney tex            | Sticler H<br>Comfort tex             |
| Stubbs G W<br>Clifton tex           | Spencer J & Bro<br>Harper tex        |
| Scott R L<br>Clifton tex            | Stamps W S<br>Ballinger tex          |
| Strong C T<br>Clifton tex           | Swift & Bedost<br>Ballinger tex      |
| Sellers & Bros<br>Iredell tex       | Smith J W<br>Colorado tex            |
| Sears T A<br>Valley Mills tex       | Shahan John<br>Colorado tex          |
| Sparks S F, Sr.<br>Valley Mills tex | Schmidt & Gerst-<br>waidt] Mason tex |
| Spence S E<br>Morgan tex            | Stephenson Clay<br>Midland tex       |
| Sweeknar Geo<br>Encinal tex         | Starkey Wm<br>Leaky tex              |
| Smith J A<br>Encinal tex            | Schauer LeVon<br>San Angelo tex      |
| Spon Dr Henry<br>Encinal tex        | Stilson & Case<br>San Angelo tex     |
| Sturges J P & Co<br>Taylor tex      | Schauer, Dye & Co<br>San Angelo tex  |
| Sowe Wilhelmime<br>Anholdt tex      | Sanderson R B<br>San Angelo tex      |
| Skaggs G C<br>Anholdt tex           | Spear A C<br>San Angelo tex          |
| Stone James<br>Eagle Pass tex       | Smith Bros<br>Hayrick tex            |
| Simpson Harper<br>Muela tex         | Smith B D<br>San Angelo tex          |
| Stotsenburg Mrs EA<br>Whistler tex  | Stein Henry<br>Stockman tex          |
| Standard C W<br>Amanda tex          | Sanchez Margarito<br>Laredo tex      |
| Stockey G S<br>Good Luck tex        | Sanchez Dario<br>Laredo tex          |
| Stewart J C<br>San Saba tex         | Sanchez Roberto<br>Laredo tex        |
| Spring & Walker<br>San Saba tex     | Taylor FM<br>Taylor tex              |
| Stiber H<br>Comfort tex             | Towns Jno<br>Eagle Pass tex          |
| Stopper W N<br>Collins tex          | Thompson Robt<br>Eagle Pass tex      |
| Sims D E<br>Paint Rock tex          | Townsen W S<br>Whistler tex          |
| Smith T F<br>Poolville tex          | Tucker F W<br>Sisterdale te          |
| Smith G F<br>Medina tex             | Taylor J M<br>Ft. McKavett tex       |
| Sanders V P<br>Medina tex           | Thallmen O<br>Bandera tex            |
| Sheridan J P<br>Brady tex           | Taylor C A<br>Bandera tex            |
| Stark P S<br>Milburne tex           | Thompson R H<br>Utopia tex           |
| Sellman Bros<br>Rochells tex        | Thompson H G<br>Utopia tex           |
| Sellman Bob<br>Rochells tex         | Thompson G<br>Utopia Tex             |

- |                                   |                                     |
|-----------------------------------|-------------------------------------|
| Thallman C H<br>Bandera tex       | Townsend J<br>Pipe Creek tex        |
| Tisdale C R<br>Brady tex          | Tiller & Young<br>Killeen tex       |
| Tolbert W W<br>Tilden tex         | Tezier & Co<br>Tilden Tex           |
| Tippett H M<br>Buffalo Gap Tex    | Taylor E H<br>Carrizo Sprg's Tex    |
| Trumlett H W<br>Fredricksburg tex | Tilly Bros<br>BallingerTex          |
| Thomson Bros<br>Runnels Tex       | Thomson Rush<br>San Angelo Tex      |
| Thibe Joe<br>San Angelo Tex       | Turner Wm<br>San Angelo Tex         |
| Thomson J H<br>Stockman Tex       | Trevius Jose<br>Laredo Tex          |
| Urbaku Albert<br>Encinal Tex      | Uribe J D<br>Carrizo Tex            |
| Volkman F N<br>San Saba Tex       | Vaughan Wm J<br>Menardville Tlx     |
| Vela Cresanto<br>Collins Tex      | Van Winkle Jno<br>Waldrup Tex       |
| Vaughn W H<br>Belton Tex          | Vaughn G C<br>Centre Point Tex      |
| Vidomri A<br>Laredo Tex           | Villegas Joaq<br>Laredo Tex         |
| Whitney M G<br>Cayote Tex         | Wardner F W<br>Iredell Tex          |
| Whisenant G F<br>Morgan Tex       | White & Cault<br>Meridian Tex       |
| Woolcat Sam<br>Encinal Tex        | Wilson & Massey<br>Taylor Tex       |
| Weke Hy<br>Anholdt Tex            | Woodhull Bros<br>SpaffasJunct'u Tex |
| Wickham J J E<br>Whistler Tex     | Welch David<br>Brackettville Tex    |
| Whitley Bros<br>Brackettville Tex | Woodhull Bros<br>Spofford Tex       |
| Weymiller Jno<br>Uvalde Tex       | Wish Jasper<br>Sabinal Tex          |

# NOTICE!

## To Mohair Growers:

We have no agents in Texas. Make your shipments DIRECT to New York. We are the only house handling Mohair in large quantities. Others who seek this stock are induced to speculate by present high prices. They have no facilities for GRADING, nor established trade for selling Mohair.

**WM. MACNAUGHTAN'S SONS,**  
New York and Boston.

T. C. ANDREWS, late of Young, Andrews & Kuhen.

R. N. GRAHAM

## Andrews & Graham, Live Stock and Land Dealers,

MANSION HOTEL BLOCK, FORT WORTH, TEXAS.

Make a specialty of contracting all classes of Texas cattle for future delivery. Will keep on hand jacks, jennets and horse stock of all grades. A large list of city property and farming and ranch lands to be shown at any time.

## Butchers' and Drovers' Stock Yards, Dallas, Texas. CARTER & SON, Proprietors, Live Stock Commission Merchants

Largest and best yards in Dallas. Only yards having the facilities for shipping and receiving from all the railroads. Office at the yards. Street cars to pens. Liberal advances made on all consignments. Stock scales at pens. Telephone connections.

## THE PRIZE WINNERS.



Thoroughbred Berkshire and Duroc Jersey (Jersey Red) Swine. The Valley Stock Farm, Terrell, Texas, contains more animals that won prizes at American and English fairs than any other herd in the world. Thirteen animals in this herd cost an average of \$140 each. Come and see us or write for catalogue.

TERRELL & HARRIS, Proprietors.



TRY THE TEXAS LIVE STOCK JOURNAL  
If you have anything to advertise

## City Hotel, Chicago,

Cor. State and Sixteenth Sts.

Special rate to stockmen, \$1.50 per day. Nearest hotel outside the yards. Table and rooms first-class. State Street, Archer Avenue or L. S. & M. S. Dummy pass the house to all parts of city and depots. W. F. ORCUTT, Proprietor.

Notice! When ordering Louisiana State! Little Louisiana, Big and Little Mexican, and Royal and Little Havana Lottery tickets, send to the THE LUCKY LOTTERY AGENT. Tickets, circulars, prize lists, and all information cheerfully given. Agents wanted at every town in Texas. Address ISAAC L. SHERMAN, General State Agt., 72 Main St., Houston, Tex. Mention this paper.

- |                                    |                                    |                                       |   |
|------------------------------------|------------------------------------|---------------------------------------|---|
| Wilson J K<br>Uvalde Tex           | Wallick Sam'l<br>Ft. McKavett Tex. | Wilson Mrs Mary<br>Frio Water Hole Tx | Weeks G W<br>Baird Tex                          |
| Ware Bros<br>San Saba Tex          | Wright Thos C<br>Collins Tex       | Wood Rodgers<br>Ingram Tex            | Waddell T M<br>Midland Tx                       |
| Ward Thos W<br>San Saba Tex        | Warren M W<br>Eden Tex             | Witt J M<br>Comfort Tex               | Willingham J T<br>Midland Tex                   |
| Walker H F & Son<br>San Saba Tex   | Winkel Fritz<br>Paint Rock tex     | Wilbern F C<br>BalleyHead Tex         | Webb W R<br>Barksdale Tex                       |
| Wilson J C<br>San Saba Tex         | Weldon J F<br>Bandera Tex          | Wilson J M<br>Click Tex               | Williams J D<br>San Angelo Tex                  |
| Woolschlaeger<br>Sisterdale Tex    | Waters N B<br>Brady Tex            | Welge Hy & R<br>Cherry Spg' Tex       | Weaver & Thom-<br>son<br>San Angelo Tex         |
| Wenzel C, Sr.<br>Sisterdale Tex    | Ward S T<br>Brady Tex              | Wylie R K<br>Ballinger Tex            | Weddell Jas<br>Yandel Tex                       |
| Wenzel C, Jr.<br>Sisterdale Tex    | Warrick WR<br>Salado Tex           | Wilson Bros<br>Ballinger Tex          | Weathers J W<br>Yandel Tex                      |
| Whitworth R W<br>Boerne Tex        | Weldman G F<br>Goldthwait Tex      | Wilson Philp<br>Ballinger Tex         | Wylie J D<br>Yandel Tex                         |
| Wierstrass Eug.<br>Menardville Tex | Wilsford J J<br>Minor Tex          | Ward N W & W C<br>Moore Station Tex   | Worcester Land &<br>Catt e Co<br>San Angelo Tex |
| Wilhelm J F<br>Menardville Tex     | Wittenburg Wm<br>Lometa Tex        | Waddell W N<br>Colorado Tex           | Young H C<br>San Angelo Tex                     |
| Winn Rufus<br>Menardville Tex      | Wilson Adam<br>Frio Water Hole Tx  | Wilhamson M B<br>Colorado Tex         | Yardly Jas H<br>Hayrick Tex                     |

## TEXAS LIVE STOCK JOURNAL

ESTABLISHED APRIL, 1880.

Consolidated with

## Texas Wool Grower

SEPTEMBER 13th, 1884.

ISSUED EVERY SATURDAY

—BY—

The Stock Journal Publishing Co.,

—AT—

FORT WORTH, TEXAS.

FORT WORTH OFFICE, 410 Rusk St., Between Third and Fourth Streets. W. A. GARNER, Manager.

GALVESTON OFFICE, Journal of Commerce Building, W. N. BAXTER, Manager.

DALLAS OFFICE, 747 Elm Street. A. P. CARICO, Manager.

SAN ANTONIO OFFICE, [No. 21 Main Plaza. L. A. HEIL, Manager.

EL PASO OFFICE, Ground Floor, Central Hotel Building. GEO. B. LOVING, Manager.

SUBSCRIPTION, \$1.50 PER ANNUM.

Entered at the Postoffice, Fort Worth, Texas, as second-class.

## Texas at a Glance.

One of the most noteworthy events in the year 1890 will be the holding of the famous Texas Spring Palace at Fort Worth which opens May 10 and closes with the end of the month. No city in the South has displayed more consummate skill and enterprise in the art of all arts, advertising, than this city, and with such a previous record, there is no danger but that the city will do itself proud in its usual manner in the Spring Palace of 1890.

"Texas at a glance" is the expression used in connection with this Palace, and it is very expressive and comprehensive, as the Palace displays to great advantage all the resources of the "Lone Star State." The progress of each year shows that the vast and varied resources of Texas have not been even approximately comprehended. The past twelve months have been the most remarkable in the history of the state of Texas. Unknown counties have been peopled and new towns and cities have sprung up almost in a day. Great railways have been extended, rich and vast deposits of coal and iron uncovered and worked, and new and immense industries established. The state is no longer an immense cattle ranch but a state with as great variety of industries and occupations for its people as any other.

With such a large percentage of developments taking place during the past year, the Spring Palace can be filled with exhibits, constituting a great object lesson concisely and practically showing the state's growth. Those who attended the exhibition last year will want to attend it this year to see just what this growth is, and those who have not seen any previous exhibition will wish to attend this one, so as to be able to follow the future growth and development of the state.

In order to satisfy the very large demand for space, the managers of the exhibition have found it necessary to greatly enlarge the building and increase its facilities. In itself the building is remarkably attractive, and at the time of the exhibition it will be elaborately decorated with the products of the soil and specimens of the ingenuity of the people. The up-

## EVANS-SNIDER-BUEL CO.,

(INCORPORATED)

SUCCESSOR TO HUNTER, EVANS &amp; CO.

CAPITAL STOCK, - - - \$200,000.

KANSAS CITY STOCK YARDS,  
KANSAS CITY, MO.

Each Office in charge of a  
member of the company.

UNION STOCK YARDS,  
CHICAGO, ILL.

Correspondence always has  
prompt attention.

DIRECTORS { A. G. EVANS, President. M. P. BUEL, Vice President.  
C. A. SNIDER, Treasurer. A. T. ATWATER, Secretary.  
F. W. FLAFO, Jr. IKE T. PRYOR.

NATIONAL STOCK YARDS,  
ST. CLAIR CO., ILL.

## LIVE STOCK COMMISSION MERCHANTS.

## SEEDS

CHAS. E. PRUNTY,  
7 South Main Street, SAINT LOUIS, MO.  
Wheat, Barley, Corn, Oats, Rye.  
Clover, Grass Seeds, Millets, Hemp, Pop Corn, Onion Sets.  
Mention the Journal.

per floor will be in charge of and arranged by the women of the state.

It is not a fair, in any sense of the term, but a "Karporama"—a picture of the fruits of the soil, the orchard, the garden, the farm, the forest, the mines, the streams—each wrought into form and shape with great ingenuity and artistic skill. The visitor who attends the Palace to see crazy quilts, lace handkerchiefs, embroidery, threshing machines, clothes wringers, etc., etc., will find these articles conspicuous only by their absence.

There will be no display of machinery, but simply as complete, representative and comprehensive a collection of the products and resources of the State as it is possible to get together.

The grains of the country he will find represented by a beautiful picture of the goddess of the forest, constructed of cereals, and head in raiment made of the same material, the whole presenting a veritable picture, beautiful, attractive and pleasing. Every product of the soil is treated in the same manner, and when finished the whole Palace presents more the appearance of a scene from Fairyland than a gathering of the products of the earth.

In addition to this, the threshed grains and other products are presented by samples in show cases, on shelves and in glass jars, neatly arranged for exhibition.

The birds of the State are there, treated by the Taxidermist's art, and the fishes swimming in their native element, in glass aquariums. There are also the song birds by the hundreds whose voices fill the building with sweet notes, attesting their appreciation of the beautiful scene that surrounds them. It were futile to attempt a description of this wonderful work.

The famous Elgin Band, under the direction of the great leader, Prof. J. Hecker, will entertain the many visitors at the Palace with music of the highest order. It is worth a trip of hundreds of miles to hear this band, composed of some of the best musicians in the country.

Rates of one fare for the round trip have been issued by the different railroads out of Chicago and Cheyenne on the North Atlantic sea board on the East and Denver on the West.

Fort Worth extends a welcome hand to all, and proffers hospitality to everybody interested in the progress or curious to learn the advantages of one of the most promising States of the Union.

Below is given expressions of prominent persons and newspapers in regard to last year's exhibit:

Fort Collins (Colo.) Courier.—Rivaling all the visions of youthful fancy.  
Bucyrus (Ohio) Telegraph.—It is in-

describable. The greatest exposition ever before the people. One is dazed by the splendor which greets the eye.

W. H. Newman, of Chicago.—Far more beautiful and original than anything he had seen at the Centennial or Paris Exhibition.

The Mayor of Sioux City, Iowa.—It would be impossible for me to indulge in any extravagance in saying to the people of this entire country, that no more beautiful or more unique picture was ever erected upon the face of the globe.

Ex-Gov. R. B. Hubbard.—This is a veritable wonderland. Such artistic arrangements of the cereals, such beautiful decorations, and such a wonderful exhibit of marble, granite, minerals and wood, I have never seen before.

Evansville (Ind.) Courier.—It is a magnificent structure, built entirely of the products of Texas. It is a grand object lesson, showing the world at a glance what Texas is and what she has to offer to capital and immigration.

Gov. Thayer of Nebraska.—This Palace of marvelous beauty, rivaling in grandeur a temple lined with gold and silver and studded with precious gems, made of God's handiwork, of the fruits of the field. We can see an abundance of what Texas can produce. Everything is beautiful and everyone will say: "Well done, Fort Worth; well done, Texas,"

St. Louis Globe-Democrat.—The decorations of the entire building are beautiful beyond description. There are scenes of Texas landscape, birds, flowers, musical instruments, views of the Gulf of Mexico with a railroad trestle over real water, all wrought by skillful hands from the products of the soil. Without and within, both as a whole and in minute detail, the decorations are indescribably beautiful, and wonderful in artistic conception and execution.

## Transfers of Jersey Cattle.

The following is a complete list of the transfers of Jersey cattle to purchasers in Texas, as reported by the American Jersey Cattle Club, No. 1 Broadway, New York, for the week ending April 15, 1890:

## BULLS.

Ed Simms, 21326, F. A. McLane to W. E. James, Caldwell.

Glen Star's Bronx, 24786, W. H. Williamson to J. W. Williamson, Martin's Mills.

Milam's Primus, 18427, F. A. McLane to E. D. Atkinson, Maysfield.

Oktibbeha Prince, 24056, W. B. Mont-

gomery to J. R. Thompson, Hillsborough.

Spotted Boy, 21325, F. A. McLane to R. H. Gray, Waco.

Lora's Fortune, 43241, Gray & Hardin to S. Stonary, Terrell.

Adolphus W., 24577, R. E. Willis to W. W. Upshaw, Belton.

Billy Barlow, 12073, H. J. Arledge to W. H. Cundiff, Decatur.

Don Rioter, 23471, I. B. Walker to S. M. Broadley, Denton.

Jean Lafitte, 21385, A. LeGory to D. A. Nunn, Crockett.

June LeBrocq's Mack, 23367, W. W. McClung to J. D. Bickham, Atlanta.

## COWS.

Ida Azuline, 18348, E. O. Sykes to J. D. Gray & Co. Terrell.

June LeBrocq, 39308, W. W. McClung to G. H. Dunklin, Atlanta.

Lolly Elgin, 32812, C. M. Abney to T. W. Erwin, Ennis.

Valentine Pogis, 56307, J. D. Rudd to T. W. Erwin, Jr., Ennis.

After suffering horribly for years from scrofula in its worst form, a young son of Mr. R. L. King, 706 Franklin St., Richmond, Va., was recently cured by the use of Ayer's Sarsaparilla. No other medicine can approach this preparation as a cleaner of the blood.

## Sales of Holstein-Friesian Cattle.

B. H. Knowles of Bryan, Texas, has purchased of the Clifton Stock Farm, Dallas, Texas, the grand bull, Stelleta Prince No. 13806 H.-F. H. B. His sire was Tritomia's Mercedes Prince No. 23543, H.-F. H. B.; his dam was Stelleta No. 6938 H.-F. H. B. Both sire and dam were imported, and both are in the advanced register.

Mr. Paris Hamilton of Hillsboro, Texas, purchased the cow Byronettee. She is a grand cow, and has a two-year-old record made in Texas of 41 lbs of milk in a day and 1178½ lbs of milk in one month.

## Advance in Cattle Values.

Mr. J. H. Lafferty of Alexis, Ill., writes to the Breeders Gazette, and says: "I notice in 'Gossip' of March 5 that A. A. Crane of Osco, Ill., says he attended two public sales of cattle recently, and was surprised to see how stock cattle sold; yearlings selling for \$18 per head that would not have sold for over \$12 last fall, and steers, one and two years old, bringing \$3.50 per 100 pounds.

"I have attended a number of public sales in the past four weeks in this and adjoining counties, and think stock cattle are selling fully 50 per cent. higher than four months ago. I saw a bunch of steer calves from ten to eleven months old sell for \$23.55, and a bunch of yearlings sell for \$39.75. At another sale I saw the whole lot of cows, sixteen in number, sell at from \$36 to \$46 per head and average over \$40. I think people in our part of the country have more confidence in the future of cattle than they have had in 5 years. Some of our horse breeders are now looking for cattle."



This Threshing-machine received the two last Gold Medals given by the New York State Agricultural Society; and has been selected, over all others, and illustrated and described in that great work, "Appleton's Cyclopedia of Applied Mechanics;" thus, establishing it as the standard machine of America. Straw-preserving Rye-Threshers, Clover-hullers, Ensilage-cutters, Feed-mills, Fanning-mills, and Wood Saw-machines; all of the best in market. The Fearless Horse-powers are the most economical and best Powers built for the running of Ensilage cutters, Cotton gins, and general farm and plantation use. For free Catalogues, address RICHARD HARBER, Cobleskill, N. Y.



✻ ✻ TEXAS ✻ ✻

# Spring Palace!

CONSTRUCTED, ORNAMENTED AND DECORATED ENTIRELY WITH THE  
PRODUCTS OF THE EARTH.

The Most Unique and Attractive Exhibit Ever Presented to the Public!



✻ Opens at Fort Worth, Texas, May 10th, ✻

And Closes May 31, 1890.

ONE FARE FOR THE ROUND TRIP

ON ALL RAILROADS.

Send for Circulars.

JOHN F. GROENE, Secretary.

B. B. PADDOCK, President.

## FORT WORTH.

## General Range and Stock Notes.

Long trains loaded with hogs from Missouri and Kansas are constantly passing through the city en route to Mexico, where top prices are obtained for them. Mexico on account of the heavy tax imposed by the Mexican government on the importation of American lard is becoming one of the best markets for American hogs that can be found. Missouri and Kansas, however, are reaping the benefit of it, as the hog supply in Texas, from which state freight rates would be much cheaper, is limited. Texas could gobble up the Mexican hog trade if the supply of hogs was in the state.

Tom J. Allen, representing the Kansas City stock yards, and well known to nearly all cattlemen, was in the city during the week.

Ellis Harper sold Tuesday to Waco parties a fine Tennessee bred jack for \$400.

Capt. J. J. Smith of Grandview was in the city Thursday and reported heavy rains in his section, and people doing well. We will begin shipping beef steers to the markets about June 1st. He says his cattle will be fat by that time, and he has no fears that prices will decline before that time, if then.

Had it not been for the continuous rains this week, work on the packing house at the Union stock yards would have been well under way before this. As it is everything is in readiness. Material is being arranged for and things will be whopped up as soon as the weather will admit of it.

Cattle transactions in Fort Worth have amounted to nothing this week. The market so far as trading goes seems to be at a dead standstill, though there have been quite a number of inquiries for steer cattle.

Capt. W. H. H. Larimer of the commission firm of Larimer, Smith & Bridgeford, Kansas City, was in the city this week in the interest of his firm, and also on a still hunt after steer cattle if he could find cheap ones for his pasture in the Osage country. He was pointed for the west and will be in the state some time before returning to Kansas City.

A. S. Nicholson reports that he has a number of inquiries for cattle, but somehow or other the thing ends there. No trades materialize that amount to anything.

The meeting at Corpus Christi on the 30th must not be lost sight of by the cattlemen. It is their own interests that are at stake.

Attention is invited to the card of Wm. Macnaughtan's Sons of New York and Boston, which appears in another column of this issue. They solicit consignments of mohair in large quantities. All business entrusted to them will receive careful and prompt attention.

It is feared that there will be considerable cattle loss from high waters, which are reported from all directions.

There has been no change in the local market for butcher stuff this week, the following prices ruling: Steers, 3c; cows, 2@2½c; veal, \$3.25; sheep, 3½@3¾c; hogs, 3c.

Four hundred car-loads of cattle have been handled and fed at the Union Stock Yards on the North Side this month. This is but a beginning of what will be when the refrigerators are in operation in Texas.

Arthur Tisdale left for Scurry county yesterday, and will be on the range nearly all summer. He has a bunch of about 1500 head of two-year-old steers in that section, which he says are doing so well on free grass that he has no disposition to sell just now.

The heaviest rains known in North Texas for years have fallen this week,

and have extended west far out on the plains where the range will be better than it has been for a long time. As far up in the Panhandle as heard from the down-pour has been tremendous, and all streams are at least bank full of water and some are overflowing. Railroads have been washed out, and much damage otherwise done.

Joseph Kuhen, the well known stock dealer, is seriously ill, but his friends trust that he will soon be on his feet again.

The shipment of cattle is at a dead standstill at present on account of the heavy rains all over the country and washouts on the different railroads.

One of the best sales of two-year-old steers heard of in this section for a long time, it is said, is about to be closed by a Panhandle company to Minnesota parties. The trade is for 3000 head at \$16 per head, and will be closed up if nothing prevents in a few days, if it is not already closed.

With this issue of the JOURNAL we present to our readers the card of Sherman Hall & Co., wool commission merchants, Chicago, Ills. Circulars and full information furnished promptly by mail or telegraph when desired.

Heavy rains fell in different parts of the state Tuesday and Wednesday, extending west on the plains as far as Midland. In the black land portions of the country the rain was needed, but in the range country the benefits to the range and cattle will be incalculable. Good grass is now assured for the summer and there will be an abundance of stock water.

Capt. Lee Hall came up from the Southern country Wednesday, and gives a gloomy account of cattle and range in that section east of Laredo, all the way to Brownsville. There is no water to be had for cattle in some localities, the range has about played out on account of dry weather, and in Hidalgo county especially large numbers of cattle have died and are still dying. Lee is up after improved cattle if he can get them at cheap figures.

It is predicted by a prominent railroad live stock man, with headquarters in this city, that the cattle rate war which was started by the Alton cut will not end until cattle will be shipped from St. Louis to Chicago at the rate of \$1 per car-load. The rate now is \$14 per car having been reduced to that figure from \$22 50 since the rate war commenced.

M. A. Maupin has gone to Missouri after horses, and will return with a car-load of fine driving stock about the last of next week.

Long trains of cattle in the palace cars are daily sights on the railroads coming into Fort Worth, but it is a rare thing to see a train-load of cattle in the ordinary cattle car. The palace car has come to stay.

Cbl. J. R. Fenn of Duke, Fort Bend county, one of the leading stockmen of that section, was in the city this week attending the veterans' meeting. In conversation with a STOCK JOURNAL reporter he stated that the condition of stock in his section was never better, they having come out of the winter in exceptionally good condition. He is a strong believer in the value of refrigerators in Texas to the cattle business, and thinks that with them in operation cattle prices in the state will be greatly advanced. Cattlemen generally in his part of the state indorse the refrigerator scheme as presented by the committee appointed by the cattlemen's convention, and he is of the opinion that they will take stock freely in it.

Billie Gilliland, the well known and prosperous stockman of West Texas, was in the city several days this week, and says that cattle are doing splendidly in the West since the recent glorious rains visited that section, and that the entire country is blooming like a rose. Mr. Gilliland is building a magnificent residence at Abilene where he will reside in future, when not in Fort Worth.

Capt. L. P. Scott, a prominent stockman of Benard, Fort Bend county, and one of the Texas veterans, was in the city during the week attending the meeting of the old heroes.

Capt. S. B. Burnett was down from the "6666" ranch this week and brought the usual good report of cattle and range in that section. In view of the recent orders issued by the department of interior, however, he was not feeling quite so well as he would feel if cattle could remain in the Nation a little longer—say twelve months—in order to give them a chance to be matured for the market.

Sam Hatcher has concluded a sale of 1500 head of Young county cattle for 350 acres of land located two miles west of the city. Isaac Ventonier was the purchaser of the cattle. The land received for them is valued at \$15,000.

W. K. Bell, a prosperous young cattleman of Palo Pinto county, was in the city Monday. He has recently purchased a good bunch of two-year-old steer cattle, which he will mature on his Palo Pinto pastures. He has no cattle to sell at prevailing figures, believing that the day of higher prices is in the near future.

Work has commenced on the pork packery near the Union Stock Yards, and the establishment will be ready for pork packing the coming fall. This will create a splendid market for hogs in Fort Worth, the value of which will be readily appreciated by farmers and stockmen.

In the For Sale or Exchange columns of this issue can be found the card of the Bigham hay press, manufactured at Walnut, Texas. For further information address B. F. Russell, secretary and treasurer.

The Chicago & Alton new rate sheet is out and indicates that the C. & A. officials mean exactly what they say when they speak. The Alton is no bluffer and cannot therefore be "caught out on a limb," but as is well known they have a surplus amount of cash to pay their losses should it be necessary for the road to haul live stock at a loss until their competitors quit doing business at a cut rate "on the sly." The general live stock agent, John Nesbit, is no "spring chicken" in his line, by the way.

The JOURNAL takes great pleasure in calling the attention of its readers to the card of Messrs. Little & Broderick, live stock commission merchants, National Stock yards, East St. Louis, Ills. Their card appears on the first page of this issue. All business intrusted to them will receive prompt and careful attention.

With this issue of the JOURNAL we present to our readers the card of the Western Wool Commission Co., St. Louis, Mo., which can be found among the wool cards in another column. They offer to make liberal advances on consignments of wool, and also to give all business immediate attention and prompt returns. Circulars and price currents furnished on application free of charge.

\$100 Reward. \$100.

The readers of the TEXAS LIVE STOCK JOURNAL will be pleased to learn that there is at least one dreaded disease that science has been able to cure in all its stages, and that is Catarrh. Hall's Catarrh Cure is the only positive cure now known to the medical fraternity. Catarrh being a constitutional disease, requires a constitutional treatment. Hall's Catarrh Cure is taken internally, acting directly upon the blood and mucous surfaces of the system, thereby destroying the foundation of the disease, and giving the patient strength, by building up the constitution and assisting nature in doing its work. The proprietors have so much faith in its curative powers, that they offer One Hundred Dollars for any case that it fails to cure. Send for list of testimonials. Address, F. J. CHENEY & CO., Toledo, O. Sold by Druggists, 75c.

## A MATTER OF IMPORTANCE.

## Texas Cattle Selling in Liverpool for \$80 per Head.

LIVERPOOL, April 10, 1890.

Editor Texas Live Stock Journal.

Having seen in the Fort Worth newspapers the accounts of the meeting of cattle raisers, etc., and the remarks made by one of their number regarding the proposed shipments of cattle and meat, etc., direct to England, we venture to make a few remarks as regards the latter.

There is no doubt that Texas people will have hit the right nail on the head, providing they go right in and act. One thing is quite certain, and that is that they have all these years just quietly looked on and accepted starvation prices for their cattle, while the great guns of Chicago, St. Louis, Kansas City, New York, etc., have been coining money, which ought to and could easily have gone into their (the Texas raisers') own pockets. Here are the American cattle of best quality selling in Liverpool for about £22 (\$110) per head, and still the Texans are apparently content to sell their cattle to Northern men for a mere song compared to what they would and do realize in Liverpool and other parts of Great Britain if sent direct here. Here is your market, and still you let others make the money out of your cattle, instead of shipping them direct to Liverpool, and the consumers and pocketing the money yourselves. We trust your people are awakening at last and that they will act.

There has just landed here via New Orleans from some part of Texas, 200 cattle, which were a rough grade, still they were sold for £16 (\$80 each). They were small beasts, weighing when dressed only about 29 scores or 580 lbs of dead meat, therefore the price was just about 13½c per pound. The steamer freight paid on them was £3 (\$15) per head. Now your people can calculate for themselves, and these figures speak for themselves. There is plenty of steamer space available, and if a syndicate was formed at Fort Worth amongst the cattlemen, they could easily engage all the space on a line of steamers at an agreed-on freight per head, for, say three months, with the option of renewing same for any period at the end of that time, and we would be very glad to undertake to arrange this in Liverpool direct with the steamship firms and give any information to those who will communicate with us.

We may finish up by just mentioning that it is understood here that some of the Northern middlemen are connected with these cattle, which we have mentioned, so it appears they are coming right on to your own ground now.

We are yours faithfully,  
SPINKS & Co.,  
Cattle and Meat agents, Liverpool, England.

The Only

Line running through sleeping cars to Chicago from Texas points is the Missouri, Kansas & Texas railway. Save time, transfers and lay-overs and assure yourself of a journey of ease, elegance and economy by making sure your ticket reads via the M., K. & T. railway, to Chicago and Canadian and Eastern points.

GASTON MESLIER,  
Gen'l P. & T. A., Sedalia, Mo.  
H. P. HUGHES,  
Ass't Gen'l Pass. Agt., Fort Worth, Tex.

**GALVESTON.**

**Galveston Wool Market.**

GALVESTON, TEX., }  
April 23, 1890. }

Editor Texas Live Stock Journal.

The market is quiet but firm, and notwithstanding buyers in some cases have demanded concessions from the quotations of to-day, yet with the exception of one small lot, no sales have been made at less figures than to-day's prices, while in more than one transaction twenty-two cents was paid for medium fine wools of the new clip, and factors without an exception are quite confident that the incoming clip, except for lots that do not come up to grade, will be disposed of at the quotations of this market to-day. The demand remains unchanged, and orders and inquiries from eastern points are being received almost every day by both factors and dealers. A sale of 60,000 pounds of old wool was made by Adoue & Lobit, on Monday last, at full figures and the same was shipped yesterday.

Quotations remain unchanged, hence I repeat prices of last week:

Spring, twelve months fine, 15@18c; do medium, 17@20c; six and eight months fine, 14@18c; do medium, 16@20c; Mexican improved, 14@16c; do carpet, 12@14c; sandy and burry, 3@8c less than quotations. Twelve months scoured, XX, 52@54c; do X, 48@52c; do No. 1, 45@47c; eight months scoured, XX, 50@52c; do X, 47@49c; do No. 1, 44@46c. Fall scoured, XX, 45@47c; do X, 43@44c; do No. 1, 40@42c.

The receipts of the port for to-day amount to 9687 pounds, and for the week ending to-day at 4 o'clock p. m. foot up to 16,294 pounds. The total of the season amounts to 5,860,784 pounds, against 5,069,822 pounds at this date last year, which shows a balance in favor of the present season of 800,960 pounds.

The sales and shipments for this week show a grand total of 78,492 pounds, and for the season 8,705,991 pounds, while the total of this port last year at this date was 8,089,447 pounds, therefore leaving a balance of 616,544 pounds to the credit of this season.

The stock to-day amounts to 353,865 pounds, the majority of which is not on the market, as the owners hope for an advance in prices, and therefore are not disposed to sell at the quotations of to-day. Last year's stock at this date was 220,627 pounds, which is just 132,238 pounds less than the stock of to-day.

The light receipts of the past seven days is doubtless owing to the heavy rains which have prevailed throughout almost all sections of the state for the past week, therefore preventing growers from hauling their wool to railroad points.

Mr. E. Wm. Gruendler, who left the city last week for San Antonio, where he will remain until about the 1st of May, previous to his departure disposed of his interest in the Galveston wool scouring mill, which institution will in future be managed by his former partner Mr. A. S. Exline. Mr. Gruendler will continue to make Galveston his home and devote the whole of his time to the buying and selling of the fleecy staple.

Col. John Owens, manager of the wool department of the house of Adoue & Lobit, bankers and commission merchants, left for points in the western portion of the state yesterday. The colonel is looked for in the city again the last of next week.

The sale of 60,000 pounds above re-

ferred to was to eastern houses, and they are now negotiating with Messrs. A. & L. for another round lot of about the same amount.

Several of our wool firms have this week received advices from interior points, to the effect that growers generally are actively engaged in shearing their flocks at present, and that the clip of the present year will come to market in much better condition than that of the previous season.

Messrs. Lammers & Flint informed your correspondent to-day that they have sold all of the spring clip received by them up to date, at the full market quotations of to-day, and that they disposed of one lot of extra medium for 22 cents.

Mr. P. J. Willis, jr., a member of the firm of P. J. Willis & Brother, left the city on Monday last, and while absent will visit a number of points in the interior of Texas. Mr. Willis will look after the interest of his house in the wool line while absent. As the firm has made large advances to growers within the past six months, they expect to handle this year a much larger amount of wool than they did the season of 1888 and 1889. About the last of next week Mr. Willis will return to the city.

Since the receipt of the news from Washington announcing the favorable and unanimous report of the river and harbor committee on the special bill for the appropriation of \$6,200,000 for deep water at this port, the real estate market of Galveston has undergone a wonderful change for the better, and to day many sales have been made at quite an advance over the figures asked for same property last week, and real estate men predict for the Oleander city a genuine boom before the date of the next anniversary of the independence of our government. W. N. BAXTER.

**Fortunate Chicagoans.**

Chicago (Ill.) Arkansas Traveler, March 15.

In the Feb. 11th drawing of The Louisiana State Lottery two citizens drew cash prizes which have made them wealthy. H. A. Hulburd, 38 Metropolitan Block, is one of the lucky citizens. To a Traveler representative Mr. Hulburd said: "I held one-quarter of ticket No. 40,919, which drew the third capital prize of \$50,000. The cash, \$12,500, was promptly received by me through the American Express Co." Messrs. Charles Kozminski & Co., bankers at 168 Washington St., collected for a customer, through the State National Bank of New Orleans, one-twentieth of ticket No. 64,385, which drew the first capital prize of \$300,000 in the same drawing.

**Oak Cliff, Texas.**

The lot selling and building in Oak Cliff continues unabated, the belt of the Oak Cliff & Dallas railroad is being rapidly built, and thirty-minute trains are now being run from 3 o'clock p. m. to 12 o'clock at night to accommodate the increased travel on said road. The Park hotel, at Park station, will be completed about the 1st of June. Oak Cliff has its own ice factory and steam laundry, and the question of factories of different kinds, to be located on Cedar creek, is now being agitated. Cedar creek, being fed throughout the year by springs, is one of the finest places in Texas for factories. When the location of the Cliff is considered, being the most beautiful suburban location near Dallas, it is by no means strange that its growth has been so rapid.

**Where to buy Groceries.**

Messrs. Turner & Dingee, the popular grocers of Fort Worth, make a specialty of shipping goods in their line, at wholesale prices, to consumers at shipping points on the railroads leading out of this city in eleven different directions. Their mail orders will receive the personal attention of one of the firm, and customers may depend on getting as close prices and fresh goods as if personally present. Send them a trial order.

Beecham's Pills cure bilious and nervous ills.

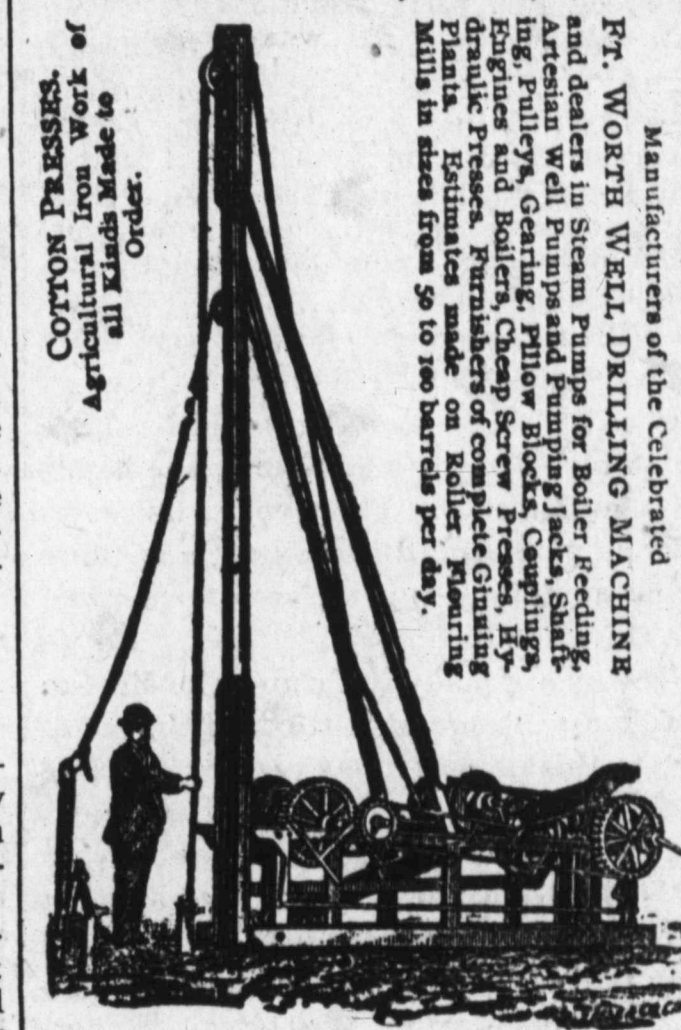
**P. J. WILLIS & BRO.**  
**"WOOL"**

Consignments Solicited. GALVESTON, TEX.

**WOOL** ESTABLISHED 1856.  
**SHERMAN HALL & CO.**  
COMMISSION MERCHANTS,  
122 MICHIGAN ST., CHICAGO, ILL.  
Warehouse, Nos. 122 to 128 Michigan St., Nos. 45 to 53 La Salle Avenue.

Commissions one cent per pound, which includes all charges after wool is received in store until sold. Sacks furnished free to shippers. Cash advances arranged for when desired. Write for circulars. Information furnished promptly by mail or telegraph when desired.

**FORT WORTH IRON WORKS,**  
FORT WORTH, TEXAS.



Manufacturers of the Celebrated  
FT. WORTH WELL DRILLING MACHINE  
and dealers in Steam Pumps for Boiler Feeding, Artesian Well Pumps and Pumping Jacks, Shafting, Pulleys, Gearing, Filling Blocks, Campings, Engines and Boilers, Cheap Screw Presses, Hydraulic Presses, Furnishers of complete Gearing Plants. Estimates made on Roller Flouring Mills in sizes from 90 to 100 barrels per day.

**The International Route**

International & Great Northern Railroad,  
the direct line to  
AUSTIN,  
SAN ANTONIO,  
LAREDO,  
And all points in  
SOUTHWEST TEXAS.  
The short line to

**The Republic of Mexico,**

Via San Antonio and Laredo.  
Sleeping cars attached to all night trains. Call for tickets via the "International Route."  
D. J. PRICE,  
Ass't Gen. Pass. and Ticket Agt.  
J. E. GALBRAITH,  
Traffic Manager,  
Palestine, Tex.

MESSRS. DAVID R. FLY & CO., Galveston, Tex.—Gentlemen: I have been using your Fly's Eli Liver Pills for about twelve months, and find them the best I have ever tried for constipation, disordered stomach, lazy or torpid liver, indigestion, loss of appetite and insomnia. I would not be without them. I take great pleasure in recommending them. I find them especially adapted to the necessities of men who travel and change water, diet, etc., and lose sleep. They are certainly a panacea for all those ills. Yours, respectfully,  
J. E. McCOMB, U. S. Att'y, E. D. T.  
For sale by C. Grammer, Fort Worth, Texas.

**THE SELF-RESTORER**  
FREE to every man, young, middle-aged, and old; postage paid. Address  
Dr. H. Du Mont, 381 Columbus Ave., Boston, Mass.

**Lammers & Flint,**  
Commission Merchants,

Solicit consignments of  
**Cotton and Wool**  
GALVESTON, TEXAS.

**5000 Wool Sacks For Sale,**  
at 15 cents each; also fleeces twine 5 cents per pound. Sacks and twine furnished free to parties desiring to scour their wools. Correspondence solicited.

EXLINE & GRUENDLER,  
Galveston Wool Scouring Mills.

**JOHN OWENS, Manager**  
Wool Department.  
**ADOUE & LOBIT**  
BANKERS

—AND—  
**WOOL** Commission Merchants,  
GALVESTON, TEXAS.  
Sole agents for Child's Sheep Dip.

**J. D. SKINNER & SON**  
GALVESTON, TEXAS,  
Solicit consignments of

**Cotton, Wool & Hides**

**Ursuline Academy,**  
GALVESTON, TEXAS.  
This institution, founded in 1847 by the venerable and beloved Archbishop Odin of New Orleans, and first Bishop of Galveston, is under the direction of the Daughters of Angela de Merici—generally known as the Ursulines—whose reputation in training is world-wide.  
Send for catalogue.

**Washington Hotel!**  
A. S. NEWSON, Proprietor.  
First-class in all respects. Rates \$2.50 per day.  
Corner Tremont and Mechanic Streets,  
GALVESTON, TEXAS.

**Mexican Lottery Co.**  
Next Drawing March 6, 1890.  
Whole tickets \$4, halves \$2, quarters \$1; 20,000 less numbers in the wheel than any other company using same scheme. Apply to  
SPENCER HUTCHINS, Gen'l Agent,  
HOUSTON, TEXAS.

**To Wool Growers.**

Dear Sirs:—The future of sheep husbandry lies with the growers.

After years of unsuccessful efforts their interests are being considered, and if they speak strongly at this important moment, their just and reasonable demands for protection will be granted.

The committee on ways and means have finished their work on the new tariff bill. It assures wise and fair protection for both grower and manufacturer.

Nine-tenths of the woolen manufacturers acknowledge themselves satisfied with the new duty on raw wool, in view of the compensating duty placed on goods of foreign make.

A small number of manufacturers and dealers, who handle only foreign wools, have accumulated wealth year by year by low duties, (and those not enforced), while American growers have been nearly ruined, and manufacturers of domestic wool have hardly held their own. The former are combining to prevent the passage of this tariff measure. Their outcry will be vigorous and directed to Washington. The interest of these men precludes patriotic feeling, and the American wool growers, because they demand tariff for protection, are their worst enemies.

It is noted that under protection the flocks of the United States between 1875 and 1884 increased nearly 17,000,000, while from 1884 to 1890 (a period one-half as long) without proper protection, there has been a decrease of 6,300,000.

If the growers throughout the country, (who are beginning to realize their strength), demand unqualified action on the part of their representatives, before they adjourn, this new tariff bill will pass both houses of congress within sixty days, and become an assurance of improved trade.

Two successive unseasonable winters have caused an accumulation of manufactured goods. This would not be a serious feature, if the enormous imports of goods were diminished. Manufacturers claim that with protection on their goods, an advance in raw wool would benefit them and stimulate trade.

The passage of the bill means both. Wool growers are in open field against the enemies to protection and development, and if they are to overcome them, it must be now or never.

WM. MACNAUGHTAN'S SONS.  
New York, March 30, 1890.

Baldness ought not to come till the age of 55 or later. If the hair begins to fall earlier, use Hall's Hair Renewer and prevent baldness and grayness.

**City Live Stock.**

Breeders' Gazette.

It may not be generally known that the live stock statistics furnished by the Department of Agriculture relate only to rural stock. The horses, cows, etc., owned in the cities are not included in the totals given to the public. These, while not extremely numerous, are usually of considerably higher average value than stock found elsewhere, and, while they would not add to the total in numbers very materially, they would, no doubt, sensibly affect the estimated valuation. There are a great many cheap horses kept in the city, but at the same time a greater proportion of high-priced horses are owned there than anywhere else. The cows of the cities are usually animals of peculiar excellence, inas-

much as the metropolitan cannot afford to indulge in a cow of ordinary capacity and inferior quality at the pail or churn. It would be interesting to know just what the valuation of our city stock is; but it is one of those things of which the public will probably continue to remain measurably ignorant.

**Consumption Surely Cured.**

To the Editor:—Please inform your readers that I have a positive remedy for consumption. By its timely use thousands of hopeless cases have been permanently cured. I shall be glad to send two bottles of my remedy FREE to any of your readers who have consumption, if they will send me their Express and P. O. Address. Respectfully, T. A. SLOCUM, M. C., 181 Pearl street, N. Y.

**Baby Beef.**

Western Farm Journal.

One of the marked changes in the method of cattle feeding is the increased number of yearling steers that are in the feed lots. Mr. Peter Mayer of Irwin, Iowa, writes the Journal as follows:

"Mr. Editor:—I sold twenty-three head of yearlings the other day which averaged 1182 pounds each, and netted me \$44.35 per head. That beats fifteen-cent corn. I am still feeding one carload of younger steers, but do not think they will average 1100.

Will any practical farmer say there was no money in these steers at present prices? Of course these cattle have good blood in them and are in the hands of a good feeder. The owner, however, has no patent on this method, and there is no monopoly in it. Every farmer can do the same in time if he will. Cattle breeders are ready to furnish the sires to grade up the common stock of the country to this point, and at very reasonable prices. The rest is care, good judgment and good feeding. To make money on this class of cattle it is not necessary to feed them off at yearlings. They will pay if fed lighter during the second winter, grazed during the next summer, and fed off on new corn for Christmas beef.

**BROWN'S IRON BITTERS**

Cures Indigestion, Biliousness, Dyspepsia, Malaria, Nervousness, and General Debility. Physicians recommend it. All dealers sell it. Genuine has trade mark and crossed red lines on wrapper.

**Turner & Dingee**

of Fort Worth, Texas, keep the finest and most select stock of groceries in the city and cater with systematic promptness to the city and country trade. Their business has been increased from year to year by reason of close attention to business and because of the choice quality of the goods they handle. Don't fail to try them once and you will become a steady customer.

**Healthy Signs.**

Montana Stock Journal.

Last year over three million head of cattle were shipped to Chicago, and there was a great increase in numbers at other stock yards throughout the country. This year the receipts of cattle at Chicago are far ahead of the corresponding period of last year. The arrivals for March show a gain of 55,000 head, and for the three months a gain 130,000 head. Notwithstanding these heavy receipts, the prices of cattle have advanced. Butchers' and canners' stock barely keep up with the demand, and stockers and feeders are in active demand. The number of hogs received for March over the same month a year ago was about 100,000 head, and for sheep about 45,000. The prices for hogs and sheep also show an advance over those of last year.

**PAINLESS BEECHAM'S PILLS** EFFECTUAL  
THE GREAT ENGLISH MEDICINE WORTH A GUINEA A BOX

For Bilious and Nervous Disorders, such as Wind and Pain in the Stomach, Sick Headache, Giddiness, Fulness, and Swelling after Meals, Dizziness and Drowsiness, Cold Chills, Flushings of Heat, Loss of Appetite, Shortness of Breath, Costiveness, Scoury, Blisters on the Skin, Disturbed Sleep, Frightful Dreams, and all Nervous and Trembling Sensations, &c. THE FIRST DOSE WILL GIVE RELIEF IN TWENTY MINUTES. This is no fiction. Every sufferer is earnestly invited to try one Box of these Pills, and they will be acknowledged to be a Wonderful Medicine. "Worth a guinea a box."

BEECHAM'S PILLS, taken as directed, will quickly restore females to complete health. For a WEAK STOMACH; IMPAIRED DIGESTION; DISORDERED LIVER; they ACT LIKE MAGIC:—a few doses will work wonders upon the Vital Organs; Strengthening the muscular System; restoring long-lost Complexion; bringing back the keen edge of appetite, and arousing with the ROSEBUD OF HEALTH the whole physical energy of the human frame. These are "facts" admitted by thousands, in all classes of society, and one of the best guarantees to the Nervous and Debilitated is that BEECHAM'S PILLS HAVE THE LARGEST SALE OF ANY PATENT MEDICINE IN THE WORLD. Full directions with each Box.

Prepared only by THOS. BEECHAM, St. Helens, Lancashire, England. Sold by Druggists generally. B. F. ALLEN & CO., 365 and 367 Canal St., New York, Sole Agents for the United States, who, (if your druggist does not keep them.) WILL MAIL BEECHAM'S PILLS ON RECEIPT OF PRICE 25 CENTS A BOX.



—THE NEW—  
**AVENUE HOTEL**

Cor. Congress Avenue and 8th Street.

Rates, \$2 and \$2.50 a Day.

TOM SMITH, Manager.

AUSTIN, - - - TEXAS.



**Ellis Hotel,**

EDWARD MUELLER, - PROPRIETOR,  
FORT WORTH, TEXAS.

The best appointed hotel in the South. Commercial travel solicited.

**There is One For You!**  
DO YOU WANT IT?

THE SUNDAY MIRROR is giving a town lot in Amarillo to everyone subscribing or renewing their subscription for that paper. AMARILLO is two years old, has 1500 inhabitants, and is bound to be the railroad center of the Panhandle. For particulars write for sample copy of the Sunday Mirror, Fort Worth, Texas, J. B. Buchanan, proprietor. Sent free to any address in the United States, Canada or Mexico.

**AGENTS \$75 per month and expenses paid any active man or woman to sell our goods by sample and live at home. Salary paid promptly and expenses in advance. Particulars and sample case FREE. We mean what we say. Standard Silverware Co., Boston, Mass.**

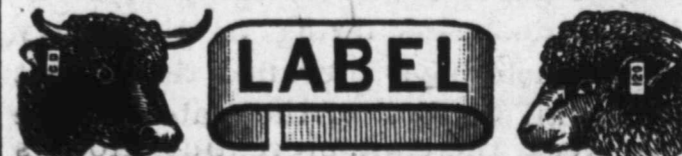
**I CURE FITS!**

When I say cure I do not mean merely to stop them for a time and then have them return again. I mean a radical cure. I have made the disease of FITS, EPILEPSY, or FALLING SICKNESS a life-long study. I warrant my remedy to cure the worst cases. Because others have failed is no reason for not now receiving a cure. Send at once for a treatise and a Free Bottle of my infallible remedy. Give Express and Post Office. H. G. ROOT, M. C., 183 Pearl St., N. Y.

ROOT'S PURGATIVE PILLS cure all Blood Diseases, Constipation and Biliousness.

**FOR MEN ONLY!**

**VIGOR AND STRENGTH** For LOST or FALLING MANHOOD; General and NERVOUS DEBILITY; Weakness of Body and Mind, Effects of Errors or Excesses in Old or Young, Robust, Noble MANHOOD fully Restored. How to enlarge and Strengthen WEAK, UNDEVELOPED ORGANS & PARTS OF BODY. Absolutely unailing HOME TREATMENT—Benefits in a day. Sent freely from 50 States and Foreign Countries. Write them. Descriptive Book, explanation and proofs mailed (sealed) free. Address **ERIE MEDICAL CO., BUFFALO, N. Y.**



Dana's White Metallic Ear Marking Label, stamped to order with name, or name and address and numbers. It is reliable, cheap and convenient. Sells at sight and gives perfect satisfaction. Illustrated Price-List and samples free. Agents wanted. **G. H. DANA, West Lebanon, N. H.**

STANDARD FOR TWENTY YEARS.

—:BUCHAN'S—:  
**Cresylic Ointment.**

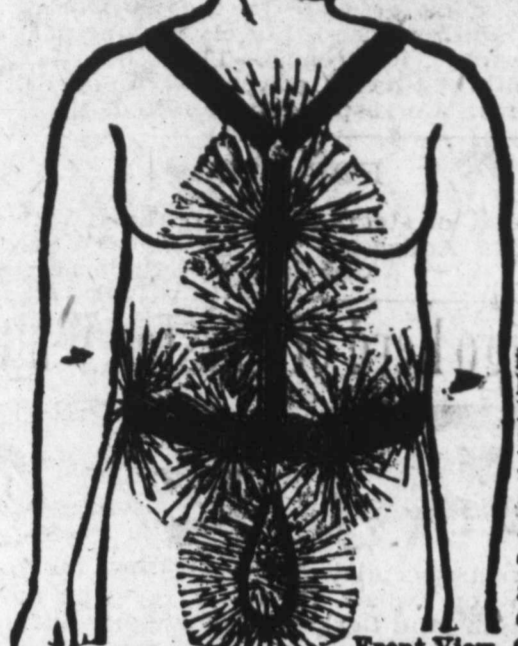
Sure Death to Screw Worms, and will Cure Foot Rot.

It will quickly heal wounds and sores on Cattle, Horses and other animals. Put up in 4 oz. bottles, 1/2 lb., 1 lb., 3 and 5-lb cans. Ask for BUCHAN'S CRESYLIC OINTMENT. Take no other! Sold by all Druggists and Grocers.

**CARBOLIC SOAP CO., Manufacturers, NEW YORK CITY.**

**DR. A. OWEN'S ELECTRIC BELT**

**GENTS' No. 4 BELT.**



WITH SPINAL APPLIANCE ATTACHED.



No. 4 Gent's Belt.

Improved July 30, 1889.



No. 4 Ladies' Belt.

**LADIES' No. 4 BELT.**



WITH SPINAL APPLIANCE ATTACHED.

Back View.

Dr. OWEN'S Electro-galvanic diseases and all other kind, Sciatica, Paralysis, Disease, Piles, Heart Costiveness, Kidney Body, and all diseases Weakness or Exhaustion. We challenge the World wearer and can be made The Suspensory for weakness of men's connected directly to the Battery, the disks are so adjusted that by means of our appliances the Electricity can be carried to any part of the Body. This is the Latest and Greatest improvement ever made in applying Electricity to the Body. This Electro-Galvanic Body Belt has just been patented. Every buyer of a belt wants the best, and this he will find the Owen to be. It differs from all others. It is a Battery Belt containing 10 Galvanic cells with 100 degrees of strength, except our No. 4 Full Power Guarantee Belt, which contains Two Batteries and Twenty Galvanic Cells, with 400 degrees of strength, has a Positive and Negative current, and the current can be reversed. Also an Electric Truss and Belt combined. The Owen Belt is not a Chain, Wire or Voltaic Belt, or a Pad, of any description. It will cure all complaints Curable by Electricity or a Galvanic Battery. The Electric current can be Tested by any one before it is applied to the body, and is worn only from six to ten hours day or night. After examining this belt you will buy no other, as it is light and easily worn and superior to all others now offered for sale. To show the Entire Confidence we have in our Electro-Galvanic Belt and Appliance, we will send our Full Power No. 4 Belt complete to responsible parties on thirty days' trial, and if it does not Prove to be or do what we Represent, you can return it to us. Physicians endorse the Owen Belt as the best. Send 5c. postage for our free illustrated Book of 224 pages written by a physician of over 40 years experience, which will be sent you in a plain sealed envelope, giving instructions how to treat yourself with electricity without the aid of a physician or the use of medicine. Send for a pair of Dr. Owen's Electric Insoles, Price \$1.00, which will cure you of Gout, Chills, Cramps in Feet or Legs, or Cold Feet. Do not waste your money on belts patented years ago. We have private consultation rooms for ladies as well as gents, and all who call or write us can rest assured that they will receive an honest opinion, and if the belt is not adapted to their case they will be so advised. Open at all times. Consultation at office, or by mail free. For information how to obtain trial belt see 224-page Book

Mention This Paper. } **The OWEN ELECTRIC BELT & APPLIANCE CO., 306 North Broadway, St. Louis, Mo. and 826 Broadway, Northeast Corner of 12th, New York City.**

**Refrigerators and a Home Market.**

To the Stock Raisers of the Southwest:  
Believing that the time has now come, when stock raisers must, for their own protection, adopt the same methods so successfully employed in every other great industry, namely, combine and act together to control the market for their products, instead of attempting, as heretofore, to act independently of each other; and believing, further, that the action of the great interstate convention at Fort Worth, endorsing the idea of establishing a large and powerful refrigerator industry on the sea coast, was wise and timely, we hereby call a convention of stock raisers and others interested to meet at the city of Corpus Christi, Texas, on the 30th day of April, A. D. 1890, to consider some definite propositions and plans which will be laid before the stockmen for their action.

We believe that it is perfectly practicable for the stockmen of Texas and other Southwestern states to so far control the market, by means of refrigerators, as to add several dollars per head to the cash market value of every beef steer in this great cattle-raising region.

We are convinced that we can no longer act independently of each other, and, single-handed, face heavy combinations among all the men with whom we deal, without suffering great and serious losses. So long as we act without harmony of purpose or plan as at present, so long we must expect our great industry to suffer depression and to be the prey of the powerful combinations with whom we are dealing.

The live stock of Texas alone is worth more than \$100,000,000; the owners of stock own also more than \$200,000,000 worth of land. Men who represent a credit of \$300,000,000 are able to help themselves, and can, if they only will, wield a power vastly greater than that of the so-called "Big Four." If we submit to having our market controlled by men who represent less than one-tenth of the credit which we do, the fault is ours—and let us not stultify ourselves by making any more complaints.

A great and serious crisis is already at hand. The Indian Territory is being closed against us, and the market for our young cattle is being shut off. Added to this, the quarantine regulations bear more and more heavily upon us, and the time is perhaps near at hand when we shall have no market worth having, unless we provide it ourselves. It is only a question of time; and the longer we wait the more seriously we may expect to be crippled.

We are informed that a definite, prac-

tical and well-digested plan will be presented to the convention, by men interested in making it a permanent success and that it does not require the stockman to do more than should reasonably be expected of him in view of all the circumstances of the case.

We earnestly hope that the convention will be largely attended and that such action will be taken as will restore our great industry to its former prosperity.

- G. W. FULTON, President Coleman-Fulton Pasture Co.
- RICHARD KING, Collins, Texas.
- G. W. FULTON, JR., Gregory, Texas.
- N. GUSSETT, Corpus Christi, Texas.
- DIMMITT PASTURE CO., Corpus Christi, Texas.
- NICHOLAS DUNN, Collins, Texas.
- A. C. JONES, Beeville, Texas.
- M. KENEDY, Corpus Christi, Texas.
- DR. J. B. TAYLOR, San Antonio, Texas.
- P. DODDRIDGE, Corpus Christi, Texas.
- T. P. MCCAMPBELL, Goliad.
- SPHON BROS., Encinal Station, Texas.
- R. J. KLEBERG, Collins, Texas, and many others.

In consequence of winter diet and lack of open air exercise, the whole physical mechanism becomes impaired. Ayer's Sarsaparilla is the proper remedy, in the spring of the year, to strengthen the appetite, invigorate the system, and expel all impurities from the blood.

**Selecting a Bull.**

Breeders' Gazette.

"If a breeder will figure the average value of his cows and multiply that sum by two, he will have about the lowest figure he must expect to pay for a bull that will be good enough to put upon them with satisfactory promise of improvement." This is the conclusion of an experienced breeder, and we imagine the proposition will meet with general endorsement. The fact is that herd-improvers are always in short supply, and those that take rank as breed-improvers are so rare that their value is almost beyond computation. The Gazette would add to the hint above given, weed out the cows thoroughly before striking the average which is to be half the herd bull's value. Real merit apparently comes high, but it is far cheapest in the end.

C. H. Edwards's music house of Fort Worth has removed from No. 308 to No. 409 Houston street.

**DR. E. C. WEST'S NERVE AND BRAIN TREATMENT.**

Specific for Hysteria, Dizziness, Fits, Neuralgia, Wakefulness, Mental Depression, Softening of the Brain, resulting in insanity and leading to misery decay and death. Premature Old Age, Barrenness, Loss of Power in either sex, Involuntary Losses, and Spermatorrhoea caused by over-exertion of the brain, self-abuse or over-indulgence. Each box contains one month's treatment. \$1 a box, or six for \$5, sent by mail prepaid. With each order for six boxes, will send purchaser guarantee to refund money if the treatment fails to cure. Guarantees issued and genuine sold only by E. M. WELLS, Druggist, sole agent, Fort Worth, Texas.

**J. C. SCOTT, ATTORNEY AT LAW,**

304 Main Street, Fort Worth, Tex.  
LAND AND COMMERCIAL LAW.  
Refers by permission to Hon. Henry M. Teller, Sec. Interior, Washington, D. C.; Valley National Bank, St. Louis, Mo.; H. M. Truehart & Co., Galveston, Tex.; Gen. B. C. Ludlow, Col. Int. Rev., Austin, Tex.; City National Bank, Fort Worth, Tex.; First National Bank, Fort Worth, Texas.

**Thos. F. West, Attorney at Law,**

Late of Jacksboro, 311 Main Street, Fort Worth, Texas. Special attention given to land and live stock litigation.

R. M. Wynne. Robt. McCart. N. A. Steadman.  
Wynne, McCart & Steadman, Attorneys at Law,

311 Main Street, FORT WORTH, - - - TEXAS.

**ALLERTON HOUSE, EAST ST. LOUIS.**

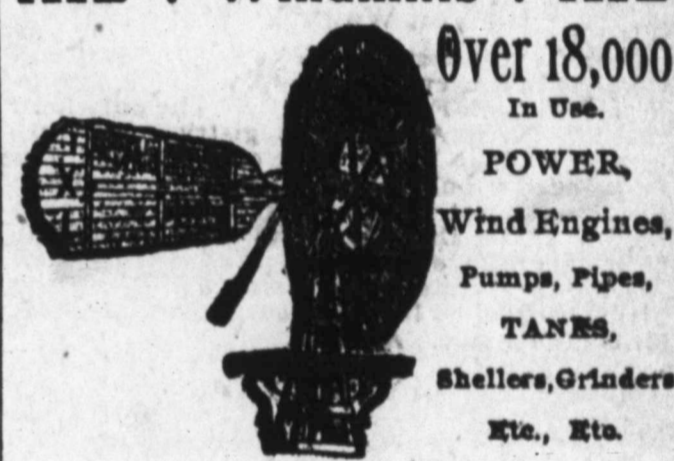
SPEYER & BRACEY, Proprietors. NATIONAL STOCK YARDS, ILL. \$1.50 a day. Special rates to stockmen.

**RUSSELL & FOWLER, LAWYERS,**

731 Main Street, over T. M. Jones & Co., DALLAS, - - TEXAS.

READERS OF ADVERTISEMENTS in these pages will greatly oblige and assist us by mentioning the TEXAS LIVE STOCK JOURNAL when writing to our advertisers.

**IXL -- Windmills -- IXL**



Over 18,000 In Use. POWER, Wind Engines, Pumps, Pipes, TANES, Shellers, Grinders Etc., Etc.

Write for Prices to— The Phelps & Bigelow Windmill Co. 1215 West 9th St., KANSAS CITY, Mo. All Texas orders filled from Dallas, Texas.

**JOHN KLEIN, Practical Hatter**

912 Main St., DALLAS, TEXAS. Silk hats blocked white waiting. Stiff and soft hats cleaned, stiffened and retrimmed equal to new for \$1.35. Work warranted first-class. Orders by mail or express promptly attended to.

SAN ANTONIO, TEXAS, APRIL 5, 1890. SEALED proposals, in triplicate, will be received here until 12 o'clock noon, 90 meridian time, MAY 5, 1890, and then opened, for furnishing Fuel, Forage and Straw, during fiscal year commencing July 1, 1890, at posts in Department of Texas. Proposals will be received at the same time by the Quartermaster at each post for furnishing the supplies required by that post only. Preference given to articles of domestic production, conditions of quality and price (including in the price of foreign productions the duty thereon) being equal. The United States reserves the right to reject any or all proposals. All information furnished on application to this office or to Quartermasters at the various posts. Envelopes containing proposals should be marked: "Proposals for— at—," and addressed to the undersigned or to the respective post quartermasters. GEO. H. WEEKS, Deputy Quartermaster General, U. S. Army, Chief Quartermaster.

SAN ANTONIO, TEXAS, APRIL 2, 1890. SEALED proposals, in triplicate, will be received here until 12 o'clock noon, on the 2d day of MAY, 1890, and then opened, for transportation of Military Supplies on following described routes, in Department of Texas, during fiscal year commencing JULY 1, 1890: Wagon Transportation, No. 1—Between Marfa and Fort Davis, Texas; No. 2—Between Pena and Fort Ringgold, Texas; No. 3—Between Spofford Junction and Fort Clark, Texas. River Transportation, No. 4—Between Forts Brown and Ringgold, Texas. Local Transportation, No. 5—At San Antonio, Texas; No. 6—At Brownsville, Texas. All information will be furnished on application to this office. The United States reserves the right to reject any or all proposals. Envelopes containing proposals should be marked: "Proposals for Transportation on Route No. —," and addressed to the undersigned. GEO. H. WEEKS, Deputy Quartermaster General, U. S. A., Chief Quartermaster.

**FOR SALE OR EXCHANGE.**

**FOR RENT OR SALE.**

The best watered and finest grassed ranch in the Osage, Indian Territory, adjoining the state of Kansas, twelve hours run from Kansas City. Said ranch has a nine years' lease from the 1st of April, is ten by eleven miles square, with good four barbed wire fence all around it, with an abundance of grass to fatten fifteen thousand head. For particulars address  
D. S. GREEN,  
2821 Champa street, Denver, Colorado.

**FOR SALE.**

A ranch of 7000 acres in Throckmorton county, Texas; half tillable, four-wire fence, two good houses, three streams of living water, farm opened up. Plenty of pecan and other timber. Price \$3.50 per acre, 1/2 cash, balance 1, 2 and 3 years. Address  
C. E. SMITH,  
Throckmorton, Texas.

**FOR SALE,**

5000 head of two, three and four-year-old steers, cheap. Address  
E. MORRIS,  
Corpus Christi, Texas.

**PRIVATE SALE. PRICE LOW.**

47 head Shorthorn Bulls.  
These are the get of pedigreed Shorthorn bulls, descendants of Rose of Sharon, Young Marys, Bates and Duches, Young Phyllis and Goodness. Their dams are selected Texas cows. These 47 head are yearlings this spring, all are large and fat, are the choice out of 81 head, are red, red and white, and roan. Address  
ANTHONY BLUM, Manager,  
Durham, Borden County, Texas.

**THE BIGHAM HAY PRESS,**

Manufactured by The Hay Press Co., Walnut, Bosque county, Texas. Price only \$100. For further information, address  
B. F. RUSSELL, Sec'y and Treas.,  
Walnut, Texas.

**HOLSTEIN-FRIESIANS**

Do You Want the Best?

Send for catalogue of the only herd in Texas that has in it over 100 head of acclimated registered Holstein-Friesian cattle. The only herd that has in it Advanced Registry cows from records made in Texas. The only herd that has at its head a bull whose dam and granddam have the largest records ever made. The only herd in Texas that has won, at the same time both the milk and butter prizes (open to all breeds) at a state fair. Young bulls to head herds, backed by largest records ever made, at all times for sale. Address  
CLIFTON STOCK FARM,  
or W. E. HUGHES,  
Dallas, Texas.

**FOR SALE.**

Three hundred head stock cattle, well-improved Durham, 1/2 to 3/4-bred. Will take forty mares, 14 1/2 to 15 hands high, 3 to 5 years old, part pay. Address me at Burnet, Texas.  
F. H. HOLLOWAY.

**BULLS FOR SALE.**

I have for sale at my Blue Mound Blooded Stock farm, 12 miles north of Fort Worth, 50 head of Shorthorn high-grade bulls, yearlings past; also, 50 head of high-grade yearling heifers.  
J. W. BURGESS,  
Fort Worth, Texas.

**HIGHLAND HERFORD FARM,**

Established 1877.  
The pioneer Hereford farm of Texas. The cheapest Herefords for the least money. Stock for sale. Address  
C. O. WHITMAN,  
Terrell, Texas.

**STEERS FOR SALE.**

I have 400 head of 2-year-old steers for sale, average cattle of this county. Write me or come and see the cattle. Price reasonable. Address  
W. T. LAUGHLIN,  
Santa Anna, Coleman county, Texas.



**Jot Gunter's Grayson County Ranch.**

Thoroughbred and grade Shorthorn and Hereford cattle. We produce over 1000 calves per annum. The largest herd of thoroughbred Shorthorns in Texas. Bulls sold from this ranch are guaranteed against Texas fever in any part of the United States or Mexico. Address  
NAT GUNTER, Manager,  
Tioga, Texas.

**STEERS FOR SALE.**

350 head good smooth steers from 1 to 7 years of age, to be delivered in our pasture in Houston county, Texas. Address us at Huntsville, Texas.  
EASTHAM BROS.

**DEVON CATTLE FOR SALE.**

A car-load of registered, acclimated Devon cattle, selected from the Laurel Hill herd; nine cows, five calves, three yearling bulls and Champion Cap. Champion Cap is the finest Devon bull in the Gulf States; weight 1680 lbs, in ordinary condition. He took the first prize at the Illinois, Nebraska and St. Louis state fairs. He is not related to any of these cows. Mr. A. Y. Walton, Jr., San Antonio, has seen these cattle. Address DUNCAN STEWART, Laurel Hill P. O., West Feliciana Parish, La.

**FOR SALE OR EXCHANGE.**

**2000 ACRES**

of fine agricultural land, inclosed by a wire fence composed of 7 wires and 1 rail, with posts 8 feet apart, making it hog proof; frame house of 4 rooms, 3 stables, 4 corrals, etc. The land is well watered and has an abundance of fine grass and timber. It is regarded as one of the finest bodies of land in the county. It is situated 3 miles west of Decatur, Wise county, Tex., and if taken soon can be bought at a great bargain. Address owner,  
A. P. BUSEY,  
St. Joseph, Mo.

**FOR SALE.**

Range-raised Hereford bulls, one and two years old, from half to seven-eighths grade. Apply to  
JOHN HARRIS,  
Colorado, Texas.

**FOR SALE.**

1700 head of good fine Merino sheep, 9-pound shearers. Correspondence solicited.  
A. S. BEBOUT,  
Gatesville, Texas.

**MULES WANTED.**

I want 200 yearling or two-year-old mules. Will buy mothers with mule colts, if low enough. Send description and price to  
S. O. MOODIE,  
Fort Worth, Texas.

**FOR SALE.**

400 head of Northwest Texas-raised one and two-year-old steers for sale. Address Fendley & Benham for particulars, Decatur, Texas.

**C. F. ESTILL,**

Breeder of Polled-Angus cattle. Young stock for sale; also stock bought and sold on commission. Correspondence solicited. Ft. Worth, Tex.

**CHAMPION, PENNINGTON & CO.**

Real Estate and Live Stock Brokers  
Werbiski Building, 12th Street,  
P. O. Box 42, BROWNSVILLE, TEXAS.



**JACKS AND STALLIONS.**

For well bred jacks and stallions, Texas raised and imported, address  
COFFIN BROS.,  
Itaska, Hill County, Texas.

**BERKSHIRE PIGS.**

I have pure-bred Berkshire pigs for sale, one to five months old, all from choice, hardy importations.  
W. S. IKARD,  
Henrietta, Texas.

**A BARGAIN.**

38,000 acre Texas ranch, in a solid tract, (can be 68,000 acres) on Gulf coast, near Aransas Pass. Well improved; mostly smooth prairie, good soil, excellent grass. No feeding needed, no winter; Gulf breeze makes summer pleasant, locality healthy, ranch well stocked with cattle raised on it and, if wanted, sold with land at market price. Land \$3 per acre. Send for complete description.  
S. M. SMITH,  
Land Title Block, Fort Worth, Texas.

**The R. G. Head BROKERAGE**

Investment Company,  
Rooms 72 and 73 Barclay Block,  
DENVER, COLO.

Buy and sell all kinds of live stock, ranch properties, farms, lands, land grants, stocks and bonds of cattle companies, and real estate. Make a specialty of handling young steers.

Make examinations, surveys of and written reports on land grants and ranch properties anywhere in the United States and Mexico.

We have for sale desirable tracts of land, large bodies in solid blocks in Texas, New Mexico and Mexico, specially adapted to agriculture, stock farming and colonizing.

Our commissions on cattle sales will be based upon a percentage of prices obtained. Schedule of rates furnished on application.

K. M. VAN ZANDT, JR. JAMES D. READ,  
Formerly with Bateman & Bro.

**VAN ZANDT & READ,**

REPRESENT  
**Jarvis-Conklin Mortgage Trust COMPANY.**

Vendor's notes bought and loans negotiated on improved farms and ranches on short notice at a low rate.  
Office, Board of Trade Building, Fort Worth, Tex.

**FOR SALE OR EXCHANGE.**

**FOR SALE!**

One hundred to fifteen hundred head of  
**Three and Four-Year-Old STEERS**

to be delivered at Alpine or Toyah, Tex.  
The Estado Land and Cattle Co.,  
No. 839 Main Street, Dallas, Texas.

F. SOMMERVILLE, MGR.  
J. C. BIDDLE, V-Pres. and Treas.

**Western Securities COMPANY,**

FORT WORTH, TEXAS.  
Capital, \$250,000.

Loans on Farms, Ranches and Improved City Property at Moderate Interest.

W. C. YOUNG, J. M. KUHEN,  
of the Llano Live Stock Co.

**YOUNG & KUHEN, LIVE STOCK.**

Office on Fourth Street, between Main and Houston Streets,  
FORT WORTH, TEXAS.

Cattle contracted for spring delivery. Horses of every description in yards and pastures. Cow-horses a specialty. Horses, mares and jacks for sale at all times.

We are prepared to enter into contracts for the delivery of cattle, horses, mares and mules at any point in Texas, and solicit correspondence.

(Incorporated.)

**International Investment Ag'cy**

GEO. B. LOVING, Manager,  
EL PASO, TEXAS.

Do a general real estate, live stock, mine and investment brokerage business.

The sale of wild lands in large bodies, ranches, cattle and mines in Texas, New Mexico, Arizona and the Republic of Mexico, a specialty.

**HEREFORD PARK STOCK FARM.**



RHOMÉ & POWELL,  
Breeders and Importers of Pure-Bred  
HEREFORD CATTLE.

Having purchased from F. M. Houts of Hereford Ranch his entire herd of pure-bred Hereford cattle, with the celebrated prize-winning bull, Harkaway, at the head, and having added other noted strains of Herefords to our number, making it the best collection of pure-bred Hereford cattle in the state, which enables us to offer for sale Texas-raised bulls free from fever risks. Have also grade Hereford and Shorthorn bulls, Texas-raised, at reasonable prices. Correspondence solicited. Address  
RHOMÉ & POWELL,  
Rhome, Wise County, Texas.

JOHN S. POWELL, N. R. POWELL,  
Fort Worth, San Antonio.

**John S. Powell & Co.,**  
Dealers in all kinds of

**BLOODED STOCK,**  
Fort Worth, TEXAS. - San Antonio.

**FOR SALE OR EXCHANGE.**

**Wm. Courtney,**  
MILES CITY, MONTANA,  
**Live Stock Broker.**

I have resided nearly a quarter of a century in Montana, am thoroughly acquainted with the leading stock growers in the Northwest, and handle Southern cattle largely for one per cent. commission. References—The First National Bank and the Stock Growers' National Bank of Miles City. Correspondence invited.

**FOR SALE.**

200 head of steers, one, two, three and four years old. Address  
A. F. COWLING,  
Cowlington, Indian Territory.

**Chicago Herd of Chester Whites**



I make a specialty of choice stock for breeders. No hog equals them for crossing on Poland-Chinas and Berkshires for pork purposes. Pedigree sent with each pig.  
W. C. VANDRUCK,  
Cherry Valley, Ills.

**FOR SALE**

**The Texas Land and Cattle Co. LIMITED,**



In the Panhandle three-year-old steers; in Nueces county 500 horses, mares and fillies, all improved and mostly highly bred. Graded Durham, Hereford and Polled-Angus bulls and heifers  
JOHN TOD,  
Laureles Ranch, Corpus Christi, Texas.

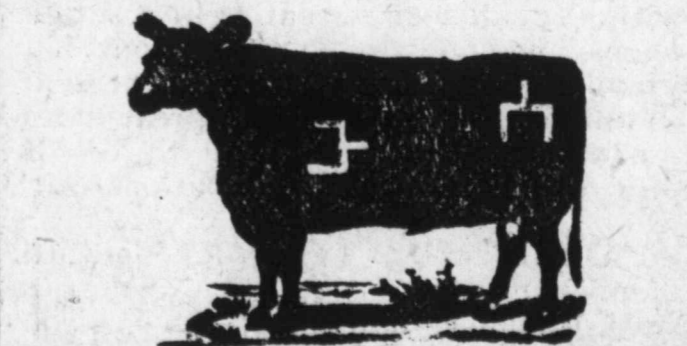
**P. A. HUFFMAN & CO., Real Estate**

Investment Agents,  
Cor. Main and 6th St.,  
FORT WORTH, TEXAS.

Postoffice Box 197.  
Land titles investigated, taxes paid and collections made for non-residents.  
Correspondence solicited.

**THE ESPUELA LAND AND CATTLE COMPANY.**

(Limited.)  
Postoffice, Dockums, Dickens County, Texas.  
FRED HORSBRUGH, Manager.



Have for sale two-year-old and yearling steers and heifers of their own raising, got by Shorthorn and Hereford bulls, in the straight spur mark and brand. Horses branded on the left hip.

**MATADOR LAND AND CATTLE COMPANY.**

(Limited.)  
W. F. SOMMERVILLE,  
Manager, Fort Worth, Texas; H. H. CAMPBELL, superintendent, P. O., Matador, Texas.

We have for sale at all times yearling, two and three-year-old steers, all in our own mark and brand and from the best grade bulls.

Additional brands: MAK on side; FANT on side; LL on side and L on the hip.  
Correspondence solicited from cattle buyers.

**SAN ANTONIO.**

Continued from 6th Page.

from a business trip to Fort Worth. He feels somewhat elated at the fair prospect of the successful issue in the refrigerator contract, which has been a dream of his life. He says he can see emancipation from Northern meat slavery clearly in sight.

Thirteen car-loads of cattle left Pearsall on Saturday for St. Louis.

J. J. O'Brien of Kansas City has recently bought a 11,000-acre ranch in Frio county, with the intention of cutting it up into farms and selling it out on easy terms. In furtherance of this scheme he, last week, sold off the stock, about 1000 head, including everything under two-year-old steers, for \$6 per head all around, and he will soon go North to bring down the men with the hoe.

Pearsall News:—The stock pens were crowded with cattle last Thursday and we are informed that about five train-loads of stock were to have been shipped the last of this week. It is doubtful whether such large shipments of cattle have ever been made from this point as the transactions of the present season have warranted.

Uvalde News:—From Mr. Ross Kennedy we learn that a large number of cattle belonging to Dillard & Fant have been unloaded at Sabinal. The herd was started from Santa Gertrudes for the Indian Territory, but upon reaching Spofford Junction they could be taken no further, they were in such poor condition. They were then shipped to Sabinal in order to drive south, but when unloaded at that point large numbers of them died, and when they reached water many of them had to be pulled out of the mud. The herd is in a deplorable condition, and before they can be taken to good range the losses will be very heavy. It was intended to drive them through the pastures of Messrs. Nat and Dan Lewis, but we understand they have enjoined them from so doing. Mr. Kennedy says he has never seen a bunch of young cattle in such a bad condition.

Uvalde News:—Piper & Ellis have purchased from Mr. Wesley Vivion of Maverick county 300 head of young cattle, and Mr. V. M. West has gone to attend to cutting out and gathering them. They will be placed on the Piper & Ellis ranch at Cline and held there.

Uvalde county reports are encouraging to stockmen. Prices are fair and trading lively. Rain has come and the future prosperity is assured.

**THE WOOL SACK.**

Victor Beze of this city recently bought 3800 muttons in Duval county. Price not stated.

Col. John Owens, the prime mover in the establishment of the Galveston wool market, was on the streets on Wednesday, wearing the satisfied smile of a successful man.

The wool warehouses are rapidly filling up and some sampling has already been going on, but it will be some weeks before any real life may be expected in the wool market. The stock on hand is fully 3000 sacks, with arrivals averaging about 250 per day.

**Grass Seeds.**

Messrs. Trumbull, Reynolds & Allen, 1428 St. Louis avenue, Kansas City, Mo., sell pure seeds suitable for seeding down ranches to permanent pastures in Texas. All the best varieties of grass and clover seeds can be secured from them and they especially ask a trial for their seeds in dry climates. They have been making a specialty of ranch seeds for nineteen years. Send for free catalogue.

Parties having barren mares or cows, or irregular breeders, will learn something to their advantage by addressing H. W. Campbell, Racine, Wisconsin.

**Sales of Cattle at Polk Stock Yards, Fort Worth, Texas.**

J. M. Tannahill sold to Schuber, 4 steers, 4065 lbs, at \$2.75 per 100 lbs.  
 A. M. Cable to John White, 1 cow, 575 lbs, \$2; 2 cows, 1895 lbs, \$2.25.  
 R. B. Kennon to John Lewis, 3 steers, 2060 lbs, \$2.75.  
 Beggs & Hackett to Little George, 3 steers, 2225 lbs \$2.75.  
 H. Speer to Kent, 3 steers, 2240 lbs, \$2.75; 1 cow, 820 lbs, \$2.25.  
 H. Speer to Robertson, 6 cows, 4260 lbs, \$2; 6 steers, 4590 lbs, \$2.25.  
 R. B. Kennon to Adams & Farrar, 14 steers, 10,155 lbs, \$2.75.  
 W. A. Hunter to Ross, 1 cow, 670 lbs, \$2; 6 cows, 4550 lbs, \$2.50.  
 R. B. Kennon sold to Adams & Farrar 2 cows, 1965 lbs, at 2c; 4 steers, 3390 lbs at 2½c.  
 R. B. Kennon sold to John Robertson 8 steers, 7130 lbs, at \$2.65 per 100.  
 Hudson sold to Shaw 4 cows, 3370 lbs, at 2c; 1 cow, 980 lbs, at 2c; 2 calves, 665 lbs, at 3c.  
 Hudson sold to Adams & Farrar 2 calves, 435 lbs, at 2½c.  
 W. J. Adams sold to Smith Bros. 12 steers, 10,200 lbs, at 2½c.  
 J. P. Ingram sold to Smith Bros. 6 steers, 5680 lbs, at 2½c.  
 R. B. Kennon sold to John Robertson 5 calves, 785 lbs, at 3c.  
 Runion sold to Shaw 3 cows, 2310 lbs, at 2c.  
 W. J. Adams sold to Smith Bros. 5 hogs, 800 lbs, at 3c.  
 S. A. Rash sold to Cunningham 1 bull, 1380 lbs, at \$1.60 per 100; 7 steers, 7345 lbs, at 2c.  
 T. J. Godney sold to Kemper 11 steers, 9700 lbs, at 2½c.  
 T. J. Godney sold to Rouse 11 steers, 10,000 lbs, at 2½c.  
 Beggs & Hackett sold to C. L. Walker 5 steers, 3165 lbs, at 2½c.  
 Beggs & Hackett sold to White 9 steers, 7180 lbs, at 2½c.  
 Beggs & Hackett sold to Hierholzer 1 cow, 500 lbs, at 2½c; 3 steers, 2100 lbs, at 2½c.  
 R. B. Kennon sold to Hardselle 6 cows, 4990 lbs, at 2½c.  
 R. B. Kennon sold to Adams & Farrar 4 cows, 4575 lbs, at 2½c.  
 R. B. Kennon sold to Newman & Rawson 3 cows, 2200 lbs, at 2½c.

**BLOODED STOCK.**

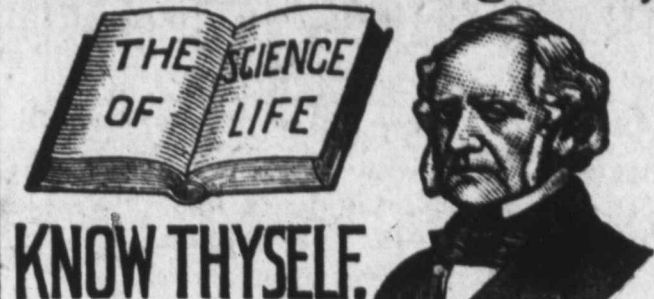
One Tennessee jack to J. Laing of Dallas, \$700.  
 One Jersey cow to Mr. Garner of Ft. Worth, \$150.  
 One Jersey cow to Capt. Sidney Martin, \$100.  
 One Jersey heifer to W. D. Baker, Houston, Tex., \$60.  
 Registered Berkshire pig to Wm. Bondies of Forney, Tex., \$10.

**For \$5**

We will send by mail or express, anywhere, the best wearing boot for the money in the world.

Logan, Evans & Smith, Ft. Worth, Tex

**THE GLORY OF MAN STRENGTH VITALITY!**  
 How Lost! How Regained,



**KNOW THYSELF.**  
 THE SCIENCE OF LIFE  
 A Scientific and Standard Popular Medical Treatise on the Errors of Youth, Premature Decline, Nervous and Physical Debility, Impurities of the Blood.

**EXHAUSTED VITALITY AND THE UNTOLD MISERIES**

Resulting from Polly, Vice, Ignorance, Excesses or Overtaxation, Enervating and unfitting the victim for Work, Business, the Married or Social Relation. Avoid unskillful pretenders. Possess this great work. It contains 800 pages, royal 8vo. Beautiful binding, embossed, full gilt. Price only \$1.00 by mail, postpaid, concealed in plain wrapper. Illustrative Prospectus Free, if you apply now. The distinguished author, Wm. H. Parker, M. D., received the GOLD AND JEWELLED MEDAL from the National Medical Association for this PRIZE ESSAY on NERVOUS and PHYSICAL DEBILITY. Dr. Parker and a corps of Assistant Physicians may be consulted, confidentially, by mail or in person, at the office of THE PEABODY MEDICAL INSTITUTE, No. 4 Bulfinch St., Boston, Mass., to whom all orders for books or letters for advice should be directed as above.

**J. G. McREYNOLDS,**  
 P. O. Box, 25,  
 NECHESVILLE, TEXAS.  
 Breeder of High-Class Poultry and Poland China Swine.  
 STANDARD FOWLS—Lt. Brahmas, Langshans, Silver and White Wyandotts, P. Rocks, Bk Minorcas, Brown Leghorns, Red Caps, and Black-Breasted Red, Red Pyle and Indian Games.  
 PIT GAMES—Shawnecks, Wagner's, Wagner's No. 4 Strain and crosses; use 3 farms to breed pit games. Write for what you want. Send two cent stamp for catalogue.

**W. K. LEWIS,**  
 Veterinary Surgeon,  
 COLORADO, TEXAS.  
 Spaying a Specialty. Liberal Contracts for large numbers.  
 References—A. A. Wiley, A. P. Bush, Winfield Scott, Esq., and many others.

**DR. R. H. CHILTON,**  
 Practice limited to  
 The Eye, Ear, Throat and Nose.  
 Tex 1 stallment Building, Elm t., 3d Floor  
 DALLAS, TEXAS.

**EGGS** For hatching, at bottom prices. 25 varieties of selected poultry. Send stamp for fine illustrated catalogue.  
 C. C. SHOEMAKER, Freeport, Ill.

**PATENTS** If you want to secure a patent, write to H. H. KERR, Solicitor, Fort Worth, Texas, formerly an examiner of applications for patents, U. S. Patent Office, Washington, D. C.

**European Steamship Business.**  
 Those who contemplate a trip to Europe, or wish to prepay the passage of relatives or friends from any part of Europe to any point on or via the line of the Santa Fe route, will do well to call on or address Wm. Doherty, 316 Houston street, G., C. & S. F. Ry. agent at Fort Worth, before negotiating or purchasing elsewhere. Mr. Doherty is prepared to quote lowest rates and furnish through tickets of all classes from or to England, Ireland, France, Germany, Switzerland, Austria, Norway, Sweden, etc., by most direct and quickest steamship lines. Mr. Doherty will at all times take pleasure in fully answering any inquiries relative to railroad or steamship business.

**CAUTION.**—Buy only Dr. Isaac Thompson's Eye Water. Carefully examine the outside wrapper. None other genuine.



**For Season 1889-90.**

I have more Pure-Bred and High-Grade Percheron stallions for sale than any other one concern in America. I also have a number of Pure-Bred French Coach and Standard-Bred Trotting stallions; also, one hundred head four-year-old mules.

**ALWAYS ON HAND.**  
 A large assortment of heavy, stylish horses, suitable for express and fire companies, matched pairs and single family-carriage horses and gentlemen's roadsters. The attention of purchasers is respectfully invited to my stock before buying.  
 Sales Stables on Fair Grounds, Dallas, Texas, Geo. R. King, manager; Ranch in Grayson county, 12 miles west from Sherman, on Texas & Pacific railroad.  
 Send for Illustrated Catalogue, and address correspondence to  
**H. B. SANBORN,**  
 Houston, Texas

**J. B. ASKEW,**  
 Successor to R. F. Tackbery  
 Manufacturer and wholesale and retail dealer in  
**Saddles, Harness, Buggies, Etc.**  
 107 and 109 Houston Street,  
 FORT WORTH - TEXAS.

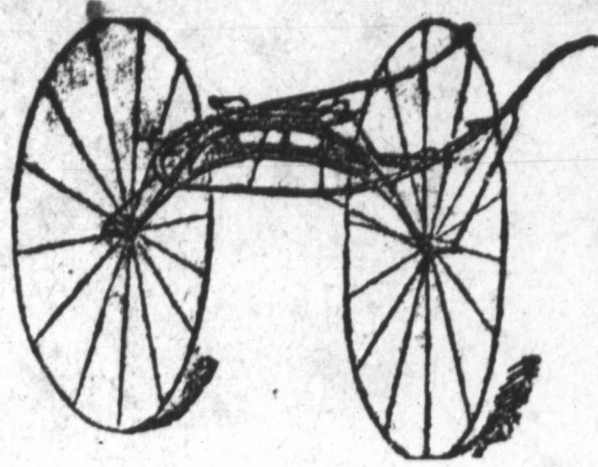


Make a specialty of the Tackbery Stock Saddles and fine Buggy Harness.  
 During the past year we filled mail orders for this popular make of saddles from Maine to California, and from Montana to the Gulf of Mexico, and to show our appreciation of this large and increasing trade, for  
**THE NEXT SIXTY DAYS**  
 we will prepay all freight or express charges on orders for saddles or harness, laying these goods down at your door at Fort Worth prices.  
 Send for catalogue and price list!

**L. B. IMBODEN. L. G. HAMILTON.**  
**IMBODEN & HAMILTON**  
 Investment Bankers,  
 FORT WORTH, - - - TEXAS.  
 Office Corner Third and Houston Sts.

Money always on hand to loan upon farms, ranches, vendors' lien notes and city property at lowest current rates. Loans closed quickly. Correspondence invited.

**SAVES POSTS, TIME AND MONEY!**  
 Old Fences made as good as new by using  
**Wheeler's Practical Fence Stay**  
**PROTECTS CATTLE FROM LIGHTNING.**  
**WHEELER & CO., 91 to 101 38th St., Chicago**  
 SOLD BY ALL FIRST-CLASS DEALERS.



**Calvin Toomey,**  
KANSAS CITY, MO.,  
Carriages, Buggies, Spring Wagons

Track Sulkeys, Road, Pole and Breaking Carts,  
And Sulky Cushions with Weight Pockets. No sulky perfect without the Wheel Guard Rail. It prevents collisions and stiffens the sulky throughout, making it run true and steady. Send for catalogue.

## Kansas City Stock Yards

Are by far the most commodious and best appointed in the Missouri Valley, with ample capacity for feeding, weighing and shipping cattle, hogs, sheep, horses and mules. They are planked throughout, no yards are better watered, and in none is there a better system of drainage. The fact that better prices are realized here than in the East is due to the location at these yards of eight packing houses, with an aggregate daily capacity of 3600 cattle and 37,200 hogs, and the regular attendance of sharp, competitive buyers for the packing houses of Omaha, Chicago, St. Louis, Indianapolis, Cincinnati, New York and Boston.

All the sixteen roads running into Kansas City have direct connection with the yards, affording the best accommodations for stock coming from the great grazing grounds of all the Western states and territories, and also for stock destined for Eastern markets.

The business of the yards is done systematically and with the utmost promptness, so there is no delay and no clashing, and stockmen find here and will continue to find that they get all their stock is worth, with the least possible delay.

Receipts for 1889 were 1,220,343 cattle, 2,073,910 hogs, 370,772 sheep and 34,563 horses and mules. Total number of cars, 83,972.

KANSAS CITY STOCK YARDS

## HORSE AND MULE MARKET

W. S. TOUGH, Manager.

This company has established in connection with the yards an extensive Horse and Mule Market, known as the KANSAS CITY STOCK YARDS HORSE AND MULE MARKET. Have always on hand a large stock of all grades of Horses and Mules, which are bought and sold on commission or in car-load lots. Regular trade auction sales every Wednesday and Saturday.

In connection with the sales Market are large feed stables and pens, where all stock will receive the best attention. Special attention given to receiving and forwarding. The facilities for handling this kind of stock are unsurpassed at any stable in this country. Consignments are solicited with the guarantee that prompt settlement will be made when stock is sold.

C. F. MORSE, General Manager. E. E. RICHARDSON, Secretary and Treasurer. H. P. CHILD, Superintendent.

## UNION STOCK YARDS,

FORT WORTH,

## THE LIVE STOCK MARKET OF TEXAS.

The management of the Union Stock Yards Company of Fort Worth with pleasure announce to the stockmen of Texas that these yards are open for feeding purposes, and that all stock delivered at the yards will receive every care in unloading and reloading, be held in spacious, well drained pens, amply supplied with artesian water and the best of feed. Ample hotel facilities at the yards for stockmen.

As the yards are on the direct line of traffic to greater markets, stockmen can avail themselves of the ample facilities afforded at these yards without increase in expense or loss of time. The largest trains can be unloaded at once.

The Union Stock Yards Company of Fort Worth confidently rely upon the earnest co-operation of the stock raisers of Texas in the effort to build and operate a large home market in their interest. To do so, stockmen should insist that all stock passing through Fort Worth be unloaded and fed at these yards.

JNO. R. HOXIE, President. J. C. McCARTHY, Vice-President and General Manager.

G. B. PAXTON, Secretary.

Visitors will be welcome. Electric Street Car Line from Main Street direct to the Stock Yards Exchange.

**TRUNK FACTORY!** HENRY POLLOCK & CO.,  
722 Elm Street,  
DALLAS, TEXAS.

Everything in the line of traveling requisites. Fine goods a specialty.

**POLK STOCK YARDS,**  
POLK BROTHERS, PROPRIETORS.

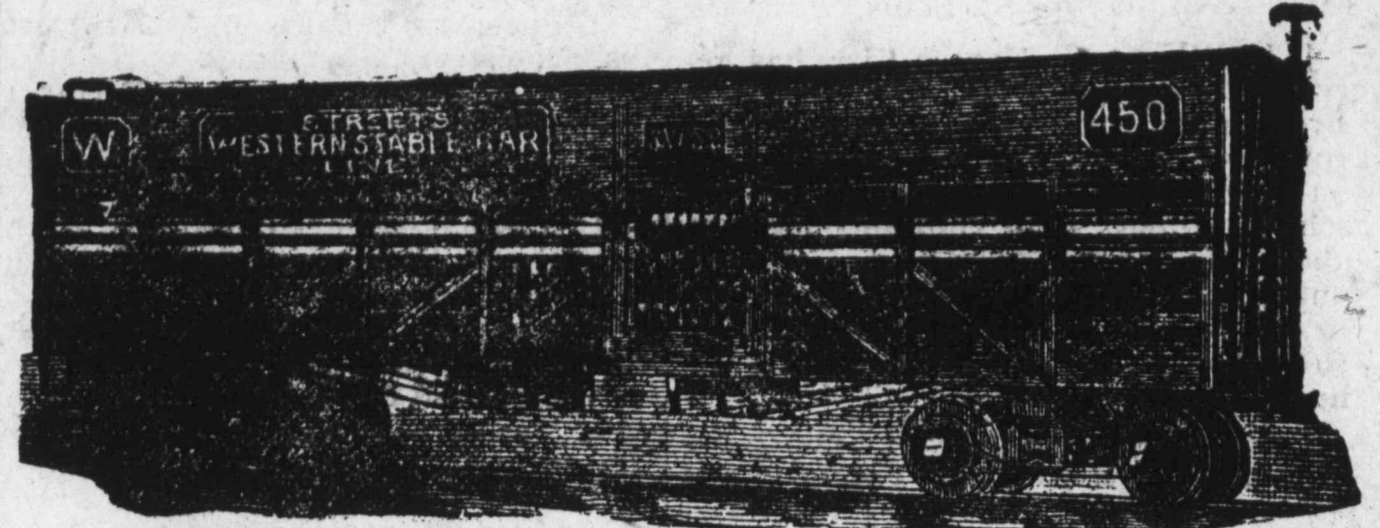
Hereford, Shorthorn, Polled, Angus, Devon, Holstein and Jerseys, Saddle Horses, Mares, Mules and Jacks. Shipments solicited.  
FORT WORTH, TEXAS.

**PURE** TRUMBULL, REYNOLDS & ALLEN.  
GRASS, FIELD, GARDEN & TREE SEEDS,  
FERTILIZERS, Etc.  
Send for Catalogue. Mailed free.  
1426-1428 St. Louis Ave., Kansas City, Mo. **SEEDS**

S. M. FISCHER, President. L. D. KNEELAND, Gen. Traffic Manager.

## Street's Stable Car Lines,

General Office, Rialto Building, CHICAGO, ILLS.



Our lines of Stable Cars, operating east and West of St. Louis and Chicago, carrying horses and cattle to market, give food, water and rest to animals without unloading.

For particulars, address

L. D. VOAK, GENERAL AGENT

For Missouri, Kansas, Colorado, Arkansas, Indian Territory, Texas, New Mexico and Arizona,  
FORT WORTH, TEXAS.

GEORGE L. GAUSE,

Successors to FLENNER & GAUSE,

## UNDERTAKER

314 W. Weatherford Street, Fort Worth, Texas.

Open Day and Night. Orders by telegraph receive prompt attention.

J. C. McCARTHY, President.

MAX KLEIN, Cashier

## City National Bank,

FORT WORTH, TEXAS.

Capital Paid In and Surplus, \$360,000.

DIRECTORS—J. O. Sandidge, J. C. McCarthy, Chas. Scheuber, Max Hiler, C. M. Crane, T. T. D. Andrews, R. E. McAnulty, Jas. W. Swayne, T. R. Sandidge.

M. B. LOYD, President.

D. C. BENNETT, Vice-President.

H. B. HARROLD, Cashier.

## First National Bank,

CORNER HOUSTON AND SECOND STREETS, FORT WORTH, TEXAS.

Cash Capital and Surplus, \$375,000.

## W. F. LAKE,

Wholesale Dealer in

## Hardware, Stoves and Tinware,

QUEENSWARE, CROCKERY AND GLASSWARE,  
Corner Houston and Second Streets, FORT WORTH, TEXAS.

## THE MARTIN-BROWN CO.

WHOLESALE

## Dry Goods,

Cor. 4th and Main Streets, Fort Worth, Texas.

The only exclusively wholesale dry goods house in the city.

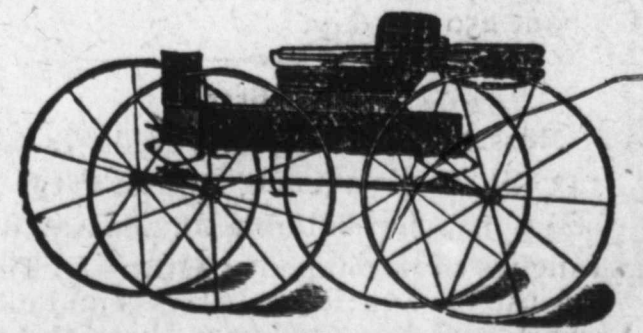
## Bay City Buggy Works,

BAY CITY, MICHIGAN.

Branch House, 406 & 408 Commerce St.,  
Opposite Windsor Hotel,

DALLAS, TEXAS.

J. B. FOX, Manager.



## :-C. H. EDWARDS MUSIC HOUSE:-

409 Houston Street, Fort Worth, Texas.

Chickering, Wheelock, Mathushek PIANOS Mason & Hamlin, Western Cottage and Kimball ORGANS

Lowest prices and easiest terms.

Call and see them before buying.