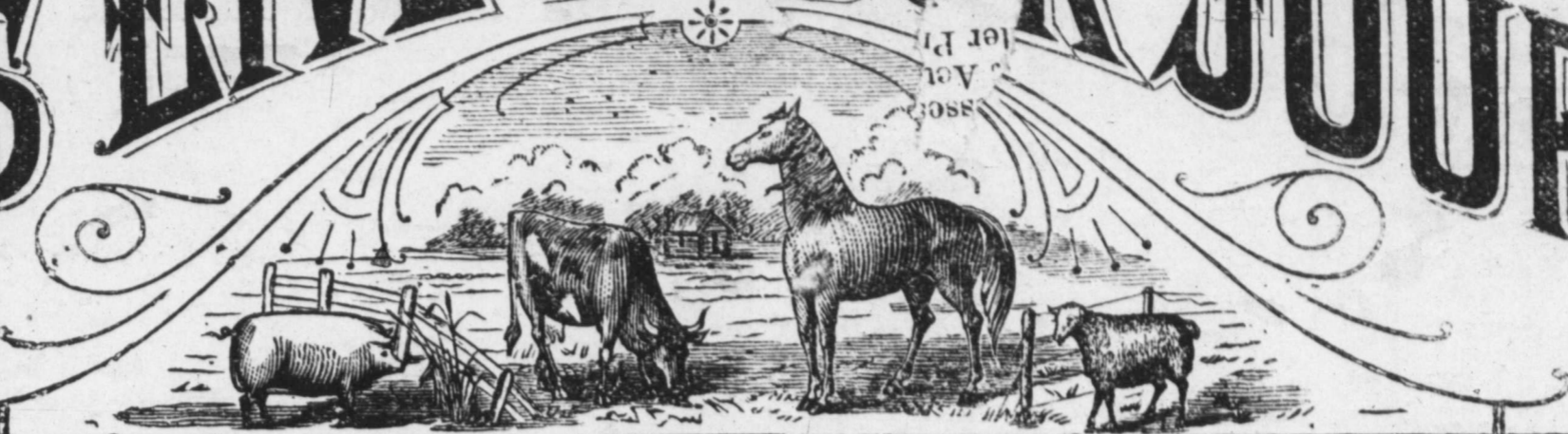


THIS PAPER
COSTS BUT \$1.50 A YEAR
 and is well worth the money. Hand
 your subscription to your Postmaster
 and he will forward it.

TEXAS LIVE STOCK JOURNAL



VOL. 10.

FORT WORTH, SATURDAY, JUNE 1, 1889.

No. 7.

James H. Campbell, President, Jerome F. Wares, Vice-President, J. H. McFarland, Sec'y and Treas., Chicago, Ill.; H. F. Parry, Manager and Cashier, National Stock Yards, Ill.; G. W. Campbell, D. L. Campbell, Managing Directors, Kansas City, Mo.

The James H. Campbell Co.

INCORPORATED.

LIVE STOCK COMMISSION MERCHANTS,

Union Stock Yards, Chicago, Ill.,

National Stock Yards, East St. Louis, Ill.

Kansas City Stock Yards, Kansas City, Mo.,

We solicit your business and invite correspondence.

Fish & Keck Co

(INCORPORATED)

LIVE STOCK COMMISSION MERCHANTS

KANSAS CITY STOCK YARDS

CONSIGNMENTS SOLICITED.

J. E. GREER, } CHICAGO.
 F. O. MILLS, }

KANSAS CITY, } A. ADLER,
 Manager.

GREER, MILLS & CO.

Live Stock Commission Merchants,

Union Stock Yards,
 CHICAGO.

Kansas City Stock Yards,
 KANSAS CITY.

A. C. CASSIDY, } Cattle Salesmen. { G. W. DOE } { N. M. MOODY. } Hog and Sheep
 T. F. TIMMONS, } { Cashier.. } { W. L. CASSIDY, } Salesmen.
 A. L. KECHLER, }

CASSIDY BROS. & CO.,

LIVE STOCK COMMISSION MERCHANTS

And Forwarding Agents,

National Stock Yards,

St. Clair County, Ills.

Z. T. WINFREE.

A. P. NORMAN.

WILEY T. PEARSON.

WINFREE, NORMAN & PEARSON,

Commission Merchants for the Sale of Live Stock,
 Stock Yards, GALVESTON, TEXAS.

We respectfully solicit patronage of stock shippers. We make liberal cash advances on bills lading, and will faithfully endeavor to the best of our ability to subserve the interests of our patrons. Correspondence solicited.

ALBERT MONTGOMERY

Commission Merchant for the Sale of Live Stock, Stock Landing

Postoffice Box 3006, New Orleans, La.

JOHN MUNFORD.

Commission Merchant for the Sale of Cattle, Hogs and Sheep, - - STOCK LANDING
 P. O. BOX 684, NEW ORLEANS, LA.

THE LIVE STOCK MARKET

- Of St. Louis. -

The St. Louis National Stock Yards,

Located at East St. Louis, Illinois, directly opposite the City of St. Louis.

Shippers should see that their stock is billed directly to the

"NATIONAL STOCK YARDS."

C. G. KNOX,

CHAS. T. JONES,

President.

Superintendent.

S. E. WOOD.

JAMES WOOD.

E. A. WOOD.

R. NASH.

WOOD BROTHERS,

LIVE STOCK COMMISSION MERCHANTS,

Union Stock Yards, CHICAGO.

Established 1867. Special attention given to the Texas trade. Correspondence invited.

ALLEN GREGORY.

H. COOLEY.

L. R. HASTINGS.

GREGORY, COOLEY & CO.

Commission Dealers in Live Stock,

Rooms 58 and 60 Exchange Building, Union Stock Yards, CHICAGO, ILL.

The Pioneer House in the Texas trade. Personal attention given consignments. Business solicited.

Chicago Live Stock Commission Company,

Incorporated. Capital Stock \$25,000.

Special attention given to the sale of Texas Cattle and Sheep. Write us for market reports.

Office 41 Exchange Building, Union Stock Yards, Chicago, Ill.

REFERENCES—Drovers' Nat. Bank, Union Stock Yards Nat. Bank, Chicago; Bank of Atlantic, Atlantic, Ia., Bank of Roodhouse, Roodhouse, Ill.

SAM'L SCALING, St. Louis.

W. L. TAMBLYN, Chicago.

SCALING & TAMBLYN.

Live Stock Commission Merchants,

National Stock Yards, East St. Louis, Ill.

Union Stock Yards, Chicago, Ill.

[TRADE MARK]

JNO. W. PAXSON.

CHAS. L. SHATTUCK.



PAXSON, SHATTUCK & CO

LIVE STOCK

Commission Merchants

Union Stock Yards,

CHICAGO, - - - ILLINOIS.

General Agents for the State of Texas: CAPT. E. F. IKARD, Headquarters at Ft. Worth; JOSEPH COLLINS, Headquarters at Goliad.

R. T. WHEELER.

C. JAMES.

J. S. MCKINNON.

WHEELER, JAMES & CO.

Live Stock Commission Merchants,

Union Stock Yards, ST. LOUIS, MO.

THE
OSCOOD
U.S.

STANDARD SCALES.

Sent on Trial, Freight Paid
—TO ANY—
R. R. STATION IN TEXAS.
Guaranteed Correct.
3 TON WAGON SCALES
\$35.00
WARRANTED FOR FIVE YEARS.
Send for Circulars and Prices.
H. W. HUBBARD,
Manufacturers' Special Agent,
936 Commerce St., DALLAS, TEX.
Engines, Boilers, Belting, Gins, Mills, &c.

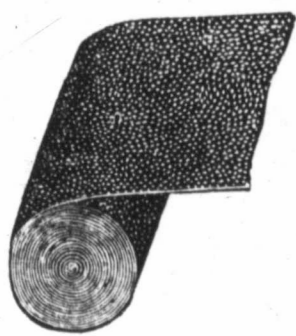
HOWARD TULLY,
JEWELER
FORT WORTH, TEX.
Watches and Diamonds.

Goods sent on memorandum through
Express or Mail.

J. P. SMITH,
President.

W. P. CONNER,
Gen. Man'g.

THE GRANITIC ROOFING:



Factory at
Fort Worth, Tex

Better than the
best, cheaper than
the cheapest roof-
ing offered in Tex-
as. Suitable for
steep or flat roofs.
Cheap enough to

cover a hen coop; good enough to
roof a palace. Specially adapted to
stockmen's barns and out-buildings.
Shingles, tin and corrugated iron must
give way before our goods. For fur-
ther particulars write to our office.

Fort Worth Granitic Roofing Co
11th and Rusk Sts., Fort Worth, T

R. M. Wynne, Robt. McCart, N. A. Steadman.

WYNNE, MCCART & STEADMAN,
Attorneys at Law,

311 MAIN STREET,
FORT WORTH, - - TEXAS.

CHAMPION, PENNINGTON & CO.,

Real Estate and Live Stock Brokers,

Werbiskl Building, 12th Street.

P. O. Box 42, BROWNSVILLE, TEXAS.

PIANOS
L & B. SMITH,
5TH
ANNUAL
CLEARANCE SALE
JUNE TO AUG.
1889
ORGANS

\$25,000
Worth of
Pianos and Organs
Must be Closed Out
by August 1.

New, Nearly New, and
Prime Second-hand
TAKEN IN EXCHANGE
and made new
in our repair factory.

MUST SELL!
Can't hold them. No room.
Cash Prices! Easy Terms!
Write for Bargain Sheet.
LUDDEN & BATES
SAVANNAH, GA.

Drs. Pollock & Keller,
401 Main Street,
FORT WORTH, TEXAS.
Chronic Diseases a Specialty

Mrs. M. E. KELLER, M. D., specialty
diseases of women and children.

DR. J. R. POLLOCK successfully treats
Piles, Fistula, Fissure and all diseases
of the rectum.

Oxygen and Electricity

for the treatment of catarrh, bronchitis
consumption, dyspepsia, constipation
and all diseases of the nervous system
Best of city references given upon ap-
plication. Correspondence solicited.

Chickering, Wheelock, Matt ushek
PIANOS

Largest stock and best
in the state at

C. H. EDWARDS,

733 and 735 Main St.,
DALLAS, TEXAS.

Send for prices before purchasing
elsewhere.

J. C. SCOTT.
Attorney-at-Law,

304 MAIN STREET, FORT WORTH, TEX.

Land and Commercial Law.

Refers by permission to Hon. Henry M. Teller,
Sec. Interior, Washington, D. C.; Valley National
Bank, St. Louis, Mo.; H. M. Truehart & Co.
Galveston, Tex.; Gen. B. C. Ludlow, Col. Int
Rev., Austin, Tex.; City National Bank, Fort
Worth, Tex.; First National Bank, Fort Worth,
Texas.

THOS. F. WEST,

Late of Jacksboro,

Attorney-at-Law,

311 Main Street,
FORT WORTH, - - TEXAS.

Special attention to Land and Live Stock
Litigation.

J. W. MADDOX. THOS. N. DEVINE.

MADDOX & DEVINE,

-:Real Estate:-

AND

Live Stock Commission Agts

First Floor Kampmann Block,

SAN ANTONIO, - - TEXAS.

Specialty made of Ranch Properties an
handling Imported Fine Stock. Loans ne
gotiated; correspondence solicited

FT. WORTH IRON WORKS

FORT WORTH, TEX.,

Manufacturers of the Celebrated

Ft. Worth Well Drilling Machine,

And dealers in

Steam Pumps for Boiler Feeding,
Artesian Well Pumps and Pumping
Jacks, Shafting, Pulleys, Gearing,
Pillow Blocks, Couplings, Engines and
Boilers.

COTTON PRESSES,

Cheap Screw Presses, Hydraulic Pres-
ses and Direct Acting Steam Cyl-
inders.

Furnishers of Complete Ginning Plants.

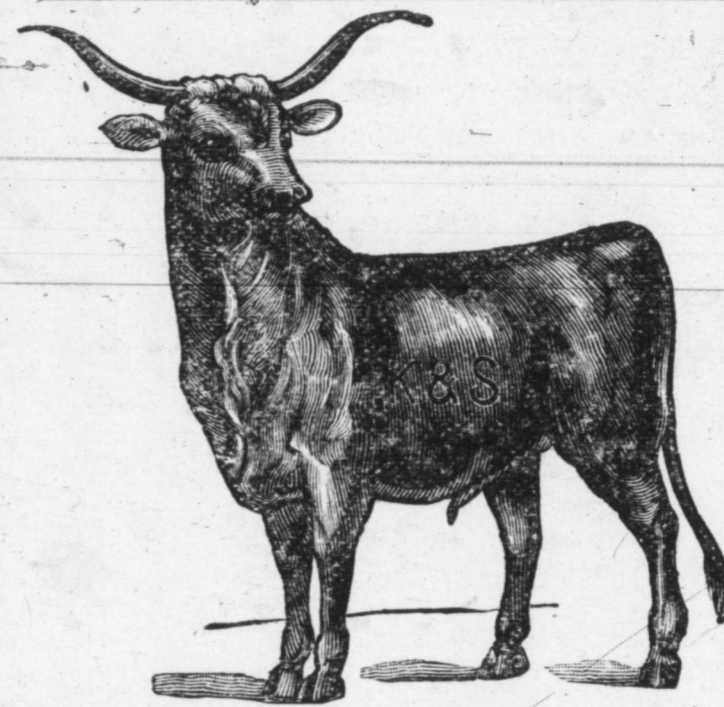
Estimates made on Roller Flouring
Mills in sizes from 50 to 100 barrels per
day.

**Architectural Iron Works of all
Kinds Made to Order,**

W. BROWN, Established 1874. E. E. BROWN.
BROWN BROS.,
Commission Merchants in Live Stock,
Rooms 100 and 102 Exchange Building, Union Stock Yards, CHICAGO.
Refer by permission to National Live Stock Bank, Chicago.
Agents in Texas—J. D. Beauchamp, Ennis; Capt. H. G. Carter, Millam; Col. J. T. Har-
ess, Colorado City.

WM. F. MOORE, } KANSAS CITY. Established 1873. J. METCALF, } ST. LOUIS.
N. T. JACKMAN, } E. J. SENSENEY, }

METCALF, MOORE & CO.,
LIVE STOCK COMMISSION MERCHANTS,
Kansas City Stock Yards, KANSAS CITY, MO. St. Louis National Stock Yards, ILLINOIS.
Letters and telegrams addressed to us at either yard will receive prompt attention.
Represented by L. L. TACKITT.



KEENAN & SONS,
LIVE STOCK COMMISSION
MERCHANTS,

Union Stock Yards, CHICAGO.

Consign your stock direct to us; it
will meet with

PROMPT ATTENTION.

Correspondence Solicited.

Have made the sale of Texas cattle
a specialty for Twenty-Five Years.

REFERENCE:—The National Live Stock
Bank of Chicago.

H. W. CRESSWELL, President,
SAM LAZARUS, Vice-President,
PAUL PHILLIPS, Treasurer,
J. W. T. GRAY, Secretary,

H. D. ROGERS, Manager, Chicago.
J. H. STEPHENS, Manager, Kansas City.
A. P. BRAINARD, Salesman, Kansas City.

AMERICAN
Live Stock Commission Co.

KANSAS CITY STOCK YARDS,

UNION STOCK YARDS, Chicago, Ill.

NATIONAL STOCK YARDS, East St. Louis, Ill.

KANSAS CITY.

DIRECTORS: H. W. Cresswell, F. B. York, A. B. Gregory, R. M. Smith, D.
R. Fant, T. S. Bugbee, Sam Lazarus, Paul Phillips, Jot Gunter, A. Rowe, W.
A. Towers.

CHARLES R. BENSLEY.

N. G. HARDY.

BENSLEY, HARDY & CO.
Live Stock Commission,

66 Exchange Building, Union Stock Yards,

CHICAGO.

C. F. REYNOLDS, } Cattle Salesmen. JOHN HOSBURY,
A. CRILL, } Cashier.

N. S. ARCHER,
Hog Salesman.

REYNOLDS & CRILL,

-:LIVE STOCK COMMISSION SALESMEN:-

Union Stock Yards, CHICAGO, ILL.

Consignments Solicited.

TELEGRAPHIC MARKETS.

*Latest Reports by Wire-From the
Market Centers.*

CHICAGO.

Special to the Live Stock Journal.

CHICAGO, ILL., May 31, '89.

Reynolds & Crill sold for M. B.
Owen, Cisco, 143 steers, 902 lbs, \$3.25;
244 sheep, 76 lbs, \$3.95; White &
Ingham, 916 sheep, 77 lbs, \$3.90.

Paxson, Shattuck & Co. sold for Cald-
well, 48 steers, 962 lbs, \$3.15; J. M.
Breckenridge, 24, 964 lbs, \$3.15; 48,
990 lbs, \$3.05; J. J. Welder, 84, 910
lbs, \$3.15; Moore Bros., 70, 926 lbs,
\$2.90; L. J. Barry, 61, 753 lbs, \$3.05;
J. Corrigan, 46, 930 lbs, \$3.90; J. J.
Stubbs, 84, 853 lbs, \$2.95; J. Fassett,
108 sheep, 75 lbs, \$3.65.

The James H. Campbell Co. sold H.

Pluger, 18, 1006 lbs, \$3.20; 22, 858 lbs,
\$2.90; 19, 1003 lbs, \$3.40; J. M. Beas-
ley, 80 1128 lbs, \$3.40; Arnold, 42, 983
\$3.25; 19, 1121 lbs, \$3.50; Baldrige,
60, 1147 lbs, \$3.60; Whiskert, 84, 948
\$3.35; S. B. Dent, 73, 912 lbs, \$3.10;
A. D. Malloy, 21, 979 lbs, \$3.10; J. H.
Lowery, 35, 871, \$3; S. M. Moore, 23,
968 lbs, \$3.10; 79, 841 lbs, \$2.90; E.
P. Withers, 46, 964 lbs, \$3.

Keenan & Sons sold for J. W. Thorn-
ton, 44, 1006 lbs, \$3.20; F. Shaw, 69,
946 lbs, \$3.25; E. P. Mayfield, 72, 916
lbs, \$3.05; Caldwell, 90, 971 lbs, \$3.15;
Terrell, 44, 921 lbs, \$2.90; 106, 914
lbs, \$2.90; Frank Root, 48, 817 lbs,
\$2.75; 17 bulls, 1031 lbs, \$1.80.

R. Strahorn & Co. sold for Nick, 48,
942 lbs, \$2.90; 104 stags, 1015 lbs, \$2;
107 bulls, 1100 lbs, \$1.75; P. J. Nor-
wood, 179 heifers, 555 lbs, \$2.10; 60
stags, 1075 lbs, \$2; 7 bulls, 961 lbs,
\$1.75.

Scaling & Tamblin sold 18 steers,

1261 lbs, \$3.50; 19, 1138 lbs, \$3.60; 22, 1172 lbs, \$3.70; 25, 734 lbs, \$2.75; 76, 909 lbs, \$2.35; 68, 985 lbs, \$3.12½; 21, 1041 lbs, \$3; 17 stags, 1012 lbs, \$2.70; 19 bulls, 1038 lbs, \$1.80; J. T. Beckham, 140, 930 lbs, \$3; 21, 1033 lbs, \$3.40.

Greer, Mills & Co. sold for A. J. Harris, 521 sheep, 76 lbs, \$3.80; N. Strauss, 20, 887 lbs, \$2.75; 33 bulls, 1210 lbs, \$1.70; 19 bulls, 1070 lbs, \$1.70; Wm. Gardner, 22, 918 lbs, \$3.10; J. T. Carroll, 25, 851 lbs, \$2.90; R. W. Kuehn, 22, 872 lbs, \$3; Weder, 21, 940 lbs, \$3; 27 cows, 768 lbs, \$2.25; 39 bulls, 1054 lbs, \$1.90.

Brown Bros. sold for H. G. Carter, 14, 1007 lbs, \$3.15; 12, 1020 lbs, \$3; 53 cows, 708 lbs, \$2.25; J. L. Edwards, 115, 960 lbs, \$3.25; 60, 989 lbs, \$3.05; 33, 888 lbs, \$2.90; 22, 993 lbs, \$3.20; 397 sheep, 70 lbs, \$3.40.

Evans-Snyder-Buel Co. sold for Davis & Co. 32, 920 lbs, \$3.15; 43, 945 lbs, \$3.15; D. B. Sloan, Hillsboro, 42, 1272 lbs, \$3.70; Sam V. Baugh, 84, 1040 lbs, \$3.40; L. V. Young, 42, 994 lbs, \$3.10; L. L. and C. Co., 40 yearlings, 527 lbs, \$3.20.

Gregory, Cooley & Co. sold for B. M. Childers, 24, 885 lbs, \$3.05; Dauran & Co., 24, 917 lbs, \$3.35; A. J. Childers, 44, 922 lbs, \$3.22; Shikers & J., 20 bulls, 1085 lbs, \$1.90; 19 bulls, 1008 lbs, \$1.80.

Wood Bros. sold for J. Griffith, 77, 1036 lbs, \$3.70; Rowe, 110, 947 lbs, \$3.15; 22, 877 lbs, \$3.10; E. Kelley, 19, 939 lbs, \$3.25; Singleton, 63, 976 lbs, \$3.35; Berry Bros., 60, 930 lbs, \$3.40; Pierson Bros., 139, 1022, \$3.40; Bowles, 22, 945 lbs, \$3.15; 16, 1035 lbs, \$3.15; 22, 970 lbs, \$2.90; C. A. Mitchell, 36, 1278 lbs, \$3.05; 38, 1045 lbs, \$3.25; J. J. Giddings, 109, 990 lbs, \$3.10; C. B. Eckelberg, 17, 1102 lbs, \$3.25; 10, 896 lbs, \$2.40; W. A. Wilson, 60, 1026 lbs, \$3.45; J. G. Wilson, 26, 990 lbs, \$3.25.

Receipts liberal and market steady. Sheep firm. Shorn, \$3.50 to \$4.25.

KANSAS CITY.

KANSAS CITY, May 31.—Receipts of cattle the past week, 15,558 head. Among them a few corn-grass Texas and Indians. Prices have varied slightly both down and up since last report, but wind up with little change from last week. Light weight good flesh

steers have the call over heavy shipping steers and are selling close up to them. Corn-fed Texans, if good, sell quicker than anything on this market owing to their handiness in handling in cooling rooms.

The following are representative sales of Texans and Indians:

D. C. Paxson & Co. sold 19 rough Texas steers, 1072 lbs, \$2.85.

Fish & Keck Co. sold for Magnolia Land & Cattle Co., 35 corn-fed yearling Texas steers, 677 lbs, \$3.30; 30 2-year-olds, 771 lbs, \$3.30; 70 yearlings, 643 lbs, \$3.40; for J. W. Garrison, 119 yearling heifers, 440 lbs, \$2.35; for Hull, 22 c.-f. Texas steers, 985 lbs, \$3.15.

Quinlan, Montgomery & Co. sold for McGaughey Bros, Purcell, I. T., 103 steers, 1083 lbs, \$3.50; for W. V. Alexander, do, 151 steers, 982 lbs, \$3.40; 3 cows, 893 lbs, \$2.65; for T. G. Mains, do, 264 steers, 988 lbs, \$3.30; J. P. Jackson, do, 99 steers, 935 lbs, \$3.30; for G. R. Beeler, do, 19, 1295 lbs, \$3.40; 79, 1156 lbs, \$3.40; 24, 1072 lbs, \$3.40; 38, 1194 lbs, \$3.45; 21, 933 lbs, \$3.15; 5 cows, 970 lbs, \$2; for J. B. Sparks, 100 steers, 994 lbs, \$3.30; 11, 1339 lbs, 3.30; for Thos. Sparks & Sons, 31, 975 lbs, \$3.40; 17, 1073 lbs, \$3.40.

The Evans-Snyder-Buel Co. for J. M. Rous, Burton, Texas, 24 steers, 930 lbs, \$2.75; for Hy Fuchs, do, 20 steers, 1053 lbs, \$3; for O. D. Halsell, Alfred, I. T., 82 calves, \$6; for D. M. Mite hell, Purcell, I. T., 900 lbs, 44 steers, \$3.15; for Frank Jones, do, 66 steers, 897 lbs, \$3.15; for S. B. Owens, 23, do, 1079 lbs, \$3.45.

The J. H. Campbell Co. sold for Pulman & Co. 957 shorn sheep, 76 lbs, \$3.25; 115 same, 77 lbs, \$3.25; 50 same, 73 lbs, \$3.25; 89 thin, shorn, 65 lbs, \$2.25; for Colson & McA., 75 calves, \$6 each; for Woodruff, 46 yearlings, 581 lbs, \$2.75; for Woodward, 24 steers, 1080 lbs, \$3.35; for Gatter, 40 steers, 990 lbs, \$3.10; for Dauty, 25 grass cows, 741 lbs, \$1.85; for Gunter, 43 calves, \$6 each; 40 bulls, 1230 lbs, \$1.85; 33 cows and heifers, 617 lbs, \$2.30; for Corker, 14 bulls, 837 lbs, \$2; 25 bulls, 780 lbs, \$1.65; for Interstate, 50 scalawags, 529 lbs, \$1.80; for Driggers, 24 steers, 1051 lbs, \$3.32½; 18 oxen, 1441 lbs, \$3.15; for M. C. Clure, 28 steers, 783 lbs, \$3; for Alexander, 369 thin sheep, 70 lbs, \$2.50; for Perry, 10 stags, 1018 lbs, \$2.10; 10 steers, 869 lbs, \$2.40; for Simpson, 24 steers, 905 lbs, \$2.85; for 90 calves, 141 lbs, 4c; 20, \$7.50 each; 20 cows, 764 lbs, \$1.90.

Twenty-six hundred cattle here today. Market strong, active and 10 to 20c advance since Wednesday on steers. Cows only steady.

D. C. Paxson & Co. sold 40 steers, 1006 lbs, at \$2.75.

ST. LOUIS.

St. Louis, May 31.—Some 80 carloads of Texas cattle in to-day, but strange to say all were billed through. The demand for good cattle is large and prices firm. Some scattering sales made to-day were at \$3.15@3.25 for 960 to 970-lb steers. Green cattle slow and lower.

Sheep active and firm to-day. 965 Texas sheep of 73 lbs brought \$3.50 per 100 lbs.

NEW ORLEANS.

NEW ORLEANS, May 31.—Market lightly supplied with beeves and cows, fat stock firm and in active demand. Calves and yearlings continue in heavy shipments. Prices unreliable. Hog market steady. Sheep market quick.

QUOTATIONS.—Choice corn-fed beeves, per pound gross, 3@3½c; choice grass-fed beeves, 2½@2¾c; good fat cows, 2½@2¾c; common to fair, \$10@15; calves, \$3@6; yearlings, \$6@9; good fat corn-fed hogs, per lb gross, 5@5½c; common to fair, 4@4½c; good fat sheep, each \$2.50 @3.00; common to fair, \$1.25@2.00.

GALVESTON.

[Reported by Winfree, Norman & Pearson, Live Stock Commission Merchants].

BEEVES AND COWS—Choice, per lb, gross, corn-fed, 2¼@2½c; choice, per lb, gross, common 2@2¼; 2-year-olds, choice, per head, \$8@12; common, per head, \$6@8; yearlings, choice, per head, \$6@8; common, per head, \$5@5.50; calves, choice, per lb, gross, 2½@3c; common, per head, \$3@4.

SHEEP—Choice, per lb, gross, 3@3½c. Beeves and cows in fair demand at quotations. Calves wanted; no fat calves offering. Sheep in fair supply.

SAN ANTONIO.

The local beef market has experienced little change for some weeks, but owing to the enterprise of G. W. Saunders in advertising in a first-class stock paper he is enabled to often relieve the surplus by shipments to interior Texas towns. Cows and young stock are about the only stock bought by local butchers, and everything choice is too rich for their blood.

Quotations are as follows:

CATTLE—Steers, shippers \$16@22, or \$2.00@2.25 per 100 lbs; and butchers, \$13@17; cows, fat, from \$12.50@14; light, at \$9 @12; yearlings, \$6@7.00; calves, \$4.50@6.

SHEEP—Muttons, \$1.50@2.25. Goats, average stock \$1.00@1.50 per head.

Hogs—Natives \$3.50@4.

DALLAS.

CATTLE.—Choice corn-fed steers, 2½@2¾c; common to fair, 2¼@2½c; choice corn-fed cows 2@2¼c; common to fair, 1½@1¾c; choice fat yearlings, \$4.50@8.00 choice veal calves, 3¾@4c; common, 3c; bulls, 1@1½c; milch cows, \$20@30.

SHEEP.—Choice corn-fed sheep, 3¼@3¾c; common to fair, 2½@2¾c.

Hogs.—Choice corn-fed hogs, 4c; stockers, 3¼@3½c.

GOATS—\$1.25@2.

Galveston Wool Market.

GALVESTON, TEX., May 29, 1889. Texas Live Stock Journal, Fort Worth.

The total receipts of staple at this port for the week ending to-day at 3 p. m. amount to 1,292,616 pounds, and for the season 8,382,596 pounds, while the sales foot up to 288,175 pounds, which leaves a stock on hand of 1,904,346 pounds. The market is steady with moderate demand, and although buyers are not quite so prompt to take all offerings, yet the sellers have no trouble to find purchasers for all their medium grade wools, at the following quotations:

Twelve months fine, 20@23c, and medium, do, 22½@25½; six and eight months fine, 18½@22½c, and medium, do, 21½@23½c. Mexican improved is worth 16½@20c, and do carpet 13@14c.

Notwithstanding the buyers are not quite so anxious to accept all wools offered as they were last week, except for large clips, yet holders are still firm in their demands at the above prices.

A number of buyers from the interior have been in the city this week, but

with two exceptions made no purchase, and all these gentlemen claim that they can buy wools in any of the interior markets for two cents per pound, including freight charges to this point, less than the same wools can be bought here.

The Lytle clip, which is well known to all producers, and buyers in Texas, was sold this week at 22c. It was six months' growth, and weighed 140,000 pounds.

Col. John Owens, the woolman for Adoue & Lobit, reports that the receipts at his house for the past week amount to over six hundred thousand pounds, and that sales for the same time were up to two hundred and seventy-five thousand.

Mr. F. H. Holloway of the firm of Holloway & Co., Burnet, Texas, has been in the city since Saturday last, and has made some large purchases for their Eastern connections. The total amount of wool purchased by Mr. Holloway, your reporter is informed, amounted to over one hundred and twenty-five thousand pounds.

Col. John Adams is in town again and has bought some wool this week, but asserts that he can do better inland, and will leave for San Antonio and other cities of the state, although he is loth to register off at the Beach hotel.

Mr. John Balch, representing Western, Whitman & Co. of Boston, Mass., has been in the city this week, but left last evening for the interior, where he claims he can make more advantageous purchases of the fleecy staple than he has been able to make in Galveston.

However, notwithstanding the complaints by buyers from the interior, ye large sales are made every day to local buyers and Eastern mills who wire their orders at the quotations of to-day.

W. N. BAXTER.

JOHN D. DOBYNS & CO.,

Successors to Stephens & Dobyne,]

LIVE STOCK

Commission Merch'nts

Kansas City, Mo. and Chicago, Ill.

We make a specialty of the Texas and Western cattle and ranch trade. Are prepared to make contracts for the delivery of Texas cattle for 1889. Consignments and correspondences solicited.]

ROBERT STRAHORN. JESSE SHERWOOD.

Established 1861.

R. STRAHORN & CO.,

Live Stock

Commission.

Room 85, Union Stock Yards, CHICAGO, ILLINOIS.

E. H. EAST, Agent for points on the Fort Worth & Denver City railway.

B. HACKETT and GEO. BEGGS Agents for Fort Worth and all points East South and West.

W. W. SHEARER, Gen'l Manager. F. B. McDOWELL, Cashier.

W. W. SHEARER & CO.,

LIVE STOCK COMMISSION MERCHANTS,

Union Stock Yards, CHICAGO, ILL.

REFERENCES: The National Live Stock Bank, Chicago; The Drovers' National Bank, Chicago

Cattle and Sheep Salesman, Hog Salesman. W. W. SHEARER. JNO. FILGER.

Chester White, Berkshire and Poland China Pigs, Fine Setter Dogs, Scotch Collies, Fox Hounds and Beagles, Sheep and Poultry bred and for sale by W. GIBBONS & Co., West Chester, Chester county, Pa. Send stamp for Circular and Price List.



TRADE MARK

Commission Merchants

[For the sale of CATTLE, HOGS AND SHEEP,

Rooms 9 and 10 Exchange Building, KANSAS CITY STOCK YARDS.

Prompt and correct market reports furnished by mail or wire. Consignments solicited. Correspondence given immediate attention.



ESTABLISHED APRIL, 1880.
Consolidated with
TEXAS WOOL GROWER
SEPTEMBER 13, 1884.
ISSUED EVERY SATURDAY.

BY
The Stock Journal Publishing Company,
AT
Fort Worth, Texas.

FORT WORTH OFFICE, 210 West Second Street. W. A. GARNER, Manager.

DALLAS OFFICE, 735 Elm Street, W. HUGHES, Manager.

SAN ANTONIO OFFICE, No. 21 Main Plaza. L. A. HEIL, Manager.

EL PASO OFFICE, Ground Floor, Central Hotel Building. GEO. B. LOVING, Manager.

Subscription, \$1.50 Per Annum.

Entered at the Postoffice, Fort Worth, Texas, as second-class matter.



The Texas Spring Palace

At Fort Worth is a magnificent structure built entirely of the products of Texas. It is a picture of Texas, made from the products and displaying the material resources of Texas.

The name is from two Greek words—Karpōs, products or fruits of the earth, and Orama, a view or picture. The plural is Karpōramata, and consequently the many pictures on the inside of the Texas Spring Palace made entirely of Texas products are named Karpōramata.

The dome of this structure of marvelous beauty will be covered entirely with wheat. The towers made of each of some separate product of the State; one of Corn; another of Cotton; one of Oats; one of Shells of the Ocean, and thus every leading product be presented.

On the lower floors of the building will be arranged in family groups, Minerals, Grains, Grasses, Fruits and Vegetables.

The upper floors or galleries will be devoted to the work of the women of Texas, and to Flowers, Birds, Historical and Archaeological exhibits, together with pictures of Farming, Stock-Raising, Domestic Life and History.

This grand and glorious object lesson will show the world in a day a study, a glance as it were, what Texas is, and what she has to offer to capital and emigration.

The world-renowned Elgin Watch Factory Band, of over sixty pieces, led by the composer, Hecker, will furnish the orchestral music, and three daily concerts will be given of an hour and a half each. These concerts will be surpassed by nothing which can be produced on this continent.

The presidents of the United States and Mexico have been invited by special commissions are expected to meet and shake hands in The Spring Palace.

The Railroads will make an excursion rate of one fare for the round trip. Opens May 29th and closes June 20th.

W. F. SOMMERVILLE, Director-Gen'l,
WILLIS H. POST, Secretary,
Fort Worth, Texas.

Reynolds & Crill.

This is one of the most reliable live stock commission firms in Chicago. The firm was formerly C. F. Reynolds & Co. Mr. Reynolds is a thorough cattleman and has had many years experience on the Chicago and Eastern markets. Mr. A. Crill is well known to many rangers, having operated very extensively in the Texas and Wyoming range business. The firm is a strong one and is in good shape for handling Texas stock.

The Cry for Statistics.

The cattle production of the United States is an unknown quantity. But if the quantity was known and a reasonable shortage was to be exhibited in the gross account, there is no guarantee that the knowledge would lead to immediate higher price. There is a presumption that way but it amounts to a presumption and nothing more. We know the visible supply daily at the markets and we can know it just as soon as the figures are ascertained at those markets, but we can only guess at the number to arrive day by day and week by week. This daily supply, however, is the element upon which daily values are based. If the country is full of cattle and the markets are short, prices go up to a certain limit, and if the cattle supply is excessive prices will go down, even though the general supplies in the country be considerably less than usual.

In these days of combinations and corners no man can figure his way to prosperity. The shortage in wheat is no guarantee that prices will go up, neither is an excessive supply any guarantee that prices are going down. There are other influences working on the markets of the commodities that can be stored and kept in hand for the simple cost of storage. Beef is not in such a category, but the ice storage of meat, together with command of immense cash resources, brings the manipulation of meat values into the line of possibility, for a week or so.

Why we say the statistics of our country alone are of no effect is because a popular error concedes to Chicago the control of beef values in the United States. Great as is that market in far-reaching influences, and great as is its power even upon the Eastern seaboard, a telegram from Liverpool can and does have as much effect on American beef values in Chicago as Liverpool quotations have in cotton in the markets of the United States.

The high prices of beef in 1882 could not have existed in this country without the active export demand. The low prices now ruling here could not be, if the English beef makers were not also "in the soup." High beef in England lifts the price on Chicago and low beef in Liverpool leaves us to our resources with a surplus on our hands.

We would certainly urge the preparation of a statistical report made quickly, regularly and reliable; it would help us in the future if the service was kept up. Such service is due the stock raising agriculturist from the government. We ought to know the population and the supply of live stock so as to have chance to husband our resources. We could then turn from cattle to hogs, to sheep or to horses, and increase either in turn as the times appear to demand changes, having a reliable guide before us. If we are dependent to a certain extent on the foreign demands, that dependence is becoming less and less as our own population increases. With regular statistical reports the farmers will be able to act in concert so that no line of pro-

duction will be pushed to excess, and in this way the supplies can be made to run more evenly, but even then with this assistance the live stock markets will give rise to high values or reduce to low just according, as now, to the amount of stock offered for sale, and according to the immediate demand for it.

Cattle Shipments Over the Fort Worth & Denver Railway.

George Reynolds of Reynolds Bros, one of the wealthiest cattle firms in Western Texas, was here during the week and gave in the following experience to a Gazette reporter:

"We have just returned from the Northwest, where we shipped about 8500 head of cattle, part for our ranch, the balance being cattle contracted for which we were interested in. We shipped over the Fort Worth & Denver from Giles station. Our entire loss was only seven head, being less than one to the 1000 head shipped. We attribute our small loss to light loading, and especially to the treatment our stock received from the whole 'crew' of the Fort Worth & Denver railroad. Superintendent Duncan, Newlin and Leary not only exerted themselves in handling the cattle, but every railroad man we had anything to do with treated us and our stock with the greatest consideration—even the men with the prod produced lightly. Were we surprised? Well, not exactly. You know Fort Worth has an aged reputation for its kind treatment of the stockmen and has been their friend first, last and all the time, and this road, one of the grandest enterprises, will, we feel assured, only add to her well earned reputation. We have been shippers over many of the best roads in this country, many of them noted for the fine handling of stock, but none of them have treated us better than the Fort Worth & Denver. After all, good men and kind treatment tell the tale. We would advise every one moving cattle to the Northern ranges to try one shipment over this road and we are sure they will never again wear out their cattle by overland. Yes, we had good hay and water and anyone who ever met G. W. Ballentine, manager of the Denver stock yards, needs no telling that a more attentive, courteous gentleman does not live. No, we had no trouble about quarantine. The officers were active and vigilant but courteous, and seemed anxious to do everything in their power to facilitate the movement of cattle. The movement of cattle from New Mexico and Arizona is nearly a stampede, as it seemed from the shipments nearly every steer that could be rounded was en route for Northern ranges. Yes, it is likely that the old lady and all her children from the Rockies will be on hand to see the Spring Palace."

An ugly complexion made Nellie a fright,
Her face was all pimply and red,
Though her features were good, and her
blue eyes were bright,
"What a plain girl is Nellie!" they said.
But now, as by magic, plain Nellie has grown
As fair as an artist's bright dream;
Her face is as sweet as a flower new blown,
Her cheeks are like peaches and cream.
As Nellie walks out in the fair morning light,
Her beauty attracts every eye,
And as for the people calling her a fright,
"Why Nellie is handsome!" they cry.

And the reason of the change is that
Nellie took Dr. Pierce's Golden Medical
Discovery, which regulated her liver,
cleared her complexion, made her blood
pure, her breath sweet, her face fair and
rosy, and removed the defects that had
obscured her beauty. Sold by drug-
gists.

Piper & Schultness are headquarters
for all kinds of fence wire, 33 and 35 W
Commerce street, San Antonio, Texas.

-[ESTABLISHED 1830.]-

DENNY, RICE & Co.
Nos. 606 to 610 Atlantic Avenue,
BOSTON, MASS.

-WOOL-

Commission Merchants.

Prompt information given by mail or telegraph by applying to their Texas representative,

C. G. HUBBARD.

SAN ANTONIO, TEX.

Cash advances made on consignments.

The Co-Operative Wool Association

An economical medium between
Producers and Consumers.

Superior facilities for selling

Scoured or Grease Wools.

Attend to receiving and forwarding wools shipped here for scouring.

Negotiate Cash Loans or Supplies for Growers.

Correspondents wanted in every county in the state. Address,

E. Wm. GRUENDLER, Manager,
Galveston, Texas.

E. S. BROOKS & CO.,

WOOL

Commission Merchants,

100 and 102 N. Main Street, Corner of Chestnut,

ST. LOUIS, MO.

We solicit consignments of Texas and Southwestern wools, and will make proper advances on all wools consigned to us. Correspondence promptly attended to.

JONH OWENS, Manager,
Wool Department.

ADOUE & LOBIT,
BANKERS

WOOL Commission Merchants,
GALVESTON, TEX.

Consignments solicited from wool growers and dealers. Advances made from clip to clip.

F. LAMMERS. E. S. FLINT.

LAMMERS & FLINT,

-WOOL-

Commission Merchants.
GALVESTON, TEXAS.

We have made the sale of wool a special branch of our business. Liberal advances on shipments, and sacks at cost to shippers.

WOOL SCOURING MILLS
—AT—
WOOL Galveston, Texas.

THEO. HOWARD, Proprietor.

Wool Scouring Done for Wool Growers and Dealers.

N. B.—Order your commission firm to have your wools scoured.

WOOL!

WESTERN WOOL COMMISSION CO.

ST. LOUIS, MO.

Consignments of Wool Solicited. Cash returns made within six days after receipt of wool. Liberal Advances made on Consignments.

References: Dun's and Bradstreet's Agencies and Local Banks.

Send for Circular and Price Current. Represented in Texas by ED. MACKECHNIE, San Antonio.

FUNSTEN & CO.,
St. Louis.

WOOL

Sacks and Twine Furnished at Cost.

TEXAS REFERENCES:—First National Bank, Abilene; First National Bank, Albany; Belton National Bank, Belton; First National Bank, Colman; First National Bank, Denison; First National Bank, Taylor; Waco National Bank, Waco; Texas Live Stock Journal, Fort Worth.
Liberal Advances Made.

W. A. ALLEN. M. EVANS.

Established 1854.

W. A. ALLEN & CO.,

142, 144 & 146 Kinzie St., Cor. La Salle Ave.,
CHICAGO, ILL.

WOOL

Commission Merchants.

Liberal advances made on consignments. Full advices of market furnished on request. Prompt and faithful attention to the interests of consignors is our rule.

W. B. Westcott & Co.

Commission Merchants,
Soliciting consignments of

Wool, Hides, Etc.

Write for market reports.

202 North Main Street, - ST. LOUIS, MO.

Refer to Texas Live Stock Journal.

E. C. KRUSE & CO.

Commission Merchants,

For the sale of

Wool

Hides, Pelts, Tallow, Furs, etc.

20 South Main Street, - ST. LOUIS, MO.

Wm. M. Price Commission Company,
108 and 110 North Main Street.

ST. LOUIS,

Solicit consignments of

WOOL

Fifteen years experience in the St. Louis wool market.

Quick Sales. Prompt Returns.

Reasonable advances on shipments.

J. D. SKINNER and SON,

GALVESTON, TEX.,

SOLICIT CONSIGNMENTS OF

WOOL AND COTTON.

A. S. EXLINE

207 Strand,

GALVESTON, TEX.,

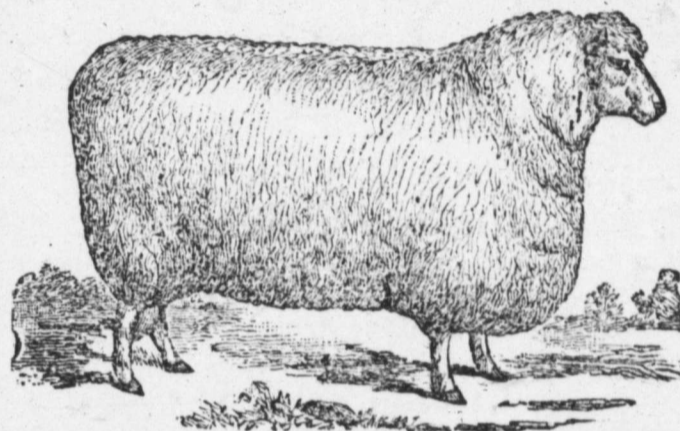
WOOL BUYER.

Correspondence solicited with Wool Growers and Dealers in the Interior.

Hide and Wool Buyer

Wants a situation to buy in Texas, New Mexico and Kansas or either of them. 15 years experience. Reference given. Address,

J. T. HICKEY,
Fort Worth, Texas.



ADOUE & LOBIT,

Galveston, Texas.

BATEMAN & BRO.

Fort Worth, Texas.

AGENTS FOR

CHILDS'

SHEEP DIP.

Soluble in Water at any Temperature.

Experienced wool growers find this Dip an improvement upon anything they have hitherto used, as the objections raised against other Dips have been overcome in this article.

It is Economical and Convenient to Use,

can be relied upon to kill Lice, Ticks and all parasites that infest sheep. A reliable exterminator of scab and other kindred diseases. In packages of convenient size.

THE CLIP.

At present there is not so much the matter with sheep.

There are now over 300,000 pounds of wool at Colorado City and fresh arrivals every day.

The sheep raisers are politely but firmly cursing the minimum. Meaning the minimum they cannot reach in loading the cars.

The San Angelo Enterprise reports the sale of the North clip at 22 1/4c per pound. This is a cross bred wool containing much of a mutton cross.

At Mt. Vernon, Franklin county, Eastern Texas, 15,000 pounds of wool sold at 24 1/4c. This represents very nearly the entire clip of Franklin county, the wools being raised in small lots and of quality very similar to the Sulphur Springs wools.

J. C. Crowds of J. C. Crowds & Co. of Fort Worth purchased the clip of Zug & Friend, Shackelford county. This is a large clip, 60,000 pounds, and cost Mr. Crowds about 20c. The Rockwall clip, about 12,000 pounds, year's growth, very light and bright, cost Mr. C. about 22c.

Coleman Voice:—Wool men are smiling over the prospect; 21 to 23 cents per pound beats 15 cents mighty bad so far as the price of wool goes, but sheep that sheared eight pounds last year are

shearing but five pounds this year, so that after all the wool clip of 1889 pays less money per head of sheep than the clip of 1888.

The Texas sheep raisers are complaining that their clips are too light and that eight-pound sheep this year shear only six pounds. The buyers on the ground have found out how light the clip really is, and it accounts for some, apparent, hasty buying. Although Texas wool growers are receiving a little more per pound, the gross total is not greater.

How to Select a Wife.

Good health, good morals, good sense and good temper, are the four essentials for a good wife. These are the indispensable. After them come the minor advantages of good looks, accomplishments, family position, etc. With the first four, married life will be comfortable and happy. Lacking either, it will be in more or less degree a failure. Upon good health depends largely good temper and good looks, and to some extent good sense also, as the best mind must be affected more or less by the weaknesses and whims attendant on frail health. Young man, if your wife is falling into a state of invalidism, first of all things try to restore her health. If she is troubled with debilitating female weaknesses, buy Dr. Pierce's Favorite Prescription. It will cure her.

Lambs.

Montana Wool Grower.

"The lamb plays always,
He knows no better;
He is only one times one!"

In about five minutes he is on his feet. The unsteady earth under him now heaves to the right; surges up and then down, and it whirls and it twirls with him while he staggers and struggles, and twists one leg around the other like a vine around a tree; or else he spreads those members all out until they look like the forks under a weather vane.

He tumbles down for the fiftieth time, and for the fiftieth time renews the fight to secure that footing in the great world from which only can he reach the life-giving milk.

His mother—particularly if it is her first—in her crazy anxiety to help, knocks him down, steps on him, and does—without leaving out a possible exception—everything she should not do, while she leaves nearly everything undone that might help the little fellow to get the desired nourishment.

"Oh, the poor dear little thing; isn't it too bad?" says the sympathetic stranger. "The confounded pair of idiots!" frets the impatient shepherd, who does not care to drive them until the lamb finds milk and "gets filled up."

In half an hour his milk can is full; his sides bulge out with a surfeit of the pure article, warranted to stand the most rigid test for admixture of water. And as the shepherd slowly urges the old ewe towards home, the lamb goes reeling and rolling along like an old tar just ashore from a year's voyage.

About the first error the lamb makes in life is to mistake the shepherd or his dog for its mother, and many are the manoeuvres that must be gone through with to make the new arrival follow the right party. His next error is likely to be an attempt to walk on air when he comes to a place where he should go down hill. His ten minutes experience in life has led him to believe that all the earth is a level plain, and in broad daylight he steps off the top of a hill just as serenely as a man steps off the top landing of the stairs in total darkness, when he is certain that the stairs are yet twenty feet away. The result is a great surprise to man and lamb in each instance.

The lamb picks himself up, and continues down the hill; he soon comes to the conclusion that everything is down hill in this life, and not on a dead level. Upon getting to the foot of the hill, he still tries to continue downward, and as a result runs his nose into the ground and looks surprised again. He now comes to a place to go up hill, and goes up just as our man starts to go upstairs in total darkness when he thinks the stairs are still twenty feet away.

Our lamb is now getting very suspicious. He was pushed over and growled at for following the dog when he thought it was his mother; the shepherd kicked and abused him for following him; he tumbled down hill when he saw nothing unusual in the looks of the ground, and up hill again under similar circumstances. In this frame of mind he comes to a shadow cast by a neighboring hill. This is the most appalling thing he has yet seen in life. He stands in the bright sunshine; twelve inches

For a DISORDERED LIVER
Try BEECHAM'S PILLS.
25cts. a Box.
OF ALL DRUGGISTS.

ahead of him all the world is black. How shall he get over that terrible line? It must be worse than going down hill, or up hill, or running after a dog that growls or a man that kicks. It surely looks much more frightful than any of these things. His mother is in the shadow, and coaxes him to come along; but he will not risk it—he stands on the edge and bawls at the top of his powers. The shepherd with his big foot comes to the rescue, and our poor lamb is lifted from sunlight to shadow on the end of a number nine boot.

He trots along after his mother for a few yards, and meets a new difficulty. This time it is from shadow to sunlight. It looks tough; the situation seems to present no end of difficulties. He walks across the line with fear and trembling, only to find it very simple and easy, and concludes that things are not so bad as they look. He has already begun to find out that things which seem easy in life lead often to disaster, and forbidding things often present no real difficulties.

At this time he is about one hour old; for a whole hour he has been running his respirative, circulative and locomotive powers as an independent being, and has become quite a lamb. Just at this instant a carriage drives rapidly along the road. His quick eye sees it; he thinks perhaps it is his mother, and that she is running from danger. He strikes out after it. It is wonderful what an hour has done for him in the way of development; he runs faster than the shepherd, faster than his mother, and is in imminent danger of getting under the horses' feet or the wheels of the carriage.

It is here that the dog comes in play, if he understands his business. He runs up alongside of the lamb, pushes it over with his nose, jumps upon it and holds it down upon the ground with his nose until the shepherd comes up. The shepherd takes the lamb and stands it upon its feet, so that it can see its mother, who has come up to within a few feet. He holds it until it sees its mother on a move, and then lets it go. The old ewe licks off the face of a sadder and wiser lamb—let him have another dose of liquid nourishment, and together they get home.

There is only one thing that is five hundred times as funny and provoking by turns as a lamb, and that is five hundred lambs together when they are about a month old. The shepherd sits down and watches the five hundred lambs all in a bunch by themselves, playing, running and frolicking—and he laughs. When he has tried and tried in vain, to get the same five hundred across a bridge or into a corral, he sits down again. But he does not laugh this time. No one can describe the antics of five hundred lambs, all of them about a month old. They must be seen to be appreciated.

A young lamb has no way of telling which ewe is its mother, and the mother only knows which lamb is her own by the scent. Hence, while very young, it is a bad plan to have too many together, or the ewe may be confused by so many lambs, or become partially indifferent, and the lambs perish for want of care. When a few weeks old, however, they know each other by the sound of the voice. In a band of two or three thousand even, a ewe may call her lamb, and the lamb will answer from the other side of the flock. They will go as straight to each other, right through the whole band, as they would if they were the only two animals for a mile around.


Bad Bowels.

Every mother knows the anxiety over this sickness; but every mother does not know that Dr. Bigger's Huckleberry Cordial will regulate and cure all bowel troubles.

Don't buy the Missouri penitentiary saddle trees, but buy the genuine Loeloff, for sale by Brackett & Hoeman, San Antonio, Texas.

For artists' material, pictures and frames write W. H. Barse & Co, 1219 Main street, Kansas City, Mo.

SAN ANTONIO.**Steers Wanted.**


 \$18000 worth of steer cattle wanted in exchange for seven houses, Nos. 327, 329, 331½, 333, 333½ and 335 Dwyer Avenue, San Antonio, earning 10 per cent. annually on \$25,000; incumbrance, \$7000 at 10 per cent. to be assumed.

MADDOX BROS. & ANDERSON,
Austin, Texas.

**MYERS & LLOYD,
Live Stock Commission Merchants.**

Liberal advances made on consignments. Yards, 901 and 903 South Flores St. Union stock yards, and opposite I. & G. N. shipping pens, with plenty of sheds. Main offices, 220 and 323 S. Flores St., San Antonio.

**Herefords and Shorthorns
For Sale.**

 400 bulls, high graded Herefords and Shorthorns, for sale. A herd of 56 head on exhibition at the fair. Every animal is Texas raised and fully guaranteed against splenic or Texas fever. For further particulars address

LEE HALL,
San Antonio, Texas.

LONE STAR**..SADDLERY..**

Manufacture all kinds of Saddles and Harness. Cowboys' Outfits a Specialty. First class work in all branches.

A. VARGA, Agent,

Dolorosa Street, opposite Southern Hotel
SAN ANTONIO, TEXAS.

CONSIDERING their condition, horses are cheaper in the San Antonio market than they have been for years. Very few thin horses are being offered for sale.

BY THOSE who should know it is confidently asserted that the first cold storage warehouse in Texas will be at the mouth of the Brazos, and that twelve months will not pass before frozen beef carcasses will be loaded on board of vessels at that port destined to foreign markets.

THE demand of the Texas live stock interests for a per cent. charge instead of a per capita commission is by no means dropped, and matters are at work when this act of justice to the Texas stockmen will have to be accorded or their trade will be transferred. They are getting tired of paying fully three times as much as their Northern competitors for the same service.

THE STOCK JOURNAL seldom makes a mistake, and the assertion that the per cent. commission on the sale of live stock in the principal markets is the next radical reform is now made. There is no more use of kicking against it, and the sooner everybody falls into the line of the new order of things the better. Texas and other other range countries are tired of paying several hundred per cent. more commission than the farmers of Kansas, Iowa, Illinois, etc.

OF ALL the shortcomings of Texas railroads as regards the ranch industry, nothing so seriously affects us as the dilatory manner of handling stock. Once loaded every hour is expensive to the shipper, and if there is a reasonably fair excuse for being seven days in transit between San Antonio and Chicago, distance 1250 miles,

with a train of stable cars, it should be made public, as seven and a half hours is a pretty easy gait for even Texas railroads. The road that will shorten the time between Texas and Chicago with stock trains ought to and will get the bulk of the business in that line.

San Antonio Wool Market

The state of the market has changed but little since last report. The sales are rather slow, but figures are well maintained although an effort is being made to hold off a little with the hope of bearing the market to some extent, but as Eastern advices do not warrant any such movement, there will probably be but little decline. The San Antonio market has not been very satisfactory, but that of the state generally cannot be reasonably complained of, and the effect of this year's work will be to scatter the wool next fall even worse than it was this spring. Last year at this time the market had not opened yet in this city, and now fully one-half of the wools have been sold. There is no reason for feeling any panic over local rumors of declines in values, and the prospects are very good that the stock on hand will be disposed of without any material concession to buyers.

Quotations are as follows:

Light medium 6 months, 20@22c; fine, do, do, 18@20c; light, do, 12-months, 22@25c; fine, do, do, 20@22c; fine Merino, 6 do, 15@17c; do, 12-months, 18@20c; burry from 1½@3c off.

San Antonio Horse Market.

This branch of business has been slightly revived, but it is far from satisfactory to holders of horse stock. It is now conceded by nearly everybody that this year's trade will be even slower than last year's, and that many will have to rebate in price to induce shippers to take hold. On their part they say that the demand for Texas horses North is very light, and that young colts and breeding mares are about the only stock that is saleable. Scrub stock is neglected more and more, and the time is not far distant when it will be altogether unsaleable here. From present prospects it will be cheaper soon to shoot them than to try to sell them in this market, or keep them on the range to eat the grass that should go to feed stock that are worth something. The receipts from Mexico have materially fallen off, owing to the fact of the slow market here becoming known in that country.

The shipments for the week were 1399 as against 898 the week previous.

Quotations are as follows:

Scrub and poor mares, 12 to 13½ hands, \$10@13
Scrub fair conditioned, 12 to 13½ hands, \$14@16
Medium mares, 13 to 14 hands, fat, 17@20
Medium mares, 13 to 14 hands, thin, 14@17
Yearling fillies, branded, 7@9
Yearling fillies, unbranded, 9@12
Two-year-old fillies, branded, 10@13
Two-year-old fillies, unbranded, 12@14
Texas improved mares, 14 to 15 hands, 25@35
American carriage horses, 15½ to 16½, 75@200
Saddle horses, good, 13 to 14½ hands, 25@30
Saddle horses, poor, 13 to 14½ hands, 17@22
Unbroke horses, 13 to 14½ hands, 15@23
Weaned, unbranded colts, 4.50@6
Mules, Mexican, 12 to 13½ hands, 20@35
Mules improved, 13½ to 14 hands, 40@55
Yearling mule colts, improved, 22@30
Two-year mule colts, improved, 30@40
Yearling mule colts, Mexican, 14@20
Two-year mule colts, Mexican, 15@27

Piper & Schulthess are headquarters for all kinds of fence wire, 33 and 35 W. Commerce street, San Antonio, Texas.

EVANS-SNIDER-BUEL CO.,

(INCORPORATED)

SUCCESSOR TO HUNTER, EVANS & CO.

CAPITAL STOCK, - - - \$200,000.

KANSAS CITY STOCK YARDS, 17 YEARS' ACTIVE EXPERIENCE in Live Stock Commission Business, Market Reports regular and special, and all other information incident to the business, will be furnished FREE by each house.
KANSAS CITY, MO.

Each Office in charge of a member of the company. **UNION STOCK YARDS,** CHICAGO, ILL. Correspondence always has prompt attention.

NATIONAL STOCK YARDS, ST. CLAIR CO., ILL.
DIRECTORS: A. G. EVANS, President. M. P. BUEL, Vice President. C. A. SNIDER, Treasurer. A. T. ATWATER, Secretary. F. W. FLATO, Jr. IKE T. PRYOR.

LIVE STOCK COMMISSION MERCHANTS.**HORNS AND HOOF.**

Victoria has aspirations to become a horse market.

J. W. Team of Mississippi is back after a bunch of horse stock.

J. T. Dickson, live stock agent of the Wabash is here hustling for business.

G. P. and J. S. Searight of Kinney prominent rancheros, are in the city.

Geo. W. West of Live Oak county is shipping some of his big fat steers to the Chicago market.

The forwarding of beeves from this portion of Texas promises to continue throughout the summer.

M. A. Withers, Caldwell county, passed through south to a visit to his ranch interests in LaSalle county.

C. W. Barnard is sending about 1000 head of beeves from his ranch near Sabinal to the Northern market.

Col. Sam Hunt, the live stock agent of the M., K. & T. railway, is sojourning here for a few days for his health.

Judge John O'Niell of Port Lavaca, Calhoun county, passed through here en route to New Orleans on business.

W. C. Irwin, the thorough ranch farmer of La Salle county, was in the city this week. He brags of hogs weighing 500 pounds.

Robt. Eriscoll sold 750 head of cows to Mexican parties for \$11 per head. This beats the average netting of cows in the Chicago market.

An effort is being made to have a trot meeting in San Antonio of stallions that have been in service, but never before track worked.

Captain Lee Hall is back from Eagle Pass where he went to attend to the crossing of the fine stock recently sold to some Mexicans.

A. P. Rachel of Wilson county is here circulating among his friends. Rain is needed to make corn in his section, but grass is fine and stock fat.

The best place in San Antonio to buy carriages, buggies, etc. is at Hick's repository, West Nueva street. Rice's coil spring vehicles a specialty.

H. C. Clark of Dallas is buying yearling and two-year-old steers in the coast country below Victoria. He is paying \$5 and \$7 per head respectively.

John Shafter went through with a train-load of hogs, about 1000 head, destined to the City of Mexico, via Eagle Pass. They were of the J. W. Glass contract and came from the North.

Major B. F. Buzard bought three carloads of good saddle horses in this market for \$25 per head. They are for the Nueces Land & Cattle company for cow ponies.

C. W. Barnard, Sabinal, Uvalde county, was in town the first of the week and reports the purchase of some 200 yearlings and two-year-old steers at \$5 and \$7 50 per head respectively.

There are many sections in this portion of the state where a rain just now would materially increase the yield of corn, but grass is fine for making fat beeves.

John J. Young is back from a trip to the ranch in Hidalgo county, which he reports badly in need of rain, although grass is yet good, but stock must be watered.

James H. David sold Douglass & Old han of Tennessee a car-load of jennets from Refugio county for \$15 a head, and 40 head of two-year-old fillies from

same county, selected Texas improved, for \$25 per head. The jennets were originally Virginia stock.

Ira Johnson was in town the first of the week. The A. B. Frank cattle are now being pushed forward to the Northern market, and they are proving to be a first-class lot.

Horse stealing is altogether too prevalent in the Southwestern counties, and some wholesome examples of the thieves would have a salutary effect on the security of equine property.

H. Half is continuing the moving of stock from his Buchel county ranch to the Wish pasture near Sabinal, Uvalde county. Scarcity of grass is the alleged reason for the shifting of the stock.

H. G. Ramirez of Ramirez Bros., City of Mexico, who recently bought some 1500 cows on the line of the Texas-Mexican railway, was in the city a few days preparatory to forwarding some of the stock.

Maddox Bros. & Anderson have a notice in this paper offering some San Antonio property for steer cattle. The notice will be worth the attention of any ranchman who desires to turn some steers into city property.

Col. D. R. Fant of Goliad county, one of the best known stockmen of this great state, was in the city during the week. Mr. Fant's beef cattle are all in the Indian Territory from where they go to market in the fall.

Don Amilio de Garate, one of the wealthiest rancheros of the state of Tamaulipas, Mexico, is here after more fine stallions. He has bought quite a number in this market within the past year, and can be found at Morin Bros. yard.

One of the notable horse transactions of the season is that of a Mexican who drove 75 head of horses and mares from Linares, 150 miles to Monterey, and shipped to this city over 300 miles, paying duty, and sold here at \$4 per head and paid 50c commission. This was one of the horse trades that a man never boasts of to his friends.

Col. R. E. Stafford, the Columbus refrigerator man and one of the principal parties in the English beef contract, spent a few days in this city. He says that certain parties in Galveston are still holding forth hope to secure the chill room for that city, but he asserts that New Orleans being already prepared to handle the meat has many advantages in the competition for this important trade.

N. R. Powell of J. S. Powell & Co., Fort Worth, has been coming to San Antonio, selling fine stock of every description, ever since the fair last fall, and sold many a head to the very best rancheros of the Southwest, but he created considerable feeling of jealousy for favoring Goliad county with his visits. The secret of his suspicious movements were exposed on the morning of the 28th, when he led to the matrimonial altar at Rayville, Goliad county, Miss Emma Ray, the daughter of one of the most prominent stockmen of that section. The happy couple left immediately for Fort Worth to assist in receiving the president to the Spring Palace. Congratulations, "Nat."

THE WOOL SACK.

Muttons are reported dull in this section of the state.

John W. Almond of Cornstalk, a wool grower, paid the Alamo City a visit last week.

C. W. Wilkins of Wilkins Bros., Langtry, was in town during the week

looking to the putting of their clip on the market as it arrives. This is one of the most prominent clips of this section of country.

Sam J. Jordan of Encinal was in the city the first of the week, looking to the sale of his wool.

J. W. McInnis, a wool grower of La Salle county, was in the city, accompanied by his wife.

The D. Hart clip of 165 sacks, at Encinal, sold for 20c per pound without tare or discount for bucks' wool.

C. S. Fielder of Fielder & Sons, prominent wool growers of Pecos county, was in the city last week on business.

Chas. Montague of Bandera county came in the first of the week to sell his golden fleece, which ranks A No. 1. He reports heavy losses among his lambs from lombriz.

W. G. Hughes of Kendall county, one of the most thorough wool growers in the West, was in the city the middle of the week. Mr. Hughes has a blue ribbon 12 months clip, but so far has had no offer for it in this market.

Del Rio Record:—Cortez and Fielder shipped half of their wool to Galveston and the other half to San Antonio. The Galveston shipments sold for 22c. They have an offer of 20c for the wool shipped to San Antonio. The wool was all the same class.

This is the semi-annual visiting season of the woolgrowers of this section of the state, and the benefits of these seasons to the commerce of the city are quite an item. The TEXAS LIVE STOCK JOURNAL is the best medium in the state through which to call the attention of these people to your wares.

There is a practice prevailing in this market that needs reforming, which is when a buyer wants a line of wools taking several clips, to strike an average, making the good wools sell the bad, whereby the man with clean light wool gets considerably less than if his clip was sold on its individual merit. A commission man who does this is unworthy of the patronage of a wool grower.

Del Rio Record:—George Ames came in from his ranch this week. He has recently made a new discovery. For six years he has been leasing land from the New York & Texas Land company. He now discovers that this land does not, nor has it ever, belonged to the above company, but is state school land. Hereafter he will lease from the state of Texas. He also states that the pecan crop along Devil's river will be a complete failure this year.

Uvalde News:—A sale of magnitude was consummated here this week, Messrs. F. A. Piper and O. Ellis purchasing from Mr. John Weymiller his ranch and cattle. This ranch contains between 35,000 and 40,000 acres, and is one of the finest in West Texas. It is all good land and well watered, and at the price paid the purchasers have made a rare bargain. It will be used by Messrs. Piper & Ellis as a sheep ranch, and they will buy several thousand head of fine sheep to stock it.

Beecham's Pills cure sick headache.

ST. LOUIS MARKET LETTER.

EAST ST. LOUIS, ILLS., {
May 28, 1888. }

Regular Correspondence Texas Live Stock Journal.

Texas cattle are now coming in quite freely, but already are buyers complaining as to the quality. The bulk of the offerings consisted of common and ordinary Texans. These are not suitable. Fair to good steers of 850 to 1100 lbs are the kind sought after by local operators, the dressed beef company and interior shippers. The tops sold well enough and brought from \$3.25@3.65 per 100 lbs, while cows and light steers brought from \$2.15@2.75 per 100 lbs. Thus it will be seen there is a great deal of difference between good and common cattle.

Native steers of 1000 to 1300 lbs only bring from \$3.60@4.20 per 100 lbs.

The sheep market continues active and firm on good fat sheep, which bring from \$3.25@3.75. Common sheep bring from \$2.50@2.75 per 100 lbs.

Among the sales made to-day may be mentioned:

Cassidy Bros. & Co. sold for Myers & Work, McKinney, 37 steers, 862 lbs, \$3.05; 10 cows, 872 lbs, \$2.25; R. Wright, Denton, 47 steers, 1054 lbs, \$3.40; J. E. Chiles, Merritt, 29 steers, 991 lbs, \$3.30; 23 cows, 763 lbs, \$2.55; 11 cows, 830 lbs, \$2.50; Taylor Bros., Lisbon, 40 steers, 1057 lbs, \$3.45.

The J. H. Campbell Co. sold for E. H. Lee, Itasca, 56 steers, 1007 lbs, \$3.25; for Boydston Bros. & Co., Sweet Springs, 41 cows, 764 lbs, \$2.65; for James Williams, Wheeler, 43 steers, 915 lbs, \$3.25.

The Evans-Snyder-Buel Co. sold for J. T. Archer, Tulsa, 22 cows, 847 lbs, \$2.50; 23 steers, 1040 lbs, \$3.50; for J. M. Daugherty, Abilene, 21 steers, 998 lbs, \$3.25; for A. J. Cockerel, Abilene, 63 steers, 1088 lbs, \$3.50; for Dyer & S., Abilene, 23 steers, 996 lbs, \$3.20.

Sealing & Tamblin sold for G. W. Sanders, San Antonio, 24 yearlings, 433 lbs, \$1.75; 26 steers, 811 lbs, \$2.65; for J. F. Ray, Pettus City, 18 bulls, 1150 lbs, \$1.75; 19 stags, 1072 lbs, \$2.25; for O. Laughlin Bros., Eolian, 25 steers, 941 lbs, \$2.90; B. O. Wolcott, Honey Grove, 14 steers, 990 lbs, \$3.35; 24 steers, 945 lbs, \$3.20; 30 steers, 1016 lbs, \$3; J. E. Barron, Thornton, 19 steers, 780 lbs, \$2.85; 20 steers, 1020 lbs, \$2.87½; W. C. Barron, 21 steers, 915 lbs, \$3; for J. C. Lathmore, Gainesville, 47 steers, 992 lbs, \$3.40; for Steed & Evans, Post Oak, 44 steers, 940 lbs, \$3.30; A. J. Davis & Speed, Gainesville, 19 steers, 947 lbs, \$3.30.

Good fat Texas hogs are selling well. Cassidy, Bros. & Co. sold for Lanham Bros., Denton, 72 hogs of 232 lbs, which brought \$4.35 per 100 lbs; a good price and nearly as much as native hogs fetch. However, grass hogs are not wanted and would not bring much over \$4 per 100 lbs.

The wool market continues active but prices are not so strong. Receipts are only moderate and good wools sell well. Common and burry wool dull and neglected. Wool shippers should make a note of this.

The Merchants' Exchange Price Current says:

"The market toward the close of the week was easy and somewhat lower. The choicest grade of wool showed a decline of about ½c from extreme prices, while coarse and low grades, which had been selling relatively too high during the extreme activity, declined to relative values, making a change in these grades of nearly 1c. We make no change in quotations, but in order to realize outside figures, wool must be strictly up to the standard in both quality and condition. Manufacturers thus far have bought very sparingly, and the advance that has taken place throughout the wool growing districts has been largely speculative. A change in freight rates is another unfavorable feature. It is not thought, however, that values will change materially from the present ones, though greater discrimination will doubtless be shown between price and quality."

Prices range in extremes from 16@25c per pound.

The Texas horse market is only moderately active. Offerings the past week were fair, but the quality nothing to brag of. Many of the shipments are sent out to grass for twenty or thirty days which shows the condition the stock is in. Sales fair at range of \$20@35 per head. RATTLER.

C. H. Edwards' music house of Fort Worth has removed from No. 308 to No. 409 Houston street.

CAUTION.—Buy only Dr. Isaac Thompson's Eye Water. Carefully examine the outside wrapper. None other genuine.

J. E. PRICE. FRANK P. HORD. I. A. DEWEES.

Traders' National Stock Yards!

J. B. PRICE & CO., Proprietors,

Near I. & G. N. Shipping Pens, - - SAN ANTONIO, TEXAS.

Best and most commodious stock yards in the state. Built expressly for the accommodation of the stockmen. All pens shedded and with hay-racks and fresh water. Charges same as other yards. Best buyers on the market always on hand for good stock.

THOS. H. MORIN. J. L. MORIN.

MORIN BROTHERS,

W. L. LUBBOCK, Manager,

Live Stock Commission Merchants, San Antonio, Texas.

Feed and Sales Yards, South Flores street.—Make a specialty of handling Spanish stock of all kinds. We offer for sale all classes of live stock, at any point in Southwest Texas and Mexico.

JESSE H. PRESNALL. HINES CLARK. JAMES F. SCOTT.

PRESNALL, CLARK & SCOTT

Live Stock Commission Merchants,

COLLINS, NUECES COUNTY, TEXAS.

Do a general live stock commission business. Special attention paid to putting up stock on order.

GEO. LOELOFF, SAN ANTONIO, TEX.

—Manufacturer of the—

CELEBRATED SAN ANTONIO SADDLE TREES.

Makes all kinds of Natural-Fork Saddle Trees, Texas, Colorado and California patterns. None genuine without my name on cantel. Look out for imitations.

Brackett & Holman,

MANUFACTURERS OF SADDLES, HARNESS, BRIDLES, ETC.

No bogus Northern penitentiary or combination saddle trees sold or rigged, but a specialty made of strong, reliable, honest goods at a reasonable price. Also sell the best farm wagon made.

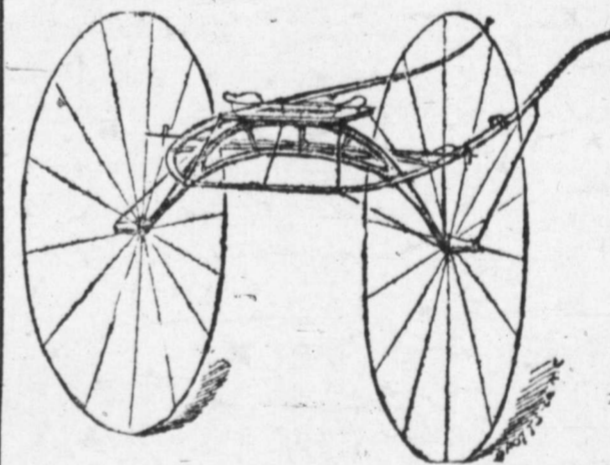
South Side of Military Plaza. San Antonio, Texas

G. W. Saunders & Co.

LIVE STOCK COMMISSION MERCHANTS

SAN ANTONIO STOCK YARDS.

Prompt sales and quick returns. Market reports and information as to supply cheerfully given. Correspondence solicited. Telephone No. 401.



CALVIN TOOMEY,

KANSAS CITY, MO.,

Carriages, Buggies and Speed Wagons.

TRACK SULKIES,

ROAD, POLE AND BREAKING CART;

And Sulky Cushions with weight pocket. No sulky perfect without the Wheel Guard Rail; it prevents collisions and stiffens the sulky throughout, making it run true and steady. Send for catalogue.

CHICAGO MARKET LETTER.

U. S. YARDS, {
CHICAGO, ILL., May 27, '89. }

Regular Correspondence Texas Live Stock Journal.

Reynolds & Crill sold for S. A. Dawes of Eliasville 67 head of 999-lb grass steers at \$3.15; for White & Ingham, 476 head of 82-lb shorn sheep at \$3.90, and to-day a similar lot at \$4; also the following Western wintered Texas steers: 36 head, 1323 lbs, \$3.95; 19, 1248 lbs, \$3.90; 29, 1060 lbs, \$3.65, and 17 head, 1092 lbs, \$3.30; for G. M. Wileman, 42 grassers, 850 lbs, \$2.85.

The American Live Stock Commission Co. sold for G. W. West of Oakville, 21 steers, 1030 lbs, \$3.40.

Keenan & Sons sold for G. W. West 64 steers, 1016 lbs, at \$3.40.

Sealing & Tamblin sold for G. W. West, 72 steers, 1075 lbs, at \$3.40; for J. T. Wiford, 96 steers, 980 lbs, at \$3.15.

Gregory, Cooley & Co. sold for G. W. West, 67 steers, 1040 lbs, at \$3.40; for H. Runge & Co., 105 steers, 921 lbs, \$3.

Paxson, Shattuck & Co. sold for G. W. West, 63 steers, 1006 lbs, \$3.40. They

also sold 42 steers, 1037 lbs, at \$3.30; 23, 905 lbs, \$3; 114 steers, 977 lbs, \$3.15; 37, 834 lbs, \$2.90; 119, 735 lbs, \$2.75; 9 cows, 682 lbs, \$2.15.

The Evans Snyder-Buel Co. sold for E. Morris of Corpus Christi, 96 steers, 757 lbs, at \$2.75.

Wood Bros sold for S. M. Samples, 66 fed steers, 1032 lbs, \$3.60; for J. Willingham, 46 steers, 1038 lbs, \$3.60.

Greer, Mills & Co. sold for J. Smith, 57 mixed, 632 lbs, at \$2.30; for Coffin Bros., 20 steers, 962 lbs, at \$3.50; T. B. Smith, 38 steers, 991 lbs, at \$3.45.

R. Strahorn & Co. sold for J. LaCroix, 73 cattle, 1019 lbs, \$3.35; 24, 1002 lbs, \$3.35.

Mallory & Son sold for M. R. Hexie, 34 steers, 825 lbs, at \$2.85; 58 cows, 6.7 lbs, \$2.15; J. D. Olive, 72 fed steers, 930 lbs, at \$3.25.

The Chicago Live Stock Commission Co. sold for J. J. Welder, 81 steers, 1024 lbs, at \$3.05.

The James H. Campbell Co. sold for J. S. Oliver, 72 steers, 964 lbs, \$3.25.

The cattle market for this week opened stronger. Sheep sold 10c higher to-day. A. C. HALLIWELL.

P. A. HUFFMAN, Fort Worth, Texas.

A. W. JONES, late of Burlington, Kansas.

S. T. NESBITT, late of Springfield, Ill.

P. A. HUFFMAN & CO.,

REAL ESTATE, LOAN AND INVESTMENT AGENTS

506 MAIN STREET, FORT WORTH, TEXAS.

Land Titles Investigated, Taxes Paid and Collections Made for Non-Residents. Correspondence Solicited.

POSTOFFICE BOX 197.

CITY PROPERTY.

For want of space we cannot give a description of our city and suburban property. We have 30 houses and lots, consisting of business and residence property, which is placed on our books at low prices and good terms, which will pay a good per cent. on the investment. Also, over 275 unimproved lots and blocks in different portions of the city and suburbs, which we offer at very low figures and on good terms. All we ask of you is to call on us and give us a chance to show you our property. We feel satisfied we can suit you; if not, it will be a satisfaction to know we have shown you our property and the city.

FARMS.

1. 80 acres 4 miles south of Fort Worth, 55 acres in cultivation. Well watered, fair improvements. \$125 per acre, 1/2 cash, balance 1 year, 10 per cent. interest.

3. 345 acres 3 1/2 miles south of Fort Worth, 125 acres in cultivation. Good water and good improvements. \$75 per acre, 1/2 cash, balance 1 and 2 years, 10 per cent. interest.

14. 297 acres near Handley station, all good land. \$20 per acre, 1/2 cash, balance to suit purchaser at 10 per cent. interest.

35. 500 acres 4 miles south of Mansfield in Ellis county, 230 acres in cultivation, balance in pasture; lasting water, 6-room house, tenant house, peach orchard, good outbuildings. \$20 per acre, 1/2 cash, balance 1 and 2 years, 10 per cent. interest.

36. 262 acres 4 miles from Fort Worth, divided into cultivated, wood and grass land; good house and outbuildings, creek, spring and artesian well. \$75 per acre.

39. 53 1/2 acres 6 miles west of Mansfield, Texas, in cross timbers; good well and peach orchard. \$8 per acre. Will exchange for Fort Worth property.

49. 430 acres 3 miles east of Fort Worth, 200 acres in cultivation, 400 acres rich bottom land; 2 average farm houses. \$60 per acre, 1/2 cash, balance to suit purchaser at 12 per cent. interest.

59. 100 acres 5 1/2 miles north of Fort Worth; 65 acres in cultivation, balance in grass; good outbuildings, good orchard, everlasting water. \$25 per acre, 1/2 cash, balance 1 and 2 years.

62. 630 acres in Wise county, 2 1/2 miles from Rhome; 77 acres in timber, good improvements, part in cultivation, balance black prairie; also 199 acres adjoining if desired. Price very low.

64. 240 acres in Wise county, 4 miles from Rhome; 105 acres in cultivation, fine water, well, good houses and improvements, splendid black waxy land. \$20 per acre; terms easy.

65. 320 acres in Wise county, 3 miles from Rhome; 130 acres in cultivation, balance in pasture, 2 wells, very good dwellings, etc., best black land. \$15 per acre; terms easy.

66. 317 acres in Wise county, 3 1/2 miles from Rhome; 100 acres in cultivation, balance fine grass for hay; medium buildings, fine black waxy land. \$12 per acre; 1/2 cash, balance easy terms.

67. 160 acres in Wise county, adjoining No. 6; 80 acres in cultivation, 70 acres in sod for hay, 10 acres for house and orchards. \$12.50 per acre, cash.

72. 160 acres 6 miles southeast of Fort Worth, 1 mile from Handley, near church, schoolhouse, gin, etc.; 7-room house, well and tank, 75 fruit trees, 50 acres timber, balance prairie. \$4000 for farm and utensils.

74. 215 acres 8 miles southwest of Fort Worth; 110 acres in cultivation, 2 good houses, water. \$20 per acre; terms easy.

75. 480 acres 18 miles from Fort Worth

and 11 miles east of Weatherford; 30 acres in timber, balance prairie, fenced on two sides. \$3.50 per acre; terms easy.

76. 451 acres 10 miles northwest of Fort Worth; nearly all in timber, 300 acres good tillable land. \$10 per acre, 1/2 cash, balance easy terms.

77. 150 acres 14 miles northwest of Fort Worth; all farming land, 75 acres in cultivation and fenced, good stock water, good box house, 2 tenant houses, smokehouse, well and spring. \$2200 cash.

78. 205 acres 2 miles north of No. 77; 100 acres in cultivation, 105 acres in pasture, but not fenced, double log house, sufficient timber for place. \$1700; \$1000 cash, balance 1 year.

81. 240 acres 8 miles from Fort Worth, on Village creek; fine grass, lasting water, good stock farm, 3-room house with hall, young orchard. \$8 per acre; terms easy, very cheap.

83. 222 acres in Ellis county, 1 mile from Waxahachie; 7-room house, 350-barrel cistern, 55 acres in timber. \$35 per acre; terms easy.

89. 320 acres 7 miles south of Fort Worth; water, timber, 3-room house, barn and buggy house, 250 acres can be cultivated. \$30 per acre, terms easy.

98. 1660 acres in southwest corner of Johnson county; 500 acres in cultivation, good tenant houses, Brazos river runs half way around it, over 2000 pecan trees. \$10 per acre, 1/2 cash, balance long time, 10 per cent. interest.

99. 676 acres 5 miles south of Fort Worth; 350 acres in cultivation, all can be cultivated, good and lasting water, 4 houses on the place and all necessary outbuildings. \$60 per acre, terms easy.

104. 949 acres 9 miles south of Fort Worth, pasture, 850 acres good tillable land. \$14 per acre, 1/2 cash, balance 1 and 2 years, 10 per cent. interest. Also 1509 acres adjoining, 160 acres in cultivation, 5-room house, good barn, good well and stock water, 1000 acres of good tillable land. \$12 per acre, 1/2 cash, balance 1 and 2 years, 10 per cent. interest. Both places \$12.50 per acre.

108. 200 acres 4 miles east of Alvarado in Johnson county; fine black land, 2 houses and improvements. Will sell 150 acres with one house and barn. \$25 per acre, 1/2 cash, balance 1 to 5 years, 10 per cent. interest.

109. 1034 acres 14 1/2 miles northwest of Denton, in Denton county; soil black loam; 150 in cultivation, all good tillable land, creek runs through place, 8 or 10 springs, good tank, 1000-barrel cistern, extra good 3 and 4-room houses, good well and a No. 1 place. \$15,000, \$6000 cash, balance to suit purchaser, 10 per cent. interest.

112. 300 acres 3 miles northeast of Mansfield, in Tarrant county; 85 acres in cultivation, 175 acres in pasture, black land, plenty of timber, 5-room house, barn, well watered, good peach orchard, a fine farm. \$20 per acre, 1/2 cash, \$1600 in 3 years, 9 per cent. interest, balance to suit purchaser, 10 per cent.

116. 350 acres 15 miles north of Fort Worth; 100 acres in cultivation, 175 acres in pasture, 75 acres in timber 2 miles distant, 7-room 2-story house and 3-room house, 100 peach trees, 2 tanks, several good wells. \$20 per acre; will trade for Fort Worth property.

126. 160 acres 8 miles south of Millsap in Parker county; 60 acres in cultivation, balance post oak timber, all good land except 25 acres which is a little gravelly, 2-room log house, good cistern, granary and corn crib, good settlement; a bargain. \$1200, or will exchange for Fort Worth property.

128. 70 acres 1 mile from courthouse in Brown county. A good bargain. Write us.

133. 731 acres 12 miles west of Fort Worth. All under fence, 40 acres in cultivation, good 4-room house, outbuild-

ings and well, 400 acres good for agricultural purposes, all good pasture, 150 acres timber bottom. \$12.50 per acre, 1/2 cash.

134. 950 acres 10 1/2 miles west of Fort Worth; 130 acres valley land in cultivation, 300 acres can be mowed, balance grazing land, all fenced, good spring, plenty of water, fair house and outbuildings. \$10 per acre; will take part city property.

135. 760 acres 15 miles southwest of Decatur in Wise county; 200 acres in cultivation, valley land, balance timber and prairie, 5 good box houses with wells, cribs and outbuildings to each, all fenced, all good pasture land, 300 pecan trees. \$10 per acre, 1/2 cash.

136. 150 acres adjoining No. 135; 40 acres in cultivation, 100 acres in valley land, balance timber and prairie, 70 fenced, 2 good log houses, good well and good stock water, about 75 bearing fruit trees. \$1000; 1/2 cash.

145. 670 acres 20 miles north of Decatur in Wise county, 1 mile west of Sunset on railroad, on Big Sandy creek; all timbered, 300 acres good agricultural land, about 80 acres of fine white sandstone (sample to be seen at our office); fine building stone, any thickness wanted. \$7.50 per acre.

146. 1010 acres west of Fort Worth; 734 acres fenced, good house, barn, cribs, well, corrals, etc., 450 acres good agricultural land, balance fine pasture, 400 acres timber, balance prairie. \$12.50 per acre.

149. 78 1/2 acres 1 mile from city limits, south of Mrs. Buford's, on Clearfork; 12 acres timber, balance good agricultural land, 3-room house, good water. \$100 per acre, 1/2 cash, balance 1 and 2 years at 10 per cent.

150. 80 acres 13 miles northwest of Fort Worth on Walnut creek; all good land, 45 acres in cultivation, 2-room house, plenty of good water. Price \$900.

151. 405 acres 8 1/2 miles east of Fort Worth; 160 acres in cultivation, 100 acres timber, balance prairie, 400 acres good agricultural land, good dwelling house and outbuildings, good peach orchard, mostly rich valley land located on Trinity river, good everlasting water. \$10 per acre, 1/2 cash, balance 1 and 2 years.

152. 200 acres 3 1/2 miles west of Arlington on Fort Worth and Johnson Station road; all timber, 1/2 mile east of Rush creek, road runs through one corner of land, good churches and school house 1/2 mile, good level farm land, 11 miles from Fort Worth. \$2100, 1/2 cash, balance 1 and 2 years at 10 per cent.

153; 50 acres 1 1/4 miles northeast of Handley; 25 acres in cultivation, balance in timber and grass, 2-room house, good well and spring. \$15 per acre, 1/2 cash, balance 1 year at 10 per cent.

155. 90,000 acres good agricultural land in Wichita county in a solid body, all under fence, with about 20 miles of running water, and good wells can be had at from 20 to 40 feet. \$150,000, 1/2 cash, balance on time. Also, 19 scattering sections of good agricultural land in Hall county; \$1.60 per acre. Also, 3000 acres fine valley land in Wichita county on Wichita river above overflow. \$3 per acre.

156. 1032 acres in Johnson county, 4 miles east of Alvarado; 600 acres in cultivation, balance in grass, 50 acres of timber, all good rich agricultural land, house of 10 rooms, good barn, stables and all necessary outbuildings, everlasting water; a very desirable stock farm, all in good condition, 9 tenant houses on place. \$30 per acre, 1/2 cash, balance 1 and 2 years.

157. 600 acres 3 miles east of Alvarado; 400 acres in cultivation, all good rich land, good dwelling and out houses, well watered; a valuable farm and in

good condition. \$30 per acre, 1/2 cash, balance 1 and 2 years at 10 per cent.

158. 900 acres in Johnson county, 3 1/2 miles east of Alvarado; 500 acres in cultivation, all good rich land, fine dwellings, everlasting water. \$30 per acre, 1/2 cash, balance 1 and 2 years.

162. 80 acres 8 miles southeast of city, known as north 1/2 of block 28 of Shelby county school land; all under fence, 60 acres in cultivation, balance grass, 2-room house, good water. \$30 per acre, 1/2 cash, balance 1 and 2 years.

163. 25 1/2 acres 3/4 mile southwest of city limits, a part of the Fleming tract, all in a high state of cultivation, everlasting water, house 3 rooms, outbuildings, etc. \$200 per acre, 1/2 cash, balance 1 year.

164. 160 acres in Hood county 1 mile west of Granbury, Nolan county school land, all good land; 100 acres in cultivation, 60 acres in pasture, good house, water and outbuildings. \$20 per acre.

165. 1476 acres in Bosque county 7 1/2 miles east of south of Meridian and 3 1/2 miles north of Clifton; 400 acres good valley agricultural land, balance good grazing land on branch of Brazos river which runs through the place, 6 acres in cultivation, good house and outbuildings. \$8000, 1/2 cash, balance 1 and 2 years.

166. 1550 acres 6 1/2 miles northwest of Fort Worth; 500 acres in cultivation, balance pasture, 1400 acres rich agricultural land, good artesian well, house of 8 rooms, barn and outbuildings. \$25 per acre, 1/2 cash, balance 1, 2 and 3 years.

167. 590 acres 12 1/2 miles north of Fort Worth; all fenced, good artesian well, nearly all agricultural land. \$16 per acre, 1/2 cash, balance 1 and 2 years at 10 per cent.

168. 66 acres 2 miles east of Fort Worth, fine fruit and vegetable land. 75 per acre; terms easy.

170. 246 1/2 acres 1 1/2 miles from Crisman depot on Santa Fe road, 1 1/4 mile from the Rio Grande road, all good agricultural land, everlasting water, in Johnson county. \$16.50 per acre, 1/2 cash, balance 1 and 2 years.

171. 1100 acres 12 miles east of Fort Worth; all fenced, 400 acres in cultivation, nearly all good land, good timber, 8 tenant houses. \$20 per acre, 1/2 cash, balance 1 and 2 years.

172. 240 acres 13 miles northeast of Fort Worth; 150 acres in cultivation, balance in wood and pasture, good house and outbuildings, 18 acres in orchard, adjoining the town of Bedford. \$25 per acre, 1/2 cash, balance 1 and 2 years.

172. 240 acres 13 miles northeast of Fort Worth; 150 acres in cultivation, balance wood and pasture, good house and outbuildings, 18 acres in orchard adjoining the town of Bedford. \$25 per acre, 1/2 cash, balance 1 and 2 years.

173. 90 acres 13 miles west of Dallas on Grapevine prairie; 75 acres prairie, 15 acres timber, frame house, good water. \$16 per acre, 1/2 cash, balance to suit.

175. 420 acres in Denton county, 3 miles northeast of Denton; all fenced, black sandy soil, all good tillable land. \$30 per acre.

177. 271 acres 3 1/2 miles southwest of Fort Worth; 89 acres in cultivation, balance in grass, plenty of water and timber, good house and outbuildings and artesian well. \$60 per acre, 1/2 cash, balance on time.

183. 400 acres in Johnson county, 2 1/2 miles east of Beulah; all fenced, 200 acres good agricultural land, balance good grass land, good water. \$15 per acre, 1/2 cash.

184. 415 acres 2 miles northwest of Dido; 50 acres in cultivation, balance in timber, 300 acres good agricultural land, 3-room house and outbuildings, everlasting water. \$10 per acre, 1/2 cash, balance 1 and 2 years.

185. 87 acres 1 1/4 miles north of Dido;

40 acres in cultivation, balance timber and prairie, good water, 3-room house and outbuildings, good peach orchard and vineyard. \$15 per acre, 1/2 cash, balance 1 and 2 years.

186. 100 acres in Wise county 17 miles south of Decatur, 2 miles north of Springtown; a never-failing well of water. \$1200.

187. 3840 acres in Callahan county, 4 miles from Clyde on T. & P. railroad, 6 miles from Baird, the county seat, has permanent water, house with 4 rooms. \$5 per acre.

188. 600 acres in Parker county, 22 miles northwest of Fort Worth, 6 miles south of Springtown; 300 acres good mowing land. \$6.50 per acre.

189. 1823 acres in Hood and Johnson counties, all under fence, everlasting water, 4 miles west of Godley and 7 miles south of Creson, good house and outbuildings. \$7 per acre, 1/2 cash, balance on time.

190. 257 1/2 acres 12 miles west of Fort Worth on north side of Westfork; 150 acres in cultivation, balance in pasture, good water and timber, house 3 rooms. \$15 per acre, 1/2 cash, balance 1 and 2 years.

191. 2400 acres in Wise county 6 miles southeast of Decatur, all under fence; 800 acres good cultivating land, 4-room house, plenty timber and water. \$10 per acre; terms easy.

193. 1268 acres 12 miles north of Fort Worth; 3-room house, plenty water, all fenced, 1000 acres cultivating land. \$15 per acre, 1/2 cash.

198. 320 acres in Kaufman county, 8 miles north of Elmo and 12 miles northeast of Terrell on T. & P. railroad. \$2100.

199. 4700 acres in Taylor county 14 miles south of Abilene, 3/4 mile from Buffalo Gap; good cultivating land. \$6.50 per acre, terms to suit.

201. 138 3/4 acres 9 miles northwest of Fort Worth, 90 acres in cultivation, small house, good water. \$15 per acre, easy payments.

204. 100 acres in Bosque county 2 miles north of Morgan; 85 acres under fence, 45 acres in cultivation, plenty water and timber, good house, barn and orchard. \$1300, 1/2 cash.

206. 1299 acres in Wichita county, 2 1/2 miles southwest of Iowa Park; all fenced except 230 acres, 60 acres in cultivation, good house, plenty water and timber. \$3.50 per acre, easy terms.

207. 3000 acres in Bosque county 6 miles north of Morgan on the Santa Fe railroad; 150 acres in cultivation, good improvements, cool spring and fine stock water, good timber. \$6 per acre.

208. 857 acres in Somervell county, 10 miles from Granbury; 150 acres in cultivation, valley land of finest kind, all fenced, flowing artesian well, good buildings. \$10 per acre.

209. 180 acres 5 miles northeast of Fort Worth; 75 acres in cultivation, balance pasture, black waxy soil, good water, good house and outbuildings, fenced with hedge. \$7,350, 1/2 cash.

210. 5000 acres in Bosque county on the Brazos 9 miles north of Morgan; all under good fence, 1/2 good cultivating land, 400 acres valley land, everlasting artesian well, plenty fine timber, 2-story frame house, other fine buildings, 400 acres in cultivation and under a solid rock fence. \$10 per acre, 1/2 cash.

213. 200 acres 1 mile east of Granbury and adjoining the town; all rich good valley land and all under fence, everlasting water. \$55 per acre.

214. 400 acres 4 miles southwest of Grapevine, 15 miles northeast of Fort Worth; 175 acres in cultivation, all fenced, good house, plenty water. \$20 per acre.

215. 176 acres 8 miles southwest of Fort Worth, 1 mile south of Benbrook; all under good wire fence. \$15 per acre, 1/2 cash, balance 1 and 2 years at 10 per cent.

PASTURES.

1. 2000 acres 8 miles from Fort Worth, plenty of timber and water, good fence. \$10 per acre.

5. 15,000 acres of land 13 miles west of Fort Worth, all under good fence, good water and timber, 2/3 good cultivating land, good ranch improvements. Texas & Pacific road runs through the place; a very desirable stock farm. Price \$10 per acre, 1/2 cash, balance on time to suit purchaser, 10 per cent.

10. 120 acres 11 miles southwest of Fort Worth on Rock creek. Will trade for

Fort Worth property. \$10 per acre cash.

11. 20,000 acres near round Point, in Chambers county; water and timber, 7000 acres under wire and board fence. \$2 to \$3 per acre. 5000 acres on Elm and Mud bayou, wire fence. \$2 per acre.

12. 1537 acres in Denton county, fenced on 3 sides. \$10 per acre; \$3337 cash, balance 4 years, 9 per cent. interest; will take part pay in live stock.

13. 1700 acres in southeast corner of Tarrant county, 120 acres timber, fine grass, lasting water, well watered and fenced. \$15 per acre.

14. 3000 acres 17 miles west of Decatur, 20 acres in cultivation, 2-room house, mesquite grass, timber. \$3.75 per acre, good terms.

16. 2080 acres in Erath county, 12 miles southeast of Gordon, on Big Sandy creek, 1700 acres inclosed, 120 acres in cultivation, 3-room house, good outbuildings; one of the best places in the county. \$13,000; \$3000 cash, balance in 5 payments. Also 65 horses and 75 high-grade cattle.

17. 700 acres 6 miles west of Colorado, in Mitchell county; 5-wire fence, half valley, half upland, 4-room house, splendid improvements, all new, plenty of water, healthy locality and good soil, 20 acres in cultivation. \$3.25 per acre; cows; houses, implements, furniture and all belongings cheap.

26. 3240 acres in Wichita county, 18 miles from Wichita Falls, 4 miles from Burk station, good inclosure, 100 acres in cultivation, well watered, plenty of timber, 2 houses. \$4 per acre; 1/2 cash, balance on time, 10 per cent. interest; 4 houses, 4 oxen, wagon, mowing machine, plows, tools, etc., will also sell if desired.

27. 60,000 acres in Hardeman and Childress counties, fine grazing land, 4-wire fence, good water and improvements; also 7500 head cattle. \$3 per acre for land, \$10 per head for cattle, \$50,000 cash, balance long time, 10 per cent. interest.

28. 2300 acres in Tom Green county, 5 miles from San Angelo, fronts 2 miles on Concho river, 2 houses, good farming land. \$5 per acre; 1/2 cash, balance on time.

29. 4480 acres 1 1/4 miles north of Baird, in Callahan county, on T. & P. R. R., inclosed and subdivided, good house, corral, etc., abundance of water from lasting spring, covered with heavy coat of mesquite grass, 2/3 of tract is good tillable land, abundance of timber, first-class horse and blooded cattle ranch. \$5 per acre; 1/2 cash, balance to suit purchaser.

30. 5346 acres in Clay county, all good tillable land, good ranch improvements. \$3.50 per acre, 1/4 cash, balance to suit purchaser, 10 per cent. interest.

31. 5000 acres in Clay county on Wichita river, inclosed, ranch improvements, fine protection, nearly all good tillable land. \$3 per acre, 1/4 cash, balance to suit purchaser.

43. 2500 acres in Nolan county, well watered, good farming land, good house improvements, all utensils, implements, 2 mares and colts, household and kitchen furniture. \$4500, 1/2 cash, balance on time. 2000 sheep will be sold at market price if desired.

48. 640 acres 6 miles west of New Waverly, in Walker county; 200 acres good tillable land on San Jacinto river, all above overflow. \$2.50 per acre, 1/2 cash, balance 1 and 2 years at 10 per cent. interest.

50. 650 acres 6 miles north of Anderson, in Grimes county; 500 acres inclosed, 350 acres in cultivation, 300 acres of good timber, all good tillable land, 2-story 5-room house, 7 tenant houses, 3 wells, good improvements and neighborhood, with churches and schools. \$12 per acre, 1/4 cash, balance 1 and 2 years, 10 per cent. interest.

53. 24 sections 10 miles south of Sweetwater in Nolan county; splendid land, well watered. \$3 per acre; terms easy.

55. 6 sections 4 miles from Clyde in Callahan county, 104 acres in cultivation, 3/4 good tillable land, good ranch improvements, a very desirable place. \$5 per acre; cattle, horses, implements, etc. can be purchased.

58. 20,953 acres 3 miles from Merkel in Taylor and Jones counties, inclosed and divided into pastures, everlasting water on many portions of the tract, splendid black sandy loam easily cultivated, 75 acres in cultivation, balance in fine mesquite grass, 6-room house and all improvements for a first-class ranch; lies in good shape for dividing into small farms; a No. 1 place for a colony. \$5.50 per acre cash, or will exchange for live stock at a bargain.

59. 315 acres in Palo Pinto, near the corner of Young and Jack counties, nearly all inclosed with rock, small house, stock corrals. Without exception best watered place in county. \$5.50 per acre cash, or will exchange for live stock at a bargain.

60. 160 acres 6 1/2 miles south of Fort Worth. \$25 per acre, 1/2 cash, balance easy.

61. 728 acres 1/2 west of No. 60; artesian well cost \$1000. \$25 per acre, 1/2 cash, balance easy terms.

62. 138 1/4 acres close to No. 61, good tank. \$25 per acre, 1/2 cash, balance easy time.

63. 150 acres 1 mile east of Handy, 40 acres fine bottom land, 5 acres timber, balance grazing land. \$15 per acre, 1/4 cash, balance 1 and 2 years, 10 per cent. interest.

64. 22,000 acres in Cottle county. For description write us. A splendid ranch. \$2.25 per acre.

65. 5300 acres 10 miles north of Fort Worth, on Fort Worth & Denver R. R.; 6000 acres good tillable land, plenty good water and timber, good ranch improvements. \$12.50 per acre, terms reasonable, 10 per cent. interest.

67. 720 acres in Denton county; 90 acres in cultivation, balance in grass, fenced 4 wires, well watered, plenty of timber, all good agricultural land, good house, barn and well, 100 stock cattle, 20 stock horses, 14 head 4-year-old mules, all implements. 1 mile from Krum, 12 miles northwest of Denton.

69. 160 acres 7 miles south of Fort Worth; nearly all good agricultural land, all under fence. \$25 per acre, 1/2 cash.

71. 1500 acres 20 miles from Georgetown, in Williamson county, 260 acres in cultivation, about 800 acres good agricultural land, balance fine grass and timber, good well and spring, new house. \$10 per acre. Will trade for Fort Worth property.

72. 5580 acres in Dickens, Crosby, Floyd, McCulloch and Foley counties, in square body. \$10,000 on terms to suit.

73. 6507 acres in center of Hockley county; all rich agricultural land, two good wells with tanks, etc. \$3.25 per acre.

74. 2300 acres 2 miles from Fort Worth; 1800 acres agricultural land. \$50 per acre. Will trade for Kansas City property to amount of half the value of the land.

76. 1268 acres 10 miles north of Fort Worth; 1000 acres good agricultural land, between the Santa Fe and Mo. P. railroads, all under fence, everlasting water, house with 3 rooms. \$14 per acre, 1/2 cash.

79. 3400 acres in solid body in Cochran county; 25 miles of good fence, 5 good artesian wells with good windmills, house and ranch improvements. \$2 per acre.

80. 1116 acres 3 miles from Morgan, in Bosque county; 2/3 good farm land, good water. \$5000, 1/2 cash.

81. The Garner league, 4500 acres in Bosque county; all fenced. \$4 per acre.

WILD LANDS.

No.	Acres.	County.	Price.
2..	1385..	Falls.....	\$ 6 00
6..	320..	McLennan.....	8 00
8..	320..	Jack.....	2 00
9..	320..	Jack.....	2 00
10..	143..	Jack.....	2 00
11..	640..	Jack.....	2 00
13..	1476..	Milam.....	2 50
14..	640..	Hartley.....	2 00
18..	160..	Parker.....	5 00
19..	640..	Jones.....	1100 00
28..	1202..	Madison.....	2 00
29..	664..	Burleson.....	2400 00
30..	400..	San Jacinto.....	2 00
41..	2533..	Motley.....	4000 00
43..	197..	Red River.....	7 00
44..	320..	Wise.....	6 00
45..	12800..	Tom Green.....	3 25
46..	5000..	" ".....	5 00
47..	18560..	" ".....	2 50
48..	10000..	" ".....	90
50..	7805..	Runnells.....	4 20
51..	1920..	" ".....	2 50
52..	1105..	" ".....	5 00
53..	1151..	" ".....	2 25
54..	9600..	" ".....	2 00
55..	41600..	Tom Green.....	1 75@7 50

56..	18017..	Montgomery.....	1 50
57..	8856..	Liberty.....	10,000 00
58..	3326..	Sabine.....	1 50
60..	19200..	Knox.....	2 50
64..	4428..	Sabine.....	7 50
66..	21355..	Presidio.....	2 25
66..	5760..	Edwards.....	1 50
66..	640..	Swisher.....	1 25
66..	2560..	Terry.....	1 00
66..	640..	Upton.....	1 00
67..	35427..	Cochran.....	1 60
68..	17712..	Hockley.....	1 75
71..	5223..	Montague.....	50,000 00
73..	2700..	" ".....	10 00
74..	795..	Jack.....	20 00
75..	13440..	Jones.....	3 00
76..	6400..	Tom Green.....	3 00
77..	640..	Cottle.....	3 00
78..	640..	Taylor.....	5 00
79..	640..	" ".....	4 00
80..	12160..	Upton.....	25,000 00
81..	12000..	Hardeman.....	2 25
82..	4480..	Motley and Dickens	1 75
83..	11520..	Hardeman.....	1 50
84..	2411..	Hartley.....	1 50
85..	2805..	Castro.....	1 50
86..	1000..	Swisher.....	1 50
88..	1428..	Tyler.....	3 00
89..	8320..	Baylor.....	2 50
90..	640..	Lynn.....	750 00
91..	22000..	Cottle.....	2 25
92..	19040..	Presidio.....	1 00
93..	18000..	" ".....	1 25
94..	26240..	" ".....	75
96..	7236..	Cochran.....	1 50
97..	17712..	Floyd and Hale.	2 50
98..	5600..	Hardeman.....	3 00
98..	640..	Wilbarger.....	3 00

105. 368 acres in Henderson county, 20 miles northwest of Athens, 7 miles from Trinity. \$5 per acre.

107. 2214 acres in Leon county; fine pine and cypress timber. \$3 per acre.

108. 3225 acres in San Jacinto county; fine pine and cypress timber. \$3 per acre.

111. 86 sections near northeast corner of Upton county; good agricultural land, good water. \$1.65 per acre, 1/4 cash.

112. 4605 acres in solid body, all covered with pine timber, in southeast corner of Polk county. \$1.50 per acre, good terms.

114. 842 acres in Liberty county; 400 acres fine pine land, 300 acres in cultivation, 20 miles from Liberty, on Trinity river. \$1.65 per acre.

115. 394 acres, Hugh Jackson survey, in Liberty county. \$1.15 per acre.

118. 1136 1/4 acres in Hardin county; part pine and oak timber. \$1.15 per acre.

119. Secs. 18 and 20 in Knox county, 20 miles south of Vernon; section 18 is nearly all good valley land. \$2.25 per acre, 1/2 cash.

120. 1280 acres in Knox county. \$2 per acre.

121. Sec. 14, block 1, Knox county. \$2.50 per acre.

123. 17,000 acres in Hardeman county; all but 1500 acres in solid body. \$3 per acre.

125. 32 alternate sections in Carson county. \$3 per acre.

126. 640 acres in survey 21, block D., on G., C. & S. F. railroad in Wise county; good agricultural land. \$1.87 1/2 per acre, 1/2 cash.

To Those Who Have Real Estate to Sell or Exchange:
We ask a chance of selling or exchanging your land. We charge a reasonable commission for selling, and make no charge unless we sell or are instrumental in making sale. We will advertise your property for sale (without cost to you), and in this way get many inquiries from purchasers. Send us a full description of your property, (with map if possible), giving the number of acres of agricultural, grass and wood land; also improvements, water, protection, etc. In describing property be sure and not overestimate it. Let purchaser find it better than you represent it.

To Those Who Wish to Buy:
We ask that you call or write to us, as we carry a large list of all kinds of property, and feel confident we can please you. No trouble to answer questions or letters, or to show property.

The above is only a partial list of property on our books for sale. Call on or write us for description and prices of land in all parts of Texas.

WE REFER BY PERMISSION TO--K. M. VanZandt, President Fort Worth National Bank; Capt. M. B. Loyd, President First National Bank of Fort Worth; J. Q. Sandidge, President City National Bank, Fort Worth; Col. W. M. Harrison, President State National Bank, Fort Worth; W. J. Boaz, President Traders National Bank, Fort Worth; H. S. Broiles, Mayor of Fort Worth; Col. J. P. Smith, Ex-Mayor of Fort Worth; W. A. Huffman, of W. A. Huffman Implement Company; J. H. Brown, Wholesale Grocer, Fort Worth; Capt. Sidney Martin, President The Martin-Brown Company, Fort Worth; Col. Morgan Jones, President Fort Worth & Denver City Railway, Fort Worth; Peoples' National Bank, Burlington, Kansas.

FORT WORTH.

Texas papers will please put on their mailing lists "Press Headquarters," Fort Worth, Texas, and a file of their papers will be kept for the inspection of visitors.

The Palace Open.

The Spring Palace at Fort Worth is open to the world, and by next Tuesday the Elgin band, sixty pieces strong, will be on hand to delight all comers by the rendition of the choicest music. This band is the best regularly organized musical combination in the United States, and is worth traveling hundreds of miles to see and hear. The JOURNAL is unable to describe the beauties of the Palace, but can say the impartial and uniform verdict of the visitors is that it is all the originators intended; it should be. A grand exhibition of Texas products, a magnificent illustration of the states resources, a revelation to our own people and a startling surprise to the visitors from other states. Come to Fort Worth and see the Palace, you will know Texas better even if you were born and raised on Texas soil.

General Range and Stock Notes.

Come and see the Spring Palace.

Mr. C. F. Estill of Fort Worth sold 1 Holstein bull—registered stock, to go to Baylor county.

Captain S. A. Hatcher is due in Fort Worth on Saturday with another lot of select horses and mares.

Tom Montgomery is just in from his ranch in the Panhandle, and reports cattle and grass as being all that could be asked for.

Mr. P. D. Gray of Fort Worth, who is representing Messrs. Keenan & Sons in Northern Texas has fixed for a trip amongst the feeders.

Col. Chas. H. Gould of Montana, who was here last year as cattle inspector, now comes again as live stock agent of the C. B. & N. K. railroad.

Attention is invited to the card of G. W. Mahoney of Santa Anna, Coleman county, Texas, in the For Sale columns. He has a fine lot of muttons for sale.

Faught, Wolf & Johnson of Scurry county, have sold about 200 yearlings to Wm. Hittson and delivered them at the ranch in Stonewall county. Price \$8.

Mr. J. A. Barbish of Austin, Texas will receive subscriptions for the JOURNAL. Stockmen of Austin and Travis county are requested to hand him their subscriptions.

Fort Worth butchers say that the market is fairly supplied. Cows bring 2 cents, steers 2 1/2 c. at the outside, calves \$2.50@5.00 per head, sheep 2 1/2 cents, hogs nominal.

Col. J. S. Godwin of Fort Worth has purchased of Coffin Bros. Itaska, 2 car-loads of Southern Texas yearling mules which cost \$30 per head. They were a good lot of yearlings.

J. W. Hooker, manager of the Valley View stock farm of Gordon, Texas, offers 40 select Texas cows with Hereford calves this week, at a very low price, and some grade native Hereford bulls.]

Jno. S. Powell & Co. of Fort Worth have on the road 400 head of horses, consisting of yearlings, mares and colts, geldings and dry mares. These horses will be sold at Fort Worth at prices ranging from \$8 to \$20 around.

Messrs. Hatcher, Woods & Coppinger of Fort Worth, Texas, have sold 150 mares and 50 geldings to Bradley Bros. of Woonsocket, Dakota. This stock will be delivered by the sellers to the purchasers on their Dakota range.

A controlling interest in the Grand River Land & Live Stock company of Colorado is offered in our For Sale or Exchange columns. Our readers can learn something of the prosperity from the description taken from the Mesa County Democrat.

P. J. WILLIS & BRO., "WOOL"

CONSIGNMENTS
SOLICITED.

GALVESTON,
TEXAS.

HORSES and MARES

HATCHER, WOODS & COPPINGER,
Office Mansion Hotel, Fort Worth, Texas.

Have 2500 head of the largest and best selected bunch of Northwest Texas brood mares and horses on the market; also one and two-year-old fillies. Will contract Northwest Texas cattle for future delivery.

Messrs. Douglas & Oldham of Nashville Tenn. were in Southern Texas last week. The object of their search being 1/4 and half breed Norman fillies, yearlings and twos. They succeeded in getting about 250, paying \$25@30 per head, in the same markets common grown mares sell at \$15@20 with colts thrown in.

Messrs. Bensley, Hardy & Co., live stock commission merchants of Chicago, begin their card in this issue, to which attention is invited, on the market report page. The firm are in the field competing for the Texas trade and are fixed to handle all consignments quickly and promise a satisfactory result to their customers. They solicit a trial shipment.

Col R. G. Head of Denver was at the Spring Palace Thursday and left on the T. P. west bound train Friday morning. Col Head was loud in his praise of the Palace. "It exceeds anything I ever saw as an attraction and will benefit the state beyond the most sanguine anticipations of the promoters," said he. This coming from a man who has traveled over the whole world extensively and who observes closely will be appreciated by his Texas friends.

Messrs. Jno. S. Powell & Co. sold to Mrs. H. M. King of Santa Gertrudes ranch, Nueces county, 130 Durham bulls, also to Mueley Bros. of Corpus Christi, a car-load of Herefords, and to E. Corkill of Realitos 1 car-load of Herefords. All these bulls were raised in North Texas and selected personally by Messrs. Powell. They also sold to D. J. Woodard of San Antonio, 1 saddle stallion, and Frank P. Hood 1 roadster stallion.

L. A. Dillon of Normal, Ill. of the firm of Dillon Bros. passed through Fort Worth to assume the management of the Norman Horse company of Shackelford county, of which company he is one of the principal owners. Mr. Dillon said that he would add largely to the present establishment as the demand for Percheron horses and graded Normans was rapidly increasing and beyond the capacity of the northern states to supply.

Mr. S. W. Lomax, manager of the Espuela Land & Cattle company, shipped from Colorado City last Monday at 1 p. m., 13 cars of two-year-old steers. They went in Streets stable cars via Texas Pacific, Iron Mountain to St. Louis and via Chicago & Alton to Chicago. The cattle were delayed at St. Louis bridge four hours but made the run in sixty-eight hours, arriving at Chicago on Thursday at 8 a. m. This is good time for cattle shipments between Colorado City and Chicago.

A letter from Wm. Powell at Childress on the Fort Worth & Denver railroad to the JOURNAL says: "I sold this week to T. W. Waggoner of Harold, the Hereford bull, Weaver, by Mars 14th; to R. D. Benson of Midland, Texas, six registered Hereford bulls. Included in the list was the bull Anxiety, by Clark's Anxiety, and from the Success cow, Rosaline. Cattle all doing fine, have had good rains and grass is growing fine, we have also had an addition of five head to the herd since arriving here by births."

The firm of George L. Goulding & Co. at the City stock yards of Denver, Colorado, is now the City Stock Yards Com-

mission company, with Geo. L. Goulding as president. The company own the City yards and do a general commission business in blooded stock, holding regular sales. The next grand combination sale is announced for July 15 to 20 inclusive.

This institution is very successful and is the means of affording buyers and sellers the very best facilities for the transaction of their business, thereby centralizing the trade and increasing the transactions in blooded stock.

Do you want some good horses, colts fillies and the best lot of broodmares in the state; if so read the notice of A. E. Morse to be found in the For Sale column. He offers 40 mules, 1 to 3 years old, 25 mares, 25 colts and fillies and two stallions. His prices are mentioned but the character of the stock is not fully set forth in his advertisement. The mares have not a brand on them and there is not a Texas mare in the lot, everyone being selected from American stocks, for breeding to the two stallions, one a fine Norman, the other a thoroughbred. Investigate this offer and examine this stock.

Col A. M. Britton and S. W. Lomax of the Espuela Land & Cattle company, have organized a national bank at Vernon, Texas, and will open for business there in a few weeks. They will give their personal attention to the bank and with their extensive experience in banking and financing a successful career is insured for the enterprise. The JOURNAL heartily wishes you success gentlemen, and congratulates Vernon on the acquisition of two of Fort Worth's most substantial citizens who were always foremost in all public enterprises here and contributed liberally with their money and energy to make our city what she is to-day—the Chicago of Texas.

How's This!

We offer One Hundred Dollars reward for any case of Catarrh that cannot be cured by taking Hall's Catarrh Cure.

F. J. CHENEY & CO., Props., Toledo, O. We, the undersigned, have known F. J. Cheney for the last 15 years, and believe him perfectly honorable in all business transactions, and financially able to carry out any obligations made by their firm. WEST & TRUAX,

Wholesale druggists, Toledo, O. WALKING, KINNAN & MARVIN, Wholesale druggists, Toledo, O.

E. H. VAN HOESEN, Cashier, Toledo National Bank, Toledo, O. Hall's Catarrh Cure is taken internally, acting directly upon the blood and mucous surfaces of the system. Testimonials sent free. Price 75c per bottle. Sold by all druggists.

P. A. Huffman & Co.

The firm of P. A. Huffman & Co. of Fort Worth, composed of P. A. Huffman, A. W. Jones and S. T. Nesbitt, are the best-known real estate, loan and investment agents in the state of Texas. They handle city properties, suburban properties, farms, ranches and wild lands. They act for the sellers and in many instances act as buyers' agents, and have secured for their patrons some of the best paying properties in the state. The firm is constantly in a position to offer nice bargains because they are large advertisers, and have choice of a large selection of good properties before they are offered to other agents.

The firm of P. A. Huffman & Co. are fully vouched for as responsible and trustworthy by nearly every business house or leading citizen of Ft. Worth, and this paper can safely say that the firm have justly earned their high reputation for doing a wide and successful business in a strictly honorable and conservative manner.

A Big Deal.

Yellowstone Journal.

Jesse Hasten returned yesterday from Helena, where he closed the sale of the entire outfit of the Niobrara Cattle company, except the ranch property, to Thos. Cruse of Helena. The sale covers between 5000 and 6000 head of stock cattle and about 50 head of horses on the Powder range. The price paid was \$19.75 all round for cattle with calves thrown in, and \$30 per head for the horses; stock to be counted out and actual number delivered to be paid for. Mr. Cruse by this purchase becomes the owner of the N— brand. It is Mr. Cruse's intention to move the stock to his ranch on the Flat Willow, and it is expected that the herd will cross the Yellowstone about the middle of May.

This closes out all interest of the once famous Niobrara Cattle company in Montana. This company was, prior to the disastrous winter, one of the largest companies in Eastern Montana, and represented a capital up in the millions. By the ravages of that severe season they lost heavily and were crippled so severely financially that the business could not be put upon its feet again. The assets went into the hands of an assignee, who conducted the business for the past two years for the benefit of the creditors, realizing what he could from beef shipments. The sale now made by Mr. Hasten closes out all assets except the ranch property, for the sale of which negotiations are now pending.

NEW MEMPHIS LINE.

Via Iron Mountain Route From All Points in Texas.

The daily trains, one solid consisting of coaches and free reclining chair car are now being run between Texarkana and Memphis via the Iron Mountain route and Bald Knob. Through sleeping car from all principal points in Texas run through to Little Rock on the other train and at that point make connection with similar equipment through to Memphis. Direct connection is made at Memphis with all lines to the East and Southeast. This is a revolution in transportation service to Memphis. Ask your agent for a ticket via this route.

J. R. JETER & CO., Real Estate Agents

405 Main St., Fort Worth, Tex.,
"MONEY TO LEND"
On Real Estate. Vender's Lien Notes Bought.

Special Properties.

Eight single 640-acre tracts in Wichita county, rich lands at reasonable prices.

40,000 acres in Wheeler county, solid body, \$3.00 per acre.

168,000 acres on the plains, under fence and cross fences, \$2.50 per acre.

130,000-acre ranch with 12,000 head of cattle in Southwest Texas, for sale at a bargain or exchange for New York city property.

We have on our books various other good tracts of land, improved and unimproved, ranging in extent from 1000 to 10,000 acres.

CITY HOTEL, - CHICAGO.

Cor. State and 16th Sts.

SPECIAL RATE TO STOCKMEN, \$1.50 PER DAY. Nearest hotel outside the yards. Table and Rooms first-class. State st., Archer av or L. S. & M. S. Dummy pass the house to a part of city and depot.

W F ORCUTT, Proprietor

DALLAS.

DALLAS DOTS.

S. J. Mathews of Collin county arrived on market with 35 head choice butcher cattle.

P. J. O'Reilley of Tarrant county was on the market with 22 head of choice steers and found ready sale at 2½c.

B. B. Sachse of Sachse station is on the market with a bunch of choice grassers.

J. E. Littlefield of Dallas county sold 39 head of choice sheep to local butchers.

Geo. Bryant of Collin county sold a lot of milch cows and choice veal calves on this market.

Price Jones sold a lot of choice veal calves and hogs to local butchers.

Morris Miller of Grand Prairie is in the city looking out for steers for feeding next winter.

For the past week the stock market has been quite full of stock, but nevertheless prices have been fair for first-class, and second or third-class is never the correct thing to make quotations on anyhow.

Farmington (Mo.) Times:—J. F. and A. K. Harris recently sold two Short-horn bulls at good prices. One, "Rose of Sharon," to Dr. Edwin May of Annapolis, Iron county, for \$100, and a young eight-months-old to Wm. Ashburn of this county for \$45. If such prices as these can be obtained for good stock during the present low price of cattle, would it not be well for our farmers to pay more attention to their stock?

The JOURNAL, with a long experience, answers your question most emphatically in the affirmative, brother Fisher. In this age of progression farmers must get above the idea that common stock "will do" because they can be purchased for less money.

A number of the friends of the JOURNAL from Denton were in the city this week and they speak very favorably of the wheat crop that is now being harvested in Denton county.

Our readers are directed to the card of Frank J. Smith Iron Fence works of Dallas, Texas. Mr. Smith is selling a great deal of his goods in Texas, and deserves to do so.

Geo. A. Preston, cashier of Fannin county bank was in the city this week. George is one of the first acquaintances of "ye manager" of the JOURNAL when coming to Texas, and is that kind of a man that the longer a person knows him the more he is esteemed. He informs us that a first-class brick hotel is to be erected in Bonham this summer.

Dr. O. B. Hewitt recently sold five thoroughbred Hereford bulls to West Bissell of Colorado, Texas, at \$250, and 15 Hereford heifers at \$15 each. He also sold 30 head of one and two-year-old Hereford heifers to Geo. W. Loomis for \$750. The For Sale column was the doctor's resort, recollect.

Charley Carter has returned and taken his position at the stock yards. He reports having a good time during his absence, but says Dallas beats any of the cities he was at for business and general goaheaditiveness.

Sales of Live Stock at Central Stock Yards, Wallace & Black, Proprietors, Dallas, Tex.

J. B. Wilson, 23 steers to Hamm; coming 2-year-olds, wt. 1005 lbs. Price unknown. The cattle are three-fourths to full blood, evidencing the fact that blooded stock will pay in Texas. The best we ever handled in the state. J.

ST. JACOBS OIL

For Strains, Injuries. RECENT, PERFECT CURES.

Crippled. Streator, Ill., May 20, 1888. Mr. M. ZACK, professional stilt skater, in January, 1887, wrenched his ankle and was crippled for two months on crutches; he used two bottles of St. Jacobs Oil and was permanently cured. C. E. CROSWELL, Druggist.

Crushed. Chandler, Ill., May 22, 1888. About six months ago I was jammed between cars; in bed 23 days; suffered four months; used three bottles St. Jacobs Oil; was able to be about in one week. J. ASHURST.

Strained. Mt. Carmel, Ill., May 28, 1888. Strained my back in February last; could not get round for two weeks without a cane; was cured in three days by St. Jacobs Oil. J. F. WARNER.

AT DRUGGISTS AND DEALERS. THE CHARLES A. VOGELER CO., Baltimore, Md.

B. Wilson is one of the best cattlemen in the state.

Geo. Botzler, 100 good sheep, 3c per lbs. to local butchers.

Mr. Power of Collin is in with 20 extra cows.

C. A. Pierce, 29 cattle from Cleburne.

Dock Hill, 1 car speyed heifers, sold by J. B. Wilson to local butchers, 24@2½c.

Sam Samples, 3 loads of cattle to Chicago, wt. 1100 lbs.

Kahn of Texarkana bought on this market 1 car cattle, sheep and hogs.

C. C. Gibbon of Waxahachie, 15 cows, sold to various parties at 2c.

F. N. Simmons of Wills Point, calves and sheep; veal calves 4c.

C. T. Lewis of Wise, a car of veal calves, 4c per lb gross; 8 cows at \$15 per head.

J. Barnes, 8 cows and steers; steers \$2.40 per 100 lbs.

Bob Neison, 200 yearlings for Western market, \$5.50 per head.

Market not so good as last week, butchers contending that the time has come for cheaper beef. Market at this place as good as at any, less freight and shrinkage.

For artists' material, pictures and frames write W. H. Barse & Co., 1219 Main street, Kansas City, Mo.

Sales of Cattle at Carter & Son's Stock Yards, Dallas, Texas.

S. J. Mathews of Collin county sold 35 head of mixed cattle to local butchers at 1½c@2½c.

D. B. Sachse of Sachse station sold 37 head of mixed cattle to local butchers at 2@2½c, av. 840 lbs.

P. A. Maddox sold 8 steers, 880 lbs, at \$2.40.

J. B. Price sold 11 cows, 730 lbs, at \$1.75.

O. J. Meeley sold 23 head of choice veal calves, 198 lbs, \$3.50@4.

R. A. Murphey sold 9 hogs, 183 lbs, \$4.

P. D. Burns sold 5 milch cows at \$18 @25 per head.

F. Williams sold 2 milch cows at \$28 per head.

C. C. Trowser of Denton county sold 42 sheep, 94 lbs, at 3½c.

T. F. Davis sold 5 hogs, 117 lbs, at 4c.

B. L. Stokey sold 107 head of stock hogs at 3½c for feeding purposes.

C. H. McBride of Tarrant county sold 18 sheep, 72 lbs, at 3c; same, 39 sheep, 106 lbs, at 3½c.

L. E. Tape of Ellis county sold 18 yearlings at \$4.50@8 per head.

G. H. Snodgrass of Dallas county sold 7 veal calves at \$3.85 per 100 lbs.

James Taber sold 18 cows, 788 lbs, at 1½c.

B. Q. Myers sold 7 cows at \$12.50 per head.

Sam Davis sold 3 steers, 1060 lbs, at 2½c.

J. A. Barnes sold 22 lambs at \$2 per head.

Butchers' and Drovers' Stock Yards Dallas, Tex.

CARTER & SON, Props.,

Live Stock Commission Merchants.

Largest and best yards in Dallas. Only yards having the facilities for shipping and receiving from all the railroads. Office at theyards. Street cars to pens. Liberal advances made on all consignments. Stock scales at pens. Telephone connections.

A. SCHLAECHTER.

—THE—

C. F. MYERS.

U. S. CARRIAGE CO.,

Builders of Fine Buggies, Carriages, Phaetons, and Carriage Parts:

Nos. 251, 253, 255, 257, 259 and 261 South Fourth St., COLUMBUS, OHIO, U. S. A.

G. V. KANE, State Agent, - - - DALLAS, TEXAS.

C. H. EDWARDS MUSIC HOUSE,

09 Houston St., Fort Worth, Texas.

PIANOS Mason & Hamlin, Western Cottage and Kimball **ORGANS**

Lowest prices and easiest terms. Call and see them before buying.

R. L. Collins sold 2 milch cows at \$22.50 per head.

C. D. Hayden sold 10 cows at \$13 per head.

H. B. Jones sold 36 goats at \$1.70 per head to local butchers.

C. B. Cowan sold 15 cows at 1½@1¼c.

Geo. Smith sold 4 steers at \$17.50 per head.

Sam McPearson sold 8 veal calves at 3c, av. 260 lbs.

Tom Graves sold 29 cows and yearlings at 1½@2c.

E. P. Davidson sold 9 steers at \$21 per head.

Galveston's Semi-Centennial.

Galveston is putting her best foot foremost in an effort to befittingly celebrate the semi-centennial anniversary of the incorporation of the city by the sea. Preparations for a grand civic and military display, probably unsurpassed in the history of the South, are being made. The fun will commence promptly and early on the 4th of June and continue until late in the night of June 15th. Reduced rates over all railroads from all points in the state will be secured, and those who want to bathe in the glorious surf and breathe the wave-kissed breezes from the Gulf of Mexico will not soon again be afforded such an opportunity. In addition to all the natural attractions the management having charge of the arrangements announce that the military display on this occasion will be something marvelous. Altogether prizes aggregating \$22,975 are offered for competing military, horse racing and regattas. At night the grand panoramic spectacular military drama, "Fall of Paris and Reign of the Commune," will furnish a spectacle worth going hundreds of miles to see. This is one of the most startling and realistic productions ever witnessed in the South.

On the encampment grounds the regular army will be represented by four companies of infantry, six companies of cavalry, a battery and military band. Five interstate and twelve state companies have already entered, and it is safely estimated that there will be 5000 soldiers in camp. The camp grounds are within two miles of the heart of the city, and reached by the Galveston & Western railroad, affording ample and cheap transportation. Galveston extends an invitation, especially to the people of Texas, to join with her in celebrating her semi-centennial.

Largest stock of tin plate, metals, sheet iron, iron roofing and siding in Western Texas, Piper & Schulthess, San Antonio, Texas. We sell at factory prices, only freight added.

For Exchange!

I offer 1300 head choice cattle (800 head being selected cows), and 6000 acres beautiful land in Cottle county, in exchange for North Texas land and part cash.

JAS. B. SIMPSON, Dallas, Texas.



Warranted the Best. Easiest rider made. Tight Foot Back to prevent dust. Made for two passengers; carries one easier than all others. Delivered anywhere in Texas, \$20 cash with order. PARLIN & ORENDORFF CO., Dallas, Texas.

Central Stock Yards, WALLACE & BLACK.

Successors to J. W. Thomas & Son, Commission Dealers in Live Stock. We have facilities for transferring from stock pens of all railroads. Liberal advances made on all consignments. Accommodations first class. Telephone connection. Street cars by office. East Dallas, Tex.

DR. O. B. HEWETT, THE DENTIST. Dallas, Texas. Teeth extracted without pain. The BEST is the CAEAPEST.

JOHN PRACTICAL KLEIN, Hatter,

912 Main St., Dallas, Texas. Silk hats waiting. Stiff cleaned, stiff trimmed for \$1.35. Work warranted first class. Orders by mail or express promptly attended to.

CHAS. I. EVANS. J. GOOCH. **EVANS & GOOCH, Attorneys-at-Law,** Cor. Commerce and Lamar Sts., DALLAS, - - - TEXAS.

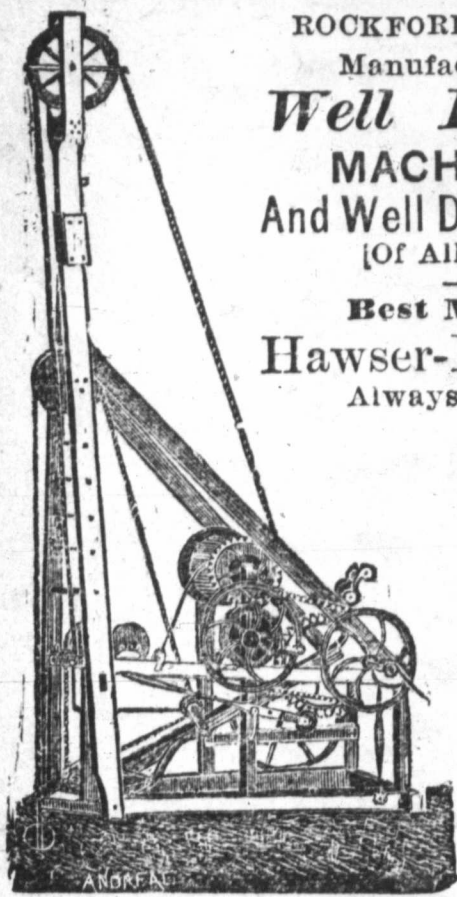
FRANK J. SMITH Iron Fence Works

113 Sycamore Street, DALLAS, - - - TEXAS. Dealers in Plain and Ornamental Wire, Steel and Iron Fence, MONUMENTAL WORK, RO CRESTING: Chairs and Settees, Vases, Flower Stands, Stable Fixtures, Bank and Counter Railings.

Utter Manufacturing Co.,

ROCKFORD, ILLINOIS.
Manufacturers of
Well Drilling
MACHINERY
And Well Drilling Tools
(Of All Kinds.)

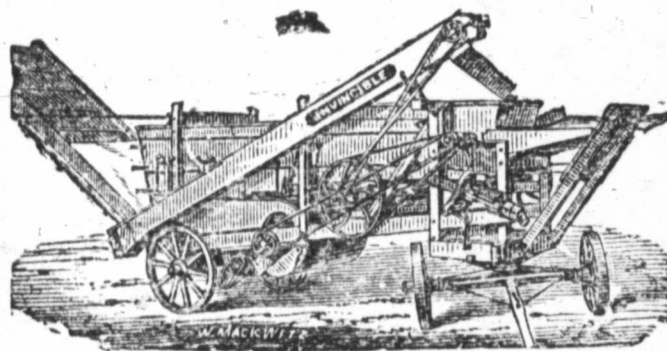
Best Manila
Hawser-Laid Rope
Always in stock.



Send for Circular.

GENERAL AGENTS FOR TEXAS:
F. M. ROWE, San Antonio; P. T. MOREY,
Belton; FORD, WEAKLY & JOHNSON, De-
catur. Mention this paper.

KINGSLAND & DOUGLAS
MANUFACTURING CO.,
ST. LOUIS, MO.



THRESHERS
PLAIN AND TRACTION
ENGINES.

SEND FOR CATALOGUE.

Mention this paper.

STOCKMEN

Of Texas and the Indian Territory, or elsewhere, who are visiting St. Louis and Chicago, can save money by purchasing their

CLOTHING

In St. Louis of us.

We are the Leading Clothiers of St. Louis, carry the largest stock of fine goods, and will make a suit to order, on short notice, cheaper and better by thirty-five per cent. than you get a similar suit at home.

Call on us, mention the Texas Live Stock Journal, and your purchases will be expressed at our expense. Send for an Illustrated Catalogue; mailed free.

F. W. HUMPHREY & CO.,

Corner Broadway and Pine,

ST. LOUIS, MISSOURI.



Dressed Beef Prices.

Chicago Tribune.

It has been freely charged against the dressed beef men that they have kept up the prices of their product to consumers during the steady decline of the last few years in the prices paid by them for the live animal. This has been denied with equal positiveness, but no proof was available to the public on either side. It is true the prices of dressed beef at the East have been published each week for some time in one or two Eastern papers, but it was difficult to obtain from this source a sufficient number of figures to make an intelligent comparison. The desired information has recently been furnished by one of the leading firms in the business, and the figures give the following range:

Year.	Price range.
1884.....	8 @ 10 cents
1885.....	7 1/2 @ 9 cents
1886.....	6 1/2 @ 8 cents
1887.....	6 @ 7 1/2 cents
1888.....	5 1/2 @ 6 1/2 cents
1889 to date.....	4 1/2 @ 6 cents

These are the prices per pound at which the carcass was sold at wholesale to retailers in Eastern markets. The Table exhibits a decline in the prices of product of about 40 per cent. in the last five years, which is fully equal to that suffered by sellers of the live animal. It is really more, for the reason that freight rates are lower than they were then, while the dressed beef men are making less profit than five years ago, though the offal is worth more to them than in the first year for which the prices are given. Indeed, the firm furnishing them says at present the company is sinking about all the freight and commission charges on all dressed beef it is shipping East, together amounting to nearly one cent per pound.

The statement shows conclusively that if the consumer has failed to reap the full benefit of the decline in the prices of cattle, the fault is not with the big firms in this city. It must lie with the men who have disposed of it at retail. The probability is, however, that the latter have not taken a greater share of profit recently than they did at first, and that the charge was made by men who did not duly consider the facts they were talking about. The assertion was made by those who had an ax to grind in opposing the dressed beef business, and they appear not to have been too scrupulous in endeavoring to find out whether or not the statement was true before sending it out broadcast. It is due to them, as to all other classes concerned, that the truth of the matter be published as widely.

A Puzzled Porker.

San Francisco Butchers' Gazette.

Out on a Yolo county ranch a few years ago a small band of hogs were confined in a lot fenced in with logs. In one part of the fence there was a hollow log, shaped something like a joint of stovepipe, one opening being inside the lot and the other outside. One day an intelligent porker discovered this fact, and thereafter went out and returned at his own pleasure. The owner of the ranch happened to witness the mode of egress of the hog one day and decided to put up a job on him. By slewing the log around a little he so contrived as to place both openings of the log inside the lot. In a few moments the hog ran up to his usual exit and passed through the log. Imagine his surprise when he walked out the other end of the log and found himself still inside the lot. He looked about him in a puzzled way, scratched

his ear and tried again. Same result. "Well, I'll be danged!" grunted the hog. Again he ran into the log and ran out again, with the same result. He became wild with rage and dashed through the log so often and so fast that the smoke began to issue from the cracks. Then he gave it up as a bad job, and, so the owner of the hogs says, never went near the fence until the day of his death.

DISEASED BLOOD.

Humors, Blotches, Sores, Scabs, Crusts, and Loss of Hair Cured.

Terrible Blood Poison. Suffered all a man could suffer and live. Face and body covered with awful sores. Used the CUTICURA Remedies ten weeks and is practically cured. A remarkable case.

I contracted a terrible blood poisoning a year ago. I doctored with two good physicians, neither of whom did me any good. I suffered all a man can suffer and live. Hearing of your CUTICURA REMEDIES I concluded to try them, knowing if they did me no good they could make me no worse. I have been using them about ten weeks, and am most happy to say that I am almost rid of the awful sores that covered my face and body. My face was as bad, if not worse, than that of Miss Boynton, spoken of in your book, and I would say to any one in the same condition, to use CUTICURA, and they will surely be cured. You may use this letter in the interest of suffering humanity.

E. W. REYNOLDS, Ashland, Ohio.

Covered With Running Sores 17 Years.

I have been troubled with a skin and scalp disease for seventeen years. My head at times was one running sore, and my body was covered with them as large as a half dollar. I tried a great many remedies without effect until I used the CUTICURA REMEDIES, and am thankful to state that after two months of their use I am entirely cured. I feel it my duty to you and the public to state the above case.

L. R. McDOWELL, Jamesburg, N. J.

Dug and Scratched 38 Years.

I go Mr. Dennis Downing ten years better. I have dug and scratched for thirty-eight years. I had what is termed pruritis, and have suffered everything, and tried a number of doctors, but got no relief. Anybody could have got \$500 had they cured me. The CUTICURA REMEDIES cured me. God bless the man who invented CUTICURA.

CHENEY GREEN, Cambridge, Mass.
Cuticura Remedies

Are sold everywhere. Price, CUTICURA, 50 cts. SOAP, 25 cts.; RESOLVENT, \$1. Prepared by the POTTER DRUG AND CHEMICAL CORPORATION, Boston, Mass.

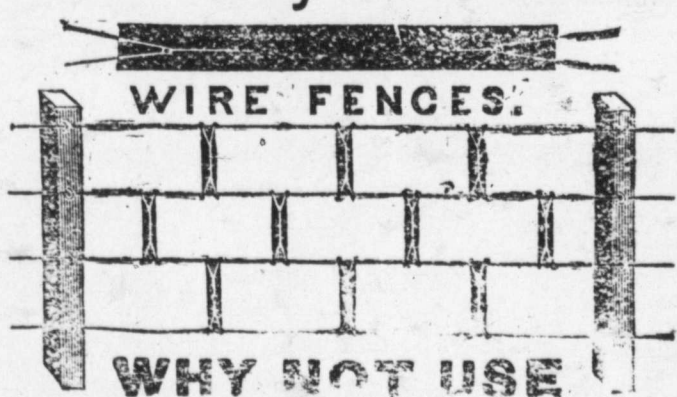
Send for "How to Cure Skin Diseases," 64 pages, 50 illustrations and 100 testimonials.



ACHING SIDES AND BACK,

Hip, kidney, and uterine pains and weaknesses relieved in one minute by the Cuticura Anti-Pain Plaster. The first and only instantaneous pain-killing strengthening plaster.

Steel Stay Guards For



Large smooth wire and our Stay Guards, and build the cheapest, strongest and most durable harmless fence ever put up? Can be made hog or sheep-tight. For information write

WIRE FENCE IMPROVEMENT CO.,
325 Dearborn Street, Chicago, Ill.
Mention this Paper.

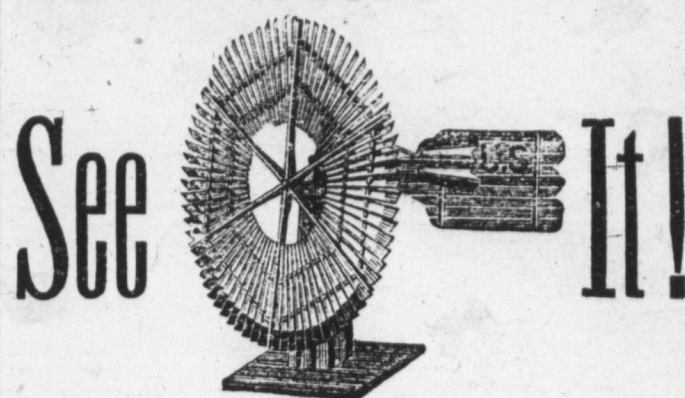
PIANOS & ORGANS

Direct to customers from headquarters, at wholesale prices. All goods guaranteed. No money asked until instruments are received and fully tested. Write us before purchasing. An investment of 2 cts. may save you many dollars. Address

Jesse French Piano & Organ Co.,
NASHVILLE, TENN.

U. S. Solid Wheel
Halladay Standard
EUREKA **Wind Mills**

THE U. S. SOLID WHEEL,



It is the best and most successful pumping Wind Mill ever made.

LONG STROKE,
SOLID and DURABLE.
HORSE POWERS, tread or sweep,
PUMPING JACKS, best in market,
Feed Cutters, Pear Cutters,
Iron Pipe, Well Casing, Engines,
Farm Pumps, Ranch Pumps,
Hose, Belting, Brass Goods,
Tanks, Well Drilling
Machines,
Grinding Machinery.

If you want any of the above, or if you want farm or ranch fitted with a water supply outfit, get our prices and our catalogues. It will cost you but little and may pay you well.

THE PANHANDLE
Machinery and Improvement Co.

Corner Throckmorton and First Sts.,

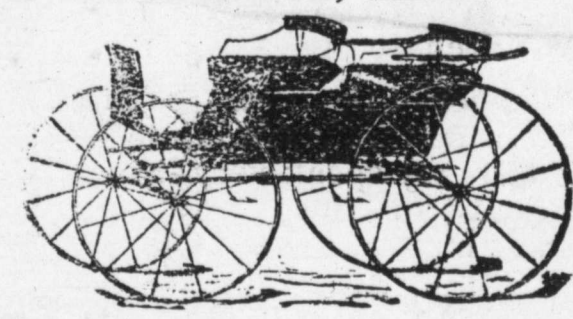
FORT WORTH, TEXAS.

Branch House, Colorado, Texas.

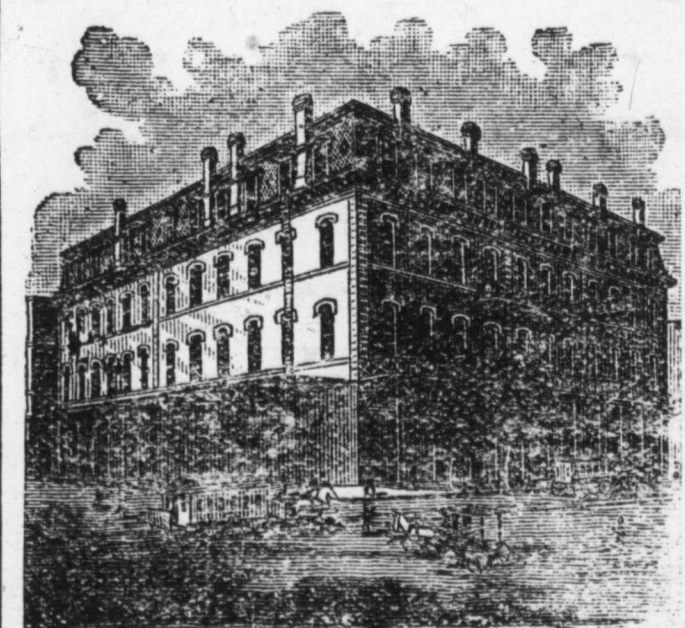
Active Agents wanted in every county in the state.

E. H. KELLER,

Salesroom 208, Shops 210 & 212 Throckmorton St.,
FORT WORTH, TEXAS.



Columbus Buggy Co.'s Buggies. Columbus, Ohio
E. M. Miller & Co., Quincy, Ill. Truckboards
and Spring Wagons, Tops, Dashes, Cushions, Fine Trimming, Painting and Repairing a Specialty.



ELLIS HOTEL

Fort Worth, Texas.

The best appointed hotel in the South. Commercial travel solicited.

ED. MUELLER, - Proprietor.

Summer Cook Stoves.

FOR WOOD, COAL OR COBS.
Simpler and Safer than Oil or Gasoline.

Why Not confine heat in a stove, as to confine cold in a refrigerator, and use the same stove for Summer as well as Winter? Price, \$7 and up.

HESS STOVE WORKS,
210 Van Buren St. Chicago, Ill



PUEBLO COMPLAINS

That Denver is Taking Advantage of Her Power.

DENVER, COLO., May 26.—Yesterday the state sanitary board, on account of the shipment of several cars of cattle from south of the quarantine line having been unladed at the Pueblo Union Stock yards, issued orders cleansing the yards for thirty days and also quarantining the pasture to which the cattle were moved for ninety days.

The president at the yards at once secured an injunction restraining the sanitary board from discriminating against the Pueblo yards, alleging that the first discrimination was the removal of a state cattle inspector at Pueblo. The second was to order all cattle inspected at the state line and shipped straight through to Denver, and the last was to issue a quarantine against the Pueblo yards to hold for a period of thirty days.

The governor was seen by a committee of Pueblo citizens, and he promised to rectify the matter, expressing great indignation at the action of the board.

It is claimed here that these discriminations against Pueblo were made in the interest of the Denver Union Stock yards, in which F. P. Earnest, a member of the sanitary board, is a large stockholder. The Pueblo yards have just been completed at a cost of \$25,000, and are capable of holding 12,000 head of stock comfortably. The action of the state sanitary board has caused great indignation among the Pueblo stockmen and the matter will be probed to the core.

"Oh! why should the spirit of mortal be proud?" We have often wondered why, and have concluded that we don't know, unless it be that at his disposal, at all times, are Dr. Pierce's Pellets, to relieve him, should he suffer from torpidity of the liver, sick or nervous headache, dyspepsia, consumption, etc. Druggists.

The Business of the Feeder.

Editor Texas Live Stock Journal.

There is admitted to be a loss by some one somewhere in the cattle business; but by whom and at what point along the line from calf-hood to the day the fat steer goes to the shambles. Who can tell?

How it may be in other localities I know not but here in Central Illinois it seems that so long as the people raise babies the cattle grower will buy feeding steers for less money than he could raise them. When a new child comes into the family a fresh milch cow is one of the first prescriptions ordered by the village physician.

The children must have milk. In the cities this can be had, such as it is, from the milk wagons or supply stores, but in the towns and villages the family cow is an indispensable. The cost of keeping the calf until it can be taken by the farmer is counted as nothing, placed rather to family expense account. When it is offered for sale at weaning time the question of cost to date has nothing to do with the price. It goes to the buyer at whatever he is ready to give. He perhaps is a farmer who cares to buy a few only to place with a few of his own raising to glean about the barn and feed lots, thus saving what might otherwise be lost. But unless he has a large farm and plenty of pasture, he soon finds himself over-stocked with a lot of half-fattened young cattle. Se he in turn is ready to sell at figures to be fixed by

the next buyer. He either ships to Chicago or sells to the farmer near home who has the broad acres and the money.

This last purchaser is the cattle feeder proper. As a rule he buys in the fall the best 2½ or 3-year-old steers to be found among neighboring farmers, or at the stock yards, usually paying about 3c per pound or an average of \$33 per head. He winters them on grass and corn and sells within ten months at an advance of \$30 to \$36 per head. Even then the feeder is not always sure of having made a reasonable profit on the purchase money, the land and the time invested.

Surely if there has been little or no profit to the last handler, how could there be any to those who bring the feeding steers to the age when they are to be ready for market? One thing is very certain, the cattle feeder does not raise his own feeding stock. He waits and buys only when the animals are right for the last turn.

PHIL THRIFTON.

Correspondence Solicited.

Live men (merchants preferred) wanted in Texas, to act as local agents for engines and boilers, mills, cotton gins, scales and belting, by the special representative of several large manufacturers. Address H. W. Hubbard, Dallas, Texas.

Transfers of Jersey Cattle.

The following is a complete list of the transfers of Jersey cattle in Texas as reported by the American Jersey Cattle Club, No. 1 Broadway, New York, for the week ending May 21, 1889.

RULLS.

Dan Grady, 15,769, J. H. Carter to L. Blum, Galveston.

Forest Lord, 20,314, W. B. Montgomery to W. N. Mayfield, Burton.

Gilded Pogis, 22,488, E. Key to B. W. Long, Marshall.

Hero of St. Lambert, 22,637, F. C. Sales to Gray & Hardin, Terrell.

Ida's Gordon Pogis, 22,494, M. C. Campbell to Rogers & Hill, Allenfarm.

Lucky Marpetro, 20,312, W. B. Montgomery to J. Hayton, Williamsburgh.

Marajah, 19,959, W. P. Glenn to T. L. Myers, Hico.

COWS.

Harry's Ida, 49,960, T. H. Ives to L. Blum, Galveston.

Mary's May Alpha, 52,416, J. Arbuckle to A. Cooper, Clifton.

Transfers of Berkshires.

Phil M. Springer, secretary American Berkshire association, Springfield, Ill., sends the following transfers of recorded Berkshires:

Champion Dolly VIII, 20,584, J. J. Renfro & Sons, Collinsville, Ill., to Wm Dyches, Granger, Texas.

Honor, 21,281, John B. Thompson, Plattsburgh, Mo., to L. C. LaMaster, Honey Grove, Texas.

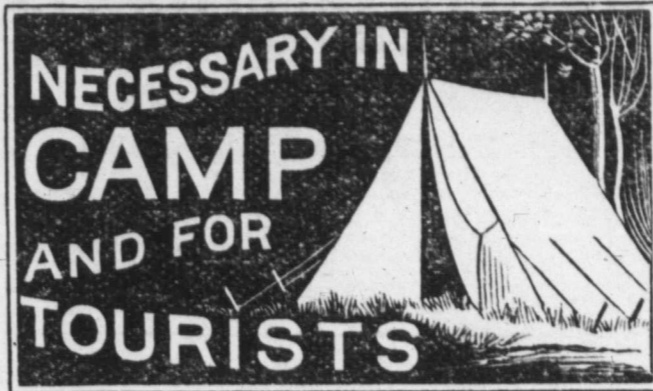
Duchess, 21,287, A. W. Rollins, Manhattan, Kan., to W. H. Pierce, Denton, Texas.

Henrietta Carlisle, 21,308, and Pearl of Texas, 21,316, T. R. Proctor, Utica, N. Y., to W. S. Ikard, Henrietta, Texas.

Mary, 21,319, and Sallie, 21,320, J. B. Key, Pilot Point, Texas, to F. M. Swan, Arlington, Texas.

Largest stock of tin plate, metals, sheet iron, iron roofing and siding in Western Texas, Piper & Schulthess, San Antonio, Texas. We sell at factory prices, only freight added.

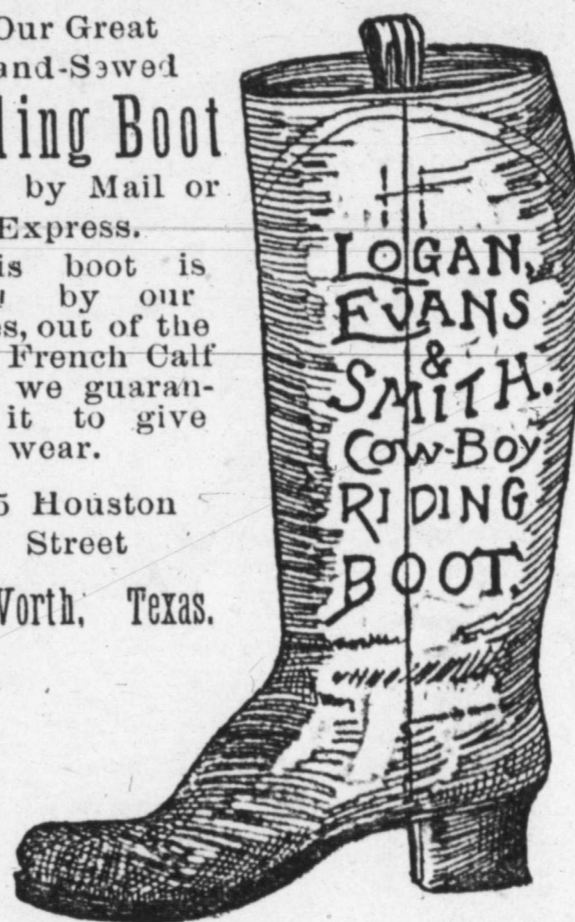
RUSSIA RUSALVE



Our Great Hand-Sewed Riding Boot Sent by Mail or Express.

This boot is made by our selves, out of the best French Calf and we guarantee it to give good wear.

315 Houston Street Ft. Worth, Texas.

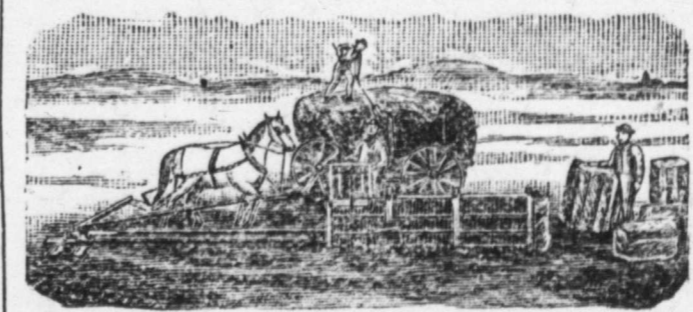


WHITMAN'S PATENT GUARANTEED SUPERIOR TO ANY LEVER PRESS POW MADE



Received First Premium at N. Y. State Fair, in 1880, 1881, 1882, 1883 and 1885, including the Grand Gold Medal and two Silver Medals, over Dederick and others; also World's Fair at New Orleans, California State Fair, New England and Dallas (Texas) State, 1888. The most rapid, powerful and durable press made; puts over ten tons in car; bale every three minutes; fully warranted and protected; three bales to any other press's two. Also Horse Powers, Cider Mills, Corn Shellers, Feed Cutters, &c. Send for illustrated circulars. Address, WHITMAN AGRICULTURAL CO., St. Louis, Mo.

We also make the best Steam Press in America, and Full Circle Steel, guaranteed.



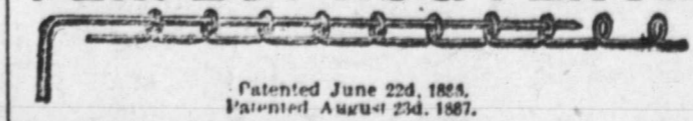
When you want a Hay Press write us for price of

THE GEORGIA PRESS,

A full circle press, simple, strong, effective. Price less than half that of other presses of same capacity. It will pay you to send for a circular and price.

The Panhandle Machinery & Improvement Co. FORT WORTH, TEXAS.

Wheeler's Practical Fence Stay — MAKES A — PERFECT HOG FENCE



Patented June 23d, 1865. Patented August 23d, 1867. WHEELER & CO., 7-21 38th St., Chicago. W. A. HOFFMAN IMP. CO., Ft. Worth, Tex.

J. B. ASKEW,

Successor to R. F. TACKABERY. Manufacturer, Wholesale and Retail Dealer in Saddles, Harness, Leather, Etc. Also, a well selected stock of Road Carts, Buggies, Phaetons, Carriages, Etc. 107 and 109 Houston St., Fort Worth, Texas.



The Tackabery Saddle leads all competitors. During the past year mail orders were received from ten states and four territories for this popular saddle. Send for photos and price list. I also manufacture large quantities of wagon, express, carriage and buggy harness. We buy our buggies, phaetons and carriages from the largest wholesale manufacturers in the United States, and can sell you as good goods and on as reasonable terms as any house in Texas. Call and examine for your self. Mail orders will receive prompt attention. Three car-loads just received.

M. W. DUNHAM'S OAKLAWN FARM.

3,000 PERCHERON FRENCH COACH HORSES, IMPORTED.

STOCK ON HAND: 300 STALLIONS of serviceable age. 150 COLTS superior individuals, with choice pedigrees. 200 IMPORTED BROOD MARES

(80 in foal by Brilliant, the most famous living sire).

ALL STOCK SOLD FULLY GUARANTEED.

Best Quality. Prices Reasonable. Terms Easy. Don't Buy without inspecting this Greatest and Most Successful Breeding Establishment of America.

Address, for 250-page catalogue, free,

M. W. DUNHAM, WAYNE, ILLINOIS. 35 miles west of Chicago on C. & N.-W. R'y, between Turner Junction and Elgin.

BEST STEEL WIRE GALVANIZED. Woven Wire Fencing Wire Rope Selvage



80c TO \$2 PER ROD. All sizes and widths. Gates to match. Sold by us or dealers in this line of goods. FREIGHT PAID. Information free. THE McMULLEN WOVEN WIRE FENCE CO., North Market and Ontario Sts., Chicago, Ill. Mention this paper.

WELL DRILLING Machinery & Tools

ST. LOUIS VISE & ARTESIAN TOOL CO., WELL

Catalogue Free: ST. LOUIS, MO. Mention this paper.

Fort Worth Grocer Co.

Send us a trial order for anything in the grocery line. Fresh goods at low prices.

Fort Worth Grocer Co.

We keep in stock ROCK SALT. Orders for car lots or in small quantities filled promptly.

Fort Worth Grocer Co.

We can save you money on your next bill of groceries. Give us a trial.

Fort Worth Grocer Co.

Ranchmen can depend upon us or any supplies needed. Orders by mail given especial attention.

FOR SALE OR EXCHANGE.

MUTTON BUCKS.

We want to buy 1000 buck lambs, a cross of English bucks and good Merino ewes.
MUNDY BROS.,
Care Wm. H. Earl, Newton, Kansas.

For Sale.

HORSES, MULES AND COLTS.

25 mule colts, from 1 to 3 years old, broke and unbroke.
25 brood mares, well bred, from 4 to 9 years old.
25 horse colts and fillies, from 1 to 4 years old, broke and unbroke.
1 stallion, Norman and Steeldust, 5 years old.
1 stallion, Incomode and Rebel, 5 years old. Mares all bred in spring of 1888 to above stallions, and most all in foal.
Will sell for \$60 per head, cash or on time. Stock can be seen on ranch, 3 miles from Corsicana. Inquire of
A. E. MORSE or GEO. B. WALKER,
June 1, 1889. Corsicana, Texas.

For Lease.

The Childress County, Texas, school land, leagues Nos. 121, 122, 123 and 124, containing about 17,000 acres, is offered for lease, for five years, payable annually in advance. The land lies in Bailey county, Texas. Sealed bids will be received at the office of the county clerk of Childress county up to the 13th day of August, 1889, and all bids will be opened August 14th, 1889. The right is reserved to reject any and all bids.
FRED M. CAMPBELL,
County Judge C. C. T.
Childress, Texas, May 16, 1889.

Irrigated Ranch For Sale.

A controlling interest in the Grand River Land and Live Stock company, located in Mesa county, Colorado, can be purchased of J. F. McFarland, cashier of the First National Bank of Grand Junction, Colorado, at a reasonable figure. The company owns the largest alfalfa ranch in Western Colorado, having perpetual water rights in a quarter-million-dollar ditch located upon it. An inexhaustible range is contiguous, and the solid, booming cities of Ouray, Grand Junction, Glenwood Springs, Aspen and Leadville insure the best markets in the world for cattle and horses. Responsible parties can secure time on part of purchase price.

AT AUCTION.

The Missouri Horse Exchange

Under instructions from
Thos. T. Turner, Esq.,
of Normandy, Mo., will sell by

PUBLIC AUCTION

At their Mammoth Repository, Broadway and Chouteau Ave., St. Louis, Mo., on
Monday, June 3rd at 10 O'Clock

By **Harry Ashman, Auctioneer.**

The well-known stud of imported and home-bred Shetland Ponies, Standard and Thoroughbred trotters, numbering in all about 60 head purchased and bred by Mr. Turner from the best strains and blood of the present day, many of which cannot be duplicated. Full particulars as to ages, qualities and pedigrees will be found in Catalogues ready May 1st.

From the fact that Mr. Turner has made the matter of the proper selection of live stock a study for years and no expense or trouble spared, this sale offers an opportunity seldom, if ever, to be met with, and every animal will be sold absolutely to the highest bidder as Mr. Turner, through other business engagements, cannot devote any further time or attention to his stock farm.

Special Notice.

This being the date of the annual meeting of the St. Louis Jockey Club, The Missouri Horse Exchange will hold a large Combination Sale of horses lasting ten days, June 3, 4, 5, 6, 7, 8, 10, 11, 12 and 13. Entries for these sales must be made by May 1st so that catalogues can be prepared and mailed. Entries received after May 1st will be published in supplementary catalogues.

P. A. HUFFMAN, A. W. JONES, S. T. NESBITT,
Ft. Worth, Tex. Late of Burlington, Kan. Springfield, Ill.

P. A. HUFFMAN & CO.,

REAL ESTATE
(AND)

Investment Agents

506 Main Street,

FORT WORTH, - - - TEXAS.

Postoffice Box 197.

Land titles investigated, taxes paid and collections made for non-residents.

Correspondence solicited.

FOR SALE OR EXCHANGE.

W. F. SOMMERVILLE, Pres.
SAM'L KERR, V. Pres. and Treas.

—THE—

Western Securities Co.

FORT WORTH, TEXAS.

CAPITAL \$250,000.

Loans on Farms, Ranches and Improved City Property, at Moderate Interest.

For Sale. Special Bargain.

At Valley View Stock Farm, 12 miles southeast of Gordon, Texas, 40 select Texas cows with calves at foot by $\frac{3}{4}$ and $\frac{1}{4}$ grade Hereford bulls, and in service again to same bulls. Will take for the lot \$20 per cow and calf. Have also for sale at a bargain 10 native 1 and 2-year-old grade Hereford bulls. Write to J. W. HOOKER, Manager, Gordon, Texas.

Range For Sale.

Best Equipped Range on Cherokee Strip, I. T., with good pasture, well fenced for 8000 head of cattle; also, barns, houses, sheds and corrals—the best on the Strip—and 1000 head of cattle and 100 head of horses, situated on the A. T. & S. F. railroad 18 miles south of Arkansas City, Kan. Unsurpassed shipping facilities. For prices and further information, address
W. B. ROBERTS,
Titusville, Pennsylvania.

The BOSS and STAR CHURNS

Best Churns in the World

A child can work them. No churn cleans so easy. No dashers or paddles, no inside fixtures. Will make 10 per cent. more butter. One or two churns at wholesale prices where we have no agents. Write for catalogue M and prices. Agents wanted. Mention this paper.

JOHN McDERMAID, Rockford, Illinois.

C. F. ESTILL, Live Stock Commission Dealer, Fort Worth, Texas.

Yards on Calhoun St., between 7th and 8th. Office at Yards. Live stock of every description boarded and yarded, and sold on commission. We solicit consignments.

Stockmen of Texas

Can buy GROCERIES at Wholesale by addressing

JOHN DEVLIN & CO.,

24 & 26 E. Randolph Street, Chicago, Ill. Mention the Journal. Write for price-list, or send list of groceries wanted and ask for estimate.

Chicago Improved Property.

\$50,000 to \$100,000 worth to exchange for ranches well stocked with cattle. Would assume a reasonable incumbrance. North and Central Texas preferred.

FRANK R. BAKER,
232 La Salle Street, Chicago, Ill

C. B. WALKER,

Millsap, Parker county, Texas. I have for sale 750 head of Angora goats, including very fine pure-bred bucks and ewes.

Steer Cattle, Etc.

W. S. & M. Ikard, Henrietta, Tex., live stock commission merchants, will contract to deliver steer cattle, or choice selections of Northwest Texas stock cattle. Have also for sale thoroughbred and grade Hereford bulls, some of which are fully acclimated. Will fill orders for Northwest Texas cattle and horses.

Johnson Grass Seed,

\$1 per bushel; sound and reliable. Early Amber Sorghum seed, \$1 per bu. Remit by postal order or draft on Dallas, and orders will receive prompt attention. Reference, National Exchange Bank, Dallas, Texas. Address, W. M. D. RICHARDSON, Mountain, Peak, Ellis County, Texas.

FOR SALE OR EXCHANGE.

The R. G. Head

Brokerage and Investment Company

Rooms 72 and 73 Barclay Block,

Denver, Colo.

Buy and sell all kinds of live stock, ranch properties, farms, lands, land grants, stocks and bonds of cattle companies, and real estate. Make a specialty of handling young steers.

Make examinations, surveys of and written reports on land grants and ranch properties anywhere in the United States and Mexico.

We have for sale desirable tracts of land, large bodies in solid blocks in Texas, New Mexico and Mexico, specially adapted to agriculture, stock farming and colonizing.

Our commissions on cattle sales will be based upon a percentage of prices obtained. Schedule of rates furnished on application.

Muttons For Sale.

G. W. Mahoney of Santa Anna, Coleman county, has 4000 good muttons for sale. Buyers take notice.

IXL WINDMILLS.

OVER 18,000

In Use.

POWER,

Wind Engines,

Pumps, Pipes,

TANKS,

Shellers, Grinders,

Etc., Etc.

Write for catalogue to

The Phelps & Bigelow Windmill Co.

1215 West 9th St., Kansas City, Mo.

All Texas orders filled from Dallas, Texas.

Lands Wanted

Parties having for sale large tracts of Texas farm and pasture lands at a bargain will do well to address

F. M. FERRIS,

505 Exchange Building, Kansas City, Mo.

Breaking Carts and Sulkies

Our perfect riding buggies are the best made. We do not compete with cheap makes. Address BOHANON CARLAGE CO., 161 and 163 Ogden Av., Chicago, Ill. Mention the JOURNAL and ask for particulars and description of the celebrated Bohanon Breaking Cart.

Mares For Sale.

The best bunch of mares in Coleman County. 100 mares—40 head are broke, 60 to 70 of them have graded Clyde and Norman colts unbranded. This spring's colts by Khedive, a Percheron, that took first prize for best draft stallion in Coleman county. Will sell half interest, all, or any number. Mares being bred to Khedive this season. Also lease on 1900-acre pasture. O. C. LANE, Santa Anna, Coleman Co., Texas.

E. VOXALL
Denver, Colorado.
Wholesale dealer in fat sheep and lambs.

San Juan, 1876. St. Louis, 1888.

JEAN F. WEBB,

MINING LAWYER!

220 N. Broadway, St. Louis, Mo.

Long practical experience as attorney, manager and superintendent of mines. Mines and mine titles examined. Will act as attorney or associate counsel in mining matters. Correspondence solicited.

WANTED!

3000 Yearling Steers,

—ALSO—

1000 Three-Year-Old Steers.

BEGGS & HACKETT,

Fort Worth, Texas.

FOR SALE OR EXCHANGE.

BARGAINS.

10,000 acre fenced and watered pasture in a solid body, 50 miles north of Austin, timber enough for shelter, a good winter and summer range. For sale at a low price.

\$50,000. 4000-acre pasture 45 miles north of Fort Worth, well watered, fences subdivide into several enclosures, mostly rich farm land, some timber. To exchange for good city property.

\$10,000. 4944 acres in Uvalde county; 4680 acres of this in one tract, fenced by itself, well watered by good everlasting streams and springs, plenty of good grass.

Parties wanting to sell, buy or exchange property may find what suits them by communicating with me.

\$1000 to \$100,000 to lend on real estate on favorable terms. Special inducements to borrowers of large amounts of money on choice securities.

S. M. SMITH,
Austin, Texas.

HARNESSES Send to Headquarters for catalogues & prices. Consumers Harness & Saddle Co., 371 Wabash Ave, Chicago.

Creamery Package Manuf'g Co.,

Kansas City, Mo.,

Manufacturers of Butter Tubs, Egg Cases,

—AND—

CREAMERY AND CHEESE FACTORY

SUPPLIES.

Our 100-page catalogue for 1889 is just out. If you are interested, send us four cents in stamps for same.

Splendid Ranch For Sale.

I offer for sale the Arbita Ranch Property, situated in Jones County, on the Clear Fork of the Brazos, several miles on both sides of the stream. It includes 3800 acres of land, 2000 of which are under fence, 225 head of horses, good improvements, everlasting water, rich land for agricultural and other purposes. Altogether, this is one of the finest and most desirable pieces of property in Northwest Texas.

Also about 8000 acres of Pine Lands in Montgomery County.

WM. D. CLEVELAND,
Houston, Texas.

J. W. FIELDS. TOBE ODEM.
FIELDS & ODEM,

Real Estate and Live Stock Agents,

Do a general Commission Business. Pay freight on all stock consigned to us. Butchers' stock a specialty.

Office at St. James Hotel, Main Street,
Dallas, Texas.

Valley View Stock Farm.

W. P. PATTILLO, Prop., Atlanta, Ga.

12 miles southeast from Gordon, in Erath county, Texas.

Percherons, Clydes, Herefords, Angoras and Poland Chinas on hand and for sale.

A special bargain is offered in full-blood and grade Angora Goats, grade male Hereford cattle, and cows bred to Hereford bulls.

Come and see, or write to

J. W. HOOKER, Manager,
Gordon, Texas.

DEVON CATTLE

Polk Bros. of Fort Worth have for sale a car-load of pure-bred and

ACCLIMATED

Devon cows, two to three years old. The only car-load of acclimated Devons in Texas. Have been here a full year. Address

POLK'S STOCK YARDS,

Fort Worth, Texas.

FOR SALE OR EXCHANGE.

Horses For Sale.

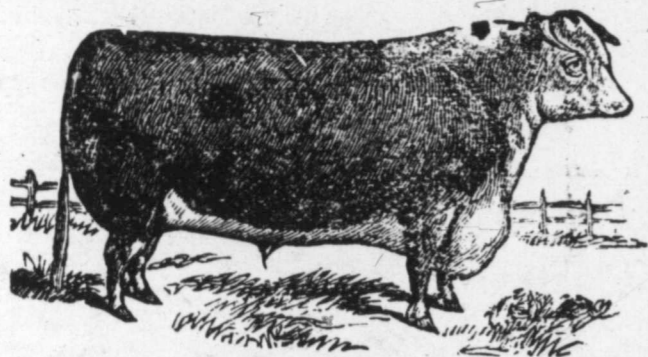
SPREAD EAGLE.—A perfect saddle and harness stallion, 16 hands high, and weighs in condition 1150.
TWO trotting-bred young stallions, both broke to harness and good movers.
MARES from 13½ to 15 hands high, broke to halter, some to saddle and harness.
LEBON.—A Clydesdale stallion, 17 hands high, weighs in condition 1800 lbs; acclimated and a uniform producer.
YOUNG ENTERPRISE.—An English Fhire stallion, 16½ hands high, weighs in condition 1650 lbs. Very handsome and a sure foal getter.
TWO high-bred jacks, one 15 hands, the other about 13½, both young and good performers.
 The above are for sale at Pleasant Valley Horse Ranch, P. O., Crafton, Wise county. Railroad station, Sunset, on Fort Worth & Denver. All stock guaranteed.
 Address **PERRYMAN & MARSHALL**, Crafton, Texas.

Texas Blue Grass Sets.

Hand-stripped extra cleaned Johnson Grass seed, Bermuda Grass seed, Japan Clover and other field seeds, for sale by

H. POST,

SELMA, ALABAMA



Herefords!

We have for sale 240 head of pure bred registered bulls and heifers in the Brown pasture at Childress, Texas, a few miles from the Fort Worth & Denver road. Will sell singly or in car lots on favorable terms and at reasonable prices. Some of these cattle are acclimated. Address by letter.

HENRY & POWELL,
 Pickwick Hotel, Fort Worth, Texas.

STEERS

For Spring Delivery.

I have for sale some special large lots of Central, North and West Texas steers, and will quote prices and terms upon application.

A. S. NICHOLSON,

Main Street, Fort Worth, Tex.

W. C. YOUNG, of the Llano Live Stock Co.,
T. C. ANDREWS, J. M. KUHEN.

YOUNG, ANDREWS & KUHEN,

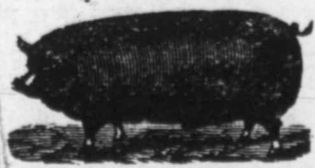
—Dealers in—

-LIVE STOCK-

Tenth and Houston Sts.,
FORT WORTH, - - TEXAS.

Cattle contracted for spring delivery. Horses of every description in yards and pastures. Cow-horses a specialty. Horses, mares, mules and jacks for sale at all times. We are prepared to enter into contracts for the delivery of cattle, horses, mares and mules at any point in Texas, and solicit correspondence.

Berkshire Pigs.



I have pure bred Berkshire pigs for sale, one to five months old, all from choice, hardy importations.
W. S. IKARD,
 Henrietta, Texas.

Panhandle Pasture.

A good well watered mesquite grass Panhandle pasture, 20,000 acres in extent, and no stock on it now. Can be had on reasonable terms to pasture yearlings at a price per head per year. Will not take over 1600. For particulars address **PASTURE,** Care Stock Journal, Fort Worth, Texas.

FOR SALE OR EXCHANGE.

\$2,500,000 TO LOAN ON REAL ESTATE at 10 per cent. straight

BY WRIGHT & LENOIR,

At Mansion Hotel, Fort Worth, Tex.

Also have some choice

Farm, Ranch and City Properties FOR SALE.

And invite correspondence from buyers and sellers.

T. P. LENOIR, Live Stock Broker, will contract horses, cattle or other live stock.

JNO. S. POWELL & CO

Office, Mansion Hotel,



Fort Worth, Texas.

Offer for sale choice thoroughbred and high-grade **Hereford, Polled-Angus, Durham, Holsteins and Jersey Bulls and Heifers.** Stock on hand and for sale on very reasonable terms

Shorthorn Bulls For Sale.

100 head of Shorthorn yearling bulls and heifers; also 1 car-load of two-year-old bulls, all reds and raised at Blue Mound Stock Farm. For prices address

J. W. BURGESS,
 Fort Worth, Texas.

Cedar Fence Posts!

We keep on hand a large supply of Cedar Fence Posts, ½, 8, 9, 10, 12, 14 and 16 feet long; also House Blocks. We can give special rates for car-load lots to all points in the state.

JOHNSON BROS.,
 Strawn, Palo Pinto County, Texas.



Standard-Bred Poultry.

J. G. McReynolds & Co., Nechesville, Texas, breeds English Red Caps, Black Minorcas, Ga. Shawneck Pit Games, Brown Leghorns, Langshans, Wyandottes and Plymouth Rocks. Bred strictly to the standard. The most complete poultry farm in the state.
 Write for wants.

Matador Land and Cattle Company.

(Limited.)



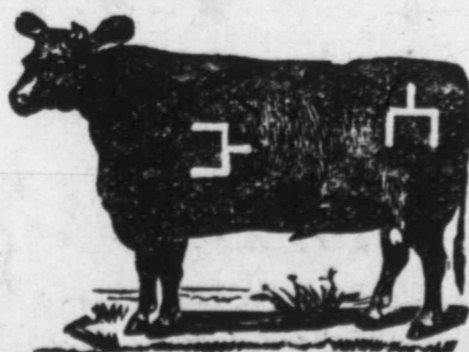
RANCH BRAND.

W. F. SOMMERVILLE, Manager, Fort Worth, Texas; **H. H. CAMP BELL,** superintendent, P. O., Matador, Tex. We have for sale at all times yearling, two and three-year-old steers, all in our own mark and brand and from the best grade bulls. Correspondence solicited from cattle buyers.

The Espuela Land and Cattle Company.

(Limited.)

Postoffice, Dockums, Dickens County, Texas; **S. W. LOMAX,** Manager.



Have for sale two-year-old and yearling steers and heifers of their own raising, good by Shorthorn and Hereford bulls, in the straight Spur mark and J brand. Horses branded on left hip.

ARIZONA AND MEXICO.

TUCSON, A. T., May 28, 1889.

Editor Texas Live Stock Journal:

About the only thing this town can boast of is its age, and while it is probably like some people not as old as it looks, at the same time it is claimed by those in a position to know to be second only in age in the United States. The San Xavier church, nine miles above Tucson, and now in a fair state of preservation was, it is claimed, built or begun only a few years later than the old Mission at Santa Fe, N. M., which is, without doubt the oldest church building in the United States.

Tucson now contains about 8000 people, 60 per cent. of which are Mexicans. Among her citizens are many good, whole-souled, wide-awake men. The winters are mild, the climate at that season being the finest in the world. The summers are, however, "nuey caliente."

The principal hotel of the town is the "Palace." The building is owned by my friend, Fred Maish, and is leased and operated by the genial George Rayfield, who seems to make quite a distinction between his personal friend and strangers in his charges. It was my good fortune to spend Sunday at the "Palace" and while reading the morning paper, noticed an advertisement, complimenting the above hotel and also stating the price of meals to be only 25c. Later on, the same day I happened to overhear a conversation between the proprietor and three strangers, who, before registering desired to know the rates for board and lodging by the day. The landlord in his usual affable style informed them that his rates to transients was one dollar and a quarter per day. As newspaper correspondents are not given to paying more than the usual rate, I thought it time to make "a kick" and at once asked how it was that I a frequent visitor was charged \$2 per day, while the strangers were required to pay but \$1.25. "My dear sir," replied the delicately constructed inn-keeper, "if a man can't make money off of his friends, how is he to get along in this world? You are my friend." The argument was unanswerable. Seventy-five cents a day for friendship. But after all when a fellow gets to know Rayfield well it is cheap enough—worth the money.

I recently visited the well known Rancho de la Osa, located near the line of Mexico in this (Pima) county, about 75 miles southwest of this place. The property is owned by Mr. W. S. Sturges, formerly of Chicago and found it one of the finest and best arranged ranches in the territory.

The cattle on this ranch are now nice and slick and, I am told, keep in fine condition throughout the year. They are watered mainly in finely built cement troughs, supplied by pipes from tanks, which are enclosed in stone walls and are fed by springs or wells. When from the latter, the water is pumped by small steam engines. I noticed quite a number of ranches in Southern Arizona are supplied entirely by wells—steam engines being used in hoisting the water. This seems to be a favorite idea of many of the stockmen of this section. It enables them to control their cattle to better advantage and with much less expense, and in this way are enabled to utilize a great deal of fine grazing land which heretofore was unoccupied on account of being no water. The cattle do not gather in great herds around the water troughs and all come at one time (middle of the day) as one would suppose, but seem to take in the situation and come in small squads at all hours, both day and night and do not

linger around, but after getting their "fill" retire to the range.

I have seen ranches where it was claimed 3000 cattle were watered at one well and were all fat and contented; many of them ranging fully ten miles from the well, and coming to the water only once in two days.

The only sale I have to report this week is of 1000 two-year-old steers, sold by the International Investment agency of El Paso, Texas, for W. S. Sturges of this county and territory to the Carizozo Cattle company of New Mexico at \$10.50 per head delivered June 1st on board the cars at this place.

The "shipping boom" from New Mexico and Arizona to Wendover, Wyoming, continues, but will, I think, be over by June 10th. It was surmised by many that the Santa Fe railway would be unable to handle so many large shipments, in so short time; they have, however, been fully equal to the occasion and have not only furnished the cars promptly, but have made splendid time and given entire satisfaction to the shippers.

During the last week I have seen considerable of Northern Sonora, Mexico, and am very favorably impressed with it as a stock country. The range is good as is evidenced by the fine condition of the cattle. Water in some localities is scarce, but can be readily supplied by wells. The altitude in the section visited is over 5000 feet. The winters are mild, while the summers are delightful. I understand these lands can be secured in large solid bodies at from 40c to 50c per acre.

Northern Sonora is undoubtedly the best stock raising section of Mexico and offers, in my opinion a fine opening for those who wish to engage permanently in the business.

On account of my absence from El Paso am unable to give you any items from that point. **GEO. B. LOVING.**

Open Orders Solicited.

Messrs. Turner, McClure & Co., the wholesale and retail grocers of Fort Worth, Texas, are making low prices on all goods in their line, and have a full and complete stock. They make a specialty of sending goods all over the country, and stockmen can save a big per cent. on their purchases by sending the firm open orders for goods. A letter received by them is given the same attention as if you visited them personally, and satisfaction is guaranteed in every case. Send for their price list at once. Address **TURNER, McCLURE & Co.,** Fort Worth, Texas.

Eclipse & Star Mills.

We make a specialty of water supply for ranches, stock farms, city factories or residences. Furnish horse-powers, pumping jacks and well drilling machinery. The STAR and new improved long stroke ECLIPSE mills are the best in the market. Agents for Fairbanks' scales, Blake's steam pumps, &c. We repair boilers, engines and all kinds of machinery. The pioneer house in Texas.

F. F. COLLINS MANUFACTURING CO.
 Fort Worth and San Antonio, Tex.

Rock Salt.

Messrs. Turner, McClure & Co. of Fort Worth have on hand a car-load of the celebrated rock salt, which is the best salt that can be used for cattle, horses, and all kinds of stock. Cattle like the rock salt and prefer it to all other. They cannot eat enough to hurt them, as it is as hard as a rock and must be licked. Messrs. Turner, McClure & Co. will fill orders by mail promptly, either in large or small quantity. Send a trial order.

TURNER, McCLURE & Co.

W. J. HAYNES & CO., H. F. LANGENBERG, G. F. LANGENBERG.

W. J. HAYNES & CO., WOOL COMMISSION

Cor. Market and Commercial Streets,
ST. LOUIS, MO.

Liberal Advances on Consignments of WOOL, HIDES, PELTS, ETC.
REFERENCES: St. Louis Nat'l Bank, Dunn's and Bradstreet's Commercial Agencies

ARMENTROUT & FRAZER,

Corner of Weatherford and Throckmorton and corner of Weatherford and Lamar Streets
FORT WORTH, TEXAS.

Dealers in Wool, Hides, Etc.

Also keep in stock a full line of
WEIR PLOW COMPANY'S FARM IMPLEMENTS,
Tennessee Wagons, manufactured by Cherry, Morrow & Co., Nashville, Tenn.; Bain Wagons, H. W. Davis & Co.'s Buggies, Cincinnati, Ohio; The E. M. Miller Buggies, Quincy, Ill.; Cook & Co.'s Buggies, Cincinnati, Ohio; The Racine Spring Wagons and Carriages; The Minnesota Chief Thresher, and Traction Engines.

GEORGE L. GAUSE.

(Successor to FLENNER & GAUSE.)

UNDERTAKER

314 W. Weatherford St., FORT WORTH, TEX.

Open Day and Night. Orders by telegraph receive prompt attention.

Wholesale Dry Goods. **THE MARTIN-BROWN CO**
Cor. 4th and Main Streets.
The only exclusively wholesale dry goods house in the city.

W. F. LAKE,

WHOLESALE DEALER IN

HARDWARE, STOVES, TINWARE,

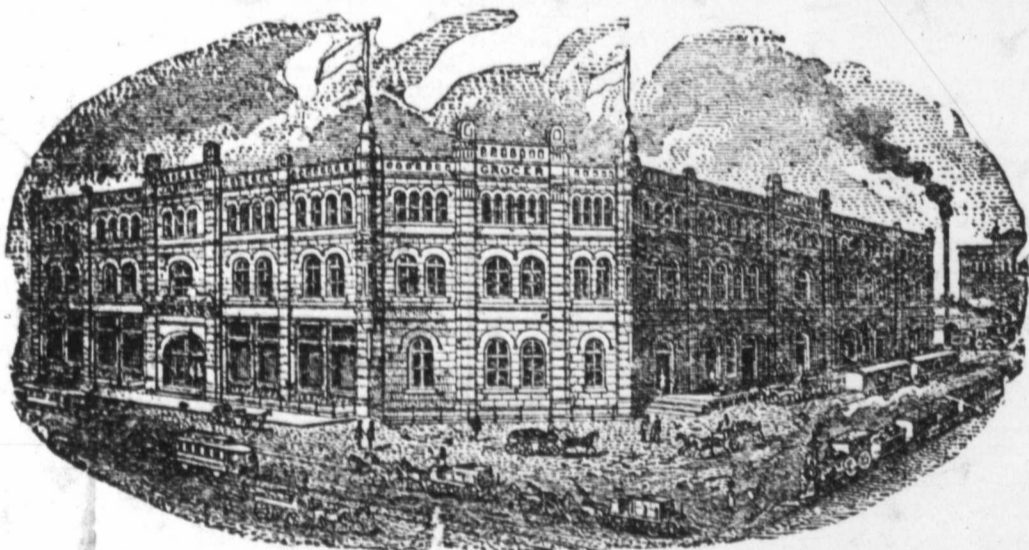
Queensware, Crockery and Glassware,

Corner Houston and Second Streets. FORT WORTH, TEXAS.

JOSEPH H. BROWN, Wholesale Grocer,

Manufacturer of the Celebrated

SILVER LOAF BAKING POWDER.



-: Sultan Roasted Coffee:- FORT WORTH, TEX.

J. Q. SANDIDGE, Pres. MAX ELSEER, Cashier

CITY NATIONAL BANK, FORT WORTH, TEXAS.

Capital Paid in and Surplus, \$200,000.

DIRECTORS—J. Q. Sandidge, Chas. Scheuber, Max Elser, C. M. Crane, T. T. D. Andrews, R. E. McNulty, Jas. W. Swayne, T. R. Sandidge.

M. B. LOYD, President. D. C. BENNETT, Vice-President. E. B. HARROLD, Cashier.

FIRST NATIONAL BANK,

Corner Houston & Second Streets, - - - Fort Worth, Texas.

CASH CAPITAL AND SURPLUS, \$375,000.

DIRECTORS—J. S. Godwin, M. B. Loyd, J. D. Reed, Zane Cetti, D. C. Bennett, George, Jack son, S. B. Burnett, E. B. Harrold and E. F. Ikard.

THE KANSAS CITY STOCK YARDS

Receipts for 1888: Cattle, 1,056,086; Hogs, 2,008,984;
Sheep, 351,050; Horses and Mules, 27,650.

These yards are by far the most commodious and best appointed in the Missouri Valley, with ample capacity for feeding, weighing and shipping Cattle, Hogs, Sheep, Horses and Mules. They are planked throughout, no yards are better watered, and in none is there a better system of drainage. The fact that higher prices are realized here than in the East is due to the location at these yards of eight packing houses, with an aggregate daily capacity of 3300 cattle and 27,200 hogs, and the regular attendance of sharp, competitive buyers for the packing houses of Omaha, Chicago, St. Louis, Indianapolis, Cincinnati, New York and Boston.

All the sixteen roads running into Kansas City have direct connection with the yards, affording the best accommodation for stock coming from the great grazing grounds of all the Western States and Territories, and also for stock destined for Eastern markets.

The business of the yards is done systematically and with the utmost promptness, so there is no delay and no clashing, and stockmen have found here, and will continue to find, that they get all their stock is worth, with the least possible delay.

Kansas City Stock Yards Company

HORSE AND MULE MARKET

FRANK E. SHORT. {FRANK E. SHORT & CO., Managers.} CAPT. E. S. TOUGH.

This company has established in connection with the yards an extensive Horse and Mule Market, known as the KANSAS CITY STOCK YARDS COMPANY HORSE AND MULE MARKET. Have always on hand a large stock of all grades of Horses and Mules, which are bought and sold on commission in car-load lots.

In connection with the Sales Market are large feed stables and pens, where all stock will receive the best of care.

Special attention given to receiving and forwarding.

The facilities for handling this kind of stock are unsurpassed at any stable in this country.

Consignments are solicited with the guarantee that prompt settlement will be made when stock is sold.

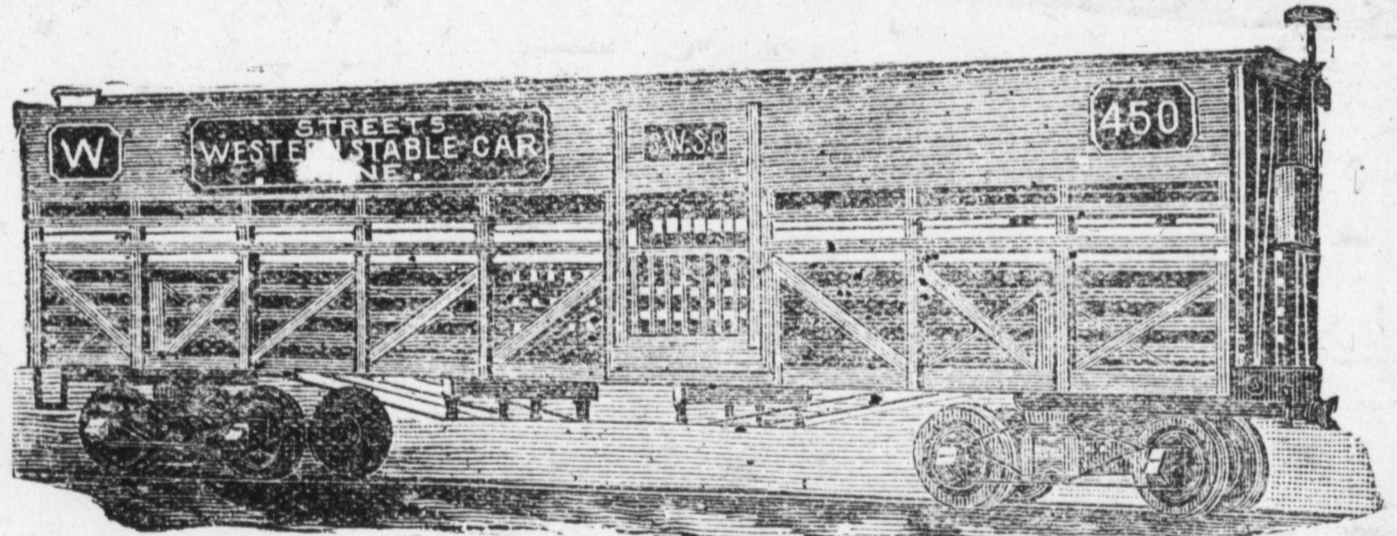
C. F. MORSE, E. E. RICHARDSON, H. P. CHILD,
Gen'l Manager. Treasurer and Secretary. Superintendent.

STREET'S STABLE CAR LINES,

GENERAL OFFICE, RIALTO BUILDING, CHICAGO, ILLS.

S. M. FISCHER, President.

L. D. KNEELAND, Gen. Traffic Manager.

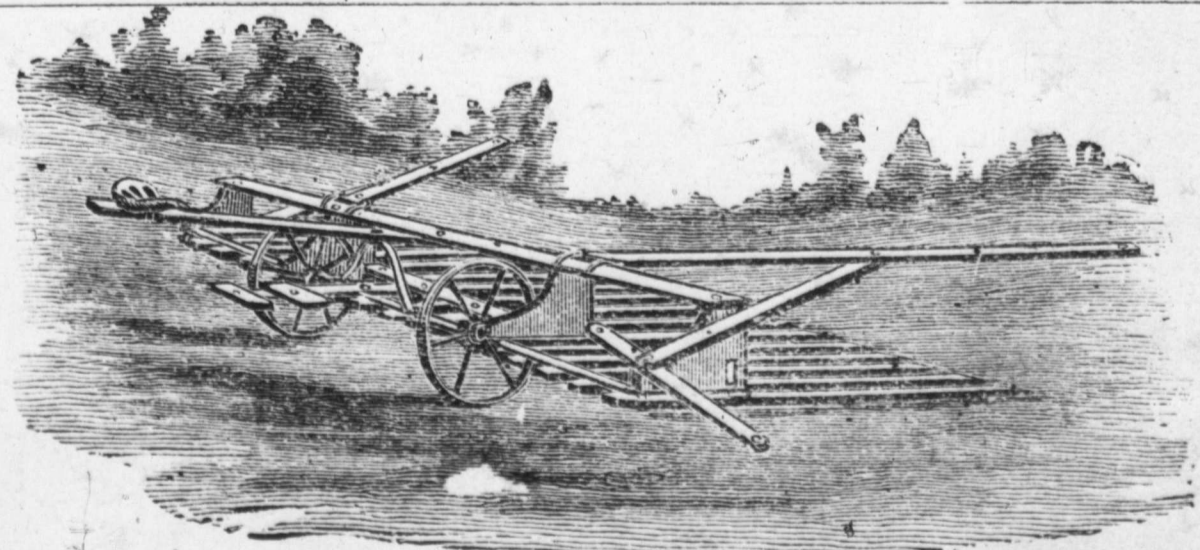


Our lines of Stable Cars, operating east and west of St. Louis and Chicago, carrying horses and cattle to market, give food, water and rest to animals without unloading. For particulars, address

L. D. VOA, GENERAL AGENT,

For Missouri, Kansas, Colorado, Arkansas, Indian Territory, Texas, New Mexico and Arizona.

FORT WORTH, TEXAS.



THE DAIN HAY GATHERERS.

Stockmen and hay growers everywhere are using this Gatherer in preference to any other, as it does away with winnowing, shocking and hauling the hay. It gathers the hay from the swath and delivers it to the stack; being twelve feet wide, will take 600 to 800 pounds at a load. Write the

T. R. & A. MANUFACTURING CO., Kansas City, Mo.,

For descriptive circulars and price list.