

THIS PAPER COSTS BUT \$1.50 A YEAR and is well worth the money. Hand your subscription to your Postmaster and he will forward it.

TEXAS LIVE STOCK JOURNAL



VOL. 10.

FORT WORTH, SATURDAY, MAY 11, 1889.

No. 4.

James H. Campbell, President, Jerome F. Wares, Vice-President, J. H. McFarland, Sec'y and Treas., Chicago, Ill.; H. F. Parry, Manager and Cashier, National Stock Yards, Ill.; G. W. Campbell, D. L. Campbell, Managing Directors, Kansas City, Mo.

The James H. Campbell Co.

INCORPORATED.

LIVE STOCK COMMISSION MERCHANTS,

Union Stock Yards, Chicago, Ill.,

National Stock Yards, East St. Louis, Ill.

Kansas City Stock Yards, Kansas City, Mo.,

We solicit your business and invite correspondence.

Fish & Keck Co

(INCORPORATED)

LIVE STOCK COMMISSION MERCHANTS

KANSAS CITY STOCK YARDS

CONSIGNMENTS SOLICITED.

J. E. GREER.

FRANK O. MILLS.

GREER, MILLS & CO.

Live Stock Commission Dealers,

Room 47 Exchange, Union Stock Yards, - - - CHICAGO, ILLINOIS

A. C. CASSIDY, } Cattle Salesmen. { G. W. DOERR, } N. M. MOODY, } Hog and Sheep
T. F. TIMMONS, } A. L. KEECHLER, } U. R. } W. L. CASSIDY, } W. S. CODDINGTON, } Salesmen.

CASSIDY BROS. & CO.,

LIVE STOCK COMMISSION MERCHANTS

And Forwarding Agents,

National Stock Yards, - - - St. Clair County, Ills.

SEEDS

J. G. PEPPARD, 1220 UNION AVENUE,

MILLET A SPECIALTY. (One block from Union Depot)
Red, White, Alfalfa & Alsike Clovers, KANSAS CITY, MO.
Timothy, Blue Grass, Orchard Grass, Red Top,
Onion Setts, Tree Seeds, Cane Seed, Etc.

Z. T. WINFREE.

A. P. NORMAN.

WILEY T. PEARSON.

WINFREE, NORMAN & PEARSON,

Commission Merchants for the Sale of Live Stock,

Stock Yards, GALVESTON, TEXAS.

We respectfully solicit patronage of stock shippers. We make liberal cash advances on bills lading, and will faithfully endeavor to the best of our ability to subserve the interests of our patrons. Correspondence solicited.

ALBERT MONTGOMERY

Commission Merchant for the Sale of Live Stock, Stock Landing

Postoffice Box 3006, New Orleans, La.

JOHN MUNFORD.

Commission Merchant for the Sale of Cattle, Hogs and Sheep, - - - STOCK LANDING

P. O. BOX 684, NEW ORLEANS, LA.

THE LIVE STOCK MARKET

- Of St. Louis. -

The St. Louis National Stock Yards,

Located at East St. Louis, Illinois, directly opposite the City of St. Louis.

Shippers should see that their stock is billed directly to the

"NATIONAL STOCK YARDS."

C. G. KNOX,

CHAS. T. JONES,

President.

Superintendent.

S. E. WOOD.

JAMES WOOD.

E. A. WOOD.

R. NASH.

WOOD BROTHERS,

LIVE STOCK COMMISSION MERCHANTS,

Union Stock Yards, CHICAGO.

Established 1867. Special attention given to the Texas trade. Correspondence invited.

ALLEN GREGORY.

H. COOLEY.

L. R. HASTINGS.

GREGORY, COOLEY & CO.

Commission Dealers in Live Stock,

Rooms 58 and 60 Exchange Building, Union Stock Yards, CHICAGO, ILL.

The Pioneer House in the Texas trade. Personal attention given consignments. Business solicited.

President, WM. M. WARREN, Banker, New Berlin, Ill. Secretary and Treasurer, LEVI B. DOUD.

Cashier, CHAS. KELLY.

Managers, T. B. LEE, THOS. KELLY

Chicago Live Stock Commission Company,

Incorporated. Capital Stock \$25,000.

Special attention given to the sale of Texas Cattle and Sheep. Write us for market reports.

Office 41 Exchange Building, Union Stock Yards, Chicago, Ill.

REFERENCES—Drovers' Nat. Bank, Union Stock Yards Nat. Bank, Chicago; Bank of Atlantic, Atlantic, Ia., Bank of Roodhouse, Roodhouse, Ill.

SAM'L SCALING, St. Louis.

W. L. TAMBLYN, Chicago.

SCALING & TAMBLYN.

Live Stock Commission Merchants,

National Stock Yards, East St. Louis, Ill. Union Stock Yards, Chicago, Ill.

[TRADE MARK.]

JNO. W. PAXSON.

CHAS. L. SHATTUCK.



PAXSON, SHATTUCK & CO

LIVE STOCK

Commission Merchants

Union Stock Yards,

CHICAGO, - - - ILLINOIS,

General Agents for the State of Texas: CAPT. E. F. IKARD, Headquarters at Ft. Worth; JOSEPH COLLINS, Headquarters at Goliad.

E. T. WHEELER.

G. JAMES.

J. S. MCKINNON

WHEELER, JAMES & CO.

Live Stock Commission Merchants,

Union Stock Yards, ST. LOUIS, MO.

FOR SALE OR EXCHANGE.

San Juan, 1876. St. Louis, 1888.
JEAN F. WEBB,
MINING LAWYER!
 220 N. Broadway, St. Louis, Mo.

Long practical experience as attorney, manager and superintendent of mines. Mines and mine titles examined. Will act as attorney or associate counsel in mining matters. Correspondence solicited.

For Lease!

The Childress County, Texas school land, leagues Nos. 121, 122, 123 and 124, containing about 17,000 acres, is offered for lease for three or five years, payable annually in advance. The land lies in Bailey county, Texas. Sealed bids will be received at the office of the county clerk of Childress county up to the 14th day of May, 1889, and all bids will be opened May 15th, 1889. The right is reserved to reject any or all bids.

FRED M. CAMPBELL,
 County Judge C. C. T.
 CHILDRESS, TEXAS, April 13, 1889.

Stallions and Stock Horses.

150 head of good stock horses and three No. 1 stallions to sell, or will exchange for cow horses. Address
 IOWA RANCH,
 Lubbock, Texas.

Cattle For Sale.

I will contract to deliver one and two-year-old steers and she cattle by the herd, at any point in Texas. Correspondence solicited.
 FELIX MANN,
 Menardville, Texas.

WANTED!

3000 Yearling Steers,

—ALSO—

1000 Three-Year-Old Steers.

BEGGS & HACKETT,
 Fort Worth, Texas.

AT AUCTION.

The Missouri Horse Exchange

Under instructions from

Thos. T. Turner, Esq.,
 of Normandy, Mo., will sell by

PUBLIC AUCTION

At their Mammoth Repository, Broadway and Chouteau Ave., St. Louis, Mo., on

Monday, June 3rd at 10 O'Clock

By Harry Ashman, Auctioneer.

The well-known stud of imported and home-bred Shetland Ponies, Standard and Thoroughbred trotters, numbering in all about 60 head purchased and bred by Mr. Turner from the best strains and blood of the present day, many of which cannot be duplicated. Full particulars as to ages, qualities and pedigrees will be found in Catalogues ready May 1st.

From the fact that Mr. Turner has made the matter of the proper selection of live stock a study for years and no expense or trouble spared, this sale offers an opportunity seldom, if ever, to be met with, and every animal will be sold absolutely to the highest bidder as Mr. Turner, through other business engagements, cannot devote any further time or attention to his stock farm.

Special Notice.

This being the date of the annual meeting of the St. Louis Jockey Club, The Missouri Horse Exchange will hold a large Combination Sale of horses lasting ten days, June 3, 4, 5, 6, 7, 8, 10, 11, 12 and 13. Entries for these sales must be made by May 1st so that catalogues can be prepared and mailed. Entries received after May 1st will be published in supplementary catalogues.

Steers For Sale.

Two thousand (2,000) head of ones and two thousand (2,000) head of twos delivered at Clayton or Springer at \$10 and \$14.50.

Best cattle in New Mexico. In prime condition Address for particulars.

H. H. PIERCE,
 Roswell, Lincoln County, New Mexico.

FOR SALE OR EXCHANGE.

W.F. SOMMERVILLE, Pres.
 SAM'L KERR, V. Pres. and Treas.

—THE—
Western Securities Co.

FORT WORTH, TEXAS.

CAPITAL \$250,000.

Loans on Farms, Ranches and Improved City Property, at Moderate Interest.

Range For Sale.

Best Equipped Range on Cherokee Strip, I. T., with good pasture, well fenced for 8000 head of cattle; also, barns, houses, sheds and corrals—the best on the Strip—and 1000 head of cattle and 100 head of horses, situated on the A., T. & S. F. railroad 18 miles south of Arkansas City, Kan. Unsurpassed shipping facilities. For prices and further information, address

W. B. ROBERTS,
 Titusville, Pennsylvania.

**The BOSS and STAR CHURNS**

Best Churns in the World

A child can work them. No churn cleans so easy. No dashers or paddles, no inside fixtures. Will make 10 per cent. more Butter. One or two churns at wholesale prices where we have no

agents. Write for catalogue M and prices. Agents wanted. Mention this paper.

JOHN McDERMAID, Rockford, Illinois.

Stockmen of Texas

Can buy GROCERIES at Wholesale by addressing

JOHN DEVLIN & CO.,

24 & 26 E. Randolph Street, Chicago, Ill.

Mention the Journal. Write for price-list, or send list of groceries wanted and ask for estimate.

Chicago Improved Property.

\$50,000 to \$100,000 worth to exchange for ranches well stocked with cattle. Would assume a reasonable incumbrance. North and Central Texas preferred.

FRANK R. BAKER,
 232 La Salle Street, Chicago, Ill

STEERS For Spring Delivery.

I have for sale some special large lots of Central, North and West Texas steers, and will quote prices and terms upon application.

A. S. NICHOLSON,

Main Street, Fort Worth, Tex.

**C. B. WALKER,**

Millsap, Parker county, Texas. I have for sale 750 head of Angora goats, including very fine pure-bred bucks and ewes.

Steer Cattle, Etc.

W.S. & M. Ikard, Henrietta, Tex., live stock commission merchants, will contract to deliver steer cattle, or choice selections of Northwest Texas stock cattle. Have also for sale thoroughbred and grade Hereford bulls, some of which are fully acclimated. Will fill orders for Northwest Texas cattle and horses.

Johnson Grass Seed,

\$1 per bushel; sound and reliable. Early Amber Sorghum seed, \$1 per bu. Remit by postal order or draft on Dallas, and orders will receive prompt attention. Reference, National Exchange Bank, Dallas, Texas. Address, WM. D. RICHARDSON, Mountain, Peak, Ellis County, Texas.

FOR SALE OR EXCHANGE.

The R. G. Head
 Brokerage and Investment Company

Rooms 72 and 73 Barclay Block,

Denver, Colo.

Buy and sell all kinds of live stock, ranch properties, farms, lands, land grants, stocks and bonds of cattle companies, and real estate. Make a specialty of handling young steers.

Make examinations, surveys of and written reports on land grants and ranch properties anywhere in the United States and Mexico.

We have for sale desirable tracts of land, large bodies in solid blocks in Texas, New Mexico and Mexico, specially adapted to agriculture, stock farming and colonizing.

Our commissions on cattle sales will be based upon a percentage of prices obtained. Schedule of rates furnished on application.

IXL WINDMILLS.

OVER 18,000

In Use.

POWER,

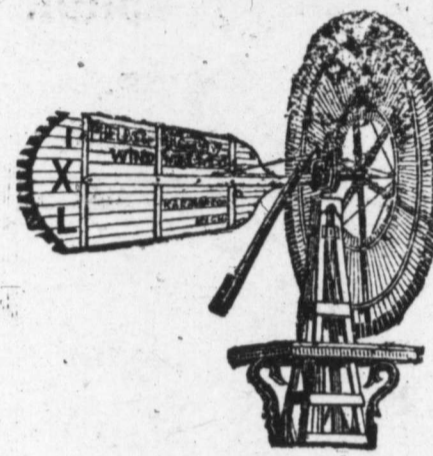
Wind Engines,

Pumps, Pipes,

TANKS,

Shellers, Grinders,

Etc., Etc.



Write for catalogue to

The Phelps & Bigelow Windmill Co.

1215 West 9th St., Kansas City, Mo.

All Texas orders filled from Dallas, Texas.

Lands Wanted

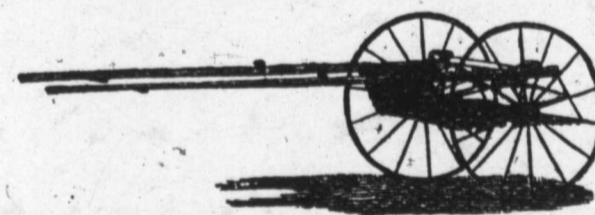
Parties having for sale large tracts of Texas farm and pasture lands at a bargain will do well to address

F. M. FERRIS,

505 Exchange Building, Kansas City, Mo.

CATTLE!

Messrs. Hatcher, Woods & Coppinger of Fort Worth, Texas, office in Mansion Hotel, are prepared to contract for delivery on the railroads in North Texas any number of North and Northwest Texas steers or stock cattle. Correspondence solicited.

**Breaking Carts and Sulkies**

Our perfect riding buggies are the best made. We do not compete with cheap makes. Address BOHANON CARRIAGE CO., 161 and 163 Ogden Av., Chicago, Ill. Mention the JOURNAL and ask for particulars and description of the Celebrated Bohanon Breaking Cart.

For Sale.

1000 Hay Presses,

At \$100 Each,

F. O. B. at Walnut, Texas. For further information address B. F. RUSSELL, Walnut, Texas.

Mares For Sale.

The best bunch of mares in Coleman County. 100 mares, 60 to 70 of them have graded Clyde and Norman colts unbranded. This spring's colts by Khedive, a Percheron, that took first prize for best draft stallion in Coleman county. Will sell half interest, all, or any number. Mares being bred to Khedive this season. Also lease on 1900-acre pasture. O. O. LANE, Santa Anna, Coleman Co., Texas.

STEERS!

700 two-year-old steers for sale on ranch in Mitchell county. For particulars address A. G. ANDERSON, Colorado, Texas

JESSE K. LLOYD,

Dealer in LIVE STOCK of All Kinds.

Sold on Commission in car lots. Wholesale and retail at the yards, 220 S. Flores street, near Military Plaza. SAN ANTONIO, TEXAS.

FOR SALE OR EXCHANGE.**BARGAINS.**

10,000 acre fenced and watered pasture in a solid body, 50 miles north of Austin, timber enough for shelter, a good winter and summer range. For sale at a low price.

\$50,000. 4000-acre pasture 45 miles north of Fort Worth, well watered, fences subdivide into several enclosures, mostly rich farm land, some timber. To exchange for good city property.

\$10,000. 4944 acres in Uvalde county; 4680 acres of this in one tract, fenced by itself, well watered by good everlasting streams and springs, plenty of good grass.

Parties wanting to sell, buy or exchange property may find what suits them by communicating with me.

\$1000 to \$100,000 to lend on real estate on favorable terms. Special inducements to borrowers of large amounts of money on choice securities.

S. M. SMITH,
 Austin, Texas.

HARNESSES Send to Headquarters for catalogues & prices. Consumers Harness & Saddle Co., 371 Wabash Ave, Chicago.

HORSES!

Messrs. Hatcher, Woods & Coppinger of Fort Worth, Texas, office in Mansion Hotel building, are dealers in horses and mares, and handle the best North Texas stock exclusively. They will quote prices for horses mares, yearlings, two-year-olds and colts. Correspondence promptly attended to.

Creamery Package Manufact'g Co.,

Kansas City, Mo.,

Manufacturers of Butter Tubs, Egg Cases,

—AND—

CREAMERY AND CHEESE FACTORY SUPPLIES.

Our 100-page catalogue for 1889 is just out. If you are interested, send us four cents in stamps for same.

SPLENDID RANCH**FOR SALE.**

I offer for sale the Arbiter Ranch Property, situated in Jones County, on the Clear Fork of the Brazos, several miles on both sides of the stream. It includes 3800 acres of land, 2000 of which are under fence, 225 head of horses, good improvements, everlasting water, rich land for agricultural and other purposes. Altogether, this is one of the finest and most desirable pieces of property in Northwest Texas.

Also about 8000 acres of Pine Lands in Montgomery County.

Wm. D. CLEVELAND,

HOUSTON.

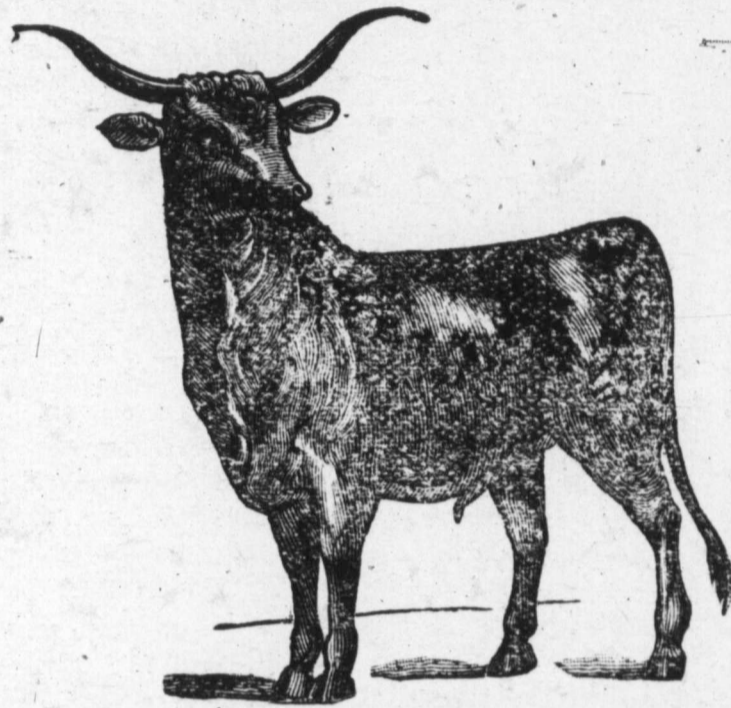
E. YOXALL
 Denver, Colorado.
 Wholesale dealer in fat Sheep and lambs.

Jersey Cattle!

A. J. C. C. Jerseys for sale cheap, young acclimated bulls and heifers. Choice butter strains. F. J. GATES, Box 29, Denton, Texas.

W. C. BROWN, Established 1874. E. E. BROWN.
BROWN BROS.,
 Commission Merchants in Live Stock,
 Rooms 100 and 102 Exchange Building, Union Stock Yards, CHICAGO.
 Refer by permission to National Live Stock Bank, Chicago.
 Agents in Texas—J. D. Beauchamp, Emis; Capt. H. G. Carter, Millam; Col. J. T. Har-
 ess, Colorado City.

Wm. F. MOORE, } KANSAS CITY. Established 1873. J. METCALF, } ST. LOUIS.
 N. T. JACKMAN, } E. J. SENSENEY. }
METCALF, MOORE & CO.,
 LIVE STOCK COMMISSION MERCHANTS,
 Kansas City Stock Yards, KANSAS CITY, MO. St. Louis National Stock Yards, ILLINOIS.
 Letters and telegrams addressed to us at either yard will receive prompt attention.
 Represented by L. L. TACKITT.



KEENAN & SONS,
 LIVE STOCK COMMISSION
 MERCHANTS,
 Union Stock Yards, CHICAGO.
 Consign your stock direct to us; it
 will meet with
 PROMPT ATTENTION.
Correspondence Solicited.
 Have made the sale of Texas cattle
 a specialty for Twenty-Five Years.
 REFERENCE:—The National Live Stock
 Bank of Chicago.

TELEGRAPHIC MARKETS.

Latest Reports by Wire From the
 Market Centers.

CHICAGO.
 Special to the Live Stock Journal.
 CHICAGO, ILL., May 10, '89.
 Cattle strong, sheep steady.
 Gregory, Cooley & Co. sold for J. M.
 Frost 80 steers, 928 pounds, \$3.05; J.
 L. Davis, 41 steers, 1116 pounds, \$3.65;
 A. Swasey, 21 steers, 1038 pounds,
 \$3.55.
 R. Strahorn & Company sold for
 Lazarus 19 steers, 1089 pounds, \$3.65;
 22 steers, 959 pounds, \$2.90; M. & O.,
 146 steers, 988 pounds, \$3.60; 19 bulls,
 1186 pounds, \$2.65.
 James H. Campbell & Co. sold 24
 steers, 984 pounds, \$3.65; for J. H. &
 S., 311 shorn sheep, 70 pounds, \$3.35;
 Wheeler & Sons, 548 sheep, 86 pounds,
 \$3.85; Howard Bland, 240 sheep, 62

pounds, \$3.30, 221 sheep, 66 pounds,
 \$2.80; Caperton of Austin, 60 steers,
 1041 pounds, \$3.40; J. Z. Morrow, 221
 sheep, 79 pounds, \$3.20; E. Copp, 45
 steers, 1142 pounds, \$3.80.
 Keenan & Sons for J. C. Thompson, 19
 bulls, 1058 pounds, \$1.80; for G. M. H.,
 118 grassers, 880 pounds, \$2.85; 14
 cows, 812 pounds, \$2.40.
 Wood Bros. sold 262 shorn sheep, 67
 pounds, \$3.12; M. & Adams, 55 steers,
 1125 pounds, \$3.70; Hill & W., 57
 steers, 1071 pounds, \$3.65; D. C. Hill,
 58 steers, 1184 pounds, \$3.70; Benning-
 ton, 65 steers, 956 pounds, \$3.10; W.
 Reed, 44 steers, 1000 pounds, \$3.40;
 21 steers, 984 pounds, \$3.25; A. J.
 Vick, 167 steers, 982 pounds, \$3.60; A.
 Wheeler, 60 steers, 1071 pounds, \$3.60;
 J. M. Frost, 60 steers, 918 pounds,
 \$3.00; E. M. House, Cotulla, 128
 grassers, 903, \$2.85; 25 steers, 804
 pounds, \$2.85; 422 shorn sheep, 75
 pounds, \$3.00.
 Paxson. Shattuck & Co. sold 21
 steers, 969 pounds, \$3.65; 61 steers,
 941 pounds, \$3.45; 697 shorn sheep,
 69 pounds, \$2.80; 632 shorn sheep, 67
 pounds, \$2.70; 602 shorn sheep, 80
 pounds, \$3.40; 15 grassers, 882
 pounds, \$3.10.
 Brown Bros., sold for Davison 661
 shorn sheep, 80 pounds, \$3.50; 606
 woolled, 77 pounds, \$4.00; 705 woolled,
 76 pounds, \$4.00.
 Scaling & Tamblin sold Lasater
 132 grass cows, 752 pounds, \$2.50; 44
 calves, 190 pounds, \$3.50.
 Greer, Mills & Co. sold for J. Smith,
 36 steers, 1116 pounds, \$3.75; Hunter,
 183 steers, 954 pounds, \$3.75; 45 steers,
 810 pounds, \$3.60; A. J. Harris, 517
 shorn sheep, 79 pounds, \$3.35; Brown
 & A., 755 shorn sheep, 75 pounds,
 \$3.10.
 W. W. Shearer & Co. sold for
 Hunter 43 steers, 970 pounds, \$3.25;
 22 steers, 875 pounds, \$3.00.
 The Evans-Snyder-Buel company

sold 59 grassers, 932 pounds, \$3;
 Thornton, Floresville, 272 grassers,
 935 pounds, \$3.10; G. W. Weaver, 90
 fed, 1030 pounds, \$3.60; Caperton &
 Myer, 39 steers, 965 pounds, \$3.40;
 Dobie, Beeville, 110 grassers, 885
 pounds, \$3.25.

KANSAS CITY.
 KANSAS CITY, May 10.—Receipts of
 cattle this week, 16,115 head. The
 general market for the first half of the
 week ruled strong and active on tidy
 dressed beef steers with prices about
 10 to 15c stronger, while heavy ship-
 ping steers were rather slow but
 steady. Texas and Indians consider-
 ing quality sold well. 76 Texas corn-
 fed steers, 1171 lbs sold at \$3.50; 76
 same, 1176 lbs, \$3.65; 19 same, 1176
 lbs, \$3.25; 84 same, 1142 lbs, \$3.50;
 108 half-breed corn-fed yearlings (fine)
 690 lbs, \$3.37.
 Fish & Keck sold for Camp, 22 corn-
 fed Texas steers, 994 lbs, \$3.15; Wiser,
 93 same, h.-b. yearling heifers, 460 lbs,
 \$2.60; 119 461 lbs, \$2.75; for Thomp-
 son, 21 c.-f. Texas steers, 997 lbs,
 \$3.45.
 Sheep market 35 to 50c lower than
 last week. 900 shorn Texas sheep, 83
 lbs, sold at \$3.50; a good price for
 them.

ST. LOUIS.
 ST. LOUIS, May 10.—Only two car-
 loads of grass Texans offered to-day,
 which brought \$2.40@2.70 per 100 lbs.
 No supply; market active and prices
 strong.
 No sheep in; fat Texans are wanted.

NEW ORLEANS.
 NEW ORLEANS, May 10.—Market
 fairly supplied with beef cattle, calves
 and yearlings. Choice stock firm and
 in demand.
 Sheep market fully supplied.
 Hog market quiet and steady.

QUOTATIONS.—Choice corn-fed
 beeves, per pound gross, 3@3½c;
 choice grass-fed beeves, 2½@3½c;
 good fat cows, 2½@3c; com-
 mon to fair, \$10@15; calves, \$6@10;
 yearlings, \$9@18; good fat corn-fed
 hogs, per lb gross, 4½@5½c; common to
 fair, 3½@4½c; good fat sheep, each \$3.00
 @3.50; common to fair, \$1.25@2.50.

SAN ANTONIO.
 There has been a much healthier tone
 to the market the past week than for
 several past, principally owing to butch-
 ers' orders from Central Texas, by which
 the surplus is kept down. The demand
 is about equal to the supply, but care
 should be taken not to ship except on
 the advice of a reliable commission man.
 Quotations are as follows:
CATTLE—Steers, shippers \$16@22, or
 \$2.00@2.25 per 100 lbs; and butchers, \$13@
 17; cows, fat, from \$12.50@14; light, at \$9
 @12; yearlings, \$6@7.00; calves, \$4.50@6.
SHEEP—Muttons, \$1.50@2.25. Goats,
 average stock \$1.00@1.50 per head.
HOGS—Natives \$3.50@4.

GALVESTON.
 [Reported by Winfree, Norman & Pearson,
 Live Stock Commission Merchants].
BEEVES AND COWS—Choice, per lb,
 gross, corn-fed, 2½@3c; choice, per
 lb, gross, grass-fed 2½@2¾; 2-year-olds,
 choice, per head, \$5@12; common, per
 head, \$6@8; yearlings, choice, per
 head, \$6@8; common, per head, \$5@

JOHN D. DOBYNS & CO.,
 Successors to Stephens & Dobyms,
LIVE STOCK
Commission Merchants
 Kansas City, Mo. and Chicago, Ill.
 We make a specialty of the Texas and
 Western cattle and ranch trade. Are pre-
 pared to make contracts for the delivery of
 Texas cattle for 1889. Consignments and
 correspondence invited.

ROBERT STRAHORN, JESSE SHERWOOD.
 Established 1861.
R. STRAHORN & CO.,
Live Stock
Commission.
 Room 35, Union Stock Yards,
 CHICAGO, ILLINOIS.
 E. H. EAST, Agent for points on the
 Fort Worth & Denver City railway.
 B. HACKETT and GEO. BEGGS Agents for
 Fort Worth and all points East South and
 West.

H. C. (HANK) MALLORY, CHAS. A. MALLORY
 —Established 1867.—
MALLORY & SON,
Live Stock Commission,
 Room 16 & 115 Exchange Building,
 Union Stock Yards,
CHICAGO, ILLINOIS.
 Howard Bland of Taylor, Texas, agent for East
 Texas. C. A. Lyt of San Antonio agent for
 South Texas.

W. W. SHEARER, F. B. McDOWELL,
 Gen'l Manager. Cashier.
W. W. SHEARER & CO.,
LIVE STOCK
COMMISSION MERCHANTS,
 Union Stock Yards, CHICAGO, ILL.
 REFERENCES: The National Live Stock Bank,
 Chicago; The Drovers' National Bank, Chicago
 Cattle and Sheep Salesman, Hog Salesman,
 W. W. SHEARER. JNO. FILGER.

MUTTON BUCKS.
 We want to buy 1000 buck lambs, a cross of
 English bucks and good Merino ewes.
 MUNDY BROS.,
 Care Wm. H. Earl, Newton, Kansas.

HOWARD TULLY,
JEWELER
FORT WORTH, TEX.
Watches and Diamonds.
 Goods sent on memorandum through
 Express or Mail.

DEVON CATTLE
 Polk Bros. of Fort Worth have for sale a
 car-load of pure-bred and
ACCLIMATED
 Devon cows, two to three years old. The
 only car-load of acclimated Devons in
 Texas. Have been here a full year. Address
POLK'S STOCK YARDS,
FORT WORTH, TEXAS.

\$5.50; calves, choice, per lb, gross,
 2½@3c; springers, choice, per lb gross,
 3½@4c.
SHEEP—Choice, per lb, gross, 3@4c.
 Beeves and cows—Fair demand for
 good grass cattle; corn-fed dull.
 Calves—Market well supplied.
 Sheep—Market overstocked.
 Hogs—Dull and slow sale.



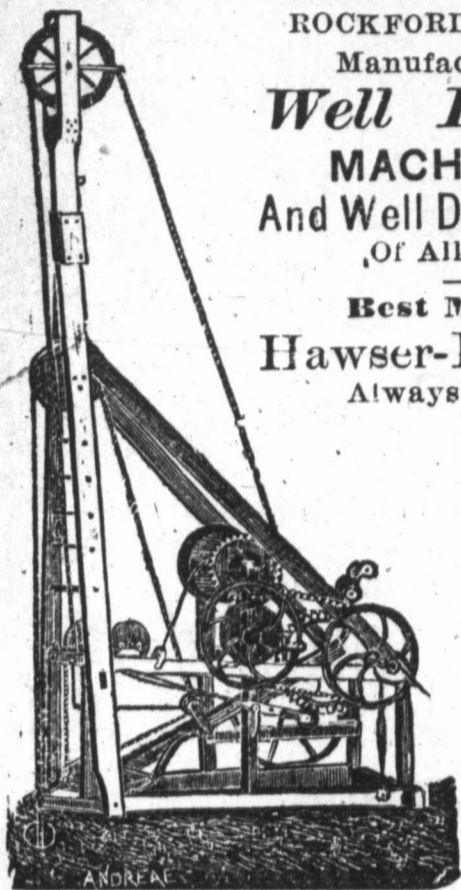
GRADE MARK
Commission Merchants:
 For the sale of
CATTLE, HOGS AND SHEEP,
 Rooms 9 and 10 Exchange Building,
KANSAS CITY STOCK YARDS.
 Prompt and correct market reports fur-
 nished by mail or wire. Consignments so-
 licited. Correspondence given immediate
 attention.

Utter Manufacturing Co.,

ROCKFORD, ILLINOIS.
Manufacturers of
**Well Drilling
MACHINERY**
And Well Drilling Tools
Of All Kinds.

**Best Manila
Hawser-Laid Rope**
Always in stock.

Send for Circular.



GENERAL AGENTS FOR TEXAS:

F. M. ROWE, San Antonio; P. T. MOREY, Belton; FORD, WEAKLY & JOHNSON, DeCatur. Mention this paper.

KINGSLAND & DOUGLAS MANUFACTURING CO.

ST. LOUIS, MO.



THRESHERS PLAIN AND TRACTION ENGINES.

SEND FOR CATALOGUE.

Mention this paper.

J. B. ASKEW,

Successor to R. F. TACKABERY.

Manufacturer, Wholesale and Retail Dealer in
Saddles, Harness, Leather, Etc.
Also, a well selected stock of
Road Carts, Buggies, Phaetons, Carriages, Etc.
107 and 109 Houston St.,
Fort Worth, Texas.



The Tackabery Saddle leads all competitors. During the past year mail orders were received from ten states and four territories for this popular saddle. Send for photos and price list. I also manufacture large quantities of wagon, express, carriage and buggy harness.
We buy our bugles, phaetons and carriages from the largest wholesale manufacturers in the United States, and can sell you as good goods and on as reasonable terms as any house in Texas. Call and examine for yourself. Mail orders will receive prompt attention. Three car-loads just received.

ROUND-UPS.

Kansas City consumed 10,369 beef cattle during the week ending April 30, 1880, against 7676 for the same week last year.

N. M. Stock Grower:—John H. Norton of Wilcox, Arizona, will supply the San Carlos Indians with beef this year at \$1.90 per 100 pounds, live weight. The amount of beef required is 1,500,000 lbs.

Eagle Pass Guide:—Mr. Robert W. Dowe has sold his stock of 500 head of cattle to Mr. P. W. Thomson. The price was \$7 a head all around. This is considered a good price for stock cattle, considering the price of the markets.

K. C. Drovers' Telegram:—P. E. Johnson of Frankfort, Kan., had on the market yesterday a bull bought of E. Schriener, LaGrange, Kas., weighing 2540 pounds, said to be the largest animal that ever went over the C. & A. scales.

N. M. Stock Grower:—Frank Cady having charge of Head & Hearst's cattle interests at San Simon valley, was shot by the Indians and roasted while yet alive. It is estimated that there were forty of the redskins when the attack was made on the ranch.

The rainfall at Fort Elliott, Wheeler county, Tex., during the month of April, as reported by Mr. C. H. Stuller, U. S. Signal Corps, was 4.86 inches. The heaviest rainfall was on the 10th. The mean temperature for the month was 57.9, the lowest temperature being 35 degrees.

N. M. Stock Grower:—The Stock Grower continues to receive the best news from the range as to the growing ing'grass and the improving condition of the cattle. The rains of the present week have been pretty general and thus the favorable conditions are made more favorable for a good season to the range-men.

Tascosa Pioneer:—Amarillo and Texline, on both sides of Tascosa, had something like a half inch of snow on Tuesday morning. This was something phenomenal for the time of the year, and must mean, if it means anything, that the world will give all other sections roundabout the cold shoulder, except us.

Silver City Enterprise:—The beef contract at Fort Bayard will no doubt be awarded to John Stotz of Georgetown, he having the lowest bid. The bids were as follows: John Stotz, \$4.75; S. P. Carpenter, \$5; G. F. Patrick, \$5; S. Lindauer, \$5.12½. It is not likely that the bids opened in Los Angeles will be lower than that of Mr. Stotz.

Northwestern Live Stock Journal:—Mr. Holden of the firm of Holden & Stevens, Minneapolis, Minn has purchased the interest of his partner in the herd ranging in Western Dakota. The price paid is not given. The purchase includes from 6000 to 10,000 cattle, a large portion of which are Texas steers, driven up two years ago.

Chicago Drovers' Journal:—The new Texas division of the stock yards, which has been under construction for some time past, was opened for business today. Dick Scanlon will be yardmaster, and no division superintendent will be appointed for the present. The new division lies south of the Forty-third street viaduct, and will be used exclusively for Texas cattle.

Eagle Pass Guide:—Mr. Robert W. Dowe, having sold out his stock cattle to Mr. P. W. Thomson, will hereafter devote his attention to buying cattle for the Mexican market. He expects to put up a herd of 500 head twice each month for Messrs. Riddle & Lane. While Mr. Lane is taking one herd to Mexico city, Mr. Dowe will be collecting a second so as to have it ready for his return.

Tascosa Pioneer:—John Howell of the LE ranch has been here much of the week. Mr. Howell has the principal care of the blooded stock department of that ranch, and has been receiving and unloading here a lot of fine horses, cows and bulls. It is a saving sign in the Panhandle when we see stock owners, big and little, giving more attention to the quality than to the number of their stock.

Elko (Nev.) Independent:—Morgan S. Hill is in receipt of a letter inquiring for the name and address of parties in this vicinity who are offering cattle at \$8 a head. The writer of the letter is misinformed, as no cattle have been offered for that price. We have heard a rumor that range cattle could be bought at \$12 a head, but we do not know of any for

sale at that price. A few heifers with first calves were sold in Pleasant Valley recently, at \$20 a head, cash.

Chicago Drovers' Journal:—Jefferson City, Mo., May 3.—The beef inspection bill, as indorsed by the convention which assembled in St. Louis in March, was defeated in the legislature to-day. This is a big victory for Chicago packers, as it was thought that of all the states Missouri would adopt the anti-beef combine bill. The indications are that the measure will be rejected by all the states, and the butchers have accomplished nothing.

Tascosa Pioneer:—Range Foreman A. G. Boyce of the XIT's, or the Capitol people, has spent some of the week here. He says that the Capitol company will soon start 15,000 head to maturing grounds away up in the black Hills. Arrangements are being made now for the drive, for they will go clear through from starting place to stopping place over the trail, and not by rail. They will divide in six herds of 2500 each, or thereabout.

Field and Farm:—The Denver, Texas and Fort Worth road now has 100 car-loads of stock en transit north. It is estimated by Mr. Jim Leary that 150,000 head of stock cattle for northern ranges will pass through Denver this year. Arrangements are being made in all sections for extraordinary large shipments this season. The Denver stock yards are being enlarged and improved to meet the heavy trade which it will be called upon to accommodate.

Mineral Wells Herald:—W. K. Bell has purchased forty brood mares from J. R. Coutts of Weatherford, and will place them on his ranch west of Palo Pinto. He also has purchased a Clydesdale stallion.—Jack Hittson has purchased and placed on his ranch, twelve miles west of Palo Pinto, a fine young stallion weighing nearly 1700 pounds, of English coach horse stock. The day for the Texas pony is rapidly passing away, as there is money only in improved stock.

Shoe and Leather Reporter:—The exports of live cattle and dressed beef are assuming large proportions. A Chicago shipper recently had \$50,000 placed to his credit in Liverpool to draw against for shipments of live cattle. To accommodate this great trade every regular line of steamers which leaves the United States is used, except the Cunard. The National Line carry no passengers. All the space is now devoted to live stock. The exports have been as high as 4200 cattle a week. Beeves are said to be high in price in England, while here they are cheap, and the great corn crop of last summer has been used to put them in better condition than ever before. Morris, Eastman and Swift & Co. are the principal shippers.

On Wednesday last nineteen car-loads of hogs reached Eagle Pass from Kansas City en route for the City of Mexico. They were fed, reloaded into sixteen M. I. R. R. double-deckers thirty-four feet long, despatched through the custom-house, and went forward to Torreon the same day. The shippers are Messrs. J. W. Glass & Co. and Messrs. J. M. and J. C. Glass, (well known in Eagle Pass) were in charge. This traffic has hitherto gone by way of Laredo, but, like Dr. Carruthers and others, they prefer the Eagle Pass route, for obvious reasons. By the way, Dr. Carruthers' fertile brain is at present exercised over a plan for a wheel-bar row line. He says he has not perfected the details, but is sanguine that he can beat the Mexican National freight trains from Laredo to Mexico City.

Kansas City Drovers' Telegram:—The bill which recently passed the lower house of the Missouri legislature, providing for the local inspection of cattle at the point where they are to be slaughtered and consumed, was rejected in the senate yesterday. The margin of rejection was very small. We put this prediction on record now, that the producers of cattle will admit in the not very distant future that the death of the bill was not against their interests. We hope that cattle raising will soon become a profitable business again, and as it has only been a year since the same buyers who are now indifferent on cheap cattle were anxious buyers of cattle at \$1.50 to \$1.75 per cwt. more than present prices, so we expect to see them scramble after high cattle again. The natural laws of business will make cattle profitably high again. It will never be done by limiting the number of buyers, or the number of cattle any men or class of men want to buy, or the distribution of beef in the carcass.

—[ESTABLISHED 1830.]—

DENNY, RICE & CO.

Nos. 606 to 610 Atlantic Avenue,

BOSTON, MASS.

-WOOL-

Commission Merchants.

Prompt information given by mail or telegraph by applying to their Texas representative,

C. G. HUBBARD.

SAN ANTONIO, TEX.

Cash advances made on consignments.

The Co-Operative Wool Association

An economical medium between

Producers and Consumers.

Superior facilities for selling

Scoured or Grease Wools.

Attend to receiving and forwarding wools shipped here for scouring.

Negotiate Cash Loans or Supplies for Growers.

Correspondents wanted in every county in the state. Address,

E. Wm. GRUENDLER, Manager,
Galveston, Texas.

E. S. BROOKS & CO.,

WOOL

Commission Merchants,

100 and 102 N. Main Street, Corner of Chestnut,

ST. LOUIS, MO.

We solicit consignments of Texas and Southwestern wools, and will make proper advances on all wools consigned to us. Correspondence promptly attended to.

JONH OWENS, Manager,

Wool Department.

ADOUE & LOBIT, BANKERS

—AND—

WOOL Commission Merchants,

GALVESTON, TEX.

Consignments solicited from wool growers and dealers. Advances made from clip to clip.

A. ROEMER.

H. RIEDEL.

A. ROEMER & RIEDEL,

GENERAL

Commission Merchants

And Wholesale Dealers,

173 Strand, Galveston, Tex.

Solicit consignments of

-WOOL-

Hides and other Country Produce. Will make reasonable advances in cash or supplies, at lowest rates.

WOOL SCOURING MILLS

—AT—

WOOL Galveston, Texas.

THEO. HOWARD, Proprietor.

Wool Scouring Done for Wool Growers and Dealers.

N. B.—Order your commission firm to save your wools scoured.

WOOL!

WESTERN WOOL COMMISSION CO.
ST. LOUIS, MO.

Consignments of Wool Solicited.
Cash returns made within six days after receipt of wool. Liberal Advances made on Consignments.
References: Dun's and Bradstreet's Agencies and Local Banks.
Send for Circular and Price Current.
Represented in Texas by ED. MACKECHNIE, San Antonio.

FUNSTEN & CO., St. Louis. WOOL

Sacks and Twine Furnished at Cost.

TEXAS REFERENCES:—First National Bank, Abilene; First National Bank, Albany; Belton National Bank, Belton; First National Bank, Colman; First National Bank, Denison; First National Bank, Taylor; Waco National Bank, Waco; Texas Live Stock Journal, Fort Worth.

Liberal Advances Made.

W. A. ALLEN. M. EVANS.
Established 1854.

W. A. ALLEN & CO.,
142, 144 & 146 Kinzie St., Cor. La Salle Ave.,
CHICAGO, ILL.

WOOL

Commission Merchants.

Liberal advances made on consignments. Full advices of market furnished on request. Prompt and faithful attention to the interests of consignors is our rule.

W. B. Westcott & Co.

Commission Merchants,
Soliciting consignments of

Wool, Hides, Etc.

Write for market reports.

202 North Main Street, - ST. LOUIS, MO.

Refer to Texas Live Stock Journal.

E. C. KRUSE & CO.

Commission Merchants,

For the sale of

Wool

Hides, Pelts, Tallow, Furs, etc.

318 N. Commercial St., - ST. LOUIS, MO.

Wm. M. Price Commission Company,
108 and 110 North Main Street,
ST. LOUIS, MO.

Solicit consignments of

WOOL

Fifteen years experience in the St. Louis wool market.

Quick Sales. Prompt Returns.

Reasonable advances on shipments.

J. D. SKINNER and SON,

GALVESTON, TEX.,

SOLICIT CONSIGNMENTS OF

WOOL AND COTTON.

A. S. EXLINE

207 Strand,

GALVESTON, TEX.,

WOOL BUYER.

Correspondence solicited with Wool Growers and Dealers in the Interior.

Hide and Wool Buyer

Wants a situation to buy in Texas, New Mexico and Kansas or either of them. 15 years experience. Reference given. Address,

J. T. HICKEY,
Fort Worth, Texas.



ADOUÉ & LOBIT,
Galveston, Texas.

BATEMAN & BRO.

Fort Worth, Texas.

AGENTS FOR

CHILDS'

SHEEP DIP.

Soluble in Water at any Temperature.

Experienced wool growers find this Dip an improvement upon anything they have hitherto used, as the objections raised against other Dips have been overcome in this article.

It is Economical and Convenient to Use,

can be relied upon to kill Lice, Ticks and all parasites that infest sheep. A reliable exterminator of scab and other kindred diseases. In packages of convenient size.

N. M. Stock Grower:—The demand for steers remains good. The Northern maturers now recognize the fact that New Mexico and Arizona can breed cattle better than the Northern country, and that the proper adjustment of the relation between North and South lies in the former maturing what the latter so well produces. Then, too, the ability of our cattlemen to make early deliveries has much to do in making this section a favorable place for the purchase of steers. This week Wm. Robert sold 4000 head of one, two and three-year-old steers of the jinglebob brand to Major J. S. Smith of Springfield, Ill., to go to his Montana ranch, at \$10, \$14 and \$17, delivered at Las Vegas. This sale was followed by that of the Muscatine Cattle company who sold to H. Boice of Montana all their two-year-olds at \$14. Both bunches are most excellent steers and will widely advertise the Southern range by reason of their excellent appearance.

Wilcox Stockman:—Mr. A. N. Goudey was at department headquarters at Los Angeles on Monday last, when the bids for supplying the posts in the military department of Arizona with beef etc., for the coming fiscal year, were opened, and has kindly sent the Stockman the names of the successful bidders for beef, with the price that is to be paid as follows: Camp Apache, Nathan Wansley, at 5.23c per lb.; Fort Bowie, B. Riggs, 5c; Fort Grant, C. P. Leitch,

4.32c. Fort Hauchuaca, E. J. Roberts, 4.49c; Fort Thomas, F. E. McGinness, 3c; San Carlos, F. E. McGinness, 4.74c; Fort McDowell, R. C. Vadencia, 7.94c; Fort Lowell, C. P. Schumacker, 5c; Whipple Barracks, Q. Stephens, 4.15c; Camp Verde, L. P. Nash, 7c; Fort Wingate, S. R. E. Havlin, 5.94c; Fort Bayard, John Henz, 4.75c; Fort Stanton, Y. B. Tolley, 5.30c; Fort Union, H. D. Renkein, 10c; San Diego Barracks, White & Hardy, 5.99c. Mr. Goudey is of the opinion that the majority of these contracts were taken at too low figures, as he believes the outlook for the beef market in California the coming fall is good. Our Tom Steele evidently thinks likewise, as he had a bid in for beef at Fort Thomas at 13.50c.

The World's Wool Supply.

The U. S. Economist says: Messrs. Helmuth Schwartz & Co. of London, England, have published some tables of wool statistics which are very interesting, showing the production of wool in the United Kingdom, Continent of Europe, North America, Australia, Cape, River Plate, etc., and also the consumption per head in Europe and North America. The total clip of wool in above countries is estimated as follows:

| | | |
|-----------|--------------|---------------|
| 1879..... | Grand Total, | 1,522,000,000 |
| 1880..... | do | 1,633,000,000 |
| 1881..... | do | 1,627,000,000 |
| 1882..... | do | 1,711,000,000 |
| 1883..... | do | 1,727,000,000 |
| 1884..... | do | 1,820,000,000 |
| 1885..... | do | 1,830,000,000 |
| 1886..... | do | 1,911,000,000 |
| 1887..... | do | 1,872,000,000 |
| 1888..... | do | 1,967,000,000 |

The above table is interesting, because it shows not only the production of wool in the countries named, the total increasing almost every year. The product of 1888 is 345,000,000 in excess of 1879, but it shows also that when the small supplies in the markets of the world are considered, that the demand has grown faster than the supply. This is proved in the table showing the production of wool, population of Europe and America, and proportion of wool to population of each year:

| Year. | Production, Million Pounds. | Population, Europe and America. | Consumption per head. |
|-----------|-----------------------------|---------------------------------|-----------------------|
| 1879..... | 1,522 | 361 | 4.22 |
| 1880..... | 1,633 | 366 | 4.45 |
| 1881..... | 1,627 | 370 | 4.40 |
| 1882..... | 1,711 | 374 | 4.58 |
| 1883..... | 1,727 | 378 | 4.57 |
| 1884..... | 1,820 | 383 | 4.75 |
| 1885..... | 1,830 | 387 | 4.73 |
| 1886..... | 1,911 | 391 | 4.89 |
| 1887..... | 1,872 | 396 | 4.73 |
| 1888..... | 1,967 | 401 | 4.90 |

It is thus seen that owing to various causes, some of which are known, such an improvement in the condition of the masses, lower prices of raw material, and improved processes of manufacture whereby the cost of woollen goods has been materially reduced, the consumption of wool has increased in a ratio fully equal to increase in the product, and in fact at the present time is slightly in excess of production, notwithstanding the large increase in the clip at Australia and South America.

THE CLIP.

Mr. J. C. Crowder of E. S. Brooks & Co., St. Louis, Mo., is making the rounds in Texas.

Kansas City consumed 4500 sheep during the week ending April 30, against 4013 during the same week last year.

Four thousand pounds of wool at Colorado City is reported to have sold at 20c, being the property of W. H. Wiley.

The fourth annual picnic of the Hamilton County Wool Growers association was a great success, exceeding former gatherings of this character.

Denver Field and Farm:—Hon. T. D. Burns of Tierra Amarilla, lost 600 sheep last winter. W. F. Burns & Bro. lost less than 100 out of 25,000.

Ballinger Leader:—J. L. Plants purchased the H. S. Perkins clip of wool (6 months) last Saturday, at 18c. Mr. Perkin's ranch is in Menard county.

Denver Field and Farm:—Mr. L. D. Wight of Trinidad reported his flocks in excellent condition. He says he will have a bigger and finer clip of wool this year than ever before. Mr. Wight has 60,000 of the woolly tribes.

Says an English paper:—"The general large crop of lambs, which are said to amount to an average of 1 1/4 lambs for each ewe on arable land, can in a great measure be attributed to the mildness of the past season and the favorable weather experienced during the lambing time."

San Angelo Standard:—The wool market opened Thursday morning at the ware house of Halfin & Rueff, where J. H. Patterson of the firm of Patterson & Igleheart bought the 7000-pound clip of P. B. Irvin and the 7000-pound clip of A. B. Powell's at 20c. The wool was shipped on the same day.

Mundy Bros. are desirous of purchasing a lot of buck lambs, the cross on Merino ewes by the mutton bucks sold in Texas last fall. They will buy in lots from a car-load up, and will want to receive them in the fall. The card is in the For Sale column, and the address for the present is at Newton, Kas.

San Angelo Standard:—Thos. Laech, Jr., of the firm of Wood, Holloway & Co., Burnet, Texas, wool buyers, arrived Thursday from Ballinger where he bought 40,000 pounds of wool. Terms strictly private. It is evident that Mr. Gay, "the best informed wool man in West Texas," is ashamed to let the low price at which this wool was sold be made public.

San Angelo Standard:—J. F. Williams of Dawson, Navarro county, arrived Wednesday. This young and handsome gentleman is the son of B. J. Williams, of the well-known firm of Patterson & Williams, fine sheep and buck raisers. He is here in the interest of the firm and says he will move out all their fine sheep from Navarro county in a few months.

Sonora (Sutton county) correspondence San Angelo Standard:—Sheepmen in this part of the country are all busy shearing, or getting ready to shear. The clip so far is slightly on the light side of their anticipations in comparison with last year. There are about 100,000 pounds of wool in this vicinity and nearly 150,000 pounds between here and McKavett to be shipped to Kerrville, so here is a good chance for freighters.

Mr. D. H. Speel of Wichita Falls, an old friend of the JOURNAL and a sheepman who has followed the sheep through the valley of depression to the hills of prosperity, was in town bound homeward after about eight months rustling on the Pecos, and in the sotol country generally. He has recently made some satisfactory shipments of muttons, and has more to follow from Abilene. He is of the opinion that for a sheep range the Southwest is superior to Northwest Texas.

Boston Commercial Bulletin:—The market continues in its previous unsatisfactory condition. There is a poor assortment and sales are very small. Low wools and quarter-blood are almost unmarketable at any price. The stock of wool is largely pulled, of which alone is there anything like a good supply. The week has been broken by holidays and comparatively little interest is shown either by buyer or sellers, the result being that prices are generally, though in buyers' favor still, on about same level. The tone of the market is, if anything, a little better this week, and one or two mills have evidently subscribed to the belief that between an active market in the West and a strong market abroad, Boston is the cheapest market in the world to-day, as indeed it is. There has even been a little, very little, purchasing of wool by manufacturers which has been stored in Boston and will not be used for months to come. This may be merely sporadic or the indication of greater confidence in the market. The inquiry at the close showed considerable improvement.

SAN ANTONIO.

RECENTLY many proofs have been given by the authorities on both sides of the Rio Grande that crooked stock dealings is becoming dangerous. All the good citizens hail this with unqualified satisfaction.

JOHNSON grass should be cut before heading for two reasons: First when once headed the stems are too hard to make good feed; and secondly, few persons are now willing to feed Johnson grass hay that contains seed for fear of spreading it.

COMPLAINTS as to the methods of doing business in the horse market of San Antonio are continually made, and the STOCK JOURNAL is appealed to in the matter to point out abuses and attempt their correction. This subject has been fully treated in times past, and the JOURNAL can only do as in the past and lay the blame largely to consignors, who persist in placing stock in the hands of several or all the commission men instead of one reliable firm and holding them strictly accountable for the sale of the stock.

American Hereford Record.

Volume 9 of the American Hereford Record containing 3000 entries to No. 35,500 has been issued, and a copy received by the JOURNAL from the secretary, Mr. C. R. Thomas of Independence, Mo. The following Texas herds are represented in the work.

E. B. Burleson, Bastrop; Finch, Lord & Nelson, Burlingame, Kan. and Panhandle, Texas; Henry & Powell, Beecher, Ill. and Childress, Texas; F. M. Houts, Decatur, W. S. Ikard, Henrietta, T. P. McCampbell, Gregory, F. O. Skidmore, Skidmore, Texas; and C. O. Whitman, Terrell.

THE discrepancy between the dead line of New Mexico and that of Colorado, Nebraska, Montana and Dakota, is proof enough of the necessity of the quarantine matter being taken charge of by the federal government. Why should it be more dangerous for Texas cattle from the country lying between Val Verde county and the southern boundary of New Mexico go to New Mexico than to the other states and territories mentioned? Nothing is more ridiculous. Let the agricultural department have a corps of competent live stock inspectors who will establish regulations for the sanitary protection of stock and not for the trade protection of one state or territory as against another, contrary to the constitution of the United States. A fair investigation will prove our assertion that for several years back the object of the quarantine regulations of many of the states and territories were more for trade than sanitary protection. Owing to the fact that there is not enough live stock trade now between Texas and New Mexico to attract much attention to the outrageous discrimination against Texas cattle, but the unjustness of the principle still remains, and calls for action on the part of the federal authorities.

THERE is some opposition to farmers' institutes on the part of the Alliance, Grange and Wheel people. It is claimed by them that the institute is nothing more nor less than a debating school. What can be the animus of this opposition other than petty jealousy is hard to conceive. It is certainly better to debate practical methods from the light of experience for the better education of practical farmers, than to try to regulate and move the sun, moon and stars, just from a spirit of unrest and dissatisfaction.

A YOUNG man came to San Antonio a few days ago with buying orders from a New England state for some 150 head of horses at not more than \$5 per head. Such gross ignorance is inexcusable. The STOCK JOURNAL has published a corrected weekly horse market report for over three years, and at no time has the price been lower than \$8 and that was for what was classed as the lowest of scrub here, which there would be trash that would not pay the feed. What is here quoted fairly good stock worth from \$18 to \$25 per head, is almost unsaleable in New England under the classification of low scrub. Experience proves that it does not pay to feed a poor horse anywhere, and especially where feed is high as it is in the East. The lowest grade horses now sold here come from Mexico, and as an illustration of the utter worthlessness of stock in some portions of that country it is cited that an experienced importer of Mexican horses a few days ago was enabled to cut out only 45 head of saddle horses out of a round-up of 1400 head in the state of San Luis Potosi. Scrub horse stock is suffering continual depreciation in the public estimation, which act is known to the majority of Texas rancheros now, who are engaged in bettering their horses both by the infusion of improved blood and better care.

The Horned Dorset Sheep.

This breed is comparatively new in the United States, and quite scarce in Texas, Messrs. Eldridge & Fields of Lampasas county being the only persons who have any. They have a fine medium wool and crossed with the Merino tend to lengthen the staple. But its chief merit lies in its mutton qualities and especially early maturity and prolific breeding, twins and triplets being the rule more than exception. They are said to arrive at maturity at one-year-old, and a two month's lamb is an epicurian dainty. Messrs. Eldridge & Fields have great expectations from a cross of this breed with the Merino in a perfect combination of wool and mutton qualities, which is so desirable to successful sheep husbandry in Texas.

San Antonio Wool Market.

The condition of this season's market here may be said to be in embryo, showing some life, but not enough to fully determine its vitality. Some sales have been made, but buyers unexceptionally impose the ban of secrecy, although the facts are beginning to leak out. It is known that the John Thompson clip of six month's wool from Maverick county brought 18½c. It was not choice, and 20c per pound have been refused for a number of six months clips. So far as

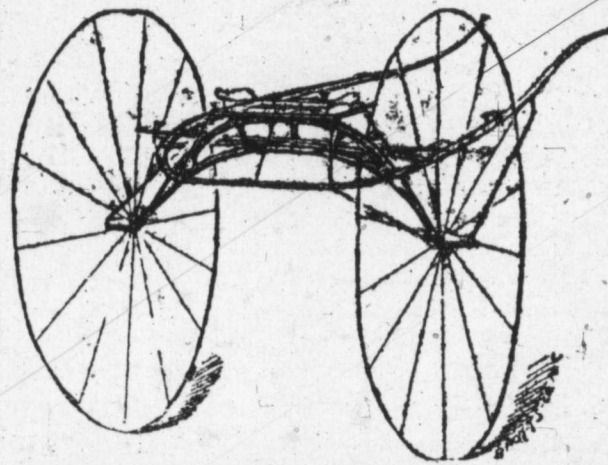
PAINLESS BEECHAM'S PILLS EFFECTUAL

FOR Billious and Nervous Disorders, such as Wind and Pain in the Stomach, Sick Headache, Giddiness, Fulness, and Swelling after Meals, Dizziness and Drowsiness, Cold Chills, Flushings of Heat, Loss of Appetite, Shortness of Breath, Costiveness, Scurvy, Blisters on the Skin, Disturbed Sleep, Frightful Dreams, and all Nervous and Trembling Sensations, &c. THE FIRST DOSE WILL GIVE RELIEF IN TWENTY MINUTES. This is no fiction. Every sufferer is earnestly invited to try one Box of these Pills, and they will be acknowledged to be a Wonderful Medicine. "Worth a guinea a box."

BECHAM'S PILLS, taken as directed, will quickly restore females to complete health. For a WEAK STOMACH; IMPAIRED DIGESTION; DISORDERED LIVER; they ACT LIKE MAGIC:—a few doses will work wonders upon the Vital Organs; Strengthening the muscular System; restoring long-lost Complexion; bringing back the keen edge of appetite, and arousing with the ROSEBUD OF HEALTH the whole physical energy of the human frame. These are "facts" admitted by thousands, in all classes of society, and one of the best guarantees to the Nervous and Debilitated is that BEECHAM'S PILLS HAVE THE LARGEST SALE OF ANY PATENT MEDICINE IN THE WORLD. Full directions with each Box.

Prepared only by THOS. BEECHAM, St. Helens, Lancashire, England. Sold by Druggists generally. B. F. ALLEN & CO., 365 and 367 Canal St., New York, Sole Agents for the United States, who, (if your druggist does not keep them,)

WILL MAIL BEECHAM'S PILLS ON RECEIPT OF PRICE 25 CENTS A BOX.



CALVIN TOOMEY

KANSAS CITY, MO.,

Carriages, Buggies and Speed Wagons,

TRACK SULKIES,

ROAD, POLE AND BREAKING CARTS

And Sulky Cushions with weight pocket. No sulky perfect without the Wheel Guard Rail; it prevents collisions and stiffens the sulky throughout, making it run true and steady. send for catalogue.

GEO. B. JOHNSTON & CO.

21 Main Plaza, San Antonio.

Real Estate and Live Stock

Ranches a specialty. Fine stock on hand. FOR SALE.—A herd of Registered Herefords and cross bloods. It is a Texas raised show herd.

A CARD

—TO—

Wool Growers!

We will from now on and in our own name carry on a Wool Business, as conducted heretofore by our Senior, F. Lammers, as manager of the Wool Factors' Association, which has been dissolved by mutual consent. We solicit the continued good will of old friends and are prepared to negotiate with all disposed to intrust the sale of wool to our care.

Wool sacks at cost to shippers.

LAMMERS & FLINT

GALVESTON.

February 16, 1889.

JNO. S. POWELL & CO

Office, Mansion Hotel,



Fort Worth, Texas.

Offer for sale choice thoroughbred and high-grade Hereford, Polled-Angus, Durham, Holsteins and Jersey Bulls and Heifers. Stock on hand and for sale on very reasonable terms.

known no 12-months' clips have yet been sold here this spring. The stock on hand is now nearing 3,000,000 pounds, and a grand break would not surprise no one now at any day, but it may possibly hold off for another week. Of course without transactions, reliable quotations cannot be given, but the market will open at nearly the following figures: Light medium 6 months, 20 to 21½c; fine, do, do, 18 to 20c; light, do, 12 months, 22 to 24c; fine, do, do, 20 to 22c; fine Merino, 6 do, 11 to 16c; do, do 12 months, 18 to 20c; burry from 1½ to 3c off.

San Antonio Horse Market.

The trade is steadily increasing although the number of foreign buyers, is not so great as might be wished. Many of the local men are shipping stock gathered in dull seasons. The demand continues strongest for medium class of mares, with a fair average for young mules and unbroken horses, while saddle horses are dull and hard to work off. The receipts continue in excess of the shipments and the pastures contiguous to the city are rapidly filling, but owing to the luxuriant grass the stock is generally improved by a short pasturing and increased in value over the expense.

The shipments were 1149 as against 1192 for the week previous, and about 100 head came from below that were sold but loaded below.

Quotations are as follows:

| | |
|--|---------|
| Scrub and poor mares, 12 to 13½ hands. | \$10@13 |
| Scrub fair conditioned, 12 to 13½ hands. | 14@16 |
| Medium mares, 13 to 14 hands, fat. | 17@20 |
| Medium mares, 13 to 14 hands, thin. | 14@17 |
| Yearling fillies, branded. | 7@9 |
| Yearling fillies, unbranded. | 9@12 |
| Two-year-old fillies, branded. | 10@13 |
| Two-year-old fillies, unbranded. | 12@14 |
| Texas improved mares, 14 to 15 hands. | 25@35 |
| American carriage horses, 15½ to 16½. | 75@200 |
| Saddle horses, good, 13 to 14½ hands. | 25@30 |
| Saddle horses, poor, 13 to 14½ hands. | 17@22 |
| Unbroke horses, 13 to 14½ hands. | 15@23 |
| Weaned, unbranded colts. | 4.50@6 |
| Mules, Mexican, 12 to 13½ hands. | 20@35 |
| Mules improved, 13½ to 14 hands. | 40@55 |
| Yearling mule colts, improved. | 22@30 |
| Two-year mule colts, improved. | 30@40 |
| Yearling mule colts, Mexican. | 14@20 |
| Two-year mule colts, Mexican. | 15@27 |

HORNS AND HOOF.

Geo. Wharton shipped out 60 head of horses on Wednesday for New York state.

Geo. Lason of New York is here after a car-load of select horses which he will pick up in the retail market.

J. L. Rutledge, the wide awake ranchero of Karnes county, was registered at the Southern last week.

W. L. Lubbock of Morin Bros. return-

ed from a business trip to Eagle Pass, and reports prospects for a large horse importing trade very flattering.

The best place in San Antonio to buy carriages, buggies, etc. is at Hicks' repository, West Nueva street. Rice's coil spring vehicles a specialty.

C. C. French, general state agent for the James H. Campbell company, autographed at the Southern last week while hunting for shipments.

A. E. Noble, who has extensive cattle interests near Nacimiento Coahuila, Mexico, and lives in Eagle Pass, spent several days in the city and returned home the first of the week.

Uvalde News:—A cattle trade of some importance went through to-day. The purchaser was Capt. Wallace of Barksdale, the parties selling living near here, about \$5 around being the price.

The heaviest Southwest Texas steer that went to market this year is that of R. J. Hill, Austin, weighing 2035 pounds, which was sent to James H. Campbell & Co., Chicago. He was corn-fed.

Jesse K. Lloyd, commission merchant, reports the following as among his sales for the week: 25 horses, \$23; 25 mares, \$15.00; 25 horses, \$20.50; 25 horses, \$24.50; 80 yearling mules, \$22.50; 50 mares and horses \$18.

Dr. Carver shipped another car-load of ponies from here on Monday to Detroit, where his Wild West show is organizing. These were principally spotted, the buckers having gone a couple of weeks ago.

C. C. Lewis, who has transferred his ranch interests from Mexico to Starr county, is just up from that section, and says that Starr county is one of the exceptional localities in which rain would be a great benefit just now.

John McAllen of McAllen & Young, rancheros of Hidalgo county, went up to the Territory Tuesday to see about placing 2600 steers in pasture. These are those which were cut out for J. L. Harris, which he he did not take.

Dr. J. B. Taylor left for his Edwards county ranch the first of the week, having just come up from the McMullen county ranch, where he received several thousand head of the Coleman-Fulton cattle purchased some weeks ago.

F. O. Skidmore of Bee county, one of the most enterprising ranchmen of that section, says that he has too much confidence in the future of the business to sacrifice his stock on a low market while grass is knee deep in his pastures. He will hold over.

O. Fuller of Muskogee, I. T., who has purchased quite a number of cattle in this section this spring, is just back from home and ships a train load from Floresville. He says that grass is better in the Territory now than ever known, and cattlemen wear a 15 cent smile on their pretty faces.

The growing popularity of stable cars proves that the STOCK JOURNAL'S position at the incipency of the agitation for use of improved stock cars was the correct one. The supply is not equal to the demand, and other cars besides the Street stable cars are about to enter the field in Texas, among which are the Burton car.

Cotulla Ledger:—If this country had a few more such men as W. S. Carothers it would be in a more prosperous condition. During the month of April he paid the International & Great Northern Railroad company \$16,656.54 freight bill on 6957 head of cattle. Some were put on the market, the balance stop in the Territory to mature.

Realitos correspondence in Corpus Christi Caller:—We learn of one land trade in the county. N. G. Collins sold to Mr. Hoffman of Corpus the ranch formerly owned by Mr. Weidenmueller, between San Diego and Kleberg, consisting of 2800 acres, price \$3.25 per acre. Fair price, but the land is fine and well worth the money.

Wm. Ragland, the live agent of the Chicago Live Stock Commission company, wants it understood that he is not the Wm. Ragland that is reported as selling sheep in Chicago through J. H. Campbell & Co. He has not shipped a sheep on his own account this season, and does not do business with James H. Campbell & Co. while representing another house.

The best time made at the roving contests at the Taylor fair was 1:26 2/5 minutes, by R. E. Barber. S. C. Lewis, the

winner of the San Antonio prize last fall, would have won by unequalled time but for unforeseen accident. His work was very fine. Barker two years ago made it in 46 seconds. There were eleven contestants and it was the leading attraction of the fair, passing off without accident and unpleasant incident.

A free wild west show was afforded the denizens of the neighborhood of the I. & G. N. shipping pens on Tuesday night. Several Street stable car-loads of bulls were received from Pearsall, when one car-load broke through the sides of the car and started to clean out the "shebang." A circus was no patching to the fun. The loose cow boys of the community were pressed into service and after four hours they were hunted from the surrounding country and reloaded in another car. He who thinks that a Texas bull is not wild, let him tackle one on a rampage.

Skidmore correspondence in Corpus Christi Caller:—Last Friday Mr. Matt McWhorter, the king of cowboys, passed Skidmore with 1834 cattle under herd, en route to Devil's River, Dak. The drive will occupy four months, and notwithstanding the time required it is claimed that the drive will be much cheaper than rail transportation. The cattle belong to Coleman-Fulton Pasture company. The hands consist of Messrs. Walton Imly, Milton Phillips, Felix Merchant, Wm. Dorsett, Burney Mills and Ollie Allen of Rockport, and Mr. Sam Quinn and Alf Truett of Sharpsburg, as good and certainly as respectable a cow crowd as could well be found. Another large herd passed later, but could not get information as to numbers or who in charge.

Col. D. R. Fant passed through to his home in Goliad from a visit North, during which he took part in the meeting and selection of officers of the American Live Stock Commission company organized at Kansas City sometime ago. He gave the following as a corrected report of the election of officers: H. W. Creswell, Kansas City, president; F. Phillips, Kansas City, treasurer; Wm. Gray, Kansas City secretary. Directors:—J. C. Gunter, Dallas; A. B. Gregory, Ill; F. B. York, St. Louis; P. Phillips, Kansas City, W. A. Towers, Montana; D. R. Fant, Texas; T. S. Bugbee, Kansas City. General managers:—H. D. Rodgers, Chicago, and J. H. Stevens, Kansas City. The company proposes to do a general commission business as well as selling the stock of its members.

THE WOOL SACK.

J. K. Burr, wool grower of Maverick county, is spending several days in town.

E. Wm. Gruendler, the live wool buyer of Galveston, is looking about in this market.

An offer of 21 cents was refused for one of the principal 6 months' clip in this market.

J. Bienen stock, wool buyer from St. Louis, is here and has already dabbled in the market to some extent.

The Barclay Bell clip of Williamson county has been sold, delivered and shipped. It was a twelve month growth, fine Merino, and brought 20c per lb.

Brewster Bell:—J. J. Corbet arrived Saturday with the balance of his spring clip, amounting in all to 2760 pounds, which he will ship to the San Antonio market.

The incomings and outgoings of wool buyers have been so frequent this season as to baffle an attempt to keep track of them. They are rounding up the strays.

Marfa is coming out as a wool market, and over 500 sacks are now in store there awaiting purchasers. It is well located to handle the clip of an extensive wool growing section.



This threshing-machine received the highest award of any at the Centennial Exhibition; the two last Gold Medals given by the New York State Agricultural Society; and has been selected from all others, and illustrated and described in that great work "Appleton's Encyclopedia of Applied Mechanics." Catalogue sent free. Address, MINARD HARDER, Cobleskill, Schoharie Co., N. Y. Also straw-preserving Rye-threshers, Clever-hul-lers, Fodder-cutters, Feed-mills, Fanning-mills and Saw-machines; all of the best in market.

The Fearless Horse-powers are the most economical and best Powers built for the running of En-lage-cutters and Cotton-gins, and for general farm and plantation use.

J. E. PRICE. FRANK P. HORD. I. A. DEWENS.
Traders' National Stock Yards!
 J. E. PRICE & CO., Proprietors,
 Near I. & G. N. Shipping Pens, - - - SAN ANTONIO, TEXAS.

Best and most commodious stock yards in the state. Built expressly for the accommodation of the stockmen. All pens shedded and with hay-racks and fresh water. Charges same as other yards. Best buyers on the market always on hand for good stock.

THOS. H. MORIN. J. L. MORIN.
MORIN BROTHERS,
 W. L. LUBBOCK, Manager,
Live Stock Commission Merchants, San Antonio, Texas.
 Feed and Sales Yards, South Flores street. Make a specialty of handling Spanish stock of all kinds. We offer for sale all classes of live stock, at any point in Southwest Texas and Mexico.

JESSE H. PRESNALL. HINES CLARK. JAMES F. SCOTT.
PRESNALL, CLARK & SCOTT
Live Stock Commission Merchants,
 COLLINS, NUECES COUNTY, TEXAS.
 Do a general live stock commission business. Special attention paid to putting up stock on order.

The Southern Hotel,
 J. P. HICKMAN, Prop.,
 San Antonio, Texas.

GEO. LOELOFF, SAN ANTONIO, TEX.
 Manufacturer of the
CELEBRATED SAN ANTONIO SADDLE TREES.
 Makes all kinds of Natural-Fork Saddle Trees, Texas, Colorado and California patterns. None genuine without my name on cantel. Look out for imitations.

Brackett & Holman,
MANUFACTURERS OF SADDLES, HARNESS, BRIDLES, ETC.
 No bogus Northern penitentiary or combination saddle trees sold or rigged, but a specialty made of strong, reliable, honest goods at a reasonable price. Also sell the best farm wagon made.
 South Side of Military Plaza. San Antonio, Texas

G. W. Saunders & Co.
LIVE STOCK COMMISSION MERCHANTS
 SAN ANTONIO STOCK YARDS.
 Prompt sales and quick returns. Market reports and information as to shipping cheer-fully given. Correspondence solicited. Telephone No. 401.

EWELL FARM.
 Home of Brown Hal, 2:13—Best Stallion Record.
 The Sixteenth Annual Sale of
Trotting AND Pacing Horses, Jerseys AND Ponies
 —Is fixed for—
Wednesday, May 29th, 1889.

Ewell Farm is Thirty miles South of Nashville, Tenn., on the Louisville & Nashville road; Ewell Station is on the Farm; four daily trains each way; sale at stable, 300 yards from station.

Eighty-One Head of Trotting and Pacing Horses
 By such sires as Brown Hal, 2:13; Baron Wilkes, 2:18; Wedgewood, 2:19; Egbert, (sire of Emma, 2:16 1/2); Tennessee Wilkes, trial, 2:25; Don Wilkes (son of Alcyone); Brighton, (son of Harry Clay, sire of Green Mountain Maid); Stranger, (son of Goldsmith Maid, 2:14); Nuthill (son of Nutwood and Hildegard by Harold); Wood's Hambletonian, (sire of Nancy Hackett, 2:20); Tom Hal (sire of Little Brown Jug, 2:11 1/2, 2:11 1/2; 2:12 1/2, fastest three heats in harness,) Etc. Also a dozen nicely broken ponies and 20 highly-bred young Jerseys. CATALOGUES NOW READY. Write to
CAMPBELL BROWN,
 Spring Hill, Tenn

LOANS offering Money on Farms, Ranches -AND- City Property on the most reasonable terms.
 Funds loaned at three, four or five years and on installment plan if desired. No delay. **JAMES B. SIMPSON,**
 735 Elm Street, Dallas, Texas.

LONE STAR SADDLERY:
 Manufacture all kinds of Saddles and Harness. Cowboys' Outfits a Specialty. First-class work in all branches.
A. VARGA, Agent,
 Dolorosa Street, opposite Southern Hotel, SAN ANTONIO, TEXAS.

TEXAS LIVE STOCK JOURNAL

ESTABLISHED APRIL, 1880.

Consolidated with

TEXAS WOOL GROWER

SEPTEMBER 13, 1884.

ISSUED EVERY SATURDAY.

BY
The Stock Journal Publishing Company,AT
Fort Worth, Texas.

FORT WORTH OFFICE, 210 West Second Street. W. A. GARNER, Manager.

DALLAS OFFICE, 735 Elm Street, W. HUGHES, Manager.

SAN ANTONIO OFFICE, No. 21 Main Plaza. L. A. HELL, Manager.

EL PASO OFFICE, Ground Floor, Central Hotel Building. GEO. B. LOVING, Manager.

Subscription, \$1.50 Per Annum.

Entered at the Postoffice, Fort Worth, Texas, as second-class matter.

Notice to Subscribers.

Our subscribers who may receive sample copies of this paper will understand that the extra copy is sent without charge, to be handed to a neighbor, who will likely subscribe.

Any person sending us three subscribers at one time will be furnished the paper one year for his trouble.

We solicit.

We solicit your subscription to the TEXAS LIVE STOCK JOURNAL if you are not already receiving the paper. It is the cheapest and at the same time is the oldest, best and most reliable market reporter in the Southwest. Your postmaster will forward the subscription if you will hand it to him. The price is \$1.50 per annum.

AN English court decision is against cattle dehorning as being cruelty to animals. The information comes from the Farming World, which paper says that a farmer being tried before a justice's court was acquitted, but an appeal being taken, the higher court reversed the decision.

A Call.

By request of a mass meeting of cattlemen and business men held at San Angelo, March 26, 1889, a convention of all the cattlemen of Western Texas, is hereby called to meet at San Angelo, June 1st, 1889, for the purpose of cooperating with the Central Texas Live Stock association, in an effort to obtain and keep a record of the supply and demand for cattle of the West, and such other matters as may be deemed necessary to the cattle interest.

CHAS. A. DAILEY,
President Colorado and Concho Live Stock association.

Missouri Horse Exchange.

Please refer to the advertisement, at auction by the Missouri Horse exchange on Monday, June 3, at their mammoth repository, Broadway and

Chouteau avenue, St. Louis, Mo., at 10 o'clock a. m., the well known stud of fancy imported and home-bred Shetland ponies, standard trotters and thoroughbred yearlings, in all about sixty head, the property of Mr. Thos. T. Turner, Normandy, Mo., who has made the problem of breeding a study, and will offer a most attractive lot of ponies, trotters, saddlers and thoroughbred yearlings of his own importation and breeding, all pledged to absolute sale, because Mr. Turner has assumed other business engagement which will prevent him from giving such practical attention to the science of breeding as to make it successful. It will therefore be a peremptory sale, under the management of the Missouri Horse exchange, Mr. Harry Ashman, auctioneer, and will take place Monday, June 3, the first day of the spring meeting of the St. Louis Jockey club. For catalogues address the Missouri Horse exchange, Broadway and Chouteau avenue, St. Louis, Mo.

Dressed Hogs for Mexico.

During the winter time the business of shipping live hogs to Mexico was conducted from Kansas City with profit to the shippers, but of late the losses in transit being so heavy the live shipments have been discontinued. Dr. A. E. Carothers of Texas, the pioneer in the trade has now commenced a daily shipment of dressed hogs and will forward a car-load every day during the summer months. The first shipment left Kansas City last Monday and was billed to the City of Mexico via Eagle Pass. The icing of the refrigerator cars in Mexico is arranged to be done with natural ice from the mountains and the details of the shipment have been thoroughly attended to in advance.

Will Continue the Fast Trains.

The announcement was made some time ago that the railroads between Kansas City, St. Paul, Omaha and Chicago had determined to stop the fast runs of cattle, sheep and hogs between these markets and Chicago and limit the time to thirty-two hours. This was agreed upon by all the lines but the agreement was rescinded in consequence of one of these lines withdrawing from the arrangement. Some of the lines can make the run between Kansas City and Chicago in twenty-four hours and there is no reason why the stock should be delayed.

Heavy Cattle Movements.

Mr. H. R. Irvine, special agent of the A. T. & S. F. railway, was sent to Fort Worth some time since to expedite the cattle movement into the Indian Territory and to assist Mr. Eli Titus, general live stock agent in the handling of live stock. The movement was expected to be very large and as official figures show the result has fully realized expectations. Between January 1st, 1889, and April 30th the Santa Fe hauled into the Nation 10,138 cars of stock, or in round numbers 250,000 head of cattle. This includes all the stock hauled north by the road, whether hauled upon the

EVANS-SNIDER-BUEL CO.,

(INCORPORATED)

SUCCESSOR TO HUNTER, EVANS & CO.

CAPITAL STOCK, - - - \$200,000.

KANSAS CITY STOCK YARDS,
KANSAS CITY, MO.Each Office in charge of a
member of the company.

17 YEARS' ACTIVE EXPERIENCE in Live Stock Commission Business, Market Reports regular and special, and all other information incident to the business, will be furnished FREE by each house.

UNION STOCK YARDS,
CHICAGO, ILL.Correspondence always has
prompt attention.DIRECTORS { A. G. EVANS, President. M. P. BUEL, Vice President.
C. A. SNIDER, Treasurer. A. T. ATWATER, Secretary.
F. W. FLATO, Jr. IKE T. PRYOR.NATIONAL STOCK YARDS,
ST. CLAIR CO., ILL.**LIVE STOCK COMMISSION MERCHANTS.**

Santa Fe throughout, or received from other roads at Fort Worth and Gainesville.

A Change in the Trade.

During the last few months the cattle trade of Texas has amounted principally to the disposal of steer cattle to those who are in the business of maturing steers for the beef markets. Transactions have been heavy at times, and the number of steer cattle sold is quite respectable.

In this trade, to the casual observer there is nothing unusual transpiring, and transactions have been much the same as usual for several years past, even to a sameness as to prices paid for the various classes of stock.

But there is something unusual going on denoting to us that we are no longer alone in the cattle breeding business; that we, for the first time, have competitors in the field who are prepared to fill our orders to the extent of their capacity at lower prices. This is the unusual feature of the trade, denoting the absolute necessity for Texas stockmen to mature cattle as well as breed them.

The fact is apparent that New Mexico and Arizona as range cattle producing countries are finding their proper level. Without the ability to fatten anything in the line of cattle production upon the ranges, and with no farming country to speak of near by, the entire cattle interest of those territories is dependent for support upon the sale of steers and spayed heifers for steady revenue, just as Southern Texas was for many years, before the resources of that country became better known and appreciated. The ambition of the New Mexico and Arizona ranchmen was to maintain a standard of prices higher than the prices realized in Texas, claiming the quality as superior, and freedom from quarantine regulations as another inducement to the buyer. The result has not been exactly as expected, but the recent sales of New Mexico and Arizona cattle denote that those ranges are in active competition with Texas; and further, that this competition is no longer sustained in our favor by maintenance of prices. The level has at last been reached, and between the choice of selling three and four-year-old steers to feeders, and yearling and two-year-old steers to the Northern ranchmen, the latter is preferable even at prices considerably lower than the people hoped to obtain.

The ranchmen of Texas must con-

sider New Mexico and Arizona as customers no longer, but consider them as competitors in all but the beef trade—competitors having free grazing privileges and competitors relying almost wholly upon the sale of immature and unfattened cattle for revenue from their business.

The inference is that Texas cattlemen must finish her own cattle for the butcher to dispose of them at a profit. Not from choice or as a matter of policy, but because of the stern necessity forcing its way upon them.

We believe that the changes coming upon us bring compensations for all losses. Progress in agriculture deprives us of part of our ranges, but the change increases the beef fattening capacity of the country. If New Mexico and Arizona, our former customers, are to compete with us in the sale of young cattle, we may in time become their customers and fill our feeding pens and pastures with their steers. Texas is able to make a turn in any direction if the stockmen will improve their stock in quality and keep their pastures from becoming overstocked.

The American Meat Company.

The American Meat company has been revived again since the resignations of J. H. Flagler as president and J. O. Moss as vice-president were sent in and accepted. Ex-Senator Warner Miller of New York is president and Mr. James G. Belden, congressman from the Syracuse, New York, district, is a director. It is a political outfit, and the stock interests of the country need not anticipate any advantage to be gained by their operations.

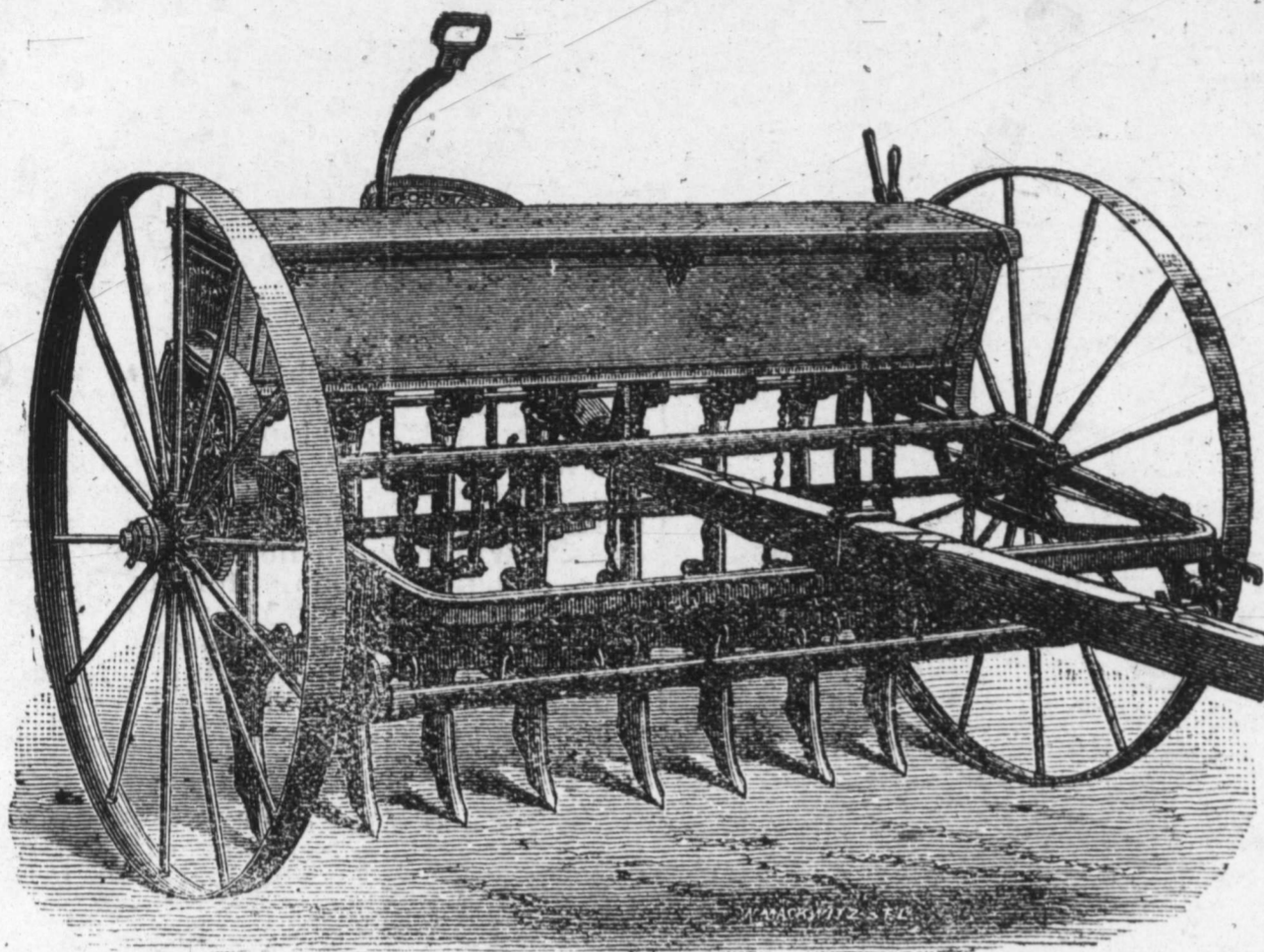
Boycotting Patent Stock Cars.

Railroad managers whose lines run east of Chicago are trying their best to dispense with the improved live stock cars. The Vanderbilt road has issued such an order. It is said to be a move to freeze out owners of the private patent car systems. The line with the motto entitled "The Public be Damned" inaugurates the movement because it has a few more patent cars of its own than the other lines and is a trifle more independent of the private car owners, but the other roads are to fall in line to gain the object they desire to obtain.

Such a movement in Texas would be considered a direct antagonism to the general live stock interests of the country and would be resisted as such. Had it not been for the ingenuity and enterprise of the stable car patentees

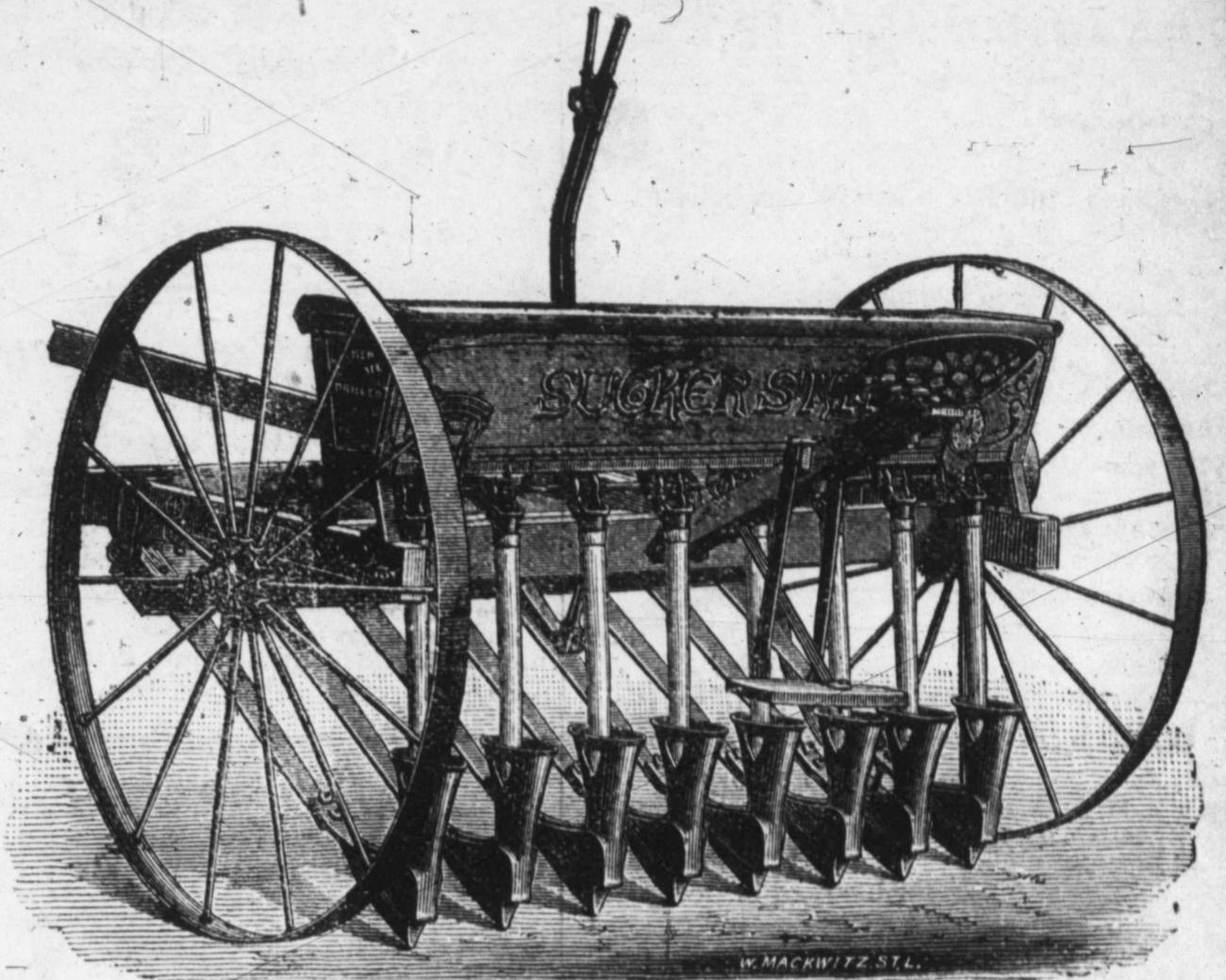
W. A. HUFFMAN IMPLEMENT COMPANY

STATE AGENTS. FORT WORTH. TEXAS.



STEEL FRAME AND STEEL WHEEL SUCKER STATE DRILLS.

This Drill has been in competition with other Drills for the past 25 years and has gained a World-wide reputation. By our PATENT FLUKED FEED WHEELS and GAUGE BLOCK we secure a perfect and regular flow of any desired quantity, per acre, of Wheat, Oats or Barley. The FEED CUPS are made in two sections, so that either feed being broken, can be replaced without disturbing balance of Feed. The frame is made of ANGLE STEEL, which is as light as wood and more durable. Our STEEL WHEELS are made 48 inches diameter, 2 1/2 inch tire, 14 spokes and Malleable Iron Hub with Removable Screw Boxes, guaranteed to stand as well as wood wheels. Inside the Hopper is an Agitator Shaft, with Pins, that prevent any clogging of the feed by straws and keep Oats and Barley from packing while sowing. Our Hoes are all made OVAL SHAPE, with POLISHED STEEL POINTS. These we furnish in either Pin or Spring Hoe; the Spring Hoe being intended for stumpy ground. To each Hoe can be attached a ROLLER that has sufficient weight to press and pulverize the ground. This Roller also gauges depth of sowing, being held fast by a ratchet. The FINISH and WORKMANSHIP CAN NOT BE SURPASSED. We use only the best of material and employ only skilled and experienced mechanics. We submit this Drill to the trade on its merits.



STEEL WHEEL SUCKER STATE RUNNER PRESS DRILL.

In construction this drill combines the principal features of our SUCKER STATE FLUKE DRILL, known to the trade for the past 25 years. The springs attached to the hoisting bar and to the front of the shoes allow the shoes to conform to the inequalities of the ground and at the same time hold them down steady to their work, securing an unequalled uniformity in depths of the furrows and depositing the grain at the proper germinating point. To suit all soils we have introduced a POLISHED STEEL SHOE for the black waxy soils of Texas, and in all other soils our Chilled Iron shoe being preer able and costing less to renew. THE IMPROVED CHILLED IRON SHOE is furnished on all drills except those going into black waxy soils, and is a pronounced success, and gave great satisfaction wherever used. The edge of this shoe can not be filed; it must be ground on a Grind-stone or Emery Wheel; it has a narrow cutting edge so that obstructions will not lift it out of the ground. The drag bars are made of flat spring steel attached to a lifting bar in front, upon which the pressure of 110 lbs to each runner can be put on by a single lever, which is easily controlled by the operator from his seat. The finish and workmanship can not be surpassed and is guaranteed second to none on the market.

Enquire of Nearest Merchants for these Drills and if they don't keep them Write Us for Prices and terms.

we would have to wait on the railroads a very long time for any improvements to be made over the old time methods. Able as the railroad men appear to be they sometimes discover a good thing a long time after the public has known it. The stable car for live stock is an example. Railroads contended against the innovation when they were making money out of it. Railroads have charged an excess for these cars when the cars were necessary to fill out the working equipment. Even now some Texas roads have no present use for their own stock cars while other roads are using all they have and all belonging to other roads they can get. Ordinarily there is a feast or famine of stock cars. A well managed stable car company using their cars to the best advantage is able to do the business of 5000 cars belonging to different lines with half that number, by having the power to shift them from district to district, from one line to the other, at pleasure.

Again, the Texas roads are worried over stacks of damage claims for injuries to stock. The stable cars are reducing these charges to almost nothing. The half of these damage claims are impositions at best and the very purpose of the patent car is to do away with the causes furnishing support to actual, trival or bogus claims arising from the use of common cars.

We hope no movement such as the one above referred to will reach Texas, and if it does we hope sincerely that the stockmen will unitedly resist it, and insist by all the powers at their command that they shall not be deprived of the only improvement in live stock transportation afforded them since cattle pens on wheels were first invented.

BEST STEEL WIRE GALVANIZED. **Woven Wire Fencing** Wire Rope Salvage **McMULLEN'S**

80c TO \$2 PER ROD. All sizes and widths. Gates to match. Sold by us or dealers in this line of goods. FREIGHT PAID. Information free. THE McMULLEN WOVEN WIRE FENCE CO., North Market and Ontario Sts., Chicago, Ill.

ALFALFA

Johnson Grass, Sorghum, Millet and other

SEEDS!

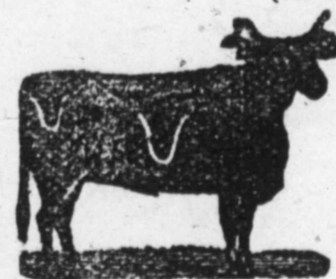
For prices, mention this paper and address

W. F. PATTERSON,

FORT WORTH, TEXAS.

Matador Land and Cattle Company.

(Limited.)



grade bulls. Correspondence solicited from cattle buyers.

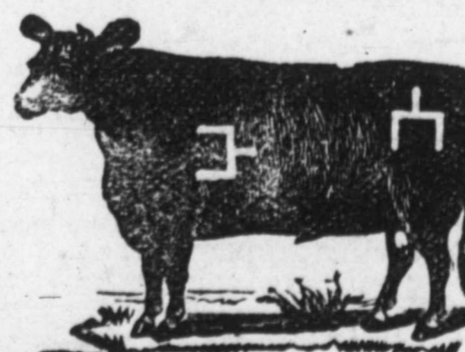
W. F. SOMMERVILLE, Manager, Fort Worth, Texas; H. H. CAMP BELL, superintendent, P. O., Matador, Tex.

We have for sale at all times yearling, two and three-year-old steers, all in our own mark and brand and from the best

The Espuela Land and Cattle Company.

(Limited.)

Postoffice, Dockums, Dickens county, Texas; S. W. LOMAX, Manager.



Have for sale two-year-old and yearling steers and heifers of their own raising, go by Shorthorn and Hereford bulls, in the straight Spur mark and brand Horses branded on left hip.

WELL DRILLS FOR ALL PURPOSES.



Send 20 cts. for mailing catalogues with full particulars.

F. C. Austin Mfg. Co

Sarpenter St. and Carroll Ave., Chicago, Ill.



When you want a Hay Press write us for price of

THE GEORGIA PRESS,

A full circle press, simple, strong, effective. Price less than half that of other presses of same capacity. It will pay you to send for a circular and price.

The Panhandle Machinery & Improvement Co., FORT WORTH, TEXAS.

CHICAGO Veterinary College.

FOUNDED 1883.

The most successful college of this continent. For further particulars address the Secretary, **JOS. HUGHES, M. R. C. V. S.,** 2537-2539 State Street, Chicago, Ill.

J. R. JETER & CO., Real Estate Agents

405 Main St., Fort Worth, Tex.,

MONEY TO LEND

On Real Estate. Vender's Lien Notes Bought.

Special Properties.

Eight single 640-acre tracts in Wichita county, rich lands at reasonable prices.

40,000 acres in Wheeler county, solid body, \$3.00 per acre.

168,000 acres on the plains, under fence and cross fences, \$2.50 per acre.

130,000-acre ranch with 12,000 head of cattle in Southwest Texas, for sale at a bargain or exchange for New York city property.

We have on our books various other good tracts of land, improved and unimproved, ranging in extent from 1000 to 10,000 acres.

J. P. SMITH,
President.

W. P. CONNER,
Gen. Man'g.

THE GRANITIC ROOFING

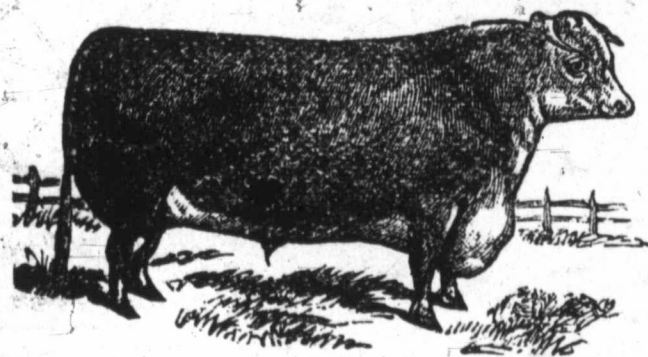
Factory at
Fort Worth, Tex

Better than the best, cheaper than the cheapest roofing offered in Texas. Suitable for steep or flat roofs. Cheap enough to

cover a hen coop; good enough to roof a palace. Specially adapted to stockmen's barns and out-buildings. Shingles, tin and corrugated iron must give way before our goods. For further particulars write to our office.

Fort Worth Granitic Roofing Co

11th and Rusk Sts., Fort Worth, T



Herefords!

We have for sale 240 head of pure bred registered bulls and heifers in the Brown pasture at Childress, Texas, a few miles from the Fort Worth & Denver road. Will sell singly or in car lots on favorable terms and at reasonable prices. Some of these cattle are acclimated. Address by letter.

HENRY & POWELL,
Pickwick Hotel, Fort Worth, Texas.

Horses For Sale.

SPREAD EAGLE.—A perfect saddle and harness stallion, 16 hands high, and weighs in condition 1150.

TWO trotting-bred young stallions, both broke to harness and good movers.

MARES from 13½ to 15 hands high, broke to halter, some to saddle and harness.

LEBON.—A Clydesdale stallion, 17 hands high, weighs in condition 1800 lbs; acclimated and a uniform producer.

YOUNG ENTERPRISE.—An English Shire stallion, 16½ hands high, weighs in condition 1650 lbs. Very handsome and a sure foal getter.

TWO high-bred jacks, one 15 hands, the other about 13½, both young and good performers.

The above are for sale at Pleasant Valley Horse Ranch, P. O., Crafton, Wise county. Railroad station, Sunset, on Fort Worth & Denver. All stock guaranteed.
Address PERRYMAN & MARSHALL,
Crafton, Texas.

Texas Blue Grass Sets,

Hand-stripped extra cleaned Johnson Grass seed, Bermuda Grass seed, Japan Clover and other field seeds, for sale by

H. POST,

SELMA, ALABAMA

P. J. WILLIS & BRO., "WOOL"

CONSIGNMENTS

SOLICITED.

GALVESTON, TEXAS.

Notice to Cattle Buyers

The undersigned will have for sale and delivery on May 25th over one hundred head of kind stock cattle, consisting of some good and trained milch cows; some three-year-old heaves, but mostly young cattle of both sex. They will be in pen May 25, three miles from the town of Grapevine, Tarrant county, Texas, where they may be shipped by rail if sold.

Parties interested in buying can address me until then at Bayou LaChute, Caddo Pa., La.
M. A. BONNER.

FORT WORTH.

Chicago, Illinois, to Chicago in Texas.

A train now leaves Chicago via the Chicago & Alton railway at 6 o'clock p. m., and arrives at Higbee, Mo., at 5 a. m. the following morning. Twenty-three minutes later the M., K. & T. train leaves Higbee for Texas reaching Fort Worth, Texas, the following morning at 8:45. The train is 11½ hours to Higbee, and 27¼ from Higbee to Fort Worth, a total from Chicago of 38¼ hours, or about the time ordinarily taken for passenger service between Fort Worth and St. Louis. In effect by this route the traveler loses one business day only between Chicago of Illinois and Fort Worth, (the Chicago of Texas). When a through sleeper is placed on this route it will undoubtedly gain the through traffic between Texas and Chicago.

General Range and Stock Notes.

An advertisement in the TEXAS LIVE STOCK JOURNAL talks to ten thousand men.

Col. J. R. Coats of Weatherford is moving 400 head of horses from Palo Pinto to Colorado.

Mr. Wm. Hittson of Stonewall county has sold 2000 steer yearlings to Winfield Scott. The price is said to be about \$8 00 per head.

Ben Hampton of Caddo, I. T., a prominent stockman of that territory was in town during the past week looking up blooded stock.

F. E. Cox, Black Jack Grove; W. F. Hope, Epworth, are mentioned in the records as recent purchasers of pure blood Holstein cattle.

Mr. H. H. Pierce of Roswell, Lincoln county, N. M., is advertising 4000 head of New Mexico steers. The notice is in the For Sale column.

General H. B. Stoddard, president of the Texas Live Association was in Fort Worth during the week, attending the Knight Templars' conclave.

Do not fail to notice the advertisement of Major Campbell Brown announcing his annual sale of trotting and pacing horses, Jersey cattle and ponies.

C. F. Estill of the Kentucky stock yards sold this week a purely-bred Holstein bull for \$100 and a lot of small cow ponies at retail at an average price of \$30.

We are still sending the TEXAS LIVE STOCK JOURNAL and the Fort Worth Weekly Gazette, both papers, one year for two dollars. Address us at Fort Worth, Texas.

Mr. John Nesbitt of St. Louis, general live stock agent of the Chicago & Alton railway, arrived in town Wednesday and stopped over a day in Fort Worth

Mr. O. C. Lane of Santa Anna, Coleman county is offering for sale a fine bunch of mares and colts, also a lease.

Texas cattle are not running freely because the market is not asking for them. The Texas shipments are not responsible for present prices and will not be for thirty days.

Mr. W. H. Jolly of Wichita Falls was down to Fort Worth during the early part of the week and reports the cattle interests as resting easy, stock doing well and no sales of any importance.

The Nueces Land & Cattle company of Uvalde shipped eight successive trains of cattle from Uvalde to Red Rock and Ponca, I. T., in the Street stable cars without the loss of an animal, not even one crippled.

Mr. W. W. McIlhany of the U. S. Yards, Chicago, is now with The James H. Campbell Co. Mr. McIlhany is one of the oldest cattle salesmen in the yards and will greatly add to the facilities of the company securing his services.

At the present time the live cattle shippers on the Chicago market are buying about as many cattle per week as the entire receipts amounted to in 1880, 1881 and 1882, and for all this prices are about a cent lower than last year at this time.

Messrs. Knight & Wilson of Tarrant county advertised a fine lot of imported jacks in the columns of the JOURNAL and sold all the year for sale. Mr. Wilson says that out of eleven jacks sold the STOCK JOURNAL advertisement sold ten of them.

Messrs. Wheeler, James & Co. of the Union Stock Yards, St. Louis, Mo., quote choice Indian and Texas steers at \$2.75@3.50, and native muttons as follows: Common to fair, \$3 to \$3 50; fair to good, \$3 60 to \$4 50; choice to fancy, \$4.75 to 5 25; lambs, \$1.50 to \$3.

Messrs. Daggett & Nicholson of Fort Worth sold about 500 head of Tarrant county three-year-old steers to Harry Halsell at \$16 around. They also sold 500 head of yearlings and twos to S. B. Burnett at \$7 50@12 respectively and delivered the same during the week in good shape.

Mr. W. De. S. Maud of the Moon ranche in Cottle county has sold about 1500 steer cattle to the Genesee Cattle company at \$14.75 for two-year-olds and \$19.75 for threes, the cattle to be delivered in the nation. It is said that Mr. Maud also sold 1000 two-year-old heifers at \$10 50 around to the Prairie Cattle company.

On Saturday last Mr. Glen Walker of Fort Worth donated the right of way through his land for a mile adjoining the stock yards for a railroad to be built from the Texas & Pacific track. This will give the Missouri, Kansas & Texas, the Fort Worth & Denver, the Transcontinental and the Houston & Texas Central access to the Union Stock yards.

Hatcher, Woods & Coppinger of Fort Worth are on the market with a fine lot of North Texas brood mares, and sold their first car load to Alford & Miller of Humboldt, Tennessee. These mares are all North Texas improved stock, and Messrs. Hatcher, Woods & Coppinger are prepared to do a larger business than last year, having twice the usual quantity of stock on hand.

John S. Powell & Co. of Fort Worth sold to J. V. Taylor of Tennessee one car-load of horses and mares—the horses at \$30 00 and the mares at \$25 00. They also sold to F. S. Conover four head of pure bred Galloway bulls. From Wm. Taylor they purchased a choice saddle stallion, and they are now shipping a car-load of Durham bulls to San Antonio.

At Ewell farm, thirty miles south of Nashville, Tenn., on May 29th Major Campbell Brown will offer for sale 81 head of trotting and pacing horses, 12 nicely broken ponies and 20 head of finely bred young Jersey cattle. The catalogue can be obtained by addressing Major Campbell Brown, Spring Hill, Tenn. This is one of the most important spring sales and the horses offered are of the very best.

Mr. W. S. Ikard of Henrietta, breeder of Berkshire swine, writes as follows: I sold to E. W. Greenwood of Lampasas two sow pigs on April 25th for Mr. J. M. Malone, and he has ordered another pair of pedigreed pigs. I ship today to S. H. Colwick of Norse, Bosque county, one boar pig to-day, two sows to follow when old enough. Your valuable paper did it for me and I could not afford to be without the paper and advertisement in it.

Captain S. A. Hatcher of Fort Worth started for Young county with 750 head of steers, taking along Doc Shannon and a mule as part of the equipment. There is a controversy now going on at the office of Hatcher, Woods & Coppinger as to whether the herd is bound for Young county or bound for Fort Worth; the cattle are about evenly divided—some moving east and some going west. They agree that Doc Shannon fell off his mule and stampeded the herd, but cannot determine at present what has become of him.

Mr. H. H. Metcalf, a prominent ranchman of Colorado, secretary of the State Cattle Growers' association, and member of the live stock sanitary board, was in Fort Worth bound homeward on Saturday last. Mr. Metcalf has been rusticiating and recruiting his health at Biloxi, Miss., and is now voluntary live stock agent of that place advocating it as a winter resort for stockmen of luxurious tastes and limited means. Mr. Metcalf has quite a variety of alligator and fish yarns in his possession, also a pocketful of evidence in support of the same.

A joint tariff sheet just issued by the Fort Worth & Denver and the Union Pacific railroads, applying to range cattle in train loads from points on the Denver road in Texas to points on the Union Pacific road in Wyoming and Montana makes the rate for transportation in stable cars very close to the rate charged for ordinary stock cars, and should bring many stable cars in use for this traffic. For instance, from Giles to Wendover the rate in a 36 foot stable car is \$70.80, and in a common car of the same length, if such cars were in use, the rate would be \$69; so that for the same service in the stable car the extra charge is only \$1.80 per car. This is done in a liberal spirit. The Fort Worth & Denver road and the Union Pacific management are giving stockmen every advantage consistent with decent remuneration for services rendered, and will so increase the popularity of the rail trail.

\$100 Reward. \$100.

The readers of the JOURNAL will be pleased to learn that there is at least one dreaded disease that science has been able to cure in all its stages, and that is Catarrh. Hall's Catarrh Cure is the only positive cure now known to the medical fraternity. Catarrh being a constitutional disease, requires a constitutional treatment. Hall's Catarrh Cure is taken internally, acting directly upon the blood and mucus surfaces of the system, thereby destroying the foundation of the disease, and giving the patient strength, by building up the constitution and assisting nature in doing its work. The proprietors have so much faith in its curative powers that they offer One Hundred Dollars for any case that it fails to cure. Send for list of testimonials. Address

F. J. CHENEY & CO., Toledo, O.
Sold by Druggists. 75c.

Subscribe for the Stock Journal.

Cattle for Sale.

Three hundred three and four-year-old steers for sale. Correspondence solicited.
HUGHES & OLDFHAM,
Bonham, Texas

DALLAS.

DALLAS DOTS.

Kirby & Askins of Collin county sold a bunch of choice grassers to the local butchers.

W. R. Woodhouse of Weatherford sold 1 car of choice corn-fed cows to G. H. Langsdale of Texarkana at 24c, for butcher purposes.

E. Fitzgerald of Denton sold one car of cows and veal calves in this market.

G. B. Egan of Denton county arrived on the market with a car of fine one and two-year-olds.

E. L. Morgan of Dallas county sold a car-load of corn-fed hogs on the Dallas market at 4c.

J. J. Munday of Wylie sold a lot of fine lambs in this market.

Ed Williams of Dallas county sold a fine lot of cows and calves to dairymen of this city.

King & Pior collected in this and adjoining counties 300 head of one-year-old steers, and have delivered the same to Halsell of Decatur at \$7 per head. Tobe Odem said they were the finest lot of young steers he had seen this season.

Thomas Coleman, the cattle man from Cottle county, was in the city this week.

The stock yards here frequently get telegraphic orders for car-load lots of beef cattle from distant points which are shipped at once, so the JOURNAL is informed by one of the proprietors.

Who doubts advertising in the For Sale and Exchange columns? Dr. Hewett, the dentist, advertised five times and sold his cattle. It's a good idea to advertise as Dr. Hewett did. When he gave us his ad. he said leave it in till the cattle are sold.

Bucklin's Arnica Salve.

The best salve in the world for cuts, bruises, sores, ulcers, salt rheum, fever sores, tetter, chapped hands, chilblains, corns, and all skin eruptions, and positively cures piles, or no pay required. It is guaranteed to give perfect satisfaction, or money refunded. Price 25 cents per box. For sale by H. W. Williams & Co.

Sales of Live Stock at Central Stock Yards, Wallace & Black, Proprietors, Dallas, Tex.

John Thall sold 100 head of hogs at 4c.

Bill Thomas, 1 car of cattle; also 1 car of sheep to Kahn of Texarkana, at 3c.

J. B. Wilson, 50 steers to local butchers at \$2.85 per 100 gross.

Bob Nelson, 20 steers at \$2.75 per 100 lbs.

C. T. Lewis, 40 head of cattle to local butchers, \$2.60 per 100.

Stark Bros. of Richardson, 10 head of cows, 24c.

Malcolm & Co., Waxahachie, 20 head cows and yearlings, 24c per lb.

Vol Brown, a nice bunch of 20 cows at 24c per lb.

Henry Scott, 20 cows, \$20 per head.

Samuel Sample, 20 nice steers, \$2.85 per 100.

Bill Thomas, 1 cow, 1300 lbs, dressed 800 lbs net, to Bill Owens at 3c per lb gross.

B. P. Caldwell, 15 cows to local butchers at various prices.

Parson Live of Dallas county, 15 cattle to Frank Hann, \$2.70 per 100.

Willingham to Thomas, 21 steers, \$2.75.

S. Marshall, 20 veal calves, 4c per lb gross.

Haterfield, 20 steers to local butchers, price unknown.

John Herndon, 40 head of cattle to local butchers, prices unknown.

ST. JACOBS OIL
For Rheumatism.

Fresh Proofs Just Received.

25 Years. Sandville, Ohio, June 19, 1888. Was taken with rheumatism in 1861; suffered at times ever since and used crutches; St. Jacobs Oil cured me about 2 years ago; no return since.
GEO. E. NIXON.

11 Years. Columbus, Ohio, June 12, 1888. Taken with rheumatism 12 years ago; suffered till one year ago; cured by St. Jacobs Oil. No return since.
E. E. BRYAN.

Crippled Feet. Washburne, Ill., May 22, '88. Five years ago had rheumatism in my feet; suffered 3 years; used cane. St. Jacobs Oil cured me.
JOSEPH FELS.

AT DRUGGISTS AND DEALERS.
THE CHARLES A. VOGELER CO., Baltimore, Md.

Messrs. Wallace & Black conclude the report saying: "Market firm with good supply on hand, owing partly to the firmness of the markets north. Prospects improving. We fully appreciate your valuable paper, and wish it good success, as it well deserves."

Sales of Cattle at Carter & Son's Stock Yards, Dallas, Texas.

W. J. Truefford sold 18 cows at 24c, average 764 lbs.

B. E. Davis of Collin county sold 9 steers at 24c, average 960.

Mr. Morrow of Dallas sold a choice bunch of corn-fed steers to Chas. H. Williams at 3c, average 970.

L. E. McElary of Kaufman county sold 22 cows at 24c, average 820.

E. Fitzgerald of Denton county sold a choice lot of veal calves to local butchers at 4c, average 170.

J. E. Emberson of Pilot Point sold a lot of muttons at 3@34c.

Taylor Bros. of Dallas county sold a bunch of choice grassers to local butchers at 24c.

C. J. Murphy of Tarrant county sold 29 sheep at 3 1/2 @ 4c, average 98.

Dr. Edwards of Ellis county sold 23 hogs at 4c.

J. Buckart of Cedar Hill sold a bunch of hogs at 4c.

L. T. Bradley of Arlington sold 2 bulls at 14c, weight 2270.

A. L. Kanaday contracted 76 two-year-old steers to Mat Hunter at \$11.75 per head.

C. B. Perry sold 7 hogs at 4c, average 173.

Sam McMullen sold 8 veal calves at 34c average 209.

O. J. Smith sold 21 sheep at 24c, average 72.

B. C. Williams sold 18 goats to local butchers at \$1.75 per head.

W. O. Rodgers sold 3 milch cows at \$26 per head.

E. E. Davis sold 3 cows at \$13 per head.

K. W. Putz sold 9 hogs at 4c.

C. P. Miller sold 7 yearlings at \$8.25 per head.

G. H. Mason sold 2 milch cows at \$20 per head.

L. B. Wiggings sold 3 hogs at 4c.

A. Sanders sold 1 bull at 14c.

J. T. McCarmack sold 11 goats at \$1.75 per head.

Joe Bolantz sold 18 cows at 24c, average 784 lbs.

J. J. Goodwin sold 6 steers at \$2.60 per hundred, average 904 lbs.

P. L. Phoenix sold 8 hogs at 24c, average 208 lbs.

Open Orders Solicited.

Messrs. Turner, McClure & Co., the wholesale and retail grocers of Fort Worth, Texas, are making low prices on all goods in their line, and have a full and complete stock. They make a specialty of sending goods all over the country, and stockmen can save a big per cent. on their purchases by sending the firm open orders for goods. A letter received by them is given the same attention as if you visited them personally, and satisfaction is guaranteed in every case. Send for their price list at once. Address
TURNER, McCLURE & Co.,
Fort Worth, Texas.

Butchers' and Drovers' Stock Yards Dallas, Tex.

CARTER & SON, Props.,

Live Stock Commission Merchants.

Largest and best yards in Dallas. Only yards having the facilities for shipping and receiving from all the railroads. Office at theyards. Street cars to pens. Liberal advances made on all consignments. Stock scales at pens. Telephone connections.

A. SCHLAECHTER.

O. F. MYERS.

THE U. S. CARRIAGE CO.,

Builders of Fine Buggies, Carriages, Phaetons, and Carriage Parts.

Nos. 251, 253, 255, 257, 259 and 261 South Fourth St., COLUMBUS, OHIO, U. S. A.

G. V. KANE, State Agent,

DALLAS, TEXAS.

FOR SALE OR EXCHANGE.

\$2,500,000 TO LOAN ON REAL ESTATE at 10 per cent. straight

BY WRIGHT & LENOIR,

At Mansion Hotel, Fort Worth, Tex.

Also have some choice

Farm Ranch and City Properties FOR SALE.

And invite correspondence from buyers and sellers.

T. P. LENOIR, Live Stock Broker, will contract horses, cattle or other live stock.

CHAS. I. EVANS.

J. GOUGH.

EVANS & GOUGH, Attorneys-at-Law,

Cor. Commerce and Lamar Sts.,

DALLAS, TEXAS.

W. C. YOUNG, of the Llano Live Stock Co.

T. C. ANDREWS, J. M. KUHEN.

YOUNG, ANDREWS & KUHEN, Dealers in— LIVE STOCK—

Tenth and Houston Sts.,

FORT WORTH, TEXAS.

Cattle contracted for spring delivery. Horses of every description in yards and pastures. Cow-horses a specialty. Horses, mares, mules and jacks for sale at all times. We are prepared to enter into contracts for the delivery of cattle, horses, mares and mules at any point in Texas, and solicit correspondence.

Berkshire Pigs.

I have pure-bred Berkshire pigs for sale, one to five months old, all from choice, hardy importations.
W. S. IKARD,
Henrietta, Texas.

Panhandle Pasture.

A good well watered mesquite grass Panhandle pasture, 20,000 acres in extent, and no stock on it now. Can be had on reasonable terms to pasture yearlings at a price per head per year. Will not take over 1600. For particulars address
PASTURE,
Care Stock Journal, Fort Worth, Texas.

Herefords and Shorthorns For Sale.

400 bulls, high graded Herefords and Shorthorns, for sale. A herd of 56 head on exhibition at the fair. Every animal is Texas raised and fully guaranteed against splenic or Texas fever. For further particulars address
LEE HALL,
San Antonio, Texas.

Shorthorn Bulls For Sale.

100 head of Shorthorn yearling bulls and heifers; also 1 car-load of two-year-old bulls, all reds and raised at Blue Mound Stock Farm. For prices address
J. W. BURGESS,
Fort Worth, Texas.

C. F. ESTILL,

Live Stock Commission Dealer,
Fort Worth, Texas.

Yards on Calhoun St., between 7th and 8th. Office at Yards. Live stock of every description boarded and yarded, and sold on commission. We solicit consignments.

FOR SALE OR EXCHANGE.

J. W. FIELDS. TOBE ODEM.

FIELDS & ODEM,

Real Estate and Live Stock Agents,

Do a general Commission Business. Pay freight on all stock consigned to us. Butchers' stock a specialty.

Office at St. James Hotel, Main Street, Dallas, Texas.

We Wish to Sell Our Entire Herd of Horses,

which has been improved by using



DRAFT STALLIONS

Will sell any age, or stallions separate, if so desired; also, have a small well-improved ranch for sale.

B. P. STERRETT,
Hulltown, Shackelford County, Texas.

CUPPER ROAD

Warranted the Best. Easiest rider made. Tight Foot Rack to prevent dust. Made for two passengers; carries one easier than all others. Delivered anywhere in Texas, \$20 cash with order.
PARLIN & ORENDORFF CO., Dallas, Texas.

Central Stock Yards, WALLACE & BLACK,

Successors to J. W. Thomas & Son,

Commission Dealers in Live Stock.

We have facilities for transferring from stock pens of all railroads. Liberal advances made on all consignments. Accommodations first class. Telephone connection. Street cars by office. East Dallas, Tex.

DR. O. B. HEWETT, THE DENTIST.
Dallas, Texas.
Teeth extracted without pain.
The BEST is the CHEAPEST.

JOHN KLEIN, Practical Hatter,

912 Main St., Dallas, Texas. Silk hats waiting. Stiff cleaned, trimmed for \$1.35. Work warranted first class. Orders by mail or express promptly attended to.

CITY HOTEL - CHICAGO.

Corner State and 16th Sts.

SPECIAL TO STOCKMEN, \$1.50 PER DAY. Nearest to outside the yards. Table and Rooms first-class. State st., Archer av or L. S. & M. S. Dummy pass the house to a part of city and depots.
W. F. OBCUTT, Proprietor

Chester White, Berkshire and Poland China Pigs, Fine Setter Dogs, Scotch Collies, Fox Hounds and Beagles, Sheep and Poultry bred and for sale by W. GIBBONS & Co., West Chester, Pa. Send stamp for Circular and Price List.

Quarantine Regulations Governing the Admission of Cattle to New Mexico.

The quarantine regulations of the territory of New Mexico go into effect on March 15th of each year and continue in force until November 15th of the same year, whereby all cattle coming from south and east of the below described line in Texas and from the district in Mexico as outlined are prohibited admission, to-wit: South and east of a line extending the southern boundary line of New Mexico east to Mitchell county, Texas, thence north along the west side of Mitchell, thence east along the southern line of Scurry, Fisher and Jones counties, thence north along the western lines of Shackelford and Throckmorton counties, thence east along the north boundary line of Throckmorton county, and thence north, crossing the Denver, Texas & Fort Worth railway near Wichita and on to the 36th parallel in the Indian Territory; as well as all cattle from that portion of Mexico lying east of the Mexican Central railway from El Paso, Texas, to the 26th parallel of latitude, are absolutely prohibited admission into New Mexico, except cattle that are destined to points outside of the territory and being transported all the way through New Mexico by rail without unloading except into designated quarantine stock yards provided by the railway companies.

If any person, persons, company or corporation shall violate the provisions of the foregoing sections, the penalty imposed is not less than \$100 nor more than \$5000 for each offense, as well as further liability in such civil action as may be instituted by reason of damages that may result from such action.

It is necessary for any one bringing cattle into New Mexico to first obtain a written permit either from the board, veterinary surgeon, or its employes, who are designated as inspectors. Failure to comply with this provision is punishable by a fine not less than \$500 nor more than \$5000 and, besides, the person so violating the law is liable personally for all loss and damages sustained by reason of the introduction of any contagious or infectious disease from cattle unlawfully imported into the territory. Any person may require the person in charge of cattle to produce for his inspection the permit granted by the board. A refusal to produce said permit upon demand at any time within a year from the time the cattle were driven in shall be subject to all the penalty named in the foregoing sections. For all cattle, the owner or person in charge of which desires to have inspected at any place other than the designated points of inspection, the application for such inspection must be made at least ten days in advance of the time specified for such inspection. The applicant for such inspection must pay all expenses of inspection and investigation, including per diem and traveling expenses of the person or officer making the same and designated for that purpose by the board.

Cattle brought into New Mexico in violation of any of the provisions of the law of quarantine are not only subject to all of the aforesaid penalties, but they can be seized and held for the payment of said penalties. These liens take precedence over any other lien or incumbrance on such cattle existing at the time of their unlawful importation. Said liens become effective also as security for ultimate payment without further legal proceeding, except the foreclosure by sale of the cattle on execution.

The places of inspection on the eastern boundary line of New Mexico for Texas and other cattle are at El Paso, P. Mothersill, inspector; the point where the river crosses the line of New Mexico, Geo. H. Williams, inspector; the point where the Fort Sumner and Texas road crosses the New Mexico line, R. C. Temple, inspector; the point where the

Canadian river crosses the New Mexico line, T. G. Duncan, inspector; at Clayton and Raton, N. M., G. E. Lyon, inspector.

Address all communications to the office of the secretary of the cattle sanitary board of New Mexico, at Las Vegas, N. M.

LEWIS LUTZ,
President, East Las Vegas, N. M.
J. E. SAINT,
Albuquerque, N. M.
S. S. JACKSON,
Kingston, N. M.
J. D. WARNER,
Secretary, Las Vegas, N. M.

A Life Preserver,

thrown to you in the sea of troubles that threatens to engulf you ladies in its danger-fraught waves, so to speak, and one that will float you over their threatening crests with perfect safety, is found in Dr. Pierce's Favorite prescription. You make a dangerous mistake if you do not seize and make use of it, if you are afflicted with any of those distressing ailments peculiar to your sex, styled "female complaints," for it is a guaranteed cure for each and every ill of the kind. The only medicine sold by druggists, under a positive guarantee from manufacturers, of satisfaction in every case, or money refunded. Read guarantee on bottle-wrapper.

Agriculture as a Profession.

The above title is the subject of an article in Harpers Monthly for June by James K. Reeve. It starts out by saying that in the near future farming will have to be conducted on closer and more enlightened methods than now obtain. He then shows that American production per acre in very small as compared with other nations. Mr. Reeve then states that the present generation will see the limit to expansion of territory; that lands will increase in value, and the farmer will have to come right down to business to make ends meet at all. The article mentions the coming necessity for general application of scientific knowledge and exact methods in agriculture in order to produce the best results and believes the necessity will be supplied when men are educated for agriculture as a profession or business men yield to the superior inducements of agriculture and carry to the farm the qualities insuring their success in other walks of life.

The writer goes through a vast amount of interesting matter showing the favorable results of small farms thoroughly cultivated and distinctly marks the difference between the methods of the farmer using small tracts of land adjacent to market and those of the great West having control of cheap lands in large quantities. The one economises land because it is expensive: the other economises labor. The Western man tills 100 acres and does not derive so great a return as well directed labor can derive from ten acres situated snug up to the market.

The article is an admirable one and advocates a higher education, a more practical education and a more

thorough education for farming as a profession, one that will guide the agriculturalist to the production of many crops not ordinarily raised upon the farms. Such an education as will cause the "man with a hoe" to study his soil, climate, market conditions, and all the requirements necessary for the growth and development of all vegetable matter and virtually insure success for the agricultural operators conducted by proper methods after the whole conditions have been rightly ascertained.

CAUTION.—Buy only Dr. Isaac Thompson's Eye Water. Carefully examine the outside wrapper. None other genuine.

STOCKMEN

Of Texas and the Indian Territory, or elsewhere, who are visiting St. Louis and Chicago, can save money by purchasing their

CLOTHING

In St. Louis of us.

We are the Leading Clothiers of St. Louis, carry the largest stock of fine goods, and will make a suit to order, on short notice, cheaper and better by thirty-five per cent. than you get a similar suit at home.

Call on us, mention the Texas Live Stock Journal, and your purchases will be expressed at our expense. Send for an Illustrated Catalogue; mailed free.

F. W. HUMPHREY & CO.,
Corner Broadway and Pine,
ST. LOUIS, MISSOURI.

WIND MILLS
THE HALLADAY PUMPING MILL is acknowledged the Standard Wind Mill of the World and is made in 18 sizes, 8 to 60 ft. diameter, 1 man to 40 horse power. It is adapted to pumping water for Stock and Dairy Farms, Ornamental and Village Water Supply and Fire Protection, Railway Water Stations, Irrigation, Drainage, etc.

THE HALLADAY is made upon honor and guaranteed THE MOST POWERFUL, DURABLE and BEST REGULATED, STORM DEFYING Wind Mill Made.

U. S. SOLID WHEEL WIND MILL
7 sizes, 10 to 22 feet diameter. Not cheaply made but heavy and strong in construction. These Mills are taking the lead of all Solid Wheels on the market, and are guaranteed the Best of their class.

PUMPS
We make a very complete line of WIND MILL, HAND AND POWER PUMPS, IRON, BRASS AND BRASS LINED CYLINDERS. Our 3 Way Force Pumps have no equal.

TANKS We make the largest assortment of Tanks on the market, consisting of Round, Half-Round and Square Stock Tanks, Milk Cooling Tanks, Storage and House Tanks. Special sizes made to order.

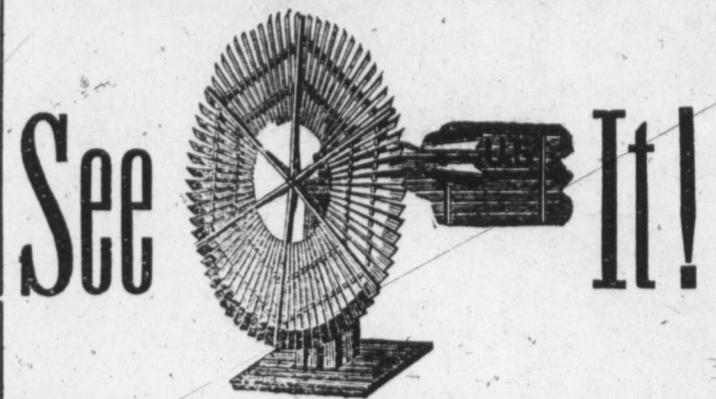
STANDARD HAY TOOLS
For stacking out in fields and mowing away in barns. The use of a good Hay Carrier and Fork a few hours before a storm, may save many times their cost. We make the most complete line of Horse Hay Tools on the market, consisting of Anti-Friction, Swivel, Reversible and Rod Hay Carriers, Harpoon and Grapple Hay Forks, Pulleys, Floor Hooks, etc.

We also make the HALLADAY STANDARD GEARED WIND MILL, in 11 sizes, 1 1/4 to 40-horse power, Corn Shellers, Horse Powers and Jacks, Stalk Cutters, Feed Grinders, Saw Tables, Tank Heaters, &c. All goods guaranteed. Send for Catalogue and Prices. Reliable Agents Wanted in all unassigned Territory.

U. S. WIND ENGINE & PUMP CO.
BATAVIA, ILLINOIS, U. S. A.
BRANCH HOUSES:—Kansas City, Mo., Omaha, Neb., Fort Worth, Tex., Boston, Mass.

U. S. Solid Wheel Halladay Standard EUREKA Wind Mills

THE U. S. SOLID WHEEL,



It is the best and most successful pumping Wind Mill ever made.

LONG STROKE, SOLID and DURABLE.
HORSE POWERS, tread or sweep, PUMPING JACKS, best in market,
Feed Cutters, Pear Cutters, Iron Pipe, Well Casing, Engines, Farm Pumps, Ranch Pumps, Hose, Belting, Brass Goods, Tanks, Well Drilling Machines, Grinding Machinery.

If you want any of the above, or if you want farm or ranch fitted with a water supply outfit, get our prices and our catalogues. It will cost you but little and may pay you well.

THE PANHANDLE Machinery and Improvement Co.

Corner Throckmorton and First Sts., FORT WORTH, TEXAS.

Branch House, Colorado, Texas.

Active Agents wanted in every county in the state.

E. H. KELLER,
Salesroom 208 Shops 210 & 212 Throckmorton St., FORT WORTH, TEXAS.



Go umbos Buggy Co.'s Buggies, Columbus, Ohio
E. M. Miller & Co., Quincy, Ill. Truckboards and Spring Wagons, Tops, Dashes, Cushions, Fine Trimming, Painting and Repairing a Specialty.



ELLIS HOTEL
Fort Worth, Texas.

The best appointed hotel in the South. Commercial travel solicited.
ED. MULLER, Proprietor.

Summer Cook Stoves.

FOR WOOD, COAL OR COBS. **safer than Oil or Gasoline.**
Why Not confine heat in a stove, so to speak, in a register, and use the same stove for Summer as well as Winter? **Price, \$7 and up.**
Hess Stove Works,
210 Van Buren St., Chicago, Ill.



STANDARD FOR TWENTY YEARS.
—BUCHAN'S—
Cresylic Ointment.
Sure Death to Screw Worms, and will Cure Foot Rot.
It will quickly heal wounds and sores on Cattle, Horses and other animals. Put up in 4 oz. bottles, 1/2 lb., 1 lb., 3 and 5-lb cans. Ask for BUCHAN'S CRESYLIC OINTMENT. Take no other. Sold by all Druggists and Grocers.
CARBOLIC SOAP CO., Manufacturers, NEW YORK CITY.

Transfers of Berkshires.

Phil M. Springer, secretary American Berkshire association, Springfield, Ill., sends the following transfers of recorded Berkshires:

Charmer, XXV 21165, N. H. Gentry, Sedalia, Mo., to M. H. Arbuckle, Dallas, Texas.

Rosa Lee, 21194, Valley Beauty, 21195 and Valley Charmer, 212,196, N. H. Gentry to J. O. Terrell, Terrell, Texas.

Transfers of Jersey Cattle.

The following is a list of the transfers of Jersey cattle to purchasers in Texas, as reported by the American Jersey Cattle club, No. 1 Broadway, New York, for the week ending April 29, 1889:

BULLS.

Lit Moore, 22457, L. W. Moore to S. P. Williams, Brownwood.

Navasota Cowboy of St. L., 19068, R. P. Owen to H. Stone, Brenham.

COWS.

Lucky Minka, 49862, W. B. Montgomery to H. Lewis, Gonzales.

Saucer's Laosa, 50934, J. Arbuckle to G. W. Cross, Garden Valley.

Is Consumption Incurable?

Read the following: Mr. C. H. Morris, Newark, Ark., says: "Was down with abscess of lungs, and friends and physicians pronounced me an incurable consumptive. Began taking Dr. King's New Discovery for consumption; am now on my third bottle, and able to oversee the work on my farm. It is the finest medicine ever made."

Jesse Middlewart, Decatur, Ohio, says: "Had it not been for Dr. King's New Discovery for consumption he would have died of lung troubles. Was given up by doctors. Am now in best of health." Try it. Sample bottles free at H. W. Williams & Co's.

For biliousness, sick headache, indigestion, and constipation, take Dr. Pierce's Pellets. One a dose

THE STORM.

Heavy Hail and Rain Does Immense Damage.

Marfa New Era.

Last Saturday evening this section of the country was visited by a very heavy rain and hail storm. It was only the tail end that struck Marfa, but at Mrs. Crosson's ranch, Alamito creek and several other places no little damage was done.

AT MRS. CROSSON'S

the storm commenced in the early afternoon, and about 4 o'clock a regular flood came sweeping down the canyon, carrying everything before it. Mrs. Crosson's house, barn and shearing pens were situated at the very mouth of a long canyon, and the water poured down in a perfect torrent, filling the house to the depth of six or eight feet. Johnnie Crosson stepped to the door and looked up the canyon and saw the water coming. He cried to his mother and little brother to run, and they all started for the elevated ground just west of the house. They had barely time to make their escape before the water struck the house. It washed the two north rooms entirely away, and damaged the balance of the house so that it will be of no further use. All the chickens, turkeys, hogs, etc., were drowned. The entire household furniture was destroyed, or damaged to such an extent that it will be of little use. A piano recently purchased is ruined. The loss to Mrs. Crosson alone is estimated at \$5000, be-

sides the heavy loss in cattle to John M. Dean and others. The creek is literally strewn with cattle—estimated at from 100 to 300 head. The horses escaped. They were in the pasture above the house, and the water carried them clear over the fences and they swam out and were recovered. This was the most damaging flood that has ever been known in that section. The water came up to within ten feet of Bob Nevill's house. In the vicinity of the

ALAMITO CREEK

the damage done was not so extensive, but about 140 head of sheep and 30 goats were drowned for Mr. Joe Organ. W. W. Bogel got off with a loss of only 20 head of sheep. John G. Davis' field fence was washed away, and Mr. M. D. Jordan lost a few mares and colts and considerable fence.

I Use It Myself.

Jno. E. Jones, Fort Valley, Ga., a leading druggist there, says he commends Dr. Biggers' Huckleberry Cordial because he uses it himself and knows its value for bowel troubles.

A Rich Legacy.

The attorney of the Pullman Sleeping Car Co., Ex-Chief Justice Lochrane, says that old Dr. Biggers could leave no better legacy than his Huckleberry Cordial for all bowel affections.

Correspondence Solicited.

Live men (merchants preferred) wanted in Texas, to act as local agents for engines and boilers, mills, cotton gins, scales and belting, by the special representative of several large manufacturers. Address H. W. Hubbard, Dallas, Texas.

Piper & Schulthess are headquarters for all kinds of fence wire, 33 and 35 W. Commerce street, San Antonio, Texas.

C. H. Edwards' music house of Fort Worth has removed from No. 308 to No. 409 Houston street.

About Live Stock Records.

The utility of public records for the various breeds of farm animals is no longer questioned, not even by the plain, every-day farmer. As the most of these records in America were started within the United States, Canadian breeders have of late been discussing the question of having for themselves such records of the different breeds of sheep and swine.

The multiplicity of these records for any one breed does not, however, meet with general favor, since they are found only to increase the expense and make more difficult the tracing of pedigrees, without adding to the value of the animals.

Separate records for the several breeds in England, in South America or in Australia may be proper enough, but there is no reason why breeders in the United States and Canadas should not be satisfied with one record for each breed in North America.

The American Berkshire association, for example, has never drawn a line between Canada and the United States.

The same rules must be complied with and the same fees are required of the breeders of the States as of those of the Canadas, and the latter have all the privileges of the former as members of the association or patrons of the record. The same is true also of the American Southdown association, and the record it publishes.

Baby One Solid Rash.

Ugly, Painful, Blotched, Malignant. No rest by day, no peace by night. Doctors and all remedies failed. Tried Cuticura Remedies. Effect Marvellous. Complete cure in five weeks. Saved his Life.

Our oldest child, now six years of age, when an infant six months old, was attacked with a virulent, malignant skin disease. All ordinary remedies failing, we called our family physician, who attempted to cure it; but it spread with almost incredible rapidity, until the lower portion of the little fellow's person, from the middle of his back down to his knees, was one solid rash, ugly, painful blotched and malignant. We had no rest at night, no peace by day. Finally we were advised to try the CUTICURA REMEDIES. The effect was simply marvelous. In three or four weeks a complete cure was wrought, leaving the little fellow's person as white and healthy as though he had never been attacked. In my opinion, your valuable remedies saved his life, and to-day he is a strong, healthy child, perfectly well, no repetition of the disease having ever occurred. GEO. B. SMITH, Att'y-at-law and Ex Pros. Att'y, Ashland, O. REFERENCE—J. G. Weist, Druggist, Ashland, O.

Blotches and Scabs from Head to Feet.

My boy, aged nine years, has been troubled all his life with a very bad humor, which appeared all over his body in small red blotches, with a dry white scab on them. Last year he was worse than ever, being covered with scabs from the top of his head to his feet, and continually growing worse, although he had been treated by two physicians. As a last resort, I determined to try the CUTICURA REMEDIES, and am happy to say they did all that I could wish. Using them according to directions, the humor rapidly disappeared, leaving the skin fair and smooth, and performing a thorough cure. The CUTICURA REMEDIES are all you claim for them. They are worth their weight in gold to any one troubled as my boy was.

GEORGE F. LEAVITT, North Andover, Mass.

Mothers who Love their Children Who take pride in their beauty, purity, and health, and in bestowing upon them a child's greatest inheritance,—a skin without a blemish, and a body nourished by pure blood,—should not fail to make trial of the CUTICURA REMEDIES.

Sold everywhere. Price, CUTICURA, 50 cts.; SOAP, 25 cts.; RESOLVENT, \$1. Prepared by the POTTER DRUG AND CHEMICAL CORPORATION, Boston, Mass. Send for "How to Cure Skin Diseases." 64 pages, 50 illustrations and 100 testimonials.

BABY'S Skin and Scalp preserved and beautified by Cuticura Medicated soap.

HOW MY SIDE ACHES! Aching Sides and Back, Hip, Kidney and Uterine Pains, Rheumatic, Sciatic, Neuralgic, Sharp and Shooting Pains, relieved in One Minute by the Cuticura Anti-Pain Plaster. The first and only pain-killing plaster. 25 cts.

TANSY PILLS! Safe, Certain and Effective. Particulars 4c. WILCOX SPECIFIC CO., Phila., Pa.

No so-called "international" record could in practice be more international than are these, and when our Canadian friends come to look more closely into the matter, they will hardly find any ground for starting new records of these breeds, at least within their own borders.

The first few days and nights in May have been cold enough to make us wonder if in some way a part of the month of March may not have been misplaced.

Corn is being planted this season in the dust rather than (so often the case) in the mud. At least one-half of the planting is done, and some already up just enough to be nipped by the recent frost.

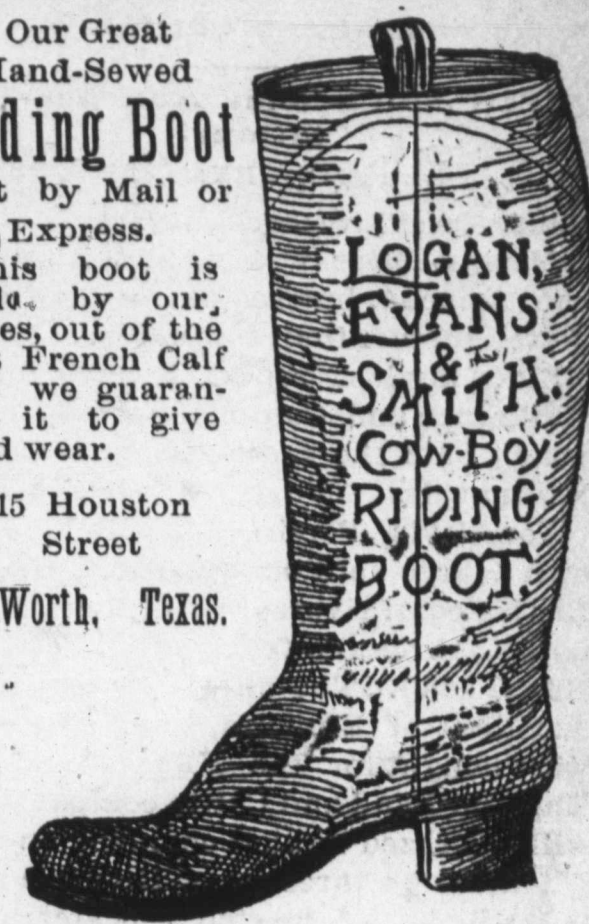
Farmers are again venturing largely in hog-raising. There has been so little loss of late from diseases that men are encouraged to try hogs once more. PHIL THRIFTON.

Largest stock of tin plate, metals, sheet iron, iron roofing and siding in Western Texas, Piper & Schulthess, San Antonio, Texas. We sell at factory prices, only freight added.

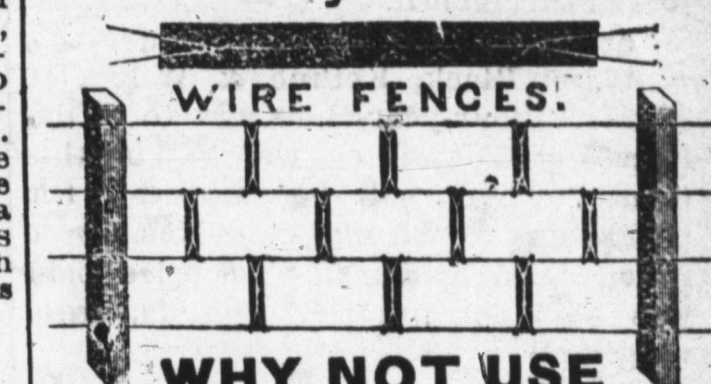
Our Great Hand-Sewed Riding Boot Sent by Mail or Express.

This boot is made by our selves, out of the best French Calf and we guarantee it to give good wear.

315 Houston Street Ft. Worth, Texas.



Steel Stay Guards For



Large smooth wire and four Stay Guards, and build the cheapest, strongest and most durable harmless fence ever put up? Can be made hog or sheep-tight. For information write WIRE FENCE IMPROVEMENT CO., 325 Dearborn Street, Chicago, Ill. Mention this Paper.

WHITMAN'S NEW PATENT GUARANTEED SUPERIOR to any LEVER PRESS NOW MADE



Received First Premium at N. Y. State Fair, in 1880, 1881, 1882, 1883 and 1885, including the Grand Gold Medal and two Silver Medals, over Dederick and others; also World's Fair at New Orleans, California State Fair, New England and Dallas (Texas) State, 1886. The most rapid, powerful and durable press made; puts over ten tons in car; bale every three minutes; fully warranted and protected; three bales to any other press's two. Also Horse Powers Cider Mills, Corn Shellers, Feed Cutters, &c. Send for illustrated circulars. Address: WHITMAN AGRIC'L CO., St. Louis, Mo.

We also make the best Steam Press in America, and Full Circle Steel, guaranteed.

PIANOS and ORGANS

Direct to customers from headquarters, at wholesale prices. All goods guaranteed. No money asked until instruments are received and fully tested. Write us before purchasing. An investment of 2 cts. may save you many dollars. Address:

Jesse French Piano & Organ Co., NASHVILLE, TENN.

Wheeler's Practical Fence Stay PERFECT HOG FENCE



Patented June 22d, 1886. WHEELER & CO., 7-21 38th St., Chicago. W. A. HOFFMAN IMP. CO., Ft. Worth, Tex.

Fort Worth Grocer Co.

We can save you money on your next bill of groceries. Give us a trial.

Fort Worth Grocer Co.

We keep in stock ROCK SALT. Orders for car lots or in small quantities filled promptly.

Fort Worth Grocer Co.

Send us a trial order for anything in the grocery line. Fresh goods at low prices.

Fort Worth Grocer Co.

Ranchmen can depend upon us, or any supplies needed. Orders by mail given special attention.

EL PASO ITEMS.

A Few Sales—Some Ranches—Quotations.

EL PASO, TEX., May 7, 1889.

Editor Texas Live Stock Journal:

My last letter was written from Tucson, Arizona, but seems to have never gotten further than this office.

Since my last report I have, for the Brokerage and Commission company of which I am the manager, made the following sales:

For Tevis, Ferrin, Land & Co., who own a large herd on the San Pedro and Barbaricomi rivers, in Southern Arizona, 1000 three and four-year-old steers at \$16 per head. The purchaser was Major A. Gillett of Emporia, Kas. The cattle were bought for the Kansas and New England Land and Cattle company, and will be grazed by that company on their extensive pastures near Emporia until fall, when it is expected the steers will be "thick fat," and bring good prices on the Kansas City market. They will be shipped from Deming, N. M., about the 20th of this month.

For Maish & Driscoll of Tucson, A. T., to Hurst, Black, Keihne & Wiley, 500 three and four-year-old steers, to be delivered at Tucson on the 10th of this month. These will be shipped by the purchasers to Strong City, Kas., to be fattened on pasture. The price paid was \$1.75 per hundred pounds, gross weight.

For Wm. T. Hughes and others of Benson, A. T., to W. M. Lacy of Minneapolis, Kas., 500 head of three and four-year-old steers, to be delivered at Benson on the 12th inst., at \$15.50 per head.

For McClure, Goodfellow and others of Tucson, A. T., to W. M. Lacy, 500 head of three and four-year-old steers, to be delivered at Huachuca, A. T., on the 12th inst., at \$15.50 per head. All of these cattle go to Kansas pastures, and as they are now in fine flesh, will doubtless bring their purchasers handsome profits.

I have recently visited some of the prettiest and best ranches in Southern Arizona that it has ever been my good fortune to see. Was greatly surprised, not only at the attractiveness of the location, improvements, etc., but at the high grade of stock found on these ranges. There are a number of large herds in this section in which none but high grade, thoroughbred bulls are used, and as a natural result the young stock are all good colors, fine styled and pretty cattle. I may mention as one of, if not the finest ranch and herd that I have ever seen, that of the Sierra Bonita Land and Stock company, located twenty-five miles north of Wilcox. This herd was started by Mr. H. C. Hooker, the president of the above company, more than twenty years ago. The beginning was made with American cattle, and by the continued use of thoroughbred bulls they have constantly improved until now they are a herd of from 15,000 to 20,000 high grade cattle. It was from this herd that the sale of 1000 two-year-old steers was made to H. S. Boice, as reported in last week's JOURNAL.

There are very few stock cattle selling—not enough to establish a market; however, mixed bunches can be bought at the following figures: Yearlings, \$7.50; twos and dry cows, \$10; cows and calves, \$13.50; making the average price for mixed lots of cows, calves yearlings and twos (equal number of each) at from \$7.50 to \$8 per head. Now that from good herds first class cattle can be bought at these figures, it certainly makes the cattle business look tempting. Indeed, any one who will carefully review the past and survey the present can come to but one conclusion, and that is that at present prices "there's millions in it."

GEO. B. LOVING.

Don't buy the Missouri penitentiary saddle trees, but buy the genuine Loeloff, for sale by Braskett & Holman, San Antonio, Texas.

A LIBERAL OFFER.

The W. A. Huffman Implement Company of Fort Worth Make a Proposition to Farmers

Attention is directed to the illustration of wheat drills in this issue on page 9, and descriptions of the same. As an evidence that these drills are a great saving over the old methods of sowing broadcast, The W. A. Huffman Implement company agree to furnish a drill to responsible farmers and take in payment for the drill the wheat saved by using the drill, in sowing, and the excess raised on one hundred acres of average farming land during a good season. This offer is made to show the faith the state agents have in the saving made by using these drills. Ask your nearest dealer for these drills and if they do not keep them in stock write to the W. A. Huffman Implement company, Fort Worth, for full particulars.

Beccham's Pills act like magic on a weak stomach.

Eclipse & Star Mills.

We make a specialty of water supply for ranches, stock farms, city factories or residences. Furnish horse-powers, pumping jacks, and well drilling machinery. The STAR and new improved long stroke ECLIPSE mills are the best in the market. Agents for Fairbanks' scales, Blake's steam pumps, &c. We repair boilers, engines and all kinds of machinery. The pioneer house in Texas.

F. F. COLLINS MANUFACTURING CO.
Fort Worth and San Antonio, Tex.

Galveston Wool Market.

GALVESTON, TEX., May 8, 1889.

Texas Live Stock Journal, Fort Worth.

The receipts for wool for the past seven days exceed those of the previous week by over 28,000 pounds, and amount to 322,160 pounds, while the sales for the same time foot up to 136,250 pounds, which is an increase of 127,720 pounds as compared to those of the previous week. The market is active and firm with a demand in excess of the supply. Twelve months' fine is worth 17½@22 and do medium 18@24, six and eight months' fine, 16@21½, and do medium 18@22½, Mexican improved 16@19, and carpet 12½@13½.

Adone & Lobit on last Monday sold five hundred bags of six and eight months' growth, which graded from medium to fine for 22 cents. An Eastern manufacturing firm recently made an offer of 22 cents for the Callahan clip of Laredo, delivered here, which was refused.

Mr. Lammers of the firm of Lammers & Flint, has just returned to the city from Western Texas, where he has been for the past week or ten days visiting the wool growers of that portion of the state, and reports that almost without an exception all who shipped their clips to this market last season, are well pleased with the prices obtained for their wool.

Col J. C. Hall, representing the firm of Nichols, Dupee & Co. of Boston, Mass., arrived in the city Tuesday and is reconnoitering the wool market. Mr. F. H. Holloway is also in town and is willing to take any bargains in the wool line that may be offered. Capt. T. H. Zanderson of San Antonio was in the city last week, and made several purchases which clearly demonstrate the fact that Galveston is the wool market of Texas. Mr. Wood, representing the firm of E. Mellor & Co. of Philadelphia, Pa., was also with us last week in quest of the fleecy staple. Mr. E. Wm. Gruendler left for the Alamo city last Friday to look after the wool interest of himself and association.

Information has been received by the leading wool firms of Galveston this week from the western portion of the state, to the effect that buyers are visiting the ranches for the purpose of purchasing clips from the growers. However, but few if any sales have been reported up to date. Past experience has demonstrated that it is to the interest of the wool men to ship their clips to this and other central points for sale.

W. N. BAXTER

By Special, May 10, 1889.

The W. T. Laughlin clip of wool, 12-months' growth, and amounting to 10,000 pounds, sold to-day for 24 cents.

THE
OSGOOD
U. S.
STANDARD SCALES.

Sent on Trial, Freight Paid
—TO ANY—
R. R. STATION IN TEXAS.
Guaranteed Correct.
3 TON WAGON SCALES
\$35.00
WARRANTED FOR FIVE YEARS.
Send for Circulars and Prices.
H. W. HUBBARD,
Manufacturers' Special Agent,
936 Commerce St., DALLAS, TEX.
Engines, Boilers, Belting, Gins, Mills, &c.

DROPSY

TREATED FREE.

Positively Cured with Vegetable Remedies
Have cured many thousand cases. Cure patients pronounced hopeless by the best physicians. From first dose symptoms rapidly disappear, and in ten days at least two-thirds of all symptoms are removed. Send for free book of testimonials of miraculous cures. Ten days' treatment furnished free by mail. If you order trial, send 10c. in stamps to pay postage. Dr. H. H. GREEN & SONS, Atlanta, Ga.

CANE MILLS

More kinds and sizes of Mills and Evaporators, for Sorghum and Sugar Cane, are made by The **Glymyer Iron Works Co.**, of Cincinnati, O., than by any other works in the world. They are the sole makers of the *Victor*, *Great Western* and *Niles Mills*, the *Genuine Cook Evaporator*, and the *Automatic Cook Evaporator*. Send for Catalogue, Prices, and The Sorghum Hand Book for 1889.

Ohio IMPROVED Chesters
WARRANTED CHOLERA PROOF.
EXPRESS PREPAID. WINS 1ST
PRIZES IN U. S. & FOREIGN COUNTRIES. 2 WEIGHED 2808 LBS.
SEND FOR DESCRIPTION & PRICE OF THESE FAMOUS HOGS, ALSO FOWLS.
L. B. SILVER CO. CLEVELAND, O.
(This Company sold 973 head for breeding purposes in 1887. Send for facts and mention this paper.)

STEDMAN, AYERS & FINGER,
Lawyers,

Corner Main and First Streets,
FORT WORTH, TEXAS.

Standard-Bred Poultry.
J. G. McReynolds & Co.,
Nechesville, Texas, breeds English Red Caps, Black Minorcas, Ga. Shawlneck Pit Games, Brown Leghorns, Langshans, Wyandottes and Plymouth Rocks. Bred strictly to the standard. The most complete poultry farm in the state. Write for wants.

CHAMPION, PENNINGTON & CO.,

Real Estate and Live Stock Brokers,

Werbiskl Building, 12th Street.

P. O. Box 42, BROWNSVILLE, TEXAS.

The New Through Line

TEXAS TO THE NORTH AND EAST

-:-Cotton Belt Route-:-

Pullman Buffet Sleepers, Free Reclining Chair Cars, Elegant Day Coaches between Texas and St. Louis, connecting in Union depot at St. Louis with trains to all points North and East. No change of cars to Cairo, Memphis or St. Louis. The shortest route via Memphis to all points in the Southeast. Double daily trains. Unexcelled service.

If you wish to save time and distance, do not purchase a ticket to any point until you have consulted an agent of the ST. LOUIS, ARKANSAS & TEXAS RAILWAY, OR
D. MILLER, E. W. LABEAUME,
Gen'l Pass'r Agt. Ass't Gen'l Pass'r Agt.
St. Louis, Mo.
W. H. WINFIELD,
Gen'l Agt. Pass'r Department,
Texarkana, Texas.

Drs. Pollock & Keller,401 Main Street,
FORT WORTH, TEXAS.**Chronic Diseases a Specialty**

MRS. M. E. KELLER, M. D., specialty diseases of women and children.

DR. J. R. POLLOCK successfully treats Piles, Fistula, Fissure and all diseases of the rectum.

Oxygen and Electricity

for the treatment of catarrh, bronchitis, consumption, dyspepsia, constipation and all diseases of the nervous system. Best of city references given upon application. Correspondence solicited.

Chickering, Wheelock, Malt ushek
PIANOS

Largest stock and best
in the state at

C. H. EDWARDS,

733 and 735 Main St.,

DALLAS, TEXAS.

Send for prices before purchasing elsewhere.

J. C. SCOTT,
Attorney-at-Law,

304 MAIN STREET, FORT WORTH, TEX.

Land and Commercial Law.

Refers by permission to Hon. Henry M. Teller, Sec. Interior, Washington, D. C.; Valley National Bank, St. Louis, Mo.; H. M. Truheart & Co. Galveston, Tex.; Gen. B. C. Ludlow, Col. Int. Rev., Austin, Tex.; City National Bank, Fort Worth, Tex.; First National Bank, Fort Worth, Texas.

THOS. F. WEST,

Late of Jacksboro,

Attorney-at-Law,

311 Main Street,

FORT WORTH, - - TEXAS

Special attention to Land and Live Stock Litigation.

J. W. MADDOX. THOS. N. DEVINE.

MADDOX & DEVINE,

-:-Real Estate:-

AND
Live Stock Commission Agts

First Floor Kampmann Block,

SAN ANTONIO, - - TEXAS.

Specialty made of Ranch Properties an handling Imported Fine Stock. Loans negotiated; correspondence solicited

FT. WORTH IRON WORKS

FORT WORTH, TEX.,

Manufacturers of the Celebrated

Ft. Worth Well Drilling Machine,

And dealers in

Steam Pumps for Boiler Feeding, Artesian Well Pumps and Pumping Jacks, Shafting, Pulleys, Gearing, Pillow Blocks, Couplings, Engines and Boilers.

COTTON PRESSES,

Cheap Screw Presses, Hydraulic Presses and Direct Acting Steam Cylinder Presses.

Furnishers of Complete Ginning Plants.

Estimates made on Roller Flouring Mills in sizes from 50 to 100 barrels per day.

Architectural Iron Works of all
Kinds Made to Order,

CHICAGO MARKET LETTER.

Fed Steers, \$3 to \$3.65; Grassers, \$2.40 to \$3.25—Shorn Texas Sheep, \$2.25 to \$3.85; Mainly \$3.30 to \$3.50—Notes and Personals.

U. S. YARDS,
CHICAGO, ILL., May 6, '89.

Regular Correspondence Texas Live Stock Journal.

The week opens with 12,000 cattle, 21,000 hogs and over 5000 sheep in the pens. Cattle firmer; hogs weaker; sheep firm.

Some of the Vick oil meal Texas cattle were recently marketed at Philadelphia. Buyers were prejudiced against the cattle until they killed a steer for a test. They were so well pleased that they paid 15@20c more than they were willing to give before.

W. W. Shearer & Co. will have a consignment of Texas cattle tomorrow. Cattle, he says, are in fine order. He says cattlemen in his country are not overstocked as they were last spring, and will not be obliged to ship regardless of prices or quality, but they will have a good crop of good beeves this year.

Mr. F. P. Evans of Galvez ranch, Duval county, came to market with 12 cars of 940-lb grass steers owned by H. G. Seeligson, which sold at \$3. He says grass has been plenty, and is now as good as it ever was; also plenty of water.

Gregory, Cooley & Co. sold for J. M. Frost 80 steers, 928 lbs, at \$3.05.

R. Strahorn & Co. sold 146 M. & O. cattle, 988 lbs, \$3.60; 19 bulls, 1186 lbs, \$2.65.

Brown Bros. sold for Davidson 661 shorn sheep, 80 lbs, at \$3.50.

Paxson, Shattuck & Co. sold for H. G. Seeligson 274 grass steers, 944 lbs, \$3.00.

The Evans-Snyder-Buel Co. sold for J. M. Frost 59 grassers, 932 lbs, at \$3. For J. M. Dobie of Beeville, 110 grassers, 885 lbs, \$3.25.

Keenan & Sons sold for Muzzy & Lewis 390 shorn sheep, 82 lbs, at \$3.55; 49 sheep, 81 lbs, \$3.55.

Wood Bros. sold 262 shorn sheep, 65 lbs, \$3.12½. For J. M. Frost, 60 steers, 918 lbs, \$3. W. P. Reed, 44 steers, 1000 lbs, \$3.40; 21 steers, 984 lbs, \$3.25. For Bennington & J., 65 steers, 956 lbs, \$3.10. A. Wheeler & Son, 60 steers, 1071 lbs, \$3.60. For A. J. Vick & Co., 167 meal-fed steers, 982 lbs, at \$3.60.

The James H. Campbell Co. sold 24 Texas steers, 984 lbs, at \$3.65. For Wheeler & Sons, 548 shorn sheep, 85 lbs, \$3.85. For J. H. & S., 311 shorn sheep, 70 lbs, \$3.35. For Howard Bland, 240 shorn sheep, 66 lbs, \$3.30.

Other sales included a lot of 69 inferior grassers, 769 lbs, \$2.40; 97 shorn sheep, 88 lbs, \$3.75; 272 do, 86 lbs, \$3.75; 172 do, 85 lbs, \$3.75; and 426 inferior shearlings, 66 lbs, at \$2.25.

A. C. HALLIWELL.

Rock-Salt.

Messrs. Turner, McClure & Co. of Fort Worth have on hand a car-load of the celebrated rock salt, which is the best salt that can be used for cattle, horses, and all kinds of stock. Cattle like the rock salt and prefer it to all other. They cannot eat enough to hurt them, as it is as hard as a rock and must be licked. Messrs. Turner, McClure & Co. will fill orders by mail promptly, either in large or small quantity. Send a trial order.

TURNER, MCCLURE & Co.

ST. LOUIS MARKET LETTER.

Market Report of Cattle, Horses, Hogs, Sheep and Wool.

EAST ST. LOUIS, ILL., }
May 7, 1888. }

Regular Correspondence Texas Live Stock Journal.

Quite a fair number of Texas steers were offered each day, but of the quality there was nothing to brag of. True, there were some good ones, and then again there were plenty of common steers. Decent to good wintered Texas steers sold well enough, all things considered, the bulk of which brought from \$3.30 to \$3.65, with a gradual downward range to \$2.50 per 100 lbs, the last price being for common coasters. Many of them are billed through, and holders refuse offers here and go further and fare worse.

The leading stock centers were, as a general thing, pretty well crowded with all kinds of cattle. At this point we had, with few exceptions, pretty fair receipts.

Good, smooth native and Southwest steers of 800 to 1100 pounds were the best selling, and these brought from \$3.10 to \$3.60, while heavy native steers of 1300 to 1500 lbs and over brought only from \$3.75 to \$4.20 per 100 lbs.

Native cow stock is quite plentiful, and fat ones sell well enough. It can be said that fat Texas steers sell readily.

But few grass Texas steers are coming in, and sales were made at \$2.40 to \$3.00 per 100 lbs.

Texas hogs, if smooth and fat, find ready buyers and at pretty good figures—within a few cents per 100 lbs of what the range native hogs are bringing. However, they must be fat and not weigh over 220 to 250 lbs.

J. H. Campbell Co. sold yesterday for D. C. Hill of McKinney 72 Texas hogs of 249 lbs at \$4.60, and for Sampson & Riddle of Alvarado 59 hogs of 222 lbs at \$4.60 per 100 lbs.

Of course, later on, when hogs become grassy they will not sell up to native hog prices, and Texas hog shippers must bear this in mind.

The Texas horse season has opened up and some are coming forward which are shipped east on orders. Sam A. White, the superintendent, says that the outlook for good stock is quite flattering, but so far no reliable prices can be given. Common stock is slow.

Plenty of Texas sheared landed at the yards the past week, the bulk of which went through in first hands. The quality was not very good. In fact, the major part of the offerings common sheep only fit for the pasture as stockers. It seems that Texas flockmasters have not taken very good care of their sheep, and now when the fleece is removed it exposes a very thin animal. Perhaps it is a surprise to them. Even those who thought they had very good sheep, when they sheared them only graded as fair.

The demand for good fat sheep was quite large, and good 85 to 90-lb clipped Texas brought \$3.60 to \$3.80 per 100 lbs. Thin 65 to 75-lb sheep were sold as stockers, and brought from \$2.40 to \$2.90 per 100 lbs.

The wool market is picking up some. Offerings are small, and not of the best quality. Good Texas wool brings from 19c to 24c; sandy, burry and common, 13c to 16c. Some Texas wools sold yesterday at 20½c.

The Western Wool Commission company have just issued their weekly circular entitled the Weekly Wool Reporter, and quote Texas and Indian Territory wools as follows: Medium twelve months, 23@24c; coarse, 18@20c; low, 14@16c; light fine, 20@22c; heavy fine and sandy, 15@17c. The quotations for six and eight months wools are as follows: Medium, 20@22c; coarse, 16@18c; light fine, 18@20c; heavy fine, 13@15c.

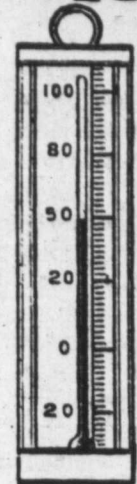
In addition to the firm mentioned above the houses in the wool trade of St. Louis soliciting consignments of Texas wools are W. J. Haynes & Co., E. S. Brooks & Co., Wm. M. Price Commission Co., Funsten & Co., W. B. Westcott & Co. and E. C. Kruse & Co. Sheep raisers or wool dealers in Texas can consign wools to any of these firms in perfect confidence that their business will be attended to properly, and the wools sold to good advantage. All the firms stand well here and are perfectly responsible.

RATTLER.

A Cure or no Pay

is guaranteed to those who use Dr. Pierce's Golden Medical Discovery for catarrh in the head, or for bronchial or throat affections, or consumption (which is lung scrofula) if taken in time and given a fair trial. Money promptly refunded if it does not cure.

RUSSIA SALVE



RASH & ERUPTIONS
INSECT BITES
FLESH WOUNDS
CHAPPED HANDS
CHILBLAINS
FROST BITES.
PRICE, 25 CENTS.

**Well Drilling Machinery
SOLD ON TRIAL.**

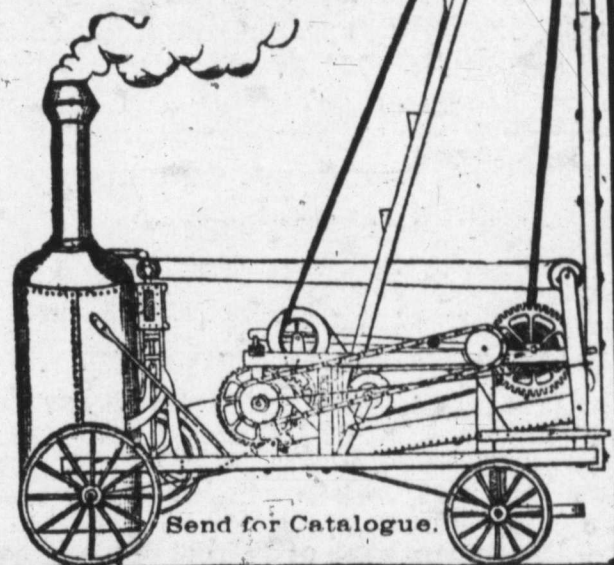
No Cash Payment—or settlement
kind—until after a

SATISFACTORY TEST.

Machinery and Tools
Guaranteed to make Wells
anywhere,

and at the rate of 3 ft. to every 2 ft.
by any other machine, or no sale.

THE BEST is always
THE CHEAPEST.



EMPIRE WELL AUGER CO.,
ITHACA, N. Y.

**WELL DRILLING
Machinery & Tools**

ST. LOUIS VISE & ARTESIAN TOOL CO.,
WELL

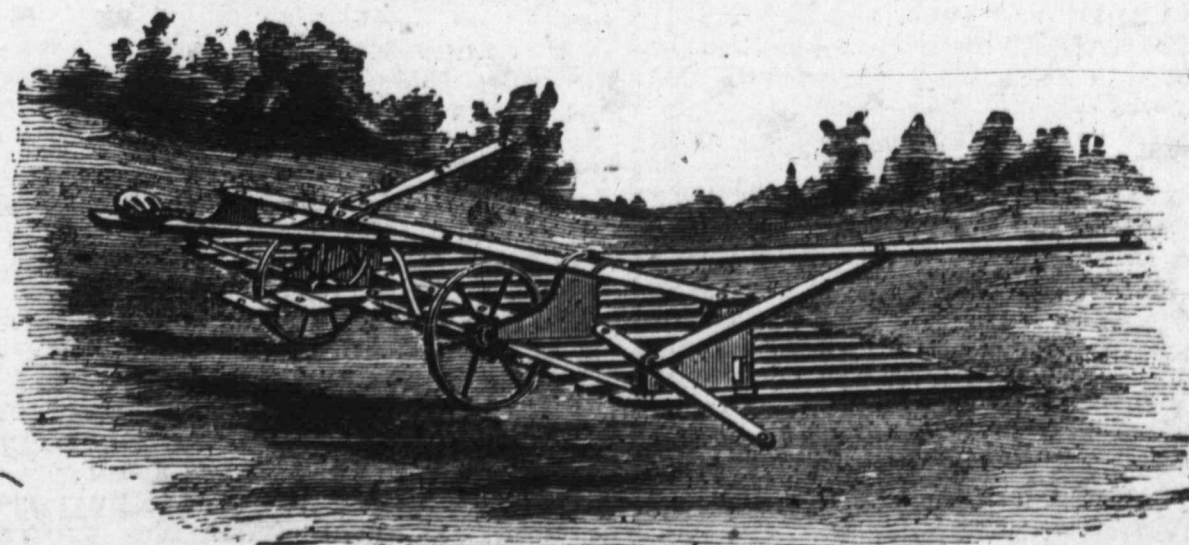
Catalogue Free: ST. LOUIS, MO.

Mention this paper.

Cedar Fence Posts!

We keep on hand a large supply of Cedar Fence Posts, ½, 8, 9, 10, 12, 14 and 16 feet long; also House Blocks. We can give special rates for car-load lots to all points in the state.

JOHNSON BROS.,
Strawn, Palo Pinto County, Texas.



THE DAIN HAY GATHERERS.

Stockmen and hay growers everywhere are using this Gatherer in preference to any other, as it does away with winnowing, shocking and hauling the hay. It gathers the hay from the swath and delivers it to the stack; being twelve feet wide, will take 600 to 800 pounds at a load. Write the

T. B. & A. MANUFACTURING CO., Kansas City, Mo.,

For descriptive circulars and price list.

The Texas Spring Palace

At Fort Worth is a magnificent structure built entirely of the products of Texas. It is a picture of Texas, made from the products and displaying the material resources of Texas.

The name is from two Greek words—Karpōs, products or fruits of the earth, and Orāma, a view or picture. The plural is Karpōramata, and consequently the many pictures on the inside of the Texas Spring Palace made entirely of Texas products are named Karpōramata.

The dome of this structure of marvelous beauty will be covered entirely with wheat. The towers made of each of some separate product of the State; one of Corn; another of Cotton; one of Oats; one of Shells of the Ocean, and thus every leading product be presented.

On the lower floors of the building will be arranged in family groups, Minerals, Grains, Grasses, Fruits and Vegetables.

The upper floors or galleries will be devoted to the work of the women of Texas, and to Flowers, Birds, Historical and Archaeological exhibits, together with pictures of Farming, Stock-Raising, Domestic Life and History.

This grand and glorious object lesson will show the world in a day a study, a glance as it were, what Texas is, and what she has to offer to capital and emigration.

The world-renowned Elgin Watch Factory Band, of over sixty pieces, led by the composer, Hecker, will furnish the orchestral music, and three daily concerts will be given of an hour and a half each. These concerts will be surpassed by nothing which can be produced on this continent.

The presidents of the United States and Mexico have been invited by special commissions are expected to meet and shake hands in The Spring Palace.

The Railroads will make an excursion rate of one fare for the round trip. Opens May 29th and closes June 20th.

W. F. SOMMERVILLE, Director-Gen'l,
WILLIS H. POST, Secretary,
Fort Worth, Texas.

Warranted not to slow down of the tower, and that our Geared Windmills have double the power of any other mill in existence. Mrs. of Tanks and Windmill supplies of every description

and the Celebrated Challenge Feed Grinders, Horse Powers, Corn Shellers, Pumps and Brass Cylinders. Send for Catalogues and Prices.

GOOD AGENTS WANTED.

Challenge Wind Mill & Feed Mill Co.,
Batavia, Kane Co., Ill

Valley View Stock Farm.

W. P. PATTILLO, Prop., Atlanta, Ga.

12 miles southeast from Gordon, in Erath county, Texas.

Percherons, Clydes, Herefords, Angoras and Poland Chinas on hand and for sale.

A special bargain is offered in full-blood and grade Angora Goats, grade male Hereford cattle, and cows bred to Hereford bulls.

Come and see, or write to

J. W. HOOKER, Manager,
Gordon, Texas.

W. J. HAYNES

H. F. LANGENBERG.

G. F. LANGENBERG.

W. J. HAYNES & CO.,

WOOL COMMISSION

Cor. Market and Commercial Streets,

ST. LOUIS, MO.

Liberal Advances on Consignments of WOOL, HIDES, PELTS, ETC.

REFERENCES: St. Louis Nat'l Bank, Dunn's and Bradstreet's Commercial Agencies

ARMENTROUT & FRAZER,

Corner of Weatherford and Throckmorton and corner of Weatherford and Lamar Streets
FORT WORTH, TEXAS.

Dealers in Wool, Hides, Etc.

Also keep in stock a full line of

WEIR PLOW COMPANY'S FARM IMPLEMENTS,

Tennessee Wagons, manufactured by Cherry, Morrow & Co., Nashville, Tenn.; Bain Wagons, H. W. Davis & Co.'s Buggies, Cincinnati, Ohio; The E. M. Miller Buggies, Quincy, Ills.; Cook & Co.'s Buggies, Cincinnati, Ohio; The Racine Spring Wagons and Carriages; The Minnesota Chief Thresher, and Traction Engines.

GEORGE L. GAUSE.

Successor to FLENNER & GAUSE.

UNDERTAKER

314 W. Weatherford St., FORT WORTH, TEX.

Open Day and Night. Orders by telegraph receive prompt attention.

Wholesale Dry Goods. **THE MARTIN-BROWN CO**
Cor. 4th and Main Streets.
The only exclusively wholesale dry goods house in the city.

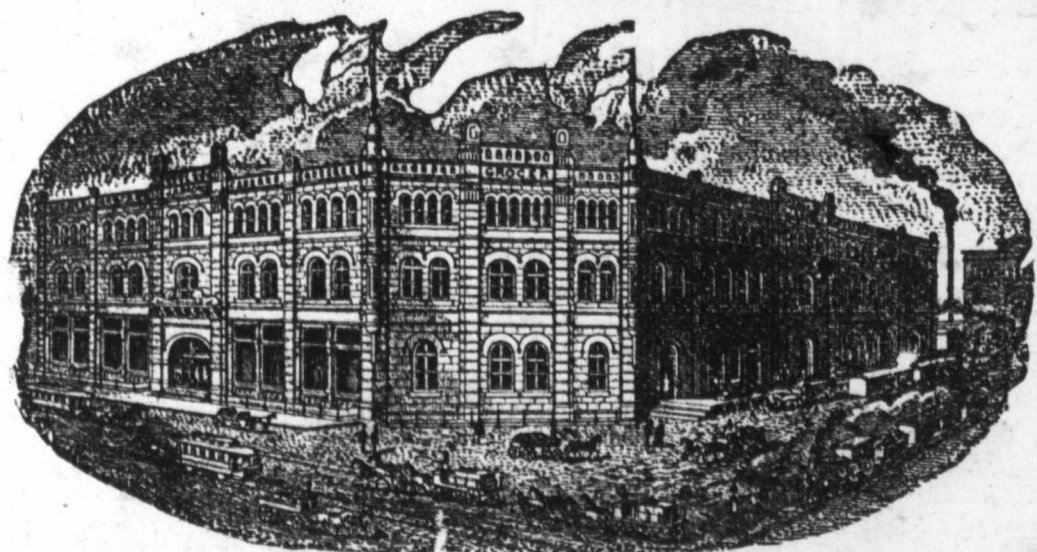
Hardware & Queensware. **W. F. LAKE,**
Cor. 2nd and Houston Sts.
Wholesale and Retail.

JOSEPH H. BROWN,

Wholesale Grocer,

Manufacturer of the Celebrated

SILVER LOAF BAKING POWDER.



Sultan Roasted Coffee:
FORT WORTH, TEX.

J. Q. SANDIDGE, Pres.

MAX ELSER, Cashier

CITY NATIONAL BANK,
FORT WORTH, TEXAS.

Capital Paid in and Surplus, \$200,000.

DIRECTORS—J. Q. Sandidge, Chas. Scheuber, Max Elser, C. M. Crane, T. T. D. Andrews, R. E. McNulty, Jas. W. Swayne, T. R. Sandidge.

M. B. LOYD, President.

D. C. BENNETT, Vice-President.

E. B. HARROLD, Cashier.

FIRST NATIONAL BANK,

Corner Houston & Second Streets, - - - Fort Worth, Texas.

CASH CAPITAL AND SURPLUS, \$375,000.

DIRECTORS—J. S. Godwin, M. B. Loyd, J. D. Reed, Zane Cetti, D. C. Bennett, George Jackson, S. B. Barnett, E. B. Harrold and E. F. Ikard.

PURE | TRUMBULL, REYNOLDS & ALLEN. | **SEEDS**
GRASS, FIELD, GARDEN & TREE SEEDS,
FERTILIZERS, Etc.
Send for Catalogue. Mailed free.
1426-1428 St. Louis Ave., Kansas City, Mo.

THE KANSAS CITY STOCK YARDS

Receipts for 1888: Cattle, 1,056,086; Hogs, 2,008,984; Sheep, 351,050; Horses and Mules, 27,650.

These yards are by far the most commodious and best appointed in the Missouri Valley, with ample capacity for feeding, weighing and shipping Cattle, Hogs, Sheep, Horses and Mules. They are planked throughout, no yards are better watered, and in none is there a better system of drainage. The fact that higher prices are realized here than in the East is due to the location at these yards of eight packing houses, with an aggregate daily capacity of 3300 cattle and 27,200 hogs, and the regular attendance of sharp, competitive buyers for the packing houses of Omaha, Chicago, St. Louis, Indianapolis, Cincinnati, New York and Boston.

All the sixteen roads running into Kansas City have direct connection with the yards, affording the best accommodation for stock coming from the great grazing grounds of all the Western States and Territories, and also for stock destined for Eastern markets.

The business of the yards is done systematically and with the utmost promptness, so there is no delay and no clashing, and stockmen have found here, and will continue to find, that they get all their stock is worth, with the least possible delay.

Kansas City Stock Yards Company

HORSE AND MULE MARKET

FRANK E. SHORT. {FRANK E. SHORT & CO., Managers.} CAPT. E. S. TOUGH.

This company has established in connection with the yards an extensive Horse and Mule Market, known as the KANSAS CITY STOCK YARDS COMPANY HORSE AND MULE MARKET. Have always on hand a large stock of all grades of Horses and Mules, which are bought and sold on commission in car-load lots.

In connection with the Sales Market are large feed stables and pens, where all stock will receive the best of care.

Special attention given to receiving and forwarding.

The facilities for handling this kind of stock are unsurpassed at any stable in this country.

Consignments are solicited with the guarantee that prompt settlement will be made when stock is sold.

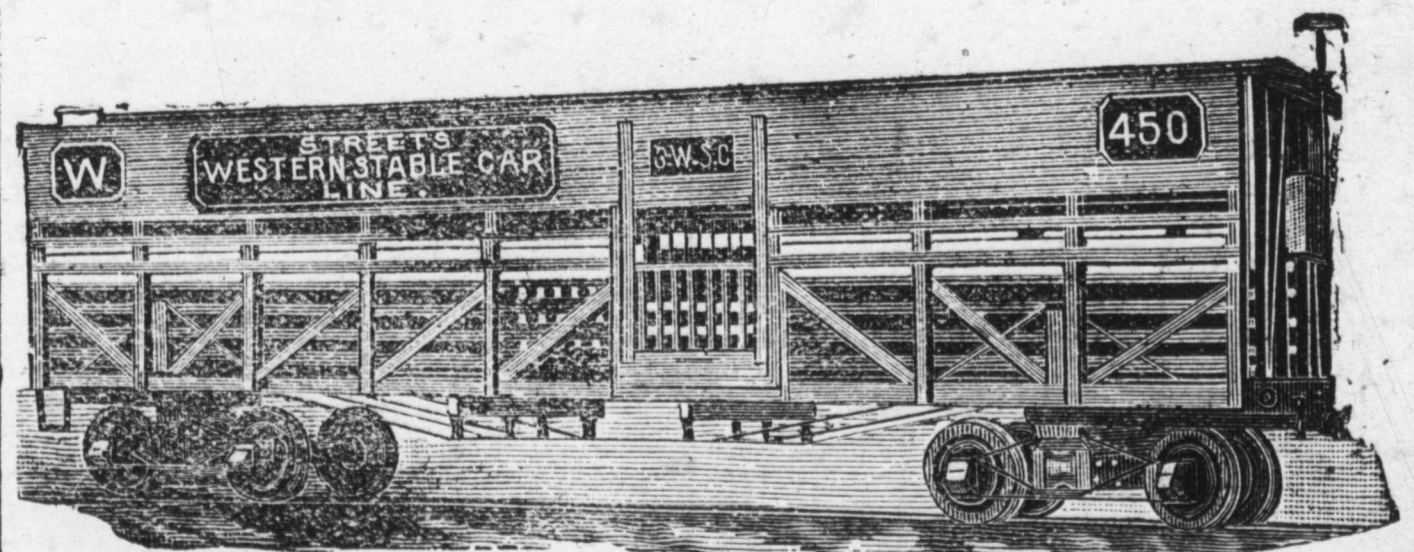
C. F. MORSE, E. E. RICHARDSON, H. P. CHILD,
Gen'l Manager. Treasurer and Secretary. Superintendent.

STREET'S STABLE CAR LINES,

GENERAL OFFICE, RIALTO BUILDING, CHICAGO, ILLS.

S. M. FISCHER, President.

L. D. KNEELAND, Gen. Traffic Manager.



Our lines of Stable Cars, operating east and west of St. Louis and Chicago, carrying horses and cattle to market, give food, water and rest to animals without unloading. For particulars, address

L. D. VOAK, GENERAL AGENT,

For Missouri, Kansas, Colorado, Arkansas, Indian Territory, Texas, New Mexico and Arizona.

FORT WORTH, TEXAS.

C. H. EDWARDS MUSIC HOUSE,

09 Houston St., Fort Worth, Texas.

Chickering, Wheelock, Mathushek PIANOS Mason & Hamlin, Western Cottage and Kimball ORGANS

Lowest prices and easiest terms.

Call and see them before buying.