


# TEXAS LIVE STOCK JOURNAL



VOL. 9.

FORT WORTH, SATURDAY, SEPTEMBER 15, 1888.

No. 7.

James H. Campbell, President, Jerome F. Wares, Vice-President, J. H. McFarland, Sec'y and Treas., Chicago, Ill.; H. F. Parry, Manager and Cashier, National Stock Yards, Ill.; G. W. Campbell, D. L. Campbell, Managing Directors, Kansas City, Mo.

## The James H. Campbell Co.

INCORPORATED.

LIVE STOCK COMMISSION MERCHANTS,

Union Stock Yards, Chicago, Ill.,

National Stock Yards, East St. Louis, Ill.

Kansas City Stock Yards, Kansas City, Mo.,

We solicit your business and invite correspondence.

## THE FISH & KECK CO.,

(INCORPORATED.)

LIVE STOCK COMMISSION MERCHANTS,

KANSAS CITY STOCK YARDS.

We have the experienced working force of the late firm of Andy J. Saylor & Co., as follows:  
**SEO. O. KROCK,** Cattle Salesman. **FRANK O. FISH,** Office. **W. C. MURRAY,** Bookkeeper. **WM. SUMMERS,** Yardman.  
**HARRY HILL,** Solicitor. **LOUIS KURTH,** also **W. J. CUMMINGS,** Hog Salesman.  
 We will be represented at Western shipping points during the range season.  
 Authorized agents for sale of strays of Pan Handle Stock Growers Association.

J. E. GREER.

FRANK O. MILLS.

## GREER, MILLS & CO.

Live Stock Commission Dealers,

Room 47 Exchange, Union Stock Yards, - - - - CHICAGO, ILLINOIS

## SEEDS

**J. C. PEPPARD,** 1220 UNION AVENUE,  
 MILLET A SPECIALTY. (One block from Union Depot)  
 Red, White, Alfalfa & Alsike Clovers, KANSAS CITY, MO.  
 Timothy, Blue Grass, Orchard Grass, Red Top,  
 Onion Setts, Tree Seeds, Cane Seed, Etc.

Z. T. WINFREE.

A. P. NORMAN.

WILEY T. PEARSON.

**WINFREE, NORMAN & PEARSON,**  
 Commission Merchants for the Sale of Live Stock,  
 Stock Yards, GALVESTON, TEXAS.

We respectfully solicit patronage of stock shippers. We make liberal cash advances on bills lading, and will faithfully endeavor to the best of our ability to subserve the interests of our patrons. Correspondence solicited.

## ALBERT MONTGOMERY

Commission Merchant for the Sale of Live Stock, Stock Landing  
 Postoffice Box 3006, New Orleans, La.

R. M. FLAUTT.

C. H. CROWLEY.

## R. M. FLAUTT & CO.,

Commission Merchants for the Sale of Live Stock,  
 Stock Landing, New Orleans, La.

## De GROAT & CO.,

LIVE STOCK COMMISSION MERCHANTS

Stock Landing, - (P. O. Box 2510.) - New Orleans, La.

## THE Union Stock Yards,

CHICAGO, ILLINOIS.

The Largest and Best Live Stock Market in the World

The entire system of the Railways of the West centers here, making the Union Stock Yards the most accessible point in the country. The capacity of the yards, the facilities for unloading, feeding, reshipping, or for the sale of stock are unlimited. There is no point in the United States where stock will find as satisfactory market and sale to the shipper as the Union Stock Yards.

The quality of feed and accommodations given cannot be surpassed at any point in the country. The great city of packing houses that are located here, the large bank capital and the large number of buyers for the Eastern market constantly on hand, make this a quick, active and independent market. Cattle from the North, West and Southwest should reach this market without fail, in order to procure the best prices. There is now established a direct Cattle, Hog, Sheep and Horse trade between these yards and the most important markets in Europe. Agents constantly here from London, Paris, Hamburg, Liverpool and Manchester. The daily shipments from these yards to Europe are from one to two steamerloads. THIS IS STRICTLY A CASH MARKET.

**N. THAYER,** President. **ELMER WASHBURN,** Gen'l Superintendent.  
**GEO. T. WILLIAMS,** Secretary and Treas. **J. C. DENISON,** Ass't Sec. Ass't Treas.  
**J. B. SHERMAN,** Vice-Pres. and Gen'l Manager.

ALLEN GREGORY.

H. H. COOLEY.

L. R. HASTINGS.

## GREGORY, COOLEY & CO.

Commission Dealers in Live Stock,

Rooms 58 and 60 Exchange Building, Union Stock Yards, CHICAGO, ILL.  
 The Pioneer House in the Texas trade. Personal attention given consignments. Business solicited.

President, Wm. M. WARREN, Banker, New Berlin, Ill. Secretary and Treasurer, LEVI B. DOUD.  
 Cashier, CHAS. KELLY. Managers, T. B. LEE, THOS. KELLY

## Chicago Live Stock Commission Company,

Incorporated. Capital Stock \$25,000.

Special attention given to the sale of Texas Cattle and Sheep. Write us for market reports.  
 Office 41 Exchange Building, Union Stock Yards, Chicago, Ill.

REFERENCES—Drovers' Nat. Bank, Union Stock Yards Nat. Bank, Chicago; Bank of Atlantic, Atlantic, Ia., Bank of Roodhouse, Roodhouse, Ill.

SAM'L SCALING, St. Louis.

W. L. TAMBLYN, Chicago.

## SCALING & TAMBLYN,

Live Stock Commission Merchants,

National Stock Yards, East St. Louis, Ill. Union Stock Yards, Chicago, Ill.

R. T. WHEELER.

C. JAMES.

J. S. MCKINNON

**WHEELER, JAMES & CO.**  
 Live Stock Commission Merchants,  
 Union Stock Yards, ST. LOUIS, MO.

## M. O. LYNN,

W. C. BROWN.

Agent for

E. E. BROWN.

**BROWN BROTHERS,**  
 COMMISSION MERCHANTS IN LIVE STOCK,

Union Stock Yards, Chicago, Ill.

Refer by permission to National Live Stock Bank, U. S. Yards, Chicago.

## JOHN MUNFORD,

Successor to R. L. MAUPIN & CO.,

Commission Merchant for the Sale of Cattle, Hogs and Sheep, - - STOCK LANDING  
 P. O. BOX 3190, NEW ORLEANS, LA.



**FOR SALE OR EXCHANGE.**  
**MONEY TO LEND**  
 On improved lands on long time,  
*At Ten Per Cent. Per Annum.*  
**STEERS,**  
**JACKS, HORSES,**  
**LAND,**  
 --For sale by--  
**R. E. MADDOX & CO.,**  
*Fort Worth, Texas.*  
 Office on Front Street, south of J. H. Brown Building.  
 If you are buying or selling call on us, or correspond.  
 Choice Lot of Two-Year-Old Steers For Sale.

**Mules, Mules.**

We have for sale at a great bargain 100 head of fine young mules, ranging from one to four years old, as follows: 3 four-year-olds, 7 three-year-olds, 30 two-year-olds, 61 one-year-olds; also 40 head more out of the same stock that will class about as above, in lots to suit the purchaser. These mules are from one of the finest jacks in the state, from good Texas mares, and are all fine large animals. Anyone desiring to purchase mules will get a bargain in this lot. Call on or address,

WEBB, CAMPBELL & HILL,  
 Albany, Texas.

**Southdown Buck Lambs.**

I have a fine lot of thoroughbred Southdown buck lambs, also a number of high-grades, which I will sell low down.

H. O. SAMUELL,  
 Mesquite, Dallas County, Texas.

**Land, Cattle, Horses and Sheep.**

Range cattle, horses, sheep and choice farming and ranch lands for sale by  
 E. H. WILKES & CO.,  
 Law, Land and Live Stock Agency,  
 Santa Anna, Coleman County, Texas.

**To Sheepmen.**

A stock of groceries worth \$6000 and a dwelling in a live railroad town in exchange for sheep. Will put them in towards paying for a large herd. Will pay some cash. Will furnish hay, range and 25-cent corn on a trade for sheep or cattle, or will exchange above for sheep or cattle.  
 GEO. W. WEST,  
 Pauls Valley, I. T.

**Elmwood Poultry Yard!**  
**R. A. CORBETT & SONS,**  
 Breeders and shippers of  
**FINE POULTRY.**



Eggs for hatching, from pure-bred and carefully mated prize-winning birds at Texas State Fair at Dallas. Will sell from the following varieties: Plymouth Rock, \$2 per setting of 13; Brown Leghorns, \$2; White Leghorns, \$2; Silver Spangled Hamburgs, \$2.50; White Minorcas, \$2. Send your orders at once; we guarantee square dealing, safe arrival and good stock. Stock for sale after Aug. 1. Write for prices.

We also have on our ranch a few high-grade Holstein bulls, Shackleford county raised, for sale. Address  
**R. A. CORBETT & SONS,**  
 Albany, Texas.

**Horses for Sale.**

The well-known Northwest Texas Horse Company have placed in our hands for sale  
 Mares and colts, 100 head  
 Dr. Mares, 100 "  
 Geldings, unbroke, 100 "  
 Two-year-old geldings and fillies, 100 "  
 One-year-old geldings and fillies, nearly all unbranded, 40 "  
 We also have in our pastures near Albany all classes of horse stock, and can fill any size order desired on short notice. Call on or address WEBB, CAMPBELL & HILL,  
 Albany, Texas

S. A. HATCHER. J. P. WOODS. CHAS. COPPINGER.  
**HATCHER, WOODS & COPPINGER,**  
 Make a specialty of handling  
**American Mares, Geldings, 1 and 2-year-old Horses and Fillies, 1, 2 and 3-year-old Steers and Stock Cattle.**

Have a large number of cattle for sale; also 1000 head of good American mares and horses. Can furnish any class of stock on short notice. Land and city property. We guarantee satisfaction. Prices given on application. 406 Main St., FORT WORTH, TEXAS.

**LIVE STOCK EXCHANGE STABLES,**  
 109 Rusk Street, Fort Worth, Texas.

Public sales of live stock on the second Saturday of each month. Stallions and jacks for sale. We make a specialty of handling good driving horses, North Texas range mares, horses and cattle. Stockmen are cordially invited to make our office their headquarters.  
**KIMSEY & JONES, - - - FORT WORTH, TEXAS.**

**FOR SALE OR EXCHANGE.**

**RANCHES FOR SALE.**

One of 12,000 acres in Clay county, near Henrietta, and one of 8000 acres in Archer and Jack counties, near Antelope. Both newly fenced and have good grass and water. Also, quite a variety of smaller tracts, including a number of splendid farms in the best farming localities in the state. Easy terms.  
 C. E. WELLESLEY,  
 Dallas, Texas.

**RECEIVER'S SALE OF THOROUGH-BRED HEREFORD CATTLE.**

Notice is hereby given that by virtue of an order and judgment made by the district court of the First judicial district of the Territory of Wyoming, sitting within and for the county of Laramie in a certain cause therein pending, wherein Charles E. Anthony and Cliff and M. Anthony are plaintiffs, and the Wyoming Hereford Association, Sir Charles Clifford and Colin J. McKenzie are defendants, and wherein the undersigned was by said court appointed receiver, which said order and judgment was made upon the application of the Stock Growers' National Bank of Cheyenne, the undersigned as such receiver will, on the 27th day of September, A. D. 1888, at the ranch of the said Wyoming Hereford Association, in said county of Laramie, about six miles southeast of Cheyenne city, offer for sale and sell for cash to the highest bidder about six hundred and ninety (690) head of Hereford cattle, of which all but about forty head are thoroughbred, pedigree animals, registered in the English or American herd books, the remainder being high-grade superior Hereford cattle. Said sale will commence at 10 a. m., September 27th, 1888, and will be continued from day to day until completed, and will be made in lots calculated to carry into effect said order of court.  
 COLIN HUNTER, Receiver.  
 Cheyenne, Wyo., July 19, 1888.

Butchers' and Drovers' Stock Yards, Dallas, Tex.  
**CARTER & SONS, Props.,**

**LIVE STOCK COMMISSION MERCHANTS.**  
 Largest and best yards in Dallas. Only yards having the facilities for shipping and receiving from all the railroads. Office at the yards. Street cars to pens. Liberal advances made on all consignments. Stock scales a pens. Telephone connections.

W. C. YOUNG, of the Llano Live Stock Co. T. C. ANDREWS. J. M. KUHEN.

**YOUNG, ANDREWS & KUHEN,**  
 --Dealers in--  
**-LIVE STOCK-**  
 Tenth and Houston Sts.,  
 FORT WORTH, - - TEXAS.

Cattle contracted for spring delivery. Horses of every description in yards and pastures. Cow-horses a specialty. Horses, mares, mules and jacks for sale at all times. We are prepared to enter into contracts for the delivery of cattle, horses, mares and mules at any point in Texas, and solicit correspondence.

**To Exchange.**

Plant for manufacture of engines and boilers, at Springfield, Ohio; also, stock of engines, to exchange for ranch or Western lands.  
 A. T. BYERS,  
 Fort Worth, Texas

**New York Rams.**

New York Rams for sale, in lots to suit the purchaser. Shropshire-downs, Oxfordshire-downs, South-downs, Cotswolds, and big, strong, woolly Merinos. Prefer to sell in car lots. Will deliver at any station on railroad in U. S. Our prices are right. We guarantee satisfaction.  
 GEO. A. & R. I. PAGE,  
 East Bethany, New York.

**WRIGHT & HANNAH,**

**FOR SALE OR EXCHANGE.**

W. F. SOMMERVILLE, Pres. A. R. MABRY, Sec. SAM'L KERR, V. Pres. and Treas.

**Western Securities Co.**

FORT WORTH, TEXAS.  
 CAPITAL \$250,000.

Loans on Farms, Ranches and Improved City Property, at Moderate Interest.

REYNOLDS & DAVED,  
 MULVANE, KAN.,



Breeders of National and Vermont Spanish Merino Sheep, from Kaby Lord, Rip Van Winkle and Lord Wool Stock.  
 Rams and Ewes at prices to suit the times

**COW-HORSES FOR SALE.**

50 head of well-broke young cow-horses, wintered through on corn. Will sell on time, good security.  
 Address, E. G. SANDEFUR,  
 Box 484 Sherman Texas.

**Feeding Steers.**

We invite correspondence with regard to feeding steers. Have some good steers for sale at fair prices, and may require some more.  
 RICHARDSON & HACKETT,  
 Fort Worth, Texas.

**C. F. ESTILL,**  
**Live Stock Commission Dealers,**  
 Fort Worth, Texas.

Yards on Calhoun St., between 7th and 8th. Office at Yards. Live stock of every description boarded and yarded, and sold on commission. We solicit consignments.

**FINE CATTLE FOR SALE.**

About 100 head stock cattle, including 25 head full-blood Durham, the balance 1/2, 3/4, etc., Durham. Will trade for horses or steers.  
 W. M. D. RICHARDSON,  
 Mountain Peak, Ellis County, Texas.

**W. C. ROGERS,**

Breeder of and dealer in thoroughbred  
**-Hereford and Shorthorn Cattle-**  
 A nice lot of bull and heifer calves for sale or trade, on terms to suit purchaser. Can furnish any kind of blooded cattle in any number. Address Mansion Hotel, Ft. Worth  
 Peach Orchard Ranch, Vineyard, Jack Co, Tex.

**C. B. WALKER,**

Millsap, Parker county, Tex., importer and breeder of pure-bred Angora Goats. Pure-bred and high-grade bucks and ewes for sale.

Chester White, Berkshire and Poland China Pigs  
 Fine Setter Dogs, Scotch Collies, Fox Hounds and Beagles, Sheep and Pontry bred and for sale by W. GIBBONS & Co., West Chester, Chester county, Pa. Send stamp for Circular and Price List.

**Live Stock Commission Merchants,**  
**KANSAS CITY STOCK YARDS.**  
 Market Reports Free. Range Trade solicited.

**FOR SALE OR EXCHANGE.**

**Feeding Steers.**

We have for sale 500 head of Hardeman county four and five-year-old steers, to be sold half cash and balance on time; also, 5000 Southwestern steers at a bargain.  
 RICHARDSON & HACKETT,  
 Fort Worth, Texas.

**Holstein-Friesians.**

Oak Glen Holstein-Friesian herd numbers seventy head of thoroughbred cattle, aged from calves to four years. I am prepared to sell from one animal to a car-load. Prices as low as can be found anywhere for this class of cattle.

S. B. HOWARD,

BONHAM, - - - TEXAS.

**Spaying and Dehorning.**

Will make engagements to spay and dehorn cattle. Will guarantee that heifers spayed by me will be perfectly quiet thereafter. Correspondence solicited.  
 J. B. ELLIOTT,  
 Mansion Hotel, Fort Worth, Texas.

**Jersey Cattle For Sale.**

I have for sale a herd of 30 Jersey dairy cattle, mostly cows in milk. Will sell all or in numbers to suit purchaser.  
 L. H. DURHAM,  
 Fort Worth, Texas.  
 Ask at Journal office for location of herd.

**FEEDING STEERS.**

Jno. S. Andrews & Company of Dallas, Texas, invite correspondence with those who desire to purchase feeding steers or to contract for cattle for future delivery.

**Ranch Properties.**

A few extensive and select ranch properties for sale by

JNO. S. ANDREWS & CO.,  
 Dallas, Texas.

**TELEGRAPHIC MARKETS.**

**Latest Reports by Wire From the Market Centers.**

**CHICAGO.**

Special to the Live Stock Journal.

CHICAGO, ILL., Sept. 14, '88.

Cattle steady. Sheep firmer.  
 Greer, Mills & Co. sold for A. B. Robertson 48 Indians, 967 lbs, \$3.50; 83, 788 lbs, \$2.85; J. T. Beall 131, 861 \$2.80; McWilliams, 76 cows, 805 lbs, \$2.30; Teller Co. 75 cows, 741 lbs, \$2.40; S. A. Reed, 104 cows, 707 lbs, \$2.25; C. M. Frank 21, 981 lbs, \$3.30; E. McKenzie, Amarillo, 64, 956 lbs, \$3.15; 15, 855 lbs, \$2.65; 8 cows, 852 lbs, \$2.45; J. Harris 19 bulls, 1101 lbs, \$2.10; 28 cows, 846 lbs, \$2.40.

W. W. McIlhany & Co. sold 187 Indians, 1070 lbs, \$3.50; 191 Indians, 1078 lbs, \$3.40; 24 steers, 779 lbs, \$2.55; 21 cows, 647 lbs, \$2.25; E. Blarver, 52 cows, 749 lbs, \$2.40; B. Simpson, 262 sheep, 72 lbs, \$3.

Scaling & Tamblin sold 23 steers, 996 lbs, \$3.40; 21, 809 lbs, \$2.70; 21, 822 lbs, \$2.60; 47 steers, 752 lbs, \$2.40; 24 cows, 932 lbs, \$2.35; 23 cows, 761 lbs, \$2.30; H. Bischoff, 58 cows, 776 \$2.25; G. W. Tamblin, 52 steers, 868 lbs, \$3.35; 26 cows, 794 lbs, \$2.

Wood Bros. sold for J. E. Oliver, Denison, 23 cows, 686 lbs, \$2.25; Smith, Grandview, 92, 961 lbs, \$3; S. M. Sampler, 46, 945 lbs, \$3.25; 24, 822 lbs, \$2.75; C. Williams, Abilene, 24,



945 lbs, \$3; Davis & C., Hutto, 25 cows, 760 lbs, \$2.30; J. C. Angeline, Denison, 23 cows, 718 lbs, \$2.10.

Chicago Commission Co. sold for J. M. Dougherty, Abilene, 50, 820 lbs, \$2.60; 24, 855 lbs, \$2.60; White Bros., Quanah, 26 cows, 798 lbs, \$2.30; 60 cows, 790 lbs, \$2.35; J. H. White, Quanah, 15 cows, 765 lbs, \$2.35.

Gregory, Cooley & Co. sold for D. Waggoner, 19 steers, 951 lbs, \$2.85; 40 yearlings, 517 lbs, \$2.40; Forsyth 153 cows 740 240; Mattador 281 cows, 663 lbs, \$2.40; Hastings 68, 931 lbs, \$3.30.

The James H. Campbell Co. sold for F. B. Severs, 163 Indians, 1209 lbs, \$4.60; G. W. Miller, 84 Indians, 1064 lbs, \$3.75; 182 Indians, 840 lbs, \$2.75; J. B. Howell 48, 1008 lbs, \$3; Belcher, 371, 995 lbs, \$3.40; 19, 1066 lbs, \$3.60, also 102 cows, 843 lbs, \$2.25; 192 cows, 776, \$2.25; 65, 910 lbs, \$2.75.

Brown Bros. sold 96 steers, 798 lbs, \$2.65.

Hunter, Evans & Co. sold 114, 934 lbs, \$3.30; 204 Indians, 1021 lbs, \$3.60; 59 cows, 985 lbs, \$2.65; S. T. Tuttle, 301 Indians, 1206 lbs, \$4.30; Crain, 25, cows, 748 lbs, \$2.25.

W. W. Shearer & Co. sold 32 steers, 766 lbs, \$2.50; 26 mixed, 857 lbs, \$2.35; 22 cows, 654 lbs, \$2.10.

R. Strahorn & Co. sold for Kimberlin 232 calves, 234 lbs, \$4; 108 cows, 798 lbs, \$2.45.

**KANSAS CITY.**

Special to the Texas Live Stock Journal.

KANSAS CITY, Sept. 14.—Receipts of cattle for the week, 36,826. For the year to date, 583,941; an increase over 1887 of 196,772 head for the corresponding period. Monday the market for range cattle was weak and 10c lower than Saturday. Tuesday's market was slow, with another decline of 5 to 10c; cows selling more readily than steers. Wednesday the movement was slow and values weak, buyers only wanting the best and these at weak prices. Common cattle hard to dispose of. We quote choice 1050 to 1200-pound steers at \$3.35@3.70; fair to good, \$2.75@3.25; common, \$2.25@2.60; cows, \$1.50@2.20.

Receipts to-day 3500, market slow



TRADE MARK

Commission Merchants

For the sale of

CATTLE, HOGS AND SHEEP.

Rooms 9 and 10 Exchange Building, KANSAS CITY STOCK YARDS.

Prompt and correct market reports furnished by mail or wire. Consignments solicited. Correspondence given immediate attention.

but steady, with Wednesday's prospects stronger.

Fish & Keck Co. sold for S. J. Garvin, I. T., 451 gr. Tex. steers, 985 lbs, \$3.40; Holmes & Son, Chase county, Kan., 88 same, 948 lbs, \$3; J. D. Payne, Cherokee Strip, 157 same, 1229 lbs, \$4.10; J. A. Blair, Cherokee Strip, 50 same, 1068 lbs, \$3.60; S. J. Garvin, I. T., 390 same, 992 lbs, \$3.40; Frank Biggers, Panhandle, 25 cows, 812 lbs, \$2.25; 23 steers, 919 lbs, \$2.75; Lynch & Boder, Cherokee Strip, 328 steers, 1084 lbs, \$3.50; 211 cows, 865 lbs, \$2.45; A. J. & J. M. Day, Cherokee Strip, 155 steers, 986 lbs, \$3.40; Am. Past. Co., Cherokee Strip, 188 steers, 1116 lbs, \$3.35; Ark. Valley L. & C. Co., Cherokee Strip, 127 steers, 1101 lbs, \$3.30; Hood, Hewins & T., 294 cows, 753 lbs, \$2.12; Finch, Lord & N., Cherokee Strip, 120 steers, 1259 lbs, \$3.85; Upsher, S. & B., Cherokee Strip, 95 N. M. steers, 784 lbs, \$2.55; S. J. Garvin, I. T., 20 Texas steers, 990 lbs, \$3.25; 23 same, 918 lbs, \$2.90; J. M. Day, Cherokee Strip, 82 cows, 771 lbs, \$2.35; Ives & Doyle, Cherokee Strip, 173 steers, 1056 lbs, \$3.40; 24 steers, 959 lbs, \$2.40; Holmes & Son, Kan., 88 N. M. steers, 939 lbs, \$2.90; Upcher, S. & B., Kan., 113 same, 778 lbs, \$2.60; J. M. Day, Cherokee Strip, 99 calves, \$8 each; M. B. Overton, Cherokee Strip, 51 calves, \$6 each; 49 Tex. cows, 788 lbs, \$2.25; D. R. Fant, Cherokee Strip, 20 heifers, 618 lbs, \$2; A. J. Day, 39 cows, 860 lbs, \$2.40.

Stephens & Dobyns sold 18 Texas cows, 812 lbs, \$2.10; 15 cows, 856 lbs, \$2.20; 26 cows, 735 lbs, \$2.05; 13 steers, 864 lbs, \$2.67; 49 steers, 958 lbs, \$2.95; 34 cows, 819 lbs, \$2.10; 74 cows, 821 lbs, \$2.10; 16 cows, 830 lbs, \$2.10; 23 steers, 1040 lbs, \$3.35; 87 calves, \$6 each; 25 cows, 805 lbs, \$2.

Wright & Hannah sold for P. Hargo, Sacred Heart Mission, I. T., 22 Indian steers, 838 lbs, \$2.80; 22 same, 717 lbs, \$2.40; 3 cows, 973 lbs, \$2.40; I. H. Harness, Purcell, I. T., 24 Indian steers, 862 lbs, \$2.60; L. C. Wantland, Purcell, I. T., 52 Indian steers, 1060 lbs, \$3.50; J. W. Gardner, Wynnewood, I. T., 2 Indian bulls, 1290 lbs, \$1.60; 3 cows, 753 lbs, \$2.25; 44 steers, 861 lbs, \$2.55.

M. S. Peters & Co. sold for Maplewood Live Stock company, 30 Texas cows, 796 lbs, \$2.25; 89 steers, 1009 lbs, \$3.20; 84, 1025 lbs, \$3.20; 57 1005 lbs, \$3.20; 64, 1098 lbs, \$3.20; 80, 1017 lbs, \$3.20; Pawley & Forsyth, 46, 1060 lbs, \$3.25; J. P. Holliday, 60 Indian cows, 778 lbs, \$2.05.

Larimer, Smith & Bridgeford sold for Elgin Cattle Co. 128 Texas steers, 1176 lbs, \$3.70; 126, 1158 lbs, \$3.70; H. M. Catlett, 51 cows, 805 lbs, \$2.05.

The James H. Campbell & Co. sold for J. C. Worley, 6 Indian steers, 963 lbs, \$3.10; 25, 1030 lbs, \$3.45; 11 cows, 861 lbs, \$2.25; 3 cows, 923 lbs, \$2.50; W. C. Koogle, 27 Texas cows, 801 lbs, \$2.50; D. L. Knox, 54, 761 lbs, \$2.20; 73 steers, 834 lbs, \$2.50; 25, 950 lbs, \$2.85; J. B. Wilson, 161 Indian steers, 988 lbs, \$3.35; D. R. Streeter, 18, 1447 lbs, \$4; 80, 1187 lbs, \$3.85; 57, 1219 lbs, \$3.20; 58 cows, 653 lbs, \$2.50; 46, 904 lbs, \$2.40; 56 calves, \$8.75 per

head; Wm. McClure, 4, \$6 per head; 50 steers, 910 lbs, \$2.75; 75 cows, 837 lbs, \$2.10; E. W. McKenzie, 27 Texas cows, 778 lbs, \$2; Hensley, Herrod & Hensley, 31, 775 lbs, \$1.78; 4 bulls, 1135 lbs, \$1.40.

Hunter, Evans & Co. sold for J. J. Hand, Eastland, Texas, 25 cows, 779 lbs, \$2.20; R. G. Head, Clayton, N. M. 324 steers, 1014 lbs, \$2.80; 58, 912 \$2.40; H. Kollar, Dodge City, Kansas, 86 calves, \$7 each; A. J. Day, Wintarop, I. T., 57 steers, 1295 lbs, \$3.40; 51, 1126 lbs, \$3.60; J. H. Walner, Wynne Wood, I. T., 10, 963 lbs, \$2.75; 11 cows, 880 lbs, \$2.20; Forsythe & Swearingen, Pond Creek, I. T., 237 steers, 1123 lbs, \$3.45; L. C. Taylor, Winthrop, I. T. 38 cows, 796 lbs, \$2.40; 75 steers, 946 lbs, \$2.95; N. P. Rodgers, Ballinger, Texas, 23 bulls, 974 lbs, \$1.50; 122 cows, 754 lbs, \$2.10; J. A. French, Gibson, I. T., 28, 775 lbs, \$2.15; R. Moody, Canadian, Texas, 50, 867 lbs, \$2.20; Wilson & Williams, Alfred, I. T., 139 steers, 980 lbs, \$3.35; J. Mobon, Canadian, Texas, 21, 1089 \$3.20; T. S. Hutton, Caldwell, Kansas, 62 cows, 958 lbs, \$2.60; 22 steers, 1022 lbs, \$3.40; 24, 1174 lbs, \$3.70; 117 cows, 753 lbs, \$2.10; Childress Co. L. & Co., Elgin, Kansas, 108 steers, 1121 lbs, \$3.50; R. G. Head, Clayton, N. M., 119, 905 lbs, \$2.35.

**ST. LOUIS.**

Special to the Live Stock Journal.

ST. LOUIS, Sept. 14.—Run to-day light and wholly of common stuff which was slow of disposal at weak prices. Good Texas steers, \$2.90@3.25 to \$3.75; cows, \$1.80@2.20; mixed stuff, \$2@2.50. Sheep scarce and good ones steady at \$2.90@3.75 per 100 lbs.

**GALVESTON.**

[Reported by Winfree, Norman & Pearson.]

BEEVES AND Cows—Choice, per lb, gross, 2@2 1/4c; common, per head, \$9@12; 2-year-olds, choice, per head, \$9@12; common, per head, \$7@8; yearlings, choice, per head, \$6@7; common, per head, \$4@5; calves, choice, per lb, gross, 2@2 1/2c; common, per head, \$3.00@4.00.

SHEEP—Choice, per lb, gross, 3@3 1/2c.

REMARKS.—The demand for smooth and fat 800 and 900-lb beeves and cows is good, while common cattle barely bring range prices. Calf and yearling market active. Fat sheep at a premium, car of choice sheep would bring good figures.

**DALLAS.**

CATTLE.—Choice feeding steers, 3 and 4 years old, \$20; choice fat steers light weight, \$15@18; butcher cows, \$12@16; 2-year-old heifers and steers, \$5@9; veal calves, 2 1/2@3; bulls, 1c; milch cows, \$20@30.

SHEEP.—Choice fat mutton sheep, 2 1/2@3c; goats, \$1@1.50.

HOGS.—Stockers and feeders, 5c; choice fat, 5 1/2@6c.

Bulls find ready sale at 1c; milch cows in ready demand, also seer yearlings and 2-year-olds find ready sale.

**The Best Wire Fence**

for farms, railroads and ranch purposes. Send for illustrations. Address, GHOLSON FENCING CO., 114 East Pearl St., Cincinnati, O. B. F. Gholson, Fort Worth, Texas, State Agent

E. R. HUNTER, formerly cattle buyer for Monroe in St. Louis. R. H. LEE. W. M. DUNHAM.

**E. R. HUNTER & CO.**

Live Stock Commission Merchants, Union Stock Yards, CHICAGO, ILL.

Refer to Drovers' Nat'l Bank, and Nels Morris Chicago, J. S. Hughes & Co., bankers, Richmond, Mo. Market reports by mail or wire.

S. E. WOOD. JAMES WOOD. E. A. WOOD

**WOOD BROTHERS,**

**Live Stock Commission**

Union Stock Yards, Chicago.

—Established 1871—

**W. W. McILHANY & CO.**

**LIVE STOCK**

**Commission Merchants**

Union Stock Yards, CHICAGO, - ILLINOIS.

Our Mr. C. C. FRENCH, at Fort Worth Texas, will attend to Texas business.

We solicit consignments of Texas cattle, sheep and hogs, and specially invite consignments of Texas horses.

**W. W. SHEARER & CO.,**

**LIVE STOCK**

**Commission Merchants**

128 Exchange Building,

Union Stock Yards, - CHICAGO, ILL.

REFERENCES:

Union Stock Yard National Bank, and Drovers' National Bank, Chicago, Ill.

ROBERT STRAHORN. JESSE SHERWOOD.

—Established 1861.—

**R. STRAHORN & CO.,**

**Live Stock**

**Commission.**

Room 85, Union Stock Yards, CHICAGO, - ILLINOIS.

J. C. RICHARDSON, Fort Worth, General Agent for the State of Texas.

H. C. (HANK) MALLORY. CHAS. A. MALLORY

—Established 1862.—

**MALLORY & SON,**

**Live Stock Commission,**

Rooms 113 & 115 Exchange Building, Union Stock Yards, CHICAGO, - ILLINOIS.

Howard Bland of Taylor, Texas, agent for East Texas. C. A. Lyford of San Antonio agent for South Texas.

J. H. STEPHENS, JNO. D. DOBYNS,

(Uncle Henry.) Kansas City, Chicago, Ill.

**STEPHENS & DOBYNS,**

**LIVE STOCK**

**Commission Merchants**

Kansas City, Mo. and Chicago, Ill.

We make a specialty of the Texas and Western cattle and ranch trade. Are prepared to make contracts for the delivery of Texas cattle for 1889. Consignments and correspondence solicited.



## ROUND-UPS.

The American Stockman and Farmer of Pittsburgh, Va. says, Nelse Morris had 30 or 40 car-loads of Texas cattle here on Monday which were offered for sale, but no buyers being found they were shipped on to New York.

N. M. Stock Grower:—J. B. Wilson & Co., ranging in Eastern New Mexico, expect a large bunch of steers fat enough to send to market the latter part of the month. Their range must be relieved, even though the Big Four will pay them only half price for their steers.

N. M. Stock Crower:—Captain J. C. Lea has sold his bunch of 1200 steers which he took to Kansas to Captain Helm of Hunnewell. He was paid \$10, \$15 and \$20 respectively for ones, twos and threes. Captain Lea will shortly send forward to the Indian Territory a bunch of steers to mature there.

San Angelo Enterprise:—M. B. Pulliam bought of Jno. McCarthy 140 head of ones and twos at \$8 and \$12. They were put in Skinner's pasture to winter. Max Mayer sold to W. H. Godair 3000 head of twos, threes and fours at \$11 and \$15 per head. Jonathan Miles bought from Preston & Vernoy 500 stock cattle at \$8 per head and calves thrown in.

St. Louis, Sept. 6.—Texas fever has made its appearance among the cattle in the western suburbs of the city, and is killing off fine milch cows belonging to dairymen and the suburban residents at a terrible rate. It is claimed the disease was brought there by several herds of Texas cattle driven from the North St. Louis stock yards to slaughter houses.

Silver City Enterprise:—Mr. Hurst of the firm of Hurst, Kiehne & Wiley, stockmen, has purchased about 2000 head of steers throughout Socorro county to be delivered at Magdalena, October 15. The prices paid are said to have been from \$1.80 to \$2, gross. The following outfits have sold: WS, 600; HAM, 250; C—N, 400; V cross T, 200; T bar, 80 and DD bar, 200.

Chicago Drovers' Journal:—Letters have been received from Texas showing that some have misunderstood the new Texas cattle regulations at Chicago and supposed that cattle were shut out of the market for a while. There is nothing to prevent Texas cattle coming to Chicago the same as ever. The only change is that all Texas and Indian cattle have a separate part of the yards. For a short time the butchers were shut out of this division, but now that is all straightened and all buyers can buy Texas cattle as freely as ever.

Chicago Drovers' Journal:—D. P. Atwood of Colorado City, Texas, a well-known cattle and sheep ranchman, is here on business. He says grass is better than it has been in five years. Stockmen are fast getting into a financial condition whereby they can hold back. They are dissatisfied with present prices, and shipments will decrease unless prices improve. Yearlings are selling at \$8.50@9, twos at \$12.50@13, or \$1 higher than a year ago. He says cattlemen will be all right in a year or two. He asks what other business would allow men to pay 18@24 per cent without all going to the wall. He believes in spaying, and will spay all the heifers he brands.

Silver City Enterprise:—Some careless Mexican miners who have been doing assessment work on a number of claims north of this city, have caused the death of a number of cattle by

throwing giant powder promiscuously around their camps where the cattle can get at it. Cattle readily eat giant powder for the saltpeter it contains, presumably, and if they get too much it kills them. George Eddy and Nic Grenfell have found seventeen head of cattle dead, also one ZN and one YL and one not known within the past two weeks. A malicious-inclined miner with a few sticks of giant powder could ruin all the cowmen in the country. The miners have several times been cautioned by Eddy & Grenfell.

Albany News:—Col. D. C. Harris of Gainesville was here to receive the 4200 head of steers that Messrs. Webb, Campbell & Hill have contracted to Col. J. R. Stevens of Gainesville. Col. Harris being interested in the purchase. The first herd will be started on the trail to-morrow, and the second next week. Messrs. Webb, Campbell & Hill are to deliver them at Bellevue, on the Fort Worth & Denver railroad. We understand that Col. Harris is well pleased with the cattle he has seen, and as he is one of the most prominent and wealthiest stockmen in Texas, it is quite a compliment to Messrs. W., C. & H. for him to speak so well of the cattle they put up. Col. Harris has made many friends during his stay here, and we trust that he will come often. This is about the largest trade made in Texas this year, and Messrs. W., C. & H. are to be congratulated on the sale. Cattle have advanced since the contract was made and Col. Harris could now turn the herds over at a handsome profit.

## A Safe Investment

Is one which is guaranteed to bring you satisfactory results, or in case of failure a return of purchase price. On this safe plan you can buy from our advertised druggist a bottle of Dr. King's New Discovery for Consumption. It is guaranteed to bring relief in every case, when used for any affection of throat, lungs or chest, such as consumption, inflammation of lungs, bronchitis, asthma, whooping cough, croup, etc., etc. It is pleasant and agreeable to taste, perfectly safe, and can always be depend upon. Trial bottles free at H. W. Williams & Co.'s drug store.

## A Mistake of Strawberry Growers.

American Agriculturist.

The aggregate strawberry crop of the present year was deficient in quantity, and prices ruled correspondingly high. This led to the marketing of much inferior fruit, which was packed in the lower tiers of the crates. Such a practice is an actual fraud, which will not fail to react on the market in future. There is danger that the high prices of the season just past will tempt growers to leave their old, rundown beds to produce a crop of inferior berries next year, instead of plowing them under.

"There is a divinity that shapes our ends,  
Rough hew them as we may."

No close observer of human affairs can gain-say the poet as above quoted. The close observer aforesaid must have noted, however, that there are many persons who seem to think that their ends will be shaped without any "rough hewing" on their part. How much nobler is it for young men to strike boldly out to build their own characters under God's guidance. To all who aspire to do a good work and do it well, we say write to B. F. Johnson & Co., 1009 Main St., Richmond, Va., who will give you helpful suggestions.

## Some Dairy Problems.

American Agriculturist.

The dairyman must study the market demand for his products, whether these are butter, cheese, or milk, and keep cows adapted for that want. It would be financial suicide to sell Jersey and Guernsey milk to the city milkman, when twelve per cent. of solids constitute "good" milk, or keep so-called cheese cows from which to make butter. A line of dairying must be decided upon, and held to, for frequent change in dairy methods will never bring reputation, nor very great prosperity.

Then the cow should be treated and cared for as a mother, and fed a mother's food, not the food of bullocks. This feeding and care should commence with the calf. The stunted calf that has been obliged to rob its bodily growth to keep from freezing, or spend its summer fighting the "gaunt wolf," has had its energies misdirected, and in after life it will rarely ever pay to try to make a profitable cow of it.

The calf that is raised for a dairy cow should be abundantly—not lavishly—fed on good grass, clover hay, oats, bran and other protein foods. Corn meal should be discarded. Milk-giving is a function separate and apart from beef making, and to first induce the beef habit by feeding fat-formers, like corn meal, is to train the heifer in that way, and at last, when a cow, and you wish to "feed her up," the extra food will go to four-cent beef instead of thirty-cent butter, and a big loss is met with; for the food that is turned into butter is sold every day, and there is only one sale for the beef.

Our heifer calf should be well fed, well housed, and kept warm in the winter, for in a stable of good light and pure air, she will develop the kind of hardness that dairy cows need, the oats and bran will give solid bone and strong muscle and nerve, and also build up the embryo life that she must otherwise rob herself of to supply, or leave incomplete. Then our heifer, if milked as long as possible the first year of her dairy life, generously fed to make good, rich blood, out of which to make good milk—for milk-giving is first blood secretion governed by nerve force—we shall, as a rule, find we have a profitable dairy cow. This cow should be retained as long as she profitably pays her keep, then sold as a "sausager" for what she will bring; for we hold that no man ever fattened an old dairy cow to a profit. Better by far put this food into a cow that gives milk, and get pay for food consumed.

Largest stock of tin plate, metals, sheet iron, iron roofing and siding in Western Texas, Piper & Schulthess, San Antonio, Texas. We sell at factory prices, only freight added.

## The Best Wire Fence

for farms, railroads and ranch purposes. Send for illustrations. Address, GHOLSON FENCING CO., 114 East Pearl St., Cincinnati, O. B. F. Gholson, Fort Worth, Texas, State Agent

## To the Afflicted.

We call the attention of our readers to the advertisement of Dr. J. R. Pollock in this issue of the JOURNAL. To those who are afflicted with rectal troubles we can recommend the doctor as a specialist in that particular; he having effected some remarkable cures in cases which had become chronic. Dr. Pollock successfully treats consumption, bronchitis, catarrh, dyspepsia and all other chronic diseases with oxygen and electricity. Correspond with the doctor if you need the services of a reliable physician who can give the best of references.

UNPRECEDENTED ATTRACTIONS!  
OVER A MILLION DISTRIBUTED

L.S.L.

Louisiana State Lottery Company.

Incorporated by the Legislature in 1868, for Educational and Charitable purposes, and its franchise made a part of the pre-ent State Constitution, in 1879, by an overwhelming popular vote.

Its GRAND EXTRAORDINARY Drawings take place Semi-Annually, (June and December), and its GRAND SINGLE NUMBER Drawings take place on each of the other ten months in the year, and are all drawn in public, at the Academy of Music, New Orleans, La.

"We do hereby certify that we supervise the arrangements for all the Monthly and quarterly Drawings of the Louisiana State Lottery Company, and in person manage and control the drawings themselves, and that the same are conducted with honesty, fairness, and in good faith toward all parties, and we authorize the company to use this certificate, with fac-similes of our signatures attached, in its advertisements."

*E. J. ...*  
*J. F. ...*

Commissioners.

We, the undersigned Banks and Bankers will pay all Prizes drawn in the Louisiana State Lotteries which may be presented at our counters.

R. M. WALMSLEY, Pres. Louisiana Nat. Bk.  
PIERRE LANAUX, Pres. State Nat'l Bk.  
A. BALDWIN, Pres. New Orleans Nat'l Bk.  
CARL KOHN, Pres. Union National Bank.

## GRAND MONTHLY DRAWING

In the Academy of Music, New Orleans,  
Tuesday, October 9, 1888.

## Capital Prize, \$300,000

100,000 Tickets at Twenty Dollars each. Halves \$10; Quarters \$5; Tenths \$2; Twentieths \$1.

## LIST OF PRIZES.

1 PRIZE OF \$300,000 is .....	\$300,000
1 PRIZE OF 100,000 is .....	100,000
1 PRIZE OF 50,000 is .....	50,000
1 PRIZE OF 25,000 is .....	25,000
2 PRIZES OF 10,000 are .....	20,000
5 PRIZES OF 5,000 are .....	25,000
25 PRIZES OF 1,000 are .....	25,000
100 PRIZES OF 500 are .....	50,000
200 PRIZES OF 300 are .....	60,000
500 PRIZES OF 200 are .....	100,000

## APPROXIMATION PRIZES.

100 Prizes of \$500 are .....	50,000
100 Prizes of \$300 are .....	30,000
100 Prizes of \$200 are .....	20,000

## TERMINAL PRIZES.

999 Prizes of \$100 are .....	99,900
999 Prizes of \$100 are .....	99,900

3134 Prizes, amounting to..... \$1,054,800

NOTE—Tickets drawing capital prizes are not entitled to terminal prizes.

For Club Rates, or any further information desired, write legibly to the undersigned, clearly stating your residence, with state, county, street and number.

More rapid return mail delivery will be insured by your enclosing an envelope bearing your full address.

Send Postal Notes, Express Money Orders, or New York Exchange in ordinary letter. Currency by express (at our expense) addressed to

M. A. DAUPHIN,  
New Orleans, La.  
or M. A. DAUPHIN,  
Washington, D. C.

Address Registered Letters to  
NEW ORLEANS NATIONAL BANK,  
New Orleans, La.

REMEMBER That the presence of Generals Beauregard and Early, who are in charge of the drawings, is a guarantee of absolute fairness and integrity, that the chances are all equal, and that no one can possibly divine what number will draw a prize.

REMEMBER that the payment of all prizes is GUARANTEED BY FOUR NATIONAL BANKS of New Orleans, and the tickets are signed by the president of an institution whose chartered rights are recognized in the highest courts; therefore, beware of any imitations or anonymous schemes.

GOLD. You can live at home and make more money at work than at anything else in the world. Either sex; all ages. No outfit FREE. Terms FREE. Address, TRUE & Co., Augusta,

## MUSTANG LINIMENT

MEXICAN MUSTANG LINIMENT, Penetrates Muscles to the Very Bone! Wonderful! TRY IT.

## MUSTANG LINIMENT

MEXICAN MUSTANG LINIMENT cures PILES, OLD SORES, CAKED BREAKS—all INFLAMMATION.

## MUSTANG LINIMENT

MEXICAN MUSTANG LINIMENT conquers SPAVINE, SCRATCHES and SPRAINS in HORSES and MULES.

## MUSTANG LINIMENT

MEXICAN MUSTANG LINIMENT, for Man and BEAST. Greatest Curative discovery ever made.



**A Wool Circular.**

168 and 170 S. 5th Avenue, }  
NEW YORK, Sept. 8, 1888. }

Editor Texas Live Stock Journal:

Dear Sir.—After more than two years of interrupted dullness and steadily weakening values, we are able to report a much improved market and a clear advance on certain kinds. It gives us the more pleasure to report this change now, because it is at a favorable season for our consignors. Most activities and advances occur when stocks are very light and dealers and manufacturers are able to "work a boom." This time the stocks are light only in dealers hands, for the growers and country middlemen hold or did hold before the recent large sales, considerable stocks, and holding them firmly, they were the means of strengthening the market. Manufacturers getting orders for their woolen goods and coming into the market were obliged to pay good prices.

We wish to refer you to our report of July 28th in which we say that in our estimation the tariff bill this season is a dead issue, and that values of wool should strengthen. We do not wish to take undue credit to ourselves, but our house always has had an enviable reputation for being quick to anticipate and report, yet at all times conservative and reliable.

The market to-day is in good condition for selling and unless otherwise ordered we are opening and grading every lot in its turn as received, and shall sell at first favorable opportunity.

For the future of the market, many well informed firms claim that wools may advance further. We doubt, for we do not see just reason for it.

We no doubt will have a good trade for months to come, but the tariff question must come up another session of congress, and this will stop the selling of woolen goods, on which our wool market depends. We think the highest point of the season has been reached and that when manufacturers get further supplies, the market may be quieter without declining.

If you have, or can secure further lots, we advise you to send them forward, and let us place them while the market is in such a favorable condition.

Yours faithfully,  
WM. MACNAUGHTAN'S SONS.

**THE CLIP.**

The first fall clip of the season at Colorado City brought only 12c.

San Angelo Enterprise:—J. A. Caldwell & Co. sold the R. O. Smith clip of 10,600 pounds.

Sales of wool reported by the Boston Commercial Bulletin:—185,000 lbs spr Texas 17@21c; 295,000 fine spr Texas, 19@22c.

Boston Advertiser:—Texas and Southern wools—Texas spring medium (12 months), 18@22c; Texas spring fine, 18@21c; Texas spring fine (six to eight months), 17@20c; Texas fall fine, 11@15c; Texas fall medium, 13@18c.

Boston Advertiser:—The sales for the week comprise 3,466,000 lbs of domestic fleece and pulled and 110,000 lbs of foreign, making the week's transactions foot up 3,578,000 lbs, against 3,853,000 lbs for the previous

week, and 1,843,500 lbs for the corresponding week last year.

The U. S. Economist says: Wm. Macnaughtans' Sons have gone a few blocks up town above this office, and are the first wool house that has jumped Canal and Grand streets. They are now located at 168 and 170 South Fifth avenue, in a fine warehouse adapted to their growing wants. This firm is full of young manhood, with a keen eye to mercantile dealings on sound principles. They have good credit, and what is better still, a fine past record.

American Cultivator:—It is understood that the senate tariff bill does not exactly increase the duty on the finer wools one cent a pound, as reported, but equalizes and simplifies the present rates, so that all imported clothing and combing wools, whether valued at less or more than thirty cents a pound, shall pay a duty of eleven cents; it is now ten or twelve cents, according as the price is below or above thirty cents. But virtually this is an increase of a cent a pound, because only a very small part of the imported clothing and combing wools is above thirty cents a pound in value.

Boston Commercial Bulletin:—The prices have ruled about the same as last week's sales, but the dealers have moderated their extreme views and are not asking such extreme prices as last week. In fact, while washed fleeces are full as strong as last week and in some instances a little stronger, there is rather an easier feeling in the Territory wools. It appears that a large amount of wool is being held out of the market on orders from owners in the West, some of whom feel that better prices will be obtained later owing to good trade prospects and others who are taking chances on the presidential election, and are holding their wool until after that event or until the indications point more strongly than at present to the successful party.

American Wool Reporter:—A small flock of Shropshire merino cross in Laramie county sheared 12 lbs. per capita. Wool of this class has brought two cents per lb. more than that of the Spanish merino. John Taylor of Las Animas county has clipped 70,000 pounds of wool from 10,000 half breed merinos. The South Park is becoming a grand sheep growing country. The flock owners will soon drift into the downs breeds and rely more on mutton than wool. So near as we can ascertain there have been fifty thousand Colorado wethers contracted for by Kansas and Nebraska feeders up to the present time. The drive of sheep from Oregon will be less than half this year what it was last year. The sheep demand in the Northwest is increasing, and Oregon can sell at home.

Boston Advertiser:—The wool market still shows a fair amount of activity, and the sales of the week foot up liberal, notwithstanding the fact that prices have been advanced considerably from the lowest point. The fact is that many mills were not on time at the low prices ruling for wool several weeks ago, and consequently they are obliged to purchase their raw material at more money at present. As a general rule, however, buyers are not inclined to do much at the present views of sellers and are holding back, although lots that can be picked up at anywhere like old prices are readily taken. The amount of wool placed since the first of the year has been large, and foots up nearly 19,000,000 pounds more than during the same period in 1887, but this cannot be interpreted into meaning a successful business by wool dealers. To be sure a large amount of wool has been sold, but except during the past few weeks it has nearly all been at a loss to the holder.

**ROYAL**  
  
**BAKING POWDER**  
**Absolutely Pure.**

This powder never varies. A marvel of purity, strength and wholesomeness. More economical than the ordinary kinds, and cannot be sold in competition with the multitude of low-test, short-weight alum or phosphate powders. Sold only in cans. ROYAL BAKING POWDER CO., 106 Wall St., N. Y.

**E. WM. GRUENDLER,**  
GALVESTON, TEX.

**Wool and Sheepskins**  
Handled for  
**Manufacturers' and Pullers' Orders.**

Consignments and Correspondence Solicited.

—[ESTABLISHED 1830.]—  
**DENNY, RICE & Co.**  
Nos. 606 to 610 Atlantic Avenue,  
BOSTON, MASS..

**-WOOL-**  
**Commission Merchants.**

Prompt information given by mail or telegraph by applying to their Texas representative,

**C. G. HUBBARD.**  
SAN ANTONIO, TEX.

Cash advances made on consignments.  
Also make Texas Wool Growers Cash Advances on Wool at Eight Per Cent. Per Annum, at any time during the year.

**J. R. POLLOCK, M. D.**  
401 Main Street,  
FORT WORTH, TEXAS.

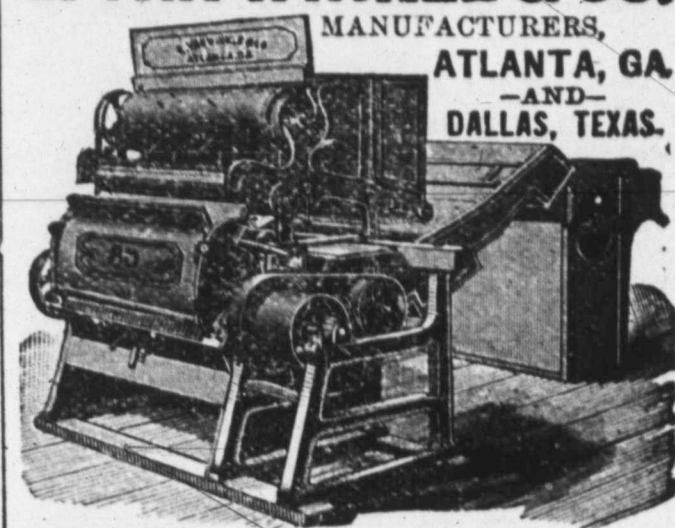
**Chronic Diseases a Specialty**  
Piles, Fistula, Fissure and all diseases of the rectum successfully treated.  
**Oxygen and Electricity**

for the treatment of catarrh, bronchitis, consumption, dyspepsia, constipation and all diseases of the nervous system. Best of city references given upon application. Correspondence solicited.

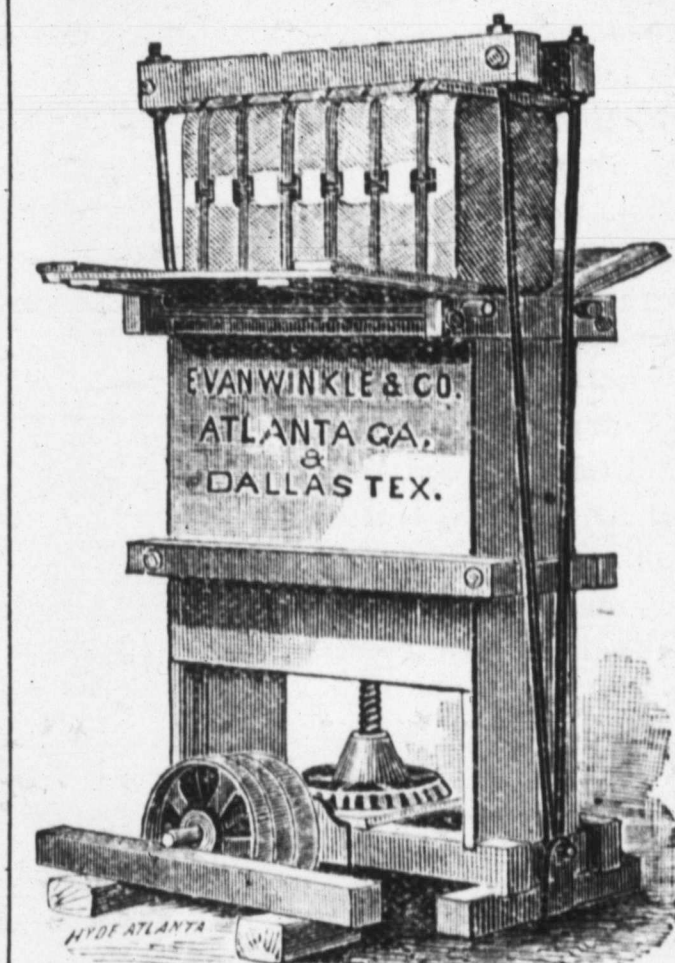
**CITY HOTEL, - CHICAGO.**  
Cor. State and 16th Sts.

SPECIAL RATE TO STOCKMEN, \$1.50 PER DAY. Nearest hotel outside the yards. Table and Rooms first-class. State st., Archer av or L. S. & M. S. Dummy pass the house to a parts of city and depots.  
W. F. ORCUTT, Proprietor

**E. VAN WINKLE & CO.**  
MANUFACTURERS,  
ATLANTA, GA.  
-AND-  
DALLAS, TEXAS.



**COTTON GINS and PRESSES,**  
Cotton Seed Oil Mills, Cotton Seed Linters, Cane Mills, Saw Mills, Shafting, Pulleys, Hangers, Wind Mills and Castings, Pumps and Tanks.  
**E. VAN WINKLE & CO.,**



**COTTON PRESSES.**  
**E. VAN WINKLE & CO.**  
ATLANTA, GA.  
AND  
DALLAS, TEXAS.



Patented 1878. Improved 1881. Patented 1882.  
Prices reduced to one-half former prices.  
No. 1 Mach. \$30.00 | No. 2 Mach. \$40.00  
Best Cleaner for Seed Cotton in the market. No Ginner can afford to be without one.  
**E. VAN WINKLE & CO.,** Manufacturers,  
Atlanta, Ga.

AND ALSO - -  
**Seed Cotton Cleaners**  
Of equal merit. Send for catalogue and prices.

**E. VAN WINKLE & CO.,**  
Box 146,  
DALLAS, - - - TEXAS  
Responsible agents wanted.  
Name this paper.



## SAN ANTONIO.

THE fall crop of sorghum from the spring planting promises to be nearly as heavy as the first cutting. Sorghum is taking the lead as the fodder crop, quality and quantity taken into account.

A SURFACE flowing well has been struck on the west end addition to San Antonio, at a depth of 250 feet. The stream is strong and steady, and the water pure. This will have a very encouraging effect on well sinking throughout the Southwest.

SMITH & REDMON of this city drive 400 head of mules from the Rio Grande to San Antonio. When such old and experienced stockmen can better afford to drive 150 miles through pastures and lanes than shipping by rail, there is something seriously wrong in the management of the railroad. It certainly is not operated for the accommodation of the public.

It is a notorious fact that the interstate commerce law is disregarded by Texas railroads except when it operates in their favor. Unless some action is taken by our next legislature, the ranchmen of Texas might as well execute their deeds to the railroads first as last, as their mortgages will take all the profits there is in the business.

THE Union stock yard question in San Antonio, which has stirred up considerable acrimony, seems to have not yet died out entirely, although the official announcement of the I. & G. N. railway officers that their present shipping pens would not be removed, union yards or no union yards, is considered as a decided victory for the live stock commission men. By many it is thought as wasted powder to fight the union yards, as any set of men have as much a right to build yards with their money as to build a dry goods store, and if they make a losing speculation it is no body's business except their own.

THE greatest obstacle to a successful refrigerator and canning institution is said to be the uncertainty of the beef supply in Texas. If this is the case, it will soon be removed beyond any doubt. The best informed agree that in the future the ranchman of this state, and especially of the Southwest will provide for putting fat beefs on the market with just as much certainty as the Northern farmers. This coming winter, it is true, but few cattle will be fed, simply because nothing short of a miracle can prevent the cattle from getting fat on the luxuriant mesquite grass that is found almost everywhere. But even now many ranchmen have securely stacked away hundreds of tons of hay and and fodder, and cottonseed can be had on short order. From now on Southwest Texas must be classed as among the beef maturing countries.

It is questionable, with many whether horse raising can be made as profit-

able in Southwest Texas as cattle or sheep. When it is confined to the wild scrub stock that has been the rule heretofore, the question has good grounds for debate, but in the light of experiments in raising the grade the affirmative is settled beyond doubt. Experience has proven that full blood and high grade horses can be raised here on pastures without any extra care as is required for the fine grades of the bovine family. All that is needed is plenty of grass and water so as that they can get it themselves, and no deterioration takes place. Of course, should the grass get short, and they are not furnished with food, they will suffer, as will every other class of stock by starvation. As to the profits, several sales have taken place in the San Antonio market during the past summer of grade draft and thoroughbred horses, wild from the range at \$50 per head for three-year-old horses and mares. This was with the inevitable brand that damaged them fully 25 per cent. in value. A three-year-old mule from a Kentucky jack and a Texas mare is worth also from \$40 to \$50.

### A Mammoth Enterprise.

It is reported that W. Broderick Cloete, the Englishman who is now at the head of an English company that is running one of the largest ranches in Mexico, and who has been in England for several months, has organized another company with a capital of \$11,000,000 for the purpose of buying and stocking another ranch in the state of Coahuila, Mexico. This like the other ranch, is to contain all kinds of stock including Angora goats.

### San Antonio Horse Market.

The horse market has been quiet for some time, but the demand for good stock is strong and healthy, while thin stock is entirely at the mercy of pasture men who buy them to hold over till next season. Prices keep up well for the time of year, with the prospect of not falling down to the level of last years. The demand is yet mostly for mares, but horses are by no means neglected, and colts of all kinds find a ready sale. Mules are not yet much in active demand, but it is expected that the late fall and winter demand will be strong. The retail trade is reported dull. The shipments were 1009 head, as against 1037 the previous week.

Quotations are as follows:

Scrub and poor mares, 12 to 13½ hands.	\$ 9@13
Scrub fair conditioned, 12 to 13½ hands.	12@ 15
Medium mares, 13 to 14 hands, fat.	18@ 22
Medium mares, 13 to 14 hands, thin.	14@ 16
Yearling fillies, branded.	8@ 9
Yearling fillies, unbranded.	10@ 12
Two-year-old fillies, branded.	10@ 13
Two-year-old fillies, unbranded.	12@ 14
Texas improved mares, 14 to 15 hands.	30@ 40
American carriage horses, 15½ to 16½	75@200
Saddle horses, good, 13 to 14½ hands.	20@ 30
Saddle horses, poor, 13 to 14½ hands.	16@ 22
Unbroke horses, 13 to 14½ hands.	15@ 23
Weaned, unbranded colts.	4.50@ 6
Mules, Mexican, 12 to 13½ hands.	27@ 46
Mules improved, 13½ to 14 hands.	45@ 65
Yearling mule colts, improved.	25@ 30
Two-year mule colts, improved.	30@ 40
Yearling mule colts, Mexican.	15@ 20
Two-year mule colts, Mexican.	20@ 30

### HORNS AND HOOFES.

Dell Dewees happy face was on the streets again this week.

W. P. Slaughter of Frio county was up for a few days last week.

J. B. Kincaid, now a resident of Uvalde, was in to see how the old town looked.

J. D. Petty has bought a fine silver

dust mare of Fred Buss, for \$150. She will be bred.

Jesse H. Presnall, the well known stockman has been made an alderman of San Antonio.

Geo. Carlisle of Nolan county was here last week and got some cow ponies for the ranch.

Sam Abney of Wilson county left for the Eastern cotton states with a shipment of horses.

S. B. Mosser of Cottula was in town this week. It is said that Mr. Mosser will become a San Antonian.

T. C. Shelton of Webb county, is back from a trip to Chicago where he had a train-load of beefs.

M. C. Yates, Jr., Campbellton, Azscoosa county, a ranchero, was figuring around to see what "critters" are worth.

Ed C. Lasater is just returned from a trip to the Indian Territory looking after some stock interests of his in that section.

J. W. Glass, who some months ago went to California, is back again. Mr. Glass has large ranch interests in Maverick county.

Capt. C. L. Nevill of Marfa sheriff of Presidio county, is in town and says that a little more rain would not do them any harm.

W. J. Stayton, who is now making Bee county his home, took a bunch of horse stock to the Eastern cotton states this week.

Abundio Garza from the lower Rio Grande country was here last week with 130 head of horse stock which were sold by Morin Bros.

James F. Scott, well known to all stockmen of the coast country, is Democratic candidate for sheriff of Nueces county, and is as good as elected.

Pearsall News:—C. W. Cox left for Wilson county last Sunday, where he goes to buy cattle. He has a contract for about 2500 head to be delivered at Pearsall about the 15th of the month.

Capt. J. Buchanan, formerly of the British army, and recently a horse raiser in Karnes county, was killed on Friday, September 7, in Boerne by falling into an excavation for a building.

Frank Hall, formerly a ranchman in La Salle county and now running a Jersey dairy near Montrey, Mexico, passed through here last week going north looking for more of the gentle Jerseys.

C. W. Barnard of Sabinal, Uvalde county was in town Wednesday. He says there is some local trading going on in his section in young steer cattle prices averaging about \$6.50, \$9 and \$12 for ones, twos and threes.

Geo. Saunders of this city has sold 800 one-year-old steers to H. J. Hotchkiss, manager of Mellisa Ranch company, Kerr county, for \$6.25 per head delivered at Mellisa ranch. They were put up in Hays county by Jennings & Ellison.

H. B. Clarke & Co., 76 Union street, Memphis, Tenn., are prepared to feed horse stock in any numbers at reasonable prices. All stock transferred free of charge. They solicit the patronage of all who ship by way of Memphis.

Shippers of horse stock and mules to the Southern market will do well to call on Ben Darlington at the Southern hotel, San Antonio, Tex., who is a member of the firm of H. B. Clarke & Co., Memphis, Tenn., live stock commission merchants.

The Fort Davis News must have attended a revival. This week it is chuck full of good things, and it is

hoped it will not back-slide, as it would be a pity to see it resume its old habits after giving proof of how good-goddy it can be when it tries.

Alonzo Millet left for the ranch on Wednesday. He will make the ranch his home, planting out garden and fruit, which he proposes to subirrigate. This is another who proposes to run a ranch on strictly business principles by being on hand when most needed and making it a home of comfort and pride.

Capt. W. W. Wallace, was in town on business this week. The captain, who is a merchant and ranchman says that Uvalde county is coming out fast. This year will see the great majority of the cattlemen out of debt, and the sheepmen in easy circumstances. Another year like this will leave a comfortable surplus in the country, over which they will not lose as much sleep as certain politicians pretend to lose over the national surplus at Washington.

Mrs. H. C. Tardy of Del Rio, wife of the well known stockman, has raised a fine crop of almonds this year. The example of Mrs. Tardy is worthy of emulation by thousands of ranch homes in Southwest Texas. Not only almonds, but a great range of nuts and fruits, not mentioning an endless variety of ornamental shrubs and flowers could be raised about the ranch homes, adding profit with comfort and elegance, instead of the bleak and weed covered surroundings that are altogether too common in this section.

Morin Bros. report the following as among their sales for the past week: 40 horses and mules, \$20.50; 15 mules, \$29; 102 horses, \$11; 20 horses and mares, \$16; 33 horses and mares, \$15.75; 92 horses and mares, \$17.75; 31 horses and mares, \$14.50; horses, mares and mules, \$28.50; 39 horses and mares, \$25.75; 60 horses, mares and mules, \$16; 96 horses, mares and mules \$17; 100 horses and mares, \$18.50; 100 horses and mares, \$16; 50 mares and mule colts, \$16; 130 mares, \$14.75; 86 mares, \$15; 50 mares, \$16.25; 26 mares, \$14; 38 mares, \$15.75; 50 mares, \$21.75; 44 mares, \$15.50.

### THE WOOL SACK.

R. P. Buttrick of Michigan is here figuring in the buck market.

James McLymont of Kinney county is here after a few choice rams.

F. E. Leason, a wool grower of Maverick county, was in town last week.

G. Hellemann, wool buyer is back from New York, ready for the fall business.

Howard Bland, the fine stock raiser and wool grower of Taylor, made a flying visit to this city the latter part of last week.

Sam Jordan was in town last week. Sam was one of the Encinal resolvers who offended Crain so much, and says he is glad of it.

Ed Mackichnie, representing the Western Wool Commission company, St. Louis, was in town this week looking after the interests of his house.

James H. David, the well known horse and mule dealer of this city is invading the ranks of the sheepmen this year by going into the buck business.

The prospect of a good mutton market is about the only consolation that the sheepmen have for the future in the event that the Mills bill becomes a law.

Experience has proved this year that while grass can't be too rank for the cow or the horse, it can easily be so for the sheep. In the dry sections the sheep are in much the best fix this fall.

Wool buyers will hardly put in an



appearance this season in any considerable number till after the election. Prices must be unusually good before the growers will be willing to sell until that important event.

From present prospects the buck trade this year will be much lighter than it was last year. There is too much Mills' bill danger ahead for the flockmasters to care about increasing their flocks.

Zeno Fielder of Fielder & Sons, extensive wool growers of Val Verde county, was down this week looking for bucks. Last spring this firm shipped to Galveston, and will do so again this fall. They began shearing this week.

C. W. Wilkins of Wilkins Bros., Langtry, is with us again. He had to come down to see about those sheep of his which he bought some time ago in Atascosa county and which got waterlogged in Frio county, while on the drive to Val Verde county.

L. W. Pease, who is now a mutton shipper, has returned from New Orleans, where he sold two car-loads of muttons which he got of John Fitzpatrick, McMullen county. Mr. Pease says the mutton market was hard when he was in New Orleans, although cattle were selling very well.

J. M. Campbell of Val Verde county recently bought two California French Merino bucks, one for \$200 and the other for \$400. This may appear pretty steep, but when you bear in mind that he sold all his spring thoroughbred buck lambs of \$7 per head, you will see where the investment was not so very wild after all.

Eugene Staffel, formerly a wool commission merchant of this city, and now traveling for the Galveston Wool Factors' association, was in the city the early part of the week. He says that at that date only about 1000 bags of wool were left unsold in that market, with a very good prospect of fair prices for fall wools.

There is a tendency to spread out in this section of country. A few years ago it would have been considered as proof of lunacy to take bucks to any of the little towns surrounding San Antonio for sale. Now it is not an unusual thing. Kerrville is quite enterprising in that line, and also in its efforts to establish a wool market of its own.

**M. S. Peters & Co.,**

live stock commission merchants, office 11 and 11 1/2 Stock Exchange, Kansas City are doing an excellent business and seem to be getting a good trade from Texas and the Indian Territory. Following are Texas and Indian cattle sales for eight or ten days ending September 1. For F. M. Dougherty 25 Indians, 658 lbs, \$1.50; 67 same, 827 lbs, \$2.10. For J. T. Harris 256 same, 945 lbs, \$2.90; 28 same, 770 lbs, \$2. For Forsyth & Swearingen 136 Texans, 1120 lbs, \$3.30. For Walter Dymont, 160 Indians, 993 lbs, \$3.25. For Maplewood L. S. Co., 122 Texas cows, 812 lbs, \$2.25. For F. M. Dougherty 27 same, 910 lbs, \$2.90; 33 same, 593 lbs, \$1.50; 46 same, 804 lbs, \$2.15. For S. M. Huntly 27 Indians, 940 lbs, \$3. For W. H. H. Addington 29 same, 690 lbs, \$2.15. For O'Hair & Singleton 120 Colorados, 1215 lbs, \$4.10. For T. N. Field 121 Texas canners, 968 lbs, \$2.90; 13 same, 1008 lbs, \$2.90. Total 1210 head.

**Open Orders Solicited.**

Messrs. Turner, McClure & Co., the wholesale and retail grocers of Fort Worth, Texas, are making low prices on all goods in their line, and have a full and complete stock. They make a specialty of sending goods all over the country, and stockmen can

save a big per cent. on their purchases by sending the firm open orders for goods. A letter received by them is given the same attention as if you visited them personally, and satisfaction is guaranteed in every case. Send for their price list at once. Address

**TURNER, MCCLURE & Co.,**  
Fort Worth, Texas.

Piper & Schuithess are headquarters for all kinds of fence wire, 33 and 35 W. Commerce street, San Antonio, Texas.

**SAN ANTONIO.**

Little or no change has taken place since last report. Cows are yet the class most in demand for local consumption, and shipping steers have very few buyers. The stock is generally in pretty fat condition that is now offered, and the prices are not such as to encourage any extra care in selecting the same. Sheep are nominal, but hogs are in very fair demand, with a short supply.

Quotations are as follows:

**CATTLE**—Steers, shippers and butchers, \$14@18; cows, fat, from \$10@12; light, at \$7@10; yearlings, \$5@3.50; calves, \$3@4.

**SHEEP**—Muttons, \$1.00@2.00. Goats, average stock 50c@\$.125 per head.

**Hogs**—Natives \$3.50@4.

**FOR SALE OR EXCHANGE.**

**FOR SALE OR LEASE.**

Pasture of 18,000 acres under good wire fence, to lease at 12 1/2 cents per acre, with 2000 head of steer cattle for sale at market price. 17,000-acre pasture in Kinney county, to lease at 12 1/2 cents per acre. 17,250 acres in alternate sections in Starr county, for sale at 75 cents per acre. 1860 acres of land under fence; good improvements, 500 head of cattle, 30 miles from San Antonio; price, \$10,500.  
C. W. DUNN,  
San Antonio, Texas.

**SPANISH MERINO RAMS FOR SALE.**

The undersigned has about 800 head of fine Vermont and Michigan rams for sale in San Antonio. Sheepmen are cordially invited to call and see same.  
HENRY BURNS,  
San Antonio, Texas.

**POLAND CHINA HOGS.**

Breeders of and for sale pure-bred native-born and acclimated Poland China hogs.  
DR. J. P. KLINE & SONS,  
Box 369,  
San Antonio, Texas.

J. W. MADDOX. THOS. N. DEVINE.

**MADDOX & DEVINE,**  
-:Real Estate:-

**Live Stock Commission Agts**

First Floor Kampmann Block,  
SAN ANTONIO, - - TEXAS.

Specialty made of Ranch Properties and handling Imported Fine Stock. Loans negotiated; correspondence solicited.

**LONE STAR**

**:.SADDLERY:.**

Manufacture all kinds of Saddles and Harness. Cowboys' Outfits a Specialty. First-class work in all branches.

**A. VARGA, Agent,**

Dolorosa Street, opposite Southern Hotel,  
SAN ANTONIO, TEXAS.

**SHEDD'S**

Apparatus for

**Training Range Horses!**

Important improvements have recently been made, and the cost of building very much reduced.

Address

**C. F. SHEDD,**

BOISE CITY, - - - IDAHO.

**THE CLOSING-OUT SALE**

Of the bulk of

**Trotting and Pacing Horses and Ponies at Ewell Farm**

Is fixed for Wednesday, October 3, 1888.

Ewell Farm is 3 1/2 miles south of Nashville, Tenn., on the Louisville & Nashville road; Ewell Station is on the farm. Four daily trains each way. Sale at stable, 300 yards from station.

**85-HEAD OF TROTTING AND PACING HORSES-85**

By such sires as Nutwood, 2:18 3/4; Lord Russell, full brother to Maud S. 2:38 3/4; Wedgewood, 2:19, sire of Favonia, 2:15; Belmont, sire of Nutwood and Wedgewood; Enfield, 2:29; Brighton, by Harry Clay, sire of Green Mountain Maid; Tennessee Wilkes, trial 2:25; Victor Von Bismarck; Hylas, 2:24 1/4, sire of Susie S., 2:20, at three years; Brown Hal, 2:13, fastest stallion record; Tom Hal, sire of Little Brown Jug, 2:11 1/4, 2:11 1/2, 2:12 1/2, fastest three heats in harness.

The offerings consist of stallions, brood mares, one, two and three-year-old fillies and fast roadsters. Catalogues now ready. Write to

**CAMPBELL BROWN, Spring Hill, Tenn.**

**Traders' National Stock Yards!**

J. E. PRICE, Proprietor,

Near I. & G. N. Shipping Pens, - - - SAN ANTONIO, TEXAS.

Best and most commodious stock yards in the state. Built expressly for the accommodation of the stockmen. All pens shedded and with hay-racks and fresh water. Charges same as other yards. Best buyers on the market always on hand for good stock.

JESSE H. PRESNALL. HINES CLARK. JAMES F. SCOTT. I

**PRESNALL, CLARK & SCOTT**

Live Stock Commission Merchants,

COLLINS, NUECES COUNTY, TEXAS.

Do a general live stock commission business. Special attention paid to putting up stock on order.

**The Southern Hotel,**

J. P. HICKMAN, Prop.,

San Antonio, Texas.

**BELL BROS.,**

(Established in 1852.)

**DIAMONDS, WATCHES, JEWELRY,**

No. 281 Commerce Street, San Antonio, Texas.

Watches and Jewelry Repaired. Engraving Done.

**MOORE, SNOWDEN & LYFORD,**

**LIVE STOCK COMMISSION MERCHANTS,**

San Antonio, Texas.

Yards at end of South Flores Street-Railway track. Liberal advances made on consignments. Commodious Stock Yards.

THOS. H. MORIN. J. L. MORIN.

**MORIN BROTHERS,**

**Live Stock Commission Merchants, San Antonio, Texas.**

Feed and Sales Yards, South Flores street. Make a specialty of handling Spanish stock of all kinds. Will contract, sell and deliver stock at any railway station in Southwest Texas.

**MONEY TO LOAN**

In Southwestern Texas, on Farms and Ranches.

Reasonable rates, time to suit borrowers; also, Farms and Ranches for sale.  
E. B. CHANDLER, No. 4 Kampmann Building, SAN ANTONIO, TEXAS

**GEO. W. SAUNDERS,**

**LIVE STOCK COMMISSION MERCHANT,**

SAN ANTONIO STOCK YARDS.

Prompt sales and quick returns. Market reports and information as to shipping cheerfully given. Correspondence solicited. Telephone No. 401.

**SAN ANTONIO STOCK YARDS.** Situated on S. A. & A. P. and I. & G. N. railroads. Large and commodious pens, and feed charges moderate. Shedd's horse-breaking machine attached to yards.

**SAUNDERS & HENRY, Proprietors.**

**GEO. LOELOFF, SAN ANTONIO, TEX.**

Manufacturer of the

**CELEBRATED SAN ANTONIO SADDLE TREES.**

Makes all kinds of Natural-Fork Saddle Trees, Texas, Colorado and California patterns. None genuine without my name on cantel. Look out for imitations.

**L. S. BRACKETT,**

**MANUFACTURER OF SADDLES, HARNESS, BRIDLES, ETC.**

No bogus Northern penitentiary or combination saddle trees sold or rigged, but a specialty made of strong, reliable, honest goods at a reasonable price. Also sell the best farm wagon 12 x 16.

South Side of Military Plaza. San Antonio, Texas





ESTABLISHED APRIL, 1880.

Consolidated with

**TEXAS WOOL GROWER**

SEPTEMBER 13, 1884.

ISSUED EVERY SATURDAY.

—BY—

The Stock Journal Publishing Company,

—AT—

Fort Worth, Dallas and San Antonio.

FORT WORTH OFFICE, 210 West Second Street. W. A. GARNER, Manager.

DALLAS OFFICE, 702 Main St. FRANK POWELL, Manager.

SAN ANTONIO OFFICE, Room No. 2, Beze Building. L. A. HEIL, Manager.

**SUBSCRIPTION PRICE.**Weekly Edition per annum.....\$1 50  
Monthly Stock Farmers' Edition..... 75

Entered at the Postoffice, Fort Worth, Texas, as second-class matter.

Entered at the Postoffice, San Antonio, Texas, as second-class matter.

Entered at the Postoffice, Dallas, Texas, as second-class matter.

SUBSCRIPTIONS to the TEXAS LIVE STOCK JOURNAL are solicited upon the ground that the information given is worth the money to any man in Texas who is either raising, dealing in, or feeding any description of live stock in Texas, Louisiana, the Indian Territory, or any section of the range country. The weekly edition costs but \$1.50 per year. We ask those who are subscribers to renew promptly and those who are not subscribers to give the paper a yearly trial. Subscriptions can be sent direct to the TEXAS LIVE STOCK JOURNAL.

ALL yearlings are now long yearlings, and all twos are long twos, and for the first time in several years are selling on their merits and age.

RANGE cattle are now selling better than they have sold for fully two years; this is not due to excited beef markets, but is due to the recognized scarcity of everything in the steer line.

THE JOURNAL would not be at all surprised if the quarantines against Texas cattle would finally force all Texas cattle to be slaughtered at home. The stockmen of Texas would lose nothing by such arrangements as home markets will be established thereby.

NO MATTER what the price of cattle may be, calves have advanced. The range calves have gone to market in remarkable large numbers and have sold uniformly well. This is not to boom the business of shipping calves to market although many a worse thing has been done in the cattle business.

IF THE discussion started by Colonel Black would lead around to hastening the establishment of one or two good central stock yards in the state of Tex-

as his efforts will not have been in vain. The exchanges would follow as a matter of course, but would pattern after similar exchanges. There is considerable trading in hogs, cattle and sheep going to waste in these days because there is no central yard to bring the stuff in sight. Men who want feeders don't know where to get them. Men who sell feeders don't know where to place them and so on. The trade is dull for want of stock yards.

**The St. Louis Meeting.**

Another meeting is announced which is of interest to cattle raisers and cattle feeders. This time the butchers are invited to attend the convention and according to the programme the producers of beef together with the retailers of beef are to devise ways and means to restore the old order of things when butchers went to market to buy cattle, instead of purchasing sides of beef from the dressed beef packing houses, as many are now doing.

That cattle raisers attribute much of their misfortunes to the control of prices of cattle by the great packing houses goes without saying; the entire directory of the range association requested the president to issue the call, and in a general way the purpose of the meeting meets the unqualified approval of the cattle raising interests of the West. It is possible also that the meeting will be approved by commission men who see the buying interest is greatly reduced in numbers even if the few buyers of the dressed beef houses are perfectly able to handle the entire offerings of cattle.

The butchers are enthusiastic that something beneficial will come of the meeting and believe that the joint expression of cattlemen with themselves together with the report of the senate committee, will cause legislation to be enacted that will keep the packers from concentrating their powers on city after city as they have done in the past for the purpose of controlling the butcher trade.

THE TEXAS LIVE STOCK JOURNAL is in full sympathy with the movement in any attack on recognized monopoly, and hopes the convention will fight monopoly with effective weapons, that is by fighting dressed beef with dressed beef, and not vainly attempt to do away with the entire dressed beef system.

If the butcher interest would unite for the purpose of erecting central abattoirs for the purpose of competing with the giants of the dressed beef trade, they could do so to great and permanent advantage. The management of the butchers abattoirs would have the advantage of being in sympathy with the retailers, and the retailers could participate proportionately in the profits of the butchers packery. The butchers of St. Louis who want to hold their own market for themselves for all time are strong enough to establish a packery in St. Louis far greater in extent and capacity than the one operated there; they could compete on even terms with any packing interest, and there is no rea-

**HUNTER, EVANS & CO.**NATIONAL STOCK YARDS  
ST. CLAIR CO., ILL.Each office in charge of  
a member of the firm.15 YEARS' ACTIVE EXPERIENCE in Live  
Stock Commission Business. Market Re-  
ports reg'r and special, and all other information incident  
to the business, will be furnished FREE by each house.KANSAS CITY STOCK YARDS  
KANSAS CITY, MO.Correspondence always  
has prompt attention.Parties having Stock to market, in large or small num-  
bers, will do well to confer with us before making arrangem'tsUNION STOCK YARDS  
CHICAGO, ILL.**LIVE STOCK COMMISSION MERCHANTS.**

son except their own negligence that permits Armour, Swift or Hammond to undersell them in any market.

If the butchers would array themselves on the side of dressed beef, and use the weapon in their own behalf that is now crushing them out, they would furnish the competition so desired by the cattle raisers. The cattle raisers see this and the temptation is very great that they should erect packing houses of their own, but they are not butchers and have no desire to follow their cattle beyond the stock yards, if any life remains in competitive markets.

We hope the meeting will do something of benefit to the trade, for the competition element seems to have been knocked out of it.

**Farm Mortgages.**

Farm mortgages form a very interesting topic for newspapers of late, and as is usual the companies loaning the money are severely condemned. There is a vast amount of rot and nonsense in all this cry, because the loaning companies are indeed of great assistance in the development of the West, and absolutely necessary to enable many a poor, almost penniless man to exist while he secures the fruits of his labor upon the land a beneficent government has endowed him.

No one thinks of condemning the man for borrowing the money. He may need a house, or wagon, or a team of horses and agricultural implements or grub and have no possible chance of securing either without recourse to the agent of the monopolistic loaning company, who will loan money on land at ten per cent. and a brokerage. The man who borrows the money is blameless, but without the money, in the majority of cases he would have to go East again to work as a common laborer, or in whatever line his abilities would place him. He could not acquire a home without assistance and could not support himself or family until he could raise and sell a crop. If he is blameless, why condemn the man or company coming to his assistance?

Men who know rates of interest charged by local capitalists in Western countries, including banks both private and national, will agree with us that long loans on land at 10 per cent. have proven a great blessing and helped many a man in the acquisition of valuable properties. It is the cheapest money in the entire West, but the com-

petition (there being no money trust) in farm loans, has reduced rates of interest in some states to 8 and 6 per cent. In Texas we want eight per cent. money now and the company offering money at such a rate can do plenty of business and get gilt edge securities.

Many a man has come West with a few thousand dollars for the purpose of investing in land or other property and finding the rates of interest so high has quietly set down shaving notes and making annually over twenty-five per cent. This thing is not so common now because land loans have relieved the necessities of the people, but sufficient of it remains to cause the JOURNAL to receive the fullest endorsement when we say don't discourage the land loaning companies, we need them in our business and we need them bad.

The cry of the West is for cheap money, and only fools will drive it away.

**—:WARREN:—****FEMALE INSTITUTE**

A boarding and day school of high order, for young ladies and girls.

**Fifth Annual Session**

of thirty-two weeks, commences

**SEPT. 3, 1888.**

Faculty complete in every department. Eleven teachers employed. Send for catalogue.

Mrs. ED. F. WARREN, Principal,  
Fort Worth, Texas.

R. G. HEAD, PRES'T.

J. G. HOPKINS, SEC. T. H. LAWRENCE, TR.

**The R. G. Head****Brokerage and Investment Company.**

Rooms 72 and 73 Barclay Block,  
Denver, Col.

Buy and sell all kinds of live stock, ranch properties, farms, lands, land grants, stocks and bonds of cattle companies, and real estate. Make a specialty of handling young steers.

Make examinations, surveys of and write reports on land grants and ranch properties anywhere in the United States and Mexico.

We have for sale desirable tracts of land, large bodies, solid blocks in Texas, New Mexico, and Mexico, specially adapted to agriculture, stock farming and colonization.

Our commissions on cattle sales will be based upon a percentage of prices obtained. Schedule of rates furnished on application.

**\$75 to \$250 A MONTH** can be made working for us. Agents preferred who can furnish a horse and give their whole time to the business. Spare moments may be profitably employed also. A few vacancies in towns and cities. B. F. JOHNSON & CO., 1009 Main St., Richmond, Va.



Wool sales reported by the U. S. Economist:—The sales of the week are much lighter and embrace 35,000 lbs. XX Ohio fleece at 30@31c. now held higher: h 10,000 lbs. X Michigan do at 23c.; 12,000 lbs. No. 1 combing fleece at 35c. choice is now held at 36c.; 10,000 lbs. fine-medium-unwashed Territory at 20½c; 11,000 lbs. heavy Kansas at 14c; 31,600 lbs. fine Wyoming at 13@14c; 14,000 lbs. medium Montana at 23c; 2,200 lbs. black do at 20c; 6,000 lbs. staple light Montana 23@24c; 52,000 pounds clip Montana on private terms; 60,000 lbs. years' growth spring Texas at 22c; @22½c; 10,000 lbs. heavy years' growth old spring do at 12½c; 10,000 lbs lambs super, and 90,000 lbs super and other sorts of pulled wools on terms reserved; 16,000 lbs scoured Texas at 46@48c; 10,000 lbs scoured Territory at 53½c; 1000 lbs scoured Wyoming at 52c; 27,500 lbs short spring California light shrink at 15c; 13,500 lbs spring Texas, 10,000 lbs scoured do, and 1600 lbs medium fleece and 5,000 lbs carpet wool on private terms; 5,000 lbs ring waste at 55c;

**To Whom and Where it Went Late-ly.**

It was Tuesday, August 7, 1888, always Tuesday, the 219th grand monthly drawing of the Louisiana State Lottery occurred under the sole management (as usual) of Gen'l G. T. Beauregard of Louisiana, and Jubal A. Early of Virginia. The prizes ranged from \$100 to \$300,000 and were distributed from Maine to Texas and California to Alaska. You want to know to whom and where. No. 3894 drew the first capital prize of \$300,000. It was sold in fractions of twentieths at \$1 each, sent to M. A. Dauphin, New Orleans, La.: one was held by Mrs. Mary L. Callender, New York city; one by Chas. Wiess, Altoona, Pa.; one by a depositor, through Wells, Fargo & Co., San Francisco, Cal.; one by Joseph Fishbough, 129 First street, Elizabeth, N. J.; one by Amos Marsh, Bell street, Orange, N. J.; one by Peter Klein, 99 E. Kinsey street, Chicago, Ill.; one by Vasilio Grissaffi, Front street, near Jackson street ferry, Gretna, La.; one by Ellis Richardson, Fort Worth, Texas; one by F. L. Dant, Rowland, Ky., through Citizen's National Bank of Louisville, Ky.; one by J. Rivard, Brownsville, Dak.; one by Aug. Hartdegen, Columbus, Ohio; the rest went elsewhere. Ticket No. 31,809 drew second capital prize of \$100,000 also sold in fractional parts: one went to a party at Oxford, Miss., collected through Bickham & Moore, 218 Gravier street, New Orleans, La.; one to S. Goldfarb, 192 Division street, New York city, one to Alonzo Edwards, Ithaca, New York; one to Stewart & Bradway, Bridgeport, Ind.; one to a depositor, through Wells, Fargo & Co., San Francisco, Cal.; one to J. Spiro, Michigan City, Ind.; one to J. M. Woodridge, Gilliam, Mo.; one to O. G. Trepanier, St. John the Baptist, La., Bonne Carre P. O.; the other portions were held by parties whose names are withheld. Ticket No. 53,283 drew third prize of \$50,000—it was sold also in twentieths: two each went to National Bank of Commerce, Kansas City, Mo., and J. Beltrami, New York city; one to Henry Hildenbrand, New York city; one to Hugh Leddy, New York city; one to a depositor, through Louisiana National Bank, New Orleans, La.; one to Merchants Bank of Atlanta, Ga. Ticket No. 84,769 drew fourth prize of \$25,000 one-half of it went to H. McManus, Omaha, Neb., etc., etc. Any information desired can be had on an application to M. A. Dauphin, New Orleans, La. The whole affair will go over on Tuesday, Oct. 9th, 1888. Take note of date.

Don't buy the Missouri penitentiary saddle trees, but buy the genuine Loeloff, for sale by L. S. Brackett, San Antonio, Texas.

**The Great Secret**

Of exceptionally long and abundant hair may never be solved; but that Ayer's Hair Vigor preserves the hair in all its beauty and luxuriance, and even restores it, when thin and gray, is

**Well Known.**

P. J. Cullen, Saratoga Springs, N. Y., writes: "My father, at about the age of fifty, lost all the hair from the top of his head. After one month's trial of Ayer's Hair Vigor, the hair began coming, and, in three months, he had a fine growth of hair of the natural color."

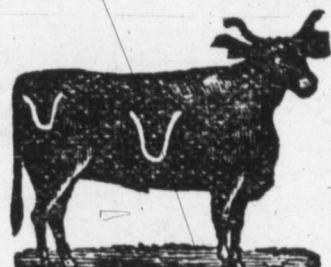
J. T. Gibson, 96 Hope st., Huntley, Staffordshire, Eng., says: "I have seen young men in South Australia quite gray, whose hair has been restored to its natural color after using but one bottle of Ayer's Hair Vigor."

**Ayer's Hair Vigor,**

Prepared by Dr. J. C. Ayer & Co., Lowell, Mass. Sold by Druggists and Perfumers.

**Matador Land and Cattle Company.**

(Limited.)



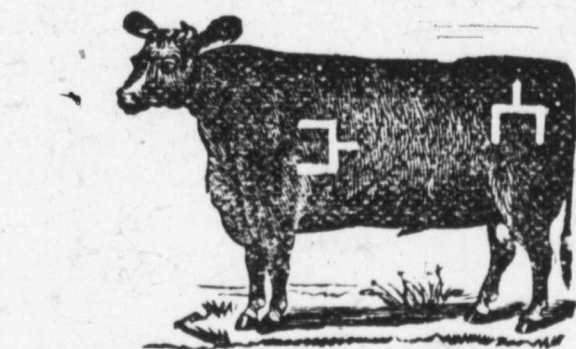
RANCH BRAND.

H. H. CAMPBELL, superintendent. P. O., Teepe City, Motley county. Also cattle branded **EX** on left side, **U** on the right side, also **NN** and **N** hip, marked **crop right**, underbit left; also **INK** left side, **T** hip, marked **crop** and split right; also **T41** on left side, marked **underslope left**; also **T** on each side, some of which have **K** on left jaw or **T** on each hip, marked **under-half-crop** in each ear; also, same mark, branded **71** left side and **TIL** right side. Some of these also have **K** on right jaw. Also **50** left side, **M** hip, or **A** on right hip, **W** side in various marks; also **7** on left shoulder, **7** on side, **7** hip, marked **crop left ear**; and also **AOA** on left side, in various marks, or marked **crop** and two splits in left and swallowfork in right, or **crop** and two splits in left only, or swallowfork in left and underbit in right. Also **V** or **8** in various marks.

**The Espuela Land and Cattle Company.**

(Limited.)

Postoffice, Dockums, Dickens county, Texas S. W. LOMAX, Manager.

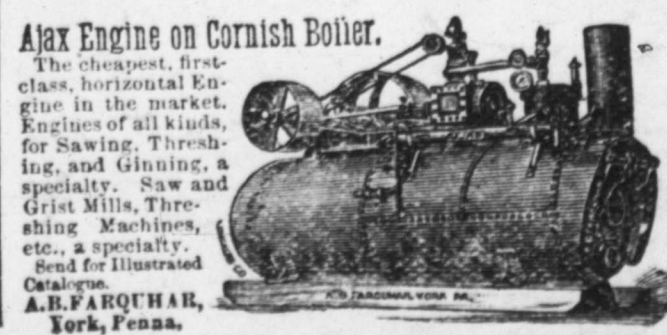


Have for sale two-year-old and yearling steers and heifers of their own raising, got by Shorthorn and Hereford bulls, in the straight Spur mark and brand. Horses branded **7** on left hip.

**Best and Cheapest-Cold Water Sheep Dip**



Prepared Roofing, Cheap, durable, easily applied. TEXAS STORAGE CO., 829 Main St., Dallas, Texas



**Atlas Engine on Cornish Boiler.** The cheapest, first class, horizontal Engine in the market. Engines of all kinds, for Sawing, Threshing, and Ginning, a specialty. Saw and Grist Mills, Threshing Machines, etc., a specialty. Send for illustrated Catalogue. A. B. FARQUHAR, York, Penna.

J. B. LITTLEJOHN, Manager Insurance Department. THOMAS P. MARTIN, Attorney-at-Law, Manager Land Dept. **LITTLEJOHN & MARTIN,** Insurance, Loan and Real Estate Agents, 513 Main Street, Fort Worth, Texas.

Buy and sell (on commission only) lands in all parts of Texas and City real estate. Property rendered and taxes paid on same. Lands examined and divided. Patents obtained, titles examined and perfected. A specialty made of business with the different state departments at Austin. A general business transacted. Commissions reasonable.

J. Q. SANDIDGE, Pres. MAX ELSER, Cashier. **CITY NATIONAL BANK,** FORT WORTH, TEXAS. Capital Paid in and Surplus, \$200,000. DIRECTORS—J. Q. Sandidge, Max Elser, Chas. Scheuber, C. M. Crane, T. T. D. Andrews.

M. B. LOYD, President. D. C. BENNETT, Vice-President. E. B. HARROLD, Cashier. **FIRST NATIONAL BANK,** Corner Houston & Second Streets, - - - Fort Worth, Texas. CASH CAPITAL AND SURPLUS, \$375,000. DIRECTORS—J. S. Godwin, M. B. Loyd, J. D. Reed, Zane Cetti, D. C. Bennett, George Jackson, S. B. Burnet, E. B. Harrold and E. F. Ikard.

**POLK STOCK YARDS,** POLK BROTHERS, Proprietors.

Hereford, Shorthorn, Polled Angus, Devon, Holstein and Jerseys, Saddle Horses, Mares, Mules and Jacks. Shipments Solicited. Fort Worth, Texas. We Sell on Commission.

C. H. COOPER. E. H. ROBERTSON. **COOPER & ROBERTSON,** Real Estate and Rental Agts. 702 MAIN STREET, DALLAS, TEXAS.

Are now preparing their annual catalogue of Dallas City, Farm and Ranch properties, Wild Lands, Timber and Mineral, many thousands of which will be distributed during the coming State Fair at Dallas. Those having properties for sale or exchange, can have description of same inserted free of charge by corresponding with them.

**WM. HENRY & CO.,** --Dealers in Stoves and Hardware--

513 and 515 Houston Street, Fort Worth, Texas. AGENTS—Fire and Burglar Proof Safes and Vault Doors, Laffin & Rand Powder Co., Glidden Steel Barb Wire, Iron and Slate Mantels and Grates, &c.

**Hardware & Queensware.** W. F. LAKE, Cor. 2nd and Houston Sts. Wholesale and Retail.

**Wholesale Dry Goods.** THE MARTIN-BROWN CO. Cor. 4th and Main Streets. The only exclusively wholesale dry goods house in the city.

**THE LIVE STOCK MARKET** —Of St. Louis.—

**The Louis National Stock Yards,**

Located at East St. Louis, Illinois, directly opposite the City of St. Louis. Shippers should see that their stock is billed directly to the "NATIONAL STOCK YARDS," ISAAC H. KNOX, CHAS. T. JONES, PRESIDENT. SUPERINTENDENT

**The Lightning Hay Press.** Full Circle.



Kansas City Hay Press and Foundry Co. Send for circulars. Kansas City, Mo

**KEEP COOL. Summer Cook Stoves,**

FOR WOOD, COAL or COBS. Cheaper and Safer than Oil or Gasoline. Five cents a day to cook, bake, wash, iron for entire family. They save their cost in one season. Every farmer has waste fuel enough to heat his house and cook his food. The cobs from 3 acres of corn will run his cook stove. These stoves have refrigerator cases that confine the heat to its work. Before you buy elsewhere send for circulars. We make several sizes. Double Quick, Price, \$5.60. GEO. H. HESS CO., 210 Van Buren St., Chicago.



**CHIEF MAYES** of the Cherokee Strip has issued a proclamation, announcing expiration of present lease on October 1, 1888, and claims all improvements on said land as then becoming property of the nation; also, that as his duty is to look after said property, an agent will be appointed to take it all in. He advises stockmen to submit quietly and he will do no more than he is obliged to under the law, and will make arrangements to let the cattle range until November 1st, when the pastures and improvements will be offered for lease.

**FORT WORTH NOTES.**

Captin J. C. Richardson quotes all sorts and conditions of feeders at 2@2½ cents.

The Fort Worth Union stock yards is permitting a vast amount of business to go to waste.

The Cresswell Cattle company of the Panhandle sold Zack Mullhall 67 steers at \$35 ar und.

Homer Smoot of Denton county passed through town with 100 Parker county steers for feeding purposes.

Jno S. Powell & Company sold 1 car of mares to Mr. A. B. Guinn, Bridgeport, Texas, at \$30 around. Also, 1 jack at \$325.

Business in feeders is in fashion now a days and the demand for them is strong. The men buying feeders would like to see the stock offered them in stock pens.

There is considerable speculation as to when the Kansas rates will be restored, but the JOURNAL is pretty well informed that there will be no restoration, not for a long time.

Mr. C. F. Estill has for sale in his pasture near this city, one car-load of 4 and 5-year-old mares, unbranded, also 40 mule colts. He has just shipped two cars of horses to Eastern Texas.

Mr. Charles Goodnight of Palo Duro has leased the Diamond F pasture, formerly property of the Franklin Cattle Co, at \$15,000 per annum for 540 acres. The chances are that he will make good money out of the lease.

Young, Andrews & Kuhlen, Fort Worth, Texas, are selling numbers of single drivers, saddle horses and work stock. Tom Andrews of the firm is expected back home Monday, having sold out the stock sent to Illinois.

The information contained in the TEXAS LIVE STOCK JOURNAL costs the subscriber but \$1.50 per year, and the paper contains more than when the price was \$3. The stockman who buys the paper gets his information in a reliable form, and obtains it very cheap.

A petition is going the rounds for signature requesting the railroads to haul cattle in stable cars at the same rate as cattle are hauled in common cars. Just the same as is done elsewhere. When the petition is signed up it will bear the names of the principal cattle shippers in Texas.

Colonel R. D. Hunter of St. Louis was in town during the past week. He believes that the establishment of the Fort Worth Union stock yards will be of great benefit to the trade, and be a paying institution. He will establish an agency at the yards directly they are in operation.

Mr. S. O. Moodie of Fort Worth has an excellent property on the Fort Worth & Denver road, and has just placed upon it 54 head of North Texas selected mares, which cost him \$40 around. He purchased the mares of Hatcher, Woods & Coppinger of Fort Worth, and obtained a very smooth and well conditioned bunch of horse stock.

Richardson & Hackett, sold to R. H. Quarles, Hillsboro, for Young, Andrews & Kuhlen, 125 head of feeding steers at \$20 around. They also sold to G. W. Weaver of Plano, 125 four-year-old steers, the property of J. Y. Hogsett, at \$25.50 around. Messrs. Richardson & Hackett sold 2-cars of hogs to local butchers at 5½c.

John K. Rosson has returned from a trip to the Panhandle and to Kansas.

He reports that for three weeks it has rained in the Panhandle and there is a good inquiry developing for young steers. He also states that rates are solidly maintained at all Texas points. Panhandle City to Kansas City being \$57.50, and \$100 to Chicago, while at Liberal, Kansas, the Rock Island is hauling palace cars to Kansas City at \$25, and to Chicago at \$50.

Sales at Polk's steck yards:—Frank Booth to Hier Wholzer, 7 heifers av 620 lbs. at 1½c; J. J. Whelan to Tom Smith, 7 cows av 810 lbs. at 1¼c; C. B. Stone 2 cows av 840 lbs. at 1½, to Hardcastle; 5 cows av 820 lbs. at 1½ to Shuber; Slocum to Butchers, 16 cows av 840 lbs. at 1½c; Slocum to Weaver, 26 cows av 820 lbs. at 1½c; E. R. Garth to Weaver, 2 cows av 845 lbs. at 1½c; E. R. Garth to Hardcastle 3 cows at \$24; Getz & Sims to butchers, 16 cows av 815 lbs at 1½c; H. F. Shaw to butchers, 100 sheep av 95 lbs. at 2½c; E. M. Daggett to R. H. Quarles, 50 feeders, 3-year-olds, at 2c; Bill Wallace to R. H. Quarles, 118 hogs at 5½c; Richardson & Hackett to J. B. Ayers, 80 hogs at 5½c.

**Wool Clippings.**

From Sheep and Wool, published at the Darien Press, Bristol Place, Edinburgh, Scotland.

One of the most interesting features of the season has been the shipment of "Laps" to America. Outside readers will naturally ask what are Laps? Laps are really waste made in the process between combing and spinning. Pieces of combed wool in the process of attenuation become wrapped round the intervening rollers instead of proceeding in due course to the spindles. These are pulled off and thrown aside as waste, to be recombbed or otherwise dealt with. Spinning waste, i. e., fully twisted thread waste, has always been admitted into the States at 10 cents per lb duty, but the American custom authorities have hitherto resisted the inclusion of laps under this heap. Some American firms have taken the matter before the courts, and have succeeded in obtaining a decision which classes laps as waste. As they are practically equal to scoured wool, upon which the duty is 20 cents per lb., it will easily be understood that there was a good margin in favor of importing them. The market has been consequently very well cleared, and they have advanced from a waste price to almost equal value with the tops out of which they are made.

The American tariff question still remains unsettled. What is known as the Mills bill has passed through the lower house of the American legislature, and is now undergoing consideration by the senate. As there is a small protectionist majority in the senate, it is taken for granted in most quarters that the bill will not be passed. There is, however, an off-chance that the party exigencies might induce the Republican party to pass the bill in some form.

If the Mills bill should pass, it would no doubt stimulate the trade in English wools, as one of the provisions of that bill is to admit all wools free of duty.

The provisions of the bill as regards worsted and woolen goods would probably mean no good to manufactures on this side, as it maintains the duties on these goods at something like 42 per cent. On some classes of worsteds, in fact its effect will be to increase the duty.

If, however, the question was settled, either by the acceptance, or rejection of the tariff proposals, the trade would probably improve, as the present uncertainty does more to restrain than anything that could happen.

**THE ONLY EXPLANATION.**

An old shepherd sold a fine collie to Lord G—, but the dog would not stay with his lordship, and returned to his old master whenever he got the

chance. The shepherd faithfully returned with the animal, and gave it back to the noble owner. The last time the dog ran away his lordship was very angry, and thinking the shepherd must have enticed it, asked: "Can you not explain why that dog will not stay with me?" "Maybe," replied the shepherd, "maybe I can. He maybe sees ye dinna think muckle o' him. Dogs are queer, an' if ye dinna like them theyll no like you." "But that can't be the reason," returned his lordship, "for I treat him well, and have the highest opinion of his intelligence." "Weel, it maun be because he cannot form a high opinion o' you," replied the shepherd, simply.

**NOT SO MAD.**

When the Earl of Bradford was brought before Lord Chancellor Loughborough to be examined upon application of the statute of lunacy against him, the chancellor asked him:—"How many legs has a sheep?" "Does your lordship mean," answered Lord Bradford, "a live or a dead sheep?" "Is it not the same thing?" said the chancellor. "No, my lord," said Lord Bradford; "there is much difference. A living sheep may have four legs, a dead sheep has only two. There are but two legs of mntton: the two fore-legs are shoulders."

During the Afghan campaign a lot of sheep were brought into the British camp at Cabul to be slaughtered for the soldiers. Their tails (the sheep's, not the soldiers'), which were large masses of fat, the size of a man's head, were a source of great curiosity to the soldiers, two of whom stood regarding them with wonder. "Arrah," says one, "how do they get them big tails?" "Aisy enough, Paddy, me bhoy. You see they be always grazing up-hill, and of course the fat runs down into their tails."

American Agriculturist:—The Island of Jersey makes a specialty of early vegetables and fruits for the London market, which is found more profitable by many than dairying. There were 2744 occupiers of land on the island last year, whose holdings averaged about seven and three-fourths acres. Grapes are extensively grown under glass, one hundred and twelve tons having been shipped last year; they are preserved in houses lined with sawdust to keep out the frost, and their freshness is maintained by keeping in bottles of water. Tomatoes are another great crop, of which fifty thousand dollars' worth are annually sold. Early potatoes, however, are the principal crop, the Jersey tubers being usually the first in market. Nearly one-fifth of the whole island is devoted to potatoes, which yield from eight to ten tons per acre, and sell at from twenty to forty dollars per ton. The average cost of production in 1887 was \$237 per acre, the average return being \$360, or a profit of \$123 per acre. The usual profit is between forty and fifty dollars per acre. Myatts planted in January are ready to dig in May, and are followed by Early Royal Jersey Fluke and Prince of Wales. The land is prodigiously manured, sea-weed and stable manure being much used, and guano is applied four or five times as liberally as on the Continent.

**To the Afflicted.**

We call the attention of our readers to the advertisement of Dr. J. R. Pollock in this issue of the JOURNAL. To those who are afflicted with renal troubles we can recommend the doctor as a specialist in that particular; he having effected some remarkable cures in cases which had become chronic. Dr. Pollock successfully treats consumption, bronchitis, catarrh, dyspepsia and all other chronic diseases with oxygen and electricity. Correspond with the doctor if you need the services of a reliable physician who can give the best of references.

J. P. SMITH, President. FRANKLIN B. HOUGH, Secretary.

**THE GRANITIC ROOFING.**

Factory at Fort Worth, Tex  
Better than the best, cheaper than the cheapest roofing offered in Texas. Suitable for steep or flat roofs. Cheap enough to cover a hen coop; good enough to roof a palace. Specially adapted to stockmen's barns and out-buildings. Shingles, tin and corrugated iron must give way before our goods. For further particulars write to our office.

Fort Worth Granitic Roofing Co  
11th and Rusk Sts., Fort Worth, Tex

**JNO. S. POWELL & CO**

Office, Mansion Hotel, Fort Worth, Texas.



Offer for sale choice thoroughbred and high-grade Hereford, Polled-Angus, Durham, Holsteins and Jersey Culls and Heifers. Stock on hand and for sale on very reasonable terms.

**TERRY, WRIGHT & LENOIR,**

Fort Worth, Texas,  
**REAL ESTATE AGENTS,**  
Have some choice  
Farm Ranch and City Properties  
**FOR SALE.**

And invite correspondence from buyers and sellers.  
T. P. LENOIR, Live Stock Broker, will contract horses, cattle or other live stock.

J. R. JETER, Atty-at-Law. J. E. COOPER.

**J. R. JETER & CO.,**  
**Land and Investment Agents**

405 Main St., Fort Worth, Tex.,  
Have for sale

- Cheap Lands for Home-Seekers.**
1. 8257 acres fine land in center Hutchinson county, at \$2.50 per acre.
  2. 10,000 acres in Hardeman county, from ¼ to 10 miles from railroad, in tracts to suit, from \$2 to \$4 per acre.
  3. The best improved stock farm in Texas of 3000 acres; well watered and fenced, residence, barn, orchard and all necessary improvements, 300 to 500 acres in cultivation. Price, for 60 days, \$6 per acre; terms easy.
  4. 7500 acres in Wichita county; fine farming land near railroad station, fine location for colony; from \$3 to \$4.50 per acre.
  5. Ranch 3000 acres in Zavalla county, 3 miles from county seat, all rich valley land, fenced; \$10,000 on easy terms, or will trade for big young mares or mules at cash value.
  6. Ranch 1500 acres in Bosque county, 200 acres in Bosque valley, 3 miles railroad town; 2-story modern residence, 2-story barn 80x120 ft., and \$4.00 worth fine stock, etc. Price for land, stock and improvements, \$10,000, on very easy terms.
  8. City property in Fort Worth, Houston and Temple, to trade for desirable North Texas lands.
  9. Valuable city property in Northern city, rented, to trade for large bodies North Texas land, clear of incumbrance.
- Many other bargains in farm, ranch and timber lands. Lands for sale and exchange. In all sections of the state, in any size tract desired. State what you want; we can furnish land to suit.

**Johnson Grass Seed,**  
**Alfalfa Seed, Sorghum**  
Seed, all kinds bulk seeds.  
**W. F. PATTERSON,**  
**Ft. Worth Seed Merchant,**  
WILL QUOTE PRICES



**DALLAS.**

**THE GREAT FAIR AND EXPOSITION.**

**Making Ready for the Thousands of Visitors.**

One visiting the Fair and Exposition grounds at this time would of necessity be impressed with the idea that the enterprise had taken on much growth, and had awakened a greater and more general interest throughout the country than at any time past. The enlargement of the grounds, the expansion and multiplying of exhibit buildings carries conviction of itself, and the hundreds of men busy at work making ready for the occasion is far from leaving a doubt of the immensity of this third grand annual entertainment.

The agricultural display this year in the way of county exhibits will occupy the machinery hall of last year, and indeed that large structure has at this date its entire capacity taxed to the brim, all available space taken, and still the exhibitors call for room, from which fact it can be readily seen that the thousands of interested visitors from other states who come to see and learn of Texas, of her great and boundless resources, will find conveniently grouped much of the evidences of her possibilities.

**THE RACES**

this year have awakened an unusual interest, and the event is usually prefaced with the assurance that it will surpass anything of the kind ever given in the South, the purses being larger and the array of entries embracing more of the noted horses of America.

**THE CATTLE ROPING**

contests have elicited much interest, and the entries, principally from the Western ranges, of Texas and Mexico, are numerous, and it is safe to say that those unacquainted with the arts of skilled roping will have a bountiful opportunity to know more in this line. This exhibition will take place on Mondays only, beginning at 10 a. m. on October the 15th and 22nd.

Among others, Parker county seems to be doing the handsome thing in the way of a county exhibit. Having erected her own building, and an elegant one, too, preparations are being made to store it with the products of her rich and varied soils. Dallas and Kaufman counties are not a whit behind, and there is much inquiry about Tarrant county in the premises.

The old system of selling tickets at the gates has been perceptibly modified, and in its stead ten automatic turnstiles are being arranged, the machinery for which is so adjusted as to receive a silver half dollar, the adult fee, while a number of them for children respond only for a quarter, which make it necessary that the visitor at the entrance present the even fare and in coin.

The city will be brilliantly lit up during the night by the extensive arrangements now in process, in the way of the many beautiful grand arches spanning the streets, with their countless electric lights. All in all, the fair to date is pronounced in advance of the happiest conceptions of its founders. The attendance is predicted to be double that of last year. The experimental period has passed. The world now knows of the great state fair, and exposition of Texas.

**William Little Dead.**

Wm. Little, the noted Johnson grass man, who resided at Hutchins, Dallas county, died Monday morning of cancer of the stomach. He was a valuable citizen, a good neighbor and one of the most intelligent and practical farmers

and stock growers in the state. He was superintendent of the swine department of the State Fair, and in which capacity he served at the two preceding fairs with credit to himself and friends. The STOCK JOURNAL regrets to chronicle the sad line.

**Sales of Cattle at Carter & Son's Stock Yards, Dallas.**

P. J. Ingle, Auburn, sold 44 head of choice fat cows to local butchers at \$15 per head.

W. E. Wallace of Decatur, Wise county, sold 71 head of choice fat cows at \$13@15.

S. J. Mathews of Lebanon, Collin county, sold 28 mixed cattle, price not known.

D. E. German sold 8 veal calves at 2½c. average 220 lbs, and 7 yearlings \$6.75 per head.

H. Harton of Denton county, sold 8 cows at \$12.50 per head.

J. B. Hutsons of Montague county, sold 15 head of choice fat cattle at \$12.50.

R. M. Johnson of Dallas county, sold 19 cows at \$13 per head and 4 bulls, average 974 lbs, at 1c.

B. Hicks of Dallas county sold 6 milch cows and calves at \$23 per head.

J. P. Beacham of Kaufman county, sold 18 cattle on local market, price not known.

J. D. H. Morison sold 29 cows at \$13.50 per head, 6 steers \$18.25 per head, and 7 yearlings at \$6.50 per head.

Lewis Miller sold 6 two-year-old steers, at \$12.75 per head.

O. P. King sold 11 cows at \$11.50 per head.

Sam Gates sold 13 veal calves at 2½c per lb.

H. Sligh sold 67 sheep at 2½c, av. 95 lbs.

D. M. Garden sold 5 cows at \$12.50 and 11 yearlings at \$5.25.

Joe Bergman of San Saba county, sold 33 cows at \$11.75 per head.

Harry Staden sold 11 steers at \$21 per head.

J. A. Carroll sold 15 cows at \$14 per head.

Harvy Wells sold 3 yearlings at \$8.75 per head, and 9 veal calves at 2½c.

L. B. Morgan sold 19 cows at \$10 per head.

G. A. Ott sold 50 choice fat goats at \$1.50@1.75.

F. L. Sneed sold 3 milk cows at \$26 per head.

**Butchers and Cattlemen to Meet at St. Louis.**

St. Louis, Mo., Sept. 10, 1888. To the Cattle Raisers, Cattle Feeders and Butchers of the United States:

By authority of the directors of the International Range Association and of the Butchers' National Protective Association, we hereby call upon the cattle raisers, feeders and slaughterers of the United States, to assemble together in convention in the city of St. Louis on the 20th day of November, 1888, for the purpose of meeting a committee of the United States senate having in charge the investigation of the beef trade, and at the same time to confer together to devise measures which shall result in re-establishing competition in the purchase and sale of beef cattle in the markets of the United States, thus securing to both producer and consumer prices based on the laws of supply and demand. Also to recommend such sanitary measures in the handling of our beef supply as will raise the product above all suspicion of disease. The securing of wholesome meat at fair prices, based upon the natural laws of trade is a matter of national importance, affecting every man, woman and child in the United States. Such wise measures as may be inaugurated by a national convention of beef growers and butchers tending to secure beneficial results will certain-

ly receive the hearty support of the masses of the people and be soon placed in successful operation. At the present time the entire producing interest is having a price set upon cattle by a few large dressed beef companies which also dictate terms and prices to the consumers, and by the combined force and power of money are steadily destroying the retail slaughtering trade of the country and establishing instead a gigantic monopoly which is fast reducing cattle raisers to poverty by reason of low prices paid for cattle, while the consumers are required to pay prices for wholesome beef above the means of the masses of the people. Believing that the meeting will result favorably to the general interests of the people of the entire country, all cattle raisers and feeders are especially urged to attend, and all butchers who desire to perpetuate the system of legitimate competition in all markets. Special announcement will be made later of reduced rates of transportation for parties attending the convention.

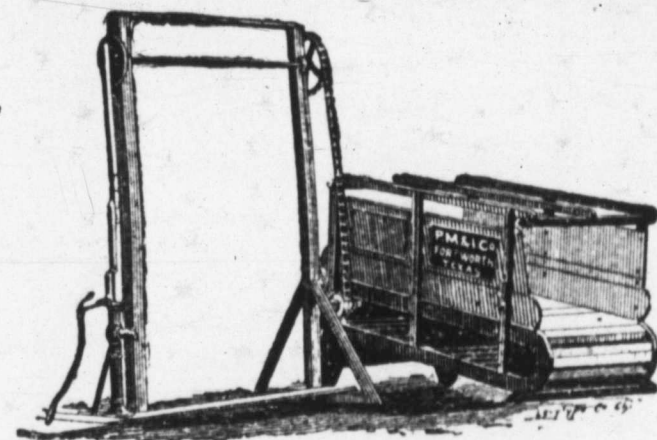
T. T. D. ANDREWS,  
President of International Range Ass'n.

CHARLES JAMES,  
President Butchers' National Protective Association.

**Rock Salt.**

Messrs. Turner, McClure & Co. of Fort Worth have en route a car-load of the celebrated rock salt, which is the best salt that can be used for cattle, horses, and all kinds of stock. Cattle like the rock salt and prefer it to all other. They cannot eat enough to hurt them, as it is as hard as a rock and must be licked. Messrs. Turner, McClure & Co. will fill orders by mail promptly, either in large or small quantity. Send a trial order.

TURNER, MCCLURE & CO.



**The Marshall Pumping Power.**

The best and most economical horse power for pumping. A pair of ponies, burros, Texas steers, or anything which can walk and has weight will do the work and without a driver. No pulling, just a walk up hill. Used for raising water for irrigation, watering stock and brick making. Will handle pump in any depth of well. Send for prices.

THE PANHANDLE M. & I. CO.,  
Fort Worth and Colorado, Texas.

**Lawrence's COMMERCIAL COLLEGE.**

910 and 912 Elm St., Dallas, Texas,

Includes superior facilities for Short-hand, Type-writing, Telegraphy and Music. Our famous pen artist and former student, Mr. J. B. Andrews, who wears the Grand State Prize Gold Medal from the Dallas State Fair and Exposition of last year, for the finest display of penmanship by professionals, is now exclusively and permanently in our faculty. Remember that champion penmen come from this College only. No vacation. In session fifteen years. For reduced rates of tuition in all departments and College Journal, call at the college or address

E. B. LAWRENCE, Prest,  
Dallas, Texas.

**DR. VAL RILEY,**  
Practice confined to  
**CATARH**  
Of the Air Passages, Ear and Eye.  
Office 912 Elm Street,  
DALLAS, - - TEXAS.

**\$93 Sewing Machine Free!**

We want one person in every village, town and township, to keep in their homes a line of our ART SAMPLES; to those who will keep and simply show these samples to those who call, we will send, free, the very best Sewing Machine manufactured in the world, with all the attachments. This machine is made after the SINGER patents, which have expired. Before the patents run out, this style machine, with the attachments, was sold for \$93; it now sells for \$50. Reader, it may seem to you the most WONDERFUL THING ON EARTH, but you can secure one of these machines ABSOLUTELY FREE, provided your application comes in first, from your locality, and if you will keep in your home and show to those who call, a set of our elegant and unequalled art samples. We do not ask you to show these samples for more than two months, and then they become your own property. The art samples are sent to you ABSOLUTELY FREE of cost. How can we do all this?—easily enough! We often get as much as \$2,000 or \$3,000 in trade from even a small place, after our art samples have remained where they could be seen for a month or two. We need one person in each locality, all over the country, and take this means of securing them at once. Those who write to us at once, will secure, FREE, the very best Sewing Machine manufactured, and the finest general assortment of works of high art ever shown together in America. All particulars FREE by return mail. Write at once; a postal card on which to write to us will cost you but one cent, and after you know all, should you conclude to go no further, why no harm is done. Wonderful as it seems, you need no capital—all is free. Address at once, TRUE & CO., Augusta, Maine.

**DR. GEO. WILKINS, DENTIST.**



Does everything in the way of dentistry. Besides filling teeth and putting in artificial ones, he makes a specialty of treating, saving and making useful and durable teeth of those that are diseased, aching and badly decayed, such as are generally extracted. Call and see the new method.

Teeth without plates that will not drop or get loose. See samples of porcelain continuous gum-teeth, enamel fronts and crowns made to match your own teeth. Porcelain fillings a specialty.

Cor. Elm and Harwood Streets.  
DALLAS, - - TEXAS.

**DR. O. B. HEWETT, THE DENTIST.**  
Dallas, Texas.  
Teeth extracted without pain.  
The BEST is the CHEAPEST.

**DALLAS DENTAL PARLORS!**  
PRICE CHEAPENY, D.D.S., Prop.  
709, 711 Elm St., Dallas, Tex.  
Call, write or telephone and make appointments in order to have the me reserved for your work.

**D. A. WILLIAMS,**  
Candidate for  
County Attorney Dallas Co.  
Election Nov. 6, 1888.

**BEV. SCOTT,**  
Candidate for  
County Clerk Dallas County.  
Election Nov. 6, 1888.

**JOHN P. GILLESPIE,**  
Candidate for  
County Attorney of Dallas County.  
Election Nov. 6, 1888.

The JOURNAL is authorized to announce  
**JAMES D. FARMER**  
as a candidate for the office of  
County Clerk of Tarrant County.  
at the election to be held Nov. 6.

**JOHN W. SAUNDERS,**  
Candidate for  
Assessor of Taxes of Dallas County.  
Election Nov. 6, 1888.

**LEE H. HUGHES,**  
Candidate for  
County Clerk, Dallas County.  
Election November 6, 1888.

**THOMAS F. McENNIS,**  
Candidate for  
County Clerk, Dallas County.  
Election Nov. 6, 1888.

**HENRY H. SMITH,**  
Treasurer of Dallas County  
Candidate or re-election.  
Election Nov. 6, 1888.



**The Wyoming Hereford Association.**  
Northwestern Live Stock Journal.

On the 27th of this month will occur the most notable public sale of pure bred cattle that has ever taken place in any country. Over 700 head of the choicest bred Hereford cattle on the face of the earth will be knocked down to the highest bidder at the receiver's sale near this city.

This herd was mainly made up of animals purchased in England by the distinguished Hereford breeder, George F. Morgan, and the best to be found on that side were selected. The herd is made up of the Rudolph, Wilton, Grove 3rd and Ivington Rose tribes, recognized by all Hereford breeders as the choicest families of the white-faced race. It is generally claimed that Mr. Morgan succeeded in buying all the representatives of the Ivington Roses in England and most of those in America.

Rudolph, that for years was at the head of this herd, was unquestionably the best bull of any breed ever shown at a fair, and his owner refused an offer of \$40,000 for him. Hundreds of his own and his sons' get are now in the herd.

Rudolph jr., won the great sweepstakes prize in all the classes at the Chicago Fat Stock show in 1886, an honor never before or since won by the Herefords. This same blood, equally as good as that which coursed through the veins of Rudolph and Rudolph jr., is still in the herd and offered to those who desire to secure it. Not a white-faced herd in this or any other country, but what could be improved by the infusion of some of this royal blood. Breeders, come to the sale and get something extra choice. No such opportunity will ever again be offered, and you can not afford to neglect this. Every Hereford breeder in the United States should be present. Hereford men, stand by your colors. Come and bid, show to the stockmen of the land that you have faith in the cattle you have for years been championing.

**Merit Wins.**

We desire to say to our citizens, that for years we have been selling Dr. King's New Discovery for Consumption, Dr. King's New Life Pills, Bucklen's Arnica Salve and Electric Bitters, and have never handled remedies that sell as well, or that have given such universal satisfaction. We do not hesitate to guarantee them every time, and we stand ready to refund the purchase price, if satisfactory results do not follow their use. These remedies have won their great popularity purely on their merits. H. W. Williams & Co., druggists.

**Missouri Pacific Railway and Iron Mountain Route**

offer a choice of routes to St. Louis and all points north and east; the Iron Mountain Route through Arkansas and Missouri, and the M., K. & T. through the Beautiful Indian Territory. Pullman buffet sleeping cars run through via both routes without change. This is also the direct line to Kansas City, St. Joseph and Omaha, and the Colorado Short Line from Kansas City to Pueblo and Denver.

**Rock Salt.**

Messrs. Turner, McClure & Co. of Fort Worth have en route a car-load of the celebrated rock salt, which is the best salt that can be used for cattle, horses, and all kinds of stock. Cattle like the rock salt and prefer it to all other. They cannot eat enough to hurt them, as it is as hard as a rock and must be licked. Messrs. Turner, McClure & Co. will fill orders by mail promptly, either in large or small quantity. Send a trial order.

TURNER, MCCLURE & Co.

**AN ABSOLUTE CURE**

**Of a Most Distressing Skin Disease, by the Cuticura Remedies.**

In the winter of 1879-80 I found myself afflicted with a singular eruption on my limbs, to which I had hitherto been a stranger. The trouble appeared in large blotches, upon which the skin was raised, but no gathering under it. No particular pain attended it, save a burning stinging sensation and an intolerable itching, such as was never before experienced. After becoming satisfied that it had come to stay, I called my physician, who, after a thorough examination, pronounced it a case of eczema. He comforted me by saying he could cure it; that it was only a skin disease incident to old people; was neither dangerous nor contagious, but if not arrested would prove exceedingly troublesome and annoying to me. I asked him to prescribe, which he did; powders and pills to be taken inwardly, and a wash for outward application. I attended faithfully to all directions, but the wash only aggravated the irritation, and after a few applications had to be abandoned. Becoming thoroughly alarmed, I asked my physician to call counsel, which he did. The case was examined, the medicines changed. I obeyed orders to the letter, all to no purpose. The blotches would disappear in one place (leaving a stain upon the skin, as if some dark liquid had been spilled over it), only to appear in another. It had been a part of my early education to discountenance all advertised medicines as a delusion and a snare, but one day, in glancing over a newspaper, I noticed under the head of your CUTICURA REMEDIES a case precisely similar to my own, and after reading it over several times I went immediately to the nearest drug store, purchased a bottle of CUTICURA RESOLVENT, two cakes of CUTICURA SOAP, and a box of CUTICURA, resolving to use them clandestinely, carefully noting the effects. The result of the first bath, with an after application of the CUTICURA, was most grateful and astonishing, quickly allaying the burning, itching sensation, and making me almost forget it ever existed. I persevered until an absolute cure was effected. I consider your CUTICURA REMEDIES invaluable, and cheerfully recommend them as such. One of your "Seven Cuticura Boys," which has gone all over the world, is my grandson, and the remedies that effected his speedy and wonderful cure were applied upon my recommendation.

AUGUSTA B. SMITH, Ashland, Ohio.

Sold everywhere. Price, CUTICURA, 50 cts.; SOAP, 25 cts.; RESOLVENT, \$1. Prepared by the POTTER DRUG AND CHEMICAL CO., Boston, Mass.

Send for "How to Cure Skin Diseases." 64 pages, 50 illustrations and 100 testimonials.

PIMPLES, black-heads, red, rough, chapped and oily skin prevented by Cuticura Soap.

**IT STOPS THE PAIN.**

Aching Muscles, Back, Hips and Sides, and all Pain, Inflammation and weakness Relieved in One Minute by the Cuticura Anti-Pain Plaster. The first and only pain-subduing plaster. 25 cents.

CHAS. I. EVANS. G. J. GOOCH.

**EVANS & GOOCH,**  
**Attorneys-at-Law,**

505 Elm Street,  
DALLAS, - - - TEXAS.

**J. C. SCOTT,**  
**Attorney-at-Law,**

304 MAIN STREET, FORT WORTH, TEX.  
**Land and Commercial Law.**

Refers by permission to Hon. Henry M. Teller, Sec. Interior, Washington, D. C.; Valley National Bank, St. Louis, Mo.; H. M. Truehart & Co., Galveston, Tex.; Gen. B. C. Ludlow, Col. Int. Rev., Austin, Tex.; City National Bank, Fort Worth, Tex.; First National Bank, Fort Worth, Texas.

**THOS. F. WEST,**  
Late of Jacksboro,  
**Attorney-at-Law,**

311 Main Street,  
FORT WORTH, - - - TEXAS.  
Special attention to Land and Live Stock Litigation.

N. A. STEDMAN. EDWARD F. WARREN,  
City Attorney.

**STEDMAN & WARREN,**  
**Lawyers,**

Corner of Main Street and Public Square  
FORT WORTH, TEXAS.

**JOHN KLEIN,**  
**Practical Hatter,**

912 Main St.,  
Hats blocked  
Stiff, soft and  
cleaned and  
to new. Best  
state. Work warranted first-class,  
or express promptly attended to.



Dallas, Texas  
while waiting  
straw hats  
stiffened equa  
facilities in the  
Orders by ma.

**CHAS. H. FRY,**

DEALER IN

**Watches, Diamonds, Jewelry, Clocks,**  
**SILVERWARE, ETC.**

212 Main St., Fort Worth, Texas.

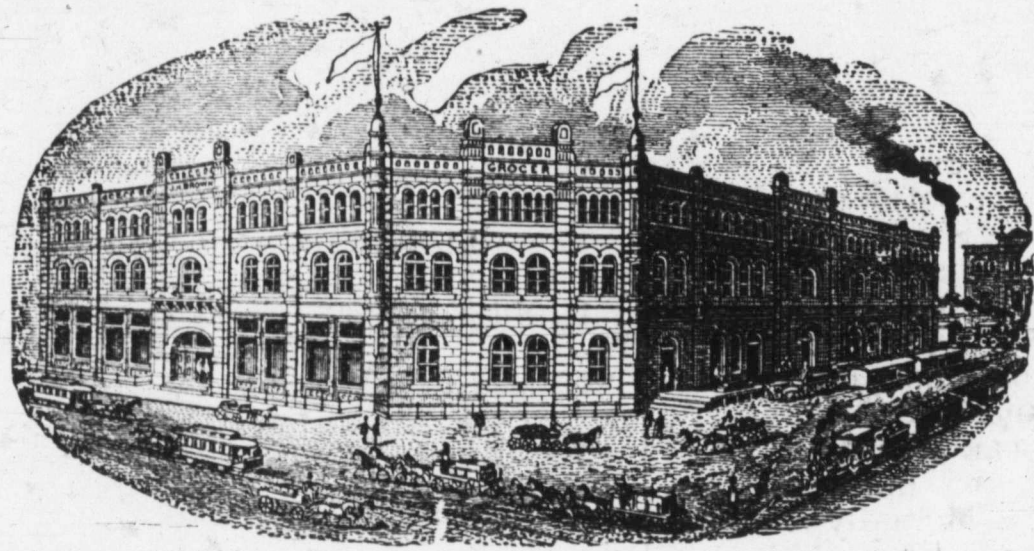
Orders for goods carefully filled, subject to inspection. Work in all departments carefully done. All work and goods guaranteed.

**JOSEPH H. BROWN,**

*Wholesale Grocer,*

Manufacturer of the Celebrated

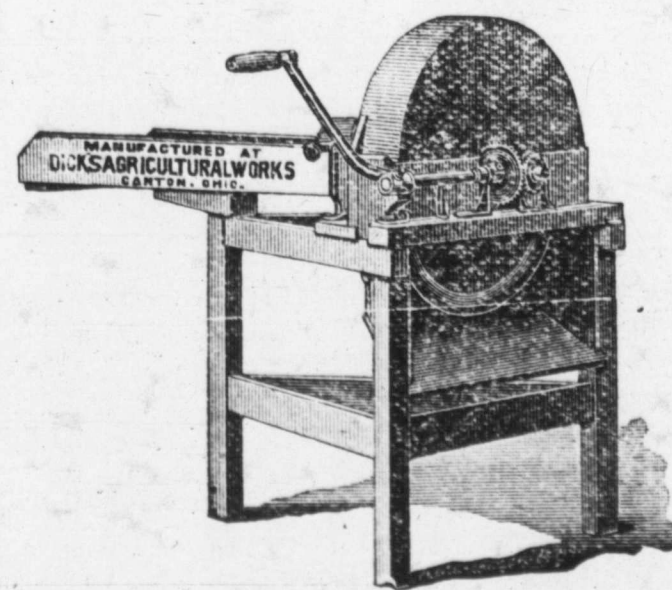
**SILVER LOAF BAKING POWDER.**



**-:Sultan Roasted Coffee:-**  
**FORT WORTH, TEX.**

This Cut Represents

**Dick's Famous Feed Cutter**



Will run with less power and do more cutting than any other style made. Its cutting capacity is perfectly simple and condensed. The knives are located on the balance wheel, thereby saving power. It is the only cutter made to which can be attached a corn stalk splitting attachment.

Write for Prices.

**W. A. HUFFMAN IMPLEMENT CO.,**

STATE AGENTS

Fort Worth, - - - Texas.



**An Open Letter.**

CHICAGO, ALTON & ST. LOUIS R. R. CO.  
OFFICE GEN'L LIVE STOCK AGT.,  
ST. LOUIS, July 20, 1888.

The undersigned, as the live stock representative of the old reliable and well-known Alton road, respectfully calls the attention of live stock shippers to the improved fast time now being made by this line from St. Louis, Kansas City and Higbee to Chicago. The cars of this line are uniform in size, and the roof is higher and better ventilated than any other ordinary stock cars now in use on other lines. In addition, the Alton is furnishing more of the improved palace stock cars to Texas shippers than all other lines combined. The Chicago & Alton makes a specialty of the handling of live stock, and in the past five years shipments have largely increased each year, which shows to all fair-minded people that we give attention to our patrons. No other line in the country transports as much live stock as the C. & A. in proportion to mileage. The books of the stock yards at St. Louis and Chicago will verify this. I can say, without fear of successful contradiction, that the C. & A. in the past has done some good work in behalf of live stock shippers so far as rates are concerned. The officers of this company have at all times looked upon the prosperity of stockmen as being beneficial to the road. The success of one was prosperity for both. I respectfully solicit of shippers a good share of their consignments, and promise them good treatment, fast time and rates as low as any first-class road makes.

I sincerely thank live stock shippers for the large patronage given our line in the past, and ask for their friendship and support in the future.

Shippers desiring any information or favors, by addressing me at St. Louis, will receive prompt replies.

JNO. NESBITT,  
Gen. Live Stock Agent.

**Bucklin's Arnica Salve.**

The best salve in the world for cuts, bruises, sores, ulcers, salt rheum, fever sores, tetter, chapped hands, chilblains, corns, and all skin eruptions, and positively cures piles, or no pay required. Is guaranteed to give perfect satisfaction, or money refunded. Price 25 cents per box. For sale by H. W. Williams & Co.

**New Zealand Cheese.**

American Agriculturist.

New Zealand cheese is gradually growing in favor in the English markets, although its flavor is rather stronger than that of Canadian or American cheese. The business of exporting cheese from New Zealand is as yet in its infancy, as the shipments thus far have traveled mostly as ordinary cargo, with no ventilation or other arrangements to preserve the quality. The fact that a few cases brought in cold storage sold as high as the best American makes, will doubtless lead to providing better transportation facilities for New Zealand cheese, and also for butter, the exports of which are increasing. Low freight rates have been given, so that the cost of transportation now stands as follows:

	BUTTER. Cts. per lb.	CHEESE. Cts. per lb.
From New Zealand to London.....	2	1½
From New York to London.....	1¼	1¼ to ½.

There are charges for "primage" to be paid in the colonies, but the extra charges on American exports will probably about offset this. Thus American cheese can be laid down in Lon-

don only about one cent, and butter one and a half cents per pound cheaper than the products of Southern Zone dairies, so far as freights are concerned. Therefore competition from this source is likely to increase.

**DRS. BETTS & BETTS**

Corner Champa and Seventeenth Sts.  
DENVER, - - - COLORADO.



**NERVOUS** Debility, Spermatorrhœa, Seminal Losses, Night Emissions, Loss of Vital Powers, Sleeplessness, Despondency, Loss of Memory, Confusion of Ideas, Lassitude, Gloominess, Depression of spirits, Aversion to Society, Easily Discouraged, Lack of Confidence, Dull, Listless, Unfit for Study or business, and finds life a burden, SAFELY, PERMANENTLY and PRIVATELY CURED.

**BLOOD AND SKIN** Diseases, Syphilis, a disease most horrible in its results, completely eradicated without the use of mercury. Scrofulous, Erysipelas, Fever Sores, Blotches, Pimples, Ulcers, Pains in the Head and Bones, Syphilitic Sore Throat, Mouth and Tongue, Catarrh, etc., PERMANENTLY CURED WHEN OTHERS HAVE FAILED.

**URINARY** Kidney and Bladder Troubles, Weak Back, Burning Urine, Frequency of Urinating, Urine high colored or with milky sediment on standing, Gonorrhœa, Gleet, Cystitis, etc, promptly and safely cured. Charges reasonable.

**TO YOUNG AND MIDDLE-AGED MEN.**

**A SURE CURE** The awful effects of early vice, which brings Organic Weakness, destroying both mind and body, with all its dreadful ills, permanently cured. **URETHRAL STRICTURE** permanently cured, removal complete—neither knife, caustic nor dilation—without pain or injury. Proof indisputable.

**DRS. BETTS** address those who have impaired themselves by improper indulgence and solitary habits, which ruin both body and mind, unfitting them for business, study or marriage.

**MARRIED MEN**, or those entering on that happy life, aware of physical debility, quickly assisted.

**OUR SUCCESS**

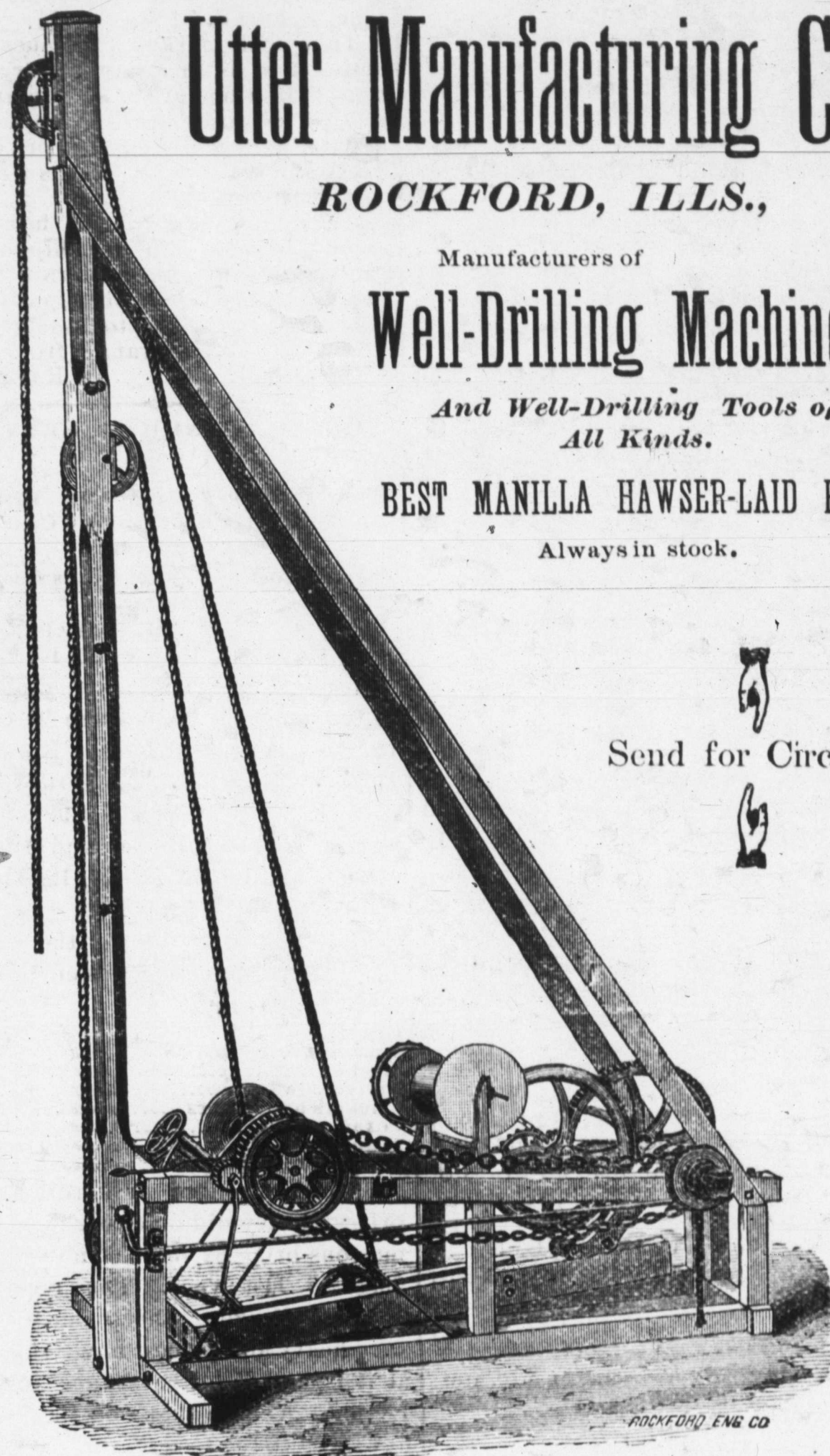
is based upon facts. First—Practical experience. Second—Every case is especially studied, thus starting aright. Third—Medicines are prepared in our laboratory exactly to suit each case, thus effecting cures without injury.

Send 6 cents postage for celebrated works on Chronic, Nervous and Delicate Diseases. Thousands cured. A friendly letter or call may save future suffering and shame, and add golden years to life. No letters answered unless accompanied by 4 cents in stamps. Address or call on

**DRS. BETTS & BETTS,**  
Corner Champa and Seventeenth Sts,  
DENVER, - - - COLORADO.

**RUSSIA SALVE**

FOR  
INSECT BITES, RASH,  
ERUPTIONS, SORES



**Utter Manufacturing Co.,**

ROCKFORD, ILLS.,

Manufacturers of

**Well-Drilling Machinery**

And Well-Drilling Tools of  
All Kinds.

BEST MANILLA HAWSER-LAID ROPE

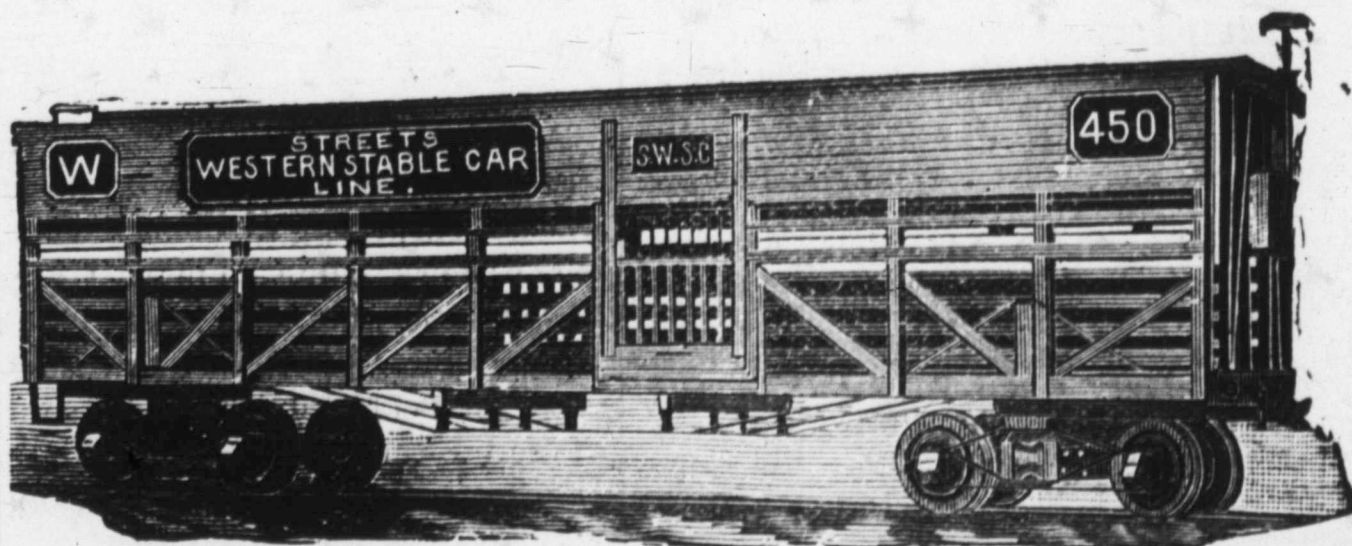
Always in stock.

Send for Circular

A. NATHAN, Pres. J. W. STREET, Vice-Pres. S. M. FISCHER, Gen'l Man'r.  
L. D. KNEELAND, Secretary and Auditor.

**Street's Western Stable Car Line,**

GENERAL OFFICE, RIALTO BUILDING, CHICAGO.



Our line of Stable Cars running to markets, carrying horses and cattle, give food, water and rest to animals without unloading. For further particulars address,

S. M. FISCHER, General Manager.

**GEORGE L. GAUSE,**

[Successor to FLENNER & GAUSE.]

**UNDERTAKER**

314 W. Weatherford St., FORT WORTH, TEX.

Open Day and Night. Orders by telegraph receive prompt attention.



**ST. LOUIS MARKET LETTER.**

**They Want More Cattle—Various Prices Paid for Sheep.**  
Regular Correspondence Texas Live Stock Journal.

EAST ST. LOUIS, ILLS., }  
Sept. 11, 1888. }

The run of range cattle is lessening somewhat, or in other words, the receipts of grass Texas and Indian cattle are falling off. Offerings were fair the past week, but by no means excessive. Then, too, the quality is deteriorating, as now the bulk of the supply consists of light steers, cows, heifers, bulls, etc. The demand exceeded the supply, and sellers succeed in putting up prices, but yesterday the advance was lost.

But few native steers were offered, consequently all classes of buyers had to depend almost wholly on range cattle. Plenty of native cows and heifers were offered, and prices for these ranged from \$2@2.75 per 100 lbs.

Hunter, Evans & Co. sold for W. M. Coleman, Wichita Falls, 16 steers, 991 lbs, at \$3.60; 145 calves, \$7.50 each. For Mex. Nat'l R. R., Poena, 92 head 771 lbs, \$2.30. For Fort Stockton L. S. Co., Midland, 18 head, 974 lbs, \$2.50; 22 head, 813 lbs, \$2.05; 19 head, 784 lbs, \$2.

Scaling & Tamblin sold for Sid Webb, Belleview, 24 head, 784 lbs, \$2 3/4; 15 calves, \$8 each. For B. L. Miller, Belleview, 10 head, 799 lbs, \$2.75; 16 head, 688 lbs, \$2.25. For W. E. Scott, Frosa, 11 head, 829 lbs, \$2.65; 16 cows, 695 lbs, \$2.15. For H. J. Hudson, Frosa, 20 head, 1020 lbs, \$2.85; 13 cows, 723 lbs, \$2.25. For T. J. Adams, Belcherville, 24 steers, 876 lbs, \$2.90. For F. A. Wetherly, Greenville, 23 head, 873 lbs, \$2.55; 28 head, 696 lbs, \$2.05; 28 cows, 632 lbs, \$1.90; 25 cows, 732 lbs, \$2.25. For W. H. Megers, Henrietta, 22 steers, 1137 lbs, \$3.55; 24 steers, 989 lbs, \$3.35. For A. A. Hartgrove, Midland, 19 steers, 855 lbs, \$2.75; 13 steers, 810 lbs, \$2.65; 19 steers, 823 lbs, \$2.80; 22 steers, 861 lbs, \$2.75. For J. J. Jackson, Snyder, 23 steers, 839 lbs, \$2.75; 27 steers, 779 lbs, \$2.55; 13 steers, 810 lbs, \$2.65. For B. Gatewood, Colorado City, 24 head, 737 lbs, \$2.40. For Ira Duckworth, Snyder, 22 steers, 897 lbs, \$3.05; 27 head, 728 lbs, \$2.40. For J. T. Spears, Gainesville, 26 cows, 831 lbs, \$2.30; 30 cows, 704 lbs, \$2.37 1/2; 26 cows, 807 lbs, \$2.25. For W. L. Gwaltney, Bowie, 26 head, 758 lbs, \$2.35; 25 head, 754 lbs, \$2.50. For John B. Wilson, Dallas, 200 steers, 1021 lbs, \$3.70. For S. E. Newman, Bellevue, 22 steers, 969 lbs, \$3.15; 22 steers, 915 lbs, \$3.10.

The James H. Campbell Co. sold 93 Indian steers, from Winfield, 1009 lbs, \$3.40; 273 Texas steers, Gamesville, 1168 lbs, \$3.60; 211 same, 919 lbs, \$3.10; 21 Indians, mixed, Coody's Bluff, 777 lbs, \$2.50; 50 steers, Muskogee, 909 lbs, \$3; 26 Texas cows, Montague, 772 lbs, \$2.30; 151 steers, Wacanda, 919 lbs, \$3; 260 Indian steers, Winfield, 967 lbs, \$3.12 1/2; 24 same, Muskogee, 968 lbs, \$3.95; 25 same, 915 lbs, \$3.65; 47 Texas steers, Midland, 870 lbs, \$2.75; 23 same, 795 lbs, \$2.75.

There is no change to note in the sheep market. Fair to good sheep are in demand, while the supply was only moderate, and consisted mainly of common to medium Texas and native sheep. The quality of the offerings of Texas sheep is not good, and consequently bring low prices. Good fat Texas sheep of 90 lbs would command from \$3.40 to \$3.75 per 100 lbs.

Hunter, Evans & Co. sold for C. C. Worthington, Clifton, 598 head of 67 lbs at \$2.30. For W. F. Payne, Moody, 99 sheep, 70 lbs, \$2 50.

Scaling & Tamblin sold for W. H. Kelso, Abilene, 213 head, 79 lbs, \$3.25. For Thomas Trammell, Abilene, 239 head, 72 lbs, \$2.87 1/2.

The wool market continues fairly active, and is in a satisfactory condition. Offerings are moderate and find ready disposal to manufacturers' agents at pretty strong prices; the range in extremes for Texas wools being from 13 1/2 to 22 1/2c per lb.

A fair number of Texas horses are coming forward and are shipped east. The demand is only moderate and for good breeding mares principally. The season is fast coming to an end. Thin stock dull. Prices range from \$18 to \$30 per head. RATTLER.

**CHICAGO MARKET LETTER.**

**Best Cattle Bring Big Figures—Heavy Run of Native Cows—Sheep Lower.**

Regular Correspondence Texas Live Stock Journal.

U. S. YARDS, }  
CHICAGO, ILL., Sept. 10, '88. }

Receipts of cattle last week were 54,000 of which 16,500 were Texas and Indian and 14,200 from the Northwest. During the week Northern wintered Texans sold at \$3.90@4.90 for averages of 1050 to 1275 lbs, and the best Western natives averaging 1260 to 1400 lbs sold at \$4.70@5.25.

The following shows the range of prices for different grades current now and one year ago:

Grades.	1888.	1887.
Best native heaves.....	\$6.00@6.10	\$5.00@5.15
Medium.....	5.00@5.40	4.00@4.40
Native cows.....	1.50@3.25	1.35@3.00
Stockers and feebers.....	2.00@3.25	2.00@2.95
Texas cows.....	2.00@2.55	1.50@1.95
Texas steers.....	2.50@3.75	2.00@2.65
Best Western rangers....	4.75@5.25	3.25@3.65

Sheep are selling for hardly as good prices as they did one year ago, Texas muttons bring \$2.75@3.60 now, against \$3@3.95 last year. The receipts of Montana-Oregon sheep have been very heavy and prices have ruled low at \$3.25@3.65 for averages of 100 to 122 lbs. A large share of these sheep have sold to the feeders.

The indications are that an immense number of these sheep will be corn-fed this winter. A driver who has just returned from the far west, however, says that the territories have been pretty well cleared of sheep and he looks for decidedly higher prices next year.

About 4000 Iowa, Illinois, Wisconsin and Missouri cows were received here to-day, the largest number on record.

A year ago when all of this country was literally burned out with drouth it was not surprising that enormous numbers of cows came to market regardless of price, but it is somewhat surprising now when the country is so full of all kinds of feed. The only solution of the big run is that prices for cows have been reasonably good, in fact very good for the season. Other years they have been held back until the Texas run was over and all marketed in a rush bringing even less than they were worth during the late summer and fall. Then again a good many misunderstood the nature of the new Texas cattle regulations and supposed that they meant the temporary exclusion of cattle from Texas, and hence a good time to market "native" cows.

Some of the Wood, White & Wood Dakota-Texans, originally of the Mata-

dor outfit sold to-day at \$4.75 for 123 head avg. 1132 lbs, and 107 head 1132 lbs, and 107 head averaging 1298 lbs.

Fancy native cattle sold this week at \$6@6.60. Good cattle are scarce.

Farmers are hunting young steers to feed. The corn crop is now well assured, one of the finest the country has known.

A lot of 20 head of 1080-lb Polled-Angus cows sold at \$4.25. W. W. Jones of Peoria, Ill., was the owner.

Mr. D. P. Atwood thinks there will be a good demand for improved breeding stock in Texas this winter. He is a believer in the plan of spaying the surplus heifers. He says three and four-year-olds are now very scarce in Texas and thinks cattlemen as a rule are in condition to go slow and demand better prices.

Harzard Bros. sold 137 Indians, 1103 lbs, at \$3.80, and 148 head, 964 lbs, at \$3.40.

A. Drumm got \$3 35 for 61 coarse 1067-lb cattle.

W. C. Burns sold 42, 838-lb steers at \$2.80, and W. Clements got \$3 for 44, 980-lb steers.

E. B. Carver marketed 19 835-lb cows at \$2.25, and 34 steers, 1002 lbs, at \$3.35.

J. W. Beall of Indian Territory marketed 158 head of 970-lb cattle to-day at \$3.75, a very good price.

Ed H. East had sold here to-day 122 head of 967-lb steers at \$3.60 and 24 cows, 778 lbs at \$2.50.

Carl Nation got \$3.40 for 1103-lb steers, and \$2.75 for 144 avg. 796 lbs.

The London cattle market about steady at 13c for best American steers but there is a remarkable lack of life and strength in the market over there.

Never was there a better outlook for the range cattle business than now. So say such men as Mr. Robert Strahorn, D. P. Atwood and others who do not arrive at conclusions hastily or without consideration.

A. C. HALLIWELL.

**Farmers, Ranchmen and Hotels,**  
Sending their address to Turner & McClure, wholesale and retail grocers, Fort Worth, Texas, will receive by return mail their very low price list.

**Well Drilling Machinery SOLD ON TRIAL.**

No Cash Payment—or settlement of any kind—until after a

**SATISFACTORY TEST.**

Machinery and Tools  
Guaranteed to make Wells anywhere,

and at the rate of 3 ft. to every 2 ft. by any other machine, or no sale.

**THE BEST** is always  
**THE CHEAPEST.**



EMPIRE WELL AUGER CO.,  
ITHACA, N. Y.

**OPIUM** Morphine Habit Cured in 10 to 20 days. No pay till cured. Dr. J. Stephens, Lebanon, Ohio

P. A. HUFFMAN, Ft. Worth, Texas.  
A. W. JONES. J. M. HENDERSON, Jr.,  
Late of Burlington, Kas. Athens, Tenn.

**P. A. HUFFMAN & CO.**

Successors to Huffman, Sellers & Co.,  
**Real Estate, Loan**

—AND—  
**INVESTMENT AGENTS,**  
506 Main Street, Fort Worth, Texas.

Land Titles Investigated, Taxes Paid and Collections Made for Non-Residents. Correspondence Solicited. P. O. Box 197.

WE REFER BY PERMISSION TO  
K. M. Van Zandt, president Ft. Worth National Bank; Capt. M. B. Loyd, president First National Bank of Ft. Worth; A. M. Britton, president City National Bank, Ft. Worth; Col. W. M. Harrison, president State National Bank, Ft. Worth; W. J. Boaz, president Traders' National Bank, Ft. Worth; Dr. H. S. Brolles, Mayor of Ft. Worth; Col. J. P. Smith, ex-Mayor of Ft. Worth; W. A. Huffman of W. A. Huffman Implement Co., Ft. Worth; J. H. Brown, wholesale grocer, Ft. Worth; Capt. Sidney Martin, president the Martin-Brown Co., Ft. Worth; Col. Morgan Jones, president Ft. Worth & Denver City Railway, Ft. Worth; People's National Bank, Burlington, Kas.

U. S. Solid Wheel  
Halladay Standard **Wind Mills**  
**EUREKA**

**HORSE POWERS, tread or sweep,**  
**PUMPING JACKS, best in market,**  
Feed Cutters, Pear Cutters,  
**Iron Pipe, Well Casing, Engines,**  
**Farm Pumps, Ranch Pumps,**  
**Hose, Belting, Brass Goods,**  
**Tanks, Well Drilling**  
**Machines,**  
**Grinding Machinery.**

If you want any of the above, or if you want farm or ranch fitted with a water supply outfit, get our prices and our catalogues. It will cost you but little and may pay you well.

**THE PANHANDLE**  
**Machinery and Improvement Co.,**

Corner Throckmorton and First Sts.,  
FORT WORTH, TEXAS.  
Branch House, Colorado, Texas.  
Active Agents wanted in every county in the state.

**LOGAN, EVANS & SMITH,**

315 Houston  
Street,  
Ft. Worth, Texas.  
Our Great  
Hand-Sewed

**Riding Boot**

Sent by Mail or  
Express.

This boot is made by ourselves, out of the best French Calf and we guarantee it to give good wear.



600 ACRES. 13 GREENHOUSE ES.  
**TREES AND PLANTS**

We offer for the Fall trade a large and fine stock of every description of FRUIT and Ornamental TREES, Shrubs, Roses, Vines, SMALL FRUITS, Hedge Plants, Fruit Tree Seedlings and Forest Tree Seedlings. Priced Catalogue, Fall of 1888, mailed free. Established 1862.  
**BLOOMINGTON (PHENIX) NURSERY**  
SIDNEY TUTTLE & CO., Proprietors, BLOOMINGTON, ILL.



**CATTLE IN THE NORTHWEST.**

**Condition and Prospects of the Range Industry in Wyoming—Growing Demand for Texas Cattle.**

CHEYENNE, WY. T., Sept. 10, 1888.

Editorial Correspondence Texas Live Stock Journal.

Texas cattle producers have a keen interest in the condition of the cattle industry in the Northwest. It is to Wyoming and Montana that a large part of the surplus stock of Texas is sent to be matured. Texas produces most abundantly; the Northwestern ranges mature most perfectly. In fairly prosperous seasons, when grass is good, and the Chicago beef market is inviting, and the Northwestern ranches have money, the drive of Texas cattle to these territories exceeds 400,000 head. In 1884 the drive was 437,000 head. These are the figures furnished by Dr. Holcomb, state veterinarian of Wyoming. If the ranges are not in good condition, or if the ranchmen have no money to buy with, to restock, the demand for Texas stock falls off, as in the present year, when up to date there have been but 56,886 head of Texans shipped or driven to the Northwest.

To this extent, therefore, the Texas readers of the LIVE STOCK JOURNAL are interested in the condition and prospects of the cattle interest in the Northwest.

To ascertain that condition, and to obtain prognostics of the future, is the business of this writer, and to unfold them to the readers of the STOCK JOURNAL is the object of this letter.

After conversing with several well informed and experienced cattlemen in Cheyenne, I find the consensus of opinion to be largely on the side of better times ahead. Perhaps State Veterinarian Holcomb expresses the condition of affairs best, and I will give his words, as nearly as I can recall them to mind.

"The range is good and the cattle in excellent condition pretty generally throughout this territory." Said that gentleman. "We have had hard times, but the crisis is past, and the business has begun to rally. Cattle will enter the winter in strong condition, and unless it should be one of unusual severity they will pass through with but trifling losses. The calf crop of 1888 is good. So I think our cattlemen will soon begin to get their heads above water once more.

"At present our ranges are very scantily stocked, and the great majority of our cattlemen are not able to buy the cattle to restock them. They have confidence in the future, and would buy Texas yearlings as long as they could find room for them, if they had the money, but that they have not. But I look for some relief from another quarter. Confidence in the cattle business is beginning to revive among Eastern capitalists, and by the formation of new companies they may bring money into the business and cause a demand for Texans to stock our depleted ranges. Far-seeing business men perceive that there are now no better investments than in cattle, and some of our strongest companies, of which there are a few left, are buying largely, or have bought, in Texas. They know that cattle are bound to go up, of which the markets now shows favorable signs. Production has been at a minimum for three years, and this fact must soon begin to show itself in an inability to meet the demand for cattle. Take the case of this territory. The calf crop of 1885 was small; that of 1886 was smaller; while in 1887, succeeding the very cold winter of that year, it was insignificant as to numbers. This year, however, it has been large.

But what are we to do to meet the demand for beeves until our 1888 calves mature, at the end of three or four years? It is very plain that there must be a scarcity, that prices must go up, the result of which is better times, more money, and a demand for Texas steers."

It is not pretended that these are the exact words of Dr. Holcomb, but I believe they express very fairly what he did say, and that he will not take exception to them.

The Northern movement of Texas cattle this year is quite small, being as has been said, but 56,886 head, up to this time. These figures were obtained from the books of the state veterinarian, and are official. The Wyoming laws require that all cattle that pass through the state must be inspected, and their number sworn to by the owner or the drover. The number, where from, by whom owned, and the destination, are recorded in a book kept for that purpose, so that one can ascertain at any time how many cattle are moving north. The total number registered in this book is 75,925 head, including cattle from Texas, Colorado, Kansas, New Mexico and the Indian Territory. Deducting the 56,886 head credited to Texas, we find that there were but 19,039 cattle driven north from the other states and territories mentioned.

Of the 56,886 Texas cattle, 32,486 came by rail, while 24,400 were driven over the trail. This shows to what extent the railroads are becoming factors in the cattle business of Texas, since the building of the Fort Worth & Denver road. By it cattle are sent direct to Denver, and from thence over the Union Pacific road through Cheyenne to Wendover, near the Montana line. I find the Union Pacific in good favor among cattle shippers, for its regard to their welfare in the handling of stock and the courtesy of its employees. It is provided with an abundance of rolling-stock, so that shippers are not vexed by expensive and embarrassing delays. When the cattle business gets on its legs again, and Texas cattle move to the Northwest by the hundred thousand, as they did in 1884 and previous years, the Union Pacific will have a bonanza in the hauling of Texas cattle.

The 24,400 head driven over the trail were all South Texas cattle, which went that way because they would have had to stop 90 days at the Wyoming quarantine line if they had been shipped through. But for this, it is very likely that the entire 56,886 would have been shipped by rail.

Among others with whom I talked were Gov. Moonlight, the present head of the territorial government, who became well known for his brave leadership of the Democratic party of Kansas in 1856, as its candidate for governor. The governor looked every inch like a well-to-do ranchman, seated in his office, clad in a comfortable suit of gray jeans, and in his shirt-sleeves. He said he looked for an increase in the calf production of Wyoming from the "grangers" who are settling the little mountain valleys and taking up half-section claims. These settlers all have small herds of cattle, from a dozen up to a hundred, and will have every spring from ten to seventy-five calves to sell. They cannot afford to keep these calves and make beeves of them, as to do so would require more land, but they will sell them to the large ranchers, who have range enough to mature them, and a great deal to spare. But it is not likely that this business will ever get large enough to interfere with the breeding of calves in Texas and selling them in the Northwest. The only thing that hurts that business is the lack of money

among the cattlemen of this and other territories.

In closing this letter I cannot but express my obligations to Dr. Holcomb, the territorial veterinary surgeon, and to Dr. Allen, his assistant in that office. They both put themselves to pains to assist me in collecting information and statistics contained in this letter, and to them the readers of the STOCK JOURNAL are indebted. C. E. L.

**Scenes in the Rocky Mountains.**

The scenery in the Rockies is grand beyond description. To give an idea of it the Denver & Rio Grande R. R. has just issued four elegant tint views, showing "Curcanti Needle," "The Portal," "Sultan Mountain" and "The Second Tunnel, Canon of the Grand River." These pictures are on cardboard mounts 11x13 inches in size, and will be sent prepaid to any address on receipt of forty cents in postage stamps for the set, or ten cents in stamps each for any one or more of the views. Address, S. K. Hooper, G. P. & T. Agt., D. & R. G. R. R., Denver, Colo.

**CAUTION.**—Buy only Dr. Isaac Thompson's Eye Water. Carefully examine the outside wrapper. None other genuine

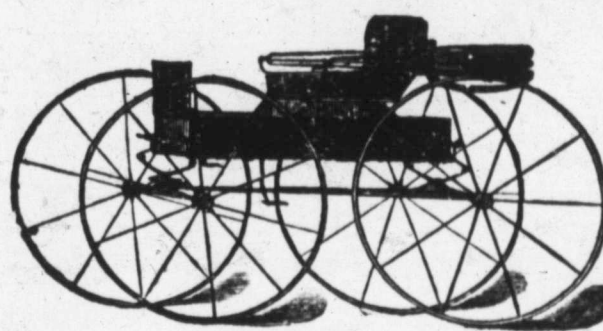
**Dr. J. H. Gibbs,**

Practice limited to the treatment of the diseases of the eye, ear, nose and throat. Office No. 505 Main street, Dallas, Texas.

**E. H. KELLER,**

Salesroom 208, Shops 210 and 212 Throckmorton Street

**FORT WORTH TEXAS.**



Columbus Buggy Company's Buggies, Columbus, Ohio. E. M. Miller & Co., Quincy, Ill. Buck-Boards and Spring Wagons. Tops, Dashes, Cushions, Fine Trimming & Painting and Repairing a Specialty.

**VICTORIOUS EVERYWHERE**

**COMBINED**  
Cotton Seed Huller, Corn and Cob Grinder



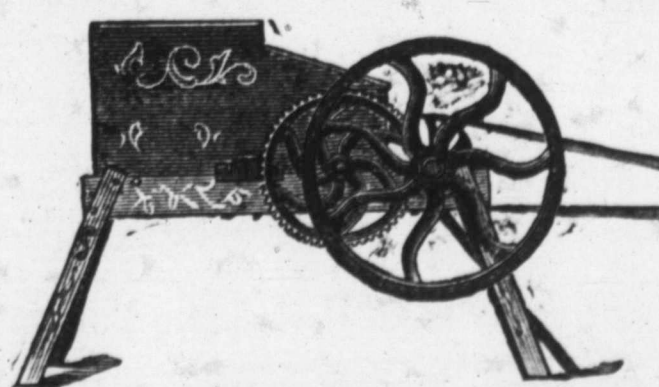
WILL GRIND CORN MEAL Equal to Burr Stone.

Thousands in Use

26 SIZES AND STYLES. EVERY MILL WARRANTED. Send for Catalogue and Price List.

Paubhandle Machinery and Improvement Co., FORT WORTH, TEXAS.

**Cattle Feeding Machine.**



Crushing corn with shuck on or off, wet or dry, hard or soft, at the rate of 100 bushels per hour with two-horse power. Circulars free. Address

**E. A. PORTER & BROS.,**  
Bowling Green, Ky.

**CURE CURE** for Epilepsy or Fits in 24 hours. Free to poor. Dr. KRUSE, M.C., 2336 Hickory St., St. Louis, Mo

**J. B. ASKEW.**

Manufacturer and Dealer in

Saddles, Harness, Leather, Etc.,  
**FORT WORTH, TEX.**



Stock Saddles and Hand-Made Harness a Specialty. Any style of saddle, plain or full stamped, made to order. Harness, from the lightest buggy to the heaviest float. Workmanship and material all first-class. C. E. Moore, late foreman for R. F. Tackabery, will have charge of the saddle department. Every good saddle will be fitted out with a pair of Tackabery's improved Lightning Cowboy Cinch Fasteners. All orders by mail will receive prompt attention. Reference—W. J. Roaz, Pres. Traders' National Bank; R. E. Maddox, Breeder and Dealer in Blooded Stock, Fort Worth.

**F. M. HOUTS,**

Proprietor of

**HEREFORD RANCH, WISE COUNTY!**

P. O., Decatur, Texas.

Breeder of

**HEREFORD CATTLE.**

100 head of grade HEREFORD BULLS Texas raised and ready for service.

A few choice thoroughbred HEREFORD BULLS and some grade HEREFORD HEIFERS.

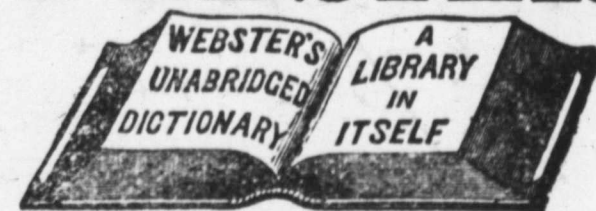
The above I will sell at a reasonable price and on easy terms

My ranch is on the Fort Worth & Denver railroad, near Decatur in Wise county, and the stock can be shown any day. Address,

**F. M. HOUTS,**

DECATUR, TEXAS.

**WEBSTER**



3000 more Words and nearly 2000 more Illustrations than any other American Dictionary.

Among the supplementary features, unequalled for concise and trustworthy information, are

**A Biographical Dictionary**

giving brief facts concerning 9,700 Noted Persons of ancient and modern times,

**A Gazetteer of the World**

locating and describing 25,000 Places; and a Vocabulary of the names of Noted

**Fictitious Persons and Places.**

The latter is not found in any other Dictionary. Webster excels in SYNONYMS which are appropriately found in the body of the work.

Sold by all Booksellers. Pamphlet free. J. & C. MERRIAM & CO., Pub'rs, Springfield, Mass.

Chickering, Wheelock, Mathushek

**PIANOS**

Largest stock and best line in the state at

**C. H. EDWARDS,**

733 and 735 Main St.,

**DALLAS, TEXAS.**

Send for prices before purchasing elsewhere.



W. J. HAYNES.

H. F. LANGENBERG.

G. F. LANGENBERG.

**W. J. HAYNES & CO.,**  
**WOOL COMMISSION**

Cor. Market and Commercial Streets,

ST. LOUIS, MO.

Liberal Advances on Consignments of WOOL, HIDES, PELTS, ETC.

REFERENCES: St. Louis Nat'l Bank, Dunn's and Bradstreet's Commercial Agencies

J. J. FUNSTEN.

W. F. FUNSTEN.

**FUNSTEN & COMPANY,**  
**Wool Commission,**

ST. LOUIS, MO.

References—First Nat. Bank, Abilene, Texas; First Nat. Bank, Albany, Texas; Belton Nat. Bank, Belton, Texas; First Nat. Bank, Coleman, Texas; First Nat. Bank, Denison, Texas; First Nat. Bank, Taylor, Texas; Waco Nat. Bank, Waco, Texas; Texas Live Stock Journal, Fort Worth, Texas; St. Louis Nat. Bank, St. Louis, Mo.

Liberal advances made on consignments of wool, hides, etc.

**A. ARMENTROUT,**

Corner of Weatherford and Throckmorton and corner of Weatherford and Lamar Streets  
FORT WORTH, TEXAS.

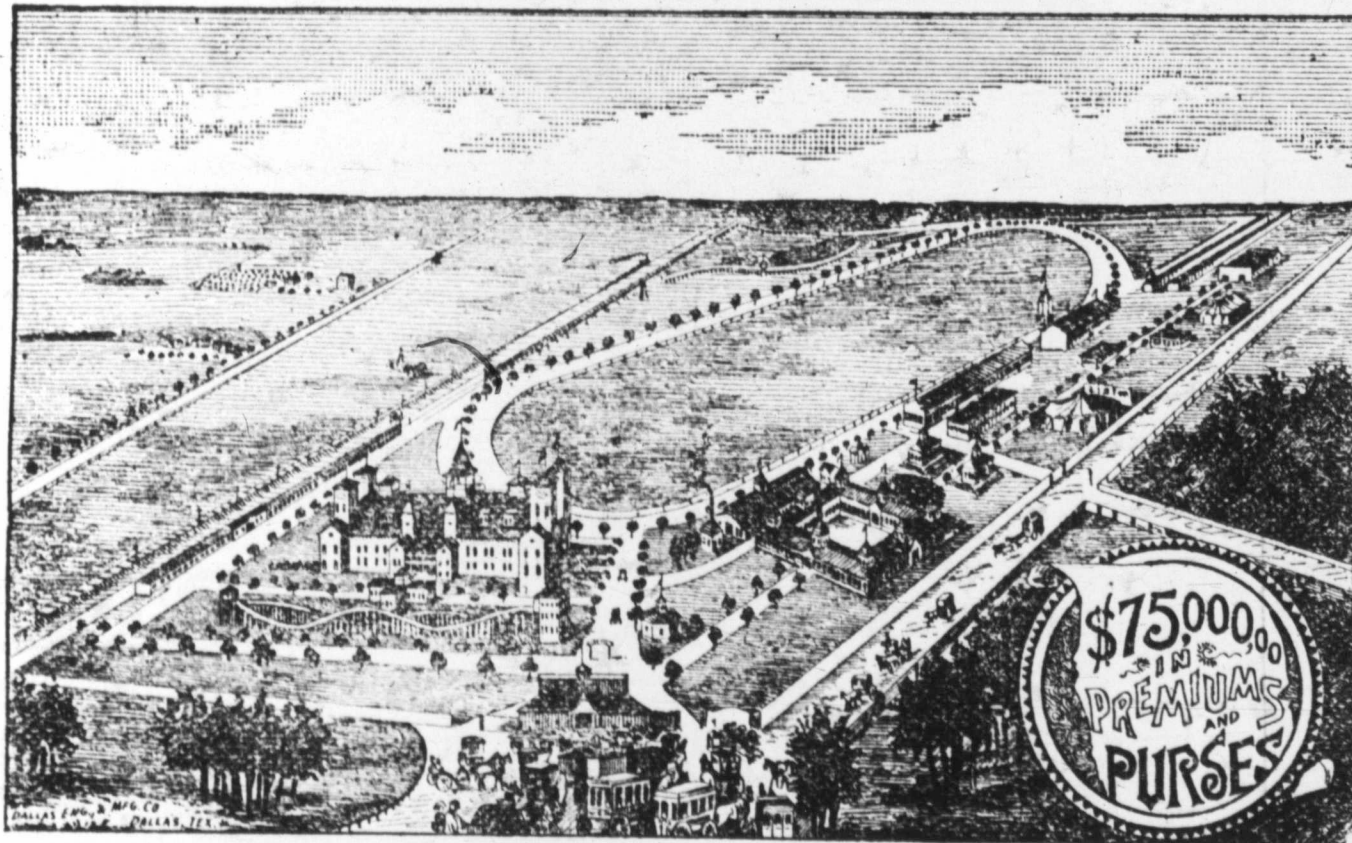
**Dealer in Wool, Hides, Etc.**

Also keeps in stock a full line of

**WEIR PLOW COMPANY'S FARM IMPLEMENTS,**

Tennessee Wagons, manufactured by Cherry, Morrow & Co., Nashville, Tenn.; Bain Wagons, H. W. Davis & Co.'s Buggies, Cincinnati, Ohio; The E. M. Miller Buggies, Quincy, Ills.; Cook & Co.'s Buggies, Cincinnati, Ohio; The Racine Spring Wagons and Carriages; The Minnesota Chief Thresher, and Traction Engines.

**Texas State Fair and Dallas Exposition.**  
1888. October 11 to 31. 1888.  
At DALLAS, TEXAS.



The coming Fair and Exposition will, beyond doubt, excel in point of attractiveness, numbers and variety of exhibits any heretofore held.

The County Exhibit Department promises to be the most attractive feature, one never before attempted by any State. Over forty counties up to date have secured space, and more still to enter. The exhibits these counties will present will be something that will astonish visitors.

Every variety of attractions has been provided for, and the musical treat we have in store for visitors will be provided over by the world renowned Cornetist, Prof. A. Liberati.

The purses offered in the Race Department cover \$30,000, and will be competed for by the best racers in the land. The management of this department propose to give during the Fair and Exposition the finest races ever given in the South.

We desire to call the attention of counties to the fact that now is the time to get up their exhibits, when grain, fruits, etc., are ripening, and not wait until it is too late.

Space in the County Exhibit Department is free, and no county of our State can afford not to be represented. There will be more people here than ever before, and we want them all to see the varied resources of our great State.

To exhibitors in general we can promise them the finest opportunity ever offered to make displays, from which will return good results, and to visitors we can assure them of the grandest entertainment ever given in the Southwest.

**Remember the Fair and Exposition Opens on Oct. 11.**

This day will be an occasion unheard of in this section of country.

**Excursion Rates on all Railroads.**

Full information mailed on application.

**SYDNEY SMITH, Secretary,**

**J. S. ARMSTRONG, President.**

**DR. J. R. BRIGGS,**

Practice limited exclusively to diseases of the EYE, EAR, THROAT and NOSE. A large assortment of artificial eyes constantly on hand, the finest in the market. Broken eyes duplicated by mail. Price \$10. Call on or address

**DR. J. R. BRIGGS,**

904 Elm Street, Room 2 and 3, up stairs.

Dallas, Texas.

THE

**KANSAS CITY STOCK YARDS**

Are by far the most commodious and best appointed in the Missouri Valley, with ample capacity for feeding, weighing and shipping Cattle, Hogs, Sheep, Horses and Mules. They are planked throughout, no yards are better watered, and in none is there a better system of drainage. The fact that

**HIGHER PRICES ARE REALIZED HERE**

Than in the East is due to the location at these yards of

**EIGHT PACKING HOUSES,**

with an aggregate daily capacity of 3300 cattle and 27,200 hogs, and the regular attendance of sharp, competitive buyers for the packing houses of Omaha, Chicago, St. Louis, Indianapolis, Cincinnati, New York and Boston.

All the sixteen roads running into Kansas City have direct connection with the yards, affording the best accommodation for stock coming from the great grazing grounds of all the Western states and territories, and also for stock destined for Eastern markets.

The business of the yards is done systematically and with the utmost promptness, so that there is no delay and no clashing, and stockmen have found here, and will continue to find, that they get all their stock is worth with the least possible delay

**C. F. MORSE, E. E. RICHARDSON, H. P. CHILD,**

Gen'l Manager.

Treasurer and Secretary.

Superintendent.

G. H. DASHWOOD.

E. D. OESCH.

**Dashwood & Oesch,**  
**DRUGGISTS,**

Under Burt & Field's Office, 314 Main St., Fort Worth.

**OPEN ALL NIGHT.**

*Wm Macnaughtan's Sons,*  
*Wool Commission Merchants*  
*168 & 170 South Fifth Avenue*  
*New York*  
*McHair*

J. M. FROST, President.

T. S. FOSTER, Vice-President.

CHAS. WIGGINS, Treas.

**WESTERN WOOL COMMISSION COMPANY,**

Commission Merchants for exclusive sale of

**WOOL**

104-106 North Main St., 105-107 North Commerce St., ST. LOUIS, MO.  
Liberal advances made on consignments. Information gladly furnished by mail or telegraph.

**WOOL W. B. WESTCOTT & CO. HIDES**  
**Commission Merchants,**

Soliciting consignments of Hides, Wool, etc.  
Write for market reports.

202 North Main Street,

ST. LOUIS, MO.

Refer to Texas Live Stock Journal.