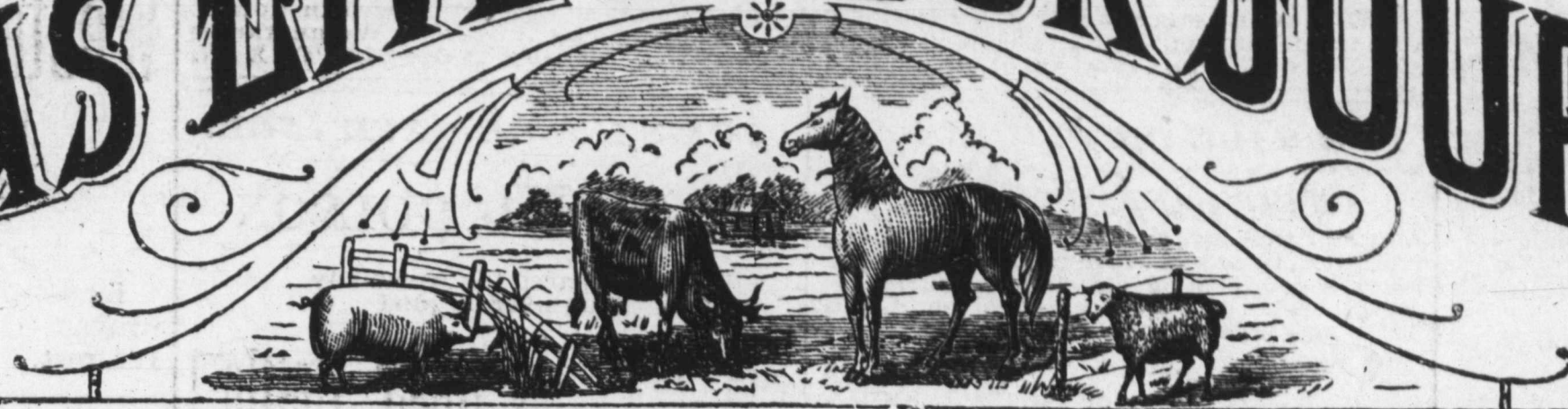


WEEKLY EDITION, \$1.50 A YEAR.

# TEXAS LIVE STOCK JOURNAL



VOL. 8.

FORT WORTH, SATURDAY, JUNE 2, 1888.

No. 44.

JAS. H. CAMPBELL, Chicago, Ill. G. W. CAMPBELL, Kansas City, Mo. D. L. CAMPBELL, East St. Louis, Ill.

## JAS. H. CAMPBELL & CO.

LIVE STOCK COMMISSION MERCHANTS,

Union Stock Yards, Chicago, Ill.,

Kansas City Stock Yards, Kansas City, Mo.,

National Stock Yards, East St. Louis, Ill.

We solicit for sale your cattle, hogs and sheep at the three leading markets in the country.

## THE FISH & KECK CO., (INCORPORATED.) LIVE STOCK COMMISSION MERCHANTS, KANSAS CITY STOCK YARDS.

We have the experienced working force of the late firm of Andy J. Snider & Co., as follows:  
GEO. O. KECK, Cattle Salesman. FRANK O. FISK, Office. W. C. MURRAY, Bookkeeper. WM. SUMMERS, Yardman.  
HARRY HILL, Solicitor. LOUIS KURTZ, also W. J. CUMMINGS, Hog Salesman.  
We will be represented at Western shipping points during the range season.  
Authorized agents for sale of strays of Pan Handle Stock Growers Association.

J. E. GREER.

FRANK O. MILLS.

## GREER, MILLS & CO.

Live Stock Commission Dealers,

Room 47 Exchange, Union Stock Yards, - - - CHICAGO, ILLINOIS.

W. H. H. LARIMER.

ED. M. SMITH.

CHURCH G. BRIDGEFORD.

## LARIMER, SMITH & BRIDGEFORD,

Live Stock Commission Merchants

For the Sale of Cattle, Hogs and Sheep.

Kansas City Stock Yards, KANSAS CITY, MO.

Handling Texas Cattle a Specialty. Market Reports sent free on application. Correspondence Solicited.

## SEEDS

J. G. PEPPARD, 1220 UNION AVENUE,  
MILLET A SPECIALTY.  
(One block from Union Depot)  
Red, White, Alfalfa & Ayrick Clovers,  
Timothy, Blue Grass, Orchard Grass, Red Top,  
Onion Sets, Tree Seeds, Cane Seed, Etc. KANSAS CITY, MO.

A. C. CASSIDY,  
T. F. TIMMONS,  
A. L. KEECHLER,

Cattle Salesmen.

G. W. DOERR,  
C A S

N. M. MOODY,  
W. L. CASSIDY,  
E. S. CODDINGTON,

Hog and Sheep  
Salesmen.

## CASSIDY BROS. & CO.,

LIVE STOCK COMMISSION MERCHANTS

And Forwarding Agents,

National Stock Yards,

St. Clair County, Ills.

SAM'L SCALING, St. Louis.

W. L. TAMBLYN, Chicago.

## SCALING & TAMBLYN,

Live Stock Commission Merchants,

National Stock Yards, East St. Louis, Ill. Union Stock Yards, Chicago, Ill.

## ALBERT MONTGOMERY,

Commission Merchant for the Sale of Live Stock, Stock Landing  
Postoffice Box 3006, New Orleans, La.

## HUNTER, EVANS & CO.

NATIONAL STOCK YARDS  
ST. CLAIR CO., ILL.

15 YEARS' ACTIVE EXPERIENCE in Live Stock Commission Business. Market Reports reg'r and special, and all other information incident to the business, will be furnished FREE by each house.

Each office in charge of a member of the firm.

KANSAS CITY STOCK YARDS  
KANSAS CITY, MO.

Correspondence always has prompt attention.

Parties having Stock to market, in large or small numbers, will do well to confer with us before making arrangements

UNION STOCK YARDS  
CHICAGO, ILL.

## LIVE STOCK COMMISSION MERCHANTS.

ALLEN GREGORY.

H. H. COOLEY.

L. R. HASTINGS.

## GREGORY, COOLEY & CO.

Commission Dealers in Live Stock,

Rooms 58 and 60 Exchange Building, Union Stock Yards, CHICAGO, ILL.

The Pioneer House in the Texas trade. Personal attention given consignments. Business solicited.

President, WM. M. WARREN, Banker, New Berlin, Ill.

Secretary and Treasurer, LEVI B. DOUD.

Cashier, CHAS. KELLY.

Managers, T. B. LEE, THOS. K.

## Chicago Live Stock Commission Company,

Incorporated. Capital Stock \$25,000.

Special attention given to the sale of Texas Cattle and Sheep. Write us for market reports

Office 41 Exchange Building, Union Stock Yards, Chicago, Ill.

REFERENCES—Drovers' Nat. Bank, Union Stock Yards Nat. Bank, Chicago; Bank of Atlantic, Atlantic, Ia.; Bank of Roodhouse, Roodhouse, Ill.

Z. T. WINFREE.

A. P. NORMAN.

WILEY T. PEARSON.

## WINFREE, NORMAN & PEARSON,

Commission Merchants for the Sale of Live Stock,

Stock Yards, GALVESTON, TEXAS.

We respectfully solicit patronage of stock shippers. We make liberal cash advances on bills lading, and will faithfully endeavor to the best of our ability to subserve the interests of our patrons. Correspondence solicited.

R. T. WHEELER.

C. JAMES.

J. S. MCKINNON

## WHEELER, JAMES & CO.

Live Stock Commission Merchants,

Union Stock Yards, ST. LOUIS, MO.

## M. O. LYNN,

W. C. BROWN.

Agent for—

E. E. BROWN.

## BROWN BROTHERS,

COMMISSION MERCHANTS IN LIVE STOCK,

Union Stock Yards, Chicago, Ill.

Refer by permission to National Live Stock Bank, U. S. Yards, Chicago.

## JOHN MUNFORD,

Successor to R. L. MAUPIN & CO.,

Commission Merchant for the Sale of Cattle, Hogs and Sheep, - - STOCK LANDING

P. O. BOX 3190, NEW ORLEANS, LA.

## POLK STOCK YARDS,

POLK BROTHERS, Proprietors.

Hereford, Shorthorn, Polled Angus, Devon, Holstein and Jerseys, Saddle Horses, Mares, Mules and Jacks. Shipments Solicited.

Fort Worth,

Texas.

We Sell on Commission.

FOR SALE OR EXCHANGE.

## MONEY TO LEND

On improved lands on long time,  
At Ten Per Cent. Per Annum.

STEEERS,  
JACKS, HORSES,  
LAND,

For sale by—  
**R. E. MADDOX & CO.,**  
Fort Worth, Texas.

Office on Front Street, south of J. H. Brown Building.

If you are buying or selling, call on us, or correspond.

Choice Lot of Two-Year-Old Steers For Sale.

## \$250 Reward.

Stolen from my stable at San Pedro, New Mexico, on night of May 1st, American horse, bay, branded—on left hip. Will pay two hundred and fifty dollars for the recovery of horse and arrest of the thief, provided the horse is not broken down or ruined by over riding. DONALD FERGUSON, San Pedro, N. M.

## Land, Cattle, Horses and Sheep.

Range cattle, horses, sheep and choice farming and ranch lands for sale by

E. H. WILKES & CO.,  
Law, Land and Live Stock Agency,  
Santa Anna, Coleman County, Texas.

## 5000 Cattle Cheap.

Richardson & Hackett, Fort Worth, office on Main street, between Second and Third, offer for sale:  
500 steers, 3 and 4 years old, in Fisher Co. A stock of 5000 head of stock cattle at \$8.50 per head, part on time.

## Stolen Horses.

A number of stock horses have lately been stolen from Presidio county, Texas. Principal brands as follows:

- on hip or thigh;
- on shoulder;
- U on thigh;
- on thigh.

Anyone recovering any of the same or capturing the criminals will be well rewarded. Address communications to

HUMPHRIS & CO.,  
Marfa, Texas.

## FOR SALE.

7000 acres in Hardeman county, Texas, in one tract, good shape for inclosing, 11 miles west of Quanah, 7 miles from Fort Worth & Denver R. R. Ample timber for fuel. 3 miles front on both sides of Pease river. 2 creeks on land, abundance living running water, fine winter protection. Price \$2 per acre on favorable terms, or will lease cheap.

R. H. KIRBY,  
Austin, Texas.

## FOR SALE.

A first-class saddlery business in a first-class town, tributary to the range country. Will require about \$10,000 capital. Will sell all or half interest. For particulars address

TEXAS SADDLES,  
Care Stock Journal, Fort Worth, Texas.

## Spaying.

Dr. J. Willis, V. S., Des Moines, Iowa, makes a specialty of spaying heifers and cows. Stockmen contemplating spaying this season will do well to correspond with him.

## Elmwood Poultry Yard!

**R. A. CORBETT & SONS,**  
Breeder and shippers of  
**FINE POULTRY.**

Eggs for hatching from pure-bred and carefully mated prize-winning birds at Texas State Fair at Dallas. Will sell from the following varieties: Plymouth Rock, \$2 per setting of 13; Brown Leghorns, \$2; White Leghorns, \$2; Silver Spangled Hamburgs, \$2.50; White Minorcas, \$4. Send your orders at once; we guarantee square dealing, safe arrival and good stock. Stock for sale after Aug. 1. Write for prices.

We also have on our ranch a few high-grade Holstein bulls, Shackelford county raised, for sale. Address

**R. A. CORBETT & SONS,**  
Albany, Texas.

S. A. HATCHER.

J. P. WOODS.

CHAS. COPPINGER.

## HATCHER, WOODS &amp; COPPINGER,

Make a specialty of handling

American Mares, Geldings, 1 and 2-year-old Horses and Fillies,  
1, 2 and 3-year-old Steers and Stock Cattle.

We have a large number of cattle for sale; also 1000 head of good American horses. Can furnish any class of stock on short notice. Land and city property. We guarantee satisfaction. Prices given on application. 406 Main St., FORT WORTH, TEXAS.

## FOR SALE OR EXCHANGE.

## CHEAP LANDS FOR SALE.

Situated in Clay, Archer, Jack and Young counties, in tracts from 320 to 5000 acres, suitable for farming and grazing purposes. Small cash payment, balance on LONG TIME and LOW RATE OF INTEREST.  
Address, C. E. WELLESLEY, Dallas, Texas,  
or J. J. CHITWOOD,  
Antelope, Jack county, Texas,  
Who will show the land.

## JNO. S. POWELL &amp; CO.

Office, Mansion Hotel,  
Fort Worth, Texas.



Fort Worth, Texas.

Offer for sale choice thoroughbred and high-grade Hereford, Polled-Angus, Durham, Holsteins and Jersey Bulls and Heifers. Stock on hand and for sale on very reasonable terms.

## Horses, Cattle, Lands.

We have for sale 2000 horses, 3000 cattle and 25,000 acres of land in Callahan county, 500 extra improved American mares and geldings, and 2000 2, 3, and 4-year-old steers. Unimproved lands \$2 to \$2.50 per acre. Improved ranches and farms \$2.50 to \$5.  
WEBB & WEBB,  
Baird, Callahan County, Texas.

## W. C. ROGERS,

Breeder of and dealer in thoroughbred  
**Hereford and Shorthorn Cattle:**

A nice lot of bull and heifer calves for sale or trade, on terms to suit purchaser. Can furnish any kind of blooded cattle in any number. Address Mansion Hotel, Ft. Worth Peach Orchard Ranch, Vineyard, Jack Co., Tex.

## TERRY, WRIGHT &amp; LENOIR,

Fort Worth, Texas,

## REAL ESTATE AGENTS,

Have some choice

## Farm Ranch and City Properties

## FOR SALE,

And invite correspondence from buyers and sellers.

T. P. LENOIR, Live Stock Broker, will contract horses, cattle or other live stock.

## 100 Bulls For Sale.

One hundred head of thoroughbred and high-grade Shorthorn bulls—yearlings, twos and threes—Texas raised, to be seen at Blue Mound Blooded Stock Farm, 12 miles north of Fort Worth, on the A., T. & S. F. road. Address, BURGESS & ESTILL, Fort Worth, Texas.  
Sample at yards of C. F. Estill & Co.

## FOR SALE.

I have a fine registered and acclimated Hereford bull of the T. L. Miller stock, Beecher, Illinois, which I will sell reasonable and on easy terms.  
Dr. C. R. HEWETT,  
Dallas, Texas.

## FINE CATTLE FOR SALE.

About 100 head stock cattle, including 25 head full-blood Durham, the balance  $\frac{1}{2}$ ,  $\frac{3}{4}$ , etc. Durham. Will trade for horses or steers.  
WM. D. RICHARDSON,  
Mountain Peak, Ellis County, Texas.

## FOR SALE OR EXCHANGE.

## A. S. NICHOLSON

Is prepared to furnish any number of good

## North Texas Steer Cattle!

On short notice. Has specially for sale

## 3000 Graded Heifers,

One and two years old.

513 Main Street - - FORT WORTH, TEX.

## Geo. L. Goulding &amp; Co.

## LIVE STOCK

## Commission Merchants,

PROPRIETORS CITY STOCK YARDS,  
DENVER, - - COLORADO.

We handle all classes of live stock, as sellers' agents, and keep constantly on hand at our establishment a large assortment of breeding stock, both grades and pure-bred.

A full line of draft stallions now on hand.

Special attention given to furnishing bulls in car lots for range purposes.

SPECIAL--We have on our books numerous calls for Northern Texas cattle for the summer of 1888 delivery. Parties having such stock for sale and desiring to make contracts are invited to correspond with us giving prices, etc. Address as above.

## 150 Head North Texas Stock Horses,

For sale or trade for cattle.

**R. E. MADDOX & CO.,**  
Fort Worth, Texas.

## COW-HORSES FOR SALE.

50 head of well-broke young cow-horses, wintered through on corn. Will sell on time, good security.  
Address, E. G. SANDEFUR, Box 484 Sherman, Texas.

W. C. YOUNG, of the Llano Live Stock Co., T. C. ANDREWS, J. M. KUHEN.

## YOUNG, ANDREWS &amp; KUHEN,

Dealers in—

## -LIVE STOCK-

Tenth and Houston Sts.,  
FORT WORTH, - - TEXAS.

Cattle contracted for spring delivery. Horses of every description in yards and pastures. Cow-horses a specialty. Horses, mares, mules and jacks for sale at all times. We are prepared to enter into contracts for the delivery of cattle, horses, mares and mules at any point in Texas, and solicit correspondence.

## M. V. B. EXUM,

Carroll, Tennessee.

## Breeder of Registered Jerseys.

Creole Tom at head of herd. Coomassle and St. Heller. 45 blood cows, heifers and bulls for sale cheap. Fine shipping point south and west on M. & O and I. C. railroads.

## J. F. PRICE &amp; CO.,

## Real Estate Agency,

N. E. Corner Mansion Hotel, Fort Worth, Texas  
Have for sale some good bargains in City, Suburban, Farms, Raw Lands and Ranch Properties in Texas.

FOR SALE OR EXCHANGE.

W. F. SOMMERVILLE, Pres. A. R. MABRY, Sec.  
SAM'L KEER, V. Pres. and Treas.

## Western Securities Co.

FORT WORTH, TEXAS.

CAPITAL \$250,000.

Loans on Farms, Ranches and Improved City Property, at Moderate Interest,

## STEEERS FOR SALE,

or any class of cattle raised in Texas, for delivery this spring. We sold 23,000 cattle last year and we are in a position to contract for any number of cattle or horses from any part of Texas. We have unsurpassed facilities for handling Texas stock, and guarantee satisfaction in every instance. WEBB, CAMPBELL & HILL, Albany, Texas.

C. F. ESTILL, late of Lexington, Ky.  
J. W. BURGESS, late of Lexington, Ky.  
J. R. SHANNON, late of Danville, Ky.

## C. F. ESTILL &amp; CO.

## Live Stock Commission Dealers,

FORT WORTH, TEX.

Yards on Calhoun Street, between 7th and 8th. Office at Yards and Mansion Hotel.

Specialties--Mares, mules and horses in car-loads, driving horses and thoroughbred and full-blood bulls of all breeds. We will buy and sell first-class young horses and mules, and specially invite correspondence concerning the same.

## Southdown Buck Lambs.

I have a fine lot of thoroughbred Southdown buck lambs, also a number of high-grades, which I will sell low down.

H. O. SAMUELL,  
Mesquite, Dallas County, Texas.

## To Exchange for Cattle, Sheep or Angoras.

A first-class improved property, a large store room in Deming, New Mexico, worth, at a low valuation, \$9000, paying an annual rental of \$1800, to exchange for good cattle, raised north of the quarantine line in Texas. Will take \$15,000 or \$20,000 worth of cattle at their cash valuation and pay the difference in money. Also a nice store house 25 1/2 x 95 feet on Railroad avenue, Las Vegas, N. M., bringing an annual rental of \$600. Will sell for \$5000 cash, or will exchange for \$5000 worth of cattle, sheep or Angoras, or \$2500 if existing mortgage of \$2500 is assumed. Address, G. L. BROOKS, Agent, Albuquerque, N. M.

## Berkshire Pigs For Sale.

Pure-bred Berkshire pigs, one to six months old. Write to  
W. S. IKARD,  
Henrietta, Texas

Chester White, Berkshire and Poland China Pigs, Fine Setter Dogs, Scotch Collies, Fox Hounds and Beagles, Sheep and Poultry bred and for sale by W. GIBBONS & Co., West Chester, Chester county, Pa. Send stamp for Circular and Price List.

## FLORAL HILL HERD FARM.

The finest stock in the South. As good as America can produce, consisting of the celebrated Cholera-Proof Chester White, Poland China, English Berkshire and Small-Bone Yorkshire. Pigs for sale. One mile west of Dallas. All stock registered. Address IKE STORY & SON, Mangrs, 702 Main Street, Dallas, Texas.

## FOR SALE OR EXCHANGE.

One-half interest in an 800-acre farm, well improved, also 100 head of cattle; first-rate crop growing on farm; also, 2000 acres of fine pine land in Southwest Georgia. Correspondence solicited. J. P. GRIFFIN, No. 504 East Second Street, Austin, Texas.

TELEGRAPHIC MARKETS.

Latest Reports by Wire From the Market Centers.

CHICAGO. Special to the Live Stock Journal. CHICAGO, ILL., June 1, '88. BY GREER, MILLS & CO.

Table with columns: No., Av., Pr. Lists prices for various livestock items such as steers, sheep, hogs, and calves from different agents like W. Kelsoe, J. W. Edens, etc.



Commission Merchants

For the sale of CATTLE, HOGS AND SHEEP.

Rooms 9 and 10 Exchange Building, KANSAS CITY STOCK YARDS. Prompt and correct market reports furnished by mail or wire.

Table listing livestock prices by Wood Bros., including steers, hogs, and calves from agents like Thos. Wilson, Ferguson, etc.

Table listing livestock prices by Hunter, Evans & Co., including steers and calves from agents like J. B. Bishop, Nueces Co., etc.

Table listing livestock prices by W. W. McIlhany & Co., including steers, sheep, and hogs from agents like Hilburn, Bennett, etc.

Table listing livestock prices by Scaling & Tamlyn, including steers, hogs, and calves from agents like H. M. Beauchamp, etc.

Table listing livestock prices by Brown Bros., including steers, hogs, and calves from agents like A. G. Anderson, etc.

KANSAS CITY. Special to the Texas Live Stock Journal. KANSAS CITY, June 1.—Receipts today 2600 head. Fed cattle 10@15c higher.

NEW ORLEANS. Special to the Live Stock Journal. NEW ORLEANS, June 1.—Market for good fat beef cattle, calves and yearlings in fair and promising condition.

QUOTATIONS.—Choice c.-fed beeves 3 1/4@4c; choice grass 3@3 1/2c; fair to common, 2@2 1/2c; good cows, 2 1/2@3 1/2c; calves, \$4@8; yearlings \$7@11; good corn-fed hogs, 5@6c; good fat sheep, \$2@2.75.

ST. LOUIS. Special to the Live Stock Journal. ST. LOUIS, June 1.—Some 40 carloads of through Texans offered; thin in flesh and dull of disposal.

GALVESTON. [Reported by Winfree, Norman & Pearson]. GALVESTON, TEX., May 30, 1888. BEEVES AND COWS—Choice, per lb, gross, 2 1/2@3c; common, per head, \$10@12; 2-year-olds, choice, per head, \$8@10; common, per head, \$6@8; yearlings, choice, per head, \$6@8; common, per head, \$4@5; calves, choice, per lb, gross, 3@3 1/2c; common, per head, \$2.50@3.00.

SAN ANTONIO. The local beef market has been rather quiet, owing to the heavy rains, and prices have been fairly maintained at quotations. There are shippers constantly on hand now to take fat stock, but thin stock offered on the beef market is a heavy drag, and goes begging at starvation prices.

DALLAS. [Reported by F. H. & H. L. Doran Butchers.] DALLAS, TEXAS, May 31, 1888. CATTLE—Steers, corn-fed, 2 3/4@3 1/2c; cows, corn-fed, 2@3/4c; veal calves, 3c. HOGS—Common to good 4c. SHEEP—3@3 3/4c, and hard to get. DRESSED MEATS—WHOLESALE. Steers sides 6c; cows, sides 4 1/2@5 1/2c; hogs, 7@7 1/2c; mutton 6@7c; veal 8c.

FORT WORTH. CATTLE—Steers, 2@2 1/2c for good fat corn-fed steers; cows sell at 1 3/4@2c; calves sell at \$3@4. HOGS—No market. SHEEP—2c for fat muttons.

Missouri Pacific Railway and Iron Mountain Route offer a choice of routes to St. Louis and all points north and east; the Iron Mountain Route through Arkansas and Missouri, and the M., K. & T. through the Beautiful Indian Territory.

SPAYING. Contract prices; on application with reference.

W. K. LEWIS, Veterinary Surgeon, (Late of Meriden, Conn.) Member of the Royal College of Veterinary Surgeons, England; Fellow of the Connecticut Veterinary Medical Association, begs to inform cattlemen and horse-owners generally that he has come to Colorado City to permanently locate, and is now prepared to treat all diseases in cattle, horses, sheep, hogs and dogs.

E. R. HUNTER & CO. Live Stock Commission Merchants, Union Stock Yards, CHICAGO, ILL. Refer to 1st Nat'l Bank, and Neils Morris, Chicago; J. S. Hughes & Co., bankers, Richmond, Mo. Market reports by mail or wire.

WOOD BROTHERS, Live Stock Commission Union Stock Yards, Chicago. —Established 1871.—

W. W. McILHANY & CO. LIVE STOCK Commission Merch'nts Union Stock Yards, CHICAGO, - - - ILLINOIS.

Our Mr. C. C. FRENCH, at Fort Worth Texas, will attend to Texas business. We solicit consignments of Texas cattle, sheep and hogs, and specially invite consignments of Texas horses.

W. W. SHEARER & CO., LIVE STOCK Commission Merch'nts 28 Exchange Building, Union Stock Yards, - - CHICAGO, ILL.

REFERENCES: Union Stock Yard National Bank, and Drovers' National Bank, Chicago, Ill.

ROBERT STRAHORN. JESSE SHERWOOD. —Established 1861.—

R. STRAHORN & CO., Live Stock Commission. Room 85, Union Stock Yards, CHICAGO, - - - ILLINOIS.

J. C. RICHARDSON, Fort Worth, General Agent for the State of Texas. H. C. (HAN) CHAS. A. MALLORY —Established 1862.—

MALLORY & SON, Live Stock Commission, Rooms 113 & 115 Exchange Building, Union Stock Yards, CHICAGO, - - - ILLINOIS.

HAGEY & WILHELM, WOOL Commission Merchants, 220 North Commercial Street, Established 1876. ST. LOUIS, MO.

REFERENCE—Boatmen's Bank; Dunn's Mercantile Agency; Bradstreet's Mercantile Agency. Sales and full returns guaranteed inside of 10 days from receipt of shipment.

WEAK, UNDEVELOPED PARTS OF the Body enlarged and strengthened. Full particulars sent sealed free. ERIC MED. CO., BUFFALO, N. Y. SUFFERERS FROM NERVOUSNESS, result of over-Work, indiscretion, etc., address above

## CHICAGO MARKET LETTER.

**Cattlemen Have Taken the Journal's Advice and Have Been Piling Cattle into Market at a Lively Rate—Sheep Trade in Bad Shape.**

Regular Correspondence Texas Live Stock Journal.

U. S. YARDS, }  
CHICAGO, ILL., May 28, '88. }

Last week we received over 50,000 cattle. This run coming right after 48,500 of the week previous seemed heavy. The demand, however, was good and buyers wanted the cattle and took all of them. Prices closed stronger than they opened. This certainly is a hopeful sign and denotes a healthy state of trade.

Texas cattlemen are evidently taking the advice of the STOCK JOURNAL to ship early, as the receipts of grass Texas cattle have been about 1000 to 2500 head per day for some time past, and most of them are grassers. Prices lately have ranged as follows: Grass steers, inferior to fair, \$2.75@3.25; good to choice, \$3.40@3.50; fed steers, common to choice, \$3.40@4.25; cows, \$1.75@2.50, with fancy heifers as high as \$3.12½c.

By the way, the San Antonio representative was recently objecting to classification in Northern reports of Texas cattle as "grassers" and "fed" and said they ought to be classed the same as other cattle. They are so classed. If he reads the market reports after awhile he will see long lists of "native" cattle that are distinguished as grassers and corn-fed.

The sheep market is in a bad way. Receipts are more than excessive. Prices are \$1.50@2 per cwt., and in some cases more, lower than at the high time. Texas stockers and feeders, \$1.75@2.75; muttons, \$3.50@4.20.

Mr. Edwin E. Brown of the well-known live stock commission firm of Brown Bros. has returned from a lengthy visit to the state of Texas. He was very favorably impressed with what he saw in Texas.

The Chicago & Alton is again stirring up the railroad animals. She is accused of running stock in palace cars from the West to the seaboard direct over the Chicago & Atlantic in a manner that enables her to dodge the Eastern pool regulations. She is putting on her own double-decks and first thing we know there will be a first-class railroad war on hand that wont stop until Western stockmen get what they ought to have had long ago—double-deckers, stable cars, quick time and living freight rates. All of which is a "consummation devoutly to be wished." A. C. HALLIWELL.

## ROUND-UPS.

Vernon Guard:—John Tod of San Antonio was in Vernon this week, and delivered to W. H. Hopkins of the Laurel Leaf ranch 3000 head of stock cattle.

BAIRD, TEXAS, May 27.—The J. W. Day ranch, between Baird and Belle Plain, together with the residence at Belle Plain, has just been purchased by Messrs. C. C. Seale and H. K. White of Bryan, Texas, the consideration being \$20,000.

Tascosa Pioneer:—The XIT people have introduced an innovation in range practices in the Panhandle. Last Sunday the foreman of the Capitol outfit

announced to the boys that six days were enough in every seven for man or beast to work, and that they would stop for twenty-four hours and observe Sunday. Nobody said nay, and accordingly the programme is changed on the ranges of one cattle corporation.

## An Interesting Letter from Kent County.

JAYTON, KENT CO., TEXAS, }  
May 22, 1888. }

Editor Live Stock Journal:

It is understood the remainder of the JTH cattle, after gathering for two years and driving to New Mexico, have been sold by Tom Hazlewood to Bill Sager for \$8.50 per head, delivered. These cattle range in Kent and Stonewall counties principally.

The spring work has developed the fact that considerable brand burning was indulged in last winter, and indictment and punishment, it is said, is certain in many cases. A number of maverick brands, too, have been started, principally by young men and lads who do not see the results likely to follow. Owners of stock have little respect for maverick brands started by persons who own no cattle, and these latter are not permitted to receive any benefit from their crooked work. So, too, there has been considerable stealing of unbranded colts and stray horses, as well as of feed and provisions from ranches. These acts have been mostly traced to one outfit, which is said to have been driven from another county for stealing. They have known connections in Colorado and there are indictments against most of them in several counties. Most of them have left and the few remaining ones will probably soon be in the iron grasp of the law.

Seasonable rains continue and vegetation is getting exceedingly rank, so much so, that cattle will soon cease to venture into the dark recesses of the weed covered canyons, except to slack their thirst, should the ponds and more convenient waters dry up. The lands here are exceedingly rich, and seasonable rains cause the canyons to produce crops of weeds, which in height and thickness are precisely similar to a large cane-brake. Sunflowers from ten to fifteen feet and bloodweeds fifteen to twenty and other kinds in proportional height, are the way they grow here. It need not be wondered at, then, that these are sometimes taken for groves of young cottonwood trees, when seen at a distance. It is observed, too, that these canyons never fail to produce a rank growth, no matter how dry, but the growth is greater during rainy years.

The few farmers who have opened farms in these low places and along the low and overflowing valleys have yet to make their first failure in crops. During the dryest years local rains will fall somewhere up the streams and water spreads out over these valleys, depositing a rich coating of sediment, which is the finest of manure. Many of these valleys lie waiting for the good farmer, who is entirely ignorant of what awaits him. The stockmen, too, would only be too glad to buy all his surplus at round prices, instead of hauling long distances over rough roads from the railroad.

In corroboration of the tendency of the times, as indicated in a former communication, it is now developed that another large stock is to be closed out by shipments of stock for slaughter as fast as they can be had with a sufficient amount of flesh to justify shipment.

LIFELONG STOCKMAN.

## Breeding for Particular Characteristics.

National Live Stock Journal.

In the March number of the Journal reference was made to the influence of a handsome appearance in determining the choice of a horse, some being so captivated by this as to overlook serious defects in the animal. Admiration of fine looks is not confined to buyers of horses, and beauty is a great help in selling nearly all kinds of stock. Beauty does not consist alone of well-shaped forms, for style in an animal, and uniformity in the color and appearance of a herd, have quite as much influence with some men. A breeder of Jersey cattle once said to us that he would not have in his herd a cow, no matter how handsome or how heavy a milker, that was not of the solid fawn color that distinguished all his herd. This breeder was extreme in his views; he preferred perfect uniformity in color to all other qualities, and was willing to sacrifice profitable returns in order to have what pleased the eye. Being wealthy, it was not material to him whether his herd made money for him or not, and he could afford to consult his fancy altogether. The majority of breeders, however, are not so well situated, and must regard the financial result of their enterprise and be governed accordingly. At the same time it is not necessary to disregard entirely what it is well known will aid in effecting sales in order to secure the best returns in work or producing milk, butter, wool, etc. A shapely animal is not necessarily less useful on this account, and by skillful selection in breeding, a great deal may be accomplished in the way of combining useful qualities with an attractive appearance.

A breeder of Shorthorns once remarked in our presence at the fat-stock show, that his objection to Hereford cattle was largely due to the coarseness about their heads, but if the cows could be bred with such horns as were carried by one on exhibition there, that was very exceptional in this respect, he could not help admiring them. Their uniformity in color, and their heavy bodies, on short legs, pleased him, but this was more than offset, in his estimation, by their heavy horns. He had bred Shorthorns for many years, and a handsome head and horns were so attractive for him that his selections were made with these characteristics in view, and his herd was exceptional in this respect.

Not all men admire the same points, and in looking over the stock of a skillful breeder, it is not usually difficult to discover what particular features he has had in mind in making his selections for breeding purposes. It is the extent to which forms may be molded and certain qualities developed, that gives the business of breeding fine stock so much fascination for many men, and skill shown in this direction indicates the successful breeder.

## Rock Salt.

Messrs. Turner, McClure & Co. of Fort Worth have en route a car-load of the celebrated rock salt, which is the best salt that can be used for cattle, horses, and all kinds of stock. Cattle like the rock salt and prefer it to all other. They cannot eat enough to hurt them, as it is as hard as a rock and must be licked. Messrs. Turner, McClure & Co. will fill orders by mail promptly, either in large or small quantity. Send a trial order.

TURNER, MCCLURE & CO.

## The Best Wire Fence

for farms, railroads and ranch purposes. Send for illustrations. Address, GHOLSON FENCING CO., 160 West 3d St., Cincinnati, O. B. F. Gholson, Fort Worth, Texas, State Agent.

UNPRECEDENTED ATTRACTIONS!  
OVER A MILLION DISTRIBUTED.

Capital Prize, \$300,000.

**L.S.L.**

Louisiana State Lottery Company.

Incorporated by the Legislature in 1868, for Educational and Charitable purposes, and its franchise made a part of the present State Constitution, in 1879, by an overwhelming popular vote.

Its Grand Single Number Drawings take place Monthly, and the Grand Quarterly Drawings, regularly every three months (March, June, September and December).

"We do hereby certify that we supervise the arrangements for all the Monthly and quarterly Drawings of the Louisiana State Lottery Company, and in person manage and control the drawings themselves, and that the same are conducted with honesty, fairness, and in good faith toward all parties, and we authorize the company to use this certificate, with fac-similes of our signatures attached, in its advertisements."

*J. P. ...*  
*J. F. ...*

Commissioners.

We, the undersigned Banks and Bankers will pay all Prizes drawn in the Louisiana State Lotteries which may be presented at our counters.

R. M. WALMSLEY, Pres. Louisiana Nat. Bk.

PIERRE LANAUX, Pres. State Nat'l Bk.

A. B. ALDWIN, Pres. New Orleans Nat'l Bk.

CARL KOHN, Pres. Union National Bank.

## GRAND QUARTERLY DRAWING

In the Academy of Music, New Orleans,  
Tuesday, June 12, 1888.

Capital Prize, \$300,000

100,000 Tickets at Twenty Dollars each. Halves \$10; Quarters \$5; Tenths \$2; Twentieths \$1.

## LIST OF PRIZES.

|                               |           |
|-------------------------------|-----------|
| 1 PRIZE OF \$300,000 is ..... | \$300,000 |
| 1 PRIZE OF 100,000 is .....   | 100,000   |
| 1 PRIZE OF 50,000 is .....    | 50,000    |
| 1 PRIZE OF 25,000 is .....    | 25,000    |
| 2 PRIZES OF 10,000 are .....  | 20,000    |
| 5 PRIZES OF 5,000 are .....   | 25,000    |
| 25 PRIZES OF 1,000 are .....  | 25,000    |
| 100 PRIZES OF 500 are .....   | 50,000    |
| 200 PRIZES OF 300 are .....   | 60,000    |
| 500 PRIZES OF 200 are .....   | 100,000   |

## APPROXIMATION PRIZES.

|  |        |
|--|--------|
| 100 Prizes of \$500 approximating to \$300,000 prize are ..... | 50,000 |
| 100 Prizes of \$300 approximating to \$100,000 prize are ..... | 30,000 |
| 100 Prizes of \$200 approximating to \$50,000 prize are .....  | 20,000 |

## TERMINAL PRIZES.

|   |         |
|---|---------|
| 1000 Prizes of \$100 decided by \$300,000 prize are ..... | 100,000 |
| 1000 Prizes of \$100 decided by \$100,000 prize are ..... | 100,000 |

3136 Prizes, amounting to .....

\$1,055,000 For Club Rates or any further information apply to the undersigned. Your handwriting must be distinct and signature plain. More rapid return mail delivery will be insured by your inclosing an envelope bearing your full address.

Send Postal Notes, Express Money Orders, or New York Exchange in ordinary letter. Currency by express (at our expense) addressed to

M. A. DAUPHIN,  
New Orleans, La.

or M. A. DAUPHIN,  
Washington, D. C.

Address Registered Letters to  
NEW ORLEANS NATIONAL BANK,  
New Orleans, La.

**REMEMBER** That the presence of Generals Beauregard and Early, who are in charge of the drawings, is a guarantee of absolute fairness and integrity, that the chances are all equal, and that no one can possibly divine what number will draw a prize.

REMEMBER that the payment of all prizes is GUARANTEED BY FOUR NATIONAL BANKS of New Orleans, and the tickets are signed by the president of an institution whose chartered rights are recognized in the highest courts; therefore, beware of any imitations or anonymous schemes.

**Dairy Apparatus and Supplies,**  
Engines, Boilers, Churns, Milk Cans, Cream Separators, Butter Packages, Creamers, Feed Cutters, Feed Mills, Horse Powers, Etc.  
H. McK. WILSON & CO., St. Louis, Mo.

Monthly Catalogue and Price-List,  
Descriptive of and Illustrating  
over 8000 Lines in  
Dry Goods, Notions,  
Millinery, Clothing,  
Shoes, Hats,  
Trunks, Carpets, Etc..

MAILED FREE

To any address on application.

W. H. TAYLOR,

405 & 407 Houston St., Fort Worth, Texas.

P. S.—In addressing your letters don't fail to give my street and number.

THE CLIP.

"The jig is up." Don't send any more stock sheep to market.

Very little wool has been sold at Colorado City up to date. The wool is brighter than West Texas wools usually are.

Tom Scollard, who generally buys from the growers in the Abilene district, gives the Texas clip a good character this year.

Quite a number of indiscriminate sheep shipments to the great markets have resulted disastrously. Now it pays only to send good ones.

The biggest thief in the wool trade is the American Wool Reporter. Note—Give us credit when you take our items, or leave the JOURNAL alone.

W. A. Allen & Co. of Chicago, advertising in the JOURNAL, will be pleased to correspond with Texas wool growers and dealers who desire to consign their wools to the Chicago market.

The sheep interest of Texas ought to be very thankful for the good sheep market we did have for two months. There was not one single car of Texas corn-fed muttons to take advantage of it.

The railroads can adjust the sheep transportation rates so as to permit the sheep to be corn-fed in Texas, and the railroads will make money by so doing. The grazing districts cannot fatten enough sheep.

A shipment of 1300 lambs from Encinal, Texas, sold at 25 cents per head. The telegram was received for publication in the last issue of the JOURNAL, but being rather indefinite did not appear. Don't ship any lambs.

If the railroads leaving Texas will do for the Texas sheep interest what ought to be done, give us double-deck sheep rates at same as cattle are transported, then the sheep shipments can run all the year round.

The Chicago Drovers' Journal says:—During the boom some choice Texas sheep made a profit of \$785 per double-deck for the men who bought and shipped them. It is not all that way. A man marketed 1000 Texas sheep at 80c per head, 100 goats at \$1 per head,

and 1300 lambs at 25@40c. After paying charges he had \$3 left with which to pay the cost of the stock.

O. B. Batchelor of Young county says he shipped out the last of 4000 muttons before the break and made more money to the amount invested than in anything he ever touched in his life. He will buy again some day.

The receipts of sheep at Chicago represent only a tenth of the receipts of cattle, and the proportion holds about good in the United States. For every pound of mutton we raise ten pounds of beef. In ten years the proportions will be nearer equal.

The stock of wool on hand at Galveston amounts to 1,500,000 pounds. The following quotations are announced: Spring, 12-months' clip: Fine, 16@18c; medium, 18@20c; for spring, 6 to 8-months clip: Fine, 14@16c; medium, 15@17c.

S. A. Brimley of Colorado City, who has shipped out a good number of sheep this spring, intends to corn-feed sheep during the winter, provided he can prevail upon the railroads to give a rate into the Texas corn belt and out again to market.

A larger carcass and letting the wool care for itself in the proper programme for Texas sheep raisers to follow. One 100-pound sheep when fat is worth two 75-pound sheep when fat, and there is not much difference in the cost of raising them.

Chicago quotations for Texas wool from the Wool Journal:

|                  | Heavy. | Average. | Choice. |
|------------------|--------|----------|---------|
| Fine.....        | 9@11   | 13@15    | 16@18   |
| Fine medium..... | @      | 14@17    | 17@19   |
| Medium.....      | @      | 14@17    | 17@20   |
| Low medium.....  | @      | 14@16    | 16@19   |
| Coarse.....      | @      | 10@11    | 13@14   |
| Carpet.....      | @      | 8@11     | 12@14   |

If the sheepmen of Texas know their friends they will ship their sheep by the Chicago & Alton road. The only reduction in rates ever made to the sheep interest came from the C. & A., and yet we hear that some of our leading sheep shippers at Colorado are working against the C. & A.

The Central Wisconsin Sheep Breeders' and Wool Growers' association shearing brought to the front Merinos weighing 184, 181, 160, 146 and 202 pounds respectively. A good large

bodied Merino the product of such rams would probably justify feeding range sheep over the winter, not to save life, but to fatten.

The New York U. S. Economist:—In Texas we notice the first large sale of the new spring clip last week, and this week we have to note the sale of the Callaghan clip of one hundred and fifty thousand pounds on the ranch for a New York firm at 14@15c, the last figure including cost of buying.

Wheeler, James & Co. of the Union stock yards, St. Louis, Mo., quote mutton sheep as follows: Common to fair, \$2.25@3; fair to good muttons, \$3@4; choice to fancy, \$4@4.50; good to choice lambs, 40 to 60 lbs, \$2.50@3 per head; common to good, \$1@2.25 per head. The above quotations for sheared sheep.

The U. S. Economist of New York says:—The city is full of foreign wool dealers to-day watching the operations of congress and the passage of the "Mills" bill, and in such an event they are prepared to fill all orders and supply the American mills with a twelve-months' stock at 10c a pound less on unwashed wools, 20c on washed, and 30c on scoured wools, and 50c a pound on worsted combed tops.

American Wool Reporter:—A sheep breeder in Manitoba reports a ewe which never has less than three lambs at a time. And he says her daughters kept up the record. One of them had three lambs in October, 1885, two in April, '86, and two in October, '86, and three in April, 1887, raising all but one (which died when a month old), thus bearing ten lambs in twenty-three months. A good family to breed from, that, and one likely to pay many-fold to the careful shepherd.

Boston Advertiser:—Texas wools are scarce, and few lots of old are left. Small lots of new wool have been received here and sold, one lot of 7 to 8-months growth, new spring, selling at 47@48c scoured, this being 15@18c in the grease. Choice lots of one year's growth would probably bring about 50c scoured, but no sales have been reported as yet. As near as can be learned the spring clip in Texas appears in good condition, the plentiful rains leaving it clean, although it is rather greasy and does not scour much better than the last clip. The situation in Texas remains unchanged, buyers and sellers being several cents apart in their views, and little business has yet been done.

Drovers' Journal:—It has been a bad week for sheep, especially common sheep. Texas shorn sheep, 58 to 70 lbs, sold as low as \$1@2.50, largely to contry feeders; medium to good Texas shorn \$3.50@4.25, and some choice 95-lb Texas shorn at \$4.55 were the same as some which sold at \$5.75, less than two weeks ago. Some 114-lb Nebraska shorn sheep of good quality sold at \$5, and some superior 128-lb Montana shorn sold at \$5.70 yesterday, \$5.50 to-day. Very few native sheep are coming. Some prime heavy native muttons, shorn, sold at \$5.75. No wooled sheep are coming or wanted. Prices are extremely uneven. Some sales showed 15c decline from yesterday on fat stock and other sales showed no change. Some 1040 76-lb Texas sheep sold to a feeder at \$2.85, about \$1.50 lower than two weeks ago, and some thin 62-lb Texas stockers sold to go to the country at \$1.60. There were 1000 head of Texas sheep for which 75c per head was the best offer, and 1361 head of Texas lambs sold at 25@40c per head. Four cars of Texas lambs sold in St. Louis yesterday only netted \$93 for the lot, which shows that Texas sheep men make a mistake in shipping inferior stock; much of it will hardly pay expenses to say nothing of cost.



**ROYAL**  
FULL WEIGHT  
ROYAL BAKING POWDER  
ABSOLUTELY PURE  
**ROYAL**  
BAKING POWDER  
**BAKING POWDER**  
Absolutely Pure.

This powder never varies. A marvel of purity, strength and wholesomeness. More economical than the ordinary kinds, and cannot be sold in competition with the multitude of low-test, short-weight alum or phosphate powders. Sold only in cans ROYAL BAKING POWDER CO., 106 Wall St., N.Y.

R. G. HEAD, PRES'T.  
J. G. HOPKINS, SEC. T. H. LAWRENCE, TR.

**The R. G. Head**  
Brokerage and Investment Company.  
Rooms 72 and 73 Barclay Block,  
Denver, Col.

Buy and sell all kinds of live stock, ranch properties, farms, lands, land grants, stocks and bonds of cattle companies, and real estate. Make a specialty of handling young steers. Make examinations, surveys of and written reports on land grants and ranch properties anywhere in the United States and Mexico. We have for sale desirable tracts of land, large bodies, sold blocks in Texas, New Mexico, and Mexico, specially adapted to agriculture, stock farming and colonization. Our commissions on cattle sales will be based upon a percentage of prices obtained. Schedule of rates furnished on application.

**F. M. HOUTS,**  
Proprietor of  
**HEREFORD RANCH, WISE COUNTY.**  
P. O., Decatur, Texas.  
Breeder of

**HEREFORD CATTLE.**  
100 head of grade HEREFORD BULLS, Texas raised and ready for service. A few choice thoroughbred HEREFORD BULLS and some grade HEREFORD HEIFERS.

The above I will sell at a reasonable price and on easy terms. My ranch is on the Fort Worth & Denver railroad, near Decatur in Wise county, and the stock can be shown any day. Address,

**F. M. HOUTS,**  
DECATUR, TEXAS.

**E. H. KELLER,**  
Salesroom 208, Shops 210 and 212 Throckmorton Street  
**FORT WORTH, TEXAS.**



Columbus Buggy Company's Buggies, Coaches, Umbrellas, Ohio. Hynes Carriage Company's Carriages, Quincy, Ill. Buck Boards and Spring Wagons. Tops, Dashes, Cushions, Fine Trimming Painting and Repairing a Specialty.

**SAN ANTONIO.**

By weight is the only reasonable and fair way to sell and buy live stock.

THERE is more pasture feed on an acre of Bermuda grass in the summer than any other that can be grown in the South.

Not a pound of beef should leave the borders of this great state except in a prepared condition, and the great proportion of it by its gulf ports.

WITH the assurance that muttens would continue to sell as they have sold this spring, the future of the sheep business would be pretty fair, but that there is no confidence in the stability of the mutton demand is proved by the very low price at which stock sheep are held. One dollar a head would buy hundreds of thousands of them in Texas.

THE STOCK JOURNAL is always in the lead in advocating methods of handling and marketing live stock. It has long and persistently labored to have live stock sold everywhere on the per cent. commission, instead of by per capita commission, because it is just and correct in principle, and because by the per capita Texas pays over double the per cent. of commission paid by Northern stockmen. It is therefore gratifying to announce that the percentage commission is being adopted by Chicago live stock commission men, and it is to be hoped that it will soon be the universal custom, and also in all live stock markets of the country. Why should not live stock be sold on per cent. commission as well as grain, wool, cotton, and other articles of commerce?

THE agricultural and stock fair project in San Antonio has taken tangible shape by the formal organization of the San Antonio International Fair association, on May 26. Some \$30,000 of the \$100,000 asked for has been subscribed and the following gentlemen were elected directors: Uriah Lott, A. C. Schrymer, E. H. Terrell, W. J. B. Patterson, W. Henemann, B. F. Yoakum, Sam Maverick, A. Belknap, Geo. W. Brackenridge, J. S. Alexander, H. B. Andrews, Dan Sullivan, H. D. Kampmann, Henry Elmridorf, Albert Maverick. It is doubtful whether a more enterprising and responsible directory could have been selected, which is a guarantee of its ultimate success. A charter has been sent for, and active operations are to begin immediately. The LIVE STOCK JOURNAL will cheerfully do its part in making the fair a complete success.

OUT of some 60 head of horses that were offered here under the recent contract let to Toby for cavalry horses, only two were accepted. The requirements were at least 15 hands high and weighing 950 pounds. While numbers of them would come up to the height, they would fail in the weight. The great majority of Texas ranchmen of life-long experience would have preferred the majority of the rejected hor-

ses to those accepted for durability and service, still the cavalry officers decide otherwise. As before remarked, there is no good excuse to offer on the part of Texas farmers and ranchmen for not raising any and all classes of horses needed by the government, and the STOCK JOURNAL hopes in the near future to record the fact that all the needs of the troops in Texas both in horses and mules be supplied by our own people.

**HORNS AND HOOFES.**

Vint James is shipping beeves from Uvalde.

Geo. West sent forward two train-loads of stock this week.

James H. David is back from Nueces county with a bunch of mules.

R. D. Benson of Palestine, who has ranch interests in Midland county, is in the city.

A. E. Nobles is in from Eagle Pass with a couple car-loads of horse stock, which he disposed of at good prices.

Wm. Ragland went west, not to grow up with the country, but to rustle for shipments for his house, McIlhany & Co.

T. C. Shelton of Webb passed through on his way home from Chicago, where he had a shipment of big fat stock.

The Floresville Citizen reports the sale of 81 head of steers by I. T. Thornton to San Antonio butchers at 24c per pound.

G. W. Carson bought some 250 head of steers from different parties in Atascosa county, for which he paid an average of \$20 per head.

Geo. W. Saunders went to Kerrville the early part of the week to attend to the shipping of the steers which he bought of Hotchiss a couple weeks ago.

Sidney James of Uvalde county is in the city visiting relatives and friends. He says they are ready to ship fat beeves, and expect to forward several hundred in the near future.

The fact of the case is, which we are free to remark, that the man who says it never rains west of the Colorado river is in danger of his life if he shows up anywhere among men of truth and veracity.

C. H. Johnson of this city went down to Aransas bay and brought a 400-lb turtle. Southern Texas don't confine herself to raising beef and mutton, but is now daily sending fish and turtles to Colorado and other distant ports.

French Whitecotton is back from a trip to Illinois with a couple car-loads of horses, and says the spring up there is very backward and Texas horse stock slow of sale on account of hard times and a scarcity of money.

The worms are reported bad in many sections of the country, and some loss of stock, especially calves. This is a matter which requires the closest of attention, and is one of the most arduous of a Texas ranchman's duties.

Cotulla Ledger:—Dull Bros. made a shipment of a train-load of stall-fed beeves to the Chicago market on Wednesday last. This week will about wind up the shipments of fed cattle from this portion of Texas until next winter.

A. Adler & Co. bought about 400 head of steers from H. J. Delemar of Duval county, many of which are said to swing the beam at 1200 pounds. Mr. Delemar is a very careful and painstaking stockman, and just such a

**SHEDD'S HORSE-BREAKING MACHINE!**

Apparatus in operation at the

**Kansas City Stock Yards, and San Antonio Stock Yards.**

Contracts made with dealers to train horses in car-load lots. Trained horses furnished in any number on order. Parties desiring to secure Shedd's Patent Horse-Training Apparatus will address

**C. F. SHEDD, Porter House, San Antonio.**

Machines can be seen at work at Stock Yards, Kansas City, Mo.; or, San Antonio Stock Yards Company, San Antonio, Texas.

**Traders' National Stock Yards!**

**J. E. PRICE, Proprietor,**

Near I. & G. N. Shipping Pens, - - SAN ANTONIO, TEXAS.

Best and most commodious stock yards in the state. Built expressly for the accommodation of the stockmen. All pens shedded and with hay-racks and fresh water. Charges same as other yards. Best buyers on the market always on hand for good stock.

HINES CLARK.

JAMES F. SCOTT.

**CLARK & SCOTT.**

**Live Stock Commission Merchants,**

**COLLINS, NUECES COUNTY, TEXAS.**

Do a general live stock commission business. Special attention paid to putting up stock on order.

**The Southern Hotel,**

**J. P. HICKMAN, Prop.,**

**San Antonio, Texas.**

one as is expected to turn out big fat stock.

Hines Clark of Clark & Scott, commission men of Collins, was in the city the early part of the week and sold a bunch of horse stock at satisfactory figures. He is a veteran in the business, and controls the trade of as fine a stock country as can be found under the sun.

The majority of the cattle now going North from the Aransas Pass railroad south of Kenedy is going over the Santa Fe, via Wallis. Although that connection has long been open, until recently cattlemen did not like the way they were handled there.

J. L. Harris, representing Gregory, Cooley & Co., returned from Chicago Monday, having sold some 980 head of cattle, which he bought from about Gonzales. He says he has some 2000 head to forward to his house. As to future prices he does not speak very hopefully.

Corpus Christi Caller:—Stock of all kinds are being shipped rapidly out of Nueces county. It is estimated that fully 50,000 head of cattle, besides numerous horses, mules and sheep will leave this section this season. The following are the shipments from Corpus Christi for the past ten days: 6255 head of cattle, 411 head of horses and mules and 1250 sheep.

G. W. Carson of Rocky Comfort, Mo., who has been here some weeks buying and shipping beeves and muttens and had a good opportunity to see for himself as to what is the most valuable live stock paper, put down the necessary funds for a copy to a friend in Winfield, Kansas, and one for himself. He wanted solid facts without false coloring of any kind, and of course had to select the Old Reliable.

Alfred Giles, who recently bought two thoroughbred Jersey heifers and

sent them to his ranch in Kendall county, reports the loss of both of them by acclimation fever. It is claimed by many that the Jerseys are almost exempt from dangerous acclimation fever, but from a close observation we are ready to assert the contrary, although they pass through the fever with less danger if well cared for.

C. A. Lyford makes the following report of sales made since May 1: 100 Mexican mares, \$14.25; 2 cars same, \$13; car Mexican horses, \$15.50; car Mexican mares, \$14; car Mexican mares and yearlings, \$11.25; car Mexican improved mares, \$16; car Texas mares, \$30; 10 saddle-horses, \$30.20; 2 cars beeves, \$17.25; 2 cars bulls, \$13.25; car bulls, \$12.50; car common cows, \$10; 2 cars good cows, \$13; 2 cars cows and beeves, \$19.25; car cows and beeves, \$14.50; 26 beeves to butchers, \$11.15; 105 yearlings, \$15.25; 197 cows and heifers, \$11.15.

The killing of R. Lee Pope at Laredo on Monday cast a gloom over a large circle of intimate friends throughout the Southwest. The circumstances were that Pope went into a saloon with a number of friends to take a drink, and taking lemonade, lingered till the others had left, when the bartender, a Mexican named Rosales, asked him for the pay. Pope being there on invitation, said that the pay had probably been forgotten, and if the one who had treated did not pay that he would. At this the bartender made some insulting remarks and pulled a pistol. Pope left for his room, armed himself and returned to the saloon. On entering the firing began almost simultaneously, and quite a number of shots were fired. When the firing ceased Pope lay dead with a bullet through his heart, and Rosales lay behind the counter mortally wounded. Pope was a young man, with wife and one child, a true type of a Texas rancher, brave

and generous, a fast and true friend and a dangerous enemy. His ranch is in La Salle county, and he had large ranch interests in Southern Kansas.

**THE WOOL SACR.**

White & Ingham shipped their clip, filling seven cars, from Encinal to Galveston.

The T. J. Buckley clip at Encinal has been sold, and report says that 14 1/2 cents is the price realized.

The C. M. McDonald clip, which was stored in the Encinal wool warehouse, is reported sold at 15c per pound.

Mr. Mellen of Dimmit county was in last week with his family and to see about the outlook in the wool market.

Thos. Downy, wool grower of Dimmit county, is in the city with his family and attending to the sale of his wool.

C. W. Wilkins of Wilkins Bros., Langtry, one of the largest wool raising firms in the West, is here, attending the sale of their clip.

Oscar Richardson is opposed to Galveston as a wool market because the News is free trade and by its utterances seek to injure the industry, the trade of which the business men of its town so earnestly solicit.

The wool buyers are more inclined to play base ball than to buy wool this year. This is the way it went two years ago, and when once the market opened wool went like hot cakes.

Cotulla Ledger:—Owing to the bad condition of the roads the spring clip of wool has not all been brought in yet. Mr. M. P. Kerr has nearly the entire clip of this community stored here, and will get in the remainder in a few days.

J. K. Burr of Maverick county has returned from a trip to Chicago with muttons, and visited friends in Iowa. He did well with the sheep and now wants to get rid of the wool he has here, when he will be ready for another siege of six months.

Geo. W. Ames of Val Verde county is here, and taking a lively interest in the wool men's meeting. He is opposed to shipping wool to any commission house that works against the sheep men's interest by voting or working for free trade. There are a large majority of that class of men handling wool in San Antonio, and therefore Mr. Ames is soliciting them. In this matter he is thoroughly consistent, and exercising an American's privilege.

**A CORRECTION.**

The Boston Wool Commission and Other Charges.

SAN ANTONIO, TEXAS, }  
May 30, 1888. }

Editor Texas Live Stock Journal:

Please correct the statement in regard to Boston wool commission merchants' commissions published in your journal May 26, 1886. Where wool is sold upon a given percentage, commission brokerage, storage, insurance, opening and grading and guarantee of sales became separate charges, whether the wool is from the North, South, East or West. Where 1 1/2c per pound commission is charged it also includes brokerage, when advisable 12-months storage if desired; 12-months fire insurance if desired; and opening, grading and resacking, and guarantee of sales.

Please correct and oblige.

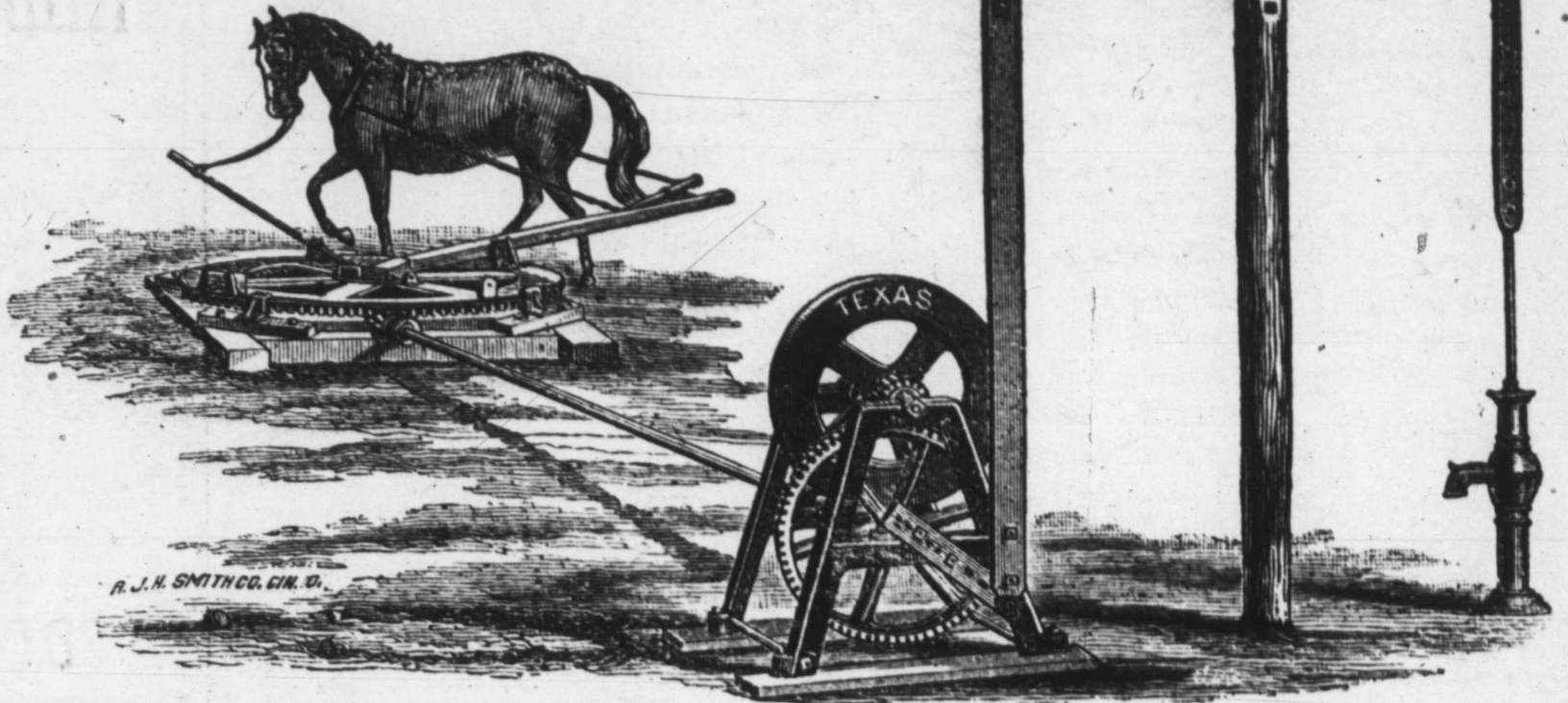
Respectfully yours,  
C. G. HUBBARD.

**STOCKMEN AND FARMERS!**  
The "TEXAS" All-Iron Pumping Outfit for \$125.

The lightest running, most complete and compact outfit made. The patent all-iron jack has extension crank, giving any stroke, from 9 to 24 inches; has heavy fly-wheel and strong gearing. The horse-power has a heavy 56-inch master-wheel, with large cogs and a compensation spring lever, making it work easy on horses. The outfit will also run our Prickly Pear Cutter, corn-sheller, feed cutter, or other similar belt machine.

Well tools made and repaired; also general machinery repairing.

The Alamo Iron Works  
San Antonio, Tex.



Patented July 19, 1887.

**FOR SALE OR EXCHANGE.**

**MONEY**  
*Cheap and Quick.*

Parties desiring loans on first mortgage on pastures or cultivated lands in Texas, Louisiana, Arkansas, Mississippi or Alabama, should inquire our terms.

FRANCIS SMITH, CALDWELL & CO.,

San Antonio, Texas.  
Or, STARK WEST, Waco, Texas.

**MONEY!**

to loan on

Ranch, Farm and City Property.

No commissions and no expenses. Write or call on

R. F. HENDRICKS,  
SAN ANTONIO, TEXAS.

**30 HEREFORD BULLS**

For sale by G. W. Saunders at San Antonio Stock Yards.

**POLAND CHINA HOGS.**

Breeders of and for sale pure-bred native-born and acclimated Poland China hogs.

DR. J. P. KLINE & SONS,  
Box 369. San Antonio, Texas.

**POLLED ANGUS BULLS.**



We have seven acclimated Polled-Angus bulls for sale. Apply to J. L. HICKMAN & CO., Union Stock Yards, San Antonio, Texas.

**EDWARD PERSCH,**

—DEALER IN—

**CORRUGATED IRON,**

Roofing Tin,

Sheet Iron, Zinc, Copper,  
Pig Tin, Solder,

TIN PLATE, ETC.

254 Market St., San Antonio, Tex.

**LONE STAR**

**..SADDLERY..**

Manufacture all kinds of Saddles and Harness. Cowboys' Outfits a Specialty. First-class work in all branches.

A. VARGA, Agent,

Dolorosa Street, opposite Southern Hotel,  
SAN ANTONIO, TEXAS.

**UNION STOCK YARDS,**  
SAN ANTONIO, TEXAS.

J. L. HICKMAN & CO.,

**LIVE STOCK COMMISSION MERCHANTS,**

South Flores Street, on S. A. & A. P. Railroad. Largest and best yards in San Antonio. Only yards having the facilities for shipping and receiving from all the railroads at the yards. Office at the Southern Hotel and at the yards. Street cars to pens. Liberal advances made on all consignments. Stock scales pens. Telephone connections.

**ED STEVES & SONS,**

San Antonio, Texas,

**LUMBER DEALERS**

Solicit the patronage of the ranchmen of Southwest Texas.

**SPAYING!**

DR. FRED J. BAILEY will make contracts for spaying cows and heifers, at a reasonable figure. Has had better success than any operator in Texas, and has done more. Reference: B. L. Crouch, Frio county; T. C. Sheldon, Webb county; Lott & Nelson, Duval county, and many others. Address,

FRED J. BAILEY, San Antonio, Tex

**C. A. LYFORD,**

(Successor to S. RODGERS & CO.)

**Live Stock Commission Merchant, San Antonio, Texas.**

Yards at end of South Flores Street-Railway track. Liberal advances made on consignments. Commodious Stock Yards.

**AGENCY LOUISIANA STATE LOTTERY.**

204 W. Houston St., San Antonio, Texas.

ORDERS PROMPTLY FILLED.

TOM YATES, AGENT.

**MONEY TO LOAN**

In Southwestern Texas, on Farms and Ranches.

Reasonable rates, time to suit borrowers; also, Farms and Ranches for sale. E. B. CHANDLER, No. 4 Kampmann Building, SAN ANTONIO, TEXAS

**GEO. W. SAUNDERS,**

**LIVE STOCK COMMISSION MERCHANT,**  
SAN ANTONIO STOCK YARDS.

Prompt sales and quick returns. Market reports and information as to shipping cheerfully given. Correspondence solicited. Telephone No. 401.

SAN ANTONIO STOCK YARDS, Situated on S. A. & A. P. and I. & G. N. railroads. Large and commodious pens, and feed charges moderate. Shedd's horse-breaking machine attached to yards.

SAUNDERS & HENRY, Proprietors.

**GEO. LOELOFF, SAN ANTONIO, TEX.**

—Manufacturer of the—

**CELEBRATED SAN ANTONIO SADDLE TREES.**

Makes all kinds of Natural-Fork Saddle Trees, Texas, Colorado and California patterns. None genuine without my name on cantel. Look out for imitations.

**L. S. BRACKETT,**

**MANUFACTURER OF SADDLES, HARNESS, BRIDLES, ETC.**

No bogus Northern penitentiary or combination saddle trees sold or rigged, but a specialty made of strong, reliable, honest goods at a reasonable price. Also sell the best farm wagon made.

South Side of Military Plaza,

San Antonio, Texas.

# TEXAS LIVE STOCK JOURNAL.



ESTABLISHED APRIL, 1880.

Consolidated with

**TEXAS WOOL GROWER**

SEPTEMBER 13, 1884.

ISSUED EVERY SATURDAY.

—BY—

**The Stock Journal Publishing Company,**

—AT—

**Fort Worth, Dallas and San Antonio.**

**FORT WORTH OFFICE,** 210 West Second Street. W. A. GARNER, Manager.

**DALLAS OFFICE,** 702 Main St. FRANK POWELL, Manager.

**SAN ANTONIO OFFICE,** Room No. 2, Beze Building. L. A. HEIL, Manager.

### SUBSCRIPTION PRICE.

Weekly Edition per annum.....\$1 50  
Monthly Stock Farmers' Edition..... 75

Entered at the Postoffice, Fort Worth, Texas, as second-class matter.

Entered at the Postoffice, San Antonio, Texas, as second-class matter.

Entered at the Postoffice, Dallas, Texas, as second-class matter.

SUBSCRIPTIONS to the TEXAS LIVE STOCK JOURNAL are solicited upon the ground that the information given is worth the money to any man in Texas who is either raising, dealing in, or feeding any description of live stock in Texas, Louisiana, the Indian Territory, or any section of the range country. The weekly edition costs but \$1.50 per year. We ask those who are subscribers to renew promptly and those who are not subscribers to give the paper a yearly trial. Subscriptions can be sent direct to the TEXAS LIVE STOCK JOURNAL.

THE STOCK JOURNAL has received and "sampled" a jar of prickly-pear preserves, sent by Mr. W. J. Davis of Dublin. They taste very much like preserved figs, and show that the despised prickly pear can be made of good use in feeding the human race.

THE general expectation is that there will be very few difficulties placed in the way of the enactment of state laws requiring the inspection of all live cattle in the states where the dead meat is to be sold, but a constitutional question is involved that will be looked into very closely before the fight between butchers and packers is settled.

THE Panhandle route, familiarly known as the Fort Worth & Denver railroad, has issued an elegant tourist's folder showing the beauties and glories of the mountain districts. There is a colored map showing the short line from Denver to the sea and a vast amount of information concerning the great mountain summer resorts. This folder is in great request because of its artistic beauties and finish, in addition to the map of the through line which is presented to the public for the first time.

WHEN the Detroit butchers who were trying to keep dressed beef out of the market proposed to secure the enactment of a law requiring that all meat sold in Michigan should be inspected alive within the state, their lawyer found a readymade statute already upon the statute books which covered the case. If this law stands the butchers will be able to keep out the new invasion of dressed beef, and at the same time will stop the sale of Hammond's dressed beef, which has been sold upon that market for a long time.

### Texas Bulls.

The stockmen of Texas who have failed to purchase the necessary number of bulls for service on their ranges are reminded that for years past a number of breeders have been importing pure blooded beef cattle in order to supply the demand for grade bulls. These bulls can be purchased at any time of the year without danger of loss by acclimation, and can be had at prices just so low that the cost is very little above the price of an ordinary fat beef steer. There is just as good stock in Texas of this character as there is in other states and the stock is generally to be found advertised in the TEXAS LIVE STOCK JOURNAL. The ranchman who is still running scrub bulls will very soon find that his stock will sell lower than graded cattle on other ranges and will very likely find that these hard times make it doubly necessary to have some blooded cattle in the herd. You cannot import foreign bulls now, but the supply at home is good enough and cheap enough.

### The Beef Cattle Prospect.

The assertion is often advanced that for the cattle business there remains no hope for better times. That the beef packers are so mighty as to own us all and that they are able to squeeze every cowman or cattle owner out of the business. That the packers dictate the prices and will continue to say exactly the sum total the cattle will bring.

The butchers, too, claim that the packing houses are gradually doing away with local butchering establishments, and that whatever town is invaded by the packing interest has to surrender, and the butchers become retailers of meat for the great packing houses and that the packers in a measure control the selling price.

We will grant that the butchers know what they are talking about. It is easy to perceive that the few local butchers in a town of moderate proportions are no match for concentrated capital amounting to over one hundred millions. The masses buy of the butcher selling meat the cheapest and when the order to "sell low" is passed by the packers the local butchers have to come under their influence and buy the dressed meat or give up their custom to retail shops established by the packers.

The only hope for better prices for beef cattle that the TEXAS LIVE STOCK JOURNAL has been able to cling to, is that despite all that has been said to the contrary, the law of supply and

demand has not been nullified; that there remains to us the prospect that as the undeniable increase in demand continues, the inevitable decrease in production will have an effect and that under influence of lighter receipts the profits of cattle raising will be greater.

We recognize fully, that at present prices cattle raising is not generally profitable; and further, that in the most favorable localities the production of cattle is diminishing; and further than this, the recognition is fully as strong that our future markets must rule stronger or the supply will continue to be very steadily decreased until the predicted famine is at hand.

The two features of the cattle trade which to us have the greatest significance have shown no sign lately other than the general low figures paid for beef cattle would indicate. These features are, first, the English markets, the second being the Chicago receipts.

When cattle are scarce and prices are low then we will say there is no hope. When the British markets are booming and ours are slow, then we will say the pool controls us; let us get out of business the best way we can. At present there is no absolute proof that the beef markets will not react as the sheep market has done.

The JOURNAL will wait a little longer before giving the entire business of cattle raising over to the dogs, backing the business up with a steadily decreasing supply, and Texas cattlemen raising cattle at less cost than any other section of the United States.

### The Montana Quarantine.

Preston A. Leslie, governor of Montana Territory, has issued a proclamation in regard to Texas cattle. It is dated May 11, 1888, and stripped of the surplusage usual to such documents the proclamation reads as follows. Says the governor:

"And I have no reason whatever to believe that cattle originally from points south and east of this line, but which have been ninety days or more north or west of said line, are liable to convey splenic fever. Therefore, I do not consider that the herds of Montana would be jeopardized by allowing bona-fide Panhandle cattle, or cattle which have been ninety days north or west of the before mentioned line, free entry into the territory.

"It is therefore deemed most reasonably certain that the said quarantine proclamations heretofore issued from this office may without danger of bringing into this territory any contagious or infectious disease to domestic animals be modified.

"Wherefore, I, Preston H. Leslie, governor of the territory of Montana, do, by virtue of the power vested in me by law, hereby modify and change said proclamation so that the same shall not apply to that part of the state of Texas called and known as "The Panhandle" and which is the territory that lies and is north and west of a straight line drawn from the northwest corner of Wilbarger county to the southeast corner of Presidio county, in said state of Texas. And it is hereby declared that any cattle that have

been and remained for all the time of ninety days or more within the said Panhandle part of the state of Texas, north and west of the line aforesaid, may be brought from there and admitted into the territory of Montana without regard to said proclamation; provided, however, before they or any of them shall be brought into the territory of Montana the owner and the person in charge of them, must file with the veterinary surgeon their own written or printed affidavits subscribed and sworn to before a notary public of Montana, and such other evidences and proofs as shall, with the said affidavits of the owner and person in charge, show and satisfy him that such cattle were within said Panhandle as before described for ninety days, or more, immediately preceding their start from there for Montana, and have been or are being brought directly from that locality to Montana, and also that they have been subjected to the quarantine regulations of the state of Colorado and territory of Wyoming on the way of their transportation."

CAUTION.—Buy only Dr. Isaac Thompson's Eye Water. Carefully examine the outside wrapper. None other genuine.

## J. R. JETER & CO.,

Land, Loan and Investment Agents,  
Fort Worth, Texas, have for sale:

No. 1. 3650 acres fine land 3 miles northeast from center of Hutchinson Co., \$2 per acre.

No. 2. 1158 acres 2 miles west of Chillicothe on Fort Worth & Denver railroad; fine farming land; \$3 per acre.

No. 3. 1000 acres in Swisher county, on line of Hale; \$1.25 per acre.

No. 4. 2800 acres 5 miles northwest from center of Castro county; \$1.40 per acre.

No. 5. 2400 acres in northeast corner Hartley county; \$1.50 per acre.

No. 6. 1 section in western part of Lynn county. Price \$500 per section.

No. 7. 45,000-acre pasture to lease for term of years.

No. 8. 17,728 acres in Hockley county; price \$1.65 per acre; small cash payment and easy terms and low interest on balance.

No. 9. The best improved stock farm in Texas of 3000 acres; well watered and fenced, residence, barn, orchard and all necessary improvements, 300 to 500 acres in cultivation. Price, for 60 days, \$6 per acre; terms easy.

Farm, ranch and timber lands in every county in the state, and in any size tracts, to suit purchaser.

P. A. HUFFMAN, Ft. Worth, Texas.

A. W. JONES.

J. M. HENDERSON, Jr.,

Late of Burlington, Kas.

Athens, Tenn.

## P. A. HUFFMAN & CO.

Successors to Huffman, Sellers & Co.,

## Real Estate, Loan

—AND—  
INVESTMENT AGENTS,  
506 Main Street, Fort Worth, Texas.

Land Titles Investigated, Taxes Paid and Collections Made for Non-Residents. Correspondence Solicited. P. O. Box 197.

WE REFER BY PERMISSION TO

K. M. Van Zandt, president Ft. Worth National Bank; Capt. M. B. Loyd, president First National Bank of Ft. Worth; A. M. Britton, president City National Bank, Ft. Worth; Col. W. M. Harrison, president State National Bank, Ft. Worth; W. J. Boaz, president Traders' National Bank, Ft. Worth; Dr. H. S. Broiles, Mayor of Ft. Worth; Col. J. P. Smith, ex-Mayor of Ft. Worth; W. A. Huffman of W. A. Huffman Implement Co., Ft. Worth; J. H. Brown, wholesale grocer, Ft. Worth; Capt. Sidney Martin, president the Martin-Brown Co., Ft. Worth; Col. Morgan Jones, president Ft. Worth & Denver City railway, Ft. Worth; People's National Bank, Burlington, Kas.

ORGANS AND SEWING MACHINES  
\$3.00 up. 30 styles. Sent on trial; new and perfect; warranted 5 years. Buy direct and save half. Circular with 10,000 testimonials FREE. GEO. PAYNE & CO. 177 So. 125 S. Clinton St., Chicago, Ill.



**A Big Cattle Deal.**

Silver City (N. M.) Enterprise.

Messrs. Hammond, Baker and Dane this week visited the Boca Grande country in Mexico, and before returning closed a deal with Doc Bolton of Texas, the owner of the grant, for 100,000 acres of land and 40,000 head of stock cattle, thirty thousand of which will be delivered on the grant and the balance turned loose upon the range of the company, which, in the future, will be purchased in Grant county. As soon as this deal is closed Mr. Hammond will return to New York, perfect the organization of his company, and then return to Grant county and personally superintend the purchasing of the ranches and cattle.

The company will be organized under the laws of the territory of New Mexico, with a capital stock of \$10,000,000, and will be known as the New York and New Mexico Meat company, and will start into business with 250,000 head of cattle on the range. Mr. Hammond has turned into the company his long line of meat markets in the city of Baltimore, and also a complete slaughtering plant in Kansas City. In addition to this the company will open a line of markets in New York city, and if needed in other cities. Extensive feeding sheds will be adjacent to the Kansas City plant.

The selection of ranches and ranges in Southwestern New Mexico has been made with shrewd business foresight, looking to the welfare of the company's herds. This country is so far to the south that the disasters which hard winters bring to cattle in Montana and other grazing countries of the North are entirely unknown. Snow and ice are never of sufficient depth or duration to interfere with feeding throughout the year. The general altitude is from 4000 to 6000 feet, which is sufficient to insure not only freedom from insects but an unusual degree of health for breeding and grazing cattle. The average rate of increase for these reasons is higher than in any other grazing country, while the mortality is much less. The Atchison, Topeka & Santa Fe and the Southern Pacific railroads are within easy distance of Silver City or Deming. There is no doubt that in all essential particulars this district affords advantages not offered by any other country, and if fair business ability is displayed in the management of the various departments, the enterprise will prove a grand financial success.

Like any individual, the company will buy its cattle and ranches just as cheap as possible. At least ninety per cent. of all brands turned in must be counted. The management will not accept a range count, as the eastern stockholders have their eye-teeth cut by that method of doing business before.

**Our Candidate for President.**

He will be nominated by the convention and will be elected by the people, because he will come the nearest to filling their ideal of a chief magistrate. Electric Bitters has been given the highest place, because no other medicine has so well filled the ideal of a perfect tonic and alterative. The people have indorsed Electric Bitters and rely upon this great remedy in all troubles of liver, stomach and kidneys. For all malarial fevers and diseases caused by malarial poisons, Electric Bitters cannot be too highly recommended. Also cures headache and constipation. Satisfaction guaranteed, or money refunded. Price 50c and \$1 at H. W. Williams & Co.'s drug store.

**A Prosperous Cattle Company.**

Denver Field and Farm.

We now refer to the Wendling company of Colorado and New Mexico. It is in fact a prosperous company, and is fast growing in gigantic proportion.

tions. While most companies have been shrinking, the Wendling has been swelling. We have been prompted to these remarks by learning that the Wendling people have within the past few days added to their landed possessions in New Mexico ten thousand acres, giving them in all sixty-eight thousand acres in that territory. They have five thousand in Colorado, and seventy-two thousand all told. This would be a big pasture field, if it was all used to graze the lowing herds, but it is not. The Wendling company grow grain and grass for hay. Down in their New Mexico possessions they have this year planted a hundred acres to oats, a hundred to alfalfa and forty to corn.

Meeting Mr. E. F. Lamb, the gentlemanly manager of the company, who had lately returned from the East and also from their ranges in the South, we inquired of the condition of their cattle and of his company's plans for the future. Said he: "I have never seen cattle looking so fine as they do now at the middle of May in any of the prior years. They have shed their winter jackets and look like well-kept race horses. Our losses were merely nothing last year, and they will not be in the future, since our grazing grounds are fenced and we shall never overstock them. I have just bought for my company a thousand head of the finest native two-year-old cows that I had seen for many years—have bought them at a bargain. They will be delivered in our New Mexico pastures in the next ten days."

**Sore From Knee to Ankle**

*Skin Entirely Gone. Flesh a Mass of Disease. Leg Diminished One-Third in Size. Condition Hopeless. Cured by The Cuticura Remedies.*

For three years I was almost crippled with an awful sore leg, from my knee down to my ankle; the skin was entirely gone, and the flesh was one mass of disease. Some physicians pronounced it incurable. It had diminished about one-third the size of the other, and I was in a hopeless condition. After trying all kinds of remedies and spending hundreds of dollars, from which I got no relief whatever, I was persuaded to try your CUTICURA REMEDIES, and the result was as follows: After three days I noticed a decided change for the better, and at the end of three months I was completely cured. My flesh was purified, and the bone (which had been exposed for over a year) got sound. The flesh began to grow, and to-day, and for nearly two years past, my leg is as well as ever it was, sound in every respect, and not a sign of the disease to be seen.  
S. G. AHREN, Dubois, Dodge Co., Ga.

**Terrible Suffering from Skin Diseases.**

I have been a terrible sufferer for years from diseases of the skin and blood, and have been obliged to shun public places by reason of my disfiguring humors. Have had the best of physicians and spent hundreds of dollars, but got no relief until I used the CUTICURA REMEDIES, which have cured me and left my skin as clear and my blood as pure as a child's.  
IDA MAY BASS,  
Olive Branch P. O., Miss.

**From 145 Pounds to 172 Pounds.**

I have taken several bottles of CUTICURA RESOLVENT with all the results I could wish for. About this time last year, when commencing its use, I weighed 145 pounds, and to-day I weigh 172 pounds.  
GEO. CAMPBELL, Washington, D. C.

NOTE—The CUTICURA RESOLVENT is beyond all doubt the greatest blood purifier ever compounded.

CUTICURA, the great Skin Cure, and CUTICURA SOAP, an exquisite Skin Beautifier, externally, and CUTICURA RESOLVENT, the new Blood Purifier, internally, are a positive cure for every form of Skin and Blood disease, from Pimples to Scrofula.

Sold everywhere Price, CUTICURA, 50 cts.; SOAP, 25 cts.; RESOLVENT, \$1. Prepared by the POTTER DRUG AND CHEMICAL CO., Boston, Mass.

Send for "How to Cure Skin Diseases." 64 pages, 50 illustrations and 100 testimonials.

BABY'S Skin and Scalp preserved and beautified by Cuticura Medicated Soap.

**HOW MY BACK ACHES**

Back Ache, Kidney Pains and Weakness, Soreness, Lameness, Strains and pain relieved in one minute by the Cuticura Anti-Pain Plaster. The first and only pain-killing plaster. 25 cents.

J. B. LITTLEJOHN,  
Manager Insurance Department.

THOMAS P. MARTIN,  
Attorney-at-Law, Manager Land Dept

**LITTLEJOHN & MARTIN,**  
Insurance, Loan and Real Estate Agents,

513 Main Street, Fort Worth, Texas.

Buy and sell (on commission only) lands in all parts of Texas and City real estate. Property rendered and taxes paid on same. Lands examined and divided. Patents obtained, titles examined and perfected. A specialty made of business with the different state departments at Austin. A general business transacted. Commissions reasonable.

**J. B. ASKEW,**  
MANUFACTURER AND DEALER IN  
**SADDLES, HARNESS, LEATHER, ETC.**

Fort Worth, Texas.

**Stock Saddles and Hand-Made Harness a Specialty.**

Any style of saddle, plain or full stamped, made to order. Harness, from the lightest buggy to the heaviest float. Workmanship and material all first class.

C. E. MOORE, late foreman for R. F. Tackabery, will have charge of the saddle department. Every good saddle will be fitted out with a pair of Tackabery's improved Lightning Cowboy Cinch Fasteners.

All orders by mail will receive prompt attention.

REFERENCE.—W. J. Boaz, Pres. Traders' National Bank; Col. R. E. Maddox, Breeder and Dealer in Fine Blooded Stock, Fort Worth.

**FLENNER & GAUSE,**  
**UNDERTAKERS**

602 Houston St., FORT WORTH, TEX.

Open Day and Night. Orders by telegraph receive prompt attention.

G. H. DASHWOOD.

E. D. OESCH.

**Dashwood & Oesch,**  
**DRUGGISTS,**

Under Burt & Field's Office, 314 Main St., Fort Worth.

OPEN ALL NIGHT.

**KANSAS HEREFORD CATTLE COMPANY**

(Successor to the Cherokee Hereford Cattle Company.)  
LAWRENCE, KANSAS.



**200 Head of Pure-Bred Herefords**

of all ages to select from, comprising all the most noted strains to be found in England and America. Catalogue on application. The farm is but three miles from the city, known as "The Gibb Farm."

F. P. CRANE, Manager.

C. H. COOPER.

E. H. ROBERTSON.

**COOPER & ROBERTSON,**  
**Real Estate and Rental Agts.**

702 MAIN STREET, DALLAS, TEXAS.

Buy and sell city property, ranches, grazing, farm and timber lands and live stock, loan and invest money for capitalists.

**WM. HENRY & CO.,**  
**--Dealers in Stoves and Hardware--**

513 and 515 Houston Street, Fort Worth, Texas.

AGENTS—Fire and Burglar Proof Safes and Vault Doors, Laffin & Rand Powder Co., Glidden Steel Barb Wire, Iron and Slate Mantels and Grates, &c.

J. Q. SANDIDGE, Pres. C. B. DAGGETT, Vice-Pres. MAX ELSER, Cashier.

**CITY NATIONAL BANK,**

FORT WORTH, TEXAS.

Capital Paid in and Surplus, \$200,000.

DIRECTORS—J. Q. Sandidge, C. B. Daggett, Max Elser, Chas. Scheuber, C. M. Crane

M. B. LOYD, President. D. C. BENNETT, Vice-President. E. B. HARROLD, Cashier.

**FIRST NATIONAL BANK,**

Corner Houston & Second Streets, - - - Fort Worth, Texas.

CASH CAPITAL AND SURPLUS, \$430,000.

DIRECTORS—J. S. Godwin, M. B. Loyd, J. D. Reed, Zane Cetti, D. C. Bennett, George Jackson, S. B. Barnett, E. B. Harrold and E. F. Ikard.

**Hardware & Queensware.** **W. F. LAKE,**  
Cor. 2nd and Houston Sts. Wholesale and Retail.

**Wholesale Dry Goods.** **THE MARTIN-BROWN CO**  
Cor. 4th and Main Streets.  
The only exclusively wholesale dry goods house in the city.

**FORT WORTH NOTES.**

Mr. A. B. Combs, general agent for James H. Campbell & Co., is again at his headquarters in Fort Worth.

Mark Lynn returned from the West and says that Texas Pacific beef will commence to run about the middle of June.

Wm. Hittson sold to Geo. Miller of Winfield, Kansas, 2000 2-year-old steers; delivered at the Hittson ranch, at \$12 around.

Butcher market at Fort Worth is quoted: Steers at 2@24c; cows at 14@2c; sheep, plenty in sight, at 2c; hogs, no market; calves \$3 and \$4.

Young, Andrews & Kuhen sold to Kelly & Elliott of Knoxville, Iowa, 10 horses and 38 mares, also 2 cars of horses and mares to go to Chattanooga.

Major J. W. Burgess of Fort Worth and Dr. Logan of St. Joe, Mo., bought 2265 acres of land north of Fort Worth. The investment amounted to over \$30,000.

Mr. G. L. Brooks of Albuquerque, New Mexico, is offering a good property in Deming, N. M., in exchange for live stock. His advertisement is in the For Sale column.

Mr. Wm. D. Richardson of Mountain Peak, Ellis county, is advertising about 100 head of stock cattle, including 25 head of full blood Durhams, the balance good grades. He will trade for horses or steers.

L. W. Christian of Weatherford is distinguishing himself by sending some magnificent corn-fed beeves to Chicago by way of the Santa Fe, shipping from the junction of the Santa Fe and Rio Grande roads.

Captain J. C. Richardson bought of Ed Farmer of Tarrant county 220 head of steers and they are now going to R. Strahorn & Co. of Chicago. The price was not given but Mr. Farmer is known to have refused \$36 around.

D. A. Constable of Caldwell, Kansas, purchased of Ben Cobb of Henrietta 1500 two-year-old steers delivered at Henrietta for \$11 per head. The cattle ranged in Young and Archer and were in extra good condition.

The movement in range cattle is very quiet and transactions are few and far between, but the condition of cattle throughout the state is so good that market shipments will more than counterbalance the short range demand.

For the present Mr. C. F. Shedd, the manufacturer of the horse breaking machine, desires to be addressed at Laramie, Wyoming. He is there placing some machines in position. The card is in the San Antonio department.

Mr. W. D. Reynolds of Albany, having as usual started some herds for Montana, had them stopped at the Colorado line, but will have no trouble getting them through. The Reynolds cattle have gone up the trail ever since there was a trail and there is no danger to be apprehended from them.

Jno. K. Rosson of Fort Worth, and representing Stephens & Dobyns of Kansas City, returned from an expedition into Collin county and other feeding districts. He purchased 2 car-loads of good steers of a Mr. Hill in Collin and will send them forward soon. Mr. Rosson says that the supply of cattle is very small now, the good and large beeves having gone to market.

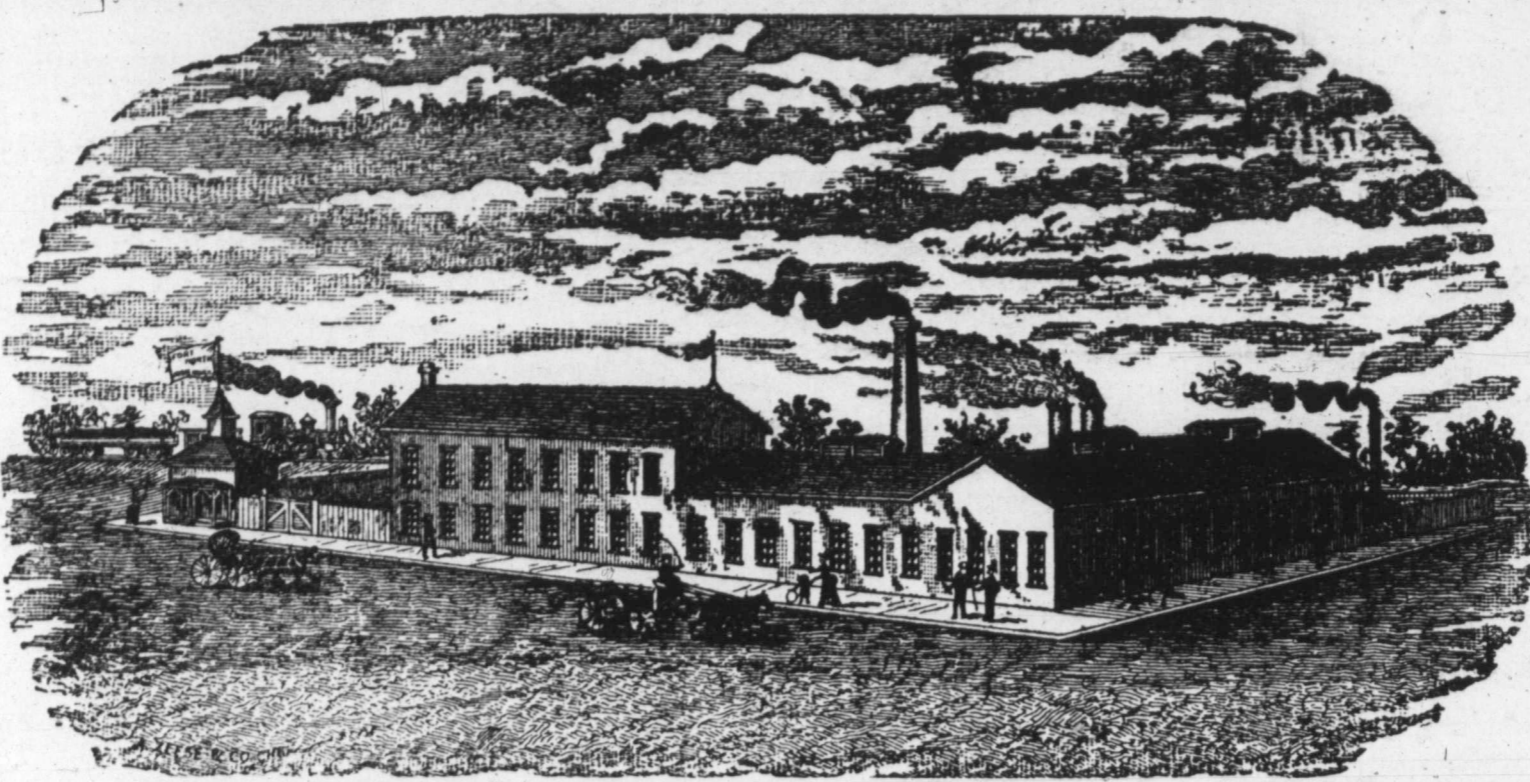
Mr. W. L. Hanna of Morgan, Bosque county, mentioned in the JOURNAL last week as having purchased some of the Berkshire pigs advertised in the JOURNAL by W. S. Ikard of Henrietta, is very much pleased with his purchase, saying: "I have seen many ex-

O. LYNCH, President.

JNO. F. MOORE, Superintendent.

A. W. MCARTHUR, Secretary

**FORT WORTH IRON WORKS**



Corner Lamar and North Streets, Fort Worth, Texas.

Manufacturers of the celebrated Fort Worth Artesian Well Drilling Machine, the best in the world.

Architectural Iron Work, Artesian Well Drills, Drill Bars, Rope Sockets, Jars, Fishing Tools, and Pumping Jacks for Artesian Wells.

Repair and Rebuild Portable and Stationary Engines, Boilers, Pumps, and do a General Foundry and Machine Business.

hibited at shows northward and in England with which Mr. Ikard's pigs would compare favorably."

Commission men quote yearling steers at \$7, 2-year-old steers at \$11.50, 3-year-old steers at \$15.50, and 4-year-old steers \$18. These figures about cover nearly all cattle west and south of Fort Worth, but not further north than Clay county. The yearlings and 2-year-olds are easy to obtain but the steers are likely to cost more money if fat. Stock cattle in nice small bunches can be had at very low prices.

The delivery of horses to the contractor who had sold under contract to the U. S. quartermaster was not an easy matter here. Most of the horses were rejected. The old style of a horse board consisting of army officers buying all the horses they were willing to accept and paying for them on the spot appears to have been the best plan. In 1875-6 the army horse board purchased several thousand horses at an average cost of \$115.

Mr. S. B. Burnett of Fort Worth has just returned from his ranch up the Denver road and reports grass good and cattle fattening. He believes that beef cattle will leave the Northwestern range about the middle of July, but that none of importance will go out earlier. This item is important to Southern Texas ranchmen, as they can be sure of another month before they will meet the North Texas and Indian cattle on the beef markets. The fat cattle in Southern Texas ought to be run out during the month of June.

The Monitor Hay Press Co. of Kansas City are offering in the columns of the JOURNAL an advertisement of the Little Monitor, which they claim to be the best hay press on the market. It is recommended by Johnson, Trapper & Co., hay merchants, Kansas City; E. C. Lucas, Creston, Iowa; G. B. Reed, Denver, Col.; I. N. Lee & Son, Emporia, Kansas; Clark Bros., Caldwell, Kansas; John Muckhart, Boulder, Col., and many others who have given the press a thorough trial. The readers of the JOURNAL will find in our columns the advertisements of three hay press manufacturers.

**Open Orders Solicited.**

Messrs. Turner, McClure & Co., the wholesale and retail grocers of Fort Worth, Texas, are making low prices on all goods in their line, and have a full and complete stock. They make a specialty of sending goods C. O. D. all over the country, and stockmen can save a big per cent. on their purchases by sending the firm open orders for goods. A letter received by them is given the same attention as if you visited them personally, and satisfaction is guaranteed in every case. Send

them a trial order at once and they will not fail to please you. Address TURNER, MCCLURE & Co., Fort Worth, Texas.

**San Antonio Horse Market.**

Although there has been an unusual amount of rain during the week, trade has been fair, but several hundred head more would have been shipped had it not been too muddy to gather and drive. There are a goodly number of buyers in, and horse stock in good flesh go very readily, the trouble being that the great majority of stock this season has been thin, which is the case yet. Although grass is rank, it is too soft to put on fat that will bear handling. There are fully 2000 head of horses held in and about the city, but they would last only a very few days were they in a good shipping condition. Prices are well maintained, but no boom exists nor is there much likelihood of there being a big one this season. The demand is principally for mares, with a fair inquiry for mules, mostly young ones being wanted. Horses in fair demand for the season, with a preference for young unbroken stock. Shipments for the week amounted to 1491 head, which was 199 head less than last week.

Quotations are as follows:  
Scrub and poor mares, 12 to 13 1/2 hands, \$12@16  
Scrub fair conditioned, 12 to 13 1/2 hands, 15@ 18  
Medium mares, 13 to 14 hands, fat, . . . . .25@ 35  
Medium mares, 13 to 14 hands, thin, . . . . .15@ 20  
Texas improved mares, 14 to 15 hands, 30@ 40  
American carriage horses, 15 1/2 to 16 1/2, 75@200  
Saddle horses, good, 13 to 14 1/2 hands, 22@ 35  
Saddle horses, poor, 13 to 14 1/2 hands, . . . . .20@ 28  
Unbroke horses, 13 to 14 1/2 hands, . . . . .16@ 25  
Weaned, unbranded colts, . . . . .4.50@ 6  
Mules, Mexican, 12 to 13 1/2 hands, . . . . .27@ 46  
Mules, improved, 13 1/2 to 14 hands, . . . . .45@ 65  
Yearling mule colts, improved, . . . . .25@ 30  
Two-year mule colts, improved, . . . . .30@ 40  
Yearling mule colts, Mexican, . . . . .15@ 20  
Two-year mule colts, Mexican, . . . . .20@ 30

**San Antonio Wool Market.**

It is becoming monotonous to repeat the announcement that nothing is being done in the wool market of this city, but such is the fact. The rare question and other points of differences having been settled, the principal obstacle of trading still remains, which is the difference between asking and offering prices. If the object is, as many assert, to let Galveston open the market, it will probably be attained, as several buyers have left for that town, and it is said that wool will change hands in that city at a lively rate. Where the advantage to San Antonio in this comes in is hard to see. As to what prices will be here, is as yet only conjectural, but many claim

that it will not be far from the following:

| TWELVE-MONTHS WOOL.              |                |
|----------------------------------|----------------|
| Medium bright and light. . . . . | 17 @18         |
| Medium dark and heavy. . . . .   | 15 1/2 @16 1/2 |
| Fine bright and light. . . . .   | 16 @17         |
| Fine dark and heavy. . . . .     | 14 @15         |
| Coarse. . . . .                  | 11 @13         |
| SIX-MONTHS WOOL.                 |                |
| Medium bright and light. . . . . | 14 1/2 @15 1/2 |
| Medium dark and heavy. . . . .   | 13 @14         |
| Fine bright and light. . . . .   | 14 @15         |
| Fine dark and heavy. . . . .     | 13 @14         |
| Coarse. . . . .                  | 11 @13         |

These are about the holding figures, and of course the offerings are somewhat less, and it remains to be seen who has to make the greatest concessions.

LATER.—At the last hour a break in the monotony of nothing was made by the following sales by Ed Kotula: Kearney & Richardson clip, Dimmit county, 102 sacks, 6-months, 16c; J. A. Carr, Webb county, 234 sacks, 6-months, 16 1/2c; J. M. Franklin, McMullen county, 25 sacks, 6-months, 15c.

**Bucklin's Arnica Salve.**

The best salve in the world for cuts, bruises, sores, ulcers, salt rheum, fever sores, tetter, chapped hands, chilblains, corns, and all skin eruptions, and positively cures piles, or no pay required. Is guaranteed to give perfect satisfaction, or money refunded. Price 25 cents per box. For sale by H. W. Williams & Co.

**Have You a Watch?**

When your watch or clock is out of order take it to H. W. Dawson, 607 Elm street, the most skillful and only genuine watchmaker in Dallas; four years with Kneply & Son and five years with M. W. Shaw of Galveston. Having served seven years apprenticeship in Liverpool, England, and worked in the different watch factories, I can make any part of a watch, either English, Swiss or American. 607. Work done for the trade. 607.

J. P. SMITH, President. FRANKLIN B. HOUGH, Secretary.

**THE GRANITIC ROOFING:**

Factory at Fort Worth, Tex. Better than the best, cheaper than the cheapest roofing offered in Texas. Suitable for steep or flat roofs. Cheap enough to cover a hen coop; good enough to roof a palace. Specially adapted to stockmen's barns and out-buildings. Shingles, tin and corrugated iron must give way before our goods. For further particulars write to our office.

Fort Worth Granitic Roofing Co., 11th and Rusk Sts., Fort Worth, Tex

**DALLAS.**

**Dallas' Pork Packery.**

A twelve-month or more ago the STOCK JOURNAL agitated the importance to our people and country of a pork packery at Dallas, an enterprise of sufficient capacity to consume the hog product of our farmers and stock growers. We were as decided then as now that no enterprise of similar outlay would be prolific of as much general good to the country, and that belief is shared in by the best financiers of the city, and though no outward evidences or demonstrations tending to the development of such a work are visible to the casual observer, there is a quiet, business-like move formulating itself here that will, before long, speak for itself. The STOCK JOURNAL representative called on one of the gentlemen prominent in the movement who precluded his remarks with the request that publicity of names be withheld for the present. He said: "It is one of the urgent necessities for our people. There is nothing that would contribute to the development and stability of our agricultural interest as an establishment for the curing and preservation of meats, and it is our purpose to put in a plant soon, large enough to meet all demands. Climatic influences no longer cut any figure in the matter, since the advanced methods of refrigerating; packing can be done just as well in July as in January. It used to be that the farmer would have to keep his hogs until winter before he could turn them into money; not so now. He can sell them whenever they get fat and for the money. It has been the rule for a long time in Texas that the farmer had money only once a year, when he got his cotton in, or the crop matured. The founding of the packery, which will certainly be done, will introduce a new order of things. We will provide him with the means and opportunity of having it at any month out of the twelve—whenever he has a fat hog. We have one of the finest countries in the world, and it will improve with development. So it is with the various roots and grasses; it is unsurpassed. The packery will prove the final solution of the 'more corn and less cotton' problem; there will be a demand for it; every bushel that can be raised."

The gentleman here drew from his desk a large package of data of months' accumulation by correspondence, and proceeded to explain the varied and annual losses to Texas by reason of the want of facilities for packing the hog product. For instance, "side meat" loses to the farmer, or rather his loss with the increase in cost to the consumer, is fully 50 per cent. It is freighted out of the state to the packery and then back, and so with other meats.

The packery solves the problem; that it will be built is as certain as any thing can be, and if the STOCK JOURNAL'S agitation of the subject has proved, in the humblest degree, a means to the end, it will feel that it has served its people well.

**A Choice Jersey.**

M. P. Hays, Dallas, bought this week Pride of Waco, 22,831, bred by J. P. Marat, St. Saviour's, Island of

Jersey. The STOCK JOURNAL is informed that she is the only imported cow in Texas. Mr. Hays is the young man, as announced by the STOCK JOURNAL some time ago, who conceived the idea of establishing a Jersey butter farm with Dallas as a market. His contract for the delivery of butter goes into effect July the 1st, next, and at 40c a pound the year round.

**Conclusions from the Experiment.**

Tennessee Experiment Station.

1. The most desirable method of fastening an animal for dehorning, so as to keep it satisfactorily quiet, is to cast it, bind the feet firmly together and hold the head in a halter close to the ground, either with the hands or by placing a plank across the neck. Then remove the horn uppermost, and by means of a rope of sufficient length, fastened where the feet come together, to turn the animal upon the other side and remove the remaining horn.

2. For removing the horns, an ordinary meat saw, with a set-screw in the end of the blade furthest from the handle that will enable the blade to be tightened but not to turn from side to side, is perfectly satisfactory. A strong running-oose rope halter, and about 20 feet of five-eighths and 10 feet of three-eighths inch rope are also necessary.

3. The horns should be removed as close to the head as possible without cutting the skull proper. It is best to cut down from one-fourth to one-half inch of flesh at the base of the horn. The sawing should be done rapidly, and with long sweeps of the arm if possible.

4. Animals one and two years of age appear to suffer considerably in dehorning. The painful effects decrease with increase of age, so that an animal 10 years old may suffer but very little. This is owing to the layer of flesh surrounding the base of the horn, which is much thicker in young than old animals. Dehorning causes an abnormal increase of pulsation and temperature, which extends over several days. The appetite is also affected during the 24 hours succeeding the operation.

5. Dehorning is more especially to be recommended for those animals that are of vicious temperament, that are what are termed "masters;" to be applied to bulls and to beef animals that are to be kept quiet and closely stabled or shipped.

6. From evidence quoted from other sources it appears that dehorning is not necessarily a cruel practice, but may be conducted to promote ends that are both humane and desirable in live stock breeding.

**Alfalfa Abroad.**

Denver Field and Farm.

It has frequently been asked of us, more generally by Eastern readers, if we thought alfalfa would thrive in various parts of the United States. We have replied that the plant would grow anywhere if the soil was right, but we had our doubts about its tendency to withstand the rigors of winter everywhere. It seems that the agricultural department has been testing the plant in different states and recently made the following report:

"The Colorado agricultural college reports alfalfa an entire success. With irrigation two crops can be taken the first season; the second season three cuttings can be made, and in the most favorable seasons four crops may be taken. When once well rooted it seems impossible to kill it.

"Indiana experiment station: Alfalfa does well, but must be sown in

drills to secure a stand. Louisiana: Alfalfa did well on dry good land. Michigan agricultural college: Alfalfa does well on dry upland, but does not get a good stand until the second year. Missouri agricultural college: In the southern part of the state alfalfa is a success. Nebraska industrial college: The seed was sown broadcast and failed to maintain itself against weeds. New York experiment station: Alfalfa is a success. Sown broadcast it failed to keep ahead of the weeds. Sown in drills, June, 1885, and cultivated it was in bloom May 15, 1886, and gave a fair crop. Pennsylvania state college: Alfalfa set well the first year and yielded several fair cuttings. South Carolina experimental station: Alfalfa is thoroughly adapted to the soil and climate and is considered a most valuable forage plant. Texas agricultural college: Alfalfa does well only on rich land and is a good crop.

**Stock Farming in the Panhandle.**

Higgins Courier.

One day last week the Courier man met Mr. Henry Hamburg, an old resident and successful stock grower, as the latter was on his way to Chicago. Mr. Hamburg has been in the Panhandle for nearly twenty years, and is still full of enthusiasm for the Panhandle as a stock farming country. He has made a great deal of money since coming to this country, and his wealth is now estimated as being far up toward a hundred thousand dollars. Mr. Hamburg has, in addition to his large herds of cattle on the range, a fine and well managed farm about eight miles north of Mobeetie. On this farm he has about 150 acres in cultivation. Last year he raised 600 tons of millet hay. On this farm he has never failed to raise such crops as are needed to feed his stock and supply his table with the choicest vegetables.

In the spring his farmer starts a large "pulverizer," pulled by six mules. This pulverizer tears the ground all to pieces, and leaves it in the best condition imaginable for planting. By using this implement the plowman is enabled to break ten or twelve acres for one day's work, and can in a few favorable days break and plant his entire crop.

**Dr. J. H. Gibbs,**

Practice limited to the treatment of the diseases of the eye, ear, nose and throat. Office No. 505 Main street, Dallas, Texas.

**The Best Wire Fence**

for farms, railroads and ranch purposes. Send for illustrations. Address, GHOLSON FENCING Co., 160 West 3d St., Cincinnati, O. B. F. Gholson, Fort Worth, Texas, State Agent.

Piper & Schulthess are headquarters for all kinds of fence wire, 33 and 35 W. Commerce street, San Antonio, Texas.

**J. R. POLLOCK, M. D.**

401 Main Street,

FORT WORTH, TEXAS.

**Chronic Diseases a Specialty**

Piles, Fistula, Fissure and all diseases of the rectum successfully treated.

**Oxygen and Electricity**

for the treatment of catarrh, bronchitis, consumption, dyspepsia, constipation and all diseases of the nervous system. Best of city references given upon application. Correspondence solicited.

**Jno. S. Andrews & Co.**  
**LIVE STOCK**

**LAND DEALERS!**  
DALLAS, - - TEXAS.

**SPECIALTY:**  
**Cattle for Future Delivery.**

20,000 one and two-year-old steers offered at a bargain. A few desirable ranch properties for sale. Loans negotiated on pasture land.

**WHITMAN'S NEW PATENT REBOUND PLUNGER PERPETUAL**  
GUARANTEED SUPERIOR TO ANY LEVER PRESS NOW MADE



Received First Premium at N. Y. State Fair, in 1880, 1881, 1882, 1883 and 1885, including the Grand Gold Medal and two Silver Medals, over Dederick and others; also World's Fair at New Orleans, California State Fair, New England and Dallas (Texas) State, 1881. The most rapid powerful and durable press made; puts over ten tons in car; bale every three minutes; fully warranted and protected; three bales to any other press's two. Also Horse Powers, Cider Mills, Corn Shellers, Feed Cutters, &c. Send for illustrated circulars. Address, WHITMAN AGRICULTURAL CO., St. Louis, Mo. We also make the best Steam Press in America.

The BUYERS' GUIDE is issued March and Sept., each year. It is an encyclopedia of useful information for all who purchase the luxuries or the necessities of life. We can clothe you and furnish you with all the necessary and unnecessary appliances to ride, walk, dance, sleep, eat, fish, hunt, work, go to church, or stay at home, and in various sizes, styles and quantities. Just figure out what is required to do all these things COMFORTABLY, and you can make a fair estimate of the value of the BUYERS' GUIDE, which will be sent upon receipt of 10 cents to pay postage. MONTGOMERY WARD & CO. 111-114 Michigan Avenue, Chicago, Ill.

**DR. VAL RILEY,**

Practice confined to

**CATARRH**

Of the Air Passages, Ear and Eye.

Office 912 Elm Street,

DALLAS, - - TEXAS.

**DR. O. B. HEWETT, THE DENTIST.**  
Dallas, Texas.  
Teeth extracted without pain.  
The BEST is the CHEAPEST.

**DALLAS DENTAL PARLORS**  
PRICE CHEANEY, D.D.S., Prop  
709, 711 Elm St., Dallas, Tex.  
Call, write or telephone and make appointments in order to have the me reserved for your work.

**Dr. G. E. Stowers**  
**DENTIST.**  
Office in Postoffice Building,  
DALLAS, TEXAS.

**THOMAS F. McENNIS,**  
Candidate for  
County Clerk, Dallas County.  
Election Nov. 6, 1888.

**HENRY H. SMITH,**  
Treasurer of Dallas County,  
Candidate for re-election.  
Election Nov. 6, 1888.

**MUSTANG LINIMENT**

MEXICAN MUSTANG LINIMENT, for MAN and BEAST. Greatest Curative discovery ever made.

**MUSTANG LINIMENT**

MEXICAN MUSTANG LINIMENT conquers SPAINS, SCRATCHES and SPRAINS in HORSES and MULES.

**MUSTANG LINIMENT**

MEXICAN MUSTANG LINIMENT. Penetrates Muscles to the Very Bone! Wonderful! TRY IT.

**MUSTANG LINIMENT**

MEXICAN MUSTANG LINIMENT cures PILES, OLD SORES, CAKED BREASTS—all INFLAMMATION.

**Mutton for Market.**  
National Journal.

Three kinds of farm stock give us two opportunities for profit. Poultry give us an increase and the eggs, while with turkeys, geese, and ducks we (in addition) can secure some revenue from the feathers. With cows we secure the calves, and, in addition, a supply of milk that can be marketed or made into butter or cheese on the farm, and then sold as a manufactured product. With sheep we not only secure the increase, but the wool, so that with these three kinds of stock it would seem that, by proper management, a fair profit might be obtained. Hogs give us but one source of revenue, and are generally considered profitable. It is true that hogs will consume much that might otherwise go to waste, and this is always an item in their favor. But, at least to a considerable extent, sheep will do the same, especially during the summer. With a good pasture during the summer and proper shelter during the winter, sheep can be kept at comparatively small expense. The cost in very many cases does not exceed one dollar per head, while one dollar and a half is a good price for feeding a sheep throughout the entire year. Good mutton sheep are nearly always in demand; even in the smaller towns good juicy mutton can be sold at fair prices, so that the sum realized for the carcass, when taken in connection with that obtained for the wool, clearly shows that a fair profit can still be realized from the growing of good sheep.

If sold as lambs, very little feeding is necessary—that is, direct feeding. The ewes, of course, must be kept in good condition, and while nursing must be supplied with a liberal amount of nutritious food, in order to secure a good growth for their young. When lambs are well fed, the price realized for them will generally be sufficient to make the work of raising them quite profitable.

As with all other stock kept upon the farm, it pays to keep sheep in a good, growing condition. This is the case whether we are making a specialty of wool or mutton. In feeding to secure a good growth of flesh, we will also be able to procure a better fleece of wool, and, as a rule, a good growth of wool means a good growth of mutton. Taking the cost of feeding and the price received for good mutton into account, sheep can be made to pay a fair per cent. of profit, leaving out the question of wool entirely. Poor sheep do not pay, for the reason that inferior wool or mutton seldom, if ever, meet with a ready demand. The small difference in the cost of keeping a flock of pure-bred or common sheep is not sufficient to make up the difference. It costs but little more to keep good sheep, and to keep them growing, than it does to maintain poor ones, that will not make a good growth, even with the best of care. My experience and observation that good mutton sheep can be made to pay a profit, while in a great majority of cases, inferior ones do not pay either for mutton or wool.

S. H.

**Capt. Barclay Won a Prize in a Lottery.**

Indianapolis (Ind.) Journal, April 22.  
Capt. William H. Barclay, the pension agent at Pittsburgh, has drawn a \$75,000 prize from the Louisiana State Lottery. He said: "Some time ago I purchased two half tickets at \$5. Yesterday I was notified that ticket No. 12,615 had drawn the capital prize of \$150,000, and as that is the number of one of my half tickets, I am entitled to half that amount and \$25 besides, inasmuch as all tickets ending with the number 15 are good for \$50 each. I understand that the other half of the capital prize was won by five Philadelphia mechanics.

**Types of Cowboys.**

Bill Nyo.

Boys who sigh to push madly across the plains to follow the cow path to fame, do not know the danger and desolation such a life involves. There are two classes of cowboys in the West, viz.: the working cowboys and the lay-figure cowboy. The latter remains in town and rolls cigarettes while he smokes fiercely through his nose. He talks learnedly of cattle brands, corrals, round-ups, "cavvayards," ranges, brands, bunches and herds, but really don't know a range cow from a Texas steer.

The genuine cowboy is not always beautiful, but he is conversant with his business, knows every brand in his district at least and who owns it; is brave where bravery is most needed, that is, in the discharge of his duty. To stand watch all night in a blizzard and hold a band of restless bellowing cattle from stampeding; to ride all the next day half asleep in his saddle; to fall occasionally from his pony when the latter makes a mistake and steps into a prairie dog village, or to have a collar-bone broken when fifty miles from a physician, are some of the features of cowboy life which the boys who run away from school to cross the Missouri do not consider.

Piper & Schulthess are headquarters for all kinds of fence wire, 33 and 35 W. Commerce street, San Antonio, Texas.

**Hog Cholera**

If your HOGS or POULTRY show signs of disease use **HALL'S HOG AND POULTRY CHOLERA CURE**. It is a sure preventive and cures where all other remedies fail. Write for information to Hall's Hog & Poultry Cholera Cure Co., St. Louis, Mo. For sale by all druggists. In writing mention this paper.

**CHAS. I. EVANS, ATTORNEY-AT-LAW**

505 Elm St., Dallas, Texas.  
Special bargains in Western Texas Farm and Ranch Lands.  
Refers by permission to Hon. A. H. Wille chief justice supreme court of Texas; Hon. Jno. P. White, judge court of appeals of Texas; Hon. J. M. Hurt, judge court of appeals of Texas.

**J. C. SCOTT, Attorney-at-Law,**

304 MAIN STREET, FORT WORTH, TEX.  
**Land and Commercial Law.**  
Refers by permission to Hon. Henry M. Teller, Sec. Interior, Washington, D. C.; Valley National Bank, St. Louis, Mo.; H. M. Truehart & Co., Galveston, Tex.; Gen. B. C. Ludlow, Col. Int. Rev., Austin, Tex.; City National Bank, Fort Worth, Tex.; First National Bank, Fort Worth, Texas.

**THOS. F. WEST, Attorney-at-Law,**

Late of Jacksboro,  
311 Main Street,  
FORT WORTH, TEXAS.  
Special attention to Land and Live Stock Litigation.

N. A. STEDMAN. EDWARD F. WARREN,  
City Attorney.

**STEDMAN & WARREN, Lawyers,**  
Corner of Main Street and Public Square  
FORT WORTH, TEXAS.



EMPIRE WELL AUGER CO., ITHACA, N. Y.

**OPIUM** Morphine Habit Cured in 10 to 20 days. No pay till cured. Dr. J. Stephens, Lebanon, Ohio

**GOLD!** You can live at home and make more money at work than at anything else in the world. Either sex; all ages. **ly out FREE. Terms FREE. Address, TRUS & Co., Augusta,**

**Rhine, the Ft. Worth Photographer,**

Is ready for engagement to make views of interiors, buildings,

**Live Stock Ranches, Etc.**

His Fort Worth Studio will be in charge of a highly accomplished artist from

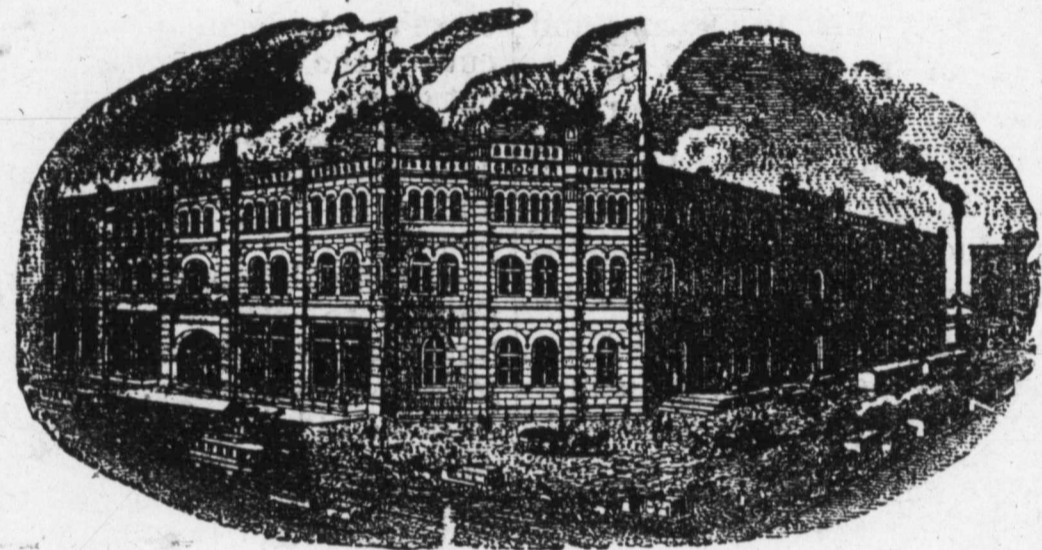
**Kurtz' Gallery, Broadway, New York.**

**JOSEPH H. BROWN,**

**Wholesale Grocer,**

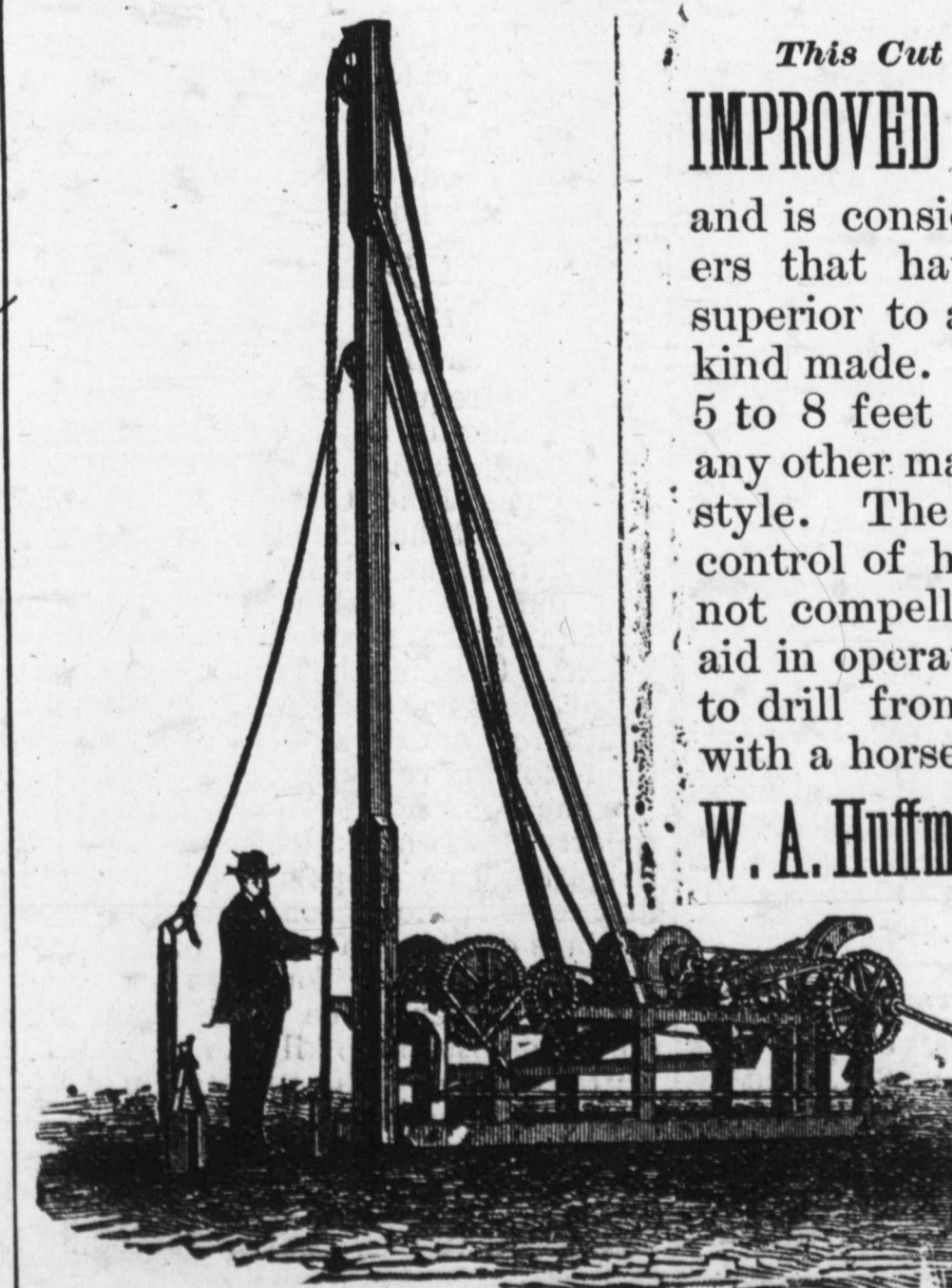
Manufacturer of the Celebrated

**SILVER LOAF BAKING POWDER.**



**-:Sultan Roasted Coffee:-**

**FORT WORTH, TEX.**



**This Cut Represents our IMPROVED WELL DRILL,**

and is considered by all drillers that have tried it to be superior to any others of the kind made. It will drill from 5 to 8 feet more a day than any other machine of the same style. The driller has entire control of his machine, and is not compelled to have extra aid in operating. Guaranteed to drill from 500 to 700 feet with a horse-power.

**W. A. Huffman Implement Co.**  
Fort Worth, Texas.

Send for  
**Prices**  
—AND—  
**Catalogue.**

## Very Wonderful

Are the effects produced by the use of Ayer's Sarsaparilla. Sores, Scabs, Glandular Swellings, Boils, Carbuncles, and all kinds of Humors disappear, as if by magic, by the use of this

### Standard Blood-Purifier.

F. C. James, of Albany, Greene Co., Tenn., writes: "Ayer's Sarsaparilla saved the life of my only child. When three years old, her head was covered with Scrofulous Sores. She became almost helpless. Skillful physicians did all they could to relieve her, but failed. At last I purchased a bottle of Ayer's Sarsaparilla, gave it to her according to directions, and she immediately began to improve. Encouraged by the result, I continued to give her this medicine until the cure was complete."

## Ayer's Sarsaparilla,

Prepared by Dr. J. C. Ayer & Co., Lowell, Mass. Sold by all Druggists. Price \$1; six bottles, \$5.

### Saved from Hydrophobia.

Kansas City Journal.

Tom Harris, a cowboy from the Staked Plains, Texas, is lying at the Pacific hotel in this city, recovering from an attack of hydrophobia. Last Saturday night he was bitten by a "hydrophobia cat," while away from the ranch gathering up stray cattle in the Indian Territory. As the fatal result of such a bite is well known in those parts of the country, the man left the herd at once and rode to Fort Elliott, Texas, in search of a madstone, but failing to find one started for Kansas City, where he arrived Wednesday morning, with his left hand and arm swollen and suffering intense pain. Dr. J. M. Dickson of this city, who possesses a pair of madstones, which his grandfather carried with him from Ireland, was at once sent for and began treatment. The wound is a very small and harmless looking one, consisting of three tiny teeth marks on the inside of the third finger of the left hand. The madstones have drawn more or less pus from the wound since they were first applied yesterday morning—as much as half an eggshellful at one time. The swelling has decreased in proportion, and the doctor thinks now the case is under control.

Dr. J. M. Dickson has two stuffed specimens of the "hydrophobia cat" at his residence, 1307 Dripps street. He says it is an entirely distinct species, different from the skunk or polecat, with which it is often confounded. The animal is no larger than an ordinary gray squirrel, with red eyeballs, and its long, shaggy hair and feelers standing upward and forward. Its bite is always poisonous, and fatal if not attended to. The doctor attributes the frequency of hydrophobia in this Western country to the prevalence of this animal. It is found in Texas, Indian Territory, Arkansas, Kansas and Western Missouri. Often, and especially in severe weather, the hydrophobia cat will make its way into houses, dugouts or stables, biting people and animals it may come in contact with, and many cases of hydrophobia in domestic and wild animals are due to its bite. Very frequently hydrophobia patients come from the Staked Plains, in Texas and Indian Territory, to be treated with the madstone. Among Dr. Dickson's former patients was Chie, Keokukowa, of the Sac and Fox tribe, in the Indian Territory, who was a grandson of the old Chief Keokuk, after whom Keokuk, Iowa, was named.

### Cattle Kings.

Montana Live Stock Journal.

Within the past year or so the opinion has generally prevailed that cattle companies, as they once existed, would soon be wiped out. It was supposed that with the incoming settler coupled with the fear of another '86-'87 winter the day of the "cattle king" had about

passed away and that of the small cattle holder about to be inaugurated. Present appearances do not justify this opinion; on the contrary they indicate the bringing to the front another class of cattle kings. Railroads and the modification of our quarantine are the factors to bring this about.

It is now possible to ship cattle from the Texas Panhandle and land them upon Montana ranges in a very few days. Formerly it took the whole summer season and the stock being thin in flesh and unacclimated laid down by the wayside and died during the winter if it happened to be a hard one. The chances being so great against Texas cattle passing through their first winter here and the old trail being so obstructed by settlers, drives from that state were out of the question.

But a new order of things has arisen and a complete revolution in the cattle industry in Montana may take place under it. We do not say that it will take place, but we do say that it is possible with every indication pointing to its consummation. As we have said, cattle from the Texas Panhandle may be landed here in a few days but little the worse for the journey. The number that may be shipped is only limited by the carrying capacity of the railroads. It is proposed to rush in 75,000 to 100,000 head this season. These cattle will be turned upon our ranges and those that can gather fat enough for market will be shipped East before winter closes down upon them. We will suppose that the next season new importations from the overstocked ranges of Texas and its near-lying territories will be made, which in turn will be shipped to the Eastern markets in the late fall. And thus Montana will become simply the fattening ground for the two, three and four-year-old steers of Texas, New Mexico and Arizona.

The modification of our quarantine has made this possible and it is reasonable to suppose that every advantage will be taken of it. If money can be made by shipping young steers in the spring from the points named to our ranges, fattening them and sending them to Eastern markets before the season closes, it will be done. No risks of winter will be taken. Purchasers will visit the Southern breeding grounds in the early spring, buy such steers as they want, ship them to the Territory, turn them upon our ranges, gather them up in the fall, send them to Chicago, St. Paul, Omaha, St. Louis or Kansas City, pocket the proceeds of their sale, spend the winter in the East and repeat the same operation the next year. This is possible, and we repeat it, if money can be made out of it it will be done every season. The result will be our ranges will be overrun with alien cattle, small stock raisers crowded out of existence and a new class of cattle kings will come to the front. Railroads and the almost unrestricted importation of cattle may bring this all about.

### Reducing the Surplus.

The disposition of the surplus in the U. S. treasury engages the attention of our statesmen, but a more vital question has our attention, and that is the reduction of the surplus consumptives. Since the discovery and introduction of Dr. King's New Discovery for consumption, there has been a marked decrease in the mortality from this dreaded disease, and it is possible to still further reduce the number of consumptives. How? By keeping constantly at hand a bottle of Dr. King's New Discovery and using according to directions, upon the appearance of the first symptoms, such as a cough, a cold, a sore throat, a chest or side pain. Taken thus early a cure is guaranteed. Trial bottles free at H. W. Williams & Co.'s drug store.

## DRS. BETTS & BETTS

Corner Champa and Seventeenth Sts. DENVER, - - - COLORADO.



**NERVOUS** Debility, Spermatorrhoea, Seminal Losses, Night Emissions, Loss of Vital Powers, Sleeplessness, Despondency, Loss of Memory, Confusion of Ideas, Lassitude, Gloominess, Depression of spirits, Aversion to Society, Easily Discouraged, Lack of Confidence, Dull, Listless, Unfit for Study or business, and finds life a burden. SAFELY, PERMANENTLY and PRIVATELY CURED.

**BLOOD AND SKIN** Diseases, Syphilis, a disease most horrible in its results, completely eradicated without the use of mercury. Scrofulous, Erysipelas, Fever Sores, Blotches, Pimples, Ulcers, Pains in the Head and Bones, Syphilitic Sore Throat, Mouth and Tongue, Catarrh, etc. PERMANENTLY CURED WHEN OTHERS HAVE FAILED.

**URINARY** Kidney and Bladder Troubles, Weak Back, Burning Urine, Frequency of Urinating, Urine high colored or with milky sediment on standing, Gonorrhoea, Gleet, Cystitis, etc, promptly and safely cured. Charges reasonable.

### TO YOUNG AND MIDDLE-AGED MEN.

**A SURE CURE** The awful effects of early Weakness, destroying both mind and body, with all its dreadful ills, permanently cured. **URETHRAL STRICTURE** permanently cured, removal complete—neither knife, caustic nor dilation—without pain or injury. Proof indisputable.

**DRS. BETTS** address those who have been impaired themselves by improper indulgence and solitary habits, which ruin both body and mind, unfitting them for business, study or marriage.

**MARRIED MEN**, or those entering on that happy life, aware of physical debility, quickly assisted.

### OUR SUCCESS

is based upon facts. First—Practical experience. Second—Every case is especially studied, thus starting aright. Third—Medicines are prepared in our laboratory exactly to suit each case, thus effecting cures without injury.

Send 6 cents postage for celebrated works on Chronic, Nervous and Delicate Diseases. Thousands cured. A friendly letter or call may save future suffering and shame, and add golden years to life. No letters answered unless accompanied by 4 cents in stamps. Address or call on

**DRS. BETTS & BETTS,**  
Corner Champa and Seventeenth Sts,  
DENVER, - - - COLORADO.

**Lawrence's COMMERCIAL COLLEGE.**  
910 and 912 Elm St., Dallas, Texas,

Is indorsed by all the leading business and professional men of this city and the entire Southwest. Has thousands of graduates successful in business, and is in its fifteenth year without any vacation; has a large, competent and experienced corps of teachers. 43 gold medals, valuable souvenirs and diplomas on record. For reduced rates of tuition in all departments and College Journal, call at the college or address

**E. B. LAWRENCE, Pres.**

**CITY HOTEL, - CHICAGO.**

Cor. State and 16th Sts.

**SPECIAL RATE TO STOCKMEN, \$1.50 PER DAY.** Nearest hotel outside the yards. Table and Rooms first-class. State st., Archer av. or L. S. & M. S. Dummy pass the house to all parts of city and depots.  
**W. F. ORCUTT, Proprietor**

## R. F. TACKABERY.



The popular saddle and harness manufacturer of Fort Worth, Texas. Mail orders a specialty. Received the first and only premium for Best Make of Texas Stock Saddle at the great Dallas State Fair.

Chickering, Wheelock, Mathushek  
**PIANOS**

Largest stock and best line in the state at

**C. H. EDWARDS,**

733 and 735 Main St.,

**DALLAS, TEXAS.**

Send for prices before purchasing elsewhere.

**HILLYER & SON,**  
**Photographers!**  
Dallas and Belton.

Dallas Gallery 701 Elm Street.

Thirty years' experience in the art. Twenty years the leading artist in Austin, where our legislative and society groups have given us a national reputation. 16 diplomas, 3 silver cups, 3 silver medals and a diploma at the late New Orleans Exposition attest our merit as artists.

**The Lightning Hay Press.**  
Full Circle.



**Kansas City Hay Press and Foundry Co.**  
Send for circulars. Kansas City, Mo

**JOHN KLEIN,**  
**Practical Hatter,**

912 Main St., Dallas, Texas  
Hats blocked while waiting  
Soft, stiff and cleaned and stiffened straw hats  
to new. Best facilities in the state. Work warranted first-class. Orders by mail or express promptly attended to.

**Johnson Grass Seed,**  
**Alfalfa Seed, Sorghum**

Seed, all kinds bulk seeds.  
**W. F. PATTERSON,**  
**Ft. Worth Seed Merchant,**  
WILL QUOTE PRICE

Butchers' and Drovers' Stock Yards, Dallas, Tex.

**CARTER & SONS, Props.,**  
**LIVE STOCK COMMISSION MERCHANTS.**

Largest and best yards in Dallas. Only yards having the facilities for shipping and receiving from all the railroads. Office at the yards. Street cars to pens. Liberal advances made on all consignments. Stock scales a pens. Telephone connections.

**ST. LOUIS MARKET LETTER.**

**Good Fat Stock Wanted, But Common Stuff a Drag.**

Regular Correspondence Texas Live Stock Journal.

EAST ST. LOUIS, ILLS., }  
May 29, 1888. }

Scaling & Tamlyn sold for T. A. Bounds, Wortham, 24 calves at \$6 per head; for Ben Willis, Eastland, 21 steers, 876 lbs, \$3.85; 18 steers, 788 lbs, at \$3.75; L. C. Featherstone, South Canadian, I. T., 25 steers, 880 lbs, at \$3.60.

Hunter, Evans & Co. sold for G. W. West, Oakville, 25 head, 692 lbs, at \$2.95; 55 head, 713 lbs, at \$2.80; 42 head, 1049 lbs, at \$2.37 1/2. For B. T. Chet, San Marcos, 25 head, 880 lbs, at \$3; 27 head, 967 lbs, at \$3. For A. D. McGhee, San Marcos, 24 head, 752 lbs, \$2.60; 50 head, 784 lbs, at \$3. For J. & M. Watkins, Charco, 44 head, 860 lbs, at \$3.35. For M. Cartwright, Terrell, 22 head, 1090 lbs, at p. t. For A. G. & G. R. Dewees, San Antonio, 51 head, 943 lbs, at \$3.20; 15 head, 846 lbs, at \$3.25; 18 head, 1055 lbs, at \$4; 13 head, 720 lbs, at \$2.40; 10 head, 787 lbs, at \$3.25. For W. M. Smith, Bluff Springs, 17 head, 905 lbs, at \$3.40; 21 head, 882 lbs, at \$2.25. For Smith & M., Bluff Springs, 20 head, 816 lbs, at \$3.25; 33 head, 423 lbs, at \$2. For Sloan & Bro., Abbott, 21 head, 1058 lbs, at \$4. For D. B. Sloan, Abbott, 45 head, 938 lbs, at \$3.55. For J. H. Benton, Bluff Springs, 43 head, 893 lbs, at \$3.55. For Frazier & Davis, Hillsboro, 21 head, 942 lbs, at \$3.40. For H. M. Frazier, Hillsboro, 11 head, 694 lbs, at \$3.25. For Weaver & B., Plano, 44 head, 923 lbs, at \$3.75; 20 head, 919 lbs, at \$3.25. For P. B. Butler, Beeville, 65 head, 898 lbs, at \$3.15. For E. R. Stiff, Sherman, 31 head, 907 lbs, at \$3.45; 74 head, 844 lbs, at \$2.75; 18 head, 810 lbs, at \$2.75; 36 head, 917 lbs, at \$3.40; 11 head, 813 lbs, at \$2.90. For R. H. Fitzgerald, Gonzales, 19 head, 962 lbs, at \$3.75. For Booth & Son, Gonzales, 22 head, 1135 lbs, at \$3; 23 head, 982 lbs, at \$3.80; 24 head, 939 lbs, at \$3.75; 46 head, 1014 lbs, at \$3.80. For West & Fant, Sinton, 211 head, 946 lbs, at \$3.25; 103 head, 946 lbs, at \$3.20.

James H. Campbell & Co. sold 48 Texas steers, 937 lbs, at \$3.70; 51 same, 827 lbs, at \$3.25; 44 same, 1043 lbs, at \$3.85; 22 same, 1123 lbs, at \$3.85; 20 same, 963 lbs, at \$3.85; 107 Indian calves, at \$6 per head; 24 Texas cows, 737 lbs, at \$2; 15 same, 778 lbs, at \$2.70; 24 South Texas steers, 863 lbs, at \$3; 20 same, cows, 670 lbs, at \$2.25; 44 Texas fed steers, 1087 lbs, at \$3.82 1/2; 177 same, 1133 lbs, at \$4; 26 same, 944 lbs, at \$3.65; 48 same, 1010 lbs, at \$3.80; 45 same, 835 lbs, at \$3.65; 46 Texas steers, 986 lbs, at \$3.60; 22 same, 1037 lbs, at \$4; 45 same, 1014 lbs, at \$4.12 1/2; 87 same, 1116 lbs, at \$4.30; 88 same, 1094 lbs, at \$4.20.

Do not ship common Texas sheep, for it is only absolute loss of money. Scaling & Tamlyn sold for B. G. Anderson, Wichita Falls, 592 sheep, 81 lbs, at \$3.75. Hunter, Evans & Co. sold for N. B. Riggins, Morgan, 116 sheep; 59 lbs, at \$2.12 1/2. For C. F. Peniman, Clifton, 503 sheep, 101 lbs, at \$2.60. For J. J. Wilson, Hondo City, 419 sheep, 72 lbs, at \$2.85. For G. H. Burns, San Antonio, 220 sheep, 60 lbs, at \$3.

Funsten & Co. made the following sales of wool: Lot from Cisco at 16c; lot from Abilene, fine, short, heavy, at 12 1/2c; lot from Cisco, short, heavy, fine,

at 12 1/2c; lot from Cisco, same, 12 1/2c; lot from Brownwood at 20c; 73 sacks from Hico at 15 1/2c; lot from Mineola at 20c; lot from Albany at 14 1/2c; lot from Abilene at 14 1/2c; lot from Abilene at 13 1/2c; lot from Corsicana at 21 1/2c; lot from Corsicana at 14 1/2c; lot from Greenville at 19c; lot from Caddo at 19 1/2c; lot from Weatherford at 18 1/2c; lot from Coleman at 17c; lot from Dublin at 19 1/2c.

Western Wool Commission Co. sold 14,000 lbs of heavy fine, also heavy, from Sweetwater at 12c; 20,000 lbs fine medium from Vernon at 15c; 15,000 lbs medium from Vernon at 21 1/2c.

Price-Grimm Commission Co. sold a lot of medium wool from Pilot Point at 21 1/2c; lot of fine from Toyah at 14c; lot of mixed fine and coarse from Toyah at 15c.

RATTLER.

The following circular explains itself, and is a long step towards reducing the distance between Chicago and Texas in live stock shipments:

"THE MISSOURI PACIFIC RAILWAY,  
"SOUTHERN DIVISION)  
"DALLAS, TEXAS, May 23, 1888."  
"CIRCULAR NO. 170 A."

To Agents and Connections:

"Effective June 5, 1888. Rates on live stock from Texas points shall be as follows when loaded in ordinary cars: Over 33 feet to 34 feet inclusive, 10 per cent. additional of standard car rate; over 34 feet to 36 feet inclusive, 15 per cent. additional of standard car rate; over 36 feet to 38 feet inclusive, 20 per cent. additional of standard car rate; over 38 feet 2 1/2 per cent. per foot or fraction thereof.

"When loaded in palace stable cars 115 per cent. of ordinary stock car rate for cattle and calves, 120 per cent. for horses and mules. All cars so constructed that stock may be fed and watered in transit shall be charged at palace car rates.

J. E. GALBRAITH,  
"A. G. F. A."

By this it will be seen that the Missouri Pacific, and in fact all Texas railroads will pay the mileage of the improved stock cars, and charge the shipper 115 per cent. of regular rates, which will be \$132.25 per car of the Street stable cars, they being 36-foot cars, to Chicago.

Right here it may not be out of place to say a few words historically of the progress made in the use of improved stock cars, no little credit of which the STOCK JOURNAL takes to itself. It is generally known that railroads were opposed to the innovation because it had a tendency to render useless their equipment of common stock cars. But many of the more far-seeing railroad managers realized that it was inevitable that a great improvement must soon take place in the transportation of live stock, and among this class must be rated the management of the Missouri Pacific. This was the first and only road leading into the state that would give the improved stock car companies a chance to get their cars before the public, and last February the Street Stable Car Co. were enabled to bring in several trains to give stock shippers a practical test of their utility. The result was highly satisfactory, and the demand for the cars grew so great that the railroads have finally taken the action expressed in the above circular. The impression went forth that railroads were throwing obstacles in the way of the use of the stable cars by unnecessary and vexatious delays, but if such is

the fact as to some, truth compels the assertion that the Missouri Pacific was not one of the parties to such a course, but that it has used all reasonable means to bring about the desirable end that will be accomplished on June 5th.

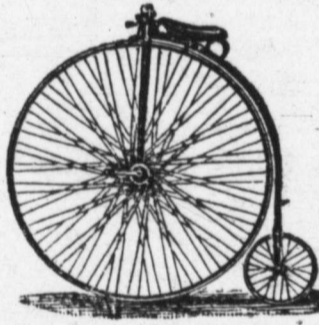
**A Beautiful Catalogue.**

F. W. Humphrey & Co., N. E. corner of Pine and Broadway, St. Louis, Mo.; clothiers, hatters and furnishers, have issued an elegant and beautiful clothing catalogue which will be sent free to readers of the TEXAS LIVE STOCK JOURNAL. The work contains some beautiful colored chromo lithographs and the fashion plates were specially designed to show the present spring and summer fashions.

The catalogue shows children's and boys' clothing, gentlemen's full dress attire, Prince Albert suits, walking suits, sack and cut-away suits, clerical suits, etc. Then follows the "hattery," then haberdashery, then hoisery and neck wear, and concluding with the glove department, measuring and order blanks. Visitors to St. Louis are requested to call and examine the immense stock of clothing, and friends at a distance are invited to send for the art volume catalogue, addressing F. W. Humphrey & Co., St. Louis, Mo.

**To the Afflicted.**

We call the attention of our readers to the advertisement of Dr. J. R. Pollock in this issue of the JOURNAL. To those who are afflicted with rectal troubles we can recommend the doctor as a specialist in that particular; he having effected some remarkable cures in cases which had become chronic. Dr. Pollock successfully treats consumption, bronchitis, catarrh, dyspepsia and all other chronic diseases with oxygen and electricity. Correspond with the doctor if you need the services of a reliable physician who can give the best of references.



**VICTOR BICYCLES,  
TRICYCLES  
-AND-  
SAFETY BICYCLES,**

Are in all respects the best and most reliable machines made. Send for illustrated catalogue, which will tell you about them. Mailed free.

**Overman Wheel Co.,  
MAKERS,  
BOSTON, - - - MASS.**

**THE COOLEY CREAMER**

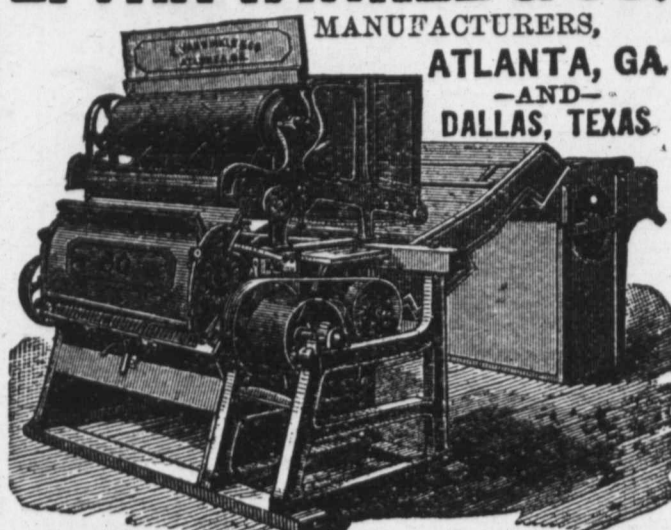


The first invented, never yet equalled, and the only one that uses the patented submerged process, which gives it its great value over all others. Where there are no agents, will sell one at wholesale price. Send for circular.  
**JOHN BOYD, Mfr.,  
199 Lake St., CHICAGO**

**ARTESIAN AND TUBULAR  
WELL MACHINERY  
AND TOOLS  
FOR EVERY KNOWN PURPOSE.  
Send for Catalogue.  
NEEDHAM & RUPP,  
86 W. LAKE ST.  
CHICAGO, ILLINOIS.**

**E. VAN WINKLE & CO.**

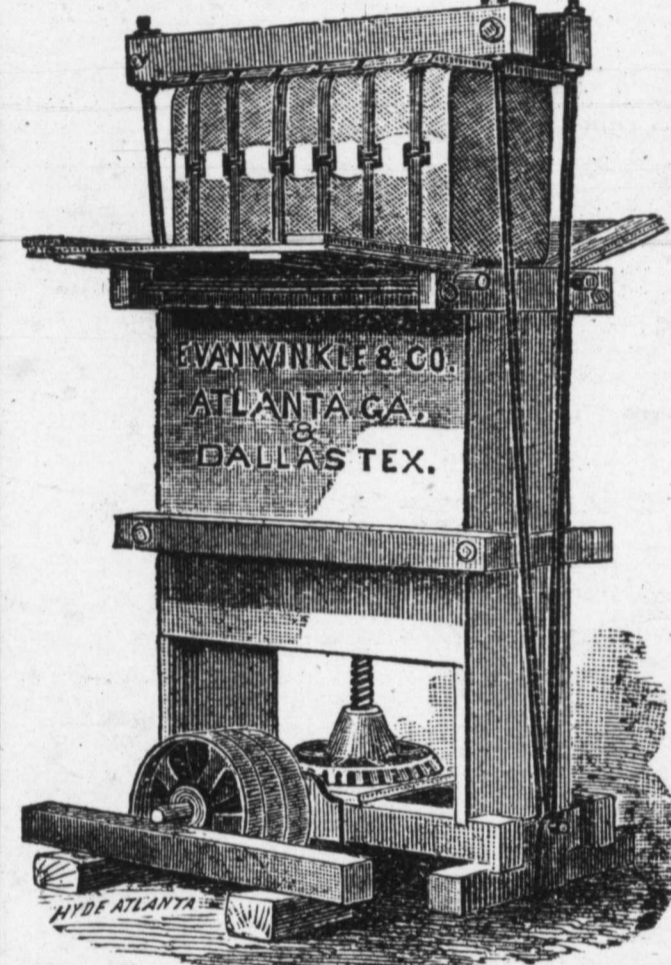
MANUFACTURERS,  
ATLANTA, GA.  
-AND-  
DALLAS, TEXAS.



**COTTON GINS and PRESSES,**

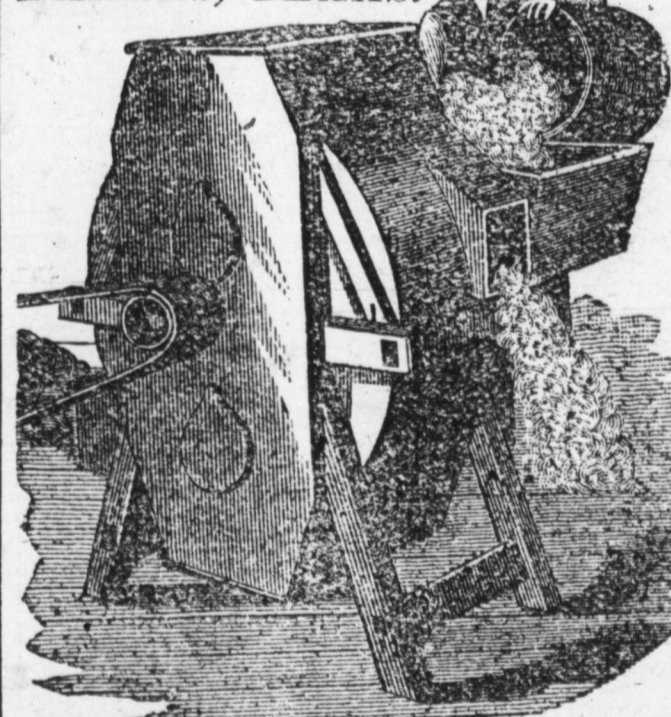
Cotton Seed Oil Mills, Cotton Seed Linters, Cane Mills, Saw Mills, Shafting, Pulley, Hangers, Wind Mills and Castings, Pumps and Tanks.

**E. VAN WINKLE & CO.**



**COTTON PRESSES.**

**E. VAN WINKLE & CO.  
ATLANTA, GA.  
AND  
DALLAS, TEXAS.**



Patented 1878. Improved 1881. Patented 1885.  
Prices reduced to one-half former prices.  
**No. 1 Mach. \$20.00 | No. 2 Mach. \$40.00**  
Best Cleaner for Seed Cotton in the market. No Ginmer can afford to be without one.  
**E. VAN WINKLE & CO., Manufacturers,  
Atlanta, Ga.**

**Seed Cotton Cleaners**

Of equal merit. Send for catalogue and prices.

**E. VAN WINKLE & CO.,  
Box 146,  
DALLAS, - - - TEXAS**  
Responsible agents wanted.  
Name this paper.

**The Fashion Bazar.**

Ever since Mrs. C. D. Brown opened the above establishment at Fort Worth, the ladies have acquired and put in practice a nicer perception and keener faculty of discerning beauty, order, symmetry, harmony of colors, and whatever constitutes congruity in the composition of ladies' apparel. Mrs. Brown has filled her bazar with an abundant stock and varied assortment of millinery and dress goods, and since the display of fine goods at and after her grand opening, there has been no necessity nor excuse for sending elsewhere for the finest and most elegant attire; and since Mrs. Brown's assurance that she is able and willing to compete with any other house, anywhere, as to qualities and prices, there has been little or no sending away to other cities orders for ladies' dresses and millinery. This is as it should be. Mail orders receive prompt and careful attention and the trade of all Texas is solicited.

**San Antonio Woolgrowers' Meeting.**

On Wednesday night some 300 woolgrowers of Western Texas and persons interested in the industry met at Turner hall to give expression to their views on the question of the wool tariff. Geo. Paschall delivered a very plain and logical speech, confining himself almost exclusively to the question of a tariff on wool, which was well received by the audience. Mr. J. L. Slayden offered the following resolutions, which were adopted:

"Whereas, wool growing is one the most important of the wealth producing industries of this the Tenth congressional district of Texas, directly and indirectly benefiting every business and laboring man in the district, and the further depression or destruction of which would be an injury to the whole, and return to a state of wilderness a large part of the district, and whereas the pending tariff measure has created a paralysis in the wool trade which is causing a serious financial loss to the district, therefore be it

Resolved, by the wool growers and dealers in mass meeting assembled, that they view with alarm the indifference of their representatives to the business interests of West Texas.

"That we consider this question of the tariff as purely a matter of business and that it should not be dragged into the political arena where its calm consideration on its merits is not possible.

"That we consider the wool tariff as already low enough to meet the idea of being a tariff for revenue only, and the protection incident to such a tariff should not be withdrawn."

Another resolution was offered as follows:

"Resolved, by the wool growers and dealers in mass meeting assembled, that they regard with grave apprehension the prospect of the 'Mills bill,' which puts wool on the free list, and that we favor the permanent organization of a club, regardless of politics, which will work to the end that the protection to wool be not removed."

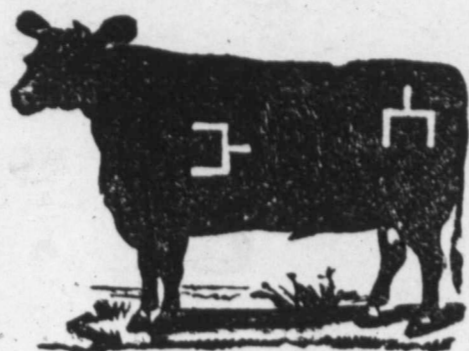
The above resolution was adopted unanimously and on motion the chair appointed a committee of five to organize a club in San Antonio. The committee was as follows: J. L. Slayden, chairman; T. C. Frost, J. P. Devine, I. Efron and John F. Alexander.

Don't buy the Missouri penitentiary saddle trees, but buy the genuine Loeloff, for sale by L. S. Brackett, San Antonio, Texas.

**The Espuela Land and Cattle Company.**

(Limited.)

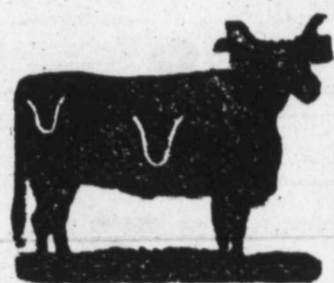
Postoffice, Dockums, Dickens county, Texas  
S. W. LOMAX, Manager.



Have for sale two-year-old and yearling steers and heifers of their own raising, got by Shorthorn and Hereford bulls, in the straight Spur mark and brand. Horses branded on left hip.

**Matador Land and Cattle Company.**

(Limited.)



RANCH BRAND.

H. H. CAMPBELL, superintendent. P. O., Teepe City, Motley county. Also cattle branded on left side, on the right side, also on right side and on left side, marked crop right, underbit left; also left side, T hip, marked crop the left. and crop and split right; also on left side, marked underslope left; on each side, some of which have K on T left jaw or T on each hip, marked under-half-crop in each ear; also, same mark, branded left side and right side. Some of these also have K on right jaw. Also left side, M hip, or A on right hip, side in various marks: also on left shoulder, on side, hip, marked crop left ear; and also on left side, in various marks, or marked crop and two splits in left and swallowfork in right, or crop and two splits in left only, or swallowfork in left and underbit in right. Also or in various marks.

**TEXAS-RAISED**

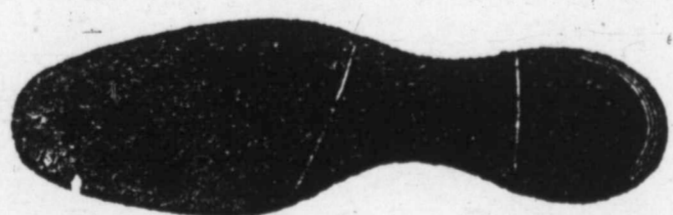
**HEREFORD BULLS.**



We have for sale on our Hall county ranch three hundred head of high-grade Hereford bulls, one and two years old; also, some heifers of the same class. These cattle are as well bred as any from other states. Will deliver at at any railroad point in the West. Prices reasonable. Address,

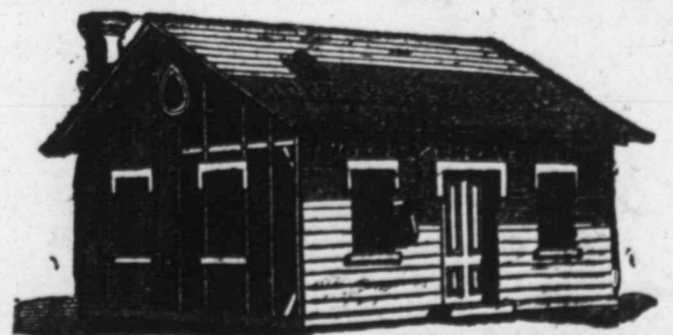
**FINCH, LORD & NELSON,**

Panhandle, Carson Co., Texas.



We carry an immense stock of Boots and Shoes of every description, and can fit you in any kind or price you wish. Fine goods a specialty. We have the great lines of fine goods in Ladies' Hand turned and Hand Sewed Shoes and Gentlemen's French Calf, Kangaroo, etc. We are also manufacturing a very superior class of hand-sewed work, and guarantee a fit. Send for our catalogue. It is so arranged that you buy from us by mail just as well as by visiting the store. **LOGAN, EVANS & SMITH,** 315 Houston St., Fort Worth

**Best and Cheapest-Cold Water Sheep Dip**



**Prepared Roofing,**

Cheap, durable, easily applied.

TEXAS STORAGE CO., 829 Main St., Dallas, Texas

**THE LIVE STOCK MARKET**

—Of St. Louis.—

**The Louis National Stock Yards,**

Located at East St., Louis, Illinois, directly opposite the City of St. Louis.

Shippers should see that their stock is billed directly to the

**"NATIONAL STOCK YARDS,"**

**ISAAC H. KNOX, CHAS. T. JONES,**

PRESIDENT.

SUPERINTENDENT

**THE TEXAS & PACIFIC RAILWAY**

**THE GREAT POPULAR ROUTE**

**Between the East and West.**

—SHORT LINE TO—

*New Orleans and All Points in Louisiana,  
New Mexico, Arizona and California.*

**Favorite Line to the North, East and Southwest.**

Double daily line of Pullman Palace Sleeping cars through to St. Louis via

**THE IRON MOUNTAIN ROUTE.**

See that your tickets read via Texas & Pacific Railway. For maps, time tables, rates and all required information, call on

**C. D. LUSK,** Ticket Agent, Fort Worth, Texas.  
**JOHN A. GRANT,** General Manager, Dallas, Tex.  
**H. C. ARCHER,** Traveling Pass. Agt., Dallas, Tex.  
**B. W. McCULLOUGH,** Gen. Pass. and Ticket Agt., Dallas, Texas.

—THE—

**Missouri Pacific Railway**

THE GREAT

**"NORTH AND SOUTH TRUNK LINE,"**

Is the Thoroughfare of Travel between

*Central and Southwest Texas to All Points  
North, East and West.*

Double daily service of elegant Pullman Buffet and Sleeping cars between San Antonio and Kansas City and St. Louis.

Don't be deceived, but call for your tickets via the Missouri Pacific Railway. For any desired information, tickets, maps, folders, etc., call on

**C. D. LUSK,** Ticket Agent, Fort Worth

**H. C. ARCHER,** Northern Texas Passenger Agent, Dallas, Texas.

**B. W. McCULLOUGH,** Gen. Pass. and Ticket Agt., Dallas, Texas.

**Cigars & Liquors.**

**CHAS. SCHEUBER & CO**

Wholesale Liquors and Cigars.  
Sole Agents for Silurian Springs Waukesha Water  
Ph. Best's keg and bottle beer. 404 Houston Street.

W. J. HAYNES.

H. F. LANGENBERG.

G. F. LANGENBERG.

W. J. HAYNES & CO.,

# WOOL COMMISSION

Cor. Market and Commercial Streets,  
ST. LOUIS, MO.

Liberal Advances on Consignments of WOOL, HIDES, PELTS, ETC.

REFERENCES: St. Louis Nat'l Bank, Dunn's and Bradstreet's Commercial Agencies.



FENNO BROTHERS & CHILDS

—WOOL—  
Commission Merchants,

117 Federal St., Boston, Mass.

Liberal cash advances made on consignments.  
Special attention given to insure prompt sales  
and quick returns. Information promptly  
given by mail or telegram.

J. J. FUNSTEN.

W. F. FUNSTEN.

FUNSTEN & COMPANY,

## Wool Commission,

ST. LOUIS, MO.

References—First Nat. Bank, Abilene, Texas; First Nat. Bank, Albany, Texas; Belton Nat. Bank, Belton, Texas; First Nat. Bank, Coleman, Texas; First Nat. Bank, Denison, Texas; First Nat. Bank, Taylor, Texas; Waco Nat. Bank, Waco, Texas; Texas Live Stock Journal, Fort Worth, Texas; St. Louis Nat. Bank, St. Louis, Mo.

Liberal advances made on consignments of wool, hides, etc.

A. ARMENTROUT,

Corner of Weatherford and Throckmorton and corner of Weatherford and Lamar Streets  
FORT WORTH, TEXAS.

Dealer in Wool, Hides, Etc.

Also keeps in stock a full line of

WEIR PLOW COMPANY'S FARM IMPLEMENTS,

Tennessee Wagons, manufactured by Cherry, Morrow & Co., Nashville, Tenn.; Bain Wagons, H. W. Davis & Co.'s Buggies, Cincinnati, Ohio; The E. M. Miller Buggies, Quincy, Ill.; Cook & Co.'s Buggies, Cincinnati, Ohio; The Racine Spring Wagons and Carriages; The Minnesota Chief Thresher, and Traction Engines.

John Owens,  
Manager

WOOL  
Department

ADOUE & LOBIT,  
BANKERS  
AND  
Commission Merchants.

Galveston

W. A. ALLEN.

Established 1854.

M. EVANS.

W. A. ALLEN & CO.,

CHICAGO, ILL. — WOOL — COMMISSION.

142-146 Kinzie St., Corner La Salle Ave., CHICAGO, ILL.

Send for their Market Reports. References:—The Martin Brown Co., Jos. H. Brown, Fort Worth, Tex.; Atlas National Bank of Chicago; C. F. Grey, Pres. Hide and Leather Bank, Chicago.

J. M. FROST, President.

T. S. FOSTER, Vice-President.

CHAS. WIGGINS, Treas.

WESTERN WOOL COMMISSION COMPANY,

Commission Merchants for exclusive sale of

—WOOL—

104-106 North Main St., 105-107 North Commerce St., ST. LOUIS, MO.

Liberal advances made on consignments. Information gladly furnished by mail or telegraph.

WOOL

E. C. KRUSE & COMPANY,

Successors to EVANS & HUNTLEY,

Commission Merchants

For the sale of Wool, Hides, Pelts, Tallow, Furs, Etc.,

318 N. Commercial St., - - - St. Louis, Mo.

WOOL

W. B. WESTCOTT & CO.

Commission Merchants,

Soliciting consignments of Hides, Wool, etc.  
Write for market reports.

203 North Main Street, - - - ST. LOUIS, MO.

Refer to Texas Live Stock Journal.

WOOL

H. G. BRADY & CO.,

Dallas, Texas.

Dealers in WOOL, HIDES, PELTS, etc. Special attention  
given to consignments. Correspondence from  
interior solicited.

HIDES

—THE—

# KANSAS CITY STOCK YARDS

Are by far the most commodious and best appointed in the Missouri Valley, with ample capacity for feeding, weighing and shipping Cattle, Hogs, Sheep, Horses and Mules. They are planked throughout, no yards are better watered, and in none is there a better system of drainage. The fact that

## HIGHER PRICES ARE REALIZED HERE

Than in the East is due to the location at these yards of

—EIGHT PACKING HOUSES,—

with an aggregate daily capacity of 3300 cattle and 27,200 hogs, and the regular attendance of sharp, competitive buyers for the packing houses of Omaha, Chicago, St. Louis, Indianapolis, Cincinnati, New York and Boston.

All the sixteen roads running into Kansas City have direct connection with the yards, affording the best accommodation for stock coming from the great grazing grounds of all the Western states and territories, and also for stock destined for Eastern markets.

The business of the yards is done systematically and with the utmost promptness, so that there is no delay and no clashing, and stockmen have found here, and will continue to find, that they get all their stock is worth with the least possible delay

C. F. MORSE, E. E. RICHARDSON, H. P. CHILD,

Gen'l Manager.

Treasurer and Secretary.

Superintendent.

*Wm Macnaughtan Sons,*  
*Wool Commission Merchants,*  
*108 & 170 South Fifth Avenue*  
*New York*  
*Mohair*

WM. M. PRICE.

HENRY J. GRIMM.

WOOL PRICE-GRIMM COMMISSION CO. HIDES  
COMMISSION MERCHANTS,  
108 & 110 N. Main Street, - - ST. LOUIS, MO.  
Liberal Advances Made on Consignments.

—[ESTABLISHED 1830.]—

DENNY, RICE & CO.

Nos. 606 to 610 Atlantic Avenue,  
BOSTON, MASS..

—WOOL—  
Commission Merchants.

Prompt information given by mail or telegraph by applying to their Texas representative,

C. G. HUBBARD.

SAN ANTONIO, TEX.

Cash advances made on consignments.

Also make Texas Wool Growers Cash Advances on Wool at Eight Per Cent. Per Annum, at any time during the year.

—WOOL—

A. J. CHILD,

209 Market St., - - - St. Louis, Mo

Pays particular and personal attention to wool shipments. Full information about the preparation of wool for market, shipping and St. Louis charges for handling and selling, furnished upon application. Correspondence solicited.