

WEEKLY EDITION, \$1.50 A YEAR.

TEXAS LIVE STOCK JOURNAL



VOL. 8.

FORT WORTH, SATURDAY, MAY 26, 1888.

No. 43.

JAS. H. CAMPBELL, Chicago, Ill. G. W. CAMPBELL, Kansas City, Mo. D. L. CAMPBELL, East St. Louis, Ill.

JAS. H. CAMPBELL & CO.

LIVE STOCK COMMISSION MERCHANTS,

Union Stock Yards, Chicago, Ill.,
Kansas City Stock Yards, Kansas City, Mo.,
National Stock Yards, East St. Louis, Ill.

We solicit for sale your cattle, hogs and sheep at the three leading markets in the country.

THE FISH & KECK CO.,

(INCORPORATED.)
LIVE STOCK COMMISSION MERCHANTS,
KANSAS CITY STOCK YARDS.

We have the experienced working force of the late firm of Andy J. Snider & Co., as follows:
GEO. G. KROK, Cattle Salesman. FRANK O. FISK, Office. W. G. MURRAY, Bookkeeper. WM. SUMMERS, Yardsman.
HARRY HILL, Solicitor. LOUIS KURTZ, also W. J. CUMMINGS, Hog Salesman.
We will be represented at Western shipping points during the range season.
Authorized agents for sale of strays of Pan Handle Stock Growers Association.

J. E. GREER.

FRANK O. MILLS.

GREER, MILLS & CO.

Live Stock Commission Dealers,
Room 47 Exchange, Union Stock Yards, - - - CHICAGO, ILLINOIS.

W. H. H. LARIMER.

ED. M. SMITH.

CHURCH G. BRIDGEFORD.

LARIMER, SMITH & BRIDGEFORD,

Live Stock Commission Merchants
For the Sale of Cattle, Hogs and Sheep.
Kansas City Stock Yards, KANSAS CITY, MO.
Handling Texas Cattle a Specialty. Market Reports sent free on application. Correspondence Solicited.

SEEDS

J. C. PEPPARD, 1220 UNION AVENUE,
MILLET A SPECIALTY. (One block from Union Depot)
Red, White, Alfalfa & Alsike Clovers, KANSAS CITY, MO.
Timothy, Blue Grass, Orchard Grass, Red Top,
Onion Sets, Tree Seeds, Cane Seed, Etc.

A. C. CASSIDY, } Cattle Salesmen. G. W. DOERR, } Cashier. N. M. MOODY, } Hog and Sheep
T. F. TIMMONS, } A. L. KEECHLER, } E. S. CODDINGTON, } Salesmen.

CASSIDY BROS. & CO.,

LIVE STOCK COMMISSION MERCHANTS
And Forwarding Agents,
National Stock Yards, St. Clair County, Ills.

SAM'L SCALING, St. Louis.

W. L. TAMBLYN, Chicago.

SCALING & TAMBLYN,

Live Stock Commission Merchants,
National Stock Yards, East St. Louis, Ill. Union Stock Yards, Chicago, Ill.

ALBERT MONTGOMERY,

Commission Merchant for the Sale of Live Stock, Stock Landing
Postoffice Box 3006, New Orleans, La.

JOHN MUNFORD,

Successor to R. L. MAUPIN & CO.,
Commission Merchant for the Sale of Cattle, Hogs and Sheep, STOCK LANDING
P. O. BOX 3190, NEW ORLEANS, LA.

HUNTER, EVANS & CO.

NATIONAL STOCK YARDS 15 YEARS' ACTIVE EXPERIENCE in Live
ST. CLAIR CO., ILL. Stock Commission Business, Market Re-
ports reg'r and special, and all other information incident
to the business, will be furnished FREE by each house.

Each office in charge of KANSAS CITY STOCK YARDS Correspondence always
a member of the firm. KANSAS CITY, MO. has prompt attention.

Parties having Stock to market, in large or small num- UNION STOCK YARDS
bers, will do well to confer with us before making arrangem'ts CHICAGO, ILL.

LIVE STOCK COMMISSION MERCHANTS.

ALLEN GREGORY.

H. H. COOLEY.

L. R. HASTINGS.

GREGORY, COOLEY & CO.

Commission Dealers in Live Stock,

Rooms 58 and 60 Exchange Building, Union Stock Yards, CHICAGO, ILL.
The Pioneer House in the Texas trade. Personal attention given consignments. Business solicited.

President, WM. M. WARREN, Banker, New Berlin, Ill. Secretary and Treasurer, LEVI B. DOUD,
Cashier, CHAS. KELLY. Managers, T. B. LEE, THOS. K.

Chicago Live Stock Commission Company,

Incorporated. Capital Stock \$25,000.
Special attention given to the sale of Texas Cattle and Sheep. Write us for market reports
Office 41 Exchange Building, Union Stock Yards, Chicago, Ill.
REFERENCES—Drovers' Nat. Bank, Union Stock Yards Nat. Bank, Chicago; Bank of Atlantic,
Atlantic, Ia., Bank of Roodhouse, Roodhouse, Ill.

Z. T. WINFREE.

A. P. NORMAN.

WILEY T. PEARSON.

WINFREE, NORMAN & PEARSON,

Commission Merchants for the Sale of Live Stock,
Stock Yards, GALVESTON, TEXAS.

We respectfully solicit patronage of stock shippers. We make liberal cash advances
on bills lading, and will faithfully endeavor to the best of our ability to subserve the in-
terests of our patrons. Correspondence solicited.

R. T. WHEELER.

C. JAMES.

J. S. MCKINNON

WHEELER, JAMES & CO.

Live Stock Commission Merchants,
Union Stock Yards, ST. LOUIS, MO.

M. O. LYNN,

W. C. BROWN.

Agent for

E. E. BROWN.

BROWN BROTHERS,

COMMISSION MERCHANTS IN LIVE STOCK,
Union Stock Yards, Chicago, Ill.

Refer by permission to National Live Stock Bank, U. S. Yards, Chicago.



PERCHERON HORSES.

FRENCH COACH HORSES.

More Imported and Bred than by any other Eight Establishments.

511 PURE-BREDS Now Actually on Hand.

Experience and Facilities Combined for Furnishing Best Stock of Both Breeds
at Reasonable Prices.

Separate Catalogues for each breed, with history of same. Say which is wanted. Address
M. W. DUNHAM, WAYNE, DU PAGE CO., ILLINOIS.

FOR SALE OR EXCHANGE.

MONEY TO LEND

On improved lands on long time,
At Ten Per Cent. Per Annum.

**STEERS,
JACKS, HORSES,
LAND,**
For sale by—

R. E. MADDOX & CO.,
Fort Worth, Texas.

Office on Front Street, south of J. H. Brown
Building.

If you are buying or selling, call on us, or
correspond.

Choice Lot of Two-Year-Old Steers For Sale.

\$250 Reward.

Stolen from my stable at San
Pedro, New Mexico, on night of
May 1st, American horse, bay,
branded—on left hip. Will pay
two hundred and fifty dollars for the re-
covery of horse and arrest of the thief, pro-
vided the horse is not broken down or ruined
by over riding. DONALD FERGUSON,
San Pedro, N. M.

**Land, Cattle, Horses
and Sheep.**

Range cattle, horses, sheep and choice
farming and ranch lands for sale by

E. H. WILKES & CO.,
Law, Land and Live Stock Agency,
Santa Anna, Coleman County, Texas.

5000 Cattle Cheap.

Richardson & Hackett, Fort
Worth, office on Main street,
between Second and Third, of-
fer for sale:

500 steers, 3 and 4 years old, in Fisher Co.
A stock of 5000 head of mixed cattle in
Fisher county, at a low-down price and easy
terms.

Stolen Horses.

A number of stock horses have lately been
stolen from Presidio county, Texas. Principal
brands as follows:

B on hip or thigh;

C on shoulder;

F on thigh;

R on thigh.

Anyone recovering any of the same or
capturing the criminals will be well reward-
ed. Address communications to

HUMPHRIS & CO.,
Marfa, Texas.

FOR SALE.

7000 acres in Hardeman county, Texas, in
one tract, good shape for inclosing, 11 miles
west of Quanah, 7 miles from Fort Worth &
Denver R. R. Ample timber for fuel. 3 miles
front on both sides of Pease river. 2 creeks
on land, abundance living running water,
fine winter protection. Price \$2 per acre on
favorable terms, or will lease cheap.

R. H. KIRBY,
Austin, Texas.

FOR SALE.

A first-class saddlery business in a first-
class town, tributary to the range country.
Will require about \$10,000 capital. Will sell
all or half interest. For particulars address
TEXAS SADDLES,
Care Stock Journal, Fort Worth, Texas.

Spaying.

Dr. J. Willis, V. S., Des Moines, Iowa, makes
a specialty of spaying heifers and cows.
Stockmen contemplating spaying this season
will do well to correspond with him.

Elmwood Poultry Yard!

R. A. CORBETT & SONS,
Breeder and shippers of
FINE POULTRY.

Eggs for hatching from pure-bred and
carefully mated prize-winning birds at Tex-
as State Fair at Dallas. Will sell from the
following varieties: Plymouth Rock, \$2 per
setting of 13; Brown Leghorns, \$2; White
Leghorns, \$2; Silver Spangled Hamburgs,
\$2.50; White Minorcas, \$4. Send your orders
at once; we guarantee square dealing, safe
arrival and good stock. Stock for sale after
Aug. 1. Write for prices.

We also have on our ranch a few high-
grade Holstein bulls, Shackelford county
raised, for sale. Address

R. A. CORBETT & SONS,
Albany, Texas.

S. A. HATCHER.

J. P. WOODS.

CHAS. COPPINGER.

HATCHER, WOODS & COPPINGER,

Make a specialty of handling

**American Mares, Geldings, 1 and 2-year-old Horses and Fillies,
1, 2 and 3-year-old Steers and Stock Cattle.**

We have a large number of cattle for sale; also 1000 head of good American horses.
Can furnish any class of stock on short notice. Land and city property. We guarantee
satisfaction. Prices given on application. 406 Main St., FORT WORTH, TEXAS.

FOR SALE OR EXCHANGE.**CHEAP LANDS FOR SALE.**

Situated in Clay, Archer, Jack and Young
counties, in tracts from 320 to 5000 acres,
suitable for farming and grazing purposes.
Small cash payment, balance on LONG
TIME and LOW RATE OF INTEREST.

Address, C. E. WELLESLEY,
Dallas, Texas,
or J. J. CHITWOOD,
Antelope, Jack County, Texas,
Who will show the land.

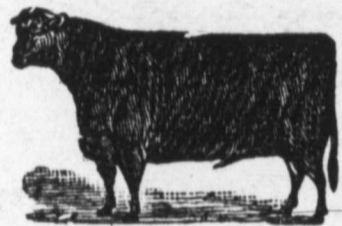
JNO. S. POWELL & CO.

Office,
Mansion Hotel,



Fort
Worth,
Texas.

Offer for sale choice thoroughbred and high-
grade Hereford, Polled-Angus, Dur-
ham, Holsteins and Jersey Bulls
and Heifers. Stock on hand and for sale
on very reasonable terms.

**PUBLIC SALE**

—OF—

FIRST-CLASS**Shorthorn Cattle!**

Owned by B. F. Winn, at

Denver, Colorado, Thursday,
May 24, 1888.

30 females and 10 bulls, all first-class Short-
horns. The offerings will compare favor-
ably with the best cattle of any country,
several of them being first-class show ani-
mals. They are not culls and pick-ups for
Western trade, as they are all of my own
breeding except four. The bulls are an ex-
tra lot in every respect, and include the 7th
Duke of Kirklevington 41797 (Pure Bates)
that cost \$1000 when a calf. The most attrac-
tive part of the sale is the 23 two-year-old
heifers that are bred to one of my Bates
bulls or to the Baronet 58250, Clay & Winn's
grand show bull. Catalogues will be ready
by May 1, and will be sent on application to
B. F. WINN, Edgerton, Mo.
or ED HUNTER, Denver, Col.
Col. F. M. WOOD, Auctioneer.

Horses, Cattle, Lands.

We have for sale
2000 horses, 3000 cattle
and 25,000 acres of land
in Callahan county,
500 extra improved American mares and
geldings, and 2000 2, 3, and 4-year-old steers.
Unimproved lands \$2 to \$2.50 per acre. Im-
proved ranches and farms \$2.50 to \$5.
WEBB & WEBB,
Baird, Callahan County, Texas.

W. C. ROGERS,

Breeder of and dealer in thoroughbred
Hereford and Shorthorn Cattle.

A nice lot of bull and heifer calves for sale
or trade, on terms to suit purchaser. Can
furnish any kind of blooded cattle in any
number. Address Mansion Hotel, Ft. Worth
Peach Orchard Ranch, Vineyard, Jack Co., Tex.

TERRY, WRIGHT & LENOIR,

Fort Worth, Texas,

REAL ESTATE AGENTS,

Have some choice

Farm Ranch and City Properties

FOR SALE,

And invite correspondence from buyers and
sellers.

T. P. LENOIR, Live Stock Broker, will
contract horses, cattle or other live stock.

FOR SALE OR EXCHANGE.**A. S. NICHOLSON**

Is prepared to furnish any
number of good

North Texas Steer Cattle!

On short notice. Has specially for sale

3000 Graded Heifers,

One and two years old.

513 Main Street - - FORT WORTH, TEX.

Geo. L. Goulding & Co.

LIVE STOCK

Commission Merchants,

PROPRIETORS CITY STOCK YARDS,
DENVER, - - COLORADO.

We handle all classes of live stock, as sell-
ers' agents, and keep constantly on hand at
our establishment a large assortment of
breeding stock, both grades and pure-bred.

A full line of draft stallions now on hand.
Special attention given to furnishing bulls
in car lots for range purposes.

SPECIAL--We have on our books numer-
ous calls for Northern Texas cattle for the
summer of 1888 delivery. Parties having
such stock for sale and desiring to make
contracts are invited to correspond with us
giving prices, etc. Address as above.

**150 Head North Texas
Stock Horses,**

For sale or trade for cattle.

R. E. MADDOX & CO.,
Fort Worth, Texas.

COW-HORSES FOR SALE.

50 head of well-broke young cow-
horses, wintered through on corn.
Will sell on time, good security.
Address, E. G. SANDEFUR,
Box 484, Sherman, Texas.

W. C. YOUNG, of the Llano Live Stock Co.,
T. C. ANDREWS. J. M. KUHN.

YOUNG, ANDREWS & KUHN,

Dealers in—

LIVE STOCK.

Tenth and Houston Sts.,
FORT WORTH, - - TEXAS.

Cattle contracted for spring delivery. Hor-
ses of every description in yards and pas-
tures. Cow-horses a specialty. Horses,
mares, mules and jacks for sale at all times.
We are prepared to enter into contracts
for the delivery of cattle, horses, mares and
mules at any point in Texas, and solicit
correspondence.

M. V. B. EXUM,

Carroll, Tennessee.

Breeder of Registered Jerseys.

Croze Tom at head of herd. Coomassie
and St. Heller. 45 blood cows, heifers and
bulls for sale cheap. Fine shipping point
south and west on M. & O and I. C. railroads.

J. F. PRICE & CO.,**Real Estate Agency,**

N. E. Corner Mansion Hotel, Fort Worth, Texas
Have for sale some good bargains in City,
Suburban, Farms, Raw Lands and Ranch
Properties in Texas.

FOR SALE OR EXCHANGE.

W. F. SOMMERVILLE, Pres. A. R. MARRY, Sec.
SAM'L KERR, V. Pres. and Treas.

Western Securities Co.

FORT WORTH, TEXAS.

CAPITAL \$250,000.

Loans on Farms, Ranches and Im-
proved City Property, at Moderate
Interest.

STEERS FOR SALE,

or any class of cattle raised in
Texas, for delivery this spring.
We sold 23,000 cattle last year
and we are in a position to con-
tract for any number of cattle or horses
from any part of Texas. We have unsur-
passed facilities for handling Texas stock,
and guarantee satisfaction in every in-
stance. WEBB, CAMPBELL & HILL,
Albany, Texas.

C. F. ESTILL, late of Lexington, Ky.
J. W. BURGESS, late of Lexington, Ky.
J. R. SHANNON, late of Danville, Ky.

C. F. ESTILL & CO.**Live Stock Commission Dealers,**

FORT WORTH, TEX.

Yards on Calhoun Street, between 7th
and 8th. Office at Yards and Man-
sion Hotel.

Specialties--Mares, mules and horses in
car-leads, driving horses and thoroughbred
and full-blood bulls of all breeds. We will
buy and sell first-class young horses and
mules, and specially invite correspondence
concerning the same.

F. M. HOUTS,

Proprietor of

HEREFORD RANCH, WISE COUNTY.

P. O., Decatur, Texas.

Breeder of,

HEREFORD CATTLE.

100 head of grade HEREFORD BULLS,
Texas raised and ready for service.

A few choice thoroughbred HEREFORD
BULLS and some grade HEREFORD HEIF-
ERS.

The above I will sell at a reasonable price
and on easy terms

My ranch is on the Fort Worth & Denver
railroad, near Decatur in Wise county, and
the stock can be shown any day. Address,

F. M. HOUTS,

DECATUR, TEXAS.

**Berkshire Pigs For
Sale.**

Pure-bred Berkshire
pigs, one to six months
old. Write to
W. S. IKARD,
Henrietta,
Texas



Chester White, Berkshire
and Poland China Pigs,
Fine Setter Dogs, Scotch
Collies, Fox Hounds and
Beagles, Sheep and Pontry
bred and for sale by W.
GIBBONS & CO., West Ches-
ter, Chester county, Pa. Send stamp for Circular
and Price List.

FOR SALE OR EXCHANGE.

One-half interest in an 800-acre farm, well
improved, also 100 head of cattle; first-rate
crop growing on farm; also, 2000 acres of
fine pine land in Southwest Georgia. Cor-
respondence solicited. J. P. GRIFFIN,
No. 504 East Second Street, Austin, Texas.

100 Bulls For Sale.

One hundred head of thorough-
bred and high-grade Shorthorn
bulls—yearlings, twos and threes
—Texas raised, to be seen at
Blue Mound Blooded Stock Farm, 12 miles
north of Fort Worth, on the A. T. & S. F.
road. Address, BURGESS & ESTILL,
Fort Worth, Texas,
Sample at yards of C. F. Estill & Co.

TELEGRAPHIC MARKETS.

Latest Reports by Wire From the Market Centers.

CHICAGO.

Special to the Live Stock Journal.

CHICAGO, ILL., May 25, '88.

Good cattle steady. Common sheep decidedly lower. Representative sales:

James H. Campbell & Co. sold for Ferrell & L. 22 fed steers, 1086 lbs, at \$4; 23 same, 945 lbs, at \$3.60; for A. A. Laroe, 27 same, 948 lbs, at \$3.70; for G. Barden, 51 same, 804 lbs, at \$3.15; for Carothers, 120 pear-fed steers, 916 lbs, at \$3.35; 144 steers, 906 lbs, at \$3.40.

R. Strahorn & Co. sold for M. B. Owen 50 steers, 935 lbs, at \$3.85; 24 stags, 1062 lbs, at \$2.70; for T. R. Sanders, 40 steers, 876 lbs, at \$3.75.

Scaling & Tamblin sold for T. Stringer 24 cows, 760 lbs, at \$3.20; for J. O. Taylor, Coleman, 1008 sheep, 78 lbs, at \$3.85; 816 same, 62 lbs, at \$3.15; for Snapp, Wortham, 69 steers, 881 lbs, at \$3.25; for J. L. Edwards, Ennis, 120 sheep, per head 70c.

Wood Bros. sold for Geo. Blount, Doss, 29 steers, 948 lbs, at \$3.35; 204 same, 913 lbs, at \$2.75; for W. F. Huff, Itaska, 118 same, 927 lbs, at \$4; for S. M. Johnson, Cuero, 123 same, 943 lbs, at \$4; for Green L. Wood, 123 same, 878 lbs, at \$2.87; J. D. Mitchell, Edna, 124 same, 849 lbs, at \$2.87; 113 same, 954 lbs, \$2.87; for W. Strauss, Edna, 20 same, 829 lbs, \$2.75; 18 bulls, 1065 lbs, at \$2.10; for Atwood, 385 shorn sheep, 88 lbs, at \$4.10; 558 same, 88 lbs, at \$3.75; 1071 extra, same, 95 lbs, at \$4.55; for C. P. Ricker, Corsicana, 545 sheep, 61 lbs, at \$2; 101 same, 75c each.

Gregory, Cooley & Co. sold for T. C. Sheldon, 239 steers, 835 lbs, at \$2.85; 329 cows, 745 lbs, at \$2.15; for J. Perry, 48 steers, 861 lbs, at \$3.25; for J. Hart, 41 same, 1050 lbs, at \$3.75; 40 same, 920 lbs, at \$3.30; for G. W. West, 103 heifers, 693 lbs, at \$3.12.

W. W. McIlhany & Co. sold for Beauchamp, 254 fed steers, 1111 lbs, at \$4.25; for Carver, 389 woolled sheep,

89 lbs, at \$4.40; 152 tailings, 47 lbs, at \$1.50; for Letison, 638 shorn, 81 lbs, at \$3.50; for Coggins, 227 same, 75 lbs, at \$3.15.

Hunter, Evans & Co. sold for Butler, Kennedy, 207 steers, 871 lbs, at \$3.25; 25 do, 806 lbs, at \$3.15; for Mayfield, Kennedy, 73 do, 796 lbs, at \$2.75.

KANSAS CITY.

Special to the Texas Live Stock Journal.

KANSAS CITY, May 25.—Receipts of cattle to date since January for 1888 are 218,293 head, being an increase over the same period last year of 33,220 head. The receipts for the week were 9669 head. Saturday and Monday the receipts were quite light and scarcely sufficient to make a market. On Tuesday the receipts were over 3000 head, and the demand was fully up to the supply, both the local trade and shippers being in the field, making a strong and active market, and prices were about as quoted last week.

Wednesday the receipts were 2273 head. The movement was not quite so active as on Tuesday, heavy-weight steers being the hardest to sell. Dressed beef and butcher steers weighing from 1100 to 1300, or less if fat, are the best sellers, and sold to-day at \$4.15@4.40, while 1500 to 1600-lb steers brought only \$4.40@4.55. A bunch of New Mexico corn-fed steers, averaging 1378 lbs, sold for \$4.35. No Texans have shown up this week.

James H. Campbell & Co. sold for C. H. McAllister, Ft. Arbuckle, 22 Indian steers, averaging 969 lbs, at \$3.90; for W. McClure of Atoka, I. T., 29 Indian grass steers, averaging 852 lbs, at \$3.15; 43 do cows, averaging 786 lbs, at \$2.25; 27 do yearlings, average 536 lbs, at \$2.25.

Fish & Keck sold for M. C. Campbell, Wichita, Kan., 110 corn-fed Colorado steers, average 1363 lbs, at \$4.25; for Irons Bros. 114 do, average 1335 lbs, at \$4.27.

For sheep the market remains weak, though not specially lower than quoted last week. Common thin sheep are hard to sell at any figure. Fish & Keck sold on Tuesday 321 head of Texas shorn sheep for \$4.50 per 100. They averaged 74 lbs, and were from Coleman.

Receipts of hogs Wednesday 10,885 head. Bulk of sales at \$5.35@5.50; top \$5.60.

A Chicago commission firm bought 3 car-loads of sheep at Coleman, Texas, billed them for Chicago and sold them on the Kansas City market, Tuesday last. Texas sheepmen, stick a pin here.

Cattle 10c higher.

Fish & Keck sold 287 Texas sheep, 87 lbs, at \$3.65.

GALVESTON.

[Reported by Winfree, Norman & Pearson]. GALVESTON, TEX., May 23, 1888.

BEEVES AND COWS—Choice, per lb, gross, 2½@3c; common, per head, \$10@12; 2-year-olds, choice, per head, \$8@10; common, per head, \$6@8; yearlings, choice, per head, \$6@8; common, per head, \$4@5; calves, choice, per lb, gross, 3@3½c; common, per head, \$2.50@3.00.

SHEEP—Choice, per lb. gross, 3@3½c. REMARKS.—Receipts of cattle unusu-

ally light. Market close with an active demand at quotations. Other stock in fair supply.

SAN ANTONIO.

The beef market has been pretty fair all the past week. Shippers were on hand to take good stock, very little of which was found in the pens. Nothing but fat stock can dictate prices, and all poor and scrubby must be almost given away.

CATTLE—Steers, shippers and butchers, \$15@20; cows, fat, from \$10@15; light, at \$8@10; yearlings, \$6@7.00; calves, \$4@5.

SHEEP—Muttons, \$1.90@2.50. Goats 50c@1.25 per head.

Hogs—Natives \$3@3.50.

DALLAS.

[Reported by F. H. & H. L. Doran Butchers.]

DALLAS, TEXAS, May 24, 1888.

CATTLE—Steers, corn-fed, 2½@3½c; cows, corn-fed, 2@¼c; veal calves, 3c.

Hogs—Common to good 4c.

SHEEP—3@3¾c, and hard to get.

DRESSED MEATS—WHOLESALE.

Steers sides 6c; cows, sides 4½@5½c; hogs, 7@7½c; mutton 6@7c; veal 8c.

FORT WORTH.

CATTLE—Steers, 2½@3c for good fat corn-fed steers; cows sell at 2@2¼c; calves sell at \$3@5.

Hogs—4@4½c per lb.

SHEEP—3c for fat muttons.

San Antonio Horse Market.

The past week has been another good one for the trade, and although business was somewhat interfered with by the Austin festivities, yet it was not slow by any means. The stock on hand is mostly Mexican, and the pastures adjacent to the city are now pretty well filled with it. Prices are fair for desirable stock, and mares are mostly sought after.

Shipments were 1690, a decrease of 126 from the previous week.

Quotations are as follows:

Scrub and poor mares, 12 to 13½ hands, \$12@16
Scrub fair conditioned, 12 to 13½ hands, 15@18
Medium mares, 13 to 14 hands, fat, 25@35
Medium mares, 13 to 14 hands, thin, 15@20
Texas improved mares, 14 to 15 hands, 30@40
American carriage horses, 15½ to 16½, 75@200
Saddle horses, good, 13 to 14½ hands, 22@35
Saddle horses, poor, 13 to 14½ hands, 20@28
Unbroke horses, 13 to 14½ hands, 16@25
Weaned, unbranded colts, 4.50@6
Mules, Mexican, 12 to 13½ hands, 27@46
Mules, improved, 13½ to 14 hands, 45@65
Yearling mule colts, improved, 25@30
Two-year mule colts, improved, 30@40
Yearling mule colts, Mexican, 15@20
Two-year mule colts, Mexican, 20@30

The Tax Bill is a Law.

AUSTIN, TEX., May 22.—Gov. Ross has signed the tax bill, although the best estimates that can now be made indicate that the reduction of the tax rate next year will produce a revenue deficit. He preferred to remit taxes for this year altogether and use the revenue surplus for expenses and keep the rate at 25 cents for the next year, subject to the action of the Twenty-first legislature, but the large extra session appropriations were not anticipated, so that even with a 10 cent tax this year and 20 cents next year, the outcome is doubtful. As the legislature assumed superior wisdom on the financial question, disregarding the executive's advice and making the heavy appropriations, the governor could not afford to veto the tax bill and bring back the statesmen in a second extra session.

Don't buy the Missouri penitentiary saddle trees, but buy the genuine Loeloff, for sale by L. S. Brackett, San Antonio, Texas.

E. R. HUNTER, formerly cattle buyer for Monroe in St. Louis. R. H. LEE. W. M. DUNHAM.

E. R. HUNTER & CO.

Live Stock Commission Merchants, Union Stock Yards, CHICAGO, ILL.

Refer to 1st Nat'l Bank, and Nels Morris, Chicago; J. S. Hughes & Co., bankers, Richmond, Mo. Market reports by mail or wire.

S. E. WOOD. JAMES WOOD. E. A. WOOD

WOOD BROTHERS, Live Stock Commission Union Stock Yards, Chicago.

W.W. McILHANY & CO. LIVE STOCK Commission Merchants

Union Stock Yards, CHICAGO, - - ILLINOIS. Established 1871.

Our Mr. C. C. FRENCH, at Fort Worth Texas, will attend to Texas business. We solicit consignments of Texas cattle, sheep and hogs, and specially invite consignments of Texas horses.

W. W. SHEARER & CO., LIVE STOCK Commission Merchants

28 Exchange Building, Union Stock Yards, - - CHICAGO, ILL.

REFERENCES: Union Stock Yard National Bank, and Drovers' National Bank, Chicago, Ill.

ROBERT STRAHORN. JESSE SHERWOOD. Established 1861.

R. STRAHORN & CO., Live Stock Commission.

Room 85, Union Stock Yards, CHICAGO, - - ILLINOIS.

J. C. RICHARDSON, Fort Worth, General Agent for the State of Texas.

MALLORY & SON, Live Stock Commission, Rooms 113 & 115 Exchange Building, Union Stock Yards, CHICAGO, - - ILLINOIS.

Howard Bland of Taylor, Texas, agent for East Texas. C. A. Lyford of San Antonio agent for South Texas.

HAGEY & WILHELM, WOOL

Commission Merchants, 220 North Commercial Street, ST. LOUIS, MO. Established 1876.

REFERENCE—Boatmen's Bank; Dunn's Mercantile Agency; Bradstreet's Mercantile Agency. Sales and full returns guaranteed inside of 10 days from receipt of shipment.

WEAK, UNDEVELOPED PARTS Of the Body enlarged and strengthened. Full particulars sent sealed free. ERIE MED. CO., BUFFALO, N. Y. SUFFERERS FROM NERVOUSNESS Body or Mind, result of over-Work, indiscretion, etc., address above



TRADE MARK

Commission Merchants

For the sale of

CATTLE, HOGS AND SHEEP.

Rooms 9 and 10 Exchange Building,

KANSAS CITY STOCK YARDS.

Prompt and correct market reports furnished by mail or wire. Consignments solicited. Correspondence given immediate attention.

ROUND-UPS.

Gainesville Register:—The Rumrill place north of the city has been sold to Mr. Harger of Fort Worth for \$20,000. The sale was consummated on Thursday.

Quanah Advance:—A drove of cattle numbering 1070, and with Ed F. Baker in charge, passed through near Quanah yesterday. They belong to the Louisville Land & Cattle company, whose ranch is in King county, and are en route to the Cherokee Strip.

Weatherford Sun:—On Tuesday last D. K. Holyfield, superintendent of the Warrenton farm, was in town with nineteen head of thoroughbred Short-horn bulls, which were shipped to the Aztec Land and Cattle company at Holbrook, Arizona. They are to be put on the range with the Aztec cattle, and will prove a valuable addition to the company's herd.

New Mexico Stock Grower:—E. Coggershall and H. Tusler of Miles City, Montana, called on the Stock Grower this week. These gentlemen have come into New Mexico to buy 4000 head of two-year-old steers. On Thursday they accompanied M. E. Richardson of the El Capitan Cattle company to his ranch on the Pecos, where they expect to purchase the entire number of steers they want.

Wheeler, James & Co., live stock commission merchants of the Union stock yards, St. Louis, Mo., report the following representative sales of cattle: 11 good native steers, 1240 lbs, \$4.40; 25 fair native heifers, 746 lbs, \$3.60; 22 choice native heifers, 865 lbs, \$4.20; 10 do 819 lbs, \$4.37; 40 yearling heifers, 555 lbs, \$3.20; 19 light native steers, 795 lbs, \$4; 20 fair southwest steers, 993 lbs \$3.87; 26 southwest stock steers, 809 lbs \$3.40.

New Mexico Stock Grower:—Hugo Zuber of Puerto de Luna, a successful sheepman, has contracted his crop of 2500 wethers to Seldomridge & Pebbles of Colorado at \$2 per head, delivered at Las Vegas on July 15, after they have been sheared. The wool from the lot is estimated at \$1 per head. Messrs. Seldomridge & Pebbles do quite an extensive business in handling the improved wethers of New Mexico, buying them for maturers in Nebraska. Geo. Longmore and F. S. Keys of the same locality as Mr. Zuber, sold 1500 head to the buyers of the aforementioned lot at \$1.60 per head, July delivery at Las Vegas.

New Mexico Stock Grower:—This has been the banner week in the number of cattle purchased by the Maxwell Cattle company. In addition to the purchases noted elsewhere, Manager Clutton has bought of W. P. Metcalf of the Estancia grant 4000 cattle, consisting of about 1500 head of yearling steers, and 2500 head of the stock from two years old and up to six years, at the round price of \$9 per head, delivered on the Maxwell grant this season. The McCuiston cattle were taken at \$13.50 per head, yearlings up. Frank Putman of Trinidad turns in his cattle to the company at \$14, and the cattle of John Gilpin of Raton are also thrown into the Maxwell herd. The total purchases of the Maxwell company this year are about 18,000 head.

Colfax County (N. M.) Stockman: Francis Clutton, Manager of the Maxwell Cattle Company, has, since our last report, bought the cattle of Pat Lyons at \$15, W. H. Brackett at \$15, and Henry Alexander at \$15. J. K. Hunt sold a bunch of stock horses to Mrs. T. F. Maudling of Wagon Mound, last Wednesday. Among the number was a span of fine mares which has sold before this at \$600. Clutton and Ford are on a cattle trade. The latter offered his HL and H brands at \$12.50 and his 74 brand at \$12. Clut-

ton offers \$12.50 for the HL and \$12 for the other brands. A. H. Stouter has sold his 74 (connected) and clover-leaf brand of cattle to George D. Ford, and the former firm of Duncan & Stouter is dissolved, each partner assuming his own indebtedness. Stouter retains the clover-leaf brand of horses. We have been informed that Mr. Clutton will not purchase cattle for the Maxwell Company after July 1st, as by that time he expects to have purchased all that the company wants. D. A. Clouthier has been doing something in cattle this week. He sold three, four and five year-old steers to Markley & Wear of Minneapolis, also 2000 steers to be delivered in July to Northern parties, and purchased 500 twos and upwards from Southern parties.

From New Mexico.

LINCOLN, N. M., May 6, 1888.

Editor Texas Live Stock Journal:

Cattle here wintered fairly well. Don't think the losses were over 2 or 2½ per cent., although it was said to be the hardest winter experienced here in many years. A good many horses died in this county from loco, mostly horses that got here late in the fall and were poor when turned loose. Both cattle and horses are now rapidly improving, as we have had any amount of rain lately, and grass is No. 1.

Quite a number of Texas men lost nearly all their horses from freezing and loco.

The round-ups commence here about the 10th inst., and there will be several herds of steers driven to Colorado, principally ones and twos.

West Texas is far ahead of this country as a breeding country, but I believe this to be a better beef country, as steers mature faster here than in Texas.

There is little or no demand here yet for cattle and all these large mountains are still capped with snow, and people here don't trade as they do in the Lone Star state, anyway. N. K. E.

For First Place.

A great amount of political engineering will be done by friends of candidates to secure for their man the first place on the ticket, and the best man will probably secure the coveted place. Then if indorsed by the majority of the people, the election is assured. Electric Bitters has been put to the front, its merits passed upon, has been indorsed, and unanimously given the first place, among remedies adapted to the relief and cure of all Diseases of the Kidneys, Liver and Stomach. Electric Bitters, being guaranteed, is a safe investment. Price 50c. and \$1 per bottle, at H. W. Williams & Co.'s drug store.

Open Orders Solicited.

Messrs. Turner, McClure & Co., the wholesale and retail grocers of Fort Worth, Texas, are making low prices on all goods in their line, and have a full and complete stock. They make a specialty of sending goods C. O. D. all over the country, and stockmen can save a big per cent. on their purchases by sending the firm open orders for goods. A letter received by them is given the same attention as if you visited them personally, and satisfaction is guaranteed in every case. Send them a trial order at once and they will not fail to please you. Address
TURNER, MCCLURE & CO.,
Fort Worth, Texas.

Dr. J. H. Gibbs,

Practice limited to the treatment of the diseases of the eye, ear, nose and throat. Office No. 505 Main street, Dallas, Texas.

CAUTION.—Buy only Dr. Isaac Thompson's Eye Water. Carefully examine the outside wrapper. None other genuine

What Mr. Garnett Said.

At a banquet given to Mr. Jeremiah Garnett and to Mr. Aitkin, two English gentlemen who attended the dedication ceremonies at Austin, Mr. Garnett said that they made the investments in Northwest Texas upon the representations of Mr. Farwell. When he came over and said to us he had confidence in the lands and in the people of Texas and asked us to join him, we were at once prepared to do so. But I have visited the country and I find that he has not told us half of the good of this land. I was prepared to find a good country and a great country on account of the products of the land and their capacity to yield of the fruits of the earth more cheaply and better than any land I know about, but yet I was not prepared to find such a country as I have found. Traveling many days through it, and especially the Panhandle and Northwest, I have found it surpasses all my anticipations.

Mr. Garnett spoke of the fertile soil and successful efforts at farming there, and concluded it needed but few things to develop into a magnificent land—one was to increase its population and the next was to attract capital.

A Sweet Opera singer Strikes a High Note.

Chicago (Ill.) Arkansas Traveler, April 7.

Hearing that a member of the Carleton Opera Company, which delighted Chicago audiences with comic opera, held one-twentieth of ticket No. 82,114, which drew \$50,000 in the March drawing of the Louisiana State Lottery, a Traveler representative was informed that Miss Clara Wisdom was the fortunate person. Calling at her hotel, Miss Clara Wisdom, who is a very attractive young lady of twenty-two, and whose voice and manners are quite as charming as her appearance, said: "I held one-twentieth of ticket No. 82,114, which drew \$50,000 in the March 13th drawing of the Louisiana State Lottery Co. The Carleton Opera Company was en route to Denver, and at Ogden a vendor came into our car, and remembering a five-dollar gold piece which I had found in Los Angeles, I thought I would invest. Well, it didn't win the largest prize, but it has brought me \$2500, which will assist my memory wonderfully."

At Austin the cowboy contest resulted as follows:

J. F. Priest, first prize; A. P. Blocker, second; S. C. Saunders, third; Joe Broussard, fourth. For entrance fees J. F. Priest won first prize, Joe Broussard second.

Two-thirds of entrance money was the first prize and one-third the second.

The committee was composed of the following gentlemen: Ike Pryor, Joe W. Davis, John T. Lytle, W. Scott, J. M. Day, with A. L. Matlock, chairman.

The time consumed by Mr. Priest was 48 seconds, and the second, A. P. Blocker, 58 seconds.

Bucklin's Arnica Salve.

The best salve in the world for cuts, bruises, sores, ulcers, salt rheum, fever sores, tetter, chapped hands, chilblains, corns, and all skin eruptions, and positively cures piles, or no pay required. Is guaranteed to give perfect satisfaction, or money refunded. Price 25 cents per box. For sale by H. W. Williams & Co.

Farmers, Ranchmen and Hotels,

Sending their address to Turner & McClure, wholesale and retail grocers, Fort Worth, Texas, will receive by return mail their very low price list.

Don't buy the Missouri penitentiary saddle trees, but buy the genuine Loeloff, for sale by L. S. Brackett, San Antonio, Texas.

UNPRECEDENTED ATTRACTIONS!
OVER A MILLION DISTRIBUTED

Capital Prize, \$300,000.

L.S.L.

Louisiana State Lottery Company.

Incorporated by the Legislature in 1868, for Educational and Charitable purposes, and its franchise made a part of the present State Constitution, in 1879, by an overwhelming popular vote.

Its Grand Single Number Drawings take place Monthly, and the Grand Quarterly Drawings, regularly every three months (March, June, September and December).

"We do hereby certify that we supervise the arrangements for all the Monthly and quarterly Drawings of the Louisiana State Lottery Company, and in person manage and control the drawings themselves, and that the same are conducted with honesty, fairness, and in good faith toward all parties, and we authorize the company to use this certificate, with fac-similes of our signatures attached, in its advertisements."

Commissioners.

We, the undersigned Banks and Bankers will pay all Prizes drawn in the Louisiana State Lotteries which may be presented at our counters.

R. M. WALMSLEY, Pres. Louisiana Nat. Bk.
PIERRE LANAUX, Pres. State Nat'l Bk.
A. BALDWIN, Pres. New Orleans Nat'l Bk.
CARL KOHN, Pres. Union National Bank.

GRAND QUARTERLY DRAWING

In the Academy of Music, New Orleans,
Tuesday, June 12, 1888.

Capital Prize, \$300,000

100,000 Tickets at Twenty Dollars each. Halves \$10; Quarters \$5; Tenths \$2; Twentieths \$1.

LIST OF PRIZES.
1 PRIZE OF \$300,000 is \$300,000
1 PRIZE OF 100,000 is 100,000
1 PRIZE OF 50,000 is 50,000
1 PRIZE OF 25,000 is 25,000
2 PRIZES OF 10,000 are 20,000
5 PRIZES OF 5,000 are 25,000
25 PRIZES OF 1,000 are 25,000
100 PRIZES OF 500 are 50,000
200 PRIZES OF 300 are 60,000
500 PRIZES OF 200 are 100,000

APPROXIMATION PRIZES.
100 Prizes of \$500 approximating to \$300,000 prize are 50,000
100 Prizes of \$300 approximating to \$100,000 prize are 30,000
100 Prizes of \$200 approximating to \$50,000 prize are 20,000

TERMINAL PRIZES.
1000 Prizes of \$100 decided by \$300,000 prize are 100,000
1000 Prizes of \$100 decided by \$100,000 prize are 100,000

3136 Prizes, amounting to \$1,055,000

For Club Rates or any further information apply to the undersigned. Your handwriting must be distinct and signature plain. More rapid return mail delivery will be insured by your inclosing an envelope bearing your full address.

Send Postal Notes, Express Money Orders, or New York Exchange in ordinary letter. Currency by express (at our expense) addressed to

M. A. DAUPHIN,
New Orleans, La.or M. A. DAUPHIN,
Washington, D. C.

Address Registered Letters to
NEW ORLEANS NATIONAL BANK,
New Orleans, La.

REMEMBER That the presence of Generals Beards and Early, who are in charge of the drawings, is a guarantee of absolute fairness and integrity, that the chances are all equal, and that no one can possibly divine what number will draw a prize.

REMEMBER that the payment of all prizes is GUARANTEED BY FOUR NATIONAL BANKS of New Orleans, and the tickets are signed by the president of an institution whose chartered rights are recognized in the highest courts; therefore, beware of any imitations or anonymous schemes.

Dairy Apparatus and Supplies,
Engines, Boilers, Churns, Milk
Cans, Cream Separators, Butter
Packages, Creamers,
Feed Cutters, Feed
Mills, Horse Powers, Etc.
H. McK. WILSON & CO., St. Louis, Mo.

Monthly Catalogue and Price-List,
Descriptive of and Illustrating
over 8000 Lines in
Dry Goods, Notions,
Millinery, Clothing,
Shoes, Hats,
Trunks, Carpets, Etc..

MAILED FREE

To any address on application.

W. H. TAYLOR,

405 & 407 Houston St., Fort Worth, Texas.

P. S.—In addressing your letters don't fail to give my street and number.

THE CLIP.

The Fort Worth local wool market is dull and very little wool is coming in; the top notch is about 16c for bright medium.

Midland Staked Plain:—Last Friday John Scharbauer of this place consummated the heaviest sheep trade that has yet been made in West Texas. He sold 7500 wethers to a Chicago firm.

The American Wool Reporter says: "There is nearly twice as much combing and carpet wool in bond in Boston to-day as at this time last year; and the amount warehoused is constantly increasing."

The San Angelo Standard announces the arrival of 383,203 pounds of wool. The larger clips are those of E. J. Harris. T. B. Sanderson, Schaner, Dye & Co., J. I. Huffman, R. O. Smith, S. E. Couch, Patterson & Williams, W. C. Jones and R. H. Revell & Co.

The U. S. Economist, New York, reports the following sales: 20,000 lbs spring Texas (Western) at 14@16c; 85,000 lbs fall do on private terms; 5,000 lbs unwashed fleece. 1500 lbs fine Territory, 1500 lbs scoured spring Texas, 4000 lbs scoured Texas and 3000 lbs Southern in grease.

San Angelo Standard:—A gigantic scheme is on foot to organize a joint stock company on the California plan, for the purpose of turning the South Concho river on the Lipan Flat and irrigating the entire 150,000 acres which comprise a tract of the most fertile land in America.

U. S. Economist:—The Martin clip of fall and spring Texas has been bought in Texas on New York account at 13 3/4c. and the fall clip portion has been sold here, to arrive, at a price which affords no adequate margin. Some say it admits of none, as the whole invoice was sold within 14c. to 16c. a pound.

Boston Commercial Bulletin:—In Texas there is considerable stock arriving, and though the Eastern buyers are well represented both at San Antonio and Galveston, the purchases have been very light, the local holders asking 3c and more above what the wool would be worth here. Wool which

would be worth about 45@46c here on a scoured basis is being held at equal to 50@51c scoured. The local price for some grades of wool is 15@18c, for which buyers would be willing to give only 12@15c.

Mr. J. E. Wright, once a wool shipper of Baird, Texas, is now pulling wool at Fort Worth, and the JOURNAL is pleased to be able to say that he is progressing fairly. The operations now going on call for the assistance of 8 men and Mr. Wright is in hopes that he will soon be able to scour his wools before sending them to market.

P. C. O'Loughlin of O'Loughlin Bros., Le Walt, Stephens county, was a visitor at the JOURNAL office, having returned from Chicago, where he sold a lot of 70-pound sheep at \$2.75, \$3.10 and \$3.15 per hundred. Mr. O'Loughlin has a filly just two years old that is running around with her own colt by her side, and wants to know who has bred horse stock at so early an age.

The seventh annual meeting of the American Southdown association will be held in the Illinois National Bank building, Springfield, Ill., May 30, 1888, at 2:30 p. m. The announcement says that parties who have heretofore not thought a public record of Southdown sheep necessary, are now being led, by the increasing demand for recorded animals, to seek the registry of their breeding stock. This fact, with the growing interest in mutton sheep throughout the country, is encouraging to every member of the association and patrons of the Record, and should insure a good attendance at the coming meeting.

U. S. Economist:—Young Mr. Lynch has returned from his pleasure tour in Texas and Mexico, where he has been sojourning the past two or three months. He confirms previous accounts about the spring clip of Texas wool, as being bright and in good condition. There was a large accumulation of wool in San Antonio and but little doing in the way of purchases except among local buyers. He says that 13 1/2c. to 14 1/2c. will be about the ruling price for seven months growth. Fine, soft rains have made a good growth of grass and a good fall clip is looked for.

San Angelo Standard:—John Loomis of the famous Ostrander & Loomis

ranch was in town for supplies on Monday. He is fencing in still more of the earth, and as he is allowing the grass in his pasture to mature before stocking, the fire guard plow is to prevent prairie fires is over 150 miles long. Their large wool clip will be stored on the ranch until wool buyers enter the market. Mr. Loomis says that the bridges in this county will have a tendency to draw all the trade of his section to San Angelo, as the citizens of Concho county are tired waiting on the pleasure of the Concho river to go to town.

Boston Advertiser:—In Texas wools the movement is small, and sales have been mostly confined to cleaning-up lots. One large lot of 12 months' Texas was reported sold at 17c, but as in the case of territory wools, most purchases are based on the scoured pound. Reports from Texas show but little business done in that section as as yet, there being too much difference between the views of seller and buyer. It is reported that one Texas clip that sold last spring in Texas at 21c was offered at 16c on board the cars there. California wools are also very quiet, with stocks well cleaned up here. One lot of 50,000 lbs. new California wool was reported sold here, but the seller refused to make the price public. Stocks are still accumulating in San Francisco, and the sales there up to the present time have been small.

U. S. Economist:—The markets throughout the broad continent are devoid of animation, and, to effect sales of moment, a lower scale of prices have to be accepted than is known to the memory of the oldest inhabitant connected with the wool trade. For the past two years there has been known losses of 22 million dollars to the wool interest, and what the unknown losses are no man can reckon correctly. This year there will be a loss of 6 cents a pound on 340 millions, equal to close on twenty and one-half millions of dollars. If we keep on at this ratio of depreciation in the value of all other description of merchandise a howl will go up from all the inhabitants of this land that will shake up the pillars of the Washington capitol, and the question will not be how to deplete the treasury but how to get something into it, if the people are to be led on the road to a chasm which yawns for their destruction.

The Boston Advertiser says the wool market continues in about the same condition reported a week ago, except that the weakness is rather more aggravated if anything. The market continues weak, and to move anything even lower prices have to be accepted. The situation is without life on any kind of wool, and the longer this state of affairs lasts, the weaker the market appears. The actual sales made during the week are much larger than appears in our sale column, as the general rule of the trade is to report the transactions when the wool is weighed up and delivered. One large house which had a big amount of wool on hand three weeks ago has been emptying its lofts at the best price obtainable, and it is estimated that their sales will foot up between 2,000,000 and 2,500,000 lbs. since the first of the month. Their stocks are now well reduced, and they are now in condition to pay attention to the new clip, which is almost at hand. Nearly all of the other houses are also well cleaned up on stocks. Only one large house having any amount of territory wools on hand.

Uvalde News:—Ellis & Dibrell brought in a car of cattle to ship Monday, but before doing so Mr. J. N. Heard made them an offer of \$21 around for the lot, and it was accepted. Mr. Heard will forward them to New Orleans with another car-load being gathered.

ROYAL



BAKING POWDER
Absolutely Pure.

This powder never varies. A marvel of purity, strength and wholesomeness. More economical than the ordinary kinds, and cannot be sold in competition with the multitude of low-test, short-weight alum or phosphate powders. Sold only in cans ROYAL BAKING POWDER CO., 106 Wall St., N. Y.

—[ESTABLISHED 1830.]—

DENNY, RICE & Co.

Nos. 606 to 610 Atlantic Avenue,
BOSTON, MASS..

-WOOL-

Commission Merchants.

Prompt information given by mail or telegraph by applying to their Texas representative,

C. G. HUBBARD.

SAN ANTONIO, TEX.

Cash advances made on consignments.
 Also make Texas Wool Growers Cash Advances on Wool at Eight Per Cent. Per Annum, at any time during the year.

-WOOL-

A. J. CHILD,

209 Market St., St. Louis, Mo

Pays particular and personal attention to wool shipments. Full information about the preparation of wool for market, shipping and St. Louis charges for handling and selling, furnished upon application. Correspondence solicited.

E. H. KELLER,

Salesroom 208, Shops 210 and 212 Throckmorton Street.
FORT WORTH, TEXAS.



Columbus Buggy Company's Buggies, Columbus, Ohio. Hynes Carriage Company's Carriages, Quincy, Ill. Buck Boards and Spring Wagons. Tops, Dashes, Cushions, Fine Trimming, Painting and Repairing a Specialty.



EMPIRE WELL AUGER CO., ITHACA, N. Y.

SAN ANTONIO.

THE U. S. senate is to investigate the "Big Four" at Chicago. Well, what then?

AT THE setting of every sun throughout the year a million pounds of wool have grown on the sheeps' backs in the United States.

PONY steers of about 1000 pounds are the most sought after in the Northern markets. That's where Texas can get in her work.

FROM present indications the market for Southern Texas grass beeves will continue good longer than was expected, and many predict that it will be fair for fat stock all through the summer.

THERE will be a mass meeting of citizens interested in the wool industry in San Antonio, May 30, to give expression of their sentiments on the tariff question. A large attendance is anticipated.

THERE is every indication in the East of a rapid restoration of confidence in ranch property, and another influx of capital seeking investment in lands and cattle may be looked for in no very distant future.

THE continuous rains have kept stock back from getting big fat very materially. The grass is too soft and the flies and mosquitoes worry it very bad. A month of dry weather would assist very much in marketing.

TEXAS sheepmen will hesitate about shipping wool to Boston, to be charged 1½ cents per pound commission. One and one-half cents per pound commission on wool at its present price amounts to about 15 per cent., while wool from east of the Mississippi is charged only 5 per cent. commission. Why this discrimination of 10 per cent.?

THE experience of this spring has taught the lesson that nothing will profitably supplant good mesquite grass for fattening stock. This not used as an argument against feeding, as nine years out of ten there is not enough of mesquite grass to fully fatten a steer, but when there is, so there is this season, stock cannot be as profitably fattened on any other feed whatever.

You can curse and rail at the "Big Four" till you split and you will never better the present condition of the beef market till you secure refrigerators in our own state and ship our prepared meats to the East and Europe via the Texas coast. If that can't be done, you might as well silk-line the Chicago yoke with improved stock cars, and make its gall as light as possible.

FOR some years it has been the custom in San Antonio to allow three pounds of tare for the wool sacks without any remuneration therefor. A few days ago the San Antonio wool exchange agreed to make a charge of 25 cents for sacks, when the buyers also

resolved themselves into an "exchange," but not secret like the other, and flatly refused to pay a penny for the sacks. Thereupon the "exchange" met again and took it all back."

BOSTON wool commission men have decided to charge all wools from west of the Mississippi river one and one-half cents per pound commission. Texas wools are low grade and consequently the percentage is higher on her product than on that of other states; just as 50 cents per head commission on her cattle in Chicago is double the percentage of commission paid by the majority of stock sold in that market. The STOCK JOURNAL has always contended against the injustice of a fixed commission, claiming that the only proper way to charge a commission is by percentage.

Improved Stock Cars.

Owing to the great distance of Texas from the leading live stock markets, and the excessive shrinkage in the transportation of live stock, the STOCK JOURNAL was the pioneer in advocating the use of improved cars in which time could be saved in transit by being obliged to unload to feed, and consequently a much less percentage of shrinkage than in the old style cars. We have labored in our efforts by showing the advantages of improved cars to the shippers and to the consumers, and it is, therefore, with no little satisfaction that we announce that our efforts are about to be crowned with a complete success. Only last week it was announced that the Southern Pacific Railroad, company had agreed to pay to the stable car companies the mileage for the use of their cars the same as one railroad company pays another, leaving the shipper to pay only the 15 per cent. extra freight which the Texas Traffic association charges on that class of shipments, and now we can almost give positive assurance that in a very few days the Missouri Pacific railroad will haul the improved stock cars without any extra charge whatever. The adoption of these cars will save Texas about \$1,500,000 a year over the old method of transporting live stock.

HORNS AND HOOFS.

Capt. Henry Scott of Refugio is again in the city.

Hank Sullivan of Bee county spent a few days in the city this week.

Look up the advertisement of A. Varga in this week's paper. He has something to say to all who want saddles and harness.

Mrs. Sarah Holbein, widow of the late Ruben Holbein of Santa Gertrudes ranch, Nueces county, sold James H. David a bunch of 35 mares.

Newt Rächal was up the last of the week, and says that shipping will take a new start from about Cotulla in a few days.

Geo. Hinder of Frio county was in the city and had business with some of the commission men advertising in the STOCK JOURNAL.

Trinidad San Miguil of Maverick county sold two car-loads of steers to Wm. Ragland for \$16 per head, who shipped them to McIlhany & Co., Chicago.

The sight of improved stock cars in this section of country has ceased to be

SHEDD'S HORSE-BREAKING MACHINE!

Apparatus in operation at the

Kansas City Stock Yards, and San Antonio Stock Yards.

Contracts made with dealers to train horses in car-load lots. Trained horses furnished in any number on order. Parties desiring to secure Shedd's Patent Horse-Training Apparatus will address

C. F. SHEDD, Porter House, San Antonio.

Machines can be seen at work at Stock Yards, Kansas City, Mo.; or, San Antonio Stock Yards Company, San Antonio, Texas.

Traders' National Stock Yards!

J. E. PRICE, Proprietor,

Near I. & G. N. Shipping Pens, - - SAN ANTONIO, TEXAS.

Best and most commodious stock yards in the state. Built expressly for the accommodation of the stockmen: All pens shedded and with hay-racks, and fresh water. Charges same as other yards. Best buyers on the market always on hand for good stock.

HINES CLARK.

JAMES F. SCOTT.

CLARK & SCOTT.

Live Stock Commission Merchants,

COLLINS, NUECES COUNTY, TEXAS.

Do a general live stock commission business. Special attention paid to putting up stock on order.

The Southern Hotel,

J. P. HICKMAN, Prop.,

San Antonio, Texas.

a novelty, and the time is not far distant when the common cars now in use will be more rare.

Capt. J. P. Moore, live stock agent of the Texas & Pacific, came in from the Fort on Tuesday and met with a hearty welcome from his numerous friends.

Chas. Weil, merchant and ranchero of Corpus Christi, paid the STOCK JOURNAL a substantial call last week, because he could not do without the old reliable.

Mineral City Correspondence in Beeville Bee:—Sid Howard was in the neighborhood last week, buying yearlings, smiling at the ladies and kissing the babies.

Capt. W. A. Pettús of Goliad county spent a few days in the city this week. He says that he has several hundred more \$30 grass steers which will soon go to market.

Col. N. G. Collins of San Diego, Texas, spent several days in the Alamo city last week. The Colonel is an extensive ranchero, and raises cattle, sheep and horses.

Special from Corpus Christi in San Antonio Express:—Forty-six cars of cattle, six cars of sheep and two of horses were shipped out by the S. A. & A. P. Tuesday morning.

Since the Southern Pacific has adopted the stable cars the demand for shipments via New Orleans has materially increased. It is now only a question of supply of stable cars.

Adams Bros. of Nueces county ordered the old reliable stock paper of the Southwest, so as to be posted as to the value of their fine bred steers, which are second to none in this state.

All in need of corrugated iron roofing, tin, etc., are referred to the advertisement of Edward Pesch, which ap-

pears in this issue, and where fair prices and square dealings are guaranteed.

Booth & Son shipped 360 head of corn-fed beeves from Gonzales on Tuesday last, for which it is said they paid \$25 per head. J. L. Harris is also shipping cattle from that place.

There were 558 head of cattle shipped from San Antonio the past week, which is a heavy shipment for this place, as the great majority of stock in this section of country is shipped from the nearest railroad station to the ranch.

There are some 5000 head of fat beeves in and about Collins awaiting the completion of the S. A. & A. P. to that place to be shipped North. It is expected that the road will be completed by June 1st.

The well on the Cable ranch near this city has reached a depth of 1800 feet with water within 150 feet of the surface. It is the intention to go at least 3000 feet before hopes of a surface flow are abandoned.

Geo. Reynolds, Nueces county, sends for the STOCK JOURNAL because he can't do without fresh and reliable market reports. He got \$25 a head for the 400 head of steers that he recently sold to A. Adler & Co.

The cattle that Waite & Flatow bought of Wm. Benton, Nueces county, and which was reported in the STOCK JOURNAL some weeks ago, were recently resold to Jernings, Johnson & Lasater at a profit of about \$3 per head.

James H. David is in again and this time brought 1 car-load of potros, which he bought of J. D. McIntire, and two cars of unbranded 1 and 2-year-old mules from Adams Bros., T. C. Wright and Harry Reynolds, all of Nueces county.

John Nesbitt, live stock agent of the Chicago & Alton railroad, went through here on Wednesday en route to Corpus Christi. Mr. Nesbitt represents the road that was first to adopt improved stock cars for this section, and should not be forgotten for it.

Wm. Votaw returned to his ranch the early part of the week to forward some more of those big, fat steers. When Votaw's steers go to market everybody is on the qui vive to see what they bring, for they always rank away up among the top crowd.

Geo. W. Haynes, Milam county, was here the first of the week, looking around to see if there was any good chances of picking up an honest penny in the stock trade. He some weeks ago bought some 400 head of beeves at Sabinal, Uvalde county, mention of which was made in this paper at the time, and expects to begin shipping them by the first. He wants to secure stable cars.

Geo. W. Saunders reports the following among his sales for the past week: Two cars beeves for S. A. Hickok, \$23; 1 car cows for same, \$12; 1 car cows and beeves for Wiley Rix, \$11 and \$16.50; car cows and beeves for Oscar Liffing, \$15; car cows for B. Musgrave, \$13; car cows for Hugh J. O'Reily, \$11; 2 cars 2 and 3-year-old steers for O. G. Hugo, \$12.50; car cows for same \$11; car mixed cattle for F. O. Skidmore, about \$9.

THE WOOL SACK.

Nearly all the wools about Laredo have been sold at from 14 to 14½ cents per pound.

Henry Burns bought 660 head of muttons from Gilam of Medina, for \$2.25 a head.

J. P. Devine sold several hundred fine shorn muttons to Henry Burns for \$2.25 per head.

F. E. Leason of Maverick county last week shipped 635 head of sheared muttons to McIlhany & Co., Chicago.

The forwarding of muttons continues to be pretty free yet. The past week the shipments from San Antonio were 7551 head.

Thos. Upton of San Jose, California, who has extensive sheep ranch interests in Val Verde county, was in the city this week.

Uvalde News:—Mr. J. H. Etheridge has received returns from his wool clip, which was shipped to Galveston. It was sold for 16 cents.

D. M. Level, a veteran sheepman of Encinal county, was in town this week. His clip of about 21,000 pounds was sold in Laredo for 14½ cents per pound.

N. M. Morris of Maverick county sold 1100 sheared muttons to Dowe & Noble for \$1.75 per head, and they went forward to the North this week.

D. H. Ainsworth has some stock en route to Chicago, from which he is awaiting advices. He has developed into an extensive shipper as well as ranchero.

Geo. Hobbs, the gentlemanly manager of Woodhull Bros' sheep ranch in Kinney county, is here spending a few days with friends, and reports his sheep doing well.

James McLymont has recently been buying several thousand head of muttons in Maverick and Kinney counties, for which he paid from \$1.80 to \$2.25 per head, shorn. They are intended for the Northern market.

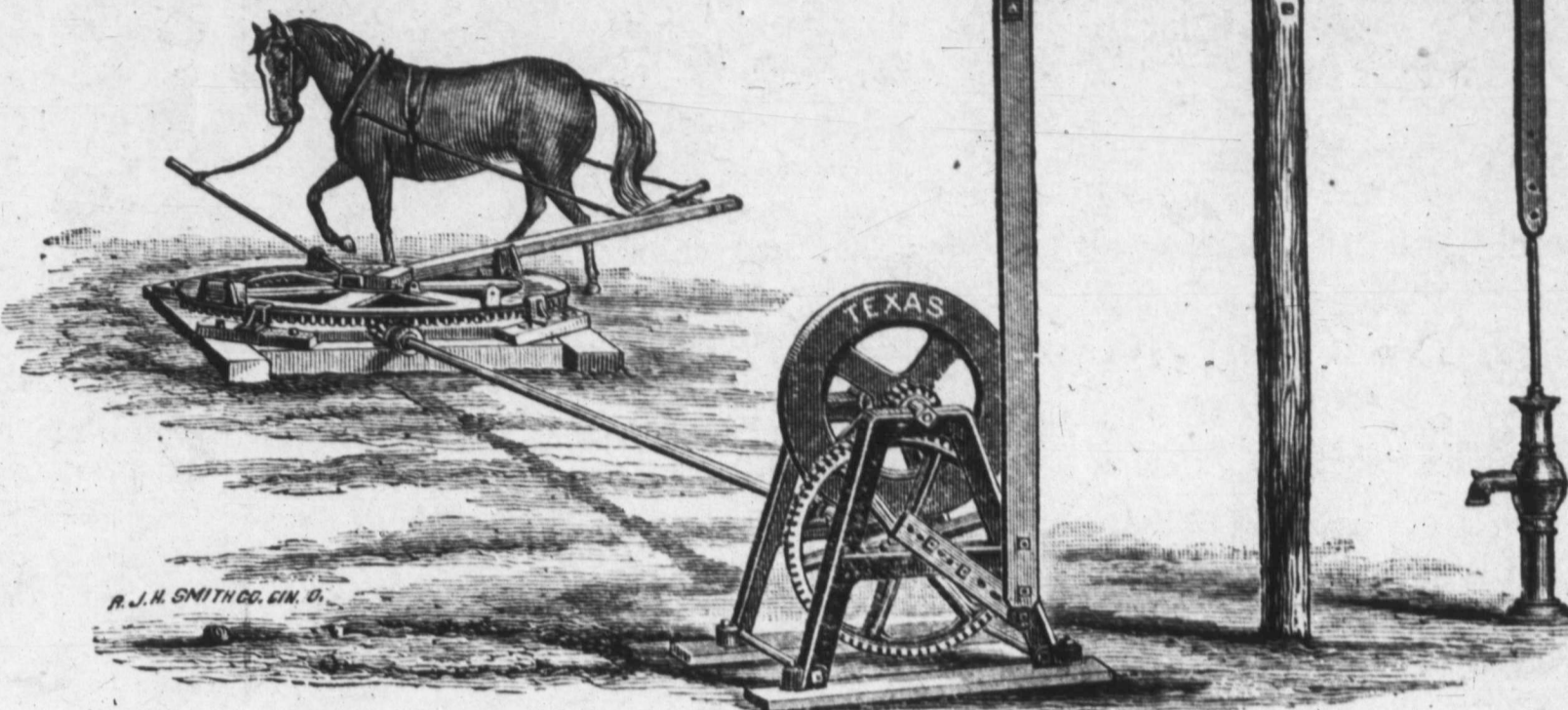
The J. T. Lytle & Co. clip of 558 sacks from Maverick county has gone to Galveston. This is now the largest clip of wool in Texas, and one of the largest in the United States, amounting to about 1000 sacks a year.

STOCKMEN AND FARMERS!
The "TEXAS" All-Iron Pumping Outfit for \$125.

The lightest running, most complete and compact outfit made. The patent all-iron jack has extension crank, giving any stroke, from 9 to 24 inches; has heavy fly-wheel and strong gearing. The horse-power has a heavy 56-inch master-wheel, with large cogs and a compensation spring lever, making it work easy on horses. The outfit will also run our Prickly Pear Cutter, corn-sheller, feed cutter, or other similar belt machine.

Well tools made and repaired; also general machinery repairing.

The Alamo Iron Works
San Antonio, Tex.



Patented July 19, 1887.

FOR SALE OR EXCHANGE.

MONEY
Cheap and Quick.

Parties desiring loans on first mortgage on pastures or cultivated lands in Texas, Louisiana, Arkansas, Mississippi or Alabama, should inquire our terms.

FRANCIS SMITH, CALDWELL & CO.,
San Antonio, Texas.
Or, STARK WEST, Waco, Texas.

MONEY!

to loan on

Ranch, Farm and City Property.

No commissions and no expenses. Write or call on

R. F. HENDRICKS,
SAN ANTONIO, - - - TEXAS.

30 HEREFORD BULLS

For sale by G. W. Saunders at San Antonio Stock Yards.

POLAND CHINA HOGS.

Breeders of and for sale pure-bred native-born and acclimated Poland China hogs.
DR. J. P. KLINE & SONS,
Box 369. San Antonio, Texas.

POLLED ANGUS BULLS.

We have seven acclimated Polled-Angus bulls for sale. Apply to **J. L. HICKMAN & CO.,** Union Stock Yards, San Antonio, Texas.

EDWARD PERSCH,

—DEALER IN—

CORRUGATED IRON,

Roofing Tin,

Sheet Iron, Zinc, Copper,
Pig Tin, Solder,

TIN PLATE, ETC.

254 Market St., San Antonio, Tex.

LONE STAR

..SADDLERY..
Manufacture all kinds of Saddles and Harness. Cowboys' Outfits a Specialty. First-class work in all branches.

A. VARGA, Agent,
Dolorosa Street, opposite Southern Hotel,
SAN ANTONIO, TEXAS.

Piper & Schulthess are headquarters for all kinds of fence wire, 33 and 35 W. Commerce Street, San Antonio, Texas.

UNION STOCK YARDS,

SAN ANTONIO, TEXAS.

J. L. HICKMAN & CO.,

LIVE STOCK COMMISSION MERCHANTS,

South Flores Street, on S. A. & A. P. Railroad. Largest and best yards in San Antonio. Only yards having the facilities for shipping and receiving from all the railroads at the yards. Office at the Southern Hotel and at the yards. Street cars to pens. Liberal advances made on all consignments. Stock scales pens. Telephone connections.

ED STEVES & SONS,

San Antonio, Texas,

LUMBER DEALERS

Solicit the patronage of the ranchmen of Southwest Texas.

SPAYING!

DR. FRED J. BAILEY will make contracts for spaying cows and heifers, at a reasonable figure. Has had better success than any operator in Texas, and has done more. Reference: B. L. Crouch, Frio county; T. C. Sheldon, Webb county; Lott & Nelson, Duval county, and many others. Address,

FRED J. BAILEY, San Antonio, Tex

C. A. LYFORD,

(Successor to S. RODGERS & CO.)

Live Stock Commission Merchant, San Antonio, Texas.

Yards at end of South Flores Street-Railway track. Liberal advances made on consignments. Commodious Stock Yards.

AGENCY LOUISIANA STATE LOTTERY.

204 W. Houston St., San Antonio, Texas.

ORDERS PROMPTLY FILLED.

TOM YATES, AGENT.

MONEY TO LOAN

In Southwestern Texas, on Farms and Ranches.

Reasonable rates, time to suit borrowers; also, Farms and Ranches for sale.
E. B. CHANDLER, No. 4 Kampmann Building, SAN ANTONIO, TEXAS

GEO. W. SAUNDERS,

LIVE STOCK COMMISSION MERCHANT,

SAN ANTONIO STOCK YARDS.

Prompt sales and quick returns. Market reports and information as to shipping cheerfully given. Correspondence solicited. Telephone No. 401.

SAN ANTONIO STOCK YARDS.

Situated on S. A. & A. P. and I. & G. N. railroads. Large and commodious pens, and feed charges moderate. Shedd's horse-breaking machine attached to yards.
SAUNDERS & HENRY, Proprietors.

GEO. LOELOFF, SAN ANTONIO, TEX.

—Manufacturer of the—

CELEBRATED SAN ANTONIO SADDLE TREES.

Makes all kinds of Natural Fork Saddle Trees, Texas, Colorado and California patterns. None genuine without my name on cantel. Look out for imitations.

L. S. BRACKETT,

MANUFACTURER OF SADDLES, HARNESS, BRIDLES, ETC.

No bogus Northern penitentiary or combination saddle trees sold or rigged, but a specialty made of strong, reliable, honest goods at a reasonable price. Also sell the best farm wagon in the South Side of Military Plaza, San Antonio, Texas



ESTABLISHED APRIL, 1880.

Consolidated with

TEXAS WOOL GROWER

SEPTEMBER 13, 1884.

ISSUED EVERY SATURDAY.

—BY—

The Stock Journal Publishing Company,

—AT—

Fort Worth, Dallas and San Antonio.

FORT WORTH OFFICE, 210 West Second Street. W. A. GARNER, Manager.

DALLAS OFFICE, 702 Main St. FRANK POWELL, Manager.

SAN ANTONIO OFFICE, Room No. 2, Beze Building. L. A. HEIL, Manager.

SUBSCRIPTION PRICE.

Weekly Edition per annum.....\$1 50
Monthly Stock Farmers' Edition..... 75

Entered at the Postoffice, Fort Worth, Texas, as second-class matter.

Entered at the Postoffice, San Antonio, Texas, as second-class matter.

Entered at the Postoffice, Dallas, Texas, as second-class matter.

SUBSCRIPTIONS to the TEXAS LIVE STOCK JOURNAL are solicited upon the ground that the information given is worth the money to any man in Texas who is either raising, dealing in, or feeding any description of live stock in Texas, Louisiana, the Indian Territory, or any section of the range country. The weekly edition costs but \$1.50 per year. We ask those who are subscribers to renew promptly and those who are not subscribers to give the paper a yearly trial. Subscriptions can be sent direct to the TEXAS LIVE STOCK JOURNAL.

THE JOURNAL issued last October strongly advanced the Panhandle of Texas as furnishing a field for the production of hay, either by protecting the native grasses against stock grazing upon it and cutting and baling the hay for shipment to market, or by cultivating tame grasses. Johnson grass, as being specially adopted to the locality, was mentioned. It produces largely, sells readily, and as hay is uniformly satisfactory. Since hay is in so great demand more money is made from good meadow lands than from the most successful animal crops.

THE A., T. & S. F. railroad in the Texas Panhandle has arranged to run cattle from Panhandle City to Chicago, via Kansas City, on one feed and in three days' time. This distance is fully as great as from Central Texas to Chicago. It occurs to the JOURNAL that other Texas lines should be able to make as good time to the Eastern markets, and it is only a question in the near future when they will be forced to do this or lose the bulk of the trade. We have had samples of quick time in transit from Central Texas, but the goods never equaled the sample.

A CHICAGO commission firm in the Northwestern trade is advertising to sell cattle at a charge of 1 per cent. commission. The JOURNAL has always believed in the percentage basis as the correct foundation for all commission charges; and believing also that stockmen are willing to pay a fair rate of compensation for the important service of selling cattle, has urged the percentage basis as one calculated to be the best for all parties concerned. One per cent. on Northwestern cattle amounts to very nearly the regular charge of 50 cents on all cattle, and it is not that the charge is excessive on good cattle that is the objection to a fixed charge, but that the fixed charge was excessive on the low priced mixed lots that enriched the commission man while the seller was impoverished by low markets and his own necessities. The commission basis is the correct one and more likely to stand than a fixed charge which is not adapted to all classes of stock.

New Orleans Charges.

The New Orleans conference resulted in the employment of a public weigher and an agreement that 5 cents a head be charged on cattle for weighing. It was further agreed that from and after May 1st the charges for commission be 3 per cent. on calves and yearlings, 5 per cent. on all cattle selling at \$20 per head and less than \$20 per head; \$1 (one dollar) per head on cattle selling at \$20 per head to \$33 1/3 (thirty-three and one-third dollars) per head, and 3 per cent. on all cattle selling at over thirty-three and one-third dollars per head.

It was further agreed to pay no rebates or commission to bankers, agents or solicitors, but agents and solicitors could be sent out on salary.

The Price of Sheep.

The sheep market is excited by reason of the supply of sheep in the United States being very short. There are about forty million sheep where once there were fifty million, and the reaction is due to the sacrifice of sheep in the country upon the change in the wool tariff.

Texas sheep have sold recently at so high a price as \$7.30 per head for 114-pound fat ones, while the same report announced the sale of a lot of 70-pound thin ones at \$3.15, \$3.10 and \$2.75 per 100 pounds. The good sheep net the owner about \$6.30 per head, and the 70-pound shorn scalawags sold at a price that net the owner something between a dollar and a dollar and a half per head.

The speculators who run into the state of Texas to buy the sheep complain that the excited market has made men foolish, also that the JOURNAL exposes the market to the sheep interest. This is true. A man who wants the value of stock and no more requires no speculator and is perfectly able to market his stock without the privilege of feeding a speculator with a portion of his earnings. Consequently the JOURNAL does not care if the speculator is pleased or not. But for all this, even the speculator is

obliged to confess that there is no ignorance so dense and no man so difficult to deal with as the man who knows sheep are high upon hearsay evidence and who has only a glimmering of an idea of what he owns and what it will bring.

They run to extremes; they are either too high or too low. They suppose that because one sheep brought \$7.30, all sheep are worth that amount, whereas it may be that for what they have a dollar and a half is a fair price. Instead of growing at the JOURNAL it will pay all parties, including the speculator, to disseminate information under the supposition that it is easier to do business with a man who is well informed than it is with a blind, ignorant fool.

Not All Gold.

The sheep market at Chicago last Monday shows the business is now running upon quality. While good fat weighty mutton sells well, some of the Texans are barely paying the freight. Here are sales:

No.	Av.	Pr.
232 Texas shorn.....	66	\$1.62 1/2
243 same	54	2.00
232 same.....	55	2.00
325 same.....	67	2.00
36 same.....	73	2.00
228 same.....	74	3.50
353 same.....	73	3.50
232 same.....	73	4.15
126 same.....	77	4.50
366 same.....	77	4.50
298 same.....	84	4.55
298 same.....	84	4.55
124 same, wooled.....	81	5 00
15 same.....	92	5.00
197 same.....	72	5.50
100 same, goats.....	per hd	1.00
2 same.....	per hd	1.50
421 sheep, shorn.....	71	3.50

Their Business Booming.

Probably no one thing has caused such a general revival of trade at H. W. Williams & Co.'s drug store as their giving away to their customers of so many free trial bottles of Dr. King's New discovery for Consumption. Their trade is simply enormous in this very valuable article from the fact that it always cures and never disappoints. Coughs, Colds, Asthma, Bronchitis, Croup, and all throat and lung diseases quickly cured. You can test it before buying by getting a trial bottle free, large size, \$1. Every bottle warranted.

Ranch Investments.

National Stockman.

For two years but little money has been invested in ranch property in any section. Capitalists have turned their attention to property which for the time seemed more attractive. A disposition is manifested this spring, however, to invest again to a limited extent; and although a good deal of caution is displayed it is plain that confidence is in some degree strengthening again. The greatest investment that we have heard of for a long time is that of the Goodrich Cattle company, just organized to operate in New Mexico, with a capital of \$500,000. There is not likely, though, to be an early and heavy rush of money in this direction. And the country can well afford to hope that capital will never again set in cattleward as it did a few years ago on the plains.

Largest stock of tin plate, metals, sheet iron, iron roofing and siding in Western Texas, Piper & Schulthess, San Antonio, Texas. We sell at factory prices, only freight added.

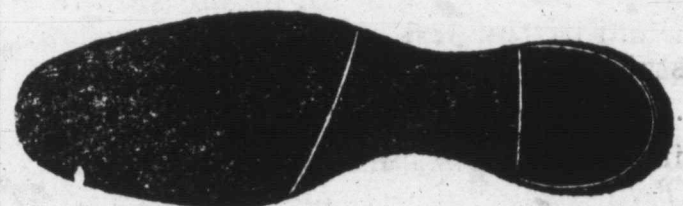
MRS. C. D. BROWN

Yields to the importunities of her Friends and Customers and will remain in business, and will re-open with a new stock of spring and summer goods. In order to secure the latest styles and best fabrics I shall go to the Eastern Markets and personally inspect such goods as I know, from my twelve years' experience, will meet the approbation of the people, and hope to deserve in the future the same liberal patronage I have always been favored with.

MRS. C. D. BROWN,

316 HOUSTON STREET,

Fort Worth, - - - Texas.



We carry an immense stock of Boots and Shoes of every description, and can fit you in any kind or price you wish. Fine goods a specialty. We have the great lines of fine goods in Ladies' Hand turned and Hand Sewed Shoes and Gentlemen's French Calf, Kangaroo, etc. We are also manufacturing a very superior class of hand-sewed work, and guarantee a fit. Send for our catalogue. It is so arranged that you buy from us by mail just as well as by visiting the store. LOGAN, EVANS & SMITH, 315 Houston St., Fort Worth

J. R. JETER & CO.,

Land, Loan and Investment Agents, Fort Worth, Texas, have for sale:

- No. 1. 3650 acres fine land 3 miles northeast from center of Hutchinson Co., \$2 per acre.
 - No. 2. 1158 acres 2 miles west of Chillicothe on Fort Worth & Denver railroad; fine farming land; \$3 per acre.
 - No. 3. 1000 acres in Swisher county, on line of Hale; \$1.25 per acre.
 - No. 4. 2800 acres 5 miles northwest from center of Castro county; \$1.40 per acre.
 - No. 5. 2400 acres in northeast corner Hartley county; \$1.50 per acre.
 - No. 6. 1 section in western part of Lynn county. Price \$500 per section.
 - No. 7. 45,000-acre pasture to lease for term of years.
 - No. 8. 17,728 acres in Hockley county; price \$1.65 per acre; small cash payment and easy terms and low interest on balance.
 - No. 9. The best improved stock farm in Texas of 3000 acres; well watered and fenced, residence, barn, orchard and all necessary improvements, 300 to 500 acres in cultivation. Price, for 60 days, \$6 per acre; terms easy.
- Farm, ranch and timber lands in every county in the state, and in any size tracts, to suit purchaser.

P. A. HUFFMAN, Ft. Worth, Texas.
A. W. JONES. J. M. HENDERSON, Jr.,
Late of Burlington, Kas. Athens, Tenn.

P. A. HUFFMAN & CO.

Successors to Huffman, Sellers & Co.,

Real Estate, Loan

—AND—
INVESTMENT AGENTS,
506 Main Street, Fort Worth, Texas.

Land Titles Investigated, Taxes Paid and Collections Made for Non-Residents. Correspondence Solicited. P. O. Box 197.

WE REFER BY PERMISSION TO
K. M. Van Zandt, president Ft. Worth National Bank; Capt. M. B. Loyd, president First National Bank of Ft. Worth; A. M. Britton, president City National Bank, Ft. Worth; Col. W. M. Harrison, president State National Bank, Ft. Worth; W. J. Boaz, president Traders' National Bank, Ft. Worth; Dr. H. S. Brolles, Mayor of Ft. Worth; Col. J. P. Smith, ex-Mayor of Ft. Worth; W. A. Huffman of W. A. Huffman Implement Co., Ft. Worth; J. H. Brown, wholesale grocer, Ft. Worth; Capt. Sidney Martin, president the Martin-Brown Co., Ft. Worth; Col. Morgan Jones, president Ft. Worth & Denver City railway, Ft. Worth; People's National Bank, Burlington, Kas.

ORGANS AND SEWING MACHINES
\$3.00 up. 30 styles. Sent on trial; new and perfect; warranted 5 years. Buy direct and save half. Circular with 10,000 testimonials FREE. GEO. FAYNE & CO., 277 So. 125 S. Clinton St., Chicago, Ill.

Dairying in Texas.

The making of butter is not conducted in Texas as it ought to be. Between scrub cattle and scrub methods, much of the butter sold realizes miserable prices, and the utter want of uniformity simply gives Texas butter a bad name, and the unreliability of the general run of Texas butter causes the principal hotel keepers and other large consumers to receive regular supplies of creamery butter from the North or East.

It is not asserted here that no good butter is made in Texas, because the object of this writing is to place before our readers examples to be found near the principal towns of the state to show that excellent butter can, and will be, made, and is made in Texas, and further than this, that the demand is quite strong for the gilt-edge article whenever it is presented to the consumers.

The following was written to the Dairy World by J. U. Vance, who is ranching near San Antonio, and was written in response to an inquiry concerning the proper temperature for churning in the South:

"In regard to Mrs. E. A. G.'s and Mr. McIntyre's views on churning temperature in the South, I must say that I differ very much with them. In the first place, as to not being able to make cream rise at a low temperature. We set our milk in a Cooley creamer, in 18-quart cans, submerged, and find that the colder the water the more cream we get and the quicker it rises; in fact, have set the cans out of the north side of the milk house in a norther, when the temperature was about freezing point, and the cream would all rise inside of four hours, and there would be from six to seven inches of cream on the milk. In the second place, as to churning. In summer we churn at as near 58 degrees as we can get the cream, using ice to cool it; in winter we churn at from 62 to 64 degrees, keeping our cream in a warm room in order to get the right temperature and to have the cream sour. We use a No. 3½ rectangular churn, run at the rate of fifty revolutions a minute, by horse power, and the butter never fails to come in from a half to three quarters of an hour, when the cream is at the right stage of ripeness and temperature (i. e., 58 degrees in summer and 62 to 64 degrees in winter). We stop churning when the butter is in grains, about the size of No. 6 shot; draw off the buttermilk and wash the butter in cold salt water, using ice in summer, and then in cold clear water two or three times, until the water comes from the churn clear; salt in the churn one ounce of Kellogg's royal dairy salt to the pound, and turn the churn until the butter forms in large lumps; set away in the milkhouse twelve hours, and then work a lever worker and mold in one-pound prints with a Nesbitt printer, and when finished I do not think there is much better butter made anywhere in the South, and we have no difficulty in getting 50 cents a pound for all we can make.

"Our milkhouse is made with double

stone walls, having an eighth-inch space between. The ceiling joists are 2x12-inch stuff, and covered with flooring, and on that an 18-inch layer of concrete; over that a space of 2½ feet, with ventilators in the gables, and covered with a shingle roof. The milk-house has large ventilators on all sides that can be closed at will; the walls and floor are cemented. In the milk-house we have a pump from an underground cistern, and a faucet from our tank, which is supplied from a 185-foot drilled well, by a windmill. In summer we open the door and ventilators of the milk-house at night, and close them up tight at daylight, and the temperature in the house is always from 10 to 20 degrees lower than outside. The ventilators are covered with wire cloth, and the door has an outside door made of wire cloth, so as to keep out flies and insects.

"Our herd consists of registered and grade Jerseys, some imported from Ohio and Tennessee and some Texas raised. We feed our milk cows ½ bushel of cut feed, consisting of sugar-cane, millet and Johnson grass, cut in ¼-inch lengths, mixed with two quarts of ground corn and oats, twice a day, and have had them running on a by-pasture all winter. In summer we do not feed them, but they have good mesquite grass pasture. I do not think cottonseed good for milk cows, as it gives a bad taste to the butter."

BABY'S SKIN AND SCALP

Cleansed, Purified and Beautified by Cuticura Remedies.

Our oldest child, now six years of age, when an infant six months old, was attacked with a virulent, malignant skin disease. All ordinary remedies failing, we called our family physician, who attempted to cure it; but it spread with almost incredible rapidity, until the lower portion of the little fellow's person, from the middle of his back down to his knees, was one solid rash, ugly, painful, itched and malicious. We had no rest at night, no peace by day. Finally we were advised to try the CUTICURA REMEDIES. The effect was simply marvelous. In three or four weeks a complete cure was wrought, leaving the little fellow's person as white and healthy as though he had never been attacked. In my opinion, your valuable remedies saved his life, and to-day he is a strong, healthy child, perfectly well, no repetition of the disease having ever occurred.

GEO. B. SMITH,
Att'y-at-law and Ex Pros. Att'y, Ashland, O.
REFERENCE—J. G. Witt, Druggist, Ashland, O.

Clear Skin, Pure Blood.

No mother who loves her children, who takes pride in their beauty, purity and health, and in bestowing upon them a child's greatest inheritance—a skin without a blemish, and a body nourished by pure blood—should fail to make trial of the Cuticura Remedies.

I have seen the Cuticura Remedies used for milk crust by a visitor in my house, and can testify that the cure was speedy and permanent. I have also used them myself, for eruptions of the skin on my little child, with satisfactory results in every respect. The skin was broken out and began to assume ugly proportions. I have also heard my neighbors speak of the Cuticura Remedies in the highest terms.

E. P. BEAR,
Churchville, Augusta Co., V.

Sold everywhere Price, CUTICURA, 50 cts.; SOAP, 25 cts.; RESOLVENT, \$1. Prepared by the POTTER DRUG AND CHEMICAL Co., Boston, Mass.

Send for "How to Cure Skin Diseases." 64 pages, 50 illustrations and 100 testimonials.

BABY'S Skin and Scalp preserved and beautified by Cuticura Medicated Soap.

HOW MY SIDE ACHES!

Aching Sides and Back, Hip, Kidney and Uterine Pains, Rheumatic, Sciatic, Neuralgic, Sharp and Shooting Pains, relieved in One Minute by the Cuticura Anti-Pain Plaster. The first and only pain-killing plaster. 25cts.

J. B. LITTLEJOHN,
Manager Insurance Department.

THOMAS P. MARTIN,
Attorney-at-Law, Manager Land Dep't

LITTLEJOHN & MARTIN,

Insurance, Loan and Real Estate Agents,

513 Main Street, Fort Worth, Texas.

Buy and sell (on commission only) lands in all parts of Texas and City real estate. Property rendered and taxes paid on same. Lands examined and divided. Patents obtained, titles examined and perfected. A practicality made of business with the different state departments at Austin. A general land business transacted. Commissions reasonable.

J. B. ASKEW,

MANUFACTURER AND DEALER IN

SADDLES, HARNESS, LEATHER, ETC.

Fort Worth, Texas.

Stock Saddles and Hand-Made Harness a Specialty.

Any style of saddle, plain or full stamped, made to order. Harness, from the lightest buggy to the heaviest float. Workmanship and material all first class.

C. E. MOORE, late foreman for R. F. Tackabery, will have charge of the saddle department. Every good saddle will be fitted out with a pair of Tackabery's improved Lightning Cowboy Cinch Fasteners.

All orders by mail will receive prompt attention.

REFERENCE.—W. J. Boaz, Pres. Traders' National Bank; Col. R. E. Maddox, Breeder and Dealer in Fine Blooded Stock, Fort Worth.

PUBLIC SALE!

The subscriber will sell by auction

At Geo. L. Goulding & Co.'s Stock Yards, Denver, Colorado,
ON TUESDAY, MAY 29, 1888,

13 PURE-BRED SUSSEX CATTLE

7 BULLS, 1 to 3 years, 6 HEIFERS, 1 and 2 years old.

The SUSSEX, though a stranger to most American stockmen, has made an enviable reputation at the shows. Exhibited almost exclusively in carcass form, with only 6 animals entered, there are 3 firsts and 1 grand sweepstakes prize to the credit of the BREED, won at the Kansas City and Chicago Fat Stock Shows. Another first and a second grand sweepstakes prize were lost by the vote of the umpire. 4 of these animals, including the winners of two firsts, were exhibited by the subscriber. All the elements essential to the production of beef at a profit are possessed to a marked degree; easy keeping, quick maturity, heavy weight of flesh of most excellent quality, fecundity and prepotency. The animals offered comprise the best and most fashionable strains; sound and in good flesh, not a made-up one in the lot. For catalogues address
OVERTON LEA,
Or S. A. SAWYER, Auctioneer Manhattan, Kansas. (Lea and) Nashville, Tenn.

POLK STOCK YARDS,

POLK BROTHERS, Proprietors.

Hereford, Shorthorn, Polled Angus, Devon, Holstein and Jerseys, Saddle Horses, Mares, Mules and Jacks. Shipments Solicited.

Fort Worth,

Texas.

We Sell on Commission.

KANSAS HEREFORD CATTLE COMPANY

(Successor to the Cherokee Hereford Cattle Company.)

LAWRENCE, KANSAS.

200 Head of Pure-Bred Herefords

of all ages to select from, comprising all the most noted strains to be found in England and America. Catalogue on application. The farm is but three miles from the city, known as "The Gibb Farm."

F. P. CRANE, Manager.

C. H. COOPER.

E. H. ROBERTSON.

COOPER & ROBERTSON,
Real Estate and Rental Agts.

702 MAIN STREET, DALLAS, TEXAS.

Buy and sell city property, ranches, grazing, farm and timber lands and live stock, loan and invest money for capitalists.

WM. HENRY & CO.,
:-Dealers in Stoves and Hardware:-

513 and 515 Houston Street, Fort Worth, Texas.

AGENTS—Fire and Burglar Proof Safes and Vault Doors, Laffin & Rand Powder Co., Glidden Steel Barb Wire, Iron and Slate Mantels and Grates, &c.

J. Q. SANDIDGE, Pres. C. B. DAGGETT, Vice-Pres. MAX ELSER, Cashier.

CITY NATIONAL BANK,

FORT WORTH, TEXAS.

Capital Paid in and Surplus, \$200,000.

DIRECTORS—J. Q. Sandidge, C. B. Daggett, Max Elser, Chas. Scheuber, C. M. Crane.

Hardware & Queensware. **W. F. LAKE,**
Cor. 2nd and Houston Sts. Wholesale and Retail.

Wholesale Dry Goods. **THE MARTIN-BROWN CO**
Cor. 4th and Main Streets.
The only exclusively wholesale dry goods house in the city.

FORT WORTH NOTES.

Joe Beverley, Plano, Collin county, came to Fort Worth to look after horse stock to place on a pasture he has in Hardeman county.

Mr. John Nesbitt, live stock agent of the Chicago & Alton road, was in town on Monday, pushing southward to San Antonio and Corpus.

W. F. Patterson, seed merchant of Fort Worth, has quite a supply of sorghum seed on hand and is still filling orders. He will quote prices promptly.

Mr. W. S. Ikard of Henrietta, who is advertising Berkshire pigs in the STOCK JOURNAL, has sold a pair of them to Mr. W. L. Hanna of Morgan, Bosque county.

Mr. J. V. Farwell of Chicago stopped over at Fort Worth. He said that the prospects were favorable for the ranch to ship 25,000 steers to Chicago during the present year.

Major J. S. Grinnan of Terrell, breeder of Herefords, was a delegate to the Democratic convention. He says live stock are thriving but demand for blooded cattle is not so strong as it might be.

E. H. Wilkes & Co. of Santa Anna (Coleman county) purchased for Messrs. Harger & Wiggins of Michigan 22 cottonseed and hay-fed steers from Mr. Henry Sackett of Camp Colorado for \$725.

Mr. M. W. Keenan, brother to H. T. Keenan, is in town and will gravitate to and from Fort Worth as representative of the C., B. & Q. railroad. He is a practical man and worthily represents his road.

Messrs. C. F. Estill & Co. shipped to Paris, Kentucky, a car-load of yearlings and two-year-old North Texas fillies. They also sold to Marlow Bros. a pair of drivers at \$200 and single horses at \$45.

Mr. Chas. I. Evans of the Dallas bar and senior of the firm of Evans & Gooch was in town last week, attending to some legal matters. This firm makes a specialty of land litigation and conveyancing, attending to some important interests.

Col. Chas. H. Gould, inspector for cattle going by rail to Colorado, is making headquarters at the Fort Worth & Denver railroad office, and he will be glad to confer with stockmen in advance of shipments.

Young, Andrews & Kuhen are getting together a lot of 15-hand horses to go in under contract with the U. S. cavalry forces. The delivery will take place at their yards on Monday, 28th. They are paying \$110 for suitable stock and want a few more.

Mr. Chas. Coppinger of Hatcher, Woods & Coppinger of Fort Worth says that the buyers coming to Fort Worth are mostly after Spanish stock, that the superior quality and breeding of the North Texas horse of American stock is not so highly appreciated as it might be. They have in pasture 300 mares and young stock, all blacks, bays and browns, not a bad color in the whole bunch. They have more to arrive.

A correspondent writing from Arkansas City, Kansas, date of May 18, says: "Last night this county was visited by a terrific rain and hail storm. The wind blew a hurricane for a while, blowing down a number of houses. Spring is cold and backward. Some grass-fat cattle have gone into Kansas City already, also some corn-fed from the Wachita, I. T. One herd of Texas ponies has arrived at Caldwell, (Andy Adams). Pony stock is dull sale this year. Grass is good and plenty of it.

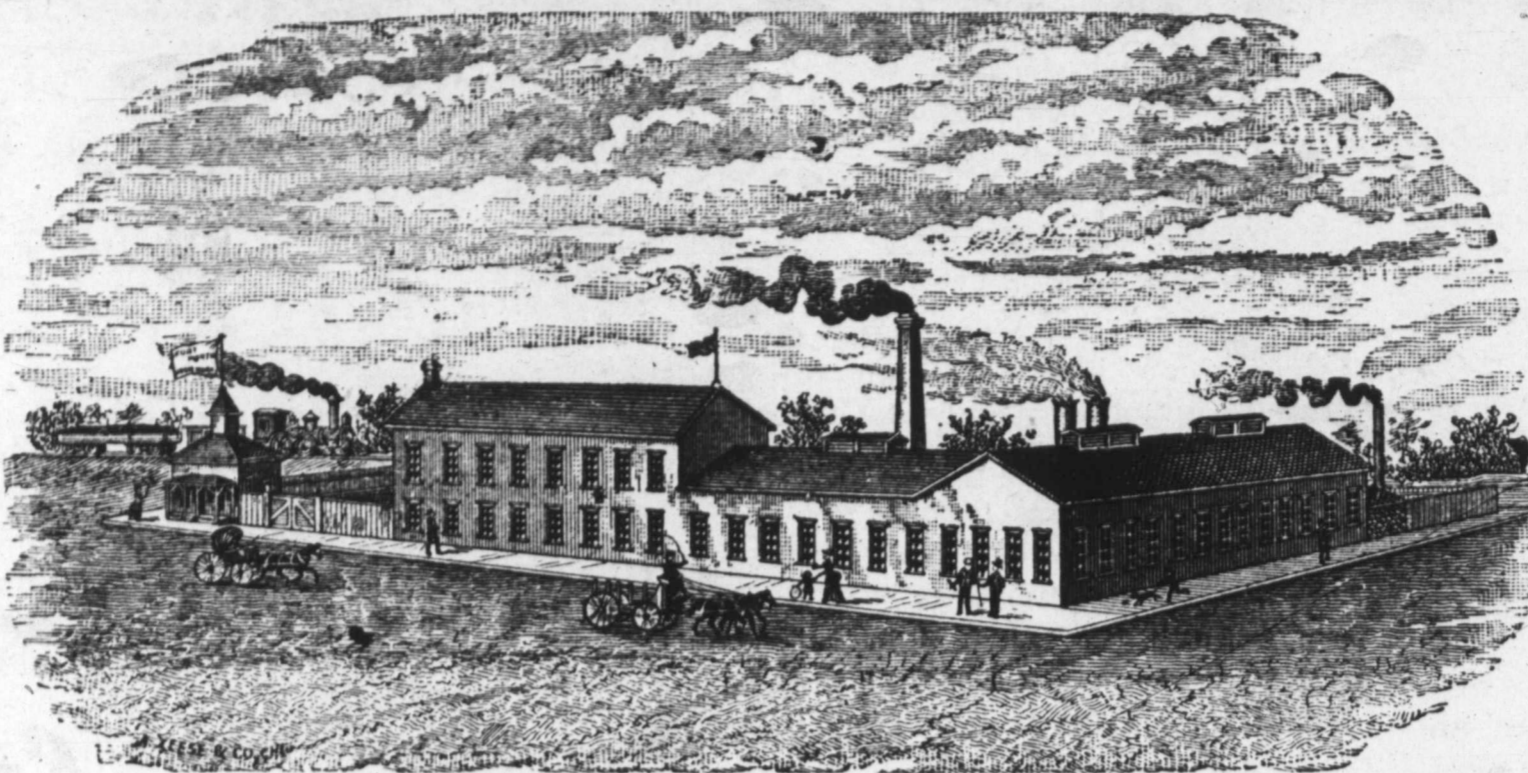
Mr. G. T. Newman of El Paso, Tex-

O. LYNCH, President.

JNO. F. MOORE, Superintendent.

A. W. MCARTHUR, Secretary

FORT WORTH IRON WORKS



Manufacturers of the celebrated Fort Worth Artesian Well Drilling Machine, [the best in the world.]

Architectural Iron Work, Artesian Well Drills, Drill Bars, Rope Sockets, Jars, Fishing Tools, and Pumping Jacks for Artesian Wells.

Repair and Rebuild Portable and Stationary Engines, Boilers, Pumps, and do a General Foundry and Machine Business.

Corner Lamar and North Streets, Fort Worth, Texas.

as, one of the largest owners of cattle in the El Paso district, was in town. He has been shipping cattle into the Indian Territory. Being questioned concerning the El Paso refrigerator plant he informed the JOURNAL that during the winter operations were successful, and three shipments per week were made to Los Angeles and San Diego, California. The only difficulty was in obtaining the use of a proper number of cars. These the company has purchased and the operations will commence again in October. In the meantime the El Paso and Fort Worth refrigerators are both employed making ice.

Mr. J. C. Loving, manager of the Loving Cattle company of Lost Valley, Jack county, does not claim to have realized very large profits on cattle of late, having held most of the steers back from market on account of low prices, but he has made some money out of grass. Mr. Loving had about 80 acres in Johnson grass and the yield was so abundant that after feeding his work-horses and old cows he had hay to spare, and livery stable owners at the town of Graham relieved him of it at \$14 and \$15 per ton. Mr. Loving increases his acreage in Johnson grass every year, and considers it valuable to him, and the best paying farming he has ever done.

The local butcher trade of Fort Worth is unchanged and cows continue to sell at 2@2 1/2c, good steers going at 2 1/2@3. There are no hogs offering to speak of and 4 1/2c is about the price. Calves sell at \$3@5. Sheep continue scarce. A local butcher went to Granbury and paid \$2.25 per head for the pick of several little bunches. Good fat sheep sell here at about 3c.

Won't Pay the Tax.

GAINESVILLE, TEX., May 24.—News has been received here from Ardmore that the non-citizens of the Chickasaw nation have determined to resist the authorities in their collection of the live stock tax, which is \$1 per head for stock outside of a certain number which are exempt. It is reported that the stock owners have thoroughly organized, armed and equipped themselves for a stubborn resistance, and have served notice on Permit Collector Richard McLish and his deputies that they will not pay the stock law tax, and if any measures are taken by the authorities to coerce them they will resist to the bitter end. These threats have caused the collectors to suspend action and appeal to the governor for additional help. It is reliably reported that the governor will call out militia at once and enforce the collection of this tax regardless of the consequences. The conservative people there entertain fears of serious trouble before the matter is finally settled.

Cutting Hay.

Live Stock Indicator.

One of the most important items of work on the farm is the proper cutting and storing of the hay. Just at what stage is the best time for cutting grass, in order to secure the best quality of hay, is with many a debatable question. If cut too early, there is an excess of water that in curing dries out, so there is a considerable loss of weight, that is, hay or grass cut too early requires a larger bulk of hay to weigh a given amount than if the hay is allowed to ripen. Again, if the hay is allowed to stand too long and get too ripe it contains too large a per cent. of woody fiber that destroys, to a greater or less extent, its value as a food. It is not only an item to secure hay that will contain as large a per cent. of nutriment, but at the same time it should be in a condition to be well relished by the stock.

Where a large crop is to be taken care of, in many cases it will be necessary to commence a little early or else run considerable risk of having a part entirely too ripe. All things considered, so far as possible, the nearer the grass can be cut when it is in full bloom or just after, is the best time for making hay, and it can be done by arranging ahead, getting everything in good shape so that the work can be pushed along as rapidly as possible. Hay cut at the right stage, well cured and properly stored, will make a feed of the very best quality, but there is a very considerable difference between that which is cut at the right stage, well cured and properly stored, and when cut either too early or too late and good care is not taken in the cutting or storing away.

It is only by feeding food of a good quality that we can expect to secure the best grain at the least expense, while at the same time better health and thrift will be secured. While it is very important to cut at the right stage, the curing and storing away is fully as important if the best quality is secured. Good hay is good feed at all seasons of the year, and stock can be kept in a good thrifty condition with the addition of very little extra grain. And, under ordinary conditions, hay is a cheap food, one of the cheapest that can be secured and used on the farm; never should be allowed to waste. Make all the hay possible, as it can nearly always be used to a good advantage. What cannot be used to a good advantage at one time will, if properly stored, keep a long time. But care should be taken to cut at the right stage, cure thoroughly, and then store so as to keep in a good condition.

The house of representatives, by a vote of 233 to 13, passed the Hatch bill to make the department of agricul-

ture a cabinet office. It creates an executive department to be known as the department of agriculture, under the supervision and control of the secretary of agriculture, and provides for the appointment of a first assistant secretary of agriculture. It also transfers the weather service of the U. S. signal service to the department of agriculture. Commissioner Colman will very likely take his position in the cabinet among the dignitaries that sit there.

WHITMAN'S NEW PATENT REBOUND PLUNGER PERPETUAL



GUARANTEED SUPERIOR TO ANY LEVER PRESS NOW MADE. Received First Premium at N. Y. State Fair, in 1880, 1881, 1882, 1883 and 1885, including the Grand Gold Medal and two Silver Medals, over Dederick and others; also World's Fair at New Orleans, California State Fair, New England and Dallas (Texas) State, 1886. The most rapid, powerful and durable press made; puts over ten tons in car; bale every three minutes; fully warranted and protected; three bales to any other press's two. Also Horse Powers, Cider Mills, Corn Shellers, Feed Cutters, &c. Send for illustrated circulars. Address: WHITMAN AGRIC'L CO., St. Louis, Mo.

We also make the best Steam Press in America.

J. P. SMITH, President. FRANKLIN B. HOUGH, Secretary.

THE GRANITIC ROOFING

Factory at Fort Worth, Tex. Better than the best, cheaper than the cheapest roofing offered in Texas. Suitable for steep or flat roofs. Cheap enough to cover a hen coop; good enough to roof a palace. Specially adapted to stockmen's barns and out-buildings. Shingles, tin and corrugated iron must give way before our goods. For further particulars write to our office.

Fort Worth Granitic Roofing Co., 11th and Rusk Sts., Fort Worth, Tex.

SPAYING. Contract prices on application with reference.

W. K. LEWIS, Veterinary Surgeon,

(Late of Meriden, Conn.) Member of the Royal College of Veterinary Surgeons, England; Fellow of the Connecticut Veterinary Medical Association, begs to inform cattlemen and horse-owners generally that he has come to Colorado City to permanently locate, and is now prepared to treat all diseases in cattle, horses, sheep, hogs and dogs. Surgical operations most skillfully performed.

Office at Rendrebrook Hotel, COLORADO, TEX.

DALLAS.

A Dallasite in the West.

Captain Sydney Smith, who is now in El Paso in the interest of the State Fair, among other things says, in a letter to Claude A. Cour, Dallas: "Everything looks green and flourishing; crops of all kinds can be grown at little cost and watered at pleasure. Apples, pears, quinces and oranges grow in greatest luxuriance; so do oats, barley and all kinds of vegetables and grapes, too abundant to talk about. Their main hay crop seems to be alfalfa, and when a man can clear \$400

per annum on seven acres of this hay, you can form some idea of its adaptability to this climate and soil. I have arranged with Mr. Russell to start out to-morrow and visit a few of the largest orchards and gardens around this city, and when I hear from the owners and producers, themselves, their own stories as to what they have done, I'll load up and be ready to give you a few dots as to what we may expect to see at the El Paso exhibit next fall. I have already found one pear tree, the present owner of which is some forty-five years old, and who says that his grandfather told him that when he, the grandfather, was a small boy, the tree was then called old, so old, that no one around there knew who planted it. It has never been known to miss a crop in all these long years."

Sales of Cattle at Carter & Sons Stock Yards, Dallas.

- S. J. Mathews sold a bunch of butcher cattle on local market at 2 1/2 @ 2 1/2 c.
- B. Roberts sold 7 yearlings at \$10 per head.
- W. H. Hayes sold 4 milch cows at \$25 per head.
- Myers of Denton county sold a bunch of sheep at \$2 @ 2.50 per head, and a bunch of goats at \$1.25 per head.
- D. Williams sold 8 hogs, average 160 lbs, at 4 1/2 c.
- Dave Flood of Fort Worth sold a bunch of horses on local market.
- H. Solinsky shipped 1 car of cattle to Texarkana, Ark., for butcher purposes.
- G. H. Langsdale of Texarkana shipped a car of choice corn-fed cattle to Texarkana for butcher purposes.
- W. Wilson sold 26 steers, av. 980 lbs, at 3 1/2 c.
- W. Wilson sold a bunch of butcher cattle on local market to different butchers.
- R. S. Kilgore of Ellis county sold a bunch of grassers, av. 785 lbs, at 2 1/2 c.
- J. F. Dargant sold 7 cows and calves at \$22.50 per head.
- Mr. Knowls sold a bunch of sheep to F. and G. Harris at \$2.25 per head.
- R. J. Dudley sold 5 steers, av. 825 lbs, at 2 1/2 c.
- S. K. Affens sold to Leo Walters 3 calves, av. 150 lbs, at 3 1/2 c.

The Coming Fair.

About thirty counties in the state have arranged for a fine exhibit at the coming fair. Dallas and Parker counties have gone farther. They have each set about to erect a handsome building in which to exhibit their respective resources. It is expected that there will be a general movement of this kind at least among the well developed counties in the state. The enterprise has passed by the limits of a mere local work. It is a state institution and in which every section should feel common interest and a common pride—belonging alike to the

people and the counties comprising it. There is and should be no rivalry—rivalry in the sense of an approach to jealousy.

Horticultural.

A committee of the State Horticultural society met in Dallas Monday and cancelled the date of the floral and fruit festival that was to be held on the 16th and 17th of June next on the fair grounds in Dallas. It conflicted with the meeting in Denison on the 27th of the same month, at which time a regular annual meeting at the State Fair grounds in Dallas will be arranged for.

Dallas Stock Yards.

Choice corn-fed steers, 3 1/4 @ 3 1/2 c; choice corn-fed butcher steers, 2 1/4 @ 3 c; inferior cattle, 1 1/4 @ 1 1/2 c; sheep first quality, 3 @ 3 1/2 c, second quality, 2 @ 2 1/2 c; hogs, 4 1/2 @ 4 1/2 c; milch cows and young calves, \$20 @ 30; bulls, 1 @ 1 1/2 c; yearlings, \$5 @ 9.

The market has been very lightly supplied this week and there has been a good demand for everything on the market. Hogs are very scarce, and none on the market. Fat sheep in good demand, and milch cows in good demand. Stock hogs scarce with a great many calls for them.

DALLAS DOTS.

Hadley, Hall & Co. will erect handsome quarters at the fair to exhibit their cotton picker.

The card of the Texas Storage Co., Dallas, is before our readers. It is a thoroughly reliable firm of good business men.

Mr. H. O. Samuell of Mesquite made the STOCK JOURNAL a pleasant call this week. He has something to say to you in this issue.

Gen. R. M. Gano leaves for Kentucky on the 1st, the scenes of his earlier days. He is to give the STOCK JOURNAL readers the benefit of his observation in the stock line.

The card of Dr. Val Riley, Dallas, appears this week. If you are troubled with the ills which he offers to treat, go and see him. The writer has heard his patients declare his methods new and wonderful in effect.

J. B. Wilson and Tom Uhl shipped for Chicago Sunday last twelve carloads of steers. They left by the Texas Pacific at 12 a. m., and reached Texarkana precisely at midnight, 222 miles, a little over 18 miles an hour, and at 9 a. m. Monday they were at Little Rock.

E. H. Robinson of Cooper & Robinson returned this week from an extensive tour through the Eastern states. At no time within his recollection, says he, has there been such a great and general interest in Texas, and his predictions are that the early future has much in store for us. He was in about twenty different states and mixed with the people, and the talk is Texas.

Reports from the agricultural districts show that much of the corn is suffering from the wet weather, and meantime the weeds and grass are doing their best. Considerable area of the bottom lands—has been drowned out. A large portion of the wheat and barley crops is dead ripe and lying flat on the ground, in a rusty condition, and the fields are impassable for either team or reaper, by reason of the quagmires.

The STOCK JOURNAL is under obligations to Mr. E. Frank Lewis, wool

scourer, Walpole, Mass., for one of his neat little compilations of the relative values of wool in the grease and scoured, and gives prices. It is a handy little book for a man to have who has anything to do with wool.

CHICAGO MARKET LETTER.

Texas Grass Cattle Arriving 1000 to 1500 Per Day. Best Grades Selling Fairly—Sheep Market Badly Overstocked.

Regular Correspondence Texas Live Stock Journal.

U. S. YARDS, CHICAGO, ILL., May 21, '88.

Last week 48,000 cattle arrived of which number fully 6500 were from Texas, and not many of them had had enough feed to make much of an impression on them either.

Prices for Texas cattle lately have been about steady on good stock though the inferior culling kinds have declined considerably, having been in large supply.

The sheep market has literally "gone to pieces" lately and prices have declined \$1 to \$2 per cwt. from the highest point.

Too many common to fair light sheep were held back to be shorn and are now crowding the market too much.

R. Strahorn & Co. sold for J. J. Welder of Victoria 61 head of 839-lb steers at \$3.55. Jesse Sherwood said these may have been fed but they were no fatter than plenty of grass cattle.

James H. Campbell & Co. sold for R. E. C. 102 head of 733-lb steers at \$2.80; 52, 841 lbs, at \$3.25, and 25, 928 lbs, at \$3.70; for L. P. McCord some very thin stock sheep, 232 av. 66 lbs, at \$1.62 1/2, and 327 avg. 67 lbs at \$2.

Brown Bros. sold to-day 197 head of 72-lb woolled Texas yearlings at \$5.50.

Hunter, Evans & Co. sold 256 head of 884-lb grass steers to-day at \$3.25; for J. M. Mathis, 67 steers, 824 lbs, at \$3.12 1/2.

Sealing & Tamblin sold for W. T. George of Hunt county, 41 steers, 910 lbs, at \$3.25.

W. W. McIlhany & Co. sold for Smith Bros. 124 woolled sheep, 81 lbs. at \$5; for J. J. Welder 39 steers, 944 lbs, at \$3.65; for Jennings 43 steers, 880 lbs, at \$3.25.

Gregory, Cooley & Co. sold for R. A. Riddle, Alvarado, 69 steers, 1004 lbs, at \$3.50; for Bundy & Ross 596 shorn sheep, 84 lbs, at \$4.55; for I. Hart 492 shorn sheep, 77 lbs, at \$4.50; for P. & H. 475 sheep, 55 lbs, at \$2 per cwt.

A Kansas man writes writes that winter-fed cattle have nearly all been marketed and generally at very discouraging prices, considering cost of production, and adds: "I think most of us will profit by the experience of the past three years and not winter feed." This is the temper of many feeders in the "corn belt" and if they stick to that notion prices can't help going up. A. C. HALLIWELL.

Kerrville News:—No sales of wool have yet been made in Kerrville. Clips have been arriving freely during the week, most of which were stored in Shreiner's warehouse. The number of bags in warehouse at present foots up 750.

\$93 Sewing Machine Free!

We want one person in every village, town and township, to keep in their homes a line of our ART SAMPLES; to those who will keep and simply show these samples to those who call, we will send, free, the very best Sewing Machine manufactured in the world, with all the attachments. This machine is made after the SINGER patents, which have expired. Before the patents run out, this style machine, with the attachments, was sold for \$93; it now sells for \$50. Reader, it may seem to you the most WONDERFUL THING ON EARTH, but you can secure one of these machines ABSOLUTELY FREE, provided your application comes in first, from your locality, and if you will keep in your home and show to those who call, a set of our elegant and unequalled art samples. We do not ask you to show these samples for more than two months, and then they become your own property. The art samples are sent to you ABSOLUTELY FREE of cost. How can we do all this?—easily enough! We often get as much as \$2,000 or \$3,000 in trade from even a small place, after our art samples have remained where they could be seen for a month or two. We need one person in each locality, all over the country, and take this means of securing them at once. Those who write to us at once, will secure, FREE, the very best Sewing Machine manufactured, and the finest general assortment of works of high art ever shown together in America. All particulars FREE by return mail. Write at once; a postal card on which to write to us will cost you but one cent, and after you know all, should you conclude to go no further, why no harm is done. Wonderful as it seems, you need no capital—all is free. Address at once, TRUE & CO., Augusta, Maine.

R. G. HEAD, PRES'T. J. G. HOPKINS, SEC. T. H. LAWRENCE, TR.

The R. G. Head Brokerage and Investment Company.

Rooms 72 and 73 Barclay Block, Denver, Col.

Buy and sell all kinds of live stock, ranch properties, farms, lands, land grants, stocks and bonds of cattle companies, and real estate. Make a specialty of handling young steers. Make examinations, surveys of and write ten reports on land grants and ranch properties anywhere in the United States and Mexico. We have for sale desirable tracts of land, large bodies solid blocks in Texas, New Mexico, and Mexico, specially adapted to agriculture, stock farming and colonization. Our commissions on cattle sales will be based upon a percentage of prices obtained. Schedule of rates furnished on application.

TEXAS-RAISED HEREFORD BULLS.



We have for sale on our Hall county ranch three hundred head of high-grade Hereford bulls, one and two years old; also, some heifers of the same class. These cattle are as well bred as any from other states. Will deliver at any railroad point in the West. Prices reasonable. Address,

FINCH, LORD & NELSON, Panhandle, Carson Co., Texas.

DR. VAL RILEY, Practice confined to CATARRH

Of the Air Passages, Ear and Eye. Office 912 Elm Street, DALLAS, TEXAS.

Southdown Buck Lambs.

I have a fine lot of thorough-bred Southdown buck lambs, also a number of high-grades, which I will sell low down.

H. O. SAMUELL, Mesquite, Dallas County, Texas.

DR. O. B. HEWETT, THE DENTIST, Dallas, Texas. Teeth extracted without pain. The BEST is the CHEAPEST.

DALLAS DENTAL PARLORS PRICE CHEANEY, D.D.S., Prop 709, 711 Elm St., Dallas, Tex. Call, write or telephone and make appointments in order to have the me reserved for your work.

THOMAS F. MCENNIS, Candidate for County Clerk, Dallas County. Election Nov. 6, 1888.

HENRY H. SMITH, Treasurer of Dallas County, Candidate for re-election. Election Nov. 6, 1888.

MUSTANG LINIMENT

MEXICAN MUSTANG LINIMENT cures PILES, Old Sores, Caked Breasts—all INFLAMMATION.

MUSTANG LINIMENT

MEXICAN MUSTANG LINIMENT conquers SPRAIN, SCRATCHES and SPRAINS in HORSES and MULES.

MUSTANG LINIMENT

MEXICAN MUSTANG LINIMENT, Penetrates Muscles to the Very Bone! Wonderful! TRY IT!

MUSTANG LINIMENT

MEXICAN MUSTANG LINIMENT, for MAN and BEAST, Greatest Curative discovery ever made.

Pure-Bred Bulls.

Major Alvord in American Cultivator.

There never was a time more favorable than the present for procuring pure-blooded bulls of the several well recognized breeds of dairy cattle. Throughout the Eastern and Middle states, half-bloods and higher grades are found by practical dairymen to be the most profitable stock. The more distinctively dairy blood one can get into his herd, without paying too much for it, the better the results.

Experience leads us to a preference for Holstein-Friesians and Ayrshires for quantity of milk, and to the Guernsey and Jersey for quantity and quality of butter. As economical dairy animals, high-grades are as good as full-bloods. The cheapest and safest way to get such animals is to raise them, by using a pure-bred bull of the breed preferred upon well selected cows of known merit. These should be "natives" or grades, and if the latter, the improved blood showing in the dam should be of the same breed as the sire chosen. Too much of a mixture of breeds usually results in failure. The purchase and use of a grade bull is a decided mistake; although the animal himself may be fine, there is no telling what his offspring may be, and for every good calf there are likely to be several poor ones. On the contrary, a strongly-bred bull of any one of the dairy breeds is reasonably sure of transmitting his good qualities to all his calves, and making most of them better than their dams, if the latter are natives or grades. There have been a good many sales lately of bull calves from parents of excellent dairy families of registered stock, at \$20 to \$50, and of mature bulls, often recorded animals of proved merit as sires, from \$40 to \$100. With \$40 or \$50 in hand, one need not go far in New York or New England to have his choice of several desirable pure-bred bulls, old enough for service. This is unquestionably a good investment for any one who has eight or ten cows or heifers to be bred within a year. The increased value of every heifer calf obtained over the get of a common or grade bull can safely be put at \$5, and with perhaps some outside service, a well selected young bull may pay for himself within a year. This is certainly the time to buy, and bargains are in sight all around.

Rumination.

Ensilage, has, I think, come to stay. There is a loss in drying fodder, no doubt, although how the loss occurs no one as yet has explained. There is certainly a loss in curing silage, for the curing uses up something, but is this loss not much less than that in dry curing? Prof. Henry says, "had the same parties (the ensilers) grown an equal crop of corn-fodder and saved it without loss by drying," etc., etc. This is the precise point at issue. I have grown over 40 tons of green or corn fodder per acre, and have had eight tons when it was cured. At the same time I was growing mangels at the rate of 1200 bushels—nearly 40 tons per acre—and although these roots had less than four tons of dry matter in them, I got twice as much feeding value in proportion from them as from the dry matter. No doubt a very large part of the substance of the corn fodder becomes indigestible in the dry curing, while in the process of ensilage the fiber becomes more digestible, although possibly at the expense of some loss of carbonaceous matter. Prof. Henry's remarks about deep plowing, cooking food, and other crazes, are hardly consistent, and tend rather to the repression of improvements. Have we learned everything? I think not. The Rural Experiment farm has proved otherwise in regard to many things. "Prove all things, but hold fast to that which is good"

only. I think ensilage is a good thing; for when at no more cost than curing the fodder dry, one can have from one acre of ground, green food that will feed one cow 400 days, and yet not have a big crop, he has got a good thing.

Rock Salt.

Messrs. Turner, McClure & Co. of Fort Worth have en route a car-load of the celebrated rock salt, which is the best salt that can be used for cattle, horses, and all kinds of stock. Cattle like the rock salt and prefer it to all other. They cannot eat enough to hurt them, as it is as hard as a rock and must be licked. Messrs. Turner, McClure & Co. will fill orders by mail promptly, either in large or small quantity. Send a trial order.

TURNER, McCLURE & Co.

Missouri Pacific Railway and Iron Mountain Route

offer a choice of routes to St. Louis and all points north and east; the Iron Mountain Route through Arkansas and Missouri, and the M., K. & T. through the Beautiful Indian Territory. Pullman buffet sleeping cars run through via both routes without change. This is also the direct line to Kansas City, St. Joseph and Omaha, and the Colorado Short Line from Kansas City to Pueblo and Denver.

The Best Wire Fence

for farms, railroads and ranch purposes. Send for illustrations. Address, GHOLSON FENCING Co., 160 West 3d St., Cincinnati, O. B. F. Gholson, Fort Worth, Texas, State Agent.

Hog Cholera

If your HOGS or POULTRY show signs of disease use HALL'S HOG AND POULTRY CHOLERA CURE. It is a sure preventive and cures where all other remedies fail. Write for information to Hall's Hog & Poultry Cholera Cure Co., St. Louis, Mo. For sale by all druggists. In writing mention this paper.

CHAS. I. EVANS, ATTORNEY-AT-LAW

505 Elm St., Dallas, Texas.

Special bargains in Western Texas Farm and Ranch Lands.

Refers by permission to Hon. A. H. Willie chief justice supreme court of Texas; Hon. Jno. P. White, judge court of appeals of Texas; Hon. J. M. Hurt, judge court of appeals of Texas.

J. C. SCOTT.*Attorney-at-Law,*

304 MAIN STREET, FORT WORTH, TEX.

Land and Commercial Law.

Refers by permission to Hon. Henry M. Teller, Sec. Interior, Washington, D. C.; Valley National Bank, St. Louis, Mo.; H. M. Truheart & Co., Galveston, Tex.; Gen. B. C. Ludlow, Col. Int. Rev., Austin, Tex.; City National Bank, Fort Worth, Tex.; First National Bank, Fort Worth, Texas.

THOS. F. WEST,

Late of Jacksboro,

Attorney-at-Law,

311 Main Street,

FORT WORTH, - - TEXAS.

Special attention to Land and Live Stock Litigation.

N. A. STEDMAN. EDWARD F. WARREN,

City Attorney.

STEDMAN & WARREN, Lawyers,

Corner of Main Street and Public Square FORT WORTH, TEXAS.

OPIUM Morphine Habit Cured in 10 to 20 days. No pay till cured. Dr. J. Stephens, Lebanon, Ohio**GOLD** You can live at home and make more money at work than at anything else in the world. Either sex; all ages by outfit FREE. Terms FREE. Address, TRUS & Co., Augusta,**Rhine, the Ft. Worth Photographer,**

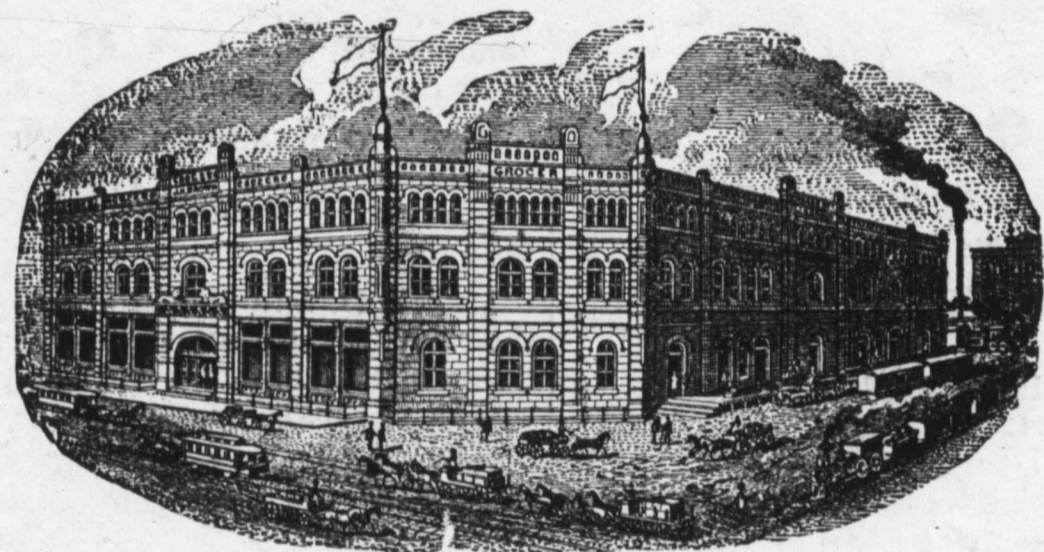
Is ready for engagement to make views of interiors, buildings,

Live Stock Ranches, Etc.

His Fort Worth Studio will be in charge of a highly accomplished artist from

*Kurtz' Gallery, Broadway, New York.***JOSEPH H. BROWN.****Wholesale Grocer,**

Manufacturer of the Celebrated

SILVER LOAF BAKING POWDER.**-:Sultan Roasted Coffee:-**

FORT WORTH, TEX.

*This Cut Represents our***IMPROVED WELL DRILL,**

and is considered by all drillers that have tried it to be superior to any others of the kind made. It will drill from 5 to 8 feet more a day than any other machine of the same style. The driller has entire control of his machine, and is not compelled to have extra aid in operating. Guaranteed to drill from 500 to 700 feet with a horse-power.

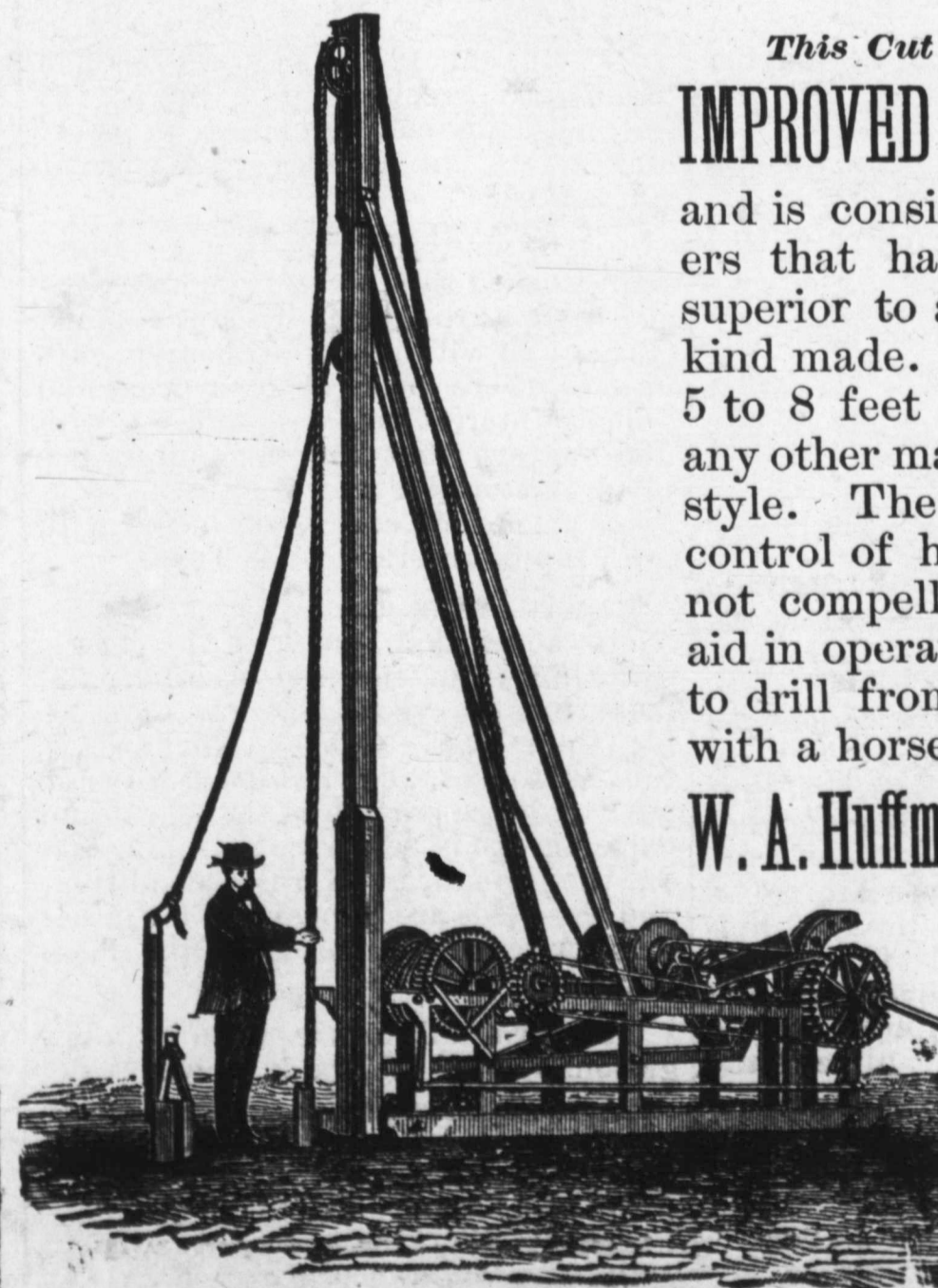
W. A. Huffman Implement Co.

Fort Worth, Texas.

Send for

Prices

—AND—

Catalogue.

Never Despair

Until you have tried what **Ayer's Pills** can do for you. It is the Liver that renders your views of life so gloomy. Depend upon it, a box or two of Ayer's purely vegetable, sugar-coated, Cathartic Pills would materially change your feelings, and still make

Life Worth Living.

Lucius Alexander, Marblehead, Mass., says: "I was severely afflicted with Dyspepsia and Enlargement of the Liver, most of the time being unable to retain any solid food on my stomach. Three boxes of Ayer's Pills cured me."

"Ayer's Pills are a sure cure for Liver Complaint. Nothing seemed to help me until I finally began to take Ayer's Pills."—E. S. Fulton, Hanover, N. H.

Ayer's Pills,

Prepared by Dr. J. C. Ayer & Co., Lowell, Mass. Sold by all Druggists and Dealers in Medicine.

The Profit in Live Stock.

Breeders' Gazette.

At a recent farmers' club in Michigan, one person raised the question as to whether it paid to raise stock, declaring he "had made some very close experiments weighing and feeding, and could not yet figure out a margin of profit for himself." It is not likely that some would pay if one were to go into the market and purchase everything which it consumes, but the conditions under which live stock is grown upon the farms are altogether different. On every farm there is considerable inferior grain and hay practically without commercial value, which nevertheless makes profitable stock food, and which in point of fact constitutes a very considerable portion of its support, and there are incidental products, like straw, stalks and chaff, which but for the value that live stock is capable of extracting would go to utter waste. There is much coarse herbage consumed by it which the farmer can neither eliminate from his fields with any reasonable amount of labor nor possibly turn into mercantile products. There are "gleanings" in all the fields after the farmer has finished the most careful harvest and gathering of the crops, and there are aftermaths and second growths of various descriptions which could never profitably be prepared for market, but which contribute not a little to the growth and support of the live stock. It gathers and turns to profitable use without involving any expense on account of labor the grass growing in the pastures and upon all portions of the farm not under actual tillage. In short its principal support is derived from products otherwise without material value, or which have not been reduced to a mercantile condition. Besides, its presence enlarges the number of field crops which can be grown with profit, and opens the way for the most intelligent and profitable rotation, for in its absence all manner of root-crops as well as clover and grass (except for hay), would be eliminated from the list of profitable crops open to the farmer's selection. Finally, the rotation which it permits and the manure it distributes in the fields or leaves around the stabling and feeding lots is a means of sustaining whatever degree of fertility the farm possesses, renders the profitable production of general crops possible, and prevents the farm from sinking speedily into a state of absolute sterility. So, even if a farmer cannot always take his pencil and figure out just what profit he is making from the growth of his live stock, or just what advantage has been secured each day and hour, the final aggregate results show that it has made good money for its owner. Farmers who have devoted themselves mainly to its production have generally grown rich, and while the farmer may not be able to measure his profit

with the same precision as in many other matters, he knows that the sales of live stock products constitute a very large proportion of the income of the farm.

At the same time it must not be supposed that the character of the stock maintained is a matter of indifference. There is considerable merchantable product fed out first and last, and unless the stock is of an improved character a loss is likely to be made on this, which of course cuts down the profits that are realized from other sources of growth, and perhaps dissipates them altogether; and it is also important that the pasturage and coarse fodder be turned to the largest and very best account, which only stock of an improved character can accomplish. There is abundant occasion for a farmer to figure elaborately as to the comparative profits to be realized from various descriptions of stock. Indeed, it is an encouraging sign to find him indulging in figures of this sort, since the difference between the improved breeds and inferior and common sorts is so great that a careful examination of the subject will be sure to impress any intelligent farmer with the great advantage of keeping only the improved sorts. But to enter upon calculations as to whether the maintenance of any description of stock is profitable is time thrown away, since the experience of the world, extending through thousands of years, since the day our ancestors were nomads, wandering in the desert with no other visible wealth than their herds and flocks, has settled that point beyond the possibility of any intelligent dispute.]

Dairy Food.

Those who are in the dairy or creamery business and who study the care and production of milk, or manufacture of butter or cheese, must study the best methods and use modern appliances or they will get left in the race. Texas is far behind in the dairy and creamery business and several years will pass before the important cities will be furnished with uniformly good butter. The firm of H. McK Wilson & Co. of 112 N. 2d street, St. Louis, issue a very complete catalogue of dairy goods and inform the JOURNAL that they desire to send it to all dairymen and farmers who desire to obtain prices of dairy machinery and supplies. This firm is also offering a food preservative. And if it will cure meat as they claim, the preservative will be a great boon for Texas people. They will send a circular about the preservative with the catalogue.

A Beautiful Catalogue.

F. W. Humphrey & Co., N. E. corner of Pine and Broadway, St. Louis, Mo., clothiers, hatters and furnishers, have issued an elegant and beautiful clothing catalogue which will be sent free to readers of the TEXAS LIVE STOCK JOURNAL. The work contains some beautiful colored chromo lithographs and the fashion plates were specially designed to show the present spring and summer fashions.

The catalogue shows children's and boys' clothing, gentlemen's full dress attire, Prince Albert suits, walking suits, sack and cut-away suits, clerical suits, etc. Then follows the "hattery," then haberdashery, then hoisery and neck wear, and concluding with the glove department, measuring and order blanks. Visitors to St. Louis are requested to call and examine the immense stock of clothing, and friends at a distance are invited to send for the art volume catalogue, addressing F. W. Humphrey & Co., St. Louis, Mo.

Piper & Schulthess are headquarters for all kinds of fence wire, 33 and 35 W. Commerce street, San Antonio, Texas.

DRS. BETTS & BETTS

Corner Champa and Seventeenth Sts. DENVER, - - - COLORADO.



NERVOUS Debility, Spermatorrhœa, Seminal Losses, Night Emissions, Loss of Vital Powers, Sleeplessness, Despondency, Loss of Memory, Confusion of Ideas, Lassitude, Gloominess, Depression of spirits, Aversion to Society, Easily Discouraged, Lack of Confidence, Dull, Listless, Unfit for Study or business, and finds life a burden. **SAFELY, PERMANENTLY and PRIVATELY CURED.**

BLOOD AND SKIN Diseases, Syphilis, a disease most horrible in its results, completely eradicated without the use of mercury. Scrofulous, Erysipelas, Fever Sores, Blotches, Pimples, Ulcers, Pains in the Head and Bones, Syphilitic Sore Throat, Mouth and Tongue, Catarrh, etc. **PERMANENTLY CURED WHEN OTHERS HAVE FAILED.**

URINARY Kidney and Bladder Troubles, Weak Back, Burning Urine, Frequency of Urinating, Urine high colored or with milky sediment on standing, Gonorrhœa, Gleet, Cystitis, etc, promptly and safely cured. Charges reasonable.

TO YOUNG AND MIDDLE-AGED MEN.

A SURE CURE The awful effects of early vice, which brings Organic Weakness, destroying both mind and body, with all its dreadful ills, permanently cured.

URETHRAL STRICTURE permanently cured, removal complete—neither knife, caustic nor dilation—without pain or injury. Proof indisputable.

DRS. BETTS address those who have impaired themselves by improper indulgence and solitary habits, which ruin both body and mind, unfitting them for business, study or marriage.

MARRIED MEN, or those entering on that happy life, aware of physical debility, quickly assisted.

OUR SUCCESS

is based upon facts. First—Practical experience. Second—Every case is especially studied, thus starting aright. Third—Medicines are prepared in our laboratory exactly to suit each case, thus effecting cures without injury.

Send 6 cents postage for celebrated works on Chronic, Nervous and Delicate Diseases. Thousands cured. A friendly letter or call may save future suffering and shame, and add golden years to life. No letters answered unless accompanied by 4 cents in stamps. Address: or call on

DRS. BETTS & BETTS,

Corner Champa and Seventeenth Sts. DENVER, - - - COLORADO.

Lawrence's COMMERCIAL COLLEGE.

910 and 912 Elm St., Dallas, Texas,

Is endorsed by all the leading business and professional men of this city and the entire southwest. Has thousands of graduates successful in business, and is in its fifteenth year without any vacation; has a large, competent and experienced corps of teachers. 43 gold medals, valuable souvenirs and diplomas on record. For reduced rates of tuition in all departments and College Journal, call at the college or address

E. B. LAWRENCE, Pres.

CITY HOTEL, - CHICAGO.

Cor. State and 16th Sts.

SPECIAL RATE TO STOCKMEN, \$1.50 PER DAY. Nearest hotel outside the yards. Table and Rooms first-class. State st., Archer av., or L. S. & M. S. Dummy pass the house to all parts of city and depots.

W. F. OROUT, Proprietor

R. F. TACKABERY.



The popular saddle and harness manufacturer of Fort Worth, Texas. Mail orders a specialty. Received the first and only premium for Best Make of Texas Stock Saddle at the great Dallas State Fair.

Chickering, Wheelock, Mathushek PIANOS

Largest stock and best line in the state at

C. H. EDWARDS,

733 and 735 Main St.,

DALLAS, TEXAS.

Send for prices before purchasing elsewhere.

HILLYER & SON, Photographers!

Dallas and Belton.

Dallas Gallery 701 Elm Street.

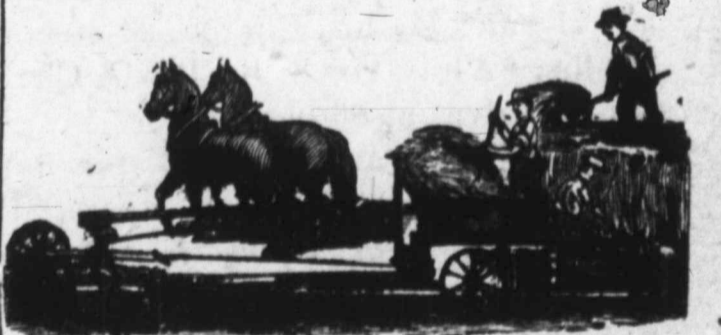
Thirty years' experience in the art. Twenty years the leading artist in Austin, where our legislative and society groups have given us a national reputation. 16 diplomas, 3 silver cups, 3 silver medals and a diploma at the late New Orleans Exposition attest our merit as artists.

JOHN KLEIN, Practical Hatter,

912 Main St., Dallas, Texas. Hats blocked while waiting. Stuff, soft and cleaned and stiffened equal to new. Best state. Work warranted first-class. Orders by mail or express promptly attended to.

The Lightning Hay Press.

Full Circle.



Kansas City Hay Press and Foundry Co. Send for circulars. Kansas City, Mo.

Johnson Grass Seed, Alfalfa Seed, Sorghum

Seed, all kinds bulk seeds.

W. F. PATTERSON, Ft. Worth Seed Merchant, WILL QUOTE PRICE

Butchers' and Drovers' Stock Yards, Dallas, Tex.

CARTER & SONS, Props.,

LIVE STOCK COMMISSION MERCHANTS.

Largest and best yards in Dallas. Only yards having the facilities for shipping and receiving from all the railroads. Office at the yards. Street cars to pens. Liberal advances made on all consignments. Stock scales at pens. Telephone connections.

ST. LOUIS MARKET LETTER.

**Good Demand for Good Beef Stock
—Sheep Declining.**

Regular Correspondence Texas Live Stock Journal.

EAST ST. LOUIS, ILLS., }
May 22, 1888. }

The demand for fair to good butcher steers was very large the past week, while the offerings were somewhat moderate. Local speculators, interior shippers and the dressed beef buyers were out in force each day, and their demands for the above grades were quite large. Good killing cattle of 800 to 1100 lbs were the grades most sought after and brought from \$3.50 to \$4.25 per 100 lbs, according to quality. Yesterday and to-day the run of Texas cattle was quite fair, but the quality was thin, consisting mainly of thin, which are slow of disposal at \$3 to \$3.35 per 100 lbs. Good grassers are bringing from \$3.25 to \$3.75 per 100 lbs.

Hunter, Evans & Co. sold for Boothe & Son, Gonzales, 19 steers, 1045 lbs, at \$3.75; 17 steers, 1188 lbs, at \$3.65; 20 steers, 1040 lbs, \$3.85; 14 steers, 1267 lbs, at \$3.87. For F. M. Daugherty, Gainesville, 23 steers, 1031 lbs, \$3.90. For J. W. Frost, Houston, 60 steers, 893 lbs, \$3.40; 19 steers, 827 lbs, \$3.35; 21 steers, 789 lbs, \$3.20; 40 steers, 948 lbs, \$3.50; 21 steers, 868 lbs, \$3.25; 38 yearlings, \$7 per head. For J. O. Taylor, Beeville, 17 head, 620 lbs, \$2.60; 21 bulls, 1157 lbs, \$2.25. For J. B. Hatch, Denton, 18 steers, 1033 lbs, \$3.70; 17 steers, 922 lbs, \$3.50. For W. J. Autrey, Staple's Store, 22 steers, 745 lbs, \$3.25; 15 head, 789 lbs, \$2.50. For S. R. Davis, Denton, 21 steers, 1010 lbs, \$3.60; 22 steers, 910 lbs, \$3.25; 20 steers, 1088 lbs, \$3.85. For W. W. Maas, Commerce, 40 steers, 1120 lbs, \$4; 41 steers, 1011 lbs, \$3.75. For J. E. Laroe, Terrell, 19 steers, 1062 lbs, \$3.70; 19 steers, 927 lbs, \$3.60. For J. H. Lindley, Commerce, 21 steers, 1054 lbs, at \$3.50. 19 steers, 1038 lbs, \$3.50. For J. H. Jarnigin, Commerce, 44 steers, 885 lbs, \$3.20; 19 steers, 1037 lbs, \$3.50. For J. A. Farrow, Commerce, 38 steers, 1051 lbs, \$3.70. For S. P. Cowen, Commerce, 24 steers, 914 lbs \$3.55. For J. M. Mathis, Charco, 23 steers, 778 lbs, \$2.40. For S. R. Davis, Chelsea, 77 calves at \$6 per head.

Scaling & Tamblin sold for Jeff Hudgpath, Gainesville, 23 steers, 849 lbs, \$3.60. For Jones & Whaley, Gainesville, 22 steers, 1094 lbs, \$3.75; 24 stags and steers, 1036 lbs, \$3.30. For Frank Houston, Terrell, 19 bulls, 1436 lbs, \$2.85. For J. F. Taylor, Coleman, 60 steers, 1052 lbs, \$3.85. For Alf Allen, Kaufman, 22 steers, 1007 lbs, \$3.60; 24 steers, 887 lbs, \$3.40. For J. M. Clymer, Lane, 18 steers, 1057 lbs, \$4.15; 17 steers, 890 lbs, \$3.65.

J. H. Campbell & Co. sold 11 cows, Taylor, Texas, 727 lbs, \$3.10; 21 steers, same, 960 lbs, \$3.80; 18 steers, same, 844 lbs, \$3.60; 20 oxen, same, 1196 lbs, \$3.65; 18 steers, same, 800 lbs, \$3.60; 42 steers, Alvarado, 1097 lbs, \$4.25; 67 steers, Dallas, 1137 lbs, \$4.25; 23 steers, Kaufman, 913 lbs, \$3.25; 22 steers, same, 863 lbs, \$3.25; 23 steers, same, 838 lbs, \$3.25; 24 steers, same, 837 lbs, \$3.35; 23 steers, same, 985 lbs, \$3.62.

23 steers, Greenville, 950 lbs, \$3.50; 16 steers, same, 798 lbs, at \$3.15.

Cassidy Bros. & Co. sold a fair number of Texas cattle the past week, but at the last minute I find I mislaid their list and can not give the sales.

The run of Texas sheared sheep was quite large and prices have come down 75c and \$1 per 100 lbs from the highest notch of a couple of weeks ago. Common sheep are plentiful and dull, as now all kinds of sheep are being shipped in. Prices range from \$3 to \$4.75 per 100 lbs in extremes, but even now common sheared sheep run in the \$2.

Hunter, Evans & Co. sold for H. Burns, San Antonio, 688 sheep, 77 lbs, \$3.40. For J. F. Beek, Uvalde, 442 sheep, 76 lbs, \$3.50. For Baker & Andrews, Belton, 251 sheep, 71 lbs, \$3.25. For Bryce & Little, Pearsall, 416 sheep, 82 lbs, \$4.10. For Ellis & S., Uvalde, 689 sheep, 74 lbs, \$3.65.

Scaling & Tamblin sold for B. G. Anderson, Wichita Falls, 25 sheep, 98 lbs, \$3.65.

J. H. Campbell & Co. sold 210 South Texas sheep, 74 lbs, \$3.70.

Sam A. White, superintendent of the horse department of the National Stock yards, when interviewed to-day said: "The cold weather makes spring sales backward, and the high water also has its effect. The demand is entirely for good stock. Prices have advanced so fast in Texas that the Northern buyer is getting alarmed at the figures asked. Over 60 car-loads came in at the National yards the past week, and the whole United States is the field of operation. Sales range from \$25 to \$37.50. The demand is principally for mares."

The wool market continues slow and quiet with prices low and about unchanged.

The Western Wool Commission Co. sold 23 sacks from Vernon, medium, at 15c; 73 sacks from Pecos, fine, at 14c; 28 sacks Missouri wool at 21c; 33 sacks from Belton, medium, at 19c; 19 sacks, Hillsboro, medium, at 21c; 11 sacks, Kansas, medium, at 17c; 8 sacks, do, at 19c.

Funsten & Co. sold a lot of Indian Territory fine at 21c; lot fine at 20c; lot fine at 19c; lot Weatherford, 20c; do 17c; lot from Cleburne, fine, at 13c; Fort Worth at 15c; Coleman 13c; Corsicana 20c 17c and 15c; from Cisco at 16c, 13c and 12c; from Brownwood at 20c and 14c; Abilene 12c.

W. J. Haynes & Co, 38 sacks from Bowie, mixed lot, mostly medium, at 18c. Fine wooddull.

A. J. Child sold 60 lots of Missouri and Texas wools at prices ranging from 19@22c for combed and medium, and from 13@15c for common wool.

Price-Grimm Commission Co. sold to-day 25 bags of eight-months Texas wool at 14c.

Wescott & Co. sold a lot of Northeast Texas wool at 20c; 15 sacks Kansas fine and medium light at 15c.

E. C. Kruse & Co. sold several lots from 19@21c; also several car-loads of fallen stock hides at 7c. RATTLER.

San Antonio Wool Market.

Another week of inactivity has passed. Now that the buyers have gained their point on the wool-sack question no apparent excuse is found for not taking hold, except the difference in prices, which probably is the true one. It is probable that very few returns have been received from samples forwarded, and as for speculators, the prices asked here at present keep them out of the market. While there are hardly as many buyers here as usual, still all the different interests are represented, and there is nothing lacking on that score. The Southern wools, along the Texas-Mexican railway and about Laredo, are reported as selling at figures above the prices offered here.

The Improved Stock Cars Adopted.

The STOCK JOURNAL was the very first to enlighten the stock-raisers of Texas as to the features and advantages of improved stable stock cars, and has for months persistently urged their adoption. It is, therefore, no little satisfaction to inform its readers that it has been successful, and that one, and one of the most important, of the Texas railroads, and a prominent member of the Texas Traffic association, struck colors to the popular demand. It is the Southern Pacific railroad that has agreed to pay the mileage to the improved stock car companies, giving the cars to the shippers free, except the 15 per cent. additional which is imposed by the Traffic association. In other words, to ship by a stable car from San Antonio to Chicago costs only \$115 per car, instead of about \$133, as heretofore, a reduction of over \$18. Although this order has just gone into effect, already more orders for stable cars are in than can possibly be filled for some time. About the first to go over that road under the new arrangement are 100 cars from Corpus Christi, via of San Antonio and New Orleans, to Chicago, for A. Adler & Co.

Blighted Prospects

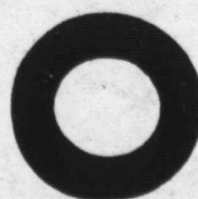
are largely the result of improvidence and lack of enterprise. Those who look out for the good chance, get on; such people are fast learning that they can live at home and make \$1 and upwards per hour at work for us, in our new line of splendid business. All who take hold are started free by us. All ages, both sexes. Any one can do this pleasant, easy work. Those who are ambitious and enterprising will write at once and learn all; no harm will be done if you do unwisely conclude not to go to work. All is free. Address Stinson & Co., Portland, Maine.

Seventy Horses Cremated

CHICAGO, ILL., May 21.—At o'clock this morning a fire broke out in a barn on West Monroe street. Seventy horses were suffocated. John Foran and his wife with five children were nearly suffocated and one child will die. Sampson Stafford, wife and one, child were rescued by the firemen in an unconscious condition. The seventy horses are estimated to have been worth \$275 each.

To the Afflicted.

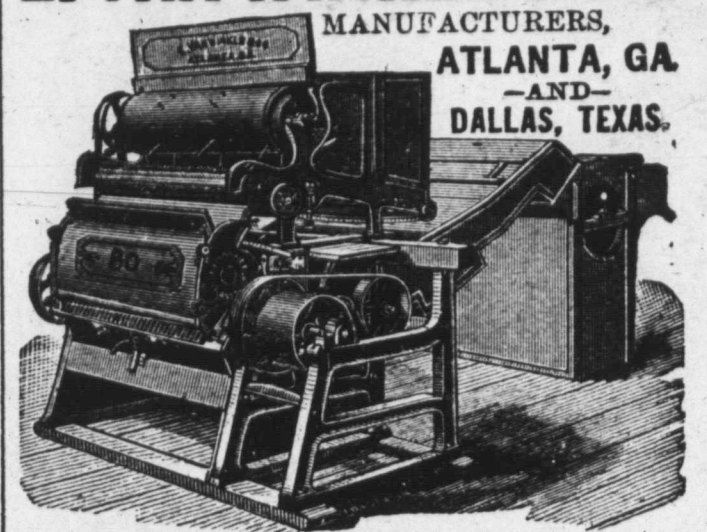
We call the attention of our readers to the advertisement of Dr. J. R. Pollock in this issue of the JOURNAL. To those who are afflicted with rectal troubles we can recommend the doctor as a specialist in that particular; he having effected some remarkable cures in cases which had become chronic. Dr. Pollock successfully treats consumption, bronchitis, catarrh, dyspepsia and all other chronic diseases with oxygen and electricity. Correspond with the doctor if you need the services of a reliable physician who can give the best of references.



The BUYERS' GUIDE is issued March and Sept., each year. It is an encyclopedia of useful information for all who purchase the luxuries or the necessities of life. We can clothe you and furnish you with all the necessary and unnecessary appliances to ride, walk, dance, sleep, eat, fish, hunt, work, go to church, or stay at home, and in various sizes, styles and quantities. Just figure out what is required to do all these things COMFORTABLY, and you can make a fair estimate of the value of the BUYERS' GUIDE, which will be sent upon receipt of 10 cents to pay postage. MONTGOMERY WARD & CO. 111-114 Michigan Avenue, Chicago, Ill.

E. VAN WINKLE & CO.

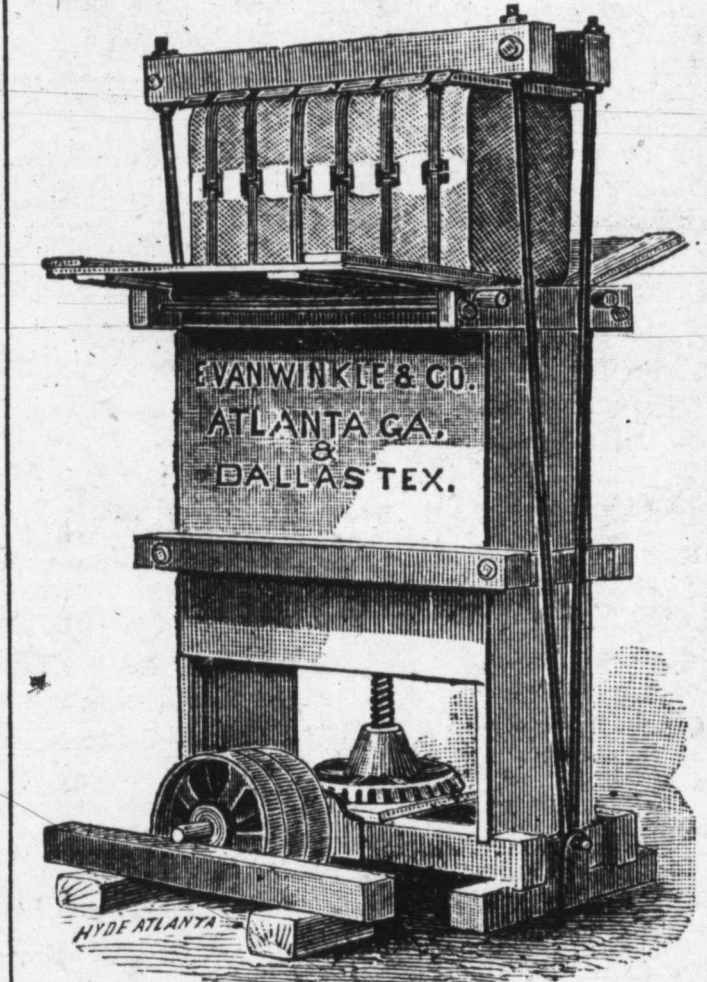
MANUFACTURERS,
ATLANTA, GA.
—AND—
DALLAS, TEXAS.



COTTON GINS and PRESSES,

Cotton Seed Oil Mills, Cotton Seed Linters, Cane Mills, Saw Mills, Shafting, Pulleys, Hangers, Wind Mills and Castings, Pumps and Tanks.

E. VAN WINKLE & CO.



COTTON PRESSES.

E. VAN WINKLE & CO.

ATLANTA, GA.
AND
DALLAS, TEXAS.



Patented 1878. Improved 1881. Patented 1882. Prices reduced to one-half former prices.

No. 1 Mach. \$30.00 | No. 2 Mach. \$40.00
Best Cleaner for Seed Cotton in the market.
No Ginner can afford to be without one.
E. VAN WINKLE & CO., Manufacturers,
Atlanta, Ga.

—AND ALSO—

Seed Cotton Cleaners

Of equal merit. Send for catalogue and prices.

E. VAN WINKLE & CO.,

Box 146,

DALLAS, - - - TEXAS

Responsible agents wanted.
Name this paper.

G. H. DASHWOOD.

E. D. OESCH.

Dashwood & Oesch, DRUGGISTS,

Under Burt & Field's Office, 314 Main St., Fort Worth.
OPEN ALL NIGHT.

Cigars & Liquors. CHAS. SCHEUBER & CO
Wholesale Liquors and Cigars.
Sole Agents for Silurian Springs Waukesha Water
Ph. Best's keg and bottle beer. 404 Houston Street.

TO COTTON RAISERS.



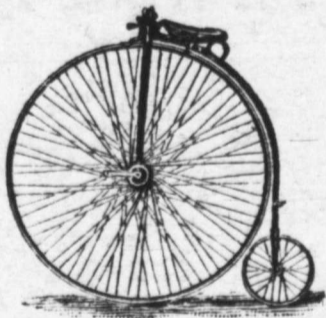
It is with great satisfaction that we announce to the cotton raisers that we are prepared to furnish them the J. T. Martin cotton picker—a little machine weighing less than two pounds, that can be used with one hand, gloves on or off that will do the work of from three to four men. An ordinary boy of 14 years of age can pick from 400 to 600 pounds of cotton per day with it with less labor than he can pick 100 pounds without it. It picks the cotton clean and clear from the boll, and from any point, high or low, on the stalk, or from the ground—sacks as it pick it and sacks nothing but the clean cotton, thus insuring a higher and better staple and no percentage left in the field. Retail price, \$10. All orders accompanied with the cash promptly filled.

HADLEY, HALL & CO.,
Sole Manufacturers,
DALLAS, - - TEXAS.

Best and Cheapest-Cold Water Sheep Dip



Prepared Roofing,
Cheap, durable, easily applied.
TEXAS STORAGE CO., 829 Main St., Dallas, Texas



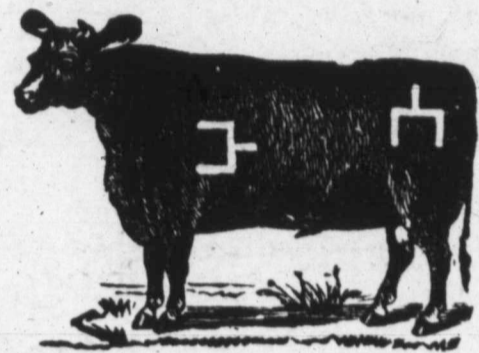
VICTOR BICYCLES,
TRICYCLES
—AND—
SAFETY BICYCLES,


Are in all respects the best and most reliable machines made. Send for illustrated catalogue, which will tell you about them. Mailed free.

Overman Wheel Co.,
MAKERS,
BOSTON, - - MASS.

The Espuela Land and Cattle Company.

(Limited.)
Postoffice, Dockums, Dickens County, Texas
S. W. LOMAX, Manager.

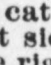




Have for sale two-year-old and yearling steers and heifers of their own raising, got by Shorthorn and Hereford bulls, in the straight Spur mark and brand. Horses branded  on left hip.

Matador Land and Cattle Company.

(Limited.)



H. H. CAMPBELL, superintendent. P. O., Teepe City, Motley county. Also cattle branded  on left side,  on the right side, also **NN** right side and **N** hip, marked crop right, underbit left; also **INK** left side, **T** hip, marked crop the left side, **T** hip, marked crop the left side, and split right; also **T41** on left side, marked underslope left; also **T** on each side, some of which have **K** on **T** left jaw or **T** on each hip, marked under-half-crop in each ear; also, same mark, branded **71** left side and **TIL** right side. Some of these also **TIL** have **K** on right jaw. Also **50** left side, **M** hip, or **A** on right hip, **side** in various marks; also **7** on **W** left shoulder, **7** on side, **7** hip, marked crop left ear; and also **NOA** on left side, in various marks, or marked crop and two splits in left and swallowfork in right, or crop and two splits in left only, or swallowfork in left and underbit in right. Also **V** or  in various marks.

Jno. S. Andrews & Co.
LIVE STOCK

—AND—
LAND DEALERS!
DALLAS, - - TEXAS.

SPECIALTY:
Cattle for Future Delivery.

20,000 one and two-year-old steers offered at a bargain. A few desirable ranch properties for sale. Loans negotiated on pasture land.

J. R. POLLOCK, M. D.
401 Main Street,
FORT WORTH, TEXAS.

Chronic Diseases a Specialty

Piles, Fistula, Fissure and all diseases of the rectum successfully treated.

Oxygen and Electricity
for the treatment of catarrh, bronchitis, consumption, dyspepsia, constipation and all diseases of the nervous system. Best of city references given upon application. Correspondence solicited.

Utter Manufacturing Co.,

ROCKFORD, ILLS.,

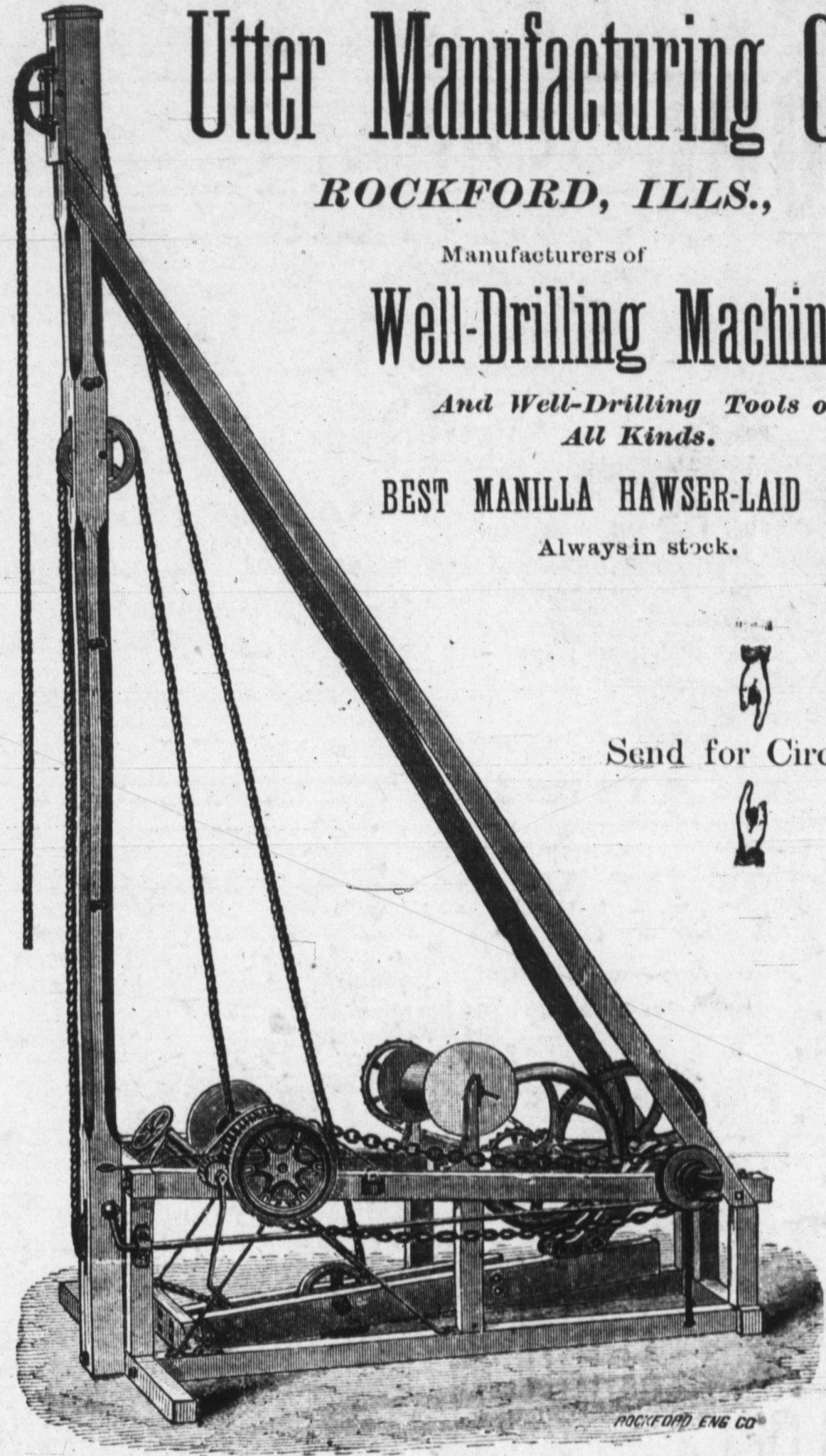
Manufacturers of

Well-Drilling Machinery

And Well-Drilling Tools of
All Kinds.

BEST MANILLA HAWSER-LAID ROPE

Always in stock.



Send for Circular

THE LIVE STOCK MARKET

—Of St. Louis.—

The Louis National Stock Yards,

Located at East St. Louis, Illinois, directly opposite the City of St. Louis.

Shippers should see that their stock is billed directly to the

"NATIONAL STOCK YARDS,"

ISAAC H. KNOX, CHAS. T. JONES,

PRESIDENT.

SUPERINTENDENT.

FLENNER & GAUSE, UNDERTAKERS

602 Houston St., FORT WORTH, TEX.

Open Day and Night. Orders by telegraph receive prompt attention.

M. B. LOYD, President. D. C. BENNETT, Vice-President. E. B. HARROLD, Cashier.

FIRST NATIONAL BANK,

Corner Houston & Second Streets, - - - Fort Worth, Texas.

CASH CAPITAL AND SURPLUS, \$430,000.

DIRECTORS—J. S. GoIwin, M. B. Loyd, J. D. Reed, Zane Cetti, D. C. Bennett, George Jack son, S. B. Barnett, E. B. Harrold and E. F. Ikard.

W. J. HAYNES.

H. F. LANGENBERG.

G. F. LANGENBERG.

W. J. HAYNES & CO., WOOL COMMISSION

Cor. Market and Commercial Streets,
ST. LOUIS, MO.

Liberal Advances on Consignments of WOOL, HIDES, PELTS, ETC.

REFERENCES: St. Louis Nat'l Bank, Dunn's and Bradstreet's Commercial Agencies.



FENNO BROTHERS & CHILDS

—WOOL— Commission Merchants,

117 Federal St., Boston, Mass.

Liberal cash advances made on consignments.
Special attention given to insure prompt sales
and quick returns. Information promptly
given by mail or telegram.

A. ARMENTROUT,

Corner of Weatherford and Throckmorton and corner of Weatherford and Lamar Streets
FORT WORTH, TEXAS.

Dealer in Wool, Hides, Etc.

Also keeps in stock a full line of
WEIR PLOW COMPANY'S FARM IMPLEMENTS,
Tennessee Wagons, manufactured by Cherry, Morrow & Co., Nashville, Tenn.; Bain Wag-
ons, H. W. Davis & Co.'s Buggies, Cincinnati, Ohio; The E. M. Miller Buggies, Quincy,
Ills.; Cook & Co.'s Buggies, Cincinnati, Ohio; The Racine Spring Wagons and
Carriages; The Minnesota Chief Thresher, and Traction Engines.

J. J. FUNSTEN.

W. F. FUNSTEN.

FUNSTEN & COMPANY, Wool Commission,

ST. LOUIS, MO.

References—First Nat. Bank, Abilene, Texas; First Nat. Bank, Albany, Texas; Belton
Nat. Bank, Belton, Texas; First Nat. Bank, Coleman, Texas; First Nat. Bank, Denison, Tex-
as; First Nat. Bank, Taylor, Texas; Waco Nat. Bank, Waco, Texas; Texas Live Stock
Journal, Fort Worth, Texas; St. Louis Nat. Bank, St. Louis, Mo.

Liberal advances made on consignments of wool, hides, etc.

John Owens,
Manager
WOOL
Department

ADOUE & LOBIT,
BANKERS
AND
Commission Merchants.

Galveston

W. A. ALLEN.

Established 1854.

M. EVANS.

W. A. ALLEN & CO., CHICAGO, ILL.—WOOL—COMMISSION.

142-146 Kinzie St., Corner La Salle Ave., CHICAGO, ILL.

Send for their Market Reports. References:—The Martin Brown Co., Jos. H. Brown, Fort Worth,
Tex.; Atlas National Bank of Chicago; C. F. Grey, Pres. Hide and Leather Bank, Chicago.

J. M. FROST, President.

T. S. FOSTER, Vice-President.

CHAS. WIGGINS, Treas.

WESTERN WOOL COMMISSION COMPANY,

Commission Merchants for exclusive sale of

—WOOL—

104-106 North Main St., 105-107 North Commerce St., ST. LOUIS, MO.

Liberal advances made on consignments. Information gladly furnished by mail or tele-
graph.

WOOL

E. C. KRUSE & COMPANY,
Successors to EVANS & HUNTLEY,
Commission Merchants

For the sale of Wool, Hides, Pelts, Tallow, Furs, Etc.,

318 N. Commercial St., - - - St. Louis, Mo.

WOOL

W. B. WESTCOTT & CO.
Commission Merchants,

Soliciting consignments of Hides, Wool, etc.
Write for market reports.

202 North Main Street, - - - ST. LOUIS, MO.

Refer to Texas Live Stock Journal.

WOOL

H. G. BRADY & CO.,
Dallas, Texas,

Dealers in WOOL, HIDES, PELTS, etc. Special attention
given to consignments. Correspondence from,
interior solicited.

HIDES

—THE—

KANSAS CITY STOCK YARDS

Are by far the most commodious and best appointed in the Missouri Valley,
with ample capacity for feeding, weighing and shipping Cattle, Hogs,
Sheep, Horses and Mules. They are planked throughout, no yards
are better watered, and in none is there a better system
of drainage. The fact that

HIGHER PRICES ARE REALIZED HERE

Than in the East is due to the location at these yards of

EIGHT PACKING HOUSES,

with an aggregate daily capacity of 3300 cattle and 27,200
hogs, and the regular attendance of sharp, competitive buy-
ers for the packing houses of Omaha, Chicago, St. Louis,
Indianapolis, Cincinnati, New York and Boston.

All the sixteen roads running into Kansas City have di-
rect connection with the yards, affording the best accommo-
dation for stock coming from the great grazing grounds of
all the Western states and territories, and also for stock
destined for Eastern markets.

The business of the yards is done systematically and with
the utmost promptness, so that there is no delay and no
clashing, and stockmen have found here, and will continue
to find, that they get all their stock is worth with the least
possible delay

C. F. MORSE, E. E. RICHARDSON, H. P. CHILD,

Gen'l Manager.

Treasurer and Secretary.

Superintendent.



F. H. & H. L. DORAN,

Wholesale and Retail Butchers and General Dealers in

Beef, Mutton, Pork, Poultry,

FISH AND ALL KINDS OF GAME.

The best general market in the city. Correspondence solicit-
ed from all points in the West and Southwest, and in-
formation in regard to the markets promptly
and correctly given. We buy in any and
all quantities and pay top prices.

728 Main St., Dallas, Tex.

Wm Macnaughtan's Sons,
Wool Commission Merchants,
108 & 110 South Fifth Avenue
New York
Mohair.

WM. M. PRICE.

HENRY J. GRIMM.

WOOL

PRICE-GRIMM COMMISSION CO.
COMMISSION MERCHANTS,

108 & 110 N. Main Street, - - ST. LOUIS, MO.
Liberal Advances Made on Consignments.

HIDES