

Important to Stockmen.

On July 1st and thereafter the TEXAS LIVE STOCK JOURNAL will publish a daily market report edition, giving the sales of Texas cattle, hogs and sheep at the principal market centers on the same day.

KANSAS CITY LETTER.

Good Market—Strong Demand for Fat Cattle—Sale of Texas Cornfed Steers—Market for Texas Horses—Personal, Etc.

BRANCH OFFICE, TEXAS LIVE STOCK JOURNAL, KANSAS CITY, MO., June 22, 1886.

Receipts of live stock for the past week has been rather heavier than the week before with prices a shade higher. The demand for good fat cattle of medium weight is strong and has been so during the entire season.

Good steers, 1350 pounds and over have sold from \$4.70 to \$5.10. Cows 1250 pounds, \$3.60 to \$3.75; 51 Texas cornfed, 1280 pounds, \$4.60; 102 Col. half-bred, 1300 pounds, \$4.62 and 96 of the same grade weighing 1319 pounds, brought \$4.75.

Good steers, 1350 pounds and over have sold from \$4.70 to \$5.10. Cows 1250 pounds, \$3.60 to \$3.75; 51 Texas cornfed, 1280 pounds, \$4.60; 102 Col. half-bred, 1300 pounds, \$4.62 and 96 of the same grade weighing 1319 pounds, brought \$4.75.

The rapid construction of the two lines of railroad into Texas from this city causes thoughtful men both here and in Texas, to consider Kansas City as the coming great market, and Texas as the great field from which we are to draw our chief supplies.

Attention is called to the advertisement of Dr. H. J. Whittier of Kansas City, which appears in this issue of the JOURNAL. He makes a specialty of skin and blood diseases.

The Ostrich Business. (See W. Peck in Pecks Sun.) But you'd a dide to see pa at the ostrich farm. You know they raise ostriches there the same as we raise hens here, and pick feathers often en.

From the Chicago Tribune of May 28, 1886: "A receiver in this city yesterday forwarded to a shipper in Nebraska, five cents per bushel as his share on a consignment of corn. The receiver had been sold in store here at twenty-seven cents per bushel, twenty-two of which went to pay railroad cost of transportation, the storage and commission. In another case this week the Nebraska shipper received the magnificent sum of \$26.50, being the whole amount coming to him from the sale of a car load of some 350 bushels of corn, the railroad freight on which to this city was \$147.50.

Kansas City Stock Yards. KANSAS CITY.

Are far the most commodious and best appointed yards in the Missouri Valley, with ample capacity for feeding, weighing and shipping Cattle, Hogs, Sheep, Horses and Mules. No yards are better watered, and in none is there a better system of drainage.

TOTAL YEARLY RECEIPTS: Table with columns for Year, Cattle, Hogs, Sheep, Horses & Mules, and Cars. Data spans from 1871 to 1885.

HIGHER PRICES ARE REALIZED Here than in the markets east. All the roads running into Kansas City have direct connection with the yards, which thus afford the best accommodations for stock coming from the great grazing grounds of Texas, Colorado, New Mexico and Kansas.

KANSAS CITY-- Stock Yards Company Horse & Mule Market, F. E. SHORT & CO., Managers.

Have always on hand a large stock of all grades of HORSES AND MULES. Which are bought and sold on commission by the head and in car loads. In connection with the sales market are Large Feed Stables and Pens.

Complex block for D. THOMSON & CO. - Live Stock - COMMISSION MERCHANTS. Includes text about stock commission and services.

Complex block for D. L. JONES & BROS. - Market reports furnished free. Includes text about market reports and stock services.

Complex block for THE FISH & KECK CO., LIVE STOCK COMMISSION MERCHANTS. Includes text about live stock commission and services.

Complex block for WHITE & HOLMES, LIVE STOCK COMMISSION MERCHANTS. Includes text about live stock commission and services.

Complex block for C. G. MEANS & SONS, Live Stock Commission Merchants. Includes text about live stock commission and services.

Complex block for MCCOY & UNDERWOOD, Live Stock Commission Merchants. Includes text about live stock commission and services.

Complex block for G. W. PANGLE, M. D., READER OF DISEASES OF MEN AND WOMEN. Includes text about medical services.

Complex block for Centropolis Hotel. Includes text about hotel services and location.

Complex block for The National Kansas City Business College. Includes text about business education.

Complex block for The Oldest Jewelry House in Kansas City. Includes text about jewelry services.

Complex block for M. B. WRIGHT, Kansas City, Missouri. Includes text about jewelry and watch services.

Complex block for SURE CURE. Includes text about medical treatments and services.

Kansas City's Largest and Best Clothing House.

To Range and Stockmen, And wearers of clothes. In making our bow to the 280,000 readers of this JOURNAL, we want to say we are white men and Americans, in name and nature.

Now then when you get acquainted with us and our way of doing business, you will be pleased to know us. For we are Square Dealers, tireless, restless workers after trade with strictly one price.

Complex block for Herrick Clothing Co. Includes text about clothing services and location.

Complex block for KANSAS CITY HAY PRESS CO. Includes text about hay pressing services.

Complex block for Dr. WHITTIER, The Leading and Most Successful Physician and Surgeon. Includes text about medical services.

Complex block for FIRST NATIONAL BANK. Includes text about banking services.

Complex block for COLUMBUS BUGGY COMPANY. Includes text about buggy services.

Complex block for NATIONAL Bank of Kansas City. Includes text about banking services.

Complex block for G. W. PANGLE, M. D., READER OF DISEASES OF MEN AND WOMEN. Includes text about medical services.

Complex block for CITY HOTEL. Includes text about hotel services.

Complex block for A TRUE TEST. Includes text about product testing and services.

Complex block for J. H. BROWN. Includes text about services.

Complex block for DO YOU FARMERS' NAMES. Includes text about services for farmers.

Complex block for GEORGETOWN RANCH COMPANY. Includes text about ranch services.

Complex block for S. B. BURNETT. Includes text about services.

Complex block for T. M. & T. A. COLEMAN. Includes text about services.

Complex block for CHILDRESS LAND AND CATTLE COMPANY. Includes text about land and cattle services.

Complex block for S. B. BURNETT. Includes text and an image of a cow.

Complex block for T. M. & T. A. COLEMAN. Includes text and an image of a cow.

Complex block for CHILDRESS LAND AND CATTLE COMPANY. Includes text and an image of a cow.

Complex block for CRESCENT H. RANCH. Includes text and an image of a cow.

Complex block for DICKY CATTLE COMPANY. Includes text and an image of a cow.

Complex block for ESTADO LAND AND CATTLE CO. Includes text and an image of a cow.

Complex block for THE ESPUELA LAND & CATTLE CO. Includes text and an image of a cow.

Complex block for CITY HOTEL. Includes text and an image of a cow.

Complex block for A TRUE TEST. Includes text and an image of a cow.

Complex block for J. H. BROWN. Includes text and an image of a cow.

Complex block for DO YOU FARMERS' NAMES. Includes text and an image of a cow.

Complex block for GEORGETOWN RANCH COMPANY. Includes text and an image of a cow.

Complex block for S. B. BURNETT. Includes text and an image of a cow.

Complex block for T. M. & T. A. COLEMAN. Includes text and an image of a cow.

Complex block for CHILDRESS LAND AND CATTLE COMPANY. Includes text and an image of a cow.

Help! Help! Help! Peoples Employment Office...

CAPERA & BROTHER, Confectioneries...

J. T. HARNES, Land and Live Stock Broker...

A. WYSCHEZKI & CO., LAND AND GENERAL AGENTS...

BOOK-KEEPING. Most thorough and practical school...

SHORTHAND taught by an expert court reporter...

BARNES & HAYWARD, Short-Hand and Business College...

HARTSOOK & PATTON, ATTORNEYS...

TEXAS LAND AND CATTLE COMPANY (\$300.00 REWARD)

GLOSS MOUNTAIN RANCH. Eagle Chief and Chimarron brands...

PILES. Instant relief. Final cure...

HORSE-SHOE RANCH. Range, Canadian river, postoffice...

RANCHO DE LOS LAURELES. Various other prominent brands...

UNDERWOOD, CLARK & CO. Various other prominent brands...

E. C. SUGG & BRO. Various other prominent brands...

S. R. E. LAND AND CATTLE COMPANY. Various other prominent brands...

E. G. THURMOND. Various other prominent brands...

Various other prominent brands...

Various other prominent brands...

Various other prominent brands...

Various other prominent brands...

Various other prominent brands...

J. C. SCOTT, Attorney at Law...

R. M. WYNNE, Attorney at Law...

G. W. Alexander, Notary Public...

The City National Bank, FORT WORTH, TEXAS.

THE FIRST NATIONAL BANK, FORT WORTH, TEXAS.

THE FIRST NATIONAL BANK, FORT WORTH, TEXAS.

THE FIRST NATIONAL BANK, FORT WORTH, TEXAS.

THE FIRST NATIONAL BANK, FORT WORTH, TEXAS.

THE FIRST NATIONAL BANK, FORT WORTH, TEXAS.

THE FIRST NATIONAL BANK, FORT WORTH, TEXAS.

THE FIRST NATIONAL BANK, FORT WORTH, TEXAS.

THE FIRST NATIONAL BANK, FORT WORTH, TEXAS.

THE FIRST NATIONAL BANK, FORT WORTH, TEXAS.

THE FIRST NATIONAL BANK, FORT WORTH, TEXAS.

THE FIRST NATIONAL BANK, FORT WORTH, TEXAS.

THE FIRST NATIONAL BANK, FORT WORTH, TEXAS.

THE FIRST NATIONAL BANK, FORT WORTH, TEXAS.

THE FIRST NATIONAL BANK, FORT WORTH, TEXAS.

THE FIRST NATIONAL BANK, FORT WORTH, TEXAS.

THE FIRST NATIONAL BANK, FORT WORTH, TEXAS.

THE FIRST NATIONAL BANK, FORT WORTH, TEXAS.

THE FIRST NATIONAL BANK, FORT WORTH, TEXAS.

TREES, SHRUBS, ETC. How to Plant Them, and Care for Them.

H. C. Bliss in Racine Agriculturist. This is about the season when agricultural papers are flooded with amateur articles...

As to whether it is better to buy your stock of the home nurseries...

Now both of the bills were the same in number, variety, etc., and should have done equally well.

Further along in this article I will try to tell you how to plant, but all the directions on earth won't stop a tree from dying if you don't follow them.

Every agricultural paper gives usually in the spring these directions...

Many nurserymen now give as a premium a copy of some fruit book...

kind finally die; for this reason also the bottom of the hole should be mellow...

As soon as it settles away, fill in the hole with dirt so it can't bake...

THE BRAHMIN CATTLE. Saddle Oxen and Pack Oxen in India Superior to Horses and Mules.

A writer, well informed in regard to the Brahmin or Zebu cattle in India...

Buffon observed that the ox without the dorsal hump is thinly distributed toward the region of the south...

The following interesting facts are taken from "Knight's Pictorial Museum of Animated Nature."

considered that an eighth or sixteenth Brahma made a decided improvement.

Mr. Albert Montgomery of New Orleans has imported from India two Brahma bulls...

Col. Peters of Georgia, and the great stock breeder of that state...

Men and Women Who are constantly nervous are, in nineteen cases out of twenty, dyspeptic.

CONSUMPTION CAN BE CURED. DR. HALL'S BALSAM.

RELIEF! FORTY YEARS A SUFFERER FROM CATARRH.

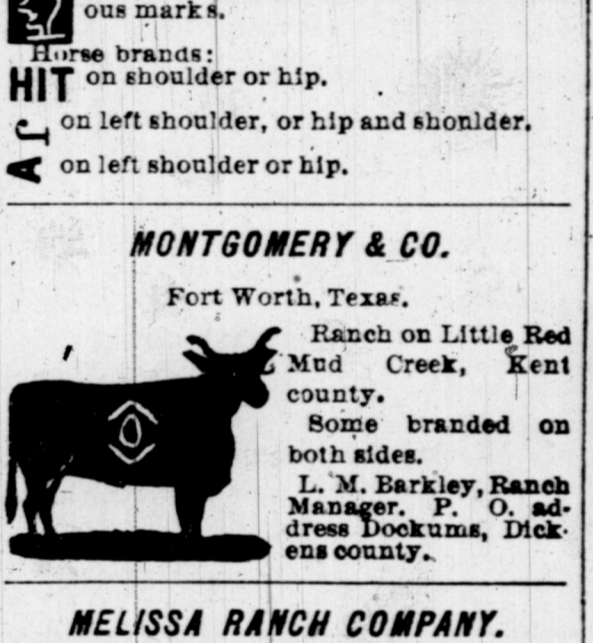
The FRANCKLYN Land & Cattle Co.



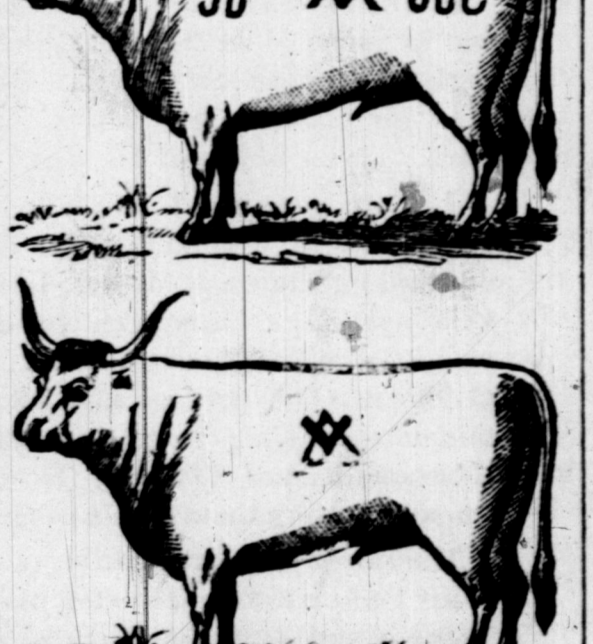
The leading mark and brand of this herd is cross off left ear, X left jaw...



AMERICAN BRAND. Horse and Mule Brands.



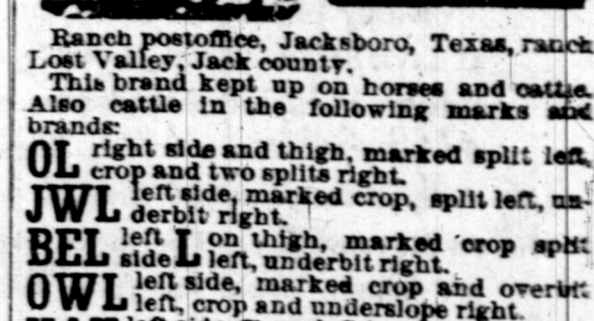
MONTGOMERY & CO. Ranch on Little Red Mud Creek...



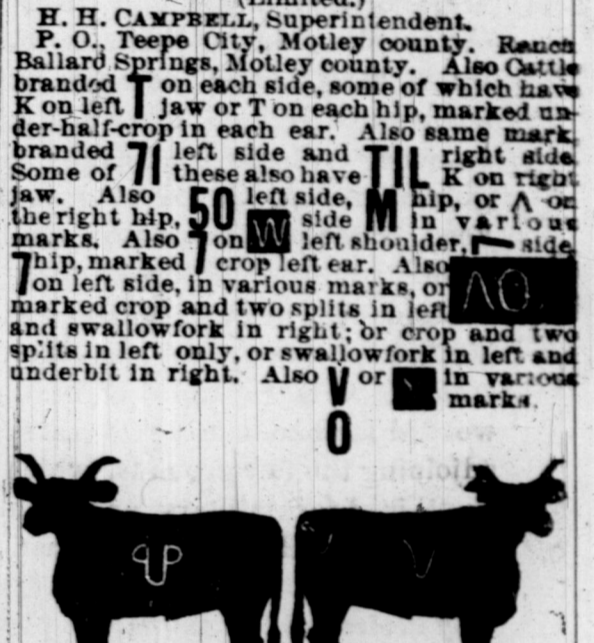
MELISSA RANCH COMPANY. Postoffice Kerrville...



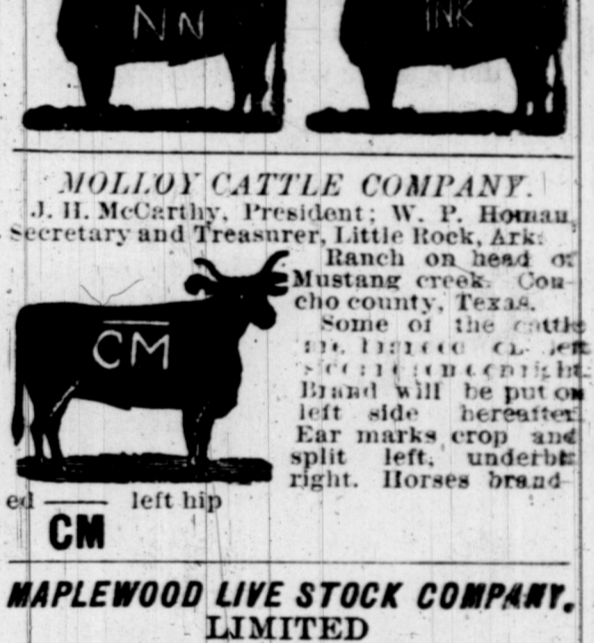
LOVING CATTLE COMPANY.



Ranch postoffice, Jackboro, Texas, ranch postoffice, Jackboro, Texas...



MATADOR LAND AND CATTLE CO. H. H. Campbell, Superintendent.



MOLLY CATTLE COMPANY. J. H. McCurdy, President...



MAPLEWOOD LIVE STOCK COMPANY. Limited. Postoffice Waco...



Various other prominent brands...

Various other prominent brands...

Various other prominent brands...

Various other prominent brands...

Various other prominent brands...

Various other prominent brands...

Various other prominent brands...

Various other prominent brands...

Various other prominent brands...

Various other prominent brands...

