

MEMBER 1980
 TEXAS PRESS ASSOCIATION

The Lynn County News

20¢


Oldest Business Institution In Lynn County

NOVEMBER 20, 1980

TAHOKA, LYNN COUNTY, TEXAS, THURSDAY, NOVEMBER 20, 1980

10 PAGES IN ONE SECTION PLUS INSERT

WOODWORK



by dalton

SURE HOPE that all of you folks who had to snow off the walks this week and who had to slip around in the mush and slush remember you complained about the hot weather last week.

Not saying I didn't complain about the heat, but it was extreme, but even then I usually tried to insert the comment that hot weather is better than cold. Nobody likes it to be 100 degrees here or four weeks in a row, but it's worse to be 5 degrees for the same amount of time.

Didn't have 5 degrees? Well, no, but the wind chill factor was below zero, and if you were outside Sunday, you could easily believe it.

Life is pretty, but only through the picture window. That is a famous statement by the noted Siberian philosopher E. Froziz Tailoff.

EDITORIAL in the dailies Monday by an Associated Press writer remarked on the current idiocy about the show "Dallas" and "Who Shot J.R." This writer said she didn't know who shot J.R. and more, she didn't care. She also said she had seen the show, but had heard enough to know she didn't want to see it.

That, I'd say amen. Dirk West, I think it was the best comment on the "Who Shot J.R." question; he said they should have shot the bastards.

Never seen an episode of Dallas, nor do I know who shot J.R. I did see about 10 minutes of a segment and turned to something else. It's simply a soap opera, and if it has any redeeming qualities, I've never heard of them. I really can't see why anyone would watch it, but someone told me a lot of folks left the Slaton-Post football game (which was very close) early last week so they could watch "Dallas."

That I judge that it must be on the tube on Sunday nights. I really don't know when it's on.

Only "Dallas" I watch is the Cowboys, and I don't know why even that is pretty disgusting (to me, Denver?).

HOUSEWIFE ON HWY. 87 notes that she complains because they have to take out the trash. But they should remember that we had to take out that garbage.



WINTER ALREADY--The home of Mr. and Mrs. Mike Huffaker and girls at the corner of 2nd and Ave. K had this wintry look after the big 8-to-9-inch snow Sunday. The snow was very wet and expected to be beneficial to crops and detrimental to carpets.

(LYNN COUNTY NEWS PHOTO)

Dogs, Tracy White Wind Up Good Season

BY DALTON WOOD

The Tahoka Bulldogs wound up another fine football season Friday night with a 43-0 blasting of Roosevelt, ending up with an 8-2 record, but going nowhere outside of district as unbeaten Slaton made the title a sure thing with a 21-20 squeaker over Post.

Tracy White carried the ball remarkably 44 times against Roosevelt, gaining 232 yards and scoring five touchdowns, but despite the efforts of the super running back, he was unable to crack the lofty plateau of 2,000 yards in a season.

Had White not missed one game--Ballinger--he almost certainly would have managed 2,000. He finished up with 1,873 yards on 274 carries in his nine games, or an average of 208 yards per game.

Strong Defense

The Bulldogs, with the top defensive football team on the South Plains, allowed

Roosevelt only 22 total yards in the cold breeze Friday night, and just 3 first downs.

It was not a runaway in the first half, however. Tahoka's first punt was blocked by Patrick Vasquez of Roosevelt and the Eagles took over at the Bulldog 6 with a great chance to score first. But good defensive plays by Johnny Alvarado, Ronald Lusk and Jacky Jolly stopped the Eagles with a fourth and goal at the 2. Roosevelt then tried a field goal which was blocked by Luchion Thompson.

Later in the quarter, Tahoka generated a drive featuring a 25-yard run by White, who scored from the 1 at 2:47. Kevin Elmore kicked the first of five extra points--a perfect night for him, since the Dogs once elected to throw for 2 points.

Aerial Game

Quarterback Mark Hudlin's throwing arm accounted for the second Bulldog TD in the second period. He threw for

18 yards to back James Wells, then passed 6 to End Johnny Alvarado in the end zone. It was 14-0 at halftime.

Tahoka added two more scores in the third, on runs of 15 and 1 by White. Marcus Del Toro and Luchion Thompson recovered fumbles for Tahoka in this period.

In the fourth, White ran 10 and 4 for touchdowns, the last one coming after Hudlin intercepted a pass and returned it to the Eagle 28. Hudlin passed to Del Toro for 2 points after the last TD.

Hudlin ran 12 times for 76 yards in the game. For the season, White, probably the finest running back in Tahoka High School history, scored 182 points on 30 touchdowns and one

2-point run. A 190-pounder who was never injured, the elusive senior displayed some fantastic running. His season high for one game was 412 yards against Cooper. He went over 300 yards against Frenship and scored 7 touchdowns in that game. Coach A.D. Shaver and aides are convinced he is a prime college prospect.

White was certainly not the only star of the good Tahoka team this season. Several other players did excellent work on both offense and defense, with the leader on defense being 200-pound Jacky Jolly at middle linebacker. Jolly made a lot of tackles in every game and was a fierce blocker on offense from his guard position. He also should attract the attention of college scouts.

Tubb School Will Get New Boiler

Will Get New Boiler

Tahoka School Board last Thursday moved to investigate the possibility of selling lots for delinquent property taxes, voted to replace a leaky boiler in Tubb Elementary School and accepted the resignation of Mike Reid as vocational agriculture teacher, effective Jan. 1.

The board also accepted an annual audit report from Orland Gilbert, representing an accounting firm.

Also discussed was progress on rebuilding the recently burned home economics building. Another meeting with insurance adjusters on the building was held Wednesday morning. The board also expressed appreciation to the Tahoka Fire Dept. for their efforts to save the structure.

Supt. Jim Coulston told the board that two serious leaks in the boiler at Tubb necessitated its replacement. It was voted to replace the boiler at an approximate cost of \$11,000.

Alta Thomas and Janie Isbell were approved as substitute teachers.

Heavy Snow Chills Area

The fall's first real blizzard, accompanied by an 8-inch snow, swept across Lynn County Saturday night and Sunday, closing many roads, the schools, and stopping cotton harvest. Some areas of the county received more than recorded in Tahoka.

From Saturday night until Monday morning, 8 inches was measured in Tahoka producing .58 inch of water in the Weather Service rain gauge. Due to blowing snow, the gauge, usually considered very accurate, may not have caught it all. An

8-inch cross section of snow melted by the local observer produced .72 inch of moisture, but the .58 reading must go in the record book.

This brings total precipitation for the year in Tahoka to 15.01 officially.

Earlier Snows

This was probably the biggest November snow, or one of the biggest. However, a total of 10 inches fell in November 1943 and again in 1947. In November, 1968, Tahoka recorded 6 1/2 inches and 7 inches fell Nov. 12-13, 1976.

Some slight damage, farmers report, may have been done to cotton still on the stalk, but the hard freeze of 18 degrees Tuesday morning will help shedding of leaves of stalks which had not been totally killed by the Oct. 29 freeze. One local ginners estimates the crop is at least 60 percent harvested, but says it will be several days before farmers can get back in the field with strippers.

On the plus side, the snow will help the land for next year's crop.

Highway Department men worked all Sunday night clearing main roads. By Tuesday, most of them were clear but slick in places. Drifted snow still blocked some rural roads.

Schools were dismissed Monday, but most students were back at classes Tuesday.

Early Paper Next Week

The Lynn County News will be published one day early next week, on Wednesday, the day before Thanksgiving. This means all news items and advertising must be received by 4 p.m. Monday.

Most businesses in the county will be closed Thanksgiving, with many also planning to close Friday. Some grocery stores and other businesses will be open Thanksgiving, however.

The News will be closed both days.

Smith Acting District Judge

Truett Smith of Tahoka is currently serving as district judge for the 121st district, which includes Terry, Hockley, Cochran and Yoakum Counties.

He was appointed to serve on the bench in that district Oct. 3, with the appointment scheduled to expire Dec. 31, at which time the elected judge is supposed to return to duty.

Turkey Dinner For Senior Citizens Set

Lynn County Pioneer Club Assn. will serve a Thanksgiving dinner at noon Sunday for senior citizens. This will be the holiday meal, according to director Catherine Barham, who said the center would not serve a meal on Thursday, Thanksgiving Day.

The menu will include turkey, giblet gravy, mashed potatoes, cranberry sauce, green beans, hot rolls and butter, fruit cocktail, coffee, milk or tea.

Any persons planning to eat the meal at the senior citizens center are asked to call 998-5264 by 5 p.m. Friday, so the personnel will know how many to prepare for.

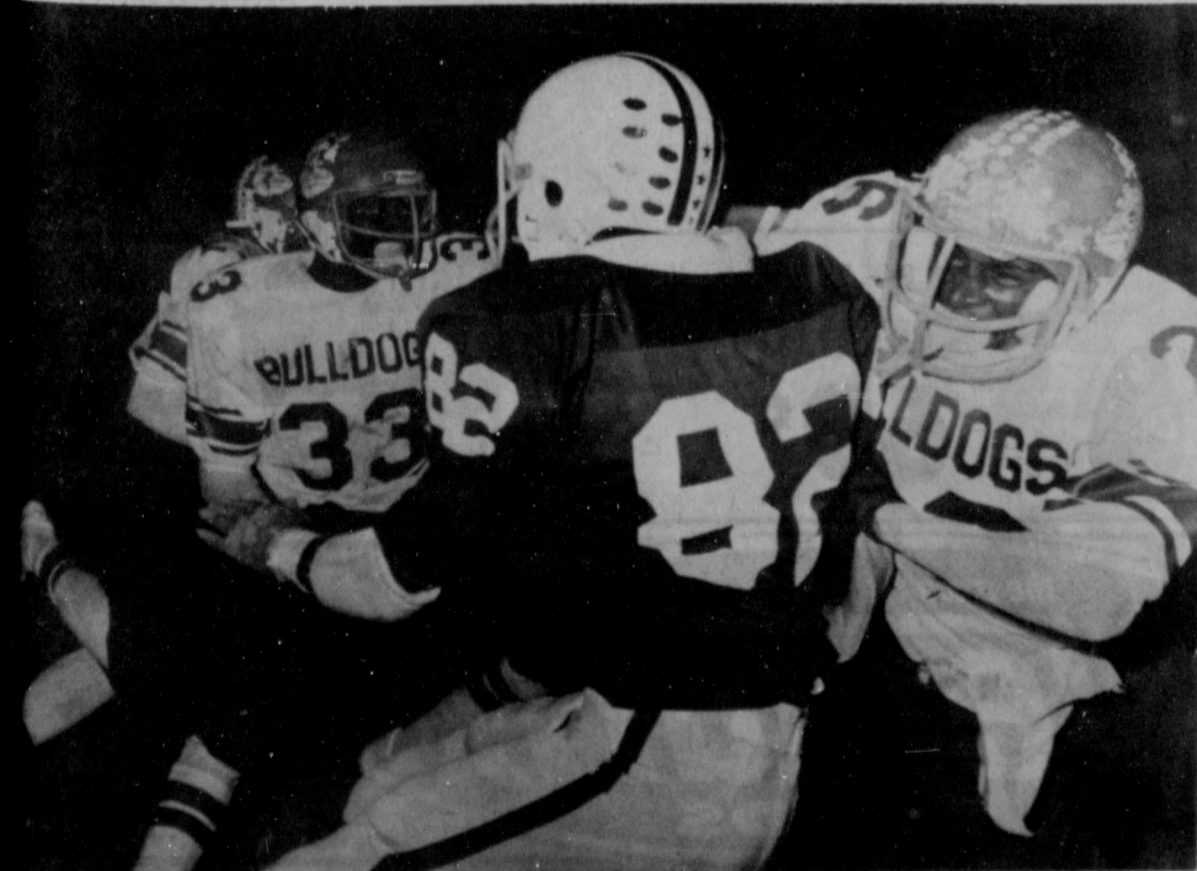
Persons other than senior citizens also may eat at the center.

Tahoka Weather

DATE	HIGH	LOW
Nov. 13	70	54
Nov. 14	68	36
Nov. 15	42	36
Nov. 16	42	29
Nov. 17	31	27
Nov. 18	36	18
Nov. 19	49	20

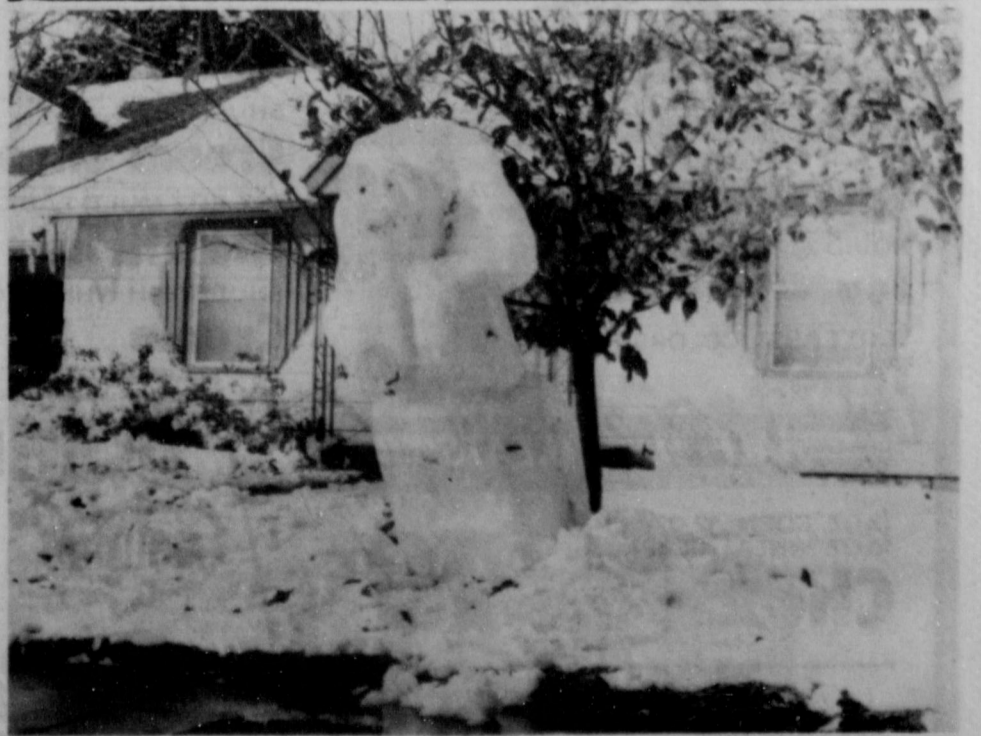
DOG TRACKS

TAHOKA	ROOSEVELT	
26	First downs	3
336	Yds. rushing	22
39	Yds. passing	0
4-6-1	Completed by	0-6-1
0	Fumbles lost	3
3-22	Punts, avg.	5-31
9-95	Penalties	3-15
6	Penetrations	1



HEMMED IN--Tim Sheppard (82) of Roosevelt is surrounded by a couple of tough Bulldogs, Danny Thompson (33) and James Wells (26), who kept Sheppard out of the play as Tracy White runs by in the background. Tahoka won the final game of the season 43-0.

(LYNN COUNTY NEWS PHOTO)

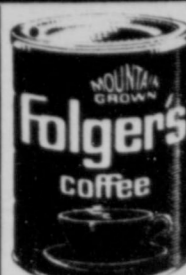


SNOW PERSON--This snow person, dubbed "Dolly Parton" by sculptors (?) Ricky Edwards and son, was in the front yard of the Edwards home, 1820 N. 3rd, after the big early-season snowstorm last Sunday.

(LYNN COUNTY NEWS PHOTO)

Shop Venture for Bountiful Bargains

ALL GRINDS MOUNTAIN GROWN




Folger's Coffee 1 LB. CAN **\$2.39**

PURE VEGETABLE



Crisco Shortening 3 LB. CAN **\$1.99**



Coca Cola 6 PACK 32 OZ PLUS DEPOSIT **\$1.89**
Tab or Sprite

SWANSON

Chicken Broth 14 1/2 OZ. CAN **29¢**

SHURFINE WHOLE OR STRAINED

Cranberry Sauce 16 OZ. CAN **39¢**

SHURFRESH SELF-BASTING



Turkeys **79¢** LB.
USDA GRADE A WITH TENDER-TIMER FINEST QUALITY 18-22 LBS. AVG.

HORMEL CURE 81 BONELESS FULLY COOKED 3-5 LB. AVG.

Half Hams THE REGISTERED BONELESS HAM LB. **\$2.79**

USDA GRADE A SHURFRESH 4-6 LB. AVG.

Baking Hens LB. **69¢**

COUNTRY PRIDE HICKORY 8-10 LB. AVG.

Smoked Turkey LB. **\$1.49**

SUPER SELECT FRESH BOSTON BUTT

Pork Roast LB. **\$1.49**

HORMEL BLACK LABEL THE SUNDAY BACON

Sliced Bacon 1 LB. PKG. **\$1.79**

WILSON CERTIFIED SLICED

Meat Bologna 1 LB. PKG. **\$1.59**

WILSON

Meat Franks 12 OZ. PKG. **\$1.09**

HORMEL LITTLE SIZZLERS PORK

Link Sausage 12 OZ. PKG. **\$1.29**

WASHINGTON GOLDEN DELICIOUS



Apples **3 \$1** LBS.

PRODUCE SPECIALS

SWEET **Yellow Onions** LB. **19¢**

CALIFORNIA SUNKIST **Navel Oranges** LB. **39¢**

WASHINGTON **D'Anjou Pears** LB. **39¢**

CALIFORNIA GREEN PASCAL **Celery** LRG. STALK **39¢**

EAST TEXAS PUERTO RICAN **Yams** LB. **43¢**

LARGE EMERALD **Walnuts** LB. **98¢**

GROCERY SPECIALS

GREEN GIANT CUT GREEN **Asparagus** NO. 1 CAN **99¢**

LE SUER MINI **Sweet Peas** 17 OZ. CAN **49¢**

GREEN GIANT SLI./WHOLE **Mushrooms** 2 1/2 OZ. JAR **59¢**

DEL MONTE FRUIT **Cocktail** 17 OZ. CAN **69¢**

DEL MONTE BARTLETT HALVES **Pears** 16 OZ. CAN **69¢**

KRAFT CATALINA OR 1000 ISLAND **Dressing** 8 OZ. BTL. **79¢**

SCHILLING RUBBED **Sage** 7/16 OZ. CAN **59¢**

PRESTO TURKEY **Roasting Bags** 2 CT. PKG. **69¢**

REYNOLD'S HEAVY DUTY **Aluminum Foil** 18x25 ROLL **89¢**

KLEENEX DINNER **Napkins** 50 CT. PKG. **79¢**

BETTY CROCKER MIX **Brownies** 22 OZ. BOX **1.19**

HERSHEY'S SEMI-SWEET OR MILK **Chocolate Chips** 6 OZ. PKG. **99¢**

IMPERIAL STA-SOFT BRN. OR PWD **Sugar** 2 LB. PKG. **1.19**

KRAFT MINI **Marshmallows** 2 6 1/2 OZ. PKG. **69¢**

SUGARY SAM CUT



Yams 24 OZ. CAN **59¢**

DEL MONTE



Pumpkin 16 OZ. CANS **2.89**

KRAFT



Miracle Whip QT. JAR **\$1.29**

SHURFINE WHOLE



Green Beans 15 1/2 OZ. CANS **2.79**

THIS WEEK'S LUCKY TURKEY WINNERS

Dennis Vardeman

Clealis Freeman

Register today for two more turkeys to be given away this Tuesday.

Register Today At Summit Venture Foods

DAIRY AND FROZEN FOODS

PET-RITZ CUSTARD **Pumpkin Pie** 26 OZ. PKG. **99¢**

SHURFINE WHIPPED **Topping** 8 OZ. BOWL **49¢**

GREEN GIANT CH. SAUCE CAULIF. **Broccoli** OR 10 OZ. PKG. **79¢**

PILLSBURY CRESCENT **Dinner Rolls** 8 CT. CAN **79¢**

PILLSBURY P. BUT/SUG/OAT/CHOC. CHIP **Cookies** ROLL **\$1.29**

KRAFT **Velveeta** 2 LB. BOX **\$2.99**

SHURFRESH **Cream Cheese** 8 OZ. PKG. **69¢**

PET-RITZ MULTI PACK **Pie Shells** 5 CT. PKG. **\$1.49**

SHURFRESH WHIPPING **Cream** 1/2 PINT CTN. **39¢**

HEALTH & BEAUTY AIDS

VASELINE LOTION **Intensive Care** 10 OZ. BTL. **\$1.49**

VASELINE INTENSIVE CARE **Bath Beads** 15 OZ. BOX **\$1.29**

HAIR SPRAY REG/EX. HOLD **Rave** PUMP 8 OZ. BTL. **\$1.99**

REG./LEMON POLISH REMOVER **Cutex** 4 OZ. BTL. **69¢**

COTTON SWABS **Q-Tips** 170 CT. BOX **99¢**

LIQUID EX. STRENGTH **Tylenol** 8 OZ. BTL. **\$1.99**

SHELF SPECIALS

FAMILY SIZE 25" OFF LBL. **Cascade** 65 OZ. BOX **\$2.49**

LIQUID 20" OFF LABEL **Joy** 32 OZ. BTL. **\$1.49**

SCOTT ASST. COLORS/PRINTS **Towels** JUMBO ROLL **69¢**

HALF TIME TREATS

12 OZ. CORN/ 12 OZ. RICE/ 15 OZ. WHEAT CEREAL **Chex** BOX **99¢**

ALL VARIETIES **Pringles** 9 OZ. PKG. **\$1.19**

SUMMITT the price fighter



VENTURE FOODS

WE RESERVE THE RIGHT TO LIMIT QUANTITY WE REDEEM USDA FOOD STAMPS

WE GIVE AND REDEEM GOLD BOND STAMPS DOUBLE ON WEDNESDAY

Prices Effective Nov. 20-26

Tahoka's Full Service Supermarket

JOLLY WELL BLOC
Goode of Roosevelt as

County
Food Show

Lynn County 4-H Food
will be held Saturday,
at the Lyntegar
Room. Contestants
show should
9:45 a.m. with their
at 10 a.m. The
will be held at the
of judging and
which should be

Tahoka
Oldest Business In

LYNN COUNTY
ashed weekly on
day of each year, a
location is 1614
888. Entered as se
at Tahoka, Texas
Postmaster: send
Box 1170, Tahoka,

SUBSCR
and Adjoining Cou
here in Texas
of Texas

Wood
Jolly
D. Phillips

It?

"I built a n
use the hea
I like the
because it's
I like to ma
rice, my dr
where... ai
systems w
that proble
The heat p
because it
I been very s

The
hea
out
pur

SOU

Tahoka Boys To Compete In Reese AFB Tourney

Lt. Col. George D. Wilson, project officer for the sixth annual Reese Air Force Base Christmas Classic High School Basketball Tournament, has announced that 15 teams are scheduled to play in the Dec. 18-20 event. One slot for a 16th team remains open in the small school (Commander's Trophy) division due to the withdrawal of Fabens from the Classic.

Any coach interested in entering his team in the Classic may do so by contacting Lt. Colonel Wilson at Reese AFB at (806) 885-3169, or at home at (806) 794-5682. Fabens, from district 5-AAA, was scheduled to compete in what, even without them, is the strongest and most representative field ever to play in a West Texas high school basketball tournament. The field in the Commander's Trophy Division will match teams from seven (or eight) different districts, a feat that not even the University Interscholastic League can match with its four-team Regional playoffs.

All of the Commander's Trophy Division teams are mentioned as contenders for their district Championship. Those teams and their

districts are: Ballinger (8-AAA), Childress (3AAA), Denver City (5-AAA) the defending champion, Dimmitt (2-AAA), Lubbock Christian (Texas Association of Private Schools), Olney (9-AAA), and Tahoka (4-AAA).

Ballinger and Childress will be playing in the Christmas Classic for the first time ever. Dimmitt will be playing in the Commander's Trophy Division for the first time. The Bobcats competed in the President's Trophy Division during their powerhouse years of 1977 and 1978, and finished with third and second place finishes respectively.

Despite the absence of a defending champion, the President's Trophy Division has its most balanced and most representative field ever, with plenty of new faces too. The participating teams are: Amarillo, El Paso Andrews, Andrews, Big Spring, Lubbock Coronado, Canyon, Lubbock Dunbar, and Midland Lee.

Agronomist predicts, less sneezing this fall

COLLEGE STATION — A weed control expert at Texas A&M University is predicting a milder-than-normal season statewide for sufferers of hay fever because of the recent dry spell. Some of the areas of the state have still received less than half their normal January-through-August rainfall, according to the State Climatologist's Office at Texas A&M. Dr. Rupert Palmer, an agronomist, said lack of rain slowed the growth of ragweed.

THS Twirlers Rated Tops

Cindy Lawson and Jennifer Ehlers earned Division I ratings in UIL contests recently at Lubbock and will join state competition in the spring.

Other Tahoka High School twirlers also were given high ratings, with Tammie Kelley, Perry Dunlap and Kim White getting Division II marks, the same rating given the entire group as an ensemble.

Miss Lawson is the daughter of Mr. and Mrs. Paul Lawson and Miss Ehler's parents are Mr. and Mrs. Milton Ehlers. Parents of the others are the Alton Kelleys and Jake Dunlaps and Mrs. Billie White.



**MONTY WITT
Pep Squad
Beau Chosen**

Monty Witt, son of Mr. and Mrs. Guy Witt, was chosen as the 1980 Pep Squad Beau. Monty is an 8th grader and played fullback on the Tahoka Jr. High football team. He also runs track and plays basketball for Tahoka. Other contestants for beau were Charles Wells, 8th grader, and Trey Teaff and Andrew Chapa, 7th graders. Monty was chosen by popular vote of the Pep Squad, and was presented a megaphone by pep squad president Mistie Cook.



GLADLY WELL BLOCKED--That's no British phrase, it's Jacky Jolly (65) blocking out the Goode of Roosevelt as Tracy White Goes merrily on his way.
(LYNN COUNTY NEWS PHOTO)

Lynn County Food Show

Lynn County 4-H Food Show will be held Saturday, Nov. 22, at the Lyntegar Room. Contestants in the food show should be prepared. Judging will begin at 10 a.m. The show will be held at the Lyntegar Room which should be

at about 11:30 a.m. There will be a junior and senior division. Categories in each division will be Main Dish, Side Dish, Breads and Desserts, Snacks and Beverages. The public is invited to attend the program. If you have a question call Sherry Etheredge, Lynn Co. Agent at 998-4650.

Shop in Tahoka

Tahoka, Texas 79373
"Oldest Business Institution in Lynn County"
THE LYNN COUNTY NEWS (USPS 323200) is published weekly on Thursday, except the last day of each year, at Tahoka, Lynn County, Texas. The location is 1614 Ave. J, Tahoka. Phone (806) 998-4650. Entered as second-class matter at the post office at Tahoka, Texas 79373 under Act of March 3, 1879. Postmaster: send address changes to The News, P.O. Box 1170, Tahoka, Tx. 79373.
SUBSCRIPTION RATES
Lynn and Adjoining Counties \$7.50
Elsewhere in Texas \$8.50
Outside Texas \$9.50
Editor and Publisher
Jolly... Adv. and Bookkeeping
D. Phillips... Compugraphic Operator

OEA Student Of The Week



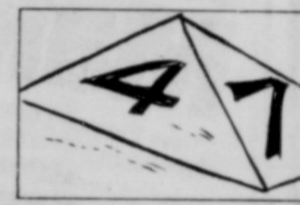
OEA STUDENT OF THE WEEK--The OEA student of the week is Connie Chambers, daughter of Mr. and Mrs. Jim Chambers. Connie is presently serving as OEA treasurer and is studying the field of general secretary. She is active in Student Council, Science Club, debate, and annual staff. Upon graduation, Connie plans to attend Texas Tech and major in elementary education.

Student Council Sponsors Blood Drive Here Monday

Tahoka High Student Council will sponsor a blood drive Monday in the high school library from 9 a.m. to 3 p.m. Anyone who is healthy and is from 18-65 years of age can be a donor. Seventeen-year-olds may be donors with parental permission. Each donor will give a pint of blood. "Blood is much needed now, since it is estimated that 6 out of every 10 people will need blood or blood derivatives during their lives," said a student council spokesman. Anyone interested in being a donor is asked to contact Jody Roberson or Randall Stotts at 998-4538 from 8 a.m. to 3:30 p.m. or call 998-4481 after 4 p.m. for an appointment. Keeping dashboard lights dim at night helps you see the road better.

Lynn Co. Information Day

The Lynn Co. Extension Service will hold an Information Day on Tuesday, Nov. 25, 11 a.m. at the Lyntegar Meeting Room. The purpose of the meeting will be to acquaint the public with Extension Programs related to agriculture, home economics and 4-H. Any interested person is invited to attend. If you have a question concerning this activity, call 998-4650 at the County Agents Office.



Four and seven were considered magic numbers in ancient Egypt.

Message to Washington

FREE BURROS
MESSAGE—I heard that burros from the Grand Canyon are free to the public. I own a small ranch and would like to have some of those donkeys. Could you tell me how I can pick one up? R.J.—Sam Rayburn

SENATOR BENTSEN RESPONDS—National Park Service officials inform me that you must apply for a permit. They note that the rugged terrain makes it hard to capture these wild burros and they urge you to study closely the topography of the canyon before making an attempt. The Park Service will assist you by processing forms, providing maps and monitoring the capture, but it cannot lend you personnel or equipment. Also, you will have to make a deposit in case an emergency rescue is called for.

DRUGGED PRISONERS?
MESSAGE—I heard that Iranians held for deportation were forced to take medication against their will. Although I don't sympathize with the Iranian government, this report disturbs me. Who is responsible for this action? C.O.—Amarillo

SENATOR BENTSEN RESPONDS—Officials with the Bureau of Prisons advise me that the Iranian aliens detained in their custody were forced to take liquid nutrients and glucose to keep them from dying; they were not given tranquilizing drugs of any kind. Officials took the step because the prisoners' lives were endangered from fasting. The bureau's policy is to let any competent detainee refuse medical care except at risk to his life.

Do you have a problem with government? MESSAGE TO WASHINGTON cuts through the red tape to get answers to your questions about Social Security, veterans benefits, immigration matters and other problems you may have run into in your dealings with the Federal Government in Washington. Write MESSAGE TO WASHINGTON, c/o Senator Lloyd Bentsen, U.S. Senate, Washington, D.C. 20510. Inquiries to MESSAGE TO WASHINGTON are sometimes edited before publication, but the intent and substance of the inquiries are maintained.

Tahoka School Menu

- Nov. 24-28, 1980
BREAKFAST
MONDAY- Honey Buns, Sliced Peaches, Milk
TUESDAY- Hot Oatmeal, Toast, Apple Juice, Milk
WEDNESDAY- Cereal (Corn Flakes), 1/2 Cup Raisins, Milk
THURSDAY- Thanksgiving Holiday
FRIDAY- Thanksgiving Holiday
LUNCH
MONDAY- Pizza, Buttered Corn, Tossed Salad, Sliced Peas, Milk
TUESDAY- Macaroni & Cheese with ham, Buttered June Peas, Lettuce Wedges, Hot Rolls, Peanut Butter Cookies, Milk
WEDNESDAY- Hamburgers, French Fries, Lettuce, Onions, Pickles, Apricot Halves, Milk
THURSDAY- Thanksgiving Holiday
FRIDAY- Thanksgiving Holiday

It's True.

"I built a new home about two years ago and decided to use the heat pump because it is energy efficient. Number 1, I like the idea of electric heating and air conditioning because it's cleaner. The heat pump system is clean and I like to maintain a place that stays clean. My walls stay nice, my draperies stay nice and I don't have lint everywhere... and I've had other systems where I did have that problem. The heat pump is great because it is clean... we've been very satisfied with it."



The things said about the heat pump are true. Find out more about the heat pump. It can save for you.



careful handling
You can count on it when your car is insured by State Farm. Good service plus our traditionally competitive rates can mean an outstanding value for you. Call me for details.
Ed Redwine
2128 Lockwood
998-5250
STATE FARM MUTUAL Automobile Insurance Company
Home Office: Bloomington, Illinois

KEEP YOUR CAR RUNNING GOOD AND LOOKING GREAT!
HIGHEST QUALITY
BODY WORK AND AUTO MECHANICS
NIAE CERTIFIED TECHNICIANS
AT
Bray Chevrolet Company
998-4544
"We Service What We Sell You; We Do What We Tell You."
GM QUALITY SERVICE/PARTS
GENERAL MOTORS PARTS DIVISION
Keep that great GM feeling with genuine GM parts!

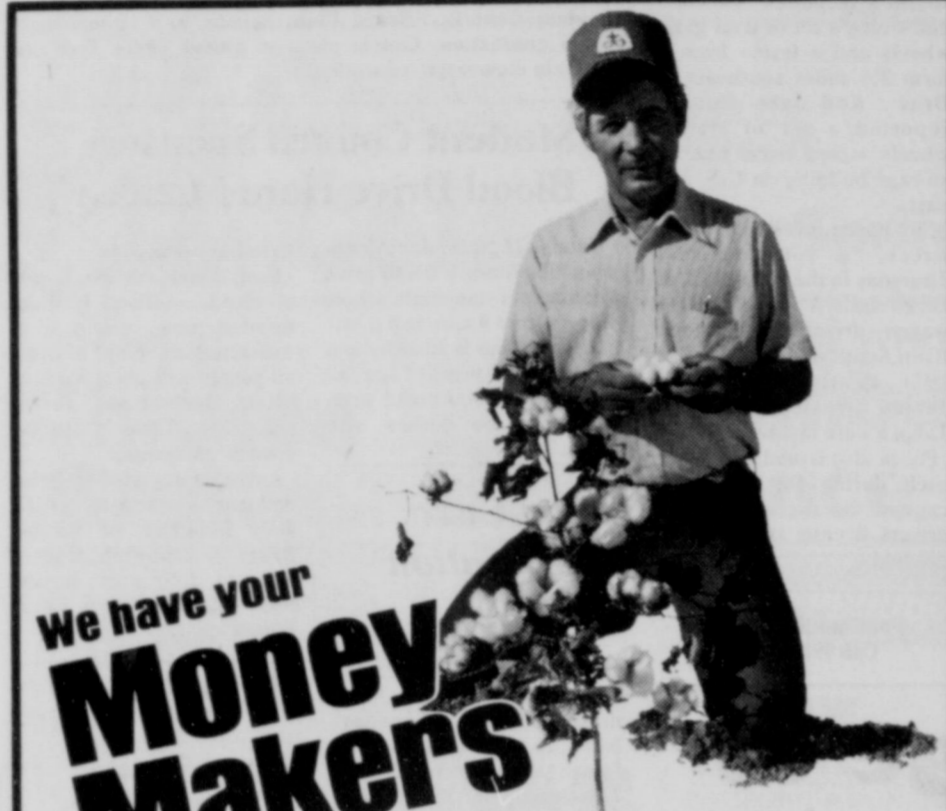
OWENS CORNING FIBERGLASS
AIR TOP INSULATION
We Do A Good Job On Attics And Metal Buildings
Free Estimates
After 6 p.m. 924-7244
Dennis Haley

COUNTY TAX DISCOUNT OFFERED
Lynn County completed mailing tax statements on Nov. 17. A discount of 3% will be given if taxes are paid in November. On December 1st only a 1% discount will be given.
George D. McCracken
Tax Assessor-Collector

MS
ADE A ER-TIMER QUALITY . AVG.
\$ 1 79
1 LB. PKG.
ED
a 1 LB. PKG. \$ 1 59
12 OZ. PKG. \$ 1 09
S PORK 12 OZ. PKG. \$ 1 29
ags 2 CT. PKG. 69
UTY Foil 18x25 ROLL 89
50 CT. PKG. 79
22 OZ. BOX \$ 1
EET OR MILK 6 OZ. PKG. 99
hips 2 LB. PKG. \$ 1
ows 2 6 1/2 OZ. PKG. 69
FINE WHOLE n Beans 79c
5% OZ. CANS
INTENSIVE CARE th Beads 7 29
2-Tips 99c
UID EX. STRENGTH Tylenol \$ 1 99
PRICE FIGHTER ve Nov. 20-26
arket



"GEORGE M!" HIGHLIGHTS TAHOKA TALENT-- Ira White (left) of Tahoka plays Rose in the upcoming South Plains College production of the musical "George M!" With her are cast members (from left) Mary Beth Barton as Fay Templeton, Kevin McCullough as Mr. Behman and Jan Willis as Madame Grimaldi. Ira, 1979 graduate of Tahoka High, also had a lead role in last year's "Mame." Showtime is 8 p.m. Nov. 20-22 in SPC's Theater for the Performing Arts. Tickets are \$2 for adults and \$1 for students and children. Contact SPC at 894-9611 for ticket information. (SPC PHOTO)



We have your Money Makers

These Pioneer® brand cotton varieties do well in our area. Certified **Lockett 77*** — We saw this variety stand up to conditions that saw other varieties deliver disappointing performances in 1980. From emergence through fruiting and on into harvest, Lockett 77 showed its strength throughout the season. It demonstrated its resistance to bacterial blight and the fusarium wilt-nematode complex. And it proved itself in a variety of management programs on both irrigated and non-irrigated land. Fiber quality has been good, too. Certified **PR80*** — Seed for this variety is hard to come by, so many of our customers will have to wait for PR80 until next season. But we encourage you to keep an eye on this powerful new variety from Pioneer. You'll like its early maturity. And its yields will make you think twice about planting anything else. Along with resistance to many common cotton diseases, PR80 shows good fiber qualities and high gin turnout. We really like the looks of this one! You will, too!

*U.S. protected varieties.



PIONEER
BRAND SEEDS
RESEARCH... for the Business of Farming.
Bryant Seed & Delinting Inc.
Farmers Co-Op Ass'n. No. 1
Louder Gin Co.
Tahoka Co-Op Gin
Tahoka

Senior Citizens Menu

Nov. 24-28, 1980
MONDAY: Lasagna, Buttered Green Beans, Tossed Salad w Dressing, Roll, Butter, Ice Cream, Milk
TUESDAY: Oven Fried Chicken, Cream Gravy, Mashed Potatoes, Okra & Tomatoes, Roll, Butter, Bread Pudding, Milk
WEDNESDAY: Spanish Rice w Beef, Chopped Broccoli, Sliced Cukes w Onions, Roll, Butter, Butterscotch Pudding, Milk
THURSDAY: Holiday
FRIDAY: Sliced Ham, Pinto Beans, Shredded Lettuce w Dressing, Cornbread, Butter, Pineapple Tidbits, milk

Texas Tech Medical School Rotary Subject

Scope, service, and importance to the area of Texas Tech University Medical School and Hospital was told Tahoka Rotarians Thursday noon in a talk by "Dub" Harris, an administrator of the institution. He revealed that \$164 million has been invested in the school since it started. It has 1025 employees, including doctors, nurses, and others, including 81 at Amarillo and 109 at El Paso branches. Starting in 1974, the medical school has graduated 236 doctors, from 286 who have enrolled, of which 130 are doing residency work at this time.

Lots Of Applicants
This year, the school had 1,200 applicants for entrance, of which number about 400 could meet the stringent qualifications for making doctors. Only 100 of the total number were enrolled this year, but the school hopes to be able to enroll 130 this coming year. The hospital has had 96,000 patient visits. Medical students periodically visit smaller hospitals and clinics in surrounding towns as a part of their training. The school and hospital promotes health education programs over the area, also; and the school has 150 research projects conducted at a cost of about two million dollars.

He declared 17 counties in this area of West Texas have no doctor at all. As a result, this area has about one-third of the national average. Since many young doctors gravitate to the big cities, the rural areas have insufficient medical service. He said the Tech school attempts to encourage doctors to remain in this area and engage in family practice. The program was arranged by Rev. Lloyd Hamilton, and Dr. David Midkiff introduced the speaker.

Allow more following distance when driving behind a motorcycle.

Read-A-Thon Is Labeled Big Success

"The 1980 MS Read-A-Thon in Tahoka elementary schools was a wonderful success," stated Gio Hays, local coordinator for the program and member of the Phebe K. Warner Study Club which sponsored the MS Read-A-Thon for the second year. There were 75 children who completed the program, reading over 1600 books and collecting approximately \$1217.00 to help find a cure for multiple sclerosis, the mysterious crippler of young adults.

The prizes were as follows: MS T shirt- for most books read in a school. MS stuffed dog- for most money collected in a school. MS Read-A-Thon pen- read at least 5 books; collect at least \$10. MS Read-A-Thon frisbee- read at least 8 books; collect at least \$20. MS official dog tags ID- read at least 10 books; collect at least \$40. 10 coupons for a free hamburger, french fries, and a coke were donated as prizes in the Ms Read-A-Thon by Dairy Queen of Tahoka.

Tubb Elementary students read 743 books and collected \$603.98. Third grade read the most books, 460, and collected the most money, \$316.11. Second grade read 287 books and collected \$287.87. Michele Colon read the most books at Tubb Elementary and won an MS T shirt. Lori Taylor collected the most money- \$32.25- and won an MS stuffed dog. Dairy Queen certificate winners (randomly picked) were: Rachele Ramsour, Jennifer Bingham, Nicky Leal, Cheryl Stancell and Diana Silvas.

North Elementary students read 860 books and collected \$613.11. Fifth grade read the most books- 532- and collected the most money- \$316.81. Fourth grade read 186 books and collected \$158.95. Sixth grade read 142 books and collected \$137.35. Elizabeth Colon read the most books at North Elementary (84) and won a MS T shirt. Lori Tipton collected the most money at North Elementary (\$76.70) and won a MS stuffed dog. Random winners of Dairy Queen certificates were: Autumn Martin, Kathy Saldana, Kelly Vardeman, Lisa Carter and Lisa Lehman. All children who completed the program received a certificate.

Garden Club

The Tahoka Garden Club meeting was post-poned until Tuesday, Nov. 25, at 2:30 p.m. in the Bank Party Room.

Tahoka Merchants Appreciate Your Business

Stork Market



Mr. and Mrs. Jessie Paniagua of Dallas are the parents of a son born Nov. 15 at 1:16 p.m. Jeremiah James weighed 6 pounds 9 1/2 ounces and was 19 1/4 inches long. Grandparents are Mr. and Mrs. Andrew Benavides and Mr. and Mrs. Ellis Paniagua of Tahoka. Great-grandmother is Lucia Ramirez of Delavan, Wisc.

Drive Safely During The Holidays

The Thanksgiving Holiday has always been a day when we give thanks for the lifestyles we enjoy here in the United States-- some things a lot of us take for granted such as our freedom, good jobs, vacation and our automobile. Everyone agrees the automobile and all it has brought to this nation is marvelous, but it could be an instrument of suffering and even death.

Major C.W. Bell, Regional Commander of the Texas Dept. of Public Safety in Lubbock, stated that this Thanksgiving Holiday weekend, thousands of more drivers will be on the streets and highways. Some drivers will only be going across town- several states will be crossing several states. Major Bell also said that the Department of Public Safety wants you to have a safe and pleasant holiday, so if you are planning a trip out of town, check your car, the road conditions, the weather conditions, and your driving habits, and remember that the early darkness and heavy traffic call for more caution and less speed. If we think safety first and drive defensively then a safe and pleasant Thanksgiving is almost certain.

join the great
american smokeout
NOV 20
American Cancer Society

HERBED PORK ROAST

1 (4-5 lb.) center loin pork roast
1 tsp. rosemary
1 tsp. thyme
1/2 tsp. seasoning salt
1 T. cornstarch
Chicken broth
1 C. chopped fresh mushrooms
1 green pepper, cut in rings
1 red pepper, cut in rings

Place roast on a trivet in baking pan. Rub with seasoning. Bake at 325 degrees fahrenheit for 30-40 minutes per pound. When done, set it aside and separate pan drippings from excess fat. These drippings in a one quart saucepan. Add enough chicken broth to equal 2 cups. Stir in cornstarch, dissolve well. Add green red pepper, and mushrooms. Bring mixture to boil, then reduce and simmer for 20 minutes. Serve with rice if desired.

For more recipes write: Texas Department of Agriculture, P. O. Box 12847, Austin, Texas 78711

One cup of kerosene, one cup of water, and one cup of rubbing alcohol, mixed together, shaken well and used to make an inexpensive and useful window cleaner.

Happy Birthday Hattie Lou

INSUR-MATION

By JOEY MEADOR

Lynn County Farm Bureau

I hear someone talking about "the underwriter" in a good mood when they approved that policy. What were they talking about?

Technically, an underwriter is the person who names on the insurance contract. Realistically, an underwriter is the person in the home office of an insurance company who, after collating all facts about prospective insured and the relevant risk factors, whether the risk should either be accepted or under the terms of the specific policy. A sales insurance agent is also an underwriter in that he exercises the initial underwriting in making the prospects... thus eliminating the most obvious surable risks or finding the policy best suited to a particular person.

How About A

Trampoline?

Put in your order now for Olympic size trampoline Christmas!

Ask Me

Melvin Edwards

998-4784

Thanksgiving Clearance

Nov. 24th - Nov. 29th

Dresses & Sportswear
ONE GROUP **20% Off** ONE GROUP **30% Off**

ONE GROUP **50% Off**

Lingerie & Hose
20% Off

Jeans, Blouses & Pants
20% and 50% Off

WRANGLER KNIT
Jeans \$10.00 PAIR

WRANGLER 945
NO FAULT
JEANS \$11.00 PAIR

The Lady Bug Dress Shop

Open Thanksgiving Day from 1-5 p.m.

New Home

BUSH HOG 3-Point, 9-Row, Skip-Row Shredders Now At Wade's



★ Slip-Clutches ★ Rugged Construction ★ Maneuverability

Wade Farm Implement, Inc.

TAHOKA

PH 998-4558 or 998-4559

PLAY IT AGAIN SAM
CEILING FANS

- ELEGANT
- ENERGY SAVING
- EASY TO INSTALL
- Decorator designed wood blades
- Antiqued brass hardware
- Five-speed control
- No TV or radio interference
- Pre-wired for independent lighting
- Easy do-it-yourself installation
- Five-year limited warranty
- Helps cool in summer/heat in winter
- Three 48" styles: Chestnut finish, wiped natural white or genuine teak

Swag Kit and Light Kits Optional

Lighthouse
998-4707

New Home
By Florence
Call 924-747

Hattie McManus was...
Saturday and is at...
of her daughter,
Alma Blethode in...
Her other...
Velma Thomas...
in Lubbock...
to help with the care...
together.

+++
Morris was in...
Hospital for tests...
until Tuesday, her...
Dr. Doris Lamb of...
is here three weeks...
Ernestine West of...
Nevada for one...
returned to their...
week.

+++
shower for Mrs. (Dodie) Banks was...
in the home of Mrs. Doris Ashcraft, and Margret Shad-lou, made their...
to Dallas. They...
day and returned...
by.

+++
Martinez will enter...
Hospital Wed-...
and have major...
Thursday.

+++
Hiracheta was...
from St. Mary's...
and returned home...
Monday.

+++
Jenkins was able to...
his home in Jal...
Wednesday. Cap had...
urgery in Methodist...
Monday, Nov. 3.

+++
Bobbie Fillingim...
passed her sister-in-...
Mrs. Betty Mary

JOHN H...
PRESENTS THE H...
Country Weste...
Cecil Co...
on Fri. & Sa...
BUFFET DINNER (6-...
& SHOW (8-1...
Make reservat...
Christma...
for Sunday lu...
of Brownfiel...
on Carlisle R...

Over...
Imple...
951...
Tube-Ty...
Sp...
Thurs...
\$

Also Good S...
Safem

New Home News

By Florence Davies
Call 924-7479

McManus was treated from Methodist Hospital Saturday and is at home of her daughter, Anna Blethrode in Pottsville. Her other daughter, Velma Thomas lives in Lubbock to help with the care of her mother.

Morris was in Methodist Hospital for tests until Tuesday, her daughter Doris Lamb of Pottsville was here three weeks ago. Ernestine West of Nevada for one week returned to their home.

Mr. and Mrs. (Bodie) Banks was in the home of Mrs. Sherman Wednesday. The hostess gift was a turkey.

"Sisters", Pauline and Blakney of New Pottsville, Doris Ashcraft, and Margaret Shadrou, made their way to Dallas. They returned home.

Martinez will enter St. Mary's Hospital Wednesday and have major surgery on Thursday.

Mr. and Mrs. John Nelson from Durango, Colo. came Monday morning and spent the night with Shine Barnett. The ladies are first cousins.

Mr. and Mrs. Maurel Cabral and daughter are new residents here. They came from Killeen. Jennifer is a first grade student.

JOHN HENRY'S

PRESENTS THE HAYLOFT OPRY *

*Country Western Stage Show

Cecil Caldwell
on Fri. & Sat. in Nov.

BUFFET DINNER (6-7:30) \$9.95
& SHOW (8-10)

Make reservations now for
Christmas parties

for Sunday lunch 11AM-3PM

John of Brownfield 794-2738
on Carlisle Rd.

Overstock Sale On Implement Tires

95L-15, 8-Ply Rating,
Tube-Type Nylon, Reg. \$45.95
Special Price
Thurs.-Fri.-Sat. Only
\$39⁹⁵

Also Good Selection of Goodyear and
Safemark Rear Tractor Tires

Wade Tire Co
1229 Lockwood, Tahoka
"Quality Service At A Fair Price"
998-5488

FOOD MARKETING ALERT

USDA
Agricultural Marketing Service

SPECIAL ALERT: For your holiday baking needs, turn to Prunes. The largest Prune crop since 1973 will keep supplies bulging through December, says USDA's AMS.

As of mid-October, the November supply situation looks like this...

RED MEATS AND POULTRY

Pork . . . plentiful. Supplies to be seasonally large with production rates 3-5% below high of last Nov., but 12% above 1977-79 Nov. average.

Beef . . . adequate. Weekly production rates in Nov. to be close to year earlier but about 10% below 1977-79 Nov. average. Cattle feeders put more cattle in feedlots this summer, and some of the heavier stock will be ready for slaughter in Nov. As a result, should be more grain-fed beef this Nov. than during year earlier.

Turkey . . . adequate, with supplies for Thanksgiving down 6-8% from year earlier and 4-6% below 1977-79 Nov. average. Beginning of Nov. cold storage holdings to be 6-8% below year earlier. Slaughter rates in Nov. may be slightly higher than last Nov., but average sizes of new-crop turkeys to be somewhat smaller than last year.

Broiler-fryers . . . plentiful, rising from Oct.'s "adequate". Production rates to average 5-7% above last Nov. and about 14% above 1977-79 average. But output from week to week will vary widely—down slightly from last Nov.'s high first half of month; up as much as 10-12% over same period of 1979 during last half.

EGGS & DAIRY PRODUCTS

Eggs . . . adequate. Nov. output to be down slightly from year

earlier but about 1% above 1977-79 Nov. average.

Milk and dairy products . . . adequate. Milk production to continue above year-earlier levels—about 2% more in Nov. But milk and dairy product production to be at or near seasonal lows for 1980.

FRUITS, VEGETABLES, & NUTS

Fresh cranberries . . . plentiful. Crop to set new record, slightly larger than last season's record. **Winter pears** . . . plentiful. Crop likely to set new record, and good quality fruit expected.

Fresh oranges and grapefruit . . . plentiful, as result of large new-season crops. **Tangerines and tangelos** . . . adequate.

Fresh apples . . . plentiful, from record-large crop. **Grapes** . . . adequate, with season's production above last year and beginning-of-Oct. storage holdings substantially above that of past two years.

Major canned noncitrus fruits and juices, and canned, frozen, and chilled citrus juices . . . adequate.

Dried prunes and raisins . . . plentiful. The dried prune crop is expected to be largest since 1973. End-of-Aug. supply was 20% above year earlier, with most prunes in medium and larger sizes. It appears raisin crop will be about same as last

year's large output.

Sweetpotatoes . . . adequate, with production sharply below last year's large output and well below average for past 3 years. But supplies of **canned sweetpotatoes** should be ample for Thanksgiving and Christmas holidays; carryover stocks in Aug. were largest in 5 years. **Potatoes** . . . adequate. Output from fall storage crop to be 12% less than very heavy level of last year but sufficient for expected needs. End-of-Aug. holdings of **frozen potatoes** were 4% below average of past 3 years. **Onions** . . . adequate. Production of summer storage onions to be down 14% from last year and 9% less than 1978, but nearly equal to 1977.

Other fresh vegetables . . . adequate. Acreage devoted to vegetables this fall in total is only slightly less than last year, but sizable reductions are indicated for such key items as **cabbage, carrots, and celery**, and the overall output of 14 vegetables may be 5% less than in fall of 1979.

Processed vegetables . . . adequate. Stocks that processors carried over into 1980 packing season were quite heavy; but sharply reduced packs to result in 1980-81 supplies of following items well below record or near-record large holdings of last season: **Canned snap beans, sweet corn, cucumber pickles, and tomatoes**. Stocks of frozen cut corn, corn-on-the-cob, green peas, and spinach are sharply below year-ago, though current supplies of frozen lima beans, snap beans, and carrots are above a year ago and past 3 years.

Almonds, filberts, and walnuts . . . plentiful. The almond crop to be 10% below last year's record. However, stocks carried over from last year's crop were higher this year than last, making total supplies for the 1980 season about the same as 1979. This year's filbert crop is about the same as record crop in 1978. The 1980 walnut crop to be 5% above



GETTING HELP.—With some help from his friends, Tahoka Quarterback Mark Hudlin goes for a good gain against Roosevelt. Among Bulldogs blocking and running here are Marty Lindsey (73), Richard Payne (71) and Ronald Lusk (51). (LYNN COUNTY NEWS PHOTO)

record 1979 crop.

GRAINS & LEGUMES

Rice . . . plentiful, with 1980 crop record-large — 9% above 1979 and 18% above 1977-79 average. **Dry beans** . . . plentiful, with 1980 crop 17% above 1979 and 28% above 1977-79 average. Harvesting is about complete, except in California. **Dry split peas** . . . plentiful, with 1980 crop 37% above 1979 and 27% above 1977-79 average.

Proper inflation is the most important factor in tire safety and tire mileage.

After four hours behind the wheel, the average driver takes about 20% longer between steering wheel corrections.

Sherry Etheredge Says . . .

Holiday Food Safety

The holidays can be a hectic time, with food being prepared and served in larger-than-usual amounts and festive styles, and being prepared in a busy kitchen. Food safety is especially important during this season, so take the time to keep your family safe.

Here are some tips from the U.S. Department of Agriculture's Food Safety and Quality Service to keep food poisoning from ruining your holiday season.

When it's time to cook the bird, be sure you have allowed time in your busy schedule for proper thawing. Thaw the bird in the refrigerator if possible. When meats or poultry are thawed outside of the refrigerator, the outer surfaces of the meat are exposed too long at temperatures that allow germs to grow.

If the turkey is too large for the refrigerator, thaw it in a water-tight package under

cold running water. Or, place the bird in a double brown paper bag to insulate it against too warm temperatures and uneven thawing.

To prevent germs from spreading while you're handling the raw meat, keep your hands and the kitchen utensils and cutting surfaces clean with soap and hot water. You should never use the same cutting board and utensils for cooked meat that you used when the meat was raw or you'll get the germs right back on your cooked foods.

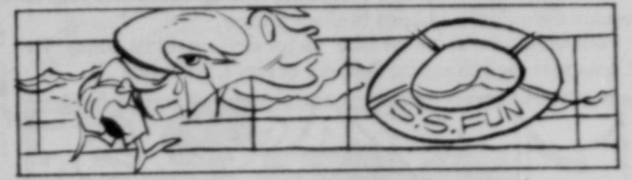
The safest way to prepare stuffing for the bird is separate from it. Germs love the ingredients in stuffing and the warm moist inside of a turkey is the perfect place for germs to grow. The thick meat on the turkey protects the germs from extreme heat or cold so they continue to grow to dangerous numbers. The stuffing also gets a lot of handling in its preparation, so it's easy for germs to get inside the turkey.

If you do stuff your turkey, follow these precautions. If you mix the stuffing in advance, store it in the refrigerator separate from the bird. Stuff the bird just before cooking, and cook the interior of the stuffing to at least 165°. If there is any leftover stuffing, remove it from the bird and refrigerate in a separate container.

When everything is cooked and ready to serve, buffets are a festive and fun way to present your holiday fare. Remember, though, when foods are left for a long time on a buffet table, the chance of food poisoning increases. Keep buffet servings small and replenish as needed directly from the refrigerator or stove. Never leave food at room temperatures for more than two hours.

Pay particular attention to dishes containing meat, poultry or eggs because these are just what germs love. Each year, many cases of food poisoning are reported from holiday dishes such as cold meat cuts, turkey stuffing, potato salad and other salads made with mayonnaise, cream pies and eggnog.

Unfortunately, it is not always possible to tell by taste, looks or odor if food is safe to eat. Meat, poultry and dairy products, left at room temperature, allows germs to grow to dangerous numbers. Even in large numbers, these germs seldom change the taste, odor or looks of food. Keep meat and poultry dishes cold—below 40° F. or hot—above 140° F.—until serving time to assure you and your family and guests a safe holiday season.



A child aboard a ship supposedly insures a good voyage.

The United States produces twice as many cars each year as babies!

ATTENTION!
Tahoka Cafeteria
will be open
Monday-Friday
6 to 8:30 Nightly
DON'T FORGET OUR Mexican Food Thursday Night
SPECIAL ON FRIDAY Fish
998-5166

THOMAS, LOVE, HAYS & SCHAFFNER
Certified Public Accountants
JOE F. HAYS, C.P.A.
Please Note Office Telephone
Number Changed To
998-4526

Meet Your Banking Specialists:

Dwain Lusk is senior vice president, loan officer and a major fan of the Tahoka Bulldogs, who just wound up an excellent football season and now are starting both boys and girls basketball. He is president of the Bulldog Booster Club and is ready to assist bank customers in any area from securing loans to getting rides to athletic events.

Say hello to the friendly folks at
THE FIRST NATIONAL BANK OF TAHOKA
"Helping You Change Things For The Better"

Shop Early, Mail Early, Tahoka Citizens Urged

This year the post office is joining forces with the Tahoka Chamber of Commerce in urging customers to shop early and mail early for Christmas and to shop at local merchants.

Tahoka Postmaster Jim Lummus and Chamber of Commerce President Eual Davis officially declared the start of the Christmas shopping season by asking shoppers to help with the Christmas mail crunch by shopping early and mailing early to make sure cards and parcels reach their destinations in plenty of time for Christmas.

The key to successful holiday mailing is to mail early and mail right. That means planning now for gifts that must travel long distances by Christmas.

"Many overseas mailing dates, including those for delivery to members of the Armed Forces overseas, fall due this month," Postmaster Lummus said. Specific information on dates can be obtained by calling the Tahoka Post Office at 998-4322.

"Customers should also be sure to take time to write legible ZIP Coded addresses for both that of the recipient and the sender," said Lummus. "Since mail sorting relies on the ZIP Code as well as the name of the particular city and state, the use of the correct ZIP Code will aid us in processing your mail."

"Last year our customers helped us tremendously," he added. "They mailed early in the season and early in the day. We're sure they'll want to cooperate with us again this year to insure we all have a happy holiday season."

Following are some of the suggested mailing dates for Christmas mail to assure delivery before Christmas:



Violent exercise retards digestion while mild exercise accelerates it.

Recommended Mailing Dates For Christmas Mail Listed

The following chronological list of suggested mailing dates for Christmas mail to assure delivery before Christmas is provided for your convenience and quick reference for answering queries during the 1980 holiday mailing period.

- Military Mail**
- Nov. 21 **Space Available Mail (SAM) parcels** to Armed Forces in Europe and the Far East.
 - Nov. 24 **Regular surface parcels** to Armed Forces in Greenland and Iceland.
 - Space Available Mail (SAM) parcels** to Armed Forces in the Caribbean and West Indies, Greenland and Iceland.
 - Nov. 28 **Parcel Airlift (PAL) Mail** to Armed Forces in Europe and the Far East.
 - Dec. 1 **Regular surface parcels** to Armed Forces in Alaska and Hawaii.
 - Space Available Mail (SAM) parcels** to Armed Forces in Alaska.
 - Parcel Airlift (PAL) Mail** to Armed Forces in the Caribbean and West Indies, Greenland and Iceland.
 - Priority Mail** to Armed Forces in Australia, Central and South America, and Southeast Asia.
 - First-Class Letter Mail** to Armed Forces in Australia, Central and South America, and Southeast Asia.
 - Dec. 5 **Priority Mail** to Armed Forces in the Mid East.
 - First-Class Letter Mail** to Armed Forces in the Mid East.
 - Dec. 8 **Parcel Airlift (PAL) Mail** to Armed Forces in Alaska.
 - Priority Mail** to Armed Forces in Africa and Greenland.
 - First-Class Letter Mail** to Armed Forces in Africa and Greenland.
 - Dec. 12 **Priority Mail** to Armed Forces in Europe and the Far East.
 - First-Class Letter Mail** to Armed Forces in Europe and the Far East.
 - Dec. 14 **Priority Mail** to Armed Forces in Iceland.
 - First-Class Letter Mail** to Armed Forces in Iceland.
 - Dec. 15 **Priority Mail** to Armed Forces in Alaska, Hawaii, and the Caribbean and West Indies.
 - First-Class Letter Mail** to Armed Forces in Alaska, Hawaii, and the Caribbean and West Indies.
 - International Mail**
 - Nov. 28 **Air parcels** to North and Northwest Africa, Australia, the Mid East, Southeast Africa and West Africa.
 - Dec. 1 **Air parcels** to Central and South America and Southeast Asia.

- Airmail letters and cards** to Australia, Central and South America, and Southeast Asia.
- Dec. 5 **Airmail letters and cards** to the Mid East.
- Dec. 8 **Air parcels** to Europe and the Far East.
- Airmail letters and cards** to North and Northwest Africa, Southeast Africa and West Africa.
- Dec. 12 **Air parcels** to the Caribbean and West Indies.
- Airmail letters and cards** to Europe and the Far East.
- Dec. 15 **Airmail letters and cards** to the Caribbean and West Indies.

- Domestic Mail**
- Dec. 1 **Surface parcels** to Alaska and Hawaii.
 - Dec. 15 **Priority Mail** to Alaska and Hawaii.
 - All letters and cards** to Alaska and Hawaii.

Basketball News

By AMY PORTERFIELD

The J.V. and Varsity girls basketball teams opened their '80-'81 season Nov. 18, against Brownfield. According to Coach Oliver there is not much depth again this year but better material than in the past. There are only 3 seniors on the team this year. There are only 24 girls from freshman up to play on the three teams. Due to the lack of players, some freshman girls will be playing on both freshman and JV teams.

Chosen for the varsity squad are seniors Lani Brown, Amy Porterfield and Cathy Meeks; juniors Lynia Payne, Denise White, Andra Draper and Danette Phillips; sophomores, Pam Ashcraft and Melanie Terry and Lela Bailey.

The varsity girls lost to Brownfield 39-59. The Dogettes came from a 15-36 deficit at half time to score 20 points in the third quarter and holding Brownfield to only 8 points gained. Tahoka was unable to move the fourth quarter, gaining only 4 points to Brownfield's 15.

Although the Dogettes lost they showed much spirit and teamwork. Brown led the scoring with 10 points and had 8 steals. Porterfield and Bailey scored 8 points each and had 6 rebounds each. Meeks had 6 points, Payne 4 and Draper 3.

The JV girls also lost to Brownfield with a final score of 18-63. Julie Patterson led scoring with 9 points, Lisa Huckaby scored 5, Cara Monk 2 and Yvette Payne 2.

The Varsity boys and JV boys will play at Ralls Nov. 21.

Bridge Winners

Winners in T-Bar Tuesday bridge were: Mrs. Carol Maule and James McAllister, Lamesa, first; Mrs. Clint Walker and Mrs. Auda Norman, second; Mrs. Olen Renfro and Mrs. Wilson Edwards, third; Mrs. C.R. Burleson, O'Donnell, and Mrs. Margie Maddox, Lamesa, fourth; Mrs. Arlys Askew and Frank Hill, fifth.

Wednesday Duplicate Bridge

Wednesday Duplicate Bridge winners were: First, Mable Gurley and Mac Edwards. Second, Christine Askew and Polly Cords. Third, Billie Barnes and Bertha Gardenhire. Fourth, Vinita Hamilton and Mary Wright.



GOLF WINNER—Rev. Newton Starnes, pastor of the United Methodist Church, was medalist at the tournament for pastors of the Methodist Northern Conference, held at Meadowbrook course in Lubbock, Texas, Thursday. Starnes shot two rounds of 40 each, to tie Archie Echols of Friona, and won the traveling trophy here, which he will keep for a year. Rev. Lloyd Hinkle played in the tournament. (LYNN COUNTY NEWS)



Roman women cleansed their skin with...

BRYANT SEED & DELINTING, INC.
1/2 MILES NORTH OF Tahoka on Hwy. 87

We have special built module trailers on which to store your seed. Ask your ginmer to call us for trailers. Catch is too large or too small. We go anywhere anytime.

Bring your seed in on your own trailer for a \$5.00 ton discount.

Our policy is the same as it's always been... trailers be hauled directly from the gin to our delinting plant insure accurate records and handling.

CALL COLLECT:
Office: 806-998-4497 998-4935
Night: 998-5093 998-4746 745-4192

WANTED: OIL FIELD EQUIPMENT OPERATORS

Halliburton Services has openings for Oil Field Equipment Operators. Job responsibilities include driving and delivering bulk cement to an oilfield location, transferring cement to field storage bins or mixing equipment, operation and maintenance of assigned equipment.

Applicants should be 19 or over, in good health, have a commercial driver's license, have good driving record and have some mechanical aptitude. Experience would be helpful but is not required. Halliburton Services offers a generous wage and benefit plan.

Apply in person and talk to Joe Fowler at the intersection of Highway 1611 and Highway 1611 approximately 8 miles north of Snyder.

HALLIBURTON SERVICES

Shock Absorbers Often Neglected Components

Car's bouncing like a bronco at a road, you say? shocks.

As any savvy mechanic will tell you, shock absorbers to the top of the list as the components more neglected by the average motorist than just about anything else.

You can go along virtually ignoring your shock absorbers until suddenly — whoops! — your stomach takes off over that big dip in the road.

Or the car body threatens to divorce the chassis on that sharp turn.

Fluid leakage is the most common reason why shock absorbers need replacing, but it's not the only one.

Worn mounting bushings or, for that matter, broken mountings can make a shock absorber just as useless.

Picture the piston-like device that

keeps your story door from slamming. A shock absorber works very much like this... a telescoping tube with a piston inside.

Fluid inside the tube passes through several small openings in the piston as it moves in and out.

One end of the tube is connected to the car's suspension system while the other is attached to the body or frame.

As the automobile passes over the bump or moves into a turn, the shock absorber telescopes accordingly, cushioning the sudden change in course.

New shock absorbers won't compensate for badly worn suspension components. But installing a heavy-duty type of shock absorber on an older-model car to compensate for suspension parts that have limbered up can help to restore that new-car ride.

Let Us Check Your Shock Absorbers Free

We can replace them - but only if it's needed

EXPERT FRONT END WORK

Dan's Auto & Body Repair

1313 Lockwood-Next to Flanigan's Auto Parts
Dan Taylor, Mgr.
998-5375



You've worked hard for your money. Now it's time for your money to go to work.

You've worked hard for your money. From 8-5, Monday through Friday. Plus nights, weekends, even holidays sometimes.

Now it's time to put your money to work for you.

At Sentry Savings, every dollar you save earns the maximum interest permitted by law. From 8-5, Monday through Friday. Nights. Weekends. Holidays.

Bring us your savings. We'll guard them — and make them grow.

SENTRY SAVINGS

Tahoka
1900 Lockwood • 998-4586
Joy Brookshire, Mgr.
Home Office Station, TX • Member FSUIC

Russell Stover CANDIES

A family tradition at Thanksgiving

Thanksgiving Slip On Box 1 lb. \$5.20

Fruit Cake Tin 2 lbs. \$8.95

Tahoka Drug

Obituaries

el Rogers

... for Ethel Enolia ... of Tahoka were ... p.m. Friday in First Methodist Church ... the Rev. Newton pastor, officiating, ... was in Tahoka ... under direction of ... funeral Home.

Rogers died about ... Wednesday in her ... had been under a ... care.

ack County native ... school in Post oak ... Hill. She married ... Richard Rogers on ... 1913, in Post Oak. ... lived to Lynn County ... from Post Oak. They ... until retiring. Rogers ... 16, 1959.

ogers was a member ... Baptist Church and ... of the World.

ogers include a daught- ... eta Mae Kidwell of ... two sons, William ... of Tahoka and ... Turner of Tahoka; a ... Annie Hubble of ... brother, Ira Carl ...

P
CA
ORIC
10LE
Bar
Fe
PRICE EFFECTI
YOUR FULL

Easy Money

... is the r
your s
earn w
for yo
worker

Don't le
billfold ...
... or unn
ing accoun
in a saving
icates of d
high wages

Wilson
St
Member Federal I

R

INTERNA
AGRICUL
EQUIPMI

Obituaries

Rogers

Services for Ethel Enolia Rogers, 86, of Tahoka were 11 p.m. Friday in First Methodist Church with the Rev. Newton pastor, officiating. She was in Tahoka under direction of General Home.

Rogers died about 10:30 a.m. Wednesday in her home which had been under a care.

She was a native of Rock County and a school in Post oak Hill. She married Richard Rogers on 1913, in Post Oak.

She moved to Lynn County from Post Oak. They were together until retiring, Rogers in 1959.

Survivors include a daughter, Mrs. Mae Kidwell of Tahoka and Turner of Tahoka; a son, Annie Hubble of Tahoka; a brother, Ira Carl

Hart of Post Oak; six grandchildren; and seven great-grandchildren.

Pallbearers were Johnny Rogers, David Rogers, Dean Rogers, Tommy Kidwell, Buster Burr and Kurt McMillan.

Olga Nieman

Services for Mrs. Willie G. (Olga) Nieman, 71, of the Tahoka area were held at 10:30 a.m. Saturday at Lakeview Baptist Church in Tahoka.

Funeral services were held at 10:30 a.m. Saturday at Lakeview Baptist Church in Tahoka with the Rev. Oscar Newell, pastor, and the Rev. Rick Wolfe, Methodist minister from New Home, officiating.

Burial was in Green Memorial Park in Wilson under direction of White Funeral Home of Tahoka.

Mrs. Nieman died Thursday morning at a Lubbock nursing home.

Born in Temple, Feb. 25, 1909, she moved from Milam County to Lynn County in 1923. The former Olga Schneider married Willie

Nieman Feb. 23, 1929, in Tahoka. He died in 1974. Mrs. Nieman was a member of Lakeview Baptist Church.

Survivors include three sons, Willie and Clarence, both of Tahoka, and Norvin of Post; three sisters, Della Schneider of Slaton, Mary Jones of Lubbock and Francis Hughes of Big Spring; three brothers, Frank Schneider and Herman, both of Wilson, and Adolf of Slaton; 10 grandchildren; four step-grandchildren; and five step-grandchildren.

Pallbearers were Marvin Nieman, Rand Nieman, Radd Nieman, Ricky Nieman, Mike Snow and Rodney Graves, grandsons.

born in Trenton and married Emma Pearl Starnes on Oct. 5, 1925, in Trenton. A retired farmer, he was a Baptist.

Survivors include his wife, Pearl; two daughters, Mrs. Harvey (Dorothy) Craig of Lamesa and Mrs. Dwayne (Jo Ann) McNeely of Tahoka; two sons, George N. of Guthrie and Bill of Seminole; six sisters, Ella Key of Savoy, Ruby Ramsey of Dimmitt, Dacey Webster of Bonham, Oleada Hance of Dimmitt, Phoebe Claborn of Dimmitt and Dale Madison of Savoy; a brother, Charlie Joe of Ector; nine grandchildren; and three great-grandchildren.

Carl William Wessels

Services for Carl William Wessels, 74, were held Tuesday, Nov. 11, at 10:30 a.m. in St. John's Lutheran Church of Winters. Presiding minister was Lawrence S. Keene.

Wessels was born on April 18, 1906, in Fairfield, Tampa, Illinois. The family moved to Hatchel, Texas when Carl was nearly six years old. He was married to Lydia Emma Kruse on Dec. 25, 1933 in the Lutheran Church in Westhoff.

She preceded him in death in July 1979. Carl was a farmer at Hatchel and Winters until 1974. He was a member of St. John's Lutheran Church and of St. John's Brotherhood.

Survivors include; two daughters, Mrs. William J. (Wanda Jean) Howell of Midland, Mrs. Milton G. (Betty Sue) Ehlers of Tahoka; one brother, Alfred of Winters; two sisters, Mrs. Robert (Irene) Gerhart of Winters and Mrs. Tena Meek of Silsbee; five grandchildren and one great-grandchild.

Pallbearers were J.C. Wessels, Clarence Wessels, Delbert Kruse, A.C. Wessels, Henry Lang, Richard Kruse, and Donald Kruse, nephews. Honorary Pall Bearers: Kenneth Kruse, Jimmy Kruse, Glenn Meek, Milton Gerhart and Harold Reints.

Lee Lane Jr.

Graveside services for Lee Lane Jr., 46, of O'Donnell will be held at 2 p.m. Thursday (today) in O'Donnell Cemetery.

Lane was dead at 9:05 a.m. Monday on arrival at Medical Arts Hospital after an illness.

Justice of the Peace Fred Vera ruled the death was of natural causes.

Lane had lived in Miami, Fla., for 12 years before moving to O'Donnell nine months ago. He was a mechanic.

Survivors include his parents, Mr. and Mrs. Lee Lane of O'Donnell; two sisters, Helen and Mildred Stone, both of Waco; three brothers, Ulysses of Houston, Stanley and Bean Stone, both of Waco.

Robert Stokes

Services for Robert Luther Stokes, 82, of O'Donnell were held at 3 p.m. Wednesday in O'Donnell Church of Christ with Leslie Micky, minister, officiating.

Burial was in O'Donnell Cemetery.

Stokes died at 9 p.m. Sunday in Medical Arts Hospital after an illness.

The retired farmer and rancher had lived in the O'Donnell area since 1919. He married Eula Lee Gardenhire on June 13, 1925, in O'Donnell. He was a member of O'Donnell Church of Christ.

Survivors include his wife; a daughter, Eunice May Cox of Mesa, Ariz.; two sons, Bobby Lee of Truth or Consequences, N.M., and Albert Ray of Springville, Ariz.; four sisters, Ethel Cozart of Lamesa, Berdie Childers of Fort Worth, Lucy Archer of Seminole and Leona Roberts of Summit City, Calif.; two brothers, N.W. of Westbrook and Arthur of Hale Center; 13 grandchildren; and nine great-grandchildren.

George Key

Services for George Olen Key, 79, of Dimmitt were held at 10:30 a.m. Tuesday at Parsons Chapel with the Rev. Ronnie Travis, pastor of Lee Street Baptist Church, officiating.

Graveside services were held at 3 p.m. at Tahoka Cemetery.

Key died at 8:37 a.m. Sunday in Deaf Smith General Hospital after an illness.

The 20-year Dimmitt resident, came to Castro County from Tahoka where he had lived since 1936. He was

Pesticide Users Need To Renew Licenses For '81

AUSTIN--All pesticide applicators in Texas need to renew their licenses reported Agriculture Commissioner Reagan V. Brown. He noted only commercial and non-commercial applicators whose licenses will expire December 31, 1980 are affected.

Under the Texas Pesticide Control Law, all persons purchasing, using, and/or supervising the use of restricted-use pesticides must either be licensed or certified by the appropriate licensing agency, Brown explained. Prompt return of the form and renewal fee will also facilitate the licensing process, he said.

Applicators who do not return their applications by the March 1, 1980, deadline, will be required to retest for licensing. Certified or private applicators do not need to renew their licenses.

For additional information please contact Charlie G. Rogers, Texas Department of Agriculture, Box 12847, Capitol Station, Austin, Texas 78711 or call (512) 475-6133.

Drought Brings Crop Harvest Estimates Down

AUSTIN--The vegetable harvest for the last quarter of 1980 is expected to drop, one more lingering effect of the drought that in some areas of the state made it "too dry to plant," reports Agriculture Commissioner Reagan V. Brown.

Harvest of carrots, bell peppers, spinach, lettuce and cabbage will all be down, according to the Texas Crop and Livestock Reporting Service. Only cucumbers and tomatoes are expected to increase over the 1979 fall harvest.

"It wasn't disease or insects that got these crops," said Agriculture Commissioner Reagan V. Brown. "It was the hot, dry weather. In some areas it was too dry to plant."

Prospective harvest figures for the October-December quarter are 3,400 acres of carrots, down 11 percent from 1979; 4,800 acres of bell peppers, down 17 percent; 4,000 acres of cabbage, down 33 percent; 1,700 acres of spinach, down 37 percent, and 900 acres of lettuce, down 47 percent.

Around 4,600 acres of cucumbers, a 35 percent increase over last year, are expected for harvest. Tomatoes will increase from 500 acres in 1979 to 800 this fall.

Nationwide, harvest for 14 fresh market vegetables is estimated at 249,000 acres, down one percent from a year ago.

Casarez of the home; three sisters, Caroline Garces of O'Donnell and Mary and Dee Dee Hernandez, both of San Bernardino, Calif.; three brothers, Rudy, Frank Jr. and Tommy, all of San Bernardino, Calif.; and four grandchildren.



WHOZIT--Another Whozit showed up at the Lynn County News this week. Anyone knowing these people is invited to let us know who they are. Actually, we already know who three of them are.

FACTS & FIGURES

Heating Water by the Sun

It may surprise some to know that solar water heaters are not new. There were thousands in use in Florida and the Southwest during the 1930s. Now, they're becoming increasingly popular in the Northeast. In 1979 alone, the number of installations doubled from 5,000 to 10,000 thanks to the efforts of the Northeast Solar Energy Center, which is operated in Massachusetts by the not-for-profit Northern Energy Corp.

IF IT'S FRIDAY THIS MUST BE KILIMANJARO!

It takes five days to climb Mount Kilimanjaro.

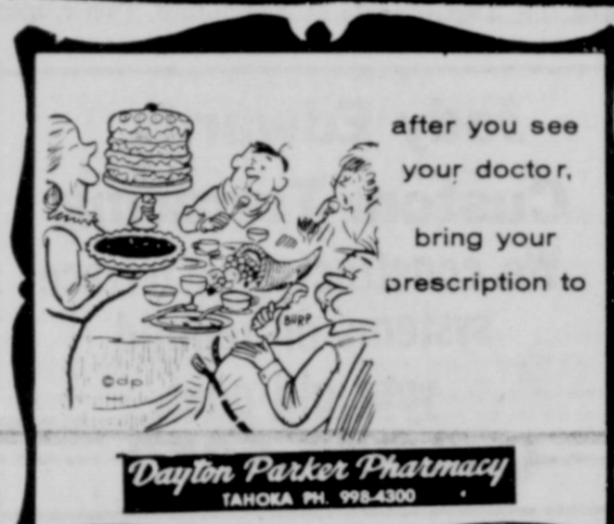
ALAYAN ELECTRONICS SALES & SERVICE

★ TVs ★ STEREOs ★ RADIOS
★ CBS ★ CALCULATORS
★ PARTS

BOX 1646
1520 MAIN STREET
TAHOKA, TX 79373
S.U.S. (806) 998-8217
RES. (806) 795-2736



The average family of four can save 40 to 60 percent of its annual water heating bill by heating that water with a solar system. A homeowner can get a 40 percent federal tax credit for having a system installed. Some states also have a state tax credit. This can bring the cost of installation well below \$2,000.



after you see your doctor, bring your prescription to

Dayton Parker Pharmacy

TAHOKA, PH. 998-4300

Shop In Tahoka

One 1980 and One 1981 GMC Diesel Pickups In Stock!



- New aerodynamic styling
- 6 1/2- or 8-foot cargo box
- Double-wall construction
- Steel-belted radial tires, standard
- 350 Diesel engine available

Also, see the new LeSabre diesel and other new 1981 Buicks, Olds, Pontiacs and GMC's now at McCord's

...And if you don't see what you want, ask Jess or H. B. - We can get cars from other dealers in a hurry.

A Few 1980 Models Left



Keep that great GM feeling with genuine GM parts!

McCord Motor Co.

TAHOKA, TEXAS

SEE THE NEW GENERAL MOTORS LINE OF FINE CARS



YOUR FULL SERVICE BANK



Easy Money

... is the money that your spare dollars earn while they work for you as you worked for them.

Don't let them loaf in your billfold... or in a cookie jar... or unneeded in your checking account. Put them to work in a savings account or certificates of deposit... at today's high wages for working money.

Wilson State Bank

Member Federal Deposit Insurance Corporation

BREAKING PLOWs IN STOCK!

4-Bottom, 18-Inch ROLLOVERS

Wade Farm Implement, Inc.

TAHOKA

PH 998-4558 or 998-4559

INTERNATIONAL AGRICULTURAL EQUIPMENT

Wildcat Mfg.

6 Miles S. on U.S. 87

Leighton Knox Jr.

- ★ Treelan Rigs Built
- ★ Nurse Tanks
- ★ General Spray Equipment
- ★ Wildcat 3-Wheelers

Phone 327-5602

Save - Save - Save

Due to the short crops it could be that the most money we make, will be the money we save.

Why don't you start your savings with us--by checking our prices and protection.

Hochheim Prairie Farm Mutual

See us for low-cost coverage to fit your needs!

Fire & Extended Coverage Hospitalization	Medicare Supplements Life & Estate Planning
Roland Clem	Jeannell Edwards

J. A. & Joyce Pebsworth

2208 Main St. 998-4564	Tahoka 998-5160
---------------------------	--------------------

COTTON TALKS

FROM PLAINS COTTON GROWERS, INC.

Texas farmers and ranchers by the thousands from about mid-November to early January will be receiving crop or livestock questionnaires from the Texas Crop and Livestock Reporting Service (TCLRS) or will be personally interviewed by the Service's field staff. And a high percentage of the questionnaires will be received by farmers in the 25 High Plains counties represented by Plains Cotton Growers, Inc.

That's why Joe D. Unfred of New Home, current PCG President, is urging that all farmers complete the questionnaires as accurately as possible and otherwise cooperate with TCLRS in every way.

The information gathered through the questionnaires and interviews provides the basis for determining final acreage, yield and production of crops and end-of-the-year livestock and poultry numbers for the state of Texas and for each county.

All of the estimates published by TCLRS are based on the data provided by Texas farmers and ranchers county Extension Agents, ASCS offices and many others in agriculture. This cooperation provides the necessary data which is then returned to the farmers and ranchers and others in the form of estimates.

"Statistics sometimes make for pretty dull reading," admits Unfred, "but they essential to producers seeking to make production and marketing decisions based on sound information rather than what otherwise would be mostly guesswork."

Estimates also are needed by farm organizations and legislators in promoting, planning, and enacting wise legislation and are used in establishing acreages and payment levels to producers under the various commodity programs. "And the more conscientious farmers are in supplying requested information," Unfred adds, "the more accurate and useful the estimates will be."

The collection and publication of agricultural statistics are a cooperative effort between the Texas and U.S. Departments of Agriculture. This cooperation avoids duplication of effort, promotes economy in

government, and increases the effectiveness of all statistical reports. Individual farm and ranch information is kept confidential, and only state and county summaries become a part of the final published estimates.

The U.S. Department of Agriculture's Farmers Home Administration (FmHA) now has the authority to make unsubsidized emergency disaster loans to farmers who are able to get credit from other sources. The new authority, announced by Assistant Secretary of Agriculture Alex Mercure, was recently granted to permit FmHA to serve credit-worthy farmers previously served by the Small Business Administration (SBA).

Although SBA disaster loans to farmers will not be eliminated, they will be severely restricted, and farmers able to get credit elsewhere will be eligible for SBA loans for losses only if they have been turned down for such loans by FmHA because of legal restrictions. Also, loans to farmers for losses to residential housing still may be made by either the SBA or FmHA.

COTTON TODAY

A NATIONAL COTTON COUNCIL SERVICE

Cotton Crop Drops: The 1980 cotton crop will total 11,224,300 bales, according to the U.S. Department of Agriculture's Nov. 1 estimate.

The total is down 365,000 bales from the Oct. 1 estimate and 23 percent from the total in 1979.

Top states in production are Texas, 3.4 million bales; California, 3.0 million; Arizona, 1.3 million; and Mississippi, 1.1 million.

Arizona farmers lead the parade in estimated per-acre yields, with 1,062 pounds per acre. California is next with 983 pounds per acre. For the Cotton Belt, the estimated per-acre yield is 408 pounds.

Chairmen Named: Ed Breihan, general manager of the Plains Cooperative Oil Mill, Lubbock, will serve as general chairman of the 1981 Beltwide Cotton Production-Mechanization Conference, Jan. 7-8, in New Orleans. James Stanford, cotton

producer and president of McQueen-Smith Farms, Prattville, Ala., will be chairman of a session on new developments from agricultural chemical and equipment industries, scheduled Jan. 6 as part of the Beltwide Cotton Conferences.

The National Cotton Council will sponsor the general conferences in cooperation with other groups.

The first speeding ticket was issued in 1902 to T.H. Shelvin of Minnesota, who was the first of the hot rodders. He was fined ten dollars for going over ten mph.

+++
The world's largest dump truck is the "Terex Titan", made in 1974 by General Motors. It stands 56 feet high and holds 700,000 pounds of dirt.

Tahoka Merchants Appreciate Your Business

BACKHOE SERVICE

B. B. McAllister
Call 924-7291 or 924-7338

Case Case

"THE TRACTOR SPECIALIST"



Why not deal with the specialist...?

Call Grady Jackson, Home 744-0806
Call Joe Anthony, Home 762-5040

Case Power & Equipment

3302 Slaton Hwy. Lubbock 745-4451

Harvest Reaches Peak

The Texas High Plains cotton harvest reached peak volume this week, according to Mack Bennett, Area Director for USDA's Marketing Services Office at Lubbock. Most harvest equipment was in the fields and much late evening work was being done.

An estimated 50 to 60 percent of the crop was off the stalk, Bennett said. Many gins reported seed cotton field stored in modules as harvest quickly out-paced ginning capacity.

Lubbock's office classed 125,000 samples during the week ended Nov. 13, as the classing staff increased to 41 from 39 a week earlier. A night shift started last Monday to accommodate more classers expected soon.

The season's total graded at Lubbock approached 339,000. This compares with 117,000 classed by the same date last year.

Predominant grades during the week were grade 42 at 56 percent, grade 41 - 16 percent and grade 32 - 12 percent. About three percent were reduced one grade because of bark, according to USDA's Agricultural Marketing Service.

Staple 32 was predominant at 35 percent. Staple 31 was 26 percent followed by staple 33 at 18 percent. Average staple for the week was 32.0, up from 31.9 a week earlier.

Micronaire readings of 35 - 49 accounted for 73 percent. One percent miked higher while 26 percent were lower. The week's average miked at Lubbock was 39, unchanged from a week earlier.

Average breaking strength was 84,000 pounds per square inch, down from

87,000 one week ago. High Plains growers sold mixed lots of mostly grades 42 and 52, staples 30 and 31, mikes 35 - 49 around 73.85 cents per pound, up about one cent from last week. Mixed lots of mostly grades 41 and 51, staples 32 and 33 mikes 35 - 49 brought about 81.80 cents up about 1 1/2 cents per pound from a week earlier.

Gins paid growers \$110 to \$125 per ton for cottonseed, mostly \$110 to \$115.



NEW AT WADE'S--J.W. Phillips, a longtime resident of Tahoka, has been named manager of Wade Tire Co. here. Phillips is married to the former Velma D. Daniell and they have three daughters, D'Ann, 19, of Lubbock; Danette, 17, and Johanna, 9, students in Tahoka schools. They are members of Sweet Street Baptist Church.

One out of every four vehicles on the highways is running on an under inflated tire, according to the National Bureau of Standards.

A Visit With Your County Agent

By Stanley Young

Tips Aired On Buying Firewood

With winter weather just around the corner, homeowners will soon be making preparations for sitting by a glowing fireplace. But these dreams of a warm fire and a cozy fireplace may go up in smoke if the wrong type of wood is purchased.

Since firewood purchases are not covered by consumer protection laws, it's the responsibility of the buyer to shop and choose the right type of wood.

Price comparisons may be difficult since firewood may be sold by the standard cord, the face cord or the truck load.

A standard cord is 8 feet long, 4 feet wide and 4 feet high, or 128 cubic feet. On the other hand, a face cord measures 8 by 4 feet on the face of the stack, with the wood cut into smaller pieces. The face cord measures about 1/2 to 1/3 of a standard cord.

The best way to compare prices is to calculate the cubic feet of wood. Measure the stack and multiply the length by the width and by the height.

Following this advice will also keep the unwary buyer from making a mistake out of what appears to be a bargain. Cubic feet measurements should also be used on truck loads of firewood.

After the truck is unloaded and the wood stacked, multiply the length, width and height of the stack in feet and divide by 128 to obtain the portion of a cord you have. For example: 6 feet x 2 feet x 4 feet is 48 cubic feet: 48 divided by 128 is .38 or about 1/2 of a standard cord. A good rule of thumb is that a standard 1/2 ton pickup without heavy-duty springs can carry about 1/3 cord.

Certain types of firewood also burn better than others. Live oak, hickory, white oak, post oak, red oak and pecan are excellent, long-burning woods with a high heat output. However, pine and cedar are softwoods that make excellent kindling but produce only short-burning fires.

A combination of softwood for kindling, hardwood for heat, and fruit or nut wood for aroma will make shopping around worthwhile. Always choose dry, lightweight wood over green wood. Drier wood can give up to 20 percent more heat and is much easier to kindle

Small Crop Production Brings Higher Prices

AUSTIN--While some weather problems and international events produced several problems for farmers and ranchers, forcing some out of business, those that persevered will receive higher farm prices, reports Agriculture Commissioner Reagan V. Brown.

"Anyone who thinks the forces of supply and demand do not govern farm prices should look at 1980 for proof to the contrary," said Agriculture Commissioner Reagan V. Brown. "Grain sorghum, corn and cotton are excellent examples of commodities whose prices have increased substantially since last season because of outside events which decreased supplies or increased demand."

Brown noted that the Texas grain sorghum harvest is expected to be down some 28 percent because of this summer's drought and heat wave, and will be the smallest crop since 1956. However, prices for grain sorghum in the Golden Triangle area of the state have averaged around \$5.75 - \$6.07 per hundredweight in recent weeks, compared to \$4.75 per hundred during the same period a year ago. Corn, expected to be down 18 percent in production this year, has risen in price by 51 - 56 cents a bushel because of the dropoff.

Brown noted that the signing of the U. S. - China bilateral grain agreement likely would push prices higher for the grains covered under the agreement.

The effects of the drought, and subsequent damaging

rainfall at harvest expected to cut U.S. production in Texas 10 percent this year. However, this demand, has pushed prices above year ago

For example, Delta market prices for 1 1/2 strict low middling cotton week was 81.30 a pound, compared to a pound a year ago.

Texans have hotter temperatures past records in

COLLEGE STATION--This summer was on record for most of the major metropolitan areas but not enough to top the 44-year-old record for test day.

That mark of 120 degrees set in Seymour on the 2nd and 4th of the month at the Hall. Robbie Robertson

Unofficial figures for State Climatologist's Texas A&M University that Wichita Falls was worst of it this summer. Days of 100-degree temperatures by the first week of the month and rainfall local newspaper called than the Best Deal

Classified Deaths Tuesday 5 p.m.

14" Empire Busters

Contact us for more information
Bartley-Weaver Fertilizer Co.
998-4717

AS

Civic organizations

Rotary Club meets at each Thursday at Cafeteria.

Boys Club meets at 7:00 on the 2nd and 4th of the month at B.F. Sherrod

E. "Red" Brown

REAL ESTATE BROKER
We Can Be Sold We Can Sell It
Beecher Sherrod Salesman

Notice

Cakes-All occasion complete reception
Ann Johnson Service. 628-4781

Southwest Real Estate

FOR SALE

- Room 1 bath, Stucco with central heating cooling.
- Room, 1 bath, Mobile with appliances, great condition.
- Room, 1 bath home, fully brick, extra nice lot.
- Room, 3 bath, brick on corner lot, 2 room garage house in rear, and well. Excellent location.
- Room, 1 bath home double garage--near school.
- Room, 1 bath Stucco with garage, fenced yard--near school.
- Quanset equipment \$70 in south part of very handy and safe.
- 2 bedroom, 1 bath, home, fenced yard, 40 building in rear for commercial use.
- Commercial lot on west side of road. Excellent location.

JOHN DEERE

Service is the other half of a great product

Taylor Tractor & Equip. Co., Inc.

Phone 998-4549 Tahoka, TX

Jody Edwards Custom Terracing

We construct new terrace systems or rebuild your old ones.
Call 327-5252

SNAPPER Lawnmowers & Tillers
DAYTON Lawnmowers & Tillers
POULAN Chain Saws
COMMUTER Spray Rigs
TEEL Water Pumps
Good supply of Parts, Chain, Blades for above items
Sharpen Chains & Blades

SERVICE ALL I SELL & OTHER BRANDS
Curry's Commuter & Lawnmower
727 Lockwood 998-4779

THESE TAHOKA FIRMS ARE MAKING THIS FARM NEWS POSSIBLE	
McCord Oil Co. H. B. McCord, Jr.	Lubbock-Tahoka Federal Land Bank Assn. Jay Dee House, Mgr.
Production Credit Association Don Boydston	Farmers Co-Op Assn. No. 1 Tommy Lawson, Mgr.
Tahoka Co-Op David Martin, Mgr.	Tahoka Auto Supply The Hollands
Taylor Tractor & Equipment Co., Inc. Fen Taylor	Lynn County Farm Bureau Joey Meador, Mgr.

FAST RESULTS WITH WANT ADS

p Product
gher Prices
rainfall at harvest
expected to cut
production in
percent this year.
However, this
production, as
continued steady
demand, has pushed
prices above year-
ago levels.
For example, the
market prices for
strict low midding
week was 83
pound, compared
a pound a year ago.
COLLEGE STUN
This summer was
on record for most
major metropolitan
but not enough to
44-year-old record
test day.
That mark of 100
set in Seymour in
1936 - was shattered
unseated by
Wichita Falls which
117 degrees on June
highest temperature
come out of the
wave.
Unofficial figures
State Climatologist
Texas A&M University
that Wichita Falls
worst of it this summer.
days of 100-degree
tures by the first
temper and rainfall
local newspaper called
than the Dust Bowl
Classified Deadline
Tuesday 5 p.m.

Civic Organizations

Rotary Club meets at each Thursday at Cafeteria.

Wichita Falls Lions Club meets at 7 p.m. the 2nd and 4th of the month at 909 Hill. Robbie Roberson, president.

E. "Red" Brown REAL ESTATE BROKER

Can Be Sold We Can Sell It

Beecher Sherrad Salesman

990-930 J.E. Brown
992-582 B.F. Sherrad
WICHITA FALLS - TAHOKA

Notice

Cakes-All occasion complete reception. Ann Johnson Service. 628-4781 36-tfc

Dresses and Imprinting wedding and showers. of colors. Tahoka Drug 18-tfc

Southwest Real Estate

FOR SALE

1 bedroom 1 bath, Stucco on corner lot, 2 room garage with central heating cooling.

1 bedroom, 1 bath, Mobile home with appliances. Excellent condition.

1 bedroom, 1 bath home, fully brick. Extra nice lot.

1 bedroom, 3 bath, brick on corner lot, 2 room garage house in rear, and well. Excellent lot.

1 bedroom, 1 bath home, double garage - near school.

1 bedroom, 1 bath, Stucco on garage, fenced yard - near school.

Quanser equipment 70 in south part of very handy and cheap.

1 bedroom, 1 bath, 2 room home, fenced yard. Building in rear for office or commercial use.

Commercial lot on west side road. Excellent location.

W. MAIN, TAHOKA

For further information contact:

Jeanell Edwards
Office 998-4564
Res. 998-4784

Roland Clem
Office 998-5162
Res. 998-4462

A. Peabworth, Jr.
BROKER
998-4091

W. Weaver Fertilizer Co., Inc.
Tahoka, Texas

Business Services

YOUR OLD family portraits copied and restored by C. Edmund Finney, 1813 North 1st. Hours 1-5 p.m. 22-tfc

New McCulloch saws, also parts, chains sharpened. Small motors repaired. 9 miles north, 2 miles west of Tahoka. O. O. Tekell. 924-7471. 39-tfc

COOK PUMP SERVICE-service on Western furnaces and all makes of submersibles. Ph. 998-4752. tfc

WE DO PICTURE FRAMING-All sizes. Borden Davis Frame Shop. tfc

Thank You

We would like to express our appreciation to family and friends for the food and flowers sent to us. It is times like this that we truly know what it means to have family and friends. God bless you all.

The Family of Carl Wessels Mr. and Mrs. Milton Ehlers and family
Mr. and Mrs. William J. Howell and Family
47-1tp

Thank You

Through this medium, I want to express our thanks and love for every kindness shown at this time of our loss. We have been blessed by many of you in many ways during our sorrow.
We know there is a time to die and a time to mourn, but when we stop to count our blessings we will find strength and faith in Christ always.

Wilma Ramsey
J.E. Ramsey & Family
Hazel Baugh & Family
47-1tc

R.D.'s Custom Cabinets and Formica counter tops. Call Rick Renfro Phone 828-4685 Slaton 35-4tc

Old Taylor Leather Shop Anything made of leather. (Except saddles and boots) Shoe repair. Call 428-3782 in O'Donnell Owner--Burl Styles Taylor Mgr. C.L. "Jude" Taylor 40-tfc

Have Pickup, chainsaw, etc. Would like work such as cutting down or digging up unwanted trees, cleaning up alleys, lots, etc. Hauling off junk, trash or whatever. Working weekends. Roosevelt Moore Jr. 998-5423 or 998-4124

New Home Farm Store, Inc.

P.O. Box 177
New Home, Texas 79383

Joe D. Unfred (806) 924-7444
Broker Res. 924-7272

"SELLING FARMS FOR PROFITS"

For Sale: 640 acres (one section) good cotton and milo land, has water and some minerals, North west Lynn County. $\uparrow\uparrow\uparrow$

160 acres (1/4 section) good location suitable for cotton, milo, livestock. Waters from center pivot, no minerals \$700. per acre. $\uparrow\uparrow\uparrow$

2 houses located in New Home.

Bartley-Weaver Fertilizer Co.

Box 480 998-4717
for lands sake - use fertilizer

Real Estate

For Sale: 160 acres 5 1/2 miles west of Tahoka on Hiway 380. Good cotton production record. \$700 per acre. Call Stinsons, Inc. 792-3733 or DuWayne Nichols 794-4109 36-4tc

For Sale: 2-bedroom home, one bath, garage, storage room and cellar. 1920 N. 4th. call 998-5193. 32-tfc

For Sale: 354 acres at \$350. per acre, near Maple in Bailey County. Possession now, plowed and ready to plant wheat. Also other good values in farm land. Ethel and Alton Cain, Vernon Pruett, Broker. Slaton - 828-3697. 39-tfc

For Sale: 2 Bedroom, 2 bath, living room, large den and kitchen combination, utility room, garage and cellar. Shown by appointment only. 1909 N. 3rd 998-4246. 46-tfc

WILSON COMMUNITY CLEAN UP FOR MUSEUM BUILDING

The City of Wilson has opened it's museum building to the whole community for any and all kinds of meetings or get together with no charge, but, now we are asking for help to give it a good cleaning. Bring your ladders if you have one, Pledge, dishwashing soap, cleaner, or whatever you used to work on Monday, Dec. 8, at 7 p.m. No children under 12 please! 47-2tc

Arts and Crafts Sale

New Home will present an Arts and Crafts Display on Dec. 5-6 from 10 a.m. to 5 p.m. in the New Home city hall.
Various crafts and paintings will be for sale. 47-3tc

Own your own Jean Shop: go direct - no middle man, no salesman's fee. Offering all the nationally known brands such as Jordache, Vanderbilt, Calvin Klein, Sedgefield, Levi and over 70 other brands. \$14,500.00 includes beginning inventory, airfare for 1 to our national warehouse, training, fixtures and Grand Opening Promotions. Call Mr. Loughlin at Mademoiselle Fashions. 612-835-1304 47-1tp

Misc. For Sale

For Sale: 30 inch electric range. Call 998-4186 46-tfc

Farm Sale Dec. 20, 8 miles North of Tahoka, east side of road, Phillips 66 Service Station. Antiques, antique cars and old model cars. Watch for farm sale ad. Consignments welcome. Russell Howle 998-4144-Bobby Fletcher of Wolfworth Auctioneer-866-4422 44-1tc

Notice

For Rent: Business building for small business or offices. Inquire, 998-5120 or 998-4390 34-tfc

Let FX Bacteria help clean your Septic Tank the Easy Way--\$7.98. Tree roots removed from sewer lines, sinks opened.
Whitaker Hardware Company, Tahoka 44-7tc

Homemade cakes, pies, cookies, dessert breads and sweet rolls made on order only. Nancy Ross--628-2171 If no answer call 628-3521. Wilson 42-tfc

For Rent: Furnished 3 room apt. 998-5150 46-tfc

Open your own retail apparel shop. Offer the latest in jeans, denims and sportswear. \$14,850. includes inventory, fixtures, etc. Complete Store! Open in as little as 2 weeks anywhere in U.S.A. (Also infants and childrens shop). Call SUE, TOLL FREE 1-800-874-4780. 47-1tp

Reward: for black poodle about 18 inches high, some white spots, missing from Wilson. Call 628-2281 or 924-7362 47-2tc

Autos For Sale

For Sale: 1973 GMC 1/2 ton pickup. Power and air. Call 924-7779 47-2tc

SURPLUS JEEPS, CARS, and trucks available through government agency! Many sell for under \$200. Call 312-742-1142 ext. 9145 for information on how to purchase. 38-2tp

For Sale: 1971 Monte Carlo--998-4778 after 5 p.m. 40-tfc

1974 Red Pontiac Ventura. Air Conditioned, 56,000 miles--looks good. \$995. Call 998-5124. 44-tfc

For Sale: 1960 Mercury Comet, extra clean, garaged for most of last 20 years. Only 25,000 miles, 6-cyl. automatic. \$1595. Dalton Wood, 998-4888 or 998-5369. 45-2tf

Classified Deadline

Tuesday 5 p.m.

News Items Deadline

2 p.m. Tuesday

Garage Sales

5 Family Garage Sale: 1919 N. 6th. Clothing, carpet, Avon gifts, misc. Saturday only. 998-4667 42-tfc

Garage Sale: 1621 Ave. K Friday, Saturday and Sunday 47-1tc

3 Family Garage Sale: Furniture, toys, clothes, rugs, heaters, bicycles, misc. 1604 Green Ave. in Wilson. 8:30 to 4:30 Saturday only. 47-1tc

Garage Sale: 2510 N. 1st Friday, Nov. 21, starts 9 a.m. Toys, men's clothes, lots more. 47-1tc

Inside Sale: Thursday, Friday and Saturday. Clothes, dishes and misc. Inside Gomez Imports. 47-1tp

REAL ESTATE

• FARMS • RANCHES • HOUSES

ETHEL AND ALTON CAIN
VERNON PRUETT, BROKER

Offering Good Values in Farm Land

SLATON, TEXAS Phone (806) 828-3697

Robert Harvick Insurance Agency

★ Fire ★ Farm ★ Life ★ Auto
★ Crop Hail ★ Hospitalization
Ralph Allaire, O'Donnell, Agent
Located in the former Poka-Lambro Building

2129 Main St. in Tahoka
NO MEMBERSHIP DUES
HOME PHONE 628-2841
Ph. 998-4536

Wedding & Portrait Photography

Betty Stennett offers some of the best in wedding and portrait photography at reasonable prices. (Special prices for children's portraits.) For all your photographic needs contact Betty Stennett at 998-5029 or 998-4238 or come by 2013 North 1st.

VETERANS OR WIDOWS OF ALL WARS WHO NEED HELP OR ADVICE IN CLAIM BENEFITS, CONTACT--

RUSSELL HOWLE

SERVICE OFFICER

Wednesday of each week at Courthouse
Tahoka, Texas

FARM EQUIP REAL ESTATE LIVESTOCK

Bobby Fletcher Auctioneers

Txs-011-0248

David Hutcheson 806 866-4391 Office
806-4863

Wolfforth 866-4422 Office
Bobby Fletcher 792-3376

PAYNE EQUIPMENT SALES, INSTALLATION & SERVICE

FOLLIS HEATING & AIR CONDITIONING

FOR FREE ESTIMATE
PHONE 628-3271

OSCAR FOLLIS WILSON, TEXAS

A TRUE VALUE STORE

WHITAKER HARDWARE

"WE SELL EVERYTHING - KEEP NOTHING"

Phone 998-4749 Tahoka, Tex 79373

PROFESSIONAL DIRECTORY

<p>New Books And New Services Now Available At City-County Library Now Open: Mon. & Wed. 8 a.m. to 5 p.m. Fri. 1-5 Phone 998-4050 Located on S. 1st., just west of the square</p>	<p>Dan's Auto & Body Repair Tahoka, Texas Dan Taylor Mgr. 1313 Lockwood Ph. 998-5375 NIASE Certified Technicians</p>	<p>CUSTOM LANDSCAPE CONSTRUCTION</p> <p>* Landscape Design * Pruning * Landscape Construction - Planting, Walls, Decks, Shadestructures * Concrete - Walks, Drives, Patios * Dirt Work - Grading, Backhoe Services Dan R. Reid, Mgr. Phone 998-5254</p>
<p>Service To All Faiths "WE CARE FOR YOURS AS WE WOULD HAVE OURS CARED FOR" BILLIE WHITE - OWNER WHITE FUNERAL HOME PHONE 998-4433 COMPLETE FUNERAL SERVICE</p>	<p>Spraberry and Associates Specializing in Rare Coins & Stamps 314 North Austin Lamesa, Tx. 79331 Phone (806) 872-6231 LM, TNA, LM, ANA, APS Mr. and Mrs. David Spraberry</p>	<p>Tahoka Gun Shop 1505 Ave. J Gun repairs Ammunition</p>
<p>P & D PRODUCTS, INC. Phone 428-3882 O'Donnell, Texas</p> <p>SAND FIGHTERS STALK CUTTERS BED SLIDES TOOL BAR ACCES. MARKERS POINT SHARPENING</p> <p>CUSTOM WELDING OF ALL KINDS</p>	<p>Sam Pridmore Aerial Spraying</p> <p>NORTH SIDE OF T-BAR AIRPORT AT TAHOKA</p> <p>TAHOKA PH # 998-5292 NEW HOME PH # 924-7761</p>	<p>* SPRAYING * DUSTING * SEEDING * FERTILIZING</p> <h3>RANDOLPH AVIATION</h3> <p>* DEFOLIATION * "WE FLY ON SERVICE"</p> <p>Box 299, Tahoka DICKIE RANDOLPH T-Bar Airport 806/998-4209</p>
<p>REAL ESTATE SALES Lease & Rental Contracts Management Service NEW HOME FARM STORE, INC. Box 177 New Home, Texas 79383 Call 806-924-7444</p> <p>Joe D. Unfred, Broker 924-7272 Lee Moore, Sales 924-7329 863-2593 Jan Stone 327-5263</p>	<p>JEANNEL EDWARDS NATIONAL FARM LIFE INSURANCE CO P O Box 1367 TAHOKA, TEXAS 79373</p>	<p>Boat & Saddle Repair Custom Leather Work</p> <h3>The Harness Shop</h3> <p>Tate Fondy 120 W Panhandle Slaton Texas 79364</p>
<p>Mary Kay COSMETICS Helen Saltana Professional Beauty Consultant For Appt. or Information 1721 S 3rd, Box 214 Call (806) 998 4601 Tahoka, TX 79373</p>	<p>ELECTRONICALLY RIDES HOMES & BUSINESSES OF WATERBUGS ROACHES RATS MICE CARPENTER ANTS MOSQUITOES FLEAS</p> <h3>PANASONIC</h3> <p>Available At Flannigan's Auto Parts 1313 Lockwood Phone 998-4095</p>	<h3>TAHOKA BODY SHOP</h3> <p>FREE ESTIMATES Raymond Barrientez 1617 S. 3rd St. Bus. 998-5309 Res. 998-5208</p>



Texas farmers and ranchers by the thousands from about mid-November to early January will be receiving crop or livestock questionnaires from the Texas Crop and Livestock Reporting Service (TCLRS) or will be personally interviewed by the Service's field staff. And a high percentage of the questionnaires will be received by farmers in the 25 High Plains counties represented by Plains Cotton Growers, Inc.

That's why Joe D. Unfred of New Home, current PCG President, is urging that all farmers complete the questionnaires as accurately as possible and otherwise cooperate with TCLRS in every way.

The information gathered through the questionnaires and interviews provides the basis for determining final acreage, yield and production of crops and end-of-the-year livestock and poultry numbers for the state of Texas and for each county.

All of the estimates published by TCLRS are based on the data provided by Texas farmers and ranchers county Extension Agents, ASCS offices and many others in agriculture. This cooperation provides the necessary data which is then returned to the farmers and ranchers and others in the form of estimates.

"Statistics sometimes make for pretty dull reading," admits Unfred, "but they essential to producers seeking to make production and marketing decisions based on sound information rather than what otherwise would be mostly guesswork."

Estimates also are needed by farm organizations and legislators in promoting, planning, and enacting wise legislation and are used in establishing acreages and payment levels to producers under the various commodity programs. "And the more conscientious farmers are in supplying requested information," Unfred adds, "the more accurate and useful the estimates will be."

The collection and publication of agricultural statistics are a cooperative effort between the Texas and U.S. Departments of Agriculture. This cooperation avoids duplication of effort, promotes economy in

government, and increases the effectiveness of all statistical reports. Individual farm and ranch information is kept confidential, and only state and county summaries become a part of the final published estimates.

The U.S. Department of Agriculture's Farmers Home Administration (FmHA) now has the authority to make unsubsidized emergency disaster loans to farmers who are able to get credit from other sources.

The new authority, announced by Assistant Secretary of Agriculture Alex Mercure, was recently granted to permit FmHA to serve credit-worthy farmers previously served by the Small Business Administration (SBA).

Although SBA disaster loans to farmers will not be eliminated, they will be severely restricted, and farmers able to get credit elsewhere will be eligible for SBA loans for losses only if they have been turned down for such loans by FmHA because of legal restrictions. Also, loans to farmers for losses to residential housing still may be made by either the SBA or FmHA.

COTTON TODAY

A NATIONAL COTTON COUNCIL SERVICE

Cotton Crop Drops: The 1980 cotton crop will total 11,224,300 bales, according to the U.S. Department of Agriculture's Nov. 1 estimate.

The total is down 365,000 bales from the Oct. 1 estimate and 23 percent from the total in 1979.

Top states in production are Texas, 3.4 million bales; California, 3.0 million; Arizona, 1.3 million; and Mississippi, 1.1 million.

Arizona farmers lead the parade in estimated per-acre yields, with 1,062 pounds per acre. California is next with 983 pounds per acre. For the Cotton Belt, the estimated per-acre yield is 408 pounds.

Chairmen Named: Ed Breihan, general manager of the Plains Cooperative Oil Mill, Lubbock, will serve as general chairman of the 1981 Beltwide Cotton Production-Mechanization Conference, Jan. 7-8, in New Orleans. James Stanford, cotton

producer and president of McQueen-Smith Farms, Prattville, Ala., will be chairman of a session on new developments from agricultural chemical and equipment industries, scheduled Jan. 6 as part of the Beltwide Cotton Conferences.

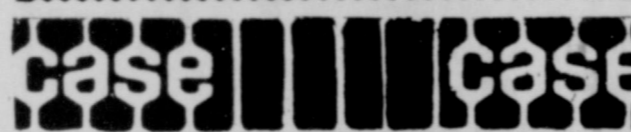
The National Cotton Council will sponsor the general conferences in cooperation with other groups.

The first speeding ticket was issued in 1902 to T.H. Shelvin of Minnesota, who was the first of the hot rodders. He was fined ten dollars for going over ten mph.

+++ The world's largest dump truck is the "Terex Titan", made in 1974 by General Motors. It stands 56 feet high and holds 700,000 pounds of dirt.

Tahoka Merchants Appreciate Your Business

BACKHOE SERVICE
B. B. McAllister
Call 924-7291
or 924-7338



Why not deal with the specialist...?

Call Grady Jackson, Home 744-0806
Call Joe Anthony, Home 762-5040

Case Power & Equipment

3302 Slaton Hwy. Lubbock 745-4451

Jody Edwards
Custom Terracing
We construct new terrace systems or rebuild your old ones.
Call 327-5252

SNAPPER Lawnmowers & Tillers
DAYTON Lawnmowers & Tillers
POULAN Chain Saws
COMMUTER Spray Rigs
TEEL Water Pumps
Good supply of Parts, Chain, Blades for above items
Sharpen Chains & Blades
SERVICE ALL I SELL & OTHER BRANDS
Curry's Commuter & Lawnmower
727 Lockwood 998-4779

THESE TAHOKA FIRMS ARE MAKING THIS FARM NEWS POSSIBLE

McCord Oil Co. H. B. McCord, Jr.	Lubbock-Tahoka Federal Land Bank Assn. Jay Dee House, Mgr.
Production Credit Association Don Boydston	Farmers Co-Op Assn. No. 1 Tommy Lawson, Mgr.
Tahoka Co-Op David Martin, Mgr.	Tahoka Auto Supply The Hollands
Taylor Tractor & Equipment Co., Inc. Fen Taylor	Lynn County Farm Bureau Joey Meador, Mgr.

Harvest Reaches Peak

The Texas High Plains cotton harvest reached peak volume this week, according to Mack Bennett, Area Director for USDA's Marketing Services Office at Lubbock. Most harvest equipment was in the fields and much late evening work was being done.

An estimated 50 to 60 percent of the crop was off the stalk, Bennett said. Many gins reported seed cotton field stored in modules as harvest quickly out-paced ginning capacities.

Lubbock's office classed 125,000 samples during the week ended Nov. 13, as the classing staff increased to 41 from 39 a week earlier. A night shift started last Monday to accommodate more classers expected soon.

The season's total graded at Lubbock approached 339,000. This compares with 117,000 classed by the same date last year.

Predominant grades during the week were grade 42 at 56 percent, grade 41 - 16 percent and grade 32 - 12 percent. About three percent were reduced one grade because of bark, according to USDA's Agricultural Marketing Service.

Staple 32 was predominant at 35 percent. Staple 31 was 26 percent followed by staple 33 at 18 percent. Average staple for the week was 32.0, up from 31.9 a week earlier.

Micronaire readings of 35-49 accounted for 73 percent. One percent miked higher while 26 percent were lower.

The week's average mike at Lubbock was 39, unchanged from a week earlier.

Average breaking strength was 84,000 pounds per square inch, down from

87,000 one week ago. High Plains growers sold mixed lots of mostly grades 42 and 52, staples 30 and 31, mike 35 - 49 around 73.85 cents per pound, up about one cent from last week. Mixed lots of mostly grades 41 and 51, staples 32 and 33 mike 35 - 49 brought about 81.80 cents up about 1 1/2 cents per pound from a week earlier.

Gins paid growers \$110 to \$125 per ton for cottonseed, mostly \$110 to \$115.



NEW AT WADE'S--J.W. Phillips, a longtime resident of Tahoka, has been named manager of Wade Tire Co. here. Phillips is married to the former Velma D. Daniell and they have three daughters, D'Ann, 19, of Lubbock; Danette, 17, and Johnna, 9, students in Tahoka schools. They are members of Sweet Street Baptist Church.

One out of every four vehicles on the highways is running on an under inflated tire, according to the National Bureau of Standards.

A Visit With Your County Agent
By Stanley Young

Tips Aired On Buying Firewood

With winter weather just around the corner, homeowners will soon be making preparations for sitting by a glowing fireplace. But these dreams of a warm fire and a cozy fireplace may go up in smoke if the wrong type of wood is purchased.

Since firewood purchases are not covered by consumer protection laws, it's the responsibility of the buyer to shop and choose the right type of wood.

Price comparisons may be difficult since firewood may be sold by the standard cord, the face cord or the truck load.

A standard cord is 8 feet long, 4 feet wide and 4 feet high, or 128 cubic feet. On the other hand, a face cord measures 8 by 4 feet on the face of the stack, with the wood cut into smaller pieces. The face cord measures about 1/2 to 2/3 of a standard cord.

The best way to compare prices is to calculate the cubic feet of wood. Measure the stack and multiply the length by the width and by the height.

Following this advice will also keep the unwary buyer from making a mistake out of what appears to be a bargain. Cubic feet measurements should also be used on truck loads of firewood.

After the truck is unloaded and the wood stacked, multiply the length, width and height of the stack in feet and divide by 128 to obtain the portion of a cord you have. For example: 6 feet x 2 feet x 4 feet is 48 cubic feet: 48 divided by 128 is .38 or about 1/2 of a standard cord. A good rule of thumb is that a standard 1/2 ton pickup without heavy-duty springs can carry about 1/2 cord.

Certain types of firewood also burn better than others. Live oak, hickory, white oak, post oak, red oak and pecan are excellent, long-burning woods with a high heat output. However, pine and cedar are softwoods that make excellent kindling but produce only short-burning fires.

A combination of softwood for kindling, hardwood for heat, and fruit or nut wood for aroma will make shopping around worthwhile. Always choose dry, lightweight wood over green wood. Drier wood can give up to 20 percent more heat and is much easier to kindle

Small Crop Production Brings Higher Prices

AUSTIN--While some weather problems and international events produced several problems for farmers and ranchers, those that persevered will receive higher farm prices, reports Agriculture Commissioner Reagan V. Brown.

"Anyone who thinks the forces of supply and demand do not govern farm prices should look at 1980 for proof to the contrary," said Agriculture Commissioner Reagan V. Brown. "Grain sorghum, corn and cotton are excellent examples of commodities whose prices have increased substantially since last season because of outside events which decreased supplies or increased demand."

Brown noted that the Texas grain sorghum harvest is expected to be down some 28 percent because of this summer's drought and heat wave, and will be the smallest crop since 1956. However, prices for grain sorghum in the Golden Triangle area of the state have averaged around \$5.75 - \$6.07 per hundredweight in recent weeks, compared to \$4.75 per hundred during the same period a year ago. Corn, expected to be down 18 percent in production this year, has risen in price by 51 - 56 cents a bushel because of the dropoff.

Brown noted that the signing of the U. S. - China bilateral grain agreement likely would push prices higher for the grains covered under the agreement.

The effects of the drought, and subsequent damping

rainfall at harvest are expected to cut United States production in Texas 50 percent this year, Brown said. However, this decrease in production, as the continued steady demand, has produced prices above year ago

For example, Dallas market prices for a strict low middling cotton week was 83.5 cents per pound, compared to 81.5 a pound a year ago.

Texans have had hotter temperatures in past records.

COLLEGE STUDENTS This summer was the on record for most heat in the major metropolitan area but not enough to topple 44-year-old record for test day.

That mark of 122 degrees was set in Seymour on 8/14/1936 -- was shattered by a week of 117 degree on June 23 highest temperatures come out of the Texas wave.

Unofficial figures from State Climatologist of Texas A&M University at Wichita Falls said worst of it this summer's 100-degree temperatures by the first week of August and rainfall by the local newspaper called that the Dust Bowl

Classified Daily Tuesday 5 p.m.

14" Empire Busters
Contact us for more information
Bartley-Weaver Fertilizer Co.
998-4717

Let us tone up the muscles of your John Deere equipment

We believe in providing you with the very best in quality and performance. That's the John Deere way. We also believe in keeping your equipment in the best possible shape.

So we put a lot of emphasis on good service. Skilled service personnel with the right tools and equipment. Fast, computerized parts service. Even emergency field service, overtime when necessary.

You bought the best. We want to help you keep it that way. Let us be your John Deere Fitness Center.

Service is the other half of a great product

Taylor Tractor & Equip. Co., Inc.
Phone 998-4549
Tahoka, Tex.

Civic Organizations
Lions Club meets at each Thursday at Cafeteria.
Lions Club meets at 7:30 on the 2nd and 4th of the month at home of Robbie Robertson.
Lions Club meets at 7:30 - J. E. Brown, 382 B.F. Sherrod.
IS - TAHOKA
Notice
Cakes - All occasion complete reception
Ann Johnson Service. 628-4781
36-ft.
and Imprinting wedding and showers.
of colors.
Tahoka Drug 18-ftc.
Southwest Estate
FOR SALE
Room 1 bath, Stucco with central heating cooling.
Room 1 bath, Mobile with appliances. Excellent condition.
Room 1 bath home, fully brick. Extra nice.
Room 3 bath, brick on corner lot, 2 room garage house in rear, and well. Excellent lot.
Room 1 bath home double garage - near school.
Room 1 bath Stucco with garage, fenced yard - near school.
Quaset equipment 70 in south part of property handy and cheap.
2 bedroom, 1 bath, home, fenced yard, 40 building in rear for use of commercial use.
Commercial lot on west side of road. Excellent.
31 MAIN, TAHOKA
Further information contact:
Joanell Edwards Office 998-4564 Res. 998-4784
Waland Clem Office 998-5162 Res. 998-4462
A. Rebsworth, Jr. BROKER Res. 998-4091

FAST RESULTS WITH WANT ADS

Civic Organizations

For example, Dallas market prices for 1-1/2 percent this year. However, this year's production, as well as continued steady demand, has pushed prices above year-ago levels.

Texans have a hotter temperature than most of the past records.

COLLEGE STADIUM This summer was on record for most of the major metropolitan areas, but not enough to top a 44-year-old record for test day.

That mark of 120 degrees set in Seymour on June 1936 — was shaken by unseasoned by wind.

Wichita Falls reached 117 degrees on June 24. Highest temperatures come out of the Texas wave.

Unofficial figures from State Climatologist's Texas A&M University show that Wichita Falls was worst of it this summer.

100-degree days were 117 in number by the first of the month and rainfall of local newspaper called than the Dust Bowl.

Classified Deadlines Tuesday 5 p.m.

REAL ESTATE BROKER
J.E. Brown
382 B.F. Sherrod
Tahoka

Notice
Cakes-All occasion complete reception
Ann Johnson
Service. 628-4781
36-tfc

Wedding and Imprinting
Wedding and showers.
of colors.
Tahoka Drug
18-tfc

Southwest Real Estate
HOMES FOR SALE
Bedroom 1 bath, Stucco
with central heating
cooling.

Bedroom, 1 bath, Mobile
with appliances.
Excellent condition.

Bedroom, 1 bath home,
fully brick, Extra nice
ter.

Bedroom, 3 bath, brick
on corner lot, 2 room
age house in rear, and
well. Excellent lo-

Bedroom, 1 bath Stucco
with garage, fenced
yard—near school.

Household equipment
70 in south part of
very handy and
free go.

2 bedroom, 1 bath,
on same, fenced yard,
40 building in rear for
or commercial use.

Commercial lot on west
end road. Excellent
location.

Business Services

YOUR OLD family portraits copied and restored by C. Edmund Finney, 1813 North 1st. Hours 1-5 p.m. 22-tfc

Real Estate

For Sale: 160 acres 5 1/4 miles west of Tahoka on Hiway 380. Good cotton production record. \$700 per acre. Call Stinsons, Inc. 792-3733 or DuWayne Nichols 794-4109 36-4tc

Misc. For Sale

For Sale: 30 inch electric range. Call 998-4186 46-tfc

Autos For Sale

For Sale: 1973 GMC 1/2 ton pickup. Power and air. Call 924-7779 47-2tc

Garage Sales

5 Family Garage Sale: 1919 N. 6th. Clothing, carpet, Avon gifts, misc. Saturday only. 998-4667 42-tfc

Wedding & Portrait Photography

Betty Stennett offers some of the best in wedding and portrait photography at reasonable prices. (Special prices for children's portraits.) For all your photographic needs contact Betty Stennett at 998-5029 or 998-4238 or come by 2013 North 1st.

New McCulloch saws, also parts, chains sharpened. Small motors repaired. 9 miles north, 2 miles west of Tahoka. O. O. Tekell. 924-7471. 39-tfc

For Sale: 2-bedroom home, one bath, garage, storage room and cellar. 1920 N. 4th. call 998-5193. 32-tfc

Farm Sale Dec. 20, 8 miles North of Tahoka, east side of road, Phillips 66 Service Station. Antiques, antique cars and old model cars. Watch for farm sale ad. Consignments welcome. Russell Howle 998-4144-Bobby Fletcher of Wolforth Auctioneer-866-4422 44-1tc

SURPLUS JEEPS, CARS, and trucks available through government agency! Many sell for under \$200. Call 312-742-1142 ext. 9145 for information on how to purchase. 38-2tp

Garage Sale: 1621 Ave. K Friday, Saturday and Sunday 47-tfc

VETERANS OR WIDOWS OF ALL WARS WHO NEED HELP OR ADVICE IN CLAIM BENEFITS, CONTACT--

RUSSELL HOWLE

SERVICE OFFICER
Wednesday of each week at Courthouse Tahoka, Texas

COOK PUMP SERVICE-service on Western furnaces and all makes of submersibles. Ph. 998-4752. 1tc

For Sale: 354 acres at \$350. per acre, near Maple in Bailey County. Possession now, plowed and ready to plant wheat. Also other good values in farm land. Ethel and Alton Cain, Vernon Pruett, Broker. Slaton-828-3697. 39-tfc

Notice

For Rent: Business building for small business or offices. Inquire, 998-5120 or 998-4390 34-tfc

For Sale: 1971 Monte Carlo-998-4778 after 5 p.m. 40-tfc

Garage Sale: 2510 N. 1st Friday, Nov. 21, starts 9 a.m. Toys, men's clothes, lots more. 47-1tc

FARM EQUIP REAL ESTATE LIVESTOCK

Bobby Fletcher Auctioneers

Txs-011-0248
David Hutcheson Wolforth Bobby Fletcher
806 866-4391 Office 866-4422 Office
866-4863 792-3376

Thank You

We would like to express our appreciation to family and friends for the food and flowers sent to us. It is times like this that we truly know what it means to have family and friends. God bless you all.

For Sale: 2 Bedroom, 2 bath, living room, large den and kitchen combination, utility room, garage and cellar. Shown by appointment only. 1909 N. 3rd 998-4246. 46-tfc

Let FX Bacteria help clean your Septic Tank the Easy Way—\$7.98. Tree roots removed from sewer lines, sinks opened.
Whitaker Hardware Company, Tahoka 44-7tc

For Sale: 1960 Mercury Comet, extra clean, garaged for most of last 20 years. Only 25,000 miles, 6-cyl. automatic. \$1595, Dalton Wood, 998-4888 or 998-5369. 45-2tf

Inside Sale: Thursday, Friday and Saturday. Clothes, dishes and misc. Inside Gomez Imports. 47-1tp

PAYNE EQUIPMENT SALES, INSTALLATION & SERVICE

FOLLIS HEATING & AIR CONDITIONING

FOR FREE ESTIMATE PHONE 628-3271

OSCAR FOLLIS WILSON, TEXAS

The Family of Carl Wessels Mr. and Mrs. Milton Ehlers and family Mr. and Mrs. William J. Howell and Family 47-1tp

WILSON COMMUNITY CLEAN UP FOR MUSEUM BUILDING
The City of Wilson has opened it's museum building to the whole community for any and all kinds of meetings or get togethers with no charge, but, now we are asking for help to give it a good cleaning. Bring your ladders if you have one, Pledge, dishwashing soap, cleaner, or whatever you have and come to the museum building ready and willing to work on Monday, Dec. 8, at 7 p.m. No children under 12 please! 47-2tc

Homemade cakes, pies, cookies, dessert breads and sweet rolls made on order only. Nancy Ross-628-2171. If no answer call 628-3521. Wilson 42-tfc

For Rent: Furnished 3 room apt. 998-5150 46-tfc

Classified Deadline Tuesday 5 p.m.
News Items Deadline 2 p.m. Tuesday

A TRUE VALUE STORE

WHITAKER HARDWARE

"WE SELL EVERYTHING - KEEP NOTHING"

Phone 998-4743 Tahoka, Tex 79373

Thank You

Through this medium, I want to express our thanks and love for every kindness shown at this time of our loss. We have been blessed by many of you in many ways during our sorrow.

We know there is a time to die and a time to mourn, but when we stop to count our blessings we will find strength and faith in Christ always.

Wilma Ramsey
J.E. Ramsey & Family
Hazel Baugh & Family 47-1tc

Arts and Crafts Sale
New Home will present an Arts and Crafts Display on Dec. 5-6 from 10 a.m. to 5 p.m. in the New Home city hall.
Various crafts and paintings will be for sale. 47-3tc

Open your own retail apparel shop. Offer the latest in jeans, denim and sportswear. \$14,850. includes inventory, fixtures, etc. Complete Store! Open in as little as 2 weeks anywhere in U.S.A (Also infants and childrens shop). Call SUE, TOLL FREE 1-800-874-4780. 47-1tp

Reward: for black poodle about 18 inches high, some white spots, missing from Wilson. Call 628-2281 or 924-7362 47-2tc

REAL ESTATE
ETHEL AND ALTON CAIN
VERNON PRUETT, BROKER
Offering Good Values In Farm Land
SLATON, TEXAS Phone (806) 828-3697

PH. 998-4536

HOME PHONE 628-2841

PROFESSIONAL DIRECTORY

New Books And New Services Now Available At
City-County Library
Now Open:
Mon. & Wed. 8 a.m. to 5 p.m. Fri. 1-5
Phone 998-4050
Located on S. 1st., just west of the square

Dan's Auto & Body Repair
Tahoka, Texas
Dan Taylor Mgr. 1313 Lockwood Ph. 998-5375
NIASE Certified Technicians

CUSTOM LANDSCAPE CONSTRUCTION

- * Landscape Design
- * Landscape Construction - Planting, Walls, Decks, Shadestruces
- * Concrete - Walks, Drives, Patios
- * Dirt Work - Grading, Backhoe Services

*Pruning
Dan R. Reid, Mgr. Phone 998-5254

Have Pickup, chainsaw, etc. Would like work such as cutting down or digging up unwanted trees, cleaning up alleys, lots, etc. Hauling off junk, trash or whatever. Working weekends.
Roosevelt Moore Jr. 998-5423 or 998-4124

Own your own Jean Shop: go direct - no middle man, no salesman's fee. Offering all the national known brands such as Jordache, Vanderbilt, Calvin Klein, Sedgewfield, Levi and over 70 other brands. \$14,500.00 includes beginning inventory, airfare for 1 to our national warehouse, training, fixtures and Grand Opening Promotions. Call Mr. Loughlin at Mademoiselle Fashions. 612-835-1304 47-1tp

"WE CARE FOR YOURS AS WE WOULD HAVE OURS CARED FOR"
BILLIE WHITE - OWNER
WHITE FUNERAL HOME
PHONE 998-4433
COMPLETE FUNERAL SERVICE

Spraberry and Associates
Specializing in Rare Coins & Stamps
314 North Austin Lamesa, Tx. 79331
Phone (806) 872-6231
LM, TNA, LM, ANA, APS
Mr. and Mrs. David Spraberry

Tahoka Gun Shop
1505 Ave. J
Gun repairs
Ammunition
* SPRAYING * DUSTING * SEEDING * FERTILIZING



New Home Farm Store, Inc.
P.O. Box 177
New Home, Texas 79383
Joe D. Unfred (806) 924-7444
Broker Res. 924-7272
"SELLING FARMS FOR PROFITS"
For Sale: 640 acres (one section) good cotton and milo land, has water and some minerals, North west Lynn County.
++
160 acres (1/4 section) good location suitable for cotton, milo, livestock. Waters from center pivot, no minerals \$700. per acre.
++
2 houses located in New Home.

P & D PRODUCTS, INC.
Phone 428-3882 O'Donnell, Texas
SAND FIGHTERS STALK CUTTERS
BED SLIDES TOOL BAR ACCES.
MARKERS POINT SHARPENING
CUSTOM WELDING OF ALL KINDS

Sam Pridmore Aerial Spraying
NORTH SIDE OF T-BAR AIRPORT AT TAHOKA
TAHOKA PH # 998-5292
NEW HOME PH # 924-7761

RANDOLPH AVIATION
"WE FLY ON SERVICE"
Box 299, Tahoka DICKIE RANDOLPH
T-Bar Airport 806/998-4209

Bartley-Weaver Fertilizer Co.
Box 480 998-4717
for lands sake - use fertilizer

REAL ESTATE SALES
Lease & Rental Contracts Management Service
NEW HOME FARM STORE, INC.
Box 177 New Home, Texas 79383
Call 806-924-7444
Joe D. Unfred, Broker 924-7272
Lee Moore, Sales 924-7329 863-2593
Jan Stone 327-5263

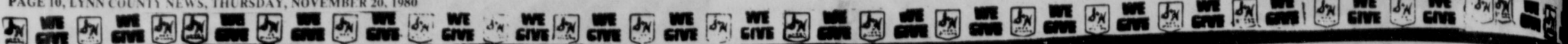
JEANELL EDWARDS
NATIONAL FARM LIFE INSURANCE CO
P.O. Box 1367
TAHOKA, TEXAS 79373

The Harness Shop
Tate Fondy
120 W Panhandle Slaton Texas 79364

Mary Kay COSMETICS
Helen Saldana
Professional Beauty Consultant
For Appl. in Intermex 1721 N. 3rd. Box 244
Call (806) 998-4671 Tahoka, TX 79373

ELECTRONICALLY RIDES HOMES & BUSINESSES OF
RATS WATERBUGS ROACHES
MICE CARPENTER ANTS FLIES
FLEAS MOSQUITOES
PANASONY
Available At
Flannigan's Auto Parts
1313 Lockwood
Phone 998-4095

TAHOKA BODY SHOP
FREE ESTIMATES
Raymond Barrientez
1617 S. 3rd St.
Bus. 998-5309 Res. 998-5208



DEL MONTE PUMPKIN
 SHURFRESH WHIPPING CREAM 16 OZ. CAN
49¢
 39¢

KRAFT MINIATURE MARSHMALLOWS
 10 1/2 OZ. PKG.
49¢

ALL VEGETABLE SHORTENING CRISCO
 3 LB. CAN
\$1.99

ALL PURPOSE GOLD MEDAL FLOUR
 5 LB. BAG
89¢

IMPERIAL POWDERED OR STA-SOFT BROWN SUGAR
 2 LB. BAG
\$1.29

TYLENOL EXTRA STRENGTH CAPSULES 50 CT. BTL. **\$2.49**
TYLENOL ELIXIR FOR CHILDREN LIQUID 2 OZ. BTL. **\$1.49**
ALKA-SELTZER 25 CT. PKG. **\$1.19**

THE CHOICE IS YOURS

BUFFERIN	60 CT. BTL.	\$1.59
NASAL SPRAY	1/2 OZ. BTL.	\$1.19
BAN ROLL-ON	1.5 OZ. BTL.	\$1.29
EXCEDRIN	40 CT. BTL.	\$1.89
EXCEDRIN P.M.	30 CT. BTL.	\$1.49
VITALIS TONIC	7 OZ. BTL.	\$1.89
BODY-ON-TAP	7 OZ. BTL.	\$1.39
CONDITIONER	7 OZ. BTL.	\$1.29

THRIFTY IS HUNTING TOTAL SAVER BARGAINS FOR YOUR THANKSGIVING FEAST!

U.S.D.A. GRADE 'A' SHURFRESH SELF-BASTING FINEST 18-22 LBS. AVG. **TURKEYS**
 WITH TENDER TIMER **77¢** LB.
 SHURFRESH TURKEYS - TURKEY BREAST - SWIFT S BUTTERBALL TURKEYS

RICH'S BONELESS FULLY COOKED HAMS 2 LB. AVG. **\$1.89**
BACON 1 LB. PKG. **\$1.49**
SAUSAGE 12 OZ. PKG. **\$1.29**
WIENERS 1 LB. PKG. **\$1.89**
FRANKS 1 LB. PKG. **\$1.89**
BOLOGNA 8 OZ. PKG. **\$1.19**
HAM 8 OZ. PKG. **\$1.59**

KAHN'S HICKORY GROVE BONELESS FULLY COOKED WATER ADDED 12-14 LBS. AVG. WHOLE HAMS
\$1.99 LB.
HALF OR PORTIONS 4-7 LBS. AVG. **\$2.09** LB.
HENS 4-6 LBS. AVG. **69¢** LB.
TURKEYS 8-10 LBS. AVG. **\$1.49** LB.
HAM BONELESS CENTER CUT **\$2.39** LB.

HOLIDAY BAKING SPECIALS

SHURFINE WHOLE GREEN BEANS	3 15 1/2 OZ. CANS	\$1.00
SHURFINE VAC PAK COFFEE	1 LB. CAN	\$2.19
SWANSON CHICKEN BROTH	3 14 OZ. CANS	\$1.00
CARNATION EVAPORATED MILK	2 TALL CANS	89¢
SHURFINE SWEET PICKLES MIDGETS	8 OZ. JAR	89¢
SHURFINE LIGHT CORN SYRUP	32 OZ. BTL.	89¢
SHURFINE MANZ. THROWN STUFF OLIVES	7 OZ. JAR	99¢
GREEN GIANT SLL. WHOLE MUSHROOMS	4 1/2 OZ. JAR	\$1.09
LE SEUER MINI SWEET PEAS	17 OZ. CAN	55¢

THRIFTY GROCERY BUYS

GREEN GIANT CREAM STYLE/WHOLE KERNEL GOLDEN CORN	17 OZ. CAN	39¢
SCHILLING POULTRY SEASONING	1/4 OZ. CAN	79¢
NEW! BETTY CROCKER SUPER MOIST MIX CARROT CAKE	18 OZ. BOX	79¢
NEW! BETTY CROCKER CREAM CHEESE FROSTING WITH NUTS	13.5 OZ. BOX	99¢
SUGARY SAM CUT YAMS	24 OZ. CAN	69¢

TOTAL GROCERY SAVERS

ASSTD./DECORATOR PAPER SCOT TOWELS	JUMBO ROLL	69¢
REYNOLD'S HEAVY DUTY ALUMINUM FOIL	18" x 25" ROLL	89¢
JELL-O INSTANT PIE FILLING & PUDDING	3 3 OZ. BOXES	\$1.00
KRAFT REAL GRAPE JELLY	2 LB. JAR	\$1.29
SUNSHINE SWISS GRAHAMS	12 OZ. BOX	99¢

SHURFINE STRAINED OR WHOLE CRANBERRY SAUCE
 16 OZ. CANS
3 \$1

WASHINGTON EXTRA FANCY WINESAP APPLES

CALIFORNIA GREEN PASCAL CELERY	1 LB.	29¢
TANGERINES	1 LB.	45¢
WASHINGTON D'ANJOU PEARS	1 LB.	45¢
CALIFORNIA PURPLE TOP TURNIPS	1 LB.	39¢
ZIPPER SKINS SWEET ONIONS	1 LB.	23¢
LARGE EMERALD WALNUTS	1 LB.	98¢
CALIFORNIA FRESH BROCCOLI	1 LB.	59¢

FROZEN FOOD SPECIALS

TOPPING FROZEN COOL WHIP	8 OZ. CTN.	69¢
PET RITZ MULTI-PAK PIE SHELLS	5 CT. PKG.	\$1.29
PET RITZ CUSTARD PUMPKIN PIE	26 OZ. BOX	\$1.09
NEW! SNOW CROP FIVE ALIVE FRUIT PUNCH	12 OZ. CAN	79¢
GREEN GIANT CORN ON COB	4 EAR PKG.	\$1.09
GREEN GIANT IN CHEESE SAUCE BROCCOLI	10 OZ. CTN.	89¢

FRESH DAIRY SPECIALS

SHURFRESH SWEET CREAM QTRS. BUTTER	1 LB. BOX	\$1.99
SHURFRESH SOUR CREAM	2 1/2 PT. CTN.	89¢
KRAFT PHILADELPHIA CREAM CHEESE	8 OZ. BOX	79¢
PILLSBURY CRESCENT DINNER ROLLS	8 OZ. CAN	79¢
MARYLAND CLUB COFFEE	1 LB. CAN	\$2.39

FOLGER'S MOUNTAIN GROWN COFFEE
 1 LB. CAN
\$2.39

CHOCOLATE FLAVORED BAKING CHIPS
 BAKER'S
 12 OZ. PKG.
99¢

REFRESH YOURSELF COCA COLA
 32 OZ BOTTLES
 6 PLUS DEPOSIT
\$1.89

ASSTD. CHRISTMAS PAPER GIFT WRAP
 3-26" ROLLS
98¢
 CHRISTMAS BAG OR BOWS 28 CT. BAG **69¢**

WE GIVE WE GIVE
 DOUBLE S & H GREEN STAMPS EACH WEDNESDAY WITH \$2.00 PURCHASE OR MORE

ON SALE THIS WEEK! BEAUTIFUL IMPORTED STONWARE DINNER PLATE
49¢ WITH EA. \$5.00 PURCHASE

THRIFTWAY

WE ACCEPT FOOD STAMPS

PRICES EFFECTIVE NOV. 16-26, 1980

