

MEMBER 1980  
TEXAS PRESS ASSOCIATION

# The Lynn County News 20¢

Oldest Business Institution In Lynn County

77, NUMBER 19 THURSDAY, MAY 8, 1980

TAHOKA, LYNN COUNTY, TEXAS

14 PAGES IN ONE SECTION PLUS INSERT

## Krause, Anderson Win; Gattis and Edwards To Be In Runoff

County Democratic gave the nomination to Deputy Stanley Krause by a large margin in last Saturday's election, with Democratic Gattis and Edwards being the runners-up.



ELDON GATTIS

in office, since there will be no Republican candidates on the county portion of the ballot in November.

In the five-man race for commissioner of Precinct 1, Eldon Gattis and Melvin Edwards will face each other in a runoff June 7. Gattis led the ballot with 174 votes, to 157 for Edwards. Other candidates and their totals were J.L. Hyde 136,

Lawrence Harvick 50 and George Wright 43.

In the only other county commission race, Prec. 3 incumbent Bart Anderson won over challenger David Massey by 321 to 150.

Krause polled 1804 votes to 267 for Roberson in the contest to succeed longtime Sheriff Norvell Redwine in office. Redwine did not seek re-election.

County Democrats gave Jimmy Carter 960 votes, Edward Kennedy 277, Jerry Brown 65 and for uncommitted delegates, 558. The Demo vote on presidential preference was not binding on delegates, however.

Unopposed winners of Democratic nominations in the county were Joe Smith for district attorney, Jimmy Wright for county attorney, and George McCracken for tax assessor-collector.

A total of 2129 Democratic votes was cast in the county.

There were 28 votes cast in the Republican primary in Lynn County, with Ronald Reagan getting 19 and George Bush 9 for nomination in the presidential race. For railroad commissioner,

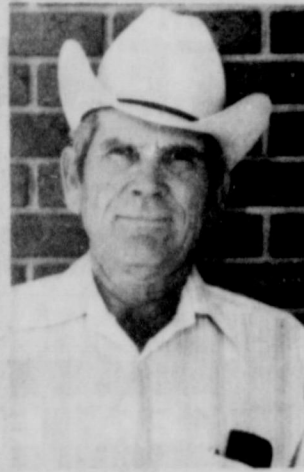


STANLEY KRAUSE

Henry Grover had 14, to 7 for Henderson and 5 for Kidd.

A chart showing the Democratic vote in each of the county's 11 boxes is published inside this issue of the News.

Anyone who didn't vote in the recent election because they had not registered, still may register at the county courthouse by 5 p.m. today, May 8, to vote in the runoff election or in the general election, according to County Judge Melvin Burks.



BART ANDERSON

### Tahoka Weather

Date	High	Low
May 1	80	55
May 2	78	48
May 3	73	50
May 4	68	54
May 5	74	50
May 6	82	56
May 7	83	51

Trace of rain April 30, May 3 and May 6.

### TAHOKA SCHOOL BOARD MEETING POSTPONED

The regular School Board meeting of Thursday, May 8, has been postponed until Thursday, May 15, at 8 p.m. in the Tahoka Board Room.

## Petition For Teen Curfew Rejected

A petition for a curfew aimed at teenagers in Tahoka was presented to and rejected by Tahoka City Council Monday night, although a spokesman for the petitioners said people "are sick and tired of the vandalism and littering" which he said have been on the increase in the city.

W.T. Kidwell and Mrs. Frances Chestnutt appeared before the council to present the petition carrying 248 signatures including those of about 12 merchants in the city, requesting such a curfew law.

Council members agreed there is a problem with such offenses in the city, but said that curfew laws have been held illegal and also would not be in the best interests of the community.

Kidwell pointed out that O'Donnell, Brownfield and other communities have curfew laws, but Mayor Mel Leslie said that such laws, when challenged, have been ruled illegal and an infringement on civil rights of those affected.

The council members told the petitioners that an increased effort would be made to enforce existing ordinances on drinking, littering and traffic violations.

Cal Huffaker also was more than in 1972.

Last year Cindy went to the state meet at Austin and placed second in the 800-meter run. In regional she also set a new mark for that meet, but Saturday's was her fastest official time. She is coached by Danny Chisum.

Miss Slone said she does plan to continue running in college, but isn't sure just where she will attend.

present to listen and participate in the lengthy discussion on the problem and its possible solutions. All council members, mayor and city manager also were present.

The mayor said that

merchants need to cooperate in enforcement of the ordinances and that when they know of something illegal being done, they should be willing to sign a complaint against the violators.

## Property Damage Reported

One disturbance call and a couple of incidents of damage to private property were investigated by Tahoka Police Dept. during the last week and the owner of a business on Main St. signed a trespassing complaint against three teenagers he said would not leave his property when he asked them to.

Ornamental ironwork along a walkway at White Funeral Home was damaged when struck by a vehicle sometime after 1 a.m. Tuesday.

On Monday, police were advised of a disturbance on the high school parking lot where some three wheelers were reported in operation.

Taylor Tractor reported damage to a tractor after someone started it and a pulley broke, damaging the radiator.

The incident involving the three young men occurred on Sunday afternoon, April 27, and the charges were heard by City Judge Mel Leslie last Tuesday, with his ruling made the following day. The three pleaded no contest to the charges, Leslie said he assessed no fine, however, on the recommendation of the complainant.

In other business Monday, the city entered into an agreement with other taxing jurisdictions in the county to establish a three-person review board on tax appraisals, a group which will replace the traditional equalization board.

Councilmen also adopted a resolution supporting establishment of a school of nursing in Lubbock and passed routine procedures related to two current city projects, one on waterworks and one of paving and street improvements.

Also discussed was the possibility of leasing mineral rights on city property at the landfill operation northeast of the city.

issued two tickets for impeding traffic, and one each for improper left turn, running red light, parking in roadway and no drivers license.

Ralph Ramirez, Rt. 2, O'Donnell, was treated and released at Lynn County Hospital for injuries suffered Saturday morning when his car when out of control and struck a utility pole about four miles north of O'Donnell on FM 2053.

Lynn County deputies and New Home officer Don Sharp investigated the burglary Saturday night of New Home Grocery. Missing were a radio, watches, pocket knives, envelopes, sun glasses, belt buckles and a stick of bologna.

**WOODWORK**

by dalton

ONE OF THOSE persons who has a lot of trouble going to sleep—except at the wrong times of the day. I get very sleepy in church, while driving toward the sun, during most civic club meetings and when people are telling me about their operations. But I have a hard time going to sleep at night after I stretch out in what ought to be a comfortable position for spending several hours.

The other 50 per cent of our household has trouble at all going to sleep, I lie there listening to the clock ticking, aware of the light coming in through the kitchen window, hearing every move made in the back yard, considering all the things I have to do the next day, and all the things I have ever done in my life (and wondering why I do some of them differently).

Mostly I just lie there and worry, knowing I don't hurry up and drop off, I'm going to sleep the next day. This causes even more trouble (one of the things which the big-brains say keeps people awake) and makes it even harder to go to sleep.

At the same time I can't get comfortable, no matter how I turn. Already I have turned over 57 times, curled up in a fetal position and tried stretching my legs. My body is not made for beds; I sleep much better if I could take off my arms and put them on a chair. But I certainly don't want to be able to reattach them the next morning. Occasionally I do go to sleep with my arm up over my pillow and wake up the next morning with my shoulder feeling like Godzilla had been stepping on it all night.

Consumer Reports article on insomnia covers the things it recommends for better sleep: frequent exercise, no naps during the day, no caffeine for several hours before bedtime, a regular schedule for going to bed and getting up, and "if you're not sleepy, get out of bed, read a book or turn on the radio or television."

Well, I guess I don't really have insomnia, if I define it as an inability to sleep. I sleep fine, and I go to sleep, so I just have insomnia on one end of the scale. I'm plenty sleepy when it comes to getting up.

Book of Lists, a volume of mostly useless interesting information, has a section listing famous insomniacs. Included are Charles Darwin, Thomas Edison, Rudyard Kipling, Mark Twain, Franklin and James Thurber.

From making me feel better for being in such a lousy company, it kind of depresses me, when these guys couldn't sleep, they wrote poetry or great stories, invented electric light or scribbled brilliant things in almanacs. I just go to the bathroom and lay around until I were asleep.

## Wilson Girl Sets State Record

If anyone ever catches Cindy Slone, it will be because she wants them to, because the Wilson senior can run a long way in a short time.

The daughter of Mr. and Mrs. C.W. Slone, a senior at

Wilson High, made the most of her second trip to the state girls track meet in Austin last Saturday, flying to a new state Class B record of 2:16.8 in the 800-meter dash. That's almost a half mile, for the benefit of folks who have

trouble converting to metrics.

"I knew this was going to be my last chance to run at state," Cindy said. "This was it for me, really. So I didn't care what it was going to take to win."

Miss Slone took the lead in the race from the first, and held off the late challenge down the last 100-meter stretch by Alisa Willis of Newcastle, who placed second with 2:17.8, also breaking the old record in Class B, 2:18.5 set by Princess Lindsey of Skid-



SETS STATE RECORD—Cindy Slone, Wilson High School senior who set a new state record in the 800-meter run at Austin last Saturday, shows her state championship medal. (LYNN COUNTY NEWS PHOTO)

## Wilson Bank In New Building

Wilson State Bank was operating in its new building this week, proudly showing off modern facilities and equipment with features which the bank has never offered before.

These new features include a drive-in window, night depository with letter drop, a larger and more convenient parking lot, and the time and temperature device erected near the entrance to the bank.

The new bank is located on the north side of FM 211 on the west edge of town.

President Dan Cook, who said the new building represents fulfillment of planning which has been underway for about 10 years, said tentative plans call for an open house later this month.

Going inside the new facility, constructed by Mike Kline Construction of Lubbock and designed by architects Whitaker and Hall of Lubbock, the visitor immediately comes to a new information desk personned by Charline Webb. The spacious lobby area is

smartly appointed with new furnishings, as are all the offices, and the design of the overhead ceiling with recessed lighting has a pleasing effect.

The bank building includes 6,300 square feet of space.

Cook, who has been president of the bank since the death of his father, H.G. Cook, in 1964, said the bank would observe its 60th anniversary on Oct. 19 this year.

Originally the 25-acre plot on which the bank is the first

structure was planned to include a building to house at least two other businesses, an apartment complex and lots for 40 or more residences. But with home construction and other building projects sharply curtailed at this time, those plans may have to wait for a more favorable climate, Cook indicated. All are expected to materialize in the future, however.

The Wilson Insurance Agency still is a part of the bank.



NEW WILSON BANK—Photo at above left shows the east end of the new Wilson State Bank, including new drive-in window, on FM 211, west edge of Wilson. The bank opened at its new facility Monday. At right is bank president Dan Cook in his new office. Cook said the new



bank was a culmination of 10 years of planning. It is located on a 25-acre plot which is designed for further development of other businesses and housing some time in the future. (LYNN COUNTY NEWS PHOTO)



# SHOP HERE and SAVE MORE on FOOD

**GRADE A FRYERS**  
**POUND 48c**

MORTON FROZEN  
**DINNERS 8 OZ 59c**

BIRDS EYE LITTLE EARS  
**CORN ON THE COB 8 CT 88c**

**COOL WHIP 59c**

BORDENS 1/2 GAL  
**BUTTERMILK 79c**  
 BORDENS  
**COTTAGE CHEESE \$1.49**

BORDENS  
**ICE CREAM 1/2 GAL \$1.19**

RANCH STYLE  
**BEANS 22 OZ 2/\$1.00**

GREEN GIANT C/S OR W/K  
**CORN 17 OZ 3/\$1.00**

GREEN GIANT  
**PEAS 17 OZ 3/\$1.00**

CAMPBELLS CHICKEN & RICE  
**SOUP 10 1/2 OZ 3/\$1.00**

HEINZ TOMATO  
**KETCHUP 89c**

HORMEL VIENNA  
**SAUSAGE 5 1/2 OZ 39c**

SHORTENING  
**CRISCO 3 LB CAN 98c**  
**\$1.98 WITH \$20.00 PURCHASE**

SHOULDER  
**ROAST POUND \$1.69**

RANCH  
**STEAK POUND \$1.69**

**PORK CHOPS**  
 CENTER **\$1.29 POUND**  
 END **99c POUND**  
 LIMIT 4 LBS


 HUNGRY JACK MASHED  
**POTATO 16 OZ 79c**

KRAFT B B Q  
**SAUCE 18 OZ 69c**

 ORIGINAL STYLE  
**POTATO CHIPS 9 OZ 99c**

CHINET 40 CT  
**PAPER PLATES \$1.79**

HI DRY  
**TISSUE 4 ROLL PKG 69c** LIMIT 3

 **FOLGERS COFFEE 1 LB**  
**\$1.98 \$2.79 WITH \$20.00 PURCHASE**

 **KRAFT MIRACLE WHIP 16 OZ 69c**

**COKES 32 OZ 6 PACK \$1.89 PLUS TAX & DEPOSIT**


**POTATOES 20 LBS \$1.58**

CELLO  
**TOMATOES CARTON 39c**

YELLOW  
**ONIONS POUND 9c**

SPECIALS GOOD MAY 8-14

**SMALL EGGS 2 DOZEN 2/89c**

 **DISH LIQUID DAWN 22 OZ 89c**

**WHITE SWAN BLEACH 69c**

**WHITE SWAN FABRIC SOFTENER 79c**

HI DRY PAPER  
**TOWELS LIMIT 4 2/\$1.00**



**A 4-PIECE PLACE SETTING (DINNER PLATE, CUP, SAUCER, BREAD & BUTTER PLATE) ONLY 99c**

**SIERRA STONEWARE HERE'S HOW EASY SAV-A-COUPON WORKS!**

You will receive one coupon with each \$5.00 purchase.  
 \$ 5.00 to \$ 9.99 ..... one coupon  
 \$10.00 to \$14.99 ..... two coupons, etc.  
 Paste the coupons onto your saver card.  
 Redeem your full saver card for a 4-piece place setting as follows:  
 99c ..... with 2 full saver cards  
 \$2.99 ..... with one full card  
 \$4.99 ..... when purchased with no saver cards  
 Partially filled saver cards have no redemption value.

Face Trials Monday

eight defendants in cases are on the 10th District Court Monday, with jury to begin at 10 a.m. to go on trial the week are the

Torres, Esther and Lillie Mae all of Tahoka, and charged in separate welfare fraud.

Whitehead of Post, in connection with farm tractor weights over farm equipment in February and of this year.

DeLeon of Tahoka, with attempted in the knifing of Calvillo on New-

Roberson of Tahoka, with criminal mis- destruction of glasses on three owned by Bray

Mondez of Wilson, attempted murder of Roberto on Feb. 6. Bishop Mathis, charged with while intoxicated, offense. cases also on the week.

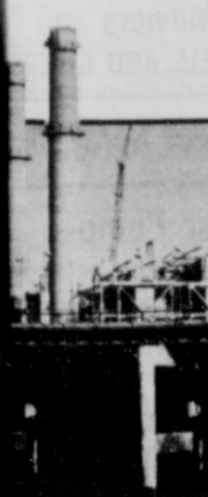
ie Says - - -

THAI

To all those who Sheriff last Saturday Stanley Krause or urge all citizens to law enforcement way possible.

Robbie R

paid for by Robbie Robe



ELECT

It's good to

most all of us depend on our homes, factories to provide for more productivity. . . and a living. Yes, electricity roll in the scientific technological development make these things possible.

## Rim Rock Supermarket

2001 Lockwood

Tahoka

998-5128



Face Trials Monday

Eight defendants in cases are on the 108th District Court Monday, with jury trial to begin at 10 a.m. The week are the Torres, Esther and Lillie Mae all of Tahoka, and charged in separate welfare fraud.

Whitehead of Post, in connection with farm tractor weights farm equipment in February and of this year.

DeLeon of Tahoka, with attempted in the knifing of Calvillo on New



**DRIVE-IN WINDOW**--Virginia Gickhorn appears as an apparition through the drive-in window at the new Wilson State Bank, but she's really more substantial than that. Out of the picture, but just to the left and below the window is a new night depository with letter drop. (LYNN COUNTY NEWS PHOTO)

**Memorial Service Set**

A memorial service has been planned by the Tahoka Cemetery Board for Sunday, May 25, when interested persons are asked to bring their picnic lunches after church to the Mini Park.

Cold drinks and homemade ice cream will be sold by Tahoka Chamberettes, with proceeds to go to the cemetery fund. The memorial service will follow at the cemetery at 1:30 p.m.



**TAHOKA WOMAN RECEIVES ENGLISH AWARD**--Jona Valentine of Tahoka is the recipient of the Ethel Roettig Award for outstanding achievements in English at South Plains College. Making the presentation during SPC's departmental awards assembly is Nathan Tubb, SPC academic dean. Miss Valentine was also initiated into Theta Epsilon, chapter of Phi Theta Kappa, national honor society for two-year colleges with requirements of having maintained at least a 3.5 overall grade point average.

ie Says - - -  
**THANKS**

To all those who voted for me for Sheriff last Saturday. I congratulate Stanley Krause on his victory, and urge all citizens to support all of our law enforcement agencies in every way possible.

**Robbie Roberson**

**NEWS OF NUTRITION**

**Added Nutrients Are Identical To Natural**

Vitamins and minerals added to foods like breakfast cereals to enhance their basic nutritional value are chemically and biologically identical to nutrients naturally present in food. In fact, U.S. Food and Drug Administration regulations prohibit any statement in food labeling which differentiates in any way between vitamins naturally present and those added to a food.

These added vitamins and minerals are utilized by the body just as those already present in food, the



**Piggly-Wiggly Now Thriftway**

Piggly-Wiggly supermarket no longer will be Piggly-Wiggly, but now is Thriftway, owners Turner Rogers and W.T. Kidwell announced this week.

Rogers and Kidwell will continue to operate the store.

More than 92% of ready-to-eat cereals are now nutritionally fortified, up from about 20% a decade ago.

Cereal Institute reports. The virtual disappearance of rickets and pellagra in the U.S. as a result of nutrient additions to foods is evidence of the biological effectiveness of such added nutrients.

More than 92 percent of

Tahoka, Texas 79373  
"Oldest Business Institution in Lynn County"

Published weekly on Thursday, except the last Thursday of each year, at Tahoka, Lynn County, Texas, office located at 1614 Avenue J, Box 1170, Telephone Area Code 806-998-4888.

Entered as second-class matter at the post office at Tahoka, Texas 79373, under Act of March 3, 1879, and published continuously without recess.

**SUBSCRIPTION RATES**

Lynn and Adjoining Counties	\$7.50
Elsewhere in Texas	\$8.50
Out of Texas	\$9.50

Dalton Wood ..... Editor and Publisher  
Betty Jolly ..... Adv. and Bookkeeping  
Jan Orr ..... Compugraphic Operator  
Piper Foster ..... Photography

Does your health insurance plan help protect against large medical expenses from long term illness?

**ED REDWINE**  
2128 Lockwood  
998-5250

See me for one that does-State Farm hospital/surgical insurance with catastrophic medical expense rider

Like a good neighbor, State Farm is there.

State Farm Mutual Automobile Insurance Company  
Home Office: Bloomington, Illinois

**Graduation Pictures**

Photographer Betty Stennett will be at graduation to take pictures of the graduating senior. The picture package will include an 8 x 10 of the entire 1980 graduating class and a 5 x 7 individual picture of your senior receiving his or her diploma. Both of the pictures will be together in a mat. Price of this package is \$12.50 plus tax.

If you are interested in having a picture made at graduation, please call

**BETTY STENNETT at 998-5029**

**We've put it all together**

**GMAC FINANCING**

Monte Carlo Landau Coupe

**GMAC RETAIL**

Consistent, dependable source.

Rates have not changed

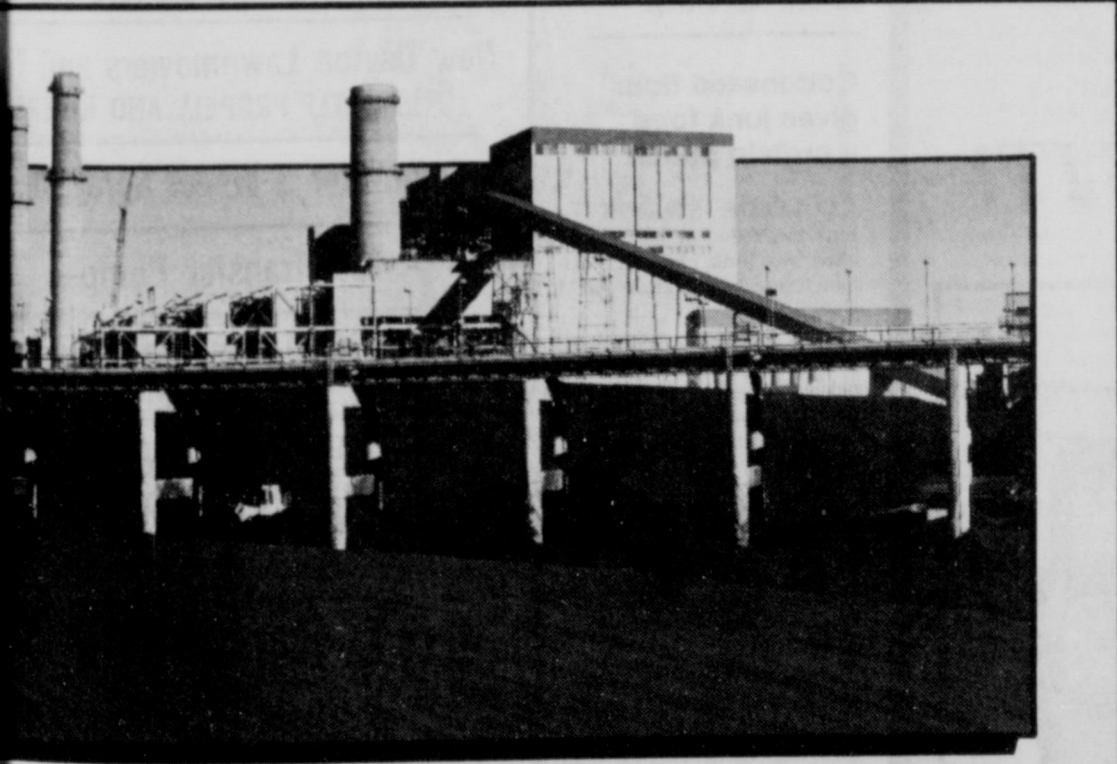
Available 36, 42, 48 mo. financing

48 Mos. Annual Percentage Rate

**13.51**

We Finance New & Used Cars & Trucks

**Bray Chevrolet Company**  
TAHOKA, TX 998-4544



**ELECTRICITY FROM COAL...**

It's good to know there's something we can depend on.

Most all of us depend on electricity in our homes, factories, and offices to provide for more jobs... greater productivity... and a higher standard of living. Yes, electricity plays a major role in the scientific and technological developments that make these things possible.

The constant striving for these innovative and advanced ideas and achievements of tomorrow means we will need more electricity. That's why Southwestern Public Service is continuing the building program of new electric generating plants that use coal as fuel. Because it's good to know there's something we can depend on.



**At Sentry we're building for the future**

At Sentry Savings, we're building for the future. We're moving ahead by planning ahead. Some time ago we made strategic plans to enable us to have building funds on hand now when they are needed. Our mortgage loan department is actively seeking new loans for FHA, VA and conventional mortgages and supporting our builders with interim construction financing.

Our savings department is paying the highest rates in our history. Security for savings—more important now than ever before—has never been greater.

If you are looking for loan funds for a new home, we believe there will never be a better time to buy.

If you are saving for the future, we believe there will never be a better time to open an account.

Bring your savings to Sentry. We'll guard them—and make them grow.

**Accounts Insured to \$100,000.**

**SENTRY SAVINGS**  
Tahoka  
1900 Lockwood - 998-4586  
Joy Brookshire, Mgr.  
Home Office: Slaton, TX Member FSLIC





BRIDGETTE FOWLKES AND RICKY HOLMES

### Fowlkes - Holmes Plan Wedding In Brownwood

Bridgette Rene Fowlkes' parents, Mr. and Mrs. Ronnie Fowlkes of Brownwood, have announced the approaching marriage of their daughter to Ricky Alan Holmes of Brownwood. The bride-elect attended Tahoka High School, graduated from Brownwood High, and attended Angelo State University. A June 21st wedding is planned in the First Baptist Church of Brownwood.

#### SAUSAGE AND BEANS TAMPICO

- 1 package (12 oz.) smoked pork sausage links, cut in 1-inch pieces
- 1 cup chopped onions
- 1 tablespoon oil (optional)
- 3-1/3 cups drained, cooked or canned pinto or kidney beans
- 1 cup tomato juice
- 1 teaspoon each salt and chili powder
- 1/4 teaspoon each garlic powder and pepper
- 2 cups peeled, cored, and thickly sliced Golden Delicious apples
- 3 cups hot cooked rice
- 1/2 cup sour cream

Cook sausage and onions in oil about 5 minutes; stir often. Add beans, tomato juice, and seasonings. Simmer, uncovered, 10 minutes. Stir in apples and continue cooking 10 minutes longer, or until most of the liquid has evaporated. Serve over beds of fluffy rice and top with dollops of sour cream. Serve with scallions and yellow chilies, if desired. Makes 6 servings.



Some cancers, once thought to be hopeless, can now be cured.

"Often, the surest way to convey misinformation is to tell the strict truth." Mark Twain

## ES Beef

AUSTIN--It's shocking what some meat packers are doing to beef these days, according to Agriculture Commissioner Reagan V. Brown.

"A relatively new process called electrical stimulation (ES) is spreading through the industry, almost with the speed of the electric current being used to tenderize beef carcasses," Brown said.

Sending electric current through a freshly slaughtered carcass results in more tender cuts of meat from "prime" grades down to the least expensive, tougher cuts. The greatest increase in tenderness is in those carcasses that fall into the lowest grades.

The procedure is quick and inexpensive. Within 90 seconds, the carcass receives 15 to 20 jolts of 550 volt current. This series of rapid on-and-off shocks stretches and breaks some of the meat fibers.

Electrical stimulation is particularly effective on meat from animals that have grazed on pasture land and spent little, if any, time in a feedlot. Grain finishing in a feedlot is an added expense, but has long been recognized as the best way to improve beef quality because beef from feedlot cattle has more interior fat, known as marbling, which makes those cuts more flavorful and tender.

In addition to tenderizing, the ES process has some other favorable effects on beef:

Natural enzymes in the meat are released quicker, which allows the carcasses to be chilled sooner and reduces aging time by more than half. Faster processing means lower costs to the packer.

These same enzymes slow the rate at which the meat spoils after it is cut and wrapped. With longer shelf life, retailers will have fewer losses due to spoilage, and shoppers may find a more constant selection.

Once the steak is in the skillet or the roast in the oven, there may be another savings from ES beef -- less shrinkage. It is reported that meat that has been electrically stimulated shrinks 10 to 15 percent less than beef that has not been processed in the same manner.

But with all these benefits, the ultimate consumer



KATHI LYNN GARY AND DAVID BROOKSHIRE

### Gary - Brookshire Announce Engagement

Rev. and Mrs. Raymond Gary wish to announce the engagement and approaching marriage of their daughter, Kathi Lynn, to James David Brookshire, son of Mr. and Mrs. David Brookshire of Tahoka.

Miss Gary is a 1978 graduate of O'Donnell High School and is employed with Farmers Home Administration in Tahoka. Mr. Brookshire is a 1975 graduate of Tahoka High School and attended South Plains College in Levelland. He is currently employed by Lyntegar Electric Cooperative. The couple plan to be married June 28 in the First Baptist Church of Tahoka. They will make their home in Tahoka.

question will be answered at the dinner table: How does it taste?

Taste tests by Texas A&M University researchers indicate not only that the meat is more tender, but that it is improved flavor as well.

The ES innovation in meat packing followed four years of experiments by Dr. Jeff Savell and other animal scientists at Texas A&M.

Earlier U.S. experiments with electrical stimulation some 30 years ago were short-lived and no more work was done on the concept until Savell's project began in the mid-1970's.

Savell believes that "the technology won't change in the foreseeable future. We tested lower and higher voltage and found 550 volts to be the most efficient."

Within five years, Savell

thinks about 75 percent of all beef processed in this country will be electrically stimulated. But that doesn't mean an end to grain-fed beef, because, as Savell points out, ES processing does not duplicate the feedlot product.

More likely, it will mean that cattle will not have to be fattened to the extent they are now.

Leaner beef would be a plus for those confirmed beef eaters who are restricting their fat intake for health reasons.

They could enjoy their favorite cuts without sacrificing tenderness or flavor.

Some consumers in Texas and other states have been buying ES beef for almost two years. A packer in Mercedes was the first to use the process in 1978 while a few months later, another company in

Corpus Christi began the first automated operation. Since then, the number has grown to more than 30 plants across the nation, with about half of them in Texas.

Because of this increased supply, some packers have recently begun identifying their ES products with special labels. Savell thinks once consumers understand the benefits of electrical stimulation, ES labeling for packaged meat will be a marketing aid for retailers that consumers will welcome.



eyes and answers  
Weston A. Pettey, O.D.

#### WINDSHIELD TINT

Dear Dr. Pettey: Just driving around the other day, I found out that I could roll my door glass down, stick my head out, and see a little better on street markers ahead than I could through my windshield. Why is that?

The reason is simple. Your windshield is apparently slightly tinted, like most of them are today. Here's a little background on the situation.

A few years ago, one of our distinguished researchers investigated the difference in the effect on the eyes of tinted and nontinted windshields. He found out several interesting facts. For example, he discovered that night driving is hampered to some degree with the tinted windshield, whether the driver wore glasses or not. He also found out that a slight tint in spectacles lowered visual sharpness a little more, and people who wore heavier color in their glasses experienced even a little more dulled vision.

The same experiments were conducted with a clear windshield, and you guessed it: Vision was sharper on all objects and extended more nearly to the length of the headlight beams; subjects with a little less than 20/20 vision did better; and reaction to desired danger signals was quicker in all categories.

Daylight experiments were also conducted, and only small differences were shown to exist. You are probably one whose visual acuity is a little more sensitive than average.

#### Cottonseed flour gives junk food a protein punch

COLLEGE STATION — Junk foods do not have to be filled with junk, claims a nutrition researcher at Texas A&M University.

Such delights as cookies, pies, cakes and candies can be healthy if given the protein punch of glandless cottonseed now being developed at Texas A&M.

"A cookie fortified with glandless cottonseed flour can have 40 percent more protein content," says Rhonda Simmons of Texas A&M's Food Protein Research and Development Center.

To get the 40 percent protein punch, the glandless cottonseed flour is substituted for 25 percent of the all purpose flour in a cookie recipe.



TRACY LEE AND LYNSON BRAZILE

### Tracy Lee-Harold Brazile Plan August Wedding

Mr. and Mrs. Bobby Lee announce the engagement of their daughter, Tracy Lee, to Lynson Brazile, son of Mr. and Mrs. Harold Brazile of Amarillo. Tracy is a nursing major at Texas State University and Brazile is a 1980 graduate of Texas State University. The couple plan to marry August 1st at St. Joseph's Church in Slaton.

### Happy Birthday Judy Leverett

May 15

Mac & Jone

ANNOUNCE  
**TOP FLITE** TOPFLITE  
FEEDS FEEDS  
NOW AVAILABLE  
1029 LOCKWOOD  
BARTLEY-EWEAVER FERTILIZER CO.

New Snapper Lawnmowers and Tractors  
PUSH, SELF PROPELL AND RIDERS

New Dayton Lawnmowers and Tractors  
PUSH, SELF PROPELL AND RIDERS

Commuter 3 Wheel Spray Rigs

Teel Transfer Pumps

Used Lawnmowers OF ALL KINDS

GOOD SUPPLY OF Parts and Lawnmower Blades

Good Supply in Show Room

Curry's Commuter And Lawn Mower

727 Lockwood

998-4178

SPECIAL LOW PRICES ON GIFTS FOR MOTHERS AND GRADUATES

## SUNDAY IS MOTHER'S DAY AND DON'T YOU FORGET IT!

**AMITY**  
**Secretariat checkbook clutch**

Regular \$25.00\*  
**NOW \$17.88**

Smart, popular checkbook clutch at a once-a-year sale price. Has removable checkbook case, outside coin pocket, pen, plus pockets for cards, photos, and cash. Luxurious leather in four fashion colors. Attractively gift boxed.

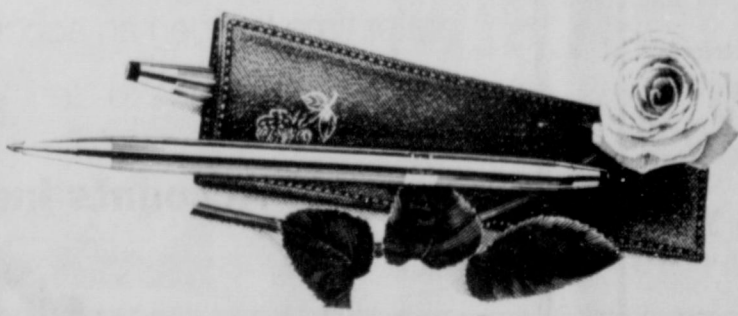
**Dayton Parker Pharmacy**  
TAHOKA PH. 998-4300

**SEIKO**

Seiko watches for men \$95.00 up

Seiko for women \$100 and up

No. ZWA25M--\$100.00  
17, stainless steel, white dial.  
Also available in yellow--\$115.00



Cross Pens and Pen-Pencil Sets \$7.50 up

## Be A Rodeo Queen!

Entries being accepted until Monday from high school girls.

For details, call 998-4037.

## Plan Now To Attend The Tahoka Rodeo

June 13-14!

...And if you're interested in the rodeo, please come to a meeting tonight [Thurs.], 8 p.m. at the Tahoka Cafeteria.

ROUN  
By Leon

Lynn Co. VIST  
Committee met on  
y night at 7:30 at th  
Center. Judy Nolan  
onnell was chair  
for the meeting  
were 8 committe  
s present and on  
Summer project  
discussed. Anothe  
is scheduled fo

ttt  
here last week wit  
ther, John Thoma  
and his sister, Linni  
were Mr. and Mrs  
Wayne Tippit an

THAT

your support  
ence shown durin  
for Commisi  
bet 1.

ask for your contin  
election to be hel

Melvin  
Paid By Melvin

mak  
T

For M  
Congra

More than meets the ah  
Wicky Vaughn's sleek gl  
erry shag is the dress r  
should be without. Clev  
trim defines the super. i  
lines. Shows up as a bu  
round the elasticized w  
poly cotton terry shag.  
wash-dry Natural. 3-13

Wicky vaug

P. S. IF IN  
GIVE  
CERT

for th  
we use the b  
style men &  
today

ADRIA

T  
Jeanette Roese



## ROUND TOWN

By Leona Waldrip

Lynn Co. VISTA Committee met on Friday night at 7:30 at the Center. Judy Noland was chairperson for the meeting. There were 8 committee members present and one Summer project discussed. Another is scheduled for

the last week with her, John Thomas and his sister, Linnie, were Mr. and Mrs. Wayne Tippit and

youngest daughter, Kate, from Ridgewood, N.J. Having lived in Tahoka during his school days, Gerald Wayne is better known to those who watch daytime TV as Ted Adamson on "Search for Tomorrow".

On Monday afternoon, 12 members of Wilson Sewing Club met at the Museum Bldg. Mrs. Lichey and Mrs. Williamson were hostesses. Mrs. J.L. Hyde was a visitor. The club plans to meet twice a month during the summer and fall months and will go

back to once a month in the winter. Mrs. Cordie Swann and Mrs. Charlie Lichey attended from Tahoka.

Friday luncheon at Lynn Co. Pioneer Club was well attended with 31 members and guest registering. Mrs. K.R. Durham assisted staff members as hostesses. Judge Melvin Burks, presided at the business session. Willie Mae Childress drew the "Lucky Member" gift and Bertha Williams was winner of the quilt that the club has been taking donations on for the building fund.

Stanley Krause was the speaker in the afternoon. The newly organized "kitchen band" played three numbers with Louise Wyatt at the piano.

Mrs. Edna Brasher was hostess to the "88" Club on Friday night. There were 8 members present.

Mildred Walker left Friday morning for San Antonio for a visit with relatives. She will visit others in Corpus Christi before returning home.

Sunday was "Senior Adult" Day at First Baptist Church. Older adults filled the choir and Mrs. Clay Bennett and Dr. Durham were given plaques honoring them as outstanding seniors in church and community affairs. The group is to be honored with a banquet in Fellowship Hall Tuesday.

Mrs. Gladys Holden of Big Spring is visiting her sister, Mrs. Charlie Lichey this week.

Mrs. Tinnie Meeks had

major surgery in Methodist Hospital Lubbock on Monday.

Mrs. Mildred Abbe has been chosen to represent Lynn Co. as outstanding Senior Citizen of 1980 at the Senior Olympics to be held Wednesday, May 28 at South Plain, College in Levelland. The affair will include a "Health Fair", Fitness is Fun" and a awards reception at night. Activities will begin at 10 a.m. Participants will go by Senior Citizens van and private cars.

The May birthday party will be held at Senior Center this Friday May 9 at 2:30. Those having birthdays in May will be special guests. The center has a record of 7 persons with birthday in May, but if you are over 60 you are welcome to come. New Home Extension Club will make the birthday cake.

Out of town people attending funeral services for Bert Short were: Charles and Merna Verner, Lubbock; Laylan and Staci Copelin, Waco; Charles and Jacqui Swift, Plainview; Mr. and Mrs. Auburn Armstrong, Abilene; J.D. Wall, Denver City; James Warren, Plains; Keith and Salena Prough, Monahans; Dana Martin, Lubbock; Dan and Patsy Hays, Lamesa; Mr. and Mrs. Alton Cain, Slaton; Mr. and Mrs. Durward Mahon, Lubbock; Joe Durham, Lubbock; Elmer Tarbox, Lubbock; Buddy Barron, Lubbock; Dorothy Craig, Lamesa; L.J. Walker; Buzz Robnett, Lubbock; and Linda Short, Monahans.

## OBITUARIES

### C.E. "Bert" Short

Services for C.E. "Bert" Short, father of State Sen. E.L. Short, were held at 2:30 p.m. Friday in First United Methodist Church with the Rev. Newton Starnes, pastor, officiating. Burial was in Grassland Cemetery under the direction of White Funeral Home. He died Saturday at Lubbock's Methodist Hospital after an illness. He was born May 27, 1890 in Ozark Co., Ark and moved to Lynn County in 1912 from Cook County. He married Edna Piott in Cook County Sept. 27, 1917 and was a farmer until his retirement. He was a Methodist. Survivors include two daughters, Helen Ellis of Tahoka and Louise Dietrich of Lubbock; two sons, Nat of Tahoka and E.A. of Abilene; a sister, Canna Allen of Tahoka; seven grandchildren; and five great-grandchildren. Pallbearers were Milt Draper, Jim Payne, Mike Huffaker, Harold Lucas, Roy Stephens, and Leroy Knight.

Lynn County at the home of her parents.

Short, a Methodist, had farmed in the Grassland and Plains areas before retiring. Survivors include his wife; two sons, E.L. and Harry Lee, both of Tahoka; nine grandchildren; and four great-grandchildren.

The family suggests memorials in the form of donations to a favorite charity.

Pallbearers were John Paul Lawson, Steve Greer, O.C. Harrison, H.B. McCord, Wendel Norman and Kenneth Huffaker.

Honorary pallbearers were Roy LeMond, Leroy Davis, Pete Hegi, James F. Roberts, Sam Edwards, Jim Bob Porterfield, C.O. McLeskey, James Aten, C.A. Walker, J.D. Wall, J.W. Inkleberger, R.M. Thomas, Wade Holland and Glenn Norman.

### E.A. Park

Services for E.A. Park, 89, of Tahoka were held Monday, May 5 at 2 p.m. in First United Methodist Church with the Rev. Newton Starnes, pastor, officiating. Burial was in Tahoka Cemetery under direction of

### Mattie Armes

Services for Mattie B. Armes, 88, of New Home were held May 2 in Resthaven Chapel with the Rev. Rick Wolfe, pastor of the New Home United Methodist Church, officiating.

Burial was in Resthaven Memorial Park.

The native of Ardmore, Okla., married W.A. Armes in Willow Point on Sept. 1, 1912. He died in 1963. She was a member of the New Home United Methodist Church.

Survivors include three sons, Carl of New Home, William of New Hope and L.A. of Memphis; seven grandchildren; and 13 great-grandchildren.

Grandsons served as pallbearers: Johnny Armes, Donnie Scroggins, Royce Armes, Brad Smith, David Morris and David Morris Jr.

### Ramon Corona

Services for Ramon Corona, 64, were held at 10 a.m. Monday in St. Jude Catholic Church with Father Pat

Hoffman, pastor, officiating. Burial was in Tahoka Cemetery under the direction of White Funeral Home.

Corona died at 2 a.m. Friday at his home. Justice of the Peace Ed Hamilton ruled the death was of natural causes.

Born on November 15, 1915 in Mexico, he moved to Tahoka in 1959. He married Luz Tovar in 1945 in Robstown. She died in 1962. He was a farm laborer.

Survivors include a son, Johnny of Tahoka; two stepdaughters, Lupe Rodriguez of Calif. and Lucy Zuniga of Tahoka; a stepson, Manuel Zuniga of Tampa, Fla.; and a sister, Amelia Rodriguez of Tahoka.

### Bridge Winners

Last week's Tuesday bridge winners were: Mrs. Olen Renfro and Mrs. Wilson Edwards, first; Mrs. C.R. Burleson and James McAlister, second; Mrs. Vivian Broyles and Mrs. Margie Peltier, third; and Mrs. Jess Gurley and Mrs. Frank Hill, fourth.

**TOP FLITE** ANNOUNCING  
**TOPFLITE FEEDS**  
NOW AVAILABLE  
1029 LOCKWOOD  
BARTLEY-WEAVER FERTILIZER CO.

**ALAYAN ELECTRONICS**  
SALES & SERVICE  
★ TVs ★ STEREOs ★ RADIOS  
★ CBS ★ CALCULATORS  
★ PARTS  
BOX 1646  
1820 MAIN STREET  
TAHOKA, TX 79733  
BUS. (806) 998-8217  
RES. (806) 798-2736

### THANK YOU



Your support and assistance shown during the election for Commissioner District 1.

Thank you for your continued support in the upcoming election to be held June 7.

Melvin W. Edwards  
Paid By Melvin Edwards, Box 1367, Tahoka, TX

make it a day TO REMEMBER  
For Mother & Graduate  
Congratulations To Both



More than meets the eye... Vicky Vaughn's sleek glide of terry shag is the dress no summer should be without. Clever rope trim defines the super, simple lines. Shows up as a buckled belt around the elasticized waist. In poly cotton terry shag, machine wash-dry. Natural. 3-13. 00.00

vicky vaughn

P. S. IF IN DOUBT  
GIVE A GIFT  
CERTIFICATE

for the newest in Hair Styles,  
we use the best products on your hair. We also style men & boys hair. Call for an appointment today

OPERATORS

ADRIANA, ANN, CHRIS, JOE BELLE & JEANETTE, owner & operator

Togs And Curls  
1926 Lockwood Box 500  
TAHOKA, TEXAS 79753  
Ph. 998-5120

### Mental Health



"There is a large, metal bell, at our national office, which was cast from the shackles and handcuffs that once bound mentally and emotionally disturbed people," said John Stevens, President of the Mental Health Association in Texas.

"This bell is now a symbol for the Mental Health Association, ringing out hope for the mentally ill and victory over mental illness," he said.

During May, mental Health Month, Bellringers will be collecting to help the association continue their work.

Mrs. Laverne McAlister will chair the fundraising drive in New Home this year.

The Association's logo, used in conjunction with the slogan "Citizens Who Do Make A Difference" stresses strength through unity, while making full allowance for individual differences.

The logo depicts a group of people standing with hands joined, forming and unbroken circle. In the center is the Mental Health Bell.

The changing shades of people, overlaid on the changing shades of the world in which they live, suggests the power of different individuals united to change conditions. The unbroken circle of people suggests togetherness and unity of organization.

The circle of people with hands towards the bell suggests the many heads concentrating together through an organization trying to find solutions to problems.

That mental health is a full-time, year-round activity is suggested by the fact that there are 12 people forming the circle.

During May citizens here can "make a difference" by contributing to the Mental Health Association.

### Lung Patients Forum Slated

A free open forum for patients with lung disease, and for other interested persons, will be offered from 3 to 5:30 p.m. Tuesday at the Brewer Assembly Room of Methodist Hospital in Lubbock.

Doctors and Texas Tech officials will speak on subjects including care of breathing equipment and stress problems for respiratory patients.

# MOM'S THE WORD SUNDAY

Happy Mother's Day

To All Mothers



THE FIRST NATIONAL BANK OF TAHOKA

"Helping You Change Things For The Better"





## New Home News

By Florence Davies

Congratulations to Coach Jimmie Fillingim and the mile relay team, Elaine Griffin, Mitzi Blake, D. J. Hirecheta, Devon Vickers and alternate, Lana Kieth for winning second place in the State Meet in Austin



after you see your doctor, bring your prescription to

**Dayton Parker Pharmacy**  
TAHOKA, TX. 998-4300

Saturday. Relatives and friends going to Austin for the event were Mr. and Mrs. James Blake, Mr. and Mrs. Hiram Sharp, Mr. and Mrs. Moses Hirecheta, Mrs. Julio Hirecheta, Mr. and Mrs. Wendell Morrow and Brad, Jimmie Wyatt, Freddie Kieth, Mrs. John Vickers, Jimmie Kieth, Mrs. Jimmie Fillingim, Mrs. B.B. McAllister and Mitzi.

Pre-school Day was held Tuesday, April 29 for the new 1980-81 kindergarten students. Ten children pre-registered. They were Sally Ann Alonzo, Christine Hernandez, Kawy Turner, Jennifer Foreman, Misty Gassaway, Jenny Haley, Julio Hirecheta Jr., Selma Armijo, Becky Gonzales and Blain Fillingim. Fourth grade students acted as big brothers and sisters. A graduation program was held to honor the new students entering the school. Mrs. Lavon Sharp is the kindergarten teacher.

Andrea Eades was honored

with a graduation supper Thursday evening in the home of her aunt and uncle, Mr. and Mrs. John Edwards. Special guest were her parents, Mr. and Mrs. Gene Eades and the senior girls: Kelly Smith, DeAnn Webster, Vickie Zant and Dana Poer, of New Home and Stephanie Cook of Wilson. Others helping with the steak supper were Andrea's grandparents, Mr. and Mrs. C.G. Eades and cousins, Mr. and Mrs. Larry Durham and Keri. A gift of luggage was presented Andrea. Graduation will be May 29.

Alan Eades underwent an emergency appendectomy Friday noon in Methodist Hospital. He was dismissed to return home Sunday and expects to return to school early this week. Alan is a junior.

Robert Poer visited in Tucumcari, New Mexico Monday thru Friday with his brother Jack Poer.

There will be a bridal shower in the home of Mrs.

J.T. Swinson Saturday, May 10 from 2 to 6 p.m. honoring Miss Margaret Thomas, bride elect of Rickey Maloney. Everyone is invited.

Mrs. Raymond Correa had major surgery Friday in Methodist Hospital. She is doing well and expects to return home about the middle of the week.

Mr. and Mrs. Delbert Mouser of Spade brought her mother, Mrs. Cary Chambers of Littlefield and her sister, Mrs. Mary Bowman of Mundy, here to visit their brother, Bob Poer and Caroline. Mrs. Mouser (Sis) is postmaster at Spade and Delbert is with the ASC Office in Littlefield. They visited in Wilson with their son, Pat and family, before returning home.

Mr. and Mrs. D.B. Morris and their daughter, Mrs. Glenda Dulin of Muleshoe flew to Houston Wednesday to visit Mr. and Mrs. Bobby Sparkman and Shannon

Bouise. They also visited their niece, Mrs. Jackie Walton and Family and with Gerald and Ornela (Inman) Walton, and attended services Monday evening in the Freeway Manor Baptist Church where Rev. Jackie Lee, pastor of the New Home Baptist Church was conducting a revival meeting. The Morrises and Glenda returned home Monday night.

Friends are invited to a bridal shower for Terri Nieman Saturday, May 10 from 3 to 5 p.m. in the home of Barbara White. Selections are at Hemphill Wells and Dunlaps.

Glen Gray, minister of the New Home Church of Christ, graduated from Lubbock Christian College last week with a B.A. in Bible.

Mr. and Mrs. Joe Mac Armontrout took his mother, Mrs. John Armontrout to Salado, Tx. for the Kerbo Family Reunion. Mrs. Armontrout and her two sisters, Mrs. Allie Nail of Dallas and Mrs. Lula Walton of Glenrose were the honor guest and with their families made about 74 relatives at the reunion in the Stage Coach Inn. Area grandchildren of Mrs. Armontrout attending were Mr. and Mrs. Russell Barnett of New Home and Mr. and Mrs. Richard Palmer of Big Springs.

Mrs. Ann Gray went to Denver, Colo. Saturday where she was the keynote speaker at Ladies Inspiration Day for the women of the Denver area Church of Christ. Ann returned home Sunday night.

Mrs. Leroy Nettles was dismissed from Highland Hospital and returned home Friday. Her brothers and sisters in law, Mr. and Mrs. Otis McWhorter of San Angelo and Mr. and Mrs. Garland McWhorter of Lubbock visited with them Saturday. Von and Bret came Tuesday and returned home Friday with Ken as He returned from Gioretta.

### Oatmeal Cookie Recipe Offered

SWPS Home Service Advisor, Vivian Liner, offers the following as a good snack for youngsters this summer:

**Banana Oatmeal Cookies**  
Preheat over to 350 degrees F. Mash 3 bananas in large bowl. Add 1/2 cup salad oil, 2 cups quick cooking uncooked oats, 1 1/2 cups chopped dates, 1/2 cup chopped walnuts, 1 teaspoon vanilla and 1/4 teaspoon salt. Mix well and drop by rounded tablespoons onto ungreased cookie sheet. Bake 20 to 25 minutes. Remove and cool on wire rack. Makes about 30 cookies.

For your copy of a publication on snacks and other foods write: Vivian Liner, Home Service Advisor, Southwestern Public Service Company, Box 631, Lubbock, Tx. 79408. Telephone 806/763-2881.

This week is National Transportation Week -- A good time for each of us to consider how much everything we eat, wear and use depends upon a good transportation system. Transportation is America's lifeline.

Have your blood pressure checked at State Health Dept., 1640 S. 1st St., Tahoka. Call 998-4604.

## FHA-HERO Student Of Week



HERO STUDENT OF THE WEEK is Debbie Jolly, daughter of Mr. and Mrs. Bobby Jolly. Debbie has been enrolled in Home Economic Cooperative Education class for one year. She is employed, at Texaco Station as an attendant.

## New Home FHA To Host "Challenges of the Sexes"

The New Home FHA is hosting the annual 'Challenges of the Sexes' Thursday (tonight) at 8 p.m. in the High School Gym. School and adult groups are invited. Also, there will be good things to eat. Admission is 50 cents. All proceeds go to the Home FHA. Come and have fun.

There will be Jr. High, High School and adult groups.

## ACCORDING TO THE BIBLE

BIBLE Answers for BIBLE Questions: By DOUG CARTER

Question: What is the purpose of baptism?  
Answer: (part 5) As we discussed last week, a person baptized in order to be Born Again. It follows that who is Born-Anew is a NEW Creature. Notice again Romans 6 that Paul writes that we are "baptized into Christ Jesus...raised...walk in newness of life." (1 Cor. 5:17 the same thought is stated, "If any man is in Christ, he is a new creature.")

After explaining the sacrifice of Christ on the cross by the means of our reconciliation, the apostle writes: "Buried with him in baptism wherein ye were also raised with him through faith in the working of God, who raised him from the dead...For ye died, and your life is hid with Christ...have put off the old man with his doings, and have put on the new man, that is being renewed unto knowledge after the image of him that created him." (Col. 2: 3:1-3; 3:9,10). Not only are we a New Creature, but we have been saved from our past sins.

All controversy over whether or not baptism necessary to salvation is resolved by our Lord. "He that believeth and is baptized shall be saved." (Mk. 16:16) It is difficult to see how anyone can misunderstand this.

Paul clearly states that we "die" during our baptism INTO Jesus (that is we put off the old man Col. 3:1-3). Note in Rom. 6:7, "for he that hath DIED is justified from sin." Look at your marginal note in your Bible the word justified means RELEASED from sin.

The apostles all understood what Jesus had taught them, and they taught the same thing later. What did Peter preach on the day of Pentecost? "Repent ye and be baptized every one of you in the name of Jesus Christ unto the remission of your sins" (Acts 2:38) Why be baptized? "Unto remission of your sins" (Eph. 2:8) While some say, "baptism doesn't save," it is stated indeed that God said "baptism doth also now save us..." (1 Peter 3:21). It is a fact that it does save because salvation is only IN Christ (2 Tim. 2:10) and ONLY way to be put IN Christ is through the command of baptism (1 Cor. 12:13).

We are released from our sins because the person who has faith, and is repentant, and thereby accepts God's grace through his trust of obedience. When we are baptized, we are cleansed by the Blood of Jesus and will discuss that next week.

Bible Classes 10 a.m.  
Morning Worship 10:50 a.m.  
Evening Worship 6 p.m.  
Wednesday Classes 8 p.m.

Free home Bible studies and correspondence courses are available upon request.

Send your Bible questions to the Tahoka church of Christ, Box 1177, Tahoka, Tx. 79375

# MAY 15, 1980

## A BAD DAY FOR AMERICA...

**AN OPEN LETTER TO THE PRESIDENT OF THE UNITED STATES:**

The ten cent per gallon fee you intend to impose on gasoline on May 15 will result in disastrous economic repercussions for all Americans. The impact will be felt most severely in rural America, in the nation's farming communities and among small businesses—that segment of Americans who can least afford it.

We believe the negative impacts of the program on all Americans far outweigh any possible reduction in crude oil imports and energy conservation. Specifically, your ten-cent per gallon gasoline fee will:

- Result in supply shortages in rural America and in agricultural communities.
- Drastically affect 1980 farm crop output and raise food prices for American consumers.
- Add \$10.3 billion to the cost of gasoline during the first year of the program and unnecessarily increase the price of all other petroleum products.
- Place a disproportionate economic burden on low income families, rural areas and small businesses.
- Increase nationwide inflation the first year by at least 1%.
- Make it impossible for small businesses to assimilate the overnight increase of 8% in gasoline product cost.
- Bring about disastrous effects on American farms, businesses and consumers; no economic impact analysis of these effects has been prepared.
- Constitute taxation without Congressional representation.

For these reasons we ask you withdraw the Petroleum Import Adjustment Program and the Gasoline Conservation Fee prior to its scheduled implementation on May 15, 1980. Absent Presidential action we further request that the U.S. Congress take appropriate and swift action to spare all Americans by halting this inflationary program.

Respectfully,

### EXPRESS YOUR CONCERN BY WRITING YOUR LEGISLATOR

Charles Stenholm  
U.S. House of Representatives, Washington, D.C. 20515

John Tower  
Lloyd Bentsen  
U.S. Senate, Washington, D.C. 20510

... IT'S NOT TOO LATE TO STOP IT!

**McCORD OIL CO.**  
**FARMERS CO-OP ASSN. NO. 1**

## Thank You

Precinct 1 Voters: I appreciate your vote of confidence in helping me to lead the ticket in the primary. I have enjoyed visiting with each of you and your continued support in our effort will be appreciated.

I wish to thank all the candidates for the fine campaigns which they conducted.

To the many friends and supporters for having worked in so many ways, I have a deep sense of gratitude. My promise to the voters and you is that you will have my best effort.

**Eldon Gattis**

## Wilson

weekend of hard work by the employees of the State Bank are now in building. Plans for the new building are being made.

Country reports a "job opening" by the Wilson County for the Cancer Donations totaling \$2,000 were collected for the American Cancer Society junior class won project contest by the most in the county to college for "Research" en-

ever will present Piano Recital on May 15, at 8 p.m. in Lutheran Church on. Everyone is invited. David is a student of Mrs. Onita Ser.

ending trout were April 29. The new High School 1980-81 Cheerleaders are head cheerleader Houchin; juniors Kerri Tamera Houchin, and Bishop, and freshmen Haushauer and Sharon

Wilke was chosen cheerleader in Jr. High. Also elected were Benavidez, Tammy Christi Slone, and Morales.

Congratulations to Wilson School senior girls Lane and Laurie Ross for accomplishments at Track competition. Lane won first, setting a state record with her 800-meter dash, Laurie won seventh in

League (Wilson Lutheran Church) will continue their work on a full time basis. There will be a trailer to put the trailer will be "Paperdrive". Do not put any type paper, junk mail, boxes, books, etc.) as well as clothes would be used. However, rugs and rubber items will be used. It would be used in newspapers would be sent from maga-

To The Peo

I would like opportunity to ti support shown n election. I feel ti valuable experier term and will try use the next four. I am looking fi better acquainted you my next 1 number is 428-3 call me collect at: Thank Bart A

Pol. Adv. paid Rt. 1, O'Donnell

Check w we still ha

ide:

13

GMA

AV

McC

SEE THE NEW



**More Donors To Fund Cited**

This week the following donated to the "Jaws of Life" fund of the Tahoka Volunteer Fire Dept: Jess Gurley, Eldon Gattis, W.T. Kidwell, Clyde Spruiell and J. J. Raindl.

Also Dub Gurley, Jerry Wayne Pebsworth, John Ed Redwine, Sam Pridmore, Otis Davis and Richard White.

**Auxiliary To Meet**

The Lynn County Hospital Auxiliary will meet Monday, May 12 at 9:30 at Sentry Savings.

All interested persons are invited to attend.

matching. Select an easy-to-sew pattern, too. They're labeled as easy-to-sew --and they suggest appropriate fabrics, have only a few pattern pieces and recommend easy-to-understand, simple techniques.

Examples of simple techniques are using fusibles, minimizing handwork, doing machine-made buttonholes or using centered zippers.

In addition, read the guidesheet before you sew --to save time.

Finally, remember that most homesewers find after they've made a garment once, future garments by the same pattern are faster and easier to sew.

ing eggs. Spoon enough sauce over egg to coat it lightly. Cover and cook over medium heat, basting with sauce once or twice, about 5 to 7 minutes or until eggs are cooked to desired degree of doneness. Serve eggs on English muffins. Spoon sauce over eggs. Garnish.

Saving time in homesewing means saving dollars, because personal time is valuable.

Consider your current sewing habits. Then streamline as many as possible. Here are some ideas: Spend a few minutes organizing -- and save hours.

Know where your sewing supplies are, and keep them in a convenient place to save motions.

If possible, arrange a permanent sewing area to save time getting out and putting away supplies. An ideal area would include space for the sewing machine, pressing equipment and a comfortable-height cutting surface.

Buy frequently used supplies in quantity -- including interfacing and elastic. When starting a new garment, buy all needed supplies at one time. Dovetail as many tasks as possible. For example, preshrink fabric in advance with routine laundry.

Buy easy-to-sew fabrics. These are generally firm, non-raveling, don't stretch excessively, are not bulky and don't require matching. Designs smaller than 1/4-in. (6 mm) do not need

**Sherry Etheredge Says....**

**Bring Mom a Special Brunch**  
One of the nicest ways to celebrate Mother's Day is with a festive breakfast or brunch.

The menu may vary according to where you live. Johnnycakes, hotcakes or grits, ham, bacon, pork chops or corned beef hash are just a few items to choose for a brunch. And, the national accompaniment for all these brunch favorites is eggs.

It is a good time to buy eggs because they are in plentiful supply, according to U.S. Department of Agriculture marketing specialists.

Scramble, fry or poach them. But, no matter how you prepare eggs, be sure you buy the right quality eggs for the intended use.

The USDA grade on the carton will tell you what you need to know about quality.

Higher quality eggs, (Grades AA and A) are ideal for frying and poaching--where appearance is important. They are also the best choice for hard-cooked eggs.

Grade B eggs are good for general cooking and baking and for other uses where appearance is not important. They are just as nutritious as the higher grade eggs.

Egg grades tell you what the interior quality of the egg is. A top quality egg has a thick white and the yolk is firm and high.

The white in a Grade B egg will spread more than Grades AA or A. The yolk may also be flatter.

Add green pepper, onion, potatoes, salt and pepper. Cover and cook 10 minutes. Remove cover. Lift mixture with pancake turner to thoroughly turn and mix potatoes. Cover and cook 10 additional minutes.

Thoroughly mix potatoes again. Make 6 indentations in potato mixture. Break egg into each indentation. Cover and cook over low heat until eggs are almost set--about 3 minutes. Sprinkle with cheese. Crumble bacon over all. Cover. Continue cooking until eggs are of desired doneness--about 5 minutes. Makes 6 servings.

**Sunday Brunch for Two**

- 1 can (10-1/4 oz.) condensed cream of mushroom soup, undiluted
- 1/2 cup shredded Swiss cheese
- 2 tablespoons milk
- 2 teaspoons instant minced onion
- 1/4 teaspoon dried dill weed
- 2 English muffins, split, toasted and buttered
- Pimiento strips for garnish, optional

In medium skillet combine soup, cheese, milk, onion and dill weed. Cook and stir over medium heat until sauce just begins to bubble. Break an egg into a sauce dish. Then stir egg into sauce, holding side close to sauce's surface. Repeat with remain-

**Country Brunch**

- 6 slices bacon
- 1/4 cup chopped green pepper
- 1/2 cup chopped onion
- 6 cups frozen hash brown potatoes
- 1 teaspoon salt
- 1/4 teaspoon pepper
- 6 eggs
- 1/2 cup shredded Cheddar cheese

Cook bacon in 10-12 inch skillet until crisp; remove from skillet. Pour off all but 3 tablespoons bacon drippings.



**HONOR STUDENTS NAMED--Two students have been named by Gary Cox, Principal of Wilson High School, to receive coveted academic honors as members of the school's 1980 graduating class. Recognized as class valedictorian is David Weaver, son of Mr. and Mrs. Billy Weaver of Post, with a scholastic average of 95.5. Salutatorian honors go to Cindy Slone, daughter of Mr. and Mrs. C.W. Slone of Wilson, with a 91.7 average.**

**Wilson School Menu**

**BREAKFAST**  
MONDAY - Biscuit with bacon slice, apple juice and milk.

TUESDAY - Pancake with butter and syrup, orange juice and milk.

WEDNESDAY - Cereal with Milk, one-half slice toast and pears.

THURSDAY - Cheese toast, peaches and milk.

FRIDAY - Donut, raisins and milk.

**LUNCH**  
MONDAY - Barbecue pork on bun, French fries, carrot and raisin salad, catsup, milk and peanut cookie.

TUESDAY - Fish Krispie with tartar sauce, whole tomatoes, green beans, cheese rolls, milk and orange jello with pears.

WEDNESDAY - Frito pie, pinto beans, candied yams, cornbread, lemondade, milk and apricot cobbler.

THURSDAY - Chicken fried steak with cream gravy, cream potatoes, spinach, hot rolls, peanuts, milk and pink applesauce.

FRIDAY - Cheese burger, lettuce, tomatoes, onions, pickles, catsup, French fries, milk and pineapple pudding.

**Scanning Social Security**

By JIM LATIMER

Now is the time for all young people and students to apply for a social security card if they intend to work this summer. Since everyone must submit proof of age, identity and citizenship, and it takes several weeks to get a social security card anymore, making application now might save anxious days waiting to get the card. It might enable you to get your paycheck after the first week you work. Some employers will not pay a worker without a social security card.

If you have any questions about a social security card or other matter pertaining to social security, call 806-762-7381 or write the social security office at 1205 Texas Avenue, Room 102, Lubbock, Tx. 79401.

**Major League Schedule**

- May 12 Taylor vs First National Louder vs. Parker
- May 15 First National vs Taylor Parker vs. Louder
- May 19 Taylor vs. Parker Louder vs. First National
- May 22 (open) May 26 Parker vs. Taylor First National vs. Louder
- May 29 Parker vs. First National Taylor vs. Louder
- June 2 First National vs. Parker Louder vs. Taylor
- June 5 Louder vs. Parker First National vs. Taylor
- June 9 Parker vs. Louder Taylor vs. First National
- June 12 Parker vs. First National Louder vs. Taylor
- June 16 Taylor vs. Parker First National vs. Louder
- June 19 Parker vs. Taylor Louder vs. First National

Games will begin at 6 p.m. Teams listed first will be home team.

**Minor League Schedule**

- May 13 Bray vs. Rimrock Wade vs. New Home Gin
- May 16 Rimrock vs. Bray New Home Gin vs. Wade
- May 20 Bray vs. New Home Gin Wade vs. Rimrock
- May 23 New Home Gin vs. Bray Rimrock vs. Wade
- May 27 New Home Gin - Rimrock Bray vs. Wade
- May 30 Rimrock - New Home Gin Wade vs. Bray
- June 3 Wade vs. New Home Gin Rimrock vs. Bray
- June 6 New Home Gin - Wade Bray vs. Rimrock
- June 10 New Home Gin - Rimrock Wade vs. Bray
- June 13 Bray - New Home Gin Rimrock vs. Wade
- June 17 New Home Gin - Bray Wade vs. Rimrock
- June 20 Bray vs. Wade Rimrock - New Home Gin

Games will begin at 6 p.m. each night.

**Wilson News**

by BETTY BISHOP

weekend of hard the employees of State Bank are now in building. Plans for use are being made.

Country reports a "job" by the Wilson for the Cancer Donations totaling were collected for American Cancer Society junior class won project-contest by the most in the house to college for "Research" en-

will present Piano Recital on May 15, at 8 p.m. in Lutheran Church. Everyone is attend. David is a student of Mrs. Onita

troups were April 29. The new High School 1980-81 Cheerleaders are more head cheerleader Houchin; juniors Kerri Panera Houchin, and Bishop; and freshmen Embauser and Sharon

Wilke was chosen cheerleader in Jr. High Also elected were Benavidez, Tammy Christi Slone, and

relations to Wilson School senior girls Slone and Laurie Ross accomplishments at Track competition. won first, setting a record with her 800-meter dash, Laurie won seventh in

League (Wilson Lutheran Church will continue their on a full time There will be a trailer Wilson to put

The trailer will be "Paperdrive". Do any type paper junk mail, boxes, books, etc.) as well as rubber items used. It would be newspapers would from maga-

zines. For more information please call 628-3651 or 628-2111.

After collecting newspapers Sunday afternoon, the Luther League enjoyed bowling and pizza with St. Paul Lutheran youth. Sponsors, Curtis and Linda Wilke, and Roy Isham, accompanied the youth.

Live potted plants and red and white decorations set the scene for the FHA Banquet held April 28 in the Elementary Gym. A buffet style meal, catered by Lubbock's Southern Seas, was enjoyed by the thirty-six F.H.A. members and their parents, sponsors, and special guests. On display were pictures (taken of the F.H.A. projects and trips) and the year's scrap book made by Pam Ray.

The principal speaker was Dr. V. Chamberlain. Outgoing officers are: 1st vice president, Sherri Steinhauer; 2nd vice president, Kerri Lee; 3rd vice pres. Debra Hagens; 4th vice pres. Debbie Daniell; 5th vice pres. Laurie Ross; secretary, Cindy Slone; treasurer, Paige Bishop; historian/parliamentarian, Pam Ray and sponsors, Marsha Meacham and Janet Wheatley.

The Athletic Banquet will be May 13 at 7:30 in the Elementary Gym. Guest speaker will be Coach Sherwood from Plainview. Southern Seas will cater the meal. Tickets are \$5 each and may be purchased by contacting any of the athletic kids or by calling the school.

The F.H.A. Secret Grandmother Tea will be May 8 at 4 p.m. in the school cafeteria. Identities of secret grandmothers, granddaughters, big sisters, and little brothers and sisters will be revealed.

Wilson students may be riding in chariots soon -- its all part of an English II unit study over Greece involving the play "Medea", myths, history, and cultural understanding. The class brought Greek food last week and found the treats were tasty even though they were different. Mrs. Judy Womack is teacher for the

**Indian Artifacts Show Set**

An Indian Artifacts Show will be held on Saturday, May 10 at Seagraves community building, sponsored by the Gaines County Historical Commission. Collectors in the area are invited, and exhibits may be set up from 8 a.m. to 10 a.m. There is no entry fee and no admission charge. The first annual Artifacts Show was held last June in Seminole, and there were many interesting collections displayed. Area residents are invited to view the things that are being preserved, used by Indians all over the United States.

- English students.
- Dates To Remember**  
May 8 FHA Secret Grandmother Tea  
May 13 Athletic Banquet  
May 14 High School Awards Assembly  
May 15 Sr. Piano recital for David Weaver  
May 18 Baccalaureate  
May 20 Elem. School Awards Assembly  
May 22 Jr. High Graduation  
May 22 School's Out  
May 23 High School Graduation

**To The People Of Pct. 3**

I would like to take this opportunity to thank you for the support shown me in the primary election. I feel that I have gained valuable experience during my first term and will try to put it to good use the next four years.

I am looking forward to getting better acquainted and working with you my next term. My phone number is 428-3808. Feel free to call me collect at any time.

Thanks Again  
Bart Anderson

Pol. Adv. paid by Bart Anderson, Rt. 1, O'Donnell, Tx. 79351.

Check with us before you buy - we still have a good selection of cars, ideal for the graduate.

**13.51%**

(APR, 48 month contract)

**GMAC FINANCING AVAILABLE**

**McCORD MOTOR CO**

TAHOKA, TEXAS

SEE THE NEW GENERAL MOTORS LINE OF FINE CARS



**Give Mother the Best...**

**20% Off**

**silk arrangements**

**House Of Flowers**

1317 AVE J TAHOKA 998-4596

---

**We've Moved!**

**with all kinds of better ways to serve you!**

- ★ Drive-In Window
- ★ Plenty of Parking Space
- ★ Night Depository with Letter Drop
- ★ Same Friendly Service, in Great New Surroundings

Watch For Our Grand Opening This Month At The New

**Wilson State Bank**

On FM 211, West Side of Town

Phone 628-2311 Member of FDIC, with accounts now insured up to \$100,000.





OEA AIDS PROJECT--Tahoka Office Education Assn. donated \$25 to a fund to purchase a heart monitor at Lynn County Hospital. Presenting the check to John Brooks, hospital administrator, is Melanie Tekell, vice president of OEA. At right is the OEA sponsor, Mrs. Barbara Jaquess. (LYNN COUNTY NEWS PHOTO)

### Tahoka School Menu

**BREAKFAST**  
 MONDAY - Honey Buns, pear halves and milk.  
 TUESDAY - Scrambled eggs, hot biscuits, butter, jelly, grape juice and milk.  
 WEDNESDAY - Donuts, pineapple tidbits and milk.  
 THURSDAY - Cereal (Sugar Pops), orange halves and milk.  
 FRIDAY - Hot oatmeal, buttered toast, juice and milk.  
**LUNCH**  
 MONDAY - Pizza, buttered corn, lettuce wedges and sliced peaches.  
 TUESDAY - Baked ham, buttered sweet potatoes, seasoned green beans, hot rolls and fruit jello.  
 WEDNESDAY - Macaroni and cheese, mashed potatoes, tossed salad, hot rolls and chocolate candy.  
 THURSDAY - Hamburgers, French fries, lettuce, onions, pickles and purple plum cobbler.  
 FRIDAY - Fish and catsup.

seasoned blackeye peas, buttered potatoes, cornbread and peanut butter cookies.

### Sixth Grade Band Earns Two Trophies

The 6th grade band of THS competed at the Levelland Band Festival on May 3. They brought home two trophies with a division II excellent rating in contest and a division II excellent rating in sightreading.

Along with them at the contest were some of our 5th, 7th, and 8th graders who participated in solo and ensemble events. The following received medals for their division I superior ratings:

- 5th Grade**  
 Michelle Coulston, flute solo,  
 Patricia Davis, clarinet solo,  
 2 piano solos,  
 Katie Hays, piano solo,  
 Julie Meeks, clarinet solo,  
 Tommy Moore, 3 alto sax solos,  
 Emily Rivas, alto sax solo,

Dawn Teaff, 2 clarinet solos,  
 Katie Hays and Patricia Davis, clarinet duet.

**Junior High**  
 Lena McKibben, clarinet solo  
 Paula, Cass, Kathy Cook and Lena McKibben, clarinet trio.

The following students received a division II excellent rating:

**5th Grade**  
 May Austin, trumpet solo  
 Ty Botkin, piano solo,  
 Rusty Cook, piano solo,  
 Michele Coulston, flute solo  
 Melissa Coulston, alto sax solo,  
 Dawn Teaff, clarinet solo.

**Junior High**  
 Paula Cass, clarinet solo,  
 Shawn Stotts, drum solo,  
 Minerva Benevidas, Crystal Murry - trumpet duet,  
 Jennifer Ehlers, Deanna Stanley and Yvette Baroccio - twirling duet,  
 Minerva Benevidas, Paula Cass, Kathy Cook, Lena McKibben, Crystal Murry and Scott Orr - ensemble.

### Area men In Service

Second Lieutenant Billy E. Birdwell, son of Mr. and Mrs. C.E. Birdwell of Tahoka, has been decorated with the U.S. Air Force Commendation Medal at Kirtland Air Force Base.

The Air Force Commendation Medal is awarded to those individuals who demonstrate outstanding achievement or meritorious service in the performance of their duties on behalf of the Air Force.

Lieutenant Birdwell, a 1970 graduate of Tahoka High School, received a bachelor's degree in 1974 from Southwest Texas State University at San Marcos. In 1979 he was commissioned through Officer Training School, Lackland Air Force Base.

His wife, Nancy is the daughter of Mr. and Mrs. Pinkney Branch of Knoxville, Tenn.

### Major League Concession Workers

- May 12**  
 6 p.m. Ann Wyatt  
 8 p.m. Mrs. Vicki Morin  
**May 15**  
 6 p.m. Linda McClendon  
 8 p.m. Geannie Forsythe  
**May 19**  
 6 p.m. Karen Lawson  
 8 p.m. Mrs. DeLeon  
**May 26**  
 6 p.m. Mrs. Morrow  
 8 p.m. Mrs. Chappa  
**May 29**  
 6 p.m. Mrs. Barrientez  
 8 p.m. Shirley Hardin  
**June 2**  
 6 p.m. Nancy Williams  
 8 p.m. Peggy Jennings  
**June 9**  
 6 p.m. Mrs. Raindl  
 8 p.m. Mrs. Lehman  
**June 12**  
 6 p.m. Mrs. Dan Taylor  
 8 p.m. Mrs. Judy Woodard  
**June 16**  
 6 p.m. Mrs. Dills  
 8 p.m. Mrs. Alciou  
**June 19**  
 6 p.m. Mrs. Botkin  
 8 p.m. Mrs. Susan Guinn

"He who serves his country well has no need of ancestors." Voltaire



The Board of Directors of Lubbock-based Plains Cotton Growers, Inc. after a long and spirited discussion April 30 agreed with 19th District Congressman Kent Hance that it would be unwise at this time to commit the organization for or against House Agriculture Committee Bill #6815.

The bill would mandate a minimum loan level at 65 percent of parity for wheat, feed grains, cotton and other farm commodities.

As Hance originally introduced the bill to the House Cotton Subcommittee only wheat and feed grains were included. Cotton and other commodities were added as an amendment by Congressman Dawson Mathis of Georgia.

Hance's preference that the PCG Board take no firm stance on the bill at this time was made known to the Board, at Hance's request, by PCG Executive Vice President Donald Johnson. Johnson made it clear that Hance was not opposed to producers getting 65 percent of parity for their cotton but was only expressing the opinion that producer interests would be better served if he were not locked in on a position with regard to the bill in question.

There were wide differences of opinion among PCG Board members. Although none argued that Committee Bill #6815 had any reasonable chance of becoming law with cotton as one of the covered commodities, some nevertheless felt strongly that the Board should voice its support.

Others were just as firmly convinced that PCG's chances to render meaningful service to High Plains cotton producers would be improved by delaying any action until a more realistic opportunity could be found.

The latter viewpoint prevailed when a majority of the Board voted to "... make no commitment on Committee Bill #6815 at this particular meeting."

In an attempt to avoid misunderstanding of its failure to act on the bill, the PCG Board later resolved to "... redouble its efforts on all fronts to secure a more equitable price for cotton grown on the High Plains."

The outcome of discussion on Hance's bill and the content of this latter resolution, along with an expression of appreciation for the Congressman's efforts and counsel, were conveyed to Hance by telegram after the meeting.

In other action the PCG Board elected six members to serve on the organization's executive committee for 1980-81 and four members to this year's nominating committee.

Elected to the executive committee were W.L. Edelson of Friona, Bennie Claunch of Bula, Henry Kveton of Petersburg, Tommy Fondren of Lorenzo, Gerald Caswell of Brownfield and Frank Jones of Lamesa. Claunch and Kveton are new members of the committee, the others being re-elected.

Selected for the nominating committee this year were Caswell, Jarrell Edwards of O'Donnell, Ben Loe of Spur and Kenneth Wofford of Lockney.



Various preparations from the leaves and roots of the deadly European nightshade weed known as *belladonna* are used to counteract pain, spasm and opium poisoning.

**Classified Deadline Tuesday 5 p.m.**

### IMMEDIATE OPENINGS FOR NAVY, AIR FORCE AND MARINE RESERVE.

Your local Army Reserve unit has openings for someone with your experience. You'll enjoy comparable rank, plus pay that's increased almost 20% the last two years. If you were a Petty Officer 3rd Class, a Marine Corporal, or a Senior Airman, you could make \$80 a weekend or more, serving part time with us. Over \$1,200 a year. Just call your Army Representative, in the Yellow Pages under "Recruiting."



**MEET TODAY'S ARMY RESERVE.**

### Faulks Named To AACT

Jack Faulks, president of Lubbock based Jack Faulks Auctioneers was recently appointed to the 1980 Auctioneer Advisory Committee of Texas. The committee assists the Texas Department of Labor and Standards in enforcing laws relating to auctioneering. The committee includes members involved in the various market segments of the auctioneers profession.



MAS W. PEARSON

**ART WINNER--Randy Redwine of Tahoka** was third place and a \$15 cash award in the first annual Art Exhibit at Western Texas College. A graduate of Tahoka High School, he has attend WTC on a music scholarship. He has been a member of the WTC Jazz Ensemble, trumpet. He plans to return to WTC on an art scholarship next year. Redwine is the son of Mr. and Mrs. J. Redwine of Tahoka. He is hold his entry in the Art Exhibit in a 16-inch Bowie knife.

## Rodeo Queen Hopefuls Soug

The dates for the Tahoka Rodeo have been set for June 13-14. The Rodeo Assn. is now accepting entries for Rodeo Queen. Any high school girl who has not reigned as a rodeo queen in Lynn County is eligible to enter. Entries will be accepted until May 12. Call Phyllis Taylor 998-4037 to enter and for additional information.

The Rodeo Assn. has pointed out in order to have more interest in the queens' race this year, several requirements have been added:

1. Be required to ride horseback in the arena at each performance.
  2. Live in Lynn County.
  3. Must wear complete western attire.
- The queen will receive a dozen long stemmed crown, queen's belt banner, and a semi party in her honor. Gifts will be announced. A queen and a first second runner-up chosen.

There will be a Rodeo meeting Thursday at the Tahoka Cafeteria. Interested party may also and also any girl in running for rodeo queen.

**TRANSPORTATION AMERICAS LIFELINE**  
 NATIONAL TRANSPORTATION MAY 11-17, 1980

### Visit Miniature Hills Golf During These New Hours:

Mon. - Thurs: Closed  
 Friday: 4 p.m. - 11:30p.m.  
 Saturday: 2 p.m. - 11:30 p.m.  
 Sunday: 1:30 - 5:00 p.m.  
 7:00 - 10:00

These hours effective through the end of school, May 29.

828-4653  
 700 W. Panhandle  
 \$1.25 Adults  
 \$1.12 & under



### KRAUSE THANKS COUNTY VOTERS

I would like to take this means to express my sincere appreciation to all the citizens of Lynn County that supported and helped me in the May 3 primary election. It has been rewarding and informative visiting and meeting with many of you during the campaign.

When officially sworn into office, I will perform the duties of Lynn County Sheriff to the best of my ability, enforcing the laws, protecting the rights of and serving all county residents.

### STANLEY KRAUSE

Pol. Adv. paid by Stanley Krause, Box 344, Tahoka, TX 79373

PERRYS

Mom's Day SPECIAL

<b>KNEE-HI HOSE</b> <b>ANKLE-HI HOSE</b> YOUR CHOICE	29 <sup>c</sup>	ENTIRE STOCK <b>ALL 2-SLICE TOASTERS</b> ALL ONE LOW PRICE VALUES FROM \$15 <sup>88</sup> TO \$19 <sup>88</sup>	\$11 <sup>88</sup>
SELECTED ASSORTMENT CROCHET COTTON <b>RUG YARN</b>	1/2 Price	10 INCH ASSORTED <b>HANGING BASKETS</b>	\$4 <sup>88</sup> <small>SUPER SPECIAL</small> <small>\$7<sup>95</sup> VALUE</small>
ONEIDA STAINLESS <b>SILVERWARE SET</b> REG \$22 <sup>88</sup> SUPER SALE PRICE 25-PIECE SERVICE FOR FOUR	\$16 <sup>88</sup>	CORELLE BY CORNING <b>LIVINGWARE</b> SUPER SALE 20 PIECE SETS	\$25 <sup>88</sup> <small>REG \$34<sup>95</sup></small>
ENTIRE STOCK <b>TIMEX WATCHES</b> <b>30% Off</b> MANUFACTURER'S LISTED RETAIL PRICE		SILVERSTONE 7-PIECE <b>COOKWARE SET</b> SAVE \$8 <sup>00</sup> REG \$26 <sup>88</sup>	\$18 <sup>88</sup> <small>SUPER SALE</small>
SUE PRE <b>TOILETRIES</b> * PAPAYA LOTION * HONEY & ALMOND LOTION * EGG & RUM SHAMPOO 16 OZ SIZE	47 <sup>c</sup> <small>YOUR CHOICE</small>	<b>SPRAY-A-RAMA</b> SPRAY ENAMEL 12 OZ CAN REG \$1 <sup>49</sup>	88 <sup>c</sup> <small>SUPER SALE CAN</small>
PLASTIC COATED <b>PLAYING CARDS</b> 69 <sup>c</sup> VALUE	29 <sup>c</sup> <small>DECK</small>	MENS BANLON <b>SOCKS</b>	47 <sup>c</sup> <small>PAIR</small> <small>REG 99<sup>c</sup></small>

a Men Service

Lieutenant Thomas Pearson, son of Patricia Pearson of 29 Hinsdale Road, Tahoka, N.Y., is serving U.S. Air Force following graduation from pilot training at Reese Air Force Base.

...qualified pilot will be the KC-135 at Reese Air Force Base.

...graduate of North High School, Glen ... earned a bachelor's degree in 1978 from State College of New York at Potsdam. He was commissioned in 1979 as an Officer Training School graduate at Lackland Air Force Base, Texas.

...wife, Camille, is the daughter of Stuart Rice of Wilson, Texas. Lieutenant's father, W. Pearson, resides in Saquepa, N.Y.

ME EARLY COLLECTION OF DIFFERENT PLANTS, AN PLANTS

ISH GARDEN, P BOUQUETS.

nce Range Murray's

1537 Ave. J

outh Tahoka 1.23

Wilson 2.24

Dannell 3.26

Home 4.28

5.31

North Tahoka 6.41

Lackland 7.28

ordon 8.22

West Tahoka 9.19

New Moore 10.21

ake View 11.37

esentee 98

Total 1643



Men Service



MAS W. PEARSON

Lieutenant Thomas Pearson, son of Patricia Pearson of 29 Hinsdale...

Style Show Luncheon Saturday

Annual Spring Luncheon and Style Show sponsored by the Chamberettes will be at noon Saturday at the First Methodist Church in Tahoka...

Proceeds will go to senior citizens hot meals, Lynn County Library and the county stock show barn. Tickets are on sale for \$5, which includes lunch and the show, door prizes and entertainment.

Models will show styles from Genny's, Tahoka Daisy, Togs & Curls, Jennings and the Fabric Place, with a mother-daughter theme planned.

Virginia House is chairman of the project with committees headed by Chloe Jan Wells, Genny Halford, Sherree Jerden, Beth Huffaker, Dean Bartley, Buena Hagood, Ann Roberts, Pam Womack and Nadine Dunlap.

Providing entertainment will be the "surnise" group including Kim Havens, Jerri Beth McKibben, Becky Pinkston and Rajeania House, who also will play piano for the entire event.

Tickets are available from participating stores and at Tahoka Drug.

Museum Receives New Items

Many new articles of historical interest have been received recently by Tahoka Pioneer Museum.

Mrs. Fenner (Juanell) Tubbs of Lubbock, daughter

of the late Dr. and Mrs. S.H. Windham, has donated a variety of new items, bringing to more than one hundred items she has contributed.

Included are medical-surgical instruments, books and treatises pertaining to medicine used by her father at Tahoka in 1904-1924. She has also given some more pioneer pictures, and her mother's collection of sheet music bearing copyrights as far back as 1862.

Another item of interest is a framed certificate her stepfather, Judge Tom Garrard received in 1945 from "His Majesty's Government in United Kingdom of Great Britain and Northern Ireland" thanking the people and Red Cross Chapter of Lynn County for their help during the war.

Mrs. Morris McClendon and Mrs. Claude Brown of the C.M. Greer family have given a number of items including historic plates, a hand carved pipe, and a two volume Texas State history.

David Weathers of Abilene brought in an enlarged and framed picture of the 1935 Tahoka football squad.

Mrs. Otto Carter has donated a child's wicker rocking chair she and her husband bought for their little daughter before her death.

Winston Wharton also has given a rocking chair that was bought for Doug Morrell in 1893. Mr. Morrel, who died recently at Post, was the father of Mrs. Wharton.

Many other small items, pictures, documents and family histories have been received, too numerous to mention.

The Museum is supported almost entirely by donations and sale of memberships. Support of the project is urged, and citizens can help by sending their checks to Pioneer Museum.



Congressman Charles W. Stenholm

Congressional Comment

(EDITOR'S NOTE: This is the second of four articles investigating the Social Security Program.)

WASHINGTON, D.C. — The chaotic years following the Great Depression spawned many of our current Federal programs dealing with socio-economic problems of American citizens. Perhaps none of these has had the widespread and long-range impact of the Social Security Program.

The purpose of the first Social Security law, enacted during the Roosevelt years, was to provide the foundation for a three-part income maintenance system for older people in retirement. These three parts consist of: 1) social insurance (the social security benefit), 2) income from private means (such as individual insurance, savings and other investments), and 3) assistance from means-tested programs, when such assistance is necessary (the Supplemental Security Income (SSI) Program is one such means-tested program).

The original Social Security law was established in 1935 and this law was later built upon with the addition of protection for disabled employees and self-employed people, and for the dependents of retired, disabled and deceased workers. This entire program is now known as the Old Age Survivors and Disability Insurance (OASDI) Program.

Many changes have been made with regard to the Social Security law over the years. There are a good many misconceptions which exist with regard to this program. A review of the records, hearings and transcripts of testimony given through the years shows that while some changes have

been made in the program, one idea continues to remain consistent: The practical objective of the Social Security Program is and always has been to pay benefits that provide a minimum degree of social security as a basis upon which the worker, through his own efforts, will have a better chance to provide adequately for his individual security.

I have heard from far too many individuals who have made no provision for their retirement, other than the receipt of SS retirement benefits. They find out, only too late, that Social Security Retirement benefits alone are not sufficient for meeting their living expenses. It is my personal feeling that the public needs to be made more fully aware of just how the Social Security Program works. For example, the Social Security Program is a "pay-as-you-go" program; this means, of course, that today's workers must pay in this month the amount that will be paid out next month.

It is my feeling that the program, more than any other program in the U.S., has done much to help individuals who, for whatever reasons, are experiencing a change in their incomes and thus require financial assistance. This program provides assistance for retired persons, disabled workers and their families and widows with school-age dependents.

There are many misconceptions about the Social Security Program, however it has done much to assist the needy and will continue to do so in the years ahead.

Next week, we will examine the program as it presently exists, with a final article the following week on proposed future directions.

Fort Worth Woman Takes First

Mrs. Beverly Sebastian, a finalist in last year's Texas Beef Cook-off, has won the 1980 contest, a \$300 first prize and a trip to Scottsdale, Arizona, where she will compete in the National Beef Cook-off in September.

Mrs. Sebastian, 5133 Gibbons, Fort Worth, is a cooking contest veteran who has represented Texas twice at the National Chicken Cook-off and at the Pillsbury Bake-off. Her winning recipe in Thursday's cook-off was Beef and Broccoli Dinner Bells.

Mrs. Hershel Thompson, 216 North Austin, Tulia, received the \$200 second prize for an Oriental Beef Ring. Mrs. Thompson was third place winner in the contest last year.

The Texas CowBelles sponsor the cook-off.

BEEF AND BROCCOLI DINNER BELLS

1st Place Winner-1980 Texas Beef Cook-off Mrs. Beverly Sebastian, Fort Worth

- 2 lb. beef top round
3/4 C. chopped onion
1/4 C. cooking oil
2 tsp. garlic salt
2 tsp. lemon-pepper seasoning
1 C. chopped tomatoes
1 (10 oz.) pkg. frozen broccoli spears in butter sauce
6 frozen patty shells, thawed
1 C. shredded cheddar cheese
1 C. shredded Swiss cheese
1/4 C. brown sugar
2 T. melted margarine
Juice of 1/2 lg. lemon
Parsley
Cherry tomatoes
Lemon slices

Cut top round into thin strips, about 2-3 inches long. In large frying pan, cook steak and onion in hot oil until golden brown. Sprinkle with garlic salt and lemon-pepper seasoning while cooking. Cover. Simmer 20 minutes until steak strips are tender. Remove from heat. Stir in chopped tomatoes. Prepare broccoli as directed on the package. Split open cooking bag and cool. To shape bells, roll each patty shell on floured surface to 7-8 inch square. Divide steak mixture evenly among squares. Place a broccoli spear on each with blossom clusters near corner. Cut spears lengthwise if necessary to make six even portions. Sprinkle with cheeses. Bring two corners together to form a cone, leaving blossom ends open at the bottom. Round small end and press with wet fingers to seal seams. Sprinkle with brown sugar. Drizzle with melted margarine. Squeeze lemon juice over all. Bake on ungreased cookie sheet at 400 degrees F. for 20 minutes or until golden brown. Garnish with parsley, cherry tomatoes and lemon slices. Serves 6.

Persons over 65 who wish to be permanently exempted from jury service in the county are asked to clip and fill in the exemption request below, and mail it or take it to the Lynn County Tax Office, Box 1208, Tahoka, Tx. 79373.

THE STATE OF TEXAS COUNTY OF LYNN PERMANENT JURY EXEMPTION

I, \_\_\_\_\_ am over 65 years of age and desire to claim a permanent exemption from jury service on this ground. This statement shall authorize the clerk of any Court and the tax assessor-collector to remove my name from the role of names from which a jury list is selected. I understand that I may rescind this exemption at any time by filing a signed request for rescission with the tax assessor-collector.

DATED \_\_\_\_\_
WITNESS \_\_\_\_\_

MOMMS Are Special

WE EARLY FOR A GOOD SELECTION OF MORE THAN DIFFERENT KINDS OF BLOOMING PLANTS GREEN PLANTS, AND UNUSUAL PLANTS.

FISH GARDEN, PATIO GARDEN, BOUQUETS, CORSAGES,

Price Range For Everyone

Murray's Florists

1537 Ave. J 998-5273

Diaper Data

Mr. and Mrs. Johnny Antu are the parents of a son, Johnathan Paul weighing 7 lbs. 13 oz.

Grandparents are Mr. and Mrs. Alfonso Bernal and Mr. and Mrs. John Antu.

Phil and Linda Olson are the parents of a son, Josef J. Olson, born May 4 at 1:34 p.m. weighing 8 lbs. 3 1/2 oz. and 20 inches long.

Grandparents are Mr. and Mrs. Pat Chamblee, and Mrs. Pauline Sumpter of Ford Dodge, Iowa. Also the late Mr. Glen Olson.

This is National Transportation week. Why don't you leave your car at home one day this week and use another form of transportation?



Human hair grows about an inch in ten weeks.

The Gomez imports

Located at the Old Hamilton Building are selling Hot Tamales every Saturday and Sunday. You can also find Mother's Day and Graduation cards. Plus summer blouses, jewelry, planters and Mexican curios. So come in and look around.

Open Every Day except Thursdays

REMEMBER MOM ON HER DAY with a gift from The Tahoka Daisy (former Clint Walker Building) 1636 AVE J TAHOKA B & B Pant & Gift MINI MALL O'DONNELL

Large table with multiple columns and rows containing numerical data, likely a record or ledger.



**OEA Student  
Of The Week**



OEA STUDENT OF THE WEEK is Lilla Riojas. Lilla is the daughter of Mr. and Mrs. Porfirio Riojas. Lilla is a senior and enrolled in her first year of VOE. After graduation Lilla plans to attend South Plains College.

**Letter To Editor**

Letters to the editor do not necessarily express the views of this newspaper. All correspondence must be signed, and in good taste before it will be published, and the name of the writer must be published also. Letters to the editor may not be more than two double-spaced typewritten pages.

Dear Sir:

In reference to our sons--Don Porterfield, Todd Brown and Rance House--being charged with Criminal Trespassing on the Jif-E-Mart parking lot by Mr. W.T. Kidwell on Sunday afternoon, April 27, 1980: we would like to offer the following information:

Since then we have heard all sorts of rumors concerning our sons. Some have said they were fined for obscene language, littering, and were fined \$200; others say they stole the bread from Piggly Wiggly, and others even say that W.T. Kidwell was assaulted when he spoke to the boys. None of these accusations are true, contrary to what you have heard. The only thing the boys are guilty of are being parked on the Jif-E-Mart lot while shopping in the store, moving to another lot with a vacant business sitting on it, unaware that it too belonged to Mr. Kidwell and being reared in a town that has absolutely nothing to offer our youth. There is no place the kids can park and talk. They cannot stop in the streets. This is dangerous. They cannot park on your parking lots. We know they are a pain in the neck. They litter, they are noisy, they are rowdy and they are also bored, restless and need someplace to expel their energy.

We are aware that our sons are not perfect, and agree that all three of them have done things we are not proud of, but they are not guilty of rumors being spread about them.

Mr. and Mrs. Jerry Brown  
Mr. and Mrs. Jim Bob Porterfield  
Mr. and Mrs. Jay Dee House

years to make enough money for a trip and they finally were able to go.

A special "Thanks" to Mr. Wise, the school board, Mr. Coulston, Mr. Marcus and the parents for having enough faith in our kids and us as chaperons to allow this trip. I appreciate having the opportunity to go with them and get to know all these young people better.

Tahoka was very well represented at the Six Flags band weekend by the Tahoka High School Band.

Sincerely,  
Pat Bingham

Dear Sir:

Read the article where the person was not getting their paper. We had that trouble. Sometimes get it a week later or not at all. We couldn't figure why until one day we got 4 Lynn Co. News all in one bunch. Two were addressed to someone in Brownwood and one in San Saba. We took them back to our post office and told Bob to see that these people get their papers as we did not like losing ours.

So perhaps someone is getting this person's paper, too. If so he should have it sent on to him. Several times we've gotten 4 papers. And since we sent the other ones to these other people, we get ours every week.

So thought we would let you know what and where things happen to them.

Hope it helps these people get their papers straight. But please if you get someone's paper, send it on to them.

Mr. and Mrs. J.R. Mathis  
Lometa, Texas

**THS Student  
In Honor Band**

Denise Dodson, daughter of Mr. and Mrs. Monte Dodson of Tahoka has been accepted as a member of the United Methodist Church Bi-State Honor Band for Texas and New Mexico.

The junior tuba player in the THS band will join with other members of the band at McMurry College in Abilene on June 8. After rehearsals, the band will go on a tour of cities in the two states.

National Transportation Week is a good time to remember that public transportation saves energy. Try it.

SHOP IN TAHOKA

★ **Loose Weight** ★  
Permant Weight Loss  
Safe, Low In Cost  
CALL  
**924-7213**

**Alcohol Plant  
Being Proposed**

The proposed fuel alcohol plant for the South Plains was explained at the Rotary Club's farmers day program last Thursday by "Rusty" Andrews, Brownfield farmer-CPA, who is secretary of the newly-organized South Plains Grain Products Cooperative.

The proposed plant would produce 20 million gallons of 200-proof alcohol a year utilizing about 50 million pounds of milo, and would cost an estimated \$30 million to build.

Grain producer members are now signing contracts in units of 10,000 bushels per year guaranteed, plus a \$500 down payment and a later payment of \$1,500.

Feasibility studies and plant construction advise is being prepared by three nationally known firms for a series of such plants, another of which is proposed for the Muleshoe area.

Andrews said planners of the proposed plant are assured that a farmer becoming a member of the cooperative would receive about \$7.33 per 100 pounds of grain sorghum.

The speaker was introduced by Joe Hays, who arranged the program.

About two dozen farmers were present as guests of Rotarians.

**FFA Plans  
Work Days**

By EVAN JOHNSTON

The Tahoka FFA Chapter has set May 10 and May 17 as work days as a money raising project. The money will be used to help finish paying for the recently built FFA trailer.

Any work will be accepted with a donation of your choice replacing wages.

If interested, please contact Mr. Mike Reid, Mr. Danny Preston, or any FFA member.

**FFA Banquet  
Held**

The Tahoka Chapter of Future Farmers of America held their annual banquet Monday night, May 5 at the new Poka-Lambro office building.

Receiving awards were: Star Greenhand, Todd Lockaby; Star Chapter Farmer, Curt Terry; Beef Production Award, Greg Williams; Crop Production, Bryan Harston; Sheep Production, Garland Crotwell and Swine Production, Evan Johnston.

Special awards were presented to John Curry, Honorary Chapter Farmer and an appreciation plaque to Royce Bevers. Also appreciation gifts were presented to Mr. Reid and Mr. Preston. An appreciation gift was presented to Mr. and Mrs. Jim Bob Porterfield.

Max Cleland, 37, the tenth Administrator of Veterans Affairs, is the first Vietnam veteran and the youngest person to hold the agency's top post since VA's inception in 1930.

**Late Freeze Damages Peaches  
Crop Down 350,000 Bushels**

AUSTIN--Late season freezing temperatures which hit parts of the state in March have damaged the Texas peach crop to the tune of approximately \$3.5 million.

According to Agriculture Commissioner Reagan V. Brown, early estimates anticipate losses of nearly 350,000 bushels, with the dollar loss about half the total value of last year's production.

Gillespie County, the state's biggest peach producer, reportedly has lost 90 percent of its crop from the effects of freezes that struck March 1 and 17. Further losses were

sustained from a hailstorm. Peaches in the Panhandle are also expected to drop 90 percent. This area has relatively small production.

"The situation could be worse," Brown said. "East Texas did not experience any weather damage, and we are expecting a full crop from that part of the state."

In north Texas two or three early varieties were affected by freeze conditions, but mid-season varieties are expected to produce normally. Crop losses in the Stephenville, Fort Worth, Waco and Red River areas are estimated at 30-40 percent.

**Cotton Planting of 8 Mil. Acres**

AUSTIN--The current season's Upland cotton acreage will be the largest in Texas since 1954 if growers in the state fulfill their intentions to plant some 8 million acres, Agriculture Commissioner Reagan V. Brown has announced.

According to Commissioner Brown, Upland cotton planting intentions are 6,555,000 acres in West Texas, a five percent increase, 950,000 in South Texas, a one percent increase, and 495,000 in Northeast Texas, a five percent decrease. Cotton acreage nationwide is estimated at 14.8 million acres, an increase of six percent.

"The increased demand for cotton on domestic and foreign markets has raised the price of cotton and encouraged farmers to plant more this year," Brown said. Last year, Texas posted its biggest crop since 1949 with a 5.7 million-bale harvest.

Total planting intentions are also up statewide, according to figures released by the Texas Crop and Livestock Reporting Service. Wheat, corn, sorghum and sunflower acreage is expected to increase significantly. Wheat seedings at 6.8 million are up 17 percent from 1979. Production is forecast at 103.4 million bushels, well below last year's record production but nearly double 1978's drought-plagued crop. South Texas fields have already begun to head out, and on the High Plains cattle are being moved off small grain pastures that will be harvested for grain.

Other figures for increased planting intentions are: Corn, 1.5 million acres, up seven percent from last year; sorghum, 5.3 million acres, up six percent; sunflowers, 140,000 acres, up 87 percent; rice, 590,000 acres, up five percent; sugarbeets, 26,000 acres, up 21 percent.

Decreases include: Peanuts, 310,000 acres, down two percent; hay for harvest, 2.1 million acres, down 11 percent; oats, 1.5 million acres, down 12 percent; flax, 4,000 acres, down 67 percent.

**Tarleton students  
train for careers  
in horse industry**

STEPHENVILLE--Tarleton State University's new train students for the million-dollar horse industry are paying off.

Tarleton State began its horse program in 1977 and people for professional production and management.

The program has produced its first graduates. Some 80 students enrolled are receiving inquiries from dozen states, as well as Great Britain, Guatemala and Australia.

The operation offers a diploma in horse production and management--the only one of its kind in the Southwestern United States, said Dr. L. Mack, director of the program at Tarleton State, part of Texas A&M University System.

**Fitness expert  
says running  
is not enough**

COLLEGE STATE--Running or jogging will not guarantee fitness, says a Texas fitness expert.

Developing strength flexibility are important elements to an aerobically fit person, advises Dr. J. Chevette, health education professor and owner of "Running for Fitness."

"Although running gives you strength in your legs, don't develop muscle body strength or overall ability," Chevette said. "To be in all-around condition, you need to do all three areas."

His book is a how-to designed to acquaint the runner with all three areas of exercise.

Shop At Home Ad

**YOUR FULL SERVICE BANK**

**The Personalized Check**

- Safer to carry than cash
- Coded for fast, accurate handling
- Printed with your own name, address and account number
- Proof of tax-deductible expenses
- Payment stoppable if lost
- Simplifies record-keeping
- Useful in establishing identity

We make it easier for you to do business in a business-like way... by keeping up with all of the methods of providing better and more efficient banking service.

**Wilson State Bank**  
Member Federal Deposit Insurance Corporation

**CELEBRATING OUR 1st ANNIVERSARY**

You're invited to visit Genny's Saturday (May 10) as we celebrate our first anniversary in Tahoka. Genny Halford is offering special sale prices to show appreciation to her customers.

**Just in time for Mother's Day**

*genny's*

WEST SIDE OF THE SQUARE IN TAHOKA

PHONE 998-4001

**VOTE  
Melvin W. Edwards  
FOR  
COMMISSIONER PRECINCT 1  
LYNN COUNTY**

**MELVIN EDWARDS:**

- is interested in Lynn County and dedicated to its people
- is a homeowner, landowner and a farmer in Precinct 1 Travels Precinct 1 rural roads and is interested in their upkeep
- attended school at Wilson, Texas in Precinct 1
- is interested in county progress incorporating economical and cooperative county government
- is familiar with machinery and concerned with maintenance of county equipment
- has been self employed, and an employer for 20 years
- is serving a second term as a director of the Farmers Coop Assn. in O'Donnell
- is an active church member, and has served on the budget committee and the nominating committee, and is presently working with the youth at the First Baptist Church in Tahoka
- is interested in county 4-H youth programs
- presently holds a Real Estate License and an Auctioneers License

**IS THE MAN FOR THE JOB**

Pol. Adv. paid by Melvin Edwards

VOTE June 7

HOUSE MAY 14-17. Above, David M. Le... with Mayor Mel Le... carrying all citizens to... the proclamation said... principal need for r... facilities has... benefits," that all are... tion as America's

Save Gas - S

**NOW ON  
Hull  
Nursing  
Ultra Mod  
Government  
Beds ava  
quality nu  
Hull  
Nursing  
Post  
Call 806/**

**GAN  
HOE**

Bearings  
1-9  
10-19  
20-29  
30-39  
40-49  
50-59  
60-69  
70-79  
80-89  
99-100  
[For John

Front-  
\* 295  
\* 71

Good sel  
Gang Ro

**Go**

R&  
42, 48,

**Buy  
and  
b**

**W**

POST HWY.



arleton students  
ain for careers  
horse industry

STEPHENVILLE —  
State University's  
in students for the  
million-dollar horse  
paying off.

Tarleton State  
re program in 1977  
ople for professions  
duction and manage  
The program has  
ced its first gradu  
me 80 students em  
receiving inquiries  
zen states, as well  
reat Britain, Gu  
atemala and Austr  
The operation —  
s a diploma in hor  
n and manage  
e only one of its  
outhwest, said Dr.  
ack, director of the  
Tarleton State, per  
exas A&M Unive  
stem.



itness expert  
ays running  
not enough

COLLEGE STATI  
inning or jogging  
ll not guarantee  
ness, says a Tex  
ness expert.

Developing streng  
xibility are impor  
ements to an aerob  
am, advises Dr. J  
hevrette, health an  
a professor and  
Running for Fit  
ness.

"Although running  
u strength in your  
n't develop musc  
dy strength or spe  
dity," Chevrette sa  
e to be in all-around  
ndition, you need  
l three areas."

His book is a how-  
esigned to acquaint  
er with all three area  
al exercise.

HOUSE MAY 14—The Texas Hwy Dept. office in U.S. 87 access road will have open house next Monday in connection with National Transportation Week 1980. Above, David Midkiff, maintenance foreman, is with Mayor Mel Leslie reading a proclamation by asking all citizens to take note of better highways and transportation facilities to the American quality of life. In the proclamation said that while highways continue to be a principal need for rural America, and "improved transportation facilities have demonstrated an increase in benefits," that all are urged to take note of the role of transportation as America's lifeline.

Save Gas - Shop At Home

**NOW OPEN NEW  
Huntley  
Nursing Home**

**Ultra Modern State &  
Government Approved**

Beds available for  
quality nursing care

**Huntley  
Nursing Home**  
Post, Texas  
Call 806/495-2848

**Legal Notice**

Notice is hereby given that the Commissioners Court of Lynn County will receive bids until the regular meeting of the Court at 10 a.m. on Monday, May 12th, 1980 for the purchase of a used loader meeting following specifications:

Not less than 1 1/4 yard capacity with 4-wheel drive, engine, transmission and all hydraulic systems in good condition.

Lynn County will offer in trade: one used Hough H60 loader. This equipment may be inspected in Precinct #3, Bart Anderson, Commissioner.

The Commissioners Court of Lynn County reserves the right to accept or reject any or all bids.

s/s Melvin Burks  
Lynn County Judge,  
Lynn County  
Box 7  
Tahoka, Tx. 79373

**CONTRACTORS' NOTICE  
Of Texas Highway  
Construction**

Sealed proposals for construction 26.809 miles of Raised Reflective Pavement and Thermoplastic Striping located at various locations throughout District Five on Highway No. U.S. 87, etc., covered by PMS 000S(125) in Lubbock, etc. County, will be received at the State Department of Highways and Public Transportation, Austin, until 9:00 a.m., May 13, 1980, and then publicly opened and read.

The State Department of Highways and Public Transportation, in accordance with the provisions of Title VI of the Civil Rights Act of 1964 (78 Stat. 252) and the Regulations of the U.S. Department of Transportation (15 C.F.R., Part 8), issued pursuant to such Act, hereby notifies all bidders that it will affirmatively insure that the contract entered into pursuant to this advertisement will be awarded to the lowest responsible bidder without discrimination on the ground of race, color, or national origin, and further that it will affirmatively insure that in any contract entered into pursuant to this advertisement, minority business enter-



**NICE NEW SURROUNDINGS**—Workers in the new Wilson State Bank were enjoying their new modern facilities after moving in Monday. At left Reda Abbe, teller, waits on a customer, Trina Cedillo. At right executive vice president Victor Steinhauser surveys the carpeted open lobby while Faith Askew just keeps on working.



(LYNN COUNTY NEWS PHOTO)

prises will be afforded full opportunity to submit bids in response to this invitation and will not be discriminated against on the grounds of race, color, or national origin in consideration for an award. Plans and specifications including minimum wage rates as provided by law are available at the office of W.C. Powell, Resident Engineer, Lubbock, Texas, and State Department of Highways and Public Transportation, Austin.

Usual rights reserved.

**CARDS OF THANKS**

I want to thank the people of Lynn County for your vote and support in the Democratic primary. I am grateful for the opportunity to be your Tax Assessor-Collector.

s/s George D. McCracken

The family of Marvin J. Munn wish to express their deepest appreciation to the many friends who have seen to our every need during his stay in the hospital and since his death.

We want to especially thank Dr. Wright and his staff of nurses for their concern and courtesy during his stay in the hospital.

It would be impossible to list the many, many friends who have been so kind and thoughtful, for the money memorials and beautiful floral offerings; the abundance of food brought to the home and the lovely lunch served at the church for the family relatives and friends. This gesture means so much at a time such as this.

Most of all we want to thank you for thoughtfulness and prayers and we covet your prayers in this period of adjustment.

May God bless each of you is our prayer. We love you all.

Jewell Munn  
Sargent J. Munn & family  
Roger W. Munn & family

We want to express our appreciation to our many friends, relatives and neighbors for their concern, prayers, cards, visits, flowers, telephone calls, food and many other acts of kindness shown us because of the automobile accident in which we were involved.

It is great to have friends, neighbors and loved ones who have so diligently stood by us in this time of need, for which we thank you from the bottom of our hearts.

May God richly bless each of you.

**CARDS OF THANKS**

I would like to thank the people that supported me in my bid for commissioner.

Sincerely,  
George Wright

Shop In Tahoka

We would like to take this opportunity to thank our many friends who shared in the sorrow of the loss of our dear husband, father, grandfather and great-grandfather.

Words fail to express the gratitude for the beautiful service and the message brought by our pastor Brother Starnes. The songs that were sung by Johnny Wells and our beloved granddaughter, Leah Taylor. For the many prayers, food, flowers, memorials and any act of kindness during the long illness; to Thelma Raintl's many visits showing her love and concern; for our personal nurse who helped me care for him with kindness and service; Dr. Shenouda who came to our house when needed.

May God's richest blessing help you along your way in sickness and sorrow as He helped me and seem to linger so near.

Mrs. C.E. Short  
E.L. Dink & daughters  
Harry, Bobbie & children

**Cub Scouts  
Plan  
Extravaganza**

Two rural districts of the South Plains Council, Boy Scouts of America, will hold a "Wild West Extravaganza" for Cub Scouts at Camp Post in June. Members of the two districts, Quanah Parker and Comanche Trail, are encouraged to register now.

Quanah Parker District covers the area including Brownfield, Denver City, Lamesa, Meadow, Plains, Seminole, Tahoka and Wellman.

Comanche Trail District includes Post, Crosbyton, Ralls, Spur, Matador, Lorenzo, Idalou, Floydada, Petersburg and Jayton.

The one-day event will be held June 7, and registration is limited to 150 Cub Scouts. Featured events will include an action archery hunt at "Ned Buntline and Annie Oakley's Shootin' Gallery", a nature trail in the guise of "Reckless Willie's Wild Cat roundup, panning for gold and Indian dancing. Water fun will include tossing water balloons and spashing around in the "Curry Comb Ranch Waterin' Hole (also known as the Camp Post swimming pool).

Registration forms have been mailed to Cub Scout leaders in your area, or contact the South Plains Council Center, #30 Briercroft Office Park, Lubbock, Tx. 79412 - phone, 747-2631.

**Salvation Army  
Fund Drive**

The annual Salvation Army Fund Drive will kick off May 13 at 10 a.m. according to Grace Huffaker, campaign chairman for the drive who asks that all captains and workers be present at Tahoka Cafeteria at that time. Mrs. Huffaker states that the quota set for 1980 is \$1500 and hopes that all donors will respond as they have in past years.

In addition to Mrs. Huffaker, other members of the local committee are Harold Roberts, Betty Johnston, W.T. Kidwell, John Wells, Jon Roy Ramsour, Rev. Newton Starns and Dixie Coleman.

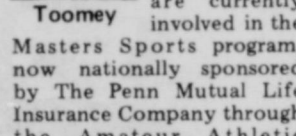
**PHYSICAL  
FITNESS**

By Bill Toomey,  
Executive Director,  
AAU-Penn Mutual  
Masters Sports

**Helping You Stay Trim**

Ever wonder what happened to all the great athletes of five, ten or 20 years ago?

Some have lost the battle of the bulge, while others have taken up personal fitness programs to stay in shape. And still others, over 20,000 men and women, have never lost their competitive spirit. They are currently involved in the Masters Sports program, now nationally sponsored by The Penn Mutual Life Insurance Company through the Amateur Athletic



Toomey involved in the Masters Sports program, now nationally sponsored by The Penn Mutual Life Insurance Company through the Amateur Athletic

**Researchers  
probe problems  
of chewed cables**

COLLEGE STATION — How to stop pesky varmints from chewing up thousands of dollars worth of oil company seismic cable is a problem that is being tackled by scientists at Texas A&M University.

A curious rodent like a nutria or even a cow can knock out a \$100,000-a-day crew out of work with one or two chomps.

The cables act similarly to radar to map underground structures that might hold oil reserves.

A major problem facing the Texas A&M researchers is that the devised method must work for different animals. While a crew might be able to take a pot shot at a rodent gnawing on a cable, no Western landowner would be as understanding about his cattle, explained geophysicist Dr. A. F. Gangi.

Nearly 90 percent of the 30 million living ex-service personnel are war veterans — persons with military service during defined periods of armed hostilities.

Most Small Engines  
Bicycle Models Repaired  
CHAIN SAWS

**Lester's Bicycle & Lawnmower Repair**

640 SO. 9TH SLATON, TEXAS  
LABOR GUARANTEED

PHONE 828-5177 HOURS 8:00 - 5:00

Toro, Snapper, Lawn-Boy Mowers and Trimmers. Complete repair shop. Labor guaranteed. Check our prices before you buy or repair. Chainsaw sales and service. Financing available.

**GANG ROTARY  
HOE BEARINGS**

Bearings	Price, each
1-9	3.60
10-19	3.50
20-29	3.40
30-39	3.30
40-49	3.20
50-59	3.10
60-69	3.00
70-79	2.90
80-89	2.80
99-100†	2.70

[For John Deere, Yetter]

Front-mounted gauge wheels for:  
\* 295 Bed Planter  
\* 71 John Deere

Good selection of 28 & 30-foot yetter Gang Rotary Hoes in Stock

**Go-Devil Knives**

R&J, Phares & Wilkins,  
42, 48, 54, and 60-inch lengths

Buy a set at 5% discount,  
and get an additional 5%  
by paying cash!

**Wade Implement Co.**

POST HWY. TAHOKA 998-4558

Last Chance

**SBA FARM DISASTER  
LOAN # 1708**

Deadline Extended to May 12, 1980  
For Hail—Rain, June, July, August, 1979

Resource Capital Co.  
Jim Crenshaw  
806/763-8338  
1210 - 13th — By Appointment  
Lubbock, Texas

"ASK YOUR BANKER ABOUT US"  
We Prepare Applications

**Liquid Fertilizer  
Top Flite Feeds  
Economy Mills Feed**

Vet Supplies Garden Seed

Oxygen Acetylene (Welding Supplies) Bermuda Grass Seed

Rat Bait Gopher Bait Fly Bait Pramital Hyar Roundup Quarts, Gallons, 5 Gallons

Lawn Fertilizers Yard Supplies

HOT KAPS RAKES PLANT STAKES SHOVELS SPRAYERS WATER HOSES

**Bartley-Weaver  
Fertilizer Co.**

Phone 998-4717 Location: Former Tatum Bros. Office



## A Visit With Your County Agent

By Stanley Young

Instead of staking and pruning tomatoes this year, use wire cages to support the plants.

Caging offers the home vegetable gardener in Lynn County several advantages, including less sun burn and higher yields with less work. Ground rot and fruit cracking are also reduced in cage-grown tomatoes.

Cages can be constructed from concrete reinforcing wire, hog wire, or any other sturdy wire mesh that has openings of at least four inches. Cut and bend the mesh material into cylinders, then fasten the ends together and snip off the bottom rung. By cutting off the bottom rung, cages can be pushed into the ground about six inches for support. Make cages 18 to 20 inches in diameter and two-and-one-half to five feet tall.

Young says all varieties will do well in cages but suggests high-yielding, disease resistant tomatoes such as Bigset, Bonus, Spring Giant, Better Boy, Floramerica and Terrific.

Space plants about two-and-one-half to three feet apart in the row, with four to five feet between rows.

Place a cage over each plant, making sure it is well anchored into the ground. The wire mesh will support the growing plant. No suckering, pruning or training will be necessary. As fruit ripens, pick it through the cage openings.

Initial expense of cages may

seem high, but they can be stored and used each year. Cages can also be used for growing other trailing crops such as cucumbers and pole beans.

Spring is the time when many homeowners discover they have termites. This is the time when winged forms appear and swarm.

If winged termites are seen outdoors, usually there is no problem, since this is a natural occurrence. But if they are found indoors, usually on a window sill, chances are good that an infestation has established in your home.

Termites can cause extensive damage to wooden parts of your home, so take some precautions.

Quite often termites and certain ants swarm at the same time and it's important to be able to tell the difference between these two insects. Carpenter ants swarm in the springtime and can cause some structural damage to wood. However, termites are much more destructive and require different control measures. Termites have a broad waist-ants have a narrow, constricted; termite wings are the same size and shape-winged ants have a front and back pair of wings of different lengths and shape; termites have straight antennae (feelers on their

heads)-ants have elbowed antennae.

Termites may be attracted to your house by dead tree limbs, stumps, old lumber and other sources of termite food. These should be removed. If soil is above the point where wood or brick meets the foundation, termites have easy access to your home. Anywhere that wood meets dirt (siding, wooden steps) is a potential spot for termite entry into the home.

Termites also have the ability to build mud tunnels over non-wooden structures to reach a food source. These tunnels (about 1/4 inch wide) may extend several feet up concrete surfaces. On a slab home, these may be seen on foundation concrete between soil and brick. On homes built above the ground, these tunnels can be found on piers or pipes that go from soil to structure. The bath trap in homes built on a slab is another source of entry. Plumbing in this situation has contact with soil under the slab, and termite tunnels may be found in this area.

Although a thorough inspection is best done by a professional, a homeowner can make a quick check for termite infestations. If termites or damage is found, contact a local pest control company. This is one insect pest that should not be handled by a "do-it-yourselfer". Commercial pest control companies have the necessary equipment and experience to effectively rid a home of termites.



**Propst Warns Producers:** National Cotton Council President Herman Propst told the Producer Steering Committee this week in Dallas that the greatest impact of the cotton dust problem ultimately will fall on producers.

Acknowledging that some producers think dust is only a textile mill problem, he said mills have an option not open to producers - namely, that of converting to synthetic fibers. "And if the cotton dust problem -- with all its

ramifications -- causes them to do this in great numbers, I don't have to tell you what kind of impact that will have on us as producers." As strong as export markets are, Propst said a strong domestic market is still an absolute necessity if producers are going to continue growing on a large scale. He also noted that the dust problem could eventually affect cotton exports since foreign countries generally follow the lead of the U.S. in adopting health and safety standards. The Anson, Tx., producer's remarks were strongly supported by W.D. Lawson, III, Gastonia, N.C., merchant, and Murray Williams, Altus, Okla., producer, who is chairman of the Cotton Board.

**Priority For Dust Research:** Agriculture Secretary Bob Bergland and industry leaders agreed at a Washington meeting this week that the proposed two-year crash research program to identify and eliminate the byssinosis causative will require full government-industry cooperation and must be given top priority. The Secretary explained that the current emphasis on balancing the federal budget has made it necessary to re-examine funding possibilities for the program. A government-industry task force will now refine the plan presented earlier this year to USDA, and then seek early decisions on financing. Assistant Secretary P.R. (Bobby) Smith and Dr. Anson Bertrand, director of the Science and Education Administration, participated in the discussions, along with top officials of the National Cotton Council, the American Textile Manufacturers Institute, Cotton Incorporated, the Cotton Board, the American Cotton Shippers Association, Fieldcrest Mills, and Ranchers Cotton Oil Mill.

**Exports Reported:** Export shipments of 200,800 running bales of upland cotton during the week ended April 6 brought the current season's total to 5,970,800. Net new sales of 7,100 brought total commitments to 9,037,300. Sales of 214,000 bales for 1980-81 delivery were primarily to

## Billy Whitaker Says...

**4-H'ers Learn Cycle Safety**  
Almost 150,000 motorcycle accidents occur each year, and more than 4,000 of these result in death of the rider.

More than 20 percent of all accidents involve new riders out for the first or second time. More than half of all motorcycle accidents involve young people between the ages of 16 and 20.

These grim statistics come from the 4-H Motorcycle Manual and Leader's Guide, an advanced educational unit used in the Texas 4-H automotive program.

While it is true that motorcycles are high-risk transportation, riders can reduce their accident risks by learning defensive street riding, observing safety measures, and wearing protective equipment and clothing.

Learning to ride a motorcycle or drive a car is a big step toward independence for any young person. 4-H automotive projects and activities, supported by The Firestone Tire and Rubber Co., encourage boys and girls to acquire the knowledge and skills they need to become responsible owners and operators of motor vehicles.

An example of 4-H motorcycle safety training

comes from Jefferson Co. There 12 boys and girls, members of the Bevil Oaks 4-H Club, are learning motorbike safety and maintenance through their local 4-H project group. Under the volunteer leadership of Raymond Read, these 4-H'ers are learning proper care and safety in operating their vehicles.

Such worthwhile programs can expand with more dedicated volunteers and

China (164,800 bales) and to Taiwan, Korea, and Japan.

**And Cotton yesterday:** Commercial production of cotton in the Plainview, Texas, area started in 1906. Ginner J.N. Jordan reported a turnout of 730 bales.

interested 4-H members. For more information, contact the county Extension office.

**4-H Gardening Project Means Fresh Vegetables**

Just imagine a meal with home-grown, mouth-watering cucumbers, tomatoes, green beans, bell peppers, cantaloupes, radishes, lettuce and onions.

It's enough to make anyone, especially youngsters, jump with joy. And youngsters can take an active part in growing these tasty treats through a 4-H gardening project.

Gardening is a good way for 4-H'ers to help their families beat the high cost of living and provide good, home-grown meals. With living costs expected to skyrocket during 1980, a productive garden can help families fight inflation.

Furthermore, a gardening project helps youngsters learn responsibility as well as learn about the growth and development of plants. Through gardening, young people can also learn the basics of insect and disease control.

You don't need a lot of space to have a garden. You can plant vegetables in tubs or pots or any handy container that has good drainage. A window box can be used to grow lettuce, radishes and beets, and a five-gallon bucket or can is large enough for eggplants, tomatoes and peppers.

Plants grown in a typical garden. Soil should be a mix of organic matter, peat moss and sand. Adequate mixes can be made at home or purchased at local garden centers or nurseries.

Vegetables can also be grown around the edges of flower beds. A border of lettuce, onions, carrots or parsley is attractive as well as edible. Plant tomatoes, peppers or eggplants with taller flowers and put beans or cucumbers against a fence or screen.

The first step to a successful

## Kits Offered By Post Office

"If you're one of the estimated 36 million persons who plan to move their residence this year, you should begin notifying everyone who regularly sends you mail at least one full month before you move."

That's the advice from Tahoka Postmaster Jim Lummus, who suggests you file change-of-address forms with you post office and send them to correspondents and publishers.

The Postal Service offers free Change-of-Address Kits to make it easier to notify everyone. Available in post offices and from rural carriers, the kits include convenient postcards to alert the postmaster and for mailing to department stores, friends and relatives, utility companies, banks, newspaper and magazine publishers and others who do

business with the planning a move. "Too often people who moving wait until the minute to notify correspondents," said Lummus. "The result is that up to several days of First-Class mail delivery because it must be forwarded to the new address, is added."

Those who fail to publishers at least a advance notice must pay additional postage forwarding, if desired, wait several weeks before publisher changes the address. This means correspondents may miss one or more of their favorite magazines.

garden is planning. Decide what and how much you want to grow and the garden location. Select a site that will get plenty of sunlight and drains well.

Once the garden soil has been tilled, you're ready to plant your favorite vegetables. Be sure to select adapted varieties. Information on these is available at the county Extension office.

Gardening can be both an enjoyable and worthwhile activity for young and old alike.

business with the planning a move. "Too often people who moving wait until the minute to notify correspondents," said Lummus. "The result is that up to several days of First-Class mail delivery because it must be forwarded to the new address, is added."

Those who fail to publishers at least a advance notice must pay additional postage forwarding, if desired, wait several weeks before publisher changes the address. This means correspondents may miss one or more of their favorite magazines.

## Water Group Honors Davis

Eual Davis, district vationist for the Lynn County Soil and Water Conservation District 119 for the last 10 years, was honored by a group Tuesday morning. Directors presented him "tokens of appreciation service to the district".

Lit Moore of New Secretary-treasurer SWCD, said Davis presented two Tahoka Country Squire Thru Lubbock, plus a floral his wife.

James Sanders of nell is president of the

Although this is a Transportation Week reminder is timely around -- Carpooling of the most effective save energy. Try it.

**Golden Acres BRAND**  
**HYBRID FORAGE SORGHUM**  
"GRAZE, GREEN CHOP OR HAY"

**TE HAYGRAZER**

- Astonishing growth, often 2" per day
- Exceptionally drought tolerant
- Will carry 4-5 cows per acre

Tremendous Quantities of T.D.N. per acre  
Fast recovery, unexcelled regrowth

WE RECOMMEND TE HAYGRAZER

Tatum Bros. Elevators  
O'Donnell Farm & Ranch

**Case Case**  
"THE TRACTOR SPECIALIST"

Why not deal with the specialist...?

Call Grady Jackson, Home 744-0806  
Call Joe Anthony, Home 762-5040

**Case Power & Equipment**  
3302 Slaton Hwys. Lubbock, 745-4451

**Wildcat Mfg.**  
6 Miles S. on U.S. 87  
Tahoka, TX

**Leighton Knox Jr.**

- Treflan Rigs Built
- Nurse Tanks
- General Spray Equipment
- Wildcat 3-Wheelers

Phone 327-5602

**BACKHOE SERVICE**  
B. B. McAllister  
Call 924-7291 or 924-7338

**Southwest Seed & Delinting Now Has**

**Paymaster SEED**

All types of hybrid sudangrass, grain sorghum and maze sorghums and cottonseed

**SW S**

US 380 998-41

**BARGAIN TIME AT TAYLOR TRACTOR & EQUIPMENT**  
Spring Specials on Lawn & Garden Equipment

	Reg.	Now
68-8H. P. Rider Mower w/30 Mower & Grass Bag-Elec. start	\$1450 <sup>00</sup>	\$1275 <sup>00</sup>
20" Push Type Mower w/Grass Bag	\$255 <sup>00</sup>	\$225 <sup>00</sup>
No. 111 Lawn Tractor-Rear Grass Bag	\$1825 <sup>00</sup>	\$1625 <sup>00</sup>
Used 68 Mower Rider	\$900 <sup>00</sup>	\$625 <sup>00</sup>
480 Tractor-22 H.P.	\$6500 <sup>00</sup>	\$5250 <sup>00</sup>

All other Lawn & Garden Equipment  
**15% off (including parts)**  
Offer good only to May 31, 1980 Offer good only on available stock

**Taylor Tractor & Equip. Co., Inc.**  
Tahoka 998-4549

THESE TAHOKA FIRMS ARE MAKING THIS FARM NEWS POSSIBLE

McCord Oil Co.	Federal Land Bank Assn. of Tahoka Jay Dee House, Mgr.
Production Credit Association Don Boydston	Farmers Co-Op Assn. No. Tommy Lawson, Mgr.
Tahoka Co-Op J. O. Reed, Mgr.	Tahoka Auto Supply The Hollands
Taylor Tractor & Equipment Co., Inc. Fen Taylor	Lynn County Farm Bureau

**E. "Red" Brown**  
REAL ESTATE BROKER  
Can Be Sold We Can Sell It  
**Shecher Sherrod**  
Salesman  
430-J.E. Brown  
432-B.F. Sherrod  
515-TAHOKA

**Civic Organizations**  
Lubbock Club meets at 7:30 p.m. each Thursday at the Coterie. Jim Soloway, president.

**Insurance**  
Hochheim Prairie Mutual Insurance Co. offers a non-legal policy for a low price. Try us.

**MANOVER TRAILERS**  
STOCK TRAILERS  
HORSE TRAILERS  
GOOSENECKS  
NETH TURNER  
Dealer  
998-4146Tahoka, Tex

transportation industry vital segment of our economy. It produces one out of every job - More than ten of them. We salute transportation industry national transportation.

Items Deadline Tuesday 2 p.m.

**Southwest Real Estate**  
FOR SALE  
nice 3 bedroom, 2 1/2 bath brick home, 2012 sq. ft.

Commercial lot on west side of road. Excellent location.

Section east part of Lynn County just broke into lots. Ready to start building. Immediate possession.

**REAL ESTATE LISTINGS**  
JIMMIE EDWARDS  
Office 998-4564  
Res. 998-4784

Roland Clem  
Office 998-5162  
Res. 998-4462

J.A. Pebsworth, Jr.  
BROKER  
Res. 998-4091



# FAST RESULTS WITH WANT ADS

**E. "Red" Brown**  
REAL ESTATE BROKER  
Can Be Sold  
We Can Sell It  
**Sherrrod**  
Salesman  
4930-J.E. Brown  
4932 B.F. Sherrrod  
515 - TAHOKA

**Civic Organizations**  
Lynn County Club meets at 7:30 p.m. on the 2nd and 4th of the month at the El Comodoro. Jim Soloski, president.  
Carpooling - Carpooling is the most effective energy. Try it.

**OECE**  
llister  
-7291  
-7338  
Shopping can be fun. Hochheim Prairie Mutual Insurance Co. offers a non-accident policy for a low price. Try us.

**SEED**  
hybrid  
n sorghum  
rghums  
seed

**SEED**  
hybrid  
n sorghum  
rghums  
seed

**SEED**  
hybrid  
n sorghum  
rghums  
seed

**SEED**  
hybrid  
n sorghum  
rghums  
seed

**SEED**  
hybrid  
n sorghum  
rghums  
seed

**SEED**  
hybrid  
n sorghum  
rghums  
seed

**SEED**  
hybrid  
n sorghum  
rghums  
seed

**SEED**  
hybrid  
n sorghum  
rghums  
seed

**SEED**  
hybrid  
n sorghum  
rghums  
seed

**SEED**  
hybrid  
n sorghum  
rghums  
seed

**Business Services**  
YOUR OLD family portraits copied and restored by C. Edmund Finney, 1813 North 1st. Hours 1-5 p.m. 22-tfc

New McCulloch saws, also parts, chains sharpened. Small motors repaired. 9 miles north, 2 miles west of Tahoka. O. O. Tekell. 924-7471. 19-tfc

COOK PUMP SERVICE - service on Western turbines and all makes of submersibles. Ph. 998-4752. 1-tfc

WE DO PICTURE FRAMING - All sizes. Borden Davis Frame Shop. 1-tfc

Fertilize lawns with a special mix that is 100% guaranteed. Call 872-7281. 17-4tp

I specialize in repair of Mobile Home Roof leaks and stop rumble. Call 872-7281. 17-4tp

**Autos For Sale**  
For Sale: 1979 Olds Cutlass Supreme Broughm, excellent shape. Contact Joey Dorman 428-3852 or 428-3795. 18-tfc

For Sale: Jeeps \$59.50  
Cars 48.00  
Trucks \$89.00  
Call 602-941-8060, extension number 121. 16-4tc

**Notice**  
Wanted: Will do babysitting in my home daily - weekly, hot meals. Call 998-5465. 17-tfc

CAKES BAKED - Mother's Day, Graduation, Showers, Birthdays and Weddings - Call 998-4617.  
Napkins and Imprinting for wedding and showers. Variety of colors. Tahoka Drug 18-tfc

Dealer Wanted, Texaco Station, Wilson, Tx. Call E.T. Cloe at 998-4166, Tahoka. 12-tfc

Rand M Poultry Ranch - And Hatchery  
Your West Texas Poultry Agent. Call 924-7487.

Will tear down old buildings for lumber. Call 998-4641 or 998-4944. 4-tfc

David C. Sprayberry and Associates, Inc., 314 N. Austin, Lamesa, TX. 872-6231, Lamesa - only rare coin shop. 5-tfc

Personalized ALOE VERA SKIN CARE  
For information, call Mary Ruth Ramsour, 998-5471. 9-tfc

Wanted: Want house to rent. June 1, Call Melba at 998-4533. 18-2tc

**Real Estate**  
For Sale: 100 ft. lot on 1st Street in Country Club addition. Contact Georgia Clem, 863-2610. 1-tfc

For Sale: by owner. 2 bedroom stucco house, large back yard with chain link fence. 1821 S. 1st. Call Shallowater 832-4855 or 998-4223. 10-tfc

For Sale: 3 bedroom, 2 bath, 2 car garage, formal dining room, corner lot. Shown by appointment only. Call 998-4940 or 998-4636 after 5 p.m. 17-tfc

For Sale: 3 bedroom, 2 bath, split-level home, over 2,000 sq. ft., 2 big lots and water well. Newly remodeled kitchen and den. Call 998-5196. 11-tfc

For Sale: 80 acres cultivated land 11 miles west of Tahoka on Hwy 380. Call 915-697-2187 (before 8:30 a.m. or after 8 p.m.) 18-3tc

For Sale By Owner: 4 Bedroom, 2 Bath, nice carpet, 2000 sq. ft. Assume existing 9% loan or refinance. 1904 N. 8th. Call 998-5249. 14-tfc

For Sale: House and 18 1/2 acres of land. H.H. Bain, Tahoka, Tx. 16-4tp

For Sale By Owner: 2 bedroom house, carpet, paneled, fence, 20 x 40 ft. storage building on lot. 1529 N. 6th & Main. Call for appt. 998-5283. 16-tfc

For Sale: 2 bedroom, 1 bath, house. Very clean and neat, large storehouse and garden area. 2301 Ave. O, call 998-5302. 18-tfc

For Sale: 3 bedroom, 1 bath, utility, office, living room, and den with fireplace. 1817 N. 6th. Shown by appointment only. Call 998-4824 after 5 p.m. 19-2tc

All married persons have some idea of how their relationship is functioning, but relatively few carefully evaluate their relationship and discuss their feelings with each other, a family life education specialist, Diane Welch, notes.

Mrs. Welch is with the Texas Agricultural Extension Service, The Texas A&M University System.

When preparing a grocery list, take a minute to arrange the list as the store is arranged, advises Lillian Chenoweth, a family resource management specialist with the Texas Agricultural Extension Service, The Texas A&M University System.

This saves extra trips in the store - and return trips to the store for forgotten items.

**BOOTS FOR WORK**  
Also available with safety toe.  
**RED WING**  
SHOE BOX  
213 E. Main Post, Tex.

**Garage Sales**  
Garage Sale: Three Family Sale - 2009 N. 4th, Thursday, Friday and Saturday. Five good tires, tools, one good screen door, toys, linens, curtains, dishes, cookware, baby, children, ladies and mens good clothing. Will give \$3 credit on 1 book of stamps toward merchandise. 18-tfc

Backyard Sale: 1924 S. 8th, Thursday and Friday. 19-1tp

Garage Sale: 1820 N. 3rd, Friday and Saturday; Boys clothes, bedspread, books and chest. 19-1tp

Garage Sale: Old Poncho Cafe, 1614 Ave. J., Friday and Saturday. 19-1tc

Garage Sale: 1901 N. 4th, Saturday Only. 19-1tc

Garage Sale: 2407 N. 1st, Thursday and Friday, 8 - 5; bedspreads, linens, Hoover floor scrubber, appliances, antique pressed back chairs, furniture, pots, pans, dishes, etc. 19-1tp

Garage Sale: Grassland Community Center - Car, 3 sewing machines, slide projector, TV stands, TV instruments, printing press, lots of quilt scraps, air conditioner, adding machine, lots of misc. 19-1tc

Garage Sale: 2116 N. 7th, Wednesday, Thursday, Friday and Saturday. Baby clothes, hutch, ladies' and men's clothing, kitchen appliances, portable TV, metal detector, drapes, asst. misc. 19-1tc

Clothing is an important part of non-verbal communication - use it to your advantage, urges Becky Saunders, clothing specialist with the Texas Agricultural Extension Service, Teh Texas A&M University System.

\*\*\*\*\*  
Do you know of a handicapped child age 3 to 21 who is not in school? If so call your local school district and ask to talk to the director of special education or call Child Serve: 1-800-692-4453.

**Misc. For Sale**  
For Sale: 15 ft. V-bottom aluminum boat and trailer, 9 1/2 HP Johnson motor; good upright deep freezer; hospital bed; assortment of metal kitchen cabinets, 998-5022, Dwain Jones. 19-2tc

For Sale: 2 piece bedroom suite, large platform rocker and 2 piece sofa. Friday and Saturday Only call 465-3791. 19-1tc

For Sale: Admiral Refrigerator and a Kenmore refrigerated air conditioner. Call 998-5383. 19-1tp

For Sale: Female AKC poodle, 6 mo. Phone 327-5541 after 5 p.m. 19-1tc

For Sale: Good couch, call 998-4682. 19-1tc

For Sale: 1 good "Red Fish" fishing boat. 1717 N. 5th. 19-1tc

When I get there for the "Old" timers reunion June 19, 1980, come to the Echo Motel and bring me a gallon of water that "stinks" and I'll prove to you in person that "our" home water distillers will remove the smell stink, plus "all" other impurities from your water. Call me 7:30 a.m. your time and make an appointment. I will pay you for the call from your phone bill when I get there. (collect calls are too expensive)  
Phone me, Raymond Griffin (209) 632-4672 or call locally 628-2278 and ask for Ruby. 18-9tc

Have pickup, chainsaw, etc. Would like some summer work such as cutting down or digging up unwanted trees, cleaning up alleys, lots, etc. Hauling off junk, trash or whatever. Working hours are 6 p.m. until dark weekdays and all day Saturdays.  
Roosevelt Moore Jr. 998-5423

**Robert Harvick Insurance Agency**  
★ Fire ★ Farm ★ Life ★ Auto  
★ Crop Hail ★ Hospitalization  
Ralph Allaire, O'Donnell, Agent  
Located in the former Poka-Lambro building  
2129 Main St. in Tahoka  
NO MEMBERSHIP DUES  
Ph. 998-4536 or 998-4537

For Sale: Midis Mini Motor Home. Good condition. See at 2321 Lockwood or Call 998-4189. 15-2tc

For Sale: Fishing worms. Call 327-5335 or 998-5273. 16-4tc

The Veterans Administration's work-study program is open to veterans attending college full-time under the GI Bill. Students can earn a maximum \$775 per semester above their GI Bill allowance by agreeing to work 250 hours at \$3.10 per hour. \*\*\*

Under existing legislation, armed forces veterans will get an estimated \$6.2 billion in compensation from the Veterans Administration in fiscal year 1981 for disabilities incurred while in service. The amount for individuals is based on degree of disability. \*\*\*

Vietnam Era veterans made 3.3 million outpatient visits to Veterans Administration medical centers last year, or more than one out of five made by all former service members. \*\*\*

Newly discharged military members receive a package of information from the Veterans Administration advising them of their eligibility for benefits. \*\*\*

**BULLDOZER DUMP TRUCK & LOADER**  
**RODNEY RANDOLPH**  
**745-6975**  
YARD SCALPING & LEVELING

ARE YOU PLANNING A *Wedding*  
LET US HELP YOU  
**House Of Flowers**  
FTD - FLORAFAX  
Flowers and Plants for All Occasions  
998-4596 TAHOKA, TEXAS

A TRUE VALUE STORE  
**WHITAKER HARDWARE**  
"WE SELL EVERYTHING - KEEP NOTHING"  
Phone 998-4747 Tahoka, Tex 79373

PAYNE EQUIPMENT SALES, INSTALLATION & SERVICE  
**FOLLIS HEATING & AIR CONDITIONING**  
FOR FREE ESTIMATE  
PHONE 628-3271  
OSCAR FOLLIS WILSON, TEXAS

Phillips Pest Control & Plumbing, TPCL 3382 PTL, 2128 Main Tahoka. 998-4806. If long distance, call collect. Free Estimates, Quality Work. On call service, 24 hours a day.

VETERANS OR WIDOWS OF ALL WARS WHO NEED HELP OR ADVICE IN CLAIM BENEFITS, CONTACT--  
**RUSSELL HOWLE**  
SERVICE OFFICER  
Wednesday of each week at Courthouse  
Tahoka, Texas

## PROFESSIONAL DIRECTORY

**Service To All Faiths**  
"WE CARE FOR YOURS AS WE WOULD HAVE OURS CARED FOR"  
BILLIE WHITE - OWNER  
**WHITE FUNERAL HOME**  
PHONE 998-4433  
COMPLETE FUNERAL SERVICE

**REMODELING**  
F.G. Cervantes, contractor  
Specializing In Roofing, Interior, Exterior and Painting  
Blow on acoustic ceilings.  
307 N. 10th Lamesa, Texas 872-8543

Get Your Office Supplies At  
**LYNN COUNTY NEWS**

**P & D PRODUCTS, INC.**  
Phone 428-3882 O'Donnell, Texas  
SAND FIGHTERS STALK CUTTERS  
BED SLIDES TOOL BAR ACCES.  
MARKERS POINT SHARPENING  
CUSTOM WELDING OF ALL KINDS

**Sam Pridmore Aerial Spraying**  
NORTH SIDE OF T-BAR AIRPORT AT TAHOKA  
TAHOKA PH # 998-5292 NEW HOME PH # 924-7761  
OFFICE 806 998 5160 RES. 806 998 4784

\* SPRAYING \* DUSTING \* SEEDING \* FERTILIZING  
**RANDOLPH AVIATION**  
DEFOLIATION  
"WE FLY ON SERVICE"  
Box 299, Tahoka DICKIE RANDOLPH  
T-Bar Airport 806/998-4209

**REAL ESTATE SALES**  
Lease & Rental Contracts  
Management Service  
**NEW HOME FARM STORE, INC.**  
Box 177 New Home, Texas 79383  
Call 806-924-7444  
Joe D. Unfred, Broker 924-7272  
Lee Moore, Sales 924-7329 863-2593  
Jan Stone 327-5263

**JEANELL EDWARDS**  
NATIONAL FARM LIFE INSURANCE CO  
P. O. Box 1367  
TAHOKA TEXAS 79373

Boat & Saddle Repair  
Custom Leather Work  
**The Harness Shop**  
Tate Fondy  
120 W Panhandle Slaton, Texas 79364

**Lynn County Hospital District**  
Highway 380 and Country Club Road  
Member Texas Hospital Association  
American Hospital Association  
Medical Staff: 998-4533  
Rouchdy Shenouda, M.D. 998-4170  
Richard Wright, M.D. 998-4577  
Visiting Hours: 9:30-11 a.m.; 1:30-4:30; 6:30-9 p.m.

**ELECTRICAL CARPENTRY**  
LICENSED AND BONDED  
**Andy's Construction**  
2029 N. Main Street  
ROOFING PAINTING

**TAHOKA BODY SHOP**  
IS UNDER NEW OWNERSHIP  
**Raymond Barrientez**  
FREE ESTIMATES  
TAHOKA BODY SHOP 998-5309  
1617 S. 3rd St.



PLUS S&H GREEN STAMPS DOUBLE ON WEDNESDAY WITH A \$2.50 PURCHASE OR MORE

HAPPY MOTHER'S DAY! SPECIALS GOOD MAY 8-14, 1989

# All Moms are Tops



at



U.S. RUSSET <b>POTATOES</b> SAVE 50¢ WITH 1 FILLED S&H STAMP BONUS BOOK 10LB BAG <b>28¢</b>	KRAFT <b>CARAMELS</b> SAVE 50¢ WITH 1 FILLED S&H STAMP BONUS BOOK 19oz. PKG. <b>29¢</b>
DEL MONTE <b>CATSUP</b> SAVE 50¢ WITH 1 FILLED S&H STAMP BONUS BOOK 32oz. BTL. <b>39¢</b>	GLOVER THICK SLICED <b>BACON</b> BULK WITH 1 FILLED S&H STAMP BONUS BOOK LB. <b>39¢</b>

SHURFINE GRADE A WITH TIMER  
**TURKEYS**  
 18-20LB. AVG.  
 LB. **69¢**

SHURFINE CANNED  
**HAMS** 3LB. CAN **\$5.29**

WILSON SMOKED 6-8LB. AVG.  
**PICNIC** LB. **69¢**

**BEEF BRISKET** HEAVY GRAIN FED 6-10LB. AVG. **\$1.39** LB.

GLOVER THICK SLICED BULK  
**BACON** LB. **89¢**

**BEEF CUBES** HEAVY GRAIN FED BONELESS LEAN **\$1.89** LB.

HEAVY GRAIN FED BEEF CHUCK  
**ROAST** BLADE CUT LB. **\$1.19**

**WRIGHT'S HAM**  
 SHANK END  
 BUTT END \$1.19  
 CENTER ROAST \$1.29  
 CENTER SLICES \$1.79  
 LB. **79¢**

**RED RIPE TOMATOES**  
 LB. **39¢**

**TEA** LIPTON LOW CALORIE INSTANT LEMON LG. 4oz. JAR **\$1.69**

**OIL** PURITAN COOKING 32oz. BTL. **\$1.69**

**CARAMELS** KRAFT 14oz. PKG. **79¢**

**CRACKERS** ZESTA LB. BOX **79¢**

**PRINGLES** TASTY 4 1/2oz. CAN **59¢**

**SHURFINE ICE CREAM**  
 1/2 GAL. RND. CNL. **\$1.59**

**PICKLES** BEST MAID KOSHER DILLS 32oz. JAR **\$1.39**

**CHEESE** KRAFT SLICES AMER. P.M. 8oz. PKG. **99¢**

**COOK'N'BAGS** MORTON 4oz. PKG. **2.89¢**

**SHURFINE STORAGE FOOD BAGS** 25ct. PKG. **69¢**

**SIGNAL** 30% OFF LABEL MOUTH-WASH 24oz. BTL. **\$1.98**

**LIGHT SPREAD** **\$1.59**

**PARKAY** 2LB. BOWL **\$1.59**

**SHURFINE COFFEE** LB. CAN **\$2.59**

**GREEN GIANT CORN** 3 1/2oz. CANS **\$1.00**

**DEL MONTE CATSUP** 32oz. BTL. **89¢**

**DELSEV TISSUE** 4ROLL PKG. **83¢**

**MOTHER'S DAY IN ENGLISH OR SPANISH CAKES** EA. **\$2.99**

**SHORTENING BAKE-RITE** 3LB. CAN **\$1.19**

**U.S. RUSSET POTATOES**  
 10LB. BAG **89¢**

<b>WHITE ONIONS</b> NEW CRDP	LB.	<b>19¢</b>
<b>BANANAS</b> GOLDEN	LB.	<b>29¢</b>
<b>CARROTS</b> FRESH YELLOW	LB. CELLU BAG	<b>20¢</b>
<b>ORANGES</b> CALIFORNIA SUNKIST	3 LBS.	<b>\$1.00</b>

THIS WEEK'S FEATURE  
 VALUABLE COUPON WORTH \$2.00 TOWARD THE PURCHASE OF THIS WEEK'S SUGAR BOWL WITH COUPON

JOHANN HAVILAND  
**FINE CHINA**  
 WITH \$3.00 PURCHASE ONLY PER CHINA STAMP ON SAVINGS PLAN  
**99¢**

SHOP THE FRIENDLIEST STORE IN TOWN  
 HOME OWNED HOME OPERATED TURNER ROGERS AND W.T. KIDWELL  
**EVERYDAY LOW FOOD PRICES**  
**PIGGLY WIGGLY TAHOKE**  
 WE RESERVE THE RIGHT TO LIMIT QUANTITIES

MEMBER 1980  
 AS PRESS ASSOCIATION  
 7, NUMBER 20  
 SUBJECT--New sewer line in the northwest part of Turner... improvements project... and issue in February... sewer line going in on... street just yet.  
 (LYNN)  
 FOODWORK  
 WEEK I made a r... but I didn't rea... ch. I figure thi... just a bit more... remark on one o... ran across. You'll... maybe ask M... ask him OUTSIDE... reason you could as... to his wife. And th... go ahead and mak... to make now is that I... and I know she's goin... ect, she very pointe... of it before she le... person who mak... one master list to... lists. By the time... can only do a coup... have to allow anothe... things I was go... row's list.  
 I lost all my lists... to do all day.  
 are so many intere... with some pretty du... copy (this is undo... inside the cover).  
 lists like the one... keep mine, I would... though to be bound i... best-seller, thoug... and over things list... cleaners, pay bills... on note, school... with Carl Reynolds''  
 ...  
 ADY ON LOCKW... w people on a diet  
 ...  
 VE. M Musclemar... with his girlfriend... they both turned an... w yards ahead of t... honey," she said... face death for me... ld," he replied.