

# The Lynn County News

Oldest Business Institution In Lynn County

PAGE 76, NUMBER 46

15c EACH ISSUE

TAHOKA, LYNN COUNTY, TEXAS 79373

THURSDAY, NOVEMBER 15, 1979

12 PAGES IN ONE SECTION

## Big District Shootout All Set Here

### Post Is Zapped 20-8

**DALTON WOOD**  
Antelope meat was tough chewing for the Bulldogs last Friday but Tahoka took advantage of some Post mistakes and finally put the post out of reach just before the end of the game. The Bulldogs won 20-8 at Post. The game was played plenty tough. Tahoka was just a little out of sync with one ear tuned to the game, sure enough, the Tigers bounced Seminole and set up a crucial hanger here this week. The Bulldogs now have a chance to earn a tie for the district title. Tracy White, Tahoka's top rusher for the year, ran over the 1,000-yard mark for this season as he ran for exactly 100 yards against the Antelopes. Leaders for the game, were Clifford Oages, who gained 160 yards in 23 carries, and Post's Alonzo Brown who had about that

GAME AT A GLANCE		
TAHOKA		POST
15	First Downs	14
284	Yds. rushing	185
4	Yds. passing	48
1-2-0	Completed by	2-7-2
1	Fumbles lost	4
11-135	Penalties	7-65
5-30.4	Punts, avg.	2-34.5

Dogs drove 63 yards to score. The drive included runs of 18 and 14 by Oages and 12 by Tracy White, who also scored the TD on a one-yard lunge. Elmore kicked and it was 14-0 with 32 seconds left in the third.

**Post Scores**  
Post scored in the fourth period after Quarterback Drew Kirkpatrick hit End Mark Holly on a 36-yard pass play to the Tahoka 25. Luna ran 3 for the touchdown and Kirkpatrick passed to Mike Macy for 2 points to close the gap to 14-8 with 6:18 left.

Tahoka lost a chance to score after a good drive featuring a 22-yard run by Tracy White, as White later fumbled at the Post 4 and the Dogs lost the ball. Luna had a 35-yard run for Post, but shortly thereafter Tackle Doug Barham recovered a Luna fumble at the Post 48. Oages broke free a couple of plays later and raced 37 yards to score. Tahoka missed the point and it was 20-8 with just over a minute left.

Danny Thompson and Brad White at defensive ends and Johnny McKibben and Jacky Jolly at linebackers played well for Tahoka, and on offense coaches



**LOTS OF YARDS--Clifford Oages of Tahoka carries the ball for a gain against Post, whose Charles Curtis is coming up to protest what Oages is doing. Oages gained 160 yards in the game won by the Bulldogs. (Photo by Charlie Holland)**

credited pulling guards Jolly and Freddy Garcia with good blocking performances.

Tahoka Weather		
Date	High	Low
Nov. 8	53	46
Nov. 9	71	43
Nov. 10	48	33
Nov. 11	37	25
Nov. 12	57	37
Nov. 13	53	27
Nov. 14	60	30

First freeze, Nov. 2, but little kill of vegetation; first hard freeze, Nov. 11.  
Rainfall past week, .38 inch; total for year, 19.28 inches.

**WOODWORK**

by dalton

TODAY (Thursday) is the day of the so-called "Great Smokeout," when everybody is urged to go a whole day without smoking. I don't smoke, so I think it's a great idea. In fact, I wouldn't mind if smoking were made a crime, punishable by tying the culprit in front of the TV for 10 consecutive hours of listening to Howard Cosell. But of course it's always us non-smokers who think everybody else ought to quit.

If they want to help me any, they'll organize a "Great Eatout" day, and that doesn't mean a day you go and eat out, either. A whole day without food would take a lot of will power.

Everytime there is a campaign to make people quit smoking, I think of what George Dolan wrote in the Fort Worth Star-Telegram the first time there was a big warning on cigarettes. He suggested that people who want to quit do it on a buddy system. Get someone else who wants to quit and help each other, he urged. For example, he said, if you wake up in the middle of the night just dying for a cigarette, call up your buddy. He then comes over to your house and you get drunk together.

START SAVING your money now for the big Fall Vacation trip to Dalhart next October. Tahoka High School has made its football schedule for next season and that's one of the Bulldogs' road games. When Principal Jim Marcus told me we'd be playing at Ballinger next Oct. 3 and that it was 170 miles away, I thought he was kidding. Then he told me we would play the following week at Dalhart, 225 miles from here.

So from there, since nobody could get home that night anyway, we may as well all go on to Red River or Eagle Nest and spend the weekend.

The Bulldogs play Post here the Friday after the Dalhart game. I guess we'll have to forfeit if the team's not back by then.

## New Veterans Service Officer Named For Lynn

Lynn County Commissioners Monday hired a new Veterans Service Officer, adopted a new charter for the county library and took action toward defense of a suit against the county regarding precinct boundary lines.

Russell Howle was hired as Veterans Service Officer and will be available on Wednesdays to confer with anyone needing help. The new charter for the library was necessary to meet requirements for the library to join the West Texas Library Assn. and provide additional services to county residents.

The library now has expanded its open hours to three afternoons a week. It is open from 12:30 to 5:30 p.m. Monday, Wednesday and Friday.

Commissioners discussed the pending lawsuit filed

## News To Be One Day Early

The Lynn County News will be published a day earlier next week so that everyone will get his paper before Thursday's Thanksgiving holiday.

No news or advertising will be accepted after 4 p.m. Monday and any who can get material in on Friday are asked to do so.

against Lynn and other counties by groups alleging that the precinct boundaries are drawn in such a way as to prevent Mexican-Americans from having voting strength. County Atty. Gerald Huffaker was authorized to contact the other counties involved to determine if any kind of joint defense could be arranged.

All the way, Blue!

## Residents Invited To Eat Turkey Dinner On Sunday

Annual Thanksgiving Dinner of turkey and dressing and all that goes with it will be served starting at noon Sunday at the school cafeteria. Serving will be \$3 per plate.

Sponsoring the event will be the Tahoka Chamberettes, and the group this week expressed concern over advance ticket sales being slower than usual. "We're just hoping that a lot of people will buy tickets between now and Sunday, or at least show up and buy them at the door," a representative said.

All proceeds from the event are used to help buy new Christmas decorations for the city, and the women's civic group has been hoping to decorate 25 more poles downtown this year.

Chamberette President Joy Brookshire said tickets are available from any Chamberette member or at Tahoka Drug. Also, it was pointed out that deliveries of plates are available. Anyone wanting to buy tickets and leave their names may have food delivered to their homes or to shut-ins, she said.

## Playoff Berth Is At Stake

District 5-AA's Big Shootout at the Hoky Corral will take place Friday night as a Salty Dog and Tough Tiger will tangle in what has become an annual cliffhanger with who represents the district at stake.

This is the third straight year in which who wins or ties for the district title is determined by what happens in the Tahoka-Slaton game, last of the regular season, and in both those other games the Bulldogs have come out winners in two super, hard-hitting contests. Both times the result has been a tie for the district title involving Tahoka and Slaton and some other folks, and this year, if Tahoka can win, the district will wind up in a three-way tie with Seminole the third co-winner.

If Tahoka can beat Slaton--something no team has done this season--representatives of the three schools will meet here after the game for another drawing to see who represents district in the playoffs. The district has had no outright winner since 1974, and in the past four years, Slaton has been lucky in twice drawing the right to go

**Tahoka Mayor Meldon Leslie has proclaimed Friday as "Beat Slaton Day" in the city, and has urged Tahoka businesses to close for 30 minutes or so starting at 3 p.m. so that business persons and employees may attend the pep rally at the school gymnasium which starts at that time.**

into the playoffs.

Slaton gave Tahoka a chance to tie for district by

## Library Plans Improvements, Rotary Told

Plans for improving the City-County Library were presented the Rotary Club last Thursday noon in a talk by Mrs. Joe (Glo) Hays, a member of the newly reorganized library board.

Compared with other area libraries, she pointed out, the local library is far short on financing, number of hours it is kept open, usage by citizens, and services rendered county people. However, it does have an adequate number of books, nearly 10,000.

The library board has set a goal of meeting requirements for membership in West Texas Library System, which include an increase in the budget to about \$9,100 per year, an increase of about \$2,000 from the present budget; remaining open 20 hours a week, compared to the 15 hours now; and installation of a telephone.

By qualifying for West Texas Library System membership, the local library would become eligible to receive loan of books from other libraries on almost any subject, for adults, young adults, and children; receive audio-visual equipment, purchase books at 75 percent of original cost, and gain other advantages.

Resources of area libraries would be shared with the local library, story-telling program would be initiated, help and advice given by area library experts, etc.

Plans also are in the making for forming a Friends of the Library to help finance the project. Mrs. Hays expressed special thanks to Judge Melvin Burks and the Commissioners Court, as well as City of Tahoka, for help in the library financing, and to Binie White, the library board chairman.

The new board, she said, is very enthusiastic, and intend to see that improvement goals are reached.

beating Seminole last week 17-7, first loss of the district for Seminole, which beat Tahoka earlier 20-12. If the Tigers beat Tahoka, Slaton will end up 9-0-1 for the year and will go into the playoffs as the clear winner.

If Tahoka wins, the three-way tie will result, unless Cooper upsets Seminole, in which case the Bulldogs would represent district by virtue of beating Slaton, with whom they would tie for the title.

Slaton features a tough defense and ball-control offense with running backs Lance Bownds, Jesse Titus and Michael Whaley all grinding out yardage.

"We'll need to control the ball quite a bit to beat Slaton," said Bulldog Head Coach A.D. Shaver. "We just have to get fired up and play a little better football to win." The coaches, players and fans know that if the Bulldogs play up to their potential, they have the capability of winning this biggest of all the games this season.

Tahoka, now 7-2-0 for the year, will counter the Tiger offensive weapons with the running of Tracy White, who has more than 1,000 yards for the year, plus 15 touchdowns, and Clifford Oages, who is nearing the 1,000-yard mark after a big 160-yard performance against Post. Quarterback Todd Brown has been running the keeper better all the time, too, and the Dogs have plenty of other offensive weapons, with much hinging on the good blocking up front.

And the outcome could well depend on the placekicking of Titus for Slaton or Kevin Elmore for Tahoka, who has been placekicking well all season.

Whatever happens, an overflow crowd of fans for both teams--and Seminole--is expected for the 7:30 p.m. kickoff Friday night.

Whoever winds up representing this district in the playoffs will play either, Stamford, Coahoma or Abilene Wylie in bi-district, as that district is in exactly the same situation as this one. Substitute Stamford (6-0 in Dist. 6-AA play) for Slaton, Coahoma (5-1) for Tahoka, and Wylie (5-1) for Seminole and the picture is the same. Stamford plays at Coahoma Friday night and could win it all by winning the game, but if Coahoma wins, it will be a three-way tie necessitating a drawing. Wylie meantime plays weak Merkel.

## 4-H Awards Banquet Held

The Lynn County 4-H Awards Banquet was held Tuesday at the Lyntegar Meeting Room. The purpose of the awards banquet is to recognize 4-H Club members, adult leaders and supporters of the 4-H program. A total of 69 4-H members received awards, also recognized were 81 4-H leaders and supporters.

Special awards were presented to several youngsters. Gold Star awards went to Curt Terry and Sheri Barton. Dustie Cook won the Foley award, Eugene Lane received the Friend of 4-H award, and "I Dare You" awards went to Karla James and Ben Edwards.

Miss James, of O'Donnell, was mistress of ceremonies. Among the adult leaders recognized was Fred James, who received the Gold Clover Award for 10 years of support to 4-H.



**4-H WINNERS--These six young persons were winners of the top awards as Lynn County 4-H had its annual awards dinner Monday. From left are Dustie Cook, Curt Terry, Sheri Barton, Eugene Lane, Karla James and Ben Edwards.**

All the Fixin's for your Proudest Feast!



# THANKSGIVING DINNER

SPECIALS  
GOOD  
NOVEMBER  
15-21

## TURKEYS

<b>BUTTERBALL</b> 10 TO 18 LBS POUND <b>87c</b>	<b>NORBEST</b> 10 TO 16 LBS POUND <b>73c</b>
18 TO 22 LBS POUND <b>79c</b>	16 TO 22 LBS POUND <b>67c</b>

## COUNTRY PRIDE GRADE A BAKING HENS

POUND <b>59c</b>	Peyton Franks Bologna
<b>TURKEY</b> \$1.79	
<b>HAMS</b> POUND	12 Oz <b>79c</b>

## COUNTRY PRIDE DUCKS

POUND **\$1.29**

## COUNTRY PRIDE GEESE

POUND **\$1.59**

## COUNTRY PRIDE SMOKED TURKEY

POUND **\$1.09**

WILSON CERTIFIED ONE/HALF

## HAMS

POUND **\$1.79**

PASCAL **CELERY** BUNCH **29**

NO. 1 **POTATOES** 5 LB BAG **49**

WASHINGTON **APPLES** FANCY LARGE POUND **39**

## GOLDEN RIPE BANANAS

POUND **29c**

## DEL MONTE FRUIT COCKTAIL

16 OZ **2/\$1.00**

DEL MONTE **PINEAPPLES** **59**

CHUNK OR CRUSHED IN JUICE 20 OZ

SUNSHINE **PECAN** HALVE & PIECES **49**

## BLACKBURN CRYSTAL WHITE SYRUP

**77c**

PRINCELLA **YAMS** 23 OZ **69**

DEL MONTE CUT

## GREEN BEANS

16 OZ **3/\$1.00**

## DEL MONTE PUMPKIN

16 OZ **39c**

## PILLSBURY CAKE MIX

WHITE YELLOW **59c**

## PILLSBURY READY TO SPREAD FROSTING

CHOCOLATE VANILLA **99c**

## LARGE SIZE JELLO

STRAWBERRY CHERRY ORANGE **2/97c** LEMON LIME

ANGLE FLAKE

## COCONUT

7 OZ BAG **79c**

## BIRDS EYE COOL WHIP

8 OZ **49c**

PET DEEP DISH **PIE SHELLS** 2 CT **69c**

MINUTE MAID **ORANGE JUICE** 12 OZ **79c**

## CHEEZ WHIZ

7 OZ **99c** PLAIN PEMENTO JAL.

BORDENS

## DIPS OR WHIPPING CREAM

**39c**

## KRAFT PARKAY MARGARINE

1 LB QUARTERS **49c**

## VELVETA CHEESE

2 LBS **\$2.89**

## O & C ONION RING

**49c**

## WHITE SWAN NAPKINS

280 CT **99c**

## REYNOLDS TURKEY BAGS

2 CT **68c**

## HOLLYWOOD SAFFLOWER OIL

32 OZ **\$1.89**

## DR PEPPER

**\$1.49**

6 PACK 32 OZ PLUS TAX & DEPOSIT

## COCA COLA

**\$1.49**

6 PACK 32 OZ PLUS TAX & DEPOSIT

## PEPSI COLA

2 LITER **59c**

## MOUNTAIN DEW

2 LITER **59c**

## ORCHARD ORANGE DRINK

64 OZ **69c**

## DEL MONTE CATSUP

32 OZ **79c**

# Rim Rock Supermarket

2001 Lockwood

Tahoka

998-5128

Roosevelt Moore Jr. won

\$515.00 in last weeks Jack Pot.

This weeks Jack Pot will be \$1500

MESS--We're no  
cause that's where  
Charles Bryson (2  
currently Lance Dum  
ogs  
ams  
with a new alignme  
et teams around  
coming up by  
all season, Tahoka  
schools have fini  
up new sched  
Bulldogs next year  
some teams  
ably never have pl  
and some of  
et opponents agair  
aged on the same f  
ere this season.  
minole and Denver  
be in another di  
year, and Tahoka  
ily DC, but will i  
Seminole, but f  
ference game.  
Band  
Concession  
Workers  
15 - Mr. and  
re Dodson, Mr.  
Dan Garcia, and  
Mrs. Edgar Hammo  
16 - Mr. and  
Simpson, Mr.  
James Bingham,  
and Mrs. Gil  
so.  
you cannot work on  
red, you are resp  
find someone to  
place.  
The Bulldog  
football tea  
will host a  
TIGER  
MEAT  
DINNER  
7:30 p.m.  
Friday  
RE-  
Satu  
at 5  
FRIDAY 4:30 PM  
KCA.  
Star of the I  
Ta  
"Oldest Busine  
ublished weekly  
ursday of each ye  
nce located at 161  
998-4888.  
ntered as second-  
ahoka, Texas 7937  
ublished continuou  
SUB  
n and Adjoining  
ewhere in Texas  
st of Texas  
nton Wood  
etty Jolly  
n Orr  
per Foster



# Solar Power Study Project Launched

A half-million dollar solar repowering study for the Department of Energy (DOE) by Southwestern Public Service Company and General Electric to determine the feasibility of a solar powered electric generating unit has been launched. The project could result in the installation of an \$80-million solar-powered unit at SPS's Plant X near Earth, Texas.

A great deal of research has been done on solar-powered plants but not much has been done on the concept of adding solar units to existing plants. This study will determine the engineering and economic factors of repowering an electric plant -- if it can be done on a large scale and if it would be more

economical than building new solar plants.

In recent years, as the search for feasible alternatives became more intense, SPS began an effort to assess those options that might have practical utility application. Solar power was one of the alternatives selected for consideration. The company's involvement began with a data collection and literature review program of the latest developments in solar energy. As early as 1975, Southwestern became an active participant in a solar energy. An early as 1975, Southwestern became an active participant in a solar program called the Southwest Project. The objective of this study was to examine the technical, economic and institutional barriers to the rapid implementation of solar energy. A final report was drafted in January, 1979.

Southwestern's second solar project involved participation in a General Atomic study (sponsored by DOE) of a 100 MW Line Focus Solar Central Power System (LFSCPS). General Atomic's Fixed Mirror Solar Concentrator tracks the motion of the line image of the sun. This study was completed on

Oct. 1. Six utility-industrial groups, including SPS and GE, were chosen by the DOE to develop designs for combining a solar energy plant with an existing electric generating plant. Six similar contracts were awarded by the DOE for research on repowering units for industrial use.

The repowering of existing plants, both for electric generation and industrial use, is a relatively new idea and is being developed more as a fuel saver than an alternate fuel source. The proposed plan calls for about 60 percent of the thermal energy of the retrofit unit be supplied by the sun, and, if feasible, could save approximately 1-billion cubic feet of gas annually. It could also increase or recapture the life of an existing plant. By adding an alternate fuel supply to an existing plant, that plant could last beyond the use of restrictive fuel supplies.

The proposed solar unit at Plant X would produce enough energy to drive an existing steam turbine. The steam turbine would, however, be capable of using natural gas or a combination of natural gas and solar

power. The solar portion of the plant would consist of a mirror field, a central receiver mounted on top a 300-foot tower, a liquid sodium heat transfer system and three steam generators. The mirror field would include approximately 5,000 steerable sun-tracking mirrors called heliostats, occupying 276 acres.

The central receiver of the system will be cooled by constantly flowing liquid sodium, which will maintain a constant temperature. GE has been interested in the use of liquid sodium for many years and has found it to be a highly efficient source.

The liquid sodium as a heat transfer agent, could be a major area of consideration by the DOE when it begins reviewing the repowering proposals. Similar plant designs are expected to use water, molten salts and gases as cooling agents.

Other factors DOE will be considering are efficiency, price and geographical location, for amounts of sunshine.

**Go, Big Blue!**



**GARDEN CLUB MEET**--Members of Garden Clubs from throughout the district were in Tahoka Tuesday for an annual zone session hosted by the Tahoka Garden Club. Shown here are some of the participants at the head table.

## Tahoka Garden Club Host Zone Meeting

The Tahoka Garden Club was host Nov. 13 at United Methodist Church to the annual Central Zone Meeting of Texas Garden Clubs.

Twelve clubs were represented with a total of 61 Garden Clubbers in attendance.

Mrs. Copeland of Levelland, zone chairman, presided over the business meeting.

The Sundown Garden Club gave a humorous skit.

During the delicious turkey dinner catered by the Phebe

K. Warner Club, models from Togs & Curls, Jennings

of Tahoka, The Tahoka and Genny's showed some of the new styles.

Door prizes were given many Tahoka firms.

Glo Hays kept audience laughing with a in which she portrayed an time patent medicine salesman.

Mrs. Chris Easton Lubbock presented a program on the new technique of growing plants.

## All JEANS 1/2 Price

the Fabric Place

1614 MAIN - BOX 143  
TAHOKA, TEXAS 79373



## DIABETICS MUST TAKE CARE OF THEIR FEET

Elevated blood sugar levels make them easily susceptible to infections. They should bathe their feet daily with lukewarm water and a mild soap. Never wear shoes without also wearing stockings. Avoid the intense heat of electric pads or heat lamps. Tight shoes should not be worn and corns, callouses, bunions or ingrown toenails should not be self-treated.

by following a physician's advice, diabetes can be easily and comfortably lived with. We carry in stock everything any physician, even those from distant cities, may prescribe or advise those with diabetes to use or take.

A GREAT MANY PEOPLE ENTRUST US with their prescriptions, health needs and other pharmacy products. We consider this trust a privilege and a duty. May we be your personal family pharmacy?

Phone 998-4041

## TAHOKA DRUG

PRESCRIPTION CHEMISTS

1610 Main Tahoka, Texas

## We back up every sale with service.



When you buy a new Chevrolet car or truck from us, that's not the end of it. Because when it comes to service for your car we strive to get it done right. We want to help you take care of your Chevy and keep it running smoothly over the years. After all, when it comes time for you to buy a new one, we hope it will be another Chevrolet from us.

Really -- Wouldn't you rather have your service work done by a certified technician? We would -- that's why ours are National Certified!



## Bray Chevrolet Company

1615 Lockwood Tahoka 998-4541



# COMPARE John Deere

## parts and merchandise

There are a lot of "will fits" on the market. But--do they meet John Deere specs and tests?

We are reducing the price on some fast moving line items. So you can test and see the difference now!

		WAS	NOW
AR43634	<b>Engine Oil Filter</b>	\$8.70	<b>\$7.40</b>
AR50041	<b>Fuel Filter</b>	\$6.75	<b>\$5.50</b>

If John Deere filters are used and serviced as specified wear will be reduced and performance will be improved.

**John Deere Engine and Hydraulic Oils are bought in truckload lots to save our customers 20%**

		WAS	NOW
JD9313	<b>Auger Bearing</b>	\$9.91	<b>\$7.95</b>
JD9353	<b>Brush Bearing</b>	\$10.30	<b>\$7.95</b>
AN121448	<b>Fan Belt</b>	\$16.48	<b>\$13.95</b>
AN121874	<b>Cross Auger Belt</b>	\$22.35	<b>\$18.95</b>

John Deere stripper belts are made of premium quality to reduce stretch and twisting.

## Taylor Tractor & Equip. Co., Inc.

TAHOKA, TEXAS



PHONE 998-4549

# Wilson News

By Marsha Chisum

Mustang Band received Division II rating at the Marching Contest last week at Lubbock. The four bands received a Division I rating on their twirling routines composed of debra Kimbrell, and Angie Kimbrell. Individual routines performed by three of the bands. For their solos Tracy Lee and Angie each received a Division I and a Division III.

Tracy Lee, daughter of Mr. and Mrs. Bobby Lee, recently selected as Queen at West Texas University.

Wilson FFA is selling turkeys - 10lbs for \$9.50, grapefruit - \$9.50, oranges - \$11. A box of grapefruit and half grapefruit can be purchased for \$10. To order contact any member.

Athletic Booster Club begins meeting monthly. Next scheduled meeting is 10 directly after the meeting - New Home Jr. High.

Classes will be a student Wednesday Nov. 21. Classes will be dismissed Friday and Friday, Nov. 23 for the Thanksgiving holidays. Classes will resume regular time on Monday, Nov. 26.

Wilson Mustangs ended their season with a 7-3 record by defeating Dawson 34-6 last

Thursday at home. The Mustangs scored on the first play of the ballgame with a 50-yard touchdown pass from quarterback Keith Spears to Joel Velasquez. Sammy Nava carried for the extra points. The next Wilson TD was set up by another pass from Spears to Velasquez, this time for 40 yards ending on the 4 yard line. Nava carried for the score. The final three touchdowns were scored by Ricky Morales, Spears, and Nava.

The Mustangs did an outstanding job this year and earned the district title in the junior high division.

The high school girls basketball teams were defeated in their season opener last Tuesday night by Sands. The JV lost 28-22 with Tonda Klaus leading scorer with 6 points. Debra Hagens scored 16 points in the varsity game but Sands won 47-33.

The girls will travel to Christ the King this Thursday night with the JV playing at 6:30 and varsity following. The boys open cage action at home next Tuesday night with Western Hills Baptist. The JV girls game will begin at 5:30 followed by varsity girls at 6:30 and boys at 8 p.m.

Concession workers for the Nov. 20 games are: Mr. and Mrs. Tom Freitag (C), Mr. and Mrs. Bobby Lee, Mr. and Mrs. C.W. Slone, and Mr. and Mrs. Tom Autry.

The Wilson Mustangs ended their 1979 football

season with a 7-3 overall record - 4-1 in zone play giving them a second place standing behind Klondike who will represent the 3-B West Zone in the district championship game against Sterling City at 7:30 p.m. Saturday in Colorado City.

It wasn't the perfect record that the Mustangs had hoped for but it was a "Good Year" just the same. As a team they shared some disappointments, but they also had their share of exciting team victories. No one will forget the comeback to defeat Meadow or the exciting closing seconds of the New Home game. These Mustangs learned what it means to pull together as a team, school, and community and the true meaning of "Mustang" Spirit and Pride. They were able to end their season last Friday night having fun playing football. All of the Mustangs saw action—some even tried out new positions. The big senior linemen who were use to opening and closing up the holes got a chance to carry the ball as fullbacks—only to have two of their touchdowns called back.

Overall statistics for the 10-game season show the Mustangs with 120 first downs, 2824 yards rushing, 180 passing, 29 penetrations, and 141 points scored. Their opponents totaled 87 first downs, 1197 yards rushing, 527 passing, 23 penetrations, and 107 points scored.

Individually Randy Hall totaled 883 yards rushing for the season followed by Kendall Wilke with 384, Jon Cox with 284, Bobby Garcia with 195, Donald Freitag with 121, and Tim Bednarz with 86. Hall had 69 yards on pass receptions followed by Garcia with 36 and Mitch Bartley with 34. Hall scored 48 points, Cox 30, Freitag 12, Bartley 11, and Randy Moczygemba 6. Defensively, Quintin Talkmitt had 178 tackles for the season followed by David Weaver with 111, Moczygemba with 86, Bartley with 80, and Robbie Autry with 43.

The Mustangs will lose 7 members of this '79 team - but look for Wilson to be back again next year - only competing for the first time as a Class A team according to the new UIL classification change. But for right now it's think "roundball" time in Wilson!

Australia, dry and sparsely vegetated, by necessity, has the biggest cattle ranches in the world. One, the Barkly Downs, is larger than Israel, covering 5.4 million acres of 8,460 square miles. It grazes 90,000 lightly spread cattle.

The U.S. Department of Agriculture estimates the 1979 domestic cotton crop at 14.2 million bales -- a half million more than predicted and up 31 percent from last year's crop.

Go, Big Blue!

## Wilson School Menu

**BREAKFAST**  
**MONDAY** - Pancake with butter and syrup, grape juice and milk.  
**TUESDAY** - Cereal with Milk, one half slice toast, and orange juice.  
**LUNCH**  
**MONDAY** - Fish with tartar sauce, sliced potatoes with cheese, English peas, hot rolls, plum cobbler and milk.  
**TUESDAY** - Ham patties, cream potatoes, green beans, hot rolls, peanut butter cup, applesauce and milk.

## Mustangs Victory Over Dragons

The Wilson Mustangs traveled to Dawson last Friday night to end their '79 season with a 20-0 victory over the Dragons. On their first play of the ballgame, tailback Randy Hall broke for a 66 yard touchdown run followed by a successful after point kick by Mitch Bartley. The next points on the board were made on a 2 yard run by fullback Jon Cox. The kick failed. The final score was made by fullback Donald Freitag who ran 32 yards for a touchdown. Bartley's kick was good.

Team statistics for the game show Wilson with 14 first downs, 304 yards rushing, and 6 penetrations. The Dragons totaled 3 first downs, 32 yards rushing, 14 passing, and 0 penetrations. Randy Hall led with 102 yards on 13 carries followed by Freitag with 57 on 5 carries, Cox 50 on 9 carries, Wilke 44 on 8, and Bobby Garcia 43 on 10. Defensively Quintin Talkmitt had 15 tackles followed by Weaver with 12, Moczygemba with 11, and Bartley with 10.

The Mustangs went 7-3 for the season and ended up second in zone play with a 4-1 record behind Klondike.

## Gross Sales Climb

State Comptroller Bob Bullock Monday said one of the barometers of the state's economic health—gross sales continued to climb in the second quarter of 1979.

Bullock said a sales tax analysis of gross sales for April, May and June of this year shows that gross sales in Texas totaled \$49.5 billion, up \$5.3 billion over the same three-month period of 1978.

The second quarter gross sales surpassed sales in this year's first quarter by about \$1 billion, Bullock said.

The gross sales figures were gathered from 262,128 reporting outlets across the state.

Out-of-state gross sales received from 4,788 reporting outlets from the same period totaled \$3.8 billion.

## Letter To Editor

Letters to the editor do not necessarily express the views of this newspaper. All correspondence must be signed, and in good taste before it will be published, and the name of the writer must be published also. Letters to the editor may not be more than two double-spaced typewritten pages.

Dear Dalton,

Last Friday night presented another sterling performance by our Bulldog football team against a highly inspired and hard hitting Post football team. High praise should go to all; the football team, band, student body and especially to the stands full of Tahoka people. This is great, the united effort shown by all.

Friday, Nov. 16, 1979 is "Cardiac Arrest" time again. Tahoka vs. Slaton. No holds barred, pull no punches, or whatever it takes to put Slaton away. IT CAN BE DONE and with a united effort Tahoka can do it.

Thanks again for your time. See you Friday night.

Sincerely,  
 s/s Dwain Lusk

Dear Mr. Wood:

Here we are again to say how proud we are of our Band. They put on a fine show for the Fans Friday night. We believe the band as a whole has improved greatly. We'd also like to point out we have a lot of new students in our band and this has been their first year on the field and they have done a good job, and next year we expect to see a bigger improvement than this year.

Band requires a lot of practice and hard work the same as football, I'm sure a lot of people don't realize this. We've heard a few comments concerning the Band playing "Rocky" so many times during the game. We'd like to explain this, it seems this inspires the football boys and they request the band to play it.

To our understanding the coaches, the football boys and the Cheerleaders all request they play this, as a matter of fact there have been times when the band was just about played out and some of the above would come and request this song for that needed inspiration. You can tell a difference

when this song is being played. So the band plays for those they support.

We would like this Friday night to see the Fans stand up and give the band a show of Appreciation. Lets really let them know we care about their efforts. We would like to thank Mr. Wise for his efforts and hard work and patience this year. We feel he has accomplished a great deal and has more to give in the future.

If this is to be our last game (we hope it isn't) the band will not stop working, they have other contests and concerts to attend. So lets all give them a lot of support so that they might represent us at these events well.

We want to thank all those in the past who have supported the band and hope you will continue.  
 Linda Owen, Wanda Curry, and Wanda Clary

## Wilson High School Basketball Schedule

	A Girls	B Girls	A Boys	B Boys
Nov. 6	Sands	X	X	
Nov. 13	Whitharral	X	X	
Nov. 15	at CTK	X	X	
Nov. 20	Western Hills	X	X	X
Nov. 27	CTK	X	X	X
Nov. 29, 30, Dec. 1	Anton	X	X	X
Tournament			X	X
Dec. 11	Bordon Co.	X		X
Dec. 13, 14, 15		X	X	X
Bordon Co. Tournament			X	X
Dec. 18	at Western Hills	X		X
Jan. 3, 4, 5	Sundown	X	X	X
Tournament			X	X
Jan. 8	at Union	X		X
Jan. 11	Smyer	X	X	X
Jan. 10, 11, 12	Smyer JV	X	X	X
Tournament		X	X	X
Jan. 15	at Meadow	X	X	X
Jan. 18	New Home	X		X
Jan. 22	at Southland	X	X	X
Jan. 25	Union	X		X
Jan. 24, 25, 26	Wilson JV	X		X
Tournament			X	X
Jan. 29	at Smyer	X		X
Feb. 1	Meadow	X		X
Feb. 5	at New Home	X	X	X
Feb. 8	Southland	X		X



Some kinds of flowers have been wiped out because of careless and thoughtless picking.

## SHOULD YOU HAVE A FOOD RESERVE?

We are proud to offer the Simpler Life Food Reserve Program. Not only does it fulfill the basic requirements of a sensible delicious food reserve—balanced nutritionally—but it is composed of natural and whole foods. These are fruits, vegetables, grains, seeds, meats, fish, dry milk and natural sweets produced without artificial chemicals. And no preservatives have been used. Instead, each container is vacuum-packed or nitrogen sealed for lasting freshness without refrigeration. Water purification kit, cookbooks, matches, candles and can opener are included in the lightweight, compact units.

What better personal investment can you make for times like these?



Before you invest in your food storage plan, you owe it to your family to fully investigate Simpler Life. It is a product of Arrowhead Mills, one of America's leading producers of natural foods. We guarantee that we can sell you this food at substantially lower cost than any other producer of natural food.



Southwest Natural Food Reserve  
 5601 Aberdeen, Lubbock, Texas 79414 (800) 792-2902  
 Gentlemen: I am interested in learning more about the comprehensive Simpler Life Natural Food Reserve Program. Please send me your literature, without obligation, of course.  
 Name \_\_\_\_\_  
 Street \_\_\_\_\_  
 City \_\_\_\_\_  
 State \_\_\_\_\_ Zip \_\_\_\_\_  
 Phone ( ) \_\_\_\_\_

Like a good neighbor, State Farm is there.

LOOKING FOR MORE VALUE FOR YOUR CAR INSURANCE DOLLAR?

Give me a call! State Farm's combination rates and service is hard to beat. Save time or drop in anytime.

**ED REDWINE**  
 2128 Lockwood  
 998-5250

STATE FARM MUTUAL AUTOMOBILE INSURANCE COMPANY • HOME OFFICE: BLOOMINGTON, ILLINOIS

## Let Hallmark Help Make Your Thanksgiving Memorable

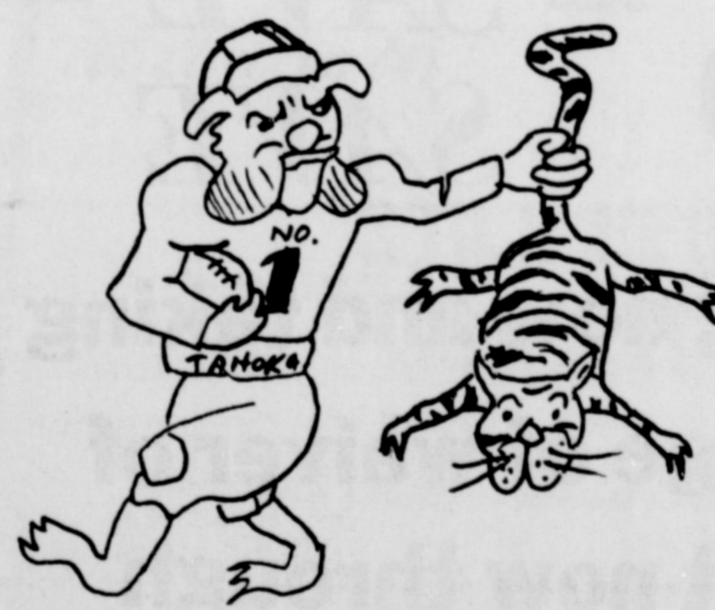
**A Nice and Easy Thanksgiving With Hallmark Partyware**  
 Create a beautiful Thanksgiving table, and make clean-up easy, too, with Hallmark paper partyware. Start with our colorful turkey centerpiece and a complete range of matching accessories — banquet plates, napkins, cups, placemats, and more!



**Thanksgiving Cards**  
 Remember far-away friends and relatives with thoughtful Hallmark cards on Thursday, November 22.

**Dayton Parker Pharmacy**  
 TAHOKA PH. 998-4300

# HOLD THAT TIGER



IT CAN BE DONE, AND THE BULLDOGS CAN DO IT!

We believe the Bulldogs are going to win the game and the draw Friday. Go get a Tiger, guys!

**FB** THE FIRST NATIONAL BANK OF TAHOKA  
 YOUR FULL SERVICE BANK

## AROUND TOWN

By Leona Waldrip

Mr. and Mrs. Edd Akin spent Friday night thru Sunday with her sister in Hobbs, N.M.

Mr. Jerry Miller of Dallas, Rebekah Assembly Pres. of Texas made her official visit to Levelland and Lubbock lodges on Thursday night in Levelland. Visitors from surrounding lodges were present also.

After a delicious Thanksgiving supper by the host lodge, the president presented her program and goals. Mrs. Leona Waldrip from Tahoka attended and spent the night with her son's family, the Randall Waldrips.

Twenty members were on hand for the November Birthday Party at Lynn Co. Pioneer Club on Friday.

Honored guests having birthdays were Willie Thomas, Clara Harper, Jimmie Wyatt and Lottie Spears. Each drew a birthday gift and "Happy Birthday" was sung to them. Mrs. Vesta Appling made the birthday cake which was served with

hot chocolate. Friday will be the next regular luncheon day and a program is planned.

Mr. and Mrs. Bill Erwin and Mrs. Gladys Holden were visitors in the Charlie Lichey home on Friday.

Past Noble Grand Club will not meet this week because of conflicts but will meet on the 5th Thursday instead with Evelyn Burr as the hostess. This will be on Nov. 29.

There were 60 persons present on Monday night when District 18 of the Rebekah Lodges met in Lamesa, with Lamesa #90 hosting the affair. Those attending were from Seminole, Brownfield and Tahoka besides the two lodges in Lamesa.

Retha Ford, Dist. Deputy President lead in the Degree work with 8 candidates being initiated into 4 lodges. Those going from Tahoka included, Willie Childress, Cal Massey, Iline McMillan, Leona Waldrip, Louise Wyatt,

Audrey Akin, Bertha Williams and Evelyn Burr.

Avis Henry is home after spending several days in a Lubbock Hospital.

Mrs. Williamson and Eva were hostesses for the Wilson Sewing Club when it met at the regular place on Tuesday afternoon. Mrs. Rice and Mrs. Lichey attended from Tahoka.

Lynn Co. Pioneer Club will be closed Thursday and Friday Nov. 22-23, for the Thanksgiving holidays.

### Cars Must Stop For School Bus

Two recent incidents in which students leaving school buses have almost been struck by passing vehicles have prompted school and law enforcement officials here to remind motorists of the law requiring vehicles to stop when school bus red flasher lights are on.

The law says a vehicle approaching from either direction must stop and remain stopped for school buses loading or unloading students when the flasher lights are on, both in the city and rural areas.

A vehicle may not proceed past the stopped bus until the bus resumes motion, the flashing red lights are turned off, or the bus driver signals motorists to proceed.



EXPLORERS learn army life.

## Explorers News

### EXPLORER BIVOAC

The United States Army, Fort Hood, and the South Central Region High Adventure Exploring Committee sponsored a Super Adventure Activity for 1000 Explorers at Fort Hood, Oct. 26-28.

Highlights of this trip included live fire-power demonstrations, M-16 range firing by every Explorer, field kitchen meals (with rattlesnake hors d'oeuvres) transport by various military vehicles, survival and med-

ical training, huge display of military equipment, and outstanding demonstrations by various units at Fort Hood.

The Explorers were also involved in competition activities with other Explorer posts. These activities included backpacking, cross country skiing, archery, orienteering, skeet shooting, rappelling, canoeing, hurdles, and an obstacle course. Saturday night the Explorers were honored with an outdoor "Disco Stomp".

Those attending this Bivouac were Ronny and Pam Vaughan, Rudy and Betty Johnston, Bengie and Debbie Williams, Sandy Oliver, Cal Huffaker, Ralph Huffaker, Dennis Grocke, Lee Holden, Jim Cawman, Otis Pendleton, John Curry, Starrlynn Knox, Lisa Perkins, Denise Ehlers, Jhoni Caswell, Rajeania House, Ellen Hutsell, Dustie Cook, Sarah Marex, Roddy Williams and Bryan Simpson.

These explorers were also presented T-Shirts, patches and dog tags upon their arrival at Fort Hood.

### High Grades Low Mikes

High grades, normal staples and low mikes - that's this year's High Plains cotton, according to Paul R. Dickson, Area Director for USDA's Cotton Division Offices on the High Plains.

About 75 percent of the samples graded in the white grades the week ended Nov. 8, Dickson said. Staples 31 through 33 accounted for 87 percent of the samples while 80 percent miked below 35.

Predominant grades for the week were grade 31 at 22 percent, grade 41 - 43 percent, grade 32 - 10 percent and grade 42 - 14 percent. Three percent of the samples were reduced one

grade because of grass and one percent for bark.

Predominant staples were staple 31 at 29 percent, 32 - 44 percent and 33 was 14 percent.

Mikes 35 - 49 accounted for 20 percent, 33 - 34 was 16 percent, 30 - 32 was 38 percent, 27 - 29 was 24 percent while 26 and lower accounted for two percent.

Average breaking strength was good at 87,000 pounds per square inch.

Prices paid growers for their 35 - 49 mike cotton ranged between 750 and 1050 points over 1979 loan rates. Growers sold mixed lots of mostly grades 42 and better, staples 30 - 33, mikes 35 - 49 around 55.65 cents per pound - down 75 points compared to a week ago.

Lower mike cotton brought 400 to 750 points over '79 loan rates, according to USDA's Agriculture Marketing Service. Gins paid growers 110 to 125 dollars per ton for cottonseed.

A study of New York dairy farms shows farm energy costs soaring. The average cost per farm in 1977 was \$2,775 for gasoline and oil, \$1,515 for electricity. Last year, costs rose to \$3,293 for gas and oil, \$1,877 for electricity.

And this year, the average annual costs are \$5,269 for gas and oil, \$2,159 for electricity. The conclusion: energy costs, previously five percent of milk selling price, have risen to 6.4 percent for the farms studied.

## New Home News

By Florence Davis

Mrs. Agnes Fulks from Freona visited in the home of Bro. Jack, Donna, Jared and Becky lee from Thursday until Monday.

Mr. and Mrs. Rob Davis of Mangum, Okl. were visiting his brother, Doug Davis and family and attended services in the New Home Baptist Church Sunday.

Mrs. Shine Barnett spent Monday and Monday night in Lubbock with her daughter, Mrs. Leon Blackmon and family.

Mr. and Mrs. Leroy Nettles were in Sweetwater Thursday until Saturday with Kenneth, Von, and Brett.

C.H. Reese of Sheridan, Ark. visited with us here Wednesday.

Mr. and Mrs. James Ray visited in Freeport with Vickie and Gerry Smith and children and in Lufkin with Bruce and Carol Ray. They accompanied James and Jean to Dallas to visit another son, Gary Ray and wife, Penny with Jean's brother, James Fuller.

Mrs. J.W. Clements was dismissed from Methodist Hospital and returned here Thursday.

Mrs. Don (Lorette) Smith had major surgery Friday in Highland Hospital.

Dale Clem was in Highland Hospital Wednesday until Saturday. He will return to the hospital later this week for further test.

Mrs. Ronnie (Meldoy) Miller and daughter, Alessa and Amy of Plainview were here for homecoming and visiting her parents, Mr. and

Mrs. Garland Peek. They stayed until Monday with their grandparents near their home.

Mrs. Loyd Evans returned in very critical condition to Highland Hospital. Evans was taken to Methodist Hospital and remained under treatment in monitor room. He expects to be moved to a private room early this week.

Mrs. Rhonda Time and daughters, Tara, Tobie of Seminole Saturday to visit her parents, Mr. and Mrs. Robbie and family.

The PTC met Tuesday, Nov. 6. They decided to have a Tupperware Sale as a money making project to buy new equipment for school. Everyone buy tupperware.

Sock it to 'em Bulldogs!

Get Your Office Supplies At Lynn County News

Attic-Blow Installation...Metal Building Spray-On Central Heating and Cooling Systems Storm Windows and Doors...

free estimates anywhere

924-7244 Dennis Haley New Home

See All The ECONOMICAL 80's

Now At

McCord Motor Co

TAHOKA, TEXAS

SEE THE NEW GENERAL MOTORS LINE OF FINE CARS



## Parker's Special Of The Week!



Antique Finish Picture Frames

40% Off Reg Price

For pictures 3 X 5 to 8 X 10 with oval mats

SEE THEM NOW AT

Dayton Parker Pharmacy

TAHOKA PH. 998-4300

It's Lonnie Paul's Birthday . . .

HAPPY BIRTHDAY, OLD MAN!



## ALAYAN ELECTRONICS SALES & SERVICE

★ TVs ★ STEREOS ★ RADIOS  
★ CBS ★ CALCULATORS  
★ PARTS

BOX 1616 1620 MAIN STREET TAHOKA, TX 79373 BUS. (806) 998-5217 RES. (806) 795-2736



SAVE — SAVE — SAVE

By buying now and taking advantage of waiver of interest now through March 1, 1980

(Must buy before Jan. 31 to get this savings)

Waiver of interest effective only on purchases of new or used tractors plus implements purchased with tractors

See what we have now. We have the right tractor to help you do the job!

Wade Implement Co.

380 EAST, POST HWY.



TAHOKA

998-4558

Salas of Comanche and Elida and Carolina Gonzales, both of Tahoka; and five brothers, John of Orange Grove, Calif., Rafael and Joe, both of Lubbock, and Ernest and Carmel, both of Comanche.

### Bridge Winners

Last week's Tuesday bridge winners were: Mrs. Meldon Leslie and Mrs. Roy LeMond, first; Mrs. Olen Renfro and Mrs. Audie Norman, second; Mrs. Jess Gurley and Frank Hill, third; Mrs. Vivian Broyles and Mrs. Margie Peltier, La-mesa, fourth.

Wednesday, Oct. 31 Duplicate bridge winners were Mary Taylor and Janelle Franklin, first; Venita Hamilton and Mabel Gurley, second; Polly Cords and Christine Askew, third.

Nov. 6 winners were: Janice Curry and Gerry Renfro, first; Doris Ascraft and Laquita Leverett and Janelle Franklin and Mary Taylor, tied for second and third; and Catherine Baram and Mabel Gurley, fourth.

### C-C Plans Breakfast

The monthly Tahoka Chamber of Commerce breakfast will be at 7 a.m. Tuesday in the Cafeteria. All members are urged to attend.

Causes of marital disruption are often multi-problematic involving psychological, social and economic factors, points out a family life education specialist, Diane Welch.

### Go, Big Blue!

KEEP MEDICINE OUT OF REACH OF CHILDREN

after you see your doctor, bring your prescription to

**Dayton Parker Pharmacy**  
TAHOKA PH 998-4300

## OBITUARIES

### Rev. George Dale

Services for the Rev. George A. Dale, 98, of Bender Terrace Nursing Home were held at 10:30 a.m. Monday at the First Baptist Church with Dr. Melvin Ratha of Sun City, Ariz., the Rev. I.D. Walker, interim pastor, the Rev. J.T. Bolding, retired pastor of the First Baptist Church, and Dr. J. Ralph Grant, pastor emeritus officiating. Burial was in Resthaven Memorial Park.

Dale died about 5 p.m. Friday at the nursing home after a long illness.

He was born in Knox County, Tenn. and moved to Texas in 1888. On Oct. 16, 1898, he married Frances Jane Simmons. An ordained Southern Baptist minister, he served churches throughout Oklahoma and Texas. He was pastor of the First Baptist Church in Tahoka from 1934 to 1942. After suffering a heart attack in 1942, he resigned and moved to Lubbock. He later served as interim pastor for churches in West Texas, eastern New Mexico and Wyoming. He was the organizing Pastor of the Parkdale Baptist Church in Lubbock and in 1971 was named pastor emeritus of the First Baptist Church of Tahoka. One son, Everett, died in 1977.

Survivors include his widow; three sons, George of Lubbock, Troy of Nashville, Tenn., and Paul of Plano; two daughters, Mrs. G.R. Kennedy and Mrs. James C. Edwards, both of Lubbock; 10 grandchildren; and 22 great-grandchildren. Pallbearers were grandsons and great-grandsons.

### Antonio Gonzales

Services for Antonio Moreno Gonzales, 14, of Tahoka were held at 11 a.m. Tuesday in St. Jude's Catholic Church with the Rev. Patrick Hoffman, pastor, officiating. Burial was in Tahoka Cemetery under direction of White Funeral Home.

The youth died shortly after midnight Sunday in a after midnight Sunday in a Lynn County Hospital in Tahoka of an illness. Justice of the Peace Ed Hamilton ruled the death was of natural causes.

Gonzales, son of Mr. and Mrs. Juan Gonzales, was born Jan. 6, 1965 in Brownfield and attended Comanche schools. He was a Catholic.

Survivors include his parents; his grandparents, Rafael Gonzales of Tahoka, Anita Moreno of Lampasas, Jessie Moreno of Mexico; four sisters, Mary Helen Ortega of Lubbock, Isabel

## Former Tahokan Presents McMurry Copy Of Book

Price, 59, is a Levelland funeral home director. He has been active in Masonic work and is a member of numerous Masonic organizations.

Price served with the infantry during World War II and was discharged in 1945 as a lieutenant. During 33 years in Levelland Price has been highly active in church, school, civic, cultural and club activities.

Price married the former Ophelia Eudaly of Tahoka. They have a son, George Price Jr., pastor of a Methodist Church in Quitaque, and daughter, Mrs. Gayle Robertson of Levelland.

Mr. and Mrs. Johnny Elwood Reasonover of 3012 58th in Lubbock presented a copy of his book, "Palatine Trails," Friday to Jay-Rollins Library at McMurry College.

Reasonover presented the book to Dr. Thomas K. Kim, McMurry president, at a luncheon in the President's Dining Room of McMurry's Iris Graham Dining Hall. The book deals with Reasonover family genealogy.

The book had its genesis in 1960 when the Reasonovers' daughter, now Mrs. D.P. (Ann) Ammons of Abilene, was taking a Texas history course under the legendary McMurry professor Vernie Newman.

Miss Newman assigned student Ann to write a paper on her family background. She went home to Tahoka and asked her father, who was manager for the Tahoka office of Southwestern Public Service Co. from 1952-1961. He didn't know much about the family history, but he looked into it and got interested.

"Reasonover" is not the most common of names, and this somewhat aided his search. He soon picked up the habit of telephoning Reasonovers whom he found in the directory when visiting a strange city.

Johnny and his wife, the former Charlotte Canning, traced his Reasonover forebears back to their settling in New Bern, North Carolina, in 1710, and then further back to the Palatinate in Germany.

Soon Reasonover began publishing a quarterly newsletter, "Tomorrow's Ancestors," which now goes to 70 relations near and distant.

Last summer Reasonover did a long first draft of

### Palatine Trails

This he revised and cut down to the 290 pages of the published book.

"I had enough information to make it three times that long," he said, "but that would just be too much."

Reasonover, who grew up at Lockney, was district manager for Southwestern Public Service Co. supervising in the Ralls-Crosbyton-Lorenzo district.

### Junior Class Supper Friday

The Tahoka High Junior Class will sponsor a Tamale Supper Friday, Nov. 16 from 5 to 7 p.m. at the Tahoka School cafeteria. Tickets are \$3 for adults and \$1.50 for children under 12 years old.

The menu consists of homemade tamales, Spanish rice, beans, tossed salad, coffee or tea, and a dessert.

Tickets may be purchased from any junior class member or at the door.

### Hearing Slated On Aging Plan

A Public Hearing on the Fiscal Year 1980 Area Plan for the Area Agency on Aging, South Plains Association of Governments, (SPAG) will be held in the SPAG Conference Room Nov. 20, at 1709 26th St., Lubbock.

The hearing will be held in conjunction with the Aging Advisory Council meeting, at approximately 1:30. Copies of the abstract of the plan are available for study in the Area Agency on Aging.

For the coming winter, make sure the attic is closed off from the rest of the home by sealing cracks around doors, pulldown stairways and air-duct passages, advises Claudia Kerbel, a consumer information specialist with the Texas Agricultural Extension Service, The Texas A&M University System.

Employed women are five to six times more likely to shop for clothes in the evening than non-employed women, reports Becky Culp, a clothing specialist with the Texas Agricultural Extension Service, The Texas A&M University System.



George Price of Tahoka Grad and Honor Masons

### Tahoka School Menu

**BREAKFAST**  
MONDAY - Corn Flakes, orange halves and milk.  
TUESDAY - Honey buns, pear halves and milk.

**LUNCH**  
MONDAY - Pizza, buttered corn, tossed salad, and sliced peaches.  
TUESDAY - Barbecue burgers, French fries, lettuce wedges and apple sauce cake.

Wednesday, Thursday, and Friday-Thanksgiving Holiday

## Special Of The Week Velours & Terrys

SALE \$2<sup>00</sup> Off REG PRICE

PLUS

### New Holiday Fabrics

Reg \$4<sup>99</sup> Sale \$3<sup>49</sup>

the Fabric Place  
1614 MAIN - BOX 143  
TAHOKA, TEXAS 79373

Get Your Office Supplies At Lynn County News

## Flats Fixed For Just



From now through Nov. 30, Wade Tire Co. is offering this one dollar special on fixing flats, just so we can show you our new tire store

Passenger Cars, Cotton Trailers and Lightweight Pickups Only, Bring 'em in and get that flat fixed for just \$1<sup>00!</sup>

Featuring new Michelin, Goodyear, Lee and Safemark tires.



## Wade Tire Co.

1229 Lockwood, Tahoka

"Quality Service At A Fair Price"

998-5488

### Keep your family together.

The holidays are a time when families are just naturally together. Why not keep your family together all year long—in a professional family portrait. Call now for an appointment, and it will be ready in time for holiday giving.



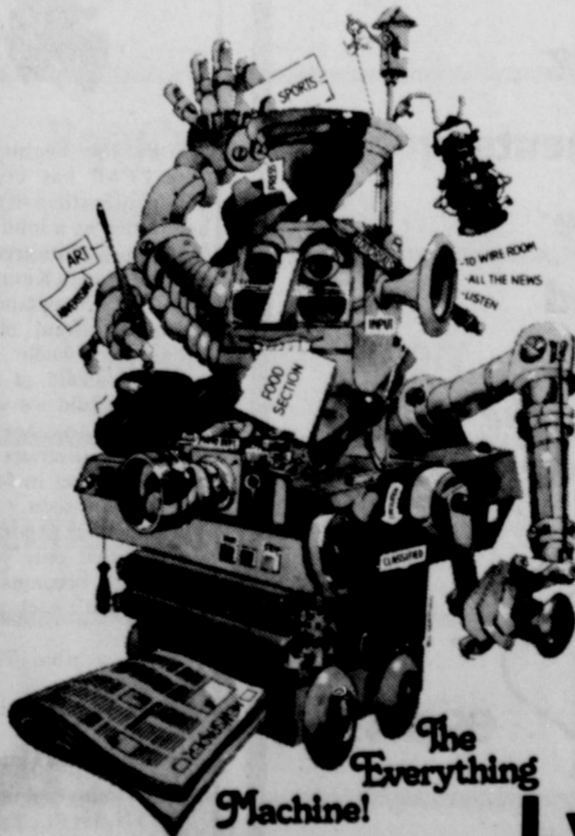
### C. Edmund Finney

Photographer  
1813 N. 1st St., Tahoka  
By Appointment Only  
Phone 998-4142

"Glance away from this ad for a few seconds, then look at it again!"

STILL HERE ISN'T IT ?

The spoken word is like air... But the printed is always there.



Newspaper advertising sells.

Advertise in the

Lynn County News



A few producers and processors of agricultural commodities on the High Plains already have been investigated and cited for violations of a law most of them had never heard of. And unless something is done, more of the same will follow, says Ed Dean, Field Service Director of Plains Cotton Growers, Inc., Lubbock, and also a director and executive committee member of the National Council of Agricultural Employers (NCAE).

The law, the Farm Labor Contractor Registration Act, known as FLCRA, was passed in 1963 with a worthy objective — to curb the exploitation of migrant farm workers by unscrupulous "crew leaders."

But the law was amended in 1974 and under subsequent interpretations now requires the registration of farmers, ginners and others who in their wildest dreams never imagined themselves a "farm labor contractor."

The language of the Act itself defines a farm labor contractor as "any person who, for a fee, either for

himself or on behalf of another person, recruits, solicits, hires, furnishes, or transports migrant workers for agricultural employment." Specific exemptions are granted for "any farmer, processor, canner, ginner, packing shed operator or nurseryman who personally engages in any such activity for the purpose of supplying migrant workers solely for his own operation," and "any fulltime or regular employee of an entity . . . who engages in such activity solely for his employer on no more than an incidental basis."

The word "personally" in the stated exemption was added to the law in the 1974 amendment and the U.S. Department of Labor (USDOL) is using that word to bring all incorporated farmers and agricultural product processors under its jurisdiction.

Growers do not agree with the USDOL interpretation and it is being tested in a number of Federal court challenges. But until the courts decide, or until Congress amends the law, a high percentage of the farmers, ginners and others in agricultural processing who use anything other than year-round labor will be subject to citation if they fail to register, fail to comply with all the requirements that follow registration, or if they employ a farm labor contractor who isn't properly registered.

At the urging of PCG, NCAE, the Texas Cotton Ginners' Association, the National Cotton Council and others, some 52 senators have signed and sent to Secretary of Labor Ray Marshall a letter expressing their dissatisfaction with the broad powers he has assumed under the law.

In addition a move is afoot to get an amendment to the law that will force the Secretary of Labor to conform to the intent of Congress instead of his own labor-biased inclinations.

It is generally agreed, according to Dean, that the USDOL is using this law, among other things, as a backdoor approach to curbing the use of illegal aliens. "The FLCRA is the only Federal law on the books directly dealing with the employment of illegal aliens," he says, "and unless the Secretary of Labor is curbed, many in agriculture will be shocked to find themselves the target of a massive Federal law enforcement campaign."

Dean invites anyone concerned with liability under FLCRA to contact him at the PCG office in Lubbock.

### Dry Your Own Flowers

If you are fortunate enough to have flowers in your yard, why not dry some of your favorite blossoms for year round pleasure. Had you thought about gluing them on holiday packages? Also all kinds of dried arrangements may be dried to last always.

Conventional drying requires 1 to 8 days but you can dry your flowers in the microwave oven in a fraction of the time, usually less than an hour. Patience is a must however.

Some colors are better than others. Whites, blues, golds and yellows usually give good results. Some flower shapes dry better than others. Pansies, roses, chrysanthemums, asters and daisies usually give excellent results.

For drying flowers several items are needed. One is silica gel crystals. The flowers are placed in silica gel for drying. This mineral

extracts the moisture from the flowers causing them to dry. Other items include some thin florist wire, green florist tape, tooth picks and a small brush. These are available at most craft and florist stores. Silica gel crystals are reusable. About one pound is needed for each batch flower drying.

Here are the steps to follow:

1. Pick flowers just before they have reached their peak. Include some buds and flowers that are just opening along with a few leaves. Dry as soon after picking as possible.
2. Cut blossoms leaving 1/2 inch stem. This is for florist wire to be attached later.
3. Place about 1/2 inch of silica gel crystals in an 8 x 4 inch glass loaf dish or 7 inch round casserole. Arrange blossoms stem-side down in gel leaving about 1/2 inch between each blossom. Carefully spoon more crystals, allowing them to gently fill in around the petals. Add the crystals so the petals are not forced together or pressed out of their natural shape. Add crystals until flowers are just covered.
4. Place a cup filled with water in one corner of the oven. Place the dish with flowers.

Microwave, uncovered 1

1/4 minutes (1 minute for pansies and leaves) in 600-675 watt oven or 1 1/2 minutes in 400-500 watt oven. Bottom of dish should feel quite warm. Let stand 30 minutes. Carefully remove blossoms; shake off crystals. Handle gently using toothpicks. Blossoms will still be a little flexible and it is best to attach the florist wire at this time. If more drying is needed to stand upright, place the flowers on a broiler rack or perforated surface so the stem can hang through and the petals will not be crushed.

6. Attach blossoms to florist wire by cutting wire desired length and placing it parallel to blossom stems. Wrap with florist tape, starting at blossom ends. Add your own dried leaves or use leaves available in craft shops. Bend wires and blossoms to make flowers look natural. When drying leaves, be sure there is ample stem for attaching to florist tape. Leaves can be layered in gel, but they require only 1 minute microwave time to dry.

Once flowers are dried arrange in desired containers or glue flowers on decorative containers, wrapped packages or make shadow boxes for wall hangings.

Good Luck! and best wishes for enjoyment and happiness with your very own creations. For additional information, write: Vivian Linder, Home Service Advisor, Box 631, Lubbock, Texas 79408.

### Short Urges End To Fuel Priorities

State Sen. E.L. Short of Tahoka last week repeated a request to Texas Gov. Bill Clements to lift the priorities of fuel allocation for the urban areas at the expense of the rural parts of the state.

Short made the request in a letter to the governor written after Gov. Clements had answered an earlier letter from Short on the subject of the needs of farmers and others in his district.

In his letter to the governor, Short said, in part:

"We West Texans are going to move around a lot in harvesting this crop, and over in Odessa, the area is on a boom in the development of energy resources. I have had inquiries from both ends of my District about nonavailability of gasoline. I feel certain our people are not going to understand that Fort Worth, Dallas, and Houston have priorities if we cannot get to the oil field and to the farm."

He went on to ask that the priorities for urban areas be lifted and "permit the free enterprise system to function equally for all."

The letter was sent prior to President Carter's announcement that no more Iranian oil would be imported.

Another banner American corn harvest is anticipated this year, according to Sperry New Holland. The U.S. corn crop alone is likely to outstrip the combined Soviet harvests of wheat, corn, barley, oats, rye, rice, millet, buckwheat, and miscellaneous grains.

†††  
The King Ranch in Texas encompasses 800,000 piecemeal acres.

### Sherry Etheredge Says....

**Promise Them No Left-Overs**  
If you want a whole poultry roast on your Thanksgiving table, but prefer not to have leftovers, try roast chicken.

A ready-to-cook, 3 to 4 pound broiler-fryer will serve four people amply. And record large production of broilers and pork make chicken economically attractive, as prices continue to drop, according to the Agricultural Marketing Service of the U.S. Department of Agriculture.

Here's how you prepare Roasted Stuffed Chicken with Giblet Gravy, a southern favorite.

**Roast Chicken and Stuffing**  
1/4 cup minced onion  
1 cup diced celery  
4 tablespoons of fat  
4 cups of bread crumbs, firmly packed  
1/2 tsp. poultry seasoning  
1/2 to 1 cup broth, water or milk  
1/2 tsp. salt (for cavity)  
1 broiler-fryer, 3 to 4 lbs.  
1 tsp. salt  
1/2 tsp. pepper

For stuffing, cook onion and celery in fat over low heat, stirring occasionally until onion is soft, but not browned. Meanwhile, blend seasonings with bread crumbs. Add onion, celery and fat. Blend. Pour broth over surface, stirring lightly.

Add more seasoning as desired. After rubbing chicken cavity with 1/2 teaspoon salt, place enough dressing in neck end to fill it out nicely. Fasten neck skin down to back with skewer. Stuff body cavity with dressing, do not pack it. Fasten opening. Brush bird thoroughly with melted, unsalted fat. Place bird in a shallow pan on a rack, breast down. Cover with a cloth dipped in melted fat. Roast in moderate oven, 325 to 350 degrees F. Turn bird breast side up (with cloth replaced over breast) when about half done. Do not sear or add any water to pan. Do not season outside. Spoon fat from bottom of pan to re-moisten cloth if necessary during roasting. Bird is done when

moving leg causes drumstick-thigh joint to break or move easily.

**Giblet Gravy**  
Cooked giblets, chopped  
3 tablespoons flour for each pint of gravy

To make gravy in the pan, use the liquid in which the giblets cooked and as much additional water or milk as needed for the volume of gravy wanted. Mix equal parts of flour and cold liquid in a bowl with an egg beater to prevent lumpy gravy. Add to remaining liquid, stir. Add giblet and cook until done.

For a new twist, take your Thanksgiving dinner outdoors with Barbecued Chicken in Robin-Red sauce.

**Robin-Red Sauce**  
1 tablespoon onion salt  
1 tablespoon dry powdered mustard  
1/2 teaspoon pepper  
1 teaspoon tabasco sauce  
1 cup vinegar  
1/2 bottle worchestershire sauce

2 cups tomato paste  
1 cup water  
1/2 cup butter, margarine  
salad oil

Combine ingredients, sautépan and heat to boil. Keep hot for basting chicken. Makes 5 cups—enough for barbecue and serve with 4 chickens.

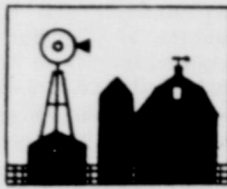
Baste birds with fat before cooking. After chickens are brown (45 minutes or so) baste with Robin-Red Sauce about every 15 minutes until done.

Be a safe camper, Claudia Kerbel, a consumer information specialist at the Texas Agricultural Extension Service, Texas A&M University System.

Help eliminate hazards by pitching your well away from the camp and avoid using light candles, matches, flammable liquids or other sources of ignition in or near the Ms. Kerbel adds.

Tahoka Merchants Appreciate Your Business

### YOUR FULL SERVICE BANK



## Farming and livestock are big and basic businesses

Our ability and readiness to help people in this business area is demonstrated by the success of so many farmers and stockmen who regularly use our facilities in their operations.

**Wilson State Bank**  
Member Federal Deposit Insurance Corporation

## Let Southwest Seed Do Your Delinting!

We've renovated our Tahoka plant, and manager Zane Curry and crew are ready to serve you.

- ★ Acid Delinting
- ★ Seed Treatments
- ★ Seed Storage
- ★ Planting Seed

We will catch your seed at the gin and delint it at competitive prices.



US 380

998-4115

Tahoka

Also plants in Brownfield, Lamesa and Seagraves

### FINNEY SAYS..



Since the beginning of time FEAR has been the dominant instinct of man. A baby cries at a loud noise. Most husbands are afraid of their wives. Kennedy is afraid of Chappaquiddick. Carter is afraid of Kennedy. The whole bloody world is afraid of OPEC, and I'm afraid we will not be able to get your Christmas portraits ready unless you get in for your appointment soon.

Remember a portrait is the gift that only you can give and becomes more precious with each passing year.

Have a nice Thanksgiving. Make your appointment now.

C. Edmund Finney  
Photographer  
1813 N. 1st St., Tahoka  
By Appointment Only  
Phone 998-4142

### COMPUCRUISE CAN SAVE YOU MONEY BY SAVING FUEL! LEARN HOW TO SAVE FUEL BY DRIVING YOUR VEHICLE AT ITS MOST EFFICIENT RATE

At the Push of a Button, CompuCruise Will Perform 44 Important Computer Functions in Your Vehicle.

#### COMPUCRUISE FUNCTIONS — MODEL 44

- |   |  |  |
|---|--|--|
| 1. time of day - 12 hour quartz crystal clock       | 17. fuel used since fillup - liters                      | 32. current fuel efficiency - miles per gallon                   |
| 2. elapsed time - hours, minutes, seconds           | 18. fuel used on trip - gallons                          | 33. current fuel efficiency - liters per 100 kilometers          |
| 3. stop watch - lap timer - hours, minutes, seconds | 19. fuel used on trip - liters                           | 34. average fuel efficiency for trip - miles per gallon          |
| 4. trip driving time - hours, minutes               | 20. fuel to arrival - gallons                            | 35. average fuel efficiency for trip - liters per 100 kilometers |
| 5. time to empty - hours, minutes                   | 21. fuel to arrival - liters                             | 36. inside temperature - degrees Fahrenheit                      |
| 6. time to empty - hours, minutes                   | 22. fuel to empty - gallons                              | 37. inside temperature - degrees Celsius                         |
| 7. alarm - wakeup or reminder                       | 23. fuel to empty - liters                               | 38. outside temperature - degrees Fahrenheit or Celsius (select) |
| 8. distance traveled since fillup - miles           | 24. current vehicle speed - miles per hour               | 39. outside temperature - degrees Celsius or Fahrenheit (select) |
| 9. distance traveled since fillup - kilometers      | 25. current vehicle speed - kilometers per hour          | 40. battery voltage - volts                                      |
| 10. distance traveled on trip - miles               | 26. average vehicle speed for trip - miles per hour      | 41. cruise control - digital read speed                          |
| 11. distance traveled on trip - kilometers          | 27. average vehicle speed for trip - kilometers per hour | 42. cruise control - engage & disengage                          |
| 12. distance to arrival - miles                     | 28. current fuel consumption - gallons per hour          | 43. cruise control - resume at set speed                         |
| 13. distance to arrival - kilometers                | 29. current fuel consumption - liters per hour           | 44. night time display dimming                                   |
| 14. distance to empty - miles                       | 30. average fuel consumption for trip - gallons per hour |  |
| 15. distance to empty - kilometers                  | 31. average fuel consumption for trip - liters per hour  |  |
| 16. fuel used since fillup - gallons                |  |  |

Installation... We believe CompuCruise will mount on and function on any vehicle, foreign or domestic, except for diesel, or fuel injected engines. Installation is no more difficult than a conventional cruise control.

FOR MORE INFORMATION CONTACT:

**Steve Payne 327-5377**

### THESE TAHOKA FIRMS ARE MAKING THIS FARM NEWS POSSIBLE

<b>McCord Oil Co.</b>	<b>Federal Land Bank Assn. of Tahoka</b> Jay Dee House, Mgr.
<b>Production Credit Association</b> Don Boydston	<b>Farmers Co-Op Assn. No.</b> Tommy Lawson, Mgr.
<b>Tahoka Co-Op</b> J. O. Reed, Mgr.	<b>Tahoka Auto Supply</b> The Hollands
<b>Taylor Tractor &amp; Equipment Co., Inc.</b> Fen Taylor	<b>Lynn County Farm Bureau</b>



# Tahoka Vs. Slaton

At Kelley Stadium at 7:30 p.m.

## Bulldog Individual Statistics

## CAGE THE TIGERS



**MIKE DILLS**  
Assistant  
Southeastern Okla. State U.



**T. A. BELL**  
7th and 8th Grade  
Pepperdine U.

### BULLDOG SCHEDULE

- Sept. 7 — Stanton
  - Sept. 14 — open
  - Sept. 21 — at Dimmitt
  - Sept. 28 — At Crane
  - Oct. 5 — at Cooper†
  - Oct. 12 — Roosevelt†
  - Oct. 19 — at Seminole†
  - Oct. 26 — Denver City†
  - Nov. 2 — Franship†
  - Nov. 9 — at Post†
  - Nov. 16 — Slaton†
- † district games

RUSHING				
Player	Yds.	Carries	Avg.	
White	1029	178	5.8	
Oages	971	147	6.6	
Chapa	68	25	2.7	
Brown	383	76	5.0	
Scott	22	9	2.4	
McKibben	10	3	3.3	
Bryson	4	4	1.0	
Curry	4	1	4.0	
Mitchell	48	7	6.9	
PASSING				
Player	Att.	C.	Int.	Pct.
Brown	39	15	2	.378
Curry	1	0	0	.000
Oages	1	1	0	1.000
RECEIVING				
Player	Caught	Yards		
Chapa	3	18		
T. White	8	155		
B. White	3	37		
Alvarado	1	13		
Scott	1	18		
SCORING				
Player	TD	EP	FG	TP
Oages	8	4	0	52
T. White	15	2	0	92
Brown	8	0	0	48
Elmore	0	22	0	22
B. White	2	0	0	12
Scott	1	0	0	6
L. Thompson	1	0	0	6



**VARSITY FOOTBALL TEAM** — Back row (left to right), Danny Thompson, Johnny McKibben, Kevin Elmore, Todd Brown, Brad Hammonds, Brad White, Johnny Alvarado, Tracy White, Jacky Jolly and Doug Barham. Middle row, Don Porterfield, Rance House, Ronald Lusk, Dwight Adams, Terry Botkins, Charles Bryson, Mark Hudlin, Clifford Oages, and Lyndell Martin. Bottom row, George Vega, Jerry Nutt, Alan Curry, Luchion Thompson, Freddy Garcia, Kelly Gass, Willie Ray Mitchell, Greg Williams, and Ricky Chapa.

**Take a look at this list of folks who are backing the Bulldogs 100%!**

Taylor Tractor & Equipment Co., Inc.	Take a look at this list of folks who are backing the Bulldogs 100%!		Bray Chevrolet Company
Handi Hobby	House of Flowers	Lynn County Abstract	Hochheim Insurance
Higginbotham-Bartlett Lumber Co.	Dairy Queen	Haney Gin	Genny's
Tahoka Dept. Store	Tahoka Drug	Spruiell Automotive	Witt Butane
Edwards-Miller Auction Service	Tahoka Cafeteria	Delia's Hair Styling	Lyntegar Electric Cooperative, Inc. <small>"Owned &amp; Operated by Those We Serve"</small>
Tahoka Chamber of Commerce	Tatum Bros.	Production Credit Assn.	Pridmore Aerial Spraying
Cook Pump Service	Southwest Seed & Delinting Co. <small>Zane D. Curry, Mgr.</small>	Fenton Insurance	Piggly Wiggly
Bryant Seed & Delinting, Inc.	Jennings of Tahoka	Jimmy B. Wright <small>ATTORNEY</small>	Poka-Lambro
McCord Motor Co.	Whitaker Hardware	<i>Get 'em Bulldogs!</i>	Ayerway Cleaners
Entry Savings & Loan Assn.	Tahoka Daisy	Bryan's Pawn Shop and Antiques	Tejeda Cafe
Huffaker and Green	Chancy & Son	Tahoka Auto Supply	Dixie Dog Drive In
Tahoka Food Mart	Flanigan's Auto Supply	Farmers Co-Op Assn. No. 1	Lubbock-Tahoka Federal Land Bank Assn.
Curry's Commuter & Lawn Mower	Togs 'n Curls	Phillips Pest Control	Star Lite Drive In
Louder Gin	Murray's Florist	Lynn County News	Jif-E-Mart

ips tomato paste  
p water  
cup butter, margai  
id oil  
Combine ingredien  
cepan and heat to bo  
p hot for basting chi  
kes 5 cups-enoug  
becue and serve wit  
ticken.  
laste birds with fat  
ore cooking. After  
s are brown (45 mi  
io) baste with Robi  
ice about every  
utes until done.

e a safe camper.  
dis Kerbel, a cost  
mation specialist  
Texas Agricult  
ension Service,  
as A&M Unive  
em.  
elp eliminate  
rds by pitching you  
away from the cam  
avoid using lig  
fles, matches, flam  
ids or other sourc  
ion in or near the  
Kerbel adds.

Tahoka Merchants  
Appreciate  
Your Business

Line  
ny  
eeds  
ir Service  
Guaranteed)  
IMPS  
ay Rigs  
rder  
LIBRATED  
BROS.  
Last Ph. 998-47  
MONEY BY  
VE FUEL B  
OST  
Will Perform  
ur Vehicle.  
present fuel efficiency - mile  
ation  
present fuel efficiency - mile  
0 kilometers  
verage fuel efficiency for 100  
iles per gallon  
verage fuel efficiency for 100  
ers per 100 kilometers  
side temperature - degree  
ahrenheit  
side temperature - degree  
Fahen  
inside temperature - degree  
Fahrenheit for coolant temper  
inside temperature - degree  
Fahrenheit for coolant temper  
ature  
terns voltage - volt  
one control - digital read  
one control - engage at 1000  
eed  
one control - resume at 1000  
eed  
get time display dimming  
items subject to change without

function on  
cted engines.  
ntrol.  
CT:  
27-537  
BLE  
ank Assn.  
ka  
ie, Mgr.  
Assn. No.  
Mgr.  
Supply  
ds.  
Bureau

# Case Case

"THE TRACTOR SPECIALIST"



Why not deal with the specialist...?

Call Grady Jackson, Home 744-0806  
Call Joe Anthony, Home 762-5040

## Case Power & Equipment

3302 Slaton Hwy. Lubbock 745-4451

### EMGYDIA!

In the 18th century, historians say, the decks of some ships were cleaned with grapefruit.



Today, grapefruit is more valued as a delicious part of the American diet. Grapefruit juice, blended with the natural goodness of four other citrus juices — orange, lemon, tangerine and lime — can now be enjoyed in Snow Crop Five Alive, a unique new fruit beverage containing 60 percent fruit juice. A refreshing alternative to soft drinks, it can be consumed and enjoyed throughout the day by the entire family.

## OEA Student Of The Week



KELLIE PARIS

OEA STUDENT OF THE WEEK—Kellie Paris is the daughter of Mr. and Mrs. Leslie Paris. Kellie is a senior and parliamentarian of the OEA Club. Her activities include varsity cheerleading, varsity golf, Science Club, FHA and 4-H. After graduation, Kellie plans to attend college at Angelo State University and major in fashion design.

## Conner New President Of Sentry Savings Assn.

Coffee R. Conner has been named President and a director of Sentry Savings Assn. Jack Gauling, vice chairman of the board and chief executive officer, announced following a special board meeting called last week by Board Chairman Jerry Powell.

Conner was previously associated with a Lubbock bank for 23 years where he resigned in August 1979 as executive vice president. He also served as a member of the board of directors of West Central Investment, a mortgage banking affiliate.

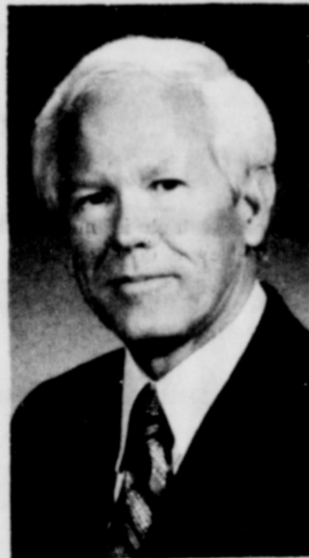
In announcing the appointment of Conner, Gauling

stated "we are pleased to have a person of Mr. Conner's banking background, and especially his experience as a mortgage banker, join us in this capacity at Sentry." Conner is a 1952 graduate of Texas Tech University and a 1963 graduate of the School of Mortgage Banking at Northwestern University.

He has been a faculty member of the American Bankers Association's National Mortgage School and the Texas Tech's Intermediate School of Banking. He has been active in many other civic and business organizations.

Conner's wife, Lou, is past president of the Lubbock Junior League and currently is serving as president elect of the Lubbock Women's Club. They have three children, Cary Burchak, a graduate student of SMU; Cindy, a senior at Texas Tech; and Pace, a sophomore at Lubbock High. They are members of Forrest Heights Methodist Church.

Earlier this month directors named Gauling vice chairman of the board and chief executive officer of the association. Gauling is a 1960 Texas Tech graduate. He began his banking career at a local bank in 1957 and became manager of their mortgage loan department in 1968. He resigned from the bank as senior vice president



COFFEE CONNER

## PET FACTS & FIGURES

The greatest canine jumper on record was Crumstone Danko, an agile German shepherd owned by the De Beers mining company. In Pretoria, South Africa in 1942, he rose to the top of a wall 11 feet, three inches high in a single bound.



Many dogs shed all over the rugs, leaving dirt and doggy odor behind. But your dog days, thankfully, can be over, now that there's Lestoil Deodorizing Rug Shampoo. Just spray the unique deodorizing foam all over the rug—let dry and vacuum it up. In as little as 15 minutes your rug is clean and odor-free — your whole room smells fresh again!

The world's "top dog" may well have been the Samoyed husky, variously named Kudryavka, Limonchik, Malyshka, Zuchka and Laika who traveled in Sputnik II on November 3, 1957.

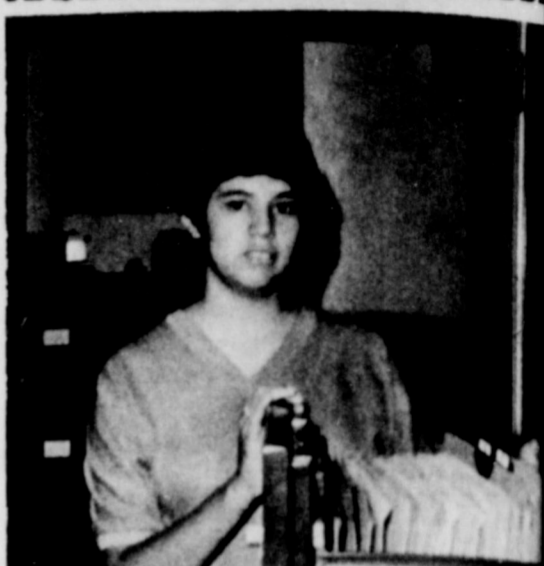
In 1973, and was president and a member of the Board of West Central Investment.

Gauling has served as president of the Lubbock Mortgage Bankers Assn. for two terms and is a past director of the Texas Mortgage Bankers Assn. He has served as an officer of the Texas Bankers Assn. and served on various committee appointments of both the Texas Mortgage Bankers Assn. and the Mortgage Bankers Assn. of America.



JACK GAULING

## DECA Student Of The Week



SYLVIA TEJEDA

DECA STUDENT OF THE WEEK—Sylvia Tejada is 17 old and a senior at Tahoka High School. She is employed at Tahoka Dental Office and works with Dr. White at Midkiff. After graduation she plans to attend University. Her hobbies include skeet shooting and swimming.

One-fourth of all persons buying by direct mail buy shoes and clothing, reports Becky Culp, a clothing specialist with the Texas Agricultural Extension Service, The Texas A&M University System.

If your child rubs his feet frequently or often sees, that may signal a problem, explains a education specialist, Shearer, with the Agricultural Extension Service, The Texas University System.

## Texas Pellet Products

For your roughage feeding needs this winter, check with us about our cotton burr pellets.

Also we handle a complete line of Hi-Pro Feeds including show animal rations

TEXAS PELLET PRODUCTS  
806/924-7341 NEW HO

Bray Chevrolet's  
**SUPER 79's**  
YOUR CHOICE ON SELECTED GROUPS  
**PRICES**

1979 MALIBU SPORT COUPE  
1979 CAMARO Z28  
1979 MONTE CARLO SPORT COUPE  
1979 Monte Carlo

DEALER'S DEMO

Check Our Prices Before You Buy  
**HURRY AND BUY AT**  
Bray Chevrolet Company

GM QUALITY SERVICE/PARTS  
GENERAL MOTORS PARTS DIVISION  
Keep That Great GM Feeling With Genuine GM Parts™

Tahoka, Texas 998-4544

Many new items of office supplies have been stocked by the Lynn County News so please check with us for all your office supply needs.

- Coronamatic and other typewriter, adding machine and calculator ribbons
- Legal pads
- Ledger sheets
- Adding machine and calculator paper
- Eraser-Mate erasable ink pens
- Squeeze-bottle moisteners
- Self-adhesive labels
- Liquid Paper
- Rubber stamps made
- Poster board 28x22
- File folders
- Wire baskets
- Many other items

We also now can supply new Smith-Corona office and portable electric typewriters, with some in stock and also can supply Hon filing cabinets, desks, office chairs and other items.

# The Lynn County News

For Rent  
RENT: Business for small business. Inquire, 998-5190.  
E. "Red" Brown  
REAL ESTATE BROKER  
It Can Be Sold We Can Sell It  
Becher Sherrod  
Salesman  
998-4930-J. E. Brown  
998-082 B. F. Sherr  
998-515-TAHOK  
HANOVI TRAILER  
STOCK TRAILER HORSE TRAILER GOOSENECK  
KENNETH TUR/ Dealer  
998-4146 Tahok  
Chapman  
Co. Realtors  
3212 34th  
Lubbock Texas  
Balley Co.  
little open cu  
ch. A coupl  
mills, set of v  
sks. 800 acres of l  
dy rolling gra  
a priced to se  
be a good  
Call Marlin  
e. 327-5472.  
Burnett Co.  
looks like a be  
ing ranch and i  
ows while you'r  
a lot of deer,  
p, quail and ver  
hunting, also  
game. All n  
ing it are large  
lot of cover fo  
agements will h  
ade to see this  
Marlin Hawtl  
472.  
more informa  
Marlin Hawthor  
Hawthorne.  
998/327-5472  
Southwe  
Real Esta  
HOUSES FOR SA  
2 bedroom ho  
2nd. New carg  
ge, across fron  
field south.  
on for school te  
family with sch  
ren. Very good t  
droom, 2 bath  
e. Has fenced  
drive and s  
a. Very neat.  
droom, 1 bath,  
e to be moved  
5th.  
ection land e  
ta on pav  
ession as soon  
athered.  
eres west of  
down with  
possession i  
ps are gather  
MAIN, TAH  
further informa  
contact:  
Jeanell Edward  
Office 998-4564  
Res. 998-4784  
Roland Clem  
Office 998-5161  
Res. 998-4462  
A. Pebsworth, A  
BROKER  
Res. 998-4091

# FAST RESULTS WITH WANT ADS

**For Rent**  
 Business build-  
 small business or  
 Inquire, 998-5120 or  
 8-tfc

**E. "Red" Brown**  
 REAL ESTATE  
 BROKER  
 If It Can Be Sold  
 We Can Sell It  
**Beecher Sherrod**  
 salesman  
 998-4930-J.E. Brown  
 998-4382 B.F. Sherrod  
 998-5151 - TAHOKA

**HANOVER TRAILERS**  
 STOCK TRAILERS  
 HORSE TRAILERS  
 GOOSENECKS  
**KENNETH TURNER**  
 Dealer  
 998-4146 Tahoka, Tex

**Chapman**  
 Co. Realtors  
 3212 34th  
 Lubbock Texas  
 Bailey Co.  
 little open country  
 800 acres of level to  
 rolling grassland.  
 is priced to sell and  
 is a good invest-  
 Call Marlin Haw-  
 327-5472.

**Burnett Co.**  
 looks like a beautiful  
 ranch and raise a  
 cows while you're at it.  
 a lot of deer, some  
 quail and very good  
 hunting, also other  
 game. All ranches  
 are large places  
 a lot of cover for deer.  
 agents will have to  
 see to see this land.  
 Marlin Hawthorne.  
 327-5472.  
 For more information,  
 Marlin Hawthorne or  
 327-5472

**Southwest Real Estate**  
 HOUSES FOR SALE  
 2 bedroom house on  
 2nd. New carpet and  
 across from foot-  
 field south. Good  
 for school teachers  
 family with school age  
 Very good buy.  
 45-2TP

**Notice**  
 I will not be responsible for  
 any debts other than my  
 own. Nanette Watson.  
 45-2TP  
**To Give Away:** Kittens - Call  
 327-5563. 46-1tf

**Wanted:** Butane and gas  
 truck driver. Apply at  
 Grassland Butane. Call  
 327-5448. 46-1tc  
**Wanted:** Will do baby-sitting  
 in your home. *Marjorie*  
 House. Call 998-5150  
 46-tfc

**Wanted:** To live in and care  
 for elderly woman. Call  
 998-5287. 46-1tc

**Real Estate**  
**For Sale** — 4-bedroom, 3  
 bath, brick home. Has  
 storage building and water  
 well. Excellent location.  
 Shown by appointment only.  
 1729 North 7th. Call 998-  
 5160 or 998-4784 after 5.  
 Melvin Edwards. 37-tfc

**For Sale:** Large 4 bedroom  
 house on almost 3 lots. 1302  
 N6th, 998-4886. 38-tfc

**For Sale:** 1/4 Section land, 3  
 miles east and 4 1/2 miles  
 south of Tahoka. Call J. E.  
 Brown at 998-4930. 45-tfc

**For Sale:** House for sale near  
 school, good location. 2308  
 N. 3rd. Call 998-4702  
 44-1tfc

**For Sale**—3 bedroom house  
 with large backyard. Call  
 998-5288 after 5 p.m.

**HOUSES FOR SALE**  
 Three bedroom stucco  
 dwelling on N. Main and  
 Sixth Street. The price is  
 right.

Large two story stucco.  
 Good location. Has been  
 newly plumbed, painted,  
 and new roof. Air condi-  
 tioned. Well in back yard.  
 Great possibilities.

Nice two bedroom stucco  
 located across street from  
 Sweet Street Baptist  
 Church. In good shape.  
 Carpeted, storm windows,  
 and new plumbing. Ready  
 to move into.  
 Clint Walker  
 998-4519 day  
 998-4197

**DO YOU NEED YOUR  
 THANKSGIVING AND  
 CHRISTMAS BAKING  
 DONE** but just don't have  
 time to do it? Call me, I'll be  
 glad to do it for you. Donna  
 Lee, 924-7711. New Home,  
 Tx. 46-2TP

**Wanted:** Sewing wanted,  
 specialize in long dresses,  
 very reasonable. Have refer-  
 ences. Pat Bingham 998-4722  
 45-tfc

**To Give Away:** Part German  
 Shepherd puppy, male. Call  
 998-4888 or 998-5361.  
 46-1tf

**Let us do your roofing**—58 a  
 sq. Call Harlon Dyke,  
 998-5168, Tahoka or Bobbie  
 Pendleton 872-3956 Lamesa.  
 45-2TP

**Wanted:** Butane and gas  
 truck driver. Apply at  
 Grassland Butane. Call  
 327-5448. 46-1tc

**Wanted:** Will do baby-sitting  
 in your home. *Marjorie*  
 House. Call 998-5150  
 46-tfc

**Wanted:** To live in and care  
 for elderly woman. Call  
 998-5287. 46-1tc

**Insurance**  
 Insurance shopping can be  
 rewarding. Hochheim Pra-  
 rie Farm Mutual Insurance  
 Association offers a nonde-  
 ductible policy for a low,  
 low cost. Try us.

**J.A. Pebsworth**  
**Joyce Pebsworth**  
**Jeanell Edwards**  
 2208 Main  
 998-4564, or 998-5160

**Misc. For Sale**  
**For Sale:** Stero AM/FM  
 Console. Good condition. \$80  
 Call 327-5541 after 5 p.m.  
 44-1tp

**For Sale:** Forney 225 AMP  
 Welder with leads. Can be  
 seen at Tahoka High School  
 Ag Shop. 41-tfc

**For Sale:** 9 wood and wire  
 cotton trailers. Call 628-3501  
 or 628-2221. 46-1tc

**For Sale:** IBM Electric Script  
 Typewriter with stand and  
 ribbons, \$65, an oak antique  
 desk, 6 drawers, \$40, and an  
 orange rocker and foot stool,  
 \$40. Call 998-4039. 45-2tp

**Jewelry for Christmas...** I can  
 order 14 K GOLD CHAINS  
 and 12K gold-filled chains. I  
 also carry a full line of the  
 highest quality fashion  
 jewelry. Virginia Gickhorn  
 628-3591. 46-4tc

**For Sale:** Butchering size  
 hogs. Reasonable. Call  
 924-7372. 1tc

**Business Services**  
**LET FX BACTERIA**  
 HELP CLEAN YOUR Septic  
 Tank the Easy Way—\$6.98.  
 Tree Roots Removed from  
 Sewer Lines. Sinks opened.  
 Farmers Coop Assoc. #1  
 P.O. Box 698  
 Tahoka, Texas 79373  
 45-4tp

**Curry's Commuter and  
 Lawnmower Sales & Service**  
 Have dealership for Snap-  
 per and Dayton Lawnmower,  
 also dealer for Commuter 3  
 Wheelers, with or without  
 spray rig. Keep good supply  
 of Briggs Stratton, Tecumseh  
 and Kohler engine parts.  
 Good supply of lawnmower  
 and edger blades. 46-tfc

**New McCulloch saws,** also  
 parts, chains sharpened.  
 Small motors repaired. 9  
 miles north, 2 miles west of  
 Tahoka. O. O. Tekell.  
 924-7471. 39-tfc

**WE DO PICTURE FRAM-  
 ING**—All sizes. Borden Davis  
 Frame Shop. 1tc

**COOK PUMP SERVICE**—ser-  
 vice on Western turbines  
 and all makes of submersi-  
 bles. Ph. 998-4752. 1tc

**YOUR OLD** family portraits  
 copied and restored by C.  
 Edmund Finney, 1813 North  
 1st. Hours 1-5 p.m. 22-tfc

**Wanted:** Trenching or back-  
 hoe work. 20c ft. and \$20 hr.  
 Call 998-4255 28-tfc

**An Ohio Oil Co. offers**  
 PLENTY OF MONEY plus  
 cash bonuses, fringe benefits  
 to mature individual in  
 Tahoka area. Regardless of  
 experience, write C.C. Read,  
 Pres., American Lubricants  
 Co., Box 696, Dayton, Ohio  
 45401.

**Civic Organizations**  
 Tahoka Rotary Club meets at  
 12 Noon each Thursday at  
 Tahoka Cafeteria. Jim Solo-  
 mon is president.

**Tahoka Lions Club** meets at 7  
 p.m. on the 2nd and 4th  
 Tuesday of the month at  
 WOW Hall. Robbie Roberson  
 is president.

**Autos For Sale**  
**For Sale:** 1976 T-Bird. Come  
 by McCord Motor Company  
 and drive. Only \$1995.  
 46-1tc

**For Sale:** 1965 VW Call  
 998-4707. 40-tfc

**For Sale:** 1976 Chevette Call  
 998-4293 after 7 p.m. 41-tfc

**For Sale:** 1977 Chevy  
 Silverado, all electric, 454,  
 tilt wheel, cruise control,  
 44,000 miles, excellent  
 condition. Call 998-5188.  
 41-tfc

**For Sale:** Jeep, 4-wheel  
 drive. Come by and see at  
 McCord Motor Co. 46-1tc

**For Sale:** 75 Ford 1/2 ton  
 pickup, 4-wheel-drive, for  
 \$2950. Call 8-4641. 46-2tf

**For Sale:** Mercury Monarch  
 4-dr, clean and nice, good  
 economical transportation.  
 See at McCord Motor Co.  
 46-1tc

**CARD OF THANKS**  
 We wish to express our  
 thanks for each act of  
 sympathy shown to us. Your  
 kindness and consideration  
 shall never be forgotten.  
 May God bless you.  
 Relatives of Clay (Billy)  
 Mitchell 46-1tp

**JERRY HOOVER**  
 sells  
 VWs, Subaru  
 Porsche & Audi  
 Guar. Used Cars  
**Montgomery Motors**  
 41st & Q  
 828-6758 — 747-5131  
 18-tfc

**Card of Thanks**  
 With deepest gratitude,  
 we thank you for the  
 kindness shown to us during  
 the loss of our mother and  
 grandmother.  
 Mr. and Mrs. Harold Roberts  
 Mr. and Mrs. Cal Womack  
 Mr. and Mrs. Jim Crawford  
 Mr. and Mrs. Ken Lamberson

Dear Friends, I am no longer  
 your County Service Officer,  
 but if I can help you call Sid  
 A. Lowery 795 7268 or come  
 to my home at 2410 30th St.  
 Lubbock, Texas. 42-4tp

**VETERANS OR WIDOWS OF ALL WARS**  
 WHO NEED HELP OR ADVICE IN CLAIM  
 BENEFITS, CONTACT---  
**RUSSELL HOWLE**  
 SERVICE OFFICER  
 Wednesday of each week at Courthouse  
 Tahoka, Texas

**Garage Sales**  
**Garage Sale:** 13th Green St.  
 Wilson, Saturday 8 to 4 - toys  
 gifts, coats, chest, clothes  
 and misc. 46-1tc

**Garage Sale:** 2100 N. 8th,  
 Thursday and Friday, 8 a.m.  
 to 6 p.m. Dresser,  
 children's clothes, material  
 and misc. 46-1tc

**Garage Sale:** Crafts and  
 misc. items Thursday only.  
 8:30 - 5 at 1604 N. 6th. Nina  
 and Billie 46-1tp

**Garage Sale:** 5 Family  
 garage sale at Grassland  
 Community Center Friday  
 and Saturday. 46-1tp

**Misc. For Sale**  
**"Same Low Price"** Kirby  
 Vacuum Cleaners for sale.  
 thru November. Atten.  
 \$23.50.  
 Lay-a-way for Christmas!  
**Purveyer's Sales & Repairs**  
 546-2256 - Seagraves - 912  
 16th Street. 44-1tp

**Payne**  
 THE GAS FURNACE THAT WORKS HARDER.  
 On Display at  
 Togs & Curis  
 and Jennings  
 of Tahoka  
 For electric heating  
 and cooling  
**Jack's Heating,  
 Cooling and  
 Electric**  
 Tahoka, Texas  
 998-4390 after 6 p.m.

**Payne**  
 NUTONE  
 PADDLE FANS  
 52" Fan. Brown enamel housing  
 (PF-52BE). Walnut stained  
 wood blades  
 (PFBW-52D). Optional light kit  
 (PFLK-1BR).  
 On Display at  
 Togs & Curis  
 and Jennings  
 of Tahoka  
 For electric heating  
 and cooling  
**Jack's Heating,  
 Cooling and  
 Electric**  
 Tahoka, Texas  
 998-4390 after 6 p.m.

**Payne**  
 NUTONE  
 PADDLE FANS  
 52" Fan. Brown enamel housing  
 (PF-52BE). Walnut stained  
 wood blades  
 (PFBW-52D). Optional light kit  
 (PFLK-1BR).  
 On Display at  
 Togs & Curis  
 and Jennings  
 of Tahoka  
 For electric heating  
 and cooling  
**Jack's Heating,  
 Cooling and  
 Electric**  
 Tahoka, Texas  
 998-4390 after 6 p.m.

**Payne**  
 NUTONE  
 PADDLE FANS  
 52" Fan. Brown enamel housing  
 (PF-52BE). Walnut stained  
 wood blades  
 (PFBW-52D). Optional light kit  
 (PFLK-1BR).  
 On Display at  
 Togs & Curis  
 and Jennings  
 of Tahoka  
 For electric heating  
 and cooling  
**Jack's Heating,  
 Cooling and  
 Electric**  
 Tahoka, Texas  
 998-4390 after 6 p.m.

**Payne**  
 NUTONE  
 PADDLE FANS  
 52" Fan. Brown enamel housing  
 (PF-52BE). Walnut stained  
 wood blades  
 (PFBW-52D). Optional light kit  
 (PFLK-1BR).  
 On Display at  
 Togs & Curis  
 and Jennings  
 of Tahoka  
 For electric heating  
 and cooling  
**Jack's Heating,  
 Cooling and  
 Electric**  
 Tahoka, Texas  
 998-4390 after 6 p.m.

**Payne**  
 NUTONE  
 PADDLE FANS  
 52" Fan. Brown enamel housing  
 (PF-52BE). Walnut stained  
 wood blades  
 (PFBW-52D). Optional light kit  
 (PFLK-1BR).  
 On Display at  
 Togs & Curis  
 and Jennings  
 of Tahoka  
 For electric heating  
 and cooling  
**Jack's Heating,  
 Cooling and  
 Electric**  
 Tahoka, Texas  
 998-4390 after 6 p.m.

**Payne**  
 NUTONE  
 PADDLE FANS  
 52" Fan. Brown enamel housing  
 (PF-52BE). Walnut stained  
 wood blades  
 (PFBW-52D). Optional light kit  
 (PFLK-1BR).  
 On Display at  
 Togs & Curis  
 and Jennings  
 of Tahoka  
 For electric heating  
 and cooling  
**Jack's Heating,  
 Cooling and  
 Electric**  
 Tahoka, Texas  
 998-4390 after 6 p.m.

**Payne**  
 NUTONE  
 PADDLE FANS  
 52" Fan. Brown enamel housing  
 (PF-52BE). Walnut stained  
 wood blades  
 (PFBW-52D). Optional light kit  
 (PFLK-1BR).  
 On Display at  
 Togs & Curis  
 and Jennings  
 of Tahoka  
 For electric heating  
 and cooling  
**Jack's Heating,  
 Cooling and  
 Electric**  
 Tahoka, Texas  
 998-4390 after 6 p.m.

**Payne**  
 NUTONE  
 PADDLE FANS  
 52" Fan. Brown enamel housing  
 (PF-52BE). Walnut stained  
 wood blades  
 (PFBW-52D). Optional light kit  
 (PFLK-1BR).  
 On Display at  
 Togs & Curis  
 and Jennings  
 of Tahoka  
 For electric heating  
 and cooling  
**Jack's Heating,  
 Cooling and  
 Electric**  
 Tahoka, Texas  
 998-4390 after 6 p.m.

**Payne**  
 NUTONE  
 PADDLE FANS  
 52" Fan. Brown enamel housing  
 (PF-52BE). Walnut stained  
 wood blades  
 (PFBW-52D). Optional light kit  
 (PFLK-1BR).  
 On Display at  
 Togs & Curis  
 and Jennings  
 of Tahoka  
 For electric heating  
 and cooling  
**Jack's Heating,  
 Cooling and  
 Electric**  
 Tahoka, Texas  
 998-4390 after 6 p.m.

**Payne**  
 NUTONE  
 PADDLE FANS  
 52" Fan. Brown enamel housing  
 (PF-52BE). Walnut stained  
 wood blades  
 (PFBW-52D). Optional light kit  
 (PFLK-1BR).  
 On Display at  
 Togs & Curis  
 and Jennings  
 of Tahoka  
 For electric heating  
 and cooling  
**Jack's Heating,  
 Cooling and  
 Electric**  
 Tahoka, Texas  
 998-4390 after 6 p.m.

**Payne**  
 NUTONE  
 PADDLE FANS  
 52" Fan. Brown enamel housing  
 (PF-52BE). Walnut stained  
 wood blades  
 (PFBW-52D). Optional light kit  
 (PFLK-1BR).  
 On Display at  
 Togs & Curis  
 and Jennings  
 of Tahoka  
 For electric heating  
 and cooling  
**Jack's Heating,  
 Cooling and  
 Electric**  
 Tahoka, Texas  
 998-4390 after 6 p.m.

**Payne**  
 NUTONE  
 PADDLE FANS  
 52" Fan. Brown enamel housing  
 (PF-52BE). Walnut stained  
 wood blades  
 (PFBW-52D). Optional light kit  
 (PFLK-1BR).  
 On Display at  
 Togs & Curis  
 and Jennings  
 of Tahoka  
 For electric heating  
 and cooling  
**Jack's Heating,  
 Cooling and  
 Electric**  
 Tahoka, Texas  
 998-4390 after 6 p.m.

**Payne**  
 NUTONE  
 PADDLE FANS  
 52" Fan. Brown enamel housing  
 (PF-52BE). Walnut stained  
 wood blades  
 (PFBW-52D). Optional light kit  
 (PFLK-1BR).  
 On Display at  
 Togs & Curis  
 and Jennings  
 of Tahoka  
 For electric heating  
 and cooling  
**Jack's Heating,  
 Cooling and  
 Electric**  
 Tahoka, Texas  
 998-4390 after 6 p.m.

**Payne**  
 NUTONE  
 PADDLE FANS  
 52" Fan. Brown enamel housing  
 (PF-52BE). Walnut stained  
 wood blades  
 (PFBW-52D). Optional light kit  
 (PFLK-1BR).  
 On Display at  
 Togs & Curis  
 and Jennings  
 of Tahoka  
 For electric heating  
 and cooling  
**Jack's Heating,  
 Cooling and  
 Electric**  
 Tahoka, Texas  
 998-4390 after 6 p.m.

**Payne**  
 NUTONE  
 PADDLE FANS  
 52" Fan. Brown enamel housing  
 (PF-52BE). Walnut stained  
 wood blades  
 (PFBW-52D). Optional light kit  
 (PFLK-1BR).  
 On Display at  
 Togs & Curis  
 and Jennings  
 of Tahoka  
 For electric heating  
 and cooling  
**Jack's Heating,  
 Cooling and  
 Electric**  
 Tahoka, Texas  
 998-4390 after 6 p.m.

**Payne**  
 NUTONE  
 PADDLE FANS  
 52" Fan. Brown enamel housing  
 (PF-52BE). Walnut stained  
 wood blades  
 (PFBW-52D). Optional light kit  
 (PFLK-1BR).  
 On Display at  
 Togs & Curis  
 and Jennings  
 of Tahoka  
 For electric heating  
 and cooling  
**Jack's Heating,  
 Cooling and  
 Electric**  
 Tahoka, Texas  
 998-4390 after 6 p.m.

**Payne**  
 NUTONE  
 PADDLE FANS  
 52" Fan. Brown enamel housing  
 (PF-52BE). Walnut stained  
 wood blades  
 (PFBW-52D). Optional light kit  
 (PFLK-1BR).  
 On Display at  
 Togs & Curis  
 and Jennings  
 of Tahoka  
 For electric heating  
 and cooling  
**Jack's Heating,  
 Cooling and  
 Electric**  
 Tahoka, Texas  
 998-4390 after 6 p.m.

**Payne**  
 NUTONE  
 PADDLE FANS  
 52" Fan. Brown enamel housing  
 (PF-52BE). Walnut stained  
 wood blades  
 (PFBW-52D). Optional light kit  
 (PFLK-1BR).  
 On Display at  
 Togs & Curis  
 and Jennings  
 of Tahoka  
 For electric heating  
 and cooling  
**Jack's Heating,  
 Cooling and  
 Electric**  
 Tahoka, Texas  
 998-4390 after 6 p.m.

**Payne**  
 NUTONE  
 PADDLE FANS  
 52" Fan. Brown enamel housing  
 (PF-52BE). Walnut stained  
 wood blades  
 (PFBW-52D). Optional light kit  
 (PFLK-1BR).  
 On Display at  
 Togs & Curis  
 and Jennings  
 of Tahoka  
 For electric heating  
 and cooling  
**Jack's Heating,  
 Cooling and  
 Electric**  
 Tahoka, Texas  
 998-4390 after 6 p.m.

**Get Your  
 Office  
 Supplies  
 At Lynn  
 County  
 News**

**Get Your  
 Office  
 Supplies  
 At Lynn  
 County  
 News**

**Get Your  
 Office  
 Supplies  
 At Lynn  
 County  
 News**

**Get Your  
 Office  
 Supplies  
 At Lynn  
 County  
 News**

**Get Your  
 Office  
 Supplies  
 At Lynn  
 County  
 News**

**Get Your  
 Office  
 Supplies  
 At Lynn  
 County  
 News**

**Get Your  
 Office  
 Supplies  
 At Lynn  
 County  
 News**

**Get Your  
 Office  
 Supplies  
 At Lynn  
 County  
 News**

**Get Your  
 Office  
 Supplies  
 At Lynn  
 County  
 News**

**Get Your  
 Office  
 Supplies  
 At Lynn  
 County  
 News**

**Get Your  
 Office  
 Supplies  
 At Lynn  
 County  
 News**

**Get Your  
 Office  
 Supplies  
 At Lynn  
 County  
 News**

**FARM BUREAU  
 INSURANCE**  
 INSURANCE FOR ALL YOUR NEEDS  
 LIFE - AUTO - FIRE - FARM LIABILITY  
 BLUE CROSS - BLUE SHIELD  
**Robert Harvick, Agency Mgr.**  
 Ralph Allaire, Agent, O'Donnell  
 PHONES 998-4320 AND 998-4591 RES. 628-2841  
 TAHOKA, TEXAS PHONE Wilson

**A TRUE VALUE STORE**  
**WHITAKER HARDWARE**  
 "WE SELL EVERYTHING - KEEP NOTHING"  
 Phone 998-4749 Tahoka, Tex 79373

**LENNOX**  
**The Weather Doctors**  
 CERTIFIED HEAT PUMP SPECIALIST  
 Residential & Commercial  
 Heating Air-Conditioning  
 Sheet Metal  
 WILSON, TEXAS  
 628-2461  
 ttc

**PAYNE EQUIPMENT  
 SALES, INSTALLATION & SERVICE**  
**FOLLIS HEATING &  
 AIR CONDITIONING**  
 FOR FREE ESTIMATE  
 PHONE 628-3271  
**OSCAR FOLLIS WILSON, TEXAS**

**Phillips Pest Control & Plumbing.** TPCL 3382  
 PTL 2128 Main Tahoka. 998-4806. If long  
 distance, call collect. Free Estimates, Quality  
 Work. On call service, 24 hours a day.

**Wedding and Portrait  
 Photography**  
 WEDDINGS, RECEPTIONS CHILDREN TOO!  
 GROUP OR INDIVIDUAL PORTRAITS  
**CALL BETTY STENNETT**  
 998-5029 or 998-4238

## PROFESSIONAL DIRECTORY

**Service To All Faiths**  
 "WE CARE FOR YOURS AS  
 WE WOULD HAVE OURS CARED FOR"  
**BILLIE WHITE - OWNER**  
**WHITE FUNERAL HOME**  
 PHONE 998-4433  
 COMPLETE FUNERAL SERVICE

**We Pump Cesspools  
 and Station Pits**  
**JOE BRYAN**  
 998-4757 or 998-5444

PLUS S&H GREEN STAMPS DOUBLE ON WEDNESDAY WITH A \$2.50 PURCHASE OR MORE

# A Cornucopia of Thanksgiving Values

SPECIALS GOOD NOVEMBER 15-21, 1979

<p>COUNTRY PRIDE <b>HENS</b> 5-7LB. AVG. <b>69¢</b> LB.</p>	<p>GOLDEN FRUIT <b>BANANAS</b> 4 LBS. <b>\$1</b></p>	<p>TASTY RED DELICIOUS <b>APPLES</b> 3 LBS. <b>\$1</b></p>
<p>SHURFRESH GRADE "A" WITH COOKING TIMER 18-20LB. AVG. <b>TURKEYS</b> <b>63¢</b> LB.</p>	<p>SMOKED <b>PICNICS</b> 6-8LB. AVG. <b>78¢</b> LB.</p>	<p>FRESH CRISP <b>LETTUCE</b> <b>34¢</b> LARGE HEAD</p>
<p>SHURFRESH CREAM STYLE OR WHOLE MILK <b>CORN</b> 303 CAN <b>29¢</b></p>	<p>SHURFRESH SLICED <b>BACON</b> <b>\$1.19</b> LB.</p>	<p>FRESH CALIFORNIA CRISP <b>CELERY</b> <b>28¢</b> LB.</p>
<p>OCEAN SPRAY <b>CRANBERRIES</b> 1LB. BAG <b>59¢</b></p>	<p>SHURFRESH GREEN BEANS 303 CAN <b>34¢</b></p>	

<b>KRAFT AMERICAN CHEESE</b> SINGLES 12oz. PKG. <b>\$1.49</b>	<b>SHURFINE CAKE MIX</b> WHITE-YELLOW-CHOCOLATE BOX <b>59¢</b>
<b>KRAFT COOKIES</b> SUGAR OR CHOCOLATE CHIP 18oz. PKG. <b>\$1.19</b>	<b>SUGARY SAM YAMS</b> No. 3 SQUAT CAN <b>59¢</b>
<b>JOHNSTON PIE SHELLS</b> FROZEN 2 PACK <b>59¢</b>	<b>SHURFINE BABY SHAMPOO</b> 16oz. BTL. <b>98¢</b>
<b>DEL MONTE PUMPKIN</b> 303 CAN <b>39¢</b>	<b>SEA BREEZE</b> 10 1/2oz. BTL. <b>\$1.49</b>
<b>SHURFINE WHIPPED TOPPING</b> 9oz. FROZEN CAN <b>59¢</b>	<b>FRESH KRISP PICKLES</b> KITCHEN STYLE 16oz. JAR <b>69¢</b>
<b>BLACKBURN'S WHITE SYRUP</b> FOR THAT CANDY! 32oz. JAR <b>89¢</b>	<b>GRAIN FED SHOULDER ROAST BEEF</b> LB. <b>\$1.00</b>
<b>WELCH GRAPE JELLY</b> 20oz. JAR <b>74¢</b>	<b>GRAIN FED CUBE STEAK</b> LB. <b>\$2.00</b>

<p>KRAFT QUARTERS <b>PARKAY</b> <b>59¢</b> LB.</p>	<p>PET RITZ FROZEN <b>PUMPKIN PIE</b> 24oz. PKG. <b>89¢</b></p>	<p>OWEN'S PACK 2LB. BAG <b>SAUSAGE</b> <b>\$2.50</b></p>
<p>GOLDEN BAKE BROWN &amp; SERVE <b>ROLLS</b> 3 <b>\$1.00</b> 12ct. PKG.</p>	<p>LUCKY LEAF APPLE <b>PIE MIX</b> No. 2 CAN <b>79¢</b></p>	<p>CHILI No. 9 PKG. <b>89¢</b></p>
<p>IMPERIAL POWDERED <b>SUGAR</b> 2LB. BAG <b>69¢</b></p>	<p>GANDY'S WHIPPING <b>CREAM</b> 1/2 PT. CTN. <b>39¢</b></p>	<p>KRAFT <b>VELVEETA</b> <b>\$2.89</b> 2LB. Box</p>
<p>MAXWELL HOUSE <b>COFFEE</b> <b>\$2.89</b> 1LB. CAN</p>	<p>SHURFRESH OVEN READY <b>BISCUITS</b> 4 10ct. CANS <b>59¢</b></p>	<p>GANDY'S OLD FASHIONED <b>BUTTER MILK</b> 1/2 GAL. <b>89¢</b></p>

SHOP THE FRIENDLIEST STORE IN TOWN  
HOME OWNED HOME OPERATED TURNER ROGERS AND W.T. KIDWELL  
**PIGGLY WIGGLY TAHOKA**  
EVERYDAY LOW FOOD PRICES  
WE RESERVE THE RIGHT TO LIMIT QUANTITIES  
THURSDAY is a special day, for which our doors are open from 10:00 AM to 10:00 PM.

TIME 76, NUMB  
T SLATU  
Bi  
DALTON WO  
the Tahoka Bu  
ing with a lot o  
with Head Coac  
over missing fre  
lines because  
er's death Th  
ay night turned i  
first games ever  
school football  
named a tie  
championship  
an and Semin  
ing the previous  
Tigers 20-0 at  
id.  
pite winning th  
sively, howeve  
ldgs lost the w  
ing between ret  
WOODI  
WHEN I WAS  
ed John Sewe  
rs I have coi  
spect for the wis  
both beautiful a  
Must my true  
beautiful so I'll  
Dumb so she  
this is really go  
e's why: as a c  
alike, and mor  
s, pick out a g  
en you've bee  
tury, you'll fin  
Of course, this i  
cause she will s  
why, after 26  
e reading an ad  
contested div  
there could be  
if you don't thir  
after years of  
the 50th annivers  
te often their  
s and expressio  
cause they l  
periences over t  
er's habits and  
oo often we  
rners, but some  
example, I ha  
king up the bec  
one up). And  
cover my wife h  
m the bottom, ti  
For 26 years I h  
middle, as si  
thpaste out of tt  
to choke a chici  
CONGRATULA  
Tahoka Bulldogs a  
ason, and espec  
ston, where t  
standing. Not w  
nobody can tak  
me Friday night  
ow that we dor  
be we should  
boys, who see  
WE FORGOT  
gone if the ol  
out the snow. Pr  
endar had pre  
ween Nov. 8-11  
snowed in L  
v. 10.  
m so impress  
ack Draught aga  
THURSDAY is  
nty News will  
day, for which o