

## Classic clamping down on cable theft

Cable television viewers who are hooked up to Classic Cable's cable systems without proper authorization have until March 31 to get legal or they will be prosecuted, officials of the area's largest cable system said.

"Stealing cable television service may have less social stigma than other crimes, but it is still as criminal as shoplifting," said Classic Cable spokeswoman Tracy Anderson.

The unauthorized use of cable service is punishable by six months in jail and a fine of \$2,000, according to Anderson.

Homes that currently have unauthorized cable connections can call the company at 1-800-999-8876 by March 31 to sign up to pay for the service or have the service disconnected without any questions asked.

Classic Cable executives have said no records will be

"Stealing cable television service may have less social stigma than other crimes, but it is still as criminal as shoplifting."

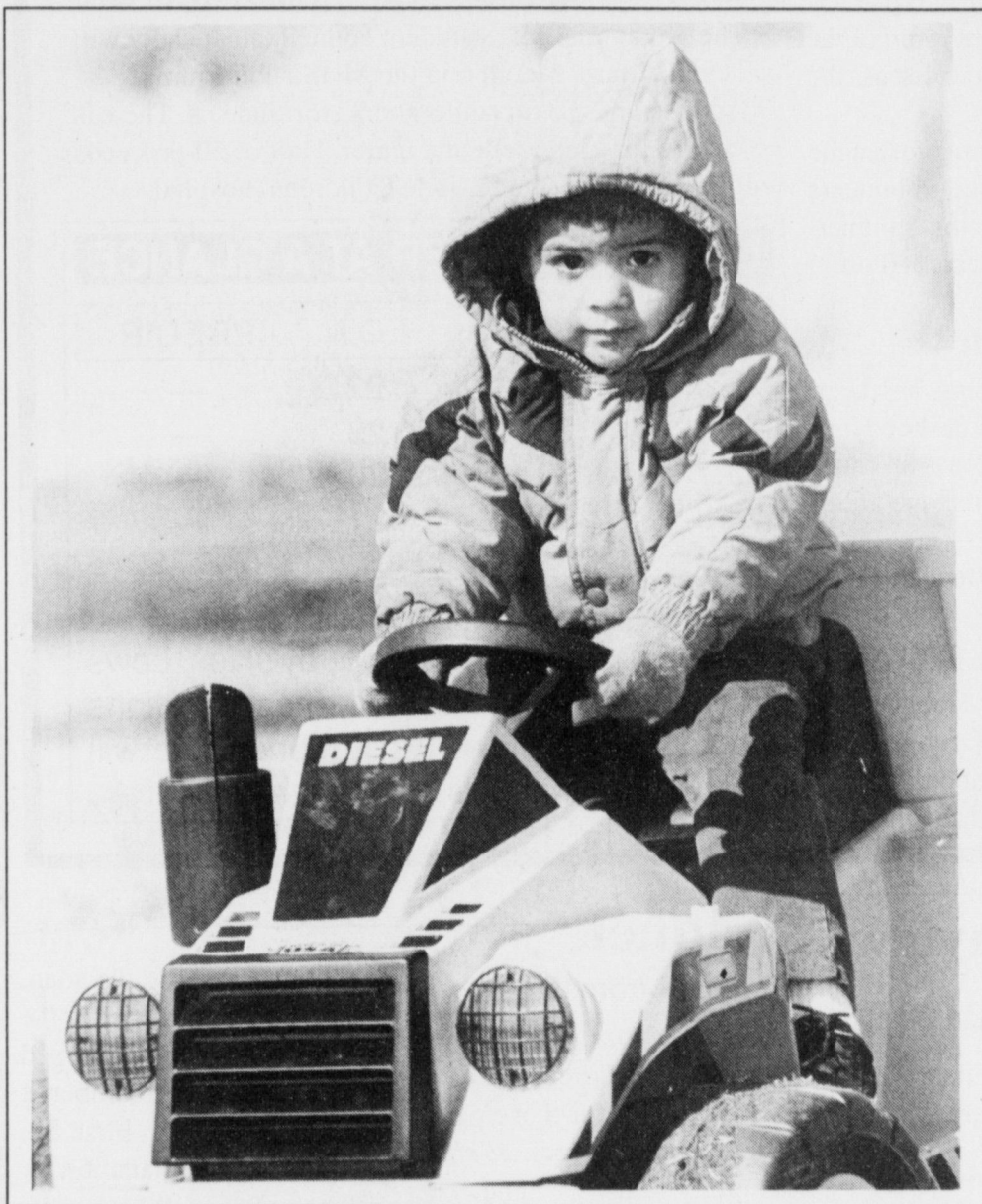
— Classic Cable  
spokeswomen  
Tracy Anderson

kept of unauthorized connections reported by the March 31 deadline.

After March 31, Classic Cable personnel will begin using special equipment and visual inspections to examine cable connections. Charges will be filed against those who have nonpaying hookups.

Anderson said an estimated

Continued on page 5



### Diesel dude

Joey Guerra, 2, takes a ride on his toy tractor Thursday in the city park. He is the son of Wally and Ana Guerra of Muleshoe.

## Ag news

# Combest concerned about CRP

By RICK WHITE  
Managing Editor

WASHINGTON — The late release of Conservation Reserve Program guidelines have placed area farmers in a bind, according to U.S. Rep. Larry Combest.

And he blames the Department of Agriculture.

Combest (R-Lubbock) said Thursday during a teleconference with rural newspaper editors that farmers are being rushed into making financial and planting decisions because the USDA released its new CRP guidelines two months late.

Local Farm Service Agencies will begin accepting applications Monday, less than three weeks after the guidelines for a retooled CRP were officially released. Applications will be accepted through March 28.

Farmers will not be notified until June whether or not their land is accepted, USDA officials said.

"A lot of this lies at the doorstep of the USDA," Combest said. "It's a very quick time frame they are trying to compress this into in order to get it ready for this year."

"There are still a tremendous amount of uncertainties," added Combest, who chairs the House subcommittee that oversees the 11-year-old federal program that pays farmers to idle fragile farmland.

The contracts on nearly all of the 100,000 acres of CRP land in Bailey County expire Sept. 30.

Combest said the subcommittee has discussed several options that would give farmers more time to make informed decisions, including extending all current CRP contracts by one year. (Contracts would then be renewed for nine years).

"Let them sign up now and then they can wait to see if they're eligible before they have to make any decisions. It would just be a good business decision," Combest said.

Combest is less than optimistic any legislative changes to the program will be passed because the USDA steadfastly opposes any extension.

Continued on page 3

## Three juveniles charged with stealing cellular phones



### Don't call us . . .

Muleshoe Police Department officers Benny Parker (left) and Richard Wills pose with several cellular phones that were stolen last weekend. Police have arrested three Muleshoe juveniles in connection with the case.

By SAMUEL VILLARREAL  
Journal staff writer

Three Muleshoe youths were arrested Wednesday in connection with the theft of several cellular phones over the weekend.

City police arrested three Muleshoe teenagers, ages 13, 14 and 15 after using phone records to identify the suspects.

After questioning the suspects, the Muleshoe Police Department recovered eight stolen phones Wednesday afternoon hidden throughout the Richland Hills area.

According to police reports, the phone were stolen sometime Saturday night from unlocked vehicles in the Richland Hills area.

MPD patrolman Benny Parker said officers used phone records track calls made from the stolen phones, then questioned the persons receiving those calls to identify the phone snatchers.

Parker said seven of the eight recovered phones have already been matched to their owners. The eighth phone has not been reported stolen.

Parker said the juveniles had given at least one phone to a friend, who promptly returned the phone when questioned by the police. He was not charged.

The estimated value of the stolen phones was more than \$1,000.

Continued on page 6

## Muleshoe Chamber of Commerce Banquet April 5

Tickets for the 47th annual Muleshoe Chamber of Commerce & Agriculture Banquet go on sale Wednesday.

The banquet, which features a classic steak and shrimp dinner, chamber awards and live entertainment, is at 6:30 p.m. Saturday, April 5 at the Muleshoe High School cafeteria.

Tickets are \$50 and can be purchased at the Muleshoe Chamber of Commerce or from any chamber board member. For more information call 272-4528.

Only 320 tickets will be sold.

The theme of this year's banquet is rock & roll at the hop in the 1950s, with live entertainment by Johnny Dee and the Rocket 88's, an Austin-based band that has performed their brand of zany nostalgia and fast-paced medleys in front of millions for the last decade.

"We want everybody to bring out their poodle skirts and roll up their jeans and have a rockin', rolling good time," said Lavon Hunt, a member of the chamber banquet committee.

Johnny Dee and the Rocket 88's perform music by such greats as Elvis Presley, The Platters, Buddy Holly, Roy Orbison, Jerry Lee Lewis and Fats Domino.

"JD and the 88's remind me of Sid Caesar's



### Banquet entertainers

Johnny Dee and the Rocket 88's will perform live at the Muleshoe Chamber of Commerce & Agricultural Banquet April 5 at the Muleshoe High School cafeteria.

Continued on page 2

## Critics claim application is too long & confusing

WASHINGTON — The new application form for the Conservation Program has more pages than the Bailey County phone directory.

The 26-page application form came under scrutiny Wednesday by farm-state legislators during a hearing held by a House agriculture subcommittee.

"Signing up for CRP isn't rocket science," said U.S. Rep. Earl Pomeroy, D-N.D. "It's harder than rocket science."

Pomeroy's comment was exactly the reason that Rep. Larry Combest, chairman of the House agriculture subcommittee that oversees the program, called for the daylong hearings with Department of Agriculture officials.

The new applications are lengthy and confusing, asserted some lawmakers.

The application form is what Congress mandated USDA write for the nation's largest land retirement program. The rules are designed to make sure only the most environmentally fragile land is enrolled in the program.

USDA officials stood by its long application form, saying most of it must be filled out by agency personnel, not farmers, using data readily available in the USDA's county offices.

The department will begin taking applications Monday and will accept them through March 28.

AROUND MULESHOE

**Muleshoe PTA meeting March 3**

The Muleshoe PTA will meet at 6:30 p.m. March 3 in the Dillman Elementary cafeteria.

Officers will be nominated for next year. A short program will be presented by the pre-kindergarten and early childhood classes.

For more information, contact Johnette Marlow at 946-3389

**Little League meeting moved to March 3**

The Muleshoe Little League has rescheduled its parents' meeting for 7 p.m. March 3 in the conference room of the Bailey County Electric Cooperative building to discuss the future of the program.

The meeting is very important, according to league representative David Marricle. If not enough volunteers are found, the program may be discontinued this summer.

For more information, contact David Marricle at (home) 272-4863 or (work) 272-4504.

**Fine arts boosters meeting March 4**

The Muleshoe Fine Arts Boosters meeting has been rescheduled to 7:30 p.m. March 4 in the Muleshoe High School band hall. Parents whose children are in band, choir, or theatre/speech will meet to discuss the upcoming Fine Arts Night to Shine.

If you have any questions, call Ronnie Bennett (272-5319) or Carol Cox (272-4396).

**MASH hosting fund-raiser lunch March 6**

The Muleshoe Association to Serve the Hungry will host a beans and cornbread lunch at noon March 6 in the First Baptist Church Fellowship Hall in Muleshoe. There is no charge for the meal, but donations will be accepted and

will benefit MASH.

**Local church hosting blood drive March 6**

The Texas Blood Institute will conduct a blood drive from noon - 7 p.m. March 6 in the fellowship hall of the 16th and D Church of Christ.

Refreshments will be available, and all donors will receive a free T-shirt.

For more information, contact the Texsa Blood Institute at 1-800-333-6920.

**Muleshoe High School talent show March 6**

The 3rd annual MHS student council talent show will be held at 7 p.m. March 6 in the MHS auditorium.

Admission is \$3 for adults and \$2 for students. There is no charge for kids pre-k and under. Half of all proceeds will be donated to the St. Jude Childrens' hospital.

**LOCAL WEATHER AT A GLANCE**

	HIGH	LOW	PRECIP
2/25	25	22	—
2/26	28	23	—
2/27	39	20	—
2/28	58	21	—

Source: R.G. Bennett, Observer - National Weather Service

**Extended Forecast**

Fair weather with partly cloudy skies. Lows in the mid 30's through Wednesday. Highs could reach the low 70's by Monday, but will drop to the mid 60's by Wednesday.

**Girl Scouts selling cookies until March 7**

The deadline for purchasing Girl Scout Cookies is fast approaching, according to Muleshoe Girl Scout Service Unit Chairman Nelda Merriott.

Local Girl Scouts will be selling cookies until March 7.

Renee Rudd is taking orders for those who are not visited by a Scout. Orders can be placed at 272-5996. Cookies not immediately available can be ordered and will arrive within one week.



**1997 Ford Ranger XLT** \$189 DOWN \$189 MONTH  
(A/C, cassette, sliding window) \* 24 month Ford credit RCO; MSRP \$15,030; 62% residual; balloon payment \$9,318.60; 8.85% APR; plus T.T.&L., W. A. C.

**1996 Ford Mustang** (Automatic; 11,000 miles) \$14,900

**1995 Dodge Intrepid** \$10,900

**1994 Chevrolet 1500 Pickup** \$5,900

**1991 Ford Explorer** \$7,400

**1991 Ford Tempo** \$4,700

*Many below NADA Wholesale. SHOP AND SAVE.*  
*We want to be your car & Truck Dealer* \*WAC

1225 W. American Blvd. 806-272-4251 or 800-432-7617

**Bailey County Journal** USPS 040-200  
Established March 31, 1963. Published by Triple S Publishing, Inc. Every Sunday at 204 W. Second, Box 449, Muleshoe, TX 79347.

Second Class Postage paid at Muleshoe, TX.  
 POSTMASTER: Send address changes to the Bailey County Journal, P.O. Box 449, Muleshoe, TX 79347.

We are qualified members of:  
 Panhandle Press Association, National Newspaper Association,  
 West Texas Press Association and Texas Press Association

WEST TEXAS PRESS ASSOCIATION

PPA Panhandle Press Association

MEMBER 1997

**TA TEXAS PRESS ASSOCIATION**

Scot Stinnett, Publisher  
 Lisa Stinnett, Vice-President/Comptroller  
 Rick White, Editor  
 Jessica Orozco, Classifieds  
 Pat Durben, Advertising

© 1990

SUBSCRIPTIONS: Muleshoe Journal and Bailey County Journal By Carrier Yearly - \$22.00  
 Bailey and surrounding counties: by mail - \$24.00  
 Elsewhere - \$26.00  
 Advertising Rate Cards on Application

\*Advertisers should check their ad the first day of insertion. The Journals will not be liable for failure to publish an ad or for a typographical error or errors in publications except to the extent of the cost of the ad for the first day of insertion. Adjustment for errors will be limited to the cost of that portion of the ad where the error occurred.\*

**March 7 meeting in Plainview will focus on water legislation**

The planning committee of the High Plains Ogallala Area Regional Water Management Plan will meet at 10 a.m. March 7, at the Plainview Country Club, 2902 West 4th Street in Plainview.

The meeting will focus on the proposed ground water legislation to be introduced during the current state legislative session.

C.E. Williams, manager of the Panhandle Groundwater Conservation District in White Deer, will discuss groundwater legislation during the morning session.

Following a lunch break, representatives of the USDA-Natural Resources Conservation Service will present information about new Conservation Reserve Program rules. Representatives from the Texas Water Development Board will discuss the future of the Ogallala Aquifer.

The meeting is open to the public, and all interested persons are invited to attend. A dutch treat lunch will be served at a cost of \$9.80. Reservations must be made by contacting Kathryn deBaca at the High Plains Water District at (806) 762-0181 no later than 5 p.m. March 4.

**Banquet**

Continued from page 1

version of rock & roll in the '50s — The Haircuts. They offer the humor for those who always suspected rock & roll was pretty funny . . . and for those who didn't, their music is serious and true to its form." — Dallas Morning News.

The all-you-can-eat dinner, cooked and served by chamber boards members and volunteers, features char-broiled rib-eye steaks and steamed Louisiana shrimp.

In between dinner and Johnny Dee & the Rocket 88's, the Chamber will present its annual awards for Man, Woman and Farm Family of The Year, plus Business and Employee of the Year.

Nominations for the man, woman and farm family of the year can be mailed or dropped off at the Muleshoe Chamber of Commerce, 215 S. First St.. Include a short explanation for the choice.

The nomination deadline is Friday, March 21.

The banquet, which serves as the chamber's sole fund-raising event for the year, is gaining a reputation for its fine food and quality entertainment.

**FINAL CLEARANCE**

**ONE DAY ONLY!**  
**Thursday, March 6th**



**Regular Price of Every Clearance Item in the Store!**

**ANTHONY'S**  
*Family Apparel & Shoes*

321 Main - Muleshoe 272-3478 Monday-Saturday 9:00-6:00

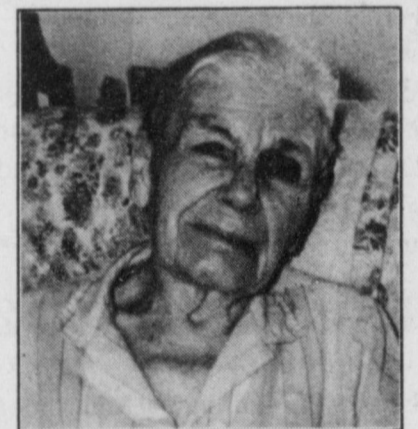
*Home Folks Caring For Folks At Home.*

**MULESHOE AREA HOME HEALTH Agency**

**Featured Patient**

Ruby Reed of Muleshoe, is married to Ray Reed. They have lived in Muleshoe since 1924. Mrs. Reed was a homemaker.

They have two children Gloria Leveque of Amarillo and Rosemary Bell of Muleshoe. They have 7 grandchildren and 7 great-grandchildren. She belongs to the Jehovah's Witnesses.



Ruby Reed

*To receive Home Health Services, talk with your physician or talk with hospital personnel when you are hospitalized.*

**24 Hour # 272-3346**  
 Local Nurse on call 24 hours a day to offer prompt service.

We accept Medicare, Medicaid and Private Insurance  
**It Is Your Right To Choose The Home Health Agency You Prefer.**



Affiliated with Lubbock Methodist Hospital Systems

**FREE Information on New Out Of Hospital Advance Directives will be available soon!**

*Watch this ad for further info as it comes available.*

# CRP

Continued from page 1

Combest said even if the subcommittee could push a new proposal through the House and Senate, "it's equal or better than equal odds the President would veto it and then we would be back to square one."

"But that doesn't mean we're going to roll over and play dead," Combest said. "We're still going to try to do what we think is right."

The CRP program has pumped in the neighborhood of \$25-30 million into the local economy in the last decade.

The new guidelines will stress the environmental benefits of idling acreage and not focus solely on soil erosion factors.

Combest said even after reviewing the new rules, he remains uncertain how West Texas will be affected.

Of the 4 million plus CRP acres in Texas, 1.5 million are in the Panhandle, South Plains and Permian Basin.

Combest said he has received assurances from USDA officials that there will not be any major regional shifts of CRP land under the new guidelines.

But if a University of Missouri study, which was partially funded through Congress, is on target, as much as 37 percent of the currently enrolled acreage in Texas, or 1.5 million acres, could be eliminated.

Under the new rules, land is accepted into the program on a competitive basis according to the payment farmers want for their acres and the environmental benefits of not using it. Farmers are paid not to farm the land for 10 years and could get some federal help to plant grass and trees on it.

Combest said bid amounts are a strong factor in getting land accepted into the CRP, which could be favorable for West Texas farmers because of the relatively low land costs.

Between 230 and 240 million acres, two third of the nations farmlands, are eligible for CRP; roughly 15 percent of which will be accepted into the program.

CRP contracts covering about 22 million acres nationally expire Sept. 30.

About 32.9 million acres are now in the program, with the total eventually reaching the ceiling of 36.4 million acres.

"I hate to beat a dead horse, but this is something we should have been talking about last summer — not last week."



## Muleshoe High School solo/ensemble

Fifteen students from the Muleshoe High School band received first divisions at the University Interscholastic League regional solo/ensemble contest. Pictured are (back row, from left) Joseph Mata, James Cox, Steven Madrid, Toby Kitchens, Timothy Madrid, Nathan Keller, Kristi Bennett, Beau Henry, (front row) Melissa Mata, Amy Ronek, Jennifer Walls, Leisha Wallace, Amy Marricle, Jennifer Patterson and Gerardo Loya.

## 11 Mighty 'M' members qualify for state

Eleven members of the Mighty 'M' Band qualified for the University Interscholastic League state solo/ensemble contest in San Marcos this spring.

Three soloist and two quartets received first division ratings at the regional solo/ensemble competition held Feb. 28 at Texas Tech University.

Students who qualified for state are Jennifer Patterson, piano soloist, Melissa Mata, alto saxophone soloist, and Gerardo Loya, clarinet soloist. The brass quartet of James Cox, Joseph Mata, Steven Madrid, and Toby Kitchens also qualified for the state competition, as did the saxophone quartet of Kristi Bennet, Nathan Keller, Beau Henry, and Timothy Madrid.

To qualify for the state contest, students must achieve a first division rating on a musical piece specifically written for their instrument or group of instruments.

UIL has a list from which students must choose their music. The music is divided into several classes according to difficulty.

Students who wish to qualify for state must play music categorized as Class I, the most difficult category. In addition, students who play solos are required to memorize their music.

A flute quartet and one additional soloist from Muleshoe also performed at the solo/ensemble contest, but did not advance to state.

The flute quartet of Amy Ronek, Jennifer Walls, Amy Marricle and Leisha Wallace earned a first division on their Class II ensemble, while soloist Joseph Anguiano received a second division on his class I multiple-percussion solo.

Solos are available for any instrument, and ensembles can contain more than a dozen students.

The students usually choose the music and organize rehearsals on their own. Band director Rob Lovett offers his assistance to students learning their music, but the initiative is placed on the students.

Lovett said experience gained by the individual students assist the whole band.

"When you get better, it makes the band better," Lovett told his students.

If You Can't Come To Miracle Ear... We'll Come to You  
 Our Hearing Aid Service Center is coming to a location near you. Free hearing test!  
 March 6th 9am-4pm  
 Muleshoe Medical Center

Air Flight Turbulence - basketball

If you're not quick in these, guess what, you're not quick.

"Come Celebrate March Madness" with  
**Williams Athletics**  
 322 Main • Muleshoe, TX 79347

Most seeds should be set in soil set as deep as they are wide.

### "Productivity appraisal" may lower the property taxes on your farm, ranch or timber land!

Texas law allows farmers, ranchers and timber growers to pay property taxes based upon the "production value," of their land rather than on its market value. This "productivity appraisal" means qualified land is taxed based on its ability to produce crops, livestock or timber — not on its value on the real estate market. And it can mean substantial property tax savings.

**When is the application deadline?**  
 If your land has never had a productivity appraisal or you are a new owner, you must apply to your local appraisal district by April 30 to take advantage of this benefit on your 1997 property taxes. You may get up to 60 extra days if you have a good reason and ask for it by April 30. If you miss this deadline, you may still be able to apply, but you will pay a penalty. Check with your appraisal district office.

**Do you need to reapply annually?**  
 If your land already receives agricultural or timber productivity appraisal, you normally don't need to reapply unless the chief appraiser requires you to do so. If a new application is required the appraisal district will notify you by mail.

For more information, call or come by:  
**Bailey Central Appraisal District**  
 302 Main Street  
 Muleshoe, TX 79347  
 806-272-5501

We'll be happy to answer your questions and provide you a free copy of  
**"Texas Property Taxes: Taxpayers' Rights, Remedies & Responsibilities"**

OR CONTACT:  
 Comptroller's Property Tax Division  
 P.O. Box 13528  
 Austin, TX 78711-3528

A public service announcement courtesy of this newspaper.

**MULESHOE MOTOR CO.**

"A nice, durable, easy-to-service four-door sedan for \$6,000? That's kind of like the fabled 5-cent cigar. You could make it - but nobody would want to smoke it."  
 — Jerry Flint

**Stop by and test drive a new car or truck today.**  
**The cigar will be on us!**  
 — Lary Hooten

**Muleshoe Motor Co., Inc.**  
 1225 W. American Blvd.  
 806-272-4251 or 800-432-7617

**WE WANT TO BE YOUR CAR OR TRUCK DEALER!**

AZTECA MILLING CO., L.P.  
 D.B.A.  
**VALLEY GRAIN PRODUCTS**  
 Is Contracting Food Corn  
 for the 1997 growing season.

For further information, please contact:  
**JERRY BARBER OR JERRY BRUNS** at  
 (806) 272-6701

"HEY COUNT... STILL GOING?"

The first practical battery was probably developed by Count Alessandro Volta, an Italian scientist, in the late 1790s.

Advertise It In The Muleshoe Journal Classifieds!  
**Call 272-4536**



## Gruver eliminates 'Horns in area

CANYON—The better the team, the harder a weakness is to hide.

Brant Armes scored 14 points and exposed Lazbuddie's lack of a true point guard, leading Gruver to a 52-41 win Tuesday in a Class 1A area playoff game at Randall High School.

Armes dominated the third quarter, when the Greyhounds turned a one-point halftime deficit into 36-28 lead.

"They really took charge of the game in the first three minutes of the third quarter," Lazbuddie coach Gary Grahn said. "They put some much pressure on our guards."

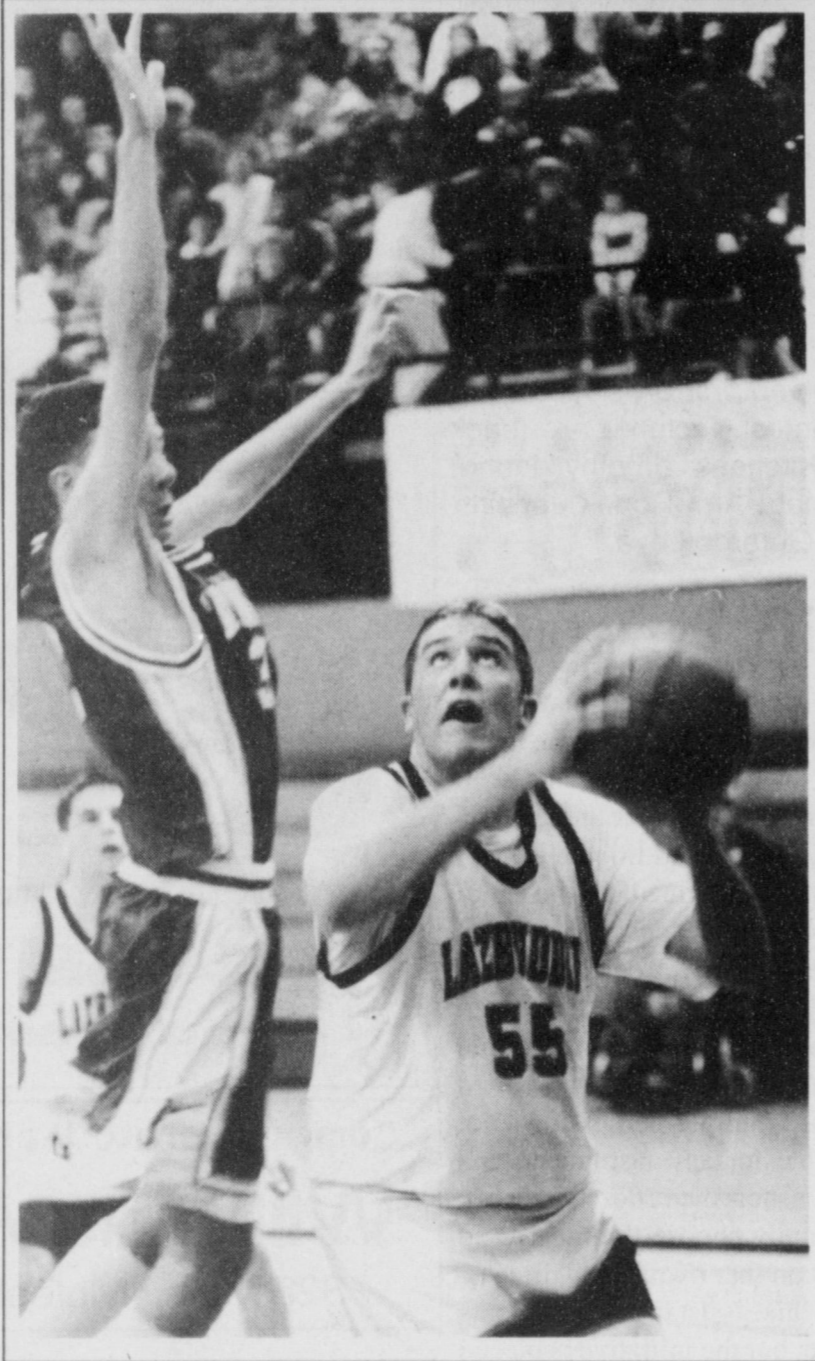
"When you have a weakness, it catches up with you."

Gruver, which trailed 21-20 at halftime, forced eight Lazbuddie turnovers in the third quarter.

"They're playing really well right now," Grahn said. "We never really made a run after they jumped on us in the third quarter."

Shooting guard Josh Mayhew led the District 2-1A champion Greyhounds with 17 points, including three 3-pointers.

But it was Armes (two 3-pointers) who was the difference, said Grahn, calling him the most athletic and maybe



### Pump fake

Jason Thomas gets a Farwell defender in the air during a game earlier this season. Lazbuddie was the last local team left in the playoffs before losing to Gruver 52-41 Tuesday in the area round.

Continued page 5

## BASKETBALL

### State playoffs

#### BOYS

#### CLASS 1A

#### Region I

#### Area

Gruver 52, Lazbuddie 41  
Nazareth 87, Higgins 64  
Lorenzo 85, Samnorwood 61  
Valley 67, New Home 44  
Rotan 81 Klondike 66  
Paducah 104, Smyer 69  
Roby 46, Borden County 38  
Springlake-Earth 47, Silverton 44

#### Region I-1A Tournament

at Texan Dome, Levelland

#### Friday

#### Quarterfinals

Roby (W16) (27-3) vs Paducah (W12) (28-1)

Springlake-Earth (R7) (15-11) vs Gruver (W2) (21-13)

Rotan (R16) (21-8) vs Valley (R12) (24-9)

Lorenzo (W7) (28-4) vs Nazareth (W3) (29-4)

#### Saturday

Roby-Paducah winner vs Springlake-Earth-Gruver winner

Rotan-Valley winner vs Lorenzo-Nazareth winner

#### Championship

semifinal winners, 7 p.m.

#### CLASS 3A

#### Region I

#### Area

Tulia 77, Sonora 63  
Merkel 52, Comanche 41  
Seminole 77, Clint 51  
Glen Rose 65, Iowa Park 64

#### Regional 1-3A Tournament

Lubbock Memorial Coliseum

#### Friday

Tulia (W3) (32-2) vs Merkel (R6) (24-10)

Seminole (W2) (30-4) vs Glen Rose (W8) (26-7)

#### Saturday

#### Championship

semifinal winners

## Two Mule powerlifters qualify for region meet

SUNDOWN—Muleshoe's Colby Latham and Ricko Aguirre have qualified for the regional powerlifting meet March 8 at Sundown.

Latham and Aguirre each finished third at a qualifying meet in Sundown Feb. 22 that drew 232 competitors.

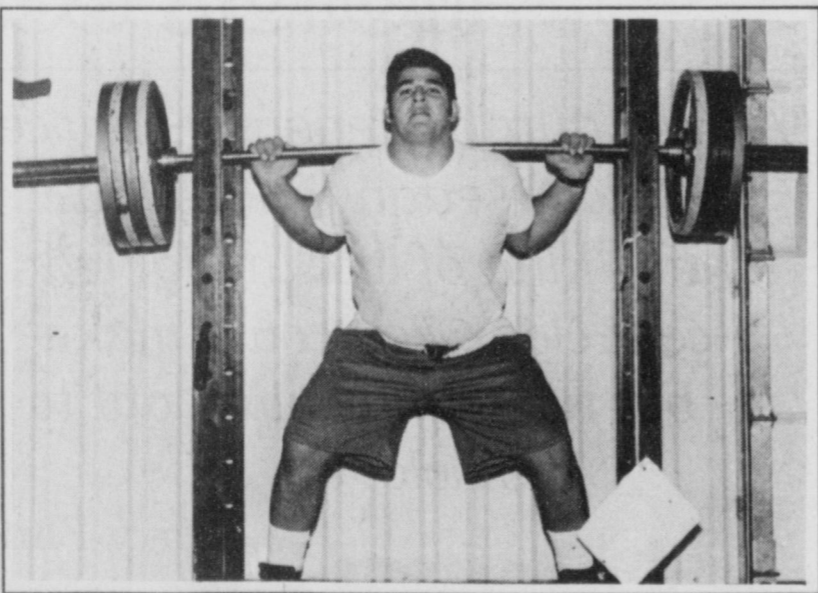
Latham, a senior, was third in the 148-pound class with a total lift of 1,005 pounds, which is the fifth best total in the region. Latham lifted 215 pounds in the bench press, 375 pounds in the squat and 415 pounds in the dead lift.

Aguirre, a junior, had a total lift of 1,240 pounds in the super heavyweight division (275 plus), the sixth best total in the region.

Aguirre's individual totals were 285 pounds in the bench, 455 in the squat and 500 in the dead lift.

Sophomore Matt Turney finished fifth in the 242-pound division.

Other Muleshoe team members who competed at Sundown were Lucio Soto and Hadley Henderson (114 pounds), Michael Dan Lopez (123 pounds), Jeff Bruns, John Brian Cowart and Pablo Olivarez (148 pounds); and Greg Pena (198 pounds).



### Pumping iron

Muleshoe junior Ricko Aguirre squat lifts about 400 pounds Friday morning during a workout. Aguirre is one of two Mule powerlifters who have qualified for the March 8 regional meet.

**GIVE US A CALL!**



We're Here To Serve You!

**272-4984**

LOCAL OFFICE PHONE NUMBER

**1-800-999-8876**

CUSTOMER SERVICE 24 HOURS A DAY



224 S. Main

Muleshoe, TX 79347

<http://www.classic-cable.com>



Most children will have a full set of 20 teeth by the age of three years.

## FARMERS MEETING

Tuesday, March 4th 7 p.m.  
Bailey County Civic Center

*Delton E. Wilhite and Associates would like to invite you to their Farmers Meeting.*

Subjects discussed:

Crop Revenue Coverage - Cotton and Corn  
Dry Beans and Black-Eyed Pea Coverage  
Fresh Green Bean Coverage - Cut Beans

*Refreshments will be served.*



## Muleshoe Foot Center

Wouldn't it be nice...  
if your specialist came to  
your town!

## High Plains Podiatry Group

Mark Cettie, D.P.M.

Brian Sicher, D.P.M.

- Ingrown Nails
- Bunions
- Heel Pains
- Corns/Calluses

Tuesday, March 4

1 p.m. - 5 p.m.

Muleshoe Area Medical Center, Suite 4  
For Appointment, Call 1-888-292-3668

708 South First Street 1-888-292-FOOT  
Muleshoe, Texas 79347 (3668)

## Time's Running Out!

**IRA  
NOT  
IRS**

**April 15th Will Be Here  
Soon**

- Contributions are tax deductible
- Interest on your contributions are tax sheltered and compounding until you take it out.

## MULESHOE STATE BANK

101 W. American Blvd.  
272-4561 Muleshoe, TX

801 Ave. A  
481-9580 Farwell, TX



## Laz

Continued from page 4

the best point guard the Longhorns faced all season.

Gruver played Springlake-Earth (15-11) in the quarterfinals of the Region I-1A Tournament at the Texan Dome in Levelland.

Justin St. Clair and Israel Lopez scored 12 points each for the 3-1A runner-up Longhorns, who finished the season at 21-8. Jason Thomas, the Longhorns' leading scorer at 16 points a game, was held to four.

"Obviously, I'm disappointed," Grahn said. "You always want to go farther."

Lazbuddie, which has qualified for the state playoffs in each of Grahn's five years at Lazbuddie, hasn't reached the regional tournament since 1989.

"I'm a little frustrated because we didn't play well at all in the playoffs," Grahn said.

**Lazbuddie (41)**—Justin St. Clair 3 6-7 12, Chris Smith 1 (1) 0-0 5, Brice Foster 00-20, Israel Lopez 6 0-3 12, Josh Morris 0 0-0 0, Heath Brown 00-00, Blake Mimms 10-02, Dustin Weir 0(1)0-03, Deon Gallman 00-00, Seth Black 0(1)0-0 3, Adam St. Clair 00-20, Jason Thomas 20-1 4. Totals 13 6-14 41.

**Gruver (52)**—Buster McClain 1 1-5 3, Brant Armes 3 (2) 4-6 14, Jim Potts 4 1-2 9, Josh Mayhew 3 (3) 2-2 17, Rob Murrell 0 0-1 0, Jared Johnson 2-2 6, Heath Tolleson 00-1 0. Totals 18 10-19 52.

**Lazbuddie** 11 10 7 13 41  
**Gruver** 12 8 16 16 52



Have a nice day

## Meeting to elect PCG rep March 11

Bailey County cotton producers and agribusiness representatives will meet at 7:30 p.m. March 11 in the Bailey County Coliseum to elect a producer to the Plains Cotton Growers board of directors.

Bailey County is currently represented within the PCG by producer director James Brown of Muleshoe and business di-

rector Marvin McCual of Maple.

All producers and business people are invited to the meeting.

However, under PCG by-laws, only members of PCG who have paid their dues are eligible to be nominated or to vote.

## LADIES COUNTY CLUB ASSOCIATION

The Ladies County Club Association held its first meeting of the new year Feb. 19.

President Anita Allgood called the meeting to order. We had a delicious meal of salads, hot rolls and desert furnished by various club members.

Members present were Anita Allgood, Cookie Bamert, Linda Elder, Neets Foster, Jeanine Gunstream, Analita Haley, Darlene Henry, Argilee Millen, Anita Mitchell, Deborah Noble, Yolonda Phillips, Jeanetta Precure, Jo Rempe, Evelyn Riley, Sherri Shipman, Dorothy St. Clair, Helen Templeton, and Laverne Winn. Three new members, Cindy Baker, Tammy Black and Judy Wilbanks.

Ladies with birthdays in January were Deborah Noble, Linda Elder, Dorothy St. Clair, Laverne Winn. February birthday Helen Templeton.

Fourteen ladies spent the afternoon playing cards.

**S** Infants  
**T** Toddlers  
**E** My home or yours  
**P** Senior Adults  
**S** Hospital or Home

When you need someone to help call  
**806-272-3323**  
Serving Muleshoe, Farwell, and Clovis

## Cable

Continued from page 1

230 people in the Classic Cable service area are receiving cable service without paying, usually through making unauthorized connections, tampering with cable boxes or moving into a new place that has cable without paying for the service.

Anderson said unauthorized cable connections results in an estimated \$780 a year in lost franchise fees and taxes to the local community and state.

**MASH FUNDRAISER**

**Lunch served by MASH**

(Muleshoe Association to Serve the Hungry)  
Beans, Cornbread, Dessert  
Mini-concert- members of MHS Choir

**Thursday, March 6, 1997**  
**12:00 noon**

**First Baptist Church Fellowship Hall**

COST: Donations Accepted  
All proceeds help local Meals on Wheels

**LANDMARK LABEL & DESIGN**

**URNS ONE YEAR OLD THIS MONTH**

Susie Sowder the business owner, worked from a home-based business until Oct. 96 when she moved her location into Muleshoe. The business designs standard and custom labels, businesscards, letterheads, business forms, announcements and advertising specialties.

"I really love my business," Sowder said from her Muleshoe office, located at 218 Main Street. I enjoy dealing with people and I try to make every customer feel like they are appreciated. I do what it takes to make my business successful, but I do not look at it monetarily. I want the customers to really enjoy doing business with me. Muleshoe is the only real home I had growing up and I just want to give back some of what was given to me. Helping to improve the community is something I love to do. I want to do what I can to make my business successful. I'll keep working hard for my business and for my community. It's very important to me to be located in Muleshoe because we need new businesses here in order to survive."

Family owned and operated business with guaranteed quality and prices.

Proud to do business in the community.

**LLD LANDMARK LABEL & DESIGN**

Susie Sowder, owner  
218 Main St. Muleshoe  
(806) 272-6767 Fax (806) 272-6820

# YOUR DODGE TRUCK HEADQUARTERS

OVER 25 DODGE RAM CLUB CABS HERE AND ON THE WAY -

1997 PLYMOUTH VOYAGER

7 Passenger • Air • AM/FM Cassette & More!



Starting at **\$299** per.\*  
mo.

Starting at **\$259** per.\*  
mo.

\* 10% down cash or trade equity, optional final payment \$14,359. 9.50% APR, 36 mo. Chrysler Gold Key finance plan. See dealer for details, stock #75165, WAC, T, T & L extra.

\* 10% down cash or trade equity, optional final payment \$9,897. 9.5% APR, 36 mo. Chrysler Gold Key finance plan, see dealer for details. Stock # 75071, WAC, T, T & L extra.

## Just Arrived! 96 Chrysler Program Cars!

Hurry down to Bender Chrysler, Plymouth Dodge for best selection!



Stock#	NADA Retail	Your Price
4808 96 Dodge Intrepid ES	\$19,525	<b>\$17,495</b>
4824 96 Plymouth Breeze	\$13,875	<b>\$12,500</b>
4827 96 Dodge Stratus	\$13,725	<b>\$12,500</b>
4829 96 Dodge Stratus	\$13,725	<b>\$12,500</b>
4832 96 Dodge Stratus	\$13,725	<b>\$12,500</b>
4833 96 Dodge Stratus	\$13,725	<b>\$12,500</b>
4828 96 Dodge Stratus	\$13,725	<b>\$12,500</b>

\* All with remaining factory warranty! \* All eligible for Chrysler New Car Service Contracts!



**B** the bender family of dealerships - you'll like our family

# BENDER CHRYSLER-PLYMOUTH-DODGE

3400 Mabry Drive • 762-4511

CLOVIS, NM

### School Menus

For the week of March 3-7

#### MULESHOE

Dillman & DeShazo

#### Breakfast

**Monday**— breakfast hot pocket, fruit or juice, milk. **Tuesday**— sausage biscuit, fruit or juice, milk. **Wednesday**— breakfast burrito, fruit or juice, milk. **Thursday**— breakfast pizza, fruit or juice, milk. **Friday**— cinnamon roll, fruit or juice, milk.

#### Lunch

**Monday**—cheese burger, lettuce, tomatoes, fries, apple slices, milk. **Tuesday**—baked potato, ham & cheese, mixed fruit, brownie, milk. **Wednesday**— soft taco, lettuce, tomato, ranch beans, apple crisp, milk. **Thursday**—corn dog, veggie soup, cinnamon roll, sliced pears, milk. **Friday**— fish nuggets, macaroni & cheese, sweet peas, hot roll, milk.

#### Jr. High and High School

Breakfast

**Monday**— breakfast hot pocket, fruit or juice, milk. **Tuesday**— sausage biscuit, fruit or juice, milk. **Wednesday**— breakfast burrito, fruit or juice, milk. **Thursday**— breakfast pizza, fruit or juice, milk. **Friday**— cinnamon roll, fruit or juice, milk.

#### Lunch

**Monday**— burrito, chili, corn, sliced peaches, milk. **Tuesday**— szechuan chicken, white rice, egg roll, mixed veggies, milk. **Wednesday**— soft taco, lettuce, tomato, ranch beans, apple crisp, milk. **Thursday**— corn dog, veggie soup, cinnamon roll, sliced pears, milk. **Friday**— fish filet, macaroni & cheese, sweet peas, hot roll, milk.

#### THREWAY

Breakfast

**Monday**— donuts, juice, milk. **Tuesday**— breakfast burritos, juice, milk. **Wednesday**— Oatmeal, Apple Cinnamon Cheerios, juice, toast, graham crackers, milk. **Thursday**— eggs, Canadian bacon, biscuit, juice, milk. **Friday**— waffles, sausage, juice, milk.

#### Lunch

**Monday**— chicken, gravy, whipped potatoes, corn, rolls, pineapple, milk. **Tuesday**— fajitas, salad, pinto beans, tortillas, chocolate yogurt, milk. **Wednesday**— corn dogs, potato wedge, seet peas, orange, milk. **Thursday**— taco salad, refried beans, crackers, banana pudding, milk. **Friday**— Pizza, salad, peaches, birthday cake, milk.

### Phones

Continued from page 1

The teenagers were charged with theft, a misdemeanor, punishable by up to a year in jail and a \$4,000 fine.

Officers also recovered cassette tapes, CDs and a camera.

After being charged, the juveniles were returned to school at the request of their parents.

**March Mania**

**\$10 OFF**

Any Massage From Amanda  
THRU THE MONTH OF MARCH

Call Jan's Unique Nails  
272-4827

## Think Quick!

**GM Goodwrench Quick Lube Plus oil change.**  
It's fast — or it's free!

Bring your car or light truck to us for a GM Goodwrench Quick Lube Plus oil change. We'll complete all of these services in 29 minutes or less or your next oil change is free:

- Refill your engine with up to 5 quarts of GM Goodwrench\* Motor Oil
- Install a new ACDelco Oil Filter
- Perform a complete chassis lube
- Check fluid levels: brake fluid, differential fluid, power steering fluid, transmission fluid, windshield washer fluid, transfer case fluid (4wd vehicles)
- Inspect: drive belts, hoses, air filter, tire pressure

SPECIAL \$17.00

**GM Goodwrench QUICK LUBE<sup>plus</sup>**

DOC STEWART

CHEVROLET • GEO • BUICK

2500 Mabry Drive  
Clovis, NM  
505-763-4465  
1-800-530-8842

Spring is in Sight!

ALLSUP'S

**Chuck Waggon**

Combo Meals

COMBO OF THE MONTH

Allsup's Hot Link, Potato Wedges & Tallsup

\$1.99

COMBOS OF THE QUARTER	COMBOS OF THE QUARTER	COMBOS OF THE QUARTER
<p>Sausage or Canadian Bacon, Egg &amp; Biscuit, Hashbrowns, &amp; 22 oz. Soft Drink or 16 oz. Coffee</p> <p style="text-align: center; font-size: 1.5em; font-weight: bold;">\$2.09</p> <p style="font-size: 0.8em;">WITHOUT EGG \$1.79</p>	<p>Sauteeya, Western Style Potato Wedges &amp; Tallsup</p> <p style="text-align: center; font-size: 1.5em; font-weight: bold;">\$2.29</p>	<p>BBQ Beef Sandwich, Western Style Potato Wedges &amp; Tallsup</p> <p style="text-align: center; font-size: 1.5em; font-weight: bold;">\$2.29</p>

Enjoy **Coca-Cola** CLASSIC

SAVE ON **Coca-Cola**

6 pack, 12 oz.

\$1.89

ALL FLAVORS **Doritos**<sup>®</sup>

REG. \$2.19

\$1.79

<p>ULTRA <b>Cuddles Diapers</b></p> <p>24 CT. MED./18 CT. LG.</p> <p style="font-size: 1.5em; font-weight: bold;">\$4.99</p>	<p>DECKER <b>Chopped Ham</b></p> <p>10 OZ. PKG.</p> <p style="font-size: 1.5em; font-weight: bold;">\$1.39</p>	<p>ULTRA POWER <b>Shurfine Detergent</b></p> <p>18 LOAD</p> <p style="font-size: 1.5em; font-weight: bold;">\$2.99</p>
--	--	--

You'll Find All This and More at Your Allsup's Store

Store #34 318 W. American Blvd. 272-4862 MULESHOE

<p>HAMBURGER POCKET SANDWICH.....</p>	<p>RIB-B-QUE SANDWICH.....</p>
\$1.49	99¢

ALLSUP'S

LOW PRICES, GREAT PRODUCTS

24 HOURS A DAY

PRICES EFFECTIVE MAR. 2-MAR. 15, 1997 OFFER GOOD WHILE SUPPLIES LAST

Always

### NURSING HOME NEWS

By Joy Stancell

Thursday morning Pastor David McIntire, J.C. Shanks and Clara Lou Jones directed our Devotional/Reflection time.

Friday we celebrated Presidents Day. The morning was spent playing Presidents Trivia and reading about presidents. We also discussed our favorite president. In the afternoon the

residents gathered and each made themselves a cherry tart. Anna B. Lane, and Tiffany lead us in several songs. Stephanie Brown read us the piece that she will be competing for at U.I.L. Melvin Griffin appeared wearing Abe Lincoln's hat.

Saturday afternoon Melvin and wanda Griffin called and assisted the residents in Bingo. Buster Kittrell taught the Sunday School Class Sunday Morning.

Sunday afternoon the Progress Church came for Church services and to visit.

Tuesday afternoon Claudine Embry, Ruth Ann Kitchens, Shonia Orozco, Leesa and Jolene shampooed and set the ladies hair and gave manicures.

Dot Kent visited the care Center Friday and donated several useful items.

Bob Phillips brought us

fresh donuts Tuesday morning Melvin Griffin brought us a large bag of bananas.

We wish to express our heart felt sympathy to the friends and family of Vera Engelking. We shall miss her too.

Buster Kittrell hosted coffee time Wednesday morning. Also Buster and Bobbie Johnson lead us in our sing-spiration and devotional time.

Wednesday afternoon Holly Millsap, T.R. White, his wife Vivian and daughter attended the sing-a-puppet show with Glenda Jennings.

Zoada Gibbs celebrated her birthday Wednesday with cards, birthday song and cake.

Jim Claunch attended the Wednesday morning coffee and sing-spiration with his wife Cordie.

### HOSPITAL ADMISSIONS

The Muleshoe Area Medical Center reported the following admissions.

**Feb. 21** — Joseph Juarez, Janelle Haydon, Carmen Ramirez, Cindi Smith, R.J. Sanderson, Frank Lee, Ruie Dutton, Emmi Wieler, Baby girl, Laura Rosales, Baby boy

**Feb. 22** — Joseph Juarez, Janelle Haydon, Huelan Elmore, Cindi Smith, Lola Goodnough, Frank Lee, Ruie Dutton, Billy Crouch, Emmi Wieler, Baby girl

**Feb. 23** — Joseph Juarez, Janelle Haydon, Cindi Smith, Lola Goodnough, Frank Lee, Ruie Dutton, Lino Salas

**Feb. 24** — Joseph Juarez, Janelle Haydon, Beatrice Toscano, Cindi Smith, Lola Goodnough, Emmanuel Rosales, Frank Lee, Ruie Dutton, Lino Salas

**Feb. 25** — Janelle Haydon, Beatrice Toscano, Kline Buhman, Cindi Smith, John Lesly, Manuela Martinez, Emmanuel Rosales, Frank Lee, Ruie Dutton, Margarite Bustamante, Lino Salas

**Feb. 26** — Bryan Garcia, Janelle Haydon, Beatrice Toscano, Kline Buhman, John Lesly, Manuela Martinez, Jimmy Copley, Emmanuel Rosales, Frank Lee, Ruie Dutton, Lino Salas

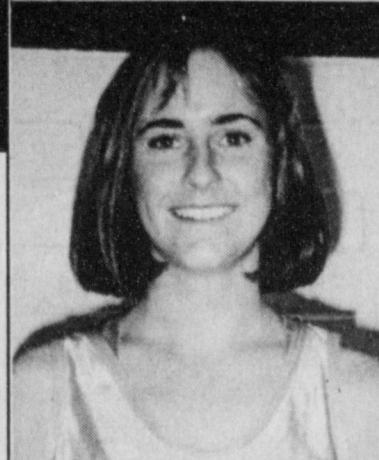
**Feb. 27** — Bryan Garcia, Janelle Haydon, beatrice Toscano, Kline Buhman, John Lesly, Manuela Martinez, Jimmy copley, Emmanuel Rosales, Frank Lee, Ruie Dutton, Lino Salas

## Western 66

### Congratulates the Mule & Lady Mule of the Week!



**JEFFREY WHEELER**  
Senior Jeffrey Wheeler was the winning pitcher against Morton. Jeffrey is the son of Carl and Jackye Wheeler.



**CARI FAVOR**  
Senior Cari Favor won 3rd in the one mile and 4th in the two mile in the last track meet. Cari is the daughter of David and Ann Favor.

SUPERCLEAN

UNLEADED GASOLINES

The CardStop

24 Hour Fuel Service

715 W. American Blvd., Muleshoe

To apply for a card, contact WESTERN 66

272-4556

We have diesel!

### Federal Land Bank Association

316 Main St., Muleshoe  
806-272-3010

Long Term Financing for Farms, Ranches, Rural Housing, Operating and Improvements.

Current Variable Rate 7.95%.

Fixed rates are available. Call for quote.

A Property Rights Advocate and Equal Opportunity Lender.

# BAILEY COUNTY DEVOTIONAL PAGE

**Risinger Plumbing**  
Serving Muleshoe Area  
All Plumbing Repairs  
**272-6772**

**El Jacalito**  
Tortilla Factory  
516 North First Muleshoe  
272-5556  
Mon.-Wed.-Thurs. Alfredo & Mariann Anzuldua

**EASTER GRAIN, INC.**  
Easter 272-5255 Labuddie 965-2817

**Y-L CATTLE FEEDERS**  
COMPLETE CATTLE CARE  
Buy, Sell, Pre-Condition, Grow  
Bob Gable-Owner 965-2610  
Operators: L.D. Clark Mobil 946-8268, Cary Dasher H-965-2937

**ALEX'S TIRE SERVICE**  
302 E. American Blvd.  
272-5012 Muleshoe

**IRRIGATION PUMPS & POWER**  
ZIMMATIC CENTER-PIVOTS  
W. Hwy. 84 272-4483

**MAPLE COOP GIN**  
927-5501  
Maple, Texas

**Leal's Tortilla Factory, Inc.**  
"Serving West Texas since 1957"  
107 E. Ash 272-5772 Muleshoe, TX

**O & C OSONS**  
Erection Sprinkler Ser. Welding & Repair  
Lupe 272-5018 909 W. American Blvd.  
Olivarez 272-3475

**CompuTeK**  
Discount Computer & Repair Service  
206 Main 272-5404  
1-800-687-3816

**BOBO INSURANCE AGENCY**  
108 E. Ave. C 272-4264

**Shipman's Body Shop**  
Auto Painting • Wrecker Service • Free Estimates  
Tractor Glass & Windshields  
410 N. 1st Muleshoe, TX  
272-4408 FAX 272-3366

**SAIN IRRIGATION & MACHINES**  
Complete Pump Service  
W. American Blvd. 272-4397  
Walt Sain Muleshoe, TX 272-4148

**Bob STOVALL Printing**  
Quality -- Service  
221 E. AVE. B 272-3373  
C.R. & EVA NELL DALE MULESHOE

**TERRA INTERNATIONAL, INC.**  
272-4203  
Muleshoe, Texas

**RONNIE HOLT INSURANCE AGENCY**  
Specializing in Crop, Life & Health Insurance  
Western 66 Office Bldg.  
272-4271 Muleshoe, TX

**PACO FEED YARD, INC.**  
Commercial Cattle Feeders  
P.O. Box 956 265-3281  
Frona, TX  
Feller Hughs-Mgr.

**WESTERN '66' COMPANY**

**JAMES CRANE TIRE CO., INC.**  
107 Main 272-4594  
Mike Hahn Muleshoe, TX

## Facts About The BIBLE BY JOHN LEHTI

AHAB, THE SON OF OMRI, SEVENTH KING OF ISRAEL (B.C. 919-896), WAS A MAN WHO, ALTHOUGH HE HAD GOOD INSTINCTS, BEHAVED WICKEDLY DUE TO THE EVIL INFLUENCES OF HIS WIFE JEZEBEL, A PHOENICIAN PRINCESS AND PRIESTESS OF THE HEATHEN GODDESS ASTARTE. JEZEBEL MEANT TO INSTALL THE WORSHIP OF ASTARTE THROUGHOUT ISRAEL WITH AHAH'S HELP AND ONLY THE PROPHET ELIJAH STOOD TO DEFEAT HER, PREDICTING ALSO THAT AHAH WOULD BE DESTROYED FOR TRYING TO HELP HER, NO MATTER WHAT PRECAUTIONS HE TOOK AND, ALTHOUGH AHAH WAS CAREFUL TO DISGUISE HIMSELF ON THE BATTLEFIELD SO AS NOT TO BE A CONSPICUOUS MARK FOR ENEMY ARCHERS, IN HIS LAST BATTLE WITH BENHADAD OF SYRIA, A RANDOM ARROW HIT BETWEEN THE JOINTS OF HIS ARMOR, KILLING HIM, THUS FULFILLING ELIJAH'S PREDICTION (1 KINGS 21:19).



NEXT WEEK  
THE BETRAYER!

SAVE THIS FOR YOUR SUNDAY SCHOOL SCRAP-BOOK

This devotional & directory is made possible by these businesses who encourage all of us to attend worship services.

**ASSEMBLY OF GOD**  
FIRST ASSEMBLY OF GOD  
521 South First Street • 272-3017  
Jack Stone, Min. • 272-3984  
S.S. 9:45 a.m., W.S. 11 a.m. & 6:30 p.m.,  
Wed. 7:30 p.m.

**BAPTIST**  
CALVARY BAPTIST  
1733 W. Ave. C. Rev. Jeff Coffman  
CIRCLE BACK BAPTIST  
Intersection FM 3397 & FM 298  
Jessie Shaver, Min • 946-3676

FIRST BAPTIST  
220 West Ave. E.  
Stacey Conner, Min.  
FIRST BAPTIST  
Lazbuddie • 965-2126

PRIMERA IGLESIA BAUTISTA  
223 E. Ave. B Roy Martinez, Min.  
PRIMITIVE BAPTIST  
621 South First  
Elder Cleveland Bass, Min.

PROGRESS BAPTIST  
Progress, TX  
PROGRESS SECOND BAPTIST  
Arthur Hays, Min.

1st & 3rd Sundays  
RICHLAND HILLS BAPTIST  
17th & West Ave. D  
Brad Gathright, Min.

ST. MATTHEWS BAPTIST  
Corner of W. Boston & W. Birch  
Floyd R. Monroe, Min.  
TRINITY BAPTIST  
314 E. Ave. B  
Robert Brown, Min.

**CATHOLIC**  
IMMACULATE CONCEPTION CATHOLIC  
805 E. Hickory  
Joseph Agustine, Min.  
**CHRISTIAN**  
THE CHRISTIAN CENTER  
Morton Hwy. • 272-5105  
Reydon Stanford, Min.

**CHURCH OF CHRIST**  
LARIAT CHURCH OF CHRIST  
Sam Billingsley, Min.  
S.S. 10 a.m.; W.S. 11 a.m. &  
6 p.m., Wed. 7 p.m.

**LAZBUDDIE CHURCH OF CHRIST**  
Nathan Crawford, Min.  
S.S. 9:30 a.m.; W.S. 10:20 a.m. & 5 p.m.;  
Wed. 7 p.m.

**MULESHOE CHURCH OF CHRIST**  
22nd & W. American Blvd.  
John Knox, Min.  
S.S. 9:30 a.m.; W.S. 10:20 a.m. & 6 p.m.;  
Wed. 7:30 p.m.

**SIXTEENTH & AVE. D CHURCH OF CHRIST**  
Curtis Shelburne, Min. • 272-4619  
W.S. 10:30 a.m. & 6 p.m.;  
Wed. 7:30 p.m.

**LUTHERAN**  
ST. JOHN LUTHERAN  
Lariat, TX  
Richard Greenhaner, Min.  
S.S. 10:30 a.m.; W.S. 9:30 a.m.

**METHODIST**  
FIRST UNITED METHODIST  
HISPANIC MINISTRIES  
E. 5th and E. Ave. D  
Pastor Benito Cavazos

FIRST UNITED METHODIST  
507 W. 2nd St.  
Pastor John Wagoner  
LAZBUDDIE METHODIST  
965-2121

**EL DEVINO SALVADOR**  
814 W. Ave. C, Muleshoe, TX  
Guadalupe Ballinas, Min.

**NAZARENE**  
NEW VISION CHURCH OF THE NAZARENE  
814 W. Ave. C • 272-3622  
David R. McIntire

**PENTECOSTAL**  
IGLESIA PENTECOSTAL UNIDIA  
207 East Ave. G • 272-3636  
Wencelado Trevino, Min.

**INTER DENOMINATIONAL**  
NEW COVENANT  
Plainview Hwy. Jimmy Low, Min.  
S.S. 9:30 a.m.; W.S. 10:15 a.m.;  
Wed. 7 p.m.

**WINKLES TRUCKS, INC.**  
Box 757 (806) 247-2724  
Frona, TX

**Lowe's MARKETPLACE**  
401 W. American Blvd.  
Muleshoe 272-4585

**Decorators Floral & Gifts**  
616 South First 272-4340  
Muleshoe, TX

**SHERLEY-ANDERSON LAZBUDDIE ELEVATOR**  
965-2922 Lazbuddie, TX

**1ST BANK** MEMBER FDIC  
202 South First 272-4515

**WES-TEX FEED YARDS, INC.**  
Custom Cattle Feeding  
272-7555 Muleshoe, TX

**AMERICAN AVI INC.** West Hiway 84 272-4266 Muleshoe

**BAILEY GIN COMPANY, INC.**  
946-3397  
Sudan, TX  
Peanut Hawkins, MGR

**WESTERN DRUG**  
114 Main 272-3106 Muleshoe

**Delton E. Wilhite & Associates**  
Home, Auto, Crop, Life & Health Insurance  
1631 W. American Blvd., Muleshoe 272-3652

**HERITAGE HOUSE INN**  
2301 W. American Blvd. 272-7575  
Muleshoe, Texas  
Clint & Evelyn Peat - Resident Owners  
Reservations 1-800-253-5896

**BRUCE, INC.**  
AIR CONDITIONING  
Hwy. 214 North 272-5114  
Muleshoe, TX  
TACL-B003350C, LP08638

**MULESHOE COOPERATIVE GINS**  
P.O. Box 569  
272-4794 Muleshoe, TX

**MULESHOE AREA HEALTHCARE Center**  
"Committed to Caring"  
106 W. Ave. H Muleshoe 272-7578

**MULESHOE MOTOR CO.**  
1225 W. American Blvd. 272-4251

**"THE FIVE AREA TELEPHONE COOPERATIVE ORGANIZATION"**  
West Plains Telecommunications Co.  
Five Area Systems, Inc., Plateau Cellular Network  
Five Area Long Distance - Five Area Internet  
302 Uvalde Muleshoe, USA (806)272-5533

**WANDA BROWND INSURANCE AGENCY**  
118 E. Ave. C Muleshoe 272-7548

Since 1957 - The Original  
**Leal's** Mexican Restaurant  
1010 W. American Blvd. 272-3294  
Muleshoe, TX Victor & Debbie Leal

**Triple S Publishing**  
304 W. 2nd 272-4536  
Publishers of the Muleshoe Journal and Bailey County Journals

**ENOCHS NEWS**

By Mrs. J.D. Bayless

Ellen Bayless was in Muleshoe Tuesday and visited her sister-in-law, Mrs. Clara Coffman and ate lunch with her.

Jeff Austin from California visited his parents, J.R. and Sandra Austin, Monday till Friday. Even though it was snowing they still visited his grandmother, Mrs. Olive Cox on Thursday. He helped celebrate his parents birthdays which were the 10th and 13th.

Margie Peterson was in Lubbock Wednesday and spent the night with her sister Mrs. Martha Ann Leake.

Ethel Feagan of Lubbock spent Saturday night with her sister Gladys and Morris Phillips. Sunday she visited another sister Mrs. Inez Sanders.

Susie Shields of Lelia Lake and Tefany visited her mother and brother Mrs. Lorella Jones and Wendell on Saturday. Other guests Sunday were Roslyn Sellers from Seagraves.

Olene Cunningham of Lubbock came Saturday and stayed till Sunday with her sister, Ellen Bayless and they attended church at the Baptist Church. The Gidon's were in charge of the services. They told of their work and about the bibles and

where they gave them away. Thursday Feb. 13 it snowed. It helped because we needed a lot of moisture. That morning Feb. 24 it was misty rain and freezing at a temperature of 25 degrees.

The J.R. Austin's went to Muleshoe and took her mother Olive Cox to Clovis, and went shopping.

Mr. and Mrs. Chris Locke of Muleshoe are the parents of a son, who was born Feb. 17 at Methodist Hospital in Lubbock. He weighed 7 lb 5 oz. His name is Bransen James, he has a sister, Chelsea.

Grandparents are Mr. and Mrs. Dennis Turney of Enochs, and Mrs. Joan Cotton of Abilene; great-grandparents, Mr. and Mrs. Truman Nix of Enochs, Ferris and Diane Locke of Portales, N.M. and Mrs. Wanda Locke of Lubbock.

Mrs. Beverly Turney and Mrs. Myrna Turney attended the baby shower in Muleshoe Saturday.

Mr. and Mrs. Harvey Blackstone visited their son Mr. and Mrs. Thomas Blackstone and family in Littlefield Sunday afternoon and attended church with them and were supper guests.

**BRIDAL SHOWER**



**Mrs. Audra Parker**

Audra Lee, bride-elect of Eric Parker, was given a bridal shower Feb. 8 in the home of Annette Bonds of Muleshoe. Special guests in attendance were grandmother of the bride, Mrs. Dorothy Lee from Roaring Springs, Texas; mother of the groom, Mrs. Carol Parker of Odessa; and mother of the bride, Mrs. Linda Lee of Muleshoe. Out of town guests included Tanya Leible and Leslie Morris of Canyon. Hostess gifts were a Panasonic vacuum cleaner and a potted plant. Hostesses were Vicki Black, Lynn Box, Myrt Feagley, Terri Hahn, Iva Noble, Lenda Trussell, Lana Bomer, Jan Crawford, LeAnn Gallman, Charlotte Holt, Joyce Scott, Annette Bonds, JoBeth Edwards, Amy Gilleland, Loretta Lloyd, Sherry Shipman and Carol Cox.

**A variety of homestead exemptions could lower your property taxes!**

A homestead exemption lowers the property taxes on your home by lowering its taxable value. If your home is valued at \$50,000 and you receive a \$5,000 homestead exemption, your home will be taxed as if it were worth \$45,000.

**Who qualifies for an exemption?**

Anyone who owned a home on January 1st (and used it as their primary residence on that date) is entitled to a \$5,000 homestead exemption to lower their school taxes this year...and it doesn't matter if your home is a house, condominium or mobile home. (Counties, cities and special taxing districts may also offer homestead exemptions.)

**Are other exemptions available?**

If you're disabled--or if you're 65 years old or older--you are entitled to an additional \$10,000 school tax exemption on your home. And if you qualify for the over-65 exemption, you're also entitled to a permanent, locked-in "ceiling" on the school property taxes on your home. (The ceiling does not apply to county or city property taxes, and those entities may offer other exemptions.) The over-65 homeowner's exemptions and school tax ceiling transfers to the surviving spouse, if the spouse is 55 years of age or older at the time of death and lives in and owns the home.

**Do I have to apply each year?**

No. If you had a homestead exemption on your home in 1996, you won't need to reapply for 1997 unless your chief appraiser requires it. However, if you haven't received an exemption on your present home--or if you've moved to a new home--you'll need to file for an exemption for 1997. And if you turned 65 or became disabled during 1996, you need to file for the additional exemptions.

**When and where should I file?**

File applications by April 30 at your appraisal district office. If you need more time, contact us at:

**Bailey Central Appraisal District**  
302 Main Street, Muleshoe, TX 79347  
806-272-5501

For more information, stop in or call for a free copy of "Texas Property Taxes: Taxpayers' Rights, Remedies & Responsibilities"

Or contact:  
**Comptroller's Property Tax Division**  
P.O. Box 13528  
Austin, TX 78711-3528

A public service announcement courtesy of this newspaper.

Subscribe Today!  
Call the Muleshoe Journal  
272-4536

**OBITUARIES**

**Frances Park**

EARTH—Funeral services for Frances Park, 70, of Earth were held Feb. 28 at First Baptist Church, Earth with Rev. Bobby Broyles, pastor officiating.

Burial followed in the Earth Memorial Cemetery under the direction of Parsons-Ellis Funeral Home of Earth.

Mrs. Park died Feb. 26 at the Methodist Hospital in Lubbock after an illness. She was born Oct. 27 in Quannah, Texas. She married Leo Fred Park June 22, 1944 in Altus, Okla. He died March 9, 1996.

Mrs. Park had lived in Earth since 1954, moving from

Quannah. She was a homemaker and a member of the First Baptist Church of Earth. She was preceded in death by one brother, L.T. Stepp in 1988.

Survivors include one son, Donald Wayne Park of Earth; one daughter, Judy Park Morgan of Houston; one sister, Marie Evans of Antlers, Okla.; one brother, Bobby Stepp of Lubbock; five grandchildren and one great-grandchild.

**W.F. Ragland, Jr.**

HOBBS, N.M. — Funeral services for W.F. Ragland, Jr., 75, of Hobbs were held Feb. 27

in Prairie Haven Cemetery with Pastor Jack Stringer officiating.

Burial followed in the Prairie Haven Cemetery under the direction of Griffin Funeral Home, Inc., Hobbs.

Mr. Ragland died Feb. 25 in Lubbock. He was born March 25, 1921 in Roaring Spring, Texas. He married Earline Ragland.

He was a retired farmer, having made his home in Hobbs for the last 6 years. He was preceded in death by his wife, Earline Ragland in May 1975.

Survivors include one son, Ken Ragland of Hobbs; one daughter, Glorcia Searcy of Granbury, Texas; two brothers, Harley Ragland of Ft. Worth, Gil Ragland of Acuff, Texas; two sisters Lois Thornton of Texas City, Texas and Frankie Rigby; 6 grandchildren, 3 great-grandchildren.

**Genuine Faith Never Comes Easily or Cheaply**

Some things just can't be rushed. No matter how badly you want it, you'll not be able to enjoy the shade from a 75-year-old oak tree unless someone 75 years ago took the trouble and had the foresight to plant it.

The same kind of thing applies, I believe, to faith. Lots of us want the blessings and the stability that can come during life's storms only

deeply, unfairly hurt you. (Loving enemies is such a very nice concept—until you actually have one.) Like using our dollars to help others and not just ourselves. (Nothing writes a clearer commentary on our real priorities in life than our check registers.) Like taking the time and making the effort to be a genuine part of a church family of faith. (Not just a nominal "Christmas & Easter" member who could never be "convicted" of membership on the basis of such evidence as attendance or giving.) Like developing a relationship with God in prayer and by reading his word. Like devoting each day to him and doing whatever we do to his glory, not as someone who is "religious" but as a person who knows that his whole life is lived in the gracious presence of the divine Author of life and joy.

If we want genuine and strong faith, we can have it. Possessing that kind of faith will be a blessing of untold value. But if we think it is a blessing we can get almost by accident and without effort, we've seriously self-deluded, and we've not learned the truth of Christ's words, "whoever wants to save his life will lose it, but whoever loses his life for me will save it" (Luke 9:24). I think that Christ is saying is that, contrary to our world's "wisdom," the way to true satisfaction, joy, and happiness both here and hereafter, the way to life that is full in every sense, is to want Him more than we want anything else.

That's faith.

Curtis Shelburne is minister of the 16th & D Church of Christ in Muleshoe.



**Focus On Faith**  
Curtis Shelburne

through a deep and abiding faith. I want those blessings, too, but I must understand that, though salvation is, thank God, a free gift bought by the blood of Christ, faith that is strong enough to stand the tests of time and adversity will not cheaply had or quickly grown. Faith that is in its own way as strong and comforting as a 75-year-old oak tree cannot spring forth full grown in the space of a heartbeat, no matter how badly we need it or want it.

I guess what I'm saying is that if we want strong faith, we must ask God to help us do the things it takes to make it strong. Some of those things may seem mundane. Some of them may just seem like hard work. Things like really making an effort to forgive someone who has

**BIRTHS**

**Emmanuel Juan Rosales**

Marcus and Laura Rosales of Friona announce the birth of their son, Emmanuel Juan.

Emmanuel Juan was born Feb. 21 at the Muleshoe Area Medical Center. He weighed 6 lb 8oz.

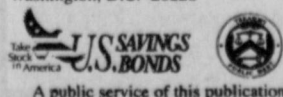
Grandparents are Pete and Mary Prieto of Friona, Martin and Jackie Rosales of Ralls. Great-grandparents are Rumalda Mendoza of Friona, Juan and Juanita Rosales of Ralls, and Pedro and Juanita Garcia also of Ralls.

**Kids!**  
Win U.S. Savings Bonds up to \$5,000!

Announcing the 1997 U.S. Savings Bonds National Student Poster Contest - the perfect opportunity for 4th, 5th, and 6th grade students to demonstrate their artistic talents and win prizes including U.S. Savings Bonds and a trip to Washington, D.C. The Contest deadline is February 7, 1997.

For contest information contact your school or write:

National Student Poster Contest  
Savings Bonds Marketing Office  
Room 331  
Department of the Treasury  
Washington, D.C. 20226



A public service of this publication.

**REAL ESTATE AUCTION**

320 ACRES, M/L

PARMER COUNTY, TEXAS

Monday, March 10, 1997 ----- Sale Time: 11:00 A.M.

Auction Location: Bovina, (Parmer Co.) TX

Bovina EMS Bldg., 109 Third Street (Next to GTE Bldg.)

Property location: From Bovina, TX 2.2 miles South on FM Hwy 1731, then 1 mile East on CR S to Northwest

Corner of Property; or from Farwell, TX 9 miles East on FM Hwy 145, then 7 miles North on FM 1731, then 1 mile East on CR S to Northwest Corner of Property; or from Muleshoe, TX 10 miles Northwest on US Hwy 84, then 11 miles North on FM Hwy 1731, then 1 mile East on CR S to Northwest Corner of Property

James T. Hull Estate -- Owner Mary Sue Hull, Trustee  
For more information contact: Cruce & Fletcher Auctioneers (806) 296-5050 or (806) 866-4201

LEGAL: North 1/2 of Section 35, Township 7, South Range 2 East, out of Leagues 528 & 529 of a Capitol Syndicate Subdivision, Parmer County, TX containing 320 Acres, m/l

ASCS: Parmer County Farm #900  
320 acres Farmland 287.4 acres Cropland 43.1 acres Wheat 139.6 acres Corn  
97.1 acres Cotton 6.1 acres Barley 1997 Estimated Payment \$9,942 to \$11,805

Farm Status: Farm is rented on Crop Basis for 1997 Crop Year. Buyer will assume present owners position receiving 1/3 of Crop Rent & Government Payments. Buyer will also assume present owners expense regarding crops. Contact Auctioneers as to Rental Agreement. (806) 296-5050

Irrigation: 1-8" Well 2-6" Wells 1-Tailwater Pump Approx. 2 miles of Underground Pipe Pumps & Gearheads go with lease of land. Motors & sprinklers belong to tenant.

Improvements: Older Barn Minerals: Buyer will Receive 1/2 of Seller's Equity.

Manner of Sale: Dollars per acre X 320 acres to determine Total Sales Price.

Terms: Cash. Successful bidders will be required to execute a real estate contract and deposit 10% of total purchase price with escrow agent.

Title: Property is to be conveyed to purchaser by General Warranty Deed with Updated Abstracts.

Taxes: 1997 Taxes To Be Paid By Buyer. Closing: Closing to be March 31, 1997 or sooner.

Possession: Buyers shall take possession at Closing with possession from tenant as 1997 crops are Harvested.

Buyer Note: All prospective buyers shall examine the property, its improvements and all relevant documentation carefully as each bidder is responsible for evaluating the property and shall not rely on the seller or the auctioneers. Prospective buyers are responsible for conducting their own independent investigation, inquires and due diligence research concerning the legal documents: the property and its improvements. Seller and Auctioneers are assuming that the bidders have inspected the property and all improvements thereon and are satisfied and accept them "AS-IS-WHERE IS" and without representations and warranties expressed or implied. The failure of any bidder to inspect, or to be fully informed as to the condition of all or any portion of the property sold, will not constitute grounds for any claim or demand for adjustment or withdrawal of a bid. Announcements made sale day take precedence.

Owner Will Be Given 20 minutes to Accept or Reject Bid

JAMES G. CRUCE  
Plainview, TX  
(806) 296-5050  
Lic. # 6704

**Cruce & Fletcher**  
Auctioneers & Real Estate Brokers  
P.O. Box 609 -- Wolfforth, TX 79382

BOBBY FLETCHER  
Wolfforth, TX  
(806) 866-4201  
Lic # 7131



# Shower of Values



ALL TYPES  
Pepsi Cola  
3 liter btl.  
**2/\$3**

LIMIT 4 TOTAL  
Additional  
Purchases \$1.19

ALL TYPES  
Pepsi Cola

**99¢**

6 pack, 12 oz. cans



## MEAT



8 oz. pkg.,  
Oscar Mayer Regular or Lite  
**Beef Bologna**

Buy One, Get One

**FREE**

U.S.D.A. Select Beef Boneless  
**Round Steak**

**\$1.59**  
lb.

- U.S.D.A. Select Beef Sirloin **\$1.99**
- Tip Roast** ..... lb **\$1.99**
- U.S.D.A. Select Bottom Round Roast, Top Round Roast or Beef **\$1.99**
- Rump Roast** ..... lb. **\$1.99**
- Red Rind **\$2.29**
- Longhorn Cheese** ..... lb **\$2.29**
- Pepperoni or Cheeseburger Mama Rosa **\$2.69**
- 5" Pizza** ..... 4 pack **\$2.69**
- 12 oz. pkgs., Johnsonville **2/\$5**
- Breakfast Links** ..... **2/\$5**
- Johnsonville Beef Bratwurst, Hot Links or Beddar Cheddar **\$2.69**
- Smoked Sausage** ..... 1 lb. pkg. **\$2.69**

LENTEN SPECIAL

Skin-On  
**Perch Fillets**

lb. **\$2.99**

Sirloin Tip Steak

lb. **\$2.49**

Tenderized Beef  
**Round Steak**

lb. **\$1.89**

Any Size Package  
**Ground Round**

lb. **\$1.99**

Jumbo Pack, Pilgrim's Pride Split  
**Chicken Breast**

lb. **99¢**

- Healthy Choice, 10 oz. pkg. Resealable Package **\$2.69**
- Honey Ham or Cooked Ham** ..... **\$2.69**
- U.S.D.A. Select Beef London **\$2.29**
- Broil Roast** ..... lb. **\$2.29**
- Seasoned Market Made **\$1.99**
- Pork Asado** ..... lb. **\$1.99**

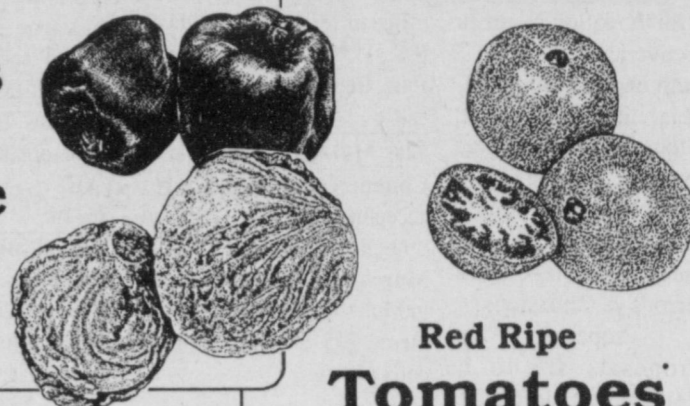
## PRODUCE

Fresh  
**Bell Peppers**

or Green

**Leaf Lettuce**

**2 for \$1**



- Fresh Yellow **Hot Peppers** ..... lb. **99¢**
- Fresh **Serrano Peppers** ..... lb. **88¢**
- Chilean **Nectarines** ..... lb. **99¢**
- Thompson **Seedless Grapes** ..... lb. **\$1.19**

Red Ripe  
**Tomatoes**

or Fresh

**Hot Jalapenos**

**2 for \$1**

American or Pizza Flavor,  
NEW - Super Slice  
**Kraft Cheese**

**\$1.88**

12 oz. pkg.



6 oz. cans, Water or Oil  
Pack Chunk Light  
**Tuna**

**2/\$1**

Lowe's White  
**Sandwich Bread**

**57¢**

24 oz. loaf

Bread N Butter, Whole Dill, Hamburger  
Slices, Best Maid **\$1.69**

**Pickles** ..... 16 oz. jar

Assorted Lay's® or Wavy Lay's®

Reg. \$2.99 size

**Potato Chips** ..... **2/\$4**



Hi-Dri Paper Towels

**2 \$1**  
Rolls For



SOFT'N GENTLE  
ASSORTED OR WHITE  
Bath Tissue

**88¢**  
4 roll pkg.



CRUNCHY, LOW FAT CREAMY,  
OR CREAMY  
**Jif Peanut Butter**

**1.79**  
18 oz. jar



TEXSUN  
**Pink Grapefruit Juice**

**49¢**  
46 oz. can



ASSORTED  
**Blue Bell Ice Cream**

**2.79**  
1/2 gal. ctn.



GENERAL MILLS CEREAL  
**Total Raisin Bran**

**2.79**  
18 oz. box



FRESH BURST, COOL MINT,  
OR ORIGINAL  
**Listerine Mouthwash**

**2.99**  
16.9 oz. btl.



WESTERN FAMILY  
**Baby Oil**

**1.79**  
14 oz. btl.

WESTERN FAMILY  
**Cosmetic Puffs**

**2.99**  
100 ct. pkg.

**Zantac Tablets**

**3.99**  
10 ct. pkg.

**Anacin Tablets**

**6.79**  
100 ct. pkg.



ASSORTED  
**Smack Ramen Noodles**

**8.51**  
3 oz. pkgs. For



HERSHEY'S  
**Chocolate Milk Mix**

**1.99**  
14 oz. can



PIONEER BUTTERMILK OR ORIGINAL  
**Biscuit & Baking Mix**

**2.49**  
40 oz. box



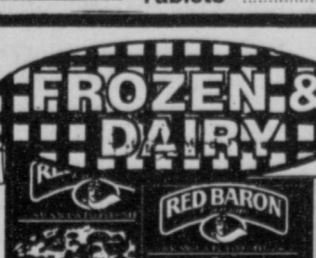
ASSORTED  
**Capri Sun Drinks**

**2.39**  
10 pack 8 oz.



ASSORTED  
**Patio Burritos**

**3.51**  
5 oz. pkgs. For



ASSORTED FAMILY SIZE  
**Red Baron 12" Pizza**

**2.99**  
each



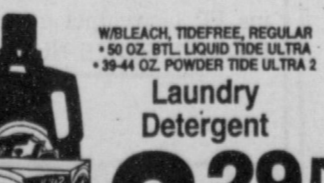
**Sunny Delight Citrus Punch**

**1.19**  
64 oz. btl.



HEFTY TWIST TIE  
**Trash Bags**

**1.59**  
12 ct. 30 gallon



W/LEACH, TIDEFREE, REGULAR  
+50 OZ. BTL. LIQUID TIDE ULTRA  
+39-44 OZ. POWDER TIDE ULTRA 2

**Laundry Detergent**

**3.29**  
YOUR CHOICE



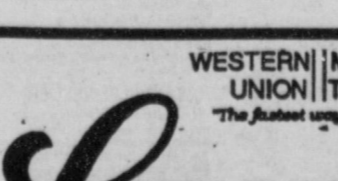
LEMON LIQUID OR POWDER  
**Cascade Automatic Dish Detergent**

**2.39**  
50 oz. btl./box



1.5-3.4 WITH BEEF GRAVY  
**Cycle Dog Food**

**2.89¢**  
13.2 oz. can



**9 Lives Cat Food**

**3.51**  
For



HONEY BOY  
**Pink Salmon**

**99¢**  
7 oz. can



HORSERADISH, TARTAR, TARTAR  
FAT FREE, OR SEAFOOD COCKTAIL

**Kraft Sauces**

**99¢**  
9 oz. jar



HAMBICO REDUCED FAT  
ORIGINAL, CHOCOLATE, OR  
ORIGINAL

**Nilla Wafers**

**1.99**  
11-12 oz. box



HAMBICO REGULAR OR  
LOW FAT ASSORTED

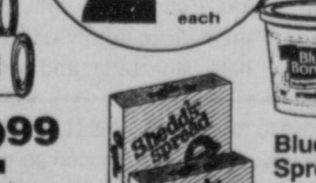
**Honey Maid Grahams**

**2.39**  
18 oz. box



VAN DE KAMP'S VALUE PACK  
**Minced Fish Sticks**

**2.99**  
25 oz. pkg.



**Blue Bonnet Spread**

**2.53**  
For



SHEDD'S COUNTRY CROCK  
**Spread Quarters**

**59¢**  
18 oz. box

WESTERN UNION MONEY TRANSFER™  
"The fastest way to send money"

# Lowe's Pay-n-Save

515 W. American Blvd.  
401 W. American Blvd.  
Muleshoe 272-4585

WE RESERVE THE RIGHT TO LIMIT QUANTITIES IN TEXAS

Muleshoe 272-4406

PRICES EFFECTIVE FEB. 26-MARCH 4, 1997  
OPEN MONDAY-SATURDAY 7:30 A.M. - 8:00 P.M., SUNDAY 8:00 A.M. - 7:00 P.M.

