

Battle brewing over back taxes

■ *Lamb County contends city owes \$23,000*

By RICK WHITE
Managing Editor

A high-stakes poker game has developed over almost \$23,000 in property taxes.

The City of Muleshoe, two Lamb County taxing districts and a group of private landowners are all pointing at the other to ante up.

The dispute arises over 2,423 acres of land the City of Muleshoe purchased in Lamb County from private landowners in January of 1995.

Lamb County and the Sudan Independent School District claim the City of Muleshoe owes them more than \$12,500 in back taxes for 1995 and as Oct. 1, another \$10,500 for 1996.

The city claims the former landowners owe the taxes because they are earning money off the land through a lease agreement with the city.

An attorney for the former landowners denies his clients owe a dime to anyone.

The Lamb County property is part of a larger 4,800-acre parcel that straddles the Bailey County and Lamb County line. The city purchased the property from Ed C. Barrett and Terry and Jay Crofoot for \$1 million.

One of the conditions of the sale was that the city would lease back 3,760 of the acres that Barrett-Crofoot had previously enrolled in the federal government's Conservation Reserve Program.

That would allow them to collect about \$40 per acre on

the CRP land, or the legal limit of \$150,000 per year.

The city charged a nominal fee of \$10 for an original 21-month lease, then in May, extended the lease for another year through October of 1997 for \$43,800.

"They were not willing to sell the land unless they were able to keep the CRP contract," Muleshoe City Mayor Robert Montgomery said.

Located about three miles east of Muleshoe near the SPS Tolk Station, the land was bought by the city as a backup water source and as a possible sight for industrial development, Montgomery said.

Municipality-owned property is normally exempt from taxes.

But because private citizens are using the property to make a profit, the Lamb County Appraisal District feels the land should be included on its tax roll.

"We understand Lamb County's point because private citizens are making money on it," Montgomery said. "We don't deny taxes are owed."

But Montgomery and City Attorney Mike Caldwell believe the city is protected by an indemnity clause in the contract against "any losses that occur due to crops being grown on the land."

"We're going to legally encourage Barrett-Crofoot to honor the terms of the contract," Montgomery said. "We feel they balked on the contract because they agreed to pay any taxes."

Some of the CRP land Barrett-Crofoot collects on is in Bailey County. But the

Continued on page 3

Queen for a day



Run for the roses

Katie Black, middle of the back row, was named the 1996 Muleshoe High School homecoming queen Friday before the football game. Katie is the daughter of Rex and Brenda Black. The rest of the homecoming court is (clockwise from top left) Amy Locker, Brandi Harrison, Cari Faver and Rhonda Warren.

Homecoming queens notice how little student life changes

by SAMUEL VILLARREAL
Journal staff writer

As the years pass, some things never change, according to four former Muleshoe High School Homecoming Queens.

Chosen as the 1980 Homecoming Queen, Shelli Carpenter remembers high school as a fun time in her life.

Known as Shelli Hawkins then, she was an active student who took part in high school sports, student council, and was area president of the Home Economics Co-Operative Education (HECE) club.

Carpenter and her friends would often spend their free time driving down Main Street and listening to the Eagles, Heart, Led Zeppelin and other popular music groups of that time.

"There weren't any fashion fads from that

time," she said. "We all wore jeans, but we didn't have bell-bottoms or anything."

"A lot of girls wore Famallore shoes," she recalled. "They had wedge heels with a circle taken out. We called them yo-yos."

Shoe aside, the students of her time were much like the students of today.

The most memorable part of high school for 1971 Homecoming Queen Marilyn Riley was the time she spent as a twirler for the Mighty 'M' Band. Music runs in the family, with Riley's oldest son, Lincoln, currently playing trumpet in the Watson Junior High School band.

Students in her day spent a lot of their time during football season making posters and signs to decorate the school halls, according to Riley.

Continued on page 10

Masa plant sold

The sale of the ADM Milling Corp. corn flour plant in Muleshoe to a Mexican company paves the way for the merger of the nation's two largest tortilla flour manufacturers.

Grupo Minsa S.A. of Mexico City announced earlier this week the purchase of the corn flour plant, but did not disclose the purchase price or provide further details.

In a news release, Minsa said it expects the new acquisition to help increase its total corn flour production by 8 percent and improve the company's competitiveness in the southern U.S.

Minsa said it purchased the U.S. plant as an "operating business," receiving 138 acres of adjacent land and its customer base.

The deal also offers the option to buy a 60,000-ton capacity bulk storage facility on contiguous property.

A call to Muleshoe plant manager James Turnbow inquiring about how the local operation would be affected Friday was not returned.

However, the news release said "Grupo Minsa intends and desires that all the plant's current personnel continue to work in the plant, and talks are well under way with each person to attain that goal."

The U.S. Justice Department's antitrust division required the sale of the plant as a condition between Archer-Daniels-Midland and the Mexican corn flour giant

Continued on page 8

Williams, Wolverines plow past Mules, 28-0

By RICK WHITE
Managing Editor

The next touchdown Springlake-Earth allows this season will be the first.

The Wolverines extended their shutout to three games Friday, beating Muleshoe, 28-0, before a large homecoming crowd at Benny Douglass Stadium.

Junior quarterback James Williams ran for 147 yards and three touchdowns and passed for another as Springlake-Earth, ranked third in the state in Class 1A, improved to 3-0.

The loss left Muleshoe at 0-3 for the season.

Muleshoe was missing three starters, suspended for one game for disciplinary reasons.

The suspensions left the Mules thin, especially on the offensive line, but even worse was the emotional scar left on teammates.

"We didn't play with the same emotion as last week," said a disappointed Muleshoe



Loose

MHS junior fullback Michael Woodward breaks loose for a short gain on the Mules' first offensive series Friday.

head coach David Wood. "I think a lot of that had to do with the suspensions."

The Wolverines pretty much manipulated the scoreboard at will in their first

two wins, beating Olton and Morton by a combined score of 106-0.

Muleshoe was still in the game until Williams scored on back-to-back drives midway through the second half.

"We started out pretty quick, but in the second quarter we kind of struggled," Williams said. "But we sucked it up in the third quarter and played better."

Leading 14-0 at the half, the Wolverines scored on their second drive of the second half.

Williams' 17-yard punt return to the Muleshoe 43 gave the Wolverines a short field to work with, as was the story much of the night.

After an offside penalty on third-and-four gave Springlake-Earth a first down, Williams slithered through the secondary for a 32-yard touchdown on an option keeper with five minutes left in the third

Continued on page 4

CRP revisions could hurt Panhandle farmers

WASHINGTON, D.C. — U.S. Rep. Larry Combest (R-Lubbock) expressed alarm as he closely quizzed U.S. Agriculture officials' plans for vast changes in Conservation Reserve Program.

The changes will impact CRP contracts which begin expiring next year, Sept. 1997.

Combest was particularly astounded at USDA's wholesale departure from established CRP policies that may result in one-fourth of the nation's current CRP acreage no longer eligible under USDA's new qualifications.

USDA Undersecretary Richard Rominger said he did not know of any concentration in one region where land would no longer be qualified.

Earlier reports had indicated that USDA officials had intentions of moving the focus of conservation acres away from the drier, windblown western

region to the eastern U.S. which is prone to flooding.

In Thursday's House Agriculture Committee hearing, Combest established that wind erosion would be included as a major factor in determining the qualifications for bidding land into CRP.

"I want to make certain that USDA's bureaucratic equations include the continued safeguarding from wind erosion in the Panhandle-South Plains," said Combest. "With USDA already three months late providing some information, producers whose contracts expire in September of 1997 must have USDA details long before that to make decisions for spring planting. Judging by the cautious nature of their answers to my questions during today's hearing, the Agriculture Department is not committing

Continued on page 6

AROUND MULESHOE

**Meet the teachers
Monday at Dillman**

The Muleshoe PTA will hold a meeting 6:30 Monday at in the Dillman gymnasium. It will be "Meet the Teacher Night" for Dillman teachers.

PTA will begin its yearly fund-raiser Sept. 24. Dillman and DeShazo students will take orders for gift wrap, gift sacks, and other miscellaneous items.

All proceeds will go to the PTA.

Any questions or fund-raiser orders can be made to PTA President Adena Johnson at 272-5335.

**Blood drive at First
Methodist Church**

The Lubbock center of the Texas Blood Institute will hold a blood drive from 10 a.m. to 7 p.m. Oct. 3 at the Muleshoe First Methodist Church.

Donors receive a free cholesterol test and mini-physical. A goal has been set for 60 donors.

**Three Way senior class
hold BBQ brisket dinner**

MAPLE—The Three Way High School senior class is holding a BBQ Brisket dinner before and after the football game Oct. 4 against the Melrose Buffaloes.

The menu include BBQ brisket, potato salad, relish tray, pinto beans, white sheet cake, strawberries & cool whip, and tea or coffee.

Tickets at the door are \$5.50 for adults and \$4.50 for children. Tickets bought before the game will be \$5 for adults and \$4 for children.

Doors open at 6 p.m. and dinner will also be served after the game.

**Girl Scout council holding
local sign-ups Saturday, Sept. 28**

The Caprock Girl Scout Caprock council will be holding local sign-ups for the Girl Scouts.

The sign-up will be 10-11 a.m. Saturday, Sept. 28 at the Muleshoe Girl Scout Hut.

Sign-up are open for ages 5-17.

**State representative nominee
holding press conference**

AMARILLO—Republican Party of Texas Chairman Tom Paukin will hold a joint press conference with District 85 State Representative nominee Hollis Cain at 2:20 Thursday, Sept. 19 in the Amarillo Republican Party Phone Center located at 1759 Avondale.



Most spirited

Secretary Sheryl Altman displays the Muleshoe Booster Club's community spirit trophy awarded to Muleshoe Veterinary Supply this week.

The press conference will address the effect of the Robin Hood school finance plan has had on the communities of West Texas since its passage. Cain will also lay out his campaign position on the issue.

**Muleshoe Independent School
District meet Monday**

The Board of Trustees of the Muleshoe Independent School District will meet in regular session on Monday, Sept. 23.

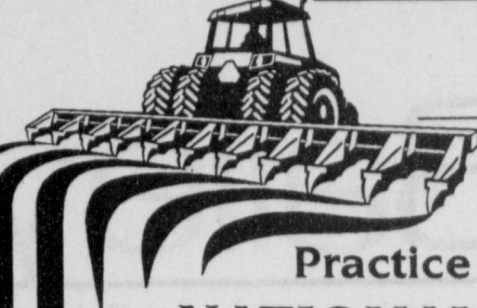
Business and administrative reports will be given at this time.

**MHS parents meeting regarding
scholarship information Monday**

All parents of Muleshoe High School junior and senior students are invited to a meeting Monday, Sept. 23, at 6 p.m. in the MHS auditorium.

Scholarship information, financial aid and college applications will be discussed.

For more information contact Gayla Gear at 272-7571.



**Practice Farm Safety
NATIONAL FARM
SAFETY WEEK**

Protect by knowing how to prevent farm injuries and illnesses. Read and follow instructions in manuals and on labels. Note safety and health articles in magazines and newspapers. Read booklets on the subject and pay attention to safety reminders on radio/tv. But, just knowing isn't enough - you must act on that knowledge to reduce risk of costly injury and illnesses.

Bailey County Farm Bureau
Muleshoe, TX 272-4567

Bailey County Journal USPS 040-200

Established March 31, 1963. Published by Triple S Publishing, Inc. Every Sunday at 304 W. Second. Box 449, Muleshoe, TX 79347.

Second Class Postage paid at Muleshoe, TX.
POSTMASTER: Send address changes to the Bailey County Journal, P.O. Box 449, Muleshoe, TX 79347.

We are qualified members of:
Panhandle Press Association, National Newspaper Association,
West Texas Press Association and Texas Press Association

WEST TEXAS PRESS ASSOCIATION

PPA
Panhandle Press Association

TA MEMBER 1996
TEXAS PRESS ASSOCIATION

Scot Stinnett, Publisher
Lisa Stinnett, Vice-President/Comptroller
Rick White, Editor
Holly Millsap, Classifieds
Pat Durben, Advertising

© 1990

NNA
NATIONAL NEWSPAPER
ASSOCIATION

SUBSCRIPTIONS: Muleshoe Journal and Bailey County Journal
By Carrier Yearly - \$22.00
Bailey and surrounding counties: by mail - \$24.00
Elsewhere - \$26.00
Advertising Rate Cards on Application

Advertisers should check their ad the first day of insertion. The Journals will not be liable for failure to publish an ad or for a typographical error or errors in publications except to the extent of the cost of the ad for the first day of insertion. Adjustment for errors will be limited to the cost of that portion of the ad where the error occurred.

Subscribe Today! Call 272-4536

**URGENT! URGENT!
URGENT!!**

**Please join in the National Campaign to End
Partial-Birth Abortions!**

Send a Message Urging Congress to Override
President Clinton's Veto.

**Tell President Clinton to change his position
and oppose partial-birth abortions!**

Some Facts about the Partial-Birth Abortion

- A partial-birth abortion is a procedure in which the abortionist partially delivers a living baby before killing the baby and completing the delivery.
- The partial-birth abortion is used after 20 weeks (4 1/2 months) of pregnancy—often to six months, seven months, and even later.
- In a partial-birth abortion the baby is almost completely delivered, so the difference between partial-birth abortion and legal homicide is a mere three inches...

Write or call your
Senators TODAY at:
Senators
U.S. Senate
Washington, D.C. 20510

You may also call the Capitol
Switchboard at (202)224-3121.
Tell them to oppose partial-birth
abortion and vote to override
President Clintons veto.

*Senate - Partial-Birth Veto Legislation
Will Be Voted On Thursday, Sept. 26*
— **CRITICAL — CRITICAL — CRITICAL**

DON'T DELAY! WRITE TODAY!
Now, more than ever,
we must speak up for
the babies!

For more information and documenta-
tion on partial-birth abortion and how
you can help end this brutal procedure,
call (202) 626-8800, ext. 256.

Paid for by L.T. Johnson, Victor Leal, Bobby McGee, Kenneth & Marjorie Precure, Mark & Eileen Morton, Jerry Hutton & Bill Millen

**BRUCE PURDY, M.D.
MULESHOE METHODIST
FAMILY MEDICINE
Clinic**

IS PLEASED TO ANNOUNCE
THE ASSOCIATION OF

GAIL HARGROVE, P.A.

Gail will BEGIN HER
PRACTICE IN MULESHOE ON
SEPTEMBER 9, 1996.

**Dr. Bruce Purdy serves as a preferred
provider for the following insurance
carriers:**

- First Care
- American Medical Security
- First Health
- BC/BS of Texas
- Blue Choice
- National Health Alliance
- HMO Blue
- TRS Preferred Care
- Texas Municipal League
- Medicare
- Medicaid

MHS students excited about new band hall

by SAMUEL VILLARREAL
Journal staff writer

On most days after school, students can be found in the Muleshoe High School band hall.

Between rehearsals, the band hall is often a place for band students to gather and socialize. And the topic of discussion on everybody's mind as of lately has been the new band hall.

Plans for a new \$209,000 band hall are underway at Muleshoe High School. The 60' x 60' steel building will be complete with acoustically designed practice rooms. The main rehearsal room will also be designed with the advice of an Austin-based acoustical engineering firm.

Contacts will be awarded in December. Construction is projected to be done by the end of the current school year. Students couldn't be happier.

"It's going to add a lot of pride to our band program," said to

Continued on page 8

Battle

Continued from page 1

Bailey County Appraisal District interpreted that land to be "public use," and therefore is not taxable, according to chief appraiser Kay Elliott.

Now the bluffing begins.

Neither side wants to go to court because court costs will most likely exceed the amount of money in dispute.

Montgomery said the "city would not be real motivated" to enter into another agreement with Barrett-Crofoot when the current contract runs out, drying up the lessee's CRP cash cow.

Barrett-Crofoot might be banking on new CRP regulations eliminating the property from the program, thereby negating the city's wild card.

Montgomery said the City Council learned about the conflict about a month ago.

Former City Manager Dave Marr, under the impression that municipalities are unconditionally exempt from taxes, simply returned the tax notices with the word "exempt" written on them.

Property owners must appeal a tax district appraisal within 45 days of receiving a notice, according to Kay Elliott.

The Lamb County Appraisal District sends out notices Oct. 1.

Montgomery said the city plans with the Lamb County Appraiser as the first step to settling the dispute.

No doubt to lay their cards on the table.



Human wishbones

Two Muleshoe High School cheerleaders lead a cheer Thursday during a bonfire at the new City Park. Muleshoe hosted Springlake-Earth Friday during its annual homecoming game.

Subscribe today!

Call 272-4536

Dear Friends,

Your kindness to us in the past few weeks has been overwhelming! The prayers cards, calls, visits, food, flowers, gifts and other gracious acts have been greatly appreciated. Thank-you for your demonstration of love during the blood drive and benefit supper as well.

We appreciate you for honoring Terry in so many ways, for sharing your own personal "Hutto stories" with us and making us laugh at fond memories of him and his spirited ways. This is truly a community of love and compassion.

With Gratitude,

Debbi, T.J. & Candace Hutto

Joan Hutto

Julie James & family

Gary Hutto & family

Clyde & Nancy Vaughn

Fall Flowers Are Here!



- Pansie's • Mums
- Flowering Cabbage and Kale
- Winterizer on Lawn Food

WINTERIZER

by ferti-lome, is the answer!

WINTERIZER builds in winter hardiness with its special formula and strengthens the root systems of trees, shrubs, and lawns.

Lawns fed in the fall are the first to green up in the spring.

Feed up to 5,000 ft.

\$11.00

for



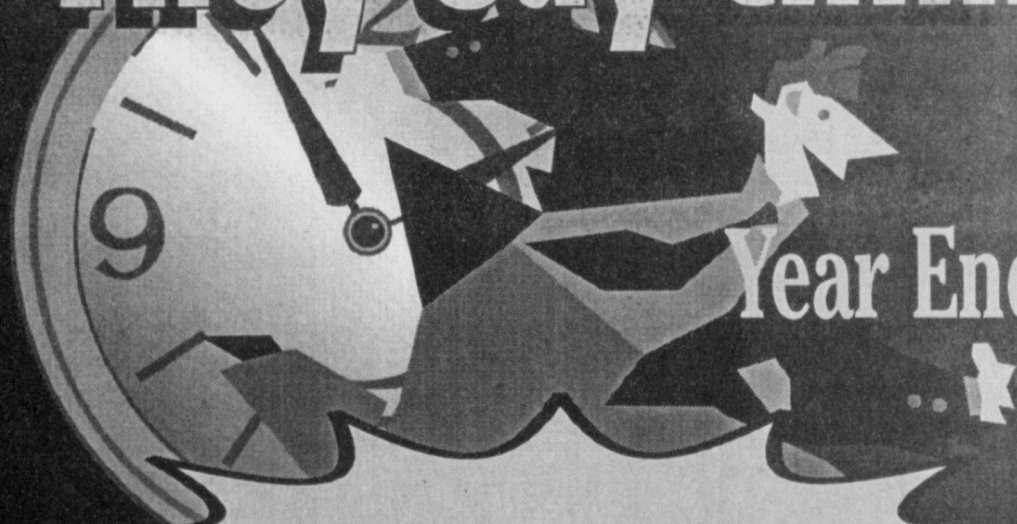
Kristy's Plants

710 E. American Blvd. 272-5536

Advertise It In The Muleshoe Journal Classifieds!

Call 272-4536

They say timing is everything ...



5.9% APR*

*Ends 11/4/96. Up to 48 months. W.A.C. through AHFC

Bender Honda Super Center

Year End Clearance Sale on all 1996 Hondas

Financing
in your
best
interest!



1996 HONDA ACCORD #69125



#4782
White, 4 Door,
Automatic, A/C

Sale
\$9995

1996 GEO METRO



#47171
White, 4 Door,
Automatic, V-6

Sale
\$5995

1990 BUICK LESABRE CUST.



#46281
5 Speed, White
2 Door

Sale
\$2,995

1985 TOYOTA MR2



#651391
Green, XLT,
A/C, Low Miles

Sale
\$10,695

1993 FORD RANGER SUPERCAB 4X2

Pathfinders!

Quests!

Maximas!

Sentras!

240SX's!

Passports!

Prelude

Accords!



#47331
4 Door, White,
Completely Loaded

Sale
\$2995

1983 OLDS REGENCY



#531071
Coupe, Turquoise,
With V-6

Sale
\$7495

1992 DODGE DAYTONA



#4744-1
Gold, automatic,
A/C

Sale
\$2995

1986 CHEVY CAPRICE CLASSIC



#690881
2 Door, White,
Automatic

Sale
\$6995

1991 MERCURY COUGAR LS

Civics!

Odysseys!

Trucks!

Reg Cabs!

King Cabs!

4x4 Trucks!



#691031
4 Door, Blue,
Automatic, A/C

Sale
\$4495

1990 OLDS CIERA



#531051
Blue,
Reg. Cab

Sale
\$6495

1994 TOYOTA TRUCK 4X2



#6531001 White,
hatchback, 5 speed,
A/C, 47 city MPG,
36 highway MPG

Sale
\$10,995

1994 HONDA CIVIC VX

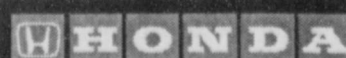


#690482
2 Door, Red,
Extra Clean

Sale
\$4995

1990 OLDS CALAIS

Bender Honda Super Center



HWY. 60-84, CLOVIS, NM • 762-3701

Wolverines post 3rd-straight shutout

Continued from page 1

quarter.

Springlake-Earth scored again on its next possession to put the game out of reach.

Starting at the Muleshoe 49, Williams engineered a seven-play drive that gave the Wolverines a 28-0 lead one minute into the fourth quarter.

Williams kept the drive alive with a 29-yard run to the 11 on third-and-one. The 6-2, 190 junior scored four plays later on a three-yard keeper.

Williams gained 111 yards in the second half on 12 carries, most on a play called the follow dive.

Williams would put the ball in the fullback's belly until the last second, yanked it out like a magician pulls a rabbit out of the hat, and then head for the nearest crack in the Muleshoe defense.

"They just let him run the option in the second half," said Wood, who feels Williams might be the best quarterback the Mules face all season. "If he gets to run it that many times, he's almost impossible to stop."

Springlake-Earth finished with 366 total yards, 303 on the ground.

Williams' only completion gave the Wolverines a 6-0 lead three minutes into the game.

On third-and-six, Williams (1-6) hit tight end Ty Moudy on a quick slant. Moudy didn't stop running until he reached the end zone 63 yards later.

Wood said it was just a case of blown coverage.

Springlake-Earth scored less than four minutes later on Williams quarterback sneak. Williams ran for the two-point conversion, making it 14-0.

Muleshoe then put together its best drive of the night, moving 63 yards before the drive stalled at the Wolverine 19.

Louis Hines, who finished with 68 yards on 17 carries, got the drive going with an 18-yard run. Only a shoestring tackle by the last Wolverine defender prevented a touchdown.

Chris Shelburne (29 yards on 4 carries) kept the drive alive with a 13-yard run on fourth-and-six at the Wolverine 38.

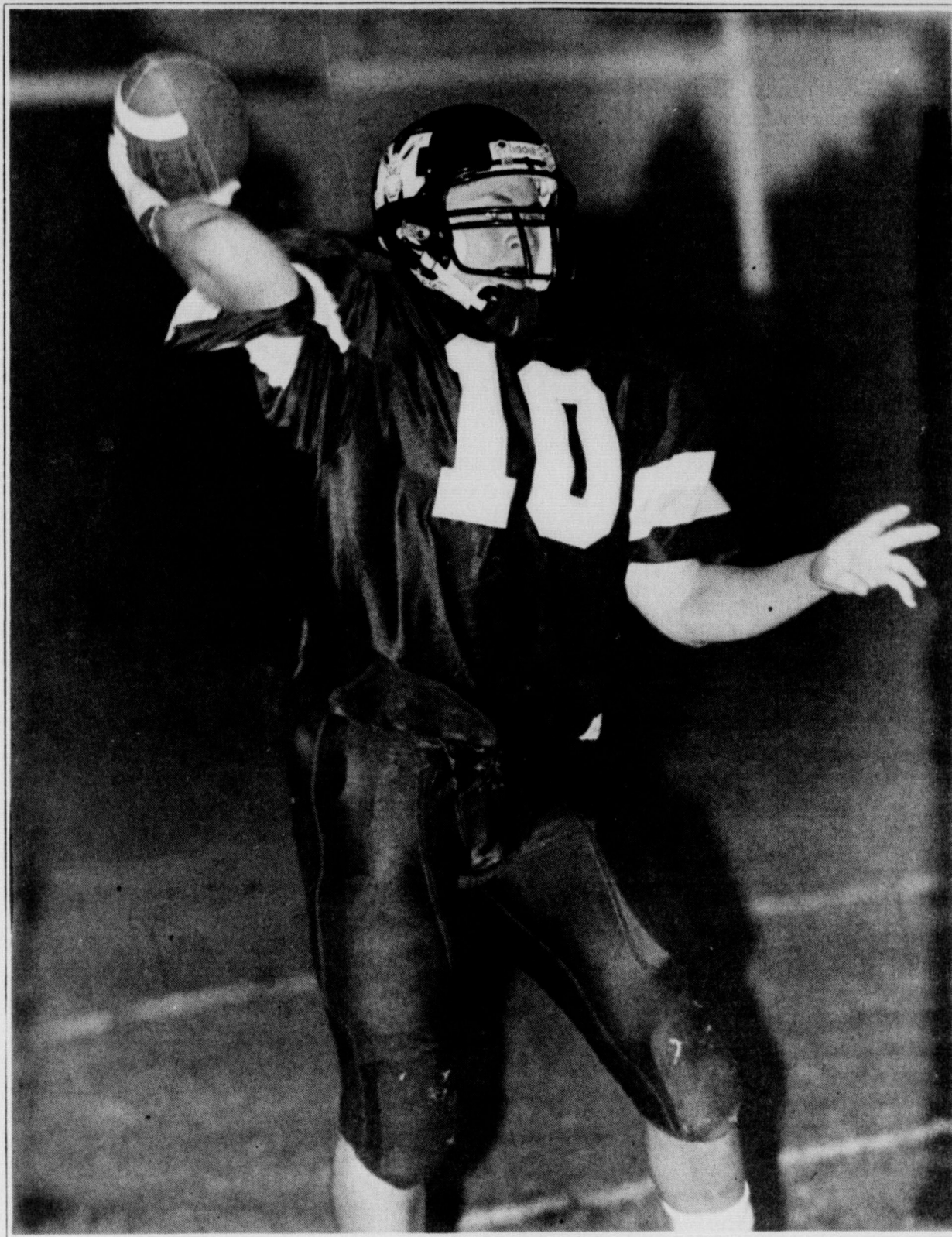
Douglass Field's 50-yard kickoff return and a 15-yard facemask penalty after the Wolverines' last touchdown gave Muleshoe the ball at the Springlake-Earth 21.

But Matt McClanahan (2-for-14 for 25 yards) threw his second interception two plays later.

Muleshoe finished with 154 total yards.

"A few plays do not constitute a drive," Wood said.

"We're not quite there as far as knowing we can win a game," Wood added. "We think we can win a game. But there's a big difference between hoping you can win a game and knowing you can."



Armed & dangerous

Muleshoe sophomore quarterback Matt McClanahan fires a pass Friday during the Mules' 28-0 loss to Springlake-Earth in their annual homecoming game before a packed house at Benny Douglass Stadium. MHS opens its District 1-3A season at Dimmitt next week.

SL-EARTH 28, MHS 0

SL-Earth 14 0 6 8 28
Muleshoe 0 0 0 0 0

SCORING SUMMARY

SLE — Ty Moudy 63 pass from James Williams (kick blocked)
SLE — Williams 1 run (Williams run)
SLE — Williams 32 run (kick failed)
SLE — Williams 3 run (Williams pass to Russell Verden)

TEAM TOTALS

	SLE	MHS
First downs	18	9
Rushes-yards	49-303	31-129
Passing yards	63	25
TOTAL YARDS	369	154
Passes	1-6-0	2-14-2
Punts-avg	3-40.7	6-31.7
Fumbles-lost	1-1	1-1
Penalties	5-60	8-63

INDIVIDUAL

Passing — SLE: Chris Spencer 11-35, Ray Pez 5-28, Robert Mendoza 7-54, Jose Mendoza 5-7, Williams 19-147, Verden 2-32.
MHS: Louis Hines 17-68, Michael Woodard 7-24, Matt McClanahan 3-(-7), Chris Shelburne 4-29, Douglass Field 3-2, Manuel Campolla 1-13.

Passing — Williams 1-6, 63 yards, 1 TD. MHS: McClanahan 2-14, 25 yards, 2 int.

Receiving — SLE: Moudy 1-63, 1 TD. MHS Jarrod Redwine 2-25.

Local HS scores

DISTRICT 1-3A
Dalhart 36, WT High 36
Ftirch 24, Panhandle 23
Dimmitt 7, Canadian 0
Friona 11, Shallowater 7
Tulia 42, Cooper 13
SIX-MAN
Laz 44, Samrwood 42
Three Way 32, Wellman 12

Riley wings 4 TD passes in 32-14 win

Lincoln Riley threw four touchdowns passes Thursday, leading the Watson Junior High School 7th-grade Mules to a 32-14 season-opening win over Springlake-Earth at Benny Douglass Stadium.

Michael Norman caught two long touchdown passes for the Mules.

A 20-yard pass to Zac Yanis and a 40-yarder to Norman gave WJHS a 14-0 lead in the first quarter. Michael Johnson ran for the PAT after the first score.

Riley's third touchdown pass, three yards to Stephan Shelburne, gave the Mules a 20-6 lead late in the second quarter.

Norman's 27-yard catch in the third quarter gave the Mules a 26-14 lead, and Jose Hernandez scored on a two-yard run on the last play of the game.

8th Mules, 28-0

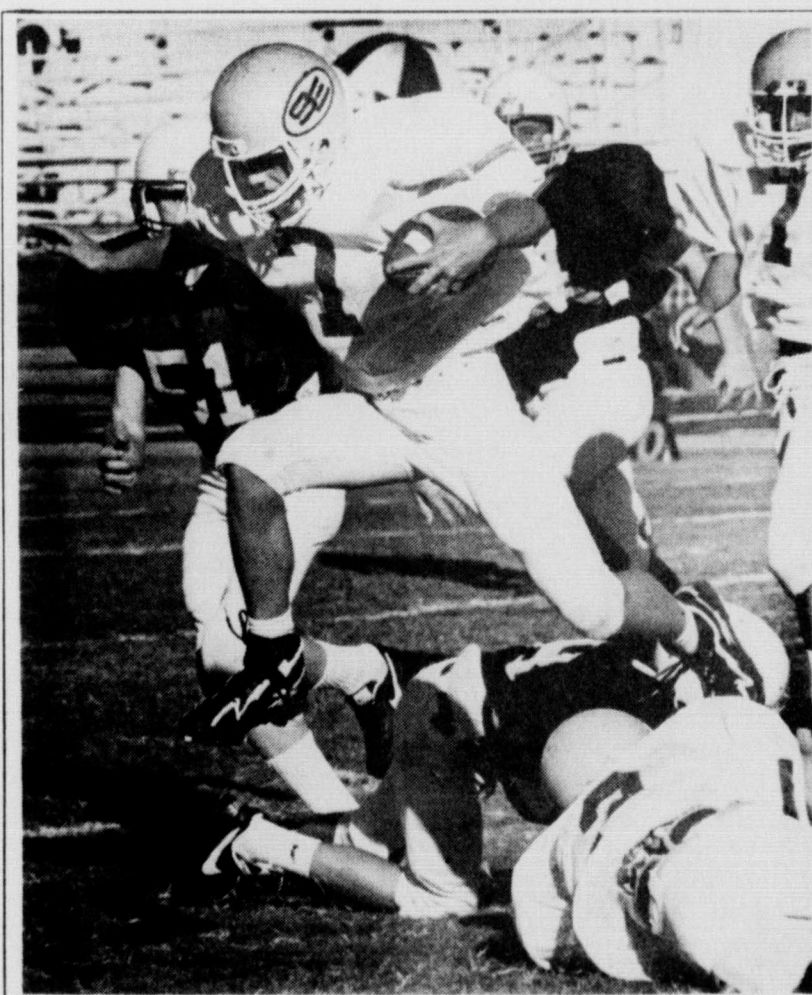
Ryan Lewis scored twice and Brandon Broyles return an interception for a touchdown Thursday, leading the Watson Junior High 8th-grade Mules to a 28-0 win over Springlake-Earth at Benny Douglass Stadium.

Lewis scored on runs of 20 and 25 yards for WJHS (2-1).

Broyles 28-yard interception return gave the Mules' a 21-0 halftime lead.

Jonathan Pacheco, who was 4-for-4 on extra points, scored the final touchdown on a 15-yard run in the third quarter.

WJHS hosts Dimmitt in its District 1-3A opener Sept. 26 at about 7 p.m.



Last hurdle

Springlake-Earth's Chance Furr leaps over a WJHS defender Thursday during a 7th-grade game.

Mule JV posts 1st win, 19-0

EARTH — The Muleshoe JV varsity won its first game of the season Thursday, 19-0, at Springlake-Earth.

Gilbert Vela scored twice for the Mules, now 1-2.

Vela scored on runs of 50 and 5 yards. Quarterback Breck Brown also scored on a 5-yard run.

Jacob Villa caught two passes for 25 yards for MHS.

The Mule JV hosts Dimmitt at 7 p.m. Sept. 26 in its District 1-3A opener.

MHS frosh fall, 20-12

HEREFORD — The Hereford sophomores rallied to beat the Muleshoe freshman, 20-12, Thursday.

Muleshoe (1-2) had taken a 14-12 lead in the third quarter on a 14-yard half pass from Jesse Reyes to John McClanahan.

Reyes scored on a 6-yard run in the first quarter.

Judd Glover and Jeffrey Bruns had interceptions for MHS.



Chevron Oil Products

Gary Dale Oil Co.

Dale's **QUICK OIL CHANGE**

OIL CHANGE **\$18⁹⁵**

Any Oil Up to
Six Quarts

TIRE SPECIALS

Lee II 235/85R16 **\$89⁹⁵**

(Mounted & Balanced with a Road Hazard Warranty)

Lee II 235/75R15 **\$55⁰⁰**

(Mounted & Balanced with a Road Hazard Warranty)

Dale Oil Co.

413 W. American Blvd. Muleshoe 272-5576

School menus

For the week of Sept. 23-27

MULESHOE

Dillman & DeShazo
Breakfast

Monday — Sausage biscuit, fruit or juice, milk. **Tuesday** — Blueberry muffin, fruit or juice, milk. **Wednesday** — Breakfast on a stick, fruit or juice, milk. **Thursday** — Apple stix, fruit or juice, milk. **Friday** — Cinnamon roll, fruit or juice, milk.

Lunch

Monday—Baked potato, chili, broccoli w/ cheese, blueberry cobbler, milk. **Tuesday**— Enchiladas, pinto beans, Spanish rice, mixed fruit, milk. **Wednesday**— Chicken nuggets, asjed potatoes, gravy, yellow squad, hot roll, milk. **Thursday**— Corn dog, vegetable

soup, cinnamon roll, pineapple tidbits, milk. **Friday**—Fish nuggets, macaroni & cheese, winter mix veggies, hot roll, milk.

Jr. High and High School
Breakfast

Monday — Sausage biscuit, fruit or juice, milk. **Tuesday** — Blueberry muffin, fruit or juice, milk. **Wednesday** — Breakfast on a stick, fruit or juice, milk. **Thursday** — Apple stix, fruit or juice, milk. **Friday** — Cinnamon roll, fruit or juice, milk.

Lunch

Monday— Pizza & fries, Hamburger & fries, Baked potato, chili, broccoli w/ cheese, blueberry cobbler, milk. **Tuesday**— Pizza & fries, Hamburger & fries, Enchiladas,

pinto beans, Spanish rice, mixed fruit, milk. **Wednesday**— Pizza & fries, Hamburger & fries, chicken nuggets, mashed potatoes, gravy, yellow squad, hot roll, milk. **Thursday**— Pizza & fries, Hamburger & fries, Corn dog, vegetable soup, cinnamon roll, pineapple tidbits, milk. **Friday**— Pizza & fries, Hamburger & fries, Fish nuggets, macaroni & cheese, winter mix veggies, hot roll, milk.

THREE WAY
Breakfast

Monday — French toast, juice, milk. **Tuesday** — Donuts, juice, milk. **Wednesday** — Oatmeal or Trix cereal, toast or graham crackers, juice, milk. **Thursday** — Breakfast taco, juice, milk. **Friday** — Waffles, sausage, juice, milk.

Lunch

Monday—Corn dog, macaroni/cheese, green beans, rice krispie treats, milk. **Tuesday**— Taco salad,

refried beans, crackers, jello, milk. **Wednesday**— Hamburger, fries, apples, milk. **Thursday**— chicken nuggets, corn, raw veggies, wheat rolls, orange sherbert, milk. **Friday**— Pizza, salad, broccli, birthday cake, milk.

LAZBUDDIE
Lunch

Monday — Pizza, burritos, sandwich with chips, corn, green beans, rice, salad, fruit, dessert, milk, tacos, milk. **Tuesday** — Hamburger basket, corn dogs, sandwich with chips, corn, green beans, black-eyed peas, salad, fruit, dessert, milk. **Wednesday** — Pizza, burritos, sandwich with chips, corn, green beans, macaroni & cheese, salad, fruit, dessert, milk. **Thursday**— Rib-B-Que basket, chef salad, sandwich with chips, chicken pot pie, corn, green beans, carrots, salad, fruit, dessert milk. **Friday** — Hamburger basket, pizza, burritos, steak fingers, corn, green beans, fries, salad, fruit, dessert, milk.

Community calendar

For more information, call Norma Perez at 272-4528

The deadline to appear in the Journal's Community Calendar is Thursday at 5 p.m.

Monday, Sept. 23

Round Dancing, 8-10 p.m., Civic Center.

Rheta White, beginner's oil painting, 213 E. Fir, 7-9 p.m.

Tuesday, Sept. 24

Alcoholics Anonymous, 7 p.m., 723 W. Ave. E. For more information, call 272-3002.

Rebekahs, 7:30 p.m., Rebekah Lodge.

The Rotary Club, 12-1 p.m., Bailey County Coliseum meeting room. Senior Citizen Dance, American Legion Hall, 8 p.m.

Rheta White, beginner's oil painting, 213 E. Fir, 10 a.m.

Thursday, Sept. 26

Alcoholics Anonymous, 7 p.m., 723 W. Ave. E. For more information, call 272-3002.

Oddfellows, 8 p.m., Oddfellows Lodge.

TOPS, 6 p.m., Church of Christ. Square dancing, Civic Center, 8-10 p.m.

Rheta White, watercolor painting, 213 E. Fir, 9:30-12:30 p.m.

Friday, Sept. 27

Kiwanis, 6:30-8 a.m., Snack Shack.

AARP, coliseum, noon-1 p.m. Rebekah's skating, coliseum, 7-9 p.m.

Editor's note: The Community Calendar appears in Sunday's Bailey County Journal.



Photo by SAMUEL VILLARREAL

Rise Ye Men

Muleshoe High School students participate in bonfire activities Thursday in preparation of the Homecoming game against the Springlake-Earth Wolverines. Pictured are (from left) Priscilla Aguirre, Mandy Myers, Katie Black and Amy Locker.

Customer Appreciation Days

September 1-30, 1996

40th ALLSUP'S

1956 - 1996 *Always*

	"ALL VARIETIES" Doritos REG. \$2.09 \$1.49		BUY ONE GET ONE FREE! ALLSUP'S Corn Dogs 79¢
	"ALL VARIETIES" 6 PACK CANS OR 3 LITER \$1.49		COMBO MEAL RIB-B-QUE Sandwich Potato Wedges & Tallsup \$1.99
	"ALL VARIETIES" ALLSUP'S Ice Cream 1/2 GALLON \$1.59		HORMEL Little Sizzlers Sausage 12 OZ. PKG. 99¢
			ALLSUP'S Canadian Bacon, Egg & Biscuit EACH 99¢
	MRS. FRESHLEY'S Cinnamon Rolls 8 CT. PKG. 11.5 OZ. 89¢		VALLEY FARE Paper Towels JUMBO ROLL 2 FOR \$1.00
	SHURFINE GRAYY OR CHUNK Dog Food 20 LB. BAG \$4.69		ALL VARIETIES Snapple Drinks 16 OZ. BTL. 69¢
			LANCE REG. 99¢ Cashews & Pistachios 1 1/2 OZ. BAG 79¢

40th ANNIVERSARY SPECIALS!

	ALL VARIETIES Sunny Cookies REG. 2 FOR \$1.00 40¢ EA.		FRITOS, LAY'S OR WAY'S Grab Bags REG. 75¢ 40¢		VANILLA & VARIETIES Champ! Cones REG. 69¢ 40¢
	Store #34 318 W. American Blvd. 272-4862 MULESHOE		ALLSUP'S Fresh Coffee 12 OZ. CUP 40¢		OZARKA Spring Water 24 OZ. SPORT CAP BTL. 40¢
			MRS. FRESHLEY'S Honey Buns 3 OZ. PKG. 40¢		

B-B-QUE CHICKEN \$4.99 B-B-QUE SANDWICH 99¢

LOW PRICES, GREAT PRODUCTS 24 HOURS A DAY

ALLSUP'S

Always

"Friends Free"

Checking Accounts!

- No Service Charge -
- No Activity Charge -

The account will be subject to any applicable miscellaneous charges.

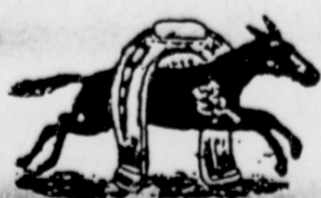
For More Information, Call Our New Accounts Personnel.

Your Safety Is Our Concern -



Remember Farm Safety!

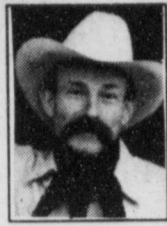
MULESHOE STATE BANK



101 W. American Blvd.
272-4561 Muleshoe, TX
801 Ave. A
481-9580 Farwell, TX



Just a dog



**BAXTER
BLACK**

ON THE EDGE OF COMMON SENSE

You were just a dog, but a good dog. Right from the start. Your loyalty was never in question. And what you didn't know, you didn't know because I never took the time to teach you.

When you were young, I was harder on you. I expected you to understand the basics... and you learned them. A "bad dog" was like a whip on your back.

But when uncontrollable instinct got you in trouble, I didn't hold it against you. I doctored you up, changed your bed and remembered that reason gets left behind in the heat of passion. Be it skunks, gyms or cloven hooves.

You were patient with the young, pups or kids. They pulled your hair, barked around you in circles and rode on your back. I never had to worry. They were safe with you.

You suffered the indignities of veterinary examinations, injections, probings and overnight incarcerations, refusing always to lift your leg under anyone's roof.

You posed for pictures, rode on loads like an acrobat and endured spring clippings yet never lost your sense of dignity.

A fierce guardian of your territory, you did your best to protect us. I knew better than to

shout you down at two in the morning. I always figured you were barking for a purpose.

Old age was not unkind to you. Despite the hearing loss, cataracts and stiff joints, you carried on. Sure, I had to help you get in the pickup, but you were part of the crew. I noticed you ate less, slept late and turned gray, but you never lost your enthusiasm for bein' part of our outfit.

People debate if dogs have a heaven. I'm not sure that matters. What is heaven to a dog? Enough to eat, something to chase, shade in the summer, someone to scratch your ears and pay you a little attention now and then.

All I know is you added to our life. Companion, listener, guardian and connection to a part of nature we tend to overlook because we're too busy worrying about the minutia of life.

You reminded us to appreciate a sunny day, a bone to chew and a kind word. You'll be missed around here.

You were just a dog. But you'll be in my heaven. Rest in peace, old friend.

Plains Cotton Co-op reports record distribution

LUBBOCK — Plains Cotton Cooperative Association (PCCA) announced a record cash distribution of \$34.6 million recently at its 43rd Annual Stockholders Meeting in Lubbock. The cooperative also reported for fiscal-year-end June 30, 1996, net margins of \$27.5 million on gross sales of \$785 million, both reaching the third highest levels ever.

"We are proud of these results because they are in keeping with our goal," PCCA President and CEO Van May said, "top add significant value

to our members' cotton." The cash distribution to members exceeds the previous record by \$2.2 million. The distribution consists of cash dividends totaling \$13.3 million, stock retirements totaling \$16.5 million and revolvment of mill option retains, totaling \$4.8 million.

May reported strong results from the 1995 crop marketing pools as well as from the company's TELCOT and crop contracting operations. "Our warehousing operations also turned in good years in spite of

smaller than average crops and rapid shipment of the bales we did receive," he added.

PCCA's year-end results also showed the cooperative's denimill at Littlefield, Texas, recorded its second highest net margins in its history, averaging \$15.09 per bale for members participating in PCCA's mil option program. May also reviewed the mill's \$14.5 million expansion project to increase production capacity.

"The project was completed ahead of schedule and \$1.1 million under budget," he said. The project originally was estimated to increase capacity by 20 percent; however, the end result was a 25 percent increase.

Have a nice day!

Revisions

Continued from page 1

itself to continuing the same priorities for conservation of our region's highly-erodible lands."

Combest said that USDA's statements lack accurate figures regarding which cropland in the Panhandle-South Plains would meet new erosion qualifications.

Combest insisted at Thursday's hearing that controlling blowing dust and conservation of underground water supplies should be given high priority when considering land enrolled in CRP.

Combest claims at least 138 million gallons of groundwater each year are saved through the CRP program.

Forums to gather comments

on the proposed rule will be held from Oct. 14-18 in all 50 states.

The Worst Lies May Be the Ones We Tell Ourselves

Among the worst lies are the ones we tell ourselves. Author Keith Miller was right on target when he wrote, "Honesty may not be the doorway into the kingdom of Heaven, but it is the latchstring to every door in the house." Lots of doors slam shut without it.

Sometimes, though, it is harder to be honest with ourselves than it is to be honest with others. Lies



**Focus
On
Faith**
Curtis
Shelburne

easily become the cancer that eats away at our souls. Healing comes only when we expose them to the light and deal with them as the lies they are. But that is not easy.

Ironically, most people who are in the midst of deluding themselves most seriously do it because they are really too honest and decent to be comfortable pursuing their present course without first lying to themselves about its morality or its consequences.

"I know Bob [or Joe or Jim] doesn't seem to care about his relationship with God now, but once we're married, he'll change and become the spiritual leader of our home."

"Yes, of course, drunkenness is a bad thing, but I really don't have an alcohol problem. I can quit drinking whenever I choose. I just

don't think now is a good time." "Yes, I know that by pushing for this divorce I am breaking every vow that I once held dear, but I have very good reasons, you see, and I can do it with no permanent damage to myself or my kids. I need it to be happy."

"If I just work a little harder, a little longer, make a little more money, or finish one more big project, then I'll take time to slow down and spend time with my family, but until then, little pieces of 'quality time' are good enough."

And maybe the most dangerous lie of all: "I'm too strong, too good, to ever tell myself the lies listed above or any of the million and one others like them. I just wouldn't make that mistake."

When God came on the scene back in Genesis 3 and found Father Adam & Mother Eve with forbidden fruit juice still trickling down their mouths, the Bible says that they stood lying to their God and suddenly realized that they were naked, and they were ashamed.

Strange. The only way that we their children can be healed and whole and unashamed is to once again stand naked before Him, laying aside the shabby rags of our self-deception, opening ourselves to be clothed in the pure white robes of His truth. His light, His Son, honestly opening all of our sin and our deep need before the One in whom there is no falsehood at all.

Curtis Shelburne is minister of the 18th & D Church of Christ in Muleshoe.

Sorghum conference in Lubbock

LUBBOCK — Scientists from 35 countries will attend a five-day conference here Sept. 23-27 to share research and examine needs and progress in improving the breeding of sorghum and pearl millet around the world.

Some 300 leaders in the genetic improvement of the important world food crops are expected for the conference at the holiday Inn Plaza, South Loop 289 at Indiana Avenue.

"It will be primarily a breeding conference," said Dr. Darrell Rosenow, professor and sorghum breeder at the Texas Agricultural Experiment Station here, chairman of the planning committee. He said the emphasis will be on the current "state of the art" of breeding and genetic improvement in the two crops, with a strong look to the future.

Sorghum and millet are important around the world as feed for poultry and cattle. Researchers also are looking at many possible new uses for the crops. Among these are production of ethanol, paper and plastics, breakfast cereals, pop sorghum and cooking oil.

In addition to the presentation of papers, the visitors will make several field tours. "Most multinational sorghum seed companies have one of their primary sorghum breeding centers within 50 miles of Lubbock," Rosenow noted.

Just in Time For Fall Baking

Pecans lb. **\$5.00**

**Lazbuddie Young Homemakers
Call 265-3299 or 965-2932**

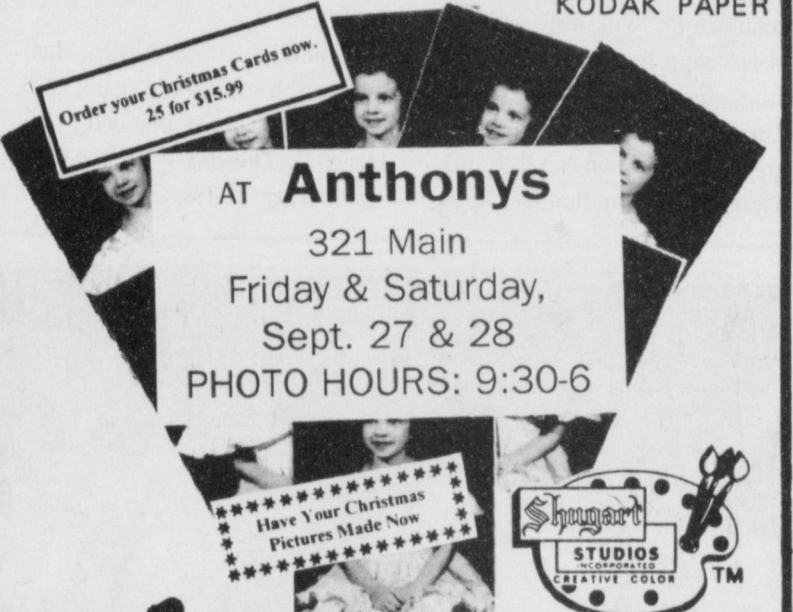
1- 10x13
(Wall Photo)
1- 8x10
2- 5x7
2- 3x5

30
Color
Photos

99¢ Deposit
\$11.00 Due at
Pick up
(plus tax)

\$11.99

WE USE
KODAK PAPER



**Shugart's
inc.**

Group charge
99¢ per person

During this promotion
you will receive
4- FREE 3 x 5's
with each \$11.99 package Purchased.



Muleshoe Heritage Foundation Tour de Muleshoe

A special thanks to the following businesses and individuals who helped make our 2nd Annual Bike Tour a big success:

Leal's Mexican
Restaurant

McDonalds Restaurants
of Muleshoe & Clovis
Southwest Airlines

Gordon Wilson
Wade King
Cindy Harrison
Dustin Cleavinger
Rick Powell
Robert Lepard
Victor Leal
Gary Skaggs
Lonnie Adrian
Dallas Anderson
Helen Adrian
Lanelle Skaggs
SCAC Members
Jim Morris
Kiwanis Club
Jennyslippers
Kenneth King
Earth Sr. Citizens
Bailey Co. EMS
Bailey Co. Sheriff's Dept.
Muleshoe Police Dept.
City of Sudan
Lamb Co. EMS
TX Dept. of Public Safety
Bailey Co. Coliseum
Channel 6
KWKA-Clovis
City of Muleshoe
Muleshoe Chamber of
Commerce & Agriculture

The Bike Path - Clovis
Gordon Wilson - Radio Shack
Winkler Meat
The Fair Store
Western Drug
Joe's Boot Shop
Damron Drug
Higginbothams
J & L Fashions
Federal Land Bank
The Fig Tree
Art Loft
Sheree's Attic
Williams Bros. Office Supply
Fry & Cox
Shafer Nursery
Williams Athletics
Bob Stovall Printing
Mohawk Auto
Dent & Co.
C & H Equipment
Heritage House Inn
Something Special
Alco
Barrett Produce
Lowe's Marketplace
Prego Spaghetti
Jarman Seed
Nabisco Foods

**We Look Forward To Your Continued Support in '97!
Thanks Again - The Board of Directors**

Federal Land Bank Association

316 Main St., Muleshoe
806-272-3010

Long Term Financing for
Farms, Ranches, Rural
Housing, Operating and
Improvements.

**Current Variable
Rate 7.95%.**

Fixed rates are available.

Call for quote.

A Property Rights Advocate
and Equal Opportunity Lender.

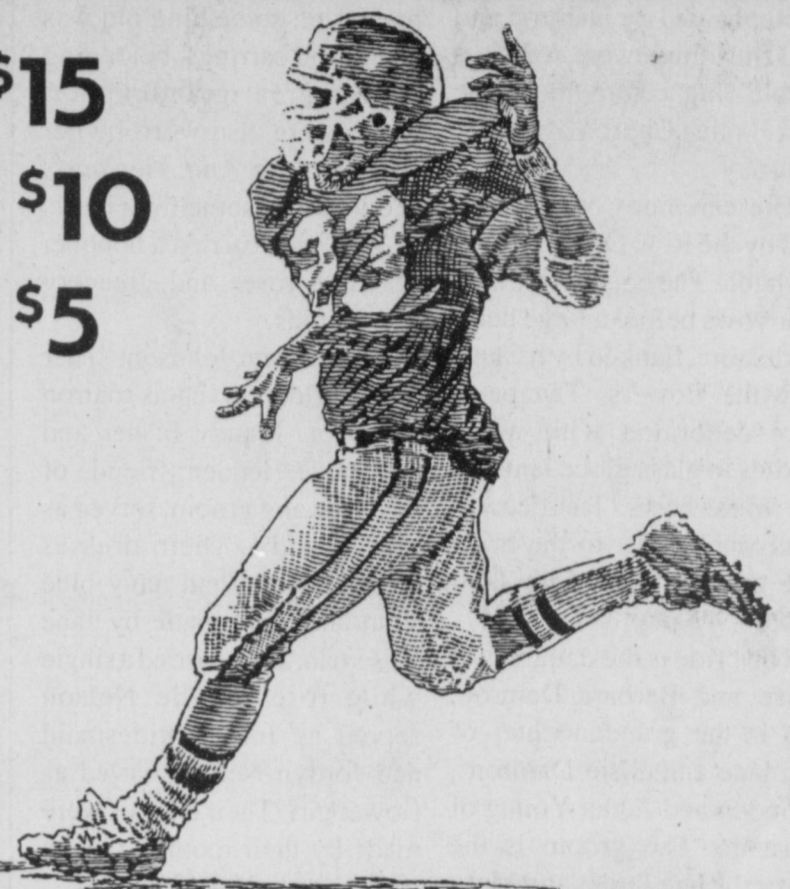
HAVE A

Bailey County Journal's

\$30 awarded each week!

FOOTBALL CONTEST

1ST PRIZE \$15
2ND PLACE \$10
3RD PLACE \$5



Name _____
Address _____
Phone () _____

GAMES OF
SEPTEMBER 27-30, 1996

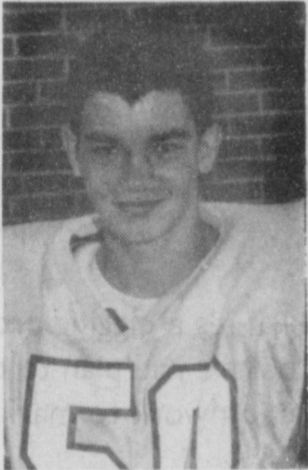
TIE BREAKER

Colorado at Texas A & M
Combined total of both teams _____

— RULES —


1. Circle your choice as the winning team in each of the 18 games.
2. The entry with the most correct selections will win. In the event of a tie, the entry which picks the closest to the actual tie breaker score will win.
3. Entries may be mailed to Muleshoe Journal, P.O. Box 449, Muleshoe, TX 79347 or drop off at the office during business hours (8:30-5:00). Please mark the envelope FOOTBALL CONTEST.
4. Entries for this week's contest must be received by the Muleshoe Journal or postmarked by 5:00 p.m. Friday, September 27, 1996.
5. Muleshoe Journal employees are not eligible for the contest.
6. Decision of the judges will be final.

Adrian Photography
218 W. 2nd
272-3487



Muleshoe at Dimmitt
Timothy Madrid

Bruce Electric
Bill Bruce
Muleshoe
272-5114




Dallas at Philadelphia
Jeffrey Wheeler

James Crane Tire Co.
322 N. 1st
272-4594




New Home at Lazbuddie
James Barrett

Wes Tex Feed Yards
Custom Cattle Feeding
Louis Reeder, Mgr. 272-7555



Tulia at Friona
Rhett Green

Sudduth Field & Co.
104 W. 2nd St.
272-4291



Ohio State at Notre Dame
Tyson Purdy

Bailey County Farm Bureau
Rickey Barrett, Mgr.
Dale Vise, Agt. Allen Mount, Agt.
1612 W. American Blvd. 272-4567



Kansas City at San Diego
Ryan Hodge

Muleshoe Co-Op Gin
Manager Charles Moraw
272-4794



Three Way at Groom
Colby Latham

Bob Stovall Printing
221 E. Ave. B
272-3373



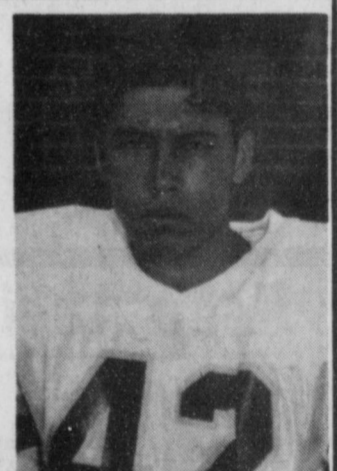
Houston at Pittsburgh
Chris Shelburne

Bailey Gin Co.
Sudan
946-3397




North Carolina at Florida State
Josh Pyle

West Camp Gin, Inc.
West Camp
925-6681



Denver at Cincinnati
Harvey Alfaro

Muleshoe Feed Barn
311 W. American Blvd.
272-5626



River Road at Dalhart
Coach Flint Bigham

McCormick Seed, Inc.
400 E. Ash Ave.
272-3156



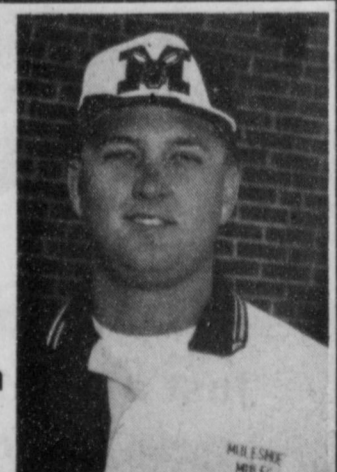
Texas at Virginia
Coach Jason Inman

Decorators Floral & Gifts
616 S. 1st 272-4340



Seminole at Denver City
Coach Ralph Mason

Wilson Drilling
W. Hiway 84
272-5521



Sanford-Fritch at Perryton
Coach Jimmy Orr

Hi-Tek Automotive
215 N. 1st
272-3480



Sudan at Kress
Coach David Wood

Leals Restaurant
1010 W. American Blvd.
272-3294



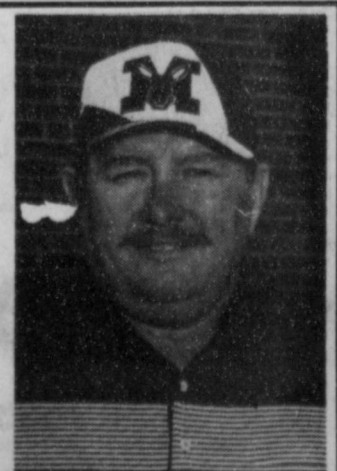
UCLA at Michigan
Coach Jesse Russell

Ag Aviation, Inc.
Friona Hwy.
272-3534



Tascosa at Clovis, NM
Coach Ron Welch

Western Drug Co.
114 Main
272-3106



Carolina at Jacksonville
Coach Butch Olsen

Damron, Steadman wed Sept. 14

Stephanie Lee Damron and Paul Steadman were wed in a double ring ceremony at the First Baptist Church of Sudan, Saturday.

The ceremony was officiated by the Rev. Oscar Newell of Slaton. The couple repeated their vows before a large heart candelabra, flanked by baskets of white flowers. The pews were decorated with white candles in glass globe lanterns and white bows. The decorations were a gift to the bride and groom from John and Bobbie Wagley.

The bride is the daughter of Julian and Barbara Damron. She is the granddaughter of Clarence and Elsie Damron, of Sudan and Zetha Young of Amarillo. The groom is the son of the late James and Mary Ann Steadman of Littlefield.

The bride wore a traditional gown of Alecon lace and ivory royal satin. The Queen Ann neckline featured a fitted bodice and long Renaissance sleeves with heavily hand beaded Alecon lace and pearls. Accenting the Basque waistline, the full ball gown skirt and cathedral train were decorated in patterned lace, sequins and pearls. The gown was highlighted by a triple tiered satin bow with rosettes and pearls. The veil was rosettes with sequins and pearls.

Something borrowed was the ring bearers' pillows, borrowed from her sister, Laurie Ann Johnson and Betheleen Harper. Something blue was

her garter, something old was pearls and earrings, belonging to her great-grandmother, which were also worn by her sister, Laurie Ann. Her dress and veil was something new.

The bride carried a bouquet of white roses and greenery and orchids.

Laurie Ann Johnson, sister of the bride, served as matron of honor. Mandy Fisher and Stephanie Hedden, friends of the bride and groom, served as bridesmaids. Their dresses were of white and navy blue satin and were made by Jane Wiseman. They carried a single white rose. Baylie Nelson served as Junior bridesmaid and Jordyn Nelson served as flower girl. Their dresses were made by their mother, Geyna Nelson.

David Steadman, of Lubbock, served his brother as best man. David Roden and John Wagley served as groomsmen.

Keith Damron and Steve Hedden served as candlelighters and ushers.

The ring bearers were Logan Lance, son of Greg and Ruth Lance of Sudan and Zachary Lance, son of Keith and Becky Lance, of Amherst.

Music selections were by Mike Hill and Penny Hargrove.

A reception was held following the ceremony in the fellowship hall of the church. The brides' table was decorated with a white brocade cloth, candles and large punch bowl. The cake was three-tiered, accented with "Precious Mo-



Mrs. Paul Steadman (nee Stephanie Lee Damron)

ments" cake topper and champagne glasses. The "Precious Moments" theme was carried out with champagne glasses, given to the bride and groom by her mother and on the register table was a special "Precious Moments" music box, a gift from the brides' sister.

The groom's table was decorated with a navy blue cloth, candles and greenery. The groom's cake was topped with a miniature John Deere tractor. A special gift was a miniature fire station and trucks, given to him by his bride.

The gift table was decorated with a navy cloth with a white lace overlay.

Following a wedding trip to Las Vegas, the couple will be at home in Sudan.

COPY DEADLINE

Copy deadlines for society news: wedding, anniversary, engagement and birthday announcements are 5:00 p.m. on Monday & Wednesday for the Thursday and Sunday editions.

Masa

Continued from page 1

Gruma S.A.

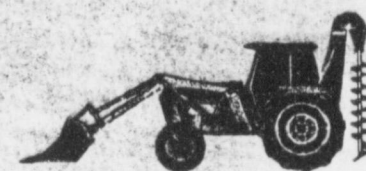
ADM announced earlier this month that it would purchase a 22-percent stake of Gruma for \$280 million. ADM and Gruma are the two largest producers of corn flour, used

to make tortillas, in the U.S.

ADM also owns the former Texas Sesame grain elevator, which is located on separate property. It is not known if it was included in the sale.

West Texas Gas, Inc. Reminds you to call BEFORE you dig

Before you begin to dig, trench, excavate, grade, build, put up a fence, plan a construction project, plant, install a sprinkler system, or landscape. Call us first to make sure you're not digging where our underground pipelines are located.



If a natural gas line is broken or cut, it will cause considerable inconvenience and expense.

Big or small, if it's a digging project, call West Texas Gas before you plan to do any landscaping or construction work to mark gas lines before you dig!



West Texas Gas, Inc.
Plainview, Texas
296-0866

Band hall

Continued from page 1

Leisha Wallace, a freshman flute player for the Mighty 'M' Band.

One of the major reasons for the new facilities is a need for space, according to band director Rob Lovett. The band is outgrowing the old band hall and the new choir program has no facilities.

Plans are underway to re-

model the old band hall for the use of the new choir program. The Muleshoe Independent School District has set aside \$21,000 for the transformation of band hall into choir room. The choir program was re-established this year after a lengthy hiatus.

"This is a wonderful opportunity," said Rob Lovett, "Not just for us, but also for the choir program. This will affect a lot

of kids. It's good that we're getting what we're needing."

Leticia Villalobos, a senior at Muleshoe High School and co-captain of the flags, will graduate before the band hall will be completed. It has given her mixed feelings about the new band hall.

"I'm sorry that I'll be missing it. But it's a good idea for the others and I'm happy for them."

Keep Accidents Down On The Farm...



Practice Safe Farming!

Farm Safety Week Reminder

Just a reminder of National Safety Council's Farm Safety and Health Week.

This year's theme is "Focus on the Future: Practice safety and health." Local events nationwide will emphasize the importance of safety awareness and education for all involved in American agriculture...especially our young people.

Bailey County Electric Cooperative Association

305 E. Ave. B 272-4504

Home Folks Caring For Folks At Home.



MULESHOE AREA HOME HEALTH

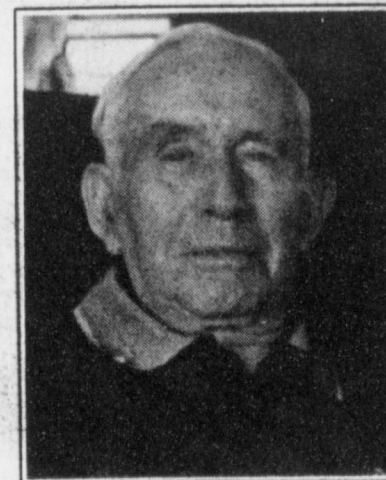
Agency

Featured Patient

Leon Lewis has lived in the Y.L. Community since 1945. He is married to Muriel Lewis. They have 5 children - Ronald Lewis of Guthrie, TX; Rheata Brunton of Amarillo; Patricia Wilson of Muleshoe; Ellen Lewis of Levelland and Kirk Lewis of Earth. They have numerous grand children.

Mr. Lewis has farmed and ranched most of his life. He is a member of the Trinity Baptist Church of Muleshoe.

The ladies from the Muleshoe Area Home Health Agency are very good to him. He appreciates them very much.



Leon Lewis

To receive Home Health Services, talk with your physician or talk with hospital personnel when you are hospitalized.

24 Hour # 272-3346
Local Nurse on call 24 hours a day to offer prompt service.

We accept Medicare, Medicaid and Private Insurance
It Is Your Right To Choose The Home Health Agency You Prefer.



Affiliated with
LUBBOCK METHODIST HOSPITAL SYSTEM

FREE Information On Advance Directives

Also known as Living Wills or Right To Die Directives. You may call our agency 272-3346 for these directives. You may also obtain these forms and assistance at 623 West 2nd Street.

OBITUARIES

A.M. Carpenter

AMARILLO — Graveside services for A.M. Carpenter, 75, of Amarillo, were held Sept. 19, at the Llano Cemetery, with Windell Taylor, Chaplain of the V.A. Medical Center, officiating.

Arrangements were by Blackburn-Shaw Memorial Chapel.

Mr. Carpenter died Monday, Sept. 16 in Amarillo.

He was born in Bell County, Texas. He was a WWII Army veteran, having worked as a surgical technician. He also worked in an evacuation hospital and supervised taking care of a ward. He was responsible for all records of the ward. He also served in the Bismark Archipelago, New Guinea, South Philippines Liberation, the American Theater, and the Asiatic-Pacific Theater. He married Mae Markins in Amarillo in 1983.

Survivors include his wife, Mae of the home; four sons, Jerry Carpenter, of Earth; J.R. Carpenter, of Kermit; Kenneth Carpenter, of Stanton; and Mike Carpenter of Norman, Okla.; one sister, Mary Lou Meyer, of Cedar Hill, Texas; 16 grandchildren and two great-grandchildren.

The family suggest memorials to the Muleshoe Fire Department.

Carol Lynn Grand

DIMMITT — Funeral services for Carol Lynn Grand, 60, of Littlefield, were held Sept. 20, at the First Christian Church of Dimmitt, with the pastor, Rev. Jim Hardwick and the Rev. Kenneth Broad, officiating.

Burial followed in the West Lawn Memorial Park of Dimmitt, under the direction of the Foskey-Lilley-McGill Funeral Homes of Dimmitt.

Mrs. Grand died Sept. 18 at her home, after a short illness. She was born Dec. 12, 1935, in Munday, Texas. She had lived in Muleshoe, moving to Dimmitt in 1993. She was a member of the First Christian Church of Dimmitt.

Survivors include two sons, Gary Grand of Dimmitt and Terry Grand of San Antonio; two daughters, Kathy Wyatt of Mansfield, Texas and Jan Provence of Ruidoso, N.M.; a stepfather, Leslie Holloway of Littlefield; one sister, JoAnn Reagan of Littlefield; nine grandchildren and one great-grandchild.

The family suggest memorials to the Alzheimers Association, Panhandle Chapter, 2200 W. 7th, Amarillo, Texas 79106 or the American Cancer Society, 3411 73rd St., Lubbock, Texas 79423.

BIRTHS

Andrea Cecilia Juarez

Cecilia and Marcelo Juarez of Friona announce the birth of a new daughter born Sept. 12, 1996 in the Muleshoe Area Medical Center of Muleshoe.

Andrea Cecilia Juarez weighed 9 lbs, 7 oz. at birth.

Grandparents include Maria Concepcion Perez and Jose Perez of Bovina and Filiberto and Carmen Juarez of Friona.

John Nicholas Apodara

Stormy and Carlos Apodara of Amherst announce the birth of a son born Monday, Sept. 16, 1996 in the Muleshoe Area Medical Center of Muleshoe.

John Nicholas Apodara

weighed 7 lbs. 4 oz. at birth.

Grandparents include Bob and Pheba Davison of Sudan and Rosendo and Adela Apodara of Amherst.

HOSPITAL ADMISSIONS

The Muleshoe Area Medical Center has reported the following admissions:

Sept. 13 — Rita Locker, Cruz Castorena, Linda Latimer, Pauline Cooper, Vickie Moraw, Cecilia Juarez

Sept. 14 — Linda Latimer,

Trini Benham

Sept. 15 — S.D. Clements, Linda Latimer, Stormy Davison

Sept. 16 — Mylissa Thompson, S.D. Clements, James Williams, Victor Contreras, Jewel Peeler, Elva Sparks, Stormy Davison, John Apodaca

Sept. 17 — S.D. Clements, James Williams, Jewel Peeler, Enrique Toscano, Alva Sparks

Sept. 18 — Johnny Vasquez, S.D. Clements, James Williams, Brenna Morris, Clarence Lewis, Jewel Peeler, Enrique Toscano

SEPTEMBER IN TEXAS

1900 — The worst natural disaster in American history hit Galveston Island on Sept. 8 and 9. The great Galveston hurricane completely inundated the island and damaged or destroyed every building. Between 6,000 and 8,000 people were killed, but an exact death toll was never established. Property damage was

estimated at \$30 million to \$40 million.

1971 — Hurricane Fern dumped 10 to 26 inches of rain on the Coastal Bend and caused the worst flooding since Hurricane Beulah. Two lives were lost and \$30 million in property losses recorded.

Thanks

to the wonderful citizens of Muleshoe for a tremendous response to the Terry Hutto Benefit Supper on Friday, September 13. More than 100 people from many churches took time to participate in the meal preparation, serving, delivery and clean-up. More than 500 people came and ate spaghetti and contributed to the donations for the Hutto family. More than \$8,000 was raised through the donations.

We thank everyone who contributed their time and talents, food and money to prepare and serve the meal. We are truly blessed to be part of a community which "rejoices with those who rejoice, and weeps with those who weep." Thanks, again for each person who in some way gave of themselves to make the Terry Hutto Benefit Supper a great success.

The Bailey County Ministerial Alliance

**Advertise It In The Muleshoe Journal Classifieds!
Call 272-4536**

Whirlpool Fall Festival of Savings



Whirlpool LXR9245E
27" Extra-Large Capacity Plus Automatic Washer

- 9 Automatic Cycles
- 2 Wash/Spin Speeds
- 4 Wash/Rinse Water Temps.
- 5 Water Level Selections
- White-on-White and Almond-on-Almond Styling

\$399⁰⁰



Whirlpool ET18GKXD
18.1 cu. ft. Top-Mount Refrigerator

- Cantilever Glass Shelves
- Flexi-Stor™ Fixed Door with Gallon Storage
- Flexi-Shelf™ Flip-Up Utility Shelf
- Flexi-Freeze™ Full-Width Adjustable Freezer Shelf
- Optional ICEMAGIC® Automatic Ice Maker
- White or Almond Styling

\$599⁰⁰
W/ FREE ICE MAKER



Whirlpool LER4634E
Extra-Large Capacity Electric Dryer

- 4 Drying Cycles
- 3 Temperature Settings (in Timer)
- White-on-White and Almond-on-Almond Styling

\$299⁰⁰



Whirlpool ED22PQXD
21.7 cu. ft. Side-by-Side Refrigerator

- Thru-the-Door Crush and Water Dispenser with Crushed/Cubed Ice
- Cantilever SPILLGUARD™ Glass Shelves
- Adjustable Door Bins with Gallon Storage, Door Shelf
- Green Tint Crisper, Temperature-Controlled Meat Pan and Snack Bin
- Exceeds 1996 Energy Standards by 20%
- White or Almond Styling

\$1199⁰⁰



Standard Clean Electric Range with SPILLGUARD™ Cooktop Model RF315PXD

- Cleans Easily Inside and Out
- 3.9 Cu. Ft. Capacity Oven Fits Your Cooking Needs
- EZ-Touch™ 200 Electronic Time-of-Day Clock with Minute Timer and Oven Controls

\$429⁰⁰



Whirlpool DU920QWD
QUIET WASH™ Plus Series Dishwasher

- 3-Level POWER CLEAN™ Wash System with Heavy-Duty Food Disposer
- Black with Black/Almond COLOR-QUICK™ Panel System or White-on-White Styling

\$419⁰⁰



Whirlpool LSR5233E
27" Super Capacity Plus Automatic Washer

- Cycle Logic™ Color-Coded Controls
- 5 Automatic Cycles
- White-on-White Styling

\$449⁰⁰



Whirlpool LER5848E
Super Capacity Plus Electric Dryer

- Cycle Logic™ Color-Coded Controls
- 5 Drying Cycles
- White-on-White Styling

\$419⁰⁰

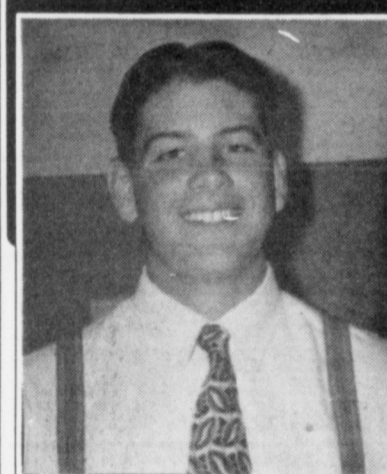


Self-Cleaning Electric Range with CleanTop® Cooking System Model RF376PXD

- Cleans Easily Inside and Out
- 3.9 Cu. Ft. Capacity Oven Fits Your Cooking Needs
- EZ-Touch™ 200 Electronic Time-of-Day Clock with Minute Timer and Oven Controls

\$699⁰⁰

**Western 66
Congratulates the Mule &
Lady Mule of the Week!**



CHRIS SHELBURNE
Junior Chris Shelburne played a great defensive game against Denver City last Friday. He is the son of Curtis and Juana Shelburne.

PRISCILLA AGUIRRE
Senior Priscilla Aguirre ran her best personal time ever-12.45, at the Plainview Cross Country meet. She is the daughter of Gilbert and Shirley Aguirre.



The CardStop
24 Hour Fuel Service

715 W. American Blvd., Muleshoe

To apply for a card, contact WESTERN 66
272-4556

We have diesel!

Wilson Appliance

117 Main 272-5532 Muleshoe

FREE DELIVERY
-up to 35 miles

Queens

Continued from page 1

known as Marilyn Pool. "The guys all wanted to wear their hair long," she remembered, "but they couldn't because of the dress-codes. The length of skirts was sometimes a problem. But overall students from that time went to school more dressed up than they do today." Free time for Riley was often spent with friends at the local drive-in. People spent as much time socializing outside their cars as they did watching the movies. Three Dog Night was the popular music of the time. Drive-ins aside, the students of her time were much like students today.

Pat King was crowned MHS Homecoming Queen in 1959. Known as Pat Barrett then, she was also a twirler for the Mighty 'M' Band. But for King, music was more than band. Music at the time most often meant the Everly Brothers, Rickie Nelson, and Elvis Presley. When King remembers her days in high school, she remembers Levi's, bobby socks, and pony tails. The drive-in was a popular place in her day. Girls in high school usually didn't own their own cars so they drove their parents' car or rode with the guys. King fondly remembers her

mother's Chrysler. The horn on the car was very deep and unlike anybody else's car. "I loved to honk the horn," she said. "Everyone knew from the sound of the horn that it was me." Bobby-socks aside, students of her time were much like kids today. Donna Nickels, Homecoming Queen for MHS in 1949, remembers students spending after-school time at the Western Drug drinking Cokes. "That was the first thing we did every day after school," said Nickels, known as Donna Kimbrough back then. Sports were a big part of student life during her years at

MHS. Among the popular sports were basketball, volleyball, and football. "Girls also spent a lot of time at each others' houses dancing and listening to music," she said. Among the other activities that students did were riding horses on western day and drag-

ing cars after school. Drag racing aside, the students of her time were much like students today.

As part of our 40th Anniversary celebration, on September 28, 1996 from 9:00 am to 5:00 pm we will have full-serve at all Allsups stores.

Allsups

\$1.00 off

SUPER CLEAN PREMIUM UNLEADED High Octane

The Purchase Of 8 Gallons Or More Of Super Unleaded Gas

Coupon Cannot Be Redeemed For Cash Or Any Other Purchase Other Than Gasoline. Coupon Good 9/28/96 ONLY • Limit One Per Customer

Allsups Store #34 318 W. American Blvd. • 272-4862 • MULESHOE

BAILEY COUNTY DEVOTIONAL PAGE

Scoggin Ag Center, Inc.

"Where Fertilizer Is Our Business"
1532 W. American Blvd.
272-4613

IRRIGATION
PUMPS & POWER
ZIMMATIC CENTER-PIVOTS
W. Hwy. 84 272-4483

MAPLE COOP GIN

927-5501
Maple, Texas

Leaf's Tortilla Factory, Inc.

"Serving West Texas since 1957"
107 E. Ash 272-5772 Muleshoe, TX

Muleshoe Country Club & Golf Shop

900 Country Club Dr. 272-4250
Swimming, Dining, Golf Lessons Available Golf Accessories & Clothing

Henry Insurance Agency

Auto, Home, Life, Health, Property & General Insurance
111 West Avenue B
Muleshoe, TX 272-4581

BOBO INSURANCE AGENCY

108 E. Ave. C 272-4264

Shipman's Body Shop

Auto Painting • Wrecker Service • Free Estimates
Tractor Glass & Windshields
410 N. 1st Muleshoe, TX
272-4408 FAX 272-3366

SAIN IRRIGATION & MACHINES

Complete Pump Service
W. American Blvd. 272-4397
Walt Sain Muleshoe, TX 272-4148

Bob STOVALL Printing

Quality -- Service
221 E. AVE. B 272-3373
C.R. & EVA NELL DALE MULESHOE

Ellis Funeral Homes

Muleshoe - Morton - Earth - Sudan
Texas

RONNIE HOLT INSURANCE AGENCY

Specializing in Crop, Life & Health Insurance
Western 66 Office Bldg.
272-4271 Muleshoe, TX

PACO FEED YARD, INC.

Commercial Cattle Feeders
P.O. Box 956 265-3281
Frona, TX
Feller Hughes-Mgr.

WEST CAMP GIN, INC.

Better Ginning & Courteous Service
Rt 2, Box 1000
925-6681 Muleshoe, TX
James Shepard • Phyllis Shepard

JAMES CRANE TIRE CO., INC.

322 N. First 272-4594
Muleshoe, TX
Mike Hahn

Facts About The BIBLE BY JOHN LEHTI

HER NAME APPEARS ONLY ONCE IN THE BIBLE—BUT...

DORCAS (OR TABITHA—THE ARAMAIC FORM OF THE NAME) A FEMALE DISCIPLE OF JESUS, LIVING IN JOPPA. SHE WAS KNOWN FOR HER GOOD WORKS SUCH AS MAKING COATS AND GARMENTS FOR THE POOR. WHEN SHE DIED, HER FRIENDS PREPARED HER FOR BURIAL AND SENT FOR PETER, WHO HAPPENED TO BE IN NEARBY LYDDA AT THE TIME...



...WHEN PETER ARRIVED HE SENT THE MOURNERS OUT OF THE ROOM AND PRAYED EARNESTLY. THEN HE BADE THE YOUNG WOMAN TO ARISE—AND SHE OPENED HER EYES AND DID! NEWS OF THIS ACT SPREAD ABOUT JOPPA AND INSPIRED MANY CONVERSIONS TO THE NEW CHRISTIAN FAITH. (ACTS 9: 36-42)

NEXT WEEK: THE RICH MAN WHO COULDN'T SAVE JESUS' LIFE BUT SAVED HIS BODY!

SAVE THIS FOR YOUR SUNDAY SCHOOL SCRAP-BOOK

This devotional & directory is made possible by these businesses who encourage all of us to attend worship services.

ASSEMBLY OF GOD

FIRST ASSEMBLY OF GOD
521 South First Street • 272-3017
Jack Stone, Min. • 272-3984
S.S. 9:45 a.m., W.S. 11 a.m. & 6:30 p.m., Wed. 7:30 p.m.

BAPTIST

CALVARY BAPTIST
1733 W. Ave. C.
Ben Davis, Min.
CIRCLE BACK BAPTIST
Intersection FM 3397 & FM 298
Jessie Shaver, Min • 946-3676
EMMANUEL BAPTIST
107 East Third
Isaias Cardenas, Min.
FIRST BAPTIST
220 West Ave. E.
Stacey Conner, Min.
FIRST BAPTIST
Lazbuddie • 965-2126
PRIMERA IGLESIA BAUTISTA
223 E. Ave. B
Roy Martinez, Min.
PRIMITIVE BAPTIST
621 South First
Elder Cleveland Bass, Min.
PROGRESS BAPTIST
Progress, TX
PROGRESS SECOND BAPTIST
Arthur Hays, Min.
1st & 3rd Sundays
RICHLAND HILLS BAPTIST
17th & West Ave. D
Brad Gathright, Min.

ST. MATTHEWS BAPTIST

Corner of W. Boston & W. Birch
Floyd R. Monroe, Min.
TRINITY BAPTIST
314 E. Ave. B
Robert Brown, Min.

CATHOLIC

IMMACULATE CONCEPTION
CATHOLIC
805 E. Hickory
Joseph Augustine, Min.
CHRISTIAN
THE CHRISTIAN CENTER
Morton Hwy. • 272-5105
Reydon Stanford, Min.

CHURCH OF CHRIST

LARIAT CHURCH OF CHRIST
Sam Billingsley, Min.
S.S. 10 a.m.; W.S. 11 a.m. & 6 p.m., Wed. 7 p.m.
LAZBUDDIE CHURCH OF CHRIST
Nathan Crawford, Min.
S.S. 9:30 a.m.; W.S. 10:20 a.m. & 5 p.m.; Wed. 7 p.m.
MULESHOE CHURCH OF CHRIST
22nd & W. American Blvd.
John Knox, Min.
S.S. 9:30 a.m.; W.S. 10:20 a.m. & 6 p.m.; Wed. 7:30 p.m.
SIXTEENTH & AVE. D
CHURCH OF CHRIST
Curtis Shelburne, Min. • 272-4619
W.S. 10:30 a.m. & 6 p.m.; Wed. 7:30 p.m.

LUTHERAN

ST. JOHN LUTHERAN
Lariat, TX
Richard Greenhaner, Min.
S.S. 10:30 a.m.; W.S. 9:30 a.m.

METHODIST

EL DIVINO SALVADOR
METHODIST
E. 5th and E. Ave. D
Guadalupe Ballinas, Min.
FIRST UNITED METHODIST
507 W. 2nd St.
John Wagoner, Pastor
9 a.m. Holy Communion-Chapel,
9:45 a.m. Sunday School,
11 a.m. Morning Worship
LAZBUDDIE METHODIST
965-2121

NAZARENE

NEW VISION CHURCH OF
THE NAZARENE
814 W. Ave. C • 272-3622
David R. McIntire

PENTECOSTAL

IGLESIA PENTECOSTAL
UNDIA
207 East Ave. G • 272-3636
Wencelado Trevino, Min.

OTHER

NEW COVENANT
Plainview Hwy.
Jimmy Low, Min.
W.S. 10 a.m.; Wed. 7 p.m.

1ST BANK

MEMBER
FDIC

202 South First 272-4515

WES-TEX FEED YARDS, INC.

Custom Cattle Feeding
272-7555 Muleshoe, TX

AMERICAN AVI INC.



West
Hiway 84
272-4266
Muleshoe

BAILEY GIN COMPANY, INC.

946-3397
Sudan, TX
Peanut Hawkins, MGR

WESTERN DRUG

114 Main 272-3106 Muleshoe

Church's CHICKEN

272-5581

1411 W. American Blvd., Muleshoe

HERITAGE HOUSE INN

2301 W. American Blvd. 272-7575
Muleshoe, Texas
Clint & Evelyn Peat - Resident Owners
Reservations 1-800-253-5896

BRUCE, INC.

AIR CONDITIONING
Hwy. 214 North 272-5114
Muleshoe, TX
TAEL-B003360C, LP08638

MULESHOE COOPERATIVE

GINS
P.O. Box 569
272-4794 Muleshoe, TX

MULESHOE AREA HEALTHCARE

"Committed to Caring"
106 W. Ave. H Muleshoe 272-7578

MULESHOE MOTOR CO.

1225 W. American Blvd. 272-4251

"THE FIVE AREA TELEPHONE COOPERATIVE ORGANIZATION"

West Plains Telecommunications Co.
Five Area Systems, Inc., Plateau-Cellular Network
Five Area Long Distance - Five Area Internet
302 Uvalde Muleshoe, USA (806)373-5533

WANDA BROWND INSURANCE AGENCY

118 E. Ave. C Muleshoe 272-7548

Since 1957 - The Original

Leal's Mexican Restaurant

1010 W. American Blvd. 272-3294
Muleshoe, TX Victor & Debbie Leal

Risinger Plumbing

Serving Muleshoe Area
NO CHARGE TIL I ARRIVE AT DOOR!
1-800-749-4472

Journal Classifieds

Call 272-4536 Deadlines: For Thursday, 5 p.m. Monday; for Sunday, 5 p.m. Thursday Call 272-4536

Public Notice

An Ordinance Approving The Adopting of a Budget for the Fiscal Year Beginning Oct. 1, 1996 and ending Sept. 30, 1997.

WHEREAS, the City Manager of the City of Muleshoe has prepared and submitted to the City Council a budget estimate of the expenditures and revenues for the City of Muleshoe of the fiscal year beginning Oct. 1, 1996 and ending Sept. 30, 1997, which has been approved and adopted.

NOW THEREFORE BE IT ORDAINED BY THE CITY OF MULESHOE, TEXAS

Section 1. That the budget estimate of the revenues of the City of Muleshoe and the expenses of conducting the affairs thereof for the ensuing fiscal year, beginning Oct. 1, 1996 and ending Sept. 30, 1997, as submitted to the City Council by the City Manager of said City, and as changed or amended by the City Council, be and the same is in all things, adopted and approved as the budget estimate of all the current expenses as well as the fixed charges against said City for the fiscal year beginning the 1st day of Oct., 1996, and ending the 30th day of Sept., 1997.

Section 2. That the sum of \$1,563,560 is hereby appropriated out of the General Fund for payment of operating expenses and capital outlay of the City Government, as set forth in detail in the budget.

Section 3. That the sum of \$140,200 is hereby appropriated out of the Interest & Sinking Fund for the paying of debt service as set forth in detail in the budget.

Section 4. That the sum of \$828,925 is hereby appropriated out of the Water & Sewer Revenue Fund for the paying of operating expenses, capital outlay, and debt service for the Water & Sewer Revenue Fund, as set forth in detail in the budget.

Section 5. That the sum of \$288,800 is hereby appropriated out of the Capital Projects fund for payment of the operating expenses and capital outlay as set forth in detail in the budget.

Section 6. That the sum of \$34,721 is hereby appropriated out of the Hotel/Motel Tax Fund for payment of operating expenses as set forth in detail in the budget.

Section 7. That the sum of \$34,350 is hereby appropriated out of the Economic Development Fund for payment of the operating expenses and capital outlay of the Economic Development, as set forth in detail in the budget.

Section 8. That the sum of \$9,050 is hereby appropriated out of the Airport fund for payment of operating expenses and capital outlay of the Municipal Airport, as set forth in detail in the budget.

PASSED AND APPROVED THIS THE 17TH DAY OF SEPTEMBER 1996.

Robert Montgomery Mayor, City of Muleshoe
ATTEST:
Mary Hicks
City Secretary, City of Muleshoe

Published in the Bailey County Journal, Sept. 22, 1996.

Public Notice

An ordinance by the City Council of the City of Muleshoe, Texas, amending the budget for the fiscal year 1995-96.

Now therefore be it ordained by the City Council of the City of Muleshoe, Texas:

Passed and approved this 17th day of September, 1996.
Robert Montgomery Mayor, City of Muleshoe
ATTEST:
Mary Hicks
City Secretary, City of Muleshoe
Published in the Bailey County Journal, Sept. 22, 1996

Public Notice

An Ordinance levying taxes of the use and support of the Municipal Government of the City of Muleshoe, Texas, for the year 1996-97, and providing for the time and manner of paying the ad valorem taxes levied.

Now therefore be it ordained by the City Council of the City of Muleshoe, Texas

Passed and approved this 17th day of September, 1996.
Robert Montgomery Mayor, City of Muleshoe
ATTEST:
Mary Hicks
City Secretary, City of Muleshoe
Published in the Bailey County Journal, Sept. 22, 1996.

Notice For Bids

The Bailey County Commissioners Court will receive bids for the purchase of a new motor grader for Precinct No. 4. Deadline for submission of bids is 10:00 a.m., Monday, September 30, 1996, at which time bids will be opened.

Sealed bids should be submitted to, and specifications for bidding may be obtained at, the County Judge's Office, 300 S. 1st, Muleshoe, TX 79347.

Bids must state the year model being offered, the lump sum gross purchase price, the trade-in allowance given, and the net trade difference. Payments will be made from Precinct No. 4 Road and Bridge funds. The Commissioners Court reserves the right to reject any or all bids, to waive formalities, and to postpone awarding of the bids until a later date, if necessary.

Published in the Bailey County Journal, Sept. 15 and 22, 1996.

Legal Notice

The Muleshoe Independent School District is accepting proposals for carpeting of classrooms and hallways at Dillman Elementary. Specifications may be acquired by calling 806/272-4828 or at the Administration office, at 514 W. Ave. G, Muleshoe, Texas 79347. All proposals are due no later than 4:00 p.m., Friday, October 18, 1996. Muleshoe ISD has the right to accept or reject any or all proposals subject to the best interest of the district.

Published in the Bailey County Journal, September 22 and 29, 1996.

Wanted

\$\$\$WANTED\$\$\$
We buy used mobile homes. We pay top dollar, any year, any condition. We need your used mobile home. Please call 1-800-404-1321.
7t-lfc

For Sale

For Sale: Big Screen TV
Take on small monthly payments upon credit approval. Call 1-800-398-3970.
37t-4tpd

Singer
1996 New unsold Heavy Duty School Models. Sews silk, canvas, leather, knits & Jeans. Sews straight, zigzag, buttonholes, monograms, serge seam finish. 10 year Factory warranty. \$198 w/ad; \$498 w/out. Free UPS statewide.
Singer Sewing Center
5418 Slide Rd.
Lubbock
806-788-0608

37t-lfc

Mobile Homes

Let's trade during the month of Sept.!!
Mustang Mobile Home's would like to trade for your used home.
Call for details
800-333-8803

Just In!
1997 Oakcreek 4-3
2300 sq. ft. wonderful oak cabinets, ceramic tile entry, T&T walls luxury at its best.
Shown by Appt. please!
800-333-8803

37s-7tc

Help Wanted

WILDLIFE/ CONSERVATION JOBS
Game Wardens, security, maintenance, etc. No exp. necessary. Now Hiring For Infor Call (219)794-0010 ext. 196898 a.m. to 10 p.m. 7 days
38s-3sun pd

Automobile

1977 GMC one ton flat bed truck. 454, standard transmission. Good strong motor, dual wheels. \$3,000 or best offer. (505) 356-5509, Portales, NM (505) 359-1775
36s-tfc wp
1993 Ford OLT Supercab 4x4 pickup. Very clean. \$9,500 OBO. 272-3102 or 925-6766. 31s-tfc

Mobile Homes

'86 Jeep Grand Wagoneer, extranice, \$3,995. Portales, NM (505) 359-1775

'91 Chevy 3/4 ton, 4x4, red, \$8,995. Portales, NM (505) 359-0947

'85 Chevy Blazer, automatic, 4x4, \$4,995. Portales, NM (505) 359-1775

'89 Cadillac Sedan DeVille, loaded, excellent condition, \$7,995. Portales, NM (505) 359-0947

'94 Plymouth Grand Voyager Mini-van, \$12,995. Portales, NM (505) 359-1775

Classifieds Sell!

Attention: Potential Homebuyers
If you have had bankruptcy or other credit problems, there is a good chance we can help you with the purchase of a home.
- No Application fees.

For a Pre-Approval Appointment
Call 806-796-8354

Local Representatives
Dianne Gonzales Beverly Parker
806-272-5192 806-272-3152

Funded primarily by



Consumer Finance Co., Inc.
38s-8tc

Byrd Realty
Ronald Byrd
Licensed Broker
Farwell, Texas

Crista Bais
Sales Associate
Home (806) 925-6464

Office (806) 481-3846
Mobile (505) 760-1495
308 Third St., Farwell, TX

78 Acres NW of Muleshoe, Highway Frontage. Excellent development property. Owner will sell as one unit for \$40,000 or will divide into 5 or 10 acre tracts at \$750.00 per acre. If you have wanted a small acreage, this is your prime opportunity

James F. Hayes & Co.
AGRICULTURAL REAL ESTATE SERVICES

656 Acres of C.R.P. — Clays Corner Hub. Area. Two years left on contract. 3 irrigation wells, 1 domestic well. 90% lays good with good soils. Will be productive farm when it comes out of C.R.P.

640 Acres Oklahoma Lane — 2 Sprinklers, 4 irrigation wells, 115 Acres of pasture, modest home, 2 domestic wells

120 acres west of Muleshoe. 2 wells. Good soil. Lays good. Immediate possession available. \$250.00 per acre.

160 Acres Northeast of Muleshoe in Parmer County. Excellent water. Excellent soil. Electric Center Pivot Sprinkler. New set of bowls on pump. Top Notch Farm

317 Acres in Lamb County on Bailey County line. 3 wells, 1 sprinkler, lays good. Call for details!

Vic Coker, Agent
310 Main St. Suite 103 Muleshoe
Office 272-3100 Home 965-2468
WHEN LAND INVOLVES COWS AND PLOWS

BETTER LIVING
MOBILE HOMES

Fall Special
6 - 1800' sq. ft. Double Wides to choose from.
\$10,000 SAVINGS
WAS \$59,000
FALL SPECIAL
\$49,995

Hurry in - these won't last long!
Model #8952*
*Approximate

1-800-404-1321
(505)356-5448
Portales

Lic. # D00681
"Se Habla Espanol"

Farm Equipment
For Sale: 1982 AC N7 Grain Combine; 1975 Ford Tandem Grain Truck, grain cart; 1982 Freightliner conventional cab w/sleeper; 1979 Great Dane refer trailer, 45 ft.
Call (915) 758-5464, Seminole.

Farm Land For Sale
Priced Right! 160 Acres of irrigated farm land with a Valley Sprinkler. Parmer County near Clays Corner.
Contact Benny Splawn
Scott & Company Realtors.
office - 806-355-9856
home - 806-355-0686
38s-3sun c

Personnels
Live!
One-on-One
1-900-476-3131
Ext. 8230
\$3.99 per min.
18+
Serve-U
619-645-8434
37t-4tpd

Real Estate
House For Sale by owner, 3-1 3/4-1 Brick home, would make good rental property. Call 272-5607 after 6 p.m. for more information
36s-tfc hm
For Sale: Comfortable 3 bdrm. home W/Water well on approximately 2 acres Large shop building for mechanic or hobby use. Hwy. frontage. Three Way School Dist. accepting sealed bids for next 30 days.
806-894-2554.
36s-5sun c

House For Sale
Nice 3 bdrm, one bath, in Lenua addition. Call 272-3920 or Lubbock collect, 806-745-0902.
38s-4 sun c

PRIMESTAR
\$50 off installation
call Gabriel for details
272-3072 or
1-800-815-2358
pin 9240
38s-tfc

Extra Good Wheat Seed!
Extra Forage - Extra Grain
Don Bryant
965-2464
King Grain
272-4541
35t-8tc

MUST SELL! 1992 Ford Explorer
2WD and 4WD, Loaded and much more No old contract to assume, no back payments to make, just need responsible party to make reasonable monthly payments.
Contact Doug in the Credit Dept., Friona Motors, 806-247-2701

MUST SELL! 1992 Mercury Cougar
Double Sharp, Loaded and much more. No old contract to assume, no back payments to make, just need responsible party to make reasonable monthly payments.
Contact Doug in the credit dept. Friona Motors, 806-247-2701

MUST SELL! 1995 Chevrolet Corsica
Low Miles, 4 door, loaded, and much more No old contract to assume, no back payments to make, just need responsible party to make reasonable monthly payments.
Contact Doug in the Credit Dept., Friona Motors, 806-247-2701

MUST SELL 1994 Ford F150
Super Cab, 4x4, Loaded and much more. No old contract to assume, no back payments to make, just need responsible party to make reasonable monthly payments.
Contact Doug in the credit dept. Friona Motors, 806-247-2701

MUST SELL! 1996 Chevrolet Crew Cab
454 V-8, Automatic, Loaded, One of a Kind and much more. No old contract to assume, no back payments to make, just need responsible party to make reasonable monthly payments.
Call Doug in the credit dept, Friona Motors, 806-247-2701

MUST SELL! 1994 Chevrolet-C-1500
4x4, Loaded, Automatic Transmission and much more No old contract to assume, no back payments to make just need responsible party to make reasonable monthly payments.
Call Doug in the credit dept, Friona Motors, 806-247-2701

Nieman Realty
116 E. Ave. C George Nieman, Broker 272-5285 or 272-5286

RICHLAND HILLS
JUST LISTED-IMMACULATE 3-2-2 Brick Home, Geo. Heat Pump, Built-ins, FP, Nice landscaped yd., Stor. Bldg., MORE!! \$70's!!! RH3
NICE 3-3-1 Brick, cent. Heat, Evap. Air, built-ins, 2000' + lv. area, fenced yd., stor. bldg., MORE!! \$60's!!! RH-2
NICE 3-2-2 Brick, cent. A&H, built-ins, FP, approx. 2150' lv. area, fenced yd., MORE!!! \$69K!!! RH-7
VERY NICE 3-2-1 Brick, Cent. A&H, built-ins, fans, new paint, carpet, & drapes, fenced yd. \$60K!!! RH-1

HIGHLAND AREA
2 Bdrm, 1 bath home, fenced yard. \$16,500!!! HL-4
VERY NICE 3-2-2 Brick, Cent. A&H, built-ins, fenced yd., spktr. sys., MUCH MORE!!! \$60's!!! HL-1
3-2-2 home, Cent. A&H, built-ins, fenced yd., corner lot. \$30's!!! HL-2
VERY NICE 3-2-1 carport Home, heat pump, built-ins, nice carpet, fans, storage-workshop! MUCH MORE!!! \$40's!!! HL-6
NICE 3-2 Home, Heat Pump, FP, fenced yd., stor. bldg. \$30's!!! HL-3
NICELY REMODELED 3-2-1 Brick, Cent. A&H, built-ins, FP, nice carpet & tile, fenced yard, storage building, MORE!!! \$60's!!! HS-8

PARKRIDGE - NICE 3-2-2- Brick, Cent. A&H, built-ins, FP, cov. patio, fenced yd. \$50's!!!
COUNTRY CLUB - 2-1-1 Carport Home, wall furnace heat, nice carpet, storm shelter, stor. bldg., fenced yd. \$20's!!!

RURAL HOMES
NICE 3-2-2+2 Carport Brick Home on 2.5 acres on pavement, close to town, Heat Pump, built-ins, FP, MUCH MORE. \$70K!!! HR-3
JUST LISTED -3-2-2 Home 1.36 ac. on pavement, Cent. A&H, built-ins, freshly painted interior & exterior, fans, fenced yd., 31' x 40' barn!!! \$40's!!! HR-2
VERY NICE 3-11/2-1 Home on 8 acres, on pavement close to town, Cent. A&H, built-ins, sun room, concrete cellar, storage bldgs., fenced yd., RV cover, mobile home hookups, stock pens, fenced acreage, & MORE!!! \$50's!!! HR-6

ASK ABOUT OUR COMMERCIAL LISTINGS!!!
160 acre tract, 8" well, circle spktr. w/drops, fully allotted!!
PARMER - BAILEY CO. Area-Elevator & Cleaning Facility - 12 million lb. Capacity, Scales, Dryer, & Office on approx. 6.5 acres!!! PRICED TO SELL!!! POSSIBLE OWNER FINANCING!!!

Classifieds sell
Call 272-4536

We never remark any passion or principle in others, of which in some degree or other, we may not find a parallel in ourselves.
—Hume

Subscribe to the Muleshoe Journal 272-4536

Lowe's 33rd Anniversary

ALL TYPES
Coca-Cola,
Dr. Pepper & Sprite
\$1.29
6 pack, 12 oz. cans



MEAT

- Fryer, 10 lb. bag **39¢**
- Thigh Quarters lb. **\$1.39**
- Single Pack, Beef Chuck **\$1.39**
- 7-Bone Steak lb. **\$3.79**
- Value Pack, Boneless Beef **\$3.79**
- Rib-Eye Steaks lb. **\$1.49**
- Fresh Preferred Chuck Quality **\$1.49**
- Ground Chili Meat lb. **\$1.99**
- Hormel Smoked Pork Chops **\$1.99**
- Wilson 1.75 lb. Sliced Just For Us Ham each **\$6.99**
- Wilson Regular or Polish Smoked Sausage 1 lb. pkg. **\$1.99**
- Wilson Regular Smoked Sausage 3 lb. pkg. **\$4.99**

Prices Pimiento 14 oz. Regular or 13 oz. Lite Cheese Spread

2/\$5

Black Label Regular, Mesquite, or Low Salt Hormel Bacon

2/\$5



Single Pack, Blade Roast, 7 Bone Roast or Chuck Roast
99¢
lb.

Bar S Meat Franks
69¢
12 oz. pkg.

Deli Pride Assorted, 4.2-6.5 oz. pkg. Frozen Sandwiches
BUY ONE, GET ONE FREE

Decker, 1 lb. pkg. Meat Bologna

BUY ONE, GET ONE FREE
Sonrito's Assorted, 4.5-4.65 oz. pkg. Burritos

BUY ONE, GET ONE FREE



PRODUCE

Broccoli Crowns

2 lbs. **\$1**

Dole Salad Mix
1 lb. bag **88¢**

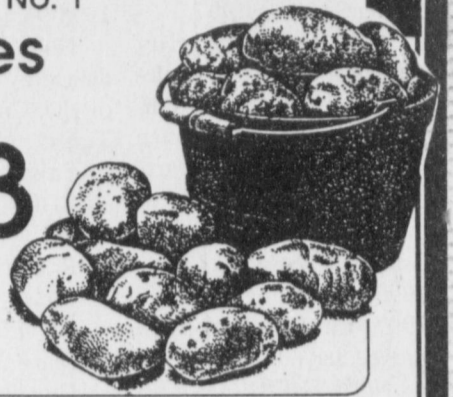
Sno-White Mushrooms
8 oz. pkg. **99¢**

Jewel Green Limes
10 for \$1

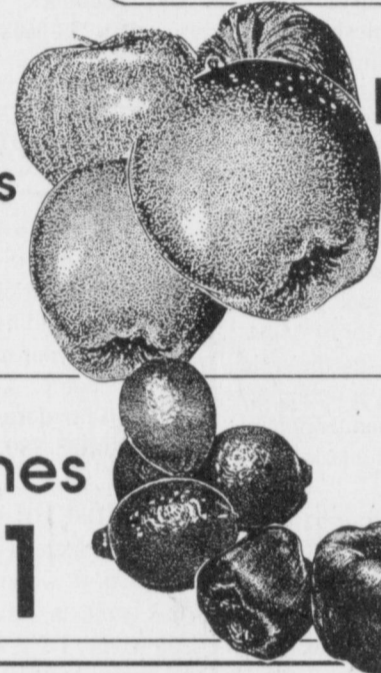
New Crop Russet No. 1

Potatoes

15 LB. BAG
2 for **\$3**



New Crop Colorado Red Delicious Apples
69¢
LB.



Large Bell Peppers
5 for \$1

Nabisco Assorted Premium Crackers
16 oz. box **99¢**

Presenting A Special Offer On This Beautiful, Contemporary Stoneware...
Now On Sale! A \$7.99 Value Save \$5.00 Per Place Setting With Our Exclusive Offer!
\$2.99 WITH EACH \$10.00 PURCHASE
4-PC. PLACE SETTING ONLY With Each \$10.00 Purchase
Coordinate Accessories Also Available... See Store Display For Complete Details, And Start Your Set Today!
At Participating Affiliated Foods Member Stores



Homo, gallon jug, Hi-Pro Lite Line Skim or 1% Borden Milk **\$1.99**



Minute Maid Country Style, Plus Calcium, Pulp Free or Regular Orange Juice **\$1.59**
64 oz. ctn.



Hi-Dri, Rolls Paper Towels **2/88¢**

GRANDS! BISCUITS
PILLSBURY ASSORTED Grands! Biscuits
BUY ONE GET ONE
FREE
17.3 oz. can

DAIRY SAVINGS!
PILLSBURY ASSORTED Cookie Dough
BUY ONE GET ONE
FREE
18-20 oz. pkg.

ASSORTED DANISH OR CINNAMON Pillsbury Rolls
BUY ONE GET ONE
FREE
9.5-12 oz. can

BORDEN REGULAR OR LOW FAT Cottage Cheese
BUY ONE GET ONE
FREE
24 oz. ctn.

FROZEN
DIGIORNO ASSORTED 12" Digiorno Rising Crust Pizza **4.99**
35 oz.

TURKEY, BEEF, OR CHICKEN Banquet Pot Pies **2\$1**
7 oz. boxes For

Fresh MEXICAN FOOD
OLD EL PASO Refried Beans **1.19**
31 oz. can

OLD EL PASO Taco Shells **1.69**
6.89 oz. 18 ct. pkg.

OLD EL PASO CHOPPED Green Chilies **1.09**
7 oz. can

OLD EL PASO Enchilada Sauce **99¢**
14 oz. can

Alka Seltzer
ORIGINAL Alka Seltzer **2.99**
36 ct.

WESTERN FAMILY ASSORTED Toothpaste
BUY ONE AT \$1.79 AND GET ONE
FREE
5-7 oz. pkg.

TYLENOL
EXTENDED RELIEF CAPLETS, OR CAPLETS/GELCAPS/GELTABS
Tylenol Extra Strength **3.99**
50 ct. pkg.

PEPCID AC
TABLETS
Pepcid AC Acid Controller **5.99**
18 ct.

ANNIVERSARY CELEBRATION

ASSORTED LAY'S® OR WAVY LAY'S® Potato Chips
3 \$5
\$2.99 size For

COCOA PEBBLES
SHREDDED WHEAT SPOON SIZE
FRUITY PEBBLES
Post Cereal
1.99
YOUR CHOICE

PEDIGREE ASSORTED Dog Food
2 \$1
13.2 oz. cans For

SWANSON CHUNK White Chicken **1.59**
5 oz. can

MR. GOODBAR
HERSHEY'S
SKOR
HERSHEY'S
ASSORTED HERSHEY'S Candy Bars **3 \$1**
bars For

COMET WONDER Long Grain Rice **99¢**
28 oz. pkg.

CORN KITS/BIS KITS/PAN KITS, OR YELLOW/WHITE/HONEY SWEET Morrison Cornbread Mix **3 \$1**
8 oz. pkgs. For

SPAGHETTI MEATBALLS
SPAGHETTI W-MEATBALLS/W-FRANKS
SPAGHETTI W-MEATBALLS, OR GARFIELD RAVIOLI
Franco American Pastas W/Meat **99¢**
14.75-15.2 oz. can

PEDIGREE SMALL CRUNCHY BITES Mealtime Dog Food **8.99**
22 lb. bag

CAMPBELL'S Tomato Soup **3 \$2**
10.75 oz. cans For

DEL MONTE Tomato Ketchup **99¢**
28 oz. squeeze. btl.

DEL MONTE ASSORTED Spaghetti Sauce **89¢**
26-26.5 oz. can

DEL MONTE Tomato Sauce **5 \$1**
8 oz. cans For

DEL MONTE ASSORTED Spaghetti Sauce **89¢**
26-26.5 oz. can

DEL MONTE Tomato Sauce **5 \$1**
8 oz. cans For

WESTERN UNION | MONEY TRANSFER™
"The fastest way to send money"

Lowe's

MARKETPLACE

515 W. American Blvd.
401 W. American Blvd.
Muleshoe 272-4585
PRICES EFFECTIVE SEPT. 18-24, 1996
OPEN MONDAY-SATURDAY 7:30 A.M. - 9:00 P.M., SUNDAY 8:00 A.M. - 8:00 P.M.

Pay-n-Save

85% OFF
WE RESERVE THE RIGHT TO LIMIT QUANTITIES IN TEXAS
Muleshoe 272-4406