

PAGE ONE

A QUICK READ OF THE NEWS

Seattle kitsch queen sells out

Seattle's queen of kitsch has retired. Ruby Montana, owner of the Pinto Pony collectibles store for more than two decades, has auctioned off boxing nuns, Tiki huts, fake vomit and a faux-leather massaging recliner that she couldn't squeeze into her fashionable new Palm Springs home.

Gone are the Kewpie dolls, vintage cookie jars and entries from 10 years of Spam-carving contests.

The last gems went on the auction block. More than 100 bidders turned out to inspect the 4,000 items.

Sneaky snake turns up

A 4-foot snake that escaped police custody in LaPorte, Ind., finally turned up after more than six months — in an evidence locker.

The snake is believed to be some sort of python. Officers had found it last August slithering down city streets.

"We placed the snake in a holding container, which ended up not holding it," Detective David Garipey said. "We scoured the building back then and found not traces, so we just figured it got out or went into the duct work and would be found dead."

The snake was taken to a pet shop.

Stuck in a tight spot

Louise Davis of Olathe, Kan., was anxious to get to work but found her car doors sealed shut by ice.

She decided to go through the trunk, planning to kick at the back seat, which folds down.

"Just as soon as I got in, the trunk slammed shut," said Davis, who tried in vain to kick down the seat.

Davis was released after a neighbor heard her pounding on the trunk.



Drawing date: Wednesday, Feb. 21
Winning numbers: 5-7-22-26-36-43
Estimated jackpot: \$29 million
Winners: 0
Next drawing: Wednesday, Feb. 24
Estimated jackpot: \$36 million

On this date in history

Feb. 24 — Col. William B. Travis sends his famous letter from the Alamo, stating "I shall never surrender or retreat." (1836)

Feb. 25 — The Republic of Texas' Navy Commission arrives in New Orleans to consider selling the Texas Navy (1843).

Feb. 26 — Fort Merrill is established on the Nueces River about 50 miles inland from Corpus Christi. (1850); it was abandoned Dec. 11, 1855.
Also on Feb. 26 — A statue of the goddess of liberty is placed atop the Texas Capitol building (1888).

LOCAL WEATHER

As of Friday, the forecast was calling for partly cloudy conditions Sunday, mostly cloudy Monday and showers Tuesday, with morning low temperatures near freezing Sunday and Monday but dropping into the low to mid-20s Tuesday and Wednesday. Daytime highs should be about 63 Sunday and Monday, then dropping into the mid- to upper 50.

Editor Ronn Smith can be reached at 272-4536 or ctyankee@fivearea.com

Missed your paper? Call carrier Melissa Flores at 272-6719 or the Journal during business hours, 8:30 a.m.-5 p.m.

City declines to commit funds to water study

JOURNAL STAFF REPORT

The Muleshoe City Council voted Tuesday to delay any commitment of funds to a water study proposed by the Canadian River Municipal Water Authority.

The authority has proposed building a pipeline from Hartley and/or Roberts counties in the Panhandle to carry water to El Paso. As one of the cities on the proposed

route of the pipeline, Muleshoe could eventually end up with a share of the water.

The authority originally asked if Muleshoe would be "interested" in a study of the proposed project, and the city responded that it would.

But City Manager Rick Hanna told the council Tuesday that the city had now been asked if it would

help fund the study at a cost of \$2 per resident — about \$9,000. He said he originally understood that the study would be paid for by the water authority.

He said the options in responding to the request were "yes, no and don't know."

"I am not in favor of funding it at all at this point, but I'd like to see us take a 'don't know' position on

this questionnaire," he said.

The council voted 4-0 to do that.

The water authority has a permit to begin pumping water in Roberts County in May. The city of Amarillo also has such a permit.

On Thursday, though, the Panhandle Groundwater Conservation District tabled a permit request from by Mesa Water Inc., headed by Amarillo's T. Boone Pickens.

City, school incumbents file to run

JOURNAL STAFF REPORT

Candidates have begun filing for the May 5 elections: Muleshoe City Council incumbents Cliff Black and Juan Chave and Muleshoe School Board incumbents David Tripp and Bruce Barrett are already registered.

No challengers had filed as of Friday, and neither had incumbents on the Lazbuddie School Board, Three Way School Board or Muleshoe Area Hospital District Board.

Candidates have until 5 p.m. March 21 to register, which can be done at the administration office of whichever board is being sought. School offices will remain open until the deadline that day.

Lazbuddie School Board seats up for re-election are those held by Tommy St. Clair and Rick Seaton, while the Three Way seats up for grabs are held by Murray Davis and Dan Simpson.

Hospital board members up for re-election are Tim Campbell and Arline Phelps.

If any board ends up with no seats contested for election, the board can declare the matter settled and not have to carry through with its election plan.

Texas 214 to be closed a week

JOURNAL STAFF REPORT

Texas 214 will be closed for a week starting Monday, just north of "the crossroads" in downtown Muleshoe, a spokesman for the Texas Department of Transportation said Friday.

The highway (North First Street) will be closed so the Burlington Northern Santa Fe railroad crossing can be revamped, he said, adding that concrete will be used to produce a smoother surface for vehicle traffic. He said railroad officials had estimated that the work would take a week, assuming all goes well.

While the repairs are being made, he said, traffic will be rerouted through the flats to cross the railroad west of downtown — or drivers can head for the east edge of town and cross the railroad there.

Gas distributors to be audited

JOURNAL STAFF REPORT

The Texas Railroad Commission voted Thursday to focus the rest of the fiscal year's audit efforts on privately owned natural-gas distribution utilities.

The audits will concentrate on the pass-through of gas costs to residential and commercial customers "in order to address public concerns over the high costs of natural gas," Commission Chairman Michael L. Williams said.

Under Texas law, gas utility companies can charge customers no more than what the utility had to pay for it.

The audits will concentrate



Journal photo: Beatrice Morin
Victor Leal and Cindy Purdy relate their experiences at the inaugural to a class of junior high students.

Eighth-graders hear about Bush inauguration

Students in Jennifer Givens' eighth-grade social studies classes have been given a firsthand account of last month's inauguration of President George W. Bush.

Muleshoe Mayor Victor Leal and school board member Cindy Purdy provided the details, along with photos taken while they and several other local residents were in Washington, D.C., for the festivities.

The pair told about attending the Black Tie and Boots Ball, staged by Texans living in the Washington area. They were able to be near the stage when the president and first lady entered. They also saw such celebrities as Clint Black, Lisa Hartman Black, Mark

Chestnut and Troy Aikman.

They discovered that Ol' Pete, the mule from the National Mule Memorial, was not in the ballroom and that no one seemed to know where he was.

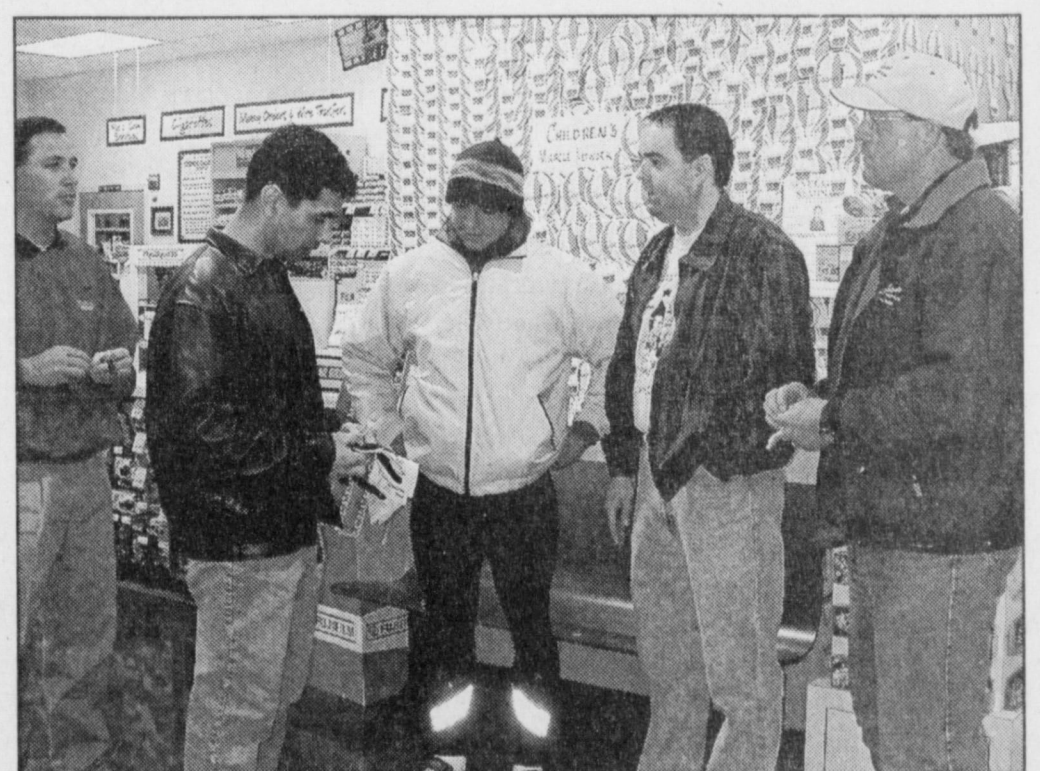
The statue was finally discovered in the hotel's kitchen, where it was parked because it was too tall to go through the doorway into the ball's "Muleshoe Room."

Former Muleshoe resident Rick Myers, who organized the Black Tie and Boots Ball, convinced the hotel management to cut out a piece of wall to allow Ol' Pete to be moved to where he was supposed to be.

Then, Leal and Purdy's husband, Dr. Bruce Purdy, had to leave the ball early in order to make sure Ol' Pete was in his assigned place for the inaugural parade by 4 a.m.

When it came time for the inauguration, though, the Secret Service would not allow the Muleshoe group to take their seats despite the fact that they had tickets: The area was closed off because of a terrorist threat, and the group had to watch on a big-screen TV in Union Station.

Both Leal and Purdy made it clear that a small disappointment didn't put a damper on their enthusiasm for the experience, though.



Journal photo: Beatrice Morin
Zac Castillo (center) and Britt Pharris (second from right) are presented mule shoes as "keys to the city" by Muleshoe Mayor Victor Leal for their roles in a fund-raiser under way for the Children's Miracle Network. The Muleshoe United Supermarket was expected to reach its goal of raising \$1,000 for the effort by Saturday. Looking on are United manager Mike Holt (left) and Muleshoe Chamber of Commerce representative Mark Washington (right).

Charity workers honored

Zac Castillo (center) and Britt Pharris (second from right) are presented mule shoes as "keys to the city" by Muleshoe Mayor Victor Leal for their roles in a fund-raiser under way for the Children's Miracle Network. The Muleshoe United Supermarket was expected to reach its goal of raising \$1,000 for the effort by Saturday. Looking on are United manager Mike Holt (left) and Muleshoe Chamber of Commerce representative Mark Washington (right).

One dies in spectacular foggy crash

Jaylene Armstrong of Portales was killed early Tuesday when her car ran under a tractor-trailer rig in dense fog.

The truck was turning onto U.S. 70 from New Mexico 202 (Cacahuete Road) and was loaded with liquid car-

bon dioxide at a temperature of more than 100 below zero. The resulting carbon dioxide cloud set off collisions involving a total of 17 vehicles and sending several people to the hospital, including one airlifted to Lubbock.

AROUND MULESHOE

Fund to aid Linda McGonagill

A fund has been established at First Bank to help the family of Linda McGonagill with expenses related to her liver transplant. McGonagill received a new liver Tuesday at the Mayo Clinic in Scottsdale, Ariz. Her sister, Carolyn Owen of Amarillo, said help is needed mainly for travel, room and board expenses for McGonagill's husband, Pat, who is with her in Arizona.

McGonagill will have to stay in Arizona for two or three months in order to be near the clinic, Owen said.

McGonagill's kidneys were not functioning after the transplant, but Owen said Friday that kidney function resumed Thursday night.

Sánchez appointed to economic board

José Sánchez was confirmed unanimously by the city council Tuesday as a member of the board of Muleshoe Economic Development Corp.

The action put the council in support of the EDC's recommendation of Sánchez to replace Shawn Rejino, who recently resigned from the board.

The board's next meeting is scheduled for 5 p.m. March 1.

Ash Wednesday service scheduled

The First United Methodist Church of Muleshoe has scheduled an Ash Wednesday service for 7 p.m. Feb. 28.

The service, which marks the beginning of the Christian season of Lent, will last 30 minutes and involves the placing of ashes on the forehead of the worshipper.

The public is invited, and a nursery will be provided.

More information is available by calling Brad Reeves at 272-5517.

Progress reunion scheduled

Anyone having addresses of former students and teachers at the Progress School are asked to share the information with Billie

Downing at 272-5169.

She will attempt to contact the former residents about the Progress School and Community Reunion being planned for May 27 at Muleshoe Church of Christ.

Evangelist to speak in Muleshoe

Evangelist Ed Rimer will conduct a series of meetings at 7 p.m. Feb. 25-28 at the First Assembly of God, 521 S. First in Muleshoe.

Rimer's background includes 11 years as a pastor and eight years as a member of the King's Quartet.

He is the author of *The Best Is Yet To Come*, a verse-by-verse commentary on the Book of Revelation. The Muleshoe services will utilize a 130-foot full-color chart of Revelation, and the lessons will be followed by question-and-answer sessions.

His other books include *Antichrist Is Coming*, *God's Word on Angels*, *The Rev. Lucifer D. Satan and Doctrines of Devils*, *The Seven Feasts of Israel*, *Iraq, Its History and Prophecy*, *Your Questions and My Answer*, *Touring Israel* and *The Holy Spirit*.

Public calendar

Feb. 26 — 10 a.m. Energas representatives to meet with area irrigation interests, at the Bailey County Coliseum.

Feb. 27 — 7:30 p.m. Muleshoe Rebekah Lodge No. 14.

Feb. 28 — Noon. Muleshoe School Board, in the board room of the administration building, 514 W. Avenue G.

March 1 — 4 p.m. Theta Rho Girls Club No. 115.

Also on March 1 — 5 p.m. Muleshoe Economic Development Corp. board of directors, in the council chambers at city hall.

Also on March 1 — 8 p.m. Muleshoe Odd Fellows Lodge No. 58.

March 8 — Deadline for Muleshoe students to apply for the Kristy M. Landers Memorial Scholarship; application forms are available at the high school counseling office.

The deadline for items to appear in Around Muleshoe is 5 p.m. Monday for Thursday's editions and 5 p.m. Thursday for Sunday.



THE "DOC" IS IN.
Williams Athletics
1405 W. American Blvd. • 272-6853

Farwell Country Club MEMBERSHIP DRIVE

There are thirty (30) opening slots for membership at Farwell Country Club. These remaining slots will be filled on a first-come first-serve basis. This drive starts immediately and will end on March 15, 2001. The membership initiation fee of \$320.00 will be waived during this period. Membership benefits for \$38.00 monthly dues are:

1. Unlimited golfing for the entire family.
2. Usage of the swimming pool for the entire family.
3. Charge account without interest in the Pro Shop.

Interested individuals may call the Farwell Country Club at (806) 481-9210.

Letters to the Editor make a difference!

Bailey County Journal USPS 040-200
Established March 31, 1963. Published by Triple S Publishing, Inc.
Every Sunday at 304 W. Second, Box 449, Muleshoe, TX 79347.
Second Class Postage paid at Muleshoe, TX.
POSTMASTER: Send address changes to the Bailey County Journal, P.O. Box 449, Muleshoe, TX 79347.
We are qualified members of:
Panhandle Press Association, National Newspaper Association,
West Texas Press Association and Texas Press Association

WEST TEXAS PRESS ASSOCIATION
PPA
Panhandle Press Association

TA MEMBER 2001
TEXAS PRESS ASSOCIATION

Scot Stinnett, Publisher
Lisa Stinnett, Vice-President/Comptroller
Ronn Smith, Editor
Beatrice Morin, Classifieds
Leah Bell, Advertising

© 1990
SUBSCRIPTIONS: Muleshoe Journal and Bailey County Journal
By Carrier Yearly - \$22.00
Bailey County — by mail - \$24.00
Elsewhere - \$26.00
Advertising Rate Cards on Application

Advertisers should check their ad the first day of insertion. The Journals will not be liable for failure to publish an ad or for a typographical error or errors in publications except to the extent of the cost of the ad for the first day of insertion. Adjustment for errors will be limited to the cost of that portion of the ad where the error occurred.

Cattle forage improving in West Texas

SPECIAL TO THE JOURNAL

West Texas cattle producers are seeing an improvement in forage conditions over last year's shortage due to drought, the Texas Agricultural Extension Service reports.

Extension beef cattle specialist Dr. Ted McCollum in Amarillo said moisture and warmer temperatures are helping wheat pasture, which is used for grazing.

"Cold temperatures and low moisture during the winter have caused wheat forage to be limited," McCollum said. "But

conditions are improving, and will help cattle producers."

He added that producers are feeding silage and hay to supplement wheat forage, which is expensive.

Muddy conditions in the Panhandle are causing cattle to use up more energy moving through pastures, he said.

"We are better off than last year, with warmer temperatures and moisture bringing weeds for grazing," said Charles Neeb, district Extension director in Fort Stockton.

He said wheat growth in

some areas has alleviated the need for supplemental feeding.

"There is still no rain in the areas farthest to the west, but overall, range conditions have improved over the past year," Neeb said.

Last year's forage was low in quality due to drought, and did not provide livestock with enough nutrients to grow efficiently. This year, producers in West Texas can reduce supplemental feeding and restock animals in some cases.

Panhandle soil moisture is considered adequate to surplus.

Many fields are too wet for work.

Cattle in the Panhandle are rated fair to good, but supplemental feeding is heavy. Some hay shortages are being reported. Wheat ranges from very poor to excellent, with most areas reporting poor to good.

On the South Plains, soil moisture is adequate and pastures are responding well to recent snow and rain.

Conserving energy at home saves cash

SPECIAL TO THE JOURNAL

COLLEGE STATION — Anyone who wants to save money on home heating costs during this winter of rising fuel prices should try changing their behavior.

In fact, behavior changes are the easiest way to lower energy costs, said Janie Harris, Texas Agricultural Extension Service housing and environment specialist. And best of all, some behavior changes don't cost a thing.

Harris suggests:

- Turn the thermostat down to 66 or 68 degrees during waking hours and down to 55 or 60 during sleeping time;

- Dress for the temperature. Wear layers of clothing, starting with a shirt or T-shirt and adding flannel shirts, sweatshirts or sweaters. Layered clothing helps trap body heat and keeps the body more comfortable in cold weather. If time is going to be spent in a quiet activity — for example, sitting and watching television — have some blankets or comforters to wrap up in;

- Keep the indoor temperature setting as close to the outdoor temperature as comfort allows; this will save money on heating in winter and cooling in summer. For example, if the indoor temperature is kept at 75 degrees while the outside temperature is 40, the homeowner has to pay for heating the indoor air 35 degrees. With the thermostat set at 68

instead, the homeowner only has to pay for 28 degrees of heating;

- Make sure the thermostat is giving an accurate reading. If it is set at 68 degrees, it should be letting the house heat up to 75 degrees. Use a desktop thermometer to check it;

- Use cold water instead of hot whenever possible. Try washing dishes in cold water instead of hot or warm because a hot water heater uses an enormous amount of energy, Harris said. Save the hot water for showers, but make them quick and use less hot water. Turn off the hot water tap when shaving

or washing hands;

- Never use the dishwasher, washing machine or clothes dryer for less than a full load. Whenever possible, don't use the dryer at all; instead, hang clothes in the sun to dry; and

- Let the sun shine in during the day by opening curtains and blinds whenever possible. Upholstery fabrics, such as those used on many couches or chairs, absorb heat from sunlight much better than plastic or leather or metal, so try to move upholstered furniture into sunny areas of rooms to help keep the sun's warmth in the house.

Six Lady Mules to be honored by receiving Gatorade awards

JOURNAL STAFF REPORT

Muleshoe High School girls' basketball coach Shana Simms announced Tuesday that six Lady Mules have been selected to receive the Gatorade Will To Win Athlete award.

The program recognizes high school athletes for dedication, determination and desire.

Honored from Muleshoe are Britni Gartin, Megan Tipps, Myndi Heathington, Jessica Carpenter, Mindy Locker and Tommie Hernández.

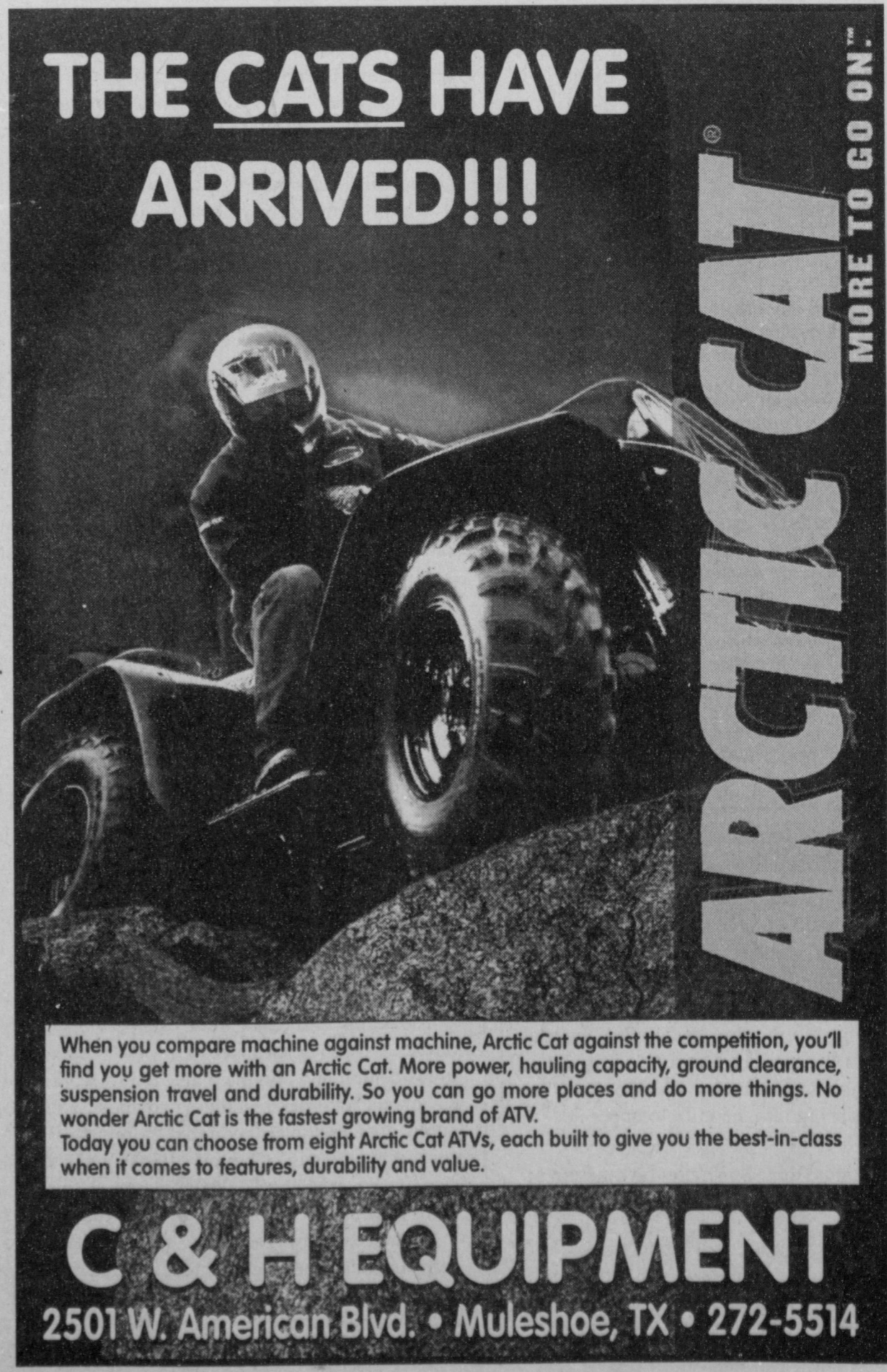
Simms said the six players earned the award throughout the season, which saw the Lady Mules earn a playoff berth by emerging from a three-way tie for second place in the district.

They lost their bi-district game to Amarillo River Road.

The athletes are selected by their coaches based on their passion for sport and their motivation to push both themselves and their teammates.

"These six girls give a little extra to the sport of basketball," Simms said. "They were good players all year long. They show through hard work and dedication what it takes to be successful."

She added, "I am proud of all the girls in the basketball program here at Muleshoe High School. . . . They are such an asset to the school and the community."

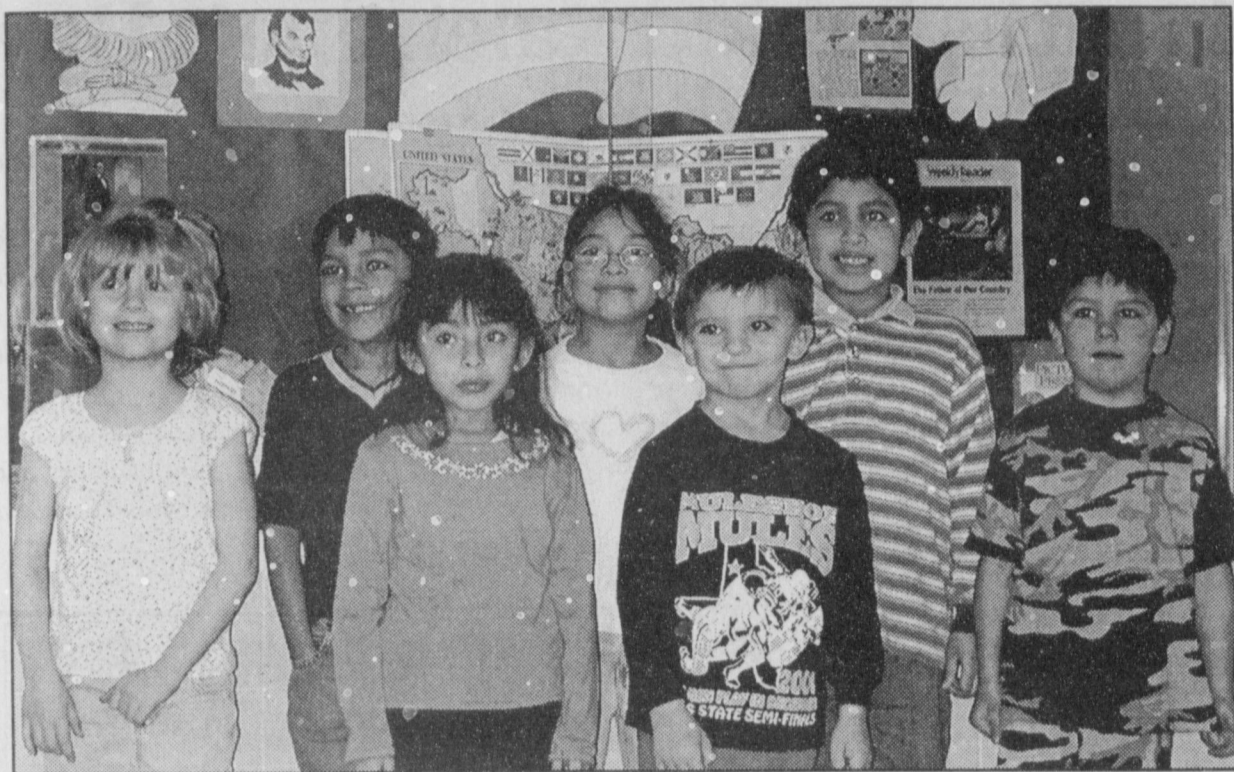


THE CATS HAVE ARRIVED!!!

ARCTIC CAT MORE TO GO ON.™

When you compare machine against machine, Arctic Cat against the competition, you'll find you get more with an Arctic Cat. More power, hauling capacity, ground clearance, suspension travel and durability. So you can go more places and do more things. No wonder Arctic Cat is the fastest growing brand of ATV. Today you can choose from eight Arctic Cat ATVs, each built to give you the best-in-class when it comes to features, durability and value.

C & H EQUIPMENT
2501 W. American Blvd. • Muleshoe, TX • 272-5514



Journal photo: Beatrice Morin

Dillman superkids

Superkids for February at Dillman Elementary School include (from left) Sarah Whitworth, Christian Castorena, Bonnie Elizarraraz, Samantha Villegas, Michael Railsback, Abel Aguilar and Cruz Castorena. Not shown is Andrea Alfaro.

HONOR ROLL

WATSON JUNIOR HIGH Fourth Six Weeks Sixth grade

TJ Brantley, Nicklas Brewster, Kati Brown, Brittini Carter, James Coffman, Laura Cogliandro, Kaitlyn Geissler, Gerardo Gómez, Jamie Hall and Callie Hancock.

Also Chelsi Hawkins, Kendall Johnson, Katherine Lepard, Alyssa López, Whitney Moulton, Madison Myers, Alvaro Ontiveros, Kindra Pruitt and Jaysol Regalado.

Also Matthew Richards, Loran Robertson, Jordan Saylor, Gregory Smith, Elizabeth Symm, Rosario Tafolla, Irma Torres and Eric Washington.

Seventh grade

Zannia Avila, Megan Baca, Brett Bamert, Garrett Behrends, Brady Black, Logan Caddell, Ashley Dickson, Arsenio Geter, Rudy Gonzales, Lindsey Hall,

Zachary Hall and William James. Also Kevin Kilmer, Chelsea López, Vanessa López, Roxana Mendoza, Lorenzo Nuñez, Veronica Nuñez, Janice Pacheco, Monica Posadas, Randall Radford and Christine Reeves.

Also Trisha Robertson, Sarah Sexton, Madison Smith, Hillary Tipps, Trevor Turnbow, Cami Vandiver, Brandi Wood and Emily Zackoski.

Eighth grade

Cristóbal Almanza, Ashley Beggs, Kelsey Beggs, Michael Black, Kami Brown, Brady Broyles, Morgan Burton, Charissa Conner, Jeremy Copley and Amber Cowart.

Also Sarah Domínguez, Kyla Ellis, Erica Estrada, Erin Gallman, Niclas Green, Ashley Gutiérrez, Jessica Hall and Vanessa Lewis.

Also Amanda López, Minerva Martínez, Paje McRoberts, April

Morgan, Barry Morris, Juan Nuñez, Shanna Rempe, Joel Salcido and Erik Sánchez.

Also Joshua Shelburne, Rosa Sotelo, Kayla Spradling, Anna Symm, Brittany Thomason, Tamara Thompson, Irene Torres, Danielle Tucker and Tyler Wood.

REBEKAHS

Muleshoe Rebekah Lodge met Feb. 20 for its weekly meeting. Lodge was called to order by Noble Grand Bonita Drennan. Chaplain Patsy Chance opened with a prayer. Ten members answered roll call.

Under sickness and distress reports, it was mentioned that Ruby Garner, Lucille Harp and Linda McGonagill are not well.

The packet for the United Nations trip was received for those going this year.

Lodge Deputy Bernie Marts installed Mary Ann Ramírez as inside guardian, assisted by Chance and

Job growth strong despite unemployment

SPECIAL TO THE JOURNAL
AUSTIN — Texas' seasonally adjusted unemployment rate rose to 3.8 percent in January from December's rate of 3.7 percent, but is down seven-tenths of a percent from January 2000.

"While the Texas unemployment rate moved up slightly, this is the first time Texas has had two consecutive months under 4 percent since April and May of 1974," said Texas Workforce Commission Chair Diane Rath.

"Despite the fact that some national economic indicators are down, Texas unemployment remains low and annual job growth remains strong at 2.8 percent," Rath said.

Non-agricultural jobs grew by an 4,100 during the month, gaining 261,800 jobs over the course of the year.

"Services led all major industries in monthly job gains, and shows the highest over-the-year growth of 123,300 jobs," said T.P. O'Mahoney, the commissioner representing labor.

The mining industry, the ma-

majority of which in Texas is oil and gas, added 1,200 jobs in January.

"This is the largest monthly gain (in that sector) in a year, and is the 17th consecutive month of growth in the mining industry," said Ron Lehman, the commissioner representing employers.

The lowest unemployment rate among the Metropolitan Statistical Areas was 1.6 percent in Bryan-College Station, but Austin-San Marcos was not far behind at 2.1 percent. They were followed by Lubbock at 2.5 percent, Amarillo at 2.9 percent and San Angelo at 3 percent.

The highest unemployment rate was 14.8 percent in the

McAllen-Edinburg-Mission area, followed by Brownsville-Harlingen at 8.5 percent, El Paso at 7.8 percent and Laredo and Beaumont-Port Arthur each at 7.3 percent.

Spring has Sprung®
Little Girls EASTER DRESSES
Size 2, 4 & 6
Just Arrived... Ladies Raincoats and Salvation Bracelets
ANTIQUES & FINE THINGS
2104 W. American Blvd. 272-4217



Have you met this agent?

She is the new Farmers Agent in Muleshoe.

Laurie Winchell

104 W. 12th St.
(806) 272-7548

Laurie is replacing Wanda Brownd due to Wanda's retirement. We all wish Wanda a happy retirement. Laurie and her husband, Darin, have two children.

Give Laurie a call or drop by the office when it is time to renew your auto or homeowner insurance, or time for a complete review of your life insurance program.



FARMERS

Gets you back where you belong!

Presented by **NEW MEXICO BANK & TRUST**

AG EXPO
February 27 - 28, 2001
Roosevelt County Fairgrounds
Portales, NM

PLATEAU Wireless

New Mexico's Premier Agricultural Trade Show!
Featuring the Following Educational Seminars:

<p>Farm, Ranch & Dairy Equipment Safety Michael O'Berry Tues., Feb. 27, 10 a.m. Sponsored by Roosevelt County Electric</p>	<p>Economics of Ranching in New Mexico Dr. Allen Torell Tues., Feb. 27, 11 a.m. Sponsored by Western Bank</p>
<p>Comprehensive Nutrient Management Dr. Robert Flynn Wed., Feb. 28, 1 p.m. Sponsored by FirstBank</p>	<p>Megatrends Affecting US Agriculture Dr. Rhonda Skaggs Wed., Feb. 28, 10 a.m. Sponsored by Southwestern Public Service</p>
<p>Worker Protection Standards & Regulations Greg Ferguson Wed., Feb. 28, 3 p.m. 1 CEU Given Sponsored by Goober McCool's</p>	<p>Producing Replacement Dairy Heifers Dr. Michael Looper Wed., Feb. 28, 11 a.m. Sponsored by Garvey Processing</p>
<p>Free Admission! Gates Open 9am to 5pm</p>	<p>Pesticide & Chemical Update Dr. Richard Lee Wed., Feb. 28, 2 p.m. 1 CEU Given Sponsored by Sunland Inc.</p>
<p>Register to WIN this 16' Stock Trailer! Must be 18 years old and present to register.</p>	

1-800-635-8036
www.portales.com or chamber@portales.com

Classic Digital Cable.

The entertainment keeps getting bigger!

- More Special Interest Channels
- More Premium Channels
- More Pay-Per-View Channels
- Digital Music
- On-Screen Navigator
- Parental Control Option

Call now to order Classic Digital Cable through our "Classic Dish" and get:

- Installation for just \$24.95
- One low price, guaranteed through January 2002
- No long-term contract to sign

Call toll-free:
1-888-202-5660

Classic DIGITAL CABLE®

Offer expires 2/28/01. Not valid in conjunction with any other offers. Some services not available in some areas. Other restrictions may apply. Digital terminal required to receive Digital Cable.

Dillman students find universal truths behind Valentine's Day

Some things about Valentine's Day are so universal as to be worthwhile remembering the year around.

That includes many of the wishes expressed recently by Rosemary Lowe's gifted/talented students in kindergarten through second grade at Dillman Elementary School in Muleshoe. Lowe asked the students what they would want if they had a magic valentine; they were to complete the sentence "If I had a magic valentine, I would wish ...":

- That everyone would love each other;
- For a machine that would make blind people see;

- That my picture could be on the dollar bill;
- That everybody could speak all languages;
- That no one would ever die;
- That dogs could talk to us;
- That my aunt would quit being so mean to my cousins;
- That my dad would come back home;
- That I had a food machine that would make free food so I could give it to my friend, who doesn't have any money;
- That people would not drink beer and drive;
- That winter would go away and it would be summer forever;
- That God and the angels

- would come back;
- That the days of the week and the seasons were backwards;
- That I could meet George Bush;
- That I could go back in time and meet Abraham Lincoln and George Washington;
- That Martin Luther King was still alive;
- That no one smoked;
- That everyone was treated the same;
- That there were no diseases;
- That my mom had a robot that would clean house for her;
- That there was a robot that could protect our whole country;
- That I was the queen of

- America;
- That my teacher was rich;
- That I could travel on an airplane;
- That people would be nice to animals;
- That it was Christmas all the time;
- That I could be on "Who Wants To Be a Millionaire?";
- That I could be skinny so people would quit calling me names;
- That Britney Spears would come to Muleshoe;
- That dinosaurs were still living;
- That we would have millions of gallons of ice cream;
- That everything was free;

- That we had flying cars;
- That there was no stealing;
- That there were no mean animals;
- That there were no robbers;
- That I could go trick-or-treating for kids who have no candy;
- That everyone's dreams would come true;
- That we had a machine to build schools;
- That everyone had a job;

- That we all could fly;
- That everyone was rich and famous;
- That money grew on trees so all the poor people could have shelter;
- That people would mind the police officers;
- That everyone was kind;
- That everyone had a car; and
- That people would share everything.

SCHOOL MENUS

MULESHOE JR./SR. HIGH Feb. 26

Breakfast — Not available.
Lunch — Hamburger, baked potato with roll, super sack lunch (ham), french fries, ranch-style beans, fruit cocktail, juice and milk.
Line two — Soft tacos, chicken enchiladas, Spanish rice, refried beans, corn, juice and milk.

Feb. 27

Breakfast — Not available.
Lunch — Szechwan chicken, chef salad with roll, hot dog, french fries, white rice, egg roll, peach cobbler, juice and milk.
Line two — Pepperoni pizza, tossed salad, corn peaches, juice and milk.

Feb. 28

Breakfast — Not available.
Lunch — Corn dog, super sack lunch (ham), chicken salad sandwich, baked Tater Tots, vegetable soup, applesauce, juice and milk.
Line two — Chicken fajitas, burrito, Spanish rice, refried beans, corn, juice and milk.

March 1

No school.

March 2

No school.

MULESHOE ELEMENTARY

Feb. 26

Breakfast — Not available.
Lunch — Cheeseburger, chef salad with roll, peanut-butter and jelly sandwich, french fries, ranch-style beans, peaches, juice and milk.

Feb. 27

Breakfast — Not available.
Lunch — Chicken nuggets with roll, baked potato with roll, peanut-butter and jelly sandwich, mashed potatoes, green beans, Rice Krispy treats, juice and milk.

Feb. 28

Breakfast — Not available.
Lunch — Pizza pocket (pepperoni), chef salad with roll, peanut-butter and jelly sandwich, broccoli, fruit cocktail, brownies, juice and milk.

March 1

No school — Teachers' comp day.

March 2

No school — Bad weather day.

Lunch — Fried chicken, mashed potatoes, corn, hot roll, cherry almond cookie and milk.

Feb. 28

Breakfast — Scrambled eggs with cheese, toast and jelly, cereal, graham cracker, juice and milk.
Lunch — Nachos grandes, Spanish rice, salad, cheese sauce, peaches and milk.

March 1

No school.

March 2

No school.

LAZBUDDIE

Feb. 26
Lunch — Chicken and rice, submarine sandwiches, pizza, green beans, squash, applesauce, salad, Jell-O, cottage cheese, yogurt and milk.

Feb. 27

Lunch — Tamales (school wide), beans, Spanish rice, hominy, pears, salad, Jell-O, yogurt, cottage cheese and milk.

Feb. 28

Lunch — Fish, hamburgers, burritos, Tater Tots, corn, pineapple, salad, Jell-O, yogurt, cottage cheese and milk.

March 1

Lunch — Chicken nuggets, pizza, corn dogs, mashed potatoes, peas, peaches, salad, Jell-O, yogurt, cottage cheese and milk.

March 2

Lunch — Manager's special.

CELLULAR 2000

CELLULARONE
Authorized Dealer



For A Limited Time Only!
**STARTAC
3000
99¢**
with activation

Come See Us At Our
NEW LOCATION
**605 W.
AMERICAN
BLVD.**
MULESHOE, TEXAS

2000 MINUTES
for **\$39.99**
Call Susan for details!
Limited time offer.
Some Restrictions Apply.

PHONE SPECIALS
RENEWALS
UPGRADES
272-7523
or 272-5153

Phone Applications Accepted
Open: 10:00 am to 5:30 pm - NEW LOCATION

When was the last time you felt this good about your carpet?

We'll replace your dowdy old carpet with
new and make you feel like a kid again!

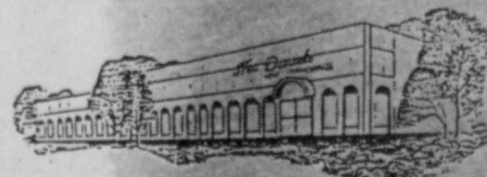
IN STOCK CARPET SPECIALS

- Mohawk "Cobra" \$15.95/yd. Installed
- Solid Saxony \$16.95/yd. Installed
- Shaw "Viva" \$17.95/yd. Installed
- Shaw Color Fantasy
Multicolor Sculpture \$13.95/yd. Installed
- Aladdin CK-308
Level Loop Berber \$16.95/yd. Installed
- Horizon "Natural Tones" \$16.95/yd. Installed

OTHER FLOORING SPECIALS

- Laminate Floors**
- Pergo Planks \$2.99/sq. ft.*
- Formica & Pickering Planks \$3.99/sq. ft.*
- Ceramic**
- Porcelanite Ceramic Tile
3 Qualities, 8x8's \$1.49/sq. ft.*
- LIMITED STOCK**
- Porcelanite 12x12 Ceramic, ET-2 Beige \$1.29/sq. ft.*
- LIMITED STOCK**
- Vinyl Tile
- Congoleum Evolution 14x14 \$2.99/sq. ft.*

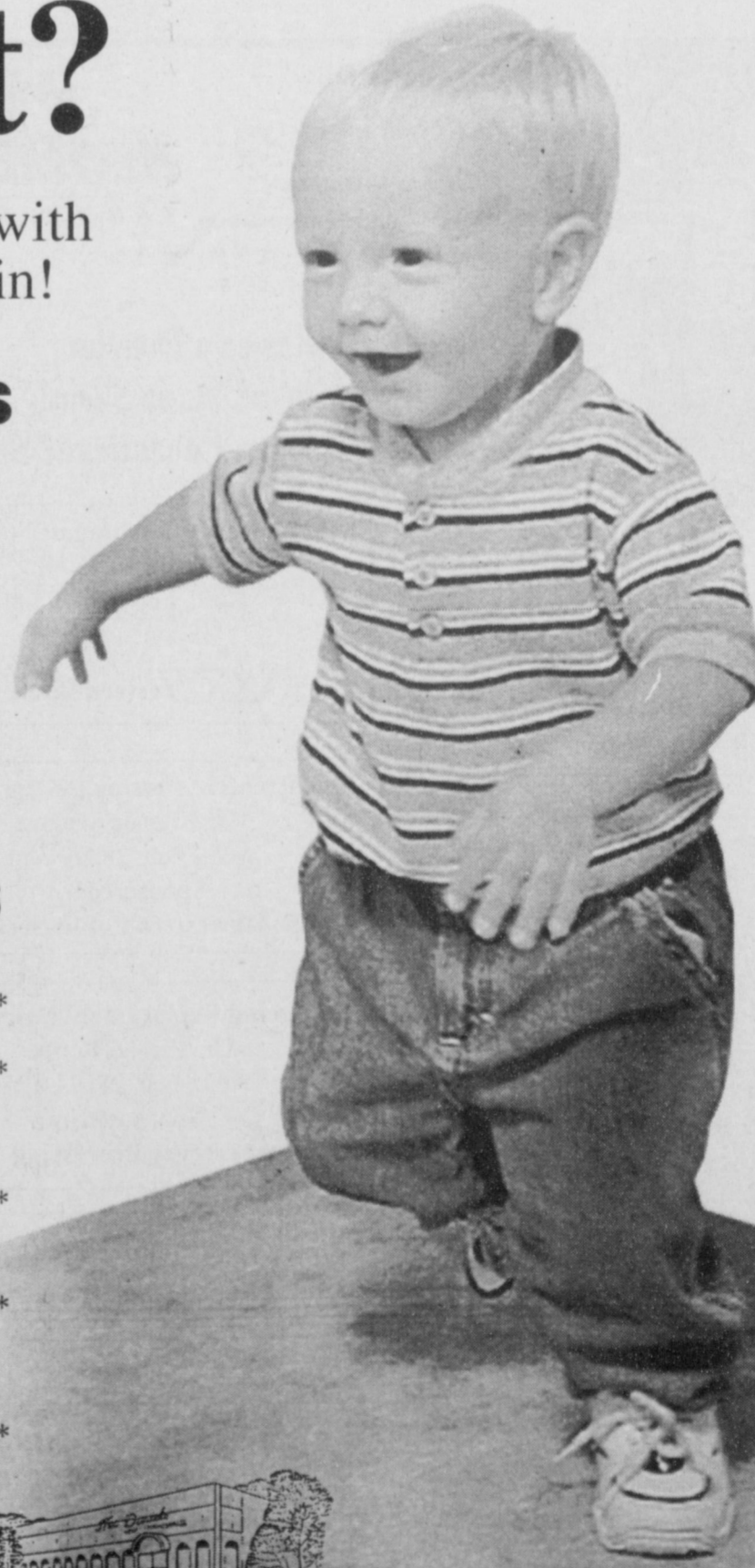
McDaniel's



Floor Covering

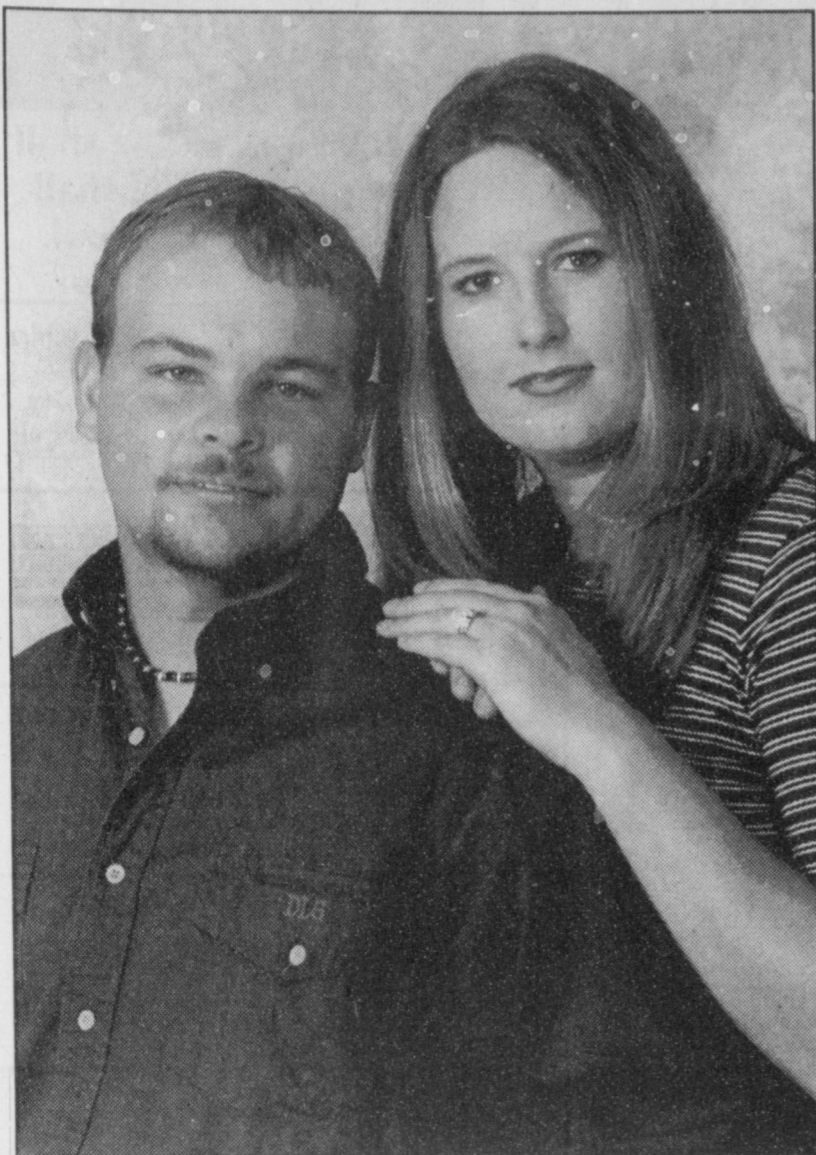
1013 Mitchell • Clovis • 762-4481

*Materials only. Installation extra.



"Simply The Best Since 1953"

ENGAGEMENT



Leffler-Gilliam

Rama Smalling of Muleshoe announces the engagement of her daughter, Lissa Leffler, to Dustin Gilliam, son of Tommy and Glenda Gilliam of Ropesville. The bride-elect is the granddaughter of J.R. and Ella Copley of Muleshoe and Wayne and Elsie Leffler of Everett, Wash. She is employed at Dynamic Foods in Lubbock and plans to graduate in August from Texas Tech University. The prospective groom is employed at Southwest Sports in Wolfforth. The wedding is scheduled for May 26 at the First Assembly of God of Muleshoe.

South Plains regional group designated as mediators

SPECIAL TO THE JOURNAL

The South Plains Association of Governments was designated by President Bush (while he was still governor of Texas) to provide USDA mediation services for Texas through Texas Rural Mediation Services.

This statewide program allows individuals involved with selected USDA programs to request mediation if they have a dispute with the federal agency.

The service assists agricultural producers, their creditors, and other people directly affected by the actions of the USDA, giving farmers and ranchers a confidential way to work out distressed or delinquent loans and resolve other USDA disputes, thereby reducing participants' cost associated with administrative appeals, litigation and bankruptcy.

The service provides mediation services for all farm credit

cases, including USDA direct and guaranteed loans and loans from commercial entities. Other agencies such as Risk Management Agency, Rural Housing Service, Forest Service, Natural Resources Conservation Service and Rural Development are also under the Texas Rural Mediation Services Umbrella.

Further information on the service can be obtained through Crystal Stone at Texas Rural

There are 10 reasons to be in the sheep business

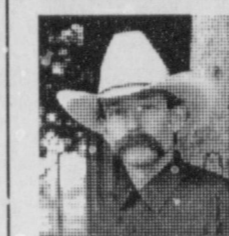
In a recent fictitious survey taken at the International House of Sheep Producers (IHSOP), the following answers were given in response to the question, "Why are you in the sheep business?"

- It's the steady income, I guess. We've tried other businesses like tanning-salon, franchise and firecracker sales, but they were so seasonal. Besides, we have 20 sections of sagebrush and high-desert south of Duckwater, Nev., so it's not like we're going to subdivide.

- I've always loved animals. And broken-mouth ewes are so ... I don't know, so cuddly with their cockleburs, scabby heads and stained britching. Originally I went to college to become an animal-control officer, but I bought this fleece-lined jacket at a flea market in Steamboat Springs and the rest is history.

- The truth is, I'm just punchin' woolies until I make enough money to buy the Ford dealership in San Angelo. Truck sales — that's my game. A trader from Mertzon tried to inject a load of goats into me, but I said, "No way. These sheep are my yellow brick road to duallys and dollars!"

- Maybe I'm just lucky. No



BAXTER BLACK

ON THE EDGE OF COMMON SENSE

one in my family ever had sheep. They were corn and soybean farmers here in Ohio and you know the compulsion farmers have to mow the 5-acre lawn from the porch to the road? I thought why not use sheep! So I designed a green saddle blanket for them to wear with a yellow stripe that says "John Deere Model Suffolk," and I rent them to the neighbors. No exactly Thomas Edison, but every little bit helps.

- I think I'm in the sheep business for the dollars. From childhood, the image of the shepherd captured me. My folks catered to the Harley crowd in Belle Fourche, but my hero was the Lone Herder, staff in hand, dog at his side, cursing the flock. Yup, that pungent aroma of formaldehyde footbath or the ringing in your ears from the shearing shed just makes my heart sing.

- Ya know, I'm not sure why I'm still in the sheep business. The market is so volatile. We're starving one year and going to Acapulco the next.

Wool subsidies, import programs, labor problems,

public-land restrictions, consumer resistance, cost of dog food, and the constant worry keeps me struggling from one day to the next. But I admit, it allows me to afford the essentials that make life worth living — Maalox, Copenhagen and Valium.

AgriFlex Credit
OPERATING FINANCING

Name Brand Crop Inputs
Flexible Credit Package
Agronomic Advice
Marketing Advice
Crop Insurance
Leasing

Contact your local representative:

Terry Moore
Plainview, TX
806-296-5679

All from one source...
Ag Services of America, Inc.
www.agservices.com 1-800-395-8505

FEBRUARY CLEARANCE SHOE SALE

LADIES SHOES OVER 300 PAIRS!
NOW ONLY... **\$6⁹⁹ - \$9⁹⁹**

CHILDREN'S SHOES AS LOW AS... **\$9⁹⁹**

MENS SHOES
One Group... **60% OFF**

RANDY'S SHOES

410 Main • Downtown Clovis

9:00 a.m. - 5:30 p.m. Monday thru Saturday

"Quality Shoes at Affordable Prices"

OBITUARIES

MOZELLE BURKETT

Services were held Thursday at Cooper-Sorrells Funeral Home in Bonham, Texas, for Mozelle Burkett, 75, of Bonham. Burial was Friday in Muleshoe Memorial Park.

She died Feb. 20 at home.

Mrs. Burkett is survived by a daughter, Juanita Kay Dulin of Bonham, a grandchild and two great-granddaughters.

BETSY LUNSFORD

Services were held Thursday at Resthaven's Abbey Chapel in Lubbock for former Muleshoe resident Betsy Lunsford, 33, of

Lubbock. Jim Witcher and Gary Watkins officiated.

Cremation was under the direction of Resthaven Funeral Home.

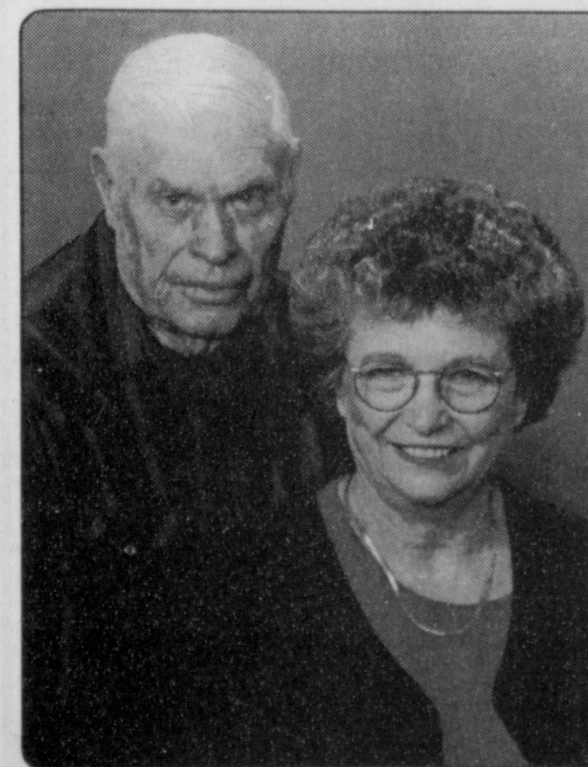
Ms. Lunsford was born July 12, 1967, in Lubbock and graduated from Muleshoe High School. She attended Angelo State University and Texas Tech University, graduating magna cum laude with a bachelor of arts in nursing from Tech in 1999. She had been employed for 10 years at Covenant-Lakeside Medical Center, where she was an oncology nurse.

She was an active member of New Hope AA.

Survivors include her mother, Frankie Lunsford of Muleshoe; two sisters, Sally Sams and Susan Decker, both of Lubbock; two nephews, Blake Sams and Cameron Lunsford; and two nieces, Paige Sams and Audra Decker.

She was preceded in death by her father, Robert Lunsford, last year and a brother, Robert Christ Lunsford, in 1964.

The family suggests memorials to the Joe Arrington Cancer Center.



Gene & Allene Harvey
will celebrate their
Golden Wedding Anniversary
with a reception
at the Clovis Inn in Clovis, N.M.
on March 4, 2001
from 2:00 p.m. to 4:00 p.m.

Hosts for the event are their children and spouses: Rhonda Robinson of Amarillo, Sondra (Sam) Andes of Clovis, Dennis Harvey of Clovis and Genia Jenkins of Seminole.

Gene married the former Allene Heard on March 10, 1951 in Muleshoe. They have lived in Clovis since 1959. Gene is a retired carpenter and Allene is retired from High Plains Federal Credit Union.

The couple has ten grandchildren and three great grandchildren.

In lieu of gifts, your presence is requested.

Life In Christ Academy wishes to extend to each auction donor and volunteer a tremendous "Thank You" for helping to make this event a great success. God bless each of you.

- Wilson Appliance
- Sanitary Barber Shop
- James Crane Tire Co.
- Hugo Vasquez Construction
- Cliff Crabtree
- Dollar General Stores
- Wiedebush & Company
- Antiques & Fine Things
- Mohawk Auto Parts
- Williams Athletics
- Western Drug & Something
- Special Gifts
- Family Dollar Store
- Alco
- Dale Oil Co., Inc.
- Joe's Boot Shop
- Banana's Video
- C & H Equipment
- Dent & Co.
- Five County Ag Service, Inc.
- Shafer's Nursery
- Sheree's Attic
- Tino's Mexican Restaurant
- Germania Farm Mutual Ins.
- Burton Service Center
- Lambert Cleaners

- Beall's
- The Honey Comb
- Tom Bonds, DDS
- Harvey Bass Appliance and Furniture
- Bratcher Motor Supply
- Muleshoe Valley, Inc.
- Muleshoe Motor Co., Inc.
- Silver Screen Video
- Leal's Mexican Restaurant
- Fry & Cox
- Five Area Telephone Cooperative, Inc.
- United Supermarket #550
- Muleshoe Feed Barn
- Oklahoma Lane Farm Supply
- Sherley-Anderson of Lariat
- Lariat Gin & Supply, Inc.
- Decorators Floral & Gifts
- Lasting Impressions
- Michael R. Precure, D.C.
- Adolf Haseloff
- Haseloff's Wood Work
- Farwell ESH/Denise Christian & Annie Williams
- Sheri Hardisty

WITH MALICE TOWARD NONE, WITH CHARITY FOR ALL!

Abraham Lincoln's Second Inaugural Address, 1865

BAILEY COUNTY DEVOTIONAL PAGE

Boehning Dairy
DRINK MORE MILK.
 Brian Boehning Earth, Texas

AG AVIATION
 2 1/2 miles North on HWY 214
 272-3066 FAX 272-3534
 P.O. Box 68 • Muleshoe, TX

MULESHOE VALLEY INC.
 West Highway 84
 272-4266 Muleshoe

STEVE STANCELL - OWNER
Two locations to serve you
 1900 W. American Blvd. 272-5337
 107 E. American Blvd. 272-3978
 Town & Country Muleshoe, TX

Lowe's MARKETPLACE
 401 W. American Blvd. • Muleshoe • 272-4585

Leal's 107 E. Ash
 Muleshoe, TX 272-5772
 Tortilla Factory, Inc.

WINKLES TRUCKS, INC.
 Box 757 (806) 247-2724
 Friona, TX

SAIN IRRIGATION & MACHINES
 Complete Pump Service
 W. American Blvd. 272-4397
 Walt Sain Muleshoe, TX 272-4148

CENTRAL COMPRESS & WAREHOUSE
 SUDAN, TEXAS

PACO FEED YARD, LTD.
 Commercial Cattle Feeders
 P.O. Box 956 265-3281
 Friona, TX
 Feller Hughs-Mgr.

BAILEY COUNTY ELECTRIC COOPERATIVE ASSN.
 Muleshoe — 272-4504 Morton — 266-8600

MAPLE COOP GIN
 927-5501
 Maple, Texas

1ST BANK MEMBER FDIC
 202 South First 272-4515

Muleshoe Feed Barn
 311 W. American Blvd. HI-PRO
 Muleshoe, TX 272-5626

WES-TEX FEED YARDS, INC.
 Custom Cattle Feeding
 272-7555 Muleshoe, TX

Decorators Floral & Gifts
 616 South First 272-4340
 Muleshoe, TX

T.J.'s Donuts
 328 S. Main St. Muleshoe 272-3542
 Open Monday thru Friday, 5 am to 2 pm • Saturday, 5 am to 1 pm

MULESHOE LIVESTOCK AUCTION
 Muleshoe, TX • Sale Every Saturday
 Clayton, C.L. & Thurman Myers • 272-4201

minsa corporation
 P.O. Box 484 272-5545
 Muleshoe, TX
 FAX (806) 272-5135 (800) 852-8291

United Supermarkets

Facts About The BIBLE BY JOHN LEHTI

HOW DAVID IS FINALLY MADE KING

WITH SAUL DEAD, ISRAEL IS WITHOUT A KING AND THE HEBRONITES ARE WORRIED OVER WHO WILL LEAD THEM SHOULD THEY BE ATTACKED BY THE PHILISTINES — BUT NOW DAVID AND HIS ARMY HAVE ARRIVED AND THEIR FEARS DISAPPEAR!

...THE ELDERS OF HEBRON ARE STILL WRESTLING WITH THE PROBLEM WHEN THEY RECEIVE THE NEWS....

DAVID IS HERE THIS DAY TO SAVE US!

...WHAT WE MUST NOW DO, IS GO AND WELCOME DAVID TO HEBRON AND THEN....

...BY THE TIME THE ELDERS HAVE PROPERLY DISCUSSED THE MANNER IN WHICH HE SHOULD BE GREETED DAVID IS ALREADY SEATED IN THE PALACE, SURROUNDED BY HIS BATTLE-TESTED SOLDIERS AND AS THEY ARRIVE, IT IS QUITE EVIDENT THIS MAN WILL BE KING WITH NO STRINGS ATTACHED!

...AND THE PEOPLE ARE JUBILANT...

240 SAVE THIS FOR YOUR SUNDAY SCHOOL SCRAPBOOK

This devotional & directory is made possible by these businesses who encourage all of us to attend worship services.

ASSEMBLY OF GOD
 FIRST ASSEMBLY OF GOD
 521 South First Street • 272-3017
 Jack Stone, Min. • 272-3984
 S.S. 9:45 am, W.S. 11 am & 6:30 pm, Wed. 7:30 pm

EL BUEN PASTOR
 415 E. Ave. F • Pastor Felix Cadena
 S.S. 9:45 am, W.S. 11 am & 6 pm; Wed. 7 pm

BAPTIST
CALVARY BAPTIST
 1733 W. Ave. C. Rev. Jeff Coffman

CIRCLE BACK BAPTIST
 Intersection FM 3397 & FM 298
 Jessie Shaver, Min • 946-3676

FIRST BAPTIST
 220 West Ave. E., Dr. Stacy Conner

FIRST BAPTIST
 Lazbuddie • 965-2126

PRIMERA IGLESIA BAUTISTA
 223 E. Ave. E. Rev. Greg Guzman

PRIMITIVE BAPTIST
 621 South First, Elder Cleveland Bass, Min.

PROGRESS BAPTIST
 Progress, TX
 Bro. O.J. Bewley

PROGRESS SECOND BAPTIST
 Arthur Hays, Min.
 1st & 3rd Sundays

RICHLAND HILLS BAPTIST
 17th & West Ave. D, Randy Tucker, Pastor

ST. MATTHEWS BAPTIST
 Corner of W. Boston & W. Birch
 Floyd R. Monroe, Min.

THREE WAY BAPTIST
 927-5467

TRINITY BAPTIST
 314 E. Ave. B, Robert Brown, Min.

CATHOLIC
IMMACULATE CONCEPTION CATHOLIC CHURCH
 805 E. Hickory, Joseph Agustine, Min.

CHARISMATIC EPISCOPAL ST. CLEMENTS
 1536 W. American Blvd. • 272-5954
 Father Sergio Leal
 Sun. W.S. 10:30 am

CHRISTIAN
TRINITY CHRISTIAN CENTER
 1723 W. American Blvd. • 272-3877
 Reydon Stanford, Min.

CHURCH OF CHRIST
LARIAT CHURCH OF CHRIST
 Sam Billingsley, Min.
 S.S. 10 a.m.; W.S. 11 a.m. & 6 p.m., Wed. 7 p.m.

LAZBUDDIE CHURCH OF CHRIST
 Nathan Crawford, Min.
 S.S. 9:30 am; W.S. 10:20 am & 5 pm;
 Wed. 7 pm

MULESHOE CHURCH OF CHRIST
 22nd & W. American Blvd.
 Harry Riggs, Min.
 S.S. 9:30 am; W.S. 10:20 am & 6 pm; Wed. 7:30 pm

16th & AVE. D CHURCH OF CHRIST
 Curtis Shelburne, Min. • 272-4619
 S.S. 10:30 am & 1:30 pm; Wed. 7:00 pm

LUTHERAN
ST. JOHN LUTHERAN
 Lariat, TX-David Symm, Min.
 S.S. 10:30 am; W.S. 9:30 am

METHODIST
FIRST UNITED METHODIST
HISPANIC MINISTRIES
 E. 5th and E. Ave. D
 Pastor Benito Cavazos

FIRST UNITED METHODIST
 507 W. 2nd St.
 Pastor Brad Reeves

LAZBUDDIE METHODIST
 965-2121

EL DIVINO SALVADOR U.M.C.
 619 E. 5th Street & Ave. G, Muleshoe, TX
 Raul Martinez, Pastor

NAZARENE
NEW VISION CHURCH OF THE NAZARENE
 814 W. Ave. C • 272-3622
 William Perhealth, Pastor-S.S. 10 & 11 am;
 W.S. 7 pm

PENTECOSTAL
UNITED PENTECOSTAL LIGHTHOUSE
 207 East Ave. G • 1-800-454-6051
 Pastor McKibben, S.S. 10 am
 Thursday, Bible Study 7 pm

INTER DENOMINATIONAL
NEW COVENANT
 Plainview Hwy.
 Steve Claybrook, Pastor
 W.S. 10 am; Wed. 7 pm

MULESHOE PEA & BEAN, INC.
 RR 2 Box 297 272-5589
 Muleshoe, TX

WEST CAMP GIN, INC.
 Better Ginning & Courteous Service
 Rt. 2 Box 1000 • 925-6681
 Muleshoe, TX
 James & Phyllis Shepard

Correct thy son, and he shall give thee rest; yea, he shall give delight unto thy soul.
 -Proverbs 29:17

New Tex Truck Parts & Service
 107 E. 5th St. • Muleshoe
 272-4106 or 800-918-9048
 4200 Mabry Drive • Clovis, NM
 (505) 762-7186 or (877) 762-9112

MULESHOE MOTOR CO.
 1225 W. American Blvd. 272-4251

MULESHOE ANIMAL CLINIC
 GENERAL PRACTICE
M S
 1430 US Hwy. 84 • Muleshoe, TX Office: 272-4990

IRRIGATION PUMPS & POWER
ZIMMATIC CENTER-PIVOTS
 W. Hwy. 84 272-4483

WESTERN DRUG
 & Something Special Gifts
 1411 W. American Blvd. 272-3106 Muleshoe

PARMER Co. COTTON GROWERS Co-OP GIN
 825-3701
 RON RILEY-GENERAL MGR. FARWELL, TX

Henry Insurance Agency
 "Serving You Since 1964"
 111 West Avenue B 272-4581
 Muleshoe, TX

"THE FIVE AREA TELEPHONE COOPERATIVE, INC."
 West Plains Telecommunications, Inc.
 Five Area Systems, Inc., Plateau Wireless
 Five Area Long Distance - Five Area Internet
 302 Uvalde Muleshoe, USA (806) 272-5533

AGRO DISTRIBUTION
 Hwy. 84 • 272-4203
 Muleshoe, Texas Bruce Bruns - Mgr.

"Do All" Family Enterprises
 203 S. Main St. • 272-4725 • Muleshoe
 Gift Wrapping Shipping Via UPS Now doing Auto Repair! Party Planning
 Catering & Floral Design Minor Home Repair & Remodeling
 New Location!

FARMERS CO-OP ASS'N
 of ENOCHS
 "Your Farmers Owned Gin"
 Chemicals • Seed • Fuel & Oil • Fertilizer
 806-927-5511 Wade Baker, Mgr.

Antiques & Fine Things
 of Muleshoe
 2104 W. American Blvd. • 272-4217

McCormick Seeds, Inc.
 400 East Ash • Muleshoe, Texas
 272-3156 A complete line of field seeds
 Tim McCormick Roland McCormick

Ellis Funeral Homes
 Muleshoe - Morton - Earth - Sudan
 Texas
 1-800-299-4574

1315 W. American Blvd.
 272-3333
 Muleshoe, TX **McDonald's**

TEXAS FARM BUREAU INSURANCE CO.
 Life-Auto-Home-Crop
 1612 W. American Blvd. • 272-4567 • Muleshoe

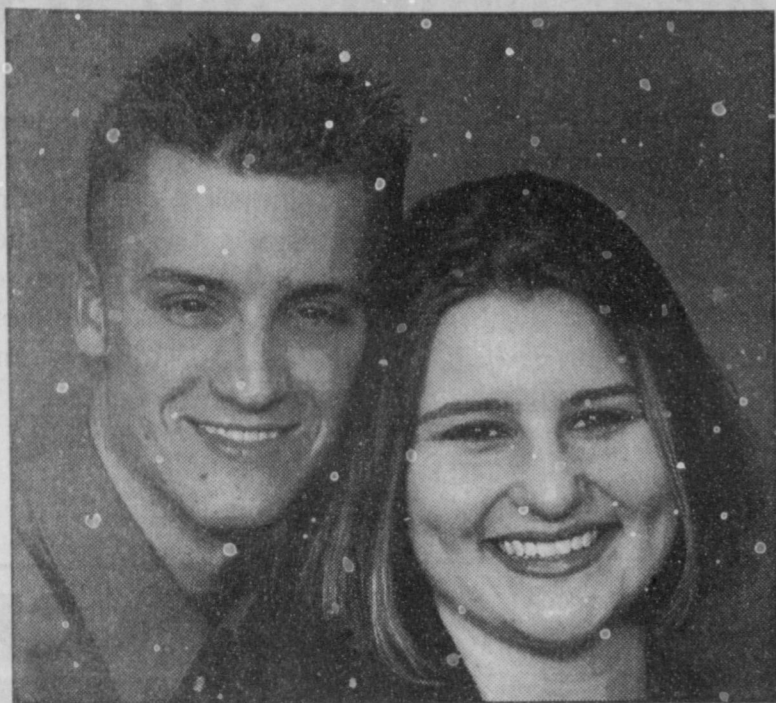
GOOD YEAR JAMES CRANE TIRE CO., INC.
 107 Main 272-4594
 Muleshoe, TX
 Mike Hahn

Jarman Seed
 801 W. American Blvd.
 Muleshoe, TX • 272-5985

Leo's Blacksmith & Machine Shop
 "Family Owned Since 1966"
 • WELDING - SHOP OR FIELD • REBUSH TRACTOR FRONT ENDS
 • ALL TYPES OF STEEL • BOLTS • AGRIC BEARINGS
 • FABRICATING PARTS & EQUIPMENT
 310 W. American Blvd. • 272-4418 • Muleshoe

THE TRINITY COMPANY
 MULESHOE, TEXAS
FIRST AG CREDIT MULESHOE
 "Serving Farmer & Bailey Counties"
 272-3010 • Fax 272-5388
 316 Main • P.O. Box 424 • Muleshoe, TX

ENGAGEMENT



Rich-King

Kenneth and Toni King of Muleshoe announce the engagement of their son, Adrian, to Lindsey Rich, daughter of Tammy Workman of Clovis and Alan Rich of Amarillo. The bride-elect is a 2000 graduate of Farwell High School. She attends the University of Texas-Permian Basin and is employed at Dillard's in Odessa. The prospective groom is a 1997 graduate of Muleshoe High School. He also attends UTPB, is employed at Waukesha-Pierce of Odessa, and is a private first class in the Army Reserve. The couple plan a double-ring ceremony March 10 at the First Baptist Church in Odessa.

HOSPITAL NEWS

Muleshoe Area Medical Center reported the following patient load:

Feb. 15 — Cecilia Cumpian, Pearl Dunlap, Lillian A. Hamilton, Jesús López, William T. Millen, Minnie Parham, Rebecca Quezada and Evelyn Stefanovic.

Feb. 16 — Stormy E. Apodaca, Antonia Cadena, Jacob

Domínguez, Jesús López, Trinidad Navejar, Jesús Orozco and Kyle Owen,

Feb. 17 — None reported.

Feb. 18 — None reported.

Feb. 19 — Alma Bevers, Myrtle Clayton, Vivian Cortez, William R. Crawford, Ruby F. Everett, Roger R. Menning, John E. Orr and Jada Price.

Feb. 20 — Alma Bevers, Cody Chisum, Vivian Cortez, Ruby F. Everett, Lillian A. Hamilton, John E. Orr and Alva D. Sparks.

Feb. 21 — Helen Beaver, Alma Bevers, Andrew T. Bonds, Cody Chisum, Ruby F. Everett, Lillian A. Hamilton, Bonie Howard, Jacquetta S. Kirkland, Pedro Quiroga and Alva D. Sparks.

PUBLIC RECORD

MULESHOE POLICE

Feb. 7
Javier Daniel, 17, no driver's license.

Feb. 9
Justin R. Naylor, 24, Lea County warrant for possession of a controlled substance.

Feb. 11
Hilario Torres, 39, Lamb County warrants — blue warrant.

Feb. 12
*Alfred Flores, 45, public intoxication.

Feb. 13
Ricardo Alarcón Jr., 29, driv-

ing while license suspended.

SHERIFF'S OFFICE

Feb. 7
Dulces Nombres "Candy" Pérez, 27, assault — terroristic threat; immigration hold.

Feb. 10
Joshua David Hernández, 17, minor in consumption, minor in possession.

James Austin Kidd, 18, DWI (third).

Feb. 16
Victor F. Espinoza, 28, warrants on DWI and assault — family violence.

Jeremy Cervántez Estraca, 21, warrant — motion to revoke probation.

Muleshoe Memorial Park Cemetery, Inc.
is announcing a

NEW OFFICE LOCATION
104 W. Ave. C
Muleshoe, Texas
272-5727

Office entrance is on the east side of the H & R Block building.

¡Se Habla Español!
Phone Applications Accepted
Mon.-Thurs. 9:00-5:30 pm
Fri. 9:00-6 pm

272-3673
LOANS \$100 TO \$467
CREDIT STARTER LOANS
LOANS WHILE YOU WAIT
CONTINENTAL CREDIT
206 S. Main Street
Muleshoe, Texas

NURSING HOME NEWS

Thursday morning, Nancy Lemons brought ceramica for the residents to paint. Participating were Aline Locke, Grace Scarbrough, Nettie Quesenberry, Juanita Teague, Bootie Tiller, Rosie Martin, Clara Coffman, Elzie Darland, Grace Plyer and Ozell Cherry.

Zona Gatewood directed a song service and devotional Thursday morning.

Members of 16th and D Church of Christ baked and served pies to the residents Thursday afternoon. Dan Throckmorton brought his old Edison wind-up Victrola and played music after the pie party.

Friday, the residents dressed up, and they and their honored guest were given a Valentine banquet. The candlelight dinner was prepared by dietary and the steaks were grilled by Edward Orozco. Brenda Guzman's high school class served the meal.

Janet Denver of Friona entertained during the meal. June Conway helped set up for the meal and helped with decorating. Dietary, nursing, activities and maintenance all had a part in the banquet. The residents' families and other volunteers helped clean up after the party.

Saturday morning, Melvin and Wanda Griffin and Harold and Mary Jo Burge directed bingo.

Sunday afternoon, members of the Primitive Baptist Church came for a singing service.

Tuesday afternoon, Linda White, Carolyn Stancell, Linda Elliott, Eva Nell Dale, Pat Watson, Mary Jo Burge, Dorothy Turner and Josie Ovale came to shampoo and set the ladies' hair.

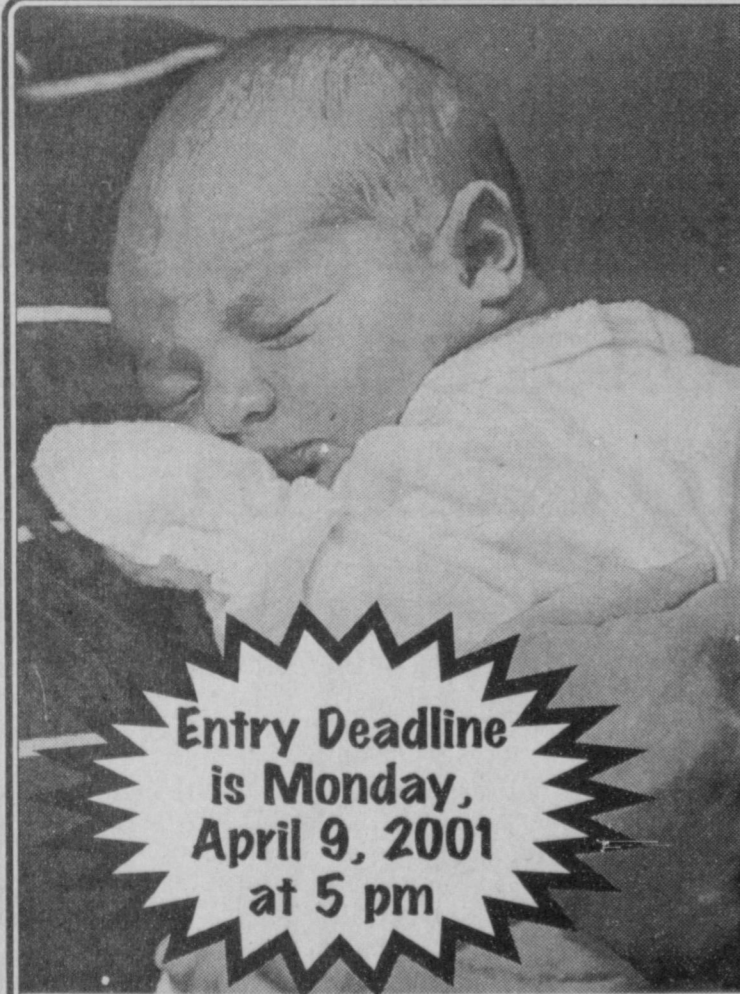
The residents and staff extend sympathy to the family and friends of Bill Millen.

Jewel Peeler and Rheata White gave the residents and staff Valentine cards and an-

gel pins.

Buster and Wanda Kittrell, Harold and Mary Jo Burge served coffee, juice and doughnuts to the residents Wednesday morning. Harold Burge read bits of humor, tidbits of wisdom and educational pieces at coffee time. Loyce Killingsworth and Buster Kittrell directed the devotional.

Glenda Jennings and Jackie Scoggins came for a sing-along Wednesday afternoon.



The Muleshoe Journal's 7th Annual CUTEST BABY CONTEST

Enter any child born in 2000 who you fell in love with at first sight - children, grandchildren, nieces, nephews, friends, etc.

Entry Deadline is Monday, April 9, 2001 at 5 pm

WINNER WILL RECEIVE A \$50 SAVINGS BOND FOR BEING SELECTED 2000'S CUTEST BABY!

This year's contestants will appear in the April 15 edition of the Bailey County Journal. A panel of unbiased judges will pick the most attractive picture to be the 2000 Cutest Baby. All baby pictures will be printed. Babies need not be born in this area.

Bring your favorite photo along with \$12 to the Muleshoe Journal office at 304 W. 2nd Street, Monday-Friday between 8:30 a.m. and 5:00 p.m. or mail the coupon below along with your child's photo and \$12 to Cutest Baby Contest, c/o Muleshoe Journal, P.O. Box 449, Muleshoe, Texas 79347. You may pick up your baby's picture during office hours after Monday, April 16, 2001. Arrangements must be made to return photos by mail.

Please provide phone number or address (it will not be published) so that we may contact you if we need additional information.

Baby's Name: _____
Date of Birth: _____
Weight at Birth: _____
Length at Birth: _____
Place of Birth: _____
Mom & Dad's Name: _____
Grandparent's Name: _____

MULESHOE CHAMBER OF COMMERCE & AGRICULTURE
Presents its 51st Annual Celebration

"2001 MULESHOE ODYSSEY"
featuring

Ventriloquist, GREG CLAASSEN

Saturday, April 7, 2001 - 6:00 p.m. - High School Cafeteria
Tickets - \$50 each

Tickets can be purchased after March 8th at the Chamber Office or from any of the Chamber Directors.

THE CHAMBER IS SEEKING NOMINATIONS FOR ITS ANNUAL AWARDS.

Awards will be presented at the "2001 MULESHOE ODYSSEY" Chamber Banquet.

Deadline for nominations is Tuesday, March 13, 2001.

NOMINATION FORM — Man of the Year

MAN OF THE YEAR: _____

WHY RECOMMENDED FOR MAN OF THE YEAR: _____

NOMINATED BY: _____

NOMINATION FORM — Woman of the Year

WOMAN OF THE YEAR: _____

WHY RECOMMENDED FOR WOMAN OF THE YEAR: _____

NOMINATED BY: _____

NOMINATION FORM — Farm Family of the Year

FARM FAMILY OF THE YEAR: _____

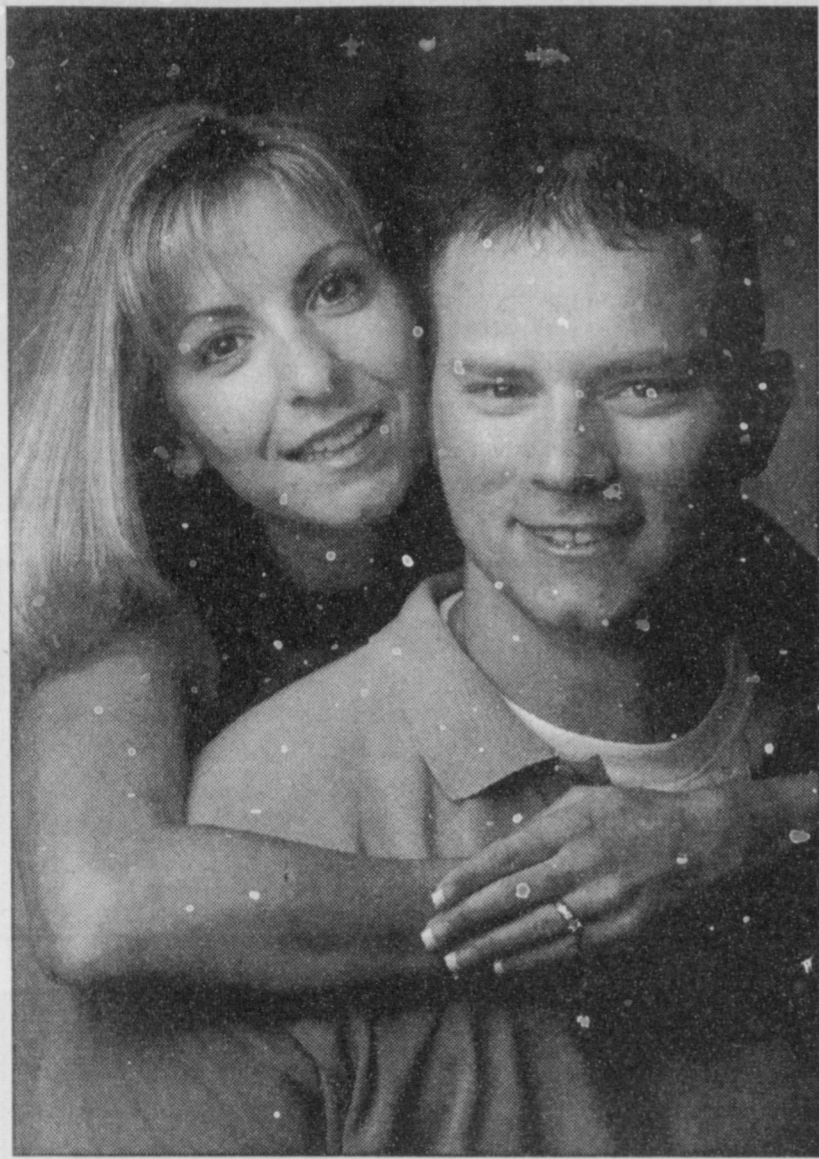
WHY RECOMMENDED FOR FARM FAMILY OF THE YEAR: _____

NOMINATED BY: _____

Mail or Deliver Your Nominations To:
MULESHOE CHAMBER OF COMMERCE
115 E. American Blvd., Muleshoe, Texas 79347

For more information, call 272-4248

ENGAGEMENT



Sweat-Garbarino

Mark and Eileen Morton of Muleshoe and Danny and Pam Garbarino of Ruston, La., announce the engagement of their son, Daniel P. Garbarino Jr., to Piper Sweat, daughter of Melinda and George Kiddie and Ed Sweat, all of Farmington, N.M. The bride-elect is a senior at New Mexico State University in Las Cruces, majoring in English secondary education. The prospective groom is a 1996 graduate of Muleshoe High School and will graduate in May from New Mexico State with a degree in wildlife and fisheries biology with a minor in biology. The wedding is scheduled for 3 p.m. July 28 at Bethany Christian Church in Farmington.

Parenting kit available at public library

SPECIAL TO THE JOURNAL

Parents and care-givers in the Muleshoe area will now have convenient access to bilingual parenting information and tools through the Muleshoe Area Public Library.

The materials are becoming available thanks to a collaboration between KERA-Dallas/Fort Worth, the Texas Library Association and the Texas State Library and Archives Commission.

This month, the organizations will provide bilingual "Ready for Life" materials to all 829 public libraries in Texas in an effort to raise awareness about the importance of early childhood development.

The materials are being provided in conjunction with the launch of KERA's website at www.firstimpressions.org. This effort offers 99 percent of Texas' residents the free access to a wealth of resources designed to connect people with the information they need to help their young children succeed.

Visitors to Muleshoe Area Public Library will be able to check out parenting materials, which include:

- A VHS copy of "Ready for Life," an award-winning documentary produced KERA that examines the first five years of life: how chil-

dren develop an identity, form attachments, move toward independence, and learn to relate to other people.

Viewers will see moving and intimate moments of children interacting with their families, hear about the challenges and successes of raising a child and learn valuable insights from experts;

- "Helping Families Make Their Children Ready for Life," a discussion guide to accompany the documentary that includes summaries, family activities, discussion questions and resources;

- "Helping Baby Grow," KERA's award-winning bilingual book, designed to appeal to children while offering parents positive examples of parent/child interactions. It is illustrated by Pierre Pratt; and

- Directions for using the s i t e ,

www.firstimpressions.org, which is intended as a bilingual gateway to information on the parenting topics explored in "Ready for Life." The website provides an interactive tool with the most up-to-date and reliable resources, information and materials needed by parents and primary care-givers. Features include an interactive directory of service agencies across Texas, expert advice,

and links to other sites where parents and care-givers can find the latest information on research, products, programs and services.

Other "Ready for Life" resources include the Family Information Line, which offers free parenting information and referrals to local parenting resources through a 24-hour

bilingual hotline.

Texans in need of parenting services or resources can receive referrals on everything from general services — such as child-care resources or parenting classes — to more specialized resources and counseling experiences.

The toll-free number is (877) 315-5437.

TERMS: CASH, CHECK, MASTERCARD & VISA

MOVING AUCTION

SATURDAY, MARCH 3, 2001 • 10:30 A.M.

930 W. 17TH STREET, PORTALES, NM
LOCATION: RIGHT UNDER THE WATER TOWER

• ANTIQUE FURNITURE • FURNITURE • APPLIANCES • UNUSUAL ITEMS & GLASS • COLLECTIBLES • HOUSEHOLD MISC. • TOOLS ETC.

www.3lefties.com/priest or email us at priest@3lefties.com

James Priest & Associates W & J Auction

"OUR KNOWLEDGE IS YOUR SECURITY"

AUCTIONEERS: James Priest, Butch Priest, Gid Priest
4205 South Prince Clovis, New Mexico

Las Vegas NM (505) 454-8026 TX LIC. # 11077 & 9474 Clovis NM (505) 763-7311

SYDNA TURNS SIXTY ON SUNDAY.

Give her a call. She would love to hear from you!!

'CREATIVE LIVING'

Information on quilting techniques and breast cancer will be featured on "Creative Living" Feb. 27 at 1 p.m. and March 3 at 3 p.m. (All times are Central.)

"Creative Living" airs on public broadcasting station KENW-TV from Eastern New Mexico University in Portales.

Patsy Shields of Sellersburg, Ind., representing Sulky of America, will show different quilting techniques, including stipple quilting, thread-sketch quilting, twin-needle quilting, and cross-hatch quilting.

Bernell Patton, owner of Bernell's Bra & Boutique in Hobbs, N.M., will show some of the newest breast forms that are available.

Information on wedding plans and shortcuts to faster

TOPS NEWS

TOPS No. 34 leader Laverne James called the Feb. 22 meeting to order and presided over it. The meeting was held at the Muleshoe Church of Christ.

Two songs were sung; the prayer and pledge were led by James.

Secretary Janie Hughes read the previous week's minutes, which were approved as read.

A recently joined member, skin-care consultant Anna Bales, gave facials to Linda White, Elaine Coburn, Alma Robertson and Retha Knowles.

Twenty-one members were present for the weigh-in, which was conducted by Alene Bryant and Betty Jo Davis.

Results of the weigh-in showed Robertson as the best loser, followed by Ruth Clements as first runner-up. Cheryl de Graffenried was the second runner-up.

Molly Davis, chairperson of Side I in the points contest, announced her side's grand total as 1,705 points. Side II, with White as chairperson, has a grand total of 1,490 points.

The next meeting is scheduled for 5:30 p.m. March 1 at the same site. Visitors are welcome.

meal preparation will be featured on Feb. 27 at 10:30 p.m. and March 1 at 1 p.m.

Karen Howland, a custom bridal designer from Loveland, Ohio, will discuss what it takes to create that perfect wedding gown. Howland also will demonstrate how to make a simple bridal purse.

Sue Vaughn of Jan-Su Publications in Lamesa will share some ideas for cutting down meal-preparation time.

"Creative Living" is produced and hosted by Sheryl Borden of Portales.

The show is carried on more than 100 PBS stations in the United States, Canada, Guam and Puerto Rico and is distributed by Westlink of Albuquerque.

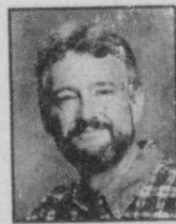
Viewers can request copies of materials offered on the show by sending a first-class stamp for each handout requested, along with name, address and

booklets requested, to "Creative Living" Requests, c/o KENW-TV, 52 Broadcast Center, Portales 88130.

We Have a Judge Who Is Both Just and Merciful

The Feb. 9 sinking of a 190-foot Japanese fishing vessel by the U.S. submarine which inadvertently surfaced underneath it was a sad event that claimed the lives of nine men and teenage boys who were aboard that vessel. Now what may be another very sad event is beginning to unfold. The blame game.

Obviously, our government needs to deal with this wisely, forthrightly, honestly, and in a way that provides as much comfort as possible for



Focus On Faith
Curtis Shelburne

those bereaved families. To do that, we need to know exactly what happened. How, if the sub's well-trained officers and crew conducted all of the prescribed periscope and sonar sweeps, could a multi-billion dollar submarine packed full of sophisticated high-tech equipment fail to spot a 190-foot ship directly above it? Is there any kind of a "blind spot" for the periscope or sonar directly above a sub? Did the presence of civilians on board, and even touching the controls, really have anything at all to do with the tragedy?

Lots of questions. And I hope they get fairly and accurately answered. That part worries me. Cynicism is no virtue, but as I read an Associated Press report this morning, I waxed a bit cynical.

The Navy has announced a court of inquiry that will focus on the actions of the sub's top officers: the captain, Cmdr. Scott Waddle; the executive officer, Lt. Cmdr. Gerald

K. Pfeifer; and the officer of the deck, Lt. j.g. Michael Coen. Depending upon the findings of the court of inquiry, courts-martial could be recommended. All of that is as it should be, and must be.

What worries me is what Michigan's Senator Carl Levin put into words in a recent interview. He talked about the very real need for a "very thorough, very high-level" and "very open" investigation, and then he said that he hoped such an investigation would "give the Japanese some confidence as to just how seriously we take this tragedy."

I hope so, too. But I also find myself wondering if any high-ranking Navy officers, governmental officials, and Senators are tripping over themselves to reassure three officers named Waddle, Pfeifer, and Coen, that this investigation will be completely open, thorough, and fair. Before this happened, the military was proud to claim these men. How quickly that changes! I just hope that their superiors are truly as interested in a genuinely open and fair investigation as they are in running for cover and looking for scapegoats.

What's the truth? Was someone terribly at fault? Did some of our highly-touted technology fail? Or was this truly a sad "accident" with no real culpability involved?

I hope these officers have more confidence in the integrity and fairness of the officers above them than I probably do. May the truth prevail.

I'm thankful that the Judge of the universe can be truly impartial and just, that He is not worried about His "career" or public opinion. I'm thankful that my Judge loves me. Just and merciful, He knows both my heart and the hearts of those who might accuse me.

Curtis Shelburne is minister of the 16th & D Church of Christ in Muleshoe.

END OF GAME NOTICE

Break The Bank while there's still time to cash in.

On March 2nd, 2001, a Texas Lottery instant game will close — Break The Bank (#174). You have until August 29th, 2001, to redeem any winning tickets for this game. You can win up to \$30,000 playing Break The Bank. You can claim prizes of up to \$599 at any Texas Lottery retailer. Prizes of \$600 or more are redeemable at one of the 22 Texas Lottery claim centers or by mail. Questions? Call the Texas Lottery Customer Service Line at 1-800-37-LOTTO (1-800-375-6886).

More prizes. More winners. More fun!

NOTICE: A Scratch Off game may continue to be sold even when all the top prizes have been claimed. For current information on prizes remaining in a Scratch Off game, call 1-800-37-LOTTO. Overall odds of winning any prize in Break The Bank are 1 in 4.94 including break-even prizes. Must be 18 years or older to purchase a ticket. © 2001 Texas Lottery.

Journal Classifieds

STOP & SHOP

Deadlines are 5 p.m. Monday and Thursday

Call 272-4536

February 25, 2001

PUBLIC NOTICE

HELP WANTED

HOMES FOR SALE

REAL ESTATE

REAL ESTATE

REAL ESTATE

SALE OF FARM REAL ESTATE

165.55 ACRES MORE OR LESS WITH IMPROVEMENTS BAILEY COUNTY TEXAS

The Farm Service Agency (FSA) will sell at a Trustee's Foreclosure Sale to the highest bidder or bidders, for cash, at the Easterly Courthouse door facing State Highway 214 in Bailey County, Texas, on Tuesday March 6, 2001. FSA's minimum bid is \$24,287.00. For specific information contact the FSA Farm Loan Manager, Joyce M. Thompson 111 East Avenue D. Muleshoe, TX 79347, (806)272-4538.

SALE OF FARM REAL ESTATE

331.1 ACRES MORE OR LESS WITH IMPROVEMENTS BAILEY COUNTY TEXAS

The Farm Service Agency (FSA) will sell at a Trustee's Foreclosure Sale to the highest bidder or bidders, for cash, at the Easterly Courthouse door facing State Highway 214 in Bailey County, Texas, on Tuesday March 6, 2001. FSA's minimum bid is \$56,410.00. For specific information contact the FSA Farm Loan Manager, Joyce M. Thompson 111 East Avenue D. Muleshoe, TX 79347, (806)272-4538.

Muleshoe Area HealthCare Center

is now accepting resumes and/or letter of interest for the following positions:

RNs LVNs
CMAs CNAs Social Worker

Prefer applicants with Alzheimer's and/or Long Term Care experience

Muleshoe Area HealthCare Center offers:

- NEW STATE OF THE ART FACILITY OPENING SOON IN A NEW LOCATION
- COMPETITIVE SALARY
- OUTSTANDING BENEFITS PACKAGE
- CARING ATMOSPHERE
- PLEASANT WORKING ENVIRONMENT
- OPPORTUNITY TO BE A PART OF THE MULE SHOE AREA HOSPITAL DISTRICT

Interested persons are asked to submit resumes and/or letters of interest to the Administrator of Muleshoe Area HealthCare Center, 106 West Avenue H, Muleshoe, Texas 79347.

No phone calls please.
All inquiries confidential. Please mark your envelope "PERSONAL/CONFIDENTIAL"

YOUTH PASTOR.

Olton Methodist Church seeks, spiritually mature, experienced youth pastor for 1/2 time position. Salary to \$12,000/year. Contact the pastor, 806-285-2777.

Homeworkers Needed \$635 weekly processing mail. Easy! No experience needed. Call 1-800-440-1570 Ext 5085 24 Hrs

Position open for secretary at the First United Methodist Church. Requires clerical, accounting and computer skills. Good pay. Ask for Brad Reeves. 272-5517

FINANCIAL SERVICES

888-990-2274. Loans by County Bank, Rehoboth Beach, DE (FDIC), Equal Opportunity Lender.

MISCELLANEOUS

TIMESHARE REALES, THE most effective way to buy, sell or rent. No commissions! Closing & financing provided. Free information. 1-888-997-6668
www.timeshareappraisals.com

LAND FOR SALE

A FREE LIST. Affordable hunting ranches, 50-100-250 acres or more. Trophy whitetail, 5 deer limit, lowest prices. E-Z terms! Call toll-free, 1-866-389-5263.

HELP WANTED

AVON - LOOKING FOR higher income? More flexible hours? Independence? Avon has what your looking for. Let's talk. 1-888-561-2866. No upfront fee.

FINANCIAL SERVICES

CLAIMS PROCESSOR! \$20-\$40/ hour potential. Processing claims is easy! Training provided, must own PC. Call now! Medicor, LLC 1-888-568-7649, ext. 698.

COMMUNITY REPRESENTATIVE PART TIME

work, full time fun! Work with international exchange students and host families. Strong community spirit and warm hearts for teens. 1-888-552-9872.

COMPUTER, INTERNET PEOPLE

wanted to work online. \$125-\$175 an hour. Full training. Vacations, bonuses and incentives. Bilinguals also needed. 49 countries. Free e-book: www.profitpc.net.

EARN UP TO \$35 per hour.

Internet travel agency. No experience needed. Full training. Computer with modem required. Call 1-888-689-1560, ext. 5073

DRIVERS WANTED

TRUCK DRIVERS WANTED.

Cattle hauling or reefer experience necessary. Must be at least 25 years old and have a current class A CDL. Cattle haulers call Terry at 1-800-234-9714. Reefers drivers call Maria at 1-800-234-9714.

TRUCK DRIVERS OTR

2-3 weeks. Solo and teams - Good miles, apy, excellent equipment and benefits. One year OTR experience required. Gulf Coast Transport, 1-888-988-8666.

DRIVERS SOLOS UP TO

.45 cpm, teams up to .41 cpm. contractors .81 cpm all miles. Lease options available (no money down), fuel incentives and more! Call Burlington Motor Carriers, 1-800-583-9504.

DRIVER TRAINING

A \$35,000 PER YEAR career! C.R. England needs driver trainees. 15 day CDL training. Housing/meals included. No upfront \$\$\$ Tractor Trailer Training. 1-888-781-8556.

FINANCIAL SERVICES

CREDIT CARD DEBT? Avoid bankruptcy. *Stop collection calls. *Cut finance charges. *Cut payments up to 50%. Debt consolidation. Fast approval. No credit check. Call 1-800-270-9894.

A BAD DAY is being in debt!

Lower your payments and interest immediately and confidentially. Call ACCC now at 1-888-BILL-FREE, www.billfree.org. Non-Profit service.

BE DEBT FREE - YEARS sooner!

Low payments. Reduce interest. Stop late fees. stop collectors. Family credit counseling. Non-profit Christian agency. Se habla Español Recorded message: 1-800-729-7964. Free quote. www.familycredit.org.

500FASTCASH.COM - SHORT TERM loans up to \$500.00!

We want your business! Top apply: 1-

DRIVERS WANTED

reimbursement up to \$5,000. (EOE-m/f), www.swifttrans.com. 1-800-284-8785.

DRIVERS: NORTH AMERICAN Van Lines

has openings in logistics, relocation, blanket wrap and flatbed fleets. Minimum of 3 months OTR experience required. Tractor purchase available. Call 1-800-348-2147, Dept. TXS.

DRIVERS 2-DAY ORIENTATION.

Great pay, Miles, support staff. Home at your request. Class A CDL required. We'll be there for you. Continental Express, 1-800-727-4374.

DRIVERS: ALLIED VAN Lines

has openings in electronics and trade shows. Class A CDL with 1 year OTR experience. Tractor purchase available. Call 1-800-634-2200, Dept. ATXS.

OTR DRIVER - MARTEN Transport Ltd.

Can pay you with one year + experience, 33cpm. Call 1-800-395-3331, www.marten.com.

DRIVERS: OWNER/OPERATORS, Fleetwood Transportation

is now leasing. Great lease package, we can help keep you loaded. Also need company drivers. 1-888-276-9923, www.ftwd.net.

DRIVERS NEEDED. LOOK!

Get your CDL training. Housing/meals included. No upfront \$\$\$ Tractor Trailer Training. 1-888-781-8556.

DRIVER - IT PAYS to start with us.

Call SRT today 1-877-BIG-PAY-DAY * Great pay * Paid weekly * Excellent benefits * New equipment * \$1,250 sign-on bonus * Student graduates welcome. Southern Refrigerate Transport.

DRIVERS WANTED

300+ ENTRY LEVEL drivers needed! 38k-42k potential! No experience necessary. Tuition reimbursement available. Over 40 trucking companies to choose from. Call today! CDL Delivers, 1-800-260-0294.

COMPANY PAID CDL training & first year income

\$35K - Steven Transport - OTR drivers wanted! Non-experienced or experienced, 1-800-333-8595. EOE.

DRIVER: CONVENANT TRANSPORT

No CDL - No problem 1-800-806-5549 * Teams start up to 46cpm * \$1,000 sign on bonus for experienced company drivers. Experienced drivers, 1-800-441-4394; owner/operators 1-877-848-6615. Graduate students 1-800-338-6428.

DRIVERS-OWNER/OPERATORS:

Run regional. Home weekly! Paid: Base plate, permits, fuel taxes. 81cpm. Loaded and empty plus fuel surcharge. 1-800-454-2887. Arnold Transportation.

DRIVERS - CFI HIRING

OTR company/student/owner operators. Company with one year experience start at \$.32cpm. Owner/Operator start at \$.86cpm all miles (w/fuel surcharge). Also ask about our 2-week spouse training program in an automatic transmission truck. Call 1-800-CFI-DRIVE.

INTERSTATE LEASING - DRIVERS and Owner/Operators

wanted for various runs. CDL training available. Tuition reimbursement up to \$3,000. (EOE-m/f), www.swifttrans.com. 1-800-227-5751.

SWIFT TRANSPORTATION - DRIVERS and Owner/Operators

wanted for various runs. CDL training available. Tuition

BANK OWNED REPO W/ FINANCING AVAILABLE!

2BR, 2BA, 1400 SF rancher. Needs carpet. (1815 W. Avenue 'B') \$37,500 - MAKE OFFER - Call P.K. Ramsey @ 1-800-757-9201 ext.7582 M-F (3% ava.)

I'M MAD...at banks who don't give real estate loans

because of bad credit, problems or new employment. I do, call L.C. Kirk, Homeland Mortgages, (254)947-4475.

CANCELLED SUBDIVISION REPOSSESSION liquidation!

Builder default: 12 brand new, affordable preinsulated home packages. Lifetime warranty. First rate quality. Your land/floorplan. Local references: 1-800-874-6032. Sacrifice - Assume Balance.

FOR SALE

FOR SALE! 99 CHEV SILVERADO Z-71, BLACK, LOADED, 35,000 MILES, VERY SHARP! CALL 272-3594 AFTER 6

Complete Computer including monitor and printer, plus desk.

Asking \$600 OBO. Call 272-3119.

Gray Brahman Bulls and heifers.

Registered from J.D. Hudgins, bloodline. Spade Brahman, Spade, TX. (806)233-2481.

SERVICES

Add On's and Roofing

We Will Travel Handy Randy References Available
Sheetrock, Drywalling, Tape & Bed, Patch Up Jobs, Acoustic & Painting, Small Concrete Jobs, Picket Fences, Bathroom Remodeling, Floor Tile, Sky Lights, Car Ports, Garage Doors
Littlefield, TX Page 766-9342 806-385-3103

AIR CONDITIONING

Financing available on new central refrigerated air conditioning - heating equipment. As low as \$59 a month. Bad credit? Bankruptcy? No Problem! WE WILL FINANCE YOU! Air America 791-1093

House for Sale at 1625 W. Ave. B.

4 Bedrooms, 2 Baths, Central Heating and Air, 2 Storage Barns. Asking \$30,000. Call 272-5095 for an appointment.

40 Acre Tracts: 2 1/2 Mi. N. of city limits on Hwy 214 & 1/2 Mi. E. to SW corner.

\$600/A.
Farrar & Associates
806-894-4386

For Sale by Owner

Richland Hills Area 3 bedrooms, 2 baths, living room, sunroom, 2 fireplaces, basement, carport, central heating & air, plus storage bldg. Asking \$176,500. By appointment only! Call 272-4943 or 272-4903

160 ACRES IRRIGATED FARM

One well. Lays good. Southeast of Lazbuddie.

320 ACRES IRRIGATED FARM

Southwest of Lariat. 4 Wells. 2 Sprinklers. Priced to Sell!!!

Call Daren at J.B. Sudderth Realty, Inc.

806-481-3288.

\$15,900 for 1995 3/2 SW. Great bargain!

Hurry! Won't last! Clayton Homes 2005 N. University

Buy It, Sell It, Trade It In the Journal!

Call today! 806-272-4536

SERVICES

Will do your ironing!

I deliver & pick-up within Muleshoe! I provide starch! Bring this ad for a 10% discount! Also call if interested in Avon - to buy or sell! Call Denise Coldiron 272-3140.

Life is what you make it!

UNBELEIVABLE!

4bdr, 2 bath home under \$30,000. Must See! Clayton Homes 2005 N. University

House for sale by owner.

3-2, carport, lg. storage & apt. bldg., brick veneer, fenced & cable hook-ups. N. 214 on pavement. Call 272-4278, mornings; 806-562-3961 or (972)625-3026.

ZERO! DOWN if you own land.

Call for details. Clayton Homes 2005 N. University. 749-4063

FIRST AG CREDIT, FCS

You find the land...we'll deliver the loan

- ◆ Farm & Ranch Loans
- ◆ Agri-Business Loans
- ◆ Small Town & Country Home Loans
- ◆ Automobile & Equipment Leasing
- ◆ Low Stock Requirement: 2% or \$1,000

Dimmitt Hereford Muleshoe
806-647-4178 806-364-1464 806-272-3010

LAMB CO. - 1378 acre farm/beef factory, 8 circles, large set of steel pens with circular crowding alley, hyd. chute and scale, barbed wire & steel post fencing, near town, pavement.

PARMER CO. - 618 acres - 4 circles, pavement, near Farwell.

We have other good dairy locations in the Panhandle and N.M. and some good ranches, we will attempt to divide them to suit your operation and assist in obtaining incentive packages from local municipalities.

www.scotlandcompany.com

Ben G. Scott - Broker (800)933-9698 day/eve

Vic Coker Land Co.

Agricultural Real Estate

Parmer County - 237 Acres East of Lariat.

2 Wells. Linear move sprinkler. Good soil and water.

1296 Acres - Castro County.

6 Circles, 6 Wells. Very good water and soil. 310 Acres of grass.

Castro County Lamb County Line.

600 Acres on Pavement. EXCELLENT WATER, 4 Wells. 3 Centerpivot sprinklers.

Northeast of Muleshoe - 195 Acres with center pivot.

2 wells. Lays good.

Parmer County - 960 Acres on Pavement.

2 Half Miles. 5 Wells. Large Barn. Modest House.

160 Acres Northeast of Muleshoe in Parmer County.

Center pivot. Good soil and 650 G.P.M. water.

280 Acres in Hub Area.

Excellent soil, lays good. Excellent water. 2 Wells. Reasonably Priced.

East of Muleshoe - 328 Acres.

90 Acres of C.R.P. 1 Large center pivot. 5 wells.

310 Main Street, Suite 103

Muleshoe, Texas
Office (806) 272-3100 Home (806) 965-2468

Nieman Realty

116 E. Ave. C • George Nieman, Broker • 272-5285 or 272-5286

RICHLAND HILLS - PARK RIDGE AREA

- NICE 2-1-1 Brick, Cent. Heat, win. evap. air, built-ins, new carpet & paint, storm windows & doors, approx. 1515' lv. area, fenced yd., MORE!!! \$39.5K!! RH-4
- VERY NICE 3-2 1/2-2 Brick Home, new paint, carpet, tile, & vinyl, new shingles, Hi-Eff. Cent. A&H, built-ins, FP w/ Country Comfort insert provides heat savings, also has approx. 600 sq. ft hobby/game room attached by breezeway, with nice carpet, wall heat, win. evap., 1/2 bath plus extra stor. bldg. & MUCH MORE!!! \$93K!! RH-3
- LOT 83, PKRDG. - \$1000 .00, SEVERAL OTHER NICE LOTS ARE AVAILABLE - CALL FOR MORE INFO!!
- NICE 3-3-1 Brick, Cent. heat, evap. air, built-ins, fans, 2000'+lv. area, fenced yd., patio, stor. bldg.!! \$57.5K!! RH-1
- JUST LISTED-NICELY REMODELED 3-2-3 Brick Home on corner lot, new paint, carpets, whirlpool tub, shower unit, & heat pump. Home also has built-ins, fireplace, fenced yd., Stor. Bldg. & MUCH MORE!!! \$79,900!! RH-2

HIGHLAND AREA

- NICE 3-1-1 Brick, Cent. heat & evap. air, nice carpet, fans, 2 stor. bldgs., fenced yd., MORE!!! \$36.5K!! HL-1

LENAU - COUNTRY CLUB AREA

- 2-1-1 Home, wall furn. heat, \$18K!! L-4

COMMERCIAL

- Duplex (2-2 bdrm. 1 bath units) plus 1 (2 or 3 bdrm) for residence or rental. \$30K!!
- GOOD INCOME PROPERTY - approx. 3490' bldg., paved parking, good net lease!! PRICED TO SELL!
- Established Business: Land, Bldg. & Equip., \$75K!!
- 6,600 sq. ft. metal building with approximately 1080 sq. ft. additional storage area on Hwy. 70-84, 140' x 100' tract!! \$34K!!
- 200 Main & E. Ave. B-4 rental units plus upstairs & basement or renovate for your own special use!! \$65K!!
- 4 Unit Apt. Complex-all 2 bdrm. 1 bath, wall furnace heat, evap. air, kit, stove, fenced yds. \$55K!!!

HIGH SCHOOL

- VERY NICE 3-1-1 Brick, Heat pump, DW, nice carpets, fenced yd., MORE!!! \$30's!! HS-1
- VERY NICE 3-1-1 Brick, Cent. A&H, stove, DW, fenced yd., MORE!!! \$38K!! HS-4

3-2 Home, corner lot, floor furnace heat, fenced yd.

\$25K!! HS-10

PRICE REDUCED - NICE 3-1-1 Home, Cent. Heat & Cent. Evap. Air, built-ins, stor. bldg., fenced yd., MORE!!! \$35.5K!!

HS8

3-1-1 Brick, Dual Fuel Heat Pump, DW, Disp., 4 fans, cov. patio, 2 stor. bldgs., fenced yd. \$34,500!!

HS-3

VERY NICE 3-1-1 Brick, Cent. A&H, 3 ceiling fans, stor. bldg., fenced yd. \$38K!!

HS-5

VERY NICE 2-1-1 Brick, Elec. Heat Pump, stove disp. fans, deck, fenced yd., MORE!! \$32.5K!!

HS-13

3-1-1 Brick, Cent. heat, evap. air, Dishwasher, fenced yd.!! \$28K!!



MARDI GRAS MONEY SAVERS

PRICES EFFECTIVE FEBRUARY 21-27, 2001

MEAT

- X-TRA SAVINGS PAK REG. **GROUND BEEF** LB **99¢**
- X-TRA SAVINGS PAK **SPLIT BREAST CHICKEN**..... LB **99¢**
- 32 OZ. REG. OR 30 OZ. BBQ PILGRIM'S PRIDE **BUFFALO WINGS**..... YOUR CHOICE **\$4.99**
- X-TRA SAVINGS PAK BONELESS **PORK SIRLOIN CHOPS** LB **\$1.99**
- WHOLE **SALMON** LB **99¢**
- WHOLE **TALAPIA** LB **\$1.39**
- OSCAR MAYER ASSTD. VARIETIES **MEGA LUNCHABLES**.. 19.51-19.96 OZ. **2/\$5**
- OSCAR MAYER ASSTD. VARIETIES **VARIETY PAKS**..... 8-9 OZ. PKG **\$2.29**
- OSCAR MAYER COOKED, BOILED, HONEY OR LOW SALT **HAM**..... 6 OZ. PKGS **2/\$3**
- OSCAR MAYER REG., THIN SLICED, LIGHT OR MEAT COTTO SALAMI **MEAT BOLOGNA** 12 OZ. PKG **4/\$5**
- BAR S JUMBO **MEAT FRANKS** 16 OZ. PKG **79¢**
- BAR S SLICED **BACON** 12 OZ. PKGS **2/\$3**
- BAR S HICKORY OR HONEY **SLICED HAM** 1 LB. PKG **\$2.99**
- BAR S WHOLE BONELESS **WHOLE HAM** EACH **\$6.99**
- BAR S **HOT LINKS** 5 LB. BAG **\$7.99**
- BAR S **MEAT FRANKS** 12 OZ. PKG **69¢**
- BAR S **RED FRANKS**..... 2 LB. PKG **2/\$5**
- BAR S JUMBO **MEAT BOLOGNA** 5 LB. ROLL **\$4.99**
- BAR S GROUND **BEEF PATTIES** 3 LB. PKG **\$4.99**
- OWENS ASSTD. VARIETIES **BREAKFAST SAUSAGE** ... 1 LB. ROLL **\$1.99**
- OWENS REG. OR HOT **BREAKFAST SAUSAGE** ... 2 LB. ROLL **\$3.79**
- LOUIS RICH **TURKEY BACON** 12 OZ. PKG **\$1.89**
- APPROX. 5-6 LB. BLOCK **MUENSTER OR ASADERO CHEESE**..... LB **\$1.79**
- BAR S 120 CT. **AMERICAN CHEESE** 5 LB. BOX **\$9.99**

- HILLS BROS. **COFFEE** 11.5-13 OZ. **2/\$4**
- ASSTD. FLAVORS **V-8 SPLASH DRINKS** 32 OZ. BTL **2/\$3**
- LOWE'S **DRINKING WATER** GAL. JUG **2/\$1**
- LOWE'S SPICES **GROUND SHRIMP** 4 OZ. **\$2.99**
- 8 OZ. CHACALES CORN • 1 OZ. GROUND SHRIMP **LOWE'S SPICES**..... YOUR CHOICE **2/\$3**
- CASA DE LOWE'S HOMESTYLE OR BURRITO SIZE **FLOUR TORTILLAS** 10 CT. PKG **79¢**
- ASSTD. 10 PACK **CAPRI SUN OR TANG DRINKS**.. 6.7 OZ. **2/\$5**
- KRAFT **MINUTE RICE** 28 OZ. BOX **2/\$5**
- TACO BELL REG. OR FAT FREE **REFRIED BEANS** 16 OZ. CAN **3/\$2**
- TACO BELL **TACO SHELLS** 12 CT. PKG **3/\$4**
- ASSTD. 6 PACK **KOOL-AID BURSTS** 6.75 OZ. **4/\$5**
- ASSTD. REG. OR INSTANT **JELL-O PUDDING** 1-3.9 OZ. PKG **3/\$2**
- ASSTD. 3 OZ. REG. OR 3 OZ. SUGAR FREE **JELL-O GELATIN** YOUR CHOICE **2/\$1**
- 16 OZ. GREAT GRAINS RAISIN DATE • 15 OZ. BANANA NUT CRUNCH • 13 OZ. CRANBERRY ALMOND CRUNCH • 13.5 OZ. BLUEBERRY MORNING • 16 OZ. GREAT GRAINS PECAN • 19.5 OZ. CINNA-CLUSTER RAISIN BRAN **POST CEREALS** YOUR CHOICE **2/\$5**
- GENERAL FOODS ASSTD. **INTERNATIONAL COFFEES** ... 4-10 OZ. **2/\$7**
- SELECT GROUP KRAFT DELUXE **MAC & CHEESE OR VELVEETA DINNERS** 9.4-14 OZ. **2/\$4**
- 6 PACK **DASANI WATER** 5 LITER BTL **2/\$4**
- ALL TYPES **COCA-COLA, SPRITE OR DR. PEPPER**..... 3 LITER BTL **3/\$5**
- ALL TYPES **COCA-COLA, SPRITE OR DR. PEPPER**..... 6 PK.-12 OZ. CANS **3/\$5**
- LOWE'S ASSTD. **SOFT DRINKS** 24 PK. CANS **\$3.99**

PRODUCE

- GOLDEN RIPE **BANANAS** LBS **4/\$1**
- TANGY **KEY LIMES** **15/\$1**
- SWEET **RED PLUMS** LB **\$1.99**
- SWEET **CANTALOUPE** LB **59¢**
- TROPICAL **COCONUTS** **2/\$1**
- LARGE SWEET **D'ANJOU PEARS** LB **89¢**
- SEEDLESS **RED GRAPES** LB **\$1.49**
- FRESH TENDER **JICAMA** LB **79¢**
- CREAMY HASS **AVOCADOS** **2/88¢**
- YOUR CHOICE • HOT SPICY JALAPENOS • YELLOW HOTS • SERRANO • ANAHEIM **PEPPERS** LB **99¢**
- FRESH **CILANTRO** BUNCHES **3/\$1**
- LARGE RIPE **TOMATOES** LB **99¢**
- SLICED OR WHOLE SNO-WHITE **MUSHROOMS** 8 OZ. PKG **99¢**

HEALTH & BEAUTY

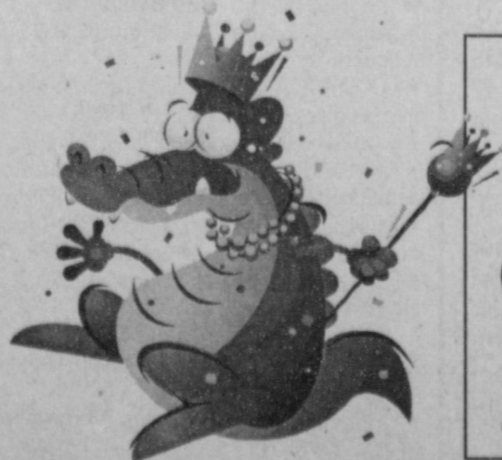
- CAPLETS, GELCAPS OR GELTABS **TYLENOL EX. STRENGTH**... 24 CT. **2/\$5**
- O.B. ASSTD. **TAMPONS** 20 CT. PKG **\$3**
- MIX OR MATCH AVEENO 4 OZ. TUBE **DIAPER RASH CREAM**, AVEENO 8 OZ. BTL **BABY LOTION OR AVEENO 5 CT. PKG BABY BATH PACKETS**..... YOUR CHOICE **2/\$7**
- CLEAN & CLEAR **FACIAL CLEANSER** 8 OZ. BTL **2/\$6**
- 30 CT. POOH OR SESAME STREET • 25 CT. BARBIE OR BLUES CLUES **BAND-AID BANDAGES** YOUR CHOICE **3/\$5**
- MIX OR MATCH JOHNSON'S • 9 OZ. REG. OR CORN STARCH HEAD-TO-TOE BABY WASH, BABY POWDER • 8 OZ. BABY BATH • 7 OZ. BABY SHAMPOO • 375 CT. COTTON SWABS • 9 OZ. BTL. ALOE VITAMIN E BABY LOTION **BABY PRODUCTS**..... YOUR CHOICE **3/\$5**

- LOWE'S SPLIT TOP **WHEAT BREAD** 24 OZ. LOAF **77¢**
- TOSTITOS® **QUESO DIP** 15.5 OZ. JAR **2/\$5**
- LAY'S® **POTATO CHIPS**..... PRE-PRICED \$2.99 **3/\$5**
- ASSTD. NABISCO TRISCUIT, WHEAT THINS OR BETTER CHEDDARS **SNACK CRACKERS** 7-10 OZ. **2/\$4**
- NESTLE ASSTD. **CANDY BARS** SINGLE BARS **3/99¢**
- GENERAL MILLS **CHEERIOS** 10 OZ. BOX **3/\$4**
- VARIETY PACK FROSTED CHERRY, FROSTED APPLE OR PLAIN CHERRY **TOAST'EM POP-UPS**..... 22 OZ. **2/\$5**
- MRS. FRESHLEY'S SUGAR, CHOCOLATE OR VARIETY **DONUTS** 11 OZ. BOX **2/\$4**
- NABISCO **OREO COOKIES** 20 OZ. PKG **2/\$5**
- LOG CABIN COUNTRY KITCHEN **SYRUP** 24 OZ. BTL **2/\$4**
- AUNT JEMIMA REG., BUTTERMILK OR COMPLETE **PANCAKE MIX** 32 OZ. BOX **3/\$5**
- SHURFINE LONG OR THIN SPAGHETTI **PASTA** 24 OZ. PKG **\$1.19**
- DEL MONTE ASSTD. **SPAGHETTI SAUCE** 26-26.5 OZ. CAN **99¢**
- HUNGRY JACK BONUS BOX **MASHED POTATOES** 15.3 OZ. **\$1.99**

FROZEN & DAIRY

- LOWE'S HOMOGENIZED/SHURFINE/SHURSAVING LOW FAT PREMIUM QUALITY-ALL VARIETIES **MILK** GALLON JUG **\$1.97**
- GOLDEN COUNTRY **SANDWICH SINGLES** 10.7 OZ. PKG **99¢**
- 6 CT. NEAPOLITAN OR VANILLA SUNDAE NUTTY SUNDAE CONES • 12 CT. KRUNCH BARS OR SWEET FREEDOM FUDGE LITES **BLUE BUNNY NOVELTIES** .. YOUR CHOICE **2/\$6**
- ASSTD. BLUE BUNNY **ICE CREAM OR FROZEN YOGURT**..... HALF GAL. **2/\$6**
- KRAFT **PARKAY SPREAD** 48 OZ. TUB **3/\$5**
- VELVEETA REG. OR CHEDDAR **SHREDDED CHEESE** 8 OZ. **2/\$4**
- REG., LIGHT OR FAT FREE TOPPING **COOL WHIP** 12 OZ. TUB **2/\$4**
- BANQUET ASSTD. **POT PIES** 7 OZ. PKG **2/\$1**
- ASSTD. VARIETIES SELECT MENU OR VALUE MENU **BANQUET DINNERS**.... 6.7-11 OZ. PKG **99¢**
- ASSTD. ORIGINAL **TOMBSTONE 12" PIZZA**.. 22 OZ. PKG **2/\$6**
- FISHER BOY **FISH STICKS** 24 OZ. PKG **\$2.99**
- ASSTD. STOVE TOP **OVEN CLASSICS** 14-16 OZ. PKG **2/\$4**
- ASSTD. PILLSBURY (STRAWBERRY OR BLUEBERRY CREAM CHEESE) **TOASTER STRUDELS, SCRAMBLES OR BAGEL SHOPPE** 10-11.5 OZ. PKG **2/\$4**
- PILLSBURY ASSTD. **COOKIE DOUGH** 18 OZ. ROLL **2/\$4**
- PILLSBURY ASSTD. **GRANDS! BISCUITS** 16.3-17.3 OZ. **4/\$5**
- CINNAMON W/ICING, CARAMEL OR ORANGE **PILLSBURY ROLLS**..... 12.4-13.9 OZ. **3/\$5**
- TOTINO'S ASSTD. **PIZZA ROLLS** 7.5 OZ. PKG **2/\$3**
- PILLSBURY HOMESTYLE OR BUTTERMILK **HUNGRY JACK WAFFLES** ... 12 OZ. **2/\$3**
- ASSTD. **JENO'S PIZZA** 7.2-8.1 OZ. BOX **88¢**
- SWEET PEAS, NIBLET CORN OR MIXED VEGETABLES **GREEN GIANT VEGETABLES** 16 OZ. PKG **4/\$5**
- SELECT GROUP GREEN GIANT **VEGETABLE BLENDS** ... 9-10 OZ. BOX **2/\$3**

- ASSTD. FOOD **STORAGE CONTAINERS** 8 PC. **2/\$5**
- 11 OZ. **JUICE GLASSES**..... 10 PACK **\$4**
- 6" STONEWARE **CEREAL BOWLS** EACH **\$1**
- ANGEL SOFT **BATH TISSUE** 4 ROLL PKG **97¢**
- CORONET PRINT **PAPER TOWELS**..... REG. ROLL **3/\$2**
- 24 CT. MEDIUM, 18 CT. LARGE OR 16 CT. EX. LARGE-PRE PRICED \$3.99 **ULTRA "CUDDLES" DIAPERS**..... YOUR CHOICE **2/\$7**
- FIELD TRIAL CHUNKS **DOG FOOD**..... 17.6 LB. BAG **\$3.99**
- SMALL OR LARGE BITES **PEDIGREE MEALTIME**..... 22 LB. BAG **\$9.99**
- PEDIGREE LITTLE CHAMPIONS GOURMET, WITH BEEF OR CHICKEN **DOG FOOD** 5.5 OZ. CAN **2/\$1**
- 100 OZ. LIQUID OR REG./W-BLEACH • 80-81 OZ. POWDER **SURF ULTRA DETERGENT** **\$3.97**
- GENERAL MILLS **WHEATIES** 12 OZ. BOX **99¢**
- PILLSBURY READY TO SPREAD ASSTD. **FROSTING** 16 OZ. CANS **3/\$4**
- PILLSBURY ASSTD. **CAKE MIXES** 18.2 OZ. BOX **77¢**
- ASSTD. SMACK CUP **RAMEN** 2.25 OZ. PKGS **3/99¢**
- ASSTD. SMACK **RAMEN NOODLES** 3 OZ. PKG **10/\$1**



Lowe's MARKETPLACE

401 W. American Blvd. Muleshoe 272-4585

WESTERN MONEY UNION TRANSFERSM
"The fastest way to send money"

AFFILIATED FOODS INC.
MEMBER STORE AT PARTICIPATING STORES

WE RESERVE THE RIGHT TO LIMIT QUANTITIES IN TEXAS